

Pneumonia - ever had shot by State, County, Island, Community, BRFSS Age Group, DOH Race-Ethnicity, Gender, Education Level, Employment Status (Grouped), Household Income, Poverty Level, Marital Status (Grouped), Married, Health Care Coverage, for the Year(s) - 2001, 2002, 2003, 2004, 2005, 2006, 2007, 2008, 2009, 2010

Note: Weighted numbers (#), percentages and 95% confidence intervals; Respondents aged 18 years and older; n/r (Not Reportable) - If the unweighted total responses for a dimension (row) is <50 that row will not be shown; n/a (Not Available) - Not asked of a subset of respondents

The trend analysis report shows the trend for the selected health variable over selected years in a table and a graph. Estimated Population: This number is a weighted representation of the population who responded to a particular question in the survey. For most questions the eligible population will be the entire adult population. For some secondary questions only a subset of the population was asked the question. For example, all survey participants were asked if they had diabetes, but only those who answered yes were asked if they use insulin. If a dimension value is unknown for a particular survey record, that record will not be included in the counts for that particular dimension.

For documentation on other terms and coding in this report, please go to the following links

[Click here to access BRFSS documentation](#)

[Click here to access DOH Race-Ethnicity coding](#)

[Click here to access The Hawai'i Data Guide](#)

[Click here to access Poverty Level Methodology](#)

**For questions about this report, please contact
The Hawaii Health Data Warehouse**

profiles@hhdw.org

(855) 946-5899 x15

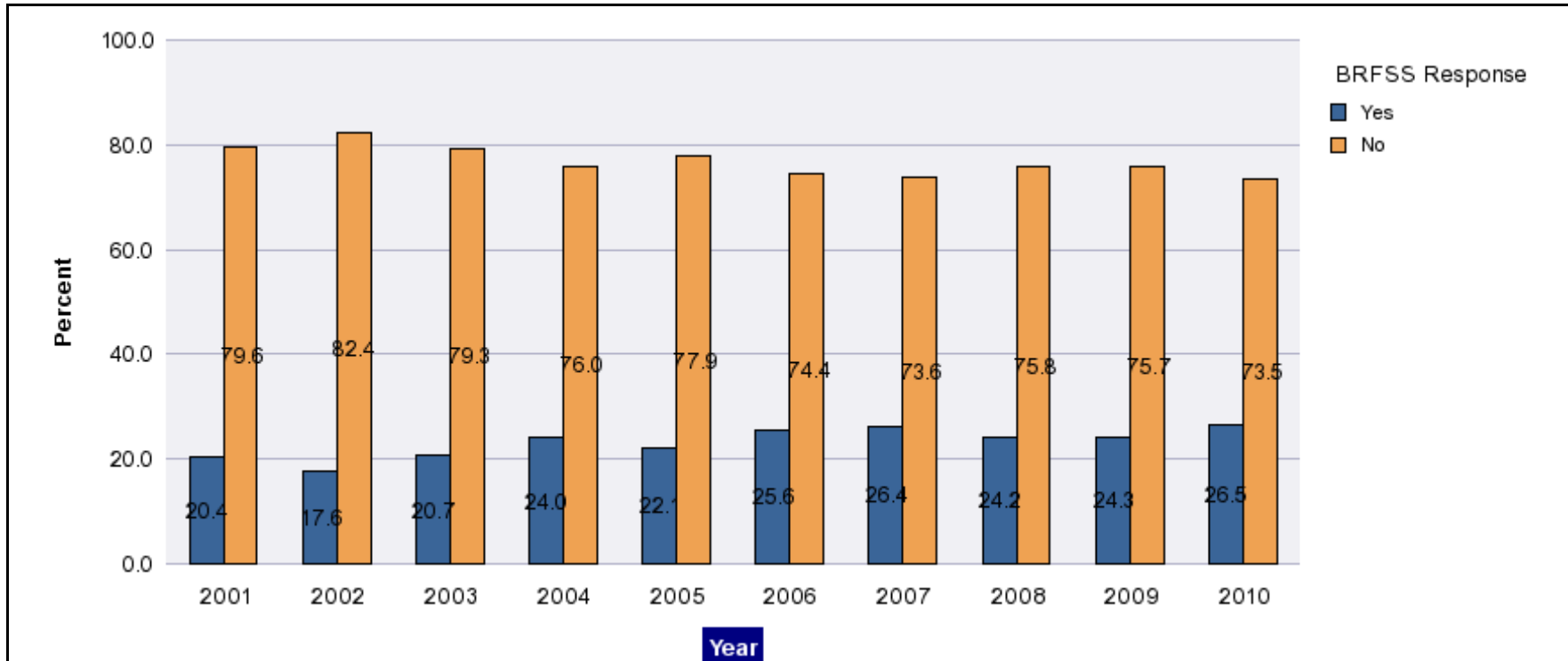
Pneumonia - ever had shot by State, County, Island, Community, BRFSS Age Group, DOH Race-Ethnicity, Gender, Education Level, Employment Status (Grouped), Household Income, Poverty Level, Marital Status (Grouped), Married, Health Care Coverage, for the Year(s) - 2001, 2002, 2003, 2004, 2005, 2006, 2007, 2008, 2009, 2010

Note: Weighted numbers (#), percentages and 95% confidence intervals; Respondents aged 18 years and older; n/r (Not Reportable) - If the unweighted total responses for a dimension (row) is <50 that row will not be shown; n/a (Not Available) - Not asked of a subset of respondents

Year	Yes			No			Estimated Population
	#	%	C.I.(95%)	#	%	C.I.(95%)	#
2001	177,000	20.4	18.7 - 22.2	688,600	79.6	77.8 - 81.3	865,500
2002	155,100	17.6	16.3 - 18.9	727,900	82.4	81.1 - 83.7	883,000
2003	187,600	20.7	19.1 - 22.2	720,200	79.3	77.8 - 80.9	907,900
2004	204,500	24.0	21.3 - 26.7	646,300	76.0	73.3 - 78.7	850,800
2005	198,300	22.1	20.7 - 23.6	698,100	77.9	76.4 - 79.3	896,500
2006	220,500	25.6	24.1 - 27.1	641,300	74.4	72.9 - 75.9	861,800
2007	231,200	26.4	24.8 - 27.9	646,200	73.6	72.1 - 75.2	877,400
2008	212,700	24.2	22.7 - 25.6	667,600	75.8	74.4 - 77.3	880,400
2009	215,400	24.3	22.9 - 25.7	671,000	75.7	74.3 - 77.1	886,400
2010	233,800	26.5	25.0 - 28.1	647,200	73.5	71.9 - 75.0	881,100

Pneumonia - ever had shot by State, County, Island, Community, BRFSS Age Group, DOH Race-Ethnicity, Gender, Education Level, Employment Status (Grouped), Household Income, Poverty Level, Marital Status (Grouped), Married, Health Care Coverage, for the Year(s) - 2001, 2002, 2003, 2004, 2005, 2006, 2007, 2008, 2009, 2010

Note: Weighted numbers (#), percentages and 95% confidence intervals; Respondents aged 18 years and older; n/r (Not Reportable) - If the unweighted total responses for a dimension (row) is <50 that row will not be shown; n/a (Not Available) - Not asked of a subset of respondents



Pneumonia - ever had shot by State, County, Island, Community, BRFSS Age Group, DOH Race-Ethnicity, Gender, Education Level, Employment Status (Grouped), Household Income, Poverty Level, Marital Status (Grouped), Married, Health Care Coverage, for the Year(s) - 2001, 2002, 2003, 2004, 2005, 2006, 2007, 2008, 2009, 2010

Note: Weighted numbers (#), percentages and 95% confidence intervals; Respondents aged 18 years and older; n/r (Not Reportable) - If the unweighted total responses for a dimension (row) is <50 that row will not be shown; n/a (Not Available) - Not asked of a subset of respondents

Year: 2010

State	Yes			No			Estimated Population
	#	%	C.I. (95%)	#	%	C.I. (95%)	#
Hawaii State	233,800	26.5	25.0 - 28.1	647,200	73.5	71.9 - 75.0	881,100

County	Yes			No			Estimated Population
	#	%	C.I. (95%)	#	%	C.I. (95%)	#
Hawaii	30,600	25.1	22.2 - 28.0	91,300	74.9	72.0 - 77.8	121,900
Honolulu	166,300	27.0	24.9 - 29.0	450,500	73.0	71.0 - 75.1	616,800
Kauai	10,900	24.9	20.3 - 29.4	33,100	75.1	70.6 - 79.7	44,000
Maui	26,000	26.4	22.9 - 30.0	72,400	73.6	70.0 - 77.1	98,300

Pneumonia - ever had shot by State, County, Island, Community, BRFSS Age Group, DOH Race-Ethnicity, Gender, Education Level, Employment Status (Grouped), Household Income, Poverty Level, Marital Status (Grouped), Married, Health Care Coverage, for the Year(s) - 2001, 2002, 2003, 2004, 2005, 2006, 2007, 2008, 2009, 2010

Note: Weighted numbers (#), percentages and 95% confidence intervals; Respondents aged 18 years and older; n/r (Not Reportable) - If the unweighted total responses for a dimension (row) is <50 that row will not be shown; n/a (Not Available) - Not asked of a subset of respondents

Year: 2010

Island	Yes			No			Estimated Population
	#	%	C.I. (95%)	#	%	C.I. (95%)	#
Hawaii	30,600	25.1	22.2 - 28.0	91,300	74.9	72.0 - 77.8	121,900
Kauai	10,900	24.9	20.3 - 29.4	33,100	75.1	70.6 - 79.7	44,000
Lanai	300	25.1	14.5 - 35.7	1,000	74.9	64.3 - 85.5	1,300
Maui	24,200	26.9	23.0 - 30.7	65,900	73.1	69.3 - 77.0	90,200
Molokai	1,400	20.8	14.7 - 26.9	5,400	79.2	73.1 - 85.3	6,800
Oahu	166,300	27.0	24.9 - 29.0	450,500	73.0	71.0 - 75.1	616,800

Community	Yes			No			Estimated Population
	#	%	C.I. (95%)	#	%	C.I. (95%)	#
Aiea/ Pearl City	19,600	33.2	25.7 - 40.6	39,600	66.8	59.4 - 74.3	59,200

Pneumonia - ever had shot by State, County, Island, Community, BRFSS Age Group, DOH Race-Ethnicity, Gender, Education Level, Employment Status (Grouped), Household Income, Poverty Level, Marital Status (Grouped), Married, Health Care Coverage, for the Year(s) - 2001, 2002, 2003, 2004, 2005, 2006, 2007, 2008, 2009, 2010

Note: Weighted numbers (#), percentages and 95% confidence intervals; Respondents aged 18 years and older; n/r (Not Reportable) - If the unweighted total responses for a dimension (row) is <50 that row will not be shown; n/a (Not Available) - Not asked of a subset of respondents

Year: 2010

Community	Yes			No			Estimated Population
	#	%	C.I. (95%)	#	%	C.I. (95%)	#
Ala Moana	5,700	33.7	24.4 - 43.0	11,300	66.3	57.0 - 75.6	17,000
Hanalei/ Kapaa	3,700	20.1	14.9 - 25.4	14,900	79.9	74.6 - 85.1	18,600
Hilo	8,900	24.4	19.2 - 29.5	27,600	75.6	70.5 - 80.8	36,500
Kaaawa/ Kahaluu/ Kaneohe	10,500	23.3	17.1 - 29.5	34,600	76.7	70.5 - 82.9	45,100
Kahului	8,100	26.7	20.1 - 33.3	22,300	73.3	66.7 - 79.9	30,300
Kailua/ Waimanalo	13,800	29.4	22.0 - 36.8	33,200	70.6	63.2 - 78.0	47,100
Kaimuki/ Palolo/ Waikiki	14,600	29.0	22.6 - 35.4	35,800	71.0	64.6 - 77.4	50,400
Kona	6,200	22.9	17.6 - 28.3	20,900	77.1	71.7 - 82.4	27,100
Lahaina/ Wailuku	8,200	28.7	21.3 - 36.0	20,400	71.3	64.0 - 78.7	28,600

Pneumonia - ever had shot by State, County, Island, Community, BRFSS Age Group, DOH Race-Ethnicity, Gender, Education Level, Employment Status (Grouped), Household Income, Poverty Level, Marital Status (Grouped), Married, Health Care Coverage, for the Year(s) - 2001, 2002, 2003, 2004, 2005, 2006, 2007, 2008, 2009, 2010

Note: Weighted numbers (#), percentages and 95% confidence intervals; Respondents aged 18 years and older; n/r (Not Reportable) - If the unweighted total responses for a dimension (row) is <50 that row will not be shown; n/a (Not Available) - Not asked of a subset of respondents

Year: 2010

Community	Yes			No			Estimated Population
	#	%	C.I. (95%)	#	%	C.I. (95%)	#
Lanai	300	25.1	14.5 - 35.7	1,000	74.9	64.3 - 85.5	1,300
Lihue-Waimea	7,200	28.3	21.5 - 35.2	18,200	71.7	64.8 - 78.5	25,400
Manoa/ Upper Makiki	14,300	31.2	23.8 - 38.7	31,400	68.8	61.3 - 76.2	45,700
Mililani/ Wahiawa	16,200	26.4	20.2 - 32.7	45,000	73.6	67.3 - 79.8	61,200
Molokai	1,400	20.8	14.7 - 26.9	5,400	79.2	73.1 - 85.3	6,800
Nanakuli/ Waianae	5,200	14.1	5.8 - 22.5	31,500	85.9	77.5 - 94.2	36,600
N.Hawaii	6,100	27.7	19.9 - 35.5	16,000	72.3	64.5 - 80.1	22,100
N.Shore/ Laie	5,000	21.2	11.4 - 31.1	18,400	78.8	68.9 - 88.6	23,300
Nuuanu/ Kalihi/ Moanalua	16,000	26.7	19.8 - 33.6	44,000	73.3	66.4 - 80.2	60,000

Pneumonia - ever had shot by State, County, Island, Community, BRFSS Age Group, DOH Race-Ethnicity, Gender, Education Level, Employment Status (Grouped), Household Income, Poverty Level, Marital Status (Grouped), Married, Health Care Coverage, for the Year(s) - 2001, 2002, 2003, 2004, 2005, 2006, 2007, 2008, 2009, 2010

Note: Weighted numbers (#), percentages and 95% confidence intervals; Respondents aged 18 years and older; n/r (Not Reportable) - If the unweighted total responses for a dimension (row) is <50 that row will not be shown; n/a (Not Available) - Not asked of a subset of respondents

Year: 2010

Community	Yes			No			Estimated Population
	#	%	C.I. (95%)	#	%	C.I. (95%)	#
Puna/ Kau	9,400	25.9	20.7 - 31.2	26,800	74.1	68.8 - 79.3	36,200
Salt Lake/ Foster Village	8,200	27.6	18.9 - 36.4	21,500	72.4	63.6 - 81.1	29,700
Upcountry/ Hana	7,900	25.4	19.3 - 31.5	23,300	74.6	68.5 - 80.7	31,200
Waialae/ Kahala/ Hawaii Kai	11,100	33.7	25.3 - 42.0	21,800	66.3	58.0 - 74.7	32,900
Waipahu/ Kapolei/ Ewa	26,100	24.0	18.9 - 29.2	82,500	76.0	70.8 - 81.1	108,700

Pneumonia - ever had shot by State, County, Island, Community, BRFSS Age Group, DOH Race-Ethnicity, Gender, Education Level, Employment Status (Grouped), Household Income, Poverty Level, Marital Status (Grouped), Married, Health Care Coverage, for the Year(s) - 2001, 2002, 2003, 2004, 2005, 2006, 2007, 2008, 2009, 2010

Note: Weighted numbers (#), percentages and 95% confidence intervals; Respondents aged 18 years and older; n/r (Not Reportable) - If the unweighted total responses for a dimension (row) is <50 that row will not be shown; n/a (Not Available) - Not asked of a subset of respondents

Year: 2010

BRFSS Age Group	Yes			No			Estimated Population
	#	%	C.I. (95%)	#	%	C.I. (95%)	#
18-24	13,200	13.6	8.4 - 18.8	83,900	86.4	81.2 - 91.6	97,000
25-34	24,500	15.9	11.4 - 20.5	129,200	84.1	79.5 - 88.6	153,700
35-44	19,800	13.3	9.8 - 16.8	129,000	86.7	83.2 - 90.2	148,800
45-54	22,700	14.3	11.7 - 17.0	136,000	85.7	83.0 - 88.3	158,700
55-64	32,400	23.4	20.6 - 26.2	106,000	76.6	73.8 - 79.4	138,400
65-74	51,700	59.1	55.3 - 63.0	35,700	40.9	37.0 - 44.7	87,500
75+	68,700	74.1	70.3 - 77.8	24,100	25.9	22.2 - 29.7	92,800

Pneumonia - ever had shot by State, County, Island, Community, BRFSS Age Group, DOH Race-Ethnicity, Gender, Education Level, Employment Status (Grouped), Household Income, Poverty Level, Marital Status (Grouped), Married, Health Care Coverage, for the Year(s) - 2001, 2002, 2003, 2004, 2005, 2006, 2007, 2008, 2009, 2010

Note: Weighted numbers (#), percentages and 95% confidence intervals; Respondents aged 18 years and older; n/r (Not Reportable) - If the unweighted total responses for a dimension (row) is <50 that row will not be shown; n/a (Not Available) - Not asked of a subset of respondents

Year: 2010

DOH Race-Ethnicity	Yes			No			Estimated Population
	#	%	C.I. (95%)	#	%	C.I. (95%)	#
Caucasian	80,900	29.7	27.2 - 32.3	191,000	70.3	67.7 - 72.8	271,800
Native Hawaiian	26,700	23.4	18.9 - 28.0	87,300	76.6	72.0 - 81.1	114,000
Chinese	14,200	28.4	22.4 - 34.3	35,800	71.6	65.7 - 77.6	50,000
Filipino	29,400	20.1	15.9 - 24.2	117,300	79.9	75.8 - 84.1	146,700
Japanese	64,800	31.7	28.6 - 34.8	139,600	68.3	65.2 - 71.4	204,500
Black	2,900	24.2	10.3 - 38.1	9,100	75.8	61.9 - 89.7	12,100
Other Asian	4,600	20.1	8.4 - 31.9	18,100	79.9	68.1 - 91.6	22,700
Other Pacific Islander	6,300	19.9	8.1 - 31.7	25,400	80.1	68.3 - 91.9	31,700
Other	3,100	14.6	7.0 - 22.2	18,400	85.4	77.8 - 93.0	21,500

Pneumonia - ever had shot by State, County, Island, Community, BRFSS Age Group, DOH Race-Ethnicity, Gender, Education Level, Employment Status (Grouped), Household Income, Poverty Level, Marital Status (Grouped), Married, Health Care Coverage, for the Year(s) - 2001, 2002, 2003, 2004, 2005, 2006, 2007, 2008, 2009, 2010

Note: Weighted numbers (#), percentages and 95% confidence intervals; Respondents aged 18 years and older; n/r (Not Reportable) - If the unweighted total responses for a dimension (row) is <50 that row will not be shown; n/a (Not Available) - Not asked of a subset of respondents

Year: 2010

Gender	Yes			No			Estimated Population
	#	%	C.I. (95%)	#	%	C.I. (95%)	#
Male	110,300	25.8	23.3 - 28.2	318,000	74.2	71.8 - 76.7	428,300
Female	123,500	27.3	25.3 - 29.3	329,200	72.7	70.7 - 74.7	452,800

Pneumonia - ever had shot by State, County, Island, Community, BRFSS Age Group, DOH Race-Ethnicity, Gender, Education Level, Employment Status (Grouped), Household Income, Poverty Level, Marital Status (Grouped), Married, Health Care Coverage, for the Year(s) - 2001, 2002, 2003, 2004, 2005, 2006, 2007, 2008, 2009, 2010

Note: Weighted numbers (#), percentages and 95% confidence intervals; Respondents aged 18 years and older; n/r (Not Reportable) - If the unweighted total responses for a dimension (row) is <50 that row will not be shown; n/a (Not Available) - Not asked of a subset of respondents

Year: 2010

Education Level	Yes			No			Estimated Population
	#	%	C.I. (95%)	#	%	C.I. (95%)	#
Never attended school/ Only Kindergarten to Grades 8	4,100	36.4	23.2 - 49.5	7,100	63.6	50.5 - 76.8	11,200
Grades 9 thru 11 (Some High School)	10,800	28.2	18.0 - 38.5	27,500	71.8	61.5 - 82.0	38,300
Grades 12 or GED (High School Grad)	68,600	26.7	23.7 - 29.6	188,500	73.3	70.4 - 76.3	257,100
College 1 to 3 years (Some College/ Tech)	69,800	28.3	25.1 - 31.4	176,900	71.7	68.6 - 74.9	246,700
College 4 years or more (College Grad)	80,600	24.6	22.4 - 26.8	246,800	75.4	73.2 - 77.6	327,400

Pneumonia - ever had shot by State, County, Island, Community, BRFSS Age Group, DOH Race-Ethnicity, Gender, Education Level, Employment Status (Grouped), Household Income, Poverty Level, Marital Status (Grouped), Married, Health Care Coverage, for the Year(s) - 2001, 2002, 2003, 2004, 2005, 2006, 2007, 2008, 2009, 2010

Note: Weighted numbers (#), percentages and 95% confidence intervals; Respondents aged 18 years and older; n/r (Not Reportable) - If the unweighted total responses for a dimension (row) is <50 that row will not be shown; n/a (Not Available) - Not asked of a subset of respondents

Year: 2010

Employment Status (Grouped)	Yes			No			Estimated Population
	#	%	C.I. (95%)	#	%	C.I. (95%)	#
Employed	78,000	15.1	13.3 - 16.9	437,400	84.9	83.1 - 86.7	515,400
Unemployed	13,600	22.2	15.1 - 29.3	47,500	77.8	70.7 - 84.9	61,000
Retired/Unable to work	117,200	58.2	55.3 - 61.2	84,100	41.8	38.8 - 44.7	201,200
Student/Homemaker	25,100	24.3	19.0 - 29.6	78,100	75.7	70.4 - 81.0	103,200

Pneumonia - ever had shot by State, County, Island, Community, BRFSS Age Group, DOH Race-Ethnicity, Gender, Education Level, Employment Status (Grouped), Household Income, Poverty Level, Marital Status (Grouped), Married, Health Care Coverage, for the Year(s) - 2001, 2002, 2003, 2004, 2005, 2006, 2007, 2008, 2009, 2010

Note: Weighted numbers (#), percentages and 95% confidence intervals; Respondents aged 18 years and older; n/r (Not Reportable) - If the unweighted total responses for a dimension (row) is <50 that row will not be shown; n/a (Not Available) - Not asked of a subset of respondents

Year: 2010

Household Income	Yes			No			Estimated Population
	#	%	C.I. (95%)	#	%	C.I. (95%)	#
Less than \$10,000	8,000	21.8	13.9 - 29.7	28,700	78.2	70.3 - 86.1	36,700
\$10,000 to \$14,999	9,000	34.5	24.5 - 44.4	17,000	65.5	55.6 - 75.5	26,000
\$15,000 to \$19,999	14,500	29.9	22.8 - 37.0	34,000	70.1	63.0 - 77.2	48,500
\$20,000 to \$24,999	15,900	26.9	20.9 - 32.9	43,300	73.1	67.1 - 79.1	59,200
\$25,000 to \$34,999	24,200	26.9	22.0 - 31.8	65,700	73.1	68.2 - 78.0	89,900
\$35,000 to \$49,999	39,200	31.2	26.8 - 35.5	86,600	68.8	64.5 - 73.2	125,800
\$50,000 to \$74,999	40,500	30.3	26.3 - 34.3	93,200	69.7	65.7 - 73.7	133,700
\$75,000 or more	61,000	22.0	19.4 - 24.5	216,500	78.0	75.5 - 80.6	277,500

Pneumonia - ever had shot by State, County, Island, Community, BRFSS Age Group, DOH Race-Ethnicity, Gender, Education Level, Employment Status (Grouped), Household Income, Poverty Level, Marital Status (Grouped), Married, Health Care Coverage, for the Year(s) - 2001, 2002, 2003, 2004, 2005, 2006, 2007, 2008, 2009, 2010

Note: Weighted numbers (#), percentages and 95% confidence intervals; Respondents aged 18 years and older; n/r (Not Reportable) - If the unweighted total responses for a dimension (row) is <50 that row will not be shown; n/a (Not Available) - Not asked of a subset of respondents

Year: 2010

Poverty Level	Yes			No			Estimated Population
	#	%	C.I. (95%)	#	%	C.I. (95%)	#
0-130%	48,100	23.1	19.5 - 26.8	159,800	76.9	73.2 - 80.5	208,000
131-185%	37,900	29.9	25.8 - 34.0	88,900	70.1	66.0 - 74.2	126,900
186+%	126,300	27.3	25.4 - 29.2	336,300	72.7	70.8 - 74.6	462,600

Pneumonia - ever had shot by State, County, Island, Community, BRFSS Age Group, DOH Race-Ethnicity, Gender, Education Level, Employment Status (Grouped), Household Income, Poverty Level, Marital Status (Grouped), Married, Health Care Coverage, for the Year(s) - 2001, 2002, 2003, 2004, 2005, 2006, 2007, 2008, 2009, 2010

Note: Weighted numbers (#), percentages and 95% confidence intervals; Respondents aged 18 years and older; n/r (Not Reportable) - If the unweighted total responses for a dimension (row) is <50 that row will not be shown; n/a (Not Available) - Not asked of a subset of respondents

Year: 2010

Marital Status (Grouped)	Yes			No			Estimated Population
	#	%	C.I. (95%)	#	%	C.I. (95%)	#
Married	138,200	27.0	25.1 - 28.9	374,000	73.0	71.1 - 74.9	512,200
Unmarried Couple	4,000	13.4	5.3 - 21.6	25,900	86.6	78.4 - 94.7	29,900
Widowed	35,100	66.3	61.1 - 71.4	17,900	33.7	28.6 - 38.9	53,000
Other	56,500	19.8	17.0 - 22.5	229,500	80.2	77.5 - 83.0	286,000

Married	Yes			No			Estimated Population
	#	%	C.I. (95%)	#	%	C.I. (95%)	#
Yes	141,100	26.9	25.0 - 28.9	382,400	73.1	71.1 - 75.0	523,500
No	92,600	26.0	23.4 - 28.7	263,400	74.0	71.3 - 76.6	356,000

Pneumonia - ever had shot by State, County, Island, Community, BRFSS Age Group, DOH Race-Ethnicity, Gender, Education Level, Employment Status (Grouped), Household Income, Poverty Level, Marital Status (Grouped), Married, Health Care Coverage, for the Year(s) - 2001, 2002, 2003, 2004, 2005, 2006, 2007, 2008, 2009, 2010

Note: Weighted numbers (#), percentages and 95% confidence intervals; Respondents aged 18 years and older; n/r (Not Reportable) - If the unweighted total responses for a dimension (row) is <50 that row will not be shown; n/a (Not Available) - Not asked of a subset of respondents

Year: 2010

Health Care Coverage	Yes			No			Estimated Population
	#	%	C.I. (95%)	#	%	C.I. (95%)	#
Yes	226,400	27.4	25.8 - 29.0	598,500	72.6	71.0 - 74.2	824,900
No	7,400	13.2	6.5 - 19.8	48,700	86.8	80.2 - 93.5	56,100

Pneumonia - ever had shot by State, County, Island, Community, BRFSS Age Group, DOH Race-Ethnicity, Gender, Education Level, Employment Status (Grouped), Household Income, Poverty Level, Marital Status (Grouped), Married, Health Care Coverage, for the Year(s) - 2001, 2002, 2003, 2004, 2005, 2006, 2007, 2008, 2009, 2010

Note: Weighted numbers (#), percentages and 95% confidence intervals; Respondents aged 18 years and older; n/r (Not Reportable) - If the unweighted total responses for a dimension (row) is <50 that row will not be shown; n/a (Not Available) - Not asked of a subset of respondents

Year: 2009

State	Yes			No			Estimated Population
	#	%	C.I. (95%)	#	%	C.I. (95%)	#
Hawaii State	215,400	24.3	22.9 - 25.7	671,000	75.7	74.3 - 77.1	886,400

County	Yes			No			Estimated Population
	#	%	C.I. (95%)	#	%	C.I. (95%)	#
Hawaii	27,200	21.9	19.3 - 24.4	97,300	78.1	75.6 - 80.7	124,500
Honolulu	155,300	25.0	23.1 - 26.9	465,100	75.0	73.1 - 76.9	620,500
Kauai	11,200	26.2	21.4 - 31.0	31,600	73.8	69.0 - 78.6	42,900
Maui	21,700	22.0	19.1 - 24.8	76,900	78.0	75.2 - 80.9	98,500

Pneumonia - ever had shot by State, County, Island, Community, BRFSS Age Group, DOH Race-Ethnicity, Gender, Education Level, Employment Status (Grouped), Household Income, Poverty Level, Marital Status (Grouped), Married, Health Care Coverage, for the Year(s) - 2001, 2002, 2003, 2004, 2005, 2006, 2007, 2008, 2009, 2010

Note: Weighted numbers (#), percentages and 95% confidence intervals; Respondents aged 18 years and older; n/r (Not Reportable) - If the unweighted total responses for a dimension (row) is <50 that row will not be shown; n/a (Not Available) - Not asked of a subset of respondents

Year: 2009

Island	Yes			No			Estimated Population
	#	%	C.I. (95%)	#	%	C.I. (95%)	#
Hawaii	27,200	21.9	19.3 - 24.4	97,300	78.1	75.6 - 80.7	124,500
Kauai	11,200	26.2	21.4 - 31.0	31,600	73.8	69.0 - 78.6	42,900
Lanai	300	20.0	13.8 - 26.1	1,200	80.0	73.9 - 86.2	1,400
Maui	19,600	21.8	18.7 - 24.9	70,300	78.2	75.1 - 81.3	89,900
Molokai	1,700	24.3	17.7 - 30.9	5,400	75.7	69.1 - 82.3	7,200
Oahu	155,300	25.0	23.1 - 26.9	465,100	75.0	73.1 - 76.9	620,500

Community	Yes			No			Estimated Population
	#	%	C.I. (95%)	#	%	C.I. (95%)	#
Aiea/ Pearl City	12,500	25.0	18.6 - 31.4	37,500	75.0	68.6 - 81.4	50,100

Pneumonia - ever had shot by State, County, Island, Community, BRFSS Age Group, DOH Race-Ethnicity, Gender, Education Level, Employment Status (Grouped), Household Income, Poverty Level, Marital Status (Grouped), Married, Health Care Coverage, for the Year(s) - 2001, 2002, 2003, 2004, 2005, 2006, 2007, 2008, 2009, 2010

Note: Weighted numbers (#), percentages and 95% confidence intervals; Respondents aged 18 years and older; n/r (Not Reportable) - If the unweighted total responses for a dimension (row) is <50 that row will not be shown; n/a (Not Available) - Not asked of a subset of respondents

Year: 2009

Community	Yes			No			Estimated Population
	#	%	C.I. (95%)	#	%	C.I. (95%)	#
Ala Moana	7,800	32.5	23.0 - 42.1	16,200	67.5	57.9 - 77.0	23,900
Hanalei/ Kapaa	3,700	21.3	15.9 - 26.7	13,700	78.7	73.3 - 84.1	17,400
Hilo	7,600	21.1	16.3 - 25.8	28,600	78.9	74.2 - 83.7	36,200
Kaaawa/ Kahaluu/ Kaneohe	11,200	25.2	18.8 - 31.7	33,200	74.8	68.3 - 81.2	44,500
Kahului	8,900	28.1	21.8 - 34.4	22,900	71.9	65.6 - 78.2	31,800
Kailua/ Waimanalo	12,800	29.2	21.8 - 36.5	31,000	70.8	63.5 - 78.2	43,800
Kaimuki/ Palolo/ Waikiki	15,700	31.2	24.9 - 37.5	34,600	68.8	62.5 - 75.1	50,300
Kona	6,800	24.3	19.1 - 29.5	21,200	75.7	70.5 - 80.9	28,000
Lahaina/ Wailuku	4,800	16.9	12.4 - 21.5	23,400	83.1	78.5 - 87.6	28,200

Pneumonia - ever had shot by State, County, Island, Community, BRFSS Age Group, DOH Race-Ethnicity, Gender, Education Level, Employment Status (Grouped), Household Income, Poverty Level, Marital Status (Grouped), Married, Health Care Coverage, for the Year(s) - 2001, 2002, 2003, 2004, 2005, 2006, 2007, 2008, 2009, 2010

Note: Weighted numbers (#), percentages and 95% confidence intervals; Respondents aged 18 years and older; n/r (Not Reportable) - If the unweighted total responses for a dimension (row) is <50 that row will not be shown; n/a (Not Available) - Not asked of a subset of respondents

Year: 2009

Community	Yes			No			Estimated Population
	#	%	C.I. (95%)	#	%	C.I. (95%)	#
Lanai	300	20.0	13.8 - 26.1	1,200	80.0	73.9 - 86.2	1,400
Lihue-Waimea	7,500	29.6	22.5 - 36.6	18,000	70.4	63.4 - 77.5	25,500
Manoa/ Upper Makiki	10,900	26.2	20.0 - 32.5	30,500	73.8	67.5 - 80.0	41,400
Mililani/ Wahiawa	16,900	23.4	17.7 - 29.1	55,300	76.6	70.9 - 82.3	72,200
Molokai	1,700	24.3	17.7 - 30.9	5,400	75.7	69.1 - 82.3	7,200
Nanakuli/ Waianae	5,900	22.3	12.6 - 31.9	20,600	77.7	68.1 - 87.4	26,500
N.Hawaii	4,900	19.5	13.7 - 25.2	20,500	80.5	74.8 - 86.3	25,400
N.Shore/ Laie	3,000	17.2	8.2 - 26.2	14,300	82.8	73.8 - 91.8	17,300
Nuuanu/ Kalihi/ Moanalua	17,400	26.9	20.2 - 33.5	47,500	73.1	66.5 - 79.8	64,900

Pneumonia - ever had shot by State, County, Island, Community, BRFSS Age Group, DOH Race-Ethnicity, Gender, Education Level, Employment Status (Grouped), Household Income, Poverty Level, Marital Status (Grouped), Married, Health Care Coverage, for the Year(s) - 2001, 2002, 2003, 2004, 2005, 2006, 2007, 2008, 2009, 2010

Note: Weighted numbers (#), percentages and 95% confidence intervals; Respondents aged 18 years and older; n/r (Not Reportable) - If the unweighted total responses for a dimension (row) is <50 that row will not be shown; n/a (Not Available) - Not asked of a subset of respondents

Year: 2009

Community	Yes			No			Estimated Population
	#	%	C.I. (95%)	#	%	C.I. (95%)	#
Puna/ Kau	7,800	22.5	17.7 - 27.3	27,100	77.5	72.7 - 82.3	34,900
Salt Lake/ Foster Village	6,200	19.4	11.6 - 27.2	25,600	80.6	72.8 - 88.4	31,800
Upcountry/ Hana	5,900	19.8	15.3 - 24.2	24,000	80.2	75.8 - 84.7	29,900
Waialae/ Kahala/ Hawaii Kai	12,800	27.2	20.8 - 33.6	34,100	72.8	66.4 - 79.2	46,900
Waipahu/ Kapolei/ Ewa	22,400	20.9	16.0 - 25.8	84,500	79.1	74.2 - 84.0	106,900

Pneumonia - ever had shot by State, County, Island, Community, BRFSS Age Group, DOH Race-Ethnicity, Gender, Education Level, Employment Status (Grouped), Household Income, Poverty Level, Marital Status (Grouped), Married, Health Care Coverage, for the Year(s) - 2001, 2002, 2003, 2004, 2005, 2006, 2007, 2008, 2009, 2010

Note: Weighted numbers (#), percentages and 95% confidence intervals; Respondents aged 18 years and older; n/r (Not Reportable) - If the unweighted total responses for a dimension (row) is <50 that row will not be shown; n/a (Not Available) - Not asked of a subset of respondents

Year: 2009

BRFSS Age Group	Yes			No			Estimated Population
	#	%	C.I. (95%)	#	%	C.I. (95%)	#
18-24	13,800	14.5	8.7 - 20.3	81,300	85.5	79.7 - 91.3	95,000
25-34	13,900	9.1	5.9 - 12.2	139,100	90.9	87.8 - 94.1	153,000
35-44	20,700	13.5	10.3 - 16.8	132,200	86.5	83.2 - 89.7	152,900
45-54	23,100	14.1	11.7 - 16.5	141,000	85.9	83.5 - 88.3	164,100
55-64	29,700	20.8	18.2 - 23.4	113,100	79.2	76.6 - 81.8	142,800
65-74	50,700	59.1	55.2 - 63.0	35,100	40.9	37.0 - 44.8	85,800
75+	62,300	69.6	65.4 - 73.7	27,300	30.4	26.3 - 34.6	89,600

Pneumonia - ever had shot by State, County, Island, Community, BRFSS Age Group, DOH Race-Ethnicity, Gender, Education Level, Employment Status (Grouped), Household Income, Poverty Level, Marital Status (Grouped), Married, Health Care Coverage, for the Year(s) - 2001, 2002, 2003, 2004, 2005, 2006, 2007, 2008, 2009, 2010

Note: Weighted numbers (#), percentages and 95% confidence intervals; Respondents aged 18 years and older; n/r (Not Reportable) - If the unweighted total responses for a dimension (row) is <50 that row will not be shown; n/a (Not Available) - Not asked of a subset of respondents

Year: 2009

DOH Race-Ethnicity	Yes			No			Estimated Population
	#	%	C.I. (95%)	#	%	C.I. (95%)	#
Caucasian	75,700	26.8	24.5 - 29.1	206,800	73.2	70.9 - 75.5	282,500
Native Hawaiian	22,200	20.7	16.4 - 24.9	85,200	79.3	75.1 - 83.6	107,400
Chinese	14,500	27.4	21.2 - 33.6	38,300	72.6	66.4 - 78.8	52,800
Filipino	22,000	14.9	11.5 - 18.3	125,600	85.1	81.7 - 88.5	147,600
Japanese	65,600	31.2	28.0 - 34.3	145,000	68.8	65.7 - 72.0	210,600
Black	3,800	28.0	14.0 - 41.9	9,800	72.0	58.1 - 86.0	13,600
Other Asian	4,100	20.1	8.9 - 31.3	16,300	79.9	68.7 - 91.1	20,400
Other Pacific Islander	2,900	11.0	3.6 - 18.5	23,200	89.0	81.5 - 96.4	26,100
Other	3,500	18.6	10.8 - 26.4	15,300	81.4	73.6 - 89.2	18,800

Pneumonia - ever had shot by State, County, Island, Community, BRFSS Age Group, DOH Race-Ethnicity, Gender, Education Level, Employment Status (Grouped), Household Income, Poverty Level, Marital Status (Grouped), Married, Health Care Coverage, for the Year(s) - 2001, 2002, 2003, 2004, 2005, 2006, 2007, 2008, 2009, 2010

Note: Weighted numbers (#), percentages and 95% confidence intervals; Respondents aged 18 years and older; n/r (Not Reportable) - If the unweighted total responses for a dimension (row) is <50 that row will not be shown; n/a (Not Available) - Not asked of a subset of respondents

Year: 2009

Gender	Yes			No			Estimated Population
	#	%	C.I. (95%)	#	%	C.I. (95%)	#
Male	93,100	21.6	19.5 - 23.6	338,900	78.4	76.4 - 80.5	432,000
Female	122,300	26.9	25.0 - 28.9	332,100	73.1	71.1 - 75.0	454,400

Pneumonia - ever had shot by State, County, Island, Community, BRFSS Age Group, DOH Race-Ethnicity, Gender, Education Level, Employment Status (Grouped), Household Income, Poverty Level, Marital Status (Grouped), Married, Health Care Coverage, for the Year(s) - 2001, 2002, 2003, 2004, 2005, 2006, 2007, 2008, 2009, 2010

Note: Weighted numbers (#), percentages and 95% confidence intervals; Respondents aged 18 years and older; n/r (Not Reportable) - If the unweighted total responses for a dimension (row) is <50 that row will not be shown; n/a (Not Available) - Not asked of a subset of respondents

Year: 2009

Education Level	Yes			No			Estimated Population
	#	%	C.I. (95%)	#	%	C.I. (95%)	#
Never attended school/ Only Kindergarten to Grades 8	3,900	30.6	18.5 - 42.7	8,800	69.4	57.3 - 81.5	12,600
Grades 9 thru 11 (Some High School)	10,000	29.9	20.7 - 39.2	23,300	70.1	60.8 - 79.3	33,300
Grades 12 or GED (High School Grad)	63,200	24.9	22.1 - 27.6	190,800	75.1	72.4 - 77.9	254,000
College 1 to 3 years (Some College/ Tech)	57,200	22.5	19.8 - 25.3	196,600	77.5	74.7 - 80.2	253,700
College 4 years or more (College Grad)	80,800	24.3	22.2 - 26.5	251,500	75.7	73.5 - 77.8	332,300

Pneumonia - ever had shot by State, County, Island, Community, BRFSS Age Group, DOH Race-Ethnicity, Gender, Education Level, Employment Status (Grouped), Household Income, Poverty Level, Marital Status (Grouped), Married, Health Care Coverage, for the Year(s) - 2001, 2002, 2003, 2004, 2005, 2006, 2007, 2008, 2009, 2010

Note: Weighted numbers (#), percentages and 95% confidence intervals; Respondents aged 18 years and older; n/r (Not Reportable) - If the unweighted total responses for a dimension (row) is <50 that row will not be shown; n/a (Not Available) - Not asked of a subset of respondents

Year: 2009

Employment Status (Grouped)	Yes			No			Estimated Population
	#	%	C.I. (95%)	#	%	C.I. (95%)	#
Employed	84,600	15.4	13.8 - 17.1	463,800	84.6	82.9 - 86.2	548,400
Unemployed	8,700	14.2	9.1 - 19.4	52,100	85.8	80.6 - 90.9	60,800
Retired/Unable to work	104,100	55.5	52.5 - 58.4	83,600	44.5	41.6 - 47.5	187,700
Student/Homemaker	18,200	20.5	15.2 - 25.8	70,500	79.5	74.2 - 84.8	88,700

Pneumonia - ever had shot by State, County, Island, Community, BRFSS Age Group, DOH Race-Ethnicity, Gender, Education Level, Employment Status (Grouped), Household Income, Poverty Level, Marital Status (Grouped), Married, Health Care Coverage, for the Year(s) - 2001, 2002, 2003, 2004, 2005, 2006, 2007, 2008, 2009, 2010

Note: Weighted numbers (#), percentages and 95% confidence intervals; Respondents aged 18 years and older; n/r (Not Reportable) - If the unweighted total responses for a dimension (row) is <50 that row will not be shown; n/a (Not Available) - Not asked of a subset of respondents

Year: 2009

Household Income	Yes			No			Estimated Population
	#	%	C.I. (95%)	#	%	C.I. (95%)	#
Less than \$10,000	4,500	18.5	12.1 - 24.9	19,800	81.5	75.1 - 87.9	24,300
\$10,000 to \$14,999	7,400	33.3	24.0 - 42.7	14,800	66.7	57.3 - 76.0	22,300
\$15,000 to \$19,999	12,200	28.0	21.1 - 34.8	31,500	72.0	65.2 - 78.9	43,800
\$20,000 to \$24,999	18,300	34.9	28.4 - 41.3	34,100	65.1	58.7 - 71.6	52,400
\$25,000 to \$34,999	22,300	25.0	20.8 - 29.3	66,800	75.0	70.7 - 79.2	89,100
\$35,000 to \$49,999	38,400	28.0	24.1 - 32.0	98,600	72.0	68.0 - 75.9	137,000
\$50,000 to \$74,999	32,900	21.0	17.9 - 24.1	123,500	79.0	75.9 - 82.1	156,400
\$75,000 or more	58,400	21.0	18.6 - 23.4	219,900	79.0	76.6 - 81.4	278,300

Pneumonia - ever had shot by State, County, Island, Community, BRFSS Age Group, DOH Race-Ethnicity, Gender, Education Level, Employment Status (Grouped), Household Income, Poverty Level, Marital Status (Grouped), Married, Health Care Coverage, for the Year(s) - 2001, 2002, 2003, 2004, 2005, 2006, 2007, 2008, 2009, 2010

Note: Weighted numbers (#), percentages and 95% confidence intervals; Respondents aged 18 years and older; n/r (Not Reportable) - If the unweighted total responses for a dimension (row) is <50 that row will not be shown; n/a (Not Available) - Not asked of a subset of respondents

Year: 2009

Poverty Level	Yes			No			Estimated Population
	#	%	C.I. (95%)	#	%	C.I. (95%)	#
0-130%	40,000	22.2	18.7 - 25.7	140,100	77.8	74.3 - 81.3	180,100
131-185%	35,000	26.5	22.6 - 30.4	97,100	73.5	69.6 - 77.4	132,100
186+%	119,400	24.3	22.5 - 26.1	372,000	75.7	73.9 - 77.5	491,400

Pneumonia - ever had shot by State, County, Island, Community, BRFSS Age Group, DOH Race-Ethnicity, Gender, Education Level, Employment Status (Grouped), Household Income, Poverty Level, Marital Status (Grouped), Married, Health Care Coverage, for the Year(s) - 2001, 2002, 2003, 2004, 2005, 2006, 2007, 2008, 2009, 2010

Note: Weighted numbers (#), percentages and 95% confidence intervals; Respondents aged 18 years and older; n/r (Not Reportable) - If the unweighted total responses for a dimension (row) is <50 that row will not be shown; n/a (Not Available) - Not asked of a subset of respondents

Year: 2009

Marital Status (Grouped)	Yes			No			Estimated Population
	#	%	C.I. (95%)	#	%	C.I. (95%)	#
Married	125,400	23.7	22.0 - 25.5	402,800	76.3	74.5 - 78.0	528,200
Unmarried Couple	5,500	20.2	10.5 - 30.0	21,800	79.8	70.0 - 89.5	27,300
Widowed	32,600	58.7	53.5 - 64.0	22,900	41.3	36.0 - 46.5	55,400
Other	52,000	18.9	16.1 - 21.6	223,500	81.1	78.4 - 83.9	275,500

Married	Yes			No			Estimated Population
	#	%	C.I. (95%)	#	%	C.I. (95%)	#
Yes	127,300	23.7	22.0 - 25.4	409,500	76.3	74.6 - 78.0	536,800
No	87,800	25.2	22.7 - 27.7	260,400	74.8	72.3 - 77.3	348,200

Pneumonia - ever had shot by State, County, Island, Community, BRFSS Age Group, DOH Race-Ethnicity, Gender, Education Level, Employment Status (Grouped), Household Income, Poverty Level, Marital Status (Grouped), Married, Health Care Coverage, for the Year(s) - 2001, 2002, 2003, 2004, 2005, 2006, 2007, 2008, 2009, 2010

Note: Weighted numbers (#), percentages and 95% confidence intervals; Respondents aged 18 years and older; n/r (Not Reportable) - If the unweighted total responses for a dimension (row) is <50 that row will not be shown; n/a (Not Available) - Not asked of a subset of respondents

Year: 2009

Health Care Coverage	Yes			No			Estimated Population
	#	%	C.I. (95%)	#	%	C.I. (95%)	#
Yes	210,000	25.5	24.0 - 26.9	614,900	74.5	73.1 - 76.0	825,000
No	5,400	9.2	4.5 - 13.9	53,000	90.8	86.1 - 95.5	58,400

Pneumonia - ever had shot by State, County, Island, Community, BRFSS Age Group, DOH Race-Ethnicity, Gender, Education Level, Employment Status (Grouped), Household Income, Poverty Level, Marital Status (Grouped), Married, Health Care Coverage, for the Year(s) - 2001, 2002, 2003, 2004, 2005, 2006, 2007, 2008, 2009, 2010

Note: Weighted numbers (#), percentages and 95% confidence intervals; Respondents aged 18 years and older; n/r (Not Reportable) - If the unweighted total responses for a dimension (row) is <50 that row will not be shown; n/a (Not Available) - Not asked of a subset of respondents

Year: 2008

State	Yes			No			Estimated Population
	#	%	C.I. (95%)	#	%	C.I. (95%)	#
Hawaii State	212,700	24.2	22.7 - 25.6	667,600	75.8	74.4 - 77.3	880,400

County	Yes			No			Estimated Population
	#	%	C.I. (95%)	#	%	C.I. (95%)	#
Hawaii	30,000	24.8	21.8 - 27.8	91,200	75.2	72.2 - 78.2	121,300
Honolulu	151,900	24.6	22.8 - 26.5	465,500	75.4	73.5 - 77.2	617,400
Kauai	10,200	23.4	19.5 - 27.3	33,600	76.6	72.7 - 80.5	43,800
Maui	20,500	21.0	18.1 - 23.9	77,300	79.0	76.1 - 81.9	97,900

Pneumonia - ever had shot by State, County, Island, Community, BRFSS Age Group, DOH Race-Ethnicity, Gender, Education Level, Employment Status (Grouped), Household Income, Poverty Level, Marital Status (Grouped), Married, Health Care Coverage, for the Year(s) - 2001, 2002, 2003, 2004, 2005, 2006, 2007, 2008, 2009, 2010

Note: Weighted numbers (#), percentages and 95% confidence intervals; Respondents aged 18 years and older; n/r (Not Reportable) - If the unweighted total responses for a dimension (row) is <50 that row will not be shown; n/a (Not Available) - Not asked of a subset of respondents

Year: 2008

Island	Yes			No			Estimated Population
	#	%	C.I. (95%)	#	%	C.I. (95%)	#
Hawaii	30,000	24.8	21.8 - 27.8	91,200	75.2	72.2 - 78.2	121,300
Kauai	10,200	23.4	19.5 - 27.3	33,600	76.6	72.7 - 80.5	43,800
Lanai	400	22.3	15.8 - 28.8	1,300	77.7	71.2 - 84.2	1,700
Maui	18,900	21.2	18.0 - 24.3	70,400	78.8	75.7 - 82.0	89,200
Molokai	1,300	18.4	12.6 - 24.2	5,600	81.6	75.8 - 87.4	6,900
Oahu	151,900	24.6	22.8 - 26.5	465,500	75.4	73.5 - 77.2	617,400

Community	Yes			No			Estimated Population
	#	%	C.I. (95%)	#	%	C.I. (95%)	#
Aiea/ Pearl City	17,800	30.8	24.4 - 37.3	40,000	69.2	62.7 - 75.6	57,800

Pneumonia - ever had shot by State, County, Island, Community, BRFSS Age Group, DOH Race-Ethnicity, Gender, Education Level, Employment Status (Grouped), Household Income, Poverty Level, Marital Status (Grouped), Married, Health Care Coverage, for the Year(s) - 2001, 2002, 2003, 2004, 2005, 2006, 2007, 2008, 2009, 2010

Note: Weighted numbers (#), percentages and 95% confidence intervals; Respondents aged 18 years and older; n/r (Not Reportable) - If the unweighted total responses for a dimension (row) is <50 that row will not be shown; n/a (Not Available) - Not asked of a subset of respondents

Year: 2008

Community	Yes			No			Estimated Population
	#	%	C.I. (95%)	#	%	C.I. (95%)	#
Ala Moana	6,400	21.7	15.1 - 28.2	23,200	78.3	71.8 - 84.9	29,500
Hanalei/ Kapaa	3,700	20.5	14.7 - 26.2	14,400	79.5	73.8 - 85.3	18,100
Hilo	10,100	26.6	21.3 - 32.0	27,900	73.4	68.0 - 78.7	38,000
Kaaawa/ Kahaluu/ Kaneohe	9,600	22.4	15.7 - 29.1	33,100	77.6	70.9 - 84.3	42,700
Kahului	6,000	20.3	15.0 - 25.6	23,300	79.7	74.4 - 85.0	29,300
Kailua/ Waimanalo	11,300	25.4	18.3 - 32.4	33,400	74.6	67.6 - 81.7	44,700
Kaimuki/ Palolo/ Waikiki	15,800	31.2	24.8 - 37.6	34,900	68.8	62.4 - 75.2	50,700
Kona	5,400	21.2	16.3 - 26.2	20,200	78.8	73.8 - 83.7	25,700
Lahaina/ Wailuku	7,400	24.5	18.3 - 30.7	22,900	75.5	69.3 - 81.7	30,400

Pneumonia - ever had shot by State, County, Island, Community, BRFSS Age Group, DOH Race-Ethnicity, Gender, Education Level, Employment Status (Grouped), Household Income, Poverty Level, Marital Status (Grouped), Married, Health Care Coverage, for the Year(s) - 2001, 2002, 2003, 2004, 2005, 2006, 2007, 2008, 2009, 2010

Note: Weighted numbers (#), percentages and 95% confidence intervals; Respondents aged 18 years and older; n/r (Not Reportable) - If the unweighted total responses for a dimension (row) is <50 that row will not be shown; n/a (Not Available) - Not asked of a subset of respondents

Year: 2008

Community	Yes			No			Estimated Population
	#	%	C.I. (95%)	#	%	C.I. (95%)	#
Lanai	400	22.3	15.8 - 28.8	1,300	77.7	71.2 - 84.2	1,700
Lihue-Waimea	6,500	25.4	20.1 - 30.7	19,200	74.6	69.3 - 79.9	25,800
Manoa/ Upper Makiki	12,700	30.2	23.5 - 36.8	29,400	69.8	63.2 - 76.5	42,200
Mililani/ Wahiawa	14,700	22.1	16.4 - 27.8	51,600	77.9	72.2 - 83.6	66,200
Molokai	1,300	18.4	12.6 - 24.2	5,600	81.6	75.8 - 87.4	6,900
Nanakuli/ Waianae	7,800	22.7	13.2 - 32.2	26,600	77.3	67.8 - 86.8	34,400
N.Hawaii	7,300	29.3	21.2 - 37.3	17,800	70.7	62.7 - 78.8	25,100
N.Shore/ Laie	2,400	10.3	3.4 - 17.2	21,000	89.7	82.8 - 96.6	23,400
Nuuanu/ Kalihi/ Moanalua	12,500	24.2	17.6 - 30.7	39,100	75.8	69.3 - 82.4	51,600

Pneumonia - ever had shot by State, County, Island, Community, BRFSS Age Group, DOH Race-Ethnicity, Gender, Education Level, Employment Status (Grouped), Household Income, Poverty Level, Marital Status (Grouped), Married, Health Care Coverage, for the Year(s) - 2001, 2002, 2003, 2004, 2005, 2006, 2007, 2008, 2009, 2010

Note: Weighted numbers (#), percentages and 95% confidence intervals; Respondents aged 18 years and older; n/r (Not Reportable) - If the unweighted total responses for a dimension (row) is <50 that row will not be shown; n/a (Not Available) - Not asked of a subset of respondents

Year: 2008

Community	Yes			No			Estimated Population
	#	%	C.I. (95%)	#	%	C.I. (95%)	#
Puna/ Kau	7,100	21.9	16.4 - 27.4	25,400	78.1	72.6 - 83.6	32,500
Salt Lake/ Foster Village	8,100	26.5	17.1 - 35.9	22,600	73.5	64.1 - 82.9	30,700
Upcountry/ Hana	5,500	18.5	13.8 - 23.2	24,100	81.5	76.8 - 86.2	29,600
Waialae/ Kahala/ Hawaii Kai	13,400	33.0	25.7 - 40.3	27,300	67.0	59.7 - 74.3	40,700
Waipahu/ Kapolei/ Ewa	19,400	18.9	14.7 - 23.0	83,400	81.2	77.0 - 85.3	102,800

Pneumonia - ever had shot by State, County, Island, Community, BRFSS Age Group, DOH Race-Ethnicity, Gender, Education Level, Employment Status (Grouped), Household Income, Poverty Level, Marital Status (Grouped), Married, Health Care Coverage, for the Year(s) - 2001, 2002, 2003, 2004, 2005, 2006, 2007, 2008, 2009, 2010

Note: Weighted numbers (#), percentages and 95% confidence intervals; Respondents aged 18 years and older; n/r (Not Reportable) - If the unweighted total responses for a dimension (row) is <50 that row will not be shown; n/a (Not Available) - Not asked of a subset of respondents

Year: 2008

BRFSS Age Group	Yes			No			Estimated Population
	#	%	C.I. (95%)	#	%	C.I. (95%)	#
18-24	12,900	12.4	7.8 - 16.9	91,600	87.6	83.1 - 92.2	104,500
25-34	16,000	11.4	7.9 - 14.8	124,500	88.6	85.2 - 92.1	140,500
35-44	18,500	11.6	9.0 - 14.2	140,800	88.4	85.8 - 91.0	159,200
45-54	22,100	13.9	11.3 - 16.5	136,900	86.1	83.5 - 88.7	159,000
55-64	28,600	20.5	17.7 - 23.3	110,600	79.5	76.7 - 82.3	139,200
65-74	50,600	59.6	55.4 - 63.8	34,300	40.4	36.2 - 44.6	84,800
75+	62,600	71.3	67.1 - 75.5	25,200	28.7	24.5 - 32.9	87,700

Pneumonia - ever had shot by State, County, Island, Community, BRFSS Age Group, DOH Race-Ethnicity, Gender, Education Level, Employment Status (Grouped), Household Income, Poverty Level, Marital Status (Grouped), Married, Health Care Coverage, for the Year(s) - 2001, 2002, 2003, 2004, 2005, 2006, 2007, 2008, 2009, 2010

Note: Weighted numbers (#), percentages and 95% confidence intervals; Respondents aged 18 years and older; n/r (Not Reportable) - If the unweighted total responses for a dimension (row) is <50 that row will not be shown; n/a (Not Available) - Not asked of a subset of respondents

Year: 2008

DOH Race-Ethnicity	Yes			No			Estimated Population
	#	%	C.I. (95%)	#	%	C.I. (95%)	#
Caucasian	74,800	25.5	23.3 - 27.8	218,300	74.5	72.2 - 76.7	293,200
Native Hawaiian	24,100	19.9	15.8 - 24.1	96,700	80.1	75.9 - 84.2	120,800
Chinese	16,100	28.4	22.6 - 34.3	40,600	71.6	65.7 - 77.4	56,800
Filipino	20,700	16.5	12.8 - 20.3	104,500	83.5	79.7 - 87.2	125,200
Japanese	66,000	32.4	29.2 - 35.6	137,600	67.6	64.4 - 70.8	203,500
Black	1,500	12.5	3.8 - 21.2	10,400	87.5	78.8 - 96.2	11,900
Other Asian	2,500	11.5	5.4 - 17.5	19,000	88.5	82.5 - 94.6	21,400
Other Pacific Islander	1,600	8.0	0.9 - 15.2	18,600	92.0	84.8 - 99.1	20,200
Other	4,500	23.6	12.8 - 34.3	14,600	76.4	65.7 - 87.2	19,100

Pneumonia - ever had shot by State, County, Island, Community, BRFSS Age Group, DOH Race-Ethnicity, Gender, Education Level, Employment Status (Grouped), Household Income, Poverty Level, Marital Status (Grouped), Married, Health Care Coverage, for the Year(s) - 2001, 2002, 2003, 2004, 2005, 2006, 2007, 2008, 2009, 2010

Note: Weighted numbers (#), percentages and 95% confidence intervals; Respondents aged 18 years and older; n/r (Not Reportable) - If the unweighted total responses for a dimension (row) is <50 that row will not be shown; n/a (Not Available) - Not asked of a subset of respondents

Year: 2008

Gender	Yes			No			Estimated Population
	#	%	C.I. (95%)	#	%	C.I. (95%)	#
Male	93,100	22.4	20.2 - 24.5	322,800	77.6	75.5 - 79.8	415,900
Female	119,700	25.8	23.9 - 27.6	344,800	74.2	72.4 - 76.1	464,400

Pneumonia - ever had shot by State, County, Island, Community, BRFSS Age Group, DOH Race-Ethnicity, Gender, Education Level, Employment Status (Grouped), Household Income, Poverty Level, Marital Status (Grouped), Married, Health Care Coverage, for the Year(s) - 2001, 2002, 2003, 2004, 2005, 2006, 2007, 2008, 2009, 2010

Note: Weighted numbers (#), percentages and 95% confidence intervals; Respondents aged 18 years and older; n/r (Not Reportable) - If the unweighted total responses for a dimension (row) is <50 that row will not be shown; n/a (Not Available) - Not asked of a subset of respondents

Year: 2008

Education Level	Yes			No			Estimated Population
	#	%	C.I. (95%)	#	%	C.I. (95%)	#
Never attended school/ Only Kindergarten to Grades 8	2,500	30.8	19.0 - 42.7	5,700	69.2	57.3 - 81.0	8,200
Grades 9 thru 11 (Some High School)	11,600	33.7	25.6 - 41.7	22,900	66.3	58.3 - 74.4	34,600
Grades 12 or GED (High School Grad)	56,900	22.1	19.5 - 24.7	200,300	77.9	75.3 - 80.5	257,100
College 1 to 3 years (Some College/ Tech)	62,000	24.6	21.8 - 27.3	190,400	75.4	72.7 - 78.2	252,400
College 4 years or more (College Grad)	79,600	24.4	22.1 - 26.6	247,200	75.6	73.4 - 77.9	326,900

Pneumonia - ever had shot by State, County, Island, Community, BRFSS Age Group, DOH Race-Ethnicity, Gender, Education Level, Employment Status (Grouped), Household Income, Poverty Level, Marital Status (Grouped), Married, Health Care Coverage, for the Year(s) - 2001, 2002, 2003, 2004, 2005, 2006, 2007, 2008, 2009, 2010

Note: Weighted numbers (#), percentages and 95% confidence intervals; Respondents aged 18 years and older; n/r (Not Reportable) - If the unweighted total responses for a dimension (row) is <50 that row will not be shown; n/a (Not Available) - Not asked of a subset of respondents

Year: 2008

Employment Status (Grouped)	Yes			No			Estimated Population
	#	%	C.I. (95%)	#	%	C.I. (95%)	#
Employed	80,400	14.6	13.0 - 16.2	469,600	85.4	83.8 - 87.0	550,000
Unemployed	5,700	14.3	7.6 - 20.9	34,000	85.7	79.1 - 92.4	39,600
Retired/Unable to work	112,900	54.2	51.2 - 57.2	95,400	45.8	42.8 - 48.8	208,200
Student/Homemaker	13,700	16.8	12.4 - 21.1	67,800	83.2	78.9 - 87.6	81,500

Pneumonia - ever had shot by State, County, Island, Community, BRFSS Age Group, DOH Race-Ethnicity, Gender, Education Level, Employment Status (Grouped), Household Income, Poverty Level, Marital Status (Grouped), Married, Health Care Coverage, for the Year(s) - 2001, 2002, 2003, 2004, 2005, 2006, 2007, 2008, 2009, 2010

Note: Weighted numbers (#), percentages and 95% confidence intervals; Respondents aged 18 years and older; n/r (Not Reportable) - If the unweighted total responses for a dimension (row) is <50 that row will not be shown; n/a (Not Available) - Not asked of a subset of respondents

Year: 2008

Household Income	Yes			No			Estimated Population
	#	%	C.I. (95%)	#	%	C.I. (95%)	#
Less than \$10,000	5,900	27.0	18.6 - 35.5	15,900	73.0	64.5 - 81.4	21,800
\$10,000 to \$14,999	6,400	30.7	21.8 - 39.7	14,400	69.3	60.3 - 78.2	20,800
\$15,000 to \$19,999	10,400	27.5	21.2 - 33.8	27,400	72.5	66.2 - 78.8	37,800
\$20,000 to \$24,999	15,400	30.6	24.5 - 36.8	34,800	69.4	63.2 - 75.5	50,200
\$25,000 to \$34,999	24,900	27.1	22.6 - 31.5	67,200	72.9	68.5 - 77.4	92,200
\$35,000 to \$49,999	36,300	28.0	24.1 - 31.9	93,400	72.0	68.1 - 75.9	129,700
\$50,000 to \$74,999	36,200	22.2	19.0 - 25.5	126,500	77.8	74.5 - 81.0	162,700
\$75,000 or more	56,500	20.1	17.6 - 22.5	224,900	79.9	77.5 - 82.4	281,400

Pneumonia - ever had shot by State, County, Island, Community, BRFSS Age Group, DOH Race-Ethnicity, Gender, Education Level, Employment Status (Grouped), Household Income, Poverty Level, Marital Status (Grouped), Married, Health Care Coverage, for the Year(s) - 2001, 2002, 2003, 2004, 2005, 2006, 2007, 2008, 2009, 2010

Note: Weighted numbers (#), percentages and 95% confidence intervals; Respondents aged 18 years and older; n/r (Not Reportable) - If the unweighted total responses for a dimension (row) is <50 that row will not be shown; n/a (Not Available) - Not asked of a subset of respondents

Year: 2008

Poverty Level	Yes			No			Estimated Population
	#	%	C.I. (95%)	#	%	C.I. (95%)	#
0-130%	35,100	21.5	18.0 - 25.0	128,000	78.5	75.0 - 82.0	163,100
131-185%	22,500	21.9	17.6 - 26.2	80,400	78.1	73.8 - 82.4	102,900
186+%	134,400	25.4	23.6 - 27.1	395,800	74.6	72.9 - 76.4	530,200

Pneumonia - ever had shot by State, County, Island, Community, BRFSS Age Group, DOH Race-Ethnicity, Gender, Education Level, Employment Status (Grouped), Household Income, Poverty Level, Marital Status (Grouped), Married, Health Care Coverage, for the Year(s) - 2001, 2002, 2003, 2004, 2005, 2006, 2007, 2008, 2009, 2010

Note: Weighted numbers (#), percentages and 95% confidence intervals; Respondents aged 18 years and older; n/r (Not Reportable) - If the unweighted total responses for a dimension (row) is <50 that row will not be shown; n/a (Not Available) - Not asked of a subset of respondents

Year: 2008

Marital Status (Grouped)	Yes			No			Estimated Population
	#	%	C.I. (95%)	#	%	C.I. (95%)	#
Married	121,500	23.3	21.5 - 25.0	400,100	76.7	75.0 - 78.5	521,500
Unmarried Couple	4,000	18.6	9.6 - 27.7	17,300	81.4	72.3 - 90.4	21,200
Widowed	32,200	60.2	54.8 - 65.6	21,300	39.8	34.4 - 45.2	53,400
Other	55,200	19.4	16.8 - 22.0	229,000	80.6	78.0 - 83.2	284,200

Married	Yes			No			Estimated Population
	#	%	C.I. (95%)	#	%	C.I. (95%)	#
Yes	122,100	23.0	21.2 - 24.7	409,800	77.0	75.3 - 78.8	532,000
No	90,400	26.1	23.7 - 28.6	255,500	73.9	71.4 - 76.3	345,900

Pneumonia - ever had shot by State, County, Island, Community, BRFSS Age Group, DOH Race-Ethnicity, Gender, Education Level, Employment Status (Grouped), Household Income, Poverty Level, Marital Status (Grouped), Married, Health Care Coverage, for the Year(s) - 2001, 2002, 2003, 2004, 2005, 2006, 2007, 2008, 2009, 2010

Note: Weighted numbers (#), percentages and 95% confidence intervals; Respondents aged 18 years and older; n/r (Not Reportable) - If the unweighted total responses for a dimension (row) is <50 that row will not be shown; n/a (Not Available) - Not asked of a subset of respondents

Year: 2008

Health Care Coverage	Yes			No			Estimated Population
	#	%	C.I. (95%)	#	%	C.I. (95%)	#
Yes	206,600	25.0	23.6 - 26.5	619,000	75.0	73.5 - 76.4	825,600
No	5,600	10.5	5.8 - 15.2	47,700	89.5	84.8 - 94.2	53,300

Pneumonia - ever had shot by State, County, Island, Community, BRFSS Age Group, DOH Race-Ethnicity, Gender, Education Level, Employment Status (Grouped), Household Income, Poverty Level, Marital Status (Grouped), Married, Health Care Coverage, for the Year(s) - 2001, 2002, 2003, 2004, 2005, 2006, 2007, 2008, 2009, 2010

Note: Weighted numbers (#), percentages and 95% confidence intervals; Respondents aged 18 years and older; n/r (Not Reportable) - If the unweighted total responses for a dimension (row) is <50 that row will not be shown; n/a (Not Available) - Not asked of a subset of respondents

Year: 2007

State	Yes			No			Estimated Population
	#	%	C.I. (95%)	#	%	C.I. (95%)	#
Hawaii State	231,200	26.4	24.8 - 27.9	646,200	73.6	72.1 - 75.2	877,400

County	Yes			No			Estimated Population
	#	%	C.I. (95%)	#	%	C.I. (95%)	#
Hawaii	30,200	25.9	23.2 - 28.6	86,500	74.1	71.4 - 76.8	116,700
Honolulu	166,500	26.8	24.8 - 28.8	455,000	73.2	71.2 - 75.2	621,500
Kauai	11,200	25.9	21.7 - 30.2	32,100	74.1	69.8 - 78.3	43,300
Maui	23,300	24.4	21.0 - 27.7	72,500	75.6	72.3 - 79.0	95,900

Pneumonia - ever had shot by State, County, Island, Community, BRFSS Age Group, DOH Race-Ethnicity, Gender, Education Level, Employment Status (Grouped), Household Income, Poverty Level, Marital Status (Grouped), Married, Health Care Coverage, for the Year(s) - 2001, 2002, 2003, 2004, 2005, 2006, 2007, 2008, 2009, 2010

Note: Weighted numbers (#), percentages and 95% confidence intervals; Respondents aged 18 years and older; n/r (Not Reportable) - If the unweighted total responses for a dimension (row) is <50 that row will not be shown; n/a (Not Available) - Not asked of a subset of respondents

Year: 2007

Island	Yes			No			Estimated Population
	#	%	C.I. (95%)	#	%	C.I. (95%)	#
Hawaii	30,200	25.9	23.2 - 28.6	86,500	74.1	71.4 - 76.8	116,700
Kauai	11,200	25.9	21.7 - 30.2	32,100	74.1	69.8 - 78.3	43,300
Lanai	400	24.9	17.2 - 32.6	1,200	75.1	67.4 - 82.8	1,500
Maui	21,300	24.5	20.8 - 28.2	65,500	75.5	71.8 - 79.2	86,800
Molokai	1,700	22.5	16.5 - 28.5	5,800	77.5	71.5 - 83.5	7,500
Oahu	166,500	26.8	24.8 - 28.8	455,000	73.2	71.2 - 75.2	621,500

Community	Yes			No			Estimated Population
	#	%	C.I. (95%)	#	%	C.I. (95%)	#
Aiea/ Pearl City	18,500	30.6	23.4 - 37.8	42,100	69.4	62.2 - 76.6	60,600

Pneumonia - ever had shot by State, County, Island, Community, BRFSS Age Group, DOH Race-Ethnicity, Gender, Education Level, Employment Status (Grouped), Household Income, Poverty Level, Marital Status (Grouped), Married, Health Care Coverage, for the Year(s) - 2001, 2002, 2003, 2004, 2005, 2006, 2007, 2008, 2009, 2010

Note: Weighted numbers (#), percentages and 95% confidence intervals; Respondents aged 18 years and older; n/r (Not Reportable) - If the unweighted total responses for a dimension (row) is <50 that row will not be shown; n/a (Not Available) - Not asked of a subset of respondents

Year: 2007

Community	Yes			No			Estimated Population
	#	%	C.I. (95%)	#	%	C.I. (95%)	#
Ala Moana	9,500	38.7	29.6 - 47.8	15,000	61.3	52.2 - 70.4	24,500
Hanalei/ Kapaa	5,400	29.1	22.2 - 36.0	13,000	70.9	64.0 - 77.8	18,400
Hilo	9,900	28.9	24.0 - 33.8	24,300	71.1	66.2 - 76.0	34,200
Kaaawa/ Kahaluu/ Kaneohe	11,800	26.2	19.3 - 33.1	33,400	73.8	66.9 - 80.7	45,200
Kahului	6,600	22.7	17.5 - 28.0	22,400	77.3	72.0 - 82.5	28,900
Kailua/ Waimanalo	14,200	31.5	24.2 - 38.8	30,800	68.5	61.2 - 75.8	45,000
Kaimuki/ Palolo/ Waikiki	14,600	28.5	22.4 - 34.7	36,600	71.5	65.3 - 77.6	51,200
Kona	6,100	24.3	18.9 - 29.7	18,900	75.7	70.3 - 81.1	24,900
Lahaina/ Wailuku	7,900	28.9	20.6 - 37.2	19,400	71.1	62.8 - 79.4	27,300

Pneumonia - ever had shot by State, County, Island, Community, BRFSS Age Group, DOH Race-Ethnicity, Gender, Education Level, Employment Status (Grouped), Household Income, Poverty Level, Marital Status (Grouped), Married, Health Care Coverage, for the Year(s) - 2001, 2002, 2003, 2004, 2005, 2006, 2007, 2008, 2009, 2010

Note: Weighted numbers (#), percentages and 95% confidence intervals; Respondents aged 18 years and older; n/r (Not Reportable) - If the unweighted total responses for a dimension (row) is <50 that row will not be shown; n/a (Not Available) - Not asked of a subset of respondents

Year: 2007

Community	Yes			No			Estimated Population
	#	%	C.I. (95%)	#	%	C.I. (95%)	#
Lanai	400	24.9	17.2 - 32.6	1,200	75.1	67.4 - 82.8	1,500
Lihue-Waimea	5,900	23.6	18.3 - 28.8	19,100	76.4	71.2 - 81.7	25,000
Manoa/ Upper Makiki	11,400	28.6	22.1 - 35.1	28,300	71.4	64.9 - 77.9	39,700
Mililani/ Wahiawa	16,000	24.7	18.7 - 30.8	48,700	75.3	69.2 - 81.3	64,600
Molokai	1,700	22.5	16.5 - 28.5	5,800	77.5	71.5 - 83.5	7,500
Nanakuli/ Waianae	9,100	24.8	14.8 - 34.8	27,500	75.2	65.2 - 85.2	36,600
N.Hawaii	6,500	25.1	18.7 - 31.5	19,400	74.9	68.5 - 81.3	25,900
N.Shore/ Laie	5,500	25.6	15.5 - 35.6	15,900	74.4	64.4 - 84.5	21,400
Nuuanu/ Kalihi/ Moanalua	18,500	29.9	22.5 - 37.2	43,400	70.1	62.8 - 77.5	61,900

Pneumonia - ever had shot by State, County, Island, Community, BRFSS Age Group, DOH Race-Ethnicity, Gender, Education Level, Employment Status (Grouped), Household Income, Poverty Level, Marital Status (Grouped), Married, Health Care Coverage, for the Year(s) - 2001, 2002, 2003, 2004, 2005, 2006, 2007, 2008, 2009, 2010

Note: Weighted numbers (#), percentages and 95% confidence intervals; Respondents aged 18 years and older; n/r (Not Reportable) - If the unweighted total responses for a dimension (row) is <50 that row will not be shown; n/a (Not Available) - Not asked of a subset of respondents

Year: 2007

Community	Yes			No			Estimated Population
	#	%	C.I. (95%)	#	%	C.I. (95%)	#
Puna/ Kau	7,700	24.4	19.3 - 29.5	23,900	75.6	70.5 - 80.7	31,700
Salt Lake/ Foster Village	3,900	15.9	8.1 - 23.6	20,900	84.1	76.4 - 91.9	24,800
Upcountry/ Hana	6,800	22.3	17.2 - 27.3	23,700	77.7	72.7 - 82.8	30,500
Waialae/ Kahala/ Hawaii Kai	10,900	32.0	23.0 - 41.0	23,200	68.0	59.0 - 77.0	34,100
Waipahu/ Kapolei/ Ewa	22,600	20.2	15.8 - 24.6	89,200	79.8	75.4 - 84.2	111,800

Pneumonia - ever had shot by State, County, Island, Community, BRFSS Age Group, DOH Race-Ethnicity, Gender, Education Level, Employment Status (Grouped), Household Income, Poverty Level, Marital Status (Grouped), Married, Health Care Coverage, for the Year(s) - 2001, 2002, 2003, 2004, 2005, 2006, 2007, 2008, 2009, 2010

Note: Weighted numbers (#), percentages and 95% confidence intervals; Respondents aged 18 years and older; n/r (Not Reportable) - If the unweighted total responses for a dimension (row) is <50 that row will not be shown; n/a (Not Available) - Not asked of a subset of respondents

Year: 2007

BRFSS Age Group	Yes			No			Estimated Population
	#	%	C.I. (95%)	#	%	C.I. (95%)	#
18-24	20,400	20.1	13.6 - 26.6	81,200	79.9	73.4 - 86.4	101,600
25-34	19,000	14.1	10.6 - 17.6	115,800	85.9	82.4 - 89.4	134,800
35-44	17,600	11.4	8.8 - 14.0	137,300	88.6	86.0 - 91.2	154,900
45-54	24,100	14.1	11.6 - 16.6	146,700	85.9	83.4 - 88.4	170,800
55-64	30,800	21.9	18.9 - 24.8	110,100	78.1	75.2 - 81.1	140,900
65-74	47,500	60.0	55.5 - 64.6	31,600	40.0	35.4 - 44.5	79,200
75+	71,100	77.4	73.2 - 81.5	20,800	22.6	18.5 - 26.8	91,900

Pneumonia - ever had shot by State, County, Island, Community, BRFSS Age Group, DOH Race-Ethnicity, Gender, Education Level, Employment Status (Grouped), Household Income, Poverty Level, Marital Status (Grouped), Married, Health Care Coverage, for the Year(s) - 2001, 2002, 2003, 2004, 2005, 2006, 2007, 2008, 2009, 2010

Note: Weighted numbers (#), percentages and 95% confidence intervals; Respondents aged 18 years and older; n/r (Not Reportable) - If the unweighted total responses for a dimension (row) is <50 that row will not be shown; n/a (Not Available) - Not asked of a subset of respondents

Year: 2007

DOH Race-Ethnicity	Yes			No			Estimated Population
	#	%	C.I. (95%)	#	%	C.I. (95%)	#
Caucasian	76,400	27.2	24.9 - 29.5	204,100	72.8	70.5 - 75.1	280,500
Native Hawaiian	23,100	19.9	16.1 - 23.8	92,800	80.1	76.2 - 83.9	115,900
Chinese	16,400	32.3	25.3 - 39.3	34,400	67.7	60.7 - 74.7	50,800
Filipino	33,300	21.4	17.3 - 25.5	122,500	78.6	74.5 - 82.7	155,800
Japanese	66,400	34.8	31.3 - 38.2	124,600	65.2	61.8 - 68.7	191,000
Black	4,400	30.4	16.0 - 44.8	10,100	69.6	55.2 - 84.0	14,500
Other Asian	2,400	13.1	6.0 - 20.2	16,100	86.9	79.8 - 94.0	18,600
Other Pacific Islander	3,700	17.6	6.3 - 28.9	17,300	82.4	71.1 - 93.7	21,000
Other	2,800	13.3	7.0 - 19.7	18,100	86.7	80.3 - 93.0	20,900

Pneumonia - ever had shot by State, County, Island, Community, BRFSS Age Group, DOH Race-Ethnicity, Gender, Education Level, Employment Status (Grouped), Household Income, Poverty Level, Marital Status (Grouped), Married, Health Care Coverage, for the Year(s) - 2001, 2002, 2003, 2004, 2005, 2006, 2007, 2008, 2009, 2010

Note: Weighted numbers (#), percentages and 95% confidence intervals; Respondents aged 18 years and older; n/r (Not Reportable) - If the unweighted total responses for a dimension (row) is <50 that row will not be shown; n/a (Not Available) - Not asked of a subset of respondents

Year: 2007

Gender	Yes			No			Estimated Population
	#	%	C.I. (95%)	#	%	C.I. (95%)	#
Male	110,500	25.8	23.4 - 28.2	317,500	74.2	71.8 - 76.6	427,900
Female	120,800	26.9	25.0 - 28.8	328,700	73.1	71.2 - 75.0	449,500

Pneumonia - ever had shot by State, County, Island, Community, BRFSS Age Group, DOH Race-Ethnicity, Gender, Education Level, Employment Status (Grouped), Household Income, Poverty Level, Marital Status (Grouped), Married, Health Care Coverage, for the Year(s) - 2001, 2002, 2003, 2004, 2005, 2006, 2007, 2008, 2009, 2010

Note: Weighted numbers (#), percentages and 95% confidence intervals; Respondents aged 18 years and older; n/r (Not Reportable) - If the unweighted total responses for a dimension (row) is <50 that row will not be shown; n/a (Not Available) - Not asked of a subset of respondents

Year: 2007

Education Level	Yes			No			Estimated Population
	#	%	C.I. (95%)	#	%	C.I. (95%)	#
Never attended school/ Only Kindergarten to Grades 8	6,600	43.3	29.8 - 56.8	8,600	56.7	43.2 - 70.2	15,100
Grades 9 thru 11 (Some High School)	8,800	27.9	20.4 - 35.4	22,800	72.1	64.6 - 79.6	31,600
Grades 12 or GED (High School Grad)	71,200	25.9	22.9 - 28.9	203,900	74.1	71.1 - 77.1	275,100
College 1 to 3 years (Some College/ Tech)	69,700	27.0	24.2 - 29.8	188,500	73.0	70.2 - 75.8	258,200
College 4 years or more (College Grad)	74,800	25.3	23.0 - 27.6	221,200	74.7	72.4 - 77.0	296,000

Pneumonia - ever had shot by State, County, Island, Community, BRFSS Age Group, DOH Race-Ethnicity, Gender, Education Level, Employment Status (Grouped), Household Income, Poverty Level, Marital Status (Grouped), Married, Health Care Coverage, for the Year(s) - 2001, 2002, 2003, 2004, 2005, 2006, 2007, 2008, 2009, 2010

Note: Weighted numbers (#), percentages and 95% confidence intervals; Respondents aged 18 years and older; n/r (Not Reportable) - If the unweighted total responses for a dimension (row) is <50 that row will not be shown; n/a (Not Available) - Not asked of a subset of respondents

Year: 2007

Employment Status (Grouped)	Yes			No			Estimated Population
	#	%	C.I. (95%)	#	%	C.I. (95%)	#
Employed	89,900	16.1	14.3 - 17.8	469,300	83.9	82.2 - 85.7	559,200
Unemployed	4,600	16.8	8.1 - 25.5	22,700	83.2	74.5 - 91.9	27,300
Retired/Unable to work	124,000	57.8	54.7 - 60.9	90,400	42.2	39.1 - 45.3	214,400
Student/Homemaker	12,600	16.6	12.0 - 21.2	63,400	83.4	78.8 - 88.0	76,000

Pneumonia - ever had shot by State, County, Island, Community, BRFSS Age Group, DOH Race-Ethnicity, Gender, Education Level, Employment Status (Grouped), Household Income, Poverty Level, Marital Status (Grouped), Married, Health Care Coverage, for the Year(s) - 2001, 2002, 2003, 2004, 2005, 2006, 2007, 2008, 2009, 2010

Note: Weighted numbers (#), percentages and 95% confidence intervals; Respondents aged 18 years and older; n/r (Not Reportable) - If the unweighted total responses for a dimension (row) is <50 that row will not be shown; n/a (Not Available) - Not asked of a subset of respondents

Year: 2007

Household Income	Yes			No			Estimated Population
	#	%	C.I. (95%)	#	%	C.I. (95%)	#
Less than \$10,000	5,000	20.2	14.1 - 26.4	19,800	79.8	73.6 - 85.9	24,800
\$10,000 to \$14,999	8,100	30.2	21.6 - 38.7	18,700	69.8	61.3 - 78.4	26,800
\$15,000 to \$19,999	12,900	31.4	24.7 - 38.0	28,200	68.6	62.0 - 75.3	41,100
\$20,000 to \$24,999	16,600	30.2	23.9 - 36.4	38,500	69.8	63.6 - 76.1	55,100
\$25,000 to \$34,999	31,000	30.6	26.0 - 35.3	70,100	69.4	64.7 - 74.0	101,100
\$35,000 to \$49,999	46,100	32.1	28.0 - 36.1	97,700	67.9	63.9 - 72.0	143,800
\$50,000 to \$74,999	33,800	21.9	18.6 - 25.2	120,500	78.1	74.8 - 81.4	154,300
\$75,000 or more	51,600	20.6	18.0 - 23.1	199,400	79.4	76.9 - 82.0	251,000

Pneumonia - ever had shot by State, County, Island, Community, BRFSS Age Group, DOH Race-Ethnicity, Gender, Education Level, Employment Status (Grouped), Household Income, Poverty Level, Marital Status (Grouped), Married, Health Care Coverage, for the Year(s) - 2001, 2002, 2003, 2004, 2005, 2006, 2007, 2008, 2009, 2010

Note: Weighted numbers (#), percentages and 95% confidence intervals; Respondents aged 18 years and older; n/r (Not Reportable) - If the unweighted total responses for a dimension (row) is <50 that row will not be shown; n/a (Not Available) - Not asked of a subset of respondents

Year: 2007

Poverty Level	Yes			No			Estimated Population
	#	%	C.I. (95%)	#	%	C.I. (95%)	#
0-130%	46,900	25.9	22.1 - 29.6	134,600	74.1	70.4 - 77.9	181,600
131-185%	21,600	21.8	17.6 - 26.1	77,500	78.2	73.9 - 82.4	99,100
186+%	136,500	26.4	24.6 - 28.2	380,800	73.6	71.8 - 75.4	517,300

Pneumonia - ever had shot by State, County, Island, Community, BRFSS Age Group, DOH Race-Ethnicity, Gender, Education Level, Employment Status (Grouped), Household Income, Poverty Level, Marital Status (Grouped), Married, Health Care Coverage, for the Year(s) - 2001, 2002, 2003, 2004, 2005, 2006, 2007, 2008, 2009, 2010

Note: Weighted numbers (#), percentages and 95% confidence intervals; Respondents aged 18 years and older; n/r (Not Reportable) - If the unweighted total responses for a dimension (row) is <50 that row will not be shown; n/a (Not Available) - Not asked of a subset of respondents

Year: 2007

Marital Status (Grouped)	Yes			No			Estimated Population
	#	%	C.I. (95%)	#	%	C.I. (95%)	#
Married	139,000	26.3	24.4 - 28.1	390,000	73.7	71.9 - 75.6	528,900
Unmarried Couple	2,400	10.4	4.6 - 16.2	21,000	89.6	83.8 - 95.4	23,400
Widowed	34,700	64.9	59.9 - 70.0	18,800	35.1	30.0 - 40.1	53,500
Other	55,100	20.3	17.3 - 23.3	216,500	79.7	76.7 - 82.7	271,600

Married	Yes			No			Estimated Population
	#	%	C.I. (95%)	#	%	C.I. (95%)	#
Yes	139,800	26.0	24.2 - 27.8	398,100	74.0	72.2 - 75.8	538,000
No	91,100	26.9	24.2 - 29.6	247,100	73.1	70.4 - 75.8	338,200

Pneumonia - ever had shot by State, County, Island, Community, BRFSS Age Group, DOH Race-Ethnicity, Gender, Education Level, Employment Status (Grouped), Household Income, Poverty Level, Marital Status (Grouped), Married, Health Care Coverage, for the Year(s) - 2001, 2002, 2003, 2004, 2005, 2006, 2007, 2008, 2009, 2010

Note: Weighted numbers (#), percentages and 95% confidence intervals; Respondents aged 18 years and older; n/r (Not Reportable) - If the unweighted total responses for a dimension (row) is <50 that row will not be shown; n/a (Not Available) - Not asked of a subset of respondents

Year: 2007

Health Care Coverage	Yes			No			Estimated Population
	#	%	C.I. (95%)	#	%	C.I. (95%)	#
Yes	223,000	27.1	25.5 - 28.6	600,300	72.9	71.4 - 74.5	823,200
No	8,200	15.2	8.2 - 22.2	45,600	84.8	77.8 - 91.8	53,700

Pneumonia - ever had shot by State, County, Island, Community, BRFSS Age Group, DOH Race-Ethnicity, Gender, Education Level, Employment Status (Grouped), Household Income, Poverty Level, Marital Status (Grouped), Married, Health Care Coverage, for the Year(s) - 2001, 2002, 2003, 2004, 2005, 2006, 2007, 2008, 2009, 2010

Note: Weighted numbers (#), percentages and 95% confidence intervals; Respondents aged 18 years and older; n/r (Not Reportable) - If the unweighted total responses for a dimension (row) is <50 that row will not be shown; n/a (Not Available) - Not asked of a subset of respondents

Year: 2006

State	Yes			No			Estimated Population
	#	%	C.I. (95%)	#	%	C.I. (95%)	#
Hawaii State	220,500	25.6	24.1 - 27.1	641,300	74.4	72.9 - 75.9	861,800

County	Yes			No			Estimated Population
	#	%	C.I. (95%)	#	%	C.I. (95%)	#
Hawaii	27,400	25.4	22.5 - 28.3	80,600	74.6	71.7 - 77.5	108,000
Honolulu	161,500	26.3	24.3 - 28.2	453,200	73.7	71.8 - 75.7	614,700
Kauai	10,700	24.8	20.6 - 29.0	32,300	75.2	71.0 - 79.4	43,000
Maui	20,900	21.8	18.8 - 24.8	75,200	78.2	75.2 - 81.2	96,100

Pneumonia - ever had shot by State, County, Island, Community, BRFSS Age Group, DOH Race-Ethnicity, Gender, Education Level, Employment Status (Grouped), Household Income, Poverty Level, Marital Status (Grouped), Married, Health Care Coverage, for the Year(s) - 2001, 2002, 2003, 2004, 2005, 2006, 2007, 2008, 2009, 2010

Note: Weighted numbers (#), percentages and 95% confidence intervals; Respondents aged 18 years and older; n/r (Not Reportable) - If the unweighted total responses for a dimension (row) is <50 that row will not be shown; n/a (Not Available) - Not asked of a subset of respondents

Year: 2006

Island	Yes			No			Estimated Population
	#	%	C.I. (95%)	#	%	C.I. (95%)	#
Hawaii	27,400	25.4	22.5 - 28.3	80,600	74.6	71.7 - 77.5	108,000
Kauai	10,700	24.8	20.6 - 29.0	32,300	75.2	71.0 - 79.4	43,000
Lanai	400	17.9	11.4 - 24.5	1,700	82.1	75.5 - 88.6	2,100
Maui	18,600	21.2	18.0 - 24.4	69,300	78.8	75.6 - 82.0	87,900
Molokai	1,900	31.2	22.8 - 39.7	4,200	68.8	60.3 - 77.2	6,100
Oahu	161,500	26.3	24.3 - 28.2	453,200	73.7	71.8 - 75.7	614,700

Community	Yes			No			Estimated Population
	#	%	C.I. (95%)	#	%	C.I. (95%)	#
Aiea/ Pearl City	15,600	26.3	20.2 - 32.4	43,600	73.7	67.6 - 79.8	59,100

Pneumonia - ever had shot by State, County, Island, Community, BRFSS Age Group, DOH Race-Ethnicity, Gender, Education Level, Employment Status (Grouped), Household Income, Poverty Level, Marital Status (Grouped), Married, Health Care Coverage, for the Year(s) - 2001, 2002, 2003, 2004, 2005, 2006, 2007, 2008, 2009, 2010

Note: Weighted numbers (#), percentages and 95% confidence intervals; Respondents aged 18 years and older; n/r (Not Reportable) - If the unweighted total responses for a dimension (row) is <50 that row will not be shown; n/a (Not Available) - Not asked of a subset of respondents

Year: 2006

Community	Yes			No			Estimated Population
	#	%	C.I. (95%)	#	%	C.I. (95%)	#
Ala Moana	12,700	43.7	34.9 - 52.5	16,400	56.3	47.5 - 65.1	29,100
Hanalei/ Kapaa	4,500	24.8	18.5 - 31.2	13,800	75.2	68.8 - 81.5	18,300
Hilo	8,900	28.5	23.0 - 34.1	22,400	71.5	65.9 - 77.0	31,400
Kaaawa/ Kahaluu/ Kaneohe	10,400	24.4	17.4 - 31.3	32,200	75.6	68.7 - 82.6	42,600
Kahului	6,800	23.8	18.2 - 29.4	21,900	76.2	70.6 - 81.8	28,700
Kailua/ Waimanalo	12,700	28.6	21.8 - 35.4	31,700	71.4	64.6 - 78.2	44,400
Kaimuki/ Palolo/ Waikiki	19,800	36.7	29.6 - 43.8	34,100	63.3	56.2 - 70.4	53,900
Kona	6,800	25.4	19.5 - 31.3	19,900	74.6	68.7 - 80.5	26,600
Lahaina/ Wailuku	5,900	19.9	14.8 - 25.1	23,600	80.1	74.9 - 85.2	29,400

Pneumonia - ever had shot by State, County, Island, Community, BRFSS Age Group, DOH Race-Ethnicity, Gender, Education Level, Employment Status (Grouped), Household Income, Poverty Level, Marital Status (Grouped), Married, Health Care Coverage, for the Year(s) - 2001, 2002, 2003, 2004, 2005, 2006, 2007, 2008, 2009, 2010

Note: Weighted numbers (#), percentages and 95% confidence intervals; Respondents aged 18 years and older; n/r (Not Reportable) - If the unweighted total responses for a dimension (row) is <50 that row will not be shown; n/a (Not Available) - Not asked of a subset of respondents

Year: 2006

Community	Yes			No			Estimated Population
	#	%	C.I. (95%)	#	%	C.I. (95%)	#
Lanai	400	17.9	11.4 - 24.5	1,700	82.1	75.5 - 88.6	2,100
Lihue-Waimea	6,100	24.8	19.3 - 30.3	18,600	75.2	69.7 - 80.7	24,700
Manoa/ Upper Makiki	12,800	29.1	22.3 - 35.9	31,100	70.9	64.1 - 77.7	43,900
Mililani/ Wahiawa	11,700	21.1	15.2 - 27.0	43,800	78.9	73.0 - 84.8	55,500
Molokai	1,900	31.2	22.8 - 39.7	4,200	68.8	60.3 - 77.2	6,100
Nanakuli/ Waianae	5,200	22.4	13.3 - 31.6	18,100	77.6	68.4 - 86.7	23,300
N.Hawaii	5,400	23.9	17.8 - 30.0	17,300	76.1	70.0 - 82.2	22,700
N.Shore/ Laie	5,400	24.1	14.0 - 34.2	17,000	75.9	65.8 - 86.0	22,400
Nuuanu/ Kalihi/ Moanalua	16,400	24.7	18.3 - 31.0	50,100	75.3	69.0 - 81.7	66,500

Pneumonia - ever had shot by State, County, Island, Community, BRFSS Age Group, DOH Race-Ethnicity, Gender, Education Level, Employment Status (Grouped), Household Income, Poverty Level, Marital Status (Grouped), Married, Health Care Coverage, for the Year(s) - 2001, 2002, 2003, 2004, 2005, 2006, 2007, 2008, 2009, 2010

Note: Weighted numbers (#), percentages and 95% confidence intervals; Respondents aged 18 years and older; n/r (Not Reportable) - If the unweighted total responses for a dimension (row) is <50 that row will not be shown; n/a (Not Available) - Not asked of a subset of respondents

Year: 2006

Community	Yes			No			Estimated Population
	#	%	C.I. (95%)	#	%	C.I. (95%)	#
Puna/ Kau	6,300	23.1	17.4 - 28.8	21,000	76.9	71.2 - 82.6	27,300
Salt Lake/ Foster Village	6,000	20.5	12.6 - 28.5	23,000	79.5	71.5 - 87.4	29,000
Upcountry/ Hana	5,900	20.0	14.1 - 25.9	23,800	80.0	74.1 - 85.9	29,800
Waialae/ Kahala/ Hawaii Kai	11,000	29.3	22.1 - 36.6	26,500	70.7	63.4 - 77.9	37,600
Waipahu/ Kapolei/ Ewa	21,800	20.3	15.0 - 25.7	85,400	79.7	74.3 - 85.0	107,300

Pneumonia - ever had shot by State, County, Island, Community, BRFSS Age Group, DOH Race-Ethnicity, Gender, Education Level, Employment Status (Grouped), Household Income, Poverty Level, Marital Status (Grouped), Married, Health Care Coverage, for the Year(s) - 2001, 2002, 2003, 2004, 2005, 2006, 2007, 2008, 2009, 2010

Note: Weighted numbers (#), percentages and 95% confidence intervals; Respondents aged 18 years and older; n/r (Not Reportable) - If the unweighted total responses for a dimension (row) is <50 that row will not be shown; n/a (Not Available) - Not asked of a subset of respondents

Year: 2006

BRFSS Age Group	Yes			No			Estimated Population
	#	%	C.I. (95%)	#	%	C.I. (95%)	#
18-24	19,900	19.8	13.6 - 26.0	80,700	80.2	74.0 - 86.4	100,500
25-34	18,400	13.7	9.8 - 17.5	115,900	86.3	82.5 - 90.2	134,300
35-44	17,700	11.4	8.9 - 13.8	137,700	88.6	86.2 - 91.1	155,400
45-54	20,200	12.4	10.0 - 14.7	143,100	87.6	85.3 - 90.0	163,300
55-64	28,900	21.3	18.2 - 24.3	107,200	78.7	75.7 - 81.8	136,100
65-74	50,700	64.8	60.3 - 69.3	27,500	35.2	30.7 - 39.7	78,200
75+	63,300	72.3	68.1 - 76.6	24,200	27.7	23.4 - 31.9	87,500

DOH Race-Ethnicity	Yes			No			Estimated Population
	#	%	C.I. (95%)	#	%	C.I. (95%)	#

Pneumonia - ever had shot by State, County, Island, Community, BRFSS Age Group, DOH Race-Ethnicity, Gender, Education Level, Employment Status (Grouped), Household Income, Poverty Level, Marital Status (Grouped), Married, Health Care Coverage, for the Year(s) - 2001, 2002, 2003, 2004, 2005, 2006, 2007, 2008, 2009, 2010

Note: Weighted numbers (#), percentages and 95% confidence intervals; Respondents aged 18 years and older; n/r (Not Reportable) - If the unweighted total responses for a dimension (row) is <50 that row will not be shown; n/a (Not Available) - Not asked of a subset of respondents

Year: 2006

DOH Race-Ethnicity	Yes			No			Estimated Population
	#	%	C.I. (95%)	#	%	C.I. (95%)	#
Caucasian	72,800	25.7	23.4 - 27.9	210,800	74.3	72.1 - 76.6	283,600
Native Hawaiian	22,700	21.4	17.2 - 25.6	83,300	78.6	74.4 - 82.8	105,900
Chinese	13,800	32.8	25.9 - 39.8	28,300	67.2	60.2 - 74.1	42,100
Filipino	26,900	20.2	15.9 - 24.5	106,400	79.8	75.5 - 84.1	133,300
Japanese	58,800	31.2	28.0 - 34.5	129,500	68.8	65.5 - 72.0	188,300
Black	2,900	23.0	8.3 - 37.8	9,700	77.0	62.2 - 91.7	12,600
Other Asian	5,100	21.3	11.8 - 30.8	18,800	78.7	69.2 - 88.2	23,900
Other Pacific Islander	4,600	19.4	6.4 - 32.3	19,000	80.6	67.7 - 93.6	23,500
Mixed Ethnicity	5,900	30.3	18.6 - 41.9	13,700	69.7	58.1 - 81.4	19,600

Pneumonia - ever had shot by State, County, Island, Community, BRFSS Age Group, DOH Race-Ethnicity, Gender, Education Level, Employment Status (Grouped), Household Income, Poverty Level, Marital Status (Grouped), Married, Health Care Coverage, for the Year(s) - 2001, 2002, 2003, 2004, 2005, 2006, 2007, 2008, 2009, 2010

Note: Weighted numbers (#), percentages and 95% confidence intervals; Respondents aged 18 years and older; n/r (Not Reportable) - If the unweighted total responses for a dimension (row) is <50 that row will not be shown; n/a (Not Available) - Not asked of a subset of respondents

Year: 2006

DOH Race-Ethnicity	Yes			No			Estimated Population
	#	%	C.I. (95%)	#	%	C.I. (95%)	#
Other	4,500	22.5	11.9 - 33.2	15,600	77.5	66.8 - 88.1	20,100

Gender	Yes			No			Estimated Population
	#	%	C.I. (95%)	#	%	C.I. (95%)	#
Male	104,200	25.1	22.7 - 27.4	311,700	74.9	72.6 - 77.3	415,800
Female	116,400	26.1	24.2 - 28.0	329,600	73.9	72.0 - 75.8	446,000

Pneumonia - ever had shot by State, County, Island, Community, BRFSS Age Group, DOH Race-Ethnicity, Gender, Education Level, Employment Status (Grouped), Household Income, Poverty Level, Marital Status (Grouped), Married, Health Care Coverage, for the Year(s) - 2001, 2002, 2003, 2004, 2005, 2006, 2007, 2008, 2009, 2010

Note: Weighted numbers (#), percentages and 95% confidence intervals; Respondents aged 18 years and older; n/r (Not Reportable) - If the unweighted total responses for a dimension (row) is <50 that row will not be shown; n/a (Not Available) - Not asked of a subset of respondents

Year: 2006

Education Level	Yes			No			Estimated Population
	#	%	C.I. (95%)	#	%	C.I. (95%)	#
Never attended school/ Only Kindergarten to Grades 8	7,400	51.4	39.5 - 63.3	7,000	48.6	36.7 - 60.5	14,400
Grades 9 thru 11 (Some High School)	10,000	27.1	20.0 - 34.1	27,000	72.9	65.9 - 80.0	37,000
Grades 12 or GED (High School Grad)	67,000	25.6	22.5 - 28.7	195,000	74.4	71.3 - 77.5	262,000
College 1 to 3 years (Some College/ Tech)	58,100	23.9	21.2 - 26.7	185,000	76.1	73.3 - 78.8	243,100
College 4 years or more (College Grad)	77,600	25.5	23.2 - 27.8	226,900	74.5	72.2 - 76.8	304,500

Pneumonia - ever had shot by State, County, Island, Community, BRFSS Age Group, DOH Race-Ethnicity, Gender, Education Level, Employment Status (Grouped), Household Income, Poverty Level, Marital Status (Grouped), Married, Health Care Coverage, for the Year(s) - 2001, 2002, 2003, 2004, 2005, 2006, 2007, 2008, 2009, 2010

Note: Weighted numbers (#), percentages and 95% confidence intervals; Respondents aged 18 years and older; n/r (Not Reportable) - If the unweighted total responses for a dimension (row) is <50 that row will not be shown; n/a (Not Available) - Not asked of a subset of respondents

Year: 2006

Employment Status (Grouped)	Yes			No			Estimated Population
	#	%	C.I. (95%)	#	%	C.I. (95%)	#
Employed	88,800	16.1	14.3 - 17.9	462,600	83.9	82.1 - 85.7	551,400
Unemployed	5,500	17.1	10.1 - 24.2	26,600	82.9	75.8 - 89.9	32,000
Retired/Unable to work	116,600	57.6	54.6 - 60.5	86,000	42.4	39.5 - 45.4	202,600
Student/Homemaker	9,400	12.6	8.3 - 17.0	65,300	87.4	83.0 - 91.7	74,700

Pneumonia - ever had shot by State, County, Island, Community, BRFSS Age Group, DOH Race-Ethnicity, Gender, Education Level, Employment Status (Grouped), Household Income, Poverty Level, Marital Status (Grouped), Married, Health Care Coverage, for the Year(s) - 2001, 2002, 2003, 2004, 2005, 2006, 2007, 2008, 2009, 2010

Note: Weighted numbers (#), percentages and 95% confidence intervals; Respondents aged 18 years and older; n/r (Not Reportable) - If the unweighted total responses for a dimension (row) is <50 that row will not be shown; n/a (Not Available) - Not asked of a subset of respondents

Year: 2006

Household Income	Yes			No			Estimated Population
	#	%	C.I. (95%)	#	%	C.I. (95%)	#
Less than \$10,000	7,400	31.4	21.5 - 41.3	16,200	68.6	58.7 - 78.5	23,600
\$10,000 to \$14,999	7,300	32.6	23.7 - 41.4	15,100	67.4	58.6 - 76.3	22,500
\$15,000 to \$19,999	16,500	41.3	33.7 - 48.9	23,400	58.7	51.1 - 66.3	39,900
\$20,000 to \$24,999	14,900	25.7	20.1 - 31.3	43,000	74.3	68.7 - 79.9	57,900
\$25,000 to \$34,999	28,100	29.9	24.6 - 35.2	65,900	70.1	64.8 - 75.4	94,000
\$35,000 to \$49,999	30,600	24.9	21.2 - 28.6	92,200	75.1	71.4 - 78.8	122,800
\$50,000 to \$74,999	28,800	21.1	17.8 - 24.3	108,000	78.9	75.7 - 82.2	136,800
\$75,000 or more	43,000	20.1	17.4 - 22.8	170,800	79.9	77.2 - 82.6	213,800

Pneumonia - ever had shot by State, County, Island, Community, BRFSS Age Group, DOH Race-Ethnicity, Gender, Education Level, Employment Status (Grouped), Household Income, Poverty Level, Marital Status (Grouped), Married, Health Care Coverage, for the Year(s) - 2001, 2002, 2003, 2004, 2005, 2006, 2007, 2008, 2009, 2010

Note: Weighted numbers (#), percentages and 95% confidence intervals; Respondents aged 18 years and older; n/r (Not Reportable) - If the unweighted total responses for a dimension (row) is <50 that row will not be shown; n/a (Not Available) - Not asked of a subset of respondents

Year: 2006

Poverty Level	Yes			No			Estimated Population
	#	%	C.I. (95%)	#	%	C.I. (95%)	#
0-130%	43,000	27.6	23.4 - 31.8	113,000	72.4	68.2 - 76.6	156,000
131-185%	21,700	20.8	16.7 - 24.9	82,800	79.2	75.1 - 83.3	104,500
186+%	111,900	24.8	23.0 - 26.7	338,800	75.2	73.3 - 77.0	450,700

Pneumonia - ever had shot by State, County, Island, Community, BRFSS Age Group, DOH Race-Ethnicity, Gender, Education Level, Employment Status (Grouped), Household Income, Poverty Level, Marital Status (Grouped), Married, Health Care Coverage, for the Year(s) - 2001, 2002, 2003, 2004, 2005, 2006, 2007, 2008, 2009, 2010

Note: Weighted numbers (#), percentages and 95% confidence intervals; Respondents aged 18 years and older; n/r (Not Reportable) - If the unweighted total responses for a dimension (row) is <50 that row will not be shown; n/a (Not Available) - Not asked of a subset of respondents

Year: 2006

Marital Status (Grouped)	Yes			No			Estimated Population
	#	%	C.I. (95%)	#	%	C.I. (95%)	#
Married	125,500	24.5	22.8 - 26.3	385,800	75.5	73.7 - 77.2	511,300
Unmarried Couple	6,200	22.4	9.8 - 35.1	21,600	77.6	64.9 - 90.2	27,800
Widowed	31,200	59.5	54.0 - 65.1	21,200	40.5	34.9 - 46.0	52,400
Other	57,600	21.3	18.4 - 24.2	212,700	78.7	75.8 - 81.6	270,300

Married	Yes			No			Estimated Population
	#	%	C.I. (95%)	#	%	C.I. (95%)	#
Yes	127,400	24.5	22.7 - 26.2	393,200	75.5	73.8 - 77.3	520,600
No	92,700	27.3	24.6 - 30.0	247,100	72.7	70.0 - 75.4	339,800

Pneumonia - ever had shot by State, County, Island, Community, BRFSS Age Group, DOH Race-Ethnicity, Gender, Education Level, Employment Status (Grouped), Household Income, Poverty Level, Marital Status (Grouped), Married, Health Care Coverage, for the Year(s) - 2001, 2002, 2003, 2004, 2005, 2006, 2007, 2008, 2009, 2010

Note: Weighted numbers (#), percentages and 95% confidence intervals; Respondents aged 18 years and older; n/r (Not Reportable) - If the unweighted total responses for a dimension (row) is <50 that row will not be shown; n/a (Not Available) - Not asked of a subset of respondents

Year: 2006

Health Care Coverage	Yes			No			Estimated Population
	#	%	C.I. (95%)	#	%	C.I. (95%)	#
Yes	208,100	26.5	24.9 - 28.0	578,600	73.5	72.0 - 75.1	786,700
No	12,300	16.9	11.3 - 22.5	60,600	83.1	77.5 - 88.7	73,000

Pneumonia - ever had shot by State, County, Island, Community, BRFSS Age Group, DOH Race-Ethnicity, Gender, Education Level, Employment Status (Grouped), Household Income, Poverty Level, Marital Status (Grouped), Married, Health Care Coverage, for the Year(s) - 2001, 2002, 2003, 2004, 2005, 2006, 2007, 2008, 2009, 2010

Note: Weighted numbers (#), percentages and 95% confidence intervals; Respondents aged 18 years and older; n/r (Not Reportable) - If the unweighted total responses for a dimension (row) is <50 that row will not be shown; n/a (Not Available) - Not asked of a subset of respondents

Year: 2005

State	Yes			No			Estimated Population
	#	%	C.I. (95%)	#	%	C.I. (95%)	#
Hawaii State	198,300	22.1	20.7 - 23.6	698,100	77.9	76.4 - 79.3	896,500

County	Yes			No			Estimated Population
	#	%	C.I. (95%)	#	%	C.I. (95%)	#
Hawaii	26,200	23.8	21.2 - 26.4	84,000	76.2	73.6 - 78.8	110,200
Honolulu	144,900	22.4	20.5 - 24.3	502,200	77.6	75.7 - 79.5	647,200
Kauai	9,300	21.9	17.9 - 25.9	33,000	78.1	74.1 - 82.1	42,300
Maui	17,900	18.5	15.7 - 21.3	78,900	81.5	78.7 - 84.3	96,800

Pneumonia - ever had shot by State, County, Island, Community, BRFSS Age Group, DOH Race-Ethnicity, Gender, Education Level, Employment Status (Grouped), Household Income, Poverty Level, Marital Status (Grouped), Married, Health Care Coverage, for the Year(s) - 2001, 2002, 2003, 2004, 2005, 2006, 2007, 2008, 2009, 2010

Note: Weighted numbers (#), percentages and 95% confidence intervals; Respondents aged 18 years and older; n/r (Not Reportable) - If the unweighted total responses for a dimension (row) is <50 that row will not be shown; n/a (Not Available) - Not asked of a subset of respondents

Year: 2005

Island	Yes			No			Estimated Population
	#	%	C.I. (95%)	#	%	C.I. (95%)	#
Hawaii	26,200	23.8	21.2 - 26.4	84,000	76.2	73.6 - 78.8	110,200
Kauai	9,300	21.9	17.9 - 25.9	33,000	78.1	74.1 - 82.1	42,300
Lanai	500	20.3	13.2 - 27.4	1,900	79.7	72.6 - 86.8	2,300
Maui	16,400	18.3	15.3 - 21.3	73,200	81.7	78.7 - 84.7	89,600
Molokai	1,100	21.4	14.2 - 28.7	3,900	78.6	71.3 - 85.8	4,900
Oahu	144,900	22.4	20.5 - 24.3	502,200	77.6	75.7 - 79.5	647,200

Community	Yes			No			Estimated Population
	#	%	C.I. (95%)	#	%	C.I. (95%)	#
Aiea/ Pearl City	14,000	21.2	16.0 - 26.5	52,000	78.8	73.5 - 84.0	66,000

Pneumonia - ever had shot by State, County, Island, Community, BRFSS Age Group, DOH Race-Ethnicity, Gender, Education Level, Employment Status (Grouped), Household Income, Poverty Level, Marital Status (Grouped), Married, Health Care Coverage, for the Year(s) - 2001, 2002, 2003, 2004, 2005, 2006, 2007, 2008, 2009, 2010

Note: Weighted numbers (#), percentages and 95% confidence intervals; Respondents aged 18 years and older; n/r (Not Reportable) - If the unweighted total responses for a dimension (row) is <50 that row will not be shown; n/a (Not Available) - Not asked of a subset of respondents

Year: 2005

Community	Yes			No			Estimated Population
	#	%	C.I. (95%)	#	%	C.I. (95%)	#
Ala Moana	6,700	21.0	14.3 - 27.8	25,100	79.0	72.2 - 85.7	31,800
Hanalei/ Kapaa	3,500	19.5	14.0 - 25.1	14,500	80.5	74.9 - 86.0	18,000
Hilo	10,100	31.2	25.8 - 36.6	22,300	68.8	63.4 - 74.2	32,500
Kaaawa/ Kahaluu/ Kaneohe	11,700	24.1	17.8 - 30.5	36,700	75.9	69.5 - 82.2	48,400
Kahului	5,800	18.2	13.4 - 23.1	26,000	81.8	76.9 - 86.6	31,800
Kailua/ Waimanalo	9,100	20.2	14.6 - 25.7	36,200	79.8	74.3 - 85.4	45,400
Kaimuki/ Palolo/ Waikiki	14,500	23.5	18.3 - 28.8	47,200	76.5	71.2 - 81.7	61,800
Kona	6,500	23.5	18.4 - 28.7	21,000	76.5	71.3 - 81.6	27,500
Lahaina/ Wailuku	5,400	18.7	13.4 - 23.9	23,500	81.3	76.1 - 86.6	28,900

Pneumonia - ever had shot by State, County, Island, Community, BRFSS Age Group, DOH Race-Ethnicity, Gender, Education Level, Employment Status (Grouped), Household Income, Poverty Level, Marital Status (Grouped), Married, Health Care Coverage, for the Year(s) - 2001, 2002, 2003, 2004, 2005, 2006, 2007, 2008, 2009, 2010

Note: Weighted numbers (#), percentages and 95% confidence intervals; Respondents aged 18 years and older; n/r (Not Reportable) - If the unweighted total responses for a dimension (row) is <50 that row will not be shown; n/a (Not Available) - Not asked of a subset of respondents

Year: 2005

Community	Yes			No			Estimated Population
	#	%	C.I. (95%)	#	%	C.I. (95%)	#
Lanai	500	20.3	13.2 - 27.4	1,900	79.7	72.6 - 86.8	2,300
Lihue-Waimea	5,800	23.7	18.1 - 29.3	18,500	76.3	70.7 - 81.9	24,300
Manoa/ Upper Makiki	11,000	27.9	19.1 - 36.8	28,500	72.1	63.2 - 80.9	39,500
Mililani/ Wahiawa	16,300	24.8	18.8 - 30.8	49,500	75.2	69.2 - 81.2	65,800
Molokai	1,100	21.4	14.2 - 28.7	3,900	78.6	71.3 - 85.8	4,900
Nanakuli/ Waianae	9,400	30.3	17.2 - 43.5	21,600	69.7	56.5 - 82.8	31,100
N.Hawaii	4,500	21.0	16.6 - 25.3	17,200	79.0	74.7 - 83.4	21,700
N.Shore/ Laie	4,600	24.7	13.2 - 36.1	14,100	75.3	63.9 - 86.8	18,700
Nuuanu/ Kalihi/ Moanalua	18,100	28.3	20.8 - 35.8	46,000	71.7	64.2 - 79.2	64,100

Pneumonia - ever had shot by State, County, Island, Community, BRFSS Age Group, DOH Race-Ethnicity, Gender, Education Level, Employment Status (Grouped), Household Income, Poverty Level, Marital Status (Grouped), Married, Health Care Coverage, for the Year(s) - 2001, 2002, 2003, 2004, 2005, 2006, 2007, 2008, 2009, 2010

Note: Weighted numbers (#), percentages and 95% confidence intervals; Respondents aged 18 years and older; n/r (Not Reportable) - If the unweighted total responses for a dimension (row) is <50 that row will not be shown; n/a (Not Available) - Not asked of a subset of respondents

Year: 2005

Community	Yes			No			Estimated Population
	#	%	C.I. (95%)	#	%	C.I. (95%)	#
Puna/ Kau	5,000	17.7	12.6 - 22.7	23,500	82.3	77.3 - 87.4	28,500
Salt Lake/ Foster Village	4,000	14.9	7.4 - 22.4	23,000	85.1	77.6 - 92.6	27,000
Upcountry/ Hana	5,200	18.0	12.6 - 23.4	23,600	82.0	76.6 - 87.4	28,800
Waialae/ Kahala/ Hawaii Kai	9,800	23.9	17.2 - 30.6	31,200	76.1	69.4 - 82.8	41,100
Waipahu/ Kapolei/ Ewa	15,500	14.5	10.6 - 18.5	91,100	85.5	81.5 - 89.4	106,600

Pneumonia - ever had shot by State, County, Island, Community, BRFSS Age Group, DOH Race-Ethnicity, Gender, Education Level, Employment Status (Grouped), Household Income, Poverty Level, Marital Status (Grouped), Married, Health Care Coverage, for the Year(s) - 2001, 2002, 2003, 2004, 2005, 2006, 2007, 2008, 2009, 2010

Note: Weighted numbers (#), percentages and 95% confidence intervals; Respondents aged 18 years and older; n/r (Not Reportable) - If the unweighted total responses for a dimension (row) is <50 that row will not be shown; n/a (Not Available) - Not asked of a subset of respondents

Year: 2005

BRFSS Age Group	Yes			No			Estimated Population
	#	%	C.I. (95%)	#	%	C.I. (95%)	#
18-24	14,400	14.9	9.3 - 20.4	82,400	85.1	79.6 - 90.7	96,700
25-34	17,700	12.1	8.0 - 16.2	129,000	87.9	83.8 - 92.0	146,800
35-44	11,200	6.6	4.8 - 8.4	158,500	93.4	91.6 - 95.2	169,700
45-54	20,000	11.5	9.1 - 13.9	154,300	88.5	86.1 - 90.9	174,300
55-64	23,500	17.3	14.4 - 20.1	112,700	82.7	79.9 - 85.6	136,300
65-74	52,000	63.8	59.2 - 68.5	29,500	36.2	31.5 - 40.8	81,500
75+	58,100	68.0	63.4 - 72.6	27,400	32.0	27.4 - 36.6	85,500

Pneumonia - ever had shot by State, County, Island, Community, BRFSS Age Group, DOH Race-Ethnicity, Gender, Education Level, Employment Status (Grouped), Household Income, Poverty Level, Marital Status (Grouped), Married, Health Care Coverage, for the Year(s) - 2001, 2002, 2003, 2004, 2005, 2006, 2007, 2008, 2009, 2010

Note: Weighted numbers (#), percentages and 95% confidence intervals; Respondents aged 18 years and older; n/r (Not Reportable) - If the unweighted total responses for a dimension (row) is <50 that row will not be shown; n/a (Not Available) - Not asked of a subset of respondents

Year: 2005

DOH Race-Ethnicity	Yes			No			Estimated Population
	#	%	C.I. (95%)	#	%	C.I. (95%)	#
Caucasian	68,900	23.2	20.9 - 25.5	228,000	76.8	74.5 - 79.1	296,900
Native Hawaiian	21,000	19.9	15.9 - 23.8	84,700	80.1	76.2 - 84.1	105,800
Chinese	10,000	20.5	14.9 - 26.2	38,900	79.5	73.8 - 85.1	48,900
Filipino	24,500	16.3	12.2 - 20.3	126,000	83.7	79.7 - 87.8	150,500
Japanese	58,200	29.7	26.5 - 32.9	137,800	70.3	67.1 - 73.5	196,000
Black	3,800	22.6	11.6 - 33.6	13,100	77.4	66.4 - 88.4	16,900
Other Asian	4,000	21.4	8.0 - 34.9	14,800	78.6	65.1 - 92.0	18,800
Other Pacific Islander	3,600	15.3	6.6 - 24.1	20,000	84.7	75.9 - 93.4	23,700
Other	2,700	9.1	4.2 - 14.1	27,100	90.9	85.9 - 95.8	29,800

Pneumonia - ever had shot by State, County, Island, Community, BRFSS Age Group, DOH Race-Ethnicity, Gender, Education Level, Employment Status (Grouped), Household Income, Poverty Level, Marital Status (Grouped), Married, Health Care Coverage, for the Year(s) - 2001, 2002, 2003, 2004, 2005, 2006, 2007, 2008, 2009, 2010

Note: Weighted numbers (#), percentages and 95% confidence intervals; Respondents aged 18 years and older; n/r (Not Reportable) - If the unweighted total responses for a dimension (row) is <50 that row will not be shown; n/a (Not Available) - Not asked of a subset of respondents

Year: 2005

Gender	Yes			No			Estimated Population
	#	%	C.I. (95%)	#	%	C.I. (95%)	#
Male	93,300	21.2	18.9 - 23.5	346,300	78.8	76.5 - 81.1	439,600
Female	105,100	23.0	21.2 - 24.8	351,800	77.0	75.2 - 78.8	456,900

Pneumonia - ever had shot by State, County, Island, Community, BRFSS Age Group, DOH Race-Ethnicity, Gender, Education Level, Employment Status (Grouped), Household Income, Poverty Level, Marital Status (Grouped), Married, Health Care Coverage, for the Year(s) - 2001, 2002, 2003, 2004, 2005, 2006, 2007, 2008, 2009, 2010

Note: Weighted numbers (#), percentages and 95% confidence intervals; Respondents aged 18 years and older; n/r (Not Reportable) - If the unweighted total responses for a dimension (row) is <50 that row will not be shown; n/a (Not Available) - Not asked of a subset of respondents

Year: 2005

Education Level	Yes			No			Estimated Population
	#	%	C.I. (95%)	#	%	C.I. (95%)	#
Never attended school/ Only Kindergarten to Grades 8	6,500	31.9	19.1 - 44.7	13,800	68.1	55.3 - 80.9	20,300
Grades 9 thru 11 (Some High School)	14,300	38.0	29.4 - 46.6	23,300	62.0	53.4 - 70.6	37,600
Grades 12 or GED (High School Grad)	62,400	24.4	21.5 - 27.4	192,900	75.6	72.6 - 78.5	255,300
College 1 to 3 years (Some College/ Tech)	47,900	18.6	16.1 - 21.0	209,900	81.4	79.0 - 83.9	257,700
College 4 years or more (College Grad)	67,000	20.7	18.5 - 23.0	256,200	79.3	77.0 - 81.5	323,300

Pneumonia - ever had shot by State, County, Island, Community, BRFSS Age Group, DOH Race-Ethnicity, Gender, Education Level, Employment Status (Grouped), Household Income, Poverty Level, Marital Status (Grouped), Married, Health Care Coverage, for the Year(s) - 2001, 2002, 2003, 2004, 2005, 2006, 2007, 2008, 2009, 2010

Note: Weighted numbers (#), percentages and 95% confidence intervals; Respondents aged 18 years and older; n/r (Not Reportable) - If the unweighted total responses for a dimension (row) is <50 that row will not be shown; n/a (Not Available) - Not asked of a subset of respondents

Year: 2005

Employment Status (Grouped)	Yes			No			Estimated Population
	#	%	C.I. (95%)	#	%	C.I. (95%)	#
Employed	69,600	12.1	10.5 - 13.7	505,600	87.9	86.3 - 89.5	575,200
Unemployed	2,800	18.2	9.1 - 27.4	12,500	81.8	72.6 - 90.9	15,300
Retired/Unable to work	112,200	50.7	47.6 - 53.9	109,000	49.3	46.1 - 52.4	221,200
Student/Homemaker	13,300	16.2	11.1 - 21.3	69,100	83.8	78.7 - 88.9	82,500

Pneumonia - ever had shot by State, County, Island, Community, BRFSS Age Group, DOH Race-Ethnicity, Gender, Education Level, Employment Status (Grouped), Household Income, Poverty Level, Marital Status (Grouped), Married, Health Care Coverage, for the Year(s) - 2001, 2002, 2003, 2004, 2005, 2006, 2007, 2008, 2009, 2010

Note: Weighted numbers (#), percentages and 95% confidence intervals; Respondents aged 18 years and older; n/r (Not Reportable) - If the unweighted total responses for a dimension (row) is <50 that row will not be shown; n/a (Not Available) - Not asked of a subset of respondents

Year: 2005

Household Income	Yes			No			Estimated Population
	#	%	C.I. (95%)	#	%	C.I. (95%)	#
Less than \$10,000	7,900	31.1	22.3 - 40.0	17,400	68.9	60.0 - 77.7	25,300
\$10,000 to \$14,999	8,300	30.6	21.9 - 39.3	18,700	69.4	60.7 - 78.1	27,000
\$15,000 to \$19,999	14,200	30.3	23.6 - 37.1	32,500	69.7	62.9 - 76.4	46,700
\$20,000 to \$24,999	15,500	26.6	21.1 - 32.1	42,800	73.4	67.9 - 78.9	58,300
\$25,000 to \$34,999	21,300	22.5	18.4 - 26.6	73,400	77.5	73.4 - 81.6	94,600
\$35,000 to \$49,999	35,200	25.2	21.3 - 29.1	104,400	74.8	70.9 - 78.7	139,600
\$50,000 to \$74,999	31,000	18.3	15.1 - 21.5	138,600	81.7	78.5 - 84.9	169,600
\$75,000 or more	35,500	16.6	13.8 - 19.4	178,600	83.4	80.6 - 86.2	214,200

Pneumonia - ever had shot by State, County, Island, Community, BRFSS Age Group, DOH Race-Ethnicity, Gender, Education Level, Employment Status (Grouped), Household Income, Poverty Level, Marital Status (Grouped), Married, Health Care Coverage, for the Year(s) - 2001, 2002, 2003, 2004, 2005, 2006, 2007, 2008, 2009, 2010

Note: Weighted numbers (#), percentages and 95% confidence intervals; Respondents aged 18 years and older; n/r (Not Reportable) - If the unweighted total responses for a dimension (row) is <50 that row will not be shown; n/a (Not Available) - Not asked of a subset of respondents

Year: 2005

Poverty Level	Yes			No			Estimated Population
	#	%	C.I. (95%)	#	%	C.I. (95%)	#
0-130%	38,700	24.5	20.6 - 28.3	119,500	75.5	71.7 - 79.4	158,100
131-185%	20,900	24.7	18.4 - 30.9	63,900	75.3	69.1 - 81.6	84,900
186+%	109,100	20.5	18.9 - 22.1	423,000	79.5	77.9 - 81.1	532,100

Pneumonia - ever had shot by State, County, Island, Community, BRFSS Age Group, DOH Race-Ethnicity, Gender, Education Level, Employment Status (Grouped), Household Income, Poverty Level, Marital Status (Grouped), Married, Health Care Coverage, for the Year(s) - 2001, 2002, 2003, 2004, 2005, 2006, 2007, 2008, 2009, 2010

Note: Weighted numbers (#), percentages and 95% confidence intervals; Respondents aged 18 years and older; n/r (Not Reportable) - If the unweighted total responses for a dimension (row) is <50 that row will not be shown; n/a (Not Available) - Not asked of a subset of respondents

Year: 2005

Marital Status (Grouped)	Yes			No			Estimated Population
	#	%	C.I. (95%)	#	%	C.I. (95%)	#
Married	117,200	21.5	19.7 - 23.4	427,600	78.5	76.6 - 80.3	544,800
Unmarried Couple	2,200	9.7	3.9 - 15.4	20,600	90.3	84.6 - 96.1	22,800
Widowed	29,700	54.0	48.6 - 59.4	25,300	46.0	40.6 - 51.4	55,100
Other	49,200	18.0	15.3 - 20.7	224,600	82.0	79.3 - 84.7	273,800

Married	Yes			No			Estimated Population
	#	%	C.I. (95%)	#	%	C.I. (95%)	#
Yes	118,200	21.3	19.5 - 23.1	436,900	78.7	76.9 - 80.5	555,100
No	79,600	23.5	21.1 - 25.9	259,800	76.5	74.1 - 78.9	339,500

Pneumonia - ever had shot by State, County, Island, Community, BRFSS Age Group, DOH Race-Ethnicity, Gender, Education Level, Employment Status (Grouped), Household Income, Poverty Level, Marital Status (Grouped), Married, Health Care Coverage, for the Year(s) - 2001, 2002, 2003, 2004, 2005, 2006, 2007, 2008, 2009, 2010

Note: Weighted numbers (#), percentages and 95% confidence intervals; Respondents aged 18 years and older; n/r (Not Reportable) - If the unweighted total responses for a dimension (row) is <50 that row will not be shown; n/a (Not Available) - Not asked of a subset of respondents

Year: 2005

Health Care Coverage	Yes			No			Estimated Population
	#	%	C.I. (95%)	#	%	C.I. (95%)	#
Yes	192,700	23.2	21.7 - 24.8	636,200	76.8	75.2 - 78.3	828,900
No	5,500	8.3	4.2 - 12.3	61,300	91.7	87.7 - 95.8	66,900

Pneumonia - ever had shot by State, County, Island, Community, BRFSS Age Group, DOH Race-Ethnicity, Gender, Education Level, Employment Status (Grouped), Household Income, Poverty Level, Marital Status (Grouped), Married, Health Care Coverage, for the Year(s) - 2001, 2002, 2003, 2004, 2005, 2006, 2007, 2008, 2009, 2010

Note: Weighted numbers (#), percentages and 95% confidence intervals; Respondents aged 18 years and older; n/r (Not Reportable) - If the unweighted total responses for a dimension (row) is <50 that row will not be shown; n/a (Not Available) - Not asked of a subset of respondents

Year: 2004

State	Yes			No			Estimated Population
	#	%	C.I. (95%)	#	%	C.I. (95%)	#
Hawaii State	204,500	24.0	21.3 - 26.7	646,300	76.0	73.3 - 78.7	850,800

County	Yes			No			Estimated Population
	#	%	C.I. (95%)	#	%	C.I. (95%)	#
Hawaii	26,100	21.8	17.7 - 25.8	93,900	78.2	74.2 - 82.3	120,000
Honolulu	151,300	25.2	21.6 - 28.8	449,400	74.8	71.2 - 78.4	600,700
Kauai	9,200	24.4	18.1 - 30.7	28,400	75.6	69.3 - 81.9	37,500
Maui	17,900	19.3	13.7 - 25.0	74,600	80.7	75.0 - 86.3	92,500

Pneumonia - ever had shot by State, County, Island, Community, BRFSS Age Group, DOH Race-Ethnicity, Gender, Education Level, Employment Status (Grouped), Household Income, Poverty Level, Marital Status (Grouped), Married, Health Care Coverage, for the Year(s) - 2001, 2002, 2003, 2004, 2005, 2006, 2007, 2008, 2009, 2010

Note: Weighted numbers (#), percentages and 95% confidence intervals; Respondents aged 18 years and older; n/r (Not Reportable) - If the unweighted total responses for a dimension (row) is <50 that row will not be shown; n/a (Not Available) - Not asked of a subset of respondents

Year: 2004

Island	Yes			No			Estimated Population
	#	%	C.I. (95%)	#	%	C.I. (95%)	#
Hawaii	26,100	21.8	17.7 - 25.8	93,900	78.2	74.2 - 82.3	120,000
Kauai	9,200	24.4	18.1 - 30.7	28,400	75.6	69.3 - 81.9	37,500
Maui	16,300	19.0	13.0 - 25.0	69,600	81.0	75.0 - 87.0	85,900
Oahu	151,300	25.2	21.6 - 28.8	449,400	74.8	71.2 - 78.4	600,700

Community	Yes			No			Estimated Population
	#	%	C.I. (95%)	#	%	C.I. (95%)	#
Aiea/ Pearl City	14,700	25.4	14.7 - 36.1	43,100	74.6	63.9 - 85.3	57,700
Hanalei/ Kapaa	2,200	15.1	7.5 - 22.6	12,300	84.9	77.4 - 92.5	14,500
Hilo	6,100	18.6	12.3 - 24.9	26,800	81.4	75.1 - 87.7	32,900

Pneumonia - ever had shot by State, County, Island, Community, BRFSS Age Group, DOH Race-Ethnicity, Gender, Education Level, Employment Status (Grouped), Household Income, Poverty Level, Marital Status (Grouped), Married, Health Care Coverage, for the Year(s) - 2001, 2002, 2003, 2004, 2005, 2006, 2007, 2008, 2009, 2010

Note: Weighted numbers (#), percentages and 95% confidence intervals; Respondents aged 18 years and older; n/r (Not Reportable) - If the unweighted total responses for a dimension (row) is <50 that row will not be shown; n/a (Not Available) - Not asked of a subset of respondents

Year: 2004

Community	Yes			No			Estimated Population
	#	%	C.I. (95%)	#	%	C.I. (95%)	#
Kaaawa/ Kahaluu/ Kaneohe	15,000	35.7	20.8 - 50.7	26,900	64.3	49.3 - 79.2	41,900
Kahului	6,400	20.7	11.1 - 30.2	24,400	79.3	69.8 - 88.9	30,800
Kailua/ Waimanalo	7,100	17.8	7.8 - 27.9	32,500	82.2	72.1 - 92.2	39,500
Kaimuki/ Palolo/ Waikiki	17,400	29.7	18.6 - 40.7	41,200	70.3	59.3 - 81.4	58,500
Kona	6,300	25.5	16.0 - 34.9	18,400	74.5	65.1 - 84.0	24,700
Lahaina/ Wailuku	3,500	13.7	6.4 - 20.9	22,100	86.3	79.1 - 93.6	25,600
Lihue-Waimea	7,000	30.3	21.4 - 39.1	16,000	69.7	60.9 - 78.6	23,000
Manoa/ Upper Makiki	9,000	19.3	9.4 - 29.3	37,400	80.7	70.7 - 90.6	46,400
Mililani/ Wahiawa	18,200	32.1	15.7 - 48.4	38,600	67.9	51.6 - 84.3	56,800

Pneumonia - ever had shot by State, County, Island, Community, BRFSS Age Group, DOH Race-Ethnicity, Gender, Education Level, Employment Status (Grouped), Household Income, Poverty Level, Marital Status (Grouped), Married, Health Care Coverage, for the Year(s) - 2001, 2002, 2003, 2004, 2005, 2006, 2007, 2008, 2009, 2010

Note: Weighted numbers (#), percentages and 95% confidence intervals; Respondents aged 18 years and older; n/r (Not Reportable) - If the unweighted total responses for a dimension (row) is <50 that row will not be shown; n/a (Not Available) - Not asked of a subset of respondents

Year: 2004

Community	Yes			No			Estimated Population
	#	%	C.I. (95%)	#	%	C.I. (95%)	#
N.Hawaii	4,800	23.3	13.5 - 33.1	15,800	76.7	66.9 - 86.5	20,600
Nuuanu/ Kalihi/ Moanalua	12,500	21.6	11.4 - 31.7	45,300	78.4	68.3 - 88.6	57,800
Puna/ Kau	8,900	21.3	13.8 - 28.8	32,900	78.7	71.2 - 86.2	41,800
Upcountry/ Hana	6,500	21.9	9.4 - 34.3	23,100	78.2	65.7 - 90.6	29,600
Waialae/ Kahala/ Hawaii Kai	8,200	24.9	10.2 - 39.7	24,700	75.1	60.3 - 89.8	33,000
Waipahu/ Kapolei/ Ewa	22,500	23.1	14.1 - 32.1	75,000	76.9	67.9 - 85.9	97,500

Pneumonia - ever had shot by State, County, Island, Community, BRFSS Age Group, DOH Race-Ethnicity, Gender, Education Level, Employment Status (Grouped), Household Income, Poverty Level, Marital Status (Grouped), Married, Health Care Coverage, for the Year(s) - 2001, 2002, 2003, 2004, 2005, 2006, 2007, 2008, 2009, 2010

Note: Weighted numbers (#), percentages and 95% confidence intervals; Respondents aged 18 years and older; n/r (Not Reportable) - If the unweighted total responses for a dimension (row) is <50 that row will not be shown; n/a (Not Available) - Not asked of a subset of respondents

Year: 2004

BRFSS Age Group	Yes			No			Estimated Population
	#	%	C.I. (95%)	#	%	C.I. (95%)	#
18-24	16,800	18.9	7.0 - 30.9	72,000	81.1	69.1 - 93.0	88,800
25-34	22,400	15.0	9.1 - 20.8	127,200	85.0	79.2 - 90.9	149,600
35-44	20,000	12.1	6.9 - 17.3	145,700	87.9	82.7 - 93.1	165,800
45-54	18,700	11.4	7.5 - 15.3	145,300	88.6	84.7 - 92.5	164,000
55-64	26,100	22.0	16.1 - 27.8	92,700	78.0	72.2 - 83.9	118,800
65-74	42,100	52.3	43.3 - 61.3	38,400	47.7	38.7 - 56.7	80,500
75+	57,000	76.5	68.0 - 85.0	17,500	23.5	15.0 - 32.0	74,500

Pneumonia - ever had shot by State, County, Island, Community, BRFSS Age Group, DOH Race-Ethnicity, Gender, Education Level, Employment Status (Grouped), Household Income, Poverty Level, Marital Status (Grouped), Married, Health Care Coverage, for the Year(s) - 2001, 2002, 2003, 2004, 2005, 2006, 2007, 2008, 2009, 2010

Note: Weighted numbers (#), percentages and 95% confidence intervals; Respondents aged 18 years and older; n/r (Not Reportable) - If the unweighted total responses for a dimension (row) is <50 that row will not be shown; n/a (Not Available) - Not asked of a subset of respondents

Year: 2004

DOH Race-Ethnicity	Yes			No			Estimated Population
	#	%	C.I. (95%)	#	%	C.I. (95%)	#
Caucasian	67,600	24.3	20.3 - 28.3	210,300	75.7	71.7 - 79.7	278,000
Native Hawaiian	29,000	25.5	17.7 - 33.3	84,800	74.5	66.7 - 82.3	113,800
Chinese	10,900	24.1	13.6 - 34.6	34,500	75.9	65.4 - 86.4	45,400
Filipino	22,900	17.1	10.5 - 23.7	111,000	82.9	76.3 - 89.5	134,000
Japanese	49,200	27.7	22.0 - 33.4	128,600	72.3	66.6 - 78.0	177,800

Pneumonia - ever had shot by State, County, Island, Community, BRFSS Age Group, DOH Race-Ethnicity, Gender, Education Level, Employment Status (Grouped), Household Income, Poverty Level, Marital Status (Grouped), Married, Health Care Coverage, for the Year(s) - 2001, 2002, 2003, 2004, 2005, 2006, 2007, 2008, 2009, 2010

Note: Weighted numbers (#), percentages and 95% confidence intervals; Respondents aged 18 years and older; n/r (Not Reportable) - If the unweighted total responses for a dimension (row) is <50 that row will not be shown; n/a (Not Available) - Not asked of a subset of respondents

Year: 2004

Gender	Yes			No			Estimated Population
	#	%	C.I. (95%)	#	%	C.I. (95%)	#
Male	95,000	23.3	19.0 - 27.5	313,300	76.7	72.5 - 81.0	408,400
Female	109,500	24.7	21.3 - 28.2	332,900	75.3	71.8 - 78.7	442,400

Education Level	Yes			No			Estimated Population
	#	%	C.I. (95%)	#	%	C.I. (95%)	#
Grades 9 thru 11 (Some High School)	11,300	39.0	21.9 - 56.2	17,700	61.0	43.8 - 78.1	29,000
Grades 12 or GED (High School Grad)	69,900	25.9	20.8 - 31.0	199,700	74.1	69.0 - 79.2	269,600
College 1 to 3 years (Some College/ Tech)	61,000	22.6	17.5 - 27.7	209,200	77.4	72.3 - 82.5	270,100
College 4 years or more (College Grad)	56,000	20.7	16.6 - 24.7	214,800	79.3	75.3 - 83.4	270,900

Pneumonia - ever had shot by State, County, Island, Community, BRFSS Age Group, DOH Race-Ethnicity, Gender, Education Level, Employment Status (Grouped), Household Income, Poverty Level, Marital Status (Grouped), Married, Health Care Coverage, for the Year(s) - 2001, 2002, 2003, 2004, 2005, 2006, 2007, 2008, 2009, 2010

Note: Weighted numbers (#), percentages and 95% confidence intervals; Respondents aged 18 years and older; n/r (Not Reportable) - If the unweighted total responses for a dimension (row) is <50 that row will not be shown; n/a (Not Available) - Not asked of a subset of respondents

Year: 2004

Employment Status (Grouped)	Yes			No			Estimated Population
	#	%	C.I. (95%)	#	%	C.I. (95%)	#
Employed	78,800	14.5	11.5 - 17.6	463,200	85.5	82.4 - 88.5	542,100
Unemployed	4,900	19.0	3.2 - 34.7	20,800	81.0	65.3 - 96.8	25,600
Retired/Unable to work	103,900	54.6	48.6 - 60.6	86,500	45.4	39.4 - 51.4	190,300
Student/Homemaker	16,900	18.6	10.9 - 26.2	74,300	81.4	73.8 - 89.1	91,300

Pneumonia - ever had shot by State, County, Island, Community, BRFSS Age Group, DOH Race-Ethnicity, Gender, Education Level, Employment Status (Grouped), Household Income, Poverty Level, Marital Status (Grouped), Married, Health Care Coverage, for the Year(s) - 2001, 2002, 2003, 2004, 2005, 2006, 2007, 2008, 2009, 2010

Note: Weighted numbers (#), percentages and 95% confidence intervals; Respondents aged 18 years and older; n/r (Not Reportable) - If the unweighted total responses for a dimension (row) is <50 that row will not be shown; n/a (Not Available) - Not asked of a subset of respondents

Year: 2004

Household Income	Yes			No			Estimated Population
	#	%	C.I. (95%)	#	%	C.I. (95%)	#
Less than \$10,000	3,400	21.5	7.7 - 35.3	12,500	78.5	64.7 - 92.3	15,900
\$10,000 to \$14,999	6,300	24.9	13.4 - 36.3	19,000	75.1	63.7 - 86.6	25,300
\$15,000 to \$19,999	21,000	47.2	33.3 - 61.2	23,500	52.8	38.8 - 66.7	44,500
\$20,000 to \$24,999	14,100	21.4	13.2 - 29.5	52,000	78.6	70.5 - 86.8	66,200
\$25,000 to \$34,999	22,700	21.9	15.1 - 28.7	80,900	78.1	71.3 - 84.9	103,600
\$35,000 to \$49,999	30,400	22.7	16.2 - 29.3	103,200	77.3	70.7 - 83.8	133,600
\$50,000 to \$74,999	66,600	25.4	20.0 - 30.8	195,400	74.6	69.2 - 80.0	262,000
\$75,000 or more	40,000	20.0	14.8 - 25.2	159,700	80.0	74.8 - 85.2	199,700

Pneumonia - ever had shot by State, County, Island, Community, BRFSS Age Group, DOH Race-Ethnicity, Gender, Education Level, Employment Status (Grouped), Household Income, Poverty Level, Marital Status (Grouped), Married, Health Care Coverage, for the Year(s) - 2001, 2002, 2003, 2004, 2005, 2006, 2007, 2008, 2009, 2010

Note: Weighted numbers (#), percentages and 95% confidence intervals; Respondents aged 18 years and older; n/r (Not Reportable) - If the unweighted total responses for a dimension (row) is <50 that row will not be shown; n/a (Not Available) - Not asked of a subset of respondents

Year: 2004

Poverty Level	Yes			No			Estimated Population
	#	%	C.I. (95%)	#	%	C.I. (95%)	#
0-130%	38,800	26.1	19.2 - 33.0	109,700	73.9	67.0 - 80.8	148,500
131-185%	25,500	23.4	13.3 - 33.5	83,500	76.6	66.5 - 86.7	109,000
186+%	140,200	23.6	20.7 - 26.6	453,100	76.4	73.4 - 79.3	593,300

Pneumonia - ever had shot by State, County, Island, Community, BRFSS Age Group, DOH Race-Ethnicity, Gender, Education Level, Employment Status (Grouped), Household Income, Poverty Level, Marital Status (Grouped), Married, Health Care Coverage, for the Year(s) - 2001, 2002, 2003, 2004, 2005, 2006, 2007, 2008, 2009, 2010

Note: Weighted numbers (#), percentages and 95% confidence intervals; Respondents aged 18 years and older; n/r (Not Reportable) - If the unweighted total responses for a dimension (row) is <50 that row will not be shown; n/a (Not Available) - Not asked of a subset of respondents

Year: 2004

Marital Status (Grouped)	Yes			No			Estimated Population
	#	%	C.I. (95%)	#	%	C.I. (95%)	#
Married	117,200	23.5	20.1 - 26.8	382,500	76.5	73.2 - 79.9	499,800
Unmarried Couple	3,000	14.8	4.1 - 25.5	17,400	85.2	74.5 - 95.9	20,400
Widowed	35,500	64.2	53.9 - 74.5	19,800	35.8	25.5 - 46.1	55,300
Other	48,700	17.7	12.7 - 22.7	226,600	82.3	77.3 - 87.3	275,300

Married	Yes			No			Estimated Population
	#	%	C.I. (95%)	#	%	C.I. (95%)	#
Yes	117,600	23.1	19.8 - 26.4	390,600	76.9	73.6 - 80.2	508,200
No	86,500	25.5	20.9 - 30.2	252,600	74.5	69.8 - 79.1	339,100

Pneumonia - ever had shot by State, County, Island, Community, BRFSS Age Group, DOH Race-Ethnicity, Gender, Education Level, Employment Status (Grouped), Household Income, Poverty Level, Marital Status (Grouped), Married, Health Care Coverage, for the Year(s) - 2001, 2002, 2003, 2004, 2005, 2006, 2007, 2008, 2009, 2010

Note: Weighted numbers (#), percentages and 95% confidence intervals; Respondents aged 18 years and older; n/r (Not Reportable) - If the unweighted total responses for a dimension (row) is <50 that row will not be shown; n/a (Not Available) - Not asked of a subset of respondents

Year: 2004

Health Care Coverage	Yes			No			Estimated Population
	#	%	C.I. (95%)	#	%	C.I. (95%)	#
Yes	194,400	25.2	22.3 - 28.1	577,500	74.8	71.9 - 77.7	771,900
No	9,500	12.7	5.5 - 19.9	65,100	87.3	80.1 - 94.5	74,600

Pneumonia - ever had shot by State, County, Island, Community, BRFSS Age Group, DOH Race-Ethnicity, Gender, Education Level, Employment Status (Grouped), Household Income, Poverty Level, Marital Status (Grouped), Married, Health Care Coverage, for the Year(s) - 2001, 2002, 2003, 2004, 2005, 2006, 2007, 2008, 2009, 2010

Note: Weighted numbers (#), percentages and 95% confidence intervals; Respondents aged 18 years and older; n/r (Not Reportable) - If the unweighted total responses for a dimension (row) is <50 that row will not be shown; n/a (Not Available) - Not asked of a subset of respondents

Year: 2003

State	Yes			No			Estimated Population
	#	%	C.I. (95%)	#	%	C.I. (95%)	#
Hawaii State	187,600	20.7	19.1 - 22.2	720,200	79.3	77.8 - 80.9	907,900

County	Yes			No			Estimated Population
	#	%	C.I. (95%)	#	%	C.I. (95%)	#
Hawaii	23,600	20.5	17.2 - 23.8	91,300	79.5	76.2 - 82.8	114,900
Honolulu	138,200	21.1	19.1 - 23.1	515,900	78.9	76.9 - 80.9	654,100
Kauai	8,100	19.3	14.8 - 23.8	33,800	80.7	76.2 - 85.2	41,900
Maui	17,800	18.3	14.7 - 22.0	79,200	81.7	78.0 - 85.3	97,000

Pneumonia - ever had shot by State, County, Island, Community, BRFSS Age Group, DOH Race-Ethnicity, Gender, Education Level, Employment Status (Grouped), Household Income, Poverty Level, Marital Status (Grouped), Married, Health Care Coverage, for the Year(s) - 2001, 2002, 2003, 2004, 2005, 2006, 2007, 2008, 2009, 2010

Note: Weighted numbers (#), percentages and 95% confidence intervals; Respondents aged 18 years and older; n/r (Not Reportable) - If the unweighted total responses for a dimension (row) is <50 that row will not be shown; n/a (Not Available) - Not asked of a subset of respondents

Year: 2003

Island	Yes			No			Estimated Population
	#	%	C.I. (95%)	#	%	C.I. (95%)	#
Hawaii	23,600	20.5	17.2 - 23.8	91,300	79.5	76.2 - 82.8	114,900
Kauai	8,100	19.3	14.8 - 23.8	33,800	80.7	76.2 - 85.2	41,900
Maui	15,700	17.8	13.9 - 21.7	72,400	82.2	78.3 - 86.1	88,200
Molokai	1,600	24.8	12.9 - 36.7	4,800	75.2	63.3 - 87.1	6,300
Oahu	138,200	21.1	19.1 - 23.1	515,900	78.9	76.9 - 80.9	654,100

Community	Yes			No			Estimated Population
	#	%	C.I. (95%)	#	%	C.I. (95%)	#
Aiea/ Pearl City	14,500	27.2	19.1 - 35.3	38,900	72.8	64.7 - 80.9	53,400
Ala Moana	7,900	25.7	17.5 - 33.9	22,800	74.3	66.1 - 82.5	30,700

Pneumonia - ever had shot by State, County, Island, Community, BRFSS Age Group, DOH Race-Ethnicity, Gender, Education Level, Employment Status (Grouped), Household Income, Poverty Level, Marital Status (Grouped), Married, Health Care Coverage, for the Year(s) - 2001, 2002, 2003, 2004, 2005, 2006, 2007, 2008, 2009, 2010

Note: Weighted numbers (#), percentages and 95% confidence intervals; Respondents aged 18 years and older; n/r (Not Reportable) - If the unweighted total responses for a dimension (row) is <50 that row will not be shown; n/a (Not Available) - Not asked of a subset of respondents

Year: 2003

Community	Yes			No			Estimated Population
	#	%	C.I. (95%)	#	%	C.I. (95%)	#
Hanalei/ Kapaa	3,200	18.3	11.5 - 25.0	14,300	81.7	75.0 - 88.5	17,400
Hilo	7,000	20.0	14.0 - 26.0	28,000	80.0	74.0 - 86.0	35,000
Kaaawa/ Kahaluu/ Kaneohe	6,600	14.5	8.1 - 20.8	38,900	85.5	79.2 - 91.9	45,500
Kahului	6,600	20.5	13.9 - 27.1	25,800	79.5	72.9 - 86.1	32,400
Kailua/ Waimanalo	9,800	19.8	13.4 - 26.1	39,900	80.2	73.9 - 86.6	49,700
Kaimuki/ Palolo/ Waikiki	14,900	23.2	17.1 - 29.2	49,500	76.8	70.8 - 82.9	64,400
Kona	4,900	16.5	11.6 - 21.4	24,700	83.5	78.6 - 88.4	29,600
Lahaina/ Wailuku	4,800	17.6	11.1 - 24.0	22,800	82.4	76.0 - 88.9	27,600
Lihue-Waimea	4,900	20.0	14.1 - 26.0	19,600	80.0	74.0 - 85.9	24,500

Pneumonia - ever had shot by State, County, Island, Community, BRFSS Age Group, DOH Race-Ethnicity, Gender, Education Level, Employment Status (Grouped), Household Income, Poverty Level, Marital Status (Grouped), Married, Health Care Coverage, for the Year(s) - 2001, 2002, 2003, 2004, 2005, 2006, 2007, 2008, 2009, 2010

Note: Weighted numbers (#), percentages and 95% confidence intervals; Respondents aged 18 years and older; n/r (Not Reportable) - If the unweighted total responses for a dimension (row) is <50 that row will not be shown; n/a (Not Available) - Not asked of a subset of respondents

Year: 2003

Community	Yes			No			Estimated Population
	#	%	C.I. (95%)	#	%	C.I. (95%)	#
Manoa/ Upper Makiki	11,800	21.9	14.9 - 28.9	42,200	78.1	71.1 - 85.1	54,000
Mililani/ Wahiawa	12,000	18.3	12.2 - 24.3	53,500	81.7	75.7 - 87.8	65,500
Molokai	1,600	24.8	12.9 - 36.7	4,800	75.2	63.3 - 87.1	6,300
Nanakuli/ Waianae	7,300	27.4	14.5 - 40.2	19,300	72.6	59.8 - 85.5	26,600
N.Hawaii	6,500	27.1	18.2 - 36.1	17,500	72.9	63.9 - 81.8	24,000
N.Shore/ Laie	4,800	19.6	9.5 - 29.7	19,800	80.4	70.3 - 90.5	24,600
Nuuanu/ Kalihi/ Moanalua	17,000	24.3	17.7 - 30.9	52,900	75.7	69.1 - 82.3	69,900
Puna/ Kau	5,200	19.7	13.6 - 25.9	21,200	80.3	74.1 - 86.4	26,400
Salt Lake/ Foster Village	3,700	8.5	3.7 - 13.3	39,500	91.5	86.7 - 96.3	43,200

Pneumonia - ever had shot by State, County, Island, Community, BRFSS Age Group, DOH Race-Ethnicity, Gender, Education Level, Employment Status (Grouped), Household Income, Poverty Level, Marital Status (Grouped), Married, Health Care Coverage, for the Year(s) - 2001, 2002, 2003, 2004, 2005, 2006, 2007, 2008, 2009, 2010

Note: Weighted numbers (#), percentages and 95% confidence intervals; Respondents aged 18 years and older; n/r (Not Reportable) - If the unweighted total responses for a dimension (row) is <50 that row will not be shown; n/a (Not Available) - Not asked of a subset of respondents

Year: 2003

Community	Yes			No			Estimated Population
	#	%	C.I. (95%)	#	%	C.I. (95%)	#
Upcountry/ Hana	4,200	15.1	7.6 - 22.5	23,900	84.9	77.5 - 92.4	28,100
Waialae/ Kahala/ Hawaii Kai	11,100	31.0	21.2 - 40.7	24,700	69.0	59.3 - 78.8	35,700
Waipahu/ Kapolei/ Ewa	16,900	18.6	13.4 - 23.7	74,000	81.4	76.3 - 86.6	90,900

Pneumonia - ever had shot by State, County, Island, Community, BRFSS Age Group, DOH Race-Ethnicity, Gender, Education Level, Employment Status (Grouped), Household Income, Poverty Level, Marital Status (Grouped), Married, Health Care Coverage, for the Year(s) - 2001, 2002, 2003, 2004, 2005, 2006, 2007, 2008, 2009, 2010

Note: Weighted numbers (#), percentages and 95% confidence intervals; Respondents aged 18 years and older; n/r (Not Reportable) - If the unweighted total responses for a dimension (row) is <50 that row will not be shown; n/a (Not Available) - Not asked of a subset of respondents

Year: 2003

BRFSS Age Group	Yes			No			Estimated Population
	#	%	C.I. (95%)	#	%	C.I. (95%)	#
18-24	12,700	11.2	6.7 - 15.7	100,600	88.8	84.3 - 93.3	113,300
25-34	12,300	7.7	5.1 - 10.3	148,100	92.3	89.7 - 94.9	160,400
35-44	9,800	5.6	3.7 - 7.4	166,400	94.4	92.6 - 96.3	176,200
45-54	16,800	9.6	7.0 - 12.2	157,400	90.4	87.8 - 93.0	174,200
55-64	23,400	19.2	14.9 - 23.5	98,500	80.8	76.5 - 85.1	121,900
65-74	55,400	67.1	61.5 - 72.8	27,100	32.9	27.2 - 38.5	82,400
75+	56,700	73.3	67.9 - 78.8	20,600	26.7	21.2 - 32.1	77,400

Pneumonia - ever had shot by State, County, Island, Community, BRFSS Age Group, DOH Race-Ethnicity, Gender, Education Level, Employment Status (Grouped), Household Income, Poverty Level, Marital Status (Grouped), Married, Health Care Coverage, for the Year(s) - 2001, 2002, 2003, 2004, 2005, 2006, 2007, 2008, 2009, 2010

Note: Weighted numbers (#), percentages and 95% confidence intervals; Respondents aged 18 years and older; n/r (Not Reportable) - If the unweighted total responses for a dimension (row) is <50 that row will not be shown; n/a (Not Available) - Not asked of a subset of respondents

Year: 2003

DOH Race-Ethnicity	Yes			No			Estimated Population
	#	%	C.I. (95%)	#	%	C.I. (95%)	#
Caucasian	65,800	19.4	17.0 - 21.7	273,900	80.6	78.3 - 83.0	339,700
Native Hawaiian	14,800	18.7	13.9 - 23.5	64,300	81.3	76.5 - 86.1	79,100
Chinese	23,500	21.8	16.9 - 26.6	84,500	78.2	73.4 - 83.1	108,000
Filipino	25,500	18.3	13.9 - 22.8	113,500	81.7	77.2 - 86.1	139,000
Japanese	45,800	27.2	23.3 - 31.1	122,600	72.8	68.9 - 76.7	168,400
Black	3,000	24.5	11.1 - 37.9	9,300	75.5	62.1 - 88.9	12,300
Other Asian	3,600	23.3	11.1 - 35.6	11,800	76.7	64.4 - 88.9	15,400
Other	3,100	13.7	4.5 - 22.9	19,600	86.3	77.1 - 95.5	22,700

Pneumonia - ever had shot by State, County, Island, Community, BRFSS Age Group, DOH Race-Ethnicity, Gender, Education Level, Employment Status (Grouped), Household Income, Poverty Level, Marital Status (Grouped), Married, Health Care Coverage, for the Year(s) - 2001, 2002, 2003, 2004, 2005, 2006, 2007, 2008, 2009, 2010

Note: Weighted numbers (#), percentages and 95% confidence intervals; Respondents aged 18 years and older; n/r (Not Reportable) - If the unweighted total responses for a dimension (row) is <50 that row will not be shown; n/a (Not Available) - Not asked of a subset of respondents

Year: 2003

Gender	Yes			No			Estimated Population
	#	%	C.I. (95%)	#	%	C.I. (95%)	#
Male	88,800	19.7	17.3 - 22.1	361,200	80.3	77.9 - 82.7	450,100
Female	98,800	21.6	19.6 - 23.6	359,000	78.4	76.4 - 80.4	457,800

Pneumonia - ever had shot by State, County, Island, Community, BRFSS Age Group, DOH Race-Ethnicity, Gender, Education Level, Employment Status (Grouped), Household Income, Poverty Level, Marital Status (Grouped), Married, Health Care Coverage, for the Year(s) - 2001, 2002, 2003, 2004, 2005, 2006, 2007, 2008, 2009, 2010

Note: Weighted numbers (#), percentages and 95% confidence intervals; Respondents aged 18 years and older; n/r (Not Reportable) - If the unweighted total responses for a dimension (row) is <50 that row will not be shown; n/a (Not Available) - Not asked of a subset of respondents

Year: 2003

Education Level	Yes			No			Estimated Population
	#	%	C.I. (95%)	#	%	C.I. (95%)	#
Never attended school/ Only Kindergarten to Grades 8	5,700	43.1	27.3 - 58.8	7,600	56.9	41.2 - 72.7	13,300
Grades 9 thru 11 (Some High School)	11,300	32.4	22.1 - 42.6	23,600	67.6	57.4 - 77.9	34,900
Grades 12 or GED (High School Grad)	60,400	22.1	19.2 - 25.0	212,800	77.9	75.0 - 80.8	273,200
College 1 to 3 years (Some College/ Tech)	49,500	18.7	15.9 - 21.5	215,200	81.3	78.5 - 84.1	264,700
College 4 years or more (College Grad)	59,800	18.7	16.2 - 21.1	260,300	81.3	78.9 - 83.8	320,100

Pneumonia - ever had shot by State, County, Island, Community, BRFSS Age Group, DOH Race-Ethnicity, Gender, Education Level, Employment Status (Grouped), Household Income, Poverty Level, Marital Status (Grouped), Married, Health Care Coverage, for the Year(s) - 2001, 2002, 2003, 2004, 2005, 2006, 2007, 2008, 2009, 2010

Note: Weighted numbers (#), percentages and 95% confidence intervals; Respondents aged 18 years and older; n/r (Not Reportable) - If the unweighted total responses for a dimension (row) is <50 that row will not be shown; n/a (Not Available) - Not asked of a subset of respondents

Year: 2003

Employment Status (Grouped)	Yes			No			Estimated Population
	#	%	C.I. (95%)	#	%	C.I. (95%)	#
Employed	62,200	10.5	9.0 - 12.1	529,900	89.5	87.9 - 91.0	592,100
Unemployed	3,100	10.4	4.2 - 16.7	27,000	89.6	83.3 - 95.8	30,200
Retired/Unable to work	113,000	58.1	54.2 - 61.9	81,500	41.9	38.1 - 45.8	194,500
Student/Homemaker	9,200	10.1	6.1 - 14.1	81,300	89.9	85.9 - 93.9	90,500

Pneumonia - ever had shot by State, County, Island, Community, BRFSS Age Group, DOH Race-Ethnicity, Gender, Education Level, Employment Status (Grouped), Household Income, Poverty Level, Marital Status (Grouped), Married, Health Care Coverage, for the Year(s) - 2001, 2002, 2003, 2004, 2005, 2006, 2007, 2008, 2009, 2010

Note: Weighted numbers (#), percentages and 95% confidence intervals; Respondents aged 18 years and older; n/r (Not Reportable) - If the unweighted total responses for a dimension (row) is <50 that row will not be shown; n/a (Not Available) - Not asked of a subset of respondents

Year: 2003

Household Income	Yes			No			Estimated Population
	#	%	C.I. (95%)	#	%	C.I. (95%)	#
Less than \$10,000	10,300	21.8	15.7 - 27.8	36,900	78.2	72.2 - 84.3	47,100
\$10,000 to \$14,999	17,000	33.9	25.1 - 42.6	33,300	66.1	57.4 - 74.9	50,300
\$15,000 to \$19,999	12,300	24.7	17.7 - 31.8	37,300	75.3	68.2 - 82.3	49,600
\$20,000 to \$24,999	9,100	16.5	11.5 - 21.5	46,200	83.5	78.5 - 88.5	55,300
\$25,000 to \$34,999	20,600	24.7	19.3 - 30.1	63,000	75.3	69.9 - 80.7	83,600
\$35,000 to \$49,999	25,500	18.2	14.5 - 21.9	114,500	81.8	78.1 - 85.5	140,000
\$50,000 to \$74,999	19,900	14.9	11.3 - 18.5	114,000	85.1	81.5 - 88.7	133,900
\$75,000 or more	21,700	13.8	10.6 - 17.0	135,700	86.2	83.0 - 89.4	157,400

Pneumonia - ever had shot by State, County, Island, Community, BRFSS Age Group, DOH Race-Ethnicity, Gender, Education Level, Employment Status (Grouped), Household Income, Poverty Level, Marital Status (Grouped), Married, Health Care Coverage, for the Year(s) - 2001, 2002, 2003, 2004, 2005, 2006, 2007, 2008, 2009, 2010

Note: Weighted numbers (#), percentages and 95% confidence intervals; Respondents aged 18 years and older; n/r (Not Reportable) - If the unweighted total responses for a dimension (row) is <50 that row will not be shown; n/a (Not Available) - Not asked of a subset of respondents

Year: 2003

Poverty Level	Yes			No			Estimated Population
	#	%	C.I. (95%)	#	%	C.I. (95%)	#
0-130%	40,800	21.7	18.0 - 25.5	146,700	78.3	74.5 - 82.0	187,500
131-185%	17,100	21.0	15.3 - 26.6	64,600	79.0	73.4 - 84.7	81,700
186+%	78,500	17.5	15.6 - 19.5	369,500	82.5	80.5 - 84.4	448,000

Pneumonia - ever had shot by State, County, Island, Community, BRFSS Age Group, DOH Race-Ethnicity, Gender, Education Level, Employment Status (Grouped), Household Income, Poverty Level, Marital Status (Grouped), Married, Health Care Coverage, for the Year(s) - 2001, 2002, 2003, 2004, 2005, 2006, 2007, 2008, 2009, 2010

Note: Weighted numbers (#), percentages and 95% confidence intervals; Respondents aged 18 years and older; n/r (Not Reportable) - If the unweighted total responses for a dimension (row) is <50 that row will not be shown; n/a (Not Available) - Not asked of a subset of respondents

Year: 2003

Marital Status (Grouped)	Yes			No			Estimated Population
	#	%	C.I. (95%)	#	%	C.I. (95%)	#
Married	108,200	20.7	18.6 - 22.8	415,200	79.3	77.2 - 81.4	523,400
Unmarried Couple	800	4.5	0.0 - 9.1	16,700	95.5	90.9 - 100.0	17,500
Widowed	35,100	53.4	47.2 - 59.6	30,600	46.6	40.4 - 52.8	65,800
Other	43,500	14.4	12.0 - 16.9	257,600	85.6	83.1 - 88.0	301,100

Married	Yes			No			Estimated Population
	#	%	C.I. (95%)	#	%	C.I. (95%)	#
Yes	109,400	20.5	18.4 - 22.5	424,900	79.5	77.5 - 81.6	534,400
No	78,100	20.9	18.6 - 23.3	294,900	79.1	76.7 - 81.4	373,000

Pneumonia - ever had shot by State, County, Island, Community, BRFSS Age Group, DOH Race-Ethnicity, Gender, Education Level, Employment Status (Grouped), Household Income, Poverty Level, Marital Status (Grouped), Married, Health Care Coverage, for the Year(s) - 2001, 2002, 2003, 2004, 2005, 2006, 2007, 2008, 2009, 2010

Note: Weighted numbers (#), percentages and 95% confidence intervals; Respondents aged 18 years and older; n/r (Not Reportable) - If the unweighted total responses for a dimension (row) is <50 that row will not be shown; n/a (Not Available) - Not asked of a subset of respondents

Year: 2003

Health Care Coverage	Yes			No			Estimated Population
	#	%	C.I. (95%)	#	%	C.I. (95%)	#
Yes	181,100	21.7	20.1 - 23.4	652,600	78.3	76.6 - 79.9	833,800
No	6,500	8.9	3.9 - 13.8	66,700	91.1	86.2 - 96.1	73,200

Pneumonia - ever had shot by State, County, Island, Community, BRFSS Age Group, DOH Race-Ethnicity, Gender, Education Level, Employment Status (Grouped), Household Income, Poverty Level, Marital Status (Grouped), Married, Health Care Coverage, for the Year(s) - 2001, 2002, 2003, 2004, 2005, 2006, 2007, 2008, 2009, 2010

Note: Weighted numbers (#), percentages and 95% confidence intervals; Respondents aged 18 years and older; n/r (Not Reportable) - If the unweighted total responses for a dimension (row) is <50 that row will not be shown; n/a (Not Available) - Not asked of a subset of respondents

Year: 2002

State	Yes			No			Estimated Population
	#	%	C.I. (95%)	#	%	C.I. (95%)	#
Hawaii State	155,100	17.6	16.3 - 18.9	727,900	82.4	81.1 - 83.7	883,000

County	Yes			No			Estimated Population
	#	%	C.I. (95%)	#	%	C.I. (95%)	#
Hawaii	17,800	16.7	14.5 - 18.9	88,900	83.3	81.1 - 85.5	106,800
Honolulu	116,300	18.1	16.4 - 19.9	525,100	81.9	80.1 - 83.6	641,400
Kauai	7,700	18.5	14.6 - 22.3	33,900	81.5	77.7 - 85.4	41,500
Maui	13,300	14.2	11.9 - 16.6	80,000	85.8	83.4 - 88.1	93,200

Pneumonia - ever had shot by State, County, Island, Community, BRFSS Age Group, DOH Race-Ethnicity, Gender, Education Level, Employment Status (Grouped), Household Income, Poverty Level, Marital Status (Grouped), Married, Health Care Coverage, for the Year(s) - 2001, 2002, 2003, 2004, 2005, 2006, 2007, 2008, 2009, 2010

Note: Weighted numbers (#), percentages and 95% confidence intervals; Respondents aged 18 years and older; n/r (Not Reportable) - If the unweighted total responses for a dimension (row) is <50 that row will not be shown; n/a (Not Available) - Not asked of a subset of respondents

Year: 2002

Island	Yes			No			Estimated Population
	#	%	C.I. (95%)	#	%	C.I. (95%)	#
Hawaii	17,800	16.7	14.5 - 18.9	88,900	83.3	81.1 - 85.5	106,800
Kauai	7,700	18.5	14.6 - 22.3	33,900	81.5	77.7 - 85.4	41,500
Lanai	400	11.6	5.4 - 17.7	3,000	88.4	82.3 - 94.6	3,400
Maui	11,500	14.0	11.4 - 16.5	70,800	86.0	83.5 - 88.6	82,300
Molokai	1,400	18.1	9.9 - 26.2	6,200	81.9	73.8 - 90.1	7,600
Oahu	116,300	18.1	16.4 - 19.9	525,100	81.9	80.1 - 83.6	641,400

Community	Yes			No			Estimated Population
	#	%	C.I. (95%)	#	%	C.I. (95%)	#
Aiea/ Pearl City	15,000	23.1	16.9 - 29.3	50,000	76.9	70.7 - 83.1	65,000

Pneumonia - ever had shot by State, County, Island, Community, BRFSS Age Group, DOH Race-Ethnicity, Gender, Education Level, Employment Status (Grouped), Household Income, Poverty Level, Marital Status (Grouped), Married, Health Care Coverage, for the Year(s) - 2001, 2002, 2003, 2004, 2005, 2006, 2007, 2008, 2009, 2010

Note: Weighted numbers (#), percentages and 95% confidence intervals; Respondents aged 18 years and older; n/r (Not Reportable) - If the unweighted total responses for a dimension (row) is <50 that row will not be shown; n/a (Not Available) - Not asked of a subset of respondents

Year: 2002

Community	Yes			No			Estimated Population
	#	%	C.I. (95%)	#	%	C.I. (95%)	#
Ala Moana	4,200	12.7	7.6 - 17.9	28,900	87.3	82.1 - 92.4	33,200
Hanalei/ Kapaa	2,700	15.3	9.8 - 20.7	14,900	84.7	79.3 - 90.2	17,600
Hilo	5,900	17.7	13.5 - 22.0	27,400	82.3	78.0 - 86.5	33,300
Kaaawa/ Kahaluu/ Kaneohe	8,300	21.0	14.1 - 27.9	31,100	79.0	72.1 - 85.9	39,300
Kahului	4,000	14.3	9.7 - 19.0	23,700	85.7	81.0 - 90.3	27,600
Kailua/ Waimanalo	8,300	17.7	11.7 - 23.7	38,800	82.3	76.3 - 88.3	47,100
Kaimuki/ Palolo/ Waikiki	16,100	24.5	19.4 - 29.7	49,600	75.5	70.3 - 80.6	65,700
Kona	4,800	16.3	12.1 - 20.6	24,400	83.7	79.4 - 87.9	29,100
Lahaina/ Wailuku	3,300	12.0	8.1 - 15.9	24,500	88.0	84.1 - 91.9	27,800

Pneumonia - ever had shot by State, County, Island, Community, BRFSS Age Group, DOH Race-Ethnicity, Gender, Education Level, Employment Status (Grouped), Household Income, Poverty Level, Marital Status (Grouped), Married, Health Care Coverage, for the Year(s) - 2001, 2002, 2003, 2004, 2005, 2006, 2007, 2008, 2009, 2010

Note: Weighted numbers (#), percentages and 95% confidence intervals; Respondents aged 18 years and older; n/r (Not Reportable) - If the unweighted total responses for a dimension (row) is <50 that row will not be shown; n/a (Not Available) - Not asked of a subset of respondents

Year: 2002

Community	Yes			No			Estimated Population
	#	%	C.I. (95%)	#	%	C.I. (95%)	#
Lanai	400	11.6	5.4 - 17.7	3,000	88.4	82.3 - 94.6	3,400
Lihue-Waimea	5,000	20.8	15.5 - 26.1	19,000	79.2	73.9 - 84.5	24,000
Manoa/ Upper Makiki	10,200	18.4	13.5 - 23.3	45,400	81.6	76.7 - 86.5	55,700
Mililani/ Wahiawa	11,900	19.4	12.7 - 26.1	49,400	80.6	73.9 - 87.3	61,400
Molokai	1,400	18.1	9.9 - 26.2	6,200	81.9	73.8 - 90.1	7,600
Nanakuli/ Waianae	4,800	19.0	9.9 - 28.2	20,400	81.0	71.8 - 90.1	25,200
N.Hawaii	3,800	17.1	12.2 - 22.0	18,300	82.9	78.0 - 87.8	22,100
N.Shore/ Laie	2,000	11.3	4.3 - 18.2	15,700	88.7	81.8 - 95.7	17,700
Nuuanu/ Kalihi/ Moanalua	11,200	17.1	11.2 - 23.0	54,300	82.9	77.0 - 88.8	65,400

Pneumonia - ever had shot by State, County, Island, Community, BRFSS Age Group, DOH Race-Ethnicity, Gender, Education Level, Employment Status (Grouped), Household Income, Poverty Level, Marital Status (Grouped), Married, Health Care Coverage, for the Year(s) - 2001, 2002, 2003, 2004, 2005, 2006, 2007, 2008, 2009, 2010

Note: Weighted numbers (#), percentages and 95% confidence intervals; Respondents aged 18 years and older; n/r (Not Reportable) - If the unweighted total responses for a dimension (row) is <50 that row will not be shown; n/a (Not Available) - Not asked of a subset of respondents

Year: 2002

Community	Yes			No			Estimated Population
	#	%	C.I. (95%)	#	%	C.I. (95%)	#
Puna/ Kau	3,400	15.2	10.8 - 19.6	18,800	84.8	80.4 - 89.2	22,200
Salt Lake/ Foster Village	4,900	13.4	7.3 - 19.6	31,300	86.6	80.4 - 92.7	36,200
Upcountry/ Hana	4,200	15.6	11.1 - 20.2	22,600	84.4	79.8 - 88.9	26,800
Waialae/ Kahala/ Hawaii Kai	9,300	20.0	13.0 - 27.1	37,100	80.0	72.9 - 87.0	46,400
Waipahu/ Kapolei/ Ewa	10,100	12.2	8.0 - 16.4	73,100	87.8	83.6 - 92.0	83,200

Pneumonia - ever had shot by State, County, Island, Community, BRFSS Age Group, DOH Race-Ethnicity, Gender, Education Level, Employment Status (Grouped), Household Income, Poverty Level, Marital Status (Grouped), Married, Health Care Coverage, for the Year(s) - 2001, 2002, 2003, 2004, 2005, 2006, 2007, 2008, 2009, 2010

Note: Weighted numbers (#), percentages and 95% confidence intervals; Respondents aged 18 years and older; n/r (Not Reportable) - If the unweighted total responses for a dimension (row) is <50 that row will not be shown; n/a (Not Available) - Not asked of a subset of respondents

Year: 2002

BRFSS Age Group	Yes			No			Estimated Population
	#	%	C.I. (95%)	#	%	C.I. (95%)	#
18-24	9,200	8.3	4.6 - 12.1	101,000	91.7	87.9 - 95.4	110,200
25-34	11,600	7.2	5.0 - 9.5	148,800	92.8	90.5 - 95.0	160,500
35-44	11,300	6.3	4.2 - 8.4	169,000	93.7	91.6 - 95.8	180,300
45-54	11,600	6.8	5.1 - 8.4	159,100	93.2	91.6 - 94.9	170,600
55-64	21,800	19.8	15.7 - 23.9	88,000	80.2	76.1 - 84.3	109,800
65-74	45,100	57.8	52.7 - 63.0	32,900	42.2	37.0 - 47.3	78,000
75+	44,100	63.1	57.7 - 68.6	25,700	36.9	31.4 - 42.3	69,800

Pneumonia - ever had shot by State, County, Island, Community, BRFSS Age Group, DOH Race-Ethnicity, Gender, Education Level, Employment Status (Grouped), Household Income, Poverty Level, Marital Status (Grouped), Married, Health Care Coverage, for the Year(s) - 2001, 2002, 2003, 2004, 2005, 2006, 2007, 2008, 2009, 2010

Note: Weighted numbers (#), percentages and 95% confidence intervals; Respondents aged 18 years and older; n/r (Not Reportable) - If the unweighted total responses for a dimension (row) is <50 that row will not be shown; n/a (Not Available) - Not asked of a subset of respondents

Year: 2002

DOH Race-Ethnicity	Yes			No			Estimated Population
	#	%	C.I. (95%)	#	%	C.I. (95%)	#
Caucasian	50,400	16.5	14.4 - 18.5	255,700	83.5	81.5 - 85.6	306,100
Native Hawaiian	15,200	13.5	10.0 - 17.0	97,500	86.5	83.0 - 90.0	112,700
Chinese	13,800	21.4	16.4 - 26.4	50,700	78.6	73.6 - 83.6	64,500
Filipino	19,800	14.9	11.3 - 18.4	113,400	85.1	81.6 - 88.7	133,200
Japanese	47,300	26.0	22.7 - 29.3	134,900	74.0	70.7 - 77.3	182,200
Black	2,500	15.9	6.9 - 24.9	13,000	84.1	75.1 - 93.1	15,500
Other Asian	2,700	13.9	6.1 - 21.7	16,600	86.1	78.3 - 93.9	19,300
Other Pacific Islander	1,100	5.2	0.0 - 11.2	19,100	94.8	88.8 - 100.0	20,200
Other	1,800	7.5	2.8 - 12.2	21,800	92.5	87.8 - 97.2	23,500

Pneumonia - ever had shot by State, County, Island, Community, BRFSS Age Group, DOH Race-Ethnicity, Gender, Education Level, Employment Status (Grouped), Household Income, Poverty Level, Marital Status (Grouped), Married, Health Care Coverage, for the Year(s) - 2001, 2002, 2003, 2004, 2005, 2006, 2007, 2008, 2009, 2010

Note: Weighted numbers (#), percentages and 95% confidence intervals; Respondents aged 18 years and older; n/r (Not Reportable) - If the unweighted total responses for a dimension (row) is <50 that row will not be shown; n/a (Not Available) - Not asked of a subset of respondents

Year: 2002

Gender	Yes			No			Estimated Population
	#	%	C.I. (95%)	#	%	C.I. (95%)	#
Male	71,800	16.4	14.5 - 18.4	364,800	83.6	81.6 - 85.5	436,600
Female	83,300	18.7	16.9 - 20.4	363,100	81.3	79.6 - 83.1	446,400

Pneumonia - ever had shot by State, County, Island, Community, BRFSS Age Group, DOH Race-Ethnicity, Gender, Education Level, Employment Status (Grouped), Household Income, Poverty Level, Marital Status (Grouped), Married, Health Care Coverage, for the Year(s) - 2001, 2002, 2003, 2004, 2005, 2006, 2007, 2008, 2009, 2010

Note: Weighted numbers (#), percentages and 95% confidence intervals; Respondents aged 18 years and older; n/r (Not Reportable) - If the unweighted total responses for a dimension (row) is <50 that row will not be shown; n/a (Not Available) - Not asked of a subset of respondents

Year: 2002

Education Level	Yes			No			Estimated Population
	#	%	C.I. (95%)	#	%	C.I. (95%)	#
Never attended school/ Only Kindergarten to Grades 8	7,700	42.1	30.3 - 53.9	10,600	57.9	46.1 - 69.7	18,200
Grades 9 thru 11 (Some High School)	9,300	30.3	21.6 - 39.0	21,300	69.7	61.0 - 78.4	30,600
Grades 12 or GED (High School Grad)	54,400	17.8	15.5 - 20.2	250,500	82.2	79.8 - 84.5	305,000
College 1 to 3 years (Some College/ Tech)	37,700	14.6	12.4 - 16.8	221,100	85.4	83.2 - 87.6	258,800
College 4 years or more (College Grad)	45,800	17.0	14.7 - 19.3	223,600	83.0	80.7 - 85.3	269,500

Pneumonia - ever had shot by State, County, Island, Community, BRFSS Age Group, DOH Race-Ethnicity, Gender, Education Level, Employment Status (Grouped), Household Income, Poverty Level, Marital Status (Grouped), Married, Health Care Coverage, for the Year(s) - 2001, 2002, 2003, 2004, 2005, 2006, 2007, 2008, 2009, 2010

Note: Weighted numbers (#), percentages and 95% confidence intervals; Respondents aged 18 years and older; n/r (Not Reportable) - If the unweighted total responses for a dimension (row) is <50 that row will not be shown; n/a (Not Available) - Not asked of a subset of respondents

Year: 2002

Employment Status (Grouped)	Yes			No			Estimated Population
	#	%	C.I. (95%)	#	%	C.I. (95%)	#
Employed	51,100	8.9	7.6 - 10.1	524,800	91.1	89.9 - 92.4	575,900
Unemployed	2,500	6.5	1.9 - 11.1	36,500	93.5	88.9 - 98.1	39,000
Retired/Unable to work	95,100	55.3	51.7 - 58.9	76,900	44.7	41.1 - 48.3	172,100
Student/Homemaker	6,300	6.6	3.5 - 9.8	89,000	93.4	90.2 - 96.5	95,300

Pneumonia - ever had shot by State, County, Island, Community, BRFSS Age Group, DOH Race-Ethnicity, Gender, Education Level, Employment Status (Grouped), Household Income, Poverty Level, Marital Status (Grouped), Married, Health Care Coverage, for the Year(s) - 2001, 2002, 2003, 2004, 2005, 2006, 2007, 2008, 2009, 2010

Note: Weighted numbers (#), percentages and 95% confidence intervals; Respondents aged 18 years and older; n/r (Not Reportable) - If the unweighted total responses for a dimension (row) is <50 that row will not be shown; n/a (Not Available) - Not asked of a subset of respondents

Year: 2002

Household Income	Yes			No			Estimated Population
	#	%	C.I. (95%)	#	%	C.I. (95%)	#
Less than \$10,000	7,500	22.1	15.8 - 28.3	26,700	77.9	71.7 - 84.2	34,200
\$10,000 to \$14,999	8,400	24.2	17.0 - 31.5	26,400	75.8	68.5 - 83.0	34,800
\$15,000 to \$19,999	6,900	17.1	10.9 - 23.2	33,400	82.9	76.8 - 89.1	40,200
\$20,000 to \$24,999	8,000	19.5	14.0 - 24.9	33,200	80.5	75.1 - 86.0	41,300
\$25,000 to \$34,999	12,600	16.8	12.3 - 21.4	62,400	83.2	78.6 - 87.7	75,000
\$35,000 to \$49,999	22,000	18.2	14.3 - 22.0	98,900	81.8	78.0 - 85.7	120,900
\$50,000 to \$74,999	21,700	17.6	14.1 - 21.2	101,400	82.4	78.8 - 85.9	123,000
\$75,000 or more	20,600	15.5	12.2 - 18.8	112,400	84.5	81.2 - 87.8	133,000

Pneumonia - ever had shot by State, County, Island, Community, BRFSS Age Group, DOH Race-Ethnicity, Gender, Education Level, Employment Status (Grouped), Household Income, Poverty Level, Marital Status (Grouped), Married, Health Care Coverage, for the Year(s) - 2001, 2002, 2003, 2004, 2005, 2006, 2007, 2008, 2009, 2010

Note: Weighted numbers (#), percentages and 95% confidence intervals; Respondents aged 18 years and older; n/r (Not Reportable) - If the unweighted total responses for a dimension (row) is <50 that row will not be shown; n/a (Not Available) - Not asked of a subset of respondents

Year: 2002

Poverty Level	Yes			No			Estimated Population
	#	%	C.I. (95%)	#	%	C.I. (95%)	#
0-130%	24,100	17.6	14.3 - 20.9	112,500	82.4	79.1 - 85.7	136,600
131-185%	12,500	18.3	13.0 - 23.7	55,700	81.7	76.3 - 87.0	68,200
186+%	71,300	17.9	16.0 - 19.9	326,400	82.1	80.1 - 84.0	397,700

Pneumonia - ever had shot by State, County, Island, Community, BRFSS Age Group, DOH Race-Ethnicity, Gender, Education Level, Employment Status (Grouped), Household Income, Poverty Level, Marital Status (Grouped), Married, Health Care Coverage, for the Year(s) - 2001, 2002, 2003, 2004, 2005, 2006, 2007, 2008, 2009, 2010

Note: Weighted numbers (#), percentages and 95% confidence intervals; Respondents aged 18 years and older; n/r (Not Reportable) - If the unweighted total responses for a dimension (row) is <50 that row will not be shown; n/a (Not Available) - Not asked of a subset of respondents

Year: 2002

Marital Status (Grouped)	Yes			No			Estimated Population
	#	%	C.I. (95%)	#	%	C.I. (95%)	#
Married	91,600	17.6	15.9 - 19.3	430,100	82.4	80.7 - 84.1	521,700
Unmarried Couple	800	3.9	0.4 - 7.4	20,600	96.1	92.6 - 99.6	21,500
Widowed	29,100	56.5	49.9 - 63.1	22,400	43.5	36.9 - 50.1	51,500
Other	33,500	11.6	9.6 - 13.7	254,700	88.4	86.3 - 90.4	288,300

Married	Yes			No			Estimated Population
	#	%	C.I. (95%)	#	%	C.I. (95%)	#
Yes	93,100	17.5	15.8 - 19.2	439,100	82.5	80.8 - 84.2	532,200
No	61,900	17.7	15.6 - 19.8	287,700	82.3	80.2 - 84.4	349,700

Pneumonia - ever had shot by State, County, Island, Community, BRFSS Age Group, DOH Race-Ethnicity, Gender, Education Level, Employment Status (Grouped), Household Income, Poverty Level, Marital Status (Grouped), Married, Health Care Coverage, for the Year(s) - 2001, 2002, 2003, 2004, 2005, 2006, 2007, 2008, 2009, 2010

Note: Weighted numbers (#), percentages and 95% confidence intervals; Respondents aged 18 years and older; n/r (Not Reportable) - If the unweighted total responses for a dimension (row) is <50 that row will not be shown; n/a (Not Available) - Not asked of a subset of respondents

Year: 2002

Health Care Coverage	Yes			No			Estimated Population
	#	%	C.I. (95%)	#	%	C.I. (95%)	#
Yes	149,600	18.5	17.1 - 20.0	656,800	81.5	80.0 - 82.9	806,300
No	5,500	7.3	4.2 - 10.4	70,600	92.7	89.6 - 95.8	76,100

Pneumonia - ever had shot by State, County, Island, Community, BRFSS Age Group, DOH Race-Ethnicity, Gender, Education Level, Employment Status (Grouped), Household Income, Poverty Level, Marital Status (Grouped), Married, Health Care Coverage, for the Year(s) - 2001, 2002, 2003, 2004, 2005, 2006, 2007, 2008, 2009, 2010

Note: Weighted numbers (#), percentages and 95% confidence intervals; Respondents aged 18 years and older; n/r (Not Reportable) - If the unweighted total responses for a dimension (row) is <50 that row will not be shown; n/a (Not Available) - Not asked of a subset of respondents

Year: 2001

State	Yes			No			Estimated Population
	#	%	C.I. (95%)	#	%	C.I. (95%)	#
Hawaii State	177,000	20.4	18.7 - 22.2	688,600	79.6	77.8 - 81.3	865,500

County	Yes			No			Estimated Population
	#	%	C.I. (95%)	#	%	C.I. (95%)	#
Hawaii	21,100	20.4	17.3 - 23.4	82,500	79.6	76.6 - 82.7	103,600
Honolulu	130,700	20.9	18.7 - 23.0	495,800	79.1	77.0 - 81.3	626,500
Kauai	8,100	20.3	16.2 - 24.4	31,700	79.7	75.6 - 83.8	39,800
Maui	17,100	17.9	12.2 - 23.6	78,600	82.1	76.4 - 87.8	95,700

Pneumonia - ever had shot by State, County, Island, Community, BRFSS Age Group, DOH Race-Ethnicity, Gender, Education Level, Employment Status (Grouped), Household Income, Poverty Level, Marital Status (Grouped), Married, Health Care Coverage, for the Year(s) - 2001, 2002, 2003, 2004, 2005, 2006, 2007, 2008, 2009, 2010

Note: Weighted numbers (#), percentages and 95% confidence intervals; Respondents aged 18 years and older; n/r (Not Reportable) - If the unweighted total responses for a dimension (row) is <50 that row will not be shown; n/a (Not Available) - Not asked of a subset of respondents

Year: 2001

Island	Yes			No			Estimated Population
	#	%	C.I. (95%)	#	%	C.I. (95%)	#
Hawaii	21,100	20.4	17.3 - 23.4	82,500	79.6	76.6 - 82.7	103,600
Kauai	8,100	20.3	16.2 - 24.4	31,700	79.7	75.6 - 83.8	39,800
Lanai	300	12.7	5.0 - 20.4	2,100	87.3	79.6 - 95.0	2,400
Maui	16,000	18.0	11.9 - 24.1	72,700	82.0	75.9 - 88.1	88,700
Molokai	900	19.2	9.8 - 28.6	3,700	80.8	71.4 - 90.2	4,600
Oahu	130,700	20.9	18.7 - 23.0	495,800	79.1	77.0 - 81.3	626,500

Community	Yes			No			Estimated Population
	#	%	C.I. (95%)	#	%	C.I. (95%)	#
Aiea/ Pearl City	19,700	32.7	23.6 - 41.9	40,500	67.3	58.1 - 76.4	60,100

Pneumonia - ever had shot by State, County, Island, Community, BRFSS Age Group, DOH Race-Ethnicity, Gender, Education Level, Employment Status (Grouped), Household Income, Poverty Level, Marital Status (Grouped), Married, Health Care Coverage, for the Year(s) - 2001, 2002, 2003, 2004, 2005, 2006, 2007, 2008, 2009, 2010

Note: Weighted numbers (#), percentages and 95% confidence intervals; Respondents aged 18 years and older; n/r (Not Reportable) - If the unweighted total responses for a dimension (row) is <50 that row will not be shown; n/a (Not Available) - Not asked of a subset of respondents

Year: 2001

Community	Yes			No			Estimated Population
	#	%	C.I. (95%)	#	%	C.I. (95%)	#
Ala Moana	6,500	25.3	16.3 - 34.4	19,200	74.7	65.6 - 83.7	25,700
Hanalei/ Kapaa	3,200	19.4	12.6 - 26.3	13,400	80.6	73.7 - 87.4	16,600
Hilo	7,200	23.6	18.2 - 29.0	23,400	76.4	71.0 - 81.8	30,600
Kaaawa/ Kahaluu/ Kaneohe	8,500	22.0	12.3 - 31.7	30,300	78.0	68.3 - 87.7	38,800
Kahului	7,600	23.1	8.6 - 37.5	25,300	76.9	62.5 - 91.4	32,800
Kailua/ Waimanalo	12,900	27.0	18.9 - 35.1	35,000	73.0	64.9 - 81.1	47,900
Kaimuki/ Palolo/ Waikiki	16,900	24.5	17.8 - 31.1	52,300	75.5	68.9 - 82.2	69,200
Kona	5,900	20.4	13.7 - 27.1	23,100	79.6	72.9 - 86.3	29,000
Lahaina/ Wailuku	4,500	15.6	10.5 - 20.6	24,300	84.4	79.4 - 89.5	28,800

Pneumonia - ever had shot by State, County, Island, Community, BRFSS Age Group, DOH Race-Ethnicity, Gender, Education Level, Employment Status (Grouped), Household Income, Poverty Level, Marital Status (Grouped), Married, Health Care Coverage, for the Year(s) - 2001, 2002, 2003, 2004, 2005, 2006, 2007, 2008, 2009, 2010

Note: Weighted numbers (#), percentages and 95% confidence intervals; Respondents aged 18 years and older; n/r (Not Reportable) - If the unweighted total responses for a dimension (row) is <50 that row will not be shown; n/a (Not Available) - Not asked of a subset of respondents

Year: 2001

Community	Yes			No			Estimated Population
	#	%	C.I. (95%)	#	%	C.I. (95%)	#
Lanai	300	12.7	5.0 - 20.4	2,100	87.3	79.6 - 95.0	2,400
Lihue-Waimea	4,900	20.9	15.8 - 26.1	18,300	79.1	73.9 - 84.2	23,200
Manoa/ Upper Makiki	12,200	23.3	15.7 - 30.9	40,300	76.7	69.1 - 84.3	52,600
Mililani/ Wahiawa	10,700	19.6	12.6 - 26.7	43,800	80.4	73.3 - 87.4	54,500
Molokai	900	19.2	9.8 - 28.6	3,700	80.8	71.4 - 90.2	4,600
Nanakuli/ Waianae	5,000	17.5	6.9 - 28.1	23,400	82.5	71.9 - 93.1	28,400
N.Hawaii	4,800	20.6	14.5 - 26.7	18,300	79.4	73.3 - 85.5	23,100
N.Shore/ Laie	3,300	12.6	5.4 - 19.8	22,600	87.4	80.2 - 94.6	25,900
Nuuanu/ Kalihi/ Moanalua	11,400	17.6	11.0 - 24.1	53,700	82.4	75.9 - 89.0	65,100

Pneumonia - ever had shot by State, County, Island, Community, BRFSS Age Group, DOH Race-Ethnicity, Gender, Education Level, Employment Status (Grouped), Household Income, Poverty Level, Marital Status (Grouped), Married, Health Care Coverage, for the Year(s) - 2001, 2002, 2003, 2004, 2005, 2006, 2007, 2008, 2009, 2010

Note: Weighted numbers (#), percentages and 95% confidence intervals; Respondents aged 18 years and older; n/r (Not Reportable) - If the unweighted total responses for a dimension (row) is <50 that row will not be shown; n/a (Not Available) - Not asked of a subset of respondents

Year: 2001

Community	Yes			No			Estimated Population
	#	%	C.I. (95%)	#	%	C.I. (95%)	#
Puna/ Kau	3,200	15.3	9.6 - 20.9	17,700	84.7	79.1 - 90.4	20,900
Salt Lake/ Foster Village	6,200	18.1	9.7 - 26.6	27,800	81.9	73.4 - 90.3	33,900
Upcountry/ Hana	3,900	14.4	8.6 - 20.2	23,200	85.6	79.8 - 91.4	27,100
Waialae/ Kahala/ Hawaii Kai	6,500	19.2	11.4 - 27.1	27,300	80.8	72.9 - 88.6	33,900
Waipahu/ Kapolei/ Ewa	10,800	11.9	7.5 - 16.4	79,700	88.1	83.6 - 92.5	90,500

Pneumonia - ever had shot by State, County, Island, Community, BRFSS Age Group, DOH Race-Ethnicity, Gender, Education Level, Employment Status (Grouped), Household Income, Poverty Level, Marital Status (Grouped), Married, Health Care Coverage, for the Year(s) - 2001, 2002, 2003, 2004, 2005, 2006, 2007, 2008, 2009, 2010

Note: Weighted numbers (#), percentages and 95% confidence intervals; Respondents aged 18 years and older; n/r (Not Reportable) - If the unweighted total responses for a dimension (row) is <50 that row will not be shown; n/a (Not Available) - Not asked of a subset of respondents

Year: 2001

BRFSS Age Group	Yes			No			Estimated Population
	#	%	C.I. (95%)	#	%	C.I. (95%)	#
18-24	16,000	16.0	9.0 - 22.9	84,200	84.0	77.1 - 91.0	100,200
25-34	14,700	9.2	6.2 - 12.1	145,200	90.8	87.9 - 93.8	159,800
35-44	13,900	7.6	5.3 - 10.0	168,100	92.4	90.0 - 94.7	182,000
45-54	16,500	10.8	8.0 - 13.6	135,800	89.2	86.4 - 92.0	152,300
55-64	20,600	17.4	13.0 - 21.8	97,800	82.6	78.2 - 87.0	118,400
65-74	54,700	63.1	57.0 - 69.3	32,000	36.9	30.7 - 43.0	86,700
75+	40,000	65.9	59.1 - 72.8	20,700	34.1	27.2 - 40.9	60,600

Pneumonia - ever had shot by State, County, Island, Community, BRFSS Age Group, DOH Race-Ethnicity, Gender, Education Level, Employment Status (Grouped), Household Income, Poverty Level, Marital Status (Grouped), Married, Health Care Coverage, for the Year(s) - 2001, 2002, 2003, 2004, 2005, 2006, 2007, 2008, 2009, 2010

Note: Weighted numbers (#), percentages and 95% confidence intervals; Respondents aged 18 years and older; n/r (Not Reportable) - If the unweighted total responses for a dimension (row) is <50 that row will not be shown; n/a (Not Available) - Not asked of a subset of respondents

Year: 2001

DOH Race-Ethnicity	Yes			No			Estimated Population
	#	%	C.I. (95%)	#	%	C.I. (95%)	#
Caucasian	58,400	20.2	17.6 - 22.7	231,500	79.8	77.3 - 82.4	289,900
Native Hawaiian	14,400	12.9	9.5 - 16.2	97,300	87.1	83.8 - 90.5	111,600
Chinese	14,400	26.5	18.8 - 34.2	39,800	73.5	65.8 - 81.2	54,100
Filipino	21,600	17.3	10.9 - 23.6	103,600	82.7	76.4 - 89.1	125,200
Japanese	51,200	28.4	24.5 - 32.3	129,100	71.6	67.7 - 75.5	180,200
Black	4,200	25.8	10.0 - 41.5	12,100	74.2	58.5 - 90.0	16,300
Other Asian	4,000	14.9	6.7 - 23.1	22,900	85.1	76.9 - 93.3	26,900
Other Pacific Islander	3,600	18.6	3.1 - 34.0	16,000	81.4	66.0 - 96.9	19,700
Other	4,100	12.4	5.0 - 19.9	28,800	87.6	80.1 - 95.0	32,900

Pneumonia - ever had shot by State, County, Island, Community, BRFSS Age Group, DOH Race-Ethnicity, Gender, Education Level, Employment Status (Grouped), Household Income, Poverty Level, Marital Status (Grouped), Married, Health Care Coverage, for the Year(s) - 2001, 2002, 2003, 2004, 2005, 2006, 2007, 2008, 2009, 2010

Note: Weighted numbers (#), percentages and 95% confidence intervals; Respondents aged 18 years and older; n/r (Not Reportable) - If the unweighted total responses for a dimension (row) is <50 that row will not be shown; n/a (Not Available) - Not asked of a subset of respondents

Year: 2001

Gender	Yes			No			Estimated Population
	#	%	C.I. (95%)	#	%	C.I. (95%)	#
Male	91,500	21.3	18.5 - 24.0	339,100	78.7	76.0 - 81.5	430,700
Female	85,400	19.6	17.4 - 21.9	349,400	80.4	78.1 - 82.6	434,900

Pneumonia - ever had shot by State, County, Island, Community, BRFSS Age Group, DOH Race-Ethnicity, Gender, Education Level, Employment Status (Grouped), Household Income, Poverty Level, Marital Status (Grouped), Married, Health Care Coverage, for the Year(s) - 2001, 2002, 2003, 2004, 2005, 2006, 2007, 2008, 2009, 2010

Note: Weighted numbers (#), percentages and 95% confidence intervals; Respondents aged 18 years and older; n/r (Not Reportable) - If the unweighted total responses for a dimension (row) is <50 that row will not be shown; n/a (Not Available) - Not asked of a subset of respondents

Year: 2001

Education Level	Yes			No			Estimated Population
	#	%	C.I. (95%)	#	%	C.I. (95%)	#
Never attended school/ Only Kindergarten to Grades 8	6,200	38.5	27.0 - 50.0	9,800	61.5	50.0 - 73.0	16,000
Grades 9 thru 11 (Some High School)	11,500	30.6	18.7 - 42.6	26,100	69.4	57.4 - 81.3	37,600
Grades 12 or GED (High School Grad)	62,700	21.8	18.9 - 24.8	224,400	78.2	75.2 - 81.1	287,100
College 1 to 3 years (Some College/ Tech)	55,600	21.0	17.4 - 24.5	209,600	79.0	75.5 - 82.6	265,200
College 4 years or more (College Grad)	40,900	15.9	13.3 - 18.5	216,500	84.1	81.5 - 86.7	257,400

Pneumonia - ever had shot by State, County, Island, Community, BRFSS Age Group, DOH Race-Ethnicity, Gender, Education Level, Employment Status (Grouped), Household Income, Poverty Level, Marital Status (Grouped), Married, Health Care Coverage, for the Year(s) - 2001, 2002, 2003, 2004, 2005, 2006, 2007, 2008, 2009, 2010

Note: Weighted numbers (#), percentages and 95% confidence intervals; Respondents aged 18 years and older; n/r (Not Reportable) - If the unweighted total responses for a dimension (row) is <50 that row will not be shown; n/a (Not Available) - Not asked of a subset of respondents

Year: 2001

Employment Status (Grouped)	Yes			No			Estimated Population
	#	%	C.I. (95%)	#	%	C.I. (95%)	#
Employed	66,400	11.6	9.8 - 13.5	503,700	88.4	86.5 - 90.2	570,100
Unemployed	2,700	9.3	2.1 - 16.5	26,000	90.7	83.5 - 97.9	28,700
Retired/Unable to work	96,900	52.7	48.3 - 57.1	87,000	47.3	42.9 - 51.7	183,900
Student/Homemaker	11,000	13.4	8.4 - 18.3	71,500	86.6	81.7 - 91.6	82,500

Pneumonia - ever had shot by State, County, Island, Community, BRFSS Age Group, DOH Race-Ethnicity, Gender, Education Level, Employment Status (Grouped), Household Income, Poverty Level, Marital Status (Grouped), Married, Health Care Coverage, for the Year(s) - 2001, 2002, 2003, 2004, 2005, 2006, 2007, 2008, 2009, 2010

Note: Weighted numbers (#), percentages and 95% confidence intervals; Respondents aged 18 years and older; n/r (Not Reportable) - If the unweighted total responses for a dimension (row) is <50 that row will not be shown; n/a (Not Available) - Not asked of a subset of respondents

Year: 2001

Household Income	Yes			No			Estimated Population
	#	%	C.I. (95%)	#	%	C.I. (95%)	#
Less than \$10,000	5,700	15.3	8.2 - 22.4	31,300	84.7	77.6 - 91.8	36,900
\$10,000 to \$14,999	10,100	25.1	17.4 - 32.7	30,200	74.9	67.3 - 82.6	40,200
\$15,000 to \$19,999	11,400	30.9	19.1 - 42.7	25,600	69.1	57.3 - 80.9	37,000
\$20,000 to \$24,999	12,700	22.1	12.1 - 32.0	44,900	77.9	68.0 - 87.9	57,600
\$25,000 to \$34,999	17,200	20.0	15.3 - 24.7	68,800	80.0	75.3 - 84.7	86,000
\$35,000 to \$49,999	20,600	15.7	12.1 - 19.2	111,100	84.3	80.8 - 87.9	131,800
\$50,000 to \$74,999	17,500	14.3	10.6 - 18.1	104,300	85.7	81.9 - 89.4	121,800
\$75,000 or more	19,300	16.4	11.9 - 20.9	98,100	83.6	79.1 - 88.1	117,400

Pneumonia - ever had shot by State, County, Island, Community, BRFSS Age Group, DOH Race-Ethnicity, Gender, Education Level, Employment Status (Grouped), Household Income, Poverty Level, Marital Status (Grouped), Married, Health Care Coverage, for the Year(s) - 2001, 2002, 2003, 2004, 2005, 2006, 2007, 2008, 2009, 2010

Note: Weighted numbers (#), percentages and 95% confidence intervals; Respondents aged 18 years and older; n/r (Not Reportable) - If the unweighted total responses for a dimension (row) is <50 that row will not be shown; n/a (Not Available) - Not asked of a subset of respondents

Year: 2001

Poverty Level	Yes			No			Estimated Population
	#	%	C.I. (95%)	#	%	C.I. (95%)	#
0-130%	28,500	20.4	14.6 - 26.3	110,800	79.6	73.7 - 85.4	139,200
131-185%	18,600	17.4	13.1 - 21.7	88,000	82.6	78.3 - 86.9	106,600
186+%	67,400	17.6	15.4 - 19.8	315,500	82.4	80.2 - 84.6	382,900

Marital Status (Grouped)	Yes			No			Estimated Population
	#	%	C.I. (95%)	#	%	C.I. (95%)	#
Married	110,300	22.2	19.8 - 24.6	386,100	77.8	75.4 - 80.2	496,500
Widowed	27,100	57.1	48.6 - 65.6	20,300	42.9	34.4 - 51.4	47,400
Other	38,400	12.3	10.1 - 14.5	274,200	87.7	85.5 - 89.9	312,600

Pneumonia - ever had shot by State, County, Island, Community, BRFSS Age Group, DOH Race-Ethnicity, Gender, Education Level, Employment Status (Grouped), Household Income, Poverty Level, Marital Status (Grouped), Married, Health Care Coverage, for the Year(s) - 2001, 2002, 2003, 2004, 2005, 2006, 2007, 2008, 2009, 2010

Note: Weighted numbers (#), percentages and 95% confidence intervals; Respondents aged 18 years and older; n/r (Not Reportable) - If the unweighted total responses for a dimension (row) is <50 that row will not be shown; n/a (Not Available) - Not asked of a subset of respondents

Year: 2001

Married	Yes			No			Estimated Population
	#	%	C.I. (95%)	#	%	C.I. (95%)	#
Yes	111,800	21.8	19.4 - 24.1	401,900	78.2	75.9 - 80.6	513,700
No	65,100	18.6	16.0 - 21.1	285,600	81.4	78.9 - 84.0	350,800

Health Care Coverage	Yes			No			Estimated Population
	#	%	C.I. (95%)	#	%	C.I. (95%)	#
Yes	171,900	21.5	19.6 - 23.3	629,500	78.5	76.7 - 80.4	801,400
No	5,000	8.0	3.6 - 12.4	57,700	92.0	87.6 - 96.4	62,700