

Weight - overweight or obese, for the State of Hawaii, for the Aggregated Year(s) - 2011-2013, 2012-2014

Weight - overweight or obese by State, County, Island, Community, BRFSS Age Group, DOH Race-Ethnicity, Gender, Education Level, Employment Status (Grouped), Household Income, Poverty Level, Marital Status (Grouped), Married, Health Care Coverage, for the Aggregated Year(s) - 2011-2013, 2012-2014

The trend analysis report shows the trend for the selected health variable over selected years in a table and a graph. Due to the addition of cell phones to the survey and changes in the weighting methodology, results from 2011 and forward cannot be trended with data from prior years. Estimated Population: This number is a weighted representation of the population who responded to a particular question in the survey. For most questions the eligible population will be the entire adult population. For some secondary questions only a subset of the population was asked the question. For example, all survey participants were asked if they had diabetes, but only those who answered yes were asked if they use insulin. If a dimension value is unknown for a particular survey record, that record will not be included in the counts for that particular dimension.

Below are the indicators included in this report and the long description for each indicator.

BRFSS Health Indicator	Health Ind Description
Weight - overweight or obese	Overweight or obese (Adults who have a body mass index greater than 25.00)

Suggested citation:

Hawaii Health Data Warehouse; Hawaii State Department of Health, Behavioral Risk Factor Surveillance System, (report title and years), Report Created: 1/15/16

For documentation on other terms and coding in this report, please go to the following links:

[Click here to access BRFSS documentation](#)

[Click here to access DOH Race-Ethnicity coding](#)

[Click here to access The Hawai'i Data Guide](#)

[Click here to access Poverty Level Methodology](#)

**For questions about this report, please contact
The Hawaii Health Data Warehouse**

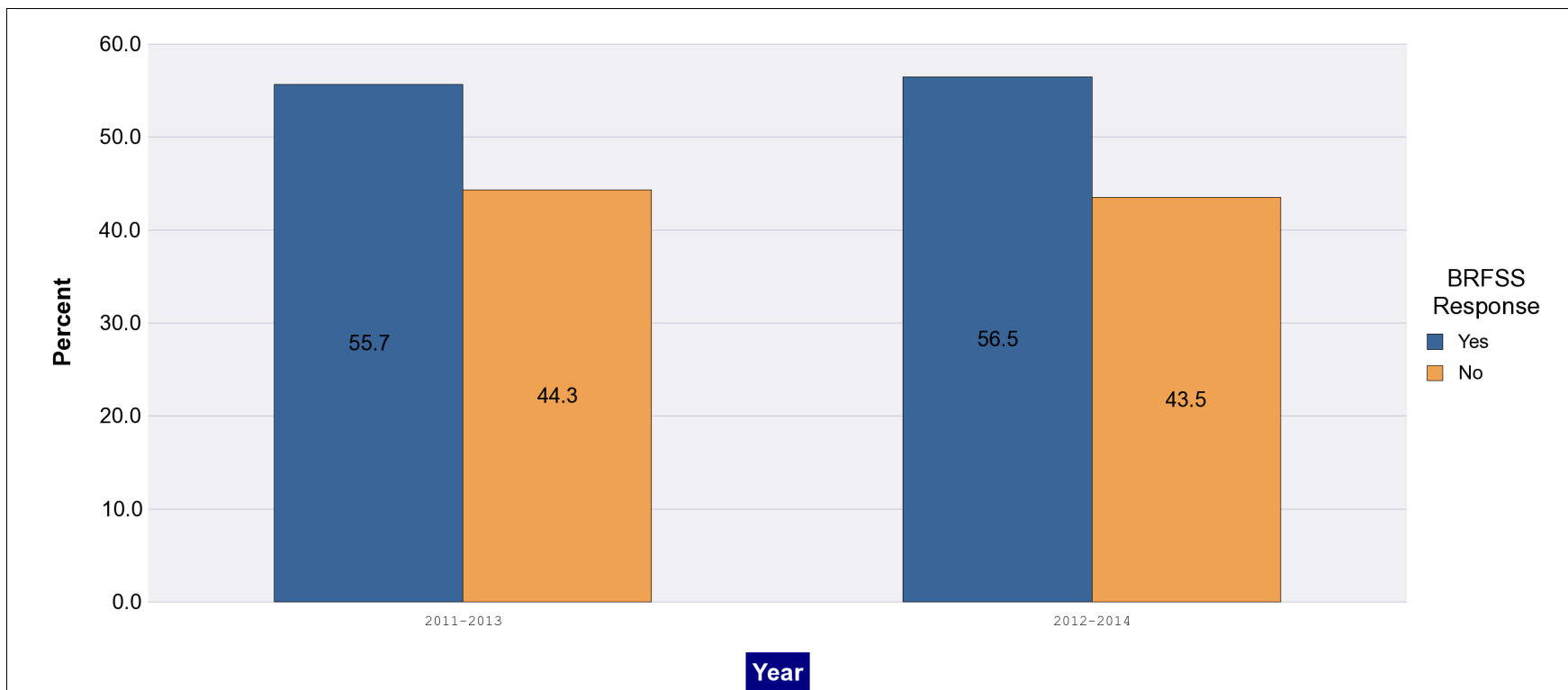
profiles@hhdw.org

(855) 946-5899 x15

Weight - overweight or obese, for the State of Hawaii, for the Aggregated Year(s) - 2011-2013, 2012-2014

Note: Weighted numbers (#) represent 3-yr averages, percentages and 95% confidence intervals; Respondents aged 18 years and older; n/r (Not Reportable) - If the unweighted total responses for a dimension (row) is <50 or if the relative standard error is > 0.3 that row will not be shown; n/a (Not Available) - Not asked of a subset of respondents

Year	Yes			No			Estimated Population (3-Yr Avg)
	#	%	C.I.(95%)	#	%	C.I.(95%)	#
2011-2013	581,000	55.7	54.7 - 56.7	462,500	44.3	43.3 - 45.3	1,043,500
2012-2014	594,300	56.5	55.5 - 57.5	457,900	43.5	42.5 - 44.5	1,052,300



Weight - overweight or obese by State, County, Island, Community, BRFSS Age Group, DOH Race-Ethnicity, Gender, Education Level, Employment Status (Grouped), Household Income, Poverty Level, Marital Status (Grouped), Married, Health Care Coverage, for the Aggregated Year(s) - 2011-2013, 2012-2014

Note: Weighted numbers (#) represent 3-yr averages, percentages and 95% confidence intervals; Respondents aged 18 years and older; n/r (Not Reportable) - If the unweighted total responses for a dimension (row) is <50 or if the relative standard error is > 0.3 that row will not be shown; n/a (Not Available) - Not asked of a subset of respondents

Year: 2012-2014

State	Yes			No			Estimated Population (3-Yr Avg)
	#	%	C.I. (95%)	#	%	C.I. (95%)	#
Totals	594,300	56.5	55.5 - 57.5	457,900	43.5	42.5 - 44.5	1,052,300

County	Yes			No			Estimated Population (3-Yr Avg)
	#	%	C.I. (95%)	#	%	C.I. (95%)	#
Hawaii	82,700	57.7	55.6 - 59.8	60,600	42.3	40.2 - 44.4	143,300
Honolulu	408,300	56.6	55.3 - 57.9	313,300	43.4	42.1 - 44.7	721,500
Kauai	26,800	52.6	49.6 - 55.5	24,200	47.4	44.5 - 50.4	51,100
Maui	67,100	56.9	54.6 - 59.1	50,900	43.1	40.9 - 45.4	118,000

Weight - overweight or obese by State, County, Island, Community, BRFSS Age Group, DOH Race-Ethnicity, Gender, Education Level, Employment Status (Grouped), Household Income, Poverty Level, Marital Status (Grouped), Married, Health Care Coverage, for the Aggregated Year(s) - 2011-2013, 2012-2014

Note: Weighted numbers (#) represent 3-yr averages, percentages and 95% confidence intervals; Respondents aged 18 years and older; n/r (Not Reportable) - If the unweighted total responses for a dimension (row) is <50 or if the relative standard error is > 0.3 that row will not be shown; n/a (Not Available) - Not asked of a subset of respondents

Year: 2012-2014

Island	Yes			No			Estimated Population (3-Yr Avg)
	#	%	C.I. (95%)	#	%	C.I. (95%)	#
Hawaii	82,700	57.7	55.6 - 59.8	60,600	42.3	40.2 - 44.4	143,300
Kauai	26,800	52.6	49.6 - 55.5	24,200	47.4	44.5 - 50.4	51,100
Lanai	1,400	61.5	48.1 - 75.0	900	38.5	25.0 - 51.9	2,400
Maui	61,000	55.9	53.5 - 58.2	48,200	44.1	41.8 - 46.5	109,100
Molokai	4,700	71.8	64.7 - 78.9	1,800	28.2	21.1 - 35.3	6,500
Oahu	408,300	56.6	55.3 - 57.9	313,300	43.4	42.1 - 44.7	721,500

Community	Yes			No			Estimated Population (3-Yr Avg)
	#	%	C.I. (95%)	#	%	C.I. (95%)	#
Aiea/ Pearl City	38,700	57.4	53.2 - 61.7	28,600	42.6	38.3 - 46.8	67,300
Ala Moana	15,500	47.6	42.0 - 53.2	17,000	52.4	46.8 - 58.0	32,500

Weight - overweight or obese by State, County, Island, Community, BRFSS Age Group, DOH Race-Ethnicity, Gender, Education Level, Employment Status (Grouped), Household Income, Poverty Level, Marital Status (Grouped), Married, Health Care Coverage, for the Aggregated Year(s) - 2011-2013, 2012-2014

Note: Weighted numbers (#) represent 3-yr averages, percentages and 95% confidence intervals; Respondents aged 18 years and older; n/r (Not Reportable) - If the unweighted total responses for a dimension (row) is <50 or if the relative standard error is > 0.3 that row will not be shown; n/a (Not Available) - Not asked of a subset of respondents

Year: 2012-2014

Community	Yes			No			Estimated Population (3-Yr Avg)
	#	%	C.I. (95%)	#	%	C.I. (95%)	#
Hanalei/ Kapaa	10,000	47.1	42.5 - 51.7	11,300	52.9	48.3 - 57.5	21,300
Hilo	23,200	59.3	55.6 - 62.9	16,000	40.7	37.1 - 44.4	39,200
Kaaawa/ Kahaluu/ Kaneohe	33,100	65.2	60.8 - 69.5	17,700	34.8	30.5 - 39.2	50,900
Kahului	21,100	58.2	54.0 - 62.4	15,200	41.8	37.6 - 46.0	36,200
Kailua/ Waimanalo	28,600	53.7	49.1 - 58.3	24,600	46.3	41.7 - 50.9	53,200
Kaimuki/ Palolo/ Waikiki	28,900	46.9	42.9 - 50.9	32,700	53.1	49.1 - 57.1	61,700
Kona	18,400	54.9	50.5 - 59.3	15,100	45.1	40.7 - 49.5	33,500
Lahaina/ Wailuku	21,000	56.3	52.5 - 60.2	16,300	43.7	39.8 - 47.5	37,300
Lanai	1,400	61.5	48.1 - 75.0	900	38.5	25.0 - 51.9	2,400
Lihue-Waimea	16,800	56.5	52.7 - 60.3	12,900	43.5	39.7 - 47.3	29,700
Manoa/ Upper Makiki	23,200	47.9	43.7 - 52.2	25,200	52.1	47.8 - 56.3	48,500
Mililani/ Wahiawa	41,000	59.8	55.4 - 64.1	27,600	40.2	35.9 - 44.6	68,700

Weight - overweight or obese by State, County, Island, Community, BRFSS Age Group, DOH Race-Ethnicity, Gender, Education Level, Employment Status (Grouped), Household Income, Poverty Level, Marital Status (Grouped), Married, Health Care Coverage, for the Aggregated Year(s) - 2011-2013, 2012-2014

Note: Weighted numbers (#) represent 3-yr averages, percentages and 95% confidence intervals; Respondents aged 18 years and older; n/r (Not Reportable) - If the unweighted total responses for a dimension (row) is <50 or if the relative standard error is > 0.3 that row will not be shown; n/a (Not Available) - Not asked of a subset of respondents

Year: 2012-2014

Community	Yes			No			Estimated Population (3-Yr Avg)
	#	%	C.I. (95%)	#	%	C.I. (95%)	#
Molokai	4,700	71.8	64.7 - 78.9	1,800	28.2	21.1 - 35.3	6,500
Nanakuli/ Waianae	27,700	70.8	65.1 - 76.5	11,400	29.2	23.5 - 34.9	39,100
N.Hawaii	15,600	58.5	53.9 - 63.1	11,100	41.5	36.9 - 46.1	26,700
N.Shore/ Laie	13,300	55.8	48.7 - 63.0	10,500	44.2	37.0 - 51.3	23,800
Nuuanu/ Kalihi/ Moanalua	38,300	56.3	52.2 - 60.4	29,700	43.7	39.6 - 47.8	68,000
Puna/ Kau	25,500	58.1	53.9 - 62.3	18,400	41.9	37.7 - 46.1	43,900
Salt Lake/ Foster Village	16,000	52.9	46.7 - 59.0	14,300	47.1	41.0 - 53.3	30,200
Upcountry/ Hana	18,900	53.0	48.8 - 57.3	16,700	47.0	42.7 - 51.2	35,600
Waialae/ Kahala/ Hawaii Kai	21,400	46.8	42.1 - 51.4	24,400	53.2	48.6 - 57.9	45,800
Waipahu/ Kapolei/ Ewa	82,600	62.6	59.4 - 65.8	49,400	37.4	34.2 - 40.6	131,900

Weight - overweight or obese by State, County, Island, Community, BRFSS Age Group, DOH Race-Ethnicity, Gender, Education Level, Employment Status (Grouped), Household Income, Poverty Level, Marital Status (Grouped), Married, Health Care Coverage, for the Aggregated Year(s) - 2011-2013, 2012-2014

Note: Weighted numbers (#) represent 3-yr averages, percentages and 95% confidence intervals; Respondents aged 18 years and older; n/r (Not Reportable) - If the unweighted total responses for a dimension (row) is <50 or if the relative standard error is > 0.3 that row will not be shown; n/a (Not Available) - Not asked of a subset of respondents

Year: 2012-2014

BRFSS Age Group	Yes			No			Estimated Population (3-Yr Avg)
	#	%	C.I. (95%)	#	%	C.I. (95%)	#
18-24	49,700	39.6	36.5 - 42.8	75,600	60.4	57.2 - 63.5	125,300
25-34	105,300	58.6	56.0 - 61.2	74,500	41.4	38.8 - 44.0	179,800
35-44	107,300	63.7	61.3 - 66.2	61,100	36.3	33.8 - 38.7	168,500
45-54	112,100	62.7	60.4 - 65.0	66,700	37.3	35.0 - 39.6	178,800
55-64	108,400	61.1	59.1 - 63.1	69,000	38.9	36.9 - 40.9	177,400
65-74	68,000	57.7	55.4 - 60.1	49,800	42.3	39.9 - 44.6	117,800
75+	40,400	41.4	38.6 - 44.2	57,100	58.6	55.8 - 61.4	97,500

Weight - overweight or obese by State, County, Island, Community, BRFSS Age Group, DOH Race-Ethnicity, Gender, Education Level, Employment Status (Grouped), Household Income, Poverty Level, Marital Status (Grouped), Married, Health Care Coverage, for the Aggregated Year(s) - 2011-2013, 2012-2014

Note: Weighted numbers (#) represent 3-yr averages, percentages and 95% confidence intervals; Respondents aged 18 years and older; n/r (Not Reportable) - If the unweighted total responses for a dimension (row) is <50 or if the relative standard error is > 0.3 that row will not be shown; n/a (Not Available) - Not asked of a subset of respondents

Year: 2012-2014

DOH Race-Ethnicity	Yes			No			Estimated Population (3-Yr Avg)
	#	%	C.I. (95%)	#	%	C.I. (95%)	#
Caucasian	181,800	54.8	53.2 - 56.4	150,100	45.2	43.6 - 46.8	331,800
Native Hawaiian	90,500	75.3	73.0 - 77.7	29,600	24.7	22.3 - 27.0	120,100
Chinese	25,900	40.7	36.7 - 44.8	37,700	59.3	55.2 - 63.3	63,500
Filipino	95,700	55.9	53.2 - 58.7	75,400	44.1	41.3 - 46.8	171,100
Japanese	111,100	49.7	47.6 - 51.8	112,400	50.3	48.2 - 52.4	223,500
Black	14,200	72.3	65.2 - 79.4	5,400	27.7	20.6 - 34.8	19,700
Native Alaskan/ American Indian	3,300	56.9	45.3 - 68.5	2,500	43.1	31.5 - 54.7	5,700
Other Asian	9,800	36.2	29.9 - 42.4	17,300	63.8	57.6 - 70.1	27,000
Other Pacific Islander	19,400	78.8	73.0 - 84.5	5,200	21.2	15.5 - 27.0	24,700
Other	19,100	65.4	59.6 - 71.3	10,100	34.6	28.7 - 40.4	29,200

Weight - overweight or obese by State, County, Island, Community, BRFSS Age Group, DOH Race-Ethnicity, Gender, Education Level, Employment Status (Grouped), Household Income, Poverty Level, Marital Status (Grouped), Married, Health Care Coverage, for the Aggregated Year(s) - 2011-2013, 2012-2014

Note: Weighted numbers (#) represent 3-yr averages, percentages and 95% confidence intervals; Respondents aged 18 years and older; n/r (Not Reportable) - If the unweighted total responses for a dimension (row) is <50 or if the relative standard error is > 0.3 that row will not be shown; n/a (Not Available) - Not asked of a subset of respondents

Year: 2012-2014

Gender	Yes			No			Estimated Population (3-Yr Avg)
	#	%	C.I. (95%)	#	%	C.I. (95%)	#
Male	351,700	65.4	64.1 - 66.8	185,800	34.6	33.2 - 35.9	537,600
Female	242,600	47.1	45.8 - 48.5	272,100	52.9	51.5 - 54.2	514,700

Education Level	Yes			No			Estimated Population (3-Yr Avg)
	#	%	C.I. (95%)	#	%	C.I. (95%)	#
Never attended school/ Only Kindergarten to Grades 8	11,600	55.5	46.7 - 64.2	9,300	44.5	35.8 - 53.3	20,900
Grades 9 thru 11 (Some High School)	45,400	57.1	52.1 - 62.0	34,200	42.9	38.0 - 47.9	79,700
Grades 12 or GED (High School Grad)	187,400	59.5	57.7 - 61.2	127,800	40.5	38.8 - 42.3	315,200
College 1 to 3 years (Some College/ Tech)	201,200	57.3	55.5 - 59.1	149,900	42.7	40.9 - 44.5	351,100
College 4 years or more (College Grad)	148,000	52.0	50.6 - 53.5	136,400	48.0	46.5 - 49.4	284,400

Weight - overweight or obese by State, County, Island, Community, BRFSS Age Group, DOH Race-Ethnicity, Gender, Education Level, Employment Status (Grouped), Household Income, Poverty Level, Marital Status (Grouped), Married, Health Care Coverage, for the Aggregated Year(s) - 2011-2013, 2012-2014

Note: Weighted numbers (#) represent 3-yr averages, percentages and 95% confidence intervals; Respondents aged 18 years and older; n/r (Not Reportable) - If the unweighted total responses for a dimension (row) is <50 or if the relative standard error is > 0.3 that row will not be shown; n/a (Not Available) - Not asked of a subset of respondents

Year: 2012-2014

Employment Status (Grouped)	Yes			No			Estimated Population (3-Yr Avg)
	#	%	C.I. (95%)	#	%	C.I. (95%)	#
Employed	383,800	59.6	58.3 - 60.8	260,200	40.4	39.2 - 41.7	644,000
Unemployed	40,000	60.8	56.5 - 65.1	25,800	39.2	34.9 - 43.5	65,800
Retired/Unable to work	129,900	53.7	51.9 - 55.5	112,200	46.3	44.5 - 48.1	242,100
Student/Homemaker	39,900	40.5	37.0 - 43.9	58,700	59.5	56.1 - 63.0	98,500

Weight - overweight or obese by State, County, Island, Community, BRFSS Age Group, DOH Race-Ethnicity, Gender, Education Level, Employment Status (Grouped), Household Income, Poverty Level, Marital Status (Grouped), Married, Health Care Coverage, for the Aggregated Year(s) - 2011-2013, 2012-2014

Note: Weighted numbers (#) represent 3-yr averages, percentages and 95% confidence intervals; Respondents aged 18 years and older; n/r (Not Reportable) - If the unweighted total responses for a dimension (row) is <50 or if the relative standard error is > 0.3 that row will not be shown; n/a (Not Available) - Not asked of a subset of respondents

Year: 2012-2014

Household Income	Yes			No			Estimated Population (3-Yr Avg)
	#	%	C.I. (95%)	#	%	C.I. (95%)	#
Less than \$10,000	29,700	54.5	50.1 - 58.9	24,800	45.5	41.1 - 49.9	54,500
\$10,000 to \$14,999	21,700	57.2	52.0 - 62.3	16,200	42.8	37.7 - 48.0	37,900
\$15,000 to \$19,999	36,000	55.0	51.2 - 58.9	29,500	45.0	41.1 - 48.8	65,500
\$20,000 to \$24,999	44,100	58.6	55.0 - 62.2	31,100	41.4	37.8 - 45.0	75,200
\$25,000 to \$34,999	61,500	56.1	53.0 - 59.1	48,200	43.9	40.9 - 47.0	109,700
\$35,000 to \$49,999	78,600	56.9	54.3 - 59.6	59,400	43.1	40.4 - 45.7	138,000
\$50,000 to \$74,999	92,100	60.0	57.6 - 62.4	61,400	40.0	37.6 - 42.4	153,400
\$75,000 or more	181,700	58.7	56.9 - 60.4	127,900	41.3	39.6 - 43.1	309,600

Weight - overweight or obese by State, County, Island, Community, BRFSS Age Group, DOH Race-Ethnicity, Gender, Education Level, Employment Status (Grouped), Household Income, Poverty Level, Marital Status (Grouped), Married, Health Care Coverage, for the Aggregated Year(s) - 2011-2013, 2012-2014

Note: Weighted numbers (#) represent 3-yr averages, percentages and 95% confidence intervals; Respondents aged 18 years and older; n/r (Not Reportable) - If the unweighted total responses for a dimension (row) is <50 or if the relative standard error is > 0.3 that row will not be shown; n/a (Not Available) - Not asked of a subset of respondents

Year: 2012-2014

Poverty Level	Yes			No			Estimated Population (3-Yr Avg)
	#	%	C.I. (95%)	#	%	C.I. (95%)	#
0-130%	68,000	59.1	55.6 - 62.6	47,100	40.9	37.4 - 44.4	115,100
131-185%	35,900	53.5	49.3 - 57.7	31,200	46.5	42.3 - 50.7	67,100
186+%	154,900	55.4	53.6 - 57.1	125,000	44.6	42.9 - 46.4	279,900

Marital Status (Grouped)	Yes			No			Estimated Population (3-Yr Avg)
	#	%	C.I. (95%)	#	%	C.I. (95%)	#
Married	318,100	59.0	57.7 - 60.3	221,000	41.0	39.7 - 42.3	539,100
Unmarried Couple	18,300	58.3	52.6 - 64.0	13,100	41.7	36.0 - 47.4	31,400
Widowed	32,500	46.5	43.0 - 49.9	37,400	53.5	50.1 - 57.0	69,900
Other	225,500	54.7	53.1 - 56.4	186,400	45.3	43.6 - 46.9	411,900

Weight - overweight or obese by State, County, Island, Community, BRFSS Age Group, DOH Race-Ethnicity, Gender, Education Level, Employment Status (Grouped), Household Income, Poverty Level, Marital Status (Grouped), Married, Health Care Coverage, for the Aggregated Year(s) - 2011-2013, 2012-2014

Note: Weighted numbers (#) represent 3-yr averages, percentages and 95% confidence intervals; Respondents aged 18 years and older; n/r (Not Reportable) - If the unweighted total responses for a dimension (row) is <50 or if the relative standard error is > 0.3 that row will not be shown; n/a (Not Available) - Not asked of a subset of respondents

Year: 2012-2014

Married	Yes			No			Estimated Population (3-Yr Avg)
	#	%	C.I. (95%)	#	%	C.I. (95%)	#
Yes	327,200	59.0	57.7 - 60.3	227,600	41.0	39.7 - 42.3	554,800
No	266,200	53.7	52.3 - 55.2	229,400	46.3	44.8 - 47.7	495,600

Health Care Coverage	Yes			No			Estimated Population (3-Yr Avg)
	#	%	C.I. (95%)	#	%	C.I. (95%)	#
Yes	541,100	56.5	55.5 - 57.5	416,600	43.5	42.5 - 44.5	957,600
No	52,000	56.3	52.9 - 59.7	40,400	43.7	40.3 - 47.1	92,400

Weight - overweight or obese by State, County, Island, Community, BRFSS Age Group, DOH Race-Ethnicity, Gender, Education Level, Employment Status (Grouped), Household Income, Poverty Level, Marital Status (Grouped), Married, Health Care Coverage, for the Aggregated Year(s) - 2011-2013, 2012-2014

Note: Weighted numbers (#) represent 3-yr averages, percentages and 95% confidence intervals; Respondents aged 18 years and older; n/r (Not Reportable) - If the unweighted total responses for a dimension (row) is <50 or if the relative standard error is > 0.3 that row will not be shown; n/a (Not Available) - Not asked of a subset of respondents

Year: 2011-2013

State	Yes			No			Estimated Population (3-Yr Avg)
	#	%	C.I. (95%)	#	%	C.I. (95%)	#
Totals	581,000	55.7	54.7 - 56.7	462,500	44.3	43.3 - 45.3	1,043,500

County	Yes			No			Estimated Population (3-Yr Avg)
	#	%	C.I. (95%)	#	%	C.I. (95%)	#
Hawaii	83,100	58.0	55.8 - 60.2	60,200	42.0	39.8 - 44.2	143,300
Honolulu	401,600	55.6	54.3 - 56.9	320,400	44.4	43.1 - 45.7	722,000
Kauai	25,800	50.8	47.6 - 54.1	25,000	49.2	45.9 - 52.4	50,800
Maui	65,100	55.9	53.6 - 58.2	51,300	44.1	41.8 - 46.4	116,400

Weight - overweight or obese by State, County, Island, Community, BRFSS Age Group, DOH Race-Ethnicity, Gender, Education Level, Employment Status (Grouped), Household Income, Poverty Level, Marital Status (Grouped), Married, Health Care Coverage, for the Aggregated Year(s) - 2011-2013, 2012-2014

Note: Weighted numbers (#) represent 3-yr averages, percentages and 95% confidence intervals; Respondents aged 18 years and older; n/r (Not Reportable) - If the unweighted total responses for a dimension (row) is <50 or if the relative standard error is > 0.3 that row will not be shown; n/a (Not Available) - Not asked of a subset of respondents

Year: 2011-2013

Island	Yes			No			Estimated Population (3-Yr Avg)
	#	%	C.I. (95%)	#	%	C.I. (95%)	#
Hawaii	83,100	58.0	55.8 - 60.2	60,200	42.0	39.8 - 44.2	143,300
Kauai	25,800	50.8	47.6 - 54.1	25,000	49.2	45.9 - 52.4	50,800
Lanai	2,000	67.0	58.9 - 75.0	1,000	33.0	25.0 - 41.1	2,900
Maui	58,300	54.9	52.4 - 57.4	47,900	45.1	42.6 - 47.6	106,200
Molokai	4,900	66.3	59.4 - 73.1	2,500	33.7	26.9 - 40.6	7,300
Oahu	401,600	55.6	54.3 - 56.9	320,400	44.4	43.1 - 45.7	722,000

Community	Yes			No			Estimated Population (3-Yr Avg)
	#	%	C.I. (95%)	#	%	C.I. (95%)	#
Aiea/ Pearl City	38,100	57.4	53.3 - 61.6	28,200	42.6	38.4 - 46.7	66,300
Ala Moana	14,500	44.5	39.1 - 49.8	18,100	55.5	50.2 - 60.9	32,600

Weight - overweight or obese by State, County, Island, Community, BRFSS Age Group, DOH Race-Ethnicity, Gender, Education Level, Employment Status (Grouped), Household Income, Poverty Level, Marital Status (Grouped), Married, Health Care Coverage, for the Aggregated Year(s) - 2011-2013, 2012-2014

Note: Weighted numbers (#) represent 3-yr averages, percentages and 95% confidence intervals; Respondents aged 18 years and older; n/r (Not Reportable) - If the unweighted total responses for a dimension (row) is <50 or if the relative standard error is > 0.3 that row will not be shown; n/a (Not Available) - Not asked of a subset of respondents

Year: 2011-2013

Community	Yes			No			Estimated Population (3-Yr Avg)
	#	%	C.I. (95%)	#	%	C.I. (95%)	#
Hanalei/ Kapaa	10,600	47.4	42.4 - 52.4	11,800	52.6	47.6 - 57.6	22,400
Hilo	24,200	60.8	57.0 - 64.6	15,600	39.2	35.4 - 43.0	39,800
Kaaawa/ Kahaluu/ Kaneohe	30,800	61.0	56.4 - 65.5	19,700	39.0	34.5 - 43.6	50,500
Kahului	20,300	56.1	51.8 - 60.5	15,900	43.9	39.5 - 48.2	36,200
Kailua/ Waimanalo	30,700	56.6	51.9 - 61.3	23,600	43.4	38.7 - 48.1	54,300
Kaimuki/ Palolo/ Waikiki	28,900	45.2	41.1 - 49.2	35,100	54.8	50.8 - 58.9	64,000
Kona	17,700	55.1	50.6 - 59.5	14,400	44.9	40.5 - 49.4	32,200
Lahaina/ Wailuku	19,700	55.9	51.8 - 60.1	15,500	44.1	39.9 - 48.2	35,300
Lanai	2,000	67.0	58.9 - 75.0	1,000	33.0	25.0 - 41.1	2,900
Lihue-Waimea	15,200	53.5	49.3 - 57.8	13,200	46.5	42.2 - 50.7	28,400
Manoa/ Upper Makiki	22,200	46.1	42.0 - 50.3	25,900	53.9	49.7 - 58.0	48,100
Mililani/ Wahiawa	41,300	58.8	54.5 - 63.1	28,900	41.2	36.9 - 45.5	70,300

Weight - overweight or obese by State, County, Island, Community, BRFSS Age Group, DOH Race-Ethnicity, Gender, Education Level, Employment Status (Grouped), Household Income, Poverty Level, Marital Status (Grouped), Married, Health Care Coverage, for the Aggregated Year(s) - 2011-2013, 2012-2014

Note: Weighted numbers (#) represent 3-yr averages, percentages and 95% confidence intervals; Respondents aged 18 years and older; n/r (Not Reportable) - If the unweighted total responses for a dimension (row) is <50 or if the relative standard error is > 0.3 that row will not be shown; n/a (Not Available) - Not asked of a subset of respondents

Year: 2011-2013

Community	Yes			No			Estimated Population (3-Yr Avg)
	#	%	C.I. (95%)	#	%	C.I. (95%)	#
Molokai	4,900	66.3	59.4 - 73.1	2,500	33.7	26.9 - 40.6	7,300
Nanakuli/ Waianae	25,200	70.5	64.6 - 76.4	10,600	29.5	23.6 - 35.4	35,800
N.Hawaii	16,300	58.0	53.3 - 62.6	11,800	42.0	37.4 - 46.7	28,100
N.Shore/ Laie	13,400	57.3	49.9 - 64.7	10,000	42.7	35.3 - 50.1	23,400
Nuuanu/ Kalihi/ Moanalua	35,800	54.4	50.1 - 58.6	30,100	45.6	41.4 - 49.9	65,900
Puna/ Kau	25,000	57.7	53.3 - 62.0	18,300	42.3	38.0 - 46.7	43,300
Salt Lake/ Foster Village	17,700	54.0	48.1 - 60.0	15,000	46.0	40.0 - 51.9	32,800
Upcountry/ Hana	18,200	52.5	48.1 - 56.9	16,500	47.5	43.1 - 51.9	34,700
Waialae/ Kahala/ Hawaii Kai	19,900	46.4	41.7 - 51.0	23,000	53.6	49.0 - 58.3	42,900
Waipahu/ Kapolei/ Ewa	82,900	61.4	58.2 - 64.6	52,200	38.6	35.4 - 41.8	135,100

Weight - overweight or obese by State, County, Island, Community, BRFSS Age Group, DOH Race-Ethnicity, Gender, Education Level, Employment Status (Grouped), Household Income, Poverty Level, Marital Status (Grouped), Married, Health Care Coverage, for the Aggregated Year(s) - 2011-2013, 2012-2014

Note: Weighted numbers (#) represent 3-yr averages, percentages and 95% confidence intervals; Respondents aged 18 years and older; n/r (Not Reportable) - If the unweighted total responses for a dimension (row) is <50 or if the relative standard error is > 0.3 that row will not be shown; n/a (Not Available) - Not asked of a subset of respondents

Year: 2011-2013

BRFSS Age Group	Yes			No			Estimated Population (3-Yr Avg)
	#	%	C.I. (95%)	#	%	C.I. (95%)	#
18-24	47,400	37.9	34.4 - 41.3	77,800	62.1	58.7 - 65.6	125,200
25-34	105,300	57.9	55.3 - 60.5	76,600	42.1	39.5 - 44.7	181,900
35-44	107,400	62.9	60.5 - 65.4	63,200	37.1	34.6 - 39.5	170,600
45-54	112,200	61.7	59.5 - 64.0	69,500	38.3	36.0 - 40.5	181,700
55-64	100,800	59.2	57.1 - 61.2	69,600	40.8	38.8 - 42.9	170,400
65-74	65,200	58.8	56.4 - 61.1	45,700	41.2	38.9 - 43.6	110,800
75+	41,200	41.9	39.3 - 44.6	57,100	58.1	55.4 - 60.7	98,300

Weight - overweight or obese by State, County, Island, Community, BRFSS Age Group, DOH Race-Ethnicity, Gender, Education Level, Employment Status (Grouped), Household Income, Poverty Level, Marital Status (Grouped), Married, Health Care Coverage, for the Aggregated Year(s) - 2011-2013, 2012-2014

Note: Weighted numbers (#) represent 3-yr averages, percentages and 95% confidence intervals; Respondents aged 18 years and older; n/r (Not Reportable) - If the unweighted total responses for a dimension (row) is <50 or if the relative standard error is > 0.3 that row will not be shown; n/a (Not Available) - Not asked of a subset of respondents

Year: 2011-2013

DOH Race-Ethnicity	Yes			No			Estimated Population (3-Yr Avg)
	#	%	C.I. (95%)	#	%	C.I. (95%)	#
Caucasian	183,300	54.3	52.7 - 55.9	154,100	45.7	44.1 - 47.3	337,400
Native Hawaiian	85,500	74.9	72.4 - 77.3	28,700	25.1	22.7 - 27.6	114,100
Chinese	24,900	38.2	34.3 - 42.2	40,200	61.8	57.8 - 65.7	65,000
Filipino	93,300	53.7	50.9 - 56.5	80,500	46.3	43.5 - 49.1	173,800
Japanese	111,600	50.2	48.2 - 52.3	110,600	49.8	47.7 - 51.8	222,200
Black	11,700	73.9	67.0 - 80.7	4,100	26.1	19.3 - 33.0	15,800
Native Alaskan/ American Indian	3,000	58.8	46.3 - 71.3	2,100	41.2	28.7 - 53.7	5,100
Other Asian	11,100	40.2	33.8 - 46.6	16,600	59.8	53.4 - 66.2	27,700
Other Pacific Islander	19,700	76.8	70.3 - 83.4	5,900	23.2	16.6 - 29.7	25,600
Other	21,000	64.5	58.5 - 70.4	11,500	35.5	29.6 - 41.5	32,500

Weight - overweight or obese by State, County, Island, Community, BRFSS Age Group, DOH Race-Ethnicity, Gender, Education Level, Employment Status (Grouped), Household Income, Poverty Level, Marital Status (Grouped), Married, Health Care Coverage, for the Aggregated Year(s) - 2011-2013, 2012-2014

Note: Weighted numbers (#) represent 3-yr averages, percentages and 95% confidence intervals; Respondents aged 18 years and older; n/r (Not Reportable) - If the unweighted total responses for a dimension (row) is <50 or if the relative standard error is > 0.3 that row will not be shown; n/a (Not Available) - Not asked of a subset of respondents

Year: 2011-2013

Gender	Yes			No			Estimated Population (3-Yr Avg)
	#	%	C.I. (95%)	#	%	C.I. (95%)	#
Male	343,900	64.7	63.3 - 66.1	187,900	35.3	33.9 - 36.7	531,800
Female	237,100	46.3	45.0 - 47.7	274,700	53.7	52.3 - 55.0	511,800

Education Level	Yes			No			Estimated Population (3-Yr Avg)
	#	%	C.I. (95%)	#	%	C.I. (95%)	#
Never attended school/ Only Kindergarten to Grades 8	11,600	53.3	44.7 - 61.8	10,200	46.7	38.2 - 55.3	21,800
Grades 9 thru 11 (Some High School)	46,300	57.4	52.6 - 62.3	34,300	42.6	37.7 - 47.4	80,600
Grades 12 or GED (High School Grad)	187,000	59.0	57.2 - 60.8	129,900	41.0	39.2 - 42.8	317,000
College 1 to 3 years (Some College/ Tech)	193,100	56.2	54.4 - 58.0	150,500	43.8	42.0 - 45.6	343,500
College 4 years or more (College Grad)	142,600	50.9	49.5 - 52.4	137,400	49.1	47.6 - 50.5	280,000

Weight - overweight or obese by State, County, Island, Community, BRFSS Age Group, DOH Race-Ethnicity, Gender, Education Level, Employment Status (Grouped), Household Income, Poverty Level, Marital Status (Grouped), Married, Health Care Coverage, for the Aggregated Year(s) - 2011-2013, 2012-2014

Note: Weighted numbers (#) represent 3-yr averages, percentages and 95% confidence intervals; Respondents aged 18 years and older; n/r (Not Reportable) - If the unweighted total responses for a dimension (row) is <50 or if the relative standard error is > 0.3 that row will not be shown; n/a (Not Available) - Not asked of a subset of respondents

Year: 2011-2013

Employment Status (Grouped)	Yes			No			Estimated Population (3-Yr Avg)
	#	%	C.I. (95%)	#	%	C.I. (95%)	#
Employed	365,900	58.4	57.2 - 59.7	260,400	41.6	40.3 - 42.8	626,300
Unemployed	43,500	60.3	56.0 - 64.6	28,700	39.7	35.4 - 44.0	72,200
Retired/Unable to work	130,900	54.7	52.9 - 56.5	108,300	45.3	43.5 - 47.1	239,200
Student/Homemaker	40,100	38.3	34.8 - 41.7	64,700	61.7	58.3 - 65.2	104,800

Weight - overweight or obese by State, County, Island, Community, BRFSS Age Group, DOH Race-Ethnicity, Gender, Education Level, Employment Status (Grouped), Household Income, Poverty Level, Marital Status (Grouped), Married, Health Care Coverage, for the Aggregated Year(s) - 2011-2013, 2012-2014

Note: Weighted numbers (#) represent 3-yr averages, percentages and 95% confidence intervals; Respondents aged 18 years and older; n/r (Not Reportable) - If the unweighted total responses for a dimension (row) is <50 or if the relative standard error is > 0.3 that row will not be shown; n/a (Not Available) - Not asked of a subset of respondents

Year: 2011-2013

Household Income	Yes			No			Estimated Population (3-Yr Avg)
	#	%	C.I. (95%)	#	%	C.I. (95%)	#
Less than \$10,000	26,600	55.1	50.6 - 59.6	21,700	44.9	40.4 - 49.4	48,300
\$10,000 to \$14,999	21,300	57.7	52.5 - 62.9	15,600	42.3	37.1 - 47.5	36,800
\$15,000 to \$19,999	33,100	52.6	48.5 - 56.7	29,800	47.4	43.3 - 51.5	62,800
\$20,000 to \$24,999	42,100	57.0	53.3 - 60.8	31,700	43.0	39.2 - 46.7	73,800
\$25,000 to \$34,999	58,700	54.1	51.0 - 57.1	49,800	45.9	42.9 - 49.0	108,500
\$35,000 to \$49,999	78,700	55.2	52.6 - 57.9	63,800	44.8	42.1 - 47.4	142,500
\$50,000 to \$74,999	95,500	60.8	58.4 - 63.2	61,600	39.2	36.8 - 41.6	157,100
\$75,000 or more	177,500	57.6	55.9 - 59.4	130,400	42.4	40.6 - 44.1	307,900

Weight - overweight or obese by State, County, Island, Community, BRFSS Age Group, DOH Race-Ethnicity, Gender, Education Level, Employment Status (Grouped), Household Income, Poverty Level, Marital Status (Grouped), Married, Health Care Coverage, for the Aggregated Year(s) - 2011-2013, 2012-2014

Note: Weighted numbers (#) represent 3-yr averages, percentages and 95% confidence intervals; Respondents aged 18 years and older; n/r (Not Reportable) - If the unweighted total responses for a dimension (row) is <50 or if the relative standard error is > 0.3 that row will not be shown; n/a (Not Available) - Not asked of a subset of respondents

Year: 2011-2013

Poverty Level	Yes			No			Estimated Population (3-Yr Avg)
	#	%	C.I. (95%)	#	%	C.I. (95%)	#
0-130%	85,500	59.2	56.0 - 62.4	59,000	40.8	37.6 - 44.0	144,600
131-185%	49,100	53.9	50.3 - 57.5	42,000	46.1	42.5 - 49.7	91,100
186+%	206,600	55.8	54.2 - 57.4	163,700	44.2	42.6 - 45.8	370,300

Marital Status (Grouped)	Yes			No			Estimated Population (3-Yr Avg)
	#	%	C.I. (95%)	#	%	C.I. (95%)	#
Married	303,600	58.4	57.0 - 59.7	216,700	41.6	40.3 - 43.0	520,300
Unmarried Couple	22,300	57.8	52.1 - 63.4	16,300	42.2	36.6 - 47.9	38,600
Widowed	34,000	46.6	43.3 - 49.9	39,000	53.4	50.1 - 56.7	73,000
Other	221,100	53.7	52.0 - 55.4	190,500	46.3	44.6 - 48.0	411,600

Weight - overweight or obese by State, County, Island, Community, BRFSS Age Group, DOH Race-Ethnicity, Gender, Education Level, Employment Status (Grouped), Household Income, Poverty Level, Marital Status (Grouped), Married, Health Care Coverage, for the Aggregated Year(s) - 2011-2013, 2012-2014

Note: Weighted numbers (#) represent 3-yr averages, percentages and 95% confidence intervals; Respondents aged 18 years and older; n/r (Not Reportable) - If the unweighted total responses for a dimension (row) is <50 or if the relative standard error is > 0.3 that row will not be shown; n/a (Not Available) - Not asked of a subset of respondents

Year: 2011-2013

Married	Yes			No			Estimated Population (3-Yr Avg)
	#	%	C.I. (95%)	#	%	C.I. (95%)	#
Yes	312,800	58.6	57.3 - 59.9	221,300	41.4	40.1 - 42.7	534,100
No	267,500	52.7	51.2 - 54.2	240,300	47.3	45.8 - 48.8	507,800

Health Care Coverage	Yes			No			Estimated Population (3-Yr Avg)
	#	%	C.I. (95%)	#	%	C.I. (95%)	#
Yes	526,500	55.8	54.8 - 56.8	417,000	44.2	43.2 - 45.2	943,500
No	53,500	54.7	51.2 - 58.1	44,300	45.3	41.9 - 48.8	97,800