

Weight - overweight or obese by State, County, Island, Community, BRFSS Age Group, DOH Race-Ethnicity, Gender, Education Level, Employment Status (Grouped), Household Income, Poverty Level, Marital Status (Grouped), Married, Health Care Coverage, for the Year(s) - 2000-2004, 2001-2005, 2002-2006, 2003-2007, 2004-2008, 2005-2009, 2006-2010

Note: Weighted numbers (#) represent 5-yr averages, percentages and 95% confidence intervals; Respondents aged 18 years and older; n/r (Not Reportable) - If the unweighted total responses for a dimension (row) is <50 that row will not be shown; n/a (Not Available) - Not asked of a subset of respondents

The trend analysis report shows the trend for the selected health variable over selected years in a table and a graph. Estimated Population: This number is a weighted representation of the population who responded to a particular question in the survey. For most questions the eligible population will be the entire adult population. For some secondary questions only a subset of the population was asked the question. For example, all survey participants were asked if they had diabetes, but only those who answered yes were asked if they use insulin. If a dimension value is unknown for a particular survey record, that record will not be included in the counts for that particular dimension.

For documentation on other terms and coding in this report, please go to the following links

[Click here to access BRFSS documentation](#)

[Click here to access DOH Race-Ethnicity coding](#)

[Click here to access The Hawai'i Data Guide](#)

[Click here to access Poverty Level Methodology](#)

**For questions about this report, please contact
The Hawaii Health Data Warehouse**

profiles@hhdw.org

(855) 946-5899 x15

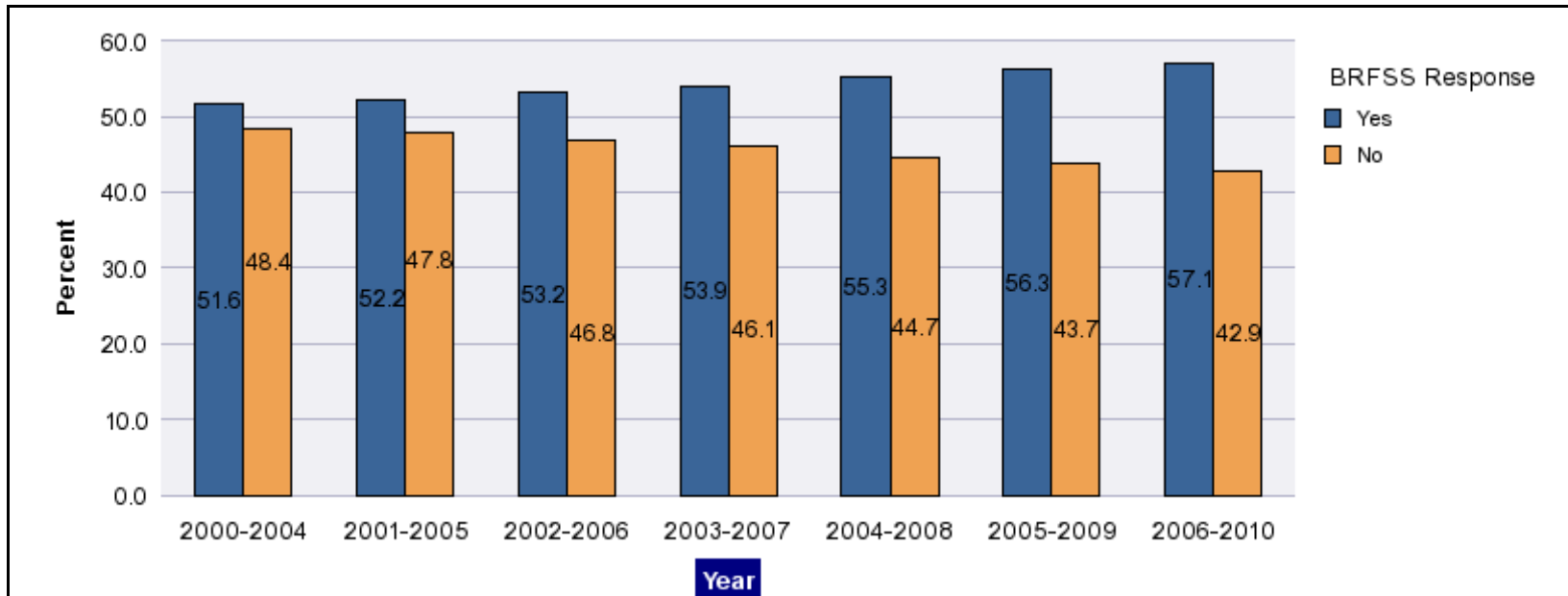
Weight - overweight or obese by State, County, Island, Community, BRFSS Age Group, DOH Race-Ethnicity, Gender, Education Level, Employment Status (Grouped), Household Income, Poverty Level, Marital Status (Grouped), Married, Health Care Coverage, for the Year(s) - 2000-2004, 2001-2005, 2002-2006, 2003-2007, 2004-2008, 2005-2009, 2006-2010

Note: Weighted numbers (#) represent 5-yr averages, percentages and 95% confidence intervals; Respondents aged 18 years and older; n/r (Not Reportable) - If the unweighted total responses for a dimension (row) is <50 that row will not be shown; n/a (Not Available) - Not asked of a subset of respondents

Year	Yes			No			Estimated Population (5-yr Avg)
	#	%	C.I.(95%)	#	%	C.I.(95%)	#
2000-2004	453,200	51.6	50.6 - 52.6	425,100	48.4	47.4 - 49.4	878,300
2001-2005	467,500	52.2	51.2 - 53.1	428,500	47.8	46.9 - 48.8	896,000
2002-2006	484,200	53.2	52.2 - 54.1	426,700	46.8	45.9 - 47.8	911,000
2003-2007	501,500	53.9	53.0 - 54.8	428,600	46.1	45.2 - 47.0	930,100
2004-2008	524,900	55.3	54.4 - 56.2	423,600	44.7	43.8 - 45.6	948,400
2005-2009	545,500	56.3	55.5 - 57.0	424,300	43.7	43.0 - 44.5	969,800
2006-2010	558,500	57.1	56.3 - 57.8	420,200	42.9	42.2 - 43.7	978,600

Weight - overweight or obese by State, County, Island, Community, BRFSS Age Group, DOH Race-Ethnicity, Gender, Education Level, Employment Status (Grouped), Household Income, Poverty Level, Marital Status (Grouped), Married, Health Care Coverage, for the Year(s) - 2000-2004, 2001-2005, 2002-2006, 2003-2007, 2004-2008, 2005-2009, 2006-2010

Note: Weighted numbers (#) represent 5-yr averages, percentages and 95% confidence intervals; Respondents aged 18 years and older; n/r (Not Reportable) - If the unweighted total responses for a dimension (row) is <50 that row will not be shown; n/a (Not Available) - Not asked of a subset of respondents



Weight - overweight or obese by State, County, Island, Community, BRFSS Age Group, DOH Race-Ethnicity, Gender, Education Level, Employment Status (Grouped), Household Income, Poverty Level, Marital Status (Grouped), Married, Health Care Coverage, for the Year(s) - 2000-2004, 2001-2005, 2002-2006, 2003-2007, 2004-2008, 2005-2009, 2006-2010

Note: Weighted numbers (#) represent 5-yr averages, percentages and 95% confidence intervals; Respondents aged 18 years and older; n/r (Not Reportable) - If the unweighted total responses for a dimension (row) is <50 that row will not be shown; n/a (Not Available) - Not asked of a subset of respondents

Year: 2006-2010

State	Yes			No			Estimated Population (5-yr Avg)
	#	%	C.I. (95%)	#	%	C.I. (95%)	#
Hawaii State	558,500	57.1	56.3 - 57.8	420,200	42.9	42.2 - 43.7	978,600

County	Yes			No			Estimated Population (5-yr Avg)
	#	%	C.I. (95%)	#	%	C.I. (95%)	#
Hawaii	77,500	59.0	57.5 - 60.5	53,900	41.0	39.5 - 42.5	131,500
Honolulu	390,600	56.5	55.5 - 57.6	300,300	43.5	42.4 - 44.5	690,900
Kauai	27,100	56.7	54.4 - 59.0	20,700	43.3	41.0 - 45.6	47,800
Maui	63,200	58.3	56.6 - 59.9	45,300	41.7	40.1 - 43.4	108,500

Weight - overweight or obese by State, County, Island, Community, BRFSS Age Group, DOH Race-Ethnicity, Gender, Education Level, Employment Status (Grouped), Household Income, Poverty Level, Marital Status (Grouped), Married, Health Care Coverage, for the Year(s) - 2000-2004, 2001-2005, 2002-2006, 2003-2007, 2004-2008, 2005-2009, 2006-2010

Note: Weighted numbers (#) represent 5-yr averages, percentages and 95% confidence intervals; Respondents aged 18 years and older; n/r (Not Reportable) - If the unweighted total responses for a dimension (row) is <50 that row will not be shown; n/a (Not Available) - Not asked of a subset of respondents

Year: 2006-2010

Island	Yes			No			Estimated Population (5-yr Avg)
	#	%	C.I. (95%)	#	%	C.I. (95%)	#
Hawaii	77,500	59.0	57.5 - 60.5	53,900	41.0	39.5 - 42.5	131,500
Kauai	27,100	56.7	54.4 - 59.0	20,700	43.3	41.0 - 45.6	47,800
Lanai	1,100	60.5	56.4 - 64.6	700	39.5	35.4 - 43.6	1,900
Maui	56,800	57.3	55.5 - 59.1	42,300	42.7	40.9 - 44.5	99,100
Molokai	5,300	70.5	67.2 - 73.7	2,200	29.5	26.3 - 32.8	7,600
Oahu	390,600	56.5	55.5 - 57.6	300,300	43.5	42.4 - 44.5	690,900

Community	Yes			No			Estimated Population (5-yr Avg)
	#	%	C.I. (95%)	#	%	C.I. (95%)	#
Aiea/ Pearl City	36,500	56.9	53.6 - 60.2	27,700	43.1	39.8 - 46.4	64,200

Weight - overweight or obese by State, County, Island, Community, BRFSS Age Group, DOH Race-Ethnicity, Gender, Education Level, Employment Status (Grouped), Household Income, Poverty Level, Marital Status (Grouped), Married, Health Care Coverage, for the Year(s) - 2000-2004, 2001-2005, 2002-2006, 2003-2007, 2004-2008, 2005-2009, 2006-2010

Note: Weighted numbers (#) represent 5-yr averages, percentages and 95% confidence intervals; Respondents aged 18 years and older; n/r (Not Reportable) - If the unweighted total responses for a dimension (row) is <50 that row will not be shown; n/a (Not Available) - Not asked of a subset of respondents

Year: 2006-2010

Community	Yes			No			Estimated Population (5-yr Avg)
	#	%	C.I. (95%)	#	%	C.I. (95%)	#
Ala Moana	13,600	48.4	44.1 - 52.8	14,500	51.6	47.2 - 55.9	28,100
Hanalei/ Kapaa	10,500	53.0	49.7 - 56.4	9,300	47.0	43.6 - 50.3	19,900
Hilo	23,000	59.4	56.7 - 62.1	15,700	40.6	37.9 - 43.3	38,700
Kaaawa/ Kahaluu/ Kaneohe	29,900	61.5	57.8 - 65.1	18,800	38.5	34.9 - 42.2	48,700
Kahului	19,100	57.2	54.1 - 60.3	14,300	42.8	39.7 - 45.9	33,500
Kailua/ Waimanalo	30,200	60.2	56.7 - 63.6	20,000	39.8	36.4 - 43.3	50,300
Kaimuki/ Palolo/ Waikiki	26,900	48.3	45.1 - 51.6	28,700	51.7	48.4 - 54.9	55,600
Kona	16,200	55.7	52.7 - 58.7	12,900	44.3	41.3 - 47.3	29,100
Lahaina/ Wailuku	19,000	58.7	55.3 - 62.0	13,400	41.3	38.0 - 44.7	32,400
Lanai	1,100	60.5	56.4 - 64.6	700	39.5	35.4 - 43.6	1,900
Lihue-Waimea	16,500	59.2	56.1 - 62.4	11,400	40.8	37.6 - 43.9	27,900

Weight - overweight or obese by State, County, Island, Community, BRFSS Age Group, DOH Race-Ethnicity, Gender, Education Level, Employment Status (Grouped), Household Income, Poverty Level, Marital Status (Grouped), Married, Health Care Coverage, for the Year(s) - 2000-2004, 2001-2005, 2002-2006, 2003-2007, 2004-2008, 2005-2009, 2006-2010

Note: Weighted numbers (#) represent 5-yr averages, percentages and 95% confidence intervals; Respondents aged 18 years and older; n/r (Not Reportable) - If the unweighted total responses for a dimension (row) is <50 that row will not be shown; n/a (Not Available) - Not asked of a subset of respondents

Year: 2006-2010

Community	Yes			No			Estimated Population (5-yr Avg)
	#	%	C.I. (95%)	#	%	C.I. (95%)	#
Manoa/ Upper Makiki	23,400	49.4	45.9 - 53.0	24,000	50.6	47.0 - 54.1	47,400
Mililani/ Wahiawa	44,500	61.8	58.8 - 64.8	27,500	38.2	35.2 - 41.2	72,100
Molokai	5,300	70.5	67.2 - 73.7	2,200	29.5	26.3 - 32.8	7,600
Nanakuli/ Waianae	25,200	73.2	68.5 - 77.9	9,200	26.8	22.1 - 31.5	34,400
N.Hawaii	15,900	59.1	55.8 - 62.4	11,000	40.9	37.6 - 44.2	26,900
N.Shore/ Laie	13,100	57.9	52.0 - 63.8	9,500	42.1	36.2 - 48.0	22,600
Nuuanu/ Kalihi/ Moanalua	36,000	52.7	49.1 - 56.3	32,300	47.3	43.7 - 50.9	68,300
Puna/ Kau	22,400	61.1	58.3 - 63.9	14,300	38.9	36.1 - 41.7	36,700
Salt Lake/ Foster Village	17,700	51.7	47.1 - 56.3	16,500	48.3	43.7 - 52.9	34,200
Upcountry/ Hana	18,600	56.1	53.2 - 58.9	14,600	43.9	41.1 - 46.8	33,200
Waiialae/ Kahala/ Hawaii Kai	20,000	46.0	42.2 - 49.8	23,500	54.0	50.2 - 57.8	43,600

Weight - overweight or obese by State, County, Island, Community, BRFSS Age Group, DOH Race-Ethnicity, Gender, Education Level, Employment Status (Grouped), Household Income, Poverty Level, Marital Status (Grouped), Married, Health Care Coverage, for the Year(s) - 2000-2004, 2001-2005, 2002-2006, 2003-2007, 2004-2008, 2005-2009, 2006-2010

Note: Weighted numbers (#) represent 5-yr averages, percentages and 95% confidence intervals; Respondents aged 18 years and older; n/r (Not Reportable) - If the unweighted total responses for a dimension (row) is <50 that row will not be shown; n/a (Not Available) - Not asked of a subset of respondents

Year: 2006-2010

Community	Yes			No			Estimated Population (5-yr Avg)
	#	%	C.I. (95%)	#	%	C.I. (95%)	#
Waipahu/ Kapolei/ Ewa	73,400	60.5	57.9 - 63.1	48,000	39.5	36.9 - 42.1	121,400

Weight - overweight or obese by State, County, Island, Community, BRFSS Age Group, DOH Race-Ethnicity, Gender, Education Level, Employment Status (Grouped), Household Income, Poverty Level, Marital Status (Grouped), Married, Health Care Coverage, for the Year(s) - 2000-2004, 2001-2005, 2002-2006, 2003-2007, 2004-2008, 2005-2009, 2006-2010

Note: Weighted numbers (#) represent 5-yr averages, percentages and 95% confidence intervals; Respondents aged 18 years and older; n/r (Not Reportable) - If the unweighted total responses for a dimension (row) is <50 that row will not be shown; n/a (Not Available) - Not asked of a subset of respondents

Year: 2006-2010

BRFSS Age Group	Yes			No			Estimated Population (5-yr Avg)
	#	%	C.I. (95%)	#	%	C.I. (95%)	#
18-24	53,700	44.3	41.2 - 47.5	67,500	55.7	52.5 - 58.8	121,200
25-34	103,400	61.0	58.8 - 63.2	66,200	39.0	36.8 - 41.2	169,600
35-44	107,400	61.8	60.0 - 63.5	66,500	38.2	36.5 - 40.0	173,900
45-54	109,000	61.5	60.0 - 63.0	68,100	38.5	37.0 - 40.0	177,200
55-64	92,900	62.2	60.7 - 63.7	56,400	37.8	36.3 - 39.3	149,300
65-74	50,800	57.8	56.0 - 59.6	37,100	42.2	40.4 - 44.0	87,900
75+	39,400	41.2	39.2 - 43.1	56,300	58.8	56.9 - 60.8	95,700

Weight - overweight or obese by State, County, Island, Community, BRFSS Age Group, DOH Race-Ethnicity, Gender, Education Level, Employment Status (Grouped), Household Income, Poverty Level, Marital Status (Grouped), Married, Health Care Coverage, for the Year(s) - 2000-2004, 2001-2005, 2002-2006, 2003-2007, 2004-2008, 2005-2009, 2006-2010

Note: Weighted numbers (#) represent 5-yr averages, percentages and 95% confidence intervals; Respondents aged 18 years and older; n/r (Not Reportable) - If the unweighted total responses for a dimension (row) is <50 that row will not be shown; n/a (Not Available) - Not asked of a subset of respondents

Year: 2006-2010

DOH Race-Ethnicity	Yes			No			Estimated Population (5-yr Avg)
	#	%	C.I. (95%)	#	%	C.I. (95%)	#
Caucasian	176,100	55.8	54.7 - 57.0	139,300	44.2	43.0 - 45.3	315,400
Native Hawaiian	96,900	75.7	73.7 - 77.7	31,100	24.3	22.3 - 26.3	128,000
Chinese	26,400	46.5	43.2 - 49.7	30,400	53.5	50.3 - 56.8	56,800
Filipino	86,500	54.8	52.6 - 57.1	71,200	45.2	42.9 - 47.4	157,700
Japanese	106,800	48.5	46.9 - 50.1	113,500	51.5	49.9 - 53.1	220,300
Black	9,400	64.0	57.5 - 70.6	5,300	36.0	29.4 - 42.5	14,700
Native Alaskan/ American Indian	3,000	59.9	50.9 - 68.9	2,000	40.1	31.1 - 49.1	5,000
Other Asian	10,100	40.7	35.4 - 46.1	14,600	59.3	53.9 - 64.6	24,700
Other Pacific Islander	23,400	85.7	81.7 - 89.7	3,900	14.3	10.3 - 18.3	27,300
Mixed Ethnicity	3,400	70.8	59.8 - 81.9	1,400	29.2	18.1 - 40.2	4,800
Other	15,000	71.0	65.7 - 76.2	6,100	29.0	23.8 - 34.3	21,100

Weight - overweight or obese by State, County, Island, Community, BRFSS Age Group, DOH Race-Ethnicity, Gender, Education Level, Employment Status (Grouped), Household Income, Poverty Level, Marital Status (Grouped), Married, Health Care Coverage, for the Year(s) - 2000-2004, 2001-2005, 2002-2006, 2003-2007, 2004-2008, 2005-2009, 2006-2010

Note: Weighted numbers (#) represent 5-yr averages, percentages and 95% confidence intervals; Respondents aged 18 years and older; n/r (Not Reportable) - If the unweighted total responses for a dimension (row) is <50 that row will not be shown; n/a (Not Available) - Not asked of a subset of respondents

Year: 2006-2010

Gender	Yes			No			Estimated Population (5-yr Avg)
	#	%	C.I. (95%)	#	%	C.I. (95%)	#
Male	328,300	67.0	65.9 - 68.2	161,400	33.0	31.8 - 34.1	489,700
Female	230,200	47.1	46.1 - 48.1	258,800	52.9	51.9 - 53.9	488,900

Education Level	Yes			No			Estimated Population (5-yr Avg)
	#	%	C.I. (95%)	#	%	C.I. (95%)	#
Never attended school/ Only Kindergarten to Grades 8	6,800	52.0	45.9 - 58.1	6,300	48.0	41.9 - 54.1	13,100
Grades 9 thru 11 (Some High School)	23,500	59.8	55.7 - 64.0	15,800	40.2	36.0 - 44.3	39,200
Grades 12 or GED (High School Grad)	177,400	61.1	59.6 - 62.6	112,900	38.9	37.4 - 40.4	290,300
College 1 to 3 years (Some College/ Tech)	167,200	59.2	57.7 - 60.6	115,500	40.8	39.4 - 42.3	282,700
College 4 years or more (College Grad)	183,300	52.0	50.8 - 53.2	169,500	48.0	46.8 - 49.2	352,800

Weight - overweight or obese by State, County, Island, Community, BRFSS Age Group, DOH Race-Ethnicity, Gender, Education Level, Employment Status (Grouped), Household Income, Poverty Level, Marital Status (Grouped), Married, Health Care Coverage, for the Year(s) - 2000-2004, 2001-2005, 2002-2006, 2003-2007, 2004-2008, 2005-2009, 2006-2010

Note: Weighted numbers (#) represent 5-yr averages, percentages and 95% confidence intervals; Respondents aged 18 years and older; n/r (Not Reportable) - If the unweighted total responses for a dimension (row) is <50 that row will not be shown; n/a (Not Available) - Not asked of a subset of respondents

Year: 2006-2010

Employment Status (Grouped)	Yes			No			Estimated Population (5-yr Avg)
	#	%	C.I. (95%)	#	%	C.I. (95%)	#
Employed	369,200	60.2	59.3 - 61.2	243,700	39.8	38.8 - 40.7	612,900
Unemployed	31,300	62.5	58.6 - 66.4	18,800	37.5	33.6 - 41.4	50,000
Retired/Unable to work	114,500	52.8	51.5 - 54.2	102,100	47.2	45.8 - 48.5	216,600
Student/Homemaker	43,100	43.8	40.9 - 46.6	55,300	56.2	53.4 - 59.1	98,400

Weight - overweight or obese by State, County, Island, Community, BRFSS Age Group, DOH Race-Ethnicity, Gender, Education Level, Employment Status (Grouped), Household Income, Poverty Level, Marital Status (Grouped), Married, Health Care Coverage, for the Year(s) - 2000-2004, 2001-2005, 2002-2006, 2003-2007, 2004-2008, 2005-2009, 2006-2010

Note: Weighted numbers (#) represent 5-yr averages, percentages and 95% confidence intervals; Respondents aged 18 years and older; n/r (Not Reportable) - If the unweighted total responses for a dimension (row) is <50 that row will not be shown; n/a (Not Available) - Not asked of a subset of respondents

Year: 2006-2010

Household Income	Yes			No			Estimated Population (5-yr Avg)
	#	%	C.I. (95%)	#	%	C.I. (95%)	#
Less than \$10,000	16,900	57.4	53.0 - 61.8	12,500	42.6	38.2 - 47.0	29,400
\$10,000 to \$14,999	14,900	57.3	52.8 - 61.8	11,100	42.7	38.2 - 47.2	26,000
\$15,000 to \$19,999	25,900	55.7	52.3 - 59.2	20,500	44.3	40.8 - 47.7	46,400
\$20,000 to \$24,999	35,100	57.7	54.6 - 60.9	25,700	42.3	39.1 - 45.4	60,800
\$25,000 to \$34,999	59,300	57.2	54.8 - 59.5	44,500	42.8	40.5 - 45.2	103,700
\$35,000 to \$49,999	89,300	60.7	58.8 - 62.7	57,700	39.3	37.3 - 41.2	147,000
\$50,000 to \$74,999	98,400	58.7	56.9 - 60.5	69,300	41.3	39.5 - 43.1	167,800
\$75,000 or more	167,600	57.4	56.0 - 58.8	124,300	42.6	41.2 - 44.0	292,000

Weight - overweight or obese by State, County, Island, Community, BRFSS Age Group, DOH Race-Ethnicity, Gender, Education Level, Employment Status (Grouped), Household Income, Poverty Level, Marital Status (Grouped), Married, Health Care Coverage, for the Year(s) - 2000-2004, 2001-2005, 2002-2006, 2003-2007, 2004-2008, 2005-2009, 2006-2010

Note: Weighted numbers (#) represent 5-yr averages, percentages and 95% confidence intervals; Respondents aged 18 years and older; n/r (Not Reportable) - If the unweighted total responses for a dimension (row) is <50 that row will not be shown; n/a (Not Available) - Not asked of a subset of respondents

Year: 2006-2010

Poverty Level	Yes			No			Estimated Population (5-yr Avg)
	#	%	C.I. (95%)	#	%	C.I. (95%)	#
0-130%	119,300	60.2	58.3 - 62.2	78,700	39.8	37.8 - 41.7	198,100
131-185%	76,200	60.0	57.8 - 62.2	50,700	40.0	37.8 - 42.2	126,900
186+%	311,900	56.9	56.0 - 57.9	236,000	43.1	42.1 - 44.0	547,900

Marital Status (Grouped)	Yes			No			Estimated Population (5-yr Avg)
	#	%	C.I. (95%)	#	%	C.I. (95%)	#
Married	342,400	59.5	58.6 - 60.5	232,800	40.5	39.5 - 41.4	575,200
Unmarried Couple	19,200	62.8	58.1 - 67.5	11,300	37.2	32.5 - 41.9	30,500
Widowed	25,700	45.1	42.8 - 47.5	31,200	54.9	52.5 - 57.2	56,900
Other	171,200	54.2	52.6 - 55.8	144,800	45.8	44.2 - 47.4	316,100

Weight - overweight or obese by State, County, Island, Community, BRFSS Age Group, DOH Race-Ethnicity, Gender, Education Level, Employment Status (Grouped), Household Income, Poverty Level, Marital Status (Grouped), Married, Health Care Coverage, for the Year(s) - 2000-2004, 2001-2005, 2002-2006, 2003-2007, 2004-2008, 2005-2009, 2006-2010

Note: Weighted numbers (#) represent 5-yr averages, percentages and 95% confidence intervals; Respondents aged 18 years and older; n/r (Not Reportable) - If the unweighted total responses for a dimension (row) is <50 that row will not be shown; n/a (Not Available) - Not asked of a subset of respondents

Year: 2006-2010

Married	Yes			No			Estimated Population (5-yr Avg)
	#	%	C.I. (95%)	#	%	C.I. (95%)	#
Yes	348,800	59.5	58.6 - 60.4	237,200	40.5	39.6 - 41.4	586,000
No	209,200	53.4	52.1 - 54.8	182,300	46.6	45.2 - 47.9	391,500

Health Care Coverage	Yes			No			Estimated Population (5-yr Avg)
	#	%	C.I. (95%)	#	%	C.I. (95%)	#
Yes	518,800	57.0	56.2 - 57.8	391,200	43.0	42.2 - 43.8	910,000
No	38,700	58.1	54.6 - 61.7	27,900	41.9	38.3 - 45.4	66,600

Weight - overweight or obese by State, County, Island, Community, BRFSS Age Group, DOH Race-Ethnicity, Gender, Education Level, Employment Status (Grouped), Household Income, Poverty Level, Marital Status (Grouped), Married, Health Care Coverage, for the Year(s) - 2000-2004, 2001-2005, 2002-2006, 2003-2007, 2004-2008, 2005-2009, 2006-2010

Note: Weighted numbers (#) represent 5-yr averages, percentages and 95% confidence intervals; Respondents aged 18 years and older; n/r (Not Reportable) - If the unweighted total responses for a dimension (row) is <50 that row will not be shown; n/a (Not Available) - Not asked of a subset of respondents

Year: 2005-2009

State	Yes			No			Estimated Population (5-yr Avg)
	#	%	C.I. (95%)	#	%	C.I. (95%)	#
Hawaii State	545,500	56.3	55.5 - 57.0	424,300	43.7	43.0 - 44.5	969,800

County	Yes			No			Estimated Population (5-yr Avg)
	#	%	C.I. (95%)	#	%	C.I. (95%)	#
Hawaii	74,600	58.6	57.1 - 60.0	52,700	41.4	40.0 - 42.9	127,400
Honolulu	384,800	55.9	54.9 - 56.9	304,000	44.1	43.1 - 45.1	688,700
Kauai	26,700	56.6	54.3 - 58.8	20,500	43.4	41.2 - 45.7	47,100
Maui	59,500	55.8	54.1 - 57.4	47,100	44.2	42.6 - 45.9	106,600

Weight - overweight or obese by State, County, Island, Community, BRFSS Age Group, DOH Race-Ethnicity, Gender, Education Level, Employment Status (Grouped), Household Income, Poverty Level, Marital Status (Grouped), Married, Health Care Coverage, for the Year(s) - 2000-2004, 2001-2005, 2002-2006, 2003-2007, 2004-2008, 2005-2009, 2006-2010

Note: Weighted numbers (#) represent 5-yr averages, percentages and 95% confidence intervals; Respondents aged 18 years and older; n/r (Not Reportable) - If the unweighted total responses for a dimension (row) is <50 that row will not be shown; n/a (Not Available) - Not asked of a subset of respondents

Year: 2005-2009

Island	Yes			No			Estimated Population (5-yr Avg)
	#	%	C.I. (95%)	#	%	C.I. (95%)	#
Hawaii	74,600	58.6	57.1 - 60.0	52,700	41.4	40.0 - 42.9	127,400
Kauai	26,700	56.6	54.3 - 58.8	20,500	43.4	41.2 - 45.7	47,100
Lanai	1,200	58.3	54.3 - 62.4	900	41.7	37.6 - 45.7	2,100
Maui	53,300	54.7	53.0 - 56.5	44,100	45.3	43.5 - 47.0	97,300
Molokai	5,000	69.2	65.8 - 72.6	2,200	30.8	27.4 - 34.2	7,200
Oahu	384,800	55.9	54.9 - 56.9	304,000	44.1	43.1 - 45.1	688,700

Community	Yes			No			Estimated Population (5-yr Avg)
	#	%	C.I. (95%)	#	%	C.I. (95%)	#
Aiea/ Pearl City	37,300	58.0	54.7 - 61.3	27,000	42.0	38.7 - 45.3	64,200

Weight - overweight or obese by State, County, Island, Community, BRFSS Age Group, DOH Race-Ethnicity, Gender, Education Level, Employment Status (Grouped), Household Income, Poverty Level, Marital Status (Grouped), Married, Health Care Coverage, for the Year(s) - 2000-2004, 2001-2005, 2002-2006, 2003-2007, 2004-2008, 2005-2009, 2006-2010

Note: Weighted numbers (#) represent 5-yr averages, percentages and 95% confidence intervals; Respondents aged 18 years and older; n/r (Not Reportable) - If the unweighted total responses for a dimension (row) is <50 that row will not be shown; n/a (Not Available) - Not asked of a subset of respondents

Year: 2005-2009

Community	Yes			No			Estimated Population (5-yr Avg)
	#	%	C.I. (95%)	#	%	C.I. (95%)	#
Ala Moana	15,300	50.1	45.9 - 54.4	15,200	49.9	45.6 - 54.1	30,500
Hanalei/ Kapaa	10,300	52.4	49.1 - 55.8	9,400	47.6	44.2 - 50.9	19,700
Hilo	21,900	58.6	55.9 - 61.3	15,500	41.4	38.7 - 44.1	37,400
Kaaawa/ Kahaluu/ Kaneohe	29,800	61.2	57.6 - 64.8	18,900	38.8	35.2 - 42.4	48,600
Kahului	18,100	54.0	50.8 - 57.2	15,400	46.0	42.8 - 49.2	33,500
Kailua/ Waimanalo	29,200	58.9	55.4 - 62.3	20,400	41.1	37.7 - 44.6	49,700
Kaimuki/ Palolo/ Waikiki	27,600	48.1	45.0 - 51.2	29,800	51.9	48.8 - 55.0	57,400
Kona	16,100	56.0	53.1 - 58.9	12,700	44.0	41.1 - 46.9	28,800
Lahaina/ Wailuku	18,400	58.1	54.9 - 61.3	13,300	41.9	38.7 - 45.1	31,700
Lanai	1,200	58.3	54.3 - 62.4	900	41.7	37.6 - 45.7	2,100
Lihue-Waimea	16,400	59.6	56.5 - 62.6	11,100	40.4	37.4 - 43.5	27,500

Weight - overweight or obese by State, County, Island, Community, BRFSS Age Group, DOH Race-Ethnicity, Gender, Education Level, Employment Status (Grouped), Household Income, Poverty Level, Marital Status (Grouped), Married, Health Care Coverage, for the Year(s) - 2000-2004, 2001-2005, 2002-2006, 2003-2007, 2004-2008, 2005-2009, 2006-2010

Note: Weighted numbers (#) represent 5-yr averages, percentages and 95% confidence intervals; Respondents aged 18 years and older; n/r (Not Reportable) - If the unweighted total responses for a dimension (row) is <50 that row will not be shown; n/a (Not Available) - Not asked of a subset of respondents

Year: 2005-2009

Community	Yes			No			Estimated Population (5-yr Avg)
	#	%	C.I. (95%)	#	%	C.I. (95%)	#
Manoa/ Upper Makiki	22,900	50.5	47.0 - 54.0	22,400	49.5	46.0 - 53.0	45,300
Mililani/ Wahiawa	43,200	59.9	57.0 - 62.9	28,900	40.1	37.1 - 43.0	72,100
Molokai	5,000	69.2	65.8 - 72.6	2,200	30.8	27.4 - 34.2	7,200
Nanakuli/ Waianae	23,600	72.2	67.4 - 77.0	9,100	27.8	23.0 - 32.6	32,600
N.Hawaii	15,800	59.2	56.0 - 62.3	10,900	40.8	37.7 - 44.0	26,700
N.Shore/ Laie	12,700	58.6	53.0 - 64.2	9,000	41.4	35.8 - 47.0	21,700
Nuuanu/ Kalihi/ Moanalua	35,400	51.4	47.9 - 55.0	33,400	48.6	45.0 - 52.1	68,800
Puna/ Kau	20,800	60.3	57.4 - 63.1	13,700	39.7	36.9 - 42.6	34,500
Salt Lake/ Foster Village	16,300	48.5	43.8 - 53.1	17,300	51.5	46.9 - 56.2	33,700
Upcountry/ Hana	16,800	52.2	49.3 - 55.2	15,300	47.8	44.8 - 50.7	32,100
Waiialae/ Kahala/ Hawaii Kai	20,200	45.4	41.7 - 49.2	24,200	54.6	50.8 - 58.3	44,400

Weight - overweight or obese by State, County, Island, Community, BRFSS Age Group, DOH Race-Ethnicity, Gender, Education Level, Employment Status (Grouped), Household Income, Poverty Level, Marital Status (Grouped), Married, Health Care Coverage, for the Year(s) - 2000-2004, 2001-2005, 2002-2006, 2003-2007, 2004-2008, 2005-2009, 2006-2010

Note: Weighted numbers (#) represent 5-yr averages, percentages and 95% confidence intervals; Respondents aged 18 years and older; n/r (Not Reportable) - If the unweighted total responses for a dimension (row) is <50 that row will not be shown; n/a (Not Available) - Not asked of a subset of respondents

Year: 2005-2009

Community	Yes			No			Estimated Population (5-yr Avg)
	#	%	C.I. (95%)	#	%	C.I. (95%)	#
Waipahu/ Kapolei/ Ewa	71,400	59.6	57.0 - 62.1	48,400	40.4	37.9 - 43.0	119,800

Weight - overweight or obese by State, County, Island, Community, BRFSS Age Group, DOH Race-Ethnicity, Gender, Education Level, Employment Status (Grouped), Household Income, Poverty Level, Marital Status (Grouped), Married, Health Care Coverage, for the Year(s) - 2000-2004, 2001-2005, 2002-2006, 2003-2007, 2004-2008, 2005-2009, 2006-2010

Note: Weighted numbers (#) represent 5-yr averages, percentages and 95% confidence intervals; Respondents aged 18 years and older; n/r (Not Reportable) - If the unweighted total responses for a dimension (row) is <50 that row will not be shown; n/a (Not Available) - Not asked of a subset of respondents

Year: 2005-2009

BRFSS Age Group	Yes			No			Estimated Population (5-yr Avg)
	#	%	C.I. (95%)	#	%	C.I. (95%)	#
18-24	54,100	44.8	41.7 - 47.9	66,700	55.2	52.1 - 58.3	120,700
25-34	98,300	59.0	56.9 - 61.2	68,200	41.0	38.8 - 43.1	166,500
35-44	105,600	60.2	58.5 - 61.9	69,800	39.8	38.1 - 41.5	175,400
45-54	106,500	59.9	58.4 - 61.5	71,200	40.1	38.5 - 41.6	177,600
55-64	92,400	62.9	61.3 - 64.4	54,600	37.1	35.6 - 38.7	147,100
65-74	49,300	57.4	55.5 - 59.3	36,600	42.6	40.7 - 44.5	85,900
75+	37,500	40.4	38.4 - 42.4	55,400	59.6	57.6 - 61.6	92,900

Weight - overweight or obese by State, County, Island, Community, BRFSS Age Group, DOH Race-Ethnicity, Gender, Education Level, Employment Status (Grouped), Household Income, Poverty Level, Marital Status (Grouped), Married, Health Care Coverage, for the Year(s) - 2000-2004, 2001-2005, 2002-2006, 2003-2007, 2004-2008, 2005-2009, 2006-2010

Note: Weighted numbers (#) represent 5-yr averages, percentages and 95% confidence intervals; Respondents aged 18 years and older; n/r (Not Reportable) - If the unweighted total responses for a dimension (row) is <50 that row will not be shown; n/a (Not Available) - Not asked of a subset of respondents

Year: 2005-2009

DOH Race-Ethnicity	Yes			No			Estimated Population (5-yr Avg)
	#	%	C.I. (95%)	#	%	C.I. (95%)	#
Caucasian	174,900	55.2	54.0 - 56.3	142,200	44.8	43.7 - 46.0	317,100
Native Hawaiian	94,200	75.2	73.3 - 77.2	31,000	24.8	22.8 - 26.7	125,200
Chinese	25,300	44.8	41.6 - 48.1	31,100	55.2	51.9 - 58.4	56,400
Filipino	83,300	53.2	50.9 - 55.5	73,200	46.8	44.5 - 49.1	156,500
Japanese	103,600	48.3	46.7 - 49.9	111,000	51.7	50.1 - 53.3	214,600
Black	9,800	62.9	56.6 - 69.2	5,800	37.1	30.8 - 43.4	15,600
Native Alaskan/ American Indian	3,000	57.8	48.9 - 66.7	2,200	42.2	33.3 - 51.1	5,200
Other Asian	9,600	40.4	35.0 - 45.8	14,100	59.6	54.2 - 65.0	23,600
Other Pacific Islander	20,700	82.9	78.4 - 87.4	4,300	17.1	12.6 - 21.6	25,000
Mixed Ethnicity	3,400	70.8	59.8 - 81.9	1,400	29.2	18.1 - 40.2	4,800
Other	16,100	70.4	65.8 - 75.0	6,800	29.6	25.0 - 34.2	22,900

Weight - overweight or obese by State, County, Island, Community, BRFSS Age Group, DOH Race-Ethnicity, Gender, Education Level, Employment Status (Grouped), Household Income, Poverty Level, Marital Status (Grouped), Married, Health Care Coverage, for the Year(s) - 2000-2004, 2001-2005, 2002-2006, 2003-2007, 2004-2008, 2005-2009, 2006-2010

Note: Weighted numbers (#) represent 5-yr averages, percentages and 95% confidence intervals; Respondents aged 18 years and older; n/r (Not Reportable) - If the unweighted total responses for a dimension (row) is <50 that row will not be shown; n/a (Not Available) - Not asked of a subset of respondents

Year: 2005-2009

Gender	Yes			No			Estimated Population (5-yr Avg)
	#	%	C.I. (95%)	#	%	C.I. (95%)	#
Male	321,900	66.3	65.2 - 67.5	163,400	33.7	32.5 - 34.8	485,300
Female	223,600	46.2	45.2 - 47.1	260,900	53.8	52.9 - 54.8	484,500

Education Level	Yes			No			Estimated Population (5-yr Avg)
	#	%	C.I. (95%)	#	%	C.I. (95%)	#
Never attended school/ Only Kindergarten to Grades 8	7,500	51.1	44.9 - 57.4	7,200	48.9	42.6 - 55.1	14,800
Grades 9 thru 11 (Some High School)	22,800	59.4	55.5 - 63.3	15,600	40.6	36.7 - 44.5	38,400
Grades 12 or GED (High School Grad)	173,700	60.5	59.0 - 61.9	113,500	39.5	38.1 - 41.0	287,200
College 1 to 3 years (Some College/ Tech)	163,800	58.2	56.7 - 59.6	117,800	41.8	40.4 - 43.3	281,600
College 4 years or more (College Grad)	177,400	51.1	49.9 - 52.3	169,900	48.9	47.7 - 50.1	347,300

Weight - overweight or obese by State, County, Island, Community, BRFSS Age Group, DOH Race-Ethnicity, Gender, Education Level, Employment Status (Grouped), Household Income, Poverty Level, Marital Status (Grouped), Married, Health Care Coverage, for the Year(s) - 2000-2004, 2001-2005, 2002-2006, 2003-2007, 2004-2008, 2005-2009, 2006-2010

Note: Weighted numbers (#) represent 5-yr averages, percentages and 95% confidence intervals; Respondents aged 18 years and older; n/r (Not Reportable) - If the unweighted total responses for a dimension (row) is <50 that row will not be shown; n/a (Not Available) - Not asked of a subset of respondents

Year: 2005-2009

Employment Status (Grouped)	Yes			No			Estimated Population (5-yr Avg)
	#	%	C.I. (95%)	#	%	C.I. (95%)	#
Employed	365,500	59.1	58.1 - 60.1	252,700	40.9	39.9 - 41.9	618,300
Unemployed	24,700	62.2	58.0 - 66.4	15,000	37.8	33.6 - 42.0	39,700
Retired/Unable to work	114,400	52.3	51.0 - 53.6	104,300	47.7	46.4 - 49.0	218,600
Student/Homemaker	40,500	43.8	40.9 - 46.6	52,000	56.2	53.4 - 59.1	92,500

Weight - overweight or obese by State, County, Island, Community, BRFSS Age Group, DOH Race-Ethnicity, Gender, Education Level, Employment Status (Grouped), Household Income, Poverty Level, Marital Status (Grouped), Married, Health Care Coverage, for the Year(s) - 2000-2004, 2001-2005, 2002-2006, 2003-2007, 2004-2008, 2005-2009, 2006-2010

Note: Weighted numbers (#) represent 5-yr averages, percentages and 95% confidence intervals; Respondents aged 18 years and older; n/r (Not Reportable) - If the unweighted total responses for a dimension (row) is <50 that row will not be shown; n/a (Not Available) - Not asked of a subset of respondents

Year: 2005-2009

Household Income	Yes			No			Estimated Population (5-yr Avg)
	#	%	C.I. (95%)	#	%	C.I. (95%)	#
Less than \$10,000	15,100	57.2	52.9 - 61.5	11,300	42.8	38.5 - 47.1	26,500
\$10,000 to \$14,999	15,100	57.6	53.2 - 62.0	11,100	42.4	38.0 - 46.8	26,200
\$15,000 to \$19,999	24,500	54.1	50.7 - 57.5	20,800	45.9	42.5 - 49.3	45,400
\$20,000 to \$24,999	33,600	56.0	52.9 - 59.0	26,400	44.0	41.0 - 47.1	60,000
\$25,000 to \$34,999	59,300	57.3	55.0 - 59.6	44,200	42.7	40.4 - 45.0	103,500
\$35,000 to \$49,999	87,300	58.6	56.7 - 60.5	61,700	41.4	39.5 - 43.3	148,900
\$50,000 to \$74,999	100,100	58.0	56.2 - 59.8	72,500	42.0	40.2 - 43.8	172,600
\$75,000 or more	157,800	57.3	55.9 - 58.7	117,500	42.7	41.3 - 44.1	275,300

Weight - overweight or obese by State, County, Island, Community, BRFSS Age Group, DOH Race-Ethnicity, Gender, Education Level, Employment Status (Grouped), Household Income, Poverty Level, Marital Status (Grouped), Married, Health Care Coverage, for the Year(s) - 2000-2004, 2001-2005, 2002-2006, 2003-2007, 2004-2008, 2005-2009, 2006-2010

Note: Weighted numbers (#) represent 5-yr averages, percentages and 95% confidence intervals; Respondents aged 18 years and older; n/r (Not Reportable) - If the unweighted total responses for a dimension (row) is <50 that row will not be shown; n/a (Not Available) - Not asked of a subset of respondents

Year: 2005-2009

Poverty Level	Yes			No			Estimated Population (5-yr Avg)
	#	%	C.I. (95%)	#	%	C.I. (95%)	#
0-130%	108,600	58.7	56.7 - 60.6	76,500	41.3	39.4 - 43.3	185,100
131-185%	69,600	59.7	57.4 - 62.0	47,000	40.3	38.0 - 42.6	116,600
186+%	314,600	56.5	55.6 - 57.4	242,100	43.5	42.6 - 44.4	556,700

Marital Status (Grouped)	Yes			No			Estimated Population (5-yr Avg)
	#	%	C.I. (95%)	#	%	C.I. (95%)	#
Married	336,200	58.5	57.6 - 59.4	238,500	41.5	40.6 - 42.4	574,700
Unmarried Couple	17,500	60.9	56.2 - 65.6	11,200	39.1	34.4 - 43.8	28,700
Widowed	25,400	45.1	42.7 - 47.5	30,900	54.9	52.5 - 57.3	56,300
Other	166,500	53.7	52.1 - 55.2	143,600	46.3	44.8 - 47.9	310,100

Weight - overweight or obese by State, County, Island, Community, BRFSS Age Group, DOH Race-Ethnicity, Gender, Education Level, Employment Status (Grouped), Household Income, Poverty Level, Marital Status (Grouped), Married, Health Care Coverage, for the Year(s) - 2000-2004, 2001-2005, 2002-2006, 2003-2007, 2004-2008, 2005-2009, 2006-2010

Note: Weighted numbers (#) represent 5-yr averages, percentages and 95% confidence intervals; Respondents aged 18 years and older; n/r (Not Reportable) - If the unweighted total responses for a dimension (row) is <50 that row will not be shown; n/a (Not Available) - Not asked of a subset of respondents

Year: 2005-2009

Married	Yes			No			Estimated Population (5-yr Avg)
	#	%	C.I. (95%)	#	%	C.I. (95%)	#
Yes	342,600	58.6	57.6 - 59.5	242,600	41.4	40.5 - 42.4	585,200
No	202,400	52.8	51.4 - 54.1	181,200	47.2	45.9 - 48.6	383,600

Health Care Coverage	Yes			No			Estimated Population (5-yr Avg)
	#	%	C.I. (95%)	#	%	C.I. (95%)	#
Yes	506,700	56.3	55.5 - 57.1	392,900	43.7	42.9 - 44.5	899,600
No	37,800	55.4	52.1 - 58.8	30,400	44.6	41.2 - 47.9	68,100

Weight - overweight or obese by State, County, Island, Community, BRFSS Age Group, DOH Race-Ethnicity, Gender, Education Level, Employment Status (Grouped), Household Income, Poverty Level, Marital Status (Grouped), Married, Health Care Coverage, for the Year(s) - 2000-2004, 2001-2005, 2002-2006, 2003-2007, 2004-2008, 2005-2009, 2006-2010

Note: Weighted numbers (#) represent 5-yr averages, percentages and 95% confidence intervals; Respondents aged 18 years and older; n/r (Not Reportable) - If the unweighted total responses for a dimension (row) is <50 that row will not be shown; n/a (Not Available) - Not asked of a subset of respondents

Year: 2004-2008

State	Yes			No			Estimated Population (5-yr Avg)
	#	%	C.I. (95%)	#	%	C.I. (95%)	#
Hawaii State	524,900	55.3	54.4 - 56.2	423,600	44.7	43.8 - 45.6	948,400

County	Yes			No			Estimated Population (5-yr Avg)
	#	%	C.I. (95%)	#	%	C.I. (95%)	#
Hawaii	72,200	57.9	56.3 - 59.6	52,400	42.1	40.4 - 43.7	124,600
Honolulu	370,500	54.9	53.7 - 56.1	304,100	45.1	43.9 - 46.3	674,600
Kauai	25,200	55.6	53.2 - 58.0	20,100	44.4	42.0 - 46.8	45,300
Maui	57,000	54.8	52.8 - 56.8	46,900	45.2	43.2 - 47.2	103,900

Weight - overweight or obese by State, County, Island, Community, BRFSS Age Group, DOH Race-Ethnicity, Gender, Education Level, Employment Status (Grouped), Household Income, Poverty Level, Marital Status (Grouped), Married, Health Care Coverage, for the Year(s) - 2000-2004, 2001-2005, 2002-2006, 2003-2007, 2004-2008, 2005-2009, 2006-2010

Note: Weighted numbers (#) represent 5-yr averages, percentages and 95% confidence intervals; Respondents aged 18 years and older; n/r (Not Reportable) - If the unweighted total responses for a dimension (row) is <50 that row will not be shown; n/a (Not Available) - Not asked of a subset of respondents

Year: 2004-2008

Island	Yes			No			Estimated Population (5-yr Avg)
	#	%	C.I. (95%)	#	%	C.I. (95%)	#
Hawaii	72,200	57.9	56.3 - 59.6	52,400	42.1	40.4 - 43.7	124,600
Kauai	25,200	55.6	53.2 - 58.0	20,100	44.4	42.0 - 46.8	45,300
Lanai	1,200	59.7	55.4 - 64.1	800	40.3	35.9 - 44.6	2,000
Maui	51,200	53.8	51.7 - 56.0	43,900	46.2	44.0 - 48.3	95,200
Molokai	4,500	67.5	63.2 - 71.8	2,200	32.5	28.2 - 36.8	6,700
Oahu	370,500	54.9	53.7 - 56.1	304,100	45.1	43.9 - 46.3	674,600

Community	Yes			No			Estimated Population (5-yr Avg)
	#	%	C.I. (95%)	#	%	C.I. (95%)	#
Aiea/ Pearl City	34,200	53.1	49.3 - 56.8	30,300	46.9	43.2 - 50.7	64,500

Weight - overweight or obese by State, County, Island, Community, BRFSS Age Group, DOH Race-Ethnicity, Gender, Education Level, Employment Status (Grouped), Household Income, Poverty Level, Marital Status (Grouped), Married, Health Care Coverage, for the Year(s) - 2000-2004, 2001-2005, 2002-2006, 2003-2007, 2004-2008, 2005-2009, 2006-2010

Note: Weighted numbers (#) represent 5-yr averages, percentages and 95% confidence intervals; Respondents aged 18 years and older; n/r (Not Reportable) - If the unweighted total responses for a dimension (row) is <50 that row will not be shown; n/a (Not Available) - Not asked of a subset of respondents

Year: 2004-2008

Community	Yes			No			Estimated Population (5-yr Avg)
	#	%	C.I. (95%)	#	%	C.I. (95%)	#
Ala Moana	14,900	48.3	43.3 - 53.3	15,900	51.7	46.7 - 56.7	30,800
Hanalei/ Kapaa	10,200	53.8	50.2 - 57.5	8,700	46.2	42.5 - 49.8	18,900
Hilo	20,700	57.4	54.4 - 60.4	15,400	42.6	39.6 - 45.6	36,100
Kaaawa/ Kahaluu/ Kaneohe	29,000	61.2	56.9 - 65.4	18,400	38.8	34.6 - 43.1	47,400
Kahului	17,400	53.6	49.8 - 57.4	15,100	46.4	42.6 - 50.2	32,500
Kailua/ Waimanalo	27,900	58.3	54.4 - 62.3	19,900	41.7	37.7 - 45.6	47,900
Kaimuki/ Palolo/ Waikiki	28,500	48.7	45.0 - 52.4	30,000	51.3	47.6 - 55.0	58,500
Kona	15,500	55.6	52.2 - 58.9	12,400	44.4	41.1 - 47.8	28,000
Lahaina/ Wailuku	17,900	57.7	53.8 - 61.5	13,200	42.3	38.5 - 46.2	31,100
Lanai	1,200	59.7	55.4 - 64.1	800	40.3	35.9 - 44.6	2,000
Lihue-Waimea	15,000	56.9	53.7 - 60.1	11,400	43.1	39.9 - 46.3	26,400

Weight - overweight or obese by State, County, Island, Community, BRFSS Age Group, DOH Race-Ethnicity, Gender, Education Level, Employment Status (Grouped), Household Income, Poverty Level, Marital Status (Grouped), Married, Health Care Coverage, for the Year(s) - 2000-2004, 2001-2005, 2002-2006, 2003-2007, 2004-2008, 2005-2009, 2006-2010

Note: Weighted numbers (#) represent 5-yr averages, percentages and 95% confidence intervals; Respondents aged 18 years and older; n/r (Not Reportable) - If the unweighted total responses for a dimension (row) is <50 that row will not be shown; n/a (Not Available) - Not asked of a subset of respondents

Year: 2004-2008

Community	Yes			No			Estimated Population (5-yr Avg)
	#	%	C.I. (95%)	#	%	C.I. (95%)	#
Manoa/ Upper Makiki	22,900	50.2	46.0 - 54.3	22,700	49.8	45.7 - 54.0	45,600
Mililani/ Wahiawa	40,700	60.0	56.2 - 63.7	27,100	40.0	36.3 - 43.8	67,800
Molokai	4,500	67.5	63.2 - 71.8	2,200	32.5	28.2 - 36.8	6,700
Nanakuli/ Waianae	25,100	74.6	69.6 - 79.6	8,600	25.4	20.4 - 30.4	33,700
N.Hawaii	14,900	58.2	54.7 - 61.7	10,700	41.8	38.3 - 45.3	25,700
N.Shore/ Laie	12,700	58.2	51.9 - 64.5	9,200	41.8	35.5 - 48.1	21,900
Nuuanu/ Kalihi/ Moanalua	34,300	51.7	47.7 - 55.7	32,100	48.3	44.3 - 52.3	66,400
Puna/ Kau	21,000	60.2	56.8 - 63.5	13,900	39.8	36.5 - 43.2	34,900
Salt Lake/ Foster Village	16,200	49.6	44.2 - 55.0	16,500	50.4	45.0 - 55.8	32,700
Upcountry/ Hana	15,900	50.3	46.7 - 53.9	15,700	49.7	46.1 - 53.3	31,500
Waiialae/ Kahala/ Hawaii Kai	17,100	42.5	38.2 - 46.9	23,100	57.5	53.1 - 61.8	40,200

Weight - overweight or obese by State, County, Island, Community, BRFSS Age Group, DOH Race-Ethnicity, Gender, Education Level, Employment Status (Grouped), Household Income, Poverty Level, Marital Status (Grouped), Married, Health Care Coverage, for the Year(s) - 2000-2004, 2001-2005, 2002-2006, 2003-2007, 2004-2008, 2005-2009, 2006-2010

Note: Weighted numbers (#) represent 5-yr averages, percentages and 95% confidence intervals; Respondents aged 18 years and older; n/r (Not Reportable) - If the unweighted total responses for a dimension (row) is <50 that row will not be shown; n/a (Not Available) - Not asked of a subset of respondents

Year: 2004-2008

Community	Yes			No			Estimated Population (5-yr Avg)
	#	%	C.I. (95%)	#	%	C.I. (95%)	#
Waipahu/ Kapolei/ Ewa	66,900	57.1	54.0 - 60.2	50,300	42.9	39.8 - 46.0	117,200

Weight - overweight or obese by State, County, Island, Community, BRFSS Age Group, DOH Race-Ethnicity, Gender, Education Level, Employment Status (Grouped), Household Income, Poverty Level, Marital Status (Grouped), Married, Health Care Coverage, for the Year(s) - 2000-2004, 2001-2005, 2002-2006, 2003-2007, 2004-2008, 2005-2009, 2006-2010

Note: Weighted numbers (#) represent 5-yr averages, percentages and 95% confidence intervals; Respondents aged 18 years and older; n/r (Not Reportable) - If the unweighted total responses for a dimension (row) is <50 that row will not be shown; n/a (Not Available) - Not asked of a subset of respondents

Year: 2004-2008

BRFSS Age Group	Yes			No			Estimated Population (5-yr Avg)
	#	%	C.I. (95%)	#	%	C.I. (95%)	#
18-24	51,400	43.8	40.3 - 47.2	66,000	56.2	52.8 - 59.7	117,400
25-34	95,000	58.0	55.5 - 60.4	69,000	42.0	39.6 - 44.5	164,000
35-44	102,400	58.6	56.6 - 60.6	72,200	41.4	39.4 - 43.4	174,600
45-54	103,700	59.3	57.5 - 61.2	71,100	40.7	38.8 - 42.5	174,800
55-64	87,000	61.9	60.1 - 63.8	53,500	38.1	36.2 - 39.9	140,500
65-74	47,500	56.7	54.3 - 59.2	36,200	43.3	40.8 - 45.7	83,700
75+	35,700	40.3	37.7 - 42.8	53,000	59.7	57.2 - 62.3	88,700

Weight - overweight or obese by State, County, Island, Community, BRFSS Age Group, DOH Race-Ethnicity, Gender, Education Level, Employment Status (Grouped), Household Income, Poverty Level, Marital Status (Grouped), Married, Health Care Coverage, for the Year(s) - 2000-2004, 2001-2005, 2002-2006, 2003-2007, 2004-2008, 2005-2009, 2006-2010

Note: Weighted numbers (#) represent 5-yr averages, percentages and 95% confidence intervals; Respondents aged 18 years and older; n/r (Not Reportable) - If the unweighted total responses for a dimension (row) is <50 that row will not be shown; n/a (Not Available) - Not asked of a subset of respondents

Year: 2004-2008

DOH Race-Ethnicity	Yes			No			Estimated Population (5-yr Avg)
	#	%	C.I. (95%)	#	%	C.I. (95%)	#
Caucasian	171,300	55.0	53.6 - 56.3	140,400	45.0	43.7 - 46.4	311,700
Native Hawaiian	92,500	74.1	71.8 - 76.3	32,400	25.9	23.7 - 28.2	124,900
Chinese	23,700	43.6	39.8 - 47.5	30,600	56.4	52.5 - 60.2	54,300
Filipino	76,200	50.4	47.8 - 53.1	74,900	49.6	46.9 - 52.2	151,200
Japanese	97,500	47.7	45.9 - 49.5	107,000	52.3	50.5 - 54.1	204,500
Black	8,400	60.0	52.8 - 67.2	5,600	40.0	32.8 - 47.2	14,100
Native Alaskan/ American Indian	3,100	54.6	43.5 - 65.7	2,600	45.4	34.3 - 56.5	5,600
Other Asian	8,600	36.9	30.7 - 43.1	14,600	63.1	56.9 - 69.3	23,200
Other Pacific Islander	20,000	83.3	78.1 - 88.6	4,000	16.7	11.4 - 21.9	24,000
Mixed Ethnicity	3,400	70.8	59.8 - 81.9	1,400	29.2	18.1 - 40.2	4,800
Other	16,000	69.1	64.1 - 74.1	7,200	30.9	25.9 - 35.9	23,100

Weight - overweight or obese by State, County, Island, Community, BRFSS Age Group, DOH Race-Ethnicity, Gender, Education Level, Employment Status (Grouped), Household Income, Poverty Level, Marital Status (Grouped), Married, Health Care Coverage, for the Year(s) - 2000-2004, 2001-2005, 2002-2006, 2003-2007, 2004-2008, 2005-2009, 2006-2010

Note: Weighted numbers (#) represent 5-yr averages, percentages and 95% confidence intervals; Respondents aged 18 years and older; n/r (Not Reportable) - If the unweighted total responses for a dimension (row) is <50 that row will not be shown; n/a (Not Available) - Not asked of a subset of respondents

Year: 2004-2008

Gender	Yes			No			Estimated Population (5-yr Avg)
	#	%	C.I. (95%)	#	%	C.I. (95%)	#
Male	310,100	65.4	64.0 - 66.7	164,100	34.6	33.3 - 36.0	474,200
Female	214,700	45.3	44.1 - 46.4	259,500	54.7	53.6 - 55.9	474,200

Education Level	Yes			No			Estimated Population (5-yr Avg)
	#	%	C.I. (95%)	#	%	C.I. (95%)	#
Never attended school/ Only Kindergarten to Grades 8	7,100	50.3	43.7 - 56.8	7,000	49.7	43.2 - 56.3	14,100
Grades 9 thru 11 (Some High School)	21,100	56.6	51.9 - 61.4	16,100	43.4	38.6 - 48.1	37,200
Grades 12 or GED (High School Grad)	169,200	59.3	57.6 - 61.1	115,900	40.7	38.9 - 42.4	285,100
College 1 to 3 years (Some College/ Tech)	160,800	57.4	55.7 - 59.1	119,300	42.6	40.9 - 44.3	280,100
College 4 years or more (College Grad)	166,400	50.2	48.8 - 51.6	164,900	49.8	48.4 - 51.2	331,300

Weight - overweight or obese by State, County, Island, Community, BRFSS Age Group, DOH Race-Ethnicity, Gender, Education Level, Employment Status (Grouped), Household Income, Poverty Level, Marital Status (Grouped), Married, Health Care Coverage, for the Year(s) - 2000-2004, 2001-2005, 2002-2006, 2003-2007, 2004-2008, 2005-2009, 2006-2010

Note: Weighted numbers (#) represent 5-yr averages, percentages and 95% confidence intervals; Respondents aged 18 years and older; n/r (Not Reportable) - If the unweighted total responses for a dimension (row) is <50 that row will not be shown; n/a (Not Available) - Not asked of a subset of respondents

Year: 2004-2008

Employment Status (Grouped)	Yes			No			Estimated Population (5-yr Avg)
	#	%	C.I. (95%)	#	%	C.I. (95%)	#
Employed	355,800	58.5	57.3 - 59.6	252,600	41.5	40.4 - 42.7	608,300
Unemployed	17,600	56.6	51.0 - 62.1	13,500	43.4	37.9 - 49.0	31,000
Retired/Unable to work	113,200	52.1	50.5 - 53.8	103,900	47.9	46.2 - 49.5	217,100
Student/Homemaker	38,000	41.7	38.5 - 44.9	53,200	58.3	55.1 - 61.5	91,200

Weight - overweight or obese by State, County, Island, Community, BRFSS Age Group, DOH Race-Ethnicity, Gender, Education Level, Employment Status (Grouped), Household Income, Poverty Level, Marital Status (Grouped), Married, Health Care Coverage, for the Year(s) - 2000-2004, 2001-2005, 2002-2006, 2003-2007, 2004-2008, 2005-2009, 2006-2010

Note: Weighted numbers (#) represent 5-yr averages, percentages and 95% confidence intervals; Respondents aged 18 years and older; n/r (Not Reportable) - If the unweighted total responses for a dimension (row) is <50 that row will not be shown; n/a (Not Available) - Not asked of a subset of respondents

Year: 2004-2008

Household Income	Yes			No			Estimated Population (5-yr Avg)
	#	%	C.I. (95%)	#	%	C.I. (95%)	#
Less than \$10,000	13,400	55.4	50.2 - 60.6	10,800	44.6	39.4 - 49.8	24,300
\$10,000 to \$14,999	15,000	56.5	51.7 - 61.4	11,600	43.5	38.6 - 48.3	26,600
\$15,000 to \$19,999	24,600	54.7	50.7 - 58.8	20,300	45.3	41.2 - 49.3	44,900
\$20,000 to \$24,999	33,700	54.6	51.1 - 58.2	28,000	45.4	41.8 - 48.9	61,700
\$25,000 to \$34,999	60,300	57.0	54.2 - 59.7	45,600	43.0	40.3 - 45.8	105,900
\$35,000 to \$49,999	82,000	56.1	53.8 - 58.4	64,200	43.9	41.6 - 46.2	146,200
\$50,000 to \$74,999	108,100	56.5	54.3 - 58.6	83,400	43.5	41.4 - 45.7	191,500
\$75,000 or more	144,200	56.6	55.0 - 58.3	110,500	43.4	41.7 - 45.0	254,700

Weight - overweight or obese by State, County, Island, Community, BRFSS Age Group, DOH Race-Ethnicity, Gender, Education Level, Employment Status (Grouped), Household Income, Poverty Level, Marital Status (Grouped), Married, Health Care Coverage, for the Year(s) - 2000-2004, 2001-2005, 2002-2006, 2003-2007, 2004-2008, 2005-2009, 2006-2010

Note: Weighted numbers (#) represent 5-yr averages, percentages and 95% confidence intervals; Respondents aged 18 years and older; n/r (Not Reportable) - If the unweighted total responses for a dimension (row) is <50 that row will not be shown; n/a (Not Available) - Not asked of a subset of respondents

Year: 2004-2008

Poverty Level	Yes			No			Estimated Population (5-yr Avg)
	#	%	C.I. (95%)	#	%	C.I. (95%)	#
0-130%	100,700	57.6	55.3 - 59.9	74,100	42.4	40.1 - 44.7	174,800
131-185%	65,200	58.9	55.8 - 61.9	45,500	41.1	38.1 - 44.2	110,700
186+%	315,600	55.3	54.2 - 56.4	254,700	44.7	43.6 - 45.8	570,300

Marital Status (Grouped)	Yes			No			Estimated Population (5-yr Avg)
	#	%	C.I. (95%)	#	%	C.I. (95%)	#
Married	322,400	57.4	56.3 - 58.5	239,100	42.6	41.5 - 43.7	561,500
Unmarried Couple	15,700	59.4	54.2 - 64.6	10,800	40.6	35.4 - 45.8	26,500
Widowed	25,500	45.8	42.8 - 48.9	30,100	54.2	51.1 - 57.2	55,600
Other	161,200	52.9	51.1 - 54.7	143,600	47.1	45.3 - 48.9	304,900

Weight - overweight or obese by State, County, Island, Community, BRFSS Age Group, DOH Race-Ethnicity, Gender, Education Level, Employment Status (Grouped), Household Income, Poverty Level, Marital Status (Grouped), Married, Health Care Coverage, for the Year(s) - 2000-2004, 2001-2005, 2002-2006, 2003-2007, 2004-2008, 2005-2009, 2006-2010

Note: Weighted numbers (#) represent 5-yr averages, percentages and 95% confidence intervals; Respondents aged 18 years and older; n/r (Not Reportable) - If the unweighted total responses for a dimension (row) is <50 that row will not be shown; n/a (Not Available) - Not asked of a subset of respondents

Year: 2004-2008

Married	Yes			No			Estimated Population (5-yr Avg)
	#	%	C.I. (95%)	#	%	C.I. (95%)	#
Yes	328,300	57.4	56.3 - 58.5	243,400	42.6	41.5 - 43.7	571,700
No	196,000	52.2	50.7 - 53.7	179,500	47.8	46.3 - 49.3	375,500

Health Care Coverage	Yes			No			Estimated Population (5-yr Avg)
	#	%	C.I. (95%)	#	%	C.I. (95%)	#
Yes	487,400	55.7	54.7 - 56.6	388,400	44.3	43.4 - 45.3	875,800
No	36,400	51.9	48.1 - 55.6	33,800	48.1	44.4 - 51.9	70,300

Weight - overweight or obese by State, County, Island, Community, BRFSS Age Group, DOH Race-Ethnicity, Gender, Education Level, Employment Status (Grouped), Household Income, Poverty Level, Marital Status (Grouped), Married, Health Care Coverage, for the Year(s) - 2000-2004, 2001-2005, 2002-2006, 2003-2007, 2004-2008, 2005-2009, 2006-2010

Note: Weighted numbers (#) represent 5-yr averages, percentages and 95% confidence intervals; Respondents aged 18 years and older; n/r (Not Reportable) - If the unweighted total responses for a dimension (row) is <50 that row will not be shown; n/a (Not Available) - Not asked of a subset of respondents

Year: 2003-2007

State	Yes			No			Estimated Population (5-yr Avg)
	#	%	C.I. (95%)	#	%	C.I. (95%)	#
Hawaii State	501,500	53.9	53.0 - 54.8	428,600	46.1	45.2 - 47.0	930,100

County	Yes			No			Estimated Population (5-yr Avg)
	#	%	C.I. (95%)	#	%	C.I. (95%)	#
Hawaii	68,400	56.9	55.2 - 58.6	51,800	43.1	41.4 - 44.8	120,200
Honolulu	355,000	53.4	52.2 - 54.6	309,500	46.6	45.4 - 47.8	664,500
Kauai	24,000	54.4	51.9 - 56.8	20,200	45.6	43.2 - 48.1	44,200
Maui	54,000	53.4	51.3 - 55.5	47,200	46.6	44.5 - 48.7	101,200

Weight - overweight or obese by State, County, Island, Community, BRFSS Age Group, DOH Race-Ethnicity, Gender, Education Level, Employment Status (Grouped), Household Income, Poverty Level, Marital Status (Grouped), Married, Health Care Coverage, for the Year(s) - 2000-2004, 2001-2005, 2002-2006, 2003-2007, 2004-2008, 2005-2009, 2006-2010

Note: Weighted numbers (#) represent 5-yr averages, percentages and 95% confidence intervals; Respondents aged 18 years and older; n/r (Not Reportable) - If the unweighted total responses for a dimension (row) is <50 that row will not be shown; n/a (Not Available) - Not asked of a subset of respondents

Year: 2003-2007

Island	Yes			No			Estimated Population (5-yr Avg)
	#	%	C.I. (95%)	#	%	C.I. (95%)	#
Hawaii	68,400	56.9	55.2 - 58.6	51,800	43.1	41.4 - 44.8	120,200
Kauai	24,000	54.4	51.9 - 56.8	20,200	45.6	43.2 - 48.1	44,200
Lanai	1,200	56.8	50.9 - 62.6	900	43.2	37.4 - 49.1	2,100
Maui	48,800	52.6	50.3 - 54.9	43,900	47.4	45.1 - 49.7	92,700
Molokai	4,000	63.6	58.6 - 68.5	2,300	36.4	31.5 - 41.4	6,400
Oahu	355,000	53.4	52.2 - 54.6	309,500	46.6	45.4 - 47.8	664,500

Community	Yes			No			Estimated Population (5-yr Avg)
	#	%	C.I. (95%)	#	%	C.I. (95%)	#
Aiea/ Pearl City	32,500	52.4	48.5 - 56.4	29,500	47.6	43.6 - 51.5	62,000

Weight - overweight or obese by State, County, Island, Community, BRFSS Age Group, DOH Race-Ethnicity, Gender, Education Level, Employment Status (Grouped), Household Income, Poverty Level, Marital Status (Grouped), Married, Health Care Coverage, for the Year(s) - 2000-2004, 2001-2005, 2002-2006, 2003-2007, 2004-2008, 2005-2009, 2006-2010

Note: Weighted numbers (#) represent 5-yr averages, percentages and 95% confidence intervals; Respondents aged 18 years and older; n/r (Not Reportable) - If the unweighted total responses for a dimension (row) is <50 that row will not be shown; n/a (Not Available) - Not asked of a subset of respondents

Year: 2003-2007

Community	Yes			No			Estimated Population (5-yr Avg)
	#	%	C.I. (95%)	#	%	C.I. (95%)	#
Ala Moana	14,200	46.5	41.4 - 51.6	16,300	53.5	48.4 - 58.6	30,400
Hanalei/ Kapaa	10,000	54.1	50.4 - 57.8	8,500	45.9	42.2 - 49.6	18,500
Hilo	19,400	56.4	53.2 - 59.5	15,000	43.6	40.5 - 46.8	34,300
Kaaawa/ Kahaluu/ Kaneohe	28,100	59.7	55.3 - 64.0	19,000	40.3	36.0 - 44.7	47,000
Kahului	17,000	52.6	48.7 - 56.5	15,300	47.4	43.5 - 51.3	32,300
Kailua/ Waimanalo	27,100	56.6	52.6 - 60.6	20,700	43.4	39.4 - 47.4	47,800
Kaimuki/ Palolo/ Waikiki	29,000	48.8	45.0 - 52.6	30,500	51.2	47.4 - 55.0	59,500
Kona	15,700	55.6	52.2 - 58.9	12,600	44.4	41.1 - 47.8	28,300
Lahaina/ Wailuku	17,000	57.1	53.0 - 61.2	12,800	42.9	38.8 - 47.0	29,700
Lanai	1,200	56.8	50.9 - 62.6	900	43.2	37.4 - 49.1	2,100
Lihue-Waimea	14,000	54.5	51.2 - 57.9	11,700	45.5	42.1 - 48.8	25,700

Weight - overweight or obese by State, County, Island, Community, BRFSS Age Group, DOH Race-Ethnicity, Gender, Education Level, Employment Status (Grouped), Household Income, Poverty Level, Marital Status (Grouped), Married, Health Care Coverage, for the Year(s) - 2000-2004, 2001-2005, 2002-2006, 2003-2007, 2004-2008, 2005-2009, 2006-2010

Note: Weighted numbers (#) represent 5-yr averages, percentages and 95% confidence intervals; Respondents aged 18 years and older; n/r (Not Reportable) - If the unweighted total responses for a dimension (row) is <50 that row will not be shown; n/a (Not Available) - Not asked of a subset of respondents

Year: 2003-2007

Community	Yes			No			Estimated Population (5-yr Avg)
	#	%	C.I. (95%)	#	%	C.I. (95%)	#
Manoa/ Upper Makiki	22,700	48.7	44.4 - 53.0	23,900	51.3	47.0 - 55.6	46,600
Mililani/ Wahiawa	37,600	56.4	52.5 - 60.2	29,100	43.6	39.8 - 47.5	66,700
Molokai	4,000	63.6	58.6 - 68.5	2,300	36.4	31.5 - 41.4	6,400
Nanakuli/ Waianae	23,100	73.5	68.2 - 78.7	8,400	26.5	21.3 - 31.8	31,500
N.Hawaii	14,200	57.2	53.6 - 60.8	10,600	42.8	39.2 - 46.4	24,700
N.Shore/ Laie	12,400	56.0	49.7 - 62.2	9,700	44.0	37.8 - 50.3	22,100
Nuuanu/ Kalihi/ Moanalua	33,000	49.2	45.2 - 53.2	34,000	50.8	46.8 - 54.8	67,000
Puna/ Kau	19,200	58.4	54.9 - 62.0	13,700	41.6	38.0 - 45.1	32,900
Salt Lake/ Foster Village	16,400	47.9	42.6 - 53.1	17,900	52.1	46.9 - 57.4	34,300
Upcountry/ Hana	14,900	48.3	44.6 - 52.0	15,900	51.7	48.0 - 55.4	30,700
Waiialae/ Kahala/ Hawaii Kai	16,400	42.9	38.3 - 47.5	21,900	57.1	52.5 - 61.7	38,300

Weight - overweight or obese by State, County, Island, Community, BRFSS Age Group, DOH Race-Ethnicity, Gender, Education Level, Employment Status (Grouped), Household Income, Poverty Level, Marital Status (Grouped), Married, Health Care Coverage, for the Year(s) - 2000-2004, 2001-2005, 2002-2006, 2003-2007, 2004-2008, 2005-2009, 2006-2010

Note: Weighted numbers (#) represent 5-yr averages, percentages and 95% confidence intervals; Respondents aged 18 years and older; n/r (Not Reportable) - If the unweighted total responses for a dimension (row) is <50 that row will not be shown; n/a (Not Available) - Not asked of a subset of respondents

Year: 2003-2007

Community	Yes			No			Estimated Population (5-yr Avg)
	#	%	C.I. (95%)	#	%	C.I. (95%)	#
Waipahu/ Kapolei/ Ewa	62,700	56.3	53.1 - 59.5	48,700	43.7	40.5 - 46.9	111,300

Weight - overweight or obese by State, County, Island, Community, BRFSS Age Group, DOH Race-Ethnicity, Gender, Education Level, Employment Status (Grouped), Household Income, Poverty Level, Marital Status (Grouped), Married, Health Care Coverage, for the Year(s) - 2000-2004, 2001-2005, 2002-2006, 2003-2007, 2004-2008, 2005-2009, 2006-2010

Note: Weighted numbers (#) represent 5-yr averages, percentages and 95% confidence intervals; Respondents aged 18 years and older; n/r (Not Reportable) - If the unweighted total responses for a dimension (row) is <50 that row will not be shown; n/a (Not Available) - Not asked of a subset of respondents

Year: 2003-2007

BRFSS Age Group	Yes			No			Estimated Population (5-yr Avg)
	#	%	C.I. (95%)	#	%	C.I. (95%)	#
18-24	49,900	43.3	39.8 - 46.8	65,200	56.7	53.2 - 60.2	115,100
25-34	88,600	55.3	52.9 - 57.7	71,600	44.7	42.3 - 47.1	160,200
35-44	101,000	57.9	55.8 - 60.0	73,500	42.1	40.0 - 44.2	174,500
45-54	101,600	58.4	56.5 - 60.3	72,400	41.6	39.7 - 43.5	173,900
55-64	81,100	60.1	58.0 - 62.2	53,800	39.9	37.8 - 42.0	134,900
65-74	44,800	54.4	51.7 - 57.0	37,600	45.6	43.0 - 48.3	82,400
75+	32,400	38.3	35.6 - 40.9	52,300	61.7	59.1 - 64.4	84,800

Weight - overweight or obese by State, County, Island, Community, BRFSS Age Group, DOH Race-Ethnicity, Gender, Education Level, Employment Status (Grouped), Household Income, Poverty Level, Marital Status (Grouped), Married, Health Care Coverage, for the Year(s) - 2000-2004, 2001-2005, 2002-2006, 2003-2007, 2004-2008, 2005-2009, 2006-2010

Note: Weighted numbers (#) represent 5-yr averages, percentages and 95% confidence intervals; Respondents aged 18 years and older; n/r (Not Reportable) - If the unweighted total responses for a dimension (row) is <50 that row will not be shown; n/a (Not Available) - Not asked of a subset of respondents

Year: 2003-2007

DOH Race-Ethnicity	Yes			No			Estimated Population (5-yr Avg)
	#	%	C.I. (95%)	#	%	C.I. (95%)	#
Caucasian	168,500	53.8	52.4 - 55.2	144,500	46.2	44.8 - 47.6	313,100
Native Hawaiian	82,300	72.7	70.3 - 75.1	30,900	27.3	24.9 - 29.7	113,200
Chinese	26,400	43.0	39.3 - 46.6	35,000	57.0	53.4 - 60.7	61,300
Filipino	74,900	49.8	47.1 - 52.4	75,600	50.2	47.6 - 52.9	150,500
Japanese	88,900	46.0	44.0 - 47.9	104,400	54.0	52.1 - 56.0	193,300
Black	8,100	58.3	50.9 - 65.7	5,800	41.7	34.3 - 49.1	13,900
Native Alaskan/ American Indian	2,900	55.8	43.6 - 68.0	2,300	44.2	32.0 - 56.4	5,200
Other Asian	7,800	36.5	29.9 - 43.0	13,600	63.5	57.0 - 70.1	21,400
Other Pacific Islander	18,500	85.6	80.5 - 90.8	3,100	14.4	9.2 - 19.5	21,600
Mixed Ethnicity	3,400	70.8	59.8 - 81.9	1,400	29.2	18.1 - 40.2	4,800
Other	15,300	64.7	59.5 - 69.8	8,400	35.3	30.2 - 40.5	23,700

Weight - overweight or obese by State, County, Island, Community, BRFSS Age Group, DOH Race-Ethnicity, Gender, Education Level, Employment Status (Grouped), Household Income, Poverty Level, Marital Status (Grouped), Married, Health Care Coverage, for the Year(s) - 2000-2004, 2001-2005, 2002-2006, 2003-2007, 2004-2008, 2005-2009, 2006-2010

Note: Weighted numbers (#) represent 5-yr averages, percentages and 95% confidence intervals; Respondents aged 18 years and older; n/r (Not Reportable) - If the unweighted total responses for a dimension (row) is <50 that row will not be shown; n/a (Not Available) - Not asked of a subset of respondents

Year: 2003-2007

Gender	Yes			No			Estimated Population (5-yr Avg)
	#	%	C.I. (95%)	#	%	C.I. (95%)	#
Male	298,800	64.2	62.9 - 65.6	166,300	35.8	34.4 - 37.1	465,100
Female	202,700	43.6	42.4 - 44.8	262,300	56.4	55.2 - 57.6	465,000

Education Level	Yes			No			Estimated Population (5-yr Avg)
	#	%	C.I. (95%)	#	%	C.I. (95%)	#
Never attended school/ Only Kindergarten to Grades 8	7,600	51.1	44.4 - 57.7	7,300	48.9	42.3 - 55.6	14,800
Grades 9 thru 11 (Some High School)	21,200	58.3	53.4 - 63.2	15,100	41.7	36.8 - 46.6	36,300
Grades 12 or GED (High School Grad)	162,700	57.9	56.2 - 59.7	118,200	42.1	40.3 - 43.8	280,900
College 1 to 3 years (Some College/ Tech)	152,400	55.3	53.6 - 57.0	123,200	44.7	43.0 - 46.4	275,600
College 4 years or more (College Grad)	157,100	48.9	47.4 - 50.3	164,400	51.1	49.7 - 52.6	321,500

Weight - overweight or obese by State, County, Island, Community, BRFSS Age Group, DOH Race-Ethnicity, Gender, Education Level, Employment Status (Grouped), Household Income, Poverty Level, Marital Status (Grouped), Married, Health Care Coverage, for the Year(s) - 2000-2004, 2001-2005, 2002-2006, 2003-2007, 2004-2008, 2005-2009, 2006-2010

Note: Weighted numbers (#) represent 5-yr averages, percentages and 95% confidence intervals; Respondents aged 18 years and older; n/r (Not Reportable) - If the unweighted total responses for a dimension (row) is <50 that row will not be shown; n/a (Not Available) - Not asked of a subset of respondents

Year: 2003-2007

Employment Status (Grouped)	Yes			No			Estimated Population (5-yr Avg)
	#	%	C.I. (95%)	#	%	C.I. (95%)	#
Employed	342,700	57.0	55.9 - 58.2	258,100	43.0	41.8 - 44.1	600,800
Unemployed	16,200	57.0	51.3 - 62.6	12,200	43.0	37.4 - 48.7	28,400
Retired/Unable to work	104,700	49.9	48.1 - 51.6	105,200	50.1	48.4 - 51.9	210,000
Student/Homemaker	37,700	41.8	38.6 - 45.0	52,600	58.2	55.0 - 61.4	90,300

Weight - overweight or obese by State, County, Island, Community, BRFSS Age Group, DOH Race-Ethnicity, Gender, Education Level, Employment Status (Grouped), Household Income, Poverty Level, Marital Status (Grouped), Married, Health Care Coverage, for the Year(s) - 2000-2004, 2001-2005, 2002-2006, 2003-2007, 2004-2008, 2005-2009, 2006-2010

Note: Weighted numbers (#) represent 5-yr averages, percentages and 95% confidence intervals; Respondents aged 18 years and older; n/r (Not Reportable) - If the unweighted total responses for a dimension (row) is <50 that row will not be shown; n/a (Not Available) - Not asked of a subset of respondents

Year: 2003-2007

Household Income	Yes			No			Estimated Population (5-yr Avg)
	#	%	C.I. (95%)	#	%	C.I. (95%)	#
Less than \$10,000	14,700	51.6	46.8 - 56.4	13,800	48.4	43.6 - 53.2	28,500
\$10,000 to \$14,999	17,200	53.7	49.0 - 58.4	14,800	46.3	41.6 - 51.0	32,000
\$15,000 to \$19,999	24,700	53.1	49.1 - 57.2	21,800	46.9	42.8 - 50.9	46,500
\$20,000 to \$24,999	32,500	53.0	49.4 - 56.6	28,800	47.0	43.4 - 50.6	61,300
\$25,000 to \$34,999	55,700	54.8	51.9 - 57.6	46,000	45.2	42.4 - 48.1	101,800
\$35,000 to \$49,999	79,500	55.1	52.8 - 57.5	64,700	44.9	42.5 - 47.2	144,200
\$50,000 to \$74,999	101,800	56.1	53.8 - 58.4	79,700	43.9	41.6 - 46.2	181,500
\$75,000 or more	122,900	55.2	53.4 - 57.0	99,800	44.8	43.0 - 46.6	222,600

Weight - overweight or obese by State, County, Island, Community, BRFSS Age Group, DOH Race-Ethnicity, Gender, Education Level, Employment Status (Grouped), Household Income, Poverty Level, Marital Status (Grouped), Married, Health Care Coverage, for the Year(s) - 2000-2004, 2001-2005, 2002-2006, 2003-2007, 2004-2008, 2005-2009, 2006-2010

Note: Weighted numbers (#) represent 5-yr averages, percentages and 95% confidence intervals; Respondents aged 18 years and older; n/r (Not Reportable) - If the unweighted total responses for a dimension (row) is <50 that row will not be shown; n/a (Not Available) - Not asked of a subset of respondents

Year: 2003-2007

Poverty Level	Yes			No			Estimated Population (5-yr Avg)
	#	%	C.I. (95%)	#	%	C.I. (95%)	#
0-130%	96,500	55.1	52.8 - 57.4	78,700	44.9	42.6 - 47.2	175,200
131-185%	60,000	58.0	54.8 - 61.2	43,500	42.0	38.8 - 45.2	103,500
186+%	292,500	54.2	53.0 - 55.3	247,200	45.8	44.7 - 47.0	539,700

Marital Status (Grouped)	Yes			No			Estimated Population (5-yr Avg)
	#	%	C.I. (95%)	#	%	C.I. (95%)	#
Married	306,300	55.9	54.7 - 57.0	242,000	44.1	43.0 - 45.3	548,300
Unmarried Couple	14,000	56.7	51.1 - 62.3	10,700	43.3	37.7 - 48.9	24,600
Widowed	25,500	44.8	41.7 - 47.9	31,500	55.2	52.1 - 58.3	57,000
Other	155,700	51.9	50.1 - 53.7	144,500	48.1	46.3 - 49.9	300,200

Weight - overweight or obese by State, County, Island, Community, BRFSS Age Group, DOH Race-Ethnicity, Gender, Education Level, Employment Status (Grouped), Household Income, Poverty Level, Marital Status (Grouped), Married, Health Care Coverage, for the Year(s) - 2000-2004, 2001-2005, 2002-2006, 2003-2007, 2004-2008, 2005-2009, 2006-2010

Note: Weighted numbers (#) represent 5-yr averages, percentages and 95% confidence intervals; Respondents aged 18 years and older; n/r (Not Reportable) - If the unweighted total responses for a dimension (row) is <50 that row will not be shown; n/a (Not Available) - Not asked of a subset of respondents

Year: 2003-2007

Married	Yes			No			Estimated Population (5-yr Avg)
	#	%	C.I. (95%)	#	%	C.I. (95%)	#
Yes	312,200	55.9	54.8 - 57.0	246,300	44.1	43.0 - 45.2	558,400
No	188,800	51.0	49.4 - 52.5	181,800	49.0	47.5 - 50.6	370,600

Health Care Coverage	Yes			No			Estimated Population (5-yr Avg)
	#	%	C.I. (95%)	#	%	C.I. (95%)	#
Yes	464,800	54.3	53.4 - 55.3	390,800	45.7	44.7 - 46.6	855,600
No	35,900	49.7	46.1 - 53.4	36,400	50.3	46.6 - 53.9	72,300

Weight - overweight or obese by State, County, Island, Community, BRFSS Age Group, DOH Race-Ethnicity, Gender, Education Level, Employment Status (Grouped), Household Income, Poverty Level, Marital Status (Grouped), Married, Health Care Coverage, for the Year(s) - 2000-2004, 2001-2005, 2002-2006, 2003-2007, 2004-2008, 2005-2009, 2006-2010

Note: Weighted numbers (#) represent 5-yr averages, percentages and 95% confidence intervals; Respondents aged 18 years and older; n/r (Not Reportable) - If the unweighted total responses for a dimension (row) is <50 that row will not be shown; n/a (Not Available) - Not asked of a subset of respondents

Year: 2002-2006

State	Yes			No			Estimated Population (5-yr Avg)
	#	%	C.I. (95%)	#	%	C.I. (95%)	#
Hawaii State	484,200	53.2	52.2 - 54.1	426,700	46.8	45.9 - 47.8	911,000

County	Yes			No			Estimated Population (5-yr Avg)
	#	%	C.I. (95%)	#	%	C.I. (95%)	#
Hawaii	65,200	56.2	54.4 - 57.9	50,900	43.8	42.1 - 45.6	116,100
Honolulu	344,300	52.7	51.5 - 53.9	309,200	47.3	46.1 - 48.5	653,400
Kauai	23,200	53.8	51.4 - 56.3	19,900	46.2	43.7 - 48.6	43,000
Maui	51,600	52.4	50.3 - 54.5	46,800	47.6	45.5 - 49.7	98,400

Weight - overweight or obese by State, County, Island, Community, BRFSS Age Group, DOH Race-Ethnicity, Gender, Education Level, Employment Status (Grouped), Household Income, Poverty Level, Marital Status (Grouped), Married, Health Care Coverage, for the Year(s) - 2000-2004, 2001-2005, 2002-2006, 2003-2007, 2004-2008, 2005-2009, 2006-2010

Note: Weighted numbers (#) represent 5-yr averages, percentages and 95% confidence intervals; Respondents aged 18 years and older; n/r (Not Reportable) - If the unweighted total responses for a dimension (row) is <50 that row will not be shown; n/a (Not Available) - Not asked of a subset of respondents

Year: 2002-2006

Island	Yes			No			Estimated Population (5-yr Avg)
	#	%	C.I. (95%)	#	%	C.I. (95%)	#
Hawaii	65,200	56.2	54.4 - 57.9	50,900	43.8	42.1 - 45.6	116,100
Kauai	23,200	53.8	51.4 - 56.3	19,900	46.2	43.7 - 48.6	43,000
Lanai	1,400	55.0	49.1 - 60.9	1,100	45.0	39.1 - 50.9	2,500
Maui	46,200	51.6	49.3 - 53.9	43,400	48.4	46.1 - 50.7	89,700
Molokai	4,000	63.6	58.4 - 68.8	2,300	36.4	31.2 - 41.6	6,200
Oahu	344,300	52.7	51.5 - 53.9	309,200	47.3	46.1 - 48.5	653,400

Community	Yes			No			Estimated Population (5-yr Avg)
	#	%	C.I. (95%)	#	%	C.I. (95%)	#
Aiea/ Pearl City	31,500	51.3	47.4 - 55.3	29,900	48.7	44.7 - 52.6	61,400

Weight - overweight or obese by State, County, Island, Community, BRFSS Age Group, DOH Race-Ethnicity, Gender, Education Level, Employment Status (Grouped), Household Income, Poverty Level, Marital Status (Grouped), Married, Health Care Coverage, for the Year(s) - 2000-2004, 2001-2005, 2002-2006, 2003-2007, 2004-2008, 2005-2009, 2006-2010

Note: Weighted numbers (#) represent 5-yr averages, percentages and 95% confidence intervals; Respondents aged 18 years and older; n/r (Not Reportable) - If the unweighted total responses for a dimension (row) is <50 that row will not be shown; n/a (Not Available) - Not asked of a subset of respondents

Year: 2002-2006

Community	Yes			No			Estimated Population (5-yr Avg)
	#	%	C.I. (95%)	#	%	C.I. (95%)	#
Ala Moana	15,100	48.2	43.2 - 53.2	16,300	51.8	46.8 - 56.8	31,400
Hanalei/ Kapaa	9,800	54.1	50.4 - 57.8	8,300	45.9	42.2 - 49.6	18,000
Hilo	19,000	55.9	52.7 - 59.1	15,000	44.1	40.9 - 47.3	34,000
Kaaawa/ Kahaluu/ Kaneohe	27,200	60.4	55.9 - 64.8	17,800	39.6	35.2 - 44.1	45,000
Kahului	16,000	51.1	47.2 - 55.1	15,300	48.9	44.9 - 52.8	31,400
Kailua/ Waimanalo	25,700	55.3	51.2 - 59.4	20,800	44.7	40.6 - 48.8	46,500
Kaimuki/ Palolo/ Waikiki	29,000	46.9	43.3 - 50.6	32,800	53.1	49.4 - 56.7	61,800
Kona	15,500	54.3	51.0 - 57.7	13,000	45.7	42.3 - 49.0	28,500
Lahaina/ Wailuku	16,400	56.3	52.2 - 60.4	12,700	43.7	39.6 - 47.8	29,100
Lanai	1,400	55.0	49.1 - 60.9	1,100	45.0	39.1 - 50.9	2,500
Lihue-Waimea	13,400	53.7	50.3 - 57.0	11,600	46.3	43.0 - 49.7	25,000

Weight - overweight or obese by State, County, Island, Community, BRFSS Age Group, DOH Race-Ethnicity, Gender, Education Level, Employment Status (Grouped), Household Income, Poverty Level, Marital Status (Grouped), Married, Health Care Coverage, for the Year(s) - 2000-2004, 2001-2005, 2002-2006, 2003-2007, 2004-2008, 2005-2009, 2006-2010

Note: Weighted numbers (#) represent 5-yr averages, percentages and 95% confidence intervals; Respondents aged 18 years and older; n/r (Not Reportable) - If the unweighted total responses for a dimension (row) is <50 that row will not be shown; n/a (Not Available) - Not asked of a subset of respondents

Year: 2002-2006

Community	Yes			No			Estimated Population (5-yr Avg)
	#	%	C.I. (95%)	#	%	C.I. (95%)	#
Manoa/ Upper Makiki	23,400	48.1	43.9 - 52.3	25,200	51.9	47.7 - 56.1	48,600
Mililani/ Wahiawa	35,000	54.6	50.5 - 58.7	29,100	45.4	41.3 - 49.5	64,100
Molokai	4,000	63.6	58.4 - 68.8	2,300	36.4	31.2 - 41.6	6,200
Nanakuli/ Waianae	21,500	75.1	69.8 - 80.4	7,100	24.9	19.6 - 30.2	28,700
N.Hawaii	13,500	57.5	53.9 - 61.1	10,000	42.5	38.9 - 46.1	23,500
N.Shore/ Laie	11,900	55.9	49.6 - 62.2	9,400	44.1	37.8 - 50.4	21,300
Nuuanu/ Kalihi/ Moanalua	32,300	48.6	44.6 - 52.5	34,200	51.4	47.5 - 55.4	66,500
Puna/ Kau	17,200	57.2	53.5 - 60.9	12,900	42.8	39.1 - 46.5	30,100
Salt Lake/ Foster Village	17,800	49.6	44.5 - 54.8	18,100	50.4	45.2 - 55.5	36,000
Upcountry/ Hana	13,800	47.3	43.5 - 51.2	15,400	52.7	48.8 - 56.5	29,200
Waiialae/ Kahala/ Hawaii Kai	17,500	43.9	39.4 - 48.3	22,400	56.1	51.7 - 60.6	39,900

Weight - overweight or obese by State, County, Island, Community, BRFSS Age Group, DOH Race-Ethnicity, Gender, Education Level, Employment Status (Grouped), Household Income, Poverty Level, Marital Status (Grouped), Married, Health Care Coverage, for the Year(s) - 2000-2004, 2001-2005, 2002-2006, 2003-2007, 2004-2008, 2005-2009, 2006-2010

Note: Weighted numbers (#) represent 5-yr averages, percentages and 95% confidence intervals; Respondents aged 18 years and older; n/r (Not Reportable) - If the unweighted total responses for a dimension (row) is <50 that row will not be shown; n/a (Not Available) - Not asked of a subset of respondents

Year: 2002-2006

Community	Yes			No			Estimated Population (5-yr Avg)
	#	%	C.I. (95%)	#	%	C.I. (95%)	#
Waipahu/ Kapolei/ Ewa	56,200	55.0	51.7 - 58.4	45,900	45.0	41.6 - 48.3	102,100

Weight - overweight or obese by State, County, Island, Community, BRFSS Age Group, DOH Race-Ethnicity, Gender, Education Level, Employment Status (Grouped), Household Income, Poverty Level, Marital Status (Grouped), Married, Health Care Coverage, for the Year(s) - 2000-2004, 2001-2005, 2002-2006, 2003-2007, 2004-2008, 2005-2009, 2006-2010

Note: Weighted numbers (#) represent 5-yr averages, percentages and 95% confidence intervals; Respondents aged 18 years and older; n/r (Not Reportable) - If the unweighted total responses for a dimension (row) is <50 that row will not be shown; n/a (Not Available) - Not asked of a subset of respondents

Year: 2002-2006

BRFSS Age Group	Yes			No			Estimated Population (5-yr Avg)
	#	%	C.I. (95%)	#	%	C.I. (95%)	#
18-24	47,500	42.2	38.8 - 45.6	65,000	57.8	54.4 - 61.2	112,600
25-34	85,300	53.4	51.0 - 55.7	74,600	46.6	44.3 - 49.0	159,900
35-44	100,100	57.1	55.1 - 59.2	75,100	42.9	40.8 - 44.9	175,300
45-54	100,200	58.6	56.6 - 60.5	70,900	41.4	39.5 - 43.4	171,200
55-64	74,800	59.2	57.0 - 61.4	51,400	40.8	38.6 - 43.0	126,200
65-74	43,700	53.7	51.0 - 56.4	37,700	46.3	43.6 - 49.0	81,300
75+	30,800	38.2	35.5 - 41.0	49,700	61.8	59.0 - 64.5	80,500

Weight - overweight or obese by State, County, Island, Community, BRFSS Age Group, DOH Race-Ethnicity, Gender, Education Level, Employment Status (Grouped), Household Income, Poverty Level, Marital Status (Grouped), Married, Health Care Coverage, for the Year(s) - 2000-2004, 2001-2005, 2002-2006, 2003-2007, 2004-2008, 2005-2009, 2006-2010

Note: Weighted numbers (#) represent 5-yr averages, percentages and 95% confidence intervals; Respondents aged 18 years and older; n/r (Not Reportable) - If the unweighted total responses for a dimension (row) is <50 that row will not be shown; n/a (Not Available) - Not asked of a subset of respondents

Year: 2002-2006

DOH Race-Ethnicity	Yes			No			Estimated Population (5-yr Avg)
	#	%	C.I. (95%)	#	%	C.I. (95%)	#
Caucasian	165,800	53.2	51.8 - 54.6	146,100	46.8	45.4 - 48.2	311,900
Native Hawaiian	79,300	73.1	70.6 - 75.5	29,200	26.9	24.5 - 29.4	108,600
Chinese	26,400	41.8	38.3 - 45.4	36,700	58.2	54.6 - 61.7	63,100
Filipino	69,100	48.3	45.6 - 51.0	73,900	51.7	49.0 - 54.4	143,000
Japanese	85,000	45.4	43.4 - 47.4	102,200	54.6	52.6 - 56.6	187,100
Black	8,200	59.1	51.9 - 66.2	5,700	40.9	33.8 - 48.1	13,900
Native Alaskan/ American Indian	2,500	54.2	41.0 - 67.4	2,100	45.8	32.6 - 59.0	4,600
Other Asian	7,400	35.1	28.6 - 41.5	13,600	64.9	58.5 - 71.4	21,000
Other Pacific Islander	18,000	85.5	80.1 - 90.9	3,100	14.5	9.1 - 19.9	21,100
Mixed Ethnicity	3,400	70.8	59.8 - 81.9	1,400	29.2	18.1 - 40.2	4,800
Other	14,800	61.5	56.3 - 66.8	9,200	38.5	33.2 - 43.7	24,000

Weight - overweight or obese by State, County, Island, Community, BRFSS Age Group, DOH Race-Ethnicity, Gender, Education Level, Employment Status (Grouped), Household Income, Poverty Level, Marital Status (Grouped), Married, Health Care Coverage, for the Year(s) - 2000-2004, 2001-2005, 2002-2006, 2003-2007, 2004-2008, 2005-2009, 2006-2010

Note: Weighted numbers (#) represent 5-yr averages, percentages and 95% confidence intervals; Respondents aged 18 years and older; n/r (Not Reportable) - If the unweighted total responses for a dimension (row) is <50 that row will not be shown; n/a (Not Available) - Not asked of a subset of respondents

Year: 2002-2006

Gender	Yes			No			Estimated Population (5-yr Avg)
	#	%	C.I. (95%)	#	%	C.I. (95%)	#
Male	291,100	63.8	62.4 - 65.2	165,100	36.2	34.8 - 37.6	456,200
Female	193,100	42.5	41.3 - 43.7	261,600	57.5	56.3 - 58.7	454,700

Education Level	Yes			No			Estimated Population (5-yr Avg)
	#	%	C.I. (95%)	#	%	C.I. (95%)	#
Never attended school/ Only Kindergarten to Grades 8	7,500	48.8	42.3 - 55.3	7,900	51.2	44.7 - 57.7	15,400
Grades 9 thru 11 (Some High School)	20,200	56.9	52.0 - 61.8	15,300	43.1	38.2 - 48.0	35,500
Grades 12 or GED (High School Grad)	161,300	57.5	55.7 - 59.3	119,200	42.5	40.7 - 44.3	280,500
College 1 to 3 years (Some College/ Tech)	145,000	53.8	52.0 - 55.5	124,700	46.2	44.5 - 48.0	269,700
College 4 years or more (College Grad)	150,000	48.5	47.0 - 50.0	159,200	51.5	50.0 - 53.0	309,100

Weight - overweight or obese by State, County, Island, Community, BRFSS Age Group, DOH Race-Ethnicity, Gender, Education Level, Employment Status (Grouped), Household Income, Poverty Level, Marital Status (Grouped), Married, Health Care Coverage, for the Year(s) - 2000-2004, 2001-2005, 2002-2006, 2003-2007, 2004-2008, 2005-2009, 2006-2010

Note: Weighted numbers (#) represent 5-yr averages, percentages and 95% confidence intervals; Respondents aged 18 years and older; n/r (Not Reportable) - If the unweighted total responses for a dimension (row) is <50 that row will not be shown; n/a (Not Available) - Not asked of a subset of respondents

Year: 2002-2006

Employment Status (Grouped)	Yes			No			Estimated Population (5-yr Avg)
	#	%	C.I. (95%)	#	%	C.I. (95%)	#
Employed	331,900	56.3	55.1 - 57.5	257,400	43.7	42.5 - 44.9	589,300
Unemployed	16,400	55.5	50.0 - 61.0	13,200	44.5	39.0 - 50.0	29,600
Retired/Unable to work	98,700	49.4	47.6 - 51.2	101,100	50.6	48.8 - 52.4	199,800
Student/Homemaker	37,000	40.4	37.3 - 43.5	54,600	59.6	56.5 - 62.7	91,600

Weight - overweight or obese by State, County, Island, Community, BRFSS Age Group, DOH Race-Ethnicity, Gender, Education Level, Employment Status (Grouped), Household Income, Poverty Level, Marital Status (Grouped), Married, Health Care Coverage, for the Year(s) - 2000-2004, 2001-2005, 2002-2006, 2003-2007, 2004-2008, 2005-2009, 2006-2010

Note: Weighted numbers (#) represent 5-yr averages, percentages and 95% confidence intervals; Respondents aged 18 years and older; n/r (Not Reportable) - If the unweighted total responses for a dimension (row) is <50 that row will not be shown; n/a (Not Available) - Not asked of a subset of respondents

Year: 2002-2006

Household Income	Yes			No			Estimated Population (5-yr Avg)
	#	%	C.I. (95%)	#	%	C.I. (95%)	#
Less than \$10,000	15,000	50.6	46.0 - 55.2	14,700	49.4	44.8 - 54.0	29,600
\$10,000 to \$14,999	17,100	52.1	47.6 - 56.7	15,700	47.9	43.3 - 52.4	32,800
\$15,000 to \$19,999	23,900	52.2	48.0 - 56.5	21,800	47.8	43.5 - 52.0	45,700
\$20,000 to \$24,999	30,100	52.0	48.3 - 55.7	27,800	48.0	44.3 - 51.7	58,000
\$25,000 to \$34,999	50,500	53.8	50.8 - 56.7	43,400	46.2	43.3 - 49.2	93,900
\$35,000 to \$49,999	72,300	53.5	51.0 - 55.9	63,000	46.5	44.1 - 49.0	135,300
\$50,000 to \$74,999	95,200	55.2	52.9 - 57.6	77,200	44.8	42.4 - 47.1	172,400
\$75,000 or more	105,700	55.1	53.1 - 57.1	86,200	44.9	42.9 - 46.9	191,900

Weight - overweight or obese by State, County, Island, Community, BRFSS Age Group, DOH Race-Ethnicity, Gender, Education Level, Employment Status (Grouped), Household Income, Poverty Level, Marital Status (Grouped), Married, Health Care Coverage, for the Year(s) - 2000-2004, 2001-2005, 2002-2006, 2003-2007, 2004-2008, 2005-2009, 2006-2010

Note: Weighted numbers (#) represent 5-yr averages, percentages and 95% confidence intervals; Respondents aged 18 years and older; n/r (Not Reportable) - If the unweighted total responses for a dimension (row) is <50 that row will not be shown; n/a (Not Available) - Not asked of a subset of respondents

Year: 2002-2006

Poverty Level	Yes			No			Estimated Population (5-yr Avg)
	#	%	C.I. (95%)	#	%	C.I. (95%)	#
0-130%	86,700	53.5	51.1 - 55.9	75,200	46.5	44.1 - 48.9	161,900
131-185%	53,300	56.7	53.3 - 60.1	40,700	43.3	39.9 - 46.7	94,000
186+%	269,900	53.6	52.4 - 54.8	233,900	46.4	45.2 - 47.6	503,800

Marital Status (Grouped)	Yes			No			Estimated Population (5-yr Avg)
	#	%	C.I. (95%)	#	%	C.I. (95%)	#
Married	296,300	55.3	54.1 - 56.5	239,400	44.7	43.5 - 45.9	535,700
Unmarried Couple	13,200	56.0	50.3 - 61.8	10,400	44.0	38.2 - 49.7	23,500
Widowed	25,500	45.1	41.9 - 48.4	31,000	54.9	51.6 - 58.1	56,600
Other	149,200	50.6	48.8 - 52.3	145,900	49.4	47.7 - 51.2	295,200

Weight - overweight or obese by State, County, Island, Community, BRFSS Age Group, DOH Race-Ethnicity, Gender, Education Level, Employment Status (Grouped), Household Income, Poverty Level, Marital Status (Grouped), Married, Health Care Coverage, for the Year(s) - 2000-2004, 2001-2005, 2002-2006, 2003-2007, 2004-2008, 2005-2009, 2006-2010

Note: Weighted numbers (#) represent 5-yr averages, percentages and 95% confidence intervals; Respondents aged 18 years and older; n/r (Not Reportable) - If the unweighted total responses for a dimension (row) is <50 that row will not be shown; n/a (Not Available) - Not asked of a subset of respondents

Year: 2002-2006

Married	Yes			No			Estimated Population (5-yr Avg)
	#	%	C.I. (95%)	#	%	C.I. (95%)	#
Yes	301,900	55.3	54.1 - 56.5	244,100	44.7	43.5 - 45.9	546,000
No	181,800	50.0	48.4 - 51.5	182,100	50.0	48.5 - 51.6	363,900

Health Care Coverage	Yes			No			Estimated Population (5-yr Avg)
	#	%	C.I. (95%)	#	%	C.I. (95%)	#
Yes	446,000	53.6	52.6 - 54.5	386,700	46.4	45.5 - 47.4	832,700
No	37,400	49.2	45.7 - 52.7	38,600	50.8	47.3 - 54.3	76,100

Weight - overweight or obese by State, County, Island, Community, BRFSS Age Group, DOH Race-Ethnicity, Gender, Education Level, Employment Status (Grouped), Household Income, Poverty Level, Marital Status (Grouped), Married, Health Care Coverage, for the Year(s) - 2000-2004, 2001-2005, 2002-2006, 2003-2007, 2004-2008, 2005-2009, 2006-2010

Note: Weighted numbers (#) represent 5-yr averages, percentages and 95% confidence intervals; Respondents aged 18 years and older; n/r (Not Reportable) - If the unweighted total responses for a dimension (row) is <50 that row will not be shown; n/a (Not Available) - Not asked of a subset of respondents

Year: 2001-2005

State	Yes			No			Estimated Population (5-yr Avg)
	#	%	C.I. (95%)	#	%	C.I. (95%)	#
Hawaii State	467,500	52.2	51.2 - 53.1	428,500	47.8	46.9 - 48.8	896,000

County	Yes			No			Estimated Population (5-yr Avg)
	#	%	C.I. (95%)	#	%	C.I. (95%)	#
Hawaii	63,400	55.9	54.1 - 57.7	50,000	44.1	42.3 - 45.9	113,400
Honolulu	332,700	51.7	50.4 - 52.9	311,400	48.3	47.1 - 49.6	644,200
Kauai	22,000	52.7	50.1 - 55.2	19,700	47.3	44.8 - 49.9	41,700
Maui	49,500	51.1	48.9 - 53.4	47,300	48.9	46.6 - 51.1	96,700

Weight - overweight or obese by State, County, Island, Community, BRFSS Age Group, DOH Race-Ethnicity, Gender, Education Level, Employment Status (Grouped), Household Income, Poverty Level, Marital Status (Grouped), Married, Health Care Coverage, for the Year(s) - 2000-2004, 2001-2005, 2002-2006, 2003-2007, 2004-2008, 2005-2009, 2006-2010

Note: Weighted numbers (#) represent 5-yr averages, percentages and 95% confidence intervals; Respondents aged 18 years and older; n/r (Not Reportable) - If the unweighted total responses for a dimension (row) is <50 that row will not be shown; n/a (Not Available) - Not asked of a subset of respondents

Year: 2001-2005

Island	Yes			No			Estimated Population (5-yr Avg)
	#	%	C.I. (95%)	#	%	C.I. (95%)	#
Hawaii	63,400	55.9	54.1 - 57.7	50,000	44.1	42.3 - 45.9	113,400
Kauai	22,000	52.7	50.1 - 55.2	19,700	47.3	44.8 - 49.9	41,700
Lanai	1,300	53.2	47.0 - 59.5	1,200	46.8	40.5 - 53.0	2,500
Maui	44,500	50.3	47.9 - 52.7	43,900	49.7	47.3 - 52.1	88,400
Molokai	3,700	62.8	57.3 - 68.3	2,200	37.2	31.7 - 42.7	5,900
Oahu	332,700	51.7	50.4 - 52.9	311,400	48.3	47.1 - 49.6	644,200

Community	Yes			No			Estimated Population (5-yr Avg)
	#	%	C.I. (95%)	#	%	C.I. (95%)	#
Aiea/ Pearl City	31,000	51.0	46.9 - 55.1	29,800	49.0	44.9 - 53.1	60,700

Weight - overweight or obese by State, County, Island, Community, BRFSS Age Group, DOH Race-Ethnicity, Gender, Education Level, Employment Status (Grouped), Household Income, Poverty Level, Marital Status (Grouped), Married, Health Care Coverage, for the Year(s) - 2000-2004, 2001-2005, 2002-2006, 2003-2007, 2004-2008, 2005-2009, 2006-2010

Note: Weighted numbers (#) represent 5-yr averages, percentages and 95% confidence intervals; Respondents aged 18 years and older; n/r (Not Reportable) - If the unweighted total responses for a dimension (row) is <50 that row will not be shown; n/a (Not Available) - Not asked of a subset of respondents

Year: 2001-2005

Community	Yes			No			Estimated Population (5-yr Avg)
	#	%	C.I. (95%)	#	%	C.I. (95%)	#
Ala Moana	14,200	47.3	42.0 - 52.5	15,800	52.7	47.5 - 58.0	30,000
Hanalei/ Kapaa	8,900	51.2	47.3 - 55.0	8,500	48.8	45.0 - 52.7	17,400
Hilo	19,300	57.7	54.4 - 60.9	14,200	42.3	39.1 - 45.6	33,400
Kaaawa/ Kahaluu/ Kaneohe	26,200	60.0	55.4 - 64.7	17,400	40.0	35.3 - 44.6	43,600
Kahului	16,000	50.7	46.4 - 55.0	15,600	49.3	45.0 - 53.6	31,600
Kailua/ Waimanalo	24,700	53.1	48.8 - 57.3	21,800	46.9	42.7 - 51.2	46,500
Kaimuki/ Palolo/ Waikiki	29,000	45.0	41.3 - 48.7	35,400	55.0	51.3 - 58.7	64,500
Kona	15,500	54.0	50.6 - 57.4	13,200	46.0	42.6 - 49.4	28,800
Lahaina/ Wailuku	15,700	54.6	50.4 - 58.8	13,000	45.4	41.2 - 49.6	28,700
Lanai	1,300	53.2	47.0 - 59.5	1,200	46.8	40.5 - 53.0	2,500
Lihue-Waimea	13,100	53.8	50.4 - 57.1	11,300	46.2	42.9 - 49.6	24,300

Weight - overweight or obese by State, County, Island, Community, BRFSS Age Group, DOH Race-Ethnicity, Gender, Education Level, Employment Status (Grouped), Household Income, Poverty Level, Marital Status (Grouped), Married, Health Care Coverage, for the Year(s) - 2000-2004, 2001-2005, 2002-2006, 2003-2007, 2004-2008, 2005-2009, 2006-2010

Note: Weighted numbers (#) represent 5-yr averages, percentages and 95% confidence intervals; Respondents aged 18 years and older; n/r (Not Reportable) - If the unweighted total responses for a dimension (row) is <50 that row will not be shown; n/a (Not Available) - Not asked of a subset of respondents

Year: 2001-2005

Community	Yes			No			Estimated Population (5-yr Avg)
	#	%	C.I. (95%)	#	%	C.I. (95%)	#
Manoa/ Upper Makiki	23,900	47.5	43.3 - 51.8	26,400	52.5	48.2 - 56.7	50,300
Mililani/ Wahiawa	32,500	52.1	47.8 - 56.3	29,900	47.9	43.7 - 52.2	62,400
Molokai	3,700	62.8	57.3 - 68.3	2,200	37.2	31.7 - 42.7	5,900
Nanakuli/ Waianae	21,900	75.3	69.8 - 80.8	7,200	24.7	19.2 - 30.2	29,100
N.Hawaii	12,900	55.7	52.0 - 59.4	10,200	44.3	40.6 - 48.0	23,100
N.Shore/ Laie	11,400	52.3	45.6 - 58.9	10,400	47.7	41.1 - 54.4	21,700
Nuuanu/ Kalihi/ Moanalua	31,400	48.1	44.1 - 52.2	33,800	51.9	47.8 - 55.9	65,200
Puna/ Kau	15,700	55.9	52.0 - 59.7	12,400	44.1	40.3 - 48.0	28,100
Salt Lake/ Foster Village	19,100	53.2	48.1 - 58.4	16,800	46.8	41.6 - 51.9	35,900
Upcountry/ Hana	12,800	45.4	41.6 - 49.3	15,400	54.6	50.7 - 58.4	28,100
Waiialae/ Kahala/ Hawaii Kai	15,900	41.5	36.8 - 46.1	22,500	58.5	53.9 - 63.2	38,400

Weight - overweight or obese by State, County, Island, Community, BRFSS Age Group, DOH Race-Ethnicity, Gender, Education Level, Employment Status (Grouped), Household Income, Poverty Level, Marital Status (Grouped), Married, Health Care Coverage, for the Year(s) - 2000-2004, 2001-2005, 2002-2006, 2003-2007, 2004-2008, 2005-2009, 2006-2010

Note: Weighted numbers (#) represent 5-yr averages, percentages and 95% confidence intervals; Respondents aged 18 years and older; n/r (Not Reportable) - If the unweighted total responses for a dimension (row) is <50 that row will not be shown; n/a (Not Available) - Not asked of a subset of respondents

Year: 2001-2005

Community	Yes			No			Estimated Population (5-yr Avg)
	#	%	C.I. (95%)	#	%	C.I. (95%)	#
Waipahu/ Kapolei/ Ewa	51,700	53.9	50.4 - 57.4	44,300	46.1	42.6 - 49.6	96,000

Weight - overweight or obese by State, County, Island, Community, BRFSS Age Group, DOH Race-Ethnicity, Gender, Education Level, Employment Status (Grouped), Household Income, Poverty Level, Marital Status (Grouped), Married, Health Care Coverage, for the Year(s) - 2000-2004, 2001-2005, 2002-2006, 2003-2007, 2004-2008, 2005-2009, 2006-2010

Note: Weighted numbers (#) represent 5-yr averages, percentages and 95% confidence intervals; Respondents aged 18 years and older; n/r (Not Reportable) - If the unweighted total responses for a dimension (row) is <50 that row will not be shown; n/a (Not Available) - Not asked of a subset of respondents

Year: 2001-2005

BRFSS Age Group	Yes			No			Estimated Population (5-yr Avg)
	#	%	C.I. (95%)	#	%	C.I. (95%)	#
18-24	44,400	40.6	37.1 - 44.1	64,900	59.4	55.9 - 62.9	109,300
25-34	86,100	53.4	51.0 - 55.8	75,100	46.6	44.2 - 49.0	161,200
35-44	98,900	56.0	53.9 - 58.1	77,700	44.0	41.9 - 46.1	176,500
45-54	95,400	57.1	55.1 - 59.1	71,800	42.9	40.9 - 44.9	167,200
55-64	70,900	58.5	56.2 - 60.9	50,200	41.5	39.1 - 43.8	121,200
65-74	43,100	52.2	49.3 - 55.1	39,500	47.8	44.9 - 50.7	82,600
75+	27,200	36.6	33.7 - 39.5	47,100	63.4	60.5 - 66.3	74,300

Weight - overweight or obese by State, County, Island, Community, BRFSS Age Group, DOH Race-Ethnicity, Gender, Education Level, Employment Status (Grouped), Household Income, Poverty Level, Marital Status (Grouped), Married, Health Care Coverage, for the Year(s) - 2000-2004, 2001-2005, 2002-2006, 2003-2007, 2004-2008, 2005-2009, 2006-2010

Note: Weighted numbers (#) represent 5-yr averages, percentages and 95% confidence intervals; Respondents aged 18 years and older; n/r (Not Reportable) - If the unweighted total responses for a dimension (row) is <50 that row will not be shown; n/a (Not Available) - Not asked of a subset of respondents

Year: 2001-2005

DOH Race-Ethnicity	Yes			No			Estimated Population (5-yr Avg)
	#	%	C.I. (95%)	#	%	C.I. (95%)	#
Caucasian	159,300	51.7	50.3 - 53.2	148,700	48.3	46.8 - 49.7	308,000
Native Hawaiian	77,100	71.7	69.1 - 74.2	30,500	28.3	25.8 - 30.9	107,600
Chinese	26,600	41.1	37.5 - 44.7	38,200	58.9	55.3 - 62.5	64,800
Filipino	65,100	47.1	44.3 - 49.9	73,200	52.9	50.1 - 55.7	138,300
Japanese	83,800	45.7	43.6 - 47.8	99,500	54.3	52.2 - 56.4	183,300
Black	8,900	61.6	54.6 - 68.6	5,500	38.4	31.4 - 45.4	14,400
Native Alaskan/ American Indian	2,400	52.3	39.1 - 65.4	2,200	47.7	34.6 - 60.9	4,700
Other Asian	7,000	33.6	26.9 - 40.2	13,800	66.4	59.8 - 73.1	20,700
Other Pacific Islander	17,100	85.3	79.6 - 90.9	3,000	14.7	9.1 - 20.4	20,100
Other	16,000	60.8	55.7 - 65.9	10,300	39.2	34.1 - 44.3	26,300

Weight - overweight or obese by State, County, Island, Community, BRFSS Age Group, DOH Race-Ethnicity, Gender, Education Level, Employment Status (Grouped), Household Income, Poverty Level, Marital Status (Grouped), Married, Health Care Coverage, for the Year(s) - 2000-2004, 2001-2005, 2002-2006, 2003-2007, 2004-2008, 2005-2009, 2006-2010

Note: Weighted numbers (#) represent 5-yr averages, percentages and 95% confidence intervals; Respondents aged 18 years and older; n/r (Not Reportable) - If the unweighted total responses for a dimension (row) is <50 that row will not be shown; n/a (Not Available) - Not asked of a subset of respondents

Year: 2001-2005

Gender	Yes			No			Estimated Population (5-yr Avg)
	#	%	C.I. (95%)	#	%	C.I. (95%)	#
Male	282,900	62.8	61.3 - 64.2	167,800	37.2	35.8 - 38.7	450,700
Female	184,600	41.5	40.2 - 42.7	260,700	58.5	57.3 - 59.8	445,300

Education Level	Yes			No			Estimated Population (5-yr Avg)
	#	%	C.I. (95%)	#	%	C.I. (95%)	#
Never attended school/ Only Kindergarten to Grades 8	7,400	47.3	40.8 - 53.8	8,300	52.7	46.2 - 59.2	15,700
Grades 9 thru 11 (Some High School)	19,700	56.7	51.4 - 62.0	15,100	43.3	38.0 - 48.6	34,800
Grades 12 or GED (High School Grad)	159,700	56.5	54.8 - 58.3	122,700	43.5	41.7 - 45.2	282,400
College 1 to 3 years (Some College/ Tech)	140,100	52.2	50.4 - 54.0	128,100	47.8	46.0 - 49.6	268,100
College 4 years or more (College Grad)	140,300	47.7	46.1 - 49.3	153,700	52.3	50.7 - 53.9	293,900

Weight - overweight or obese by State, County, Island, Community, BRFSS Age Group, DOH Race-Ethnicity, Gender, Education Level, Employment Status (Grouped), Household Income, Poverty Level, Marital Status (Grouped), Married, Health Care Coverage, for the Year(s) - 2000-2004, 2001-2005, 2002-2006, 2003-2007, 2004-2008, 2005-2009, 2006-2010

Note: Weighted numbers (#) represent 5-yr averages, percentages and 95% confidence intervals; Respondents aged 18 years and older; n/r (Not Reportable) - If the unweighted total responses for a dimension (row) is <50 that row will not be shown; n/a (Not Available) - Not asked of a subset of respondents

Year: 2001-2005

Employment Status (Grouped)	Yes			No			Estimated Population (5-yr Avg)
	#	%	C.I. (95%)	#	%	C.I. (95%)	#
Employed	321,100	55.1	53.9 - 56.3	261,500	44.9	43.7 - 46.1	582,600
Unemployed	16,300	57.4	51.8 - 63.0	12,100	42.6	37.0 - 48.2	28,300
Retired/Unable to work	93,300	48.2	46.2 - 50.1	100,500	51.8	49.9 - 53.8	193,800
Student/Homemaker	36,800	40.6	37.4 - 43.8	53,900	59.4	56.2 - 62.6	90,700

Weight - overweight or obese by State, County, Island, Community, BRFSS Age Group, DOH Race-Ethnicity, Gender, Education Level, Employment Status (Grouped), Household Income, Poverty Level, Marital Status (Grouped), Married, Health Care Coverage, for the Year(s) - 2000-2004, 2001-2005, 2002-2006, 2003-2007, 2004-2008, 2005-2009, 2006-2010

Note: Weighted numbers (#) represent 5-yr averages, percentages and 95% confidence intervals; Respondents aged 18 years and older; n/r (Not Reportable) - If the unweighted total responses for a dimension (row) is <50 that row will not be shown; n/a (Not Available) - Not asked of a subset of respondents

Year: 2001-2005

Household Income	Yes			No			Estimated Population (5-yr Avg)
	#	%	C.I. (95%)	#	%	C.I. (95%)	#
Less than \$10,000	15,900	49.6	45.0 - 54.2	16,100	50.4	45.8 - 55.0	32,000
\$10,000 to \$14,999	18,100	50.4	45.9 - 54.9	17,800	49.6	45.1 - 54.1	35,900
\$15,000 to \$19,999	22,600	50.3	45.8 - 54.8	22,300	49.7	45.2 - 54.2	44,800
\$20,000 to \$24,999	30,500	54.0	50.1 - 58.0	25,900	46.0	42.0 - 49.9	56,400
\$25,000 to \$34,999	48,300	53.3	50.2 - 56.4	42,300	46.7	43.6 - 49.8	90,600
\$35,000 to \$49,999	69,700	51.2	48.8 - 53.7	66,300	48.8	46.3 - 51.2	136,000
\$50,000 to \$74,999	89,500	53.8	51.3 - 56.2	77,000	46.2	43.8 - 48.7	166,500
\$75,000 or more	91,600	54.4	52.2 - 56.7	76,600	45.6	43.3 - 47.8	168,200

Weight - overweight or obese by State, County, Island, Community, BRFSS Age Group, DOH Race-Ethnicity, Gender, Education Level, Employment Status (Grouped), Household Income, Poverty Level, Marital Status (Grouped), Married, Health Care Coverage, for the Year(s) - 2000-2004, 2001-2005, 2002-2006, 2003-2007, 2004-2008, 2005-2009, 2006-2010

Note: Weighted numbers (#) represent 5-yr averages, percentages and 95% confidence intervals; Respondents aged 18 years and older; n/r (Not Reportable) - If the unweighted total responses for a dimension (row) is <50 that row will not be shown; n/a (Not Available) - Not asked of a subset of respondents

Year: 2001-2005

Poverty Level	Yes			No			Estimated Population (5-yr Avg)
	#	%	C.I. (95%)	#	%	C.I. (95%)	#
0-130%	82,400	53.0	50.4 - 55.5	73,200	47.0	44.5 - 49.6	155,600
131-185%	51,100	55.0	51.5 - 58.5	41,800	45.0	41.5 - 48.5	92,900
186+%	252,500	52.4	51.1 - 53.7	229,400	47.6	46.3 - 48.9	481,900

Marital Status (Grouped)	Yes			No			Estimated Population (5-yr Avg)
	#	%	C.I. (95%)	#	%	C.I. (95%)	#
Married	282,800	54.1	52.9 - 55.4	239,700	45.9	44.6 - 47.1	522,500
Unmarried Couple	10,100	52.9	46.4 - 59.4	9,000	47.1	40.6 - 53.6	19,100
Widowed	24,300	44.0	40.6 - 47.4	30,900	56.0	52.6 - 59.4	55,100
Other	150,400	50.2	48.5 - 52.0	148,900	49.8	48.0 - 51.5	299,300

Weight - overweight or obese by State, County, Island, Community, BRFSS Age Group, DOH Race-Ethnicity, Gender, Education Level, Employment Status (Grouped), Household Income, Poverty Level, Marital Status (Grouped), Married, Health Care Coverage, for the Year(s) - 2000-2004, 2001-2005, 2002-2006, 2003-2007, 2004-2008, 2005-2009, 2006-2010

Note: Weighted numbers (#) represent 5-yr averages, percentages and 95% confidence intervals; Respondents aged 18 years and older; n/r (Not Reportable) - If the unweighted total responses for a dimension (row) is <50 that row will not be shown; n/a (Not Available) - Not asked of a subset of respondents

Year: 2001-2005

Married	Yes			No			Estimated Population (5-yr Avg)
	#	%	C.I. (95%)	#	%	C.I. (95%)	#
Yes	290,100	54.3	53.1 - 55.5	244,200	45.7	44.5 - 46.9	534,300
No	177,000	49.1	47.5 - 50.6	183,700	50.9	49.4 - 52.5	360,700

Health Care Coverage	Yes			No			Estimated Population (5-yr Avg)
	#	%	C.I. (95%)	#	%	C.I. (95%)	#
Yes	431,100	52.5	51.5 - 53.5	389,700	47.5	46.5 - 48.5	820,800
No	35,800	48.9	45.3 - 52.4	37,500	51.1	47.6 - 54.7	73,300

Weight - overweight or obese by State, County, Island, Community, BRFSS Age Group, DOH Race-Ethnicity, Gender, Education Level, Employment Status (Grouped), Household Income, Poverty Level, Marital Status (Grouped), Married, Health Care Coverage, for the Year(s) - 2000-2004, 2001-2005, 2002-2006, 2003-2007, 2004-2008, 2005-2009, 2006-2010

Note: Weighted numbers (#) represent 5-yr averages, percentages and 95% confidence intervals; Respondents aged 18 years and older; n/r (Not Reportable) - If the unweighted total responses for a dimension (row) is <50 that row will not be shown; n/a (Not Available) - Not asked of a subset of respondents

Year: 2000-2004

State	Yes			No			Estimated Population (5-yr Avg)
	#	%	C.I. (95%)	#	%	C.I. (95%)	#
Hawaii State	453,200	51.6	50.6 - 52.6	425,100	48.4	47.4 - 49.4	878,300

County	Yes			No			Estimated Population (5-yr Avg)
	#	%	C.I. (95%)	#	%	C.I. (95%)	#
Hawaii	60,300	54.8	53.0 - 56.6	49,700	45.2	43.4 - 47.0	110,000
Honolulu	324,300	51.2	49.9 - 52.4	309,600	48.8	47.6 - 50.1	634,000
Kauai	20,800	51.0	48.4 - 53.5	20,000	49.0	46.5 - 51.6	40,800
Maui	47,800	51.1	48.8 - 53.4	45,700	48.9	46.6 - 51.2	93,400

Weight - overweight or obese by State, County, Island, Community, BRFSS Age Group, DOH Race-Ethnicity, Gender, Education Level, Employment Status (Grouped), Household Income, Poverty Level, Marital Status (Grouped), Married, Health Care Coverage, for the Year(s) - 2000-2004, 2001-2005, 2002-2006, 2003-2007, 2004-2008, 2005-2009, 2006-2010

Note: Weighted numbers (#) represent 5-yr averages, percentages and 95% confidence intervals; Respondents aged 18 years and older; n/r (Not Reportable) - If the unweighted total responses for a dimension (row) is <50 that row will not be shown; n/a (Not Available) - Not asked of a subset of respondents

Year: 2000-2004

Island	Yes			No			Estimated Population (5-yr Avg)
	#	%	C.I. (95%)	#	%	C.I. (95%)	#
Hawaii	60,300	54.8	53.0 - 56.6	49,700	45.2	43.4 - 47.0	110,000
Kauai	20,800	51.0	48.4 - 53.5	20,000	49.0	46.5 - 51.6	40,800
Lanai	1,400	55.5	49.2 - 61.7	1,100	44.5	38.3 - 50.8	2,500
Maui	42,700	50.2	47.8 - 52.7	42,400	49.8	47.3 - 52.2	85,100
Molokai	3,700	62.3	56.8 - 67.9	2,200	37.7	32.1 - 43.2	5,900
Oahu	324,300	51.2	49.9 - 52.4	309,600	48.8	47.6 - 50.1	634,000

Community	Yes			No			Estimated Population (5-yr Avg)
	#	%	C.I. (95%)	#	%	C.I. (95%)	#
Aiea/ Pearl City	30,700	51.6	47.5 - 55.8	28,800	48.4	44.2 - 52.5	59,500

Weight - overweight or obese by State, County, Island, Community, BRFSS Age Group, DOH Race-Ethnicity, Gender, Education Level, Employment Status (Grouped), Household Income, Poverty Level, Marital Status (Grouped), Married, Health Care Coverage, for the Year(s) - 2000-2004, 2001-2005, 2002-2006, 2003-2007, 2004-2008, 2005-2009, 2006-2010

Note: Weighted numbers (#) represent 5-yr averages, percentages and 95% confidence intervals; Respondents aged 18 years and older; n/r (Not Reportable) - If the unweighted total responses for a dimension (row) is <50 that row will not be shown; n/a (Not Available) - Not asked of a subset of respondents

Year: 2000-2004

Community	Yes			No			Estimated Population (5-yr Avg)
	#	%	C.I. (95%)	#	%	C.I. (95%)	#
Ala Moana	13,300	45.4	40.1 - 50.6	16,000	54.6	49.4 - 59.9	29,400
Hanalei/ Kapaa	8,400	49.4	45.6 - 53.2	8,600	50.6	46.8 - 54.4	17,000
Hilo	18,900	56.9	53.8 - 60.1	14,300	43.1	39.9 - 46.2	33,200
Kaaawa/ Kahaluu/ Kaneohe	25,000	60.3	55.6 - 65.1	16,400	39.7	34.9 - 44.4	41,400
Kahului	15,900	52.0	47.6 - 56.3	14,700	48.0	43.7 - 52.4	30,500
Kailua/ Waimanalo	24,600	53.1	48.9 - 57.3	21,800	46.9	42.7 - 51.1	46,400
Kaimuki/ Palolo/ Waikiki	27,900	44.2	40.5 - 48.0	35,200	55.8	52.0 - 59.5	63,100
Kona	15,100	52.9	49.5 - 56.4	13,400	47.1	43.6 - 50.5	28,500
Lahaina/ Wailuku	14,300	51.6	47.3 - 56.0	13,400	48.4	44.0 - 52.7	27,700
Lanai	1,400	55.5	49.2 - 61.7	1,100	44.5	38.3 - 50.8	2,500
Lihue-Waimea	12,400	52.1	48.7 - 55.4	11,400	47.9	44.6 - 51.3	23,800

Weight - overweight or obese by State, County, Island, Community, BRFSS Age Group, DOH Race-Ethnicity, Gender, Education Level, Employment Status (Grouped), Household Income, Poverty Level, Marital Status (Grouped), Married, Health Care Coverage, for the Year(s) - 2000-2004, 2001-2005, 2002-2006, 2003-2007, 2004-2008, 2005-2009, 2006-2010

Note: Weighted numbers (#) represent 5-yr averages, percentages and 95% confidence intervals; Respondents aged 18 years and older; n/r (Not Reportable) - If the unweighted total responses for a dimension (row) is <50 that row will not be shown; n/a (Not Available) - Not asked of a subset of respondents

Year: 2000-2004

Community	Yes			No			Estimated Population (5-yr Avg)
	#	%	C.I. (95%)	#	%	C.I. (95%)	#
Manoa/ Upper Makiki	23,700	45.4	41.3 - 49.6	28,500	54.6	50.4 - 58.7	52,200
Mililani/ Wahiawa	31,400	51.8	47.4 - 56.2	29,200	48.2	43.8 - 52.6	60,600
Molokai	3,700	62.3	56.8 - 67.9	2,200	37.7	32.1 - 43.2	5,900
Nanakuli/ Waianae	21,200	74.8	69.4 - 80.2	7,100	25.2	19.8 - 30.6	28,400
N.Hawaii	12,200	54.6	50.7 - 58.4	10,200	45.4	41.6 - 49.3	22,400
N.Shore/ Laie	11,700	53.4	46.8 - 60.0	10,200	46.6	40.0 - 53.2	22,000
Nuuanu/ Kalihi/ Moanalua	31,800	49.2	45.2 - 53.3	32,800	50.8	46.7 - 54.8	64,600
Puna/ Kau	14,100	54.4	50.4 - 58.4	11,900	45.6	41.6 - 49.6	26,000
Salt Lake/ Foster Village	19,700	53.2	48.3 - 58.1	17,400	46.8	41.9 - 51.7	37,100
Upcountry/ Hana	12,500	46.7	42.8 - 50.6	14,300	53.3	49.4 - 57.2	26,800
Waiialae/ Kahala/ Hawaii Kai	15,300	40.1	35.5 - 44.6	23,000	59.9	55.4 - 64.5	38,300

Weight - overweight or obese by State, County, Island, Community, BRFSS Age Group, DOH Race-Ethnicity, Gender, Education Level, Employment Status (Grouped), Household Income, Poverty Level, Marital Status (Grouped), Married, Health Care Coverage, for the Year(s) - 2000-2004, 2001-2005, 2002-2006, 2003-2007, 2004-2008, 2005-2009, 2006-2010

Note: Weighted numbers (#) represent 5-yr averages, percentages and 95% confidence intervals; Respondents aged 18 years and older; n/r (Not Reportable) - If the unweighted total responses for a dimension (row) is <50 that row will not be shown; n/a (Not Available) - Not asked of a subset of respondents

Year: 2000-2004

Community	Yes			No			Estimated Population (5-yr Avg)
	#	%	C.I. (95%)	#	%	C.I. (95%)	#
Waipahu/ Kapolei/ Ewa	47,800	52.5	48.9 - 56.1	43,200	47.5	43.9 - 51.1	91,000

Weight - overweight or obese by State, County, Island, Community, BRFSS Age Group, DOH Race-Ethnicity, Gender, Education Level, Employment Status (Grouped), Household Income, Poverty Level, Marital Status (Grouped), Married, Health Care Coverage, for the Year(s) - 2000-2004, 2001-2005, 2002-2006, 2003-2007, 2004-2008, 2005-2009, 2006-2010

Note: Weighted numbers (#) represent 5-yr averages, percentages and 95% confidence intervals; Respondents aged 18 years and older; n/r (Not Reportable) - If the unweighted total responses for a dimension (row) is <50 that row will not be shown; n/a (Not Available) - Not asked of a subset of respondents

Year: 2000-2004

BRFSS Age Group	Yes			No			Estimated Population (5-yr Avg)
	#	%	C.I. (95%)	#	%	C.I. (95%)	#
18-24	42,700	40.0	36.5 - 43.4	64,100	60.0	56.6 - 63.5	106,700
25-34	85,400	52.6	50.3 - 55.0	76,800	47.4	45.0 - 49.7	162,200
35-44	97,400	55.1	53.0 - 57.1	79,500	44.9	42.9 - 47.0	177,000
45-54	92,500	57.3	55.2 - 59.3	69,000	42.7	40.7 - 44.8	161,500
55-64	67,200	58.1	55.6 - 60.6	48,500	41.9	39.4 - 44.4	115,700
65-74	43,100	51.3	48.4 - 54.2	40,900	48.7	45.8 - 51.6	84,000
75+	23,800	35.2	32.1 - 38.2	43,800	64.8	61.8 - 67.9	67,600

Weight - overweight or obese by State, County, Island, Community, BRFSS Age Group, DOH Race-Ethnicity, Gender, Education Level, Employment Status (Grouped), Household Income, Poverty Level, Marital Status (Grouped), Married, Health Care Coverage, for the Year(s) - 2000-2004, 2001-2005, 2002-2006, 2003-2007, 2004-2008, 2005-2009, 2006-2010

Note: Weighted numbers (#) represent 5-yr averages, percentages and 95% confidence intervals; Respondents aged 18 years and older; n/r (Not Reportable) - If the unweighted total responses for a dimension (row) is <50 that row will not be shown; n/a (Not Available) - Not asked of a subset of respondents

Year: 2000-2004

DOH Race-Ethnicity	Yes			No			Estimated Population (5-yr Avg)
	#	%	C.I. (95%)	#	%	C.I. (95%)	#
Caucasian	149,800	50.5	49.0 - 52.0	146,900	49.5	48.0 - 51.0	296,700
Native Hawaiian	79,000	70.6	68.1 - 73.1	32,900	29.4	26.9 - 31.9	111,900
Chinese	25,200	40.2	36.6 - 43.8	37,500	59.8	56.2 - 63.4	62,600
Filipino	62,500	46.7	43.8 - 49.5	71,500	53.3	50.5 - 56.2	134,000
Japanese	83,600	46.1	44.0 - 48.2	97,700	53.9	51.8 - 56.0	181,300
Black	7,500	55.8	48.4 - 63.2	6,000	44.2	36.8 - 51.6	13,500
Native Alaskan/ American Indian	2,200	53.1	38.7 - 67.6	1,900	46.9	32.4 - 61.3	4,100
Other Asian	7,000	34.7	28.0 - 41.5	13,100	65.3	58.5 - 72.0	20,000
Other Pacific Islander	15,000	86.2	80.5 - 92.0	2,400	13.8	8.0 - 19.5	17,400
Mixed Ethnicity	2,300	51.8	41.9 - 61.6	2,100	48.3	38.4 - 58.1	4,400
Other	14,900	60.6	55.2 - 65.9	9,700	39.4	34.1 - 44.8	24,600

Weight - overweight or obese by State, County, Island, Community, BRFSS Age Group, DOH Race-Ethnicity, Gender, Education Level, Employment Status (Grouped), Household Income, Poverty Level, Marital Status (Grouped), Married, Health Care Coverage, for the Year(s) - 2000-2004, 2001-2005, 2002-2006, 2003-2007, 2004-2008, 2005-2009, 2006-2010

Note: Weighted numbers (#) represent 5-yr averages, percentages and 95% confidence intervals; Respondents aged 18 years and older; n/r (Not Reportable) - If the unweighted total responses for a dimension (row) is <50 that row will not be shown; n/a (Not Available) - Not asked of a subset of respondents

Year: 2000-2004

Gender	Yes			No			Estimated Population (5-yr Avg)
	#	%	C.I. (95%)	#	%	C.I. (95%)	#
Male	275,000	62.2	60.7 - 63.6	167,200	37.8	36.4 - 39.3	442,200
Female	178,200	40.9	39.6 - 42.1	257,900	59.1	57.9 - 60.4	436,100

Education Level	Yes			No			Estimated Population (5-yr Avg)
	#	%	C.I. (95%)	#	%	C.I. (95%)	#
Never attended school/ Only Kindergarten to Grades 8	7,400	48.2	41.9 - 54.5	8,000	51.8	45.5 - 58.1	15,400
Grades 9 thru 11 (Some High School)	19,300	53.0	47.8 - 58.2	17,100	47.0	41.8 - 52.2	36,400
Grades 12 or GED (High School Grad)	159,200	56.1	54.3 - 57.8	124,700	43.9	42.2 - 45.7	283,900
College 1 to 3 years (Some College/ Tech)	135,400	51.5	49.6 - 53.3	127,700	48.5	46.7 - 50.4	263,100
College 4 years or more (College Grad)	131,600	47.3	45.6 - 48.9	146,900	52.7	51.1 - 54.4	278,500

Weight - overweight or obese by State, County, Island, Community, BRFSS Age Group, DOH Race-Ethnicity, Gender, Education Level, Employment Status (Grouped), Household Income, Poverty Level, Marital Status (Grouped), Married, Health Care Coverage, for the Year(s) - 2000-2004, 2001-2005, 2002-2006, 2003-2007, 2004-2008, 2005-2009, 2006-2010

Note: Weighted numbers (#) represent 5-yr averages, percentages and 95% confidence intervals; Respondents aged 18 years and older; n/r (Not Reportable) - If the unweighted total responses for a dimension (row) is <50 that row will not be shown; n/a (Not Available) - Not asked of a subset of respondents

Year: 2000-2004

Employment Status (Grouped)	Yes			No			Estimated Population (5-yr Avg)
	#	%	C.I. (95%)	#	%	C.I. (95%)	#
Employed	313,900	54.4	53.2 - 55.6	263,200	45.6	44.4 - 46.8	577,100
Unemployed	17,100	56.8	51.3 - 62.3	13,000	43.2	37.7 - 48.7	30,100
Retired/Unable to work	86,500	47.3	45.3 - 49.3	96,400	52.7	50.7 - 54.7	183,000
Student/Homemaker	35,600	40.7	37.5 - 43.9	51,900	59.3	56.1 - 62.5	87,400

Weight - overweight or obese by State, County, Island, Community, BRFSS Age Group, DOH Race-Ethnicity, Gender, Education Level, Employment Status (Grouped), Household Income, Poverty Level, Marital Status (Grouped), Married, Health Care Coverage, for the Year(s) - 2000-2004, 2001-2005, 2002-2006, 2003-2007, 2004-2008, 2005-2009, 2006-2010

Note: Weighted numbers (#) represent 5-yr averages, percentages and 95% confidence intervals; Respondents aged 18 years and older; n/r (Not Reportable) - If the unweighted total responses for a dimension (row) is <50 that row will not be shown; n/a (Not Available) - Not asked of a subset of respondents

Year: 2000-2004

Household Income	Yes			No			Estimated Population (5-yr Avg)
	#	%	C.I. (95%)	#	%	C.I. (95%)	#
Less than \$10,000	17,100	49.1	44.8 - 53.5	17,700	50.9	46.5 - 55.2	34,800
\$10,000 to \$14,999	19,000	48.5	44.4 - 52.7	20,100	51.5	47.3 - 55.6	39,100
\$15,000 to \$19,999	21,900	50.6	46.0 - 55.2	21,300	49.4	44.8 - 54.0	43,200
\$20,000 to \$24,999	31,000	54.4	50.5 - 58.3	26,000	45.6	41.7 - 49.5	57,100
\$25,000 to \$34,999	48,500	52.0	49.0 - 55.0	44,700	48.0	45.0 - 51.0	93,200
\$35,000 to \$49,999	70,100	51.5	49.0 - 54.0	66,100	48.5	46.0 - 51.0	136,300
\$50,000 to \$74,999	83,100	53.5	50.9 - 56.1	72,200	46.5	43.9 - 49.1	155,200
\$75,000 or more	79,100	53.3	50.8 - 55.7	69,400	46.7	44.3 - 49.2	148,600

Weight - overweight or obese by State, County, Island, Community, BRFSS Age Group, DOH Race-Ethnicity, Gender, Education Level, Employment Status (Grouped), Household Income, Poverty Level, Marital Status (Grouped), Married, Health Care Coverage, for the Year(s) - 2000-2004, 2001-2005, 2002-2006, 2003-2007, 2004-2008, 2005-2009, 2006-2010

Note: Weighted numbers (#) represent 5-yr averages, percentages and 95% confidence intervals; Respondents aged 18 years and older; n/r (Not Reportable) - If the unweighted total responses for a dimension (row) is <50 that row will not be shown; n/a (Not Available) - Not asked of a subset of respondents

Year: 2000-2004

Poverty Level	Yes			No			Estimated Population (5-yr Avg)
	#	%	C.I. (95%)	#	%	C.I. (95%)	#
0-130%	76,000	52.7	50.1 - 55.4	68,200	47.3	44.6 - 49.9	144,200
131-185%	52,700	54.0	50.7 - 57.4	44,800	46.0	42.6 - 49.3	97,600
186+%	241,000	51.7	50.4 - 53.1	224,700	48.3	46.9 - 49.6	465,700

Marital Status (Grouped)	Yes			No			Estimated Population (5-yr Avg)
	#	%	C.I. (95%)	#	%	C.I. (95%)	#
Married	272,200	53.5	52.2 - 54.7	236,700	46.5	45.3 - 47.8	508,900
Unmarried Couple	8,300	51.1	44.0 - 58.2	7,900	48.9	41.8 - 56.0	16,200
Widowed	22,800	42.9	39.4 - 46.4	30,400	57.1	53.6 - 60.6	53,200
Other	149,900	50.0	48.2 - 51.7	150,100	50.0	48.3 - 51.8	300,000

Weight - overweight or obese by State, County, Island, Community, BRFSS Age Group, DOH Race-Ethnicity, Gender, Education Level, Employment Status (Grouped), Household Income, Poverty Level, Marital Status (Grouped), Married, Health Care Coverage, for the Year(s) - 2000-2004, 2001-2005, 2002-2006, 2003-2007, 2004-2008, 2005-2009, 2006-2010

Note: Weighted numbers (#) represent 5-yr averages, percentages and 95% confidence intervals; Respondents aged 18 years and older; n/r (Not Reportable) - If the unweighted total responses for a dimension (row) is <50 that row will not be shown; n/a (Not Available) - Not asked of a subset of respondents

Year: 2000-2004

Married	Yes			No			Estimated Population (5-yr Avg)
	#	%	C.I. (95%)	#	%	C.I. (95%)	#
Yes	279,500	53.7	52.4 - 54.9	241,200	46.3	45.1 - 47.6	520,700
No	173,200	48.6	47.0 - 50.1	183,300	51.4	49.9 - 53.0	356,500

Health Care Coverage	Yes			No			Estimated Population (5-yr Avg)
	#	%	C.I. (95%)	#	%	C.I. (95%)	#
Yes	418,200	51.9	50.9 - 52.9	387,700	48.1	47.1 - 49.1	806,000
No	34,400	48.8	45.1 - 52.4	36,200	51.2	47.6 - 54.9	70,600