

## Forced Sex or Questionable Consent in Hawaii, by County

### Forced Sex or Questionable Consent in Hawaii, by School Type, County, Gender, Grade Level, and DOH Race-Ethnicity, for the Years 2011 - 2015

*Note: Hawaii County High School data is not available in 2011. Kauai county had no Native Alaskan/ American Indian respondents for 2013.*

*Below are the indicators included in this report and the long description for each indicator.*

| Health Indicator                           | Health Indicator Description  |
|--|---|
| Forced to have sexual intercourse ever     | Students who have ever been physically forced to have sexual intercourse when they did not want to  |
| Sex intercourse - before age 13            | Students who had sexual intercourse for the first time before age 13  |
| Forced to do sexual things, past 12 months | Students who have been forced by someone they were dating or going out with to do unwanted sexual things during the past 12 months (Including kissing, touching, or being physically forced to have sexual intercourse) |

*Suggested citation:*

*Hawaii Health Data Warehouse, State of Hawaii, Hawaii School Health Survey: Youth Risk Behavior Survey Module, (report title and years), Report Created: 7/27/16*

*For documentation on other terms and coding in this report, please go to the following links:*

[Click here to access YRBS documentation](#)

[Click here to access Race-Ethnicity coding](#)

[Click here to access Hawai'i Data Guide](#)

*For questions about this report, please contact The Hawaii Health Data Warehouse*

[profiles@hhdw.org](mailto:profiles@hhdw.org)

**(855) 946-5899 x 15**

## Forced Sex or Questionable Consent in Hawaii, by School Type, by State and County, for the Years 2011 - 2015

*Note: Weighted percentages, positive responses only, 95% confidence interval; n/r (Not Reportable) - Total unweighted responses less than 100; Hawaii County High School data is not available in 2011*

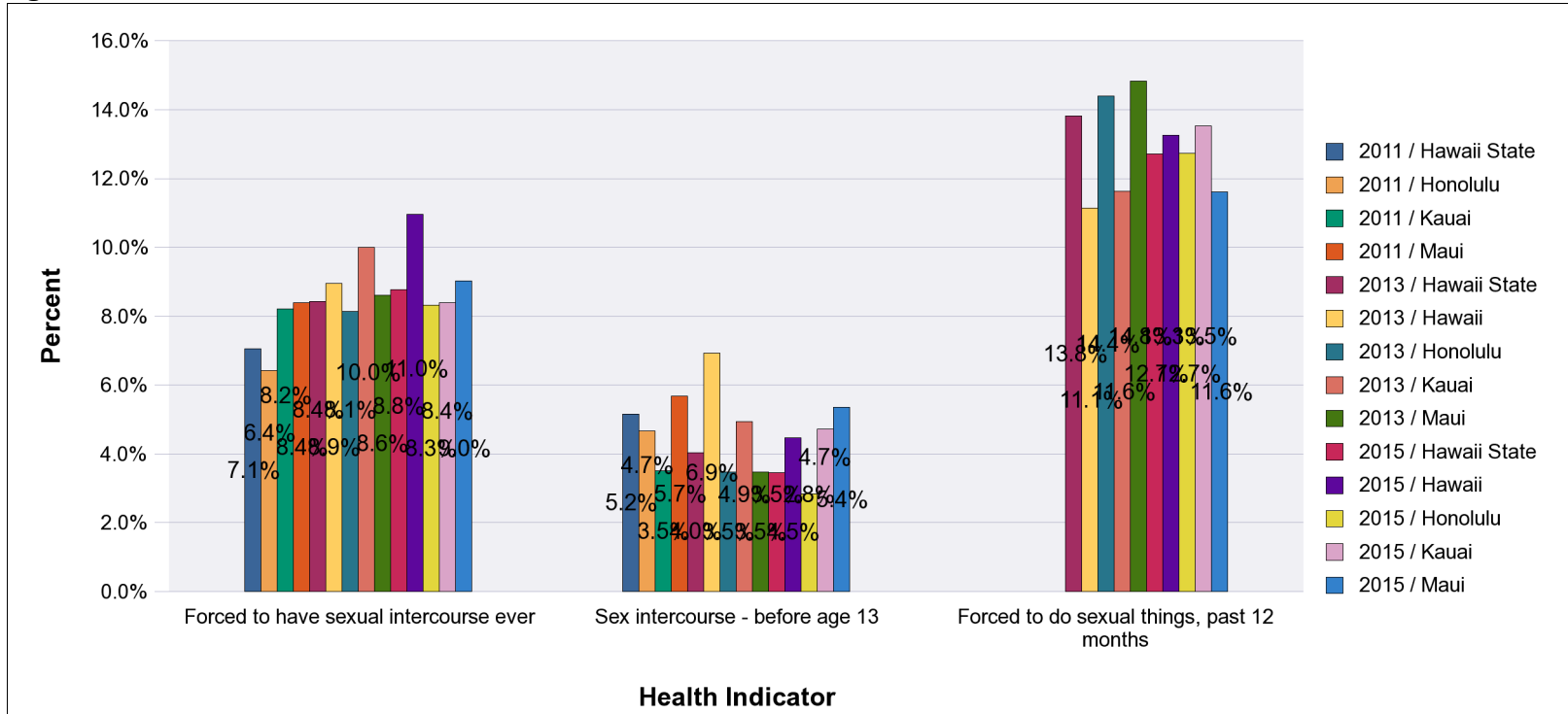
### **High Schools**

|  |      | Hawaii State | Hawaii | Honolulu | Kauai | Maui  |
|--|------|--------------|--------|----------|-------|-------|
| Forced to have sexual intercourse ever     | 2011 | 7.1%         | n/a    | 6.4%     | 8.2%  | 8.4%  |
|  | 2013 | 8.4%         | 8.9%   | 8.1%     | 10.0% | 8.6%  |
|  | 2015 | 8.8%         | 11.0%  | 8.3%     | 8.4%  | 9.0%  |
| Sex intercourse - before age 13            | 2011 | 5.2%         | n/a    | 4.7%     | 3.5%  | 5.7%  |
|  | 2013 | 4.0%         | 6.9%   | 3.5%     | 4.9%  | 3.5%  |
|  | 2015 | 3.5%         | 4.5%   | 2.8%     | 4.7%  | 5.4%  |
| Forced to do sexual things, past 12 months | 2013 | 13.8%        | 11.1%  | 14.4%    | 11.6% | 14.8% |
|  | 2015 | 12.7%        | 13.3%  | 12.7%    | 13.5% | 11.6% |

# Forced Sex or Questionable Consent in Hawaii, by School Type, by State and County, for the Years 2011 - 2015

Note: Weighted percentages, positive responses only, 95% confidence interval; n/r (Not Reportable) - Total unweighted responses less than 100; Hawaii County High School data is not available in 2011

## High Schools



## Forced Sex or Questionable Consent in Hawaii, by School Type, by State and County, for the Years 2011 - 2015

*Note: Weighted percentages, positive responses only, 95% confidence interval; n/r (Not Reportable) - Total unweighted responses less than 100; Hawaii County High School data is not available in 2011*

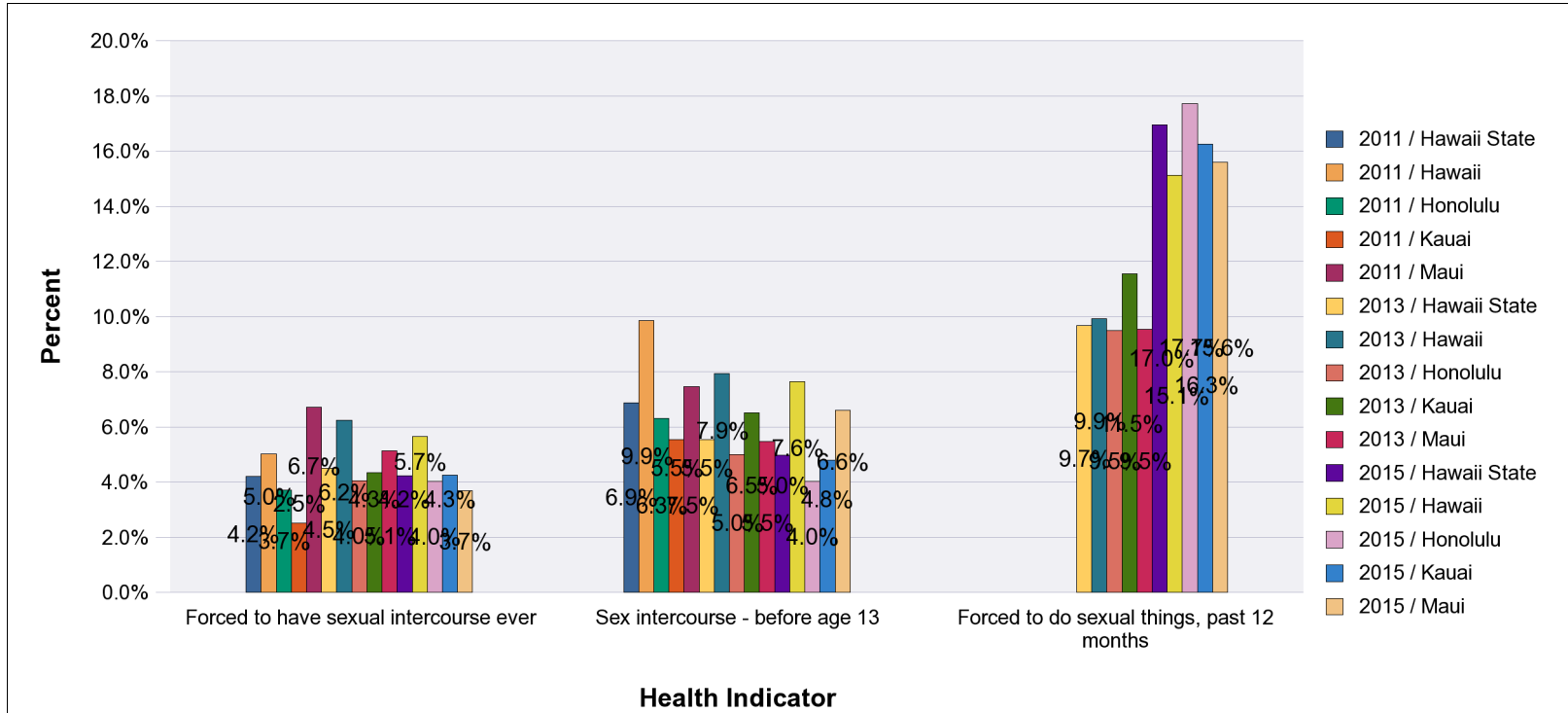
### Middle Schools

|  |      | Hawaii State | Hawaii | Honolulu | Kauai | Maui  |
|--|------|--------------|--------|----------|-------|-------|
| Forced to have sexual intercourse ever     | 2011 | 4.2%         | 5.0%   | 3.7%     | 2.5%  | 6.7%  |
|  | 2013 | 4.5%         | 6.2%   | 4.0%     | 4.3%  | 5.1%  |
|  | 2015 | 4.2%         | 5.7%   | 4.0%     | 4.3%  | 3.7%  |
| Sex intercourse - before age 13            | 2011 | 6.9%         | 9.9%   | 6.3%     | 5.5%  | 7.5%  |
|  | 2013 | 5.5%         | 7.9%   | 5.0%     | 6.5%  | 5.5%  |
|  | 2015 | 5.0%         | 7.6%   | 4.0%     | 4.8%  | 6.6%  |
| Forced to do sexual things, past 12 months | 2013 | 9.7%         | 9.9%   | 9.5%     | 11.5% | 9.5%  |
|  | 2015 | 17.0%        | 15.1%  | 17.7%    | 16.3% | 15.6% |

# Forced Sex or Questionable Consent in Hawaii, by School Type, by State and County, for the Years 2011 - 2015

Note: Weighted percentages, positive responses only, 95% confidence interval; n/r (Not Reportable) - Total unweighted responses less than 100; Hawaii County High School data is not available in 2011

## Middle Schools



## Forced Sex or Questionable Consent in Hawaii, by School Type and County, by Gender, Grade Level, and DOH Race-Ethnicity, for the Years 2011 - 2015

*Note: Weighted counts rounded to nearest 100, weighted percentages, positive responses only, 95% confidence interval; n/r (Not Reportable) - Total unweighted responses less than 100; Hawaii County High School data is not available in 2011*

### High Schools

**Year: 2015**

#### **Forced to have sexual intercourse ever**

| State         | Hawaii |       |            | Honolulu |      |           | Kauai |      |            | Maui |      |            |
|---------------|--------|-------|------------|----------|------|-----------|-------|------|------------|------|------|------------|
|               | #      | %     | CI         | #        | %    | CI        | #     | %    | CI         | #    | %    | CI         |
| <b>Totals</b> | 600    | 11.0% | 8.9 - 13.0 | 2,300    | 8.3% | 7.0 - 9.6 | 200   | 8.4% | 6.7 - 10.1 | 500  | 9.0% | 7.4 - 10.7 |

| Gender        | Hawaii |       |             | Honolulu |       |            | Kauai |      |            | Maui |       |            |
|---------------|--------|-------|-------------|----------|-------|------------|-------|------|------------|------|-------|------------|
|               | #      | %     | CI          | #        | %     | CI         | #     | %    | CI         | #    | %     | CI         |
| <b>Male</b>   | 200    | 7.7%  | 4.9 - 10.5  | 900      | 6.1%  | 4.5 - 7.8  | 100   | 7.4% | 5.1 - 9.7  | 200  | 6.7%  | 4.6 - 8.7  |
| <b>Female</b> | 400    | 14.0% | 10.5 - 17.6 | 1,500    | 10.5% | 8.0 - 13.0 | 100   | 9.4% | 6.6 - 12.2 | 300  | 10.7% | 8.2 - 13.2 |

| Grade Level       | Hawaii |       |             | Honolulu |      |            | Kauai |       |            | Maui |      |            |
|-------------------|--------|-------|-------------|----------|------|------------|-------|-------|------------|------|------|------------|
|                   | #      | %     | CI          | #        | %    | CI         | #     | %     | CI         | #    | %    | CI         |
| <b>9th Grade</b>  | 100    | 9.4%  | 5.3 - 13.5  | 500      | 6.6% | 4.9 - 8.4  | 100   | 10.3% | 6.9 - 13.7 | 100  | 8.4% | 4.8 - 12.0 |
| <b>10th Grade</b> | 100    | 6.1%  | 3.1 - 9.0   | 700      | 9.6% | 6.9 - 12.2 | <50   | 5.4%  | 2.8 - 7.9  | 100  | 9.1% | 5.6 - 12.7 |
| <b>11th Grade</b> | 100    | 10.6% | 7.5 - 13.7  | 500      | 7.4% | 3.8 - 10.9 | 100   | 9.7%  | 5.6 - 13.9 | 100  | 8.4% | 4.9 - 12.0 |
| <b>12th Grade</b> | 200    | 17.7% | 13.3 - 22.2 | 600      | 9.8% | 5.7 - 13.9 | <50   | 8.4%  | 4.2 - 12.5 | 100  | 9.0% | 6.1 - 12.0 |

## Forced Sex or Questionable Consent in Hawaii, by School Type and County, by Gender, Grade Level, and DOH Race-Ethnicity, for the Years 2011 - 2015

*Note: Weighted counts rounded to nearest 100, weighted percentages, positive responses only, 95% confidence interval;  
n/r (Not Reportable) - Total unweighted responses less than 100; Hawaii County High School data is not available in 2011*

### High Schools

**Year: 2015**

### **Forced to have sexual intercourse ever**

| DOH Race-Ethnicity              | Hawaii |       |            | Honolulu |       |            | Kauai |       |            | Maui |       |            |
|---------------------------------|--------|-------|------------|----------|-------|------------|-------|-------|------------|------|-------|------------|
|                                 | #      | %     | CI         | #        | %     | CI         | #     | %     | CI         | #    | %     | CI         |
| Caucasian                       | 100    | 6.9%  | 1.5 - 12.4 | 200      | 6.2%  | 3.4 - 9.1  | <50   | 6.4%  | 2.7 - 10.2 | 100  | 6.0%  | 1.3 - 10.7 |
| Native Hawaiian                 | 200    | 12.9% | 9.3 - 16.4 | 600      | 11.2% | 8.6 - 13.7 | 100   | 10.1% | 6.5 - 13.7 | 100  | 9.3%  | 6.2 - 12.4 |
| Filipino                        | 100    | 11.6% | 6.2 - 17.0 | 700      | 8.5%  | 5.6 - 11.5 | <50   | 6.2%  | 3.1 - 9.3  | 100  | 8.2%  | 5.3 - 11.1 |
| Japanese                        | n/r    | n/r   | n/r        | 200      | 5.0%  | 2.1 - 7.9  | n/r   | n/r   | n/r        | n/r  | n/r   | n/r        |
| Black                           | n/r    | n/r   | n/r        | n/r      | n/r   | n/r        | n/r   | n/r   | n/r        | n/r  | n/r   | n/r        |
| Native Alaskan/ American Indian | n/r    | n/r   | n/r        | n/r      | n/r   | n/r        | n/r   | n/r   | n/r        | n/r  | n/r   | n/r        |
| Other Asian                     | n/r    | n/r   | n/r        | 100      | 7.8%  | 3.7 - 12.0 | n/r   | n/r   | n/r        | n/r  | n/r   | n/r        |
| Other Pacific Islander          | n/r    | n/r   | n/r        | n/r      | n/r   | n/r        | n/r   | n/r   | n/r        | n/r  | n/r   | n/r        |
| Other                           | 100    | 11.5% | 7.5 - 15.5 | 400      | 8.6%  | 6.6 - 10.5 | <50   | 10.2% | 6.6 - 13.7 | 100  | 12.0% | 8.7 - 15.3 |

## Forced Sex or Questionable Consent in Hawaii, by School Type and County, by Gender, Grade Level, and DOH Race-Ethnicity, for the Years 2011 - 2015

*Note: Weighted counts rounded to nearest 100, weighted percentages, positive responses only, 95% confidence interval; n/r (Not Reportable) - Total unweighted responses less than 100; Hawaii County High School data is not available in 2011*

### High Schools

**Year: 2015**

#### Sex intercourse - before age 13

| State         | Hawaii |      |           | Honolulu |      |           | Kauai |      |           | Maui |      |           |
|---------------|--------|------|-----------|----------|------|-----------|-------|------|-----------|------|------|-----------|
|               | #      | %    | CI        | #        | %    | CI        | #     | %    | CI        | #    | %    | CI        |
| <b>Totals</b> | 200    | 4.5% | 3.2 - 5.7 | 700      | 2.8% | 2.0 - 3.7 | 100   | 4.7% | 3.3 - 6.2 | 200  | 5.4% | 3.7 - 7.0 |

| Gender        | Hawaii |      |           | Honolulu |      |           | Kauai |      |           | Maui |      |            |
|---------------|--------|------|-----------|----------|------|-----------|-------|------|-----------|------|------|------------|
|               | #      | %    | CI        | #        | %    | CI        | #     | %    | CI        | #    | %    | CI         |
| <b>Male</b>   | 100    | 5.7% | 3.0 - 8.4 | 400      | 3.5% | 2.4 - 4.6 | <50   | 4.9% | 2.8 - 7.1 | 200  | 7.6% | 4.9 - 10.3 |
| <b>Female</b> | 100    | 3.2% | 1.5 - 4.8 | 300      | 2.1% | 1.0 - 3.2 | <50   | 4.3% | 2.4 - 6.3 | 100  | 3.3% | 1.9 - 4.7  |

| Grade Level       | Hawaii |      |           | Honolulu |      |           | Kauai |      |           | Maui |      |            |
|-------------------|--------|------|-----------|----------|------|-----------|-------|------|-----------|------|------|------------|
|                   | #      | %    | CI        | #        | %    | CI        | #     | %    | CI        | #    | %    | CI         |
| <b>9th Grade</b>  | 100    | 5.0% | 2.0 - 8.0 | 200      | 2.3% | 0.5 - 4.0 | <50   | 5.4% | 2.1 - 8.7 | 100  | 4.7% | 2.3 - 7.2  |
| <b>10th Grade</b> | <50    | 3.2% | 0.8 - 5.6 | 300      | 5.0% | 2.9 - 7.1 | <50   | 4.2% | 1.6 - 6.7 | 100  | 6.8% | 4.3 - 9.4  |
| <b>11th Grade</b> | <50    | 3.4% | 1.5 - 5.3 | 100      | 1.0% | 0.1 - 1.8 | <50   | 4.7% | 1.3 - 8.1 | <50  | 3.2% | 0.7 - 5.7  |
| <b>12th Grade</b> | 100    | 4.6% | 1.3 - 8.0 | 100      | 2.5% | 1.0 - 4.0 | <50   | 4.5% | 1.9 - 7.2 | 100  | 6.2% | 1.5 - 10.9 |



## Forced Sex or Questionable Consent in Hawaii, by School Type and County, by Gender, Grade Level, and DOH Race-Ethnicity, for the Years 2011 - 2015

*Note: Weighted counts rounded to nearest 100, weighted percentages, positive responses only, 95% confidence interval;  
n/r (Not Reportable) - Total unweighted responses less than 100; Hawaii County High School data is not available in 2011*

### High Schools

**Year: 2015**

### **Sex intercourse - before age 13**

| DOH Race-Ethnicity              | Hawaii |      |            | Honolulu |      |           | Kauai |      |            | Maui |      |            |
|---------------------------------|--------|------|------------|----------|------|-----------|-------|------|------------|------|------|------------|
|                                 | #      | %    | CI         | #        | %    | CI        | #     | %    | CI         | #    | %    | CI         |
| Caucasian                       | n/r    | n/r  | n/r        | <50      | 0.8% | 0.0 - 1.7 | <50   | 2.4% | 0.0 - 5.1  | <50  | 5.3% | 1.3 - 9.3  |
| Native Hawaiian                 | 100    | 4.5% | 1.8 - 7.1  | 200      | 5.0% | 2.6 - 7.5 | <50   | 4.1% | 1.7 - 6.4  | 100  | 7.2% | 4.5 - 10.0 |
| Filipino                        | n/r    | n/r  | n/r        | 200      | 2.9% | 0.5 - 5.3 | <50   | 4.7% | 1.4 - 8.0  | 100  | 4.0% | 1.6 - 6.4  |
| Japanese                        | n/r    | n/r  | n/r        | <50      | 1.0% | 0.0 - 3.0 | n/r   | n/r  | n/r        | n/r  | n/r  | n/r        |
| Black                           | n/r    | n/r  | n/r        | n/r      | n/r  | n/r       | n/r   | n/r  | n/r        | n/r  | n/r  | n/r        |
| Native Alaskan/ American Indian | n/r    | n/r  | n/r        | n/r      | n/r  | n/r       | n/r   | n/r  | n/r        | n/r  | n/r  | n/r        |
| Other Asian                     | n/r    | n/r  | n/r        | <50      | 1.1% | 0.0 - 2.6 | n/r   | n/r  | n/r        | n/r  | n/r  | n/r        |
| Other Pacific Islander          | n/r    | n/r  | n/r        | n/r      | n/r  | n/r       | n/r   | n/r  | n/r        | n/r  | n/r  | n/r        |
| Other                           | 100    | 7.6% | 4.3 - 10.8 | 200      | 3.5% | 1.7 - 5.2 | <50   | 8.2% | 5.1 - 11.2 | <50  | 5.7% | 3.2 - 8.3  |

## Forced Sex or Questionable Consent in Hawaii, by School Type and County, by Gender, Grade Level, and DOH Race-Ethnicity, for the Years 2011 - 2015

*Note: Weighted counts rounded to nearest 100, weighted percentages, positive responses only, 95% confidence interval; n/r (Not Reportable) - Total unweighted responses less than 100; Hawaii County High School data is not available in 2011*

### High Schools

**Year: 2015**

#### **Forced to do sexual things, past 12 months**

| State         | Hawaii |       |             | Honolulu |       |             | Kauai |       |             | Maui |       |            |
|---------------|--------|-------|-------------|----------|-------|-------------|-------|-------|-------------|------|-------|------------|
|               | #      | %     | CI          | #        | %     | CI          | #     | %     | CI          | #    | %     | CI         |
| <b>Totals</b> | 400    | 13.3% | 10.8 - 15.7 | 1,900    | 12.7% | 10.1 - 15.4 | 200   | 13.5% | 10.5 - 16.5 | 300  | 11.6% | 9.0 - 14.2 |

| Gender        | Hawaii |       |             | Honolulu |       |             | Kauai |       |             | Maui |       |            |
|---------------|--------|-------|-------------|----------|-------|-------------|-------|-------|-------------|------|-------|------------|
|               | #      | %     | CI          | #        | %     | CI          | #     | %     | CI          | #    | %     | CI         |
| <b>Male</b>   | 100    | 9.3%  | 5.7 - 12.9  | 600      | 8.5%  | 5.9 - 11.2  | 100   | 10.7% | 6.5 - 14.9  | 100  | 9.5%  | 6.0 - 13.0 |
| <b>Female</b> | 300    | 15.7% | 12.2 - 19.1 | 1,200    | 15.8% | 11.5 - 20.1 | 100   | 15.5% | 10.7 - 20.3 | 200  | 12.5% | 8.5 - 16.4 |

| Grade Level       | Hawaii |       |            | Honolulu |       |             | Kauai |       |            | Maui |       |            |
|-------------------|--------|-------|------------|----------|-------|-------------|-------|-------|------------|------|-------|------------|
|                   | #      | %     | CI         | #        | %     | CI          | #     | %     | CI         | #    | %     | CI         |
| <b>9th Grade</b>  | 100    | 12.4% | 7.4 - 17.4 | 400      | 10.9% | 6.8 - 14.9  | <50   | 14.6% | 8.9 - 20.3 | 100  | 14.8% | 8.7 - 20.9 |
| <b>10th Grade</b> | 100    | 11.6% | 7.7 - 15.6 | 600      | 17.9% | 12.1 - 23.7 | <50   | 10.0% | 5.6 - 14.4 | 100  | 12.4% | 5.9 - 19.0 |
| <b>11th Grade</b> | 100    | 13.6% | 8.9 - 18.3 | 500      | 13.7% | 8.9 - 18.6  | <50   | 14.8% | 7.7 - 21.8 | <50  | 6.5%  | 2.7 - 10.2 |
| <b>12th Grade</b> | 100    | 13.1% | 8.2 - 17.9 | 300      | 8.5%  | 4.8 - 12.3  | 100   | 14.2% | 8.9 - 19.4 | 100  | 12.1% | 7.9 - 16.4 |

## Forced Sex or Questionable Consent in Hawaii, by School Type and County, by Gender, Grade Level, and DOH Race-Ethnicity, for the Years 2011 - 2015

*Note: Weighted counts rounded to nearest 100, weighted percentages, positive responses only, 95% confidence interval;  
n/r (Not Reportable) - Total unweighted responses less than 100; Hawaii County High School data is not available in 2011*

### High Schools

**Year: 2015**

### **Forced to do sexual things, past 12 months**

| DOH Race-Ethnicity              | Hawaii |       |             | Honolulu |       |             | Kauai |       |             | Maui |       |            |
|---------------------------------|--------|-------|-------------|----------|-------|-------------|-------|-------|-------------|------|-------|------------|
|                                 | #      | %     | CI          | #        | %     | CI          | #     | %     | CI          | #    | %     | CI         |
| Caucasian                       | n/r    | n/r   | n/r         | n/r      | n/r   | n/r         | n/r   | n/r   | n/r         | n/r  | n/r   | n/r        |
| Native Hawaiian                 | 200    | 13.4% | 9.3 - 17.6  | 400      | 14.3% | 7.7 - 20.8  | 100   | 13.2% | 7.8 - 18.6  | 100  | 13.8% | 9.5 - 18.0 |
| Filipino                        | n/r    | n/r   | n/r         | 700      | 18.3% | 12.7 - 23.8 | <50   | 9.2%  | 2.4 - 16.1  | 100  | 10.5% | 5.0 - 15.9 |
| Japanese                        | n/r    | n/r   | n/r         | n/r      | n/r   | n/r         | n/r   | n/r   | n/r         | n/r  | n/r   | n/r        |
| Black                           | n/r    | n/r   | n/r         | n/r      | n/r   | n/r         | n/r   | n/r   | n/r         | n/r  | n/r   | n/r        |
| Native Alaskan/ American Indian | n/r    | n/r   | n/r         | n/r      | n/r   | n/r         | n/a   | n/a   | n/a         | n/r  | n/r   | n/r        |
| Other Asian                     | n/r    | n/r   | n/r         | n/r      | n/r   | n/r         | n/r   | n/r   | n/r         | n/r  | n/r   | n/r        |
| Other Pacific Islander          | n/r    | n/r   | n/r         | n/r      | n/r   | n/r         | n/r   | n/r   | n/r         | n/r  | n/r   | n/r        |
| Other                           | 100    | 16.2% | 11.8 - 20.6 | 400      | 14.2% | 11.2 - 17.2 | <50   | 15.3% | 10.2 - 20.3 | <50  | 11.4% | 7.0 - 15.8 |

## Forced Sex or Questionable Consent in Hawaii, by School Type and County, by Gender, Grade Level, and DOH Race-Ethnicity, for the Years 2011 - 2015

*Note: Weighted counts rounded to nearest 100, weighted percentages, positive responses only, 95% confidence interval; n/r (Not Reportable) - Total unweighted responses less than 100; Hawaii County High School data is not available in 2011*

### High Schools

**Year: 2013**

#### Forced to have sexual intercourse ever

| State         | Hawaii |      |            | Honolulu |      |           | Kauai |       |            | Maui |      |            |
|---------------|--------|------|------------|----------|------|-----------|-------|-------|------------|------|------|------------|
|               | #      | %    | CI         | #        | %    | CI        | #     | %     | CI         | #    | %    | CI         |
| <b>Totals</b> | 500    | 8.9% | 6.9 - 11.0 | 2,300    | 8.1% | 6.6 - 9.7 | 200   | 10.0% | 7.5 - 12.5 | 500  | 8.6% | 6.7 - 10.5 |

| Gender        | Hawaii |       |            | Honolulu |       |            | Kauai |       |            | Maui |      |            |
|---------------|--------|-------|------------|----------|-------|------------|-------|-------|------------|------|------|------------|
|               | #      | %     | CI         | #        | %     | CI         | #     | %     | CI         | #    | %    | CI         |
| <b>Male</b>   | 200    | 5.5%  | 2.7 - 8.3  | 700      | 5.1%  | 3.0 - 7.1  | 100   | 6.9%  | 3.4 - 10.3 | 200  | 7.6% | 5.1 - 10.1 |
| <b>Female</b> | 400    | 12.4% | 9.1 - 15.7 | 1,600    | 11.0% | 9.3 - 12.8 | 200   | 12.6% | 9.4 - 15.8 | 300  | 9.5% | 7.0 - 12.0 |

| Grade Level       | Hawaii |      |            | Honolulu |       |            | Kauai |       |            | Maui |       |            |
|-------------------|--------|------|------------|----------|-------|------------|-------|-------|------------|------|-------|------------|
|                   | #      | %    | CI         | #        | %     | CI         | #     | %     | CI         | #    | %     | CI         |
| <b>9th Grade</b>  | 100    | 8.2% | 4.3 - 12.1 | 600      | 7.1%  | 4.3 - 10.0 | <50   | 6.7%  | 3.1 - 10.2 | 100  | 8.9%  | 5.6 - 12.2 |
| <b>10th Grade</b> | 100    | 9.8% | 4.4 - 15.1 | 400      | 5.2%  | 1.8 - 8.6  | 100   | 11.4% | 6.9 - 15.9 | 100  | 10.3% | 6.6 - 14.0 |
| <b>11th Grade</b> | 100    | 9.8% | 6.0 - 13.7 | 700      | 11.3% | 8.4 - 14.1 | 100   | 13.4% | 7.0 - 19.7 | 100  | 8.1%  | 4.9 - 11.2 |
| <b>12th Grade</b> | 100    | 8.4% | 5.6 - 11.2 | 600      | 9.6%  | 5.6 - 13.6 | 100   | 9.5%  | 4.3 - 14.8 | 100  | 6.8%  | 2.0 - 11.5 |

## Forced Sex or Questionable Consent in Hawaii, by School Type and County, by Gender, Grade Level, and DOH Race-Ethnicity, for the Years 2011 - 2015

*Note: Weighted counts rounded to nearest 100, weighted percentages, positive responses only, 95% confidence interval;  
n/r (Not Reportable) - Total unweighted responses less than 100; Hawaii County High School data is not available in 2011*

### High Schools

**Year: 2013**

#### **Forced to have sexual intercourse ever**

| DOH Race-Ethnicity              | Hawaii |       |            | Honolulu |       |            | Kauai |      |            | Maui |       |            |
|---------------------------------|--------|-------|------------|----------|-------|------------|-------|------|------------|------|-------|------------|
|                                 | #      | %     | CI         | #        | %     | CI         | #     | %    | CI         | #    | %     | CI         |
| Caucasian                       | n/r    | n/r   | n/r        | n/r      | n/r   | n/r        | n/r   | n/r  | n/r        | n/r  | n/r   | n/r        |
| Native Hawaiian                 | 200    | 10.1% | 6.7 - 13.6 | 700      | 11.9% | 8.6 - 15.3 | <50   | 6.9% | 3.1 - 10.7 | 200  | 11.4% | 7.2 - 15.6 |
| Filipino                        | 100    | 11.7% | 5.1 - 18.4 | 500      | 6.0%  | 2.8 - 9.2  | 100   | 8.7% | 4.3 - 13.1 | 100  | 7.2%  | 4.3 - 10.1 |
| Japanese                        | n/r    | n/r   | n/r        | n/r      | n/r   | n/r        | n/r   | n/r  | n/r        | n/r  | n/r   | n/r        |
| Black                           | n/r    | n/r   | n/r        | n/r      | n/r   | n/r        | n/r   | n/r  | n/r        | n/r  | n/r   | n/r        |
| Native Alaskan/ American Indian | n/r    | n/r   | n/r        | n/r      | n/r   | n/r        | n/a   | n/a  | n/a        | n/r  | n/r   | n/r        |
| Other Asian                     | n/r    | n/r   | n/r        | 200      | 11.6% | 7.9 - 15.3 | n/r   | n/r  | n/r        | n/r  | n/r   | n/r        |
| Other Pacific Islander          | n/r    | n/r   | n/r        | n/r      | n/r   | n/r        | n/r   | n/r  | n/r        | n/r  | n/r   | n/r        |
| Other                           | 100    | 10.6% | 7.4 - 13.8 | 500      | 9.4%  | 6.6 - 12.3 | <50   | 8.7% | 5.3 - 12.1 | 100  | 11.6% | 7.7 - 15.6 |

## Forced Sex or Questionable Consent in Hawaii, by School Type and County, by Gender, Grade Level, and DOH Race-Ethnicity, for the Years 2011 - 2015

*Note: Weighted counts rounded to nearest 100, weighted percentages, positive responses only, 95% confidence interval; n/r (Not Reportable) - Total unweighted responses less than 100; Hawaii County High School data is not available in 2011*

### High Schools

**Year: 2013**

#### Sex intercourse - before age 13

| State         | Hawaii |      |           | Honolulu |      |           | Kauai |      |           | Maui |      |           |
|---------------|--------|------|-----------|----------|------|-----------|-------|------|-----------|------|------|-----------|
|               | #      | %    | CI        | #        | %    | CI        | #     | %    | CI        | #    | %    | CI        |
| <b>Totals</b> | 300    | 6.9% | 4.6 - 9.2 | 900      | 3.5% | 2.2 - 4.7 | 100   | 4.9% | 2.6 - 7.2 | 200  | 3.5% | 2.0 - 4.9 |

| Gender        | Hawaii |      |            | Honolulu |      |           | Kauai |      |            | Maui |      |           |
|---------------|--------|------|------------|----------|------|-----------|-------|------|------------|------|------|-----------|
|               | #      | %    | CI         | #        | %    | CI        | #     | %    | CI         | #    | %    | CI        |
| <b>Male</b>   | 200    | 9.1% | 4.8 - 13.4 | 500      | 3.9% | 2.0 - 5.7 | 100   | 6.8% | 2.6 - 10.9 | 100  | 3.8% | 1.7 - 5.9 |
| <b>Female</b> | 100    | 4.9% | 2.7 - 7.1  | 400      | 3.0% | 1.5 - 4.5 | <50   | 3.1% | 1.0 - 5.3  | 100  | 3.1% | 1.5 - 4.7 |

| Grade Level       | Hawaii |      |            | Honolulu |      |           | Kauai |      |            | Maui |      |           |
|-------------------|--------|------|------------|----------|------|-----------|-------|------|------------|------|------|-----------|
|                   | #      | %    | CI         | #        | %    | CI        | #     | %    | CI         | #    | %    | CI        |
| <b>9th Grade</b>  | 100    | 6.0% | 1.8 - 10.1 | 200      | 3.1% | 0.5 - 5.7 | <50   | 3.2% | 0.5 - 6.0  | <50  | 2.4% | 0.4 - 4.3 |
| <b>10th Grade</b> | 100    | 8.8% | 3.1 - 14.4 | 100      | 2.4% | 0.5 - 4.3 | <50   | 6.3% | 1.3 - 11.4 | <50  | 2.5% | 0.0 - 5.1 |
| <b>11th Grade</b> | 100    | 6.3% | 2.0 - 10.6 | 400      | 6.1% | 2.4 - 9.9 | <50   | 1.3% | 0.4 - 2.2  | 100  | 4.9% | 1.7 - 8.1 |
| <b>12th Grade</b> | 100    | 5.9% | 2.8 - 9.0  | 100      | 1.7% | 0.0 - 3.7 | <50   | 8.4% | 2.3 - 14.5 | <50  | 4.0% | 0.2 - 7.8 |

## Forced Sex or Questionable Consent in Hawaii, by School Type and County, by Gender, Grade Level, and DOH Race-Ethnicity, for the Years 2011 - 2015

*Note: Weighted counts rounded to nearest 100, weighted percentages, positive responses only, 95% confidence interval;  
n/r (Not Reportable) - Total unweighted responses less than 100; Hawaii County High School data is not available in 2011*

### High Schools

**Year: 2013**

### **Sex intercourse - before age 13**

| DOH Race-Ethnicity              | Hawaii |       |            | Honolulu |      |           | Kauai |      |           | Maui |      |           |
|---------------------------------|--------|-------|------------|----------|------|-----------|-------|------|-----------|------|------|-----------|
|                                 | #      | %     | CI         | #        | %    | CI        | #     | %    | CI        | #    | %    | CI        |
| Caucasian                       | n/r    | n/r   | n/r        | n/r      | n/r  | n/r       | n/r   | n/r  | n/r       | n/r  | n/r  | n/r       |
| Native Hawaiian                 | 200    | 11.4% | 7.0 - 15.8 | 300      | 5.4% | 2.0 - 8.8 | <50   | 1.8% | 0.0 - 4.3 | 100  | 5.0% | 2.3 - 7.6 |
| Filipino                        | <50    | 1.5%  | 0.0 - 3.7  | 100      | 1.4% | 0.0 - 2.7 | <50   | 5.0% | 1.1 - 8.9 | <50  | 3.0% | 0.0 - 6.1 |
| Japanese                        | n/r    | n/r   | n/r        | n/r      | n/r  | n/r       | n/r   | n/r  | n/r       | n/r  | n/r  | n/r       |
| Black                           | n/r    | n/r   | n/r        | n/r      | n/r  | n/r       | n/r   | n/r  | n/r       | n/r  | n/r  | n/r       |
| Native Alaskan/ American Indian | n/r    | n/r   | n/r        | n/r      | n/r  | n/r       | n/a   | n/a  | n/a       | n/r  | n/r  | n/r       |
| Other Asian                     | n/r    | n/r   | n/r        | n/r      | n/r  | n/r       | n/r   | n/r  | n/r       | n/r  | n/r  | n/r       |
| Other Pacific Islander          | n/r    | n/r   | n/r        | n/r      | n/r  | n/r       | n/r   | n/r  | n/r       | n/r  | n/r  | n/r       |
| Other                           | <50    | 3.5%  | 1.5 - 5.5  | 100      | 3.3% | 1.2 - 5.3 | <50   | 4.2% | 1.7 - 6.7 | <50  | 5.5% | 2.5 - 8.5 |

## Forced Sex or Questionable Consent in Hawaii, by School Type and County, by Gender, Grade Level, and DOH Race-Ethnicity, for the Years 2011 - 2015

*Note: Weighted counts rounded to nearest 100, weighted percentages, positive responses only, 95% confidence interval; n/r (Not Reportable) - Total unweighted responses less than 100; Hawaii County High School data is not available in 2011*

### High Schools

**Year: 2013**

#### Forced to do sexual things, past 12 months

| State         | Hawaii |       |            | Honolulu |       |             | Kauai |       |            | Maui |       |             |
|---------------|--------|-------|------------|----------|-------|-------------|-------|-------|------------|------|-------|-------------|
|               | #      | %     | CI         | #        | %     | CI          | #     | %     | CI         | #    | %     | CI          |
| <b>Totals</b> | 400    | 11.1% | 8.7 - 13.6 | 2,200    | 14.4% | 10.6 - 18.2 | 200   | 11.6% | 8.4 - 14.8 | 500  | 14.8% | 11.3 - 18.3 |

| Gender        | Hawaii |       |             | Honolulu |       |             | Kauai |       |            | Maui |       |             |
|---------------|--------|-------|-------------|----------|-------|-------------|-------|-------|------------|------|-------|-------------|
|               | #      | %     | CI          | #        | %     | CI          | #     | %     | CI         | #    | %     | CI          |
| <b>Male</b>   | 100    | 7.2%  | 2.9 - 11.4  | 500      | 7.1%  | 4.2 - 10.1  | 100   | 8.6%  | 4.1 - 13.1 | 200  | 12.8% | 8.3 - 17.4  |
| <b>Female</b> | 300    | 15.0% | 11.0 - 19.1 | 1,700    | 20.0% | 13.7 - 26.3 | 100   | 14.1% | 9.4 - 18.7 | 300  | 15.8% | 11.0 - 20.7 |

| Grade Level       | Hawaii |       |            | Honolulu |       |             | Kauai |       |            | Maui |       |             |
|-------------------|--------|-------|------------|----------|-------|-------------|-------|-------|------------|------|-------|-------------|
|                   | #      | %     | CI         | #        | %     | CI          | #     | %     | CI         | #    | %     | CI          |
| <b>9th Grade</b>  | 100    | 11.8% | 7.0 - 16.7 | 700      | 17.0% | 9.3 - 24.7  | <50   | 15.1% | 7.5 - 22.8 | 100  | 14.2% | 6.3 - 22.2  |
| <b>10th Grade</b> | 100    | 11.9% | 4.5 - 19.2 | 500      | 15.3% | 9.1 - 21.5  | <50   | 9.5%  | 4.7 - 14.3 | 100  | 17.8% | 11.2 - 24.5 |
| <b>11th Grade</b> | 100    | 9.3%  | 5.0 - 13.7 | 600      | 16.4% | 10.4 - 22.4 | <50   | 14.5% | 8.0 - 21.1 | 100  | 13.0% | 7.4 - 18.5  |
| <b>12th Grade</b> | 100    | 11.6% | 7.3 - 15.9 | 400      | 9.3%  | 2.5 - 16.0  | <50   | 8.2%  | 3.7 - 12.7 | 100  | 13.1% | 6.8 - 19.3  |



## Forced Sex or Questionable Consent in Hawaii, by School Type and County, by Gender, Grade Level, and DOH Race-Ethnicity, for the Years 2011 - 2015

*Note: Weighted counts rounded to nearest 100, weighted percentages, positive responses only, 95% confidence interval;  
n/r (Not Reportable) - Total unweighted responses less than 100; Hawaii County High School data is not available in 2011*

### High Schools

**Year: 2013**

### **Forced to do sexual things, past 12 months**

| DOH Race-Ethnicity              | Hawaii |       |            | Honolulu |       |             | Kauai |       |            | Maui |       |             |
|---------------------------------|--------|-------|------------|----------|-------|-------------|-------|-------|------------|------|-------|-------------|
|                                 | #      | %     | CI         | #        | %     | CI          | #     | %     | CI         | #    | %     | CI          |
| Caucasian                       | n/r    | n/r   | n/r        | n/r      | n/r   | n/r         | n/r   | n/r   | n/r        | n/r  | n/r   | n/r         |
| Native Hawaiian                 | 200    | 13.0% | 8.5 - 17.5 | 600      | 16.0% | 9.9 - 22.2  | <50   | 8.9%  | 3.7 - 14.1 | 100  | 10.5% | 6.3 - 14.7  |
| Filipino                        | n/r    | n/r   | n/r        | 400      | 10.7% | 4.7 - 16.6  | <50   | 10.0% | 4.0 - 16.0 | 100  | 16.8% | 10.6 - 23.1 |
| Japanese                        | n/r    | n/r   | n/r        | n/r      | n/r   | n/r         | n/r   | n/r   | n/r        | n/r  | n/r   | n/r         |
| Black                           | n/r    | n/r   | n/r        | n/r      | n/r   | n/r         | n/r   | n/r   | n/r        | n/r  | n/r   | n/r         |
| Native Alaskan/ American Indian | n/r    | n/r   | n/r        | n/r      | n/r   | n/r         | n/a   | n/a   | n/a        | n/r  | n/r   | n/r         |
| Other Asian                     | n/r    | n/r   | n/r        | n/r      | n/r   | n/r         | n/r   | n/r   | n/r        | n/r  | n/r   | n/r         |
| Other Pacific Islander          | n/r    | n/r   | n/r        | n/r      | n/r   | n/r         | n/r   | n/r   | n/r        | n/r  | n/r   | n/r         |
| Other                           | 100    | 13.3% | 9.1 - 17.6 | 600      | 22.4% | 17.0 - 27.9 | <50   | 10.9% | 6.2 - 15.6 | 100  | 18.1% | 12.8 - 23.3 |

## Forced Sex or Questionable Consent in Hawaii, by School Type and County, by Gender, Grade Level, and DOH Race-Ethnicity, for the Years 2011 - 2015

*Note: Weighted counts rounded to nearest 100, weighted percentages, positive responses only, 95% confidence interval; n/r (Not Reportable) - Total unweighted responses less than 100; Hawaii County High School data is not available in 2011*

### High Schools

**Year: 2011**

#### **Forced to have sexual intercourse ever**

| State         | Honolulu |      |           | Kauai |      |            | Maui |      |            |
|---------------|----------|------|-----------|-------|------|------------|------|------|------------|
|               | #        | %    | CI        | #     | %    | CI         | #    | %    | CI         |
| <b>Totals</b> | 1,900    | 6.4% | 4.5 - 8.4 | 200   | 8.2% | 5.7 - 10.7 | 400  | 8.4% | 6.6 - 10.1 |

| Gender        | Honolulu |      |            | Kauai |      |            | Maui |      |            |
|---------------|----------|------|------------|-------|------|------------|------|------|------------|
|               | #        | %    | CI         | #     | %    | CI         | #    | %    | CI         |
| <b>Male</b>   | 500      | 3.1% | 1.2 - 5.1  | 100   | 6.4% | 3.2 - 9.5  | 200  | 6.8% | 4.2 - 9.5  |
| <b>Female</b> | 1,500    | 9.7% | 6.7 - 12.6 | 100   | 9.8% | 6.7 - 12.9 | 300  | 9.8% | 7.3 - 12.2 |

| Grade Level       | Honolulu |      |            | Kauai |       |            | Maui |       |            |
|-------------------|----------|------|------------|-------|-------|------------|------|-------|------------|
|                   | #        | %    | CI         | #     | %     | CI         | #    | %     | CI         |
| <b>9th Grade</b>  | 500      | 5.6% | 2.7 - 8.4  | <50   | 6.1%  | 2.2 - 9.9  | 100  | 8.1%  | 4.5 - 11.8 |
| <b>10th Grade</b> | 400      | 5.1% | 2.8 - 7.5  | <50   | 6.5%  | 2.6 - 10.3 | 100  | 7.1%  | 3.8 - 10.4 |
| <b>11th Grade</b> | 500      | 7.7% | 3.9 - 11.5 | <50   | 6.7%  | 3.5 - 9.9  | 100  | 7.9%  | 4.0 - 11.8 |
| <b>12th Grade</b> | 500      | 7.9% | 4.1 - 11.8 | 100   | 13.6% | 7.5 - 19.7 | 100  | 10.5% | 7.2 - 13.8 |

## Forced Sex or Questionable Consent in Hawaii, by School Type and County, by Gender, Grade Level, and DOH Race-Ethnicity, for the Years 2011 - 2015

*Note: Weighted counts rounded to nearest 100, weighted percentages, positive responses only, 95% confidence interval;  
n/r (Not Reportable) - Total unweighted responses less than 100; Hawaii County High School data is not available in 2011*

### High Schools

**Year: 2011**

#### **Forced to have sexual intercourse ever**

| DOH Race-Ethnicity              | Honolulu |      |            | Kauai |       |            | Maui |       |            |
|---------------------------------|----------|------|------------|-------|-------|------------|------|-------|------------|
|                                 | #        | %    | CI         | #     | %     | CI         | #    | %     | CI         |
| Caucasian                       | 300      | 9.4% | 4.1 - 14.7 | <50   | 6.0%  | 2.1 - 9.8  | 100  | 10.5% | 4.1 - 16.9 |
| Native Hawaiian                 | 300      | 5.6% | 3.1 - 8.1  | 100   | 7.3%  | 3.4 - 11.2 | 100  | 11.4% | 7.7 - 15.0 |
| Filipino                        | 300      | 4.4% | 1.4 - 7.4  | 100   | 9.5%  | 4.3 - 14.7 | 100  | 5.9%  | 3.3 - 8.4  |
| Japanese                        | n/r      | n/r  | n/r        | n/r   | n/r   | n/r        | n/r  | n/r   | n/r        |
| Black                           | n/r      | n/r  | n/r        | n/r   | n/r   | n/r        | n/r  | n/r   | n/r        |
| Native Alaskan/ American Indian | n/r      | n/r  | n/r        | n/r   | n/r   | n/r        | n/r  | n/r   | n/r        |
| Other Asian                     | 100      | 4.4% | 2.0 - 6.9  | n/r   | n/r   | n/r        | n/r  | n/r   | n/r        |
| Other Pacific Islander          | n/r      | n/r  | n/r        | n/r   | n/r   | n/r        | n/r  | n/r   | n/r        |
| Other                           | 600      | 8.9% | 5.5 - 12.4 | <50   | 10.2% | 5.8 - 14.7 | 100  | 5.7%  | 3.1 - 8.3  |

## Forced Sex or Questionable Consent in Hawaii, by School Type and County, by Gender, Grade Level, and DOH Race-Ethnicity, for the Years 2011 - 2015

*Note: Weighted counts rounded to nearest 100, weighted percentages, positive responses only, 95% confidence interval; n/r (Not Reportable) - Total unweighted responses less than 100; Hawaii County High School data is not available in 2011*

### High Schools

**Year: 2011**

#### **Sex intercourse - before age 13**

| State         | Honolulu |      |           | Kauai |      |           | Maui |      |           |
|---------------|----------|------|-----------|-------|------|-----------|------|------|-----------|
|               | #        | %    | CI        | #     | %    | CI        | #    | %    | CI        |
| <b>Totals</b> | 1,200    | 4.7% | 3.3 - 6.1 | 100   | 3.5% | 2.2 - 4.9 | 300  | 5.7% | 4.0 - 7.3 |

| Gender        | Honolulu |      |           | Kauai |      |           | Maui |      |           |
|---------------|----------|------|-----------|-------|------|-----------|------|------|-----------|
|               | #        | %    | CI        | #     | %    | CI        | #    | %    | CI        |
| <b>Male</b>   | 900      | 7.2% | 5.1 - 9.4 | <50   | 2.6% | 0.5 - 4.7 | 100  | 6.9% | 4.1 - 9.6 |
| <b>Female</b> | 300      | 2.2% | 1.0 - 3.5 | <50   | 4.2% | 2.2 - 6.1 | 100  | 4.5% | 2.8 - 6.2 |

| Grade Level       | Honolulu |      |           | Kauai |      |           | Maui |      |            |
|-------------------|----------|------|-----------|-------|------|-----------|------|------|------------|
|                   | #        | %    | CI        | #     | %    | CI        | #    | %    | CI         |
| <b>9th Grade</b>  | 400      | 5.6% | 2.8 - 8.4 | <50   | 4.2% | 1.9 - 6.6 | 100  | 6.4% | 2.5 - 10.3 |
| <b>10th Grade</b> | 300      | 5.1% | 2.4 - 7.8 | <50   | 2.6% | 0.0 - 5.6 | 100  | 5.9% | 3.0 - 8.7  |
| <b>11th Grade</b> | 300      | 5.2% | 2.2 - 8.3 | <50   | 3.2% | 1.0 - 5.5 | 100  | 5.3% | 2.7 - 8.0  |
| <b>12th Grade</b> | 100      | 1.5% | 0.0 - 3.0 | <50   | 3.5% | 0.0 - 7.2 | 100  | 5.0% | 1.9 - 8.1  |

## Forced Sex or Questionable Consent in Hawaii, by School Type and County, by Gender, Grade Level, and DOH Race-Ethnicity, for the Years 2011 - 2015

*Note: Weighted counts rounded to nearest 100, weighted percentages, positive responses only, 95% confidence interval;  
n/r (Not Reportable) - Total unweighted responses less than 100; Hawaii County High School data is not available in 2011*

### High Schools

**Year: 2011**

### **Sex intercourse - before age 13**

| DOH Race-Ethnicity              | Honolulu |      |            | Kauai |      |           | Maui |      |            |
|---------------------------------|----------|------|------------|-------|------|-----------|------|------|------------|
|                                 | #        | %    | CI         | #     | %    | CI        | #    | %    | CI         |
| Caucasian                       | n/r      | n/r  | n/r        | n/r   | n/r  | n/r       | 100  | 7.4% | 1.1 - 13.6 |
| Native Hawaiian                 | 400      | 8.1% | 3.4 - 12.7 | <50   | 4.5% | 1.7 - 7.3 | 100  | 8.4% | 5.2 - 11.7 |
| Filipino                        | 300      | 4.3% | 1.1 - 7.5  | <50   | 2.5% | 0.3 - 4.7 | <50  | 2.7% | 0.4 - 5.1  |
| Japanese                        | n/r      | n/r  | n/r        | n/r   | n/r  | n/r       | n/r  | n/r  | n/r        |
| Black                           | n/r      | n/r  | n/r        | n/r   | n/r  | n/r       | n/r  | n/r  | n/r        |
| Native Alaskan/ American Indian | n/r      | n/r  | n/r        | n/r   | n/r  | n/r       | n/r  | n/r  | n/r        |
| Other Asian                     | <50      | 0.6% | 0.0 - 1.8  | n/r   | n/r  | n/r       | n/r  | n/r  | n/r        |
| Other Pacific Islander          | n/r      | n/r  | n/r        | n/r   | n/r  | n/r       | n/r  | n/r  | n/r        |
| Other                           | 300      | 4.2% | 2.7 - 5.8  | <50   | 2.5% | 0.7 - 4.4 | 100  | 6.1% | 2.9 - 9.3  |

## Forced Sex or Questionable Consent in Hawaii, by School Type and County, by Gender, Grade Level, and DOH Race-Ethnicity, for the Years 2011 - 2015

*Note: Weighted counts rounded to nearest 100, weighted percentages, positive responses only, 95% confidence interval; n/r (Not Reportable) - Total unweighted responses less than 100; Hawaii County High School data is not available in 2011*

### Middle Schools

**Year: 2015**

#### **Forced to have sexual intercourse ever**

| State         | Hawaii |      |           | Honolulu |      |           | Kauai |      |           | Maui |      |           |
|---------------|--------|------|-----------|----------|------|-----------|-------|------|-----------|------|------|-----------|
|               | #      | %    | CI        | #        | %    | CI        | #     | %    | CI        | #    | %    | CI        |
| <b>Totals</b> | 200    | 5.7% | 4.2 - 7.1 | 700      | 4.0% | 2.9 - 5.2 | 100   | 4.3% | 2.9 - 5.6 | 100  | 3.7% | 2.6 - 4.7 |

| Gender        | Hawaii |      |           | Honolulu |      |           | Kauai |      |           | Maui |      |           |
|---------------|--------|------|-----------|----------|------|-----------|-------|------|-----------|------|------|-----------|
|               | #      | %    | CI        | #        | %    | CI        | #     | %    | CI        | #    | %    | CI        |
| <b>Male</b>   | 100    | 4.5% | 2.8 - 6.2 | 300      | 3.5% | 2.1 - 4.9 | <50   | 3.0% | 1.7 - 4.3 | <50  | 2.3% | 1.2 - 3.4 |
| <b>Female</b> | 100    | 6.8% | 4.5 - 9.1 | 400      | 4.6% | 2.8 - 6.4 | <50   | 5.6% | 3.1 - 8.0 | 100  | 5.1% | 3.3 - 6.9 |

| Grade Level      | Hawaii |      |           | Honolulu |      |           | Kauai |      |           | Maui |      |           |
|------------------|--------|------|-----------|----------|------|-----------|-------|------|-----------|------|------|-----------|
|                  | #      | %    | CI        | #        | %    | CI        | #     | %    | CI        | #    | %    | CI        |
| <b>6th Grade</b> | 100    | 6.9% | 4.0 - 9.9 | 100      | 2.8% | 0.7 - 4.9 | <50   | 4.1% | 1.9 - 6.3 | <50  | 1.5% | 0.2 - 2.8 |
| <b>7th Grade</b> | 100    | 5.3% | 3.0 - 7.7 | 300      | 4.3% | 2.7 - 5.9 | <50   | 3.0% | 1.4 - 4.6 | 100  | 4.6% | 2.9 - 6.4 |
| <b>8th Grade</b> | 100    | 4.9% | 2.5 - 7.4 | 300      | 3.9% | 3.1 - 4.6 | <50   | 5.9% | 3.0 - 8.8 | 100  | 4.8% | 2.7 - 7.0 |

## Forced Sex or Questionable Consent in Hawaii, by School Type and County, by Gender, Grade Level, and DOH Race-Ethnicity, for the Years 2011 - 2015

*Note: Weighted counts rounded to nearest 100, weighted percentages, positive responses only, 95% confidence interval;  
n/r (Not Reportable) - Total unweighted responses less than 100; Hawaii County High School data is not available in 2011*

### Middle Schools

**Year: 2015**

### **Forced to have sexual intercourse ever**

| DOH Race-Ethnicity              | Hawaii |      |           | Honolulu |      |           | Kauai |      |            | Maui |      |           |
|---------------------------------|--------|------|-----------|----------|------|-----------|-------|------|------------|------|------|-----------|
|                                 | #      | %    | CI        | #        | %    | CI        | #     | %    | CI         | #    | %    | CI        |
| Caucasian                       | n/r    | n/r  | n/r       | <50      | 2.0% | 0.0 - 5.5 | n/r   | n/r  | n/r        | <50  | 2.4% | 0.0 - 5.0 |
| Native Hawaiian                 | 100    | 7.0% | 4.6 - 9.4 | 100      | 4.3% | 1.9 - 6.6 | <50   | 7.0% | 3.8 - 10.2 | <50  | 3.2% | 1.5 - 4.8 |
| Filipino                        | <50    | 2.7% | 0.0 - 5.9 | 200      | 4.8% | 2.3 - 7.3 | <50   | 1.7% | 0.0 - 3.6  | <50  | 2.2% | 0.5 - 4.0 |
| Japanese                        | n/r    | n/r  | n/r       | n/r      | n/r  | n/r       | n/r   | n/r  | n/r        | n/r  | n/r  | n/r       |
| Black                           | n/r    | n/r  | n/r       | n/r      | n/r  | n/r       | n/r   | n/r  | n/r        | n/r  | n/r  | n/r       |
| Native Alaskan/ American Indian | n/r    | n/r  | n/r       | n/r      | n/r  | n/r       | n/r   | n/r  | n/r        | n/r  | n/r  | n/r       |
| Other Asian                     | n/r    | n/r  | n/r       | <50      | 1.0% | 0.0 - 2.6 | n/r   | n/r  | n/r        | n/r  | n/r  | n/r       |
| Other Pacific Islander          | n/r    | n/r  | n/r       | n/r      | n/r  | n/r       | n/r   | n/r  | n/r        | n/r  | n/r  | n/r       |
| Other                           | <50    | 6.6% | 4.3 - 8.8 | 200      | 6.8% | 4.7 - 8.9 | <50   | 4.1% | 2.0 - 6.3  | <50  | 6.8% | 4.3 - 9.3 |

## Forced Sex or Questionable Consent in Hawaii, by School Type and County, by Gender, Grade Level, and DOH Race-Ethnicity, for the Years 2011 - 2015

*Note: Weighted counts rounded to nearest 100, weighted percentages, positive responses only, 95% confidence interval; n/r (Not Reportable) - Total unweighted responses less than 100; Hawaii County High School data is not available in 2011*

### Middle Schools

**Year: 2015**

#### Sex intercourse - before age 13

| State         | Hawaii |      |           | Honolulu |      |           | Kauai |      |           | Maui |      |           |
|---------------|--------|------|-----------|----------|------|-----------|-------|------|-----------|------|------|-----------|
|               | #      | %    | CI        | #        | %    | CI        | #     | %    | CI        | #    | %    | CI        |
| <b>Totals</b> | 200    | 7.6% | 5.5 - 9.8 | 600      | 4.0% | 2.5 - 5.6 | 100   | 4.8% | 3.4 - 6.2 | 200  | 6.6% | 4.9 - 8.4 |

| Gender        | Hawaii |       |            | Honolulu |      |           | Kauai |      |           | Maui |      |            |
|---------------|--------|-------|------------|----------|------|-----------|-------|------|-----------|------|------|------------|
|               | #      | %     | CI         | #        | %    | CI        | #     | %    | CI        | #    | %    | CI         |
| <b>Male</b>   | 200    | 10.4% | 6.5 - 14.3 | 300      | 4.6% | 2.4 - 6.8 | <50   | 5.9% | 3.6 - 8.2 | 100  | 7.8% | 5.3 - 10.3 |
| <b>Female</b> | 100    | 5.2%  | 3.1 - 7.2  | 200      | 3.2% | 1.9 - 4.4 | <50   | 3.5% | 1.7 - 5.3 | 100  | 5.4% | 3.4 - 7.4  |

| Grade Level      | Hawaii |      |            | Honolulu |      |           | Kauai |      |           | Maui |      |            |
|------------------|--------|------|------------|----------|------|-----------|-------|------|-----------|------|------|------------|
|                  | #      | %    | CI         | #        | %    | CI        | #     | %    | CI        | #    | %    | CI         |
| <b>6th Grade</b> | 100    | 9.7% | 6.5 - 12.8 | <50      | 2.4% | 1.0 - 3.7 | <50   | 2.9% | 1.1 - 4.6 | 100  | 7.1% | 3.1 - 11.0 |
| <b>7th Grade</b> | 100    | 5.6% | 2.9 - 8.4  | 300      | 4.2% | 2.1 - 6.3 | <50   | 5.0% | 2.2 - 7.9 | 100  | 5.9% | 3.8 - 7.9  |
| <b>8th Grade</b> | 100    | 7.9% | 3.5 - 12.2 | 200      | 3.6% | 2.2 - 5.0 | <50   | 5.5% | 3.2 - 7.9 | 100  | 6.6% | 3.5 - 9.6  |



## Forced Sex or Questionable Consent in Hawaii, by School Type and County, by Gender, Grade Level, and DOH Race-Ethnicity, for the Years 2011 - 2015

*Note: Weighted counts rounded to nearest 100, weighted percentages, positive responses only, 95% confidence interval;  
n/r (Not Reportable) - Total unweighted responses less than 100; Hawaii County High School data is not available in 2011*

### Middle Schools

**Year: 2015**

### **Sex intercourse - before age 13**

| DOH Race-Ethnicity              | Hawaii |      |            | Honolulu |      |            | Kauai |      |            | Maui |      |            |
|---------------------------------|--------|------|------------|----------|------|------------|-------|------|------------|------|------|------------|
|                                 | #      | %    | CI         | #        | %    | CI         | #     | %    | CI         | #    | %    | CI         |
| Caucasian                       | n/r    | n/r  | n/r        | n/r      | n/r  | n/r        | n/r   | n/r  | n/r        | n/r  | n/r  | n/r        |
| Native Hawaiian                 | 100    | 7.8% | 5.4 - 10.2 | 100      | 3.8% | 1.6 - 6.1  | <50   | 7.3% | 4.0 - 10.5 | 100  | 7.8% | 4.7 - 10.9 |
| Filipino                        | <50    | 5.5% | 0.9 - 10.2 | 100      | 1.7% | 0.7 - 2.6  | <50   | 1.3% | 0.0 - 3.0  | <50  | 3.8% | 1.2 - 6.3  |
| Japanese                        | n/r    | n/r  | n/r        | n/r      | n/r  | n/r        | n/r   | n/r  | n/r        | n/r  | n/r  | n/r        |
| Black                           | n/r    | n/r  | n/r        | n/r      | n/r  | n/r        | n/r   | n/r  | n/r        | n/r  | n/r  | n/r        |
| Native Alaskan/ American Indian | n/r    | n/r  | n/r        | n/r      | n/r  | n/r        | n/r   | n/r  | n/r        | n/r  | n/r  | n/r        |
| Other Asian                     | n/r    | n/r  | n/r        | <50      | 1.2% | 0.0 - 3.6  | n/r   | n/r  | n/r        | n/r  | n/r  | n/r        |
| Other Pacific Islander          | n/r    | n/r  | n/r        | n/r      | n/r  | n/r        | n/r   | n/r  | n/r        | n/r  | n/r  | n/r        |
| Other                           | <50    | 6.1% | 3.7 - 8.4  | 100      | 7.2% | 4.3 - 10.1 | <50   | 5.6% | 3.1 - 8.0  | 100  | 8.9% | 6.4 - 11.3 |

## Forced Sex or Questionable Consent in Hawaii, by School Type and County, by Gender, Grade Level, and DOH Race-Ethnicity, for the Years 2011 - 2015

*Note: Weighted counts rounded to nearest 100, weighted percentages, positive responses only, 95% confidence interval; n/r (Not Reportable) - Total unweighted responses less than 100; Hawaii County High School data is not available in 2011*

### Middle Schools

**Year: 2015**

#### **Forced to do sexual things, past 12 months**

| State         | Hawaii |       |             | Honolulu |       |             | Kauai |       |             | Maui |       |             |
|---------------|--------|-------|-------------|----------|-------|-------------|-------|-------|-------------|------|-------|-------------|
|               | #      | %     | CI          | #        | %     | CI          | #     | %     | CI          | #    | %     | CI          |
| <b>Totals</b> | 300    | 15.1% | 11.8 - 18.5 | 1,400    | 17.7% | 13.9 - 21.6 | 100   | 16.3% | 13.5 - 19.0 | 300  | 15.6% | 12.5 - 18.6 |

| Gender        | Hawaii |       |             | Honolulu |       |             | Kauai |       |             | Maui |       |             |
|---------------|--------|-------|-------------|----------|-------|-------------|-------|-------|-------------|------|-------|-------------|
|               | #      | %     | CI          | #        | %     | CI          | #     | %     | CI          | #    | %     | CI          |
| <b>Male</b>   | 200    | 15.7% | 10.5 - 20.9 | 700      | 17.0% | 13.4 - 20.5 | 100   | 17.4% | 13.6 - 21.2 | 100  | 15.4% | 11.1 - 19.7 |
| <b>Female</b> | 100    | 14.3% | 10.1 - 18.5 | 700      | 18.5% | 13.4 - 23.6 | 100   | 15.2% | 10.7 - 19.6 | 100  | 15.9% | 11.6 - 20.1 |

| Grade Level      | Hawaii |       |             | Honolulu |       |             | Kauai |       |             | Maui |       |             |
|------------------|--------|-------|-------------|----------|-------|-------------|-------|-------|-------------|------|-------|-------------|
|                  | #      | %     | CI          | #        | %     | CI          | #     | %     | CI          | #    | %     | CI          |
| <b>6th Grade</b> | 100    | 13.6% | 8.8 - 18.3  | 200      | 19.0% | 12.2 - 25.8 | <50   | 13.8% | 8.7 - 18.9  | 100  | 13.0% | 8.2 - 17.8  |
| <b>7th Grade</b> | 100    | 13.6% | 10.4 - 16.9 | 700      | 19.2% | 12.7 - 25.6 | <50   | 18.8% | 13.2 - 24.3 | 100  | 16.2% | 10.4 - 22.0 |
| <b>8th Grade</b> | 100    | 17.6% | 10.5 - 24.6 | 500      | 15.5% | 10.6 - 20.5 | <50   | 16.1% | 11.8 - 20.3 | 100  | 18.1% | 12.8 - 23.5 |

## Forced Sex or Questionable Consent in Hawaii, by School Type and County, by Gender, Grade Level, and DOH Race-Ethnicity, for the Years 2011 - 2015

*Note: Weighted counts rounded to nearest 100, weighted percentages, positive responses only, 95% confidence interval;  
n/r (Not Reportable) - Total unweighted responses less than 100; Hawaii County High School data is not available in 2011*

### Middle Schools

**Year: 2015**

### **Forced to do sexual things, past 12 months**

| DOH Race-Ethnicity              | Hawaii |       |             | Honolulu |       |             | Kauai |       |             | Maui |       |             |
|---------------------------------|--------|-------|-------------|----------|-------|-------------|-------|-------|-------------|------|-------|-------------|
|                                 | #      | %     | CI          | #        | %     | CI          | #     | %     | CI          | #    | %     | CI          |
| Caucasian                       | n/r    | n/r   | n/r         | n/r      | n/r   | n/r         | n/r   | n/r   | n/r         | n/r  | n/r   | n/r         |
| Native Hawaiian                 | 100    | 15.4% | 11.5 - 19.4 | 400      | 20.2% | 15.2 - 25.2 | <50   | 14.3% | 10.0 - 18.6 | 100  | 15.7% | 11.1 - 20.3 |
| Filipino                        | n/r    | n/r   | n/r         | 300      | 13.1% | 4.3 - 21.9  | n/r   | n/r   | n/r         | n/r  | n/r   | n/r         |
| Japanese                        | n/r    | n/r   | n/r         | n/r      | n/r   | n/r         | n/r   | n/r   | n/r         | n/r  | n/r   | n/r         |
| Black                           | n/r    | n/r   | n/r         | n/r      | n/r   | n/r         | n/r   | n/r   | n/r         | n/r  | n/r   | n/r         |
| Native Alaskan/ American Indian | n/r    | n/r   | n/r         | n/r      | n/r   | n/r         | n/r   | n/r   | n/r         | n/r  | n/r   | n/r         |
| Other Asian                     | n/r    | n/r   | n/r         | n/r      | n/r   | n/r         | n/r   | n/r   | n/r         | n/r  | n/r   | n/r         |
| Other Pacific Islander          | n/r    | n/r   | n/r         | n/r      | n/r   | n/r         | n/r   | n/r   | n/r         | n/r  | n/r   | n/r         |
| Other                           | 100    | 14.3% | 9.6 - 19.0  | 200      | 16.7% | 12.4 - 21.0 | <50   | 18.7% | 13.4 - 24.0 | <50  | 14.2% | 10.0 - 18.5 |

## Forced Sex or Questionable Consent in Hawaii, by School Type and County, by Gender, Grade Level, and DOH Race-Ethnicity, for the Years 2011 - 2015

*Note: Weighted counts rounded to nearest 100, weighted percentages, positive responses only, 95% confidence interval; n/r (Not Reportable) - Total unweighted responses less than 100; Hawaii County High School data is not available in 2011*

### Middle Schools

**Year: 2013**

#### **Forced to have sexual intercourse ever**

| State         | Hawaii |      |           | Honolulu |      |           | Kauai |      |           | Maui |      |           |
|---------------|--------|------|-----------|----------|------|-----------|-------|------|-----------|------|------|-----------|
|               | #      | %    | CI        | #        | %    | CI        | #     | %    | CI        | #    | %    | CI        |
| <b>Totals</b> | 200    | 6.2% | 4.2 - 8.3 | 700      | 4.0% | 3.1 - 5.0 | 100   | 4.3% | 3.1 - 5.6 | 200  | 5.1% | 3.8 - 6.5 |

| Gender        | Hawaii |      |            | Honolulu |      |           | Kauai |      |           | Maui |      |           |
|---------------|--------|------|------------|----------|------|-----------|-------|------|-----------|------|------|-----------|
|               | #      | %    | CI         | #        | %    | CI        | #     | %    | CI        | #    | %    | CI        |
| <b>Male</b>   | 100    | 3.0% | 1.5 - 4.4  | 400      | 4.3% | 2.4 - 6.1 | <50   | 3.4% | 1.7 - 5.1 | 100  | 4.3% | 2.2 - 6.3 |
| <b>Female</b> | 200    | 9.3% | 5.8 - 12.8 | 300      | 3.8% | 2.7 - 5.0 | <50   | 5.2% | 3.1 - 7.3 | 100  | 6.0% | 4.1 - 7.8 |

| Grade Level      | Hawaii |      |            | Honolulu |      |           | Kauai |      |           | Maui |      |           |
|------------------|--------|------|------------|----------|------|-----------|-------|------|-----------|------|------|-----------|
|                  | #      | %    | CI         | #        | %    | CI        | #     | %    | CI        | #    | %    | CI        |
| <b>6th Grade</b> | 100    | 6.9% | 2.3 - 11.6 | 100      | 4.0% | 2.4 - 5.6 | <50   | 3.6% | 1.4 - 5.8 | 100  | 6.2% | 3.9 - 8.5 |
| <b>7th Grade</b> | 100    | 5.9% | 2.7 - 9.1  | 300      | 3.3% | 2.2 - 4.4 | <50   | 5.6% | 3.7 - 7.5 | <50  | 3.7% | 1.6 - 5.8 |
| <b>8th Grade</b> | 100    | 6.2% | 2.8 - 9.7  | 300      | 4.8% | 2.7 - 6.9 | <50   | 3.9% | 1.8 - 5.9 | 100  | 5.5% | 3.0 - 7.9 |

## Forced Sex or Questionable Consent in Hawaii, by School Type and County, by Gender, Grade Level, and DOH Race-Ethnicity, for the Years 2011 - 2015

*Note: Weighted counts rounded to nearest 100, weighted percentages, positive responses only, 95% confidence interval;  
n/r (Not Reportable) - Total unweighted responses less than 100; Hawaii County High School data is not available in 2011*

### Middle Schools

**Year: 2013**

### **Forced to have sexual intercourse ever**

| DOH Race-Ethnicity              | Hawaii |      |            | Honolulu |      |           | Kauai |      |           | Maui |      |           |
|---------------------------------|--------|------|------------|----------|------|-----------|-------|------|-----------|------|------|-----------|
|                                 | #      | %    | CI         | #        | %    | CI        | #     | %    | CI        | #    | %    | CI        |
| Caucasian                       | n/r    | n/r  | n/r        | n/r      | n/r  | n/r       | n/r   | n/r  | n/r       | n/r  | n/r  | n/r       |
| Native Hawaiian                 | 100    | 4.6% | 2.4 - 6.7  | 100      | 3.2% | 1.6 - 4.9 | <50   | 6.2% | 3.1 - 9.2 | 100  | 5.8% | 3.5 - 8.1 |
| Filipino                        | 100    | 8.9% | 3.5 - 14.3 | 200      | 4.4% | 1.6 - 7.2 | <50   | 1.7% | 0.0 - 3.7 | <50  | 4.3% | 1.5 - 7.1 |
| Japanese                        | n/r    | n/r  | n/r        | n/r      | n/r  | n/r       | n/r   | n/r  | n/r       | n/r  | n/r  | n/r       |
| Black                           | n/r    | n/r  | n/r        | n/r      | n/r  | n/r       | n/r   | n/r  | n/r       | n/r  | n/r  | n/r       |
| Native Alaskan/ American Indian | n/r    | n/r  | n/r        | n/r      | n/r  | n/r       | n/r   | n/r  | n/r       | n/r  | n/r  | n/r       |
| Other Asian                     | n/r    | n/r  | n/r        | 100      | 4.9% | 0.8 - 9.0 | n/r   | n/r  | n/r       | n/r  | n/r  | n/r       |
| Other Pacific Islander          | n/r    | n/r  | n/r        | n/r      | n/r  | n/r       | n/r   | n/r  | n/r       | n/r  | n/r  | n/r       |
| Other                           | <50    | 6.7% | 3.7 - 9.7  | 100      | 4.6% | 2.3 - 7.0 | <50   | 5.8% | 2.4 - 9.2 | <50  | 4.0% | 1.9 - 6.1 |

## Forced Sex or Questionable Consent in Hawaii, by School Type and County, by Gender, Grade Level, and DOH Race-Ethnicity, for the Years 2011 - 2015

*Note: Weighted counts rounded to nearest 100, weighted percentages, positive responses only, 95% confidence interval; n/r (Not Reportable) - Total unweighted responses less than 100; Hawaii County High School data is not available in 2011*

### Middle Schools

**Year: 2013**

#### Sex intercourse - before age 13

| State         | Hawaii |      |            | Honolulu |      |           | Kauai |      |           | Maui |      |           |
|---------------|--------|------|------------|----------|------|-----------|-------|------|-----------|------|------|-----------|
|               | #      | %    | CI         | #        | %    | CI        | #     | %    | CI        | #    | %    | CI        |
| <b>Totals</b> | 200    | 7.9% | 5.4 - 10.5 | 800      | 5.0% | 3.6 - 6.4 | 100   | 6.5% | 4.8 - 8.3 | 200  | 5.5% | 3.9 - 7.1 |

| Gender        | Hawaii |      |            | Honolulu |      |           | Kauai |      |            | Maui |      |           |
|---------------|--------|------|------------|----------|------|-----------|-------|------|------------|------|------|-----------|
|               | #      | %    | CI         | #        | %    | CI        | #     | %    | CI         | #    | %    | CI        |
| <b>Male</b>   | 100    | 8.6% | 5.1 - 12.2 | 400      | 5.1% | 2.3 - 7.9 | 100   | 7.9% | 4.9 - 11.0 | 100  | 6.5% | 4.1 - 8.8 |
| <b>Female</b> | 100    | 7.1% | 4.1 - 10.2 | 400      | 4.9% | 2.9 - 6.8 | <50   | 5.3% | 3.2 - 7.5  | 100  | 4.6% | 2.7 - 6.5 |

| Grade Level      | Hawaii |      |            | Honolulu |      |            | Kauai |      |           | Maui |      |           |
|------------------|--------|------|------------|----------|------|------------|-------|------|-----------|------|------|-----------|
|                  | #      | %    | CI         | #        | %    | CI         | #     | %    | CI        | #    | %    | CI        |
| <b>6th Grade</b> | <50    | 5.7% | 2.6 - 8.9  | 200      | 7.9% | 0.2 - 15.5 | <50   | 5.9% | 2.5 - 9.4 | 100  | 5.2% | 2.8 - 7.6 |
| <b>7th Grade</b> | 100    | 8.9% | 4.6 - 13.3 | 300      | 5.2% | 3.4 - 6.9  | <50   | 7.0% | 4.7 - 9.4 | 100  | 6.3% | 3.3 - 9.3 |
| <b>8th Grade</b> | 100    | 8.4% | 4.4 - 12.4 | 200      | 3.6% | 1.3 - 5.8  | <50   | 6.0% | 3.0 - 9.0 | 100  | 4.7% | 2.2 - 7.3 |

## Forced Sex or Questionable Consent in Hawaii, by School Type and County, by Gender, Grade Level, and DOH Race-Ethnicity, for the Years 2011 - 2015

*Note: Weighted counts rounded to nearest 100, weighted percentages, positive responses only, 95% confidence interval;  
n/r (Not Reportable) - Total unweighted responses less than 100; Hawaii County High School data is not available in 2011*

### Middle Schools

**Year: 2013**

### **Sex intercourse - before age 13**

| DOH Race-Ethnicity              | Hawaii |       |            | Honolulu |      |           | Kauai |       |            | Maui |      |           |
|---------------------------------|--------|-------|------------|----------|------|-----------|-------|-------|------------|------|------|-----------|
|                                 | #      | %     | CI         | #        | %    | CI        | #     | %     | CI         | #    | %    | CI        |
| Caucasian                       | n/r    | n/r   | n/r        | n/r      | n/r  | n/r       | n/r   | n/r   | n/r        | n/r  | n/r  | n/r       |
| Native Hawaiian                 | 100    | 7.6%  | 5.0 - 10.3 | 100      | 5.0% | 2.8 - 7.2 | <50   | 11.3% | 6.7 - 15.8 | 100  | 6.6% | 4.0 - 9.2 |
| Filipino                        | <50    | 2.8%  | 0.0 - 6.1  | 200      | 4.6% | 0.3 - 8.9 | <50   | 1.9%  | 0.0 - 4.2  | <50  | 4.0% | 1.5 - 6.5 |
| Japanese                        | n/r    | n/r   | n/r        | n/r      | n/r  | n/r       | n/r   | n/r   | n/r        | n/r  | n/r  | n/r       |
| Black                           | n/r    | n/r   | n/r        | n/r      | n/r  | n/r       | n/r   | n/r   | n/r        | n/r  | n/r  | n/r       |
| Native Alaskan/ American Indian | n/r    | n/r   | n/r        | n/r      | n/r  | n/r       | n/r   | n/r   | n/r        | n/r  | n/r  | n/r       |
| Other Asian                     | n/r    | n/r   | n/r        | n/r      | n/r  | n/r       | n/r   | n/r   | n/r        | n/r  | n/r  | n/r       |
| Other Pacific Islander          | n/r    | n/r   | n/r        | n/r      | n/r  | n/r       | n/r   | n/r   | n/r        | n/r  | n/r  | n/r       |
| Other                           | 100    | 10.2% | 6.0 - 14.3 | 100      | 5.6% | 2.8 - 8.4 | <50   | 6.8%  | 2.9 - 10.7 | <50  | 5.9% | 3.0 - 8.8 |

## Forced Sex or Questionable Consent in Hawaii, by School Type and County, by Gender, Grade Level, and DOH Race-Ethnicity, for the Years 2011 - 2015

*Note: Weighted counts rounded to nearest 100, weighted percentages, positive responses only, 95% confidence interval; n/r (Not Reportable) - Total unweighted responses less than 100; Hawaii County High School data is not available in 2011*

### Middle Schools

**Year: 2013**

#### **Forced to do sexual things, past 12 months**

| State         | Hawaii |      |            | Honolulu |      |            | Kauai |       |            | Maui |      |            |
|---------------|--------|------|------------|----------|------|------------|-------|-------|------------|------|------|------------|
|               | #      | %    | CI         | #        | %    | CI         | #     | %     | CI         | #    | %    | CI         |
| <b>Totals</b> | 300    | 9.9% | 7.7 - 12.1 | 1,600    | 9.5% | 8.0 - 10.9 | 200   | 11.5% | 8.9 - 14.2 | 300  | 9.5% | 7.4 - 11.7 |

| Gender        | Hawaii |       |            | Honolulu |       |            | Kauai |       |            | Maui |       |            |
|---------------|--------|-------|------------|----------|-------|------------|-------|-------|------------|------|-------|------------|
|               | #      | %     | CI         | #        | %     | CI         | #     | %     | CI         | #    | %     | CI         |
| <b>Male</b>   | 100    | 8.2%  | 5.5 - 10.9 | 900      | 10.4% | 8.3 - 12.5 | 100   | 12.7% | 8.8 - 16.5 | 100  | 7.2%  | 5.0 - 9.4  |
| <b>Female</b> | 200    | 11.5% | 8.3 - 14.8 | 700      | 8.6%  | 6.7 - 10.6 | 100   | 10.5% | 6.9 - 14.2 | 200  | 11.8% | 8.4 - 15.3 |

| Grade Level      | Hawaii |       |            | Honolulu |       |            | Kauai |       |            | Maui |       |            |
|------------------|--------|-------|------------|----------|-------|------------|-------|-------|------------|------|-------|------------|
|                  | #      | %     | CI         | #        | %     | CI         | #     | %     | CI         | #    | %     | CI         |
| <b>6th Grade</b> | 100    | 8.4%  | 4.1 - 12.8 | 200      | 7.2%  | 3.0 - 11.4 | 100   | 11.2% | 7.2 - 15.1 | 100  | 10.1% | 6.8 - 13.5 |
| <b>7th Grade</b> | 100    | 9.6%  | 7.1 - 12.2 | 600      | 8.7%  | 6.0 - 11.4 | 100   | 9.5%  | 4.2 - 14.7 | 100  | 6.2%  | 3.8 - 8.6  |
| <b>8th Grade</b> | 100    | 11.3% | 7.0 - 15.5 | 800      | 11.6% | 8.7 - 14.5 | 100   | 13.5% | 9.9 - 17.1 | 200  | 12.6% | 7.9 - 17.3 |



## Forced Sex or Questionable Consent in Hawaii, by School Type and County, by Gender, Grade Level, and DOH Race-Ethnicity, for the Years 2011 - 2015

*Note: Weighted counts rounded to nearest 100, weighted percentages, positive responses only, 95% confidence interval;  
n/r (Not Reportable) - Total unweighted responses less than 100; Hawaii County High School data is not available in 2011*

### Middle Schools

**Year: 2013**

### **Forced to do sexual things, past 12 months**

| DOH Race-Ethnicity              | Hawaii |       |            | Honolulu |       |            | Kauai |       |            | Maui |       |            |
|---------------------------------|--------|-------|------------|----------|-------|------------|-------|-------|------------|------|-------|------------|
|                                 | #      | %     | CI         | #        | %     | CI         | #     | %     | CI         | #    | %     | CI         |
| Caucasian                       | n/r    | n/r   | n/r        | n/r      | n/r   | n/r        | n/r   | n/r   | n/r        | n/r  | n/r   | n/r        |
| Native Hawaiian                 | 200    | 13.1% | 9.3 - 16.9 | 400      | 12.1% | 8.5 - 15.7 | 100   | 14.0% | 9.5 - 18.6 | 100  | 12.6% | 8.8 - 16.4 |
| Filipino                        | 100    | 10.6% | 4.9 - 16.2 | 400      | 10.6% | 6.2 - 15.1 | <50   | 11.3% | 5.5 - 17.0 | 100  | 8.1%  | 4.2 - 12.1 |
| Japanese                        | n/r    | n/r   | n/r        | n/r      | n/r   | n/r        | n/r   | n/r   | n/r        | n/r  | n/r   | n/r        |
| Black                           | n/r    | n/r   | n/r        | n/r      | n/r   | n/r        | n/r   | n/r   | n/r        | n/r  | n/r   | n/r        |
| Native Alaskan/ American Indian | n/r    | n/r   | n/r        | n/r      | n/r   | n/r        | n/r   | n/r   | n/r        | n/r  | n/r   | n/r        |
| Other Asian                     | n/r    | n/r   | n/r        | n/r      | n/r   | n/r        | n/r   | n/r   | n/r        | n/r  | n/r   | n/r        |
| Other Pacific Islander          | n/r    | n/r   | n/r        | n/r      | n/r   | n/r        | n/r   | n/r   | n/r        | n/r  | n/r   | n/r        |
| Other                           | <50    | 7.6%  | 4.2 - 11.1 | 100      | 7.3%  | 5.5 - 9.1  | <50   | 9.7%  | 6.2 - 13.1 | 100  | 8.0%  | 5.0 - 11.1 |

## Forced Sex or Questionable Consent in Hawaii, by School Type and County, by Gender, Grade Level, and DOH Race-Ethnicity, for the Years 2011 - 2015

*Note: Weighted counts rounded to nearest 100, weighted percentages, positive responses only, 95% confidence interval; n/r (Not Reportable) - Total unweighted responses less than 100; Hawaii County High School data is not available in 2011*

### Middle Schools

**Year: 2011**

#### **Forced to have sexual intercourse ever**

| State         | Hawaii |      |           | Honolulu |      |           | Kauai |      |           | Maui |      |           |
|---------------|--------|------|-----------|----------|------|-----------|-------|------|-----------|------|------|-----------|
|               | #      | %    | CI        | #        | %    | CI        | #     | %    | CI        | #    | %    | CI        |
| <b>Totals</b> | 200    | 5.0% | 3.7 - 6.4 | 700      | 3.7% | 2.5 - 4.9 | <50   | 2.5% | 1.4 - 3.6 | 300  | 6.7% | 4.8 - 8.6 |

| Gender        | Hawaii |      |           | Honolulu |      |           | Kauai |      |           | Maui |      |            |
|---------------|--------|------|-----------|----------|------|-----------|-------|------|-----------|------|------|------------|
|               | #      | %    | CI        | #        | %    | CI        | #     | %    | CI        | #    | %    | CI         |
| <b>Male</b>   | 100    | 3.2% | 1.7 - 4.6 | 300      | 3.7% | 2.0 - 5.4 | <50   | 1.8% | 0.6 - 3.1 | 100  | 5.1% | 2.6 - 7.5  |
| <b>Female</b> | 100    | 6.9% | 4.6 - 9.3 | 300      | 3.8% | 1.5 - 6.0 | <50   | 3.2% | 1.4 - 5.0 | 200  | 7.9% | 5.2 - 10.7 |

| Grade Level      | Hawaii |      |           | Honolulu |      |           | Kauai |      |           | Maui |      |            |
|------------------|--------|------|-----------|----------|------|-----------|-------|------|-----------|------|------|------------|
|                  | #      | %    | CI        | #        | %    | CI        | #     | %    | CI        | #    | %    | CI         |
| <b>6th Grade</b> | <50    | 3.2% | 1.6 - 4.8 | 100      | 3.9% | 2.2 - 5.7 | <50   | 1.3% | 0.2 - 2.4 | 100  | 4.1% | 1.9 - 6.4  |
| <b>7th Grade</b> | <50    | 3.6% | 1.5 - 5.8 | 200      | 3.0% | 1.6 - 4.4 | <50   | 2.6% | 0.7 - 4.4 | 100  | 6.7% | 3.1 - 10.4 |
| <b>8th Grade</b> | 100    | 7.6% | 5.5 - 9.7 | 300      | 4.1% | 2.7 - 5.4 | <50   | 3.6% | 1.1 - 6.1 | 100  | 9.0% | 5.2 - 12.7 |

## Forced Sex or Questionable Consent in Hawaii, by School Type and County, by Gender, Grade Level, and DOH Race-Ethnicity, for the Years 2011 - 2015

*Note: Weighted counts rounded to nearest 100, weighted percentages, positive responses only, 95% confidence interval;  
n/r (Not Reportable) - Total unweighted responses less than 100; Hawaii County High School data is not available in 2011*

### Middle Schools

**Year: 2011**

#### **Forced to have sexual intercourse ever**

| DOH Race-Ethnicity              | Hawaii |      |           | Honolulu |      |            | Kauai |      |           | Maui |      |            |
|---------------------------------|--------|------|-----------|----------|------|------------|-------|------|-----------|------|------|------------|
|                                 | #      | %    | CI        | #        | %    | CI         | #     | %    | CI        | #    | %    | CI         |
| Caucasian                       | n/r    | n/r  | n/r       | 0        | 0.0% | 0.0 - 0.0  | n/r   | n/r  | n/r       | n/r  | n/r  | n/r        |
| Native Hawaiian                 | 100    | 6.4% | 4.0 - 8.7 | 200      | 4.5% | 2.4 - 6.6  | <50   | 3.3% | 0.8 - 5.8 | 100  | 6.7% | 3.6 - 9.8  |
| Filipino                        | <50    | 4.3% | 0.0 - 8.6 | 200      | 3.9% | 1.8 - 5.9  | <50   | 2.1% | 0.0 - 4.3 | 100  | 9.3% | 5.0 - 13.6 |
| Japanese                        | n/r    | n/r  | n/r       | n/r      | n/r  | n/r        | n/r   | n/r  | n/r       | n/r  | n/r  | n/r        |
| Black                           | n/r    | n/r  | n/r       | n/r      | n/r  | n/r        | n/r   | n/r  | n/r       | n/r  | n/r  | n/r        |
| Native Alaskan/ American Indian | n/r    | n/r  | n/r       | n/r      | n/r  | n/r        | n/r   | n/r  | n/r       | n/r  | n/r  | n/r        |
| Other Asian                     | n/r    | n/r  | n/r       | <50      | 2.5% | 0.0 - 6.3  | n/r   | n/r  | n/r       | n/r  | n/r  | n/r        |
| Other Pacific Islander          | n/r    | n/r  | n/r       | 100      | 8.6% | 4.0 - 13.2 | n/r   | n/r  | n/r       | n/r  | n/r  | n/r        |
| Other                           | <50    | 5.5% | 2.9 - 8.2 | 200      | 4.5% | 3.0 - 6.0  | <50   | 3.4% | 1.1 - 5.6 | <50  | 7.1% | 4.5 - 9.7  |

## Forced Sex or Questionable Consent in Hawaii, by School Type and County, by Gender, Grade Level, and DOH Race-Ethnicity, for the Years 2011 - 2015

*Note: Weighted counts rounded to nearest 100, weighted percentages, positive responses only, 95% confidence interval; n/r (Not Reportable) - Total unweighted responses less than 100; Hawaii County High School data is not available in 2011*

### Middle Schools

**Year: 2011**

#### **Sex intercourse - before age 13**

| State         | Hawaii |      |            | Honolulu |      |           | Kauai |      |           | Maui |      |           |
|---------------|--------|------|------------|----------|------|-----------|-------|------|-----------|------|------|-----------|
|               | #      | %    | CI         | #        | %    | CI        | #     | %    | CI        | #    | %    | CI        |
| <b>Totals</b> | 300    | 9.9% | 7.8 - 11.9 | 1,000    | 6.3% | 4.9 - 7.7 | 100   | 5.5% | 3.7 - 7.3 | 300  | 7.5% | 5.8 - 9.1 |

| Gender        | Hawaii |       |            | Honolulu |      |           | Kauai |      |           | Maui |      |            |
|---------------|--------|-------|------------|----------|------|-----------|-------|------|-----------|------|------|------------|
|               | #      | %     | CI         | #        | %    | CI        | #     | %    | CI        | #    | %    | CI         |
| <b>Male</b>   | 200    | 12.2% | 8.5 - 15.9 | 600      | 7.5% | 5.8 - 9.3 | <50   | 6.7% | 4.0 - 9.5 | 100  | 8.7% | 6.0 - 11.5 |
| <b>Female</b> | 100    | 7.7%  | 5.4 - 9.9  | 400      | 5.1% | 2.6 - 7.6 | <50   | 4.6% | 2.4 - 6.9 | 100  | 5.9% | 3.8 - 7.9  |

| Grade Level      | Hawaii |       |            | Honolulu |      |            | Kauai |      |            | Maui |      |            |
|------------------|--------|-------|------------|----------|------|------------|-------|------|------------|------|------|------------|
|                  | #      | %     | CI         | #        | %    | CI         | #     | %    | CI         | #    | %    | CI         |
| <b>6th Grade</b> | <50    | 5.9%  | 3.1 - 8.7  | 200      | 7.4% | 4.5 - 10.3 | <50   | 2.4% | 0.2 - 4.6  | 100  | 5.5% | 3.4 - 7.5  |
| <b>7th Grade</b> | 100    | 10.8% | 6.9 - 14.7 | 300      | 4.6% | 2.9 - 6.3  | <50   | 6.4% | 3.4 - 9.5  | 100  | 6.9% | 4.4 - 9.5  |
| <b>8th Grade</b> | 100    | 11.5% | 8.8 - 14.3 | 400      | 7.3% | 4.9 - 9.7  | <50   | 7.8% | 4.5 - 11.1 | 100  | 9.9% | 6.0 - 13.8 |

## Forced Sex or Questionable Consent in Hawaii, by School Type and County, by Gender, Grade Level, and DOH Race-Ethnicity, for the Years 2011 - 2015

*Note: Weighted counts rounded to nearest 100, weighted percentages, positive responses only, 95% confidence interval;  
n/r (Not Reportable) - Total unweighted responses less than 100; Hawaii County High School data is not available in 2011*

### Middle Schools

**Year: 2011**

### **Sex intercourse - before age 13**

| DOH Race-Ethnicity              | Hawaii |       |            | Honolulu |      |            | Kauai |      |           | Maui |      |            |
|---------------------------------|--------|-------|------------|----------|------|------------|-------|------|-----------|------|------|------------|
|                                 | #      | %     | CI         | #        | %    | CI         | #     | %    | CI        | #    | %    | CI         |
| Caucasian                       | n/r    | n/r   | n/r        | 100      | 6.5% | 2.8 - 10.3 | n/r   | n/r  | n/r       | n/r  | n/r  | n/r        |
| Native Hawaiian                 | 100    | 12.0% | 8.6 - 15.3 | 300      | 9.9% | 7.8 - 11.9 | <50   | 5.7% | 2.6 - 8.9 | 100  | 9.5% | 6.2 - 12.8 |
| Filipino                        | n/r    | n/r   | n/r        | 200      | 5.0% | 1.8 - 8.2  | <50   | 5.2% | 1.2 - 9.2 | 100  | 5.9% | 2.7 - 9.1  |
| Japanese                        | n/r    | n/r   | n/r        | n/r      | n/r  | n/r        | n/r   | n/r  | n/r       | n/r  | n/r  | n/r        |
| Black                           | n/r    | n/r   | n/r        | n/r      | n/r  | n/r        | n/r   | n/r  | n/r       | n/r  | n/r  | n/r        |
| Native Alaskan/ American Indian | n/r    | n/r   | n/r        | n/r      | n/r  | n/r        | n/r   | n/r  | n/r       | n/r  | n/r  | n/r        |
| Other Asian                     | n/r    | n/r   | n/r        | <50      | 2.5% | 0.0 - 6.4  | n/r   | n/r  | n/r       | n/r  | n/r  | n/r        |
| Other Pacific Islander          | n/r    | n/r   | n/r        | n/r      | n/r  | n/r        | n/r   | n/r  | n/r       | n/r  | n/r  | n/r        |
| Other                           | 100    | 10.8% | 7.2 - 14.3 | 200      | 6.0% | 3.4 - 8.7  | <50   | 6.4% | 3.4 - 9.4 | <50  | 8.0% | 5.1 - 10.9 |