

Physical Activity in Hawaii, by County

Physical Activity in Hawaii, by School Type, County, Gender, Grade Level, and DOH Race-Ethnicity, for the Years 2011 - 2015

Note: Hawaii County High School data is not available in 2011. Kauai county had no Native Alaskan/ American Indian respondents for 2013.

Below are the indicators included in this report and the long description for each indicator.

Health Indicator	Health Indicator Description
Physical activity - 60+ min, 0 of past 7 days	Students who were physically active for a total of 60 minutes or more per day on none of the past seven days
Physical activity - 60+ min, 5+ of past 7 days	Students who were physically active for a total of 60 minutes or more per day on five or more of the past seven days
Physical activity - 60+ min, 7 of past 7 days	Students who were physically active for a total of 60 minutes or more per day on all of the past seven days

Suggested citation:

Hawaii Health Data Warehouse, State of Hawaii, Hawaii School Health Survey: Youth Risk Behavior Survey Module, (report title and years), Report Created: 7/26/16

For documentation on other terms and coding in this report, please go to the following links:

[Click here to access YRBS documentation](#)

[Click here to access Race-Ethnicity coding](#)

[Click here to access Hawai'i Data Guide](#)

For questions about this report, please contact The Hawaii Health Data Warehouse

profiles@hhdw.org

(855) 946-5899 x 15

Physical Activity in Hawaii, by School Type, by State and County, for the Years 2011 - 2015

Note: Weighted percentages, positive responses only, 95% confidence interval; n/r (Not Reportable) - Total unweighted responses less than 100; Hawaii County High School data is not available in 2011

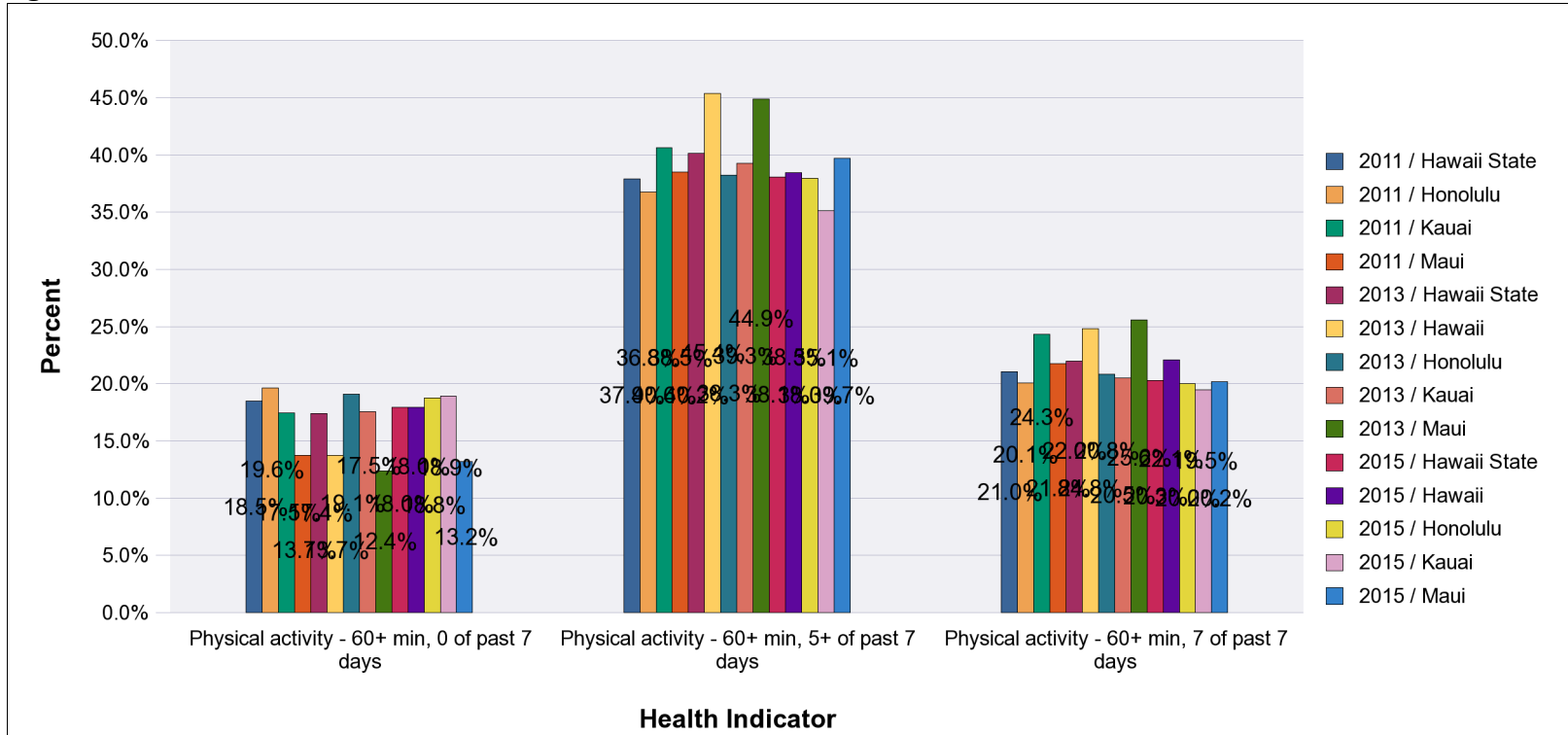
High Schools

		Hawaii State	Hawaii	Honolulu	Kauai	Maui
Physical activity - 60+ min, 0 of past 7 days	2011	18.5%	n/a	19.6%	17.5%	13.7%
	2013	17.4%	13.7%	19.1%	17.5%	12.4%
	2015	18.0%	18.0%	18.8%	18.9%	13.2%
Physical activity - 60+ min, 5+ of past 7 days	2011	37.9%	n/a	36.8%	40.6%	38.5%
	2013	40.2%	45.4%	38.3%	39.3%	44.9%
	2015	38.1%	38.5%	38.0%	35.1%	39.7%
Physical activity - 60+ min, 7 of past 7 days	2011	21.0%	n/a	20.1%	24.3%	21.8%
	2013	22.0%	24.8%	20.8%	20.5%	25.6%
	2015	20.3%	22.1%	20.0%	19.5%	20.2%

Physical Activity in Hawaii, by School Type, by State and County, for the Years 2011 - 2015

Note: Weighted percentages, positive responses only, 95% confidence interval; n/r (Not Reportable) - Total unweighted responses less than 100; Hawaii County High School data is not available in 2011

High Schools



Physical Activity in Hawaii, by School Type, by State and County, for the Years 2011 - 2015

Note: Weighted percentages, positive responses only, 95% confidence interval; n/r (Not Reportable) - Total unweighted responses less than 100; Hawaii County High School data is not available in 2011

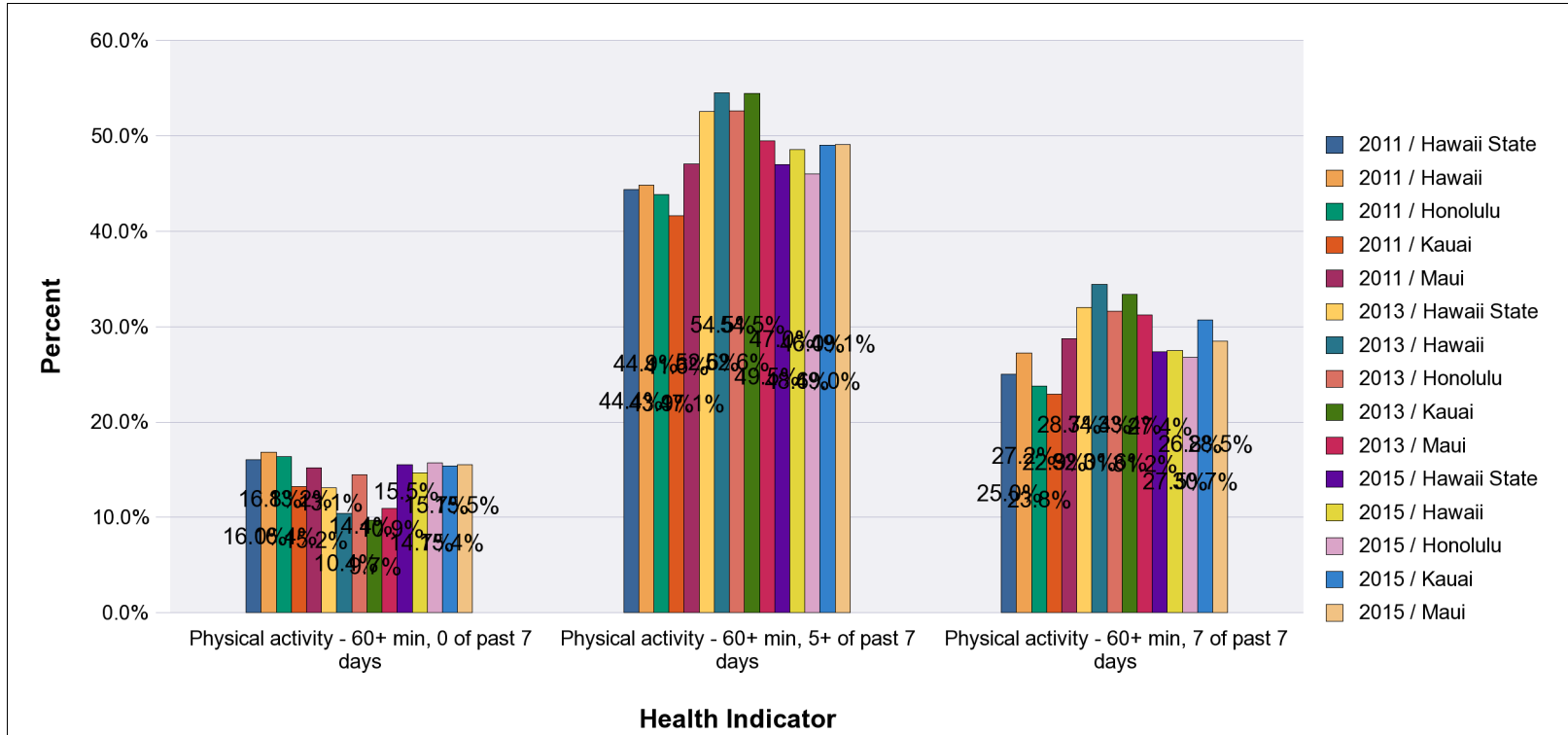
Middle Schools

		Hawaii State	Hawaii	Honolulu	Kauai	Maui
Physical activity - 60+ min, 0 of past 7 days	2011	16.0%	16.8%	16.4%	13.2%	15.2%
	2013	13.1%	10.4%	14.4%	9.7%	10.9%
	2015	15.5%	14.7%	15.7%	15.4%	15.5%
Physical activity - 60+ min, 5+ of past 7 days	2011	44.4%	44.9%	43.9%	41.6%	47.1%
	2013	52.6%	54.5%	52.6%	54.5%	49.5%
	2015	47.0%	48.6%	46.0%	49.0%	49.1%
Physical activity - 60+ min, 7 of past 7 days	2011	25.0%	27.2%	23.8%	22.9%	28.7%
	2013	32.0%	34.4%	31.6%	33.4%	31.2%
	2015	27.4%	27.5%	26.8%	30.7%	28.5%

Physical Activity in Hawaii, by School Type, by State and County, for the Years 2011 - 2015

Note: Weighted percentages, positive responses only, 95% confidence interval; n/r (Not Reportable) - Total unweighted responses less than 100; Hawaii County High School data is not available in 2011

Middle Schools



Physical Activity in Hawaii, by School Type and County, by Gender, Grade Level, and DOH Race-Ethnicity, for the Years 2011 - 2015

Note: Weighted counts rounded to nearest 100, weighted percentages, positive responses only, 95% confidence interval; n/r (Not Reportable) - Total unweighted responses less than 100; Hawaii County High School data is not available in 2011

High Schools

Year: 2015

Physical activity - 60+ min, 0 of past 7 days

State	Hawaii			Honolulu			Kauai			Maui		
	#	%	CI	#	%	CI	#	%	CI	#	%	CI
Totals	900	18.0%	15.0 - 21.0	5,100	18.8%	15.5 - 22.0	400	18.9%	15.5 - 22.3	700	13.2%	11.1 - 15.4

Gender	Hawaii			Honolulu			Kauai			Maui		
	#	%	CI	#	%	CI	#	%	CI	#	%	CI
Male	400	16.0%	12.0 - 20.0	1,900	14.4%	12.1 - 16.8	200	14.7%	10.8 - 18.6	300	12.9%	10.0 - 15.7
Female	500	19.8%	15.7 - 23.8	3,200	23.1%	17.9 - 28.2	300	22.5%	17.7 - 27.3	400	13.7%	10.8 - 16.7

Grade Level	Hawaii			Honolulu			Kauai			Maui		
	#	%	CI	#	%	CI	#	%	CI	#	%	CI
9th Grade	200	14.3%	7.9 - 20.6	1,200	15.7%	9.8 - 21.6	100	16.6%	11.2 - 22.0	200	11.5%	8.3 - 14.8
10th Grade	200	20.1%	14.2 - 25.9	1,000	14.0%	9.5 - 18.6	100	18.7%	11.4 - 26.0	100	12.1%	7.9 - 16.3
11th Grade	200	21.9%	17.4 - 26.3	1,300	21.1%	16.9 - 25.3	100	25.0%	17.1 - 32.9	100	13.5%	8.7 - 18.3
12th Grade	200	16.6%	12.4 - 20.7	1,600	24.9%	19.7 - 30.1	100	15.0%	10.6 - 19.3	200	16.2%	11.9 - 20.6

Physical Activity in Hawaii, by School Type and County, by Gender, Grade Level, and DOH Race-Ethnicity, for the Years 2011 - 2015

*Note: Weighted counts rounded to nearest 100, weighted percentages, positive responses only, 95% confidence interval;
n/r (Not Reportable) - Total unweighted responses less than 100; Hawaii County High School data is not available in 2011*

High Schools

Year: 2015

Physical activity - 60+ min, 0 of past 7 days

DOH Race-Ethnicity	Hawaii			Honolulu			Kauai			Maui		
	#	%	CI	#	%	CI	#	%	CI	#	%	CI
Caucasian	n/r	n/r	n/r	600	17.7%	10.7 - 24.7	100	16.2%	9.9 - 22.4	100	10.6%	4.4 - 16.8
Native Hawaiian	300	19.6%	14.7 - 24.6	700	14.1%	11.4 - 16.7	100	16.5%	11.1 - 21.9	100	11.5%	8.4 - 14.7
Filipino	200	22.1%	14.7 - 29.6	1,800	23.7%	17.6 - 29.8	200	23.7%	15.4 - 32.1	300	15.2%	11.0 - 19.3
Japanese	n/r	n/r	n/r	400	13.0%	4.1 - 22.0	n/r	n/r	n/r	n/r	n/r	n/r
Black	n/r	n/r	n/r	n/r	n/r	n/r	n/r	n/r	n/r	n/r	n/r	n/r
Native Alaskan/ American Indian	n/r	n/r	n/r	n/r	n/r	n/r	n/r	n/r	n/r	n/r	n/r	n/r
Other Asian	n/r	n/r	n/r	400	29.1%	19.1 - 39.0	n/r	n/r	n/r	n/r	n/r	n/r
Other Pacific Islander	n/r	n/r	n/r	n/r	n/r	n/r	n/r	n/r	n/r	n/r	n/r	n/r
Other	100	15.7%	11.6 - 19.7	800	16.6%	13.3 - 19.9	100	16.6%	12.5 - 20.7	100	14.5%	11.0 - 18.1

Physical Activity in Hawaii, by School Type and County, by Gender, Grade Level, and DOH Race-Ethnicity, for the Years 2011 - 2015

Note: Weighted counts rounded to nearest 100, weighted percentages, positive responses only, 95% confidence interval; n/r (Not Reportable) - Total unweighted responses less than 100; Hawaii County High School data is not available in 2011

High Schools

Year: 2015

Physical activity - 60+ min, 5+ of past 7 days

State	Hawaii			Honolulu			Kauai			Maui		
	#	%	CI	#	%	CI	#	%	CI	#	%	CI
Totals	1,900	38.5%	34.5 - 42.4	10,300	38.0%	35.4 - 40.5	800	35.1%	31.2 - 39.0	2,000	39.7%	36.5 - 42.9

Gender	Hawaii			Honolulu			Kauai			Maui		
	#	%	CI	#	%	CI	#	%	CI	#	%	CI
Male	1,100	46.9%	41.2 - 52.5	6,100	45.6%	42.1 - 49.2	500	44.6%	39.7 - 49.5	1,100	46.0%	42.1 - 49.8
Female	800	30.9%	26.2 - 35.6	4,200	30.5%	26.1 - 34.8	300	27.1%	21.9 - 32.2	900	33.7%	29.5 - 38.0

Grade Level	Hawaii			Honolulu			Kauai			Maui		
	#	%	CI	#	%	CI	#	%	CI	#	%	CI
9th Grade	500	39.1%	30.9 - 47.4	3,200	40.9%	34.2 - 47.6	200	40.5%	32.8 - 48.3	600	43.4%	36.3 - 50.5
10th Grade	500	41.1%	32.7 - 49.4	2,900	41.5%	36.6 - 46.5	200	35.3%	28.2 - 42.3	500	43.5%	36.6 - 50.4
11th Grade	400	33.6%	27.8 - 39.3	2,300	37.5%	30.8 - 44.2	200	29.2%	21.9 - 36.5	400	33.9%	27.6 - 40.3
12th Grade	500	39.8%	32.1 - 47.4	2,000	31.4%	27.6 - 35.2	200	36.6%	30.6 - 42.7	400	37.2%	30.5 - 43.9

Physical Activity in Hawaii, by School Type and County, by Gender, Grade Level, and DOH Race-Ethnicity, for the Years 2011 - 2015

*Note: Weighted counts rounded to nearest 100, weighted percentages, positive responses only, 95% confidence interval;
n/r (Not Reportable) - Total unweighted responses less than 100; Hawaii County High School data is not available in 2011*

High Schools

Year: 2015

Physical activity - 60+ min, 5+ of past 7 days

DOH Race-Ethnicity	Hawaii			Honolulu			Kauai			Maui		
	#	%	CI	#	%	CI	#	%	CI	#	%	CI
Caucasian	n/r	n/r	n/r	1,300	38.5%	30.0 - 47.0	200	41.7%	34.3 - 49.1	400	43.7%	33.5 - 53.9
Native Hawaiian	600	37.7%	30.9 - 44.6	2,300	44.0%	39.6 - 48.3	200	37.1%	31.1 - 43.1	600	48.5%	43.1 - 53.8
Filipino	300	40.0%	28.5 - 51.4	2,300	30.4%	24.9 - 35.8	200	27.8%	19.9 - 35.8	600	36.2%	30.1 - 42.3
Japanese	n/r	n/r	n/r	1,300	45.1%	41.4 - 48.8	n/r	n/r	n/r	n/r	n/r	n/r
Black	n/r	n/r	n/r	n/r	n/r	n/r	n/r	n/r	n/r	n/r	n/r	n/r
Native Alaskan/ American Indian	n/r	n/r	n/r	n/r	n/r	n/r	n/r	n/r	n/r	n/r	n/r	n/r
Other Asian	n/r	n/r	n/r	400	29.0%	24.1 - 33.8	n/r	n/r	n/r	n/r	n/r	n/r
Other Pacific Islander	n/r	n/r	n/r	n/r	n/r	n/r	n/r	n/r	n/r	n/r	n/r	n/r
Other	300	36.1%	31.4 - 40.9	2,000	39.7%	35.2 - 44.2	100	36.1%	30.7 - 41.5	300	40.2%	35.3 - 45.1

Physical Activity in Hawaii, by School Type and County, by Gender, Grade Level, and DOH Race-Ethnicity, for the Years 2011 - 2015

*Note: Weighted counts rounded to nearest 100, weighted percentages, positive responses only, 95% confidence interval;
n/r (Not Reportable) - Total unweighted responses less than 100; Hawaii County High School data is not available in 2011*

High Schools

Year: 2015

Physical activity - 60+ min, 7 of past 7 days

State	Hawaii			Honolulu			Kauai			Maui		
	#	%	CI	#	%	CI	#	%	CI	#	%	CI
Totals	1,100	22.1%	18.6 - 25.5	5,500	20.0%	17.8 - 22.3	400	19.5%	16.3 - 22.7	1,000	20.2%	17.9 - 22.5

Gender	Hawaii			Honolulu			Kauai			Maui		
	#	%	CI	#	%	CI	#	%	CI	#	%	CI
Male	700	30.4%	24.4 - 36.4	3,500	26.2%	21.8 - 30.6	300	28.4%	23.9 - 32.8	600	25.5%	21.8 - 29.3
Female	400	14.7%	10.8 - 18.6	2,000	14.2%	11.0 - 17.4	100	11.6%	8.3 - 14.9	400	15.2%	12.6 - 17.8

Grade Level	Hawaii			Honolulu			Kauai			Maui		
	#	%	CI	#	%	CI	#	%	CI	#	%	CI
9th Grade	300	22.7%	14.7 - 30.6	1,600	21.0%	15.7 - 26.3	100	18.5%	12.7 - 24.3	300	20.5%	14.9 - 26.0
10th Grade	300	26.3%	20.2 - 32.4	1,500	22.1%	17.5 - 26.7	100	20.9%	14.6 - 27.2	300	21.5%	16.2 - 26.7
11th Grade	200	17.6%	12.1 - 23.1	1,300	20.8%	12.8 - 28.8	100	18.5%	12.6 - 24.3	200	17.8%	13.0 - 22.6
12th Grade	300	21.3%	15.2 - 27.3	1,000	16.1%	13.2 - 19.0	100	21.2%	16.1 - 26.3	300	21.3%	16.5 - 26.1

Physical Activity in Hawaii, by School Type and County, by Gender, Grade Level, and DOH Race-Ethnicity, for the Years 2011 - 2015

*Note: Weighted counts rounded to nearest 100, weighted percentages, positive responses only, 95% confidence interval;
n/r (Not Reportable) - Total unweighted responses less than 100; Hawaii County High School data is not available in 2011*

High Schools

Year: 2015

Physical activity - 60+ min, 7 of past 7 days

DOH Race-Ethnicity	Hawaii			Honolulu			Kauai			Maui		
	#	%	CI	#	%	CI	#	%	CI	#	%	CI
Caucasian	n/r	n/r	n/r	600	18.8%	12.1 - 25.4	100	21.9%	15.0 - 28.8	200	22.4%	15.4 - 29.4
Native Hawaiian	400	24.8%	18.5 - 31.0	1,400	27.1%	23.5 - 30.6	100	21.9%	17.8 - 26.0	300	26.9%	22.1 - 31.7
Filipino	200	20.0%	11.1 - 28.9	1,100	15.1%	11.9 - 18.3	100	15.2%	8.9 - 21.5	300	16.1%	12.3 - 19.9
Japanese	n/r	n/r	n/r	700	23.9%	18.1 - 29.6	n/r	n/r	n/r	n/r	n/r	n/r
Black	n/r	n/r	n/r	n/r	n/r	n/r	n/r	n/r	n/r	n/r	n/r	n/r
Native Alaskan/ American Indian	n/r	n/r	n/r	n/r	n/r	n/r	n/r	n/r	n/r	n/r	n/r	n/r
Other Asian	n/r	n/r	n/r	200	12.5%	5.5 - 19.5	n/r	n/r	n/r	n/r	n/r	n/r
Other Pacific Islander	n/r	n/r	n/r	n/r	n/r	n/r	n/r	n/r	n/r	n/r	n/r	n/r
Other	100	20.8%	16.6 - 25.1	1,000	19.8%	16.8 - 22.7	100	18.2%	14.1 - 22.2	100	20.7%	17.0 - 24.3

Physical Activity in Hawaii, by School Type and County, by Gender, Grade Level, and DOH Race-Ethnicity, for the Years 2011 - 2015

Note: Weighted counts rounded to nearest 100, weighted percentages, positive responses only, 95% confidence interval; n/r (Not Reportable) - Total unweighted responses less than 100; Hawaii County High School data is not available in 2011

High Schools

Year: 2013

Physical activity - 60+ min, 0 of past 7 days

State	Hawaii			Honolulu			Kauai			Maui		
	#	%	CI	#	%	CI	#	%	CI	#	%	CI
Totals	800	13.7%	11.5 - 16.0	5,300	19.1%	17.4 - 20.8	400	17.5%	14.5 - 20.6	700	12.4%	10.0 - 14.8

Gender	Hawaii			Honolulu			Kauai			Maui		
	#	%	CI	#	%	CI	#	%	CI	#	%	CI
Male	200	7.8%	5.2 - 10.5	2,000	14.3%	11.2 - 17.3	100	12.2%	8.3 - 16.0	300	10.5%	7.4 - 13.5
Female	600	19.2%	15.7 - 22.8	3,300	23.9%	20.5 - 27.4	300	22.7%	18.0 - 27.4	400	14.3%	10.9 - 17.7

Grade Level	Hawaii			Honolulu			Kauai			Maui		
	#	%	CI	#	%	CI	#	%	CI	#	%	CI
9th Grade	200	14.6%	10.4 - 18.7	1,300	17.0%	13.8 - 20.2	100	19.6%	13.5 - 25.7	100	8.0%	4.4 - 11.5
10th Grade	200	12.1%	7.8 - 16.5	1,100	15.7%	12.8 - 18.7	100	15.7%	11.2 - 20.3	200	12.8%	8.4 - 17.2
11th Grade	200	14.2%	9.0 - 19.4	1,500	24.0%	19.7 - 28.3	100	16.6%	11.6 - 21.6	200	14.0%	10.6 - 17.5
12th Grade	200	13.5%	9.3 - 17.8	1,400	21.5%	17.0 - 25.9	100	18.5%	9.6 - 27.3	200	15.9%	10.0 - 21.7

Physical Activity in Hawaii, by School Type and County, by Gender, Grade Level, and DOH Race-Ethnicity, for the Years 2011 - 2015

*Note: Weighted counts rounded to nearest 100, weighted percentages, positive responses only, 95% confidence interval;
n/r (Not Reportable) - Total unweighted responses less than 100; Hawaii County High School data is not available in 2011*

High Schools

Year: 2013

Physical activity - 60+ min, 0 of past 7 days

DOH Race-Ethnicity	Hawaii			Honolulu			Kauai			Maui		
	#	%	CI	#	%	CI	#	%	CI	#	%	CI
Caucasian	n/r	n/r	n/r	n/r	n/r	n/r	n/r	n/r	n/r	n/r	n/r	n/r
Native Hawaiian	300	15.2%	10.9 - 19.5	1,000	18.7%	14.7 - 22.6	100	16.1%	10.9 - 21.2	200	13.3%	9.4 - 17.1
Filipino	100	13.0%	7.0 - 19.0	1,700	22.0%	17.6 - 26.5	200	22.9%	16.8 - 29.0	300	17.0%	12.0 - 21.9
Japanese	n/r	n/r	n/r	n/r	n/r	n/r	n/r	n/r	n/r	n/r	n/r	n/r
Black	n/r	n/r	n/r	n/r	n/r	n/r	n/r	n/r	n/r	n/r	n/r	n/r
Native Alaskan/ American Indian	n/r	n/r	n/r	n/r	n/r	n/r	n/a	n/a	n/a	n/r	n/r	n/r
Other Asian	n/r	n/r	n/r	300	22.6%	17.4 - 27.8	n/r	n/r	n/r	n/r	n/r	n/r
Other Pacific Islander	n/r	n/r	n/r	n/r	n/r	n/r	n/r	n/r	n/r	n/r	n/r	n/r
Other	100	13.3%	9.2 - 17.4	700	15.0%	11.0 - 19.0	100	13.4%	9.2 - 17.6	100	12.3%	8.7 - 15.9

Physical Activity in Hawaii, by School Type and County, by Gender, Grade Level, and DOH Race-Ethnicity, for the Years 2011 - 2015

*Note: Weighted counts rounded to nearest 100, weighted percentages, positive responses only, 95% confidence interval;
n/r (Not Reportable) - Total unweighted responses less than 100; Hawaii County High School data is not available in 2011*

High Schools

Year: 2013

Physical activity - 60+ min, 5+ of past 7 days

State	Hawaii			Honolulu			Kauai			Maui		
	#	%	CI	#	%	CI	#	%	CI	#	%	CI
Totals	2,600	45.4%	41.7 - 49.1	10,500	38.3%	35.4 - 41.2	900	39.3%	35.7 - 42.9	2,400	44.9%	41.0 - 48.7

Gender	Hawaii			Honolulu			Kauai			Maui		
	#	%	CI	#	%	CI	#	%	CI	#	%	CI
Male	1,500	56.1%	51.1 - 61.1	6,700	48.7%	45.2 - 52.3	600	51.0%	44.9 - 57.1	1,400	53.2%	47.8 - 58.6
Female	1,000	34.9%	30.6 - 39.3	3,900	28.2%	23.9 - 32.5	300	27.7%	23.1 - 32.4	1,000	37.3%	31.7 - 42.8

Grade Level	Hawaii			Honolulu			Kauai			Maui		
	#	%	CI	#	%	CI	#	%	CI	#	%	CI
9th Grade	700	46.8%	41.6 - 51.9	3,300	42.4%	38.1 - 46.6	300	39.8%	31.9 - 47.8	700	47.6%	39.9 - 55.3
10th Grade	600	43.4%	33.9 - 52.9	2,900	42.8%	35.7 - 49.9	300	43.9%	37.5 - 50.3	700	50.9%	44.2 - 57.6
11th Grade	600	45.2%	38.1 - 52.2	1,900	30.4%	25.7 - 35.0	200	35.9%	29.0 - 42.9	500	42.3%	34.2 - 50.5
12th Grade	600	45.6%	39.1 - 52.2	2,300	36.4%	28.9 - 43.9	200	35.6%	26.6 - 44.6	500	36.7%	29.9 - 43.6

Physical Activity in Hawaii, by School Type and County, by Gender, Grade Level, and DOH Race-Ethnicity, for the Years 2011 - 2015

*Note: Weighted counts rounded to nearest 100, weighted percentages, positive responses only, 95% confidence interval;
n/r (Not Reportable) - Total unweighted responses less than 100; Hawaii County High School data is not available in 2011*

High Schools

Year: 2013

Physical activity - 60+ min, 5+ of past 7 days

DOH Race-Ethnicity	Hawaii			Honolulu			Kauai			Maui		
	#	%	CI	#	%	CI	#	%	CI	#	%	CI
Caucasian	n/r	n/r	n/r	n/r	n/r	n/r	n/r	n/r	n/r	n/r	n/r	n/r
Native Hawaiian	800	45.4%	39.5 - 51.3	2,500	47.0%	41.2 - 52.8	300	43.5%	37.2 - 49.9	700	51.1%	45.6 - 56.6
Filipino	500	43.4%	34.2 - 52.5	2,500	31.7%	25.3 - 38.1	300	33.9%	27.7 - 40.0	600	34.3%	28.2 - 40.4
Japanese	n/r	n/r	n/r	n/r	n/r	n/r	n/r	n/r	n/r	n/r	n/r	n/r
Black	n/r	n/r	n/r	n/r	n/r	n/r	n/r	n/r	n/r	n/r	n/r	n/r
Native Alaskan/ American Indian	n/r	n/r	n/r	n/r	n/r	n/r	n/a	n/a	n/a	n/r	n/r	n/r
Other Asian	n/r	n/r	n/r	500	36.9%	25.9 - 47.9	n/r	n/r	n/r	n/r	n/r	n/r
Other Pacific Islander	n/r	n/r	n/r	n/r	n/r	n/r	n/r	n/r	n/r	n/r	n/r	n/r
Other	400	47.1%	40.6 - 53.6	2,000	40.1%	33.4 - 46.7	100	35.7%	29.9 - 41.4	300	48.0%	42.3 - 53.7

Physical Activity in Hawaii, by School Type and County, by Gender, Grade Level, and DOH Race-Ethnicity, for the Years 2011 - 2015

Note: Weighted counts rounded to nearest 100, weighted percentages, positive responses only, 95% confidence interval; n/r (Not Reportable) - Total unweighted responses less than 100; Hawaii County High School data is not available in 2011

High Schools

Year: 2013

Physical activity - 60+ min, 7 of past 7 days

State	Hawaii			Honolulu			Kauai			Maui		
	#	%	CI	#	%	CI	#	%	CI	#	%	CI
Totals	1,400	24.8%	21.4 - 28.2	5,700	20.8%	18.7 - 22.9	500	20.5%	17.6 - 23.5	1,400	25.6%	22.3 - 28.9

Gender	Hawaii			Honolulu			Kauai			Maui		
	#	%	CI	#	%	CI	#	%	CI	#	%	CI
Male	1,000	35.2%	29.9 - 40.5	4,000	29.0%	24.8 - 33.2	300	29.6%	24.3 - 34.9	900	34.4%	29.3 - 39.6
Female	400	14.8%	11.2 - 18.4	1,800	12.9%	10.1 - 15.7	100	11.3%	7.7 - 14.8	500	17.3%	13.2 - 21.5

Grade Level	Hawaii			Honolulu			Kauai			Maui		
	#	%	CI	#	%	CI	#	%	CI	#	%	CI
9th Grade	400	25.3%	20.3 - 30.4	1,900	24.0%	20.2 - 27.9	100	21.3%	15.7 - 27.0	400	27.6%	19.8 - 35.4
10th Grade	300	24.6%	15.3 - 33.9	1,700	24.4%	20.1 - 28.7	200	25.6%	20.0 - 31.3	400	27.5%	21.8 - 33.1
11th Grade	300	23.8%	17.4 - 30.1	900	13.6%	11.6 - 15.6	100	15.6%	10.3 - 20.9	300	23.9%	17.4 - 30.4
12th Grade	300	25.0%	19.8 - 30.3	1,300	20.2%	14.3 - 26.2	100	17.4%	9.9 - 25.0	300	22.2%	15.4 - 29.0

Physical Activity in Hawaii, by School Type and County, by Gender, Grade Level, and DOH Race-Ethnicity, for the Years 2011 - 2015

*Note: Weighted counts rounded to nearest 100, weighted percentages, positive responses only, 95% confidence interval;
n/r (Not Reportable) - Total unweighted responses less than 100; Hawaii County High School data is not available in 2011*

High Schools

Year: 2013

Physical activity - 60+ min, 7 of past 7 days

DOH Race-Ethnicity	Hawaii			Honolulu			Kauai			Maui		
	#	%	CI	#	%	CI	#	%	CI	#	%	CI
Caucasian	n/r	n/r	n/r	n/r	n/r	n/r	n/r	n/r	n/r	n/r	n/r	n/r
Native Hawaiian	500	25.5%	20.3 - 30.8	1,400	26.1%	20.6 - 31.6	200	23.9%	17.8 - 29.9	400	30.9%	25.9 - 35.9
Filipino	200	23.7%	16.1 - 31.4	1,300	17.3%	13.5 - 21.1	100	16.5%	11.9 - 21.0	300	19.7%	14.8 - 24.7
Japanese	n/r	n/r	n/r	n/r	n/r	n/r	n/r	n/r	n/r	n/r	n/r	n/r
Black	n/r	n/r	n/r	n/r	n/r	n/r	n/r	n/r	n/r	n/r	n/r	n/r
Native Alaskan/ American Indian	n/r	n/r	n/r	n/r	n/r	n/r	n/a	n/a	n/a	n/r	n/r	n/r
Other Asian	n/r	n/r	n/r	300	19.8%	12.8 - 26.9	n/r	n/r	n/r	n/r	n/r	n/r
Other Pacific Islander	n/r	n/r	n/r	n/r	n/r	n/r	n/r	n/r	n/r	n/r	n/r	n/r
Other	200	25.6%	21.5 - 29.7	1,100	21.3%	16.1 - 26.5	100	14.7%	10.3 - 19.1	200	24.9%	19.7 - 30.1

Physical Activity in Hawaii, by School Type and County, by Gender, Grade Level, and DOH Race-Ethnicity, for the Years 2011 - 2015

Note: Weighted counts rounded to nearest 100, weighted percentages, positive responses only, 95% confidence interval; n/r (Not Reportable) - Total unweighted responses less than 100; Hawaii County High School data is not available in 2011

High Schools

Year: 2011

Physical activity - 60+ min, 0 of past 7 days

State	Honolulu			Kauai			Maui		
	#	%	CI	#	%	CI	#	%	CI
Totals	5,700	19.6%	16.5 - 22.8	400	17.5%	14.2 - 20.7	700	13.7%	11.6 - 15.8

Gender	Honolulu			Kauai			Maui		
	#	%	CI	#	%	CI	#	%	CI
Male	2,100	14.8%	11.5 - 18.1	200	15.9%	11.5 - 20.2	200	10.1%	6.7 - 13.5
Female	3,600	24.4%	20.4 - 28.4	200	18.8%	14.5 - 23.1	500	16.9%	13.7 - 20.1

Grade Level	Honolulu			Kauai			Maui		
	#	%	CI	#	%	CI	#	%	CI
9th Grade	1,300	16.4%	12.6 - 20.3	100	20.4%	12.9 - 27.8	200	12.8%	8.0 - 17.5
10th Grade	1,200	16.3%	8.7 - 23.9	100	12.2%	6.4 - 18.0	100	11.0%	7.7 - 14.3
11th Grade	1,600	22.7%	11.6 - 33.7	100	19.5%	13.5 - 25.5	200	15.4%	11.3 - 19.4
12th Grade	1,500	24.4%	17.8 - 31.1	100	16.1%	11.1 - 21.2	200	15.9%	11.0 - 20.7

Physical Activity in Hawaii, by School Type and County, by Gender, Grade Level, and DOH Race-Ethnicity, for the Years 2011 - 2015

*Note: Weighted counts rounded to nearest 100, weighted percentages, positive responses only, 95% confidence interval;
n/r (Not Reportable) - Total unweighted responses less than 100; Hawaii County High School data is not available in 2011*

High Schools

Year: 2011

Physical activity - 60+ min, 0 of past 7 days

DOH Race-Ethnicity	Honolulu			Kauai			Maui		
	#	%	CI	#	%	CI	#	%	CI
Caucasian	400	12.4%	6.1 - 18.6	100	15.2%	8.3 - 22.1	100	9.2%	3.2 - 15.1
Native Hawaiian	800	14.5%	8.0 - 21.0	100	16.9%	11.0 - 22.9	200	13.5%	9.1 - 18.0
Filipino	2,000	27.4%	17.6 - 37.1	100	19.3%	12.1 - 26.4	200	15.4%	10.7 - 20.1
Japanese	n/r	n/r	n/r	n/r	n/r	n/r	n/r	n/r	n/r
Black	n/r	n/r	n/r	n/r	n/r	n/r	n/r	n/r	n/r
Native Alaskan/ American Indian	n/r	n/r	n/r	n/r	n/r	n/r	n/r	n/r	n/r
Other Asian	700	30.1%	23.7 - 36.5	n/r	n/r	n/r	n/r	n/r	n/r
Other Pacific Islander	n/r	n/r	n/r	n/r	n/r	n/r	n/r	n/r	n/r
Other	1,200	17.7%	14.0 - 21.3	100	15.5%	10.9 - 20.1	100	15.1%	9.8 - 20.3

Physical Activity in Hawaii, by School Type and County, by Gender, Grade Level, and DOH Race-Ethnicity, for the Years 2011 - 2015

Note: Weighted counts rounded to nearest 100, weighted percentages, positive responses only, 95% confidence interval; n/r (Not Reportable) - Total unweighted responses less than 100; Hawaii County High School data is not available in 2011

High Schools

Year: 2011

Physical activity - 60+ min, 5+ of past 7 days

State	Honolulu			Kauai			Maui		
	#	%	CI	#	%	CI	#	%	CI
Totals	10,600	36.8%	34.3 - 39.3	1,000	40.6%	36.8 - 44.5	2,000	38.5%	35.8 - 41.3

Gender	Honolulu			Kauai			Maui		
	#	%	CI	#	%	CI	#	%	CI
Male	6,600	46.7%	42.8 - 50.6	600	51.8%	46.2 - 57.4	1,200	48.6%	43.3 - 53.8
Female	4,000	27.1%	23.9 - 30.3	400	30.2%	25.4 - 35.0	800	29.5%	25.5 - 33.6

Grade Level	Honolulu			Kauai			Maui		
	#	%	CI	#	%	CI	#	%	CI
9th Grade	3,300	41.1%	34.9 - 47.2	200	38.6%	30.1 - 47.1	500	36.7%	31.3 - 42.1
10th Grade	3,000	40.7%	37.4 - 44.1	300	44.8%	35.9 - 53.7	500	40.2%	35.8 - 44.6
11th Grade	2,400	34.1%	27.7 - 40.6	200	40.5%	35.8 - 45.2	500	41.0%	33.9 - 48.0
12th Grade	1,800	29.6%	24.8 - 34.4	200	39.7%	31.4 - 48.1	400	37.2%	30.6 - 43.8

Physical Activity in Hawaii, by School Type and County, by Gender, Grade Level, and DOH Race-Ethnicity, for the Years 2011 - 2015

*Note: Weighted counts rounded to nearest 100, weighted percentages, positive responses only, 95% confidence interval;
n/r (Not Reportable) - Total unweighted responses less than 100; Hawaii County High School data is not available in 2011*

High Schools

Year: 2011

Physical activity - 60+ min, 5+ of past 7 days

DOH Race-Ethnicity	Honolulu			Kauai			Maui		
	#	%	CI	#	%	CI	#	%	CI
Caucasian	1,800	51.2%	42.2 - 60.2	200	47.2%	37.5 - 56.9	300	39.5%	30.7 - 48.4
Native Hawaiian	2,600	43.9%	37.5 - 50.4	300	42.2%	34.0 - 50.4	500	43.0%	36.7 - 49.3
Filipino	2,000	27.0%	21.4 - 32.7	200	35.4%	27.9 - 42.9	500	32.3%	26.4 - 38.2
Japanese	n/r	n/r	n/r	n/r	n/r	n/r	n/r	n/r	n/r
Black	n/r	n/r	n/r	n/r	n/r	n/r	n/r	n/r	n/r
Native Alaskan/ American Indian	n/r	n/r	n/r	n/r	n/r	n/r	n/r	n/r	n/r
Other Asian	500	21.7%	15.7 - 27.8	n/r	n/r	n/r	n/r	n/r	n/r
Other Pacific Islander	n/r	n/r	n/r	n/r	n/r	n/r	n/r	n/r	n/r
Other	2,500	38.1%	32.6 - 43.7	200	44.6%	37.9 - 51.2	400	43.6%	37.7 - 49.5

Physical Activity in Hawaii, by School Type and County, by Gender, Grade Level, and DOH Race-Ethnicity, for the Years 2011 - 2015

Note: Weighted counts rounded to nearest 100, weighted percentages, positive responses only, 95% confidence interval; n/r (Not Reportable) - Total unweighted responses less than 100; Hawaii County High School data is not available in 2011

High Schools

Year: 2011

Physical activity - 60+ min, 7 of past 7 days

State	Honolulu			Kauai			Maui		
	#	%	CI	#	%	CI	#	%	CI
Totals	5,800	20.1%	16.7 - 23.4	600	24.3%	20.7 - 28.0	1,100	21.8%	19.4 - 24.1

Gender	Honolulu			Kauai			Maui		
	#	%	CI	#	%	CI	#	%	CI
Male	3,800	26.9%	21.4 - 32.4	400	33.9%	27.5 - 40.3	700	29.1%	24.0 - 34.2
Female	1,900	13.1%	9.9 - 16.3	200	15.3%	11.6 - 19.0	400	15.2%	12.2 - 18.2

Grade Level	Honolulu			Kauai			Maui		
	#	%	CI	#	%	CI	#	%	CI
9th Grade	1,900	23.1%	16.6 - 29.5	100	20.3%	13.5 - 27.0	400	24.7%	19.7 - 29.7
10th Grade	1,500	19.8%	16.3 - 23.4	200	28.2%	21.0 - 35.3	300	19.8%	15.7 - 23.9
11th Grade	1,400	19.5%	13.5 - 25.6	200	27.2%	20.9 - 33.4	200	20.9%	15.5 - 26.2
12th Grade	1,000	17.0%	13.3 - 20.7	100	22.4%	15.2 - 29.7	200	21.9%	16.0 - 27.9

Physical Activity in Hawaii, by School Type and County, by Gender, Grade Level, and DOH Race-Ethnicity, for the Years 2011 - 2015

*Note: Weighted counts rounded to nearest 100, weighted percentages, positive responses only, 95% confidence interval;
n/r (Not Reportable) - Total unweighted responses less than 100; Hawaii County High School data is not available in 2011*

High Schools

Year: 2011

Physical activity - 60+ min, 7 of past 7 days

DOH Race-Ethnicity	Honolulu			Kauai			Maui		
	#	%	CI	#	%	CI	#	%	CI
Caucasian	1,200	34.9%	19.9 - 50.0	100	30.8%	20.6 - 41.0	200	22.7%	14.1 - 31.3
Native Hawaiian	1,400	23.6%	19.1 - 28.1	200	29.2%	22.0 - 36.4	300	23.0%	18.1 - 27.9
Filipino	1,100	14.7%	8.4 - 20.9	100	17.3%	11.0 - 23.6	300	18.5%	14.1 - 22.9
Japanese	n/r	n/r	n/r	n/r	n/r	n/r	n/r	n/r	n/r
Black	n/r	n/r	n/r	n/r	n/r	n/r	n/r	n/r	n/r
Native Alaskan/ American Indian	n/r	n/r	n/r	n/r	n/r	n/r	n/r	n/r	n/r
Other Asian	200	8.5%	6.4 - 10.5	n/r	n/r	n/r	n/r	n/r	n/r
Other Pacific Islander	n/r	n/r	n/r	n/r	n/r	n/r	n/r	n/r	n/r
Other	1,200	18.7%	14.0 - 23.4	100	24.1%	19.3 - 28.9	200	23.6%	18.5 - 28.7

Physical Activity in Hawaii, by School Type and County, by Gender, Grade Level, and DOH Race-Ethnicity, for the Years 2011 - 2015

Note: Weighted counts rounded to nearest 100, weighted percentages, positive responses only, 95% confidence interval; n/r (Not Reportable) - Total unweighted responses less than 100; Hawaii County High School data is not available in 2011

Middle Schools

Year: 2015

Physical activity - 60+ min, 0 of past 7 days

State	Hawaii			Honolulu			Kauai			Maui		
	#	%	CI	#	%	CI	#	%	CI	#	%	CI
Totals	500	14.7%	12.7 - 16.7	2,600	15.7%	12.3 - 19.1	200	15.4%	13.1 - 17.6	600	15.5%	13.3 - 17.7

Gender	Hawaii			Honolulu			Kauai			Maui		
	#	%	CI	#	%	CI	#	%	CI	#	%	CI
Male	200	12.7%	9.9 - 15.6	1,100	14.2%	10.1 - 18.4	100	16.3%	12.7 - 19.8	300	13.7%	10.7 - 16.6
Female	300	16.4%	13.5 - 19.3	1,400	16.9%	13.7 - 20.0	100	14.7%	11.4 - 18.0	300	17.2%	13.9 - 20.5

Grade Level	Hawaii			Honolulu			Kauai			Maui		
	#	%	CI	#	%	CI	#	%	CI	#	%	CI
6th Grade	200	17.6%	13.4 - 21.8	300	14.5%	3.6 - 25.3	100	14.8%	11.5 - 18.0	200	17.1%	13.0 - 21.3
7th Grade	200	13.7%	10.5 - 17.0	1,000	14.2%	9.2 - 19.3	100	15.0%	11.0 - 18.9	200	14.0%	11.1 - 16.9
8th Grade	200	13.5%	9.8 - 17.2	1,200	17.6%	12.7 - 22.5	100	16.3%	12.2 - 20.3	200	15.5%	10.9 - 20.0

Physical Activity in Hawaii, by School Type and County, by Gender, Grade Level, and DOH Race-Ethnicity, for the Years 2011 - 2015

*Note: Weighted counts rounded to nearest 100, weighted percentages, positive responses only, 95% confidence interval;
n/r (Not Reportable) - Total unweighted responses less than 100; Hawaii County High School data is not available in 2011*

Middle Schools

Year: 2015

Physical activity - 60+ min, 0 of past 7 days

DOH Race-Ethnicity	Hawaii			Honolulu			Kauai			Maui		
	#	%	CI	#	%	CI	#	%	CI	#	%	CI
Caucasian	n/r	n/r	n/r	300	13.1%	6.5 - 19.7	n/r	n/r	n/r	100	17.3%	10.3 - 24.3
Native Hawaiian	200	14.3%	11.1 - 17.5	400	13.2%	9.0 - 17.5	100	15.7%	11.8 - 19.6	100	14.5%	11.1 - 17.8
Filipino	100	11.6%	5.3 - 17.9	800	20.8%	16.4 - 25.2	100	18.0%	11.1 - 24.9	200	16.6%	12.1 - 21.1
Japanese	n/r	n/r	n/r	n/r	n/r	n/r	n/r	n/r	n/r	n/r	n/r	n/r
Black	n/r	n/r	n/r	n/r	n/r	n/r	n/r	n/r	n/r	n/r	n/r	n/r
Native Alaskan/ American Indian	n/r	n/r	n/r	n/r	n/r	n/r	n/r	n/r	n/r	n/r	n/r	n/r
Other Asian	n/r	n/r	n/r	100	19.7%	8.5 - 30.9	n/r	n/r	n/r	n/r	n/r	n/r
Other Pacific Islander	n/r	n/r	n/r	n/r	n/r	n/r	n/r	n/r	n/r	n/r	n/r	n/r
Other	100	13.3%	10.0 - 16.6	300	11.3%	8.5 - 14.1	<50	10.8%	7.7 - 13.9	100	12.8%	9.3 - 16.3

Physical Activity in Hawaii, by School Type and County, by Gender, Grade Level, and DOH Race-Ethnicity, for the Years 2011 - 2015

Note: Weighted counts rounded to nearest 100, weighted percentages, positive responses only, 95% confidence interval; n/r (Not Reportable) - Total unweighted responses less than 100; Hawaii County High School data is not available in 2011

Middle Schools

Year: 2015

Physical activity - 60+ min, 5+ of past 7 days

State	Hawaii			Honolulu			Kauai			Maui		
	#	%	CI	#	%	CI	#	%	CI	#	%	CI
Totals	1,800	48.6%	45.6 - 51.6	7,500	46.0%	41.0 - 51.0	700	49.0%	46.1 - 51.9	1,800	49.1%	45.9 - 52.2

Gender	Hawaii			Honolulu			Kauai			Maui		
	#	%	CI	#	%	CI	#	%	CI	#	%	CI
Male	1,000	56.9%	52.9 - 60.8	4,400	55.0%	48.3 - 61.7	400	58.5%	53.2 - 63.8	1,000	54.8%	50.9 - 58.8
Female	800	41.1%	36.7 - 45.6	3,100	37.5%	33.1 - 42.0	300	39.9%	35.4 - 44.4	800	43.4%	39.3 - 47.4

Grade Level	Hawaii			Honolulu			Kauai			Maui		
	#	%	CI	#	%	CI	#	%	CI	#	%	CI
6th Grade	500	49.4%	43.2 - 55.7	1,200	51.6%	40.0 - 63.1	200	51.8%	46.7 - 56.8	600	50.8%	45.4 - 56.2
7th Grade	700	49.7%	44.9 - 54.6	3,400	46.5%	39.7 - 53.4	300	50.7%	45.7 - 55.8	600	49.2%	44.4 - 54.0
8th Grade	600	47.1%	41.8 - 52.3	2,900	44.1%	35.9 - 52.2	200	44.8%	40.0 - 49.6	600	47.4%	41.0 - 53.9

Physical Activity in Hawaii, by School Type and County, by Gender, Grade Level, and DOH Race-Ethnicity, for the Years 2011 - 2015

*Note: Weighted counts rounded to nearest 100, weighted percentages, positive responses only, 95% confidence interval;
n/r (Not Reportable) - Total unweighted responses less than 100; Hawaii County High School data is not available in 2011*

Middle Schools

Year: 2015

Physical activity - 60+ min, 5+ of past 7 days

DOH Race-Ethnicity	Hawaii			Honolulu			Kauai			Maui		
	#	%	CI	#	%	CI	#	%	CI	#	%	CI
Caucasian	n/r	n/r	n/r	1,200	60.2%	49.3 - 71.1	n/r	n/r	n/r	300	57.7%	45.7 - 69.7
Native Hawaiian	700	52.2%	47.2 - 57.2	1,500	48.2%	39.2 - 57.2	200	50.3%	46.0 - 54.5	500	52.6%	47.2 - 58.0
Filipino	200	41.3%	33.2 - 49.4	1,600	39.9%	34.5 - 45.3	200	46.0%	37.7 - 54.3	500	42.3%	35.6 - 48.9
Japanese	n/r	n/r	n/r	n/r	n/r	n/r	n/r	n/r	n/r	n/r	n/r	n/r
Black	n/r	n/r	n/r	n/r	n/r	n/r	n/r	n/r	n/r	n/r	n/r	n/r
Native Alaskan/ American Indian	n/r	n/r	n/r	n/r	n/r	n/r	n/r	n/r	n/r	n/r	n/r	n/r
Other Asian	n/r	n/r	n/r	100	41.2%	28.9 - 53.5	n/r	n/r	n/r	n/r	n/r	n/r
Other Pacific Islander	n/r	n/r	n/r	n/r	n/r	n/r	n/r	n/r	n/r	n/r	n/r	n/r
Other	300	47.0%	42.1 - 52.0	1,000	46.8%	40.3 - 53.3	200	51.1%	45.1 - 57.0	300	51.1%	46.3 - 55.9

Physical Activity in Hawaii, by School Type and County, by Gender, Grade Level, and DOH Race-Ethnicity, for the Years 2011 - 2015

Note: Weighted counts rounded to nearest 100, weighted percentages, positive responses only, 95% confidence interval; n/r (Not Reportable) - Total unweighted responses less than 100; Hawaii County High School data is not available in 2011

Middle Schools

Year: 2015

Physical activity - 60+ min, 7 of past 7 days

State	Hawaii			Honolulu			Kauai			Maui		
	#	%	CI	#	%	CI	#	%	CI	#	%	CI
Totals	1,000	27.5%	24.2 - 30.7	4,400	26.8%	23.7 - 29.9	500	30.7%	27.5 - 33.9	1,100	28.5%	25.9 - 31.1

Gender	Hawaii			Honolulu			Kauai			Maui		
	#	%	CI	#	%	CI	#	%	CI	#	%	CI
Male	600	35.1%	29.6 - 40.6	2,700	34.6%	30.2 - 39.0	300	39.9%	34.4 - 45.4	600	34.2%	30.4 - 38.0
Female	400	20.5%	16.7 - 24.3	1,600	19.3%	15.9 - 22.6	200	21.8%	18.0 - 25.6	400	22.8%	19.3 - 26.2

Grade Level	Hawaii			Honolulu			Kauai			Maui		
	#	%	CI	#	%	CI	#	%	CI	#	%	CI
6th Grade	300	31.3%	26.0 - 36.5	800	34.5%	25.7 - 43.2	100	29.3%	23.9 - 34.7	400	31.9%	26.5 - 37.4
7th Grade	400	28.4%	23.8 - 33.0	2,000	27.7%	24.2 - 31.2	200	35.4%	29.0 - 41.8	400	28.1%	23.9 - 32.3
8th Grade	300	23.5%	17.4 - 29.6	1,600	23.6%	16.4 - 30.7	100	27.2%	23.1 - 31.2	300	25.2%	21.8 - 28.6

Physical Activity in Hawaii, by School Type and County, by Gender, Grade Level, and DOH Race-Ethnicity, for the Years 2011 - 2015

*Note: Weighted counts rounded to nearest 100, weighted percentages, positive responses only, 95% confidence interval;
n/r (Not Reportable) - Total unweighted responses less than 100; Hawaii County High School data is not available in 2011*

Middle Schools

Year: 2015

Physical activity - 60+ min, 7 of past 7 days

DOH Race-Ethnicity	Hawaii			Honolulu			Kauai			Maui		
	#	%	CI	#	%	CI	#	%	CI	#	%	CI
Caucasian	n/r	n/r	n/r	700	34.2%	21.4 - 46.9	n/r	n/r	n/r	100	28.3%	19.9 - 36.6
Native Hawaiian	400	28.1%	23.1 - 33.0	900	29.9%	22.8 - 37.0	200	35.1%	30.0 - 40.2	300	34.3%	29.8 - 38.9
Filipino	200	27.8%	19.4 - 36.3	800	20.4%	14.7 - 26.2	100	24.9%	17.6 - 32.3	300	22.1%	16.7 - 27.6
Japanese	n/r	n/r	n/r	n/r	n/r	n/r	n/r	n/r	n/r	n/r	n/r	n/r
Black	n/r	n/r	n/r	n/r	n/r	n/r	n/r	n/r	n/r	n/r	n/r	n/r
Native Alaskan/ American Indian	n/r	n/r	n/r	n/r	n/r	n/r	n/r	n/r	n/r	n/r	n/r	n/r
Other Asian	n/r	n/r	n/r	100	20.2%	8.5 - 31.9	n/r	n/r	n/r	n/r	n/r	n/r
Other Pacific Islander	n/r	n/r	n/r	n/r	n/r	n/r	n/r	n/r	n/r	n/r	n/r	n/r
Other	200	27.5%	22.3 - 32.6	600	27.7%	22.6 - 32.7	100	31.3%	25.5 - 37.2	200	30.7%	26.4 - 35.0

Physical Activity in Hawaii, by School Type and County, by Gender, Grade Level, and DOH Race-Ethnicity, for the Years 2011 - 2015

Note: Weighted counts rounded to nearest 100, weighted percentages, positive responses only, 95% confidence interval; n/r (Not Reportable) - Total unweighted responses less than 100; Hawaii County High School data is not available in 2011

Middle Schools

Year: 2013

Physical activity - 60+ min, 0 of past 7 days

State	Hawaii			Honolulu			Kauai			Maui		
	#	%	CI	#	%	CI	#	%	CI	#	%	CI
Totals	400	10.4%	8.2 - 12.5	2,500	14.4%	9.8 - 19.1	200	9.7%	7.6 - 11.7	400	10.9%	8.7 - 13.2

Gender	Hawaii			Honolulu			Kauai			Maui		
	#	%	CI	#	%	CI	#	%	CI	#	%	CI
Male	200	9.4%	6.2 - 12.6	1,300	14.7%	9.3 - 20.2	100	10.8%	7.2 - 14.4	200	10.4%	7.1 - 13.7
Female	200	11.3%	7.9 - 14.7	1,200	14.2%	9.9 - 18.5	100	8.7%	5.8 - 11.6	200	11.5%	8.5 - 14.5

Grade Level	Hawaii			Honolulu			Kauai			Maui		
	#	%	CI	#	%	CI	#	%	CI	#	%	CI
6th Grade	100	9.5%	5.3 - 13.8	500	17.0%	6.8 - 27.2	100	11.1%	7.5 - 14.8	200	14.6%	9.8 - 19.3
7th Grade	100	10.5%	7.2 - 13.8	1,000	13.1%	7.5 - 18.7	<50	7.7%	3.9 - 11.5	100	11.2%	7.7 - 14.8
8th Grade	100	11.1%	7.5 - 14.7	1,000	14.3%	9.1 - 19.5	100	10.6%	7.5 - 13.8	100	7.5%	4.5 - 10.4

Physical Activity in Hawaii, by School Type and County, by Gender, Grade Level, and DOH Race-Ethnicity, for the Years 2011 - 2015

*Note: Weighted counts rounded to nearest 100, weighted percentages, positive responses only, 95% confidence interval;
n/r (Not Reportable) - Total unweighted responses less than 100; Hawaii County High School data is not available in 2011*

Middle Schools

Year: 2013

Physical activity - 60+ min, 0 of past 7 days

DOH Race-Ethnicity	Hawaii			Honolulu			Kauai			Maui		
	#	%	CI	#	%	CI	#	%	CI	#	%	CI
Caucasian	n/r	n/r	n/r	n/r	n/r	n/r	n/r	n/r	n/r	n/r	n/r	n/r
Native Hawaiian	100	8.3%	5.6 - 11.1	400	11.9%	8.1 - 15.8	<50	8.2%	4.8 - 11.6	100	10.7%	7.3 - 14.1
Filipino	100	14.9%	7.8 - 21.9	800	19.0%	11.3 - 26.7	100	13.5%	8.6 - 18.4	100	13.0%	7.7 - 18.4
Japanese	n/r	n/r	n/r	n/r	n/r	n/r	n/r	n/r	n/r	n/r	n/r	n/r
Black	n/r	n/r	n/r	n/r	n/r	n/r	n/a	n/a	n/a	n/r	n/r	n/r
Native Alaskan/ American Indian	n/r	n/r	n/r	n/r	n/r	n/r	n/r	n/r	n/r	n/r	n/r	n/r
Other Asian	n/r	n/r	n/r	n/r	n/r	n/r	n/r	n/r	n/r	n/r	n/r	n/r
Other Pacific Islander	n/r	n/r	n/r	n/r	n/r	n/r	n/r	n/r	n/r	n/r	n/r	n/r
Other	100	8.3%	5.2 - 11.3	200	11.2%	9.0 - 13.4	<50	7.0%	4.2 - 9.8	100	8.7%	5.3 - 12.2

Physical Activity in Hawaii, by School Type and County, by Gender, Grade Level, and DOH Race-Ethnicity, for the Years 2011 - 2015

Note: Weighted counts rounded to nearest 100, weighted percentages, positive responses only, 95% confidence interval; n/r (Not Reportable) - Total unweighted responses less than 100; Hawaii County High School data is not available in 2011

Middle Schools

Year: 2013

Physical activity - 60+ min, 5+ of past 7 days

State	Hawaii			Honolulu			Kauai			Maui		
	#	%	CI	#	%	CI	#	%	CI	#	%	CI
Totals	1,800	54.5%	51.6 - 57.4	9,100	52.6%	49.2 - 56.1	900	54.5%	50.6 - 58.3	1,800	49.5%	46.4 - 52.6

Gender	Hawaii			Honolulu			Kauai			Maui		
	#	%	CI	#	%	CI	#	%	CI	#	%	CI
Male	1,000	63.7%	58.8 - 68.5	5,200	60.5%	56.6 - 64.4	500	64.3%	58.4 - 70.2	1,100	60.9%	55.8 - 66.0
Female	800	46.0%	41.5 - 50.6	3,800	44.6%	39.0 - 50.1	400	45.8%	40.9 - 50.7	700	38.5%	34.3 - 42.8

Grade Level	Hawaii			Honolulu			Kauai			Maui		
	#	%	CI	#	%	CI	#	%	CI	#	%	CI
6th Grade	500	54.6%	48.6 - 60.5	1,700	56.9%	48.7 - 65.0	300	55.4%	50.1 - 60.8	600	50.2%	44.5 - 55.9
7th Grade	700	55.6%	51.5 - 59.6	3,900	52.6%	48.0 - 57.2	300	52.2%	44.3 - 60.2	600	44.5%	39.6 - 49.4
8th Grade	600	53.8%	47.9 - 59.7	3,500	51.6%	47.2 - 56.0	300	55.5%	50.1 - 60.9	700	54.2%	49.3 - 59.2

Physical Activity in Hawaii, by School Type and County, by Gender, Grade Level, and DOH Race-Ethnicity, for the Years 2011 - 2015

*Note: Weighted counts rounded to nearest 100, weighted percentages, positive responses only, 95% confidence interval;
n/r (Not Reportable) - Total unweighted responses less than 100; Hawaii County High School data is not available in 2011*

Middle Schools

Year: 2013

Physical activity - 60+ min, 5+ of past 7 days

DOH Race-Ethnicity	Hawaii			Honolulu			Kauai			Maui		
	#	%	CI	#	%	CI	#	%	CI	#	%	CI
Caucasian	n/r	n/r	n/r	n/r	n/r	n/r	n/r	n/r	n/r	n/r	n/r	n/r
Native Hawaiian	700	59.7%	54.4 - 64.9	1,900	58.1%	51.9 - 64.4	200	53.9%	46.6 - 61.2	500	53.2%	47.0 - 59.4
Filipino	300	49.7%	40.5 - 58.9	1,800	43.7%	36.7 - 50.8	200	49.1%	40.5 - 57.8	500	45.4%	39.4 - 51.5
Japanese	n/r	n/r	n/r	n/r	n/r	n/r	n/r	n/r	n/r	n/r	n/r	n/r
Black	n/r	n/r	n/r	n/r	n/r	n/r	n/a	n/a	n/a	n/r	n/r	n/r
Native Alaskan/ American Indian	n/r	n/r	n/r	n/r	n/r	n/r	n/r	n/r	n/r	n/r	n/r	n/r
Other Asian	n/r	n/r	n/r	n/r	n/r	n/r	n/r	n/r	n/r	n/r	n/r	n/r
Other Pacific Islander	n/r	n/r	n/r	n/r	n/r	n/r	n/r	n/r	n/r	n/r	n/r	n/r
Other	300	54.9%	48.8 - 61.0	800	55.4%	47.6 - 63.2	200	58.3%	52.4 - 64.1	300	50.9%	45.5 - 56.3

Physical Activity in Hawaii, by School Type and County, by Gender, Grade Level, and DOH Race-Ethnicity, for the Years 2011 - 2015

Note: Weighted counts rounded to nearest 100, weighted percentages, positive responses only, 95% confidence interval; n/r (Not Reportable) - Total unweighted responses less than 100; Hawaii County High School data is not available in 2011

Middle Schools

Year: 2013

Physical activity - 60+ min, 7 of past 7 days

State	Hawaii			Honolulu			Kauai			Maui		
	#	%	CI	#	%	CI	#	%	CI	#	%	CI
Totals	1,200	34.4%	31.1 - 37.8	5,400	31.6%	29.0 - 34.3	500	33.4%	29.7 - 37.1	1,100	31.2%	28.3 - 34.1

Gender	Hawaii			Honolulu			Kauai			Maui		
	#	%	CI	#	%	CI	#	%	CI	#	%	CI
Male	700	45.0%	39.8 - 50.3	3,400	39.4%	35.2 - 43.7	300	43.1%	37.1 - 49.1	800	42.3%	37.4 - 47.2
Female	400	24.6%	19.8 - 29.4	2,000	23.7%	19.9 - 27.5	200	24.8%	20.7 - 29.0	400	20.5%	16.7 - 24.3

Grade Level	Hawaii			Honolulu			Kauai			Maui		
	#	%	CI	#	%	CI	#	%	CI	#	%	CI
6th Grade	300	36.4%	29.1 - 43.8	1,100	38.5%	29.7 - 47.3	200	37.6%	31.1 - 44.1	400	34.1%	28.4 - 39.9
7th Grade	400	32.5%	28.5 - 36.6	2,200	30.2%	26.3 - 34.0	200	30.8%	24.5 - 37.1	400	28.0%	23.4 - 32.6
8th Grade	400	35.3%	29.1 - 41.6	2,100	30.6%	28.0 - 33.3	200	31.8%	26.2 - 37.4	400	32.1%	27.5 - 36.8

Physical Activity in Hawaii, by School Type and County, by Gender, Grade Level, and DOH Race-Ethnicity, for the Years 2011 - 2015

*Note: Weighted counts rounded to nearest 100, weighted percentages, positive responses only, 95% confidence interval;
n/r (Not Reportable) - Total unweighted responses less than 100; Hawaii County High School data is not available in 2011*

Middle Schools

Year: 2013

Physical activity - 60+ min, 7 of past 7 days

DOH Race-Ethnicity	Hawaii			Honolulu			Kauai			Maui		
	#	%	CI	#	%	CI	#	%	CI	#	%	CI
Caucasian	n/r	n/r	n/r	n/r	n/r	n/r	n/r	n/r	n/r	n/r	n/r	n/r
Native Hawaiian	500	37.2%	31.6 - 42.8	1,100	35.4%	28.2 - 42.6	200	36.0%	29.6 - 42.4	300	35.4%	30.1 - 40.6
Filipino	200	28.0%	19.8 - 36.3	1,000	25.2%	19.6 - 30.7	100	30.7%	23.3 - 38.0	300	25.7%	20.0 - 31.3
Japanese	n/r	n/r	n/r	n/r	n/r	n/r	n/r	n/r	n/r	n/r	n/r	n/r
Black	n/r	n/r	n/r	n/r	n/r	n/r	n/a	n/a	n/a	n/r	n/r	n/r
Native Alaskan/ American Indian	n/r	n/r	n/r	n/r	n/r	n/r	n/r	n/r	n/r	n/r	n/r	n/r
Other Asian	n/r	n/r	n/r	n/r	n/r	n/r	n/r	n/r	n/r	n/r	n/r	n/r
Other Pacific Islander	n/r	n/r	n/r	n/r	n/r	n/r	n/r	n/r	n/r	n/r	n/r	n/r
Other	200	34.6%	29.3 - 39.9	500	33.5%	27.0 - 40.1	100	34.4%	28.4 - 40.5	200	33.0%	28.1 - 37.9

Physical Activity in Hawaii, by School Type and County, by Gender, Grade Level, and DOH Race-Ethnicity, for the Years 2011 - 2015

Note: Weighted counts rounded to nearest 100, weighted percentages, positive responses only, 95% confidence interval; n/r (Not Reportable) - Total unweighted responses less than 100; Hawaii County High School data is not available in 2011

Middle Schools

Year: 2011

Physical activity - 60+ min, 0 of past 7 days

State	Hawaii			Honolulu			Kauai			Maui		
	#	%	CI	#	%	CI	#	%	CI	#	%	CI
Totals	600	16.8%	13.9 - 19.7	2,700	16.4%	12.9 - 19.9	200	13.2%	10.7 - 15.8	600	15.2%	13.1 - 17.3

Gender	Hawaii			Honolulu			Kauai			Maui		
	#	%	CI	#	%	CI	#	%	CI	#	%	CI
Male	300	16.6%	12.7 - 20.5	1,300	16.0%	12.4 - 19.6	100	11.6%	8.2 - 15.1	300	14.5%	11.2 - 17.9
Female	300	17.0%	13.3 - 20.7	1,400	16.6%	12.1 - 21.2	100	14.2%	10.4 - 18.0	300	16.0%	12.9 - 19.1

Grade Level	Hawaii			Honolulu			Kauai			Maui		
	#	%	CI	#	%	CI	#	%	CI	#	%	CI
6th Grade	200	18.9%	13.1 - 24.8	600	19.3%	13.1 - 25.5	100	14.7%	10.6 - 18.9	200	19.4%	15.0 - 23.8
7th Grade	200	13.9%	9.4 - 18.4	1,100	16.4%	9.6 - 23.3	100	14.7%	9.3 - 20.1	200	14.2%	10.3 - 18.0
8th Grade	200	18.6%	13.8 - 23.4	1,000	15.0%	11.7 - 18.4	100	10.7%	7.0 - 14.4	200	12.5%	8.9 - 16.1

Physical Activity in Hawaii, by School Type and County, by Gender, Grade Level, and DOH Race-Ethnicity, for the Years 2011 - 2015

*Note: Weighted counts rounded to nearest 100, weighted percentages, positive responses only, 95% confidence interval;
n/r (Not Reportable) - Total unweighted responses less than 100; Hawaii County High School data is not available in 2011*

Middle Schools

Year: 2011

Physical activity - 60+ min, 0 of past 7 days

DOH Race-Ethnicity	Hawaii			Honolulu			Kauai			Maui		
	#	%	CI	#	%	CI	#	%	CI	#	%	CI
Caucasian	n/r	n/r	n/r	200	9.8%	5.3 - 14.4	n/r	n/r	n/r	n/r	n/r	n/r
Native Hawaiian	200	17.9%	13.4 - 22.3	400	12.2%	9.1 - 15.3	100	11.8%	8.3 - 15.3	100	14.6%	10.5 - 18.7
Filipino	100	17.1%	8.1 - 26.1	1,000	22.9%	17.6 - 28.2	100	19.4%	13.0 - 25.8	200	20.6%	15.9 - 25.3
Japanese	n/r	n/r	n/r	n/r	n/r	n/r	n/r	n/r	n/r	n/r	n/r	n/r
Black	n/r	n/r	n/r	n/r	n/r	n/r	n/r	n/r	n/r	n/r	n/r	n/r
Native Alaskan/ American Indian	n/r	n/r	n/r	n/r	n/r	n/r	n/r	n/r	n/r	n/r	n/r	n/r
Other Asian	n/r	n/r	n/r	100	11.4%	6.3 - 16.5	n/r	n/r	n/r	n/r	n/r	n/r
Other Pacific Islander	n/r	n/r	n/r	200	28.3%	17.5 - 39.2	n/r	n/r	n/r	n/r	n/r	n/r
Other	100	18.6%	13.9 - 23.2	600	13.8%	9.9 - 17.8	<50	9.9%	6.2 - 13.6	100	10.7%	7.4 - 13.9

Physical Activity in Hawaii, by School Type and County, by Gender, Grade Level, and DOH Race-Ethnicity, for the Years 2011 - 2015

Note: Weighted counts rounded to nearest 100, weighted percentages, positive responses only, 95% confidence interval; n/r (Not Reportable) - Total unweighted responses less than 100; Hawaii County High School data is not available in 2011

Middle Schools

Year: 2011

Physical activity - 60+ min, 5+ of past 7 days

State	Hawaii			Honolulu			Kauai			Maui		
	#	%	CI	#	%	CI	#	%	CI	#	%	CI
Totals	1,500	44.9%	41.9 - 47.8	7,300	43.9%	39.6 - 48.2	700	41.6%	37.5 - 45.7	1,700	47.1%	43.6 - 50.5

Gender	Hawaii			Honolulu			Kauai			Maui		
	#	%	CI	#	%	CI	#	%	CI	#	%	CI
Male	800	49.9%	45.4 - 54.5	4,200	50.4%	46.1 - 54.7	400	48.6%	42.2 - 55.0	900	50.7%	45.7 - 55.7
Female	700	39.7%	35.2 - 44.2	3,100	37.4%	32.2 - 42.6	300	35.7%	31.4 - 40.1	800	43.7%	39.0 - 48.5

Grade Level	Hawaii			Honolulu			Kauai			Maui		
	#	%	CI	#	%	CI	#	%	CI	#	%	CI
6th Grade	400	46.3%	41.4 - 51.2	1,300	44.8%	38.4 - 51.1	200	41.6%	35.0 - 48.1	500	42.3%	37.0 - 47.5
7th Grade	600	48.2%	43.1 - 53.3	3,200	45.9%	42.2 - 49.5	200	44.9%	38.7 - 51.0	600	48.4%	42.5 - 54.4
8th Grade	500	40.2%	34.8 - 45.6	2,800	41.7%	33.9 - 49.6	200	37.9%	29.6 - 46.2	600	50.1%	43.6 - 56.6

Physical Activity in Hawaii, by School Type and County, by Gender, Grade Level, and DOH Race-Ethnicity, for the Years 2011 - 2015

*Note: Weighted counts rounded to nearest 100, weighted percentages, positive responses only, 95% confidence interval;
n/r (Not Reportable) - Total unweighted responses less than 100; Hawaii County High School data is not available in 2011*

Middle Schools

Year: 2011

Physical activity - 60+ min, 5+ of past 7 days

DOH Race-Ethnicity	Hawaii			Honolulu			Kauai			Maui		
	#	%	CI	#	%	CI	#	%	CI	#	%	CI
Caucasian	n/r	n/r	n/r	900	50.9%	44.0 - 57.7	n/r	n/r	n/r	n/r	n/r	n/r
Native Hawaiian	600	48.0%	42.9 - 53.0	1,700	52.8%	48.9 - 56.7	200	46.3%	39.8 - 52.8	500	48.8%	43.4 - 54.2
Filipino	200	32.7%	23.1 - 42.3	1,300	31.9%	24.2 - 39.5	100	31.9%	24.5 - 39.3	400	38.8%	31.9 - 45.7
Japanese	n/r	n/r	n/r	n/r	n/r	n/r	n/r	n/r	n/r	n/r	n/r	n/r
Black	n/r	n/r	n/r	n/r	n/r	n/r	n/r	n/r	n/r	n/r	n/r	n/r
Native Alaskan/ American Indian	n/r	n/r	n/r	n/r	n/r	n/r	n/r	n/r	n/r	n/r	n/r	n/r
Other Asian	n/r	n/r	n/r	300	36.8%	27.5 - 46.0	n/r	n/r	n/r	n/r	n/r	n/r
Other Pacific Islander	n/r	n/r	n/r	300	37.9%	25.8 - 50.0	n/r	n/r	n/r	n/r	n/r	n/r
Other	300	46.0%	39.6 - 52.3	2,000	48.3%	43.7 - 53.0	100	44.5%	37.6 - 51.4	300	50.8%	43.9 - 57.6

Physical Activity in Hawaii, by School Type and County, by Gender, Grade Level, and DOH Race-Ethnicity, for the Years 2011 - 2015

Note: Weighted counts rounded to nearest 100, weighted percentages, positive responses only, 95% confidence interval; n/r (Not Reportable) - Total unweighted responses less than 100; Hawaii County High School data is not available in 2011

Middle Schools

Year: 2011

Physical activity - 60+ min, 7 of past 7 days

State	Hawaii			Honolulu			Kauai			Maui		
	#	%	CI	#	%	CI	#	%	CI	#	%	CI
Totals	900	27.2%	24.7 - 29.8	4,000	23.8%	21.3 - 26.3	400	22.9%	19.7 - 26.1	1,100	28.7%	25.4 - 32.0

Gender	Hawaii			Honolulu			Kauai			Maui		
	#	%	CI	#	%	CI	#	%	CI	#	%	CI
Male	500	31.7%	27.7 - 35.8	2,400	28.9%	25.4 - 32.3	200	30.0%	25.2 - 34.7	600	33.6%	28.9 - 38.2
Female	400	22.6%	18.8 - 26.5	1,600	18.7%	15.4 - 22.1	100	16.9%	13.6 - 20.2	500	24.2%	20.0 - 28.4

Grade Level	Hawaii			Honolulu			Kauai			Maui		
	#	%	CI	#	%	CI	#	%	CI	#	%	CI
6th Grade	300	31.1%	26.2 - 36.0	800	25.4%	21.0 - 29.9	100	24.5%	19.2 - 29.9	300	27.2%	21.6 - 32.8
7th Grade	400	27.3%	23.9 - 30.6	1,800	25.7%	22.3 - 29.1	100	23.1%	17.6 - 28.7	400	28.7%	23.3 - 34.2
8th Grade	300	24.6%	19.7 - 29.5	1,400	21.1%	16.0 - 26.2	100	21.0%	15.3 - 26.8	400	30.0%	23.7 - 36.3

Physical Activity in Hawaii, by School Type and County, by Gender, Grade Level, and DOH Race-Ethnicity, for the Years 2011 - 2015

*Note: Weighted counts rounded to nearest 100, weighted percentages, positive responses only, 95% confidence interval;
n/r (Not Reportable) - Total unweighted responses less than 100; Hawaii County High School data is not available in 2011*

Middle Schools

Year: 2011

Physical activity - 60+ min, 7 of past 7 days

DOH Race-Ethnicity	Hawaii			Honolulu			Kauai			Maui		
	#	%	CI	#	%	CI	#	%	CI	#	%	CI
Caucasian	n/r	n/r	n/r	500	29.1%	25.2 - 32.9	n/r	n/r	n/r	n/r	n/r	n/r
Native Hawaiian	400	32.6%	28.0 - 37.1	1,000	32.2%	28.0 - 36.4	100	27.9%	22.8 - 33.1	300	30.1%	25.1 - 35.1
Filipino	100	24.2%	15.5 - 32.8	700	15.8%	12.7 - 18.8	100	15.4%	10.2 - 20.5	200	22.2%	16.4 - 28.0
Japanese	n/r	n/r	n/r	n/r	n/r	n/r	n/r	n/r	n/r	n/r	n/r	n/r
Black	n/r	n/r	n/r	n/r	n/r	n/r	n/r	n/r	n/r	n/r	n/r	n/r
Native Alaskan/ American Indian	n/r	n/r	n/r	n/r	n/r	n/r	n/r	n/r	n/r	n/r	n/r	n/r
Other Asian	n/r	n/r	n/r	100	15.3%	11.8 - 18.8	n/r	n/r	n/r	n/r	n/r	n/r
Other Pacific Islander	n/r	n/r	n/r	200	23.1%	12.2 - 34.1	n/r	n/r	n/r	n/r	n/r	n/r
Other	200	25.8%	20.7 - 30.9	1,000	24.7%	21.1 - 28.2	100	22.1%	16.9 - 27.2	200	30.5%	24.7 - 36.3