

PRAMS Health Indicator 3-Year Aggregate Report - Drinking alcohol 3 months before pregnancy- for the State of Hawaii, for the Year(s)

2000-2002;2001-2003;2002-2004;2003-2005;2004-2006;2005-2007;2006-2008;2007-2009;2008-2010;2009-2011;2010-2012;2011-2013

PRAMS Health Indicator 3-Year Aggregate Report - Drinking alcohol 3 months before pregnancy- by State;County;DOH Race-Ethnicity;PRAMS Age Group;Infant Gender;Married;Poverty Level;Income (2000-2003);Income (2004-2011);Birthweight;Smoke 3rd Trimester;Smoke Before Pregnant;WIC During Pregnancy, for the Year(s)

2000-2002;2001-2003;2002-2004;2003-2005;2004-2006;2005-2007;2006-2008;2007-2009;2008-2010;2009-2011;2010-2012;2011-2013

Note: Weighted counts (#) represent 3-yr averages, rounded to the nearest hundred; n/r (Not Reportable) - If the unweighted total responses for a dimension (row) is <30 that row will not be shown

The trend analysis section shows the trend for the selected health variable over selected years in a table and a graph. 3-Year Weighted Total Responses: This number is a weighted representation of the mothers of babies delivered in a given year, who responded to a particular question in the survey. For most questions this will be the mothers of all babies delivered in a given year. For some secondary questions only a subset of the population was asked the question. For example, all survey participants were asked if they smoked during pregnancy, but only those who answered yes were asked how many cigarettes a day. If a dimension value is unknown for a particular survey record, that record will not be included in the counts for that particular dimension.

Note: Data collection for household income changed in 2004 and again in 2012. Because of this, income data does not exist for some 3-year aggregate periods.

Below are the indicators included in this report and the long description for each indicator.

PRAMS Health Indicator	Health Indicator Description
Drinking alcohol 3 months before pregnancy	Drinking alcohol 3 months before pregnancy

Suggested citation:

Hawaii Health Data Warehouse, Hawaii State Department of Health, Pregnancy Risk Assessment Monitoring System, (report title and years), Report Created: 2/16/17

For documentation on other terms and coding in this report, please go to the following links:

[Click here to access PRAMS documentation](#)

[Click here to access DOH-Race Ethnicity coding](#)

[Click here to access The Hawai'i Data Guide](#)

**For questions about this report, please contact
The Hawai'i Health Data Warehouse**

profiles@hhdw.org

(855) 946-5899 x15

PRAMS Health Indicator 3-Year Aggregate Report - Drinking alcohol 3 months before pregnancy- for the State of Hawaii, for the Year(s)

2000-2002;2001-2003;2002-2004;2003-2005;2004-2006;2005-2007;2006-2008;2007-2009;2008-2010;2009-2011;2010-2012;2011-2013

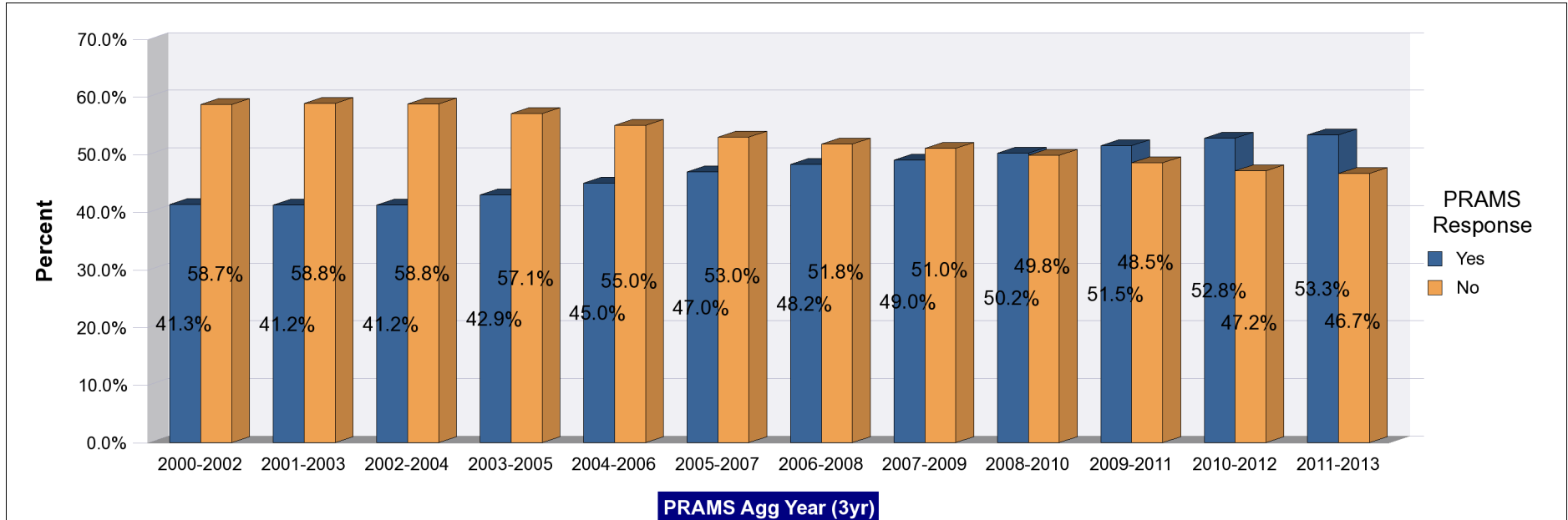
Note: Weighted counts (#) represent 3-yr averages, rounded to the nearest hundred; n/r (Not Reportable) - If the unweighted total responses for a dimension (row) is <30 that row will not be shown

Years	Yes			No			Weighted Total Responses (3-Yr Avg)
	#	%	C.I.(95%)	#	%	C.I.(95%)	#
2000-2002	6,800	41.3	39.9 - 42.7	9,600	58.7	57.3 - 60.1	16,400
2001-2003	6,900	41.2	39.7 - 42.7	9,800	58.8	57.3 - 60.3	16,700
2002-2004	7,000	41.2	39.8 - 42.7	10,000	58.8	57.3 - 60.2	17,100
2003-2005	7,400	42.9	41.6 - 44.3	9,900	57.1	55.7 - 58.4	17,300
2004-2006	7,900	45.0	43.7 - 46.3	9,700	55.0	53.7 - 56.3	17,600
2005-2007	8,400	47.0	45.6 - 48.3	9,500	53.0	51.7 - 54.4	17,900
2006-2008	8,800	48.2	46.9 - 49.6	9,500	51.8	50.4 - 53.1	18,300
2007-2009	9,000	49.0	47.5 - 50.5	9,400	51.0	49.5 - 52.5	18,400
2008-2010	9,200	50.2	48.5 - 51.9	9,200	49.8	48.1 - 51.5	18,400
2009-2011	9,500	51.5	49.7 - 53.3	8,900	48.5	46.7 - 50.3	18,400
2010-2012	9,600	52.8	51.0 - 54.7	8,600	47.2	45.3 - 49.0	18,300
2011-2013	9,700	53.3	51.4 - 55.3	8,400	46.7	44.7 - 48.6	18,100

PRAMS Health Indicator 3-Year Aggregate Report - Drinking alcohol 3 months before pregnancy- for the State of Hawaii, for the Year(s)

2000-2002;2001-2003;2002-2004;2003-2005;2004-2006;2005-2007;2006-2008;2007-2009;2008-2010;2009-2011;2010-2012;2011-2013

Note: Weighted counts (#) represent 3-yr averages, rounded to the nearest hundred; n/r (Not Reportable) - If the unweighted total responses for a dimension (row) is <30 that row will not be shown



**PRAMS Health Indicator 3-Year Aggregate Report - Drinking alcohol 3 months before pregnancy- by State;County;DOH Race-Ethnicity;PRAMS Age Group;Infant Gender;Married;Poverty Level;Income (2000-2003);Income (2004-2011);Birthweight;Smoke 3rd Trimester;Smoke Before Pregnant;WIC During Pregnancy, for the Year(s)
2000-2002;2001-2003;2002-2004;2003-2005;2004-2006;2005-2007;2006-2008;2007-2009;2008-2010;2009-2011;2010-2012;2011-2013**

Note: Weighted counts (#) represent 3-yr averages, rounded to the nearest hundred; n/r (Not Reportable) - If the unweighted total responses for a dimension (row) is <30 that row will not be shown

Years: 2011-2013

State	Yes			No			Weighted Total Responses (3-Yr Avg)
	#	%	C.I.(95%)	#	%	C.I.(95%)	#
Totals	9,700	53.3	51.4 - 55.3	8,400	46.7	44.7 - 48.6	18,100

County	Yes			No			Weighted Total Responses (3-Yr Avg)
	#	%	C.I.(95%)	#	%	C.I.(95%)	#
Hawaii	1,200	52.4	49.3 - 55.5	1,100	47.6	44.5 - 50.7	2,300
Honolulu	6,900	52.7	50.1 - 55.3	6,200	47.3	44.7 - 49.9	13,000
Kauai	500	57.5	54.0 - 60.9	400	42.5	39.1 - 46.0	800
Maui	1,100	57.0	54.0 - 59.9	800	43.0	40.1 - 46.0	1,900

**PRAMS Health Indicator 3-Year Aggregate Report - Drinking alcohol 3 months before pregnancy- by State;County;DOH Race-Ethnicity;PRAMS Age Group;Infant Gender;Married;Poverty Level;Income (2000-2003);Income (2004-2011);Birthweight;Smoke 3rd Trimester;Smoke Before Pregnant;WIC During Pregnancy, for the Year(s)
2000-2002;2001-2003;2002-2004;2003-2005;2004-2006;2005-2007;2006-2008;2007-2009;2008-2010;2009-2011;2010-2012;2011-2013**

Note: Weighted counts (#) represent 3-yr averages, rounded to the nearest hundred; n/r (Not Reportable) - If the unweighted total responses for a dimension (row) is <30 that row will not be shown

Years: 2011-2013

DOH Race-Ethnicity	Yes			No			Weighted Total Responses (3-Yr Avg)
	#	%	C.I.(95%)	#	%	C.I.(95%)	#
Caucasian	3,000	67.8	64.1 - 71.4	1,400	32.2	28.6 - 35.9	4,400
Native Hawaiian	2,900	55.4	51.9 - 58.8	2,300	44.6	41.2 - 48.1	5,200
Chinese	400	41.4	32.8 - 50.5	500	58.6	49.5 - 67.2	900
Filipino	1,300	41.3	36.8 - 45.9	1,800	58.7	54.1 - 63.2	3,100
Japanese	1,000	57.6	51.1 - 63.8	700	42.4	36.2 - 48.9	1,700
Other	1,100	40.6	35.5 - 45.8	1,600	59.4	54.2 - 64.5	2,700

PRAMS Age Group	Yes			No			Weighted Total Responses (3-Yr Avg)
	#	%	C.I.(95%)	#	%	C.I.(95%)	#
<20	200	20.7	15.4 - 27.1	800	79.3	72.9 - 84.6	1,000
20-24	2,200	55.6	51.4 - 59.7	1,800	44.4	40.3 - 48.6	4,000
25-34	5,600	56.6	54.0 - 59.2	4,300	43.4	40.8 - 46.0	9,900
35+	1,600	50.5	46.0 - 54.9	1,600	49.5	45.1 - 54.0	3,300

**PRAMS Health Indicator 3-Year Aggregate Report - Drinking alcohol 3 months before pregnancy- by State;County;DOH Race-Ethnicity;PRAMS Age Group;Infant Gender;Married;Poverty Level;Income (2000-2003);Income (2004-2011);Birthweight;Smoke 3rd Trimester;Smoke Before Pregnant;WIC During Pregnancy, for the Year(s)
2000-2002;2001-2003;2002-2004;2003-2005;2004-2006;2005-2007;2006-2008;2007-2009;2008-2010;2009-2011;2010-2012;2011-2013**

Note: Weighted counts (#) represent 3-yr averages, rounded to the nearest hundred; n/r (Not Reportable) - If the unweighted total responses for a dimension (row) is <30 that row will not be shown

Years: 2011-2013

	Yes			No			Weighted Total Responses (3-Yr Avg)
	#	%	C.I.(95%)	#	%	C.I.(95%)	#
Infant Gender							
Male	4,800	53.0	50.3 - 55.7	4,200	47.0	44.3 - 49.7	9,000
Female	4,900	53.6	50.9 - 56.4	4,200	46.4	43.6 - 49.1	9,100

	Yes			No			Weighted Total Responses (3-Yr Avg)
	#	%	C.I.(95%)	#	%	C.I.(95%)	#
Married							
Yes	5,800	51.4	48.9 - 53.9	5,500	48.6	46.1 - 51.1	11,300
No	3,800	56.5	53.4 - 59.5	3,000	43.5	40.5 - 46.6	6,800

	Yes			No			Weighted Total Responses (3-Yr Avg)
	#	%	C.I.(95%)	#	%	C.I.(95%)	#
Poverty Level							
0-130%	3,000	45.3	42.2 - 48.4	3,600	54.7	51.6 - 57.8	6,500
131-185%	1,500	55.6	50.6 - 60.6	1,200	44.4	39.4 - 49.4	2,700
186+%	4,500	62.2	59.1 - 65.1	2,800	37.8	34.9 - 40.9	7,300

**PRAMS Health Indicator 3-Year Aggregate Report - Drinking alcohol 3 months before pregnancy- by State;County;DOH Race-Ethnicity;PRAMS Age Group;Infant Gender;Married;Poverty Level;Income (2000-2003);Income (2004-2011);Birthweight;Smoke 3rd Trimester;Smoke Before Pregnant;WIC During Pregnancy, for the Year(s)
2000-2002;2001-2003;2002-2004;2003-2005;2004-2006;2005-2007;2006-2008;2007-2009;2008-2010;2009-2011;2010-2012;2011-2013**

Note: Weighted counts (#) represent 3-yr averages, rounded to the nearest hundred; n/r (Not Reportable) - If the unweighted total responses for a dimension (row) is <30 that row will not be shown

Years: 2011-2013

Birthweight	Yes			No			Weighted Total Responses (3-Yr Avg)
	#	%	C.I.(95%)	#	%	C.I.(95%)	#
Low birth weight	700	51.0	47.9 - 54.1	600	49.0	45.9 - 52.1	1,300
Normal birth weight	9,000	53.6	51.5 - 55.6	7,800	46.4	44.4 - 48.5	16,800

Smoke 3rd Trimester	Yes			No			Weighted Total Responses (3-Yr Avg)
	#	%	C.I.(95%)	#	%	C.I.(95%)	#
Yes	500	60.5	52.6 - 67.9	400	39.5	32.1 - 47.4	900
No	9,100	53.0	51.0 - 55.0	8,000	47.0	45.0 - 49.0	17,100

Smoke Before Pregnant	Yes			No			Weighted Total Responses (3-Yr Avg)
	#	%	C.I.(95%)	#	%	C.I.(95%)	#
Yes	2,400	75.1	71.2 - 78.7	800	24.9	21.3 - 28.8	3,200
No	7,200	48.6	46.5 - 50.8	7,600	51.4	49.2 - 53.5	14,800

**PRAMS Health Indicator 3-Year Aggregate Report - Drinking alcohol 3 months before pregnancy- by State;County;DOH Race-Ethnicity;PRAMS Age Group;Infant Gender;Married;Poverty Level;Income (2000-2003);Income (2004-2011);Birthweight;Smoke 3rd Trimester;Smoke Before Pregnant;WIC During Pregnancy, for the Year(s)
2000-2002;2001-2003;2002-2004;2003-2005;2004-2006;2005-2007;2006-2008;2007-2009;2008-2010;2009-2011;2010-2012;2011-2013**

Note: Weighted counts (#) represent 3-yr averages, rounded to the nearest hundred; n/r (Not Reportable) - If the unweighted total responses for a dimension (row) is <30 that row will not be shown

Years: 2011-2013

WIC During Pregnancy	Yes			No			Weighted Total Responses (3-Yr Avg)
	#	%	C.I.(95%)	#	%	C.I.(95%)	#
Yes	3,800	46.6	43.7 - 49.4	4,300	53.4	50.6 - 56.3	8,100
No	5,800	59.1	56.5 - 61.7	4,000	40.9	38.3 - 43.5	9,900

**PRAMS Health Indicator 3-Year Aggregate Report - Drinking alcohol 3 months before pregnancy- by State;County;DOH Race-Ethnicity;PRAMS Age Group;Infant Gender;Married;Poverty Level;Income (2000-2003);Income (2004-2011);Birthweight;Smoke 3rd Trimester;Smoke Before Pregnant;WIC During Pregnancy, for the Year(s)
2000-2002;2001-2003;2002-2004;2003-2005;2004-2006;2005-2007;2006-2008;2007-2009;2008-2010;2009-2011;2010-2012;2011-2013**

Note: Weighted counts (#) represent 3-yr averages, rounded to the nearest hundred; n/r (Not Reportable) - If the unweighted total responses for a dimension (row) is <30 that row will not be shown

Years: 2010-2012

State	Yes			No			Weighted Total Responses (3-Yr Avg)
	#	%	C.I.(95%)	#	%	C.I.(95%)	#
Totals	9,600	52.8	51.0 - 54.7	8,600	47.2	45.3 - 49.0	18,300

County	Yes			No			Weighted Total Responses (3-Yr Avg)
	#	%	C.I.(95%)	#	%	C.I.(95%)	#
Hawaii	1,200	53.4	50.4 - 56.3	1,100	46.6	43.7 - 49.6	2,300
Honolulu	6,800	51.7	49.2 - 54.2	6,400	48.3	45.8 - 50.8	13,200
Kauai	500	58.8	55.2 - 62.3	300	41.2	37.7 - 44.8	800
Maui	1,100	57.1	54.3 - 59.8	800	42.9	40.2 - 45.7	1,900

**PRAMS Health Indicator 3-Year Aggregate Report - Drinking alcohol 3 months before pregnancy- by State;County;DOH Race-Ethnicity;PRAMS Age Group;Infant Gender;Married;Poverty Level;Income (2000-2003);Income (2004-2011);Birthweight;Smoke 3rd Trimester;Smoke Before Pregnant;WIC During Pregnancy, for the Year(s)
2000-2002;2001-2003;2002-2004;2003-2005;2004-2006;2005-2007;2006-2008;2007-2009;2008-2010;2009-2011;2010-2012;2011-2013**

Note: Weighted counts (#) represent 3-yr averages, rounded to the nearest hundred; n/r (Not Reportable) - If the unweighted total responses for a dimension (row) is <30 that row will not be shown

Years: 2010-2012

DOH Race-Ethnicity	Yes			No			Weighted Total Responses (3-Yr Avg)
	#	%	C.I.(95%)	#	%	C.I.(95%)	#
Caucasian	3,000	67.7	64.0 - 71.1	1,400	32.3	28.9 - 36.0	4,400
Native Hawaiian	3,000	57.0	53.6 - 60.3	2,300	43.0	39.7 - 46.4	5,300
Chinese	400	42.8	34.2 - 51.8	500	57.2	48.2 - 65.8	800
Filipino	1,300	40.0	35.7 - 44.3	2,000	60.0	55.7 - 64.3	3,300
Japanese	900	54.1	47.9 - 60.3	800	45.9	39.7 - 52.1	1,700
Other	1,100	39.1	34.3 - 44.1	1,700	60.9	55.9 - 65.7	2,800

PRAMS Age Group	Yes			No			Weighted Total Responses (3-Yr Avg)
	#	%	C.I.(95%)	#	%	C.I.(95%)	#
<20	200	23.0	17.7 - 29.5	800	77.0	70.5 - 82.3	1,100
20-24	2,400	56.7	52.7 - 60.6	1,800	43.3	39.4 - 47.3	4,100
25-34	5,500	55.6	53.1 - 58.2	4,400	44.4	41.8 - 46.9	9,800
35+	1,600	49.3	44.9 - 53.6	1,600	50.7	46.4 - 55.1	3,200

**PRAMS Health Indicator 3-Year Aggregate Report - Drinking alcohol 3 months before pregnancy- by State;County;DOH Race-Ethnicity;PRAMS Age Group;Infant Gender;Married;Poverty Level;Income (2000-2003);Income (2004-2011);Birthweight;Smoke 3rd Trimester;Smoke Before Pregnant;WIC During Pregnancy, for the Year(s)
2000-2002;2001-2003;2002-2004;2003-2005;2004-2006;2005-2007;2006-2008;2007-2009;2008-2010;2009-2011;2010-2012;2011-2013**

Note: Weighted counts (#) represent 3-yr averages, rounded to the nearest hundred; n/r (Not Reportable) - If the unweighted total responses for a dimension (row) is <30 that row will not be shown

Years: 2010-2012

Infant Gender	Yes			No			Weighted Total Responses (3-Yr Avg)
	#	%	C.I.(95%)	#	%	C.I.(95%)	#
Male	4,800	52.8	50.2 - 55.4	4,300	47.2	44.6 - 49.8	9,200
Female	4,800	52.8	50.2 - 55.5	4,300	47.2	44.5 - 49.8	9,100

Married	Yes			No			Weighted Total Responses (3-Yr Avg)
	#	%	C.I.(95%)	#	%	C.I.(95%)	#
Yes	5,800	50.9	48.5 - 53.3	5,600	49.1	46.7 - 51.5	11,300
No	3,900	56.0	53.0 - 58.9	3,000	44.0	41.1 - 47.0	6,900

Poverty Level	Yes			No			Weighted Total Responses (3-Yr Avg)
	#	%	C.I.(95%)	#	%	C.I.(95%)	#
0-130%	2,900	45.5	42.4 - 48.6	3,500	54.5	51.4 - 57.6	6,500
131-185%	1,600	54.7	49.9 - 59.4	1,300	45.3	40.6 - 50.1	2,900
186+%	4,600	61.1	58.2 - 63.9	2,900	38.9	36.1 - 41.8	7,500

**PRAMS Health Indicator 3-Year Aggregate Report - Drinking alcohol 3 months before pregnancy- by State;County;DOH Race-Ethnicity;PRAMS Age Group;Infant Gender;Married;Poverty Level;Income (2000-2003);Income (2004-2011);Birthweight;Smoke 3rd Trimester;Smoke Before Pregnant;WIC During Pregnancy, for the Year(s)
2000-2002;2001-2003;2002-2004;2003-2005;2004-2006;2005-2007;2006-2008;2007-2009;2008-2010;2009-2011;2010-2012;2011-2013**

Note: Weighted counts (#) represent 3-yr averages, rounded to the nearest hundred; n/r (Not Reportable) - If the unweighted total responses for a dimension (row) is <30 that row will not be shown

Years: 2010-2012

Birthweight	Yes			No			Weighted Total Responses (3-Yr Avg)
	#	%	C.I.(95%)	#	%	C.I.(95%)	#
Low birth weight	600	48.8	45.7 - 51.9	700	51.2	48.1 - 54.3	1,300
Normal birth weight	9,000	53.2	51.2 - 55.2	7,900	46.8	44.8 - 48.8	16,900

Smoke 3rd Trimester	Yes			No			Weighted Total Responses (3-Yr Avg)
	#	%	C.I.(95%)	#	%	C.I.(95%)	#
Yes	600	59.6	52.0 - 66.8	400	40.4	33.2 - 48.0	1,000
No	9,000	52.5	50.5 - 54.4	8,100	47.5	45.6 - 49.5	17,100

Smoke Before Pregnant	Yes			No			Weighted Total Responses (3-Yr Avg)
	#	%	C.I.(95%)	#	%	C.I.(95%)	#
Yes	2,600	76.8	73.2 - 80.1	800	23.2	19.9 - 26.8	3,400
No	7,000	47.3	45.3 - 49.4	7,700	52.7	50.6 - 54.7	14,700

**PRAMS Health Indicator 3-Year Aggregate Report - Drinking alcohol 3 months before pregnancy- by State;County;DOH Race-Ethnicity;PRAMS Age Group;Infant Gender;Married;Poverty Level;Income (2000-2003);Income (2004-2011);Birthweight;Smoke 3rd Trimester;Smoke Before Pregnant;WIC During Pregnancy, for the Year(s)
2000-2002;2001-2003;2002-2004;2003-2005;2004-2006;2005-2007;2006-2008;2007-2009;2008-2010;2009-2011;2010-2012;2011-2013**

Note: Weighted counts (#) represent 3-yr averages, rounded to the nearest hundred; n/r (Not Reportable) - If the unweighted total responses for a dimension (row) is <30 that row will not be shown

Years: 2010-2012

WIC During Pregnancy	Yes			No			Weighted Total Responses (3-Yr Avg)
	#	%	C.I.(95%)	#	%	C.I.(95%)	#
Yes	3,900	47.9	45.2 - 50.7	4,200	52.1	49.3 - 54.8	8,100
No	5,700	57.0	54.4 - 59.5	4,300	43.0	40.5 - 45.6	10,000

**PRAMS Health Indicator 3-Year Aggregate Report - Drinking alcohol 3 months before pregnancy- by State;County;DOH Race-Ethnicity;PRAMS Age Group;Infant Gender;Married;Poverty Level;Income (2000-2003);Income (2004-2011);Birthweight;Smoke 3rd Trimester;Smoke Before Pregnant;WIC During Pregnancy, for the Year(s)
2000-2002;2001-2003;2002-2004;2003-2005;2004-2006;2005-2007;2006-2008;2007-2009;2008-2010;2009-2011;2010-2012;2011-2013**

Note: Weighted counts (#) represent 3-yr averages, rounded to the nearest hundred; n/r (Not Reportable) - If the unweighted total responses for a dimension (row) is <30 that row will not be shown

Years: 2009-2011

State	Yes			No			Weighted Total Responses (3-Yr Avg)
	#	%	C.I.(95%)	#	%	C.I.(95%)	#
Totals	9,500	51.5	49.7 - 53.3	8,900	48.5	46.7 - 50.3	18,400

County	Yes			No			Weighted Total Responses (3-Yr Avg)
	#	%	C.I.(95%)	#	%	C.I.(95%)	#
Hawaii	1,300	53.7	50.8 - 56.6	1,100	46.3	43.4 - 49.2	2,400
Honolulu	6,600	50.2	47.7 - 52.6	6,600	49.8	47.4 - 52.3	13,200
Kauai	500	58.5	55.0 - 61.9	300	41.5	38.1 - 45.0	800
Maui	1,100	54.8	52.1 - 57.5	900	45.2	42.5 - 47.9	2,000

**PRAMS Health Indicator 3-Year Aggregate Report - Drinking alcohol 3 months before pregnancy- by State;County;DOH Race-Ethnicity;PRAMS Age Group;Infant Gender;Married;Poverty Level;Income (2000-2003);Income (2004-2011);Birthweight;Smoke 3rd Trimester;Smoke Before Pregnant;WIC During Pregnancy, for the Year(s)
2000-2002;2001-2003;2002-2004;2003-2005;2004-2006;2005-2007;2006-2008;2007-2009;2008-2010;2009-2011;2010-2012;2011-2013**

Note: Weighted counts (#) represent 3-yr averages, rounded to the nearest hundred; n/r (Not Reportable) - If the unweighted total responses for a dimension (row) is <30 that row will not be shown

Years: 2009-2011

DOH Race-Ethnicity	Yes			No			Weighted Total Responses (3-Yr Avg)
	#	%	C.I.(95%)	#	%	C.I.(95%)	#
Caucasian	2,900	65.7	62.1 - 69.1	1,500	34.3	30.9 - 37.9	4,400
Native Hawaiian	3,000	55.0	51.7 - 58.2	2,500	45.0	41.8 - 48.3	5,500
Chinese	300	42.3	33.4 - 51.8	400	57.7	48.2 - 66.6	800
Filipino	1,300	40.0	35.9 - 44.3	2,000	60.0	55.7 - 64.1	3,300
Japanese	900	50.2	44.1 - 56.3	900	49.8	43.7 - 55.9	1,700
Other	1,000	38.2	33.4 - 43.3	1,600	61.8	56.7 - 66.6	2,700

PRAMS Age Group	Yes			No			Weighted Total Responses (3-Yr Avg)
	#	%	C.I.(95%)	#	%	C.I.(95%)	#
<20	400	30.9	25.2 - 37.3	900	69.1	62.7 - 74.8	1,300
20-24	2,400	55.2	51.3 - 59.0	2,000	44.8	41.0 - 48.7	4,400
25-34	5,200	54.4	51.8 - 56.9	4,300	45.6	43.1 - 48.2	9,500
35+	1,500	46.6	42.3 - 51.0	1,700	53.4	49.0 - 57.7	3,200

**PRAMS Health Indicator 3-Year Aggregate Report - Drinking alcohol 3 months before pregnancy- by State;County;DOH Race-Ethnicity;PRAMS Age Group;Infant Gender;Married;Poverty Level;Income (2000-2003);Income (2004-2011);Birthweight;Smoke 3rd Trimester;Smoke Before Pregnant;WIC During Pregnancy, for the Year(s)
2000-2002;2001-2003;2002-2004;2003-2005;2004-2006;2005-2007;2006-2008;2007-2009;2008-2010;2009-2011;2010-2012;2011-2013**

Note: Weighted counts (#) represent 3-yr averages, rounded to the nearest hundred; n/r (Not Reportable) - If the unweighted total responses for a dimension (row) is <30 that row will not be shown

Years: 2009-2011

	Yes			No			Weighted Total Responses (3-Yr Avg)
	#	%	C.I.(95%)	#	%	C.I.(95%)	#
Infant Gender							
Male	4,800	51.0	48.4 - 53.6	4,600	49.0	46.4 - 51.6	9,500
Female	4,600	52.0	49.4 - 54.7	4,300	48.0	45.3 - 50.6	8,900

	Yes			No			Weighted Total Responses (3-Yr Avg)
	#	%	C.I.(95%)	#	%	C.I.(95%)	#
Married							
Yes	5,700	50.2	47.9 - 52.6	5,600	49.8	47.4 - 52.1	11,300
No	3,800	53.5	50.6 - 56.4	3,300	46.5	43.6 - 49.4	7,100

	Yes			No			Weighted Total Responses (3-Yr Avg)
	#	%	C.I.(95%)	#	%	C.I.(95%)	#
Poverty Level							
0-130%	2,900	44.3	41.3 - 47.3	3,600	55.7	52.7 - 58.7	6,500
131-185%	1,600	56.0	51.2 - 60.6	1,300	44.0	39.4 - 48.8	2,900
186+%	4,600	59.5	56.6 - 62.3	3,100	40.5	37.7 - 43.4	7,700

**PRAMS Health Indicator 3-Year Aggregate Report - Drinking alcohol 3 months before pregnancy- by State;County;DOH Race-Ethnicity;PRAMS Age Group;Infant Gender;Married;Poverty Level;Income (2000-2003);Income (2004-2011);Birthweight;Smoke 3rd Trimester;Smoke Before Pregnant;WIC During Pregnancy, for the Year(s)
2000-2002;2001-2003;2002-2004;2003-2005;2004-2006;2005-2007;2006-2008;2007-2009;2008-2010;2009-2011;2010-2012;2011-2013**

Note: Weighted counts (#) represent 3-yr averages, rounded to the nearest hundred; n/r (Not Reportable) - If the unweighted total responses for a dimension (row) is <30 that row will not be shown

Years: 2009-2011

Income (2004-2011)	Yes			No			Weighted Total Responses (3-Yr Avg)
	#	%	C.I.(95%)	#	%	C.I.(95%)	#
<\$10,000	1,400	41.7	37.6 - 46.0	1,900	58.3	54.0 - 62.4	3,300
\$10,000-\$24,999	1,800	50.5	46.4 - 54.6	1,700	49.5	45.4 - 53.6	3,500
\$25,000-\$49,999	2,400	56.1	52.3 - 59.9	1,900	43.9	40.1 - 47.7	4,300
>=\$50,000	3,600	58.2	55.0 - 61.4	2,600	41.8	38.6 - 45.0	6,200

Birthweight	Yes			No			Weighted Total Responses (3-Yr Avg)
	#	%	C.I.(95%)	#	%	C.I.(95%)	#
Low birth weight	600	48.0	44.9 - 51.1	700	52.0	48.9 - 55.1	1,300
Normal birth weight	8,800	51.8	49.8 - 53.8	8,200	48.2	46.2 - 50.2	17,000

Smoke 3rd Trimester	Yes			No			Weighted Total Responses (3-Yr Avg)
	#	%	C.I.(95%)	#	%	C.I.(95%)	#
Yes	700	53.3	46.5 - 59.9	600	46.7	40.1 - 53.5	1,300
No	8,600	51.4	49.5 - 53.4	8,100	48.6	46.6 - 50.5	16,800

**PRAMS Health Indicator 3-Year Aggregate Report - Drinking alcohol 3 months before pregnancy- by State;County;DOH Race-Ethnicity;PRAMS Age Group;Infant Gender;Married;Poverty Level;Income (2000-2003);Income (2004-2011);Birthweight;Smoke 3rd Trimester;Smoke Before Pregnant;WIC During Pregnancy, for the Year(s)
2000-2002;2001-2003;2002-2004;2003-2005;2004-2006;2005-2007;2006-2008;2007-2009;2008-2010;2009-2011;2010-2012;2011-2013**

Note: Weighted counts (#) represent 3-yr averages, rounded to the nearest hundred; n/r (Not Reportable) - If the unweighted total responses for a dimension (row) is <30 that row will not be shown

Years: 2009-2011

Smoke Before Pregnant	Yes			No			Weighted Total Responses (3-Yr Avg)
	#	%	C.I.(95%)	#	%	C.I.(95%)	#
Yes	2,700	71.8	68.0 - 75.2	1,100	28.2	24.8 - 32.0	3,800
No	6,600	46.2	44.2 - 48.3	7,700	53.8	51.7 - 55.8	14,300

WIC During Pregnancy	Yes			No			Weighted Total Responses (3-Yr Avg)
	#	%	C.I.(95%)	#	%	C.I.(95%)	#
Yes	3,800	47.8	45.0 - 50.5	4,100	52.2	49.5 - 55.0	7,900
No	5,500	54.5	52.0 - 57.0	4,600	45.5	43.0 - 48.0	10,200

**PRAMS Health Indicator 3-Year Aggregate Report - Drinking alcohol 3 months before pregnancy- by State;County;DOH Race-Ethnicity;PRAMS Age Group;Infant Gender;Married;Poverty Level;Income (2000-2003);Income (2004-2011);Birthweight;Smoke 3rd Trimester;Smoke Before Pregnant;WIC During Pregnancy, for the Year(s)
2000-2002;2001-2003;2002-2004;2003-2005;2004-2006;2005-2007;2006-2008;2007-2009;2008-2010;2009-2011;2010-2012;2011-2013**

Note: Weighted counts (#) represent 3-yr averages, rounded to the nearest hundred; n/r (Not Reportable) - If the unweighted total responses for a dimension (row) is <30 that row will not be shown

Years: 2008-2010

State	Yes			No			Weighted Total Responses (3-Yr Avg)
	#	%	C.I.(95%)	#	%	C.I.(95%)	#
Totals	9,200	50.2	48.5 - 51.9	9,200	49.8	48.1 - 51.5	18,400

County	Yes			No			Weighted Total Responses (3-Yr Avg)
	#	%	C.I.(95%)	#	%	C.I.(95%)	#
Hawaii	1,200	52.0	48.7 - 55.3	1,100	48.0	44.7 - 51.3	2,400
Honolulu	6,400	48.9	46.7 - 51.1	6,700	51.1	48.9 - 53.3	13,100
Kauai	500	58.9	54.2 - 63.4	300	41.1	36.6 - 45.8	800
Maui	1,100	53.0	49.8 - 56.3	1,000	47.0	43.7 - 50.2	2,100

**PRAMS Health Indicator 3-Year Aggregate Report - Drinking alcohol 3 months before pregnancy- by State;County;DOH Race-Ethnicity;PRAMS Age Group;Infant Gender;Married;Poverty Level;Income (2000-2003);Income (2004-2011);Birthweight;Smoke 3rd Trimester;Smoke Before Pregnant;WIC During Pregnancy, for the Year(s)
2000-2002;2001-2003;2002-2004;2003-2005;2004-2006;2005-2007;2006-2008;2007-2009;2008-2010;2009-2011;2010-2012;2011-2013**

Note: Weighted counts (#) represent 3-yr averages, rounded to the nearest hundred; n/r (Not Reportable) - If the unweighted total responses for a dimension (row) is <30 that row will not be shown

Years: 2008-2010

DOH Race-Ethnicity	Yes			No			Weighted Total Responses (3-Yr Avg)
	#	%	C.I.(95%)	#	%	C.I.(95%)	#
Caucasian	2,900	65.6	62.3 - 68.8	1,500	34.4	31.2 - 37.7	4,400
Native Hawaiian	2,900	52.4	49.3 - 55.5	2,600	47.6	44.5 - 50.7	5,500
Chinese	300	45.1	36.9 - 53.6	400	54.9	46.4 - 63.1	700
Filipino	1,300	39.5	35.8 - 43.3	2,000	60.5	56.7 - 64.2	3,300
Japanese	800	48.9	43.6 - 54.3	900	51.1	45.7 - 56.4	1,700
Other	1,000	35.9	31.7 - 40.4	1,700	64.1	59.6 - 68.3	2,700

PRAMS Age Group	Yes			No			Weighted Total Responses (3-Yr Avg)
	#	%	C.I.(95%)	#	%	C.I.(95%)	#
<20	500	35.5	29.9 - 41.6	900	64.5	58.4 - 70.1	1,500
20-24	2,400	56.0	52.4 - 59.6	1,900	44.0	40.4 - 47.6	4,200
25-34	4,800	51.5	49.2 - 53.8	4,600	48.5	46.2 - 50.8	9,400
35+	1,500	45.6	41.7 - 49.5	1,800	54.4	50.5 - 58.3	3,300

**PRAMS Health Indicator 3-Year Aggregate Report - Drinking alcohol 3 months before pregnancy- by State;County;DOH Race-Ethnicity;PRAMS Age Group;Infant Gender;Married;Poverty Level;Income (2000-2003);Income (2004-2011);Birthweight;Smoke 3rd Trimester;Smoke Before Pregnant;WIC During Pregnancy, for the Year(s)
2000-2002;2001-2003;2002-2004;2003-2005;2004-2006;2005-2007;2006-2008;2007-2009;2008-2010;2009-2011;2010-2012;2011-2013**

Note: Weighted counts (#) represent 3-yr averages, rounded to the nearest hundred; n/r (Not Reportable) - If the unweighted total responses for a dimension (row) is <30 that row will not be shown

Years: 2008-2010

	Yes			No			Weighted Total Responses (3-Yr Avg)
	#	%	C.I.(95%)	#	%	C.I.(95%)	#
Infant Gender							
Male	4,800	49.9	47.6 - 52.3	4,800	50.1	47.7 - 52.4	9,600
Female	4,500	50.5	48.1 - 53.0	4,400	49.5	47.0 - 51.9	8,800

	Yes			No			Weighted Total Responses (3-Yr Avg)
	#	%	C.I.(95%)	#	%	C.I.(95%)	#
Married							
Yes	5,600	49.5	47.4 - 51.7	5,700	50.5	48.3 - 52.6	11,300
No	3,600	51.3	48.6 - 54.0	3,500	48.7	46.0 - 51.4	7,100

	Yes			No			Weighted Total Responses (3-Yr Avg)
	#	%	C.I.(95%)	#	%	C.I.(95%)	#
Poverty Level							
0-130%	2,900	43.4	40.6 - 46.2	3,700	56.6	53.8 - 59.4	6,600
131-185%	1,500	52.4	48.0 - 56.8	1,300	47.6	43.2 - 52.0	2,800
186+%	4,500	58.6	56.0 - 61.1	3,200	41.4	38.9 - 44.0	7,600

**PRAMS Health Indicator 3-Year Aggregate Report - Drinking alcohol 3 months before pregnancy- by State;County;DOH Race-Ethnicity;PRAMS Age Group;Infant Gender;Married;Poverty Level;Income (2000-2003);Income (2004-2011);Birthweight;Smoke 3rd Trimester;Smoke Before Pregnant;WIC During Pregnancy, for the Year(s)
2000-2002;2001-2003;2002-2004;2003-2005;2004-2006;2005-2007;2006-2008;2007-2009;2008-2010;2009-2011;2010-2012;2011-2013**

Note: Weighted counts (#) represent 3-yr averages, rounded to the nearest hundred; n/r (Not Reportable) - If the unweighted total responses for a dimension (row) is <30 that row will not be shown

Years: 2008-2010

Income (2004-2011)	Yes			No			Weighted Total Responses (3-Yr Avg)
	#	%	C.I.(95%)	#	%	C.I.(95%)	#
<\$10,000	1,200	37.9	34.0 - 41.9	2,000	62.1	58.1 - 66.0	3,200
\$10,000-\$24,999	1,900	51.4	47.6 - 55.1	1,800	48.6	44.9 - 52.4	3,700
\$25,000-\$49,999	2,300	54.7	51.1 - 58.2	1,900	45.3	41.8 - 48.9	4,100
>=\$50,000	3,500	56.9	54.0 - 59.8	2,700	43.1	40.2 - 46.0	6,200

Birthweight	Yes			No			Weighted Total Responses (3-Yr Avg)
	#	%	C.I.(95%)	#	%	C.I.(95%)	#
Low birth weight	600	44.5	40.7 - 48.4	700	55.5	51.6 - 59.3	1,300
Normal birth weight	8,600	50.7	48.9 - 52.4	8,400	49.3	47.6 - 51.1	17,000

Smoke 3rd Trimester	Yes			No			Weighted Total Responses (3-Yr Avg)
	#	%	C.I.(95%)	#	%	C.I.(95%)	#
Yes	900	55.3	49.3 - 61.1	700	44.7	38.9 - 50.7	1,600
No	8,300	49.8	48.0 - 51.5	8,300	50.2	48.5 - 52.0	16,600

**PRAMS Health Indicator 3-Year Aggregate Report - Drinking alcohol 3 months before pregnancy- by State;County;DOH Race-Ethnicity;PRAMS Age Group;Infant Gender;Married;Poverty Level;Income (2000-2003);Income (2004-2011);Birthweight;Smoke 3rd Trimester;Smoke Before Pregnant;WIC During Pregnancy, for the Year(s)
2000-2002;2001-2003;2002-2004;2003-2005;2004-2006;2005-2007;2006-2008;2007-2009;2008-2010;2009-2011;2010-2012;2011-2013**

Note: Weighted counts (#) represent 3-yr averages, rounded to the nearest hundred; n/r (Not Reportable) - If the unweighted total responses for a dimension (row) is <30 that row will not be shown

Years: 2008-2010

Smoke Before Pregnant	Yes			No			Weighted Total Responses (3-Yr Avg)
	#	%	C.I.(95%)	#	%	C.I.(95%)	#
Yes	2,700	70.6	67.0 - 73.9	1,100	29.4	26.1 - 33.0	3,800
No	6,500	44.9	43.0 - 46.8	7,900	55.1	53.2 - 57.0	14,400

WIC During Pregnancy	Yes			No			Weighted Total Responses (3-Yr Avg)
	#	%	C.I.(95%)	#	%	C.I.(95%)	#
Yes	3,500	45.1	42.6 - 47.7	4,300	54.9	52.3 - 57.4	7,800
No	5,500	54.0	51.7 - 56.3	4,700	46.0	43.7 - 48.3	10,300

**PRAMS Health Indicator 3-Year Aggregate Report - Drinking alcohol 3 months before pregnancy- by State;County;DOH Race-Ethnicity;PRAMS Age Group;Infant Gender;Married;Poverty Level;Income (2000-2003);Income (2004-2011);Birthweight;Smoke 3rd Trimester;Smoke Before Pregnant;WIC During Pregnancy, for the Year(s)
2000-2002;2001-2003;2002-2004;2003-2005;2004-2006;2005-2007;2006-2008;2007-2009;2008-2010;2009-2011;2010-2012;2011-2013**

Note: Weighted counts (#) represent 3-yr averages, rounded to the nearest hundred; n/r (Not Reportable) - If the unweighted total responses for a dimension (row) is <30 that row will not be shown

Years: 2007-2009

State	Yes			No			Weighted Total Responses (3-Yr Avg)
	#	%	C.I.(95%)	#	%	C.I.(95%)	#
Totals	9,000	49.0	47.5 - 50.5	9,400	51.0	49.5 - 52.5	18,400

County	Yes			No			Weighted Total Responses (3-Yr Avg)
	#	%	C.I.(95%)	#	%	C.I.(95%)	#
Hawaii	1,200	50.9	47.3 - 54.5	1,200	49.1	45.5 - 52.7	2,400
Honolulu	6,100	47.5	45.5 - 49.4	6,800	52.5	50.6 - 54.5	12,900
Kauai	500	58.3	52.8 - 63.6	400	41.7	36.4 - 47.2	900
Maui	1,100	52.1	48.4 - 55.8	1,000	47.9	44.2 - 51.6	2,100

**PRAMS Health Indicator 3-Year Aggregate Report - Drinking alcohol 3 months before pregnancy- by State;County;DOH Race-Ethnicity;PRAMS Age Group;Infant Gender;Married;Poverty Level;Income (2000-2003);Income (2004-2011);Birthweight;Smoke 3rd Trimester;Smoke Before Pregnant;WIC During Pregnancy, for the Year(s)
2000-2002;2001-2003;2002-2004;2003-2005;2004-2006;2005-2007;2006-2008;2007-2009;2008-2010;2009-2011;2010-2012;2011-2013**

Note: Weighted counts (#) represent 3-yr averages, rounded to the nearest hundred; n/r (Not Reportable) - If the unweighted total responses for a dimension (row) is <30 that row will not be shown

Years: 2007-2009

DOH Race-Ethnicity	Yes			No			Weighted Total Responses (3-Yr Avg)
	#	%	C.I.(95%)	#	%	C.I.(95%)	#
Caucasian	2,900	67.8	64.8 - 70.7	1,400	32.2	29.3 - 35.2	4,300
Native Hawaiian	2,600	49.3	46.3 - 52.3	2,700	50.7	47.7 - 53.7	5,300
Chinese	300	39.3	32.7 - 46.2	400	60.7	53.8 - 67.3	700
Filipino	1,200	36.9	33.7 - 40.3	2,100	63.1	59.7 - 66.3	3,400
Japanese	900	49.4	44.8 - 54.0	1,000	50.6	46.0 - 55.2	1,900
Other	1,000	36.5	32.7 - 40.4	1,800	63.5	59.6 - 67.3	2,800

PRAMS Age Group	Yes			No			Weighted Total Responses (3-Yr Avg)
	#	%	C.I.(95%)	#	%	C.I.(95%)	#
<20	600	35.8	30.6 - 41.3	1,100	64.2	58.7 - 69.4	1,700
20-24	2,400	55.2	52.0 - 58.4	1,900	44.8	41.6 - 48.0	4,300
25-34	4,600	49.9	47.8 - 52.1	4,600	50.1	47.9 - 52.2	9,200
35+	1,400	44.8	41.3 - 48.3	1,800	55.2	51.7 - 58.7	3,200

**PRAMS Health Indicator 3-Year Aggregate Report - Drinking alcohol 3 months before pregnancy- by State;County;DOH Race-Ethnicity;PRAMS Age Group;Infant Gender;Married;Poverty Level;Income (2000-2003);Income (2004-2011);Birthweight;Smoke 3rd Trimester;Smoke Before Pregnant;WIC During Pregnancy, for the Year(s)
2000-2002;2001-2003;2002-2004;2003-2005;2004-2006;2005-2007;2006-2008;2007-2009;2008-2010;2009-2011;2010-2012;2011-2013**

Note: Weighted counts (#) represent 3-yr averages, rounded to the nearest hundred; n/r (Not Reportable) - If the unweighted total responses for a dimension (row) is <30 that row will not be shown

Years: 2007-2009

	Yes			No			Weighted Total Responses (3-Yr Avg)
	#	%	C.I.(95%)	#	%	C.I.(95%)	#
Infant Gender							
Male	4,700	48.5	46.4 - 50.6	5,000	51.5	49.4 - 53.6	9,700
Female	4,300	49.6	47.4 - 51.8	4,400	50.4	48.2 - 52.6	8,700

	Yes			No			Weighted Total Responses (3-Yr Avg)
	#	%	C.I.(95%)	#	%	C.I.(95%)	#
Married							
Yes	5,500	48.6	46.7 - 50.4	5,800	51.4	49.6 - 53.3	11,300
No	3,500	49.7	47.2 - 52.3	3,600	50.3	47.7 - 52.8	7,100

	Yes			No			Weighted Total Responses (3-Yr Avg)
	#	%	C.I.(95%)	#	%	C.I.(95%)	#
Poverty Level							
0-130%	2,700	40.4	37.9 - 43.0	4,000	59.6	57.0 - 62.1	6,700
131-185%	1,400	50.7	46.7 - 54.7	1,300	49.3	45.3 - 53.3	2,700
186+%	4,500	59.3	57.0 - 61.5	3,100	40.7	38.5 - 43.0	7,500

**PRAMS Health Indicator 3-Year Aggregate Report - Drinking alcohol 3 months before pregnancy- by State;County;DOH Race-Ethnicity;PRAMS Age Group;Infant Gender;Married;Poverty Level;Income (2000-2003);Income (2004-2011);Birthweight;Smoke 3rd Trimester;Smoke Before Pregnant;WIC During Pregnancy, for the Year(s)
2000-2002;2001-2003;2002-2004;2003-2005;2004-2006;2005-2007;2006-2008;2007-2009;2008-2010;2009-2011;2010-2012;2011-2013**

Note: Weighted counts (#) represent 3-yr averages, rounded to the nearest hundred; n/r (Not Reportable) - If the unweighted total responses for a dimension (row) is <30 that row will not be shown

Years: 2007-2009

Income (2004-2011)	Yes			No			Weighted Total Responses (3-Yr Avg)
	#	%	C.I.(95%)	#	%	C.I.(95%)	#
<\$10,000	1,100	35.8	32.1 - 39.6	2,000	64.2	60.4 - 67.9	3,100
\$10,000-\$24,999	1,900	48.6	45.3 - 52.0	2,000	51.4	48.0 - 54.7	3,900
\$25,000-\$49,999	2,200	54.6	51.3 - 57.7	1,800	45.4	42.3 - 48.7	4,000
>=\$50,000	3,400	56.1	53.5 - 58.6	2,700	43.9	41.4 - 46.5	6,100

Birthweight	Yes			No			Weighted Total Responses (3-Yr Avg)
	#	%	C.I.(95%)	#	%	C.I.(95%)	#
Low birth weight	600	45.0	40.6 - 49.5	800	55.0	50.5 - 59.4	1,400
Normal birth weight	8,400	49.3	47.7 - 50.9	8,600	50.7	49.1 - 52.3	17,000

Smoke 3rd Trimester	Yes			No			Weighted Total Responses (3-Yr Avg)
	#	%	C.I.(95%)	#	%	C.I.(95%)	#
Yes	900	55.4	50.0 - 60.7	700	44.6	39.3 - 50.0	1,600
No	8,000	48.4	46.9 - 50.0	8,500	51.6	50.0 - 53.1	16,600

**PRAMS Health Indicator 3-Year Aggregate Report - Drinking alcohol 3 months before pregnancy- by State;County;DOH Race-Ethnicity;PRAMS Age Group;Infant Gender;Married;Poverty Level;Income (2000-2003);Income (2004-2011);Birthweight;Smoke 3rd Trimester;Smoke Before Pregnant;WIC During Pregnancy, for the Year(s)
2000-2002;2001-2003;2002-2004;2003-2005;2004-2006;2005-2007;2006-2008;2007-2009;2008-2010;2009-2011;2010-2012;2011-2013**

Note: Weighted counts (#) represent 3-yr averages, rounded to the nearest hundred; n/r (Not Reportable) - If the unweighted total responses for a dimension (row) is <30 that row will not be shown

Years: 2007-2009

Smoke Before Pregnant	Yes			No			Weighted Total Responses (3-Yr Avg)
	#	%	C.I.(95%)	#	%	C.I.(95%)	#
Yes	2,600	69.7	66.3 - 72.8	1,100	30.3	27.2 - 33.7	3,700
No	6,300	43.8	42.1 - 45.5	8,100	56.2	54.5 - 57.9	14,500

WIC During Pregnancy	Yes			No			Weighted Total Responses (3-Yr Avg)
	#	%	C.I.(95%)	#	%	C.I.(95%)	#
Yes	3,300	42.8	40.5 - 45.2	4,400	57.2	54.8 - 59.5	7,600
No	5,500	53.5	51.5 - 55.5	4,800	46.5	44.5 - 48.5	10,300

**PRAMS Health Indicator 3-Year Aggregate Report - Drinking alcohol 3 months before pregnancy- by State;County;DOH Race-Ethnicity;PRAMS Age Group;Infant Gender;Married;Poverty Level;Income (2000-2003);Income (2004-2011);Birthweight;Smoke 3rd Trimester;Smoke Before Pregnant;WIC During Pregnancy, for the Year(s)
2000-2002;2001-2003;2002-2004;2003-2005;2004-2006;2005-2007;2006-2008;2007-2009;2008-2010;2009-2011;2010-2012;2011-2013**

Note: Weighted counts (#) represent 3-yr averages, rounded to the nearest hundred; n/r (Not Reportable) - If the unweighted total responses for a dimension (row) is <30 that row will not be shown

Years: 2006-2008

State	Yes			No			Weighted Total Responses (3-Yr Avg)
	#	%	C.I.(95%)	#	%	C.I.(95%)	#
Totals	8,800	48.2	46.9 - 49.6	9,500	51.8	50.4 - 53.1	18,300

County	Yes			No			Weighted Total Responses (3-Yr Avg)
	#	%	C.I.(95%)	#	%	C.I.(95%)	#
Hawaii	1,200	49.0	45.0 - 53.0	1,200	51.0	47.0 - 55.0	2,400
Honolulu	6,100	46.7	45.1 - 48.4	6,900	53.3	51.6 - 54.9	13,000
Kauai	500	56.3	50.0 - 62.4	400	43.7	37.6 - 50.0	900
Maui	1,100	52.8	48.6 - 57.0	1,000	47.2	43.0 - 51.4	2,100

**PRAMS Health Indicator 3-Year Aggregate Report - Drinking alcohol 3 months before pregnancy- by State;County;DOH Race-Ethnicity;PRAMS Age Group;Infant Gender;Married;Poverty Level;Income (2000-2003);Income (2004-2011);Birthweight;Smoke 3rd Trimester;Smoke Before Pregnant;WIC During Pregnancy, for the Year(s)
2000-2002;2001-2003;2002-2004;2003-2005;2004-2006;2005-2007;2006-2008;2007-2009;2008-2010;2009-2011;2010-2012;2011-2013**

Note: Weighted counts (#) represent 3-yr averages, rounded to the nearest hundred; n/r (Not Reportable) - If the unweighted total responses for a dimension (row) is <30 that row will not be shown

Years: 2006-2008

DOH Race-Ethnicity	Yes			No			Weighted Total Responses (3-Yr Avg)
	#	%	C.I.(95%)	#	%	C.I.(95%)	#
Caucasian	2,900	67.7	64.9 - 70.3	1,400	32.3	29.7 - 35.1	4,300
Native Hawaiian	2,500	49.7	46.9 - 52.6	2,500	50.3	47.4 - 53.1	5,000
Chinese	200	35.8	32.1 - 39.6	400	64.2	60.4 - 67.9	600
Filipino	1,200	34.6	31.8 - 37.5	2,200	65.4	62.5 - 68.2	3,400
Japanese	1,000	49.1	45.1 - 53.2	1,100	50.9	46.8 - 54.9	2,100
Other	1,000	35.0	31.7 - 38.4	1,900	65.0	61.6 - 68.3	2,900

PRAMS Age Group	Yes			No			Weighted Total Responses (3-Yr Avg)
	#	%	C.I.(95%)	#	%	C.I.(95%)	#
<20	500	32.5	27.8 - 37.6	1,000	67.5	62.4 - 72.2	1,500
20-24	2,400	54.9	52.0 - 57.9	2,000	45.1	42.1 - 48.0	4,400
25-34	4,500	48.8	46.9 - 50.7	4,700	51.2	49.3 - 53.1	9,100
35+	1,500	44.9	41.8 - 47.9	1,800	55.1	52.1 - 58.2	3,300

**PRAMS Health Indicator 3-Year Aggregate Report - Drinking alcohol 3 months before pregnancy- by State;County;DOH Race-Ethnicity;PRAMS Age Group;Infant Gender;Married;Poverty Level;Income (2000-2003);Income (2004-2011);Birthweight;Smoke 3rd Trimester;Smoke Before Pregnant;WIC During Pregnancy, for the Year(s)
2000-2002;2001-2003;2002-2004;2003-2005;2004-2006;2005-2007;2006-2008;2007-2009;2008-2010;2009-2011;2010-2012;2011-2013**

Note: Weighted counts (#) represent 3-yr averages, rounded to the nearest hundred; n/r (Not Reportable) - If the unweighted total responses for a dimension (row) is <30 that row will not be shown

Years: 2006-2008

Infant Gender	Yes			No			Weighted Total Responses (3-Yr Avg)
	#	%	C.I.(95%)	#	%	C.I.(95%)	#
Male	4,600	48.4	46.5 - 50.3	4,900	51.6	49.7 - 53.5	9,500
Female	4,200	48.0	46.0 - 49.9	4,600	52.0	50.1 - 54.0	8,800

Married	Yes			No			Weighted Total Responses (3-Yr Avg)
	#	%	C.I.(95%)	#	%	C.I.(95%)	#
Yes	5,600	48.3	46.7 - 50.0	5,900	51.7	50.0 - 53.3	11,500
No	3,300	48.0	45.6 - 50.4	3,500	52.0	49.6 - 54.4	6,800

Poverty Level	Yes			No			Weighted Total Responses (3-Yr Avg)
	#	%	C.I.(95%)	#	%	C.I.(95%)	#
0-130%	2,600	39.0	36.8 - 41.4	4,100	61.0	58.6 - 63.2	6,700
131-185%	1,300	50.3	46.6 - 54.0	1,300	49.7	46.0 - 53.4	2,600
186+%	4,500	57.9	55.9 - 59.9	3,300	42.1	40.1 - 44.1	7,800

**PRAMS Health Indicator 3-Year Aggregate Report - Drinking alcohol 3 months before pregnancy- by State;County;DOH Race-Ethnicity;PRAMS Age Group;Infant Gender;Married;Poverty Level;Income (2000-2003);Income (2004-2011);Birthweight;Smoke 3rd Trimester;Smoke Before Pregnant;WIC During Pregnancy, for the Year(s)
2000-2002;2001-2003;2002-2004;2003-2005;2004-2006;2005-2007;2006-2008;2007-2009;2008-2010;2009-2011;2010-2012;2011-2013**

Note: Weighted counts (#) represent 3-yr averages, rounded to the nearest hundred; n/r (Not Reportable) - If the unweighted total responses for a dimension (row) is <30 that row will not be shown

Years: 2006-2008

Income (2004-2011)	Yes			No			Weighted Total Responses (3-Yr Avg)
	#	%	C.I.(95%)	#	%	C.I.(95%)	#
<\$10,000	1,000	34.0	30.7 - 37.5	2,000	66.0	62.5 - 69.3	3,100
\$10,000-\$24,999	1,800	47.4	44.3 - 50.4	2,000	52.6	49.6 - 55.7	3,900
\$25,000-\$49,999	2,300	54.3	51.5 - 57.2	1,900	45.7	42.8 - 48.5	4,200
>=\$50,000	3,300	55.2	52.9 - 57.5	2,700	44.8	42.5 - 47.1	6,000

Birthweight	Yes			No			Weighted Total Responses (3-Yr Avg)
	#	%	C.I.(95%)	#	%	C.I.(95%)	#
Low birth weight	600	42.7	37.9 - 47.7	800	57.3	52.3 - 62.1	1,400
Normal birth weight	8,200	48.7	47.3 - 50.1	8,600	51.3	49.9 - 52.7	16,900

Smoke 3rd Trimester	Yes			No			Weighted Total Responses (3-Yr Avg)
	#	%	C.I.(95%)	#	%	C.I.(95%)	#
Yes	900	55.7	50.7 - 60.6	700	44.3	39.4 - 49.3	1,600
No	7,900	47.5	46.0 - 48.9	8,700	52.5	51.1 - 54.0	16,600

**PRAMS Health Indicator 3-Year Aggregate Report - Drinking alcohol 3 months before pregnancy- by State;County;DOH Race-Ethnicity;PRAMS Age Group;Infant Gender;Married;Poverty Level;Income (2000-2003);Income (2004-2011);Birthweight;Smoke 3rd Trimester;Smoke Before Pregnant;WIC During Pregnancy, for the Year(s)
2000-2002;2001-2003;2002-2004;2003-2005;2004-2006;2005-2007;2006-2008;2007-2009;2008-2010;2009-2011;2010-2012;2011-2013**

Note: Weighted counts (#) represent 3-yr averages, rounded to the nearest hundred; n/r (Not Reportable) - If the unweighted total responses for a dimension (row) is <30 that row will not be shown

Years: 2006-2008

Smoke Before Pregnant	Yes			No			Weighted Total Responses (3-Yr Avg)
	#	%	C.I.(95%)	#	%	C.I.(95%)	#
Yes	2,500	69.3	66.3 - 72.2	1,100	30.7	27.8 - 33.7	3,700
No	6,200	42.9	41.4 - 44.3	8,300	57.1	55.7 - 58.6	14,600

WIC During Pregnancy	Yes			No			Weighted Total Responses (3-Yr Avg)
	#	%	C.I.(95%)	#	%	C.I.(95%)	#
Yes	3,200	42.2	40.0 - 44.4	4,500	57.8	55.6 - 60.0	7,700
No	5,400	52.7	51.0 - 54.5	4,900	47.3	45.5 - 49.0	10,300

**PRAMS Health Indicator 3-Year Aggregate Report - Drinking alcohol 3 months before pregnancy- by State;County;DOH Race-Ethnicity;PRAMS Age Group;Infant Gender;Married;Poverty Level;Income (2000-2003);Income (2004-2011);Birthweight;Smoke 3rd Trimester;Smoke Before Pregnant;WIC During Pregnancy, for the Year(s)
2000-2002;2001-2003;2002-2004;2003-2005;2004-2006;2005-2007;2006-2008;2007-2009;2008-2010;2009-2011;2010-2012;2011-2013**

Note: Weighted counts (#) represent 3-yr averages, rounded to the nearest hundred; n/r (Not Reportable) - If the unweighted total responses for a dimension (row) is <30 that row will not be shown

Years: 2005-2007

State	Yes			No			Weighted Total Responses (3-Yr Avg)
	#	%	C.I.(95%)	#	%	C.I.(95%)	#
Totals	8,400	47.0	45.6 - 48.3	9,500	53.0	51.7 - 54.4	17,900

County	Yes			No			Weighted Total Responses (3-Yr Avg)
	#	%	C.I.(95%)	#	%	C.I.(95%)	#
Hawaii	1,100	48.7	44.8 - 52.7	1,200	51.3	47.3 - 55.2	2,300
Honolulu	5,800	45.6	44.0 - 47.2	7,000	54.4	52.8 - 56.0	12,800
Kauai	500	52.2	45.8 - 58.4	400	47.8	41.6 - 54.2	900
Maui	1,000	52.0	47.6 - 56.2	900	48.0	43.8 - 52.4	1,900

**PRAMS Health Indicator 3-Year Aggregate Report - Drinking alcohol 3 months before pregnancy- by State;County;DOH Race-Ethnicity;PRAMS Age Group;Infant Gender;Married;Poverty Level;Income (2000-2003);Income (2004-2011);Birthweight;Smoke 3rd Trimester;Smoke Before Pregnant;WIC During Pregnancy, for the Year(s)
2000-2002;2001-2003;2002-2004;2003-2005;2004-2006;2005-2007;2006-2008;2007-2009;2008-2010;2009-2011;2010-2012;2011-2013**

Note: Weighted counts (#) represent 3-yr averages, rounded to the nearest hundred; n/r (Not Reportable) - If the unweighted total responses for a dimension (row) is <30 that row will not be shown

Years: 2005-2007

DOH Race-Ethnicity	Yes			No			Weighted Total Responses (3-Yr Avg)
	#	%	C.I.(95%)	#	%	C.I.(95%)	#
Caucasian	2,700	66.3	63.5 - 69.0	1,400	33.7	31.0 - 36.5	4,100
Native Hawaiian	2,500	49.6	46.7 - 52.4	2,500	50.4	47.6 - 53.3	4,900
Chinese	200	32.1	28.6 - 35.8	400	67.9	64.2 - 71.4	600
Filipino	1,000	31.7	28.9 - 34.5	2,300	68.3	65.5 - 71.1	3,300
Japanese	1,000	46.2	42.4 - 50.1	1,200	53.8	49.9 - 57.6	2,200
Other	1,000	36.4	33.0 - 39.9	1,800	63.6	60.1 - 67.0	2,800

PRAMS Age Group	Yes			No			Weighted Total Responses (3-Yr Avg)
	#	%	C.I.(95%)	#	%	C.I.(95%)	#
<20	500	33.6	28.9 - 38.6	1,000	66.4	61.4 - 71.1	1,600
20-24	2,300	51.1	48.2 - 54.0	2,200	48.9	46.0 - 51.8	4,400
25-34	4,300	48.7	46.8 - 50.6	4,500	51.3	49.4 - 53.2	8,800
35+	1,300	43.0	40.0 - 46.1	1,800	57.0	53.9 - 60.0	3,100

**PRAMS Health Indicator 3-Year Aggregate Report - Drinking alcohol 3 months before pregnancy- by State;County;DOH Race-Ethnicity;PRAMS Age Group;Infant Gender;Married;Poverty Level;Income (2000-2003);Income (2004-2011);Birthweight;Smoke 3rd Trimester;Smoke Before Pregnant;WIC During Pregnancy, for the Year(s)
2000-2002;2001-2003;2002-2004;2003-2005;2004-2006;2005-2007;2006-2008;2007-2009;2008-2010;2009-2011;2010-2012;2011-2013**

Note: Weighted counts (#) represent 3-yr averages, rounded to the nearest hundred; n/r (Not Reportable) - If the unweighted total responses for a dimension (row) is <30 that row will not be shown

Years: 2005-2007

	Yes			No			Weighted Total Responses (3-Yr Avg)
	#	%	C.I.(95%)	#	%	C.I.(95%)	#
Infant Gender							
Male	4,300	46.5	44.6 - 48.4	4,900	53.5	51.6 - 55.4	9,200
Female	4,100	47.5	45.5 - 49.5	4,600	52.5	50.5 - 54.5	8,700

	Yes			No			Weighted Total Responses (3-Yr Avg)
	#	%	C.I.(95%)	#	%	C.I.(95%)	#
Married							
Yes	5,300	47.0	45.4 - 48.7	6,000	53.0	51.3 - 54.6	11,300
No	3,100	47.0	44.6 - 49.4	3,500	53.0	50.6 - 55.4	6,600

	Yes			No			Weighted Total Responses (3-Yr Avg)
	#	%	C.I.(95%)	#	%	C.I.(95%)	#
Poverty Level							
0-130%	2,400	37.8	35.5 - 40.2	4,000	62.2	59.8 - 64.5	6,500
131-185%	1,200	49.8	46.0 - 53.7	1,200	50.2	46.3 - 54.0	2,300
186+%	4,400	56.7	54.7 - 58.7	3,400	43.3	41.3 - 45.3	7,800

**PRAMS Health Indicator 3-Year Aggregate Report - Drinking alcohol 3 months before pregnancy- by State;County;DOH Race-Ethnicity;PRAMS Age Group;Infant Gender;Married;Poverty Level;Income (2000-2003);Income (2004-2011);Birthweight;Smoke 3rd Trimester;Smoke Before Pregnant;WIC During Pregnancy, for the Year(s)
2000-2002;2001-2003;2002-2004;2003-2005;2004-2006;2005-2007;2006-2008;2007-2009;2008-2010;2009-2011;2010-2012;2011-2013**

Note: Weighted counts (#) represent 3-yr averages, rounded to the nearest hundred; n/r (Not Reportable) - If the unweighted total responses for a dimension (row) is <30 that row will not be shown

Years: 2005-2007

Income (2004-2011)	Yes			No			Weighted Total Responses (3-Yr Avg)
	#	%	C.I.(95%)	#	%	C.I.(95%)	#
<\$10,000	1,100	36.6	33.3 - 40.1	1,900	63.4	59.9 - 66.7	3,000
\$10,000-\$24,999	1,600	41.9	38.9 - 45.0	2,200	58.1	55.0 - 61.1	3,700
\$25,000-\$49,999	2,200	53.6	50.7 - 56.4	1,900	46.4	43.6 - 49.3	4,200
>=\$50,000	3,100	54.9	52.6 - 57.2	2,600	45.1	42.8 - 47.4	5,700

Birthweight	Yes			No			Weighted Total Responses (3-Yr Avg)
	#	%	C.I.(95%)	#	%	C.I.(95%)	#
Low birth weight	600	42.6	37.9 - 47.5	800	57.4	52.5 - 62.1	1,400
Normal birth weight	7,800	47.4	45.9 - 48.8	8,700	52.6	51.2 - 54.1	16,400

Smoke 3rd Trimester	Yes			No			Weighted Total Responses (3-Yr Avg)
	#	%	C.I.(95%)	#	%	C.I.(95%)	#
Yes	900	54.5	49.6 - 59.4	700	45.5	40.6 - 50.4	1,600
No	7,500	46.3	44.9 - 47.7	8,700	53.7	52.3 - 55.1	16,300

**PRAMS Health Indicator 3-Year Aggregate Report - Drinking alcohol 3 months before pregnancy- by State;County;DOH Race-Ethnicity;PRAMS Age Group;Infant Gender;Married;Poverty Level;Income (2000-2003);Income (2004-2011);Birthweight;Smoke 3rd Trimester;Smoke Before Pregnant;WIC During Pregnancy, for the Year(s)
2000-2002;2001-2003;2002-2004;2003-2005;2004-2006;2005-2007;2006-2008;2007-2009;2008-2010;2009-2011;2010-2012;2011-2013**

Note: Weighted counts (#) represent 3-yr averages, rounded to the nearest hundred; n/r (Not Reportable) - If the unweighted total responses for a dimension (row) is <30 that row will not be shown

Years: 2005-2007

Smoke Before Pregnant	Yes			No			Weighted Total Responses (3-Yr Avg)
	#	%	C.I.(95%)	#	%	C.I.(95%)	#
Yes	2,500	68.5	65.5 - 71.4	1,200	31.5	28.6 - 34.5	3,700
No	5,800	41.3	39.9 - 42.8	8,300	58.7	57.2 - 60.1	14,100

WIC During Pregnancy	Yes			No			Weighted Total Responses (3-Yr Avg)
	#	%	C.I.(95%)	#	%	C.I.(95%)	#
Yes	3,100	41.6	39.5 - 43.8	4,400	58.4	56.2 - 60.5	7,500
No	5,100	51.2	49.4 - 53.0	4,900	48.8	47.0 - 50.6	10,100

**PRAMS Health Indicator 3-Year Aggregate Report - Drinking alcohol 3 months before pregnancy- by State;County;DOH Race-Ethnicity;PRAMS Age Group;Infant Gender;Married;Poverty Level;Income (2000-2003);Income (2004-2011);Birthweight;Smoke 3rd Trimester;Smoke Before Pregnant;WIC During Pregnancy, for the Year(s)
2000-2002;2001-2003;2002-2004;2003-2005;2004-2006;2005-2007;2006-2008;2007-2009;2008-2010;2009-2011;2010-2012;2011-2013**

Note: Weighted counts (#) represent 3-yr averages, rounded to the nearest hundred; n/r (Not Reportable) - If the unweighted total responses for a dimension (row) is <30 that row will not be shown

Years: 2004-2006

State	Yes			No			Weighted Total Responses (3-Yr Avg)
	#	%	C.I.(95%)	#	%	C.I.(95%)	#
Totals	7,900	45.0	43.7 - 46.3	9,700	55.0	53.7 - 56.3	17,600

County	Yes			No			Weighted Total Responses (3-Yr Avg)
	#	%	C.I.(95%)	#	%	C.I.(95%)	#
Hawaii	1,000	47.0	43.1 - 51.0	1,200	53.0	49.0 - 56.9	2,200
Honolulu	5,600	43.9	42.4 - 45.5	7,200	56.1	54.5 - 57.6	12,800
Kauai	400	47.5	41.1 - 54.0	400	52.5	46.0 - 58.9	800
Maui	900	49.3	45.1 - 53.6	900	50.7	46.4 - 54.9	1,800

**PRAMS Health Indicator 3-Year Aggregate Report - Drinking alcohol 3 months before pregnancy- by State;County;DOH Race-Ethnicity;PRAMS Age Group;Infant Gender;Married;Poverty Level;Income (2000-2003);Income (2004-2011);Birthweight;Smoke 3rd Trimester;Smoke Before Pregnant;WIC During Pregnancy, for the Year(s)
2000-2002;2001-2003;2002-2004;2003-2005;2004-2006;2005-2007;2006-2008;2007-2009;2008-2010;2009-2011;2010-2012;2011-2013**

Note: Weighted counts (#) represent 3-yr averages, rounded to the nearest hundred; n/r (Not Reportable) - If the unweighted total responses for a dimension (row) is <30 that row will not be shown

Years: 2004-2006

DOH Race-Ethnicity	Yes			No			Weighted Total Responses (3-Yr Avg)
	#	%	C.I.(95%)	#	%	C.I.(95%)	#
Caucasian	2,500	63.0	60.2 - 65.8	1,500	37.0	34.2 - 39.8	4,000
Native Hawaiian	2,400	48.5	45.7 - 51.3	2,500	51.5	48.7 - 54.3	4,900
Chinese	200	30.5	27.4 - 33.8	400	69.5	66.2 - 72.6	600
Filipino	1,000	29.4	26.8 - 32.1	2,300	70.6	67.9 - 73.2	3,200
Japanese	1,000	45.0	41.3 - 48.8	1,200	55.0	51.2 - 58.7	2,200
Other	900	34.2	30.9 - 37.6	1,700	65.8	62.4 - 69.1	2,700

PRAMS Age Group	Yes			No			Weighted Total Responses (3-Yr Avg)
	#	%	C.I.(95%)	#	%	C.I.(95%)	#
<20	500	34.5	29.8 - 39.5	900	65.5	60.5 - 70.2	1,400
20-24	2,200	49.7	46.8 - 52.5	2,200	50.3	47.5 - 53.2	4,300
25-34	4,000	45.8	43.9 - 47.7	4,700	54.2	52.3 - 56.1	8,600
35+	1,300	41.3	38.4 - 44.3	1,900	58.7	55.7 - 61.6	3,200

**PRAMS Health Indicator 3-Year Aggregate Report - Drinking alcohol 3 months before pregnancy- by State;County;DOH Race-Ethnicity;PRAMS Age Group;Infant Gender;Married;Poverty Level;Income (2000-2003);Income (2004-2011);Birthweight;Smoke 3rd Trimester;Smoke Before Pregnant;WIC During Pregnancy, for the Year(s)
2000-2002;2001-2003;2002-2004;2003-2005;2004-2006;2005-2007;2006-2008;2007-2009;2008-2010;2009-2011;2010-2012;2011-2013**

Note: Weighted counts (#) represent 3-yr averages, rounded to the nearest hundred; n/r (Not Reportable) - If the unweighted total responses for a dimension (row) is <30 that row will not be shown

Years: 2004-2006

Infant Gender	Yes			No			Weighted Total Responses (3-Yr Avg)
	#	%	C.I.(95%)	#	%	C.I.(95%)	#
Male	4,100	44.5	42.7 - 46.4	5,100	55.5	53.6 - 57.3	9,200
Female	3,800	45.6	43.6 - 47.5	4,600	54.4	52.5 - 56.4	8,400

Married	Yes			No			Weighted Total Responses (3-Yr Avg)
	#	%	C.I.(95%)	#	%	C.I.(95%)	#
Yes	5,200	44.5	42.9 - 46.1	6,400	55.5	53.9 - 57.1	11,600
No	2,800	46.1	43.7 - 48.5	3,200	53.9	51.5 - 56.3	6,000

Poverty Level	Yes			No			Weighted Total Responses (3-Yr Avg)
	#	%	C.I.(95%)	#	%	C.I.(95%)	#
0-130%	2,300	36.2	34.0 - 38.5	4,000	63.8	61.5 - 66.0	6,300
131-185%	1,000	48.5	44.6 - 52.5	1,100	51.5	47.5 - 55.4	2,100
186+%	4,200	53.9	52.0 - 55.9	3,600	46.1	44.1 - 48.0	7,800

**PRAMS Health Indicator 3-Year Aggregate Report - Drinking alcohol 3 months before pregnancy- by State;County;DOH Race-Ethnicity;PRAMS Age Group;Infant Gender;Married;Poverty Level;Income (2000-2003);Income (2004-2011);Birthweight;Smoke 3rd Trimester;Smoke Before Pregnant;WIC During Pregnancy, for the Year(s)
2000-2002;2001-2003;2002-2004;2003-2005;2004-2006;2005-2007;2006-2008;2007-2009;2008-2010;2009-2011;2010-2012;2011-2013**

Note: Weighted counts (#) represent 3-yr averages, rounded to the nearest hundred; n/r (Not Reportable) - If the unweighted total responses for a dimension (row) is <30 that row will not be shown

Years: 2004-2006

Income (2004-2011)	Yes			No			Weighted Total Responses (3-Yr Avg)
	#	%	C.I.(95%)	#	%	C.I.(95%)	#
<\$10,000	1,100	36.7	33.3 - 40.1	1,800	63.3	59.9 - 66.7	2,900
\$10,000-\$24,999	1,500	39.1	36.3 - 42.0	2,400	60.9	58.0 - 63.7	3,900
\$25,000-\$49,999	2,100	49.6	46.9 - 52.4	2,100	50.4	47.6 - 53.1	4,200
>=\$50,000	2,900	53.9	51.5 - 56.2	2,500	46.1	43.8 - 48.5	5,400

Birthweight	Yes			No			Weighted Total Responses (3-Yr Avg)
	#	%	C.I.(95%)	#	%	C.I.(95%)	#
Low birth weight	500	39.6	34.8 - 44.7	800	60.4	55.3 - 65.2	1,300
Normal birth weight	7,400	45.4	44.1 - 46.8	8,900	54.6	53.2 - 55.9	16,300

Smoke 3rd Trimester	Yes			No			Weighted Total Responses (3-Yr Avg)
	#	%	C.I.(95%)	#	%	C.I.(95%)	#
Yes	800	54.3	49.4 - 59.1	700	45.7	40.9 - 50.6	1,500
No	7,100	44.1	42.8 - 45.5	8,900	55.9	54.5 - 57.2	16,000

**PRAMS Health Indicator 3-Year Aggregate Report - Drinking alcohol 3 months before pregnancy- by State;County;DOH Race-Ethnicity;PRAMS Age Group;Infant Gender;Married;Poverty Level;Income (2000-2003);Income (2004-2011);Birthweight;Smoke 3rd Trimester;Smoke Before Pregnant;WIC During Pregnancy, for the Year(s)
2000-2002;2001-2003;2002-2004;2003-2005;2004-2006;2005-2007;2006-2008;2007-2009;2008-2010;2009-2011;2010-2012;2011-2013**

Note: Weighted counts (#) represent 3-yr averages, rounded to the nearest hundred; n/r (Not Reportable) - If the unweighted total responses for a dimension (row) is <30 that row will not be shown

Years: 2004-2006

Smoke Before Pregnant	Yes			No			Weighted Total Responses (3-Yr Avg)
	#	%	C.I.(95%)	#	%	C.I.(95%)	#
Yes	2,500	66.6	63.6 - 69.5	1,200	33.4	30.5 - 36.4	3,700
No	5,400	39.3	37.8 - 40.7	8,400	60.7	59.3 - 62.2	13,800

WIC During Pregnancy	Yes			No			Weighted Total Responses (3-Yr Avg)
	#	%	C.I.(95%)	#	%	C.I.(95%)	#
Yes	2,900	39.1	37.0 - 41.2	4,600	60.9	58.8 - 63.0	7,500
No	4,800	49.9	48.1 - 51.6	4,900	50.1	48.4 - 51.9	9,700

**PRAMS Health Indicator 3-Year Aggregate Report - Drinking alcohol 3 months before pregnancy- by State;County;DOH Race-Ethnicity;PRAMS Age Group;Infant Gender;Married;Poverty Level;Income (2000-2003);Income (2004-2011);Birthweight;Smoke 3rd Trimester;Smoke Before Pregnant;WIC During Pregnancy, for the Year(s)
2000-2002;2001-2003;2002-2004;2003-2005;2004-2006;2005-2007;2006-2008;2007-2009;2008-2010;2009-2011;2010-2012;2011-2013**

Note: Weighted counts (#) represent 3-yr averages, rounded to the nearest hundred; n/r (Not Reportable) - If the unweighted total responses for a dimension (row) is <30 that row will not be shown

Years: 2003-2005

State	Yes			No			Weighted Total Responses (3-Yr Avg)
	#	%	C.I.(95%)	#	%	C.I.(95%)	#
Totals	7,400	42.9	41.6 - 44.3	9,900	57.1	55.7 - 58.4	17,300

County	Yes			No			Weighted Total Responses (3-Yr Avg)
	#	%	C.I.(95%)	#	%	C.I.(95%)	#
Hawaii	900	43.4	39.9 - 46.9	1,200	56.6	53.1 - 60.1	2,100
Honolulu	5,300	42.4	40.7 - 44.0	7,300	57.6	56.0 - 59.3	12,600
Kauai	300	43.2	37.7 - 48.9	400	56.8	51.1 - 62.3	800
Maui	800	46.5	42.8 - 50.2	1,000	53.5	49.8 - 57.2	1,800

**PRAMS Health Indicator 3-Year Aggregate Report - Drinking alcohol 3 months before pregnancy- by State;County;DOH Race-Ethnicity;PRAMS Age Group;Infant Gender;Married;Poverty Level;Income (2000-2003);Income (2004-2011);Birthweight;Smoke 3rd Trimester;Smoke Before Pregnant;WIC During Pregnancy, for the Year(s)
2000-2002;2001-2003;2002-2004;2003-2005;2004-2006;2005-2007;2006-2008;2007-2009;2008-2010;2009-2011;2010-2012;2011-2013**

Note: Weighted counts (#) represent 3-yr averages, rounded to the nearest hundred; n/r (Not Reportable) - If the unweighted total responses for a dimension (row) is <30 that row will not be shown

Years: 2003-2005

DOH Race-Ethnicity	Yes			No			Weighted Total Responses (3-Yr Avg)
	#	%	C.I.(95%)	#	%	C.I.(95%)	#
Caucasian	2,400	62.7	59.6 - 65.6	1,400	37.3	34.4 - 40.4	3,800
Native Hawaiian	2,200	45.8	43.4 - 48.3	2,600	54.2	51.7 - 56.6	4,800
Chinese	200	29.9	24.6 - 35.9	500	70.1	64.1 - 75.4	700
Filipino	1,000	29.6	26.7 - 32.6	2,400	70.4	67.4 - 73.3	3,400
Japanese	900	40.2	36.2 - 44.3	1,300	59.8	55.7 - 63.8	2,200
Other	800	31.6	28.0 - 35.4	1,700	68.4	64.6 - 72.0	2,500

PRAMS Age Group	Yes			No			Weighted Total Responses (3-Yr Avg)
	#	%	C.I.(95%)	#	%	C.I.(95%)	#
<20	500	33.2	28.9 - 37.9	1,000	66.8	62.1 - 71.1	1,400
20-24	2,000	46.5	43.6 - 49.3	2,300	53.5	50.7 - 56.4	4,200
25-34	3,800	44.0	42.0 - 46.0	4,800	56.0	54.0 - 58.0	8,600
35+	1,200	39.6	36.5 - 42.9	1,900	60.4	57.1 - 63.5	3,100

**PRAMS Health Indicator 3-Year Aggregate Report - Drinking alcohol 3 months before pregnancy- by State;County;DOH Race-Ethnicity;PRAMS Age Group;Infant Gender;Married;Poverty Level;Income (2000-2003);Income (2004-2011);Birthweight;Smoke 3rd Trimester;Smoke Before Pregnant;WIC During Pregnancy, for the Year(s)
2000-2002;2001-2003;2002-2004;2003-2005;2004-2006;2005-2007;2006-2008;2007-2009;2008-2010;2009-2011;2010-2012;2011-2013**

Note: Weighted counts (#) represent 3-yr averages, rounded to the nearest hundred; n/r (Not Reportable) - If the unweighted total responses for a dimension (row) is <30 that row will not be shown

Years: 2003-2005

Infant Gender	Yes			No			Weighted Total Responses (3-Yr Avg)
	#	%	C.I.(95%)	#	%	C.I.(95%)	#
Male	3,900	42.8	40.9 - 44.7	5,200	57.2	55.3 - 59.1	9,100
Female	3,500	43.1	41.1 - 45.2	4,600	56.9	54.8 - 58.9	8,200

Married	Yes			No			Weighted Total Responses (3-Yr Avg)
	#	%	C.I.(95%)	#	%	C.I.(95%)	#
Yes	4,900	42.2	40.5 - 43.9	6,700	57.8	56.1 - 59.5	11,500
No	2,600	44.5	42.1 - 46.9	3,200	55.5	53.1 - 57.9	5,800

Poverty Level	Yes			No			Weighted Total Responses (3-Yr Avg)
	#	%	C.I.(95%)	#	%	C.I.(95%)	#
0-130%	2,400	35.3	33.2 - 37.5	4,400	64.7	62.5 - 66.8	6,700
131-185%	900	43.2	39.2 - 47.3	1,200	56.8	52.7 - 60.8	2,100
186+%	3,700	53.3	51.2 - 55.5	3,200	46.7	44.5 - 48.8	6,900

**PRAMS Health Indicator 3-Year Aggregate Report - Drinking alcohol 3 months before pregnancy- by State;County;DOH Race-Ethnicity;PRAMS Age Group;Infant Gender;Married;Poverty Level;Income (2000-2003);Income (2004-2011);Birthweight;Smoke 3rd Trimester;Smoke Before Pregnant;WIC During Pregnancy, for the Year(s)
2000-2002;2001-2003;2002-2004;2003-2005;2004-2006;2005-2007;2006-2008;2007-2009;2008-2010;2009-2011;2010-2012;2011-2013**

Note: Weighted counts (#) represent 3-yr averages, rounded to the nearest hundred; n/r (Not Reportable) - If the unweighted total responses for a dimension (row) is <30 that row will not be shown

Years: 2003-2005

Birthweight	Yes			No			Weighted Total Responses (3-Yr Avg)
	#	%	C.I.(95%)	#	%	C.I.(95%)	#
Low birth weight	400	36.7	31.6 - 42.0	700	63.3	58.0 - 68.4	1,200
Normal birth weight	7,000	43.4	42.0 - 44.8	9,100	56.6	55.2 - 58.0	16,100

Smoke 3rd Trimester	Yes			No			Weighted Total Responses (3-Yr Avg)
	#	%	C.I.(95%)	#	%	C.I.(95%)	#
Yes	800	52.8	47.9 - 57.7	700	47.2	42.3 - 52.1	1,500
No	6,600	42.0	40.5 - 43.4	9,100	58.0	56.6 - 59.5	15,700

Smoke Before Pregnant	Yes			No			Weighted Total Responses (3-Yr Avg)
	#	%	C.I.(95%)	#	%	C.I.(95%)	#
Yes	2,300	63.2	60.1 - 66.2	1,300	36.8	33.8 - 39.9	3,600
No	5,100	37.5	36.0 - 39.0	8,500	62.5	61.0 - 64.0	13,500

**PRAMS Health Indicator 3-Year Aggregate Report - Drinking alcohol 3 months before pregnancy- by State;County;DOH Race-Ethnicity;PRAMS Age Group;Infant Gender;Married;Poverty Level;Income (2000-2003);Income (2004-2011);Birthweight;Smoke 3rd Trimester;Smoke Before Pregnant;WIC During Pregnancy, for the Year(s)
2000-2002;2001-2003;2002-2004;2003-2005;2004-2006;2005-2007;2006-2008;2007-2009;2008-2010;2009-2011;2010-2012;2011-2013**

Note: Weighted counts (#) represent 3-yr averages, rounded to the nearest hundred; n/r (Not Reportable) - If the unweighted total responses for a dimension (row) is <30 that row will not be shown

Years: 2003-2005

WIC During Pregnancy	Yes			No			Weighted Total Responses (3-Yr Avg)
	#	%	C.I.(95%)	#	%	C.I.(95%)	#
Yes	2,700	36.6	34.6 - 38.7	4,700	63.4	61.3 - 65.4	7,400
No	4,600	48.0	46.1 - 49.9	5,000	52.0	50.1 - 53.9	9,600

**PRAMS Health Indicator 3-Year Aggregate Report - Drinking alcohol 3 months before pregnancy- by State;County;DOH Race-Ethnicity;PRAMS Age Group;Infant Gender;Married;Poverty Level;Income (2000-2003);Income (2004-2011);Birthweight;Smoke 3rd Trimester;Smoke Before Pregnant;WIC During Pregnancy, for the Year(s)
2000-2002;2001-2003;2002-2004;2003-2005;2004-2006;2005-2007;2006-2008;2007-2009;2008-2010;2009-2011;2010-2012;2011-2013**

Note: Weighted counts (#) represent 3-yr averages, rounded to the nearest hundred; n/r (Not Reportable) - If the unweighted total responses for a dimension (row) is <30 that row will not be shown

Years: 2002-2004

State	Yes			No			Weighted Total Responses (3-Yr Avg)
	#	%	C.I.(95%)	#	%	C.I.(95%)	#
Totals	7,000	41.2	39.8 - 42.7	10,000	58.8	57.3 - 60.2	17,100

County	Yes			No			Weighted Total Responses (3-Yr Avg)
	#	%	C.I.(95%)	#	%	C.I.(95%)	#
Hawaii	900	43.2	40.1 - 46.3	1,200	56.8	53.7 - 59.9	2,000
Honolulu	5,100	40.5	38.6 - 42.3	7,400	59.5	57.7 - 61.4	12,500
Kauai	300	43.0	38.1 - 48.0	400	57.0	52.0 - 61.9	800
Maui	800	43.5	40.3 - 46.8	1,000	56.5	53.2 - 59.7	1,800

**PRAMS Health Indicator 3-Year Aggregate Report - Drinking alcohol 3 months before pregnancy- by State;County;DOH Race-Ethnicity;PRAMS Age Group;Infant Gender;Married;Poverty Level;Income (2000-2003);Income (2004-2011);Birthweight;Smoke 3rd Trimester;Smoke Before Pregnant;WIC During Pregnancy, for the Year(s)
2000-2002;2001-2003;2002-2004;2003-2005;2004-2006;2005-2007;2006-2008;2007-2009;2008-2010;2009-2011;2010-2012;2011-2013**

Note: Weighted counts (#) represent 3-yr averages, rounded to the nearest hundred; n/r (Not Reportable) - If the unweighted total responses for a dimension (row) is <30 that row will not be shown

Years: 2002-2004

DOH Race-Ethnicity	Yes			No			Weighted Total Responses (3-Yr Avg)
	#	%	C.I.(95%)	#	%	C.I.(95%)	#
Caucasian	2,200	60.3	57.0 - 63.5	1,500	39.7	36.5 - 43.0	3,700
Native Hawaiian	2,100	44.7	42.6 - 46.8	2,600	55.3	53.2 - 57.4	4,600
Chinese	200	28.4	21.8 - 36.0	500	71.6	64.0 - 78.2	600
Filipino	900	27.3	24.3 - 30.5	2,500	72.7	69.5 - 75.7	3,500
Japanese	900	38.9	34.6 - 43.3	1,400	61.1	56.7 - 65.4	2,200
Other	700	30.8	26.8 - 35.1	1,700	69.2	64.9 - 73.2	2,400

PRAMS Age Group	Yes			No			Weighted Total Responses (3-Yr Avg)
	#	%	C.I.(95%)	#	%	C.I.(95%)	#
<20	400	29.3	25.3 - 33.7	1,000	70.7	66.3 - 74.7	1,400
20-24	1,900	46.1	43.2 - 49.0	2,300	53.9	51.0 - 56.8	4,200
25-34	3,600	42.5	40.4 - 44.7	4,900	57.5	55.3 - 59.6	8,500
35+	1,100	36.4	33.1 - 39.9	1,900	63.6	60.1 - 66.9	3,000

**PRAMS Health Indicator 3-Year Aggregate Report - Drinking alcohol 3 months before pregnancy- by State;County;DOH Race-Ethnicity;PRAMS Age Group;Infant Gender;Married;Poverty Level;Income (2000-2003);Income (2004-2011);Birthweight;Smoke 3rd Trimester;Smoke Before Pregnant;WIC During Pregnancy, for the Year(s)
2000-2002;2001-2003;2002-2004;2003-2005;2004-2006;2005-2007;2006-2008;2007-2009;2008-2010;2009-2011;2010-2012;2011-2013**

Note: Weighted counts (#) represent 3-yr averages, rounded to the nearest hundred; n/r (Not Reportable) - If the unweighted total responses for a dimension (row) is <30 that row will not be shown

Years: 2002-2004

Infant Gender	Yes			No			Weighted Total Responses (3-Yr Avg)
	#	%	C.I.(95%)	#	%	C.I.(95%)	#
Male	3,800	41.9	39.9 - 43.9	5,200	58.1	56.1 - 60.1	9,000
Female	3,300	40.5	38.4 - 42.6	4,800	59.5	57.4 - 61.6	8,100

Married	Yes			No			Weighted Total Responses (3-Yr Avg)
	#	%	C.I.(95%)	#	%	C.I.(95%)	#
Yes	4,700	40.5	38.7 - 42.3	6,900	59.5	57.7 - 61.3	11,600
No	2,300	42.8	40.4 - 45.3	3,100	57.2	54.7 - 59.6	5,400

Poverty Level	Yes			No			Weighted Total Responses (3-Yr Avg)
	#	%	C.I.(95%)	#	%	C.I.(95%)	#
0-130%	2,400	35.7	33.5 - 37.9	4,400	64.3	62.1 - 66.5	6,800
131-185%	1,100	42.1	38.2 - 46.0	1,500	57.9	54.0 - 61.8	2,600
186+%	3,100	50.1	47.6 - 52.6	3,000	49.9	47.4 - 52.4	6,100

**PRAMS Health Indicator 3-Year Aggregate Report - Drinking alcohol 3 months before pregnancy- by State;County;DOH Race-Ethnicity;PRAMS Age Group;Infant Gender;Married;Poverty Level;Income (2000-2003);Income (2004-2011);Birthweight;Smoke 3rd Trimester;Smoke Before Pregnant;WIC During Pregnancy, for the Year(s)
2000-2002;2001-2003;2002-2004;2003-2005;2004-2006;2005-2007;2006-2008;2007-2009;2008-2010;2009-2011;2010-2012;2011-2013**

Note: Weighted counts (#) represent 3-yr averages, rounded to the nearest hundred; n/r (Not Reportable) - If the unweighted total responses for a dimension (row) is <30 that row will not be shown

Years: 2002-2004

Birthweight	Yes			No			Weighted Total Responses (3-Yr Avg)
	#	%	C.I.(95%)	#	%	C.I.(95%)	#
Low birth weight	400	35.9	30.5 - 41.8	700	64.1	58.2 - 69.5	1,100
Normal birth weight	6,600	41.6	40.1 - 43.1	9,300	58.4	56.9 - 59.9	15,900

Smoke 3rd Trimester	Yes			No			Weighted Total Responses (3-Yr Avg)
	#	%	C.I.(95%)	#	%	C.I.(95%)	#
Yes	700	51.1	46.1 - 56.1	700	48.9	43.9 - 53.9	1,400
No	6,200	40.3	38.7 - 41.8	9,300	59.7	58.2 - 61.3	15,500

Smoke Before Pregnant	Yes			No			Weighted Total Responses (3-Yr Avg)
	#	%	C.I.(95%)	#	%	C.I.(95%)	#
Yes	2,100	62.0	58.8 - 65.1	1,300	38.0	34.9 - 41.2	3,400
No	4,800	35.6	34.0 - 37.2	8,600	64.4	62.8 - 66.0	13,400

**PRAMS Health Indicator 3-Year Aggregate Report - Drinking alcohol 3 months before pregnancy- by State;County;DOH Race-Ethnicity;PRAMS Age Group;Infant Gender;Married;Poverty Level;Income (2000-2003);Income (2004-2011);Birthweight;Smoke 3rd Trimester;Smoke Before Pregnant;WIC During Pregnancy, for the Year(s)
2000-2002;2001-2003;2002-2004;2003-2005;2004-2006;2005-2007;2006-2008;2007-2009;2008-2010;2009-2011;2010-2012;2011-2013**

Note: Weighted counts (#) represent 3-yr averages, rounded to the nearest hundred; n/r (Not Reportable) - If the unweighted total responses for a dimension (row) is <30 that row will not be shown

Years: 2002-2004

WIC During Pregnancy	Yes			No			Weighted Total Responses (3-Yr Avg)
	#	%	C.I.(95%)	#	%	C.I.(95%)	#
Yes	2,700	36.7	34.6 - 38.8	4,600	63.3	61.2 - 65.4	7,300
No	4,300	44.8	42.8 - 46.8	5,300	55.2	53.2 - 57.2	9,600

**PRAMS Health Indicator 3-Year Aggregate Report - Drinking alcohol 3 months before pregnancy- by State;County;DOH Race-Ethnicity;PRAMS Age Group;Infant Gender;Married;Poverty Level;Income (2000-2003);Income (2004-2011);Birthweight;Smoke 3rd Trimester;Smoke Before Pregnant;WIC During Pregnancy, for the Year(s)
2000-2002;2001-2003;2002-2004;2003-2005;2004-2006;2005-2007;2006-2008;2007-2009;2008-2010;2009-2011;2010-2012;2011-2013**

Note: Weighted counts (#) represent 3-yr averages, rounded to the nearest hundred; n/r (Not Reportable) - If the unweighted total responses for a dimension (row) is <30 that row will not be shown

Years: 2001-2003

State	Yes			No			Weighted Total Responses (3-Yr Avg)
	#	%	C.I.(95%)	#	%	C.I.(95%)	#
Totals	6,900	41.2	39.7 - 42.7	9,800	58.8	57.3 - 60.3	16,700

County	Yes			No			Weighted Total Responses (3-Yr Avg)
	#	%	C.I.(95%)	#	%	C.I.(95%)	#
Hawaii	800	43.8	41.2 - 46.5	1,100	56.2	53.5 - 58.8	1,900
Honolulu	5,000	40.6	38.7 - 42.5	7,300	59.4	57.5 - 61.3	12,300
Kauai	300	40.9	36.7 - 45.3	400	59.1	54.7 - 63.3	800
Maui	700	42.5	39.7 - 45.4	1,000	57.5	54.6 - 60.3	1,700

**PRAMS Health Indicator 3-Year Aggregate Report - Drinking alcohol 3 months before pregnancy- by State;County;DOH Race-Ethnicity;PRAMS Age Group;Infant Gender;Married;Poverty Level;Income (2000-2003);Income (2004-2011);Birthweight;Smoke 3rd Trimester;Smoke Before Pregnant;WIC During Pregnancy, for the Year(s)
2000-2002;2001-2003;2002-2004;2003-2005;2004-2006;2005-2007;2006-2008;2007-2009;2008-2010;2009-2011;2010-2012;2011-2013**

Note: Weighted counts (#) represent 3-yr averages, rounded to the nearest hundred; n/r (Not Reportable) - If the unweighted total responses for a dimension (row) is <30 that row will not be shown

Years: 2001-2003

DOH Race-Ethnicity	Yes			No			Weighted Total Responses (3-Yr Avg)
	#	%	C.I.(95%)	#	%	C.I.(95%)	#
Caucasian	2,100	59.5	56.0 - 62.8	1,400	40.5	37.2 - 44.0	3,600
Native Hawaiian	2,000	44.6	43.0 - 46.3	2,500	55.4	53.7 - 57.0	4,500
Chinese	200	28.4	21.2 - 36.9	500	71.6	63.1 - 78.8	700
Filipino	900	26.8	23.7 - 30.1	2,600	73.2	69.9 - 76.3	3,500
Japanese	800	39.3	34.7 - 44.1	1,300	60.7	55.9 - 65.3	2,100
Other	800	33.5	29.1 - 38.2	1,500	66.5	61.8 - 70.9	2,300

PRAMS Age Group	Yes			No			Weighted Total Responses (3-Yr Avg)
	#	%	C.I.(95%)	#	%	C.I.(95%)	#
<20	500	31.2	27.5 - 35.2	1,000	68.8	64.8 - 72.5	1,500
20-24	1,900	45.2	42.3 - 48.1	2,300	54.8	51.9 - 57.7	4,100
25-34	3,500	42.8	40.7 - 45.0	4,700	57.2	55.0 - 59.3	8,200
35+	1,000	35.8	32.2 - 39.6	1,800	64.2	60.4 - 67.8	2,800

**PRAMS Health Indicator 3-Year Aggregate Report - Drinking alcohol 3 months before pregnancy- by State;County;DOH Race-Ethnicity;PRAMS Age Group;Infant Gender;Married;Poverty Level;Income (2000-2003);Income (2004-2011);Birthweight;Smoke 3rd Trimester;Smoke Before Pregnant;WIC During Pregnancy, for the Year(s)
2000-2002;2001-2003;2002-2004;2003-2005;2004-2006;2005-2007;2006-2008;2007-2009;2008-2010;2009-2011;2010-2012;2011-2013**

Note: Weighted counts (#) represent 3-yr averages, rounded to the nearest hundred; n/r (Not Reportable) - If the unweighted total responses for a dimension (row) is <30 that row will not be shown

Years: 2001-2003

	Yes			No			Weighted Total Responses (3-Yr Avg)
	#	%	C.I.(95%)	#	%	C.I.(95%)	#
Infant Gender							
Male	3,600	42.2	40.1 - 44.3	4,900	57.8	55.7 - 59.9	8,500
Female	3,300	40.2	38.1 - 42.3	4,900	59.8	57.7 - 61.9	8,100

	Yes			No			Weighted Total Responses (3-Yr Avg)
	#	%	C.I.(95%)	#	%	C.I.(95%)	#
Married							
Yes	4,500	40.2	38.4 - 42.1	6,700	59.8	57.9 - 61.6	11,200
No	2,400	43.2	40.8 - 45.5	3,100	56.8	54.5 - 59.2	5,500

	Yes			No			Weighted Total Responses (3-Yr Avg)
	#	%	C.I.(95%)	#	%	C.I.(95%)	#
Poverty Level							
0-130%	2,500	37.0	34.8 - 39.2	4,200	63.0	60.8 - 65.2	6,700
131-185%	1,300	40.5	37.1 - 44.0	1,900	59.5	56.0 - 62.9	3,100
186+%	2,700	50.2	47.4 - 53.0	2,700	49.8	47.0 - 52.6	5,300

**PRAMS Health Indicator 3-Year Aggregate Report - Drinking alcohol 3 months before pregnancy- by State;County;DOH Race-Ethnicity;PRAMS Age Group;Infant Gender;Married;Poverty Level;Income (2000-2003);Income (2004-2011);Birthweight;Smoke 3rd Trimester;Smoke Before Pregnant;WIC During Pregnancy, for the Year(s)
2000-2002;2001-2003;2002-2004;2003-2005;2004-2006;2005-2007;2006-2008;2007-2009;2008-2010;2009-2011;2010-2012;2011-2013**

Note: Weighted counts (#) represent 3-yr averages, rounded to the nearest hundred; n/r (Not Reportable) - If the unweighted total responses for a dimension (row) is <30 that row will not be shown

Years: 2001-2003

Income (2000-2003)	Yes			No			Weighted Total Responses (3-Yr Avg)
	#	%	C.I.(95%)	#	%	C.I.(95%)	#
<=\$15,000	1,200	34.8	32.0 - 37.7	2,300	65.2	62.3 - 68.0	3,600
\$15,001-\$25,000	1,000	43.9	40.0 - 47.9	1,300	56.1	52.1 - 60.0	2,300
\$25,001-\$40,000	1,400	41.0	37.7 - 44.3	2,000	59.0	55.7 - 62.3	3,400
>=\$40,001	2,900	45.7	43.1 - 48.2	3,500	54.3	51.8 - 56.9	6,400

Birthweight	Yes			No			Weighted Total Responses (3-Yr Avg)
	#	%	C.I.(95%)	#	%	C.I.(95%)	#
Low birth weight	400	33.9	28.5 - 39.7	700	66.1	60.3 - 71.5	1,100
Normal birth weight	6,500	41.7	40.2 - 43.2	9,000	58.3	56.8 - 59.8	15,500

Smoke 3rd Trimester	Yes			No			Weighted Total Responses (3-Yr Avg)
	#	%	C.I.(95%)	#	%	C.I.(95%)	#
Yes	800	51.9	47.2 - 56.5	700	48.1	43.5 - 52.8	1,500
No	6,000	40.0	38.5 - 41.6	9,000	60.0	58.4 - 61.5	15,000

**PRAMS Health Indicator 3-Year Aggregate Report - Drinking alcohol 3 months before pregnancy- by State;County;DOH Race-Ethnicity;PRAMS Age Group;Infant Gender;Married;Poverty Level;Income (2000-2003);Income (2004-2011);Birthweight;Smoke 3rd Trimester;Smoke Before Pregnant;WIC During Pregnancy, for the Year(s)
2000-2002;2001-2003;2002-2004;2003-2005;2004-2006;2005-2007;2006-2008;2007-2009;2008-2010;2009-2011;2010-2012;2011-2013**

Note: Weighted counts (#) represent 3-yr averages, rounded to the nearest hundred; n/r (Not Reportable) - If the unweighted total responses for a dimension (row) is <30 that row will not be shown

Years: 2001-2003

Smoke Before Pregnant	Yes			No			Weighted Total Responses (3-Yr Avg)
	#	%	C.I.(95%)	#	%	C.I.(95%)	#
Yes	2,000	61.2	58.0 - 64.3	1,300	38.8	35.7 - 42.0	3,300
No	4,600	35.6	33.9 - 37.2	8,400	64.4	62.8 - 66.1	13,000

WIC During Pregnancy	Yes			No			Weighted Total Responses (3-Yr Avg)
	#	%	C.I.(95%)	#	%	C.I.(95%)	#
Yes	2,700	38.3	36.2 - 40.5	4,300	61.7	59.5 - 63.8	7,000
No	4,100	43.4	41.3 - 45.4	5,400	56.6	54.6 - 58.7	9,600

**PRAMS Health Indicator 3-Year Aggregate Report - Drinking alcohol 3 months before pregnancy- by State;County;DOH Race-Ethnicity;PRAMS Age Group;Infant Gender;Married;Poverty Level;Income (2000-2003);Income (2004-2011);Birthweight;Smoke 3rd Trimester;Smoke Before Pregnant;WIC During Pregnancy, for the Year(s)
2000-2002;2001-2003;2002-2004;2003-2005;2004-2006;2005-2007;2006-2008;2007-2009;2008-2010;2009-2011;2010-2012;2011-2013**

Note: Weighted counts (#) represent 3-yr averages, rounded to the nearest hundred; n/r (Not Reportable) - If the unweighted total responses for a dimension (row) is <30 that row will not be shown

Years: 2000-2002

State	Yes			No			Weighted Total Responses (3-Yr Avg)
	#	%	C.I.(95%)	#	%	C.I.(95%)	#
Totals	6,800	41.3	39.9 - 42.7	9,600	58.7	57.3 - 60.1	16,400

County	Yes			No			Weighted Total Responses (3-Yr Avg)
	#	%	C.I.(95%)	#	%	C.I.(95%)	#
Hawaii	900	46.1	43.4 - 48.7	1,000	53.9	51.3 - 56.6	1,900
Honolulu	4,900	40.3	38.6 - 42.1	7,300	59.7	57.9 - 61.4	12,200
Kauai	300	44.1	39.6 - 48.6	400	55.9	51.4 - 60.4	700
Maui	700	42.1	39.2 - 45.0	1,000	57.9	55.0 - 60.8	1,700

**PRAMS Health Indicator 3-Year Aggregate Report - Drinking alcohol 3 months before pregnancy- by State;County;DOH Race-Ethnicity;PRAMS Age Group;Infant Gender;Married;Poverty Level;Income (2000-2003);Income (2004-2011);Birthweight;Smoke 3rd Trimester;Smoke Before Pregnant;WIC During Pregnancy, for the Year(s)
2000-2002;2001-2003;2002-2004;2003-2005;2004-2006;2005-2007;2006-2008;2007-2009;2008-2010;2009-2011;2010-2012;2011-2013**

Note: Weighted counts (#) represent 3-yr averages, rounded to the nearest hundred; n/r (Not Reportable) - If the unweighted total responses for a dimension (row) is <30 that row will not be shown

Years: 2000-2002

DOH Race-Ethnicity	Yes			No			Weighted Total Responses (3-Yr Avg)
	#	%	C.I.(95%)	#	%	C.I.(95%)	#
Caucasian	2,100	57.7	54.6 - 60.8	1,500	42.3	39.2 - 45.4	3,600
Native Hawaiian	2,000	44.4	42.9 - 46.0	2,500	55.6	54.0 - 57.1	4,400
Chinese	200	27.5	20.8 - 35.4	500	72.5	64.6 - 79.2	600
Filipino	900	25.7	22.9 - 28.8	2,500	74.3	71.2 - 77.1	3,400
Japanese	900	43.5	39.1 - 48.1	1,200	56.5	51.9 - 60.9	2,100
Other	800	34.0	29.9 - 38.5	1,500	66.0	61.5 - 70.1	2,200

PRAMS Age Group	Yes			No			Weighted Total Responses (3-Yr Avg)
	#	%	C.I.(95%)	#	%	C.I.(95%)	#
<20	600	35.6	32.0 - 39.5	1,000	64.4	60.5 - 68.0	1,600
20-24	1,900	46.1	43.4 - 48.8	2,200	53.9	51.2 - 56.6	4,100
25-34	3,300	41.7	39.7 - 43.8	4,700	58.3	56.2 - 60.3	8,000
35+	1,000	36.2	32.9 - 39.7	1,700	63.8	60.3 - 67.1	2,700

**PRAMS Health Indicator 3-Year Aggregate Report - Drinking alcohol 3 months before pregnancy- by State;County;DOH Race-Ethnicity;PRAMS Age Group;Infant Gender;Married;Poverty Level;Income (2000-2003);Income (2004-2011);Birthweight;Smoke 3rd Trimester;Smoke Before Pregnant;WIC During Pregnancy, for the Year(s)
2000-2002;2001-2003;2002-2004;2003-2005;2004-2006;2005-2007;2006-2008;2007-2009;2008-2010;2009-2011;2010-2012;2011-2013**

Note: Weighted counts (#) represent 3-yr averages, rounded to the nearest hundred; n/r (Not Reportable) - If the unweighted total responses for a dimension (row) is <30 that row will not be shown

Years: 2000-2002

	Yes			No			Weighted Total Responses (3-Yr Avg)
	#	%	C.I.(95%)	#	%	C.I.(95%)	#
Infant Gender							
Male	3,500	42.3	40.4 - 44.3	4,800	57.7	55.7 - 59.6	8,300
Female	3,300	40.3	38.3 - 42.3	4,800	59.7	57.7 - 61.7	8,100

	Yes			No			Weighted Total Responses (3-Yr Avg)
	#	%	C.I.(95%)	#	%	C.I.(95%)	#
Married							
Yes	4,500	39.8	38.0 - 41.5	6,800	60.2	58.5 - 62.0	11,200
No	2,300	44.7	42.4 - 46.9	2,900	55.3	53.1 - 57.6	5,200

	Yes			No			Weighted Total Responses (3-Yr Avg)
	#	%	C.I.(95%)	#	%	C.I.(95%)	#
Poverty Level							
0-130%	2,400	36.2	34.2 - 38.2	4,200	63.8	61.8 - 65.8	6,500
131-185%	1,300	42.9	39.6 - 46.3	1,700	57.1	53.7 - 60.4	3,000
186+%	2,800	49.6	47.0 - 52.1	2,800	50.4	47.9 - 53.0	5,600

**PRAMS Health Indicator 3-Year Aggregate Report - Drinking alcohol 3 months before pregnancy- by State;County;DOH Race-Ethnicity;PRAMS Age Group;Infant Gender;Married;Poverty Level;Income (2000-2003);Income (2004-2011);Birthweight;Smoke 3rd Trimester;Smoke Before Pregnant;WIC During Pregnancy, for the Year(s)
2000-2002;2001-2003;2002-2004;2003-2005;2004-2006;2005-2007;2006-2008;2007-2009;2008-2010;2009-2011;2010-2012;2011-2013**

Note: Weighted counts (#) represent 3-yr averages, rounded to the nearest hundred; n/r (Not Reportable) - If the unweighted total responses for a dimension (row) is <30 that row will not be shown

Years: 2000-2002

Income (2000-2003)	Yes			No			Weighted Total Responses (3-Yr Avg)
	#	%	C.I.(95%)	#	%	C.I.(95%)	#
<=\$15,000	1,200	35.8	33.2 - 38.5	2,200	64.2	61.5 - 66.8	3,400
\$15,001-\$25,000	1,000	41.3	37.8 - 44.8	1,400	58.7	55.2 - 62.2	2,400
\$25,001-\$40,000	1,500	42.7	39.6 - 45.8	2,000	57.3	54.2 - 60.4	3,400
>=\$40,001	2,800	45.3	42.9 - 47.7	3,400	54.7	52.3 - 57.1	6,200

Birthweight	Yes			No			Weighted Total Responses (3-Yr Avg)
	#	%	C.I.(95%)	#	%	C.I.(95%)	#
Low birth weight	400	35.4	30.2 - 40.9	700	64.6	59.1 - 69.8	1,100
Normal birth weight	6,400	41.7	40.2 - 43.1	8,900	58.3	56.9 - 59.8	15,300

Smoke 3rd Trimester	Yes			No			Weighted Total Responses (3-Yr Avg)
	#	%	C.I.(95%)	#	%	C.I.(95%)	#
Yes	700	53.2	48.7 - 57.5	700	46.8	42.5 - 51.3	1,400
No	6,000	40.1	38.7 - 41.6	8,900	59.9	58.4 - 61.3	14,900

**PRAMS Health Indicator 3-Year Aggregate Report - Drinking alcohol 3 months before pregnancy- by State;County;DOH Race-Ethnicity;PRAMS Age Group;Infant Gender;Married;Poverty Level;Income (2000-2003);Income (2004-2011);Birthweight;Smoke 3rd Trimester;Smoke Before Pregnant;WIC During Pregnancy, for the Year(s)
2000-2002;2001-2003;2002-2004;2003-2005;2004-2006;2005-2007;2006-2008;2007-2009;2008-2010;2009-2011;2010-2012;2011-2013**

Note: Weighted counts (#) represent 3-yr averages, rounded to the nearest hundred; n/r (Not Reportable) - If the unweighted total responses for a dimension (row) is <30 that row will not be shown

Years: 2000-2002

Smoke Before Pregnant	Yes			No			Weighted Total Responses (3-Yr Avg)
	#	%	C.I.(95%)	#	%	C.I.(95%)	#
Yes	2,100	63.9	61.0 - 66.7	1,200	36.1	33.3 - 39.0	3,200
No	4,500	35.2	33.7 - 36.8	8,300	64.8	63.2 - 66.3	12,900

WIC During Pregnancy	Yes			No			Weighted Total Responses (3-Yr Avg)
	#	%	C.I.(95%)	#	%	C.I.(95%)	#
Yes	2,700	38.6	36.7 - 40.6	4,300	61.4	59.4 - 63.3	7,000
No	4,100	43.4	41.5 - 45.4	5,300	56.6	54.6 - 58.5	9,400