

PRAMS Health Indicator 3-Year Aggregate Report - Drinking alcohol last 3 months of pregnancy- for the State of Hawaii, for the Year(s)

2000-2002;2001-2003;2002-2004;2003-2005;2004-2006;2005-2007;2006-2008;2007-2009;2008-2010;2009-2011;2010-2012;2011-2013

PRAMS Health Indicator 3-Year Aggregate Report - Drinking alcohol last 3 months of pregnancy- by State;County;DOH Race-Ethnicity;PRAMS Age Group;Infant Gender;Married;Poverty Level;Income (2000-2003);Income (2004-2011);Birthweight;Smoke 3rd Trimester;Smoke Before Pregnant;WIC During Pregnancy, for the Year(s)

2000-2002;2001-2003;2002-2004;2003-2005;2004-2006;2005-2007;2006-2008;2007-2009;2008-2010;2009-2011;2010-2012;2011-2013

Note: Weighted counts (#) represent 3-yr averages, rounded to the nearest hundred; n/r (Not Reportable) - If the unweighted total responses for a dimension (row) is <30 that row will not be shown

The trend analysis section shows the trend for the selected health variable over selected years in a table and a graph. 3-Year Weighted Total Responses: This number is a weighted representation of the mothers of babies delivered in a given year, who responded to a particular question in the survey. For most questions this will be the mothers of all babies delivered in a given year. For some secondary questions only a subset of the population was asked the question. For example, all survey participants were asked if they smoked during pregnancy, but only those who answered yes were asked how many cigarettes a day. If a dimension value is unknown for a particular survey record, that record will not be included in the counts for that particular dimension.

Note: Data collection for household income changed in 2004 and again in 2012. Because of this, income data does not exist for some 3-year aggregate periods.

Below are the indicators included in this report and the long description for each indicator.

PRAMS Health Indicator	Health Indicator Description
Drinking alcohol last 3 months of pregnancy	Drinking alcohol last 3 months of pregnancy

Suggested citation:

Hawaii Health Data Warehouse, Hawaii State Department of Health, Pregnancy Risk Assessment Monitoring System, (report title and years), Report Created: 2/16/17

For documentation on other terms and coding in this report, please go to the following links:

[Click here to access PRAMS documentation](#)

[Click here to access DOH-Race Ethnicity coding](#)

[Click here to access The Hawai'i Data Guide](#)

**For questions about this report, please contact
The Hawai'i Health Data Warehouse**

profiles@hhdw.org

(855) 946-5899 x15

PRAMS Health Indicator 3-Year Aggregate Report - Drinking alcohol last 3 months of pregnancy- for the State of Hawaii, for the Year(s)

2000-2002;2001-2003;2002-2004;2003-2005;2004-2006;2005-2007;2006-2008;2007-2009;2008-2010;2009-2011;2010-2012;2011-2013

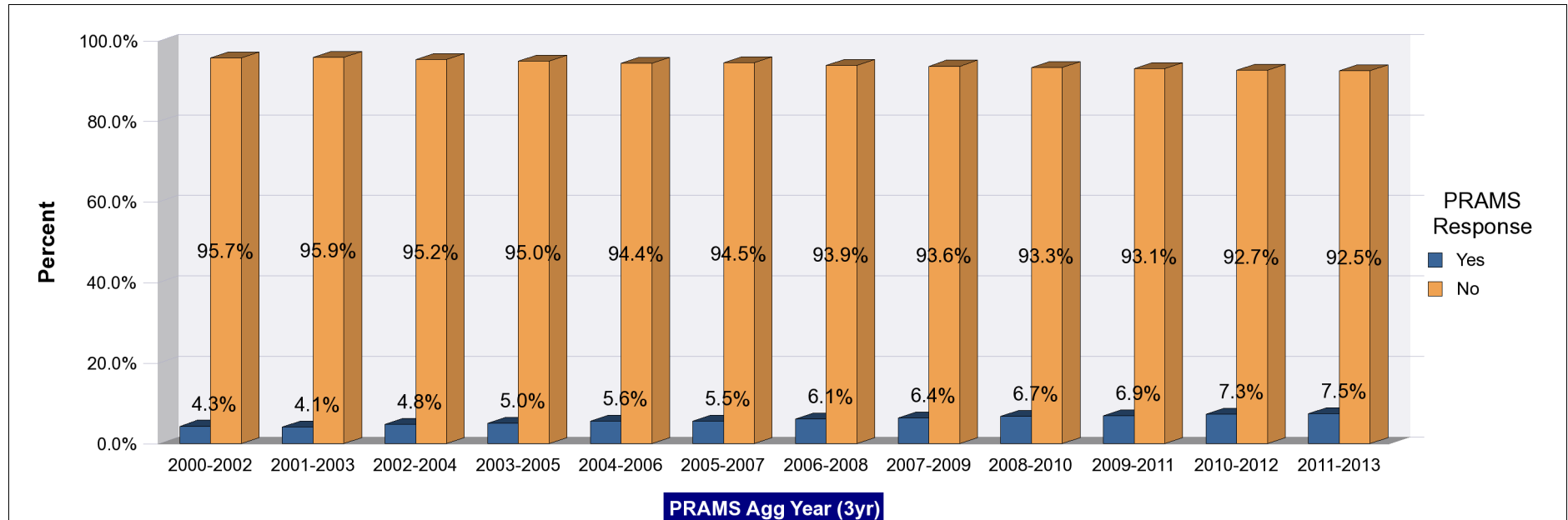
Note: Weighted counts (#) represent 3-yr averages, rounded to the nearest hundred; n/r (Not Reportable) - If the unweighted total responses for a dimension (row) is <30 that row will not be shown

Years	Yes			No			Weighted Total Responses (3-Yr Avg)
	#	%	C.I.(95%)	#	%	C.I.(95%)	#
2000-2002	700	4.3	3.8 - 4.9	15,900	95.7	95.1 - 96.2	16,600
2001-2003	700	4.1	3.6 - 4.8	16,200	95.9	95.2 - 96.4	16,900
2002-2004	800	4.8	4.2 - 5.4	16,400	95.2	94.6 - 95.8	17,300
2003-2005	900	5.0	4.5 - 5.7	16,500	95.0	94.3 - 95.5	17,400
2004-2006	1,000	5.6	5.0 - 6.3	16,600	94.4	93.7 - 95.0	17,600
2005-2007	1,000	5.5	4.9 - 6.2	16,900	94.5	93.8 - 95.1	17,900
2006-2008	1,100	6.1	5.5 - 6.8	17,200	93.9	93.2 - 94.5	18,300
2007-2009	1,200	6.4	5.7 - 7.1	17,200	93.6	92.9 - 94.3	18,400
2008-2010	1,200	6.7	6.0 - 7.6	17,200	93.3	92.4 - 94.0	18,400
2009-2011	1,300	6.9	6.1 - 7.9	17,100	93.1	92.1 - 93.9	18,400
2010-2012	1,300	7.3	6.4 - 8.3	16,900	92.7	91.7 - 93.6	18,300
2011-2013	1,400	7.5	6.5 - 8.5	16,800	92.5	91.5 - 93.5	18,100

PRAMS Health Indicator 3-Year Aggregate Report - Drinking alcohol last 3 months of pregnancy- for the State of Hawaii, for the Year(s)

2000-2002;2001-2003;2002-2004;2003-2005;2004-2006;2005-2007;2006-2008;2007-2009;2008-2010;2009-2011;2010-2012;2011-2013

Note: Weighted counts (#) represent 3-yr averages, rounded to the nearest hundred; n/r (Not Reportable) - If the unweighted total responses for a dimension (row) is <30 that row will not be shown



**PRAMS Health Indicator 3-Year Aggregate Report - Drinking alcohol last 3 months of pregnancy- by State;County;DOH Race-Ethnicity;PRAMS Age Group;Infant Gender;Married;Poverty Level;Income (2000-2003);Income (2004-2011);Birthweight;Smoke 3rd Trimester;Smoke Before Pregnant;WIC During Pregnancy, for the Year(s)
2000-2002;2001-2003;2002-2004;2003-2005;2004-2006;2005-2007;2006-2008;2007-2009;2008-2010;2009-2011;2010-2012;2011-2013**

Note: Weighted counts (#) represent 3-yr averages, rounded to the nearest hundred; n/r (Not Reportable) - If the unweighted total responses for a dimension (row) is <30 that row will not be shown

Years: 2011-2013

State	Yes			No			Weighted Total Responses (3-Yr Avg)
	#	%	C.I.(95%)	#	%	C.I.(95%)	#
Totals	1,400	7.5	6.5 - 8.5	16,800	92.5	91.5 - 93.5	18,100

County	Yes			No			Weighted Total Responses (3-Yr Avg)
	#	%	C.I.(95%)	#	%	C.I.(95%)	#
Hawaii	200	6.5	5.1 - 8.1	2,200	93.5	91.9 - 94.9	2,300
Honolulu	900	7.2	6.0 - 8.7	12,100	92.8	91.3 - 94.0	13,000
Kauai	100	11.6	9.6 - 14.0	700	88.4	86.0 - 90.4	800
Maui	200	8.6	7.1 - 10.4	1,800	91.4	89.6 - 92.9	1,900

**PRAMS Health Indicator 3-Year Aggregate Report - Drinking alcohol last 3 months of pregnancy- by State;County;DOH Race-Ethnicity;PRAMS Age Group;Infant Gender;Married;Poverty Level;Income (2000-2003);Income (2004-2011);Birthweight;Smoke 3rd Trimester;Smoke Before Pregnant;WIC During Pregnancy, for the Year(s)
2000-2002;2001-2003;2002-2004;2003-2005;2004-2006;2005-2007;2006-2008;2007-2009;2008-2010;2009-2011;2010-2012;2011-2013**

Note: Weighted counts (#) represent 3-yr averages, rounded to the nearest hundred; n/r (Not Reportable) - If the unweighted total responses for a dimension (row) is <30 that row will not be shown

Years: 2011-2013

DOH Race-Ethnicity	Yes			No			Weighted Total Responses (3-Yr Avg)
	#	%	C.I.(95%)	#	%	C.I.(95%)	#
Caucasian	500	11.8	9.6 - 14.5	3,900	88.2	85.5 - 90.4	4,400
Native Hawaiian	300	6.0	4.6 - 7.8	4,900	94.0	92.2 - 95.4	5,200
Chinese	100	8.4	4.4 - 15.4	800	91.6	84.6 - 95.6	900
Filipino	200	6.3	4.4 - 9.0	2,900	93.7	91.0 - 95.6	3,100
Japanese	100	5.6	3.4 - 9.1	1,600	94.4	90.9 - 96.6	1,700
Other	100	5.3	3.4 - 8.1	2,600	94.7	91.9 - 96.6	2,700

PRAMS Age Group	Yes			No			Weighted Total Responses (3-Yr Avg)
	#	%	C.I.(95%)	#	%	C.I.(95%)	#
<20	<50	3.6	1.5 - 8.3	900	96.4	91.7 - 98.5	1,000
20-24	300	6.4	4.6 - 8.9	3,700	93.6	91.1 - 95.4	4,000
25-34	700	7.4	6.2 - 8.8	9,100	92.6	91.2 - 93.8	9,900
35+	300	10.0	7.7 - 13.0	2,900	90.0	87.0 - 92.3	3,300

**PRAMS Health Indicator 3-Year Aggregate Report - Drinking alcohol last 3 months of pregnancy- by State;County;DOH Race-Ethnicity;PRAMS Age Group;Infant Gender;Married;Poverty Level;Income (2000-2003);Income (2004-2011);Birthweight;Smoke 3rd Trimester;Smoke Before Pregnant;WIC During Pregnancy, for the Year(s)
2000-2002;2001-2003;2002-2004;2003-2005;2004-2006;2005-2007;2006-2008;2007-2009;2008-2010;2009-2011;2010-2012;2011-2013**

Note: Weighted counts (#) represent 3-yr averages, rounded to the nearest hundred; n/r (Not Reportable) - If the unweighted total responses for a dimension (row) is <30 that row will not be shown

Years: 2011-2013

Infant Gender	Yes			No			Weighted Total Responses (3-Yr Avg)
	#	%	C.I.(95%)	#	%	C.I.(95%)	#
Male	800	8.4	7.0 - 10.0	8,300	91.6	90.0 - 93.0	9,000
Female	600	6.5	5.3 - 8.0	8,500	93.5	92.0 - 94.7	9,100

Married	Yes			No			Weighted Total Responses (3-Yr Avg)
	#	%	C.I.(95%)	#	%	C.I.(95%)	#
Yes	900	7.7	6.5 - 9.1	10,400	92.3	90.9 - 93.5	11,300
No	500	7.0	5.7 - 8.7	6,300	93.0	91.3 - 94.3	6,800

Poverty Level	Yes			No			Weighted Total Responses (3-Yr Avg)
	#	%	C.I.(95%)	#	%	C.I.(95%)	#
0-130%	400	6.0	4.7 - 7.7	6,200	94.0	92.3 - 95.3	6,500
131-185%	200	5.8	3.8 - 8.6	2,600	94.2	91.4 - 96.2	2,700
186+%	700	9.7	8.1 - 11.7	6,600	90.3	88.3 - 91.9	7,300

**PRAMS Health Indicator 3-Year Aggregate Report - Drinking alcohol last 3 months of pregnancy- by State;County;DOH Race-Ethnicity;PRAMS Age Group;Infant Gender;Married;Poverty Level;Income (2000-2003);Income (2004-2011);Birthweight;Smoke 3rd Trimester;Smoke Before Pregnant;WIC During Pregnancy, for the Year(s)
2000-2002;2001-2003;2002-2004;2003-2005;2004-2006;2005-2007;2006-2008;2007-2009;2008-2010;2009-2011;2010-2012;2011-2013**

Note: Weighted counts (#) represent 3-yr averages, rounded to the nearest hundred; n/r (Not Reportable) - If the unweighted total responses for a dimension (row) is <30 that row will not be shown

Years: 2011-2013

Birthweight	Yes			No			Weighted Total Responses (3-Yr Avg)
	#	%	C.I.(95%)	#	%	C.I.(95%)	#
Low birth weight	100	6.9	5.5 - 8.6	1,200	93.1	91.4 - 94.5	1,300
Normal birth weight	1,300	7.5	6.5 - 8.6	15,500	92.5	91.4 - 93.5	16,800

Smoke 3rd Trimester	Yes			No			Weighted Total Responses (3-Yr Avg)
	#	%	C.I.(95%)	#	%	C.I.(95%)	#
Yes	100	10.7	6.8 - 16.5	800	89.3	83.5 - 93.2	900
No	1,200	7.2	6.3 - 8.3	15,900	92.8	91.7 - 93.7	17,100

Smoke Before Pregnant	Yes			No			Weighted Total Responses (3-Yr Avg)
	#	%	C.I.(95%)	#	%	C.I.(95%)	#
Yes	200	6.2	4.5 - 8.6	3,000	93.8	91.4 - 95.5	3,200
No	1,100	7.6	6.6 - 8.9	13,700	92.4	91.1 - 93.4	14,800

**PRAMS Health Indicator 3-Year Aggregate Report - Drinking alcohol last 3 months of pregnancy- by State;County;DOH Race-Ethnicity;PRAMS Age Group;Infant Gender;Married;Poverty Level;Income (2000-2003);Income (2004-2011);Birthweight;Smoke 3rd Trimester;Smoke Before Pregnant;WIC During Pregnancy, for the Year(s)
2000-2002;2001-2003;2002-2004;2003-2005;2004-2006;2005-2007;2006-2008;2007-2009;2008-2010;2009-2011;2010-2012;2011-2013**

Note: Weighted counts (#) represent 3-yr averages, rounded to the nearest hundred; n/r (Not Reportable) - If the unweighted total responses for a dimension (row) is <30 that row will not be shown

Years: 2011-2013

WIC During Pregnancy	Yes			No			Weighted Total Responses (3-Yr Avg)
	#	%	C.I.(95%)	#	%	C.I.(95%)	#
Yes	500	5.7	4.5 - 7.1	7,700	94.3	92.9 - 95.5	8,100
No	900	8.9	7.5 - 10.5	9,000	91.1	89.5 - 92.5	9,800

**PRAMS Health Indicator 3-Year Aggregate Report - Drinking alcohol last 3 months of pregnancy- by State;County;DOH Race-Ethnicity;PRAMS Age Group;Infant Gender;Married;Poverty Level;Income (2000-2003);Income (2004-2011);Birthweight;Smoke 3rd Trimester;Smoke Before Pregnant;WIC During Pregnancy, for the Year(s)
2000-2002;2001-2003;2002-2004;2003-2005;2004-2006;2005-2007;2006-2008;2007-2009;2008-2010;2009-2011;2010-2012;2011-2013**

Note: Weighted counts (#) represent 3-yr averages, rounded to the nearest hundred; n/r (Not Reportable) - If the unweighted total responses for a dimension (row) is <30 that row will not be shown

Years: 2010-2012

State	Yes			No			Weighted Total Responses (3-Yr Avg)
	#	%	C.I.(95%)	#	%	C.I.(95%)	#
Totals	1,300	7.3	6.4 - 8.3	16,900	92.7	91.7 - 93.6	18,300

County	Yes			No			Weighted Total Responses (3-Yr Avg)
	#	%	C.I.(95%)	#	%	C.I.(95%)	#
Hawaii	100	5.5	4.3 - 7.0	2,200	94.5	93.0 - 95.7	2,300
Honolulu	900	7.2	6.0 - 8.6	12,200	92.8	91.4 - 94.0	13,200
Kauai	100	12.0	9.8 - 14.5	700	88.0	85.5 - 90.2	800
Maui	200	8.6	7.1 - 10.2	1,800	91.4	89.8 - 92.9	1,900

**PRAMS Health Indicator 3-Year Aggregate Report - Drinking alcohol last 3 months of pregnancy- by State;County;DOH Race-Ethnicity;PRAMS Age Group;Infant Gender;Married;Poverty Level;Income (2000-2003);Income (2004-2011);Birthweight;Smoke 3rd Trimester;Smoke Before Pregnant;WIC During Pregnancy, for the Year(s)
2000-2002;2001-2003;2002-2004;2003-2005;2004-2006;2005-2007;2006-2008;2007-2009;2008-2010;2009-2011;2010-2012;2011-2013**

Note: Weighted counts (#) represent 3-yr averages, rounded to the nearest hundred; n/r (Not Reportable) - If the unweighted total responses for a dimension (row) is <30 that row will not be shown

Years: 2010-2012

DOH Race-Ethnicity	Yes			No			Weighted Total Responses (3-Yr Avg)
	#	%	C.I.(95%)	#	%	C.I.(95%)	#
Caucasian	500	12.3	10.0 - 14.9	3,800	87.7	85.1 - 90.0	4,400
Native Hawaiian	300	5.8	4.5 - 7.6	5,000	94.2	92.4 - 95.5	5,300
Chinese	<50	4.6	2.0 - 10.3	800	95.4	89.7 - 98.0	800
Filipino	200	7.4	5.3 - 10.2	3,000	92.6	89.8 - 94.7	3,300
Japanese	100	5.9	3.6 - 9.5	1,600	94.1	90.5 - 96.4	1,700
Other	100	4.0	2.5 - 6.4	2,700	96.0	93.6 - 97.5	2,800

PRAMS Age Group	Yes			No			Weighted Total Responses (3-Yr Avg)
	#	%	C.I.(95%)	#	%	C.I.(95%)	#
<20	<50	2.9	1.1 - 7.4	1,000	97.1	92.6 - 98.9	1,100
20-24	200	5.4	3.9 - 7.3	3,900	94.6	92.7 - 96.1	4,200
25-34	800	8.0	6.7 - 9.5	9,000	92.0	90.5 - 93.3	9,800
35+	300	9.2	7.0 - 12.1	2,900	90.8	87.9 - 93.0	3,200

**PRAMS Health Indicator 3-Year Aggregate Report - Drinking alcohol last 3 months of pregnancy- by State;County;DOH Race-Ethnicity;PRAMS Age Group;Infant Gender;Married;Poverty Level;Income (2000-2003);Income (2004-2011);Birthweight;Smoke 3rd Trimester;Smoke Before Pregnant;WIC During Pregnancy, for the Year(s)
2000-2002;2001-2003;2002-2004;2003-2005;2004-2006;2005-2007;2006-2008;2007-2009;2008-2010;2009-2011;2010-2012;2011-2013**

Note: Weighted counts (#) represent 3-yr averages, rounded to the nearest hundred; n/r (Not Reportable) - If the unweighted total responses for a dimension (row) is <30 that row will not be shown

Years: 2010-2012

	Yes			No			Weighted Total Responses (3-Yr Avg)
	#	%	C.I.(95%)	#	%	C.I.(95%)	#
Infant Gender							
Male	700	7.7	6.5 - 9.3	8,500	92.3	90.7 - 93.5	9,200
Female	600	6.9	5.7 - 8.4	8,500	93.1	91.6 - 94.3	9,100

	Yes			No			Weighted Total Responses (3-Yr Avg)
	#	%	C.I.(95%)	#	%	C.I.(95%)	#
Married							
Yes	900	7.8	6.6 - 9.2	10,400	92.2	90.8 - 93.4	11,300
No	500	6.6	5.3 - 8.1	6,500	93.4	91.9 - 94.7	6,900

	Yes			No			Weighted Total Responses (3-Yr Avg)
	#	%	C.I.(95%)	#	%	C.I.(95%)	#
Poverty Level							
0-130%	400	5.5	4.3 - 7.0	6,100	94.5	93.0 - 95.7	6,500
131-185%	200	6.4	4.4 - 9.3	2,700	93.6	90.7 - 95.6	2,900
186+%	700	9.6	8.0 - 11.4	6,800	90.4	88.6 - 92.0	7,500

**PRAMS Health Indicator 3-Year Aggregate Report - Drinking alcohol last 3 months of pregnancy- by State;County;DOH Race-Ethnicity;PRAMS Age Group;Infant Gender;Married;Poverty Level;Income (2000-2003);Income (2004-2011);Birthweight;Smoke 3rd Trimester;Smoke Before Pregnant;WIC During Pregnancy, for the Year(s)
2000-2002;2001-2003;2002-2004;2003-2005;2004-2006;2005-2007;2006-2008;2007-2009;2008-2010;2009-2011;2010-2012;2011-2013**

Note: Weighted counts (#) represent 3-yr averages, rounded to the nearest hundred; n/r (Not Reportable) - If the unweighted total responses for a dimension (row) is <30 that row will not be shown

Years: 2010-2012

Birthweight	Yes			No			Weighted Total Responses (3-Yr Avg)
	#	%	C.I.(95%)	#	%	C.I.(95%)	#
Low birth weight	100	5.5	4.2 - 7.1	1,200	94.5	92.9 - 95.8	1,300
Normal birth weight	1,300	7.5	6.5 - 8.6	15,700	92.5	91.4 - 93.5	16,900

Smoke 3rd Trimester	Yes			No			Weighted Total Responses (3-Yr Avg)
	#	%	C.I.(95%)	#	%	C.I.(95%)	#
Yes	100	8.4	5.2 - 13.4	900	91.6	86.6 - 94.8	1,000
No	1,200	7.2	6.3 - 8.3	15,800	92.8	91.7 - 93.7	17,100

Smoke Before Pregnant	Yes			No			Weighted Total Responses (3-Yr Avg)
	#	%	C.I.(95%)	#	%	C.I.(95%)	#
Yes	200	5.9	4.3 - 8.0	3,200	94.1	92.0 - 95.7	3,400
No	1,100	7.6	6.6 - 8.8	13,600	92.4	91.2 - 93.4	14,700

**PRAMS Health Indicator 3-Year Aggregate Report - Drinking alcohol last 3 months of pregnancy- by State;County;DOH Race-Ethnicity;PRAMS Age Group;Infant Gender;Married;Poverty Level;Income (2000-2003);Income (2004-2011);Birthweight;Smoke 3rd Trimester;Smoke Before Pregnant;WIC During Pregnancy, for the Year(s)
2000-2002;2001-2003;2002-2004;2003-2005;2004-2006;2005-2007;2006-2008;2007-2009;2008-2010;2009-2011;2010-2012;2011-2013**

Note: Weighted counts (#) represent 3-yr averages, rounded to the nearest hundred; n/r (Not Reportable) - If the unweighted total responses for a dimension (row) is <30 that row will not be shown

Years: 2010-2012

WIC During Pregnancy	Yes			No			Weighted Total Responses (3-Yr Avg)
	#	%	C.I.(95%)	#	%	C.I.(95%)	#
Yes	400	5.5	4.4 - 6.8	7,700	94.5	93.2 - 95.6	8,200
No	900	8.7	7.4 - 10.3	9,100	91.3	89.7 - 92.6	9,900

**PRAMS Health Indicator 3-Year Aggregate Report - Drinking alcohol last 3 months of pregnancy- by State;County;DOH Race-Ethnicity;PRAMS Age Group;Infant Gender;Married;Poverty Level;Income (2000-2003);Income (2004-2011);Birthweight;Smoke 3rd Trimester;Smoke Before Pregnant;WIC During Pregnancy, for the Year(s)
2000-2002;2001-2003;2002-2004;2003-2005;2004-2006;2005-2007;2006-2008;2007-2009;2008-2010;2009-2011;2010-2012;2011-2013**

Note: Weighted counts (#) represent 3-yr averages, rounded to the nearest hundred; n/r (Not Reportable) - If the unweighted total responses for a dimension (row) is <30 that row will not be shown

Years: 2009-2011

State	Yes			No			Weighted Total Responses (3-Yr Avg)
	#	%	C.I.(95%)	#	%	C.I.(95%)	#
Totals	1,300	6.9	6.1 - 7.9	17,100	93.1	92.1 - 93.9	18,400

County	Yes			No			Weighted Total Responses (3-Yr Avg)
	#	%	C.I.(95%)	#	%	C.I.(95%)	#
Hawaii	100	6.0	4.8 - 7.5	2,200	94.0	92.5 - 95.2	2,400
Honolulu	900	6.6	5.5 - 8.0	12,300	93.4	92.0 - 94.5	13,200
Kauai	100	10.8	8.8 - 13.1	800	89.2	86.9 - 91.2	800
Maui	200	8.2	6.8 - 9.8	1,900	91.8	90.2 - 93.2	2,000

**PRAMS Health Indicator 3-Year Aggregate Report - Drinking alcohol last 3 months of pregnancy- by State;County;DOH Race-Ethnicity;PRAMS Age Group;Infant Gender;Married;Poverty Level;Income (2000-2003);Income (2004-2011);Birthweight;Smoke 3rd Trimester;Smoke Before Pregnant;WIC During Pregnancy, for the Year(s)
2000-2002;2001-2003;2002-2004;2003-2005;2004-2006;2005-2007;2006-2008;2007-2009;2008-2010;2009-2011;2010-2012;2011-2013**

Note: Weighted counts (#) represent 3-yr averages, rounded to the nearest hundred; n/r (Not Reportable) - If the unweighted total responses for a dimension (row) is <30 that row will not be shown

Years: 2009-2011

DOH Race-Ethnicity	Yes			No			Weighted Total Responses (3-Yr Avg)
	#	%	C.I.(95%)	#	%	C.I.(95%)	#
Caucasian	500	11.6	9.5 - 14.1	3,900	88.4	85.9 - 90.5	4,400
Native Hawaiian	300	5.4	4.1 - 7.1	5,200	94.6	92.9 - 95.9	5,600
Chinese	<50	3.7	1.6 - 8.6	700	96.3	91.4 - 98.4	800
Filipino	200	5.6	3.9 - 7.9	3,100	94.4	92.1 - 96.1	3,300
Japanese	100	6.9	4.4 - 10.6	1,600	93.1	89.4 - 95.6	1,700
Other	100	4.9	3.1 - 7.5	2,600	95.1	92.5 - 96.9	2,700

PRAMS Age Group	Yes			No			Weighted Total Responses (3-Yr Avg)
	#	%	C.I.(95%)	#	%	C.I.(95%)	#
<20	<50	2.0	0.8 - 4.6	1,300	98.0	95.4 - 99.2	1,300
20-24	200	4.5	3.3 - 6.2	4,200	95.5	93.8 - 96.7	4,400
25-34	800	8.1	6.9 - 9.6	8,800	91.9	90.4 - 93.1	9,500
35+	300	8.6	6.4 - 11.3	2,900	91.4	88.7 - 93.6	3,200

**PRAMS Health Indicator 3-Year Aggregate Report - Drinking alcohol last 3 months of pregnancy- by State;County;DOH Race-Ethnicity;PRAMS Age Group;Infant Gender;Married;Poverty Level;Income (2000-2003);Income (2004-2011);Birthweight;Smoke 3rd Trimester;Smoke Before Pregnant;WIC During Pregnancy, for the Year(s)
2000-2002;2001-2003;2002-2004;2003-2005;2004-2006;2005-2007;2006-2008;2007-2009;2008-2010;2009-2011;2010-2012;2011-2013**

Note: Weighted counts (#) represent 3-yr averages, rounded to the nearest hundred; n/r (Not Reportable) - If the unweighted total responses for a dimension (row) is <30 that row will not be shown

Years: 2009-2011

Infant Gender	Yes			No			Weighted Total Responses (3-Yr Avg)
	#	%	C.I.(95%)	#	%	C.I.(95%)	#
Male	700	6.9	5.7 - 8.3	8,900	93.1	91.7 - 94.3	9,500
Female	600	7.0	5.8 - 8.4	8,300	93.0	91.6 - 94.2	8,900

Married	Yes			No			Weighted Total Responses (3-Yr Avg)
	#	%	C.I.(95%)	#	%	C.I.(95%)	#
Yes	800	7.3	6.2 - 8.6	10,500	92.7	91.4 - 93.8	11,300
No	500	6.3	5.1 - 7.8	6,700	93.7	92.2 - 94.9	7,100

Poverty Level	Yes			No			Weighted Total Responses (3-Yr Avg)
	#	%	C.I.(95%)	#	%	C.I.(95%)	#
0-130%	300	5.2	4.1 - 6.7	6,200	94.8	93.3 - 95.9	6,500
131-185%	200	7.7	5.5 - 10.7	2,600	92.3	89.3 - 94.5	2,900
186+%	700	8.7	7.2 - 10.4	7,100	91.3	89.6 - 92.8	7,800

**PRAMS Health Indicator 3-Year Aggregate Report - Drinking alcohol last 3 months of pregnancy- by State;County;DOH Race-Ethnicity;PRAMS Age Group;Infant Gender;Married;Poverty Level;Income (2000-2003);Income (2004-2011);Birthweight;Smoke 3rd Trimester;Smoke Before Pregnant;WIC During Pregnancy, for the Year(s)
2000-2002;2001-2003;2002-2004;2003-2005;2004-2006;2005-2007;2006-2008;2007-2009;2008-2010;2009-2011;2010-2012;2011-2013**

Note: Weighted counts (#) represent 3-yr averages, rounded to the nearest hundred; n/r (Not Reportable) - If the unweighted total responses for a dimension (row) is <30 that row will not be shown

Years: 2009-2011

Income (2004-2011)	Yes			No			Weighted Total Responses (3-Yr Avg)
	#	%	C.I.(95%)	#	%	C.I.(95%)	#
<\$10,000	100	4.4	3.0 - 6.5	3,200	95.6	93.5 - 97.0	3,300
\$10,000-\$24,999	200	6.0	4.4 - 8.0	3,300	94.0	92.0 - 95.6	3,500
\$25,000-\$49,999	300	7.9	6.1 - 10.2	4,000	92.1	89.8 - 93.9	4,300
>=\$50,000	500	8.8	7.2 - 10.8	5,600	91.2	89.2 - 92.8	6,200

Birthweight	Yes			No			Weighted Total Responses (3-Yr Avg)
	#	%	C.I.(95%)	#	%	C.I.(95%)	#
Low birth weight	100	5.1	3.9 - 6.6	1,300	94.9	93.4 - 96.1	1,300
Normal birth weight	1,200	7.0	6.1 - 8.1	15,900	93.0	91.9 - 93.9	17,000

Smoke 3rd Trimester	Yes			No			Weighted Total Responses (3-Yr Avg)
	#	%	C.I.(95%)	#	%	C.I.(95%)	#
Yes	100	10.5	7.0 - 15.4	1,200	89.5	84.6 - 93.0	1,400
No	1,100	6.6	5.7 - 7.6	15,700	93.4	92.4 - 94.3	16,800

**PRAMS Health Indicator 3-Year Aggregate Report - Drinking alcohol last 3 months of pregnancy- by State;County;DOH Race-Ethnicity;PRAMS Age Group;Infant Gender;Married;Poverty Level;Income (2000-2003);Income (2004-2011);Birthweight;Smoke 3rd Trimester;Smoke Before Pregnant;WIC During Pregnancy, for the Year(s)
2000-2002;2001-2003;2002-2004;2003-2005;2004-2006;2005-2007;2006-2008;2007-2009;2008-2010;2009-2011;2010-2012;2011-2013**

Note: Weighted counts (#) represent 3-yr averages, rounded to the nearest hundred; n/r (Not Reportable) - If the unweighted total responses for a dimension (row) is <30 that row will not be shown

Years: 2009-2011

Smoke Before Pregnant	Yes			No			Weighted Total Responses (3-Yr Avg)
	#	%	C.I.(95%)	#	%	C.I.(95%)	#
Yes	200	6.6	4.9 - 8.7	3,600	93.4	91.3 - 95.1	3,800
No	1,000	7.0	6.0 - 8.1	13,300	93.0	91.9 - 94.0	14,300

WIC During Pregnancy	Yes			No			Weighted Total Responses (3-Yr Avg)
	#	%	C.I.(95%)	#	%	C.I.(95%)	#
Yes	400	5.5	4.4 - 6.9	7,500	94.5	93.1 - 95.6	7,900
No	800	7.9	6.7 - 9.4	9,400	92.1	90.6 - 93.3	10,200

**PRAMS Health Indicator 3-Year Aggregate Report - Drinking alcohol last 3 months of pregnancy- by State;County;DOH Race-Ethnicity;PRAMS Age Group;Infant Gender;Married;Poverty Level;Income (2000-2003);Income (2004-2011);Birthweight;Smoke 3rd Trimester;Smoke Before Pregnant;WIC During Pregnancy, for the Year(s)
2000-2002;2001-2003;2002-2004;2003-2005;2004-2006;2005-2007;2006-2008;2007-2009;2008-2010;2009-2011;2010-2012;2011-2013**

Note: Weighted counts (#) represent 3-yr averages, rounded to the nearest hundred; n/r (Not Reportable) - If the unweighted total responses for a dimension (row) is <30 that row will not be shown

Years: 2008-2010

State	Yes			No			Weighted Total Responses (3-Yr Avg)
	#	%	C.I.(95%)	#	%	C.I.(95%)	#
Totals	1,200	6.7	6.0 - 7.6	17,200	93.3	92.4 - 94.0	18,400

County	Yes			No			Weighted Total Responses (3-Yr Avg)
	#	%	C.I.(95%)	#	%	C.I.(95%)	#
Hawaii	200	6.9	5.5 - 8.8	2,200	93.1	91.2 - 94.5	2,400
Honolulu	800	6.2	5.2 - 7.4	12,300	93.8	92.6 - 94.8	13,100
Kauai	100	11.0	8.4 - 14.3	800	89.0	85.7 - 91.6	800
Maui	200	8.0	6.4 - 9.9	1,900	92.0	90.1 - 93.6	2,100

**PRAMS Health Indicator 3-Year Aggregate Report - Drinking alcohol last 3 months of pregnancy- by State;County;DOH Race-Ethnicity;PRAMS Age Group;Infant Gender;Married;Poverty Level;Income (2000-2003);Income (2004-2011);Birthweight;Smoke 3rd Trimester;Smoke Before Pregnant;WIC During Pregnancy, for the Year(s)
2000-2002;2001-2003;2002-2004;2003-2005;2004-2006;2005-2007;2006-2008;2007-2009;2008-2010;2009-2011;2010-2012;2011-2013**

Note: Weighted counts (#) represent 3-yr averages, rounded to the nearest hundred; n/r (Not Reportable) - If the unweighted total responses for a dimension (row) is <30 that row will not be shown

Years: 2008-2010

DOH Race-Ethnicity	Yes			No			Weighted Total Responses (3-Yr Avg)
	#	%	C.I.(95%)	#	%	C.I.(95%)	#
Caucasian	500	11.2	9.3 - 13.4	3,900	88.8	86.6 - 90.7	4,400
Native Hawaiian	300	5.4	4.1 - 7.1	5,200	94.6	92.9 - 95.9	5,500
Chinese	<50	3.9	2.1 - 7.0	700	96.1	93.0 - 97.9	700
Filipino	200	4.9	3.6 - 6.7	3,200	95.1	93.3 - 96.4	3,300
Japanese	100	7.5	5.1 - 11.0	1,600	92.5	89.0 - 94.9	1,800
Other	100	4.7	3.1 - 7.0	2,600	95.3	93.0 - 96.9	2,700

PRAMS Age Group	Yes			No			Weighted Total Responses (3-Yr Avg)
	#	%	C.I.(95%)	#	%	C.I.(95%)	#
<20	<50	2.3	1.0 - 5.0	1,400	97.7	95.0 - 99.0	1,500
20-24	200	4.6	3.4 - 6.1	4,000	95.4	93.9 - 96.6	4,200
25-34	700	7.7	6.6 - 9.1	8,700	92.3	90.9 - 93.4	9,500
35+	300	8.7	6.8 - 11.1	3,000	91.3	88.9 - 93.2	3,300

**PRAMS Health Indicator 3-Year Aggregate Report - Drinking alcohol last 3 months of pregnancy- by State;County;DOH Race-Ethnicity;PRAMS Age Group;Infant Gender;Married;Poverty Level;Income (2000-2003);Income (2004-2011);Birthweight;Smoke 3rd Trimester;Smoke Before Pregnant;WIC During Pregnancy, for the Year(s)
2000-2002;2001-2003;2002-2004;2003-2005;2004-2006;2005-2007;2006-2008;2007-2009;2008-2010;2009-2011;2010-2012;2011-2013**

Note: Weighted counts (#) represent 3-yr averages, rounded to the nearest hundred; n/r (Not Reportable) - If the unweighted total responses for a dimension (row) is <30 that row will not be shown

Years: 2008-2010

	Yes			No			Weighted Total Responses (3-Yr Avg)
	#	%	C.I.(95%)	#	%	C.I.(95%)	#
Infant Gender							
Male	600	6.4	5.4 - 7.6	9,000	93.6	92.4 - 94.6	9,600
Female	600	7.1	6.0 - 8.4	8,200	92.9	91.6 - 94.0	8,800

	Yes			No			Weighted Total Responses (3-Yr Avg)
	#	%	C.I.(95%)	#	%	C.I.(95%)	#
Married							
Yes	800	7.1	6.1 - 8.2	10,500	92.9	91.8 - 93.9	11,300
No	400	6.2	5.1 - 7.6	6,700	93.8	92.4 - 94.9	7,100

	Yes			No			Weighted Total Responses (3-Yr Avg)
	#	%	C.I.(95%)	#	%	C.I.(95%)	#
Poverty Level							
0-130%	400	5.4	4.3 - 6.8	6,200	94.6	93.2 - 95.7	6,600
131-185%	200	6.8	4.9 - 9.4	2,600	93.2	90.6 - 95.1	2,800
186+%	600	8.5	7.1 - 10.0	7,000	91.5	90.0 - 92.9	7,700

**PRAMS Health Indicator 3-Year Aggregate Report - Drinking alcohol last 3 months of pregnancy- by State;County;DOH Race-Ethnicity;PRAMS Age Group;Infant Gender;Married;Poverty Level;Income (2000-2003);Income (2004-2011);Birthweight;Smoke 3rd Trimester;Smoke Before Pregnant;WIC During Pregnancy, for the Year(s)
2000-2002;2001-2003;2002-2004;2003-2005;2004-2006;2005-2007;2006-2008;2007-2009;2008-2010;2009-2011;2010-2012;2011-2013**

Note: Weighted counts (#) represent 3-yr averages, rounded to the nearest hundred; n/r (Not Reportable) - If the unweighted total responses for a dimension (row) is <30 that row will not be shown

Years: 2008-2010

Income (2004-2011)	Yes			No			Weighted Total Responses (3-Yr Avg)
	#	%	C.I.(95%)	#	%	C.I.(95%)	#
<\$10,000	100	4.3	2.9 - 6.2	3,100	95.7	93.8 - 97.1	3,200
\$10,000-\$24,999	200	6.1	4.7 - 7.9	3,500	93.9	92.1 - 95.3	3,700
\$25,000-\$49,999	300	7.5	5.8 - 9.6	3,900	92.5	90.4 - 94.2	4,200
>=\$50,000	500	8.6	7.1 - 10.3	5,600	91.4	89.7 - 92.9	6,200

Birthweight	Yes			No			Weighted Total Responses (3-Yr Avg)
	#	%	C.I.(95%)	#	%	C.I.(95%)	#
Low birth weight	100	5.5	3.9 - 7.5	1,200	94.5	92.5 - 96.1	1,300
Normal birth weight	1,200	6.8	6.0 - 7.7	15,900	93.2	92.3 - 94.0	17,100

Smoke 3rd Trimester	Yes			No			Weighted Total Responses (3-Yr Avg)
	#	%	C.I.(95%)	#	%	C.I.(95%)	#
Yes	100	9.4	6.4 - 13.5	1,400	90.6	86.5 - 93.6	1,600
No	1,100	6.5	5.7 - 7.4	15,500	93.5	92.6 - 94.3	16,600

**PRAMS Health Indicator 3-Year Aggregate Report - Drinking alcohol last 3 months of pregnancy- by State;County;DOH Race-Ethnicity;PRAMS Age Group;Infant Gender;Married;Poverty Level;Income (2000-2003);Income (2004-2011);Birthweight;Smoke 3rd Trimester;Smoke Before Pregnant;WIC During Pregnancy, for the Year(s)
2000-2002;2001-2003;2002-2004;2003-2005;2004-2006;2005-2007;2006-2008;2007-2009;2008-2010;2009-2011;2010-2012;2011-2013**

Note: Weighted counts (#) represent 3-yr averages, rounded to the nearest hundred; n/r (Not Reportable) - If the unweighted total responses for a dimension (row) is <30 that row will not be shown

Years: 2008-2010

Smoke Before Pregnant	Yes			No			Weighted Total Responses (3-Yr Avg)
	#	%	C.I.(95%)	#	%	C.I.(95%)	#
Yes	300	7.6	5.9 - 9.7	3,500	92.4	90.3 - 94.1	3,800
No	900	6.6	5.7 - 7.6	13,500	93.4	92.4 - 94.3	14,400

WIC During Pregnancy	Yes			No			Weighted Total Responses (3-Yr Avg)
	#	%	C.I.(95%)	#	%	C.I.(95%)	#
Yes	400	5.4	4.3 - 6.7	7,400	94.6	93.3 - 95.7	7,800
No	800	7.8	6.7 - 9.1	9,500	92.2	90.9 - 93.3	10,300

**PRAMS Health Indicator 3-Year Aggregate Report - Drinking alcohol last 3 months of pregnancy- by State;County;DOH Race-Ethnicity;PRAMS Age Group;Infant Gender;Married;Poverty Level;Income (2000-2003);Income (2004-2011);Birthweight;Smoke 3rd Trimester;Smoke Before Pregnant;WIC During Pregnancy, for the Year(s)
2000-2002;2001-2003;2002-2004;2003-2005;2004-2006;2005-2007;2006-2008;2007-2009;2008-2010;2009-2011;2010-2012;2011-2013**

Note: Weighted counts (#) represent 3-yr averages, rounded to the nearest hundred; n/r (Not Reportable) - If the unweighted total responses for a dimension (row) is <30 that row will not be shown

Years: 2007-2009

State	Yes			No			Weighted Total Responses (3-Yr Avg)
	#	%	C.I.(95%)	#	%	C.I.(95%)	#
Totals	1,200	6.4	5.7 - 7.1	17,200	93.6	92.9 - 94.3	18,400

County	Yes			No			Weighted Total Responses (3-Yr Avg)
	#	%	C.I.(95%)	#	%	C.I.(95%)	#
Hawaii	200	7.4	5.8 - 9.4	2,200	92.6	90.6 - 94.2	2,400
Honolulu	800	5.8	5.0 - 6.8	12,100	94.2	93.2 - 95.0	12,900
Kauai	100	8.7	6.2 - 12.2	800	91.3	87.8 - 93.8	900
Maui	200	7.1	5.5 - 9.2	2,000	92.9	90.8 - 94.5	2,100

**PRAMS Health Indicator 3-Year Aggregate Report - Drinking alcohol last 3 months of pregnancy- by State;County;DOH Race-Ethnicity;PRAMS Age Group;Infant Gender;Married;Poverty Level;Income (2000-2003);Income (2004-2011);Birthweight;Smoke 3rd Trimester;Smoke Before Pregnant;WIC During Pregnancy, for the Year(s)
2000-2002;2001-2003;2002-2004;2003-2005;2004-2006;2005-2007;2006-2008;2007-2009;2008-2010;2009-2011;2010-2012;2011-2013**

Note: Weighted counts (#) represent 3-yr averages, rounded to the nearest hundred; n/r (Not Reportable) - If the unweighted total responses for a dimension (row) is <30 that row will not be shown

Years: 2007-2009

DOH Race-Ethnicity	Yes			No			Weighted Total Responses (3-Yr Avg)
	#	%	C.I.(95%)	#	%	C.I.(95%)	#
Caucasian	500	11.8	10.0 - 13.9	3,800	88.2	86.1 - 90.0	4,300
Native Hawaiian	300	4.8	3.7 - 6.2	5,100	95.2	93.8 - 96.3	5,300
Chinese	<50	4.8	2.8 - 8.0	700	95.2	92.0 - 97.2	700
Filipino	100	3.7	2.8 - 5.0	3,200	96.3	95.0 - 97.2	3,400
Japanese	100	7.2	5.1 - 10.1	1,800	92.8	89.9 - 94.9	1,900
Other	100	4.0	2.6 - 6.1	2,700	96.0	93.9 - 97.4	2,800

PRAMS Age Group	Yes			No			Weighted Total Responses (3-Yr Avg)
	#	%	C.I.(95%)	#	%	C.I.(95%)	#
<20	<50	2.7	1.4 - 5.2	1,600	97.3	94.8 - 98.6	1,700
20-24	200	4.6	3.4 - 6.1	4,100	95.4	93.9 - 96.6	4,300
25-34	600	6.8	5.8 - 7.9	8,600	93.2	92.1 - 94.2	9,300
35+	300	9.3	7.5 - 11.5	2,900	90.7	88.5 - 92.5	3,200

**PRAMS Health Indicator 3-Year Aggregate Report - Drinking alcohol last 3 months of pregnancy- by State;County;DOH Race-Ethnicity;PRAMS Age Group;Infant Gender;Married;Poverty Level;Income (2000-2003);Income (2004-2011);Birthweight;Smoke 3rd Trimester;Smoke Before Pregnant;WIC During Pregnancy, for the Year(s)
2000-2002;2001-2003;2002-2004;2003-2005;2004-2006;2005-2007;2006-2008;2007-2009;2008-2010;2009-2011;2010-2012;2011-2013**

Note: Weighted counts (#) represent 3-yr averages, rounded to the nearest hundred; n/r (Not Reportable) - If the unweighted total responses for a dimension (row) is <30 that row will not be shown

Years: 2007-2009

	Yes			No			Weighted Total Responses (3-Yr Avg)
	#	%	C.I.(95%)	#	%	C.I.(95%)	#
Infant Gender							
Male	600	6.5	5.5 - 7.6	9,100	93.5	92.4 - 94.5	9,700
Female	500	6.2	5.3 - 7.3	8,200	93.8	92.7 - 94.7	8,700

	Yes			No			Weighted Total Responses (3-Yr Avg)
	#	%	C.I.(95%)	#	%	C.I.(95%)	#
Married							
Yes	700	6.6	5.7 - 7.6	10,500	93.4	92.4 - 94.3	11,300
No	400	6.0	4.9 - 7.3	6,700	94.0	92.7 - 95.1	7,100

	Yes			No			Weighted Total Responses (3-Yr Avg)
	#	%	C.I.(95%)	#	%	C.I.(95%)	#
Poverty Level							
0-130%	300	4.9	3.9 - 6.1	6,400	95.1	93.9 - 96.1	6,800
131-185%	200	6.6	4.9 - 8.9	2,500	93.4	91.1 - 95.1	2,700
186+%	600	8.2	7.0 - 9.5	6,900	91.8	90.5 - 93.0	7,500

**PRAMS Health Indicator 3-Year Aggregate Report - Drinking alcohol last 3 months of pregnancy- by State;County;DOH Race-Ethnicity;PRAMS Age Group;Infant Gender;Married;Poverty Level;Income (2000-2003);Income (2004-2011);Birthweight;Smoke 3rd Trimester;Smoke Before Pregnant;WIC During Pregnancy, for the Year(s)
2000-2002;2001-2003;2002-2004;2003-2005;2004-2006;2005-2007;2006-2008;2007-2009;2008-2010;2009-2011;2010-2012;2011-2013**

Note: Weighted counts (#) represent 3-yr averages, rounded to the nearest hundred; n/r (Not Reportable) - If the unweighted total responses for a dimension (row) is <30 that row will not be shown

Years: 2007-2009

Income (2004-2011)	Yes			No			Weighted Total Responses (3-Yr Avg)
	#	%	C.I.(95%)	#	%	C.I.(95%)	#
<\$10,000	100	4.5	3.1 - 6.5	3,000	95.5	93.5 - 96.9	3,100
\$10,000-\$24,999	200	5.5	4.2 - 7.1	3,700	94.5	92.9 - 95.8	3,900
\$25,000-\$49,999	300	7.3	5.8 - 9.2	3,700	92.7	90.8 - 94.2	4,000
>=\$50,000	500	7.9	6.7 - 9.4	5,600	92.1	90.6 - 93.3	6,100

Birthweight	Yes			No			Weighted Total Responses (3-Yr Avg)
	#	%	C.I.(95%)	#	%	C.I.(95%)	#
Low birth weight	100	5.3	3.6 - 7.6	1,300	94.7	92.4 - 96.4	1,400
Normal birth weight	1,100	6.4	5.7 - 7.2	15,900	93.6	92.8 - 94.3	17,000

Smoke 3rd Trimester	Yes			No			Weighted Total Responses (3-Yr Avg)
	#	%	C.I.(95%)	#	%	C.I.(95%)	#
Yes	200	9.6	6.8 - 13.5	1,500	90.4	86.5 - 93.2	1,600
No	1,000	6.0	5.3 - 6.8	15,600	94.0	93.2 - 94.7	16,600

**PRAMS Health Indicator 3-Year Aggregate Report - Drinking alcohol last 3 months of pregnancy- by State;County;DOH Race-Ethnicity;PRAMS Age Group;Infant Gender;Married;Poverty Level;Income (2000-2003);Income (2004-2011);Birthweight;Smoke 3rd Trimester;Smoke Before Pregnant;WIC During Pregnancy, for the Year(s)
2000-2002;2001-2003;2002-2004;2003-2005;2004-2006;2005-2007;2006-2008;2007-2009;2008-2010;2009-2011;2010-2012;2011-2013**

Note: Weighted counts (#) represent 3-yr averages, rounded to the nearest hundred; n/r (Not Reportable) - If the unweighted total responses for a dimension (row) is <30 that row will not be shown

Years: 2007-2009

Smoke Before Pregnant	Yes			No			Weighted Total Responses (3-Yr Avg)
	#	%	C.I.(95%)	#	%	C.I.(95%)	#
Yes	300	7.4	5.8 - 9.4	3,400	92.6	90.6 - 94.2	3,700
No	900	6.1	5.3 - 6.9	13,600	93.9	93.1 - 94.7	14,500

WIC During Pregnancy	Yes			No			Weighted Total Responses (3-Yr Avg)
	#	%	C.I.(95%)	#	%	C.I.(95%)	#
Yes	400	5.1	4.1 - 6.2	7,200	94.9	93.8 - 95.9	7,600
No	800	7.3	6.4 - 8.4	9,600	92.7	91.6 - 93.6	10,400

**PRAMS Health Indicator 3-Year Aggregate Report - Drinking alcohol last 3 months of pregnancy- by State;County;DOH Race-Ethnicity;PRAMS Age Group;Infant Gender;Married;Poverty Level;Income (2000-2003);Income (2004-2011);Birthweight;Smoke 3rd Trimester;Smoke Before Pregnant;WIC During Pregnancy, for the Year(s)
2000-2002;2001-2003;2002-2004;2003-2005;2004-2006;2005-2007;2006-2008;2007-2009;2008-2010;2009-2011;2010-2012;2011-2013**

Note: Weighted counts (#) represent 3-yr averages, rounded to the nearest hundred; n/r (Not Reportable) - If the unweighted total responses for a dimension (row) is <30 that row will not be shown

Years: 2006-2008

State	Yes			No			Weighted Total Responses (3-Yr Avg)
	#	%	C.I.(95%)	#	%	C.I.(95%)	#
Totals	1,100	6.1	5.5 - 6.8	17,200	93.9	93.2 - 94.5	18,300

County	Yes			No			Weighted Total Responses (3-Yr Avg)
	#	%	C.I.(95%)	#	%	C.I.(95%)	#
Hawaii	100	6.3	4.6 - 8.4	2,200	93.7	91.6 - 95.4	2,300
Honolulu	700	5.6	4.9 - 6.4	12,200	94.4	93.6 - 95.1	13,000
Kauai	100	8.6	5.7 - 12.9	800	91.4	87.1 - 94.3	900
Maui	200	7.9	6.0 - 10.4	1,900	92.1	89.6 - 94.0	2,100

**PRAMS Health Indicator 3-Year Aggregate Report - Drinking alcohol last 3 months of pregnancy- by State;County;DOH Race-Ethnicity;PRAMS Age Group;Infant Gender;Married;Poverty Level;Income (2000-2003);Income (2004-2011);Birthweight;Smoke 3rd Trimester;Smoke Before Pregnant;WIC During Pregnancy, for the Year(s)
2000-2002;2001-2003;2002-2004;2003-2005;2004-2006;2005-2007;2006-2008;2007-2009;2008-2010;2009-2011;2010-2012;2011-2013**

Note: Weighted counts (#) represent 3-yr averages, rounded to the nearest hundred; n/r (Not Reportable) - If the unweighted total responses for a dimension (row) is <30 that row will not be shown

Years: 2006-2008

DOH Race-Ethnicity	Yes			No			Weighted Total Responses (3-Yr Avg)
	#	%	C.I.(95%)	#	%	C.I.(95%)	#
Caucasian	500	11.3	9.6 - 13.2	3,800	88.7	86.8 - 90.4	4,300
Native Hawaiian	300	5.1	4.0 - 6.5	4,800	94.9	93.5 - 96.0	5,000
Chinese	<50	5.4	3.9 - 7.5	600	94.6	92.5 - 96.1	600
Filipino	100	4.0	3.0 - 5.3	3,300	96.0	94.7 - 97.0	3,400
Japanese	100	5.1	3.6 - 7.2	2,000	94.9	92.8 - 96.4	2,100
Other	100	3.7	2.7 - 5.2	2,800	96.3	94.8 - 97.3	2,900

PRAMS Age Group	Yes			No			Weighted Total Responses (3-Yr Avg)
	#	%	C.I.(95%)	#	%	C.I.(95%)	#
<20	<50	2.8	1.5 - 5.1	1,500	97.2	94.9 - 98.5	1,500
20-24	200	4.6	3.5 - 6.0	4,100	95.4	94.0 - 96.5	4,300
25-34	600	6.4	5.5 - 7.4	8,600	93.6	92.6 - 94.5	9,200
35+	300	9.0	7.4 - 11.0	3,000	91.0	89.0 - 92.6	3,300

**PRAMS Health Indicator 3-Year Aggregate Report - Drinking alcohol last 3 months of pregnancy- by State;County;DOH Race-Ethnicity;PRAMS Age Group;Infant Gender;Married;Poverty Level;Income (2000-2003);Income (2004-2011);Birthweight;Smoke 3rd Trimester;Smoke Before Pregnant;WIC During Pregnancy, for the Year(s)
2000-2002;2001-2003;2002-2004;2003-2005;2004-2006;2005-2007;2006-2008;2007-2009;2008-2010;2009-2011;2010-2012;2011-2013**

Note: Weighted counts (#) represent 3-yr averages, rounded to the nearest hundred; n/r (Not Reportable) - If the unweighted total responses for a dimension (row) is <30 that row will not be shown

Years: 2006-2008

	Yes			No			Weighted Total Responses (3-Yr Avg)
	#	%	C.I.(95%)	#	%	C.I.(95%)	#
Infant Gender							
Male	500	5.7	4.9 - 6.6	8,900	94.3	93.4 - 95.1	9,500
Female	600	6.6	5.7 - 7.6	8,200	93.4	92.4 - 94.3	8,800

	Yes			No			Weighted Total Responses (3-Yr Avg)
	#	%	C.I.(95%)	#	%	C.I.(95%)	#
Married							
Yes	700	6.5	5.7 - 7.4	10,800	93.5	92.6 - 94.3	11,500
No	400	5.5	4.5 - 6.6	6,400	94.5	93.4 - 95.5	6,800

	Yes			No			Weighted Total Responses (3-Yr Avg)
	#	%	C.I.(95%)	#	%	C.I.(95%)	#
Poverty Level							
0-130%	300	4.8	3.9 - 5.9	6,400	95.2	94.1 - 96.1	6,700
131-185%	100	5.2	3.8 - 7.0	2,500	94.8	93.0 - 96.2	2,600
186+%	600	8.1	7.0 - 9.2	7,200	91.9	90.8 - 93.0	7,800

**PRAMS Health Indicator 3-Year Aggregate Report - Drinking alcohol last 3 months of pregnancy- by State;County;DOH Race-Ethnicity;PRAMS Age Group;Infant Gender;Married;Poverty Level;Income (2000-2003);Income (2004-2011);Birthweight;Smoke 3rd Trimester;Smoke Before Pregnant;WIC During Pregnancy, for the Year(s)
2000-2002;2001-2003;2002-2004;2003-2005;2004-2006;2005-2007;2006-2008;2007-2009;2008-2010;2009-2011;2010-2012;2011-2013**

Note: Weighted counts (#) represent 3-yr averages, rounded to the nearest hundred; n/r (Not Reportable) - If the unweighted total responses for a dimension (row) is <30 that row will not be shown

Years: 2006-2008

Income (2004-2011)	Yes			No			Weighted Total Responses (3-Yr Avg)
	#	%	C.I.(95%)	#	%	C.I.(95%)	#
<\$10,000	100	3.6	2.5 - 5.2	3,000	96.4	94.8 - 97.5	3,100
\$10,000-\$24,999	200	5.5	4.2 - 7.2	3,600	94.5	92.8 - 95.8	3,900
\$25,000-\$49,999	300	6.2	4.9 - 7.7	4,000	93.8	92.3 - 95.1	4,200
>=\$50,000	500	8.4	7.2 - 9.7	5,500	91.6	90.3 - 92.8	6,000

Birthweight	Yes			No			Weighted Total Responses (3-Yr Avg)
	#	%	C.I.(95%)	#	%	C.I.(95%)	#
Low birth weight	100	5.0	3.3 - 7.5	1,400	95.0	92.5 - 96.7	1,400
Normal birth weight	1,000	6.2	5.6 - 6.9	15,800	93.8	93.1 - 94.4	16,900

Smoke 3rd Trimester	Yes			No			Weighted Total Responses (3-Yr Avg)
	#	%	C.I.(95%)	#	%	C.I.(95%)	#
Yes	100	7.9	5.7 - 10.9	1,500	92.1	89.1 - 94.3	1,600
No	1,000	5.9	5.3 - 6.6	15,700	94.1	93.4 - 94.7	16,600

**PRAMS Health Indicator 3-Year Aggregate Report - Drinking alcohol last 3 months of pregnancy- by State;County;DOH Race-Ethnicity;PRAMS Age Group;Infant Gender;Married;Poverty Level;Income (2000-2003);Income (2004-2011);Birthweight;Smoke 3rd Trimester;Smoke Before Pregnant;WIC During Pregnancy, for the Year(s)
2000-2002;2001-2003;2002-2004;2003-2005;2004-2006;2005-2007;2006-2008;2007-2009;2008-2010;2009-2011;2010-2012;2011-2013**

Note: Weighted counts (#) represent 3-yr averages, rounded to the nearest hundred; n/r (Not Reportable) - If the unweighted total responses for a dimension (row) is <30 that row will not be shown

Years: 2006-2008

Smoke Before Pregnant	Yes			No			Weighted Total Responses (3-Yr Avg)
	#	%	C.I.(95%)	#	%	C.I.(95%)	#
Yes	200	6.7	5.3 - 8.5	3,400	93.3	91.5 - 94.7	3,700
No	900	5.9	5.3 - 6.7	13,700	94.1	93.3 - 94.7	14,600

WIC During Pregnancy	Yes			No			Weighted Total Responses (3-Yr Avg)
	#	%	C.I.(95%)	#	%	C.I.(95%)	#
Yes	400	4.8	3.9 - 5.9	7,300	95.2	94.1 - 96.1	7,700
No	700	7.1	6.3 - 8.1	9,600	92.9	91.9 - 93.7	10,300

**PRAMS Health Indicator 3-Year Aggregate Report - Drinking alcohol last 3 months of pregnancy- by State;County;DOH Race-Ethnicity;PRAMS Age Group;Infant Gender;Married;Poverty Level;Income (2000-2003);Income (2004-2011);Birthweight;Smoke 3rd Trimester;Smoke Before Pregnant;WIC During Pregnancy, for the Year(s)
2000-2002;2001-2003;2002-2004;2003-2005;2004-2006;2005-2007;2006-2008;2007-2009;2008-2010;2009-2011;2010-2012;2011-2013**

Note: Weighted counts (#) represent 3-yr averages, rounded to the nearest hundred; n/r (Not Reportable) - If the unweighted total responses for a dimension (row) is <30 that row will not be shown

Years: 2005-2007

State	Yes			No			Weighted Total Responses (3-Yr Avg)
	#	%	C.I.(95%)	#	%	C.I.(95%)	#
Totals	1,000	5.5	4.9 - 6.2	16,900	94.5	93.8 - 95.1	17,900

County	Yes			No			Weighted Total Responses (3-Yr Avg)
	#	%	C.I.(95%)	#	%	C.I.(95%)	#
Hawaii	100	4.8	3.4 - 6.7	2,200	95.2	93.3 - 96.6	2,300
Honolulu	700	5.3	4.6 - 6.1	12,100	94.7	93.9 - 95.4	12,800
Kauai	100	6.1	3.6 - 10.0	800	93.9	90.0 - 96.4	900
Maui	100	7.5	5.6 - 10.0	1,800	92.5	90.0 - 94.4	1,900

**PRAMS Health Indicator 3-Year Aggregate Report - Drinking alcohol last 3 months of pregnancy- by State;County;DOH Race-Ethnicity;PRAMS Age Group;Infant Gender;Married;Poverty Level;Income (2000-2003);Income (2004-2011);Birthweight;Smoke 3rd Trimester;Smoke Before Pregnant;WIC During Pregnancy, for the Year(s)
2000-2002;2001-2003;2002-2004;2003-2005;2004-2006;2005-2007;2006-2008;2007-2009;2008-2010;2009-2011;2010-2012;2011-2013**

Note: Weighted counts (#) represent 3-yr averages, rounded to the nearest hundred; n/r (Not Reportable) - If the unweighted total responses for a dimension (row) is <30 that row will not be shown

Years: 2005-2007

DOH Race-Ethnicity	Yes			No			Weighted Total Responses (3-Yr Avg)
	#	%	C.I.(95%)	#	%	C.I.(95%)	#
Caucasian	400	9.9	8.3 - 11.8	3,600	90.1	88.2 - 91.7	4,100
Native Hawaiian	200	5.0	3.9 - 6.4	4,700	95.0	93.6 - 96.1	5,000
Chinese	<50	3.6	2.4 - 5.3	600	96.4	94.7 - 97.6	600
Filipino	100	3.5	2.5 - 4.8	3,200	96.5	95.2 - 97.5	3,300
Japanese	100	3.7	2.5 - 5.5	2,100	96.3	94.5 - 97.5	2,200
Other	100	4.4	3.2 - 6.0	2,700	95.6	94.0 - 96.8	2,800

PRAMS Age Group	Yes			No			Weighted Total Responses (3-Yr Avg)
	#	%	C.I.(95%)	#	%	C.I.(95%)	#
<20	<50	2.5	1.4 - 4.6	1,500	97.5	95.4 - 98.6	1,600
20-24	200	4.2	3.2 - 5.5	4,200	95.8	94.5 - 96.8	4,400
25-34	500	5.7	4.8 - 6.6	8,300	94.3	93.4 - 95.2	8,800
35+	300	8.5	6.9 - 10.5	2,900	91.5	89.5 - 93.1	3,100

**PRAMS Health Indicator 3-Year Aggregate Report - Drinking alcohol last 3 months of pregnancy- by State;County;DOH Race-Ethnicity;PRAMS Age Group;Infant Gender;Married;Poverty Level;Income (2000-2003);Income (2004-2011);Birthweight;Smoke 3rd Trimester;Smoke Before Pregnant;WIC During Pregnancy, for the Year(s)
2000-2002;2001-2003;2002-2004;2003-2005;2004-2006;2005-2007;2006-2008;2007-2009;2008-2010;2009-2011;2010-2012;2011-2013**

Note: Weighted counts (#) represent 3-yr averages, rounded to the nearest hundred; n/r (Not Reportable) - If the unweighted total responses for a dimension (row) is <30 that row will not be shown

Years: 2005-2007

Infant Gender	Yes			No			Weighted Total Responses (3-Yr Avg)
	#	%	C.I.(95%)	#	%	C.I.(95%)	#
Male	500	5.1	4.3 - 6.0	8,700	94.9	94.0 - 95.7	9,200
Female	500	6.0	5.1 - 7.0	8,200	94.0	93.0 - 94.9	8,700

Married	Yes			No			Weighted Total Responses (3-Yr Avg)
	#	%	C.I.(95%)	#	%	C.I.(95%)	#
Yes	700	5.9	5.1 - 6.7	10,600	94.1	93.3 - 94.9	11,300
No	300	4.9	4.0 - 6.1	6,300	95.1	93.9 - 96.0	6,600

Poverty Level	Yes			No			Weighted Total Responses (3-Yr Avg)
	#	%	C.I.(95%)	#	%	C.I.(95%)	#
0-130%	300	4.2	3.3 - 5.2	6,200	95.8	94.8 - 96.7	6,500
131-185%	100	5.6	4.1 - 7.6	2,200	94.4	92.4 - 95.9	2,300
186+%	600	7.1	6.1 - 8.2	7,200	92.9	91.8 - 93.9	7,800

**PRAMS Health Indicator 3-Year Aggregate Report - Drinking alcohol last 3 months of pregnancy- by State;County;DOH Race-Ethnicity;PRAMS Age Group;Infant Gender;Married;Poverty Level;Income (2000-2003);Income (2004-2011);Birthweight;Smoke 3rd Trimester;Smoke Before Pregnant;WIC During Pregnancy, for the Year(s)
2000-2002;2001-2003;2002-2004;2003-2005;2004-2006;2005-2007;2006-2008;2007-2009;2008-2010;2009-2011;2010-2012;2011-2013**

Note: Weighted counts (#) represent 3-yr averages, rounded to the nearest hundred; n/r (Not Reportable) - If the unweighted total responses for a dimension (row) is <30 that row will not be shown

Years: 2005-2007

Income (2004-2011)	Yes			No			Weighted Total Responses (3-Yr Avg)
	#	%	C.I.(95%)	#	%	C.I.(95%)	#
<\$10,000	100	3.5	2.4 - 5.1	2,900	96.5	94.9 - 97.6	3,000
\$10,000-\$24,999	200	4.3	3.2 - 5.9	3,600	95.7	94.1 - 96.8	3,700
\$25,000-\$49,999	200	5.6	4.5 - 7.1	3,900	94.4	92.9 - 95.5	4,200
>=\$50,000	400	7.8	6.6 - 9.1	5,300	92.2	90.9 - 93.4	5,700

Birthweight	Yes			No			Weighted Total Responses (3-Yr Avg)
	#	%	C.I.(95%)	#	%	C.I.(95%)	#
Low birth weight	100	4.8	3.1 - 7.3	1,400	95.2	92.7 - 96.9	1,400
Normal birth weight	900	5.6	4.9 - 6.3	15,500	94.4	93.7 - 95.1	16,400

Smoke 3rd Trimester	Yes			No			Weighted Total Responses (3-Yr Avg)
	#	%	C.I.(95%)	#	%	C.I.(95%)	#
Yes	100	7.8	5.5 - 11.0	1,400	92.2	89.0 - 94.5	1,600
No	900	5.3	4.7 - 6.0	15,400	94.7	94.0 - 95.3	16,300

**PRAMS Health Indicator 3-Year Aggregate Report - Drinking alcohol last 3 months of pregnancy- by State;County;DOH Race-Ethnicity;PRAMS Age Group;Infant Gender;Married;Poverty Level;Income (2000-2003);Income (2004-2011);Birthweight;Smoke 3rd Trimester;Smoke Before Pregnant;WIC During Pregnancy, for the Year(s)
2000-2002;2001-2003;2002-2004;2003-2005;2004-2006;2005-2007;2006-2008;2007-2009;2008-2010;2009-2011;2010-2012;2011-2013**

Note: Weighted counts (#) represent 3-yr averages, rounded to the nearest hundred; n/r (Not Reportable) - If the unweighted total responses for a dimension (row) is <30 that row will not be shown

Years: 2005-2007

Smoke Before Pregnant	Yes			No			Weighted Total Responses (3-Yr Avg)
	#	%	C.I.(95%)	#	%	C.I.(95%)	#
Yes	200	5.9	4.5 - 7.6	3,500	94.1	92.4 - 95.5	3,700
No	800	5.4	4.8 - 6.2	13,300	94.6	93.8 - 95.2	14,100

WIC During Pregnancy	Yes			No			Weighted Total Responses (3-Yr Avg)
	#	%	C.I.(95%)	#	%	C.I.(95%)	#
Yes	300	4.4	3.6 - 5.4	7,200	95.6	94.6 - 96.4	7,500
No	600	6.4	5.6 - 7.4	9,400	93.6	92.6 - 94.4	10,100

**PRAMS Health Indicator 3-Year Aggregate Report - Drinking alcohol last 3 months of pregnancy- by State;County;DOH Race-Ethnicity;PRAMS Age Group;Infant Gender;Married;Poverty Level;Income (2000-2003);Income (2004-2011);Birthweight;Smoke 3rd Trimester;Smoke Before Pregnant;WIC During Pregnancy, for the Year(s)
2000-2002;2001-2003;2002-2004;2003-2005;2004-2006;2005-2007;2006-2008;2007-2009;2008-2010;2009-2011;2010-2012;2011-2013**

Note: Weighted counts (#) represent 3-yr averages, rounded to the nearest hundred; n/r (Not Reportable) - If the unweighted total responses for a dimension (row) is <30 that row will not be shown

Years: 2004-2006

State	Yes			No			Weighted Total Responses (3-Yr Avg)
	#	%	C.I.(95%)	#	%	C.I.(95%)	#
Totals	1,000	5.6	5.0 - 6.3	16,600	94.4	93.7 - 95.0	17,600

County	Yes			No			Weighted Total Responses (3-Yr Avg)
	#	%	C.I.(95%)	#	%	C.I.(95%)	#
Hawaii	100	4.6	3.3 - 6.6	2,100	95.4	93.4 - 96.7	2,200
Honolulu	700	5.3	4.7 - 6.1	12,100	94.7	93.9 - 95.3	12,800
Kauai	100	6.3	3.7 - 10.4	700	93.7	89.6 - 96.3	800
Maui	200	8.4	6.3 - 11.0	1,600	91.6	89.0 - 93.7	1,800

**PRAMS Health Indicator 3-Year Aggregate Report - Drinking alcohol last 3 months of pregnancy- by State;County;DOH Race-Ethnicity;PRAMS Age Group;Infant Gender;Married;Poverty Level;Income (2000-2003);Income (2004-2011);Birthweight;Smoke 3rd Trimester;Smoke Before Pregnant;WIC During Pregnancy, for the Year(s)
2000-2002;2001-2003;2002-2004;2003-2005;2004-2006;2005-2007;2006-2008;2007-2009;2008-2010;2009-2011;2010-2012;2011-2013**

Note: Weighted counts (#) represent 3-yr averages, rounded to the nearest hundred; n/r (Not Reportable) - If the unweighted total responses for a dimension (row) is <30 that row will not be shown

Years: 2004-2006

DOH Race-Ethnicity	Yes			No			Weighted Total Responses (3-Yr Avg)
	#	%	C.I.(95%)	#	%	C.I.(95%)	#
Caucasian	400	8.9	7.5 - 10.7	3,600	91.1	89.3 - 92.5	4,000
Native Hawaiian	300	5.5	4.3 - 6.9	4,600	94.5	93.1 - 95.7	4,900
Chinese	<50	3.8	2.7 - 5.4	600	96.2	94.6 - 97.3	600
Filipino	100	3.1	2.3 - 4.4	3,200	96.9	95.6 - 97.7	3,300
Japanese	100	4.6	3.2 - 6.4	2,100	95.4	93.6 - 96.8	2,200
Other	100	5.1	3.8 - 6.9	2,500	94.9	93.1 - 96.2	2,700

PRAMS Age Group	Yes			No			Weighted Total Responses (3-Yr Avg)
	#	%	C.I.(95%)	#	%	C.I.(95%)	#
<20	<50	2.7	1.4 - 4.9	1,400	97.3	95.1 - 98.6	1,400
20-24	200	4.7	3.6 - 6.0	4,200	95.3	94.0 - 96.4	4,400
25-34	500	5.6	4.8 - 6.6	8,200	94.4	93.4 - 95.2	8,700
35+	300	8.2	6.6 - 10.0	2,900	91.8	90.0 - 93.4	3,200

**PRAMS Health Indicator 3-Year Aggregate Report - Drinking alcohol last 3 months of pregnancy- by State;County;DOH Race-Ethnicity;PRAMS Age Group;Infant Gender;Married;Poverty Level;Income (2000-2003);Income (2004-2011);Birthweight;Smoke 3rd Trimester;Smoke Before Pregnant;WIC During Pregnancy, for the Year(s)
2000-2002;2001-2003;2002-2004;2003-2005;2004-2006;2005-2007;2006-2008;2007-2009;2008-2010;2009-2011;2010-2012;2011-2013**

Note: Weighted counts (#) represent 3-yr averages, rounded to the nearest hundred; n/r (Not Reportable) - If the unweighted total responses for a dimension (row) is <30 that row will not be shown

Years: 2004-2006

Infant Gender	Yes			No			Weighted Total Responses (3-Yr Avg)
	#	%	C.I.(95%)	#	%	C.I.(95%)	#
Male	400	4.8	4.1 - 5.7	8,700	95.2	94.3 - 95.9	9,200
Female	500	6.5	5.5 - 7.5	7,900	93.5	92.5 - 94.5	8,400

Married	Yes			No			Weighted Total Responses (3-Yr Avg)
	#	%	C.I.(95%)	#	%	C.I.(95%)	#
Yes	700	6.0	5.2 - 6.8	10,900	94.0	93.2 - 94.8	11,600
No	300	4.9	4.0 - 6.1	5,700	95.1	93.9 - 96.0	6,000

Poverty Level	Yes			No			Weighted Total Responses (3-Yr Avg)
	#	%	C.I.(95%)	#	%	C.I.(95%)	#
0-130%	300	4.3	3.4 - 5.3	6,000	95.7	94.7 - 96.6	6,300
131-185%	100	5.3	3.7 - 7.4	2,000	94.7	92.6 - 96.3	2,100
186+%	600	7.2	6.3 - 8.3	7,300	92.8	91.7 - 93.7	7,800

**PRAMS Health Indicator 3-Year Aggregate Report - Drinking alcohol last 3 months of pregnancy- by State;County;DOH Race-Ethnicity;PRAMS Age Group;Infant Gender;Married;Poverty Level;Income (2000-2003);Income (2004-2011);Birthweight;Smoke 3rd Trimester;Smoke Before Pregnant;WIC During Pregnancy, for the Year(s)
2000-2002;2001-2003;2002-2004;2003-2005;2004-2006;2005-2007;2006-2008;2007-2009;2008-2010;2009-2011;2010-2012;2011-2013**

Note: Weighted counts (#) represent 3-yr averages, rounded to the nearest hundred; n/r (Not Reportable) - If the unweighted total responses for a dimension (row) is <30 that row will not be shown

Years: 2004-2006

Income (2004-2011)	Yes			No			Weighted Total Responses (3-Yr Avg)
	#	%	C.I.(95%)	#	%	C.I.(95%)	#
<\$10,000	100	4.0	2.8 - 5.6	2,800	96.0	94.4 - 97.2	2,900
\$10,000-\$24,999	200	4.4	3.3 - 5.8	3,700	95.6	94.2 - 96.7	3,900
\$25,000-\$49,999	200	5.3	4.2 - 6.7	4,000	94.7	93.3 - 95.8	4,200
>=\$50,000	400	8.1	6.9 - 9.5	4,900	91.9	90.5 - 93.1	5,400

Birthweight	Yes			No			Weighted Total Responses (3-Yr Avg)
	#	%	C.I.(95%)	#	%	C.I.(95%)	#
Low birth weight	100	4.1	2.5 - 6.6	1,200	95.9	93.4 - 97.5	1,300
Normal birth weight	900	5.7	5.1 - 6.4	15,400	94.3	93.6 - 94.9	16,300

Smoke 3rd Trimester	Yes			No			Weighted Total Responses (3-Yr Avg)
	#	%	C.I.(95%)	#	%	C.I.(95%)	#
Yes	100	9.6	7.1 - 13.0	1,400	90.4	87.0 - 92.9	1,500
No	800	5.2	4.6 - 5.9	15,200	94.8	94.1 - 95.4	16,000

**PRAMS Health Indicator 3-Year Aggregate Report - Drinking alcohol last 3 months of pregnancy- by State;County;DOH Race-Ethnicity;PRAMS Age Group;Infant Gender;Married;Poverty Level;Income (2000-2003);Income (2004-2011);Birthweight;Smoke 3rd Trimester;Smoke Before Pregnant;WIC During Pregnancy, for the Year(s)
2000-2002;2001-2003;2002-2004;2003-2005;2004-2006;2005-2007;2006-2008;2007-2009;2008-2010;2009-2011;2010-2012;2011-2013**

Note: Weighted counts (#) represent 3-yr averages, rounded to the nearest hundred; n/r (Not Reportable) - If the unweighted total responses for a dimension (row) is <30 that row will not be shown

Years: 2004-2006

Smoke Before Pregnant	Yes			No			Weighted Total Responses (3-Yr Avg)
	#	%	C.I.(95%)	#	%	C.I.(95%)	#
Yes	300	7.0	5.6 - 8.8	3,400	93.0	91.2 - 94.4	3,700
No	700	5.2	4.6 - 5.9	13,100	94.8	94.1 - 95.4	13,800

WIC During Pregnancy	Yes			No			Weighted Total Responses (3-Yr Avg)
	#	%	C.I.(95%)	#	%	C.I.(95%)	#
Yes	300	4.1	3.3 - 5.0	7,300	95.9	95.0 - 96.7	7,600
No	700	6.8	6.0 - 7.8	9,100	93.2	92.2 - 94.0	9,700

**PRAMS Health Indicator 3-Year Aggregate Report - Drinking alcohol last 3 months of pregnancy- by State;County;DOH Race-Ethnicity;PRAMS Age Group;Infant Gender;Married;Poverty Level;Income (2000-2003);Income (2004-2011);Birthweight;Smoke 3rd Trimester;Smoke Before Pregnant;WIC During Pregnancy, for the Year(s)
2000-2002;2001-2003;2002-2004;2003-2005;2004-2006;2005-2007;2006-2008;2007-2009;2008-2010;2009-2011;2010-2012;2011-2013**

Note: Weighted counts (#) represent 3-yr averages, rounded to the nearest hundred; n/r (Not Reportable) - If the unweighted total responses for a dimension (row) is <30 that row will not be shown

Years: 2003-2005

State	Yes			No			Weighted Total Responses (3-Yr Avg)
	#	%	C.I.(95%)	#	%	C.I.(95%)	#
Totals	900	5.0	4.5 - 5.7	16,500	95.0	94.3 - 95.5	17,400

County	Yes			No			Weighted Total Responses (3-Yr Avg)
	#	%	C.I.(95%)	#	%	C.I.(95%)	#
Hawaii	100	4.1	2.9 - 5.7	2,100	95.9	94.3 - 97.1	2,100
Honolulu	600	4.9	4.2 - 5.7	12,100	95.1	94.3 - 95.8	12,700
Kauai	<50	4.7	2.9 - 7.6	800	95.3	92.4 - 97.1	800
Maui	100	7.1	5.4 - 9.2	1,700	92.9	90.8 - 94.6	1,800

**PRAMS Health Indicator 3-Year Aggregate Report - Drinking alcohol last 3 months of pregnancy- by State;County;DOH Race-Ethnicity;PRAMS Age Group;Infant Gender;Married;Poverty Level;Income (2000-2003);Income (2004-2011);Birthweight;Smoke 3rd Trimester;Smoke Before Pregnant;WIC During Pregnancy, for the Year(s)
2000-2002;2001-2003;2002-2004;2003-2005;2004-2006;2005-2007;2006-2008;2007-2009;2008-2010;2009-2011;2010-2012;2011-2013**

Note: Weighted counts (#) represent 3-yr averages, rounded to the nearest hundred; n/r (Not Reportable) - If the unweighted total responses for a dimension (row) is <30 that row will not be shown

Years: 2003-2005

DOH Race-Ethnicity	Yes			No			Weighted Total Responses (3-Yr Avg)
	#	%	C.I.(95%)	#	%	C.I.(95%)	#
Caucasian	300	8.7	7.2 - 10.6	3,500	91.3	89.4 - 92.8	3,800
Native Hawaiian	200	4.2	3.3 - 5.3	4,600	95.8	94.7 - 96.7	4,800
Chinese	<50	3.9	1.9 - 8.2	600	96.1	91.8 - 98.1	700
Filipino	100	2.7	1.9 - 4.0	3,300	97.3	96.0 - 98.1	3,400
Japanese	100	4.1	2.9 - 6.0	2,100	95.9	94.0 - 97.1	2,200
Other	100	5.3	3.7 - 7.4	2,400	94.7	92.6 - 96.3	2,500

PRAMS Age Group	Yes			No			Weighted Total Responses (3-Yr Avg)
	#	%	C.I.(95%)	#	%	C.I.(95%)	#
<20	<50	2.6	1.4 - 4.8	1,400	97.4	95.2 - 98.6	1,400
20-24	200	3.9	2.9 - 5.1	4,100	96.1	94.9 - 97.1	4,300
25-34	500	5.4	4.5 - 6.3	8,200	94.6	93.7 - 95.5	8,600
35+	200	6.9	5.5 - 8.7	2,900	93.1	91.3 - 94.5	3,100

**PRAMS Health Indicator 3-Year Aggregate Report - Drinking alcohol last 3 months of pregnancy- by State;County;DOH Race-Ethnicity;PRAMS Age Group;Infant Gender;Married;Poverty Level;Income (2000-2003);Income (2004-2011);Birthweight;Smoke 3rd Trimester;Smoke Before Pregnant;WIC During Pregnancy, for the Year(s)
2000-2002;2001-2003;2002-2004;2003-2005;2004-2006;2005-2007;2006-2008;2007-2009;2008-2010;2009-2011;2010-2012;2011-2013**

Note: Weighted counts (#) represent 3-yr averages, rounded to the nearest hundred; n/r (Not Reportable) - If the unweighted total responses for a dimension (row) is <30 that row will not be shown

Years: 2003-2005

Infant Gender	Yes			No			Weighted Total Responses (3-Yr Avg)
	#	%	C.I.(95%)	#	%	C.I.(95%)	#
Male	400	4.9	4.1 - 5.7	8,700	95.1	94.3 - 95.9	9,200
Female	400	5.2	4.4 - 6.2	7,800	94.8	93.8 - 95.6	8,200

Married	Yes			No			Weighted Total Responses (3-Yr Avg)
	#	%	C.I.(95%)	#	%	C.I.(95%)	#
Yes	600	5.4	4.7 - 6.3	10,900	94.6	93.7 - 95.3	11,600
No	200	4.3	3.4 - 5.3	5,600	95.7	94.7 - 96.6	5,800

Poverty Level	Yes			No			Weighted Total Responses (3-Yr Avg)
	#	%	C.I.(95%)	#	%	C.I.(95%)	#
0-130%	200	3.6	2.9 - 4.6	6,600	96.4	95.4 - 97.1	6,800
131-185%	100	5.2	3.7 - 7.4	2,000	94.8	92.6 - 96.3	2,100
186+%	500	6.8	5.8 - 8.0	6,500	93.2	92.0 - 94.2	6,900

**PRAMS Health Indicator 3-Year Aggregate Report - Drinking alcohol last 3 months of pregnancy- by State;County;DOH Race-Ethnicity;PRAMS Age Group;Infant Gender;Married;Poverty Level;Income (2000-2003);Income (2004-2011);Birthweight;Smoke 3rd Trimester;Smoke Before Pregnant;WIC During Pregnancy, for the Year(s)
2000-2002;2001-2003;2002-2004;2003-2005;2004-2006;2005-2007;2006-2008;2007-2009;2008-2010;2009-2011;2010-2012;2011-2013**

Note: Weighted counts (#) represent 3-yr averages, rounded to the nearest hundred; n/r (Not Reportable) - If the unweighted total responses for a dimension (row) is <30 that row will not be shown

Years: 2003-2005

Birthweight	Yes			No			Weighted Total Responses (3-Yr Avg)
	#	%	C.I.(95%)	#	%	C.I.(95%)	#
Low birth weight	<50	3.7	2.1 - 6.4	1,100	96.3	93.6 - 97.9	1,200
Normal birth weight	800	5.1	4.5 - 5.8	15,400	94.9	94.2 - 95.5	16,200

Smoke 3rd Trimester	Yes			No			Weighted Total Responses (3-Yr Avg)
	#	%	C.I.(95%)	#	%	C.I.(95%)	#
Yes	100	9.0	6.6 - 12.3	1,300	91.0	87.7 - 93.4	1,500
No	700	4.7	4.1 - 5.4	15,000	95.3	94.6 - 95.9	15,800

Smoke Before Pregnant	Yes			No			Weighted Total Responses (3-Yr Avg)
	#	%	C.I.(95%)	#	%	C.I.(95%)	#
Yes	200	6.1	4.8 - 7.8	3,400	93.9	92.2 - 95.2	3,600
No	700	4.8	4.2 - 5.6	12,900	95.2	94.4 - 95.8	13,600

**PRAMS Health Indicator 3-Year Aggregate Report - Drinking alcohol last 3 months of pregnancy- by State;County;DOH Race-Ethnicity;PRAMS Age Group;Infant Gender;Married;Poverty Level;Income (2000-2003);Income (2004-2011);Birthweight;Smoke 3rd Trimester;Smoke Before Pregnant;WIC During Pregnancy, for the Year(s)
2000-2002;2001-2003;2002-2004;2003-2005;2004-2006;2005-2007;2006-2008;2007-2009;2008-2010;2009-2011;2010-2012;2011-2013**

Note: Weighted counts (#) represent 3-yr averages, rounded to the nearest hundred; n/r (Not Reportable) - If the unweighted total responses for a dimension (row) is <30 that row will not be shown

Years: 2003-2005

WIC During Pregnancy	Yes			No			Weighted Total Responses (3-Yr Avg)
	#	%	C.I.(95%)	#	%	C.I.(95%)	#
Yes	200	3.3	2.6 - 4.2	7,200	96.7	95.8 - 97.4	7,500
No	600	6.4	5.5 - 7.3	9,000	93.6	92.7 - 94.5	9,600

**PRAMS Health Indicator 3-Year Aggregate Report - Drinking alcohol last 3 months of pregnancy- by State;County;DOH Race-Ethnicity;PRAMS Age Group;Infant Gender;Married;Poverty Level;Income (2000-2003);Income (2004-2011);Birthweight;Smoke 3rd Trimester;Smoke Before Pregnant;WIC During Pregnancy, for the Year(s)
2000-2002;2001-2003;2002-2004;2003-2005;2004-2006;2005-2007;2006-2008;2007-2009;2008-2010;2009-2011;2010-2012;2011-2013**

Note: Weighted counts (#) represent 3-yr averages, rounded to the nearest hundred; n/r (Not Reportable) - If the unweighted total responses for a dimension (row) is <30 that row will not be shown

Years: 2002-2004

State	Yes			No			Weighted Total Responses (3-Yr Avg)
	#	%	C.I.(95%)	#	%	C.I.(95%)	#
Totals	800	4.8	4.2 - 5.4	16,400	95.2	94.6 - 95.8	17,300

County	Yes			No			Weighted Total Responses (3-Yr Avg)
	#	%	C.I.(95%)	#	%	C.I.(95%)	#
Hawaii	100	4.6	3.4 - 6.2	2,000	95.4	93.8 - 96.6	2,000
Honolulu	600	4.4	3.7 - 5.2	12,100	95.6	94.8 - 96.3	12,600
Kauai	<50	5.7	3.8 - 8.5	700	94.3	91.5 - 96.2	800
Maui	100	6.8	5.3 - 8.7	1,700	93.2	91.3 - 94.7	1,800

**PRAMS Health Indicator 3-Year Aggregate Report - Drinking alcohol last 3 months of pregnancy- by State;County;DOH Race-Ethnicity;PRAMS Age Group;Infant Gender;Married;Poverty Level;Income (2000-2003);Income (2004-2011);Birthweight;Smoke 3rd Trimester;Smoke Before Pregnant;WIC During Pregnancy, for the Year(s)
2000-2002;2001-2003;2002-2004;2003-2005;2004-2006;2005-2007;2006-2008;2007-2009;2008-2010;2009-2011;2010-2012;2011-2013**

Note: Weighted counts (#) represent 3-yr averages, rounded to the nearest hundred; n/r (Not Reportable) - If the unweighted total responses for a dimension (row) is <30 that row will not be shown

Years: 2002-2004

DOH Race-Ethnicity	Yes			No			Weighted Total Responses (3-Yr Avg)
	#	%	C.I.(95%)	#	%	C.I.(95%)	#
Caucasian	300	9.0	7.3 - 11.1	3,400	91.0	88.9 - 92.7	3,700
Native Hawaiian	200	4.3	3.5 - 5.3	4,500	95.7	94.7 - 96.5	4,700
Chinese	<50	3.5	1.4 - 8.1	600	96.5	91.9 - 98.6	600
Filipino	100	2.3	1.5 - 3.6	3,400	97.7	96.4 - 98.5	3,500
Japanese	100	3.2	2.1 - 4.9	2,100	96.8	95.1 - 97.9	2,200
Other	100	4.3	2.8 - 6.5	2,400	95.7	93.5 - 97.2	2,500

PRAMS Age Group	Yes			No			Weighted Total Responses (3-Yr Avg)
	#	%	C.I.(95%)	#	%	C.I.(95%)	#
<20	<50	2.7	1.5 - 5.0	1,400	97.3	95.0 - 98.5	1,500
20-24	100	3.5	2.6 - 4.7	4,100	96.5	95.3 - 97.4	4,300
25-34	500	5.5	4.6 - 6.5	8,100	94.5	93.5 - 95.4	8,500
35+	200	5.5	4.2 - 7.2	2,800	94.5	92.8 - 95.8	3,000

**PRAMS Health Indicator 3-Year Aggregate Report - Drinking alcohol last 3 months of pregnancy- by State;County;DOH Race-Ethnicity;PRAMS Age Group;Infant Gender;Married;Poverty Level;Income (2000-2003);Income (2004-2011);Birthweight;Smoke 3rd Trimester;Smoke Before Pregnant;WIC During Pregnancy, for the Year(s)
2000-2002;2001-2003;2002-2004;2003-2005;2004-2006;2005-2007;2006-2008;2007-2009;2008-2010;2009-2011;2010-2012;2011-2013**

Note: Weighted counts (#) represent 3-yr averages, rounded to the nearest hundred; n/r (Not Reportable) - If the unweighted total responses for a dimension (row) is <30 that row will not be shown

Years: 2002-2004

Infant Gender	Yes			No			Weighted Total Responses (3-Yr Avg)
	#	%	C.I.(95%)	#	%	C.I.(95%)	#
Male	400	4.7	4.0 - 5.6	8,600	95.3	94.4 - 96.0	9,000
Female	400	4.8	3.9 - 5.8	7,800	95.2	94.2 - 96.1	8,200

Married	Yes			No			Weighted Total Responses (3-Yr Avg)
	#	%	C.I.(95%)	#	%	C.I.(95%)	#
Yes	600	5.2	4.4 - 6.0	11,100	94.8	94.0 - 95.6	11,700
No	200	3.9	3.1 - 4.9	5,300	96.1	95.1 - 96.9	5,500

Poverty Level	Yes			No			Weighted Total Responses (3-Yr Avg)
	#	%	C.I.(95%)	#	%	C.I.(95%)	#
0-130%	200	3.3	2.6 - 4.2	6,700	96.7	95.8 - 97.4	6,900
131-185%	100	5.0	3.5 - 7.0	2,500	95.0	93.0 - 96.5	2,700
186+%	400	6.9	5.8 - 8.3	5,700	93.1	91.7 - 94.2	6,100

**PRAMS Health Indicator 3-Year Aggregate Report - Drinking alcohol last 3 months of pregnancy- by State;County;DOH Race-Ethnicity;PRAMS Age Group;Infant Gender;Married;Poverty Level;Income (2000-2003);Income (2004-2011);Birthweight;Smoke 3rd Trimester;Smoke Before Pregnant;WIC During Pregnancy, for the Year(s)
2000-2002;2001-2003;2002-2004;2003-2005;2004-2006;2005-2007;2006-2008;2007-2009;2008-2010;2009-2011;2010-2012;2011-2013**

Note: Weighted counts (#) represent 3-yr averages, rounded to the nearest hundred; n/r (Not Reportable) - If the unweighted total responses for a dimension (row) is <30 that row will not be shown

Years: 2002-2004

Birthweight	Yes			No			Weighted Total Responses (3-Yr Avg)
	#	%	C.I.(95%)	#	%	C.I.(95%)	#
Low birth weight	<50	2.9	1.6 - 5.2	1,100	97.1	94.8 - 98.4	1,100
Normal birth weight	800	4.9	4.3 - 5.6	15,300	95.1	94.4 - 95.7	16,100

Smoke 3rd Trimester	Yes			No			Weighted Total Responses (3-Yr Avg)
	#	%	C.I.(95%)	#	%	C.I.(95%)	#
Yes	100	9.4	6.9 - 12.8	1,300	90.6	87.2 - 93.1	1,500
No	700	4.3	3.8 - 5.0	14,900	95.7	95.0 - 96.2	15,600

Smoke Before Pregnant	Yes			No			Weighted Total Responses (3-Yr Avg)
	#	%	C.I.(95%)	#	%	C.I.(95%)	#
Yes	200	6.4	5.0 - 8.1	3,200	93.6	91.9 - 95.0	3,500
No	600	4.4	3.7 - 5.1	12,900	95.6	94.9 - 96.3	13,500

**PRAMS Health Indicator 3-Year Aggregate Report - Drinking alcohol last 3 months of pregnancy- by State;County;DOH Race-Ethnicity;PRAMS Age Group;Infant Gender;Married;Poverty Level;Income (2000-2003);Income (2004-2011);Birthweight;Smoke 3rd Trimester;Smoke Before Pregnant;WIC During Pregnancy, for the Year(s)
2000-2002;2001-2003;2002-2004;2003-2005;2004-2006;2005-2007;2006-2008;2007-2009;2008-2010;2009-2011;2010-2012;2011-2013**

Note: Weighted counts (#) represent 3-yr averages, rounded to the nearest hundred; n/r (Not Reportable) - If the unweighted total responses for a dimension (row) is <30 that row will not be shown

Years: 2002-2004

WIC During Pregnancy	Yes			No			Weighted Total Responses (3-Yr Avg)
	#	%	C.I.(95%)	#	%	C.I.(95%)	#
Yes	200	3.3	2.6 - 4.2	7,100	96.7	95.8 - 97.4	7,400
No	600	5.8	5.0 - 6.8	9,100	94.2	93.2 - 95.0	9,700

**PRAMS Health Indicator 3-Year Aggregate Report - Drinking alcohol last 3 months of pregnancy- by State;County;DOH Race-Ethnicity;PRAMS Age Group;Infant Gender;Married;Poverty Level;Income (2000-2003);Income (2004-2011);Birthweight;Smoke 3rd Trimester;Smoke Before Pregnant;WIC During Pregnancy, for the Year(s)
2000-2002;2001-2003;2002-2004;2003-2005;2004-2006;2005-2007;2006-2008;2007-2009;2008-2010;2009-2011;2010-2012;2011-2013**

Note: Weighted counts (#) represent 3-yr averages, rounded to the nearest hundred; n/r (Not Reportable) - If the unweighted total responses for a dimension (row) is <30 that row will not be shown

Years: 2001-2003

State	Yes			No			Weighted Total Responses (3-Yr Avg)
	#	%	C.I.(95%)	#	%	C.I.(95%)	#
Totals	700	4.1	3.6 - 4.8	16,200	95.9	95.2 - 96.4	16,900

County	Yes			No			Weighted Total Responses (3-Yr Avg)
	#	%	C.I.(95%)	#	%	C.I.(95%)	#
Hawaii	100	3.9	3.0 - 5.1	1,800	96.1	94.9 - 97.0	1,900
Honolulu	500	3.9	3.2 - 4.7	11,900	96.1	95.3 - 96.8	12,400
Kauai	<50	5.5	3.8 - 7.9	700	94.5	92.1 - 96.2	800
Maui	100	5.7	4.5 - 7.2	1,700	94.3	92.8 - 95.5	1,800

**PRAMS Health Indicator 3-Year Aggregate Report - Drinking alcohol last 3 months of pregnancy- by State;County;DOH Race-Ethnicity;PRAMS Age Group;Infant Gender;Married;Poverty Level;Income (2000-2003);Income (2004-2011);Birthweight;Smoke 3rd Trimester;Smoke Before Pregnant;WIC During Pregnancy, for the Year(s)
2000-2002;2001-2003;2002-2004;2003-2005;2004-2006;2005-2007;2006-2008;2007-2009;2008-2010;2009-2011;2010-2012;2011-2013**

Note: Weighted counts (#) represent 3-yr averages, rounded to the nearest hundred; n/r (Not Reportable) - If the unweighted total responses for a dimension (row) is <30 that row will not be shown

Years: 2001-2003

DOH Race-Ethnicity	Yes			No			Weighted Total Responses (3-Yr Avg)
	#	%	C.I.(95%)	#	%	C.I.(95%)	#
Caucasian	300	8.6	6.8 - 10.7	3,300	91.4	89.3 - 93.2	3,600
Native Hawaiian	200	3.3	2.8 - 3.9	4,400	96.7	96.1 - 97.2	4,600
Chinese	<50	3.6	1.4 - 9.1	600	96.4	90.9 - 98.6	700
Filipino	100	1.9	1.1 - 3.1	3,500	98.1	96.9 - 98.9	3,600
Japanese	<50	1.6	0.8 - 3.2	2,100	98.4	96.8 - 99.2	2,100
Other	100	4.8	3.2 - 7.3	2,200	95.2	92.7 - 96.8	2,300

PRAMS Age Group	Yes			No			Weighted Total Responses (3-Yr Avg)
	#	%	C.I.(95%)	#	%	C.I.(95%)	#
<20	<50	2.4	1.3 - 4.3	1,500	97.6	95.7 - 98.7	1,600
20-24	100	2.9	2.1 - 4.1	4,100	97.1	95.9 - 97.9	4,200
25-34	400	5.0	4.1 - 6.0	7,900	95.0	94.0 - 95.9	8,300
35+	100	4.4	3.1 - 6.1	2,700	95.6	93.9 - 96.9	2,800

**PRAMS Health Indicator 3-Year Aggregate Report - Drinking alcohol last 3 months of pregnancy- by State;County;DOH Race-Ethnicity;PRAMS Age Group;Infant Gender;Married;Poverty Level;Income (2000-2003);Income (2004-2011);Birthweight;Smoke 3rd Trimester;Smoke Before Pregnant;WIC During Pregnancy, for the Year(s)
2000-2002;2001-2003;2002-2004;2003-2005;2004-2006;2005-2007;2006-2008;2007-2009;2008-2010;2009-2011;2010-2012;2011-2013**

Note: Weighted counts (#) represent 3-yr averages, rounded to the nearest hundred; n/r (Not Reportable) - If the unweighted total responses for a dimension (row) is <30 that row will not be shown

Years: 2001-2003

Infant Gender	Yes			No			Weighted Total Responses (3-Yr Avg)
	#	%	C.I.(95%)	#	%	C.I.(95%)	#
Male	300	3.8	3.1 - 4.7	8,300	96.2	95.3 - 96.9	8,600
Female	400	4.4	3.6 - 5.4	7,900	95.6	94.6 - 96.4	8,200

Married	Yes			No			Weighted Total Responses (3-Yr Avg)
	#	%	C.I.(95%)	#	%	C.I.(95%)	#
Yes	500	4.5	3.7 - 5.3	10,800	95.5	94.7 - 96.3	11,300
No	200	3.5	2.8 - 4.4	5,400	96.5	95.6 - 97.2	5,600

Poverty Level	Yes			No			Weighted Total Responses (3-Yr Avg)
	#	%	C.I.(95%)	#	%	C.I.(95%)	#
0-130%	200	3.1	2.4 - 4.0	6,700	96.9	96.0 - 97.6	6,900
131-185%	100	4.3	3.1 - 6.0	3,000	95.7	94.0 - 96.9	3,100
186+%	300	5.7	4.6 - 7.2	5,100	94.3	92.8 - 95.4	5,400

**PRAMS Health Indicator 3-Year Aggregate Report - Drinking alcohol last 3 months of pregnancy- by State;County;DOH Race-Ethnicity;PRAMS Age Group;Infant Gender;Married;Poverty Level;Income (2000-2003);Income (2004-2011);Birthweight;Smoke 3rd Trimester;Smoke Before Pregnant;WIC During Pregnancy, for the Year(s)
2000-2002;2001-2003;2002-2004;2003-2005;2004-2006;2005-2007;2006-2008;2007-2009;2008-2010;2009-2011;2010-2012;2011-2013**

Note: Weighted counts (#) represent 3-yr averages, rounded to the nearest hundred; n/r (Not Reportable) - If the unweighted total responses for a dimension (row) is <30 that row will not be shown

Years: 2001-2003

Income (2000-2003)	Yes			No			Weighted Total Responses (3-Yr Avg)
	#	%	C.I.(95%)	#	%	C.I.(95%)	#
<=\$15,000	100	3.8	2.8 - 5.2	3,500	96.2	94.8 - 97.2	3,600
\$15,001-\$25,000	<50	1.8	1.1 - 2.9	2,300	98.2	97.1 - 98.9	2,300
\$25,001-\$40,000	100	3.8	2.8 - 5.2	3,300	96.2	94.8 - 97.2	3,500
>=\$40,001	400	5.5	4.4 - 6.8	6,100	94.5	93.2 - 95.6	6,400

Birthweight	Yes			No			Weighted Total Responses (3-Yr Avg)
	#	%	C.I.(95%)	#	%	C.I.(95%)	#
Low birth weight	<50	3.2	1.8 - 5.6	1,100	96.8	94.4 - 98.2	1,100
Normal birth weight	700	4.2	3.6 - 4.9	15,000	95.8	95.1 - 96.4	15,700

Smoke 3rd Trimester	Yes			No			Weighted Total Responses (3-Yr Avg)
	#	%	C.I.(95%)	#	%	C.I.(95%)	#
Yes	100	7.5	5.3 - 10.6	1,400	92.5	89.4 - 94.7	1,500
No	600	3.8	3.2 - 4.4	14,600	96.2	95.6 - 96.8	15,100

**PRAMS Health Indicator 3-Year Aggregate Report - Drinking alcohol last 3 months of pregnancy- by State;County;DOH Race-Ethnicity;PRAMS Age Group;Infant Gender;Married;Poverty Level;Income (2000-2003);Income (2004-2011);Birthweight;Smoke 3rd Trimester;Smoke Before Pregnant;WIC During Pregnancy, for the Year(s)
2000-2002;2001-2003;2002-2004;2003-2005;2004-2006;2005-2007;2006-2008;2007-2009;2008-2010;2009-2011;2010-2012;2011-2013**

Note: Weighted counts (#) represent 3-yr averages, rounded to the nearest hundred; n/r (Not Reportable) - If the unweighted total responses for a dimension (row) is <30 that row will not be shown

Years: 2001-2003

Smoke Before Pregnant	Yes			No			Weighted Total Responses (3-Yr Avg)
	#	%	C.I.(95%)	#	%	C.I.(95%)	#
Yes	200	5.3	4.1 - 6.9	3,200	94.7	93.1 - 95.9	3,400
No	500	3.8	3.2 - 4.5	12,600	96.2	95.5 - 96.8	13,100

WIC During Pregnancy	Yes			No			Weighted Total Responses (3-Yr Avg)
	#	%	C.I.(95%)	#	%	C.I.(95%)	#
Yes	200	3.2	2.5 - 4.1	6,900	96.8	95.9 - 97.5	7,100
No	500	4.8	4.0 - 5.8	9,200	95.2	94.2 - 96.0	9,600

**PRAMS Health Indicator 3-Year Aggregate Report - Drinking alcohol last 3 months of pregnancy- by State;County;DOH Race-Ethnicity;PRAMS Age Group;Infant Gender;Married;Poverty Level;Income (2000-2003);Income (2004-2011);Birthweight;Smoke 3rd Trimester;Smoke Before Pregnant;WIC During Pregnancy, for the Year(s)
2000-2002;2001-2003;2002-2004;2003-2005;2004-2006;2005-2007;2006-2008;2007-2009;2008-2010;2009-2011;2010-2012;2011-2013**

Note: Weighted counts (#) represent 3-yr averages, rounded to the nearest hundred; n/r (Not Reportable) - If the unweighted total responses for a dimension (row) is <30 that row will not be shown

Years: 2000-2002

State	Yes			No			Weighted Total Responses (3-Yr Avg)
	#	%	C.I.(95%)	#	%	C.I.(95%)	#
Totals	700	4.3	3.8 - 4.9	15,900	95.7	95.1 - 96.2	16,600

County	Yes			No			Weighted Total Responses (3-Yr Avg)
	#	%	C.I.(95%)	#	%	C.I.(95%)	#
Hawaii	100	4.4	3.4 - 5.6	1,800	95.6	94.4 - 96.6	1,900
Honolulu	500	3.9	3.3 - 4.6	11,800	96.1	95.4 - 96.7	12,300
Kauai	<50	6.5	4.6 - 9.1	700	93.5	90.9 - 95.4	700
Maui	100	6.1	4.8 - 7.7	1,600	93.9	92.3 - 95.2	1,700

**PRAMS Health Indicator 3-Year Aggregate Report - Drinking alcohol last 3 months of pregnancy- by State;County;DOH Race-Ethnicity;PRAMS Age Group;Infant Gender;Married;Poverty Level;Income (2000-2003);Income (2004-2011);Birthweight;Smoke 3rd Trimester;Smoke Before Pregnant;WIC During Pregnancy, for the Year(s)
2000-2002;2001-2003;2002-2004;2003-2005;2004-2006;2005-2007;2006-2008;2007-2009;2008-2010;2009-2011;2010-2012;2011-2013**

Note: Weighted counts (#) represent 3-yr averages, rounded to the nearest hundred; n/r (Not Reportable) - If the unweighted total responses for a dimension (row) is <30 that row will not be shown

Years: 2000-2002

DOH Race-Ethnicity	Yes			No			Weighted Total Responses (3-Yr Avg)
	#	%	C.I.(95%)	#	%	C.I.(95%)	#
Caucasian	300	9.0	7.3 - 10.9	3,300	91.0	89.1 - 92.7	3,700
Native Hawaiian	200	3.6	3.1 - 4.2	4,300	96.4	95.8 - 96.9	4,500
Chinese	<50	3.3	1.4 - 7.5	600	96.7	92.5 - 98.6	700
Filipino	100	1.9	1.2 - 3.1	3,300	98.1	96.9 - 98.8	3,400
Japanese	<50	1.7	0.9 - 3.1	2,100	98.3	96.9 - 99.1	2,100
Other	100	4.4	3.0 - 6.4	2,200	95.6	93.6 - 97.0	2,300

PRAMS Age Group	Yes			No			Weighted Total Responses (3-Yr Avg)
	#	%	C.I.(95%)	#	%	C.I.(95%)	#
<20	<50	1.9	1.1 - 3.2	1,600	98.1	96.8 - 98.9	1,600
20-24	100	3.3	2.5 - 4.4	4,000	96.7	95.6 - 97.5	4,200
25-34	400	4.9	4.1 - 5.8	7,700	95.1	94.2 - 95.9	8,100
35+	100	5.4	4.1 - 7.2	2,600	94.6	92.8 - 95.9	2,800

**PRAMS Health Indicator 3-Year Aggregate Report - Drinking alcohol last 3 months of pregnancy- by State;County;DOH Race-Ethnicity;PRAMS Age Group;Infant Gender;Married;Poverty Level;Income (2000-2003);Income (2004-2011);Birthweight;Smoke 3rd Trimester;Smoke Before Pregnant;WIC During Pregnancy, for the Year(s)
2000-2002;2001-2003;2002-2004;2003-2005;2004-2006;2005-2007;2006-2008;2007-2009;2008-2010;2009-2011;2010-2012;2011-2013**

Note: Weighted counts (#) represent 3-yr averages, rounded to the nearest hundred; n/r (Not Reportable) - If the unweighted total responses for a dimension (row) is <30 that row will not be shown

Years: 2000-2002

	Yes			No			Weighted Total Responses (3-Yr Avg)
	#	%	C.I.(95%)	#	%	C.I.(95%)	#
Infant Gender							
Male	400	4.2	3.5 - 5.1	8,100	95.8	94.9 - 96.5	8,400
Female	400	4.4	3.6 - 5.2	7,800	95.6	94.8 - 96.4	8,200

	Yes			No			Weighted Total Responses (3-Yr Avg)
	#	%	C.I.(95%)	#	%	C.I.(95%)	#
Married							
Yes	500	4.5	3.8 - 5.3	10,800	95.5	94.7 - 96.2	11,300
No	200	3.9	3.1 - 4.8	5,100	96.1	95.2 - 96.9	5,300

	Yes			No			Weighted Total Responses (3-Yr Avg)
	#	%	C.I.(95%)	#	%	C.I.(95%)	#
Poverty Level							
0-130%	200	3.0	2.4 - 3.8	6,400	97.0	96.2 - 97.6	6,600
131-185%	100	4.6	3.4 - 6.1	2,900	95.4	93.9 - 96.6	3,100
186+%	300	5.9	4.8 - 7.2	5,300	94.1	92.8 - 95.2	5,600

**PRAMS Health Indicator 3-Year Aggregate Report - Drinking alcohol last 3 months of pregnancy- by State;County;DOH Race-Ethnicity;PRAMS Age Group;Infant Gender;Married;Poverty Level;Income (2000-2003);Income (2004-2011);Birthweight;Smoke 3rd Trimester;Smoke Before Pregnant;WIC During Pregnancy, for the Year(s)
2000-2002;2001-2003;2002-2004;2003-2005;2004-2006;2005-2007;2006-2008;2007-2009;2008-2010;2009-2011;2010-2012;2011-2013**

Note: Weighted counts (#) represent 3-yr averages, rounded to the nearest hundred; n/r (Not Reportable) - If the unweighted total responses for a dimension (row) is <30 that row will not be shown

Years: 2000-2002

Income (2000-2003)	Yes			No			Weighted Total Responses (3-Yr Avg)
	#	%	C.I.(95%)	#	%	C.I.(95%)	#
<=\$15,000	100	3.5	2.7 - 4.6	3,400	96.5	95.4 - 97.3	3,500
\$15,001-\$25,000	100	2.4	1.6 - 3.5	2,400	97.6	96.5 - 98.4	2,500
\$25,001-\$40,000	200	4.6	3.5 - 6.0	3,300	95.4	94.0 - 96.5	3,400
>=\$40,001	300	5.5	4.5 - 6.6	5,900	94.5	93.4 - 95.5	6,300

Birthweight	Yes			No			Weighted Total Responses (3-Yr Avg)
	#	%	C.I.(95%)	#	%	C.I.(95%)	#
Low birth weight	<50	3.5	2.2 - 5.3	1,000	96.5	94.7 - 97.8	1,100
Normal birth weight	700	4.3	3.8 - 5.0	14,800	95.7	95.0 - 96.2	15,500

Smoke 3rd Trimester	Yes			No			Weighted Total Responses (3-Yr Avg)
	#	%	C.I.(95%)	#	%	C.I.(95%)	#
Yes	100	7.9	5.8 - 10.7	1,300	92.1	89.3 - 94.2	1,400
No	600	3.9	3.4 - 4.5	14,400	96.1	95.5 - 96.6	15,000

**PRAMS Health Indicator 3-Year Aggregate Report - Drinking alcohol last 3 months of pregnancy- by State;County;DOH Race-Ethnicity;PRAMS Age Group;Infant Gender;Married;Poverty Level;Income (2000-2003);Income (2004-2011);Birthweight;Smoke 3rd Trimester;Smoke Before Pregnant;WIC During Pregnancy, for the Year(s)
2000-2002;2001-2003;2002-2004;2003-2005;2004-2006;2005-2007;2006-2008;2007-2009;2008-2010;2009-2011;2010-2012;2011-2013**

Note: Weighted counts (#) represent 3-yr averages, rounded to the nearest hundred; n/r (Not Reportable) - If the unweighted total responses for a dimension (row) is <30 that row will not be shown

Years: 2000-2002

Smoke Before Pregnant	Yes			No			Weighted Total Responses (3-Yr Avg)
	#	%	C.I.(95%)	#	%	C.I.(95%)	#
Yes	200	5.7	4.5 - 7.3	3,100	94.3	92.7 - 95.5	3,300
No	500	3.8	3.2 - 4.4	12,500	96.2	95.6 - 96.8	12,900

WIC During Pregnancy	Yes			No			Weighted Total Responses (3-Yr Avg)
	#	%	C.I.(95%)	#	%	C.I.(95%)	#
Yes	300	3.5	2.9 - 4.4	6,900	96.5	95.6 - 97.1	7,100
No	500	4.9	4.2 - 5.7	9,000	95.1	94.3 - 95.8	9,400