

PRAMS Health Indicator 3-Year Aggregate Report - Breastfeeding (any) duration 8+ weeks- for the State of Hawaii, for the Year(s) 2000-2002;2001-2003;2002-2004;2003-2005;2004-2006;2005-2007;2006-2008;2007-2009;2008-2010;2009-2011;2010-2012;2011-2013

PRAMS Health Indicator 3-Year Aggregate Report - Breastfeeding (any) duration 8+ weeks- by State;County;DOH Race-Ethnicity;PRAMS Age Group;Infant Gender;Married;Poverty Level;Income (2000-2003);Income (2004-2011);Birthweight;Smoke 3rd Trimester;Smoke Before Pregnant;WIC During Pregnancy, for the Year(s) 2000-2002;2001-2003;2002-2004;2003-2005;2004-2006;2005-2007;2006-2008;2007-2009;2008-2010;2009-2011;2010-2012;2011-2013

Note: Weighted counts (#) represent 3-yr averages, rounded to the nearest hundred; n/r (Not Reportable) - If the unweighted total responses for a dimension (row) is <30 that row will not be shown

The trend analysis section shows the trend for the selected health variable over selected years in a table and a graph. 3-Year Weighted Total Responses: This number is a weighted representation of the mothers of babies delivered in a given year, who responded to a particular question in the survey. For most questions this will be the mothers of all babies delivered in a given year. For some secondary questions only a subset of the population was asked the question. For example, all survey participants were asked if they smoked during pregnancy, but only those who answered yes were asked how many cigarettes a day. If a dimension value is unknown for a particular survey record, that record will not be included in the counts for that particular dimension.

Note: Data collection for household income changed in 2004 and again in 2012. Because of this, income data does not exist for some 3-year aggregate periods.

Below are the indicators included in this report and the long description for each indicator.

PRAMS Health Indicator	Health Indicator Description
Breastfeeding (any) duration 8+ weeks	Breastfeeding (any) duration 8+ weeks

Suggested citation:

Hawaii Health Data Warehouse, Hawaii State Department of Health, Pregnancy Risk Assessment Monitoring System, (report title and years), Report Created: 2/16/17

For documentation on other terms and coding in this report, please go to the following links:

[Click here to access PRAMS documentation](#)

[Click here to access DOH-Race Ethnicity coding](#)

[Click here to access The Hawai'i Data Guide](#)

**For questions about this report, please contact
The Hawai'i Health Data Warehouse**

profiles@hhdw.org

(855) 946-5899 x15

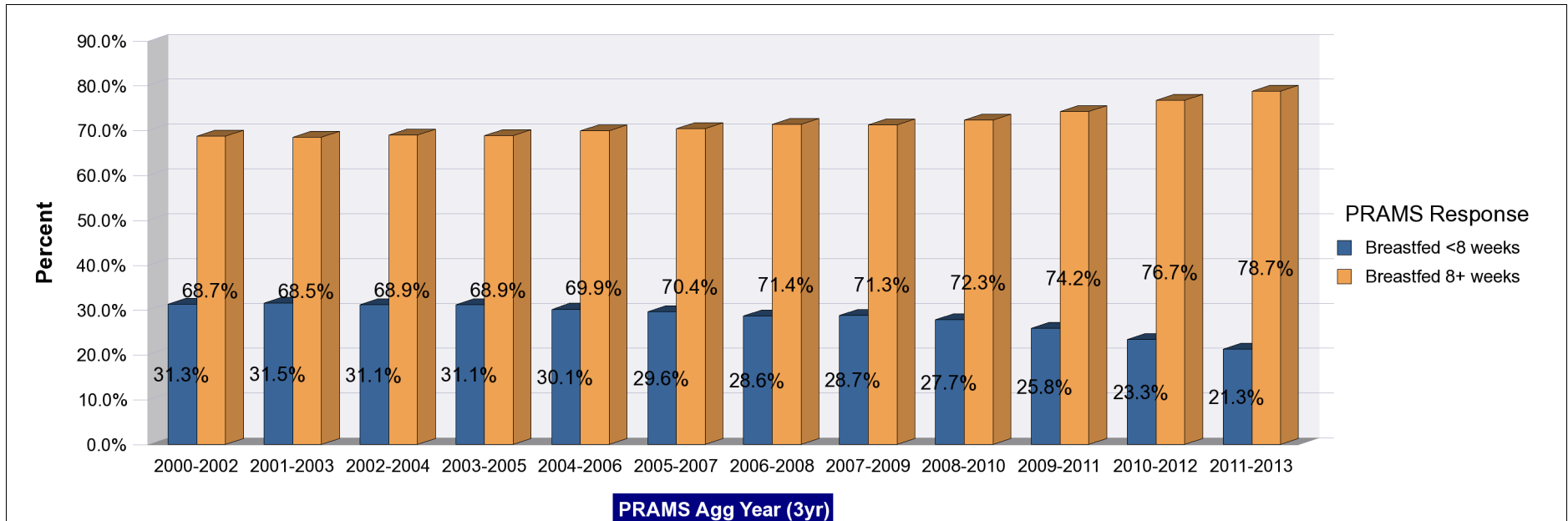
PRAMS Health Indicator 3-Year Aggregate Report - Breastfeeding (any) duration 8+ weeks- for the State of Hawaii, for the Year(s) 2000-2002;2001-2003;2002-2004;2003-2005;2004-2006;2005-2007;2006-2008;2007-2009;2008-2010;2009-2011;2010-2012;2011-2013

Note: Weighted counts (#) represent 3-yr averages, rounded to the nearest hundred; n/r (Not Reportable) - If the unweighted total responses for a dimension (row) is <30 that row will not be shown

Years	Breastfed <8 weeks			Breastfed 8+ weeks			Weighted Total Responses (3-Yr Avg)
	#	%	C.I.(95%)	#	%	C.I.(95%)	#
2000-2002	5,000	31.3	30.0 - 32.6	10,900	68.7	67.4 - 70.0	15,800
2001-2003	5,100	31.5	30.1 - 33.0	11,000	68.5	67.0 - 69.9	16,100
2002-2004	5,200	31.1	29.7 - 32.5	11,500	68.9	67.5 - 70.3	16,600
2003-2005	5,300	31.1	29.8 - 32.5	11,700	68.9	67.5 - 70.2	17,000
2004-2006	5,200	30.1	28.9 - 31.4	12,100	69.9	68.6 - 71.1	17,400
2005-2007	5,200	29.6	28.4 - 30.9	12,400	70.4	69.1 - 71.6	17,600
2006-2008	5,100	28.6	27.3 - 29.9	12,800	71.4	70.1 - 72.7	17,900
2007-2009	5,200	28.7	27.3 - 30.2	12,800	71.3	69.8 - 72.7	18,000
2008-2010	5,000	27.7	26.2 - 29.3	13,100	72.3	70.7 - 73.8	18,100
2009-2011	4,700	25.8	24.2 - 27.5	13,500	74.2	72.5 - 75.8	18,200
2010-2012	4,300	23.3	21.8 - 25.0	14,000	76.7	75.0 - 78.2	18,300
2011-2013	3,900	21.3	19.7 - 22.9	14,300	78.7	77.1 - 80.3	18,200

PRAMS Health Indicator 3-Year Aggregate Report - Breastfeeding (any) duration 8+ weeks- for the State of Hawaii, for the Year(s) 2000-2002;2001-2003;2002-2004;2003-2005;2004-2006;2005-2007;2006-2008;2007-2009;2008-2010;2009-2011;2010-2012;2011-2013

Note: Weighted counts (#) represent 3-yr averages, rounded to the nearest hundred; n/r (Not Reportable) - If the unweighted total responses for a dimension (row) is <30 that row will not be shown



PRAMS Health Indicator 3-Year Aggregate Report - Breastfeeding (any) duration 8+ weeks- by State;County;DOH Race-Ethnicity;PRAMS Age Group;Infant Gender;Married;Poverty Level;Income (2000-2003);Income (2004-2011);Birthweight;Smoke 3rd Trimester;Smoke Before Pregnant;WIC During Pregnancy, for the Year(s) 2000-2002;2001-2003;2002-2004;2003-2005;2004-2006;2005-2007;2006-2008;2007-2009;2008-2010;2009-2011;2010-2012;2011-2013

Note: Weighted counts (#) represent 3-yr averages, rounded to the nearest hundred; n/r (Not Reportable) - If the unweighted total responses for a dimension (row) is <30 that row will not be shown

Years: 2011-2013

State	Breastfed <8 weeks			Breastfed 8+ weeks			Weighted Total Responses (3-Yr Avg)
	#	%	C.I.(95%)	#	%	C.I.(95%)	#
Totals	3,900	21.3	19.7 - 22.9	14,300	78.7	77.1 - 80.3	18,200

County	Breastfed <8 weeks			Breastfed 8+ weeks			Weighted Total Responses (3-Yr Avg)
	#	%	C.I.(95%)	#	%	C.I.(95%)	#
Hawaii	500	22.6	20.1 - 25.3	1,800	77.4	74.7 - 79.9	2,300
Honolulu	2,800	21.2	19.1 - 23.4	10,300	78.8	76.6 - 80.9	13,100
Kauai	200	18.5	15.9 - 21.4	700	81.5	78.6 - 84.1	800
Maui	400	21.5	19.1 - 24.0	1,500	78.5	76.0 - 80.9	1,900

PRAMS Health Indicator 3-Year Aggregate Report - Breastfeeding (any) duration 8+ weeks- by State;County;DOH Race-Ethnicity;PRAMS Age Group;Infant Gender;Married;Poverty Level;Income (2000-2003);Income (2004-2011);Birthweight;Smoke 3rd Trimester;Smoke Before Pregnant;WIC During Pregnancy, for the Year(s) 2000-2002;2001-2003;2002-2004;2003-2005;2004-2006;2005-2007;2006-2008;2007-2009;2008-2010;2009-2011;2010-2012;2011-2013

Note: Weighted counts (#) represent 3-yr averages, rounded to the nearest hundred; n/r (Not Reportable) - If the unweighted total responses for a dimension (row) is <30 that row will not be shown

Years: 2011-2013

DOH Race-Ethnicity	Breastfed <8 weeks			Breastfed 8+ weeks			Weighted Total Responses (3-Yr Avg)
	#	%	C.I.(95%)	#	%	C.I.(95%)	#
Caucasian	800	17.2	14.3 - 20.5	3,700	82.8	79.5 - 85.7	4,500
Native Hawaiian	1,500	28.5	25.5 - 31.8	3,700	71.5	68.2 - 74.5	5,200
Chinese	200	18.7	12.5 - 26.9	700	81.3	73.1 - 87.5	900
Filipino	800	24.7	21.0 - 28.8	2,300	75.3	71.2 - 79.0	3,100
Japanese	200	9.2	6.2 - 13.4	1,600	90.8	86.6 - 93.8	1,700
Other	500	18.7	15.0 - 23.2	2,200	81.3	76.8 - 85.0	2,700

PRAMS Age Group	Breastfed <8 weeks			Breastfed 8+ weeks			Weighted Total Responses (3-Yr Avg)
	#	%	C.I.(95%)	#	%	C.I.(95%)	#
<20	400	40.0	32.5 - 48.1	600	60.0	51.9 - 67.5	1,000
20-24	1,000	23.9	20.6 - 27.7	3,100	76.1	72.3 - 79.4	4,000
25-34	2,000	20.3	18.3 - 22.6	7,900	79.7	77.4 - 81.7	9,900
35+	500	15.4	12.6 - 18.7	2,800	84.6	81.3 - 87.4	3,300

PRAMS Health Indicator 3-Year Aggregate Report - Breastfeeding (any) duration 8+ weeks- by State;County;DOH Race-Ethnicity;PRAMS Age Group;Infant Gender;Married;Poverty Level;Income (2000-2003);Income (2004-2011);Birthweight;Smoke 3rd Trimester;Smoke Before Pregnant;WIC During Pregnancy, for the Year(s) 2000-2002;2001-2003;2002-2004;2003-2005;2004-2006;2005-2007;2006-2008;2007-2009;2008-2010;2009-2011;2010-2012;2011-2013

Note: Weighted counts (#) represent 3-yr averages, rounded to the nearest hundred; n/r (Not Reportable) - If the unweighted total responses for a dimension (row) is <30 that row will not be shown

Years: 2011-2013

Infant Gender	Breastfed <8 weeks			Breastfed 8+ weeks			Weighted Total Responses (3-Yr Avg)
	#	%	C.I.(95%)	#	%	C.I.(95%)	#
Male	1,900	21.1	18.9 - 23.4	7,200	78.9	76.6 - 81.1	9,100
Female	2,000	21.5	19.3 - 23.8	7,200	78.5	76.2 - 80.7	9,100

Married	Breastfed <8 weeks			Breastfed 8+ weeks			Weighted Total Responses (3-Yr Avg)
	#	%	C.I.(95%)	#	%	C.I.(95%)	#
Yes	2,100	18.2	16.4 - 20.2	9,300	81.8	79.8 - 83.6	11,400
No	1,800	26.4	23.8 - 29.2	5,000	73.6	70.8 - 76.2	6,800

Poverty Level	Breastfed <8 weeks			Breastfed 8+ weeks			Weighted Total Responses (3-Yr Avg)
	#	%	C.I.(95%)	#	%	C.I.(95%)	#
0-130%	1,800	27.4	24.7 - 30.3	4,700	72.6	69.7 - 75.3	6,500
131-185%	600	23.2	19.1 - 27.8	2,100	76.8	72.2 - 80.9	2,700
186+%	1,100	14.7	12.6 - 17.0	6,300	85.3	83.0 - 87.4	7,400

PRAMS Health Indicator 3-Year Aggregate Report - Breastfeeding (any) duration 8+ weeks- by State;County;DOH Race-Ethnicity;PRAMS Age Group;Infant Gender;Married;Poverty Level;Income (2000-2003);Income (2004-2011);Birthweight;Smoke 3rd Trimester;Smoke Before Pregnant;WIC During Pregnancy, for the Year(s) 2000-2002;2001-2003;2002-2004;2003-2005;2004-2006;2005-2007;2006-2008;2007-2009;2008-2010;2009-2011;2010-2012;2011-2013

Note: Weighted counts (#) represent 3-yr averages, rounded to the nearest hundred; n/r (Not Reportable) - If the unweighted total responses for a dimension (row) is <30 that row will not be shown

Years: 2011-2013

Birthweight	Breastfed <8 weeks			Breastfed 8+ weeks			Weighted Total Responses (3-Yr Avg)
	#	%	C.I.(95%)	#	%	C.I.(95%)	#
Low birth weight	300	25.1	22.5 - 28.0	900	74.9	72.0 - 77.5	1,200
Normal birth weight	3,600	21.0	19.4 - 22.7	13,400	79.0	77.3 - 80.6	16,900

Smoke 3rd Trimester	Breastfed <8 weeks			Breastfed 8+ weeks			Weighted Total Responses (3-Yr Avg)
	#	%	C.I.(95%)	#	%	C.I.(95%)	#
Yes	400	43.1	35.2 - 51.3	500	56.9	48.7 - 64.8	800
No	3,400	20.2	18.6 - 21.9	13,500	79.8	78.1 - 81.4	16,900

Smoke Before Pregnant	Breastfed <8 weeks			Breastfed 8+ weeks			Weighted Total Responses (3-Yr Avg)
	#	%	C.I.(95%)	#	%	C.I.(95%)	#
Yes	1,000	31.2	27.1 - 35.5	2,200	68.8	64.5 - 72.9	3,200
No	2,800	19.2	17.5 - 20.9	11,800	80.8	79.1 - 82.5	14,600

**PRAMS Health Indicator 3-Year Aggregate Report - Breastfeeding (any) duration 8+ weeks- by State;County;DOH Race-Ethnicity;PRAMS Age Group;Infant Gender;Married;Poverty Level;Income (2000-2003);Income (2004-2011);Birthweight;Smoke 3rd Trimester;Smoke Before Pregnant;WIC During Pregnancy, for the Year(s)
2000-2002;2001-2003;2002-2004;2003-2005;2004-2006;2005-2007;2006-2008;2007-2009;2008-2010;2009-2011;2010-2012;2011-2013**

Note: Weighted counts (#) represent 3-yr averages, rounded to the nearest hundred; n/r (Not Reportable) - If the unweighted total responses for a dimension (row) is <30 that row will not be shown

Years: 2011-2013

WIC During Pregnancy	Breastfed <8 weeks			Breastfed 8+ weeks			Weighted Total Responses (3-Yr Avg)
	#	%	C.I.(95%)	#	%	C.I.(95%)	#
Yes	2,300	28.1	25.6 - 30.7	5,800	71.9	69.3 - 74.4	8,100
No	1,500	15.5	13.7 - 17.5	8,400	84.5	82.5 - 86.3	10,000

**PRAMS Health Indicator 3-Year Aggregate Report - Breastfeeding (any) duration 8+ weeks- by State;County;DOH Race-Ethnicity;PRAMS Age Group;Infant Gender;Married;Poverty Level;Income (2000-2003);Income (2004-2011);Birthweight;Smoke 3rd Trimester;Smoke Before Pregnant;WIC During Pregnancy, for the Year(s)
2000-2002;2001-2003;2002-2004;2003-2005;2004-2006;2005-2007;2006-2008;2007-2009;2008-2010;2009-2011;2010-2012;2011-2013**

Note: Weighted counts (#) represent 3-yr averages, rounded to the nearest hundred; n/r (Not Reportable) - If the unweighted total responses for a dimension (row) is <30 that row will not be shown

Years: 2010-2012

State	Breastfed <8 weeks			Breastfed 8+ weeks			Weighted Total Responses (3-Yr Avg)
	#	%	C.I.(95%)	#	%	C.I.(95%)	#
Totals	4,300	23.3	21.8 - 25.0	14,000	76.7	75.0 - 78.2	18,300

County	Breastfed <8 weeks			Breastfed 8+ weeks			Weighted Total Responses (3-Yr Avg)
	#	%	C.I.(95%)	#	%	C.I.(95%)	#
Hawaii	600	24.6	22.1 - 27.3	1,700	75.4	72.7 - 77.9	2,300
Honolulu	3,100	23.6	21.5 - 25.8	10,100	76.4	74.2 - 78.5	13,200
Kauai	100	17.6	15.0 - 20.5	700	82.4	79.5 - 85.0	800
Maui	400	22.4	20.1 - 24.8	1,500	77.6	75.2 - 79.9	1,900

PRAMS Health Indicator 3-Year Aggregate Report - Breastfeeding (any) duration 8+ weeks- by State;County;DOH Race-Ethnicity;PRAMS Age Group;Infant Gender;Married;Poverty Level;Income (2000-2003);Income (2004-2011);Birthweight;Smoke 3rd Trimester;Smoke Before Pregnant;WIC During Pregnancy, for the Year(s) 2000-2002;2001-2003;2002-2004;2003-2005;2004-2006;2005-2007;2006-2008;2007-2009;2008-2010;2009-2011;2010-2012;2011-2013

Note: Weighted counts (#) represent 3-yr averages, rounded to the nearest hundred; n/r (Not Reportable) - If the unweighted total responses for a dimension (row) is <30 that row will not be shown

Years: 2010-2012

DOH Race-Ethnicity	Breastfed <8 weeks			Breastfed 8+ weeks			Weighted Total Responses (3-Yr Avg)
	#	%	C.I.(95%)	#	%	C.I.(95%)	#
Caucasian	900	20.4	17.4 - 23.9	3,500	79.6	76.1 - 82.6	4,400
Native Hawaiian	1,500	28.8	25.8 - 32.0	3,700	71.2	68.0 - 74.2	5,300
Chinese	100	16.3	10.5 - 24.3	700	83.7	75.7 - 89.5	800
Filipino	900	28.4	24.6 - 32.5	2,300	71.6	67.5 - 75.4	3,300
Japanese	200	9.9	6.9 - 14.1	1,500	90.1	85.9 - 93.1	1,700
Other	600	22.0	18.0 - 26.6	2,200	78.0	73.4 - 82.0	2,800

PRAMS Age Group	Breastfed <8 weeks			Breastfed 8+ weeks			Weighted Total Responses (3-Yr Avg)
	#	%	C.I.(95%)	#	%	C.I.(95%)	#
<20	500	43.4	36.1 - 51.0	600	56.6	49.0 - 63.9	1,100
20-24	1,200	28.3	24.9 - 32.1	3,000	71.7	67.9 - 75.1	4,200
25-34	2,100	21.4	19.3 - 23.6	7,700	78.6	76.4 - 80.7	9,800
35+	500	16.3	13.4 - 19.7	2,700	83.7	80.3 - 86.6	3,200

PRAMS Health Indicator 3-Year Aggregate Report - Breastfeeding (any) duration 8+ weeks- by State;County;DOH Race-Ethnicity;PRAMS Age Group;Infant Gender;Married;Poverty Level;Income (2000-2003);Income (2004-2011);Birthweight;Smoke 3rd Trimester;Smoke Before Pregnant;WIC During Pregnancy, for the Year(s) 2000-2002;2001-2003;2002-2004;2003-2005;2004-2006;2005-2007;2006-2008;2007-2009;2008-2010;2009-2011;2010-2012;2011-2013

Note: Weighted counts (#) represent 3-yr averages, rounded to the nearest hundred; n/r (Not Reportable) - If the unweighted total responses for a dimension (row) is <30 that row will not be shown

Years: 2010-2012

Infant Gender	Breastfed <8 weeks			Breastfed 8+ weeks			Weighted Total Responses (3-Yr Avg)
	#	%	C.I.(95%)	#	%	C.I.(95%)	#
Male	2,200	23.8	21.6 - 26.2	7,000	76.2	73.8 - 78.4	9,200
Female	2,100	22.9	20.7 - 25.2	7,000	77.1	74.8 - 79.3	9,100

Married	Breastfed <8 weeks			Breastfed 8+ weeks			Weighted Total Responses (3-Yr Avg)
	#	%	C.I.(95%)	#	%	C.I.(95%)	#
Yes	2,200	19.5	17.6 - 21.5	9,100	80.5	78.5 - 82.4	11,400
No	2,000	29.7	27.0 - 32.5	4,800	70.3	67.5 - 73.0	6,900

Poverty Level	Breastfed <8 weeks			Breastfed 8+ weeks			Weighted Total Responses (3-Yr Avg)
	#	%	C.I.(95%)	#	%	C.I.(95%)	#
0-130%	1,900	29.2	26.4 - 32.1	4,500	70.8	67.9 - 73.6	6,400
131-185%	700	25.3	21.2 - 29.8	2,200	74.7	70.2 - 78.8	2,900
186+%	1,200	16.4	14.2 - 18.7	6,300	83.6	81.3 - 85.8	7,600

**PRAMS Health Indicator 3-Year Aggregate Report - Breastfeeding (any) duration 8+ weeks- by State;County;DOH Race-Ethnicity;PRAMS Age Group;Infant Gender;Married;Poverty Level;Income (2000-2003);Income (2004-2011);Birthweight;Smoke 3rd Trimester;Smoke Before Pregnant;WIC During Pregnancy, for the Year(s)
2000-2002;2001-2003;2002-2004;2003-2005;2004-2006;2005-2007;2006-2008;2007-2009;2008-2010;2009-2011;2010-2012;2011-2013**

Note: Weighted counts (#) represent 3-yr averages, rounded to the nearest hundred; n/r (Not Reportable) - If the unweighted total responses for a dimension (row) is <30 that row will not be shown

Years: 2010-2012

	Breastfed <8 weeks			Breastfed 8+ weeks			Weighted Total Responses (3-Yr Avg)
	#	%	C.I.(95%)	#	%	C.I.(95%)	#
Birthweight							
Low birth weight	300	27.5	24.6 - 30.5	900	72.5	69.5 - 75.4	1,200
Normal birth weight	3,900	23.0	21.4 - 24.8	13,100	77.0	75.2 - 78.6	17,000

	Breastfed <8 weeks			Breastfed 8+ weeks			Weighted Total Responses (3-Yr Avg)
	#	%	C.I.(95%)	#	%	C.I.(95%)	#
Smoke 3rd Trimester							
Yes	500	46.2	38.6 - 54.0	500	53.8	46.0 - 61.4	1,000
No	3,700	22.0	20.4 - 23.7	13,200	78.0	76.3 - 79.6	16,900

	Breastfed <8 weeks			Breastfed 8+ weeks			Weighted Total Responses (3-Yr Avg)
	#	%	C.I.(95%)	#	%	C.I.(95%)	#
Smoke Before Pregnant							
Yes	1,200	35.5	31.5 - 39.7	2,200	64.5	60.3 - 68.5	3,400
No	3,000	20.6	18.9 - 22.4	11,600	79.4	77.6 - 81.1	14,600

PRAMS Health Indicator 3-Year Aggregate Report - Breastfeeding (any) duration 8+ weeks- by State;County;DOH Race-Ethnicity;PRAMS Age Group;Infant Gender;Married;Poverty Level;Income (2000-2003);Income (2004-2011);Birthweight;Smoke 3rd Trimester;Smoke Before Pregnant;WIC During Pregnancy, for the Year(s) 2000-2002;2001-2003;2002-2004;2003-2005;2004-2006;2005-2007;2006-2008;2007-2009;2008-2010;2009-2011;2010-2012;2011-2013

Note: Weighted counts (#) represent 3-yr averages, rounded to the nearest hundred; n/r (Not Reportable) - If the unweighted total responses for a dimension (row) is <30 that row will not be shown

Years: 2010-2012

WIC During Pregnancy	Breastfed <8 weeks			Breastfed 8+ weeks			Weighted Total Responses (3-Yr Avg)
	#	%	C.I.(95%)	#	%	C.I.(95%)	#
Yes	2,400	29.6	27.1 - 32.2	5,700	70.4	67.8 - 72.9	8,100
No	1,800	18.0	16.1 - 20.1	8,200	82.0	79.9 - 83.9	9,900

**PRAMS Health Indicator 3-Year Aggregate Report - Breastfeeding (any) duration 8+ weeks- by State;County;DOH Race-Ethnicity;PRAMS Age Group;Infant Gender;Married;Poverty Level;Income (2000-2003);Income (2004-2011);Birthweight;Smoke 3rd Trimester;Smoke Before Pregnant;WIC During Pregnancy, for the Year(s)
2000-2002;2001-2003;2002-2004;2003-2005;2004-2006;2005-2007;2006-2008;2007-2009;2008-2010;2009-2011;2010-2012;2011-2013**

Note: Weighted counts (#) represent 3-yr averages, rounded to the nearest hundred; n/r (Not Reportable) - If the unweighted total responses for a dimension (row) is <30 that row will not be shown

Years: 2009-2011

State	Breastfed <8 weeks			Breastfed 8+ weeks			Weighted Total Responses (3-Yr Avg)
	#	%	C.I.(95%)	#	%	C.I.(95%)	#
Totals	4,700	25.8	24.2 - 27.5	13,500	74.2	72.5 - 75.8	18,200

County	Breastfed <8 weeks			Breastfed 8+ weeks			Weighted Total Responses (3-Yr Avg)
	#	%	C.I.(95%)	#	%	C.I.(95%)	#
Hawaii	600	27.7	25.1 - 30.4	1,700	72.3	69.6 - 74.9	2,300
Honolulu	3,400	26.2	24.1 - 28.5	9,600	73.8	71.5 - 75.9	13,000
Kauai	200	18.9	16.3 - 21.8	700	81.1	78.2 - 83.7	800
Maui	500	24.1	21.8 - 26.5	1,500	75.9	73.5 - 78.2	2,000

PRAMS Health Indicator 3-Year Aggregate Report - Breastfeeding (any) duration 8+ weeks- by State;County;DOH Race-Ethnicity;PRAMS Age Group;Infant Gender;Married;Poverty Level;Income (2000-2003);Income (2004-2011);Birthweight;Smoke 3rd Trimester;Smoke Before Pregnant;WIC During Pregnancy, for the Year(s) 2000-2002;2001-2003;2002-2004;2003-2005;2004-2006;2005-2007;2006-2008;2007-2009;2008-2010;2009-2011;2010-2012;2011-2013

Note: Weighted counts (#) represent 3-yr averages, rounded to the nearest hundred; n/r (Not Reportable) - If the unweighted total responses for a dimension (row) is <30 that row will not be shown

Years: 2009-2011

DOH Race-Ethnicity	Breastfed <8 weeks			Breastfed 8+ weeks			Weighted Total Responses (3-Yr Avg)
	#	%	C.I.(95%)	#	%	C.I.(95%)	#
Caucasian	900	21.3	18.2 - 24.7	3,500	78.7	75.3 - 81.8	4,400
Native Hawaiian	1,800	32.2	29.2 - 35.3	3,700	67.8	64.7 - 70.8	5,500
Chinese	100	17.0	10.9 - 25.7	600	83.0	74.3 - 89.1	700
Filipino	1,000	29.6	25.9 - 33.7	2,300	70.4	66.3 - 74.1	3,200
Japanese	200	12.4	8.9 - 17.0	1,500	87.6	83.0 - 91.1	1,700
Other	700	26.8	22.4 - 31.8	1,900	73.2	68.2 - 77.6	2,600

PRAMS Age Group	Breastfed <8 weeks			Breastfed 8+ weeks			Weighted Total Responses (3-Yr Avg)
	#	%	C.I.(95%)	#	%	C.I.(95%)	#
<20	600	46.0	39.3 - 52.8	700	54.0	47.2 - 60.7	1,300
20-24	1,300	31.0	27.5 - 34.7	3,000	69.0	65.3 - 72.5	4,300
25-34	2,200	23.0	20.9 - 25.3	7,200	77.0	74.7 - 79.1	9,400
35+	600	18.8	15.6 - 22.4	2,600	81.2	77.6 - 84.4	3,200

**PRAMS Health Indicator 3-Year Aggregate Report - Breastfeeding (any) duration 8+ weeks- by State;County;DOH Race-
Ethnicity;PRAMS Age Group;Infant Gender;Married;Poverty Level;Income (2000-2003);Income (2004-2011);Birthweight;Smoke 3rd
Trimester;Smoke Before Pregnant;WIC During Pregnancy, for the Year(s)
2000-2002;2001-2003;2002-2004;2003-2005;2004-2006;2005-2007;2006-2008;2007-2009;2008-2010;2009-2011;2010-2012;2011-2013**

Note: Weighted counts (#) represent 3-yr averages, rounded to the nearest hundred; n/r (Not Reportable) - If the unweighted total responses for a dimension (row) is <30 that row will not be shown

Years: 2009-2011

	Breastfed <8 weeks			Breastfed 8+ weeks			Weighted Total Responses (3-Yr Avg)
	#	%	C.I.(95%)	#	%	C.I.(95%)	#
Infant Gender							
Male	2,500	26.2	24.0 - 28.6	6,900	73.8	71.4 - 76.0	9,400
Female	2,200	25.4	23.1 - 27.8	6,600	74.6	72.2 - 76.9	8,800

	Breastfed <8 weeks			Breastfed 8+ weeks			Weighted Total Responses (3-Yr Avg)
	#	%	C.I.(95%)	#	%	C.I.(95%)	#
Married							
Yes	2,300	20.7	18.8 - 22.7	8,900	79.3	77.3 - 81.2	11,200
No	2,400	34.0	31.3 - 36.9	4,600	66.0	63.1 - 68.7	7,000

	Breastfed <8 weeks			Breastfed 8+ weeks			Weighted Total Responses (3-Yr Avg)
	#	%	C.I.(95%)	#	%	C.I.(95%)	#
Poverty Level							
0-130%	2,100	32.6	29.8 - 35.6	4,300	67.4	64.4 - 70.2	6,400
131-185%	800	27.7	23.6 - 32.3	2,000	72.3	67.7 - 76.4	2,800
186+%	1,400	18.0	15.8 - 20.4	6,300	82.0	79.6 - 84.2	7,700

PRAMS Health Indicator 3-Year Aggregate Report - Breastfeeding (any) duration 8+ weeks- by State;County;DOH Race-Ethnicity;PRAMS Age Group;Infant Gender;Married;Poverty Level;Income (2000-2003);Income (2004-2011);Birthweight;Smoke 3rd Trimester;Smoke Before Pregnant;WIC During Pregnancy, for the Year(s) 2000-2002;2001-2003;2002-2004;2003-2005;2004-2006;2005-2007;2006-2008;2007-2009;2008-2010;2009-2011;2010-2012;2011-2013

Note: Weighted counts (#) represent 3-yr averages, rounded to the nearest hundred; n/r (Not Reportable) - If the unweighted total responses for a dimension (row) is <30 that row will not be shown

Years: 2009-2011

Income (2004-2011)	Breastfed <8 weeks			Breastfed 8+ weeks			Weighted Total Responses (3-Yr Avg)
	#	%	C.I.(95%)	#	%	C.I.(95%)	#
<\$10,000	1,100	34.1	30.1 - 38.3	2,100	65.9	61.7 - 69.9	3,200
\$10,000-\$24,999	1,100	31.1	27.4 - 35.1	2,400	68.9	64.9 - 72.6	3,500
\$25,000-\$49,999	1,100	27.1	23.7 - 30.8	3,100	72.9	69.2 - 76.3	4,200
>=\$50,000	1,000	16.3	14.0 - 18.9	5,100	83.7	81.1 - 86.0	6,100

Birthweight	Breastfed <8 weeks			Breastfed 8+ weeks			Weighted Total Responses (3-Yr Avg)
	#	%	C.I.(95%)	#	%	C.I.(95%)	#
Low birth weight	400	31.2	28.3 - 34.3	900	68.8	65.7 - 71.7	1,300
Normal birth weight	4,300	25.4	23.7 - 27.2	12,600	74.6	72.8 - 76.3	16,900

Smoke 3rd Trimester	Breastfed <8 weeks			Breastfed 8+ weeks			Weighted Total Responses (3-Yr Avg)
	#	%	C.I.(95%)	#	%	C.I.(95%)	#
Yes	700	49.8	43.1 - 56.6	700	50.2	43.4 - 56.9	1,300
No	3,900	23.7	22.1 - 25.4	12,700	76.3	74.6 - 77.9	16,600

**PRAMS Health Indicator 3-Year Aggregate Report - Breastfeeding (any) duration 8+ weeks- by State;County;DOH Race-
Ethnicity;PRAMS Age Group;Infant Gender;Married;Poverty Level;Income (2000-2003);Income (2004-2011);Birthweight;Smoke 3rd
Trimester;Smoke Before Pregnant;WIC During Pregnancy, for the Year(s)
2000-2002;2001-2003;2002-2004;2003-2005;2004-2006;2005-2007;2006-2008;2007-2009;2008-2010;2009-2011;2010-2012;2011-2013**

Note: Weighted counts (#) represent 3-yr averages, rounded to the nearest hundred; n/r (Not Reportable) - If the unweighted total responses for a dimension (row) is <30 that row will not be shown

Years: 2009-2011

Smoke Before Pregnant	Breastfed <8 weeks			Breastfed 8+ weeks			Weighted Total Responses (3-Yr Avg)
	#	%	C.I.(95%)	#	%	C.I.(95%)	#
Yes	1,500	40.0	36.2 - 44.1	2,200	60.0	55.9 - 63.8	3,700
No	3,100	21.9	20.2 - 23.7	11,100	78.1	76.3 - 79.8	14,200

WIC During Pregnancy	Breastfed <8 weeks			Breastfed 8+ weeks			Weighted Total Responses (3-Yr Avg)
	#	%	C.I.(95%)	#	%	C.I.(95%)	#
Yes	2,500	32.5	30.0 - 35.2	5,300	67.5	64.8 - 70.0	7,800
No	2,100	20.6	18.6 - 22.8	8,000	79.4	77.2 - 81.4	10,100

**PRAMS Health Indicator 3-Year Aggregate Report - Breastfeeding (any) duration 8+ weeks- by State;County;DOH Race-Ethnicity;PRAMS Age Group;Infant Gender;Married;Poverty Level;Income (2000-2003);Income (2004-2011);Birthweight;Smoke 3rd Trimester;Smoke Before Pregnant;WIC During Pregnancy, for the Year(s)
2000-2002;2001-2003;2002-2004;2003-2005;2004-2006;2005-2007;2006-2008;2007-2009;2008-2010;2009-2011;2010-2012;2011-2013**

Note: Weighted counts (#) represent 3-yr averages, rounded to the nearest hundred; n/r (Not Reportable) - If the unweighted total responses for a dimension (row) is <30 that row will not be shown

Years: 2008-2010

State	Breastfed <8 weeks			Breastfed 8+ weeks			Weighted Total Responses (3-Yr Avg)
	#	%	C.I.(95%)	#	%	C.I.(95%)	#
Totals	5,000	27.7	26.2 - 29.3	13,100	72.3	70.7 - 73.8	18,100

County	Breastfed <8 weeks			Breastfed 8+ weeks			Weighted Total Responses (3-Yr Avg)
	#	%	C.I.(95%)	#	%	C.I.(95%)	#
Hawaii	700	29.7	26.7 - 32.9	1,600	70.3	67.1 - 73.3	2,300
Honolulu	3,700	28.3	26.3 - 30.4	9,300	71.7	69.6 - 73.7	12,900
Kauai	200	22.0	18.3 - 26.4	600	78.0	73.6 - 81.7	800
Maui	500	24.3	21.6 - 27.3	1,500	75.7	72.7 - 78.4	2,000

PRAMS Health Indicator 3-Year Aggregate Report - Breastfeeding (any) duration 8+ weeks- by State;County;DOH Race-Ethnicity;PRAMS Age Group;Infant Gender;Married;Poverty Level;Income (2000-2003);Income (2004-2011);Birthweight;Smoke 3rd Trimester;Smoke Before Pregnant;WIC During Pregnancy, for the Year(s) 2000-2002;2001-2003;2002-2004;2003-2005;2004-2006;2005-2007;2006-2008;2007-2009;2008-2010;2009-2011;2010-2012;2011-2013

Note: Weighted counts (#) represent 3-yr averages, rounded to the nearest hundred; n/r (Not Reportable) - If the unweighted total responses for a dimension (row) is <30 that row will not be shown

Years: 2008-2010

DOH Race-Ethnicity	Breastfed <8 weeks			Breastfed 8+ weeks			Weighted Total Responses (3-Yr Avg)
	#	%	C.I.(95%)	#	%	C.I.(95%)	#
Caucasian	1,000	22.5	19.7 - 25.7	3,400	77.5	74.3 - 80.3	4,300
Native Hawaiian	1,800	33.9	31.0 - 36.9	3,600	66.1	63.1 - 69.0	5,400
Chinese	100	16.7	11.1 - 24.3	600	83.3	75.7 - 88.9	700
Filipino	1,000	32.1	28.5 - 35.9	2,200	67.9	64.1 - 71.5	3,200
Japanese	200	13.5	10.3 - 17.6	1,500	86.5	82.4 - 89.7	1,800
Other	800	30.8	26.6 - 35.4	1,800	69.2	64.6 - 73.4	2,700

PRAMS Age Group	Breastfed <8 weeks			Breastfed 8+ weeks			Weighted Total Responses (3-Yr Avg)
	#	%	C.I.(95%)	#	%	C.I.(95%)	#
<20	600	41.4	35.5 - 47.6	800	58.6	52.4 - 64.5	1,400
20-24	1,500	35.3	31.9 - 38.8	2,700	64.7	61.2 - 68.1	4,200
25-34	2,300	24.3	22.2 - 26.4	7,000	75.7	73.6 - 77.8	9,300
35+	700	21.9	18.7 - 25.5	2,500	78.1	74.5 - 81.3	3,200

PRAMS Health Indicator 3-Year Aggregate Report - Breastfeeding (any) duration 8+ weeks- by State;County;DOH Race-Ethnicity;PRAMS Age Group;Infant Gender;Married;Poverty Level;Income (2000-2003);Income (2004-2011);Birthweight;Smoke 3rd Trimester;Smoke Before Pregnant;WIC During Pregnancy, for the Year(s) 2000-2002;2001-2003;2002-2004;2003-2005;2004-2006;2005-2007;2006-2008;2007-2009;2008-2010;2009-2011;2010-2012;2011-2013

Note: Weighted counts (#) represent 3-yr averages, rounded to the nearest hundred; n/r (Not Reportable) - If the unweighted total responses for a dimension (row) is <30 that row will not be shown

Years: 2008-2010

Infant Gender	Breastfed <8 weeks			Breastfed 8+ weeks			Weighted Total Responses (3-Yr Avg)
	#	%	C.I.(95%)	#	%	C.I.(95%)	#
Male	2,600	28.1	26.0 - 30.3	6,800	71.9	69.7 - 74.0	9,400
Female	2,400	27.4	25.2 - 29.6	6,300	72.6	70.4 - 74.8	8,700

Married	Breastfed <8 weeks			Breastfed 8+ weeks			Weighted Total Responses (3-Yr Avg)
	#	%	C.I.(95%)	#	%	C.I.(95%)	#
Yes	2,500	22.5	20.7 - 24.4	8,600	77.5	75.6 - 79.3	11,200
No	2,500	36.1	33.5 - 38.9	4,400	63.9	61.1 - 66.5	7,000

Poverty Level	Breastfed <8 weeks			Breastfed 8+ weeks			Weighted Total Responses (3-Yr Avg)
	#	%	C.I.(95%)	#	%	C.I.(95%)	#
0-130%	2,200	34.9	32.2 - 37.6	4,200	65.1	62.4 - 67.8	6,400
131-185%	800	28.3	24.4 - 32.6	2,000	71.7	67.4 - 75.6	2,800
186+%	1,500	19.8	17.7 - 22.0	6,100	80.2	78.0 - 82.3	7,600

PRAMS Health Indicator 3-Year Aggregate Report - Breastfeeding (any) duration 8+ weeks- by State;County;DOH Race-Ethnicity;PRAMS Age Group;Infant Gender;Married;Poverty Level;Income (2000-2003);Income (2004-2011);Birthweight;Smoke 3rd Trimester;Smoke Before Pregnant;WIC During Pregnancy, for the Year(s) 2000-2002;2001-2003;2002-2004;2003-2005;2004-2006;2005-2007;2006-2008;2007-2009;2008-2010;2009-2011;2010-2012;2011-2013

Note: Weighted counts (#) represent 3-yr averages, rounded to the nearest hundred; n/r (Not Reportable) - If the unweighted total responses for a dimension (row) is <30 that row will not be shown

Years: 2008-2010

Income (2004-2011)	Breastfed <8 weeks			Breastfed 8+ weeks			Weighted Total Responses (3-Yr Avg)
	#	%	C.I.(95%)	#	%	C.I.(95%)	#
<\$10,000	1,200	37.3	33.4 - 41.4	1,900	62.7	58.6 - 66.6	3,100
\$10,000-\$24,999	1,200	32.9	29.5 - 36.5	2,400	67.1	63.5 - 70.5	3,600
\$25,000-\$49,999	1,200	28.1	24.9 - 31.6	2,900	71.9	68.4 - 75.1	4,100
>=\$50,000	1,100	17.9	15.7 - 20.3	5,000	82.1	79.7 - 84.3	6,100

Birthweight	Breastfed <8 weeks			Breastfed 8+ weeks			Weighted Total Responses (3-Yr Avg)
	#	%	C.I.(95%)	#	%	C.I.(95%)	#
Low birth weight	400	30.6	27.1 - 34.4	900	69.4	65.6 - 72.9	1,300
Normal birth weight	4,600	27.5	25.9 - 29.2	12,200	72.5	70.8 - 74.1	16,900

Smoke 3rd Trimester	Breastfed <8 weeks			Breastfed 8+ weeks			Weighted Total Responses (3-Yr Avg)
	#	%	C.I.(95%)	#	%	C.I.(95%)	#
Yes	700	48.8	42.8 - 54.8	800	51.2	45.2 - 57.2	1,500
No	4,200	25.7	24.2 - 27.4	12,100	74.3	72.6 - 75.8	16,300

**PRAMS Health Indicator 3-Year Aggregate Report - Breastfeeding (any) duration 8+ weeks- by State;County;DOH Race-
Ethnicity;PRAMS Age Group;Infant Gender;Married;Poverty Level;Income (2000-2003);Income (2004-2011);Birthweight;Smoke 3rd
Trimester;Smoke Before Pregnant;WIC During Pregnancy, for the Year(s)
2000-2002;2001-2003;2002-2004;2003-2005;2004-2006;2005-2007;2006-2008;2007-2009;2008-2010;2009-2011;2010-2012;2011-2013**

Note: Weighted counts (#) represent 3-yr averages, rounded to the nearest hundred; n/r (Not Reportable) - If the unweighted total responses for a dimension (row) is <30 that row will not be shown

Years: 2008-2010

Smoke Before Pregnant	Breastfed <8 weeks			Breastfed 8+ weeks			Weighted Total Responses (3-Yr Avg)
	#	%	C.I.(95%)	#	%	C.I.(95%)	#
Yes	1,600	42.7	38.9 - 46.5	2,100	57.3	53.5 - 61.1	3,700
No	3,400	23.8	22.2 - 25.5	10,800	76.2	74.5 - 77.8	14,100

WIC During Pregnancy	Breastfed <8 weeks			Breastfed 8+ weeks			Weighted Total Responses (3-Yr Avg)
	#	%	C.I.(95%)	#	%	C.I.(95%)	#
Yes	2,700	35.5	33.0 - 38.1	4,900	64.5	61.9 - 67.0	7,600
No	2,300	22.1	20.2 - 24.1	7,900	77.9	75.9 - 79.8	10,200

**PRAMS Health Indicator 3-Year Aggregate Report - Breastfeeding (any) duration 8+ weeks- by State;County;DOH Race-Ethnicity;PRAMS Age Group;Infant Gender;Married;Poverty Level;Income (2000-2003);Income (2004-2011);Birthweight;Smoke 3rd Trimester;Smoke Before Pregnant;WIC During Pregnancy, for the Year(s)
2000-2002;2001-2003;2002-2004;2003-2005;2004-2006;2005-2007;2006-2008;2007-2009;2008-2010;2009-2011;2010-2012;2011-2013**

Note: Weighted counts (#) represent 3-yr averages, rounded to the nearest hundred; n/r (Not Reportable) - If the unweighted total responses for a dimension (row) is <30 that row will not be shown

Years: 2007-2009

State	Breastfed <8 weeks			Breastfed 8+ weeks			Weighted Total Responses (3-Yr Avg)
	#	%	C.I.(95%)	#	%	C.I.(95%)	#
Totals	5,200	28.7	27.3 - 30.2	12,800	71.3	69.8 - 72.7	18,000

County	Breastfed <8 weeks			Breastfed 8+ weeks			Weighted Total Responses (3-Yr Avg)
	#	%	C.I.(95%)	#	%	C.I.(95%)	#
Hawaii	700	29.6	26.3 - 33.0	1,700	70.4	67.0 - 73.7	2,400
Honolulu	3,700	29.1	27.4 - 31.0	9,000	70.9	69.0 - 72.6	12,600
Kauai	200	25.6	21.0 - 30.9	700	74.4	69.1 - 79.0	900
Maui	600	26.8	23.5 - 30.3	1,500	73.2	69.7 - 76.5	2,100

PRAMS Health Indicator 3-Year Aggregate Report - Breastfeeding (any) duration 8+ weeks- by State;County;DOH Race-Ethnicity;PRAMS Age Group;Infant Gender;Married;Poverty Level;Income (2000-2003);Income (2004-2011);Birthweight;Smoke 3rd Trimester;Smoke Before Pregnant;WIC During Pregnancy, for the Year(s) 2000-2002;2001-2003;2002-2004;2003-2005;2004-2006;2005-2007;2006-2008;2007-2009;2008-2010;2009-2011;2010-2012;2011-2013

Note: Weighted counts (#) represent 3-yr averages, rounded to the nearest hundred; n/r (Not Reportable) - If the unweighted total responses for a dimension (row) is <30 that row will not be shown

Years: 2007-2009

DOH Race-Ethnicity	Breastfed <8 weeks			Breastfed 8+ weeks			Weighted Total Responses (3-Yr Avg)
	#	%	C.I.(95%)	#	%	C.I.(95%)	#
Caucasian	1,000	23.0	20.4 - 25.8	3,200	77.0	74.2 - 79.6	4,200
Native Hawaiian	1,900	36.9	34.0 - 39.9	3,300	63.1	60.1 - 66.0	5,200
Chinese	100	17.4	12.4 - 23.8	600	82.6	76.2 - 87.6	700
Filipino	1,000	31.8	28.7 - 35.2	2,200	68.2	64.8 - 71.3	3,200
Japanese	300	15.5	12.3 - 19.3	1,600	84.5	80.7 - 87.7	1,900
Other	800	30.4	26.7 - 34.4	1,900	69.6	65.6 - 73.3	2,700

PRAMS Age Group	Breastfed <8 weeks			Breastfed 8+ weeks			Weighted Total Responses (3-Yr Avg)
	#	%	C.I.(95%)	#	%	C.I.(95%)	#
<20	700	42.3	36.8 - 47.9	900	57.7	52.1 - 63.2	1,600
20-24	1,600	37.2	34.1 - 40.4	2,600	62.8	59.6 - 65.9	4,200
25-34	2,300	25.1	23.2 - 27.1	6,800	74.9	72.9 - 76.8	9,100
35+	700	21.0	18.1 - 24.2	2,500	79.0	75.8 - 81.9	3,200

**PRAMS Health Indicator 3-Year Aggregate Report - Breastfeeding (any) duration 8+ weeks- by State;County;DOH Race-
Ethnicity;PRAMS Age Group;Infant Gender;Married;Poverty Level;Income (2000-2003);Income (2004-2011);Birthweight;Smoke 3rd
Trimester;Smoke Before Pregnant;WIC During Pregnancy, for the Year(s)
2000-2002;2001-2003;2002-2004;2003-2005;2004-2006;2005-2007;2006-2008;2007-2009;2008-2010;2009-2011;2010-2012;2011-2013**

Note: Weighted counts (#) represent 3-yr averages, rounded to the nearest hundred; n/r (Not Reportable) - If the unweighted total responses for a dimension (row) is <30 that row will not be shown

Years: 2007-2009

	Breastfed <8 weeks			Breastfed 8+ weeks			Weighted Total Responses (3-Yr Avg)
	#	%	C.I.(95%)	#	%	C.I.(95%)	#
Infant Gender							
Male	2,700	28.8	26.9 - 30.8	6,700	71.2	69.2 - 73.1	9,400
Female	2,500	28.7	26.7 - 30.8	6,100	71.3	69.2 - 73.3	8,600

	Breastfed <8 weeks			Breastfed 8+ weeks			Weighted Total Responses (3-Yr Avg)
	#	%	C.I.(95%)	#	%	C.I.(95%)	#
Married							
Yes	2,500	22.9	21.3 - 24.6	8,600	77.1	75.4 - 78.7	11,100
No	2,600	38.1	35.6 - 40.7	4,300	61.9	59.3 - 64.4	6,900

	Breastfed <8 weeks			Breastfed 8+ weeks			Weighted Total Responses (3-Yr Avg)
	#	%	C.I.(95%)	#	%	C.I.(95%)	#
Poverty Level							
0-130%	2,500	37.6	35.1 - 40.2	4,100	62.4	59.8 - 64.9	6,500
131-185%	800	28.1	24.5 - 32.0	1,900	71.9	68.0 - 75.5	2,700
186+%	1,500	20.3	18.5 - 22.3	5,900	79.7	77.7 - 81.5	7,400

PRAMS Health Indicator 3-Year Aggregate Report - Breastfeeding (any) duration 8+ weeks- by State;County;DOH Race-Ethnicity;PRAMS Age Group;Infant Gender;Married;Poverty Level;Income (2000-2003);Income (2004-2011);Birthweight;Smoke 3rd Trimester;Smoke Before Pregnant;WIC During Pregnancy, for the Year(s) 2000-2002;2001-2003;2002-2004;2003-2005;2004-2006;2005-2007;2006-2008;2007-2009;2008-2010;2009-2011;2010-2012;2011-2013

Note: Weighted counts (#) represent 3-yr averages, rounded to the nearest hundred; n/r (Not Reportable) - If the unweighted total responses for a dimension (row) is <30 that row will not be shown

Years: 2007-2009

Income (2004-2011)	Breastfed <8 weeks			Breastfed 8+ weeks			Weighted Total Responses (3-Yr Avg)
	#	%	C.I.(95%)	#	%	C.I.(95%)	#
<\$10,000	1,200	41.4	37.5 - 45.4	1,800	58.6	54.6 - 62.5	3,000
\$10,000-\$24,999	1,300	34.1	30.9 - 37.4	2,500	65.9	62.6 - 69.1	3,800
\$25,000-\$49,999	1,100	28.3	25.4 - 31.4	2,800	71.7	68.6 - 74.6	4,000
>=\$50,000	1,100	18.3	16.3 - 20.5	4,900	81.7	79.5 - 83.7	6,000

Birthweight	Breastfed <8 weeks			Breastfed 8+ weeks			Weighted Total Responses (3-Yr Avg)
	#	%	C.I.(95%)	#	%	C.I.(95%)	#
Low birth weight	400	32.5	28.4 - 37.0	900	67.5	63.0 - 71.6	1,300
Normal birth weight	4,700	28.4	27.0 - 30.0	11,900	71.6	70.0 - 73.0	16,700

Smoke 3rd Trimester	Breastfed <8 weeks			Breastfed 8+ weeks			Weighted Total Responses (3-Yr Avg)
	#	%	C.I.(95%)	#	%	C.I.(95%)	#
Yes	800	52.4	46.9 - 57.8	700	47.6	42.2 - 53.1	1,600
No	4,300	26.4	25.0 - 27.9	11,900	73.6	72.1 - 75.0	16,100

**PRAMS Health Indicator 3-Year Aggregate Report - Breastfeeding (any) duration 8+ weeks- by State;County;DOH Race-
Ethnicity;PRAMS Age Group;Infant Gender;Married;Poverty Level;Income (2000-2003);Income (2004-2011);Birthweight;Smoke 3rd
Trimester;Smoke Before Pregnant;WIC During Pregnancy, for the Year(s)
2000-2002;2001-2003;2002-2004;2003-2005;2004-2006;2005-2007;2006-2008;2007-2009;2008-2010;2009-2011;2010-2012;2011-2013**

Note: Weighted counts (#) represent 3-yr averages, rounded to the nearest hundred; n/r (Not Reportable) - If the unweighted total responses for a dimension (row) is <30 that row will not be shown

Years: 2007-2009

Smoke Before Pregnant	Breastfed <8 weeks			Breastfed 8+ weeks			Weighted Total Responses (3-Yr Avg)
	#	%	C.I.(95%)	#	%	C.I.(95%)	#
Yes	1,600	45.0	41.5 - 48.6	2,000	55.0	51.4 - 58.5	3,600
No	3,500	24.6	23.1 - 26.1	10,600	75.4	73.9 - 76.9	14,100

WIC During Pregnancy	Breastfed <8 weeks			Breastfed 8+ weeks			Weighted Total Responses (3-Yr Avg)
	#	%	C.I.(95%)	#	%	C.I.(95%)	#
Yes	2,800	37.4	35.1 - 39.8	4,600	62.6	60.2 - 64.9	7,400
No	2,300	22.5	20.8 - 24.3	7,900	77.5	75.7 - 79.2	10,200

**PRAMS Health Indicator 3-Year Aggregate Report - Breastfeeding (any) duration 8+ weeks- by State;County;DOH Race-Ethnicity;PRAMS Age Group;Infant Gender;Married;Poverty Level;Income (2000-2003);Income (2004-2011);Birthweight;Smoke 3rd Trimester;Smoke Before Pregnant;WIC During Pregnancy, for the Year(s)
2000-2002;2001-2003;2002-2004;2003-2005;2004-2006;2005-2007;2006-2008;2007-2009;2008-2010;2009-2011;2010-2012;2011-2013**

Note: Weighted counts (#) represent 3-yr averages, rounded to the nearest hundred; n/r (Not Reportable) - If the unweighted total responses for a dimension (row) is <30 that row will not be shown

Years: 2006-2008

State	Breastfed <8 weeks			Breastfed 8+ weeks			Weighted Total Responses (3-Yr Avg)
	#	%	C.I.(95%)	#	%	C.I.(95%)	#
Totals	5,100	28.6	27.3 - 29.9	12,800	71.4	70.1 - 72.7	17,900

County	Breastfed <8 weeks			Breastfed 8+ weeks			Weighted Total Responses (3-Yr Avg)
	#	%	C.I.(95%)	#	%	C.I.(95%)	#
Hawaii	700	28.9	25.3 - 32.7	1,600	71.1	67.3 - 74.7	2,300
Honolulu	3,700	28.7	27.2 - 30.3	9,100	71.3	69.7 - 72.8	12,700
Kauai	200	26.0	20.8 - 32.1	700	74.0	67.9 - 79.2	900
Maui	600	28.7	24.9 - 32.7	1,400	71.3	67.3 - 75.1	2,000

PRAMS Health Indicator 3-Year Aggregate Report - Breastfeeding (any) duration 8+ weeks- by State;County;DOH Race-Ethnicity;PRAMS Age Group;Infant Gender;Married;Poverty Level;Income (2000-2003);Income (2004-2011);Birthweight;Smoke 3rd Trimester;Smoke Before Pregnant;WIC During Pregnancy, for the Year(s) 2000-2002;2001-2003;2002-2004;2003-2005;2004-2006;2005-2007;2006-2008;2007-2009;2008-2010;2009-2011;2010-2012;2011-2013

Note: Weighted counts (#) represent 3-yr averages, rounded to the nearest hundred; n/r (Not Reportable) - If the unweighted total responses for a dimension (row) is <30 that row will not be shown

Years: 2006-2008

DOH Race-Ethnicity	Breastfed <8 weeks			Breastfed 8+ weeks			Weighted Total Responses (3-Yr Avg)
	#	%	C.I.(95%)	#	%	C.I.(95%)	#
Caucasian	1,100	25.2	22.8 - 27.8	3,200	74.8	72.2 - 77.2	4,200
Native Hawaiian	1,800	36.3	33.5 - 39.1	3,200	63.7	60.9 - 66.5	5,000
Chinese	100	15.8	13.1 - 18.9	500	84.2	81.1 - 86.9	600
Filipino	1,000	31.4	28.6 - 34.3	2,200	68.6	65.7 - 71.4	3,300
Japanese	300	15.1	12.3 - 18.4	1,700	84.9	81.6 - 87.7	2,100
Other	800	29.8	26.5 - 33.2	2,000	70.2	66.8 - 73.5	2,800

PRAMS Age Group	Breastfed <8 weeks			Breastfed 8+ weeks			Weighted Total Responses (3-Yr Avg)
	#	%	C.I.(95%)	#	%	C.I.(95%)	#
<20	600	41.2	36.0 - 46.5	900	58.8	53.5 - 64.0	1,500
20-24	1,600	38.3	35.5 - 41.3	2,600	61.7	58.7 - 64.5	4,300
25-34	2,200	24.8	23.2 - 26.6	6,700	75.2	73.4 - 76.8	8,900
35+	700	20.2	17.8 - 22.9	2,600	79.8	77.1 - 82.2	3,200

**PRAMS Health Indicator 3-Year Aggregate Report - Breastfeeding (any) duration 8+ weeks- by State;County;DOH Race-Ethnicity;PRAMS Age Group;Infant Gender;Married;Poverty Level;Income (2000-2003);Income (2004-2011);Birthweight;Smoke 3rd Trimester;Smoke Before Pregnant;WIC During Pregnancy, for the Year(s)
2000-2002;2001-2003;2002-2004;2003-2005;2004-2006;2005-2007;2006-2008;2007-2009;2008-2010;2009-2011;2010-2012;2011-2013**

Note: Weighted counts (#) represent 3-yr averages, rounded to the nearest hundred; n/r (Not Reportable) - If the unweighted total responses for a dimension (row) is <30 that row will not be shown

Years: 2006-2008

Infant Gender	Breastfed <8 weeks			Breastfed 8+ weeks			Weighted Total Responses (3-Yr Avg)
	#	%	C.I.(95%)	#	%	C.I.(95%)	#
Male	2,700	29.7	27.9 - 31.5	6,500	70.3	68.5 - 72.1	9,300
Female	2,400	27.5	25.7 - 29.3	6,300	72.5	70.7 - 74.3	8,700

Married	Breastfed <8 weeks			Breastfed 8+ weeks			Weighted Total Responses (3-Yr Avg)
	#	%	C.I.(95%)	#	%	C.I.(95%)	#
Yes	2,700	23.5	22.1 - 25.0	8,700	76.5	75.0 - 77.9	11,300
No	2,500	37.3	35.0 - 39.7	4,100	62.7	60.3 - 65.0	6,600

Poverty Level	Breastfed <8 weeks			Breastfed 8+ weeks			Weighted Total Responses (3-Yr Avg)
	#	%	C.I.(95%)	#	%	C.I.(95%)	#
0-130%	2,500	38.0	35.6 - 40.4	4,000	62.0	59.6 - 64.4	6,500
131-185%	700	26.7	23.5 - 30.2	1,900	73.3	69.8 - 76.5	2,500
186+%	1,600	20.8	19.2 - 22.6	6,100	79.2	77.4 - 80.8	7,700

PRAMS Health Indicator 3-Year Aggregate Report - Breastfeeding (any) duration 8+ weeks- by State;County;DOH Race-Ethnicity;PRAMS Age Group;Infant Gender;Married;Poverty Level;Income (2000-2003);Income (2004-2011);Birthweight;Smoke 3rd Trimester;Smoke Before Pregnant;WIC During Pregnancy, for the Year(s) 2000-2002;2001-2003;2002-2004;2003-2005;2004-2006;2005-2007;2006-2008;2007-2009;2008-2010;2009-2011;2010-2012;2011-2013

Note: Weighted counts (#) represent 3-yr averages, rounded to the nearest hundred; n/r (Not Reportable) - If the unweighted total responses for a dimension (row) is <30 that row will not be shown

Years: 2006-2008

Income (2004-2011)	Breastfed <8 weeks			Breastfed 8+ weeks			Weighted Total Responses (3-Yr Avg)
	#	%	C.I.(95%)	#	%	C.I.(95%)	#
<\$10,000	1,300	41.9	38.4 - 45.5	1,700	58.1	54.5 - 61.6	3,000
\$10,000-\$24,999	1,300	33.4	30.5 - 36.4	2,500	66.6	63.6 - 69.5	3,700
\$25,000-\$49,999	1,200	29.4	26.8 - 32.1	2,900	70.6	67.9 - 73.2	4,200
>=\$50,000	1,100	17.8	16.0 - 19.7	4,900	82.2	80.3 - 84.0	5,900

Birthweight	Breastfed <8 weeks			Breastfed 8+ weeks			Weighted Total Responses (3-Yr Avg)
	#	%	C.I.(95%)	#	%	C.I.(95%)	#
Low birth weight	400	31.3	26.7 - 36.3	900	68.7	63.7 - 73.3	1,400
Normal birth weight	4,700	28.4	27.1 - 29.7	11,900	71.6	70.3 - 72.9	16,600

Smoke 3rd Trimester	Breastfed <8 weeks			Breastfed 8+ weeks			Weighted Total Responses (3-Yr Avg)
	#	%	C.I.(95%)	#	%	C.I.(95%)	#
Yes	800	50.7	45.6 - 55.8	700	49.3	44.2 - 54.4	1,500
No	4,300	26.6	25.3 - 27.9	11,900	73.4	72.1 - 74.7	16,200

**PRAMS Health Indicator 3-Year Aggregate Report - Breastfeeding (any) duration 8+ weeks- by State;County;DOH Race-
Ethnicity;PRAMS Age Group;Infant Gender;Married;Poverty Level;Income (2000-2003);Income (2004-2011);Birthweight;Smoke 3rd
Trimester;Smoke Before Pregnant;WIC During Pregnancy, for the Year(s)
2000-2002;2001-2003;2002-2004;2003-2005;2004-2006;2005-2007;2006-2008;2007-2009;2008-2010;2009-2011;2010-2012;2011-2013**

Note: Weighted counts (#) represent 3-yr averages, rounded to the nearest hundred; n/r (Not Reportable) - If the unweighted total responses for a dimension (row) is <30 that row will not be shown

Years: 2006-2008

Smoke Before Pregnant	Breastfed <8 weeks			Breastfed 8+ weeks			Weighted Total Responses (3-Yr Avg)
	#	%	C.I.(95%)	#	%	C.I.(95%)	#
Yes	1,500	43.1	39.9 - 46.4	2,000	56.9	53.6 - 60.1	3,500
No	3,600	25.1	23.7 - 26.5	10,600	74.9	73.5 - 76.3	14,200

WIC During Pregnancy	Breastfed <8 weeks			Breastfed 8+ weeks			Weighted Total Responses (3-Yr Avg)
	#	%	C.I.(95%)	#	%	C.I.(95%)	#
Yes	2,700	36.6	34.5 - 38.8	4,700	63.4	61.2 - 65.5	7,500
No	2,300	22.7	21.2 - 24.3	7,900	77.3	75.7 - 78.8	10,200

**PRAMS Health Indicator 3-Year Aggregate Report - Breastfeeding (any) duration 8+ weeks- by State;County;DOH Race-Ethnicity;PRAMS Age Group;Infant Gender;Married;Poverty Level;Income (2000-2003);Income (2004-2011);Birthweight;Smoke 3rd Trimester;Smoke Before Pregnant;WIC During Pregnancy, for the Year(s)
2000-2002;2001-2003;2002-2004;2003-2005;2004-2006;2005-2007;2006-2008;2007-2009;2008-2010;2009-2011;2010-2012;2011-2013**

Note: Weighted counts (#) represent 3-yr averages, rounded to the nearest hundred; n/r (Not Reportable) - If the unweighted total responses for a dimension (row) is <30 that row will not be shown

Years: 2005-2007

State	Breastfed <8 weeks			Breastfed 8+ weeks			Weighted Total Responses (3-Yr Avg)
	#	%	C.I.(95%)	#	%	C.I.(95%)	#
Totals	5,200	29.6	28.4 - 30.9	12,400	70.4	69.1 - 71.6	17,600

County	Breastfed <8 weeks			Breastfed 8+ weeks			Weighted Total Responses (3-Yr Avg)
	#	%	C.I.(95%)	#	%	C.I.(95%)	#
Hawaii	600	28.6	25.1 - 32.5	1,600	71.4	67.5 - 74.9	2,200
Honolulu	3,800	29.7	28.2 - 31.3	8,900	70.3	68.7 - 71.8	12,600
Kauai	200	24.6	19.4 - 30.8	600	75.4	69.2 - 80.6	800
Maui	600	32.4	28.4 - 36.7	1,300	67.6	63.3 - 71.6	1,900

PRAMS Health Indicator 3-Year Aggregate Report - Breastfeeding (any) duration 8+ weeks- by State;County;DOH Race-Ethnicity;PRAMS Age Group;Infant Gender;Married;Poverty Level;Income (2000-2003);Income (2004-2011);Birthweight;Smoke 3rd Trimester;Smoke Before Pregnant;WIC During Pregnancy, for the Year(s) 2000-2002;2001-2003;2002-2004;2003-2005;2004-2006;2005-2007;2006-2008;2007-2009;2008-2010;2009-2011;2010-2012;2011-2013

Note: Weighted counts (#) represent 3-yr averages, rounded to the nearest hundred; n/r (Not Reportable) - If the unweighted total responses for a dimension (row) is <30 that row will not be shown

Years: 2005-2007

DOH Race-Ethnicity	Breastfed <8 weeks			Breastfed 8+ weeks			Weighted Total Responses (3-Yr Avg)
	#	%	C.I.(95%)	#	%	C.I.(95%)	#
Caucasian	1,000	25.0	22.5 - 27.6	3,000	75.0	72.4 - 77.5	4,000
Native Hawaiian	1,900	38.4	35.6 - 41.3	3,000	61.6	58.7 - 64.4	4,900
Chinese	100	18.3	15.4 - 21.5	500	81.7	78.5 - 84.6	600
Filipino	1,100	33.5	30.7 - 36.4	2,100	66.5	63.6 - 69.3	3,200
Japanese	300	14.8	12.2 - 18.0	1,800	85.2	82.0 - 87.8	2,100
Other	800	30.5	27.2 - 34.0	1,900	69.5	66.0 - 72.8	2,700

PRAMS Age Group	Breastfed <8 weeks			Breastfed 8+ weeks			Weighted Total Responses (3-Yr Avg)
	#	%	C.I.(95%)	#	%	C.I.(95%)	#
<20	700	44.2	39.1 - 49.4	800	55.8	50.6 - 60.9	1,500
20-24	1,700	39.4	36.6 - 42.3	2,600	60.6	57.7 - 63.4	4,400
25-34	2,200	25.7	24.0 - 27.5	6,400	74.3	72.5 - 76.0	8,600
35+	600	19.5	17.1 - 22.1	2,500	80.5	77.9 - 82.9	3,100

**PRAMS Health Indicator 3-Year Aggregate Report - Breastfeeding (any) duration 8+ weeks- by State;County;DOH Race-
Ethnicity;PRAMS Age Group;Infant Gender;Married;Poverty Level;Income (2000-2003);Income (2004-2011);Birthweight;Smoke 3rd
Trimester;Smoke Before Pregnant;WIC During Pregnancy, for the Year(s)
2000-2002;2001-2003;2002-2004;2003-2005;2004-2006;2005-2007;2006-2008;2007-2009;2008-2010;2009-2011;2010-2012;2011-2013**

Note: Weighted counts (#) represent 3-yr averages, rounded to the nearest hundred; n/r (Not Reportable) - If the unweighted total responses for a dimension (row) is <30 that row will not be shown

Years: 2005-2007

	Breastfed <8 weeks			Breastfed 8+ weeks			Weighted Total Responses (3-Yr Avg)
	#	%	C.I.(95%)	#	%	C.I.(95%)	#
Infant Gender							
Male	2,800	30.6	28.8 - 32.5	6,200	69.4	67.5 - 71.2	9,000
Female	2,500	28.6	26.8 - 30.5	6,100	71.4	69.5 - 73.2	8,600

	Breastfed <8 weeks			Breastfed 8+ weeks			Weighted Total Responses (3-Yr Avg)
	#	%	C.I.(95%)	#	%	C.I.(95%)	#
Married							
Yes	2,600	23.5	22.1 - 25.0	8,500	76.5	75.0 - 77.9	11,100
No	2,600	40.3	37.9 - 42.7	3,800	59.7	57.3 - 62.1	6,400

	Breastfed <8 weeks			Breastfed 8+ weeks			Weighted Total Responses (3-Yr Avg)
	#	%	C.I.(95%)	#	%	C.I.(95%)	#
Poverty Level							
0-130%	2,600	40.5	38.2 - 42.9	3,800	59.5	57.1 - 61.8	6,400
131-185%	700	29.2	25.8 - 33.0	1,600	70.8	67.0 - 74.2	2,300
186+%	1,500	20.0	18.4 - 21.8	6,100	80.0	78.2 - 81.6	7,600

**PRAMS Health Indicator 3-Year Aggregate Report - Breastfeeding (any) duration 8+ weeks- by State;County;DOH Race-
Ethnicity;PRAMS Age Group;Infant Gender;Married;Poverty Level;Income (2000-2003);Income (2004-2011);Birthweight;Smoke 3rd
Trimester;Smoke Before Pregnant;WIC During Pregnancy, for the Year(s)
2000-2002;2001-2003;2002-2004;2003-2005;2004-2006;2005-2007;2006-2008;2007-2009;2008-2010;2009-2011;2010-2012;2011-2013**

Note: Weighted counts (#) represent 3-yr averages, rounded to the nearest hundred; n/r (Not Reportable) - If the unweighted total responses for a dimension (row) is <30 that row will not be shown

Years: 2005-2007

Income (2004-2011)	Breastfed <8 weeks			Breastfed 8+ weeks			Weighted Total Responses (3-Yr Avg)
	#	%	C.I.(95%)	#	%	C.I.(95%)	#
<\$10,000	1,300	45.0	41.4 - 48.5	1,700	55.0	51.5 - 58.6	3,000
\$10,000-\$24,999	1,300	35.9	32.9 - 39.0	2,300	64.1	61.0 - 67.1	3,600
\$25,000-\$49,999	1,200	28.7	26.2 - 31.5	2,900	71.3	68.5 - 73.8	4,100
>=\$50,000	1,000	17.5	15.7 - 19.4	4,700	82.5	80.6 - 84.3	5,600

Birthweight	Breastfed <8 weeks			Breastfed 8+ weeks			Weighted Total Responses (3-Yr Avg)
	#	%	C.I.(95%)	#	%	C.I.(95%)	#
Low birth weight	400	32.5	27.9 - 37.4	900	67.5	62.6 - 72.1	1,400
Normal birth weight	4,800	29.4	28.1 - 30.7	11,400	70.6	69.3 - 71.9	16,200

Smoke 3rd Trimester	Breastfed <8 weeks			Breastfed 8+ weeks			Weighted Total Responses (3-Yr Avg)
	#	%	C.I.(95%)	#	%	C.I.(95%)	#
Yes	800	54.6	49.5 - 59.5	700	45.4	40.5 - 50.5	1,500
No	4,300	27.3	26.0 - 28.6	11,500	72.7	71.4 - 74.0	15,800

PRAMS Health Indicator 3-Year Aggregate Report - Breastfeeding (any) duration 8+ weeks- by State;County;DOH Race-Ethnicity;PRAMS Age Group;Infant Gender;Married;Poverty Level;Income (2000-2003);Income (2004-2011);Birthweight;Smoke 3rd Trimester;Smoke Before Pregnant;WIC During Pregnancy, for the Year(s) 2000-2002;2001-2003;2002-2004;2003-2005;2004-2006;2005-2007;2006-2008;2007-2009;2008-2010;2009-2011;2010-2012;2011-2013

Note: Weighted counts (#) represent 3-yr averages, rounded to the nearest hundred; n/r (Not Reportable) - If the unweighted total responses for a dimension (row) is <30 that row will not be shown

Years: 2005-2007

Smoke Before Pregnant	Breastfed <8 weeks			Breastfed 8+ weeks			Weighted Total Responses (3-Yr Avg)
	#	%	C.I.(95%)	#	%	C.I.(95%)	#
Yes	1,600	45.4	42.3 - 48.7	2,000	54.6	51.3 - 57.7	3,600
No	3,500	25.5	24.1 - 26.9	10,200	74.5	73.1 - 75.9	13,700

WIC During Pregnancy	Breastfed <8 weeks			Breastfed 8+ weeks			Weighted Total Responses (3-Yr Avg)
	#	%	C.I.(95%)	#	%	C.I.(95%)	#
Yes	2,800	37.6	35.4 - 39.8	4,600	62.4	60.2 - 64.6	7,400
No	2,300	23.5	22.0 - 25.1	7,600	76.5	74.9 - 78.0	9,900

**PRAMS Health Indicator 3-Year Aggregate Report - Breastfeeding (any) duration 8+ weeks- by State;County;DOH Race-Ethnicity;PRAMS Age Group;Infant Gender;Married;Poverty Level;Income (2000-2003);Income (2004-2011);Birthweight;Smoke 3rd Trimester;Smoke Before Pregnant;WIC During Pregnancy, for the Year(s)
2000-2002;2001-2003;2002-2004;2003-2005;2004-2006;2005-2007;2006-2008;2007-2009;2008-2010;2009-2011;2010-2012;2011-2013**

Note: Weighted counts (#) represent 3-yr averages, rounded to the nearest hundred; n/r (Not Reportable) - If the unweighted total responses for a dimension (row) is <30 that row will not be shown

Years: 2004-2006

State	Breastfed <8 weeks			Breastfed 8+ weeks			Weighted Total Responses (3-Yr Avg)
	#	%	C.I.(95%)	#	%	C.I.(95%)	#
Totals	5,200	30.1	28.9 - 31.4	12,100	69.9	68.6 - 71.1	17,400

County	Breastfed <8 weeks			Breastfed 8+ weeks			Weighted Total Responses (3-Yr Avg)
	#	%	C.I.(95%)	#	%	C.I.(95%)	#
Hawaii	700	30.1	26.5 - 33.9	1,500	69.9	66.1 - 73.5	2,200
Honolulu	3,800	30.1	28.7 - 31.6	8,900	69.9	68.4 - 71.3	12,700
Kauai	200	22.6	17.5 - 28.7	600	77.4	71.3 - 82.5	800
Maui	600	33.3	29.3 - 37.5	1,200	66.7	62.5 - 70.7	1,800

PRAMS Health Indicator 3-Year Aggregate Report - Breastfeeding (any) duration 8+ weeks- by State;County;DOH Race-Ethnicity;PRAMS Age Group;Infant Gender;Married;Poverty Level;Income (2000-2003);Income (2004-2011);Birthweight;Smoke 3rd Trimester;Smoke Before Pregnant;WIC During Pregnancy, for the Year(s) 2000-2002;2001-2003;2002-2004;2003-2005;2004-2006;2005-2007;2006-2008;2007-2009;2008-2010;2009-2011;2010-2012;2011-2013

Note: Weighted counts (#) represent 3-yr averages, rounded to the nearest hundred; n/r (Not Reportable) - If the unweighted total responses for a dimension (row) is <30 that row will not be shown

Years: 2004-2006

DOH Race-Ethnicity	Breastfed <8 weeks			Breastfed 8+ weeks			Weighted Total Responses (3-Yr Avg)
	#	%	C.I.(95%)	#	%	C.I.(95%)	#
Caucasian	900	23.7	21.4 - 26.3	3,000	76.3	73.7 - 78.6	3,900
Native Hawaiian	1,900	39.3	36.6 - 42.1	2,900	60.7	57.9 - 63.4	4,800
Chinese	100	19.2	16.6 - 22.1	500	80.8	77.9 - 83.4	600
Filipino	1,100	34.6	31.9 - 37.5	2,100	65.4	62.5 - 68.1	3,200
Japanese	400	16.0	13.4 - 19.1	1,800	84.0	80.9 - 86.6	2,200
Other	800	31.6	28.3 - 35.1	1,800	68.4	64.9 - 71.7	2,600

PRAMS Age Group	Breastfed <8 weeks			Breastfed 8+ weeks			Weighted Total Responses (3-Yr Avg)
	#	%	C.I.(95%)	#	%	C.I.(95%)	#
<20	600	45.2	40.1 - 50.3	800	54.8	49.7 - 59.9	1,400
20-24	1,800	40.7	37.9 - 43.5	2,600	59.3	56.5 - 62.1	4,300
25-34	2,200	25.6	24.0 - 27.3	6,300	74.4	72.7 - 76.0	8,500
35+	700	21.1	18.7 - 23.7	2,500	78.9	76.3 - 81.3	3,100

**PRAMS Health Indicator 3-Year Aggregate Report - Breastfeeding (any) duration 8+ weeks- by State;County;DOH Race-
Ethnicity;PRAMS Age Group;Infant Gender;Married;Poverty Level;Income (2000-2003);Income (2004-2011);Birthweight;Smoke 3rd
Trimester;Smoke Before Pregnant;WIC During Pregnancy, for the Year(s)
2000-2002;2001-2003;2002-2004;2003-2005;2004-2006;2005-2007;2006-2008;2007-2009;2008-2010;2009-2011;2010-2012;2011-2013**

Note: Weighted counts (#) represent 3-yr averages, rounded to the nearest hundred; n/r (Not Reportable) - If the unweighted total responses for a dimension (row) is <30 that row will not be shown

Years: 2004-2006

	Breastfed <8 weeks			Breastfed 8+ weeks			Weighted Total Responses (3-Yr Avg)
	#	%	C.I.(95%)	#	%	C.I.(95%)	#
Infant Gender							
Male	2,800	31.5	29.7 - 33.3	6,200	68.5	66.7 - 70.3	9,000
Female	2,400	28.6	26.9 - 30.5	5,900	71.4	69.5 - 73.1	8,300

	Breastfed <8 weeks			Breastfed 8+ weeks			Weighted Total Responses (3-Yr Avg)
	#	%	C.I.(95%)	#	%	C.I.(95%)	#
Married							
Yes	2,800	24.8	23.4 - 26.2	8,600	75.2	73.8 - 76.6	11,400
No	2,400	40.4	38.0 - 42.8	3,500	59.6	57.2 - 62.0	5,900

	Breastfed <8 weeks			Breastfed 8+ weeks			Weighted Total Responses (3-Yr Avg)
	#	%	C.I.(95%)	#	%	C.I.(95%)	#
Poverty Level							
0-130%	2,500	40.4	38.1 - 42.7	3,700	59.6	57.3 - 61.9	6,300
131-185%	600	30.5	26.9 - 34.3	1,400	69.5	65.7 - 73.1	2,100
186+%	1,600	20.8	19.2 - 22.4	6,100	79.2	77.6 - 80.8	7,700

PRAMS Health Indicator 3-Year Aggregate Report - Breastfeeding (any) duration 8+ weeks- by State;County;DOH Race-Ethnicity;PRAMS Age Group;Infant Gender;Married;Poverty Level;Income (2000-2003);Income (2004-2011);Birthweight;Smoke 3rd Trimester;Smoke Before Pregnant;WIC During Pregnancy, for the Year(s) 2000-2002;2001-2003;2002-2004;2003-2005;2004-2006;2005-2007;2006-2008;2007-2009;2008-2010;2009-2011;2010-2012;2011-2013

Note: Weighted counts (#) represent 3-yr averages, rounded to the nearest hundred; n/r (Not Reportable) - If the unweighted total responses for a dimension (row) is <30 that row will not be shown

Years: 2004-2006

Income (2004-2011)	Breastfed <8 weeks			Breastfed 8+ weeks			Weighted Total Responses (3-Yr Avg)
	#	%	C.I.(95%)	#	%	C.I.(95%)	#
<\$10,000	1,300	44.3	40.8 - 47.8	1,600	55.7	52.2 - 59.2	2,900
\$10,000-\$24,999	1,400	37.5	34.7 - 40.4	2,400	62.5	59.6 - 65.3	3,900
\$25,000-\$49,999	1,200	27.9	25.4 - 30.4	3,000	72.1	69.6 - 74.6	4,200
>=\$50,000	900	17.6	15.8 - 19.5	4,300	82.4	80.5 - 84.2	5,300

Birthweight	Breastfed <8 weeks			Breastfed 8+ weeks			Weighted Total Responses (3-Yr Avg)
	#	%	C.I.(95%)	#	%	C.I.(95%)	#
Low birth weight	400	31.8	27.2 - 36.8	800	68.2	63.2 - 72.8	1,200
Normal birth weight	4,800	30.0	28.7 - 31.3	11,300	70.0	68.7 - 71.3	16,100

Smoke 3rd Trimester	Breastfed <8 weeks			Breastfed 8+ weeks			Weighted Total Responses (3-Yr Avg)
	#	%	C.I.(95%)	#	%	C.I.(95%)	#
Yes	700	51.1	46.1 - 56.1	700	48.9	43.9 - 53.9	1,400
No	4,400	28.0	26.7 - 29.3	11,300	72.0	70.7 - 73.3	15,700

PRAMS Health Indicator 3-Year Aggregate Report - Breastfeeding (any) duration 8+ weeks- by State;County;DOH Race- Ethnicity;PRAMS Age Group;Infant Gender;Married;Poverty Level;Income (2000-2003);Income (2004-2011);Birthweight;Smoke 3rd Trimester;Smoke Before Pregnant;WIC During Pregnancy, for the Year(s) 2000-2002;2001-2003;2002-2004;2003-2005;2004-2006;2005-2007;2006-2008;2007-2009;2008-2010;2009-2011;2010-2012;2011-2013

Note: Weighted counts (#) represent 3-yr averages, rounded to the nearest hundred; n/r (Not Reportable) - If the unweighted total responses for a dimension (row) is <30 that row will not be shown

Years: 2004-2006

Smoke Before Pregnant	Breastfed <8 weeks			Breastfed 8+ weeks			Weighted Total Responses (3-Yr Avg)
	#	%	C.I.(95%)	#	%	C.I.(95%)	#
Yes	1,500	42.1	39.0 - 45.2	2,100	57.9	54.8 - 61.0	3,600
No	3,600	26.8	25.4 - 28.1	9,900	73.2	71.9 - 74.6	13,500

WIC During Pregnancy	Breastfed <8 weeks			Breastfed 8+ weeks			Weighted Total Responses (3-Yr Avg)
	#	%	C.I.(95%)	#	%	C.I.(95%)	#
Yes	2,800	37.0	35.0 - 39.1	4,700	63.0	60.9 - 65.0	7,500
No	2,300	24.5	23.0 - 26.1	7,200	75.5	73.9 - 77.0	9,600

**PRAMS Health Indicator 3-Year Aggregate Report - Breastfeeding (any) duration 8+ weeks- by State;County;DOH Race-Ethnicity;PRAMS Age Group;Infant Gender;Married;Poverty Level;Income (2000-2003);Income (2004-2011);Birthweight;Smoke 3rd Trimester;Smoke Before Pregnant;WIC During Pregnancy, for the Year(s)
2000-2002;2001-2003;2002-2004;2003-2005;2004-2006;2005-2007;2006-2008;2007-2009;2008-2010;2009-2011;2010-2012;2011-2013**

Note: Weighted counts (#) represent 3-yr averages, rounded to the nearest hundred; n/r (Not Reportable) - If the unweighted total responses for a dimension (row) is <30 that row will not be shown

Years: 2003-2005

State	Breastfed <8 weeks			Breastfed 8+ weeks			Weighted Total Responses (3-Yr Avg)
	#	%	C.I.(95%)	#	%	C.I.(95%)	#
Totals	5,300	31.1	29.8 - 32.5	11,700	68.9	67.5 - 70.2	17,000

County	Breastfed <8 weeks			Breastfed 8+ weeks			Weighted Total Responses (3-Yr Avg)
	#	%	C.I.(95%)	#	%	C.I.(95%)	#
Hawaii	700	32.6	29.3 - 36.0	1,400	67.4	64.0 - 70.7	2,100
Honolulu	3,900	31.1	29.5 - 32.7	8,500	68.9	67.3 - 70.5	12,400
Kauai	200	22.3	18.0 - 27.4	600	77.7	72.6 - 82.0	800
Maui	600	33.5	30.0 - 37.2	1,100	66.5	62.8 - 70.0	1,700

PRAMS Health Indicator 3-Year Aggregate Report - Breastfeeding (any) duration 8+ weeks- by State;County;DOH Race-Ethnicity;PRAMS Age Group;Infant Gender;Married;Poverty Level;Income (2000-2003);Income (2004-2011);Birthweight;Smoke 3rd Trimester;Smoke Before Pregnant;WIC During Pregnancy, for the Year(s) 2000-2002;2001-2003;2002-2004;2003-2005;2004-2006;2005-2007;2006-2008;2007-2009;2008-2010;2009-2011;2010-2012;2011-2013

Note: Weighted counts (#) represent 3-yr averages, rounded to the nearest hundred; n/r (Not Reportable) - If the unweighted total responses for a dimension (row) is <30 that row will not be shown

Years: 2003-2005

DOH Race-Ethnicity	Breastfed <8 weeks			Breastfed 8+ weeks			Weighted Total Responses (3-Yr Avg)
	#	%	C.I.(95%)	#	%	C.I.(95%)	#
Caucasian	800	22.3	19.8 - 25.1	2,900	77.7	74.9 - 80.2	3,700
Native Hawaiian	1,900	40.5	38.1 - 43.0	2,800	59.5	57.0 - 61.9	4,700
Chinese	100	16.7	13.0 - 21.2	500	83.3	78.8 - 87.0	700
Filipino	1,300	37.7	34.7 - 40.9	2,100	62.3	59.1 - 65.3	3,400
Japanese	400	17.7	14.6 - 21.2	1,800	82.3	78.8 - 85.4	2,200
Other	800	33.2	29.5 - 37.2	1,600	66.8	62.8 - 70.5	2,400

PRAMS Age Group	Breastfed <8 weeks			Breastfed 8+ weeks			Weighted Total Responses (3-Yr Avg)
	#	%	C.I.(95%)	#	%	C.I.(95%)	#
<20	700	50.5	45.6 - 55.4	700	49.5	44.6 - 54.4	1,400
20-24	1,700	41.8	39.0 - 44.6	2,400	58.2	55.4 - 61.0	4,100
25-34	2,200	26.6	24.9 - 28.5	6,200	73.4	71.5 - 75.1	8,400
35+	600	20.0	17.4 - 22.8	2,400	80.0	77.2 - 82.6	3,000

**PRAMS Health Indicator 3-Year Aggregate Report - Breastfeeding (any) duration 8+ weeks- by State;County;DOH Race-Ethnicity;PRAMS Age Group;Infant Gender;Married;Poverty Level;Income (2000-2003);Income (2004-2011);Birthweight;Smoke 3rd Trimester;Smoke Before Pregnant;WIC During Pregnancy, for the Year(s)
2000-2002;2001-2003;2002-2004;2003-2005;2004-2006;2005-2007;2006-2008;2007-2009;2008-2010;2009-2011;2010-2012;2011-2013**

Note: Weighted counts (#) represent 3-yr averages, rounded to the nearest hundred; n/r (Not Reportable) - If the unweighted total responses for a dimension (row) is <30 that row will not be shown

Years: 2003-2005

Infant Gender	Breastfed <8 weeks			Breastfed 8+ weeks			Weighted Total Responses (3-Yr Avg)
	#	%	C.I.(95%)	#	%	C.I.(95%)	#
Male	2,800	31.8	30.0 - 33.6	6,100	68.2	66.4 - 70.0	9,000
Female	2,400	30.4	28.5 - 32.3	5,600	69.6	67.7 - 71.5	8,000

Married	Breastfed <8 weeks			Breastfed 8+ weeks			Weighted Total Responses (3-Yr Avg)
	#	%	C.I.(95%)	#	%	C.I.(95%)	#
Yes	2,800	25.0	23.5 - 26.5	8,500	75.0	73.5 - 76.5	11,300
No	2,500	43.4	41.0 - 45.8	3,200	56.6	54.2 - 59.0	5,700

Poverty Level	Breastfed <8 weeks			Breastfed 8+ weeks			Weighted Total Responses (3-Yr Avg)
	#	%	C.I.(95%)	#	%	C.I.(95%)	#
0-130%	2,800	41.6	39.3 - 43.9	3,900	58.4	56.1 - 60.7	6,600
131-185%	600	30.6	27.0 - 34.6	1,500	69.4	65.4 - 73.0	2,100
186+%	1,300	19.3	17.6 - 21.0	5,500	80.7	79.0 - 82.4	6,800

**PRAMS Health Indicator 3-Year Aggregate Report - Breastfeeding (any) duration 8+ weeks- by State;County;DOH Race-
Ethnicity;PRAMS Age Group;Infant Gender;Married;Poverty Level;Income (2000-2003);Income (2004-2011);Birthweight;Smoke 3rd
Trimester;Smoke Before Pregnant;WIC During Pregnancy, for the Year(s)
2000-2002;2001-2003;2002-2004;2003-2005;2004-2006;2005-2007;2006-2008;2007-2009;2008-2010;2009-2011;2010-2012;2011-2013**

Note: Weighted counts (#) represent 3-yr averages, rounded to the nearest hundred; n/r (Not Reportable) - If the unweighted total responses for a dimension (row) is <30 that row will not be shown

Years: 2003-2005

Birthweight	Breastfed <8 weeks			Breastfed 8+ weeks			Weighted Total Responses (3-Yr Avg)
	#	%	C.I.(95%)	#	%	C.I.(95%)	#
Low birth weight	400	33.3	28.3 - 38.8	800	66.7	61.2 - 71.7	1,100
Normal birth weight	4,900	31.0	29.6 - 32.3	10,900	69.0	67.7 - 70.4	15,800

Smoke 3rd Trimester	Breastfed <8 weeks			Breastfed 8+ weeks			Weighted Total Responses (3-Yr Avg)
	#	%	C.I.(95%)	#	%	C.I.(95%)	#
Yes	800	53.2	48.2 - 58.1	700	46.8	41.9 - 51.8	1,400
No	4,400	29.0	27.6 - 30.4	10,900	71.0	69.6 - 72.4	15,300

Smoke Before Pregnant	Breastfed <8 weeks			Breastfed 8+ weeks			Weighted Total Responses (3-Yr Avg)
	#	%	C.I.(95%)	#	%	C.I.(95%)	#
Yes	1,600	45.2	42.1 - 48.4	1,900	54.8	51.6 - 57.9	3,500
No	3,600	27.1	25.7 - 28.6	9,600	72.9	71.4 - 74.3	13,200

**PRAMS Health Indicator 3-Year Aggregate Report - Breastfeeding (any) duration 8+ weeks- by State;County;DOH Race-Ethnicity;PRAMS Age Group;Infant Gender;Married;Poverty Level;Income (2000-2003);Income (2004-2011);Birthweight;Smoke 3rd Trimester;Smoke Before Pregnant;WIC During Pregnancy, for the Year(s)
2000-2002;2001-2003;2002-2004;2003-2005;2004-2006;2005-2007;2006-2008;2007-2009;2008-2010;2009-2011;2010-2012;2011-2013**

Note: Weighted counts (#) represent 3-yr averages, rounded to the nearest hundred; n/r (Not Reportable) - If the unweighted total responses for a dimension (row) is <30 that row will not be shown

Years: 2003-2005

WIC During Pregnancy	Breastfed <8 weeks			Breastfed 8+ weeks			Weighted Total Responses (3-Yr Avg)
	#	%	C.I.(95%)	#	%	C.I.(95%)	#
Yes	2,900	39.3	37.2 - 41.4	4,400	60.7	58.6 - 62.8	7,300
No	2,300	24.6	23.0 - 26.3	7,100	75.4	73.7 - 77.0	9,400

**PRAMS Health Indicator 3-Year Aggregate Report - Breastfeeding (any) duration 8+ weeks- by State;County;DOH Race-Ethnicity;PRAMS Age Group;Infant Gender;Married;Poverty Level;Income (2000-2003);Income (2004-2011);Birthweight;Smoke 3rd Trimester;Smoke Before Pregnant;WIC During Pregnancy, for the Year(s)
2000-2002;2001-2003;2002-2004;2003-2005;2004-2006;2005-2007;2006-2008;2007-2009;2008-2010;2009-2011;2010-2012;2011-2013**

Note: Weighted counts (#) represent 3-yr averages, rounded to the nearest hundred; n/r (Not Reportable) - If the unweighted total responses for a dimension (row) is <30 that row will not be shown

Years: 2002-2004

State	Breastfed <8 weeks			Breastfed 8+ weeks			Weighted Total Responses (3-Yr Avg)
	#	%	C.I.(95%)	#	%	C.I.(95%)	#
Totals	5,200	31.1	29.7 - 32.5	11,500	68.9	67.5 - 70.3	16,600

County	Breastfed <8 weeks			Breastfed 8+ weeks			Weighted Total Responses (3-Yr Avg)
	#	%	C.I.(95%)	#	%	C.I.(95%)	#
Hawaii	700	34.0	31.1 - 37.0	1,300	66.0	63.0 - 68.9	2,000
Honolulu	3,700	30.8	29.0 - 32.5	8,400	69.2	67.5 - 71.0	12,200
Kauai	200	26.4	22.2 - 31.0	500	73.6	69.0 - 77.8	700
Maui	600	32.0	29.0 - 35.2	1,200	68.0	64.8 - 71.0	1,700

PRAMS Health Indicator 3-Year Aggregate Report - Breastfeeding (any) duration 8+ weeks- by State;County;DOH Race-Ethnicity;PRAMS Age Group;Infant Gender;Married;Poverty Level;Income (2000-2003);Income (2004-2011);Birthweight;Smoke 3rd Trimester;Smoke Before Pregnant;WIC During Pregnancy, for the Year(s) 2000-2002;2001-2003;2002-2004;2003-2005;2004-2006;2005-2007;2006-2008;2007-2009;2008-2010;2009-2011;2010-2012;2011-2013

Note: Weighted counts (#) represent 3-yr averages, rounded to the nearest hundred; n/r (Not Reportable) - If the unweighted total responses for a dimension (row) is <30 that row will not be shown

Years: 2002-2004

DOH Race-Ethnicity	Breastfed <8 weeks			Breastfed 8+ weeks			Weighted Total Responses (3-Yr Avg)
	#	%	C.I.(95%)	#	%	C.I.(95%)	#
Caucasian	900	23.9	21.0 - 27.0	2,800	76.1	73.0 - 79.0	3,600
Native Hawaiian	1,800	40.4	38.3 - 42.5	2,700	59.6	57.5 - 61.7	4,500
Chinese	100	20.1	14.3 - 27.5	500	79.9	72.5 - 85.7	600
Filipino	1,200	36.2	32.9 - 39.7	2,100	63.8	60.3 - 67.1	3,400
Japanese	300	15.0	12.0 - 18.6	1,800	85.0	81.4 - 88.0	2,200
Other	800	34.7	30.4 - 39.4	1,500	65.3	60.6 - 69.6	2,300

PRAMS Age Group	Breastfed <8 weeks			Breastfed 8+ weeks			Weighted Total Responses (3-Yr Avg)
	#	%	C.I.(95%)	#	%	C.I.(95%)	#
<20	700	52.5	47.5 - 57.5	700	47.5	42.5 - 52.5	1,400
20-24	1,600	39.8	36.9 - 42.8	2,400	60.2	57.2 - 63.1	4,100
25-34	2,200	26.6	24.8 - 28.6	6,100	73.4	71.4 - 75.2	8,300
35+	600	21.1	18.2 - 24.2	2,300	78.9	75.8 - 81.8	2,900

**PRAMS Health Indicator 3-Year Aggregate Report - Breastfeeding (any) duration 8+ weeks- by State;County;DOH Race-Ethnicity;PRAMS Age Group;Infant Gender;Married;Poverty Level;Income (2000-2003);Income (2004-2011);Birthweight;Smoke 3rd Trimester;Smoke Before Pregnant;WIC During Pregnancy, for the Year(s)
2000-2002;2001-2003;2002-2004;2003-2005;2004-2006;2005-2007;2006-2008;2007-2009;2008-2010;2009-2011;2010-2012;2011-2013**

Note: Weighted counts (#) represent 3-yr averages, rounded to the nearest hundred; n/r (Not Reportable) - If the unweighted total responses for a dimension (row) is <30 that row will not be shown

Years: 2002-2004

	Breastfed <8 weeks			Breastfed 8+ weeks			Weighted Total Responses (3-Yr Avg)
	#	%	C.I.(95%)	#	%	C.I.(95%)	#
Infant Gender							
Male	2,800	32.3	30.4 - 34.3	5,900	67.7	65.7 - 69.6	8,800
Female	2,300	29.7	27.8 - 31.7	5,500	70.3	68.3 - 72.2	7,900

	Breastfed <8 weeks			Breastfed 8+ weeks			Weighted Total Responses (3-Yr Avg)
	#	%	C.I.(95%)	#	%	C.I.(95%)	#
Married							
Yes	2,800	25.0	23.4 - 26.7	8,500	75.0	73.3 - 76.6	11,300
No	2,300	44.0	41.5 - 46.5	3,000	56.0	53.5 - 58.5	5,300

	Breastfed <8 weeks			Breastfed 8+ weeks			Weighted Total Responses (3-Yr Avg)
	#	%	C.I.(95%)	#	%	C.I.(95%)	#
Poverty Level							
0-130%	2,700	40.7	38.4 - 43.0	4,000	59.3	57.0 - 61.6	6,700
131-185%	800	29.9	26.4 - 33.7	1,800	70.1	66.3 - 73.6	2,600
186+%	1,100	18.3	16.5 - 20.3	4,900	81.7	79.7 - 83.5	6,000

PRAMS Health Indicator 3-Year Aggregate Report - Breastfeeding (any) duration 8+ weeks- by State;County;DOH Race-Ethnicity;PRAMS Age Group;Infant Gender;Married;Poverty Level;Income (2000-2003);Income (2004-2011);Birthweight;Smoke 3rd Trimester;Smoke Before Pregnant;WIC During Pregnancy, for the Year(s) 2000-2002;2001-2003;2002-2004;2003-2005;2004-2006;2005-2007;2006-2008;2007-2009;2008-2010;2009-2011;2010-2012;2011-2013

Note: Weighted counts (#) represent 3-yr averages, rounded to the nearest hundred; n/r (Not Reportable) - If the unweighted total responses for a dimension (row) is <30 that row will not be shown

Years: 2002-2004

Birthweight	Breastfed <8 weeks			Breastfed 8+ weeks			Weighted Total Responses (3-Yr Avg)
	#	%	C.I.(95%)	#	%	C.I.(95%)	#
Low birth weight	400	34.8	29.2 - 40.8	700	65.2	59.2 - 70.8	1,100
Normal birth weight	4,800	30.8	29.4 - 32.3	10,800	69.2	67.7 - 70.6	15,600

Smoke 3rd Trimester	Breastfed <8 weeks			Breastfed 8+ weeks			Weighted Total Responses (3-Yr Avg)
	#	%	C.I.(95%)	#	%	C.I.(95%)	#
Yes	700	53.2	48.1 - 58.2	600	46.8	41.8 - 51.9	1,400
No	4,400	29.1	27.6 - 30.5	10,700	70.9	69.5 - 72.4	15,100

Smoke Before Pregnant	Breastfed <8 weeks			Breastfed 8+ weeks			Weighted Total Responses (3-Yr Avg)
	#	%	C.I.(95%)	#	%	C.I.(95%)	#
Yes	1,500	44.3	41.1 - 47.6	1,800	55.7	52.4 - 58.9	3,300
No	3,600	27.4	25.9 - 28.9	9,400	72.6	71.1 - 74.1	13,000

**PRAMS Health Indicator 3-Year Aggregate Report - Breastfeeding (any) duration 8+ weeks- by State;County;DOH Race-Ethnicity;PRAMS Age Group;Infant Gender;Married;Poverty Level;Income (2000-2003);Income (2004-2011);Birthweight;Smoke 3rd Trimester;Smoke Before Pregnant;WIC During Pregnancy, for the Year(s)
2000-2002;2001-2003;2002-2004;2003-2005;2004-2006;2005-2007;2006-2008;2007-2009;2008-2010;2009-2011;2010-2012;2011-2013**

Note: Weighted counts (#) represent 3-yr averages, rounded to the nearest hundred; n/r (Not Reportable) - If the unweighted total responses for a dimension (row) is <30 that row will not be shown

Years: 2002-2004

WIC During Pregnancy	Breastfed <8 weeks			Breastfed 8+ weeks			Weighted Total Responses (3-Yr Avg)
	#	%	C.I.(95%)	#	%	C.I.(95%)	#
Yes	2,900	40.7	38.5 - 42.9	4,200	59.3	57.1 - 61.5	7,100
No	2,200	23.8	22.1 - 25.6	7,100	76.2	74.4 - 77.9	9,300

**PRAMS Health Indicator 3-Year Aggregate Report - Breastfeeding (any) duration 8+ weeks- by State;County;DOH Race-Ethnicity;PRAMS Age Group;Infant Gender;Married;Poverty Level;Income (2000-2003);Income (2004-2011);Birthweight;Smoke 3rd Trimester;Smoke Before Pregnant;WIC During Pregnancy, for the Year(s)
2000-2002;2001-2003;2002-2004;2003-2005;2004-2006;2005-2007;2006-2008;2007-2009;2008-2010;2009-2011;2010-2012;2011-2013**

Note: Weighted counts (#) represent 3-yr averages, rounded to the nearest hundred; n/r (Not Reportable) - If the unweighted total responses for a dimension (row) is <30 that row will not be shown

Years: 2001-2003

State	Breastfed <8 weeks			Breastfed 8+ weeks			Weighted Total Responses (3-Yr Avg)
	#	%	C.I.(95%)	#	%	C.I.(95%)	#
Totals	5,100	31.5	30.1 - 33.0	11,000	68.5	67.0 - 69.9	16,100

County	Breastfed <8 weeks			Breastfed 8+ weeks			Weighted Total Responses (3-Yr Avg)
	#	%	C.I.(95%)	#	%	C.I.(95%)	#
Hawaii	700	35.5	33.0 - 38.1	1,200	64.5	61.9 - 67.0	1,800
Honolulu	3,700	31.1	29.3 - 32.9	8,200	68.9	67.1 - 70.7	11,900
Kauai	200	27.8	23.9 - 32.0	500	72.2	68.0 - 76.1	700
Maui	500	32.1	29.4 - 34.9	1,100	67.9	65.1 - 70.6	1,700

PRAMS Health Indicator 3-Year Aggregate Report - Breastfeeding (any) duration 8+ weeks- by State;County;DOH Race-Ethnicity;PRAMS Age Group;Infant Gender;Married;Poverty Level;Income (2000-2003);Income (2004-2011);Birthweight;Smoke 3rd Trimester;Smoke Before Pregnant;WIC During Pregnancy, for the Year(s) 2000-2002;2001-2003;2002-2004;2003-2005;2004-2006;2005-2007;2006-2008;2007-2009;2008-2010;2009-2011;2010-2012;2011-2013

Note: Weighted counts (#) represent 3-yr averages, rounded to the nearest hundred; n/r (Not Reportable) - If the unweighted total responses for a dimension (row) is <30 that row will not be shown

Years: 2001-2003

DOH Race-Ethnicity	Breastfed <8 weeks			Breastfed 8+ weeks			Weighted Total Responses (3-Yr Avg)
	#	%	C.I.(95%)	#	%	C.I.(95%)	#
Caucasian	800	23.8	20.8 - 27.1	2,600	76.2	72.9 - 79.2	3,500
Native Hawaiian	1,800	40.5	38.9 - 42.2	2,600	59.5	57.8 - 61.1	4,400
Chinese	200	23.5	16.6 - 32.2	500	76.5	67.8 - 83.4	600
Filipino	1,200	35.8	32.3 - 39.4	2,200	64.2	60.6 - 67.7	3,400
Japanese	300	16.1	12.9 - 19.9	1,800	83.9	80.1 - 87.1	2,100
Other	800	36.5	31.8 - 41.5	1,400	63.5	58.5 - 68.2	2,200

PRAMS Age Group	Breastfed <8 weeks			Breastfed 8+ weeks			Weighted Total Responses (3-Yr Avg)
	#	%	C.I.(95%)	#	%	C.I.(95%)	#
<20	800	54.1	49.5 - 58.6	700	45.9	41.4 - 50.5	1,500
20-24	1,600	39.7	36.9 - 42.6	2,400	60.3	57.4 - 63.1	4,000
25-34	2,100	26.9	25.0 - 28.9	5,800	73.1	71.1 - 75.0	8,000
35+	500	20.3	17.3 - 23.7	2,100	79.7	76.3 - 82.7	2,600

**PRAMS Health Indicator 3-Year Aggregate Report - Breastfeeding (any) duration 8+ weeks- by State;County;DOH Race-
Ethnicity;PRAMS Age Group;Infant Gender;Married;Poverty Level;Income (2000-2003);Income (2004-2011);Birthweight;Smoke 3rd
Trimester;Smoke Before Pregnant;WIC During Pregnancy, for the Year(s)
2000-2002;2001-2003;2002-2004;2003-2005;2004-2006;2005-2007;2006-2008;2007-2009;2008-2010;2009-2011;2010-2012;2011-2013**

Note: Weighted counts (#) represent 3-yr averages, rounded to the nearest hundred; n/r (Not Reportable) - If the unweighted total responses for a dimension (row) is <30 that row will not be shown

Years: 2001-2003

	Breastfed <8 weeks			Breastfed 8+ weeks			Weighted Total Responses (3-Yr Avg)
	#	%	C.I.(95%)	#	%	C.I.(95%)	#
Infant Gender							
Male	2,700	32.3	30.3 - 34.4	5,600	67.7	65.6 - 69.7	8,300
Female	2,400	30.7	28.8 - 32.7	5,400	69.3	67.3 - 71.2	7,800

	Breastfed <8 weeks			Breastfed 8+ weeks			Weighted Total Responses (3-Yr Avg)
	#	%	C.I.(95%)	#	%	C.I.(95%)	#
Married							
Yes	2,700	24.8	23.1 - 26.5	8,100	75.2	73.5 - 76.9	10,800
No	2,400	45.2	42.8 - 47.6	2,900	54.8	52.4 - 57.2	5,300

	Breastfed <8 weeks			Breastfed 8+ weeks			Weighted Total Responses (3-Yr Avg)
	#	%	C.I.(95%)	#	%	C.I.(95%)	#
Poverty Level							
0-130%	2,700	40.9	38.6 - 43.2	3,900	59.1	56.8 - 61.4	6,500
131-185%	900	29.6	26.4 - 32.9	2,200	70.4	67.1 - 73.6	3,100
186+%	900	16.6	14.7 - 18.8	4,300	83.4	81.2 - 85.3	5,200

PRAMS Health Indicator 3-Year Aggregate Report - Breastfeeding (any) duration 8+ weeks- by State;County;DOH Race-Ethnicity;PRAMS Age Group;Infant Gender;Married;Poverty Level;Income (2000-2003);Income (2004-2011);Birthweight;Smoke 3rd Trimester;Smoke Before Pregnant;WIC During Pregnancy, for the Year(s) 2000-2002;2001-2003;2002-2004;2003-2005;2004-2006;2005-2007;2006-2008;2007-2009;2008-2010;2009-2011;2010-2012;2011-2013

Note: Weighted counts (#) represent 3-yr averages, rounded to the nearest hundred; n/r (Not Reportable) - If the unweighted total responses for a dimension (row) is <30 that row will not be shown

Years: 2001-2003

Income (2000-2003)	Breastfed <8 weeks			Breastfed 8+ weeks			Weighted Total Responses (3-Yr Avg)
	#	%	C.I.(95%)	#	%	C.I.(95%)	#
<=\$15,000	1,500	45.5	42.4 - 48.7	1,800	54.5	51.3 - 57.6	3,400
\$15,001-\$25,000	800	36.2	32.5 - 40.2	1,400	63.8	59.8 - 67.5	2,200
\$25,001-\$40,000	1,100	32.1	29.0 - 35.3	2,300	67.9	64.7 - 71.0	3,300
>=\$40,001	1,200	18.8	16.9 - 20.8	5,000	81.2	79.2 - 83.1	6,200

Birthweight	Breastfed <8 weeks			Breastfed 8+ weeks			Weighted Total Responses (3-Yr Avg)
	#	%	C.I.(95%)	#	%	C.I.(95%)	#
Low birth weight	400	36.9	31.2 - 43.0	700	63.1	57.0 - 68.8	1,000
Normal birth weight	4,700	31.2	29.7 - 32.6	10,400	68.8	67.4 - 70.3	15,000

Smoke 3rd Trimester	Breastfed <8 weeks			Breastfed 8+ weeks			Weighted Total Responses (3-Yr Avg)
	#	%	C.I.(95%)	#	%	C.I.(95%)	#
Yes	800	55.1	50.3 - 59.8	600	44.9	40.2 - 49.7	1,400
No	4,200	29.3	27.8 - 30.8	10,200	70.7	69.2 - 72.2	14,500

**PRAMS Health Indicator 3-Year Aggregate Report - Breastfeeding (any) duration 8+ weeks- by State;County;DOH Race-
Ethnicity;PRAMS Age Group;Infant Gender;Married;Poverty Level;Income (2000-2003);Income (2004-2011);Birthweight;Smoke 3rd
Trimester;Smoke Before Pregnant;WIC During Pregnancy, for the Year(s)
2000-2002;2001-2003;2002-2004;2003-2005;2004-2006;2005-2007;2006-2008;2007-2009;2008-2010;2009-2011;2010-2012;2011-2013**

Note: Weighted counts (#) represent 3-yr averages, rounded to the nearest hundred; n/r (Not Reportable) - If the unweighted total responses for a dimension (row) is <30 that row will not be shown

Years: 2001-2003

Smoke Before Pregnant	Breastfed <8 weeks			Breastfed 8+ weeks			Weighted Total Responses (3-Yr Avg)
	#	%	C.I.(95%)	#	%	C.I.(95%)	#
Yes	1,500	46.6	43.4 - 49.9	1,700	53.4	50.1 - 56.6	3,200
No	3,400	27.3	25.8 - 28.9	9,100	72.7	71.1 - 74.2	12,500

WIC During Pregnancy	Breastfed <8 weeks			Breastfed 8+ weeks			Weighted Total Responses (3-Yr Avg)
	#	%	C.I.(95%)	#	%	C.I.(95%)	#
Yes	2,900	42.6	40.4 - 44.9	3,900	57.4	55.1 - 59.6	6,800
No	2,200	23.5	21.8 - 25.3	7,000	76.5	74.7 - 78.2	9,200

**PRAMS Health Indicator 3-Year Aggregate Report - Breastfeeding (any) duration 8+ weeks- by State;County;DOH Race-Ethnicity;PRAMS Age Group;Infant Gender;Married;Poverty Level;Income (2000-2003);Income (2004-2011);Birthweight;Smoke 3rd Trimester;Smoke Before Pregnant;WIC During Pregnancy, for the Year(s)
2000-2002;2001-2003;2002-2004;2003-2005;2004-2006;2005-2007;2006-2008;2007-2009;2008-2010;2009-2011;2010-2012;2011-2013**

Note: Weighted counts (#) represent 3-yr averages, rounded to the nearest hundred; n/r (Not Reportable) - If the unweighted total responses for a dimension (row) is <30 that row will not be shown

Years: 2000-2002

State	Breastfed <8 weeks			Breastfed 8+ weeks			Weighted Total Responses (3-Yr Avg)
	#	%	C.I.(95%)	#	%	C.I.(95%)	#
Totals	5,000	31.3	30.0 - 32.6	10,900	68.7	67.4 - 70.0	15,800

County	Breastfed <8 weeks			Breastfed 8+ weeks			Weighted Total Responses (3-Yr Avg)
	#	%	C.I.(95%)	#	%	C.I.(95%)	#
Hawaii	600	35.7	33.2 - 38.4	1,200	64.3	61.6 - 66.8	1,800
Honolulu	3,600	30.6	28.9 - 32.3	8,100	69.4	67.7 - 71.1	11,700
Kauai	200	28.6	24.5 - 33.1	500	71.4	66.9 - 75.5	700
Maui	500	32.3	29.6 - 35.2	1,100	67.7	64.8 - 70.4	1,600

PRAMS Health Indicator 3-Year Aggregate Report - Breastfeeding (any) duration 8+ weeks- by State;County;DOH Race-Ethnicity;PRAMS Age Group;Infant Gender;Married;Poverty Level;Income (2000-2003);Income (2004-2011);Birthweight;Smoke 3rd Trimester;Smoke Before Pregnant;WIC During Pregnancy, for the Year(s) 2000-2002;2001-2003;2002-2004;2003-2005;2004-2006;2005-2007;2006-2008;2007-2009;2008-2010;2009-2011;2010-2012;2011-2013

Note: Weighted counts (#) represent 3-yr averages, rounded to the nearest hundred; n/r (Not Reportable) - If the unweighted total responses for a dimension (row) is <30 that row will not be shown

Years: 2000-2002

DOH Race-Ethnicity	Breastfed <8 weeks			Breastfed 8+ weeks			Weighted Total Responses (3-Yr Avg)
	#	%	C.I.(95%)	#	%	C.I.(95%)	#
Caucasian	900	25.9	23.1 - 28.8	2,600	74.1	71.2 - 76.9	3,500
Native Hawaiian	1,700	40.7	39.1 - 42.2	2,500	59.3	57.8 - 60.9	4,300
Chinese	200	29.5	22.1 - 38.0	400	70.5	62.0 - 77.9	600
Filipino	1,000	32.8	29.6 - 36.2	2,100	67.2	63.8 - 70.4	3,200
Japanese	300	14.6	11.7 - 18.0	1,800	85.4	82.0 - 88.3	2,100
Other	800	36.1	31.6 - 40.8	1,400	63.9	59.2 - 68.4	2,100

PRAMS Age Group	Breastfed <8 weeks			Breastfed 8+ weeks			Weighted Total Responses (3-Yr Avg)
	#	%	C.I.(95%)	#	%	C.I.(95%)	#
<20	800	50.2	46.1 - 54.3	800	49.8	45.7 - 53.9	1,600
20-24	1,500	38.5	35.9 - 41.2	2,400	61.5	58.8 - 64.1	3,900
25-34	2,000	26.6	24.8 - 28.5	5,700	73.4	71.5 - 75.2	7,700
35+	600	22.5	19.5 - 25.8	2,000	77.5	74.2 - 80.5	2,600

PRAMS Health Indicator 3-Year Aggregate Report - Breastfeeding (any) duration 8+ weeks- by State;County;DOH Race-Ethnicity;PRAMS Age Group;Infant Gender;Married;Poverty Level;Income (2000-2003);Income (2004-2011);Birthweight;Smoke 3rd Trimester;Smoke Before Pregnant;WIC During Pregnancy, for the Year(s) 2000-2002;2001-2003;2002-2004;2003-2005;2004-2006;2005-2007;2006-2008;2007-2009;2008-2010;2009-2011;2010-2012;2011-2013

Note: Weighted counts (#) represent 3-yr averages, rounded to the nearest hundred; n/r (Not Reportable) - If the unweighted total responses for a dimension (row) is <30 that row will not be shown

Years: 2000-2002

	Breastfed <8 weeks			Breastfed 8+ weeks			Weighted Total Responses (3-Yr Avg)
	#	%	C.I.(95%)	#	%	C.I.(95%)	#
Infant Gender							
Male	2,600	32.3	30.4 - 34.2	5,500	67.7	65.8 - 69.6	8,100
Female	2,300	30.2	28.4 - 32.1	5,400	69.8	67.9 - 71.6	7,800

	Breastfed <8 weeks			Breastfed 8+ weeks			Weighted Total Responses (3-Yr Avg)
	#	%	C.I.(95%)	#	%	C.I.(95%)	#
Married							
Yes	2,700	25.6	24.1 - 27.2	8,000	74.4	72.8 - 75.9	10,700
No	2,200	43.1	40.8 - 45.4	2,900	56.9	54.6 - 59.2	5,100

	Breastfed <8 weeks			Breastfed 8+ weeks			Weighted Total Responses (3-Yr Avg)
	#	%	C.I.(95%)	#	%	C.I.(95%)	#
Poverty Level							
0-130%	2,500	39.5	37.4 - 41.6	3,800	60.5	58.4 - 62.6	6,300
131-185%	900	28.8	25.9 - 31.9	2,100	71.2	68.1 - 74.1	3,000
186+%	1,000	19.2	17.2 - 21.3	4,300	80.8	78.7 - 82.8	5,300

**PRAMS Health Indicator 3-Year Aggregate Report - Breastfeeding (any) duration 8+ weeks- by State;County;DOH Race-Ethnicity;PRAMS Age Group;Infant Gender;Married;Poverty Level;Income (2000-2003);Income (2004-2011);Birthweight;Smoke 3rd Trimester;Smoke Before Pregnant;WIC During Pregnancy, for the Year(s)
2000-2002;2001-2003;2002-2004;2003-2005;2004-2006;2005-2007;2006-2008;2007-2009;2008-2010;2009-2011;2010-2012;2011-2013**

Note: Weighted counts (#) represent 3-yr averages, rounded to the nearest hundred; n/r (Not Reportable) - If the unweighted total responses for a dimension (row) is <30 that row will not be shown

Years: 2000-2002

Income (2000-2003)	Breastfed <8 weeks			Breastfed 8+ weeks			Weighted Total Responses (3-Yr Avg)
	#	%	C.I.(95%)	#	%	C.I.(95%)	#
<=\$15,000	1,400	43.3	40.4 - 46.2	1,900	56.7	53.8 - 59.6	3,300
\$15,001-\$25,000	900	36.9	33.5 - 40.6	1,500	63.1	59.4 - 66.5	2,300
\$25,001-\$40,000	1,000	30.4	27.6 - 33.4	2,300	69.6	66.6 - 72.4	3,300
>=\$40,001	1,200	20.1	18.2 - 22.1	4,800	79.9	77.9 - 81.8	6,000

Birthweight	Breastfed <8 weeks			Breastfed 8+ weeks			Weighted Total Responses (3-Yr Avg)
	#	%	C.I.(95%)	#	%	C.I.(95%)	#
Low birth weight	400	38.1	32.7 - 43.8	600	61.9	56.2 - 67.3	1,000
Normal birth weight	4,500	30.7	29.4 - 32.1	10,200	69.3	67.9 - 70.6	14,800

Smoke 3rd Trimester	Breastfed <8 weeks			Breastfed 8+ weeks			Weighted Total Responses (3-Yr Avg)
	#	%	C.I.(95%)	#	%	C.I.(95%)	#
Yes	700	56.2	51.7 - 60.6	600	43.8	39.4 - 48.3	1,300
No	4,100	28.7	27.3 - 30.1	10,100	71.3	69.9 - 72.7	14,200

**PRAMS Health Indicator 3-Year Aggregate Report - Breastfeeding (any) duration 8+ weeks- by State;County;DOH Race-
Ethnicity;PRAMS Age Group;Infant Gender;Married;Poverty Level;Income (2000-2003);Income (2004-2011);Birthweight;Smoke 3rd
Trimester;Smoke Before Pregnant;WIC During Pregnancy, for the Year(s)
2000-2002;2001-2003;2002-2004;2003-2005;2004-2006;2005-2007;2006-2008;2007-2009;2008-2010;2009-2011;2010-2012;2011-2013**

Note: Weighted counts (#) represent 3-yr averages, rounded to the nearest hundred; n/r (Not Reportable) - If the unweighted total responses for a dimension (row) is <30 that row will not be shown

Years: 2000-2002

Smoke Before Pregnant	Breastfed <8 weeks			Breastfed 8+ weeks			Weighted Total Responses (3-Yr Avg)
	#	%	C.I.(95%)	#	%	C.I.(95%)	#
Yes	1,400	45.6	42.6 - 48.6	1,700	54.4	51.4 - 57.4	3,100
No	3,300	27.1	25.7 - 28.6	8,900	72.9	71.4 - 74.3	12,200

WIC During Pregnancy	Breastfed <8 weeks			Breastfed 8+ weeks			Weighted Total Responses (3-Yr Avg)
	#	%	C.I.(95%)	#	%	C.I.(95%)	#
Yes	2,700	40.6	38.6 - 42.7	4,000	59.4	57.3 - 61.4	6,700
No	2,200	24.2	22.5 - 25.9	6,800	75.8	74.1 - 77.5	8,900