

PRAMS Health Indicator 3-Year Aggregate Report - Breastfeeding (exclusive) duration 8+ weeks- for the State of Hawaii, for the Year(s)

2000-2002;2001-2003;2002-2004;2003-2005;2004-2006;2005-2007;2006-2008;2007-2009;2008-2010;2009-2011;2010-2012

PRAMS Health Indicator 3-Year Aggregate Report - Breastfeeding (exclusive) duration 8+ weeks- by State;County;DOH Race-Ethnicity;PRAMS Age Group;Infant Gender;Married;Poverty Level;Income (2000-2003);Income (2004-2011);Birthweight;Smoke 3rd Trimester;Smoke Before Pregnant;WIC During Pregnancy, for the Year(s) 2000-2002;2001-2003;2002-2004;2003-2005;2004-2006;2005-2007;2006-2008;2007-2009;2008-2010;2009-2011;2010-2012

Note: Weighted counts (#) represent 3-yr averages, rounded to the nearest hundred; n/r (Not Reportable) - If the unweighted total responses for a dimension (row) is <30 that row will not be shown

The trend analysis section shows the trend for the selected health variable over selected years in a table and a graph. 3-Year Weighted Total Responses: This number is a weighted representation of the mothers of babies delivered in a given year, who responded to a particular question in the survey. For most questions this will be the mothers of all babies delivered in a given year. For some secondary questions only a subset of the population was asked the question. For example, all survey participants were asked if they smoked during pregnancy, but only those who answered yes were asked how many cigarettes a day. If a dimension value is unknown for a particular survey record, that record will not be included in the counts for that particular dimension.

Note: Data collection for household income changed in 2004 and again in 2012. Because of this, income data does not exist for some 3-year aggregate periods.

Below are the indicators included in this report and the long description for each indicator.

PRAMS Health Indicator	Health Indicator Description
Breastfeeding (exclusive) duration 8+ weeks	Breastfeeding (exclusive) duration 8+ weeks

Suggested citation:

Hawaii Health Data Warehouse, Hawaii State Department of Health, Pregnancy Risk Assessment Monitoring System, (report title and years), Report Created: 9/21/15

For documentation on other terms and coding in this report, please go to the following links:

[Click here to access PRAMS documentation](#)

[Click here to access DOH-Race Ethnicity coding](#)

[Click here to access The Hawai'i Data Guide](#)

**For questions about this report, please contact
The Hawai'i Health Data Warehouse**

profiles@hhdw.org

(855) 946-5899 x15

PRAMS Health Indicator 3-Year Aggregate Report - Breastfeeding (exclusive) duration 8+ weeks- for the State of Hawaii, for the Year(s)

2000-2002;2001-2003;2002-2004;2003-2005;2004-2006;2005-2007;2006-2008;2007-2009;2008-2010;2009-2011;2010-2012

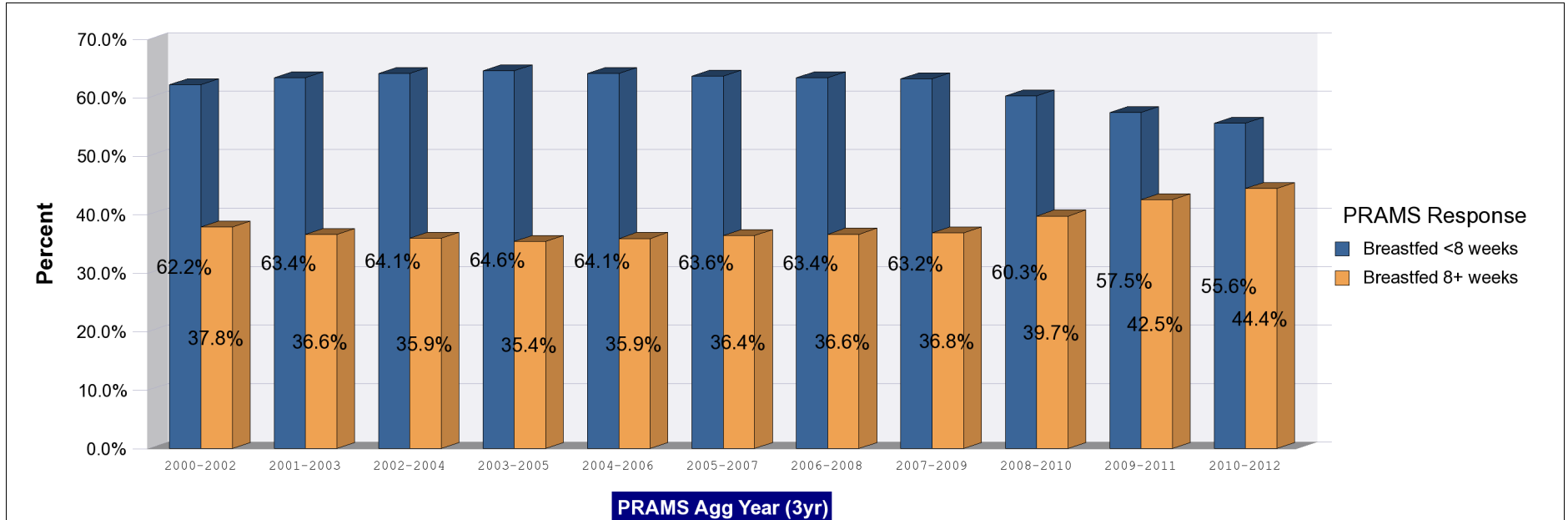
Note: Weighted counts (#) represent 3-yr averages, rounded to the nearest hundred; n/r (Not Reportable) - If the unweighted total responses for a dimension (row) is <30 that row will not be shown

Years	Breastfed <8 weeks			Breastfed 8+ weeks			Weighted Total Responses (3-Yr Avg)
	#	%	C.I.(95%)	#	%	C.I.(95%)	#
2000-2002	9,400	62.2	60.7 - 63.6	5,700	37.8	36.4 - 39.3	15,100
2001-2003	10,200	63.4	61.9 - 64.9	5,900	36.6	35.1 - 38.1	16,000
2002-2004	10,600	64.1	62.6 - 65.5	5,900	35.9	34.5 - 37.4	16,500
2003-2005	10,900	64.6	63.2 - 65.9	5,900	35.4	34.1 - 36.8	16,800
2004-2006	11,000	64.1	62.8 - 65.4	6,200	35.9	34.6 - 37.2	17,100
2005-2007	11,000	63.6	62.3 - 65.0	6,300	36.4	35.0 - 37.7	17,400
2006-2008	11,200	63.4	62.0 - 64.7	6,500	36.6	35.3 - 38.0	17,700
2007-2009	11,300	63.2	61.7 - 64.7	6,600	36.8	35.3 - 38.3	17,800
2008-2010	10,800	60.3	58.6 - 61.9	7,100	39.7	38.1 - 41.4	17,900
2009-2011	10,300	57.5	55.6 - 59.3	7,600	42.5	40.7 - 44.4	17,900
2010-2012	10,000	55.6	53.7 - 57.5	8,000	44.4	42.5 - 46.3	17,900

PRAMS Health Indicator 3-Year Aggregate Report - Breastfeeding (exclusive) duration 8+ weeks- for the State of Hawaii, for the Year(s)

2000-2002;2001-2003;2002-2004;2003-2005;2004-2006;2005-2007;2006-2008;2007-2009;2008-2010;2009-2011;2010-2012

Note: Weighted counts (#) represent 3-yr averages, rounded to the nearest hundred; n/r (Not Reportable) - If the unweighted total responses for a dimension (row) is <30 that row will not be shown



PRAMS Health Indicator 3-Year Aggregate Report - Breastfeeding (exclusive) duration 8+ weeks- by State;County;DOH Race-Ethnicity;PRAMS Age Group;Infant Gender;Married;Poverty Level;Income (2000-2003);Income (2004-2011);Birthweight;Smoke 3rd Trimester;Smoke Before Pregnant;WIC During Pregnancy, for the Year(s) 2000-2002;2001-2003;2002-2004;2003-2005;2004-2006;2005-2007;2006-2008;2007-2009;2008-2010;2009-2011;2010-2012

Note: Weighted counts (#) represent 3-yr averages, rounded to the nearest hundred; n/r (Not Reportable) - If the unweighted total responses for a dimension (row) is <30 that row will not be shown

Years: 2010-2012

State	Breastfed <8 weeks			Breastfed 8+ weeks			Weighted Total Responses (3-Yr Avg)
	#	%	C.I.(95%)	#	%	C.I.(95%)	#
Totals	10,000	55.6	53.7 - 57.5	8,000	44.4	42.5 - 46.3	17,900

County	Breastfed <8 weeks			Breastfed 8+ weeks			Weighted Total Responses (3-Yr Avg)
	#	%	C.I.(95%)	#	%	C.I.(95%)	#
Hawaii	1,200	55.0	52.0 - 58.0	1,000	45.0	42.0 - 48.0	2,300
Honolulu	7,300	56.6	54.0 - 59.0	5,600	43.4	41.0 - 46.0	13,000
Kauai	400	47.8	44.1 - 51.4	400	52.2	48.6 - 55.9	800
Maui	1,000	53.1	50.2 - 55.9	900	46.9	44.1 - 49.8	1,900

PRAMS Health Indicator 3-Year Aggregate Report - Breastfeeding (exclusive) duration 8+ weeks- by State;County;DOH Race-Ethnicity;PRAMS Age Group;Infant Gender;Married;Poverty Level;Income (2000-2003);Income (2004-2011);Birthweight;Smoke 3rd Trimester;Smoke Before Pregnant;WIC During Pregnancy, for the Year(s) 2000-2002;2001-2003;2002-2004;2003-2005;2004-2006;2005-2007;2006-2008;2007-2009;2008-2010;2009-2011;2010-2012

Note: Weighted counts (#) represent 3-yr averages, rounded to the nearest hundred; n/r (Not Reportable) - If the unweighted total responses for a dimension (row) is <30 that row will not be shown

Years: 2010-2012

DOH Race-Ethnicity	Breastfed <8 weeks			Breastfed 8+ weeks			Weighted Total Responses (3-Yr Avg)
	#	%	C.I.(95%)	#	%	C.I.(95%)	#
Caucasian	1,900	43.6	39.8 - 47.4	2,400	56.4	52.6 - 60.2	4,300
Native Hawaiian	3,100	59.9	56.6 - 63.2	2,100	40.1	36.8 - 43.4	5,200
Chinese	400	50.5	41.5 - 59.4	400	49.5	40.6 - 58.5	800
Filipino	2,100	67.8	63.5 - 71.9	1,000	32.2	28.1 - 36.5	3,100
Japanese	1,000	58.3	52.0 - 64.3	700	41.7	35.7 - 48.0	1,700
Other	1,400	52.2	47.1 - 57.3	1,300	47.8	42.7 - 52.9	2,800

PRAMS Age Group	Breastfed <8 weeks			Breastfed 8+ weeks			Weighted Total Responses (3-Yr Avg)
	#	%	C.I.(95%)	#	%	C.I.(95%)	#
<20	700	67.1	59.9 - 73.6	300	32.9	26.4 - 40.1	1,000
20-24	2,400	58.3	54.2 - 62.2	1,700	41.7	37.8 - 45.8	4,100
25-34	5,100	53.1	50.6 - 55.7	4,500	46.9	44.3 - 49.4	9,700
35+	1,800	55.9	51.4 - 60.2	1,400	44.1	39.8 - 48.6	3,200

PRAMS Health Indicator 3-Year Aggregate Report - Breastfeeding (exclusive) duration 8+ weeks- by State;County;DOH Race-Ethnicity;PRAMS Age Group;Infant Gender;Married;Poverty Level;Income (2000-2003);Income (2004-2011);Birthweight;Smoke 3rd Trimester;Smoke Before Pregnant;WIC During Pregnancy, for the Year(s) 2000-2002;2001-2003;2002-2004;2003-2005;2004-2006;2005-2007;2006-2008;2007-2009;2008-2010;2009-2011;2010-2012

Note: Weighted counts (#) represent 3-yr averages, rounded to the nearest hundred; n/r (Not Reportable) - If the unweighted total responses for a dimension (row) is <30 that row will not be shown

Years: 2010-2012

Infant Gender	Breastfed <8 weeks			Breastfed 8+ weeks			Weighted Total Responses (3-Yr Avg)
	#	%	C.I.(95%)	#	%	C.I.(95%)	#
Male	5,000	55.5	52.8 - 58.1	4,000	44.5	41.9 - 47.2	9,000
Female	5,000	55.7	53.0 - 58.4	3,900	44.3	41.6 - 47.0	8,900

Married	Breastfed <8 weeks			Breastfed 8+ weeks			Weighted Total Responses (3-Yr Avg)
	#	%	C.I.(95%)	#	%	C.I.(95%)	#
Yes	5,900	52.6	50.2 - 55.0	5,300	47.4	45.0 - 49.8	11,200
No	4,100	60.5	57.6 - 63.4	2,700	39.5	36.6 - 42.4	6,800

Poverty Level	Breastfed <8 weeks			Breastfed 8+ weeks			Weighted Total Responses (3-Yr Avg)
	#	%	C.I.(95%)	#	%	C.I.(95%)	#
0-130%	3,800	60.2	57.1 - 63.2	2,500	39.8	36.8 - 42.9	6,300
131-185%	1,700	57.9	53.1 - 62.6	1,200	42.1	37.4 - 46.9	2,900
186+%	3,800	50.6	47.7 - 53.6	3,700	49.4	46.4 - 52.3	7,500

PRAMS Health Indicator 3-Year Aggregate Report - Breastfeeding (exclusive) duration 8+ weeks- by State;County;DOH Race-Ethnicity;PRAMS Age Group;Infant Gender;Married;Poverty Level;Income (2000-2003);Income (2004-2011);Birthweight;Smoke 3rd Trimester;Smoke Before Pregnant;WIC During Pregnancy, for the Year(s) 2000-2002;2001-2003;2002-2004;2003-2005;2004-2006;2005-2007;2006-2008;2007-2009;2008-2010;2009-2011;2010-2012

Note: Weighted counts (#) represent 3-yr averages, rounded to the nearest hundred; n/r (Not Reportable) - If the unweighted total responses for a dimension (row) is <30 that row will not be shown

Years: 2010-2012

Birthweight	Breastfed <8 weeks			Breastfed 8+ weeks			Weighted Total Responses (3-Yr Avg)
	#	%	C.I.(95%)	#	%	C.I.(95%)	#
Low birth weight	800	66.3	63.2 - 69.2	400	33.7	30.8 - 36.8	1,200
Normal birth weight	9,200	54.8	52.8 - 56.8	7,600	45.2	43.2 - 47.2	16,700

Smoke 3rd Trimester	Breastfed <8 weeks			Breastfed 8+ weeks			Weighted Total Responses (3-Yr Avg)
	#	%	C.I.(95%)	#	%	C.I.(95%)	#
Yes	700	66.9	59.3 - 73.7	300	33.1	26.3 - 40.7	1,000
No	9,100	55.1	53.1 - 57.0	7,500	44.9	43.0 - 46.9	16,600

Smoke Before Pregnant	Breastfed <8 weeks			Breastfed 8+ weeks			Weighted Total Responses (3-Yr Avg)
	#	%	C.I.(95%)	#	%	C.I.(95%)	#
Yes	2,000	60.5	56.2 - 64.6	1,300	39.5	35.4 - 43.8	3,300
No	7,800	54.6	52.5 - 56.7	6,500	45.4	43.3 - 47.5	14,300

**PRAMS Health Indicator 3-Year Aggregate Report - Breastfeeding (exclusive) duration 8+ weeks- by State;County;DOH Race-Ethnicity;PRAMS Age Group;Infant Gender;Married;Poverty Level;Income (2000-2003);Income (2004-2011);Birthweight;Smoke 3rd Trimester;Smoke Before Pregnant;WIC During Pregnancy, for the Year(s)
2000-2002;2001-2003;2002-2004;2003-2005;2004-2006;2005-2007;2006-2008;2007-2009;2008-2010;2009-2011;2010-2012**

Note: Weighted counts (#) represent 3-yr averages, rounded to the nearest hundred; n/r (Not Reportable) - If the unweighted total responses for a dimension (row) is <30 that row will not be shown

Years: 2010-2012

WIC During Pregnancy	Breastfed <8 weeks			Breastfed 8+ weeks			Weighted Total Responses (3-Yr Avg)
	#	%	C.I.(95%)	#	%	C.I.(95%)	#
Yes	4,800	60.0	57.2 - 62.7	3,200	40.0	37.3 - 42.8	8,000
No	5,100	52.2	49.6 - 54.8	4,700	47.8	45.2 - 50.4	9,800

PRAMS Health Indicator 3-Year Aggregate Report - Breastfeeding (exclusive) duration 8+ weeks- by State;County;DOH Race-Ethnicity;PRAMS Age Group;Infant Gender;Married;Poverty Level;Income (2000-2003);Income (2004-2011);Birthweight;Smoke 3rd Trimester;Smoke Before Pregnant;WIC During Pregnancy, for the Year(s) 2000-2002;2001-2003;2002-2004;2003-2005;2004-2006;2005-2007;2006-2008;2007-2009;2008-2010;2009-2011;2010-2012

Note: Weighted counts (#) represent 3-yr averages, rounded to the nearest hundred; n/r (Not Reportable) - If the unweighted total responses for a dimension (row) is <30 that row will not be shown

Years: 2009-2011

State	Breastfed <8 weeks			Breastfed 8+ weeks			Weighted Total Responses (3-Yr Avg)
	#	%	C.I.(95%)	#	%	C.I.(95%)	#
Totals	10,300	57.5	55.6 - 59.3	7,600	42.5	40.7 - 44.4	17,900

County	Breastfed <8 weeks			Breastfed 8+ weeks			Weighted Total Responses (3-Yr Avg)
	#	%	C.I.(95%)	#	%	C.I.(95%)	#
Hawaii	1,300	57.0	54.1 - 59.9	1,000	43.0	40.1 - 45.9	2,300
Honolulu	7,500	58.6	56.1 - 61.0	5,300	41.4	39.0 - 43.9	12,900
Kauai	400	49.4	45.8 - 53.0	400	50.6	47.0 - 54.2	800
Maui	1,100	53.9	51.1 - 56.6	900	46.1	43.4 - 48.9	2,000

PRAMS Health Indicator 3-Year Aggregate Report - Breastfeeding (exclusive) duration 8+ weeks- by State;County;DOH Race-Ethnicity;PRAMS Age Group;Infant Gender;Married;Poverty Level;Income (2000-2003);Income (2004-2011);Birthweight;Smoke 3rd Trimester;Smoke Before Pregnant;WIC During Pregnancy, for the Year(s) 2000-2002;2001-2003;2002-2004;2003-2005;2004-2006;2005-2007;2006-2008;2007-2009;2008-2010;2009-2011;2010-2012

Note: Weighted counts (#) represent 3-yr averages, rounded to the nearest hundred; n/r (Not Reportable) - If the unweighted total responses for a dimension (row) is <30 that row will not be shown

Years: 2009-2011

DOH Race-Ethnicity	Breastfed <8 weeks			Breastfed 8+ weeks			Weighted Total Responses (3-Yr Avg)
	#	%	C.I.(95%)	#	%	C.I.(95%)	#
Caucasian	1,900	45.0	41.3 - 48.7	2,400	55.0	51.3 - 58.7	4,300
Native Hawaiian	3,400	62.5	59.3 - 65.6	2,000	37.5	34.4 - 40.7	5,400
Chinese	400	54.4	44.7 - 63.7	300	45.6	36.3 - 55.3	800
Filipino	2,200	68.6	64.3 - 72.5	1,000	31.4	27.5 - 35.7	3,200
Japanese	1,000	59.3	53.2 - 65.1	700	40.7	34.9 - 46.8	1,700
Other	1,400	53.8	48.5 - 59.0	1,200	46.2	41.0 - 51.5	2,600

PRAMS Age Group	Breastfed <8 weeks			Breastfed 8+ weeks			Weighted Total Responses (3-Yr Avg)
	#	%	C.I.(95%)	#	%	C.I.(95%)	#
<20	800	65.2	58.5 - 71.4	500	34.8	28.6 - 41.5	1,300
20-24	2,600	62.0	58.1 - 65.7	1,600	38.0	34.3 - 41.9	4,200
25-34	5,000	54.2	51.6 - 56.7	4,300	45.8	43.3 - 48.4	9,300
35+	1,800	58.0	53.5 - 62.3	1,300	42.0	37.7 - 46.5	3,100

PRAMS Health Indicator 3-Year Aggregate Report - Breastfeeding (exclusive) duration 8+ weeks- by State;County;DOH Race-Ethnicity;PRAMS Age Group;Infant Gender;Married;Poverty Level;Income (2000-2003);Income (2004-2011);Birthweight;Smoke 3rd Trimester;Smoke Before Pregnant;WIC During Pregnancy, for the Year(s) 2000-2002;2001-2003;2002-2004;2003-2005;2004-2006;2005-2007;2006-2008;2007-2009;2008-2010;2009-2011;2010-2012

Note: Weighted counts (#) represent 3-yr averages, rounded to the nearest hundred; n/r (Not Reportable) - If the unweighted total responses for a dimension (row) is <30 that row will not be shown

Years: 2009-2011

Infant Gender	Breastfed <8 weeks			Breastfed 8+ weeks			Weighted Total Responses (3-Yr Avg)
	#	%	C.I.(95%)	#	%	C.I.(95%)	#
Male	5,300	57.7	55.1 - 60.3	3,900	42.3	39.7 - 44.9	9,200
Female	5,000	57.2	54.5 - 59.8	3,700	42.8	40.2 - 45.5	8,700

Married	Breastfed <8 weeks			Breastfed 8+ weeks			Weighted Total Responses (3-Yr Avg)
	#	%	C.I.(95%)	#	%	C.I.(95%)	#
Yes	5,800	52.6	50.2 - 55.0	5,200	47.4	45.0 - 49.8	11,000
No	4,500	65.1	62.3 - 67.8	2,400	34.9	32.2 - 37.7	6,900

Poverty Level	Breastfed <8 weeks			Breastfed 8+ weeks			Weighted Total Responses (3-Yr Avg)
	#	%	C.I.(95%)	#	%	C.I.(95%)	#
0-130%	3,900	62.5	59.4 - 65.4	2,400	37.5	34.6 - 40.6	6,300
131-185%	1,600	57.8	53.0 - 62.5	1,200	42.2	37.5 - 47.0	2,800
186+%	4,000	52.8	49.9 - 55.7	3,600	47.2	44.3 - 50.1	7,600

PRAMS Health Indicator 3-Year Aggregate Report - Breastfeeding (exclusive) duration 8+ weeks- by State;County;DOH Race-Ethnicity;PRAMS Age Group;Infant Gender;Married;Poverty Level;Income (2000-2003);Income (2004-2011);Birthweight;Smoke 3rd Trimester;Smoke Before Pregnant;WIC During Pregnancy, for the Year(s) 2000-2002;2001-2003;2002-2004;2003-2005;2004-2006;2005-2007;2006-2008;2007-2009;2008-2010;2009-2011;2010-2012

Note: Weighted counts (#) represent 3-yr averages, rounded to the nearest hundred; n/r (Not Reportable) - If the unweighted total responses for a dimension (row) is <30 that row will not be shown

Years: 2009-2011

Income (2004-2011)	Breastfed <8 weeks			Breastfed 8+ weeks			Weighted Total Responses (3-Yr Avg)
	#	%	C.I.(95%)	#	%	C.I.(95%)	#
<\$10,000	2,000	64.5	60.3 - 68.6	1,100	35.5	31.4 - 39.7	3,100
\$10,000-\$24,999	2,100	62.3	58.2 - 66.3	1,300	37.7	33.7 - 41.8	3,400
\$25,000-\$49,999	2,300	54.9	51.0 - 58.7	1,900	45.1	41.3 - 49.0	4,200
>=\$50,000	3,200	52.6	49.4 - 55.8	2,900	47.4	44.2 - 50.6	6,000

Birthweight	Breastfed <8 weeks			Breastfed 8+ weeks			Weighted Total Responses (3-Yr Avg)
	#	%	C.I.(95%)	#	%	C.I.(95%)	#
Low birth weight	800	67.7	64.6 - 70.6	400	32.3	29.4 - 35.4	1,200
Normal birth weight	9,500	56.7	54.7 - 58.7	7,200	43.3	41.3 - 45.3	16,700

Smoke 3rd Trimester	Breastfed <8 weeks			Breastfed 8+ weeks			Weighted Total Responses (3-Yr Avg)
	#	%	C.I.(95%)	#	%	C.I.(95%)	#
Yes	900	69.1	62.5 - 75.0	400	30.9	25.0 - 37.5	1,300
No	9,200	56.6	54.6 - 58.5	7,100	43.4	41.5 - 45.4	16,300

PRAMS Health Indicator 3-Year Aggregate Report - Breastfeeding (exclusive) duration 8+ weeks- by State;County;DOH Race-Ethnicity;PRAMS Age Group;Infant Gender;Married;Poverty Level;Income (2000-2003);Income (2004-2011);Birthweight;Smoke 3rd Trimester;Smoke Before Pregnant;WIC During Pregnancy, for the Year(s) 2000-2002;2001-2003;2002-2004;2003-2005;2004-2006;2005-2007;2006-2008;2007-2009;2008-2010;2009-2011;2010-2012

Note: Weighted counts (#) represent 3-yr averages, rounded to the nearest hundred; n/r (Not Reportable) - If the unweighted total responses for a dimension (row) is <30 that row will not be shown

Years: 2009-2011

Smoke Before Pregnant	Breastfed <8 weeks			Breastfed 8+ weeks			Weighted Total Responses (3-Yr Avg)
	#	%	C.I.(95%)	#	%	C.I.(95%)	#
Yes	2,400	64.4	60.5 - 68.2	1,300	35.6	31.8 - 39.5	3,700
No	7,800	55.7	53.5 - 57.8	6,200	44.3	42.2 - 46.5	14,000

WIC During Pregnancy	Breastfed <8 weeks			Breastfed 8+ weeks			Weighted Total Responses (3-Yr Avg)
	#	%	C.I.(95%)	#	%	C.I.(95%)	#
Yes	4,700	61.2	58.4 - 63.9	3,000	38.8	36.1 - 41.6	7,700
No	5,500	54.8	52.3 - 57.3	4,500	45.2	42.7 - 47.7	9,900

PRAMS Health Indicator 3-Year Aggregate Report - Breastfeeding (exclusive) duration 8+ weeks- by State;County;DOH Race-Ethnicity;PRAMS Age Group;Infant Gender;Married;Poverty Level;Income (2000-2003);Income (2004-2011);Birthweight;Smoke 3rd Trimester;Smoke Before Pregnant;WIC During Pregnancy, for the Year(s) 2000-2002;2001-2003;2002-2004;2003-2005;2004-2006;2005-2007;2006-2008;2007-2009;2008-2010;2009-2011;2010-2012

Note: Weighted counts (#) represent 3-yr averages, rounded to the nearest hundred; n/r (Not Reportable) - If the unweighted total responses for a dimension (row) is <30 that row will not be shown

Years: 2008-2010

State	Breastfed <8 weeks			Breastfed 8+ weeks			Weighted Total Responses (3-Yr Avg)
	#	%	C.I.(95%)	#	%	C.I.(95%)	#
Totals	10,800	60.3	58.6 - 61.9	7,100	39.7	38.1 - 41.4	17,900

County	Breastfed <8 weeks			Breastfed 8+ weeks			Weighted Total Responses (3-Yr Avg)
	#	%	C.I.(95%)	#	%	C.I.(95%)	#
Hawaii	1,300	58.0	54.6 - 61.2	1,000	42.0	38.8 - 45.4	2,300
Honolulu	7,800	61.3	59.1 - 63.5	4,900	38.7	36.5 - 40.9	12,800
Kauai	400	53.5	48.7 - 58.2	400	46.5	41.8 - 51.3	800
Maui	1,200	59.0	55.7 - 62.2	800	41.0	37.8 - 44.3	2,000

PRAMS Health Indicator 3-Year Aggregate Report - Breastfeeding (exclusive) duration 8+ weeks- by State;County;DOH Race-Ethnicity;PRAMS Age Group;Infant Gender;Married;Poverty Level;Income (2000-2003);Income (2004-2011);Birthweight;Smoke 3rd Trimester;Smoke Before Pregnant;WIC During Pregnancy, for the Year(s) 2000-2002;2001-2003;2002-2004;2003-2005;2004-2006;2005-2007;2006-2008;2007-2009;2008-2010;2009-2011;2010-2012

Note: Weighted counts (#) represent 3-yr averages, rounded to the nearest hundred; n/r (Not Reportable) - If the unweighted total responses for a dimension (row) is <30 that row will not be shown

Years: 2008-2010

DOH Race-Ethnicity	Breastfed <8 weeks			Breastfed 8+ weeks			Weighted Total Responses (3-Yr Avg)
	#	%	C.I.(95%)	#	%	C.I.(95%)	#
Caucasian	2,000	46.5	43.1 - 50.0	2,300	53.5	50.0 - 56.9	4,300
Native Hawaiian	3,400	64.3	61.3 - 67.3	1,900	35.7	32.7 - 38.7	5,400
Chinese	400	57.4	48.7 - 65.7	300	42.6	34.3 - 51.3	700
Filipino	2,300	70.8	67.1 - 74.4	900	29.2	25.6 - 32.9	3,200
Japanese	1,100	63.2	57.8 - 68.2	600	36.8	31.8 - 42.2	1,800
Other	1,600	60.2	55.6 - 64.7	1,000	39.8	35.3 - 44.4	2,600

PRAMS Age Group	Breastfed <8 weeks			Breastfed 8+ weeks			Weighted Total Responses (3-Yr Avg)
	#	%	C.I.(95%)	#	%	C.I.(95%)	#
<20	900	64.0	57.9 - 69.6	500	36.0	30.4 - 42.1	1,400
20-24	2,600	62.9	59.4 - 66.4	1,500	37.1	33.6 - 40.6	4,100
25-34	5,300	57.5	55.2 - 59.9	3,900	42.5	40.1 - 44.8	9,200
35+	2,000	63.0	59.1 - 66.8	1,200	37.0	33.2 - 40.9	3,200

PRAMS Health Indicator 3-Year Aggregate Report - Breastfeeding (exclusive) duration 8+ weeks- by State;County;DOH Race-Ethnicity;PRAMS Age Group;Infant Gender;Married;Poverty Level;Income (2000-2003);Income (2004-2011);Birthweight;Smoke 3rd Trimester;Smoke Before Pregnant;WIC During Pregnancy, for the Year(s) 2000-2002;2001-2003;2002-2004;2003-2005;2004-2006;2005-2007;2006-2008;2007-2009;2008-2010;2009-2011;2010-2012

Note: Weighted counts (#) represent 3-yr averages, rounded to the nearest hundred; n/r (Not Reportable) - If the unweighted total responses for a dimension (row) is <30 that row will not be shown

Years: 2008-2010

Infant Gender	Breastfed <8 weeks			Breastfed 8+ weeks			Weighted Total Responses (3-Yr Avg)
	#	%	C.I.(95%)	#	%	C.I.(95%)	#
Male	5,700	60.8	58.5 - 63.1	3,600	39.2	36.9 - 41.5	9,300
Female	5,100	59.7	57.2 - 62.1	3,500	40.3	37.9 - 42.8	8,600

Married	Breastfed <8 weeks			Breastfed 8+ weeks			Weighted Total Responses (3-Yr Avg)
	#	%	C.I.(95%)	#	%	C.I.(95%)	#
Yes	6,100	55.8	53.7 - 58.0	4,900	44.2	42.0 - 46.3	11,000
No	4,700	67.3	64.7 - 69.8	2,300	32.7	30.2 - 35.3	6,900

Poverty Level	Breastfed <8 weeks			Breastfed 8+ weeks			Weighted Total Responses (3-Yr Avg)
	#	%	C.I.(95%)	#	%	C.I.(95%)	#
0-130%	4,100	64.7	61.9 - 67.4	2,200	35.3	32.6 - 38.1	6,400
131-185%	1,700	60.7	56.4 - 64.9	1,100	39.3	35.1 - 43.6	2,800
186+%	4,200	55.4	52.8 - 58.0	3,300	44.6	42.0 - 47.2	7,500

PRAMS Health Indicator 3-Year Aggregate Report - Breastfeeding (exclusive) duration 8+ weeks- by State;County;DOH Race-Ethnicity;PRAMS Age Group;Infant Gender;Married;Poverty Level;Income (2000-2003);Income (2004-2011);Birthweight;Smoke 3rd Trimester;Smoke Before Pregnant;WIC During Pregnancy, for the Year(s) 2000-2002;2001-2003;2002-2004;2003-2005;2004-2006;2005-2007;2006-2008;2007-2009;2008-2010;2009-2011;2010-2012

Note: Weighted counts (#) represent 3-yr averages, rounded to the nearest hundred; n/r (Not Reportable) - If the unweighted total responses for a dimension (row) is <30 that row will not be shown

Years: 2008-2010

Income (2004-2011)	Breastfed <8 weeks			Breastfed 8+ weeks			Weighted Total Responses (3-Yr Avg)
	#	%	C.I.(95%)	#	%	C.I.(95%)	#
<\$10,000	2,000	66.1	62.1 - 69.9	1,000	33.9	30.1 - 37.9	3,100
\$10,000-\$24,999	2,300	64.4	60.6 - 67.9	1,300	35.6	32.1 - 39.4	3,600
\$25,000-\$49,999	2,400	59.0	55.4 - 62.4	1,700	41.0	37.6 - 44.6	4,100
>=\$50,000	3,300	55.0	52.1 - 58.0	2,700	45.0	42.0 - 47.9	6,000

Birthweight	Breastfed <8 weeks			Breastfed 8+ weeks			Weighted Total Responses (3-Yr Avg)
	#	%	C.I.(95%)	#	%	C.I.(95%)	#
Low birth weight	900	70.3	66.6 - 73.8	400	29.7	26.2 - 33.4	1,200
Normal birth weight	9,900	59.5	57.8 - 61.3	6,800	40.5	38.7 - 42.2	16,700

Smoke 3rd Trimester	Breastfed <8 weeks			Breastfed 8+ weeks			Weighted Total Responses (3-Yr Avg)
	#	%	C.I.(95%)	#	%	C.I.(95%)	#
Yes	1,100	70.8	65.0 - 76.1	400	29.2	23.9 - 35.0	1,500
No	9,600	59.4	57.7 - 61.2	6,500	40.6	38.8 - 42.3	16,100

PRAMS Health Indicator 3-Year Aggregate Report - Breastfeeding (exclusive) duration 8+ weeks- by State;County;DOH Race-Ethnicity;PRAMS Age Group;Infant Gender;Married;Poverty Level;Income (2000-2003);Income (2004-2011);Birthweight;Smoke 3rd Trimester;Smoke Before Pregnant;WIC During Pregnancy, for the Year(s) 2000-2002;2001-2003;2002-2004;2003-2005;2004-2006;2005-2007;2006-2008;2007-2009;2008-2010;2009-2011;2010-2012

Note: Weighted counts (#) represent 3-yr averages, rounded to the nearest hundred; n/r (Not Reportable) - If the unweighted total responses for a dimension (row) is <30 that row will not be shown

Years: 2008-2010

Smoke Before Pregnant	Breastfed <8 weeks			Breastfed 8+ weeks			Weighted Total Responses (3-Yr Avg)
	#	%	C.I.(95%)	#	%	C.I.(95%)	#
Yes	2,500	67.8	64.2 - 71.3	1,200	32.2	28.7 - 35.8	3,700
No	8,200	58.5	56.6 - 60.4	5,800	41.5	39.6 - 43.4	14,000

WIC During Pregnancy	Breastfed <8 weeks			Breastfed 8+ weeks			Weighted Total Responses (3-Yr Avg)
	#	%	C.I.(95%)	#	%	C.I.(95%)	#
Yes	4,800	63.9	61.3 - 66.3	2,700	36.1	33.7 - 38.7	7,500
No	5,800	58.0	55.7 - 60.2	4,200	42.0	39.8 - 44.3	10,100

PRAMS Health Indicator 3-Year Aggregate Report - Breastfeeding (exclusive) duration 8+ weeks- by State;County;DOH Race-Ethnicity;PRAMS Age Group;Infant Gender;Married;Poverty Level;Income (2000-2003);Income (2004-2011);Birthweight;Smoke 3rd Trimester;Smoke Before Pregnant;WIC During Pregnancy, for the Year(s) 2000-2002;2001-2003;2002-2004;2003-2005;2004-2006;2005-2007;2006-2008;2007-2009;2008-2010;2009-2011;2010-2012

Note: Weighted counts (#) represent 3-yr averages, rounded to the nearest hundred; n/r (Not Reportable) - If the unweighted total responses for a dimension (row) is <30 that row will not be shown

Years: 2007-2009

State	Breastfed <8 weeks			Breastfed 8+ weeks			Weighted Total Responses (3-Yr Avg)
	#	%	C.I.(95%)	#	%	C.I.(95%)	#
Totals	11,300	63.2	61.7 - 64.7	6,600	36.8	35.3 - 38.3	17,800

County	Breastfed <8 weeks			Breastfed 8+ weeks			Weighted Total Responses (3-Yr Avg)
	#	%	C.I.(95%)	#	%	C.I.(95%)	#
Hawaii	1,400	58.1	54.5 - 61.7	1,000	41.9	38.3 - 45.5	2,300
Honolulu	8,100	64.8	62.9 - 66.6	4,400	35.2	33.4 - 37.1	12,500
Kauai	500	55.8	50.2 - 61.3	400	44.2	38.7 - 49.8	900
Maui	1,300	62.3	58.6 - 65.8	800	37.7	34.2 - 41.4	2,100

PRAMS Health Indicator 3-Year Aggregate Report - Breastfeeding (exclusive) duration 8+ weeks- by State;County;DOH Race-Ethnicity;PRAMS Age Group;Infant Gender;Married;Poverty Level;Income (2000-2003);Income (2004-2011);Birthweight;Smoke 3rd Trimester;Smoke Before Pregnant;WIC During Pregnancy, for the Year(s) 2000-2002;2001-2003;2002-2004;2003-2005;2004-2006;2005-2007;2006-2008;2007-2009;2008-2010;2009-2011;2010-2012

Note: Weighted counts (#) represent 3-yr averages, rounded to the nearest hundred; n/r (Not Reportable) - If the unweighted total responses for a dimension (row) is <30 that row will not be shown

Years: 2007-2009

DOH Race-Ethnicity	Breastfed <8 weeks			Breastfed 8+ weeks			Weighted Total Responses (3-Yr Avg)
	#	%	C.I.(95%)	#	%	C.I.(95%)	#
Caucasian	2,000	49.1	46.0 - 52.3	2,100	50.9	47.7 - 54.0	4,100
Native Hawaiian	3,500	67.6	64.7 - 70.4	1,700	32.4	29.6 - 35.3	5,200
Chinese	500	65.8	59.0 - 72.0	200	34.2	28.0 - 41.0	700
Filipino	2,300	71.4	68.1 - 74.6	900	28.6	25.4 - 31.9	3,200
Japanese	1,300	69.0	64.6 - 73.1	600	31.0	26.9 - 35.4	1,900
Other	1,700	61.6	57.6 - 65.5	1,000	38.4	34.5 - 42.4	2,700

PRAMS Age Group	Breastfed <8 weeks			Breastfed 8+ weeks			Weighted Total Responses (3-Yr Avg)
	#	%	C.I.(95%)	#	%	C.I.(95%)	#
<20	1,000	65.8	60.2 - 71.0	500	34.2	29.0 - 39.8	1,600
20-24	2,700	66.1	63.0 - 69.2	1,400	33.9	30.8 - 37.0	4,100
25-34	5,400	60.4	58.3 - 62.5	3,600	39.6	37.5 - 41.7	9,000
35+	2,000	65.9	62.5 - 69.2	1,100	34.1	30.8 - 37.5	3,100

PRAMS Health Indicator 3-Year Aggregate Report - Breastfeeding (exclusive) duration 8+ weeks- by State;County;DOH Race-Ethnicity;PRAMS Age Group;Infant Gender;Married;Poverty Level;Income (2000-2003);Income (2004-2011);Birthweight;Smoke 3rd Trimester;Smoke Before Pregnant;WIC During Pregnancy, for the Year(s) 2000-2002;2001-2003;2002-2004;2003-2005;2004-2006;2005-2007;2006-2008;2007-2009;2008-2010;2009-2011;2010-2012

Note: Weighted counts (#) represent 3-yr averages, rounded to the nearest hundred; n/r (Not Reportable) - If the unweighted total responses for a dimension (row) is <30 that row will not be shown

Years: 2007-2009

Infant Gender	Breastfed <8 weeks			Breastfed 8+ weeks			Weighted Total Responses (3-Yr Avg)
	#	%	C.I.(95%)	#	%	C.I.(95%)	#
Male	5,900	63.5	61.4 - 65.5	3,400	36.5	34.5 - 38.6	9,300
Female	5,300	62.8	60.7 - 65.0	3,200	37.2	35.0 - 39.3	8,500

Married	Breastfed <8 weeks			Breastfed 8+ weeks			Weighted Total Responses (3-Yr Avg)
	#	%	C.I.(95%)	#	%	C.I.(95%)	#
Yes	6,500	59.3	57.4 - 61.2	4,500	40.7	38.8 - 42.6	11,000
No	4,800	69.3	66.9 - 71.6	2,100	30.7	28.4 - 33.1	6,900

Poverty Level	Breastfed <8 weeks			Breastfed 8+ weeks			Weighted Total Responses (3-Yr Avg)
	#	%	C.I.(95%)	#	%	C.I.(95%)	#
0-130%	4,300	67.1	64.6 - 69.6	2,100	32.9	30.4 - 35.4	6,500
131-185%	1,700	63.1	59.2 - 66.9	1,000	36.9	33.1 - 40.8	2,700
186+%	4,400	59.3	57.0 - 61.6	3,000	40.7	38.4 - 43.0	7,400

PRAMS Health Indicator 3-Year Aggregate Report - Breastfeeding (exclusive) duration 8+ weeks- by State;County;DOH Race-Ethnicity;PRAMS Age Group;Infant Gender;Married;Poverty Level;Income (2000-2003);Income (2004-2011);Birthweight;Smoke 3rd Trimester;Smoke Before Pregnant;WIC During Pregnancy, for the Year(s) 2000-2002;2001-2003;2002-2004;2003-2005;2004-2006;2005-2007;2006-2008;2007-2009;2008-2010;2009-2011;2010-2012

Note: Weighted counts (#) represent 3-yr averages, rounded to the nearest hundred; n/r (Not Reportable) - If the unweighted total responses for a dimension (row) is <30 that row will not be shown

Years: 2007-2009

Income (2004-2011)	Breastfed <8 weeks			Breastfed 8+ weeks			Weighted Total Responses (3-Yr Avg)
	#	%	C.I.(95%)	#	%	C.I.(95%)	#
<\$10,000	2,000	67.5	63.6 - 71.1	1,000	32.5	28.9 - 36.4	3,000
\$10,000-\$24,999	2,500	67.1	63.8 - 70.3	1,200	32.9	29.7 - 36.2	3,800
\$25,000-\$49,999	2,500	62.6	59.4 - 65.6	1,500	37.4	34.4 - 40.6	3,900
>=\$50,000	3,500	58.8	56.2 - 61.4	2,500	41.2	38.6 - 43.8	6,000

Birthweight	Breastfed <8 weeks			Breastfed 8+ weeks			Weighted Total Responses (3-Yr Avg)
	#	%	C.I.(95%)	#	%	C.I.(95%)	#
Low birth weight	900	73.7	69.5 - 77.6	300	26.3	22.4 - 30.5	1,300
Normal birth weight	10,300	62.4	60.8 - 63.9	6,200	37.6	36.1 - 39.2	16,500

Smoke 3rd Trimester	Breastfed <8 weeks			Breastfed 8+ weeks			Weighted Total Responses (3-Yr Avg)
	#	%	C.I.(95%)	#	%	C.I.(95%)	#
Yes	1,200	74.7	69.6 - 79.2	400	25.3	20.8 - 30.4	1,500
No	9,900	62.2	60.6 - 63.7	6,000	37.8	36.3 - 39.4	16,000

**PRAMS Health Indicator 3-Year Aggregate Report - Breastfeeding (exclusive) duration 8+ weeks- by State;County;DOH Race-Ethnicity;PRAMS Age Group;Infant Gender;Married;Poverty Level;Income (2000-2003);Income (2004-2011);Birthweight;Smoke 3rd Trimester;Smoke Before Pregnant;WIC During Pregnancy, for the Year(s)
2000-2002;2001-2003;2002-2004;2003-2005;2004-2006;2005-2007;2006-2008;2007-2009;2008-2010;2009-2011;2010-2012**

Note: Weighted counts (#) represent 3-yr averages, rounded to the nearest hundred; n/r (Not Reportable) - If the unweighted total responses for a dimension (row) is <30 that row will not be shown

Years: 2007-2009

Smoke Before Pregnant	Breastfed <8 weeks			Breastfed 8+ weeks			Weighted Total Responses (3-Yr Avg)
	#	%	C.I.(95%)	#	%	C.I.(95%)	#
Yes	2,500	71.1	67.8 - 74.2	1,000	28.9	25.8 - 32.2	3,600
No	8,500	61.3	59.6 - 63.0	5,400	38.7	37.0 - 40.4	13,900

WIC During Pregnancy	Breastfed <8 weeks			Breastfed 8+ weeks			Weighted Total Responses (3-Yr Avg)
	#	%	C.I.(95%)	#	%	C.I.(95%)	#
Yes	4,800	65.7	63.3 - 68.0	2,500	34.3	32.0 - 36.7	7,300
No	6,200	61.5	59.5 - 63.4	3,900	38.5	36.6 - 40.5	10,100

PRAMS Health Indicator 3-Year Aggregate Report - Breastfeeding (exclusive) duration 8+ weeks- by State;County;DOH Race-Ethnicity;PRAMS Age Group;Infant Gender;Married;Poverty Level;Income (2000-2003);Income (2004-2011);Birthweight;Smoke 3rd Trimester;Smoke Before Pregnant;WIC During Pregnancy, for the Year(s) 2000-2002;2001-2003;2002-2004;2003-2005;2004-2006;2005-2007;2006-2008;2007-2009;2008-2010;2009-2011;2010-2012

Note: Weighted counts (#) represent 3-yr averages, rounded to the nearest hundred; n/r (Not Reportable) - If the unweighted total responses for a dimension (row) is <30 that row will not be shown

Years: 2006-2008

State	Breastfed <8 weeks			Breastfed 8+ weeks			Weighted Total Responses (3-Yr Avg)
	#	%	C.I.(95%)	#	%	C.I.(95%)	#
Totals	11,200	63.4	62.0 - 64.7	6,500	36.6	35.3 - 38.0	17,700

County	Breastfed <8 weeks			Breastfed 8+ weeks			Weighted Total Responses (3-Yr Avg)
	#	%	C.I.(95%)	#	%	C.I.(95%)	#
Hawaii	1,300	57.0	52.9 - 60.9	1,000	43.0	39.1 - 47.1	2,300
Honolulu	8,200	65.3	63.7 - 66.8	4,400	34.7	33.2 - 36.3	12,600
Kauai	500	54.8	48.3 - 61.0	400	45.2	39.0 - 51.7	900
Maui	1,300	62.5	58.3 - 66.6	800	37.5	33.4 - 41.7	2,000

PRAMS Health Indicator 3-Year Aggregate Report - Breastfeeding (exclusive) duration 8+ weeks- by State;County;DOH Race-Ethnicity;PRAMS Age Group;Infant Gender;Married;Poverty Level;Income (2000-2003);Income (2004-2011);Birthweight;Smoke 3rd Trimester;Smoke Before Pregnant;WIC During Pregnancy, for the Year(s) 2000-2002;2001-2003;2002-2004;2003-2005;2004-2006;2005-2007;2006-2008;2007-2009;2008-2010;2009-2011;2010-2012

Note: Weighted counts (#) represent 3-yr averages, rounded to the nearest hundred; n/r (Not Reportable) - If the unweighted total responses for a dimension (row) is <30 that row will not be shown

Years: 2006-2008

DOH Race-Ethnicity	Breastfed <8 weeks			Breastfed 8+ weeks			Weighted Total Responses (3-Yr Avg)
	#	%	C.I.(95%)	#	%	C.I.(95%)	#
Caucasian	2,100	50.1	47.2 - 52.9	2,100	49.9	47.1 - 52.8	4,200
Native Hawaiian	3,300	67.4	64.6 - 70.1	1,600	32.6	29.9 - 35.4	4,900
Chinese	400	65.9	62.0 - 69.5	200	34.1	30.5 - 38.0	600
Filipino	2,300	70.6	67.7 - 73.4	900	29.4	26.6 - 32.3	3,200
Japanese	1,400	70.9	67.1 - 74.5	600	29.1	25.5 - 32.9	2,000
Other	1,700	61.9	58.4 - 65.4	1,100	38.1	34.6 - 41.6	2,800

PRAMS Age Group	Breastfed <8 weeks			Breastfed 8+ weeks			Weighted Total Responses (3-Yr Avg)
	#	%	C.I.(95%)	#	%	C.I.(95%)	#
<20	1,000	65.6	60.4 - 70.5	500	34.4	29.5 - 39.6	1,500
20-24	2,800	66.3	63.5 - 69.1	1,400	33.7	30.9 - 36.5	4,200
25-34	5,400	61.0	59.0 - 62.8	3,400	39.0	37.2 - 41.0	8,800
35+	2,100	65.1	62.1 - 68.0	1,100	34.9	32.0 - 37.9	3,200

PRAMS Health Indicator 3-Year Aggregate Report - Breastfeeding (exclusive) duration 8+ weeks- by State;County;DOH Race-Ethnicity;PRAMS Age Group;Infant Gender;Married;Poverty Level;Income (2000-2003);Income (2004-2011);Birthweight;Smoke 3rd Trimester;Smoke Before Pregnant;WIC During Pregnancy, for the Year(s) 2000-2002;2001-2003;2002-2004;2003-2005;2004-2006;2005-2007;2006-2008;2007-2009;2008-2010;2009-2011;2010-2012

Note: Weighted counts (#) represent 3-yr averages, rounded to the nearest hundred; n/r (Not Reportable) - If the unweighted total responses for a dimension (row) is <30 that row will not be shown

Years: 2006-2008

Infant Gender	Breastfed <8 weeks			Breastfed 8+ weeks			Weighted Total Responses (3-Yr Avg)
	#	%	C.I.(95%)	#	%	C.I.(95%)	#
Male	5,900	64.0	62.1 - 65.9	3,300	36.0	34.1 - 37.9	9,200
Female	5,400	62.7	60.7 - 64.6	3,200	37.3	35.4 - 39.3	8,600

Married	Breastfed <8 weeks			Breastfed 8+ weeks			Weighted Total Responses (3-Yr Avg)
	#	%	C.I.(95%)	#	%	C.I.(95%)	#
Yes	6,800	61.1	59.4 - 62.7	4,400	38.9	37.3 - 40.6	11,200
No	4,400	67.3	65.0 - 69.6	2,100	32.7	30.4 - 35.0	6,600

Poverty Level	Breastfed <8 weeks			Breastfed 8+ weeks			Weighted Total Responses (3-Yr Avg)
	#	%	C.I.(95%)	#	%	C.I.(95%)	#
0-130%	4,300	67.1	64.7 - 69.3	2,100	32.9	30.7 - 35.3	6,400
131-185%	1,600	62.2	58.5 - 65.7	900	37.8	34.3 - 41.5	2,500
186+%	4,600	60.2	58.2 - 62.2	3,000	39.8	37.8 - 41.8	7,600

PRAMS Health Indicator 3-Year Aggregate Report - Breastfeeding (exclusive) duration 8+ weeks- by State;County;DOH Race-Ethnicity;PRAMS Age Group;Infant Gender;Married;Poverty Level;Income (2000-2003);Income (2004-2011);Birthweight;Smoke 3rd Trimester;Smoke Before Pregnant;WIC During Pregnancy, for the Year(s) 2000-2002;2001-2003;2002-2004;2003-2005;2004-2006;2005-2007;2006-2008;2007-2009;2008-2010;2009-2011;2010-2012

Note: Weighted counts (#) represent 3-yr averages, rounded to the nearest hundred; n/r (Not Reportable) - If the unweighted total responses for a dimension (row) is <30 that row will not be shown

Years: 2006-2008

Income (2004-2011)	Breastfed <8 weeks			Breastfed 8+ weeks			Weighted Total Responses (3-Yr Avg)
	#	%	C.I.(95%)	#	%	C.I.(95%)	#
<\$10,000	2,000	66.9	63.4 - 70.2	1,000	33.1	29.8 - 36.6	3,000
\$10,000-\$24,999	2,500	66.4	63.3 - 69.3	1,200	33.6	30.7 - 36.7	3,700
\$25,000-\$49,999	2,600	64.1	61.3 - 66.9	1,500	35.9	33.1 - 38.7	4,100
>=\$50,000	3,400	58.9	56.6 - 61.2	2,400	41.1	38.8 - 43.4	5,900

Birthweight	Breastfed <8 weeks			Breastfed 8+ weeks			Weighted Total Responses (3-Yr Avg)
	#	%	C.I.(95%)	#	%	C.I.(95%)	#
Low birth weight	1,000	72.0	67.2 - 76.4	400	28.0	23.6 - 32.8	1,300
Normal birth weight	10,300	62.7	61.3 - 64.1	6,100	37.3	35.9 - 38.7	16,400

Smoke 3rd Trimester	Breastfed <8 weeks			Breastfed 8+ weeks			Weighted Total Responses (3-Yr Avg)
	#	%	C.I.(95%)	#	%	C.I.(95%)	#
Yes	1,100	74.8	70.2 - 78.9	400	25.2	21.1 - 29.8	1,500
No	9,900	62.4	60.9 - 63.8	6,000	37.6	36.2 - 39.1	15,900

**PRAMS Health Indicator 3-Year Aggregate Report - Breastfeeding (exclusive) duration 8+ weeks- by State;County;DOH Race-Ethnicity;PRAMS Age Group;Infant Gender;Married;Poverty Level;Income (2000-2003);Income (2004-2011);Birthweight;Smoke 3rd Trimester;Smoke Before Pregnant;WIC During Pregnancy, for the Year(s)
2000-2002;2001-2003;2002-2004;2003-2005;2004-2006;2005-2007;2006-2008;2007-2009;2008-2010;2009-2011;2010-2012**

Note: Weighted counts (#) represent 3-yr averages, rounded to the nearest hundred; n/r (Not Reportable) - If the unweighted total responses for a dimension (row) is <30 that row will not be shown

Years: 2006-2008

Smoke Before Pregnant	Breastfed <8 weeks			Breastfed 8+ weeks			Weighted Total Responses (3-Yr Avg)
	#	%	C.I.(95%)	#	%	C.I.(95%)	#
Yes	2,500	71.6	68.5 - 74.4	1,000	28.4	25.6 - 31.5	3,500
No	8,600	61.4	59.9 - 62.9	5,400	38.6	37.1 - 40.1	14,000

WIC During Pregnancy	Breastfed <8 weeks			Breastfed 8+ weeks			Weighted Total Responses (3-Yr Avg)
	#	%	C.I.(95%)	#	%	C.I.(95%)	#
Yes	4,900	65.8	63.6 - 67.9	2,500	34.2	32.1 - 36.4	7,400
No	6,200	61.5	59.7 - 63.2	3,900	38.5	36.8 - 40.3	10,100

PRAMS Health Indicator 3-Year Aggregate Report - Breastfeeding (exclusive) duration 8+ weeks- by State;County;DOH Race-Ethnicity;PRAMS Age Group;Infant Gender;Married;Poverty Level;Income (2000-2003);Income (2004-2011);Birthweight;Smoke 3rd Trimester;Smoke Before Pregnant;WIC During Pregnancy, for the Year(s) 2000-2002;2001-2003;2002-2004;2003-2005;2004-2006;2005-2007;2006-2008;2007-2009;2008-2010;2009-2011;2010-2012

Note: Weighted counts (#) represent 3-yr averages, rounded to the nearest hundred; n/r (Not Reportable) - If the unweighted total responses for a dimension (row) is <30 that row will not be shown

Years: 2005-2007

State	Breastfed <8 weeks			Breastfed 8+ weeks			Weighted Total Responses (3-Yr Avg)
	#	%	C.I.(95%)	#	%	C.I.(95%)	#
Totals	11,000	63.6	62.3 - 65.0	6,300	36.4	35.0 - 37.7	17,400

County	Breastfed <8 weeks			Breastfed 8+ weeks			Weighted Total Responses (3-Yr Avg)
	#	%	C.I.(95%)	#	%	C.I.(95%)	#
Hawaii	1,300	57.8	53.8 - 61.8	900	42.2	38.2 - 46.2	2,200
Honolulu	8,300	66.1	64.6 - 67.7	4,200	33.9	32.3 - 35.4	12,500
Kauai	400	50.5	44.0 - 57.0	400	49.5	43.0 - 56.0	800
Maui	1,100	59.5	55.1 - 63.8	700	40.5	36.2 - 44.9	1,800

PRAMS Health Indicator 3-Year Aggregate Report - Breastfeeding (exclusive) duration 8+ weeks- by State;County;DOH Race-Ethnicity;PRAMS Age Group;Infant Gender;Married;Poverty Level;Income (2000-2003);Income (2004-2011);Birthweight;Smoke 3rd Trimester;Smoke Before Pregnant;WIC During Pregnancy, for the Year(s) 2000-2002;2001-2003;2002-2004;2003-2005;2004-2006;2005-2007;2006-2008;2007-2009;2008-2010;2009-2011;2010-2012

Note: Weighted counts (#) represent 3-yr averages, rounded to the nearest hundred; n/r (Not Reportable) - If the unweighted total responses for a dimension (row) is <30 that row will not be shown

Years: 2005-2007

DOH Race-Ethnicity	Breastfed <8 weeks			Breastfed 8+ weeks			Weighted Total Responses (3-Yr Avg)
	#	%	C.I.(95%)	#	%	C.I.(95%)	#
Caucasian	2,000	49.7	46.8 - 52.7	2,000	50.3	47.3 - 53.2	4,000
Native Hawaiian	3,200	67.2	64.4 - 69.9	1,600	32.8	30.1 - 35.6	4,800
Chinese	400	65.6	61.8 - 69.3	200	34.4	30.7 - 38.2	600
Filipino	2,300	71.6	68.7 - 74.3	900	28.4	25.7 - 31.3	3,200
Japanese	1,500	70.7	67.0 - 74.2	600	29.3	25.8 - 33.0	2,100
Other	1,700	62.5	58.9 - 66.0	1,000	37.5	34.0 - 41.1	2,700

PRAMS Age Group	Breastfed <8 weeks			Breastfed 8+ weeks			Weighted Total Responses (3-Yr Avg)
	#	%	C.I.(95%)	#	%	C.I.(95%)	#
<20	1,000	67.7	62.6 - 72.4	500	32.3	27.6 - 37.4	1,500
20-24	2,900	66.6	63.8 - 69.3	1,400	33.4	30.7 - 36.2	4,300
25-34	5,300	61.6	59.7 - 63.5	3,300	38.4	36.5 - 40.3	8,500
35+	1,900	63.1	59.9 - 66.1	1,100	36.9	33.9 - 40.1	3,000

PRAMS Health Indicator 3-Year Aggregate Report - Breastfeeding (exclusive) duration 8+ weeks- by State;County;DOH Race-Ethnicity;PRAMS Age Group;Infant Gender;Married;Poverty Level;Income (2000-2003);Income (2004-2011);Birthweight;Smoke 3rd Trimester;Smoke Before Pregnant;WIC During Pregnancy, for the Year(s) 2000-2002;2001-2003;2002-2004;2003-2005;2004-2006;2005-2007;2006-2008;2007-2009;2008-2010;2009-2011;2010-2012

Note: Weighted counts (#) represent 3-yr averages, rounded to the nearest hundred; n/r (Not Reportable) - If the unweighted total responses for a dimension (row) is <30 that row will not be shown

Years: 2005-2007

Infant Gender	Breastfed <8 weeks			Breastfed 8+ weeks			Weighted Total Responses (3-Yr Avg)
	#	%	C.I.(95%)	#	%	C.I.(95%)	#
Male	5,700	64.4	62.5 - 66.3	3,200	35.6	33.7 - 37.5	8,900
Female	5,300	62.8	60.8 - 64.7	3,100	37.2	35.3 - 39.2	8,500

Married	Breastfed <8 weeks			Breastfed 8+ weeks			Weighted Total Responses (3-Yr Avg)
	#	%	C.I.(95%)	#	%	C.I.(95%)	#
Yes	6,700	61.2	59.5 - 62.8	4,300	38.8	37.2 - 40.5	11,000
No	4,300	67.8	65.5 - 70.1	2,000	32.2	29.9 - 34.5	6,400

Poverty Level	Breastfed <8 weeks			Breastfed 8+ weeks			Weighted Total Responses (3-Yr Avg)
	#	%	C.I.(95%)	#	%	C.I.(95%)	#
0-130%	4,300	67.6	65.3 - 69.8	2,000	32.4	30.2 - 34.7	6,300
131-185%	1,400	63.2	59.3 - 66.9	800	36.8	33.1 - 40.7	2,200
186+%	4,600	60.1	58.1 - 62.1	3,000	39.9	37.9 - 41.9	7,600

PRAMS Health Indicator 3-Year Aggregate Report - Breastfeeding (exclusive) duration 8+ weeks- by State;County;DOH Race-Ethnicity;PRAMS Age Group;Infant Gender;Married;Poverty Level;Income (2000-2003);Income (2004-2011);Birthweight;Smoke 3rd Trimester;Smoke Before Pregnant;WIC During Pregnancy, for the Year(s) 2000-2002;2001-2003;2002-2004;2003-2005;2004-2006;2005-2007;2006-2008;2007-2009;2008-2010;2009-2011;2010-2012

Note: Weighted counts (#) represent 3-yr averages, rounded to the nearest hundred; n/r (Not Reportable) - If the unweighted total responses for a dimension (row) is <30 that row will not be shown

Years: 2005-2007

Income (2004-2011)	Breastfed <8 weeks			Breastfed 8+ weeks			Weighted Total Responses (3-Yr Avg)
	#	%	C.I.(95%)	#	%	C.I.(95%)	#
<\$10,000	2,000	67.2	63.7 - 70.5	1,000	32.8	29.5 - 36.3	3,000
\$10,000-\$24,999	2,400	68.0	65.0 - 70.8	1,200	32.0	29.2 - 35.0	3,600
\$25,000-\$49,999	2,500	61.8	58.9 - 64.6	1,500	38.2	35.4 - 41.1	4,100
>=\$50,000	3,400	60.2	57.9 - 62.5	2,200	39.8	37.5 - 42.1	5,600

Birthweight	Breastfed <8 weeks			Breastfed 8+ weeks			Weighted Total Responses (3-Yr Avg)
	#	%	C.I.(95%)	#	%	C.I.(95%)	#
Low birth weight	900	70.7	65.8 - 75.1	400	29.3	24.9 - 34.2	1,300
Normal birth weight	10,100	63.0	61.6 - 64.4	5,900	37.0	35.6 - 38.4	16,000

Smoke 3rd Trimester	Breastfed <8 weeks			Breastfed 8+ weeks			Weighted Total Responses (3-Yr Avg)
	#	%	C.I.(95%)	#	%	C.I.(95%)	#
Yes	1,100	72.6	67.9 - 76.9	400	27.4	23.1 - 32.1	1,500
No	9,800	62.7	61.3 - 64.1	5,800	37.3	35.9 - 38.7	15,600

**PRAMS Health Indicator 3-Year Aggregate Report - Breastfeeding (exclusive) duration 8+ weeks- by State;County;DOH Race-Ethnicity;PRAMS Age Group;Infant Gender;Married;Poverty Level;Income (2000-2003);Income (2004-2011);Birthweight;Smoke 3rd Trimester;Smoke Before Pregnant;WIC During Pregnancy, for the Year(s)
2000-2002;2001-2003;2002-2004;2003-2005;2004-2006;2005-2007;2006-2008;2007-2009;2008-2010;2009-2011;2010-2012**

Note: Weighted counts (#) represent 3-yr averages, rounded to the nearest hundred; n/r (Not Reportable) - If the unweighted total responses for a dimension (row) is <30 that row will not be shown

Years: 2005-2007

Smoke Before Pregnant	Breastfed <8 weeks			Breastfed 8+ weeks			Weighted Total Responses (3-Yr Avg)
	#	%	C.I.(95%)	#	%	C.I.(95%)	#
Yes	2,500	71.2	68.2 - 74.0	1,000	28.8	26.0 - 31.8	3,600
No	8,300	61.6	60.0 - 63.1	5,200	38.4	36.9 - 40.0	13,500

WIC During Pregnancy	Breastfed <8 weeks			Breastfed 8+ weeks			Weighted Total Responses (3-Yr Avg)
	#	%	C.I.(95%)	#	%	C.I.(95%)	#
Yes	4,700	65.0	62.9 - 67.2	2,500	35.0	32.8 - 37.1	7,300
No	6,100	62.1	60.4 - 63.9	3,700	37.9	36.1 - 39.6	9,800

PRAMS Health Indicator 3-Year Aggregate Report - Breastfeeding (exclusive) duration 8+ weeks- by State;County;DOH Race-Ethnicity;PRAMS Age Group;Infant Gender;Married;Poverty Level;Income (2000-2003);Income (2004-2011);Birthweight;Smoke 3rd Trimester;Smoke Before Pregnant;WIC During Pregnancy, for the Year(s) 2000-2002;2001-2003;2002-2004;2003-2005;2004-2006;2005-2007;2006-2008;2007-2009;2008-2010;2009-2011;2010-2012

Note: Weighted counts (#) represent 3-yr averages, rounded to the nearest hundred; n/r (Not Reportable) - If the unweighted total responses for a dimension (row) is <30 that row will not be shown

Years: 2004-2006

State	Breastfed <8 weeks			Breastfed 8+ weeks			Weighted Total Responses (3-Yr Avg)
	#	%	C.I.(95%)	#	%	C.I.(95%)	#
Totals	11,000	64.1	62.8 - 65.4	6,200	35.9	34.6 - 37.2	17,100

County	Breastfed <8 weeks			Breastfed 8+ weeks			Weighted Total Responses (3-Yr Avg)
	#	%	C.I.(95%)	#	%	C.I.(95%)	#
Hawaii	1,300	60.0	56.1 - 63.9	900	40.0	36.1 - 43.9	2,100
Honolulu	8,300	66.5	65.0 - 67.9	4,200	33.5	32.1 - 35.0	12,500
Kauai	400	46.9	40.4 - 53.5	400	53.1	46.5 - 59.6	800
Maui	1,000	59.7	55.4 - 63.9	700	40.3	36.1 - 44.6	1,700

PRAMS Health Indicator 3-Year Aggregate Report - Breastfeeding (exclusive) duration 8+ weeks- by State;County;DOH Race-Ethnicity;PRAMS Age Group;Infant Gender;Married;Poverty Level;Income (2000-2003);Income (2004-2011);Birthweight;Smoke 3rd Trimester;Smoke Before Pregnant;WIC During Pregnancy, for the Year(s) 2000-2002;2001-2003;2002-2004;2003-2005;2004-2006;2005-2007;2006-2008;2007-2009;2008-2010;2009-2011;2010-2012

Note: Weighted counts (#) represent 3-yr averages, rounded to the nearest hundred; n/r (Not Reportable) - If the unweighted total responses for a dimension (row) is <30 that row will not be shown

Years: 2004-2006

DOH Race-Ethnicity	Breastfed <8 weeks			Breastfed 8+ weeks			Weighted Total Responses (3-Yr Avg)
	#	%	C.I.(95%)	#	%	C.I.(95%)	#
Caucasian	1,900	48.3	45.4 - 51.2	2,000	51.7	48.8 - 54.6	3,900
Native Hawaiian	3,300	69.5	66.9 - 72.1	1,400	30.5	27.9 - 33.1	4,700
Chinese	400	67.1	63.7 - 70.3	200	32.9	29.7 - 36.3	600
Filipino	2,200	70.2	67.5 - 72.8	900	29.8	27.2 - 32.5	3,200
Japanese	1,500	70.2	66.6 - 73.6	600	29.8	26.4 - 33.4	2,200
Other	1,600	64.7	61.2 - 68.1	900	35.3	31.9 - 38.8	2,500

PRAMS Age Group	Breastfed <8 weeks			Breastfed 8+ weeks			Weighted Total Responses (3-Yr Avg)
	#	%	C.I.(95%)	#	%	C.I.(95%)	#
<20	900	68.2	63.2 - 72.7	400	31.8	27.3 - 36.8	1,400
20-24	2,900	67.8	65.1 - 70.4	1,400	32.2	29.6 - 34.9	4,300
25-34	5,200	61.8	60.0 - 63.7	3,200	38.2	36.3 - 40.0	8,400
35+	2,000	63.3	60.4 - 66.2	1,100	36.7	33.8 - 39.6	3,100

PRAMS Health Indicator 3-Year Aggregate Report - Breastfeeding (exclusive) duration 8+ weeks- by State;County;DOH Race-Ethnicity;PRAMS Age Group;Infant Gender;Married;Poverty Level;Income (2000-2003);Income (2004-2011);Birthweight;Smoke 3rd Trimester;Smoke Before Pregnant;WIC During Pregnancy, for the Year(s) 2000-2002;2001-2003;2002-2004;2003-2005;2004-2006;2005-2007;2006-2008;2007-2009;2008-2010;2009-2011;2010-2012

Note: Weighted counts (#) represent 3-yr averages, rounded to the nearest hundred; n/r (Not Reportable) - If the unweighted total responses for a dimension (row) is <30 that row will not be shown

Years: 2004-2006

Infant Gender	Breastfed <8 weeks			Breastfed 8+ weeks			Weighted Total Responses (3-Yr Avg)
	#	%	C.I.(95%)	#	%	C.I.(95%)	#
Male	5,900	65.6	63.8 - 67.3	3,100	34.4	32.7 - 36.2	8,900
Female	5,100	62.5	60.6 - 64.4	3,100	37.5	35.6 - 39.4	8,200

Married	Breastfed <8 weeks			Breastfed 8+ weeks			Weighted Total Responses (3-Yr Avg)
	#	%	C.I.(95%)	#	%	C.I.(95%)	#
Yes	6,900	61.4	59.9 - 63.0	4,300	38.6	37.0 - 40.1	11,300
No	4,100	69.2	66.9 - 71.4	1,800	30.8	28.6 - 33.1	5,900

Poverty Level	Breastfed <8 weeks			Breastfed 8+ weeks			Weighted Total Responses (3-Yr Avg)
	#	%	C.I.(95%)	#	%	C.I.(95%)	#
0-130%	4,200	68.3	66.1 - 70.5	2,000	31.7	29.5 - 33.9	6,200
131-185%	1,300	62.2	58.2 - 66.0	800	37.8	34.0 - 41.8	2,000
186+%	4,600	60.5	58.6 - 62.4	3,000	39.5	37.6 - 41.4	7,600

PRAMS Health Indicator 3-Year Aggregate Report - Breastfeeding (exclusive) duration 8+ weeks- by State;County;DOH Race-Ethnicity;PRAMS Age Group;Infant Gender;Married;Poverty Level;Income (2000-2003);Income (2004-2011);Birthweight;Smoke 3rd Trimester;Smoke Before Pregnant;WIC During Pregnancy, for the Year(s) 2000-2002;2001-2003;2002-2004;2003-2005;2004-2006;2005-2007;2006-2008;2007-2009;2008-2010;2009-2011;2010-2012

Note: Weighted counts (#) represent 3-yr averages, rounded to the nearest hundred; n/r (Not Reportable) - If the unweighted total responses for a dimension (row) is <30 that row will not be shown

Years: 2004-2006

Income (2004-2011)	Breastfed <8 weeks			Breastfed 8+ weeks			Weighted Total Responses (3-Yr Avg)
	#	%	C.I.(95%)	#	%	C.I.(95%)	#
<\$10,000	2,000	69.8	66.4 - 72.9	900	30.2	27.1 - 33.6	2,800
\$10,000-\$24,999	2,600	67.2	64.4 - 69.9	1,200	32.8	30.1 - 35.6	3,800
\$25,000-\$49,999	2,500	60.4	57.7 - 63.1	1,600	39.6	36.9 - 42.3	4,200
>=\$50,000	3,200	60.7	58.4 - 63.0	2,000	39.3	37.0 - 41.6	5,200

Birthweight	Breastfed <8 weeks			Breastfed 8+ weeks			Weighted Total Responses (3-Yr Avg)
	#	%	C.I.(95%)	#	%	C.I.(95%)	#
Low birth weight	900	71.3	66.4 - 75.8	300	28.7	24.2 - 33.6	1,200
Normal birth weight	10,100	63.6	62.2 - 64.9	5,800	36.4	35.1 - 37.8	15,900

Smoke 3rd Trimester	Breastfed <8 weeks			Breastfed 8+ weeks			Weighted Total Responses (3-Yr Avg)
	#	%	C.I.(95%)	#	%	C.I.(95%)	#
Yes	1,100	73.0	68.3 - 77.1	400	27.0	22.9 - 31.7	1,400
No	9,800	63.2	61.8 - 64.5	5,700	36.8	35.5 - 38.2	15,500

PRAMS Health Indicator 3-Year Aggregate Report - Breastfeeding (exclusive) duration 8+ weeks- by State;County;DOH Race-Ethnicity;PRAMS Age Group;Infant Gender;Married;Poverty Level;Income (2000-2003);Income (2004-2011);Birthweight;Smoke 3rd Trimester;Smoke Before Pregnant;WIC During Pregnancy, for the Year(s) 2000-2002;2001-2003;2002-2004;2003-2005;2004-2006;2005-2007;2006-2008;2007-2009;2008-2010;2009-2011;2010-2012

Note: Weighted counts (#) represent 3-yr averages, rounded to the nearest hundred; n/r (Not Reportable) - If the unweighted total responses for a dimension (row) is <30 that row will not be shown

Years: 2004-2006

Smoke Before Pregnant	Breastfed <8 weeks			Breastfed 8+ weeks			Weighted Total Responses (3-Yr Avg)
	#	%	C.I.(95%)	#	%	C.I.(95%)	#
Yes	2,500	70.4	67.5 - 73.2	1,100	29.6	26.8 - 32.5	3,600
No	8,300	62.3	60.8 - 63.8	5,000	37.7	36.2 - 39.2	13,300

WIC During Pregnancy	Breastfed <8 weeks			Breastfed 8+ weeks			Weighted Total Responses (3-Yr Avg)
	#	%	C.I.(95%)	#	%	C.I.(95%)	#
Yes	4,900	66.2	64.1 - 68.2	2,500	33.8	31.8 - 35.9	7,400
No	5,900	62.1	60.4 - 63.9	3,600	37.9	36.1 - 39.6	9,500

PRAMS Health Indicator 3-Year Aggregate Report - Breastfeeding (exclusive) duration 8+ weeks- by State;County;DOH Race-Ethnicity;PRAMS Age Group;Infant Gender;Married;Poverty Level;Income (2000-2003);Income (2004-2011);Birthweight;Smoke 3rd Trimester;Smoke Before Pregnant;WIC During Pregnancy, for the Year(s) 2000-2002;2001-2003;2002-2004;2003-2005;2004-2006;2005-2007;2006-2008;2007-2009;2008-2010;2009-2011;2010-2012

Note: Weighted counts (#) represent 3-yr averages, rounded to the nearest hundred; n/r (Not Reportable) - If the unweighted total responses for a dimension (row) is <30 that row will not be shown

Years: 2003-2005

State	Breastfed <8 weeks			Breastfed 8+ weeks			Weighted Total Responses (3-Yr Avg)
	#	%	C.I.(95%)	#	%	C.I.(95%)	#
Totals	10,900	64.6	63.2 - 65.9	5,900	35.4	34.1 - 36.8	16,800

County	Breastfed <8 weeks			Breastfed 8+ weeks			Weighted Total Responses (3-Yr Avg)
	#	%	C.I.(95%)	#	%	C.I.(95%)	#
Hawaii	1,200	60.1	56.5 - 63.5	800	39.9	36.5 - 43.5	2,100
Honolulu	8,200	67.1	65.4 - 68.7	4,000	32.9	31.3 - 34.6	12,300
Kauai	400	47.5	41.9 - 53.2	400	52.5	46.8 - 58.1	800
Maui	1,000	59.9	56.1 - 63.6	700	40.1	36.4 - 43.9	1,700

PRAMS Health Indicator 3-Year Aggregate Report - Breastfeeding (exclusive) duration 8+ weeks- by State;County;DOH Race-Ethnicity;PRAMS Age Group;Infant Gender;Married;Poverty Level;Income (2000-2003);Income (2004-2011);Birthweight;Smoke 3rd Trimester;Smoke Before Pregnant;WIC During Pregnancy, for the Year(s) 2000-2002;2001-2003;2002-2004;2003-2005;2004-2006;2005-2007;2006-2008;2007-2009;2008-2010;2009-2011;2010-2012

Note: Weighted counts (#) represent 3-yr averages, rounded to the nearest hundred; n/r (Not Reportable) - If the unweighted total responses for a dimension (row) is <30 that row will not be shown

Years: 2003-2005

DOH Race-Ethnicity	Breastfed <8 weeks			Breastfed 8+ weeks			Weighted Total Responses (3-Yr Avg)
	#	%	C.I.(95%)	#	%	C.I.(95%)	#
Caucasian	1,800	48.8	45.6 - 51.9	1,900	51.2	48.1 - 54.4	3,700
Native Hawaiian	3,200	68.5	66.1 - 70.7	1,500	31.5	29.3 - 33.9	4,600
Chinese	400	65.4	59.3 - 70.9	200	34.6	29.1 - 40.7	700
Filipino	2,400	71.6	68.5 - 74.4	900	28.4	25.6 - 31.5	3,300
Japanese	1,500	69.4	65.4 - 73.1	700	30.6	26.9 - 34.6	2,100
Other	1,600	67.5	63.6 - 71.1	800	32.5	28.9 - 36.4	2,400

PRAMS Age Group	Breastfed <8 weeks			Breastfed 8+ weeks			Weighted Total Responses (3-Yr Avg)
	#	%	C.I.(95%)	#	%	C.I.(95%)	#
<20	1,000	70.3	65.7 - 74.6	400	29.7	25.4 - 34.3	1,400
20-24	2,800	67.2	64.5 - 69.8	1,400	32.8	30.2 - 35.5	4,100
25-34	5,200	63.2	61.3 - 65.1	3,000	36.8	34.9 - 38.7	8,300
35+	1,900	62.2	58.9 - 65.3	1,100	37.8	34.7 - 41.1	3,000

PRAMS Health Indicator 3-Year Aggregate Report - Breastfeeding (exclusive) duration 8+ weeks- by State;County;DOH Race-Ethnicity;PRAMS Age Group;Infant Gender;Married;Poverty Level;Income (2000-2003);Income (2004-2011);Birthweight;Smoke 3rd Trimester;Smoke Before Pregnant;WIC During Pregnancy, for the Year(s) 2000-2002;2001-2003;2002-2004;2003-2005;2004-2006;2005-2007;2006-2008;2007-2009;2008-2010;2009-2011;2010-2012

Note: Weighted counts (#) represent 3-yr averages, rounded to the nearest hundred; n/r (Not Reportable) - If the unweighted total responses for a dimension (row) is <30 that row will not be shown

Years: 2003-2005

Infant Gender	Breastfed <8 weeks			Breastfed 8+ weeks			Weighted Total Responses (3-Yr Avg)
	#	%	C.I.(95%)	#	%	C.I.(95%)	#
Male	5,800	65.5	63.6 - 67.3	3,100	34.5	32.7 - 36.4	8,900
Female	5,100	63.6	61.6 - 65.6	2,900	36.4	34.4 - 38.4	7,900

Married	Breastfed <8 weeks			Breastfed 8+ weeks			Weighted Total Responses (3-Yr Avg)
	#	%	C.I.(95%)	#	%	C.I.(95%)	#
Yes	6,900	61.5	59.8 - 63.2	4,300	38.5	36.8 - 40.2	11,200
No	4,000	70.7	68.4 - 72.8	1,700	29.3	27.2 - 31.6	5,600

Poverty Level	Breastfed <8 weeks			Breastfed 8+ weeks			Weighted Total Responses (3-Yr Avg)
	#	%	C.I.(95%)	#	%	C.I.(95%)	#
0-130%	4,600	69.1	66.9 - 71.1	2,000	30.9	28.9 - 33.1	6,600
131-185%	1,300	62.5	58.4 - 66.4	800	37.5	33.6 - 41.6	2,100
186+%	4,100	60.1	58.0 - 62.3	2,700	39.9	37.7 - 42.0	6,700

PRAMS Health Indicator 3-Year Aggregate Report - Breastfeeding (exclusive) duration 8+ weeks- by State;County;DOH Race-Ethnicity;PRAMS Age Group;Infant Gender;Married;Poverty Level;Income (2000-2003);Income (2004-2011);Birthweight;Smoke 3rd Trimester;Smoke Before Pregnant;WIC During Pregnancy, for the Year(s) 2000-2002;2001-2003;2002-2004;2003-2005;2004-2006;2005-2007;2006-2008;2007-2009;2008-2010;2009-2011;2010-2012

Note: Weighted counts (#) represent 3-yr averages, rounded to the nearest hundred; n/r (Not Reportable) - If the unweighted total responses for a dimension (row) is <30 that row will not be shown

Years: 2003-2005

Birthweight	Breastfed <8 weeks			Breastfed 8+ weeks			Weighted Total Responses (3-Yr Avg)
	#	%	C.I.(95%)	#	%	C.I.(95%)	#
Low birth weight	800	73.8	68.8 - 78.2	300	26.2	21.8 - 31.2	1,100
Normal birth weight	10,000	63.9	62.5 - 65.3	5,700	36.1	34.7 - 37.5	15,700

Smoke 3rd Trimester	Breastfed <8 weeks			Breastfed 8+ weeks			Weighted Total Responses (3-Yr Avg)
	#	%	C.I.(95%)	#	%	C.I.(95%)	#
Yes	1,100	74.4	69.8 - 78.4	400	25.6	21.6 - 30.2	1,400
No	9,600	63.7	62.2 - 65.1	5,500	36.3	34.9 - 37.8	15,100

Smoke Before Pregnant	Breastfed <8 weeks			Breastfed 8+ weeks			Weighted Total Responses (3-Yr Avg)
	#	%	C.I.(95%)	#	%	C.I.(95%)	#
Yes	2,500	71.6	68.7 - 74.3	1,000	28.4	25.7 - 31.3	3,500
No	8,200	62.6	61.1 - 64.1	4,900	37.4	35.9 - 38.9	13,000

**PRAMS Health Indicator 3-Year Aggregate Report - Breastfeeding (exclusive) duration 8+ weeks- by State;County;DOH Race-Ethnicity;PRAMS Age Group;Infant Gender;Married;Poverty Level;Income (2000-2003);Income (2004-2011);Birthweight;Smoke 3rd Trimester;Smoke Before Pregnant;WIC During Pregnancy, for the Year(s)
2000-2002;2001-2003;2002-2004;2003-2005;2004-2006;2005-2007;2006-2008;2007-2009;2008-2010;2009-2011;2010-2012**

Note: Weighted counts (#) represent 3-yr averages, rounded to the nearest hundred; n/r (Not Reportable) - If the unweighted total responses for a dimension (row) is <30 that row will not be shown

Years: 2003-2005

WIC During Pregnancy	Breastfed <8 weeks			Breastfed 8+ weeks			Weighted Total Responses (3-Yr Avg)
	#	%	C.I.(95%)	#	%	C.I.(95%)	#
Yes	4,800	66.9	64.9 - 68.9	2,400	33.1	31.1 - 35.1	7,200
No	5,800	62.5	60.7 - 64.4	3,500	37.5	35.6 - 39.3	9,300

PRAMS Health Indicator 3-Year Aggregate Report - Breastfeeding (exclusive) duration 8+ weeks- by State;County;DOH Race-Ethnicity;PRAMS Age Group;Infant Gender;Married;Poverty Level;Income (2000-2003);Income (2004-2011);Birthweight;Smoke 3rd Trimester;Smoke Before Pregnant;WIC During Pregnancy, for the Year(s) 2000-2002;2001-2003;2002-2004;2003-2005;2004-2006;2005-2007;2006-2008;2007-2009;2008-2010;2009-2011;2010-2012

Note: Weighted counts (#) represent 3-yr averages, rounded to the nearest hundred; n/r (Not Reportable) - If the unweighted total responses for a dimension (row) is <30 that row will not be shown

Years: 2002-2004

State	Breastfed <8 weeks			Breastfed 8+ weeks			Weighted Total Responses (3-Yr Avg)
	#	%	C.I.(95%)	#	%	C.I.(95%)	#
Totals	10,600	64.1	62.6 - 65.5	5,900	35.9	34.5 - 37.4	16,500

County	Breastfed <8 weeks			Breastfed 8+ weeks			Weighted Total Responses (3-Yr Avg)
	#	%	C.I.(95%)	#	%	C.I.(95%)	#
Hawaii	1,200	60.2	57.0 - 63.2	800	39.8	36.8 - 43.0	2,000
Honolulu	8,000	66.1	64.2 - 67.9	4,100	33.9	32.1 - 35.8	12,100
Kauai	400	48.9	43.9 - 54.0	400	51.1	46.0 - 56.1	700
Maui	1,100	61.3	58.0 - 64.5	700	38.7	35.5 - 42.0	1,700

PRAMS Health Indicator 3-Year Aggregate Report - Breastfeeding (exclusive) duration 8+ weeks- by State;County;DOH Race-Ethnicity;PRAMS Age Group;Infant Gender;Married;Poverty Level;Income (2000-2003);Income (2004-2011);Birthweight;Smoke 3rd Trimester;Smoke Before Pregnant;WIC During Pregnancy, for the Year(s) 2000-2002;2001-2003;2002-2004;2003-2005;2004-2006;2005-2007;2006-2008;2007-2009;2008-2010;2009-2011;2010-2012

Note: Weighted counts (#) represent 3-yr averages, rounded to the nearest hundred; n/r (Not Reportable) - If the unweighted total responses for a dimension (row) is <30 that row will not be shown

Years: 2002-2004

DOH Race-Ethnicity	Breastfed <8 weeks			Breastfed 8+ weeks			Weighted Total Responses (3-Yr Avg)
	#	%	C.I.(95%)	#	%	C.I.(95%)	#
Caucasian	1,700	48.2	44.8 - 51.6	1,900	51.8	48.4 - 55.2	3,600
Native Hawaiian	3,100	69.0	67.0 - 70.9	1,400	31.0	29.1 - 33.0	4,500
Chinese	500	69.7	62.3 - 76.2	200	30.3	23.8 - 37.7	600
Filipino	2,300	68.8	65.4 - 72.0	1,000	31.2	28.0 - 34.6	3,300
Japanese	1,500	69.2	64.8 - 73.3	700	30.8	26.7 - 35.2	2,200
Other	1,500	66.1	61.6 - 70.4	800	33.9	29.6 - 38.4	2,300

PRAMS Age Group	Breastfed <8 weeks			Breastfed 8+ weeks			Weighted Total Responses (3-Yr Avg)
	#	%	C.I.(95%)	#	%	C.I.(95%)	#
<20	1,000	73.9	69.4 - 77.9	400	26.1	22.1 - 30.6	1,400
20-24	2,700	65.7	62.9 - 68.5	1,400	34.3	31.5 - 37.1	4,100
25-34	5,100	62.2	60.1 - 64.3	3,100	37.8	35.7 - 39.9	8,200
35+	1,800	62.4	58.8 - 65.9	1,100	37.6	34.1 - 41.2	2,900

PRAMS Health Indicator 3-Year Aggregate Report - Breastfeeding (exclusive) duration 8+ weeks- by State;County;DOH Race-Ethnicity;PRAMS Age Group;Infant Gender;Married;Poverty Level;Income (2000-2003);Income (2004-2011);Birthweight;Smoke 3rd Trimester;Smoke Before Pregnant;WIC During Pregnancy, for the Year(s) 2000-2002;2001-2003;2002-2004;2003-2005;2004-2006;2005-2007;2006-2008;2007-2009;2008-2010;2009-2011;2010-2012

Note: Weighted counts (#) represent 3-yr averages, rounded to the nearest hundred; n/r (Not Reportable) - If the unweighted total responses for a dimension (row) is <30 that row will not be shown

Years: 2002-2004

Infant Gender	Breastfed <8 weeks			Breastfed 8+ weeks			Weighted Total Responses (3-Yr Avg)
	#	%	C.I.(95%)	#	%	C.I.(95%)	#
Male	5,700	65.2	63.3 - 67.2	3,000	34.8	32.8 - 36.7	8,700
Female	4,900	62.8	60.7 - 64.9	2,900	37.2	35.1 - 39.3	7,800

Married	Breastfed <8 weeks			Breastfed 8+ weeks			Weighted Total Responses (3-Yr Avg)
	#	%	C.I.(95%)	#	%	C.I.(95%)	#
Yes	6,800	60.9	59.0 - 62.7	4,400	39.1	37.3 - 41.0	11,200
No	3,800	70.9	68.6 - 73.0	1,500	29.1	27.0 - 31.4	5,300

Poverty Level	Breastfed <8 weeks			Breastfed 8+ weeks			Weighted Total Responses (3-Yr Avg)
	#	%	C.I.(95%)	#	%	C.I.(95%)	#
0-130%	4,500	67.8	65.6 - 69.9	2,100	32.2	30.1 - 34.4	6,600
131-185%	1,600	60.5	56.5 - 64.3	1,000	39.5	35.7 - 43.5	2,600
186+%	3,500	59.8	57.3 - 62.3	2,400	40.2	37.7 - 42.7	5,900

PRAMS Health Indicator 3-Year Aggregate Report - Breastfeeding (exclusive) duration 8+ weeks- by State;County;DOH Race-Ethnicity;PRAMS Age Group;Infant Gender;Married;Poverty Level;Income (2000-2003);Income (2004-2011);Birthweight;Smoke 3rd Trimester;Smoke Before Pregnant;WIC During Pregnancy, for the Year(s) 2000-2002;2001-2003;2002-2004;2003-2005;2004-2006;2005-2007;2006-2008;2007-2009;2008-2010;2009-2011;2010-2012

Note: Weighted counts (#) represent 3-yr averages, rounded to the nearest hundred; n/r (Not Reportable) - If the unweighted total responses for a dimension (row) is <30 that row will not be shown

Years: 2002-2004

Birthweight	Breastfed <8 weeks			Breastfed 8+ weeks			Weighted Total Responses (3-Yr Avg)
	#	%	C.I.(95%)	#	%	C.I.(95%)	#
Low birth weight	800	74.2	68.5 - 79.2	300	25.8	20.8 - 31.5	1,000
Normal birth weight	9,800	63.4	61.9 - 64.9	5,700	36.6	35.1 - 38.1	15,500

Smoke 3rd Trimester	Breastfed <8 weeks			Breastfed 8+ weeks			Weighted Total Responses (3-Yr Avg)
	#	%	C.I.(95%)	#	%	C.I.(95%)	#
Yes	1,000	75.9	71.4 - 79.9	300	24.1	20.1 - 28.6	1,400
No	9,400	63.2	61.7 - 64.7	5,500	36.8	35.3 - 38.3	14,900

Smoke Before Pregnant	Breastfed <8 weeks			Breastfed 8+ weeks			Weighted Total Responses (3-Yr Avg)
	#	%	C.I.(95%)	#	%	C.I.(95%)	#
Yes	2,300	70.7	67.7 - 73.6	1,000	29.3	26.4 - 32.3	3,300
No	8,000	62.4	60.7 - 64.1	4,800	37.6	35.9 - 39.3	12,900

**PRAMS Health Indicator 3-Year Aggregate Report - Breastfeeding (exclusive) duration 8+ weeks- by State;County;DOH Race-Ethnicity;PRAMS Age Group;Infant Gender;Married;Poverty Level;Income (2000-2003);Income (2004-2011);Birthweight;Smoke 3rd Trimester;Smoke Before Pregnant;WIC During Pregnancy, for the Year(s)
2000-2002;2001-2003;2002-2004;2003-2005;2004-2006;2005-2007;2006-2008;2007-2009;2008-2010;2009-2011;2010-2012**

Note: Weighted counts (#) represent 3-yr averages, rounded to the nearest hundred; n/r (Not Reportable) - If the unweighted total responses for a dimension (row) is <30 that row will not be shown

Years: 2002-2004

WIC During Pregnancy	Breastfed <8 weeks			Breastfed 8+ weeks			Weighted Total Responses (3-Yr Avg)
	#	%	C.I.(95%)	#	%	C.I.(95%)	#
Yes	4,800	67.7	65.6 - 69.7	2,300	32.3	30.3 - 34.4	7,100
No	5,700	61.3	59.3 - 63.3	3,600	38.7	36.7 - 40.7	9,300

PRAMS Health Indicator 3-Year Aggregate Report - Breastfeeding (exclusive) duration 8+ weeks- by State;County;DOH Race-Ethnicity;PRAMS Age Group;Infant Gender;Married;Poverty Level;Income (2000-2003);Income (2004-2011);Birthweight;Smoke 3rd Trimester;Smoke Before Pregnant;WIC During Pregnancy, for the Year(s) 2000-2002;2001-2003;2002-2004;2003-2005;2004-2006;2005-2007;2006-2008;2007-2009;2008-2010;2009-2011;2010-2012

Note: Weighted counts (#) represent 3-yr averages, rounded to the nearest hundred; n/r (Not Reportable) - If the unweighted total responses for a dimension (row) is <30 that row will not be shown

Years: 2001-2003

State	Breastfed <8 weeks			Breastfed 8+ weeks			Weighted Total Responses (3-Yr Avg)
	#	%	C.I.(95%)	#	%	C.I.(95%)	#
Totals	10,200	63.4	61.9 - 64.9	5,900	36.6	35.1 - 38.1	16,000

County	Breastfed <8 weeks			Breastfed 8+ weeks			Weighted Total Responses (3-Yr Avg)
	#	%	C.I.(95%)	#	%	C.I.(95%)	#
Hawaii	1,100	59.8	57.1 - 62.5	700	40.2	37.5 - 42.9	1,800
Honolulu	7,700	65.3	63.4 - 67.2	4,100	34.7	32.8 - 36.6	11,800
Kauai	400	50.1	45.6 - 54.6	400	49.9	45.4 - 54.4	700
Maui	1,000	59.7	56.8 - 62.6	700	40.3	37.4 - 43.2	1,700

PRAMS Health Indicator 3-Year Aggregate Report - Breastfeeding (exclusive) duration 8+ weeks- by State;County;DOH Race-Ethnicity;PRAMS Age Group;Infant Gender;Married;Poverty Level;Income (2000-2003);Income (2004-2011);Birthweight;Smoke 3rd Trimester;Smoke Before Pregnant;WIC During Pregnancy, for the Year(s) 2000-2002;2001-2003;2002-2004;2003-2005;2004-2006;2005-2007;2006-2008;2007-2009;2008-2010;2009-2011;2010-2012

Note: Weighted counts (#) represent 3-yr averages, rounded to the nearest hundred; n/r (Not Reportable) - If the unweighted total responses for a dimension (row) is <30 that row will not be shown

Years: 2001-2003

DOH Race-Ethnicity	Breastfed <8 weeks			Breastfed 8+ weeks			Weighted Total Responses (3-Yr Avg)
	#	%	C.I.(95%)	#	%	C.I.(95%)	#
Caucasian	1,700	49.0	45.4 - 52.5	1,800	51.0	47.5 - 54.6	3,400
Native Hawaiian	2,900	66.7	65.1 - 68.3	1,500	33.3	31.7 - 34.9	4,400
Chinese	500	70.7	62.0 - 78.1	200	29.3	21.9 - 38.0	600
Filipino	2,200	67.4	63.8 - 70.8	1,100	32.6	29.2 - 36.2	3,300
Japanese	1,500	69.9	65.3 - 74.2	600	30.1	25.8 - 34.7	2,100
Other	1,400	65.1	60.3 - 69.7	800	34.9	30.3 - 39.7	2,200

PRAMS Age Group	Breastfed <8 weeks			Breastfed 8+ weeks			Weighted Total Responses (3-Yr Avg)
	#	%	C.I.(95%)	#	%	C.I.(95%)	#
<20	1,100	75.7	71.7 - 79.2	400	24.3	20.8 - 28.3	1,500
20-24	2,600	65.1	62.2 - 67.8	1,400	34.9	32.2 - 37.8	4,000
25-34	4,800	60.8	58.6 - 63.0	3,100	39.2	37.0 - 41.4	7,900
35+	1,600	61.6	57.7 - 65.4	1,000	38.4	34.6 - 42.3	2,600

PRAMS Health Indicator 3-Year Aggregate Report - Breastfeeding (exclusive) duration 8+ weeks- by State;County;DOH Race-Ethnicity;PRAMS Age Group;Infant Gender;Married;Poverty Level;Income (2000-2003);Income (2004-2011);Birthweight;Smoke 3rd Trimester;Smoke Before Pregnant;WIC During Pregnancy, for the Year(s) 2000-2002;2001-2003;2002-2004;2003-2005;2004-2006;2005-2007;2006-2008;2007-2009;2008-2010;2009-2011;2010-2012

Note: Weighted counts (#) represent 3-yr averages, rounded to the nearest hundred; n/r (Not Reportable) - If the unweighted total responses for a dimension (row) is <30 that row will not be shown

Years: 2001-2003

Infant Gender	Breastfed <8 weeks			Breastfed 8+ weeks			Weighted Total Responses (3-Yr Avg)
	#	%	C.I.(95%)	#	%	C.I.(95%)	#
Male	5,300	64.0	62.0 - 66.1	3,000	36.0	33.9 - 38.0	8,300
Female	4,900	62.7	60.6 - 64.8	2,900	37.3	35.2 - 39.4	7,800

Married	Breastfed <8 weeks			Breastfed 8+ weeks			Weighted Total Responses (3-Yr Avg)
	#	%	C.I.(95%)	#	%	C.I.(95%)	#
Yes	6,400	60.0	58.0 - 61.9	4,300	40.0	38.1 - 42.0	10,700
No	3,700	70.3	68.1 - 72.4	1,600	29.7	27.6 - 31.9	5,300

Poverty Level	Breastfed <8 weeks			Breastfed 8+ weeks			Weighted Total Responses (3-Yr Avg)
	#	%	C.I.(95%)	#	%	C.I.(95%)	#
0-130%	4,400	67.2	65.0 - 69.4	2,100	32.8	30.6 - 35.0	6,500
131-185%	1,900	60.4	56.9 - 63.9	1,200	39.6	36.1 - 43.1	3,100
186+%	3,000	57.9	55.1 - 60.7	2,200	42.1	39.3 - 44.9	5,100

PRAMS Health Indicator 3-Year Aggregate Report - Breastfeeding (exclusive) duration 8+ weeks- by State;County;DOH Race-Ethnicity;PRAMS Age Group;Infant Gender;Married;Poverty Level;Income (2000-2003);Income (2004-2011);Birthweight;Smoke 3rd Trimester;Smoke Before Pregnant;WIC During Pregnancy, for the Year(s) 2000-2002;2001-2003;2002-2004;2003-2005;2004-2006;2005-2007;2006-2008;2007-2009;2008-2010;2009-2011;2010-2012

Note: Weighted counts (#) represent 3-yr averages, rounded to the nearest hundred; n/r (Not Reportable) - If the unweighted total responses for a dimension (row) is <30 that row will not be shown

Years: 2001-2003

Income (2000-2003)	Breastfed <8 weeks			Breastfed 8+ weeks			Weighted Total Responses (3-Yr Avg)
	#	%	C.I.(95%)	#	%	C.I.(95%)	#
<=\$15,000	2,400	71.5	68.7 - 74.2	1,000	28.5	25.8 - 31.3	3,400
\$15,001-\$25,000	1,400	61.3	57.2 - 65.1	900	38.7	34.9 - 42.8	2,200
\$25,001-\$40,000	2,000	61.7	58.3 - 65.0	1,300	38.3	35.0 - 41.7	3,300
>=\$40,001	3,600	59.0	56.5 - 61.5	2,500	41.0	38.5 - 43.5	6,200

Birthweight	Breastfed <8 weeks			Breastfed 8+ weeks			Weighted Total Responses (3-Yr Avg)
	#	%	C.I.(95%)	#	%	C.I.(95%)	#
Low birth weight	700	71.6	65.8 - 76.8	300	28.4	23.2 - 34.2	1,000
Normal birth weight	9,400	62.8	61.3 - 64.3	5,600	37.2	35.7 - 38.7	15,000

Smoke 3rd Trimester	Breastfed <8 weeks			Breastfed 8+ weeks			Weighted Total Responses (3-Yr Avg)
	#	%	C.I.(95%)	#	%	C.I.(95%)	#
Yes	1,100	76.6	72.3 - 80.3	300	23.4	19.7 - 27.7	1,400
No	9,000	62.3	60.7 - 63.9	5,400	37.7	36.1 - 39.3	14,400

**PRAMS Health Indicator 3-Year Aggregate Report - Breastfeeding (exclusive) duration 8+ weeks- by State;County;DOH Race-Ethnicity;PRAMS Age Group;Infant Gender;Married;Poverty Level;Income (2000-2003);Income (2004-2011);Birthweight;Smoke 3rd Trimester;Smoke Before Pregnant;WIC During Pregnancy, for the Year(s)
2000-2002;2001-2003;2002-2004;2003-2005;2004-2006;2005-2007;2006-2008;2007-2009;2008-2010;2009-2011;2010-2012**

Note: Weighted counts (#) represent 3-yr averages, rounded to the nearest hundred; n/r (Not Reportable) - If the unweighted total responses for a dimension (row) is <30 that row will not be shown

Years: 2001-2003

Smoke Before Pregnant	Breastfed <8 weeks			Breastfed 8+ weeks			Weighted Total Responses (3-Yr Avg)
	#	%	C.I.(95%)	#	%	C.I.(95%)	#
Yes	2,200	69.7	66.6 - 72.6	1,000	30.3	27.4 - 33.4	3,200
No	7,600	61.7	60.0 - 63.4	4,700	38.3	36.6 - 40.0	12,400

WIC During Pregnancy	Breastfed <8 weeks			Breastfed 8+ weeks			Weighted Total Responses (3-Yr Avg)
	#	%	C.I.(95%)	#	%	C.I.(95%)	#
Yes	4,600	67.5	65.4 - 69.6	2,200	32.5	30.4 - 34.6	6,800
No	5,500	60.3	58.3 - 62.4	3,600	39.7	37.6 - 41.7	9,100

PRAMS Health Indicator 3-Year Aggregate Report - Breastfeeding (exclusive) duration 8+ weeks- by State;County;DOH Race-Ethnicity;PRAMS Age Group;Infant Gender;Married;Poverty Level;Income (2000-2003);Income (2004-2011);Birthweight;Smoke 3rd Trimester;Smoke Before Pregnant;WIC During Pregnancy, for the Year(s) 2000-2002;2001-2003;2002-2004;2003-2005;2004-2006;2005-2007;2006-2008;2007-2009;2008-2010;2009-2011;2010-2012

Note: Weighted counts (#) represent 3-yr averages, rounded to the nearest hundred; n/r (Not Reportable) - If the unweighted total responses for a dimension (row) is <30 that row will not be shown

Years: 2000-2002

State	Breastfed <8 weeks			Breastfed 8+ weeks			Weighted Total Responses (3-Yr Avg)
	#	%	C.I.(95%)	#	%	C.I.(95%)	#
Totals	9,400	62.2	60.7 - 63.6	5,700	37.8	36.4 - 39.3	15,100

County	Breastfed <8 weeks			Breastfed 8+ weeks			Weighted Total Responses (3-Yr Avg)
	#	%	C.I.(95%)	#	%	C.I.(95%)	#
Hawaii	1,000	60.4	57.6 - 63.1	700	39.6	36.9 - 42.4	1,700
Honolulu	7,100	63.4	61.5 - 65.2	4,100	36.6	34.8 - 38.5	11,200
Kauai	300	48.9	44.2 - 53.7	300	51.1	46.3 - 55.8	600
Maui	900	60.6	57.5 - 63.6	600	39.4	36.4 - 42.5	1,500

PRAMS Health Indicator 3-Year Aggregate Report - Breastfeeding (exclusive) duration 8+ weeks- by State;County;DOH Race-Ethnicity;PRAMS Age Group;Infant Gender;Married;Poverty Level;Income (2000-2003);Income (2004-2011);Birthweight;Smoke 3rd Trimester;Smoke Before Pregnant;WIC During Pregnancy, for the Year(s) 2000-2002;2001-2003;2002-2004;2003-2005;2004-2006;2005-2007;2006-2008;2007-2009;2008-2010;2009-2011;2010-2012

Note: Weighted counts (#) represent 3-yr averages, rounded to the nearest hundred; n/r (Not Reportable) - If the unweighted total responses for a dimension (row) is <30 that row will not be shown

Years: 2000-2002

DOH Race-Ethnicity	Breastfed <8 weeks			Breastfed 8+ weeks			Weighted Total Responses (3-Yr Avg)
	#	%	C.I.(95%)	#	%	C.I.(95%)	#
Caucasian	1,600	48.8	45.4 - 52.1	1,700	51.2	47.9 - 54.6	3,300
Native Hawaiian	2,800	67.3	65.7 - 68.8	1,300	32.7	31.2 - 34.3	4,100
Chinese	400	69.3	60.8 - 76.7	200	30.7	23.3 - 39.2	600
Filipino	2,000	66.2	62.6 - 69.6	1,000	33.8	30.4 - 37.4	3,100
Japanese	1,300	67.0	62.4 - 71.3	600	33.0	28.7 - 37.6	1,900
Other	1,300	61.0	56.2 - 65.6	800	39.0	34.4 - 43.8	2,100

PRAMS Age Group	Breastfed <8 weeks			Breastfed 8+ weeks			Weighted Total Responses (3-Yr Avg)
	#	%	C.I.(95%)	#	%	C.I.(95%)	#
<20	1,100	73.2	69.5 - 76.7	400	26.8	23.3 - 30.5	1,500
20-24	2,400	63.8	61.0 - 66.4	1,400	36.2	33.6 - 39.0	3,800
25-34	4,300	59.0	56.9 - 61.2	3,000	41.0	38.8 - 43.1	7,300
35+	1,500	62.0	58.1 - 65.6	900	38.0	34.4 - 41.9	2,400

PRAMS Health Indicator 3-Year Aggregate Report - Breastfeeding (exclusive) duration 8+ weeks- by State;County;DOH Race-Ethnicity;PRAMS Age Group;Infant Gender;Married;Poverty Level;Income (2000-2003);Income (2004-2011);Birthweight;Smoke 3rd Trimester;Smoke Before Pregnant;WIC During Pregnancy, for the Year(s) 2000-2002;2001-2003;2002-2004;2003-2005;2004-2006;2005-2007;2006-2008;2007-2009;2008-2010;2009-2011;2010-2012

Note: Weighted counts (#) represent 3-yr averages, rounded to the nearest hundred; n/r (Not Reportable) - If the unweighted total responses for a dimension (row) is <30 that row will not be shown

Years: 2000-2002

Infant Gender	Breastfed <8 weeks			Breastfed 8+ weeks			Weighted Total Responses (3-Yr Avg)
	#	%	C.I.(95%)	#	%	C.I.(95%)	#
Male	4,800	62.4	60.4 - 64.4	2,900	37.6	35.6 - 39.6	7,700
Female	4,500	61.9	59.8 - 64.0	2,800	38.1	36.0 - 40.2	7,300

Married	Breastfed <8 weeks			Breastfed 8+ weeks			Weighted Total Responses (3-Yr Avg)
	#	%	C.I.(95%)	#	%	C.I.(95%)	#
Yes	6,000	58.9	57.0 - 60.8	4,200	41.1	39.2 - 43.0	10,100
No	3,400	68.8	66.7 - 71.0	1,500	31.2	29.0 - 33.3	4,900

Poverty Level	Breastfed <8 weeks			Breastfed 8+ weeks			Weighted Total Responses (3-Yr Avg)
	#	%	C.I.(95%)	#	%	C.I.(95%)	#
0-130%	3,900	64.8	62.7 - 66.9	2,100	35.2	33.1 - 37.3	6,100
131-185%	1,700	60.0	56.5 - 63.4	1,100	40.0	36.6 - 43.5	2,900
186+%	2,900	57.2	54.6 - 59.9	2,100	42.8	40.1 - 45.4	5,000

PRAMS Health Indicator 3-Year Aggregate Report - Breastfeeding (exclusive) duration 8+ weeks- by State;County;DOH Race-Ethnicity;PRAMS Age Group;Infant Gender;Married;Poverty Level;Income (2000-2003);Income (2004-2011);Birthweight;Smoke 3rd Trimester;Smoke Before Pregnant;WIC During Pregnancy, for the Year(s) 2000-2002;2001-2003;2002-2004;2003-2005;2004-2006;2005-2007;2006-2008;2007-2009;2008-2010;2009-2011;2010-2012

Note: Weighted counts (#) represent 3-yr averages, rounded to the nearest hundred; n/r (Not Reportable) - If the unweighted total responses for a dimension (row) is <30 that row will not be shown

Years: 2000-2002

Income (2000-2003)	Breastfed <8 weeks			Breastfed 8+ weeks			Weighted Total Responses (3-Yr Avg)
	#	%	C.I.(95%)	#	%	C.I.(95%)	#
<=\$15,000	2,100	67.8	64.9 - 70.5	1,000	32.2	29.5 - 35.1	3,100
\$15,001-\$25,000	1,400	60.9	57.1 - 64.6	900	39.1	35.4 - 42.9	2,300
\$25,001-\$40,000	1,900	61.4	58.2 - 64.6	1,200	38.6	35.4 - 41.8	3,200
>=\$40,001	3,300	58.1	55.6 - 60.6	2,400	41.9	39.4 - 44.4	5,700

Birthweight	Breastfed <8 weeks			Breastfed 8+ weeks			Weighted Total Responses (3-Yr Avg)
	#	%	C.I.(95%)	#	%	C.I.(95%)	#
Low birth weight	700	70.0	64.2 - 75.3	300	30.0	24.7 - 35.8	1,000
Normal birth weight	8,700	61.6	60.1 - 63.1	5,400	38.4	36.9 - 39.9	14,100

Smoke 3rd Trimester	Breastfed <8 weeks			Breastfed 8+ weeks			Weighted Total Responses (3-Yr Avg)
	#	%	C.I.(95%)	#	%	C.I.(95%)	#
Yes	1,000	77.1	73.1 - 80.6	300	22.9	19.4 - 26.9	1,300
No	8,200	60.8	59.2 - 62.3	5,300	39.2	37.7 - 40.8	13,500

PRAMS Health Indicator 3-Year Aggregate Report - Breastfeeding (exclusive) duration 8+ weeks- by State;County;DOH Race-Ethnicity;PRAMS Age Group;Infant Gender;Married;Poverty Level;Income (2000-2003);Income (2004-2011);Birthweight;Smoke 3rd Trimester;Smoke Before Pregnant;WIC During Pregnancy, for the Year(s) 2000-2002;2001-2003;2002-2004;2003-2005;2004-2006;2005-2007;2006-2008;2007-2009;2008-2010;2009-2011;2010-2012

Note: Weighted counts (#) represent 3-yr averages, rounded to the nearest hundred; n/r (Not Reportable) - If the unweighted total responses for a dimension (row) is <30 that row will not be shown

Years: 2000-2002

Smoke Before Pregnant	Breastfed <8 weeks			Breastfed 8+ weeks			Weighted Total Responses (3-Yr Avg)
	#	%	C.I.(95%)	#	%	C.I.(95%)	#
Yes	2,100	67.8	64.8 - 70.7	1,000	32.2	29.3 - 35.2	3,000
No	7,000	60.5	58.8 - 62.2	4,600	39.5	37.8 - 41.2	11,600

WIC During Pregnancy	Breastfed <8 weeks			Breastfed 8+ weeks			Weighted Total Responses (3-Yr Avg)
	#	%	C.I.(95%)	#	%	C.I.(95%)	#
Yes	4,300	65.6	63.5 - 67.6	2,200	34.4	32.4 - 36.5	6,500
No	5,000	59.5	57.5 - 61.5	3,400	40.5	38.5 - 42.5	8,500