

PRAMS Health Indicator 3-Year Aggregate Report - Breastfeeding (exclusive) duration (grouped), among initiators- for the State of Hawaii, for the Year(s)

2000-2002;2001-2003;2002-2004;2003-2005;2004-2006;2005-2007;2006-2008;2007-2009;2008-2010;2009-2011;2010-2012

PRAMS Health Indicator 3-Year Aggregate Report - Breastfeeding (exclusive) duration (grouped), among initiators- by State;County;DOH Race-Ethnicity;PRAMS Age Group;Infant Gender;Married;Poverty Level;Income (2000-2003);Income (2004-2011);Birthweight;Smoke 3rd Trimester;Smoke Before Pregnant;WIC During Pregnancy, for the Year(s)

2000-2002;2001-2003;2002-2004;2003-2005;2004-2006;2005-2007;2006-2008;2007-2009;2008-2010;2009-2011;2010-2012

Note: Weighted counts (#) represent 3-yr averages, rounded to the nearest hundred; n/r (Not Reportable) - If the unweighted total responses for a dimension (row) is <30 that row will not be shown

The trend analysis section shows the trend for the selected health variable over selected years in a table and a graph. 3-Year Weighted Total Responses: This number is a weighted representation of the mothers of babies delivered in a given year, who responded to a particular question in the survey. For most questions this will be the mothers of all babies delivered in a given year. For some secondary questions only a subset of the population was asked the question. For example, all survey participants were asked if they smoked during pregnancy, but only those who answered yes were asked how many cigarettes a day. If a dimension value is unknown for a particular survey record, that record will not be included in the counts for that particular dimension.

Note: Data collection for household income changed in 2004 and again in 2012. Because of this, income data does not exist for some 3-year aggregate periods.

Below are the indicators included in this report and the long description for each indicator.

PRAMS Health Indicator	Health Indicator Description
Breastfeeding (exclusive) duration (grouped), among initiators	Breastfeeding (exclusive) duration (grouped), among initiators

Suggested citation:

Hawaii Health Data Warehouse, Hawaii State Department of Health, Pregnancy Risk Assessment Monitoring System, (report title and years), Report Created: 9/28/15

For documentation on other terms and coding in this report, please go to the following links:

[Click here to access PRAMS documentation](#)

[Click here to access DOH-Race Ethnicity coding](#)

[Click here to access The Hawai'i Data Guide](#)

**For questions about this report, please contact
The Hawai'i Health Data Warehouse**

profiles@hhdw.org

(855) 946-5899 x15

PRAMS Health Indicator 3-Year Aggregate Report - Breastfeeding (exclusive) duration (grouped), among initiators- for the State of Hawaii, for the Year(s)

2000-2002;2001-2003;2002-2004;2003-2005;2004-2006;2005-2007;2006-2008;2007-2009;2008-2010;2009-2011;2010-2012

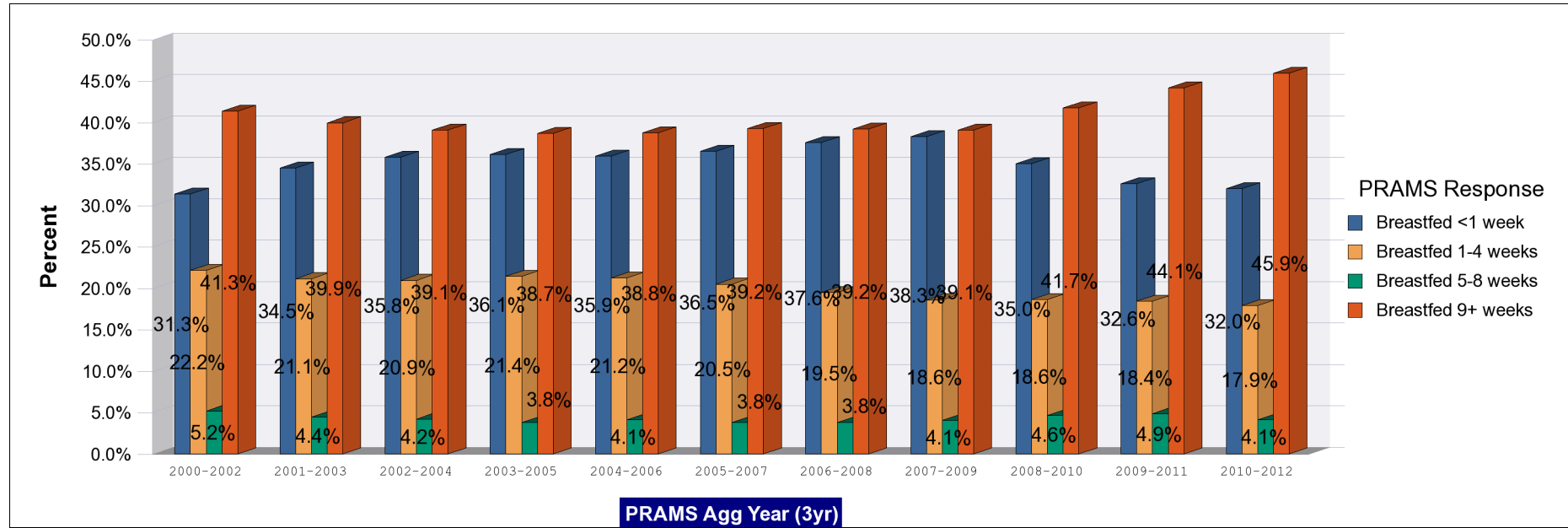
Note: Weighted counts (#) represent 3-yr averages, rounded to the nearest hundred; n/r (Not Reportable) - If the unweighted total responses for a dimension (row) is <30 that row will not be shown

Years	Breastfed <1 week			Breastfed 1-4 weeks			Breastfed 5-8 weeks			Breastfed 9+ weeks			Weighted Total Responses (3-Yr Avg)
	#	%	C.I.(95%)	#	%	C.I.(95%)	#	%	C.I.(95%)	#	%	C.I.(95%)	#
2000-2002	4,200	31.3	29.9 - 32.8	3,000	22.2	20.9 - 23.5	700	5.2	4.5 - 5.9	5,500	41.3	39.8 - 42.9	13,400
2001-2003	4,900	34.5	32.9 - 36.1	3,000	21.1	19.8 - 22.5	600	4.4	3.8 - 5.2	5,700	39.9	38.4 - 41.5	14,300
2002-2004	5,300	35.8	34.3 - 37.3	3,100	20.9	19.7 - 22.3	600	4.2	3.6 - 4.9	5,800	39.1	37.5 - 40.6	14,800
2003-2005	5,500	36.1	34.7 - 37.5	3,200	21.4	20.2 - 22.7	600	3.8	3.2 - 4.4	5,800	38.7	37.3 - 40.1	15,100
2004-2006	5,600	35.9	34.6 - 37.3	3,300	21.2	20.1 - 22.4	600	4.1	3.6 - 4.7	6,000	38.8	37.4 - 40.1	15,600
2005-2007	5,800	36.5	35.1 - 37.9	3,200	20.5	19.3 - 21.7	600	3.8	3.3 - 4.4	6,200	39.2	37.8 - 40.7	15,900
2006-2008	6,100	37.6	36.2 - 39.0	3,200	19.5	18.3 - 20.7	600	3.8	3.3 - 4.4	6,400	39.2	37.8 - 40.6	16,300
2007-2009	6,300	38.3	36.8 - 39.9	3,100	18.6	17.4 - 19.9	700	4.1	3.4 - 4.8	6,400	39.1	37.5 - 40.6	16,500
2008-2010	5,800	35.0	33.3 - 36.7	3,100	18.6	17.3 - 20.1	800	4.6	3.9 - 5.5	7,000	41.7	40.0 - 43.5	16,700
2009-2011	5,500	32.6	30.8 - 34.4	3,100	18.4	16.9 - 20.0	800	4.9	4.1 - 5.7	7,500	44.1	42.3 - 46.1	16,900
2010-2012	5,400	32.0	30.3 - 33.9	3,000	17.9	16.4 - 19.5	700	4.1	3.4 - 5.0	7,800	45.9	44.0 - 47.9	17,000

PRAMS Health Indicator 3-Year Aggregate Report - Breastfeeding (exclusive) duration (grouped), among initiators- for the State of Hawaii, for the Year(s)

2000-2002;2001-2003;2002-2004;2003-2005;2004-2006;2005-2007;2006-2008;2007-2009;2008-2010;2009-2011;2010-2012

Note: Weighted counts (#) represent 3-yr averages, rounded to the nearest hundred; n/r (Not Reportable) - If the unweighted total responses for a dimension (row) is <30 that row will not be shown



PRAMS Health Indicator 3-Year Aggregate Report - Breastfeeding (exclusive) duration (grouped), among initiators- by State;County;DOH Race-Ethnicity;PRAMS Age Group;Infant Gender;Married;Poverty Level;Income (2000-2003);Income (2004-2011);Birthweight;Smoke 3rd Trimester;Smoke Before Pregnant;WIC During Pregnancy, for the Year(s) 2000-2002;2001-2003;2002-2004;2003-2005;2004-2006;2005-2007;2006-2008;2007-2009;2008-2010;2009-2011;2010-2012

Note: Weighted counts (#) represent 3-yr averages, rounded to the nearest hundred; n/r (Not Reportable) - If the unweighted total responses for a dimension (row) is <30 that row will not be shown

Years: 2010-2012

State	Breastfed <1 week			Breastfed 1-4 weeks			Breastfed 5-8 weeks			Breastfed 9+ weeks			Weighted Total Responses (3-Yr Avg)
	#	%	C.I.(95%)	#	%	C.I.(95%)	#	%	C.I.(95%)	#	%	C.I.(95%)	#
Totals	5,400	32.0	30.3 - 33.9	3,000	17.9	16.4 - 19.5	700	4.1	3.4 - 5.0	7,800	45.9	44.0 - 47.9	17,000

County	Breastfed <1 week			Breastfed 1-4 weeks			Breastfed 5-8 weeks			Breastfed 9+ weeks			Weighted Total Responses (3-Yr Avg)
	#	%	C.I.(95%)	#	%	C.I.(95%)	#	%	C.I.(95%)	#	%	C.I.(95%)	#
Hawaii	700	31.8	28.9 - 34.7	400	17.5	15.3 - 20.0	100	4.6	3.4 - 6.1	1,000	46.1	43.1 - 49.2	2,200
Honolulu	3,900	32.2	29.9 - 34.7	2,200	18.3	16.4 - 20.5	500	4.2	3.3 - 5.4	5,500	45.2	42.6 - 47.8	12,200
Kauai	200	27.3	24.1 - 30.7	100	15.6	13.1 - 18.5	<50	3.6	2.5 - 5.2	400	53.5	49.7 - 57.1	800
Maui	600	32.8	30.2 - 35.6	300	16.4	14.4 - 18.7	100	3.1	2.2 - 4.2	900	47.7	44.8 - 50.5	1,800

PRAMS Health Indicator 3-Year Aggregate Report - Breastfeeding (exclusive) duration (grouped), among initiators- by State;County;DOH Race-Ethnicity;PRAMS Age Group;Infant Gender;Married;Poverty Level;Income (2000-2003);Income (2004-2011);Birthweight;Smoke 3rd Trimester;Smoke Before Pregnant;WIC During Pregnancy, for the Year(s) 2000-2002;2001-2003;2002-2004;2003-2005;2004-2006;2005-2007;2006-2008;2007-2009;2008-2010;2009-2011;2010-2012

Note: Weighted counts (#) represent 3-yr averages, rounded to the nearest hundred; n/r (Not Reportable) - If the unweighted total responses for a dimension (row) is <30 that row will not be shown

Years: 2010-2012

DOH Race-Ethnicity	Breastfed <1 week			Breastfed 1-4 weeks			Breastfed 5-8 weeks			Breastfed 9+ weeks			Weighted Total Responses (3-Yr Avg)
	#	%	C.I.(95%)	#	%	C.I.(95%)	#	%	C.I.(95%)	#	%	C.I.(95%)	#
Caucasian	800	18.7	15.9 - 21.8	800	19.0	16.0 - 22.4	200	3.8	2.5 - 5.7	2,400	58.5	54.6 - 62.3	4,100
Native Hawaiian	1,600	32.7	29.5 - 36.0	1,000	20.1	17.4 - 23.1	300	5.9	4.4 - 7.9	2,000	41.3	37.9 - 44.8	4,900
Chinese	300	35.6	27.3 - 45.0	100	9.9	5.8 - 16.3	<50	4.2	1.6 - 10.5	400	50.2	41.0 - 59.4	800
Filipino	1,200	41.6	37.2 - 46.2	600	21.4	17.9 - 25.4	100	4.7	3.0 - 7.1	1,000	32.3	28.1 - 36.7	3,000
Japanese	700	43.8	37.6 - 50.1	200	13.0	9.2 - 18.1	<50	1.0	0.4 - 2.8	700	42.2	36.1 - 48.5	1,600
Other	800	32.3	27.6 - 37.4	300	13.6	10.3 - 17.9	100	2.6	1.4 - 4.7	1,300	51.5	46.2 - 56.8	2,600

PRAMS Age Group	Breastfed <1 week			Breastfed 1-4 weeks			Breastfed 5-8 weeks			Breastfed 9+ weeks			Weighted Total Responses (3-Yr Avg)
	#	%	C.I.(95%)	#	%	C.I.(95%)	#	%	C.I.(95%)	#	%	C.I.(95%)	#
<20	400	38.3	31.2 - 46.0	200	24.1	17.9 - 31.6	<50	3.2	1.6 - 6.4	300	34.4	27.7 - 41.8	1,000
20-24	1,200	30.3	26.6 - 34.2	800	21.0	17.7 - 24.7	200	5.2	3.5 - 7.5	1,700	43.6	39.5 - 47.7	3,800
25-34	2,800	30.3	27.9 - 32.8	1,600	17.2	15.3 - 19.3	400	4.3	3.3 - 5.5	4,400	48.2	45.6 - 50.8	9,200
35+	1,100	37.5	33.2 - 42.0	400	14.0	11.2 - 17.4	100	2.7	1.6 - 4.4	1,400	45.8	41.3 - 50.4	3,000

PRAMS Health Indicator 3-Year Aggregate Report - Breastfeeding (exclusive) duration (grouped), among initiators- by State;County;DOH Race-Ethnicity;PRAMS Age Group;Infant Gender;Married;Poverty Level;Income (2000-2003);Income (2004-2011);Birthweight;Smoke 3rd Trimester;Smoke Before Pregnant;WIC During Pregnancy, for the Year(s) 2000-2002;2001-2003;2002-2004;2003-2005;2004-2006;2005-2007;2006-2008;2007-2009;2008-2010;2009-2011;2010-2012

Note: Weighted counts (#) represent 3-yr averages, rounded to the nearest hundred; n/r (Not Reportable) - If the unweighted total responses for a dimension (row) is <30 that row will not be shown

Years: 2010-2012

Infant Gender	Breastfed <1 week			Breastfed 1-4 weeks			Breastfed 5-8 weeks			Breastfed 9+ weeks			Weighted Total Responses (3-Yr Avg)
	#	%	C.I.(95%)	#	%	C.I.(95%)	#	%	C.I.(95%)	#	%	C.I.(95%)	#
Male	2,800	32.0	29.5 - 34.6	1,500	17.8	15.7 - 20.0	400	4.2	3.2 - 5.5	4,000	46.0	43.3 - 48.7	8,600
Female	2,700	32.0	29.5 - 34.7	1,500	18.1	16.0 - 20.3	300	4.0	3.1 - 5.3	3,900	45.9	43.1 - 48.6	8,400

Married	Breastfed <1 week			Breastfed 1-4 weeks			Breastfed 5-8 weeks			Breastfed 9+ weeks			Weighted Total Responses (3-Yr Avg)
	#	%	C.I.(95%)	#	%	C.I.(95%)	#	%	C.I.(95%)	#	%	C.I.(95%)	#
Yes	3,200	30.3	28.1 - 32.6	1,900	17.4	15.6 - 19.4	400	3.8	2.9 - 4.9	5,200	48.5	46.0 - 50.9	10,700
No	2,200	34.9	32.0 - 37.9	1,200	18.7	16.4 - 21.3	300	4.7	3.6 - 6.2	2,600	41.6	38.6 - 44.7	6,300

Poverty Level	Breastfed <1 week			Breastfed 1-4 weeks			Breastfed 5-8 weeks			Breastfed 9+ weeks			Weighted Total Responses (3-Yr Avg)
	#	%	C.I.(95%)	#	%	C.I.(95%)	#	%	C.I.(95%)	#	%	C.I.(95%)	#
0-130%	2,100	34.9	31.9 - 38.1	1,200	19.6	17.2 - 22.4	200	3.3	2.3 - 4.6	2,500	42.1	39.0 - 45.4	5,900
131-185%	800	30.8	26.4 - 35.6	500	19.6	15.9 - 23.9	200	6.3	4.3 - 9.1	1,200	43.3	38.5 - 48.3	2,700
186+%	2,200	30.7	28.0 - 33.5	1,100	15.6	13.5 - 17.9	300	3.9	2.8 - 5.3	3,600	49.8	46.8 - 52.8	7,200

PRAMS Health Indicator 3-Year Aggregate Report - Breastfeeding (exclusive) duration (grouped), among initiators- by State;County;DOH Race-Ethnicity;PRAMS Age Group;Infant Gender;Married;Poverty Level;Income (2000-2003);Income (2004-2011);Birthweight;Smoke 3rd Trimester;Smoke Before Pregnant;WIC During Pregnancy, for the Year(s) 2000-2002;2001-2003;2002-2004;2003-2005;2004-2006;2005-2007;2006-2008;2007-2009;2008-2010;2009-2011;2010-2012

Note: Weighted counts (#) represent 3-yr averages, rounded to the nearest hundred; n/r (Not Reportable) - If the unweighted total responses for a dimension (row) is <30 that row will not be shown

Years: 2010-2012

Birthweight	Breastfed <1 week			Breastfed 1-4 weeks			Breastfed 5-8 weeks			Breastfed 9+ weeks			Weighted Total Responses (3-Yr Avg)
	#	%	C.I.(95%)	#	%	C.I.(95%)	#	%	C.I.(95%)	#	%	C.I.(95%)	#
Low birth weight	500	44.7	41.5 - 48.1	200	16.7	14.3 - 19.5	<50	3.6	2.5 - 5.1	400	35.0	31.9 - 38.2	1,100
Normal birth weight	4,900	31.1	29.2 - 33.1	2,800	18.0	16.4 - 19.6	700	4.2	3.4 - 5.1	7,400	46.8	44.7 - 48.8	15,900

Smoke 3rd Trimester	Breastfed <1 week			Breastfed 1-4 weeks			Breastfed 5-8 weeks			Breastfed 9+ weeks			Weighted Total Responses (3-Yr Avg)
	#	%	C.I.(95%)	#	%	C.I.(95%)	#	%	C.I.(95%)	#	%	C.I.(95%)	#
Yes	300	35.2	27.7 - 43.5	200	22.4	16.2 - 30.0	<50	5.7	2.9 - 11.0	300	36.8	29.2 - 45.0	900
No	5,100	32.0	30.1 - 33.9	2,800	17.7	16.1 - 19.3	600	4.1	3.4 - 5.0	7,300	46.3	44.3 - 48.3	15,800

Smoke Before Pregnant	Breastfed <1 week			Breastfed 1-4 weeks			Breastfed 5-8 weeks			Breastfed 9+ weeks			Weighted Total Responses (3-Yr Avg)
	#	%	C.I.(95%)	#	%	C.I.(95%)	#	%	C.I.(95%)	#	%	C.I.(95%)	#
Yes	1,000	32.8	28.8 - 37.1	600	20.8	17.3 - 24.8	200	4.9	3.3 - 7.3	1,300	41.4	37.1 - 45.9	3,100
No	4,400	32.0	30.0 - 34.0	2,300	17.3	15.7 - 19.0	500	4.0	3.2 - 5.0	6,400	46.7	44.6 - 48.9	13,600

PRAMS Health Indicator 3-Year Aggregate Report - Breastfeeding (exclusive) duration (grouped), among initiators- by State;County;DOH Race-Ethnicity;PRAMS Age Group;Infant Gender;Married;Poverty Level;Income (2000-2003);Income (2004-2011);Birthweight;Smoke 3rd Trimester;Smoke Before Pregnant;WIC During Pregnancy, for the Year(s) 2000-2002;2001-2003;2002-2004;2003-2005;2004-2006;2005-2007;2006-2008;2007-2009;2008-2010;2009-2011;2010-2012

Note: Weighted counts (#) represent 3-yr averages, rounded to the nearest hundred; n/r (Not Reportable) - If the unweighted total responses for a dimension (row) is <30 that row will not be shown

Years: 2010-2012

WIC During Pregnancy	Breastfed <1 week			Breastfed 1-4 weeks			Breastfed 5-8 weeks			Breastfed 9+ weeks			Weighted Total Responses (3-Yr Avg)
	#	%	C.I.(95%)	#	%	C.I.(95%)	#	%	C.I.(95%)	#	%	C.I.(95%)	#
Yes	2,600	35.2	32.5 - 38.0	1,400	18.4	16.2 - 20.8	300	4.4	3.4 - 5.7	3,100	42.0	39.2 - 44.9	7,400
No	2,800	29.8	27.5 - 32.2	1,700	17.5	15.5 - 19.6	400	3.9	2.9 - 5.1	4,600	48.8	46.2 - 51.5	9,400

PRAMS Health Indicator 3-Year Aggregate Report - Breastfeeding (exclusive) duration (grouped), among initiators- by State;County;DOH Race-Ethnicity;PRAMS Age Group;Infant Gender;Married;Poverty Level;Income (2000-2003);Income (2004-2011);Birthweight;Smoke 3rd Trimester;Smoke Before Pregnant;WIC During Pregnancy, for the Year(s) 2000-2002;2001-2003;2002-2004;2003-2005;2004-2006;2005-2007;2006-2008;2007-2009;2008-2010;2009-2011;2010-2012

Note: Weighted counts (#) represent 3-yr averages, rounded to the nearest hundred; n/r (Not Reportable) - If the unweighted total responses for a dimension (row) is <30 that row will not be shown

Years: 2009-2011

State	Breastfed <1 week			Breastfed 1-4 weeks			Breastfed 5-8 weeks			Breastfed 9+ weeks			Weighted Total Responses (3-Yr Avg)
	#	%	C.I.(95%)	#	%	C.I.(95%)	#	%	C.I.(95%)	#	%	C.I.(95%)	#
Totals	5,500	32.6	30.8 - 34.4	3,100	18.4	16.9 - 20.0	800	4.9	4.1 - 5.7	7,500	44.1	42.3 - 46.1	16,900

County	Breastfed <1 week			Breastfed 1-4 weeks			Breastfed 5-8 weeks			Breastfed 9+ weeks			Weighted Total Responses (3-Yr Avg)
	#	%	C.I.(95%)	#	%	C.I.(95%)	#	%	C.I.(95%)	#	%	C.I.(95%)	#
Hawaii	700	32.1	29.3 - 35.0	400	18.2	16.0 - 20.8	100	5.3	4.1 - 6.8	1,000	44.4	41.4 - 47.5	2,200
Honolulu	4,000	33.2	30.8 - 35.6	2,300	18.7	16.8 - 20.9	600	4.9	3.9 - 6.1	5,200	43.3	40.7 - 45.8	12,000
Kauai	200	24.7	21.6 - 27.9	100	18.7	16.0 - 21.7	<50	5.6	4.1 - 7.5	400	51.1	47.4 - 54.7	800
Maui	600	32.7	30.1 - 35.4	300	16.5	14.5 - 18.7	100	4.1	3.1 - 5.3	900	46.7	44.0 - 49.5	1,900

PRAMS Health Indicator 3-Year Aggregate Report - Breastfeeding (exclusive) duration (grouped), among initiators- by State;County;DOH Race-Ethnicity;PRAMS Age Group;Infant Gender;Married;Poverty Level;Income (2000-2003);Income (2004-2011);Birthweight;Smoke 3rd Trimester;Smoke Before Pregnant;WIC During Pregnancy, for the Year(s) 2000-2002;2001-2003;2002-2004;2003-2005;2004-2006;2005-2007;2006-2008;2007-2009;2008-2010;2009-2011;2010-2012

Note: Weighted counts (#) represent 3-yr averages, rounded to the nearest hundred; n/r (Not Reportable) - If the unweighted total responses for a dimension (row) is <30 that row will not be shown

Years: 2009-2011

DOH Race-Ethnicity	Breastfed <1 week			Breastfed 1-4 weeks			Breastfed 5-8 weeks			Breastfed 9+ weeks			Weighted Total Responses (3-Yr Avg)
	#	%	C.I.(95%)	#	%	C.I.(95%)	#	%	C.I.(95%)	#	%	C.I.(95%)	#
Caucasian	800	19.9	17.1 - 23.1	700	18.0	15.2 - 21.3	200	5.8	4.2 - 8.0	2,300	56.2	52.4 - 60.0	4,100
Native Hawaiian	1,700	33.9	30.8 - 37.3	1,000	20.5	17.9 - 23.5	300	6.1	4.7 - 8.0	2,000	39.4	36.1 - 42.8	5,000
Chinese	300	35.9	27.1 - 45.8	100	12.4	7.3 - 20.5	<50	3.9	1.6 - 9.5	300	47.7	38.0 - 57.6	700
Filipino	1,300	43.1	38.7 - 47.6	600	20.9	17.5 - 24.8	100	3.7	2.4 - 5.6	1,000	32.3	28.2 - 36.6	3,000
Japanese	700	43.8	37.8 - 50.1	200	13.4	9.6 - 18.4	<50	1.7	0.7 - 3.8	700	41.1	35.2 - 47.3	1,700
Other	700	29.7	25.0 - 34.8	400	16.7	12.9 - 21.4	100	4.4	2.6 - 7.3	1,200	49.2	43.8 - 54.6	2,400

PRAMS Age Group	Breastfed <1 week			Breastfed 1-4 weeks			Breastfed 5-8 weeks			Breastfed 9+ weeks			Weighted Total Responses (3-Yr Avg)
	#	%	C.I.(95%)	#	%	C.I.(95%)	#	%	C.I.(95%)	#	%	C.I.(95%)	#
<20	400	34.5	28.3 - 41.3	300	25.4	19.6 - 32.1	<50	3.3	1.7 - 6.6	400	36.8	30.3 - 43.8	1,200
20-24	1,200	31.7	28.1 - 35.6	900	22.8	19.5 - 26.5	200	5.5	3.9 - 7.8	1,600	39.9	36.0 - 43.9	3,900
25-34	2,700	30.4	28.0 - 32.9	1,500	17.1	15.2 - 19.2	400	5.1	4.0 - 6.4	4,200	47.4	44.8 - 50.1	8,800
35+	1,200	39.4	35.0 - 43.9	400	13.7	10.8 - 17.1	100	3.9	2.5 - 6.0	1,300	43.1	38.6 - 47.6	3,000

PRAMS Health Indicator 3-Year Aggregate Report - Breastfeeding (exclusive) duration (grouped), among initiators- by State;County;DOH Race-Ethnicity;PRAMS Age Group;Infant Gender;Married;Poverty Level;Income (2000-2003);Income (2004-2011);Birthweight;Smoke 3rd Trimester;Smoke Before Pregnant;WIC During Pregnancy, for the Year(s) 2000-2002;2001-2003;2002-2004;2003-2005;2004-2006;2005-2007;2006-2008;2007-2009;2008-2010;2009-2011;2010-2012

Note: Weighted counts (#) represent 3-yr averages, rounded to the nearest hundred; n/r (Not Reportable) - If the unweighted total responses for a dimension (row) is <30 that row will not be shown

Years: 2009-2011

Infant Gender	Breastfed <1 week			Breastfed 1-4 weeks			Breastfed 5-8 weeks			Breastfed 9+ weeks			Weighted Total Responses (3-Yr Avg)
	#	%	C.I.(95%)	#	%	C.I.(95%)	#	%	C.I.(95%)	#	%	C.I.(95%)	#
Male	2,800	32.3	29.9 - 34.9	1,600	19.0	16.9 - 21.2	400	4.8	3.8 - 6.1	3,800	43.9	41.3 - 46.6	8,700
Female	2,700	32.8	30.3 - 35.5	1,500	17.8	15.8 - 20.1	400	4.9	3.8 - 6.3	3,600	44.4	41.7 - 47.1	8,200

Married	Breastfed <1 week			Breastfed 1-4 weeks			Breastfed 5-8 weeks			Breastfed 9+ weeks			Weighted Total Responses (3-Yr Avg)
	#	%	C.I.(95%)	#	%	C.I.(95%)	#	%	C.I.(95%)	#	%	C.I.(95%)	#
Yes	3,200	30.3	28.1 - 32.6	1,700	16.6	14.8 - 18.5	500	4.7	3.8 - 5.8	5,100	48.5	46.0 - 50.9	10,500
No	2,300	36.4	33.5 - 39.4	1,400	21.5	19.0 - 24.2	300	5.1	3.9 - 6.7	2,300	37.0	34.1 - 40.0	6,300

Poverty Level	Breastfed <1 week			Breastfed 1-4 weeks			Breastfed 5-8 weeks			Breastfed 9+ weeks			Weighted Total Responses (3-Yr Avg)
	#	%	C.I.(95%)	#	%	C.I.(95%)	#	%	C.I.(95%)	#	%	C.I.(95%)	#
0-130%	2,100	36.1	33.0 - 39.2	1,200	20.1	17.6 - 22.9	200	3.9	2.9 - 5.2	2,300	39.9	36.8 - 43.1	5,800
131-185%	800	30.3	26.0 - 35.1	500	19.1	15.5 - 23.3	200	6.7	4.7 - 9.6	1,200	43.9	39.1 - 48.8	2,600
186+%	2,300	31.0	28.4 - 33.8	1,200	16.5	14.4 - 18.9	400	5.1	3.9 - 6.6	3,500	47.4	44.5 - 50.3	7,300

PRAMS Health Indicator 3-Year Aggregate Report - Breastfeeding (exclusive) duration (grouped), among initiators- by State;County;DOH Race-Ethnicity;PRAMS Age Group;Infant Gender;Married;Poverty Level;Income (2000-2003);Income (2004-2011);Birthweight;Smoke 3rd Trimester;Smoke Before Pregnant;WIC During Pregnancy, for the Year(s) 2000-2002;2001-2003;2002-2004;2003-2005;2004-2006;2005-2007;2006-2008;2007-2009;2008-2010;2009-2011;2010-2012

Note: Weighted counts (#) represent 3-yr averages, rounded to the nearest hundred; n/r (Not Reportable) - If the unweighted total responses for a dimension (row) is <30 that row will not be shown

Years: 2009-2011

Income (2004-2011)	Breastfed <1 week			Breastfed 1-4 weeks			Breastfed 5-8 weeks			Breastfed 9+ weeks			Weighted Total Responses (3-Yr Avg)
	#	%	C.I.(95%)	#	%	C.I.(95%)	#	%	C.I.(95%)	#	%	C.I.(95%)	#
<\$10,000	1,000	35.9	31.6 - 40.5	700	23.0	19.3 - 27.2	100	3.1	1.9 - 5.1	1,100	38.0	33.7 - 42.5	2,900
\$10,000-\$24,999	1,100	35.4	31.5 - 39.6	600	19.7	16.5 - 23.4	200	5.2	3.7 - 7.3	1,300	39.6	35.5 - 43.9	3,200
\$25,000-\$49,999	1,200	29.5	26.0 - 33.3	700	18.0	15.1 - 21.4	200	5.3	3.8 - 7.4	1,900	47.1	43.1 - 51.1	3,900
>=\$50,000	1,900	32.0	29.0 - 35.1	900	15.4	13.1 - 18.0	300	5.3	4.0 - 7.1	2,800	47.3	44.0 - 50.5	5,900

Birthweight	Breastfed <1 week			Breastfed 1-4 weeks			Breastfed 5-8 weeks			Breastfed 9+ weeks			Weighted Total Responses (3-Yr Avg)
	#	%	C.I.(95%)	#	%	C.I.(95%)	#	%	C.I.(95%)	#	%	C.I.(95%)	#
Low birth weight	500	46.1	42.8 - 49.4	200	15.4	13.1 - 18.0	100	4.8	3.5 - 6.4	400	33.8	30.7 - 37.0	1,100
Normal birth weight	5,000	31.6	29.7 - 33.5	2,900	18.6	17.1 - 20.3	800	4.9	4.1 - 5.8	7,100	44.9	42.9 - 46.9	15,800

Smoke 3rd Trimester	Breastfed <1 week			Breastfed 1-4 weeks			Breastfed 5-8 weeks			Breastfed 9+ weeks			Weighted Total Responses (3-Yr Avg)
	#	%	C.I.(95%)	#	%	C.I.(95%)	#	%	C.I.(95%)	#	%	C.I.(95%)	#
Yes	500	43.4	36.2 - 50.9	200	15.3	11.0 - 20.8	100	5.2	2.8 - 9.4	400	36.1	29.3 - 43.5	1,100
No	5,000	31.9	30.0 - 33.8	2,900	18.6	17.0 - 20.2	800	4.9	4.1 - 5.8	6,900	44.7	42.7 - 46.7	15,500

PRAMS Health Indicator 3-Year Aggregate Report - Breastfeeding (exclusive) duration (grouped), among initiators- by State;County;DOH Race-Ethnicity;PRAMS Age Group;Infant Gender;Married;Poverty Level;Income (2000-2003);Income (2004-2011);Birthweight;Smoke 3rd Trimester;Smoke Before Pregnant;WIC During Pregnancy, for the Year(s) 2000-2002;2001-2003;2002-2004;2003-2005;2004-2006;2005-2007;2006-2008;2007-2009;2008-2010;2009-2011;2010-2012

Note: Weighted counts (#) represent 3-yr averages, rounded to the nearest hundred; n/r (Not Reportable) - If the unweighted total responses for a dimension (row) is <30 that row will not be shown

Years: 2009-2011

Smoke Before Pregnant	Breastfed <1 week			Breastfed 1-4 weeks			Breastfed 5-8 weeks			Breastfed 9+ weeks			Weighted Total Responses (3-Yr Avg)
	#	%	C.I.(95%)	#	%	C.I.(95%)	#	%	C.I.(95%)	#	%	C.I.(95%)	#
Yes	1,300	37.7	33.7 - 41.9	600	18.2	15.1 - 21.7	200	5.7	4.0 - 7.9	1,300	38.4	34.4 - 42.6	3,300
No	4,200	31.4	29.4 - 33.4	2,400	18.4	16.7 - 20.2	600	4.7	3.9 - 5.7	6,100	45.5	43.4 - 47.7	13,300

WIC During Pregnancy	Breastfed <1 week			Breastfed 1-4 weeks			Breastfed 5-8 weeks			Breastfed 9+ weeks			Weighted Total Responses (3-Yr Avg)
	#	%	C.I.(95%)	#	%	C.I.(95%)	#	%	C.I.(95%)	#	%	C.I.(95%)	#
Yes	2,500	34.9	32.2 - 37.8	1,400	19.1	16.9 - 21.5	400	5.0	3.9 - 6.4	2,900	41.0	38.2 - 43.9	7,100
No	2,900	30.9	28.6 - 33.3	1,700	18.0	16.1 - 20.2	400	4.7	3.7 - 6.0	4,400	46.3	43.8 - 48.9	9,500

PRAMS Health Indicator 3-Year Aggregate Report - Breastfeeding (exclusive) duration (grouped), among initiators- by State;County;DOH Race-Ethnicity;PRAMS Age Group;Infant Gender;Married;Poverty Level;Income (2000-2003);Income (2004-2011);Birthweight;Smoke 3rd Trimester;Smoke Before Pregnant;WIC During Pregnancy, for the Year(s) 2000-2002;2001-2003;2002-2004;2003-2005;2004-2006;2005-2007;2006-2008;2007-2009;2008-2010;2009-2011;2010-2012

Note: Weighted counts (#) represent 3-yr averages, rounded to the nearest hundred; n/r (Not Reportable) - If the unweighted total responses for a dimension (row) is <30 that row will not be shown

Years: 2008-2010

State	Breastfed <1 week			Breastfed 1-4 weeks			Breastfed 5-8 weeks			Breastfed 9+ weeks			Weighted Total Responses (3-Yr Avg)
	#	%	C.I.(95%)	#	%	C.I.(95%)	#	%	C.I.(95%)	#	%	C.I.(95%)	#
Totals	5,800	35.0	33.3 - 36.7	3,100	18.6	17.3 - 20.1	800	4.6	3.9 - 5.5	7,000	41.7	40.0 - 43.5	16,700

County	Breastfed <1 week			Breastfed 1-4 weeks			Breastfed 5-8 weeks			Breastfed 9+ weeks			Weighted Total Responses (3-Yr Avg)
	#	%	C.I.(95%)	#	%	C.I.(95%)	#	%	C.I.(95%)	#	%	C.I.(95%)	#
Hawaii	700	32.5	29.3 - 35.9	400	18.4	15.9 - 21.3	100	4.6	3.4 - 6.1	900	44.5	41.1 - 48.0	2,100
Honolulu	4,300	36.1	34.0 - 38.3	2,200	18.4	16.7 - 20.3	600	4.7	3.8 - 5.8	4,800	40.8	38.5 - 43.1	11,900
Kauai	200	26.4	22.2 - 31.1	200	21.3	17.4 - 25.8	<50	5.5	3.8 - 8.0	400	46.8	42.0 - 51.6	800
Maui	700	34.3	31.1 - 37.6	400	19.2	16.6 - 22.0	100	4.0	2.8 - 5.6	800	42.6	39.3 - 46.0	1,900

PRAMS Health Indicator 3-Year Aggregate Report - Breastfeeding (exclusive) duration (grouped), among initiators- by State;County;DOH Race-Ethnicity;PRAMS Age Group;Infant Gender;Married;Poverty Level;Income (2000-2003);Income (2004-2011);Birthweight;Smoke 3rd Trimester;Smoke Before Pregnant;WIC During Pregnancy, for the Year(s) 2000-2002;2001-2003;2002-2004;2003-2005;2004-2006;2005-2007;2006-2008;2007-2009;2008-2010;2009-2011;2010-2012

Note: Weighted counts (#) represent 3-yr averages, rounded to the nearest hundred; n/r (Not Reportable) - If the unweighted total responses for a dimension (row) is <30 that row will not be shown

Years: 2008-2010

DOH Race-Ethnicity	Breastfed <1 week			Breastfed 1-4 weeks			Breastfed 5-8 weeks			Breastfed 9+ weeks			Weighted Total Responses (3-Yr Avg)
	#	%	C.I.(95%)	#	%	C.I.(95%)	#	%	C.I.(95%)	#	%	C.I.(95%)	#
Caucasian	800	20.8	18.1 - 23.7	700	18.1	15.5 - 21.0	300	6.5	4.9 - 8.6	2,200	54.6	51.1 - 58.1	4,100
Native Hawaiian	1,800	36.3	33.2 - 39.6	1,000	19.8	17.3 - 22.6	300	5.6	4.3 - 7.4	1,900	38.2	35.0 - 41.5	4,900
Chinese	200	36.3	28.5 - 44.8	100	16.6	11.3 - 23.5	<50	4.0	1.6 - 9.7	300	43.2	34.7 - 52.0	700
Filipino	1,400	46.7	42.6 - 50.8	600	20.2	17.0 - 23.8	100	2.5	1.5 - 4.1	900	30.6	26.9 - 34.6	3,000
Japanese	800	46.1	40.7 - 51.5	200	14.4	11.1 - 18.5	<50	2.2	1.2 - 3.9	600	37.3	32.2 - 42.8	1,700
Other	800	33.5	29.1 - 38.3	400	18.9	15.2 - 23.2	100	4.0	2.4 - 6.7	1,000	43.6	38.8 - 48.5	2,400

PRAMS Age Group	Breastfed <1 week			Breastfed 1-4 weeks			Breastfed 5-8 weeks			Breastfed 9+ weeks			Weighted Total Responses (3-Yr Avg)
	#	%	C.I.(95%)	#	%	C.I.(95%)	#	%	C.I.(95%)	#	%	C.I.(95%)	#
<20	500	35.0	29.3 - 41.2	300	23.2	18.1 - 29.3	<50	3.5	1.8 - 6.7	500	38.3	32.3 - 44.6	1,300
20-24	1,300	33.3	29.9 - 37.0	800	21.9	18.8 - 25.3	200	5.3	3.9 - 7.4	1,500	39.4	35.8 - 43.2	3,800
25-34	2,800	33.2	31.0 - 35.6	1,500	17.4	15.6 - 19.4	400	4.8	3.8 - 6.0	3,800	44.5	42.1 - 47.0	8,600
35+	1,300	42.1	38.2 - 46.2	500	16.0	13.3 - 19.1	100	3.8	2.5 - 5.6	1,200	38.1	34.3 - 42.2	3,000

PRAMS Health Indicator 3-Year Aggregate Report - Breastfeeding (exclusive) duration (grouped), among initiators- by State;County;DOH Race-Ethnicity;PRAMS Age Group;Infant Gender;Married;Poverty Level;Income (2000-2003);Income (2004-2011);Birthweight;Smoke 3rd Trimester;Smoke Before Pregnant;WIC During Pregnancy, for the Year(s) 2000-2002;2001-2003;2002-2004;2003-2005;2004-2006;2005-2007;2006-2008;2007-2009;2008-2010;2009-2011;2010-2012

Note: Weighted counts (#) represent 3-yr averages, rounded to the nearest hundred; n/r (Not Reportable) - If the unweighted total responses for a dimension (row) is <30 that row will not be shown

Years: 2008-2010

Infant Gender	Breastfed <1 week			Breastfed 1-4 weeks			Breastfed 5-8 weeks			Breastfed 9+ weeks			Weighted Total Responses (3-Yr Avg)
	#	%	C.I.(95%)	#	%	C.I.(95%)	#	%	C.I.(95%)	#	%	C.I.(95%)	#
Male	3,000	34.9	32.6 - 37.2	1,700	19.3	17.4 - 21.3	400	4.9	3.9 - 6.1	3,500	41.0	38.6 - 43.4	8,700
Female	2,800	35.2	32.8 - 37.6	1,400	18.0	16.0 - 20.1	300	4.3	3.4 - 5.5	3,400	42.5	40.0 - 45.1	8,000

Married	Breastfed <1 week			Breastfed 1-4 weeks			Breastfed 5-8 weeks			Breastfed 9+ weeks			Weighted Total Responses (3-Yr Avg)
	#	%	C.I.(95%)	#	%	C.I.(95%)	#	%	C.I.(95%)	#	%	C.I.(95%)	#
Yes	3,500	33.4	31.3 - 35.5	1,800	16.8	15.2 - 18.6	500	4.5	3.6 - 5.5	4,700	45.3	43.1 - 47.5	10,500
No	2,300	37.8	35.0 - 40.6	1,300	21.7	19.3 - 24.2	300	4.9	3.8 - 6.4	2,200	35.7	33.0 - 38.5	6,200

Poverty Level	Breastfed <1 week			Breastfed 1-4 weeks			Breastfed 5-8 weeks			Breastfed 9+ weeks			Weighted Total Responses (3-Yr Avg)
	#	%	C.I.(95%)	#	%	C.I.(95%)	#	%	C.I.(95%)	#	%	C.I.(95%)	#
0-130%	2,200	38.4	35.5 - 41.4	1,100	19.3	17.0 - 21.9	200	3.9	2.9 - 5.2	2,200	38.4	35.5 - 41.4	5,700
131-185%	800	32.9	28.7 - 37.4	500	19.5	16.1 - 23.3	200	6.2	4.3 - 9.0	1,100	41.4	36.9 - 45.9	2,600
186+%	2,400	32.9	30.5 - 35.4	1,300	17.4	15.5 - 19.6	300	4.8	3.7 - 6.1	3,200	44.9	42.3 - 47.6	7,200

PRAMS Health Indicator 3-Year Aggregate Report - Breastfeeding (exclusive) duration (grouped), among initiators- by State;County;DOH Race-Ethnicity;PRAMS Age Group;Infant Gender;Married;Poverty Level;Income (2000-2003);Income (2004-2011);Birthweight;Smoke 3rd Trimester;Smoke Before Pregnant;WIC During Pregnancy, for the Year(s) 2000-2002;2001-2003;2002-2004;2003-2005;2004-2006;2005-2007;2006-2008;2007-2009;2008-2010;2009-2011;2010-2012

Note: Weighted counts (#) represent 3-yr averages, rounded to the nearest hundred; n/r (Not Reportable) - If the unweighted total responses for a dimension (row) is <30 that row will not be shown

Years: 2008-2010

Income (2004-2011)	Breastfed <1 week			Breastfed 1-4 weeks			Breastfed 5-8 weeks			Breastfed 9+ weeks			Weighted Total Responses (3-Yr Avg)
	#	%	C.I.(95%)	#	%	C.I.(95%)	#	%	C.I.(95%)	#	%	C.I.(95%)	#
<\$10,000	1,100	38.8	34.6 - 43.2	600	21.1	17.6 - 25.0	100	2.9	1.7 - 4.8	1,000	37.3	33.1 - 41.6	2,800
\$10,000-\$24,999	1,200	37.7	34.0 - 41.6	600	18.6	15.8 - 21.8	200	5.5	4.0 - 7.5	1,200	38.2	34.4 - 42.2	3,300
\$25,000-\$49,999	1,200	32.3	29.0 - 35.9	700	19.0	16.3 - 22.1	200	5.6	4.1 - 7.6	1,600	43.1	39.4 - 46.8	3,800
>=\$50,000	1,900	33.5	30.7 - 36.3	1,000	16.9	14.8 - 19.4	300	4.5	3.4 - 6.0	2,600	45.1	42.1 - 48.1	5,800

Birthweight	Breastfed <1 week			Breastfed 1-4 weeks			Breastfed 5-8 weeks			Breastfed 9+ weeks			Weighted Total Responses (3-Yr Avg)
	#	%	C.I.(95%)	#	%	C.I.(95%)	#	%	C.I.(95%)	#	%	C.I.(95%)	#
Low birth weight	500	47.9	43.8 - 52.1	200	16.1	13.2 - 19.5	100	4.7	3.3 - 6.6	400	31.2	27.6 - 35.2	1,100
Normal birth weight	5,300	34.1	32.3 - 35.8	2,900	18.8	17.4 - 20.3	700	4.6	3.9 - 5.5	6,600	42.5	40.6 - 44.3	15,600

Smoke 3rd Trimester	Breastfed <1 week			Breastfed 1-4 weeks			Breastfed 5-8 weeks			Breastfed 9+ weeks			Weighted Total Responses (3-Yr Avg)
	#	%	C.I.(95%)	#	%	C.I.(95%)	#	%	C.I.(95%)	#	%	C.I.(95%)	#
Yes	500	43.2	36.7 - 49.9	200	17.9	13.7 - 23.1	100	4.0	2.4 - 6.7	400	34.9	28.7 - 41.6	1,200
No	5,200	34.3	32.6 - 36.1	2,800	18.8	17.3 - 20.3	700	4.8	4.0 - 5.7	6,400	42.1	40.3 - 44.0	15,100

PRAMS Health Indicator 3-Year Aggregate Report - Breastfeeding (exclusive) duration (grouped), among initiators- by State;County;DOH Race-Ethnicity;PRAMS Age Group;Infant Gender;Married;Poverty Level;Income (2000-2003);Income (2004-2011);Birthweight;Smoke 3rd Trimester;Smoke Before Pregnant;WIC During Pregnancy, for the Year(s) 2000-2002;2001-2003;2002-2004;2003-2005;2004-2006;2005-2007;2006-2008;2007-2009;2008-2010;2009-2011;2010-2012

Note: Weighted counts (#) represent 3-yr averages, rounded to the nearest hundred; n/r (Not Reportable) - If the unweighted total responses for a dimension (row) is <30 that row will not be shown

Years: 2008-2010

Smoke Before Pregnant	Breastfed <1 week			Breastfed 1-4 weeks			Breastfed 5-8 weeks			Breastfed 9+ weeks			Weighted Total Responses (3-Yr Avg)
	#	%	C.I.(95%)	#	%	C.I.(95%)	#	%	C.I.(95%)	#	%	C.I.(95%)	#
Yes	1,300	39.2	35.3 - 43.2	600	19.3	16.4 - 22.7	200	5.5	4.0 - 7.4	1,200	36.0	32.2 - 40.0	3,200
No	4,500	34.0	32.2 - 35.9	2,400	18.5	17.0 - 20.2	600	4.5	3.7 - 5.5	5,700	42.9	41.0 - 44.9	13,200

WIC During Pregnancy	Breastfed <1 week			Breastfed 1-4 weeks			Breastfed 5-8 weeks			Breastfed 9+ weeks			Weighted Total Responses (3-Yr Avg)
	#	%	C.I.(95%)	#	%	C.I.(95%)	#	%	C.I.(95%)	#	%	C.I.(95%)	#
Yes	2,500	37.4	34.7 - 40.1	1,300	18.9	16.8 - 21.1	300	4.9	3.8 - 6.2	2,700	38.9	36.2 - 41.6	6,800
No	3,200	33.5	31.3 - 35.7	1,800	18.6	16.8 - 20.5	400	4.6	3.7 - 5.7	4,100	43.4	41.1 - 45.7	9,600

PRAMS Health Indicator 3-Year Aggregate Report - Breastfeeding (exclusive) duration (grouped), among initiators- by State;County;DOH Race-Ethnicity;PRAMS Age Group;Infant Gender;Married;Poverty Level;Income (2000-2003);Income (2004-2011);Birthweight;Smoke 3rd Trimester;Smoke Before Pregnant;WIC During Pregnancy, for the Year(s) 2000-2002;2001-2003;2002-2004;2003-2005;2004-2006;2005-2007;2006-2008;2007-2009;2008-2010;2009-2011;2010-2012

Note: Weighted counts (#) represent 3-yr averages, rounded to the nearest hundred; n/r (Not Reportable) - If the unweighted total responses for a dimension (row) is <30 that row will not be shown

Years: 2007-2009

State	Breastfed <1 week			Breastfed 1-4 weeks			Breastfed 5-8 weeks			Breastfed 9+ weeks			Weighted Total Responses (3-Yr Avg)
	#	%	C.I.(95%)	#	%	C.I.(95%)	#	%	C.I.(95%)	#	%	C.I.(95%)	#
Totals	6,300	38.3	36.8 - 39.9	3,100	18.6	17.4 - 19.9	700	4.1	3.4 - 4.8	6,400	39.1	37.5 - 40.6	16,500

County	Breastfed <1 week			Breastfed 1-4 weeks			Breastfed 5-8 weeks			Breastfed 9+ weeks			Weighted Total Responses (3-Yr Avg)
	#	%	C.I.(95%)	#	%	C.I.(95%)	#	%	C.I.(95%)	#	%	C.I.(95%)	#
Hawaii	700	34.0	30.5 - 37.8	400	16.8	14.1 - 19.9	100	3.7	2.6 - 5.2	1,000	45.5	41.7 - 49.4	2,100
Honolulu	4,700	40.1	38.2 - 42.1	2,200	18.5	17.0 - 20.2	500	4.0	3.2 - 4.9	4,300	37.3	35.4 - 39.3	11,600
Kauai	200	23.5	19.0 - 28.7	200	25.1	20.3 - 30.5	<50	6.0	3.9 - 9.1	400	45.4	39.8 - 51.2	800
Maui	700	38.3	34.6 - 42.2	300	17.9	15.1 - 21.1	100	3.9	2.7 - 5.7	800	39.8	36.1 - 43.7	1,900

PRAMS Health Indicator 3-Year Aggregate Report - Breastfeeding (exclusive) duration (grouped), among initiators- by State;County;DOH Race-Ethnicity;PRAMS Age Group;Infant Gender;Married;Poverty Level;Income (2000-2003);Income (2004-2011);Birthweight;Smoke 3rd Trimester;Smoke Before Pregnant;WIC During Pregnancy, for the Year(s) 2000-2002;2001-2003;2002-2004;2003-2005;2004-2006;2005-2007;2006-2008;2007-2009;2008-2010;2009-2011;2010-2012

Note: Weighted counts (#) represent 3-yr averages, rounded to the nearest hundred; n/r (Not Reportable) - If the unweighted total responses for a dimension (row) is <30 that row will not be shown

Years: 2007-2009

DOH Race-Ethnicity	Breastfed <1 week			Breastfed 1-4 weeks			Breastfed 5-8 weeks			Breastfed 9+ weeks			Weighted Total Responses (3-Yr Avg)
	#	%	C.I.(95%)	#	%	C.I.(95%)	#	%	C.I.(95%)	#	%	C.I.(95%)	#
Caucasian	900	24.3	21.6 - 27.2	700	16.7	14.4 - 19.3	200	6.2	4.7 - 8.1	2,100	52.9	49.6 - 56.1	3,900
Native Hawaiian	1,800	38.2	35.2 - 41.3	1,000	22.4	19.8 - 25.1	200	4.4	3.3 - 5.9	1,600	35.0	32.0 - 38.1	4,700
Chinese	300	43.2	36.4 - 50.2	100	18.5	14.0 - 24.1	<50	2.0	1.2 - 3.6	200	36.3	29.9 - 43.2	600
Filipino	1,500	49.1	45.4 - 52.7	600	18.5	15.8 - 21.5	100	2.2	1.5 - 3.3	900	30.2	26.9 - 33.7	3,000
Japanese	1,000	51.7	47.0 - 56.4	300	14.3	11.3 - 17.8	<50	2.5	1.4 - 4.2	600	31.6	27.4 - 36.1	1,800
Other	900	36.4	32.3 - 40.6	400	17.7	14.6 - 21.3	100	3.9	2.3 - 6.3	1,000	42.1	37.9 - 46.3	2,400

PRAMS Age Group	Breastfed <1 week			Breastfed 1-4 weeks			Breastfed 5-8 weeks			Breastfed 9+ weeks			Weighted Total Responses (3-Yr Avg)
	#	%	C.I.(95%)	#	%	C.I.(95%)	#	%	C.I.(95%)	#	%	C.I.(95%)	#
<20	500	36.5	31.1 - 42.4	300	23.4	18.7 - 28.8	<50	3.3	1.7 - 6.1	500	36.8	31.2 - 42.8	1,500
20-24	1,400	36.2	33.0 - 39.6	800	22.4	19.6 - 25.5	200	4.8	3.5 - 6.6	1,400	36.6	33.3 - 39.9	3,800
25-34	3,100	37.2	35.1 - 39.4	1,400	16.8	15.2 - 18.6	300	4.1	3.3 - 5.1	3,500	41.9	39.7 - 44.1	8,300
35+	1,300	45.0	41.4 - 48.7	500	16.3	13.8 - 19.0	100	3.4	2.3 - 5.1	1,000	35.3	31.9 - 38.8	3,000

PRAMS Health Indicator 3-Year Aggregate Report - Breastfeeding (exclusive) duration (grouped), among initiators- by State;County;DOH Race-Ethnicity;PRAMS Age Group;Infant Gender;Married;Poverty Level;Income (2000-2003);Income (2004-2011);Birthweight;Smoke 3rd Trimester;Smoke Before Pregnant;WIC During Pregnancy, for the Year(s) 2000-2002;2001-2003;2002-2004;2003-2005;2004-2006;2005-2007;2006-2008;2007-2009;2008-2010;2009-2011;2010-2012

Note: Weighted counts (#) represent 3-yr averages, rounded to the nearest hundred; n/r (Not Reportable) - If the unweighted total responses for a dimension (row) is <30 that row will not be shown

Years: 2007-2009

Infant Gender	Breastfed <1 week			Breastfed 1-4 weeks			Breastfed 5-8 weeks			Breastfed 9+ weeks			Weighted Total Responses (3-Yr Avg)
	#	%	C.I.(95%)	#	%	C.I.(95%)	#	%	C.I.(95%)	#	%	C.I.(95%)	#
Male	3,200	37.4	35.3 - 39.6	1,700	20.0	18.3 - 21.9	300	3.8	3.1 - 4.8	3,400	38.7	36.6 - 40.9	8,700
Female	3,100	39.3	37.0 - 41.6	1,300	17.0	15.3 - 18.8	300	4.3	3.4 - 5.4	3,100	39.4	37.2 - 41.7	7,800

Married	Breastfed <1 week			Breastfed 1-4 weeks			Breastfed 5-8 weeks			Breastfed 9+ weeks			Weighted Total Responses (3-Yr Avg)
	#	%	C.I.(95%)	#	%	C.I.(95%)	#	%	C.I.(95%)	#	%	C.I.(95%)	#
Yes	3,800	37.0	35.1 - 38.9	1,700	16.7	15.3 - 18.2	400	4.0	3.3 - 4.9	4,400	42.3	40.3 - 44.3	10,400
No	2,500	40.6	37.9 - 43.3	1,300	21.7	19.5 - 24.1	300	4.1	3.1 - 5.3	2,100	33.6	31.1 - 36.2	6,100

Poverty Level	Breastfed <1 week			Breastfed 1-4 weeks			Breastfed 5-8 weeks			Breastfed 9+ weeks			Weighted Total Responses (3-Yr Avg)
	#	%	C.I.(95%)	#	%	C.I.(95%)	#	%	C.I.(95%)	#	%	C.I.(95%)	#
0-130%	2,400	41.0	38.3 - 43.8	1,100	19.1	17.1 - 21.4	200	3.7	2.8 - 4.8	2,100	36.2	33.5 - 38.9	5,800
131-185%	800	34.2	30.3 - 38.2	500	21.3	18.0 - 25.0	100	4.9	3.2 - 7.4	1,000	39.6	35.6 - 43.8	2,500
186+%	2,700	37.6	35.3 - 39.9	1,200	16.7	15.0 - 18.6	300	4.3	3.4 - 5.4	2,900	41.4	39.1 - 43.8	7,100

PRAMS Health Indicator 3-Year Aggregate Report - Breastfeeding (exclusive) duration (grouped), among initiators- by State;County;DOH Race-Ethnicity;PRAMS Age Group;Infant Gender;Married;Poverty Level;Income (2000-2003);Income (2004-2011);Birthweight;Smoke 3rd Trimester;Smoke Before Pregnant;WIC During Pregnancy, for the Year(s) 2000-2002;2001-2003;2002-2004;2003-2005;2004-2006;2005-2007;2006-2008;2007-2009;2008-2010;2009-2011;2010-2012

Note: Weighted counts (#) represent 3-yr averages, rounded to the nearest hundred; n/r (Not Reportable) - If the unweighted total responses for a dimension (row) is <30 that row will not be shown

Years: 2007-2009

Income (2004-2011)	Breastfed <1 week			Breastfed 1-4 weeks			Breastfed 5-8 weeks			Breastfed 9+ weeks			Weighted Total Responses (3-Yr Avg)
	#	%	C.I.(95%)	#	%	C.I.(95%)	#	%	C.I.(95%)	#	%	C.I.(95%)	#
<\$10,000	1,100	42.0	37.8 - 46.3	500	18.8	15.7 - 22.4	100	2.7	1.7 - 4.5	1,000	36.5	32.5 - 40.6	2,600
\$10,000-\$24,999	1,300	39.4	35.9 - 42.9	700	20.6	17.9 - 23.6	200	4.6	3.3 - 6.4	1,200	35.4	32.0 - 38.9	3,400
\$25,000-\$49,999	1,300	36.0	32.9 - 39.3	700	19.4	16.9 - 22.1	200	4.9	3.6 - 6.7	1,500	39.7	36.4 - 43.0	3,700
>=\$50,000	2,200	37.7	35.1 - 40.3	900	16.4	14.5 - 18.5	200	3.9	3.0 - 5.2	2,400	42.0	39.4 - 44.6	5,700

Birthweight	Breastfed <1 week			Breastfed 1-4 weeks			Breastfed 5-8 weeks			Breastfed 9+ weeks			Weighted Total Responses (3-Yr Avg)
	#	%	C.I.(95%)	#	%	C.I.(95%)	#	%	C.I.(95%)	#	%	C.I.(95%)	#
Low birth weight	600	48.9	44.1 - 53.7	200	19.2	15.6 - 23.4	100	4.6	3.0 - 7.0	300	27.3	23.2 - 31.8	1,200
Normal birth weight	5,700	37.5	35.9 - 39.1	2,800	18.5	17.2 - 19.9	600	4.0	3.4 - 4.8	6,100	40.0	38.3 - 41.6	15,300

Smoke 3rd Trimester	Breastfed <1 week			Breastfed 1-4 weeks			Breastfed 5-8 weeks			Breastfed 9+ weeks			Weighted Total Responses (3-Yr Avg)
	#	%	C.I.(95%)	#	%	C.I.(95%)	#	%	C.I.(95%)	#	%	C.I.(95%)	#
Yes	600	45.2	39.3 - 51.2	300	20.1	15.9 - 25.1	100	5.0	3.1 - 8.0	400	29.8	24.5 - 35.6	1,300
No	5,600	37.7	36.1 - 39.4	2,800	18.5	17.2 - 19.9	600	4.0	3.4 - 4.8	5,900	39.8	38.1 - 41.4	14,900

PRAMS Health Indicator 3-Year Aggregate Report - Breastfeeding (exclusive) duration (grouped), among initiators- by State;County;DOH Race-Ethnicity;PRAMS Age Group;Infant Gender;Married;Poverty Level;Income (2000-2003);Income (2004-2011);Birthweight;Smoke 3rd Trimester;Smoke Before Pregnant;WIC During Pregnancy, for the Year(s) 2000-2002;2001-2003;2002-2004;2003-2005;2004-2006;2005-2007;2006-2008;2007-2009;2008-2010;2009-2011;2010-2012

Note: Weighted counts (#) represent 3-yr averages, rounded to the nearest hundred; n/r (Not Reportable) - If the unweighted total responses for a dimension (row) is <30 that row will not be shown

Years: 2007-2009

Smoke Before Pregnant	Breastfed <1 week			Breastfed 1-4 weeks			Breastfed 5-8 weeks			Breastfed 9+ weeks			Weighted Total Responses (3-Yr Avg)
	#	%	C.I.(95%)	#	%	C.I.(95%)	#	%	C.I.(95%)	#	%	C.I.(95%)	#
Yes	1,300	40.6	36.9 - 44.4	700	21.2	18.4 - 24.2	200	5.5	4.1 - 7.5	1,000	32.7	29.3 - 36.4	3,100
No	5,000	37.8	36.1 - 39.5	2,400	18.0	16.7 - 19.5	500	3.8	3.1 - 4.5	5,300	40.4	38.7 - 42.2	13,100

WIC During Pregnancy	Breastfed <1 week			Breastfed 1-4 weeks			Breastfed 5-8 weeks			Breastfed 9+ weeks			Weighted Total Responses (3-Yr Avg)
	#	%	C.I.(95%)	#	%	C.I.(95%)	#	%	C.I.(95%)	#	%	C.I.(95%)	#
Yes	2,500	38.7	36.2 - 41.3	1,300	19.6	17.7 - 21.8	300	4.1	3.2 - 5.3	2,500	37.6	35.1 - 40.1	6,600
No	3,600	38.0	36.0 - 40.0	1,700	17.8	16.3 - 19.5	400	4.1	3.4 - 5.1	3,800	40.0	38.0 - 42.1	9,600

PRAMS Health Indicator 3-Year Aggregate Report - Breastfeeding (exclusive) duration (grouped), among initiators- by State;County;DOH Race-Ethnicity;PRAMS Age Group;Infant Gender;Married;Poverty Level;Income (2000-2003);Income (2004-2011);Birthweight;Smoke 3rd Trimester;Smoke Before Pregnant;WIC During Pregnancy, for the Year(s) 2000-2002;2001-2003;2002-2004;2003-2005;2004-2006;2005-2007;2006-2008;2007-2009;2008-2010;2009-2011;2010-2012

Note: Weighted counts (#) represent 3-yr averages, rounded to the nearest hundred; n/r (Not Reportable) - If the unweighted total responses for a dimension (row) is <30 that row will not be shown

Years: 2006-2008

State	Breastfed <1 week			Breastfed 1-4 weeks			Breastfed 5-8 weeks			Breastfed 9+ weeks			Weighted Total Responses (3-Yr Avg)
	#	%	C.I.(95%)	#	%	C.I.(95%)	#	%	C.I.(95%)	#	%	C.I.(95%)	#
Totals	6,100	37.6	36.2 - 39.0	3,200	19.5	18.3 - 20.7	600	3.8	3.3 - 4.4	6,400	39.2	37.8 - 40.6	16,300

County	Breastfed <1 week			Breastfed 1-4 weeks			Breastfed 5-8 weeks			Breastfed 9+ weeks			Weighted Total Responses (3-Yr Avg)
	#	%	C.I.(95%)	#	%	C.I.(95%)	#	%	C.I.(95%)	#	%	C.I.(95%)	#
Hawaii	700	32.2	28.4 - 36.4	400	17.5	14.4 - 21.0	100	3.0	1.8 - 4.7	1,000	47.4	43.1 - 51.6	2,000
Honolulu	4,700	40.1	38.4 - 41.7	2,200	19.3	17.9 - 20.7	400	3.8	3.2 - 4.5	4,300	36.9	35.3 - 38.5	11,600
Kauai	200	20.7	15.9 - 26.5	200	25.8	20.4 - 32.1	<50	5.4	3.1 - 9.2	400	48.1	41.5 - 54.7	800
Maui	600	35.3	31.2 - 39.7	400	20.2	16.8 - 24.0	100	3.9	2.5 - 6.1	700	40.6	36.3 - 45.1	1,800

PRAMS Health Indicator 3-Year Aggregate Report - Breastfeeding (exclusive) duration (grouped), among initiators- by State;County;DOH Race-Ethnicity;PRAMS Age Group;Infant Gender;Married;Poverty Level;Income (2000-2003);Income (2004-2011);Birthweight;Smoke 3rd Trimester;Smoke Before Pregnant;WIC During Pregnancy, for the Year(s) 2000-2002;2001-2003;2002-2004;2003-2005;2004-2006;2005-2007;2006-2008;2007-2009;2008-2010;2009-2011;2010-2012

Note: Weighted counts (#) represent 3-yr averages, rounded to the nearest hundred; n/r (Not Reportable) - If the unweighted total responses for a dimension (row) is <30 that row will not be shown

Years: 2006-2008

DOH Race-Ethnicity	Breastfed <1 week			Breastfed 1-4 weeks			Breastfed 5-8 weeks			Breastfed 9+ weeks			Weighted Total Responses (3-Yr Avg)
	#	%	C.I.(95%)	#	%	C.I.(95%)	#	%	C.I.(95%)	#	%	C.I.(95%)	#
Caucasian	900	23.9	21.4 - 26.6	700	17.2	15.1 - 19.6	200	6.1	4.8 - 7.7	2,000	52.7	49.8 - 55.7	3,900
Native Hawaiian	1,700	37.5	34.6 - 40.5	1,000	23.4	20.9 - 26.1	200	3.4	2.5 - 4.8	1,600	35.6	32.7 - 38.6	4,400
Chinese	200	41.4	37.5 - 45.5	100	21.4	18.2 - 24.9	<50	2.6	1.6 - 4.3	200	34.5	30.8 - 38.5	600
Filipino	1,400	47.1	43.9 - 50.3	600	18.7	16.3 - 21.3	100	3.1	2.2 - 4.5	900	31.1	28.2 - 34.2	3,000
Japanese	1,000	51.6	47.5 - 55.7	300	16.2	13.3 - 19.5	<50	2.4	1.5 - 3.9	600	29.8	26.2 - 33.7	2,000
Other	900	35.8	32.2 - 39.5	500	19.0	16.2 - 22.3	100	2.9	1.8 - 4.5	1,100	42.3	38.6 - 46.1	2,500

PRAMS Age Group	Breastfed <1 week			Breastfed 1-4 weeks			Breastfed 5-8 weeks			Breastfed 9+ weeks			Weighted Total Responses (3-Yr Avg)
	#	%	C.I.(95%)	#	%	C.I.(95%)	#	%	C.I.(95%)	#	%	C.I.(95%)	#
<20	500	34.9	29.8 - 40.4	300	25.3	20.7 - 30.5	<50	2.2	1.0 - 4.7	500	37.6	32.3 - 43.2	1,300
20-24	1,400	36.5	33.5 - 39.6	800	22.1	19.6 - 24.8	200	4.4	3.3 - 5.9	1,400	37.0	34.0 - 40.1	3,800
25-34	3,000	37.1	35.2 - 39.1	1,500	17.7	16.2 - 19.3	300	3.8	3.1 - 4.7	3,400	41.3	39.3 - 43.3	8,200
35+	1,200	41.4	38.3 - 44.6	500	18.3	15.9 - 20.9	100	3.5	2.5 - 4.9	1,100	36.8	33.8 - 40.0	3,000

PRAMS Health Indicator 3-Year Aggregate Report - Breastfeeding (exclusive) duration (grouped), among initiators- by State;County;DOH Race-Ethnicity;PRAMS Age Group;Infant Gender;Married;Poverty Level;Income (2000-2003);Income (2004-2011);Birthweight;Smoke 3rd Trimester;Smoke Before Pregnant;WIC During Pregnancy, for the Year(s) 2000-2002;2001-2003;2002-2004;2003-2005;2004-2006;2005-2007;2006-2008;2007-2009;2008-2010;2009-2011;2010-2012

Note: Weighted counts (#) represent 3-yr averages, rounded to the nearest hundred; n/r (Not Reportable) - If the unweighted total responses for a dimension (row) is <30 that row will not be shown

Years: 2006-2008

Infant Gender	Breastfed <1 week			Breastfed 1-4 weeks			Breastfed 5-8 weeks			Breastfed 9+ weeks			Weighted Total Responses (3-Yr Avg)
	#	%	C.I.(95%)	#	%	C.I.(95%)	#	%	C.I.(95%)	#	%	C.I.(95%)	#
Male	3,200	37.1	35.1 - 39.0	1,800	20.8	19.2 - 22.5	300	3.9	3.2 - 4.8	3,300	38.3	36.3 - 40.2	8,500
Female	3,000	38.1	36.1 - 40.2	1,400	18.0	16.5 - 19.7	300	3.6	2.9 - 4.5	3,100	40.2	38.1 - 42.3	7,800

Married	Breastfed <1 week			Breastfed 1-4 weeks			Breastfed 5-8 weeks			Breastfed 9+ weeks			Weighted Total Responses (3-Yr Avg)
	#	%	C.I.(95%)	#	%	C.I.(95%)	#	%	C.I.(95%)	#	%	C.I.(95%)	#
Yes	3,900	37.6	35.9 - 39.3	1,900	17.8	16.5 - 19.2	400	3.6	3.0 - 4.4	4,300	41.0	39.3 - 42.7	10,400
No	2,200	37.5	35.1 - 40.0	1,300	22.5	20.4 - 24.7	200	4.0	3.1 - 5.2	2,100	36.0	33.6 - 38.5	5,900

Poverty Level	Breastfed <1 week			Breastfed 1-4 weeks			Breastfed 5-8 weeks			Breastfed 9+ weeks			Weighted Total Responses (3-Yr Avg)
	#	%	C.I.(95%)	#	%	C.I.(95%)	#	%	C.I.(95%)	#	%	C.I.(95%)	#
0-130%	2,200	38.2	35.8 - 40.8	1,200	21.7	19.6 - 23.9	200	3.4	2.6 - 4.5	2,100	36.7	34.2 - 39.2	5,700
131-185%	800	34.7	31.1 - 38.5	500	20.2	17.2 - 23.6	100	3.8	2.5 - 5.7	900	41.3	37.4 - 45.2	2,300
186+%	2,800	37.9	35.9 - 40.0	1,300	17.3	15.7 - 18.9	300	4.0	3.3 - 4.9	3,000	40.8	38.7 - 42.9	7,300

PRAMS Health Indicator 3-Year Aggregate Report - Breastfeeding (exclusive) duration (grouped), among initiators- by State;County;DOH Race-Ethnicity;PRAMS Age Group;Infant Gender;Married;Poverty Level;Income (2000-2003);Income (2004-2011);Birthweight;Smoke 3rd Trimester;Smoke Before Pregnant;WIC During Pregnancy, for the Year(s) 2000-2002;2001-2003;2002-2004;2003-2005;2004-2006;2005-2007;2006-2008;2007-2009;2008-2010;2009-2011;2010-2012

Note: Weighted counts (#) represent 3-yr averages, rounded to the nearest hundred; n/r (Not Reportable) - If the unweighted total responses for a dimension (row) is <30 that row will not be shown

Years: 2006-2008

Income (2004-2011)	Breastfed <1 week			Breastfed 1-4 weeks			Breastfed 5-8 weeks			Breastfed 9+ weeks			Weighted Total Responses (3-Yr Avg)
	#	%	C.I.(95%)	#	%	C.I.(95%)	#	%	C.I.(95%)	#	%	C.I.(95%)	#
<\$10,000	1,000	37.6	34.0 - 41.5	600	21.9	18.8 - 25.3	100	3.1	2.0 - 4.8	1,000	37.4	33.7 - 41.2	2,600
\$10,000-\$24,999	1,300	37.7	34.6 - 41.0	700	22.0	19.4 - 24.9	100	3.6	2.6 - 5.1	1,200	36.6	33.5 - 39.9	3,400
\$25,000-\$49,999	1,400	36.8	33.9 - 39.7	800	20.4	18.0 - 22.9	200	4.6	3.5 - 6.0	1,500	38.2	35.3 - 41.2	3,800
>=\$50,000	2,100	38.0	35.7 - 40.3	900	16.2	14.5 - 18.0	200	3.5	2.7 - 4.5	2,400	42.3	40.0 - 44.7	5,600

Birthweight	Breastfed <1 week			Breastfed 1-4 weeks			Breastfed 5-8 weeks			Breastfed 9+ weeks			Weighted Total Responses (3-Yr Avg)
	#	%	C.I.(95%)	#	%	C.I.(95%)	#	%	C.I.(95%)	#	%	C.I.(95%)	#
Low birth weight	600	46.1	40.8 - 51.4	200	20.4	16.3 - 25.2	<50	3.7	2.2 - 6.1	400	29.8	25.1 - 35.0	1,200
Normal birth weight	5,600	36.9	35.5 - 38.4	2,900	19.4	18.2 - 20.6	600	3.8	3.2 - 4.4	6,000	39.9	38.4 - 41.4	15,100

Smoke 3rd Trimester	Breastfed <1 week			Breastfed 1-4 weeks			Breastfed 5-8 weeks			Breastfed 9+ weeks			Weighted Total Responses (3-Yr Avg)
	#	%	C.I.(95%)	#	%	C.I.(95%)	#	%	C.I.(95%)	#	%	C.I.(95%)	#
Yes	500	39.4	34.1 - 45.0	300	24.2	19.7 - 29.3	100	6.9	4.6 - 10.4	400	29.5	24.6 - 34.8	1,200
No	5,500	37.4	35.9 - 38.9	2,800	19.2	18.0 - 20.4	500	3.5	3.0 - 4.2	5,900	39.9	38.4 - 41.4	14,800

PRAMS Health Indicator 3-Year Aggregate Report - Breastfeeding (exclusive) duration (grouped), among initiators- by State;County;DOH Race-Ethnicity;PRAMS Age Group;Infant Gender;Married;Poverty Level;Income (2000-2003);Income (2004-2011);Birthweight;Smoke 3rd Trimester;Smoke Before Pregnant;WIC During Pregnancy, for the Year(s) 2000-2002;2001-2003;2002-2004;2003-2005;2004-2006;2005-2007;2006-2008;2007-2009;2008-2010;2009-2011;2010-2012

Note: Weighted counts (#) represent 3-yr averages, rounded to the nearest hundred; n/r (Not Reportable) - If the unweighted total responses for a dimension (row) is <30 that row will not be shown

Years: 2006-2008

Smoke Before Pregnant	Breastfed <1 week			Breastfed 1-4 weeks			Breastfed 5-8 weeks			Breastfed 9+ weeks			Weighted Total Responses (3-Yr Avg)
	#	%	C.I.(95%)	#	%	C.I.(95%)	#	%	C.I.(95%)	#	%	C.I.(95%)	#
Yes	1,100	36.0	32.7 - 39.5	800	25.7	22.7 - 28.9	200	6.3	4.8 - 8.3	1,000	31.9	28.7 - 35.3	3,000
No	4,900	37.9	36.4 - 39.5	2,400	18.1	16.9 - 19.4	400	3.2	2.7 - 3.8	5,300	40.8	39.2 - 42.4	13,000

WIC During Pregnancy	Breastfed <1 week			Breastfed 1-4 weeks			Breastfed 5-8 weeks			Breastfed 9+ weeks			Weighted Total Responses (3-Yr Avg)
	#	%	C.I.(95%)	#	%	C.I.(95%)	#	%	C.I.(95%)	#	%	C.I.(95%)	#
Yes	2,500	37.5	35.2 - 39.8	1,400	20.9	19.0 - 22.9	300	3.9	3.0 - 4.9	2,500	37.8	35.5 - 40.1	6,600
No	3,600	37.6	35.9 - 39.4	1,700	18.3	16.9 - 19.8	400	3.7	3.1 - 4.5	3,800	40.3	38.5 - 42.1	9,500

PRAMS Health Indicator 3-Year Aggregate Report - Breastfeeding (exclusive) duration (grouped), among initiators- by State;County;DOH Race-Ethnicity;PRAMS Age Group;Infant Gender;Married;Poverty Level;Income (2000-2003);Income (2004-2011);Birthweight;Smoke 3rd Trimester;Smoke Before Pregnant;WIC During Pregnancy, for the Year(s) 2000-2002;2001-2003;2002-2004;2003-2005;2004-2006;2005-2007;2006-2008;2007-2009;2008-2010;2009-2011;2010-2012

Note: Weighted counts (#) represent 3-yr averages, rounded to the nearest hundred; n/r (Not Reportable) - If the unweighted total responses for a dimension (row) is <30 that row will not be shown

Years: 2005-2007

State	Breastfed <1 week			Breastfed 1-4 weeks			Breastfed 5-8 weeks			Breastfed 9+ weeks			Weighted Total Responses (3-Yr Avg)
	#	%	C.I.(95%)	#	%	C.I.(95%)	#	%	C.I.(95%)	#	%	C.I.(95%)	#
Totals	5,800	36.5	35.1 - 37.9	3,200	20.5	19.3 - 21.7	600	3.8	3.3 - 4.4	6,200	39.2	37.8 - 40.7	15,900

County	Breastfed <1 week			Breastfed 1-4 weeks			Breastfed 5-8 weeks			Breastfed 9+ weeks			Weighted Total Responses (3-Yr Avg)
	#	%	C.I.(95%)	#	%	C.I.(95%)	#	%	C.I.(95%)	#	%	C.I.(95%)	#
Hawaii	600	29.5	25.8 - 33.5	400	20.4	17.1 - 24.1	100	3.4	2.2 - 5.3	900	46.7	42.5 - 51.0	2,000
Honolulu	4,500	39.4	37.8 - 41.1	2,300	20.5	19.1 - 21.9	400	3.7	3.1 - 4.4	4,200	36.4	34.8 - 38.1	11,400
Kauai	100	15.3	11.1 - 20.7	200	25.5	20.0 - 31.9	<50	5.7	3.2 - 9.8	400	53.5	46.7 - 60.2	800
Maui	600	34.6	30.4 - 39.1	300	18.2	14.9 - 22.0	100	4.2	2.7 - 6.4	700	43.0	38.6 - 47.6	1,700

PRAMS Health Indicator 3-Year Aggregate Report - Breastfeeding (exclusive) duration (grouped), among initiators- by State;County;DOH Race-Ethnicity;PRAMS Age Group;Infant Gender;Married;Poverty Level;Income (2000-2003);Income (2004-2011);Birthweight;Smoke 3rd Trimester;Smoke Before Pregnant;WIC During Pregnancy, for the Year(s) 2000-2002;2001-2003;2002-2004;2003-2005;2004-2006;2005-2007;2006-2008;2007-2009;2008-2010;2009-2011;2010-2012

Note: Weighted counts (#) represent 3-yr averages, rounded to the nearest hundred; n/r (Not Reportable) - If the unweighted total responses for a dimension (row) is <30 that row will not be shown

Years: 2005-2007

DOH Race-Ethnicity	Breastfed <1 week			Breastfed 1-4 weeks			Breastfed 5-8 weeks			Breastfed 9+ weeks			Weighted Total Responses (3-Yr Avg)
	#	%	C.I.(95%)	#	%	C.I.(95%)	#	%	C.I.(95%)	#	%	C.I.(95%)	#
Caucasian	900	23.5	21.0 - 26.3	600	17.5	15.3 - 19.9	200	5.4	4.1 - 6.9	2,000	53.6	50.6 - 56.7	3,700
Native Hawaiian	1,500	36.0	33.1 - 39.0	1,000	24.1	21.5 - 26.8	100	3.5	2.5 - 4.8	1,600	36.5	33.5 - 39.5	4,300
Chinese	200	41.8	37.9 - 45.8	100	19.6	16.6 - 23.1	<50	3.3	2.2 - 5.1	200	35.3	31.5 - 39.2	600
Filipino	1,300	44.6	41.5 - 47.8	600	21.2	18.7 - 23.9	100	4.1	3.0 - 5.6	900	30.1	27.3 - 33.1	2,900
Japanese	1,000	51.9	47.8 - 55.8	300	15.9	13.2 - 19.1	<50	2.2	1.3 - 3.7	600	30.0	26.5 - 33.8	2,000
Other	800	33.2	29.7 - 37.0	500	21.9	18.8 - 25.3	100	3.0	1.9 - 4.7	1,000	41.9	38.1 - 45.8	2,400

PRAMS Age Group	Breastfed <1 week			Breastfed 1-4 weeks			Breastfed 5-8 weeks			Breastfed 9+ weeks			Weighted Total Responses (3-Yr Avg)
	#	%	C.I.(95%)	#	%	C.I.(95%)	#	%	C.I.(95%)	#	%	C.I.(95%)	#
<20	500	33.8	28.8 - 39.2	400	27.8	23.1 - 33.0	<50	2.5	1.2 - 5.0	500	35.9	30.7 - 41.3	1,300
20-24	1,400	34.9	32.0 - 37.9	900	24.1	21.6 - 26.9	200	4.2	3.1 - 5.6	1,400	36.8	33.9 - 39.9	3,900
25-34	2,900	36.5	34.6 - 38.5	1,400	18.4	16.9 - 20.1	300	4.1	3.3 - 5.0	3,200	41.0	39.0 - 43.0	7,800
35+	1,100	39.9	36.8 - 43.2	500	17.6	15.3 - 20.3	100	3.0	2.1 - 4.4	1,100	39.4	36.2 - 42.6	2,800

PRAMS Health Indicator 3-Year Aggregate Report - Breastfeeding (exclusive) duration (grouped), among initiators- by State;County;DOH Race-Ethnicity;PRAMS Age Group;Infant Gender;Married;Poverty Level;Income (2000-2003);Income (2004-2011);Birthweight;Smoke 3rd Trimester;Smoke Before Pregnant;WIC During Pregnancy, for the Year(s) 2000-2002;2001-2003;2002-2004;2003-2005;2004-2006;2005-2007;2006-2008;2007-2009;2008-2010;2009-2011;2010-2012

Note: Weighted counts (#) represent 3-yr averages, rounded to the nearest hundred; n/r (Not Reportable) - If the unweighted total responses for a dimension (row) is <30 that row will not be shown

Years: 2005-2007

Infant Gender	Breastfed <1 week			Breastfed 1-4 weeks			Breastfed 5-8 weeks			Breastfed 9+ weeks			Weighted Total Responses (3-Yr Avg)
	#	%	C.I.(95%)	#	%	C.I.(95%)	#	%	C.I.(95%)	#	%	C.I.(95%)	#
Male	3,000	36.7	34.7 - 38.6	1,700	21.3	19.6 - 23.0	300	3.8	3.1 - 4.7	3,100	38.2	36.2 - 40.2	8,200
Female	2,800	36.3	34.4 - 38.4	1,500	19.6	18.0 - 21.3	300	3.7	3.0 - 4.6	3,100	40.3	38.3 - 42.4	7,700

Married	Breastfed <1 week			Breastfed 1-4 weeks			Breastfed 5-8 weeks			Breastfed 9+ weeks			Weighted Total Responses (3-Yr Avg)
	#	%	C.I.(95%)	#	%	C.I.(95%)	#	%	C.I.(95%)	#	%	C.I.(95%)	#
Yes	3,700	36.6	34.9 - 38.3	1,900	18.5	17.2 - 19.9	400	3.7	3.1 - 4.4	4,200	41.2	39.5 - 43.0	10,200
No	2,100	36.4	33.9 - 38.9	1,400	24.0	21.8 - 26.3	200	3.9	3.1 - 5.1	2,000	35.7	33.3 - 38.2	5,700

Poverty Level	Breastfed <1 week			Breastfed 1-4 weeks			Breastfed 5-8 weeks			Breastfed 9+ weeks			Weighted Total Responses (3-Yr Avg)
	#	%	C.I.(95%)	#	%	C.I.(95%)	#	%	C.I.(95%)	#	%	C.I.(95%)	#
0-130%	2,000	36.9	34.5 - 39.5	1,300	23.4	21.3 - 25.7	200	3.1	2.4 - 4.2	2,000	36.5	34.1 - 39.0	5,500
131-185%	700	34.2	30.4 - 38.2	400	21.3	18.1 - 24.9	100	4.2	2.8 - 6.2	800	40.3	36.3 - 44.5	2,000
186+%	2,700	37.4	35.5 - 39.5	1,200	17.2	15.7 - 18.9	300	4.2	3.4 - 5.1	3,000	41.2	39.1 - 43.2	7,200

PRAMS Health Indicator 3-Year Aggregate Report - Breastfeeding (exclusive) duration (grouped), among initiators- by State;County;DOH Race-Ethnicity;PRAMS Age Group;Infant Gender;Married;Poverty Level;Income (2000-2003);Income (2004-2011);Birthweight;Smoke 3rd Trimester;Smoke Before Pregnant;WIC During Pregnancy, for the Year(s) 2000-2002;2001-2003;2002-2004;2003-2005;2004-2006;2005-2007;2006-2008;2007-2009;2008-2010;2009-2011;2010-2012

Note: Weighted counts (#) represent 3-yr averages, rounded to the nearest hundred; n/r (Not Reportable) - If the unweighted total responses for a dimension (row) is <30 that row will not be shown

Years: 2005-2007

Income (2004-2011)	Breastfed <1 week			Breastfed 1-4 weeks			Breastfed 5-8 weeks			Breastfed 9+ weeks			Weighted Total Responses (3-Yr Avg)
	#	%	C.I.(95%)	#	%	C.I.(95%)	#	%	C.I.(95%)	#	%	C.I.(95%)	#
<\$10,000	900	35.8	32.2 - 39.5	600	23.3	20.1 - 26.7	100	3.8	2.6 - 5.6	1,000	37.1	33.5 - 40.9	2,600
\$10,000-\$24,999	1,200	38.2	35.0 - 41.4	800	24.0	21.3 - 27.0	100	2.4	1.6 - 3.7	1,100	35.4	32.3 - 38.6	3,200
\$25,000-\$49,999	1,300	34.4	31.6 - 37.3	700	19.8	17.4 - 22.3	200	4.9	3.7 - 6.3	1,500	41.0	38.1 - 44.0	3,700
>=\$50,000	2,000	38.4	36.1 - 40.7	900	16.6	14.9 - 18.5	200	3.8	3.0 - 4.9	2,200	41.2	38.8 - 43.5	5,300

Birthweight	Breastfed <1 week			Breastfed 1-4 weeks			Breastfed 5-8 weeks			Breastfed 9+ weeks			Weighted Total Responses (3-Yr Avg)
	#	%	C.I.(95%)	#	%	C.I.(95%)	#	%	C.I.(95%)	#	%	C.I.(95%)	#
Low birth weight	500	45.3	40.1 - 50.6	200	19.3	15.4 - 24.0	<50	4.0	2.5 - 6.5	400	31.4	26.6 - 36.6	1,200
Normal birth weight	5,200	35.8	34.4 - 37.3	3,000	20.6	19.4 - 21.9	600	3.8	3.2 - 4.4	5,800	39.9	38.4 - 41.4	14,700

Smoke 3rd Trimester	Breastfed <1 week			Breastfed 1-4 weeks			Breastfed 5-8 weeks			Breastfed 9+ weeks			Weighted Total Responses (3-Yr Avg)
	#	%	C.I.(95%)	#	%	C.I.(95%)	#	%	C.I.(95%)	#	%	C.I.(95%)	#
Yes	500	40.6	35.2 - 46.3	300	21.4	17.1 - 26.5	100	4.7	2.8 - 7.8	400	33.2	28.1 - 38.8	1,200
No	5,200	36.1	34.6 - 37.5	2,900	20.4	19.1 - 21.6	500	3.7	3.2 - 4.4	5,800	39.8	38.3 - 41.3	14,400

PRAMS Health Indicator 3-Year Aggregate Report - Breastfeeding (exclusive) duration (grouped), among initiators- by State;County;DOH Race-Ethnicity;PRAMS Age Group;Infant Gender;Married;Poverty Level;Income (2000-2003);Income (2004-2011);Birthweight;Smoke 3rd Trimester;Smoke Before Pregnant;WIC During Pregnancy, for the Year(s) 2000-2002;2001-2003;2002-2004;2003-2005;2004-2006;2005-2007;2006-2008;2007-2009;2008-2010;2009-2011;2010-2012

Note: Weighted counts (#) represent 3-yr averages, rounded to the nearest hundred; n/r (Not Reportable) - If the unweighted total responses for a dimension (row) is <30 that row will not be shown

Years: 2005-2007

Smoke Before Pregnant	Breastfed <1 week			Breastfed 1-4 weeks			Breastfed 5-8 weeks			Breastfed 9+ weeks			Weighted Total Responses (3-Yr Avg)
	#	%	C.I.(95%)	#	%	C.I.(95%)	#	%	C.I.(95%)	#	%	C.I.(95%)	#
Yes	1,100	35.8	32.6 - 39.2	800	26.0	23.0 - 29.2	200	5.7	4.3 - 7.6	1,000	32.5	29.3 - 35.8	3,100
No	4,600	36.6	35.0 - 38.1	2,400	19.1	17.8 - 20.4	400	3.3	2.8 - 4.0	5,100	41.0	39.4 - 42.6	12,500

WIC During Pregnancy	Breastfed <1 week			Breastfed 1-4 weeks			Breastfed 5-8 weeks			Breastfed 9+ weeks			Weighted Total Responses (3-Yr Avg)
	#	%	C.I.(95%)	#	%	C.I.(95%)	#	%	C.I.(95%)	#	%	C.I.(95%)	#
Yes	2,300	35.1	32.9 - 37.4	1,400	22.2	20.3 - 24.3	200	3.9	3.0 - 4.9	2,500	38.8	36.5 - 41.2	6,400
No	3,400	37.2	35.5 - 39.0	1,700	19.0	17.6 - 20.6	300	3.8	3.1 - 4.6	3,600	40.0	38.2 - 41.8	9,100

PRAMS Health Indicator 3-Year Aggregate Report - Breastfeeding (exclusive) duration (grouped), among initiators- by State;County;DOH Race-Ethnicity;PRAMS Age Group;Infant Gender;Married;Poverty Level;Income (2000-2003);Income (2004-2011);Birthweight;Smoke 3rd Trimester;Smoke Before Pregnant;WIC During Pregnancy, for the Year(s) 2000-2002;2001-2003;2002-2004;2003-2005;2004-2006;2005-2007;2006-2008;2007-2009;2008-2010;2009-2011;2010-2012

Note: Weighted counts (#) represent 3-yr averages, rounded to the nearest hundred; n/r (Not Reportable) - If the unweighted total responses for a dimension (row) is <30 that row will not be shown

Years: 2004-2006

State	Breastfed <1 week			Breastfed 1-4 weeks			Breastfed 5-8 weeks			Breastfed 9+ weeks			Weighted Total Responses (3-Yr Avg)
	#	%	C.I.(95%)	#	%	C.I.(95%)	#	%	C.I.(95%)	#	%	C.I.(95%)	#
Totals	5,600	35.9	34.6 - 37.3	3,300	21.2	20.1 - 22.4	600	4.1	3.6 - 4.7	6,000	38.8	37.4 - 40.1	15,600

County	Breastfed <1 week			Breastfed 1-4 weeks			Breastfed 5-8 weeks			Breastfed 9+ weeks			Weighted Total Responses (3-Yr Avg)
	#	%	C.I.(95%)	#	%	C.I.(95%)	#	%	C.I.(95%)	#	%	C.I.(95%)	#
Hawaii	500	28.8	25.2 - 32.8	400	23.0	19.6 - 26.8	100	3.6	2.3 - 5.5	800	44.6	40.4 - 48.8	1,900
Honolulu	4,400	39.3	37.7 - 40.9	2,300	20.7	19.3 - 22.1	400	3.8	3.2 - 4.5	4,100	36.3	34.7 - 37.9	11,300
Kauai	100	14.8	10.7 - 20.0	200	24.5	19.1 - 30.7	<50	5.2	2.9 - 9.2	400	55.5	48.8 - 62.1	700
Maui	500	30.5	26.6 - 34.8	400	21.6	18.1 - 25.5	100	6.0	4.2 - 8.6	700	41.8	37.5 - 46.3	1,600

PRAMS Health Indicator 3-Year Aggregate Report - Breastfeeding (exclusive) duration (grouped), among initiators- by State;County;DOH Race-Ethnicity;PRAMS Age Group;Infant Gender;Married;Poverty Level;Income (2000-2003);Income (2004-2011);Birthweight;Smoke 3rd Trimester;Smoke Before Pregnant;WIC During Pregnancy, for the Year(s) 2000-2002;2001-2003;2002-2004;2003-2005;2004-2006;2005-2007;2006-2008;2007-2009;2008-2010;2009-2011;2010-2012

Note: Weighted counts (#) represent 3-yr averages, rounded to the nearest hundred; n/r (Not Reportable) - If the unweighted total responses for a dimension (row) is <30 that row will not be shown

Years: 2004-2006

DOH Race-Ethnicity	Breastfed <1 week			Breastfed 1-4 weeks			Breastfed 5-8 weeks			Breastfed 9+ weeks			Weighted Total Responses (3-Yr Avg)
	#	%	C.I.(95%)	#	%	C.I.(95%)	#	%	C.I.(95%)	#	%	C.I.(95%)	#
Caucasian	800	22.2	19.8 - 24.8	700	18.2	16.1 - 20.7	200	5.7	4.5 - 7.3	2,000	53.9	50.9 - 56.8	3,700
Native Hawaiian	1,500	37.3	34.5 - 40.3	1,000	24.2	21.7 - 26.9	200	4.1	3.0 - 5.4	1,400	34.4	31.6 - 37.3	4,100
Chinese	200	43.2	39.6 - 46.8	100	19.7	16.9 - 22.7	<50	3.2	2.1 - 4.8	200	33.9	30.6 - 37.4	600
Filipino	1,200	41.8	38.8 - 44.9	600	21.9	19.5 - 24.6	100	4.4	3.3 - 5.9	900	31.9	29.1 - 34.8	2,900
Japanese	1,000	49.0	45.1 - 52.9	400	17.9	15.1 - 21.1	<50	2.2	1.3 - 3.6	600	31.0	27.5 - 34.7	2,100
Other	800	34.4	30.8 - 38.1	500	23.1	20.0 - 26.5	100	3.1	2.0 - 4.7	900	39.5	35.8 - 43.3	2,200

PRAMS Age Group	Breastfed <1 week			Breastfed 1-4 weeks			Breastfed 5-8 weeks			Breastfed 9+ weeks			Weighted Total Responses (3-Yr Avg)
	#	%	C.I.(95%)	#	%	C.I.(95%)	#	%	C.I.(95%)	#	%	C.I.(95%)	#
<20	400	33.6	28.7 - 38.9	300	27.8	23.1 - 33.0	<50	3.1	1.7 - 5.4	400	35.5	30.5 - 40.9	1,200
20-24	1,300	34.3	31.6 - 37.2	1,000	25.5	22.9 - 28.2	200	5.0	3.8 - 6.4	1,400	35.2	32.4 - 38.2	3,800
25-34	2,700	35.7	33.8 - 37.7	1,500	19.2	17.6 - 20.8	300	4.2	3.5 - 5.1	3,100	40.9	38.9 - 42.9	7,700
35+	1,100	39.7	36.7 - 42.8	500	18.2	15.9 - 20.8	100	3.0	2.1 - 4.3	1,100	39.1	36.1 - 42.3	2,800

PRAMS Health Indicator 3-Year Aggregate Report - Breastfeeding (exclusive) duration (grouped), among initiators- by State;County;DOH Race-Ethnicity;PRAMS Age Group;Infant Gender;Married;Poverty Level;Income (2000-2003);Income (2004-2011);Birthweight;Smoke 3rd Trimester;Smoke Before Pregnant;WIC During Pregnancy, for the Year(s) 2000-2002;2001-2003;2002-2004;2003-2005;2004-2006;2005-2007;2006-2008;2007-2009;2008-2010;2009-2011;2010-2012

Note: Weighted counts (#) represent 3-yr averages, rounded to the nearest hundred; n/r (Not Reportable) - If the unweighted total responses for a dimension (row) is <30 that row will not be shown

Years: 2004-2006

Infant Gender	Breastfed <1 week			Breastfed 1-4 weeks			Breastfed 5-8 weeks			Breastfed 9+ weeks			Weighted Total Responses (3-Yr Avg)
	#	%	C.I.(95%)	#	%	C.I.(95%)	#	%	C.I.(95%)	#	%	C.I.(95%)	#
Male	3,000	36.9	35.0 - 38.8	1,800	21.7	20.1 - 23.4	300	4.1	3.4 - 5.0	3,000	37.3	35.4 - 39.2	8,100
Female	2,600	34.9	33.0 - 36.9	1,500	20.7	19.0 - 22.4	300	4.0	3.3 - 4.9	3,000	40.4	38.4 - 42.4	7,500

Married	Breastfed <1 week			Breastfed 1-4 weeks			Breastfed 5-8 weeks			Breastfed 9+ weeks			Weighted Total Responses (3-Yr Avg)
	#	%	C.I.(95%)	#	%	C.I.(95%)	#	%	C.I.(95%)	#	%	C.I.(95%)	#
Yes	3,700	35.7	34.1 - 37.3	2,000	19.2	17.9 - 20.6	400	4.1	3.5 - 4.9	4,300	41.0	39.4 - 42.7	10,400
No	1,900	36.5	34.0 - 39.0	1,300	25.3	23.1 - 27.6	200	4.0	3.1 - 5.1	1,800	34.2	31.8 - 36.8	5,200

Poverty Level	Breastfed <1 week			Breastfed 1-4 weeks			Breastfed 5-8 weeks			Breastfed 9+ weeks			Weighted Total Responses (3-Yr Avg)
	#	%	C.I.(95%)	#	%	C.I.(95%)	#	%	C.I.(95%)	#	%	C.I.(95%)	#
0-130%	1,900	35.9	33.6 - 38.4	1,300	24.8	22.6 - 27.0	200	3.3	2.5 - 4.3	1,900	36.0	33.6 - 38.5	5,400
131-185%	600	31.3	27.5 - 35.3	400	21.2	17.9 - 24.9	100	5.7	4.0 - 8.0	800	41.9	37.8 - 46.2	1,800
186+%	2,700	37.2	35.3 - 39.1	1,300	18.0	16.5 - 19.7	300	4.3	3.6 - 5.2	2,900	40.5	38.5 - 42.5	7,300

PRAMS Health Indicator 3-Year Aggregate Report - Breastfeeding (exclusive) duration (grouped), among initiators- by State;County;DOH Race-Ethnicity;PRAMS Age Group;Infant Gender;Married;Poverty Level;Income (2000-2003);Income (2004-2011);Birthweight;Smoke 3rd Trimester;Smoke Before Pregnant;WIC During Pregnancy, for the Year(s) 2000-2002;2001-2003;2002-2004;2003-2005;2004-2006;2005-2007;2006-2008;2007-2009;2008-2010;2009-2011;2010-2012

Note: Weighted counts (#) represent 3-yr averages, rounded to the nearest hundred; n/r (Not Reportable) - If the unweighted total responses for a dimension (row) is <30 that row will not be shown

Years: 2004-2006

Income (2004-2011)	Breastfed <1 week			Breastfed 1-4 weeks			Breastfed 5-8 weeks			Breastfed 9+ weeks			Weighted Total Responses (3-Yr Avg)
	#	%	C.I.(95%)	#	%	C.I.(95%)	#	%	C.I.(95%)	#	%	C.I.(95%)	#
<\$10,000	900	37.1	33.5 - 40.8	600	25.2	22.0 - 28.6	100	3.6	2.4 - 5.2	900	34.2	30.7 - 37.9	2,500
\$10,000-\$24,999	1,200	35.8	32.8 - 38.8	800	23.5	20.9 - 26.3	100	3.8	2.7 - 5.2	1,200	37.0	34.0 - 40.0	3,300
\$25,000-\$49,999	1,200	32.1	29.5 - 34.8	800	20.9	18.6 - 23.4	200	5.2	4.0 - 6.6	1,600	41.8	39.0 - 44.7	3,800
>=\$50,000	1,900	38.7	36.4 - 41.1	800	17.0	15.3 - 19.0	200	3.8	3.0 - 4.9	2,000	40.5	38.1 - 42.9	4,900

Birthweight	Breastfed <1 week			Breastfed 1-4 weeks			Breastfed 5-8 weeks			Breastfed 9+ weeks			Weighted Total Responses (3-Yr Avg)
	#	%	C.I.(95%)	#	%	C.I.(95%)	#	%	C.I.(95%)	#	%	C.I.(95%)	#
Low birth weight	500	49.0	43.6 - 54.4	200	15.8	12.1 - 20.3	<50	4.0	2.4 - 6.6	300	31.2	26.3 - 36.5	1,100
Normal birth weight	5,100	35.0	33.6 - 36.4	3,100	21.6	20.4 - 22.9	600	4.1	3.5 - 4.7	5,700	39.3	37.9 - 40.8	14,500

Smoke 3rd Trimester	Breastfed <1 week			Breastfed 1-4 weeks			Breastfed 5-8 weeks			Breastfed 9+ weeks			Weighted Total Responses (3-Yr Avg)
	#	%	C.I.(95%)	#	%	C.I.(95%)	#	%	C.I.(95%)	#	%	C.I.(95%)	#
Yes	400	38.8	33.5 - 44.4	300	22.7	18.4 - 27.8	100	5.2	3.2 - 8.3	400	33.3	28.2 - 38.8	1,100
No	5,100	35.5	34.1 - 37.0	3,000	21.1	19.9 - 22.3	600	4.1	3.5 - 4.7	5,600	39.3	37.9 - 40.8	14,200

PRAMS Health Indicator 3-Year Aggregate Report - Breastfeeding (exclusive) duration (grouped), among initiators- by State;County;DOH Race-Ethnicity;PRAMS Age Group;Infant Gender;Married;Poverty Level;Income (2000-2003);Income (2004-2011);Birthweight;Smoke 3rd Trimester;Smoke Before Pregnant;WIC During Pregnancy, for the Year(s) 2000-2002;2001-2003;2002-2004;2003-2005;2004-2006;2005-2007;2006-2008;2007-2009;2008-2010;2009-2011;2010-2012

Note: Weighted counts (#) represent 3-yr averages, rounded to the nearest hundred; n/r (Not Reportable) - If the unweighted total responses for a dimension (row) is <30 that row will not be shown

Years: 2004-2006

Smoke Before Pregnant	Breastfed <1 week			Breastfed 1-4 weeks			Breastfed 5-8 weeks			Breastfed 9+ weeks			Weighted Total Responses (3-Yr Avg)
	#	%	C.I.(95%)	#	%	C.I.(95%)	#	%	C.I.(95%)	#	%	C.I.(95%)	#
Yes	1,100	34.8	31.7 - 38.1	800	25.1	22.3 - 28.2	200	6.9	5.3 - 8.8	1,000	33.2	30.1 - 36.5	3,100
No	4,400	36.0	34.5 - 37.5	2,500	20.2	19.0 - 21.6	400	3.5	2.9 - 4.1	5,000	40.3	38.7 - 41.8	12,300

WIC During Pregnancy	Breastfed <1 week			Breastfed 1-4 weeks			Breastfed 5-8 weeks			Breastfed 9+ weeks			Weighted Total Responses (3-Yr Avg)
	#	%	C.I.(95%)	#	%	C.I.(95%)	#	%	C.I.(95%)	#	%	C.I.(95%)	#
Yes	2,300	34.9	32.8 - 37.1	1,500	23.5	21.6 - 25.5	300	3.9	3.1 - 4.9	2,500	37.6	35.4 - 39.9	6,500
No	3,200	36.5	34.7 - 38.3	1,700	19.4	17.9 - 20.9	400	4.2	3.5 - 5.1	3,500	39.9	38.1 - 41.7	8,800

PRAMS Health Indicator 3-Year Aggregate Report - Breastfeeding (exclusive) duration (grouped), among initiators- by State;County;DOH Race-Ethnicity;PRAMS Age Group;Infant Gender;Married;Poverty Level;Income (2000-2003);Income (2004-2011);Birthweight;Smoke 3rd Trimester;Smoke Before Pregnant;WIC During Pregnancy, for the Year(s) 2000-2002;2001-2003;2002-2004;2003-2005;2004-2006;2005-2007;2006-2008;2007-2009;2008-2010;2009-2011;2010-2012

Note: Weighted counts (#) represent 3-yr averages, rounded to the nearest hundred; n/r (Not Reportable) - If the unweighted total responses for a dimension (row) is <30 that row will not be shown

Years: 2003-2005

State	Breastfed <1 week			Breastfed 1-4 weeks			Breastfed 5-8 weeks			Breastfed 9+ weeks			Weighted Total Responses (3-Yr Avg)
	#	%	C.I.(95%)	#	%	C.I.(95%)	#	%	C.I.(95%)	#	%	C.I.(95%)	#
Totals	5,500	36.1	34.7 - 37.5	3,200	21.4	20.2 - 22.7	600	3.8	3.2 - 4.4	5,800	38.7	37.3 - 40.1	15,100

County	Breastfed <1 week			Breastfed 1-4 weeks			Breastfed 5-8 weeks			Breastfed 9+ weeks			Weighted Total Responses (3-Yr Avg)
	#	%	C.I.(95%)	#	%	C.I.(95%)	#	%	C.I.(95%)	#	%	C.I.(95%)	#
Hawaii	500	27.9	24.6 - 31.6	400	22.6	19.4 - 26.1	100	3.4	2.2 - 5.1	800	46.2	42.3 - 50.1	1,800
Honolulu	4,300	39.2	37.4 - 41.0	2,300	21.3	19.8 - 22.8	400	3.5	2.9 - 4.3	4,000	36.0	34.3 - 37.8	11,000
Kauai	100	17.7	13.8 - 22.5	200	23.7	19.0 - 29.1	<50	4.2	2.3 - 7.4	400	54.4	48.5 - 60.2	700
Maui	500	32.1	28.5 - 35.8	300	20.4	17.4 - 23.7	100	5.8	4.2 - 8.1	700	41.7	37.9 - 45.6	1,600

PRAMS Health Indicator 3-Year Aggregate Report - Breastfeeding (exclusive) duration (grouped), among initiators- by State;County;DOH Race-Ethnicity;PRAMS Age Group;Infant Gender;Married;Poverty Level;Income (2000-2003);Income (2004-2011);Birthweight;Smoke 3rd Trimester;Smoke Before Pregnant;WIC During Pregnancy, for the Year(s) 2000-2002;2001-2003;2002-2004;2003-2005;2004-2006;2005-2007;2006-2008;2007-2009;2008-2010;2009-2011;2010-2012

Note: Weighted counts (#) represent 3-yr averages, rounded to the nearest hundred; n/r (Not Reportable) - If the unweighted total responses for a dimension (row) is <30 that row will not be shown

Years: 2003-2005

DOH Race-Ethnicity	Breastfed <1 week			Breastfed 1-4 weeks			Breastfed 5-8 weeks			Breastfed 9+ weeks			Weighted Total Responses (3-Yr Avg)
	#	%	C.I.(95%)	#	%	C.I.(95%)	#	%	C.I.(95%)	#	%	C.I.(95%)	#
Caucasian	800	22.2	19.5 - 25.1	700	19.2	16.8 - 21.9	200	5.6	4.2 - 7.3	1,800	53.0	49.8 - 56.2	3,500
Native Hawaiian	1,500	37.0	34.4 - 39.6	900	22.9	20.7 - 25.2	200	4.1	3.1 - 5.3	1,400	36.1	33.5 - 38.7	4,000
Chinese	300	44.4	38.1 - 50.8	100	17.6	13.3 - 22.8	<50	2.2	1.3 - 3.7	200	35.9	30.0 - 42.1	600
Filipino	1,200	41.1	37.8 - 44.5	700	23.8	21.0 - 26.9	100	3.5	2.5 - 4.9	900	31.5	28.5 - 34.8	3,000
Japanese	1,000	48.8	44.5 - 53.1	300	17.1	14.1 - 20.6	<50	1.8	1.0 - 3.4	700	32.3	28.4 - 36.5	2,000
Other	700	35.8	31.8 - 40.1	500	24.4	20.8 - 28.4	100	2.9	1.7 - 5.0	800	36.9	32.8 - 41.1	2,100

PRAMS Age Group	Breastfed <1 week			Breastfed 1-4 weeks			Breastfed 5-8 weeks			Breastfed 9+ weeks			Weighted Total Responses (3-Yr Avg)
	#	%	C.I.(95%)	#	%	C.I.(95%)	#	%	C.I.(95%)	#	%	C.I.(95%)	#
<20	400	36.0	31.0 - 41.4	300	26.7	22.3 - 31.7	<50	3.6	2.2 - 6.1	400	33.6	28.8 - 38.7	1,200
20-24	1,200	32.6	29.8 - 35.5	1,000	26.5	23.9 - 29.3	200	4.3	3.2 - 5.7	1,300	36.7	33.8 - 39.6	3,700
25-34	2,700	36.6	34.6 - 38.7	1,400	19.3	17.7 - 21.1	300	4.1	3.3 - 5.1	3,000	39.9	37.9 - 42.0	7,500
35+	1,100	39.3	36.0 - 42.8	500	18.2	15.7 - 21.0	100	2.2	1.4 - 3.4	1,100	40.3	36.9 - 43.7	2,800

PRAMS Health Indicator 3-Year Aggregate Report - Breastfeeding (exclusive) duration (grouped), among initiators- by State;County;DOH Race-Ethnicity;PRAMS Age Group;Infant Gender;Married;Poverty Level;Income (2000-2003);Income (2004-2011);Birthweight;Smoke 3rd Trimester;Smoke Before Pregnant;WIC During Pregnancy, for the Year(s) 2000-2002;2001-2003;2002-2004;2003-2005;2004-2006;2005-2007;2006-2008;2007-2009;2008-2010;2009-2011;2010-2012

Note: Weighted counts (#) represent 3-yr averages, rounded to the nearest hundred; n/r (Not Reportable) - If the unweighted total responses for a dimension (row) is <30 that row will not be shown

Years: 2003-2005

Infant Gender	Breastfed <1 week			Breastfed 1-4 weeks			Breastfed 5-8 weeks			Breastfed 9+ weeks			Weighted Total Responses (3-Yr Avg)
	#	%	C.I.(95%)	#	%	C.I.(95%)	#	%	C.I.(95%)	#	%	C.I.(95%)	#
Male	2,900	36.6	34.6 - 38.6	1,700	21.7	20.1 - 23.5	300	3.8	3.1 - 4.7	3,000	37.9	35.9 - 39.9	7,900
Female	2,600	35.6	33.5 - 37.7	1,500	21.1	19.4 - 22.9	300	3.8	3.0 - 4.6	2,800	39.6	37.5 - 41.7	7,200

Married	Breastfed <1 week			Breastfed 1-4 weeks			Breastfed 5-8 weeks			Breastfed 9+ weeks			Weighted Total Responses (3-Yr Avg)
	#	%	C.I.(95%)	#	%	C.I.(95%)	#	%	C.I.(95%)	#	%	C.I.(95%)	#
Yes	3,600	35.3	33.6 - 37.1	2,100	19.9	18.5 - 21.4	400	3.8	3.1 - 4.5	4,200	41.0	39.2 - 42.8	10,300
No	1,800	37.8	35.2 - 40.3	1,200	24.8	22.6 - 27.1	200	3.8	2.9 - 4.9	1,600	33.7	31.3 - 36.2	4,800

Poverty Level	Breastfed <1 week			Breastfed 1-4 weeks			Breastfed 5-8 weeks			Breastfed 9+ weeks			Weighted Total Responses (3-Yr Avg)
	#	%	C.I.(95%)	#	%	C.I.(95%)	#	%	C.I.(95%)	#	%	C.I.(95%)	#
0-130%	2,100	36.5	34.1 - 38.9	1,400	24.7	22.6 - 26.9	200	3.1	2.3 - 4.0	2,000	35.8	33.5 - 38.2	5,600
131-185%	600	31.8	27.9 - 36.0	400	21.7	18.3 - 25.5	100	4.9	3.3 - 7.2	800	41.6	37.4 - 45.9	1,900
186+%	2,400	36.8	34.6 - 39.0	1,200	18.2	16.5 - 20.1	300	4.1	3.3 - 5.1	2,600	40.9	38.7 - 43.1	6,400

PRAMS Health Indicator 3-Year Aggregate Report - Breastfeeding (exclusive) duration (grouped), among initiators- by State;County;DOH Race-Ethnicity;PRAMS Age Group;Infant Gender;Married;Poverty Level;Income (2000-2003);Income (2004-2011);Birthweight;Smoke 3rd Trimester;Smoke Before Pregnant;WIC During Pregnancy, for the Year(s) 2000-2002;2001-2003;2002-2004;2003-2005;2004-2006;2005-2007;2006-2008;2007-2009;2008-2010;2009-2011;2010-2012

Note: Weighted counts (#) represent 3-yr averages, rounded to the nearest hundred; n/r (Not Reportable) - If the unweighted total responses for a dimension (row) is <30 that row will not be shown

Years: 2003-2005

Birthweight	Breastfed <1 week			Breastfed 1-4 weeks			Breastfed 5-8 weeks			Breastfed 9+ weeks			Weighted Total Responses (3-Yr Avg)
	#	%	C.I.(95%)	#	%	C.I.(95%)	#	%	C.I.(95%)	#	%	C.I.(95%)	#
Low birth weight	500	48.6	42.8 - 54.4	200	18.1	13.8 - 23.3	<50	4.9	2.8 - 8.2	300	28.5	23.6 - 33.8	1,000
Normal birth weight	5,000	35.2	33.7 - 36.7	3,100	21.7	20.4 - 23.0	500	3.7	3.2 - 4.3	5,600	39.4	37.9 - 40.9	14,100

Smoke 3rd Trimester	Breastfed <1 week			Breastfed 1-4 weeks			Breastfed 5-8 weeks			Breastfed 9+ weeks			Weighted Total Responses (3-Yr Avg)
	#	%	C.I.(95%)	#	%	C.I.(95%)	#	%	C.I.(95%)	#	%	C.I.(95%)	#
Yes	400	41.1	35.6 - 46.9	200	21.2	16.9 - 26.2	<50	3.5	2.0 - 6.0	400	34.2	29.0 - 39.8	1,000
No	4,900	35.7	34.2 - 37.2	3,000	21.5	20.2 - 22.8	500	3.8	3.3 - 4.5	5,400	39.0	37.5 - 40.6	13,900

Smoke Before Pregnant	Breastfed <1 week			Breastfed 1-4 weeks			Breastfed 5-8 weeks			Breastfed 9+ weeks			Weighted Total Responses (3-Yr Avg)
	#	%	C.I.(95%)	#	%	C.I.(95%)	#	%	C.I.(95%)	#	%	C.I.(95%)	#
Yes	1,100	38.0	34.7 - 41.4	700	23.4	20.6 - 26.4	200	5.6	4.2 - 7.3	1,000	33.0	29.9 - 36.3	2,900
No	4,200	35.5	33.9 - 37.1	2,500	21.0	19.6 - 22.4	400	3.4	2.8 - 4.1	4,800	40.1	38.5 - 41.8	12,000

PRAMS Health Indicator 3-Year Aggregate Report - Breastfeeding (exclusive) duration (grouped), among initiators- by State;County;DOH Race-Ethnicity;PRAMS Age Group;Infant Gender;Married;Poverty Level;Income (2000-2003);Income (2004-2011);Birthweight;Smoke 3rd Trimester;Smoke Before Pregnant;WIC During Pregnancy, for the Year(s) 2000-2002;2001-2003;2002-2004;2003-2005;2004-2006;2005-2007;2006-2008;2007-2009;2008-2010;2009-2011;2010-2012

Note: Weighted counts (#) represent 3-yr averages, rounded to the nearest hundred; n/r (Not Reportable) - If the unweighted total responses for a dimension (row) is <30 that row will not be shown

Years: 2003-2005

WIC During Pregnancy	Breastfed <1 week			Breastfed 1-4 weeks			Breastfed 5-8 weeks			Breastfed 9+ weeks			Weighted Total Responses (3-Yr Avg)
	#	%	C.I.(95%)	#	%	C.I.(95%)	#	%	C.I.(95%)	#	%	C.I.(95%)	#
Yes	2,200	35.3	33.1 - 37.5	1,500	23.6	21.7 - 25.7	200	3.4	2.7 - 4.4	2,400	37.7	35.5 - 39.9	6,300
No	3,100	36.5	34.6 - 38.5	1,700	19.8	18.2 - 21.4	400	4.1	3.3 - 4.9	3,400	39.6	37.7 - 41.6	8,600

PRAMS Health Indicator 3-Year Aggregate Report - Breastfeeding (exclusive) duration (grouped), among initiators- by State;County;DOH Race-Ethnicity;PRAMS Age Group;Infant Gender;Married;Poverty Level;Income (2000-2003);Income (2004-2011);Birthweight;Smoke 3rd Trimester;Smoke Before Pregnant;WIC During Pregnancy, for the Year(s) 2000-2002;2001-2003;2002-2004;2003-2005;2004-2006;2005-2007;2006-2008;2007-2009;2008-2010;2009-2011;2010-2012

Note: Weighted counts (#) represent 3-yr averages, rounded to the nearest hundred; n/r (Not Reportable) - If the unweighted total responses for a dimension (row) is <30 that row will not be shown

Years: 2002-2004

State	Breastfed <1 week			Breastfed 1-4 weeks			Breastfed 5-8 weeks			Breastfed 9+ weeks			Weighted Total Responses (3-Yr Avg)
	#	%	C.I.(95%)	#	%	C.I.(95%)	#	%	C.I.(95%)	#	%	C.I.(95%)	#
Totals	5,300	35.8	34.3 - 37.3	3,100	20.9	19.7 - 22.3	600	4.2	3.6 - 4.9	5,800	39.1	37.5 - 40.6	14,800

County	Breastfed <1 week			Breastfed 1-4 weeks			Breastfed 5-8 weeks			Breastfed 9+ weeks			Weighted Total Responses (3-Yr Avg)
	#	%	C.I.(95%)	#	%	C.I.(95%)	#	%	C.I.(95%)	#	%	C.I.(95%)	#
Hawaii	500	30.4	27.4 - 33.7	300	20.6	18.0 - 23.4	100	3.6	2.5 - 5.2	800	45.4	42.0 - 48.8	1,700
Honolulu	4,100	38.3	36.4 - 40.3	2,200	20.6	19.0 - 22.3	400	4.1	3.4 - 5.0	4,000	36.9	35.0 - 38.9	10,800
Kauai	100	18.5	14.7 - 23.0	200	23.4	19.2 - 28.2	<50	4.2	2.5 - 7.0	400	53.9	48.6 - 59.1	700
Maui	500	31.8	28.7 - 35.1	400	22.1	19.3 - 25.2	100	5.3	3.9 - 7.3	700	40.7	37.4 - 44.1	1,600

PRAMS Health Indicator 3-Year Aggregate Report - Breastfeeding (exclusive) duration (grouped), among initiators- by State;County;DOH Race-Ethnicity;PRAMS Age Group;Infant Gender;Married;Poverty Level;Income (2000-2003);Income (2004-2011);Birthweight;Smoke 3rd Trimester;Smoke Before Pregnant;WIC During Pregnancy, for the Year(s) 2000-2002;2001-2003;2002-2004;2003-2005;2004-2006;2005-2007;2006-2008;2007-2009;2008-2010;2009-2011;2010-2012

Note: Weighted counts (#) represent 3-yr averages, rounded to the nearest hundred; n/r (Not Reportable) - If the unweighted total responses for a dimension (row) is <30 that row will not be shown

Years: 2002-2004

DOH Race-Ethnicity	Breastfed <1 week			Breastfed 1-4 weeks			Breastfed 5-8 weeks			Breastfed 9+ weeks			Weighted Total Responses (3-Yr Avg)
	#	%	C.I.(95%)	#	%	C.I.(95%)	#	%	C.I.(95%)	#	%	C.I.(95%)	#
Caucasian	700	21.5	18.6 - 24.6	600	17.3	14.8 - 20.2	300	7.9	6.1 - 10.2	1,800	53.3	49.8 - 56.8	3,300
Native Hawaiian	1,400	36.3	34.1 - 38.6	900	24.0	22.1 - 26.1	200	4.0	3.2 - 5.1	1,400	35.6	33.5 - 37.8	3,900
Chinese	300	45.6	37.7 - 53.7	100	19.8	13.9 - 27.3	<50	2.1	0.7 - 5.9	200	32.5	25.6 - 40.2	600
Filipino	1,200	40.8	37.1 - 44.5	700	22.3	19.3 - 25.5	100	3.0	2.1 - 4.4	1,000	33.9	30.5 - 37.6	3,000
Japanese	1,000	46.4	41.7 - 51.2	400	19.5	16.0 - 23.6	<50	1.9	0.9 - 3.8	700	32.2	27.9 - 36.7	2,100
Other	700	37.4	32.7 - 42.4	400	20.8	17.0 - 25.2	100	3.0	1.7 - 5.2	800	38.8	34.0 - 43.7	2,000

PRAMS Age Group	Breastfed <1 week			Breastfed 1-4 weeks			Breastfed 5-8 weeks			Breastfed 9+ weeks			Weighted Total Responses (3-Yr Avg)
	#	%	C.I.(95%)	#	%	C.I.(95%)	#	%	C.I.(95%)	#	%	C.I.(95%)	#
<20	500	40.3	35.1 - 45.8	300	26.9	22.3 - 32.1	<50	3.5	1.9 - 6.4	300	29.2	24.8 - 34.1	1,200
20-24	1,200	32.7	29.8 - 35.8	900	25.1	22.5 - 28.0	100	4.0	2.9 - 5.4	1,400	38.2	35.2 - 41.3	3,600
25-34	2,600	35.6	33.4 - 37.8	1,400	18.7	17.0 - 20.6	400	4.8	3.8 - 5.9	3,000	40.9	38.7 - 43.2	7,400
35+	1,000	38.5	34.9 - 42.3	500	18.7	15.9 - 21.8	100	3.3	2.2 - 5.0	1,000	39.5	35.8 - 43.2	2,700

PRAMS Health Indicator 3-Year Aggregate Report - Breastfeeding (exclusive) duration (grouped), among initiators- by State;County;DOH Race-Ethnicity;PRAMS Age Group;Infant Gender;Married;Poverty Level;Income (2000-2003);Income (2004-2011);Birthweight;Smoke 3rd Trimester;Smoke Before Pregnant;WIC During Pregnancy, for the Year(s) 2000-2002;2001-2003;2002-2004;2003-2005;2004-2006;2005-2007;2006-2008;2007-2009;2008-2010;2009-2011;2010-2012

Note: Weighted counts (#) represent 3-yr averages, rounded to the nearest hundred; n/r (Not Reportable) - If the unweighted total responses for a dimension (row) is <30 that row will not be shown

Years: 2002-2004

Infant Gender	Breastfed <1 week			Breastfed 1-4 weeks			Breastfed 5-8 weeks			Breastfed 9+ weeks			Weighted Total Responses (3-Yr Avg)
	#	%	C.I.(95%)	#	%	C.I.(95%)	#	%	C.I.(95%)	#	%	C.I.(95%)	#
Male	2,800	36.2	34.2 - 38.4	1,600	21.1	19.3 - 22.9	300	4.3	3.5 - 5.3	3,000	38.4	36.3 - 40.5	7,700
Female	2,500	35.3	33.1 - 37.6	1,500	20.8	19.0 - 22.7	300	4.1	3.3 - 5.1	2,800	39.8	37.6 - 42.1	7,100

Married	Breastfed <1 week			Breastfed 1-4 weeks			Breastfed 5-8 weeks			Breastfed 9+ weeks			Weighted Total Responses (3-Yr Avg)
	#	%	C.I.(95%)	#	%	C.I.(95%)	#	%	C.I.(95%)	#	%	C.I.(95%)	#
Yes	3,600	34.7	32.8 - 36.6	2,000	19.4	17.9 - 21.0	500	4.4	3.7 - 5.4	4,300	41.4	39.5 - 43.4	10,300
No	1,700	38.3	35.7 - 41.0	1,100	24.4	22.1 - 26.8	200	3.6	2.8 - 4.7	1,500	33.6	31.2 - 36.2	4,500

Poverty Level	Breastfed <1 week			Breastfed 1-4 weeks			Breastfed 5-8 weeks			Breastfed 9+ weeks			Weighted Total Responses (3-Yr Avg)
	#	%	C.I.(95%)	#	%	C.I.(95%)	#	%	C.I.(95%)	#	%	C.I.(95%)	#
0-130%	2,000	36.2	33.8 - 38.7	1,300	23.5	21.5 - 25.8	200	3.1	2.3 - 4.1	2,100	37.2	34.8 - 39.6	5,600
131-185%	700	31.9	28.0 - 36.0	500	19.9	16.8 - 23.3	100	5.7	4.1 - 8.0	1,000	42.5	38.4 - 46.7	2,300
186+%	2,100	36.1	33.7 - 38.7	1,100	18.5	16.6 - 20.6	300	4.7	3.7 - 6.0	2,300	40.6	38.1 - 43.1	5,700

PRAMS Health Indicator 3-Year Aggregate Report - Breastfeeding (exclusive) duration (grouped), among initiators- by State;County;DOH Race-Ethnicity;PRAMS Age Group;Infant Gender;Married;Poverty Level;Income (2000-2003);Income (2004-2011);Birthweight;Smoke 3rd Trimester;Smoke Before Pregnant;WIC During Pregnancy, for the Year(s) 2000-2002;2001-2003;2002-2004;2003-2005;2004-2006;2005-2007;2006-2008;2007-2009;2008-2010;2009-2011;2010-2012

Note: Weighted counts (#) represent 3-yr averages, rounded to the nearest hundred; n/r (Not Reportable) - If the unweighted total responses for a dimension (row) is <30 that row will not be shown

Years: 2002-2004

Birthweight	Breastfed <1 week			Breastfed 1-4 weeks			Breastfed 5-8 weeks			Breastfed 9+ weeks			Weighted Total Responses (3-Yr Avg)
	#	%	C.I.(95%)	#	%	C.I.(95%)	#	%	C.I.(95%)	#	%	C.I.(95%)	#
Low birth weight	400	45.8	39.4 - 52.3	200	22.2	17.1 - 28.3	<50	4.2	2.2 - 7.9	300	27.9	22.5 - 34.0	900
Normal birth weight	4,900	35.1	33.5 - 36.7	2,900	20.8	19.5 - 22.2	600	4.2	3.6 - 4.9	5,500	39.8	38.2 - 41.4	13,900

Smoke 3rd Trimester	Breastfed <1 week			Breastfed 1-4 weeks			Breastfed 5-8 weeks			Breastfed 9+ weeks			Weighted Total Responses (3-Yr Avg)
	#	%	C.I.(95%)	#	%	C.I.(95%)	#	%	C.I.(95%)	#	%	C.I.(95%)	#
Yes	400	38.7	33.1 - 44.6	200	23.9	19.3 - 29.3	<50	4.1	2.5 - 6.7	300	33.3	28.0 - 39.0	1,000
No	4,900	35.6	34.0 - 37.2	2,800	20.9	19.5 - 22.3	600	4.2	3.6 - 5.0	5,400	39.3	37.7 - 40.9	13,600

Smoke Before Pregnant	Breastfed <1 week			Breastfed 1-4 weeks			Breastfed 5-8 weeks			Breastfed 9+ weeks			Weighted Total Responses (3-Yr Avg)
	#	%	C.I.(95%)	#	%	C.I.(95%)	#	%	C.I.(95%)	#	%	C.I.(95%)	#
Yes	1,000	37.1	33.7 - 40.7	600	23.3	20.4 - 26.5	100	5.2	3.9 - 6.9	900	34.4	31.1 - 37.9	2,700
No	4,200	35.4	33.6 - 37.1	2,400	20.5	19.1 - 22.0	500	4.1	3.4 - 4.9	4,700	40.1	38.3 - 41.8	11,800

PRAMS Health Indicator 3-Year Aggregate Report - Breastfeeding (exclusive) duration (grouped), among initiators- by State;County;DOH Race-Ethnicity;PRAMS Age Group;Infant Gender;Married;Poverty Level;Income (2000-2003);Income (2004-2011);Birthweight;Smoke 3rd Trimester;Smoke Before Pregnant;WIC During Pregnancy, for the Year(s) 2000-2002;2001-2003;2002-2004;2003-2005;2004-2006;2005-2007;2006-2008;2007-2009;2008-2010;2009-2011;2010-2012

Note: Weighted counts (#) represent 3-yr averages, rounded to the nearest hundred; n/r (Not Reportable) - If the unweighted total responses for a dimension (row) is <30 that row will not be shown

Years: 2002-2004

WIC During Pregnancy	Breastfed <1 week			Breastfed 1-4 weeks			Breastfed 5-8 weeks			Breastfed 9+ weeks			Weighted Total Responses (3-Yr Avg)
	#	%	C.I.(95%)	#	%	C.I.(95%)	#	%	C.I.(95%)	#	%	C.I.(95%)	#
Yes	2,200	36.1	33.8 - 38.5	1,400	23.2	21.3 - 25.4	200	3.5	2.7 - 4.6	2,200	37.1	34.8 - 39.4	6,100
No	3,100	35.5	33.4 - 37.5	1,700	19.4	17.7 - 21.1	400	4.7	3.8 - 5.7	3,500	40.5	38.4 - 42.6	8,600

PRAMS Health Indicator 3-Year Aggregate Report - Breastfeeding (exclusive) duration (grouped), among initiators- by State;County;DOH Race-Ethnicity;PRAMS Age Group;Infant Gender;Married;Poverty Level;Income (2000-2003);Income (2004-2011);Birthweight;Smoke 3rd Trimester;Smoke Before Pregnant;WIC During Pregnancy, for the Year(s) 2000-2002;2001-2003;2002-2004;2003-2005;2004-2006;2005-2007;2006-2008;2007-2009;2008-2010;2009-2011;2010-2012

Note: Weighted counts (#) represent 3-yr averages, rounded to the nearest hundred; n/r (Not Reportable) - If the unweighted total responses for a dimension (row) is <30 that row will not be shown

Years: 2001-2003

State	Breastfed <1 week			Breastfed 1-4 weeks			Breastfed 5-8 weeks			Breastfed 9+ weeks			Weighted Total Responses (3-Yr Avg)
	#	%	C.I.(95%)	#	%	C.I.(95%)	#	%	C.I.(95%)	#	%	C.I.(95%)	#
Totals	4,900	34.5	32.9 - 36.1	3,000	21.1	19.8 - 22.5	600	4.4	3.8 - 5.2	5,700	39.9	38.4 - 41.5	14,300

County	Breastfed <1 week			Breastfed 1-4 weeks			Breastfed 5-8 weeks			Breastfed 9+ weeks			Weighted Total Responses (3-Yr Avg)
	#	%	C.I.(95%)	#	%	C.I.(95%)	#	%	C.I.(95%)	#	%	C.I.(95%)	#
Hawaii	500	29.0	26.5 - 31.8	300	21.1	18.8 - 23.5	100	3.9	2.9 - 5.2	700	46.0	43.1 - 48.9	1,600
Honolulu	3,900	36.7	34.7 - 38.8	2,200	21.0	19.3 - 22.7	500	4.6	3.8 - 5.6	4,000	37.7	35.7 - 39.8	10,600
Kauai	100	19.2	15.7 - 23.3	200	23.1	19.4 - 27.3	<50	4.7	3.1 - 7.2	300	52.9	48.2 - 57.6	700
Maui	500	31.6	28.8 - 34.5	300	21.3	18.9 - 24.0	100	3.4	2.5 - 4.8	700	43.7	40.6 - 46.8	1,500

PRAMS Health Indicator 3-Year Aggregate Report - Breastfeeding (exclusive) duration (grouped), among initiators- by State;County;DOH Race-Ethnicity;PRAMS Age Group;Infant Gender;Married;Poverty Level;Income (2000-2003);Income (2004-2011);Birthweight;Smoke 3rd Trimester;Smoke Before Pregnant;WIC During Pregnancy, for the Year(s) 2000-2002;2001-2003;2002-2004;2003-2005;2004-2006;2005-2007;2006-2008;2007-2009;2008-2010;2009-2011;2010-2012

Note: Weighted counts (#) represent 3-yr averages, rounded to the nearest hundred; n/r (Not Reportable) - If the unweighted total responses for a dimension (row) is <30 that row will not be shown

Years: 2001-2003

DOH Race-Ethnicity	Breastfed <1 week			Breastfed 1-4 weeks			Breastfed 5-8 weeks			Breastfed 9+ weeks			Weighted Total Responses (3-Yr Avg)
	#	%	C.I.(95%)	#	%	C.I.(95%)	#	%	C.I.(95%)	#	%	C.I.(95%)	#
Caucasian	700	21.7	18.7 - 25.0	500	17.2	14.5 - 20.1	300	8.1	6.2 - 10.5	1,700	53.1	49.4 - 56.7	3,200
Native Hawaiian	1,300	34.6	32.8 - 36.3	800	22.8	21.3 - 24.4	100	3.8	3.2 - 4.6	1,400	38.8	37.0 - 40.6	3,700
Chinese	300	43.2	34.2 - 52.6	100	22.3	15.4 - 31.1	<50	3.1	1.1 - 8.2	200	31.4	23.5 - 40.6	600
Filipino	1,200	39.2	35.4 - 43.1	700	23.1	20.0 - 26.6	100	2.9	1.9 - 4.5	1,000	34.8	31.2 - 38.6	3,000
Japanese	900	45.2	40.2 - 50.2	400	20.5	16.8 - 24.9	100	3.2	1.9 - 5.5	600	31.1	26.7 - 35.9	2,000
Other	600	34.5	29.6 - 39.8	400	21.6	17.6 - 26.3	100	3.5	2.0 - 5.9	700	40.4	35.2 - 45.7	1,800

PRAMS Age Group	Breastfed <1 week			Breastfed 1-4 weeks			Breastfed 5-8 weeks			Breastfed 9+ weeks			Weighted Total Responses (3-Yr Avg)
	#	%	C.I.(95%)	#	%	C.I.(95%)	#	%	C.I.(95%)	#	%	C.I.(95%)	#
<20	500	41.9	37.0 - 46.9	300	27.5	23.2 - 32.2	<50	2.7	1.4 - 5.1	400	28.0	24.0 - 32.4	1,300
20-24	1,100	31.7	28.8 - 34.8	900	25.2	22.6 - 28.1	100	3.7	2.7 - 5.2	1,400	39.3	36.2 - 42.4	3,500
25-34	2,400	33.9	31.6 - 36.2	1,300	18.6	16.8 - 20.5	400	5.2	4.3 - 6.4	3,000	42.3	40.0 - 44.7	7,100
35+	900	36.6	32.6 - 40.8	500	19.4	16.3 - 22.8	100	3.9	2.6 - 5.7	1,000	40.2	36.2 - 44.3	2,400

PRAMS Health Indicator 3-Year Aggregate Report - Breastfeeding (exclusive) duration (grouped), among initiators- by State;County;DOH Race-Ethnicity;PRAMS Age Group;Infant Gender;Married;Poverty Level;Income (2000-2003);Income (2004-2011);Birthweight;Smoke 3rd Trimester;Smoke Before Pregnant;WIC During Pregnancy, for the Year(s) 2000-2002;2001-2003;2002-2004;2003-2005;2004-2006;2005-2007;2006-2008;2007-2009;2008-2010;2009-2011;2010-2012

Note: Weighted counts (#) represent 3-yr averages, rounded to the nearest hundred; n/r (Not Reportable) - If the unweighted total responses for a dimension (row) is <30 that row will not be shown

Years: 2001-2003

Infant Gender	Breastfed <1 week			Breastfed 1-4 weeks			Breastfed 5-8 weeks			Breastfed 9+ weeks			Weighted Total Responses (3-Yr Avg)
	#	%	C.I.(95%)	#	%	C.I.(95%)	#	%	C.I.(95%)	#	%	C.I.(95%)	#
Male	2,500	34.4	32.3 - 36.7	1,600	21.7	19.9 - 23.6	300	4.5	3.6 - 5.5	2,900	39.4	37.2 - 41.7	7,400
Female	2,400	34.6	32.3 - 36.9	1,400	20.6	18.7 - 22.5	300	4.4	3.5 - 5.4	2,800	40.5	38.2 - 42.8	7,000

Married	Breastfed <1 week			Breastfed 1-4 weeks			Breastfed 5-8 weeks			Breastfed 9+ weeks			Weighted Total Responses (3-Yr Avg)
	#	%	C.I.(95%)	#	%	C.I.(95%)	#	%	C.I.(95%)	#	%	C.I.(95%)	#
Yes	3,300	33.5	31.5 - 35.5	1,900	19.6	18.0 - 21.3	500	4.8	4.0 - 5.8	4,200	42.1	40.1 - 44.1	9,900
No	1,600	36.8	34.3 - 39.5	1,100	24.5	22.3 - 26.9	200	3.5	2.7 - 4.5	1,600	35.2	32.7 - 37.7	4,400

Poverty Level	Breastfed <1 week			Breastfed 1-4 weeks			Breastfed 5-8 weeks			Breastfed 9+ weeks			Weighted Total Responses (3-Yr Avg)
	#	%	C.I.(95%)	#	%	C.I.(95%)	#	%	C.I.(95%)	#	%	C.I.(95%)	#
0-130%	1,900	35.3	32.9 - 37.8	1,300	23.5	21.4 - 25.7	200	3.1	2.4 - 4.0	2,100	38.1	35.7 - 40.6	5,500
131-185%	900	31.9	28.4 - 35.5	600	20.6	17.8 - 23.7	200	5.7	4.2 - 7.8	1,200	41.8	38.1 - 45.5	2,800
186+%	1,700	34.0	31.3 - 36.9	900	18.3	16.1 - 20.6	300	5.3	4.1 - 6.8	2,100	42.4	39.6 - 45.3	5,000

PRAMS Health Indicator 3-Year Aggregate Report - Breastfeeding (exclusive) duration (grouped), among initiators- by State;County;DOH Race-Ethnicity;PRAMS Age Group;Infant Gender;Married;Poverty Level;Income (2000-2003);Income (2004-2011);Birthweight;Smoke 3rd Trimester;Smoke Before Pregnant;WIC During Pregnancy, for the Year(s) 2000-2002;2001-2003;2002-2004;2003-2005;2004-2006;2005-2007;2006-2008;2007-2009;2008-2010;2009-2011;2010-2012

Note: Weighted counts (#) represent 3-yr averages, rounded to the nearest hundred; n/r (Not Reportable) - If the unweighted total responses for a dimension (row) is <30 that row will not be shown

Years: 2001-2003

Income (2000-2003)	Breastfed <1 week			Breastfed 1-4 weeks			Breastfed 5-8 weeks			Breastfed 9+ weeks			Weighted Total Responses (3-Yr Avg)
	#	%	C.I.(95%)	#	%	C.I.(95%)	#	%	C.I.(95%)	#	%	C.I.(95%)	#
<=\$15,000	1,000	36.2	32.9 - 39.7	700	25.5	22.6 - 28.7	100	3.7	2.5 - 5.3	900	34.6	31.4 - 37.9	2,700
\$15,001-\$25,000	600	29.8	26.0 - 34.0	400	23.0	19.5 - 27.0	100	3.5	2.3 - 5.5	800	43.6	39.3 - 48.0	1,900
\$25,001-\$40,000	1,000	31.8	28.4 - 35.4	700	22.3	19.5 - 25.4	100	4.8	3.5 - 6.6	1,200	41.1	37.6 - 44.7	3,000
>=\$40,001	2,100	35.8	33.3 - 38.4	1,000	17.6	15.7 - 19.7	300	5.1	4.0 - 6.4	2,400	41.5	38.9 - 44.1	5,900

Birthweight	Breastfed <1 week			Breastfed 1-4 weeks			Breastfed 5-8 weeks			Breastfed 9+ weeks			Weighted Total Responses (3-Yr Avg)
	#	%	C.I.(95%)	#	%	C.I.(95%)	#	%	C.I.(95%)	#	%	C.I.(95%)	#
Low birth weight	400	40.6	34.2 - 47.3	200	25.1	19.7 - 31.5	<50	3.1	1.4 - 6.6	300	31.2	25.5 - 37.6	900
Normal birth weight	4,600	34.1	32.5 - 35.7	2,800	20.9	19.5 - 22.3	600	4.5	3.9 - 5.3	5,400	40.6	38.9 - 42.2	13,400

Smoke 3rd Trimester	Breastfed <1 week			Breastfed 1-4 weeks			Breastfed 5-8 weeks			Breastfed 9+ weeks			Weighted Total Responses (3-Yr Avg)
	#	%	C.I.(95%)	#	%	C.I.(95%)	#	%	C.I.(95%)	#	%	C.I.(95%)	#
Yes	400	39.1	33.7 - 44.9	200	24.2	19.7 - 29.4	<50	3.7	2.4 - 5.8	300	33.0	27.9 - 38.5	1,000
No	4,500	34.2	32.5 - 35.9	2,800	21.0	19.6 - 22.4	600	4.5	3.8 - 5.3	5,300	40.3	38.6 - 42.0	13,100

PRAMS Health Indicator 3-Year Aggregate Report - Breastfeeding (exclusive) duration (grouped), among initiators- by State;County;DOH Race-Ethnicity;PRAMS Age Group;Infant Gender;Married;Poverty Level;Income (2000-2003);Income (2004-2011);Birthweight;Smoke 3rd Trimester;Smoke Before Pregnant;WIC During Pregnancy, for the Year(s) 2000-2002;2001-2003;2002-2004;2003-2005;2004-2006;2005-2007;2006-2008;2007-2009;2008-2010;2009-2011;2010-2012

Note: Weighted counts (#) represent 3-yr averages, rounded to the nearest hundred; n/r (Not Reportable) - If the unweighted total responses for a dimension (row) is <30 that row will not be shown

Years: 2001-2003

Smoke Before Pregnant	Breastfed <1 week			Breastfed 1-4 weeks			Breastfed 5-8 weeks			Breastfed 9+ weeks			Weighted Total Responses (3-Yr Avg)
	#	%	C.I.(95%)	#	%	C.I.(95%)	#	%	C.I.(95%)	#	%	C.I.(95%)	#
Yes	900	36.0	32.6 - 39.6	600	23.6	20.7 - 26.8	100	4.3	3.1 - 5.9	900	36.1	32.7 - 39.6	2,600
No	3,800	34.0	32.2 - 35.8	2,300	20.7	19.2 - 22.2	500	4.5	3.8 - 5.4	4,600	40.9	39.1 - 42.7	11,300

WIC During Pregnancy	Breastfed <1 week			Breastfed 1-4 weeks			Breastfed 5-8 weeks			Breastfed 9+ weeks			Weighted Total Responses (3-Yr Avg)
	#	%	C.I.(95%)	#	%	C.I.(95%)	#	%	C.I.(95%)	#	%	C.I.(95%)	#
Yes	2,100	36.0	33.6 - 38.4	1,300	22.6	20.6 - 24.7	200	3.9	3.1 - 5.0	2,100	37.5	35.2 - 39.9	5,700
No	2,800	33.5	31.5 - 35.7	1,700	20.1	18.4 - 21.9	400	4.7	3.9 - 5.8	3,500	41.6	39.5 - 43.8	8,500

PRAMS Health Indicator 3-Year Aggregate Report - Breastfeeding (exclusive) duration (grouped), among initiators- by State;County;DOH Race-Ethnicity;PRAMS Age Group;Infant Gender;Married;Poverty Level;Income (2000-2003);Income (2004-2011);Birthweight;Smoke 3rd Trimester;Smoke Before Pregnant;WIC During Pregnancy, for the Year(s) 2000-2002;2001-2003;2002-2004;2003-2005;2004-2006;2005-2007;2006-2008;2007-2009;2008-2010;2009-2011;2010-2012

Note: Weighted counts (#) represent 3-yr averages, rounded to the nearest hundred; n/r (Not Reportable) - If the unweighted total responses for a dimension (row) is <30 that row will not be shown

Years: 2000-2002

State	Breastfed <1 week			Breastfed 1-4 weeks			Breastfed 5-8 weeks			Breastfed 9+ weeks			Weighted Total Responses (3-Yr Avg)
	#	%	C.I.(95%)	#	%	C.I.(95%)	#	%	C.I.(95%)	#	%	C.I.(95%)	#
Totals	4,200	31.3	29.9 - 32.8	3,000	22.2	20.9 - 23.5	700	5.2	4.5 - 5.9	5,500	41.3	39.8 - 42.9	13,400

County	Breastfed <1 week			Breastfed 1-4 weeks			Breastfed 5-8 weeks			Breastfed 9+ weeks			Weighted Total Responses (3-Yr Avg)
	#	%	C.I.(95%)	#	%	C.I.(95%)	#	%	C.I.(95%)	#	%	C.I.(95%)	#
Hawaii	400	29.6	26.9 - 32.4	300	21.8	19.4 - 24.3	100	4.3	3.2 - 5.7	700	44.3	41.4 - 47.3	1,500
Honolulu	3,200	32.7	30.9 - 34.7	2,200	21.8	20.2 - 23.5	500	5.5	4.7 - 6.5	4,000	39.9	37.9 - 41.9	9,900
Kauai	100	16.4	13.0 - 20.4	100	23.6	19.7 - 28.1	<50	5.3	3.5 - 8.0	300	54.7	49.7 - 59.6	600
Maui	400	29.3	26.4 - 32.3	300	24.3	21.7 - 27.2	100	3.6	2.6 - 5.1	600	42.7	39.6 - 46.0	1,400

PRAMS Health Indicator 3-Year Aggregate Report - Breastfeeding (exclusive) duration (grouped), among initiators- by State;County;DOH Race-Ethnicity;PRAMS Age Group;Infant Gender;Married;Poverty Level;Income (2000-2003);Income (2004-2011);Birthweight;Smoke 3rd Trimester;Smoke Before Pregnant;WIC During Pregnancy, for the Year(s) 2000-2002;2001-2003;2002-2004;2003-2005;2004-2006;2005-2007;2006-2008;2007-2009;2008-2010;2009-2011;2010-2012

Note: Weighted counts (#) represent 3-yr averages, rounded to the nearest hundred; n/r (Not Reportable) - If the unweighted total responses for a dimension (row) is <30 that row will not be shown

Years: 2000-2002

DOH Race-Ethnicity	Breastfed <1 week			Breastfed 1-4 weeks			Breastfed 5-8 weeks			Breastfed 9+ weeks			Weighted Total Responses (3-Yr Avg)
	#	%	C.I.(95%)	#	%	C.I.(95%)	#	%	C.I.(95%)	#	%	C.I.(95%)	#
Caucasian	600	18.4	15.8 - 21.3	600	18.7	16.1 - 21.5	200	8.2	6.4 - 10.5	1,600	54.7	51.2 - 58.1	3,000
Native Hawaiian	1,100	32.7	31.1 - 34.4	900	24.8	23.4 - 26.4	200	4.7	4.0 - 5.5	1,300	37.8	36.1 - 39.5	3,500
Chinese	200	38.4	29.8 - 47.7	100	23.6	16.6 - 32.4	<50	4.0	1.5 - 9.9	200	34.0	26.0 - 43.1	500
Filipino	1,000	37.2	33.5 - 41.0	700	23.4	20.4 - 26.8	100	4.1	2.9 - 5.9	1,000	35.2	31.7 - 39.0	2,800
Japanese	700	39.9	35.2 - 44.9	400	22.2	18.3 - 26.6	100	4.6	3.0 - 7.1	600	33.2	28.8 - 38.0	1,900
Other	500	30.0	25.4 - 35.0	300	20.2	16.4 - 24.6	100	3.6	2.2 - 5.8	800	46.3	41.1 - 51.5	1,700

PRAMS Age Group	Breastfed <1 week			Breastfed 1-4 weeks			Breastfed 5-8 weeks			Breastfed 9+ weeks			Weighted Total Responses (3-Yr Avg)
	#	%	C.I.(95%)	#	%	C.I.(95%)	#	%	C.I.(95%)	#	%	C.I.(95%)	#
<20	500	38.0	33.7 - 42.6	400	27.5	23.8 - 31.6	<50	3.7	2.2 - 6.2	400	30.7	26.9 - 34.9	1,300
20-24	1,000	29.4	26.7 - 32.3	900	26.4	23.9 - 29.2	100	3.8	2.8 - 5.1	1,400	40.4	37.5 - 43.4	3,400
25-34	2,000	30.2	28.1 - 32.4	1,300	19.3	17.5 - 21.1	400	6.1	5.1 - 7.3	2,900	44.4	42.1 - 46.7	6,600
35+	700	33.6	29.8 - 37.7	500	21.0	17.9 - 24.5	100	5.5	4.0 - 7.5	900	39.9	36.0 - 43.9	2,200

PRAMS Health Indicator 3-Year Aggregate Report - Breastfeeding (exclusive) duration (grouped), among initiators- by State;County;DOH Race-Ethnicity;PRAMS Age Group;Infant Gender;Married;Poverty Level;Income (2000-2003);Income (2004-2011);Birthweight;Smoke 3rd Trimester;Smoke Before Pregnant;WIC During Pregnancy, for the Year(s) 2000-2002;2001-2003;2002-2004;2003-2005;2004-2006;2005-2007;2006-2008;2007-2009;2008-2010;2009-2011;2010-2012

Note: Weighted counts (#) represent 3-yr averages, rounded to the nearest hundred; n/r (Not Reportable) - If the unweighted total responses for a dimension (row) is <30 that row will not be shown

Years: 2000-2002

Infant Gender	Breastfed <1 week			Breastfed 1-4 weeks			Breastfed 5-8 weeks			Breastfed 9+ weeks			Weighted Total Responses (3-Yr Avg)
	#	%	C.I.(95%)	#	%	C.I.(95%)	#	%	C.I.(95%)	#	%	C.I.(95%)	#
Male	2,100	31.4	29.4 - 33.6	1,500	22.0	20.3 - 23.8	300	5.1	4.2 - 6.1	2,800	41.5	39.4 - 43.7	6,800
Female	2,100	31.2	29.1 - 33.4	1,500	22.3	20.5 - 24.3	300	5.3	4.4 - 6.4	2,700	41.1	38.9 - 43.4	6,600

Married	Breastfed <1 week			Breastfed 1-4 weeks			Breastfed 5-8 weeks			Breastfed 9+ weeks			Weighted Total Responses (3-Yr Avg)
	#	%	C.I.(95%)	#	%	C.I.(95%)	#	%	C.I.(95%)	#	%	C.I.(95%)	#
Yes	2,800	29.9	28.1 - 31.8	1,900	20.7	19.2 - 22.3	500	5.7	4.8 - 6.7	4,000	43.7	41.7 - 45.7	9,200
No	1,400	34.4	32.0 - 36.9	1,100	25.3	23.1 - 27.6	200	4.1	3.3 - 5.1	1,500	36.2	33.8 - 38.6	4,200

Poverty Level	Breastfed <1 week			Breastfed 1-4 weeks			Breastfed 5-8 weeks			Breastfed 9+ weeks			Weighted Total Responses (3-Yr Avg)
	#	%	C.I.(95%)	#	%	C.I.(95%)	#	%	C.I.(95%)	#	%	C.I.(95%)	#
0-130%	1,600	31.4	29.2 - 33.8	1,300	24.3	22.4 - 26.4	200	3.7	2.9 - 4.6	2,100	40.6	38.2 - 43.0	5,200
131-185%	800	29.4	26.1 - 33.0	600	21.8	19.0 - 24.9	200	6.8	5.2 - 9.0	1,100	42.0	38.4 - 45.6	2,600
186+%	1,500	31.2	28.7 - 33.9	900	18.8	16.8 - 21.0	300	6.3	5.1 - 7.8	2,100	43.7	41.0 - 46.5	4,800

PRAMS Health Indicator 3-Year Aggregate Report - Breastfeeding (exclusive) duration (grouped), among initiators- by State;County;DOH Race-Ethnicity;PRAMS Age Group;Infant Gender;Married;Poverty Level;Income (2000-2003);Income (2004-2011);Birthweight;Smoke 3rd Trimester;Smoke Before Pregnant;WIC During Pregnancy, for the Year(s) 2000-2002;2001-2003;2002-2004;2003-2005;2004-2006;2005-2007;2006-2008;2007-2009;2008-2010;2009-2011;2010-2012

Note: Weighted counts (#) represent 3-yr averages, rounded to the nearest hundred; n/r (Not Reportable) - If the unweighted total responses for a dimension (row) is <30 that row will not be shown

Years: 2000-2002

Income (2000-2003)	Breastfed <1 week			Breastfed 1-4 weeks			Breastfed 5-8 weeks			Breastfed 9+ weeks			Weighted Total Responses (3-Yr Avg)
	#	%	C.I.(95%)	#	%	C.I.(95%)	#	%	C.I.(95%)	#	%	C.I.(95%)	#
<=\$15,000	800	32.2	29.2 - 35.4	700	26.0	23.3 - 28.9	100	4.2	3.1 - 5.7	1,000	37.6	34.4 - 40.8	2,600
\$15,001-\$25,000	500	27.6	24.1 - 31.5	500	23.8	20.5 - 27.4	100	3.5	2.3 - 5.3	900	45.1	41.0 - 49.2	2,000
\$25,001-\$40,000	800	28.2	25.1 - 31.6	700	24.1	21.3 - 27.1	200	6.2	4.7 - 8.1	1,200	41.6	38.2 - 45.0	2,800
>=\$40,001	1,800	33.0	30.6 - 35.5	1,000	18.4	16.5 - 20.5	300	5.9	4.8 - 7.3	2,300	42.7	40.1 - 45.3	5,300

Birthweight	Breastfed <1 week			Breastfed 1-4 weeks			Breastfed 5-8 weeks			Breastfed 9+ weeks			Weighted Total Responses (3-Yr Avg)
	#	%	C.I.(95%)	#	%	C.I.(95%)	#	%	C.I.(95%)	#	%	C.I.(95%)	#
Low birth weight	300	38.9	32.8 - 45.5	200	24.9	19.8 - 30.9	<50	3.4	1.9 - 6.0	300	32.8	26.9 - 39.2	900
Normal birth weight	3,800	30.8	29.3 - 32.3	2,700	22.0	20.7 - 23.3	700	5.3	4.6 - 6.1	5,200	41.9	40.3 - 43.6	12,500

Smoke 3rd Trimester	Breastfed <1 week			Breastfed 1-4 weeks			Breastfed 5-8 weeks			Breastfed 9+ weeks			Weighted Total Responses (3-Yr Avg)
	#	%	C.I.(95%)	#	%	C.I.(95%)	#	%	C.I.(95%)	#	%	C.I.(95%)	#
Yes	300	35.9	30.9 - 41.3	300	28.9	24.3 - 33.9	<50	4.2	2.6 - 6.7	300	31.0	26.3 - 36.1	900
No	3,800	31.0	29.4 - 32.6	2,700	21.7	20.4 - 23.1	600	5.3	4.6 - 6.1	5,100	42.0	40.4 - 43.7	12,200

PRAMS Health Indicator 3-Year Aggregate Report - Breastfeeding (exclusive) duration (grouped), among initiators- by State;County;DOH Race-Ethnicity;PRAMS Age Group;Infant Gender;Married;Poverty Level;Income (2000-2003);Income (2004-2011);Birthweight;Smoke 3rd Trimester;Smoke Before Pregnant;WIC During Pregnancy, for the Year(s) 2000-2002;2001-2003;2002-2004;2003-2005;2004-2006;2005-2007;2006-2008;2007-2009;2008-2010;2009-2011;2010-2012

Note: Weighted counts (#) represent 3-yr averages, rounded to the nearest hundred; n/r (Not Reportable) - If the unweighted total responses for a dimension (row) is <30 that row will not be shown

Years: 2000-2002

Smoke Before Pregnant	Breastfed <1 week			Breastfed 1-4 weeks			Breastfed 5-8 weeks			Breastfed 9+ weeks			Weighted Total Responses (3-Yr Avg)
	#	%	C.I.(95%)	#	%	C.I.(95%)	#	%	C.I.(95%)	#	%	C.I.(95%)	#
Yes	800	30.7	27.7 - 34.0	700	27.0	24.1 - 30.1	100	4.5	3.4 - 6.1	1,000	37.7	34.4 - 41.1	2,500
No	3,300	31.2	29.6 - 33.0	2,200	21.1	19.7 - 22.6	600	5.4	4.6 - 6.2	4,400	42.3	40.5 - 44.1	10,500

WIC During Pregnancy	Breastfed <1 week			Breastfed 1-4 weeks			Breastfed 5-8 weeks			Breastfed 9+ weeks			Weighted Total Responses (3-Yr Avg)
	#	%	C.I.(95%)	#	%	C.I.(95%)	#	%	C.I.(95%)	#	%	C.I.(95%)	#
Yes	1,800	32.6	30.4 - 34.9	1,300	23.2	21.3 - 25.2	300	4.8	3.9 - 5.9	2,200	39.5	37.2 - 41.8	5,500
No	2,400	30.5	28.5 - 32.5	1,700	21.4	19.8 - 23.2	400	5.4	4.5 - 6.5	3,300	42.6	40.5 - 44.8	7,800