

**PRAMS Health Indicator 3-Year Aggregate Report - Breastfeeding (exclusive) duration 8+ weeks, among initiators- for the State of Hawaii, for the Year(s)  
2000-2002;2001-2003;2002-2004;2003-2005;2004-2006;2005-2007;2006-2008;2007-2009;2008-2010;2009-2011;2010-2012**

PRAMS Health Indicator 3-Year Aggregate Report - Breastfeeding (exclusive) duration 8+ weeks, among initiators- by State;County;DOH Race-Ethnicity;PRAMS Age Group;Infant Gender;Married;Poverty Level;Income (2000-2003);Income (2004-2011);Birthweight;Smoke 3rd Trimester;Smoke Before Pregnant;WIC During Pregnancy, for the Year(s)  
2000-2002;2001-2003;2002-2004;2003-2005;2004-2006;2005-2007;2006-2008;2007-2009;2008-2010;2009-2011;2010-2012

*Note: Weighted counts (#) represent 3-yr averages, rounded to the nearest hundred; n/r (Not Reportable) - If the unweighted total responses for a dimension (row) is <30 that row will not be shown*

*The trend analysis section shows the trend for the selected health variable over selected years in a table and a graph. 3-Year Weighted Total Responses: This number is a weighted representation of the mothers of babies delivered in a given year, who responded to a particular question in the survey. For most questions this will be the mothers of all babies delivered in a given year. For some secondary questions only a subset of the population was asked the question. For example, all survey participants were asked if they smoked during pregnancy, but only those who answered yes were asked how many cigarettes a day. If a dimension value is unknown for a particular survey record, that record will not be included in the counts for that particular dimension.*

*Note: Data collection for household income changed in 2004 and again in 2012. Because of this, income data does not exist for some 3-year aggregate periods.*

*Below are the indicators included in this report and the long description for each indicator.*

PRAMS Health Indicator	Health Indicator Description
Breastfeeding (exclusive) duration 8+ weeks, among initiators	Breastfeeding (exclusive) duration 8+ weeks, among initiators

*Suggested citation:*

*Hawaii Health Data Warehouse, Hawaii State Department of Health, Pregnancy Risk Assessment Monitoring System, (report title and years), Report Created: 9/21/15*

*For documentation on other terms and coding in this report, please go to the following links:*

[Click here to access PRAMS documentation](#)

[Click here to access DOH-Race Ethnicity coding](#)

[Click here to access The Hawai'i Data Guide](#)

**For questions about this report, please contact  
The Hawai'i Health Data Warehouse**

[profiles@hhdw.org](mailto:profiles@hhdw.org)

**(855) 946-5899 x15**

**PRAMS Health Indicator 3-Year Aggregate Report - Breastfeeding (exclusive) duration 8+ weeks, among initiators- for the State of Hawaii, for the Year(s)**

**2000-2002;2001-2003;2002-2004;2003-2005;2004-2006;2005-2007;2006-2008;2007-2009;2008-2010;2009-2011;2010-2012**

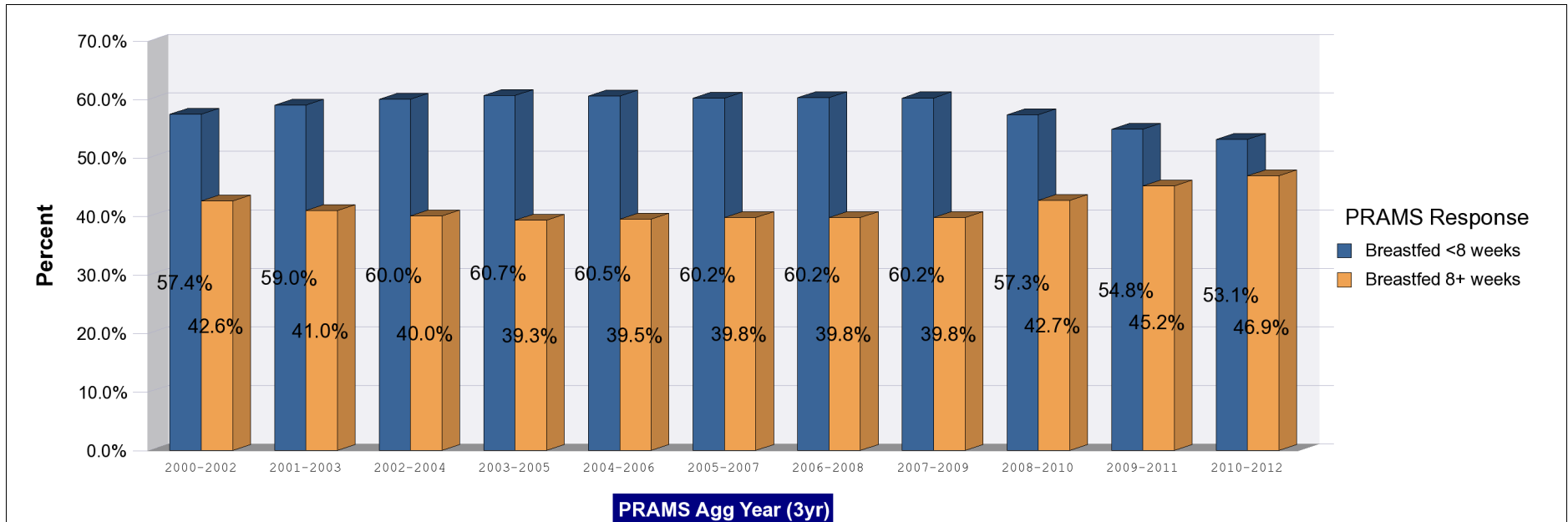
*Note: Weighted counts (#) represent 3-yr averages, rounded to the nearest hundred; n/r (Not Reportable) - If the unweighted total responses for a dimension (row) is <30 that row will not be shown*

Years	Breastfed <8 weeks			Breastfed 8+ weeks			Weighted Total Responses (3-Yr Avg)
	#	%	C.I.(95%)	#	%	C.I.(95%)	#
2000-2002	7,700	57.4	55.8 - 58.9	5,700	42.6	41.1 - 44.2	13,400
2001-2003	8,400	59.0	57.4 - 60.6	5,900	41.0	39.4 - 42.6	14,300
2002-2004	8,900	60.0	58.4 - 61.5	5,900	40.0	38.5 - 41.6	14,800
2003-2005	9,200	60.7	59.2 - 62.1	5,900	39.3	37.9 - 40.8	15,100
2004-2006	9,400	60.5	59.1 - 61.9	6,200	39.5	38.1 - 40.9	15,600
2005-2007	9,500	60.2	58.8 - 61.6	6,300	39.8	38.4 - 41.2	15,900
2006-2008	9,800	60.2	58.8 - 61.6	6,500	39.8	38.4 - 41.2	16,300
2007-2009	9,900	60.2	58.6 - 61.8	6,600	39.8	38.2 - 41.4	16,500
2008-2010	9,600	57.3	55.6 - 59.1	7,100	42.7	40.9 - 44.4	16,700
2009-2011	9,300	54.8	52.9 - 56.7	7,600	45.2	43.3 - 47.1	16,900
2010-2012	9,000	53.1	51.2 - 55.0	8,000	46.9	45.0 - 48.8	17,000

**PRAMS Health Indicator 3-Year Aggregate Report - Breastfeeding (exclusive) duration 8+ weeks, among initiators- for the State of Hawaii, for the Year(s)**

**2000-2002;2001-2003;2002-2004;2003-2005;2004-2006;2005-2007;2006-2008;2007-2009;2008-2010;2009-2011;2010-2012**

*Note: Weighted counts (#) represent 3-yr averages, rounded to the nearest hundred; n/r (Not Reportable) - If the unweighted total responses for a dimension (row) is <30 that row will not be shown*



**PRAMS Health Indicator 3-Year Aggregate Report - Breastfeeding (exclusive) duration 8+ weeks, among initiators- by State;County;DOH Race-Ethnicity;PRAMS Age Group;Infant Gender;Married;Poverty Level;Income (2000-2003);Income (2004-2011);Birthweight;Smoke 3rd Trimester;Smoke Before Pregnant;WIC During Pregnancy, for the Year(s) 2000-2002;2001-2003;2002-2004;2003-2005;2004-2006;2005-2007;2006-2008;2007-2009;2008-2010;2009-2011;2010-2012**

*Note: Weighted counts (#) represent 3-yr averages, rounded to the nearest hundred; n/r (Not Reportable) - If the unweighted total responses for a dimension (row) is <30 that row will not be shown*

**Years: 2010-2012**

State	Breastfed <8 weeks			Breastfed 8+ weeks			Weighted Total Responses (3-Yr Avg)
	#	%	C.I.(95%)	#	%	C.I.(95%)	#
<b>Totals</b>	9,000	53.1	51.2 - 55.0	8,000	46.9	45.0 - 48.8	17,000

County	Breastfed <8 weeks			Breastfed 8+ weeks			Weighted Total Responses (3-Yr Avg)
	#	%	C.I.(95%)	#	%	C.I.(95%)	#
<b>Hawaii</b>	1,100	52.9	49.7 - 55.9	1,000	47.1	44.1 - 50.3	2,200
<b>Honolulu</b>	6,600	53.8	51.3 - 56.4	5,600	46.2	43.6 - 48.7	12,200
<b>Kauai</b>	400	46.0	42.4 - 49.8	400	54.0	50.2 - 57.6	800
<b>Maui</b>	1,000	51.6	48.7 - 54.4	900	48.4	45.6 - 51.3	1,800

**PRAMS Health Indicator 3-Year Aggregate Report - Breastfeeding (exclusive) duration 8+ weeks, among initiators- by State;County;DOH Race-Ethnicity;PRAMS Age Group;Infant Gender;Married;Poverty Level;Income (2000-2003);Income (2004-2011);Birthweight;Smoke 3rd Trimester;Smoke Before Pregnant;WIC During Pregnancy, for the Year(s) 2000-2002;2001-2003;2002-2004;2003-2005;2004-2006;2005-2007;2006-2008;2007-2009;2008-2010;2009-2011;2010-2012**

*Note: Weighted counts (#) represent 3-yr averages, rounded to the nearest hundred; n/r (Not Reportable) - If the unweighted total responses for a dimension (row) is <30 that row will not be shown*

**Years: 2010-2012**

DOH Race-Ethnicity	Breastfed <8 weeks			Breastfed 8+ weeks			Weighted Total Responses (3-Yr Avg)
	#	%	C.I.(95%)	#	%	C.I.(95%)	#
Caucasian	1,700	40.8	37.0 - 44.7	2,400	59.2	55.3 - 63.0	4,100
Native Hawaiian	2,800	57.5	54.0 - 60.9	2,100	42.5	39.1 - 46.0	4,900
Chinese	400	47.2	38.1 - 56.5	400	52.8	43.5 - 61.9	800
Filipino	2,000	66.1	61.6 - 70.3	1,000	33.9	29.7 - 38.4	3,000
Japanese	1,000	57.7	51.4 - 63.8	700	42.3	36.2 - 48.6	1,700
Other	1,200	48.2	42.9 - 53.6	1,300	51.8	46.4 - 57.1	2,600

PRAMS Age Group	Breastfed <8 weeks			Breastfed 8+ weeks			Weighted Total Responses (3-Yr Avg)
	#	%	C.I.(95%)	#	%	C.I.(95%)	#
<20	600	65.3	57.9 - 72.0	300	34.7	28.0 - 42.1	1,000
20-24	2,100	55.3	51.1 - 59.4	1,700	44.7	40.6 - 48.9	3,800
25-34	4,700	50.8	48.1 - 53.4	4,500	49.2	46.6 - 51.9	9,200
35+	1,600	53.6	49.0 - 58.1	1,400	46.4	41.9 - 51.0	3,000

**PRAMS Health Indicator 3-Year Aggregate Report - Breastfeeding (exclusive) duration 8+ weeks, among initiators- by State;County;DOH Race-Ethnicity;PRAMS Age Group;Infant Gender;Married;Poverty Level;Income (2000-2003);Income (2004-2011);Birthweight;Smoke 3rd Trimester;Smoke Before Pregnant;WIC During Pregnancy, for the Year(s) 2000-2002;2001-2003;2002-2004;2003-2005;2004-2006;2005-2007;2006-2008;2007-2009;2008-2010;2009-2011;2010-2012**

*Note: Weighted counts (#) represent 3-yr averages, rounded to the nearest hundred; n/r (Not Reportable) - If the unweighted total responses for a dimension (row) is <30 that row will not be shown*

**Years: 2010-2012**

Infant Gender	Breastfed <8 weeks			Breastfed 8+ weeks			Weighted Total Responses (3-Yr Avg)
	#	%	C.I.(95%)	#	%	C.I.(95%)	#
Male	4,600	53.1	50.4 - 55.8	4,000	46.9	44.2 - 49.6	8,600
Female	4,500	53.1	50.4 - 55.9	3,900	46.9	44.1 - 49.6	8,400

Married	Breastfed <8 weeks			Breastfed 8+ weeks			Weighted Total Responses (3-Yr Avg)
	#	%	C.I.(95%)	#	%	C.I.(95%)	#
Yes	5,400	50.5	48.0 - 53.0	5,300	49.5	47.0 - 52.0	10,700
No	3,600	57.6	54.5 - 60.6	2,700	42.4	39.4 - 45.5	6,300

Poverty Level	Breastfed <8 weeks			Breastfed 8+ weeks			Weighted Total Responses (3-Yr Avg)
	#	%	C.I.(95%)	#	%	C.I.(95%)	#
0-130%	3,400	57.3	54.1 - 60.4	2,500	42.7	39.6 - 45.9	5,900
131-185%	1,500	55.6	50.6 - 60.4	1,200	44.4	39.6 - 49.4	2,700
186+%	3,500	49.0	46.0 - 52.0	3,700	51.0	48.0 - 54.0	7,200

**PRAMS Health Indicator 3-Year Aggregate Report - Breastfeeding (exclusive) duration 8+ weeks, among initiators- by State;County;DOH Race-Ethnicity;PRAMS Age Group;Infant Gender;Married;Poverty Level;Income (2000-2003);Income (2004-2011);Birthweight;Smoke 3rd Trimester;Smoke Before Pregnant;WIC During Pregnancy, for the Year(s) 2000-2002;2001-2003;2002-2004;2003-2005;2004-2006;2005-2007;2006-2008;2007-2009;2008-2010;2009-2011;2010-2012**

*Note: Weighted counts (#) represent 3-yr averages, rounded to the nearest hundred; n/r (Not Reportable) - If the unweighted total responses for a dimension (row) is <30 that row will not be shown*

**Years: 2010-2012**

Birthweight	Breastfed <8 weeks			Breastfed 8+ weeks			Weighted Total Responses (3-Yr Avg)
	#	%	C.I.(95%)	#	%	C.I.(95%)	#
Low birth weight	700	64.4	61.2 - 67.5	400	35.6	32.5 - 38.8	1,100
Normal birth weight	8,300	52.3	50.2 - 54.3	7,600	47.7	45.7 - 49.8	15,900

Smoke 3rd Trimester	Breastfed <8 weeks			Breastfed 8+ weeks			Weighted Total Responses (3-Yr Avg)
	#	%	C.I.(95%)	#	%	C.I.(95%)	#
Yes	500	62.0	53.7 - 69.6	300	38.0	30.4 - 46.3	900
No	8,400	52.8	50.8 - 54.8	7,500	47.2	45.2 - 49.2	15,800

Smoke Before Pregnant	Breastfed <8 weeks			Breastfed 8+ weeks			Weighted Total Responses (3-Yr Avg)
	#	%	C.I.(95%)	#	%	C.I.(95%)	#
Yes	1,800	57.4	52.9 - 61.7	1,300	42.6	38.3 - 47.1	3,100
No	7,100	52.4	50.2 - 54.5	6,500	47.6	45.5 - 49.8	13,600

**PRAMS Health Indicator 3-Year Aggregate Report - Breastfeeding (exclusive) duration 8+ weeks, among initiators- by State;County;DOH Race-Ethnicity;PRAMS Age Group;Infant Gender;Married;Poverty Level;Income (2000-2003);Income (2004-2011);Birthweight;Smoke 3rd Trimester;Smoke Before Pregnant;WIC During Pregnancy, for the Year(s) 2000-2002;2001-2003;2002-2004;2003-2005;2004-2006;2005-2007;2006-2008;2007-2009;2008-2010;2009-2011;2010-2012**

*Note: Weighted counts (#) represent 3-yr averages, rounded to the nearest hundred; n/r (Not Reportable) - If the unweighted total responses for a dimension (row) is <30 that row will not be shown*

**Years: 2010-2012**

WIC During Pregnancy	Breastfed <8 weeks			Breastfed 8+ weeks			Weighted Total Responses (3-Yr Avg)
	#	%	C.I.(95%)	#	%	C.I.(95%)	#
<b>Yes</b>	4,200	57.0	54.1 - 59.9	3,200	43.0	40.1 - 45.9	7,400
<b>No</b>	4,700	50.3	47.7 - 53.0	4,700	49.7	47.0 - 52.3	9,400



**PRAMS Health Indicator 3-Year Aggregate Report - Breastfeeding (exclusive) duration 8+ weeks, among initiators- by State;County;DOH Race-Ethnicity;PRAMS Age Group;Infant Gender;Married;Poverty Level;Income (2000-2003);Income (2004-2011);Birthweight;Smoke 3rd Trimester;Smoke Before Pregnant;WIC During Pregnancy, for the Year(s) 2000-2002;2001-2003;2002-2004;2003-2005;2004-2006;2005-2007;2006-2008;2007-2009;2008-2010;2009-2011;2010-2012**

*Note: Weighted counts (#) represent 3-yr averages, rounded to the nearest hundred; n/r (Not Reportable) - If the unweighted total responses for a dimension (row) is <30 that row will not be shown*

**Years: 2009-2011**

State	Breastfed <8 weeks			Breastfed 8+ weeks			Weighted Total Responses (3-Yr Avg)
	#	%	C.I.(95%)	#	%	C.I.(95%)	#
<b>Totals</b>	9,300	54.8	52.9 - 56.7	7,600	45.2	43.3 - 47.1	16,900

County	Breastfed <8 weeks			Breastfed 8+ weeks			Weighted Total Responses (3-Yr Avg)
	#	%	C.I.(95%)	#	%	C.I.(95%)	#
<b>Hawaii</b>	1,200	54.4	51.4 - 57.5	1,000	45.6	42.5 - 48.6	2,200
<b>Honolulu</b>	6,700	55.8	53.2 - 58.3	5,300	44.2	41.7 - 46.8	12,000
<b>Kauai</b>	400	47.5	43.8 - 51.1	400	52.5	48.9 - 56.2	800
<b>Maui</b>	1,000	52.2	49.4 - 55.0	900	47.8	45.0 - 50.6	1,900

**PRAMS Health Indicator 3-Year Aggregate Report - Breastfeeding (exclusive) duration 8+ weeks, among initiators- by State;County;DOH Race-Ethnicity;PRAMS Age Group;Infant Gender;Married;Poverty Level;Income (2000-2003);Income (2004-2011);Birthweight;Smoke 3rd Trimester;Smoke Before Pregnant;WIC During Pregnancy, for the Year(s) 2000-2002;2001-2003;2002-2004;2003-2005;2004-2006;2005-2007;2006-2008;2007-2009;2008-2010;2009-2011;2010-2012**

*Note: Weighted counts (#) represent 3-yr averages, rounded to the nearest hundred; n/r (Not Reportable) - If the unweighted total responses for a dimension (row) is <30 that row will not be shown*

**Years: 2009-2011**

DOH Race-Ethnicity	Breastfed <8 weeks			Breastfed 8+ weeks			Weighted Total Responses (3-Yr Avg)
	#	%	C.I.(95%)	#	%	C.I.(95%)	#
Caucasian	1,800	42.7	39.0 - 46.6	2,400	57.3	53.4 - 61.0	4,100
Native Hawaiian	3,000	59.3	55.9 - 62.6	2,000	40.7	37.4 - 44.1	5,000
Chinese	400	50.9	41.1 - 60.6	300	49.1	39.4 - 58.9	700
Filipino	2,000	66.7	62.3 - 70.8	1,000	33.3	29.2 - 37.7	3,000
Japanese	1,000	58.8	52.7 - 64.7	700	41.2	35.3 - 47.3	1,700
Other	1,200	50.1	44.7 - 55.5	1,200	49.9	44.5 - 55.3	2,400

PRAMS Age Group	Breastfed <8 weeks			Breastfed 8+ weeks			Weighted Total Responses (3-Yr Avg)
	#	%	C.I.(95%)	#	%	C.I.(95%)	#
<20	800	62.9	56.0 - 69.4	500	37.1	30.6 - 44.0	1,200
20-24	2,300	58.9	54.9 - 62.9	1,600	41.1	37.1 - 45.1	3,900
25-34	4,500	51.5	48.9 - 54.2	4,300	48.5	45.8 - 51.1	8,800
35+	1,700	56.0	51.5 - 60.4	1,300	44.0	39.6 - 48.5	3,000

**PRAMS Health Indicator 3-Year Aggregate Report - Breastfeeding (exclusive) duration 8+ weeks, among initiators- by State;County;DOH Race-Ethnicity;PRAMS Age Group;Infant Gender;Married;Poverty Level;Income (2000-2003);Income (2004-2011);Birthweight;Smoke 3rd Trimester;Smoke Before Pregnant;WIC During Pregnancy, for the Year(s) 2000-2002;2001-2003;2002-2004;2003-2005;2004-2006;2005-2007;2006-2008;2007-2009;2008-2010;2009-2011;2010-2012**

*Note: Weighted counts (#) represent 3-yr averages, rounded to the nearest hundred; n/r (Not Reportable) - If the unweighted total responses for a dimension (row) is <30 that row will not be shown*

**Years: 2009-2011**

Infant Gender	Breastfed <8 weeks			Breastfed 8+ weeks			Weighted Total Responses (3-Yr Avg)
	#	%	C.I.(95%)	#	%	C.I.(95%)	#
Male	4,800	55.0	52.3 - 57.7	3,900	45.0	42.3 - 47.7	8,700
Female	4,500	54.6	51.9 - 57.4	3,700	45.4	42.6 - 48.1	8,200

Married	Breastfed <8 weeks			Breastfed 8+ weeks			Weighted Total Responses (3-Yr Avg)
	#	%	C.I.(95%)	#	%	C.I.(95%)	#
Yes	5,300	50.6	48.1 - 53.0	5,200	49.4	47.0 - 51.9	10,500
No	3,900	62.0	59.0 - 64.9	2,400	38.0	35.1 - 41.0	6,300

Poverty Level	Breastfed <8 weeks			Breastfed 8+ weeks			Weighted Total Responses (3-Yr Avg)
	#	%	C.I.(95%)	#	%	C.I.(95%)	#
0-130%	3,400	59.3	56.1 - 62.4	2,400	40.7	37.6 - 43.9	5,800
131-185%	1,500	55.5	50.6 - 60.3	1,200	44.5	39.7 - 49.4	2,600
186+%	3,800	51.2	48.2 - 54.1	3,600	48.8	45.9 - 51.8	7,300

**PRAMS Health Indicator 3-Year Aggregate Report - Breastfeeding (exclusive) duration 8+ weeks, among initiators- by State;County;DOH Race-Ethnicity;PRAMS Age Group;Infant Gender;Married;Poverty Level;Income (2000-2003);Income (2004-2011);Birthweight;Smoke 3rd Trimester;Smoke Before Pregnant;WIC During Pregnancy, for the Year(s) 2000-2002;2001-2003;2002-2004;2003-2005;2004-2006;2005-2007;2006-2008;2007-2009;2008-2010;2009-2011;2010-2012**

*Note: Weighted counts (#) represent 3-yr averages, rounded to the nearest hundred; n/r (Not Reportable) - If the unweighted total responses for a dimension (row) is <30 that row will not be shown*

**Years: 2009-2011**

Income (2004-2011)	Breastfed <8 weeks			Breastfed 8+ weeks			Weighted Total Responses (3-Yr Avg)
	#	%	C.I.(95%)	#	%	C.I.(95%)	#
<\$10,000	1,800	61.7	57.2 - 66.1	1,100	38.3	33.9 - 42.8	2,900
\$10,000-\$24,999	1,900	58.9	54.6 - 63.1	1,300	41.1	36.9 - 45.4	3,200
\$25,000-\$49,999	2,100	52.2	48.2 - 56.2	1,900	47.8	43.8 - 51.8	3,900
>=\$50,000	3,000	51.2	48.0 - 54.5	2,900	48.8	45.5 - 52.0	5,900

Birthweight	Breastfed <8 weeks			Breastfed 8+ weeks			Weighted Total Responses (3-Yr Avg)
	#	%	C.I.(95%)	#	%	C.I.(95%)	#
Low birth weight	700	65.2	62.0 - 68.3	400	34.8	31.7 - 38.0	1,100
Normal birth weight	8,500	54.1	52.1 - 56.1	7,200	45.9	43.9 - 47.9	15,800

Smoke 3rd Trimester	Breastfed <8 weeks			Breastfed 8+ weeks			Weighted Total Responses (3-Yr Avg)
	#	%	C.I.(95%)	#	%	C.I.(95%)	#
Yes	700	62.7	55.3 - 69.6	400	37.3	30.4 - 44.7	1,100
No	8,400	54.3	52.3 - 56.3	7,100	45.7	43.7 - 47.7	15,500

**PRAMS Health Indicator 3-Year Aggregate Report - Breastfeeding (exclusive) duration 8+ weeks, among initiators- by State;County;DOH Race-Ethnicity;PRAMS Age Group;Infant Gender;Married;Poverty Level;Income (2000-2003);Income (2004-2011);Birthweight;Smoke 3rd Trimester;Smoke Before Pregnant;WIC During Pregnancy, for the Year(s) 2000-2002;2001-2003;2002-2004;2003-2005;2004-2006;2005-2007;2006-2008;2007-2009;2008-2010;2009-2011;2010-2012**

*Note: Weighted counts (#) represent 3-yr averages, rounded to the nearest hundred; n/r (Not Reportable) - If the unweighted total responses for a dimension (row) is <30 that row will not be shown*

**Years: 2009-2011**

Smoke Before Pregnant	Breastfed <8 weeks			Breastfed 8+ weeks			Weighted Total Responses (3-Yr Avg)
	#	%	C.I.(95%)	#	%	C.I.(95%)	#
<b>Yes</b>	2,000	60.4	56.2 - 64.5	1,300	39.6	35.5 - 43.8	3,300
<b>No</b>	7,100	53.5	51.3 - 55.6	6,200	46.5	44.4 - 48.7	13,300

WIC During Pregnancy	Breastfed <8 weeks			Breastfed 8+ weeks			Weighted Total Responses (3-Yr Avg)
	#	%	C.I.(95%)	#	%	C.I.(95%)	#
<b>Yes</b>	4,100	58.0	55.1 - 60.9	3,000	42.0	39.1 - 44.9	7,100
<b>No</b>	5,000	52.7	50.1 - 55.3	4,500	47.3	44.7 - 49.9	9,500

**PRAMS Health Indicator 3-Year Aggregate Report - Breastfeeding (exclusive) duration 8+ weeks, among initiators- by State;County;DOH Race-Ethnicity;PRAMS Age Group;Infant Gender;Married;Poverty Level;Income (2000-2003);Income (2004-2011);Birthweight;Smoke 3rd Trimester;Smoke Before Pregnant;WIC During Pregnancy, for the Year(s) 2000-2002;2001-2003;2002-2004;2003-2005;2004-2006;2005-2007;2006-2008;2007-2009;2008-2010;2009-2011;2010-2012**

*Note: Weighted counts (#) represent 3-yr averages, rounded to the nearest hundred; n/r (Not Reportable) - If the unweighted total responses for a dimension (row) is <30 that row will not be shown*

**Years: 2008-2010**

State	Breastfed <8 weeks			Breastfed 8+ weeks			Weighted Total Responses (3-Yr Avg)
	#	%	C.I.(95%)	#	%	C.I.(95%)	#
<b>Totals</b>	9,600	57.3	55.6 - 59.1	7,100	42.7	40.9 - 44.4	16,700

County	Breastfed <8 weeks			Breastfed 8+ weeks			Weighted Total Responses (3-Yr Avg)
	#	%	C.I.(95%)	#	%	C.I.(95%)	#
<b>Hawaii</b>	1,200	54.3	50.8 - 57.7	1,000	45.7	42.3 - 49.2	2,100
<b>Honolulu</b>	6,900	58.3	56.0 - 60.6	4,900	41.7	39.4 - 44.0	11,900
<b>Kauai</b>	400	51.7	46.9 - 56.5	400	48.3	43.5 - 53.1	800
<b>Maui</b>	1,100	56.8	53.4 - 60.1	800	43.2	39.9 - 46.6	1,900

**PRAMS Health Indicator 3-Year Aggregate Report - Breastfeeding (exclusive) duration 8+ weeks, among initiators- by State;County;DOH Race-Ethnicity;PRAMS Age Group;Infant Gender;Married;Poverty Level;Income (2000-2003);Income (2004-2011);Birthweight;Smoke 3rd Trimester;Smoke Before Pregnant;WIC During Pregnancy, for the Year(s) 2000-2002;2001-2003;2002-2004;2003-2005;2004-2006;2005-2007;2006-2008;2007-2009;2008-2010;2009-2011;2010-2012**

*Note: Weighted counts (#) represent 3-yr averages, rounded to the nearest hundred; n/r (Not Reportable) - If the unweighted total responses for a dimension (row) is <30 that row will not be shown*

**Years: 2008-2010**

DOH Race-Ethnicity	Breastfed <8 weeks			Breastfed 8+ weeks			Weighted Total Responses (3-Yr Avg)
	#	%	C.I.(95%)	#	%	C.I.(95%)	#
Caucasian	1,800	44.0	40.5 - 47.5	2,300	56.0	52.5 - 59.5	4,100
Native Hawaiian	3,000	60.7	57.4 - 63.9	1,900	39.3	36.1 - 42.6	4,900
Chinese	400	55.2	46.4 - 63.7	300	44.8	36.3 - 53.6	700
Filipino	2,100	68.7	64.7 - 72.5	900	31.3	27.5 - 35.3	3,000
Japanese	1,100	62.6	57.2 - 67.7	600	37.4	32.3 - 42.8	1,700
Other	1,300	55.7	50.7 - 60.4	1,000	44.3	39.6 - 49.3	2,400

PRAMS Age Group	Breastfed <8 weeks			Breastfed 8+ weeks			Weighted Total Responses (3-Yr Avg)
	#	%	C.I.(95%)	#	%	C.I.(95%)	#
<20	800	61.1	54.8 - 67.1	500	38.9	32.9 - 45.2	1,300
20-24	2,200	59.6	55.8 - 63.3	1,500	40.4	36.7 - 44.2	3,800
25-34	4,700	54.5	52.0 - 56.9	3,900	45.5	43.1 - 48.0	8,600
35+	1,800	60.9	56.8 - 64.8	1,200	39.1	35.2 - 43.2	3,000

**PRAMS Health Indicator 3-Year Aggregate Report - Breastfeeding (exclusive) duration 8+ weeks, among initiators- by State;County;DOH Race-Ethnicity;PRAMS Age Group;Infant Gender;Married;Poverty Level;Income (2000-2003);Income (2004-2011);Birthweight;Smoke 3rd Trimester;Smoke Before Pregnant;WIC During Pregnancy, for the Year(s) 2000-2002;2001-2003;2002-2004;2003-2005;2004-2006;2005-2007;2006-2008;2007-2009;2008-2010;2009-2011;2010-2012**

*Note: Weighted counts (#) represent 3-yr averages, rounded to the nearest hundred; n/r (Not Reportable) - If the unweighted total responses for a dimension (row) is <30 that row will not be shown*

**Years: 2008-2010**

Infant Gender	Breastfed <8 weeks			Breastfed 8+ weeks			Weighted Total Responses (3-Yr Avg)
	#	%	C.I.(95%)	#	%	C.I.(95%)	#
Male	5,000	57.9	55.5 - 60.3	3,600	42.1	39.7 - 44.5	8,700
Female	4,500	56.7	54.2 - 59.2	3,500	43.3	40.8 - 45.8	8,000

Married	Breastfed <8 weeks			Breastfed 8+ weeks			Weighted Total Responses (3-Yr Avg)
	#	%	C.I.(95%)	#	%	C.I.(95%)	#
Yes	5,600	53.6	51.4 - 55.9	4,900	46.4	44.1 - 48.6	10,500
No	3,900	63.6	60.7 - 66.3	2,300	36.4	33.7 - 39.3	6,200

Poverty Level	Breastfed <8 weeks			Breastfed 8+ weeks			Weighted Total Responses (3-Yr Avg)
	#	%	C.I.(95%)	#	%	C.I.(95%)	#
0-130%	3,500	60.9	57.9 - 63.8	2,200	39.1	36.2 - 42.1	5,700
131-185%	1,500	57.8	53.3 - 62.3	1,100	42.2	37.7 - 46.7	2,600
186+%	3,900	53.8	51.1 - 56.4	3,300	46.2	43.6 - 48.9	7,200



**PRAMS Health Indicator 3-Year Aggregate Report - Breastfeeding (exclusive) duration 8+ weeks, among initiators- by State;County;DOH Race-Ethnicity;PRAMS Age Group;Infant Gender;Married;Poverty Level;Income (2000-2003);Income (2004-2011);Birthweight;Smoke 3rd Trimester;Smoke Before Pregnant;WIC During Pregnancy, for the Year(s) 2000-2002;2001-2003;2002-2004;2003-2005;2004-2006;2005-2007;2006-2008;2007-2009;2008-2010;2009-2011;2010-2012**

*Note: Weighted counts (#) represent 3-yr averages, rounded to the nearest hundred; n/r (Not Reportable) - If the unweighted total responses for a dimension (row) is <30 that row will not be shown*

**Years: 2008-2010**

Income (2004-2011)	Breastfed <8 weeks			Breastfed 8+ weeks			Weighted Total Responses (3-Yr Avg)
	#	%	C.I.(95%)	#	%	C.I.(95%)	#
<\$10,000	1,700	62.5	58.2 - 66.6	1,000	37.5	33.4 - 41.8	2,800
\$10,000-\$24,999	2,000	60.5	56.6 - 64.3	1,300	39.5	35.7 - 43.4	3,300
\$25,000-\$49,999	2,100	56.3	52.6 - 59.9	1,700	43.7	40.1 - 47.4	3,800
>=\$50,000	3,100	53.5	50.5 - 56.4	2,700	46.5	43.6 - 49.5	5,800

Birthweight	Breastfed <8 weeks			Breastfed 8+ weeks			Weighted Total Responses (3-Yr Avg)
	#	%	C.I.(95%)	#	%	C.I.(95%)	#
Low birth weight	800	67.7	63.7 - 71.4	400	32.3	28.6 - 36.3	1,100
Normal birth weight	8,800	56.6	54.7 - 58.4	6,800	43.4	41.6 - 45.3	15,600

Smoke 3rd Trimester	Breastfed <8 weeks			Breastfed 8+ weeks			Weighted Total Responses (3-Yr Avg)
	#	%	C.I.(95%)	#	%	C.I.(95%)	#
Yes	800	64.4	57.7 - 70.6	400	35.6	29.4 - 42.3	1,200
No	8,600	56.9	55.1 - 58.7	6,500	43.1	41.3 - 44.9	15,100

**PRAMS Health Indicator 3-Year Aggregate Report - Breastfeeding (exclusive) duration 8+ weeks, among initiators- by State;County;DOH Race-Ethnicity;PRAMS Age Group;Infant Gender;Married;Poverty Level;Income (2000-2003);Income (2004-2011);Birthweight;Smoke 3rd Trimester;Smoke Before Pregnant;WIC During Pregnancy, for the Year(s) 2000-2002;2001-2003;2002-2004;2003-2005;2004-2006;2005-2007;2006-2008;2007-2009;2008-2010;2009-2011;2010-2012**

*Note: Weighted counts (#) represent 3-yr averages, rounded to the nearest hundred; n/r (Not Reportable) - If the unweighted total responses for a dimension (row) is <30 that row will not be shown*

**Years: 2008-2010**

Smoke Before Pregnant	Breastfed <8 weeks			Breastfed 8+ weeks			Weighted Total Responses (3-Yr Avg)
	#	%	C.I.(95%)	#	%	C.I.(95%)	#
<b>Yes</b>	2,000	63.4	59.4 - 67.2	1,200	36.6	32.8 - 40.6	3,200
<b>No</b>	7,400	56.0	54.0 - 58.0	5,800	44.0	42.0 - 46.0	13,200

WIC During Pregnancy	Breastfed <8 weeks			Breastfed 8+ weeks			Weighted Total Responses (3-Yr Avg)
	#	%	C.I.(95%)	#	%	C.I.(95%)	#
<b>Yes</b>	4,100	60.1	57.4 - 62.8	2,700	39.9	37.2 - 42.6	6,800
<b>No</b>	5,300	55.7	53.4 - 58.0	4,200	44.3	42.0 - 46.6	9,600

**PRAMS Health Indicator 3-Year Aggregate Report - Breastfeeding (exclusive) duration 8+ weeks, among initiators- by State;County;DOH Race-Ethnicity;PRAMS Age Group;Infant Gender;Married;Poverty Level;Income (2000-2003);Income (2004-2011);Birthweight;Smoke 3rd Trimester;Smoke Before Pregnant;WIC During Pregnancy, for the Year(s) 2000-2002;2001-2003;2002-2004;2003-2005;2004-2006;2005-2007;2006-2008;2007-2009;2008-2010;2009-2011;2010-2012**

*Note: Weighted counts (#) represent 3-yr averages, rounded to the nearest hundred; n/r (Not Reportable) - If the unweighted total responses for a dimension (row) is <30 that row will not be shown*

**Years: 2007-2009**

State	Breastfed <8 weeks			Breastfed 8+ weeks			Weighted Total Responses (3-Yr Avg)
	#	%	C.I.(95%)	#	%	C.I.(95%)	#
<b>Totals</b>	9,900	60.2	58.6 - 61.8	6,600	39.8	38.2 - 41.4	16,500

County	Breastfed <8 weeks			Breastfed 8+ weeks			Weighted Total Responses (3-Yr Avg)
	#	%	C.I.(95%)	#	%	C.I.(95%)	#
<b>Hawaii</b>	1,100	53.5	49.7 - 57.3	1,000	46.5	42.7 - 50.3	2,100
<b>Honolulu</b>	7,200	62.0	60.0 - 64.0	4,400	38.0	36.0 - 40.0	11,600
<b>Kauai</b>	400	53.0	47.2 - 58.7	400	47.0	41.3 - 52.8	800
<b>Maui</b>	1,200	59.7	55.8 - 63.4	800	40.3	36.6 - 44.2	1,900

**PRAMS Health Indicator 3-Year Aggregate Report - Breastfeeding (exclusive) duration 8+ weeks, among initiators- by State;County;DOH Race-Ethnicity;PRAMS Age Group;Infant Gender;Married;Poverty Level;Income (2000-2003);Income (2004-2011);Birthweight;Smoke 3rd Trimester;Smoke Before Pregnant;WIC During Pregnancy, for the Year(s) 2000-2002;2001-2003;2002-2004;2003-2005;2004-2006;2005-2007;2006-2008;2007-2009;2008-2010;2009-2011;2010-2012**

*Note: Weighted counts (#) represent 3-yr averages, rounded to the nearest hundred; n/r (Not Reportable) - If the unweighted total responses for a dimension (row) is <30 that row will not be shown*

**Years: 2007-2009**

DOH Race-Ethnicity	Breastfed <8 weeks			Breastfed 8+ weeks			Weighted Total Responses (3-Yr Avg)
	#	%	C.I.(95%)	#	%	C.I.(95%)	#
Caucasian	1,800	46.1	42.9 - 49.4	2,100	53.9	50.6 - 57.1	3,900
Native Hawaiian	3,000	64.1	61.0 - 67.1	1,700	35.9	32.9 - 39.0	4,700
Chinese	400	63.6	56.6 - 70.0	200	36.4	30.0 - 43.4	600
Filipino	2,100	69.3	65.8 - 72.6	900	30.7	27.4 - 34.2	3,000
Japanese	1,300	68.3	63.7 - 72.5	600	31.7	27.5 - 36.3	1,800
Other	1,400	57.2	52.9 - 61.4	1,000	42.8	38.6 - 47.1	2,400

PRAMS Age Group	Breastfed <8 weeks			Breastfed 8+ weeks			Weighted Total Responses (3-Yr Avg)
	#	%	C.I.(95%)	#	%	C.I.(95%)	#
<20	900	62.4	56.4 - 68.0	500	37.6	32.0 - 43.6	1,500
20-24	2,400	62.8	59.4 - 66.0	1,400	37.2	34.0 - 40.6	3,800
25-34	4,800	57.3	55.1 - 59.5	3,600	42.7	40.5 - 44.9	8,300
35+	1,900	64.1	60.5 - 67.5	1,100	35.9	32.5 - 39.5	3,000

**PRAMS Health Indicator 3-Year Aggregate Report - Breastfeeding (exclusive) duration 8+ weeks, among initiators- by State;County;DOH Race-Ethnicity;PRAMS Age Group;Infant Gender;Married;Poverty Level;Income (2000-2003);Income (2004-2011);Birthweight;Smoke 3rd Trimester;Smoke Before Pregnant;WIC During Pregnancy, for the Year(s) 2000-2002;2001-2003;2002-2004;2003-2005;2004-2006;2005-2007;2006-2008;2007-2009;2008-2010;2009-2011;2010-2012**

*Note: Weighted counts (#) represent 3-yr averages, rounded to the nearest hundred; n/r (Not Reportable) - If the unweighted total responses for a dimension (row) is <30 that row will not be shown*

**Years: 2007-2009**

Infant Gender	Breastfed <8 weeks			Breastfed 8+ weeks			Weighted Total Responses (3-Yr Avg)
	#	%	C.I.(95%)	#	%	C.I.(95%)	#
Male	5,300	60.6	58.4 - 62.8	3,400	39.4	37.2 - 41.6	8,700
Female	4,700	59.8	57.5 - 62.0	3,200	40.2	38.0 - 42.5	7,800

Married	Breastfed <8 weeks			Breastfed 8+ weeks			Weighted Total Responses (3-Yr Avg)
	#	%	C.I.(95%)	#	%	C.I.(95%)	#
Yes	5,900	57.0	55.0 - 58.9	4,500	43.0	41.1 - 45.0	10,400
No	4,000	65.7	63.1 - 68.2	2,100	34.3	31.8 - 36.9	6,100

Poverty Level	Breastfed <8 weeks			Breastfed 8+ weeks			Weighted Total Responses (3-Yr Avg)
	#	%	C.I.(95%)	#	%	C.I.(95%)	#
0-130%	3,600	63.1	60.3 - 65.8	2,100	36.9	34.2 - 39.7	5,800
131-185%	1,500	60.0	55.9 - 64.0	1,000	40.0	36.0 - 44.1	2,500
186+%	4,100	57.7	55.3 - 60.0	3,000	42.3	40.0 - 44.7	7,100

**PRAMS Health Indicator 3-Year Aggregate Report - Breastfeeding (exclusive) duration 8+ weeks, among initiators- by State;County;DOH Race-Ethnicity;PRAMS Age Group;Infant Gender;Married;Poverty Level;Income (2000-2003);Income (2004-2011);Birthweight;Smoke 3rd Trimester;Smoke Before Pregnant;WIC During Pregnancy, for the Year(s) 2000-2002;2001-2003;2002-2004;2003-2005;2004-2006;2005-2007;2006-2008;2007-2009;2008-2010;2009-2011;2010-2012**

*Note: Weighted counts (#) represent 3-yr averages, rounded to the nearest hundred; n/r (Not Reportable) - If the unweighted total responses for a dimension (row) is <30 that row will not be shown*

**Years: 2007-2009**

Income (2004-2011)	Breastfed <8 weeks			Breastfed 8+ weeks			Weighted Total Responses (3-Yr Avg)
	#	%	C.I.(95%)	#	%	C.I.(95%)	#
<\$10,000	1,700	63.1	59.0 - 67.1	1,000	36.9	32.9 - 41.0	2,600
\$10,000-\$24,999	2,200	63.7	60.1 - 67.0	1,200	36.3	33.0 - 39.9	3,400
\$25,000-\$49,999	2,200	59.7	56.4 - 63.0	1,500	40.3	37.0 - 43.6	3,700
>=\$50,000	3,300	57.2	54.5 - 59.8	2,500	42.8	40.2 - 45.5	5,700

Birthweight	Breastfed <8 weeks			Breastfed 8+ weeks			Weighted Total Responses (3-Yr Avg)
	#	%	C.I.(95%)	#	%	C.I.(95%)	#
Low birth weight	800	71.2	66.7 - 75.4	300	28.8	24.6 - 33.3	1,200
Normal birth weight	9,100	59.4	57.7 - 61.0	6,200	40.6	39.0 - 42.3	15,300

Smoke 3rd Trimester	Breastfed <8 weeks			Breastfed 8+ weeks			Weighted Total Responses (3-Yr Avg)
	#	%	C.I.(95%)	#	%	C.I.(95%)	#
Yes	900	69.4	63.6 - 74.7	400	30.6	25.3 - 36.4	1,300
No	8,900	59.5	57.9 - 61.2	6,000	40.5	38.8 - 42.1	14,900

**PRAMS Health Indicator 3-Year Aggregate Report - Breastfeeding (exclusive) duration 8+ weeks, among initiators- by State;County;DOH Race-Ethnicity;PRAMS Age Group;Infant Gender;Married;Poverty Level;Income (2000-2003);Income (2004-2011);Birthweight;Smoke 3rd Trimester;Smoke Before Pregnant;WIC During Pregnancy, for the Year(s) 2000-2002;2001-2003;2002-2004;2003-2005;2004-2006;2005-2007;2006-2008;2007-2009;2008-2010;2009-2011;2010-2012**

*Note: Weighted counts (#) represent 3-yr averages, rounded to the nearest hundred; n/r (Not Reportable) - If the unweighted total responses for a dimension (row) is <30 that row will not be shown*

**Years: 2007-2009**

Smoke Before Pregnant	Breastfed <8 weeks			Breastfed 8+ weeks			Weighted Total Responses (3-Yr Avg)
	#	%	C.I.(95%)	#	%	C.I.(95%)	#
<b>Yes</b>	2,100	66.6	63.0 - 70.1	1,000	33.4	29.9 - 37.0	3,100
<b>No</b>	7,700	58.8	57.0 - 60.6	5,400	41.2	39.4 - 43.0	13,100

WIC During Pregnancy	Breastfed <8 weeks			Breastfed 8+ weeks			Weighted Total Responses (3-Yr Avg)
	#	%	C.I.(95%)	#	%	C.I.(95%)	#
<b>Yes</b>	4,000	61.6	59.0 - 64.1	2,500	38.4	35.9 - 41.0	6,600
<b>No</b>	5,700	59.3	57.3 - 61.4	3,900	40.7	38.6 - 42.7	9,600

**PRAMS Health Indicator 3-Year Aggregate Report - Breastfeeding (exclusive) duration 8+ weeks, among initiators- by State;County;DOH Race-Ethnicity;PRAMS Age Group;Infant Gender;Married;Poverty Level;Income (2000-2003);Income (2004-2011);Birthweight;Smoke 3rd Trimester;Smoke Before Pregnant;WIC During Pregnancy, for the Year(s) 2000-2002;2001-2003;2002-2004;2003-2005;2004-2006;2005-2007;2006-2008;2007-2009;2008-2010;2009-2011;2010-2012**

*Note: Weighted counts (#) represent 3-yr averages, rounded to the nearest hundred; n/r (Not Reportable) - If the unweighted total responses for a dimension (row) is <30 that row will not be shown*

**Years: 2006-2008**

State	Breastfed <8 weeks			Breastfed 8+ weeks			Weighted Total Responses (3-Yr Avg)
	#	%	C.I.(95%)	#	%	C.I.(95%)	#
<b>Totals</b>	9,800	60.2	58.8 - 61.6	6,500	39.8	38.4 - 41.2	16,300

County	Breastfed <8 weeks			Breastfed 8+ weeks			Weighted Total Responses (3-Yr Avg)
	#	%	C.I.(95%)	#	%	C.I.(95%)	#
<b>Hawaii</b>	1,100	52.3	48.0 - 56.5	1,000	47.7	43.5 - 52.0	2,000
<b>Honolulu</b>	7,300	62.4	60.8 - 64.1	4,400	37.6	35.9 - 39.2	11,600
<b>Kauai</b>	400	51.5	44.9 - 58.1	400	48.5	41.9 - 55.1	800
<b>Maui</b>	1,100	59.0	54.5 - 63.3	800	41.0	36.7 - 45.5	1,800



**PRAMS Health Indicator 3-Year Aggregate Report - Breastfeeding (exclusive) duration 8+ weeks, among initiators- by State;County;DOH Race-Ethnicity;PRAMS Age Group;Infant Gender;Married;Poverty Level;Income (2000-2003);Income (2004-2011);Birthweight;Smoke 3rd Trimester;Smoke Before Pregnant;WIC During Pregnancy, for the Year(s) 2000-2002;2001-2003;2002-2004;2003-2005;2004-2006;2005-2007;2006-2008;2007-2009;2008-2010;2009-2011;2010-2012**

*Note: Weighted counts (#) represent 3-yr averages, rounded to the nearest hundred; n/r (Not Reportable) - If the unweighted total responses for a dimension (row) is <30 that row will not be shown*

**Years: 2006-2008**

DOH Race-Ethnicity	Breastfed <8 weeks			Breastfed 8+ weeks			Weighted Total Responses (3-Yr Avg)
	#	%	C.I.(95%)	#	%	C.I.(95%)	#
Caucasian	1,800	46.2	43.3 - 49.2	2,100	53.8	50.8 - 56.7	3,900
Native Hawaiian	2,800	64.0	61.0 - 66.9	1,600	36.0	33.1 - 39.0	4,400
Chinese	400	65.0	61.1 - 68.8	200	35.0	31.2 - 38.9	600
Filipino	2,000	68.2	65.1 - 71.1	900	31.8	28.9 - 34.9	3,000
Japanese	1,400	69.8	65.9 - 73.5	600	30.2	26.5 - 34.1	2,000
Other	1,400	57.3	53.5 - 61.0	1,100	42.7	39.0 - 46.5	2,500

PRAMS Age Group	Breastfed <8 weeks			Breastfed 8+ weeks			Weighted Total Responses (3-Yr Avg)
	#	%	C.I.(95%)	#	%	C.I.(95%)	#
<20	800	61.8	56.2 - 67.1	500	38.2	32.9 - 43.8	1,300
20-24	2,400	62.7	59.7 - 65.7	1,400	37.3	34.3 - 40.3	3,800
25-34	4,700	57.9	55.9 - 59.9	3,400	42.1	40.1 - 44.1	8,200
35+	1,900	62.7	59.5 - 65.7	1,100	37.3	34.3 - 40.5	3,000

**PRAMS Health Indicator 3-Year Aggregate Report - Breastfeeding (exclusive) duration 8+ weeks, among initiators- by State;County;DOH Race-Ethnicity;PRAMS Age Group;Infant Gender;Married;Poverty Level;Income (2000-2003);Income (2004-2011);Birthweight;Smoke 3rd Trimester;Smoke Before Pregnant;WIC During Pregnancy, for the Year(s) 2000-2002;2001-2003;2002-2004;2003-2005;2004-2006;2005-2007;2006-2008;2007-2009;2008-2010;2009-2011;2010-2012**

*Note: Weighted counts (#) represent 3-yr averages, rounded to the nearest hundred; n/r (Not Reportable) - If the unweighted total responses for a dimension (row) is <30 that row will not be shown*

**Years: 2006-2008**

Infant Gender	Breastfed <8 weeks			Breastfed 8+ weeks			Weighted Total Responses (3-Yr Avg)
	#	%	C.I.(95%)	#	%	C.I.(95%)	#
Male	5,200	61.2	59.2 - 63.1	3,300	38.8	36.9 - 40.8	8,500
Female	4,600	59.2	57.1 - 61.2	3,200	40.8	38.8 - 42.9	7,800

Married	Breastfed <8 weeks			Breastfed 8+ weeks			Weighted Total Responses (3-Yr Avg)
	#	%	C.I.(95%)	#	%	C.I.(95%)	#
Yes	6,100	58.3	56.5 - 60.0	4,400	41.7	40.0 - 43.5	10,400
No	3,800	63.7	61.2 - 66.1	2,100	36.3	33.9 - 38.8	5,900

Poverty Level	Breastfed <8 weeks			Breastfed 8+ weeks			Weighted Total Responses (3-Yr Avg)
	#	%	C.I.(95%)	#	%	C.I.(95%)	#
0-130%	3,600	62.9	60.4 - 65.4	2,100	37.1	34.6 - 39.6	5,700
131-185%	1,300	58.2	54.3 - 62.1	900	41.8	37.9 - 45.7	2,300
186+%	4,200	58.4	56.3 - 60.4	3,000	41.6	39.6 - 43.7	7,300

**PRAMS Health Indicator 3-Year Aggregate Report - Breastfeeding (exclusive) duration 8+ weeks, among initiators- by State;County;DOH Race-Ethnicity;PRAMS Age Group;Infant Gender;Married;Poverty Level;Income (2000-2003);Income (2004-2011);Birthweight;Smoke 3rd Trimester;Smoke Before Pregnant;WIC During Pregnancy, for the Year(s) 2000-2002;2001-2003;2002-2004;2003-2005;2004-2006;2005-2007;2006-2008;2007-2009;2008-2010;2009-2011;2010-2012**

*Note: Weighted counts (#) represent 3-yr averages, rounded to the nearest hundred; n/r (Not Reportable) - If the unweighted total responses for a dimension (row) is <30 that row will not be shown*

**Years: 2006-2008**

Income (2004-2011)	Breastfed <8 weeks			Breastfed 8+ weeks			Weighted Total Responses (3-Yr Avg)
	#	%	C.I.(95%)	#	%	C.I.(95%)	#
<\$10,000	1,600	62.4	58.6 - 66.1	1,000	37.6	33.9 - 41.4	2,600
\$10,000-\$24,999	2,100	62.9	59.7 - 66.0	1,200	37.1	34.0 - 40.3	3,400
\$25,000-\$49,999	2,300	61.2	58.2 - 64.1	1,500	38.8	35.9 - 41.8	3,800
>=\$50,000	3,200	56.8	54.4 - 59.1	2,400	43.2	40.9 - 45.6	5,600

Birthweight	Breastfed <8 weeks			Breastfed 8+ weeks			Weighted Total Responses (3-Yr Avg)
	#	%	C.I.(95%)	#	%	C.I.(95%)	#
Low birth weight	800	69.0	63.8 - 73.8	400	31.0	26.2 - 36.2	1,200
Normal birth weight	9,000	59.5	58.1 - 61.0	6,100	40.5	39.0 - 41.9	15,100

Smoke 3rd Trimester	Breastfed <8 weeks			Breastfed 8+ weeks			Weighted Total Responses (3-Yr Avg)
	#	%	C.I.(95%)	#	%	C.I.(95%)	#
Yes	900	69.2	63.8 - 74.1	400	30.8	25.9 - 36.2	1,200
No	8,800	59.5	58.0 - 61.0	6,000	40.5	39.0 - 42.0	14,800

**PRAMS Health Indicator 3-Year Aggregate Report - Breastfeeding (exclusive) duration 8+ weeks, among initiators- by State;County;DOH Race-Ethnicity;PRAMS Age Group;Infant Gender;Married;Poverty Level;Income (2000-2003);Income (2004-2011);Birthweight;Smoke 3rd Trimester;Smoke Before Pregnant;WIC During Pregnancy, for the Year(s) 2000-2002;2001-2003;2002-2004;2003-2005;2004-2006;2005-2007;2006-2008;2007-2009;2008-2010;2009-2011;2010-2012**

*Note: Weighted counts (#) represent 3-yr averages, rounded to the nearest hundred; n/r (Not Reportable) - If the unweighted total responses for a dimension (row) is <30 that row will not be shown*

**Years: 2006-2008**

Smoke Before Pregnant	Breastfed <8 weeks			Breastfed 8+ weeks			Weighted Total Responses (3-Yr Avg)
	#	%	C.I.(95%)	#	%	C.I.(95%)	#
<b>Yes</b>	2,000	67.3	63.9 - 70.5	1,000	32.7	29.5 - 36.1	3,000
<b>No</b>	7,700	58.7	57.1 - 60.2	5,400	41.3	39.8 - 42.9	13,000

WIC During Pregnancy	Breastfed <8 weeks			Breastfed 8+ weeks			Weighted Total Responses (3-Yr Avg)
	#	%	C.I.(95%)	#	%	C.I.(95%)	#
<b>Yes</b>	4,100	61.6	59.2 - 63.9	2,500	38.4	36.1 - 40.8	6,600
<b>No</b>	5,600	59.1	57.3 - 61.0	3,900	40.9	39.0 - 42.7	9,500

**PRAMS Health Indicator 3-Year Aggregate Report - Breastfeeding (exclusive) duration 8+ weeks, among initiators- by State;County;DOH Race-Ethnicity;PRAMS Age Group;Infant Gender;Married;Poverty Level;Income (2000-2003);Income (2004-2011);Birthweight;Smoke 3rd Trimester;Smoke Before Pregnant;WIC During Pregnancy, for the Year(s) 2000-2002;2001-2003;2002-2004;2003-2005;2004-2006;2005-2007;2006-2008;2007-2009;2008-2010;2009-2011;2010-2012**

*Note: Weighted counts (#) represent 3-yr averages, rounded to the nearest hundred; n/r (Not Reportable) - If the unweighted total responses for a dimension (row) is <30 that row will not be shown*

**Years: 2005-2007**

State	Breastfed <8 weeks			Breastfed 8+ weeks			Weighted Total Responses (3-Yr Avg)
	#	%	C.I.(95%)	#	%	C.I.(95%)	#
<b>Totals</b>	9,500	60.2	58.8 - 61.6	6,300	39.8	38.4 - 41.2	15,900

County	Breastfed <8 weeks			Breastfed 8+ weeks			Weighted Total Responses (3-Yr Avg)
	#	%	C.I.(95%)	#	%	C.I.(95%)	#
<b>Hawaii</b>	1,000	52.9	48.6 - 57.2	900	47.1	42.8 - 51.4	2,000
<b>Honolulu</b>	7,200	63.0	61.3 - 64.6	4,200	37.0	35.4 - 38.7	11,400
<b>Kauai</b>	400	46.1	39.4 - 52.9	400	53.9	47.1 - 60.6	800
<b>Maui</b>	1,000	56.2	51.6 - 60.7	700	43.8	39.3 - 48.4	1,700

**PRAMS Health Indicator 3-Year Aggregate Report - Breastfeeding (exclusive) duration 8+ weeks, among initiators- by State;County;DOH Race-Ethnicity;PRAMS Age Group;Infant Gender;Married;Poverty Level;Income (2000-2003);Income (2004-2011);Birthweight;Smoke 3rd Trimester;Smoke Before Pregnant;WIC During Pregnancy, for the Year(s) 2000-2002;2001-2003;2002-2004;2003-2005;2004-2006;2005-2007;2006-2008;2007-2009;2008-2010;2009-2011;2010-2012**

*Note: Weighted counts (#) represent 3-yr averages, rounded to the nearest hundred; n/r (Not Reportable) - If the unweighted total responses for a dimension (row) is <30 that row will not be shown*

**Years: 2005-2007**

DOH Race-Ethnicity	Breastfed <8 weeks			Breastfed 8+ weeks			Weighted Total Responses (3-Yr Avg)
	#	%	C.I.(95%)	#	%	C.I.(95%)	#
Caucasian	1,700	45.5	42.5 - 48.6	2,000	54.5	51.4 - 57.5	3,700
Native Hawaiian	2,700	63.2	60.2 - 66.2	1,600	36.8	33.8 - 39.8	4,300
Chinese	400	63.9	59.9 - 67.7	200	36.1	32.3 - 40.1	600
Filipino	2,000	69.1	66.0 - 71.9	900	30.9	28.1 - 34.0	2,900
Japanese	1,400	69.5	65.6 - 73.1	600	30.5	26.9 - 34.4	2,000
Other	1,400	57.7	53.9 - 61.5	1,000	42.3	38.5 - 46.1	2,400

PRAMS Age Group	Breastfed <8 weeks			Breastfed 8+ weeks			Weighted Total Responses (3-Yr Avg)
	#	%	C.I.(95%)	#	%	C.I.(95%)	#
<20	900	63.9	58.4 - 69.1	500	36.1	30.9 - 41.6	1,300
20-24	2,400	62.8	59.8 - 65.8	1,400	37.2	34.2 - 40.2	3,900
25-34	4,600	58.3	56.3 - 60.3	3,300	41.7	39.7 - 43.7	7,800
35+	1,700	60.1	56.8 - 63.3	1,100	39.9	36.7 - 43.2	2,800

**PRAMS Health Indicator 3-Year Aggregate Report - Breastfeeding (exclusive) duration 8+ weeks, among initiators- by State;County;DOH Race-Ethnicity;PRAMS Age Group;Infant Gender;Married;Poverty Level;Income (2000-2003);Income (2004-2011);Birthweight;Smoke 3rd Trimester;Smoke Before Pregnant;WIC During Pregnancy, for the Year(s) 2000-2002;2001-2003;2002-2004;2003-2005;2004-2006;2005-2007;2006-2008;2007-2009;2008-2010;2009-2011;2010-2012**

*Note: Weighted counts (#) represent 3-yr averages, rounded to the nearest hundred; n/r (Not Reportable) - If the unweighted total responses for a dimension (row) is <30 that row will not be shown*

**Years: 2005-2007**

Infant Gender	Breastfed <8 weeks			Breastfed 8+ weeks			Weighted Total Responses (3-Yr Avg)
	#	%	C.I.(95%)	#	%	C.I.(95%)	#
Male	5,000	61.2	59.2 - 63.2	3,200	38.8	36.8 - 40.8	8,200
Female	4,500	59.1	57.0 - 61.1	3,100	40.9	38.9 - 43.0	7,700

Married	Breastfed <8 weeks			Breastfed 8+ weeks			Weighted Total Responses (3-Yr Avg)
	#	%	C.I.(95%)	#	%	C.I.(95%)	#
Yes	5,900	58.1	56.3 - 59.8	4,300	41.9	40.2 - 43.7	10,200
No	3,600	64.0	61.5 - 66.4	2,000	36.0	33.6 - 38.5	5,700

Poverty Level	Breastfed <8 weeks			Breastfed 8+ weeks			Weighted Total Responses (3-Yr Avg)
	#	%	C.I.(95%)	#	%	C.I.(95%)	#
0-130%	3,500	63.1	60.6 - 65.6	2,000	36.9	34.4 - 39.4	5,500
131-185%	1,200	59.3	55.1 - 63.3	800	40.7	36.7 - 44.9	2,000
186+%	4,200	58.1	56.0 - 60.1	3,000	41.9	39.9 - 44.0	7,200

**PRAMS Health Indicator 3-Year Aggregate Report - Breastfeeding (exclusive) duration 8+ weeks, among initiators- by State;County;DOH Race-Ethnicity;PRAMS Age Group;Infant Gender;Married;Poverty Level;Income (2000-2003);Income (2004-2011);Birthweight;Smoke 3rd Trimester;Smoke Before Pregnant;WIC During Pregnancy, for the Year(s) 2000-2002;2001-2003;2002-2004;2003-2005;2004-2006;2005-2007;2006-2008;2007-2009;2008-2010;2009-2011;2010-2012**

*Note: Weighted counts (#) represent 3-yr averages, rounded to the nearest hundred; n/r (Not Reportable) - If the unweighted total responses for a dimension (row) is <30 that row will not be shown*

**Years: 2005-2007**

Income (2004-2011)	Breastfed <8 weeks			Breastfed 8+ weeks			Weighted Total Responses (3-Yr Avg)
	#	%	C.I.(95%)	#	%	C.I.(95%)	#
<\$10,000	1,600	62.6	58.8 - 66.3	1,000	37.4	33.7 - 41.2	2,600
\$10,000-\$24,999	2,100	64.1	60.9 - 67.2	1,200	35.9	32.8 - 39.1	3,200
\$25,000-\$49,999	2,200	58.6	55.6 - 61.5	1,500	41.4	38.5 - 44.4	3,700
>=\$50,000	3,100	57.9	55.6 - 60.3	2,200	42.1	39.7 - 44.4	5,300

Birthweight	Breastfed <8 weeks			Breastfed 8+ weeks			Weighted Total Responses (3-Yr Avg)
	#	%	C.I.(95%)	#	%	C.I.(95%)	#
Low birth weight	800	67.6	62.3 - 72.4	400	32.4	27.6 - 37.7	1,200
Normal birth weight	8,700	59.6	58.1 - 61.1	5,900	40.4	38.9 - 41.9	14,700

Smoke 3rd Trimester	Breastfed <8 weeks			Breastfed 8+ weeks			Weighted Total Responses (3-Yr Avg)
	#	%	C.I.(95%)	#	%	C.I.(95%)	#
Yes	800	65.4	59.8 - 70.6	400	34.6	29.4 - 40.2	1,200
No	8,600	59.7	58.2 - 61.1	5,800	40.3	38.9 - 41.8	14,400



**PRAMS Health Indicator 3-Year Aggregate Report - Breastfeeding (exclusive) duration 8+ weeks, among initiators- by State;County;DOH Race-Ethnicity;PRAMS Age Group;Infant Gender;Married;Poverty Level;Income (2000-2003);Income (2004-2011);Birthweight;Smoke 3rd Trimester;Smoke Before Pregnant;WIC During Pregnancy, for the Year(s) 2000-2002;2001-2003;2002-2004;2003-2005;2004-2006;2005-2007;2006-2008;2007-2009;2008-2010;2009-2011;2010-2012**

*Note: Weighted counts (#) represent 3-yr averages, rounded to the nearest hundred; n/r (Not Reportable) - If the unweighted total responses for a dimension (row) is <30 that row will not be shown*

**Years: 2005-2007**

Smoke Before Pregnant	Breastfed <8 weeks			Breastfed 8+ weeks			Weighted Total Responses (3-Yr Avg)
	#	%	C.I.(95%)	#	%	C.I.(95%)	#
<b>Yes</b>	2,000	66.6	63.2 - 69.8	1,000	33.4	30.2 - 36.8	3,100
<b>No</b>	7,300	58.5	56.9 - 60.1	5,200	41.5	39.9 - 43.1	12,500

WIC During Pregnancy	Breastfed <8 weeks			Breastfed 8+ weeks			Weighted Total Responses (3-Yr Avg)
	#	%	C.I.(95%)	#	%	C.I.(95%)	#
<b>Yes</b>	3,900	60.5	58.2 - 62.9	2,500	39.5	37.1 - 41.8	6,400
<b>No</b>	5,400	59.5	57.6 - 61.3	3,700	40.5	38.7 - 42.4	9,100

**PRAMS Health Indicator 3-Year Aggregate Report - Breastfeeding (exclusive) duration 8+ weeks, among initiators- by State;County;DOH Race-Ethnicity;PRAMS Age Group;Infant Gender;Married;Poverty Level;Income (2000-2003);Income (2004-2011);Birthweight;Smoke 3rd Trimester;Smoke Before Pregnant;WIC During Pregnancy, for the Year(s) 2000-2002;2001-2003;2002-2004;2003-2005;2004-2006;2005-2007;2006-2008;2007-2009;2008-2010;2009-2011;2010-2012**

*Note: Weighted counts (#) represent 3-yr averages, rounded to the nearest hundred; n/r (Not Reportable) - If the unweighted total responses for a dimension (row) is <30 that row will not be shown*

**Years: 2004-2006**

State	Breastfed <8 weeks			Breastfed 8+ weeks			Weighted Total Responses (3-Yr Avg)
	#	%	C.I.(95%)	#	%	C.I.(95%)	#
<b>Totals</b>	9,400	60.5	59.1 - 61.9	6,200	39.5	38.1 - 40.9	15,600

County	Breastfed <8 weeks			Breastfed 8+ weeks			Weighted Total Responses (3-Yr Avg)
	#	%	C.I.(95%)	#	%	C.I.(95%)	#
<b>Hawaii</b>	1,000	55.1	50.8 - 59.3	900	44.9	40.7 - 49.2	1,900
<b>Honolulu</b>	7,100	63.0	61.4 - 64.6	4,200	37.0	35.4 - 38.6	11,300
<b>Kauai</b>	300	44.0	37.4 - 50.7	400	56.0	49.3 - 62.6	700
<b>Maui</b>	900	57.0	52.6 - 61.4	700	43.0	38.6 - 47.4	1,600

**PRAMS Health Indicator 3-Year Aggregate Report - Breastfeeding (exclusive) duration 8+ weeks, among initiators- by State;County;DOH Race-Ethnicity;PRAMS Age Group;Infant Gender;Married;Poverty Level;Income (2000-2003);Income (2004-2011);Birthweight;Smoke 3rd Trimester;Smoke Before Pregnant;WIC During Pregnancy, for the Year(s) 2000-2002;2001-2003;2002-2004;2003-2005;2004-2006;2005-2007;2006-2008;2007-2009;2008-2010;2009-2011;2010-2012**

*Note: Weighted counts (#) represent 3-yr averages, rounded to the nearest hundred; n/r (Not Reportable) - If the unweighted total responses for a dimension (row) is <30 that row will not be shown*

**Years: 2004-2006**

DOH Race-Ethnicity	Breastfed <8 weeks			Breastfed 8+ weeks			Weighted Total Responses (3-Yr Avg)
	#	%	C.I.(95%)	#	%	C.I.(95%)	#
Caucasian	1,600	44.8	41.8 - 47.8	2,000	55.2	52.2 - 58.2	3,700
Native Hawaiian	2,700	65.1	62.2 - 68.0	1,400	34.9	32.0 - 37.8	4,100
Chinese	400	65.0	61.5 - 68.4	200	35.0	31.6 - 38.5	600
Filipino	2,000	67.5	64.5 - 70.3	900	32.5	29.7 - 35.5	2,900
Japanese	1,400	68.7	64.9 - 72.2	600	31.3	27.8 - 35.1	2,100
Other	1,300	60.0	56.1 - 63.7	900	40.0	36.3 - 43.9	2,200

PRAMS Age Group	Breastfed <8 weeks			Breastfed 8+ weeks			Weighted Total Responses (3-Yr Avg)
	#	%	C.I.(95%)	#	%	C.I.(95%)	#
<20	800	64.0	58.6 - 69.1	400	36.0	30.9 - 41.4	1,200
20-24	2,500	64.2	61.2 - 67.0	1,400	35.8	33.0 - 38.8	3,800
25-34	4,500	58.3	56.3 - 60.2	3,200	41.7	39.8 - 43.7	7,700
35+	1,700	60.1	57.0 - 63.2	1,100	39.9	36.8 - 43.0	2,800

**PRAMS Health Indicator 3-Year Aggregate Report - Breastfeeding (exclusive) duration 8+ weeks, among initiators- by State;County;DOH Race-Ethnicity;PRAMS Age Group;Infant Gender;Married;Poverty Level;Income (2000-2003);Income (2004-2011);Birthweight;Smoke 3rd Trimester;Smoke Before Pregnant;WIC During Pregnancy, for the Year(s) 2000-2002;2001-2003;2002-2004;2003-2005;2004-2006;2005-2007;2006-2008;2007-2009;2008-2010;2009-2011;2010-2012**

*Note: Weighted counts (#) represent 3-yr averages, rounded to the nearest hundred; n/r (Not Reportable) - If the unweighted total responses for a dimension (row) is <30 that row will not be shown*

**Years: 2004-2006**

Infant Gender	Breastfed <8 weeks			Breastfed 8+ weeks			Weighted Total Responses (3-Yr Avg)
	#	%	C.I.(95%)	#	%	C.I.(95%)	#
Male	5,000	62.1	60.2 - 64.0	3,100	37.9	36.0 - 39.8	8,100
Female	4,400	58.8	56.7 - 60.8	3,100	41.2	39.2 - 43.3	7,500

Married	Breastfed <8 weeks			Breastfed 8+ weeks			Weighted Total Responses (3-Yr Avg)
	#	%	C.I.(95%)	#	%	C.I.(95%)	#
Yes	6,000	58.1	56.5 - 59.8	4,300	41.9	40.2 - 43.5	10,400
No	3,400	65.3	62.7 - 67.7	1,800	34.7	32.3 - 37.3	5,200

Poverty Level	Breastfed <8 weeks			Breastfed 8+ weeks			Weighted Total Responses (3-Yr Avg)
	#	%	C.I.(95%)	#	%	C.I.(95%)	#
0-130%	3,400	63.6	61.2 - 66.0	2,000	36.4	34.0 - 38.8	5,400
131-185%	1,000	57.5	53.2 - 61.6	800	42.5	38.4 - 46.8	1,800
186+%	4,200	58.4	56.4 - 60.4	3,000	41.6	39.6 - 43.6	7,300

**PRAMS Health Indicator 3-Year Aggregate Report - Breastfeeding (exclusive) duration 8+ weeks, among initiators- by State;County;DOH Race-Ethnicity;PRAMS Age Group;Infant Gender;Married;Poverty Level;Income (2000-2003);Income (2004-2011);Birthweight;Smoke 3rd Trimester;Smoke Before Pregnant;WIC During Pregnancy, for the Year(s) 2000-2002;2001-2003;2002-2004;2003-2005;2004-2006;2005-2007;2006-2008;2007-2009;2008-2010;2009-2011;2010-2012**

*Note: Weighted counts (#) represent 3-yr averages, rounded to the nearest hundred; n/r (Not Reportable) - If the unweighted total responses for a dimension (row) is <30 that row will not be shown*

**Years: 2004-2006**

Income (2004-2011)	Breastfed <8 weeks			Breastfed 8+ weeks			Weighted Total Responses (3-Yr Avg)
	#	%	C.I.(95%)	#	%	C.I.(95%)	#
<\$10,000	1,600	65.6	62.0 - 69.1	900	34.4	30.9 - 38.0	2,500
\$10,000-\$24,999	2,100	62.6	59.5 - 65.6	1,200	37.4	34.4 - 40.5	3,300
\$25,000-\$49,999	2,200	57.3	54.5 - 60.2	1,600	42.7	39.8 - 45.5	3,800
>=\$50,000	2,900	58.4	56.0 - 60.8	2,000	41.6	39.2 - 44.0	4,900

Birthweight	Breastfed <8 weeks			Breastfed 8+ weeks			Weighted Total Responses (3-Yr Avg)
	#	%	C.I.(95%)	#	%	C.I.(95%)	#
Low birth weight	700	68.1	62.8 - 73.0	300	31.9	27.0 - 37.2	1,100
Normal birth weight	8,700	60.0	58.5 - 61.4	5,800	40.0	38.6 - 41.5	14,500

Smoke 3rd Trimester	Breastfed <8 weeks			Breastfed 8+ weeks			Weighted Total Responses (3-Yr Avg)
	#	%	C.I.(95%)	#	%	C.I.(95%)	#
Yes	700	65.3	59.8 - 70.5	400	34.7	29.5 - 40.2	1,100
No	8,500	60.0	58.5 - 61.4	5,700	40.0	38.6 - 41.5	14,200

**PRAMS Health Indicator 3-Year Aggregate Report - Breastfeeding (exclusive) duration 8+ weeks, among initiators- by State;County;DOH Race-Ethnicity;PRAMS Age Group;Infant Gender;Married;Poverty Level;Income (2000-2003);Income (2004-2011);Birthweight;Smoke 3rd Trimester;Smoke Before Pregnant;WIC During Pregnancy, for the Year(s) 2000-2002;2001-2003;2002-2004;2003-2005;2004-2006;2005-2007;2006-2008;2007-2009;2008-2010;2009-2011;2010-2012**

*Note: Weighted counts (#) represent 3-yr averages, rounded to the nearest hundred; n/r (Not Reportable) - If the unweighted total responses for a dimension (row) is <30 that row will not be shown*

**Years: 2004-2006**

Smoke Before Pregnant	Breastfed <8 weeks			Breastfed 8+ weeks			Weighted Total Responses (3-Yr Avg)
	#	%	C.I.(95%)	#	%	C.I.(95%)	#
<b>Yes</b>	2,000	65.6	62.3 - 68.7	1,100	34.4	31.3 - 37.7	3,100
<b>No</b>	7,300	59.1	57.5 - 60.6	5,000	40.9	39.4 - 42.5	12,300

WIC During Pregnancy	Breastfed <8 weeks			Breastfed 8+ weeks			Weighted Total Responses (3-Yr Avg)
	#	%	C.I.(95%)	#	%	C.I.(95%)	#
<b>Yes</b>	4,000	61.8	59.6 - 64.0	2,500	38.2	36.0 - 40.4	6,500
<b>No</b>	5,200	59.2	57.4 - 61.0	3,600	40.8	39.0 - 42.6	8,800

**PRAMS Health Indicator 3-Year Aggregate Report - Breastfeeding (exclusive) duration 8+ weeks, among initiators- by State;County;DOH Race-Ethnicity;PRAMS Age Group;Infant Gender;Married;Poverty Level;Income (2000-2003);Income (2004-2011);Birthweight;Smoke 3rd Trimester;Smoke Before Pregnant;WIC During Pregnancy, for the Year(s) 2000-2002;2001-2003;2002-2004;2003-2005;2004-2006;2005-2007;2006-2008;2007-2009;2008-2010;2009-2011;2010-2012**

*Note: Weighted counts (#) represent 3-yr averages, rounded to the nearest hundred; n/r (Not Reportable) - If the unweighted total responses for a dimension (row) is <30 that row will not be shown*

**Years: 2003-2005**

State	Breastfed <8 weeks			Breastfed 8+ weeks			Weighted Total Responses (3-Yr Avg)
	#	%	C.I.(95%)	#	%	C.I.(95%)	#
<b>Totals</b>	9,200	60.7	59.2 - 62.1	5,900	39.3	37.9 - 40.8	15,100

County	Breastfed <8 weeks			Breastfed 8+ weeks			Weighted Total Responses (3-Yr Avg)
	#	%	C.I.(95%)	#	%	C.I.(95%)	#
<b>Hawaii</b>	900	53.4	49.5 - 57.3	800	46.6	42.7 - 50.5	1,800
<b>Honolulu</b>	7,000	63.4	61.6 - 65.1	4,000	36.6	34.9 - 38.4	11,000
<b>Kauai</b>	300	44.1	38.4 - 50.0	400	55.9	50.0 - 61.6	700
<b>Maui</b>	900	57.4	53.5 - 61.2	700	42.6	38.8 - 46.5	1,600

**PRAMS Health Indicator 3-Year Aggregate Report - Breastfeeding (exclusive) duration 8+ weeks, among initiators- by State;County;DOH Race-Ethnicity;PRAMS Age Group;Infant Gender;Married;Poverty Level;Income (2000-2003);Income (2004-2011);Birthweight;Smoke 3rd Trimester;Smoke Before Pregnant;WIC During Pregnancy, for the Year(s) 2000-2002;2001-2003;2002-2004;2003-2005;2004-2006;2005-2007;2006-2008;2007-2009;2008-2010;2009-2011;2010-2012**

*Note: Weighted counts (#) represent 3-yr averages, rounded to the nearest hundred; n/r (Not Reportable) - If the unweighted total responses for a dimension (row) is <30 that row will not be shown*

**Years: 2003-2005**

DOH Race-Ethnicity	Breastfed <8 weeks			Breastfed 8+ weeks			Weighted Total Responses (3-Yr Avg)
	#	%	C.I.(95%)	#	%	C.I.(95%)	#
Caucasian	1,600	45.6	42.4 - 48.9	1,900	54.4	51.1 - 57.6	3,500
Native Hawaiian	2,500	63.4	60.8 - 66.0	1,500	36.6	34.0 - 39.2	4,000
Chinese	400	63.1	56.8 - 68.9	200	36.9	31.1 - 43.2	600
Filipino	2,000	68.1	64.9 - 71.2	900	31.9	28.8 - 35.1	3,000
Japanese	1,400	67.5	63.3 - 71.4	700	32.5	28.6 - 36.7	2,000
Other	1,300	62.6	58.3 - 66.7	800	37.4	33.3 - 41.7	2,100

PRAMS Age Group	Breastfed <8 weeks			Breastfed 8+ weeks			Weighted Total Responses (3-Yr Avg)
	#	%	C.I.(95%)	#	%	C.I.(95%)	#
<20	800	65.7	60.6 - 70.5	400	34.3	29.5 - 39.4	1,200
20-24	2,300	62.8	59.8 - 65.7	1,400	37.2	34.3 - 40.2	3,700
25-34	4,400	59.3	57.2 - 61.4	3,000	40.7	38.6 - 42.8	7,500
35+	1,600	59.3	55.9 - 62.6	1,100	40.7	37.4 - 44.1	2,800



**PRAMS Health Indicator 3-Year Aggregate Report - Breastfeeding (exclusive) duration 8+ weeks, among initiators- by State;County;DOH Race-Ethnicity;PRAMS Age Group;Infant Gender;Married;Poverty Level;Income (2000-2003);Income (2004-2011);Birthweight;Smoke 3rd Trimester;Smoke Before Pregnant;WIC During Pregnancy, for the Year(s) 2000-2002;2001-2003;2002-2004;2003-2005;2004-2006;2005-2007;2006-2008;2007-2009;2008-2010;2009-2011;2010-2012**

*Note: Weighted counts (#) represent 3-yr averages, rounded to the nearest hundred; n/r (Not Reportable) - If the unweighted total responses for a dimension (row) is <30 that row will not be shown*

**Years: 2003-2005**

	Breastfed <8 weeks			Breastfed 8+ weeks			Weighted Total Responses (3-Yr Avg)
	#	%	C.I.(95%)	#	%	C.I.(95%)	#
<b>Infant Gender</b>							
<b>Male</b>	4,900	61.5	59.5 - 63.5	3,100	38.5	36.5 - 40.5	7,900
<b>Female</b>	4,300	59.7	57.6 - 61.8	2,900	40.3	38.2 - 42.4	7,200

	Breastfed <8 weeks			Breastfed 8+ weeks			Weighted Total Responses (3-Yr Avg)
	#	%	C.I.(95%)	#	%	C.I.(95%)	#
<b>Married</b>							
<b>Yes</b>	6,000	58.3	56.5 - 60.1	4,300	41.7	39.9 - 43.5	10,300
<b>No</b>	3,200	65.7	63.2 - 68.1	1,700	34.3	31.9 - 36.8	4,800

	Breastfed <8 weeks			Breastfed 8+ weeks			Weighted Total Responses (3-Yr Avg)
	#	%	C.I.(95%)	#	%	C.I.(95%)	#
<b>Poverty Level</b>							
<b>0-130%</b>	3,600	63.7	61.3 - 66.1	2,000	36.3	33.9 - 38.7	5,600
<b>131-185%</b>	1,100	58.1	53.8 - 62.3	800	41.9	37.7 - 46.2	1,900
<b>186+%</b>	3,800	58.3	56.0 - 60.5	2,700	41.7	39.5 - 44.0	6,400

**PRAMS Health Indicator 3-Year Aggregate Report - Breastfeeding (exclusive) duration 8+ weeks, among initiators- by State;County;DOH Race-Ethnicity;PRAMS Age Group;Infant Gender;Married;Poverty Level;Income (2000-2003);Income (2004-2011);Birthweight;Smoke 3rd Trimester;Smoke Before Pregnant;WIC During Pregnancy, for the Year(s) 2000-2002;2001-2003;2002-2004;2003-2005;2004-2006;2005-2007;2006-2008;2007-2009;2008-2010;2009-2011;2010-2012**

*Note: Weighted counts (#) represent 3-yr averages, rounded to the nearest hundred; n/r (Not Reportable) - If the unweighted total responses for a dimension (row) is <30 that row will not be shown*

**Years: 2003-2005**

Birthweight	Breastfed <8 weeks			Breastfed 8+ weeks			Weighted Total Responses (3-Yr Avg)
	#	%	C.I.(95%)	#	%	C.I.(95%)	#
Low birth weight	700	71.2	65.8 - 76.0	300	28.8	24.0 - 34.2	1,000
Normal birth weight	8,500	59.9	58.4 - 61.4	5,700	40.1	38.6 - 41.6	14,100

Smoke 3rd Trimester	Breastfed <8 weeks			Breastfed 8+ weeks			Weighted Total Responses (3-Yr Avg)
	#	%	C.I.(95%)	#	%	C.I.(95%)	#
Yes	700	65.1	59.4 - 70.3	400	34.9	29.7 - 40.6	1,000
No	8,400	60.3	58.8 - 61.8	5,500	39.7	38.2 - 41.2	13,900

Smoke Before Pregnant	Breastfed <8 weeks			Breastfed 8+ weeks			Weighted Total Responses (3-Yr Avg)
	#	%	C.I.(95%)	#	%	C.I.(95%)	#
Yes	1,900	65.9	62.6 - 69.1	1,000	34.1	30.9 - 37.4	2,900
No	7,100	59.3	57.7 - 60.9	4,900	40.7	39.1 - 42.3	12,000

**PRAMS Health Indicator 3-Year Aggregate Report - Breastfeeding (exclusive) duration 8+ weeks, among initiators- by State;County;DOH Race-Ethnicity;PRAMS Age Group;Infant Gender;Married;Poverty Level;Income (2000-2003);Income (2004-2011);Birthweight;Smoke 3rd Trimester;Smoke Before Pregnant;WIC During Pregnancy, for the Year(s) 2000-2002;2001-2003;2002-2004;2003-2005;2004-2006;2005-2007;2006-2008;2007-2009;2008-2010;2009-2011;2010-2012**

*Note: Weighted counts (#) represent 3-yr averages, rounded to the nearest hundred; n/r (Not Reportable) - If the unweighted total responses for a dimension (row) is <30 that row will not be shown*

**Years: 2003-2005**

WIC During Pregnancy	Breastfed <8 weeks			Breastfed 8+ weeks			Weighted Total Responses (3-Yr Avg)
	#	%	C.I.(95%)	#	%	C.I.(95%)	#
<b>Yes</b>	3,900	61.8	59.6 - 64.0	2,400	38.2	36.0 - 40.4	6,300
<b>No</b>	5,100	59.6	57.6 - 61.5	3,500	40.4	38.5 - 42.4	8,600

**PRAMS Health Indicator 3-Year Aggregate Report - Breastfeeding (exclusive) duration 8+ weeks, among initiators- by State;County;DOH Race-Ethnicity;PRAMS Age Group;Infant Gender;Married;Poverty Level;Income (2000-2003);Income (2004-2011);Birthweight;Smoke 3rd Trimester;Smoke Before Pregnant;WIC During Pregnancy, for the Year(s) 2000-2002;2001-2003;2002-2004;2003-2005;2004-2006;2005-2007;2006-2008;2007-2009;2008-2010;2009-2011;2010-2012**

*Note: Weighted counts (#) represent 3-yr averages, rounded to the nearest hundred; n/r (Not Reportable) - If the unweighted total responses for a dimension (row) is <30 that row will not be shown*

**Years: 2002-2004**

State	Breastfed <8 weeks			Breastfed 8+ weeks			Weighted Total Responses (3-Yr Avg)
	#	%	C.I.(95%)	#	%	C.I.(95%)	#
<b>Totals</b>	8,900	60.0	58.4 - 61.5	5,900	40.0	38.5 - 41.6	14,800

County	Breastfed <8 weeks			Breastfed 8+ weeks			Weighted Total Responses (3-Yr Avg)
	#	%	C.I.(95%)	#	%	C.I.(95%)	#
<b>Hawaii</b>	900	54.0	50.6 - 57.3	800	46.0	42.7 - 49.4	1,700
<b>Honolulu</b>	6,700	62.1	60.1 - 64.1	4,100	37.9	35.9 - 39.9	10,800
<b>Kauai</b>	300	44.6	39.4 - 49.9	400	55.4	50.1 - 60.6	700
<b>Maui</b>	900	58.6	55.2 - 62.0	700	41.4	38.0 - 44.8	1,600

**PRAMS Health Indicator 3-Year Aggregate Report - Breastfeeding (exclusive) duration 8+ weeks, among initiators- by State;County;DOH Race-Ethnicity;PRAMS Age Group;Infant Gender;Married;Poverty Level;Income (2000-2003);Income (2004-2011);Birthweight;Smoke 3rd Trimester;Smoke Before Pregnant;WIC During Pregnancy, for the Year(s) 2000-2002;2001-2003;2002-2004;2003-2005;2004-2006;2005-2007;2006-2008;2007-2009;2008-2010;2009-2011;2010-2012**

*Note: Weighted counts (#) represent 3-yr averages, rounded to the nearest hundred; n/r (Not Reportable) - If the unweighted total responses for a dimension (row) is <30 that row will not be shown*

**Years: 2002-2004**

DOH Race-Ethnicity	Breastfed <8 weeks			Breastfed 8+ weeks			Weighted Total Responses (3-Yr Avg)
	#	%	C.I.(95%)	#	%	C.I.(95%)	#
Caucasian	1,500	44.3	40.8 - 47.8	1,900	55.7	52.2 - 59.2	3,300
Native Hawaiian	2,500	63.7	61.5 - 65.9	1,400	36.3	34.1 - 38.5	3,900
Chinese	400	67.0	59.3 - 74.0	200	33.0	26.0 - 40.7	600
Filipino	2,000	65.4	61.7 - 68.9	1,000	34.6	31.1 - 38.3	3,000
Japanese	1,400	67.8	63.3 - 72.1	700	32.2	27.9 - 36.7	2,100
Other	1,200	60.6	55.6 - 65.4	800	39.4	34.6 - 44.4	2,000

PRAMS Age Group	Breastfed <8 weeks			Breastfed 8+ weeks			Weighted Total Responses (3-Yr Avg)
	#	%	C.I.(95%)	#	%	C.I.(95%)	#
<20	800	69.1	64.1 - 73.8	400	30.9	26.2 - 35.9	1,200
20-24	2,200	61.3	58.2 - 64.4	1,400	38.7	35.6 - 41.8	3,600
25-34	4,300	58.1	55.8 - 60.3	3,100	41.9	39.7 - 44.2	7,400
35+	1,600	59.3	55.5 - 63.0	1,100	40.7	37.0 - 44.5	2,700

**PRAMS Health Indicator 3-Year Aggregate Report - Breastfeeding (exclusive) duration 8+ weeks, among initiators- by State;County;DOH Race-Ethnicity;PRAMS Age Group;Infant Gender;Married;Poverty Level;Income (2000-2003);Income (2004-2011);Birthweight;Smoke 3rd Trimester;Smoke Before Pregnant;WIC During Pregnancy, for the Year(s) 2000-2002;2001-2003;2002-2004;2003-2005;2004-2006;2005-2007;2006-2008;2007-2009;2008-2010;2009-2011;2010-2012**

*Note: Weighted counts (#) represent 3-yr averages, rounded to the nearest hundred; n/r (Not Reportable) - If the unweighted total responses for a dimension (row) is <30 that row will not be shown*

**Years: 2002-2004**

Infant Gender	Breastfed <8 weeks			Breastfed 8+ weeks			Weighted Total Responses (3-Yr Avg)
	#	%	C.I.(95%)	#	%	C.I.(95%)	#
Male	4,700	60.9	58.8 - 63.0	3,000	39.1	37.0 - 41.2	7,700
Female	4,200	59.0	56.7 - 61.3	2,900	41.0	38.7 - 43.3	7,100

Married	Breastfed <8 weeks			Breastfed 8+ weeks			Weighted Total Responses (3-Yr Avg)
	#	%	C.I.(95%)	#	%	C.I.(95%)	#
Yes	6,000	57.6	55.6 - 59.5	4,400	42.4	40.5 - 44.4	10,300
No	2,900	65.6	63.0 - 68.0	1,500	34.4	32.0 - 37.0	4,500

Poverty Level	Breastfed <8 weeks			Breastfed 8+ weeks			Weighted Total Responses (3-Yr Avg)
	#	%	C.I.(95%)	#	%	C.I.(95%)	#
0-130%	3,500	62.2	59.7 - 64.6	2,100	37.8	35.4 - 40.3	5,600
131-185%	1,300	56.2	52.0 - 60.3	1,000	43.8	39.7 - 48.0	2,300
186+%	3,300	58.3	55.7 - 60.8	2,400	41.7	39.2 - 44.3	5,700

**PRAMS Health Indicator 3-Year Aggregate Report - Breastfeeding (exclusive) duration 8+ weeks, among initiators- by State;County;DOH Race-Ethnicity;PRAMS Age Group;Infant Gender;Married;Poverty Level;Income (2000-2003);Income (2004-2011);Birthweight;Smoke 3rd Trimester;Smoke Before Pregnant;WIC During Pregnancy, for the Year(s) 2000-2002;2001-2003;2002-2004;2003-2005;2004-2006;2005-2007;2006-2008;2007-2009;2008-2010;2009-2011;2010-2012**

*Note: Weighted counts (#) represent 3-yr averages, rounded to the nearest hundred; n/r (Not Reportable) - If the unweighted total responses for a dimension (row) is <30 that row will not be shown*

**Years: 2002-2004**

Birthweight	Breastfed <8 weeks			Breastfed 8+ weeks			Weighted Total Responses (3-Yr Avg)
	#	%	C.I.(95%)	#	%	C.I.(95%)	#
Low birth weight	700	71.7	65.6 - 77.1	300	28.3	22.9 - 34.4	900
Normal birth weight	8,200	59.2	57.6 - 60.8	5,700	40.8	39.2 - 42.4	13,900

Smoke 3rd Trimester	Breastfed <8 weeks			Breastfed 8+ weeks			Weighted Total Responses (3-Yr Avg)
	#	%	C.I.(95%)	#	%	C.I.(95%)	#
Yes	600	66.3	60.6 - 71.6	300	33.7	28.4 - 39.4	1,000
No	8,100	59.8	58.1 - 61.4	5,500	40.2	38.6 - 41.9	13,600

Smoke Before Pregnant	Breastfed <8 weeks			Breastfed 8+ weeks			Weighted Total Responses (3-Yr Avg)
	#	%	C.I.(95%)	#	%	C.I.(95%)	#
Yes	1,800	64.6	61.2 - 68.0	1,000	35.4	32.0 - 38.8	2,700
No	7,000	59.0	57.2 - 60.7	4,800	41.0	39.3 - 42.8	11,800

**PRAMS Health Indicator 3-Year Aggregate Report - Breastfeeding (exclusive) duration 8+ weeks, among initiators- by State;County;DOH Race-Ethnicity;PRAMS Age Group;Infant Gender;Married;Poverty Level;Income (2000-2003);Income (2004-2011);Birthweight;Smoke 3rd Trimester;Smoke Before Pregnant;WIC During Pregnancy, for the Year(s) 2000-2002;2001-2003;2002-2004;2003-2005;2004-2006;2005-2007;2006-2008;2007-2009;2008-2010;2009-2011;2010-2012**

*Note: Weighted counts (#) represent 3-yr averages, rounded to the nearest hundred; n/r (Not Reportable) - If the unweighted total responses for a dimension (row) is <30 that row will not be shown*

**Years: 2002-2004**

WIC During Pregnancy	Breastfed <8 weeks			Breastfed 8+ weeks			Weighted Total Responses (3-Yr Avg)
	#	%	C.I.(95%)	#	%	C.I.(95%)	#
<b>Yes</b>	3,800	62.2	59.8 - 64.5	2,300	37.8	35.5 - 40.2	6,100
<b>No</b>	5,000	58.4	56.3 - 60.5	3,600	41.6	39.5 - 43.7	8,600



**PRAMS Health Indicator 3-Year Aggregate Report - Breastfeeding (exclusive) duration 8+ weeks, among initiators- by State;County;DOH Race-Ethnicity;PRAMS Age Group;Infant Gender;Married;Poverty Level;Income (2000-2003);Income (2004-2011);Birthweight;Smoke 3rd Trimester;Smoke Before Pregnant;WIC During Pregnancy, for the Year(s) 2000-2002;2001-2003;2002-2004;2003-2005;2004-2006;2005-2007;2006-2008;2007-2009;2008-2010;2009-2011;2010-2012**

*Note: Weighted counts (#) represent 3-yr averages, rounded to the nearest hundred; n/r (Not Reportable) - If the unweighted total responses for a dimension (row) is <30 that row will not be shown*

**Years: 2001-2003**

State	Breastfed <8 weeks			Breastfed 8+ weeks			Weighted Total Responses (3-Yr Avg)
	#	%	C.I.(95%)	#	%	C.I.(95%)	#
<b>Totals</b>	8,400	59.0	57.4 - 60.6	5,900	41.0	39.4 - 42.6	14,300

County	Breastfed <8 weeks			Breastfed 8+ weeks			Weighted Total Responses (3-Yr Avg)
	#	%	C.I.(95%)	#	%	C.I.(95%)	#
<b>Hawaii</b>	800	53.3	50.4 - 56.3	700	46.7	43.7 - 49.6	1,600
<b>Honolulu</b>	6,500	61.1	59.1 - 63.2	4,100	38.9	36.8 - 40.9	10,600
<b>Kauai</b>	300	45.4	40.7 - 50.1	400	54.6	49.9 - 59.3	700
<b>Maui</b>	800	55.9	52.8 - 59.0	700	44.1	41.0 - 47.2	1,500

**PRAMS Health Indicator 3-Year Aggregate Report - Breastfeeding (exclusive) duration 8+ weeks, among initiators- by State;County;DOH Race-Ethnicity;PRAMS Age Group;Infant Gender;Married;Poverty Level;Income (2000-2003);Income (2004-2011);Birthweight;Smoke 3rd Trimester;Smoke Before Pregnant;WIC During Pregnancy, for the Year(s) 2000-2002;2001-2003;2002-2004;2003-2005;2004-2006;2005-2007;2006-2008;2007-2009;2008-2010;2009-2011;2010-2012**

*Note: Weighted counts (#) represent 3-yr averages, rounded to the nearest hundred; n/r (Not Reportable) - If the unweighted total responses for a dimension (row) is <30 that row will not be shown*

**Years: 2001-2003**

DOH Race-Ethnicity	Breastfed <8 weeks			Breastfed 8+ weeks			Weighted Total Responses (3-Yr Avg)
	#	%	C.I.(95%)	#	%	C.I.(95%)	#
Caucasian	1,400	44.7	41.1 - 48.4	1,800	55.3	51.6 - 58.9	3,200
Native Hawaiian	2,200	60.6	58.8 - 62.4	1,500	39.4	37.6 - 41.2	3,700
Chinese	400	68.2	59.1 - 76.2	200	31.8	23.8 - 40.9	600
Filipino	1,900	63.9	60.0 - 67.6	1,100	36.1	32.4 - 40.0	3,000
Japanese	1,400	68.7	63.9 - 73.1	600	31.3	26.9 - 36.1	2,000
Other	1,100	59.0	53.7 - 64.2	800	41.0	35.8 - 46.3	1,800

PRAMS Age Group	Breastfed <8 weeks			Breastfed 8+ weeks			Weighted Total Responses (3-Yr Avg)
	#	%	C.I.(95%)	#	%	C.I.(95%)	#
<20	900	71.0	66.5 - 75.1	400	29.0	24.9 - 33.5	1,300
20-24	2,100	60.2	57.1 - 63.3	1,400	39.8	36.7 - 42.9	3,500
25-34	4,000	56.6	54.2 - 58.9	3,100	43.4	41.1 - 45.8	7,100
35+	1,400	58.3	54.2 - 62.3	1,000	41.7	37.7 - 45.8	2,400

**PRAMS Health Indicator 3-Year Aggregate Report - Breastfeeding (exclusive) duration 8+ weeks, among initiators- by State;County;DOH Race-Ethnicity;PRAMS Age Group;Infant Gender;Married;Poverty Level;Income (2000-2003);Income (2004-2011);Birthweight;Smoke 3rd Trimester;Smoke Before Pregnant;WIC During Pregnancy, for the Year(s) 2000-2002;2001-2003;2002-2004;2003-2005;2004-2006;2005-2007;2006-2008;2007-2009;2008-2010;2009-2011;2010-2012**

*Note: Weighted counts (#) represent 3-yr averages, rounded to the nearest hundred; n/r (Not Reportable) - If the unweighted total responses for a dimension (row) is <30 that row will not be shown*

**Years: 2001-2003**

Infant Gender	Breastfed <8 weeks			Breastfed 8+ weeks			Weighted Total Responses (3-Yr Avg)
	#	%	C.I.(95%)	#	%	C.I.(95%)	#
Male	4,400	59.6	57.4 - 61.8	3,000	40.4	38.2 - 42.6	7,400
Female	4,100	58.4	56.0 - 60.7	2,900	41.6	39.3 - 44.0	7,000

Married	Breastfed <8 weeks			Breastfed 8+ weeks			Weighted Total Responses (3-Yr Avg)
	#	%	C.I.(95%)	#	%	C.I.(95%)	#
Yes	5,600	56.6	54.6 - 58.7	4,300	43.4	41.3 - 45.4	9,900
No	2,800	64.3	61.8 - 66.7	1,600	35.7	33.3 - 38.2	4,400

Poverty Level	Breastfed <8 weeks			Breastfed 8+ weeks			Weighted Total Responses (3-Yr Avg)
	#	%	C.I.(95%)	#	%	C.I.(95%)	#
0-130%	3,300	61.1	58.7 - 63.6	2,100	38.9	36.4 - 41.3	5,500
131-185%	1,600	56.3	52.5 - 60.0	1,200	43.7	40.0 - 47.5	2,800
186+%	2,800	56.6	53.7 - 59.4	2,200	43.4	40.6 - 46.3	5,000

**PRAMS Health Indicator 3-Year Aggregate Report - Breastfeeding (exclusive) duration 8+ weeks, among initiators- by State;County;DOH Race-Ethnicity;PRAMS Age Group;Infant Gender;Married;Poverty Level;Income (2000-2003);Income (2004-2011);Birthweight;Smoke 3rd Trimester;Smoke Before Pregnant;WIC During Pregnancy, for the Year(s) 2000-2002;2001-2003;2002-2004;2003-2005;2004-2006;2005-2007;2006-2008;2007-2009;2008-2010;2009-2011;2010-2012**

*Note: Weighted counts (#) represent 3-yr averages, rounded to the nearest hundred; n/r (Not Reportable) - If the unweighted total responses for a dimension (row) is <30 that row will not be shown*

**Years: 2001-2003**

Income (2000-2003)	Breastfed <8 weeks			Breastfed 8+ weeks			Weighted Total Responses (3-Yr Avg)
	#	%	C.I.(95%)	#	%	C.I.(95%)	#
<=\$15,000	1,800	64.8	61.4 - 68.0	1,000	35.2	32.0 - 38.6	2,700
\$15,001-\$25,000	1,100	55.7	51.3 - 60.0	900	44.3	40.0 - 48.7	1,900
\$25,001-\$40,000	1,700	57.6	54.0 - 61.2	1,300	42.4	38.8 - 46.0	3,000
>=\$40,001	3,400	57.2	54.5 - 59.8	2,500	42.8	40.2 - 45.5	5,900

Birthweight	Breastfed <8 weeks			Breastfed 8+ weeks			Weighted Total Responses (3-Yr Avg)
	#	%	C.I.(95%)	#	%	C.I.(95%)	#
Low birth weight	600	68.4	62.0 - 74.1	300	31.6	25.9 - 38.0	900
Normal birth weight	7,800	58.4	56.7 - 60.0	5,600	41.6	40.0 - 43.3	13,400

Smoke 3rd Trimester	Breastfed <8 weeks			Breastfed 8+ weeks			Weighted Total Responses (3-Yr Avg)
	#	%	C.I.(95%)	#	%	C.I.(95%)	#
Yes	600	66.7	61.2 - 71.8	300	33.3	28.2 - 38.8	1,000
No	7,700	58.6	56.9 - 60.3	5,400	41.4	39.7 - 43.1	13,100

**PRAMS Health Indicator 3-Year Aggregate Report - Breastfeeding (exclusive) duration 8+ weeks, among initiators- by State;County;DOH Race-Ethnicity;PRAMS Age Group;Infant Gender;Married;Poverty Level;Income (2000-2003);Income (2004-2011);Birthweight;Smoke 3rd Trimester;Smoke Before Pregnant;WIC During Pregnancy, for the Year(s) 2000-2002;2001-2003;2002-2004;2003-2005;2004-2006;2005-2007;2006-2008;2007-2009;2008-2010;2009-2011;2010-2012**

*Note: Weighted counts (#) represent 3-yr averages, rounded to the nearest hundred; n/r (Not Reportable) - If the unweighted total responses for a dimension (row) is <30 that row will not be shown*

**Years: 2001-2003**

Smoke Before Pregnant	Breastfed <8 weeks			Breastfed 8+ weeks			Weighted Total Responses (3-Yr Avg)
	#	%	C.I.(95%)	#	%	C.I.(95%)	#
<b>Yes</b>	1,600	62.9	59.4 - 66.4	1,000	37.1	33.6 - 40.6	2,600
<b>No</b>	6,600	58.1	56.2 - 59.9	4,700	41.9	40.1 - 43.8	11,300

WIC During Pregnancy	Breastfed <8 weeks			Breastfed 8+ weeks			Weighted Total Responses (3-Yr Avg)
	#	%	C.I.(95%)	#	%	C.I.(95%)	#
<b>Yes</b>	3,500	61.5	59.1 - 63.9	2,200	38.5	36.1 - 40.9	5,700
<b>No</b>	4,900	57.3	55.1 - 59.4	3,600	42.7	40.6 - 44.9	8,500

**PRAMS Health Indicator 3-Year Aggregate Report - Breastfeeding (exclusive) duration 8+ weeks, among initiators- by State;County;DOH Race-Ethnicity;PRAMS Age Group;Infant Gender;Married;Poverty Level;Income (2000-2003);Income (2004-2011);Birthweight;Smoke 3rd Trimester;Smoke Before Pregnant;WIC During Pregnancy, for the Year(s) 2000-2002;2001-2003;2002-2004;2003-2005;2004-2006;2005-2007;2006-2008;2007-2009;2008-2010;2009-2011;2010-2012**

*Note: Weighted counts (#) represent 3-yr averages, rounded to the nearest hundred; n/r (Not Reportable) - If the unweighted total responses for a dimension (row) is <30 that row will not be shown*

**Years: 2000-2002**

State	Breastfed <8 weeks			Breastfed 8+ weeks			Weighted Total Responses (3-Yr Avg)
	#	%	C.I.(95%)	#	%	C.I.(95%)	#
<b>Totals</b>	7,700	57.4	55.8 - 58.9	5,700	42.6	41.1 - 44.2	13,400

County	Breastfed <8 weeks			Breastfed 8+ weeks			Weighted Total Responses (3-Yr Avg)
	#	%	C.I.(95%)	#	%	C.I.(95%)	#
<b>Hawaii</b>	800	54.9	51.8 - 57.8	700	45.1	42.2 - 48.2	1,500
<b>Honolulu</b>	5,800	58.6	56.6 - 60.6	4,100	41.4	39.4 - 43.4	9,900
<b>Kauai</b>	300	44.5	39.6 - 49.5	300	55.5	50.5 - 60.4	600
<b>Maui</b>	800	56.6	53.3 - 59.8	600	43.4	40.2 - 46.7	1,400

**PRAMS Health Indicator 3-Year Aggregate Report - Breastfeeding (exclusive) duration 8+ weeks, among initiators- by State;County;DOH Race-Ethnicity;PRAMS Age Group;Infant Gender;Married;Poverty Level;Income (2000-2003);Income (2004-2011);Birthweight;Smoke 3rd Trimester;Smoke Before Pregnant;WIC During Pregnancy, for the Year(s) 2000-2002;2001-2003;2002-2004;2003-2005;2004-2006;2005-2007;2006-2008;2007-2009;2008-2010;2009-2011;2010-2012**

*Note: Weighted counts (#) represent 3-yr averages, rounded to the nearest hundred; n/r (Not Reportable) - If the unweighted total responses for a dimension (row) is <30 that row will not be shown*

**Years: 2000-2002**

DOH Race-Ethnicity	Breastfed <8 weeks			Breastfed 8+ weeks			Weighted Total Responses (3-Yr Avg)
	#	%	C.I.(95%)	#	%	C.I.(95%)	#
Caucasian	1,300	43.1	39.7 - 46.6	1,700	56.9	53.4 - 60.3	3,000
Native Hawaiian	2,100	61.3	59.5 - 63.0	1,300	38.7	37.0 - 40.5	3,500
Chinese	400	66.0	56.9 - 74.0	200	34.0	26.0 - 43.1	500
Filipino	1,800	63.2	59.4 - 66.8	1,000	36.8	33.2 - 40.6	2,800
Japanese	1,200	65.6	60.8 - 70.1	600	34.4	29.9 - 39.2	1,900
Other	900	53.3	48.1 - 58.5	800	46.7	41.5 - 51.9	1,700

PRAMS Age Group	Breastfed <8 weeks			Breastfed 8+ weeks			Weighted Total Responses (3-Yr Avg)
	#	%	C.I.(95%)	#	%	C.I.(95%)	#
<20	900	68.4	64.1 - 72.3	400	31.6	27.7 - 35.9	1,300
20-24	2,000	58.9	55.9 - 61.8	1,400	41.1	38.2 - 44.1	3,400
25-34	3,600	54.3	52.0 - 56.6	3,000	45.7	43.4 - 48.0	6,600
35+	1,200	57.7	53.7 - 61.7	900	42.3	38.3 - 46.3	2,200

**PRAMS Health Indicator 3-Year Aggregate Report - Breastfeeding (exclusive) duration 8+ weeks, among initiators- by State;County;DOH Race-Ethnicity;PRAMS Age Group;Infant Gender;Married;Poverty Level;Income (2000-2003);Income (2004-2011);Birthweight;Smoke 3rd Trimester;Smoke Before Pregnant;WIC During Pregnancy, for the Year(s) 2000-2002;2001-2003;2002-2004;2003-2005;2004-2006;2005-2007;2006-2008;2007-2009;2008-2010;2009-2011;2010-2012**

*Note: Weighted counts (#) represent 3-yr averages, rounded to the nearest hundred; n/r (Not Reportable) - If the unweighted total responses for a dimension (row) is <30 that row will not be shown*

**Years: 2000-2002**

Infant Gender	Breastfed <8 weeks			Breastfed 8+ weeks			Weighted Total Responses (3-Yr Avg)
	#	%	C.I.(95%)	#	%	C.I.(95%)	#
Male	3,900	57.3	55.1 - 59.4	2,900	42.7	40.6 - 44.9	6,800
Female	3,800	57.5	55.3 - 59.8	2,800	42.5	40.2 - 44.7	6,600

Married	Breastfed <8 weeks			Breastfed 8+ weeks			Weighted Total Responses (3-Yr Avg)
	#	%	C.I.(95%)	#	%	C.I.(95%)	#
Yes	5,000	54.7	52.7 - 56.7	4,200	45.3	43.3 - 47.3	9,200
No	2,700	63.2	60.7 - 65.6	1,500	36.8	34.4 - 39.3	4,200

Poverty Level	Breastfed <8 weeks			Breastfed 8+ weeks			Weighted Total Responses (3-Yr Avg)
	#	%	C.I.(95%)	#	%	C.I.(95%)	#
0-130%	3,000	58.6	56.1 - 60.9	2,100	41.4	39.1 - 43.9	5,200
131-185%	1,400	55.5	51.8 - 59.2	1,100	44.5	40.8 - 48.2	2,600
186+%	2,600	55.0	52.3 - 57.8	2,100	45.0	42.2 - 47.7	4,800



**PRAMS Health Indicator 3-Year Aggregate Report - Breastfeeding (exclusive) duration 8+ weeks, among initiators- by State;County;DOH Race-Ethnicity;PRAMS Age Group;Infant Gender;Married;Poverty Level;Income (2000-2003);Income (2004-2011);Birthweight;Smoke 3rd Trimester;Smoke Before Pregnant;WIC During Pregnancy, for the Year(s) 2000-2002;2001-2003;2002-2004;2003-2005;2004-2006;2005-2007;2006-2008;2007-2009;2008-2010;2009-2011;2010-2012**

*Note: Weighted counts (#) represent 3-yr averages, rounded to the nearest hundred; n/r (Not Reportable) - If the unweighted total responses for a dimension (row) is <30 that row will not be shown*

**Years: 2000-2002**

Income (2000-2003)	Breastfed <8 weeks			Breastfed 8+ weeks			Weighted Total Responses (3-Yr Avg)
	#	%	C.I.(95%)	#	%	C.I.(95%)	#
<b>&lt;=\$15,000</b>	1,600	61.3	58.0 - 64.5	1,000	38.7	35.5 - 42.0	2,600
<b>\$15,001-\$25,000</b>	1,100	54.6	50.5 - 58.7	900	45.4	41.3 - 49.5	2,000
<b>\$25,001-\$40,000</b>	1,600	56.9	53.5 - 60.3	1,200	43.1	39.7 - 46.5	2,800
<b>&gt;=\$40,001</b>	3,000	55.6	53.0 - 58.2	2,400	44.4	41.8 - 47.0	5,300

Birthweight	Breastfed <8 weeks			Breastfed 8+ weeks			Weighted Total Responses (3-Yr Avg)
	#	%	C.I.(95%)	#	%	C.I.(95%)	#
<b>Low birth weight</b>	600	66.0	59.6 - 71.9	300	34.0	28.1 - 40.4	900
<b>Normal birth weight</b>	7,100	56.8	55.1 - 58.4	5,400	43.2	41.6 - 44.9	12,500

Smoke 3rd Trimester	Breastfed <8 weeks			Breastfed 8+ weeks			Weighted Total Responses (3-Yr Avg)
	#	%	C.I.(95%)	#	%	C.I.(95%)	#
<b>Yes</b>	600	68.4	63.3 - 73.1	300	31.6	26.9 - 36.7	900
<b>No</b>	6,900	56.7	55.0 - 58.3	5,300	43.3	41.7 - 45.0	12,200

**PRAMS Health Indicator 3-Year Aggregate Report - Breastfeeding (exclusive) duration 8+ weeks, among initiators- by State;County;DOH Race-Ethnicity;PRAMS Age Group;Infant Gender;Married;Poverty Level;Income (2000-2003);Income (2004-2011);Birthweight;Smoke 3rd Trimester;Smoke Before Pregnant;WIC During Pregnancy, for the Year(s) 2000-2002;2001-2003;2002-2004;2003-2005;2004-2006;2005-2007;2006-2008;2007-2009;2008-2010;2009-2011;2010-2012**

*Note: Weighted counts (#) represent 3-yr averages, rounded to the nearest hundred; n/r (Not Reportable) - If the unweighted total responses for a dimension (row) is <30 that row will not be shown*

**Years: 2000-2002**

Smoke Before Pregnant	Breastfed <8 weeks			Breastfed 8+ weeks			Weighted Total Responses (3-Yr Avg)
	#	%	C.I.(95%)	#	%	C.I.(95%)	#
<b>Yes</b>	1,500	61.1	57.7 - 64.4	1,000	38.9	35.6 - 42.3	2,500
<b>No</b>	5,900	56.4	54.6 - 58.2	4,600	43.6	41.8 - 45.4	10,500

WIC During Pregnancy	Breastfed <8 weeks			Breastfed 8+ weeks			Weighted Total Responses (3-Yr Avg)
	#	%	C.I.(95%)	#	%	C.I.(95%)	#
<b>Yes</b>	3,300	59.3	57.0 - 61.6	2,200	40.7	38.4 - 43.0	5,500
<b>No</b>	4,400	56.0	53.9 - 58.2	3,400	44.0	41.8 - 46.1	7,800