

PRAMS Health Indicator Report - Breastfeeding (exclusive) duration (grouped), among initiators- for the State of Hawaii, for the Year(s) 2000;2001;2002;2003;2004;2005;2006;2007;2008;2009;2010;2011;2012;2013

PRAMS Health Indicator Report - Breastfeeding (exclusive) duration (grouped), among initiators- by State;County;DOH Race-Ethnicity;PRAMS Age Group;Infant Gender;Married;Poverty Level;Income (2000-2003);Income (2004-2011);Income (2012+);Birthweight;Smoke 3rd Trimester;Smoke Before Pregnant;WIC During Pregnancy, for the Year(s) 2000;2001;2002;2003;2004;2005;2006;2007;2008;2009;2010;2011;2012;2013

Note: Weighted responses, rounded to the nearest hundred; n/r (Not Reportable) - If the unweighted total responses for a dimension (row) is <30 that row will not be shown

The trend analysis section shows the trend for the selected health variable over selected years in a table and a graph. Weighted Total Responses: This number is a weighted representation of the mothers of babies delivered in a given year, who responded to a particular question in the survey. For most questions this will be the mothers of all babies delivered in a given year. For some secondary questions only a subset of the population was asked the question. For example, all survey participants were asked if they smoked during pregnancy, but only those who answered yes were asked how many cigarettes a day. If a dimension value is unknown for a particular survey record, that record will not be included in the counts for that particular dimension.

Note: Data collection for household income changed in 2004 and again in 2012, so there are three different income dimensions, depending on the year.

Below are the indicators included in this report and the long description for each indicator.

PRAMS Health Indicator	Health Indicator Description
Breastfeeding (exclusive) duration (grouped), among initiators	Breastfeeding (exclusive) duration (grouped), among initiators

Suggested citation:

Hawaii Health Data Warehouse, Hawaii State Department of Health, Pregnancy Risk Assessment Monitoring System, (report title and years), Report Created: 2/13/17

For documentation on other terms and coding in this report, please go to the following links:

[Click here to access PRAMS documentation](#)

[Click here to access DOH-Race Ethnicity coding](#)

[Click here to access The Hawai'i Data Guide](#)

**For questions about this report, please contact
The Hawai'i Health Data Warehouse**

profiles@hhdw.org

(855) 946-5899 x15

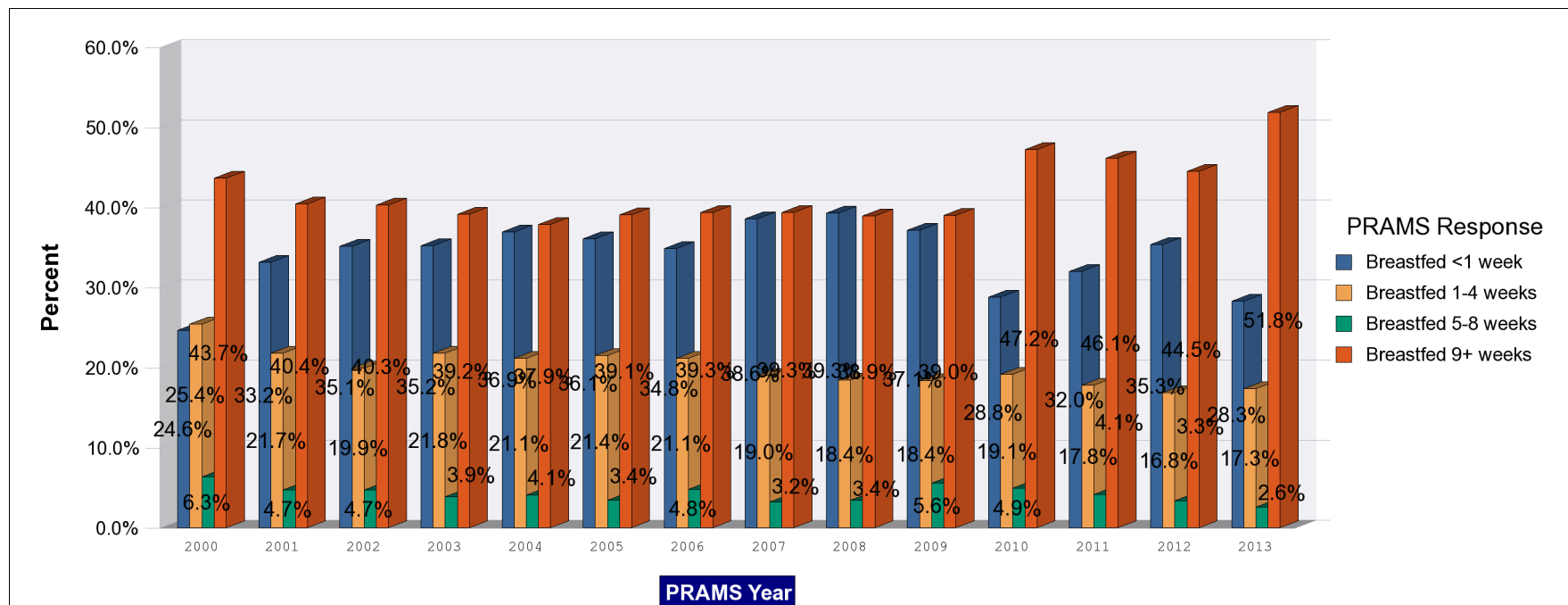
PRAMS Health Indicator Report - Breastfeeding (exclusive) duration (grouped), among initiators- for the State of Hawaii, for the Year(s) 2000;2001;2002;2003;2004;2005;2006;2007;2008;2009;2010;2011;2012;2013

Note: Weighted responses, rounded to the nearest hundred; n/r (Not Reportable) - If the unweighted total responses for a dimension (row) is <30 that row will not be shown

Year	Breastfed <1 week			Breastfed 1-4 weeks			Breastfed 5-8 weeks			Breastfed 9+ weeks			Weighted Total Responses
	#	%	C.I.(95%)	#	%	C.I.(95%)	#	%	C.I.(95%)	#	%	C.I.(95%)	#
2000	2,900	24.6	22.4 - 27.0	3,000	25.4	23.2 - 27.7	800	6.3	5.2 - 7.7	5,200	43.7	41.1 - 46.3	11,900
2001	4,600	33.2	30.9 - 35.5	3,000	21.7	19.8 - 23.8	700	4.7	3.7 - 5.9	5,700	40.4	38.0 - 42.8	14,000
2002	5,000	35.1	32.2 - 38.1	2,800	19.9	17.6 - 22.4	700	4.7	3.6 - 6.2	5,800	40.3	37.4 - 43.3	14,300
2003	5,100	35.2	32.4 - 38.1	3,200	21.8	19.4 - 24.3	600	3.9	2.9 - 5.2	5,700	39.2	36.3 - 42.0	14,600
2004	5,700	36.9	34.8 - 39.2	3,300	21.1	19.3 - 23.1	600	4.1	3.2 - 5.1	5,900	37.9	35.7 - 40.1	15,600
2005	5,500	36.1	33.7 - 38.5	3,300	21.4	19.4 - 23.6	500	3.4	2.6 - 4.4	5,900	39.1	36.7 - 41.5	15,200
2006	5,600	34.8	32.4 - 37.3	3,400	21.1	19.0 - 23.3	800	4.8	3.8 - 6.0	6,300	39.3	36.8 - 41.9	16,000
2007	6,300	38.6	36.2 - 41.0	3,100	19.0	17.1 - 21.0	500	3.2	2.4 - 4.2	6,400	39.3	36.9 - 41.8	16,400
2008	6,500	39.3	36.9 - 41.7	3,100	18.4	16.5 - 20.4	600	3.4	2.6 - 4.5	6,500	38.9	36.5 - 41.3	16,600
2009	6,100	37.1	33.9 - 40.3	3,000	18.4	15.9 - 21.1	900	5.6	4.3 - 7.3	6,400	39.0	35.8 - 42.2	16,500
2010	4,900	28.8	25.9 - 31.8	3,200	19.1	16.6 - 22.0	800	4.9	3.7 - 6.6	8,000	47.2	43.9 - 50.5	16,900
2011	5,500	32.0	29.0 - 35.2	3,100	17.8	15.3 - 20.5	700	4.1	3.0 - 5.7	7,900	46.1	42.8 - 49.5	17,200
2012	6,000	35.3	32.1 - 38.6	2,800	16.8	14.4 - 19.5	600	3.3	2.3 - 4.9	7,500	44.5	41.2 - 47.9	16,900
2013	4,700	28.3	25.1 - 31.6	2,900	17.3	14.7 - 20.3	400	2.6	1.6 - 4.1	8,600	51.8	48.2 - 55.5	16,700

PRAMS Health Indicator Report - Breastfeeding (exclusive) duration (grouped), among initiators- for the State of Hawaii, for the Year(s) 2000;2001;2002;2003;2004;2005;2006;2007;2008;2009;2010;2011;2012;2013

Note: Weighted responses, rounded to the nearest hundred; n/r (Not Reportable) - If the unweighted total responses for a dimension (row) is <30 that row will not be shown



**PRAMS Health Indicator Report - Breastfeeding (exclusive) duration (grouped), among initiators- by State;County;DOH
Race-Ethnicity;PRAMS Age Group;Infant Gender;Married;Poverty Level;Income (2000-2003);Income
(2004-2011);Income (2012+);Birthweight;Smoke 3rd Trimester;Smoke Before Pregnant;WIC During Pregnancy, for the
Year(s) 2000;2001;2002;2003;2004;2005;2006;2007;2008;2009;2010;2011;2012;2013**

Note: Weighted responses, rounded to the nearest hundred; n/r (Not Reportable) - If the unweighted total responses for a dimension (row) is <30 that row will not be shown

Year: 2013

State	Breastfed <1 week			Breastfed 1-4 weeks			Breastfed 5-8 weeks			Breastfed 9+ weeks			Weighted Total Responses
	#	%	C.I.(95%)	#	%	C.I.(95%)	#	%	C.I.(95%)	#	%	C.I.(95%)	#
Totals	4,700	28.3	25.1 - 31.6	2,900	17.3	14.7 - 20.3	400	2.6	1.6 - 4.1	8,600	51.8	48.2 - 55.5	16,700

County	Breastfed <1 week			Breastfed 1-4 weeks			Breastfed 5-8 weeks			Breastfed 9+ weeks			Weighted Total Responses
	#	%	C.I.(95%)	#	%	C.I.(95%)	#	%	C.I.(95%)	#	%	C.I.(95%)	#
Hawaii	700	32.4	27.0 - 38.2	300	14.2	10.5 - 18.9	<50	1.7	0.7 - 4.2	1,100	51.8	45.8 - 57.7	2,000
Honolulu	3,300	27.1	23.0 - 31.6	2,200	18.2	14.7 - 22.3	300	2.7	1.5 - 4.8	6,300	52.0	47.1 - 56.9	12,000
Kauai	200	19.5	15.5 - 24.3	100	19.4	15.4 - 24.1	<50	2.2	1.0 - 4.5	500	58.9	53.4 - 64.3	800
Maui	600	35.3	30.0 - 41.1	300	14.2	10.6 - 18.8	100	2.8	1.4 - 5.6	900	47.6	41.9 - 53.5	1,800

PRAMS Health Indicator Report - Breastfeeding (exclusive) duration (grouped), among initiators- by State;County;DOH Race-Ethnicity;PRAMS Age Group;Infant Gender;Married;Poverty Level;Income (2000-2003);Income (2004-2011);Income (2012+);Birthweight;Smoke 3rd Trimester;Smoke Before Pregnant;WIC During Pregnancy, for the Year(s) 2000;2001;2002;2003;2004;2005;2006;2007;2008;2009;2010;2011;2012;2013

Note: Weighted responses, rounded to the nearest hundred; n/r (Not Reportable) - If the unweighted total responses for a dimension (row) is <30 that row will not be shown

Year: 2013

DOH Race-Ethnicity	Breastfed <1 week			Breastfed 1-4 weeks			Breastfed 5-8 weeks			Breastfed 9+ weeks			Weighted Total Responses
	#	%	C.I.(95%)	#	%	C.I.(95%)	#	%	C.I.(95%)	#	%	C.I.(95%)	#
Caucasian	900	19.4	14.3 - 25.8	700	14.5	10.1 - 20.3	100	2.2	0.9 - 5.5	2,900	63.9	56.7 - 70.4	4,600
Native Hawaiian	1,300	26.0	21.1 - 31.6	1,200	24.1	18.8 - 30.3	100	1.7	0.7 - 4.3	2,300	48.2	41.8 - 54.6	4,800
Chinese	400	50.0	33.0 - 67.0	200	19.6	9.1 - 37.3	<50	0.9	0.3 - 3.0	200	29.4	16.1 - 47.5	800
Filipino	1,100	41.5	32.9 - 50.7	400	13.9	9.0 - 20.8	100	4.5	1.7 - 11.2	1,100	40.1	31.4 - 49.6	2,700
Japanese	400	24.1	15.8 - 35.1	300	16.5	9.4 - 27.4	<50	2.2	0.4 - 10.0	1,000	57.2	45.4 - 68.3	1,700
Other	600	31.2	22.1 - 42.0	300	12.1	6.8 - 20.8	100	3.8	1.2 - 11.3	1,100	52.9	42.1 - 63.4	2,100

PRAMS Age Group	Breastfed <1 week			Breastfed 1-4 weeks			Breastfed 5-8 weeks			Breastfed 9+ weeks			Weighted Total Responses
	#	%	C.I.(95%)	#	%	C.I.(95%)	#	%	C.I.(95%)	#	%	C.I.(95%)	#
<20	300	42.6	27.7 - 58.9	100	10.1	3.8 - 24.0	<50	1.9	0.4 - 8.1	300	45.4	30.3 - 61.5	800
20-24	800	20.0	15.0 - 26.1	600	15.8	10.8 - 22.5	200	4.0	1.8 - 8.6	2,300	60.2	52.5 - 67.5	3,900
25-34	2,600	28.1	23.8 - 32.8	1,700	18.5	14.9 - 22.7	200	2.0	1.0 - 4.1	4,700	51.4	46.4 - 56.4	9,100
35+	1,100	35.9	28.4 - 44.1	500	17.7	12.3 - 24.9	100	2.5	0.8 - 7.5	1,300	43.9	35.8 - 52.3	3,000

**PRAMS Health Indicator Report - Breastfeeding (exclusive) duration (grouped), among initiators- by State;County;DOH
Race-Ethnicity;PRAMS Age Group;Infant Gender;Married;Poverty Level;Income (2000-2003);Income
(2004-2011);Income (2012+);Birthweight;Smoke 3rd Trimester;Smoke Before Pregnant;WIC During Pregnancy, for the
Year(s) 2000;2001;2002;2003;2004;2005;2006;2007;2008;2009;2010;2011;2012;2013**

Note: Weighted responses, rounded to the nearest hundred; n/r (Not Reportable) - If the unweighted total responses for a dimension (row) is <30 that row will not be shown

Year: 2013

Infant Gender	Breastfed <1 week			Breastfed 1-4 weeks			Breastfed 5-8 weeks			Breastfed 9+ weeks			Weighted Total Responses
	#	%	C.I.(95%)	#	%	C.I.(95%)	#	%	C.I.(95%)	#	%	C.I.(95%)	#
Male	2,100	26.5	22.3 - 31.2	1,200	14.6	11.3 - 18.6	200	2.2	1.1 - 4.2	4,600	56.7	51.6 - 61.7	8,100
Female	2,600	29.9	25.4 - 34.8	1,700	19.9	16.1 - 24.5	300	2.9	1.6 - 5.5	4,000	47.2	42.0 - 52.4	8,600

Married	Breastfed <1 week			Breastfed 1-4 weeks			Breastfed 5-8 weeks			Breastfed 9+ weeks			Weighted Total Responses
	#	%	C.I.(95%)	#	%	C.I.(95%)	#	%	C.I.(95%)	#	%	C.I.(95%)	#
Yes	2,700	25.2	21.4 - 29.4	2,000	18.2	14.8 - 22.1	300	2.4	1.3 - 4.3	5,800	54.2	49.5 - 58.9	10,700
No	2,000	33.8	28.5 - 39.4	900	15.8	12.1 - 20.4	200	3.0	1.5 - 5.9	2,800	47.4	41.6 - 53.3	5,900

Poverty Level	Breastfed <1 week			Breastfed 1-4 weeks			Breastfed 5-8 weeks			Breastfed 9+ weeks			Weighted Total Responses
	#	%	C.I.(95%)	#	%	C.I.(95%)	#	%	C.I.(95%)	#	%	C.I.(95%)	#
0-130%	1,800	30.1	25.0 - 35.8	900	15.1	11.3 - 19.8	200	2.8	1.3 - 6.2	3,100	52.0	46.0 - 57.9	5,900
131-185%	800	34.9	26.0 - 45.1	400	16.5	10.5 - 25.2	100	4.0	1.3 - 11.4	1,000	44.5	34.8 - 54.7	2,200
186+%	1,700	25.4	20.8 - 30.6	1,300	18.8	14.6 - 23.9	100	1.9	0.8 - 4.2	3,600	53.9	48.0 - 59.6	6,700

**PRAMS Health Indicator Report - Breastfeeding (exclusive) duration (grouped), among initiators- by State;County;DOH
Race-Ethnicity;PRAMS Age Group;Infant Gender;Married;Poverty Level;Income (2000-2003);Income
(2004-2011);Income (2012+);Birthweight;Smoke 3rd Trimester;Smoke Before Pregnant;WIC During Pregnancy, for the
Year(s) 2000;2001;2002;2003;2004;2005;2006;2007;2008;2009;2010;2011;2012;2013**

Note: Weighted responses, rounded to the nearest hundred; n/r (Not Reportable) - If the unweighted total responses for a dimension (row) is <30 that row will not be shown

Year: 2013

Income (2012+)	Breastfed <1 week			Breastfed 1-4 weeks			Breastfed 5-8 weeks			Breastfed 9+ weeks			Weighted Total Responses
	#	%	C.I.(95%)	#	%	C.I.(95%)	#	%	C.I.(95%)	#	%	C.I.(95%)	#
<=\$17,000	1,100	31.0	24.6 - 38.2	600	16.5	11.6 - 22.8	100	1.9	0.7 - 5.3	1,900	50.6	43.1 - 58.0	3,700
\$17,001-\$26,000	600	29.3	21.0 - 39.3	300	13.8	8.3 - 22.1	100	3.8	1.2 - 11.5	1,200	53.1	42.9 - 63.1	2,200
\$26,001-\$51,000	1,100	31.7	24.8 - 39.6	500	15.3	10.4 - 22.1	100	3.6	1.4 - 8.6	1,700	49.4	41.4 - 57.4	3,500
>=\$51,001	1,400	24.6	19.7 - 30.3	1,100	19.5	14.9 - 25.1	100	2.2	1.0 - 4.9	3,100	53.7	47.4 - 59.9	5,800

Birthweight	Breastfed <1 week			Breastfed 1-4 weeks			Breastfed 5-8 weeks			Breastfed 9+ weeks			Weighted Total Responses
	#	%	C.I.(95%)	#	%	C.I.(95%)	#	%	C.I.(95%)	#	%	C.I.(95%)	#
Low birth weight	500	43.1	37.8 - 48.5	200	20.8	16.9 - 25.3	<50	2.5	1.4 - 4.5	400	33.6	28.6 - 38.9	1,100
Normal birth weight	4,200	27.2	23.9 - 30.8	2,700	17.1	14.3 - 20.3	400	2.6	1.6 - 4.2	8,300	53.1	49.2 - 57.0	15,500

Smoke 3rd Trimester	Breastfed <1 week			Breastfed 1-4 weeks			Breastfed 5-8 weeks			Breastfed 9+ weeks			Weighted Total Responses
	#	%	C.I.(95%)	#	%	C.I.(95%)	#	%	C.I.(95%)	#	%	C.I.(95%)	#
Yes	300	30.9	18.7 - 46.5	100	14.8	7.3 - 27.9	<50	1.3	0.3 - 4.9	400	52.9	38.0 - 67.4	800
No	4,400	28.2	25.0 - 31.7	2,700	17.5	14.8 - 20.7	400	2.7	1.7 - 4.3	8,000	51.6	47.7 - 55.4	15,400

**PRAMS Health Indicator Report - Breastfeeding (exclusive) duration (grouped), among initiators- by State;County;DOH
Race-Ethnicity;PRAMS Age Group;Infant Gender;Married;Poverty Level;Income (2000-2003);Income
(2004-2011);Income (2012+);Birthweight;Smoke 3rd Trimester;Smoke Before Pregnant;WIC During Pregnancy, for the
Year(s) 2000;2001;2002;2003;2004;2005;2006;2007;2008;2009;2010;2011;2012;2013**

Note: Weighted responses, rounded to the nearest hundred; n/r (Not Reportable) - If the unweighted total responses for a dimension (row) is <30 that row will not be shown

Year: 2013

Smoke Before Pregnant	Breastfed <1 week			Breastfed 1-4 weeks			Breastfed 5-8 weeks			Breastfed 9+ weeks			Weighted Total Responses
	#	%	C.I.(95%)	#	%	C.I.(95%)	#	%	C.I.(95%)	#	%	C.I.(95%)	#
Yes	800	27.7	20.6 - 36.0	400	15.4	10.2 - 22.6	100	3.1	1.0 - 9.0	1,500	53.8	44.9 - 62.4	2,800
No	3,800	28.5	25.0 - 32.3	2,400	17.8	14.8 - 21.2	300	2.5	1.5 - 4.2	6,900	51.2	47.1 - 55.3	13,400

WIC During Pregnancy	Breastfed <1 week			Breastfed 1-4 weeks			Breastfed 5-8 weeks			Breastfed 9+ weeks			Weighted Total Responses
	#	%	C.I.(95%)	#	%	C.I.(95%)	#	%	C.I.(95%)	#	%	C.I.(95%)	#
Yes	2,400	34.4	29.4 - 39.8	1,200	16.6	12.9 - 21.1	200	3.1	1.6 - 5.9	3,300	46.0	40.5 - 51.5	7,100
No	2,200	23.7	19.9 - 28.0	1,700	17.9	14.4 - 22.1	200	2.2	1.2 - 4.2	5,300	56.1	51.2 - 60.9	9,500

**PRAMS Health Indicator Report - Breastfeeding (exclusive) duration (grouped), among initiators- by State;County;DOH
Race-Ethnicity;PRAMS Age Group;Infant Gender;Married;Poverty Level;Income (2000-2003);Income
(2004-2011);Income (2012+);Birthweight;Smoke 3rd Trimester;Smoke Before Pregnant;WIC During Pregnancy, for the
Year(s) 2000;2001;2002;2003;2004;2005;2006;2007;2008;2009;2010;2011;2012;2013**

Note: Weighted responses, rounded to the nearest hundred; n/r (Not Reportable) - If the unweighted total responses for a dimension (row) is <30 that row will not be shown

Year: 2012

State	Breastfed <1 week			Breastfed 1-4 weeks			Breastfed 5-8 weeks			Breastfed 9+ weeks			Weighted Total Responses
	#	%	C.I.(95%)	#	%	C.I.(95%)	#	%	C.I.(95%)	#	%	C.I.(95%)	#
Totals	6,000	35.3	32.1 - 38.6	2,800	16.8	14.4 - 19.5	600	3.3	2.3 - 4.9	7,500	44.5	41.2 - 47.9	16,900

County	Breastfed <1 week			Breastfed 1-4 weeks			Breastfed 5-8 weeks			Breastfed 9+ weeks			Weighted Total Responses
	#	%	C.I.(95%)	#	%	C.I.(95%)	#	%	C.I.(95%)	#	%	C.I.(95%)	#
Hawaii	700	33.2	28.2 - 38.7	400	17.4	13.6 - 22.0	100	4.5	2.7 - 7.6	900	44.8	39.4 - 50.3	2,100
Honolulu	4,300	35.6	31.4 - 40.1	2,000	16.9	13.8 - 20.6	400	3.4	2.0 - 5.6	5,300	44.1	39.7 - 48.7	12,100
Kauai	200	31.1	25.2 - 37.6	100	12.7	8.9 - 17.8	<50	2.8	1.3 - 5.9	400	53.5	46.8 - 60.1	800
Maui	700	37.3	32.5 - 42.5	300	17.5	13.8 - 21.9	<50	2.1	1.1 - 4.1	800	43.1	38.1 - 48.3	1,900

PRAMS Health Indicator Report - Breastfeeding (exclusive) duration (grouped), among initiators- by State;County;DOH Race-Ethnicity;PRAMS Age Group;Infant Gender;Married;Poverty Level;Income (2000-2003);Income (2004-2011);Income (2012+);Birthweight;Smoke 3rd Trimester;Smoke Before Pregnant;WIC During Pregnancy, for the Year(s) 2000;2001;2002;2003;2004;2005;2006;2007;2008;2009;2010;2011;2012;2013

Note: Weighted responses, rounded to the nearest hundred; n/r (Not Reportable) - If the unweighted total responses for a dimension (row) is <30 that row will not be shown

Year: 2012

DOH Race-Ethnicity	Breastfed <1 week			Breastfed 1-4 weeks			Breastfed 5-8 weeks			Breastfed 9+ weeks			Weighted Total Responses
	#	%	C.I.(95%)	#	%	C.I.(95%)	#	%	C.I.(95%)	#	%	C.I.(95%)	#
Caucasian	800	20.7	15.7 - 26.8	700	17.7	13.0 - 23.7	100	1.8	0.5 - 5.6	2,300	59.8	52.9 - 66.4	3,900
Native Hawaiian	1,600	33.5	28.0 - 39.6	1,000	22.1	17.3 - 27.9	200	5.1	2.9 - 8.9	1,900	39.2	33.4 - 45.5	4,700
Chinese	400	43.6	30.0 - 58.3	100	6.9	2.9 - 15.4	<50	3.2	0.5 - 19.0	500	46.3	32.5 - 60.7	1,000
Filipino	1,300	42.3	34.6 - 50.4	600	20.5	14.7 - 27.8	200	5.1	2.3 - 10.7	1,000	32.2	25.1 - 40.2	3,000
Japanese	700	49.3	38.0 - 60.8	100	9.8	4.7 - 19.3	<50	0.3	0.0 - 1.5	600	40.6	29.9 - 52.2	1,500
Other	1,100	40.8	32.4 - 49.8	300	9.9	5.8 - 16.3	100	2.4	0.8 - 6.5	1,300	47.0	38.2 - 55.9	2,700

PRAMS Age Group	Breastfed <1 week			Breastfed 1-4 weeks			Breastfed 5-8 weeks			Breastfed 9+ weeks			Weighted Total Responses
	#	%	C.I.(95%)	#	%	C.I.(95%)	#	%	C.I.(95%)	#	%	C.I.(95%)	#
<20	500	51.7	37.6 - 65.5	200	18.6	9.4 - 33.4	<50	2.8	1.0 - 7.9	300	26.9	16.4 - 40.7	1,000
20-24	1,100	30.8	24.4 - 38.1	700	18.6	13.4 - 25.3	200	5.8	3.0 - 11.0	1,600	44.7	37.4 - 52.4	3,500
25-34	3,100	32.6	28.5 - 37.0	1,700	17.5	14.3 - 21.2	300	3.3	1.9 - 5.6	4,400	46.6	42.1 - 51.1	9,500
35+	1,300	44.1	36.3 - 52.2	400	12.0	8.0 - 17.7	<50	0.6	0.2 - 1.7	1,300	43.3	35.6 - 51.3	2,900

**PRAMS Health Indicator Report - Breastfeeding (exclusive) duration (grouped), among initiators- by State;County;DOH
Race-Ethnicity;PRAMS Age Group;Infant Gender;Married;Poverty Level;Income (2000-2003);Income
(2004-2011);Income (2012+);Birthweight;Smoke 3rd Trimester;Smoke Before Pregnant;WIC During Pregnancy, for the
Year(s) 2000;2001;2002;2003;2004;2005;2006;2007;2008;2009;2010;2011;2012;2013**

Note: Weighted responses, rounded to the nearest hundred; n/r (Not Reportable) - If the unweighted total responses for a dimension (row) is <30 that row will not be shown

Year: 2012

Infant Gender	Breastfed <1 week			Breastfed 1-4 weeks			Breastfed 5-8 weeks			Breastfed 9+ weeks			Weighted Total Responses
	#	%	C.I.(95%)	#	%	C.I.(95%)	#	%	C.I.(95%)	#	%	C.I.(95%)	#
Male	3,000	35.8	31.3 - 40.6	1,400	17.1	13.8 - 21.0	300	3.2	1.8 - 5.7	3,700	43.8	39.1 - 48.7	8,400
Female	2,900	34.8	30.4 - 39.5	1,400	16.5	13.3 - 20.5	300	3.5	2.1 - 5.8	3,800	45.2	40.5 - 50.0	8,400

Married	Breastfed <1 week			Breastfed 1-4 weeks			Breastfed 5-8 weeks			Breastfed 9+ weeks			Weighted Total Responses
	#	%	C.I.(95%)	#	%	C.I.(95%)	#	%	C.I.(95%)	#	%	C.I.(95%)	#
Yes	3,500	33.4	29.4 - 37.7	1,800	17.5	14.4 - 21.1	400	3.4	2.0 - 5.6	4,800	45.7	41.4 - 50.0	10,500
No	2,400	38.4	33.3 - 43.9	1,000	15.8	12.2 - 20.1	200	3.2	1.8 - 5.7	2,700	42.6	37.3 - 48.0	6,400

Poverty Level	Breastfed <1 week			Breastfed 1-4 weeks			Breastfed 5-8 weeks			Breastfed 9+ weeks			Weighted Total Responses
	#	%	C.I.(95%)	#	%	C.I.(95%)	#	%	C.I.(95%)	#	%	C.I.(95%)	#
0-130%	2,300	39.7	34.3 - 45.5	900	15.8	12.1 - 20.2	200	3.0	1.5 - 5.7	2,400	41.5	36.1 - 47.2	5,900
131-185%	900	32.7	25.4 - 41.0	700	24.4	17.6 - 32.6	200	7.3	3.8 - 13.5	1,000	35.6	28.0 - 44.1	2,800
186+%	2,200	33.6	28.7 - 38.9	900	13.6	10.3 - 17.7	100	1.6	0.6 - 3.7	3,400	51.2	45.8 - 56.6	6,600

**PRAMS Health Indicator Report - Breastfeeding (exclusive) duration (grouped), among initiators- by State;County;DOH
Race-Ethnicity;PRAMS Age Group;Infant Gender;Married;Poverty Level;Income (2000-2003);Income
(2004-2011);Income (2012+);Birthweight;Smoke 3rd Trimester;Smoke Before Pregnant;WIC During Pregnancy, for the
Year(s) 2000;2001;2002;2003;2004;2005;2006;2007;2008;2009;2010;2011;2012;2013**

Note: Weighted responses, rounded to the nearest hundred; n/r (Not Reportable) - If the unweighted total responses for a dimension (row) is <30 that row will not be shown

Year: 2012

Income (2012+)	Breastfed <1 week			Breastfed 1-4 weeks			Breastfed 5-8 weeks			Breastfed 9+ weeks			Weighted Total Responses
	#	%	C.I.(95%)	#	%	C.I.(95%)	#	%	C.I.(95%)	#	%	C.I.(95%)	#
<=\$17,000	1,600	43.2	36.2 - 50.5	600	14.9	10.6 - 20.6	<50	1.1	0.3 - 3.8	1,500	40.8	33.8 - 48.1	3,800
\$17,001-\$26,000	700	32.9	24.7 - 42.2	400	17.0	11.0 - 25.5	100	6.3	3.1 - 12.5	900	43.7	34.8 - 53.1	2,100
\$26,001-\$51,000	1,300	32.1	26.0 - 38.9	900	21.4	16.1 - 27.9	200	5.5	2.8 - 10.3	1,600	41.0	34.3 - 48.0	4,000
>=\$51,001	1,900	34.4	29.0 - 40.2	800	14.4	10.8 - 19.1	100	1.7	0.6 - 4.3	2,800	49.5	43.7 - 55.3	5,600

Birthweight	Breastfed <1 week			Breastfed 1-4 weeks			Breastfed 5-8 weeks			Breastfed 9+ weeks			Weighted Total Responses
	#	%	C.I.(95%)	#	%	C.I.(95%)	#	%	C.I.(95%)	#	%	C.I.(95%)	#
Low birth weight	500	45.7	40.0 - 51.6	200	19.3	14.9 - 24.7	<50	1.4	0.5 - 3.9	400	33.6	28.4 - 39.2	1,100
Normal birth weight	5,400	34.6	31.3 - 38.2	2,600	16.5	14.0 - 19.4	500	3.5	2.3 - 5.2	7,100	45.4	41.8 - 49.0	15,700

Smoke 3rd Trimester	Breastfed <1 week			Breastfed 1-4 weeks			Breastfed 5-8 weeks			Breastfed 9+ weeks			Weighted Total Responses
	#	%	C.I.(95%)	#	%	C.I.(95%)	#	%	C.I.(95%)	#	%	C.I.(95%)	#
Yes	200	29.7	17.3 - 46.1	300	37.7	22.8 - 55.3	0	0.0	-	200	32.6	19.7 - 48.7	700
No	5,600	35.7	32.3 - 39.1	2,500	16.1	13.7 - 18.8	600	3.5	2.4 - 5.2	7,000	44.7	41.2 - 48.2	15,600

**PRAMS Health Indicator Report - Breastfeeding (exclusive) duration (grouped), among initiators- by State;County;DOH
Race-Ethnicity;PRAMS Age Group;Infant Gender;Married;Poverty Level;Income (2000-2003);Income
(2004-2011);Income (2012+);Birthweight;Smoke 3rd Trimester;Smoke Before Pregnant;WIC During Pregnancy, for the
Year(s) 2000;2001;2002;2003;2004;2005;2006;2007;2008;2009;2010;2011;2012;2013**

Note: Weighted responses, rounded to the nearest hundred; n/r (Not Reportable) - If the unweighted total responses for a dimension (row) is <30 that row will not be shown

Year: 2012

Smoke Before Pregnant	Breastfed <1 week			Breastfed 1-4 weeks			Breastfed 5-8 weeks			Breastfed 9+ weeks			Weighted Total Responses
	#	%	C.I.(95%)	#	%	C.I.(95%)	#	%	C.I.(95%)	#	%	C.I.(95%)	#
Yes	700	28.6	21.7 - 36.6	600	22.1	15.6 - 30.3	100	3.5	1.4 - 8.6	1,200	45.8	37.6 - 54.4	2,600
No	5,000	36.7	33.1 - 40.4	2,200	16.0	13.5 - 19.0	500	3.4	2.2 - 5.2	6,000	43.9	40.2 - 47.7	13,700

WIC During Pregnancy	Breastfed <1 week			Breastfed 1-4 weeks			Breastfed 5-8 weeks			Breastfed 9+ weeks			Weighted Total Responses
	#	%	C.I.(95%)	#	%	C.I.(95%)	#	%	C.I.(95%)	#	%	C.I.(95%)	#
Yes	3,000	39.6	34.7 - 44.7	1,300	17.1	13.7 - 21.3	300	3.9	2.3 - 6.3	2,900	39.4	34.5 - 44.4	7,500
No	3,000	32.0	28.0 - 36.4	1,500	16.3	13.2 - 20.0	300	2.9	1.6 - 5.3	4,500	48.7	44.2 - 53.3	9,300

**PRAMS Health Indicator Report - Breastfeeding (exclusive) duration (grouped), among initiators- by State;County;DOH
Race-Ethnicity;PRAMS Age Group;Infant Gender;Married;Poverty Level;Income (2000-2003);Income
(2004-2011);Income (2012+);Birthweight;Smoke 3rd Trimester;Smoke Before Pregnant;WIC During Pregnancy, for the
Year(s) 2000;2001;2002;2003;2004;2005;2006;2007;2008;2009;2010;2011;2012;2013**

Note: Weighted responses, rounded to the nearest hundred; n/r (Not Reportable) - If the unweighted total responses for a dimension (row) is <30 that row will not be shown

Year: 2011

State	Breastfed <1 week			Breastfed 1-4 weeks			Breastfed 5-8 weeks			Breastfed 9+ weeks			Weighted Total Responses
	#	%	C.I.(95%)	#	%	C.I.(95%)	#	%	C.I.(95%)	#	%	C.I.(95%)	#
Totals	5,500	32.0	29.0 - 35.2	3,100	17.8	15.3 - 20.5	700	4.1	3.0 - 5.7	7,900	46.1	42.8 - 49.5	17,200

County	Breastfed <1 week			Breastfed 1-4 weeks			Breastfed 5-8 weeks			Breastfed 9+ weeks			Weighted Total Responses
	#	%	C.I.(95%)	#	%	C.I.(95%)	#	%	C.I.(95%)	#	%	C.I.(95%)	#
Hawaii	800	33.8	29.0 - 39.0	400	17.1	13.4 - 21.5	100	3.8	2.2 - 6.4	1,000	45.3	40.1 - 50.6	2,200
Honolulu	4,000	32.2	28.1 - 36.4	2,300	18.6	15.3 - 22.4	500	4.2	2.7 - 6.4	5,600	45.1	40.7 - 49.6	12,300
Kauai	200	26.2	21.0 - 32.3	100	17.8	13.4 - 23.3	<50	3.3	1.7 - 6.6	400	52.6	46.2 - 59.0	800
Maui	600	31.4	27.2 - 36.1	200	12.9	10.0 - 16.5	100	4.3	2.7 - 6.7	900	51.3	46.6 - 56.1	1,800

PRAMS Health Indicator Report - Breastfeeding (exclusive) duration (grouped), among initiators- by State;County;DOH Race-Ethnicity;PRAMS Age Group;Infant Gender;Married;Poverty Level;Income (2000-2003);Income (2004-2011);Income (2012+);Birthweight;Smoke 3rd Trimester;Smoke Before Pregnant;WIC During Pregnancy, for the Year(s) 2000;2001;2002;2003;2004;2005;2006;2007;2008;2009;2010;2011;2012;2013

Note: Weighted responses, rounded to the nearest hundred; n/r (Not Reportable) - If the unweighted total responses for a dimension (row) is <30 that row will not be shown

Year: 2011

DOH Race-Ethnicity	Breastfed <1 week			Breastfed 1-4 weeks			Breastfed 5-8 weeks			Breastfed 9+ weeks			Weighted Total Responses
	#	%	C.I.(95%)	#	%	C.I.(95%)	#	%	C.I.(95%)	#	%	C.I.(95%)	#
Caucasian	900	20.5	15.8 - 26.3	800	19.0	14.1 - 25.1	200	3.8	1.9 - 7.5	2,500	56.7	50.0 - 63.1	4,300
Native Hawaiian	1,600	33.4	28.1 - 39.2	1,000	21.2	16.6 - 26.7	300	5.9	3.4 - 9.9	1,900	39.5	33.8 - 45.5	4,900
Chinese	300	39.3	23.7 - 57.3	100	11.2	4.3 - 26.2	<50	1.7	0.6 - 4.9	300	47.8	31.2 - 65.0	700
Filipino	1,200	41.3	33.8 - 49.3	600	19.0	13.7 - 25.8	100	4.8	2.6 - 8.8	1,000	34.8	27.8 - 42.6	3,000
Japanese	800	42.5	32.5 - 53.3	300	14.2	7.8 - 24.5	<50	1.7	0.4 - 7.9	700	41.5	31.7 - 52.1	1,800
Other	700	28.5	21.0 - 37.4	300	11.8	6.8 - 19.6	100	2.7	0.9 - 7.7	1,400	57.0	47.6 - 65.9	2,500

PRAMS Age Group	Breastfed <1 week			Breastfed 1-4 weeks			Breastfed 5-8 weeks			Breastfed 9+ weeks			Weighted Total Responses
	#	%	C.I.(95%)	#	%	C.I.(95%)	#	%	C.I.(95%)	#	%	C.I.(95%)	#
<20	300	36.7	25.5 - 49.6	200	23.8	14.4 - 36.7	<50	2.6	0.8 - 8.0	300	36.9	25.3 - 50.1	900
20-24	1,300	33.0	26.7 - 39.9	900	23.5	17.8 - 30.3	200	5.5	2.9 - 10.2	1,500	38.1	31.5 - 45.1	4,000
25-34	2,800	30.1	26.1 - 34.4	1,500	16.1	12.9 - 19.8	400	4.0	2.6 - 6.2	4,600	49.8	45.3 - 54.3	9,300
35+	1,100	35.3	28.2 - 43.1	400	13.6	9.0 - 20.1	100	2.9	1.1 - 7.2	1,400	48.2	40.5 - 56.1	3,000

**PRAMS Health Indicator Report - Breastfeeding (exclusive) duration (grouped), among initiators- by State;County;DOH
Race-Ethnicity;PRAMS Age Group;Infant Gender;Married;Poverty Level;Income (2000-2003);Income
(2004-2011);Income (2012+);Birthweight;Smoke 3rd Trimester;Smoke Before Pregnant;WIC During Pregnancy, for the
Year(s) 2000;2001;2002;2003;2004;2005;2006;2007;2008;2009;2010;2011;2012;2013**

Note: Weighted responses, rounded to the nearest hundred; n/r (Not Reportable) - If the unweighted total responses for a dimension (row) is <30 that row will not be shown

Year: 2011

Infant Gender	Breastfed <1 week			Breastfed 1-4 weeks			Breastfed 5-8 weeks			Breastfed 9+ weeks			Weighted Total Responses
	#	%	C.I.(95%)	#	%	C.I.(95%)	#	%	C.I.(95%)	#	%	C.I.(95%)	#
Male	2,700	30.3	26.3 - 34.7	1,700	18.7	15.2 - 22.8	300	3.3	2.0 - 5.2	4,200	47.7	43.0 - 52.4	8,800
Female	2,800	33.8	29.4 - 38.4	1,400	16.7	13.4 - 20.7	400	5.0	3.2 - 7.7	3,700	44.5	39.8 - 49.2	8,400

Married	Breastfed <1 week			Breastfed 1-4 weeks			Breastfed 5-8 weeks			Breastfed 9+ weeks			Weighted Total Responses
	#	%	C.I.(95%)	#	%	C.I.(95%)	#	%	C.I.(95%)	#	%	C.I.(95%)	#
Yes	3,200	29.6	25.9 - 33.6	1,800	16.5	13.5 - 19.9	400	3.6	2.3 - 5.7	5,500	50.2	46.0 - 54.5	10,900
No	2,300	36.1	31.0 - 41.4	1,300	19.9	15.8 - 24.9	300	4.9	3.0 - 7.7	2,500	39.1	34.1 - 44.5	6,400

Poverty Level	Breastfed <1 week			Breastfed 1-4 weeks			Breastfed 5-8 weeks			Breastfed 9+ weeks			Weighted Total Responses
	#	%	C.I.(95%)	#	%	C.I.(95%)	#	%	C.I.(95%)	#	%	C.I.(95%)	#
0-130%	2,000	34.2	29.2 - 39.6	1,300	21.4	17.1 - 26.4	200	3.4	1.9 - 5.8	2,400	41.0	35.7 - 46.5	5,900
131-185%	700	26.8	19.8 - 35.3	500	18.0	12.0 - 26.2	100	4.8	2.3 - 9.5	1,300	50.4	41.6 - 59.1	2,600
186+%	2,500	32.5	27.9 - 37.4	1,200	15.1	11.7 - 19.2	300	4.4	2.6 - 7.2	3,700	48.1	43.1 - 53.1	7,700

**PRAMS Health Indicator Report - Breastfeeding (exclusive) duration (grouped), among initiators- by State;County;DOH
Race-Ethnicity;PRAMS Age Group;Infant Gender;Married;Poverty Level;Income (2000-2003);Income
(2004-2011);Income (2012+);Birthweight;Smoke 3rd Trimester;Smoke Before Pregnant;WIC During Pregnancy, for the
Year(s) 2000;2001;2002;2003;2004;2005;2006;2007;2008;2009;2010;2011;2012;2013**

Note: Weighted responses, rounded to the nearest hundred; n/r (Not Reportable) - If the unweighted total responses for a dimension (row) is <30 that row will not be shown

Year: 2011

Income (2004-2011)	Breastfed <1 week			Breastfed 1-4 weeks			Breastfed 5-8 weeks			Breastfed 9+ weeks			Weighted Total Responses
	#	%	C.I.(95%)	#	%	C.I.(95%)	#	%	C.I.(95%)	#	%	C.I.(95%)	#
<\$10,000	1,000	35.4	28.2 - 43.3	700	25.2	18.9 - 32.7	100	2.7	1.1 - 6.5	1,100	36.7	29.5 - 44.6	2,900
\$10,000-\$24,999	900	29.7	23.5 - 36.9	700	22.3	16.3 - 29.6	100	4.2	2.2 - 8.0	1,400	43.7	36.5 - 51.2	3,200
\$25,000-\$49,999	1,300	29.7	23.9 - 36.3	700	17.5	12.8 - 23.5	100	3.4	1.8 - 6.6	2,100	49.3	42.5 - 56.1	4,200
>=\$50,000	2,000	33.7	28.5 - 39.3	700	12.2	8.9 - 16.7	300	5.0	2.9 - 8.6	2,900	49.0	43.3 - 54.8	6,000

Birthweight	Breastfed <1 week			Breastfed 1-4 weeks			Breastfed 5-8 weeks			Breastfed 9+ weeks			Weighted Total Responses
	#	%	C.I.(95%)	#	%	C.I.(95%)	#	%	C.I.(95%)	#	%	C.I.(95%)	#
Low birth weight	600	47.7	42.0 - 53.5	200	14.8	11.0 - 19.5	<50	3.9	2.1 - 7.0	400	33.7	28.5 - 39.2	1,200
Normal birth weight	5,000	30.9	27.7 - 34.3	2,900	18.0	15.3 - 21.0	700	4.1	2.9 - 5.8	7,600	47.0	43.5 - 50.6	16,100

Smoke 3rd Trimester	Breastfed <1 week			Breastfed 1-4 weeks			Breastfed 5-8 weeks			Breastfed 9+ weeks			Weighted Total Responses
	#	%	C.I.(95%)	#	%	C.I.(95%)	#	%	C.I.(95%)	#	%	C.I.(95%)	#
Yes	300	41.2	28.6 - 55.1	200	19.5	11.1 - 31.9	100	15.3	7.1 - 29.9	200	24.0	15.2 - 35.7	800
No	5,200	31.7	28.6 - 35.0	2,800	17.3	14.8 - 20.2	600	3.6	2.5 - 5.1	7,700	47.4	43.9 - 50.8	16,300

**PRAMS Health Indicator Report - Breastfeeding (exclusive) duration (grouped), among initiators- by State;County;DOH
Race-Ethnicity;PRAMS Age Group;Infant Gender;Married;Poverty Level;Income (2000-2003);Income
(2004-2011);Income (2012+);Birthweight;Smoke 3rd Trimester;Smoke Before Pregnant;WIC During Pregnancy, for the
Year(s) 2000;2001;2002;2003;2004;2005;2006;2007;2008;2009;2010;2011;2012;2013**

Note: Weighted responses, rounded to the nearest hundred; n/r (Not Reportable) - If the unweighted total responses for a dimension (row) is <30 that row will not be shown

Year: 2011

Smoke Before Pregnant	Breastfed <1 week			Breastfed 1-4 weeks			Breastfed 5-8 weeks			Breastfed 9+ weeks			Weighted Total Responses
	#	%	C.I.(95%)	#	%	C.I.(95%)	#	%	C.I.(95%)	#	%	C.I.(95%)	#
Yes	1,100	35.0	28.3 - 42.5	600	18.8	13.6 - 25.4	200	7.3	4.0 - 12.8	1,300	38.9	31.8 - 46.4	3,200
No	4,400	31.5	28.1 - 35.1	2,400	17.1	14.4 - 20.3	500	3.4	2.3 - 5.0	6,600	47.9	44.2 - 51.7	13,800

WIC During Pregnancy	Breastfed <1 week			Breastfed 1-4 weeks			Breastfed 5-8 weeks			Breastfed 9+ weeks			Weighted Total Responses
	#	%	C.I.(95%)	#	%	C.I.(95%)	#	%	C.I.(95%)	#	%	C.I.(95%)	#
Yes	2,600	33.7	29.2 - 38.5	1,500	20.1	16.4 - 24.5	300	4.0	2.5 - 6.3	3,200	42.2	37.3 - 47.1	7,600
No	2,900	30.9	26.9 - 35.2	1,500	15.8	12.7 - 19.6	400	3.9	2.5 - 6.2	4,700	49.3	44.8 - 53.8	9,500

**PRAMS Health Indicator Report - Breastfeeding (exclusive) duration (grouped), among initiators- by State;County;DOH
Race-Ethnicity;PRAMS Age Group;Infant Gender;Married;Poverty Level;Income (2000-2003);Income
(2004-2011);Income (2012+);Birthweight;Smoke 3rd Trimester;Smoke Before Pregnant;WIC During Pregnancy, for the
Year(s) 2000;2001;2002;2003;2004;2005;2006;2007;2008;2009;2010;2011;2012;2013**

Note: Weighted responses, rounded to the nearest hundred; n/r (Not Reportable) - If the unweighted total responses for a dimension (row) is <30 that row will not be shown

Year: 2010

State	Breastfed <1 week			Breastfed 1-4 weeks			Breastfed 5-8 weeks			Breastfed 9+ weeks			Weighted Total Responses
	#	%	C.I.(95%)	#	%	C.I.(95%)	#	%	C.I.(95%)	#	%	C.I.(95%)	#
Totals	4,900	28.8	25.9 - 31.8	3,200	19.1	16.6 - 22.0	800	4.9	3.7 - 6.6	8,000	47.2	43.9 - 50.5	16,900

County	Breastfed <1 week			Breastfed 1-4 weeks			Breastfed 5-8 weeks			Breastfed 9+ weeks			Weighted Total Responses
	#	%	C.I.(95%)	#	%	C.I.(95%)	#	%	C.I.(95%)	#	%	C.I.(95%)	#
Hawaii	600	28.2	23.7 - 33.2	400	18.1	14.3 - 22.5	100	5.5	3.5 - 8.4	1,000	48.3	43.0 - 53.5	2,200
Honolulu	3,500	29.0	25.1 - 33.1	2,400	19.5	16.2 - 23.4	600	5.2	3.5 - 7.5	5,600	46.3	41.9 - 50.8	12,200
Kauai	200	24.6	19.7 - 30.3	100	16.4	12.3 - 21.4	<50	4.7	2.7 - 8.1	400	54.3	48.1 - 60.3	700
Maui	600	29.7	25.4 - 34.4	400	18.9	15.3 - 23.1	100	2.8	1.5 - 5.0	900	48.6	43.7 - 53.6	1,900

PRAMS Health Indicator Report - Breastfeeding (exclusive) duration (grouped), among initiators- by State;County;DOH Race-Ethnicity;PRAMS Age Group;Infant Gender;Married;Poverty Level;Income (2000-2003);Income (2004-2011);Income (2012+);Birthweight;Smoke 3rd Trimester;Smoke Before Pregnant;WIC During Pregnancy, for the Year(s) 2000;2001;2002;2003;2004;2005;2006;2007;2008;2009;2010;2011;2012;2013

Note: Weighted responses, rounded to the nearest hundred; n/r (Not Reportable) - If the unweighted total responses for a dimension (row) is <30 that row will not be shown

Year: 2010

DOH Race-Ethnicity	Breastfed <1 week			Breastfed 1-4 weeks			Breastfed 5-8 weeks			Breastfed 9+ weeks			Weighted Total Responses
	#	%	C.I.(95%)	#	%	C.I.(95%)	#	%	C.I.(95%)	#	%	C.I.(95%)	#
Caucasian	600	14.8	10.8 - 20.0	800	20.1	15.0 - 26.4	200	5.7	3.2 - 10.0	2,500	59.3	52.5 - 65.8	4,100
Native Hawaiian	1,600	31.2	25.9 - 37.0	900	17.1	13.2 - 21.9	300	6.7	4.4 - 10.2	2,300	45.0	39.3 - 50.9	5,000
Chinese	200	21.9	11.8 - 37.0	100	12.7	5.0 - 28.6	100	7.8	2.2 - 24.1	400	57.6	41.1 - 72.6	700
Filipino	1,200	41.3	33.8 - 49.2	700	24.8	18.5 - 32.4	100	4.2	1.8 - 9.5	900	29.7	23.1 - 37.4	2,900
Japanese	700	40.0	30.1 - 50.9	200	14.6	8.7 - 23.4	<50	0.9	0.3 - 2.6	700	44.5	34.1 - 55.3	1,700
Other	600	26.7	19.3 - 35.6	500	19.9	13.0 - 29.2	100	2.6	0.8 - 7.8	1,200	50.8	41.5 - 60.1	2,400

PRAMS Age Group	Breastfed <1 week			Breastfed 1-4 weeks			Breastfed 5-8 weeks			Breastfed 9+ weeks			Weighted Total Responses
	#	%	C.I.(95%)	#	%	C.I.(95%)	#	%	C.I.(95%)	#	%	C.I.(95%)	#
<20	300	27.5	17.8 - 40.0	300	29.2	18.7 - 42.6	<50	4.2	1.3 - 12.8	400	39.0	28.1 - 51.2	1,100
20-24	1,100	27.1	21.4 - 33.5	800	20.7	15.4 - 27.2	200	4.2	2.1 - 8.2	1,900	48.1	41.2 - 55.1	4,000
25-34	2,500	28.1	24.1 - 32.4	1,600	18.2	14.8 - 22.1	500	5.5	3.7 - 8.2	4,200	48.2	43.7 - 52.8	8,800
35+	1,000	33.3	26.4 - 41.0	500	16.4	11.4 - 22.9	100	4.4	2.3 - 8.5	1,400	45.9	38.2 - 53.7	3,100

**PRAMS Health Indicator Report - Breastfeeding (exclusive) duration (grouped), among initiators- by State;County;DOH
Race-Ethnicity;PRAMS Age Group;Infant Gender;Married;Poverty Level;Income (2000-2003);Income
(2004-2011);Income (2012+);Birthweight;Smoke 3rd Trimester;Smoke Before Pregnant;WIC During Pregnancy, for the
Year(s) 2000;2001;2002;2003;2004;2005;2006;2007;2008;2009;2010;2011;2012;2013**

Note: Weighted responses, rounded to the nearest hundred; n/r (Not Reportable) - If the unweighted total responses for a dimension (row) is <30 that row will not be shown

Year: 2010

Infant Gender	Breastfed <1 week			Breastfed 1-4 weeks			Breastfed 5-8 weeks			Breastfed 9+ weeks			Weighted Total Responses
	#	%	C.I.(95%)	#	%	C.I.(95%)	#	%	C.I.(95%)	#	%	C.I.(95%)	#
Male	2,600	30.0	25.9 - 34.4	1,500	17.4	14.1 - 21.2	500	6.2	4.2 - 9.0	4,000	46.4	41.8 - 51.0	8,500
Female	2,300	27.5	23.5 - 31.9	1,800	20.9	17.2 - 25.2	300	3.6	2.3 - 5.8	4,000	48.0	43.2 - 52.8	8,400

Married	Breastfed <1 week			Breastfed 1-4 weeks			Breastfed 5-8 weeks			Breastfed 9+ weeks			Weighted Total Responses
	#	%	C.I.(95%)	#	%	C.I.(95%)	#	%	C.I.(95%)	#	%	C.I.(95%)	#
Yes	3,000	28.0	24.4 - 32.0	2,000	18.3	15.2 - 22.0	500	4.2	2.8 - 6.3	5,300	49.4	45.2 - 53.7	10,700
No	1,800	30.0	25.4 - 35.1	1,300	20.6	16.5 - 25.3	400	6.1	3.9 - 9.4	2,700	43.3	38.1 - 48.6	6,100

Poverty Level	Breastfed <1 week			Breastfed 1-4 weeks			Breastfed 5-8 weeks			Breastfed 9+ weeks			Weighted Total Responses
	#	%	C.I.(95%)	#	%	C.I.(95%)	#	%	C.I.(95%)	#	%	C.I.(95%)	#
0-130%	1,800	30.7	25.9 - 36.0	1,300	21.8	17.4 - 27.0	200	3.5	2.0 - 6.0	2,600	43.9	38.5 - 49.5	5,800
131-185%	900	32.6	25.1 - 41.2	400	16.1	10.9 - 23.1	200	6.6	3.6 - 12.0	1,200	44.7	36.5 - 53.1	2,700
186+%	1,900	26.3	22.2 - 31.0	1,300	17.8	14.1 - 22.2	400	5.4	3.4 - 8.5	3,700	50.4	45.3 - 55.5	7,400

**PRAMS Health Indicator Report - Breastfeeding (exclusive) duration (grouped), among initiators- by State;County;DOH
Race-Ethnicity;PRAMS Age Group;Infant Gender;Married;Poverty Level;Income (2000-2003);Income
(2004-2011);Income (2012+);Birthweight;Smoke 3rd Trimester;Smoke Before Pregnant;WIC During Pregnancy, for the
Year(s) 2000;2001;2002;2003;2004;2005;2006;2007;2008;2009;2010;2011;2012;2013**

Note: Weighted responses, rounded to the nearest hundred; n/r (Not Reportable) - If the unweighted total responses for a dimension (row) is <30 that row will not be shown

Year: 2010

Income (2004-2011)	Breastfed <1 week			Breastfed 1-4 weeks			Breastfed 5-8 weeks			Breastfed 9+ weeks			Weighted Total Responses
	#	%	C.I.(95%)	#	%	C.I.(95%)	#	%	C.I.(95%)	#	%	C.I.(95%)	#
<\$10,000	900	29.6	23.3 - 36.9	800	25.0	18.7 - 32.5	100	3.8	1.7 - 8.0	1,300	41.6	34.5 - 49.1	3,100
\$10,000-\$24,999	900	32.3	25.4 - 40.0	500	18.4	13.1 - 25.3	100	3.9	1.8 - 8.1	1,300	45.5	37.7 - 53.4	2,900
\$25,000-\$49,999	1,200	27.9	22.2 - 34.4	800	18.4	13.7 - 24.3	200	5.8	3.3 - 9.8	2,000	47.9	41.3 - 54.7	4,200
>=\$50,000	1,600	28.1	23.3 - 33.5	1,000	16.7	12.7 - 21.6	300	5.5	3.3 - 8.9	2,900	49.8	44.0 - 55.5	5,900

Birthweight	Breastfed <1 week			Breastfed 1-4 weeks			Breastfed 5-8 weeks			Breastfed 9+ weeks			Weighted Total Responses
	#	%	C.I.(95%)	#	%	C.I.(95%)	#	%	C.I.(95%)	#	%	C.I.(95%)	#
Low birth weight	500	40.7	35.2 - 46.4	200	16.2	12.3 - 21.0	100	5.4	3.3 - 8.7	400	37.7	32.4 - 43.4	1,100
Normal birth weight	4,400	27.9	24.8 - 31.2	3,100	19.3	16.6 - 22.4	800	4.9	3.6 - 6.7	7,500	47.9	44.3 - 51.4	15,800

Smoke 3rd Trimester	Breastfed <1 week			Breastfed 1-4 weeks			Breastfed 5-8 weeks			Breastfed 9+ weeks			Weighted Total Responses
	#	%	C.I.(95%)	#	%	C.I.(95%)	#	%	C.I.(95%)	#	%	C.I.(95%)	#
Yes	400	34.1	22.6 - 47.8	200	15.4	8.6 - 26.0	<50	2.1	0.7 - 6.0	500	48.4	35.6 - 61.4	1,100
No	4,500	28.5	25.6 - 31.7	3,100	19.6	16.9 - 22.6	800	5.2	3.8 - 7.0	7,300	46.7	43.3 - 50.1	15,600

PRAMS Health Indicator Report - Breastfeeding (exclusive) duration (grouped), among initiators- by State;County;DOH Race-Ethnicity;PRAMS Age Group;Infant Gender;Married;Poverty Level;Income (2000-2003);Income (2004-2011);Income (2012+);Birthweight;Smoke 3rd Trimester;Smoke Before Pregnant;WIC During Pregnancy, for the Year(s) 2000;2001;2002;2003;2004;2005;2006;2007;2008;2009;2010;2011;2012;2013

Note: Weighted responses, rounded to the nearest hundred; n/r (Not Reportable) - If the unweighted total responses for a dimension (row) is <30 that row will not be shown

Year: 2010

Smoke Before Pregnant	Breastfed <1 week			Breastfed 1-4 weeks			Breastfed 5-8 weeks			Breastfed 9+ weeks			Weighted Total Responses
	#	%	C.I.(95%)	#	%	C.I.(95%)	#	%	C.I.(95%)	#	%	C.I.(95%)	#
Yes	1,200	34.0	27.4 - 41.3	700	21.7	16.1 - 28.7	100	3.7	2.0 - 6.9	1,400	40.6	33.7 - 47.8	3,400
No	3,700	27.6	24.4 - 31.1	2,500	18.6	15.8 - 21.8	700	5.3	3.8 - 7.4	6,400	48.4	44.7 - 52.2	13,300

WIC During Pregnancy	Breastfed <1 week			Breastfed 1-4 weeks			Breastfed 5-8 weeks			Breastfed 9+ weeks			Weighted Total Responses
	#	%	C.I.(95%)	#	%	C.I.(95%)	#	%	C.I.(95%)	#	%	C.I.(95%)	#
Yes	2,300	32.2	27.7 - 37.1	1,300	17.8	14.3 - 22.0	400	5.3	3.5 - 8.1	3,200	44.6	39.7 - 49.6	7,200
No	2,500	26.5	22.8 - 30.6	1,900	20.4	16.9 - 24.4	400	4.7	3.1 - 7.1	4,600	48.5	44.0 - 53.0	9,500

**PRAMS Health Indicator Report - Breastfeeding (exclusive) duration (grouped), among initiators- by State;County;DOH
Race-Ethnicity;PRAMS Age Group;Infant Gender;Married;Poverty Level;Income (2000-2003);Income
(2004-2011);Income (2012+);Birthweight;Smoke 3rd Trimester;Smoke Before Pregnant;WIC During Pregnancy, for the
Year(s) 2000;2001;2002;2003;2004;2005;2006;2007;2008;2009;2010;2011;2012;2013**

Note: Weighted responses, rounded to the nearest hundred; n/r (Not Reportable) - If the unweighted total responses for a dimension (row) is <30 that row will not be shown

Year: 2009

State	Breastfed <1 week			Breastfed 1-4 weeks			Breastfed 5-8 weeks			Breastfed 9+ weeks			Weighted Total Responses
	#	%	C.I.(95%)	#	%	C.I.(95%)	#	%	C.I.(95%)	#	%	C.I.(95%)	#
Totals	6,100	37.1	33.9 - 40.3	3,000	18.4	15.9 - 21.1	900	5.6	4.3 - 7.3	6,400	39.0	35.8 - 42.2	16,500

County	Breastfed <1 week			Breastfed 1-4 weeks			Breastfed 5-8 weeks			Breastfed 9+ weeks			Weighted Total Responses
	#	%	C.I.(95%)	#	%	C.I.(95%)	#	%	C.I.(95%)	#	%	C.I.(95%)	#
Hawaii	700	34.2	29.3 - 39.5	400	19.6	15.6 - 24.3	100	6.7	4.5 - 9.9	800	39.5	34.5 - 44.8	2,100
Honolulu	4,500	38.6	34.3 - 43.0	2,100	18.0	14.8 - 21.8	600	5.2	3.6 - 7.7	4,400	38.1	33.9 - 42.6	11,600
Kauai	200	23.0	18.1 - 28.8	200	21.9	17.1 - 27.6	100	8.8	5.8 - 13.2	400	46.3	40.1 - 52.6	800
Maui	700	36.8	32.3 - 41.5	300	17.6	14.2 - 21.6	100	5.0	3.3 - 7.6	800	40.6	36.0 - 45.4	2,000

PRAMS Health Indicator Report - Breastfeeding (exclusive) duration (grouped), among initiators- by State;County;DOH Race-Ethnicity;PRAMS Age Group;Infant Gender;Married;Poverty Level;Income (2000-2003);Income (2004-2011);Income (2012+);Birthweight;Smoke 3rd Trimester;Smoke Before Pregnant;WIC During Pregnancy, for the Year(s) 2000;2001;2002;2003;2004;2005;2006;2007;2008;2009;2010;2011;2012;2013

Note: Weighted responses, rounded to the nearest hundred; n/r (Not Reportable) - If the unweighted total responses for a dimension (row) is <30 that row will not be shown

Year: 2009

DOH Race-Ethnicity	Breastfed <1 week			Breastfed 1-4 weeks			Breastfed 5-8 weeks			Breastfed 9+ weeks			Weighted Total Responses
	#	%	C.I.(95%)	#	%	C.I.(95%)	#	%	C.I.(95%)	#	%	C.I.(95%)	#
Caucasian	1,000	24.6	19.4 - 30.6	600	14.8	10.7 - 20.0	300	8.2	5.2 - 12.8	2,100	52.4	46.0 - 58.8	4,000
Native Hawaiian	1,900	37.2	31.6 - 43.1	1,200	23.4	18.7 - 28.9	300	5.8	3.7 - 9.2	1,700	33.6	28.2 - 39.5	5,000
Chinese	300	47.8	31.4 - 64.7	100	13.4	5.2 - 30.2	<50	1.9	0.6 - 5.4	300	37.0	22.2 - 54.6	700
Filipino	1,400	46.5	39.0 - 54.2	600	19.1	13.8 - 25.8	100	2.2	1.3 - 3.8	1,000	32.2	25.3 - 39.9	3,100
Japanese	800	49.3	38.7 - 59.9	200	11.3	6.1 - 19.8	<50	2.4	0.7 - 7.9	600	37.0	27.5 - 47.7	1,600
Other	800	34.3	25.9 - 43.9	400	18.9	12.6 - 27.4	200	8.3	4.1 - 15.8	800	38.4	29.9 - 47.8	2,200

PRAMS Age Group	Breastfed <1 week			Breastfed 1-4 weeks			Breastfed 5-8 weeks			Breastfed 9+ weeks			Weighted Total Responses
	#	%	C.I.(95%)	#	%	C.I.(95%)	#	%	C.I.(95%)	#	%	C.I.(95%)	#
<20	600	37.7	28.1 - 48.5	400	23.7	15.7 - 34.3	100	3.2	1.0 - 9.7	600	35.3	25.5 - 46.6	1,700
20-24	1,300	35.4	29.1 - 42.4	900	24.4	18.8 - 31.0	300	7.0	4.1 - 11.5	1,200	33.2	27.0 - 40.0	3,700
25-34	2,800	33.2	29.0 - 37.7	1,400	17.1	13.9 - 20.8	500	5.8	4.0 - 8.3	3,600	43.8	39.3 - 48.5	8,300
35+	1,400	50.4	42.5 - 58.2	300	10.8	6.9 - 16.7	100	4.3	2.0 - 9.0	1,000	34.5	27.5 - 42.2	2,800

**PRAMS Health Indicator Report - Breastfeeding (exclusive) duration (grouped), among initiators- by State;County;DOH
Race-Ethnicity;PRAMS Age Group;Infant Gender;Married;Poverty Level;Income (2000-2003);Income
(2004-2011);Income (2012+);Birthweight;Smoke 3rd Trimester;Smoke Before Pregnant;WIC During Pregnancy, for the
Year(s) 2000;2001;2002;2003;2004;2005;2006;2007;2008;2009;2010;2011;2012;2013**

Note: Weighted responses, rounded to the nearest hundred; n/r (Not Reportable) - If the unweighted total responses for a dimension (row) is <30 that row will not be shown

Year: 2009

Infant Gender	Breastfed <1 week			Breastfed 1-4 weeks			Breastfed 5-8 weeks			Breastfed 9+ weeks			Weighted Total Responses
	#	%	C.I.(95%)	#	%	C.I.(95%)	#	%	C.I.(95%)	#	%	C.I.(95%)	#
Male	3,200	36.6	32.3 - 41.2	1,800	20.7	17.2 - 24.7	400	5.0	3.4 - 7.3	3,300	37.7	33.3 - 42.2	8,700
Female	2,900	37.6	33.1 - 42.3	1,200	15.8	12.6 - 19.6	500	6.2	4.3 - 9.0	3,200	40.4	35.9 - 45.1	7,800

Married	Breastfed <1 week			Breastfed 1-4 weeks			Breastfed 5-8 weeks			Breastfed 9+ weeks			Weighted Total Responses
	#	%	C.I.(95%)	#	%	C.I.(95%)	#	%	C.I.(95%)	#	%	C.I.(95%)	#
Yes	3,300	33.4	29.5 - 37.5	1,500	14.8	12.1 - 18.1	600	6.3	4.5 - 8.7	4,600	45.5	41.3 - 49.8	10,000
No	2,800	42.8	37.6 - 48.1	1,500	23.8	19.6 - 28.7	300	4.5	2.8 - 7.1	1,900	28.9	24.4 - 33.8	6,500

Poverty Level	Breastfed <1 week			Breastfed 1-4 weeks			Breastfed 5-8 weeks			Breastfed 9+ weeks			Weighted Total Responses
	#	%	C.I.(95%)	#	%	C.I.(95%)	#	%	C.I.(95%)	#	%	C.I.(95%)	#
0-130%	2,400	43.5	37.9 - 49.3	1,000	17.1	13.3 - 21.7	300	4.8	3.0 - 7.6	1,900	34.6	29.4 - 40.3	5,600
131-185%	800	31.5	24.3 - 39.7	600	23.2	16.9 - 31.0	200	8.7	4.9 - 15.1	1,000	36.6	29.1 - 44.8	2,600
186+%	2,400	34.4	29.7 - 39.3	1,200	16.7	13.3 - 20.8	400	5.5	3.6 - 8.3	3,000	43.4	38.5 - 48.5	6,900

**PRAMS Health Indicator Report - Breastfeeding (exclusive) duration (grouped), among initiators- by State;County;DOH
Race-Ethnicity;PRAMS Age Group;Infant Gender;Married;Poverty Level;Income (2000-2003);Income
(2004-2011);Income (2012+);Birthweight;Smoke 3rd Trimester;Smoke Before Pregnant;WIC During Pregnancy, for the
Year(s) 2000;2001;2002;2003;2004;2005;2006;2007;2008;2009;2010;2011;2012;2013**

Note: Weighted responses, rounded to the nearest hundred; n/r (Not Reportable) - If the unweighted total responses for a dimension (row) is <30 that row will not be shown

Year: 2009

Income (2004-2011)	Breastfed <1 week			Breastfed 1-4 weeks			Breastfed 5-8 weeks			Breastfed 9+ weeks			Weighted Total Responses
	#	%	C.I.(95%)	#	%	C.I.(95%)	#	%	C.I.(95%)	#	%	C.I.(95%)	#
<\$10,000	1,200	44.0	35.6 - 52.7	500	18.1	12.4 - 25.5	100	2.9	1.2 - 6.8	900	35.1	27.5 - 43.5	2,600
\$10,000-\$24,999	1,500	43.3	36.5 - 50.4	600	18.4	13.6 - 24.4	300	7.2	4.4 - 11.6	1,100	31.1	24.8 - 38.1	3,500
\$25,000-\$49,999	1,100	31.3	24.9 - 38.5	600	18.3	13.4 - 24.4	200	7.1	4.1 - 12.1	1,500	43.3	36.3 - 50.5	3,400
>=\$50,000	2,000	34.2	29.1 - 39.7	1,000	17.4	13.5 - 22.1	300	5.5	3.5 - 8.7	2,500	42.9	37.5 - 48.5	5,800

Birthweight	Breastfed <1 week			Breastfed 1-4 weeks			Breastfed 5-8 weeks			Breastfed 9+ weeks			Weighted Total Responses
	#	%	C.I.(95%)	#	%	C.I.(95%)	#	%	C.I.(95%)	#	%	C.I.(95%)	#
Low birth weight	600	49.8	44.1 - 55.6	200	15.3	11.6 - 19.8	100	5.0	3.1 - 8.0	300	29.9	24.9 - 35.4	1,100
Normal birth weight	5,600	36.2	32.8 - 39.7	2,900	18.6	16.0 - 21.5	900	5.6	4.2 - 7.4	6,100	39.6	36.3 - 43.1	15,400

Smoke 3rd Trimester	Breastfed <1 week			Breastfed 1-4 weeks			Breastfed 5-8 weeks			Breastfed 9+ weeks			Weighted Total Responses
	#	%	C.I.(95%)	#	%	C.I.(95%)	#	%	C.I.(95%)	#	%	C.I.(95%)	#
Yes	700	52.8	41.2 - 64.1	200	12.6	7.0 - 21.6	<50	1.6	0.6 - 4.6	400	33.0	23.0 - 44.8	1,300
No	5,300	35.5	32.3 - 39.0	2,800	18.8	16.2 - 21.7	900	6.1	4.6 - 7.9	5,800	39.6	36.2 - 43.0	14,800

PRAMS Health Indicator Report - Breastfeeding (exclusive) duration (grouped), among initiators- by State;County;DOH Race-Ethnicity;PRAMS Age Group;Infant Gender;Married;Poverty Level;Income (2000-2003);Income (2004-2011);Income (2012+);Birthweight;Smoke 3rd Trimester;Smoke Before Pregnant;WIC During Pregnancy, for the Year(s) 2000;2001;2002;2003;2004;2005;2006;2007;2008;2009;2010;2011;2012;2013

Note: Weighted responses, rounded to the nearest hundred; n/r (Not Reportable) - If the unweighted total responses for a dimension (row) is <30 that row will not be shown

Year: 2009

Smoke Before Pregnant	Breastfed <1 week			Breastfed 1-4 weeks			Breastfed 5-8 weeks			Breastfed 9+ weeks			Weighted Total Responses
	#	%	C.I.(95%)	#	%	C.I.(95%)	#	%	C.I.(95%)	#	%	C.I.(95%)	#
Yes	1,500	44.2	37.2 - 51.6	500	13.9	10.1 - 18.9	200	6.1	3.6 - 10.2	1,200	35.7	29.1 - 43.0	3,300
No	4,500	35.1	31.6 - 38.8	2,500	19.5	16.6 - 22.7	700	5.6	4.1 - 7.6	5,100	39.9	36.2 - 43.6	12,800

WIC During Pregnancy	Breastfed <1 week			Breastfed 1-4 weeks			Breastfed 5-8 weeks			Breastfed 9+ weeks			Weighted Total Responses
	#	%	C.I.(95%)	#	%	C.I.(95%)	#	%	C.I.(95%)	#	%	C.I.(95%)	#
Yes	2,600	39.3	34.3 - 44.5	1,300	19.2	15.4 - 23.6	400	5.9	3.9 - 8.8	2,300	35.6	30.8 - 40.8	6,500
No	3,300	35.3	31.2 - 39.6	1,700	17.9	14.7 - 21.6	500	5.6	3.9 - 8.0	3,900	41.2	37.0 - 45.6	9,500

**PRAMS Health Indicator Report - Breastfeeding (exclusive) duration (grouped), among initiators- by State;County;DOH
Race-Ethnicity;PRAMS Age Group;Infant Gender;Married;Poverty Level;Income (2000-2003);Income
(2004-2011);Income (2012+);Birthweight;Smoke 3rd Trimester;Smoke Before Pregnant;WIC During Pregnancy, for the
Year(s) 2000;2001;2002;2003;2004;2005;2006;2007;2008;2009;2010;2011;2012;2013**

Note: Weighted responses, rounded to the nearest hundred; n/r (Not Reportable) - If the unweighted total responses for a dimension (row) is <30 that row will not be shown

Year: 2008

State	Breastfed <1 week			Breastfed 1-4 weeks			Breastfed 5-8 weeks			Breastfed 9+ weeks			Weighted Total Responses
	#	%	C.I.(95%)	#	%	C.I.(95%)	#	%	C.I.(95%)	#	%	C.I.(95%)	#
Totals	6,500	39.3	36.9 - 41.7	3,100	18.4	16.5 - 20.4	600	3.4	2.6 - 4.5	6,500	38.9	36.5 - 41.3	16,600

County	Breastfed <1 week			Breastfed 1-4 weeks			Breastfed 5-8 weeks			Breastfed 9+ weeks			Weighted Total Responses
	#	%	C.I.(95%)	#	%	C.I.(95%)	#	%	C.I.(95%)	#	%	C.I.(95%)	#
Hawaii	700	35.2	28.6 - 42.5	400	17.6	12.7 - 24.0	<50	1.5	0.5 - 4.2	1,000	45.7	38.5 - 53.0	2,100
Honolulu	4,800	41.1	38.2 - 43.9	2,100	17.7	15.5 - 20.0	400	3.7	2.7 - 5.0	4,400	37.6	34.8 - 40.5	11,800
Kauai	300	31.3	21.8 - 42.6	200	25.3	16.6 - 36.5	<50	3.1	0.8 - 11.1	300	40.4	30.0 - 51.7	800
Maui	700	36.1	29.3 - 43.5	400	21.0	15.6 - 27.7	100	4.0	1.9 - 8.5	700	38.9	31.9 - 46.4	1,900

PRAMS Health Indicator Report - Breastfeeding (exclusive) duration (grouped), among initiators- by State;County;DOH Race-Ethnicity;PRAMS Age Group;Infant Gender;Married;Poverty Level;Income (2000-2003);Income (2004-2011);Income (2012+);Birthweight;Smoke 3rd Trimester;Smoke Before Pregnant;WIC During Pregnancy, for the Year(s) 2000;2001;2002;2003;2004;2005;2006;2007;2008;2009;2010;2011;2012;2013

Note: Weighted responses, rounded to the nearest hundred; n/r (Not Reportable) - If the unweighted total responses for a dimension (row) is <30 that row will not be shown

Year: 2008

DOH Race-Ethnicity	Breastfed <1 week			Breastfed 1-4 weeks			Breastfed 5-8 weeks			Breastfed 9+ weeks			Weighted Total Responses
	#	%	C.I.(95%)	#	%	C.I.(95%)	#	%	C.I.(95%)	#	%	C.I.(95%)	#
Caucasian	900	23.1	19.2 - 27.6	800	19.2	15.5 - 23.4	200	5.7	3.8 - 8.6	2,100	52.0	47.0 - 56.9	4,100
Native Hawaiian	1,900	41.1	36.1 - 46.3	900	18.9	15.2 - 23.3	200	4.2	2.6 - 6.9	1,600	35.7	30.9 - 40.9	4,500
Chinese	200	40.8	34.3 - 47.6	200	25.1	19.6 - 31.5	<50	1.8	0.7 - 4.7	200	32.4	26.4 - 39.0	600
Filipino	1,600	52.2	46.6 - 57.8	500	16.8	13.0 - 21.4	<50	1.1	0.4 - 3.1	900	29.9	25.0 - 35.2	3,000
Japanese	1,000	48.6	41.6 - 55.7	300	16.8	12.0 - 23.0	100	3.0	1.4 - 6.4	600	31.5	25.4 - 38.4	2,000
Other	1,000	39.4	33.2 - 46.0	400	17.8	13.2 - 23.5	<50	1.6	0.6 - 4.3	1,000	41.3	35.0 - 47.9	2,500

PRAMS Age Group	Breastfed <1 week			Breastfed 1-4 weeks			Breastfed 5-8 weeks			Breastfed 9+ weeks			Weighted Total Responses
	#	%	C.I.(95%)	#	%	C.I.(95%)	#	%	C.I.(95%)	#	%	C.I.(95%)	#
<20	500	37.7	29.0 - 47.3	200	17.5	11.4 - 25.9	<50	3.3	1.1 - 9.5	500	41.5	32.5 - 51.1	1,300
20-24	1,400	38.1	32.8 - 43.6	700	20.7	16.5 - 25.6	200	4.9	3.0 - 7.9	1,300	36.3	31.2 - 41.8	3,600
25-34	3,300	38.5	35.2 - 41.9	1,500	17.0	14.5 - 19.7	300	3.1	2.1 - 4.6	3,600	41.4	38.1 - 44.8	8,600
35+	1,400	43.4	38.1 - 48.8	600	20.2	16.1 - 24.9	100	2.6	1.3 - 5.0	1,100	33.9	29.0 - 39.1	3,200

**PRAMS Health Indicator Report - Breastfeeding (exclusive) duration (grouped), among initiators- by State;County;DOH
Race-Ethnicity;PRAMS Age Group;Infant Gender;Married;Poverty Level;Income (2000-2003);Income
(2004-2011);Income (2012+);Birthweight;Smoke 3rd Trimester;Smoke Before Pregnant;WIC During Pregnancy, for the
Year(s) 2000;2001;2002;2003;2004;2005;2006;2007;2008;2009;2010;2011;2012;2013**

Note: Weighted responses, rounded to the nearest hundred; n/r (Not Reportable) - If the unweighted total responses for a dimension (row) is <30 that row will not be shown

Year: 2008

Infant Gender	Breastfed <1 week			Breastfed 1-4 weeks			Breastfed 5-8 weeks			Breastfed 9+ weeks			Weighted Total Responses
	#	%	C.I.(95%)	#	%	C.I.(95%)	#	%	C.I.(95%)	#	%	C.I.(95%)	#
Male	3,300	37.8	34.6 - 41.2	1,700	19.7	17.1 - 22.5	300	3.6	2.5 - 5.1	3,400	39.0	35.7 - 42.3	8,700
Female	3,200	40.9	37.4 - 44.5	1,300	17.0	14.5 - 19.9	300	3.2	2.2 - 4.8	3,100	38.8	35.4 - 42.4	7,900

Married	Breastfed <1 week			Breastfed 1-4 weeks			Breastfed 5-8 weeks			Breastfed 9+ weeks			Weighted Total Responses
	#	%	C.I.(95%)	#	%	C.I.(95%)	#	%	C.I.(95%)	#	%	C.I.(95%)	#
Yes	4,100	38.7	35.9 - 41.7	1,800	17.3	15.1 - 19.7	300	3.0	2.1 - 4.2	4,400	41.0	38.1 - 43.9	10,700
No	2,400	40.2	36.0 - 44.6	1,200	20.4	17.1 - 24.2	200	4.1	2.7 - 6.3	2,100	35.2	31.1 - 39.5	5,900

Poverty Level	Breastfed <1 week			Breastfed 1-4 weeks			Breastfed 5-8 weeks			Breastfed 9+ weeks			Weighted Total Responses
	#	%	C.I.(95%)	#	%	C.I.(95%)	#	%	C.I.(95%)	#	%	C.I.(95%)	#
0-130%	2,400	41.1	36.8 - 45.5	1,100	19.1	15.9 - 22.7	200	3.4	2.1 - 5.4	2,100	36.5	32.4 - 40.8	5,800
131-185%	800	34.9	28.8 - 41.6	500	19.2	14.5 - 25.0	100	3.0	1.4 - 6.4	1,000	42.9	36.5 - 49.5	2,400
186+%	2,800	38.1	34.7 - 41.5	1,300	17.7	15.1 - 20.6	300	3.5	2.4 - 5.1	3,000	40.8	37.3 - 44.3	7,400

**PRAMS Health Indicator Report - Breastfeeding (exclusive) duration (grouped), among initiators- by State;County;DOH
Race-Ethnicity;PRAMS Age Group;Infant Gender;Married;Poverty Level;Income (2000-2003);Income
(2004-2011);Income (2012+);Birthweight;Smoke 3rd Trimester;Smoke Before Pregnant;WIC During Pregnancy, for the
Year(s) 2000;2001;2002;2003;2004;2005;2006;2007;2008;2009;2010;2011;2012;2013**

Note: Weighted responses, rounded to the nearest hundred; n/r (Not Reportable) - If the unweighted total responses for a dimension (row) is <30 that row will not be shown

Year: 2008

Income (2004-2011)	Breastfed <1 week			Breastfed 1-4 weeks			Breastfed 5-8 weeks			Breastfed 9+ weeks			Weighted Total Responses
	#	%	C.I.(95%)	#	%	C.I.(95%)	#	%	C.I.(95%)	#	%	C.I.(95%)	#
<\$10,000	1,200	44.5	38.0 - 51.2	500	19.4	14.7 - 25.2	<50	1.8	0.7 - 4.9	900	34.3	28.3 - 40.9	2,600
\$10,000-\$24,999	1,300	36.6	31.4 - 42.3	700	18.9	14.9 - 23.7	200	5.0	3.0 - 8.1	1,400	39.4	34.0 - 45.0	3,500
\$25,000-\$49,999	1,500	38.1	33.3 - 43.2	800	20.3	16.5 - 24.7	200	4.1	2.5 - 6.6	1,400	37.5	32.7 - 42.6	3,800
>=\$50,000	2,200	38.1	34.3 - 42.0	1,000	16.8	14.0 - 20.1	100	2.5	1.5 - 4.2	2,500	42.6	38.6 - 46.6	5,800

Birthweight	Breastfed <1 week			Breastfed 1-4 weeks			Breastfed 5-8 weeks			Breastfed 9+ weeks			Weighted Total Responses
	#	%	C.I.(95%)	#	%	C.I.(95%)	#	%	C.I.(95%)	#	%	C.I.(95%)	#
Low birth weight	600	53.3	43.8 - 62.5	200	16.9	11.0 - 25.3	<50	3.6	1.4 - 8.9	300	26.2	18.7 - 35.4	1,100
Normal birth weight	5,900	38.2	35.8 - 40.7	2,900	18.5	16.6 - 20.6	500	3.4	2.6 - 4.5	6,200	39.8	37.4 - 42.4	15,500

Smoke 3rd Trimester	Breastfed <1 week			Breastfed 1-4 weeks			Breastfed 5-8 weeks			Breastfed 9+ weeks			Weighted Total Responses
	#	%	C.I.(95%)	#	%	C.I.(95%)	#	%	C.I.(95%)	#	%	C.I.(95%)	#
Yes	500	41.2	32.2 - 50.8	300	25.9	18.4 - 35.1	100	8.3	4.3 - 15.4	300	24.7	17.3 - 33.8	1,300
No	5,900	39.2	36.7 - 41.7	2,700	17.9	16.0 - 20.0	500	3.1	2.3 - 4.1	6,000	39.9	37.4 - 42.4	15,100

**PRAMS Health Indicator Report - Breastfeeding (exclusive) duration (grouped), among initiators- by State;County;DOH
Race-Ethnicity;PRAMS Age Group;Infant Gender;Married;Poverty Level;Income (2000-2003);Income
(2004-2011);Income (2012+);Birthweight;Smoke 3rd Trimester;Smoke Before Pregnant;WIC During Pregnancy, for the
Year(s) 2000;2001;2002;2003;2004;2005;2006;2007;2008;2009;2010;2011;2012;2013**

Note: Weighted responses, rounded to the nearest hundred; n/r (Not Reportable) - If the unweighted total responses for a dimension (row) is <30 that row will not be shown

Year: 2008

Smoke Before Pregnant	Breastfed <1 week			Breastfed 1-4 weeks			Breastfed 5-8 weeks			Breastfed 9+ weeks			Weighted Total Responses
	#	%	C.I.(95%)	#	%	C.I.(95%)	#	%	C.I.(95%)	#	%	C.I.(95%)	#
Yes	1,100	39.5	33.7 - 45.7	700	22.7	17.9 - 28.3	200	6.9	4.3 - 10.8	900	30.9	25.5 - 36.9	2,900
No	5,300	39.3	36.7 - 42.0	2,400	17.6	15.6 - 19.8	400	2.7	2.0 - 3.8	5,400	40.4	37.8 - 43.1	13,400

WIC During Pregnancy	Breastfed <1 week			Breastfed 1-4 weeks			Breastfed 5-8 weeks			Breastfed 9+ weeks			Weighted Total Responses
	#	%	C.I.(95%)	#	%	C.I.(95%)	#	%	C.I.(95%)	#	%	C.I.(95%)	#
Yes	2,700	41.0	37.1 - 45.1	1,300	19.6	16.6 - 23.1	200	3.5	2.3 - 5.3	2,400	35.9	32.0 - 39.9	6,700
No	3,700	38.5	35.5 - 41.6	1,700	17.5	15.2 - 20.1	300	3.5	2.4 - 4.9	3,900	40.5	37.5 - 43.6	9,700

**PRAMS Health Indicator Report - Breastfeeding (exclusive) duration (grouped), among initiators- by State;County;DOH
Race-Ethnicity;PRAMS Age Group;Infant Gender;Married;Poverty Level;Income (2000-2003);Income
(2004-2011);Income (2012+);Birthweight;Smoke 3rd Trimester;Smoke Before Pregnant;WIC During Pregnancy, for the
Year(s) 2000;2001;2002;2003;2004;2005;2006;2007;2008;2009;2010;2011;2012;2013**

Note: Weighted responses, rounded to the nearest hundred; n/r (Not Reportable) - If the unweighted total responses for a dimension (row) is <30 that row will not be shown

Year: 2007

State	Breastfed <1 week			Breastfed 1-4 weeks			Breastfed 5-8 weeks			Breastfed 9+ weeks			Weighted Total Responses
	#	%	C.I.(95%)	#	%	C.I.(95%)	#	%	C.I.(95%)	#	%	C.I.(95%)	#
Totals	6,300	38.6	36.2 - 41.0	3,100	19.0	17.1 - 21.0	500	3.2	2.4 - 4.2	6,400	39.3	36.9 - 41.8	16,400

County	Breastfed <1 week			Breastfed 1-4 weeks			Breastfed 5-8 weeks			Breastfed 9+ weeks			Weighted Total Responses
	#	%	C.I.(95%)	#	%	C.I.(95%)	#	%	C.I.(95%)	#	%	C.I.(95%)	#
Hawaii	700	32.6	26.3 - 39.7	300	13.2	9.0 - 18.9	100	2.8	1.2 - 6.2	1,100	51.4	44.3 - 58.6	2,100
Honolulu	4,700	40.7	37.9 - 43.6	2,300	20.0	17.7 - 22.5	400	3.1	2.2 - 4.3	4,200	36.2	33.4 - 39.1	11,500
Kauai	200	17.0	10.3 - 26.8	300	27.6	19.0 - 38.3	100	6.2	2.7 - 13.7	400	49.1	38.4 - 59.9	900
Maui	800	42.2	34.9 - 49.8	300	15.2	10.5 - 21.5	100	2.6	1.0 - 6.8	800	40.0	32.9 - 47.6	1,900

PRAMS Health Indicator Report - Breastfeeding (exclusive) duration (grouped), among initiators- by State;County;DOH Race-Ethnicity;PRAMS Age Group;Infant Gender;Married;Poverty Level;Income (2000-2003);Income (2004-2011);Income (2012+);Birthweight;Smoke 3rd Trimester;Smoke Before Pregnant;WIC During Pregnancy, for the Year(s) 2000;2001;2002;2003;2004;2005;2006;2007;2008;2009;2010;2011;2012;2013

Note: Weighted responses, rounded to the nearest hundred; n/r (Not Reportable) - If the unweighted total responses for a dimension (row) is <30 that row will not be shown

Year: 2007

DOH Race-Ethnicity	Breastfed <1 week			Breastfed 1-4 weeks			Breastfed 5-8 weeks			Breastfed 9+ weeks			Weighted Total Responses
	#	%	C.I.(95%)	#	%	C.I.(95%)	#	%	C.I.(95%)	#	%	C.I.(95%)	#
Caucasian	900	25.2	20.9 - 30.0	600	16.0	12.5 - 20.3	200	4.5	2.7 - 7.2	2,000	54.3	49.0 - 59.5	3,700
Native Hawaiian	1,700	36.5	31.6 - 41.6	1,100	24.6	20.4 - 29.3	100	3.1	1.7 - 5.5	1,600	35.8	31.0 - 40.9	4,500
Chinese	300	40.4	34.0 - 47.3	100	18.0	13.3 - 23.9	<50	2.5	1.0 - 5.7	300	39.1	32.7 - 45.9	600
Filipino	1,400	48.5	43.1 - 54.0	600	19.5	15.5 - 24.2	100	3.4	1.9 - 6.1	800	28.5	23.8 - 33.7	2,900
Japanese	1,100	56.6	49.6 - 63.4	300	14.1	9.9 - 19.8	<50	1.9	0.8 - 4.8	600	27.3	21.5 - 34.1	2,000
Other	900	35.2	29.3 - 41.6	400	16.6	12.2 - 22.2	100	2.4	1.0 - 5.4	1,200	45.8	39.4 - 52.4	2,600

PRAMS Age Group	Breastfed <1 week			Breastfed 1-4 weeks			Breastfed 5-8 weeks			Breastfed 9+ weeks			Weighted Total Responses
	#	%	C.I.(95%)	#	%	C.I.(95%)	#	%	C.I.(95%)	#	%	C.I.(95%)	#
<20	500	34.1	25.4 - 44.0	400	28.4	20.5 - 37.9	<50	3.2	1.1 - 9.5	500	34.3	25.6 - 44.2	1,400
20-24	1,400	35.3	30.5 - 40.4	900	22.1	18.0 - 26.7	100	2.8	1.5 - 5.1	1,600	39.9	34.9 - 45.1	4,000
25-34	3,200	39.9	36.5 - 43.3	1,300	16.4	14.0 - 19.1	300	3.3	2.3 - 4.8	3,300	40.4	37.1 - 43.9	8,100
35+	1,200	41.7	36.2 - 47.3	500	17.3	13.5 - 21.9	100	3.4	1.8 - 6.2	1,100	37.7	32.4 - 43.3	2,900

**PRAMS Health Indicator Report - Breastfeeding (exclusive) duration (grouped), among initiators- by State;County;DOH
Race-Ethnicity;PRAMS Age Group;Infant Gender;Married;Poverty Level;Income (2000-2003);Income
(2004-2011);Income (2012+);Birthweight;Smoke 3rd Trimester;Smoke Before Pregnant;WIC During Pregnancy, for the
Year(s) 2000;2001;2002;2003;2004;2005;2006;2007;2008;2009;2010;2011;2012;2013**

Note: Weighted responses, rounded to the nearest hundred; n/r (Not Reportable) - If the unweighted total responses for a dimension (row) is <30 that row will not be shown

Year: 2007

Infant Gender	Breastfed <1 week			Breastfed 1-4 weeks			Breastfed 5-8 weeks			Breastfed 9+ weeks			Weighted Total Responses
	#	%	C.I.(95%)	#	%	C.I.(95%)	#	%	C.I.(95%)	#	%	C.I.(95%)	#
Male	3,200	37.9	34.6 - 41.2	1,700	19.7	17.0 - 22.6	300	2.9	2.0 - 4.3	3,400	39.5	36.2 - 43.0	8,500
Female	3,100	39.3	35.9 - 42.9	1,400	18.2	15.6 - 21.2	300	3.4	2.3 - 5.1	3,100	39.1	35.6 - 42.6	7,800

Married	Breastfed <1 week			Breastfed 1-4 weeks			Breastfed 5-8 weeks			Breastfed 9+ weeks			Weighted Total Responses
	#	%	C.I.(95%)	#	%	C.I.(95%)	#	%	C.I.(95%)	#	%	C.I.(95%)	#
Yes	4,000	38.6	35.7 - 41.5	1,900	18.0	15.7 - 20.4	300	2.9	2.0 - 4.1	4,200	40.5	37.6 - 43.5	10,400
No	2,300	38.5	34.3 - 42.9	1,200	20.7	17.4 - 24.5	200	3.6	2.3 - 5.6	2,200	37.1	33.0 - 41.5	6,000

Poverty Level	Breastfed <1 week			Breastfed 1-4 weeks			Breastfed 5-8 weeks			Breastfed 9+ weeks			Weighted Total Responses
	#	%	C.I.(95%)	#	%	C.I.(95%)	#	%	C.I.(95%)	#	%	C.I.(95%)	#
0-130%	2,300	38.6	34.5 - 43.0	1,200	21.2	17.8 - 25.0	200	2.9	1.7 - 4.8	2,200	37.3	33.2 - 41.6	5,900
131-185%	900	36.3	30.4 - 42.7	500	21.4	16.5 - 27.1	100	2.5	1.1 - 5.8	1,000	39.8	33.7 - 46.2	2,400
186+%	2,800	40.3	36.8 - 43.9	1,100	15.7	13.1 - 18.5	300	3.9	2.7 - 5.6	2,800	40.2	36.6 - 43.9	6,900

**PRAMS Health Indicator Report - Breastfeeding (exclusive) duration (grouped), among initiators- by State;County;DOH
Race-Ethnicity;PRAMS Age Group;Infant Gender;Married;Poverty Level;Income (2000-2003);Income
(2004-2011);Income (2012+);Birthweight;Smoke 3rd Trimester;Smoke Before Pregnant;WIC During Pregnancy, for the
Year(s) 2000;2001;2002;2003;2004;2005;2006;2007;2008;2009;2010;2011;2012;2013**

Note: Weighted responses, rounded to the nearest hundred; n/r (Not Reportable) - If the unweighted total responses for a dimension (row) is <30 that row will not be shown

Year: 2007

Income (2004-2011)	Breastfed <1 week			Breastfed 1-4 weeks			Breastfed 5-8 weeks			Breastfed 9+ weeks			Weighted Total Responses
	#	%	C.I.(95%)	#	%	C.I.(95%)	#	%	C.I.(95%)	#	%	C.I.(95%)	#
<\$10,000	1,000	37.5	31.3 - 44.2	500	19.0	14.2 - 25.0	100	3.5	1.7 - 7.2	1,100	40.0	33.6 - 46.7	2,600
\$10,000-\$24,999	1,300	38.1	32.8 - 43.7	800	24.6	20.1 - 29.9	100	1.5	0.7 - 3.6	1,200	35.7	30.5 - 41.3	3,300
\$25,000-\$49,999	1,400	38.2	33.3 - 43.3	700	19.4	15.6 - 23.8	100	3.9	2.3 - 6.5	1,500	38.6	33.7 - 43.7	3,800
>=\$50,000	2,300	40.8	36.9 - 44.8	800	15.1	12.3 - 18.2	200	3.7	2.4 - 5.7	2,300	40.4	36.5 - 44.5	5,600

Birthweight	Breastfed <1 week			Breastfed 1-4 weeks			Breastfed 5-8 weeks			Breastfed 9+ weeks			Weighted Total Responses
	#	%	C.I.(95%)	#	%	C.I.(95%)	#	%	C.I.(95%)	#	%	C.I.(95%)	#
Low birth weight	600	44.2	35.6 - 53.1	300	24.6	17.6 - 33.3	100	5.2	2.4 - 10.7	300	26.1	18.9 - 34.7	1,300
Normal birth weight	5,800	38.1	35.6 - 40.6	2,800	18.5	16.5 - 20.6	500	3.0	2.2 - 4.0	6,100	40.4	37.9 - 43.0	15,100

Smoke 3rd Trimester	Breastfed <1 week			Breastfed 1-4 weeks			Breastfed 5-8 weeks			Breastfed 9+ weeks			Weighted Total Responses
	#	%	C.I.(95%)	#	%	C.I.(95%)	#	%	C.I.(95%)	#	%	C.I.(95%)	#
Yes	500	41.1	32.0 - 50.8	300	22.2	15.2 - 31.1	100	5.3	2.3 - 11.9	400	31.4	23.3 - 41.0	1,300
No	5,700	38.4	36.0 - 41.0	2,800	18.8	16.8 - 20.9	400	3.0	2.2 - 4.0	5,900	39.8	37.3 - 42.4	14,900

**PRAMS Health Indicator Report - Breastfeeding (exclusive) duration (grouped), among initiators- by State;County;DOH
Race-Ethnicity;PRAMS Age Group;Infant Gender;Married;Poverty Level;Income (2000-2003);Income
(2004-2011);Income (2012+);Birthweight;Smoke 3rd Trimester;Smoke Before Pregnant;WIC During Pregnancy, for the
Year(s) 2000;2001;2002;2003;2004;2005;2006;2007;2008;2009;2010;2011;2012;2013**

Note: Weighted responses, rounded to the nearest hundred; n/r (Not Reportable) - If the unweighted total responses for a dimension (row) is <30 that row will not be shown

Year: 2007

Smoke Before Pregnant	Breastfed <1 week			Breastfed 1-4 weeks			Breastfed 5-8 weeks			Breastfed 9+ weeks			Weighted Total Responses
	#	%	C.I.(95%)	#	%	C.I.(95%)	#	%	C.I.(95%)	#	%	C.I.(95%)	#
Yes	1,200	37.7	32.1 - 43.6	800	27.5	22.5 - 33.2	100	3.6	1.9 - 6.7	1,000	31.2	26.0 - 37.0	3,100
No	5,100	38.9	36.2 - 41.6	2,200	17.1	15.1 - 19.3	400	3.0	2.2 - 4.1	5,400	41.0	38.3 - 43.8	13,100

WIC During Pregnancy	Breastfed <1 week			Breastfed 1-4 weeks			Breastfed 5-8 weeks			Breastfed 9+ weeks			Weighted Total Responses
	#	%	C.I.(95%)	#	%	C.I.(95%)	#	%	C.I.(95%)	#	%	C.I.(95%)	#
Yes	2,300	35.7	31.8 - 39.8	1,300	20.1	17.0 - 23.6	200	3.0	1.9 - 4.8	2,700	41.2	37.2 - 45.4	6,500
No	3,800	40.1	37.1 - 43.2	1,700	18.1	15.8 - 20.8	300	3.4	2.4 - 4.8	3,700	38.3	35.3 - 41.5	9,600

**PRAMS Health Indicator Report - Breastfeeding (exclusive) duration (grouped), among initiators- by State;County;DOH
Race-Ethnicity;PRAMS Age Group;Infant Gender;Married;Poverty Level;Income (2000-2003);Income
(2004-2011);Income (2012+);Birthweight;Smoke 3rd Trimester;Smoke Before Pregnant;WIC During Pregnancy, for the
Year(s) 2000;2001;2002;2003;2004;2005;2006;2007;2008;2009;2010;2011;2012;2013**

Note: Weighted responses, rounded to the nearest hundred; n/r (Not Reportable) - If the unweighted total responses for a dimension (row) is <30 that row will not be shown

Year: 2006

State	Breastfed <1 week			Breastfed 1-4 weeks			Breastfed 5-8 weeks			Breastfed 9+ weeks			Weighted Total Responses
	#	%	C.I.(95%)	#	%	C.I.(95%)	#	%	C.I.(95%)	#	%	C.I.(95%)	#
Totals	5,600	34.8	32.4 - 37.3	3,400	21.1	19.0 - 23.3	800	4.8	3.8 - 6.0	6,300	39.3	36.8 - 41.9	16,000

County	Breastfed <1 week			Breastfed 1-4 weeks			Breastfed 5-8 weeks			Breastfed 9+ weeks			Weighted Total Responses
	#	%	C.I.(95%)	#	%	C.I.(95%)	#	%	C.I.(95%)	#	%	C.I.(95%)	#
Hawaii	600	28.6	22.2 - 36.0	400	21.8	16.1 - 28.9	100	4.8	2.4 - 9.1	900	44.8	37.3 - 52.5	1,900
Honolulu	4,500	38.4	35.5 - 41.3	2,400	20.2	17.9 - 22.8	500	4.6	3.5 - 6.0	4,300	36.8	34.0 - 39.8	11,700
Kauai	100	13.9	7.5 - 24.3	200	24.2	15.1 - 36.3	100	6.8	2.7 - 16.1	400	55.2	42.9 - 66.9	700
Maui	400	26.4	19.8 - 34.2	400	25.0	18.5 - 33.0	100	5.2	2.6 - 10.3	700	43.4	35.4 - 51.7	1,600

PRAMS Health Indicator Report - Breastfeeding (exclusive) duration (grouped), among initiators- by State;County;DOH Race-Ethnicity;PRAMS Age Group;Infant Gender;Married;Poverty Level;Income (2000-2003);Income (2004-2011);Income (2012+);Birthweight;Smoke 3rd Trimester;Smoke Before Pregnant;WIC During Pregnancy, for the Year(s) 2000;2001;2002;2003;2004;2005;2006;2007;2008;2009;2010;2011;2012;2013

Note: Weighted responses, rounded to the nearest hundred; n/r (Not Reportable) - If the unweighted total responses for a dimension (row) is <30 that row will not be shown

Year: 2006

DOH Race-Ethnicity	Breastfed <1 week			Breastfed 1-4 weeks			Breastfed 5-8 weeks			Breastfed 9+ weeks			Weighted Total Responses
	#	%	C.I.(95%)	#	%	C.I.(95%)	#	%	C.I.(95%)	#	%	C.I.(95%)	#
Caucasian	900	23.5	19.3 - 28.4	600	16.3	12.8 - 20.6	300	8.1	5.6 - 11.4	2,000	52.1	46.8 - 57.3	3,900
Native Hawaiian	1,500	34.8	29.7 - 40.2	1,100	27.0	22.4 - 32.2	100	3.0	1.6 - 5.5	1,500	35.3	30.2 - 40.7	4,200
Chinese	200	43.4	36.3 - 50.7	100	21.3	15.9 - 27.9	<50	3.7	1.7 - 7.7	200	31.6	25.2 - 38.8	600
Filipino	1,200	40.5	35.0 - 46.3	600	19.7	15.5 - 24.7	100	4.8	2.9 - 8.0	1,000	34.9	29.7 - 40.6	2,900
Japanese	900	49.3	42.0 - 56.7	300	17.7	12.7 - 24.2	<50	2.3	0.9 - 5.6	600	30.7	24.3 - 37.9	1,900
Other	800	32.9	26.8 - 39.5	600	22.8	17.6 - 29.0	100	4.7	2.4 - 8.7	1,000	39.6	33.2 - 46.4	2,500

PRAMS Age Group	Breastfed <1 week			Breastfed 1-4 weeks			Breastfed 5-8 weeks			Breastfed 9+ weeks			Weighted Total Responses
	#	%	C.I.(95%)	#	%	C.I.(95%)	#	%	C.I.(95%)	#	%	C.I.(95%)	#
<20	400	33.1	24.7 - 42.7	400	29.5	21.4 - 39.1	0	0.0	-	500	37.4	28.6 - 47.2	1,400
20-24	1,400	36.3	31.1 - 41.8	900	23.5	19.1 - 28.5	200	5.8	3.6 - 9.1	1,300	34.5	29.4 - 39.9	3,900
25-34	2,600	32.9	29.6 - 36.3	1,600	19.9	17.1 - 23.0	400	5.2	3.8 - 7.0	3,300	42.1	38.5 - 45.7	7,900
35+	1,100	39.0	33.6 - 44.7	500	17.2	13.3 - 22.0	100	4.6	2.7 - 7.7	1,100	39.2	33.8 - 44.9	2,900

**PRAMS Health Indicator Report - Breastfeeding (exclusive) duration (grouped), among initiators- by State;County;DOH
Race-Ethnicity;PRAMS Age Group;Infant Gender;Married;Poverty Level;Income (2000-2003);Income
(2004-2011);Income (2012+);Birthweight;Smoke 3rd Trimester;Smoke Before Pregnant;WIC During Pregnancy, for the
Year(s) 2000;2001;2002;2003;2004;2005;2006;2007;2008;2009;2010;2011;2012;2013**

Note: Weighted responses, rounded to the nearest hundred; n/r (Not Reportable) - If the unweighted total responses for a dimension (row) is <30 that row will not be shown

Year: 2006

Infant Gender	Breastfed <1 week			Breastfed 1-4 weeks			Breastfed 5-8 weeks			Breastfed 9+ weeks			Weighted Total Responses
	#	%	C.I.(95%)	#	%	C.I.(95%)	#	%	C.I.(95%)	#	%	C.I.(95%)	#
Male	2,900	35.4	32.1 - 39.0	1,900	23.1	20.2 - 26.4	400	5.2	3.9 - 7.1	3,000	36.2	32.8 - 39.7	8,300
Female	2,600	34.2	30.7 - 37.8	1,500	18.9	16.2 - 22.1	300	4.3	3.0 - 6.1	3,300	42.7	39.0 - 46.4	7,700

Married	Breastfed <1 week			Breastfed 1-4 weeks			Breastfed 5-8 weeks			Breastfed 9+ weeks			Weighted Total Responses
	#	%	C.I.(95%)	#	%	C.I.(95%)	#	%	C.I.(95%)	#	%	C.I.(95%)	#
Yes	3,600	35.5	32.6 - 38.5	1,900	18.1	15.8 - 20.7	500	5.0	3.8 - 6.6	4,200	41.4	38.4 - 44.5	10,200
No	1,900	33.7	29.5 - 38.2	1,500	26.3	22.4 - 30.6	300	4.4	2.8 - 6.6	2,100	35.6	31.3 - 40.1	5,800

Poverty Level	Breastfed <1 week			Breastfed 1-4 weeks			Breastfed 5-8 weeks			Breastfed 9+ weeks			Weighted Total Responses
	#	%	C.I.(95%)	#	%	C.I.(95%)	#	%	C.I.(95%)	#	%	C.I.(95%)	#
0-130%	1,900	34.8	30.5 - 39.4	1,400	25.0	21.1 - 29.3	200	4.0	2.5 - 6.3	2,000	36.2	31.9 - 40.8	5,400
131-185%	700	32.5	26.1 - 39.7	400	20.1	14.7 - 26.9	100	6.2	3.5 - 11.0	800	41.1	34.0 - 48.6	2,100
186+%	2,700	35.6	32.3 - 39.1	1,400	18.3	15.6 - 21.3	400	4.7	3.4 - 6.5	3,100	41.4	37.8 - 45.0	7,500

**PRAMS Health Indicator Report - Breastfeeding (exclusive) duration (grouped), among initiators- by State;County;DOH
Race-Ethnicity;PRAMS Age Group;Infant Gender;Married;Poverty Level;Income (2000-2003);Income
(2004-2011);Income (2012+);Birthweight;Smoke 3rd Trimester;Smoke Before Pregnant;WIC During Pregnancy, for the
Year(s) 2000;2001;2002;2003;2004;2005;2006;2007;2008;2009;2010;2011;2012;2013**

Note: Weighted responses, rounded to the nearest hundred; n/r (Not Reportable) - If the unweighted total responses for a dimension (row) is <30 that row will not be shown

Year: 2006

Income (2004-2011)	Breastfed <1 week			Breastfed 1-4 weeks			Breastfed 5-8 weeks			Breastfed 9+ weeks			Weighted Total Responses
	#	%	C.I.(95%)	#	%	C.I.(95%)	#	%	C.I.(95%)	#	%	C.I.(95%)	#
<\$10,000	800	30.9	25.0 - 37.6	700	27.3	21.6 - 33.9	100	4.0	2.1 - 7.7	1,000	37.7	31.4 - 44.6	2,600
\$10,000-\$24,999	1,300	38.5	33.0 - 44.4	800	22.7	18.1 - 28.1	100	4.2	2.4 - 7.3	1,200	34.6	29.2 - 40.3	3,300
\$25,000-\$49,999	1,300	34.1	29.2 - 39.3	800	21.4	17.3 - 26.2	200	5.9	3.8 - 9.0	1,500	38.6	33.5 - 43.9	3,800
>=\$50,000	1,900	34.9	31.0 - 39.0	900	16.6	13.7 - 20.0	200	4.4	2.9 - 6.5	2,300	44.1	39.9 - 48.3	5,300

Birthweight	Breastfed <1 week			Breastfed 1-4 weeks			Breastfed 5-8 weeks			Breastfed 9+ weeks			Weighted Total Responses
	#	%	C.I.(95%)	#	%	C.I.(95%)	#	%	C.I.(95%)	#	%	C.I.(95%)	#
Low birth weight	500	41.4	32.6 - 50.7	200	19.2	12.7 - 28.0	<50	2.3	0.8 - 6.1	500	37.1	28.5 - 46.6	1,200
Normal birth weight	5,100	34.3	31.8 - 36.9	3,100	21.3	19.1 - 23.6	700	5.0	3.9 - 6.3	5,800	39.5	36.9 - 42.1	14,800

Smoke 3rd Trimester	Breastfed <1 week			Breastfed 1-4 weeks			Breastfed 5-8 weeks			Breastfed 9+ weeks			Weighted Total Responses
	#	%	C.I.(95%)	#	%	C.I.(95%)	#	%	C.I.(95%)	#	%	C.I.(95%)	#
Yes	400	35.9	27.0 - 45.8	300	24.5	16.9 - 34.2	100	7.2	3.5 - 14.1	400	32.4	23.9 - 42.3	1,200
No	5,000	34.4	31.9 - 37.0	3,000	20.9	18.7 - 23.2	700	4.6	3.6 - 5.9	5,800	40.1	37.5 - 42.7	14,500

**PRAMS Health Indicator Report - Breastfeeding (exclusive) duration (grouped), among initiators- by State;County;DOH
Race-Ethnicity;PRAMS Age Group;Infant Gender;Married;Poverty Level;Income (2000-2003);Income
(2004-2011);Income (2012+);Birthweight;Smoke 3rd Trimester;Smoke Before Pregnant;WIC During Pregnancy, for the
Year(s) 2000;2001;2002;2003;2004;2005;2006;2007;2008;2009;2010;2011;2012;2013**

Note: Weighted responses, rounded to the nearest hundred; n/r (Not Reportable) - If the unweighted total responses for a dimension (row) is <30 that row will not be shown

Year: 2006

Smoke Before Pregnant	Breastfed <1 week			Breastfed 1-4 weeks			Breastfed 5-8 weeks			Breastfed 9+ weeks			Weighted Total Responses
	#	%	C.I.(95%)	#	%	C.I.(95%)	#	%	C.I.(95%)	#	%	C.I.(95%)	#
Yes	1,000	31.1	25.8 - 37.1	800	26.7	21.6 - 32.6	300	8.5	5.7 - 12.6	1,100	33.6	28.1 - 39.6	3,100
No	4,500	35.4	32.7 - 38.2	2,500	19.8	17.5 - 22.2	500	3.9	3.0 - 5.2	5,200	40.9	38.1 - 43.8	12,600

WIC During Pregnancy	Breastfed <1 week			Breastfed 1-4 weeks			Breastfed 5-8 weeks			Breastfed 9+ weeks			Weighted Total Responses
	#	%	C.I.(95%)	#	%	C.I.(95%)	#	%	C.I.(95%)	#	%	C.I.(95%)	#
Yes	2,300	35.6	31.7 - 39.7	1,500	23.0	19.5 - 26.8	300	5.2	3.6 - 7.4	2,400	36.3	32.3 - 40.4	6,600
No	3,100	34.2	31.1 - 37.4	1,800	19.4	16.9 - 22.2	400	4.4	3.2 - 6.0	3,900	42.1	38.8 - 45.4	9,200

**PRAMS Health Indicator Report - Breastfeeding (exclusive) duration (grouped), among initiators- by State;County;DOH
Race-Ethnicity;PRAMS Age Group;Infant Gender;Married;Poverty Level;Income (2000-2003);Income
(2004-2011);Income (2012+);Birthweight;Smoke 3rd Trimester;Smoke Before Pregnant;WIC During Pregnancy, for the
Year(s) 2000;2001;2002;2003;2004;2005;2006;2007;2008;2009;2010;2011;2012;2013**

Note: Weighted responses, rounded to the nearest hundred; n/r (Not Reportable) - If the unweighted total responses for a dimension (row) is <30 that row will not be shown

Year: 2005

State	Breastfed <1 week			Breastfed 1-4 weeks			Breastfed 5-8 weeks			Breastfed 9+ weeks			Weighted Total Responses
	#	%	C.I.(95%)	#	%	C.I.(95%)	#	%	C.I.(95%)	#	%	C.I.(95%)	#
Totals	5,500	36.1	33.7 - 38.5	3,300	21.4	19.4 - 23.6	500	3.4	2.6 - 4.4	5,900	39.1	36.7 - 41.5	15,200

County	Breastfed <1 week			Breastfed 1-4 weeks			Breastfed 5-8 weeks			Breastfed 9+ weeks			Weighted Total Responses
	#	%	C.I.(95%)	#	%	C.I.(95%)	#	%	C.I.(95%)	#	%	C.I.(95%)	#
Hawaii	500	27.0	21.1 - 33.9	500	26.7	20.7 - 33.8	100	2.7	1.1 - 6.3	800	43.6	36.4 - 51.0	1,900
Honolulu	4,400	39.2	36.4 - 42.1	2,400	21.3	19.0 - 23.8	400	3.3	2.4 - 4.5	4,000	36.2	33.4 - 39.0	11,100
Kauai	100	14.5	8.1 - 24.6	200	24.1	15.2 - 35.9	<50	3.8	1.0 - 13.1	400	57.7	45.4 - 69.0	700
Maui	500	33.9	26.8 - 41.8	200	14.6	9.8 - 21.2	100	5.0	2.4 - 9.8	700	46.5	38.7 - 54.5	1,500

PRAMS Health Indicator Report - Breastfeeding (exclusive) duration (grouped), among initiators- by State;County;DOH Race-Ethnicity;PRAMS Age Group;Infant Gender;Married;Poverty Level;Income (2000-2003);Income (2004-2011);Income (2012+);Birthweight;Smoke 3rd Trimester;Smoke Before Pregnant;WIC During Pregnancy, for the Year(s) 2000;2001;2002;2003;2004;2005;2006;2007;2008;2009;2010;2011;2012;2013

Note: Weighted responses, rounded to the nearest hundred; n/r (Not Reportable) - If the unweighted total responses for a dimension (row) is <30 that row will not be shown

Year: 2005

DOH Race-Ethnicity	Breastfed <1 week			Breastfed 1-4 weeks			Breastfed 5-8 weeks			Breastfed 9+ weeks			Weighted Total Responses
	#	%	C.I.(95%)	#	%	C.I.(95%)	#	%	C.I.(95%)	#	%	C.I.(95%)	#
Caucasian	800	21.8	17.7 - 26.6	700	20.3	16.3 - 24.9	100	3.3	1.8 - 5.9	1,900	54.6	49.3 - 59.9	3,500
Native Hawaiian	1,500	36.7	31.8 - 42.0	800	20.5	16.5 - 25.2	200	4.4	2.7 - 7.1	1,600	38.4	33.3 - 43.7	4,100
Chinese	200	41.7	35.2 - 48.6	100	19.9	15.0 - 25.9	<50	4.0	2.0 - 7.7	200	34.4	28.3 - 41.2	600
Filipino	1,300	44.9	39.6 - 50.3	700	24.4	20.0 - 29.3	100	4.0	2.3 - 6.7	800	26.8	22.3 - 31.8	2,800
Japanese	1,100	49.6	43.1 - 56.1	300	16.1	11.8 - 21.5	100	2.4	1.0 - 5.4	700	32.0	26.2 - 38.3	2,200
Other	600	31.2	25.4 - 37.7	600	27.5	21.8 - 34.0	<50	1.7	0.7 - 4.4	800	39.6	33.2 - 46.5	2,000

PRAMS Age Group	Breastfed <1 week			Breastfed 1-4 weeks			Breastfed 5-8 weeks			Breastfed 9+ weeks			Weighted Total Responses
	#	%	C.I.(95%)	#	%	C.I.(95%)	#	%	C.I.(95%)	#	%	C.I.(95%)	#
<20	400	34.4	26.3 - 43.4	300	25.4	18.3 - 34.1	100	4.3	1.8 - 10.1	500	35.9	27.7 - 45.1	1,300
20-24	1,200	33.1	28.3 - 38.2	1,000	27.0	22.6 - 31.9	100	4.0	2.4 - 6.5	1,300	35.9	31.0 - 41.1	3,700
25-34	2,800	36.8	33.5 - 40.3	1,400	19.1	16.4 - 22.0	300	3.8	2.6 - 5.4	3,000	40.3	36.9 - 43.8	7,500
35+	1,000	39.0	33.7 - 44.6	500	18.5	14.4 - 23.4	<50	1.1	0.5 - 2.4	1,100	41.4	35.9 - 47.1	2,700

**PRAMS Health Indicator Report - Breastfeeding (exclusive) duration (grouped), among initiators- by State;County;DOH
Race-Ethnicity;PRAMS Age Group;Infant Gender;Married;Poverty Level;Income (2000-2003);Income
(2004-2011);Income (2012+);Birthweight;Smoke 3rd Trimester;Smoke Before Pregnant;WIC During Pregnancy, for the
Year(s) 2000;2001;2002;2003;2004;2005;2006;2007;2008;2009;2010;2011;2012;2013**

Note: Weighted responses, rounded to the nearest hundred; n/r (Not Reportable) - If the unweighted total responses for a dimension (row) is <30 that row will not be shown

Year: 2005

Infant Gender	Breastfed <1 week			Breastfed 1-4 weeks			Breastfed 5-8 weeks			Breastfed 9+ weeks			Weighted Total Responses
	#	%	C.I.(95%)	#	%	C.I.(95%)	#	%	C.I.(95%)	#	%	C.I.(95%)	#
Male	2,800	36.7	33.4 - 40.1	1,600	21.1	18.3 - 24.2	300	3.4	2.3 - 4.9	3,000	38.8	35.5 - 42.3	7,700
Female	2,700	35.5	32.2 - 38.9	1,600	21.8	19.0 - 24.9	300	3.4	2.4 - 5.0	2,900	39.3	35.9 - 42.8	7,500

Married	Breastfed <1 week			Breastfed 1-4 weeks			Breastfed 5-8 weeks			Breastfed 9+ weeks			Weighted Total Responses
	#	%	C.I.(95%)	#	%	C.I.(95%)	#	%	C.I.(95%)	#	%	C.I.(95%)	#
Yes	3,500	35.6	32.8 - 38.6	1,900	19.5	17.2 - 22.1	300	3.2	2.2 - 4.5	4,100	41.7	38.7 - 44.7	9,900
No	2,000	36.9	32.8 - 41.3	1,300	25.1	21.4 - 29.1	200	3.8	2.5 - 5.8	1,800	34.2	30.1 - 38.4	5,300

Poverty Level	Breastfed <1 week			Breastfed 1-4 weeks			Breastfed 5-8 weeks			Breastfed 9+ weeks			Weighted Total Responses
	#	%	C.I.(95%)	#	%	C.I.(95%)	#	%	C.I.(95%)	#	%	C.I.(95%)	#
0-130%	2,000	37.2	33.1 - 41.5	1,300	24.3	20.8 - 28.3	100	2.6	1.5 - 4.3	1,900	35.9	31.8 - 40.2	5,300
131-185%	500	33.2	26.2 - 41.0	400	22.7	16.7 - 30.0	100	4.0	1.9 - 8.4	600	40.2	32.7 - 48.1	1,600
186+%	2,600	36.6	33.3 - 40.0	1,300	17.7	15.1 - 20.6	300	3.9	2.7 - 5.6	3,000	41.9	38.4 - 45.4	7,200

**PRAMS Health Indicator Report - Breastfeeding (exclusive) duration (grouped), among initiators- by State;County;DOH
Race-Ethnicity;PRAMS Age Group;Infant Gender;Married;Poverty Level;Income (2000-2003);Income
(2004-2011);Income (2012+);Birthweight;Smoke 3rd Trimester;Smoke Before Pregnant;WIC During Pregnancy, for the
Year(s) 2000;2001;2002;2003;2004;2005;2006;2007;2008;2009;2010;2011;2012;2013**

Note: Weighted responses, rounded to the nearest hundred; n/r (Not Reportable) - If the unweighted total responses for a dimension (row) is <30 that row will not be shown

Year: 2005

Income (2004-2011)	Breastfed <1 week			Breastfed 1-4 weeks			Breastfed 5-8 weeks			Breastfed 9+ weeks			Weighted Total Responses
	#	%	C.I.(95%)	#	%	C.I.(95%)	#	%	C.I.(95%)	#	%	C.I.(95%)	#
<\$10,000	1,000	39.0	33.0 - 45.3	600	23.5	18.6 - 29.3	100	4.0	2.2 - 7.4	900	33.5	27.7 - 39.8	2,500
\$10,000-\$24,999	1,100	37.8	32.5 - 43.4	800	24.8	20.2 - 30.0	<50	1.4	0.6 - 3.3	1,100	35.9	30.7 - 41.6	3,000
\$25,000-\$49,999	1,100	30.6	26.1 - 35.6	700	18.4	14.7 - 22.8	200	4.8	3.1 - 7.5	1,700	46.2	41.0 - 51.4	3,600
>=\$50,000	2,000	39.3	35.3 - 43.4	900	18.4	15.3 - 22.0	200	3.4	2.1 - 5.5	1,900	38.9	34.8 - 43.0	5,000

Birthweight	Breastfed <1 week			Breastfed 1-4 weeks			Breastfed 5-8 weeks			Breastfed 9+ weeks			Weighted Total Responses
	#	%	C.I.(95%)	#	%	C.I.(95%)	#	%	C.I.(95%)	#	%	C.I.(95%)	#
Low birth weight	600	50.9	41.6 - 60.1	100	13.3	8.1 - 21.0	100	4.7	2.1 - 10.2	300	31.2	23.2 - 40.5	1,100
Normal birth weight	4,900	34.9	32.5 - 37.4	3,100	22.1	20.0 - 24.4	500	3.3	2.5 - 4.4	5,600	39.7	37.2 - 42.2	14,100

Smoke 3rd Trimester	Breastfed <1 week			Breastfed 1-4 weeks			Breastfed 5-8 weeks			Breastfed 9+ weeks			Weighted Total Responses
	#	%	C.I.(95%)	#	%	C.I.(95%)	#	%	C.I.(95%)	#	%	C.I.(95%)	#
Yes	500	45.6	36.1 - 55.4	200	16.9	10.8 - 25.5	<50	1.1	0.2 - 7.0	400	36.3	27.4 - 46.2	1,100
No	4,900	35.2	32.8 - 37.7	3,000	21.5	19.4 - 23.8	500	3.6	2.8 - 4.8	5,500	39.6	37.1 - 42.2	13,900

PRAMS Health Indicator Report - Breastfeeding (exclusive) duration (grouped), among initiators- by State;County;DOH Race-Ethnicity;PRAMS Age Group;Infant Gender;Married;Poverty Level;Income (2000-2003);Income (2004-2011);Income (2012+);Birthweight;Smoke 3rd Trimester;Smoke Before Pregnant;WIC During Pregnancy, for the Year(s) 2000;2001;2002;2003;2004;2005;2006;2007;2008;2009;2010;2011;2012;2013

Note: Weighted responses, rounded to the nearest hundred; n/r (Not Reportable) - If the unweighted total responses for a dimension (row) is <30 that row will not be shown

Year: 2005

Smoke Before Pregnant	Breastfed <1 week			Breastfed 1-4 weeks			Breastfed 5-8 weeks			Breastfed 9+ weeks			Weighted Total Responses
	#	%	C.I.(95%)	#	%	C.I.(95%)	#	%	C.I.(95%)	#	%	C.I.(95%)	#
Yes	1,200	38.9	33.4 - 44.7	700	23.6	19.0 - 28.9	100	4.9	2.9 - 8.2	1,000	32.6	27.3 - 38.3	3,000
No	4,200	35.2	32.6 - 37.9	2,500	20.7	18.5 - 23.1	400	3.1	2.3 - 4.2	4,900	41.0	38.3 - 43.8	11,900

WIC During Pregnancy	Breastfed <1 week			Breastfed 1-4 weeks			Breastfed 5-8 weeks			Breastfed 9+ weeks			Weighted Total Responses
	#	%	C.I.(95%)	#	%	C.I.(95%)	#	%	C.I.(95%)	#	%	C.I.(95%)	#
Yes	2,100	34.0	30.3 - 37.9	1,500	23.6	20.3 - 27.1	200	3.4	2.2 - 5.0	2,500	39.1	35.2 - 43.1	6,300
No	3,200	37.3	34.2 - 40.4	1,700	19.6	17.1 - 22.4	300	3.5	2.5 - 5.0	3,400	39.6	36.5 - 42.8	8,600

**PRAMS Health Indicator Report - Breastfeeding (exclusive) duration (grouped), among initiators- by State;County;DOH
Race-Ethnicity;PRAMS Age Group;Infant Gender;Married;Poverty Level;Income (2000-2003);Income
(2004-2011);Income (2012+);Birthweight;Smoke 3rd Trimester;Smoke Before Pregnant;WIC During Pregnancy, for the
Year(s) 2000;2001;2002;2003;2004;2005;2006;2007;2008;2009;2010;2011;2012;2013**

Note: Weighted responses, rounded to the nearest hundred; n/r (Not Reportable) - If the unweighted total responses for a dimension (row) is <30 that row will not be shown

Year: 2004

State	Breastfed <1 week			Breastfed 1-4 weeks			Breastfed 5-8 weeks			Breastfed 9+ weeks			Weighted Total Responses
	#	%	C.I.(95%)	#	%	C.I.(95%)	#	%	C.I.(95%)	#	%	C.I.(95%)	#
Totals	5,700	36.9	34.8 - 39.2	3,300	21.1	19.3 - 23.1	600	4.1	3.2 - 5.1	5,900	37.9	35.7 - 40.1	15,600

County	Breastfed <1 week			Breastfed 1-4 weeks			Breastfed 5-8 weeks			Breastfed 9+ weeks			Weighted Total Responses
	#	%	C.I.(95%)	#	%	C.I.(95%)	#	%	C.I.(95%)	#	%	C.I.(95%)	#
Hawaii	600	30.9	24.9 - 37.7	400	20.4	15.3 - 26.6	100	3.4	1.5 - 7.1	800	45.3	38.5 - 52.3	1,900
Honolulu	4,500	40.2	37.6 - 42.9	2,300	20.4	18.3 - 22.7	400	3.6	2.7 - 4.7	4,000	35.8	33.3 - 38.4	11,200
Kauai	100	16.0	9.7 - 25.2	200	25.1	17.2 - 35.1	<50	5.0	2.0 - 12.0	400	54.0	43.6 - 64.1	800
Maui	500	31.5	25.5 - 38.3	400	24.5	19.0 - 31.0	100	7.7	4.6 - 12.7	600	36.2	29.9 - 43.1	1,700

PRAMS Health Indicator Report - Breastfeeding (exclusive) duration (grouped), among initiators- by State;County;DOH Race-Ethnicity;PRAMS Age Group;Infant Gender;Married;Poverty Level;Income (2000-2003);Income (2004-2011);Income (2012+);Birthweight;Smoke 3rd Trimester;Smoke Before Pregnant;WIC During Pregnancy, for the Year(s) 2000;2001;2002;2003;2004;2005;2006;2007;2008;2009;2010;2011;2012;2013

Note: Weighted responses, rounded to the nearest hundred; n/r (Not Reportable) - If the unweighted total responses for a dimension (row) is <30 that row will not be shown

Year: 2004

DOH Race-Ethnicity	Breastfed <1 week			Breastfed 1-4 weeks			Breastfed 5-8 weeks			Breastfed 9+ weeks			Weighted Total Responses
	#	%	C.I.(95%)	#	%	C.I.(95%)	#	%	C.I.(95%)	#	%	C.I.(95%)	#
Caucasian	800	21.0	17.4 - 25.2	700	18.4	15.0 - 22.4	200	5.5	3.7 - 8.1	2,000	55.1	50.3 - 59.7	3,600
Native Hawaiian	1,700	40.6	35.8 - 45.5	1,000	25.1	21.1 - 29.7	200	4.8	3.1 - 7.5	1,200	29.5	25.2 - 34.1	4,100
Chinese	300	44.3	39.7 - 49.0	100	18.0	14.7 - 21.9	<50	2.1	1.1 - 4.0	200	35.6	31.2 - 40.2	600
Filipino	1,200	40.2	35.6 - 45.0	600	21.7	18.0 - 26.0	100	4.4	2.8 - 6.9	1,000	33.6	29.2 - 38.3	3,000
Japanese	1,000	48.0	41.6 - 54.4	400	19.9	15.2 - 25.5	<50	1.9	0.7 - 4.7	600	30.3	24.7 - 36.5	2,100
Other	900	39.1	33.0 - 45.4	400	19.3	14.7 - 24.9	100	2.5	1.2 - 5.1	900	39.1	33.1 - 45.6	2,200

PRAMS Age Group	Breastfed <1 week			Breastfed 1-4 weeks			Breastfed 5-8 weeks			Breastfed 9+ weeks			Weighted Total Responses
	#	%	C.I.(95%)	#	%	C.I.(95%)	#	%	C.I.(95%)	#	%	C.I.(95%)	#
<20	400	33.5	25.4 - 42.7	300	28.5	20.8 - 37.7	100	5.5	2.6 - 11.4	300	32.5	24.5 - 41.7	1,100
20-24	1,300	33.6	29.3 - 38.2	1,000	25.9	22.0 - 30.3	200	5.1	3.3 - 7.6	1,400	35.4	31.0 - 40.0	4,000
25-34	2,800	37.6	34.5 - 40.8	1,400	18.4	16.0 - 21.1	300	3.7	2.6 - 5.2	3,000	40.3	37.1 - 43.5	7,600
35+	1,200	40.9	36.0 - 45.9	600	18.9	15.2 - 23.3	100	3.2	1.8 - 5.6	1,100	37.0	32.2 - 42.0	3,000

**PRAMS Health Indicator Report - Breastfeeding (exclusive) duration (grouped), among initiators- by State;County;DOH
Race-Ethnicity;PRAMS Age Group;Infant Gender;Married;Poverty Level;Income (2000-2003);Income
(2004-2011);Income (2012+);Birthweight;Smoke 3rd Trimester;Smoke Before Pregnant;WIC During Pregnancy, for the
Year(s) 2000;2001;2002;2003;2004;2005;2006;2007;2008;2009;2010;2011;2012;2013**

Note: Weighted responses, rounded to the nearest hundred; n/r (Not Reportable) - If the unweighted total responses for a dimension (row) is <30 that row will not be shown

Year: 2004

Infant Gender	Breastfed <1 week			Breastfed 1-4 weeks			Breastfed 5-8 weeks			Breastfed 9+ weeks			Weighted Total Responses
	#	%	C.I.(95%)	#	%	C.I.(95%)	#	%	C.I.(95%)	#	%	C.I.(95%)	#
Male	3,200	38.5	35.5 - 41.6	1,800	20.9	18.5 - 23.6	300	3.8	2.7 - 5.2	3,100	36.8	33.9 - 39.9	8,400
Female	2,500	35.1	32.0 - 38.5	1,500	21.3	18.6 - 24.3	300	4.4	3.3 - 6.1	2,800	39.1	35.8 - 42.4	7,200

Married	Breastfed <1 week			Breastfed 1-4 weeks			Breastfed 5-8 weeks			Breastfed 9+ weeks			Weighted Total Responses
	#	%	C.I.(95%)	#	%	C.I.(95%)	#	%	C.I.(95%)	#	%	C.I.(95%)	#
Yes	4,000	35.9	33.4 - 38.5	2,200	19.8	17.8 - 22.1	500	4.2	3.2 - 5.5	4,400	40.0	37.5 - 42.7	11,000
No	1,800	39.4	35.2 - 43.9	1,100	24.2	20.6 - 28.3	200	3.7	2.4 - 5.8	1,500	32.6	28.6 - 36.9	4,500

Poverty Level	Breastfed <1 week			Breastfed 1-4 weeks			Breastfed 5-8 weeks			Breastfed 9+ weeks			Weighted Total Responses
	#	%	C.I.(95%)	#	%	C.I.(95%)	#	%	C.I.(95%)	#	%	C.I.(95%)	#
0-130%	2,000	35.9	32.1 - 39.8	1,400	25.0	21.6 - 28.6	200	3.2	2.0 - 5.1	2,000	35.9	32.2 - 39.8	5,500
131-185%	500	28.2	22.5 - 34.6	400	21.0	16.0 - 27.1	100	6.5	3.9 - 10.7	800	44.3	37.8 - 51.1	1,800
186+%	2,800	39.4	36.3 - 42.6	1,300	18.1	15.7 - 20.8	300	4.3	3.2 - 5.9	2,700	38.2	35.0 - 41.4	7,100

**PRAMS Health Indicator Report - Breastfeeding (exclusive) duration (grouped), among initiators- by State;County;DOH
Race-Ethnicity;PRAMS Age Group;Infant Gender;Married;Poverty Level;Income (2000-2003);Income
(2004-2011);Income (2012+);Birthweight;Smoke 3rd Trimester;Smoke Before Pregnant;WIC During Pregnancy, for the
Year(s) 2000;2001;2002;2003;2004;2005;2006;2007;2008;2009;2010;2011;2012;2013**

Note: Weighted responses, rounded to the nearest hundred; n/r (Not Reportable) - If the unweighted total responses for a dimension (row) is <30 that row will not be shown

Year: 2004

Income (2004-2011)	Breastfed <1 week			Breastfed 1-4 weeks			Breastfed 5-8 weeks			Breastfed 9+ weeks			Weighted Total Responses
	#	%	C.I.(95%)	#	%	C.I.(95%)	#	%	C.I.(95%)	#	%	C.I.(95%)	#
<\$10,000	1,000	41.8	35.8 - 48.1	600	24.6	19.6 - 30.4	100	2.5	1.2 - 5.3	700	31.0	25.6 - 37.0	2,300
\$10,000-\$24,999	1,200	31.5	27.2 - 36.2	900	23.2	19.3 - 27.5	200	5.3	3.5 - 8.1	1,500	39.9	35.3 - 44.8	3,700
\$25,000-\$49,999	1,300	31.5	27.6 - 35.8	900	22.6	19.1 - 26.6	200	4.8	3.3 - 7.1	1,700	41.0	36.7 - 45.4	4,100
>=\$50,000	1,900	42.5	38.5 - 46.6	700	16.0	13.2 - 19.2	200	3.5	2.3 - 5.4	1,700	38.0	34.0 - 42.0	4,500

Birthweight	Breastfed <1 week			Breastfed 1-4 weeks			Breastfed 5-8 weeks			Breastfed 9+ weeks			Weighted Total Responses
	#	%	C.I.(95%)	#	%	C.I.(95%)	#	%	C.I.(95%)	#	%	C.I.(95%)	#
Low birth weight	500	56.7	47.3 - 65.7	100	14.2	8.8 - 22.0	100	5.6	2.5 - 12.2	200	23.5	16.5 - 32.3	900
Normal birth weight	5,200	35.7	33.5 - 38.0	3,200	21.6	19.7 - 23.6	600	4.0	3.1 - 5.0	5,700	38.8	36.5 - 41.1	14,600

Smoke 3rd Trimester	Breastfed <1 week			Breastfed 1-4 weeks			Breastfed 5-8 weeks			Breastfed 9+ weeks			Weighted Total Responses
	#	%	C.I.(95%)	#	%	C.I.(95%)	#	%	C.I.(95%)	#	%	C.I.(95%)	#
Yes	400	35.5	27.1 - 44.8	300	26.4	19.1 - 35.2	100	6.8	3.4 - 13.1	300	31.4	23.5 - 40.4	1,100
No	5,300	37.0	34.7 - 39.3	3,000	20.8	18.9 - 22.8	600	3.9	3.1 - 5.0	5,500	38.3	36.1 - 40.6	14,300

**PRAMS Health Indicator Report - Breastfeeding (exclusive) duration (grouped), among initiators- by State;County;DOH
Race-Ethnicity;PRAMS Age Group;Infant Gender;Married;Poverty Level;Income (2000-2003);Income
(2004-2011);Income (2012+);Birthweight;Smoke 3rd Trimester;Smoke Before Pregnant;WIC During Pregnancy, for the
Year(s) 2000;2001;2002;2003;2004;2005;2006;2007;2008;2009;2010;2011;2012;2013**

Note: Weighted responses, rounded to the nearest hundred; n/r (Not Reportable) - If the unweighted total responses for a dimension (row) is <30 that row will not be shown

Year: 2004

Smoke Before Pregnant	Breastfed <1 week			Breastfed 1-4 weeks			Breastfed 5-8 weeks			Breastfed 9+ weeks			Weighted Total Responses
	#	%	C.I.(95%)	#	%	C.I.(95%)	#	%	C.I.(95%)	#	%	C.I.(95%)	#
Yes	1,000	34.6	29.6 - 40.0	800	24.9	20.5 - 29.9	200	7.0	4.7 - 10.4	1,000	33.4	28.5 - 38.8	3,000
No	4,600	37.4	35.0 - 39.9	2,500	20.3	18.3 - 22.4	400	3.4	2.6 - 4.5	4,800	38.9	36.5 - 41.4	12,400

WIC During Pregnancy	Breastfed <1 week			Breastfed 1-4 weeks			Breastfed 5-8 weeks			Breastfed 9+ weeks			Weighted Total Responses
	#	%	C.I.(95%)	#	%	C.I.(95%)	#	%	C.I.(95%)	#	%	C.I.(95%)	#
Yes	2,400	35.2	31.8 - 38.7	1,600	23.9	21.0 - 27.2	200	3.3	2.2 - 4.8	2,600	37.6	34.2 - 41.1	6,800
No	3,300	38.2	35.3 - 41.1	1,600	19.1	16.8 - 21.6	400	4.8	3.7 - 6.3	3,200	38.0	35.1 - 40.9	8,500

**PRAMS Health Indicator Report - Breastfeeding (exclusive) duration (grouped), among initiators- by State;County;DOH
Race-Ethnicity;PRAMS Age Group;Infant Gender;Married;Poverty Level;Income (2000-2003);Income
(2004-2011);Income (2012+);Birthweight;Smoke 3rd Trimester;Smoke Before Pregnant;WIC During Pregnancy, for the
Year(s) 2000;2001;2002;2003;2004;2005;2006;2007;2008;2009;2010;2011;2012;2013**

Note: Weighted responses, rounded to the nearest hundred; n/r (Not Reportable) - If the unweighted total responses for a dimension (row) is <30 that row will not be shown

Year: 2003

State	Breastfed <1 week			Breastfed 1-4 weeks			Breastfed 5-8 weeks			Breastfed 9+ weeks			Weighted Total Responses
	#	%	C.I.(95%)	#	%	C.I.(95%)	#	%	C.I.(95%)	#	%	C.I.(95%)	#
Totals	5,100	35.2	32.4 - 38.1	3,200	21.8	19.4 - 24.3	600	3.9	2.9 - 5.2	5,700	39.2	36.3 - 42.0	14,600

County	Breastfed <1 week			Breastfed 1-4 weeks			Breastfed 5-8 weeks			Breastfed 9+ weeks			Weighted Total Responses
	#	%	C.I.(95%)	#	%	C.I.(95%)	#	%	C.I.(95%)	#	%	C.I.(95%)	#
Hawaii	400	25.4	21.1 - 30.2	300	20.1	16.3 - 24.4	100	4.2	2.5 - 7.0	800	50.4	45.2 - 55.5	1,500
Honolulu	4,100	38.1	34.5 - 41.9	2,400	22.0	19.0 - 25.4	400	3.7	2.5 - 5.5	3,900	36.1	32.5 - 39.9	10,800
Kauai	200	22.4	16.4 - 29.8	200	22.0	16.1 - 29.2	<50	3.8	1.7 - 8.4	400	51.9	44.0 - 59.7	700
Maui	500	30.9	26.3 - 36.0	300	21.4	17.4 - 26.1	100	4.6	2.8 - 7.4	700	43.1	37.9 - 48.4	1,600

PRAMS Health Indicator Report - Breastfeeding (exclusive) duration (grouped), among initiators- by State;County;DOH Race-Ethnicity;PRAMS Age Group;Infant Gender;Married;Poverty Level;Income (2000-2003);Income (2004-2011);Income (2012+);Birthweight;Smoke 3rd Trimester;Smoke Before Pregnant;WIC During Pregnancy, for the Year(s) 2000;2001;2002;2003;2004;2005;2006;2007;2008;2009;2010;2011;2012;2013

Note: Weighted responses, rounded to the nearest hundred; n/r (Not Reportable) - If the unweighted total responses for a dimension (row) is <30 that row will not be shown

Year: 2003

DOH Race-Ethnicity	Breastfed <1 week			Breastfed 1-4 weeks			Breastfed 5-8 weeks			Breastfed 9+ weeks			Weighted Total Responses
	#	%	C.I.(95%)	#	%	C.I.(95%)	#	%	C.I.(95%)	#	%	C.I.(95%)	#
Caucasian	800	23.8	18.4 - 30.2	600	19.1	14.3 - 24.9	300	8.0	5.0 - 12.3	1,700	49.2	42.6 - 55.8	3,400
Native Hawaiian	1,300	33.4	30.3 - 36.6	900	23.0	20.3 - 25.9	100	3.0	2.1 - 4.3	1,500	40.6	37.4 - 43.9	3,800
Chinese	300	46.6	31.3 - 62.6	100	15.2	6.6 - 31.1	<50	0.9	0.1 - 5.2	200	37.3	23.5 - 53.5	700
Filipino	1,200	38.6	32.0 - 45.7	800	25.3	19.7 - 32.0	100	2.1	0.8 - 5.6	1,000	33.9	27.6 - 40.9	3,100
Japanese	900	48.6	39.0 - 58.3	300	15.1	9.3 - 23.4	<50	1.1	0.2 - 7.1	600	35.2	26.6 - 44.9	1,800
Other	700	37.1	28.4 - 46.7	500	26.8	19.3 - 36.0	100	4.7	1.9 - 11.0	600	31.3	23.3 - 40.7	1,900

PRAMS Age Group	Breastfed <1 week			Breastfed 1-4 weeks			Breastfed 5-8 weeks			Breastfed 9+ weeks			Weighted Total Responses
	#	%	C.I.(95%)	#	%	C.I.(95%)	#	%	C.I.(95%)	#	%	C.I.(95%)	#
<20	500	39.8	31.0 - 49.4	300	26.5	19.2 - 35.4	<50	1.4	0.5 - 4.0	400	32.2	24.6 - 40.9	1,300
20-24	1,000	30.7	25.5 - 36.5	900	26.6	21.6 - 32.3	100	3.7	1.9 - 6.9	1,300	39.0	33.4 - 45.0	3,300
25-34	2,600	35.4	31.4 - 39.7	1,500	20.5	17.3 - 24.2	400	4.9	3.4 - 7.2	2,900	39.1	35.1 - 43.3	7,400
35+	1,000	37.9	31.1 - 45.3	500	17.0	12.3 - 23.1	100	2.3	0.9 - 5.6	1,100	42.8	35.8 - 50.0	2,700

**PRAMS Health Indicator Report - Breastfeeding (exclusive) duration (grouped), among initiators- by State;County;DOH
Race-Ethnicity;PRAMS Age Group;Infant Gender;Married;Poverty Level;Income (2000-2003);Income
(2004-2011);Income (2012+);Birthweight;Smoke 3rd Trimester;Smoke Before Pregnant;WIC During Pregnancy, for the
Year(s) 2000;2001;2002;2003;2004;2005;2006;2007;2008;2009;2010;2011;2012;2013**

Note: Weighted responses, rounded to the nearest hundred; n/r (Not Reportable) - If the unweighted total responses for a dimension (row) is <30 that row will not be shown

Year: 2003

Infant Gender	Breastfed <1 week			Breastfed 1-4 weeks			Breastfed 5-8 weeks			Breastfed 9+ weeks			Weighted Total Responses
	#	%	C.I.(95%)	#	%	C.I.(95%)	#	%	C.I.(95%)	#	%	C.I.(95%)	#
Male	2,700	34.5	30.6 - 38.5	1,800	23.2	19.9 - 26.9	300	4.3	2.9 - 6.4	2,900	38.0	34.2 - 42.0	7,700
Female	2,500	36.1	31.9 - 40.4	1,400	20.2	16.9 - 23.8	200	3.4	2.1 - 5.3	2,800	40.4	36.3 - 44.7	6,900

Married	Breastfed <1 week			Breastfed 1-4 weeks			Breastfed 5-8 weeks			Breastfed 9+ weeks			Weighted Total Responses
	#	%	C.I.(95%)	#	%	C.I.(95%)	#	%	C.I.(95%)	#	%	C.I.(95%)	#
Yes	3,400	34.4	30.9 - 38.1	2,000	20.3	17.5 - 23.5	400	3.9	2.7 - 5.6	4,200	41.4	37.8 - 45.1	10,000
No	1,700	37.0	32.5 - 41.8	1,100	25.0	21.1 - 29.3	200	3.8	2.3 - 6.2	1,600	34.2	30.0 - 38.6	4,600

Poverty Level	Breastfed <1 week			Breastfed 1-4 weeks			Breastfed 5-8 weeks			Breastfed 9+ weeks			Weighted Total Responses
	#	%	C.I.(95%)	#	%	C.I.(95%)	#	%	C.I.(95%)	#	%	C.I.(95%)	#
0-130%	2,200	36.3	32.1 - 40.7	1,500	24.8	21.1 - 28.9	200	3.3	2.1 - 5.4	2,200	35.6	31.5 - 39.8	6,100
131-185%	700	33.9	26.9 - 41.7	500	21.5	15.9 - 28.4	100	4.3	1.9 - 9.2	900	40.3	33.1 - 48.0	2,200
186+%	1,700	33.3	28.4 - 38.6	1,000	19.3	15.4 - 23.8	200	4.2	2.5 - 6.9	2,200	43.2	38.1 - 48.4	5,000

**PRAMS Health Indicator Report - Breastfeeding (exclusive) duration (grouped), among initiators- by State;County;DOH
Race-Ethnicity;PRAMS Age Group;Infant Gender;Married;Poverty Level;Income (2000-2003);Income
(2004-2011);Income (2012+);Birthweight;Smoke 3rd Trimester;Smoke Before Pregnant;WIC During Pregnancy, for the
Year(s) 2000;2001;2002;2003;2004;2005;2006;2007;2008;2009;2010;2011;2012;2013**

Note: Weighted responses, rounded to the nearest hundred; n/r (Not Reportable) - If the unweighted total responses for a dimension (row) is <30 that row will not be shown

Year: 2003

Income (2000-2003)	Breastfed <1 week			Breastfed 1-4 weeks			Breastfed 5-8 weeks			Breastfed 9+ weeks			Weighted Total Responses
	#	%	C.I.(95%)	#	%	C.I.(95%)	#	%	C.I.(95%)	#	%	C.I.(95%)	#
<=\$15,000	1,200	37.9	32.2 - 44.1	800	26.4	21.3 - 32.2	100	3.6	1.8 - 7.3	1,000	32.1	26.8 - 37.8	3,100
\$15,001-\$25,000	500	28.3	21.5 - 36.2	500	26.2	19.4 - 34.4	100	5.0	2.5 - 9.6	700	40.6	32.9 - 48.7	1,800
\$25,001-\$40,000	1,000	35.4	29.0 - 42.4	600	20.1	15.3 - 26.1	100	3.2	1.6 - 6.4	1,200	41.2	34.6 - 48.2	2,900
>=\$40,001	2,100	34.9	30.4 - 39.7	1,100	19.2	15.7 - 23.3	300	4.3	2.7 - 6.8	2,500	41.5	36.9 - 46.3	6,000

Birthweight	Breastfed <1 week			Breastfed 1-4 weeks			Breastfed 5-8 weeks			Breastfed 9+ weeks			Weighted Total Responses
	#	%	C.I.(95%)	#	%	C.I.(95%)	#	%	C.I.(95%)	#	%	C.I.(95%)	#
Low birth weight	400	38.3	27.7 - 50.1	300	27.2	17.9 - 39.1	<50	4.3	1.3 - 13.9	300	30.1	21.4 - 40.6	1,000
Normal birth weight	4,800	35.0	32.1 - 38.0	2,900	21.4	19.0 - 24.0	500	3.8	2.8 - 5.2	5,400	39.8	36.9 - 42.8	13,600

Smoke 3rd Trimester	Breastfed <1 week			Breastfed 1-4 weeks			Breastfed 5-8 weeks			Breastfed 9+ weeks			Weighted Total Responses
	#	%	C.I.(95%)	#	%	C.I.(95%)	#	%	C.I.(95%)	#	%	C.I.(95%)	#
Yes	400	42.5	32.3 - 53.4	200	20.1	12.7 - 30.2	<50	2.4	0.9 - 6.0	300	35.0	25.6 - 45.7	1,000
No	4,600	34.7	31.8 - 37.8	3,000	22.1	19.6 - 24.8	500	3.9	2.9 - 5.4	5,300	39.3	36.3 - 42.3	13,400

PRAMS Health Indicator Report - Breastfeeding (exclusive) duration (grouped), among initiators- by State;County;DOH Race-Ethnicity;PRAMS Age Group;Infant Gender;Married;Poverty Level;Income (2000-2003);Income (2004-2011);Income (2012+);Birthweight;Smoke 3rd Trimester;Smoke Before Pregnant;WIC During Pregnancy, for the Year(s) 2000;2001;2002;2003;2004;2005;2006;2007;2008;2009;2010;2011;2012;2013

Note: Weighted responses, rounded to the nearest hundred; n/r (Not Reportable) - If the unweighted total responses for a dimension (row) is <30 that row will not be shown

Year: 2003

Smoke Before Pregnant	Breastfed <1 week			Breastfed 1-4 weeks			Breastfed 5-8 weeks			Breastfed 9+ weeks			Weighted Total Responses
	#	%	C.I.(95%)	#	%	C.I.(95%)	#	%	C.I.(95%)	#	%	C.I.(95%)	#
Yes	1,100	40.9	34.6 - 47.6	600	21.4	16.5 - 27.4	100	4.6	2.5 - 8.1	900	33.1	27.3 - 39.4	2,600
No	3,900	33.7	30.6 - 37.1	2,600	22.0	19.3 - 24.9	400	3.8	2.6 - 5.3	4,700	40.5	37.3 - 43.9	11,600

WIC During Pregnancy	Breastfed <1 week			Breastfed 1-4 weeks			Breastfed 5-8 weeks			Breastfed 9+ weeks			Weighted Total Responses
	#	%	C.I.(95%)	#	%	C.I.(95%)	#	%	C.I.(95%)	#	%	C.I.(95%)	#
Yes	2,100	36.7	32.5 - 41.2	1,300	23.4	19.9 - 27.4	200	3.7	2.3 - 6.0	2,100	36.2	32.1 - 40.5	5,800
No	3,000	34.2	30.5 - 38.2	1,800	20.5	17.5 - 24.0	300	3.9	2.6 - 5.7	3,600	41.4	37.5 - 45.3	8,700

**PRAMS Health Indicator Report - Breastfeeding (exclusive) duration (grouped), among initiators- by State;County;DOH
Race-Ethnicity;PRAMS Age Group;Infant Gender;Married;Poverty Level;Income (2000-2003);Income
(2004-2011);Income (2012+);Birthweight;Smoke 3rd Trimester;Smoke Before Pregnant;WIC During Pregnancy, for the
Year(s) 2000;2001;2002;2003;2004;2005;2006;2007;2008;2009;2010;2011;2012;2013**

Note: Weighted responses, rounded to the nearest hundred; n/r (Not Reportable) - If the unweighted total responses for a dimension (row) is <30 that row will not be shown

Year: 2002

State	Breastfed <1 week			Breastfed 1-4 weeks			Breastfed 5-8 weeks			Breastfed 9+ weeks			Weighted Total Responses
	#	%	C.I.(95%)	#	%	C.I.(95%)	#	%	C.I.(95%)	#	%	C.I.(95%)	#
Totals	5,000	35.1	32.2 - 38.1	2,800	19.9	17.6 - 22.4	700	4.7	3.6 - 6.2	5,800	40.3	37.4 - 43.3	14,300

County	Breastfed <1 week			Breastfed 1-4 weeks			Breastfed 5-8 weeks			Breastfed 9+ weeks			Weighted Total Responses
	#	%	C.I.(95%)	#	%	C.I.(95%)	#	%	C.I.(95%)	#	%	C.I.(95%)	#
Hawaii	600	34.5	29.9 - 39.3	400	21.3	17.8 - 25.3	100	3.3	1.9 - 5.7	700	40.9	36.2 - 45.8	1,700
Honolulu	3,800	36.5	32.8 - 40.4	2,000	19.4	16.5 - 22.7	500	5.1	3.7 - 7.2	4,100	38.9	35.1 - 42.8	10,500
Kauai	100	16.8	11.3 - 24.3	100	23.0	16.6 - 31.0	<50	3.8	1.7 - 8.4	300	56.3	47.7 - 64.5	600
Maui	500	33.0	28.2 - 38.3	300	20.2	16.2 - 24.8	100	3.4	1.9 - 6.0	700	43.4	38.1 - 48.8	1,500

**PRAMS Health Indicator Report - Breastfeeding (exclusive) duration (grouped), among initiators- by State;County;DOH
Race-Ethnicity;PRAMS Age Group;Infant Gender;Married;Poverty Level;Income (2000-2003);Income
(2004-2011);Income (2012+);Birthweight;Smoke 3rd Trimester;Smoke Before Pregnant;WIC During Pregnancy, for the
Year(s) 2000;2001;2002;2003;2004;2005;2006;2007;2008;2009;2010;2011;2012;2013**

Note: Weighted responses, rounded to the nearest hundred; n/r (Not Reportable) - If the unweighted total responses for a dimension (row) is <30 that row will not be shown

Year: 2002

DOH Race-Ethnicity	Breastfed <1 week			Breastfed 1-4 weeks			Breastfed 5-8 weeks			Breastfed 9+ weeks			Weighted Total Responses
	#	%	C.I.(95%)	#	%	C.I.(95%)	#	%	C.I.(95%)	#	%	C.I.(95%)	#
Caucasian	600	19.4	14.5 - 25.5	400	14.2	9.8 - 20.0	300	10.7	6.9 - 16.2	1,700	55.8	48.7 - 62.6	3,100
Native Hawaiian	1,300	34.6	31.4 - 37.9	900	23.8	21.1 - 26.8	200	4.3	3.0 - 6.0	1,400	37.3	34.1 - 40.6	3,700
Chinese	200	45.8	29.0 - 63.6	100	27.8	14.5 - 46.6	<50	3.8	0.6 - 21.8	100	22.6	11.1 - 40.6	500
Filipino	1,300	43.6	36.4 - 51.0	600	19.6	14.6 - 26.0	100	2.5	1.2 - 5.5	1,000	34.2	27.8 - 41.4	3,000
Japanese	1,000	43.2	35.0 - 51.8	500	22.7	16.3 - 30.6	100	2.5	0.8 - 7.4	700	31.6	24.3 - 39.9	2,300
Other	600	35.7	26.6 - 46.1	300	15.9	9.6 - 25.1	<50	1.8	0.5 - 6.4	800	46.5	36.5 - 56.9	1,700

PRAMS Age Group	Breastfed <1 week			Breastfed 1-4 weeks			Breastfed 5-8 weeks			Breastfed 9+ weeks			Weighted Total Responses
	#	%	C.I.(95%)	#	%	C.I.(95%)	#	%	C.I.(95%)	#	%	C.I.(95%)	#
<20	600	46.9	37.4 - 56.5	300	25.9	18.2 - 35.5	<50	4.0	1.1 - 13.0	300	23.2	16.8 - 31.2	1,200
20-24	1,200	33.6	28.2 - 39.4	800	22.8	18.3 - 28.1	100	3.0	1.6 - 5.4	1,400	40.6	35.0 - 46.4	3,600
25-34	2,400	33.6	29.5 - 37.9	1,200	17.3	14.2 - 20.8	400	5.7	4.0 - 8.0	3,100	43.5	39.2 - 47.9	7,200
35+	800	36.2	29.1 - 44.0	500	20.3	14.9 - 27.0	100	4.7	2.3 - 9.4	900	38.8	31.6 - 46.6	2,300

**PRAMS Health Indicator Report - Breastfeeding (exclusive) duration (grouped), among initiators- by State;County;DOH
Race-Ethnicity;PRAMS Age Group;Infant Gender;Married;Poverty Level;Income (2000-2003);Income
(2004-2011);Income (2012+);Birthweight;Smoke 3rd Trimester;Smoke Before Pregnant;WIC During Pregnancy, for the
Year(s) 2000;2001;2002;2003;2004;2005;2006;2007;2008;2009;2010;2011;2012;2013**

Note: Weighted responses, rounded to the nearest hundred; n/r (Not Reportable) - If the unweighted total responses for a dimension (row) is <30 that row will not be shown

Year: 2002

Infant Gender	Breastfed <1 week			Breastfed 1-4 weeks			Breastfed 5-8 weeks			Breastfed 9+ weeks			Weighted Total Responses
	#	%	C.I.(95%)	#	%	C.I.(95%)	#	%	C.I.(95%)	#	%	C.I.(95%)	#
Male	2,500	35.5	31.5 - 39.8	1,300	18.8	15.8 - 22.3	400	5.0	3.4 - 7.2	2,900	40.6	36.5 - 44.9	7,000
Female	2,500	34.7	30.7 - 39.0	1,500	20.9	17.6 - 24.6	300	4.4	2.9 - 6.6	2,900	40.0	35.8 - 44.3	7,300

Married	Breastfed <1 week			Breastfed 1-4 weeks			Breastfed 5-8 weeks			Breastfed 9+ weeks			Weighted Total Responses
	#	%	C.I.(95%)	#	%	C.I.(95%)	#	%	C.I.(95%)	#	%	C.I.(95%)	#
Yes	3,400	33.6	30.1 - 37.4	1,800	18.1	15.4 - 21.2	500	5.3	3.8 - 7.3	4,300	43.0	39.2 - 46.7	10,000
No	1,700	38.5	33.8 - 43.5	1,000	23.9	19.9 - 28.4	100	3.4	2.2 - 5.1	1,500	34.2	29.8 - 38.8	4,300

Poverty Level	Breastfed <1 week			Breastfed 1-4 weeks			Breastfed 5-8 weeks			Breastfed 9+ weeks			Weighted Total Responses
	#	%	C.I.(95%)	#	%	C.I.(95%)	#	%	C.I.(95%)	#	%	C.I.(95%)	#
0-130%	1,900	36.4	31.9 - 41.2	1,100	20.6	17.2 - 24.5	100	2.7	1.6 - 4.5	2,100	40.3	35.8 - 45.0	5,300
131-185%	1,000	32.6	26.4 - 39.5	500	17.9	13.3 - 23.7	200	6.4	3.8 - 10.4	1,300	43.0	36.4 - 50.0	3,000
186+%	1,700	34.3	29.4 - 39.6	900	18.4	14.6 - 22.8	300	5.9	3.7 - 9.1	2,000	41.4	36.3 - 46.8	4,900

**PRAMS Health Indicator Report - Breastfeeding (exclusive) duration (grouped), among initiators- by State;County;DOH
Race-Ethnicity;PRAMS Age Group;Infant Gender;Married;Poverty Level;Income (2000-2003);Income
(2004-2011);Income (2012+);Birthweight;Smoke 3rd Trimester;Smoke Before Pregnant;WIC During Pregnancy, for the
Year(s) 2000;2001;2002;2003;2004;2005;2006;2007;2008;2009;2010;2011;2012;2013**

Note: Weighted responses, rounded to the nearest hundred; n/r (Not Reportable) - If the unweighted total responses for a dimension (row) is <30 that row will not be shown

Year: 2002

Income (2000-2003)	Breastfed <1 week			Breastfed 1-4 weeks			Breastfed 5-8 weeks			Breastfed 9+ weeks			Weighted Total Responses
	#	%	C.I.(95%)	#	%	C.I.(95%)	#	%	C.I.(95%)	#	%	C.I.(95%)	#
<=\$15,000	900	37.8	31.7 - 44.4	500	21.1	16.5 - 26.5	100	3.4	1.5 - 7.3	900	37.7	31.7 - 44.1	2,500
\$15,001-\$25,000	600	29.9	23.2 - 37.5	400	20.2	14.6 - 27.3	100	2.8	1.3 - 6.1	1,000	47.1	39.4 - 55.0	2,100
\$25,001-\$40,000	1,000	32.1	25.9 - 39.1	700	22.7	17.6 - 28.9	200	6.0	3.5 - 10.0	1,200	39.1	32.8 - 45.9	3,000
>=\$40,001	2,200	37.2	32.6 - 42.0	1,000	16.6	13.4 - 20.4	300	5.0	3.2 - 7.6	2,400	41.2	36.5 - 46.1	5,900

Birthweight	Breastfed <1 week			Breastfed 1-4 weeks			Breastfed 5-8 weeks			Breastfed 9+ weeks			Weighted Total Responses
	#	%	C.I.(95%)	#	%	C.I.(95%)	#	%	C.I.(95%)	#	%	C.I.(95%)	#
Low birth weight	400	42.7	30.9 - 55.3	200	24.9	15.5 - 37.5	<50	2.5	0.5 - 11.8	300	29.9	19.5 - 43.0	900
Normal birth weight	4,600	34.6	31.6 - 37.7	2,600	19.5	17.2 - 22.1	600	4.8	3.7 - 6.4	5,500	41.0	38.0 - 44.1	13,400

Smoke 3rd Trimester	Breastfed <1 week			Breastfed 1-4 weeks			Breastfed 5-8 weeks			Breastfed 9+ weeks			Weighted Total Responses
	#	%	C.I.(95%)	#	%	C.I.(95%)	#	%	C.I.(95%)	#	%	C.I.(95%)	#
Yes	300	38.3	28.5 - 49.2	200	25.1	16.9 - 35.6	<50	2.7	1.1 - 6.7	300	33.9	24.6 - 44.6	900
No	4,600	35.1	32.1 - 38.2	2,600	19.7	17.3 - 22.3	600	4.9	3.7 - 6.5	5,300	40.3	37.2 - 43.5	13,200

**PRAMS Health Indicator Report - Breastfeeding (exclusive) duration (grouped), among initiators- by State;County;DOH
Race-Ethnicity;PRAMS Age Group;Infant Gender;Married;Poverty Level;Income (2000-2003);Income
(2004-2011);Income (2012+);Birthweight;Smoke 3rd Trimester;Smoke Before Pregnant;WIC During Pregnancy, for the
Year(s) 2000;2001;2002;2003;2004;2005;2006;2007;2008;2009;2010;2011;2012;2013**

Note: Weighted responses, rounded to the nearest hundred; n/r (Not Reportable) - If the unweighted total responses for a dimension (row) is <30 that row will not be shown

Year: 2002

Smoke Before Pregnant	Breastfed <1 week			Breastfed 1-4 weeks			Breastfed 5-8 weeks			Breastfed 9+ weeks			Weighted Total Responses
	#	%	C.I.(95%)	#	%	C.I.(95%)	#	%	C.I.(95%)	#	%	C.I.(95%)	#
Yes	900	36.3	29.9 - 43.1	600	23.3	17.9 - 29.6	100	3.7	2.0 - 6.5	900	36.8	30.5 - 43.6	2,600
No	4,000	34.8	31.6 - 38.2	2,200	19.2	16.7 - 22.0	600	5.1	3.7 - 6.9	4,700	40.9	37.6 - 44.3	11,400

WIC During Pregnancy	Breastfed <1 week			Breastfed 1-4 weeks			Breastfed 5-8 weeks			Breastfed 9+ weeks			Weighted Total Responses
	#	%	C.I.(95%)	#	%	C.I.(95%)	#	%	C.I.(95%)	#	%	C.I.(95%)	#
Yes	2,100	36.7	32.3 - 41.4	1,200	22.2	18.6 - 26.4	200	3.7	2.3 - 5.8	2,100	37.3	32.9 - 42.0	5,600
No	2,900	34.0	30.3 - 37.9	1,600	18.5	15.6 - 21.8	500	5.3	3.7 - 7.5	3,600	42.1	38.3 - 46.1	8,600

**PRAMS Health Indicator Report - Breastfeeding (exclusive) duration (grouped), among initiators- by State;County;DOH
Race-Ethnicity;PRAMS Age Group;Infant Gender;Married;Poverty Level;Income (2000-2003);Income
(2004-2011);Income (2012+);Birthweight;Smoke 3rd Trimester;Smoke Before Pregnant;WIC During Pregnancy, for the
Year(s) 2000;2001;2002;2003;2004;2005;2006;2007;2008;2009;2010;2011;2012;2013**

Note: Weighted responses, rounded to the nearest hundred; n/r (Not Reportable) - If the unweighted total responses for a dimension (row) is <30 that row will not be shown

Year: 2001

State	Breastfed <1 week			Breastfed 1-4 weeks			Breastfed 5-8 weeks			Breastfed 9+ weeks			Weighted Total Responses
	#	%	C.I.(95%)	#	%	C.I.(95%)	#	%	C.I.(95%)	#	%	C.I.(95%)	#
Totals	4,600	33.2	30.9 - 35.5	3,000	21.7	19.8 - 23.8	700	4.7	3.7 - 5.9	5,700	40.4	38.0 - 42.8	14,000

County	Breastfed <1 week			Breastfed 1-4 weeks			Breastfed 5-8 weeks			Breastfed 9+ weeks			Weighted Total Responses
	#	%	C.I.(95%)	#	%	C.I.(95%)	#	%	C.I.(95%)	#	%	C.I.(95%)	#
Hawaii	400	26.7	22.5 - 31.4	300	21.8	17.8 - 26.4	100	4.2	2.6 - 6.9	700	47.2	42.1 - 52.4	1,500
Honolulu	3,700	35.4	32.5 - 38.4	2,200	21.5	19.0 - 24.1	500	5.0	3.8 - 6.6	4,000	38.1	35.2 - 41.2	10,400
Kauai	100	17.8	12.4 - 24.8	200	24.5	18.2 - 32.1	<50	6.5	3.5 - 12.0	300	51.2	43.1 - 59.2	700
Maui	400	30.7	25.9 - 36.0	300	22.4	18.2 - 27.3	<50	2.2	1.0 - 4.5	600	44.7	39.3 - 50.2	1,400

PRAMS Health Indicator Report - Breastfeeding (exclusive) duration (grouped), among initiators- by State;County;DOH Race-Ethnicity;PRAMS Age Group;Infant Gender;Married;Poverty Level;Income (2000-2003);Income (2004-2011);Income (2012+);Birthweight;Smoke 3rd Trimester;Smoke Before Pregnant;WIC During Pregnancy, for the Year(s) 2000;2001;2002;2003;2004;2005;2006;2007;2008;2009;2010;2011;2012;2013

Note: Weighted responses, rounded to the nearest hundred; n/r (Not Reportable) - If the unweighted total responses for a dimension (row) is <30 that row will not be shown

Year: 2001

DOH Race-Ethnicity	Breastfed <1 week			Breastfed 1-4 weeks			Breastfed 5-8 weeks			Breastfed 9+ weeks			Weighted Total Responses
	#	%	C.I.(95%)	#	%	C.I.(95%)	#	%	C.I.(95%)	#	%	C.I.(95%)	#
Caucasian	700	21.7	17.5 - 26.5	600	18.1	14.5 - 22.3	200	5.7	3.5 - 9.0	1,700	54.6	49.3 - 59.8	3,100
Native Hawaiian	1,300	35.8	33.2 - 38.4	800	21.6	19.4 - 23.9	200	4.3	3.3 - 5.5	1,400	38.4	35.8 - 41.0	3,600
Chinese	200	37.4	24.8 - 51.9	200	25.3	14.8 - 39.7	<50	4.9	1.3 - 16.8	200	32.5	20.5 - 47.4	600
Filipino	1,100	35.4	29.8 - 41.4	700	24.3	19.5 - 29.7	100	4.1	2.2 - 7.5	1,100	36.3	30.7 - 42.3	3,000
Japanese	900	44.4	36.8 - 52.1	400	23.0	17.0 - 30.2	100	6.0	3.2 - 11.0	500	26.7	20.4 - 34.0	1,900
Other	600	30.7	23.8 - 38.5	400	21.6	15.9 - 28.7	100	3.7	1.7 - 7.9	800	44.0	36.4 - 51.9	1,800

PRAMS Age Group	Breastfed <1 week			Breastfed 1-4 weeks			Breastfed 5-8 weeks			Breastfed 9+ weeks			Weighted Total Responses
	#	%	C.I.(95%)	#	%	C.I.(95%)	#	%	C.I.(95%)	#	%	C.I.(95%)	#
<20	500	39.3	32.7 - 46.2	400	29.8	23.7 - 36.8	<50	2.7	1.4 - 5.0	400	28.2	22.6 - 34.6	1,300
20-24	1,100	30.8	26.7 - 35.4	900	26.4	22.4 - 30.8	200	4.6	2.8 - 7.2	1,400	38.2	33.8 - 42.8	3,600
25-34	2,200	32.5	29.1 - 36.0	1,200	17.9	15.4 - 20.8	400	5.1	3.6 - 7.1	3,000	44.5	40.9 - 48.1	6,800
35+	800	35.5	29.5 - 41.9	500	21.1	16.3 - 26.9	100	4.9	3.0 - 7.9	900	38.5	32.5 - 44.8	2,300

**PRAMS Health Indicator Report - Breastfeeding (exclusive) duration (grouped), among initiators- by State;County;DOH
Race-Ethnicity;PRAMS Age Group;Infant Gender;Married;Poverty Level;Income (2000-2003);Income
(2004-2011);Income (2012+);Birthweight;Smoke 3rd Trimester;Smoke Before Pregnant;WIC During Pregnancy, for the
Year(s) 2000;2001;2002;2003;2004;2005;2006;2007;2008;2009;2010;2011;2012;2013**

Note: Weighted responses, rounded to the nearest hundred; n/r (Not Reportable) - If the unweighted total responses for a dimension (row) is <30 that row will not be shown

Year: 2001

Infant Gender	Breastfed <1 week			Breastfed 1-4 weeks			Breastfed 5-8 weeks			Breastfed 9+ weeks			Weighted Total Responses
	#	%	C.I.(95%)	#	%	C.I.(95%)	#	%	C.I.(95%)	#	%	C.I.(95%)	#
Male	2,400	33.4	30.1 - 36.7	1,700	22.8	20.0 - 25.8	300	4.2	2.9 - 5.8	2,900	39.7	36.4 - 43.1	7,300
Female	2,200	32.9	29.7 - 36.3	1,400	20.6	17.9 - 23.6	400	5.3	3.9 - 7.3	2,800	41.1	37.7 - 44.6	6,700

Married	Breastfed <1 week			Breastfed 1-4 weeks			Breastfed 5-8 weeks			Breastfed 9+ weeks			Weighted Total Responses
	#	%	C.I.(95%)	#	%	C.I.(95%)	#	%	C.I.(95%)	#	%	C.I.(95%)	#
Yes	3,100	32.3	29.5 - 35.3	2,000	20.4	18.1 - 23.0	500	5.3	4.0 - 7.0	4,000	41.9	38.9 - 44.9	9,600
No	1,500	35.0	31.2 - 38.9	1,100	24.6	21.2 - 28.3	100	3.3	2.3 - 4.8	1,600	37.1	33.3 - 41.1	4,400

Poverty Level	Breastfed <1 week			Breastfed 1-4 weeks			Breastfed 5-8 weeks			Breastfed 9+ weeks			Weighted Total Responses
	#	%	C.I.(95%)	#	%	C.I.(95%)	#	%	C.I.(95%)	#	%	C.I.(95%)	#
0-130%	1,700	33.0	29.5 - 36.8	1,300	25.0	21.7 - 28.5	200	3.2	2.2 - 4.6	1,900	38.8	35.1 - 42.7	5,000
131-185%	900	29.7	25.2 - 34.7	700	22.5	18.6 - 27.0	200	6.1	3.9 - 9.5	1,300	41.6	36.6 - 46.8	3,100
186+%	1,700	34.4	30.3 - 38.8	900	17.2	14.1 - 20.7	300	5.8	4.0 - 8.4	2,100	42.6	38.4 - 47.0	5,000

**PRAMS Health Indicator Report - Breastfeeding (exclusive) duration (grouped), among initiators- by State;County;DOH
Race-Ethnicity;PRAMS Age Group;Infant Gender;Married;Poverty Level;Income (2000-2003);Income
(2004-2011);Income (2012+);Birthweight;Smoke 3rd Trimester;Smoke Before Pregnant;WIC During Pregnancy, for the
Year(s) 2000;2001;2002;2003;2004;2005;2006;2007;2008;2009;2010;2011;2012;2013**

Note: Weighted responses, rounded to the nearest hundred; n/r (Not Reportable) - If the unweighted total responses for a dimension (row) is <30 that row will not be shown

Year: 2001

Income (2000-2003)	Breastfed <1 week			Breastfed 1-4 weeks			Breastfed 5-8 weeks			Breastfed 9+ weeks			Weighted Total Responses
	#	%	C.I.(95%)	#	%	C.I.(95%)	#	%	C.I.(95%)	#	%	C.I.(95%)	#
<=\$15,000	900	32.7	27.8 - 38.0	800	28.8	24.0 - 34.0	100	4.0	2.5 - 6.1	900	34.5	29.6 - 39.8	2,600
\$15,001-\$25,000	600	31.3	25.7 - 37.5	400	23.1	18.2 - 28.8	100	3.0	1.2 - 7.1	800	42.6	36.4 - 49.1	1,900
\$25,001-\$40,000	900	28.1	23.7 - 32.9	700	23.9	19.9 - 28.5	200	5.0	3.1 - 8.0	1,300	43.0	38.0 - 48.1	3,100
>=\$40,001	2,000	35.3	31.5 - 39.3	1,000	17.1	14.3 - 20.3	300	5.9	4.2 - 8.3	2,400	41.7	37.8 - 45.7	5,800

Birthweight	Breastfed <1 week			Breastfed 1-4 weeks			Breastfed 5-8 weeks			Breastfed 9+ weeks			Weighted Total Responses
	#	%	C.I.(95%)	#	%	C.I.(95%)	#	%	C.I.(95%)	#	%	C.I.(95%)	#
Low birth weight	400	40.8	31.3 - 51.2	200	23.1	15.7 - 32.6	<50	2.2	0.9 - 5.6	300	33.9	25.1 - 44.0	900
Normal birth weight	4,300	32.6	30.2 - 35.0	2,800	21.7	19.7 - 23.8	600	4.9	3.9 - 6.2	5,400	40.9	38.4 - 43.4	13,100

Smoke 3rd Trimester	Breastfed <1 week			Breastfed 1-4 weeks			Breastfed 5-8 weeks			Breastfed 9+ weeks			Weighted Total Responses
	#	%	C.I.(95%)	#	%	C.I.(95%)	#	%	C.I.(95%)	#	%	C.I.(95%)	#
Yes	400	36.8	29.1 - 45.2	300	27.2	20.6 - 35.0	100	5.7	3.1 - 10.3	300	30.4	23.4 - 38.3	1,100
No	4,200	32.7	30.3 - 35.2	2,700	21.2	19.1 - 23.4	600	4.7	3.7 - 6.0	5,300	41.4	38.9 - 44.0	12,700

**PRAMS Health Indicator Report - Breastfeeding (exclusive) duration (grouped), among initiators- by State;County;DOH
Race-Ethnicity;PRAMS Age Group;Infant Gender;Married;Poverty Level;Income (2000-2003);Income
(2004-2011);Income (2012+);Birthweight;Smoke 3rd Trimester;Smoke Before Pregnant;WIC During Pregnancy, for the
Year(s) 2000;2001;2002;2003;2004;2005;2006;2007;2008;2009;2010;2011;2012;2013**

Note: Weighted responses, rounded to the nearest hundred; n/r (Not Reportable) - If the unweighted total responses for a dimension (row) is <30 that row will not be shown

Year: 2001

Smoke Before Pregnant	Breastfed <1 week			Breastfed 1-4 weeks			Breastfed 5-8 weeks			Breastfed 9+ weeks			Weighted Total Responses
	#	%	C.I.(95%)	#	%	C.I.(95%)	#	%	C.I.(95%)	#	%	C.I.(95%)	#
Yes	800	30.8	26.3 - 35.8	700	26.1	21.8 - 31.0	100	4.7	2.9 - 7.7	1,000	38.3	33.2 - 43.7	2,700
No	3,600	33.3	30.6 - 36.0	2,300	20.8	18.6 - 23.2	500	4.7	3.6 - 6.1	4,500	41.2	38.5 - 44.0	10,900

WIC During Pregnancy	Breastfed <1 week			Breastfed 1-4 weeks			Breastfed 5-8 weeks			Breastfed 9+ weeks			Weighted Total Responses
	#	%	C.I.(95%)	#	%	C.I.(95%)	#	%	C.I.(95%)	#	%	C.I.(95%)	#
Yes	2,000	34.4	31.0 - 38.0	1,300	22.1	19.3 - 25.3	300	4.4	3.0 - 6.3	2,200	39.0	35.6 - 42.6	5,800
No	2,600	32.3	29.2 - 35.6	1,700	21.3	18.7 - 24.1	400	5.0	3.7 - 6.7	3,400	41.4	38.1 - 44.7	8,200

**PRAMS Health Indicator Report - Breastfeeding (exclusive) duration (grouped), among initiators- by State;County;DOH
Race-Ethnicity;PRAMS Age Group;Infant Gender;Married;Poverty Level;Income (2000-2003);Income
(2004-2011);Income (2012+);Birthweight;Smoke 3rd Trimester;Smoke Before Pregnant;WIC During Pregnancy, for the
Year(s) 2000;2001;2002;2003;2004;2005;2006;2007;2008;2009;2010;2011;2012;2013**

Note: Weighted responses, rounded to the nearest hundred; n/r (Not Reportable) - If the unweighted total responses for a dimension (row) is <30 that row will not be shown

Year: 2000

State	Breastfed <1 week			Breastfed 1-4 weeks			Breastfed 5-8 weeks			Breastfed 9+ weeks			Weighted Total Responses
	#	%	C.I.(95%)	#	%	C.I.(95%)	#	%	C.I.(95%)	#	%	C.I.(95%)	#
Totals	2,900	24.6	22.4 - 27.0	3,000	25.4	23.2 - 27.7	800	6.3	5.2 - 7.7	5,200	43.7	41.1 - 46.3	11,900

County	Breastfed <1 week			Breastfed 1-4 weeks			Breastfed 5-8 weeks			Breastfed 9+ weeks			Weighted Total Responses
	#	%	C.I.(95%)	#	%	C.I.(95%)	#	%	C.I.(95%)	#	%	C.I.(95%)	#
Hawaii	400	26.7	22.0 - 32.0	300	22.4	18.1 - 27.3	100	5.5	3.5 - 8.7	600	45.4	39.9 - 51.0	1,300
Honolulu	2,200	25.1	22.3 - 28.1	2,200	25.1	22.4 - 27.9	600	6.6	5.2 - 8.4	3,800	43.2	40.0 - 46.5	8,800
Kauai	100	14.1	8.7 - 22.0	100	23.2	16.1 - 32.1	<50	5.3	2.4 - 11.3	300	57.5	48.0 - 66.4	500
Maui	300	22.9	18.2 - 28.4	400	31.8	26.5 - 37.6	100	5.7	3.4 - 9.4	500	39.6	33.8 - 45.7	1,200

PRAMS Health Indicator Report - Breastfeeding (exclusive) duration (grouped), among initiators- by State;County;DOH Race-Ethnicity;PRAMS Age Group;Infant Gender;Married;Poverty Level;Income (2000-2003);Income (2004-2011);Income (2012+);Birthweight;Smoke 3rd Trimester;Smoke Before Pregnant;WIC During Pregnancy, for the Year(s) 2000;2001;2002;2003;2004;2005;2006;2007;2008;2009;2010;2011;2012;2013

Note: Weighted responses, rounded to the nearest hundred; n/r (Not Reportable) - If the unweighted total responses for a dimension (row) is <30 that row will not be shown

Year: 2000

DOH Race-Ethnicity	Breastfed <1 week			Breastfed 1-4 weeks			Breastfed 5-8 weeks			Breastfed 9+ weeks			Weighted Total Responses
	#	%	C.I.(95%)	#	%	C.I.(95%)	#	%	C.I.(95%)	#	%	C.I.(95%)	#
Caucasian	400	13.8	10.3 - 18.2	700	24.3	19.8 - 29.5	200	8.3	5.9 - 11.5	1,500	53.7	48.1 - 59.1	2,800
Native Hawaiian	900	27.1	24.5 - 29.9	900	29.6	26.9 - 32.4	200	5.7	4.5 - 7.2	1,200	37.6	34.7 - 40.5	3,200
Chinese	200	31.9	19.1 - 48.0	100	17.2	8.6 - 31.5	<50	3.0	0.5 - 17.5	200	47.9	33.2 - 63.0	500
Filipino	800	31.7	26.0 - 38.0	700	27.0	21.8 - 32.9	200	6.2	3.7 - 10.2	900	35.1	29.3 - 41.5	2,500
Japanese	400	27.8	20.3 - 36.9	300	20.2	13.8 - 28.7	100	6.3	3.1 - 12.4	600	45.6	36.7 - 54.9	1,300
Other	400	22.7	16.1 - 31.0	400	23.3	17.0 - 31.1	100	5.4	2.6 - 10.9	800	48.6	40.0 - 57.2	1,600

PRAMS Age Group	Breastfed <1 week			Breastfed 1-4 weeks			Breastfed 5-8 weeks			Breastfed 9+ weeks			Weighted Total Responses
	#	%	C.I.(95%)	#	%	C.I.(95%)	#	%	C.I.(95%)	#	%	C.I.(95%)	#
<20	400	29.5	23.3 - 36.6	400	26.8	21.8 - 32.5	100	4.3	2.2 - 8.5	600	39.3	32.7 - 46.3	1,400
20-24	700	22.5	18.7 - 26.9	900	30.9	26.5 - 35.6	100	3.8	2.3 - 6.2	1,200	42.8	37.9 - 47.8	2,900
25-34	1,300	23.2	20.0 - 26.7	1,300	23.5	20.3 - 27.0	400	7.9	6.0 - 10.2	2,600	45.5	41.6 - 49.5	5,600
35+	500	28.3	22.4 - 35.0	400	21.7	16.5 - 27.9	100	7.2	4.6 - 11.1	800	42.8	36.3 - 49.6	1,900

**PRAMS Health Indicator Report - Breastfeeding (exclusive) duration (grouped), among initiators- by State;County;DOH
Race-Ethnicity;PRAMS Age Group;Infant Gender;Married;Poverty Level;Income (2000-2003);Income
(2004-2011);Income (2012+);Birthweight;Smoke 3rd Trimester;Smoke Before Pregnant;WIC During Pregnancy, for the
Year(s) 2000;2001;2002;2003;2004;2005;2006;2007;2008;2009;2010;2011;2012;2013**

Note: Weighted responses, rounded to the nearest hundred; n/r (Not Reportable) - If the unweighted total responses for a dimension (row) is <30 that row will not be shown

Year: 2000

Infant Gender	Breastfed <1 week			Breastfed 1-4 weeks			Breastfed 5-8 weeks			Breastfed 9+ weeks			Weighted Total Responses
	#	%	C.I.(95%)	#	%	C.I.(95%)	#	%	C.I.(95%)	#	%	C.I.(95%)	#
Male	1,500	24.4	21.4 - 27.8	1,500	24.7	21.7 - 27.9	400	6.2	4.7 - 8.3	2,700	44.6	41.0 - 48.3	6,100
Female	1,400	24.8	21.6 - 28.2	1,500	26.2	23.0 - 29.6	400	6.4	4.9 - 8.4	2,500	42.6	38.9 - 46.4	5,800

Married	Breastfed <1 week			Breastfed 1-4 weeks			Breastfed 5-8 weeks			Breastfed 9+ weeks			Weighted Total Responses
	#	%	C.I.(95%)	#	%	C.I.(95%)	#	%	C.I.(95%)	#	%	C.I.(95%)	#
Yes	1,800	22.5	19.7 - 25.4	1,900	24.3	21.6 - 27.2	500	6.5	5.1 - 8.3	3,700	46.7	43.4 - 50.1	8,000
No	1,100	29.1	25.3 - 33.1	1,100	27.7	24.2 - 31.5	200	5.9	4.2 - 8.3	1,400	37.3	33.3 - 41.5	3,900

Poverty Level	Breastfed <1 week			Breastfed 1-4 weeks			Breastfed 5-8 weeks			Breastfed 9+ weeks			Weighted Total Responses
	#	%	C.I.(95%)	#	%	C.I.(95%)	#	%	C.I.(95%)	#	%	C.I.(95%)	#
0-130%	1,300	24.8	21.6 - 28.3	1,400	27.6	24.4 - 31.1	300	5.1	3.7 - 7.0	2,200	42.5	38.7 - 46.4	5,100
131-185%	400	22.7	17.1 - 29.4	400	27.6	21.9 - 34.2	100	9.1	5.9 - 14.0	600	40.5	34.0 - 47.4	1,600
186+%	1,100	24.0	20.3 - 28.2	900	21.2	17.7 - 25.1	300	7.3	5.4 - 9.9	2,100	47.5	43.0 - 52.0	4,400

**PRAMS Health Indicator Report - Breastfeeding (exclusive) duration (grouped), among initiators- by State;County;DOH
Race-Ethnicity;PRAMS Age Group;Infant Gender;Married;Poverty Level;Income (2000-2003);Income
(2004-2011);Income (2012+);Birthweight;Smoke 3rd Trimester;Smoke Before Pregnant;WIC During Pregnancy, for the
Year(s) 2000;2001;2002;2003;2004;2005;2006;2007;2008;2009;2010;2011;2012;2013**

Note: Weighted responses, rounded to the nearest hundred; n/r (Not Reportable) - If the unweighted total responses for a dimension (row) is <30 that row will not be shown

Year: 2000

Income (2000-2003)	Breastfed <1 week			Breastfed 1-4 weeks			Breastfed 5-8 weeks			Breastfed 9+ weeks			Weighted Total Responses
	#	%	C.I.(95%)	#	%	C.I.(95%)	#	%	C.I.(95%)	#	%	C.I.(95%)	#
<=\$15,000	700	26.7	22.3 - 31.5	800	27.8	23.6 - 32.5	100	5.3	3.4 - 8.0	1,100	40.3	35.2 - 45.5	2,800
\$15,001-\$25,000	400	21.5	16.5 - 27.5	500	28.5	22.9 - 34.9	100	4.8	2.7 - 8.3	900	45.2	38.7 - 51.9	1,900
\$25,001-\$40,000	500	23.2	18.5 - 28.8	600	25.9	21.4 - 31.0	200	7.9	5.3 - 11.7	1,000	42.9	37.3 - 48.8	2,300
>=\$40,001	1,100	24.3	20.6 - 28.4	1,000	22.7	19.1 - 26.8	300	7.1	5.2 - 9.7	2,000	45.9	41.5 - 50.4	4,300

Birthweight	Breastfed <1 week			Breastfed 1-4 weeks			Breastfed 5-8 weeks			Breastfed 9+ weeks			Weighted Total Responses
	#	%	C.I.(95%)	#	%	C.I.(95%)	#	%	C.I.(95%)	#	%	C.I.(95%)	#
Low birth weight	300	32.5	23.2 - 43.3	200	27.0	19.3 - 36.5	<50	5.6	2.8 - 10.9	300	34.9	25.7 - 45.3	800
Normal birth weight	2,600	24.0	21.7 - 26.4	2,800	25.3	23.0 - 27.7	700	6.4	5.2 - 7.9	4,900	44.3	41.6 - 47.0	11,000

Smoke 3rd Trimester	Breastfed <1 week			Breastfed 1-4 weeks			Breastfed 5-8 weeks			Breastfed 9+ weeks			Weighted Total Responses
	#	%	C.I.(95%)	#	%	C.I.(95%)	#	%	C.I.(95%)	#	%	C.I.(95%)	#
Yes	300	32.4	24.6 - 41.2	300	34.9	27.0 - 43.8	<50	4.0	1.4 - 10.6	200	28.8	21.7 - 37.1	900
No	2,600	24.0	21.6 - 26.5	2,700	24.8	22.5 - 27.2	700	6.5	5.3 - 7.9	4,800	44.8	42.0 - 47.6	10,700

**PRAMS Health Indicator Report - Breastfeeding (exclusive) duration (grouped), among initiators- by State;County;DOH
Race-Ethnicity;PRAMS Age Group;Infant Gender;Married;Poverty Level;Income (2000-2003);Income
(2004-2011);Income (2012+);Birthweight;Smoke 3rd Trimester;Smoke Before Pregnant;WIC During Pregnancy, for the
Year(s) 2000;2001;2002;2003;2004;2005;2006;2007;2008;2009;2010;2011;2012;2013**

Note: Weighted responses, rounded to the nearest hundred; n/r (Not Reportable) - If the unweighted total responses for a dimension (row) is <30 that row will not be shown

Year: 2000

Smoke Before Pregnant	Breastfed <1 week			Breastfed 1-4 weeks			Breastfed 5-8 weeks			Breastfed 9+ weeks			Weighted Total Responses
	#	%	C.I.(95%)	#	%	C.I.(95%)	#	%	C.I.(95%)	#	%	C.I.(95%)	#
Yes	600	24.5	20.2 - 29.5	800	32.1	27.1 - 37.5	100	5.3	3.3 - 8.4	900	38.1	32.8 - 43.7	2,300
No	2,200	24.4	21.8 - 27.2	2,200	23.8	21.4 - 26.4	600	6.5	5.2 - 8.1	4,200	45.3	42.3 - 48.4	9,200

WIC During Pregnancy	Breastfed <1 week			Breastfed 1-4 weeks			Breastfed 5-8 weeks			Breastfed 9+ weeks			Weighted Total Responses
	#	%	C.I.(95%)	#	%	C.I.(95%)	#	%	C.I.(95%)	#	%	C.I.(95%)	#
Yes	1,300	26.0	22.7 - 29.5	1,300	25.4	22.4 - 28.6	300	6.4	4.8 - 8.4	2,200	42.3	38.5 - 46.1	5,200
No	1,600	23.6	20.6 - 26.9	1,700	25.4	22.4 - 28.8	400	6.1	4.6 - 8.1	2,900	44.8	41.2 - 48.5	6,600