

PRAMS Health Indicator 3-Year Aggregate Report - No contraception at conception- side effects- for the State of Hawaii, for the Year(s)

2000-2002;2001-2003;2002-2004;2003-2005;2004-2006;2005-2007;2006-2008;2007-2009;2008-2010;2009-2011;2010-2012;2011-2013

PRAMS Health Indicator 3-Year Aggregate Report - No contraception at conception- side effects- by State;County;DOH Race-Ethnicity;PRAMS Age Group;Infant Gender;Married;Poverty Level;Income (2000-2003);Income (2004-2011);Birthweight;Smoke 3rd Trimester;Smoke Before Pregnant;WIC During Pregnancy, for the Year(s)

2000-2002;2001-2003;2002-2004;2003-2005;2004-2006;2005-2007;2006-2008;2007-2009;2008-2010;2009-2011;2010-2012;2011-2013

Note: Weighted counts (#) represent 3-yr averages, rounded to the nearest hundred; n/r (Not Reportable) - If the unweighted total responses for a dimension (row) is <30 that row will not be shown

The trend analysis section shows the trend for the selected health variable over selected years in a table and a graph. 3-Year Weighted Total Responses: This number is a weighted representation of the mothers of babies delivered in a given year, who responded to a particular question in the survey. For most questions this will be the mothers of all babies delivered in a given year. For some secondary questions only a subset of the population was asked the question. For example, all survey participants were asked if they smoked during pregnancy, but only those who answered yes were asked how many cigarettes a day. If a dimension value is unknown for a particular survey record, that record will not be included in the counts for that particular dimension.

Note: Data collection for household income changed in 2004 and again in 2012. Because of this, income data does not exist for some 3-year aggregate periods.

Below are the indicators included in this report and the long description for each indicator.

PRAMS Health Indicator	Health Indicator Description
No contraception at conception- side effects	No contraception at conception- side effects

Suggested citation:

Hawaii Health Data Warehouse, Hawaii State Department of Health, Pregnancy Risk Assessment Monitoring System, (report title and years), Report Created: 2/16/17

For documentation on other terms and coding in this report, please go to the following links:

[Click here to access PRAMS documentation](#)

[Click here to access DOH-Race Ethnicity coding](#)

[Click here to access The Hawai'i Data Guide](#)

**For questions about this report, please contact
The Hawai'i Health Data Warehouse**

profiles@hhdw.org

(855) 946-5899 x15

PRAMS Health Indicator 3-Year Aggregate Report - No contraception at conception- side effects- for the State of Hawaii, for the Year(s)

2000-2002;2001-2003;2002-2004;2003-2005;2004-2006;2005-2007;2006-2008;2007-2009;2008-2010;2009-2011;2010-2012;2011-2013

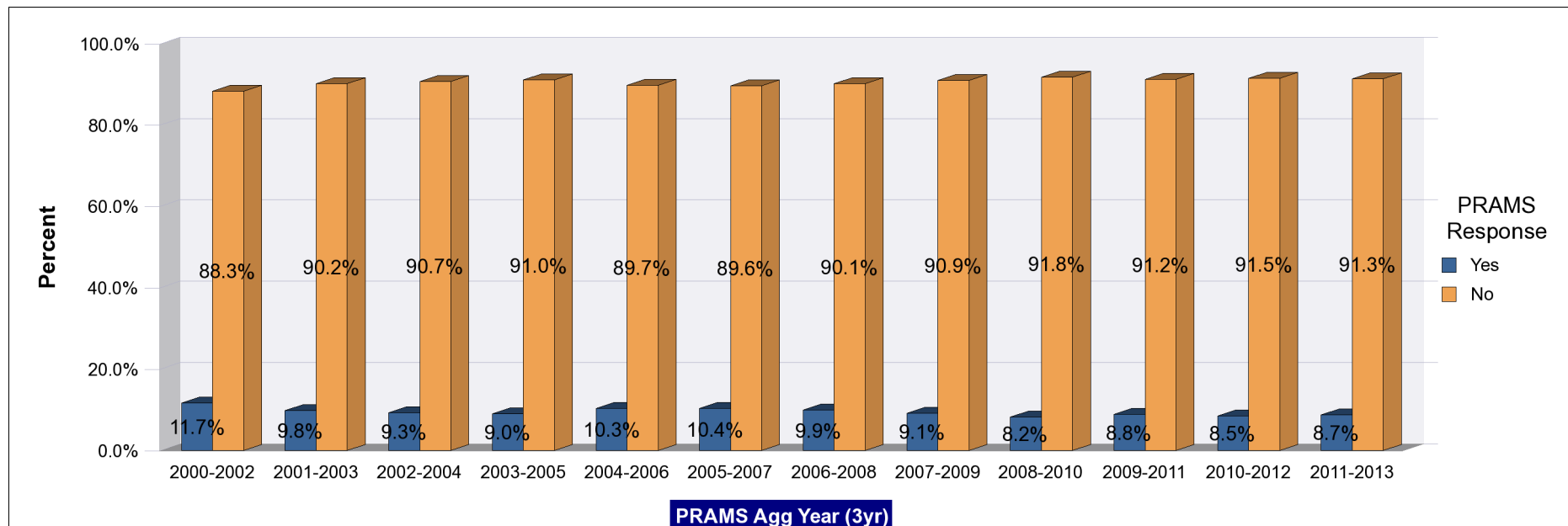
Note: Weighted counts (#) represent 3-yr averages, rounded to the nearest hundred; n/r (Not Reportable) - If the unweighted total responses for a dimension (row) is <30 that row will not be shown

Years	Yes			No			Weighted Total Responses (3-Yr Avg)
	#	%	C.I.(95%)	#	%	C.I.(95%)	#
2000-2002	600	11.7	10.2 - 13.3	4,900	88.3	86.7 - 89.8	5,600
2001-2003	600	9.8	8.4 - 11.4	5,100	90.2	88.6 - 91.6	5,600
2002-2004	500	9.3	7.9 - 10.9	5,000	90.7	89.1 - 92.1	5,500
2003-2005	500	9.0	7.6 - 10.5	4,900	91.0	89.5 - 92.4	5,400
2004-2006	500	10.3	8.8 - 11.9	4,700	89.7	88.1 - 91.2	5,200
2005-2007	600	10.4	8.9 - 12.1	4,900	89.6	87.9 - 91.1	5,500
2006-2008	500	9.9	8.4 - 11.6	4,900	90.1	88.4 - 91.6	5,500
2007-2009	500	9.1	7.6 - 10.9	5,100	90.9	89.1 - 92.4	5,600
2008-2010	500	8.2	6.7 - 10.1	5,100	91.8	89.9 - 93.3	5,500
2009-2011	500	8.8	7.1 - 11.0	5,000	91.2	89.0 - 92.9	5,500
2010-2012	500	8.5	6.8 - 10.7	4,900	91.5	89.3 - 93.2	5,400
2011-2013	500	8.7	6.8 - 11.0	5,000	91.3	89.0 - 93.2	5,400

PRAMS Health Indicator 3-Year Aggregate Report - No contraception at conception- side effects- for the State of Hawaii, for the Year(s)

2000-2002;2001-2003;2002-2004;2003-2005;2004-2006;2005-2007;2006-2008;2007-2009;2008-2010;2009-2011;2010-2012;2011-2013

Note: Weighted counts (#) represent 3-yr averages, rounded to the nearest hundred; n/r (Not Reportable) - If the unweighted total responses for a dimension (row) is <30 that row will not be shown



**PRAMS Health Indicator 3-Year Aggregate Report - No contraception at conception- side effects- by State;County;DOH Race-Ethnicity;PRAMS Age Group;Infant Gender;Married;Poverty Level;Income (2000-2003);Income (2004-2011);Birthweight;Smoke 3rd Trimester;Smoke Before Pregnant;WIC During Pregnancy, for the Year(s)
2000-2002;2001-2003;2002-2004;2003-2005;2004-2006;2005-2007;2006-2008;2007-2009;2008-2010;2009-2011;2010-2012;2011-2013**

Note: Weighted counts (#) represent 3-yr averages, rounded to the nearest hundred; n/r (Not Reportable) - If the unweighted total responses for a dimension (row) is <30 that row will not be shown

Years: 2011-2013

State	Yes			No			Weighted Total Responses (3-Yr Avg)
	#	%	C.I.(95%)	#	%	C.I.(95%)	#
Totals	500	8.7	6.8 - 11.0	5,000	91.3	89.0 - 93.2	5,400

County	Yes			No			Weighted Total Responses (3-Yr Avg)
	#	%	C.I.(95%)	#	%	C.I.(95%)	#
Hawaii	100	7.3	4.8 - 10.7	700	92.7	89.3 - 95.2	700
Honolulu	400	9.1	6.6 - 12.4	3,500	90.9	87.6 - 93.4	3,900
Kauai	<50	8.8	5.8 - 13.2	200	91.2	86.8 - 94.2	300
Maui	<50	7.7	5.2 - 11.3	500	92.3	88.7 - 94.8	600

**PRAMS Health Indicator 3-Year Aggregate Report - No contraception at conception- side effects- by State;County;DOH Race-Ethnicity;PRAMS Age Group;Infant Gender;Married;Poverty Level;Income (2000-2003);Income (2004-2011);Birthweight;Smoke 3rd Trimester;Smoke Before Pregnant;WIC During Pregnancy, for the Year(s)
2000-2002;2001-2003;2002-2004;2003-2005;2004-2006;2005-2007;2006-2008;2007-2009;2008-2010;2009-2011;2010-2012;2011-2013**

Note: Weighted counts (#) represent 3-yr averages, rounded to the nearest hundred; n/r (Not Reportable) - If the unweighted total responses for a dimension (row) is <30 that row will not be shown

Years: 2011-2013

DOH Race-Ethnicity	Yes			No			Weighted Total Responses (3-Yr Avg)
	#	%	C.I.(95%)	#	%	C.I.(95%)	#
Caucasian	100	12.2	7.3 - 19.5	900	87.8	80.5 - 92.7	1,000
Native Hawaiian	200	8.4	5.7 - 12.4	1,800	91.6	87.6 - 94.3	1,900
Chinese	<50	10.7	3.7 - 27.4	200	89.3	72.6 - 96.3	200
Filipino	100	5.2	2.4 - 11.0	900	94.8	89.0 - 97.6	1,000
Japanese	<50	8.8	3.7 - 19.5	400	91.2	80.5 - 96.3	400
Other	100	8.5	4.5 - 15.2	800	91.5	84.8 - 95.5	800

PRAMS Age Group	Yes			No			Weighted Total Responses (3-Yr Avg)
	#	%	C.I.(95%)	#	%	C.I.(95%)	#
<20	<50	5.6	2.5 - 12.3	400	94.4	87.7 - 97.5	400
20-24	200	12.1	8.1 - 17.5	1,400	87.9	82.5 - 91.9	1,600
25-34	200	8.4	5.9 - 11.9	2,400	91.6	88.1 - 94.1	2,600
35+	<50	4.3	1.8 - 10.0	800	95.7	90.0 - 98.2	800

**PRAMS Health Indicator 3-Year Aggregate Report - No contraception at conception- side effects- by State;County;DOH Race-Ethnicity;PRAMS Age Group;Infant Gender;Married;Poverty Level;Income (2000-2003);Income (2004-2011);Birthweight;Smoke 3rd Trimester;Smoke Before Pregnant;WIC During Pregnancy, for the Year(s)
2000-2002;2001-2003;2002-2004;2003-2005;2004-2006;2005-2007;2006-2008;2007-2009;2008-2010;2009-2011;2010-2012;2011-2013**

Note: Weighted counts (#) represent 3-yr averages, rounded to the nearest hundred; n/r (Not Reportable) - If the unweighted total responses for a dimension (row) is <30 that row will not be shown

Years: 2011-2013

Infant Gender	Yes			No			Weighted Total Responses (3-Yr Avg)
	#	%	C.I.(95%)	#	%	C.I.(95%)	#
Male	200	8.3	5.8 - 11.6	2,300	91.7	88.4 - 94.2	2,600
Female	300	9.1	6.5 - 12.6	2,600	90.9	87.4 - 93.5	2,900

Married	Yes			No			Weighted Total Responses (3-Yr Avg)
	#	%	C.I.(95%)	#	%	C.I.(95%)	#
Yes	200	9.2	6.5 - 12.8	2,500	90.8	87.2 - 93.5	2,700
No	200	8.2	5.8 - 11.4	2,500	91.8	88.6 - 94.2	2,700

Poverty Level	Yes			No			Weighted Total Responses (3-Yr Avg)
	#	%	C.I.(95%)	#	%	C.I.(95%)	#
0-130%	200	8.5	5.9 - 11.9	2,400	91.5	88.1 - 94.1	2,600
131-185%	100	17.2	10.7 - 26.5	700	82.8	73.5 - 89.3	800
186+%	100	6.1	3.6 - 10.1	1,400	93.9	89.9 - 96.4	1,500

**PRAMS Health Indicator 3-Year Aggregate Report - No contraception at conception- side effects- by State;County;DOH Race-Ethnicity;PRAMS Age Group;Infant Gender;Married;Poverty Level;Income (2000-2003);Income (2004-2011);Birthweight;Smoke 3rd Trimester;Smoke Before Pregnant;WIC During Pregnancy, for the Year(s)
2000-2002;2001-2003;2002-2004;2003-2005;2004-2006;2005-2007;2006-2008;2007-2009;2008-2010;2009-2011;2010-2012;2011-2013**

Note: Weighted counts (#) represent 3-yr averages, rounded to the nearest hundred; n/r (Not Reportable) - If the unweighted total responses for a dimension (row) is <30 that row will not be shown

Years: 2011-2013

Birthweight	Yes			No			Weighted Total Responses (3-Yr Avg)
	#	%	C.I.(95%)	#	%	C.I.(95%)	#
Low birth weight	<50	5.5	3.3 - 8.9	400	94.5	91.1 - 96.7	400
Normal birth weight	500	8.9	6.9 - 11.4	4,600	91.1	88.6 - 93.1	5,100

Smoke 3rd Trimester	Yes			No			Weighted Total Responses (3-Yr Avg)
	#	%	C.I.(95%)	#	%	C.I.(95%)	#
Yes	<50	2.6	1.0 - 6.6	300	97.4	93.4 - 99.0	400
No	500	9.1	7.1 - 11.6	4,500	90.9	88.4 - 92.9	5,000

Smoke Before Pregnant	Yes			No			Weighted Total Responses (3-Yr Avg)
	#	%	C.I.(95%)	#	%	C.I.(95%)	#
Yes	100	8.4	5.1 - 13.7	1,100	91.6	86.3 - 94.9	1,200
No	400	8.7	6.6 - 11.5	3,800	91.3	88.5 - 93.4	4,200

**PRAMS Health Indicator 3-Year Aggregate Report - No contraception at conception- side effects- by State;County;DOH Race- Ethnicity;PRAMS Age Group;Infant Gender;Married;Poverty Level;Income (2000-2003);Income (2004-2011);Birthweight;Smoke 3rd Trimester;Smoke Before Pregnant;WIC During Pregnancy, for the Year(s)
2000-2002;2001-2003;2002-2004;2003-2005;2004-2006;2005-2007;2006-2008;2007-2009;2008-2010;2009-2011;2010-2012;2011-2013**

Note: Weighted counts (#) represent 3-yr averages, rounded to the nearest hundred; n/r (Not Reportable) - If the unweighted total responses for a dimension (row) is <30 that row will not be shown

Years: 2011-2013

WIC During Pregnancy	Yes			No			Weighted Total Responses (3-Yr Avg)
	#	%	C.I.(95%)	#	%	C.I.(95%)	#
Yes	300	9.6	7.1 - 13.0	2,700	90.4	87.0 - 92.9	2,900
No	200	7.7	5.2 - 11.4	2,300	92.3	88.6 - 94.8	2,400

**PRAMS Health Indicator 3-Year Aggregate Report - No contraception at conception- side effects- by State;County;DOH Race-Ethnicity;PRAMS Age Group;Infant Gender;Married;Poverty Level;Income (2000-2003);Income (2004-2011);Birthweight;Smoke 3rd Trimester;Smoke Before Pregnant;WIC During Pregnancy, for the Year(s)
2000-2002;2001-2003;2002-2004;2003-2005;2004-2006;2005-2007;2006-2008;2007-2009;2008-2010;2009-2011;2010-2012;2011-2013**

Note: Weighted counts (#) represent 3-yr averages, rounded to the nearest hundred; n/r (Not Reportable) - If the unweighted total responses for a dimension (row) is <30 that row will not be shown

Years: 2010-2012

State	Yes			No			Weighted Total Responses (3-Yr Avg)
	#	%	C.I.(95%)	#	%	C.I.(95%)	#
Totals	500	8.5	6.8 - 10.7	4,900	91.5	89.3 - 93.2	5,400

County	Yes			No			Weighted Total Responses (3-Yr Avg)
	#	%	C.I.(95%)	#	%	C.I.(95%)	#
Hawaii	100	8.6	6.0 - 12.3	700	91.4	87.7 - 94.0	700
Honolulu	300	8.3	6.0 - 11.4	3,500	91.7	88.6 - 94.0	3,800
Kauai	<50	10.1	6.8 - 14.7	200	89.9	85.3 - 93.2	300
Maui	100	8.9	6.3 - 12.5	500	91.1	87.5 - 93.7	600

**PRAMS Health Indicator 3-Year Aggregate Report - No contraception at conception- side effects- by State;County;DOH Race-Ethnicity;PRAMS Age Group;Infant Gender;Married;Poverty Level;Income (2000-2003);Income (2004-2011);Birthweight;Smoke 3rd Trimester;Smoke Before Pregnant;WIC During Pregnancy, for the Year(s)
2000-2002;2001-2003;2002-2004;2003-2005;2004-2006;2005-2007;2006-2008;2007-2009;2008-2010;2009-2011;2010-2012;2011-2013**

Note: Weighted counts (#) represent 3-yr averages, rounded to the nearest hundred; n/r (Not Reportable) - If the unweighted total responses for a dimension (row) is <30 that row will not be shown

Years: 2010-2012

DOH Race-Ethnicity	Yes			No			Weighted Total Responses (3-Yr Avg)
	#	%	C.I.(95%)	#	%	C.I.(95%)	#
Caucasian	100	12.1	7.6 - 18.9	900	87.9	81.1 - 92.4	1,000
Native Hawaiian	100	7.2	4.9 - 10.5	1,700	92.8	89.5 - 95.1	1,800
Chinese	<50	4.9	1.8 - 12.3	200	95.1	87.7 - 98.2	200
Filipino	100	6.6	3.5 - 12.2	1,000	93.4	87.8 - 96.5	1,100
Japanese	<50	12.8	5.8 - 26.0	300	87.2	74.0 - 94.2	300
Other	100	8.4	4.7 - 14.6	900	91.6	85.4 - 95.3	900

PRAMS Age Group	Yes			No			Weighted Total Responses (3-Yr Avg)
	#	%	C.I.(95%)	#	%	C.I.(95%)	#
<20	<50	3.4	1.1 - 9.8	500	96.6	90.2 - 98.9	500
20-24	200	13.6	9.6 - 19.0	1,300	86.4	81.0 - 90.4	1,500
25-34	200	7.2	5.0 - 10.1	2,300	92.8	89.9 - 95.0	2,500
35+	100	6.2	3.1 - 12.1	800	93.8	87.9 - 96.9	900

**PRAMS Health Indicator 3-Year Aggregate Report - No contraception at conception- side effects- by State;County;DOH Race- Ethnicity;PRAMS Age Group;Infant Gender;Married;Poverty Level;Income (2000-2003);Income (2004-2011);Birthweight;Smoke 3rd Trimester;Smoke Before Pregnant;WIC During Pregnancy, for the Year(s)
2000-2002;2001-2003;2002-2004;2003-2005;2004-2006;2005-2007;2006-2008;2007-2009;2008-2010;2009-2011;2010-2012;2011-2013**

Note: Weighted counts (#) represent 3-yr averages, rounded to the nearest hundred; n/r (Not Reportable) - If the unweighted total responses for a dimension (row) is <30 that row will not be shown

Years: 2010-2012

	Yes			No			Weighted Total Responses (3-Yr Avg)
	#	%	C.I.(95%)	#	%	C.I.(95%)	#
Infant Gender							
Male	200	8.3	6.0 - 11.5	2,400	91.7	88.5 - 94.0	2,600
Female	200	8.7	6.3 - 11.9	2,500	91.3	88.1 - 93.7	2,700

	Yes			No			Weighted Total Responses (3-Yr Avg)
	#	%	C.I.(95%)	#	%	C.I.(95%)	#
Married							
Yes	300	9.6	7.0 - 13.0	2,500	90.4	87.0 - 93.0	2,700
No	200	7.4	5.2 - 10.3	2,400	92.6	89.7 - 94.8	2,600

	Yes			No			Weighted Total Responses (3-Yr Avg)
	#	%	C.I.(95%)	#	%	C.I.(95%)	#
Poverty Level							
0-130%	200	6.4	4.3 - 9.3	2,300	93.6	90.7 - 95.7	2,500
131-185%	100	18.4	12.0 - 27.1	600	81.6	72.9 - 88.0	700
186+%	100	9.1	6.0 - 13.5	1,500	90.9	86.5 - 94.0	1,600

**PRAMS Health Indicator 3-Year Aggregate Report - No contraception at conception- side effects- by State;County;DOH Race- Ethnicity;PRAMS Age Group;Infant Gender;Married;Poverty Level;Income (2000-2003);Income (2004-2011);Birthweight;Smoke 3rd Trimester;Smoke Before Pregnant;WIC During Pregnancy, for the Year(s)
2000-2002;2001-2003;2002-2004;2003-2005;2004-2006;2005-2007;2006-2008;2007-2009;2008-2010;2009-2011;2010-2012;2011-2013**

Note: Weighted counts (#) represent 3-yr averages, rounded to the nearest hundred; n/r (Not Reportable) - If the unweighted total responses for a dimension (row) is <30 that row will not be shown

Years: 2010-2012

Birthweight	Yes			No			Weighted Total Responses (3-Yr Avg)
	#	%	C.I.(95%)	#	%	C.I.(95%)	#
Low birth weight	<50	6.7	4.1 - 10.6	300	93.3	89.4 - 95.9	400
Normal birth weight	400	8.7	6.8 - 11.0	4,600	91.3	89.0 - 93.2	5,000

Smoke 3rd Trimester	Yes			No			Weighted Total Responses (3-Yr Avg)
	#	%	C.I.(95%)	#	%	C.I.(95%)	#
Yes	<50	2.5	1.1 - 5.7	400	97.5	94.3 - 98.9	500
No	400	9.0	7.1 - 11.4	4,300	91.0	88.6 - 92.9	4,800

Smoke Before Pregnant	Yes			No			Weighted Total Responses (3-Yr Avg)
	#	%	C.I.(95%)	#	%	C.I.(95%)	#
Yes	100	7.8	4.8 - 12.2	1,200	92.2	87.8 - 95.2	1,300
No	300	8.7	6.6 - 11.3	3,600	91.3	88.7 - 93.4	4,000

PRAMS Health Indicator 3-Year Aggregate Report - No contraception at conception- side effects- by State;County;DOH Race- Ethnicity;PRAMS Age Group;Infant Gender;Married;Poverty Level;Income (2000-2003);Income (2004-2011);Birthweight;Smoke 3rd Trimester;Smoke Before Pregnant;WIC During Pregnancy, for the Year(s) 2000-2002;2001-2003;2002-2004;2003-2005;2004-2006;2005-2007;2006-2008;2007-2009;2008-2010;2009-2011;2010-2012;2011-2013

Note: Weighted counts (#) represent 3-yr averages, rounded to the nearest hundred; n/r (Not Reportable) - If the unweighted total responses for a dimension (row) is <30 that row will not be shown

Years: 2010-2012

WIC During Pregnancy	Yes			No			Weighted Total Responses (3-Yr Avg)
	#	%	C.I.(95%)	#	%	C.I.(95%)	#
Yes	200	8.6	6.4 - 11.6	2,600	91.4	88.4 - 93.6	2,900
No	200	8.5	5.9 - 12.1	2,200	91.5	87.9 - 94.1	2,400

**PRAMS Health Indicator 3-Year Aggregate Report - No contraception at conception- side effects- by State;County;DOH Race-Ethnicity;PRAMS Age Group;Infant Gender;Married;Poverty Level;Income (2000-2003);Income (2004-2011);Birthweight;Smoke 3rd Trimester;Smoke Before Pregnant;WIC During Pregnancy, for the Year(s)
2000-2002;2001-2003;2002-2004;2003-2005;2004-2006;2005-2007;2006-2008;2007-2009;2008-2010;2009-2011;2010-2012;2011-2013**

Note: Weighted counts (#) represent 3-yr averages, rounded to the nearest hundred; n/r (Not Reportable) - If the unweighted total responses for a dimension (row) is <30 that row will not be shown

Years: 2009-2011

State	Yes			No			Weighted Total Responses (3-Yr Avg)
	#	%	C.I.(95%)	#	%	C.I.(95%)	#
Totals	500	8.8	7.1 - 11.0	5,000	91.2	89.0 - 92.9	5,500

County	Yes			No			Weighted Total Responses (3-Yr Avg)
	#	%	C.I.(95%)	#	%	C.I.(95%)	#
Hawaii	100	9.8	7.0 - 13.6	700	90.2	86.4 - 93.0	700
Honolulu	300	8.4	6.1 - 11.4	3,500	91.6	88.6 - 93.9	3,900
Kauai	<50	11.1	7.9 - 15.4	200	88.9	84.6 - 92.1	300
Maui	100	9.2	6.7 - 12.5	500	90.8	87.5 - 93.3	600

**PRAMS Health Indicator 3-Year Aggregate Report - No contraception at conception- side effects- by State;County;DOH Race-Ethnicity;PRAMS Age Group;Infant Gender;Married;Poverty Level;Income (2000-2003);Income (2004-2011);Birthweight;Smoke 3rd Trimester;Smoke Before Pregnant;WIC During Pregnancy, for the Year(s)
2000-2002;2001-2003;2002-2004;2003-2005;2004-2006;2005-2007;2006-2008;2007-2009;2008-2010;2009-2011;2010-2012;2011-2013**

Note: Weighted counts (#) represent 3-yr averages, rounded to the nearest hundred; n/r (Not Reportable) - If the unweighted total responses for a dimension (row) is <30 that row will not be shown

Years: 2009-2011

DOH Race-Ethnicity	Yes			No			Weighted Total Responses (3-Yr Avg)
	#	%	C.I.(95%)	#	%	C.I.(95%)	#
Caucasian	100	11.4	7.1 - 17.9	900	88.6	82.1 - 92.9	1,000
Native Hawaiian	200	8.5	6.0 - 12.0	1,800	91.5	88.0 - 94.0	2,000
Chinese	<50	10.5	3.3 - 28.7	200	89.5	71.3 - 96.7	200
Filipino	100	9.0	5.1 - 15.3	900	91.0	84.7 - 94.9	1,000
Japanese	<50	8.4	3.8 - 17.4	400	91.6	82.6 - 96.2	400
Other	100	6.2	3.1 - 11.8	800	93.8	88.2 - 96.9	900

PRAMS Age Group	Yes			No			Weighted Total Responses (3-Yr Avg)
	#	%	C.I.(95%)	#	%	C.I.(95%)	#
<20	<50	3.8	1.6 - 8.5	600	96.2	91.5 - 98.4	600
20-24	200	15.3	11.0 - 20.9	1,300	84.7	79.1 - 89.0	1,600
25-34	200	6.6	4.6 - 9.4	2,300	93.4	90.6 - 95.4	2,400
35+	100	6.8	3.6 - 12.4	800	93.2	87.6 - 96.4	900

**PRAMS Health Indicator 3-Year Aggregate Report - No contraception at conception- side effects- by State;County;DOH Race- Ethnicity;PRAMS Age Group;Infant Gender;Married;Poverty Level;Income (2000-2003);Income (2004-2011);Birthweight;Smoke 3rd Trimester;Smoke Before Pregnant;WIC During Pregnancy, for the Year(s)
2000-2002;2001-2003;2002-2004;2003-2005;2004-2006;2005-2007;2006-2008;2007-2009;2008-2010;2009-2011;2010-2012;2011-2013**

Note: Weighted counts (#) represent 3-yr averages, rounded to the nearest hundred; n/r (Not Reportable) - If the unweighted total responses for a dimension (row) is <30 that row will not be shown

Years: 2009-2011

	Yes			No			Weighted Total Responses (3-Yr Avg)
	#	%	C.I.(95%)	#	%	C.I.(95%)	#
Infant Gender							
Male	200	8.3	5.9 - 11.5	2,500	91.7	88.5 - 94.1	2,700
Female	300	9.3	7.0 - 12.5	2,500	90.7	87.5 - 93.0	2,700

	Yes			No			Weighted Total Responses (3-Yr Avg)
	#	%	C.I.(95%)	#	%	C.I.(95%)	#
Married							
Yes	200	8.4	6.1 - 11.5	2,500	91.6	88.5 - 93.9	2,700
No	300	9.2	6.8 - 12.4	2,500	90.8	87.6 - 93.2	2,700

	Yes			No			Weighted Total Responses (3-Yr Avg)
	#	%	C.I.(95%)	#	%	C.I.(95%)	#
Poverty Level							
0-130%	200	7.9	5.6 - 11.1	2,400	92.1	88.9 - 94.4	2,600
131-185%	100	14.5	9.0 - 22.4	600	85.5	77.6 - 91.0	700
186+%	200	9.0	6.1 - 13.2	1,500	91.0	86.8 - 93.9	1,700

**PRAMS Health Indicator 3-Year Aggregate Report - No contraception at conception- side effects- by State;County;DOH Race- Ethnicity;PRAMS Age Group;Infant Gender;Married;Poverty Level;Income (2000-2003);Income (2004-2011);Birthweight;Smoke 3rd Trimester;Smoke Before Pregnant;WIC During Pregnancy, for the Year(s)
2000-2002;2001-2003;2002-2004;2003-2005;2004-2006;2005-2007;2006-2008;2007-2009;2008-2010;2009-2011;2010-2012;2011-2013**

Note: Weighted counts (#) represent 3-yr averages, rounded to the nearest hundred; n/r (Not Reportable) - If the unweighted total responses for a dimension (row) is <30 that row will not be shown

Years: 2009-2011

Income (2004-2011)	Yes			No			Weighted Total Responses (3-Yr Avg)
	#	%	C.I.(95%)	#	%	C.I.(95%)	#
<\$10,000	100	7.3	4.4 - 12.0	1,200	92.7	88.0 - 95.6	1,300
\$10,000-\$24,999	100	12.1	7.9 - 18.2	1,000	87.9	81.8 - 92.1	1,200
\$25,000-\$49,999	100	9.2	6.1 - 13.7	1,200	90.8	86.3 - 93.9	1,300
>=\$50,000	100	8.3	5.1 - 13.2	1,200	91.7	86.8 - 94.9	1,300

Birthweight	Yes			No			Weighted Total Responses (3-Yr Avg)
	#	%	C.I.(95%)	#	%	C.I.(95%)	#
Low birth weight	<50	9.5	6.4 - 14.0	300	90.5	86.0 - 93.6	400
Normal birth weight	400	8.8	6.9 - 11.1	4,600	91.2	88.9 - 93.1	5,100

Smoke 3rd Trimester	Yes			No			Weighted Total Responses (3-Yr Avg)
	#	%	C.I.(95%)	#	%	C.I.(95%)	#
Yes	100	8.2	4.1 - 15.7	600	91.8	84.3 - 95.9	600
No	400	9.1	7.2 - 11.4	4,300	90.9	88.6 - 92.8	4,800

**PRAMS Health Indicator 3-Year Aggregate Report - No contraception at conception- side effects- by State;County;DOH Race- Ethnicity;PRAMS Age Group;Infant Gender;Married;Poverty Level;Income (2000-2003);Income (2004-2011);Birthweight;Smoke 3rd Trimester;Smoke Before Pregnant;WIC During Pregnancy, for the Year(s)
2000-2002;2001-2003;2002-2004;2003-2005;2004-2006;2005-2007;2006-2008;2007-2009;2008-2010;2009-2011;2010-2012;2011-2013**

Note: Weighted counts (#) represent 3-yr averages, rounded to the nearest hundred; n/r (Not Reportable) - If the unweighted total responses for a dimension (row) is <30 that row will not be shown

Years: 2009-2011

Smoke Before Pregnant	Yes			No			Weighted Total Responses (3-Yr Avg)
	#	%	C.I.(95%)	#	%	C.I.(95%)	#
Yes	100	8.8	5.8 - 13.2	1,400	91.2	86.8 - 94.2	1,500
No	300	9.0	6.9 - 11.6	3,500	91.0	88.4 - 93.1	3,900

WIC During Pregnancy	Yes			No			Weighted Total Responses (3-Yr Avg)
	#	%	C.I.(95%)	#	%	C.I.(95%)	#
Yes	300	8.8	6.5 - 11.8	2,600	91.2	88.2 - 93.5	2,900
No	200	9.1	6.5 - 12.5	2,300	90.9	87.5 - 93.5	2,500

**PRAMS Health Indicator 3-Year Aggregate Report - No contraception at conception- side effects- by State;County;DOH Race-Ethnicity;PRAMS Age Group;Infant Gender;Married;Poverty Level;Income (2000-2003);Income (2004-2011);Birthweight;Smoke 3rd Trimester;Smoke Before Pregnant;WIC During Pregnancy, for the Year(s)
2000-2002;2001-2003;2002-2004;2003-2005;2004-2006;2005-2007;2006-2008;2007-2009;2008-2010;2009-2011;2010-2012;2011-2013**

Note: Weighted counts (#) represent 3-yr averages, rounded to the nearest hundred; n/r (Not Reportable) - If the unweighted total responses for a dimension (row) is <30 that row will not be shown

Years: 2008-2010

State	Yes			No			Weighted Total Responses (3-Yr Avg)
	#	%	C.I.(95%)	#	%	C.I.(95%)	#
Totals	500	8.2	6.7 - 10.1	5,100	91.8	89.9 - 93.3	5,500

County	Yes			No			Weighted Total Responses (3-Yr Avg)
	#	%	C.I.(95%)	#	%	C.I.(95%)	#
Hawaii	100	9.8	6.8 - 14.0	700	90.2	86.0 - 93.2	700
Honolulu	300	7.0	5.1 - 9.5	3,600	93.0	90.5 - 94.9	3,900
Kauai	<50	15.4	10.3 - 22.4	200	84.6	77.6 - 89.7	300
Maui	100	11.0	7.8 - 15.4	600	89.0	84.6 - 92.2	600

**PRAMS Health Indicator 3-Year Aggregate Report - No contraception at conception- side effects- by State;County;DOH Race-Ethnicity;PRAMS Age Group;Infant Gender;Married;Poverty Level;Income (2000-2003);Income (2004-2011);Birthweight;Smoke 3rd Trimester;Smoke Before Pregnant;WIC During Pregnancy, for the Year(s)
2000-2002;2001-2003;2002-2004;2003-2005;2004-2006;2005-2007;2006-2008;2007-2009;2008-2010;2009-2011;2010-2012;2011-2013**

Note: Weighted counts (#) represent 3-yr averages, rounded to the nearest hundred; n/r (Not Reportable) - If the unweighted total responses for a dimension (row) is <30 that row will not be shown

Years: 2008-2010

DOH Race-Ethnicity	Yes			No			Weighted Total Responses (3-Yr Avg)
	#	%	C.I.(95%)	#	%	C.I.(95%)	#
Caucasian	100	12.2	8.2 - 17.8	800	87.8	82.2 - 91.8	1,000
Native Hawaiian	200	8.0	5.8 - 10.9	1,900	92.0	89.1 - 94.2	2,000
Chinese	<50	12.2	4.6 - 28.8	200	87.8	71.2 - 95.4	200
Filipino	100	9.9	6.1 - 15.8	900	90.1	84.2 - 93.9	1,000
Japanese	<50	4.9	2.5 - 9.2	400	95.1	90.8 - 97.5	400
Other	<50	3.5	1.5 - 7.8	900	96.5	92.2 - 98.5	900

PRAMS Age Group	Yes			No			Weighted Total Responses (3-Yr Avg)
	#	%	C.I.(95%)	#	%	C.I.(95%)	#
<20	<50	1.6	0.7 - 3.6	600	98.4	96.4 - 99.3	600
20-24	200	13.6	9.8 - 18.5	1,300	86.4	81.5 - 90.2	1,500
25-34	200	7.0	5.2 - 9.4	2,300	93.0	90.6 - 94.8	2,500
35+	100	7.5	4.2 - 13.0	800	92.5	87.0 - 95.8	900

**PRAMS Health Indicator 3-Year Aggregate Report - No contraception at conception- side effects- by State;County;DOH Race- Ethnicity;PRAMS Age Group;Infant Gender;Married;Poverty Level;Income (2000-2003);Income (2004-2011);Birthweight;Smoke 3rd Trimester;Smoke Before Pregnant;WIC During Pregnancy, for the Year(s)
2000-2002;2001-2003;2002-2004;2003-2005;2004-2006;2005-2007;2006-2008;2007-2009;2008-2010;2009-2011;2010-2012;2011-2013**

Note: Weighted counts (#) represent 3-yr averages, rounded to the nearest hundred; n/r (Not Reportable) - If the unweighted total responses for a dimension (row) is <30 that row will not be shown

Years: 2008-2010

Infant Gender	Yes			No			Weighted Total Responses (3-Yr Avg)
	#	%	C.I.(95%)	#	%	C.I.(95%)	#
Male	200	7.6	5.5 - 10.3	2,700	92.4	89.7 - 94.5	2,900
Female	200	8.9	6.8 - 11.6	2,400	91.1	88.4 - 93.2	2,700

Married	Yes			No			Weighted Total Responses (3-Yr Avg)
	#	%	C.I.(95%)	#	%	C.I.(95%)	#
Yes	200	8.7	6.5 - 11.5	2,500	91.3	88.5 - 93.5	2,800
No	200	7.8	5.8 - 10.3	2,600	92.2	89.7 - 94.2	2,800

Poverty Level	Yes			No			Weighted Total Responses (3-Yr Avg)
	#	%	C.I.(95%)	#	%	C.I.(95%)	#
0-130%	200	6.6	4.7 - 9.2	2,500	93.4	90.8 - 95.3	2,700
131-185%	100	11.1	7.0 - 17.1	600	88.9	82.9 - 93.0	700
186+%	200	10.2	7.3 - 14.1	1,500	89.8	85.9 - 92.7	1,700

**PRAMS Health Indicator 3-Year Aggregate Report - No contraception at conception- side effects- by State;County;DOH Race-Ethnicity;PRAMS Age Group;Infant Gender;Married;Poverty Level;Income (2000-2003);Income (2004-2011);Birthweight;Smoke 3rd Trimester;Smoke Before Pregnant;WIC During Pregnancy, for the Year(s)
2000-2002;2001-2003;2002-2004;2003-2005;2004-2006;2005-2007;2006-2008;2007-2009;2008-2010;2009-2011;2010-2012;2011-2013**

Note: Weighted counts (#) represent 3-yr averages, rounded to the nearest hundred; n/r (Not Reportable) - If the unweighted total responses for a dimension (row) is <30 that row will not be shown

Years: 2008-2010

Income (2004-2011)	Yes			No			Weighted Total Responses (3-Yr Avg)
	#	%	C.I.(95%)	#	%	C.I.(95%)	#
<\$10,000	100	6.7	4.2 - 10.5	1,300	93.3	89.5 - 95.8	1,400
\$10,000-\$24,999	100	8.3	5.4 - 12.7	1,100	91.7	87.3 - 94.6	1,200
\$25,000-\$49,999	100	8.9	6.0 - 13.0	1,100	91.1	87.0 - 94.0	1,300
>=\$50,000	100	9.9	6.6 - 14.5	1,100	90.1	85.5 - 93.4	1,200

Birthweight	Yes			No			Weighted Total Responses (3-Yr Avg)
	#	%	C.I.(95%)	#	%	C.I.(95%)	#
Low birth weight	<50	9.7	6.1 - 14.9	300	90.3	85.1 - 93.9	400
Normal birth weight	400	8.1	6.5 - 10.1	4,700	91.9	89.9 - 93.5	5,200

Smoke 3rd Trimester	Yes			No			Weighted Total Responses (3-Yr Avg)
	#	%	C.I.(95%)	#	%	C.I.(95%)	#
Yes	100	8.1	4.4 - 14.4	700	91.9	85.6 - 95.6	800
No	400	8.4	6.7 - 10.4	4,300	91.6	89.6 - 93.3	4,700

**PRAMS Health Indicator 3-Year Aggregate Report - No contraception at conception- side effects- by State;County;DOH Race-Ethnicity;PRAMS Age Group;Infant Gender;Married;Poverty Level;Income (2000-2003);Income (2004-2011);Birthweight;Smoke 3rd Trimester;Smoke Before Pregnant;WIC During Pregnancy, for the Year(s)
2000-2002;2001-2003;2002-2004;2003-2005;2004-2006;2005-2007;2006-2008;2007-2009;2008-2010;2009-2011;2010-2012;2011-2013**

Note: Weighted counts (#) represent 3-yr averages, rounded to the nearest hundred; n/r (Not Reportable) - If the unweighted total responses for a dimension (row) is <30 that row will not be shown

Years: 2008-2010

Smoke Before Pregnant	Yes			No			Weighted Total Responses (3-Yr Avg)
	#	%	C.I.(95%)	#	%	C.I.(95%)	#
Yes	100	7.5	5.0 - 11.2	1,400	92.5	88.8 - 95.0	1,600
No	300	8.6	6.8 - 10.9	3,500	91.4	89.1 - 93.2	3,900

WIC During Pregnancy	Yes			No			Weighted Total Responses (3-Yr Avg)
	#	%	C.I.(95%)	#	%	C.I.(95%)	#
Yes	200	6.6	5.0 - 8.8	2,700	93.4	91.2 - 95.0	2,900
No	300	10.1	7.5 - 13.4	2,300	89.9	86.6 - 92.5	2,500

**PRAMS Health Indicator 3-Year Aggregate Report - No contraception at conception- side effects- by State;County;DOH Race-Ethnicity;PRAMS Age Group;Infant Gender;Married;Poverty Level;Income (2000-2003);Income (2004-2011);Birthweight;Smoke 3rd Trimester;Smoke Before Pregnant;WIC During Pregnancy, for the Year(s)
2000-2002;2001-2003;2002-2004;2003-2005;2004-2006;2005-2007;2006-2008;2007-2009;2008-2010;2009-2011;2010-2012;2011-2013**

Note: Weighted counts (#) represent 3-yr averages, rounded to the nearest hundred; n/r (Not Reportable) - If the unweighted total responses for a dimension (row) is <30 that row will not be shown

Years: 2007-2009

State	Yes			No			Weighted Total Responses (3-Yr Avg)
	#	%	C.I.(95%)	#	%	C.I.(95%)	#
Totals	500	9.1	7.6 - 10.9	5,100	90.9	89.1 - 92.4	5,600

County	Yes			No			Weighted Total Responses (3-Yr Avg)
	#	%	C.I.(95%)	#	%	C.I.(95%)	#
Hawaii	100	10.1	6.8 - 14.6	700	89.9	85.4 - 93.2	800
Honolulu	300	8.3	6.5 - 10.6	3,600	91.7	89.4 - 93.5	3,900
Kauai	<50	12.0	7.2 - 19.2	300	88.0	80.8 - 92.8	300
Maui	100	11.5	7.7 - 16.9	600	88.5	83.1 - 92.3	700

**PRAMS Health Indicator 3-Year Aggregate Report - No contraception at conception- side effects- by State;County;DOH Race-Ethnicity;PRAMS Age Group;Infant Gender;Married;Poverty Level;Income (2000-2003);Income (2004-2011);Birthweight;Smoke 3rd Trimester;Smoke Before Pregnant;WIC During Pregnancy, for the Year(s)
2000-2002;2001-2003;2002-2004;2003-2005;2004-2006;2005-2007;2006-2008;2007-2009;2008-2010;2009-2011;2010-2012;2011-2013**

Note: Weighted counts (#) represent 3-yr averages, rounded to the nearest hundred; n/r (Not Reportable) - If the unweighted total responses for a dimension (row) is <30 that row will not be shown

Years: 2007-2009

DOH Race-Ethnicity	Yes			No			Weighted Total Responses (3-Yr Avg)
	#	%	C.I.(95%)	#	%	C.I.(95%)	#
Caucasian	100	9.2	6.3 - 13.3	800	90.8	86.7 - 93.7	900
Native Hawaiian	200	11.1	8.4 - 14.5	1,800	88.9	85.5 - 91.6	2,100
Chinese	<50	15.7	6.5 - 33.1	200	84.3	66.9 - 93.5	200
Filipino	100	9.6	6.2 - 14.6	900	90.4	85.4 - 93.8	1,000
Japanese	<50	7.7	4.5 - 13.0	500	92.3	87.0 - 95.5	500
Other	<50	4.0	1.9 - 8.0	900	96.0	92.0 - 98.1	1,000

PRAMS Age Group	Yes			No			Weighted Total Responses (3-Yr Avg)
	#	%	C.I.(95%)	#	%	C.I.(95%)	#
<20	<50	6.1	3.3 - 11.1	700	93.9	88.9 - 96.7	800
20-24	200	13.2	9.8 - 17.5	1,400	86.8	82.5 - 90.2	1,600
25-34	200	7.9	6.0 - 10.3	2,300	92.1	89.7 - 94.0	2,500
35+	100	7.8	4.6 - 12.8	700	92.2	87.2 - 95.4	800

**PRAMS Health Indicator 3-Year Aggregate Report - No contraception at conception- side effects- by State;County;DOH Race-Ethnicity;PRAMS Age Group;Infant Gender;Married;Poverty Level;Income (2000-2003);Income (2004-2011);Birthweight;Smoke 3rd Trimester;Smoke Before Pregnant;WIC During Pregnancy, for the Year(s)
2000-2002;2001-2003;2002-2004;2003-2005;2004-2006;2005-2007;2006-2008;2007-2009;2008-2010;2009-2011;2010-2012;2011-2013**

Note: Weighted counts (#) represent 3-yr averages, rounded to the nearest hundred; n/r (Not Reportable) - If the unweighted total responses for a dimension (row) is <30 that row will not be shown

Years: 2007-2009

	Yes			No			Weighted Total Responses (3-Yr Avg)
	#	%	C.I.(95%)	#	%	C.I.(95%)	#
Infant Gender							
Male	200	8.0	6.0 - 10.5	2,700	92.0	89.5 - 94.0	3,000
Female	300	10.4	8.2 - 13.0	2,400	89.6	87.0 - 91.8	2,700

	Yes			No			Weighted Total Responses (3-Yr Avg)
	#	%	C.I.(95%)	#	%	C.I.(95%)	#
Married							
Yes	200	8.0	6.1 - 10.4	2,400	92.0	89.6 - 93.9	2,700
No	300	10.1	8.0 - 12.8	2,700	89.9	87.2 - 92.0	3,000

	Yes			No			Weighted Total Responses (3-Yr Avg)
	#	%	C.I.(95%)	#	%	C.I.(95%)	#
Poverty Level							
0-130%	300	9.9	7.6 - 12.7	2,600	90.1	87.3 - 92.4	2,900
131-185%	100	7.3	4.6 - 11.3	700	92.7	88.7 - 95.4	800
186+%	200	9.3	6.8 - 12.6	1,500	90.7	87.4 - 93.2	1,600

**PRAMS Health Indicator 3-Year Aggregate Report - No contraception at conception- side effects- by State;County;DOH Race- Ethnicity;PRAMS Age Group;Infant Gender;Married;Poverty Level;Income (2000-2003);Income (2004-2011);Birthweight;Smoke 3rd Trimester;Smoke Before Pregnant;WIC During Pregnancy, for the Year(s)
2000-2002;2001-2003;2002-2004;2003-2005;2004-2006;2005-2007;2006-2008;2007-2009;2008-2010;2009-2011;2010-2012;2011-2013**

Note: Weighted counts (#) represent 3-yr averages, rounded to the nearest hundred; n/r (Not Reportable) - If the unweighted total responses for a dimension (row) is <30 that row will not be shown

Years: 2007-2009

Income (2004-2011)	Yes			No			Weighted Total Responses (3-Yr Avg)
	#	%	C.I.(95%)	#	%	C.I.(95%)	#
<\$10,000	200	10.1	7.1 - 14.3	1,300	89.9	85.7 - 92.9	1,500
\$10,000-\$24,999	100	10.5	7.4 - 14.6	1,200	89.5	85.4 - 92.6	1,400
\$25,000-\$49,999	100	6.9	4.7 - 10.2	1,100	93.1	89.8 - 95.3	1,200
>=\$50,000	100	9.3	6.5 - 13.1	1,100	90.7	86.9 - 93.5	1,200

Birthweight	Yes			No			Weighted Total Responses (3-Yr Avg)
	#	%	C.I.(95%)	#	%	C.I.(95%)	#
Low birth weight	<50	9.1	5.3 - 15.2	400	90.9	84.8 - 94.7	400
Normal birth weight	500	9.1	7.6 - 11.0	4,700	90.9	89.0 - 92.4	5,200

Smoke 3rd Trimester	Yes			No			Weighted Total Responses (3-Yr Avg)
	#	%	C.I.(95%)	#	%	C.I.(95%)	#
Yes	100	10.9	6.6 - 17.7	700	89.1	82.3 - 93.4	700
No	400	8.9	7.4 - 10.8	4,400	91.1	89.2 - 92.6	4,800

**PRAMS Health Indicator 3-Year Aggregate Report - No contraception at conception- side effects- by State;County;DOH Race-Ethnicity;PRAMS Age Group;Infant Gender;Married;Poverty Level;Income (2000-2003);Income (2004-2011);Birthweight;Smoke 3rd Trimester;Smoke Before Pregnant;WIC During Pregnancy, for the Year(s)
2000-2002;2001-2003;2002-2004;2003-2005;2004-2006;2005-2007;2006-2008;2007-2009;2008-2010;2009-2011;2010-2012;2011-2013**

Note: Weighted counts (#) represent 3-yr averages, rounded to the nearest hundred; n/r (Not Reportable) - If the unweighted total responses for a dimension (row) is <30 that row will not be shown

Years: 2007-2009

Smoke Before Pregnant	Yes			No			Weighted Total Responses (3-Yr Avg)
	#	%	C.I.(95%)	#	%	C.I.(95%)	#
Yes	100	9.4	6.5 - 13.5	1,400	90.6	86.5 - 93.5	1,500
No	400	9.1	7.4 - 11.2	3,600	90.9	88.8 - 92.6	4,000

WIC During Pregnancy	Yes			No			Weighted Total Responses (3-Yr Avg)
	#	%	C.I.(95%)	#	%	C.I.(95%)	#
Yes	300	8.9	7.0 - 11.4	2,700	91.1	88.6 - 93.0	3,000
No	200	9.4	7.2 - 12.3	2,300	90.6	87.7 - 92.8	2,500

**PRAMS Health Indicator 3-Year Aggregate Report - No contraception at conception- side effects- by State;County;DOH Race-Ethnicity;PRAMS Age Group;Infant Gender;Married;Poverty Level;Income (2000-2003);Income (2004-2011);Birthweight;Smoke 3rd Trimester;Smoke Before Pregnant;WIC During Pregnancy, for the Year(s)
2000-2002;2001-2003;2002-2004;2003-2005;2004-2006;2005-2007;2006-2008;2007-2009;2008-2010;2009-2011;2010-2012;2011-2013**

Note: Weighted counts (#) represent 3-yr averages, rounded to the nearest hundred; n/r (Not Reportable) - If the unweighted total responses for a dimension (row) is <30 that row will not be shown

Years: 2006-2008

State	Yes			No			Weighted Total Responses (3-Yr Avg)
	#	%	C.I.(95%)	#	%	C.I.(95%)	#
Totals	500	9.9	8.4 - 11.6	4,900	90.1	88.4 - 91.6	5,500

County	Yes			No			Weighted Total Responses (3-Yr Avg)
	#	%	C.I.(95%)	#	%	C.I.(95%)	#
Hawaii	100	12.1	8.0 - 17.9	600	87.9	82.1 - 92.0	700
Honolulu	300	9.1	7.5 - 11.1	3,500	90.9	88.9 - 92.5	3,800
Kauai	<50	10.2	5.3 - 18.8	300	89.8	81.2 - 94.7	300
Maui	100	11.6	7.4 - 17.7	600	88.4	82.3 - 92.6	700

**PRAMS Health Indicator 3-Year Aggregate Report - No contraception at conception- side effects- by State;County;DOH Race-Ethnicity;PRAMS Age Group;Infant Gender;Married;Poverty Level;Income (2000-2003);Income (2004-2011);Birthweight;Smoke 3rd Trimester;Smoke Before Pregnant;WIC During Pregnancy, for the Year(s)
2000-2002;2001-2003;2002-2004;2003-2005;2004-2006;2005-2007;2006-2008;2007-2009;2008-2010;2009-2011;2010-2012;2011-2013**

Note: Weighted counts (#) represent 3-yr averages, rounded to the nearest hundred; n/r (Not Reportable) - If the unweighted total responses for a dimension (row) is <30 that row will not be shown

Years: 2006-2008

DOH Race-Ethnicity	Yes			No			Weighted Total Responses (3-Yr Avg)
	#	%	C.I.(95%)	#	%	C.I.(95%)	#
Caucasian	100	10.7	7.5 - 15.1	900	89.3	84.9 - 92.5	1,000
Native Hawaiian	300	13.4	10.5 - 16.9	1,600	86.6	83.1 - 89.5	1,900
Chinese	<50	8.1	4.3 - 14.7	100	91.9	85.3 - 95.7	<50
Filipino	100	8.5	5.7 - 12.3	800	91.5	87.7 - 94.3	900
Japanese	<50	6.8	3.6 - 12.2	500	93.2	87.8 - 96.4	500
Other	100	5.8	3.6 - 9.4	1,000	94.2	90.6 - 96.4	1,100

PRAMS Age Group	Yes			No			Weighted Total Responses (3-Yr Avg)
	#	%	C.I.(95%)	#	%	C.I.(95%)	#
<20	100	9.6	5.6 - 15.9	600	90.4	84.1 - 94.4	700
20-24	200	13.8	10.8 - 17.6	1,400	86.2	82.4 - 89.2	1,600
25-34	200	8.3	6.5 - 10.7	2,300	91.7	89.3 - 93.5	2,500
35+	<50	6.7	4.0 - 11.1	700	93.3	88.9 - 96.0	700

**PRAMS Health Indicator 3-Year Aggregate Report - No contraception at conception- side effects- by State;County;DOH Race- Ethnicity;PRAMS Age Group;Infant Gender;Married;Poverty Level;Income (2000-2003);Income (2004-2011);Birthweight;Smoke 3rd Trimester;Smoke Before Pregnant;WIC During Pregnancy, for the Year(s)
2000-2002;2001-2003;2002-2004;2003-2005;2004-2006;2005-2007;2006-2008;2007-2009;2008-2010;2009-2011;2010-2012;2011-2013**

Note: Weighted counts (#) represent 3-yr averages, rounded to the nearest hundred; n/r (Not Reportable) - If the unweighted total responses for a dimension (row) is <30 that row will not be shown

Years: 2006-2008

	Yes			No			Weighted Total Responses (3-Yr Avg)
	#	%	C.I.(95%)	#	%	C.I.(95%)	#
Infant Gender							
Male	300	9.5	7.6 - 11.8	2,600	90.5	88.2 - 92.4	2,800
Female	300	10.3	8.2 - 12.9	2,400	89.7	87.1 - 91.8	2,700

	Yes			No			Weighted Total Responses (3-Yr Avg)
	#	%	C.I.(95%)	#	%	C.I.(95%)	#
Married							
Yes	200	9.0	7.2 - 11.3	2,400	91.0	88.7 - 92.8	2,700
No	300	10.7	8.6 - 13.3	2,500	89.3	86.7 - 91.4	2,800

	Yes			No			Weighted Total Responses (3-Yr Avg)
	#	%	C.I.(95%)	#	%	C.I.(95%)	#
Poverty Level							
0-130%	300	9.9	7.9 - 12.4	2,500	90.1	87.6 - 92.1	2,800
131-185%	100	10.3	6.8 - 15.5	600	89.7	84.5 - 93.2	700
186+%	200	10.5	8.0 - 13.7	1,500	89.5	86.3 - 92.0	1,700

**PRAMS Health Indicator 3-Year Aggregate Report - No contraception at conception- side effects- by State;County;DOH Race- Ethnicity;PRAMS Age Group;Infant Gender;Married;Poverty Level;Income (2000-2003);Income (2004-2011);Birthweight;Smoke 3rd Trimester;Smoke Before Pregnant;WIC During Pregnancy, for the Year(s)
2000-2002;2001-2003;2002-2004;2003-2005;2004-2006;2005-2007;2006-2008;2007-2009;2008-2010;2009-2011;2010-2012;2011-2013**

Note: Weighted counts (#) represent 3-yr averages, rounded to the nearest hundred; n/r (Not Reportable) - If the unweighted total responses for a dimension (row) is <30 that row will not be shown

Years: 2006-2008

Income (2004-2011)	Yes			No			Weighted Total Responses (3-Yr Avg)
	#	%	C.I.(95%)	#	%	C.I.(95%)	#
<\$10,000	100	8.5	6.0 - 12.1	1,300	91.5	87.9 - 94.0	1,400
\$10,000-\$24,999	200	10.9	8.1 - 14.7	1,200	89.1	85.3 - 91.9	1,400
\$25,000-\$49,999	100	12.0	8.8 - 16.2	1,000	88.0	83.8 - 91.2	1,100
>=\$50,000	100	9.3	6.6 - 12.9	1,100	90.7	87.1 - 93.4	1,200

Birthweight	Yes			No			Weighted Total Responses (3-Yr Avg)
	#	%	C.I.(95%)	#	%	C.I.(95%)	#
Low birth weight	<50	7.6	3.9 - 14.5	400	92.4	85.5 - 96.1	400
Normal birth weight	500	10.1	8.5 - 11.8	4,500	89.9	88.2 - 91.5	5,000

Smoke 3rd Trimester	Yes			No			Weighted Total Responses (3-Yr Avg)
	#	%	C.I.(95%)	#	%	C.I.(95%)	#
Yes	100	10.5	6.7 - 16.1	600	89.5	83.9 - 93.3	700
No	500	9.9	8.3 - 11.7	4,200	90.1	88.3 - 91.7	4,700

**PRAMS Health Indicator 3-Year Aggregate Report - No contraception at conception- side effects- by State;County;DOH Race-Ethnicity;PRAMS Age Group;Infant Gender;Married;Poverty Level;Income (2000-2003);Income (2004-2011);Birthweight;Smoke 3rd Trimester;Smoke Before Pregnant;WIC During Pregnancy, for the Year(s)
2000-2002;2001-2003;2002-2004;2003-2005;2004-2006;2005-2007;2006-2008;2007-2009;2008-2010;2009-2011;2010-2012;2011-2013**

Note: Weighted counts (#) represent 3-yr averages, rounded to the nearest hundred; n/r (Not Reportable) - If the unweighted total responses for a dimension (row) is <30 that row will not be shown

Years: 2006-2008

Smoke Before Pregnant	Yes			No			Weighted Total Responses (3-Yr Avg)
	#	%	C.I.(95%)	#	%	C.I.(95%)	#
Yes	200	10.7	7.9 - 14.3	1,300	89.3	85.7 - 92.1	1,500
No	400	9.7	8.0 - 11.6	3,500	90.3	88.4 - 92.0	3,900

WIC During Pregnancy	Yes			No			Weighted Total Responses (3-Yr Avg)
	#	%	C.I.(95%)	#	%	C.I.(95%)	#
Yes	300	10.4	8.3 - 12.8	2,700	89.6	87.2 - 91.7	3,000
No	200	9.0	7.0 - 11.4	2,200	91.0	88.6 - 93.0	2,400

**PRAMS Health Indicator 3-Year Aggregate Report - No contraception at conception- side effects- by State;County;DOH Race-Ethnicity;PRAMS Age Group;Infant Gender;Married;Poverty Level;Income (2000-2003);Income (2004-2011);Birthweight;Smoke 3rd Trimester;Smoke Before Pregnant;WIC During Pregnancy, for the Year(s)
2000-2002;2001-2003;2002-2004;2003-2005;2004-2006;2005-2007;2006-2008;2007-2009;2008-2010;2009-2011;2010-2012;2011-2013**

Note: Weighted counts (#) represent 3-yr averages, rounded to the nearest hundred; n/r (Not Reportable) - If the unweighted total responses for a dimension (row) is <30 that row will not be shown

Years: 2005-2007

State	Yes			No			Weighted Total Responses (3-Yr Avg)
	#	%	C.I.(95%)	#	%	C.I.(95%)	#
Totals	600	10.4	8.9 - 12.1	4,900	89.6	87.9 - 91.1	5,500

County	Yes			No			Weighted Total Responses (3-Yr Avg)
	#	%	C.I.(95%)	#	%	C.I.(95%)	#
Hawaii	100	10.7	6.9 - 16.1	600	89.3	83.9 - 93.1	700
Honolulu	400	10.2	8.5 - 12.2	3,500	89.8	87.8 - 91.5	3,900
Kauai	<50	6.7	2.9 - 14.7	300	93.3	85.3 - 97.1	300
Maui	100	13.1	8.4 - 19.8	500	86.9	80.2 - 91.6	600

**PRAMS Health Indicator 3-Year Aggregate Report - No contraception at conception- side effects- by State;County;DOH Race-Ethnicity;PRAMS Age Group;Infant Gender;Married;Poverty Level;Income (2000-2003);Income (2004-2011);Birthweight;Smoke 3rd Trimester;Smoke Before Pregnant;WIC During Pregnancy, for the Year(s)
2000-2002;2001-2003;2002-2004;2003-2005;2004-2006;2005-2007;2006-2008;2007-2009;2008-2010;2009-2011;2010-2012;2011-2013**

Note: Weighted counts (#) represent 3-yr averages, rounded to the nearest hundred; n/r (Not Reportable) - If the unweighted total responses for a dimension (row) is <30 that row will not be shown

Years: 2005-2007

DOH Race-Ethnicity	Yes			No			Weighted Total Responses (3-Yr Avg)
	#	%	C.I.(95%)	#	%	C.I.(95%)	#
Caucasian	100	12.8	9.2 - 17.5	800	87.2	82.5 - 90.8	900
Native Hawaiian	300	13.5	10.6 - 17.1	1,600	86.5	82.9 - 89.4	1,900
Chinese	<50	6.9	3.5 - 13.3	100	93.1	86.7 - 96.5	<50
Filipino	100	7.8	5.2 - 11.4	900	92.2	88.6 - 94.8	900
Japanese	<50	8.4	4.9 - 14.0	500	91.6	86.0 - 95.1	500
Other	100	6.4	4.0 - 10.0	1,000	93.6	90.0 - 96.0	1,100

PRAMS Age Group	Yes			No			Weighted Total Responses (3-Yr Avg)
	#	%	C.I.(95%)	#	%	C.I.(95%)	#
<20	100	12.4	8.2 - 18.2	700	87.6	81.8 - 91.8	800
20-24	200	12.9	10.0 - 16.5	1,500	87.1	83.5 - 90.0	1,700
25-34	200	8.5	6.6 - 10.9	2,200	91.5	89.1 - 93.4	2,400
35+	100	8.3	5.1 - 13.2	600	91.7	86.8 - 94.9	700

**PRAMS Health Indicator 3-Year Aggregate Report - No contraception at conception- side effects- by State;County;DOH Race- Ethnicity;PRAMS Age Group;Infant Gender;Married;Poverty Level;Income (2000-2003);Income (2004-2011);Birthweight;Smoke 3rd Trimester;Smoke Before Pregnant;WIC During Pregnancy, for the Year(s)
2000-2002;2001-2003;2002-2004;2003-2005;2004-2006;2005-2007;2006-2008;2007-2009;2008-2010;2009-2011;2010-2012;2011-2013**

Note: Weighted counts (#) represent 3-yr averages, rounded to the nearest hundred; n/r (Not Reportable) - If the unweighted total responses for a dimension (row) is <30 that row will not be shown

Years: 2005-2007

	Yes			No			Weighted Total Responses (3-Yr Avg)
	#	%	C.I.(95%)	#	%	C.I.(95%)	#
Infant Gender							
Male	300	10.1	8.1 - 12.5	2,500	89.9	87.5 - 91.9	2,800
Female	300	10.7	8.6 - 13.2	2,400	89.3	86.8 - 91.4	2,700

	Yes			No			Weighted Total Responses (3-Yr Avg)
	#	%	C.I.(95%)	#	%	C.I.(95%)	#
Married							
Yes	200	9.7	7.7 - 12.0	2,300	90.3	88.0 - 92.3	2,600
No	300	11.0	8.9 - 13.5	2,600	89.0	86.5 - 91.1	3,000

	Yes			No			Weighted Total Responses (3-Yr Avg)
	#	%	C.I.(95%)	#	%	C.I.(95%)	#
Poverty Level							
0-130%	300	10.4	8.3 - 13.0	2,500	89.6	87.0 - 91.7	2,700
131-185%	100	9.7	6.2 - 15.0	600	90.3	85.0 - 93.8	700
186+%	200	11.8	9.2 - 15.2	1,400	88.2	84.8 - 90.8	1,600

**PRAMS Health Indicator 3-Year Aggregate Report - No contraception at conception- side effects- by State;County;DOH Race-Ethnicity;PRAMS Age Group;Infant Gender;Married;Poverty Level;Income (2000-2003);Income (2004-2011);Birthweight;Smoke 3rd Trimester;Smoke Before Pregnant;WIC During Pregnancy, for the Year(s)
2000-2002;2001-2003;2002-2004;2003-2005;2004-2006;2005-2007;2006-2008;2007-2009;2008-2010;2009-2011;2010-2012;2011-2013**

Note: Weighted counts (#) represent 3-yr averages, rounded to the nearest hundred; n/r (Not Reportable) - If the unweighted total responses for a dimension (row) is <30 that row will not be shown

Years: 2005-2007

Income (2004-2011)	Yes			No			Weighted Total Responses (3-Yr Avg)
	#	%	C.I.(95%)	#	%	C.I.(95%)	#
<\$10,000	100	7.6	5.2 - 11.0	1,400	92.4	89.0 - 94.8	1,500
\$10,000-\$24,999	200	11.9	8.9 - 15.7	1,200	88.1	84.3 - 91.1	1,400
\$25,000-\$49,999	200	14.5	11.0 - 18.8	1,000	85.5	81.2 - 89.0	1,200
>=\$50,000	100	9.2	6.4 - 12.9	1,000	90.8	87.1 - 93.6	1,100

Birthweight	Yes			No			Weighted Total Responses (3-Yr Avg)
	#	%	C.I.(95%)	#	%	C.I.(95%)	#
Low birth weight	<50	6.8	3.4 - 13.0	400	93.2	87.0 - 96.6	500
Normal birth weight	500	10.7	9.1 - 12.5	4,500	89.3	87.5 - 90.9	5,100

Smoke 3rd Trimester	Yes			No			Weighted Total Responses (3-Yr Avg)
	#	%	C.I.(95%)	#	%	C.I.(95%)	#
Yes	100	11.0	7.2 - 16.4	700	89.0	83.6 - 92.8	700
No	500	10.5	8.9 - 12.3	4,200	89.5	87.7 - 91.1	4,700

**PRAMS Health Indicator 3-Year Aggregate Report - No contraception at conception- side effects- by State;County;DOH Race-Ethnicity;PRAMS Age Group;Infant Gender;Married;Poverty Level;Income (2000-2003);Income (2004-2011);Birthweight;Smoke 3rd Trimester;Smoke Before Pregnant;WIC During Pregnancy, for the Year(s)
2000-2002;2001-2003;2002-2004;2003-2005;2004-2006;2005-2007;2006-2008;2007-2009;2008-2010;2009-2011;2010-2012;2011-2013**

Note: Weighted counts (#) represent 3-yr averages, rounded to the nearest hundred; n/r (Not Reportable) - If the unweighted total responses for a dimension (row) is <30 that row will not be shown

Years: 2005-2007

Smoke Before Pregnant	Yes			No			Weighted Total Responses (3-Yr Avg)
	#	%	C.I.(95%)	#	%	C.I.(95%)	#
Yes	200	10.4	7.8 - 13.7	1,500	89.6	86.3 - 92.2	1,600
No	400	10.7	8.9 - 12.8	3,400	89.3	87.2 - 91.1	3,800

WIC During Pregnancy	Yes			No			Weighted Total Responses (3-Yr Avg)
	#	%	C.I.(95%)	#	%	C.I.(95%)	#
Yes	300	11.0	9.0 - 13.5	2,700	89.0	86.5 - 91.0	3,000
No	200	9.5	7.5 - 12.0	2,200	90.5	88.0 - 92.5	2,400

**PRAMS Health Indicator 3-Year Aggregate Report - No contraception at conception- side effects- by State;County;DOH Race-Ethnicity;PRAMS Age Group;Infant Gender;Married;Poverty Level;Income (2000-2003);Income (2004-2011);Birthweight;Smoke 3rd Trimester;Smoke Before Pregnant;WIC During Pregnancy, for the Year(s)
2000-2002;2001-2003;2002-2004;2003-2005;2004-2006;2005-2007;2006-2008;2007-2009;2008-2010;2009-2011;2010-2012;2011-2013**

Note: Weighted counts (#) represent 3-yr averages, rounded to the nearest hundred; n/r (Not Reportable) - If the unweighted total responses for a dimension (row) is <30 that row will not be shown

Years: 2004-2006

State	Yes			No			Weighted Total Responses (3-Yr Avg)
	#	%	C.I.(95%)	#	%	C.I.(95%)	#
Totals	500	10.3	8.8 - 11.9	4,700	89.7	88.1 - 91.2	5,200

County	Yes			No			Weighted Total Responses (3-Yr Avg)
	#	%	C.I.(95%)	#	%	C.I.(95%)	#
Hawaii	100	11.2	7.3 - 16.8	600	88.8	83.2 - 92.7	700
Honolulu	400	10.0	8.3 - 12.0	3,400	90.0	88.0 - 91.7	3,800
Kauai	<50	8.4	3.9 - 17.3	200	91.6	82.7 - 96.1	300
Maui	100	11.9	7.6 - 18.1	500	88.1	81.9 - 92.4	500

**PRAMS Health Indicator 3-Year Aggregate Report - No contraception at conception- side effects- by State;County;DOH Race-Ethnicity;PRAMS Age Group;Infant Gender;Married;Poverty Level;Income (2000-2003);Income (2004-2011);Birthweight;Smoke 3rd Trimester;Smoke Before Pregnant;WIC During Pregnancy, for the Year(s)
2000-2002;2001-2003;2002-2004;2003-2005;2004-2006;2005-2007;2006-2008;2007-2009;2008-2010;2009-2011;2010-2012;2011-2013**

Note: Weighted counts (#) represent 3-yr averages, rounded to the nearest hundred; n/r (Not Reportable) - If the unweighted total responses for a dimension (row) is <30 that row will not be shown

Years: 2004-2006

DOH Race-Ethnicity	Yes			No			Weighted Total Responses (3-Yr Avg)
	#	%	C.I.(95%)	#	%	C.I.(95%)	#
Caucasian	100	13.7	10.0 - 18.6	700	86.3	81.4 - 90.0	800
Native Hawaiian	200	12.1	9.4 - 15.5	1,600	87.9	84.5 - 90.6	1,800
Chinese	<50	5.1	2.6 - 9.7	100	94.9	90.3 - 97.4	<50
Filipino	100	8.4	5.8 - 12.0	900	91.6	88.0 - 94.2	900
Japanese	<50	7.5	4.3 - 12.7	500	92.5	87.3 - 95.7	500
Other	100	7.9	5.3 - 11.8	900	92.1	88.2 - 94.7	1,000

PRAMS Age Group	Yes			No			Weighted Total Responses (3-Yr Avg)
	#	%	C.I.(95%)	#	%	C.I.(95%)	#
<20	100	10.8	7.0 - 16.2	600	89.2	83.8 - 93.0	700
20-24	200	13.1	10.2 - 16.6	1,400	86.9	83.4 - 89.8	1,700
25-34	200	8.8	6.9 - 11.3	2,000	91.2	88.7 - 93.1	2,200
35+	100	7.8	4.9 - 12.2	700	92.2	87.8 - 95.1	700

**PRAMS Health Indicator 3-Year Aggregate Report - No contraception at conception- side effects- by State;County;DOH Race- Ethnicity;PRAMS Age Group;Infant Gender;Married;Poverty Level;Income (2000-2003);Income (2004-2011);Birthweight;Smoke 3rd Trimester;Smoke Before Pregnant;WIC During Pregnancy, for the Year(s)
2000-2002;2001-2003;2002-2004;2003-2005;2004-2006;2005-2007;2006-2008;2007-2009;2008-2010;2009-2011;2010-2012;2011-2013**

Note: Weighted counts (#) represent 3-yr averages, rounded to the nearest hundred; n/r (Not Reportable) - If the unweighted total responses for a dimension (row) is <30 that row will not be shown

Years: 2004-2006

Infant Gender	Yes			No			Weighted Total Responses (3-Yr Avg)
	#	%	C.I.(95%)	#	%	C.I.(95%)	#
Male	300	10.4	8.4 - 12.8	2,400	89.6	87.2 - 91.6	2,700
Female	300	10.2	8.2 - 12.6	2,300	89.8	87.4 - 91.8	2,600

Married	Yes			No			Weighted Total Responses (3-Yr Avg)
	#	%	C.I.(95%)	#	%	C.I.(95%)	#
Yes	300	9.9	8.0 - 12.3	2,300	90.1	87.7 - 92.0	2,600
No	300	10.6	8.5 - 13.1	2,400	89.4	86.9 - 91.5	2,600

Poverty Level	Yes			No			Weighted Total Responses (3-Yr Avg)
	#	%	C.I.(95%)	#	%	C.I.(95%)	#
0-130%	200	9.4	7.4 - 11.8	2,300	90.6	88.2 - 92.6	2,500
131-185%	100	9.2	5.7 - 14.5	500	90.8	85.5 - 94.3	600
186+%	200	13.2	10.4 - 16.6	1,400	86.8	83.4 - 89.6	1,600

**PRAMS Health Indicator 3-Year Aggregate Report - No contraception at conception- side effects- by State;County;DOH Race-Ethnicity;PRAMS Age Group;Infant Gender;Married;Poverty Level;Income (2000-2003);Income (2004-2011);Birthweight;Smoke 3rd Trimester;Smoke Before Pregnant;WIC During Pregnancy, for the Year(s)
2000-2002;2001-2003;2002-2004;2003-2005;2004-2006;2005-2007;2006-2008;2007-2009;2008-2010;2009-2011;2010-2012;2011-2013**

Note: Weighted counts (#) represent 3-yr averages, rounded to the nearest hundred; n/r (Not Reportable) - If the unweighted total responses for a dimension (row) is <30 that row will not be shown

Years: 2004-2006

Income (2004-2011)	Yes			No			Weighted Total Responses (3-Yr Avg)
	#	%	C.I.(95%)	#	%	C.I.(95%)	#
<\$10,000	100	7.0	4.8 - 10.1	1,300	93.0	89.9 - 95.2	1,300
\$10,000-\$24,999	100	10.5	7.8 - 14.0	1,200	89.5	86.0 - 92.2	1,400
\$25,000-\$49,999	200	15.1	11.6 - 19.5	900	84.9	80.5 - 88.4	1,100
>=\$50,000	100	9.9	6.9 - 14.1	800	90.1	85.9 - 93.1	900

Birthweight	Yes			No			Weighted Total Responses (3-Yr Avg)
	#	%	C.I.(95%)	#	%	C.I.(95%)	#
Low birth weight	<50	6.0	2.8 - 12.6	400	94.0	87.4 - 97.2	400
Normal birth weight	500	10.6	9.1 - 12.4	4,300	89.4	87.6 - 90.9	4,900

Smoke 3rd Trimester	Yes			No			Weighted Total Responses (3-Yr Avg)
	#	%	C.I.(95%)	#	%	C.I.(95%)	#
Yes	100	10.9	7.3 - 16.0	700	89.1	84.0 - 92.7	800
No	500	10.3	8.8 - 12.2	3,900	89.7	87.8 - 91.2	4,400

**PRAMS Health Indicator 3-Year Aggregate Report - No contraception at conception- side effects- by State;County;DOH Race-Ethnicity;PRAMS Age Group;Infant Gender;Married;Poverty Level;Income (2000-2003);Income (2004-2011);Birthweight;Smoke 3rd Trimester;Smoke Before Pregnant;WIC During Pregnancy, for the Year(s)
2000-2002;2001-2003;2002-2004;2003-2005;2004-2006;2005-2007;2006-2008;2007-2009;2008-2010;2009-2011;2010-2012;2011-2013**

Note: Weighted counts (#) represent 3-yr averages, rounded to the nearest hundred; n/r (Not Reportable) - If the unweighted total responses for a dimension (row) is <30 that row will not be shown

Years: 2004-2006

Smoke Before Pregnant	Yes			No			Weighted Total Responses (3-Yr Avg)
	#	%	C.I.(95%)	#	%	C.I.(95%)	#
Yes	200	11.0	8.4 - 14.3	1,400	89.0	85.7 - 91.6	1,600
No	400	10.2	8.5 - 12.2	3,200	89.8	87.8 - 91.5	3,500

WIC During Pregnancy	Yes			No			Weighted Total Responses (3-Yr Avg)
	#	%	C.I.(95%)	#	%	C.I.(95%)	#
Yes	300	10.1	8.2 - 12.5	2,600	89.9	87.5 - 91.8	2,800
No	200	10.0	7.9 - 12.6	2,000	90.0	87.4 - 92.1	2,200

**PRAMS Health Indicator 3-Year Aggregate Report - No contraception at conception- side effects- by State;County;DOH Race-Ethnicity;PRAMS Age Group;Infant Gender;Married;Poverty Level;Income (2000-2003);Income (2004-2011);Birthweight;Smoke 3rd Trimester;Smoke Before Pregnant;WIC During Pregnancy, for the Year(s)
2000-2002;2001-2003;2002-2004;2003-2005;2004-2006;2005-2007;2006-2008;2007-2009;2008-2010;2009-2011;2010-2012;2011-2013**

Note: Weighted counts (#) represent 3-yr averages, rounded to the nearest hundred; n/r (Not Reportable) - If the unweighted total responses for a dimension (row) is <30 that row will not be shown

Years: 2003-2005

State	Yes			No			Weighted Total Responses (3-Yr Avg)
	#	%	C.I.(95%)	#	%	C.I.(95%)	#
Totals	500	9.0	7.6 - 10.5	4,900	91.0	89.5 - 92.4	5,400

County	Yes			No			Weighted Total Responses (3-Yr Avg)
	#	%	C.I.(95%)	#	%	C.I.(95%)	#
Hawaii	100	9.0	6.1 - 13.1	600	91.0	86.9 - 93.9	700
Honolulu	300	8.9	7.2 - 10.8	3,500	91.1	89.2 - 92.8	3,900
Kauai	<50	8.3	4.4 - 15.1	200	91.7	84.9 - 95.6	300
Maui	100	10.0	6.5 - 15.1	500	90.0	84.9 - 93.5	500

**PRAMS Health Indicator 3-Year Aggregate Report - No contraception at conception- side effects- by State;County;DOH Race-Ethnicity;PRAMS Age Group;Infant Gender;Married;Poverty Level;Income (2000-2003);Income (2004-2011);Birthweight;Smoke 3rd Trimester;Smoke Before Pregnant;WIC During Pregnancy, for the Year(s)
2000-2002;2001-2003;2002-2004;2003-2005;2004-2006;2005-2007;2006-2008;2007-2009;2008-2010;2009-2011;2010-2012;2011-2013**

Note: Weighted counts (#) represent 3-yr averages, rounded to the nearest hundred; n/r (Not Reportable) - If the unweighted total responses for a dimension (row) is <30 that row will not be shown

Years: 2003-2005

DOH Race-Ethnicity	Yes			No			Weighted Total Responses (3-Yr Avg)
	#	%	C.I.(95%)	#	%	C.I.(95%)	#
Caucasian	100	13.2	9.3 - 18.3	700	86.8	81.7 - 90.7	800
Native Hawaiian	200	8.9	6.9 - 11.4	1,700	91.1	88.6 - 93.1	1,900
Chinese	<50	8.6	3.3 - 20.6	100	91.4	79.4 - 96.7	200
Filipino	100	8.1	5.4 - 12.0	1,000	91.9	88.0 - 94.6	1,100
Japanese	<50	8.7	4.9 - 15.1	400	91.3	84.9 - 95.1	500
Other	100	6.7	4.1 - 10.9	900	93.3	89.1 - 95.9	900

PRAMS Age Group	Yes			No			Weighted Total Responses (3-Yr Avg)
	#	%	C.I.(95%)	#	%	C.I.(95%)	#
<20	100	12.4	8.5 - 17.7	700	87.6	82.3 - 91.5	800
20-24	200	10.0	7.6 - 13.2	1,500	90.0	86.8 - 92.4	1,700
25-34	200	7.9	6.0 - 10.3	2,000	92.1	89.7 - 94.0	2,200
35+	<50	6.4	3.9 - 10.3	700	93.6	89.7 - 96.1	700

**PRAMS Health Indicator 3-Year Aggregate Report - No contraception at conception- side effects- by State;County;DOH Race- Ethnicity;PRAMS Age Group;Infant Gender;Married;Poverty Level;Income (2000-2003);Income (2004-2011);Birthweight;Smoke 3rd Trimester;Smoke Before Pregnant;WIC During Pregnancy, for the Year(s)
2000-2002;2001-2003;2002-2004;2003-2005;2004-2006;2005-2007;2006-2008;2007-2009;2008-2010;2009-2011;2010-2012;2011-2013**

Note: Weighted counts (#) represent 3-yr averages, rounded to the nearest hundred; n/r (Not Reportable) - If the unweighted total responses for a dimension (row) is <30 that row will not be shown

Years: 2003-2005

Infant Gender	Yes			No			Weighted Total Responses (3-Yr Avg)
	#	%	C.I.(95%)	#	%	C.I.(95%)	#
Male	200	8.2	6.5 - 10.3	2,700	91.8	89.7 - 93.5	2,900
Female	200	9.9	7.8 - 12.4	2,200	90.1	87.6 - 92.2	2,400

Married	Yes			No			Weighted Total Responses (3-Yr Avg)
	#	%	C.I.(95%)	#	%	C.I.(95%)	#
Yes	200	8.7	6.8 - 11.0	2,400	91.3	89.0 - 93.2	2,700
No	300	9.3	7.4 - 11.5	2,400	90.7	88.5 - 92.6	2,700

Poverty Level	Yes			No			Weighted Total Responses (3-Yr Avg)
	#	%	C.I.(95%)	#	%	C.I.(95%)	#
0-130%	200	8.5	6.7 - 10.7	2,600	91.5	89.3 - 93.3	2,800
131-185%	<50	7.7	4.4 - 13.2	600	92.3	86.8 - 95.6	600
186+%	200	11.5	8.8 - 14.9	1,200	88.5	85.1 - 91.2	1,400

**PRAMS Health Indicator 3-Year Aggregate Report - No contraception at conception- side effects- by State;County;DOH Race-Ethnicity;PRAMS Age Group;Infant Gender;Married;Poverty Level;Income (2000-2003);Income (2004-2011);Birthweight;Smoke 3rd Trimester;Smoke Before Pregnant;WIC During Pregnancy, for the Year(s)
2000-2002;2001-2003;2002-2004;2003-2005;2004-2006;2005-2007;2006-2008;2007-2009;2008-2010;2009-2011;2010-2012;2011-2013**

Note: Weighted counts (#) represent 3-yr averages, rounded to the nearest hundred; n/r (Not Reportable) - If the unweighted total responses for a dimension (row) is <30 that row will not be shown

Years: 2003-2005

Birthweight	Yes			No			Weighted Total Responses (3-Yr Avg)
	#	%	C.I.(95%)	#	%	C.I.(95%)	#
Low birth weight	<50	4.4	2.0 - 9.4	400	95.6	90.6 - 98.0	400
Normal birth weight	500	9.3	7.9 - 11.0	4,500	90.7	89.0 - 92.1	5,000

Smoke 3rd Trimester	Yes			No			Weighted Total Responses (3-Yr Avg)
	#	%	C.I.(95%)	#	%	C.I.(95%)	#
Yes	100	10.9	7.1 - 16.5	700	89.1	83.5 - 92.9	800
No	400	8.7	7.3 - 10.3	4,100	91.3	89.7 - 92.7	4,500

Smoke Before Pregnant	Yes			No			Weighted Total Responses (3-Yr Avg)
	#	%	C.I.(95%)	#	%	C.I.(95%)	#
Yes	200	9.8	7.3 - 13.0	1,500	90.2	87.0 - 92.7	1,600
No	300	8.8	7.2 - 10.7	3,300	91.2	89.3 - 92.8	3,600

**PRAMS Health Indicator 3-Year Aggregate Report - No contraception at conception- side effects- by State;County;DOH Race- Ethnicity;PRAMS Age Group;Infant Gender;Married;Poverty Level;Income (2000-2003);Income (2004-2011);Birthweight;Smoke 3rd Trimester;Smoke Before Pregnant;WIC During Pregnancy, for the Year(s)
2000-2002;2001-2003;2002-2004;2003-2005;2004-2006;2005-2007;2006-2008;2007-2009;2008-2010;2009-2011;2010-2012;2011-2013**

Note: Weighted counts (#) represent 3-yr averages, rounded to the nearest hundred; n/r (Not Reportable) - If the unweighted total responses for a dimension (row) is <30 that row will not be shown

Years: 2003-2005

WIC During Pregnancy	Yes			No			Weighted Total Responses (3-Yr Avg)
	#	%	C.I.(95%)	#	%	C.I.(95%)	#
Yes	300	8.7	7.0 - 10.8	2,700	91.3	89.2 - 93.0	2,900
No	200	9.2	7.2 - 11.7	2,100	90.8	88.3 - 92.8	2,300

**PRAMS Health Indicator 3-Year Aggregate Report - No contraception at conception- side effects- by State;County;DOH Race-Ethnicity;PRAMS Age Group;Infant Gender;Married;Poverty Level;Income (2000-2003);Income (2004-2011);Birthweight;Smoke 3rd Trimester;Smoke Before Pregnant;WIC During Pregnancy, for the Year(s)
2000-2002;2001-2003;2002-2004;2003-2005;2004-2006;2005-2007;2006-2008;2007-2009;2008-2010;2009-2011;2010-2012;2011-2013**

Note: Weighted counts (#) represent 3-yr averages, rounded to the nearest hundred; n/r (Not Reportable) - If the unweighted total responses for a dimension (row) is <30 that row will not be shown

Years: 2002-2004

State	Yes			No			Weighted Total Responses (3-Yr Avg)
	#	%	C.I.(95%)	#	%	C.I.(95%)	#
Totals	500	9.3	7.9 - 10.9	5,000	90.7	89.1 - 92.1	5,500

County	Yes			No			Weighted Total Responses (3-Yr Avg)
	#	%	C.I.(95%)	#	%	C.I.(95%)	#
Hawaii	100	9.5	6.8 - 13.1	700	90.5	86.9 - 93.2	700
Honolulu	400	9.1	7.3 - 11.3	3,500	90.9	88.7 - 92.7	3,900
Kauai	<50	9.5	5.5 - 15.9	200	90.5	84.1 - 94.5	300
Maui	100	9.8	7.0 - 13.7	600	90.2	86.3 - 93.0	600

**PRAMS Health Indicator 3-Year Aggregate Report - No contraception at conception- side effects- by State;County;DOH Race-Ethnicity;PRAMS Age Group;Infant Gender;Married;Poverty Level;Income (2000-2003);Income (2004-2011);Birthweight;Smoke 3rd Trimester;Smoke Before Pregnant;WIC During Pregnancy, for the Year(s)
2000-2002;2001-2003;2002-2004;2003-2005;2004-2006;2005-2007;2006-2008;2007-2009;2008-2010;2009-2011;2010-2012;2011-2013**

Note: Weighted counts (#) represent 3-yr averages, rounded to the nearest hundred; n/r (Not Reportable) - If the unweighted total responses for a dimension (row) is <30 that row will not be shown

Years: 2002-2004

DOH Race-Ethnicity	Yes			No			Weighted Total Responses (3-Yr Avg)
	#	%	C.I.(95%)	#	%	C.I.(95%)	#
Caucasian	100	9.9	6.6 - 14.6	800	90.1	85.4 - 93.4	900
Native Hawaiian	200	9.3	7.6 - 11.4	1,700	90.7	88.6 - 92.4	1,900
Chinese	<50	14.8	6.2 - 31.3	100	85.2	68.7 - 93.8	200
Filipino	100	8.9	5.8 - 13.4	1,000	91.1	86.6 - 94.2	1,100
Japanese	<50	10.5	5.7 - 18.5	400	89.5	81.5 - 94.3	500
Other	100	7.4	4.3 - 12.5	800	92.6	87.5 - 95.7	900

PRAMS Age Group	Yes			No			Weighted Total Responses (3-Yr Avg)
	#	%	C.I.(95%)	#	%	C.I.(95%)	#
<20	100	11.2	7.3 - 16.6	700	88.8	83.4 - 92.7	800
20-24	200	11.5	8.9 - 14.8	1,500	88.5	85.2 - 91.1	1,700
25-34	200	8.5	6.4 - 11.2	2,000	91.5	88.8 - 93.6	2,200
35+	<50	4.6	2.7 - 7.8	800	95.4	92.2 - 97.3	800

**PRAMS Health Indicator 3-Year Aggregate Report - No contraception at conception- side effects- by State;County;DOH Race-Ethnicity;PRAMS Age Group;Infant Gender;Married;Poverty Level;Income (2000-2003);Income (2004-2011);Birthweight;Smoke 3rd Trimester;Smoke Before Pregnant;WIC During Pregnancy, for the Year(s)
2000-2002;2001-2003;2002-2004;2003-2005;2004-2006;2005-2007;2006-2008;2007-2009;2008-2010;2009-2011;2010-2012;2011-2013**

Note: Weighted counts (#) represent 3-yr averages, rounded to the nearest hundred; n/r (Not Reportable) - If the unweighted total responses for a dimension (row) is <30 that row will not be shown

Years: 2002-2004

Infant Gender	Yes			No			Weighted Total Responses (3-Yr Avg)
	#	%	C.I.(95%)	#	%	C.I.(95%)	#
Male	300	8.9	7.0 - 11.2	2,600	91.1	88.8 - 93.0	2,900
Female	200	9.7	7.7 - 12.2	2,300	90.3	87.8 - 92.3	2,600

Married	Yes			No			Weighted Total Responses (3-Yr Avg)
	#	%	C.I.(95%)	#	%	C.I.(95%)	#
Yes	200	7.8	6.1 - 10.0	2,700	92.2	90.0 - 93.9	2,900
No	300	10.9	8.8 - 13.6	2,300	89.1	86.4 - 91.2	2,500

Poverty Level	Yes			No			Weighted Total Responses (3-Yr Avg)
	#	%	C.I.(95%)	#	%	C.I.(95%)	#
0-130%	300	10.1	8.1 - 12.4	2,500	89.9	87.6 - 91.9	2,800
131-185%	100	7.0	4.2 - 11.4	700	93.0	88.6 - 95.8	800
186+%	100	10.4	7.5 - 14.3	1,100	89.6	85.7 - 92.5	1,200

**PRAMS Health Indicator 3-Year Aggregate Report - No contraception at conception- side effects- by State;County;DOH Race-Ethnicity;PRAMS Age Group;Infant Gender;Married;Poverty Level;Income (2000-2003);Income (2004-2011);Birthweight;Smoke 3rd Trimester;Smoke Before Pregnant;WIC During Pregnancy, for the Year(s)
2000-2002;2001-2003;2002-2004;2003-2005;2004-2006;2005-2007;2006-2008;2007-2009;2008-2010;2009-2011;2010-2012;2011-2013**

Note: Weighted counts (#) represent 3-yr averages, rounded to the nearest hundred; n/r (Not Reportable) - If the unweighted total responses for a dimension (row) is <30 that row will not be shown

Years: 2002-2004

Birthweight	Yes			No			Weighted Total Responses (3-Yr Avg)
	#	%	C.I.(95%)	#	%	C.I.(95%)	#
Low birth weight	<50	10.1	4.9 - 19.9	300	89.9	80.1 - 95.1	400
Normal birth weight	500	9.2	7.8 - 10.9	4,600	90.8	89.1 - 92.2	5,100

Smoke 3rd Trimester	Yes			No			Weighted Total Responses (3-Yr Avg)
	#	%	C.I.(95%)	#	%	C.I.(95%)	#
Yes	100	11.6	7.7 - 17.1	700	88.4	82.9 - 92.3	800
No	400	8.9	7.4 - 10.6	4,200	91.1	89.4 - 92.6	4,600

Smoke Before Pregnant	Yes			No			Weighted Total Responses (3-Yr Avg)
	#	%	C.I.(95%)	#	%	C.I.(95%)	#
Yes	200	11.1	8.4 - 14.4	1,400	88.9	85.6 - 91.6	1,600
No	300	8.4	6.8 - 10.4	3,400	91.6	89.6 - 93.2	3,700

**PRAMS Health Indicator 3-Year Aggregate Report - No contraception at conception- side effects- by State;County;DOH Race- Ethnicity;PRAMS Age Group;Infant Gender;Married;Poverty Level;Income (2000-2003);Income (2004-2011);Birthweight;Smoke 3rd Trimester;Smoke Before Pregnant;WIC During Pregnancy, for the Year(s)
2000-2002;2001-2003;2002-2004;2003-2005;2004-2006;2005-2007;2006-2008;2007-2009;2008-2010;2009-2011;2010-2012;2011-2013**

Note: Weighted counts (#) represent 3-yr averages, rounded to the nearest hundred; n/r (Not Reportable) - If the unweighted total responses for a dimension (row) is <30 that row will not be shown

Years: 2002-2004

WIC During Pregnancy	Yes			No			Weighted Total Responses (3-Yr Avg)
	#	%	C.I.(95%)	#	%	C.I.(95%)	#
Yes	300	9.5	7.7 - 11.8	2,700	90.5	88.2 - 92.3	2,900
No	200	8.7	6.7 - 11.2	2,200	91.3	88.8 - 93.3	2,500

**PRAMS Health Indicator 3-Year Aggregate Report - No contraception at conception- side effects- by State;County;DOH Race-Ethnicity;PRAMS Age Group;Infant Gender;Married;Poverty Level;Income (2000-2003);Income (2004-2011);Birthweight;Smoke 3rd Trimester;Smoke Before Pregnant;WIC During Pregnancy, for the Year(s)
2000-2002;2001-2003;2002-2004;2003-2005;2004-2006;2005-2007;2006-2008;2007-2009;2008-2010;2009-2011;2010-2012;2011-2013**

Note: Weighted counts (#) represent 3-yr averages, rounded to the nearest hundred; n/r (Not Reportable) - If the unweighted total responses for a dimension (row) is <30 that row will not be shown

Years: 2001-2003

State	Yes			No			Weighted Total Responses (3-Yr Avg)
	#	%	C.I.(95%)	#	%	C.I.(95%)	#
Totals	600	9.8	8.4 - 11.4	5,100	90.2	88.6 - 91.6	5,600

County	Yes			No			Weighted Total Responses (3-Yr Avg)
	#	%	C.I.(95%)	#	%	C.I.(95%)	#
Hawaii	100	10.9	8.5 - 13.9	600	89.1	86.1 - 91.5	700
Honolulu	400	9.8	7.9 - 11.9	3,600	90.2	88.1 - 92.1	4,000
Kauai	<50	7.6	4.7 - 12.1	300	92.4	87.9 - 95.3	300
Maui	100	9.7	7.3 - 12.9	600	90.3	87.1 - 92.7	600

**PRAMS Health Indicator 3-Year Aggregate Report - No contraception at conception- side effects- by State;County;DOH Race-Ethnicity;PRAMS Age Group;Infant Gender;Married;Poverty Level;Income (2000-2003);Income (2004-2011);Birthweight;Smoke 3rd Trimester;Smoke Before Pregnant;WIC During Pregnancy, for the Year(s)
2000-2002;2001-2003;2002-2004;2003-2005;2004-2006;2005-2007;2006-2008;2007-2009;2008-2010;2009-2011;2010-2012;2011-2013**

Note: Weighted counts (#) represent 3-yr averages, rounded to the nearest hundred; n/r (Not Reportable) - If the unweighted total responses for a dimension (row) is <30 that row will not be shown

Years: 2001-2003

DOH Race-Ethnicity	Yes			No			Weighted Total Responses (3-Yr Avg)
	#	%	C.I.(95%)	#	%	C.I.(95%)	#
Caucasian	100	11.1	7.5 - 16.0	800	88.9	84.0 - 92.5	900
Native Hawaiian	200	10.1	8.7 - 11.7	1,800	89.9	88.3 - 91.3	2,000
Chinese	<50	12.5	4.7 - 29.4	200	87.5	70.6 - 95.3	200
Filipino	100	8.6	5.5 - 13.0	1,100	91.4	87.0 - 94.5	1,200
Japanese	100	13.3	7.8 - 21.8	400	86.7	78.2 - 92.2	500
Other	100	7.1	4.0 - 12.5	800	92.9	87.5 - 96.0	900

PRAMS Age Group	Yes			No			Weighted Total Responses (3-Yr Avg)
	#	%	C.I.(95%)	#	%	C.I.(95%)	#
<20	100	11.9	8.3 - 16.7	800	88.1	83.3 - 91.7	900
20-24	200	10.8	8.4 - 13.9	1,600	89.2	86.1 - 91.6	1,700
25-34	200	10.3	8.1 - 13.0	2,100	89.7	87.0 - 91.9	2,300
35+	<50	3.4	1.8 - 6.3	700	96.6	93.7 - 98.2	700

**PRAMS Health Indicator 3-Year Aggregate Report - No contraception at conception- side effects- by State;County;DOH Race-Ethnicity;PRAMS Age Group;Infant Gender;Married;Poverty Level;Income (2000-2003);Income (2004-2011);Birthweight;Smoke 3rd Trimester;Smoke Before Pregnant;WIC During Pregnancy, for the Year(s)
2000-2002;2001-2003;2002-2004;2003-2005;2004-2006;2005-2007;2006-2008;2007-2009;2008-2010;2009-2011;2010-2012;2011-2013**

Note: Weighted counts (#) represent 3-yr averages, rounded to the nearest hundred; n/r (Not Reportable) - If the unweighted total responses for a dimension (row) is <30 that row will not be shown

Years: 2001-2003

Infant Gender	Yes			No			Weighted Total Responses (3-Yr Avg)
	#	%	C.I.(95%)	#	%	C.I.(95%)	#
Male	300	9.0	7.2 - 11.3	2,700	91.0	88.7 - 92.8	2,900
Female	300	10.6	8.6 - 13.1	2,400	89.4	86.9 - 91.4	2,700

Married	Yes			No			Weighted Total Responses (3-Yr Avg)
	#	%	C.I.(95%)	#	%	C.I.(95%)	#
Yes	200	8.2	6.5 - 10.4	2,700	91.8	89.6 - 93.5	3,000
No	300	11.6	9.5 - 14.1	2,300	88.4	85.9 - 90.5	2,700

Poverty Level	Yes			No			Weighted Total Responses (3-Yr Avg)
	#	%	C.I.(95%)	#	%	C.I.(95%)	#
0-130%	300	10.7	8.8 - 13.0	2,600	89.3	87.0 - 91.2	2,900
131-185%	100	8.3	5.6 - 12.3	900	91.7	87.7 - 94.4	1,000
186+%	100	10.7	7.5 - 15.1	1,000	89.3	84.9 - 92.5	1,100

**PRAMS Health Indicator 3-Year Aggregate Report - No contraception at conception- side effects- by State;County;DOH Race- Ethnicity;PRAMS Age Group;Infant Gender;Married;Poverty Level;Income (2000-2003);Income (2004-2011);Birthweight;Smoke 3rd Trimester;Smoke Before Pregnant;WIC During Pregnancy, for the Year(s)
2000-2002;2001-2003;2002-2004;2003-2005;2004-2006;2005-2007;2006-2008;2007-2009;2008-2010;2009-2011;2010-2012;2011-2013**

Note: Weighted counts (#) represent 3-yr averages, rounded to the nearest hundred; n/r (Not Reportable) - If the unweighted total responses for a dimension (row) is <30 that row will not be shown

Years: 2001-2003

Income (2000-2003)	Yes			No			Weighted Total Responses (3-Yr Avg)
	#	%	C.I.(95%)	#	%	C.I.(95%)	#
<=\$15,000	200	11.1	8.7 - 14.2	1,600	88.9	85.8 - 91.3	1,800
\$15,001-\$25,000	100	9.7	6.5 - 14.1	700	90.3	85.9 - 93.5	800
\$25,001-\$40,000	100	8.2	5.6 - 11.7	1,100	91.8	88.3 - 94.4	1,200
>=\$40,001	100	10.3	7.5 - 13.9	1,300	89.7	86.1 - 92.5	1,400

Birthweight	Yes			No			Weighted Total Responses (3-Yr Avg)
	#	%	C.I.(95%)	#	%	C.I.(95%)	#
Low birth weight	<50	11.2	6.2 - 19.6	400	88.8	80.4 - 93.8	400
Normal birth weight	500	9.7	8.3 - 11.3	4,700	90.3	88.7 - 91.7	5,200

Smoke 3rd Trimester	Yes			No			Weighted Total Responses (3-Yr Avg)
	#	%	C.I.(95%)	#	%	C.I.(95%)	#
Yes	100	10.4	7.0 - 15.2	700	89.6	84.8 - 93.0	800
No	500	9.8	8.3 - 11.6	4,300	90.2	88.4 - 91.7	4,700

**PRAMS Health Indicator 3-Year Aggregate Report - No contraception at conception- side effects- by State;County;DOH Race- Ethnicity;PRAMS Age Group;Infant Gender;Married;Poverty Level;Income (2000-2003);Income (2004-2011);Birthweight;Smoke 3rd Trimester;Smoke Before Pregnant;WIC During Pregnancy, for the Year(s)
2000-2002;2001-2003;2002-2004;2003-2005;2004-2006;2005-2007;2006-2008;2007-2009;2008-2010;2009-2011;2010-2012;2011-2013**

Note: Weighted counts (#) represent 3-yr averages, rounded to the nearest hundred; n/r (Not Reportable) - If the unweighted total responses for a dimension (row) is <30 that row will not be shown

Years: 2001-2003

Smoke Before Pregnant	Yes			No			Weighted Total Responses (3-Yr Avg)
	#	%	C.I.(95%)	#	%	C.I.(95%)	#
Yes	200	11.2	8.6 - 14.4	1,400	88.8	85.6 - 91.4	1,600
No	400	9.2	7.6 - 11.2	3,500	90.8	88.8 - 92.4	3,800

WIC During Pregnancy	Yes			No			Weighted Total Responses (3-Yr Avg)
	#	%	C.I.(95%)	#	%	C.I.(95%)	#
Yes	300	10.2	8.3 - 12.4	2,600	89.8	87.6 - 91.7	2,900
No	300	9.5	7.4 - 12.0	2,400	90.5	88.0 - 92.6	2,700

**PRAMS Health Indicator 3-Year Aggregate Report - No contraception at conception- side effects- by State;County;DOH Race-Ethnicity;PRAMS Age Group;Infant Gender;Married;Poverty Level;Income (2000-2003);Income (2004-2011);Birthweight;Smoke 3rd Trimester;Smoke Before Pregnant;WIC During Pregnancy, for the Year(s)
2000-2002;2001-2003;2002-2004;2003-2005;2004-2006;2005-2007;2006-2008;2007-2009;2008-2010;2009-2011;2010-2012;2011-2013**

Note: Weighted counts (#) represent 3-yr averages, rounded to the nearest hundred; n/r (Not Reportable) - If the unweighted total responses for a dimension (row) is <30 that row will not be shown

Years: 2000-2002

State	Yes			No			Weighted Total Responses (3-Yr Avg)
	#	%	C.I.(95%)	#	%	C.I.(95%)	#
Totals	600	11.7	10.2 - 13.3	4,900	88.3	86.7 - 89.8	5,600

County	Yes			No			Weighted Total Responses (3-Yr Avg)
	#	%	C.I.(95%)	#	%	C.I.(95%)	#
Hawaii	100	11.0	8.6 - 14.1	600	89.0	85.9 - 91.4	700
Honolulu	500	11.7	9.8 - 13.8	3,500	88.3	86.2 - 90.2	4,000
Kauai	<50	10.9	7.1 - 16.4	200	89.1	83.6 - 92.9	300
Maui	100	12.5	9.7 - 16.1	500	87.5	83.9 - 90.3	600

**PRAMS Health Indicator 3-Year Aggregate Report - No contraception at conception- side effects- by State;County;DOH Race-Ethnicity;PRAMS Age Group;Infant Gender;Married;Poverty Level;Income (2000-2003);Income (2004-2011);Birthweight;Smoke 3rd Trimester;Smoke Before Pregnant;WIC During Pregnancy, for the Year(s)
2000-2002;2001-2003;2002-2004;2003-2005;2004-2006;2005-2007;2006-2008;2007-2009;2008-2010;2009-2011;2010-2012;2011-2013**

Note: Weighted counts (#) represent 3-yr averages, rounded to the nearest hundred; n/r (Not Reportable) - If the unweighted total responses for a dimension (row) is <30 that row will not be shown

Years: 2000-2002

DOH Race-Ethnicity	Yes			No			Weighted Total Responses (3-Yr Avg)
	#	%	C.I.(95%)	#	%	C.I.(95%)	#
Caucasian	100	13.3	9.6 - 18.0	800	86.7	82.0 - 90.4	900
Native Hawaiian	200	12.0	10.6 - 13.6	1,700	88.0	86.4 - 89.4	1,900
Chinese	<50	13.9	4.8 - 34.3	100	86.1	65.7 - 95.2	<50
Filipino	100	10.8	7.6 - 15.1	1,100	89.2	84.9 - 92.4	1,200
Japanese	100	13.8	8.6 - 21.6	400	86.2	78.4 - 91.4	500
Other	100	8.8	5.4 - 13.9	800	91.2	86.1 - 94.6	900

PRAMS Age Group	Yes			No			Weighted Total Responses (3-Yr Avg)
	#	%	C.I.(95%)	#	%	C.I.(95%)	#
<20	100	10.7	7.7 - 14.6	800	89.3	85.4 - 92.3	900
20-24	200	14.3	11.6 - 17.5	1,400	85.7	82.5 - 88.4	1,700
25-34	300	12.1	9.8 - 14.9	1,900	87.9	85.1 - 90.2	2,200
35+	<50	5.6	3.4 - 9.1	700	94.4	90.9 - 96.6	700

**PRAMS Health Indicator 3-Year Aggregate Report - No contraception at conception- side effects- by State;County;DOH Race-Ethnicity;PRAMS Age Group;Infant Gender;Married;Poverty Level;Income (2000-2003);Income (2004-2011);Birthweight;Smoke 3rd Trimester;Smoke Before Pregnant;WIC During Pregnancy, for the Year(s)
2000-2002;2001-2003;2002-2004;2003-2005;2004-2006;2005-2007;2006-2008;2007-2009;2008-2010;2009-2011;2010-2012;2011-2013**

Note: Weighted counts (#) represent 3-yr averages, rounded to the nearest hundred; n/r (Not Reportable) - If the unweighted total responses for a dimension (row) is <30 that row will not be shown

Years: 2000-2002

	Yes			No			Weighted Total Responses (3-Yr Avg)
	#	%	C.I.(95%)	#	%	C.I.(95%)	#
Infant Gender							
Male	300	11.9	9.9 - 14.3	2,500	88.1	85.7 - 90.1	2,900
Female	300	11.4	9.5 - 13.7	2,400	88.6	86.3 - 90.5	2,700

	Yes			No			Weighted Total Responses (3-Yr Avg)
	#	%	C.I.(95%)	#	%	C.I.(95%)	#
Married							
Yes	300	10.4	8.6 - 12.5	2,700	89.6	87.5 - 91.4	3,000
No	300	13.2	11.0 - 15.8	2,200	86.8	84.2 - 89.0	2,500

	Yes			No			Weighted Total Responses (3-Yr Avg)
	#	%	C.I.(95%)	#	%	C.I.(95%)	#
Poverty Level							
0-130%	400	13.1	11.1 - 15.4	2,500	86.9	84.6 - 88.9	2,900
131-185%	100	9.2	6.6 - 12.6	800	90.8	87.4 - 93.4	900
186+%	100	12.3	9.0 - 16.6	1,000	87.7	83.4 - 91.0	1,200

**PRAMS Health Indicator 3-Year Aggregate Report - No contraception at conception- side effects- by State;County;DOH Race-Ethnicity;PRAMS Age Group;Infant Gender;Married;Poverty Level;Income (2000-2003);Income (2004-2011);Birthweight;Smoke 3rd Trimester;Smoke Before Pregnant;WIC During Pregnancy, for the Year(s)
2000-2002;2001-2003;2002-2004;2003-2005;2004-2006;2005-2007;2006-2008;2007-2009;2008-2010;2009-2011;2010-2012;2011-2013**

Note: Weighted counts (#) represent 3-yr averages, rounded to the nearest hundred; n/r (Not Reportable) - If the unweighted total responses for a dimension (row) is <30 that row will not be shown

Years: 2000-2002

Income (2000-2003)	Yes			No			Weighted Total Responses (3-Yr Avg)
	#	%	C.I.(95%)	#	%	C.I.(95%)	#
<=\$15,000	200	14.3	11.7 - 17.5	1,500	85.7	82.5 - 88.3	1,700
\$15,001-\$25,000	100	11.0	7.9 - 15.3	800	89.0	84.7 - 92.1	900
\$25,001-\$40,000	100	10.3	7.7 - 13.5	1,000	89.7	86.5 - 92.3	1,100
>=\$40,001	200	11.0	8.2 - 14.6	1,200	89.0	85.4 - 91.8	1,400

Birthweight	Yes			No			Weighted Total Responses (3-Yr Avg)
	#	%	C.I.(95%)	#	%	C.I.(95%)	#
Low birth weight	100	16.0	9.9 - 24.7	300	84.0	75.3 - 90.1	400
Normal birth weight	600	11.3	9.9 - 13.0	4,500	88.7	87.0 - 90.1	5,100

Smoke 3rd Trimester	Yes			No			Weighted Total Responses (3-Yr Avg)
	#	%	C.I.(95%)	#	%	C.I.(95%)	#
Yes	100	9.2	6.6 - 12.7	700	90.8	87.3 - 93.4	700
No	600	12.3	10.7 - 14.1	4,100	87.7	85.9 - 89.3	4,700

**PRAMS Health Indicator 3-Year Aggregate Report - No contraception at conception- side effects- by State;County;DOH Race-Ethnicity;PRAMS Age Group;Infant Gender;Married;Poverty Level;Income (2000-2003);Income (2004-2011);Birthweight;Smoke 3rd Trimester;Smoke Before Pregnant;WIC During Pregnancy, for the Year(s)
2000-2002;2001-2003;2002-2004;2003-2005;2004-2006;2005-2007;2006-2008;2007-2009;2008-2010;2009-2011;2010-2012;2011-2013**

Note: Weighted counts (#) represent 3-yr averages, rounded to the nearest hundred; n/r (Not Reportable) - If the unweighted total responses for a dimension (row) is <30 that row will not be shown

Years: 2000-2002

Smoke Before Pregnant	Yes			No			Weighted Total Responses (3-Yr Avg)
	#	%	C.I.(95%)	#	%	C.I.(95%)	#
Yes	200	11.3	9.0 - 14.1	1,400	88.7	85.9 - 91.0	1,500
No	400	11.9	10.1 - 13.9	3,300	88.1	86.1 - 89.9	3,800

WIC During Pregnancy	Yes			No			Weighted Total Responses (3-Yr Avg)
	#	%	C.I.(95%)	#	%	C.I.(95%)	#
Yes	400	12.5	10.5 - 14.8	2,500	87.5	85.2 - 89.5	2,900
No	300	10.9	8.9 - 13.3	2,400	89.1	86.7 - 91.1	2,700