

**PRAMS Health Indicator 3-Year Aggregate Report - No contraception at conception- thought couldn't get pregnant- for the State of Hawaii, for the Year(s)**

**2000-2002;2001-2003;2002-2004;2003-2005;2004-2006;2005-2007;2006-2008;2007-2009;2008-2010;2009-2011;2010-2012;2011-2013**

PRAMS Health Indicator 3-Year Aggregate Report - No contraception at conception- thought couldn't get pregnant- by State;County;DOH Race-Ethnicity;PRAMS Age Group;Infant Gender;Married;Poverty Level;Income (2000-2003);Income (2004-2011);Birthweight;Smoke 3rd Trimester;Smoke Before Pregnant;WIC During Pregnancy, for the Year(s)

2000-2002;2001-2003;2002-2004;2003-2005;2004-2006;2005-2007;2006-2008;2007-2009;2008-2010;2009-2011;2010-2012;2011-2013

*Note: Weighted counts (#) represent 3-yr averages, rounded to the nearest hundred; n/r (Not Reportable) - If the unweighted total responses for a dimension (row) is <30 that row will not be shown*

*The trend analysis section shows the trend for the selected health variable over selected years in a table and a graph. 3-Year Weighted Total Responses: This number is a weighted representation of the mothers of babies delivered in a given year, who responded to a particular question in the survey. For most questions this will be the mothers of all babies delivered in a given year. For some secondary questions only a subset of the population was asked the question. For example, all survey participants were asked if they smoked during pregnancy, but only those who answered yes were asked how many cigarettes a day. If a dimension value is unknown for a particular survey record, that record will not be included in the counts for that particular dimension.*

*Note: Data collection for household income changed in 2004 and again in 2012. Because of this, income data does not exist for some 3-year aggregate periods.*

*Below are the indicators included in this report and the long description for each indicator.*

PRAMS Health Indicator	Health Indicator Description
No contraception at conception- thought couldn't get pregnant	No contraception at conception- thought couldn't get pregnant

*Suggested citation:*

*Hawaii Health Data Warehouse, Hawaii State Department of Health, Pregnancy Risk Assessment Monitoring System, (report title and years), Report Created: 2/16/17*

*For documentation on other terms and coding in this report, please go to the following links:*

[Click here to access PRAMS documentation](#)

[Click here to access DOH-Race Ethnicity coding](#)

[Click here to access The Hawai'i Data Guide](#)

**For questions about this report, please contact  
The Hawai'i Health Data Warehouse**

[profiles@hhdw.org](mailto:profiles@hhdw.org)

**(855) 946-5899 x15**

**PRAMS Health Indicator 3-Year Aggregate Report - No contraception at conception- thought couldn't get pregnant- for the State of Hawaii, for the Year(s)**

**2000-2002;2001-2003;2002-2004;2003-2005;2004-2006;2005-2007;2006-2008;2007-2009;2008-2010;2009-2011;2010-2012;2011-2013**

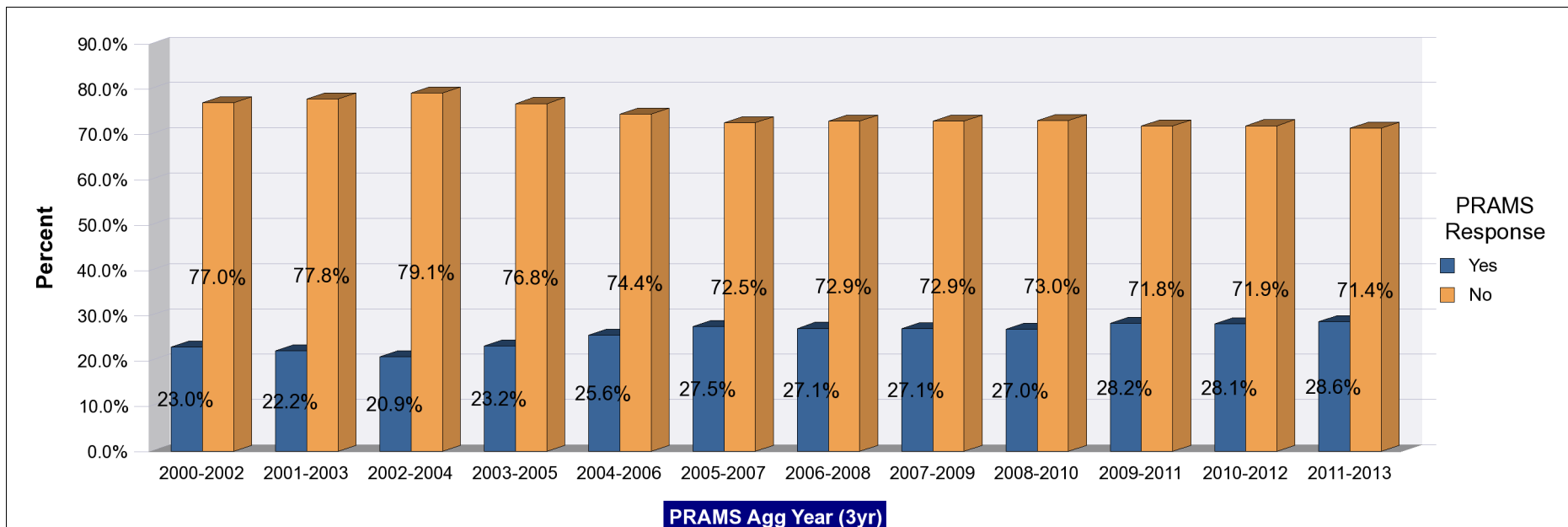
*Note: Weighted counts (#) represent 3-yr averages, rounded to the nearest hundred; n/r (Not Reportable) - If the unweighted total responses for a dimension (row) is <30 that row will not be shown*

Years	Yes			No			Weighted Total Responses (3-Yr Avg)
	#	%	C.I.(95%)	#	%	C.I.(95%)	#
2000-2002	1,300	23.0	21.1 - 25.1	4,300	77.0	74.9 - 78.9	5,600
2001-2003	1,300	22.2	20.2 - 24.3	4,400	77.8	75.7 - 79.8	5,600
2002-2004	1,100	20.9	18.9 - 23.1	4,300	79.1	76.9 - 81.1	5,500
2003-2005	1,200	23.2	21.2 - 25.4	4,100	76.8	74.6 - 78.8	5,400
2004-2006	1,300	25.6	23.4 - 27.9	3,900	74.4	72.1 - 76.6	5,200
2005-2007	1,500	27.5	25.3 - 29.9	4,000	72.5	70.1 - 74.7	5,500
2006-2008	1,500	27.1	24.9 - 29.5	4,000	72.9	70.5 - 75.1	5,500
2007-2009	1,500	27.1	24.6 - 29.7	4,100	72.9	70.3 - 75.4	5,600
2008-2010	1,500	27.0	24.2 - 29.9	4,000	73.0	70.1 - 75.8	5,500
2009-2011	1,500	28.2	25.2 - 31.4	3,900	71.8	68.6 - 74.8	5,500
2010-2012	1,500	28.1	25.1 - 31.4	3,900	71.9	68.6 - 74.9	5,400
2011-2013	1,600	28.6	25.5 - 31.9	3,900	71.4	68.1 - 74.5	5,400

# PRAMS Health Indicator 3-Year Aggregate Report - No contraception at conception- thought couldn't get pregnant- for the State of Hawaii, for the Year(s)

2000-2002;2001-2003;2002-2004;2003-2005;2004-2006;2005-2007;2006-2008;2007-2009;2008-2010;2009-2011;2010-2012;2011-2013

Note: Weighted counts (#) represent 3-yr averages, rounded to the nearest hundred; n/r (Not Reportable) - If the unweighted total responses for a dimension (row) is <30 that row will not be shown



**PRAMS Health Indicator 3-Year Aggregate Report - No contraception at conception- thought couldn't get pregnant- by State;County;DOH Race-Ethnicity;PRAMS Age Group;Infant Gender;Married;Poverty Level;Income (2000-2003);Income (2004-2011);Birthweight;Smoke 3rd Trimester;Smoke Before Pregnant;WIC During Pregnancy, for the Year(s) 2000-2002;2001-2003;2002-2004;2003-2005;2004-2006;2005-2007;2006-2008;2007-2009;2008-2010;2009-2011;2010-2012;2011-2013**

*Note: Weighted counts (#) represent 3-yr averages, rounded to the nearest hundred; n/r (Not Reportable) - If the unweighted total responses for a dimension (row) is <30 that row will not be shown*

**Years: 2011-2013**

State	Yes			No			Weighted Total Responses (3-Yr Avg)
	#	%	C.I.(95%)	#	%	C.I.(95%)	#
<b>Totals</b>	1,600	28.6	25.5 - 31.9	3,900	71.4	68.1 - 74.5	5,400

County	Yes			No			Weighted Total Responses (3-Yr Avg)
	#	%	C.I.(95%)	#	%	C.I.(95%)	#
<b>Hawaii</b>	200	33.3	28.3 - 38.8	500	66.7	61.2 - 71.7	700
<b>Honolulu</b>	1,100	28.5	24.4 - 33.1	2,800	71.5	66.9 - 75.6	3,900
<b>Kauai</b>	100	22.9	18.0 - 28.6	200	77.1	71.4 - 82.0	300
<b>Maui</b>	200	25.8	21.3 - 30.9	400	74.2	69.1 - 78.7	600

**PRAMS Health Indicator 3-Year Aggregate Report - No contraception at conception- thought couldn't get pregnant- by State;County;DOH Race-Ethnicity;PRAMS Age Group;Infant Gender;Married;Poverty Level;Income (2000-2003);Income (2004-2011);Birthweight;Smoke 3rd Trimester;Smoke Before Pregnant;WIC During Pregnancy, for the Year(s) 2000-2002;2001-2003;2002-2004;2003-2005;2004-2006;2005-2007;2006-2008;2007-2009;2008-2010;2009-2011;2010-2012;2011-2013**

*Note: Weighted counts (#) represent 3-yr averages, rounded to the nearest hundred; n/r (Not Reportable) - If the unweighted total responses for a dimension (row) is <30 that row will not be shown*

**Years: 2011-2013**

DOH Race-Ethnicity	Yes			No			Weighted Total Responses (3-Yr Avg)
	#	%	C.I.(95%)	#	%	C.I.(95%)	#
Caucasian	200	22.5	16.3 - 30.2	800	77.5	69.8 - 83.7	1,000
Native Hawaiian	600	30.5	25.5 - 35.9	1,300	69.5	64.1 - 74.5	1,900
Chinese	<50	16.3	7.4 - 32.3	200	83.7	67.7 - 92.6	200
Filipino	300	31.0	23.9 - 39.2	700	69.0	60.8 - 76.1	1,000
Japanese	100	16.8	9.3 - 28.4	400	83.2	71.6 - 90.7	400
Other	300	38.6	29.8 - 48.3	500	61.4	51.7 - 70.2	800

PRAMS Age Group	Yes			No			Weighted Total Responses (3-Yr Avg)
	#	%	C.I.(95%)	#	%	C.I.(95%)	#
<20	200	50.4	38.1 - 62.6	200	49.6	37.4 - 61.9	400
20-24	500	30.5	24.6 - 37.0	1,100	69.5	63.0 - 75.4	1,600
25-34	600	22.9	18.9 - 27.4	2,000	77.1	72.6 - 81.1	2,600
35+	300	31.9	24.5 - 40.3	600	68.1	59.7 - 75.5	800

**PRAMS Health Indicator 3-Year Aggregate Report - No contraception at conception- thought couldn't get pregnant- by State;County;DOH Race-Ethnicity;PRAMS Age Group;Infant Gender;Married;Poverty Level;Income (2000-2003);Income (2004-2011);Birthweight;Smoke 3rd Trimester;Smoke Before Pregnant;WIC During Pregnancy, for the Year(s) 2000-2002;2001-2003;2002-2004;2003-2005;2004-2006;2005-2007;2006-2008;2007-2009;2008-2010;2009-2011;2010-2012;2011-2013**

*Note: Weighted counts (#) represent 3-yr averages, rounded to the nearest hundred; n/r (Not Reportable) - If the unweighted total responses for a dimension (row) is <30 that row will not be shown*

**Years: 2011-2013**

	Yes			No			Weighted Total Responses (3-Yr Avg)
	#	%	C.I.(95%)	#	%	C.I.(95%)	#
<b>Infant Gender</b>							
<b>Male</b>	700	29.0	24.6 - 33.8	1,800	71.0	66.2 - 75.4	2,600
<b>Female</b>	800	28.3	24.1 - 33.0	2,100	71.7	67.0 - 75.9	2,900

	Yes			No			Weighted Total Responses (3-Yr Avg)
	#	%	C.I.(95%)	#	%	C.I.(95%)	#
<b>Married</b>							
<b>Yes</b>	700	24.2	20.0 - 28.9	2,100	75.8	71.1 - 80.0	2,700
<b>No</b>	900	33.0	28.6 - 37.8	1,800	67.0	62.2 - 71.4	2,700

	Yes			No			Weighted Total Responses (3-Yr Avg)
	#	%	C.I.(95%)	#	%	C.I.(95%)	#
<b>Poverty Level</b>							
<b>0-130%</b>	1,000	37.0	32.2 - 42.1	1,600	63.0	57.9 - 67.8	2,600
<b>131-185%</b>	100	17.8	11.8 - 25.9	600	82.2	74.1 - 88.2	800
<b>186+%</b>	300	17.0	12.6 - 22.5	1,200	83.0	77.5 - 87.4	1,500

**PRAMS Health Indicator 3-Year Aggregate Report - No contraception at conception- thought couldn't get pregnant- by State;County;DOH Race-Ethnicity;PRAMS Age Group;Infant Gender;Married;Poverty Level;Income (2000-2003);Income (2004-2011);Birthweight;Smoke 3rd Trimester;Smoke Before Pregnant;WIC During Pregnancy, for the Year(s) 2000-2002;2001-2003;2002-2004;2003-2005;2004-2006;2005-2007;2006-2008;2007-2009;2008-2010;2009-2011;2010-2012;2011-2013**

*Note: Weighted counts (#) represent 3-yr averages, rounded to the nearest hundred; n/r (Not Reportable) - If the unweighted total responses for a dimension (row) is <30 that row will not be shown*

**Years: 2011-2013**

Birthweight	Yes			No			Weighted Total Responses (3-Yr Avg)
	#	%	C.I.(95%)	#	%	C.I.(95%)	#
Low birth weight	100	37.2	31.8 - 42.9	200	62.8	57.1 - 68.2	400
Normal birth weight	1,400	27.9	24.6 - 31.4	3,700	72.1	68.6 - 75.4	5,100

Smoke 3rd Trimester	Yes			No			Weighted Total Responses (3-Yr Avg)
	#	%	C.I.(95%)	#	%	C.I.(95%)	#
Yes	100	36.4	24.6 - 50.2	200	63.6	49.8 - 75.4	400
No	1,400	28.6	25.3 - 32.1	3,500	71.4	67.9 - 74.7	5,000

Smoke Before Pregnant	Yes			No			Weighted Total Responses (3-Yr Avg)
	#	%	C.I.(95%)	#	%	C.I.(95%)	#
Yes	300	26.1	20.3 - 33.0	900	73.9	67.0 - 79.7	1,200
No	1,200	29.9	26.3 - 33.8	2,900	70.1	66.2 - 73.7	4,200

**PRAMS Health Indicator 3-Year Aggregate Report - No contraception at conception- thought couldn't get pregnant- by State;County;DOH Race-Ethnicity;PRAMS Age Group;Infant Gender;Married;Poverty Level;Income (2000-2003);Income (2004-2011);Birthweight;Smoke 3rd Trimester;Smoke Before Pregnant;WIC During Pregnancy, for the Year(s) 2000-2002;2001-2003;2002-2004;2003-2005;2004-2006;2005-2007;2006-2008;2007-2009;2008-2010;2009-2011;2010-2012;2011-2013**

*Note: Weighted counts (#) represent 3-yr averages, rounded to the nearest hundred; n/r (Not Reportable) - If the unweighted total responses for a dimension (row) is <30 that row will not be shown*

**Years: 2011-2013**

WIC During Pregnancy	Yes			No			Weighted Total Responses (3-Yr Avg)
	#	%	C.I.(95%)	#	%	C.I.(95%)	#
<b>Yes</b>	1,000	33.1	28.7 - 37.8	2,000	66.9	62.2 - 71.3	2,900
<b>No</b>	600	22.9	18.8 - 27.7	1,900	77.1	72.3 - 81.2	2,400



**PRAMS Health Indicator 3-Year Aggregate Report - No contraception at conception- thought couldn't get pregnant- by State;County;DOH Race-Ethnicity;PRAMS Age Group;Infant Gender;Married;Poverty Level;Income (2000-2003);Income (2004-2011);Birthweight;Smoke 3rd Trimester;Smoke Before Pregnant;WIC During Pregnancy, for the Year(s) 2000-2002;2001-2003;2002-2004;2003-2005;2004-2006;2005-2007;2006-2008;2007-2009;2008-2010;2009-2011;2010-2012;2011-2013**

*Note: Weighted counts (#) represent 3-yr averages, rounded to the nearest hundred; n/r (Not Reportable) - If the unweighted total responses for a dimension (row) is <30 that row will not be shown*

**Years: 2010-2012**

State	Yes			No			Weighted Total Responses (3-Yr Avg)
	#	%	C.I.(95%)	#	%	C.I.(95%)	#
<b>Totals</b>	1,500	28.1	25.1 - 31.4	3,900	71.9	68.6 - 74.9	5,400

County	Yes			No			Weighted Total Responses (3-Yr Avg)
	#	%	C.I.(95%)	#	%	C.I.(95%)	#
<b>Hawaii</b>	200	31.2	26.4 - 36.4	500	68.8	63.6 - 73.6	700
<b>Honolulu</b>	1,100	27.7	23.7 - 32.1	2,700	72.3	67.9 - 76.3	3,800
<b>Kauai</b>	100	23.6	18.5 - 29.6	200	76.4	70.4 - 81.5	300
<b>Maui</b>	200	28.9	24.4 - 33.9	400	71.1	66.1 - 75.6	600

**PRAMS Health Indicator 3-Year Aggregate Report - No contraception at conception- thought couldn't get pregnant- by State;County;DOH Race-Ethnicity;PRAMS Age Group;Infant Gender;Married;Poverty Level;Income (2000-2003);Income (2004-2011);Birthweight;Smoke 3rd Trimester;Smoke Before Pregnant;WIC During Pregnancy, for the Year(s) 2000-2002;2001-2003;2002-2004;2003-2005;2004-2006;2005-2007;2006-2008;2007-2009;2008-2010;2009-2011;2010-2012;2011-2013**

*Note: Weighted counts (#) represent 3-yr averages, rounded to the nearest hundred; n/r (Not Reportable) - If the unweighted total responses for a dimension (row) is <30 that row will not be shown*

**Years: 2010-2012**

DOH Race-Ethnicity	Yes			No			Weighted Total Responses (3-Yr Avg)
	#	%	C.I.(95%)	#	%	C.I.(95%)	#
Caucasian	200	21.1	15.4 - 28.3	800	78.9	71.7 - 84.6	1,000
Native Hawaiian	600	31.8	26.7 - 37.4	1,200	68.2	62.6 - 73.3	1,800
Chinese	<50	17.3	7.5 - 34.9	200	82.7	65.1 - 92.5	200
Filipino	300	27.6	21.1 - 35.2	800	72.4	64.8 - 78.9	1,100
Japanese	100	15.7	8.3 - 27.7	300	84.3	72.3 - 91.7	300
Other	300	35.8	27.9 - 44.6	600	64.2	55.4 - 72.1	900

PRAMS Age Group	Yes			No			Weighted Total Responses (3-Yr Avg)
	#	%	C.I.(95%)	#	%	C.I.(95%)	#
<20	200	49.4	37.8 - 61.0	200	50.6	39.0 - 62.2	500
20-24	500	30.4	24.6 - 36.9	1,100	69.6	63.1 - 75.4	1,500
25-34	600	23.0	19.1 - 27.4	1,900	77.0	72.6 - 80.9	2,500
35+	200	27.5	20.5 - 35.8	600	72.5	64.2 - 79.5	900

**PRAMS Health Indicator 3-Year Aggregate Report - No contraception at conception- thought couldn't get pregnant- by State;County;DOH Race-Ethnicity;PRAMS Age Group;Infant Gender;Married;Poverty Level;Income (2000-2003);Income (2004-2011);Birthweight;Smoke 3rd Trimester;Smoke Before Pregnant;WIC During Pregnancy, for the Year(s) 2000-2002;2001-2003;2002-2004;2003-2005;2004-2006;2005-2007;2006-2008;2007-2009;2008-2010;2009-2011;2010-2012;2011-2013**

*Note: Weighted counts (#) represent 3-yr averages, rounded to the nearest hundred; n/r (Not Reportable) - If the unweighted total responses for a dimension (row) is <30 that row will not be shown*

**Years: 2010-2012**

Infant Gender	Yes			No			Weighted Total Responses (3-Yr Avg)
	#	%	C.I.(95%)	#	%	C.I.(95%)	#
Male	800	30.0	25.6 - 34.7	1,800	70.0	65.3 - 74.4	2,600
Female	700	26.4	22.3 - 30.9	2,000	73.6	69.1 - 77.7	2,700

Married	Yes			No			Weighted Total Responses (3-Yr Avg)
	#	%	C.I.(95%)	#	%	C.I.(95%)	#
Yes	600	22.3	18.5 - 26.6	2,100	77.7	73.4 - 81.5	2,700
No	900	34.2	29.7 - 39.0	1,700	65.8	61.0 - 70.3	2,600

Poverty Level	Yes			No			Weighted Total Responses (3-Yr Avg)
	#	%	C.I.(95%)	#	%	C.I.(95%)	#
0-130%	900	35.1	30.4 - 40.1	1,600	64.9	59.9 - 69.6	2,500
131-185%	100	20.1	13.9 - 28.2	600	79.9	71.8 - 86.1	700
186+%	300	18.0	13.8 - 23.2	1,300	82.0	76.8 - 86.2	1,600

**PRAMS Health Indicator 3-Year Aggregate Report - No contraception at conception- thought couldn't get pregnant- by State;County;DOH Race-Ethnicity;PRAMS Age Group;Infant Gender;Married;Poverty Level;Income (2000-2003);Income (2004-2011);Birthweight;Smoke 3rd Trimester;Smoke Before Pregnant;WIC During Pregnancy, for the Year(s) 2000-2002;2001-2003;2002-2004;2003-2005;2004-2006;2005-2007;2006-2008;2007-2009;2008-2010;2009-2011;2010-2012;2011-2013**

*Note: Weighted counts (#) represent 3-yr averages, rounded to the nearest hundred; n/r (Not Reportable) - If the unweighted total responses for a dimension (row) is <30 that row will not be shown*

**Years: 2010-2012**

Birthweight	Yes			No			Weighted Total Responses (3-Yr Avg)
	#	%	C.I.(95%)	#	%	C.I.(95%)	#
Low birth weight	100	35.6	30.0 - 41.7	200	64.4	58.3 - 70.0	400
Normal birth weight	1,400	27.5	24.3 - 30.9	3,600	72.5	69.1 - 75.7	5,000

Smoke 3rd Trimester	Yes			No			Weighted Total Responses (3-Yr Avg)
	#	%	C.I.(95%)	#	%	C.I.(95%)	#
Yes	100	31.0	21.5 - 42.5	300	69.0	57.5 - 78.5	500
No	1,300	28.0	24.8 - 31.5	3,400	72.0	68.5 - 75.2	4,800

Smoke Before Pregnant	Yes			No			Weighted Total Responses (3-Yr Avg)
	#	%	C.I.(95%)	#	%	C.I.(95%)	#
Yes	300	25.1	19.8 - 31.2	1,000	74.9	68.8 - 80.2	1,300
No	1,200	29.3	25.7 - 33.2	2,800	70.7	66.8 - 74.3	4,000

**PRAMS Health Indicator 3-Year Aggregate Report - No contraception at conception- thought couldn't get pregnant- by State;County;DOH Race-Ethnicity;PRAMS Age Group;Infant Gender;Married;Poverty Level;Income (2000-2003);Income (2004-2011);Birthweight;Smoke 3rd Trimester;Smoke Before Pregnant;WIC During Pregnancy, for the Year(s) 2000-2002;2001-2003;2002-2004;2003-2005;2004-2006;2005-2007;2006-2008;2007-2009;2008-2010;2009-2011;2010-2012;2011-2013**

*Note: Weighted counts (#) represent 3-yr averages, rounded to the nearest hundred; n/r (Not Reportable) - If the unweighted total responses for a dimension (row) is <30 that row will not be shown*

**Years: 2010-2012**

WIC During Pregnancy	Yes			No			Weighted Total Responses (3-Yr Avg)
	#	%	C.I.(95%)	#	%	C.I.(95%)	#
<b>Yes</b>	900	31.6	27.4 - 36.1	2,000	68.4	63.9 - 72.6	2,900
<b>No</b>	600	23.7	19.5 - 28.5	1,800	76.3	71.5 - 80.5	2,400

**PRAMS Health Indicator 3-Year Aggregate Report - No contraception at conception- thought couldn't get pregnant- by State;County;DOH Race-Ethnicity;PRAMS Age Group;Infant Gender;Married;Poverty Level;Income (2000-2003);Income (2004-2011);Birthweight;Smoke 3rd Trimester;Smoke Before Pregnant;WIC During Pregnancy, for the Year(s) 2000-2002;2001-2003;2002-2004;2003-2005;2004-2006;2005-2007;2006-2008;2007-2009;2008-2010;2009-2011;2010-2012;2011-2013**

*Note: Weighted counts (#) represent 3-yr averages, rounded to the nearest hundred; n/r (Not Reportable) - If the unweighted total responses for a dimension (row) is <30 that row will not be shown*

**Years: 2009-2011**

State	Yes			No			Weighted Total Responses (3-Yr Avg)
	#	%	C.I.(95%)	#	%	C.I.(95%)	#
<b>Totals</b>	1,500	28.2	25.2 - 31.4	3,900	71.8	68.6 - 74.8	5,500

County	Yes			No			Weighted Total Responses (3-Yr Avg)
	#	%	C.I.(95%)	#	%	C.I.(95%)	#
<b>Hawaii</b>	200	28.6	24.0 - 33.6	500	71.4	66.4 - 76.0	700
<b>Honolulu</b>	1,100	28.3	24.3 - 32.6	2,800	71.7	67.4 - 75.7	3,900
<b>Kauai</b>	100	24.9	19.9 - 30.6	200	75.1	69.4 - 80.1	300
<b>Maui</b>	200	29.0	24.7 - 33.9	400	71.0	66.1 - 75.3	600

**PRAMS Health Indicator 3-Year Aggregate Report - No contraception at conception- thought couldn't get pregnant- by State;County;DOH Race-Ethnicity;PRAMS Age Group;Infant Gender;Married;Poverty Level;Income (2000-2003);Income (2004-2011);Birthweight;Smoke 3rd Trimester;Smoke Before Pregnant;WIC During Pregnancy, for the Year(s) 2000-2002;2001-2003;2002-2004;2003-2005;2004-2006;2005-2007;2006-2008;2007-2009;2008-2010;2009-2011;2010-2012;2011-2013**

*Note: Weighted counts (#) represent 3-yr averages, rounded to the nearest hundred; n/r (Not Reportable) - If the unweighted total responses for a dimension (row) is <30 that row will not be shown*

**Years: 2009-2011**

DOH Race-Ethnicity	Yes			No			Weighted Total Responses (3-Yr Avg)
	#	%	C.I.(95%)	#	%	C.I.(95%)	#
Caucasian	200	21.4	15.6 - 28.6	800	78.6	71.4 - 84.4	1,000
Native Hawaiian	600	28.9	24.2 - 34.1	1,400	71.1	65.9 - 75.8	2,000
Chinese	<50	22.2	10.4 - 41.2	200	77.8	58.8 - 89.6	200
Filipino	300	30.1	23.2 - 38.0	700	69.9	62.0 - 76.8	1,000
Japanese	100	20.2	12.0 - 32.0	300	79.8	68.0 - 88.0	400
Other	300	37.5	29.1 - 46.6	500	62.5	53.4 - 70.9	900

PRAMS Age Group	Yes			No			Weighted Total Responses (3-Yr Avg)
	#	%	C.I.(95%)	#	%	C.I.(95%)	#
<20	200	41.2	31.6 - 51.4	400	58.8	48.6 - 68.4	600
20-24	500	28.7	23.2 - 35.0	1,100	71.3	65.0 - 76.8	1,600
25-34	500	22.6	18.7 - 27.0	1,900	77.4	73.0 - 81.3	2,400
35+	300	33.9	26.2 - 42.7	600	66.1	57.3 - 73.8	900

**PRAMS Health Indicator 3-Year Aggregate Report - No contraception at conception- thought couldn't get pregnant- by State;County;DOH Race-Ethnicity;PRAMS Age Group;Infant Gender;Married;Poverty Level;Income (2000-2003);Income (2004-2011);Birthweight;Smoke 3rd Trimester;Smoke Before Pregnant;WIC During Pregnancy, for the Year(s) 2000-2002;2001-2003;2002-2004;2003-2005;2004-2006;2005-2007;2006-2008;2007-2009;2008-2010;2009-2011;2010-2012;2011-2013**

*Note: Weighted counts (#) represent 3-yr averages, rounded to the nearest hundred; n/r (Not Reportable) - If the unweighted total responses for a dimension (row) is <30 that row will not be shown*

**Years: 2009-2011**

	Yes			No			Weighted Total Responses (3-Yr Avg)
	#	%	C.I.(95%)	#	%	C.I.(95%)	#
<b>Infant Gender</b>							
<b>Male</b>	800	29.3	25.1 - 33.9	1,900	70.7	66.1 - 74.9	2,700
<b>Female</b>	700	27.1	23.0 - 31.7	2,000	72.9	68.3 - 77.0	2,700

	Yes			No			Weighted Total Responses (3-Yr Avg)
	#	%	C.I.(95%)	#	%	C.I.(95%)	#
<b>Married</b>							
<b>Yes</b>	700	24.6	20.6 - 29.1	2,100	75.4	70.9 - 79.4	2,700
<b>No</b>	900	31.8	27.5 - 36.4	1,900	68.2	63.6 - 72.5	2,700

	Yes			No			Weighted Total Responses (3-Yr Avg)
	#	%	C.I.(95%)	#	%	C.I.(95%)	#
<b>Poverty Level</b>							
<b>0-130%</b>	900	33.9	29.3 - 38.8	1,700	66.1	61.2 - 70.7	2,600
<b>131-185%</b>	200	22.4	15.7 - 30.9	600	77.6	69.1 - 84.3	700
<b>186+%</b>	300	20.3	15.9 - 25.6	1,300	79.7	74.4 - 84.1	1,700



**PRAMS Health Indicator 3-Year Aggregate Report - No contraception at conception- thought couldn't get pregnant- by State;County;DOH Race-Ethnicity;PRAMS Age Group;Infant Gender;Married;Poverty Level;Income (2000-2003);Income (2004-2011);Birthweight;Smoke 3rd Trimester;Smoke Before Pregnant;WIC During Pregnancy, for the Year(s) 2000-2002;2001-2003;2002-2004;2003-2005;2004-2006;2005-2007;2006-2008;2007-2009;2008-2010;2009-2011;2010-2012;2011-2013**

*Note: Weighted counts (#) represent 3-yr averages, rounded to the nearest hundred; n/r (Not Reportable) - If the unweighted total responses for a dimension (row) is <30 that row will not be shown*

**Years: 2009-2011**

Income (2004-2011)	Yes			No			Weighted Total Responses (3-Yr Avg)
	#	%	C.I.(95%)	#	%	C.I.(95%)	#
<\$10,000	500	34.9	28.6 - 41.7	900	65.1	58.3 - 71.4	1,300
\$10,000-\$24,999	400	33.8	27.1 - 41.2	800	66.2	58.8 - 72.9	1,200
\$25,000-\$49,999	300	22.2	17.1 - 28.4	1,000	77.8	71.6 - 82.9	1,300
>=\$50,000	300	20.5	15.3 - 26.9	1,000	79.5	73.1 - 84.7	1,300

Birthweight	Yes			No			Weighted Total Responses (3-Yr Avg)
	#	%	C.I.(95%)	#	%	C.I.(95%)	#
Low birth weight	100	32.1	26.9 - 37.9	300	67.9	62.1 - 73.1	400
Normal birth weight	1,400	27.8	24.6 - 31.2	3,700	72.2	68.8 - 75.4	5,100

Smoke 3rd Trimester	Yes			No			Weighted Total Responses (3-Yr Avg)
	#	%	C.I.(95%)	#	%	C.I.(95%)	#
Yes	200	27.9	19.8 - 37.8	500	72.1	62.2 - 80.2	600
No	1,300	28.0	24.8 - 31.4	3,400	72.0	68.6 - 75.2	4,800

**PRAMS Health Indicator 3-Year Aggregate Report - No contraception at conception- thought couldn't get pregnant- by State;County;DOH Race-Ethnicity;PRAMS Age Group;Infant Gender;Married;Poverty Level;Income (2000-2003);Income (2004-2011);Birthweight;Smoke 3rd Trimester;Smoke Before Pregnant;WIC During Pregnancy, for the Year(s) 2000-2002;2001-2003;2002-2004;2003-2005;2004-2006;2005-2007;2006-2008;2007-2009;2008-2010;2009-2011;2010-2012;2011-2013**

*Note: Weighted counts (#) represent 3-yr averages, rounded to the nearest hundred; n/r (Not Reportable) - If the unweighted total responses for a dimension (row) is <30 that row will not be shown*

**Years: 2009-2011**

Smoke Before Pregnant	Yes			No			Weighted Total Responses (3-Yr Avg)
	#	%	C.I.(95%)	#	%	C.I.(95%)	#
Yes	400	25.4	20.4 - 31.2	1,100	74.6	68.8 - 79.6	1,500
No	1,100	29.0	25.4 - 32.9	2,700	71.0	67.1 - 74.6	3,900

WIC During Pregnancy	Yes			No			Weighted Total Responses (3-Yr Avg)
	#	%	C.I.(95%)	#	%	C.I.(95%)	#
Yes	800	29.0	24.9 - 33.3	2,000	71.0	66.7 - 75.1	2,900
No	700	27.3	22.9 - 32.2	1,800	72.7	67.8 - 77.1	2,500

**PRAMS Health Indicator 3-Year Aggregate Report - No contraception at conception- thought couldn't get pregnant- by State;County;DOH Race-Ethnicity;PRAMS Age Group;Infant Gender;Married;Poverty Level;Income (2000-2003);Income (2004-2011);Birthweight;Smoke 3rd Trimester;Smoke Before Pregnant;WIC During Pregnancy, for the Year(s) 2000-2002;2001-2003;2002-2004;2003-2005;2004-2006;2005-2007;2006-2008;2007-2009;2008-2010;2009-2011;2010-2012;2011-2013**

*Note: Weighted counts (#) represent 3-yr averages, rounded to the nearest hundred; n/r (Not Reportable) - If the unweighted total responses for a dimension (row) is <30 that row will not be shown*

**Years: 2008-2010**

State	Yes			No			Weighted Total Responses (3-Yr Avg)
	#	%	C.I.(95%)	#	%	C.I.(95%)	#
<b>Totals</b>	1,500	27.0	24.2 - 29.9	4,000	73.0	70.1 - 75.8	5,500

County	Yes			No			Weighted Total Responses (3-Yr Avg)
	#	%	C.I.(95%)	#	%	C.I.(95%)	#
<b>Hawaii</b>	200	25.5	20.7 - 31.0	500	74.5	69.0 - 79.3	700
<b>Honolulu</b>	1,000	26.8	23.2 - 30.6	2,900	73.2	69.4 - 76.8	3,900
<b>Kauai</b>	100	25.2	18.7 - 33.0	200	74.8	67.0 - 81.3	300
<b>Maui</b>	200	30.5	25.2 - 36.5	400	69.5	63.5 - 74.8	600

**PRAMS Health Indicator 3-Year Aggregate Report - No contraception at conception- thought couldn't get pregnant- by State;County;DOH Race-Ethnicity;PRAMS Age Group;Infant Gender;Married;Poverty Level;Income (2000-2003);Income (2004-2011);Birthweight;Smoke 3rd Trimester;Smoke Before Pregnant;WIC During Pregnancy, for the Year(s) 2000-2002;2001-2003;2002-2004;2003-2005;2004-2006;2005-2007;2006-2008;2007-2009;2008-2010;2009-2011;2010-2012;2011-2013**

*Note: Weighted counts (#) represent 3-yr averages, rounded to the nearest hundred; n/r (Not Reportable) - If the unweighted total responses for a dimension (row) is <30 that row will not be shown*

**Years: 2008-2010**

DOH Race-Ethnicity	Yes			No			Weighted Total Responses (3-Yr Avg)
	#	%	C.I.(95%)	#	%	C.I.(95%)	#
Caucasian	200	21.1	15.7 - 27.7	800	78.9	72.3 - 84.3	1,000
Native Hawaiian	600	27.5	23.1 - 32.4	1,500	72.5	67.6 - 76.9	2,000
Chinese	<50	17.0	8.2 - 32.1	200	83.0	67.9 - 91.8	200
Filipino	300	30.7	24.2 - 38.0	700	69.3	62.0 - 75.8	1,000
Japanese	100	19.8	12.5 - 30.1	300	80.2	69.9 - 87.5	400
Other	300	33.2	26.1 - 41.2	600	66.8	58.8 - 73.9	900

PRAMS Age Group	Yes			No			Weighted Total Responses (3-Yr Avg)
	#	%	C.I.(95%)	#	%	C.I.(95%)	#
<20	200	36.7	28.3 - 46.0	400	63.3	54.0 - 71.7	600
20-24	400	27.9	22.7 - 33.7	1,100	72.1	66.3 - 77.3	1,500
25-34	600	22.6	18.9 - 26.7	1,900	77.4	73.3 - 81.1	2,500
35+	300	30.9	23.9 - 38.8	600	69.1	61.2 - 76.1	900

**PRAMS Health Indicator 3-Year Aggregate Report - No contraception at conception- thought couldn't get pregnant- by State;County;DOH Race-Ethnicity;PRAMS Age Group;Infant Gender;Married;Poverty Level;Income (2000-2003);Income (2004-2011);Birthweight;Smoke 3rd Trimester;Smoke Before Pregnant;WIC During Pregnancy, for the Year(s) 2000-2002;2001-2003;2002-2004;2003-2005;2004-2006;2005-2007;2006-2008;2007-2009;2008-2010;2009-2011;2010-2012;2011-2013**

*Note: Weighted counts (#) represent 3-yr averages, rounded to the nearest hundred; n/r (Not Reportable) - If the unweighted total responses for a dimension (row) is <30 that row will not be shown*

**Years: 2008-2010**

Infant Gender	Yes			No			Weighted Total Responses (3-Yr Avg)
	#	%	C.I.(95%)	#	%	C.I.(95%)	#
Male	800	28.7	24.9 - 32.7	2,100	71.3	67.3 - 75.1	2,900
Female	700	25.1	21.3 - 29.3	2,000	74.9	70.7 - 78.7	2,700

Married	Yes			No			Weighted Total Responses (3-Yr Avg)
	#	%	C.I.(95%)	#	%	C.I.(95%)	#
Yes	600	23.4	19.9 - 27.4	2,100	76.6	72.6 - 80.1	2,800
No	800	30.5	26.5 - 34.7	1,900	69.5	65.3 - 73.5	2,800

Poverty Level	Yes			No			Weighted Total Responses (3-Yr Avg)
	#	%	C.I.(95%)	#	%	C.I.(95%)	#
0-130%	800	31.1	27.0 - 35.5	1,800	68.9	64.5 - 73.0	2,700
131-185%	200	25.4	18.6 - 33.8	500	74.6	66.2 - 81.4	700
186+%	300	19.2	15.2 - 23.8	1,400	80.8	76.2 - 84.8	1,700

**PRAMS Health Indicator 3-Year Aggregate Report - No contraception at conception- thought couldn't get pregnant- by State;County;DOH Race-Ethnicity;PRAMS Age Group;Infant Gender;Married;Poverty Level;Income (2000-2003);Income (2004-2011);Birthweight;Smoke 3rd Trimester;Smoke Before Pregnant;WIC During Pregnancy, for the Year(s) 2000-2002;2001-2003;2002-2004;2003-2005;2004-2006;2005-2007;2006-2008;2007-2009;2008-2010;2009-2011;2010-2012;2011-2013**

*Note: Weighted counts (#) represent 3-yr averages, rounded to the nearest hundred; n/r (Not Reportable) - If the unweighted total responses for a dimension (row) is <30 that row will not be shown*

**Years: 2008-2010**

Income (2004-2011)	Yes			No			Weighted Total Responses (3-Yr Avg)
	#	%	C.I.(95%)	#	%	C.I.(95%)	#
<\$10,000	500	32.7	27.2 - 38.9	1,000	67.3	61.1 - 72.8	1,400
\$10,000-\$24,999	400	29.7	23.9 - 36.3	900	70.3	63.7 - 76.1	1,200
\$25,000-\$49,999	300	22.7	17.7 - 28.7	1,000	77.3	71.3 - 82.3	1,300
>=\$50,000	300	20.7	16.0 - 26.3	1,000	79.3	73.7 - 84.0	1,200

Birthweight	Yes			No			Weighted Total Responses (3-Yr Avg)
	#	%	C.I.(95%)	#	%	C.I.(95%)	#
Low birth weight	100	28.0	21.8 - 35.2	300	72.0	64.8 - 78.2	400
Normal birth weight	1,400	26.7	23.9 - 29.8	3,800	73.3	70.2 - 76.1	5,200

Smoke 3rd Trimester	Yes			No			Weighted Total Responses (3-Yr Avg)
	#	%	C.I.(95%)	#	%	C.I.(95%)	#
Yes	200	25.3	18.4 - 33.8	600	74.7	66.2 - 81.6	800
No	1,300	26.9	24.0 - 30.0	3,400	73.1	70.0 - 76.0	4,700

**PRAMS Health Indicator 3-Year Aggregate Report - No contraception at conception- thought couldn't get pregnant- by State;County;DOH Race-Ethnicity;PRAMS Age Group;Infant Gender;Married;Poverty Level;Income (2000-2003);Income (2004-2011);Birthweight;Smoke 3rd Trimester;Smoke Before Pregnant;WIC During Pregnancy, for the Year(s) 2000-2002;2001-2003;2002-2004;2003-2005;2004-2006;2005-2007;2006-2008;2007-2009;2008-2010;2009-2011;2010-2012;2011-2013**

*Note: Weighted counts (#) represent 3-yr averages, rounded to the nearest hundred; n/r (Not Reportable) - If the unweighted total responses for a dimension (row) is <30 that row will not be shown*

**Years: 2008-2010**

Smoke Before Pregnant	Yes			No			Weighted Total Responses (3-Yr Avg)
	#	%	C.I.(95%)	#	%	C.I.(95%)	#
Yes	400	24.9	20.0 - 30.6	1,200	75.1	69.4 - 80.0	1,600
No	1,100	27.4	24.2 - 30.9	2,800	72.6	69.1 - 75.8	3,900

WIC During Pregnancy	Yes			No			Weighted Total Responses (3-Yr Avg)
	#	%	C.I.(95%)	#	%	C.I.(95%)	#
Yes	800	27.5	23.8 - 31.5	2,100	72.5	68.5 - 76.2	2,900
No	700	26.1	22.1 - 30.5	1,900	73.9	69.5 - 77.9	2,500

**PRAMS Health Indicator 3-Year Aggregate Report - No contraception at conception- thought couldn't get pregnant- by State;County;DOH Race-Ethnicity;PRAMS Age Group;Infant Gender;Married;Poverty Level;Income (2000-2003);Income (2004-2011);Birthweight;Smoke 3rd Trimester;Smoke Before Pregnant;WIC During Pregnancy, for the Year(s) 2000-2002;2001-2003;2002-2004;2003-2005;2004-2006;2005-2007;2006-2008;2007-2009;2008-2010;2009-2011;2010-2012;2011-2013**

*Note: Weighted counts (#) represent 3-yr averages, rounded to the nearest hundred; n/r (Not Reportable) - If the unweighted total responses for a dimension (row) is <30 that row will not be shown*

**Years: 2007-2009**

State	Yes			No			Weighted Total Responses (3-Yr Avg)
	#	%	C.I.(95%)	#	%	C.I.(95%)	#
<b>Totals</b>	1,500	27.1	24.6 - 29.7	4,100	72.9	70.3 - 75.4	5,600

County	Yes			No			Weighted Total Responses (3-Yr Avg)
	#	%	C.I.(95%)	#	%	C.I.(95%)	#
<b>Hawaii</b>	200	27.4	21.9 - 33.7	600	72.6	66.3 - 78.1	800
<b>Honolulu</b>	1,000	26.6	23.4 - 30.0	2,900	73.4	70.0 - 76.6	3,900
<b>Kauai</b>	100	25.4	18.2 - 34.3	200	74.6	65.7 - 81.8	300
<b>Maui</b>	200	30.7	24.7 - 37.4	500	69.3	62.6 - 75.3	700



**PRAMS Health Indicator 3-Year Aggregate Report - No contraception at conception- thought couldn't get pregnant- by State;County;DOH Race-Ethnicity;PRAMS Age Group;Infant Gender;Married;Poverty Level;Income (2000-2003);Income (2004-2011);Birthweight;Smoke 3rd Trimester;Smoke Before Pregnant;WIC During Pregnancy, for the Year(s) 2000-2002;2001-2003;2002-2004;2003-2005;2004-2006;2005-2007;2006-2008;2007-2009;2008-2010;2009-2011;2010-2012;2011-2013**

*Note: Weighted counts (#) represent 3-yr averages, rounded to the nearest hundred; n/r (Not Reportable) - If the unweighted total responses for a dimension (row) is <30 that row will not be shown*

**Years: 2007-2009**

DOH Race-Ethnicity	Yes			No			Weighted Total Responses (3-Yr Avg)
	#	%	C.I.(95%)	#	%	C.I.(95%)	#
Caucasian	200	23.4	18.3 - 29.4	700	76.6	70.6 - 81.7	900
Native Hawaiian	500	24.4	20.4 - 28.8	1,600	75.6	71.2 - 79.6	2,100
Chinese	<50	22.7	12.1 - 38.5	100	77.3	61.5 - 87.9	200
Filipino	300	32.3	26.4 - 38.8	700	67.7	61.2 - 73.6	1,000
Japanese	100	20.6	14.0 - 29.3	400	79.4	70.7 - 86.0	500
Other	300	35.3	28.8 - 42.5	600	64.7	57.5 - 71.2	1,000

PRAMS Age Group	Yes			No			Weighted Total Responses (3-Yr Avg)
	#	%	C.I.(95%)	#	%	C.I.(95%)	#
<20	300	36.1	28.6 - 44.3	500	63.9	55.7 - 71.4	800
20-24	400	27.6	23.0 - 32.7	1,100	72.4	67.3 - 77.0	1,600
25-34	500	21.9	18.6 - 25.6	2,000	78.1	74.4 - 81.4	2,500
35+	300	34.0	27.2 - 41.5	500	66.0	58.5 - 72.8	800

**PRAMS Health Indicator 3-Year Aggregate Report - No contraception at conception- thought couldn't get pregnant- by State;County;DOH Race-Ethnicity;PRAMS Age Group;Infant Gender;Married;Poverty Level;Income (2000-2003);Income (2004-2011);Birthweight;Smoke 3rd Trimester;Smoke Before Pregnant;WIC During Pregnancy, for the Year(s) 2000-2002;2001-2003;2002-2004;2003-2005;2004-2006;2005-2007;2006-2008;2007-2009;2008-2010;2009-2011;2010-2012;2011-2013**

*Note: Weighted counts (#) represent 3-yr averages, rounded to the nearest hundred; n/r (Not Reportable) - If the unweighted total responses for a dimension (row) is <30 that row will not be shown*

**Years: 2007-2009**

	Yes			No			Weighted Total Responses (3-Yr Avg)
	#	%	C.I.(95%)	#	%	C.I.(95%)	#
<b>Infant Gender</b>							
<b>Male</b>	800	28.3	24.9 - 32.0	2,100	71.7	68.0 - 75.1	3,000
<b>Female</b>	700	25.8	22.2 - 29.6	2,000	74.2	70.4 - 77.8	2,700

	Yes			No			Weighted Total Responses (3-Yr Avg)
	#	%	C.I.(95%)	#	%	C.I.(95%)	#
<b>Married</b>							
<b>Yes</b>	600	23.8	20.5 - 27.5	2,000	76.2	72.5 - 79.5	2,700
<b>No</b>	900	30.0	26.4 - 33.9	2,100	70.0	66.1 - 73.6	3,000

	Yes			No			Weighted Total Responses (3-Yr Avg)
	#	%	C.I.(95%)	#	%	C.I.(95%)	#
<b>Poverty Level</b>							
<b>0-130%</b>	900	31.7	28.0 - 35.6	2,000	68.3	64.4 - 72.0	2,900
<b>131-185%</b>	200	24.7	18.4 - 32.3	600	75.3	67.7 - 81.6	800
<b>186+%</b>	300	19.2	15.5 - 23.5	1,300	80.8	76.5 - 84.5	1,600

**PRAMS Health Indicator 3-Year Aggregate Report - No contraception at conception- thought couldn't get pregnant- by State;County;DOH Race-Ethnicity;PRAMS Age Group;Infant Gender;Married;Poverty Level;Income (2000-2003);Income (2004-2011);Birthweight;Smoke 3rd Trimester;Smoke Before Pregnant;WIC During Pregnancy, for the Year(s) 2000-2002;2001-2003;2002-2004;2003-2005;2004-2006;2005-2007;2006-2008;2007-2009;2008-2010;2009-2011;2010-2012;2011-2013**

*Note: Weighted counts (#) represent 3-yr averages, rounded to the nearest hundred; n/r (Not Reportable) - If the unweighted total responses for a dimension (row) is <30 that row will not be shown*

**Years: 2007-2009**

Income (2004-2011)	Yes			No			Weighted Total Responses (3-Yr Avg)
	#	%	C.I.(95%)	#	%	C.I.(95%)	#
<\$10,000	500	33.5	28.3 - 39.2	1,000	66.5	60.8 - 71.7	1,500
\$10,000-\$24,999	400	28.9	24.0 - 34.4	1,000	71.1	65.6 - 76.0	1,400
\$25,000-\$49,999	300	23.2	18.2 - 29.1	900	76.8	70.9 - 81.8	1,200
>=\$50,000	200	20.4	16.2 - 25.5	900	79.6	74.5 - 83.8	1,200

Birthweight	Yes			No			Weighted Total Responses (3-Yr Avg)
	#	%	C.I.(95%)	#	%	C.I.(95%)	#
Low birth weight	100	26.6	19.8 - 34.7	300	73.4	65.3 - 80.2	400
Normal birth weight	1,400	27.0	24.4 - 29.8	3,800	73.0	70.2 - 75.6	5,200

Smoke 3rd Trimester	Yes			No			Weighted Total Responses (3-Yr Avg)
	#	%	C.I.(95%)	#	%	C.I.(95%)	#
Yes	200	23.2	17.0 - 30.9	600	76.8	69.1 - 83.0	700
No	1,300	27.4	24.8 - 30.3	3,500	72.6	69.7 - 75.2	4,800

**PRAMS Health Indicator 3-Year Aggregate Report - No contraception at conception- thought couldn't get pregnant- by State;County;DOH Race-Ethnicity;PRAMS Age Group;Infant Gender;Married;Poverty Level;Income (2000-2003);Income (2004-2011);Birthweight;Smoke 3rd Trimester;Smoke Before Pregnant;WIC During Pregnancy, for the Year(s) 2000-2002;2001-2003;2002-2004;2003-2005;2004-2006;2005-2007;2006-2008;2007-2009;2008-2010;2009-2011;2010-2012;2011-2013**

*Note: Weighted counts (#) represent 3-yr averages, rounded to the nearest hundred; n/r (Not Reportable) - If the unweighted total responses for a dimension (row) is <30 that row will not be shown*

**Years: 2007-2009**

Smoke Before Pregnant	Yes			No			Weighted Total Responses (3-Yr Avg)
	#	%	C.I.(95%)	#	%	C.I.(95%)	#
Yes	400	25.1	20.5 - 30.3	1,200	74.9	69.7 - 79.5	1,500
No	1,100	27.6	24.7 - 30.7	2,900	72.4	69.3 - 75.3	4,000

WIC During Pregnancy	Yes			No			Weighted Total Responses (3-Yr Avg)
	#	%	C.I.(95%)	#	%	C.I.(95%)	#
Yes	800	28.3	24.9 - 31.9	2,200	71.7	68.1 - 75.1	3,000
No	600	25.6	22.0 - 29.6	1,900	74.4	70.4 - 78.0	2,500

**PRAMS Health Indicator 3-Year Aggregate Report - No contraception at conception- thought couldn't get pregnant- by State;County;DOH Race-Ethnicity;PRAMS Age Group;Infant Gender;Married;Poverty Level;Income (2000-2003);Income (2004-2011);Birthweight;Smoke 3rd Trimester;Smoke Before Pregnant;WIC During Pregnancy, for the Year(s) 2000-2002;2001-2003;2002-2004;2003-2005;2004-2006;2005-2007;2006-2008;2007-2009;2008-2010;2009-2011;2010-2012;2011-2013**

*Note: Weighted counts (#) represent 3-yr averages, rounded to the nearest hundred; n/r (Not Reportable) - If the unweighted total responses for a dimension (row) is <30 that row will not be shown*

**Years: 2006-2008**

State	Yes			No			Weighted Total Responses (3-Yr Avg)
	#	%	C.I.(95%)	#	%	C.I.(95%)	#
<b>Totals</b>	1,500	27.1	24.9 - 29.5	4,000	72.9	70.5 - 75.1	5,500

County	Yes			No			Weighted Total Responses (3-Yr Avg)
	#	%	C.I.(95%)	#	%	C.I.(95%)	#
<b>Hawaii</b>	200	30.0	23.5 - 37.4	500	70.0	62.6 - 76.5	700
<b>Honolulu</b>	1,000	25.9	23.3 - 28.8	2,800	74.1	71.2 - 76.7	3,800
<b>Kauai</b>	100	28.5	19.9 - 38.9	200	71.5	61.1 - 80.1	300
<b>Maui</b>	200	30.5	23.8 - 38.0	500	69.5	62.0 - 76.2	700

**PRAMS Health Indicator 3-Year Aggregate Report - No contraception at conception- thought couldn't get pregnant- by State;County;DOH Race-Ethnicity;PRAMS Age Group;Infant Gender;Married;Poverty Level;Income (2000-2003);Income (2004-2011);Birthweight;Smoke 3rd Trimester;Smoke Before Pregnant;WIC During Pregnancy, for the Year(s) 2000-2002;2001-2003;2002-2004;2003-2005;2004-2006;2005-2007;2006-2008;2007-2009;2008-2010;2009-2011;2010-2012;2011-2013**

*Note: Weighted counts (#) represent 3-yr averages, rounded to the nearest hundred; n/r (Not Reportable) - If the unweighted total responses for a dimension (row) is <30 that row will not be shown*

**Years: 2006-2008**

DOH Race-Ethnicity	Yes			No			Weighted Total Responses (3-Yr Avg)
	#	%	C.I.(95%)	#	%	C.I.(95%)	#
Caucasian	200	23.1	18.4 - 28.6	700	76.9	71.4 - 81.6	1,000
Native Hawaiian	500	25.1	21.2 - 29.4	1,400	74.9	70.6 - 78.8	1,900
Chinese	<50	26.5	19.3 - 35.1	100	73.5	64.9 - 80.7	<50
Filipino	300	30.5	25.4 - 36.1	600	69.5	63.9 - 74.6	900
Japanese	100	23.1	16.6 - 31.2	400	76.9	68.8 - 83.4	500
Other	400	33.4	27.9 - 39.4	700	66.6	60.6 - 72.1	1,100

PRAMS Age Group	Yes			No			Weighted Total Responses (3-Yr Avg)
	#	%	C.I.(95%)	#	%	C.I.(95%)	#
<20	300	40.1	32.5 - 48.2	400	59.9	51.8 - 67.5	700
20-24	500	28.1	23.9 - 32.7	1,200	71.9	67.3 - 76.1	1,600
25-34	500	22.1	19.1 - 25.5	1,900	77.9	74.5 - 80.9	2,500
35+	200	30.3	24.6 - 36.7	500	69.7	63.3 - 75.4	700

**PRAMS Health Indicator 3-Year Aggregate Report - No contraception at conception- thought couldn't get pregnant- by State;County;DOH Race-Ethnicity;PRAMS Age Group;Infant Gender;Married;Poverty Level;Income (2000-2003);Income (2004-2011);Birthweight;Smoke 3rd Trimester;Smoke Before Pregnant;WIC During Pregnancy, for the Year(s) 2000-2002;2001-2003;2002-2004;2003-2005;2004-2006;2005-2007;2006-2008;2007-2009;2008-2010;2009-2011;2010-2012;2011-2013**

*Note: Weighted counts (#) represent 3-yr averages, rounded to the nearest hundred; n/r (Not Reportable) - If the unweighted total responses for a dimension (row) is <30 that row will not be shown*

**Years: 2006-2008**

Infant Gender	Yes			No			Weighted Total Responses (3-Yr Avg)
	#	%	C.I.(95%)	#	%	C.I.(95%)	#
Male	800	28.6	25.4 - 32.0	2,000	71.4	68.0 - 74.6	2,800
Female	700	25.6	22.4 - 29.0	2,000	74.4	71.0 - 77.6	2,700

Married	Yes			No			Weighted Total Responses (3-Yr Avg)
	#	%	C.I.(95%)	#	%	C.I.(95%)	#
Yes	600	22.4	19.6 - 25.5	2,100	77.6	74.5 - 80.4	2,700
No	900	31.7	28.2 - 35.3	1,900	68.3	64.7 - 71.8	2,800

Poverty Level	Yes			No			Weighted Total Responses (3-Yr Avg)
	#	%	C.I.(95%)	#	%	C.I.(95%)	#
0-130%	900	32.5	29.0 - 36.1	1,900	67.5	63.9 - 71.0	2,800
131-185%	200	23.8	18.2 - 30.5	500	76.2	69.5 - 81.8	700
186+%	300	18.9	15.7 - 22.7	1,400	81.1	77.3 - 84.3	1,700

**PRAMS Health Indicator 3-Year Aggregate Report - No contraception at conception- thought couldn't get pregnant- by State;County;DOH Race-Ethnicity;PRAMS Age Group;Infant Gender;Married;Poverty Level;Income (2000-2003);Income (2004-2011);Birthweight;Smoke 3rd Trimester;Smoke Before Pregnant;WIC During Pregnancy, for the Year(s) 2000-2002;2001-2003;2002-2004;2003-2005;2004-2006;2005-2007;2006-2008;2007-2009;2008-2010;2009-2011;2010-2012;2011-2013**

*Note: Weighted counts (#) represent 3-yr averages, rounded to the nearest hundred; n/r (Not Reportable) - If the unweighted total responses for a dimension (row) is <30 that row will not be shown*

**Years: 2006-2008**

Income (2004-2011)	Yes			No			Weighted Total Responses (3-Yr Avg)
	#	%	C.I.(95%)	#	%	C.I.(95%)	#
<\$10,000	500	34.9	30.0 - 40.1	900	65.1	59.9 - 70.0	1,400
\$10,000-\$24,999	400	30.2	25.6 - 35.2	1,000	69.8	64.8 - 74.4	1,400
\$25,000-\$49,999	200	17.6	13.8 - 22.2	900	82.4	77.8 - 86.2	1,100
>=\$50,000	300	22.5	18.4 - 27.3	900	77.5	72.7 - 81.6	1,200

Birthweight	Yes			No			Weighted Total Responses (3-Yr Avg)
	#	%	C.I.(95%)	#	%	C.I.(95%)	#
Low birth weight	100	28.5	20.8 - 37.7	300	71.5	62.3 - 79.2	400
Normal birth weight	1,400	27.0	24.7 - 29.5	3,700	73.0	70.5 - 75.3	5,000

Smoke 3rd Trimester	Yes			No			Weighted Total Responses (3-Yr Avg)
	#	%	C.I.(95%)	#	%	C.I.(95%)	#
Yes	200	23.9	18.2 - 30.8	600	76.1	69.2 - 81.8	700
No	1,300	27.3	24.9 - 29.9	3,400	72.7	70.1 - 75.1	4,700



**PRAMS Health Indicator 3-Year Aggregate Report - No contraception at conception- thought couldn't get pregnant- by State;County;DOH Race-Ethnicity;PRAMS Age Group;Infant Gender;Married;Poverty Level;Income (2000-2003);Income (2004-2011);Birthweight;Smoke 3rd Trimester;Smoke Before Pregnant;WIC During Pregnancy, for the Year(s) 2000-2002;2001-2003;2002-2004;2003-2005;2004-2006;2005-2007;2006-2008;2007-2009;2008-2010;2009-2011;2010-2012;2011-2013**

*Note: Weighted counts (#) represent 3-yr averages, rounded to the nearest hundred; n/r (Not Reportable) - If the unweighted total responses for a dimension (row) is <30 that row will not be shown*

**Years: 2006-2008**

Smoke Before Pregnant	Yes			No			Weighted Total Responses (3-Yr Avg)
	#	%	C.I.(95%)	#	%	C.I.(95%)	#
Yes	400	26.2	21.9 - 31.0	1,100	73.8	69.0 - 78.1	1,500
No	1,100	27.1	24.5 - 29.9	2,900	72.9	70.1 - 75.5	3,900

WIC During Pregnancy	Yes			No			Weighted Total Responses (3-Yr Avg)
	#	%	C.I.(95%)	#	%	C.I.(95%)	#
Yes	900	31.4	28.1 - 34.8	2,000	68.6	65.2 - 71.9	3,000
No	500	22.6	19.5 - 26.0	1,900	77.4	74.0 - 80.5	2,400

**PRAMS Health Indicator 3-Year Aggregate Report - No contraception at conception- thought couldn't get pregnant- by State;County;DOH Race-Ethnicity;PRAMS Age Group;Infant Gender;Married;Poverty Level;Income (2000-2003);Income (2004-2011);Birthweight;Smoke 3rd Trimester;Smoke Before Pregnant;WIC During Pregnancy, for the Year(s) 2000-2002;2001-2003;2002-2004;2003-2005;2004-2006;2005-2007;2006-2008;2007-2009;2008-2010;2009-2011;2010-2012;2011-2013**

*Note: Weighted counts (#) represent 3-yr averages, rounded to the nearest hundred; n/r (Not Reportable) - If the unweighted total responses for a dimension (row) is <30 that row will not be shown*

**Years: 2005-2007**

State	Yes			No			Weighted Total Responses (3-Yr Avg)
	#	%	C.I.(95%)	#	%	C.I.(95%)	#
<b>Totals</b>	1,500	27.5	25.3 - 29.9	4,000	72.5	70.1 - 74.7	5,500

County	Yes			No			Weighted Total Responses (3-Yr Avg)
	#	%	C.I.(95%)	#	%	C.I.(95%)	#
<b>Hawaii</b>	200	28.6	22.4 - 35.9	500	71.4	64.1 - 77.6	700
<b>Honolulu</b>	1,100	27.1	24.5 - 29.9	2,900	72.9	70.1 - 75.5	3,900
<b>Kauai</b>	100	29.1	20.4 - 39.7	200	70.9	60.3 - 79.6	300
<b>Maui</b>	200	28.0	21.3 - 35.9	400	72.0	64.1 - 78.7	600

**PRAMS Health Indicator 3-Year Aggregate Report - No contraception at conception- thought couldn't get pregnant- by State;County;DOH Race-Ethnicity;PRAMS Age Group;Infant Gender;Married;Poverty Level;Income (2000-2003);Income (2004-2011);Birthweight;Smoke 3rd Trimester;Smoke Before Pregnant;WIC During Pregnancy, for the Year(s) 2000-2002;2001-2003;2002-2004;2003-2005;2004-2006;2005-2007;2006-2008;2007-2009;2008-2010;2009-2011;2010-2012;2011-2013**

*Note: Weighted counts (#) represent 3-yr averages, rounded to the nearest hundred; n/r (Not Reportable) - If the unweighted total responses for a dimension (row) is <30 that row will not be shown*

**Years: 2005-2007**

DOH Race-Ethnicity	Yes			No			Weighted Total Responses (3-Yr Avg)
	#	%	C.I.(95%)	#	%	C.I.(95%)	#
Caucasian	200	21.7	17.1 - 27.2	700	78.3	72.8 - 82.9	900
Native Hawaiian	500	25.5	21.6 - 29.8	1,400	74.5	70.2 - 78.4	1,900
Chinese	<50	23.6	16.9 - 31.9	100	76.4	68.1 - 83.1	<50
Filipino	300	32.8	27.6 - 38.3	600	67.2	61.7 - 72.4	900
Japanese	100	22.7	16.5 - 30.3	400	77.3	69.7 - 83.5	500
Other	400	34.3	28.9 - 40.1	700	65.7	59.9 - 71.1	1,100

PRAMS Age Group	Yes			No			Weighted Total Responses (3-Yr Avg)
	#	%	C.I.(95%)	#	%	C.I.(95%)	#
<20	300	41.6	34.6 - 49.0	400	58.4	51.0 - 65.4	800
20-24	400	26.1	22.2 - 30.5	1,200	73.9	69.5 - 77.8	1,700
25-34	500	22.7	19.6 - 26.1	1,800	77.3	73.9 - 80.4	2,400
35+	200	32.0	26.1 - 38.6	500	68.0	61.4 - 73.9	700

**PRAMS Health Indicator 3-Year Aggregate Report - No contraception at conception- thought couldn't get pregnant- by State;County;DOH Race-Ethnicity;PRAMS Age Group;Infant Gender;Married;Poverty Level;Income (2000-2003);Income (2004-2011);Birthweight;Smoke 3rd Trimester;Smoke Before Pregnant;WIC During Pregnancy, for the Year(s) 2000-2002;2001-2003;2002-2004;2003-2005;2004-2006;2005-2007;2006-2008;2007-2009;2008-2010;2009-2011;2010-2012;2011-2013**

*Note: Weighted counts (#) represent 3-yr averages, rounded to the nearest hundred; n/r (Not Reportable) - If the unweighted total responses for a dimension (row) is <30 that row will not be shown*

**Years: 2005-2007**

Infant Gender	Yes			No			Weighted Total Responses (3-Yr Avg)
	#	%	C.I.(95%)	#	%	C.I.(95%)	#
Male	800	28.8	25.6 - 32.2	2,000	71.2	67.8 - 74.4	2,800
Female	700	26.2	23.1 - 29.6	2,000	73.8	70.4 - 76.9	2,700

Married	Yes			No			Weighted Total Responses (3-Yr Avg)
	#	%	C.I.(95%)	#	%	C.I.(95%)	#
Yes	600	21.9	19.1 - 25.1	2,000	78.1	74.9 - 80.9	2,600
No	1,000	32.3	29.0 - 35.8	2,000	67.7	64.2 - 71.0	3,000

Poverty Level	Yes			No			Weighted Total Responses (3-Yr Avg)
	#	%	C.I.(95%)	#	%	C.I.(95%)	#
0-130%	900	32.5	29.1 - 36.1	1,800	67.5	63.9 - 70.9	2,700
131-185%	200	25.6	19.7 - 32.5	500	74.4	67.5 - 80.3	700
186+%	300	19.6	16.3 - 23.4	1,300	80.4	76.6 - 83.7	1,600

**PRAMS Health Indicator 3-Year Aggregate Report - No contraception at conception- thought couldn't get pregnant- by State;County;DOH Race-Ethnicity;PRAMS Age Group;Infant Gender;Married;Poverty Level;Income (2000-2003);Income (2004-2011);Birthweight;Smoke 3rd Trimester;Smoke Before Pregnant;WIC During Pregnancy, for the Year(s) 2000-2002;2001-2003;2002-2004;2003-2005;2004-2006;2005-2007;2006-2008;2007-2009;2008-2010;2009-2011;2010-2012;2011-2013**

*Note: Weighted counts (#) represent 3-yr averages, rounded to the nearest hundred; n/r (Not Reportable) - If the unweighted total responses for a dimension (row) is <30 that row will not be shown*

**Years: 2005-2007**

Income (2004-2011)	Yes			No			Weighted Total Responses (3-Yr Avg)
	#	%	C.I.(95%)	#	%	C.I.(95%)	#
<\$10,000	500	36.1	31.3 - 41.2	900	63.9	58.8 - 68.7	1,500
\$10,000-\$24,999	400	29.1	24.6 - 34.0	1,000	70.9	66.0 - 75.4	1,400
\$25,000-\$49,999	300	21.9	17.8 - 26.7	900	78.1	73.3 - 82.2	1,200
>=\$50,000	200	19.5	15.4 - 24.3	900	80.5	75.7 - 84.6	1,100

Birthweight	Yes			No			Weighted Total Responses (3-Yr Avg)
	#	%	C.I.(95%)	#	%	C.I.(95%)	#
Low birth weight	100	30.8	23.2 - 39.6	300	69.2	60.4 - 76.8	500
Normal birth weight	1,400	27.2	24.9 - 29.7	3,700	72.8	70.3 - 75.1	5,100

Smoke 3rd Trimester	Yes			No			Weighted Total Responses (3-Yr Avg)
	#	%	C.I.(95%)	#	%	C.I.(95%)	#
Yes	200	25.6	19.9 - 32.4	600	74.4	67.6 - 80.1	700
No	1,300	27.5	25.0 - 30.0	3,400	72.5	70.0 - 75.0	4,700

**PRAMS Health Indicator 3-Year Aggregate Report - No contraception at conception- thought couldn't get pregnant- by State;County;DOH Race-Ethnicity;PRAMS Age Group;Infant Gender;Married;Poverty Level;Income (2000-2003);Income (2004-2011);Birthweight;Smoke 3rd Trimester;Smoke Before Pregnant;WIC During Pregnancy, for the Year(s) 2000-2002;2001-2003;2002-2004;2003-2005;2004-2006;2005-2007;2006-2008;2007-2009;2008-2010;2009-2011;2010-2012;2011-2013**

*Note: Weighted counts (#) represent 3-yr averages, rounded to the nearest hundred; n/r (Not Reportable) - If the unweighted total responses for a dimension (row) is <30 that row will not be shown*

**Years: 2005-2007**

Smoke Before Pregnant	Yes			No			Weighted Total Responses (3-Yr Avg)
	#	%	C.I.(95%)	#	%	C.I.(95%)	#
Yes	500	29.4	25.2 - 34.0	1,200	70.6	66.0 - 74.8	1,600
No	1,000	26.3	23.6 - 29.1	2,800	73.7	70.9 - 76.4	3,800

WIC During Pregnancy	Yes			No			Weighted Total Responses (3-Yr Avg)
	#	%	C.I.(95%)	#	%	C.I.(95%)	#
Yes	1,000	31.9	28.6 - 35.3	2,000	68.1	64.7 - 71.4	3,000
No	500	22.7	19.6 - 26.0	1,800	77.3	74.0 - 80.4	2,400

**PRAMS Health Indicator 3-Year Aggregate Report - No contraception at conception- thought couldn't get pregnant- by State;County;DOH Race-Ethnicity;PRAMS Age Group;Infant Gender;Married;Poverty Level;Income (2000-2003);Income (2004-2011);Birthweight;Smoke 3rd Trimester;Smoke Before Pregnant;WIC During Pregnancy, for the Year(s) 2000-2002;2001-2003;2002-2004;2003-2005;2004-2006;2005-2007;2006-2008;2007-2009;2008-2010;2009-2011;2010-2012;2011-2013**

*Note: Weighted counts (#) represent 3-yr averages, rounded to the nearest hundred; n/r (Not Reportable) - If the unweighted total responses for a dimension (row) is <30 that row will not be shown*

**Years: 2004-2006**

State	Yes			No			Weighted Total Responses (3-Yr Avg)
	#	%	C.I.(95%)	#	%	C.I.(95%)	#
<b>Totals</b>	1,300	25.6	23.4 - 27.9	3,900	74.4	72.1 - 76.6	5,200

County	Yes			No			Weighted Total Responses (3-Yr Avg)
	#	%	C.I.(95%)	#	%	C.I.(95%)	#
<b>Hawaii</b>	100	21.8	16.2 - 28.5	500	78.2	71.5 - 83.8	700
<b>Honolulu</b>	1,000	26.1	23.6 - 28.8	2,800	73.9	71.2 - 76.4	3,800
<b>Kauai</b>	100	31.8	22.1 - 43.4	200	68.2	56.6 - 77.9	300
<b>Maui</b>	100	23.8	17.7 - 31.2	400	76.2	68.8 - 82.3	500

**PRAMS Health Indicator 3-Year Aggregate Report - No contraception at conception- thought couldn't get pregnant- by State;County;DOH Race-Ethnicity;PRAMS Age Group;Infant Gender;Married;Poverty Level;Income (2000-2003);Income (2004-2011);Birthweight;Smoke 3rd Trimester;Smoke Before Pregnant;WIC During Pregnancy, for the Year(s) 2000-2002;2001-2003;2002-2004;2003-2005;2004-2006;2005-2007;2006-2008;2007-2009;2008-2010;2009-2011;2010-2012;2011-2013**

*Note: Weighted counts (#) represent 3-yr averages, rounded to the nearest hundred; n/r (Not Reportable) - If the unweighted total responses for a dimension (row) is <30 that row will not be shown*

**Years: 2004-2006**

DOH Race-Ethnicity	Yes			No			Weighted Total Responses (3-Yr Avg)
	#	%	C.I.(95%)	#	%	C.I.(95%)	#
Caucasian	200	18.0	13.7 - 23.3	700	82.0	76.7 - 86.3	800
Native Hawaiian	500	25.4	21.6 - 29.7	1,300	74.6	70.3 - 78.4	1,800
Chinese	<50	22.3	16.3 - 29.6	100	77.7	70.4 - 83.7	<50
Filipino	300	29.4	24.6 - 34.6	700	70.6	65.4 - 75.4	900
Japanese	100	25.0	18.6 - 32.7	400	75.0	67.3 - 81.4	500
Other	300	29.5	24.4 - 35.3	700	70.5	64.7 - 75.6	1,000

PRAMS Age Group	Yes			No			Weighted Total Responses (3-Yr Avg)
	#	%	C.I.(95%)	#	%	C.I.(95%)	#
<20	300	43.4	36.2 - 50.8	400	56.6	49.2 - 63.8	700
20-24	400	22.9	19.2 - 27.0	1,300	77.1	73.0 - 80.8	1,700
25-34	500	21.5	18.5 - 24.9	1,700	78.5	75.1 - 81.5	2,200
35+	200	27.9	22.4 - 34.1	500	72.1	65.9 - 77.6	700



**PRAMS Health Indicator 3-Year Aggregate Report - No contraception at conception- thought couldn't get pregnant- by State;County;DOH Race-Ethnicity;PRAMS Age Group;Infant Gender;Married;Poverty Level;Income (2000-2003);Income (2004-2011);Birthweight;Smoke 3rd Trimester;Smoke Before Pregnant;WIC During Pregnancy, for the Year(s) 2000-2002;2001-2003;2002-2004;2003-2005;2004-2006;2005-2007;2006-2008;2007-2009;2008-2010;2009-2011;2010-2012;2011-2013**

*Note: Weighted counts (#) represent 3-yr averages, rounded to the nearest hundred; n/r (Not Reportable) - If the unweighted total responses for a dimension (row) is <30 that row will not be shown*

**Years: 2004-2006**

Infant Gender	Yes			No			Weighted Total Responses (3-Yr Avg)
	#	%	C.I.(95%)	#	%	C.I.(95%)	#
Male	700	26.0	23.0 - 29.3	2,000	74.0	70.7 - 77.0	2,700
Female	600	25.2	22.1 - 28.5	1,900	74.8	71.5 - 77.9	2,600

Married	Yes			No			Weighted Total Responses (3-Yr Avg)
	#	%	C.I.(95%)	#	%	C.I.(95%)	#
Yes	500	20.1	17.5 - 23.1	2,100	79.9	76.9 - 82.5	2,600
No	800	31.0	27.7 - 34.6	1,800	69.0	65.4 - 72.3	2,600

Poverty Level	Yes			No			Weighted Total Responses (3-Yr Avg)
	#	%	C.I.(95%)	#	%	C.I.(95%)	#
0-130%	700	29.6	26.3 - 33.2	1,800	70.4	66.8 - 73.7	2,500
131-185%	100	23.7	17.9 - 30.7	500	76.3	69.3 - 82.1	600
186+%	300	19.9	16.6 - 23.7	1,300	80.1	76.3 - 83.4	1,600

**PRAMS Health Indicator 3-Year Aggregate Report - No contraception at conception- thought couldn't get pregnant- by State;County;DOH Race-Ethnicity;PRAMS Age Group;Infant Gender;Married;Poverty Level;Income (2000-2003);Income (2004-2011);Birthweight;Smoke 3rd Trimester;Smoke Before Pregnant;WIC During Pregnancy, for the Year(s) 2000-2002;2001-2003;2002-2004;2003-2005;2004-2006;2005-2007;2006-2008;2007-2009;2008-2010;2009-2011;2010-2012;2011-2013**

*Note: Weighted counts (#) represent 3-yr averages, rounded to the nearest hundred; n/r (Not Reportable) - If the unweighted total responses for a dimension (row) is <30 that row will not be shown*

**Years: 2004-2006**

Income (2004-2011)	Yes			No			Weighted Total Responses (3-Yr Avg)
	#	%	C.I.(95%)	#	%	C.I.(95%)	#
<\$10,000	500	33.5	28.8 - 38.6	900	66.5	61.4 - 71.2	1,300
\$10,000-\$24,999	300	25.5	21.3 - 30.2	1,000	74.5	69.8 - 78.7	1,400
\$25,000-\$49,999	300	23.0	18.8 - 27.9	900	77.0	72.1 - 81.2	1,100
>=\$50,000	200	17.6	13.6 - 22.5	800	82.4	77.5 - 86.4	900

Birthweight	Yes			No			Weighted Total Responses (3-Yr Avg)
	#	%	C.I.(95%)	#	%	C.I.(95%)	#
Low birth weight	100	31.2	23.1 - 40.6	300	68.8	59.4 - 76.9	400
Normal birth weight	1,200	25.2	23.0 - 27.6	3,600	74.8	72.4 - 77.0	4,900

Smoke 3rd Trimester	Yes			No			Weighted Total Responses (3-Yr Avg)
	#	%	C.I.(95%)	#	%	C.I.(95%)	#
Yes	200	26.8	21.0 - 33.5	600	73.2	66.5 - 79.0	800
No	1,100	25.2	22.9 - 27.7	3,300	74.8	72.3 - 77.1	4,400

**PRAMS Health Indicator 3-Year Aggregate Report - No contraception at conception- thought couldn't get pregnant- by State;County;DOH Race-Ethnicity;PRAMS Age Group;Infant Gender;Married;Poverty Level;Income (2000-2003);Income (2004-2011);Birthweight;Smoke 3rd Trimester;Smoke Before Pregnant;WIC During Pregnancy, for the Year(s) 2000-2002;2001-2003;2002-2004;2003-2005;2004-2006;2005-2007;2006-2008;2007-2009;2008-2010;2009-2011;2010-2012;2011-2013**

*Note: Weighted counts (#) represent 3-yr averages, rounded to the nearest hundred; n/r (Not Reportable) - If the unweighted total responses for a dimension (row) is <30 that row will not be shown*

**Years: 2004-2006**

Smoke Before Pregnant	Yes			No			Weighted Total Responses (3-Yr Avg)
	#	%	C.I.(95%)	#	%	C.I.(95%)	#
Yes	500	29.9	25.7 - 34.4	1,100	70.1	65.6 - 74.3	1,600
No	800	23.4	20.9 - 26.2	2,700	76.6	73.8 - 79.1	3,500

WIC During Pregnancy	Yes			No			Weighted Total Responses (3-Yr Avg)
	#	%	C.I.(95%)	#	%	C.I.(95%)	#
Yes	800	29.6	26.5 - 32.9	2,000	70.4	67.1 - 73.5	2,800
No	500	21.2	18.2 - 24.5	1,800	78.8	75.5 - 81.8	2,200

**PRAMS Health Indicator 3-Year Aggregate Report - No contraception at conception- thought couldn't get pregnant- by State;County;DOH Race-Ethnicity;PRAMS Age Group;Infant Gender;Married;Poverty Level;Income (2000-2003);Income (2004-2011);Birthweight;Smoke 3rd Trimester;Smoke Before Pregnant;WIC During Pregnancy, for the Year(s) 2000-2002;2001-2003;2002-2004;2003-2005;2004-2006;2005-2007;2006-2008;2007-2009;2008-2010;2009-2011;2010-2012;2011-2013**

*Note: Weighted counts (#) represent 3-yr averages, rounded to the nearest hundred; n/r (Not Reportable) - If the unweighted total responses for a dimension (row) is <30 that row will not be shown*

**Years: 2003-2005**

State	Yes			No			Weighted Total Responses (3-Yr Avg)
	#	%	C.I.(95%)	#	%	C.I.(95%)	#
<b>Totals</b>	1,200	23.2	21.2 - 25.4	4,100	76.8	74.6 - 78.8	5,400

County	Yes			No			Weighted Total Responses (3-Yr Avg)
	#	%	C.I.(95%)	#	%	C.I.(95%)	#
<b>Hawaii</b>	100	17.3	13.2 - 22.5	600	82.7	77.5 - 86.8	700
<b>Honolulu</b>	900	24.5	21.9 - 27.2	2,900	75.5	72.8 - 78.1	3,900
<b>Kauai</b>	100	25.8	18.0 - 35.6	200	74.2	64.4 - 82.0	300
<b>Maui</b>	100	20.8	15.9 - 26.7	400	79.2	73.3 - 84.1	500

**PRAMS Health Indicator 3-Year Aggregate Report - No contraception at conception- thought couldn't get pregnant- by State;County;DOH Race-Ethnicity;PRAMS Age Group;Infant Gender;Married;Poverty Level;Income (2000-2003);Income (2004-2011);Birthweight;Smoke 3rd Trimester;Smoke Before Pregnant;WIC During Pregnancy, for the Year(s) 2000-2002;2001-2003;2002-2004;2003-2005;2004-2006;2005-2007;2006-2008;2007-2009;2008-2010;2009-2011;2010-2012;2011-2013**

*Note: Weighted counts (#) represent 3-yr averages, rounded to the nearest hundred; n/r (Not Reportable) - If the unweighted total responses for a dimension (row) is <30 that row will not be shown*

**Years: 2003-2005**

DOH Race-Ethnicity	Yes			No			Weighted Total Responses (3-Yr Avg)
	#	%	C.I.(95%)	#	%	C.I.(95%)	#
Caucasian	100	16.6	12.2 - 22.2	700	83.4	77.8 - 87.8	800
Native Hawaiian	500	24.3	21.0 - 27.8	1,400	75.7	72.2 - 79.0	1,900
Chinese	<50	18.5	9.8 - 32.2	100	81.5	67.8 - 90.2	200
Filipino	300	29.1	24.1 - 34.7	800	70.9	65.3 - 75.9	1,100
Japanese	100	18.3	12.8 - 25.5	400	81.7	74.5 - 87.2	500
Other	200	23.5	18.4 - 29.5	700	76.5	70.5 - 81.6	900

PRAMS Age Group	Yes			No			Weighted Total Responses (3-Yr Avg)
	#	%	C.I.(95%)	#	%	C.I.(95%)	#
<20	300	40.7	34.2 - 47.5	400	59.3	52.5 - 65.8	800
20-24	400	21.1	17.6 - 25.0	1,300	78.9	75.0 - 82.4	1,700
25-34	400	17.8	15.0 - 20.9	1,800	82.2	79.1 - 85.0	2,200
35+	200	26.4	20.7 - 33.1	500	73.6	66.9 - 79.3	700

**PRAMS Health Indicator 3-Year Aggregate Report - No contraception at conception- thought couldn't get pregnant- by State;County;DOH Race-Ethnicity;PRAMS Age Group;Infant Gender;Married;Poverty Level;Income (2000-2003);Income (2004-2011);Birthweight;Smoke 3rd Trimester;Smoke Before Pregnant;WIC During Pregnancy, for the Year(s) 2000-2002;2001-2003;2002-2004;2003-2005;2004-2006;2005-2007;2006-2008;2007-2009;2008-2010;2009-2011;2010-2012;2011-2013**

*Note: Weighted counts (#) represent 3-yr averages, rounded to the nearest hundred; n/r (Not Reportable) - If the unweighted total responses for a dimension (row) is <30 that row will not be shown*

**Years: 2003-2005**

Infant Gender	Yes			No			Weighted Total Responses (3-Yr Avg)
	#	%	C.I.(95%)	#	%	C.I.(95%)	#
Male	700	22.5	19.8 - 25.5	2,300	77.5	74.5 - 80.2	2,900
Female	600	24.1	20.9 - 27.5	1,900	75.9	72.5 - 79.1	2,400

Married	Yes			No			Weighted Total Responses (3-Yr Avg)
	#	%	C.I.(95%)	#	%	C.I.(95%)	#
Yes	500	18.3	15.7 - 21.2	2,200	81.7	78.8 - 84.3	2,700
No	800	28.1	25.0 - 31.5	1,900	71.9	68.5 - 75.0	2,700

Poverty Level	Yes			No			Weighted Total Responses (3-Yr Avg)
	#	%	C.I.(95%)	#	%	C.I.(95%)	#
0-130%	700	26.8	23.8 - 30.1	2,000	73.2	69.9 - 76.2	2,800
131-185%	100	19.0	13.9 - 25.5	500	81.0	74.5 - 86.1	600
186+%	300	18.6	15.0 - 22.8	1,100	81.4	77.2 - 85.0	1,400

**PRAMS Health Indicator 3-Year Aggregate Report - No contraception at conception- thought couldn't get pregnant- by State;County;DOH Race-Ethnicity;PRAMS Age Group;Infant Gender;Married;Poverty Level;Income (2000-2003);Income (2004-2011);Birthweight;Smoke 3rd Trimester;Smoke Before Pregnant;WIC During Pregnancy, for the Year(s) 2000-2002;2001-2003;2002-2004;2003-2005;2004-2006;2005-2007;2006-2008;2007-2009;2008-2010;2009-2011;2010-2012;2011-2013**

*Note: Weighted counts (#) represent 3-yr averages, rounded to the nearest hundred; n/r (Not Reportable) - If the unweighted total responses for a dimension (row) is <30 that row will not be shown*

**Years: 2003-2005**

Birthweight	Yes			No			Weighted Total Responses (3-Yr Avg)
	#	%	C.I.(95%)	#	%	C.I.(95%)	#
Low birth weight	100	32.9	24.4 - 42.8	300	67.1	57.2 - 75.6	400
Normal birth weight	1,100	22.5	20.4 - 24.7	3,900	77.5	75.3 - 79.6	5,000

Smoke 3rd Trimester	Yes			No			Weighted Total Responses (3-Yr Avg)
	#	%	C.I.(95%)	#	%	C.I.(95%)	#
Yes	200	22.6	17.6 - 28.6	600	77.4	71.4 - 82.4	800
No	1,000	23.2	20.9 - 25.6	3,500	76.8	74.4 - 79.1	4,500

Smoke Before Pregnant	Yes			No			Weighted Total Responses (3-Yr Avg)
	#	%	C.I.(95%)	#	%	C.I.(95%)	#
Yes	400	27.3	23.5 - 31.6	1,200	72.7	68.4 - 76.5	1,600
No	800	21.2	18.8 - 23.9	2,800	78.8	76.1 - 81.2	3,600

**PRAMS Health Indicator 3-Year Aggregate Report - No contraception at conception- thought couldn't get pregnant- by State;County;DOH Race-Ethnicity;PRAMS Age Group;Infant Gender;Married;Poverty Level;Income (2000-2003);Income (2004-2011);Birthweight;Smoke 3rd Trimester;Smoke Before Pregnant;WIC During Pregnancy, for the Year(s) 2000-2002;2001-2003;2002-2004;2003-2005;2004-2006;2005-2007;2006-2008;2007-2009;2008-2010;2009-2011;2010-2012;2011-2013**

*Note: Weighted counts (#) represent 3-yr averages, rounded to the nearest hundred; n/r (Not Reportable) - If the unweighted total responses for a dimension (row) is <30 that row will not be shown*

**Years: 2003-2005**

WIC During Pregnancy	Yes			No			Weighted Total Responses (3-Yr Avg)
	#	%	C.I.(95%)	#	%	C.I.(95%)	#
<b>Yes</b>	800	26.0	23.1 - 29.1	2,200	74.0	70.9 - 76.9	2,900
<b>No</b>	500	19.8	16.9 - 23.1	1,900	80.2	76.9 - 83.1	2,300



**PRAMS Health Indicator 3-Year Aggregate Report - No contraception at conception- thought couldn't get pregnant- by State;County;DOH Race-Ethnicity;PRAMS Age Group;Infant Gender;Married;Poverty Level;Income (2000-2003);Income (2004-2011);Birthweight;Smoke 3rd Trimester;Smoke Before Pregnant;WIC During Pregnancy, for the Year(s) 2000-2002;2001-2003;2002-2004;2003-2005;2004-2006;2005-2007;2006-2008;2007-2009;2008-2010;2009-2011;2010-2012;2011-2013**

*Note: Weighted counts (#) represent 3-yr averages, rounded to the nearest hundred; n/r (Not Reportable) - If the unweighted total responses for a dimension (row) is <30 that row will not be shown*

**Years: 2002-2004**

State	Yes			No			Weighted Total Responses (3-Yr Avg)
	#	%	C.I.(95%)	#	%	C.I.(95%)	#
<b>Totals</b>	1,100	20.9	18.9 - 23.1	4,300	79.1	76.9 - 81.1	5,500

County	Yes			No			Weighted Total Responses (3-Yr Avg)
	#	%	C.I.(95%)	#	%	C.I.(95%)	#
<b>Hawaii</b>	100	18.0	14.5 - 22.3	600	82.0	77.7 - 85.5	700
<b>Honolulu</b>	800	21.2	18.6 - 24.1	3,100	78.8	75.9 - 81.4	3,900
<b>Kauai</b>	100	21.4	14.8 - 29.9	200	78.6	70.1 - 85.2	300
<b>Maui</b>	100	22.5	18.2 - 27.5	500	77.5	72.5 - 81.8	600

**PRAMS Health Indicator 3-Year Aggregate Report - No contraception at conception- thought couldn't get pregnant- by State;County;DOH Race-Ethnicity;PRAMS Age Group;Infant Gender;Married;Poverty Level;Income (2000-2003);Income (2004-2011);Birthweight;Smoke 3rd Trimester;Smoke Before Pregnant;WIC During Pregnancy, for the Year(s) 2000-2002;2001-2003;2002-2004;2003-2005;2004-2006;2005-2007;2006-2008;2007-2009;2008-2010;2009-2011;2010-2012;2011-2013**

*Note: Weighted counts (#) represent 3-yr averages, rounded to the nearest hundred; n/r (Not Reportable) - If the unweighted total responses for a dimension (row) is <30 that row will not be shown*

**Years: 2002-2004**

DOH Race-Ethnicity	Yes			No			Weighted Total Responses (3-Yr Avg)
	#	%	C.I.(95%)	#	%	C.I.(95%)	#
Caucasian	100	15.6	11.3 - 21.3	800	84.4	78.7 - 88.7	900
Native Hawaiian	400	23.0	20.3 - 25.8	1,500	77.0	74.2 - 79.7	1,900
Chinese	<50	21.4	10.6 - 38.4	100	78.6	61.6 - 89.4	200
Filipino	300	24.6	19.5 - 30.6	800	75.4	69.4 - 80.5	1,100
Japanese	100	17.7	11.3 - 26.6	400	82.3	73.4 - 88.7	500
Other	200	19.0	13.8 - 25.5	700	81.0	74.5 - 86.2	900

PRAMS Age Group	Yes			No			Weighted Total Responses (3-Yr Avg)
	#	%	C.I.(95%)	#	%	C.I.(95%)	#
<20	300	37.5	31.1 - 44.3	500	62.5	55.7 - 68.9	800
20-24	300	19.5	16.2 - 23.3	1,400	80.5	76.7 - 83.8	1,700
25-34	300	15.7	13.0 - 19.0	1,800	84.3	81.0 - 87.0	2,200
35+	200	22.4	17.0 - 28.8	600	77.6	71.2 - 83.0	800

**PRAMS Health Indicator 3-Year Aggregate Report - No contraception at conception- thought couldn't get pregnant- by State;County;DOH Race-Ethnicity;PRAMS Age Group;Infant Gender;Married;Poverty Level;Income (2000-2003);Income (2004-2011);Birthweight;Smoke 3rd Trimester;Smoke Before Pregnant;WIC During Pregnancy, for the Year(s) 2000-2002;2001-2003;2002-2004;2003-2005;2004-2006;2005-2007;2006-2008;2007-2009;2008-2010;2009-2011;2010-2012;2011-2013**

*Note: Weighted counts (#) represent 3-yr averages, rounded to the nearest hundred; n/r (Not Reportable) - If the unweighted total responses for a dimension (row) is <30 that row will not be shown*

**Years: 2002-2004**

Infant Gender	Yes			No			Weighted Total Responses (3-Yr Avg)
	#	%	C.I.(95%)	#	%	C.I.(95%)	#
Male	600	20.3	17.6 - 23.2	2,300	79.7	76.8 - 82.4	2,900
Female	600	21.7	18.6 - 25.0	2,000	78.3	75.0 - 81.4	2,600

Married	Yes			No			Weighted Total Responses (3-Yr Avg)
	#	%	C.I.(95%)	#	%	C.I.(95%)	#
Yes	500	15.5	13.0 - 18.4	2,500	84.5	81.6 - 87.0	2,900
No	700	27.1	24.0 - 30.5	1,900	72.9	69.5 - 76.0	2,500

Poverty Level	Yes			No			Weighted Total Responses (3-Yr Avg)
	#	%	C.I.(95%)	#	%	C.I.(95%)	#
0-130%	700	24.9	21.9 - 28.2	2,100	75.1	71.8 - 78.1	2,800
131-185%	100	16.8	12.1 - 22.9	700	83.2	77.1 - 87.9	800
186+%	200	14.7	11.2 - 19.1	1,100	85.3	80.9 - 88.8	1,200

**PRAMS Health Indicator 3-Year Aggregate Report - No contraception at conception- thought couldn't get pregnant- by State;County;DOH Race-Ethnicity;PRAMS Age Group;Infant Gender;Married;Poverty Level;Income (2000-2003);Income (2004-2011);Birthweight;Smoke 3rd Trimester;Smoke Before Pregnant;WIC During Pregnancy, for the Year(s) 2000-2002;2001-2003;2002-2004;2003-2005;2004-2006;2005-2007;2006-2008;2007-2009;2008-2010;2009-2011;2010-2012;2011-2013**

*Note: Weighted counts (#) represent 3-yr averages, rounded to the nearest hundred; n/r (Not Reportable) - If the unweighted total responses for a dimension (row) is <30 that row will not be shown*

**Years: 2002-2004**

Birthweight	Yes			No			Weighted Total Responses (3-Yr Avg)
	#	%	C.I.(95%)	#	%	C.I.(95%)	#
Low birth weight	100	25.3	17.2 - 35.5	300	74.7	64.5 - 82.8	400
Normal birth weight	1,000	20.6	18.5 - 22.8	4,000	79.4	77.2 - 81.5	5,100

Smoke 3rd Trimester	Yes			No			Weighted Total Responses (3-Yr Avg)
	#	%	C.I.(95%)	#	%	C.I.(95%)	#
Yes	200	21.6	16.7 - 27.5	600	78.4	72.5 - 83.3	800
No	1,000	20.8	18.5 - 23.2	3,700	79.2	76.8 - 81.5	4,600

Smoke Before Pregnant	Yes			No			Weighted Total Responses (3-Yr Avg)
	#	%	C.I.(95%)	#	%	C.I.(95%)	#
Yes	400	25.0	21.1 - 29.3	1,200	75.0	70.7 - 78.9	1,600
No	700	19.3	16.9 - 21.9	3,000	80.7	78.1 - 83.1	3,700

**PRAMS Health Indicator 3-Year Aggregate Report - No contraception at conception- thought couldn't get pregnant- by State;County;DOH Race-Ethnicity;PRAMS Age Group;Infant Gender;Married;Poverty Level;Income (2000-2003);Income (2004-2011);Birthweight;Smoke 3rd Trimester;Smoke Before Pregnant;WIC During Pregnancy, for the Year(s) 2000-2002;2001-2003;2002-2004;2003-2005;2004-2006;2005-2007;2006-2008;2007-2009;2008-2010;2009-2011;2010-2012;2011-2013**

*Note: Weighted counts (#) represent 3-yr averages, rounded to the nearest hundred; n/r (Not Reportable) - If the unweighted total responses for a dimension (row) is <30 that row will not be shown*

**Years: 2002-2004**

WIC During Pregnancy	Yes			No			Weighted Total Responses (3-Yr Avg)
	#	%	C.I.(95%)	#	%	C.I.(95%)	#
<b>Yes</b>	700	23.9	21.0 - 27.0	2,200	76.1	73.0 - 79.0	2,900
<b>No</b>	400	17.7	14.9 - 20.9	2,000	82.3	79.1 - 85.1	2,500

**PRAMS Health Indicator 3-Year Aggregate Report - No contraception at conception- thought couldn't get pregnant- by State;County;DOH Race-Ethnicity;PRAMS Age Group;Infant Gender;Married;Poverty Level;Income (2000-2003);Income (2004-2011);Birthweight;Smoke 3rd Trimester;Smoke Before Pregnant;WIC During Pregnancy, for the Year(s) 2000-2002;2001-2003;2002-2004;2003-2005;2004-2006;2005-2007;2006-2008;2007-2009;2008-2010;2009-2011;2010-2012;2011-2013**

*Note: Weighted counts (#) represent 3-yr averages, rounded to the nearest hundred; n/r (Not Reportable) - If the unweighted total responses for a dimension (row) is <30 that row will not be shown*

**Years: 2001-2003**

State	Yes			No			Weighted Total Responses (3-Yr Avg)
	#	%	C.I.(95%)	#	%	C.I.(95%)	#
<b>Totals</b>	1,300	22.2	20.2 - 24.3	4,400	77.8	75.7 - 79.8	5,600

County	Yes			No			Weighted Total Responses (3-Yr Avg)
	#	%	C.I.(95%)	#	%	C.I.(95%)	#
<b>Hawaii</b>	100	20.1	16.8 - 23.7	600	79.9	76.3 - 83.2	700
<b>Honolulu</b>	900	23.0	20.3 - 25.9	3,100	77.0	74.1 - 79.7	4,000
<b>Kauai</b>	100	17.4	12.8 - 23.2	200	82.6	76.8 - 87.2	300
<b>Maui</b>	100	21.7	18.0 - 26.0	500	78.3	74.0 - 82.0	600

**PRAMS Health Indicator 3-Year Aggregate Report - No contraception at conception- thought couldn't get pregnant- by State;County;DOH Race-Ethnicity;PRAMS Age Group;Infant Gender;Married;Poverty Level;Income (2000-2003);Income (2004-2011);Birthweight;Smoke 3rd Trimester;Smoke Before Pregnant;WIC During Pregnancy, for the Year(s) 2000-2002;2001-2003;2002-2004;2003-2005;2004-2006;2005-2007;2006-2008;2007-2009;2008-2010;2009-2011;2010-2012;2011-2013**

*Note: Weighted counts (#) represent 3-yr averages, rounded to the nearest hundred; n/r (Not Reportable) - If the unweighted total responses for a dimension (row) is <30 that row will not be shown*

**Years: 2001-2003**

DOH Race-Ethnicity	Yes			No			Weighted Total Responses (3-Yr Avg)
	#	%	C.I.(95%)	#	%	C.I.(95%)	#
Caucasian	200	16.6	12.2 - 22.3	800	83.4	77.7 - 87.8	900
Native Hawaiian	500	24.0	21.9 - 26.2	1,500	76.0	73.8 - 78.1	2,000
Chinese	<50	19.7	9.1 - 37.6	100	80.3	62.4 - 90.9	200
Filipino	300	27.3	22.0 - 33.3	900	72.7	66.7 - 78.0	1,200
Japanese	100	14.5	8.5 - 23.7	400	85.5	76.3 - 91.5	500
Other	200	21.6	16.1 - 28.4	700	78.4	71.6 - 83.9	900

PRAMS Age Group	Yes			No			Weighted Total Responses (3-Yr Avg)
	#	%	C.I.(95%)	#	%	C.I.(95%)	#
<20	300	35.0	29.5 - 41.0	600	65.0	59.0 - 70.5	900
20-24	400	20.8	17.5 - 24.4	1,400	79.2	75.6 - 82.5	1,700
25-34	400	17.2	14.3 - 20.5	1,900	82.8	79.5 - 85.7	2,300
35+	200	26.0	20.1 - 32.9	500	74.0	67.1 - 79.9	700

**PRAMS Health Indicator 3-Year Aggregate Report - No contraception at conception- thought couldn't get pregnant- by State;County;DOH Race-Ethnicity;PRAMS Age Group;Infant Gender;Married;Poverty Level;Income (2000-2003);Income (2004-2011);Birthweight;Smoke 3rd Trimester;Smoke Before Pregnant;WIC During Pregnancy, for the Year(s) 2000-2002;2001-2003;2002-2004;2003-2005;2004-2006;2005-2007;2006-2008;2007-2009;2008-2010;2009-2011;2010-2012;2011-2013**

*Note: Weighted counts (#) represent 3-yr averages, rounded to the nearest hundred; n/r (Not Reportable) - If the unweighted total responses for a dimension (row) is <30 that row will not be shown*

**Years: 2001-2003**

Infant Gender	Yes			No			Weighted Total Responses (3-Yr Avg)
	#	%	C.I.(95%)	#	%	C.I.(95%)	#
Male	700	22.5	19.8 - 25.5	2,300	77.5	74.5 - 80.2	2,900
Female	600	21.8	18.9 - 25.0	2,100	78.2	75.0 - 81.1	2,700

Married	Yes			No			Weighted Total Responses (3-Yr Avg)
	#	%	C.I.(95%)	#	%	C.I.(95%)	#
Yes	500	16.6	14.0 - 19.5	2,500	83.4	80.5 - 86.0	3,000
No	800	28.4	25.4 - 31.6	1,900	71.6	68.4 - 74.6	2,700

Poverty Level	Yes			No			Weighted Total Responses (3-Yr Avg)
	#	%	C.I.(95%)	#	%	C.I.(95%)	#
0-130%	700	25.8	22.9 - 28.9	2,100	74.2	71.1 - 77.1	2,900
131-185%	200	19.5	14.9 - 25.0	800	80.5	75.0 - 85.1	1,000
186+%	200	14.8	11.0 - 19.6	1,000	85.2	80.4 - 89.0	1,100



**PRAMS Health Indicator 3-Year Aggregate Report - No contraception at conception- thought couldn't get pregnant- by State;County;DOH Race-Ethnicity;PRAMS Age Group;Infant Gender;Married;Poverty Level;Income (2000-2003);Income (2004-2011);Birthweight;Smoke 3rd Trimester;Smoke Before Pregnant;WIC During Pregnancy, for the Year(s) 2000-2002;2001-2003;2002-2004;2003-2005;2004-2006;2005-2007;2006-2008;2007-2009;2008-2010;2009-2011;2010-2012;2011-2013**

*Note: Weighted counts (#) represent 3-yr averages, rounded to the nearest hundred; n/r (Not Reportable) - If the unweighted total responses for a dimension (row) is <30 that row will not be shown*

**Years: 2001-2003**

Income (2000-2003)	Yes			No			Weighted Total Responses (3-Yr Avg)
	#	%	C.I.(95%)	#	%	C.I.(95%)	#
<=\$15,000	500	27.5	23.7 - 31.5	1,300	72.5	68.5 - 76.3	1,800
\$15,001-\$25,000	200	24.0	19.0 - 29.9	600	76.0	70.1 - 81.0	800
\$25,001-\$40,000	200	19.7	15.5 - 24.8	900	80.3	75.2 - 84.5	1,200
>=\$40,001	200	16.6	13.1 - 20.9	1,200	83.4	79.1 - 86.9	1,400

Birthweight	Yes			No			Weighted Total Responses (3-Yr Avg)
	#	%	C.I.(95%)	#	%	C.I.(95%)	#
Low birth weight	100	23.5	16.3 - 32.7	300	76.5	67.3 - 83.7	400
Normal birth weight	1,100	22.1	20.0 - 24.3	4,100	77.9	75.7 - 80.0	5,200

Smoke 3rd Trimester	Yes			No			Weighted Total Responses (3-Yr Avg)
	#	%	C.I.(95%)	#	%	C.I.(95%)	#
Yes	200	18.8	14.6 - 23.8	700	81.2	76.2 - 85.4	800
No	1,100	22.7	20.4 - 25.1	3,600	77.3	74.9 - 79.6	4,700

**PRAMS Health Indicator 3-Year Aggregate Report - No contraception at conception- thought couldn't get pregnant- by State;County;DOH Race-Ethnicity;PRAMS Age Group;Infant Gender;Married;Poverty Level;Income (2000-2003);Income (2004-2011);Birthweight;Smoke 3rd Trimester;Smoke Before Pregnant;WIC During Pregnancy, for the Year(s) 2000-2002;2001-2003;2002-2004;2003-2005;2004-2006;2005-2007;2006-2008;2007-2009;2008-2010;2009-2011;2010-2012;2011-2013**

*Note: Weighted counts (#) represent 3-yr averages, rounded to the nearest hundred; n/r (Not Reportable) - If the unweighted total responses for a dimension (row) is <30 that row will not be shown*

**Years: 2001-2003**

Smoke Before Pregnant	Yes			No			Weighted Total Responses (3-Yr Avg)
	#	%	C.I.(95%)	#	%	C.I.(95%)	#
Yes	400	22.4	18.9 - 26.4	1,200	77.6	73.6 - 81.1	1,600
No	800	22.2	19.7 - 24.9	3,000	77.8	75.1 - 80.3	3,800

WIC During Pregnancy	Yes			No			Weighted Total Responses (3-Yr Avg)
	#	%	C.I.(95%)	#	%	C.I.(95%)	#
Yes	700	24.6	21.8 - 27.7	2,200	75.4	72.3 - 78.2	2,900
No	500	19.5	16.7 - 22.7	2,100	80.5	77.3 - 83.3	2,700

**PRAMS Health Indicator 3-Year Aggregate Report - No contraception at conception- thought couldn't get pregnant- by State;County;DOH Race-Ethnicity;PRAMS Age Group;Infant Gender;Married;Poverty Level;Income (2000-2003);Income (2004-2011);Birthweight;Smoke 3rd Trimester;Smoke Before Pregnant;WIC During Pregnancy, for the Year(s) 2000-2002;2001-2003;2002-2004;2003-2005;2004-2006;2005-2007;2006-2008;2007-2009;2008-2010;2009-2011;2010-2012;2011-2013**

*Note: Weighted counts (#) represent 3-yr averages, rounded to the nearest hundred; n/r (Not Reportable) - If the unweighted total responses for a dimension (row) is <30 that row will not be shown*

**Years: 2000-2002**

State	Yes			No			Weighted Total Responses (3-Yr Avg)
	#	%	C.I.(95%)	#	%	C.I.(95%)	#
<b>Totals</b>	1,300	23.0	21.1 - 25.1	4,300	77.0	74.9 - 78.9	5,600

County	Yes			No			Weighted Total Responses (3-Yr Avg)
	#	%	C.I.(95%)	#	%	C.I.(95%)	#
<b>Hawaii</b>	100	20.5	17.2 - 24.3	600	79.5	75.7 - 82.8	700
<b>Honolulu</b>	1,000	24.0	21.5 - 26.7	3,000	76.0	73.3 - 78.5	4,000
<b>Kauai</b>	<50	17.2	12.4 - 23.3	200	82.8	76.7 - 87.6	300
<b>Maui</b>	100	22.0	18.2 - 26.4	500	78.0	73.6 - 81.8	600

**PRAMS Health Indicator 3-Year Aggregate Report - No contraception at conception- thought couldn't get pregnant- by State;County;DOH Race-Ethnicity;PRAMS Age Group;Infant Gender;Married;Poverty Level;Income (2000-2003);Income (2004-2011);Birthweight;Smoke 3rd Trimester;Smoke Before Pregnant;WIC During Pregnancy, for the Year(s) 2000-2002;2001-2003;2002-2004;2003-2005;2004-2006;2005-2007;2006-2008;2007-2009;2008-2010;2009-2011;2010-2012;2011-2013**

*Note: Weighted counts (#) represent 3-yr averages, rounded to the nearest hundred; n/r (Not Reportable) - If the unweighted total responses for a dimension (row) is <30 that row will not be shown*

**Years: 2000-2002**

DOH Race-Ethnicity	Yes			No			Weighted Total Responses (3-Yr Avg)
	#	%	C.I.(95%)	#	%	C.I.(95%)	#
Caucasian	200	16.8	12.8 - 21.8	800	83.2	78.2 - 87.2	900
Native Hawaiian	400	23.6	21.6 - 25.6	1,500	76.4	74.4 - 78.4	1,900
Chinese	<50	24.2	11.9 - 42.8	100	75.8	57.2 - 88.1	<50
Filipino	300	26.3	21.6 - 31.7	900	73.7	68.3 - 78.4	1,200
Japanese	100	20.8	14.0 - 29.6	400	79.2	70.4 - 86.0	500
Other	200	25.1	19.3 - 32.0	700	74.9	68.0 - 80.7	900

PRAMS Age Group	Yes			No			Weighted Total Responses (3-Yr Avg)
	#	%	C.I.(95%)	#	%	C.I.(95%)	#
<20	300	34.0	29.1 - 39.3	600	66.0	60.7 - 70.9	900
20-24	400	21.8	18.6 - 25.2	1,300	78.2	74.8 - 81.4	1,700
25-34	400	18.5	15.5 - 21.9	1,800	81.5	78.1 - 84.5	2,200
35+	200	25.9	20.5 - 32.1	500	74.1	67.9 - 79.5	700

**PRAMS Health Indicator 3-Year Aggregate Report - No contraception at conception- thought couldn't get pregnant- by State;County;DOH Race-Ethnicity;PRAMS Age Group;Infant Gender;Married;Poverty Level;Income (2000-2003);Income (2004-2011);Birthweight;Smoke 3rd Trimester;Smoke Before Pregnant;WIC During Pregnancy, for the Year(s) 2000-2002;2001-2003;2002-2004;2003-2005;2004-2006;2005-2007;2006-2008;2007-2009;2008-2010;2009-2011;2010-2012;2011-2013**

*Note: Weighted counts (#) represent 3-yr averages, rounded to the nearest hundred; n/r (Not Reportable) - If the unweighted total responses for a dimension (row) is <30 that row will not be shown*

**Years: 2000-2002**

Infant Gender	Yes			No			Weighted Total Responses (3-Yr Avg)
	#	%	C.I.(95%)	#	%	C.I.(95%)	#
Male	700	24.7	21.9 - 27.6	2,200	75.3	72.4 - 78.1	2,900
Female	600	21.3	18.7 - 24.2	2,100	78.7	75.8 - 81.3	2,700

Married	Yes			No			Weighted Total Responses (3-Yr Avg)
	#	%	C.I.(95%)	#	%	C.I.(95%)	#
Yes	500	17.5	15.1 - 20.3	2,500	82.5	79.7 - 84.9	3,000
No	800	29.6	26.7 - 32.6	1,800	70.4	67.4 - 73.3	2,500

Poverty Level	Yes			No			Weighted Total Responses (3-Yr Avg)
	#	%	C.I.(95%)	#	%	C.I.(95%)	#
0-130%	700	26.0	23.3 - 28.9	2,100	74.0	71.1 - 76.7	2,900
131-185%	200	21.0	16.4 - 26.4	700	79.0	73.6 - 83.6	900
186+%	200	15.5	12.0 - 19.9	1,000	84.5	80.1 - 88.0	1,200

**PRAMS Health Indicator 3-Year Aggregate Report - No contraception at conception- thought couldn't get pregnant- by State;County;DOH Race-Ethnicity;PRAMS Age Group;Infant Gender;Married;Poverty Level;Income (2000-2003);Income (2004-2011);Birthweight;Smoke 3rd Trimester;Smoke Before Pregnant;WIC During Pregnancy, for the Year(s) 2000-2002;2001-2003;2002-2004;2003-2005;2004-2006;2005-2007;2006-2008;2007-2009;2008-2010;2009-2011;2010-2012;2011-2013**

*Note: Weighted counts (#) represent 3-yr averages, rounded to the nearest hundred; n/r (Not Reportable) - If the unweighted total responses for a dimension (row) is <30 that row will not be shown*

**Years: 2000-2002**

Income (2000-2003)	Yes			No			Weighted Total Responses (3-Yr Avg)
	#	%	C.I.(95%)	#	%	C.I.(95%)	#
<=\$15,000	500	28.9	25.3 - 32.8	1,200	71.1	67.2 - 74.7	1,700
\$15,001-\$25,000	200	21.7	17.3 - 26.8	700	78.3	73.2 - 82.7	900
\$25,001-\$40,000	200	21.7	17.4 - 26.7	900	78.3	73.3 - 82.6	1,100
>=\$40,001	200	16.8	13.5 - 20.7	1,100	83.2	79.3 - 86.5	1,400

Birthweight	Yes			No			Weighted Total Responses (3-Yr Avg)
	#	%	C.I.(95%)	#	%	C.I.(95%)	#
Low birth weight	100	23.0	16.3 - 31.6	300	77.0	68.4 - 83.7	400
Normal birth weight	1,200	23.1	21.1 - 25.2	3,900	76.9	74.8 - 78.9	5,100

Smoke 3rd Trimester	Yes			No			Weighted Total Responses (3-Yr Avg)
	#	%	C.I.(95%)	#	%	C.I.(95%)	#
Yes	200	21.1	16.7 - 26.3	600	78.9	73.7 - 83.3	700
No	1,100	23.2	21.0 - 25.5	3,600	76.8	74.5 - 79.0	4,700

**PRAMS Health Indicator 3-Year Aggregate Report - No contraception at conception- thought couldn't get pregnant- by State;County;DOH Race-Ethnicity;PRAMS Age Group;Infant Gender;Married;Poverty Level;Income (2000-2003);Income (2004-2011);Birthweight;Smoke 3rd Trimester;Smoke Before Pregnant;WIC During Pregnancy, for the Year(s) 2000-2002;2001-2003;2002-2004;2003-2005;2004-2006;2005-2007;2006-2008;2007-2009;2008-2010;2009-2011;2010-2012;2011-2013**

*Note: Weighted counts (#) represent 3-yr averages, rounded to the nearest hundred; n/r (Not Reportable) - If the unweighted total responses for a dimension (row) is <30 that row will not be shown*

**Years: 2000-2002**

Smoke Before Pregnant	Yes			No			Weighted Total Responses (3-Yr Avg)
	#	%	C.I.(95%)	#	%	C.I.(95%)	#
Yes	400	24.0	20.5 - 28.0	1,200	76.0	72.0 - 79.5	1,500
No	900	22.7	20.3 - 25.2	2,900	77.3	74.8 - 79.7	3,800

WIC During Pregnancy	Yes			No			Weighted Total Responses (3-Yr Avg)
	#	%	C.I.(95%)	#	%	C.I.(95%)	#
Yes	700	24.8	22.1 - 27.6	2,100	75.2	72.4 - 77.9	2,900
No	600	21.2	18.4 - 24.3	2,100	78.8	75.7 - 81.6	2,700