

**PRAMS Health Indicator 3-Year Aggregate Report - No contraception at conception- thought she or partner was sterile- for the State of Hawaii, for the Year(s)**

**2000-2002;2001-2003;2002-2004;2003-2005;2004-2006;2005-2007;2006-2008;2007-2009;2008-2010;2009-2011;2010-2012;2011-2013**

PRAMS Health Indicator 3-Year Aggregate Report - No contraception at conception- thought she or partner was sterile- by State;County;DOH Race-Ethnicity;PRAMS Age Group;Infant Gender;Married;Poverty Level;Income (2000-2003);Income (2004-2011);Birthweight;Smoke 3rd Trimester;Smoke Before Pregnant;WIC During Pregnancy, for the Year(s)

2000-2002;2001-2003;2002-2004;2003-2005;2004-2006;2005-2007;2006-2008;2007-2009;2008-2010;2009-2011;2010-2012;2011-2013

*Note: Weighted counts (#) represent 3-yr averages, rounded to the nearest hundred; n/r (Not Reportable) - If the unweighted total responses for a dimension (row) is <30 that row will not be shown*

*The trend analysis section shows the trend for the selected health variable over selected years in a table and a graph. 3-Year Weighted Total Responses: This number is a weighted representation of the mothers of babies delivered in a given year, who responded to a particular question in the survey. For most questions this will be the mothers of all babies delivered in a given year. For some secondary questions only a subset of the population was asked the question. For example, all survey participants were asked if they smoked during pregnancy, but only those who answered yes were asked how many cigarettes a day. If a dimension value is unknown for a particular survey record, that record will not be included in the counts for that particular dimension.*

*Note: Data collection for household income changed in 2004 and again in 2012. Because of this, income data does not exist for some 3-year aggregate periods.*

*Below are the indicators included in this report and the long description for each indicator.*

PRAMS Health Indicator	Health Indicator Description
No contraception at conception- thought she or partner was sterile	No contraception at conception- thought she or partner was sterile

*Suggested citation:*

*Hawaii Health Data Warehouse, Hawaii State Department of Health, Pregnancy Risk Assessment Monitoring System, (report title and years), Report Created: 2/16/17*

*For documentation on other terms and coding in this report, please go to the following links:*

[Click here to access PRAMS documentation](#)

[Click here to access DOH-Race Ethnicity coding](#)

[Click here to access The Hawai'i Data Guide](#)

**For questions about this report, please contact  
The Hawai'i Health Data Warehouse**

[profiles@hhdw.org](mailto:profiles@hhdw.org)

**(855) 946-5899 x15**

**PRAMS Health Indicator 3-Year Aggregate Report - No contraception at conception- thought she or partner was sterile- for the State of Hawaii, for the Year(s)**  
**2000-2002;2001-2003;2002-2004;2003-2005;2004-2006;2005-2007;2006-2008;2007-2009;2008-2010;2009-2011;2010-2012;2011-2013**

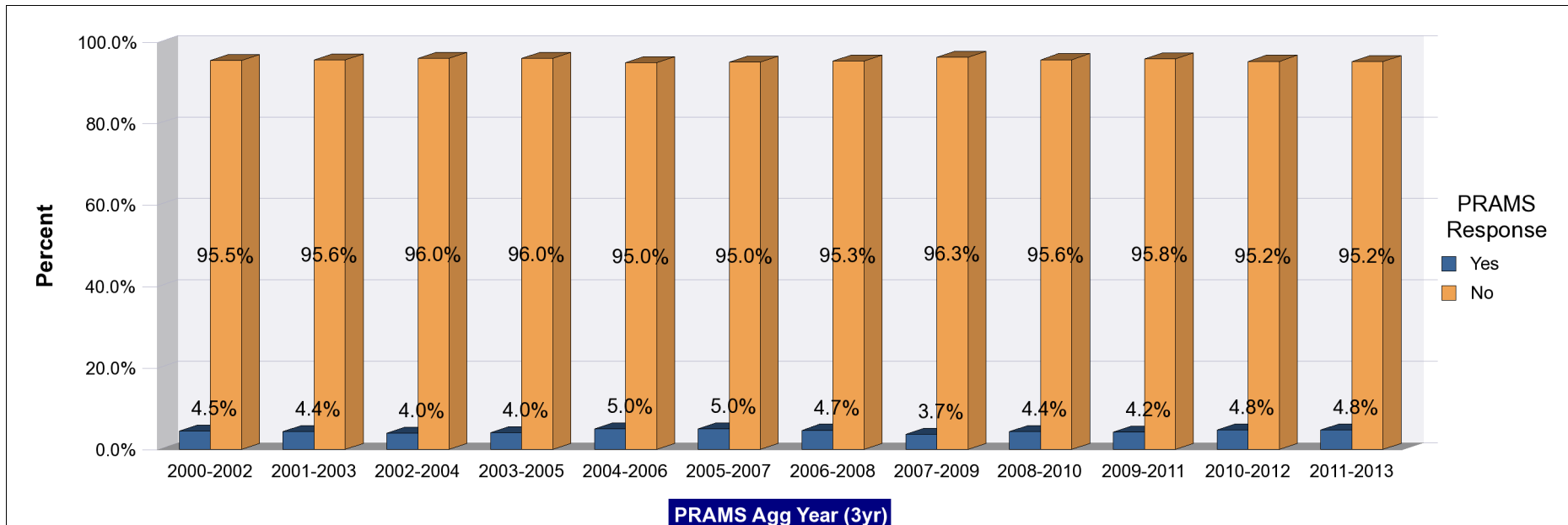
*Note: Weighted counts (#) represent 3-yr averages, rounded to the nearest hundred; n/r (Not Reportable) - If the unweighted total responses for a dimension (row) is <30 that row will not be shown*

Years	Yes			No			Weighted Total Responses (3-Yr Avg)
	#	%	C.I.(95%)	#	%	C.I.(95%)	#
2000-2002	300	4.5	3.6 - 5.6	5,300	95.5	94.4 - 96.4	5,600
2001-2003	200	4.4	3.4 - 5.6	5,400	95.6	94.4 - 96.6	5,600
2002-2004	200	4.0	3.0 - 5.2	5,300	96.0	94.8 - 97.0	5,500
2003-2005	200	4.0	3.1 - 5.2	5,200	96.0	94.8 - 96.9	5,400
2004-2006	300	5.0	4.0 - 6.3	5,000	95.0	93.7 - 96.0	5,200
2005-2007	300	5.0	4.0 - 6.2	5,200	95.0	93.8 - 96.0	5,500
2006-2008	300	4.7	3.7 - 5.9	5,200	95.3	94.1 - 96.3	5,500
2007-2009	200	3.7	2.8 - 4.8	5,400	96.3	95.2 - 97.2	5,600
2008-2010	200	4.4	3.3 - 5.8	5,300	95.6	94.2 - 96.7	5,500
2009-2011	200	4.2	3.1 - 5.6	5,200	95.8	94.4 - 96.9	5,500
2010-2012	300	4.8	3.5 - 6.4	5,100	95.2	93.6 - 96.5	5,400
2011-2013	300	4.8	3.5 - 6.4	5,200	95.2	93.6 - 96.5	5,400

**PRAMS Health Indicator 3-Year Aggregate Report - No contraception at conception- thought she or partner was sterile- for the State of Hawaii, for the Year(s)**

**2000-2002;2001-2003;2002-2004;2003-2005;2004-2006;2005-2007;2006-2008;2007-2009;2008-2010;2009-2011;2010-2012;2011-2013**

*Note: Weighted counts (#) represent 3-yr averages, rounded to the nearest hundred; n/r (Not Reportable) - If the unweighted total responses for a dimension (row) is <30 that row will not be shown*



**PRAMS Health Indicator 3-Year Aggregate Report - No contraception at conception- thought she or partner was sterile- by State;County;DOH Race-Ethnicity;PRAMS Age Group;Infant Gender;Married;Poverty Level;Income (2000-2003);Income (2004-2011);Birthweight;Smoke 3rd Trimester;Smoke Before Pregnant;WIC During Pregnancy, for the Year(s) 2000-2002;2001-2003;2002-2004;2003-2005;2004-2006;2005-2007;2006-2008;2007-2009;2008-2010;2009-2011;2010-2012;2011-2013**

*Note: Weighted counts (#) represent 3-yr averages, rounded to the nearest hundred; n/r (Not Reportable) - If the unweighted total responses for a dimension (row) is <30 that row will not be shown*

**Years: 2011-2013**

State	Yes			No			Weighted Total Responses (3-Yr Avg)
	#	%	C.I.(95%)	#	%	C.I.(95%)	#
<b>Totals</b>	300	4.8	3.5 - 6.4	5,200	95.2	93.6 - 96.5	5,400

County	Yes			No			Weighted Total Responses (3-Yr Avg)
	#	%	C.I.(95%)	#	%	C.I.(95%)	#
<b>Hawaii</b>	100	7.2	4.9 - 10.5	700	92.8	89.5 - 95.1	700
<b>Honolulu</b>	200	4.2	2.6 - 6.5	3,700	95.8	93.5 - 97.4	3,900
<b>Kauai</b>	<50	1.8	0.7 - 4.7	300	98.2	95.3 - 99.3	300
<b>Maui</b>	<50	7.0	4.6 - 10.4	500	93.0	89.6 - 95.4	600

**PRAMS Health Indicator 3-Year Aggregate Report - No contraception at conception- thought she or partner was sterile- by State;County;DOH Race-Ethnicity;PRAMS Age Group;Infant Gender;Married;Poverty Level;Income (2000-2003);Income (2004-2011);Birthweight;Smoke 3rd Trimester;Smoke Before Pregnant;WIC During Pregnancy, for the Year(s) 2000-2002;2001-2003;2002-2004;2003-2005;2004-2006;2005-2007;2006-2008;2007-2009;2008-2010;2009-2011;2010-2012;2011-2013**

*Note: Weighted counts (#) represent 3-yr averages, rounded to the nearest hundred; n/r (Not Reportable) - If the unweighted total responses for a dimension (row) is <30 that row will not be shown*

**Years: 2011-2013**

DOH Race-Ethnicity	Yes			No			Weighted Total Responses (3-Yr Avg)
	#	%	C.I.(95%)	#	%	C.I.(95%)	#
Caucasian	100	6.4	3.3 - 12.0	1,000	93.6	88.0 - 96.7	1,000
Native Hawaiian	100	5.1	3.2 - 8.1	1,800	94.9	91.9 - 96.8	1,900
Chinese	<50	7.1	1.8 - 24.3	200	92.9	75.7 - 98.2	200
Filipino	<50	3.9	1.7 - 8.6	1,000	96.1	91.4 - 98.3	1,000
Japanese	<50	4.0	1.0 - 14.1	400	96.0	85.9 - 99.0	400
Other	<50	2.8	1.5 - 4.9	800	97.2	95.1 - 98.5	800

PRAMS Age Group	Yes			No			Weighted Total Responses (3-Yr Avg)
	#	%	C.I.(95%)	#	%	C.I.(95%)	#
<20	<50	4.1	2.1 - 8.0	400	95.9	92.0 - 97.9	400
20-24	100	5.3	3.0 - 9.2	1,500	94.7	90.8 - 97.0	1,600
25-34	100	5.0	3.2 - 7.6	2,500	95.0	92.4 - 96.8	2,600
35+	<50	3.5	1.6 - 7.4	800	96.5	92.6 - 98.4	800

**PRAMS Health Indicator 3-Year Aggregate Report - No contraception at conception- thought she or partner was sterile- by State;County;DOH Race-Ethnicity;PRAMS Age Group;Infant Gender;Married;Poverty Level;Income (2000-2003);Income (2004-2011);Birthweight;Smoke 3rd Trimester;Smoke Before Pregnant;WIC During Pregnancy, for the Year(s) 2000-2002;2001-2003;2002-2004;2003-2005;2004-2006;2005-2007;2006-2008;2007-2009;2008-2010;2009-2011;2010-2012;2011-2013**

*Note: Weighted counts (#) represent 3-yr averages, rounded to the nearest hundred; n/r (Not Reportable) - If the unweighted total responses for a dimension (row) is <30 that row will not be shown*

**Years: 2011-2013**

Infant Gender	Yes			No			Weighted Total Responses (3-Yr Avg)
	#	%	C.I.(95%)	#	%	C.I.(95%)	#
Male	200	6.2	4.1 - 9.2	2,400	93.8	90.8 - 95.9	2,600
Female	100	3.5	2.2 - 5.4	2,800	96.5	94.6 - 97.8	2,900

Married	Yes			No			Weighted Total Responses (3-Yr Avg)
	#	%	C.I.(95%)	#	%	C.I.(95%)	#
Yes	100	2.9	1.7 - 4.9	2,600	97.1	95.1 - 98.3	2,700
No	200	6.6	4.6 - 9.4	2,600	93.4	90.6 - 95.4	2,700

Poverty Level	Yes			No			Weighted Total Responses (3-Yr Avg)
	#	%	C.I.(95%)	#	%	C.I.(95%)	#
0-130%	100	3.4	2.2 - 5.4	2,500	96.6	94.6 - 97.8	2,600
131-185%	<50	3.4	1.6 - 6.7	800	96.6	93.3 - 98.4	800
186+%	100	4.6	2.6 - 8.0	1,400	95.4	92.0 - 97.4	1,500

**PRAMS Health Indicator 3-Year Aggregate Report - No contraception at conception- thought she or partner was sterile- by State;County;DOH Race-Ethnicity;PRAMS Age Group;Infant Gender;Married;Poverty Level;Income (2000-2003);Income (2004-2011);Birthweight;Smoke 3rd Trimester;Smoke Before Pregnant;WIC During Pregnancy, for the Year(s) 2000-2002;2001-2003;2002-2004;2003-2005;2004-2006;2005-2007;2006-2008;2007-2009;2008-2010;2009-2011;2010-2012;2011-2013**

*Note: Weighted counts (#) represent 3-yr averages, rounded to the nearest hundred; n/r (Not Reportable) - If the unweighted total responses for a dimension (row) is <30 that row will not be shown*

**Years: 2011-2013**

Birthweight	Yes			No			Weighted Total Responses (3-Yr Avg)
	#	%	C.I.(95%)	#	%	C.I.(95%)	#
Low birth weight	<50	6.7	4.4 - 10.1	300	93.3	89.9 - 95.6	400
Normal birth weight	200	4.6	3.3 - 6.4	4,800	95.4	93.6 - 96.7	5,100

Smoke 3rd Trimester	Yes			No			Weighted Total Responses (3-Yr Avg)
	#	%	C.I.(95%)	#	%	C.I.(95%)	#
Yes	<50	12.5	5.6 - 25.8	300	87.5	74.2 - 94.4	400
No	200	4.2	3.1 - 5.9	4,700	95.8	94.1 - 96.9	4,900

Smoke Before Pregnant	Yes			No			Weighted Total Responses (3-Yr Avg)
	#	%	C.I.(95%)	#	%	C.I.(95%)	#
Yes	100	8.8	5.4 - 14.1	1,100	91.2	85.9 - 94.6	1,200
No	200	3.7	2.5 - 5.4	4,000	96.3	94.6 - 97.5	4,200

**PRAMS Health Indicator 3-Year Aggregate Report - No contraception at conception- thought she or partner was sterile- by State;County;DOH Race-Ethnicity;PRAMS Age Group;Infant Gender;Married;Poverty Level;Income (2000-2003);Income (2004-2011);Birthweight;Smoke 3rd Trimester;Smoke Before Pregnant;WIC During Pregnancy, for the Year(s) 2000-2002;2001-2003;2002-2004;2003-2005;2004-2006;2005-2007;2006-2008;2007-2009;2008-2010;2009-2011;2010-2012;2011-2013**

*Note: Weighted counts (#) represent 3-yr averages, rounded to the nearest hundred; n/r (Not Reportable) - If the unweighted total responses for a dimension (row) is <30 that row will not be shown*

**Years: 2011-2013**

WIC During Pregnancy	Yes			No			Weighted Total Responses (3-Yr Avg)
	#	%	C.I.(95%)	#	%	C.I.(95%)	#
Yes	100	3.9	2.6 - 5.9	2,800	96.1	94.1 - 97.4	2,900
No	100	5.8	3.8 - 8.9	2,300	94.2	91.1 - 96.2	2,400



**PRAMS Health Indicator 3-Year Aggregate Report - No contraception at conception- thought she or partner was sterile- by State;County;DOH Race-Ethnicity;PRAMS Age Group;Infant Gender;Married;Poverty Level;Income (2000-2003);Income (2004-2011);Birthweight;Smoke 3rd Trimester;Smoke Before Pregnant;WIC During Pregnancy, for the Year(s) 2000-2002;2001-2003;2002-2004;2003-2005;2004-2006;2005-2007;2006-2008;2007-2009;2008-2010;2009-2011;2010-2012;2011-2013**

*Note: Weighted counts (#) represent 3-yr averages, rounded to the nearest hundred; n/r (Not Reportable) - If the unweighted total responses for a dimension (row) is <30 that row will not be shown*

**Years: 2010-2012**

State	Yes			No			Weighted Total Responses (3-Yr Avg)
	#	%	C.I.(95%)	#	%	C.I.(95%)	#
<b>Totals</b>	300	4.8	3.5 - 6.4	5,100	95.2	93.6 - 96.5	5,400

County	Yes			No			Weighted Total Responses (3-Yr Avg)
	#	%	C.I.(95%)	#	%	C.I.(95%)	#
<b>Hawaii</b>	100	7.3	5.0 - 10.5	700	92.7	89.5 - 95.0	700
<b>Honolulu</b>	200	4.3	2.7 - 6.6	3,600	95.7	93.4 - 97.3	3,800
<b>Kauai</b>	<50	1.8	0.7 - 4.8	300	98.2	95.2 - 99.3	300
<b>Maui</b>	<50	6.2	4.1 - 9.2	500	93.8	90.8 - 95.9	600

**PRAMS Health Indicator 3-Year Aggregate Report - No contraception at conception- thought she or partner was sterile- by State;County;DOH Race-Ethnicity;PRAMS Age Group;Infant Gender;Married;Poverty Level;Income (2000-2003);Income (2004-2011);Birthweight;Smoke 3rd Trimester;Smoke Before Pregnant;WIC During Pregnancy, for the Year(s) 2000-2002;2001-2003;2002-2004;2003-2005;2004-2006;2005-2007;2006-2008;2007-2009;2008-2010;2009-2011;2010-2012;2011-2013**

*Note: Weighted counts (#) represent 3-yr averages, rounded to the nearest hundred; n/r (Not Reportable) - If the unweighted total responses for a dimension (row) is <30 that row will not be shown*

**Years: 2010-2012**

DOH Race-Ethnicity	Yes			No			Weighted Total Responses (3-Yr Avg)
	#	%	C.I.(95%)	#	%	C.I.(95%)	#
Caucasian	100	6.1	3.2 - 11.1	1,000	93.9	88.9 - 96.8	1,000
Native Hawaiian	100	5.5	3.4 - 8.8	1,700	94.5	91.2 - 96.6	1,800
Chinese	<50	7.4	1.7 - 27.2	200	92.6	72.8 - 98.3	200
Filipino	<50	3.2	1.3 - 7.4	1,000	96.8	92.6 - 98.7	1,100
Japanese	<50	2.3	0.9 - 5.7	300	97.7	94.3 - 99.1	300
Other	<50	4.0	1.9 - 8.0	900	96.0	92.0 - 98.1	900

PRAMS Age Group	Yes			No			Weighted Total Responses (3-Yr Avg)
	#	%	C.I.(95%)	#	%	C.I.(95%)	#
<20	<50	5.7	2.1 - 14.5	400	94.3	85.5 - 97.9	500
20-24	100	5.0	2.8 - 8.6	1,400	95.0	91.4 - 97.2	1,500
25-34	100	4.1	2.6 - 6.3	2,400	95.9	93.7 - 97.4	2,500
35+	100	5.9	2.9 - 11.6	800	94.1	88.4 - 97.1	900

**PRAMS Health Indicator 3-Year Aggregate Report - No contraception at conception- thought she or partner was sterile- by State;County;DOH Race-Ethnicity;PRAMS Age Group;Infant Gender;Married;Poverty Level;Income (2000-2003);Income (2004-2011);Birthweight;Smoke 3rd Trimester;Smoke Before Pregnant;WIC During Pregnancy, for the Year(s) 2000-2002;2001-2003;2002-2004;2003-2005;2004-2006;2005-2007;2006-2008;2007-2009;2008-2010;2009-2011;2010-2012;2011-2013**

*Note: Weighted counts (#) represent 3-yr averages, rounded to the nearest hundred; n/r (Not Reportable) - If the unweighted total responses for a dimension (row) is <30 that row will not be shown*

**Years: 2010-2012**

Infant Gender	Yes			No			Weighted Total Responses (3-Yr Avg)
	#	%	C.I.(95%)	#	%	C.I.(95%)	#
Male	200	6.1	4.1 - 8.9	2,500	93.9	91.1 - 95.9	2,600
Female	100	3.5	2.2 - 5.6	2,600	96.5	94.4 - 97.8	2,700

Married	Yes			No			Weighted Total Responses (3-Yr Avg)
	#	%	C.I.(95%)	#	%	C.I.(95%)	#
Yes	100	3.9	2.3 - 6.3	2,600	96.1	93.7 - 97.7	2,700
No	100	5.7	3.9 - 8.2	2,500	94.3	91.8 - 96.1	2,600

Poverty Level	Yes			No			Weighted Total Responses (3-Yr Avg)
	#	%	C.I.(95%)	#	%	C.I.(95%)	#
0-130%	100	4.5	2.9 - 7.1	2,400	95.5	92.9 - 97.1	2,500
131-185%	<50	4.1	1.7 - 9.5	700	95.9	90.5 - 98.3	700
186+%	100	5.0	2.9 - 8.4	1,500	95.0	91.6 - 97.1	1,600

**PRAMS Health Indicator 3-Year Aggregate Report - No contraception at conception- thought she or partner was sterile- by State;County;DOH Race-Ethnicity;PRAMS Age Group;Infant Gender;Married;Poverty Level;Income (2000-2003);Income (2004-2011);Birthweight;Smoke 3rd Trimester;Smoke Before Pregnant;WIC During Pregnancy, for the Year(s) 2000-2002;2001-2003;2002-2004;2003-2005;2004-2006;2005-2007;2006-2008;2007-2009;2008-2010;2009-2011;2010-2012;2011-2013**

*Note: Weighted counts (#) represent 3-yr averages, rounded to the nearest hundred; n/r (Not Reportable) - If the unweighted total responses for a dimension (row) is <30 that row will not be shown*

**Years: 2010-2012**

Birthweight	Yes			No			Weighted Total Responses (3-Yr Avg)
	#	%	C.I.(95%)	#	%	C.I.(95%)	#
Low birth weight	<50	4.0	2.1 - 7.2	300	96.0	92.8 - 97.9	400
Normal birth weight	200	4.8	3.5 - 6.6	4,800	95.2	93.4 - 96.5	5,000

Smoke 3rd Trimester	Yes			No			Weighted Total Responses (3-Yr Avg)
	#	%	C.I.(95%)	#	%	C.I.(95%)	#
Yes	<50	5.2	2.0 - 12.9	400	94.8	87.1 - 98.0	500
No	200	4.6	3.3 - 6.3	4,600	95.4	93.7 - 96.7	4,800

Smoke Before Pregnant	Yes			No			Weighted Total Responses (3-Yr Avg)
	#	%	C.I.(95%)	#	%	C.I.(95%)	#
Yes	100	8.1	5.1 - 12.7	1,200	91.9	87.3 - 94.9	1,300
No	100	3.6	2.4 - 5.3	3,800	96.4	94.7 - 97.6	4,000

**PRAMS Health Indicator 3-Year Aggregate Report - No contraception at conception- thought she or partner was sterile- by State;County;DOH Race-Ethnicity;PRAMS Age Group;Infant Gender;Married;Poverty Level;Income (2000-2003);Income (2004-2011);Birthweight;Smoke 3rd Trimester;Smoke Before Pregnant;WIC During Pregnancy, for the Year(s) 2000-2002;2001-2003;2002-2004;2003-2005;2004-2006;2005-2007;2006-2008;2007-2009;2008-2010;2009-2011;2010-2012;2011-2013**

*Note: Weighted counts (#) represent 3-yr averages, rounded to the nearest hundred; n/r (Not Reportable) - If the unweighted total responses for a dimension (row) is <30 that row will not be shown*

**Years: 2010-2012**

WIC During Pregnancy	Yes			No			Weighted Total Responses (3-Yr Avg)
	#	%	C.I.(95%)	#	%	C.I.(95%)	#
<b>Yes</b>	100	4.4	2.9 - 6.6	2,800	95.6	93.4 - 97.1	2,900
<b>No</b>	100	5.4	3.5 - 8.2	2,300	94.6	91.8 - 96.5	2,400

**PRAMS Health Indicator 3-Year Aggregate Report - No contraception at conception- thought she or partner was sterile- by State;County;DOH Race-Ethnicity;PRAMS Age Group;Infant Gender;Married;Poverty Level;Income (2000-2003);Income (2004-2011);Birthweight;Smoke 3rd Trimester;Smoke Before Pregnant;WIC During Pregnancy, for the Year(s) 2000-2002;2001-2003;2002-2004;2003-2005;2004-2006;2005-2007;2006-2008;2007-2009;2008-2010;2009-2011;2010-2012;2011-2013**

*Note: Weighted counts (#) represent 3-yr averages, rounded to the nearest hundred; n/r (Not Reportable) - If the unweighted total responses for a dimension (row) is <30 that row will not be shown*

**Years: 2009-2011**

State	Yes			No			Weighted Total Responses (3-Yr Avg)
	#	%	C.I.(95%)	#	%	C.I.(95%)	#
<b>Totals</b>	200	4.2	3.1 - 5.6	5,200	95.8	94.4 - 96.9	5,500

County	Yes			No			Weighted Total Responses (3-Yr Avg)
	#	%	C.I.(95%)	#	%	C.I.(95%)	#
<b>Hawaii</b>	100	7.1	4.8 - 10.3	700	92.9	89.7 - 95.2	700
<b>Honolulu</b>	100	3.5	2.2 - 5.6	3,700	96.5	94.4 - 97.8	3,900
<b>Kauai</b>	<50	2.5	1.1 - 5.2	300	97.5	94.8 - 98.9	300
<b>Maui</b>	<50	6.0	4.0 - 8.9	600	94.0	91.1 - 96.0	600

**PRAMS Health Indicator 3-Year Aggregate Report - No contraception at conception- thought she or partner was sterile- by State;County;DOH Race-Ethnicity;PRAMS Age Group;Infant Gender;Married;Poverty Level;Income (2000-2003);Income (2004-2011);Birthweight;Smoke 3rd Trimester;Smoke Before Pregnant;WIC During Pregnancy, for the Year(s) 2000-2002;2001-2003;2002-2004;2003-2005;2004-2006;2005-2007;2006-2008;2007-2009;2008-2010;2009-2011;2010-2012;2011-2013**

*Note: Weighted counts (#) represent 3-yr averages, rounded to the nearest hundred; n/r (Not Reportable) - If the unweighted total responses for a dimension (row) is <30 that row will not be shown*

**Years: 2009-2011**

DOH Race-Ethnicity	Yes			No			Weighted Total Responses (3-Yr Avg)
	#	%	C.I.(95%)	#	%	C.I.(95%)	#
Caucasian	100	6.0	3.4 - 10.4	900	94.0	89.6 - 96.6	1,000
Native Hawaiian	100	4.3	2.6 - 7.1	1,900	95.7	92.9 - 97.4	2,000
Chinese	<50	1.3	0.4 - 4.7	200	98.7	95.3 - 99.6	200
Filipino	<50	2.8	1.1 - 6.8	1,000	97.2	93.2 - 98.9	1,000
Japanese	<50	2.5	1.0 - 5.7	400	97.5	94.3 - 99.0	400
Other	<50	5.0	2.5 - 9.8	800	95.0	90.2 - 97.5	900

PRAMS Age Group	Yes			No			Weighted Total Responses (3-Yr Avg)
	#	%	C.I.(95%)	#	%	C.I.(95%)	#
<20	<50	5.5	2.4 - 11.9	600	94.5	88.1 - 97.6	600
20-24	100	3.8	2.1 - 6.7	1,500	96.2	93.3 - 97.9	1,600
25-34	100	2.9	1.7 - 4.7	2,400	97.1	95.3 - 98.3	2,400
35+	100	7.7	4.2 - 13.5	800	92.3	86.5 - 95.8	900

**PRAMS Health Indicator 3-Year Aggregate Report - No contraception at conception- thought she or partner was sterile- by State;County;DOH Race-Ethnicity;PRAMS Age Group;Infant Gender;Married;Poverty Level;Income (2000-2003);Income (2004-2011);Birthweight;Smoke 3rd Trimester;Smoke Before Pregnant;WIC During Pregnancy, for the Year(s) 2000-2002;2001-2003;2002-2004;2003-2005;2004-2006;2005-2007;2006-2008;2007-2009;2008-2010;2009-2011;2010-2012;2011-2013**

*Note: Weighted counts (#) represent 3-yr averages, rounded to the nearest hundred; n/r (Not Reportable) - If the unweighted total responses for a dimension (row) is <30 that row will not be shown*

**Years: 2009-2011**

Infant Gender	Yes			No			Weighted Total Responses (3-Yr Avg)
	#	%	C.I.(95%)	#	%	C.I.(95%)	#
Male	100	5.1	3.4 - 7.7	2,600	94.9	92.3 - 96.6	2,700
Female	100	3.2	2.1 - 4.8	2,600	96.8	95.2 - 97.9	2,700

Married	Yes			No			Weighted Total Responses (3-Yr Avg)
	#	%	C.I.(95%)	#	%	C.I.(95%)	#
Yes	100	4.6	2.9 - 7.0	2,600	95.4	93.0 - 97.1	2,700
No	100	3.8	2.5 - 5.7	2,600	96.2	94.3 - 97.5	2,700

Poverty Level	Yes			No			Weighted Total Responses (3-Yr Avg)
	#	%	C.I.(95%)	#	%	C.I.(95%)	#
0-130%	100	4.0	2.6 - 6.2	2,500	96.0	93.8 - 97.4	2,600
131-185%	100	7.3	3.6 - 14.4	700	92.7	85.6 - 96.4	700
186+%	100	3.7	2.1 - 6.3	1,600	96.3	93.7 - 97.9	1,700



**PRAMS Health Indicator 3-Year Aggregate Report - No contraception at conception- thought she or partner was sterile- by State;County;DOH Race-Ethnicity;PRAMS Age Group;Infant Gender;Married;Poverty Level;Income (2000-2003);Income (2004-2011);Birthweight;Smoke 3rd Trimester;Smoke Before Pregnant;WIC During Pregnancy, for the Year(s) 2000-2002;2001-2003;2002-2004;2003-2005;2004-2006;2005-2007;2006-2008;2007-2009;2008-2010;2009-2011;2010-2012;2011-2013**

*Note: Weighted counts (#) represent 3-yr averages, rounded to the nearest hundred; n/r (Not Reportable) - If the unweighted total responses for a dimension (row) is <30 that row will not be shown*

**Years: 2009-2011**

Income (2004-2011)	Yes			No			Weighted Total Responses (3-Yr Avg)
	#	%	C.I.(95%)	#	%	C.I.(95%)	#
<\$10,000	100	5.3	3.0 - 9.0	1,300	94.7	91.0 - 97.0	1,300
\$10,000-\$24,999	<50	2.7	1.4 - 5.4	1,200	97.3	94.6 - 98.6	1,200
\$25,000-\$49,999	100	5.3	2.9 - 9.4	1,200	94.7	90.6 - 97.1	1,300
>=\$50,000	100	4.1	2.2 - 7.8	1,200	95.9	92.2 - 97.8	1,300

Birthweight	Yes			No			Weighted Total Responses (3-Yr Avg)
	#	%	C.I.(95%)	#	%	C.I.(95%)	#
Low birth weight	<50	5.3	3.2 - 8.6	400	94.7	91.4 - 96.8	400
Normal birth weight	200	4.1	3.0 - 5.7	4,900	95.9	94.3 - 97.0	5,100

Smoke 3rd Trimester	Yes			No			Weighted Total Responses (3-Yr Avg)
	#	%	C.I.(95%)	#	%	C.I.(95%)	#
Yes	<50	2.9	1.5 - 5.7	600	97.1	94.3 - 98.5	600
No	200	4.1	3.0 - 5.7	4,600	95.9	94.3 - 97.0	4,800

**PRAMS Health Indicator 3-Year Aggregate Report - No contraception at conception- thought she or partner was sterile- by State;County;DOH Race-Ethnicity;PRAMS Age Group;Infant Gender;Married;Poverty Level;Income (2000-2003);Income (2004-2011);Birthweight;Smoke 3rd Trimester;Smoke Before Pregnant;WIC During Pregnancy, for the Year(s) 2000-2002;2001-2003;2002-2004;2003-2005;2004-2006;2005-2007;2006-2008;2007-2009;2008-2010;2009-2011;2010-2012;2011-2013**

*Note: Weighted counts (#) represent 3-yr averages, rounded to the nearest hundred; n/r (Not Reportable) - If the unweighted total responses for a dimension (row) is <30 that row will not be shown*

**Years: 2009-2011**

Smoke Before Pregnant	Yes			No			Weighted Total Responses (3-Yr Avg)
	#	%	C.I.(95%)	#	%	C.I.(95%)	#
Yes	100	6.3	4.0 - 9.8	1,400	93.7	90.2 - 96.0	1,500
No	100	3.2	2.1 - 4.8	3,700	96.8	95.2 - 97.9	3,900

WIC During Pregnancy	Yes			No			Weighted Total Responses (3-Yr Avg)
	#	%	C.I.(95%)	#	%	C.I.(95%)	#
Yes	100	4.3	2.9 - 6.4	2,700	95.7	93.6 - 97.1	2,900
No	100	4.2	2.7 - 6.6	2,400	95.8	93.4 - 97.3	2,500

**PRAMS Health Indicator 3-Year Aggregate Report - No contraception at conception- thought she or partner was sterile- by State;County;DOH Race-Ethnicity;PRAMS Age Group;Infant Gender;Married;Poverty Level;Income (2000-2003);Income (2004-2011);Birthweight;Smoke 3rd Trimester;Smoke Before Pregnant;WIC During Pregnancy, for the Year(s) 2000-2002;2001-2003;2002-2004;2003-2005;2004-2006;2005-2007;2006-2008;2007-2009;2008-2010;2009-2011;2010-2012;2011-2013**

*Note: Weighted counts (#) represent 3-yr averages, rounded to the nearest hundred; n/r (Not Reportable) - If the unweighted total responses for a dimension (row) is <30 that row will not be shown*

**Years: 2008-2010**

State	Yes			No			Weighted Total Responses (3-Yr Avg)
	#	%	C.I.(95%)	#	%	C.I.(95%)	#
<b>Totals</b>	200	4.4	3.3 - 5.8	5,300	95.6	94.2 - 96.7	5,500

County	Yes			No			Weighted Total Responses (3-Yr Avg)
	#	%	C.I.(95%)	#	%	C.I.(95%)	#
<b>Hawaii</b>	<50	4.9	3.1 - 7.8	700	95.1	92.2 - 96.9	700
<b>Honolulu</b>	200	4.1	2.8 - 6.2	3,700	95.9	93.8 - 97.2	3,900
<b>Kauai</b>	<50	2.5	1.2 - 5.4	300	97.5	94.6 - 98.8	300
<b>Maui</b>	<50	5.8	3.5 - 9.4	600	94.2	90.6 - 96.5	600

**PRAMS Health Indicator 3-Year Aggregate Report - No contraception at conception- thought she or partner was sterile- by State;County;DOH Race-Ethnicity;PRAMS Age Group;Infant Gender;Married;Poverty Level;Income (2000-2003);Income (2004-2011);Birthweight;Smoke 3rd Trimester;Smoke Before Pregnant;WIC During Pregnancy, for the Year(s) 2000-2002;2001-2003;2002-2004;2003-2005;2004-2006;2005-2007;2006-2008;2007-2009;2008-2010;2009-2011;2010-2012;2011-2013**

*Note: Weighted counts (#) represent 3-yr averages, rounded to the nearest hundred; n/r (Not Reportable) - If the unweighted total responses for a dimension (row) is <30 that row will not be shown*

**Years: 2008-2010**

DOH Race-Ethnicity	Yes			No			Weighted Total Responses (3-Yr Avg)
	#	%	C.I.(95%)	#	%	C.I.(95%)	#
Caucasian	<50	4.8	2.6 - 8.7	900	95.2	91.3 - 97.4	1,000
Native Hawaiian	100	4.6	2.8 - 7.5	1,900	95.4	92.5 - 97.2	2,000
Chinese	<50	2.0	0.7 - 5.6	200	98.0	94.4 - 99.3	200
Filipino	<50	2.9	1.2 - 7.0	1,000	97.1	93.0 - 98.8	1,000
Japanese	<50	2.3	0.9 - 5.9	400	97.7	94.1 - 99.1	400
Other	100	6.2	3.4 - 11.1	900	93.8	88.9 - 96.6	900

PRAMS Age Group	Yes			No			Weighted Total Responses (3-Yr Avg)
	#	%	C.I.(95%)	#	%	C.I.(95%)	#
<20	<50	3.9	1.4 - 10.5	600	96.1	89.5 - 98.6	600
20-24	100	5.3	3.3 - 8.5	1,400	94.7	91.5 - 96.7	1,500
25-34	100	3.0	1.9 - 4.9	2,400	97.0	95.1 - 98.1	2,500
35+	100	6.9	3.6 - 12.7	800	93.1	87.3 - 96.4	900

**PRAMS Health Indicator 3-Year Aggregate Report - No contraception at conception- thought she or partner was sterile- by State;County;DOH Race-Ethnicity;PRAMS Age Group;Infant Gender;Married;Poverty Level;Income (2000-2003);Income (2004-2011);Birthweight;Smoke 3rd Trimester;Smoke Before Pregnant;WIC During Pregnancy, for the Year(s) 2000-2002;2001-2003;2002-2004;2003-2005;2004-2006;2005-2007;2006-2008;2007-2009;2008-2010;2009-2011;2010-2012;2011-2013**

*Note: Weighted counts (#) represent 3-yr averages, rounded to the nearest hundred; n/r (Not Reportable) - If the unweighted total responses for a dimension (row) is <30 that row will not be shown*

**Years: 2008-2010**

Infant Gender	Yes			No			Weighted Total Responses (3-Yr Avg)
	#	%	C.I.(95%)	#	%	C.I.(95%)	#
Male	200	5.3	3.6 - 7.8	2,700	94.7	92.2 - 96.4	2,900
Female	100	3.3	2.2 - 5.0	2,600	96.7	95.0 - 97.8	2,700

Married	Yes			No			Weighted Total Responses (3-Yr Avg)
	#	%	C.I.(95%)	#	%	C.I.(95%)	#
Yes	100	4.3	2.8 - 6.6	2,600	95.7	93.4 - 97.2	2,800
No	100	4.4	3.0 - 6.5	2,600	95.6	93.5 - 97.0	2,800

Poverty Level	Yes			No			Weighted Total Responses (3-Yr Avg)
	#	%	C.I.(95%)	#	%	C.I.(95%)	#
0-130%	100	4.3	2.9 - 6.5	2,600	95.7	93.5 - 97.1	2,700
131-185%	<50	6.1	2.7 - 12.8	700	93.9	87.2 - 97.3	700
186+%	100	4.1	2.5 - 6.8	1,600	95.9	93.2 - 97.5	1,700

**PRAMS Health Indicator 3-Year Aggregate Report - No contraception at conception- thought she or partner was sterile- by State;County;DOH Race-Ethnicity;PRAMS Age Group;Infant Gender;Married;Poverty Level;Income (2000-2003);Income (2004-2011);Birthweight;Smoke 3rd Trimester;Smoke Before Pregnant;WIC During Pregnancy, for the Year(s) 2000-2002;2001-2003;2002-2004;2003-2005;2004-2006;2005-2007;2006-2008;2007-2009;2008-2010;2009-2011;2010-2012;2011-2013**

*Note: Weighted counts (#) represent 3-yr averages, rounded to the nearest hundred; n/r (Not Reportable) - If the unweighted total responses for a dimension (row) is <30 that row will not be shown*

**Years: 2008-2010**

Income (2004-2011)	Yes			No			Weighted Total Responses (3-Yr Avg)
	#	%	C.I.(95%)	#	%	C.I.(95%)	#
<\$10,000	100	5.8	3.4 - 9.5	1,300	94.2	90.5 - 96.6	1,400
\$10,000-\$24,999	<50	3.3	1.8 - 6.1	1,200	96.7	93.9 - 98.2	1,200
\$25,000-\$49,999	100	5.3	3.0 - 9.3	1,200	94.7	90.7 - 97.0	1,300
>=\$50,000	<50	3.4	1.7 - 6.7	1,200	96.6	93.3 - 98.3	1,200

Birthweight	Yes			No			Weighted Total Responses (3-Yr Avg)
	#	%	C.I.(95%)	#	%	C.I.(95%)	#
Low birth weight	<50	4.4	2.3 - 8.2	400	95.6	91.8 - 97.7	400
Normal birth weight	200	4.4	3.2 - 5.9	4,900	95.6	94.1 - 96.8	5,200

Smoke 3rd Trimester	Yes			No			Weighted Total Responses (3-Yr Avg)
	#	%	C.I.(95%)	#	%	C.I.(95%)	#
Yes	<50	3.1	1.7 - 5.5	700	96.9	94.5 - 98.3	800
No	200	4.3	3.1 - 6.0	4,500	95.7	94.0 - 96.9	4,700

**PRAMS Health Indicator 3-Year Aggregate Report - No contraception at conception- thought she or partner was sterile- by State;County;DOH Race-Ethnicity;PRAMS Age Group;Infant Gender;Married;Poverty Level;Income (2000-2003);Income (2004-2011);Birthweight;Smoke 3rd Trimester;Smoke Before Pregnant;WIC During Pregnancy, for the Year(s) 2000-2002;2001-2003;2002-2004;2003-2005;2004-2006;2005-2007;2006-2008;2007-2009;2008-2010;2009-2011;2010-2012;2011-2013**

*Note: Weighted counts (#) represent 3-yr averages, rounded to the nearest hundred; n/r (Not Reportable) - If the unweighted total responses for a dimension (row) is <30 that row will not be shown*

**Years: 2008-2010**

Smoke Before Pregnant	Yes			No			Weighted Total Responses (3-Yr Avg)
	#	%	C.I.(95%)	#	%	C.I.(95%)	#
Yes	100	6.1	3.8 - 9.4	1,500	93.9	90.6 - 96.2	1,600
No	100	3.4	2.3 - 5.0	3,700	96.6	95.0 - 97.7	3,900

WIC During Pregnancy	Yes			No			Weighted Total Responses (3-Yr Avg)
	#	%	C.I.(95%)	#	%	C.I.(95%)	#
Yes	100	4.8	3.3 - 7.0	2,800	95.2	93.0 - 96.7	2,900
No	100	3.7	2.3 - 5.9	2,400	96.3	94.1 - 97.7	2,500

**PRAMS Health Indicator 3-Year Aggregate Report - No contraception at conception- thought she or partner was sterile- by State;County;DOH Race-Ethnicity;PRAMS Age Group;Infant Gender;Married;Poverty Level;Income (2000-2003);Income (2004-2011);Birthweight;Smoke 3rd Trimester;Smoke Before Pregnant;WIC During Pregnancy, for the Year(s) 2000-2002;2001-2003;2002-2004;2003-2005;2004-2006;2005-2007;2006-2008;2007-2009;2008-2010;2009-2011;2010-2012;2011-2013**

*Note: Weighted counts (#) represent 3-yr averages, rounded to the nearest hundred; n/r (Not Reportable) - If the unweighted total responses for a dimension (row) is <30 that row will not be shown*

**Years: 2007-2009**

State	Yes			No			Weighted Total Responses (3-Yr Avg)
	#	%	C.I.(95%)	#	%	C.I.(95%)	#
<b>Totals</b>	200	3.7	2.8 - 4.8	5,400	96.3	95.2 - 97.2	5,600

County	Yes			No			Weighted Total Responses (3-Yr Avg)
	#	%	C.I.(95%)	#	%	C.I.(95%)	#
<b>Hawaii</b>	<50	5.4	3.2 - 9.0	700	94.6	91.0 - 96.8	800
<b>Honolulu</b>	100	3.0	2.0 - 4.4	3,800	97.0	95.6 - 98.0	3,900
<b>Kauai</b>	<50	3.1	1.2 - 7.7	300	96.9	92.3 - 98.8	300
<b>Maui</b>	<50	6.5	3.7 - 10.9	600	93.5	89.1 - 96.3	700



**PRAMS Health Indicator 3-Year Aggregate Report - No contraception at conception- thought she or partner was sterile- by State;County;DOH Race-Ethnicity;PRAMS Age Group;Infant Gender;Married;Poverty Level;Income (2000-2003);Income (2004-2011);Birthweight;Smoke 3rd Trimester;Smoke Before Pregnant;WIC During Pregnancy, for the Year(s) 2000-2002;2001-2003;2002-2004;2003-2005;2004-2006;2005-2007;2006-2008;2007-2009;2008-2010;2009-2011;2010-2012;2011-2013**

*Note: Weighted counts (#) represent 3-yr averages, rounded to the nearest hundred; n/r (Not Reportable) - If the unweighted total responses for a dimension (row) is <30 that row will not be shown*

**Years: 2007-2009**

DOH Race-Ethnicity	Yes			No			Weighted Total Responses (3-Yr Avg)
	#	%	C.I.(95%)	#	%	C.I.(95%)	#
Caucasian	<50	5.4	3.3 - 8.8	900	94.6	91.2 - 96.7	900
Native Hawaiian	100	3.5	2.1 - 5.6	2,000	96.5	94.4 - 97.9	2,100
Chinese	<50	3.0	1.2 - 7.3	200	97.0	92.7 - 98.8	200
Filipino	<50	2.2	0.9 - 5.4	900	97.8	94.6 - 99.1	1,000
Japanese	<50	2.4	0.9 - 6.0	500	97.6	94.0 - 99.1	500
Other	<50	4.9	2.8 - 8.6	900	95.1	91.4 - 97.2	1,000

PRAMS Age Group	Yes			No			Weighted Total Responses (3-Yr Avg)
	#	%	C.I.(95%)	#	%	C.I.(95%)	#
<20	<50	3.4	1.6 - 7.0	700	96.6	93.0 - 98.4	800
20-24	100	4.3	2.7 - 6.8	1,500	95.7	93.2 - 97.3	1,600
25-34	100	3.1	2.0 - 4.9	2,400	96.9	95.1 - 98.0	2,500
35+	<50	4.5	2.3 - 8.5	800	95.5	91.5 - 97.7	800

**PRAMS Health Indicator 3-Year Aggregate Report - No contraception at conception- thought she or partner was sterile- by State;County;DOH Race-Ethnicity;PRAMS Age Group;Infant Gender;Married;Poverty Level;Income (2000-2003);Income (2004-2011);Birthweight;Smoke 3rd Trimester;Smoke Before Pregnant;WIC During Pregnancy, for the Year(s) 2000-2002;2001-2003;2002-2004;2003-2005;2004-2006;2005-2007;2006-2008;2007-2009;2008-2010;2009-2011;2010-2012;2011-2013**

*Note: Weighted counts (#) represent 3-yr averages, rounded to the nearest hundred; n/r (Not Reportable) - If the unweighted total responses for a dimension (row) is <30 that row will not be shown*

**Years: 2007-2009**

	Yes			No			Weighted Total Responses (3-Yr Avg)
	#	%	C.I.(95%)	#	%	C.I.(95%)	#
<b>Infant Gender</b>							
<b>Male</b>	100	3.5	2.4 - 5.2	2,900	96.5	94.8 - 97.6	3,000
<b>Female</b>	100	3.9	2.7 - 5.6	2,600	96.1	94.4 - 97.3	2,700

	Yes			No			Weighted Total Responses (3-Yr Avg)
	#	%	C.I.(95%)	#	%	C.I.(95%)	#
<b>Married</b>							
<b>Yes</b>	100	3.2	2.0 - 4.9	2,600	96.8	95.1 - 98.0	2,700
<b>No</b>	100	4.2	3.0 - 5.8	2,900	95.8	94.2 - 97.0	3,000

	Yes			No			Weighted Total Responses (3-Yr Avg)
	#	%	C.I.(95%)	#	%	C.I.(95%)	#
<b>Poverty Level</b>							
<b>0-130%</b>	100	3.5	2.4 - 5.0	2,800	96.5	95.0 - 97.6	2,900
<b>131-185%</b>	<50	5.2	2.3 - 11.0	700	94.8	89.0 - 97.7	800
<b>186+%</b>	100	3.5	2.2 - 5.4	1,600	96.5	94.6 - 97.8	1,600

**PRAMS Health Indicator 3-Year Aggregate Report - No contraception at conception- thought she or partner was sterile- by State;County;DOH Race-Ethnicity;PRAMS Age Group;Infant Gender;Married;Poverty Level;Income (2000-2003);Income (2004-2011);Birthweight;Smoke 3rd Trimester;Smoke Before Pregnant;WIC During Pregnancy, for the Year(s) 2000-2002;2001-2003;2002-2004;2003-2005;2004-2006;2005-2007;2006-2008;2007-2009;2008-2010;2009-2011;2010-2012;2011-2013**

*Note: Weighted counts (#) represent 3-yr averages, rounded to the nearest hundred; n/r (Not Reportable) - If the unweighted total responses for a dimension (row) is <30 that row will not be shown*

**Years: 2007-2009**

Income (2004-2011)	Yes			No			Weighted Total Responses (3-Yr Avg)
	#	%	C.I.(95%)	#	%	C.I.(95%)	#
<\$10,000	100	4.8	3.1 - 7.4	1,400	95.2	92.6 - 96.9	1,500
\$10,000-\$24,999	<50	3.3	2.0 - 5.4	1,300	96.7	94.6 - 98.0	1,400
\$25,000-\$49,999	100	4.4	2.3 - 8.1	1,200	95.6	91.9 - 97.7	1,200
>=\$50,000	<50	2.1	1.1 - 3.9	1,200	97.9	96.1 - 98.9	1,200

Birthweight	Yes			No			Weighted Total Responses (3-Yr Avg)
	#	%	C.I.(95%)	#	%	C.I.(95%)	#
Low birth weight	<50	4.2	2.2 - 7.9	400	95.8	92.1 - 97.8	400
Normal birth weight	200	3.7	2.8 - 4.9	5,000	96.3	95.1 - 97.2	5,200

Smoke 3rd Trimester	Yes			No			Weighted Total Responses (3-Yr Avg)
	#	%	C.I.(95%)	#	%	C.I.(95%)	#
Yes	<50	5.8	3.4 - 9.8	700	94.2	90.2 - 96.6	700
No	200	3.3	2.4 - 4.6	4,600	96.7	95.4 - 97.6	4,800

**PRAMS Health Indicator 3-Year Aggregate Report - No contraception at conception- thought she or partner was sterile- by State;County;DOH Race-Ethnicity;PRAMS Age Group;Infant Gender;Married;Poverty Level;Income (2000-2003);Income (2004-2011);Birthweight;Smoke 3rd Trimester;Smoke Before Pregnant;WIC During Pregnancy, for the Year(s) 2000-2002;2001-2003;2002-2004;2003-2005;2004-2006;2005-2007;2006-2008;2007-2009;2008-2010;2009-2011;2010-2012;2011-2013**

*Note: Weighted counts (#) represent 3-yr averages, rounded to the nearest hundred; n/r (Not Reportable) - If the unweighted total responses for a dimension (row) is <30 that row will not be shown*

**Years: 2007-2009**

Smoke Before Pregnant	Yes			No			Weighted Total Responses (3-Yr Avg)
	#	%	C.I.(95%)	#	%	C.I.(95%)	#
Yes	100	5.6	3.8 - 8.3	1,500	94.4	91.7 - 96.2	1,500
No	100	2.9	2.0 - 4.2	3,900	97.1	95.8 - 98.0	4,000

WIC During Pregnancy	Yes			No			Weighted Total Responses (3-Yr Avg)
	#	%	C.I.(95%)	#	%	C.I.(95%)	#
Yes	100	3.6	2.5 - 5.0	2,900	96.4	95.0 - 97.5	3,000
No	100	3.5	2.2 - 5.4	2,400	96.5	94.6 - 97.8	2,500

**PRAMS Health Indicator 3-Year Aggregate Report - No contraception at conception- thought she or partner was sterile- by State;County;DOH Race-Ethnicity;PRAMS Age Group;Infant Gender;Married;Poverty Level;Income (2000-2003);Income (2004-2011);Birthweight;Smoke 3rd Trimester;Smoke Before Pregnant;WIC During Pregnancy, for the Year(s) 2000-2002;2001-2003;2002-2004;2003-2005;2004-2006;2005-2007;2006-2008;2007-2009;2008-2010;2009-2011;2010-2012;2011-2013**

*Note: Weighted counts (#) represent 3-yr averages, rounded to the nearest hundred; n/r (Not Reportable) - If the unweighted total responses for a dimension (row) is <30 that row will not be shown*

**Years: 2006-2008**

State	Yes			No			Weighted Total Responses (3-Yr Avg)
	#	%	C.I.(95%)	#	%	C.I.(95%)	#
<b>Totals</b>	300	4.7	3.7 - 5.9	5,200	95.3	94.1 - 96.3	5,500

County	Yes			No			Weighted Total Responses (3-Yr Avg)
	#	%	C.I.(95%)	#	%	C.I.(95%)	#
<b>Hawaii</b>	<50	6.7	3.7 - 11.7	600	93.3	88.3 - 96.3	700
<b>Honolulu</b>	200	4.2	3.1 - 5.7	3,700	95.8	94.3 - 96.9	3,800
<b>Kauai</b>	<50	2.6	0.7 - 9.2	300	97.4	90.8 - 99.3	300
<b>Maui</b>	<50	6.5	3.5 - 11.8	600	93.5	88.2 - 96.5	700

**PRAMS Health Indicator 3-Year Aggregate Report - No contraception at conception- thought she or partner was sterile- by State;County;DOH Race-Ethnicity;PRAMS Age Group;Infant Gender;Married;Poverty Level;Income (2000-2003);Income (2004-2011);Birthweight;Smoke 3rd Trimester;Smoke Before Pregnant;WIC During Pregnancy, for the Year(s) 2000-2002;2001-2003;2002-2004;2003-2005;2004-2006;2005-2007;2006-2008;2007-2009;2008-2010;2009-2011;2010-2012;2011-2013**

*Note: Weighted counts (#) represent 3-yr averages, rounded to the nearest hundred; n/r (Not Reportable) - If the unweighted total responses for a dimension (row) is <30 that row will not be shown*

**Years: 2006-2008**

DOH Race-Ethnicity	Yes			No			Weighted Total Responses (3-Yr Avg)
	#	%	C.I.(95%)	#	%	C.I.(95%)	#
Caucasian	100	6.8	4.3 - 10.6	900	93.2	89.4 - 95.7	1,000
Native Hawaiian	100	4.4	2.8 - 6.8	1,800	95.6	93.2 - 97.2	1,900
Chinese	<50	2.3	0.7 - 7.3	100	97.7	92.7 - 99.3	<50
Filipino	<50	0.7	0.2 - 2.5	900	99.3	97.5 - 99.8	900
Japanese	<50	6.6	3.4 - 12.5	500	93.4	87.5 - 96.6	500
Other	100	6.2	3.8 - 9.8	1,000	93.8	90.2 - 96.2	1,100

PRAMS Age Group	Yes			No			Weighted Total Responses (3-Yr Avg)
	#	%	C.I.(95%)	#	%	C.I.(95%)	#
<20	<50	4.0	1.7 - 9.0	600	96.0	91.0 - 98.3	700
20-24	100	5.5	3.7 - 8.3	1,500	94.5	91.7 - 96.3	1,600
25-34	100	4.3	2.9 - 6.2	2,400	95.7	93.8 - 97.1	2,500
35+	<50	4.9	2.7 - 8.6	700	95.1	91.4 - 97.3	700

**PRAMS Health Indicator 3-Year Aggregate Report - No contraception at conception- thought she or partner was sterile- by State;County;DOH Race-Ethnicity;PRAMS Age Group;Infant Gender;Married;Poverty Level;Income (2000-2003);Income (2004-2011);Birthweight;Smoke 3rd Trimester;Smoke Before Pregnant;WIC During Pregnancy, for the Year(s) 2000-2002;2001-2003;2002-2004;2003-2005;2004-2006;2005-2007;2006-2008;2007-2009;2008-2010;2009-2011;2010-2012;2011-2013**

*Note: Weighted counts (#) represent 3-yr averages, rounded to the nearest hundred; n/r (Not Reportable) - If the unweighted total responses for a dimension (row) is <30 that row will not be shown*

**Years: 2006-2008**

	Yes			No			Weighted Total Responses (3-Yr Avg)
	#	%	C.I.(95%)	#	%	C.I.(95%)	#
<b>Infant Gender</b>							
<b>Male</b>	100	4.5	3.2 - 6.3	2,700	95.5	93.7 - 96.8	2,800
<b>Female</b>	100	4.8	3.4 - 6.8	2,500	95.2	93.2 - 96.6	2,700

	Yes			No			Weighted Total Responses (3-Yr Avg)
	#	%	C.I.(95%)	#	%	C.I.(95%)	#
<b>Married</b>							
<b>Yes</b>	100	3.1	2.0 - 4.6	2,600	96.9	95.4 - 98.0	2,700
<b>No</b>	200	6.2	4.6 - 8.3	2,600	93.8	91.7 - 95.4	2,800

	Yes			No			Weighted Total Responses (3-Yr Avg)
	#	%	C.I.(95%)	#	%	C.I.(95%)	#
<b>Poverty Level</b>							
<b>0-130%</b>	100	5.3	3.8 - 7.2	2,600	94.7	92.8 - 96.2	2,800
<b>131-185%</b>	<50	2.7	1.2 - 6.1	700	97.3	93.9 - 98.8	700
<b>186+%</b>	100	4.3	2.7 - 6.7	1,600	95.7	93.3 - 97.3	1,700

**PRAMS Health Indicator 3-Year Aggregate Report - No contraception at conception- thought she or partner was sterile- by State;County;DOH Race-Ethnicity;PRAMS Age Group;Infant Gender;Married;Poverty Level;Income (2000-2003);Income (2004-2011);Birthweight;Smoke 3rd Trimester;Smoke Before Pregnant;WIC During Pregnancy, for the Year(s) 2000-2002;2001-2003;2002-2004;2003-2005;2004-2006;2005-2007;2006-2008;2007-2009;2008-2010;2009-2011;2010-2012;2011-2013**

*Note: Weighted counts (#) represent 3-yr averages, rounded to the nearest hundred; n/r (Not Reportable) - If the unweighted total responses for a dimension (row) is <30 that row will not be shown*

**Years: 2006-2008**

Income (2004-2011)	Yes			No			Weighted Total Responses (3-Yr Avg)
	#	%	C.I.(95%)	#	%	C.I.(95%)	#
<\$10,000	100	6.9	4.7 - 10.1	1,300	93.1	89.9 - 95.3	1,400
\$10,000-\$24,999	100	4.8	3.0 - 7.6	1,300	95.2	92.4 - 97.0	1,400
\$25,000-\$49,999	<50	3.1	1.6 - 5.9	1,100	96.9	94.1 - 98.4	1,100
>=\$50,000	<50	2.8	1.5 - 5.5	1,100	97.2	94.5 - 98.5	1,200

Birthweight	Yes			No			Weighted Total Responses (3-Yr Avg)
	#	%	C.I.(95%)	#	%	C.I.(95%)	#
Low birth weight	<50	4.9	2.1 - 11.0	400	95.1	89.0 - 97.9	400
Normal birth weight	200	4.7	3.6 - 6.0	4,800	95.3	94.0 - 96.4	5,000

Smoke 3rd Trimester	Yes			No			Weighted Total Responses (3-Yr Avg)
	#	%	C.I.(95%)	#	%	C.I.(95%)	#
Yes	100	8.9	5.4 - 14.2	700	91.1	85.8 - 94.6	700
No	200	4.0	3.0 - 5.3	4,500	96.0	94.7 - 97.0	4,700



**PRAMS Health Indicator 3-Year Aggregate Report - No contraception at conception- thought she or partner was sterile- by State;County;DOH Race-Ethnicity;PRAMS Age Group;Infant Gender;Married;Poverty Level;Income (2000-2003);Income (2004-2011);Birthweight;Smoke 3rd Trimester;Smoke Before Pregnant;WIC During Pregnancy, for the Year(s) 2000-2002;2001-2003;2002-2004;2003-2005;2004-2006;2005-2007;2006-2008;2007-2009;2008-2010;2009-2011;2010-2012;2011-2013**

*Note: Weighted counts (#) represent 3-yr averages, rounded to the nearest hundred; n/r (Not Reportable) - If the unweighted total responses for a dimension (row) is <30 that row will not be shown*

**Years: 2006-2008**

Smoke Before Pregnant	Yes			No			Weighted Total Responses (3-Yr Avg)
	#	%	C.I.(95%)	#	%	C.I.(95%)	#
Yes	100	9.0	6.4 - 12.5	1,300	91.0	87.5 - 93.6	1,500
No	100	3.0	2.1 - 4.3	3,800	97.0	95.7 - 97.9	3,900

WIC During Pregnancy	Yes			No			Weighted Total Responses (3-Yr Avg)
	#	%	C.I.(95%)	#	%	C.I.(95%)	#
Yes	200	5.3	3.9 - 7.2	2,800	94.7	92.8 - 96.1	3,000
No	100	3.5	2.3 - 5.3	2,300	96.5	94.7 - 97.7	2,400

**PRAMS Health Indicator 3-Year Aggregate Report - No contraception at conception- thought she or partner was sterile- by State;County;DOH Race-Ethnicity;PRAMS Age Group;Infant Gender;Married;Poverty Level;Income (2000-2003);Income (2004-2011);Birthweight;Smoke 3rd Trimester;Smoke Before Pregnant;WIC During Pregnancy, for the Year(s) 2000-2002;2001-2003;2002-2004;2003-2005;2004-2006;2005-2007;2006-2008;2007-2009;2008-2010;2009-2011;2010-2012;2011-2013**

*Note: Weighted counts (#) represent 3-yr averages, rounded to the nearest hundred; n/r (Not Reportable) - If the unweighted total responses for a dimension (row) is <30 that row will not be shown*

**Years: 2005-2007**

State	Yes			No			Weighted Total Responses (3-Yr Avg)
	#	%	C.I.(95%)	#	%	C.I.(95%)	#
<b>Totals</b>	300	5.0	4.0 - 6.2	5,200	95.0	93.8 - 96.0	5,500

County	Yes			No			Weighted Total Responses (3-Yr Avg)
	#	%	C.I.(95%)	#	%	C.I.(95%)	#
<b>Hawaii</b>	100	7.5	4.4 - 12.5	700	92.5	87.5 - 95.6	700
<b>Honolulu</b>	200	4.6	3.5 - 6.0	3,800	95.4	94.0 - 96.5	3,900
<b>Kauai</b>	<50	2.6	0.7 - 9.4	300	97.4	90.6 - 99.3	300
<b>Maui</b>	<50	5.8	2.8 - 11.4	500	94.2	88.6 - 97.2	600

**PRAMS Health Indicator 3-Year Aggregate Report - No contraception at conception- thought she or partner was sterile- by State;County;DOH Race-Ethnicity;PRAMS Age Group;Infant Gender;Married;Poverty Level;Income (2000-2003);Income (2004-2011);Birthweight;Smoke 3rd Trimester;Smoke Before Pregnant;WIC During Pregnancy, for the Year(s) 2000-2002;2001-2003;2002-2004;2003-2005;2004-2006;2005-2007;2006-2008;2007-2009;2008-2010;2009-2011;2010-2012;2011-2013**

*Note: Weighted counts (#) represent 3-yr averages, rounded to the nearest hundred; n/r (Not Reportable) - If the unweighted total responses for a dimension (row) is <30 that row will not be shown*

**Years: 2005-2007**

DOH Race-Ethnicity	Yes			No			Weighted Total Responses (3-Yr Avg)
	#	%	C.I.(95%)	#	%	C.I.(95%)	#
Caucasian	100	6.9	4.3 - 10.8	900	93.1	89.2 - 95.7	900
Native Hawaiian	100	4.4	2.8 - 6.8	1,800	95.6	93.2 - 97.2	1,900
Chinese	<50	2.0	0.6 - 6.4	100	98.0	93.6 - 99.4	<50
Filipino	<50	2.4	1.2 - 4.8	900	97.6	95.2 - 98.8	900
Japanese	<50	8.9	5.2 - 14.8	500	91.1	85.2 - 94.8	500
Other	100	5.0	3.0 - 8.2	1,000	95.0	91.8 - 97.0	1,100

PRAMS Age Group	Yes			No			Weighted Total Responses (3-Yr Avg)
	#	%	C.I.(95%)	#	%	C.I.(95%)	#
<20	<50	6.0	3.3 - 10.7	700	94.0	89.3 - 96.7	800
20-24	100	4.0	2.5 - 6.3	1,600	96.0	93.7 - 97.5	1,700
25-34	100	5.1	3.6 - 7.2	2,300	94.9	92.8 - 96.4	2,400
35+	<50	5.8	3.3 - 9.9	600	94.2	90.1 - 96.7	700

**PRAMS Health Indicator 3-Year Aggregate Report - No contraception at conception- thought she or partner was sterile- by State;County;DOH Race-Ethnicity;PRAMS Age Group;Infant Gender;Married;Poverty Level;Income (2000-2003);Income (2004-2011);Birthweight;Smoke 3rd Trimester;Smoke Before Pregnant;WIC During Pregnancy, for the Year(s) 2000-2002;2001-2003;2002-2004;2003-2005;2004-2006;2005-2007;2006-2008;2007-2009;2008-2010;2009-2011;2010-2012;2011-2013**

*Note: Weighted counts (#) represent 3-yr averages, rounded to the nearest hundred; n/r (Not Reportable) - If the unweighted total responses for a dimension (row) is <30 that row will not be shown*

**Years: 2005-2007**

	Yes			No			Weighted Total Responses (3-Yr Avg)
	#	%	C.I.(95%)	#	%	C.I.(95%)	#
<b>Infant Gender</b>							
<b>Male</b>	100	4.7	3.4 - 6.5	2,600	95.3	93.5 - 96.6	2,800
<b>Female</b>	100	5.3	3.8 - 7.2	2,600	94.7	92.8 - 96.2	2,700

	Yes			No			Weighted Total Responses (3-Yr Avg)
	#	%	C.I.(95%)	#	%	C.I.(95%)	#
<b>Married</b>							
<b>Yes</b>	100	3.3	2.2 - 4.9	2,500	96.7	95.1 - 97.8	2,600
<b>No</b>	200	6.5	4.9 - 8.5	2,800	93.5	91.5 - 95.1	3,000

	Yes			No			Weighted Total Responses (3-Yr Avg)
	#	%	C.I.(95%)	#	%	C.I.(95%)	#
<b>Poverty Level</b>							
<b>0-130%</b>	200	5.7	4.2 - 7.7	2,600	94.3	92.3 - 95.8	2,700
<b>131-185%</b>	<50	3.8	1.9 - 7.6	600	96.2	92.4 - 98.1	700
<b>186+%</b>	100	4.5	2.9 - 6.9	1,500	95.5	93.1 - 97.1	1,600

**PRAMS Health Indicator 3-Year Aggregate Report - No contraception at conception- thought she or partner was sterile- by State;County;DOH Race-Ethnicity;PRAMS Age Group;Infant Gender;Married;Poverty Level;Income (2000-2003);Income (2004-2011);Birthweight;Smoke 3rd Trimester;Smoke Before Pregnant;WIC During Pregnancy, for the Year(s) 2000-2002;2001-2003;2002-2004;2003-2005;2004-2006;2005-2007;2006-2008;2007-2009;2008-2010;2009-2011;2010-2012;2011-2013**

*Note: Weighted counts (#) represent 3-yr averages, rounded to the nearest hundred; n/r (Not Reportable) - If the unweighted total responses for a dimension (row) is <30 that row will not be shown*

**Years: 2005-2007**

Income (2004-2011)	Yes			No			Weighted Total Responses (3-Yr Avg)
	#	%	C.I.(95%)	#	%	C.I.(95%)	#
<\$10,000	100	6.7	4.5 - 9.8	1,400	93.3	90.2 - 95.5	1,500
\$10,000-\$24,999	100	5.6	3.7 - 8.4	1,300	94.4	91.6 - 96.3	1,400
\$25,000-\$49,999	<50	3.6	2.0 - 6.4	1,100	96.4	93.6 - 98.0	1,200
>=\$50,000	<50	3.6	1.9 - 6.5	1,000	96.4	93.5 - 98.1	1,100

Birthweight	Yes			No			Weighted Total Responses (3-Yr Avg)
	#	%	C.I.(95%)	#	%	C.I.(95%)	#
Low birth weight	<50	5.6	2.7 - 11.4	400	94.4	88.6 - 97.3	500
Normal birth weight	200	4.9	3.9 - 6.2	4,800	95.1	93.8 - 96.1	5,100

Smoke 3rd Trimester	Yes			No			Weighted Total Responses (3-Yr Avg)
	#	%	C.I.(95%)	#	%	C.I.(95%)	#
Yes	100	9.4	5.8 - 14.7	700	90.6	85.3 - 94.2	700
No	200	4.4	3.4 - 5.7	4,500	95.6	94.3 - 96.6	4,700

**PRAMS Health Indicator 3-Year Aggregate Report - No contraception at conception- thought she or partner was sterile- by State;County;DOH Race-Ethnicity;PRAMS Age Group;Infant Gender;Married;Poverty Level;Income (2000-2003);Income (2004-2011);Birthweight;Smoke 3rd Trimester;Smoke Before Pregnant;WIC During Pregnancy, for the Year(s) 2000-2002;2001-2003;2002-2004;2003-2005;2004-2006;2005-2007;2006-2008;2007-2009;2008-2010;2009-2011;2010-2012;2011-2013**

*Note: Weighted counts (#) represent 3-yr averages, rounded to the nearest hundred; n/r (Not Reportable) - If the unweighted total responses for a dimension (row) is <30 that row will not be shown*

**Years: 2005-2007**

Smoke Before Pregnant	Yes			No			Weighted Total Responses (3-Yr Avg)
	#	%	C.I.(95%)	#	%	C.I.(95%)	#
<b>Yes</b>	100	8.7	6.3 - 11.9	1,500	91.3	88.1 - 93.7	1,600
<b>No</b>	100	3.5	2.6 - 4.9	3,600	96.5	95.1 - 97.4	3,800

WIC During Pregnancy	Yes			No			Weighted Total Responses (3-Yr Avg)
	#	%	C.I.(95%)	#	%	C.I.(95%)	#
<b>Yes</b>	200	5.9	4.4 - 7.8	2,800	94.1	92.2 - 95.6	3,000
<b>No</b>	100	3.8	2.5 - 5.6	2,300	96.2	94.4 - 97.5	2,400

**PRAMS Health Indicator 3-Year Aggregate Report - No contraception at conception- thought she or partner was sterile- by State;County;DOH Race-Ethnicity;PRAMS Age Group;Infant Gender;Married;Poverty Level;Income (2000-2003);Income (2004-2011);Birthweight;Smoke 3rd Trimester;Smoke Before Pregnant;WIC During Pregnancy, for the Year(s) 2000-2002;2001-2003;2002-2004;2003-2005;2004-2006;2005-2007;2006-2008;2007-2009;2008-2010;2009-2011;2010-2012;2011-2013**

*Note: Weighted counts (#) represent 3-yr averages, rounded to the nearest hundred; n/r (Not Reportable) - If the unweighted total responses for a dimension (row) is <30 that row will not be shown*

**Years: 2004-2006**

State	Yes			No			Weighted Total Responses (3-Yr Avg)
	#	%	C.I.(95%)	#	%	C.I.(95%)	#
<b>Totals</b>	300	5.0	4.0 - 6.3	5,000	95.0	93.7 - 96.0	5,200

County	Yes			No			Weighted Total Responses (3-Yr Avg)
	#	%	C.I.(95%)	#	%	C.I.(95%)	#
<b>Hawaii</b>	<50	6.9	4.0 - 11.8	600	93.1	88.2 - 96.0	700
<b>Honolulu</b>	200	4.9	3.8 - 6.4	3,600	95.1	93.6 - 96.2	3,800
<b>Kauai</b>	<50	2.8	0.7 - 9.9	300	97.2	90.1 - 99.3	300
<b>Maui</b>	<50	4.5	2.0 - 9.5	500	95.5	90.5 - 98.0	500

**PRAMS Health Indicator 3-Year Aggregate Report - No contraception at conception- thought she or partner was sterile- by State;County;DOH Race-Ethnicity;PRAMS Age Group;Infant Gender;Married;Poverty Level;Income (2000-2003);Income (2004-2011);Birthweight;Smoke 3rd Trimester;Smoke Before Pregnant;WIC During Pregnancy, for the Year(s) 2000-2002;2001-2003;2002-2004;2003-2005;2004-2006;2005-2007;2006-2008;2007-2009;2008-2010;2009-2011;2010-2012;2011-2013**

*Note: Weighted counts (#) represent 3-yr averages, rounded to the nearest hundred; n/r (Not Reportable) - If the unweighted total responses for a dimension (row) is <30 that row will not be shown*

**Years: 2004-2006**

DOH Race-Ethnicity	Yes			No			Weighted Total Responses (3-Yr Avg)
	#	%	C.I.(95%)	#	%	C.I.(95%)	#
Caucasian	<50	5.8	3.5 - 9.6	800	94.2	90.4 - 96.5	800
Native Hawaiian	100	4.7	3.0 - 7.1	1,700	95.3	92.9 - 97.0	1,800
Chinese	<50	1.0	0.2 - 5.0	100	99.0	95.0 - 99.8	<50
Filipino	<50	2.6	1.4 - 4.9	900	97.4	95.1 - 98.6	900
Japanese	<50	9.1	5.3 - 15.2	500	90.9	84.8 - 94.7	500
Other	100	5.7	3.5 - 9.2	1,000	94.3	90.8 - 96.5	1,000

PRAMS Age Group	Yes			No			Weighted Total Responses (3-Yr Avg)
	#	%	C.I.(95%)	#	%	C.I.(95%)	#
<20	<50	6.1	3.3 - 10.8	600	93.9	89.2 - 96.7	700
20-24	100	4.4	2.8 - 6.8	1,600	95.6	93.2 - 97.2	1,700
25-34	100	5.4	3.8 - 7.6	2,100	94.6	92.4 - 96.2	2,200
35+	<50	4.5	2.6 - 7.9	700	95.5	92.1 - 97.4	700



**PRAMS Health Indicator 3-Year Aggregate Report - No contraception at conception- thought she or partner was sterile- by State;County;DOH Race-Ethnicity;PRAMS Age Group;Infant Gender;Married;Poverty Level;Income (2000-2003);Income (2004-2011);Birthweight;Smoke 3rd Trimester;Smoke Before Pregnant;WIC During Pregnancy, for the Year(s) 2000-2002;2001-2003;2002-2004;2003-2005;2004-2006;2005-2007;2006-2008;2007-2009;2008-2010;2009-2011;2010-2012;2011-2013**

*Note: Weighted counts (#) represent 3-yr averages, rounded to the nearest hundred; n/r (Not Reportable) - If the unweighted total responses for a dimension (row) is <30 that row will not be shown*

**Years: 2004-2006**

	Yes			No			Weighted Total Responses (3-Yr Avg)
	#	%	C.I.(95%)	#	%	C.I.(95%)	#
<b>Infant Gender</b>							
<b>Male</b>	100	4.9	3.6 - 6.8	2,600	95.1	93.2 - 96.4	2,700
<b>Female</b>	100	5.1	3.7 - 7.1	2,400	94.9	92.9 - 96.3	2,600

	Yes			No			Weighted Total Responses (3-Yr Avg)
	#	%	C.I.(95%)	#	%	C.I.(95%)	#
<b>Married</b>							
<b>Yes</b>	100	4.3	3.1 - 6.0	2,500	95.7	94.0 - 96.9	2,600
<b>No</b>	200	5.7	4.2 - 7.7	2,500	94.3	92.3 - 95.8	2,600

	Yes			No			Weighted Total Responses (3-Yr Avg)
	#	%	C.I.(95%)	#	%	C.I.(95%)	#
<b>Poverty Level</b>							
<b>0-130%</b>	200	6.0	4.5 - 8.1	2,400	94.0	91.9 - 95.5	2,500
<b>131-185%</b>	<50	3.6	1.7 - 7.7	600	96.4	92.3 - 98.3	600
<b>186+%</b>	100	4.8	3.2 - 7.2	1,500	95.2	92.8 - 96.8	1,600

**PRAMS Health Indicator 3-Year Aggregate Report - No contraception at conception- thought she or partner was sterile- by State;County;DOH Race-Ethnicity;PRAMS Age Group;Infant Gender;Married;Poverty Level;Income (2000-2003);Income (2004-2011);Birthweight;Smoke 3rd Trimester;Smoke Before Pregnant;WIC During Pregnancy, for the Year(s) 2000-2002;2001-2003;2002-2004;2003-2005;2004-2006;2005-2007;2006-2008;2007-2009;2008-2010;2009-2011;2010-2012;2011-2013**

*Note: Weighted counts (#) represent 3-yr averages, rounded to the nearest hundred; n/r (Not Reportable) - If the unweighted total responses for a dimension (row) is <30 that row will not be shown*

**Years: 2004-2006**

Income (2004-2011)	Yes			No			Weighted Total Responses (3-Yr Avg)
	#	%	C.I.(95%)	#	%	C.I.(95%)	#
<\$10,000	100	6.6	4.5 - 9.8	1,300	93.4	90.2 - 95.5	1,300
\$10,000-\$24,999	100	5.4	3.5 - 8.2	1,300	94.6	91.8 - 96.5	1,400
\$25,000-\$49,999	<50	4.1	2.4 - 7.0	1,100	95.9	93.0 - 97.6	1,100
>=\$50,000	<50	4.4	2.5 - 7.6	900	95.6	92.4 - 97.5	900

Birthweight	Yes			No			Weighted Total Responses (3-Yr Avg)
	#	%	C.I.(95%)	#	%	C.I.(95%)	#
Low birth weight	<50	6.0	2.7 - 12.9	400	94.0	87.1 - 97.3	400
Normal birth weight	200	5.0	3.9 - 6.3	4,600	95.0	93.7 - 96.1	4,900

Smoke 3rd Trimester	Yes			No			Weighted Total Responses (3-Yr Avg)
	#	%	C.I.(95%)	#	%	C.I.(95%)	#
Yes	100	7.0	4.1 - 11.8	700	93.0	88.2 - 95.9	800
No	200	4.8	3.7 - 6.2	4,200	95.2	93.8 - 96.3	4,400

**PRAMS Health Indicator 3-Year Aggregate Report - No contraception at conception- thought she or partner was sterile- by State;County;DOH Race-Ethnicity;PRAMS Age Group;Infant Gender;Married;Poverty Level;Income (2000-2003);Income (2004-2011);Birthweight;Smoke 3rd Trimester;Smoke Before Pregnant;WIC During Pregnancy, for the Year(s) 2000-2002;2001-2003;2002-2004;2003-2005;2004-2006;2005-2007;2006-2008;2007-2009;2008-2010;2009-2011;2010-2012;2011-2013**

*Note: Weighted counts (#) represent 3-yr averages, rounded to the nearest hundred; n/r (Not Reportable) - If the unweighted total responses for a dimension (row) is <30 that row will not be shown*

**Years: 2004-2006**

Smoke Before Pregnant	Yes			No			Weighted Total Responses (3-Yr Avg)
	#	%	C.I.(95%)	#	%	C.I.(95%)	#
Yes	100	8.2	5.9 - 11.3	1,500	91.8	88.7 - 94.1	1,600
No	100	3.8	2.8 - 5.1	3,400	96.2	94.9 - 97.2	3,500

WIC During Pregnancy	Yes			No			Weighted Total Responses (3-Yr Avg)
	#	%	C.I.(95%)	#	%	C.I.(95%)	#
Yes	200	6.5	5.0 - 8.5	2,700	93.5	91.5 - 95.0	2,800
No	100	3.4	2.2 - 5.2	2,200	96.6	94.8 - 97.8	2,200

**PRAMS Health Indicator 3-Year Aggregate Report - No contraception at conception- thought she or partner was sterile- by State;County;DOH Race-Ethnicity;PRAMS Age Group;Infant Gender;Married;Poverty Level;Income (2000-2003);Income (2004-2011);Birthweight;Smoke 3rd Trimester;Smoke Before Pregnant;WIC During Pregnancy, for the Year(s) 2000-2002;2001-2003;2002-2004;2003-2005;2004-2006;2005-2007;2006-2008;2007-2009;2008-2010;2009-2011;2010-2012;2011-2013**

*Note: Weighted counts (#) represent 3-yr averages, rounded to the nearest hundred; n/r (Not Reportable) - If the unweighted total responses for a dimension (row) is <30 that row will not be shown*

**Years: 2003-2005**

State	Yes			No			Weighted Total Responses (3-Yr Avg)
	#	%	C.I.(95%)	#	%	C.I.(95%)	#
<b>Totals</b>	200	4.0	3.1 - 5.2	5,200	96.0	94.8 - 96.9	5,400

County	Yes			No			Weighted Total Responses (3-Yr Avg)
	#	%	C.I.(95%)	#	%	C.I.(95%)	#
<b>Hawaii</b>	<50	4.0	2.2 - 7.2	700	96.0	92.8 - 97.8	700
<b>Honolulu</b>	200	4.3	3.2 - 5.8	3,700	95.7	94.2 - 96.8	3,900
<b>Kauai</b>	<50	2.1	0.6 - 6.7	300	97.9	93.3 - 99.4	300
<b>Maui</b>	<50	3.1	1.5 - 6.2	500	96.9	93.8 - 98.5	500

**PRAMS Health Indicator 3-Year Aggregate Report - No contraception at conception- thought she or partner was sterile- by State;County;DOH Race-Ethnicity;PRAMS Age Group;Infant Gender;Married;Poverty Level;Income (2000-2003);Income (2004-2011);Birthweight;Smoke 3rd Trimester;Smoke Before Pregnant;WIC During Pregnancy, for the Year(s) 2000-2002;2001-2003;2002-2004;2003-2005;2004-2006;2005-2007;2006-2008;2007-2009;2008-2010;2009-2011;2010-2012;2011-2013**

*Note: Weighted counts (#) represent 3-yr averages, rounded to the nearest hundred; n/r (Not Reportable) - If the unweighted total responses for a dimension (row) is <30 that row will not be shown*

**Years: 2003-2005**

DOH Race-Ethnicity	Yes			No			Weighted Total Responses (3-Yr Avg)
	#	%	C.I.(95%)	#	%	C.I.(95%)	#
Caucasian	<50	3.7	1.8 - 7.2	800	96.3	92.8 - 98.2	800
Native Hawaiian	100	3.6	2.4 - 5.4	1,800	96.4	94.6 - 97.6	1,900
Chinese	<50	0.8	0.1 - 4.0	200	99.2	96.0 - 99.9	200
Filipino	<50	3.7	2.0 - 6.7	1,100	96.3	93.3 - 98.0	1,100
Japanese	<50	6.9	3.6 - 13.0	400	93.1	87.0 - 96.4	500
Other	<50	4.7	2.5 - 8.5	900	95.3	91.5 - 97.5	900

PRAMS Age Group	Yes			No			Weighted Total Responses (3-Yr Avg)
	#	%	C.I.(95%)	#	%	C.I.(95%)	#
<20	100	7.2	4.2 - 12.0	700	92.8	88.0 - 95.8	800
20-24	<50	2.9	1.7 - 4.7	1,600	97.1	95.3 - 98.3	1,700
25-34	100	3.6	2.4 - 5.3	2,100	96.4	94.7 - 97.6	2,200
35+	<50	5.0	2.6 - 9.2	700	95.0	90.8 - 97.4	700

**PRAMS Health Indicator 3-Year Aggregate Report - No contraception at conception- thought she or partner was sterile- by State;County;DOH Race-Ethnicity;PRAMS Age Group;Infant Gender;Married;Poverty Level;Income (2000-2003);Income (2004-2011);Birthweight;Smoke 3rd Trimester;Smoke Before Pregnant;WIC During Pregnancy, for the Year(s) 2000-2002;2001-2003;2002-2004;2003-2005;2004-2006;2005-2007;2006-2008;2007-2009;2008-2010;2009-2011;2010-2012;2011-2013**

*Note: Weighted counts (#) represent 3-yr averages, rounded to the nearest hundred; n/r (Not Reportable) - If the unweighted total responses for a dimension (row) is <30 that row will not be shown*

**Years: 2003-2005**

Infant Gender	Yes			No			Weighted Total Responses (3-Yr Avg)
	#	%	C.I.(95%)	#	%	C.I.(95%)	#
Male	100	3.7	2.6 - 5.2	2,800	96.3	94.8 - 97.4	2,900
Female	100	4.5	3.1 - 6.4	2,300	95.5	93.6 - 96.9	2,400

Married	Yes			No			Weighted Total Responses (3-Yr Avg)
	#	%	C.I.(95%)	#	%	C.I.(95%)	#
Yes	100	3.5	2.4 - 5.2	2,600	96.5	94.8 - 97.6	2,700
No	100	4.5	3.3 - 6.3	2,600	95.5	93.7 - 96.7	2,700

Poverty Level	Yes			No			Weighted Total Responses (3-Yr Avg)
	#	%	C.I.(95%)	#	%	C.I.(95%)	#
0-130%	100	4.6	3.3 - 6.4	2,700	95.4	93.6 - 96.7	2,800
131-185%	<50	3.0	1.4 - 6.1	600	97.0	93.9 - 98.6	600
186+%	100	4.5	2.7 - 7.3	1,300	95.5	92.7 - 97.3	1,400

**PRAMS Health Indicator 3-Year Aggregate Report - No contraception at conception- thought she or partner was sterile- by State;County;DOH Race-Ethnicity;PRAMS Age Group;Infant Gender;Married;Poverty Level;Income (2000-2003);Income (2004-2011);Birthweight;Smoke 3rd Trimester;Smoke Before Pregnant;WIC During Pregnancy, for the Year(s) 2000-2002;2001-2003;2002-2004;2003-2005;2004-2006;2005-2007;2006-2008;2007-2009;2008-2010;2009-2011;2010-2012;2011-2013**

*Note: Weighted counts (#) represent 3-yr averages, rounded to the nearest hundred; n/r (Not Reportable) - If the unweighted total responses for a dimension (row) is <30 that row will not be shown*

**Years: 2003-2005**

Birthweight	Yes			No			Weighted Total Responses (3-Yr Avg)
	#	%	C.I.(95%)	#	%	C.I.(95%)	#
Low birth weight	<50	3.1	1.2 - 7.3	400	96.9	92.7 - 98.8	400
Normal birth weight	200	4.1	3.2 - 5.3	4,800	95.9	94.7 - 96.8	5,000

Smoke 3rd Trimester	Yes			No			Weighted Total Responses (3-Yr Avg)
	#	%	C.I.(95%)	#	%	C.I.(95%)	#
Yes	<50	4.2	2.2 - 8.0	700	95.8	92.0 - 97.8	800
No	200	4.1	3.1 - 5.3	4,300	95.9	94.7 - 96.9	4,500

Smoke Before Pregnant	Yes			No			Weighted Total Responses (3-Yr Avg)
	#	%	C.I.(95%)	#	%	C.I.(95%)	#
Yes	100	5.1	3.4 - 7.6	1,500	94.9	92.4 - 96.6	1,600
No	100	3.7	2.7 - 5.1	3,500	96.3	94.9 - 97.3	3,600

**PRAMS Health Indicator 3-Year Aggregate Report - No contraception at conception- thought she or partner was sterile- by State;County;DOH Race-Ethnicity;PRAMS Age Group;Infant Gender;Married;Poverty Level;Income (2000-2003);Income (2004-2011);Birthweight;Smoke 3rd Trimester;Smoke Before Pregnant;WIC During Pregnancy, for the Year(s) 2000-2002;2001-2003;2002-2004;2003-2005;2004-2006;2005-2007;2006-2008;2007-2009;2008-2010;2009-2011;2010-2012;2011-2013**

*Note: Weighted counts (#) represent 3-yr averages, rounded to the nearest hundred; n/r (Not Reportable) - If the unweighted total responses for a dimension (row) is <30 that row will not be shown*

**Years: 2003-2005**

WIC During Pregnancy	Yes			No			Weighted Total Responses (3-Yr Avg)
	#	%	C.I.(95%)	#	%	C.I.(95%)	#
<b>Yes</b>	100	5.0	3.7 - 6.7	2,800	95.0	93.3 - 96.3	2,900
<b>No</b>	100	3.1	1.9 - 4.8	2,300	96.9	95.2 - 98.1	2,300



**PRAMS Health Indicator 3-Year Aggregate Report - No contraception at conception- thought she or partner was sterile- by State;County;DOH Race-Ethnicity;PRAMS Age Group;Infant Gender;Married;Poverty Level;Income (2000-2003);Income (2004-2011);Birthweight;Smoke 3rd Trimester;Smoke Before Pregnant;WIC During Pregnancy, for the Year(s) 2000-2002;2001-2003;2002-2004;2003-2005;2004-2006;2005-2007;2006-2008;2007-2009;2008-2010;2009-2011;2010-2012;2011-2013**

*Note: Weighted counts (#) represent 3-yr averages, rounded to the nearest hundred; n/r (Not Reportable) - If the unweighted total responses for a dimension (row) is <30 that row will not be shown*

**Years: 2002-2004**

State	Yes			No			Weighted Total Responses (3-Yr Avg)
	#	%	C.I.(95%)	#	%	C.I.(95%)	#
<b>Totals</b>	200	4.0	3.0 - 5.2	5,300	96.0	94.8 - 97.0	5,500

County	Yes			No			Weighted Total Responses (3-Yr Avg)
	#	%	C.I.(95%)	#	%	C.I.(95%)	#
<b>Hawaii</b>	<50	3.8	2.2 - 6.7	700	96.2	93.3 - 97.8	700
<b>Honolulu</b>	200	4.2	3.0 - 5.9	3,700	95.8	94.1 - 97.0	3,900
<b>Kauai</b>	<50	2.2	0.7 - 6.8	200	97.8	93.2 - 99.3	300
<b>Maui</b>	<50	3.2	1.8 - 5.8	600	96.8	94.2 - 98.2	600

**PRAMS Health Indicator 3-Year Aggregate Report - No contraception at conception- thought she or partner was sterile- by State;County;DOH Race-Ethnicity;PRAMS Age Group;Infant Gender;Married;Poverty Level;Income (2000-2003);Income (2004-2011);Birthweight;Smoke 3rd Trimester;Smoke Before Pregnant;WIC During Pregnancy, for the Year(s) 2000-2002;2001-2003;2002-2004;2003-2005;2004-2006;2005-2007;2006-2008;2007-2009;2008-2010;2009-2011;2010-2012;2011-2013**

*Note: Weighted counts (#) represent 3-yr averages, rounded to the nearest hundred; n/r (Not Reportable) - If the unweighted total responses for a dimension (row) is <30 that row will not be shown*

**Years: 2002-2004**

DOH Race-Ethnicity	Yes			No			Weighted Total Responses (3-Yr Avg)
	#	%	C.I.(95%)	#	%	C.I.(95%)	#
Caucasian	<50	3.9	2.0 - 7.7	900	96.1	92.3 - 98.0	900
Native Hawaiian	100	3.6	2.5 - 5.0	1,800	96.4	95.0 - 97.5	1,900
Chinese	<50	9.3	2.9 - 25.8	200	90.7	74.2 - 97.1	200
Filipino	<50	3.0	1.4 - 6.2	1,100	97.0	93.8 - 98.6	1,100
Japanese	<50	4.9	1.9 - 11.9	400	95.1	88.1 - 98.1	500
Other	<50	4.6	2.3 - 9.0	900	95.4	91.0 - 97.7	900

PRAMS Age Group	Yes			No			Weighted Total Responses (3-Yr Avg)
	#	%	C.I.(95%)	#	%	C.I.(95%)	#
<20	100	6.6	3.8 - 11.3	700	93.4	88.7 - 96.2	800
20-24	100	3.8	2.4 - 6.0	1,700	96.2	94.0 - 97.6	1,700
25-34	<50	2.1	1.2 - 3.7	2,100	97.9	96.3 - 98.8	2,200
35+	100	6.8	3.9 - 11.7	700	93.2	88.3 - 96.1	800

**PRAMS Health Indicator 3-Year Aggregate Report - No contraception at conception- thought she or partner was sterile- by State;County;DOH Race-Ethnicity;PRAMS Age Group;Infant Gender;Married;Poverty Level;Income (2000-2003);Income (2004-2011);Birthweight;Smoke 3rd Trimester;Smoke Before Pregnant;WIC During Pregnancy, for the Year(s) 2000-2002;2001-2003;2002-2004;2003-2005;2004-2006;2005-2007;2006-2008;2007-2009;2008-2010;2009-2011;2010-2012;2011-2013**

*Note: Weighted counts (#) represent 3-yr averages, rounded to the nearest hundred; n/r (Not Reportable) - If the unweighted total responses for a dimension (row) is <30 that row will not be shown*

**Years: 2002-2004**

Infant Gender	Yes			No			Weighted Total Responses (3-Yr Avg)
	#	%	C.I.(95%)	#	%	C.I.(95%)	#
Male	100	3.7	2.5 - 5.3	2,800	96.3	94.7 - 97.5	2,900
Female	100	4.3	3.0 - 6.2	2,500	95.7	93.8 - 97.0	2,600

Married	Yes			No			Weighted Total Responses (3-Yr Avg)
	#	%	C.I.(95%)	#	%	C.I.(95%)	#
Yes	100	3.7	2.5 - 5.4	2,800	96.3	94.6 - 97.5	2,900
No	100	4.3	2.9 - 6.2	2,400	95.7	93.8 - 97.1	2,500

Poverty Level	Yes			No			Weighted Total Responses (3-Yr Avg)
	#	%	C.I.(95%)	#	%	C.I.(95%)	#
0-130%	100	4.6	3.3 - 6.4	2,700	95.4	93.6 - 96.7	2,800
131-185%	<50	2.3	0.9 - 5.5	800	97.7	94.5 - 99.1	800
186+%	100	5.1	3.0 - 8.6	1,200	94.9	91.4 - 97.0	1,200

**PRAMS Health Indicator 3-Year Aggregate Report - No contraception at conception- thought she or partner was sterile- by State;County;DOH Race-Ethnicity;PRAMS Age Group;Infant Gender;Married;Poverty Level;Income (2000-2003);Income (2004-2011);Birthweight;Smoke 3rd Trimester;Smoke Before Pregnant;WIC During Pregnancy, for the Year(s) 2000-2002;2001-2003;2002-2004;2003-2005;2004-2006;2005-2007;2006-2008;2007-2009;2008-2010;2009-2011;2010-2012;2011-2013**

*Note: Weighted counts (#) represent 3-yr averages, rounded to the nearest hundred; n/r (Not Reportable) - If the unweighted total responses for a dimension (row) is <30 that row will not be shown*

**Years: 2002-2004**

Birthweight	Yes			No			Weighted Total Responses (3-Yr Avg)
	#	%	C.I.(95%)	#	%	C.I.(95%)	#
Low birth weight	<50	5.8	2.5 - 13.2	400	94.2	86.8 - 97.5	400
Normal birth weight	200	3.8	2.9 - 5.1	4,900	96.2	94.9 - 97.1	5,100

Smoke 3rd Trimester	Yes			No			Weighted Total Responses (3-Yr Avg)
	#	%	C.I.(95%)	#	%	C.I.(95%)	#
Yes	<50	3.5	1.7 - 7.0	700	96.5	93.0 - 98.3	800
No	200	4.1	3.1 - 5.4	4,400	95.9	94.6 - 96.9	4,600

Smoke Before Pregnant	Yes			No			Weighted Total Responses (3-Yr Avg)
	#	%	C.I.(95%)	#	%	C.I.(95%)	#
Yes	100	4.6	3.0 - 7.0	1,500	95.4	93.0 - 97.0	1,600
No	100	3.8	2.6 - 5.3	3,600	96.2	94.7 - 97.4	3,700

**PRAMS Health Indicator 3-Year Aggregate Report - No contraception at conception- thought she or partner was sterile- by State;County;DOH Race-Ethnicity;PRAMS Age Group;Infant Gender;Married;Poverty Level;Income (2000-2003);Income (2004-2011);Birthweight;Smoke 3rd Trimester;Smoke Before Pregnant;WIC During Pregnancy, for the Year(s) 2000-2002;2001-2003;2002-2004;2003-2005;2004-2006;2005-2007;2006-2008;2007-2009;2008-2010;2009-2011;2010-2012;2011-2013**

*Note: Weighted counts (#) represent 3-yr averages, rounded to the nearest hundred; n/r (Not Reportable) - If the unweighted total responses for a dimension (row) is <30 that row will not be shown*

**Years: 2002-2004**

WIC During Pregnancy	Yes			No			Weighted Total Responses (3-Yr Avg)
	#	%	C.I.(95%)	#	%	C.I.(95%)	#
<b>Yes</b>	100	4.2	3.0 - 5.8	2,800	95.8	94.2 - 97.0	2,900
<b>No</b>	100	3.8	2.5 - 5.8	2,400	96.2	94.2 - 97.5	2,500

**PRAMS Health Indicator 3-Year Aggregate Report - No contraception at conception- thought she or partner was sterile- by State;County;DOH Race-Ethnicity;PRAMS Age Group;Infant Gender;Married;Poverty Level;Income (2000-2003);Income (2004-2011);Birthweight;Smoke 3rd Trimester;Smoke Before Pregnant;WIC During Pregnancy, for the Year(s) 2000-2002;2001-2003;2002-2004;2003-2005;2004-2006;2005-2007;2006-2008;2007-2009;2008-2010;2009-2011;2010-2012;2011-2013**

*Note: Weighted counts (#) represent 3-yr averages, rounded to the nearest hundred; n/r (Not Reportable) - If the unweighted total responses for a dimension (row) is <30 that row will not be shown*

**Years: 2001-2003**

State	Yes			No			Weighted Total Responses (3-Yr Avg)
	#	%	C.I.(95%)	#	%	C.I.(95%)	#
<b>Totals</b>	200	4.4	3.4 - 5.6	5,400	95.6	94.4 - 96.6	5,600

County	Yes			No			Weighted Total Responses (3-Yr Avg)
	#	%	C.I.(95%)	#	%	C.I.(95%)	#
<b>Hawaii</b>	<50	3.8	2.4 - 6.1	700	96.2	93.9 - 97.6	700
<b>Honolulu</b>	200	4.7	3.5 - 6.4	3,800	95.3	93.6 - 96.5	4,000
<b>Kauai</b>	<50	3.6	1.8 - 7.1	300	96.4	92.9 - 98.2	300
<b>Maui</b>	<50	3.2	2.0 - 5.2	600	96.8	94.8 - 98.0	600

**PRAMS Health Indicator 3-Year Aggregate Report - No contraception at conception- thought she or partner was sterile- by State;County;DOH Race-Ethnicity;PRAMS Age Group;Infant Gender;Married;Poverty Level;Income (2000-2003);Income (2004-2011);Birthweight;Smoke 3rd Trimester;Smoke Before Pregnant;WIC During Pregnancy, for the Year(s) 2000-2002;2001-2003;2002-2004;2003-2005;2004-2006;2005-2007;2006-2008;2007-2009;2008-2010;2009-2011;2010-2012;2011-2013**

*Note: Weighted counts (#) represent 3-yr averages, rounded to the nearest hundred; n/r (Not Reportable) - If the unweighted total responses for a dimension (row) is <30 that row will not be shown*

**Years: 2001-2003**

DOH Race-Ethnicity	Yes			No			Weighted Total Responses (3-Yr Avg)
	#	%	C.I.(95%)	#	%	C.I.(95%)	#
Caucasian	<50	3.4	1.6 - 7.0	900	96.6	93.0 - 98.4	900
Native Hawaiian	100	3.8	3.0 - 4.9	1,900	96.2	95.1 - 97.0	2,000
Chinese	<50	8.8	2.7 - 24.9	200	91.2	75.1 - 97.3	200
Filipino	100	4.4	2.4 - 7.7	1,200	95.6	92.3 - 97.6	1,200
Japanese	<50	3.9	1.3 - 10.9	500	96.1	89.1 - 98.7	500
Other	100	6.1	3.3 - 11.0	800	93.9	89.0 - 96.7	900

PRAMS Age Group	Yes			No			Weighted Total Responses (3-Yr Avg)
	#	%	C.I.(95%)	#	%	C.I.(95%)	#
<20	100	6.8	4.2 - 10.9	800	93.2	89.1 - 95.8	900
20-24	100	3.7	2.3 - 6.0	1,700	96.3	94.0 - 97.7	1,700
25-34	100	2.8	1.8 - 4.4	2,200	97.2	95.6 - 98.2	2,300
35+	100	8.0	4.7 - 13.3	700	92.0	86.7 - 95.3	700

**PRAMS Health Indicator 3-Year Aggregate Report - No contraception at conception- thought she or partner was sterile- by State;County;DOH Race-Ethnicity;PRAMS Age Group;Infant Gender;Married;Poverty Level;Income (2000-2003);Income (2004-2011);Birthweight;Smoke 3rd Trimester;Smoke Before Pregnant;WIC During Pregnancy, for the Year(s) 2000-2002;2001-2003;2002-2004;2003-2005;2004-2006;2005-2007;2006-2008;2007-2009;2008-2010;2009-2011;2010-2012;2011-2013**

*Note: Weighted counts (#) represent 3-yr averages, rounded to the nearest hundred; n/r (Not Reportable) - If the unweighted total responses for a dimension (row) is <30 that row will not be shown*

**Years: 2001-2003**

Infant Gender	Yes			No			Weighted Total Responses (3-Yr Avg)
	#	%	C.I.(95%)	#	%	C.I.(95%)	#
Male	100	4.3	3.1 - 6.0	2,800	95.7	94.0 - 96.9	2,900
Female	100	4.5	3.2 - 6.4	2,600	95.5	93.6 - 96.8	2,700

Married	Yes			No			Weighted Total Responses (3-Yr Avg)
	#	%	C.I.(95%)	#	%	C.I.(95%)	#
Yes	100	3.4	2.3 - 5.0	2,900	96.6	95.0 - 97.7	3,000
No	100	5.5	4.1 - 7.5	2,500	94.5	92.5 - 95.9	2,700

Poverty Level	Yes			No			Weighted Total Responses (3-Yr Avg)
	#	%	C.I.(95%)	#	%	C.I.(95%)	#
0-130%	100	4.8	3.5 - 6.6	2,700	95.2	93.4 - 96.5	2,900
131-185%	<50	4.1	2.5 - 6.8	900	95.9	93.2 - 97.5	1,000
186+%	100	5.1	2.8 - 9.0	1,100	94.9	91.0 - 97.2	1,100



**PRAMS Health Indicator 3-Year Aggregate Report - No contraception at conception- thought she or partner was sterile- by State;County;DOH Race-Ethnicity;PRAMS Age Group;Infant Gender;Married;Poverty Level;Income (2000-2003);Income (2004-2011);Birthweight;Smoke 3rd Trimester;Smoke Before Pregnant;WIC During Pregnancy, for the Year(s) 2000-2002;2001-2003;2002-2004;2003-2005;2004-2006;2005-2007;2006-2008;2007-2009;2008-2010;2009-2011;2010-2012;2011-2013**

*Note: Weighted counts (#) represent 3-yr averages, rounded to the nearest hundred; n/r (Not Reportable) - If the unweighted total responses for a dimension (row) is <30 that row will not be shown*

**Years: 2001-2003**

Income (2000-2003)	Yes			No			Weighted Total Responses (3-Yr Avg)
	#	%	C.I.(95%)	#	%	C.I.(95%)	#
<=\$15,000	100	3.9	2.6 - 5.7	1,700	96.1	94.3 - 97.4	1,800
\$15,001-\$25,000	100	6.6	3.9 - 10.9	700	93.4	89.1 - 96.1	800
\$25,001-\$40,000	100	4.8	2.7 - 8.3	1,100	95.2	91.7 - 97.3	1,200
>=\$40,001	100	4.5	2.7 - 7.5	1,400	95.5	92.5 - 97.3	1,400

Birthweight	Yes			No			Weighted Total Responses (3-Yr Avg)
	#	%	C.I.(95%)	#	%	C.I.(95%)	#
Low birth weight	<50	5.7	2.5 - 12.2	400	94.3	87.8 - 97.5	400
Normal birth weight	200	4.3	3.3 - 5.5	5,000	95.7	94.5 - 96.7	5,200

Smoke 3rd Trimester	Yes			No			Weighted Total Responses (3-Yr Avg)
	#	%	C.I.(95%)	#	%	C.I.(95%)	#
Yes	<50	5.5	3.3 - 9.1	800	94.5	90.9 - 96.7	800
No	200	4.2	3.2 - 5.5	4,500	95.8	94.5 - 96.8	4,700

**PRAMS Health Indicator 3-Year Aggregate Report - No contraception at conception- thought she or partner was sterile- by State;County;DOH Race-Ethnicity;PRAMS Age Group;Infant Gender;Married;Poverty Level;Income (2000-2003);Income (2004-2011);Birthweight;Smoke 3rd Trimester;Smoke Before Pregnant;WIC During Pregnancy, for the Year(s) 2000-2002;2001-2003;2002-2004;2003-2005;2004-2006;2005-2007;2006-2008;2007-2009;2008-2010;2009-2011;2010-2012;2011-2013**

*Note: Weighted counts (#) represent 3-yr averages, rounded to the nearest hundred; n/r (Not Reportable) - If the unweighted total responses for a dimension (row) is <30 that row will not be shown*

**Years: 2001-2003**

Smoke Before Pregnant	Yes			No			Weighted Total Responses (3-Yr Avg)
	#	%	C.I.(95%)	#	%	C.I.(95%)	#
Yes	100	5.1	3.5 - 7.5	1,500	94.9	92.5 - 96.5	1,600
No	200	4.0	2.8 - 5.5	3,700	96.0	94.5 - 97.2	3,800

WIC During Pregnancy	Yes			No			Weighted Total Responses (3-Yr Avg)
	#	%	C.I.(95%)	#	%	C.I.(95%)	#
Yes	100	3.8	2.7 - 5.4	2,800	96.2	94.6 - 97.3	2,900
No	100	5.1	3.6 - 7.1	2,500	94.9	92.9 - 96.4	2,700

**PRAMS Health Indicator 3-Year Aggregate Report - No contraception at conception- thought she or partner was sterile- by State;County;DOH Race-Ethnicity;PRAMS Age Group;Infant Gender;Married;Poverty Level;Income (2000-2003);Income (2004-2011);Birthweight;Smoke 3rd Trimester;Smoke Before Pregnant;WIC During Pregnancy, for the Year(s) 2000-2002;2001-2003;2002-2004;2003-2005;2004-2006;2005-2007;2006-2008;2007-2009;2008-2010;2009-2011;2010-2012;2011-2013**

*Note: Weighted counts (#) represent 3-yr averages, rounded to the nearest hundred; n/r (Not Reportable) - If the unweighted total responses for a dimension (row) is <30 that row will not be shown*

**Years: 2000-2002**

State	Yes			No			Weighted Total Responses (3-Yr Avg)
	#	%	C.I.(95%)	#	%	C.I.(95%)	#
<b>Totals</b>	300	4.5	3.6 - 5.6	5,300	95.5	94.4 - 96.4	5,600

County	Yes			No			Weighted Total Responses (3-Yr Avg)
	#	%	C.I.(95%)	#	%	C.I.(95%)	#
<b>Hawaii</b>	<50	4.2	2.7 - 6.4	700	95.8	93.6 - 97.3	700
<b>Honolulu</b>	200	4.7	3.5 - 6.2	3,800	95.3	93.8 - 96.5	4,000
<b>Kauai</b>	<50	4.6	2.3 - 9.1	200	95.4	90.9 - 97.7	300
<b>Maui</b>	<50	3.6	2.2 - 5.8	600	96.4	94.2 - 97.8	600

**PRAMS Health Indicator 3-Year Aggregate Report - No contraception at conception- thought she or partner was sterile- by State;County;DOH Race-Ethnicity;PRAMS Age Group;Infant Gender;Married;Poverty Level;Income (2000-2003);Income (2004-2011);Birthweight;Smoke 3rd Trimester;Smoke Before Pregnant;WIC During Pregnancy, for the Year(s) 2000-2002;2001-2003;2002-2004;2003-2005;2004-2006;2005-2007;2006-2008;2007-2009;2008-2010;2009-2011;2010-2012;2011-2013**

*Note: Weighted counts (#) represent 3-yr averages, rounded to the nearest hundred; n/r (Not Reportable) - If the unweighted total responses for a dimension (row) is <30 that row will not be shown*

**Years: 2000-2002**

DOH Race-Ethnicity	Yes			No			Weighted Total Responses (3-Yr Avg)
	#	%	C.I.(95%)	#	%	C.I.(95%)	#
Caucasian	100	5.7	3.5 - 9.2	900	94.3	90.8 - 96.5	900
Native Hawaiian	100	3.9	3.1 - 5.0	1,800	96.1	95.0 - 96.9	1,900
Chinese	<50	11.5	3.6 - 31.0	100	88.5	69.0 - 96.4	<50
Filipino	<50	3.2	1.7 - 5.9	1,200	96.8	94.1 - 98.3	1,200
Japanese	<50	4.0	1.7 - 9.4	500	96.0	90.6 - 98.3	500
Other	<50	5.5	2.9 - 9.9	800	94.5	90.1 - 97.1	900

PRAMS Age Group	Yes			No			Weighted Total Responses (3-Yr Avg)
	#	%	C.I.(95%)	#	%	C.I.(95%)	#
<20	100	6.1	4.0 - 9.2	900	93.9	90.8 - 96.0	900
20-24	100	4.5	3.0 - 6.7	1,600	95.5	93.3 - 97.0	1,700
25-34	100	3.2	2.1 - 4.8	2,100	96.8	95.2 - 97.9	2,200
35+	<50	6.5	3.7 - 11.2	700	93.5	88.8 - 96.3	700

**PRAMS Health Indicator 3-Year Aggregate Report - No contraception at conception- thought she or partner was sterile- by State;County;DOH Race-Ethnicity;PRAMS Age Group;Infant Gender;Married;Poverty Level;Income (2000-2003);Income (2004-2011);Birthweight;Smoke 3rd Trimester;Smoke Before Pregnant;WIC During Pregnancy, for the Year(s) 2000-2002;2001-2003;2002-2004;2003-2005;2004-2006;2005-2007;2006-2008;2007-2009;2008-2010;2009-2011;2010-2012;2011-2013**

*Note: Weighted counts (#) represent 3-yr averages, rounded to the nearest hundred; n/r (Not Reportable) - If the unweighted total responses for a dimension (row) is <30 that row will not be shown*

**Years: 2000-2002**

	Yes			No			Weighted Total Responses (3-Yr Avg)
	#	%	C.I.(95%)	#	%	C.I.(95%)	#
<b>Infant Gender</b>							
<b>Male</b>	100	4.8	3.5 - 6.5	2,700	95.2	93.5 - 96.5	2,900
<b>Female</b>	100	4.2	3.0 - 5.7	2,600	95.8	94.3 - 97.0	2,700

	Yes			No			Weighted Total Responses (3-Yr Avg)
	#	%	C.I.(95%)	#	%	C.I.(95%)	#
<b>Married</b>							
<b>Yes</b>	100	3.6	2.5 - 5.0	2,900	96.4	95.0 - 97.5	3,000
<b>No</b>	100	5.6	4.2 - 7.4	2,400	94.4	92.6 - 95.8	2,500

	Yes			No			Weighted Total Responses (3-Yr Avg)
	#	%	C.I.(95%)	#	%	C.I.(95%)	#
<b>Poverty Level</b>							
<b>0-130%</b>	100	4.5	3.3 - 6.0	2,700	95.5	94.0 - 96.7	2,900
<b>131-185%</b>	<50	4.4	2.6 - 7.1	900	95.6	92.9 - 97.4	900
<b>186+%</b>	100	5.6	3.4 - 9.1	1,100	94.4	90.9 - 96.6	1,200

**PRAMS Health Indicator 3-Year Aggregate Report - No contraception at conception- thought she or partner was sterile- by State;County;DOH Race-Ethnicity;PRAMS Age Group;Infant Gender;Married;Poverty Level;Income (2000-2003);Income (2004-2011);Birthweight;Smoke 3rd Trimester;Smoke Before Pregnant;WIC During Pregnancy, for the Year(s) 2000-2002;2001-2003;2002-2004;2003-2005;2004-2006;2005-2007;2006-2008;2007-2009;2008-2010;2009-2011;2010-2012;2011-2013**

*Note: Weighted counts (#) represent 3-yr averages, rounded to the nearest hundred; n/r (Not Reportable) - If the unweighted total responses for a dimension (row) is <30 that row will not be shown*

**Years: 2000-2002**

Income (2000-2003)	Yes			No			Weighted Total Responses (3-Yr Avg)
	#	%	C.I.(95%)	#	%	C.I.(95%)	#
<=\$15,000	100	3.8	2.5 - 5.6	1,700	96.2	94.4 - 97.5	1,700
\$15,001-\$25,000	100	6.5	4.2 - 9.9	800	93.5	90.1 - 95.8	900
\$25,001-\$40,000	<50	3.8	2.2 - 6.6	1,100	96.2	93.4 - 97.8	1,100
>=\$40,001	100	5.0	3.1 - 8.0	1,300	95.0	92.0 - 96.9	1,400

Birthweight	Yes			No			Weighted Total Responses (3-Yr Avg)
	#	%	C.I.(95%)	#	%	C.I.(95%)	#
Low birth weight	<50	6.8	3.4 - 13.2	400	93.2	86.8 - 96.6	400
Normal birth weight	200	4.3	3.4 - 5.5	4,900	95.7	94.5 - 96.6	5,100

Smoke 3rd Trimester	Yes			No			Weighted Total Responses (3-Yr Avg)
	#	%	C.I.(95%)	#	%	C.I.(95%)	#
Yes	<50	5.5	3.4 - 8.6	700	94.5	91.4 - 96.6	700
No	200	4.4	3.4 - 5.6	4,500	95.6	94.4 - 96.6	4,700

**PRAMS Health Indicator 3-Year Aggregate Report - No contraception at conception- thought she or partner was sterile- by State;County;DOH Race-Ethnicity;PRAMS Age Group;Infant Gender;Married;Poverty Level;Income (2000-2003);Income (2004-2011);Birthweight;Smoke 3rd Trimester;Smoke Before Pregnant;WIC During Pregnancy, for the Year(s) 2000-2002;2001-2003;2002-2004;2003-2005;2004-2006;2005-2007;2006-2008;2007-2009;2008-2010;2009-2011;2010-2012;2011-2013**

*Note: Weighted counts (#) represent 3-yr averages, rounded to the nearest hundred; n/r (Not Reportable) - If the unweighted total responses for a dimension (row) is <30 that row will not be shown*

**Years: 2000-2002**

Smoke Before Pregnant	Yes			No			Weighted Total Responses (3-Yr Avg)
	#	%	C.I.(95%)	#	%	C.I.(95%)	#
Yes	100	6.1	4.4 - 8.3	1,400	93.9	91.7 - 95.6	1,500
No	100	3.7	2.7 - 5.1	3,600	96.3	94.9 - 97.3	3,800

WIC During Pregnancy	Yes			No			Weighted Total Responses (3-Yr Avg)
	#	%	C.I.(95%)	#	%	C.I.(95%)	#
Yes	100	4.0	3.0 - 5.4	2,700	96.0	94.6 - 97.0	2,900
No	100	5.1	3.7 - 7.0	2,500	94.9	93.0 - 96.3	2,700