

PRAMS Health Indicator 5-Year Aggregate Report - Illicit drug use in pregnancy- for the State of Hawaii, for the Year(s) 2000-2004;2001-2005;2002-2006;2003-2007;2004-2008;2005-2009;2006-2010;2007-2011

PRAMS Health Indicator 5-Year Aggregate Report - Illicit drug use in pregnancy- by State;County;DOH Race-Ethnicity;PRAMS Age Group;Infant Gender;Married;Poverty Level;Income (2004-2011);Birthweight;Smoke 3rd Trimester;Smoke Before Pregnant;WIC During Pregnancy, for the Year(s) 2000-2004;2001-2005;2002-2006;2003-2007;2004-2008;2005-2009;2006-2010;2007-2011

Note: Weighted counts (#) represent 5-yr averages, rounded to the nearest hundred; n/r (Not Reportable) - If the unweighted total responses for a dimension (row) is <30 that row will not be shown

The trend analysis section shows the trend for the selected health variable over selected years in a table and a graph. 5-Year Weighted Total Responses: This number is a weighted representation of the mothers of babies delivered in a given year, who responded to a particular question in the survey. For most questions this will be the mothers of all babies delivered in a given year. For some secondary questions only a subset of the population was asked the question. For example, all survey participants were asked if they smoked during pregnancy, but only those who answered yes were asked how many cigarettes a day. If a dimension value is unknown for a particular survey record, that record will not be included in the counts for that particular dimension.

Note: Data collection for household income changed in 2004 and again in 2012. Because of this, 5-year aggregate data does not exist for all 5-year aggregate periods.

Below are the indicators included in this report and the long description for each indicator.

PRAMS Health Indicator	Health Indicator Description
Illicit drug use in pregnancy	Illicit drug use during pregnancy

Suggested citation:

Hawaii Health Data Warehouse, Hawaii State Department of Health, Pregnancy Risk Assessment Monitoring System, (report title and years), Report Created: 9/24/15

For documentation on other terms and coding in this report, please go to the following links:

[Click here to access PRAMS documentation](#)

[Click here to access DOH-Race Ethnicity coding](#)

[Click here to access The Hawai'i Data Guide](#)

**For questions about this report, please contact
The Hawai'i Health Data Warehouse**

profiles@hhdw.org

(855) 946-5899 x15

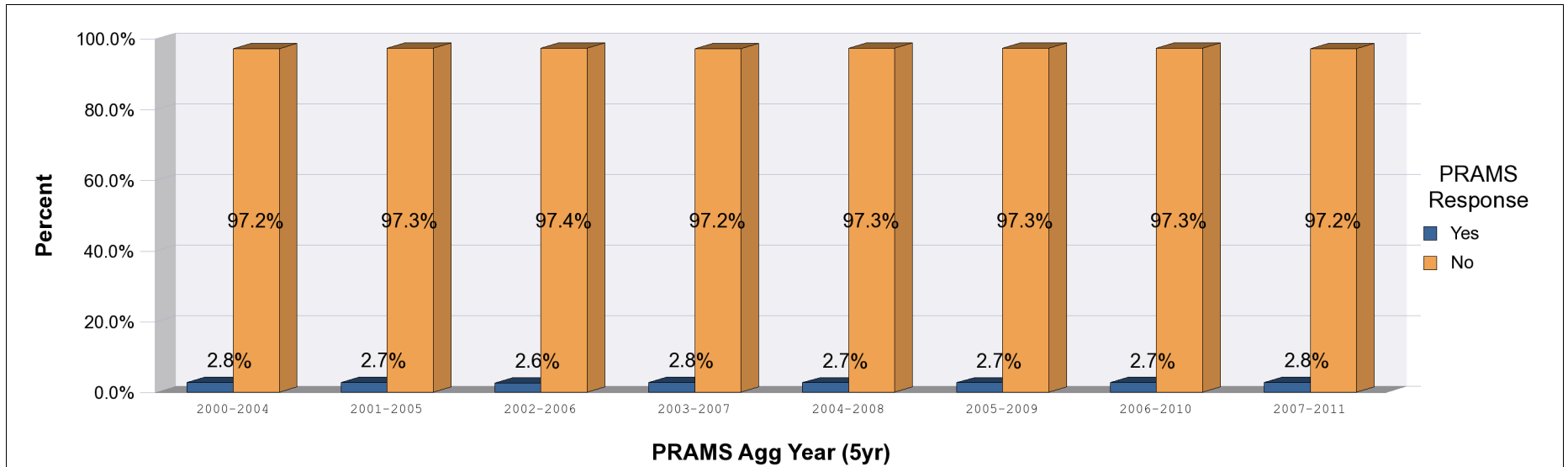
**PRAMS Health Indicator 5-Year Aggregate Report - Illicit drug use in pregnancy- for the State of Hawaii, for the Year
(s) 2000-2004;2001-2005;2002-2006;2003-2007;2004-2008;2005-2009;2006-2010;2007-2011**

Note: Weighted counts (#) represent 5-yr averages, rounded to the nearest hundred; n/r (Not Reportable) - If the unweighted total responses for a dimension (row) is <30 that row will not be shown

Years	Yes			No			Weighted Total Responses (5-Yr Avg)
	#	%	C.I.(95%)	#	%	C.I.(95%)	#
2000-2004	500	2.8	2.5 - 3.2	16,500	97.2	96.8 - 97.5	17,000
2001-2005	500	2.7	2.4 - 3.1	16,600	97.3	96.9 - 97.6	17,100
2002-2006	500	2.6	2.3 - 3.0	16,900	97.4	97.0 - 97.7	17,400
2003-2007	500	2.8	2.4 - 3.2	17,200	97.2	96.8 - 97.6	17,700
2004-2008	500	2.7	2.3 - 3.1	17,400	97.3	96.9 - 97.7	17,900
2005-2009	500	2.7	2.3 - 3.1	17,500	97.3	96.9 - 97.7	18,000
2006-2010	500	2.7	2.3 - 3.1	17,700	97.3	96.9 - 97.7	18,100
2007-2011	500	2.8	2.4 - 3.2	17,600	97.2	96.8 - 97.6	18,200

PRAMS Health Indicator 5-Year Aggregate Report - Illicit drug use in pregnancy- for the State of Hawaii, for the Year (s) 2000-2004;2001-2005;2002-2006;2003-2007;2004-2008;2005-2009;2006-2010;2007-2011

Note: Weighted counts (#) represent 5-yr averages, rounded to the nearest hundred; n/r (Not Reportable) - If the unweighted total responses for a dimension (row) is <30 that row will not be shown



**PRAMS Health Indicator 5-Year Aggregate Report - Illicit drug use in pregnancy- by State;County;DOH Race-Ethnicity;PRAMS Age Group;Infant Gender;Married;Poverty Level;Income (2004-2011);Birthweight;Smoke 3rd Trimester;Smoke Before Pregnant;WIC During Pregnancy, for the Year(s)
2000-2004;2001-2005;2002-2006;2003-2007;2004-2008;2005-2009;2006-2010;2007-2011**

Note: Weighted counts (#) represent 5-yr averages, rounded to the nearest hundred; n/r (Not Reportable) - If the unweighted total responses for a dimension (row) is <30 that row will not be shown

Year: 2007-2011

State	Yes			No			Weighted Total Responses (5-Yr Avg)
	#	%	C.I.(95%)	#	%	C.I.(95%)	#
Totals	500	2.8	2.4 - 3.2	17,600	97.2	96.8 - 97.6	18,200

County	Yes			No			Weighted Total Responses (5-Yr Avg)
	#	%	C.I.(95%)	#	%	C.I.(95%)	#
Hawaii	100	4.0	3.1 - 5.1	2,300	96.0	94.9 - 96.9	2,400
Honolulu	300	2.0	1.6 - 2.6	12,600	98.0	97.4 - 98.4	12,800
Kauai	<50	4.9	3.5 - 6.8	800	95.1	93.2 - 96.5	900
Maui	100	5.6	4.5 - 6.9	1,900	94.4	93.1 - 95.5	2,100

**PRAMS Health Indicator 5-Year Aggregate Report - Illicit drug use in pregnancy- by State;County;DOH Race-Ethnicity;PRAMS Age Group;Infant Gender;Married;Poverty Level;Income (2004-2011);Birthweight;Smoke 3rd Trimester;Smoke Before Pregnant;WIC During Pregnancy, for the Year(s)
2000-2004;2001-2005;2002-2006;2003-2007;2004-2008;2005-2009;2006-2010;2007-2011**

Note: Weighted counts (#) represent 5-yr averages, rounded to the nearest hundred; n/r (Not Reportable) - If the unweighted total responses for a dimension (row) is <30 that row will not be shown

Year: 2007-2011

DOH Race-Ethnicity	Yes			No			Weighted Total Responses (5-Yr Avg)
	#	%	C.I.(95%)	#	%	C.I.(95%)	#
Caucasian	100	3.1	2.4 - 4.1	4,100	96.9	95.9 - 97.6	4,300
Native Hawaiian	200	4.1	3.3 - 5.1	5,100	95.9	94.9 - 96.7	5,400
Chinese	<50	1.4	0.5 - 4.0	700	98.6	96.0 - 99.5	700
Filipino	100	2.2	1.4 - 3.3	3,200	97.8	96.7 - 98.6	3,300
Japanese	<50	1.5	0.8 - 2.5	1,800	98.5	97.5 - 99.2	1,800
Other	100	1.8	1.3 - 2.7	2,700	98.2	97.3 - 98.7	2,700

PRAMS Age Group	Yes			No			Weighted Total Responses (5-Yr Avg)
	#	%	C.I.(95%)	#	%	C.I.(95%)	#
<20	100	5.8	3.9 - 8.4	1,300	94.2	91.6 - 96.1	1,400
20-24	200	3.6	2.8 - 4.6	4,100	96.4	95.4 - 97.2	4,300
25-34	200	2.2	1.8 - 2.8	9,100	97.8	97.2 - 98.2	9,300
35+	100	2.2	1.4 - 3.2	3,100	97.8	96.8 - 98.6	3,200

**PRAMS Health Indicator 5-Year Aggregate Report - Illicit drug use in pregnancy- by State;County;DOH Race-Ethnicity;PRAMS Age Group;Infant Gender;Married;Poverty Level;Income (2004-2011);Birthweight;Smoke 3rd Trimester;Smoke Before Pregnant;WIC During Pregnancy, for the Year(s)
2000-2004;2001-2005;2002-2006;2003-2007;2004-2008;2005-2009;2006-2010;2007-2011**

Note: Weighted counts (#) represent 5-yr averages, rounded to the nearest hundred; n/r (Not Reportable) - If the unweighted total responses for a dimension (row) is <30 that row will not be shown

Year: 2007-2011

Infant Gender	Yes			No			Weighted Total Responses (5-Yr Avg)
	#	%	C.I.(95%)	#	%	C.I.(95%)	#
Male	200	2.6	2.1 - 3.2	9,100	97.4	96.8 - 97.9	9,400
Female	300	3.0	2.5 - 3.7	8,500	97.0	96.3 - 97.5	8,800

Married	Yes			No			Weighted Total Responses (5-Yr Avg)
	#	%	C.I.(95%)	#	%	C.I.(95%)	#
Yes	100	1.1	0.9 - 1.5	11,000	98.9	98.5 - 99.1	11,200
No	400	5.5	4.7 - 6.5	6,600	94.5	93.5 - 95.3	7,000

Poverty Level	Yes			No			Weighted Total Responses (5-Yr Avg)
	#	%	C.I.(95%)	#	%	C.I.(95%)	#
0-130%	300	4.4	3.7 - 5.3	6,300	95.6	94.7 - 96.3	6,600
131-185%	100	2.2	1.4 - 3.3	2,700	97.8	96.7 - 98.6	2,800
186+%	100	1.7	1.3 - 2.3	7,500	98.3	97.7 - 98.7	7,600

**PRAMS Health Indicator 5-Year Aggregate Report - Illicit drug use in pregnancy- by State;County;DOH Race-Ethnicity;PRAMS Age Group;Infant Gender;Married;Poverty Level;Income (2004-2011);Birthweight;Smoke 3rd Trimester;Smoke Before Pregnant;WIC During Pregnancy, for the Year(s)
2000-2004;2001-2005;2002-2006;2003-2007;2004-2008;2005-2009;2006-2010;2007-2011**

Note: Weighted counts (#) represent 5-yr averages, rounded to the nearest hundred; n/r (Not Reportable) - If the unweighted total responses for a dimension (row) is <30 that row will not be shown

Year: 2007-2011

Income (2004-2011)	Yes			No			Weighted Total Responses (5-Yr Avg)
	#	%	C.I.(95%)	#	%	C.I.(95%)	#
<\$10,000	200	6.4	5.1 - 8.0	3,000	93.6	92.0 - 94.9	3,200
\$10,000-\$24,999	100	3.1	2.4 - 4.1	3,500	96.9	95.9 - 97.6	3,600
\$25,000-\$49,999	100	1.8	1.3 - 2.6	4,200	98.2	97.4 - 98.7	4,200
>=\$50,000	100	1.6	1.1 - 2.3	5,900	98.4	97.7 - 98.9	6,000

Birthweight	Yes			No			Weighted Total Responses (5-Yr Avg)
	#	%	C.I.(95%)	#	%	C.I.(95%)	#
Low birth weight	<50	3.2	2.2 - 4.7	1,300	96.8	95.3 - 97.8	1,300
Normal birth weight	500	2.8	2.4 - 3.2	16,300	97.2	96.8 - 97.6	16,800

Smoke 3rd Trimester	Yes			No			Weighted Total Responses (5-Yr Avg)
	#	%	C.I.(95%)	#	%	C.I.(95%)	#
Yes	200	10.9	8.5 - 14.0	1,300	89.1	86.0 - 91.5	1,400
No	300	2.1	1.8 - 2.5	16,100	97.9	97.5 - 98.2	16,400

**PRAMS Health Indicator 5-Year Aggregate Report - Illicit drug use in pregnancy- by State;County;DOH Race-Ethnicity;PRAMS Age Group;Infant Gender;Married;Poverty Level;Income (2004-2011);Birthweight;Smoke 3rd Trimester;Smoke Before Pregnant;WIC During Pregnancy, for the Year(s)
2000-2004;2001-2005;2002-2006;2003-2007;2004-2008;2005-2009;2006-2010;2007-2011**

Note: Weighted counts (#) represent 5-yr averages, rounded to the nearest hundred; n/r (Not Reportable) - If the unweighted total responses for a dimension (row) is <30 that row will not be shown

Year: 2007-2011

Smoke Before Pregnant	Yes			No			Weighted Total Responses (5-Yr Avg)
	#	%	C.I.(95%)	#	%	C.I.(95%)	#
Yes	300	7.6	6.2 - 9.2	3,400	92.4	90.8 - 93.8	3,600
No	200	1.6	1.3 - 1.9	14,000	98.4	98.1 - 98.7	14,200

WIC During Pregnancy	Yes			No			Weighted Total Responses (5-Yr Avg)
	#	%	C.I.(95%)	#	%	C.I.(95%)	#
Yes	300	3.9	3.2 - 4.7	7,500	96.1	95.3 - 96.8	7,800
No	200	2.0	1.6 - 2.4	9,900	98.0	97.6 - 98.4	10,100

**PRAMS Health Indicator 5-Year Aggregate Report - Illicit drug use in pregnancy- by State;County;DOH Race-Ethnicity;PRAMS Age Group;Infant Gender;Married;Poverty Level;Income (2004-2011);Birthweight;Smoke 3rd Trimester;Smoke Before Pregnant;WIC During Pregnancy, for the Year(s)
2000-2004;2001-2005;2002-2006;2003-2007;2004-2008;2005-2009;2006-2010;2007-2011**

Note: Weighted counts (#) represent 5-yr averages, rounded to the nearest hundred; n/r (Not Reportable) - If the unweighted total responses for a dimension (row) is <30 that row will not be shown

Year: 2006-2010

State	Yes			No			Weighted Total Responses (5-Yr Avg)
	#	%	C.I.(95%)	#	%	C.I.(95%)	#
Totals	500	2.7	2.3 - 3.1	17,700	97.3	96.9 - 97.7	18,100

County	Yes			No			Weighted Total Responses (5-Yr Avg)
	#	%	C.I.(95%)	#	%	C.I.(95%)	#
Hawaii	100	3.3	2.5 - 4.4	2,300	96.7	95.6 - 97.5	2,300
Honolulu	300	2.0	1.6 - 2.5	12,600	98.0	97.5 - 98.4	12,900
Kauai	100	6.1	4.3 - 8.8	800	93.9	91.2 - 95.7	900
Maui	100	5.1	4.0 - 6.5	1,900	94.9	93.5 - 96.0	2,100

**PRAMS Health Indicator 5-Year Aggregate Report - Illicit drug use in pregnancy- by State;County;DOH Race-Ethnicity;PRAMS Age Group;Infant Gender;Married;Poverty Level;Income (2004-2011);Birthweight;Smoke 3rd Trimester;Smoke Before Pregnant;WIC During Pregnancy, for the Year(s)
2000-2004;2001-2005;2002-2006;2003-2007;2004-2008;2005-2009;2006-2010;2007-2011**

Note: Weighted counts (#) represent 5-yr averages, rounded to the nearest hundred; n/r (Not Reportable) - If the unweighted total responses for a dimension (row) is <30 that row will not be shown

Year: 2006-2010

DOH Race-Ethnicity	Yes			No			Weighted Total Responses (5-Yr Avg)
	#	%	C.I.(95%)	#	%	C.I.(95%)	#
Caucasian	100	3.0	2.3 - 3.9	4,100	97.0	96.1 - 97.7	4,200
Native Hawaiian	200	4.0	3.2 - 5.0	5,100	96.0	95.0 - 96.8	5,300
Chinese	<50	0.7	0.3 - 1.5	700	99.3	98.5 - 99.7	700
Filipino	100	1.8	1.2 - 2.8	3,200	98.2	97.2 - 98.8	3,300
Japanese	<50	1.5	0.8 - 2.5	1,900	98.5	97.5 - 99.2	1,900
Other	100	2.2	1.5 - 3.2	2,700	97.8	96.8 - 98.5	2,800

PRAMS Age Group	Yes			No			Weighted Total Responses (5-Yr Avg)
	#	%	C.I.(95%)	#	%	C.I.(95%)	#
<20	100	5.2	3.5 - 7.5	1,400	94.8	92.5 - 96.5	1,500
20-24	100	3.3	2.5 - 4.3	4,100	96.7	95.7 - 97.5	4,300
25-34	200	2.2	1.8 - 2.7	8,900	97.8	97.3 - 98.2	9,100
35+	100	2.2	1.5 - 3.3	3,100	97.8	96.7 - 98.5	3,200

**PRAMS Health Indicator 5-Year Aggregate Report - Illicit drug use in pregnancy- by State;County;DOH Race-Ethnicity;PRAMS Age Group;Infant Gender;Married;Poverty Level;Income (2004-2011);Birthweight;Smoke 3rd Trimester;Smoke Before Pregnant;WIC During Pregnancy, for the Year(s)
2000-2004;2001-2005;2002-2006;2003-2007;2004-2008;2005-2009;2006-2010;2007-2011**

Note: Weighted counts (#) represent 5-yr averages, rounded to the nearest hundred; n/r (Not Reportable) - If the unweighted total responses for a dimension (row) is <30 that row will not be shown

Year: 2006-2010

Infant Gender	Yes			No			Weighted Total Responses (5-Yr Avg)
	#	%	C.I.(95%)	#	%	C.I.(95%)	#
Male	200	2.6	2.1 - 3.2	9,200	97.4	96.8 - 97.9	9,400
Female	200	2.8	2.3 - 3.4	8,500	97.2	96.6 - 97.7	8,700

Married	Yes			No			Weighted Total Responses (5-Yr Avg)
	#	%	C.I.(95%)	#	%	C.I.(95%)	#
Yes	100	1.1	0.9 - 1.4	11,100	98.9	98.6 - 99.1	11,200
No	400	5.3	4.5 - 6.3	6,600	94.7	93.7 - 95.5	6,900

Poverty Level	Yes			No			Weighted Total Responses (5-Yr Avg)
	#	%	C.I.(95%)	#	%	C.I.(95%)	#
0-130%	300	4.3	3.6 - 5.2	6,200	95.7	94.8 - 96.4	6,500
131-185%	100	2.1	1.3 - 3.3	2,600	97.9	96.7 - 98.7	2,700
186+%	100	1.5	1.1 - 2.0	7,500	98.5	98.0 - 98.9	7,700

**PRAMS Health Indicator 5-Year Aggregate Report - Illicit drug use in pregnancy- by State;County;DOH Race-Ethnicity;PRAMS Age Group;Infant Gender;Married;Poverty Level;Income (2004-2011);Birthweight;Smoke 3rd Trimester;Smoke Before Pregnant;WIC During Pregnancy, for the Year(s)
2000-2004;2001-2005;2002-2006;2003-2007;2004-2008;2005-2009;2006-2010;2007-2011**

Note: Weighted counts (#) represent 5-yr averages, rounded to the nearest hundred; n/r (Not Reportable) - If the unweighted total responses for a dimension (row) is <30 that row will not be shown

Year: 2006-2010

Income (2004-2011)	Yes			No			Weighted Total Responses (5-Yr Avg)
	#	%	C.I.(95%)	#	%	C.I.(95%)	#
<\$10,000	200	6.2	4.9 - 7.8	2,900	93.8	92.2 - 95.1	3,100
\$10,000-\$24,999	100	3.0	2.2 - 4.0	3,600	97.0	96.0 - 97.8	3,700
\$25,000-\$49,999	100	2.1	1.5 - 2.9	4,100	97.9	97.1 - 98.5	4,200
>=\$50,000	100	1.1	0.8 - 1.7	5,900	98.9	98.3 - 99.2	6,000

Birthweight	Yes			No			Weighted Total Responses (5-Yr Avg)
	#	%	C.I.(95%)	#	%	C.I.(95%)	#
Low birth weight	100	3.7	2.5 - 5.4	1,300	96.3	94.6 - 97.5	1,400
Normal birth weight	400	2.6	2.3 - 3.1	16,300	97.4	96.9 - 97.7	16,700

Smoke 3rd Trimester	Yes			No			Weighted Total Responses (5-Yr Avg)
	#	%	C.I.(95%)	#	%	C.I.(95%)	#
Yes	200	11.6	9.2 - 14.6	1,400	88.4	85.4 - 90.8	1,600
No	300	1.8	1.5 - 2.2	16,000	98.2	97.8 - 98.5	16,300

**PRAMS Health Indicator 5-Year Aggregate Report - Illicit drug use in pregnancy- by State;County;DOH Race-Ethnicity;PRAMS Age Group;Infant Gender;Married;Poverty Level;Income (2004-2011);Birthweight;Smoke 3rd Trimester;Smoke Before Pregnant;WIC During Pregnancy, for the Year(s)
2000-2004;2001-2005;2002-2006;2003-2007;2004-2008;2005-2009;2006-2010;2007-2011**

Note: Weighted counts (#) represent 5-yr averages, rounded to the nearest hundred; n/r (Not Reportable) - If the unweighted total responses for a dimension (row) is <30 that row will not be shown

Year: 2006-2010

Smoke Before Pregnant	Yes			No			Weighted Total Responses (5-Yr Avg)
	#	%	C.I.(95%)	#	%	C.I.(95%)	#
Yes	300	7.8	6.5 - 9.4	3,400	92.2	90.6 - 93.5	3,700
No	200	1.3	1.1 - 1.7	13,900	98.7	98.3 - 98.9	14,100

WIC During Pregnancy	Yes			No			Weighted Total Responses (5-Yr Avg)
	#	%	C.I.(95%)	#	%	C.I.(95%)	#
Yes	300	3.9	3.3 - 4.8	7,400	96.1	95.2 - 96.7	7,700
No	200	1.7	1.4 - 2.2	10,000	98.3	97.8 - 98.6	10,200

**PRAMS Health Indicator 5-Year Aggregate Report - Illicit drug use in pregnancy- by State;County;DOH Race-Ethnicity;PRAMS Age Group;Infant Gender;Married;Poverty Level;Income (2004-2011);Birthweight;Smoke 3rd Trimester;Smoke Before Pregnant;WIC During Pregnancy, for the Year(s)
2000-2004;2001-2005;2002-2006;2003-2007;2004-2008;2005-2009;2006-2010;2007-2011**

Note: Weighted counts (#) represent 5-yr averages, rounded to the nearest hundred; n/r (Not Reportable) - If the unweighted total responses for a dimension (row) is <30 that row will not be shown

Year: 2005-2009

State	Yes			No			Weighted Total Responses (5-Yr Avg)
	#	%	C.I.(95%)	#	%	C.I.(95%)	#
Totals	500	2.7	2.3 - 3.1	17,500	97.3	96.9 - 97.7	18,000

County	Yes			No			Weighted Total Responses (5-Yr Avg)
	#	%	C.I.(95%)	#	%	C.I.(95%)	#
Hawaii	100	3.9	3.0 - 5.2	2,200	96.1	94.8 - 97.0	2,300
Honolulu	200	1.9	1.6 - 2.4	12,500	98.1	97.6 - 98.4	12,800
Kauai	<50	5.7	3.7 - 8.5	800	94.3	91.5 - 96.3	900
Maui	100	4.7	3.5 - 6.1	1,900	95.3	93.9 - 96.5	2,000

**PRAMS Health Indicator 5-Year Aggregate Report - Illicit drug use in pregnancy- by State;County;DOH Race-Ethnicity;PRAMS Age Group;Infant Gender;Married;Poverty Level;Income (2004-2011);Birthweight;Smoke 3rd Trimester;Smoke Before Pregnant;WIC During Pregnancy, for the Year(s)
2000-2004;2001-2005;2002-2006;2003-2007;2004-2008;2005-2009;2006-2010;2007-2011**

Note: Weighted counts (#) represent 5-yr averages, rounded to the nearest hundred; n/r (Not Reportable) - If the unweighted total responses for a dimension (row) is <30 that row will not be shown

Year: 2005-2009

DOH Race-Ethnicity	Yes			No			Weighted Total Responses (5-Yr Avg)
	#	%	C.I.(95%)	#	%	C.I.(95%)	#
Caucasian	100	2.8	2.2 - 3.8	4,000	97.2	96.2 - 97.8	4,100
Native Hawaiian	200	3.9	3.1 - 4.9	5,000	96.1	95.1 - 96.9	5,200
Chinese	<50	0.8	0.4 - 1.6	600	99.2	98.4 - 99.6	600
Filipino	<50	1.4	0.9 - 2.2	3,200	98.6	97.8 - 99.1	3,300
Japanese	<50	1.9	1.2 - 3.0	2,000	98.1	97.0 - 98.8	2,000
Other	100	2.6	1.8 - 3.6	2,700	97.4	96.4 - 98.2	2,700

PRAMS Age Group	Yes			No			Weighted Total Responses (5-Yr Avg)
	#	%	C.I.(95%)	#	%	C.I.(95%)	#
<20	100	4.6	3.2 - 6.6	1,500	95.4	93.4 - 96.8	1,600
20-24	100	3.0	2.3 - 3.9	4,100	97.0	96.1 - 97.7	4,300
25-34	200	2.4	2.0 - 2.9	8,800	97.6	97.1 - 98.0	9,000
35+	100	2.0	1.4 - 3.0	3,100	98.0	97.0 - 98.6	3,100

**PRAMS Health Indicator 5-Year Aggregate Report - Illicit drug use in pregnancy- by State;County;DOH Race-Ethnicity;PRAMS Age Group;Infant Gender;Married;Poverty Level;Income (2004-2011);Birthweight;Smoke 3rd Trimester;Smoke Before Pregnant;WIC During Pregnancy, for the Year(s)
2000-2004;2001-2005;2002-2006;2003-2007;2004-2008;2005-2009;2006-2010;2007-2011**

Note: Weighted counts (#) represent 5-yr averages, rounded to the nearest hundred; n/r (Not Reportable) - If the unweighted total responses for a dimension (row) is <30 that row will not be shown

Year: 2005-2009

Infant Gender	Yes			No			Weighted Total Responses (5-Yr Avg)
	#	%	C.I.(95%)	#	%	C.I.(95%)	#
Male	200	2.6	2.1 - 3.1	9,100	97.4	96.9 - 97.9	9,400
Female	200	2.8	2.3 - 3.4	8,400	97.2	96.6 - 97.7	8,600

Married	Yes			No			Weighted Total Responses (5-Yr Avg)
	#	%	C.I.(95%)	#	%	C.I.(95%)	#
Yes	100	1.0	0.8 - 1.3	11,100	99.0	98.7 - 99.2	11,200
No	400	5.4	4.5 - 6.3	6,500	94.6	93.7 - 95.5	6,800

Poverty Level	Yes			No			Weighted Total Responses (5-Yr Avg)
	#	%	C.I.(95%)	#	%	C.I.(95%)	#
0-130%	300	4.4	3.6 - 5.3	6,200	95.6	94.7 - 96.4	6,500
131-185%	100	2.0	1.3 - 3.1	2,400	98.0	96.9 - 98.7	2,500
186+%	100	1.4	1.0 - 1.8	7,600	98.6	98.2 - 99.0	7,700

**PRAMS Health Indicator 5-Year Aggregate Report - Illicit drug use in pregnancy- by State;County;DOH Race-Ethnicity;PRAMS Age Group;Infant Gender;Married;Poverty Level;Income (2004-2011);Birthweight;Smoke 3rd Trimester;Smoke Before Pregnant;WIC During Pregnancy, for the Year(s)
2000-2004;2001-2005;2002-2006;2003-2007;2004-2008;2005-2009;2006-2010;2007-2011**

Note: Weighted counts (#) represent 5-yr averages, rounded to the nearest hundred; n/r (Not Reportable) - If the unweighted total responses for a dimension (row) is <30 that row will not be shown

Year: 2005-2009

Income (2004-2011)	Yes			No			Weighted Total Responses (5-Yr Avg)
	#	%	C.I.(95%)	#	%	C.I.(95%)	#
<\$10,000	200	6.0	4.8 - 7.6	2,900	94.0	92.4 - 95.2	3,100
\$10,000-\$24,999	100	3.3	2.5 - 4.3	3,700	96.7	95.7 - 97.5	3,800
\$25,000-\$49,999	100	1.9	1.4 - 2.5	4,000	98.1	97.5 - 98.6	4,100
>=\$50,000	100	1.0	0.7 - 1.5	5,800	99.0	98.5 - 99.3	5,900

Birthweight	Yes			No			Weighted Total Responses (5-Yr Avg)
	#	%	C.I.(95%)	#	%	C.I.(95%)	#
Low birth weight	100	3.9	2.6 - 5.8	1,300	96.1	94.2 - 97.4	1,400
Normal birth weight	400	2.6	2.2 - 3.0	16,200	97.4	97.0 - 97.8	16,600

Smoke 3rd Trimester	Yes			No			Weighted Total Responses (5-Yr Avg)
	#	%	C.I.(95%)	#	%	C.I.(95%)	#
Yes	200	12.1	9.7 - 15.1	1,400	87.9	84.9 - 90.3	1,600
No	300	1.7	1.4 - 2.1	15,800	98.3	97.9 - 98.6	16,100

**PRAMS Health Indicator 5-Year Aggregate Report - Illicit drug use in pregnancy- by State;County;DOH Race-Ethnicity;PRAMS Age Group;Infant Gender;Married;Poverty Level;Income (2004-2011);Birthweight;Smoke 3rd Trimester;Smoke Before Pregnant;WIC During Pregnancy, for the Year(s)
2000-2004;2001-2005;2002-2006;2003-2007;2004-2008;2005-2009;2006-2010;2007-2011**

Note: Weighted counts (#) represent 5-yr averages, rounded to the nearest hundred; n/r (Not Reportable) - If the unweighted total responses for a dimension (row) is <30 that row will not be shown

Year: 2005-2009

Smoke Before Pregnant	Yes			No			Weighted Total Responses (5-Yr Avg)
	#	%	C.I.(95%)	#	%	C.I.(95%)	#
Yes	300	8.1	6.7 - 9.6	3,400	91.9	90.4 - 93.3	3,700
No	200	1.2	1.0 - 1.5	13,800	98.8	98.5 - 99.0	14,000

WIC During Pregnancy	Yes			No			Weighted Total Responses (5-Yr Avg)
	#	%	C.I.(95%)	#	%	C.I.(95%)	#
Yes	300	3.8	3.1 - 4.6	7,300	96.2	95.4 - 96.9	7,500
No	200	1.8	1.5 - 2.2	9,900	98.2	97.8 - 98.5	10,100

**PRAMS Health Indicator 5-Year Aggregate Report - Illicit drug use in pregnancy- by State;County;DOH Race-Ethnicity;PRAMS Age Group;Infant Gender;Married;Poverty Level;Income (2004-2011);Birthweight;Smoke 3rd Trimester;Smoke Before Pregnant;WIC During Pregnancy, for the Year(s)
2000-2004;2001-2005;2002-2006;2003-2007;2004-2008;2005-2009;2006-2010;2007-2011**

Note: Weighted counts (#) represent 5-yr averages, rounded to the nearest hundred; n/r (Not Reportable) - If the unweighted total responses for a dimension (row) is <30 that row will not be shown

Year: 2004-2008

State	Yes			No			Weighted Total Responses (5-Yr Avg)
	#	%	C.I.(95%)	#	%	C.I.(95%)	#
Totals	500	2.7	2.3 - 3.1	17,400	97.3	96.9 - 97.7	17,900

County	Yes			No			Weighted Total Responses (5-Yr Avg)
	#	%	C.I.(95%)	#	%	C.I.(95%)	#
Hawaii	100	4.0	3.0 - 5.4	2,200	96.0	94.6 - 97.0	2,300
Honolulu	300	2.0	1.7 - 2.4	12,500	98.0	97.6 - 98.3	12,800
Kauai	100	5.9	3.9 - 8.8	800	94.1	91.2 - 96.1	900
Maui	100	3.9	2.8 - 5.4	1,900	96.1	94.6 - 97.2	2,000

**PRAMS Health Indicator 5-Year Aggregate Report - Illicit drug use in pregnancy- by State;County;DOH Race-Ethnicity;PRAMS Age Group;Infant Gender;Married;Poverty Level;Income (2004-2011);Birthweight;Smoke 3rd Trimester;Smoke Before Pregnant;WIC During Pregnancy, for the Year(s)
2000-2004;2001-2005;2002-2006;2003-2007;2004-2008;2005-2009;2006-2010;2007-2011**

Note: Weighted counts (#) represent 5-yr averages, rounded to the nearest hundred; n/r (Not Reportable) - If the unweighted total responses for a dimension (row) is <30 that row will not be shown

Year: 2004-2008

DOH Race-Ethnicity	Yes			No			Weighted Total Responses (5-Yr Avg)
	#	%	C.I.(95%)	#	%	C.I.(95%)	#
Caucasian	100	2.5	1.9 - 3.3	3,900	97.5	96.7 - 98.1	4,000
Native Hawaiian	200	3.9	3.1 - 4.9	4,800	96.1	95.1 - 96.9	5,000
Chinese	<50	1.1	0.7 - 1.9	600	98.9	98.1 - 99.3	600
Filipino	<50	1.3	0.9 - 2.0	3,300	98.7	98.0 - 99.1	3,300
Japanese	<50	2.1	1.3 - 3.2	2,100	97.9	96.8 - 98.7	2,200
Other	100	3.1	2.3 - 4.2	2,700	96.9	95.8 - 97.7	2,800

PRAMS Age Group	Yes			No			Weighted Total Responses (5-Yr Avg)
	#	%	C.I.(95%)	#	%	C.I.(95%)	#
<20	100	5.2	3.7 - 7.2	1,400	94.8	92.8 - 96.3	1,500
20-24	100	3.4	2.6 - 4.3	4,200	96.6	95.7 - 97.4	4,300
25-34	200	2.3	1.9 - 2.8	8,700	97.7	97.2 - 98.1	8,900
35+	100	1.6	1.1 - 2.4	3,100	98.4	97.6 - 98.9	3,200

**PRAMS Health Indicator 5-Year Aggregate Report - Illicit drug use in pregnancy- by State;County;DOH Race-Ethnicity;PRAMS Age Group;Infant Gender;Married;Poverty Level;Income (2004-2011);Birthweight;Smoke 3rd Trimester;Smoke Before Pregnant;WIC During Pregnancy, for the Year(s)
2000-2004;2001-2005;2002-2006;2003-2007;2004-2008;2005-2009;2006-2010;2007-2011**

Note: Weighted counts (#) represent 5-yr averages, rounded to the nearest hundred; n/r (Not Reportable) - If the unweighted total responses for a dimension (row) is <30 that row will not be shown

Year: 2004-2008

Infant Gender	Yes			No			Weighted Total Responses (5-Yr Avg)
	#	%	C.I.(95%)	#	%	C.I.(95%)	#
Male	200	2.4	2.0 - 2.9	9,100	97.6	97.1 - 98.0	9,300
Female	300	2.9	2.5 - 3.5	8,300	97.1	96.5 - 97.5	8,600

Married	Yes			No			Weighted Total Responses (5-Yr Avg)
	#	%	C.I.(95%)	#	%	C.I.(95%)	#
Yes	100	1.2	0.9 - 1.5	11,400	98.8	98.5 - 99.1	11,500
No	300	5.3	4.5 - 6.2	6,100	94.7	93.8 - 95.5	6,400

Poverty Level	Yes			No			Weighted Total Responses (5-Yr Avg)
	#	%	C.I.(95%)	#	%	C.I.(95%)	#
0-130%	300	4.2	3.5 - 5.1	6,300	95.8	94.9 - 96.5	6,500
131-185%	<50	1.8	1.2 - 2.7	2,300	98.2	97.3 - 98.8	2,300
186+%	100	1.5	1.1 - 1.9	7,600	98.5	98.1 - 98.9	7,700

**PRAMS Health Indicator 5-Year Aggregate Report - Illicit drug use in pregnancy- by State;County;DOH Race-Ethnicity;PRAMS Age Group;Infant Gender;Married;Poverty Level;Income (2004-2011);Birthweight;Smoke 3rd Trimester;Smoke Before Pregnant;WIC During Pregnancy, for the Year(s)
2000-2004;2001-2005;2002-2006;2003-2007;2004-2008;2005-2009;2006-2010;2007-2011**

Note: Weighted counts (#) represent 5-yr averages, rounded to the nearest hundred; n/r (Not Reportable) - If the unweighted total responses for a dimension (row) is <30 that row will not be shown

Year: 2004-2008

Income (2004-2011)	Yes			No			Weighted Total Responses (5-Yr Avg)
	#	%	C.I.(95%)	#	%	C.I.(95%)	#
<\$10,000	200	6.1	4.9 - 7.6	2,800	93.9	92.4 - 95.1	3,000
\$10,000-\$24,999	100	3.0	2.3 - 3.9	3,800	97.0	96.1 - 97.7	3,900
\$25,000-\$49,999	100	1.9	1.4 - 2.6	4,100	98.1	97.4 - 98.6	4,200
>=\$50,000	100	1.0	0.7 - 1.4	5,600	99.0	98.6 - 99.3	5,600

Birthweight	Yes			No			Weighted Total Responses (5-Yr Avg)
	#	%	C.I.(95%)	#	%	C.I.(95%)	#
Low birth weight	100	4.6	3.2 - 6.7	1,300	95.4	93.3 - 96.8	1,300
Normal birth weight	400	2.5	2.2 - 2.9	16,100	97.5	97.1 - 97.8	16,500

Smoke 3rd Trimester	Yes			No			Weighted Total Responses (5-Yr Avg)
	#	%	C.I.(95%)	#	%	C.I.(95%)	#
Yes	200	12.4	10.0 - 15.2	1,300	87.6	84.8 - 90.0	1,500
No	300	1.8	1.5 - 2.1	15,800	98.2	97.9 - 98.5	16,100

**PRAMS Health Indicator 5-Year Aggregate Report - Illicit drug use in pregnancy- by State;County;DOH Race-Ethnicity;PRAMS Age Group;Infant Gender;Married;Poverty Level;Income (2004-2011);Birthweight;Smoke 3rd Trimester;Smoke Before Pregnant;WIC During Pregnancy, for the Year(s)
2000-2004;2001-2005;2002-2006;2003-2007;2004-2008;2005-2009;2006-2010;2007-2011**

Note: Weighted counts (#) represent 5-yr averages, rounded to the nearest hundred; n/r (Not Reportable) - If the unweighted total responses for a dimension (row) is <30 that row will not be shown

Year: 2004-2008

Smoke Before Pregnant	Yes			No			Weighted Total Responses (5-Yr Avg)
	#	%	C.I.(95%)	#	%	C.I.(95%)	#
Yes	300	8.2	6.9 - 9.7	3,300	91.8	90.3 - 93.1	3,600
No	200	1.3	1.0 - 1.6	13,800	98.7	98.4 - 99.0	14,000

WIC During Pregnancy	Yes			No			Weighted Total Responses (5-Yr Avg)
	#	%	C.I.(95%)	#	%	C.I.(95%)	#
Yes	300	3.6	3.0 - 4.3	7,400	96.4	95.7 - 97.0	7,600
No	200	1.9	1.6 - 2.4	9,700	98.1	97.6 - 98.4	9,900

**PRAMS Health Indicator 5-Year Aggregate Report - Illicit drug use in pregnancy- by State;County;DOH Race-Ethnicity;PRAMS Age Group;Infant Gender;Married;Poverty Level;Income (2004-2011);Birthweight;Smoke 3rd Trimester;Smoke Before Pregnant;WIC During Pregnancy, for the Year(s)
2000-2004;2001-2005;2002-2006;2003-2007;2004-2008;2005-2009;2006-2010;2007-2011**

Note: Weighted counts (#) represent 5-yr averages, rounded to the nearest hundred; n/r (Not Reportable) - If the unweighted total responses for a dimension (row) is <30 that row will not be shown

Year: 2003-2007

State	Yes			No			Weighted Total Responses (5-Yr Avg)
	#	%	C.I.(95%)	#	%	C.I.(95%)	#
Totals	500	2.8	2.4 - 3.2	17,200	97.2	96.8 - 97.6	17,700

County	Yes			No			Weighted Total Responses (5-Yr Avg)
	#	%	C.I.(95%)	#	%	C.I.(95%)	#
Hawaii	100	4.5	3.4 - 5.9	2,100	95.5	94.1 - 96.6	2,200
Honolulu	300	2.2	1.8 - 2.6	12,500	97.8	97.4 - 98.2	12,800
Kauai	100	6.1	4.1 - 9.0	800	93.9	91.0 - 95.9	900
Maui	100	3.5	2.5 - 5.0	1,800	96.5	95.0 - 97.5	1,900

**PRAMS Health Indicator 5-Year Aggregate Report - Illicit drug use in pregnancy- by State;County;DOH Race-Ethnicity;PRAMS Age Group;Infant Gender;Married;Poverty Level;Income (2004-2011);Birthweight;Smoke 3rd Trimester;Smoke Before Pregnant;WIC During Pregnancy, for the Year(s)
2000-2004;2001-2005;2002-2006;2003-2007;2004-2008;2005-2009;2006-2010;2007-2011**

Note: Weighted counts (#) represent 5-yr averages, rounded to the nearest hundred; n/r (Not Reportable) - If the unweighted total responses for a dimension (row) is <30 that row will not be shown

Year: 2003-2007

DOH Race-Ethnicity	Yes			No			Weighted Total Responses (5-Yr Avg)
	#	%	C.I.(95%)	#	%	C.I.(95%)	#
Caucasian	100	3.1	2.4 - 4.0	3,800	96.9	96.0 - 97.6	3,900
Native Hawaiian	200	4.2	3.4 - 5.1	4,700	95.8	94.9 - 96.6	4,900
Chinese	<50	1.0	0.6 - 1.7	600	99.0	98.3 - 99.4	600
Filipino	<50	1.3	0.8 - 2.0	3,300	98.7	98.0 - 99.2	3,400
Japanese	<50	1.6	0.9 - 2.6	2,100	98.4	97.4 - 99.1	2,200
Other	100	3.1	2.2 - 4.3	2,600	96.9	95.7 - 97.8	2,700

PRAMS Age Group	Yes			No			Weighted Total Responses (5-Yr Avg)
	#	%	C.I.(95%)	#	%	C.I.(95%)	#
<20	100	5.4	3.9 - 7.5	1,400	94.6	92.5 - 96.1	1,500
20-24	200	3.5	2.8 - 4.4	4,200	96.5	95.6 - 97.2	4,300
25-34	200	2.5	2.0 - 3.0	8,500	97.5	97.0 - 98.0	8,700
35+	<50	1.4	1.0 - 2.2	3,100	98.6	97.8 - 99.0	3,100

**PRAMS Health Indicator 5-Year Aggregate Report - Illicit drug use in pregnancy- by State;County;DOH Race-Ethnicity;PRAMS Age Group;Infant Gender;Married;Poverty Level;Income (2004-2011);Birthweight;Smoke 3rd Trimester;Smoke Before Pregnant;WIC During Pregnancy, for the Year(s)
2000-2004;2001-2005;2002-2006;2003-2007;2004-2008;2005-2009;2006-2010;2007-2011**

Note: Weighted counts (#) represent 5-yr averages, rounded to the nearest hundred; n/r (Not Reportable) - If the unweighted total responses for a dimension (row) is <30 that row will not be shown

Year: 2003-2007

Infant Gender	Yes			No			Weighted Total Responses (5-Yr Avg)
	#	%	C.I.(95%)	#	%	C.I.(95%)	#
Male	200	2.5	2.1 - 3.1	9,000	97.5	96.9 - 97.9	9,200
Female	300	3.1	2.6 - 3.6	8,200	96.9	96.4 - 97.4	8,500

Married	Yes			No			Weighted Total Responses (5-Yr Avg)
	#	%	C.I.(95%)	#	%	C.I.(95%)	#
Yes	200	1.3	1.0 - 1.7	11,300	98.7	98.3 - 99.0	11,500
No	300	5.5	4.7 - 6.4	5,900	94.5	93.6 - 95.3	6,200

Poverty Level	Yes			No			Weighted Total Responses (5-Yr Avg)
	#	%	C.I.(95%)	#	%	C.I.(95%)	#
0-130%	300	4.3	3.6 - 5.1	6,400	95.7	94.9 - 96.4	6,700
131-185%	<50	1.6	1.0 - 2.4	2,300	98.4	97.6 - 99.0	2,300
186+%	100	1.5	1.1 - 2.0	7,100	98.5	98.0 - 98.9	7,300

**PRAMS Health Indicator 5-Year Aggregate Report - Illicit drug use in pregnancy- by State;County;DOH Race-Ethnicity;PRAMS Age Group;Infant Gender;Married;Poverty Level;Income (2004-2011);Birthweight;Smoke 3rd Trimester;Smoke Before Pregnant;WIC During Pregnancy, for the Year(s)
2000-2004;2001-2005;2002-2006;2003-2007;2004-2008;2005-2009;2006-2010;2007-2011**

Note: Weighted counts (#) represent 5-yr averages, rounded to the nearest hundred; n/r (Not Reportable) - If the unweighted total responses for a dimension (row) is <30 that row will not be shown

Year: 2003-2007

Birthweight	Yes			No			Weighted Total Responses (5-Yr Avg)
	#	%	C.I.(95%)	#	%	C.I.(95%)	#
Low birth weight	100	5.0	3.5 - 7.0	1,300	95.0	93.0 - 96.5	1,300
Normal birth weight	400	2.6	2.3 - 3.0	15,900	97.4	97.0 - 97.7	16,300

Smoke 3rd Trimester	Yes			No			Weighted Total Responses (5-Yr Avg)
	#	%	C.I.(95%)	#	%	C.I.(95%)	#
Yes	200	13.5	11.1 - 16.3	1,300	86.5	83.7 - 88.9	1,500
No	300	1.7	1.5 - 2.0	15,600	98.3	98.0 - 98.5	15,900

Smoke Before Pregnant	Yes			No			Weighted Total Responses (5-Yr Avg)
	#	%	C.I.(95%)	#	%	C.I.(95%)	#
Yes	300	8.5	7.3 - 10.0	3,300	91.5	90.0 - 92.7	3,600
No	200	1.2	1.0 - 1.5	13,600	98.8	98.5 - 99.0	13,700

**PRAMS Health Indicator 5-Year Aggregate Report - Illicit drug use in pregnancy- by State;County;DOH Race-Ethnicity;PRAMS Age Group;Infant Gender;Married;Poverty Level;Income (2004-2011);Birthweight;Smoke 3rd Trimester;Smoke Before Pregnant;WIC During Pregnancy, for the Year(s)
2000-2004;2001-2005;2002-2006;2003-2007;2004-2008;2005-2009;2006-2010;2007-2011**

Note: Weighted counts (#) represent 5-yr averages, rounded to the nearest hundred; n/r (Not Reportable) - If the unweighted total responses for a dimension (row) is <30 that row will not be shown

Year: 2003-2007

WIC During Pregnancy	Yes			No			Weighted Total Responses (5-Yr Avg)
	#	%	C.I.(95%)	#	%	C.I.(95%)	#
Yes	300	3.8	3.2 - 4.5	7,200	96.2	95.5 - 96.8	7,500
No	200	2.0	1.6 - 2.4	9,600	98.0	97.6 - 98.4	9,800

**PRAMS Health Indicator 5-Year Aggregate Report - Illicit drug use in pregnancy- by State;County;DOH Race-Ethnicity;PRAMS Age Group;Infant Gender;Married;Poverty Level;Income (2004-2011);Birthweight;Smoke 3rd Trimester;Smoke Before Pregnant;WIC During Pregnancy, for the Year(s)
2000-2004;2001-2005;2002-2006;2003-2007;2004-2008;2005-2009;2006-2010;2007-2011**

Note: Weighted counts (#) represent 5-yr averages, rounded to the nearest hundred; n/r (Not Reportable) - If the unweighted total responses for a dimension (row) is <30 that row will not be shown

Year: 2002-2006

State	Yes			No			Weighted Total Responses (5-Yr Avg)
	#	%	C.I.(95%)	#	%	C.I.(95%)	#
Totals	500	2.6	2.3 - 3.0	16,900	97.4	97.0 - 97.7	17,400

County	Yes			No			Weighted Total Responses (5-Yr Avg)
	#	%	C.I.(95%)	#	%	C.I.(95%)	#
Hawaii	100	4.9	3.8 - 6.2	2,000	95.1	93.8 - 96.2	2,100
Honolulu	200	2.0	1.6 - 2.4	12,500	98.0	97.6 - 98.4	12,700
Kauai	<50	5.9	4.0 - 8.7	700	94.1	91.3 - 96.0	800
Maui	100	3.3	2.4 - 4.6	1,700	96.7	95.4 - 97.6	1,800

**PRAMS Health Indicator 5-Year Aggregate Report - Illicit drug use in pregnancy- by State;County;DOH Race-Ethnicity;PRAMS Age Group;Infant Gender;Married;Poverty Level;Income (2004-2011);Birthweight;Smoke 3rd Trimester;Smoke Before Pregnant;WIC During Pregnancy, for the Year(s)
2000-2004;2001-2005;2002-2006;2003-2007;2004-2008;2005-2009;2006-2010;2007-2011**

Note: Weighted counts (#) represent 5-yr averages, rounded to the nearest hundred; n/r (Not Reportable) - If the unweighted total responses for a dimension (row) is <30 that row will not be shown

Year: 2002-2006

DOH Race-Ethnicity	Yes			No			Weighted Total Responses (5-Yr Avg)
	#	%	C.I.(95%)	#	%	C.I.(95%)	#
Caucasian	100	3.1	2.4 - 4.0	3,700	96.9	96.0 - 97.6	3,800
Native Hawaiian	200	4.2	3.5 - 5.0	4,600	95.8	95.0 - 96.5	4,800
Chinese	<50	1.3	0.5 - 3.4	600	98.7	96.6 - 99.5	600
Filipino	<50	0.9	0.5 - 1.6	3,400	99.1	98.4 - 99.5	3,400
Japanese	<50	1.3	0.8 - 2.3	2,200	98.7	97.7 - 99.2	2,200
Other	100	2.7	1.9 - 3.8	2,500	97.3	96.2 - 98.1	2,500

PRAMS Age Group	Yes			No			Weighted Total Responses (5-Yr Avg)
	#	%	C.I.(95%)	#	%	C.I.(95%)	#
<20	100	4.8	3.4 - 6.7	1,400	95.2	93.3 - 96.6	1,500
20-24	100	3.3	2.7 - 4.1	4,100	96.7	95.9 - 97.3	4,300
25-34	200	2.4	2.0 - 2.9	8,400	97.6	97.1 - 98.0	8,600
35+	<50	1.3	0.9 - 2.0	3,000	98.7	98.0 - 99.1	3,000

**PRAMS Health Indicator 5-Year Aggregate Report - Illicit drug use in pregnancy- by State;County;DOH Race-Ethnicity;PRAMS Age Group;Infant Gender;Married;Poverty Level;Income (2004-2011);Birthweight;Smoke 3rd Trimester;Smoke Before Pregnant;WIC During Pregnancy, for the Year(s)
2000-2004;2001-2005;2002-2006;2003-2007;2004-2008;2005-2009;2006-2010;2007-2011**

Note: Weighted counts (#) represent 5-yr averages, rounded to the nearest hundred; n/r (Not Reportable) - If the unweighted total responses for a dimension (row) is <30 that row will not be shown

Year: 2002-2006

Infant Gender	Yes			No			Weighted Total Responses (5-Yr Avg)
	#	%	C.I.(95%)	#	%	C.I.(95%)	#
Male	200	2.4	2.0 - 2.9	8,800	97.6	97.1 - 98.0	9,000
Female	200	2.8	2.4 - 3.4	8,100	97.2	96.6 - 97.6	8,400

Married	Yes			No			Weighted Total Responses (5-Yr Avg)
	#	%	C.I.(95%)	#	%	C.I.(95%)	#
Yes	100	1.3	1.0 - 1.6	11,300	98.7	98.4 - 99.0	11,500
No	300	5.3	4.5 - 6.2	5,600	94.7	93.8 - 95.5	5,900

Poverty Level	Yes			No			Weighted Total Responses (5-Yr Avg)
	#	%	C.I.(95%)	#	%	C.I.(95%)	#
0-130%	300	4.1	3.4 - 4.8	6,400	95.9	95.2 - 96.6	6,700
131-185%	<50	1.4	0.9 - 2.2	2,400	98.6	97.8 - 99.1	2,500
186+%	100	1.4	1.1 - 1.9	6,700	98.6	98.1 - 98.9	6,800

**PRAMS Health Indicator 5-Year Aggregate Report - Illicit drug use in pregnancy- by State;County;DOH Race-Ethnicity;PRAMS Age Group;Infant Gender;Married;Poverty Level;Income (2004-2011);Birthweight;Smoke 3rd Trimester;Smoke Before Pregnant;WIC During Pregnancy, for the Year(s)
2000-2004;2001-2005;2002-2006;2003-2007;2004-2008;2005-2009;2006-2010;2007-2011**

Note: Weighted counts (#) represent 5-yr averages, rounded to the nearest hundred; n/r (Not Reportable) - If the unweighted total responses for a dimension (row) is <30 that row will not be shown

Year: 2002-2006

Birthweight	Yes			No			Weighted Total Responses (5-Yr Avg)
	#	%	C.I.(95%)	#	%	C.I.(95%)	#
Low birth weight	100	4.0	2.7 - 6.0	1,200	96.0	94.0 - 97.3	1,200
Normal birth weight	400	2.5	2.2 - 2.9	15,700	97.5	97.1 - 97.8	16,100

Smoke 3rd Trimester	Yes			No			Weighted Total Responses (5-Yr Avg)
	#	%	C.I.(95%)	#	%	C.I.(95%)	#
Yes	200	12.1	9.8 - 14.8	1,300	87.9	85.2 - 90.2	1,500
No	300	1.7	1.4 - 2.0	15,400	98.3	98.0 - 98.6	15,600

Smoke Before Pregnant	Yes			No			Weighted Total Responses (5-Yr Avg)
	#	%	C.I.(95%)	#	%	C.I.(95%)	#
Yes	300	7.8	6.6 - 9.1	3,300	92.2	90.9 - 93.4	3,600
No	200	1.2	1.0 - 1.5	13,300	98.8	98.5 - 99.0	13,500

**PRAMS Health Indicator 5-Year Aggregate Report - Illicit drug use in pregnancy- by State;County;DOH Race-Ethnicity;PRAMS Age Group;Infant Gender;Married;Poverty Level;Income (2004-2011);Birthweight;Smoke 3rd Trimester;Smoke Before Pregnant;WIC During Pregnancy, for the Year(s)
2000-2004;2001-2005;2002-2006;2003-2007;2004-2008;2005-2009;2006-2010;2007-2011**

Note: Weighted counts (#) represent 5-yr averages, rounded to the nearest hundred; n/r (Not Reportable) - If the unweighted total responses for a dimension (row) is <30 that row will not be shown

Year: 2002-2006

WIC During Pregnancy	Yes			No			Weighted Total Responses (5-Yr Avg)
	#	%	C.I.(95%)	#	%	C.I.(95%)	#
Yes	300	3.5	3.0 - 4.2	7,200	96.5	95.8 - 97.0	7,400
No	200	2.0	1.6 - 2.4	9,500	98.0	97.6 - 98.4	9,700

**PRAMS Health Indicator 5-Year Aggregate Report - Illicit drug use in pregnancy- by State;County;DOH Race-Ethnicity;PRAMS Age Group;Infant Gender;Married;Poverty Level;Income (2004-2011);Birthweight;Smoke 3rd Trimester;Smoke Before Pregnant;WIC During Pregnancy, for the Year(s)
2000-2004;2001-2005;2002-2006;2003-2007;2004-2008;2005-2009;2006-2010;2007-2011**

Note: Weighted counts (#) represent 5-yr averages, rounded to the nearest hundred; n/r (Not Reportable) - If the unweighted total responses for a dimension (row) is <30 that row will not be shown

Year: 2001-2005

State	Yes			No			Weighted Total Responses (5-Yr Avg)
	#	%	C.I.(95%)	#	%	C.I.(95%)	#
Totals	500	2.7	2.4 - 3.1	16,600	97.3	96.9 - 97.6	17,100

County	Yes			No			Weighted Total Responses (5-Yr Avg)
	#	%	C.I.(95%)	#	%	C.I.(95%)	#
Hawaii	100	5.5	4.4 - 6.8	1,900	94.5	93.2 - 95.6	2,000
Honolulu	300	2.1	1.7 - 2.5	12,200	97.9	97.5 - 98.3	12,500
Kauai	<50	4.6	3.2 - 6.5	700	95.4	93.5 - 96.8	800
Maui	100	3.3	2.4 - 4.4	1,700	96.7	95.6 - 97.6	1,800

**PRAMS Health Indicator 5-Year Aggregate Report - Illicit drug use in pregnancy- by State;County;DOH Race-Ethnicity;PRAMS Age Group;Infant Gender;Married;Poverty Level;Income (2004-2011);Birthweight;Smoke 3rd Trimester;Smoke Before Pregnant;WIC During Pregnancy, for the Year(s)
2000-2004;2001-2005;2002-2006;2003-2007;2004-2008;2005-2009;2006-2010;2007-2011**

Note: Weighted counts (#) represent 5-yr averages, rounded to the nearest hundred; n/r (Not Reportable) - If the unweighted total responses for a dimension (row) is <30 that row will not be shown

Year: 2001-2005

DOH Race-Ethnicity	Yes			No			Weighted Total Responses (5-Yr Avg)
	#	%	C.I.(95%)	#	%	C.I.(95%)	#
Caucasian	100	3.5	2.7 - 4.4	3,500	96.5	95.6 - 97.3	3,700
Native Hawaiian	200	4.0	3.4 - 4.7	4,500	96.0	95.3 - 96.6	4,700
Chinese	<50	1.8	0.7 - 4.1	600	98.2	95.9 - 99.3	700
Filipino	<50	1.0	0.6 - 1.7	3,400	99.0	98.3 - 99.4	3,400
Japanese	<50	1.4	0.8 - 2.3	2,200	98.6	97.7 - 99.2	2,200
Other	100	3.0	2.1 - 4.2	2,300	97.0	95.8 - 97.9	2,400

PRAMS Age Group	Yes			No			Weighted Total Responses (5-Yr Avg)
	#	%	C.I.(95%)	#	%	C.I.(95%)	#
<20	100	4.9	3.6 - 6.6	1,400	95.1	93.4 - 96.4	1,500
20-24	200	3.6	3.0 - 4.4	4,100	96.4	95.6 - 97.0	4,200
25-34	200	2.3	1.9 - 2.8	8,200	97.7	97.2 - 98.1	8,400
35+	<50	1.6	1.1 - 2.3	2,800	98.4	97.7 - 98.9	2,900

**PRAMS Health Indicator 5-Year Aggregate Report - Illicit drug use in pregnancy- by State;County;DOH Race-Ethnicity;PRAMS Age Group;Infant Gender;Married;Poverty Level;Income (2004-2011);Birthweight;Smoke 3rd Trimester;Smoke Before Pregnant;WIC During Pregnancy, for the Year(s)
2000-2004;2001-2005;2002-2006;2003-2007;2004-2008;2005-2009;2006-2010;2007-2011**

Note: Weighted counts (#) represent 5-yr averages, rounded to the nearest hundred; n/r (Not Reportable) - If the unweighted total responses for a dimension (row) is <30 that row will not be shown

Year: 2001-2005

Infant Gender	Yes			No			Weighted Total Responses (5-Yr Avg)
	#	%	C.I.(95%)	#	%	C.I.(95%)	#
Male	200	2.5	2.1 - 3.0	8,600	97.5	97.0 - 97.9	8,800
Female	200	3.0	2.5 - 3.5	8,000	97.0	96.5 - 97.5	8,200

Married	Yes			No			Weighted Total Responses (5-Yr Avg)
	#	%	C.I.(95%)	#	%	C.I.(95%)	#
Yes	200	1.5	1.2 - 1.8	11,200	98.5	98.2 - 98.8	11,400
No	300	5.3	4.6 - 6.1	5,400	94.7	93.9 - 95.4	5,700

Poverty Level	Yes			No			Weighted Total Responses (5-Yr Avg)
	#	%	C.I.(95%)	#	%	C.I.(95%)	#
0-130%	300	4.1	3.5 - 4.8	6,400	95.9	95.2 - 96.5	6,700
131-185%	<50	1.6	1.1 - 2.3	2,600	98.4	97.7 - 98.9	2,700
186+%	100	1.5	1.1 - 2.0	6,200	98.5	98.0 - 98.9	6,300

**PRAMS Health Indicator 5-Year Aggregate Report - Illicit drug use in pregnancy- by State;County;DOH Race-Ethnicity;PRAMS Age Group;Infant Gender;Married;Poverty Level;Income (2004-2011);Birthweight;Smoke 3rd Trimester;Smoke Before Pregnant;WIC During Pregnancy, for the Year(s)
2000-2004;2001-2005;2002-2006;2003-2007;2004-2008;2005-2009;2006-2010;2007-2011**

Note: Weighted counts (#) represent 5-yr averages, rounded to the nearest hundred; n/r (Not Reportable) - If the unweighted total responses for a dimension (row) is <30 that row will not be shown

Year: 2001-2005

Birthweight	Yes			No			Weighted Total Responses (5-Yr Avg)
	#	%	C.I.(95%)	#	%	C.I.(95%)	#
Low birth weight	<50	3.4	2.2 - 5.1	1,100	96.6	94.9 - 97.8	1,200
Normal birth weight	400	2.7	2.4 - 3.0	15,400	97.3	97.0 - 97.6	15,900

Smoke 3rd Trimester	Yes			No			Weighted Total Responses (5-Yr Avg)
	#	%	C.I.(95%)	#	%	C.I.(95%)	#
Yes	200	11.2	9.2 - 13.6	1,300	88.8	86.4 - 90.8	1,500
No	300	1.9	1.6 - 2.2	15,000	98.1	97.8 - 98.4	15,300

Smoke Before Pregnant	Yes			No			Weighted Total Responses (5-Yr Avg)
	#	%	C.I.(95%)	#	%	C.I.(95%)	#
Yes	300	7.5	6.4 - 8.8	3,200	92.5	91.2 - 93.6	3,500
No	200	1.4	1.2 - 1.7	13,000	98.6	98.3 - 98.8	13,200

**PRAMS Health Indicator 5-Year Aggregate Report - Illicit drug use in pregnancy- by State;County;DOH Race-Ethnicity;PRAMS Age Group;Infant Gender;Married;Poverty Level;Income (2004-2011);Birthweight;Smoke 3rd Trimester;Smoke Before Pregnant;WIC During Pregnancy, for the Year(s)
2000-2004;2001-2005;2002-2006;2003-2007;2004-2008;2005-2009;2006-2010;2007-2011**

Note: Weighted counts (#) represent 5-yr averages, rounded to the nearest hundred; n/r (Not Reportable) - If the unweighted total responses for a dimension (row) is <30 that row will not be shown

Year: 2001-2005

WIC During Pregnancy	Yes			No			Weighted Total Responses (5-Yr Avg)
	#	%	C.I.(95%)	#	%	C.I.(95%)	#
Yes	300	3.6	3.1 - 4.3	7,000	96.4	95.7 - 96.9	7,300
No	200	2.0	1.7 - 2.4	9,400	98.0	97.6 - 98.3	9,600

**PRAMS Health Indicator 5-Year Aggregate Report - Illicit drug use in pregnancy- by State;County;DOH Race-Ethnicity;PRAMS Age Group;Infant Gender;Married;Poverty Level;Income (2004-2011);Birthweight;Smoke 3rd Trimester;Smoke Before Pregnant;WIC During Pregnancy, for the Year(s)
2000-2004;2001-2005;2002-2006;2003-2007;2004-2008;2005-2009;2006-2010;2007-2011**

Note: Weighted counts (#) represent 5-yr averages, rounded to the nearest hundred; n/r (Not Reportable) - If the unweighted total responses for a dimension (row) is <30 that row will not be shown

Year: 2000-2004

State	Yes			No			Weighted Total Responses (5-Yr Avg)
	#	%	C.I.(95%)	#	%	C.I.(95%)	#
Totals	500	2.8	2.5 - 3.2	16,500	97.2	96.8 - 97.5	17,000

County	Yes			No			Weighted Total Responses (5-Yr Avg)
	#	%	C.I.(95%)	#	%	C.I.(95%)	#
Hawaii	100	4.9	3.9 - 6.0	1,900	95.1	94.0 - 96.1	2,000
Honolulu	300	2.3	1.9 - 2.7	12,200	97.7	97.3 - 98.1	12,500
Kauai	<50	4.9	3.6 - 6.7	700	95.1	93.3 - 96.4	800
Maui	100	3.4	2.6 - 4.4	1,700	96.6	95.6 - 97.4	1,800

**PRAMS Health Indicator 5-Year Aggregate Report - Illicit drug use in pregnancy- by State;County;DOH Race-Ethnicity;PRAMS Age Group;Infant Gender;Married;Poverty Level;Income (2004-2011);Birthweight;Smoke 3rd Trimester;Smoke Before Pregnant;WIC During Pregnancy, for the Year(s)
2000-2004;2001-2005;2002-2006;2003-2007;2004-2008;2005-2009;2006-2010;2007-2011**

Note: Weighted counts (#) represent 5-yr averages, rounded to the nearest hundred; n/r (Not Reportable) - If the unweighted total responses for a dimension (row) is <30 that row will not be shown

Year: 2000-2004

DOH Race-Ethnicity	Yes			No			Weighted Total Responses (5-Yr Avg)
	#	%	C.I.(95%)	#	%	C.I.(95%)	#
Caucasian	100	3.5	2.8 - 4.4	3,600	96.5	95.6 - 97.2	3,700
Native Hawaiian	200	4.4	3.8 - 5.0	4,400	95.6	95.0 - 96.2	4,600
Chinese	<50	1.5	0.6 - 3.9	600	98.5	96.1 - 99.4	700
Filipino	<50	1.3	0.8 - 2.0	3,400	98.7	98.0 - 99.2	3,500
Japanese	<50	1.3	0.7 - 2.2	2,100	98.7	97.8 - 99.3	2,100
Other	100	2.6	1.8 - 3.9	2,300	97.4	96.1 - 98.2	2,300

PRAMS Age Group	Yes			No			Weighted Total Responses (5-Yr Avg)
	#	%	C.I.(95%)	#	%	C.I.(95%)	#
<20	100	5.9	4.5 - 7.6	1,500	94.1	92.4 - 95.5	1,600
20-24	200	3.7	3.0 - 4.4	4,000	96.3	95.6 - 97.0	4,200
25-34	200	2.2	1.8 - 2.7	8,100	97.8	97.3 - 98.2	8,300
35+	<50	1.7	1.2 - 2.4	2,800	98.3	97.6 - 98.8	2,900

**PRAMS Health Indicator 5-Year Aggregate Report - Illicit drug use in pregnancy- by State;County;DOH Race-Ethnicity;PRAMS Age Group;Infant Gender;Married;Poverty Level;Income (2004-2011);Birthweight;Smoke 3rd Trimester;Smoke Before Pregnant;WIC During Pregnancy, for the Year(s)
2000-2004;2001-2005;2002-2006;2003-2007;2004-2008;2005-2009;2006-2010;2007-2011**

Note: Weighted counts (#) represent 5-yr averages, rounded to the nearest hundred; n/r (Not Reportable) - If the unweighted total responses for a dimension (row) is <30 that row will not be shown

Year: 2000-2004

Infant Gender	Yes			No			Weighted Total Responses (5-Yr Avg)
	#	%	C.I.(95%)	#	%	C.I.(95%)	#
Male	200	2.6	2.2 - 3.0	8,600	97.4	97.0 - 97.8	8,800
Female	300	3.1	2.6 - 3.6	7,900	96.9	96.4 - 97.4	8,200

Married	Yes			No			Weighted Total Responses (5-Yr Avg)
	#	%	C.I.(95%)	#	%	C.I.(95%)	#
Yes	200	1.6	1.3 - 1.9	11,300	98.4	98.1 - 98.7	11,500
No	300	5.5	4.7 - 6.3	5,200	94.5	93.7 - 95.3	5,500

Poverty Level	Yes			No			Weighted Total Responses (5-Yr Avg)
	#	%	C.I.(95%)	#	%	C.I.(95%)	#
0-130%	300	3.9	3.4 - 4.6	6,600	96.1	95.4 - 96.6	6,900
131-185%	<50	1.5	1.1 - 2.2	2,700	98.5	97.8 - 98.9	2,800
186+%	100	1.8	1.4 - 2.4	5,900	98.2	97.6 - 98.6	6,000

**PRAMS Health Indicator 5-Year Aggregate Report - Illicit drug use in pregnancy- by State;County;DOH Race-Ethnicity;PRAMS Age Group;Infant Gender;Married;Poverty Level;Income (2004-2011);Birthweight;Smoke 3rd Trimester;Smoke Before Pregnant;WIC During Pregnancy, for the Year(s)
2000-2004;2001-2005;2002-2006;2003-2007;2004-2008;2005-2009;2006-2010;2007-2011**

Note: Weighted counts (#) represent 5-yr averages, rounded to the nearest hundred; n/r (Not Reportable) - If the unweighted total responses for a dimension (row) is <30 that row will not be shown

Year: 2000-2004

Birthweight	Yes			No			Weighted Total Responses (5-Yr Avg)
	#	%	C.I.(95%)	#	%	C.I.(95%)	#
Low birth weight	<50	3.6	2.4 - 5.2	1,100	96.4	94.8 - 97.6	1,100
Normal birth weight	400	2.7	2.4 - 3.1	15,400	97.3	96.9 - 97.6	15,800

Smoke 3rd Trimester	Yes			No			Weighted Total Responses (5-Yr Avg)
	#	%	C.I.(95%)	#	%	C.I.(95%)	#
Yes	200	10.6	8.7 - 12.9	1,300	89.4	87.1 - 91.3	1,500
No	300	2.0	1.7 - 2.3	14,900	98.0	97.7 - 98.3	15,200

Smoke Before Pregnant	Yes			No			Weighted Total Responses (5-Yr Avg)
	#	%	C.I.(95%)	#	%	C.I.(95%)	#
Yes	300	7.5	6.5 - 8.7	3,100	92.5	91.3 - 93.5	3,400
No	200	1.5	1.3 - 1.8	12,900	98.5	98.2 - 98.7	13,100

**PRAMS Health Indicator 5-Year Aggregate Report - Illicit drug use in pregnancy- by State;County;DOH Race-Ethnicity;PRAMS Age Group;Infant Gender;Married;Poverty Level;Income (2004-2011);Birthweight;Smoke 3rd Trimester;Smoke Before Pregnant;WIC During Pregnancy, for the Year(s)
2000-2004;2001-2005;2002-2006;2003-2007;2004-2008;2005-2009;2006-2010;2007-2011**

Note: Weighted counts (#) represent 5-yr averages, rounded to the nearest hundred; n/r (Not Reportable) - If the unweighted total responses for a dimension (row) is <30 that row will not be shown

Year: 2000-2004

WIC During Pregnancy	Yes			No			Weighted Total Responses (5-Yr Avg)
	#	%	C.I.(95%)	#	%	C.I.(95%)	#
Yes	300	3.7	3.2 - 4.3	7,000	96.3	95.7 - 96.8	7,300
No	200	2.1	1.8 - 2.6	9,300	97.9	97.4 - 98.2	9,500