

PRAMS Health Indicator 3-Year Aggregate Report - Baby placed in ICU after birth- for the State of Hawaii, for the Year(s) 2000-2002;2001-2003;2002-2004;2003-2005;2004-2006;2005-2007;2006-2008;2007-2009;2008-2010;2009-2011;2010-2012;2011-2013

PRAMS Health Indicator 3-Year Aggregate Report - Baby placed in ICU after birth- by State;County;DOH Race-Ethnicity;PRAMS Age Group;Infant Gender;Married;Poverty Level;Income (2000-2003);Income (2004-2011);Birthweight;Smoke 3rd Trimester;Smoke Before Pregnant;WIC During Pregnancy, for the Year(s) 2000-2002;2001-2003;2002-2004;2003-2005;2004-2006;2005-2007;2006-2008;2007-2009;2008-2010;2009-2011;2010-2012;2011-2013

Note: Weighted counts (#) represent 3-yr averages, rounded to the nearest hundred; n/r (Not Reportable) - If the unweighted total responses for a dimension (row) is <30 that row will not be shown

The trend analysis section shows the trend for the selected health variable over selected years in a table and a graph. 3-Year Weighted Total Responses: This number is a weighted representation of the mothers of babies delivered in a given year, who responded to a particular question in the survey. For most questions this will be the mothers of all babies delivered in a given year. For some secondary questions only a subset of the population was asked the question. For example, all survey participants were asked if they smoked during pregnancy, but only those who answered yes were asked how many cigarettes a day. If a dimension value is unknown for a particular survey record, that record will not be included in the counts for that particular dimension.

Note: Data collection for household income changed in 2004 and again in 2012. Because of this, income data does not exist for some 3-year aggregate periods.

Below are the indicators included in this report and the long description for each indicator.

PRAMS Health Indicator	Health Indicator Description
Baby placed in ICU after birth	Baby placed in ICU after birth

Suggested citation:

Hawaii Health Data Warehouse, Hawaii State Department of Health, Pregnancy Risk Assessment Monitoring System, (report title and years), Report Created: 2/17/17

For documentation on other terms and coding in this report, please go to the following links:

[Click here to access PRAMS documentation](#)

[Click here to access DOH-Race Ethnicity coding](#)

[Click here to access The Hawai'i Data Guide](#)

**For questions about this report, please contact
The Hawai'i Health Data Warehouse**

profiles@hhdw.org

(855) 946-5899 x15

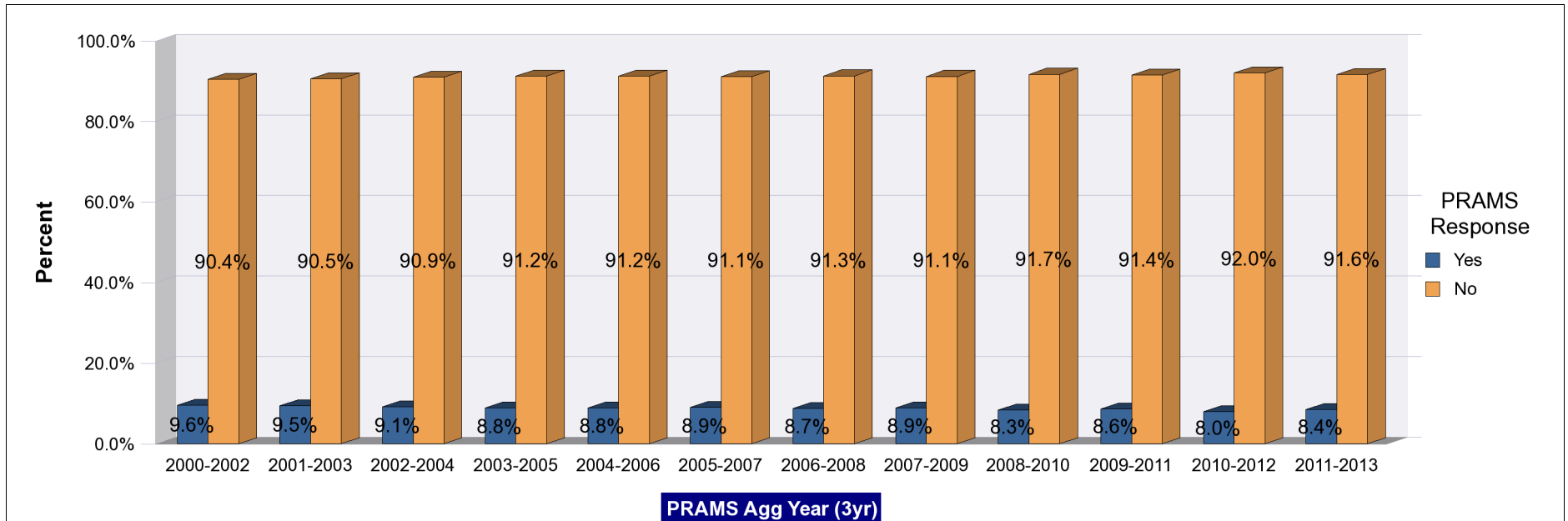
**PRAMS Health Indicator 3-Year Aggregate Report - Baby placed in ICU after birth- for the State of Hawaii, for the Year(s)
2000-2002;2001-2003;2002-2004;2003-2005;2004-2006;2005-2007;2006-2008;2007-2009;2008-2010;2009-2011;2010-2012;2011-2013**

Note: Weighted counts (#) represent 3-yr averages, rounded to the nearest hundred; n/r (Not Reportable) - If the unweighted total responses for a dimension (row) is <30 that row will not be shown

Years	Yes			No			Weighted Total Responses (3-Yr Avg)
	#	%	C.I.(95%)	#	%	C.I.(95%)	#
2000-2002	1,600	9.6	8.8 - 10.5	15,200	90.4	89.5 - 91.2	16,800
2001-2003	1,600	9.5	8.6 - 10.4	15,300	90.5	89.6 - 91.4	16,900
2002-2004	1,600	9.1	8.3 - 10.0	15,700	90.9	90.0 - 91.7	17,200
2003-2005	1,500	8.8	8.0 - 9.7	15,800	91.2	90.3 - 92.0	17,300
2004-2006	1,600	8.8	8.1 - 9.7	16,100	91.2	90.3 - 91.9	17,600
2005-2007	1,600	8.9	8.2 - 9.8	16,300	91.1	90.2 - 91.8	17,900
2006-2008	1,600	8.7	8.0 - 9.6	16,800	91.3	90.4 - 92.0	18,400
2007-2009	1,600	8.9	8.1 - 9.7	16,700	91.1	90.3 - 91.9	18,300
2008-2010	1,500	8.3	7.5 - 9.2	16,800	91.7	90.8 - 92.5	18,300
2009-2011	1,600	8.6	7.7 - 9.5	16,700	91.4	90.5 - 92.3	18,200
2010-2012	1,500	8.0	7.2 - 8.9	16,700	92.0	91.1 - 92.8	18,200
2011-2013	1,500	8.4	7.5 - 9.4	16,600	91.6	90.6 - 92.5	18,100

**PRAMS Health Indicator 3-Year Aggregate Report - Baby placed in ICU after birth- for the State of Hawaii, for the Year(s)
2000-2002;2001-2003;2002-2004;2003-2005;2004-2006;2005-2007;2006-2008;2007-2009;2008-2010;2009-2011;2010-2012;2011-2013**

Note: Weighted counts (#) represent 3-yr averages, rounded to the nearest hundred; n/r (Not Reportable) - If the unweighted total responses for a dimension (row) is <30 that row will not be shown



PRAMS Health Indicator 3-Year Aggregate Report - Baby placed in ICU after birth- by State;County;DOH Race-Ethnicity;PRAMS Age Group;Infant Gender;Married;Poverty Level;Income (2000-2003);Income (2004-2011);Birthweight;Smoke 3rd Trimester;Smoke Before Pregnant;WIC During Pregnancy, for the Year(s) 2000-2002;2001-2003;2002-2004;2003-2005;2004-2006;2005-2007;2006-2008;2007-2009;2008-2010;2009-2011;2010-2012;2011-2013

Note: Weighted counts (#) represent 3-yr averages, rounded to the nearest hundred; n/r (Not Reportable) - If the unweighted total responses for a dimension (row) is <30 that row will not be shown

Years: 2011-2013

State	Yes			No			Weighted Total Responses (3-Yr Avg)
	#	%	C.I.(95%)	#	%	C.I.(95%)	#
Totals	1,500	8.4	7.5 - 9.4	16,600	91.6	90.6 - 92.5	18,100

County	Yes			No			Weighted Total Responses (3-Yr Avg)
	#	%	C.I.(95%)	#	%	C.I.(95%)	#
Hawaii	100	6.0	4.7 - 7.6	2,200	94.0	92.4 - 95.3	2,300
Honolulu	1,200	9.3	8.1 - 10.7	11,800	90.7	89.3 - 91.9	13,100
Kauai	<50	5.0	3.7 - 6.7	800	95.0	93.3 - 96.3	800
Maui	100	6.6	5.3 - 8.2	1,800	93.4	91.8 - 94.7	1,900

PRAMS Health Indicator 3-Year Aggregate Report - Baby placed in ICU after birth- by State;County;DOH Race-Ethnicity;PRAMS Age Group;Infant Gender;Married;Poverty Level;Income (2000-2003);Income (2004-2011);Birthweight;Smoke 3rd Trimester;Smoke Before Pregnant;WIC During Pregnancy, for the Year(s) 2000-2002;2001-2003;2002-2004;2003-2005;2004-2006;2005-2007;2006-2008;2007-2009;2008-2010;2009-2011;2010-2012;2011-2013

Note: Weighted counts (#) represent 3-yr averages, rounded to the nearest hundred; n/r (Not Reportable) - If the unweighted total responses for a dimension (row) is <30 that row will not be shown

Years: 2011-2013

DOH Race-Ethnicity	Yes			No			Weighted Total Responses (3-Yr Avg)
	#	%	C.I.(95%)	#	%	C.I.(95%)	#
Caucasian	400	10.0	8.0 - 12.5	4,000	90.0	87.5 - 92.0	4,400
Native Hawaiian	400	8.2	6.6 - 10.2	4,800	91.8	89.8 - 93.4	5,300
Chinese	100	8.1	4.8 - 13.3	800	91.9	86.7 - 95.2	900
Filipino	300	7.9	6.2 - 10.2	2,900	92.1	89.8 - 93.8	3,200
Japanese	100	5.5	3.4 - 8.9	1,600	94.5	91.1 - 96.6	1,700
Other	200	8.8	6.7 - 11.6	2,400	91.2	88.4 - 93.3	2,600

PRAMS Age Group	Yes			No			Weighted Total Responses (3-Yr Avg)
	#	%	C.I.(95%)	#	%	C.I.(95%)	#
<20	100	13.4	8.5 - 20.4	800	86.6	79.6 - 91.5	1,000
20-24	300	8.4	6.4 - 10.9	3,700	91.6	89.1 - 93.6	4,000
25-34	700	7.5	6.4 - 8.8	9,200	92.5	91.2 - 93.6	9,900
35+	300	9.9	7.9 - 12.3	2,900	90.1	87.7 - 92.1	3,300

PRAMS Health Indicator 3-Year Aggregate Report - Baby placed in ICU after birth- by State;County;DOH Race-Ethnicity;PRAMS Age Group;Infant Gender;Married;Poverty Level;Income (2000-2003);Income (2004-2011);Birthweight;Smoke 3rd Trimester;Smoke Before Pregnant;WIC During Pregnancy, for the Year(s) 2000-2002;2001-2003;2002-2004;2003-2005;2004-2006;2005-2007;2006-2008;2007-2009;2008-2010;2009-2011;2010-2012;2011-2013

Note: Weighted counts (#) represent 3-yr averages, rounded to the nearest hundred; n/r (Not Reportable) - If the unweighted total responses for a dimension (row) is <30 that row will not be shown

Years: 2011-2013

Infant Gender	Yes			No			Weighted Total Responses (3-Yr Avg)
	#	%	C.I.(95%)	#	%	C.I.(95%)	#
Male	800	9.0	7.7 - 10.5	8,200	91.0	89.5 - 92.3	9,000
Female	700	7.9	6.6 - 9.3	8,400	92.1	90.7 - 93.4	9,100

Married	Yes			No			Weighted Total Responses (3-Yr Avg)
	#	%	C.I.(95%)	#	%	C.I.(95%)	#
Yes	900	8.2	7.1 - 9.5	10,400	91.8	90.5 - 92.9	11,300
No	600	8.8	7.3 - 10.6	6,200	91.2	89.4 - 92.7	6,800

Poverty Level	Yes			No			Weighted Total Responses (3-Yr Avg)
	#	%	C.I.(95%)	#	%	C.I.(95%)	#
0-130%	500	8.2	6.8 - 9.9	5,900	91.8	90.1 - 93.2	6,500
131-185%	300	9.9	7.5 - 13.1	2,500	90.1	86.9 - 92.5	2,800
186+%	600	7.9	6.6 - 9.5	6,800	92.1	90.5 - 93.4	7,300

PRAMS Health Indicator 3-Year Aggregate Report - Baby placed in ICU after birth- by State;County;DOH Race-Ethnicity;PRAMS Age Group;Infant Gender;Married;Poverty Level;Income (2000-2003);Income (2004-2011);Birthweight;Smoke 3rd Trimester;Smoke Before Pregnant;WIC During Pregnancy, for the Year(s) 2000-2002;2001-2003;2002-2004;2003-2005;2004-2006;2005-2007;2006-2008;2007-2009;2008-2010;2009-2011;2010-2012;2011-2013

Note: Weighted counts (#) represent 3-yr averages, rounded to the nearest hundred; n/r (Not Reportable) - If the unweighted total responses for a dimension (row) is <30 that row will not be shown

Years: 2011-2013

Birthweight	Yes			No			Weighted Total Responses (3-Yr Avg)
	#	%	C.I.(95%)	#	%	C.I.(95%)	#
Low birth weight	600	46.8	43.8 - 49.9	700	53.2	50.1 - 56.2	1,300
Normal birth weight	900	5.5	4.5 - 6.5	15,900	94.5	93.5 - 95.5	16,800

Smoke 3rd Trimester	Yes			No			Weighted Total Responses (3-Yr Avg)
	#	%	C.I.(95%)	#	%	C.I.(95%)	#
Yes	100	10.6	7.5 - 14.6	800	89.4	85.4 - 92.5	900
No	1,400	8.3	7.3 - 9.3	15,400	91.7	90.7 - 92.7	16,800

Smoke Before Pregnant	Yes			No			Weighted Total Responses (3-Yr Avg)
	#	%	C.I.(95%)	#	%	C.I.(95%)	#
Yes	400	11.5	9.2 - 14.4	2,800	88.5	85.6 - 90.8	3,200
No	1,100	7.7	6.7 - 8.8	13,400	92.3	91.2 - 93.3	14,500

PRAMS Health Indicator 3-Year Aggregate Report - Baby placed in ICU after birth- by State;County;DOH Race-Ethnicity;PRAMS Age Group;Infant Gender;Married;Poverty Level;Income (2000-2003);Income (2004-2011);Birthweight;Smoke 3rd Trimester;Smoke Before Pregnant;WIC During Pregnancy, for the Year(s) 2000-2002;2001-2003;2002-2004;2003-2005;2004-2006;2005-2007;2006-2008;2007-2009;2008-2010;2009-2011;2010-2012;2011-2013

Note: Weighted counts (#) represent 3-yr averages, rounded to the nearest hundred; n/r (Not Reportable) - If the unweighted total responses for a dimension (row) is <30 that row will not be shown

Years: 2011-2013

WIC During Pregnancy	Yes			No			Weighted Total Responses (3-Yr Avg)
	#	%	C.I.(95%)	#	%	C.I.(95%)	#
Yes	700	9.0	7.6 - 10.6	7,400	91.0	89.4 - 92.4	8,100
No	800	8.0	6.8 - 9.3	9,100	92.0	90.7 - 93.2	9,900

PRAMS Health Indicator 3-Year Aggregate Report - Baby placed in ICU after birth- by State;County;DOH Race-Ethnicity;PRAMS Age Group;Infant Gender;Married;Poverty Level;Income (2000-2003);Income (2004-2011);Birthweight;Smoke 3rd Trimester;Smoke Before Pregnant;WIC During Pregnancy, for the Year(s) 2000-2002;2001-2003;2002-2004;2003-2005;2004-2006;2005-2007;2006-2008;2007-2009;2008-2010;2009-2011;2010-2012;2011-2013

Note: Weighted counts (#) represent 3-yr averages, rounded to the nearest hundred; n/r (Not Reportable) - If the unweighted total responses for a dimension (row) is <30 that row will not be shown

Years: 2010-2012

State	Yes			No			Weighted Total Responses (3-Yr Avg)
	#	%	C.I.(95%)	#	%	C.I.(95%)	#
Totals	1,500	8.0	7.2 - 8.9	16,700	92.0	91.1 - 92.8	18,200

County	Yes			No			Weighted Total Responses (3-Yr Avg)
	#	%	C.I.(95%)	#	%	C.I.(95%)	#
Hawaii	100	5.4	4.2 - 6.9	2,200	94.6	93.1 - 95.8	2,300
Honolulu	1,100	8.7	7.6 - 9.9	12,000	91.3	90.1 - 92.4	13,100
Kauai	<50	5.0	3.6 - 6.8	800	95.0	93.2 - 96.4	800
Maui	100	7.7	6.3 - 9.3	1,800	92.3	90.7 - 93.7	1,900

PRAMS Health Indicator 3-Year Aggregate Report - Baby placed in ICU after birth- by State;County;DOH Race-Ethnicity;PRAMS Age Group;Infant Gender;Married;Poverty Level;Income (2000-2003);Income (2004-2011);Birthweight;Smoke 3rd Trimester;Smoke Before Pregnant;WIC During Pregnancy, for the Year(s) 2000-2002;2001-2003;2002-2004;2003-2005;2004-2006;2005-2007;2006-2008;2007-2009;2008-2010;2009-2011;2010-2012;2011-2013

Note: Weighted counts (#) represent 3-yr averages, rounded to the nearest hundred; n/r (Not Reportable) - If the unweighted total responses for a dimension (row) is <30 that row will not be shown

Years: 2010-2012

DOH Race-Ethnicity	Yes			No			Weighted Total Responses (3-Yr Avg)
	#	%	C.I.(95%)	#	%	C.I.(95%)	#
Caucasian	400	8.6	6.8 - 10.8	3,900	91.4	89.2 - 93.2	4,300
Native Hawaiian	400	6.9	5.6 - 8.5	4,900	93.1	91.5 - 94.4	5,300
Chinese	100	8.1	5.0 - 12.8	800	91.9	87.2 - 95.0	900
Filipino	300	7.7	5.9 - 9.9	3,000	92.3	90.1 - 94.1	3,300
Japanese	100	6.6	4.4 - 9.8	1,600	93.4	90.2 - 95.6	1,700
Other	300	10.3	7.9 - 13.3	2,500	89.7	86.7 - 92.1	2,800

PRAMS Age Group	Yes			No			Weighted Total Responses (3-Yr Avg)
	#	%	C.I.(95%)	#	%	C.I.(95%)	#
<20	100	12.3	8.1 - 18.4	900	87.7	81.6 - 91.9	1,000
20-24	300	7.9	6.2 - 10.0	3,800	92.1	90.0 - 93.8	4,100
25-34	700	6.8	5.8 - 8.0	9,100	93.2	92.0 - 94.2	9,800
35+	300	10.2	8.1 - 12.8	2,900	89.8	87.2 - 91.9	3,200

PRAMS Health Indicator 3-Year Aggregate Report - Baby placed in ICU after birth- by State;County;DOH Race-Ethnicity;PRAMS Age Group;Infant Gender;Married;Poverty Level;Income (2000-2003);Income (2004-2011);Birthweight;Smoke 3rd Trimester;Smoke Before Pregnant;WIC During Pregnancy, for the Year(s) 2000-2002;2001-2003;2002-2004;2003-2005;2004-2006;2005-2007;2006-2008;2007-2009;2008-2010;2009-2011;2010-2012;2011-2013

Note: Weighted counts (#) represent 3-yr averages, rounded to the nearest hundred; n/r (Not Reportable) - If the unweighted total responses for a dimension (row) is <30 that row will not be shown

Years: 2010-2012

Infant Gender	Yes			No			Weighted Total Responses (3-Yr Avg)
	#	%	C.I.(95%)	#	%	C.I.(95%)	#
Male	800	8.4	7.2 - 9.7	8,400	91.6	90.3 - 92.8	9,200
Female	700	7.6	6.4 - 8.9	8,300	92.4	91.1 - 93.6	9,000

Married	Yes			No			Weighted Total Responses (3-Yr Avg)
	#	%	C.I.(95%)	#	%	C.I.(95%)	#
Yes	900	7.8	6.8 - 9.0	10,500	92.2	91.0 - 93.2	11,300
No	600	8.3	7.0 - 9.9	6,300	91.7	90.1 - 93.0	6,800

Poverty Level	Yes			No			Weighted Total Responses (3-Yr Avg)
	#	%	C.I.(95%)	#	%	C.I.(95%)	#
0-130%	600	8.7	7.3 - 10.3	5,800	91.3	89.7 - 92.7	6,400
131-185%	200	7.2	5.3 - 9.7	2,700	92.8	90.3 - 94.7	2,900
186+%	600	7.5	6.3 - 9.0	7,000	92.5	91.0 - 93.7	7,600

PRAMS Health Indicator 3-Year Aggregate Report - Baby placed in ICU after birth- by State;County;DOH Race-Ethnicity;PRAMS Age Group;Infant Gender;Married;Poverty Level;Income (2000-2003);Income (2004-2011);Birthweight;Smoke 3rd Trimester;Smoke Before Pregnant;WIC During Pregnancy, for the Year(s) 2000-2002;2001-2003;2002-2004;2003-2005;2004-2006;2005-2007;2006-2008;2007-2009;2008-2010;2009-2011;2010-2012;2011-2013

Note: Weighted counts (#) represent 3-yr averages, rounded to the nearest hundred; n/r (Not Reportable) - If the unweighted total responses for a dimension (row) is <30 that row will not be shown

Years: 2010-2012

Birthweight	Yes			No			Weighted Total Responses (3-Yr Avg)
	#	%	C.I.(95%)	#	%	C.I.(95%)	#
Low birth weight	600	47.9	44.8 - 51.0	700	52.1	49.0 - 55.2	1,300
Normal birth weight	800	5.0	4.1 - 6.0	16,000	95.0	94.0 - 95.9	16,900

Smoke 3rd Trimester	Yes			No			Weighted Total Responses (3-Yr Avg)
	#	%	C.I.(95%)	#	%	C.I.(95%)	#
Yes	100	8.8	6.0 - 12.8	900	91.2	87.2 - 94.0	1,000
No	1,300	7.9	7.0 - 8.9	15,500	92.1	91.1 - 93.0	16,800

Smoke Before Pregnant	Yes			No			Weighted Total Responses (3-Yr Avg)
	#	%	C.I.(95%)	#	%	C.I.(95%)	#
Yes	300	9.7	7.8 - 12.2	3,100	90.3	87.8 - 92.2	3,400
No	1,100	7.6	6.6 - 8.6	13,400	92.4	91.4 - 93.4	14,500

PRAMS Health Indicator 3-Year Aggregate Report - Baby placed in ICU after birth- by State;County;DOH Race-Ethnicity;PRAMS Age Group;Infant Gender;Married;Poverty Level;Income (2000-2003);Income (2004-2011);Birthweight;Smoke 3rd Trimester;Smoke Before Pregnant;WIC During Pregnancy, for the Year(s) 2000-2002;2001-2003;2002-2004;2003-2005;2004-2006;2005-2007;2006-2008;2007-2009;2008-2010;2009-2011;2010-2012;2011-2013

Note: Weighted counts (#) represent 3-yr averages, rounded to the nearest hundred; n/r (Not Reportable) - If the unweighted total responses for a dimension (row) is <30 that row will not be shown

Years: 2010-2012

WIC During Pregnancy	Yes			No			Weighted Total Responses (3-Yr Avg)
	#	%	C.I.(95%)	#	%	C.I.(95%)	#
Yes	700	8.2	6.9 - 9.6	7,400	91.8	90.4 - 93.1	8,100
No	800	7.8	6.7 - 9.1	9,100	92.2	90.9 - 93.3	9,900

PRAMS Health Indicator 3-Year Aggregate Report - Baby placed in ICU after birth- by State;County;DOH Race-Ethnicity;PRAMS Age Group;Infant Gender;Married;Poverty Level;Income (2000-2003);Income (2004-2011);Birthweight;Smoke 3rd Trimester;Smoke Before Pregnant;WIC During Pregnancy, for the Year(s) 2000-2002;2001-2003;2002-2004;2003-2005;2004-2006;2005-2007;2006-2008;2007-2009;2008-2010;2009-2011;2010-2012;2011-2013

Note: Weighted counts (#) represent 3-yr averages, rounded to the nearest hundred; n/r (Not Reportable) - If the unweighted total responses for a dimension (row) is <30 that row will not be shown

Years: 2009-2011

State	Yes			No			Weighted Total Responses (3-Yr Avg)
	#	%	C.I.(95%)	#	%	C.I.(95%)	#
Totals	1,600	8.6	7.7 - 9.5	16,700	91.4	90.5 - 92.3	18,200

County	Yes			No			Weighted Total Responses (3-Yr Avg)
	#	%	C.I.(95%)	#	%	C.I.(95%)	#
Hawaii	100	5.9	4.7 - 7.5	2,200	94.1	92.5 - 95.3	2,400
Honolulu	1,200	9.3	8.2 - 10.6	11,800	90.7	89.4 - 91.8	13,100
Kauai	<50	6.0	4.5 - 7.9	800	94.0	92.1 - 95.5	800
Maui	200	7.8	6.5 - 9.4	1,800	92.2	90.6 - 93.5	2,000

PRAMS Health Indicator 3-Year Aggregate Report - Baby placed in ICU after birth- by State;County;DOH Race-Ethnicity;PRAMS Age Group;Infant Gender;Married;Poverty Level;Income (2000-2003);Income (2004-2011);Birthweight;Smoke 3rd Trimester;Smoke Before Pregnant;WIC During Pregnancy, for the Year(s) 2000-2002;2001-2003;2002-2004;2003-2005;2004-2006;2005-2007;2006-2008;2007-2009;2008-2010;2009-2011;2010-2012;2011-2013

Note: Weighted counts (#) represent 3-yr averages, rounded to the nearest hundred; n/r (Not Reportable) - If the unweighted total responses for a dimension (row) is <30 that row will not be shown

Years: 2009-2011

DOH Race-Ethnicity	Yes			No			Weighted Total Responses (3-Yr Avg)
	#	%	C.I.(95%)	#	%	C.I.(95%)	#
Caucasian	400	8.1	6.5 - 10.2	4,100	91.9	89.8 - 93.5	4,400
Native Hawaiian	400	7.0	5.7 - 8.6	5,200	93.0	91.4 - 94.3	5,500
Chinese	100	9.1	5.4 - 15.0	700	90.9	85.0 - 94.6	800
Filipino	300	7.9	6.2 - 10.0	3,000	92.1	90.0 - 93.8	3,200
Japanese	100	7.0	4.8 - 10.2	1,600	93.0	89.8 - 95.2	1,700
Other	400	14.4	11.3 - 18.1	2,200	85.6	81.9 - 88.7	2,600

PRAMS Age Group	Yes			No			Weighted Total Responses (3-Yr Avg)
	#	%	C.I.(95%)	#	%	C.I.(95%)	#
<20	200	11.9	8.1 - 17.0	1,100	88.1	83.0 - 91.9	1,300
20-24	400	9.4	7.5 - 11.7	3,900	90.6	88.3 - 92.5	4,300
25-34	700	7.4	6.4 - 8.7	8,800	92.6	91.3 - 93.6	9,500
35+	300	9.6	7.6 - 12.0	2,800	90.4	88.0 - 92.4	3,100

PRAMS Health Indicator 3-Year Aggregate Report - Baby placed in ICU after birth- by State;County;DOH Race-Ethnicity;PRAMS Age Group;Infant Gender;Married;Poverty Level;Income (2000-2003);Income (2004-2011);Birthweight;Smoke 3rd Trimester;Smoke Before Pregnant;WIC During Pregnancy, for the Year(s) 2000-2002;2001-2003;2002-2004;2003-2005;2004-2006;2005-2007;2006-2008;2007-2009;2008-2010;2009-2011;2010-2012;2011-2013

Note: Weighted counts (#) represent 3-yr averages, rounded to the nearest hundred; n/r (Not Reportable) - If the unweighted total responses for a dimension (row) is <30 that row will not be shown

Years: 2009-2011

Infant Gender	Yes			No			Weighted Total Responses (3-Yr Avg)
	#	%	C.I.(95%)	#	%	C.I.(95%)	#
Male	800	8.8	7.6 - 10.1	8,600	91.2	89.9 - 92.4	9,400
Female	700	8.4	7.1 - 9.8	8,100	91.6	90.2 - 92.9	8,800

Married	Yes			No			Weighted Total Responses (3-Yr Avg)
	#	%	C.I.(95%)	#	%	C.I.(95%)	#
Yes	900	8.1	7.1 - 9.3	10,300	91.9	90.7 - 92.9	11,200
No	700	9.3	7.9 - 11.0	6,400	90.7	89.0 - 92.1	7,000

Poverty Level	Yes			No			Weighted Total Responses (3-Yr Avg)
	#	%	C.I.(95%)	#	%	C.I.(95%)	#
0-130%	700	10.2	8.6 - 12.1	5,700	89.8	87.9 - 91.4	6,400
131-185%	200	6.3	4.6 - 8.5	2,700	93.7	91.5 - 95.4	2,800
186+%	600	8.0	6.8 - 9.5	7,100	92.0	90.5 - 93.2	7,700

PRAMS Health Indicator 3-Year Aggregate Report - Baby placed in ICU after birth- by State;County;DOH Race-Ethnicity;PRAMS Age Group;Infant Gender;Married;Poverty Level;Income (2000-2003);Income (2004-2011);Birthweight;Smoke 3rd Trimester;Smoke Before Pregnant;WIC During Pregnancy, for the Year(s) 2000-2002;2001-2003;2002-2004;2003-2005;2004-2006;2005-2007;2006-2008;2007-2009;2008-2010;2009-2011;2010-2012;2011-2013

Note: Weighted counts (#) represent 3-yr averages, rounded to the nearest hundred; n/r (Not Reportable) - If the unweighted total responses for a dimension (row) is <30 that row will not be shown

Years: 2009-2011

Income (2004-2011)	Yes			No			Weighted Total Responses (3-Yr Avg)
	#	%	C.I.(95%)	#	%	C.I.(95%)	#
<\$10,000	300	10.8	8.5 - 13.7	2,800	89.2	86.3 - 91.5	3,200
\$10,000-\$24,999	300	8.0	6.4 - 10.1	3,200	92.0	89.9 - 93.6	3,500
\$25,000-\$49,999	400	9.0	7.1 - 11.2	3,900	91.0	88.8 - 92.9	4,300
>=\$50,000	500	7.5	6.2 - 9.0	5,700	92.5	91.0 - 93.8	6,100

Birthweight	Yes			No			Weighted Total Responses (3-Yr Avg)
	#	%	C.I.(95%)	#	%	C.I.(95%)	#
Low birth weight	600	47.6	44.5 - 50.7	700	52.4	49.3 - 55.5	1,300
Normal birth weight	900	5.5	4.7 - 6.5	16,000	94.5	93.5 - 95.3	16,900

Smoke 3rd Trimester	Yes			No			Weighted Total Responses (3-Yr Avg)
	#	%	C.I.(95%)	#	%	C.I.(95%)	#
Yes	100	10.2	6.9 - 14.8	1,200	89.8	85.2 - 93.1	1,400
No	1,400	8.4	7.5 - 9.4	15,200	91.6	90.6 - 92.5	16,600

PRAMS Health Indicator 3-Year Aggregate Report - Baby placed in ICU after birth- by State;County;DOH Race-Ethnicity;PRAMS Age Group;Infant Gender;Married;Poverty Level;Income (2000-2003);Income (2004-2011);Birthweight;Smoke 3rd Trimester;Smoke Before Pregnant;WIC During Pregnancy, for the Year(s) 2000-2002;2001-2003;2002-2004;2003-2005;2004-2006;2005-2007;2006-2008;2007-2009;2008-2010;2009-2011;2010-2012;2011-2013

Note: Weighted counts (#) represent 3-yr averages, rounded to the nearest hundred; n/r (Not Reportable) - If the unweighted total responses for a dimension (row) is <30 that row will not be shown

Years: 2009-2011

Smoke Before Pregnant	Yes			No			Weighted Total Responses (3-Yr Avg)
	#	%	C.I.(95%)	#	%	C.I.(95%)	#
Yes	400	9.8	7.8 - 12.2	3,400	90.2	87.8 - 92.2	3,800
No	1,200	8.2	7.2 - 9.3	13,000	91.8	90.7 - 92.8	14,200

WIC During Pregnancy	Yes			No			Weighted Total Responses (3-Yr Avg)
	#	%	C.I.(95%)	#	%	C.I.(95%)	#
Yes	700	9.1	7.8 - 10.5	7,100	90.9	89.5 - 92.2	7,800
No	800	8.1	7.0 - 9.4	9,300	91.9	90.6 - 93.0	10,100

PRAMS Health Indicator 3-Year Aggregate Report - Baby placed in ICU after birth- by State;County;DOH Race-Ethnicity;PRAMS Age Group;Infant Gender;Married;Poverty Level;Income (2000-2003);Income (2004-2011);Birthweight;Smoke 3rd Trimester;Smoke Before Pregnant;WIC During Pregnancy, for the Year(s) 2000-2002;2001-2003;2002-2004;2003-2005;2004-2006;2005-2007;2006-2008;2007-2009;2008-2010;2009-2011;2010-2012;2011-2013

Note: Weighted counts (#) represent 3-yr averages, rounded to the nearest hundred; n/r (Not Reportable) - If the unweighted total responses for a dimension (row) is <30 that row will not be shown

Years: 2008-2010

State	Yes			No			Weighted Total Responses (3-Yr Avg)
	#	%	C.I.(95%)	#	%	C.I.(95%)	#
Totals	1,500	8.3	7.5 - 9.2	16,800	91.7	90.8 - 92.5	18,300

County	Yes			No			Weighted Total Responses (3-Yr Avg)
	#	%	C.I.(95%)	#	%	C.I.(95%)	#
Hawaii	200	6.3	4.9 - 8.2	2,200	93.7	91.8 - 95.1	2,400
Honolulu	1,200	9.0	8.0 - 10.1	11,800	91.0	89.9 - 92.0	13,000
Kauai	<50	5.4	3.8 - 7.7	800	94.6	92.3 - 96.2	800
Maui	200	7.8	6.2 - 9.8	1,900	92.2	90.2 - 93.8	2,100

PRAMS Health Indicator 3-Year Aggregate Report - Baby placed in ICU after birth- by State;County;DOH Race-Ethnicity;PRAMS Age Group;Infant Gender;Married;Poverty Level;Income (2000-2003);Income (2004-2011);Birthweight;Smoke 3rd Trimester;Smoke Before Pregnant;WIC During Pregnancy, for the Year(s) 2000-2002;2001-2003;2002-2004;2003-2005;2004-2006;2005-2007;2006-2008;2007-2009;2008-2010;2009-2011;2010-2012;2011-2013

Note: Weighted counts (#) represent 3-yr averages, rounded to the nearest hundred; n/r (Not Reportable) - If the unweighted total responses for a dimension (row) is <30 that row will not be shown

Years: 2008-2010

DOH Race-Ethnicity	Yes			No			Weighted Total Responses (3-Yr Avg)
	#	%	C.I.(95%)	#	%	C.I.(95%)	#
Caucasian	300	7.0	5.6 - 8.7	4,100	93.0	91.3 - 94.4	4,400
Native Hawaiian	400	6.9	5.7 - 8.3	5,100	93.1	91.7 - 94.3	5,500
Chinese	100	9.1	5.6 - 14.4	600	90.9	85.6 - 94.4	700
Filipino	200	7.5	5.9 - 9.4	3,000	92.5	90.6 - 94.1	3,200
Japanese	100	7.9	5.7 - 11.0	1,600	92.1	89.0 - 94.3	1,800
Other	400	14.7	11.7 - 18.2	2,300	85.3	81.8 - 88.3	2,700

PRAMS Age Group	Yes			No			Weighted Total Responses (3-Yr Avg)
	#	%	C.I.(95%)	#	%	C.I.(95%)	#
<20	200	10.8	7.7 - 14.9	1,300	89.2	85.1 - 92.3	1,400
20-24	400	8.8	7.1 - 10.9	3,900	91.2	89.1 - 92.9	4,200
25-34	700	7.5	6.4 - 8.6	8,700	92.5	91.4 - 93.6	9,400
35+	300	9.2	7.4 - 11.4	2,900	90.8	88.6 - 92.6	3,200

PRAMS Health Indicator 3-Year Aggregate Report - Baby placed in ICU after birth- by State;County;DOH Race-Ethnicity;PRAMS Age Group;Infant Gender;Married;Poverty Level;Income (2000-2003);Income (2004-2011);Birthweight;Smoke 3rd Trimester;Smoke Before Pregnant;WIC During Pregnancy, for the Year(s) 2000-2002;2001-2003;2002-2004;2003-2005;2004-2006;2005-2007;2006-2008;2007-2009;2008-2010;2009-2011;2010-2012;2011-2013

Note: Weighted counts (#) represent 3-yr averages, rounded to the nearest hundred; n/r (Not Reportable) - If the unweighted total responses for a dimension (row) is <30 that row will not be shown

Years: 2008-2010

Infant Gender	Yes			No			Weighted Total Responses (3-Yr Avg)
	#	%	C.I.(95%)	#	%	C.I.(95%)	#
Male	800	8.7	7.6 - 9.9	8,700	91.3	90.1 - 92.4	9,500
Female	700	8.0	6.8 - 9.3	8,100	92.0	90.7 - 93.2	8,800

Married	Yes			No			Weighted Total Responses (3-Yr Avg)
	#	%	C.I.(95%)	#	%	C.I.(95%)	#
Yes	900	7.7	6.7 - 8.8	10,400	92.3	91.2 - 93.3	11,300
No	700	9.4	8.1 - 10.9	6,400	90.6	89.1 - 91.9	7,000

Poverty Level	Yes			No			Weighted Total Responses (3-Yr Avg)
	#	%	C.I.(95%)	#	%	C.I.(95%)	#
0-130%	700	10.5	9.0 - 12.3	5,800	89.5	87.7 - 91.0	6,500
131-185%	100	5.3	3.8 - 7.2	2,600	94.7	92.8 - 96.2	2,800
186+%	600	7.7	6.6 - 8.9	7,100	92.3	91.1 - 93.4	7,700

PRAMS Health Indicator 3-Year Aggregate Report - Baby placed in ICU after birth- by State;County;DOH Race-Ethnicity;PRAMS Age Group;Infant Gender;Married;Poverty Level;Income (2000-2003);Income (2004-2011);Birthweight;Smoke 3rd Trimester;Smoke Before Pregnant;WIC During Pregnancy, for the Year(s) 2000-2002;2001-2003;2002-2004;2003-2005;2004-2006;2005-2007;2006-2008;2007-2009;2008-2010;2009-2011;2010-2012;2011-2013

Note: Weighted counts (#) represent 3-yr averages, rounded to the nearest hundred; n/r (Not Reportable) - If the unweighted total responses for a dimension (row) is <30 that row will not be shown

Years: 2008-2010

Income (2004-2011)	Yes			No			Weighted Total Responses (3-Yr Avg)
	#	%	C.I.(95%)	#	%	C.I.(95%)	#
<\$10,000	400	12.4	10.0 - 15.3	2,800	87.6	84.7 - 90.0	3,100
\$10,000-\$24,999	300	7.9	6.3 - 9.8	3,400	92.1	90.2 - 93.7	3,700
\$25,000-\$49,999	300	7.4	5.9 - 9.2	3,800	92.6	90.8 - 94.1	4,100
>=\$50,000	500	7.4	6.2 - 8.8	5,700	92.6	91.2 - 93.8	6,200

Birthweight	Yes			No			Weighted Total Responses (3-Yr Avg)
	#	%	C.I.(95%)	#	%	C.I.(95%)	#
Low birth weight	600	46.7	42.8 - 50.6	700	53.3	49.4 - 57.2	1,300
Normal birth weight	900	5.4	4.6 - 6.3	16,100	94.6	93.7 - 95.4	17,000

Smoke 3rd Trimester	Yes			No			Weighted Total Responses (3-Yr Avg)
	#	%	C.I.(95%)	#	%	C.I.(95%)	#
Yes	200	10.2	7.1 - 14.3	1,400	89.8	85.7 - 92.9	1,600
No	1,300	8.2	7.4 - 9.1	15,000	91.8	90.9 - 92.6	16,400

PRAMS Health Indicator 3-Year Aggregate Report - Baby placed in ICU after birth- by State;County;DOH Race-Ethnicity;PRAMS Age Group;Infant Gender;Married;Poverty Level;Income (2000-2003);Income (2004-2011);Birthweight;Smoke 3rd Trimester;Smoke Before Pregnant;WIC During Pregnancy, for the Year(s) 2000-2002;2001-2003;2002-2004;2003-2005;2004-2006;2005-2007;2006-2008;2007-2009;2008-2010;2009-2011;2010-2012;2011-2013

Note: Weighted counts (#) represent 3-yr averages, rounded to the nearest hundred; n/r (Not Reportable) - If the unweighted total responses for a dimension (row) is <30 that row will not be shown

Years: 2008-2010

Smoke Before Pregnant	Yes			No			Weighted Total Responses (3-Yr Avg)
	#	%	C.I.(95%)	#	%	C.I.(95%)	#
Yes	300	8.9	7.1 - 11.1	3,400	91.1	88.9 - 92.9	3,700
No	1,200	8.2	7.3 - 9.2	13,000	91.8	90.8 - 92.7	14,200

WIC During Pregnancy	Yes			No			Weighted Total Responses (3-Yr Avg)
	#	%	C.I.(95%)	#	%	C.I.(95%)	#
Yes	700	9.6	8.4 - 11.0	7,000	90.4	89.0 - 91.6	7,700
No	800	7.3	6.3 - 8.5	9,500	92.7	91.5 - 93.7	10,300

PRAMS Health Indicator 3-Year Aggregate Report - Baby placed in ICU after birth- by State;County;DOH Race-Ethnicity;PRAMS Age Group;Infant Gender;Married;Poverty Level;Income (2000-2003);Income (2004-2011);Birthweight;Smoke 3rd Trimester;Smoke Before Pregnant;WIC During Pregnancy, for the Year(s) 2000-2002;2001-2003;2002-2004;2003-2005;2004-2006;2005-2007;2006-2008;2007-2009;2008-2010;2009-2011;2010-2012;2011-2013

Note: Weighted counts (#) represent 3-yr averages, rounded to the nearest hundred; n/r (Not Reportable) - If the unweighted total responses for a dimension (row) is <30 that row will not be shown

Years: 2007-2009

State	Yes			No			Weighted Total Responses (3-Yr Avg)
	#	%	C.I.(95%)	#	%	C.I.(95%)	#
Totals	1,600	8.9	8.1 - 9.7	16,700	91.1	90.3 - 91.9	18,300

County	Yes			No			Weighted Total Responses (3-Yr Avg)
	#	%	C.I.(95%)	#	%	C.I.(95%)	#
Hawaii	200	7.2	5.6 - 9.4	2,300	92.8	90.6 - 94.4	2,400
Honolulu	1,200	9.7	8.6 - 10.8	11,600	90.3	89.2 - 91.4	12,800
Kauai	100	7.0	4.6 - 10.4	900	93.0	89.6 - 95.4	900
Maui	100	6.8	5.1 - 9.0	2,000	93.2	91.0 - 94.9	2,100

PRAMS Health Indicator 3-Year Aggregate Report - Baby placed in ICU after birth- by State;County;DOH Race-Ethnicity;PRAMS Age Group;Infant Gender;Married;Poverty Level;Income (2000-2003);Income (2004-2011);Birthweight;Smoke 3rd Trimester;Smoke Before Pregnant;WIC During Pregnancy, for the Year(s) 2000-2002;2001-2003;2002-2004;2003-2005;2004-2006;2005-2007;2006-2008;2007-2009;2008-2010;2009-2011;2010-2012;2011-2013

Note: Weighted counts (#) represent 3-yr averages, rounded to the nearest hundred; n/r (Not Reportable) - If the unweighted total responses for a dimension (row) is <30 that row will not be shown

Years: 2007-2009

DOH Race-Ethnicity	Yes			No			Weighted Total Responses (3-Yr Avg)
	#	%	C.I.(95%)	#	%	C.I.(95%)	#
Caucasian	300	7.5	6.1 - 9.2	4,000	92.5	90.8 - 93.9	4,300
Native Hawaiian	400	7.3	6.0 - 8.9	5,000	92.7	91.1 - 94.0	5,400
Chinese	100	9.5	6.0 - 14.8	600	90.5	85.2 - 94.0	700
Filipino	300	9.1	7.5 - 11.1	3,000	90.9	88.9 - 92.5	3,300
Japanese	100	6.4	4.5 - 9.0	1,800	93.6	91.0 - 95.5	1,900
Other	400	15.3	12.5 - 18.5	2,300	84.7	81.5 - 87.5	2,800

PRAMS Age Group	Yes			No			Weighted Total Responses (3-Yr Avg)
	#	%	C.I.(95%)	#	%	C.I.(95%)	#
<20	200	11.8	8.7 - 15.7	1,400	88.2	84.3 - 91.3	1,600
20-24	400	9.3	7.6 - 11.3	3,900	90.7	88.7 - 92.4	4,300
25-34	700	7.7	6.7 - 8.9	8,500	92.3	91.1 - 93.3	9,200
35+	300	10.1	8.3 - 12.3	2,900	89.9	87.7 - 91.7	3,200

PRAMS Health Indicator 3-Year Aggregate Report - Baby placed in ICU after birth- by State;County;DOH Race-Ethnicity;PRAMS Age Group;Infant Gender;Married;Poverty Level;Income (2000-2003);Income (2004-2011);Birthweight;Smoke 3rd Trimester;Smoke Before Pregnant;WIC During Pregnancy, for the Year(s) 2000-2002;2001-2003;2002-2004;2003-2005;2004-2006;2005-2007;2006-2008;2007-2009;2008-2010;2009-2011;2010-2012;2011-2013

Note: Weighted counts (#) represent 3-yr averages, rounded to the nearest hundred; n/r (Not Reportable) - If the unweighted total responses for a dimension (row) is <30 that row will not be shown

Years: 2007-2009

Infant Gender	Yes			No			Weighted Total Responses (3-Yr Avg)
	#	%	C.I.(95%)	#	%	C.I.(95%)	#
Male	900	9.4	8.3 - 10.7	8,700	90.6	89.3 - 91.7	9,600
Female	700	8.3	7.2 - 9.5	8,000	91.7	90.5 - 92.8	8,700

Married	Yes			No			Weighted Total Responses (3-Yr Avg)
	#	%	C.I.(95%)	#	%	C.I.(95%)	#
Yes	900	7.8	6.8 - 8.8	10,400	92.2	91.2 - 93.2	11,300
No	800	10.6	9.2 - 12.3	6,300	89.4	87.7 - 90.8	7,100

Poverty Level	Yes			No			Weighted Total Responses (3-Yr Avg)
	#	%	C.I.(95%)	#	%	C.I.(95%)	#
0-130%	800	11.4	9.9 - 13.2	5,900	88.6	86.8 - 90.1	6,700
131-185%	200	6.3	4.7 - 8.3	2,500	93.7	91.7 - 95.3	2,700
186+%	600	7.9	6.8 - 9.1	7,000	92.1	90.9 - 93.2	7,600

PRAMS Health Indicator 3-Year Aggregate Report - Baby placed in ICU after birth- by State;County;DOH Race-Ethnicity;PRAMS Age Group;Infant Gender;Married;Poverty Level;Income (2000-2003);Income (2004-2011);Birthweight;Smoke 3rd Trimester;Smoke Before Pregnant;WIC During Pregnancy, for the Year(s) 2000-2002;2001-2003;2002-2004;2003-2005;2004-2006;2005-2007;2006-2008;2007-2009;2008-2010;2009-2011;2010-2012;2011-2013

Note: Weighted counts (#) represent 3-yr averages, rounded to the nearest hundred; n/r (Not Reportable) - If the unweighted total responses for a dimension (row) is <30 that row will not be shown

Years: 2007-2009

Income (2004-2011)	Yes			No			Weighted Total Responses (3-Yr Avg)
	#	%	C.I.(95%)	#	%	C.I.(95%)	#
<\$10,000	400	14.1	11.6 - 17.2	2,600	85.9	82.8 - 88.4	3,100
\$10,000-\$24,999	400	9.1	7.4 - 11.0	3,500	90.9	89.0 - 92.6	3,900
\$25,000-\$49,999	300	7.8	6.3 - 9.6	3,700	92.2	90.4 - 93.7	4,000
>=\$50,000	400	7.3	6.1 - 8.7	5,700	92.7	91.3 - 93.9	6,100

Birthweight	Yes			No			Weighted Total Responses (3-Yr Avg)
	#	%	C.I.(95%)	#	%	C.I.(95%)	#
Low birth weight	600	43.6	39.2 - 48.1	800	56.4	51.9 - 60.8	1,400
Normal birth weight	1,000	6.0	5.3 - 6.9	15,900	94.0	93.1 - 94.7	16,900

Smoke 3rd Trimester	Yes			No			Weighted Total Responses (3-Yr Avg)
	#	%	C.I.(95%)	#	%	C.I.(95%)	#
Yes	200	12.7	9.4 - 16.9	1,400	87.3	83.1 - 90.6	1,600
No	1,400	8.5	7.7 - 9.4	15,000	91.5	90.6 - 92.3	16,400

PRAMS Health Indicator 3-Year Aggregate Report - Baby placed in ICU after birth- by State;County;DOH Race-Ethnicity;PRAMS Age Group;Infant Gender;Married;Poverty Level;Income (2000-2003);Income (2004-2011);Birthweight;Smoke 3rd Trimester;Smoke Before Pregnant;WIC During Pregnancy, for the Year(s) 2000-2002;2001-2003;2002-2004;2003-2005;2004-2006;2005-2007;2006-2008;2007-2009;2008-2010;2009-2011;2010-2012;2011-2013

Note: Weighted counts (#) represent 3-yr averages, rounded to the nearest hundred; n/r (Not Reportable) - If the unweighted total responses for a dimension (row) is <30 that row will not be shown

Years: 2007-2009

Smoke Before Pregnant	Yes			No			Weighted Total Responses (3-Yr Avg)
	#	%	C.I.(95%)	#	%	C.I.(95%)	#
Yes	400	9.8	7.9 - 12.1	3,300	90.2	87.9 - 92.1	3,700
No	1,200	8.7	7.8 - 9.6	13,000	91.3	90.4 - 92.2	14,300

WIC During Pregnancy	Yes			No			Weighted Total Responses (3-Yr Avg)
	#	%	C.I.(95%)	#	%	C.I.(95%)	#
Yes	800	10.2	8.9 - 11.6	6,800	89.8	88.4 - 91.1	7,600
No	800	7.9	6.9 - 9.0	9,500	92.1	91.0 - 93.1	10,400

PRAMS Health Indicator 3-Year Aggregate Report - Baby placed in ICU after birth- by State;County;DOH Race-Ethnicity;PRAMS Age Group;Infant Gender;Married;Poverty Level;Income (2000-2003);Income (2004-2011);Birthweight;Smoke 3rd Trimester;Smoke Before Pregnant;WIC During Pregnancy, for the Year(s) 2000-2002;2001-2003;2002-2004;2003-2005;2004-2006;2005-2007;2006-2008;2007-2009;2008-2010;2009-2011;2010-2012;2011-2013

Note: Weighted counts (#) represent 3-yr averages, rounded to the nearest hundred; n/r (Not Reportable) - If the unweighted total responses for a dimension (row) is <30 that row will not be shown

Years: 2006-2008

State	Yes			No			Weighted Total Responses (3-Yr Avg)
	#	%	C.I.(95%)	#	%	C.I.(95%)	#
Totals	1,600	8.7	8.0 - 9.6	16,800	91.3	90.4 - 92.0	18,400

County	Yes			No			Weighted Total Responses (3-Yr Avg)
	#	%	C.I.(95%)	#	%	C.I.(95%)	#
Hawaii	200	7.7	5.8 - 10.2	2,200	92.3	89.8 - 94.2	2,400
Honolulu	1,200	9.5	8.6 - 10.5	11,800	90.5	89.5 - 91.4	13,000
Kauai	100	6.1	3.7 - 9.9	900	93.9	90.1 - 96.3	900
Maui	100	6.1	4.4 - 8.6	1,900	93.9	91.4 - 95.6	2,100

PRAMS Health Indicator 3-Year Aggregate Report - Baby placed in ICU after birth- by State;County;DOH Race-Ethnicity;PRAMS Age Group;Infant Gender;Married;Poverty Level;Income (2000-2003);Income (2004-2011);Birthweight;Smoke 3rd Trimester;Smoke Before Pregnant;WIC During Pregnancy, for the Year(s) 2000-2002;2001-2003;2002-2004;2003-2005;2004-2006;2005-2007;2006-2008;2007-2009;2008-2010;2009-2011;2010-2012;2011-2013

Note: Weighted counts (#) represent 3-yr averages, rounded to the nearest hundred; n/r (Not Reportable) - If the unweighted total responses for a dimension (row) is <30 that row will not be shown

Years: 2006-2008

DOH Race-Ethnicity	Yes			No			Weighted Total Responses (3-Yr Avg)
	#	%	C.I.(95%)	#	%	C.I.(95%)	#
Caucasian	300	7.3	6.0 - 9.0	4,000	92.7	91.0 - 94.0	4,300
Native Hawaiian	300	6.8	5.5 - 8.4	4,800	93.2	91.6 - 94.5	5,100
Chinese	100	8.9	6.9 - 11.5	600	91.1	88.5 - 93.1	600
Filipino	300	10.2	8.5 - 12.2	3,000	89.8	87.8 - 91.5	3,400
Japanese	100	6.7	4.9 - 9.2	2,000	93.3	90.8 - 95.1	2,100
Other	400	13.9	11.6 - 16.7	2,500	86.1	83.3 - 88.4	2,900

PRAMS Age Group	Yes			No			Weighted Total Responses (3-Yr Avg)
	#	%	C.I.(95%)	#	%	C.I.(95%)	#
<20	200	12.8	9.6 - 16.7	1,400	87.2	83.3 - 90.4	1,600
20-24	400	9.4	7.8 - 11.3	4,000	90.6	88.7 - 92.2	4,400
25-34	700	7.5	6.6 - 8.6	8,500	92.5	91.4 - 93.4	9,200
35+	300	9.2	7.6 - 11.2	3,000	90.8	88.8 - 92.4	3,300

PRAMS Health Indicator 3-Year Aggregate Report - Baby placed in ICU after birth- by State;County;DOH Race-Ethnicity;PRAMS Age Group;Infant Gender;Married;Poverty Level;Income (2000-2003);Income (2004-2011);Birthweight;Smoke 3rd Trimester;Smoke Before Pregnant;WIC During Pregnancy, for the Year(s) 2000-2002;2001-2003;2002-2004;2003-2005;2004-2006;2005-2007;2006-2008;2007-2009;2008-2010;2009-2011;2010-2012;2011-2013

Note: Weighted counts (#) represent 3-yr averages, rounded to the nearest hundred; n/r (Not Reportable) - If the unweighted total responses for a dimension (row) is <30 that row will not be shown

Years: 2006-2008

Infant Gender	Yes			No			Weighted Total Responses (3-Yr Avg)
	#	%	C.I.(95%)	#	%	C.I.(95%)	#
Male	900	9.1	8.0 - 10.2	8,600	90.9	89.8 - 92.0	9,500
Female	700	8.4	7.3 - 9.6	8,100	91.6	90.4 - 92.7	8,900

Married	Yes			No			Weighted Total Responses (3-Yr Avg)
	#	%	C.I.(95%)	#	%	C.I.(95%)	#
Yes	800	7.2	6.4 - 8.1	10,700	92.8	91.9 - 93.6	11,600
No	800	11.3	9.9 - 12.9	6,000	88.7	87.1 - 90.1	6,800

Poverty Level	Yes			No			Weighted Total Responses (3-Yr Avg)
	#	%	C.I.(95%)	#	%	C.I.(95%)	#
0-130%	800	11.7	10.2 - 13.3	5,900	88.3	86.7 - 89.8	6,700
131-185%	200	6.3	4.8 - 8.4	2,400	93.7	91.6 - 95.2	2,600
186+%	600	7.2	6.2 - 8.3	7,300	92.8	91.7 - 93.8	7,900

PRAMS Health Indicator 3-Year Aggregate Report - Baby placed in ICU after birth- by State;County;DOH Race-Ethnicity;PRAMS Age Group;Infant Gender;Married;Poverty Level;Income (2000-2003);Income (2004-2011);Birthweight;Smoke 3rd Trimester;Smoke Before Pregnant;WIC During Pregnancy, for the Year(s) 2000-2002;2001-2003;2002-2004;2003-2005;2004-2006;2005-2007;2006-2008;2007-2009;2008-2010;2009-2011;2010-2012;2011-2013

Note: Weighted counts (#) represent 3-yr averages, rounded to the nearest hundred; n/r (Not Reportable) - If the unweighted total responses for a dimension (row) is <30 that row will not be shown

Years: 2006-2008

Income (2004-2011)	Yes			No			Weighted Total Responses (3-Yr Avg)
	#	%	C.I.(95%)	#	%	C.I.(95%)	#
<\$10,000	400	14.5	12.2 - 17.3	2,600	85.5	82.7 - 87.8	3,100
\$10,000-\$24,999	400	9.5	7.9 - 11.5	3,400	90.5	88.5 - 92.1	3,800
\$25,000-\$49,999	300	7.3	6.0 - 8.9	3,900	92.7	91.1 - 94.0	4,300
>=\$50,000	400	6.4	5.4 - 7.6	5,700	93.6	92.4 - 94.6	6,100

Birthweight	Yes			No			Weighted Total Responses (3-Yr Avg)
	#	%	C.I.(95%)	#	%	C.I.(95%)	#
Low birth weight	600	42.6	37.8 - 47.6	800	57.4	52.4 - 62.2	1,400
Normal birth weight	1,000	5.8	5.2 - 6.6	15,900	94.2	93.4 - 94.8	16,900

Smoke 3rd Trimester	Yes			No			Weighted Total Responses (3-Yr Avg)
	#	%	C.I.(95%)	#	%	C.I.(95%)	#
Yes	200	12.5	9.6 - 16.3	1,400	87.5	83.7 - 90.4	1,600
No	1,400	8.4	7.6 - 9.2	15,100	91.6	90.8 - 92.4	16,500

PRAMS Health Indicator 3-Year Aggregate Report - Baby placed in ICU after birth- by State;County;DOH Race-Ethnicity;PRAMS Age Group;Infant Gender;Married;Poverty Level;Income (2000-2003);Income (2004-2011);Birthweight;Smoke 3rd Trimester;Smoke Before Pregnant;WIC During Pregnancy, for the Year(s) 2000-2002;2001-2003;2002-2004;2003-2005;2004-2006;2005-2007;2006-2008;2007-2009;2008-2010;2009-2011;2010-2012;2011-2013

Note: Weighted counts (#) represent 3-yr averages, rounded to the nearest hundred; n/r (Not Reportable) - If the unweighted total responses for a dimension (row) is <30 that row will not be shown

Years: 2006-2008

Smoke Before Pregnant	Yes			No			Weighted Total Responses (3-Yr Avg)
	#	%	C.I.(95%)	#	%	C.I.(95%)	#
Yes	400	9.7	7.9 - 11.8	3,300	90.3	88.2 - 92.1	3,600
No	1,200	8.5	7.7 - 9.4	13,200	91.5	90.6 - 92.3	14,400

WIC During Pregnancy	Yes			No			Weighted Total Responses (3-Yr Avg)
	#	%	C.I.(95%)	#	%	C.I.(95%)	#
Yes	800	10.8	9.5 - 12.2	6,900	89.2	87.8 - 90.5	7,700
No	700	7.2	6.3 - 8.2	9,700	92.8	91.8 - 93.7	10,400

PRAMS Health Indicator 3-Year Aggregate Report - Baby placed in ICU after birth- by State;County;DOH Race-Ethnicity;PRAMS Age Group;Infant Gender;Married;Poverty Level;Income (2000-2003);Income (2004-2011);Birthweight;Smoke 3rd Trimester;Smoke Before Pregnant;WIC During Pregnancy, for the Year(s) 2000-2002;2001-2003;2002-2004;2003-2005;2004-2006;2005-2007;2006-2008;2007-2009;2008-2010;2009-2011;2010-2012;2011-2013

Note: Weighted counts (#) represent 3-yr averages, rounded to the nearest hundred; n/r (Not Reportable) - If the unweighted total responses for a dimension (row) is <30 that row will not be shown

Years: 2005-2007

State	Yes			No			Weighted Total Responses (3-Yr Avg)
	#	%	C.I.(95%)	#	%	C.I.(95%)	#
Totals	1,600	8.9	8.2 - 9.8	16,300	91.1	90.2 - 91.8	17,900

County	Yes			No			Weighted Total Responses (3-Yr Avg)
	#	%	C.I.(95%)	#	%	C.I.(95%)	#
Hawaii	200	7.3	5.5 - 9.8	2,100	92.7	90.2 - 94.5	2,300
Honolulu	1,300	9.8	8.9 - 10.8	11,600	90.2	89.2 - 91.1	12,900
Kauai	100	6.8	4.2 - 10.9	800	93.2	89.1 - 95.8	900
Maui	100	6.0	4.2 - 8.4	1,800	94.0	91.6 - 95.8	1,900

PRAMS Health Indicator 3-Year Aggregate Report - Baby placed in ICU after birth- by State;County;DOH Race-Ethnicity;PRAMS Age Group;Infant Gender;Married;Poverty Level;Income (2000-2003);Income (2004-2011);Birthweight;Smoke 3rd Trimester;Smoke Before Pregnant;WIC During Pregnancy, for the Year(s) 2000-2002;2001-2003;2002-2004;2003-2005;2004-2006;2005-2007;2006-2008;2007-2009;2008-2010;2009-2011;2010-2012;2011-2013

Note: Weighted counts (#) represent 3-yr averages, rounded to the nearest hundred; n/r (Not Reportable) - If the unweighted total responses for a dimension (row) is <30 that row will not be shown

Years: 2005-2007

DOH Race-Ethnicity	Yes			No			Weighted Total Responses (3-Yr Avg)
	#	%	C.I.(95%)	#	%	C.I.(95%)	#
Caucasian	300	7.3	5.9 - 9.0	3,800	92.7	91.0 - 94.1	4,100
Native Hawaiian	400	7.2	5.9 - 8.9	4,600	92.8	91.1 - 94.1	5,000
Chinese	100	9.7	7.6 - 12.3	600	90.3	87.7 - 92.4	600
Filipino	400	11.2	9.4 - 13.2	2,900	88.8	86.8 - 90.6	3,300
Japanese	100	5.9	4.3 - 8.1	2,100	94.1	91.9 - 95.7	2,200
Other	400	14.1	11.7 - 16.9	2,300	85.9	83.1 - 88.3	2,700

PRAMS Age Group	Yes			No			Weighted Total Responses (3-Yr Avg)
	#	%	C.I.(95%)	#	%	C.I.(95%)	#
<20	200	12.3	9.2 - 16.1	1,400	87.7	83.9 - 90.8	1,500
20-24	400	10.0	8.4 - 11.9	4,000	90.0	88.1 - 91.6	4,400
25-34	700	7.9	6.9 - 9.0	8,100	92.1	91.0 - 93.1	8,800
35+	300	8.7	7.1 - 10.6	2,900	91.3	89.4 - 92.9	3,100

PRAMS Health Indicator 3-Year Aggregate Report - Baby placed in ICU after birth- by State;County;DOH Race-Ethnicity;PRAMS Age Group;Infant Gender;Married;Poverty Level;Income (2000-2003);Income (2004-2011);Birthweight;Smoke 3rd Trimester;Smoke Before Pregnant;WIC During Pregnancy, for the Year(s) 2000-2002;2001-2003;2002-2004;2003-2005;2004-2006;2005-2007;2006-2008;2007-2009;2008-2010;2009-2011;2010-2012;2011-2013

Note: Weighted counts (#) represent 3-yr averages, rounded to the nearest hundred; n/r (Not Reportable) - If the unweighted total responses for a dimension (row) is <30 that row will not be shown

Years: 2005-2007

Infant Gender	Yes			No			Weighted Total Responses (3-Yr Avg)
	#	%	C.I.(95%)	#	%	C.I.(95%)	#
Male	900	9.7	8.6 - 11.0	8,300	90.3	89.0 - 91.4	9,200
Female	700	8.1	7.1 - 9.3	8,000	91.9	90.7 - 92.9	8,700

Married	Yes			No			Weighted Total Responses (3-Yr Avg)
	#	%	C.I.(95%)	#	%	C.I.(95%)	#
Yes	900	7.7	6.9 - 8.7	10,500	92.3	91.3 - 93.1	11,400
No	700	11.0	9.6 - 12.6	5,800	89.0	87.4 - 90.4	6,500

Poverty Level	Yes			No			Weighted Total Responses (3-Yr Avg)
	#	%	C.I.(95%)	#	%	C.I.(95%)	#
0-130%	700	11.3	9.8 - 12.9	5,700	88.7	87.1 - 90.2	6,400
131-185%	200	7.4	5.7 - 9.7	2,200	92.6	90.3 - 94.3	2,300
186+%	600	7.4	6.4 - 8.5	7,300	92.6	91.5 - 93.6	7,800

PRAMS Health Indicator 3-Year Aggregate Report - Baby placed in ICU after birth- by State;County;DOH Race-Ethnicity;PRAMS Age Group;Infant Gender;Married;Poverty Level;Income (2000-2003);Income (2004-2011);Birthweight;Smoke 3rd Trimester;Smoke Before Pregnant;WIC During Pregnancy, for the Year(s) 2000-2002;2001-2003;2002-2004;2003-2005;2004-2006;2005-2007;2006-2008;2007-2009;2008-2010;2009-2011;2010-2012;2011-2013

Note: Weighted counts (#) represent 3-yr averages, rounded to the nearest hundred; n/r (Not Reportable) - If the unweighted total responses for a dimension (row) is <30 that row will not be shown

Years: 2005-2007

Income (2004-2011)	Yes			No			Weighted Total Responses (3-Yr Avg)
	#	%	C.I.(95%)	#	%	C.I.(95%)	#
<\$10,000	400	13.5	11.3 - 16.2	2,600	86.5	83.8 - 88.7	3,000
\$10,000-\$24,999	300	9.3	7.7 - 11.2	3,300	90.7	88.8 - 92.3	3,700
\$25,000-\$49,999	300	8.1	6.6 - 9.7	3,900	91.9	90.3 - 93.4	4,200
>=\$50,000	400	6.8	5.7 - 8.0	5,400	93.2	92.0 - 94.3	5,800

Birthweight	Yes			No			Weighted Total Responses (3-Yr Avg)
	#	%	C.I.(95%)	#	%	C.I.(95%)	#
Low birth weight	600	43.3	38.5 - 48.2	800	56.7	51.8 - 61.5	1,400
Normal birth weight	1,000	5.9	5.3 - 6.6	15,500	94.1	93.4 - 94.7	16,500

Smoke 3rd Trimester	Yes			No			Weighted Total Responses (3-Yr Avg)
	#	%	C.I.(95%)	#	%	C.I.(95%)	#
Yes	200	11.9	9.0 - 15.5	1,400	88.1	84.5 - 91.0	1,600
No	1,400	8.7	7.9 - 9.5	14,700	91.3	90.5 - 92.1	16,100

PRAMS Health Indicator 3-Year Aggregate Report - Baby placed in ICU after birth- by State;County;DOH Race-Ethnicity;PRAMS Age Group;Infant Gender;Married;Poverty Level;Income (2000-2003);Income (2004-2011);Birthweight;Smoke 3rd Trimester;Smoke Before Pregnant;WIC During Pregnancy, for the Year(s) 2000-2002;2001-2003;2002-2004;2003-2005;2004-2006;2005-2007;2006-2008;2007-2009;2008-2010;2009-2011;2010-2012;2011-2013

Note: Weighted counts (#) represent 3-yr averages, rounded to the nearest hundred; n/r (Not Reportable) - If the unweighted total responses for a dimension (row) is <30 that row will not be shown

Years: 2005-2007

Smoke Before Pregnant	Yes			No			Weighted Total Responses (3-Yr Avg)
	#	%	C.I.(95%)	#	%	C.I.(95%)	#
Yes	300	9.1	7.5 - 11.2	3,300	90.9	88.8 - 92.5	3,700
No	1,200	8.9	8.0 - 9.8	12,700	91.1	90.2 - 92.0	13,900

WIC During Pregnancy	Yes			No			Weighted Total Responses (3-Yr Avg)
	#	%	C.I.(95%)	#	%	C.I.(95%)	#
Yes	700	9.9	8.7 - 11.4	6,700	90.1	88.6 - 91.3	7,500
No	800	8.1	7.1 - 9.1	9,300	91.9	90.9 - 92.9	10,100

PRAMS Health Indicator 3-Year Aggregate Report - Baby placed in ICU after birth- by State;County;DOH Race-Ethnicity;PRAMS Age Group;Infant Gender;Married;Poverty Level;Income (2000-2003);Income (2004-2011);Birthweight;Smoke 3rd Trimester;Smoke Before Pregnant;WIC During Pregnancy, for the Year(s) 2000-2002;2001-2003;2002-2004;2003-2005;2004-2006;2005-2007;2006-2008;2007-2009;2008-2010;2009-2011;2010-2012;2011-2013

Note: Weighted counts (#) represent 3-yr averages, rounded to the nearest hundred; n/r (Not Reportable) - If the unweighted total responses for a dimension (row) is <30 that row will not be shown

Years: 2004-2006

State	Yes			No			Weighted Total Responses (3-Yr Avg)
	#	%	C.I.(95%)	#	%	C.I.(95%)	#
Totals	1,600	8.8	8.1 - 9.7	16,100	91.2	90.3 - 91.9	17,600

County	Yes			No			Weighted Total Responses (3-Yr Avg)
	#	%	C.I.(95%)	#	%	C.I.(95%)	#
Hawaii	100	6.5	4.8 - 8.8	2,000	93.5	91.2 - 95.2	2,200
Honolulu	1,300	9.9	9.0 - 10.9	11,600	90.1	89.1 - 91.0	12,900
Kauai	<50	5.7	3.4 - 9.5	700	94.3	90.5 - 96.6	800
Maui	100	5.3	3.7 - 7.6	1,700	94.7	92.4 - 96.3	1,800

PRAMS Health Indicator 3-Year Aggregate Report - Baby placed in ICU after birth- by State;County;DOH Race-Ethnicity;PRAMS Age Group;Infant Gender;Married;Poverty Level;Income (2000-2003);Income (2004-2011);Birthweight;Smoke 3rd Trimester;Smoke Before Pregnant;WIC During Pregnancy, for the Year(s) 2000-2002;2001-2003;2002-2004;2003-2005;2004-2006;2005-2007;2006-2008;2007-2009;2008-2010;2009-2011;2010-2012;2011-2013

Note: Weighted counts (#) represent 3-yr averages, rounded to the nearest hundred; n/r (Not Reportable) - If the unweighted total responses for a dimension (row) is <30 that row will not be shown

Years: 2004-2006

DOH Race-Ethnicity	Yes			No			Weighted Total Responses (3-Yr Avg)
	#	%	C.I.(95%)	#	%	C.I.(95%)	#
Caucasian	300	7.3	6.0 - 9.0	3,700	92.7	91.0 - 94.0	4,000
Native Hawaiian	400	8.0	6.6 - 9.6	4,500	92.0	90.4 - 93.4	4,900
Chinese	100	10.3	8.4 - 12.6	600	89.7	87.4 - 91.6	600
Filipino	300	10.4	8.7 - 12.3	2,900	89.6	87.7 - 91.3	3,300
Japanese	100	6.4	4.7 - 8.6	2,100	93.6	91.4 - 95.3	2,200
Other	300	12.6	10.4 - 15.3	2,300	87.4	84.7 - 89.6	2,600

PRAMS Age Group	Yes			No			Weighted Total Responses (3-Yr Avg)
	#	%	C.I.(95%)	#	%	C.I.(95%)	#
<20	100	10.5	7.8 - 14.1	1,300	89.5	85.9 - 92.2	1,400
20-24	400	10.2	8.6 - 12.1	3,900	89.8	87.9 - 91.4	4,300
25-34	700	8.0	7.0 - 9.1	8,000	92.0	90.9 - 93.0	8,700
35+	300	8.6	7.1 - 10.5	2,900	91.4	89.5 - 92.9	3,200

PRAMS Health Indicator 3-Year Aggregate Report - Baby placed in ICU after birth- by State;County;DOH Race-Ethnicity;PRAMS Age Group;Infant Gender;Married;Poverty Level;Income (2000-2003);Income (2004-2011);Birthweight;Smoke 3rd Trimester;Smoke Before Pregnant;WIC During Pregnancy, for the Year(s) 2000-2002;2001-2003;2002-2004;2003-2005;2004-2006;2005-2007;2006-2008;2007-2009;2008-2010;2009-2011;2010-2012;2011-2013

Note: Weighted counts (#) represent 3-yr averages, rounded to the nearest hundred; n/r (Not Reportable) - If the unweighted total responses for a dimension (row) is <30 that row will not be shown

Years: 2004-2006

Infant Gender	Yes			No			Weighted Total Responses (3-Yr Avg)
	#	%	C.I.(95%)	#	%	C.I.(95%)	#
Male	900	9.4	8.3 - 10.5	8,300	90.6	89.5 - 91.7	9,200
Female	700	8.3	7.3 - 9.4	7,700	91.7	90.6 - 92.7	8,400

Married	Yes			No			Weighted Total Responses (3-Yr Avg)
	#	%	C.I.(95%)	#	%	C.I.(95%)	#
Yes	900	8.1	7.3 - 9.0	10,700	91.9	91.0 - 92.7	11,600
No	600	10.3	8.9 - 11.9	5,400	89.7	88.1 - 91.1	6,000

Poverty Level	Yes			No			Weighted Total Responses (3-Yr Avg)
	#	%	C.I.(95%)	#	%	C.I.(95%)	#
0-130%	700	10.4	9.1 - 11.9	5,700	89.6	88.1 - 90.9	6,300
131-185%	200	7.7	5.9 - 10.1	1,900	92.3	89.9 - 94.1	2,100
186+%	600	7.5	6.6 - 8.6	7,300	92.5	91.4 - 93.4	7,900

PRAMS Health Indicator 3-Year Aggregate Report - Baby placed in ICU after birth- by State;County;DOH Race-Ethnicity;PRAMS Age Group;Infant Gender;Married;Poverty Level;Income (2000-2003);Income (2004-2011);Birthweight;Smoke 3rd Trimester;Smoke Before Pregnant;WIC During Pregnancy, for the Year(s) 2000-2002;2001-2003;2002-2004;2003-2005;2004-2006;2005-2007;2006-2008;2007-2009;2008-2010;2009-2011;2010-2012;2011-2013

Note: Weighted counts (#) represent 3-yr averages, rounded to the nearest hundred; n/r (Not Reportable) - If the unweighted total responses for a dimension (row) is <30 that row will not be shown

Years: 2004-2006

Income (2004-2011)	Yes			No			Weighted Total Responses (3-Yr Avg)
	#	%	C.I.(95%)	#	%	C.I.(95%)	#
<\$10,000	400	12.4	10.2 - 14.9	2,500	87.6	85.1 - 89.8	2,900
\$10,000-\$24,999	300	8.8	7.3 - 10.5	3,500	91.2	89.5 - 92.7	3,800
\$25,000-\$49,999	300	8.0	6.7 - 9.7	3,900	92.0	90.3 - 93.3	4,300
>=\$50,000	400	7.1	6.0 - 8.4	5,000	92.9	91.6 - 94.0	5,400

Birthweight	Yes			No			Weighted Total Responses (3-Yr Avg)
	#	%	C.I.(95%)	#	%	C.I.(95%)	#
Low birth weight	600	45.0	40.0 - 50.0	700	55.0	50.0 - 60.0	1,300
Normal birth weight	1,000	6.0	5.3 - 6.7	15,300	94.0	93.3 - 94.7	16,300

Smoke 3rd Trimester	Yes			No			Weighted Total Responses (3-Yr Avg)
	#	%	C.I.(95%)	#	%	C.I.(95%)	#
Yes	200	10.4	7.8 - 13.8	1,300	89.6	86.2 - 92.2	1,500
No	1,400	8.6	7.8 - 9.4	14,500	91.4	90.6 - 92.2	15,800

PRAMS Health Indicator 3-Year Aggregate Report - Baby placed in ICU after birth- by State;County;DOH Race-Ethnicity;PRAMS Age Group;Infant Gender;Married;Poverty Level;Income (2000-2003);Income (2004-2011);Birthweight;Smoke 3rd Trimester;Smoke Before Pregnant;WIC During Pregnancy, for the Year(s) 2000-2002;2001-2003;2002-2004;2003-2005;2004-2006;2005-2007;2006-2008;2007-2009;2008-2010;2009-2011;2010-2012;2011-2013

Note: Weighted counts (#) represent 3-yr averages, rounded to the nearest hundred; n/r (Not Reportable) - If the unweighted total responses for a dimension (row) is <30 that row will not be shown

Years: 2004-2006

Smoke Before Pregnant	Yes			No			Weighted Total Responses (3-Yr Avg)
	#	%	C.I.(95%)	#	%	C.I.(95%)	#
Yes	300	8.3	6.7 - 10.1	3,400	91.7	89.9 - 93.3	3,700
No	1,200	8.9	8.0 - 9.8	12,500	91.1	90.2 - 92.0	13,700

WIC During Pregnancy	Yes			No			Weighted Total Responses (3-Yr Avg)
	#	%	C.I.(95%)	#	%	C.I.(95%)	#
Yes	800	10.1	8.9 - 11.4	6,800	89.9	88.6 - 91.1	7,500
No	800	7.8	6.9 - 8.9	9,000	92.2	91.1 - 93.1	9,800

PRAMS Health Indicator 3-Year Aggregate Report - Baby placed in ICU after birth- by State;County;DOH Race-Ethnicity;PRAMS Age Group;Infant Gender;Married;Poverty Level;Income (2000-2003);Income (2004-2011);Birthweight;Smoke 3rd Trimester;Smoke Before Pregnant;WIC During Pregnancy, for the Year(s) 2000-2002;2001-2003;2002-2004;2003-2005;2004-2006;2005-2007;2006-2008;2007-2009;2008-2010;2009-2011;2010-2012;2011-2013

Note: Weighted counts (#) represent 3-yr averages, rounded to the nearest hundred; n/r (Not Reportable) - If the unweighted total responses for a dimension (row) is <30 that row will not be shown

Years: 2003-2005

State	Yes			No			Weighted Total Responses (3-Yr Avg)
	#	%	C.I.(95%)	#	%	C.I.(95%)	#
Totals	1,500	8.8	8.0 - 9.7	15,800	91.2	90.3 - 92.0	17,300

County	Yes			No			Weighted Total Responses (3-Yr Avg)
	#	%	C.I.(95%)	#	%	C.I.(95%)	#
Hawaii	100	6.2	4.8 - 8.1	2,000	93.8	91.9 - 95.2	2,100
Honolulu	1,200	9.9	8.9 - 10.9	11,400	90.1	89.1 - 91.1	12,600
Kauai	<50	6.3	4.1 - 9.6	700	93.7	90.4 - 95.9	800
Maui	100	5.4	4.0 - 7.4	1,700	94.6	92.6 - 96.0	1,800

PRAMS Health Indicator 3-Year Aggregate Report - Baby placed in ICU after birth- by State;County;DOH Race-Ethnicity;PRAMS Age Group;Infant Gender;Married;Poverty Level;Income (2000-2003);Income (2004-2011);Birthweight;Smoke 3rd Trimester;Smoke Before Pregnant;WIC During Pregnancy, for the Year(s) 2000-2002;2001-2003;2002-2004;2003-2005;2004-2006;2005-2007;2006-2008;2007-2009;2008-2010;2009-2011;2010-2012;2011-2013

Note: Weighted counts (#) represent 3-yr averages, rounded to the nearest hundred; n/r (Not Reportable) - If the unweighted total responses for a dimension (row) is <30 that row will not be shown

Years: 2003-2005

DOH Race-Ethnicity	Yes			No			Weighted Total Responses (3-Yr Avg)
	#	%	C.I.(95%)	#	%	C.I.(95%)	#
Caucasian	200	6.6	5.2 - 8.3	3,600	93.4	91.7 - 94.8	3,800
Native Hawaiian	400	9.1	7.8 - 10.7	4,400	90.9	89.3 - 92.2	4,800
Chinese	100	8.6	6.1 - 12.1	600	91.4	87.9 - 93.9	700
Filipino	300	9.9	8.2 - 12.1	3,100	90.1	87.9 - 91.8	3,400
Japanese	100	6.4	4.6 - 8.8	2,000	93.6	91.2 - 95.4	2,200
Other	300	12.3	9.8 - 15.3	2,100	87.7	84.7 - 90.2	2,500

PRAMS Age Group	Yes			No			Weighted Total Responses (3-Yr Avg)
	#	%	C.I.(95%)	#	%	C.I.(95%)	#
<20	100	9.4	6.9 - 12.7	1,300	90.6	87.3 - 93.1	1,400
20-24	400	9.5	7.9 - 11.3	3,800	90.5	88.7 - 92.1	4,200
25-34	700	8.2	7.2 - 9.4	7,900	91.8	90.6 - 92.8	8,600
35+	300	9.3	7.5 - 11.5	2,800	90.7	88.5 - 92.5	3,100

PRAMS Health Indicator 3-Year Aggregate Report - Baby placed in ICU after birth- by State;County;DOH Race-Ethnicity;PRAMS Age Group;Infant Gender;Married;Poverty Level;Income (2000-2003);Income (2004-2011);Birthweight;Smoke 3rd Trimester;Smoke Before Pregnant;WIC During Pregnancy, for the Year(s) 2000-2002;2001-2003;2002-2004;2003-2005;2004-2006;2005-2007;2006-2008;2007-2009;2008-2010;2009-2011;2010-2012;2011-2013

Note: Weighted counts (#) represent 3-yr averages, rounded to the nearest hundred; n/r (Not Reportable) - If the unweighted total responses for a dimension (row) is <30 that row will not be shown

Years: 2003-2005

Infant Gender	Yes			No			Weighted Total Responses (3-Yr Avg)
	#	%	C.I.(95%)	#	%	C.I.(95%)	#
Male	900	9.6	8.5 - 10.8	8,300	90.4	89.2 - 91.5	9,100
Female	600	7.9	6.9 - 9.1	7,500	92.1	90.9 - 93.1	8,200

Married	Yes			No			Weighted Total Responses (3-Yr Avg)
	#	%	C.I.(95%)	#	%	C.I.(95%)	#
Yes	1,000	8.6	7.6 - 9.6	10,500	91.4	90.4 - 92.4	11,500
No	500	9.3	8.0 - 10.8	5,200	90.7	89.2 - 92.0	5,800

Poverty Level	Yes			No			Weighted Total Responses (3-Yr Avg)
	#	%	C.I.(95%)	#	%	C.I.(95%)	#
0-130%	600	9.4	8.2 - 10.8	6,100	90.6	89.2 - 91.8	6,800
131-185%	200	9.4	7.2 - 12.2	1,900	90.6	87.8 - 92.8	2,100
186+%	500	7.7	6.6 - 9.0	6,400	92.3	91.0 - 93.4	7,000

PRAMS Health Indicator 3-Year Aggregate Report - Baby placed in ICU after birth- by State;County;DOH Race-Ethnicity;PRAMS Age Group;Infant Gender;Married;Poverty Level;Income (2000-2003);Income (2004-2011);Birthweight;Smoke 3rd Trimester;Smoke Before Pregnant;WIC During Pregnancy, for the Year(s) 2000-2002;2001-2003;2002-2004;2003-2005;2004-2006;2005-2007;2006-2008;2007-2009;2008-2010;2009-2011;2010-2012;2011-2013

Note: Weighted counts (#) represent 3-yr averages, rounded to the nearest hundred; n/r (Not Reportable) - If the unweighted total responses for a dimension (row) is <30 that row will not be shown

Years: 2003-2005

Birthweight	Yes			No			Weighted Total Responses (3-Yr Avg)
	#	%	C.I.(95%)	#	%	C.I.(95%)	#
Low birth weight	500	45.1	39.8 - 50.5	600	54.9	49.5 - 60.2	1,200
Normal birth weight	1,000	6.1	5.5 - 6.9	15,100	93.9	93.1 - 94.5	16,100

Smoke 3rd Trimester	Yes			No			Weighted Total Responses (3-Yr Avg)
	#	%	C.I.(95%)	#	%	C.I.(95%)	#
Yes	100	8.7	6.3 - 11.9	1,300	91.3	88.1 - 93.7	1,500
No	1,400	8.8	8.0 - 9.7	14,200	91.2	90.3 - 92.0	15,500

Smoke Before Pregnant	Yes			No			Weighted Total Responses (3-Yr Avg)
	#	%	C.I.(95%)	#	%	C.I.(95%)	#
Yes	300	7.6	6.2 - 9.4	3,300	92.4	90.6 - 93.8	3,500
No	1,200	9.0	8.1 - 10.0	12,200	91.0	90.0 - 91.9	13,400

PRAMS Health Indicator 3-Year Aggregate Report - Baby placed in ICU after birth- by State;County;DOH Race-Ethnicity;PRAMS Age Group;Infant Gender;Married;Poverty Level;Income (2000-2003);Income (2004-2011);Birthweight;Smoke 3rd Trimester;Smoke Before Pregnant;WIC During Pregnancy, for the Year(s) 2000-2002;2001-2003;2002-2004;2003-2005;2004-2006;2005-2007;2006-2008;2007-2009;2008-2010;2009-2011;2010-2012;2011-2013

Note: Weighted counts (#) represent 3-yr averages, rounded to the nearest hundred; n/r (Not Reportable) - If the unweighted total responses for a dimension (row) is <30 that row will not be shown

Years: 2003-2005

WIC During Pregnancy	Yes			No			Weighted Total Responses (3-Yr Avg)
	#	%	C.I.(95%)	#	%	C.I.(95%)	#
Yes	700	9.1	8.0 - 10.4	6,700	90.9	89.6 - 92.0	7,400
No	800	8.4	7.4 - 9.5	8,800	91.6	90.5 - 92.6	9,600

PRAMS Health Indicator 3-Year Aggregate Report - Baby placed in ICU after birth- by State;County;DOH Race-Ethnicity;PRAMS Age Group;Infant Gender;Married;Poverty Level;Income (2000-2003);Income (2004-2011);Birthweight;Smoke 3rd Trimester;Smoke Before Pregnant;WIC During Pregnancy, for the Year(s) 2000-2002;2001-2003;2002-2004;2003-2005;2004-2006;2005-2007;2006-2008;2007-2009;2008-2010;2009-2011;2010-2012;2011-2013

Note: Weighted counts (#) represent 3-yr averages, rounded to the nearest hundred; n/r (Not Reportable) - If the unweighted total responses for a dimension (row) is <30 that row will not be shown

Years: 2002-2004

State	Yes			No			Weighted Total Responses (3-Yr Avg)
	#	%	C.I.(95%)	#	%	C.I.(95%)	#
Totals	1,600	9.1	8.3 - 10.0	15,700	90.9	90.0 - 91.7	17,200

County	Yes			No			Weighted Total Responses (3-Yr Avg)
	#	%	C.I.(95%)	#	%	C.I.(95%)	#
Hawaii	100	6.9	5.6 - 8.6	1,900	93.1	91.4 - 94.4	2,000
Honolulu	1,300	10.1	9.0 - 11.2	11,400	89.9	88.8 - 91.0	12,600
Kauai	100	8.2	5.8 - 11.5	700	91.8	88.5 - 94.2	800
Maui	100	5.2	4.0 - 6.9	1,700	94.8	93.1 - 96.0	1,800

PRAMS Health Indicator 3-Year Aggregate Report - Baby placed in ICU after birth- by State;County;DOH Race-Ethnicity;PRAMS Age Group;Infant Gender;Married;Poverty Level;Income (2000-2003);Income (2004-2011);Birthweight;Smoke 3rd Trimester;Smoke Before Pregnant;WIC During Pregnancy, for the Year(s) 2000-2002;2001-2003;2002-2004;2003-2005;2004-2006;2005-2007;2006-2008;2007-2009;2008-2010;2009-2011;2010-2012;2011-2013

Note: Weighted counts (#) represent 3-yr averages, rounded to the nearest hundred; n/r (Not Reportable) - If the unweighted total responses for a dimension (row) is <30 that row will not be shown

Years: 2002-2004

DOH Race-Ethnicity	Yes			No			Weighted Total Responses (3-Yr Avg)
	#	%	C.I.(95%)	#	%	C.I.(95%)	#
Caucasian	300	7.1	5.5 - 9.2	3,500	92.9	90.8 - 94.5	3,700
Native Hawaiian	500	9.6	8.5 - 11.0	4,300	90.4	89.0 - 91.5	4,700
Chinese	<50	6.5	4.1 - 10.1	600	93.5	89.9 - 95.9	700
Filipino	300	9.8	7.9 - 12.2	3,200	90.2	87.8 - 92.1	3,500
Japanese	200	8.2	6.0 - 11.1	2,000	91.8	88.9 - 94.0	2,200
Other	300	11.6	8.9 - 14.9	2,100	88.4	85.1 - 91.1	2,400

PRAMS Age Group	Yes			No			Weighted Total Responses (3-Yr Avg)
	#	%	C.I.(95%)	#	%	C.I.(95%)	#
<20	100	9.6	7.1 - 12.9	1,300	90.4	87.1 - 92.9	1,400
20-24	400	10.1	8.3 - 12.2	3,800	89.9	87.8 - 91.7	4,200
25-34	700	8.0	6.9 - 9.3	7,900	92.0	90.7 - 93.1	8,600
35+	300	10.4	8.4 - 12.9	2,700	89.6	87.1 - 91.6	3,000

PRAMS Health Indicator 3-Year Aggregate Report - Baby placed in ICU after birth- by State;County;DOH Race-Ethnicity;PRAMS Age Group;Infant Gender;Married;Poverty Level;Income (2000-2003);Income (2004-2011);Birthweight;Smoke 3rd Trimester;Smoke Before Pregnant;WIC During Pregnancy, for the Year(s) 2000-2002;2001-2003;2002-2004;2003-2005;2004-2006;2005-2007;2006-2008;2007-2009;2008-2010;2009-2011;2010-2012;2011-2013

Note: Weighted counts (#) represent 3-yr averages, rounded to the nearest hundred; n/r (Not Reportable) - If the unweighted total responses for a dimension (row) is <30 that row will not be shown

Years: 2002-2004

	Yes			No			Weighted Total Responses (3-Yr Avg)
	#	%	C.I.(95%)	#	%	C.I.(95%)	#
Infant Gender							
Male	800	9.4	8.2 - 10.7	8,200	90.6	89.3 - 91.8	9,000
Female	700	8.8	7.6 - 10.1	7,500	91.2	89.9 - 92.4	8,200

	Yes			No			Weighted Total Responses (3-Yr Avg)
	#	%	C.I.(95%)	#	%	C.I.(95%)	#
Married							
Yes	1,000	8.5	7.5 - 9.6	10,700	91.5	90.4 - 92.5	11,700
No	600	10.4	9.0 - 12.1	4,900	89.6	87.9 - 91.0	5,500

	Yes			No			Weighted Total Responses (3-Yr Avg)
	#	%	C.I.(95%)	#	%	C.I.(95%)	#
Poverty Level							
0-130%	700	10.1	8.8 - 11.6	6,200	89.9	88.4 - 91.2	6,900
131-185%	200	9.2	7.0 - 12.0	2,400	90.8	88.0 - 93.0	2,700
186+%	500	7.4	6.2 - 8.8	5,700	92.6	91.2 - 93.8	6,200

PRAMS Health Indicator 3-Year Aggregate Report - Baby placed in ICU after birth- by State;County;DOH Race-Ethnicity;PRAMS Age Group;Infant Gender;Married;Poverty Level;Income (2000-2003);Income (2004-2011);Birthweight;Smoke 3rd Trimester;Smoke Before Pregnant;WIC During Pregnancy, for the Year(s) 2000-2002;2001-2003;2002-2004;2003-2005;2004-2006;2005-2007;2006-2008;2007-2009;2008-2010;2009-2011;2010-2012;2011-2013

Note: Weighted counts (#) represent 3-yr averages, rounded to the nearest hundred; n/r (Not Reportable) - If the unweighted total responses for a dimension (row) is <30 that row will not be shown

Years: 2002-2004

Birthweight	Yes			No			Weighted Total Responses (3-Yr Avg)
	#	%	C.I.(95%)	#	%	C.I.(95%)	#
Low birth weight	600	48.4	42.5 - 54.3	600	51.6	45.7 - 57.5	1,100
Normal birth weight	1,000	6.3	5.6 - 7.1	15,100	93.7	92.9 - 94.4	16,100

Smoke 3rd Trimester	Yes			No			Weighted Total Responses (3-Yr Avg)
	#	%	C.I.(95%)	#	%	C.I.(95%)	#
Yes	200	10.6	7.8 - 14.1	1,300	89.4	85.9 - 92.2	1,400
No	1,400	8.9	8.0 - 9.9	14,100	91.1	90.1 - 92.0	15,500

Smoke Before Pregnant	Yes			No			Weighted Total Responses (3-Yr Avg)
	#	%	C.I.(95%)	#	%	C.I.(95%)	#
Yes	300	9.8	8.0 - 12.0	3,100	90.2	88.0 - 92.0	3,400
No	1,200	8.8	7.9 - 9.9	12,200	91.2	90.1 - 92.1	13,400

PRAMS Health Indicator 3-Year Aggregate Report - Baby placed in ICU after birth- by State;County;DOH Race-Ethnicity;PRAMS Age Group;Infant Gender;Married;Poverty Level;Income (2000-2003);Income (2004-2011);Birthweight;Smoke 3rd Trimester;Smoke Before Pregnant;WIC During Pregnancy, for the Year(s) 2000-2002;2001-2003;2002-2004;2003-2005;2004-2006;2005-2007;2006-2008;2007-2009;2008-2010;2009-2011;2010-2012;2011-2013

Note: Weighted counts (#) represent 3-yr averages, rounded to the nearest hundred; n/r (Not Reportable) - If the unweighted total responses for a dimension (row) is <30 that row will not be shown

Years: 2002-2004

WIC During Pregnancy	Yes			No			Weighted Total Responses (3-Yr Avg)
	#	%	C.I.(95%)	#	%	C.I.(95%)	#
Yes	800	10.4	9.1 - 11.9	6,600	89.6	88.1 - 90.9	7,400
No	800	8.1	7.1 - 9.3	8,900	91.9	90.7 - 92.9	9,700

PRAMS Health Indicator 3-Year Aggregate Report - Baby placed in ICU after birth- by State;County;DOH Race-Ethnicity;PRAMS Age Group;Infant Gender;Married;Poverty Level;Income (2000-2003);Income (2004-2011);Birthweight;Smoke 3rd Trimester;Smoke Before Pregnant;WIC During Pregnancy, for the Year(s) 2000-2002;2001-2003;2002-2004;2003-2005;2004-2006;2005-2007;2006-2008;2007-2009;2008-2010;2009-2011;2010-2012;2011-2013

Note: Weighted counts (#) represent 3-yr averages, rounded to the nearest hundred; n/r (Not Reportable) - If the unweighted total responses for a dimension (row) is <30 that row will not be shown

Years: 2001-2003

State	Yes			No			Weighted Total Responses (3-Yr Avg)
	#	%	C.I.(95%)	#	%	C.I.(95%)	#
Totals	1,600	9.5	8.6 - 10.4	15,300	90.5	89.6 - 91.4	16,900

County	Yes			No			Weighted Total Responses (3-Yr Avg)
	#	%	C.I.(95%)	#	%	C.I.(95%)	#
Hawaii	100	7.7	6.4 - 9.3	1,800	92.3	90.7 - 93.6	1,900
Honolulu	1,300	10.3	9.2 - 11.5	11,100	89.7	88.5 - 90.8	12,400
Kauai	100	8.5	6.3 - 11.3	700	91.5	88.7 - 93.7	800
Maui	100	5.9	4.6 - 7.4	1,700	94.1	92.6 - 95.4	1,800

PRAMS Health Indicator 3-Year Aggregate Report - Baby placed in ICU after birth- by State;County;DOH Race-Ethnicity;PRAMS Age Group;Infant Gender;Married;Poverty Level;Income (2000-2003);Income (2004-2011);Birthweight;Smoke 3rd Trimester;Smoke Before Pregnant;WIC During Pregnancy, for the Year(s) 2000-2002;2001-2003;2002-2004;2003-2005;2004-2006;2005-2007;2006-2008;2007-2009;2008-2010;2009-2011;2010-2012;2011-2013

Note: Weighted counts (#) represent 3-yr averages, rounded to the nearest hundred; n/r (Not Reportable) - If the unweighted total responses for a dimension (row) is <30 that row will not be shown

Years: 2001-2003

DOH Race-Ethnicity	Yes			No			Weighted Total Responses (3-Yr Avg)
	#	%	C.I.(95%)	#	%	C.I.(95%)	#
Caucasian	300	7.0	5.4 - 9.1	3,400	93.0	90.9 - 94.6	3,600
Native Hawaiian	400	9.7	8.8 - 10.8	4,100	90.3	89.2 - 91.2	4,600
Chinese	<50	6.6	3.5 - 12.2	600	93.4	87.8 - 96.5	700
Filipino	400	9.9	7.9 - 12.4	3,200	90.1	87.6 - 92.1	3,500
Japanese	200	9.1	6.7 - 12.4	1,900	90.9	87.6 - 93.3	2,100
Other	300	13.2	10.2 - 16.8	2,000	86.8	83.2 - 89.8	2,300

PRAMS Age Group	Yes			No			Weighted Total Responses (3-Yr Avg)
	#	%	C.I.(95%)	#	%	C.I.(95%)	#
<20	200	11.3	8.8 - 14.5	1,400	88.7	85.5 - 91.2	1,500
20-24	400	10.0	8.2 - 12.1	3,800	90.0	87.9 - 91.8	4,200
25-34	700	8.2	7.1 - 9.5	7,700	91.8	90.5 - 92.9	8,400
35+	300	11.3	9.1 - 14.0	2,500	88.7	86.0 - 90.9	2,800

PRAMS Health Indicator 3-Year Aggregate Report - Baby placed in ICU after birth- by State;County;DOH Race-Ethnicity;PRAMS Age Group;Infant Gender;Married;Poverty Level;Income (2000-2003);Income (2004-2011);Birthweight;Smoke 3rd Trimester;Smoke Before Pregnant;WIC During Pregnancy, for the Year(s) 2000-2002;2001-2003;2002-2004;2003-2005;2004-2006;2005-2007;2006-2008;2007-2009;2008-2010;2009-2011;2010-2012;2011-2013

Note: Weighted counts (#) represent 3-yr averages, rounded to the nearest hundred; n/r (Not Reportable) - If the unweighted total responses for a dimension (row) is <30 that row will not be shown

Years: 2001-2003

Infant Gender	Yes			No			Weighted Total Responses (3-Yr Avg)
	#	%	C.I.(95%)	#	%	C.I.(95%)	#
Male	800	9.5	8.3 - 10.8	7,800	90.5	89.2 - 91.7	8,600
Female	800	9.4	8.2 - 10.8	7,500	90.6	89.2 - 91.8	8,200

Married	Yes			No			Weighted Total Responses (3-Yr Avg)
	#	%	C.I.(95%)	#	%	C.I.(95%)	#
Yes	1,000	8.5	7.5 - 9.7	10,300	91.5	90.3 - 92.5	11,300
No	600	11.4	9.9 - 13.1	4,900	88.6	86.9 - 90.1	5,600

Poverty Level	Yes			No			Weighted Total Responses (3-Yr Avg)
	#	%	C.I.(95%)	#	%	C.I.(95%)	#
0-130%	700	10.0	8.7 - 11.5	6,100	90.0	88.5 - 91.3	6,800
131-185%	300	9.0	7.1 - 11.4	2,900	91.0	88.6 - 92.9	3,200
186+%	400	7.9	6.5 - 9.5	5,000	92.1	90.5 - 93.5	5,500

PRAMS Health Indicator 3-Year Aggregate Report - Baby placed in ICU after birth- by State;County;DOH Race-Ethnicity;PRAMS Age Group;Infant Gender;Married;Poverty Level;Income (2000-2003);Income (2004-2011);Birthweight;Smoke 3rd Trimester;Smoke Before Pregnant;WIC During Pregnancy, for the Year(s) 2000-2002;2001-2003;2002-2004;2003-2005;2004-2006;2005-2007;2006-2008;2007-2009;2008-2010;2009-2011;2010-2012;2011-2013

Note: Weighted counts (#) represent 3-yr averages, rounded to the nearest hundred; n/r (Not Reportable) - If the unweighted total responses for a dimension (row) is <30 that row will not be shown

Years: 2001-2003

Income (2000-2003)	Yes			No			Weighted Total Responses (3-Yr Avg)
	#	%	C.I.(95%)	#	%	C.I.(95%)	#
<=\$15,000	400	12.2	10.3 - 14.4	3,200	87.8	85.6 - 89.7	3,600
\$15,001-\$25,000	200	9.0	7.0 - 11.5	2,100	91.0	88.5 - 93.0	2,300
\$25,001-\$40,000	300	7.6	5.9 - 9.8	3,200	92.4	90.2 - 94.1	3,500
>=\$40,001	600	8.5	7.2 - 10.0	5,900	91.5	90.0 - 92.8	6,500

Birthweight	Yes			No			Weighted Total Responses (3-Yr Avg)
	#	%	C.I.(95%)	#	%	C.I.(95%)	#
Low birth weight	600	48.5	42.7 - 54.4	600	51.5	45.6 - 57.3	1,100
Normal birth weight	1,000	6.6	5.9 - 7.5	14,700	93.4	92.5 - 94.1	15,700

Smoke 3rd Trimester	Yes			No			Weighted Total Responses (3-Yr Avg)
	#	%	C.I.(95%)	#	%	C.I.(95%)	#
Yes	200	11.4	8.7 - 14.9	1,300	88.6	85.1 - 91.3	1,500
No	1,400	9.3	8.4 - 10.3	13,700	90.7	89.7 - 91.6	15,100

PRAMS Health Indicator 3-Year Aggregate Report - Baby placed in ICU after birth- by State;County;DOH Race-Ethnicity;PRAMS Age Group;Infant Gender;Married;Poverty Level;Income (2000-2003);Income (2004-2011);Birthweight;Smoke 3rd Trimester;Smoke Before Pregnant;WIC During Pregnancy, for the Year(s) 2000-2002;2001-2003;2002-2004;2003-2005;2004-2006;2005-2007;2006-2008;2007-2009;2008-2010;2009-2011;2010-2012;2011-2013

Note: Weighted counts (#) represent 3-yr averages, rounded to the nearest hundred; n/r (Not Reportable) - If the unweighted total responses for a dimension (row) is <30 that row will not be shown

Years: 2001-2003

Smoke Before Pregnant	Yes			No			Weighted Total Responses (3-Yr Avg)
	#	%	C.I.(95%)	#	%	C.I.(95%)	#
Yes	400	11.2	9.3 - 13.4	3,000	88.8	86.6 - 90.7	3,300
No	1,200	9.0	8.0 - 10.1	11,800	91.0	89.9 - 92.0	13,000

WIC During Pregnancy	Yes			No			Weighted Total Responses (3-Yr Avg)
	#	%	C.I.(95%)	#	%	C.I.(95%)	#
Yes	700	10.4	9.1 - 12.0	6,300	89.6	88.0 - 90.9	7,100
No	800	8.7	7.6 - 9.9	8,800	91.3	90.1 - 92.4	9,700

PRAMS Health Indicator 3-Year Aggregate Report - Baby placed in ICU after birth- by State;County;DOH Race-Ethnicity;PRAMS Age Group;Infant Gender;Married;Poverty Level;Income (2000-2003);Income (2004-2011);Birthweight;Smoke 3rd Trimester;Smoke Before Pregnant;WIC During Pregnancy, for the Year(s) 2000-2002;2001-2003;2002-2004;2003-2005;2004-2006;2005-2007;2006-2008;2007-2009;2008-2010;2009-2011;2010-2012;2011-2013

Note: Weighted counts (#) represent 3-yr averages, rounded to the nearest hundred; n/r (Not Reportable) - If the unweighted total responses for a dimension (row) is <30 that row will not be shown

Years: 2000-2002

State	Yes			No			Weighted Total Responses (3-Yr Avg)
	#	%	C.I.(95%)	#	%	C.I.(95%)	#
Totals	1,600	9.6	8.8 - 10.5	15,200	90.4	89.5 - 91.2	16,800

County	Yes			No			Weighted Total Responses (3-Yr Avg)
	#	%	C.I.(95%)	#	%	C.I.(95%)	#
Hawaii	200	7.9	6.6 - 9.5	1,700	92.1	90.5 - 93.4	1,900
Honolulu	1,300	10.3	9.3 - 11.5	11,100	89.7	88.5 - 90.7	12,400
Kauai	100	8.8	6.6 - 11.7	700	91.2	88.3 - 93.4	700
Maui	100	6.2	4.9 - 7.9	1,600	93.8	92.1 - 95.1	1,700

PRAMS Health Indicator 3-Year Aggregate Report - Baby placed in ICU after birth- by State;County;DOH Race-Ethnicity;PRAMS Age Group;Infant Gender;Married;Poverty Level;Income (2000-2003);Income (2004-2011);Birthweight;Smoke 3rd Trimester;Smoke Before Pregnant;WIC During Pregnancy, for the Year(s) 2000-2002;2001-2003;2002-2004;2003-2005;2004-2006;2005-2007;2006-2008;2007-2009;2008-2010;2009-2011;2010-2012;2011-2013

Note: Weighted counts (#) represent 3-yr averages, rounded to the nearest hundred; n/r (Not Reportable) - If the unweighted total responses for a dimension (row) is <30 that row will not be shown

Years: 2000-2002

DOH Race-Ethnicity	Yes			No			Weighted Total Responses (3-Yr Avg)
	#	%	C.I.(95%)	#	%	C.I.(95%)	#
Caucasian	300	8.2	6.6 - 10.2	3,400	91.8	89.8 - 93.4	3,700
Native Hawaiian	500	10.2	9.2 - 11.2	4,100	89.8	88.8 - 90.8	4,500
Chinese	<50	4.8	2.4 - 9.7	600	95.2	90.3 - 97.6	700
Filipino	400	10.4	8.5 - 12.8	3,100	89.6	87.2 - 91.5	3,400
Japanese	200	9.2	6.9 - 12.3	2,000	90.8	87.7 - 93.1	2,200
Other	200	11.1	8.5 - 14.3	2,000	88.9	85.7 - 91.5	2,200

PRAMS Age Group	Yes			No			Weighted Total Responses (3-Yr Avg)
	#	%	C.I.(95%)	#	%	C.I.(95%)	#
<20	200	13.3	10.8 - 16.2	1,400	86.7	83.8 - 89.2	1,600
20-24	400	10.6	8.9 - 12.6	3,700	89.4	87.4 - 91.1	4,200
25-34	700	8.0	7.0 - 9.2	7,500	92.0	90.8 - 93.0	8,200
35+	300	10.4	8.5 - 12.7	2,500	89.6	87.3 - 91.5	2,800

PRAMS Health Indicator 3-Year Aggregate Report - Baby placed in ICU after birth- by State;County;DOH Race-Ethnicity;PRAMS Age Group;Infant Gender;Married;Poverty Level;Income (2000-2003);Income (2004-2011);Birthweight;Smoke 3rd Trimester;Smoke Before Pregnant;WIC During Pregnancy, for the Year(s) 2000-2002;2001-2003;2002-2004;2003-2005;2004-2006;2005-2007;2006-2008;2007-2009;2008-2010;2009-2011;2010-2012;2011-2013

Note: Weighted counts (#) represent 3-yr averages, rounded to the nearest hundred; n/r (Not Reportable) - If the unweighted total responses for a dimension (row) is <30 that row will not be shown

Years: 2000-2002

Infant Gender	Yes			No			Weighted Total Responses (3-Yr Avg)
	#	%	C.I.(95%)	#	%	C.I.(95%)	#
Male	800	9.3	8.2 - 10.5	7,700	90.7	89.5 - 91.8	8,500
Female	800	9.9	8.7 - 11.2	7,400	90.1	88.8 - 91.3	8,300

Married	Yes			No			Weighted Total Responses (3-Yr Avg)
	#	%	C.I.(95%)	#	%	C.I.(95%)	#
Yes	900	8.2	7.3 - 9.3	10,500	91.8	90.7 - 92.7	11,400
No	700	12.4	11.0 - 14.1	4,700	87.6	85.9 - 89.0	5,300

Poverty Level	Yes			No			Weighted Total Responses (3-Yr Avg)
	#	%	C.I.(95%)	#	%	C.I.(95%)	#
0-130%	700	10.0	8.8 - 11.4	6,000	90.0	88.6 - 91.2	6,600
131-185%	300	8.3	6.5 - 10.5	2,900	91.7	89.5 - 93.5	3,100
186+%	500	8.6	7.2 - 10.1	5,200	91.4	89.9 - 92.8	5,700

PRAMS Health Indicator 3-Year Aggregate Report - Baby placed in ICU after birth- by State;County;DOH Race-Ethnicity;PRAMS Age Group;Infant Gender;Married;Poverty Level;Income (2000-2003);Income (2004-2011);Birthweight;Smoke 3rd Trimester;Smoke Before Pregnant;WIC During Pregnancy, for the Year(s) 2000-2002;2001-2003;2002-2004;2003-2005;2004-2006;2005-2007;2006-2008;2007-2009;2008-2010;2009-2011;2010-2012;2011-2013

Note: Weighted counts (#) represent 3-yr averages, rounded to the nearest hundred; n/r (Not Reportable) - If the unweighted total responses for a dimension (row) is <30 that row will not be shown

Years: 2000-2002

Income (2000-2003)	Yes			No			Weighted Total Responses (3-Yr Avg)
	#	%	C.I.(95%)	#	%	C.I.(95%)	#
<=\$15,000	400	12.6	10.8 - 14.7	3,100	87.4	85.3 - 89.2	3,500
\$15,001-\$25,000	200	8.0	6.3 - 10.2	2,300	92.0	89.8 - 93.7	2,500
\$25,001-\$40,000	300	7.8	6.2 - 9.7	3,200	92.2	90.3 - 93.8	3,500
>=\$40,001	600	9.0	7.7 - 10.5	5,800	91.0	89.5 - 92.3	6,400

Birthweight	Yes			No			Weighted Total Responses (3-Yr Avg)
	#	%	C.I.(95%)	#	%	C.I.(95%)	#
Low birth weight	500	45.2	39.7 - 50.8	600	54.8	49.2 - 60.3	1,100
Normal birth weight	1,100	7.0	6.3 - 7.8	14,500	93.0	92.2 - 93.7	15,600

Smoke 3rd Trimester	Yes			No			Weighted Total Responses (3-Yr Avg)
	#	%	C.I.(95%)	#	%	C.I.(95%)	#
Yes	200	12.7	9.9 - 16.1	1,200	87.3	83.9 - 90.1	1,400
No	1,400	9.3	8.5 - 10.2	13,600	90.7	89.8 - 91.5	15,000

PRAMS Health Indicator 3-Year Aggregate Report - Baby placed in ICU after birth- by State;County;DOH Race-Ethnicity;PRAMS Age Group;Infant Gender;Married;Poverty Level;Income (2000-2003);Income (2004-2011);Birthweight;Smoke 3rd Trimester;Smoke Before Pregnant;WIC During Pregnancy, for the Year(s) 2000-2002;2001-2003;2002-2004;2003-2005;2004-2006;2005-2007;2006-2008;2007-2009;2008-2010;2009-2011;2010-2012;2011-2013

Note: Weighted counts (#) represent 3-yr averages, rounded to the nearest hundred; n/r (Not Reportable) - If the unweighted total responses for a dimension (row) is <30 that row will not be shown

Years: 2000-2002

Smoke Before Pregnant	Yes			No			Weighted Total Responses (3-Yr Avg)
	#	%	C.I.(95%)	#	%	C.I.(95%)	#
Yes	400	12.9	10.9 - 15.1	2,900	87.1	84.9 - 89.1	3,300
No	1,100	8.7	7.8 - 9.7	11,800	91.3	90.3 - 92.2	12,900

WIC During Pregnancy	Yes			No			Weighted Total Responses (3-Yr Avg)
	#	%	C.I.(95%)	#	%	C.I.(95%)	#
Yes	800	10.8	9.6 - 12.3	6,300	89.2	87.7 - 90.4	7,100
No	800	8.6	7.6 - 9.7	8,700	91.4	90.3 - 92.4	9,500