

PRAMS Health Indicator 3-Year Aggregate Report - Baby discharged within 48 hours- for the State of Hawaii, for the Year(s) 2000-2002;2001-2003;2002-2004;2003-2005;2004-2006;2005-2007;2006-2008;2007-2009;2008-2010;2009-2011;2010-2012;2011-2013

PRAMS Health Indicator 3-Year Aggregate Report - Baby discharged within 48 hours- by State;County;DOH Race-Ethnicity;PRAMS Age Group;Infant Gender;Married;Poverty Level;Income (2000-2003);Income (2004-2011);Birthweight;Smoke 3rd Trimester;Smoke Before Pregnant;WIC During Pregnancy, for the Year(s) 2000-2002;2001-2003;2002-2004;2003-2005;2004-2006;2005-2007;2006-2008;2007-2009;2008-2010;2009-2011;2010-2012;2011-2013

Note: Weighted counts (#) represent 3-yr averages, rounded to the nearest hundred; n/r (Not Reportable) - If the unweighted total responses for a dimension (row) is <30 that row will not be shown

The trend analysis section shows the trend for the selected health variable over selected years in a table and a graph. 3-Year Weighted Total Responses: This number is a weighted representation of the mothers of babies delivered in a given year, who responded to a particular question in the survey. For most questions this will be the mothers of all babies delivered in a given year. For some secondary questions only a subset of the population was asked the question. For example, all survey participants were asked if they smoked during pregnancy, but only those who answered yes were asked how many cigarettes a day. If a dimension value is unknown for a particular survey record, that record will not be included in the counts for that particular dimension.

Note: Data collection for household income changed in 2004 and again in 2012. Because of this, income data does not exist for some 3-year aggregate periods.

Below are the indicators included in this report and the long description for each indicator.

PRAMS Health Indicator	Health Indicator Description
Baby discharged within 48 hours	Baby discharged within 48 hours

Suggested citation:

Hawaii Health Data Warehouse, Hawaii State Department of Health, Pregnancy Risk Assessment Monitoring System, (report title and years), Report Created: 2/17/17

For documentation on other terms and coding in this report, please go to the following links:

[Click here to access PRAMS documentation](#)

[Click here to access DOH-Race Ethnicity coding](#)

[Click here to access The Hawai'i Data Guide](#)

**For questions about this report, please contact
The Hawai'i Health Data Warehouse**

profiles@hhdw.org

(855) 946-5899 x15

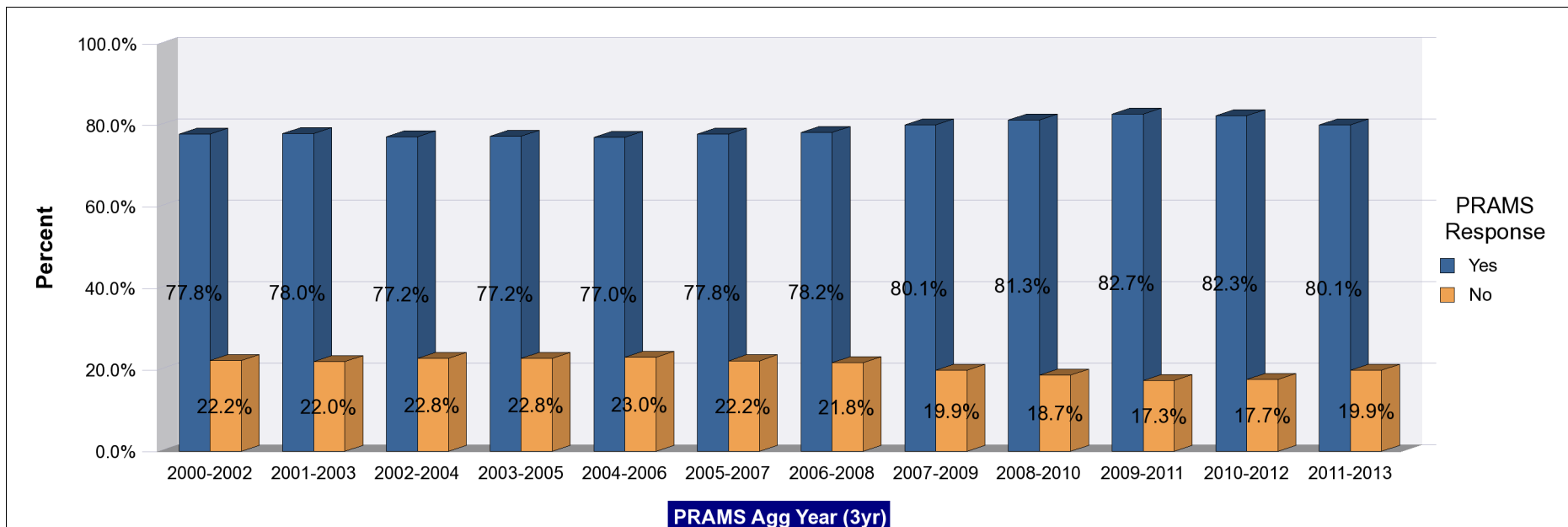
**PRAMS Health Indicator 3-Year Aggregate Report - Baby discharged within 48 hours- for the State of Hawaii, for the Year(s)
2000-2002;2001-2003;2002-2004;2003-2005;2004-2006;2005-2007;2006-2008;2007-2009;2008-2010;2009-2011;2010-2012;2011-2013**

Note: Weighted counts (#) represent 3-yr averages, rounded to the nearest hundred; n/r (Not Reportable) - If the unweighted total responses for a dimension (row) is <30 that row will not be shown

Years	Yes			No			Weighted Total Responses (3-Yr Avg)
	#	%	C.I.(95%)	#	%	C.I.(95%)	#
2000-2002	9,600	77.8	76.3 - 79.1	2,800	22.2	20.9 - 23.7	12,400
2001-2003	10,300	78.0	76.5 - 79.4	2,900	22.0	20.6 - 23.5	13,200
2002-2004	10,300	77.2	75.7 - 78.6	3,000	22.8	21.4 - 24.3	13,300
2003-2005	10,000	77.2	75.8 - 78.6	3,000	22.8	21.4 - 24.2	13,000
2004-2006	10,000	77.0	75.6 - 78.3	3,000	23.0	21.7 - 24.4	13,100
2005-2007	10,300	77.8	76.4 - 79.1	2,900	22.2	20.9 - 23.6	13,300
2006-2008	10,600	78.2	76.9 - 79.6	3,000	21.8	20.4 - 23.1	13,600
2007-2009	10,800	80.1	78.6 - 81.4	2,700	19.9	18.6 - 21.4	13,500
2008-2010	10,700	81.3	79.8 - 82.7	2,500	18.7	17.3 - 20.2	13,200
2009-2011	10,900	82.7	81.0 - 84.2	2,300	17.3	15.8 - 19.0	13,200
2010-2012	10,800	82.3	80.6 - 83.9	2,300	17.7	16.1 - 19.4	13,200
2011-2013	10,600	80.1	78.3 - 81.9	2,600	19.9	18.1 - 21.7	13,300

PRAMS Health Indicator 3-Year Aggregate Report - Baby discharged within 48 hours- for the State of Hawaii, for the Year(s) 2000-2002;2001-2003;2002-2004;2003-2005;2004-2006;2005-2007;2006-2008;2007-2009;2008-2010;2009-2011;2010-2012;2011-2013

Note: Weighted counts (#) represent 3-yr averages, rounded to the nearest hundred; n/r (Not Reportable) - If the unweighted total responses for a dimension (row) is <30 that row will not be shown



PRAMS Health Indicator 3-Year Aggregate Report - Baby discharged within 48 hours- by State;County;DOH Race-Ethnicity;PRAMS Age Group;Infant Gender;Married;Poverty Level;Income (2000-2003);Income (2004-2011);Birthweight;Smoke 3rd Trimester;Smoke Before Pregnant;WIC During Pregnancy, for the Year(s) 2000-2002;2001-2003;2002-2004;2003-2005;2004-2006;2005-2007;2006-2008;2007-2009;2008-2010;2009-2011;2010-2012;2011-2013

Note: Weighted counts (#) represent 3-yr averages, rounded to the nearest hundred; n/r (Not Reportable) - If the unweighted total responses for a dimension (row) is <30 that row will not be shown

Years: 2011-2013

State	Yes			No			Weighted Total Responses (3-Yr Avg)
	#	%	C.I.(95%)	#	%	C.I.(95%)	#
Totals	10,600	80.1	78.3 - 81.9	2,600	19.9	18.1 - 21.7	13,300

County	Yes			No			Weighted Total Responses (3-Yr Avg)
	#	%	C.I.(95%)	#	%	C.I.(95%)	#
Hawaii	1,300	82.8	79.8 - 85.5	300	17.2	14.5 - 20.2	1,600
Honolulu	7,800	79.5	77.0 - 81.8	2,000	20.5	18.2 - 23.0	9,800
Kauai	400	69.5	65.5 - 73.2	200	30.5	26.8 - 34.5	600
Maui	1,100	86.2	83.5 - 88.5	200	13.8	11.5 - 16.5	1,300

PRAMS Health Indicator 3-Year Aggregate Report - Baby discharged within 48 hours- by State;County;DOH Race-Ethnicity;PRAMS Age Group;Infant Gender;Married;Poverty Level;Income (2000-2003);Income (2004-2011);Birthweight;Smoke 3rd Trimester;Smoke Before Pregnant;WIC During Pregnancy, for the Year(s) 2000-2002;2001-2003;2002-2004;2003-2005;2004-2006;2005-2007;2006-2008;2007-2009;2008-2010;2009-2011;2010-2012;2011-2013

Note: Weighted counts (#) represent 3-yr averages, rounded to the nearest hundred; n/r (Not Reportable) - If the unweighted total responses for a dimension (row) is <30 that row will not be shown

Years: 2011-2013

DOH Race-Ethnicity	Yes			No			Weighted Total Responses (3-Yr Avg)
	#	%	C.I.(95%)	#	%	C.I.(95%)	#
Caucasian	2,600	80.4	76.5 - 83.8	600	19.6	16.2 - 23.5	3,300
Native Hawaiian	3,300	81.4	78.1 - 84.3	700	18.6	15.7 - 21.9	4,000
Chinese	500	85.3	76.1 - 91.3	100	14.7	8.7 - 23.9	600
Filipino	1,700	76.0	71.1 - 80.3	500	24.0	19.7 - 28.9	2,300
Japanese	1,000	79.3	72.5 - 84.8	300	20.7	15.2 - 27.5	1,300
Other	1,500	80.7	75.3 - 85.1	400	19.3	14.9 - 24.7	1,900

PRAMS Age Group	Yes			No			Weighted Total Responses (3-Yr Avg)
	#	%	C.I.(95%)	#	%	C.I.(95%)	#
<20	600	75.0	67.2 - 81.5	200	25.0	18.5 - 32.8	900
20-24	2,500	79.1	74.9 - 82.7	700	20.9	17.3 - 25.1	3,100
25-34	5,900	81.0	78.4 - 83.3	1,400	19.0	16.7 - 21.6	7,300
35+	1,600	80.9	76.2 - 84.8	400	19.1	15.2 - 23.8	2,000

PRAMS Health Indicator 3-Year Aggregate Report - Baby discharged within 48 hours- by State;County;DOH Race-Ethnicity;PRAMS Age Group;Infant Gender;Married;Poverty Level;Income (2000-2003);Income (2004-2011);Birthweight;Smoke 3rd Trimester;Smoke Before Pregnant;WIC During Pregnancy, for the Year(s) 2000-2002;2001-2003;2002-2004;2003-2005;2004-2006;2005-2007;2006-2008;2007-2009;2008-2010;2009-2011;2010-2012;2011-2013

Note: Weighted counts (#) represent 3-yr averages, rounded to the nearest hundred; n/r (Not Reportable) - If the unweighted total responses for a dimension (row) is <30 that row will not be shown

Years: 2011-2013

Infant Gender	Yes			No			Weighted Total Responses (3-Yr Avg)
	#	%	C.I.(95%)	#	%	C.I.(95%)	#
Male	5,200	79.7	77.0 - 82.1	1,300	20.3	17.9 - 23.0	6,500
Female	5,400	80.6	77.9 - 83.0	1,300	19.4	17.0 - 22.1	6,800

Married	Yes			No			Weighted Total Responses (3-Yr Avg)
	#	%	C.I.(95%)	#	%	C.I.(95%)	#
Yes	6,500	81.0	78.6 - 83.2	1,500	19.0	16.8 - 21.4	8,100
No	4,100	78.7	75.7 - 81.5	1,100	21.3	18.5 - 24.3	5,200

Poverty Level	Yes			No			Weighted Total Responses (3-Yr Avg)
	#	%	C.I.(95%)	#	%	C.I.(95%)	#
0-130%	4,000	79.9	76.8 - 82.6	1,000	20.1	17.4 - 23.2	5,000
131-185%	1,600	80.0	74.9 - 84.4	400	20.0	15.6 - 25.1	2,000
186+%	4,200	81.4	78.4 - 84.1	1,000	18.6	15.9 - 21.6	5,200

PRAMS Health Indicator 3-Year Aggregate Report - Baby discharged within 48 hours- by State;County;DOH Race-Ethnicity;PRAMS Age Group;Infant Gender;Married;Poverty Level;Income (2000-2003);Income (2004-2011);Birthweight;Smoke 3rd Trimester;Smoke Before Pregnant;WIC During Pregnancy, for the Year(s) 2000-2002;2001-2003;2002-2004;2003-2005;2004-2006;2005-2007;2006-2008;2007-2009;2008-2010;2009-2011;2010-2012;2011-2013

Note: Weighted counts (#) represent 3-yr averages, rounded to the nearest hundred; n/r (Not Reportable) - If the unweighted total responses for a dimension (row) is <30 that row will not be shown

Years: 2011-2013

Birthweight	Yes			No			Weighted Total Responses (3-Yr Avg)
	#	%	C.I.(95%)	#	%	C.I.(95%)	#
Low birth weight	300	45.1	41.2 - 49.1	400	54.9	50.9 - 58.8	800
Normal birth weight	10,300	82.3	80.3 - 84.1	2,200	17.7	15.9 - 19.7	12,500

Smoke 3rd Trimester	Yes			No			Weighted Total Responses (3-Yr Avg)
	#	%	C.I.(95%)	#	%	C.I.(95%)	#
Yes	500	79.2	70.9 - 85.6	100	20.8	14.4 - 29.1	600
No	9,900	80.1	78.1 - 81.9	2,500	19.9	18.1 - 21.9	12,400

Smoke Before Pregnant	Yes			No			Weighted Total Responses (3-Yr Avg)
	#	%	C.I.(95%)	#	%	C.I.(95%)	#
Yes	1,800	78.0	73.4 - 82.0	500	22.0	18.0 - 26.6	2,300
No	8,600	80.5	78.4 - 82.4	2,100	19.5	17.6 - 21.6	10,600

**PRAMS Health Indicator 3-Year Aggregate Report - Baby discharged within 48 hours- by State;County;DOH Race-
Ethnicity;PRAMS Age Group;Infant Gender;Married;Poverty Level;Income (2000-2003);Income (2004-2011);Birthweight;Smoke
3rd Trimester;Smoke Before Pregnant;WIC During Pregnancy, for the Year(s)
2000-2002;2001-2003;2002-2004;2003-2005;2004-2006;2005-2007;2006-2008;2007-2009;2008-2010;2009-2011;2010-2012;2011-2013**

Note: Weighted counts (#) represent 3-yr averages, rounded to the nearest hundred; n/r (Not Reportable) - If the unweighted total responses for a dimension (row) is <30 that row will not be shown

Years: 2011-2013

WIC During Pregnancy	Yes			No			Weighted Total Responses (3-Yr Avg)
	#	%	C.I.(95%)	#	%	C.I.(95%)	#
Yes	4,800	79.2	76.4 - 81.8	1,300	20.8	18.2 - 23.6	6,100
No	5,700	80.8	78.3 - 83.1	1,400	19.2	16.9 - 21.7	7,100

PRAMS Health Indicator 3-Year Aggregate Report - Baby discharged within 48 hours- by State;County;DOH Race-Ethnicity;PRAMS Age Group;Infant Gender;Married;Poverty Level;Income (2000-2003);Income (2004-2011);Birthweight;Smoke 3rd Trimester;Smoke Before Pregnant;WIC During Pregnancy, for the Year(s) 2000-2002;2001-2003;2002-2004;2003-2005;2004-2006;2005-2007;2006-2008;2007-2009;2008-2010;2009-2011;2010-2012;2011-2013

Note: Weighted counts (#) represent 3-yr averages, rounded to the nearest hundred; n/r (Not Reportable) - If the unweighted total responses for a dimension (row) is <30 that row will not be shown

Years: 2010-2012

State	Yes			No			Weighted Total Responses (3-Yr Avg)
	#	%	C.I.(95%)	#	%	C.I.(95%)	#
Totals	10,800	82.3	80.6 - 83.9	2,300	17.7	16.1 - 19.4	13,200

County	Yes			No			Weighted Total Responses (3-Yr Avg)
	#	%	C.I.(95%)	#	%	C.I.(95%)	#
Hawaii	1,300	82.8	79.9 - 85.4	300	17.2	14.6 - 20.1	1,600
Honolulu	8,000	82.6	80.4 - 84.7	1,700	17.4	15.3 - 19.6	9,700
Kauai	400	70.0	66.0 - 73.7	200	30.0	26.3 - 34.0	600
Maui	1,100	84.9	82.3 - 87.2	200	15.1	12.8 - 17.7	1,300

PRAMS Health Indicator 3-Year Aggregate Report - Baby discharged within 48 hours- by State;County;DOH Race-Ethnicity;PRAMS Age Group;Infant Gender;Married;Poverty Level;Income (2000-2003);Income (2004-2011);Birthweight;Smoke 3rd Trimester;Smoke Before Pregnant;WIC During Pregnancy, for the Year(s) 2000-2002;2001-2003;2002-2004;2003-2005;2004-2006;2005-2007;2006-2008;2007-2009;2008-2010;2009-2011;2010-2012;2011-2013

Note: Weighted counts (#) represent 3-yr averages, rounded to the nearest hundred; n/r (Not Reportable) - If the unweighted total responses for a dimension (row) is <30 that row will not be shown

Years: 2010-2012

DOH Race-Ethnicity	Yes			No			Weighted Total Responses (3-Yr Avg)
	#	%	C.I.(95%)	#	%	C.I.(95%)	#
Caucasian	2,500	81.8	78.2 - 84.9	600	18.2	15.1 - 21.8	3,100
Native Hawaiian	3,300	82.9	79.8 - 85.5	700	17.1	14.5 - 20.2	4,000
Chinese	600	86.7	78.8 - 92.0	100	13.3	8.0 - 21.2	600
Filipino	1,800	80.4	75.9 - 84.2	400	19.6	15.8 - 24.1	2,200
Japanese	1,100	83.0	77.1 - 87.6	200	17.0	12.4 - 22.9	1,300
Other	1,600	82.5	77.5 - 86.5	300	17.5	13.5 - 22.5	1,900

PRAMS Age Group	Yes			No			Weighted Total Responses (3-Yr Avg)
	#	%	C.I.(95%)	#	%	C.I.(95%)	#
<20	700	78.0	71.4 - 83.5	200	22.0	16.5 - 28.6	900
20-24	2,600	81.0	77.2 - 84.3	600	19.0	15.7 - 22.8	3,200
25-34	5,800	83.0	80.7 - 85.1	1,200	17.0	14.9 - 19.3	7,000
35+	1,700	84.1	79.9 - 87.5	300	15.9	12.5 - 20.1	2,000

**PRAMS Health Indicator 3-Year Aggregate Report - Baby discharged within 48 hours- by State;County;DOH Race-
Ethnicity;PRAMS Age Group;Infant Gender;Married;Poverty Level;Income (2000-2003);Income (2004-2011);Birthweight;Smoke
3rd Trimester;Smoke Before Pregnant;WIC During Pregnancy, for the Year(s)
2000-2002;2001-2003;2002-2004;2003-2005;2004-2006;2005-2007;2006-2008;2007-2009;2008-2010;2009-2011;2010-2012;2011-2013**

Note: Weighted counts (#) represent 3-yr averages, rounded to the nearest hundred; n/r (Not Reportable) - If the unweighted total responses for a dimension (row) is <30 that row will not be shown

Years: 2010-2012

Infant Gender	Yes			No			Weighted Total Responses (3-Yr Avg)
	#	%	C.I.(95%)	#	%	C.I.(95%)	#
Male	5,400	81.7	79.3 - 84.0	1,200	18.3	16.0 - 20.7	6,600
Female	5,500	82.9	80.5 - 85.1	1,100	17.1	14.9 - 19.5	6,600

Married	Yes			No			Weighted Total Responses (3-Yr Avg)
	#	%	C.I.(95%)	#	%	C.I.(95%)	#
Yes	6,600	83.2	81.0 - 85.2	1,300	16.8	14.8 - 19.0	8,000
No	4,200	81.0	78.3 - 83.5	1,000	19.0	16.5 - 21.7	5,200

Poverty Level	Yes			No			Weighted Total Responses (3-Yr Avg)
	#	%	C.I.(95%)	#	%	C.I.(95%)	#
0-130%	3,900	80.2	77.2 - 82.9	1,000	19.8	17.1 - 22.8	4,800
131-185%	1,700	83.4	78.9 - 87.1	300	16.6	12.9 - 21.1	2,100
186+%	4,500	84.8	82.2 - 87.1	800	15.2	12.9 - 17.8	5,300

PRAMS Health Indicator 3-Year Aggregate Report - Baby discharged within 48 hours- by State;County;DOH Race-Ethnicity;PRAMS Age Group;Infant Gender;Married;Poverty Level;Income (2000-2003);Income (2004-2011);Birthweight;Smoke 3rd Trimester;Smoke Before Pregnant;WIC During Pregnancy, for the Year(s) 2000-2002;2001-2003;2002-2004;2003-2005;2004-2006;2005-2007;2006-2008;2007-2009;2008-2010;2009-2011;2010-2012;2011-2013

Note: Weighted counts (#) represent 3-yr averages, rounded to the nearest hundred; n/r (Not Reportable) - If the unweighted total responses for a dimension (row) is <30 that row will not be shown

Years: 2010-2012

Birthweight	Yes			No			Weighted Total Responses (3-Yr Avg)
	#	%	C.I.(95%)	#	%	C.I.(95%)	#
Low birth weight	400	48.9	44.8 - 53.0	400	51.1	47.0 - 55.2	700
Normal birth weight	10,400	84.4	82.6 - 86.0	1,900	15.6	14.0 - 17.4	12,400

Smoke 3rd Trimester	Yes			No			Weighted Total Responses (3-Yr Avg)
	#	%	C.I.(95%)	#	%	C.I.(95%)	#
Yes	600	84.4	78.2 - 89.1	100	15.6	10.9 - 21.8	700
No	10,000	82.2	80.4 - 83.9	2,200	17.8	16.1 - 19.6	12,200

Smoke Before Pregnant	Yes			No			Weighted Total Responses (3-Yr Avg)
	#	%	C.I.(95%)	#	%	C.I.(95%)	#
Yes	2,000	80.7	76.7 - 84.1	500	19.3	15.9 - 23.3	2,500
No	8,600	82.7	80.8 - 84.5	1,800	17.3	15.5 - 19.2	10,400

PRAMS Health Indicator 3-Year Aggregate Report - Baby discharged within 48 hours- by State;County;DOH Race-Ethnicity;PRAMS Age Group;Infant Gender;Married;Poverty Level;Income (2000-2003);Income (2004-2011);Birthweight;Smoke 3rd Trimester;Smoke Before Pregnant;WIC During Pregnancy, for the Year(s) 2000-2002;2001-2003;2002-2004;2003-2005;2004-2006;2005-2007;2006-2008;2007-2009;2008-2010;2009-2011;2010-2012;2011-2013

Note: Weighted counts (#) represent 3-yr averages, rounded to the nearest hundred; n/r (Not Reportable) - If the unweighted total responses for a dimension (row) is <30 that row will not be shown

Years: 2010-2012

WIC During Pregnancy	Yes			No			Weighted Total Responses (3-Yr Avg)
	#	%	C.I.(95%)	#	%	C.I.(95%)	#
Yes	5,000	80.8	78.2 - 83.1	1,200	19.2	16.9 - 21.8	6,100
No	5,800	83.9	81.6 - 85.9	1,100	16.1	14.1 - 18.4	6,900

PRAMS Health Indicator 3-Year Aggregate Report - Baby discharged within 48 hours- by State;County;DOH Race-Ethnicity;PRAMS Age Group;Infant Gender;Married;Poverty Level;Income (2000-2003);Income (2004-2011);Birthweight;Smoke 3rd Trimester;Smoke Before Pregnant;WIC During Pregnancy, for the Year(s) 2000-2002;2001-2003;2002-2004;2003-2005;2004-2006;2005-2007;2006-2008;2007-2009;2008-2010;2009-2011;2010-2012;2011-2013

Note: Weighted counts (#) represent 3-yr averages, rounded to the nearest hundred; n/r (Not Reportable) - If the unweighted total responses for a dimension (row) is <30 that row will not be shown

Years: 2009-2011

State	Yes			No			Weighted Total Responses (3-Yr Avg)
	#	%	C.I.(95%)	#	%	C.I.(95%)	#
Totals	10,900	82.7	81.0 - 84.2	2,300	17.3	15.8 - 19.0	13,200

County	Yes			No			Weighted Total Responses (3-Yr Avg)
	#	%	C.I.(95%)	#	%	C.I.(95%)	#
Hawaii	1,300	80.7	77.8 - 83.4	300	19.3	16.6 - 22.2	1,600
Honolulu	8,000	83.5	81.3 - 85.4	1,600	16.5	14.6 - 18.7	9,600
Kauai	400	72.8	69.0 - 76.3	200	27.2	23.7 - 31.0	600
Maui	1,200	83.6	81.1 - 85.9	200	16.4	14.1 - 18.9	1,400

**PRAMS Health Indicator 3-Year Aggregate Report - Baby discharged within 48 hours- by State;County;DOH Race-
Ethnicity;PRAMS Age Group;Infant Gender;Married;Poverty Level;Income (2000-2003);Income (2004-2011);Birthweight;Smoke
3rd Trimester;Smoke Before Pregnant;WIC During Pregnancy, for the Year(s)
2000-2002;2001-2003;2002-2004;2003-2005;2004-2006;2005-2007;2006-2008;2007-2009;2008-2010;2009-2011;2010-2012;2011-2013**

Note: Weighted counts (#) represent 3-yr averages, rounded to the nearest hundred; n/r (Not Reportable) - If the unweighted total responses for a dimension (row) is <30 that row will not be shown

Years: 2009-2011

DOH Race- Ethnicity	Yes			No			Weighted Total Responses (3-Yr Avg)
	#	%	C.I.(95%)	#	%	C.I.(95%)	#
Caucasian	2,600	82.1	78.7 - 85.1	600	17.9	14.9 - 21.3	3,200
Native Hawaiian	3,300	80.6	77.4 - 83.4	800	19.4	16.6 - 22.6	4,100
Chinese	500	85.5	76.8 - 91.3	100	14.5	8.7 - 23.2	600
Filipino	1,800	82.7	78.6 - 86.1	400	17.3	13.9 - 21.4	2,200
Japanese	1,100	86.6	81.6 - 90.4	200	13.4	9.6 - 18.4	1,300
Other	1,500	84.5	79.8 - 88.2	300	15.5	11.8 - 20.2	1,800

PRAMS Age Group	Yes			No			Weighted Total Responses (3-Yr Avg)
	#	%	C.I.(95%)	#	%	C.I.(95%)	#
<20	800	76.2	69.6 - 81.8	300	23.8	18.2 - 30.4	1,100
20-24	2,700	80.9	77.3 - 84.1	600	19.1	15.9 - 22.7	3,400
25-34	5,700	84.0	81.8 - 86.0	1,100	16.0	14.0 - 18.2	6,800
35+	1,700	84.4	80.4 - 87.7	300	15.6	12.3 - 19.6	2,000

**PRAMS Health Indicator 3-Year Aggregate Report - Baby discharged within 48 hours- by State;County;DOH Race-
Ethnicity;PRAMS Age Group;Infant Gender;Married;Poverty Level;Income (2000-2003);Income (2004-2011);Birthweight;Smoke
3rd Trimester;Smoke Before Pregnant;WIC During Pregnancy, for the Year(s)
2000-2002;2001-2003;2002-2004;2003-2005;2004-2006;2005-2007;2006-2008;2007-2009;2008-2010;2009-2011;2010-2012;2011-2013**

Note: Weighted counts (#) represent 3-yr averages, rounded to the nearest hundred; n/r (Not Reportable) - If the unweighted total responses for a dimension (row) is <30 that row will not be shown

Years: 2009-2011

	Yes			No			Weighted Total Responses (3-Yr Avg)
	#	%	C.I.(95%)	#	%	C.I.(95%)	#
Infant Gender							
Male	5,700	82.2	79.9 - 84.3	1,200	17.8	15.7 - 20.1	6,900
Female	5,200	83.1	80.7 - 85.3	1,100	16.9	14.7 - 19.3	6,200

	Yes			No			Weighted Total Responses (3-Yr Avg)
	#	%	C.I.(95%)	#	%	C.I.(95%)	#
Married							
Yes	6,700	84.4	82.4 - 86.3	1,200	15.6	13.7 - 17.6	7,900
No	4,200	80.0	77.2 - 82.5	1,100	20.0	17.5 - 22.8	5,300

	Yes			No			Weighted Total Responses (3-Yr Avg)
	#	%	C.I.(95%)	#	%	C.I.(95%)	#
Poverty Level							
0-130%	3,800	79.2	76.3 - 81.9	1,000	20.8	18.1 - 23.7	4,800
131-185%	1,700	84.9	80.6 - 88.3	300	15.1	11.7 - 19.4	2,000
186+%	4,600	85.1	82.7 - 87.3	800	14.9	12.7 - 17.3	5,400

PRAMS Health Indicator 3-Year Aggregate Report - Baby discharged within 48 hours- by State;County;DOH Race-Ethnicity;PRAMS Age Group;Infant Gender;Married;Poverty Level;Income (2000-2003);Income (2004-2011);Birthweight;Smoke 3rd Trimester;Smoke Before Pregnant;WIC During Pregnancy, for the Year(s) 2000-2002;2001-2003;2002-2004;2003-2005;2004-2006;2005-2007;2006-2008;2007-2009;2008-2010;2009-2011;2010-2012;2011-2013

Note: Weighted counts (#) represent 3-yr averages, rounded to the nearest hundred; n/r (Not Reportable) - If the unweighted total responses for a dimension (row) is <30 that row will not be shown

Years: 2009-2011

Income (2004-2011)	Yes			No			Weighted Total Responses (3-Yr Avg)
	#	%	C.I.(95%)	#	%	C.I.(95%)	#
<\$10,000	1,900	78.8	74.4 - 82.6	500	21.2	17.4 - 25.6	2,400
\$10,000-\$24,999	2,000	78.6	74.6 - 82.1	600	21.4	17.9 - 25.4	2,600
\$25,000-\$49,999	2,700	86.4	83.2 - 89.1	400	13.6	10.9 - 16.8	3,100
>=\$50,000	3,600	84.7	81.9 - 87.2	700	15.3	12.8 - 18.1	4,300

Birthweight	Yes			No			Weighted Total Responses (3-Yr Avg)
	#	%	C.I.(95%)	#	%	C.I.(95%)	#
Low birth weight	400	49.5	45.4 - 53.6	400	50.5	46.4 - 54.6	800
Normal birth weight	10,500	84.7	83.0 - 86.3	1,900	15.3	13.7 - 17.0	12,400

Smoke 3rd Trimester	Yes			No			Weighted Total Responses (3-Yr Avg)
	#	%	C.I.(95%)	#	%	C.I.(95%)	#
Yes	800	80.8	74.3 - 85.9	200	19.2	14.1 - 25.7	1,000
No	9,900	82.8	81.1 - 84.4	2,100	17.2	15.6 - 18.9	12,000

PRAMS Health Indicator 3-Year Aggregate Report - Baby discharged within 48 hours- by State;County;DOH Race-Ethnicity;PRAMS Age Group;Infant Gender;Married;Poverty Level;Income (2000-2003);Income (2004-2011);Birthweight;Smoke 3rd Trimester;Smoke Before Pregnant;WIC During Pregnancy, for the Year(s) 2000-2002;2001-2003;2002-2004;2003-2005;2004-2006;2005-2007;2006-2008;2007-2009;2008-2010;2009-2011;2010-2012;2011-2013

Note: Weighted counts (#) represent 3-yr averages, rounded to the nearest hundred; n/r (Not Reportable) - If the unweighted total responses for a dimension (row) is <30 that row will not be shown

Years: 2009-2011

Smoke Before Pregnant	Yes			No			Weighted Total Responses (3-Yr Avg)
	#	%	C.I.(95%)	#	%	C.I.(95%)	#
Yes	2,200	79.3	75.4 - 82.8	600	20.7	17.2 - 24.6	2,800
No	8,500	83.6	81.7 - 85.2	1,700	16.4	14.8 - 18.3	10,200

WIC During Pregnancy	Yes			No			Weighted Total Responses (3-Yr Avg)
	#	%	C.I.(95%)	#	%	C.I.(95%)	#
Yes	4,700	79.6	76.9 - 82.0	1,200	20.4	18.0 - 23.1	5,900
No	6,000	85.3	83.2 - 87.2	1,000	14.7	12.8 - 16.8	7,100

PRAMS Health Indicator 3-Year Aggregate Report - Baby discharged within 48 hours- by State;County;DOH Race-Ethnicity;PRAMS Age Group;Infant Gender;Married;Poverty Level;Income (2000-2003);Income (2004-2011);Birthweight;Smoke 3rd Trimester;Smoke Before Pregnant;WIC During Pregnancy, for the Year(s) 2000-2002;2001-2003;2002-2004;2003-2005;2004-2006;2005-2007;2006-2008;2007-2009;2008-2010;2009-2011;2010-2012;2011-2013

Note: Weighted counts (#) represent 3-yr averages, rounded to the nearest hundred; n/r (Not Reportable) - If the unweighted total responses for a dimension (row) is <30 that row will not be shown

Years: 2008-2010

State	Yes			No			Weighted Total Responses (3-Yr Avg)
	#	%	C.I.(95%)	#	%	C.I.(95%)	#
Totals	10,700	81.3	79.8 - 82.7	2,500	18.7	17.3 - 20.2	13,200

County	Yes			No			Weighted Total Responses (3-Yr Avg)
	#	%	C.I.(95%)	#	%	C.I.(95%)	#
Hawaii	1,300	79.6	76.1 - 82.7	300	20.4	17.3 - 23.9	1,600
Honolulu	7,800	81.7	79.7 - 83.5	1,800	18.3	16.5 - 20.3	9,600
Kauai	400	75.8	71.0 - 80.0	100	24.2	20.0 - 29.0	600
Maui	1,200	83.0	79.9 - 85.7	200	17.0	14.3 - 20.1	1,400

**PRAMS Health Indicator 3-Year Aggregate Report - Baby discharged within 48 hours- by State;County;DOH Race-
Ethnicity;PRAMS Age Group;Infant Gender;Married;Poverty Level;Income (2000-2003);Income (2004-2011);Birthweight;Smoke
3rd Trimester;Smoke Before Pregnant;WIC During Pregnancy, for the Year(s)
2000-2002;2001-2003;2002-2004;2003-2005;2004-2006;2005-2007;2006-2008;2007-2009;2008-2010;2009-2011;2010-2012;2011-2013**

Note: Weighted counts (#) represent 3-yr averages, rounded to the nearest hundred; n/r (Not Reportable) - If the unweighted total responses for a dimension (row) is <30 that row will not be shown

Years: 2008-2010

DOH Race-Ethnicity	Yes			No			Weighted Total Responses (3-Yr Avg)
	#	%	C.I.(95%)	#	%	C.I.(95%)	#
Caucasian	2,600	82.5	79.4 - 85.2	500	17.5	14.8 - 20.6	3,100
Native Hawaiian	3,300	80.3	77.3 - 83.0	800	19.7	17.0 - 22.7	4,100
Chinese	500	79.9	71.6 - 86.3	100	20.1	13.7 - 28.4	600
Filipino	1,800	80.6	76.9 - 83.8	400	19.4	16.2 - 23.1	2,200
Japanese	1,100	84.7	79.8 - 88.5	200	15.3	11.5 - 20.2	1,300
Other	1,600	80.5	76.2 - 84.1	400	19.5	15.9 - 23.8	2,000

PRAMS Age Group	Yes			No			Weighted Total Responses (3-Yr Avg)
	#	%	C.I.(95%)	#	%	C.I.(95%)	#
<20	800	70.7	64.3 - 76.4	300	29.3	23.6 - 35.7	1,200
20-24	2,600	79.6	76.3 - 82.6	700	20.4	17.4 - 23.7	3,300
25-34	5,600	83.4	81.4 - 85.3	1,100	16.6	14.7 - 18.6	6,700
35+	1,700	83.1	79.3 - 86.2	300	16.9	13.8 - 20.7	2,100

**PRAMS Health Indicator 3-Year Aggregate Report - Baby discharged within 48 hours- by State;County;DOH Race-
Ethnicity;PRAMS Age Group;Infant Gender;Married;Poverty Level;Income (2000-2003);Income (2004-2011);Birthweight;Smoke
3rd Trimester;Smoke Before Pregnant;WIC During Pregnancy, for the Year(s)
2000-2002;2001-2003;2002-2004;2003-2005;2004-2006;2005-2007;2006-2008;2007-2009;2008-2010;2009-2011;2010-2012;2011-2013**

Note: Weighted counts (#) represent 3-yr averages, rounded to the nearest hundred; n/r (Not Reportable) - If the unweighted total responses for a dimension (row) is <30 that row will not be shown

Years: 2008-2010

Infant Gender	Yes			No			Weighted Total Responses (3-Yr Avg)
	#	%	C.I.(95%)	#	%	C.I.(95%)	#
Male	5,600	80.4	78.3 - 82.4	1,400	19.6	17.6 - 21.7	7,000
Female	5,100	82.2	80.0 - 84.3	1,100	17.8	15.7 - 20.0	6,200

Married	Yes			No			Weighted Total Responses (3-Yr Avg)
	#	%	C.I.(95%)	#	%	C.I.(95%)	#
Yes	6,600	83.0	81.1 - 84.8	1,300	17.0	15.2 - 18.9	7,900
No	4,100	78.7	76.1 - 81.0	1,100	21.3	19.0 - 23.9	5,300

Poverty Level	Yes			No			Weighted Total Responses (3-Yr Avg)
	#	%	C.I.(95%)	#	%	C.I.(95%)	#
0-130%	3,700	77.1	74.3 - 79.6	1,100	22.9	20.4 - 25.7	4,800
131-185%	1,700	84.4	80.5 - 87.6	300	15.6	12.4 - 19.5	2,100
186+%	4,500	84.3	82.0 - 86.3	800	15.7	13.7 - 18.0	5,300

PRAMS Health Indicator 3-Year Aggregate Report - Baby discharged within 48 hours- by State;County;DOH Race-Ethnicity;PRAMS Age Group;Infant Gender;Married;Poverty Level;Income (2000-2003);Income (2004-2011);Birthweight;Smoke 3rd Trimester;Smoke Before Pregnant;WIC During Pregnancy, for the Year(s) 2000-2002;2001-2003;2002-2004;2003-2005;2004-2006;2005-2007;2006-2008;2007-2009;2008-2010;2009-2011;2010-2012;2011-2013

Note: Weighted counts (#) represent 3-yr averages, rounded to the nearest hundred; n/r (Not Reportable) - If the unweighted total responses for a dimension (row) is <30 that row will not be shown

Years: 2008-2010

Income (2004-2011)	Yes			No			Weighted Total Responses (3-Yr Avg)
	#	%	C.I.(95%)	#	%	C.I.(95%)	#
<\$10,000	1,800	74.8	70.5 - 78.6	600	25.2	21.4 - 29.5	2,400
\$10,000-\$24,999	2,100	78.1	74.5 - 81.4	600	21.9	18.6 - 25.5	2,800
\$25,000-\$49,999	2,500	83.9	80.9 - 86.5	500	16.1	13.5 - 19.1	3,000
>=\$50,000	3,700	85.6	83.0 - 87.8	600	14.4	12.2 - 17.0	4,300

Birthweight	Yes			No			Weighted Total Responses (3-Yr Avg)
	#	%	C.I.(95%)	#	%	C.I.(95%)	#
Low birth weight	400	49.2	44.1 - 54.4	400	50.8	45.6 - 55.9	700
Normal birth weight	10,400	83.2	81.7 - 84.7	2,100	16.8	15.3 - 18.3	12,400

Smoke 3rd Trimester	Yes			No			Weighted Total Responses (3-Yr Avg)
	#	%	C.I.(95%)	#	%	C.I.(95%)	#
Yes	1,000	80.9	75.1 - 85.5	200	19.1	14.5 - 24.9	1,200
No	9,600	81.4	79.8 - 82.9	2,200	18.6	17.1 - 20.2	11,800

PRAMS Health Indicator 3-Year Aggregate Report - Baby discharged within 48 hours- by State;County;DOH Race-Ethnicity;PRAMS Age Group;Infant Gender;Married;Poverty Level;Income (2000-2003);Income (2004-2011);Birthweight;Smoke 3rd Trimester;Smoke Before Pregnant;WIC During Pregnancy, for the Year(s) 2000-2002;2001-2003;2002-2004;2003-2005;2004-2006;2005-2007;2006-2008;2007-2009;2008-2010;2009-2011;2010-2012;2011-2013

Note: Weighted counts (#) represent 3-yr averages, rounded to the nearest hundred; n/r (Not Reportable) - If the unweighted total responses for a dimension (row) is <30 that row will not be shown

Years: 2008-2010

Smoke Before Pregnant	Yes			No			Weighted Total Responses (3-Yr Avg)
	#	%	C.I.(95%)	#	%	C.I.(95%)	#
Yes	2,100	78.9	75.3 - 82.2	600	21.1	17.8 - 24.7	2,700
No	8,400	82.0	80.3 - 83.6	1,800	18.0	16.4 - 19.7	10,300

WIC During Pregnancy	Yes			No			Weighted Total Responses (3-Yr Avg)
	#	%	C.I.(95%)	#	%	C.I.(95%)	#
Yes	4,500	78.2	75.7 - 80.6	1,300	21.8	19.4 - 24.3	5,700
No	6,100	83.9	82.0 - 85.6	1,200	16.1	14.4 - 18.0	7,200

PRAMS Health Indicator 3-Year Aggregate Report - Baby discharged within 48 hours- by State;County;DOH Race-Ethnicity;PRAMS Age Group;Infant Gender;Married;Poverty Level;Income (2000-2003);Income (2004-2011);Birthweight;Smoke 3rd Trimester;Smoke Before Pregnant;WIC During Pregnancy, for the Year(s) 2000-2002;2001-2003;2002-2004;2003-2005;2004-2006;2005-2007;2006-2008;2007-2009;2008-2010;2009-2011;2010-2012;2011-2013

Note: Weighted counts (#) represent 3-yr averages, rounded to the nearest hundred; n/r (Not Reportable) - If the unweighted total responses for a dimension (row) is <30 that row will not be shown

Years: 2007-2009

State	Yes			No			Weighted Total Responses (3-Yr Avg)
	#	%	C.I.(95%)	#	%	C.I.(95%)	#
Totals	10,800	80.1	78.6 - 81.4	2,700	19.9	18.6 - 21.4	13,500

County	Yes			No			Weighted Total Responses (3-Yr Avg)
	#	%	C.I.(95%)	#	%	C.I.(95%)	#
Hawaii	1,400	80.5	76.9 - 83.7	300	19.5	16.3 - 23.1	1,700
Honolulu	7,700	79.5	77.7 - 81.2	2,000	20.5	18.8 - 22.3	9,700
Kauai	500	75.9	69.9 - 81.0	200	24.1	19.0 - 30.1	600
Maui	1,200	85.1	81.5 - 88.0	200	14.9	12.0 - 18.5	1,400

PRAMS Health Indicator 3-Year Aggregate Report - Baby discharged within 48 hours- by State;County;DOH Race-Ethnicity;PRAMS Age Group;Infant Gender;Married;Poverty Level;Income (2000-2003);Income (2004-2011);Birthweight;Smoke 3rd Trimester;Smoke Before Pregnant;WIC During Pregnancy, for the Year(s) 2000-2002;2001-2003;2002-2004;2003-2005;2004-2006;2005-2007;2006-2008;2007-2009;2008-2010;2009-2011;2010-2012;2011-2013

Note: Weighted counts (#) represent 3-yr averages, rounded to the nearest hundred; n/r (Not Reportable) - If the unweighted total responses for a dimension (row) is <30 that row will not be shown

Years: 2007-2009

DOH Race-Ethnicity	Yes			No			Weighted Total Responses (3-Yr Avg)
	#	%	C.I.(95%)	#	%	C.I.(95%)	#
Caucasian	2,500	82.9	80.1 - 85.4	500	17.1	14.6 - 19.9	3,000
Native Hawaiian	3,200	78.6	75.7 - 81.3	900	21.4	18.7 - 24.3	4,100
Chinese	400	81.9	75.6 - 86.8	100	18.1	13.2 - 24.4	500
Filipino	1,800	78.7	75.4 - 81.7	500	21.3	18.3 - 24.6	2,300
Japanese	1,200	84.6	80.5 - 88.0	200	15.4	12.0 - 19.5	1,400
Other	1,600	76.6	72.6 - 80.2	500	23.4	19.8 - 27.4	2,100

PRAMS Age Group	Yes			No			Weighted Total Responses (3-Yr Avg)
	#	%	C.I.(95%)	#	%	C.I.(95%)	#
<20	1,000	71.9	66.2 - 77.0	400	28.1	23.0 - 33.8	1,400
20-24	2,600	77.7	74.6 - 80.6	800	22.3	19.4 - 25.4	3,400
25-34	5,500	82.0	80.1 - 83.8	1,200	18.0	16.2 - 19.9	6,700
35+	1,700	83.1	79.7 - 86.0	300	16.9	14.0 - 20.3	2,000

**PRAMS Health Indicator 3-Year Aggregate Report - Baby discharged within 48 hours- by State;County;DOH Race-
Ethnicity;PRAMS Age Group;Infant Gender;Married;Poverty Level;Income (2000-2003);Income (2004-2011);Birthweight;Smoke
3rd Trimester;Smoke Before Pregnant;WIC During Pregnancy, for the Year(s)
2000-2002;2001-2003;2002-2004;2003-2005;2004-2006;2005-2007;2006-2008;2007-2009;2008-2010;2009-2011;2010-2012;2011-2013**

Note: Weighted counts (#) represent 3-yr averages, rounded to the nearest hundred; n/r (Not Reportable) - If the unweighted total responses for a dimension (row) is <30 that row will not be shown

Years: 2007-2009

Infant Gender	Yes			No			Weighted Total Responses (3-Yr Avg)
	#	%	C.I.(95%)	#	%	C.I.(95%)	#
Male	5,600	78.9	76.8 - 80.8	1,500	21.1	19.2 - 23.2	7,100
Female	5,200	81.4	79.4 - 83.3	1,200	18.6	16.7 - 20.6	6,300

Married	Yes			No			Weighted Total Responses (3-Yr Avg)
	#	%	C.I.(95%)	#	%	C.I.(95%)	#
Yes	6,700	82.9	81.3 - 84.5	1,400	17.1	15.5 - 18.7	8,100
No	4,100	75.7	73.2 - 78.1	1,300	24.3	21.9 - 26.8	5,400

Poverty Level	Yes			No			Weighted Total Responses (3-Yr Avg)
	#	%	C.I.(95%)	#	%	C.I.(95%)	#
0-130%	3,800	75.4	72.8 - 77.9	1,300	24.6	22.1 - 27.2	5,100
131-185%	1,700	84.1	80.7 - 87.0	300	15.9	13.0 - 19.3	2,000
186+%	4,400	83.5	81.4 - 85.4	900	16.5	14.6 - 18.6	5,300

PRAMS Health Indicator 3-Year Aggregate Report - Baby discharged within 48 hours- by State;County;DOH Race-Ethnicity;PRAMS Age Group;Infant Gender;Married;Poverty Level;Income (2000-2003);Income (2004-2011);Birthweight;Smoke 3rd Trimester;Smoke Before Pregnant;WIC During Pregnancy, for the Year(s) 2000-2002;2001-2003;2002-2004;2003-2005;2004-2006;2005-2007;2006-2008;2007-2009;2008-2010;2009-2011;2010-2012;2011-2013

Note: Weighted counts (#) represent 3-yr averages, rounded to the nearest hundred; n/r (Not Reportable) - If the unweighted total responses for a dimension (row) is <30 that row will not be shown

Years: 2007-2009

Income (2004-2011)	Yes			No			Weighted Total Responses (3-Yr Avg)
	#	%	C.I.(95%)	#	%	C.I.(95%)	#
<\$10,000	1,700	71.8	67.6 - 75.7	700	28.2	24.3 - 32.4	2,400
\$10,000-\$24,999	2,300	77.6	74.3 - 80.6	700	22.4	19.4 - 25.7	2,900
\$25,000-\$49,999	2,400	82.6	79.7 - 85.1	500	17.4	14.9 - 20.3	2,900
>=\$50,000	3,700	85.5	83.2 - 87.4	600	14.5	12.6 - 16.8	4,300

Birthweight	Yes			No			Weighted Total Responses (3-Yr Avg)
	#	%	C.I.(95%)	#	%	C.I.(95%)	#
Low birth weight	400	49.2	43.4 - 55.0	400	50.8	45.0 - 56.6	800
Normal birth weight	10,400	82.2	80.7 - 83.5	2,200	17.8	16.5 - 19.3	12,600

Smoke 3rd Trimester	Yes			No			Weighted Total Responses (3-Yr Avg)
	#	%	C.I.(95%)	#	%	C.I.(95%)	#
Yes	900	76.6	70.8 - 81.5	300	23.4	18.5 - 29.2	1,200
No	9,700	80.4	78.9 - 81.8	2,400	19.6	18.2 - 21.1	12,000

PRAMS Health Indicator 3-Year Aggregate Report - Baby discharged within 48 hours- by State;County;DOH Race-Ethnicity;PRAMS Age Group;Infant Gender;Married;Poverty Level;Income (2000-2003);Income (2004-2011);Birthweight;Smoke 3rd Trimester;Smoke Before Pregnant;WIC During Pregnancy, for the Year(s) 2000-2002;2001-2003;2002-2004;2003-2005;2004-2006;2005-2007;2006-2008;2007-2009;2008-2010;2009-2011;2010-2012;2011-2013

Note: Weighted counts (#) represent 3-yr averages, rounded to the nearest hundred; n/r (Not Reportable) - If the unweighted total responses for a dimension (row) is <30 that row will not be shown

Years: 2007-2009

Smoke Before Pregnant	Yes			No			Weighted Total Responses (3-Yr Avg)
	#	%	C.I.(95%)	#	%	C.I.(95%)	#
Yes	2,100	77.4	73.8 - 80.6	600	22.6	19.4 - 26.2	2,700
No	8,500	80.8	79.2 - 82.3	2,000	19.2	17.7 - 20.8	10,500

WIC During Pregnancy	Yes			No			Weighted Total Responses (3-Yr Avg)
	#	%	C.I.(95%)	#	%	C.I.(95%)	#
Yes	4,500	77.5	75.1 - 79.7	1,300	22.5	20.3 - 24.9	5,800
No	6,100	82.1	80.3 - 83.8	1,300	17.9	16.2 - 19.7	7,400

PRAMS Health Indicator 3-Year Aggregate Report - Baby discharged within 48 hours- by State;County;DOH Race-Ethnicity;PRAMS Age Group;Infant Gender;Married;Poverty Level;Income (2000-2003);Income (2004-2011);Birthweight;Smoke 3rd Trimester;Smoke Before Pregnant;WIC During Pregnancy, for the Year(s) 2000-2002;2001-2003;2002-2004;2003-2005;2004-2006;2005-2007;2006-2008;2007-2009;2008-2010;2009-2011;2010-2012;2011-2013

Note: Weighted counts (#) represent 3-yr averages, rounded to the nearest hundred; n/r (Not Reportable) - If the unweighted total responses for a dimension (row) is <30 that row will not be shown

Years: 2006-2008

State	Yes			No			Weighted Total Responses (3-Yr Avg)
	#	%	C.I.(95%)	#	%	C.I.(95%)	#
Totals	10,600	78.2	76.9 - 79.6	3,000	21.8	20.4 - 23.1	13,600

County	Yes			No			Weighted Total Responses (3-Yr Avg)
	#	%	C.I.(95%)	#	%	C.I.(95%)	#
Hawaii	1,300	81.1	77.0 - 84.5	300	18.9	15.5 - 23.0	1,700
Honolulu	7,600	77.0	75.4 - 78.5	2,300	23.0	21.5 - 24.6	9,900
Kauai	500	74.5	67.4 - 80.5	200	25.5	19.5 - 32.6	700
Maui	1,200	85.9	81.8 - 89.1	200	14.1	10.9 - 18.2	1,400

PRAMS Health Indicator 3-Year Aggregate Report - Baby discharged within 48 hours- by State;County;DOH Race-Ethnicity;PRAMS Age Group;Infant Gender;Married;Poverty Level;Income (2000-2003);Income (2004-2011);Birthweight;Smoke 3rd Trimester;Smoke Before Pregnant;WIC During Pregnancy, for the Year(s) 2000-2002;2001-2003;2002-2004;2003-2005;2004-2006;2005-2007;2006-2008;2007-2009;2008-2010;2009-2011;2010-2012;2011-2013

Note: Weighted counts (#) represent 3-yr averages, rounded to the nearest hundred; n/r (Not Reportable) - If the unweighted total responses for a dimension (row) is <30 that row will not be shown

Years: 2006-2008

DOH Race-Ethnicity	Yes			No			Weighted Total Responses (3-Yr Avg)
	#	%	C.I.(95%)	#	%	C.I.(95%)	#
Caucasian	2,600	82.0	79.3 - 84.5	600	18.0	15.5 - 20.7	3,100
Native Hawaiian	3,100	79.4	76.6 - 81.9	800	20.6	18.1 - 23.4	3,900
Chinese	400	76.4	72.4 - 80.0	100	23.6	20.0 - 27.6	500
Filipino	1,800	76.1	72.9 - 79.0	600	23.9	21.0 - 27.1	2,400
Japanese	1,200	81.8	77.8 - 85.3	300	18.2	14.7 - 22.2	1,500
Other	1,600	71.3	67.4 - 74.9	600	28.7	25.1 - 32.6	2,200

PRAMS Age Group	Yes			No			Weighted Total Responses (3-Yr Avg)
	#	%	C.I.(95%)	#	%	C.I.(95%)	#
<20	900	70.2	64.7 - 75.2	400	29.8	24.8 - 35.3	1,300
20-24	2,700	76.5	73.6 - 79.2	800	23.5	20.8 - 26.4	3,500
25-34	5,400	79.8	77.9 - 81.5	1,400	20.2	18.5 - 22.1	6,800
35+	1,700	81.1	77.8 - 83.9	400	18.9	16.1 - 22.2	2,100

**PRAMS Health Indicator 3-Year Aggregate Report - Baby discharged within 48 hours- by State;County;DOH Race-
Ethnicity;PRAMS Age Group;Infant Gender;Married;Poverty Level;Income (2000-2003);Income (2004-2011);Birthweight;Smoke
3rd Trimester;Smoke Before Pregnant;WIC During Pregnancy, for the Year(s)
2000-2002;2001-2003;2002-2004;2003-2005;2004-2006;2005-2007;2006-2008;2007-2009;2008-2010;2009-2011;2010-2012;2011-2013**

Note: Weighted counts (#) represent 3-yr averages, rounded to the nearest hundred; n/r (Not Reportable) - If the unweighted total responses for a dimension (row) is <30 that row will not be shown

Years: 2006-2008

Infant Gender	Yes			No			Weighted Total Responses (3-Yr Avg)
	#	%	C.I.(95%)	#	%	C.I.(95%)	#
Male	5,400	76.5	74.6 - 78.4	1,700	23.5	21.6 - 25.4	7,100
Female	5,200	80.1	78.2 - 81.9	1,300	19.9	18.1 - 21.8	6,500

Married	Yes			No			Weighted Total Responses (3-Yr Avg)
	#	%	C.I.(95%)	#	%	C.I.(95%)	#
Yes	6,800	80.5	78.9 - 82.0	1,700	19.5	18.0 - 21.1	8,500
No	3,800	74.5	72.0 - 76.9	1,300	25.5	23.1 - 28.0	5,100

Poverty Level	Yes			No			Weighted Total Responses (3-Yr Avg)
	#	%	C.I.(95%)	#	%	C.I.(95%)	#
0-130%	3,900	74.8	72.4 - 77.1	1,300	25.2	22.9 - 27.6	5,100
131-185%	1,600	80.0	76.5 - 83.2	400	20.0	16.8 - 23.5	2,000
186+%	4,500	81.6	79.6 - 83.4	1,000	18.4	16.6 - 20.4	5,500

PRAMS Health Indicator 3-Year Aggregate Report - Baby discharged within 48 hours- by State;County;DOH Race-Ethnicity;PRAMS Age Group;Infant Gender;Married;Poverty Level;Income (2000-2003);Income (2004-2011);Birthweight;Smoke 3rd Trimester;Smoke Before Pregnant;WIC During Pregnancy, for the Year(s) 2000-2002;2001-2003;2002-2004;2003-2005;2004-2006;2005-2007;2006-2008;2007-2009;2008-2010;2009-2011;2010-2012;2011-2013

Note: Weighted counts (#) represent 3-yr averages, rounded to the nearest hundred; n/r (Not Reportable) - If the unweighted total responses for a dimension (row) is <30 that row will not be shown

Years: 2006-2008

Income (2004-2011)	Yes			No			Weighted Total Responses (3-Yr Avg)
	#	%	C.I.(95%)	#	%	C.I.(95%)	#
<\$10,000	1,700	72.4	68.6 - 75.9	700	27.6	24.1 - 31.4	2,400
\$10,000-\$24,999	2,100	74.5	71.2 - 77.5	700	25.5	22.5 - 28.8	2,900
\$25,000-\$49,999	2,600	80.6	77.9 - 83.1	600	19.4	16.9 - 22.1	3,200
>=\$50,000	3,600	83.6	81.5 - 85.5	700	16.4	14.5 - 18.5	4,300

Birthweight	Yes			No			Weighted Total Responses (3-Yr Avg)
	#	%	C.I.(95%)	#	%	C.I.(95%)	#
Low birth weight	500	49.4	43.2 - 55.6	500	50.6	44.4 - 56.8	900
Normal birth weight	10,200	80.4	79.0 - 81.7	2,500	19.6	18.3 - 21.0	12,700

Smoke 3rd Trimester	Yes			No			Weighted Total Responses (3-Yr Avg)
	#	%	C.I.(95%)	#	%	C.I.(95%)	#
Yes	900	75.5	70.1 - 80.2	300	24.5	19.8 - 29.9	1,200
No	9,600	78.5	77.1 - 79.9	2,600	21.5	20.1 - 22.9	12,200

PRAMS Health Indicator 3-Year Aggregate Report - Baby discharged within 48 hours- by State;County;DOH Race-Ethnicity;PRAMS Age Group;Infant Gender;Married;Poverty Level;Income (2000-2003);Income (2004-2011);Birthweight;Smoke 3rd Trimester;Smoke Before Pregnant;WIC During Pregnancy, for the Year(s) 2000-2002;2001-2003;2002-2004;2003-2005;2004-2006;2005-2007;2006-2008;2007-2009;2008-2010;2009-2011;2010-2012;2011-2013

Note: Weighted counts (#) represent 3-yr averages, rounded to the nearest hundred; n/r (Not Reportable) - If the unweighted total responses for a dimension (row) is <30 that row will not be shown

Years: 2006-2008

Smoke Before Pregnant	Yes			No			Weighted Total Responses (3-Yr Avg)
	#	%	C.I.(95%)	#	%	C.I.(95%)	#
Yes	2,100	77.1	73.8 - 80.2	600	22.9	19.8 - 26.2	2,700
No	8,400	78.6	77.0 - 80.0	2,300	21.4	20.0 - 23.0	10,700

WIC During Pregnancy	Yes			No			Weighted Total Responses (3-Yr Avg)
	#	%	C.I.(95%)	#	%	C.I.(95%)	#
Yes	4,500	76.8	74.6 - 78.9	1,300	23.2	21.1 - 25.4	5,800
No	6,000	79.2	77.4 - 80.8	1,600	20.8	19.2 - 22.6	7,600

PRAMS Health Indicator 3-Year Aggregate Report - Baby discharged within 48 hours- by State;County;DOH Race-Ethnicity;PRAMS Age Group;Infant Gender;Married;Poverty Level;Income (2000-2003);Income (2004-2011);Birthweight;Smoke 3rd Trimester;Smoke Before Pregnant;WIC During Pregnancy, for the Year(s) 2000-2002;2001-2003;2002-2004;2003-2005;2004-2006;2005-2007;2006-2008;2007-2009;2008-2010;2009-2011;2010-2012;2011-2013

Note: Weighted counts (#) represent 3-yr averages, rounded to the nearest hundred; n/r (Not Reportable) - If the unweighted total responses for a dimension (row) is <30 that row will not be shown

Years: 2005-2007

State	Yes			No			Weighted Total Responses (3-Yr Avg)
	#	%	C.I.(95%)	#	%	C.I.(95%)	#
Totals	10,300	77.8	76.4 - 79.1	2,900	22.2	20.9 - 23.6	13,300

County	Yes			No			Weighted Total Responses (3-Yr Avg)
	#	%	C.I.(95%)	#	%	C.I.(95%)	#
Hawaii	1,300	81.8	77.7 - 85.2	300	18.2	14.8 - 22.3	1,600
Honolulu	7,500	76.5	74.9 - 78.1	2,300	23.5	21.9 - 25.1	9,800
Kauai	400	70.0	62.5 - 76.6	200	30.0	23.4 - 37.5	600
Maui	1,100	86.5	82.4 - 89.8	200	13.5	10.2 - 17.6	1,300

PRAMS Health Indicator 3-Year Aggregate Report - Baby discharged within 48 hours- by State;County;DOH Race-Ethnicity;PRAMS Age Group;Infant Gender;Married;Poverty Level;Income (2000-2003);Income (2004-2011);Birthweight;Smoke 3rd Trimester;Smoke Before Pregnant;WIC During Pregnancy, for the Year(s) 2000-2002;2001-2003;2002-2004;2003-2005;2004-2006;2005-2007;2006-2008;2007-2009;2008-2010;2009-2011;2010-2012;2011-2013

Note: Weighted counts (#) represent 3-yr averages, rounded to the nearest hundred; n/r (Not Reportable) - If the unweighted total responses for a dimension (row) is <30 that row will not be shown

Years: 2005-2007

DOH Race-Ethnicity	Yes			No			Weighted Total Responses (3-Yr Avg)
	#	%	C.I.(95%)	#	%	C.I.(95%)	#
Caucasian	2,500	82.5	79.7 - 84.9	500	17.5	15.1 - 20.3	3,000
Native Hawaiian	3,000	78.4	75.5 - 81.0	800	21.6	19.0 - 24.5	3,800
Chinese	400	80.1	76.3 - 83.4	100	19.9	16.6 - 23.7	500
Filipino	1,800	74.7	71.5 - 77.6	600	25.3	22.4 - 28.5	2,400
Japanese	1,300	82.0	78.2 - 85.3	300	18.0	14.7 - 21.8	1,600
Other	1,400	69.7	65.7 - 73.5	600	30.3	26.5 - 34.3	2,000

PRAMS Age Group	Yes			No			Weighted Total Responses (3-Yr Avg)
	#	%	C.I.(95%)	#	%	C.I.(95%)	#
<20	900	71.2	65.8 - 76.1	400	28.8	23.9 - 34.2	1,300
20-24	2,600	76.2	73.3 - 78.9	800	23.8	21.1 - 26.7	3,500
25-34	5,200	79.2	77.3 - 81.0	1,400	20.8	19.0 - 22.7	6,500
35+	1,600	80.3	77.0 - 83.2	400	19.7	16.8 - 23.0	2,000

**PRAMS Health Indicator 3-Year Aggregate Report - Baby discharged within 48 hours- by State;County;DOH Race-
Ethnicity;PRAMS Age Group;Infant Gender;Married;Poverty Level;Income (2000-2003);Income (2004-2011);Birthweight;Smoke
3rd Trimester;Smoke Before Pregnant;WIC During Pregnancy, for the Year(s)
2000-2002;2001-2003;2002-2004;2003-2005;2004-2006;2005-2007;2006-2008;2007-2009;2008-2010;2009-2011;2010-2012;2011-2013**

Note: Weighted counts (#) represent 3-yr averages, rounded to the nearest hundred; n/r (Not Reportable) - If the unweighted total responses for a dimension (row) is <30 that row will not be shown

Years: 2005-2007

Infant Gender	Yes			No			Weighted Total Responses (3-Yr Avg)
	#	%	C.I.(95%)	#	%	C.I.(95%)	#
Male	5,200	76.5	74.5 - 78.4	1,600	23.5	21.6 - 25.5	6,800
Female	5,200	79.2	77.3 - 81.0	1,400	20.8	19.0 - 22.7	6,500

Married	Yes			No			Weighted Total Responses (3-Yr Avg)
	#	%	C.I.(95%)	#	%	C.I.(95%)	#
Yes	6,700	80.1	78.5 - 81.6	1,700	19.9	18.4 - 21.5	8,400
No	3,600	73.9	71.4 - 76.3	1,300	26.1	23.7 - 28.6	4,900

Poverty Level	Yes			No			Weighted Total Responses (3-Yr Avg)
	#	%	C.I.(95%)	#	%	C.I.(95%)	#
0-130%	3,600	74.6	72.1 - 76.9	1,200	25.4	23.1 - 27.9	4,900
131-185%	1,400	78.2	74.3 - 81.6	400	21.8	18.4 - 25.7	1,700
186+%	4,600	82.0	80.1 - 83.7	1,000	18.0	16.3 - 19.9	5,600

PRAMS Health Indicator 3-Year Aggregate Report - Baby discharged within 48 hours- by State;County;DOH Race-Ethnicity;PRAMS Age Group;Infant Gender;Married;Poverty Level;Income (2000-2003);Income (2004-2011);Birthweight;Smoke 3rd Trimester;Smoke Before Pregnant;WIC During Pregnancy, for the Year(s) 2000-2002;2001-2003;2002-2004;2003-2005;2004-2006;2005-2007;2006-2008;2007-2009;2008-2010;2009-2011;2010-2012;2011-2013

Note: Weighted counts (#) represent 3-yr averages, rounded to the nearest hundred; n/r (Not Reportable) - If the unweighted total responses for a dimension (row) is <30 that row will not be shown

Years: 2005-2007

Income (2004-2011)	Yes			No			Weighted Total Responses (3-Yr Avg)
	#	%	C.I.(95%)	#	%	C.I.(95%)	#
<\$10,000	1,700	72.0	68.2 - 75.6	600	28.0	24.4 - 31.8	2,300
\$10,000-\$24,999	2,000	74.3	71.0 - 77.3	700	25.7	22.7 - 29.0	2,700
\$25,000-\$49,999	2,500	80.6	77.9 - 83.0	600	19.4	17.0 - 22.1	3,100
>=\$50,000	3,400	82.9	80.8 - 84.9	700	17.1	15.1 - 19.2	4,100

Birthweight	Yes			No			Weighted Total Responses (3-Yr Avg)
	#	%	C.I.(95%)	#	%	C.I.(95%)	#
Low birth weight	400	47.7	41.7 - 53.9	500	52.3	46.1 - 58.3	900
Normal birth weight	9,900	80.1	78.7 - 81.4	2,400	19.9	18.6 - 21.3	12,300

Smoke 3rd Trimester	Yes			No			Weighted Total Responses (3-Yr Avg)
	#	%	C.I.(95%)	#	%	C.I.(95%)	#
Yes	800	73.8	68.3 - 78.7	300	26.2	21.3 - 31.7	1,100
No	9,300	78.2	76.8 - 79.6	2,600	21.8	20.4 - 23.2	11,900

PRAMS Health Indicator 3-Year Aggregate Report - Baby discharged within 48 hours- by State;County;DOH Race-Ethnicity;PRAMS Age Group;Infant Gender;Married;Poverty Level;Income (2000-2003);Income (2004-2011);Birthweight;Smoke 3rd Trimester;Smoke Before Pregnant;WIC During Pregnancy, for the Year(s) 2000-2002;2001-2003;2002-2004;2003-2005;2004-2006;2005-2007;2006-2008;2007-2009;2008-2010;2009-2011;2010-2012;2011-2013

Note: Weighted counts (#) represent 3-yr averages, rounded to the nearest hundred; n/r (Not Reportable) - If the unweighted total responses for a dimension (row) is <30 that row will not be shown

Years: 2005-2007

Smoke Before Pregnant	Yes			No			Weighted Total Responses (3-Yr Avg)
	#	%	C.I.(95%)	#	%	C.I.(95%)	#
Yes	2,100	77.3	74.1 - 80.3	600	22.7	19.7 - 25.9	2,700
No	8,000	78.1	76.5 - 79.5	2,300	21.9	20.5 - 23.5	10,300

WIC During Pregnancy	Yes			No			Weighted Total Responses (3-Yr Avg)
	#	%	C.I.(95%)	#	%	C.I.(95%)	#
Yes	4,200	75.6	73.3 - 77.7	1,400	24.4	22.3 - 26.7	5,600
No	5,900	79.5	77.7 - 81.1	1,500	20.5	18.9 - 22.3	7,400

PRAMS Health Indicator 3-Year Aggregate Report - Baby discharged within 48 hours- by State;County;DOH Race-Ethnicity;PRAMS Age Group;Infant Gender;Married;Poverty Level;Income (2000-2003);Income (2004-2011);Birthweight;Smoke 3rd Trimester;Smoke Before Pregnant;WIC During Pregnancy, for the Year(s) 2000-2002;2001-2003;2002-2004;2003-2005;2004-2006;2005-2007;2006-2008;2007-2009;2008-2010;2009-2011;2010-2012;2011-2013

Note: Weighted counts (#) represent 3-yr averages, rounded to the nearest hundred; n/r (Not Reportable) - If the unweighted total responses for a dimension (row) is <30 that row will not be shown

Years: 2004-2006

State	Yes			No			Weighted Total Responses (3-Yr Avg)
	#	%	C.I.(95%)	#	%	C.I.(95%)	#
Totals	10,000	77.0	75.6 - 78.3	3,000	23.0	21.7 - 24.4	13,100

County	Yes			No			Weighted Total Responses (3-Yr Avg)
	#	%	C.I.(95%)	#	%	C.I.(95%)	#
Hawaii	1,200	80.6	76.5 - 84.2	300	19.4	15.8 - 23.5	1,500
Honolulu	7,400	75.7	74.1 - 77.2	2,400	24.3	22.8 - 25.9	9,800
Kauai	400	70.1	62.6 - 76.7	200	29.9	23.3 - 37.4	600
Maui	1,000	86.7	82.7 - 90.0	200	13.3	10.0 - 17.3	1,200

**PRAMS Health Indicator 3-Year Aggregate Report - Baby discharged within 48 hours- by State;County;DOH Race-
Ethnicity;PRAMS Age Group;Infant Gender;Married;Poverty Level;Income (2000-2003);Income (2004-2011);Birthweight;Smoke
3rd Trimester;Smoke Before Pregnant;WIC During Pregnancy, for the Year(s)
2000-2002;2001-2003;2002-2004;2003-2005;2004-2006;2005-2007;2006-2008;2007-2009;2008-2010;2009-2011;2010-2012;2011-2013**

Note: Weighted counts (#) represent 3-yr averages, rounded to the nearest hundred; n/r (Not Reportable) - If the unweighted total responses for a dimension (row) is <30 that row will not be shown

Years: 2004-2006

DOH Race- Ethnicity	Yes			No			Weighted Total Responses (3-Yr Avg)
	#	%	C.I.(95%)	#	%	C.I.(95%)	#
Caucasian	2,300	78.9	76.0 - 81.4	600	21.1	18.6 - 24.0	2,900
Native Hawaiian	2,900	78.4	75.6 - 81.0	800	21.6	19.0 - 24.4	3,600
Chinese	400	78.6	75.2 - 81.7	100	21.4	18.3 - 24.8	500
Filipino	1,700	73.2	70.1 - 76.1	600	26.8	23.9 - 29.9	2,400
Japanese	1,400	82.6	78.9 - 85.7	300	17.4	14.3 - 21.1	1,600
Other	1,400	70.9	66.9 - 74.5	600	29.1	25.5 - 33.1	1,900

PRAMS Age Group	Yes			No			Weighted Total Responses (3-Yr Avg)
	#	%	C.I.(95%)	#	%	C.I.(95%)	#
<20	800	69.9	64.6 - 74.8	400	30.1	25.2 - 35.4	1,200
20-24	2,600	75.5	72.7 - 78.1	800	24.5	21.9 - 27.3	3,400
25-34	5,100	78.4	76.6 - 80.2	1,400	21.6	19.8 - 23.4	6,400
35+	1,600	78.8	75.5 - 81.7	400	21.2	18.3 - 24.5	2,000

**PRAMS Health Indicator 3-Year Aggregate Report - Baby discharged within 48 hours- by State;County;DOH Race-
Ethnicity;PRAMS Age Group;Infant Gender;Married;Poverty Level;Income (2000-2003);Income (2004-2011);Birthweight;Smoke
3rd Trimester;Smoke Before Pregnant;WIC During Pregnancy, for the Year(s)
2000-2002;2001-2003;2002-2004;2003-2005;2004-2006;2005-2007;2006-2008;2007-2009;2008-2010;2009-2011;2010-2012;2011-2013**

Note: Weighted counts (#) represent 3-yr averages, rounded to the nearest hundred; n/r (Not Reportable) - If the unweighted total responses for a dimension (row) is <30 that row will not be shown

Years: 2004-2006

	Yes			No			Weighted Total Responses (3-Yr Avg)
	#	%	C.I.(95%)	#	%	C.I.(95%)	#
Infant Gender							
Male	5,100	75.7	73.8 - 77.5	1,600	24.3	22.5 - 26.2	6,700
Female	5,000	78.3	76.4 - 80.2	1,400	21.7	19.8 - 23.6	6,300

	Yes			No			Weighted Total Responses (3-Yr Avg)
	#	%	C.I.(95%)	#	%	C.I.(95%)	#
Married							
Yes	6,700	78.1	76.5 - 79.6	1,900	21.9	20.4 - 23.5	8,600
No	3,300	74.8	72.3 - 77.2	1,100	25.2	22.8 - 27.7	4,500

	Yes			No			Weighted Total Responses (3-Yr Avg)
	#	%	C.I.(95%)	#	%	C.I.(95%)	#
Poverty Level							
0-130%	3,500	74.0	71.5 - 76.3	1,200	26.0	23.7 - 28.5	4,700
131-185%	1,300	77.2	73.2 - 80.8	400	22.8	19.2 - 26.8	1,600
186+%	4,600	80.5	78.7 - 82.3	1,100	19.5	17.7 - 21.3	5,700

PRAMS Health Indicator 3-Year Aggregate Report - Baby discharged within 48 hours- by State;County;DOH Race- Ethnicity;PRAMS Age Group;Infant Gender;Married;Poverty Level;Income (2000-2003);Income (2004-2011);Birthweight;Smoke 3rd Trimester;Smoke Before Pregnant;WIC During Pregnancy, for the Year(s) 2000-2002;2001-2003;2002-2004;2003-2005;2004-2006;2005-2007;2006-2008;2007-2009;2008-2010;2009-2011;2010-2012;2011-2013

Note: Weighted counts (#) represent 3-yr averages, rounded to the nearest hundred; n/r (Not Reportable) - If the unweighted total responses for a dimension (row) is <30 that row will not be shown

Years: 2004-2006

Income (2004-2011)	Yes			No			Weighted Total Responses (3-Yr Avg)
	#	%	C.I.(95%)	#	%	C.I.(95%)	#
<\$10,000	1,600	71.0	67.2 - 74.5	600	29.0	25.5 - 32.8	2,200
\$10,000-\$24,999	2,100	74.0	70.9 - 76.9	700	26.0	23.1 - 29.1	2,900
\$25,000-\$49,999	2,600	79.1	76.5 - 81.5	700	20.9	18.5 - 23.5	3,300
>=\$50,000	3,200	82.2	79.9 - 84.2	700	17.8	15.8 - 20.1	3,900

Birthweight	Yes			No			Weighted Total Responses (3-Yr Avg)
	#	%	C.I.(95%)	#	%	C.I.(95%)	#
Low birth weight	400	45.5	39.2 - 52.0	400	54.5	48.0 - 60.8	800
Normal birth weight	9,700	79.0	77.7 - 80.3	2,600	21.0	19.7 - 22.3	12,300

Smoke 3rd Trimester	Yes			No			Weighted Total Responses (3-Yr Avg)
	#	%	C.I.(95%)	#	%	C.I.(95%)	#
Yes	800	74.0	68.6 - 78.8	300	26.0	21.2 - 31.4	1,100
No	9,100	77.4	76.0 - 78.7	2,700	22.6	21.3 - 24.0	11,800

PRAMS Health Indicator 3-Year Aggregate Report - Baby discharged within 48 hours- by State;County;DOH Race-Ethnicity;PRAMS Age Group;Infant Gender;Married;Poverty Level;Income (2000-2003);Income (2004-2011);Birthweight;Smoke 3rd Trimester;Smoke Before Pregnant;WIC During Pregnancy, for the Year(s) 2000-2002;2001-2003;2002-2004;2003-2005;2004-2006;2005-2007;2006-2008;2007-2009;2008-2010;2009-2011;2010-2012;2011-2013

Note: Weighted counts (#) represent 3-yr averages, rounded to the nearest hundred; n/r (Not Reportable) - If the unweighted total responses for a dimension (row) is <30 that row will not be shown

Years: 2004-2006

Smoke Before Pregnant	Yes			No			Weighted Total Responses (3-Yr Avg)
	#	%	C.I.(95%)	#	%	C.I.(95%)	#
Yes	2,100	76.5	73.3 - 79.4	600	23.5	20.6 - 26.7	2,700
No	7,800	77.3	75.8 - 78.8	2,300	22.7	21.2 - 24.2	10,100

WIC During Pregnancy	Yes			No			Weighted Total Responses (3-Yr Avg)
	#	%	C.I.(95%)	#	%	C.I.(95%)	#
Yes	4,200	74.7	72.5 - 76.7	1,400	25.3	23.3 - 27.5	5,600
No	5,700	78.6	76.9 - 80.3	1,500	21.4	19.7 - 23.1	7,200

PRAMS Health Indicator 3-Year Aggregate Report - Baby discharged within 48 hours- by State;County;DOH Race-Ethnicity;PRAMS Age Group;Infant Gender;Married;Poverty Level;Income (2000-2003);Income (2004-2011);Birthweight;Smoke 3rd Trimester;Smoke Before Pregnant;WIC During Pregnancy, for the Year(s) 2000-2002;2001-2003;2002-2004;2003-2005;2004-2006;2005-2007;2006-2008;2007-2009;2008-2010;2009-2011;2010-2012;2011-2013

Note: Weighted counts (#) represent 3-yr averages, rounded to the nearest hundred; n/r (Not Reportable) - If the unweighted total responses for a dimension (row) is <30 that row will not be shown

Years: 2003-2005

State	Yes			No			Weighted Total Responses (3-Yr Avg)
	#	%	C.I.(95%)	#	%	C.I.(95%)	#
Totals	10,000	77.2	75.8 - 78.6	3,000	22.8	21.4 - 24.2	13,000

County	Yes			No			Weighted Total Responses (3-Yr Avg)
	#	%	C.I.(95%)	#	%	C.I.(95%)	#
Hawaii	1,200	81.2	77.6 - 84.4	300	18.8	15.6 - 22.4	1,500
Honolulu	7,400	75.8	74.1 - 77.5	2,400	24.2	22.5 - 25.9	9,800
Kauai	400	71.3	64.8 - 77.1	200	28.7	22.9 - 35.2	500
Maui	1,000	86.8	83.4 - 89.7	200	13.2	10.3 - 16.6	1,200

PRAMS Health Indicator 3-Year Aggregate Report - Baby discharged within 48 hours- by State;County;DOH Race-Ethnicity;PRAMS Age Group;Infant Gender;Married;Poverty Level;Income (2000-2003);Income (2004-2011);Birthweight;Smoke 3rd Trimester;Smoke Before Pregnant;WIC During Pregnancy, for the Year(s) 2000-2002;2001-2003;2002-2004;2003-2005;2004-2006;2005-2007;2006-2008;2007-2009;2008-2010;2009-2011;2010-2012;2011-2013

Note: Weighted counts (#) represent 3-yr averages, rounded to the nearest hundred; n/r (Not Reportable) - If the unweighted total responses for a dimension (row) is <30 that row will not be shown

Years: 2003-2005

DOH Race-Ethnicity	Yes			No			Weighted Total Responses (3-Yr Avg)
	#	%	C.I.(95%)	#	%	C.I.(95%)	#
Caucasian	2,200	79.7	76.7 - 82.4	600	20.3	17.6 - 23.3	2,800
Native Hawaiian	2,800	77.8	75.3 - 80.1	800	22.2	19.9 - 24.7	3,600
Chinese	400	79.5	72.8 - 84.8	100	20.5	15.2 - 27.2	500
Filipino	1,900	73.4	70.0 - 76.6	700	26.6	23.4 - 30.0	2,500
Japanese	1,400	84.2	80.3 - 87.4	300	15.8	12.6 - 19.7	1,600
Other	1,300	70.9	66.4 - 75.0	500	29.1	25.0 - 33.6	1,900

PRAMS Age Group	Yes			No			Weighted Total Responses (3-Yr Avg)
	#	%	C.I.(95%)	#	%	C.I.(95%)	#
<20	800	70.3	65.2 - 74.9	300	29.7	25.1 - 34.8	1,200
20-24	2,500	74.8	71.8 - 77.5	900	25.2	22.5 - 28.2	3,400
25-34	5,100	79.4	77.5 - 81.2	1,300	20.6	18.8 - 22.5	6,500
35+	1,500	78.5	74.8 - 81.8	400	21.5	18.2 - 25.2	2,000

**PRAMS Health Indicator 3-Year Aggregate Report - Baby discharged within 48 hours- by State;County;DOH Race-
Ethnicity;PRAMS Age Group;Infant Gender;Married;Poverty Level;Income (2000-2003);Income (2004-2011);Birthweight;Smoke
3rd Trimester;Smoke Before Pregnant;WIC During Pregnancy, for the Year(s)
2000-2002;2001-2003;2002-2004;2003-2005;2004-2006;2005-2007;2006-2008;2007-2009;2008-2010;2009-2011;2010-2012;2011-2013**

Note: Weighted counts (#) represent 3-yr averages, rounded to the nearest hundred; n/r (Not Reportable) - If the unweighted total responses for a dimension (row) is <30 that row will not be shown

Years: 2003-2005

Infant Gender	Yes			No			Weighted Total Responses (3-Yr Avg)
	#	%	C.I.(95%)	#	%	C.I.(95%)	#
Male	5,100	76.2	74.2 - 78.1	1,600	23.8	21.9 - 25.8	6,700
Female	4,900	78.3	76.3 - 80.2	1,400	21.7	19.8 - 23.7	6,300

Married	Yes			No			Weighted Total Responses (3-Yr Avg)
	#	%	C.I.(95%)	#	%	C.I.(95%)	#
Yes	6,700	78.6	76.9 - 80.2	1,800	21.4	19.8 - 23.1	8,600
No	3,300	74.6	72.1 - 76.9	1,100	25.4	23.1 - 27.9	4,400

Poverty Level	Yes			No			Weighted Total Responses (3-Yr Avg)
	#	%	C.I.(95%)	#	%	C.I.(95%)	#
0-130%	3,800	74.6	72.2 - 76.8	1,300	25.4	23.2 - 27.8	5,100
131-185%	1,300	78.4	74.2 - 82.0	300	21.6	18.0 - 25.8	1,600
186+%	4,200	81.5	79.4 - 83.4	900	18.5	16.6 - 20.6	5,100

PRAMS Health Indicator 3-Year Aggregate Report - Baby discharged within 48 hours- by State;County;DOH Race-Ethnicity;PRAMS Age Group;Infant Gender;Married;Poverty Level;Income (2000-2003);Income (2004-2011);Birthweight;Smoke 3rd Trimester;Smoke Before Pregnant;WIC During Pregnancy, for the Year(s) 2000-2002;2001-2003;2002-2004;2003-2005;2004-2006;2005-2007;2006-2008;2007-2009;2008-2010;2009-2011;2010-2012;2011-2013

Note: Weighted counts (#) represent 3-yr averages, rounded to the nearest hundred; n/r (Not Reportable) - If the unweighted total responses for a dimension (row) is <30 that row will not be shown

Years: 2003-2005

Birthweight	Yes			No			Weighted Total Responses (3-Yr Avg)
	#	%	C.I.(95%)	#	%	C.I.(95%)	#
Low birth weight	300	46.0	39.0 - 53.1	400	54.0	46.9 - 61.0	700
Normal birth weight	9,700	79.0	77.6 - 80.4	2,600	21.0	19.6 - 22.4	12,300

Smoke 3rd Trimester	Yes			No			Weighted Total Responses (3-Yr Avg)
	#	%	C.I.(95%)	#	%	C.I.(95%)	#
Yes	900	76.7	71.5 - 81.1	300	23.3	18.9 - 28.5	1,100
No	9,000	77.4	75.9 - 78.9	2,600	22.6	21.1 - 24.1	11,700

Smoke Before Pregnant	Yes			No			Weighted Total Responses (3-Yr Avg)
	#	%	C.I.(95%)	#	%	C.I.(95%)	#
Yes	2,100	77.7	74.6 - 80.6	600	22.3	19.4 - 25.4	2,700
No	7,700	77.2	75.6 - 78.8	2,300	22.8	21.2 - 24.4	10,000

PRAMS Health Indicator 3-Year Aggregate Report - Baby discharged within 48 hours- by State;County;DOH Race-Ethnicity;PRAMS Age Group;Infant Gender;Married;Poverty Level;Income (2000-2003);Income (2004-2011);Birthweight;Smoke 3rd Trimester;Smoke Before Pregnant;WIC During Pregnancy, for the Year(s) 2000-2002;2001-2003;2002-2004;2003-2005;2004-2006;2005-2007;2006-2008;2007-2009;2008-2010;2009-2011;2010-2012;2011-2013

Note: Weighted counts (#) represent 3-yr averages, rounded to the nearest hundred; n/r (Not Reportable) - If the unweighted total responses for a dimension (row) is <30 that row will not be shown

Years: 2003-2005

WIC During Pregnancy	Yes			No			Weighted Total Responses (3-Yr Avg)
	#	%	C.I.(95%)	#	%	C.I.(95%)	#
Yes	4,200	75.0	72.8 - 77.1	1,400	25.0	22.9 - 27.2	5,600
No	5,700	79.0	77.1 - 80.8	1,500	21.0	19.2 - 22.9	7,200

PRAMS Health Indicator 3-Year Aggregate Report - Baby discharged within 48 hours- by State;County;DOH Race-Ethnicity;PRAMS Age Group;Infant Gender;Married;Poverty Level;Income (2000-2003);Income (2004-2011);Birthweight;Smoke 3rd Trimester;Smoke Before Pregnant;WIC During Pregnancy, for the Year(s) 2000-2002;2001-2003;2002-2004;2003-2005;2004-2006;2005-2007;2006-2008;2007-2009;2008-2010;2009-2011;2010-2012;2011-2013

Note: Weighted counts (#) represent 3-yr averages, rounded to the nearest hundred; n/r (Not Reportable) - If the unweighted total responses for a dimension (row) is <30 that row will not be shown

Years: 2002-2004

State	Yes			No			Weighted Total Responses (3-Yr Avg)
	#	%	C.I.(95%)	#	%	C.I.(95%)	#
Totals	10,300	77.2	75.7 - 78.6	3,000	22.8	21.4 - 24.3	13,300

County	Yes			No			Weighted Total Responses (3-Yr Avg)
	#	%	C.I.(95%)	#	%	C.I.(95%)	#
Hawaii	1,200	81.1	78.0 - 83.8	300	18.9	16.2 - 22.0	1,500
Honolulu	7,600	75.7	73.8 - 77.5	2,400	24.3	22.5 - 26.2	10,000
Kauai	400	73.1	67.6 - 78.0	100	26.9	22.0 - 32.4	500
Maui	1,100	86.4	83.4 - 88.9	200	13.6	11.1 - 16.6	1,200

**PRAMS Health Indicator 3-Year Aggregate Report - Baby discharged within 48 hours- by State;County;DOH Race-
Ethnicity;PRAMS Age Group;Infant Gender;Married;Poverty Level;Income (2000-2003);Income (2004-2011);Birthweight;Smoke
3rd Trimester;Smoke Before Pregnant;WIC During Pregnancy, for the Year(s)
2000-2002;2001-2003;2002-2004;2003-2005;2004-2006;2005-2007;2006-2008;2007-2009;2008-2010;2009-2011;2010-2012;2011-2013**

Note: Weighted counts (#) represent 3-yr averages, rounded to the nearest hundred; n/r (Not Reportable) - If the unweighted total responses for a dimension (row) is <30 that row will not be shown

Years: 2002-2004

DOH Race- Ethnicity	Yes			No			Weighted Total Responses (3-Yr Avg)
	#	%	C.I.(95%)	#	%	C.I.(95%)	#
Caucasian	2,300	78.2	74.9 - 81.2	600	21.8	18.8 - 25.1	2,900
Native Hawaiian	2,800	78.2	76.1 - 80.2	800	21.8	19.8 - 23.9	3,600
Chinese	400	78.0	69.8 - 84.4	100	22.0	15.6 - 30.2	500
Filipino	2,000	74.3	70.4 - 77.8	700	25.7	22.2 - 29.6	2,700
Japanese	1,400	84.0	79.7 - 87.6	300	16.0	12.4 - 20.3	1,600
Other	1,400	72.0	67.0 - 76.4	600	28.0	23.6 - 33.0	2,000

PRAMS Age Group	Yes			No			Weighted Total Responses (3-Yr Avg)
	#	%	C.I.(95%)	#	%	C.I.(95%)	#
<20	900	73.0	67.9 - 77.6	300	27.0	22.4 - 32.1	1,200
20-24	2,600	75.9	72.8 - 78.6	800	24.1	21.4 - 27.2	3,500
25-34	5,200	78.3	76.2 - 80.3	1,400	21.7	19.7 - 23.8	6,600
35+	1,500	78.3	74.2 - 81.9	400	21.7	18.1 - 25.8	1,900

PRAMS Health Indicator 3-Year Aggregate Report - Baby discharged within 48 hours- by State;County;DOH Race- Ethnicity;PRAMS Age Group;Infant Gender;Married;Poverty Level;Income (2000-2003);Income (2004-2011);Birthweight;Smoke 3rd Trimester;Smoke Before Pregnant;WIC During Pregnancy, for the Year(s) 2000-2002;2001-2003;2002-2004;2003-2005;2004-2006;2005-2007;2006-2008;2007-2009;2008-2010;2009-2011;2010-2012;2011-2013

Note: Weighted counts (#) represent 3-yr averages, rounded to the nearest hundred; n/r (Not Reportable) - If the unweighted total responses for a dimension (row) is <30 that row will not be shown

Years: 2002-2004

	Yes			No			Weighted Total Responses (3-Yr Avg)
	#	%	C.I.(95%)	#	%	C.I.(95%)	#
Infant Gender							
Male	5,200	75.5	73.4 - 77.5	1,700	24.5	22.5 - 26.6	6,800
Female	5,100	78.9	76.8 - 80.9	1,400	21.1	19.1 - 23.2	6,400

	Yes			No			Weighted Total Responses (3-Yr Avg)
	#	%	C.I.(95%)	#	%	C.I.(95%)	#
Married							
Yes	7,000	78.2	76.3 - 79.9	2,000	21.8	20.1 - 23.7	9,000
No	3,200	75.2	72.6 - 77.6	1,100	24.8	22.4 - 27.4	4,300

	Yes			No			Weighted Total Responses (3-Yr Avg)
	#	%	C.I.(95%)	#	%	C.I.(95%)	#
Poverty Level							
0-130%	4,000	74.7	72.3 - 77.0	1,400	25.3	23.0 - 27.7	5,400
131-185%	1,700	79.7	75.7 - 83.2	400	20.3	16.8 - 24.3	2,100
186+%	3,800	80.7	78.4 - 82.9	900	19.3	17.1 - 21.6	4,700

PRAMS Health Indicator 3-Year Aggregate Report - Baby discharged within 48 hours- by State;County;DOH Race-Ethnicity;PRAMS Age Group;Infant Gender;Married;Poverty Level;Income (2000-2003);Income (2004-2011);Birthweight;Smoke 3rd Trimester;Smoke Before Pregnant;WIC During Pregnancy, for the Year(s) 2000-2002;2001-2003;2002-2004;2003-2005;2004-2006;2005-2007;2006-2008;2007-2009;2008-2010;2009-2011;2010-2012;2011-2013

Note: Weighted counts (#) represent 3-yr averages, rounded to the nearest hundred; n/r (Not Reportable) - If the unweighted total responses for a dimension (row) is <30 that row will not be shown

Years: 2002-2004

Birthweight	Yes			No			Weighted Total Responses (3-Yr Avg)
	#	%	C.I.(95%)	#	%	C.I.(95%)	#
Low birth weight	300	46.9	39.4 - 54.5	400	53.1	45.5 - 60.6	700
Normal birth weight	9,900	78.9	77.4 - 80.3	2,700	21.1	19.7 - 22.6	12,600

Smoke 3rd Trimester	Yes			No			Weighted Total Responses (3-Yr Avg)
	#	%	C.I.(95%)	#	%	C.I.(95%)	#
Yes	900	75.2	69.9 - 79.9	300	24.8	20.1 - 30.1	1,100
No	9,200	77.3	75.8 - 78.9	2,700	22.7	21.1 - 24.2	11,900

Smoke Before Pregnant	Yes			No			Weighted Total Responses (3-Yr Avg)
	#	%	C.I.(95%)	#	%	C.I.(95%)	#
Yes	2,000	76.7	73.4 - 79.8	600	23.3	20.2 - 26.6	2,700
No	8,000	77.2	75.5 - 78.8	2,400	22.8	21.2 - 24.5	10,300

PRAMS Health Indicator 3-Year Aggregate Report - Baby discharged within 48 hours- by State;County;DOH Race-Ethnicity;PRAMS Age Group;Infant Gender;Married;Poverty Level;Income (2000-2003);Income (2004-2011);Birthweight;Smoke 3rd Trimester;Smoke Before Pregnant;WIC During Pregnancy, for the Year(s) 2000-2002;2001-2003;2002-2004;2003-2005;2004-2006;2005-2007;2006-2008;2007-2009;2008-2010;2009-2011;2010-2012;2011-2013

Note: Weighted counts (#) represent 3-yr averages, rounded to the nearest hundred; n/r (Not Reportable) - If the unweighted total responses for a dimension (row) is <30 that row will not be shown

Years: 2002-2004

WIC During Pregnancy	Yes			No			Weighted Total Responses (3-Yr Avg)
	#	%	C.I.(95%)	#	%	C.I.(95%)	#
Yes	4,300	75.8	73.5 - 78.0	1,400	24.2	22.0 - 26.5	5,700
No	5,800	78.2	76.2 - 80.1	1,600	21.8	19.9 - 23.8	7,400

PRAMS Health Indicator 3-Year Aggregate Report - Baby discharged within 48 hours- by State;County;DOH Race-Ethnicity;PRAMS Age Group;Infant Gender;Married;Poverty Level;Income (2000-2003);Income (2004-2011);Birthweight;Smoke 3rd Trimester;Smoke Before Pregnant;WIC During Pregnancy, for the Year(s) 2000-2002;2001-2003;2002-2004;2003-2005;2004-2006;2005-2007;2006-2008;2007-2009;2008-2010;2009-2011;2010-2012;2011-2013

Note: Weighted counts (#) represent 3-yr averages, rounded to the nearest hundred; n/r (Not Reportable) - If the unweighted total responses for a dimension (row) is <30 that row will not be shown

Years: 2001-2003

State	Yes			No			Weighted Total Responses (3-Yr Avg)
	#	%	C.I.(95%)	#	%	C.I.(95%)	#
Totals	10,300	78.0	76.5 - 79.4	2,900	22.0	20.6 - 23.5	13,200

County	Yes			No			Weighted Total Responses (3-Yr Avg)
	#	%	C.I.(95%)	#	%	C.I.(95%)	#
Hawaii	1,100	79.7	77.1 - 82.1	300	20.3	17.9 - 22.9	1,400
Honolulu	7,700	77.0	75.0 - 78.8	2,300	23.0	21.2 - 25.0	9,900
Kauai	400	73.8	68.9 - 78.2	100	26.2	21.8 - 31.1	500
Maui	1,100	85.8	83.2 - 88.0	200	14.2	12.0 - 16.8	1,300

**PRAMS Health Indicator 3-Year Aggregate Report - Baby discharged within 48 hours- by State;County;DOH Race-
Ethnicity;PRAMS Age Group;Infant Gender;Married;Poverty Level;Income (2000-2003);Income (2004-2011);Birthweight;Smoke
3rd Trimester;Smoke Before Pregnant;WIC During Pregnancy, for the Year(s)
2000-2002;2001-2003;2002-2004;2003-2005;2004-2006;2005-2007;2006-2008;2007-2009;2008-2010;2009-2011;2010-2012;2011-2013**

Note: Weighted counts (#) represent 3-yr averages, rounded to the nearest hundred; n/r (Not Reportable) - If the unweighted total responses for a dimension (row) is <30 that row will not be shown

Years: 2001-2003

DOH Race- Ethnicity	Yes			No			Weighted Total Responses (3-Yr Avg)
	#	%	C.I.(95%)	#	%	C.I.(95%)	#
Caucasian	2,300	80.1	76.8 - 83.0	600	19.9	17.0 - 23.2	2,900
Native Hawaiian	2,800	78.8	77.2 - 80.3	800	21.2	19.7 - 22.8	3,600
Chinese	400	76.8	67.1 - 84.3	100	23.2	15.7 - 32.9	500
Filipino	2,100	77.1	73.2 - 80.6	600	22.9	19.4 - 26.8	2,700
Japanese	1,300	82.6	77.9 - 86.5	300	17.4	13.5 - 22.1	1,500
Other	1,400	71.1	66.0 - 75.8	600	28.9	24.2 - 34.0	1,900

PRAMS Age Group	Yes			No			Weighted Total Responses (3-Yr Avg)
	#	%	C.I.(95%)	#	%	C.I.(95%)	#
<20	1,000	74.2	69.6 - 78.3	300	25.8	21.7 - 30.4	1,300
20-24	2,700	76.7	73.8 - 79.4	800	23.3	20.6 - 26.2	3,500
25-34	5,200	79.4	77.3 - 81.4	1,300	20.6	18.6 - 22.7	6,500
35+	1,400	77.9	73.5 - 81.7	400	22.1	18.3 - 26.5	1,900

**PRAMS Health Indicator 3-Year Aggregate Report - Baby discharged within 48 hours- by State;County;DOH Race-
Ethnicity;PRAMS Age Group;Infant Gender;Married;Poverty Level;Income (2000-2003);Income (2004-2011);Birthweight;Smoke
3rd Trimester;Smoke Before Pregnant;WIC During Pregnancy, for the Year(s)
2000-2002;2001-2003;2002-2004;2003-2005;2004-2006;2005-2007;2006-2008;2007-2009;2008-2010;2009-2011;2010-2012;2011-2013**

Note: Weighted counts (#) represent 3-yr averages, rounded to the nearest hundred; n/r (Not Reportable) - If the unweighted total responses for a dimension (row) is <30 that row will not be shown

Years: 2001-2003

Infant Gender	Yes			No			Weighted Total Responses (3-Yr Avg)
	#	%	C.I.(95%)	#	%	C.I.(95%)	#
Male	5,100	76.8	74.7 - 78.8	1,500	23.2	21.2 - 25.3	6,600
Female	5,200	79.2	77.1 - 81.1	1,400	20.8	18.9 - 22.9	6,500

Married	Yes			No			Weighted Total Responses (3-Yr Avg)
	#	%	C.I.(95%)	#	%	C.I.(95%)	#
Yes	7,000	79.2	77.3 - 81.0	1,800	20.8	19.0 - 22.7	8,800
No	3,300	75.5	73.0 - 77.8	1,100	24.5	22.2 - 27.0	4,300

Poverty Level	Yes			No			Weighted Total Responses (3-Yr Avg)
	#	%	C.I.(95%)	#	%	C.I.(95%)	#
0-130%	4,000	75.3	73.0 - 77.6	1,300	24.7	22.4 - 27.0	5,400
131-185%	1,900	79.0	75.4 - 82.1	500	21.0	17.9 - 24.6	2,500
186+%	3,500	82.2	79.6 - 84.5	700	17.8	15.5 - 20.4	4,200

PRAMS Health Indicator 3-Year Aggregate Report - Baby discharged within 48 hours- by State;County;DOH Race-Ethnicity;PRAMS Age Group;Infant Gender;Married;Poverty Level;Income (2000-2003);Income (2004-2011);Birthweight;Smoke 3rd Trimester;Smoke Before Pregnant;WIC During Pregnancy, for the Year(s) 2000-2002;2001-2003;2002-2004;2003-2005;2004-2006;2005-2007;2006-2008;2007-2009;2008-2010;2009-2011;2010-2012;2011-2013

Note: Weighted counts (#) represent 3-yr averages, rounded to the nearest hundred; n/r (Not Reportable) - If the unweighted total responses for a dimension (row) is <30 that row will not be shown

Years: 2001-2003

Income (2000-2003)	Yes			No			Weighted Total Responses (3-Yr Avg)
	#	%	C.I.(95%)	#	%	C.I.(95%)	#
<=\$15,000	2,100	73.7	70.4 - 76.8	700	26.3	23.2 - 29.6	2,800
\$15,001-\$25,000	1,500	78.0	74.0 - 81.6	400	22.0	18.4 - 26.0	1,900
\$25,001-\$40,000	2,100	75.9	72.4 - 79.2	700	24.1	20.8 - 27.6	2,700
>=\$40,001	4,100	82.3	80.0 - 84.5	900	17.7	15.5 - 20.0	5,000

Birthweight	Yes			No			Weighted Total Responses (3-Yr Avg)
	#	%	C.I.(95%)	#	%	C.I.(95%)	#
Low birth weight	300	47.7	40.4 - 55.1	400	52.3	44.9 - 59.6	700
Normal birth weight	9,900	79.8	78.3 - 81.2	2,500	20.2	18.8 - 21.7	12,400

Smoke 3rd Trimester	Yes			No			Weighted Total Responses (3-Yr Avg)
	#	%	C.I.(95%)	#	%	C.I.(95%)	#
Yes	900	75.0	69.9 - 79.4	300	25.0	20.6 - 30.1	1,200
No	9,200	78.2	76.6 - 79.8	2,600	21.8	20.2 - 23.4	11,700

PRAMS Health Indicator 3-Year Aggregate Report - Baby discharged within 48 hours- by State;County;DOH Race-Ethnicity;PRAMS Age Group;Infant Gender;Married;Poverty Level;Income (2000-2003);Income (2004-2011);Birthweight;Smoke 3rd Trimester;Smoke Before Pregnant;WIC During Pregnancy, for the Year(s) 2000-2002;2001-2003;2002-2004;2003-2005;2004-2006;2005-2007;2006-2008;2007-2009;2008-2010;2009-2011;2010-2012;2011-2013

Note: Weighted counts (#) represent 3-yr averages, rounded to the nearest hundred; n/r (Not Reportable) - If the unweighted total responses for a dimension (row) is <30 that row will not be shown

Years: 2001-2003

Smoke Before Pregnant	Yes			No			Weighted Total Responses (3-Yr Avg)
	#	%	C.I.(95%)	#	%	C.I.(95%)	#
Yes	2,000	77.5	74.2 - 80.4	600	22.5	19.6 - 25.8	2,600
No	7,900	78.0	76.3 - 79.7	2,200	22.0	20.3 - 23.7	10,200

WIC During Pregnancy	Yes			No			Weighted Total Responses (3-Yr Avg)
	#	%	C.I.(95%)	#	%	C.I.(95%)	#
Yes	4,300	76.9	74.6 - 79.0	1,300	23.1	21.0 - 25.4	5,600
No	5,900	78.9	76.9 - 80.8	1,600	21.1	19.2 - 23.1	7,500

PRAMS Health Indicator 3-Year Aggregate Report - Baby discharged within 48 hours- by State;County;DOH Race-Ethnicity;PRAMS Age Group;Infant Gender;Married;Poverty Level;Income (2000-2003);Income (2004-2011);Birthweight;Smoke 3rd Trimester;Smoke Before Pregnant;WIC During Pregnancy, for the Year(s) 2000-2002;2001-2003;2002-2004;2003-2005;2004-2006;2005-2007;2006-2008;2007-2009;2008-2010;2009-2011;2010-2012;2011-2013

Note: Weighted counts (#) represent 3-yr averages, rounded to the nearest hundred; n/r (Not Reportable) - If the unweighted total responses for a dimension (row) is <30 that row will not be shown

Years: 2000-2002

State	Yes			No			Weighted Total Responses (3-Yr Avg)
	#	%	C.I.(95%)	#	%	C.I.(95%)	#
Totals	9,600	77.8	76.3 - 79.1	2,800	22.2	20.9 - 23.7	12,400

County	Yes			No			Weighted Total Responses (3-Yr Avg)
	#	%	C.I.(95%)	#	%	C.I.(95%)	#
Hawaii	1,200	80.4	77.9 - 82.7	300	19.6	17.3 - 22.1	1,400
Honolulu	7,000	76.4	74.5 - 78.1	2,200	23.6	21.9 - 25.5	9,100
Kauai	400	76.5	71.8 - 80.7	100	23.5	19.3 - 28.2	500
Maui	1,100	85.1	82.5 - 87.4	200	14.9	12.6 - 17.5	1,300

**PRAMS Health Indicator 3-Year Aggregate Report - Baby discharged within 48 hours- by State;County;DOH Race-
Ethnicity;PRAMS Age Group;Infant Gender;Married;Poverty Level;Income (2000-2003);Income (2004-2011);Birthweight;Smoke
3rd Trimester;Smoke Before Pregnant;WIC During Pregnancy, for the Year(s)
2000-2002;2001-2003;2002-2004;2003-2005;2004-2006;2005-2007;2006-2008;2007-2009;2008-2010;2009-2011;2010-2012;2011-2013**

Note: Weighted counts (#) represent 3-yr averages, rounded to the nearest hundred; n/r (Not Reportable) - If the unweighted total responses for a dimension (row) is <30 that row will not be shown

Years: 2000-2002

DOH Race- Ethnicity	Yes			No			Weighted Total Responses (3-Yr Avg)
	#	%	C.I.(95%)	#	%	C.I.(95%)	#
Caucasian	2,300	78.5	75.5 - 81.3	600	21.5	18.7 - 24.5	2,900
Native Hawaiian	2,600	78.1	76.6 - 79.6	700	21.9	20.4 - 23.4	3,300
Chinese	400	81.4	72.4 - 88.0	100	18.6	12.0 - 27.6	500
Filipino	1,900	76.2	72.3 - 79.6	600	23.8	20.4 - 27.7	2,500
Japanese	1,100	82.1	77.4 - 86.0	300	17.9	14.0 - 22.6	1,400
Other	1,300	73.6	68.7 - 78.1	500	26.4	21.9 - 31.3	1,800

PRAMS Age Group	Yes			No			Weighted Total Responses (3-Yr Avg)
	#	%	C.I.(95%)	#	%	C.I.(95%)	#
<20	1,000	72.5	68.1 - 76.5	400	27.5	23.5 - 31.9	1,400
20-24	2,600	77.1	74.4 - 79.6	800	22.9	20.4 - 25.6	3,400
25-34	4,700	79.4	77.3 - 81.3	1,200	20.6	18.7 - 22.7	5,900
35+	1,300	77.6	73.5 - 81.2	400	22.4	18.8 - 26.5	1,700

PRAMS Health Indicator 3-Year Aggregate Report - Baby discharged within 48 hours- by State;County;DOH Race-Ethnicity;PRAMS Age Group;Infant Gender;Married;Poverty Level;Income (2000-2003);Income (2004-2011);Birthweight;Smoke 3rd Trimester;Smoke Before Pregnant;WIC During Pregnancy, for the Year(s) 2000-2002;2001-2003;2002-2004;2003-2005;2004-2006;2005-2007;2006-2008;2007-2009;2008-2010;2009-2011;2010-2012;2011-2013

Note: Weighted counts (#) represent 3-yr averages, rounded to the nearest hundred; n/r (Not Reportable) - If the unweighted total responses for a dimension (row) is <30 that row will not be shown

Years: 2000-2002

	Yes			No			Weighted Total Responses (3-Yr Avg)
	#	%	C.I.(95%)	#	%	C.I.(95%)	#
Infant Gender							
Male	4,700	76.9	74.8 - 78.8	1,400	23.1	21.2 - 25.2	6,200
Female	4,900	78.6	76.6 - 80.5	1,300	21.4	19.5 - 23.4	6,200

	Yes			No			Weighted Total Responses (3-Yr Avg)
	#	%	C.I.(95%)	#	%	C.I.(95%)	#
Married							
Yes	6,700	79.4	77.6 - 81.1	1,700	20.6	18.9 - 22.4	8,400
No	3,000	74.3	71.9 - 76.7	1,000	25.7	23.3 - 28.1	4,000

	Yes			No			Weighted Total Responses (3-Yr Avg)
	#	%	C.I.(95%)	#	%	C.I.(95%)	#
Poverty Level							
0-130%	3,800	75.3	73.0 - 77.4	1,200	24.7	22.6 - 27.0	5,000
131-185%	1,900	78.9	75.5 - 81.9	500	21.1	18.1 - 24.5	2,400
186+%	3,300	80.9	78.5 - 83.2	800	19.1	16.8 - 21.5	4,100

PRAMS Health Indicator 3-Year Aggregate Report - Baby discharged within 48 hours- by State;County;DOH Race-Ethnicity;PRAMS Age Group;Infant Gender;Married;Poverty Level;Income (2000-2003);Income (2004-2011);Birthweight;Smoke 3rd Trimester;Smoke Before Pregnant;WIC During Pregnancy, for the Year(s) 2000-2002;2001-2003;2002-2004;2003-2005;2004-2006;2005-2007;2006-2008;2007-2009;2008-2010;2009-2011;2010-2012;2011-2013

Note: Weighted counts (#) represent 3-yr averages, rounded to the nearest hundred; n/r (Not Reportable) - If the unweighted total responses for a dimension (row) is <30 that row will not be shown

Years: 2000-2002

Income (2000-2003)	Yes			No			Weighted Total Responses (3-Yr Avg)
	#	%	C.I.(95%)	#	%	C.I.(95%)	#
<=\$15,000	1,900	74.0	70.8 - 76.9	700	26.0	23.1 - 29.2	2,600
\$15,001-\$25,000	1,500	77.4	73.7 - 80.7	400	22.6	19.3 - 26.3	1,900
\$25,001-\$40,000	2,000	77.4	74.2 - 80.4	600	22.6	19.6 - 25.8	2,600
>=\$40,001	3,700	80.5	78.2 - 82.7	900	19.5	17.3 - 21.8	4,600

Birthweight	Yes			No			Weighted Total Responses (3-Yr Avg)
	#	%	C.I.(95%)	#	%	C.I.(95%)	#
Low birth weight	300	44.5	37.6 - 51.7	400	55.5	48.3 - 62.4	700
Normal birth weight	9,300	79.8	78.4 - 81.2	2,400	20.2	18.8 - 21.6	11,600

Smoke 3rd Trimester	Yes			No			Weighted Total Responses (3-Yr Avg)
	#	%	C.I.(95%)	#	%	C.I.(95%)	#
Yes	800	73.4	68.4 - 77.9	300	26.6	22.1 - 31.6	1,100
No	8,600	78.1	76.5 - 79.5	2,400	21.9	20.5 - 23.5	11,000

PRAMS Health Indicator 3-Year Aggregate Report - Baby discharged within 48 hours- by State;County;DOH Race-Ethnicity;PRAMS Age Group;Infant Gender;Married;Poverty Level;Income (2000-2003);Income (2004-2011);Birthweight;Smoke 3rd Trimester;Smoke Before Pregnant;WIC During Pregnancy, for the Year(s) 2000-2002;2001-2003;2002-2004;2003-2005;2004-2006;2005-2007;2006-2008;2007-2009;2008-2010;2009-2011;2010-2012;2011-2013

Note: Weighted counts (#) represent 3-yr averages, rounded to the nearest hundred; n/r (Not Reportable) - If the unweighted total responses for a dimension (row) is <30 that row will not be shown

Years: 2000-2002

Smoke Before Pregnant	Yes			No			Weighted Total Responses (3-Yr Avg)
	#	%	C.I.(95%)	#	%	C.I.(95%)	#
Yes	1,800	75.6	72.4 - 78.6	600	24.4	21.4 - 27.6	2,400
No	7,500	78.1	76.5 - 79.7	2,100	21.9	20.3 - 23.5	9,600

WIC During Pregnancy	Yes			No			Weighted Total Responses (3-Yr Avg)
	#	%	C.I.(95%)	#	%	C.I.(95%)	#
Yes	4,100	76.5	74.3 - 78.6	1,300	23.5	21.4 - 25.7	5,400
No	5,400	78.7	76.8 - 80.5	1,500	21.3	19.5 - 23.2	6,900