

**PRAMS Health Indicator 3-Year Aggregate Report - Preterm delivery- for the State of Hawaii, for the Year(s)
2000-2002;2001-2003;2002-2004;2003-2005;2004-2006;2005-2007;2006-2008;2007-2009;2008-2010;2009-2011;2010-2012;2011-2013**

PRAMS Health Indicator 3-Year Aggregate Report - Preterm delivery- by State;County;DOH Race-Ethnicity;PRAMS Age Group;Infant Gender;Married;Poverty Level;Income (2000-2003);Income (2004-2011);Birthweight;Smoke 3rd Trimester;Smoke Before Pregnant;WIC During Pregnancy, for the Year(s)
2000-2002;2001-2003;2002-2004;2003-2005;2004-2006;2005-2007;2006-2008;2007-2009;2008-2010;2009-2011;2010-2012;2011-2013

Note: Weighted counts (#) represent 3-yr averages, rounded to the nearest hundred; n/r (Not Reportable) - If the unweighted total responses for a dimension (row) is <30 that row will not be shown

The trend analysis section shows the trend for the selected health variable over selected years in a table and a graph. 3-Year Weighted Total Responses: This number is a weighted representation of the mothers of babies delivered in a given year, who responded to a particular question in the survey. For most questions this will be the mothers of all babies delivered in a given year. For some secondary questions only a subset of the population was asked the question. For example, all survey participants were asked if they smoked during pregnancy, but only those who answered yes were asked how many cigarettes a day. If a dimension value is unknown for a particular survey record, that record will not be included in the counts for that particular dimension.

Note: Data collection for household income changed in 2004 and again in 2012. Because of this, income data does not exist for some 3-year aggregate periods.

Below are the indicators included in this report and the long description for each indicator.

PRAMS Health Indicator	Health Indicator Description
Preterm delivery	Preterm delivery

Suggested citation:

Hawaii Health Data Warehouse, Hawaii State Department of Health, Pregnancy Risk Assessment Monitoring System, (report title and years), Report Created: 2/17/17

For documentation on other terms and coding in this report, please go to the following links:

[Click here to access PRAMS documentation](#)

[Click here to access DOH-Race Ethnicity coding](#)

[Click here to access The Hawai'i Data Guide](#)

**For questions about this report, please contact
The Hawai'i Health Data Warehouse**

profiles@hhdw.org

(855) 946-5899 x15

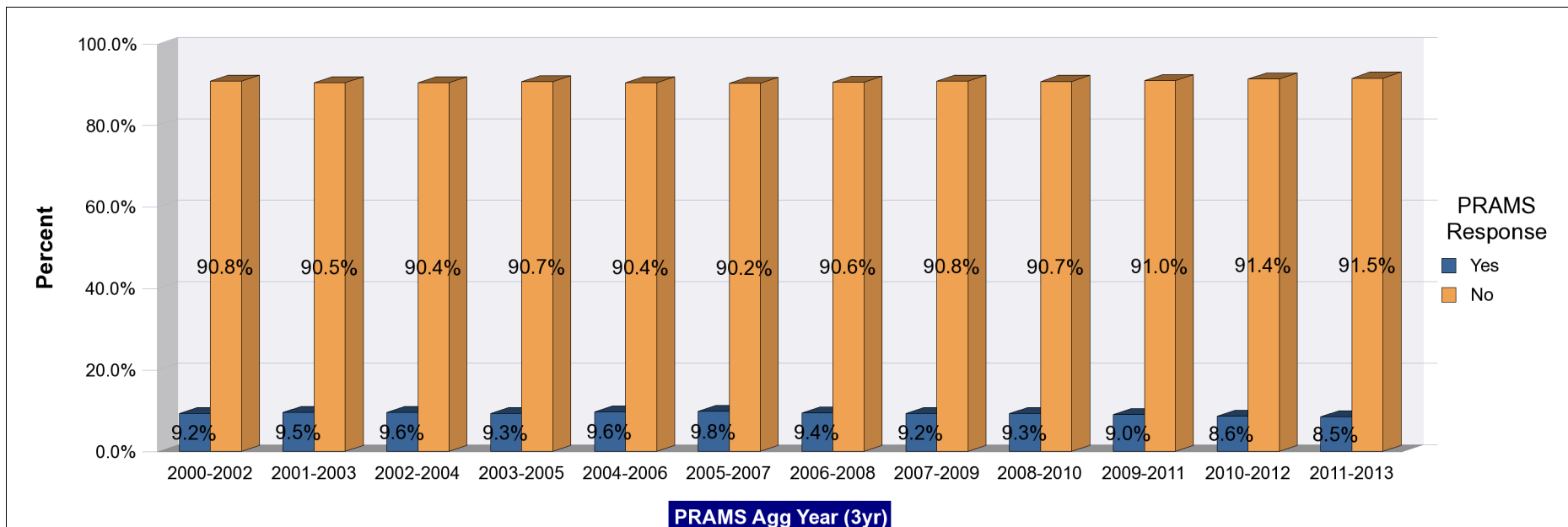
**PRAMS Health Indicator 3-Year Aggregate Report - Preterm delivery- for the State of Hawaii, for the Year(s)
2000-2002;2001-2003;2002-2004;2003-2005;2004-2006;2005-2007;2006-2008;2007-2009;2008-2010;2009-2011;2010-2012;2011-2013**

Note: Weighted counts (#) represent 3-yr averages, rounded to the nearest hundred; n/r (Not Reportable) - If the unweighted total responses for a dimension (row) is <30 that row will not be shown

Years	Yes			No			Weighted Total Responses (3-Yr Avg)
	#	%	C.I.(95%)	#	%	C.I.(95%)	#
2000-2002	1,500	9.2	8.4 - 10.1	15,200	90.8	89.9 - 91.6	16,700
2001-2003	1,600	9.5	8.7 - 10.5	15,500	90.5	89.5 - 91.3	17,100
2002-2004	1,700	9.6	8.7 - 10.5	15,800	90.4	89.5 - 91.3	17,500
2003-2005	1,600	9.3	8.5 - 10.1	16,000	90.7	89.9 - 91.5	17,700
2004-2006	1,700	9.6	8.9 - 10.5	16,200	90.4	89.5 - 91.1	18,000
2005-2007	1,800	9.8	9.0 - 10.6	16,500	90.2	89.4 - 91.0	18,200
2006-2008	1,800	9.4	8.7 - 10.3	17,000	90.6	89.7 - 91.3	18,800
2007-2009	1,700	9.2	8.5 - 10.0	17,000	90.8	90.0 - 91.5	18,700
2008-2010	1,700	9.3	8.5 - 10.1	16,900	90.7	89.9 - 91.5	18,700
2009-2011	1,700	9.0	8.3 - 9.8	16,800	91.0	90.2 - 91.7	18,500
2010-2012	1,600	8.6	7.9 - 9.4	17,000	91.4	90.6 - 92.1	18,600
2011-2013	1,600	8.5	7.7 - 9.3	17,000	91.5	90.7 - 92.3	18,500

**PRAMS Health Indicator 3-Year Aggregate Report - Preterm delivery- for the State of Hawaii, for the Year(s)
2000-2002;2001-2003;2002-2004;2003-2005;2004-2006;2005-2007;2006-2008;2007-2009;2008-2010;2009-2011;2010-2012;2011-2013**

Note: Weighted counts (#) represent 3-yr averages, rounded to the nearest hundred; n/r (Not Reportable) - If the unweighted total responses for a dimension (row) is <30 that row will not be shown



**PRAMS Health Indicator 3-Year Aggregate Report - Preterm delivery- by State;County;DOH Race-Ethnicity;PRAMS Age Group;Infant Gender;Married;Poverty Level;Income (2000-2003);Income (2004-2011);Birthweight;Smoke 3rd Trimester;Smoke Before Pregnant;WIC During Pregnancy, for the Year(s)
2000-2002;2001-2003;2002-2004;2003-2005;2004-2006;2005-2007;2006-2008;2007-2009;2008-2010;2009-2011;2010-2012;2011-2013**

Note: Weighted counts (#) represent 3-yr averages, rounded to the nearest hundred; n/r (Not Reportable) - If the unweighted total responses for a dimension (row) is <30 that row will not be shown

Years: 2011-2013

State	Yes			No			Weighted Total Responses (3-Yr Avg)
	#	%	C.I.(95%)	#	%	C.I.(95%)	#
Totals	1,600	8.5	7.7 - 9.3	17,000	91.5	90.7 - 92.3	18,500

County	Yes			No			Weighted Total Responses (3-Yr Avg)
	#	%	C.I.(95%)	#	%	C.I.(95%)	#
Hawaii	200	10.2	8.5 - 12.2	2,100	89.8	87.8 - 91.5	2,400
Honolulu	1,100	8.2	7.3 - 9.3	12,200	91.8	90.7 - 92.7	13,300
Kauai	100	8.4	6.7 - 10.5	800	91.6	89.5 - 93.3	900
Maui	200	8.0	6.5 - 9.7	1,800	92.0	90.3 - 93.5	2,000

**PRAMS Health Indicator 3-Year Aggregate Report - Preterm delivery- by State;County;DOH Race-Ethnicity;PRAMS Age Group;Infant Gender;Married;Poverty Level;Income (2000-2003);Income (2004-2011);Birthweight;Smoke 3rd Trimester;Smoke Before Pregnant;WIC During Pregnancy, for the Year(s)
2000-2002;2001-2003;2002-2004;2003-2005;2004-2006;2005-2007;2006-2008;2007-2009;2008-2010;2009-2011;2010-2012;2011-2013**

Note: Weighted counts (#) represent 3-yr averages, rounded to the nearest hundred; n/r (Not Reportable) - If the unweighted total responses for a dimension (row) is <30 that row will not be shown

Years: 2011-2013

DOH Race-Ethnicity	Yes			No			Weighted Total Responses (3-Yr Avg)
	#	%	C.I.(95%)	#	%	C.I.(95%)	#
Caucasian	300	7.0	5.6 - 8.7	4,200	93.0	91.3 - 94.4	4,500
Native Hawaiian	400	7.9	6.7 - 9.3	4,900	92.1	90.7 - 93.3	5,400
Chinese	100	10.8	6.9 - 16.3	800	89.2	83.7 - 93.1	900
Filipino	400	11.5	9.3 - 14.1	2,900	88.5	85.9 - 90.7	3,200
Japanese	100	6.1	4.2 - 8.7	1,700	93.9	91.3 - 95.8	1,800
Other	300	9.2	7.2 - 11.7	2,500	90.8	88.3 - 92.8	2,700

PRAMS Age Group	Yes			No			Weighted Total Responses (3-Yr Avg)
	#	%	C.I.(95%)	#	%	C.I.(95%)	#
<20	100	6.9	5.0 - 9.5	900	93.1	90.5 - 95.0	1,000
20-24	300	7.3	5.8 - 9.0	3,800	92.7	91.0 - 94.2	4,100
25-34	800	7.9	6.9 - 9.0	9,400	92.1	91.0 - 93.1	10,200
35+	400	12.3	10.2 - 14.8	2,900	87.7	85.2 - 89.8	3,300

**PRAMS Health Indicator 3-Year Aggregate Report - Preterm delivery- by State;County;DOH Race-Ethnicity;PRAMS Age Group;Infant Gender;Married;Poverty Level;Income (2000-2003);Income (2004-2011);Birthweight;Smoke 3rd Trimester;Smoke Before Pregnant;WIC During Pregnancy, for the Year(s)
2000-2002;2001-2003;2002-2004;2003-2005;2004-2006;2005-2007;2006-2008;2007-2009;2008-2010;2009-2011;2010-2012;2011-2013**

Note: Weighted counts (#) represent 3-yr averages, rounded to the nearest hundred; n/r (Not Reportable) - If the unweighted total responses for a dimension (row) is <30 that row will not be shown

Years: 2011-2013

Infant Gender	Yes			No			Weighted Total Responses (3-Yr Avg)
	#	%	C.I.(95%)	#	%	C.I.(95%)	#
Male	900	9.5	8.3 - 10.8	8,400	90.5	89.2 - 91.7	9,200
Female	700	7.5	6.5 - 8.5	8,600	92.5	91.5 - 93.5	9,300

Married	Yes			No			Weighted Total Responses (3-Yr Avg)
	#	%	C.I.(95%)	#	%	C.I.(95%)	#
Yes	1,000	8.4	7.4 - 9.5	10,600	91.6	90.5 - 92.6	11,600
No	600	8.6	7.5 - 9.9	6,400	91.4	90.1 - 92.5	7,000

Poverty Level	Yes			No			Weighted Total Responses (3-Yr Avg)
	#	%	C.I.(95%)	#	%	C.I.(95%)	#
0-130%	600	8.6	7.4 - 10.0	6,100	91.4	90.0 - 92.6	6,700
131-185%	200	8.0	6.2 - 10.1	2,600	92.0	89.9 - 93.8	2,800
186+%	600	8.3	7.1 - 9.7	6,900	91.7	90.3 - 92.9	7,500

**PRAMS Health Indicator 3-Year Aggregate Report - Preterm delivery- by State;County;DOH Race-Ethnicity;PRAMS Age Group;Infant Gender;Married;Poverty Level;Income (2000-2003);Income (2004-2011);Birthweight;Smoke 3rd Trimester;Smoke Before Pregnant;WIC During Pregnancy, for the Year(s)
2000-2002;2001-2003;2002-2004;2003-2005;2004-2006;2005-2007;2006-2008;2007-2009;2008-2010;2009-2011;2010-2012;2011-2013**

Note: Weighted counts (#) represent 3-yr averages, rounded to the nearest hundred; n/r (Not Reportable) - If the unweighted total responses for a dimension (row) is <30 that row will not be shown

Years: 2011-2013

Birthweight	Yes			No			Weighted Total Responses (3-Yr Avg)
	#	%	C.I.(95%)	#	%	C.I.(95%)	#
Low birth weight	900	65.6	62.7 - 68.5	400	34.4	31.5 - 37.3	1,300
Normal birth weight	700	4.0	3.3 - 4.8	16,500	96.0	95.2 - 96.7	17,200

Smoke 3rd Trimester	Yes			No			Weighted Total Responses (3-Yr Avg)
	#	%	C.I.(95%)	#	%	C.I.(95%)	#
Yes	100	10.2	7.2 - 14.2	800	89.8	85.8 - 92.8	900
No	1,400	8.3	7.6 - 9.2	15,800	91.7	90.8 - 92.4	17,200

Smoke Before Pregnant	Yes			No			Weighted Total Responses (3-Yr Avg)
	#	%	C.I.(95%)	#	%	C.I.(95%)	#
Yes	300	8.7	7.1 - 10.6	3,000	91.3	89.4 - 92.9	3,200
No	1,200	8.4	7.5 - 9.3	13,600	91.6	90.7 - 92.5	14,900

**PRAMS Health Indicator 3-Year Aggregate Report - Preterm delivery- by State;County;DOH Race-Ethnicity;PRAMS Age Group;Infant Gender;Married;Poverty Level;Income (2000-2003);Income (2004-2011);Birthweight;Smoke 3rd Trimester;Smoke Before Pregnant;WIC During Pregnancy, for the Year(s)
2000-2002;2001-2003;2002-2004;2003-2005;2004-2006;2005-2007;2006-2008;2007-2009;2008-2010;2009-2011;2010-2012;2011-2013**

Note: Weighted counts (#) represent 3-yr averages, rounded to the nearest hundred; n/r (Not Reportable) - If the unweighted total responses for a dimension (row) is <30 that row will not be shown

Years: 2011-2013

WIC During Pregnancy	Yes			No			Weighted Total Responses (3-Yr Avg)
	#	%	C.I.(95%)	#	%	C.I.(95%)	#
Yes	700	8.4	7.4 - 9.6	7,600	91.6	90.4 - 92.6	8,300
No	900	8.6	7.5 - 9.8	9,300	91.4	90.2 - 92.5	10,200

**PRAMS Health Indicator 3-Year Aggregate Report - Preterm delivery- by State;County;DOH Race-Ethnicity;PRAMS Age Group;Infant Gender;Married;Poverty Level;Income (2000-2003);Income (2004-2011);Birthweight;Smoke 3rd Trimester;Smoke Before Pregnant;WIC During Pregnancy, for the Year(s)
2000-2002;2001-2003;2002-2004;2003-2005;2004-2006;2005-2007;2006-2008;2007-2009;2008-2010;2009-2011;2010-2012;2011-2013**

Note: Weighted counts (#) represent 3-yr averages, rounded to the nearest hundred; n/r (Not Reportable) - If the unweighted total responses for a dimension (row) is <30 that row will not be shown

Years: 2010-2012

State	Yes			No			Weighted Total Responses (3-Yr Avg)
	#	%	C.I.(95%)	#	%	C.I.(95%)	#
Totals	1,600	8.6	7.9 - 9.4	17,000	91.4	90.6 - 92.1	18,600

County	Yes			No			Weighted Total Responses (3-Yr Avg)
	#	%	C.I.(95%)	#	%	C.I.(95%)	#
Hawaii	200	9.0	7.5 - 10.9	2,100	91.0	89.1 - 92.5	2,400
Honolulu	1,200	8.7	7.7 - 9.7	12,200	91.3	90.3 - 92.3	13,400
Kauai	100	9.3	7.5 - 11.6	800	90.7	88.4 - 92.5	800
Maui	200	7.7	6.4 - 9.3	1,800	92.3	90.7 - 93.6	2,000

**PRAMS Health Indicator 3-Year Aggregate Report - Preterm delivery- by State;County;DOH Race-Ethnicity;PRAMS Age Group;Infant Gender;Married;Poverty Level;Income (2000-2003);Income (2004-2011);Birthweight;Smoke 3rd Trimester;Smoke Before Pregnant;WIC During Pregnancy, for the Year(s)
2000-2002;2001-2003;2002-2004;2003-2005;2004-2006;2005-2007;2006-2008;2007-2009;2008-2010;2009-2011;2010-2012;2011-2013**

Note: Weighted counts (#) represent 3-yr averages, rounded to the nearest hundred; n/r (Not Reportable) - If the unweighted total responses for a dimension (row) is <30 that row will not be shown

Years: 2010-2012

DOH Race-Ethnicity	Yes			No			Weighted Total Responses (3-Yr Avg)
	#	%	C.I.(95%)	#	%	C.I.(95%)	#
Caucasian	300	6.6	5.3 - 8.2	4,100	93.4	91.8 - 94.7	4,400
Native Hawaiian	400	7.8	6.6 - 9.2	4,900	92.2	90.8 - 93.4	5,400
Chinese	100	9.4	6.1 - 14.0	800	90.6	86.0 - 93.9	900
Filipino	400	11.0	8.9 - 13.5	3,000	89.0	86.5 - 91.1	3,300
Japanese	200	8.9	6.4 - 12.3	1,600	91.1	87.7 - 93.6	1,700
Other	300	10.1	7.9 - 12.9	2,600	89.9	87.1 - 92.1	2,900

PRAMS Age Group	Yes			No			Weighted Total Responses (3-Yr Avg)
	#	%	C.I.(95%)	#	%	C.I.(95%)	#
<20	100	7.7	5.5 - 10.8	1,000	92.3	89.2 - 94.5	1,100
20-24	300	8.0	6.4 - 9.9	3,900	92.0	90.1 - 93.6	4,200
25-34	800	7.8	6.8 - 8.9	9,200	92.2	91.1 - 93.2	10,000
35+	400	12.3	10.1 - 14.9	2,900	87.7	85.1 - 89.9	3,300

**PRAMS Health Indicator 3-Year Aggregate Report - Preterm delivery- by State;County;DOH Race-Ethnicity;PRAMS Age Group;Infant Gender;Married;Poverty Level;Income (2000-2003);Income (2004-2011);Birthweight;Smoke 3rd Trimester;Smoke Before Pregnant;WIC During Pregnancy, for the Year(s)
2000-2002;2001-2003;2002-2004;2003-2005;2004-2006;2005-2007;2006-2008;2007-2009;2008-2010;2009-2011;2010-2012;2011-2013**

Note: Weighted counts (#) represent 3-yr averages, rounded to the nearest hundred; n/r (Not Reportable) - If the unweighted total responses for a dimension (row) is <30 that row will not be shown

Years: 2010-2012

Infant Gender	Yes			No			Weighted Total Responses (3-Yr Avg)
	#	%	C.I.(95%)	#	%	C.I.(95%)	#
Male	900	9.5	8.4 - 10.8	8,500	90.5	89.2 - 91.6	9,300
Female	700	7.7	6.7 - 8.8	8,500	92.3	91.2 - 93.3	9,200

Married	Yes			No			Weighted Total Responses (3-Yr Avg)
	#	%	C.I.(95%)	#	%	C.I.(95%)	#
Yes	1,000	8.6	7.6 - 9.7	10,500	91.4	90.3 - 92.4	11,500
No	600	8.7	7.6 - 10.0	6,400	91.3	90.0 - 92.4	7,000

Poverty Level	Yes			No			Weighted Total Responses (3-Yr Avg)
	#	%	C.I.(95%)	#	%	C.I.(95%)	#
0-130%	600	9.7	8.3 - 11.3	5,900	90.3	88.7 - 91.7	6,600
131-185%	200	7.2	5.5 - 9.3	2,700	92.8	90.7 - 94.5	3,000
186+%	600	8.3	7.1 - 9.6	7,000	91.7	90.4 - 92.9	7,700

**PRAMS Health Indicator 3-Year Aggregate Report - Preterm delivery- by State;County;DOH Race-Ethnicity;PRAMS Age Group;Infant Gender;Married;Poverty Level;Income (2000-2003);Income (2004-2011);Birthweight;Smoke 3rd Trimester;Smoke Before Pregnant;WIC During Pregnancy, for the Year(s)
2000-2002;2001-2003;2002-2004;2003-2005;2004-2006;2005-2007;2006-2008;2007-2009;2008-2010;2009-2011;2010-2012;2011-2013**

Note: Weighted counts (#) represent 3-yr averages, rounded to the nearest hundred; n/r (Not Reportable) - If the unweighted total responses for a dimension (row) is <30 that row will not be shown

Years: 2010-2012

Birthweight	Yes			No			Weighted Total Responses (3-Yr Avg)
	#	%	C.I.(95%)	#	%	C.I.(95%)	#
Low birth weight	900	65.3	62.2 - 68.2	500	34.7	31.8 - 37.8	1,300
Normal birth weight	700	4.2	3.5 - 5.0	16,500	95.8	95.0 - 96.5	17,200

Smoke 3rd Trimester	Yes			No			Weighted Total Responses (3-Yr Avg)
	#	%	C.I.(95%)	#	%	C.I.(95%)	#
Yes	100	8.3	5.6 - 11.9	1,000	91.7	88.1 - 94.4	1,000
No	1,500	8.7	7.9 - 9.5	15,700	91.3	90.5 - 92.1	17,200

Smoke Before Pregnant	Yes			No			Weighted Total Responses (3-Yr Avg)
	#	%	C.I.(95%)	#	%	C.I.(95%)	#
Yes	300	8.2	6.7 - 9.9	3,100	91.8	90.1 - 93.3	3,400
No	1,300	8.7	7.9 - 9.7	13,500	91.3	90.3 - 92.1	14,800

**PRAMS Health Indicator 3-Year Aggregate Report - Preterm delivery- by State;County;DOH Race-Ethnicity;PRAMS Age Group;Infant Gender;Married;Poverty Level;Income (2000-2003);Income (2004-2011);Birthweight;Smoke 3rd Trimester;Smoke Before Pregnant;WIC During Pregnancy, for the Year(s)
2000-2002;2001-2003;2002-2004;2003-2005;2004-2006;2005-2007;2006-2008;2007-2009;2008-2010;2009-2011;2010-2012;2011-2013**

Note: Weighted counts (#) represent 3-yr averages, rounded to the nearest hundred; n/r (Not Reportable) - If the unweighted total responses for a dimension (row) is <30 that row will not be shown

Years: 2010-2012

WIC During Pregnancy	Yes			No			Weighted Total Responses (3-Yr Avg)
	#	%	C.I.(95%)	#	%	C.I.(95%)	#
Yes	700	8.5	7.4 - 9.7	7,600	91.5	90.3 - 92.6	8,300
No	900	8.9	7.8 - 10.1	9,200	91.1	89.9 - 92.2	10,100

**PRAMS Health Indicator 3-Year Aggregate Report - Preterm delivery- by State;County;DOH Race-Ethnicity;PRAMS Age Group;Infant Gender;Married;Poverty Level;Income (2000-2003);Income (2004-2011);Birthweight;Smoke 3rd Trimester;Smoke Before Pregnant;WIC During Pregnancy, for the Year(s)
2000-2002;2001-2003;2002-2004;2003-2005;2004-2006;2005-2007;2006-2008;2007-2009;2008-2010;2009-2011;2010-2012;2011-2013**

Note: Weighted counts (#) represent 3-yr averages, rounded to the nearest hundred; n/r (Not Reportable) - If the unweighted total responses for a dimension (row) is <30 that row will not be shown

Years: 2009-2011

State	Yes			No			Weighted Total Responses (3-Yr Avg)
	#	%	C.I.(95%)	#	%	C.I.(95%)	#
Totals	1,700	9.0	8.3 - 9.8	16,800	91.0	90.2 - 91.7	18,500

County	Yes			No			Weighted Total Responses (3-Yr Avg)
	#	%	C.I.(95%)	#	%	C.I.(95%)	#
Hawaii	200	9.8	8.1 - 11.6	2,100	90.2	88.4 - 91.9	2,400
Honolulu	1,200	9.0	8.1 - 10.1	12,100	91.0	89.9 - 91.9	13,300
Kauai	100	9.3	7.5 - 11.5	800	90.7	88.5 - 92.5	900
Maui	200	8.0	6.6 - 9.5	1,900	92.0	90.5 - 93.4	2,000

**PRAMS Health Indicator 3-Year Aggregate Report - Preterm delivery- by State;County;DOH Race-Ethnicity;PRAMS Age Group;Infant Gender;Married;Poverty Level;Income (2000-2003);Income (2004-2011);Birthweight;Smoke 3rd Trimester;Smoke Before Pregnant;WIC During Pregnancy, for the Year(s)
2000-2002;2001-2003;2002-2004;2003-2005;2004-2006;2005-2007;2006-2008;2007-2009;2008-2010;2009-2011;2010-2012;2011-2013**

Note: Weighted counts (#) represent 3-yr averages, rounded to the nearest hundred; n/r (Not Reportable) - If the unweighted total responses for a dimension (row) is <30 that row will not be shown

Years: 2009-2011

DOH Race-Ethnicity	Yes			No			Weighted Total Responses (3-Yr Avg)
	#	%	C.I.(95%)	#	%	C.I.(95%)	#
Caucasian	300	6.7	5.4 - 8.3	4,100	93.3	91.7 - 94.6	4,400
Native Hawaiian	500	8.7	7.5 - 10.2	5,100	91.3	89.8 - 92.5	5,600
Chinese	100	10.4	6.8 - 15.7	700	89.6	84.3 - 93.2	800
Filipino	400	10.9	9.0 - 13.3	2,900	89.1	86.7 - 91.0	3,300
Japanese	200	10.1	7.4 - 13.6	1,600	89.9	86.4 - 92.6	1,700
Other	300	10.0	7.8 - 12.8	2,400	90.0	87.2 - 92.2	2,700

PRAMS Age Group	Yes			No			Weighted Total Responses (3-Yr Avg)
	#	%	C.I.(95%)	#	%	C.I.(95%)	#
<20	100	7.6	5.4 - 10.6	1,200	92.4	89.4 - 94.6	1,300
20-24	400	8.4	6.9 - 10.3	4,000	91.6	89.7 - 93.1	4,400
25-34	800	8.3	7.3 - 9.4	8,800	91.7	90.6 - 92.7	9,600
35+	400	12.8	10.5 - 15.4	2,800	87.2	84.6 - 89.5	3,200

**PRAMS Health Indicator 3-Year Aggregate Report - Preterm delivery- by State;County;DOH Race-Ethnicity;PRAMS Age Group;Infant Gender;Married;Poverty Level;Income (2000-2003);Income (2004-2011);Birthweight;Smoke 3rd Trimester;Smoke Before Pregnant;WIC During Pregnancy, for the Year(s)
2000-2002;2001-2003;2002-2004;2003-2005;2004-2006;2005-2007;2006-2008;2007-2009;2008-2010;2009-2011;2010-2012;2011-2013**

Note: Weighted counts (#) represent 3-yr averages, rounded to the nearest hundred; n/r (Not Reportable) - If the unweighted total responses for a dimension (row) is <30 that row will not be shown

Years: 2009-2011

Infant Gender	Yes			No			Weighted Total Responses (3-Yr Avg)
	#	%	C.I.(95%)	#	%	C.I.(95%)	#
Male	900	9.4	8.4 - 10.6	8,700	90.6	89.4 - 91.6	9,600
Female	800	8.6	7.5 - 9.8	8,200	91.4	90.2 - 92.5	8,900

Married	Yes			No			Weighted Total Responses (3-Yr Avg)
	#	%	C.I.(95%)	#	%	C.I.(95%)	#
Yes	1,000	9.0	8.0 - 10.1	10,300	91.0	89.9 - 92.0	11,300
No	700	9.1	8.0 - 10.5	6,500	90.9	89.5 - 92.0	7,200

Poverty Level	Yes			No			Weighted Total Responses (3-Yr Avg)
	#	%	C.I.(95%)	#	%	C.I.(95%)	#
0-130%	600	9.8	8.4 - 11.4	5,900	90.2	88.6 - 91.6	6,500
131-185%	200	7.3	5.7 - 9.4	2,700	92.7	90.6 - 94.3	2,900
186+%	700	8.8	7.7 - 10.2	7,100	91.2	89.8 - 92.3	7,800

**PRAMS Health Indicator 3-Year Aggregate Report - Preterm delivery- by State;County;DOH Race-Ethnicity;PRAMS Age Group;Infant Gender;Married;Poverty Level;Income (2000-2003);Income (2004-2011);Birthweight;Smoke 3rd Trimester;Smoke Before Pregnant;WIC During Pregnancy, for the Year(s)
2000-2002;2001-2003;2002-2004;2003-2005;2004-2006;2005-2007;2006-2008;2007-2009;2008-2010;2009-2011;2010-2012;2011-2013**

Note: Weighted counts (#) represent 3-yr averages, rounded to the nearest hundred; n/r (Not Reportable) - If the unweighted total responses for a dimension (row) is <30 that row will not be shown

Years: 2009-2011

Income (2004-2011)	Yes			No			Weighted Total Responses (3-Yr Avg)
	#	%	C.I.(95%)	#	%	C.I.(95%)	#
<\$10,000	300	10.2	8.2 - 12.7	3,000	89.8	87.3 - 91.8	3,300
\$10,000-\$24,999	300	9.6	7.9 - 11.6	3,200	90.4	88.4 - 92.1	3,500
\$25,000-\$49,999	300	8.0	6.6 - 9.8	4,000	92.0	90.2 - 93.4	4,300
>=\$50,000	500	8.8	7.5 - 10.3	5,600	91.2	89.7 - 92.5	6,200

Birthweight	Yes			No			Weighted Total Responses (3-Yr Avg)
	#	%	C.I.(95%)	#	%	C.I.(95%)	#
Low birth weight	900	66.2	63.2 - 69.0	500	33.8	31.0 - 36.8	1,300
Normal birth weight	700	4.3	3.6 - 5.2	16,400	95.7	94.8 - 96.4	17,100

Smoke 3rd Trimester	Yes			No			Weighted Total Responses (3-Yr Avg)
	#	%	C.I.(95%)	#	%	C.I.(95%)	#
Yes	100	9.2	6.6 - 12.7	1,200	90.8	87.3 - 93.4	1,400
No	1,500	9.0	8.2 - 9.8	15,300	91.0	90.2 - 91.8	16,800

**PRAMS Health Indicator 3-Year Aggregate Report - Preterm delivery- by State;County;DOH Race-Ethnicity;PRAMS Age Group;Infant Gender;Married;Poverty Level;Income (2000-2003);Income (2004-2011);Birthweight;Smoke 3rd Trimester;Smoke Before Pregnant;WIC During Pregnancy, for the Year(s)
2000-2002;2001-2003;2002-2004;2003-2005;2004-2006;2005-2007;2006-2008;2007-2009;2008-2010;2009-2011;2010-2012;2011-2013**

Note: Weighted counts (#) represent 3-yr averages, rounded to the nearest hundred; n/r (Not Reportable) - If the unweighted total responses for a dimension (row) is <30 that row will not be shown

Years: 2009-2011

Smoke Before Pregnant	Yes			No			Weighted Total Responses (3-Yr Avg)
	#	%	C.I.(95%)	#	%	C.I.(95%)	#
Yes	400	9.4	7.8 - 11.3	3,400	90.6	88.7 - 92.2	3,800
No	1,300	8.9	8.0 - 9.9	13,100	91.1	90.1 - 92.0	14,400

WIC During Pregnancy	Yes			No			Weighted Total Responses (3-Yr Avg)
	#	%	C.I.(95%)	#	%	C.I.(95%)	#
Yes	700	9.0	7.9 - 10.2	7,300	91.0	89.8 - 92.1	8,000
No	900	9.1	8.0 - 10.3	9,300	90.9	89.7 - 92.0	10,200

**PRAMS Health Indicator 3-Year Aggregate Report - Preterm delivery- by State;County;DOH Race-Ethnicity;PRAMS Age Group;Infant Gender;Married;Poverty Level;Income (2000-2003);Income (2004-2011);Birthweight;Smoke 3rd Trimester;Smoke Before Pregnant;WIC During Pregnancy, for the Year(s)
2000-2002;2001-2003;2002-2004;2003-2005;2004-2006;2005-2007;2006-2008;2007-2009;2008-2010;2009-2011;2010-2012;2011-2013**

Note: Weighted counts (#) represent 3-yr averages, rounded to the nearest hundred; n/r (Not Reportable) - If the unweighted total responses for a dimension (row) is <30 that row will not be shown

Years: 2008-2010

State	Yes			No			Weighted Total Responses (3-Yr Avg)
	#	%	C.I.(95%)	#	%	C.I.(95%)	#
Totals	1,700	9.3	8.5 - 10.1	16,900	90.7	89.9 - 91.5	18,700

County	Yes			No			Weighted Total Responses (3-Yr Avg)
	#	%	C.I.(95%)	#	%	C.I.(95%)	#
Hawaii	200	9.8	8.0 - 12.0	2,200	90.2	88.0 - 92.0	2,400
Honolulu	1,300	9.7	8.7 - 10.7	12,000	90.3	89.3 - 91.3	13,300
Kauai	100	7.9	6.0 - 10.5	800	92.1	89.5 - 94.0	900
Maui	100	6.7	5.3 - 8.5	2,000	93.3	91.5 - 94.7	2,100

**PRAMS Health Indicator 3-Year Aggregate Report - Preterm delivery- by State;County;DOH Race-Ethnicity;PRAMS Age Group;Infant Gender;Married;Poverty Level;Income (2000-2003);Income (2004-2011);Birthweight;Smoke 3rd Trimester;Smoke Before Pregnant;WIC During Pregnancy, for the Year(s)
2000-2002;2001-2003;2002-2004;2003-2005;2004-2006;2005-2007;2006-2008;2007-2009;2008-2010;2009-2011;2010-2012;2011-2013**

Note: Weighted counts (#) represent 3-yr averages, rounded to the nearest hundred; n/r (Not Reportable) - If the unweighted total responses for a dimension (row) is <30 that row will not be shown

Years: 2008-2010

DOH Race-Ethnicity	Yes			No			Weighted Total Responses (3-Yr Avg)
	#	%	C.I.(95%)	#	%	C.I.(95%)	#
Caucasian	400	7.9	6.4 - 9.7	4,100	92.1	90.3 - 93.6	4,400
Native Hawaiian	500	9.0	7.6 - 10.5	5,100	91.0	89.5 - 92.4	5,600
Chinese	100	8.9	6.2 - 12.6	700	91.1	87.4 - 93.8	700
Filipino	300	10.4	8.5 - 12.5	3,000	89.6	87.5 - 91.5	3,400
Japanese	200	9.2	6.8 - 12.3	1,600	90.8	87.7 - 93.2	1,800
Other	300	10.9	8.6 - 13.7	2,500	89.1	86.3 - 91.4	2,800

PRAMS Age Group	Yes			No			Weighted Total Responses (3-Yr Avg)
	#	%	C.I.(95%)	#	%	C.I.(95%)	#
<20	100	8.7	6.3 - 11.9	1,400	91.3	88.1 - 93.7	1,500
20-24	400	9.0	7.3 - 10.9	3,900	91.0	89.1 - 92.7	4,300
25-34	800	8.4	7.3 - 9.5	8,800	91.6	90.5 - 92.7	9,600
35+	400	12.5	10.5 - 14.9	2,900	87.5	85.1 - 89.5	3,300

**PRAMS Health Indicator 3-Year Aggregate Report - Preterm delivery- by State;County;DOH Race-Ethnicity;PRAMS Age Group;Infant Gender;Married;Poverty Level;Income (2000-2003);Income (2004-2011);Birthweight;Smoke 3rd Trimester;Smoke Before Pregnant;WIC During Pregnancy, for the Year(s)
2000-2002;2001-2003;2002-2004;2003-2005;2004-2006;2005-2007;2006-2008;2007-2009;2008-2010;2009-2011;2010-2012;2011-2013**

Note: Weighted counts (#) represent 3-yr averages, rounded to the nearest hundred; n/r (Not Reportable) - If the unweighted total responses for a dimension (row) is <30 that row will not be shown

Years: 2008-2010

	Yes			No			Weighted Total Responses (3-Yr Avg)
	#	%	C.I.(95%)	#	%	C.I.(95%)	#
Infant Gender							
Male	1,000	10.0	8.9 - 11.2	8,800	90.0	88.8 - 91.1	9,700
Female	800	8.5	7.4 - 9.7	8,200	91.5	90.3 - 92.6	8,900

	Yes			No			Weighted Total Responses (3-Yr Avg)
	#	%	C.I.(95%)	#	%	C.I.(95%)	#
Married							
Yes	1,100	9.3	8.3 - 10.4	10,400	90.7	89.6 - 91.7	11,400
No	700	9.3	8.0 - 10.6	6,600	90.7	89.4 - 92.0	7,200

	Yes			No			Weighted Total Responses (3-Yr Avg)
	#	%	C.I.(95%)	#	%	C.I.(95%)	#
Poverty Level							
0-130%	600	9.5	8.1 - 11.1	6,000	90.5	88.9 - 91.9	6,700
131-185%	200	8.8	6.9 - 11.2	2,600	91.2	88.8 - 93.1	2,800
186+%	700	9.3	8.2 - 10.6	7,000	90.7	89.4 - 91.8	7,800

**PRAMS Health Indicator 3-Year Aggregate Report - Preterm delivery- by State;County;DOH Race-Ethnicity;PRAMS Age Group;Infant Gender;Married;Poverty Level;Income (2000-2003);Income (2004-2011);Birthweight;Smoke 3rd Trimester;Smoke Before Pregnant;WIC During Pregnancy, for the Year(s)
2000-2002;2001-2003;2002-2004;2003-2005;2004-2006;2005-2007;2006-2008;2007-2009;2008-2010;2009-2011;2010-2012;2011-2013**

Note: Weighted counts (#) represent 3-yr averages, rounded to the nearest hundred; n/r (Not Reportable) - If the unweighted total responses for a dimension (row) is <30 that row will not be shown

Years: 2008-2010

Income (2004-2011)	Yes			No			Weighted Total Responses (3-Yr Avg)
	#	%	C.I.(95%)	#	%	C.I.(95%)	#
<\$10,000	300	10.6	8.4 - 13.1	2,900	89.4	86.9 - 91.6	3,300
\$10,000-\$24,999	300	8.9	7.3 - 10.8	3,400	91.1	89.2 - 92.7	3,700
\$25,000-\$49,999	400	10.0	8.3 - 12.0	3,800	90.0	88.0 - 91.7	4,200
>=\$50,000	500	8.7	7.5 - 10.1	5,700	91.3	89.9 - 92.5	6,200

Birthweight	Yes			No			Weighted Total Responses (3-Yr Avg)
	#	%	C.I.(95%)	#	%	C.I.(95%)	#
Low birth weight	900	67.4	63.7 - 70.9	400	32.6	29.1 - 36.3	1,300
Normal birth weight	800	4.6	3.9 - 5.4	16,500	95.4	94.6 - 96.1	17,300

Smoke 3rd Trimester	Yes			No			Weighted Total Responses (3-Yr Avg)
	#	%	C.I.(95%)	#	%	C.I.(95%)	#
Yes	200	9.8	7.1 - 13.4	1,400	90.2	86.6 - 92.9	1,600
No	1,500	9.2	8.3 - 10.0	15,200	90.8	90.0 - 91.7	16,700

**PRAMS Health Indicator 3-Year Aggregate Report - Preterm delivery- by State;County;DOH Race-Ethnicity;PRAMS Age Group;Infant Gender;Married;Poverty Level;Income (2000-2003);Income (2004-2011);Birthweight;Smoke 3rd Trimester;Smoke Before Pregnant;WIC During Pregnancy, for the Year(s)
2000-2002;2001-2003;2002-2004;2003-2005;2004-2006;2005-2007;2006-2008;2007-2009;2008-2010;2009-2011;2010-2012;2011-2013**

Note: Weighted counts (#) represent 3-yr averages, rounded to the nearest hundred; n/r (Not Reportable) - If the unweighted total responses for a dimension (row) is <30 that row will not be shown

Years: 2008-2010

Smoke Before Pregnant	Yes			No			Weighted Total Responses (3-Yr Avg)
	#	%	C.I.(95%)	#	%	C.I.(95%)	#
Yes	400	9.9	8.2 - 12.0	3,400	90.1	88.0 - 91.8	3,800
No	1,300	9.0	8.2 - 10.0	13,200	91.0	90.0 - 91.8	14,500

WIC During Pregnancy	Yes			No			Weighted Total Responses (3-Yr Avg)
	#	%	C.I.(95%)	#	%	C.I.(95%)	#
Yes	700	9.5	8.3 - 10.8	7,200	90.5	89.2 - 91.7	7,900
No	900	9.1	8.1 - 10.3	9,500	90.9	89.7 - 91.9	10,400

**PRAMS Health Indicator 3-Year Aggregate Report - Preterm delivery- by State;County;DOH Race-Ethnicity;PRAMS Age Group;Infant Gender;Married;Poverty Level;Income (2000-2003);Income (2004-2011);Birthweight;Smoke 3rd Trimester;Smoke Before Pregnant;WIC During Pregnancy, for the Year(s)
2000-2002;2001-2003;2002-2004;2003-2005;2004-2006;2005-2007;2006-2008;2007-2009;2008-2010;2009-2011;2010-2012;2011-2013**

Note: Weighted counts (#) represent 3-yr averages, rounded to the nearest hundred; n/r (Not Reportable) - If the unweighted total responses for a dimension (row) is <30 that row will not be shown

Years: 2007-2009

State	Yes			No			Weighted Total Responses (3-Yr Avg)
	#	%	C.I.(95%)	#	%	C.I.(95%)	#
Totals	1,700	9.2	8.5 - 10.0	17,000	90.8	90.0 - 91.5	18,700

County	Yes			No			Weighted Total Responses (3-Yr Avg)
	#	%	C.I.(95%)	#	%	C.I.(95%)	#
Hawaii	200	9.7	7.8 - 12.1	2,200	90.3	87.9 - 92.2	2,500
Honolulu	1,200	9.3	8.4 - 10.3	11,900	90.7	89.7 - 91.6	13,100
Kauai	100	9.1	6.4 - 12.9	900	90.9	87.1 - 93.6	900
Maui	200	7.9	6.2 - 10.1	2,000	92.1	89.9 - 93.8	2,200

**PRAMS Health Indicator 3-Year Aggregate Report - Preterm delivery- by State;County;DOH Race-Ethnicity;PRAMS Age Group;Infant Gender;Married;Poverty Level;Income (2000-2003);Income (2004-2011);Birthweight;Smoke 3rd Trimester;Smoke Before Pregnant;WIC During Pregnancy, for the Year(s)
2000-2002;2001-2003;2002-2004;2003-2005;2004-2006;2005-2007;2006-2008;2007-2009;2008-2010;2009-2011;2010-2012;2011-2013**

Note: Weighted counts (#) represent 3-yr averages, rounded to the nearest hundred; n/r (Not Reportable) - If the unweighted total responses for a dimension (row) is <30 that row will not be shown

Years: 2007-2009

DOH Race-Ethnicity	Yes			No			Weighted Total Responses (3-Yr Avg)
	#	%	C.I.(95%)	#	%	C.I.(95%)	#
Caucasian	400	8.3	6.9 - 10.1	4,000	91.7	89.9 - 93.1	4,300
Native Hawaiian	500	9.2	7.8 - 10.9	5,000	90.8	89.1 - 92.2	5,500
Chinese	100	7.9	5.4 - 11.5	600	92.1	88.5 - 94.6	700
Filipino	400	11.4	9.6 - 13.4	3,000	88.6	86.6 - 90.4	3,400
Japanese	100	7.5	5.5 - 10.1	1,800	92.5	89.9 - 94.5	1,900
Other	300	9.4	7.5 - 11.8	2,600	90.6	88.2 - 92.5	2,900

PRAMS Age Group	Yes			No			Weighted Total Responses (3-Yr Avg)
	#	%	C.I.(95%)	#	%	C.I.(95%)	#
<20	200	9.9	7.3 - 13.2	1,500	90.1	86.8 - 92.7	1,700
20-24	400	8.6	7.1 - 10.5	4,000	91.4	89.5 - 92.9	4,300
25-34	800	8.3	7.3 - 9.4	8,600	91.7	90.6 - 92.7	9,400
35+	400	12.3	10.4 - 14.6	2,900	87.7	85.4 - 89.6	3,300

**PRAMS Health Indicator 3-Year Aggregate Report - Preterm delivery- by State;County;DOH Race-Ethnicity;PRAMS Age Group;Infant Gender;Married;Poverty Level;Income (2000-2003);Income (2004-2011);Birthweight;Smoke 3rd Trimester;Smoke Before Pregnant;WIC During Pregnancy, for the Year(s)
2000-2002;2001-2003;2002-2004;2003-2005;2004-2006;2005-2007;2006-2008;2007-2009;2008-2010;2009-2011;2010-2012;2011-2013**

Note: Weighted counts (#) represent 3-yr averages, rounded to the nearest hundred; n/r (Not Reportable) - If the unweighted total responses for a dimension (row) is <30 that row will not be shown

Years: 2007-2009

Infant Gender	Yes			No			Weighted Total Responses (3-Yr Avg)
	#	%	C.I.(95%)	#	%	C.I.(95%)	#
Male	1,000	9.7	8.6 - 10.8	8,900	90.3	89.2 - 91.4	9,800
Female	800	8.7	7.7 - 9.9	8,100	91.3	90.1 - 92.3	8,900

Married	Yes			No			Weighted Total Responses (3-Yr Avg)
	#	%	C.I.(95%)	#	%	C.I.(95%)	#
Yes	1,000	9.1	8.2 - 10.2	10,400	90.9	89.8 - 91.8	11,500
No	700	9.4	8.2 - 10.7	6,600	90.6	89.3 - 91.8	7,300

Poverty Level	Yes			No			Weighted Total Responses (3-Yr Avg)
	#	%	C.I.(95%)	#	%	C.I.(95%)	#
0-130%	600	9.2	7.9 - 10.6	6,200	90.8	89.4 - 92.1	6,800
131-185%	300	9.4	7.4 - 11.8	2,500	90.6	88.2 - 92.6	2,700
186+%	700	9.4	8.3 - 10.7	6,900	90.6	89.3 - 91.7	7,700

**PRAMS Health Indicator 3-Year Aggregate Report - Preterm delivery- by State;County;DOH Race-Ethnicity;PRAMS Age Group;Infant Gender;Married;Poverty Level;Income (2000-2003);Income (2004-2011);Birthweight;Smoke 3rd Trimester;Smoke Before Pregnant;WIC During Pregnancy, for the Year(s)
2000-2002;2001-2003;2002-2004;2003-2005;2004-2006;2005-2007;2006-2008;2007-2009;2008-2010;2009-2011;2010-2012;2011-2013**

Note: Weighted counts (#) represent 3-yr averages, rounded to the nearest hundred; n/r (Not Reportable) - If the unweighted total responses for a dimension (row) is <30 that row will not be shown

Years: 2007-2009

Income (2004-2011)	Yes			No			Weighted Total Responses (3-Yr Avg)
	#	%	C.I.(95%)	#	%	C.I.(95%)	#
<\$10,000	300	9.2	7.4 - 11.4	2,900	90.8	88.6 - 92.6	3,200
\$10,000-\$24,999	400	10.5	8.7 - 12.5	3,500	89.5	87.5 - 91.3	3,900
\$25,000-\$49,999	400	9.1	7.6 - 11.0	3,700	90.9	89.0 - 92.4	4,100
>=\$50,000	500	8.8	7.6 - 10.2	5,600	91.2	89.8 - 92.4	6,200

Birthweight	Yes			No			Weighted Total Responses (3-Yr Avg)
	#	%	C.I.(95%)	#	%	C.I.(95%)	#
Low birth weight	900	65.8	61.4 - 69.9	500	34.2	30.1 - 38.6	1,400
Normal birth weight	800	4.5	3.9 - 5.2	16,500	95.5	94.8 - 96.1	17,300

Smoke 3rd Trimester	Yes			No			Weighted Total Responses (3-Yr Avg)
	#	%	C.I.(95%)	#	%	C.I.(95%)	#
Yes	200	11.8	9.0 - 15.3	1,400	88.2	84.7 - 91.0	1,600
No	1,500	8.9	8.1 - 9.8	15,200	91.1	90.2 - 91.9	16,700

**PRAMS Health Indicator 3-Year Aggregate Report - Preterm delivery- by State;County;DOH Race-Ethnicity;PRAMS Age Group;Infant Gender;Married;Poverty Level;Income (2000-2003);Income (2004-2011);Birthweight;Smoke 3rd Trimester;Smoke Before Pregnant;WIC During Pregnancy, for the Year(s)
2000-2002;2001-2003;2002-2004;2003-2005;2004-2006;2005-2007;2006-2008;2007-2009;2008-2010;2009-2011;2010-2012;2011-2013**

Note: Weighted counts (#) represent 3-yr averages, rounded to the nearest hundred; n/r (Not Reportable) - If the unweighted total responses for a dimension (row) is <30 that row will not be shown

Years: 2007-2009

Smoke Before Pregnant	Yes			No			Weighted Total Responses (3-Yr Avg)
	#	%	C.I.(95%)	#	%	C.I.(95%)	#
Yes	400	10.1	8.3 - 12.2	3,300	89.9	87.8 - 91.7	3,700
No	1,300	8.9	8.1 - 9.9	13,300	91.1	90.1 - 91.9	14,600

WIC During Pregnancy	Yes			No			Weighted Total Responses (3-Yr Avg)
	#	%	C.I.(95%)	#	%	C.I.(95%)	#
Yes	700	9.5	8.3 - 10.8	7,100	90.5	89.2 - 91.7	7,800
No	900	9.0	8.0 - 10.1	9,500	91.0	89.9 - 92.0	10,500

**PRAMS Health Indicator 3-Year Aggregate Report - Preterm delivery- by State;County;DOH Race-Ethnicity;PRAMS Age Group;Infant Gender;Married;Poverty Level;Income (2000-2003);Income (2004-2011);Birthweight;Smoke 3rd Trimester;Smoke Before Pregnant;WIC During Pregnancy, for the Year(s)
2000-2002;2001-2003;2002-2004;2003-2005;2004-2006;2005-2007;2006-2008;2007-2009;2008-2010;2009-2011;2010-2012;2011-2013**

Note: Weighted counts (#) represent 3-yr averages, rounded to the nearest hundred; n/r (Not Reportable) - If the unweighted total responses for a dimension (row) is <30 that row will not be shown

Years: 2006-2008

State	Yes			No			Weighted Total Responses (3-Yr Avg)
	#	%	C.I.(95%)	#	%	C.I.(95%)	#
Totals	1,800	9.4	8.7 - 10.3	17,000	90.6	89.7 - 91.3	18,800

County	Yes			No			Weighted Total Responses (3-Yr Avg)
	#	%	C.I.(95%)	#	%	C.I.(95%)	#
Hawaii	200	9.9	7.8 - 12.6	2,200	90.1	87.4 - 92.2	2,400
Honolulu	1,300	9.6	8.7 - 10.6	12,000	90.4	89.4 - 91.3	13,300
Kauai	100	10.7	7.4 - 15.2	800	89.3	84.8 - 92.6	900
Maui	200	7.5	5.6 - 10.1	2,000	92.5	89.9 - 94.4	2,100

**PRAMS Health Indicator 3-Year Aggregate Report - Preterm delivery- by State;County;DOH Race-Ethnicity;PRAMS Age Group;Infant Gender;Married;Poverty Level;Income (2000-2003);Income (2004-2011);Birthweight;Smoke 3rd Trimester;Smoke Before Pregnant;WIC During Pregnancy, for the Year(s)
2000-2002;2001-2003;2002-2004;2003-2005;2004-2006;2005-2007;2006-2008;2007-2009;2008-2010;2009-2011;2010-2012;2011-2013**

Note: Weighted counts (#) represent 3-yr averages, rounded to the nearest hundred; n/r (Not Reportable) - If the unweighted total responses for a dimension (row) is <30 that row will not be shown

Years: 2006-2008

DOH Race-Ethnicity	Yes			No			Weighted Total Responses (3-Yr Avg)
	#	%	C.I.(95%)	#	%	C.I.(95%)	#
Caucasian	300	8.0	6.6 - 9.7	4,000	92.0	90.3 - 93.4	4,300
Native Hawaiian	500	8.7	7.2 - 10.5	4,700	91.3	89.5 - 92.8	5,200
Chinese	100	8.8	6.8 - 11.3	600	91.2	88.7 - 93.2	600
Filipino	400	12.2	10.4 - 14.3	3,100	87.8	85.7 - 89.6	3,500
Japanese	200	9.8	7.7 - 12.5	1,900	90.2	87.5 - 92.3	2,100
Other	300	9.5	7.6 - 11.7	2,700	90.5	88.3 - 92.4	3,000

PRAMS Age Group	Yes			No			Weighted Total Responses (3-Yr Avg)
	#	%	C.I.(95%)	#	%	C.I.(95%)	#
<20	200	13.1	10.0 - 17.0	1,400	86.9	83.0 - 90.0	1,600
20-24	400	8.9	7.4 - 10.8	4,000	91.1	89.2 - 92.6	4,400
25-34	800	8.4	7.4 - 9.5	8,600	91.6	90.5 - 92.6	9,400
35+	400	11.2	9.4 - 13.3	3,000	88.8	86.7 - 90.6	3,300

**PRAMS Health Indicator 3-Year Aggregate Report - Preterm delivery- by State;County;DOH Race-Ethnicity;PRAMS Age Group;Infant Gender;Married;Poverty Level;Income (2000-2003);Income (2004-2011);Birthweight;Smoke 3rd Trimester;Smoke Before Pregnant;WIC During Pregnancy, for the Year(s)
2000-2002;2001-2003;2002-2004;2003-2005;2004-2006;2005-2007;2006-2008;2007-2009;2008-2010;2009-2011;2010-2012;2011-2013**

Note: Weighted counts (#) represent 3-yr averages, rounded to the nearest hundred; n/r (Not Reportable) - If the unweighted total responses for a dimension (row) is <30 that row will not be shown

Years: 2006-2008

Infant Gender	Yes			No			Weighted Total Responses (3-Yr Avg)
	#	%	C.I.(95%)	#	%	C.I.(95%)	#
Male	900	9.6	8.5 - 10.8	8,800	90.4	89.2 - 91.5	9,700
Female	800	9.3	8.2 - 10.5	8,200	90.7	89.5 - 91.8	9,100

Married	Yes			No			Weighted Total Responses (3-Yr Avg)
	#	%	C.I.(95%)	#	%	C.I.(95%)	#
Yes	1,000	8.8	7.9 - 9.8	10,700	91.2	90.2 - 92.1	11,800
No	700	10.6	9.2 - 12.1	6,300	89.4	87.9 - 90.8	7,000

Poverty Level	Yes			No			Weighted Total Responses (3-Yr Avg)
	#	%	C.I.(95%)	#	%	C.I.(95%)	#
0-130%	700	10.6	9.2 - 12.1	6,100	89.4	87.9 - 90.8	6,800
131-185%	200	7.7	6.0 - 9.9	2,400	92.3	90.1 - 94.0	2,600
186+%	700	9.3	8.2 - 10.5	7,200	90.7	89.5 - 91.8	8,000

**PRAMS Health Indicator 3-Year Aggregate Report - Preterm delivery- by State;County;DOH Race-Ethnicity;PRAMS Age Group;Infant Gender;Married;Poverty Level;Income (2000-2003);Income (2004-2011);Birthweight;Smoke 3rd Trimester;Smoke Before Pregnant;WIC During Pregnancy, for the Year(s)
2000-2002;2001-2003;2002-2004;2003-2005;2004-2006;2005-2007;2006-2008;2007-2009;2008-2010;2009-2011;2010-2012;2011-2013**

Note: Weighted counts (#) represent 3-yr averages, rounded to the nearest hundred; n/r (Not Reportable) - If the unweighted total responses for a dimension (row) is <30 that row will not be shown

Years: 2006-2008

Income (2004-2011)	Yes			No			Weighted Total Responses (3-Yr Avg)
	#	%	C.I.(95%)	#	%	C.I.(95%)	#
<\$10,000	400	12.3	10.2 - 14.9	2,800	87.7	85.1 - 89.8	3,200
\$10,000-\$24,999	400	9.3	7.6 - 11.2	3,600	90.7	88.8 - 92.4	3,900
\$25,000-\$49,999	400	8.9	7.4 - 10.6	3,900	91.1	89.4 - 92.6	4,300
>=\$50,000	500	8.7	7.5 - 10.0	5,600	91.3	90.0 - 92.5	6,100

Birthweight	Yes			No			Weighted Total Responses (3-Yr Avg)
	#	%	C.I.(95%)	#	%	C.I.(95%)	#
Low birth weight	1,000	65.9	61.1 - 70.4	500	34.1	29.6 - 38.9	1,500
Normal birth weight	800	4.5	3.9 - 5.1	16,500	95.5	94.9 - 96.1	17,300

Smoke 3rd Trimester	Yes			No			Weighted Total Responses (3-Yr Avg)
	#	%	C.I.(95%)	#	%	C.I.(95%)	#
Yes	200	12.5	9.6 - 16.1	1,400	87.5	83.9 - 90.4	1,600
No	1,500	9.1	8.3 - 10.0	15,300	90.9	90.0 - 91.7	16,800

**PRAMS Health Indicator 3-Year Aggregate Report - Preterm delivery- by State;County;DOH Race-Ethnicity;PRAMS Age Group;Infant Gender;Married;Poverty Level;Income (2000-2003);Income (2004-2011);Birthweight;Smoke 3rd Trimester;Smoke Before Pregnant;WIC During Pregnancy, for the Year(s)
2000-2002;2001-2003;2002-2004;2003-2005;2004-2006;2005-2007;2006-2008;2007-2009;2008-2010;2009-2011;2010-2012;2011-2013**

Note: Weighted counts (#) represent 3-yr averages, rounded to the nearest hundred; n/r (Not Reportable) - If the unweighted total responses for a dimension (row) is <30 that row will not be shown

Years: 2006-2008

Smoke Before Pregnant	Yes			No			Weighted Total Responses (3-Yr Avg)
	#	%	C.I.(95%)	#	%	C.I.(95%)	#
Yes	400	10.1	8.3 - 12.3	3,300	89.9	87.7 - 91.7	3,700
No	1,400	9.2	8.4 - 10.1	13,400	90.8	89.9 - 91.6	14,700

WIC During Pregnancy	Yes			No			Weighted Total Responses (3-Yr Avg)
	#	%	C.I.(95%)	#	%	C.I.(95%)	#
Yes	800	10.2	8.9 - 11.6	7,100	89.8	88.4 - 91.1	7,900
No	900	9.0	8.0 - 10.0	9,600	91.0	90.0 - 92.0	10,500

**PRAMS Health Indicator 3-Year Aggregate Report - Preterm delivery- by State;County;DOH Race-Ethnicity;PRAMS Age Group;Infant Gender;Married;Poverty Level;Income (2000-2003);Income (2004-2011);Birthweight;Smoke 3rd Trimester;Smoke Before Pregnant;WIC During Pregnancy, for the Year(s)
2000-2002;2001-2003;2002-2004;2003-2005;2004-2006;2005-2007;2006-2008;2007-2009;2008-2010;2009-2011;2010-2012;2011-2013**

Note: Weighted counts (#) represent 3-yr averages, rounded to the nearest hundred; n/r (Not Reportable) - If the unweighted total responses for a dimension (row) is <30 that row will not be shown

Years: 2005-2007

State	Yes			No			Weighted Total Responses (3-Yr Avg)
	#	%	C.I.(95%)	#	%	C.I.(95%)	#
Totals	1,800	9.8	9.0 - 10.6	16,500	90.2	89.4 - 91.0	18,200

County	Yes			No			Weighted Total Responses (3-Yr Avg)
	#	%	C.I.(95%)	#	%	C.I.(95%)	#
Hawaii	200	10.7	8.4 - 13.4	2,100	89.3	86.6 - 91.6	2,300
Honolulu	1,300	9.7	8.8 - 10.6	11,800	90.3	89.4 - 91.2	13,100
Kauai	100	12.3	8.6 - 17.2	800	87.7	82.8 - 91.4	900
Maui	200	8.3	6.2 - 11.0	1,800	91.7	89.0 - 93.8	2,000

**PRAMS Health Indicator 3-Year Aggregate Report - Preterm delivery- by State;County;DOH Race-Ethnicity;PRAMS Age Group;Infant Gender;Married;Poverty Level;Income (2000-2003);Income (2004-2011);Birthweight;Smoke 3rd Trimester;Smoke Before Pregnant;WIC During Pregnancy, for the Year(s)
2000-2002;2001-2003;2002-2004;2003-2005;2004-2006;2005-2007;2006-2008;2007-2009;2008-2010;2009-2011;2010-2012;2011-2013**

Note: Weighted counts (#) represent 3-yr averages, rounded to the nearest hundred; n/r (Not Reportable) - If the unweighted total responses for a dimension (row) is <30 that row will not be shown

Years: 2005-2007

DOH Race-Ethnicity	Yes			No			Weighted Total Responses (3-Yr Avg)
	#	%	C.I.(95%)	#	%	C.I.(95%)	#
Caucasian	300	7.0	5.6 - 8.6	3,800	93.0	91.4 - 94.4	4,100
Native Hawaiian	500	10.5	8.9 - 12.4	4,500	89.5	87.6 - 91.1	5,100
Chinese	100	9.2	7.3 - 11.7	600	90.8	88.3 - 92.7	600
Filipino	400	12.6	10.8 - 14.7	3,000	87.4	85.3 - 89.2	3,400
Japanese	200	9.2	7.2 - 11.7	2,000	90.8	88.3 - 92.8	2,200
Other	300	9.7	7.8 - 11.9	2,500	90.3	88.1 - 92.2	2,800

PRAMS Age Group	Yes			No			Weighted Total Responses (3-Yr Avg)
	#	%	C.I.(95%)	#	%	C.I.(95%)	#
<20	200	14.8	11.5 - 18.8	1,400	85.2	81.2 - 88.5	1,600
20-24	400	9.7	8.1 - 11.5	4,100	90.3	88.5 - 91.9	4,500
25-34	800	8.8	7.8 - 10.0	8,200	91.2	90.0 - 92.2	9,000
35+	300	10.0	8.3 - 12.0	2,900	90.0	88.0 - 91.7	3,200

**PRAMS Health Indicator 3-Year Aggregate Report - Preterm delivery- by State;County;DOH Race-Ethnicity;PRAMS Age Group;Infant Gender;Married;Poverty Level;Income (2000-2003);Income (2004-2011);Birthweight;Smoke 3rd Trimester;Smoke Before Pregnant;WIC During Pregnancy, for the Year(s)
2000-2002;2001-2003;2002-2004;2003-2005;2004-2006;2005-2007;2006-2008;2007-2009;2008-2010;2009-2011;2010-2012;2011-2013**

Note: Weighted counts (#) represent 3-yr averages, rounded to the nearest hundred; n/r (Not Reportable) - If the unweighted total responses for a dimension (row) is <30 that row will not be shown

Years: 2005-2007

Infant Gender	Yes			No			Weighted Total Responses (3-Yr Avg)
	#	%	C.I.(95%)	#	%	C.I.(95%)	#
Male	900	9.9	8.8 - 11.1	8,400	90.1	88.9 - 91.2	9,300
Female	900	9.7	8.6 - 10.9	8,100	90.3	89.1 - 91.4	8,900

Married	Yes			No			Weighted Total Responses (3-Yr Avg)
	#	%	C.I.(95%)	#	%	C.I.(95%)	#
Yes	1,000	9.0	8.1 - 10.0	10,500	91.0	90.0 - 91.9	11,500
No	700	11.1	9.7 - 12.7	6,000	88.9	87.3 - 90.3	6,700

Poverty Level	Yes			No			Weighted Total Responses (3-Yr Avg)
	#	%	C.I.(95%)	#	%	C.I.(95%)	#
0-130%	800	11.7	10.3 - 13.4	5,800	88.3	86.6 - 89.7	6,600
131-185%	200	7.0	5.3 - 9.2	2,200	93.0	90.8 - 94.7	2,400
186+%	700	9.1	8.0 - 10.3	7,200	90.9	89.7 - 92.0	7,900

**PRAMS Health Indicator 3-Year Aggregate Report - Preterm delivery- by State;County;DOH Race-Ethnicity;PRAMS Age Group;Infant Gender;Married;Poverty Level;Income (2000-2003);Income (2004-2011);Birthweight;Smoke 3rd Trimester;Smoke Before Pregnant;WIC During Pregnancy, for the Year(s)
2000-2002;2001-2003;2002-2004;2003-2005;2004-2006;2005-2007;2006-2008;2007-2009;2008-2010;2009-2011;2010-2012;2011-2013**

Note: Weighted counts (#) represent 3-yr averages, rounded to the nearest hundred; n/r (Not Reportable) - If the unweighted total responses for a dimension (row) is <30 that row will not be shown

Years: 2005-2007

Income (2004-2011)	Yes			No			Weighted Total Responses (3-Yr Avg)
	#	%	C.I.(95%)	#	%	C.I.(95%)	#
<\$10,000	400	13.3	11.0 - 15.9	2,700	86.7	84.1 - 89.0	3,100
\$10,000-\$24,999	400	10.0	8.3 - 12.0	3,400	90.0	88.0 - 91.7	3,800
\$25,000-\$49,999	300	8.1	6.7 - 9.8	3,900	91.9	90.2 - 93.3	4,200
>=\$50,000	500	9.1	7.9 - 10.5	5,300	90.9	89.5 - 92.1	5,800

Birthweight	Yes			No			Weighted Total Responses (3-Yr Avg)
	#	%	C.I.(95%)	#	%	C.I.(95%)	#
Low birth weight	1,000	66.1	61.4 - 70.6	500	33.9	29.4 - 38.6	1,500
Normal birth weight	800	4.8	4.2 - 5.4	16,000	95.2	94.6 - 95.8	16,800

Smoke 3rd Trimester	Yes			No			Weighted Total Responses (3-Yr Avg)
	#	%	C.I.(95%)	#	%	C.I.(95%)	#
Yes	200	13.0	9.9 - 16.7	1,400	87.0	83.3 - 90.1	1,600
No	1,500	9.5	8.7 - 10.3	14,800	90.5	89.7 - 91.3	16,400

**PRAMS Health Indicator 3-Year Aggregate Report - Preterm delivery- by State;County;DOH Race-Ethnicity;PRAMS Age Group;Infant Gender;Married;Poverty Level;Income (2000-2003);Income (2004-2011);Birthweight;Smoke 3rd Trimester;Smoke Before Pregnant;WIC During Pregnancy, for the Year(s)
2000-2002;2001-2003;2002-2004;2003-2005;2004-2006;2005-2007;2006-2008;2007-2009;2008-2010;2009-2011;2010-2012;2011-2013**

Note: Weighted counts (#) represent 3-yr averages, rounded to the nearest hundred; n/r (Not Reportable) - If the unweighted total responses for a dimension (row) is <30 that row will not be shown

Years: 2005-2007

Smoke Before Pregnant	Yes			No			Weighted Total Responses (3-Yr Avg)
	#	%	C.I.(95%)	#	%	C.I.(95%)	#
Yes	400	10.2	8.4 - 12.3	3,300	89.8	87.7 - 91.6	3,700
No	1,400	9.6	8.8 - 10.6	12,800	90.4	89.4 - 91.2	14,200

WIC During Pregnancy	Yes			No			Weighted Total Responses (3-Yr Avg)
	#	%	C.I.(95%)	#	%	C.I.(95%)	#
Yes	800	10.9	9.6 - 12.3	6,800	89.1	87.7 - 90.4	7,700
No	900	9.0	8.0 - 10.1	9,300	91.0	89.9 - 92.0	10,200

**PRAMS Health Indicator 3-Year Aggregate Report - Preterm delivery- by State;County;DOH Race-Ethnicity;PRAMS Age Group;Infant Gender;Married;Poverty Level;Income (2000-2003);Income (2004-2011);Birthweight;Smoke 3rd Trimester;Smoke Before Pregnant;WIC During Pregnancy, for the Year(s)
2000-2002;2001-2003;2002-2004;2003-2005;2004-2006;2005-2007;2006-2008;2007-2009;2008-2010;2009-2011;2010-2012;2011-2013**

Note: Weighted counts (#) represent 3-yr averages, rounded to the nearest hundred; n/r (Not Reportable) - If the unweighted total responses for a dimension (row) is <30 that row will not be shown

Years: 2004-2006

State	Yes			No			Weighted Total Responses (3-Yr Avg)
	#	%	C.I.(95%)	#	%	C.I.(95%)	#
Totals	1,700	9.6	8.9 - 10.5	16,200	90.4	89.5 - 91.1	18,000

County	Yes			No			Weighted Total Responses (3-Yr Avg)
	#	%	C.I.(95%)	#	%	C.I.(95%)	#
Hawaii	300	11.4	9.1 - 14.2	2,000	88.6	85.8 - 90.9	2,200
Honolulu	1,300	9.6	8.7 - 10.5	11,800	90.4	89.5 - 91.3	13,100
Kauai	100	10.0	6.7 - 14.6	700	90.0	85.4 - 93.3	800
Maui	100	7.8	5.8 - 10.4	1,700	92.2	89.6 - 94.2	1,800

**PRAMS Health Indicator 3-Year Aggregate Report - Preterm delivery- by State;County;DOH Race-Ethnicity;PRAMS Age Group;Infant Gender;Married;Poverty Level;Income (2000-2003);Income (2004-2011);Birthweight;Smoke 3rd Trimester;Smoke Before Pregnant;WIC During Pregnancy, for the Year(s)
2000-2002;2001-2003;2002-2004;2003-2005;2004-2006;2005-2007;2006-2008;2007-2009;2008-2010;2009-2011;2010-2012;2011-2013**

Note: Weighted counts (#) represent 3-yr averages, rounded to the nearest hundred; n/r (Not Reportable) - If the unweighted total responses for a dimension (row) is <30 that row will not be shown

Years: 2004-2006

DOH Race-Ethnicity	Yes			No			Weighted Total Responses (3-Yr Avg)
	#	%	C.I.(95%)	#	%	C.I.(95%)	#
Caucasian	300	6.6	5.3 - 8.1	3,800	93.4	91.9 - 94.7	4,000
Native Hawaiian	500	10.3	8.7 - 12.1	4,500	89.7	87.9 - 91.3	5,000
Chinese	100	9.8	7.9 - 12.1	600	90.2	87.9 - 92.1	600
Filipino	400	11.5	9.8 - 13.5	3,000	88.5	86.5 - 90.2	3,400
Japanese	200	10.3	8.3 - 12.8	2,000	89.7	87.2 - 91.7	2,300
Other	300	10.1	8.1 - 12.4	2,400	89.9	87.6 - 91.9	2,700

PRAMS Age Group	Yes			No			Weighted Total Responses (3-Yr Avg)
	#	%	C.I.(95%)	#	%	C.I.(95%)	#
<20	200	13.3	10.2 - 17.1	1,300	86.7	82.9 - 89.8	1,500
20-24	400	9.9	8.3 - 11.7	4,000	90.1	88.3 - 91.7	4,400
25-34	800	8.8	7.8 - 10.0	8,000	91.2	90.0 - 92.2	8,800
35+	300	9.9	8.3 - 11.8	2,900	90.1	88.2 - 91.7	3,200

**PRAMS Health Indicator 3-Year Aggregate Report - Preterm delivery- by State;County;DOH Race-Ethnicity;PRAMS Age Group;Infant Gender;Married;Poverty Level;Income (2000-2003);Income (2004-2011);Birthweight;Smoke 3rd Trimester;Smoke Before Pregnant;WIC During Pregnancy, for the Year(s)
2000-2002;2001-2003;2002-2004;2003-2005;2004-2006;2005-2007;2006-2008;2007-2009;2008-2010;2009-2011;2010-2012;2011-2013**

Note: Weighted counts (#) represent 3-yr averages, rounded to the nearest hundred; n/r (Not Reportable) - If the unweighted total responses for a dimension (row) is <30 that row will not be shown

Years: 2004-2006

Infant Gender	Yes			No			Weighted Total Responses (3-Yr Avg)
	#	%	C.I.(95%)	#	%	C.I.(95%)	#
Male	900	9.9	8.8 - 11.0	8,400	90.1	89.0 - 91.2	9,400
Female	800	9.4	8.3 - 10.6	7,800	90.6	89.4 - 91.7	8,600

Married	Yes			No			Weighted Total Responses (3-Yr Avg)
	#	%	C.I.(95%)	#	%	C.I.(95%)	#
Yes	1,100	8.9	8.1 - 9.9	10,700	91.1	90.1 - 91.9	11,800
No	700	11.0	9.5 - 12.6	5,500	89.0	87.4 - 90.5	6,200

Poverty Level	Yes			No			Weighted Total Responses (3-Yr Avg)
	#	%	C.I.(95%)	#	%	C.I.(95%)	#
0-130%	700	11.2	9.8 - 12.7	5,700	88.8	87.3 - 90.2	6,400
131-185%	100	6.4	4.7 - 8.7	2,000	93.6	91.3 - 95.3	2,200
186+%	700	9.3	8.2 - 10.5	7,200	90.7	89.5 - 91.8	7,900

**PRAMS Health Indicator 3-Year Aggregate Report - Preterm delivery- by State;County;DOH Race-Ethnicity;PRAMS Age Group;Infant Gender;Married;Poverty Level;Income (2000-2003);Income (2004-2011);Birthweight;Smoke 3rd Trimester;Smoke Before Pregnant;WIC During Pregnancy, for the Year(s)
2000-2002;2001-2003;2002-2004;2003-2005;2004-2006;2005-2007;2006-2008;2007-2009;2008-2010;2009-2011;2010-2012;2011-2013**

Note: Weighted counts (#) represent 3-yr averages, rounded to the nearest hundred; n/r (Not Reportable) - If the unweighted total responses for a dimension (row) is <30 that row will not be shown

Years: 2004-2006

Income (2004-2011)	Yes			No			Weighted Total Responses (3-Yr Avg)
	#	%	C.I.(95%)	#	%	C.I.(95%)	#
<\$10,000	400	12.6	10.4 - 15.1	2,600	87.4	84.9 - 89.6	3,000
\$10,000-\$24,999	300	8.8	7.3 - 10.5	3,600	91.2	89.5 - 92.7	3,900
\$25,000-\$49,999	400	9.0	7.6 - 10.7	3,900	91.0	89.3 - 92.4	4,300
>=\$50,000	500	9.1	7.9 - 10.6	5,000	90.9	89.4 - 92.1	5,500

Birthweight	Yes			No			Weighted Total Responses (3-Yr Avg)
	#	%	C.I.(95%)	#	%	C.I.(95%)	#
Low birth weight	900	68.5	63.7 - 73.0	400	31.5	27.0 - 36.3	1,300
Normal birth weight	800	4.9	4.3 - 5.5	15,800	95.1	94.5 - 95.7	16,600

Smoke 3rd Trimester	Yes			No			Weighted Total Responses (3-Yr Avg)
	#	%	C.I.(95%)	#	%	C.I.(95%)	#
Yes	200	13.1	10.2 - 16.8	1,300	86.9	83.2 - 89.8	1,500
No	1,500	9.2	8.4 - 10.1	14,600	90.8	89.9 - 91.6	16,100

**PRAMS Health Indicator 3-Year Aggregate Report - Preterm delivery- by State;County;DOH Race-Ethnicity;PRAMS Age Group;Infant Gender;Married;Poverty Level;Income (2000-2003);Income (2004-2011);Birthweight;Smoke 3rd Trimester;Smoke Before Pregnant;WIC During Pregnancy, for the Year(s)
2000-2002;2001-2003;2002-2004;2003-2005;2004-2006;2005-2007;2006-2008;2007-2009;2008-2010;2009-2011;2010-2012;2011-2013**

Note: Weighted counts (#) represent 3-yr averages, rounded to the nearest hundred; n/r (Not Reportable) - If the unweighted total responses for a dimension (row) is <30 that row will not be shown

Years: 2004-2006

Smoke Before Pregnant	Yes			No			Weighted Total Responses (3-Yr Avg)
	#	%	C.I.(95%)	#	%	C.I.(95%)	#
Yes	400	9.8	8.1 - 11.9	3,300	90.2	88.1 - 91.9	3,700
No	1,300	9.5	8.6 - 10.4	12,600	90.5	89.6 - 91.4	13,900

WIC During Pregnancy	Yes			No			Weighted Total Responses (3-Yr Avg)
	#	%	C.I.(95%)	#	%	C.I.(95%)	#
Yes	800	10.5	9.3 - 11.9	6,900	89.5	88.1 - 90.7	7,700
No	900	9.1	8.2 - 10.2	9,000	90.9	89.8 - 91.8	9,900

**PRAMS Health Indicator 3-Year Aggregate Report - Preterm delivery- by State;County;DOH Race-Ethnicity;PRAMS Age Group;Infant Gender;Married;Poverty Level;Income (2000-2003);Income (2004-2011);Birthweight;Smoke 3rd Trimester;Smoke Before Pregnant;WIC During Pregnancy, for the Year(s)
2000-2002;2001-2003;2002-2004;2003-2005;2004-2006;2005-2007;2006-2008;2007-2009;2008-2010;2009-2011;2010-2012;2011-2013**

Note: Weighted counts (#) represent 3-yr averages, rounded to the nearest hundred; n/r (Not Reportable) - If the unweighted total responses for a dimension (row) is <30 that row will not be shown

Years: 2003-2005

State	Yes			No			Weighted Total Responses (3-Yr Avg)
	#	%	C.I.(95%)	#	%	C.I.(95%)	#
Totals	1,600	9.3	8.5 - 10.1	16,000	90.7	89.9 - 91.5	17,700

County	Yes			No			Weighted Total Responses (3-Yr Avg)
	#	%	C.I.(95%)	#	%	C.I.(95%)	#
Hawaii	200	10.9	8.9 - 13.4	1,900	89.1	86.6 - 91.1	2,200
Honolulu	1,200	9.2	8.3 - 10.3	11,700	90.8	89.7 - 91.7	12,900
Kauai	100	7.2	4.7 - 10.7	700	92.8	89.3 - 95.3	800
Maui	200	8.7	6.8 - 11.0	1,700	91.3	89.0 - 93.2	1,800

**PRAMS Health Indicator 3-Year Aggregate Report - Preterm delivery- by State;County;DOH Race-Ethnicity;PRAMS Age Group;Infant Gender;Married;Poverty Level;Income (2000-2003);Income (2004-2011);Birthweight;Smoke 3rd Trimester;Smoke Before Pregnant;WIC During Pregnancy, for the Year(s)
2000-2002;2001-2003;2002-2004;2003-2005;2004-2006;2005-2007;2006-2008;2007-2009;2008-2010;2009-2011;2010-2012;2011-2013**

Note: Weighted counts (#) represent 3-yr averages, rounded to the nearest hundred; n/r (Not Reportable) - If the unweighted total responses for a dimension (row) is <30 that row will not be shown

Years: 2003-2005

DOH Race-Ethnicity	Yes			No			Weighted Total Responses (3-Yr Avg)
	#	%	C.I.(95%)	#	%	C.I.(95%)	#
Caucasian	200	6.0	4.7 - 7.6	3,600	94.0	92.4 - 95.3	3,800
Native Hawaiian	500	11.1	9.6 - 12.8	4,300	88.9	87.2 - 90.4	4,900
Chinese	<50	7.4	5.3 - 10.3	600	92.6	89.7 - 94.7	700
Filipino	400	10.2	8.5 - 12.3	3,200	89.8	87.7 - 91.5	3,500
Japanese	200	8.4	6.4 - 10.9	2,000	91.6	89.1 - 93.6	2,200
Other	300	10.8	8.5 - 13.6	2,300	89.2	86.4 - 91.5	2,500

PRAMS Age Group	Yes			No			Weighted Total Responses (3-Yr Avg)
	#	%	C.I.(95%)	#	%	C.I.(95%)	#
<20	200	11.4	8.6 - 15.1	1,300	88.6	84.9 - 91.4	1,500
20-24	400	9.4	7.9 - 11.2	3,900	90.6	88.8 - 92.1	4,300
25-34	800	8.9	7.9 - 10.1	8,000	91.1	89.9 - 92.1	8,700
35+	300	9.1	7.4 - 11.1	2,900	90.9	88.9 - 92.6	3,100

**PRAMS Health Indicator 3-Year Aggregate Report - Preterm delivery- by State;County;DOH Race-Ethnicity;PRAMS Age Group;Infant Gender;Married;Poverty Level;Income (2000-2003);Income (2004-2011);Birthweight;Smoke 3rd Trimester;Smoke Before Pregnant;WIC During Pregnancy, for the Year(s)
2000-2002;2001-2003;2002-2004;2003-2005;2004-2006;2005-2007;2006-2008;2007-2009;2008-2010;2009-2011;2010-2012;2011-2013**

Note: Weighted counts (#) represent 3-yr averages, rounded to the nearest hundred; n/r (Not Reportable) - If the unweighted total responses for a dimension (row) is <30 that row will not be shown

Years: 2003-2005

Infant Gender	Yes			No			Weighted Total Responses (3-Yr Avg)
	#	%	C.I.(95%)	#	%	C.I.(95%)	#
Male	900	10.1	9.0 - 11.3	8,400	89.9	88.7 - 91.0	9,300
Female	700	8.4	7.3 - 9.6	7,600	91.6	90.4 - 92.7	8,300

Married	Yes			No			Weighted Total Responses (3-Yr Avg)
	#	%	C.I.(95%)	#	%	C.I.(95%)	#
Yes	1,000	8.9	7.9 - 9.9	10,700	91.1	90.1 - 92.1	11,800
No	600	10.1	8.8 - 11.7	5,300	89.9	88.3 - 91.2	5,900

Poverty Level	Yes			No			Weighted Total Responses (3-Yr Avg)
	#	%	C.I.(95%)	#	%	C.I.(95%)	#
0-130%	700	10.2	8.9 - 11.6	6,200	89.8	88.4 - 91.1	6,900
131-185%	200	8.7	6.6 - 11.4	2,000	91.3	88.6 - 93.4	2,200
186+%	600	8.6	7.5 - 9.9	6,400	91.4	90.1 - 92.5	7,000

**PRAMS Health Indicator 3-Year Aggregate Report - Preterm delivery- by State;County;DOH Race-Ethnicity;PRAMS Age Group;Infant Gender;Married;Poverty Level;Income (2000-2003);Income (2004-2011);Birthweight;Smoke 3rd Trimester;Smoke Before Pregnant;WIC During Pregnancy, for the Year(s)
2000-2002;2001-2003;2002-2004;2003-2005;2004-2006;2005-2007;2006-2008;2007-2009;2008-2010;2009-2011;2010-2012;2011-2013**

Note: Weighted counts (#) represent 3-yr averages, rounded to the nearest hundred; n/r (Not Reportable) - If the unweighted total responses for a dimension (row) is <30 that row will not be shown

Years: 2003-2005

Birthweight	Yes			No			Weighted Total Responses (3-Yr Avg)
	#	%	C.I.(95%)	#	%	C.I.(95%)	#
Low birth weight	800	66.0	60.7 - 70.9	400	34.0	29.1 - 39.3	1,200
Normal birth weight	800	5.1	4.5 - 5.8	15,600	94.9	94.2 - 95.5	16,500

Smoke 3rd Trimester	Yes			No			Weighted Total Responses (3-Yr Avg)
	#	%	C.I.(95%)	#	%	C.I.(95%)	#
Yes	200	11.7	9.0 - 15.1	1,300	88.3	84.9 - 91.0	1,500
No	1,400	9.0	8.2 - 9.9	14,400	91.0	90.1 - 91.8	15,900

Smoke Before Pregnant	Yes			No			Weighted Total Responses (3-Yr Avg)
	#	%	C.I.(95%)	#	%	C.I.(95%)	#
Yes	300	8.5	7.0 - 10.4	3,300	91.5	89.6 - 93.0	3,600
No	1,300	9.4	8.5 - 10.4	12,400	90.6	89.6 - 91.5	13,700

**PRAMS Health Indicator 3-Year Aggregate Report - Preterm delivery- by State;County;DOH Race-Ethnicity;PRAMS Age Group;Infant Gender;Married;Poverty Level;Income (2000-2003);Income (2004-2011);Birthweight;Smoke 3rd Trimester;Smoke Before Pregnant;WIC During Pregnancy, for the Year(s)
2000-2002;2001-2003;2002-2004;2003-2005;2004-2006;2005-2007;2006-2008;2007-2009;2008-2010;2009-2011;2010-2012;2011-2013**

Note: Weighted counts (#) represent 3-yr averages, rounded to the nearest hundred; n/r (Not Reportable) - If the unweighted total responses for a dimension (row) is <30 that row will not be shown

Years: 2003-2005

WIC During Pregnancy	Yes			No			Weighted Total Responses (3-Yr Avg)
	#	%	C.I.(95%)	#	%	C.I.(95%)	#
Yes	700	9.7	8.5 - 11.0	6,900	90.3	89.0 - 91.5	7,600
No	900	9.1	8.1 - 10.2	8,900	90.9	89.8 - 91.9	9,700

**PRAMS Health Indicator 3-Year Aggregate Report - Preterm delivery- by State;County;DOH Race-Ethnicity;PRAMS Age Group;Infant Gender;Married;Poverty Level;Income (2000-2003);Income (2004-2011);Birthweight;Smoke 3rd Trimester;Smoke Before Pregnant;WIC During Pregnancy, for the Year(s)
2000-2002;2001-2003;2002-2004;2003-2005;2004-2006;2005-2007;2006-2008;2007-2009;2008-2010;2009-2011;2010-2012;2011-2013**

Note: Weighted counts (#) represent 3-yr averages, rounded to the nearest hundred; n/r (Not Reportable) - If the unweighted total responses for a dimension (row) is <30 that row will not be shown

Years: 2002-2004

State	Yes			No			Weighted Total Responses (3-Yr Avg)
	#	%	C.I.(95%)	#	%	C.I.(95%)	#
Totals	1,700	9.6	8.7 - 10.5	15,800	90.4	89.5 - 91.3	17,500

County	Yes			No			Weighted Total Responses (3-Yr Avg)
	#	%	C.I.(95%)	#	%	C.I.(95%)	#
Hawaii	200	9.2	7.6 - 11.1	1,900	90.8	88.9 - 92.4	2,100
Honolulu	1,300	9.9	8.8 - 11.1	11,500	90.1	88.9 - 91.2	12,800
Kauai	100	7.2	5.1 - 10.3	700	92.8	89.7 - 94.9	800
Maui	200	8.5	6.8 - 10.5	1,700	91.5	89.5 - 93.2	1,800

**PRAMS Health Indicator 3-Year Aggregate Report - Preterm delivery- by State;County;DOH Race-Ethnicity;PRAMS Age Group;Infant Gender;Married;Poverty Level;Income (2000-2003);Income (2004-2011);Birthweight;Smoke 3rd Trimester;Smoke Before Pregnant;WIC During Pregnancy, for the Year(s)
2000-2002;2001-2003;2002-2004;2003-2005;2004-2006;2005-2007;2006-2008;2007-2009;2008-2010;2009-2011;2010-2012;2011-2013**

Note: Weighted counts (#) represent 3-yr averages, rounded to the nearest hundred; n/r (Not Reportable) - If the unweighted total responses for a dimension (row) is <30 that row will not be shown

Years: 2002-2004

DOH Race-Ethnicity	Yes			No			Weighted Total Responses (3-Yr Avg)
	#	%	C.I.(95%)	#	%	C.I.(95%)	#
Caucasian	300	7.4	5.8 - 9.4	3,500	92.6	90.6 - 94.2	3,800
Native Hawaiian	500	10.1	8.9 - 11.4	4,300	89.9	88.6 - 91.1	4,800
Chinese	100	8.8	5.3 - 14.3	600	91.2	85.7 - 94.7	700
Filipino	400	11.5	9.4 - 14.0	3,200	88.5	86.0 - 90.6	3,600
Japanese	200	7.9	5.8 - 10.6	2,100	92.1	89.4 - 94.2	2,200
Other	300	10.8	8.3 - 14.0	2,200	89.2	86.0 - 91.7	2,500

PRAMS Age Group	Yes			No			Weighted Total Responses (3-Yr Avg)
	#	%	C.I.(95%)	#	%	C.I.(95%)	#
<20	100	8.6	6.3 - 11.7	1,400	91.4	88.3 - 93.7	1,500
20-24	400	10.0	8.3 - 12.0	3,900	90.0	88.0 - 91.7	4,300
25-34	800	9.1	7.9 - 10.4	7,900	90.9	89.6 - 92.1	8,700
35+	300	10.8	8.7 - 13.3	2,700	89.2	86.7 - 91.3	3,100

**PRAMS Health Indicator 3-Year Aggregate Report - Preterm delivery- by State;County;DOH Race-Ethnicity;PRAMS Age Group;Infant Gender;Married;Poverty Level;Income (2000-2003);Income (2004-2011);Birthweight;Smoke 3rd Trimester;Smoke Before Pregnant;WIC During Pregnancy, for the Year(s)
2000-2002;2001-2003;2002-2004;2003-2005;2004-2006;2005-2007;2006-2008;2007-2009;2008-2010;2009-2011;2010-2012;2011-2013**

Note: Weighted counts (#) represent 3-yr averages, rounded to the nearest hundred; n/r (Not Reportable) - If the unweighted total responses for a dimension (row) is <30 that row will not be shown

Years: 2002-2004

Infant Gender	Yes			No			Weighted Total Responses (3-Yr Avg)
	#	%	C.I.(95%)	#	%	C.I.(95%)	#
Male	900	10.2	9.0 - 11.5	8,300	89.8	88.5 - 91.0	9,200
Female	700	8.8	7.7 - 10.1	7,600	91.2	89.9 - 92.3	8,300

Married	Yes			No			Weighted Total Responses (3-Yr Avg)
	#	%	C.I.(95%)	#	%	C.I.(95%)	#
Yes	1,100	9.0	8.0 - 10.1	10,800	91.0	89.9 - 92.0	11,900
No	600	10.7	9.2 - 12.4	5,000	89.3	87.6 - 90.8	5,600

Poverty Level	Yes			No			Weighted Total Responses (3-Yr Avg)
	#	%	C.I.(95%)	#	%	C.I.(95%)	#
0-130%	700	10.2	8.9 - 11.7	6,300	89.8	88.3 - 91.1	7,000
131-185%	300	9.7	7.5 - 12.5	2,500	90.3	87.5 - 92.5	2,700
186+%	500	8.8	7.5 - 10.3	5,700	91.2	89.7 - 92.5	6,200

**PRAMS Health Indicator 3-Year Aggregate Report - Preterm delivery- by State;County;DOH Race-Ethnicity;PRAMS Age Group;Infant Gender;Married;Poverty Level;Income (2000-2003);Income (2004-2011);Birthweight;Smoke 3rd Trimester;Smoke Before Pregnant;WIC During Pregnancy, for the Year(s)
2000-2002;2001-2003;2002-2004;2003-2005;2004-2006;2005-2007;2006-2008;2007-2009;2008-2010;2009-2011;2010-2012;2011-2013**

Note: Weighted counts (#) represent 3-yr averages, rounded to the nearest hundred; n/r (Not Reportable) - If the unweighted total responses for a dimension (row) is <30 that row will not be shown

Years: 2002-2004

Birthweight	Yes			No			Weighted Total Responses (3-Yr Avg)
	#	%	C.I.(95%)	#	%	C.I.(95%)	#
Low birth weight	800	69.4	63.8 - 74.5	400	30.6	25.5 - 36.2	1,200
Normal birth weight	800	5.1	4.5 - 5.8	15,500	94.9	94.2 - 95.5	16,300

Smoke 3rd Trimester	Yes			No			Weighted Total Responses (3-Yr Avg)
	#	%	C.I.(95%)	#	%	C.I.(95%)	#
Yes	200	10.9	8.3 - 14.2	1,300	89.1	85.8 - 91.7	1,500
No	1,500	9.3	8.4 - 10.3	14,300	90.7	89.7 - 91.6	15,700

Smoke Before Pregnant	Yes			No			Weighted Total Responses (3-Yr Avg)
	#	%	C.I.(95%)	#	%	C.I.(95%)	#
Yes	300	9.1	7.3 - 11.2	3,200	90.9	88.8 - 92.7	3,500
No	1,300	9.6	8.6 - 10.6	12,300	90.4	89.4 - 91.4	13,600

**PRAMS Health Indicator 3-Year Aggregate Report - Preterm delivery- by State;County;DOH Race-Ethnicity;PRAMS Age Group;Infant Gender;Married;Poverty Level;Income (2000-2003);Income (2004-2011);Birthweight;Smoke 3rd Trimester;Smoke Before Pregnant;WIC During Pregnancy, for the Year(s)
2000-2002;2001-2003;2002-2004;2003-2005;2004-2006;2005-2007;2006-2008;2007-2009;2008-2010;2009-2011;2010-2012;2011-2013**

Note: Weighted counts (#) represent 3-yr averages, rounded to the nearest hundred; n/r (Not Reportable) - If the unweighted total responses for a dimension (row) is <30 that row will not be shown

Years: 2002-2004

WIC During Pregnancy	Yes			No			Weighted Total Responses (3-Yr Avg)
	#	%	C.I.(95%)	#	%	C.I.(95%)	#
Yes	700	9.7	8.4 - 11.1	6,800	90.3	88.9 - 91.6	7,500
No	900	9.6	8.5 - 10.9	8,900	90.4	89.1 - 91.5	9,800

**PRAMS Health Indicator 3-Year Aggregate Report - Preterm delivery- by State;County;DOH Race-Ethnicity;PRAMS Age Group;Infant Gender;Married;Poverty Level;Income (2000-2003);Income (2004-2011);Birthweight;Smoke 3rd Trimester;Smoke Before Pregnant;WIC During Pregnancy, for the Year(s)
2000-2002;2001-2003;2002-2004;2003-2005;2004-2006;2005-2007;2006-2008;2007-2009;2008-2010;2009-2011;2010-2012;2011-2013**

Note: Weighted counts (#) represent 3-yr averages, rounded to the nearest hundred; n/r (Not Reportable) - If the unweighted total responses for a dimension (row) is <30 that row will not be shown

Years: 2001-2003

State	Yes			No			Weighted Total Responses (3-Yr Avg)
	#	%	C.I.(95%)	#	%	C.I.(95%)	#
Totals	1,600	9.5	8.7 - 10.5	15,500	90.5	89.5 - 91.3	17,100

County	Yes			No			Weighted Total Responses (3-Yr Avg)
	#	%	C.I.(95%)	#	%	C.I.(95%)	#
Hawaii	200	8.6	7.3 - 10.2	1,800	91.4	89.8 - 92.7	2,000
Honolulu	1,300	9.9	8.8 - 11.1	11,300	90.1	88.9 - 91.2	12,600
Kauai	100	7.7	5.7 - 10.4	700	92.3	89.6 - 94.3	800
Maui	200	8.7	7.2 - 10.4	1,600	91.3	89.6 - 92.8	1,800

**PRAMS Health Indicator 3-Year Aggregate Report - Preterm delivery- by State;County;DOH Race-Ethnicity;PRAMS Age Group;Infant Gender;Married;Poverty Level;Income (2000-2003);Income (2004-2011);Birthweight;Smoke 3rd Trimester;Smoke Before Pregnant;WIC During Pregnancy, for the Year(s)
2000-2002;2001-2003;2002-2004;2003-2005;2004-2006;2005-2007;2006-2008;2007-2009;2008-2010;2009-2011;2010-2012;2011-2013**

Note: Weighted counts (#) represent 3-yr averages, rounded to the nearest hundred; n/r (Not Reportable) - If the unweighted total responses for a dimension (row) is <30 that row will not be shown

Years: 2001-2003

DOH Race-Ethnicity	Yes			No			Weighted Total Responses (3-Yr Avg)
	#	%	C.I.(95%)	#	%	C.I.(95%)	#
Caucasian	300	7.4	5.8 - 9.4	3,400	92.6	90.6 - 94.2	3,700
Native Hawaiian	500	10.2	9.2 - 11.3	4,200	89.8	88.7 - 90.8	4,600
Chinese	100	10.2	5.9 - 16.9	600	89.8	83.1 - 94.1	700
Filipino	400	11.5	9.3 - 14.1	3,200	88.5	85.9 - 90.7	3,600
Japanese	200	7.5	5.4 - 10.5	2,000	92.5	89.5 - 94.6	2,200
Other	200	10.2	7.6 - 13.5	2,100	89.8	86.5 - 92.4	2,400

PRAMS Age Group	Yes			No			Weighted Total Responses (3-Yr Avg)
	#	%	C.I.(95%)	#	%	C.I.(95%)	#
<20	200	9.8	7.4 - 12.8	1,400	90.2	87.2 - 92.6	1,600
20-24	400	10.1	8.4 - 12.0	3,800	89.9	88.0 - 91.6	4,200
25-34	700	8.6	7.5 - 9.9	7,800	91.4	90.1 - 92.5	8,500
35+	300	11.3	9.1 - 14.1	2,500	88.7	85.9 - 90.9	2,800

**PRAMS Health Indicator 3-Year Aggregate Report - Preterm delivery- by State;County;DOH Race-Ethnicity;PRAMS Age Group;Infant Gender;Married;Poverty Level;Income (2000-2003);Income (2004-2011);Birthweight;Smoke 3rd Trimester;Smoke Before Pregnant;WIC During Pregnancy, for the Year(s)
2000-2002;2001-2003;2002-2004;2003-2005;2004-2006;2005-2007;2006-2008;2007-2009;2008-2010;2009-2011;2010-2012;2011-2013**

Note: Weighted counts (#) represent 3-yr averages, rounded to the nearest hundred; n/r (Not Reportable) - If the unweighted total responses for a dimension (row) is <30 that row will not be shown

Years: 2001-2003

Infant Gender	Yes			No			Weighted Total Responses (3-Yr Avg)
	#	%	C.I.(95%)	#	%	C.I.(95%)	#
Male	900	10.4	9.1 - 11.7	7,900	89.6	88.3 - 90.9	8,800
Female	700	8.7	7.5 - 10.0	7,600	91.3	90.0 - 92.5	8,300

Married	Yes			No			Weighted Total Responses (3-Yr Avg)
	#	%	C.I.(95%)	#	%	C.I.(95%)	#
Yes	1,000	8.6	7.6 - 9.7	10,500	91.4	90.3 - 92.4	11,500
No	600	11.5	10.0 - 13.2	5,000	88.5	86.8 - 90.0	5,700

Poverty Level	Yes			No			Weighted Total Responses (3-Yr Avg)
	#	%	C.I.(95%)	#	%	C.I.(95%)	#
0-130%	700	10.7	9.3 - 12.2	6,200	89.3	87.8 - 90.7	6,900
131-185%	300	9.4	7.5 - 11.8	2,900	90.6	88.2 - 92.5	3,200
186+%	400	8.2	6.8 - 9.8	5,000	91.8	90.2 - 93.2	5,500

**PRAMS Health Indicator 3-Year Aggregate Report - Preterm delivery- by State;County;DOH Race-Ethnicity;PRAMS Age Group;Infant Gender;Married;Poverty Level;Income (2000-2003);Income (2004-2011);Birthweight;Smoke 3rd Trimester;Smoke Before Pregnant;WIC During Pregnancy, for the Year(s)
2000-2002;2001-2003;2002-2004;2003-2005;2004-2006;2005-2007;2006-2008;2007-2009;2008-2010;2009-2011;2010-2012;2011-2013**

Note: Weighted counts (#) represent 3-yr averages, rounded to the nearest hundred; n/r (Not Reportable) - If the unweighted total responses for a dimension (row) is <30 that row will not be shown

Years: 2001-2003

Income (2000-2003)	Yes			No			Weighted Total Responses (3-Yr Avg)
	#	%	C.I.(95%)	#	%	C.I.(95%)	#
<=\$15,000	400	11.8	9.9 - 13.9	3,200	88.2	86.1 - 90.1	3,700
\$15,001-\$25,000	200	9.2	7.1 - 11.9	2,100	90.8	88.1 - 92.9	2,400
\$25,001-\$40,000	300	9.0	7.3 - 11.1	3,200	91.0	88.9 - 92.7	3,500
>=\$40,001	600	8.8	7.5 - 10.4	6,000	91.2	89.6 - 92.5	6,600

Birthweight	Yes			No			Weighted Total Responses (3-Yr Avg)
	#	%	C.I.(95%)	#	%	C.I.(95%)	#
Low birth weight	800	68.2	62.5 - 73.4	400	31.8	26.6 - 37.5	1,200
Normal birth weight	800	5.1	4.4 - 5.8	15,100	94.9	94.2 - 95.6	15,900

Smoke 3rd Trimester	Yes			No			Weighted Total Responses (3-Yr Avg)
	#	%	C.I.(95%)	#	%	C.I.(95%)	#
Yes	200	10.5	8.0 - 13.6	1,300	89.5	86.4 - 92.0	1,500
No	1,400	9.3	8.4 - 10.3	13,900	90.7	89.7 - 91.6	15,300

**PRAMS Health Indicator 3-Year Aggregate Report - Preterm delivery- by State;County;DOH Race-Ethnicity;PRAMS Age Group;Infant Gender;Married;Poverty Level;Income (2000-2003);Income (2004-2011);Birthweight;Smoke 3rd Trimester;Smoke Before Pregnant;WIC During Pregnancy, for the Year(s)
2000-2002;2001-2003;2002-2004;2003-2005;2004-2006;2005-2007;2006-2008;2007-2009;2008-2010;2009-2011;2010-2012;2011-2013**

Note: Weighted counts (#) represent 3-yr averages, rounded to the nearest hundred; n/r (Not Reportable) - If the unweighted total responses for a dimension (row) is <30 that row will not be shown

Years: 2001-2003

Smoke Before Pregnant	Yes			No			Weighted Total Responses (3-Yr Avg)
	#	%	C.I.(95%)	#	%	C.I.(95%)	#
Yes	300	9.6	7.8 - 11.7	3,100	90.4	88.3 - 92.2	3,400
No	1,200	9.4	8.4 - 10.4	12,000	90.6	89.6 - 91.6	13,200

WIC During Pregnancy	Yes			No			Weighted Total Responses (3-Yr Avg)
	#	%	C.I.(95%)	#	%	C.I.(95%)	#
Yes	700	9.5	8.3 - 10.9	6,500	90.5	89.1 - 91.7	7,200
No	900	9.5	8.3 - 10.7	8,900	90.5	89.3 - 91.7	9,800

**PRAMS Health Indicator 3-Year Aggregate Report - Preterm delivery- by State;County;DOH Race-Ethnicity;PRAMS Age Group;Infant Gender;Married;Poverty Level;Income (2000-2003);Income (2004-2011);Birthweight;Smoke 3rd Trimester;Smoke Before Pregnant;WIC During Pregnancy, for the Year(s)
2000-2002;2001-2003;2002-2004;2003-2005;2004-2006;2005-2007;2006-2008;2007-2009;2008-2010;2009-2011;2010-2012;2011-2013**

Note: Weighted counts (#) represent 3-yr averages, rounded to the nearest hundred; n/r (Not Reportable) - If the unweighted total responses for a dimension (row) is <30 that row will not be shown

Years: 2000-2002

State	Yes			No			Weighted Total Responses (3-Yr Avg)
	#	%	C.I.(95%)	#	%	C.I.(95%)	#
Totals	1,500	9.2	8.4 - 10.1	15,200	90.8	89.9 - 91.6	16,700

County	Yes			No			Weighted Total Responses (3-Yr Avg)
	#	%	C.I.(95%)	#	%	C.I.(95%)	#
Hawaii	200	8.1	6.8 - 9.7	1,800	91.9	90.3 - 93.2	1,900
Honolulu	1,200	9.7	8.7 - 10.9	11,100	90.3	89.1 - 91.3	12,300
Kauai	100	8.4	6.3 - 11.3	700	91.6	88.7 - 93.7	700
Maui	100	7.4	6.0 - 9.1	1,600	92.6	90.9 - 94.0	1,800

**PRAMS Health Indicator 3-Year Aggregate Report - Preterm delivery- by State;County;DOH Race-Ethnicity;PRAMS Age Group;Infant Gender;Married;Poverty Level;Income (2000-2003);Income (2004-2011);Birthweight;Smoke 3rd Trimester;Smoke Before Pregnant;WIC During Pregnancy, for the Year(s)
2000-2002;2001-2003;2002-2004;2003-2005;2004-2006;2005-2007;2006-2008;2007-2009;2008-2010;2009-2011;2010-2012;2011-2013**

Note: Weighted counts (#) represent 3-yr averages, rounded to the nearest hundred; n/r (Not Reportable) - If the unweighted total responses for a dimension (row) is <30 that row will not be shown

Years: 2000-2002

DOH Race-Ethnicity	Yes			No			Weighted Total Responses (3-Yr Avg)
	#	%	C.I.(95%)	#	%	C.I.(95%)	#
Caucasian	300	7.6	6.1 - 9.5	3,500	92.4	90.5 - 93.9	3,700
Native Hawaiian	400	9.8	8.9 - 10.8	4,100	90.2	89.2 - 91.1	4,500
Chinese	100	10.8	6.5 - 17.5	600	89.2	82.5 - 93.5	700
Filipino	400	11.4	9.3 - 14.0	3,000	88.6	86.0 - 90.7	3,400
Japanese	200	7.5	5.5 - 10.3	1,900	92.5	89.7 - 94.5	2,100
Other	200	8.6	6.3 - 11.5	2,100	91.4	88.5 - 93.7	2,300

PRAMS Age Group	Yes			No			Weighted Total Responses (3-Yr Avg)
	#	%	C.I.(95%)	#	%	C.I.(95%)	#
<20	200	9.7	7.8 - 12.1	1,500	90.3	87.9 - 92.2	1,600
20-24	400	9.8	8.2 - 11.6	3,800	90.2	88.4 - 91.8	4,200
25-34	600	7.9	6.8 - 9.2	7,500	92.1	90.8 - 93.2	8,100
35+	300	12.0	9.8 - 14.7	2,400	88.0	85.3 - 90.2	2,800

**PRAMS Health Indicator 3-Year Aggregate Report - Preterm delivery- by State;County;DOH Race-Ethnicity;PRAMS Age Group;Infant Gender;Married;Poverty Level;Income (2000-2003);Income (2004-2011);Birthweight;Smoke 3rd Trimester;Smoke Before Pregnant;WIC During Pregnancy, for the Year(s)
2000-2002;2001-2003;2002-2004;2003-2005;2004-2006;2005-2007;2006-2008;2007-2009;2008-2010;2009-2011;2010-2012;2011-2013**

Note: Weighted counts (#) represent 3-yr averages, rounded to the nearest hundred; n/r (Not Reportable) - If the unweighted total responses for a dimension (row) is <30 that row will not be shown

Years: 2000-2002

	Yes			No			Weighted Total Responses (3-Yr Avg)
	#	%	C.I.(95%)	#	%	C.I.(95%)	#
Infant Gender							
Male	800	9.5	8.4 - 10.8	7,700	90.5	89.2 - 91.6	8,500
Female	700	8.9	7.8 - 10.2	7,500	91.1	89.8 - 92.2	8,200

	Yes			No			Weighted Total Responses (3-Yr Avg)
	#	%	C.I.(95%)	#	%	C.I.(95%)	#
Married							
Yes	900	8.2	7.2 - 9.2	10,400	91.8	90.8 - 92.8	11,400
No	600	11.5	10.1 - 13.2	4,700	88.5	86.8 - 89.9	5,400

	Yes			No			Weighted Total Responses (3-Yr Avg)
	#	%	C.I.(95%)	#	%	C.I.(95%)	#
Poverty Level							
0-130%	700	9.9	8.7 - 11.3	6,000	90.1	88.7 - 91.3	6,600
131-185%	300	8.4	6.6 - 10.6	2,900	91.6	89.4 - 93.4	3,100
186+%	500	8.5	7.2 - 10.1	5,100	91.5	89.9 - 92.8	5,600

**PRAMS Health Indicator 3-Year Aggregate Report - Preterm delivery- by State;County;DOH Race-Ethnicity;PRAMS Age Group;Infant Gender;Married;Poverty Level;Income (2000-2003);Income (2004-2011);Birthweight;Smoke 3rd Trimester;Smoke Before Pregnant;WIC During Pregnancy, for the Year(s)
2000-2002;2001-2003;2002-2004;2003-2005;2004-2006;2005-2007;2006-2008;2007-2009;2008-2010;2009-2011;2010-2012;2011-2013**

Note: Weighted counts (#) represent 3-yr averages, rounded to the nearest hundred; n/r (Not Reportable) - If the unweighted total responses for a dimension (row) is <30 that row will not be shown

Years: 2000-2002

Income (2000-2003)	Yes			No			Weighted Total Responses (3-Yr Avg)
	#	%	C.I.(95%)	#	%	C.I.(95%)	#
<=\$15,000	400	10.9	9.1 - 12.9	3,100	89.1	87.1 - 90.9	3,500
\$15,001-\$25,000	200	8.8	6.9 - 11.2	2,300	91.2	88.8 - 93.1	2,500
\$25,001-\$40,000	300	7.9	6.4 - 9.8	3,200	92.1	90.2 - 93.6	3,500
>=\$40,001	600	9.1	7.8 - 10.6	5,700	90.9	89.4 - 92.2	6,300

Birthweight	Yes			No			Weighted Total Responses (3-Yr Avg)
	#	%	C.I.(95%)	#	%	C.I.(95%)	#
Low birth weight	700	67.7	62.4 - 72.6	400	32.3	27.4 - 37.6	1,100
Normal birth weight	800	5.0	4.3 - 5.6	14,800	95.0	94.4 - 95.7	15,600

Smoke 3rd Trimester	Yes			No			Weighted Total Responses (3-Yr Avg)
	#	%	C.I.(95%)	#	%	C.I.(95%)	#
Yes	200	10.7	8.3 - 13.6	1,300	89.3	86.4 - 91.7	1,400
No	1,300	9.0	8.2 - 9.9	13,600	91.0	90.1 - 91.8	14,900

**PRAMS Health Indicator 3-Year Aggregate Report - Preterm delivery- by State;County;DOH Race-Ethnicity;PRAMS Age Group;Infant Gender;Married;Poverty Level;Income (2000-2003);Income (2004-2011);Birthweight;Smoke 3rd Trimester;Smoke Before Pregnant;WIC During Pregnancy, for the Year(s)
2000-2002;2001-2003;2002-2004;2003-2005;2004-2006;2005-2007;2006-2008;2007-2009;2008-2010;2009-2011;2010-2012;2011-2013**

Note: Weighted counts (#) represent 3-yr averages, rounded to the nearest hundred; n/r (Not Reportable) - If the unweighted total responses for a dimension (row) is <30 that row will not be shown

Years: 2000-2002

Smoke Before Pregnant	Yes			No			Weighted Total Responses (3-Yr Avg)
	#	%	C.I.(95%)	#	%	C.I.(95%)	#
Yes	400	10.7	8.9 - 12.8	2,900	89.3	87.2 - 91.1	3,300
No	1,100	8.7	7.8 - 9.7	11,800	91.3	90.3 - 92.2	12,900

WIC During Pregnancy	Yes			No			Weighted Total Responses (3-Yr Avg)
	#	%	C.I.(95%)	#	%	C.I.(95%)	#
Yes	600	9.1	8.0 - 10.4	6,500	90.9	89.6 - 92.0	7,100
No	900	9.2	8.2 - 10.5	8,600	90.8	89.5 - 91.8	9,400