

PRAMS Health Indicator 5-Year Aggregate Report - Pregnancy intention- for the State of Hawaii, for the Year(s) 2000-2004;2001-2005;2002-2006;2003-2007;2004-2008;2005-2009;2006-2010;2007-2011

PRAMS Health Indicator 5-Year Aggregate Report - Pregnancy intention- by State;County;DOH Race-Ethnicity;PRAMS Age Group;Infant Gender;Married;Poverty Level;Income (2004-2011);Birthweight;Smoke 3rd Trimester;Smoke Before Pregnant;WIC During Pregnancy, for the Year(s) 2000-2004;2001-2005;2002-2006;2003-2007;2004-2008;2005-2009;2006-2010;2007-2011

Note: Weighted counts (#) represent 5-yr averages, rounded to the nearest hundred; n/r (Not Reportable) - If the unweighted total responses for a dimension (row) is <30 that row will not be shown

The trend analysis section shows the trend for the selected health variable over selected years in a table and a graph. 5-Year Weighted Total Responses: This number is a weighted representation of the mothers of babies delivered in a given year, who responded to a particular question in the survey. For most questions this will be the mothers of all babies delivered in a given year. For some secondary questions only a subset of the population was asked the question. For example, all survey participants were asked if they smoked during pregnancy, but only those who answered yes were asked how many cigarettes a day. If a dimension value is unknown for a particular survey record, that record will not be included in the counts for that particular dimension.

Note: Data collection for household income changed in 2004 and again in 2012. Because of this, 5-year aggregate data does not exist for all 5-year aggregate periods.

Below are the indicators included in this report and the long description for each indicator.

PRAMS Health Indicator	Health Indicator Description
Pregnancy intention	Births that were intended, mis-timed, or unwanted

Suggested citation:

Hawaii Health Data Warehouse, Hawaii State Department of Health, Pregnancy Risk Assessment Monitoring System, (report title and years), Report Created: 9/30/15

For documentation on other terms and coding in this report, please go to the following links:

[Click here to access PRAMS documentation](#)

[Click here to access DOH-Race Ethnicity coding](#)

[Click here to access The Hawai'i Data Guide](#)

**For questions about this report, please contact
The Hawai'i Health Data Warehouse**

profiles@hhdw.org

(855) 946-5899 x15

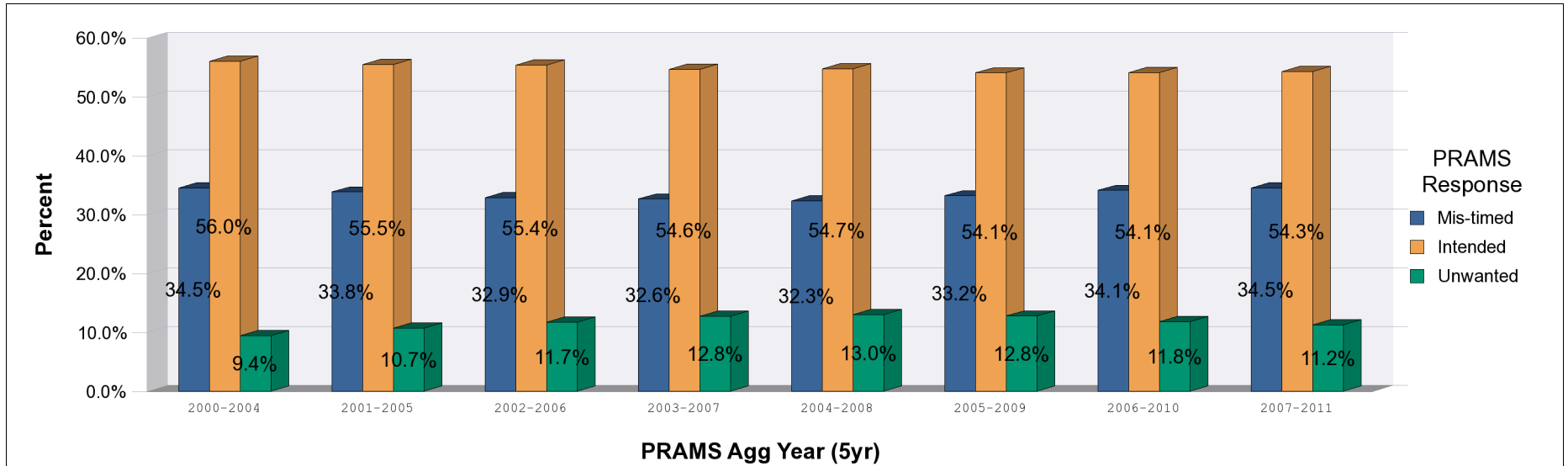
**PRAMS Health Indicator 5-Year Aggregate Report - Pregnancy intention- for the State of Hawaii, for the Year(s)
2000-2004;2001-2005;2002-2006;2003-2007;2004-2008;2005-2009;2006-2010;2007-2011**

Note: Weighted counts (#) represent 5-yr averages, rounded to the nearest hundred; n/r (Not Reportable) - If the unweighted total responses for a dimension (row) is <30 that row will not be shown

Years	Mis-timed			Intended			Unwanted			Weighted Total Responses (5-Yr Avg)
	#	%	C.I.(95%)	#	%	C.I.(95%)	#	%	C.I.(95%)	#
2000-2004	5,900	34.5	33.5 - 35.6	9,600	56.0	54.9 - 57.1	1,600	9.4	8.8 - 10.1	17,200
2001-2005	5,800	33.8	32.8 - 34.9	9,500	55.5	54.4 - 56.6	1,800	10.7	10.0 - 11.4	17,200
2002-2006	5,700	32.9	31.8 - 33.9	9,700	55.4	54.3 - 56.5	2,000	11.7	11.0 - 12.4	17,500
2003-2007	5,800	32.6	31.6 - 33.7	9,700	54.6	53.5 - 55.7	2,300	12.8	12.0 - 13.5	17,700
2004-2008	5,800	32.3	31.3 - 33.3	9,800	54.7	53.7 - 55.8	2,300	13.0	12.3 - 13.7	17,900
2005-2009	6,000	33.2	32.1 - 34.3	9,700	54.1	52.9 - 55.2	2,300	12.8	12.0 - 13.6	18,000
2006-2010	6,200	34.1	32.9 - 35.3	9,900	54.1	52.9 - 55.3	2,100	11.8	11.0 - 12.6	18,200
2007-2011	6,300	34.5	33.3 - 35.8	9,900	54.3	53.0 - 55.5	2,100	11.2	10.4 - 12.1	18,300

**PRAMS Health Indicator 5-Year Aggregate Report - Pregnancy intention- for the State of Hawaii, for the Year(s)
2000-2004;2001-2005;2002-2006;2003-2007;2004-2008;2005-2009;2006-2010;2007-2011**

Note: Weighted counts (#) represent 5-yr averages, rounded to the nearest hundred; n/r (Not Reportable) - If the unweighted total responses for a dimension (row) is <30 that row will not be shown



**PRAMS Health Indicator 5-Year Aggregate Report - Pregnancy intention- by State;County;DOH Race-
Ethnicity;PRAMS Age Group;Infant Gender;Married;Poverty Level;Income (2004-2011);Birthweight;Smoke 3rd
Trimester;Smoke Before Pregnant;WIC During Pregnancy, for the Year(s)
2000-2004;2001-2005;2002-2006;2003-2007;2004-2008;2005-2009;2006-2010;2007-2011**

Note: Weighted counts (#) represent 5-yr averages, rounded to the nearest hundred; n/r (Not Reportable) - If the unweighted total responses for a dimension (row) is <30 that row will not be shown

Year: 2007-2011

State	Mis-timed			Intended			Unwanted			Weighted Total Responses (5-Yr Avg)
	#	%	C.I.(95%)	#	%	C.I.(95%)	#	%	C.I.(95%)	#
Totals	6,300	34.5	33.3 - 35.8	9,900	54.3	53.0 - 55.5	2,100	11.2	10.4 - 12.1	18,300

County	Mis-timed			Intended			Unwanted			Weighted Total Responses (5-Yr Avg)
	#	%	C.I.(95%)	#	%	C.I.(95%)	#	%	C.I.(95%)	#
Hawaii	900	36.3	33.8 - 38.9	1,200	51.4	48.8 - 54.1	300	12.2	10.6 - 14.1	2,400
Honolulu	4,500	34.3	32.7 - 35.9	7,100	54.6	52.9 - 56.3	1,400	11.1	10.1 - 12.2	13,000
Kauai	300	34.7	31.2 - 38.4	500	54.9	51.1 - 58.6	100	10.4	8.4 - 12.9	900
Maui	700	33.8	31.3 - 36.3	1,100	55.1	52.5 - 57.7	200	11.1	9.6 - 12.8	2,100

**PRAMS Health Indicator 5-Year Aggregate Report - Pregnancy intention- by State;County;DOH Race-
Ethnicity;PRAMS Age Group;Infant Gender;Married;Poverty Level;Income (2004-2011);Birthweight;Smoke 3rd
Trimester;Smoke Before Pregnant;WIC During Pregnancy, for the Year(s)
2000-2004;2001-2005;2002-2006;2003-2007;2004-2008;2005-2009;2006-2010;2007-2011**

Note: Weighted counts (#) represent 5-yr averages, rounded to the nearest hundred; n/r (Not Reportable) - If the unweighted total responses for a dimension (row) is <30 that row will not be shown

Year: 2007-2011

DOH Race- Ethnicity	Mis-timed			Intended			Unwanted			Weighted Total Responses (5-Yr Avg)
	#	%	C.I.(95%)	#	%	C.I.(95%)	#	%	C.I.(95%)	#
Caucasian	1,200	27.2	24.9 - 29.6	2,800	65.4	62.8 - 67.8	300	7.4	6.2 - 8.9	4,300
Native Hawaiian	2,300	42.4	40.0 - 44.8	2,300	43.3	40.9 - 45.7	800	14.3	12.7 - 16.1	5,300
Chinese	200	25.4	20.2 - 31.3	500	67.2	61.0 - 72.8	100	7.5	4.8 - 11.3	700
Filipino	1,300	38.0	35.2 - 41.0	1,700	50.3	47.3 - 53.2	400	11.7	10.0 - 13.7	3,300
Japanese	400	23.5	20.3 - 27.1	1,300	69.1	65.3 - 72.8	100	7.4	5.4 - 9.9	1,900
Other	1,000	36.3	32.9 - 39.7	1,400	49.5	46.0 - 53.0	400	14.2	11.9 - 16.9	2,700

PRAMS Age Group	Mis-timed			Intended			Unwanted			Weighted Total Responses (5-Yr Avg)
	#	%	C.I.(95%)	#	%	C.I.(95%)	#	%	C.I.(95%)	#
<20	1,000	66.2	61.8 - 70.3	300	21.1	17.6 - 24.9	200	12.7	10.1 - 15.9	1,400
20-24	2,100	49.5	46.8 - 52.2	1,700	39.8	37.2 - 42.5	500	10.7	9.1 - 12.5	4,300
25-34	2,700	29.4	27.8 - 31.1	5,700	60.8	59.0 - 62.6	900	9.8	8.7 - 10.9	9,300
35+	500	14.9	12.9 - 17.2	2,200	69.6	66.7 - 72.3	500	15.6	13.4 - 18.0	3,200

**PRAMS Health Indicator 5-Year Aggregate Report - Pregnancy intention- by State;County;DOH Race-
Ethnicity;PRAMS Age Group;Infant Gender;Married;Poverty Level;Income (2004-2011);Birthweight;Smoke 3rd
Trimester;Smoke Before Pregnant;WIC During Pregnancy, for the Year(s)
2000-2004;2001-2005;2002-2006;2003-2007;2004-2008;2005-2009;2006-2010;2007-2011**

Note: Weighted counts (#) represent 5-yr averages, rounded to the nearest hundred; n/r (Not Reportable) - If the unweighted total responses for a dimension (row) is <30 that row will not be shown

Year: 2007-2011

Infant Gender	Mis-timed			Intended			Unwanted			Weighted Total Responses (5-Yr Avg)
	#	%	C.I.(95%)	#	%	C.I.(95%)	#	%	C.I.(95%)	#
Male	3,300	34.6	32.9 - 36.4	5,300	55.6	53.8 - 57.4	900	9.8	8.7 - 10.9	9,500
Female	3,000	34.4	32.7 - 36.2	4,700	52.8	50.9 - 54.6	1,100	12.8	11.6 - 14.1	8,800

Married	Mis-timed			Intended			Unwanted			Weighted Total Responses (5-Yr Avg)
	#	%	C.I.(95%)	#	%	C.I.(95%)	#	%	C.I.(95%)	#
Yes	2,800	24.9	23.5 - 26.3	7,400	65.9	64.3 - 67.4	1,000	9.3	8.3 - 10.3	11,300
No	3,500	50.1	48.0 - 52.2	2,500	35.6	33.6 - 37.6	1,000	14.4	13.0 - 15.9	7,000

Poverty Level	Mis-timed			Intended			Unwanted			Weighted Total Responses (5-Yr Avg)
	#	%	C.I.(95%)	#	%	C.I.(95%)	#	%	C.I.(95%)	#
0-130%	2,900	43.6	41.5 - 45.8	2,700	40.3	38.2 - 42.4	1,100	16.1	14.6 - 17.7	6,600
131-185%	1,000	37.7	34.4 - 41.1	1,400	51.0	47.6 - 54.4	300	11.3	9.4 - 13.6	2,800
186+%	1,900	25.0	23.3 - 26.8	5,300	68.5	66.6 - 70.3	500	6.5	5.6 - 7.6	7,700

**PRAMS Health Indicator 5-Year Aggregate Report - Pregnancy intention- by State;County;DOH Race-
Ethnicity;PRAMS Age Group;Infant Gender;Married;Poverty Level;Income (2004-2011);Birthweight;Smoke 3rd
Trimester;Smoke Before Pregnant;WIC During Pregnancy, for the Year(s)
2000-2004;2001-2005;2002-2006;2003-2007;2004-2008;2005-2009;2006-2010;2007-2011**

Note: Weighted counts (#) represent 5-yr averages, rounded to the nearest hundred; n/r (Not Reportable) - If the unweighted total responses for a dimension (row) is <30 that row will not be shown

Year: 2007-2011

Income (2004-2011)	Mis-timed			Intended			Unwanted			Weighted Total Responses (5-Yr Avg)
	#	%	C.I.(95%)	#	%	C.I.(95%)	#	%	C.I.(95%)	#
<\$10,000	1,600	50.5	47.3 - 53.6	1,100	34.5	31.6 - 37.5	500	15.1	13.1 - 17.3	3,200
\$10,000-\$24,999	1,500	41.3	38.5 - 44.1	1,600	44.4	41.6 - 47.3	500	14.3	12.4 - 16.5	3,700
\$25,000-\$49,999	1,400	32.9	30.4 - 35.5	2,400	56.0	53.3 - 58.7	500	11.1	9.5 - 13.0	4,200
>=\$50,000	1,400	22.9	21.1 - 24.8	4,300	70.2	68.1 - 72.2	400	6.9	5.8 - 8.2	6,100

Birthweight	Mis-timed			Intended			Unwanted			Weighted Total Responses (5-Yr Avg)
	#	%	C.I.(95%)	#	%	C.I.(95%)	#	%	C.I.(95%)	#
Low birth weight	400	32.0	29.1 - 35.0	700	53.4	50.3 - 56.5	200	14.6	12.5 - 17.1	1,300
Normal birth weight	5,900	34.7	33.4 - 36.0	9,200	54.4	53.0 - 55.7	1,900	11.0	10.1 - 11.9	16,900

Smoke 3rd Trimester	Mis-timed			Intended			Unwanted			Weighted Total Responses (5-Yr Avg)
	#	%	C.I.(95%)	#	%	C.I.(95%)	#	%	C.I.(95%)	#
Yes	600	38.9	34.5 - 43.5	600	41.8	37.3 - 46.5	300	19.3	15.9 - 23.2	1,400
No	5,700	34.2	32.9 - 35.5	9,200	55.2	53.9 - 56.6	1,800	10.6	9.8 - 11.4	16,600

**PRAMS Health Indicator 5-Year Aggregate Report - Pregnancy intention- by State;County;DOH Race-
Ethnicity;PRAMS Age Group;Infant Gender;Married;Poverty Level;Income (2004-2011);Birthweight;Smoke 3rd
Trimester;Smoke Before Pregnant;WIC During Pregnancy, for the Year(s)
2000-2004;2001-2005;2002-2006;2003-2007;2004-2008;2005-2009;2006-2010;2007-2011**

Note: Weighted counts (#) represent 5-yr averages, rounded to the nearest hundred; n/r (Not Reportable) - If the unweighted total responses for a dimension (row) is <30 that row will not be shown

Year: 2007-2011

Smoke Before Pregnant	Mis-timed			Intended			Unwanted			Weighted Total Responses (5-Yr Avg)
	#	%	C.I.(95%)	#	%	C.I.(95%)	#	%	C.I.(95%)	#
Yes	1,500	39.8	37.0 - 42.7	1,700	45.4	42.5 - 48.3	500	14.8	12.9 - 17.0	3,700
No	4,800	33.3	31.9 - 34.7	8,100	56.4	54.9 - 57.9	1,500	10.3	9.5 - 11.3	14,400

WIC During Pregnancy	Mis-timed			Intended			Unwanted			Weighted Total Responses (5-Yr Avg)
	#	%	C.I.(95%)	#	%	C.I.(95%)	#	%	C.I.(95%)	#
Yes	3,400	43.2	41.2 - 45.1	3,300	42.6	40.7 - 44.6	1,100	14.2	12.9 - 15.7	7,800
No	2,800	27.8	26.3 - 29.4	6,500	63.2	61.5 - 64.9	900	9.0	8.0 - 10.0	10,200

**PRAMS Health Indicator 5-Year Aggregate Report - Pregnancy intention- by State;County;DOH Race-
Ethnicity;PRAMS Age Group;Infant Gender;Married;Poverty Level;Income (2004-2011);Birthweight;Smoke 3rd
Trimester;Smoke Before Pregnant;WIC During Pregnancy, for the Year(s)
2000-2004;2001-2005;2002-2006;2003-2007;2004-2008;2005-2009;2006-2010;2007-2011**

Note: Weighted counts (#) represent 5-yr averages, rounded to the nearest hundred; n/r (Not Reportable) - If the unweighted total responses for a dimension (row) is <30 that row will not be shown

Year: 2006-2010

State	Mis-timed			Intended			Unwanted			Weighted Total Responses (5-Yr Avg)
	#	%	C.I.(95%)	#	%	C.I.(95%)	#	%	C.I.(95%)	#
Totals	6,200	34.1	32.9 - 35.3	9,900	54.1	52.9 - 55.3	2,100	11.8	11.0 - 12.6	18,200

County	Mis-timed			Intended			Unwanted			Weighted Total Responses (5-Yr Avg)
	#	%	C.I.(95%)	#	%	C.I.(95%)	#	%	C.I.(95%)	#
Hawaii	900	37.4	34.7 - 40.2	1,200	50.1	47.3 - 52.9	300	12.4	10.7 - 14.4	2,300
Honolulu	4,400	33.6	32.1 - 35.1	7,100	54.7	53.1 - 56.2	1,500	11.7	10.8 - 12.7	13,000
Kauai	300	34.5	30.6 - 38.7	500	53.0	48.7 - 57.2	100	12.5	9.9 - 15.5	900
Maui	700	33.4	30.7 - 36.2	1,100	55.5	52.6 - 58.3	200	11.1	9.5 - 13.0	2,100

**PRAMS Health Indicator 5-Year Aggregate Report - Pregnancy intention- by State;County;DOH Race-
Ethnicity;PRAMS Age Group;Infant Gender;Married;Poverty Level;Income (2004-2011);Birthweight;Smoke 3rd
Trimester;Smoke Before Pregnant;WIC During Pregnancy, for the Year(s)
2000-2004;2001-2005;2002-2006;2003-2007;2004-2008;2005-2009;2006-2010;2007-2011**

Note: Weighted counts (#) represent 5-yr averages, rounded to the nearest hundred; n/r (Not Reportable) - If the unweighted total responses for a dimension (row) is <30 that row will not be shown

Year: 2006-2010

DOH Race- Ethnicity	Mis-timed			Intended			Unwanted			Weighted Total Responses (5-Yr Avg)
	#	%	C.I.(95%)	#	%	C.I.(95%)	#	%	C.I.(95%)	#
Caucasian	1,200	28.0	25.8 - 30.3	2,700	63.5	61.0 - 65.8	400	8.5	7.3 - 10.0	4,300
Native Hawaiian	2,200	41.6	39.3 - 44.0	2,300	43.9	41.5 - 46.2	800	14.5	13.0 - 16.3	5,300
Chinese	200	24.9	20.2 - 30.3	500	66.1	60.4 - 71.3	100	9.0	6.2 - 12.9	700
Filipino	1,200	37.4	34.7 - 40.1	1,700	50.3	47.6 - 53.1	400	12.3	10.6 - 14.2	3,300
Japanese	400	23.5	20.5 - 26.8	1,300	69.7	66.2 - 73.0	100	6.8	5.1 - 9.0	1,900
Other	1,000	34.9	31.9 - 38.1	1,400	50.0	46.8 - 53.3	400	15.1	12.9 - 17.5	2,800

PRAMS Age Group	Mis-timed			Intended			Unwanted			Weighted Total Responses (5-Yr Avg)
	#	%	C.I.(95%)	#	%	C.I.(95%)	#	%	C.I.(95%)	#
<20	1,000	65.6	61.4 - 69.5	300	22.1	18.8 - 25.9	200	12.3	9.9 - 15.2	1,500
20-24	2,000	47.3	44.7 - 49.9	1,800	41.6	39.1 - 44.1	500	11.1	9.6 - 12.8	4,300
25-34	2,700	29.2	27.6 - 30.8	5,500	60.0	58.3 - 61.7	1,000	10.8	9.8 - 11.9	9,100
35+	500	15.4	13.5 - 17.6	2,300	69.5	66.8 - 72.1	500	15.1	13.1 - 17.4	3,200

**PRAMS Health Indicator 5-Year Aggregate Report - Pregnancy intention- by State;County;DOH Race-
Ethnicity;PRAMS Age Group;Infant Gender;Married;Poverty Level;Income (2004-2011);Birthweight;Smoke 3rd
Trimester;Smoke Before Pregnant;WIC During Pregnancy, for the Year(s)
2000-2004;2001-2005;2002-2006;2003-2007;2004-2008;2005-2009;2006-2010;2007-2011**

Note: Weighted counts (#) represent 5-yr averages, rounded to the nearest hundred; n/r (Not Reportable) - If the unweighted total responses for a dimension (row) is <30 that row will not be shown

Year: 2006-2010

Infant Gender	Mis-timed			Intended			Unwanted			Weighted Total Responses (5-Yr Avg)
	#	%	C.I.(95%)	#	%	C.I.(95%)	#	%	C.I.(95%)	#
Male	3,200	34.0	32.3 - 35.6	5,300	55.7	54.0 - 57.4	1,000	10.4	9.4 - 11.4	9,400
Female	3,000	34.3	32.6 - 36.0	4,600	52.5	50.7 - 54.2	1,200	13.3	12.1 - 14.5	8,800

Married	Mis-timed			Intended			Unwanted			Weighted Total Responses (5-Yr Avg)
	#	%	C.I.(95%)	#	%	C.I.(95%)	#	%	C.I.(95%)	#
Yes	2,800	25.0	23.7 - 26.4	7,400	65.4	63.9 - 66.9	1,100	9.6	8.7 - 10.5	11,300
No	3,400	48.8	46.8 - 50.9	2,500	35.8	33.9 - 37.7	1,100	15.4	14.0 - 16.9	6,900

Poverty Level	Mis-timed			Intended			Unwanted			Weighted Total Responses (5-Yr Avg)
	#	%	C.I.(95%)	#	%	C.I.(95%)	#	%	C.I.(95%)	#
0-130%	2,800	42.1	40.1 - 44.2	2,700	41.7	39.6 - 43.7	1,100	16.2	14.8 - 17.8	6,500
131-185%	1,000	37.3	34.2 - 40.6	1,300	48.8	45.6 - 52.1	400	13.8	11.8 - 16.1	2,700
186+%	2,000	25.5	23.9 - 27.2	5,200	67.9	66.1 - 69.6	500	6.6	5.7 - 7.6	7,700

**PRAMS Health Indicator 5-Year Aggregate Report - Pregnancy intention- by State;County;DOH Race-
Ethnicity;PRAMS Age Group;Infant Gender;Married;Poverty Level;Income (2004-2011);Birthweight;Smoke 3rd
Trimester;Smoke Before Pregnant;WIC During Pregnancy, for the Year(s)
2000-2004;2001-2005;2002-2006;2003-2007;2004-2008;2005-2009;2006-2010;2007-2011**

Note: Weighted counts (#) represent 5-yr averages, rounded to the nearest hundred; n/r (Not Reportable) - If the unweighted total responses for a dimension (row) is <30 that row will not be shown

Year: 2006-2010

Income (2004-2011)	Mis-timed			Intended			Unwanted			Weighted Total Responses (5-Yr Avg)
	#	%	C.I.(95%)	#	%	C.I.(95%)	#	%	C.I.(95%)	#
<\$10,000	1,500	47.7	44.6 - 50.7	1,100	36.2	33.3 - 39.2	500	16.1	14.1 - 18.4	3,100
\$10,000-\$24,999	1,500	40.3	37.7 - 43.0	1,700	45.6	43.0 - 48.3	500	14.0	12.3 - 16.0	3,700
\$25,000-\$49,999	1,400	34.0	31.6 - 36.5	2,200	53.8	51.3 - 56.4	500	12.2	10.6 - 14.0	4,200
>=\$50,000	1,400	22.9	21.2 - 24.8	4,200	69.9	67.9 - 71.8	400	7.1	6.1 - 8.3	6,000

Birthweight	Mis-timed			Intended			Unwanted			Weighted Total Responses (5-Yr Avg)
	#	%	C.I.(95%)	#	%	C.I.(95%)	#	%	C.I.(95%)	#
Low birth weight	400	32.5	29.4 - 35.8	700	52.4	49.0 - 55.8	200	15.1	12.7 - 17.8	1,400
Normal birth weight	5,800	34.2	33.0 - 35.5	9,100	54.2	53.0 - 55.5	1,900	11.5	10.7 - 12.4	16,800

Smoke 3rd Trimester	Mis-timed			Intended			Unwanted			Weighted Total Responses (5-Yr Avg)
	#	%	C.I.(95%)	#	%	C.I.(95%)	#	%	C.I.(95%)	#
Yes	600	39.6	35.5 - 44.0	600	40.1	35.9 - 44.4	300	20.3	17.0 - 24.0	1,600
No	5,500	33.6	32.3 - 34.8	9,100	55.4	54.1 - 56.7	1,800	11.0	10.2 - 11.8	16,400

**PRAMS Health Indicator 5-Year Aggregate Report - Pregnancy intention- by State;County;DOH Race-
Ethnicity;PRAMS Age Group;Infant Gender;Married;Poverty Level;Income (2004-2011);Birthweight;Smoke 3rd
Trimester;Smoke Before Pregnant;WIC During Pregnancy, for the Year(s)
2000-2004;2001-2005;2002-2006;2003-2007;2004-2008;2005-2009;2006-2010;2007-2011**

Note: Weighted counts (#) represent 5-yr averages, rounded to the nearest hundred; n/r (Not Reportable) - If the unweighted total responses for a dimension (row) is <30 that row will not be shown

Year: 2006-2010

Smoke Before Pregnant	Mis-timed			Intended			Unwanted			Weighted Total Responses (5-Yr Avg)
	#	%	C.I.(95%)	#	%	C.I.(95%)	#	%	C.I.(95%)	#
Yes	1,500	40.5	37.8 - 43.2	1,600	44.1	41.4 - 46.9	600	15.4	13.5 - 17.5	3,700
No	4,600	32.4	31.1 - 33.8	8,100	56.7	55.3 - 58.0	1,500	10.9	10.1 - 11.8	14,200

WIC During Pregnancy	Mis-timed			Intended			Unwanted			Weighted Total Responses (5-Yr Avg)
	#	%	C.I.(95%)	#	%	C.I.(95%)	#	%	C.I.(95%)	#
Yes	3,200	42.0	40.1 - 43.9	3,300	43.0	41.1 - 44.9	1,200	15.0	13.7 - 16.4	7,700
No	2,900	28.1	26.7 - 29.6	6,400	62.4	60.8 - 64.0	1,000	9.4	8.5 - 10.4	10,300

**PRAMS Health Indicator 5-Year Aggregate Report - Pregnancy intention- by State;County;DOH Race-
Ethnicity;PRAMS Age Group;Infant Gender;Married;Poverty Level;Income (2004-2011);Birthweight;Smoke 3rd
Trimester;Smoke Before Pregnant;WIC During Pregnancy, for the Year(s)
2000-2004;2001-2005;2002-2006;2003-2007;2004-2008;2005-2009;2006-2010;2007-2011**

Note: Weighted counts (#) represent 5-yr averages, rounded to the nearest hundred; n/r (Not Reportable) - If the unweighted total responses for a dimension (row) is <30 that row will not be shown

Year: 2005-2009

State	Mis-timed			Intended			Unwanted			Weighted Total Responses (5-Yr Avg)
	#	%	C.I.(95%)	#	%	C.I.(95%)	#	%	C.I.(95%)	#
Totals	6,000	33.2	32.1 - 34.3	9,700	54.1	52.9 - 55.2	2,300	12.8	12.0 - 13.6	18,000

County	Mis-timed			Intended			Unwanted			Weighted Total Responses (5-Yr Avg)
	#	%	C.I.(95%)	#	%	C.I.(95%)	#	%	C.I.(95%)	#
Hawaii	900	36.9	34.1 - 39.8	1,100	49.2	46.3 - 52.1	300	13.9	12.0 - 16.1	2,300
Honolulu	4,200	32.5	31.2 - 33.9	7,000	54.7	53.3 - 56.1	1,600	12.7	11.8 - 13.7	12,900
Kauai	300	33.9	29.7 - 38.5	400	51.9	47.3 - 56.5	100	14.1	11.2 - 17.8	900
Maui	700	32.8	29.9 - 35.8	1,100	56.2	53.1 - 59.3	200	11.0	9.2 - 13.1	2,000

**PRAMS Health Indicator 5-Year Aggregate Report - Pregnancy intention- by State;County;DOH Race-
Ethnicity;PRAMS Age Group;Infant Gender;Married;Poverty Level;Income (2004-2011);Birthweight;Smoke 3rd
Trimester;Smoke Before Pregnant;WIC During Pregnancy, for the Year(s)
2000-2004;2001-2005;2002-2006;2003-2007;2004-2008;2005-2009;2006-2010;2007-2011**

Note: Weighted counts (#) represent 5-yr averages, rounded to the nearest hundred; n/r (Not Reportable) - If the unweighted total responses for a dimension (row) is <30 that row will not be shown

Year: 2005-2009

DOH Race- Ethnicity	Mis-timed			Intended			Unwanted			Weighted Total Responses (5-Yr Avg)
	#	%	C.I.(95%)	#	%	C.I.(95%)	#	%	C.I.(95%)	#
Caucasian	1,100	27.3	25.2 - 29.5	2,600	63.8	61.5 - 66.0	400	8.9	7.7 - 10.3	4,200
Native Hawaiian	2,000	39.7	37.5 - 42.0	2,300	43.8	41.6 - 46.1	800	16.5	14.8 - 18.2	5,200
Chinese	200	22.7	18.9 - 26.9	400	67.4	62.7 - 71.7	100	9.9	7.2 - 13.5	700
Filipino	1,200	35.6	33.2 - 38.1	1,700	51.4	48.8 - 53.9	400	13.0	11.4 - 14.8	3,300
Japanese	500	26.0	23.2 - 29.1	1,400	67.3	64.0 - 70.4	100	6.7	5.1 - 8.6	2,000
Other	900	34.7	31.8 - 37.6	1,300	48.8	45.7 - 51.8	500	16.6	14.5 - 18.9	2,700

PRAMS Age Group	Mis-timed			Intended			Unwanted			Weighted Total Responses (5-Yr Avg)
	#	%	C.I.(95%)	#	%	C.I.(95%)	#	%	C.I.(95%)	#
<20	1,000	62.4	58.4 - 66.2	400	24.0	20.8 - 27.6	200	13.6	11.1 - 16.5	1,600
20-24	2,000	46.2	43.8 - 48.6	1,800	41.1	38.8 - 43.5	500	12.7	11.1 - 14.4	4,300
25-34	2,500	28.1	26.6 - 29.5	5,400	60.1	58.5 - 61.7	1,100	11.8	10.8 - 12.9	9,000
35+	500	15.2	13.4 - 17.1	2,200	69.7	67.2 - 72.1	500	15.2	13.3 - 17.3	3,200

**PRAMS Health Indicator 5-Year Aggregate Report - Pregnancy intention- by State;County;DOH Race-
Ethnicity;PRAMS Age Group;Infant Gender;Married;Poverty Level;Income (2004-2011);Birthweight;Smoke 3rd
Trimester;Smoke Before Pregnant;WIC During Pregnancy, for the Year(s)
2000-2004;2001-2005;2002-2006;2003-2007;2004-2008;2005-2009;2006-2010;2007-2011**

Note: Weighted counts (#) represent 5-yr averages, rounded to the nearest hundred; n/r (Not Reportable) - If the unweighted total responses for a dimension (row) is <30 that row will not be shown

Year: 2005-2009

Infant Gender	Mis-timed			Intended			Unwanted			Weighted Total Responses (5-Yr Avg)
	#	%	C.I.(95%)	#	%	C.I.(95%)	#	%	C.I.(95%)	#
Male	3,200	33.8	32.3 - 35.4	5,200	55.0	53.4 - 56.6	1,000	11.1	10.2 - 12.2	9,400
Female	2,800	32.5	30.9 - 34.1	4,600	53.0	51.3 - 54.6	1,300	14.5	13.4 - 15.8	8,700

Married	Mis-timed			Intended			Unwanted			Weighted Total Responses (5-Yr Avg)
	#	%	C.I.(95%)	#	%	C.I.(95%)	#	%	C.I.(95%)	#
Yes	2,800	25.0	23.8 - 26.3	7,300	65.1	63.8 - 66.5	1,100	9.9	9.0 - 10.8	11,200
No	3,200	46.5	44.6 - 48.5	2,500	35.9	34.1 - 37.8	1,200	17.5	16.1 - 19.0	6,800

Poverty Level	Mis-timed			Intended			Unwanted			Weighted Total Responses (5-Yr Avg)
	#	%	C.I.(95%)	#	%	C.I.(95%)	#	%	C.I.(95%)	#
0-130%	2,700	41.4	39.5 - 43.4	2,700	40.7	38.8 - 42.7	1,200	17.9	16.4 - 19.4	6,500
131-185%	800	34.4	31.4 - 37.4	1,200	50.1	47.0 - 53.3	400	15.5	13.4 - 17.9	2,500
186+%	1,900	25.3	23.8 - 26.8	5,200	68.0	66.4 - 69.6	500	6.7	5.9 - 7.6	7,700

**PRAMS Health Indicator 5-Year Aggregate Report - Pregnancy intention- by State;County;DOH Race-
Ethnicity;PRAMS Age Group;Infant Gender;Married;Poverty Level;Income (2004-2011);Birthweight;Smoke 3rd
Trimester;Smoke Before Pregnant;WIC During Pregnancy, for the Year(s)
2000-2004;2001-2005;2002-2006;2003-2007;2004-2008;2005-2009;2006-2010;2007-2011**

Note: Weighted counts (#) represent 5-yr averages, rounded to the nearest hundred; n/r (Not Reportable) - If the unweighted total responses for a dimension (row) is <30 that row will not be shown

Year: 2005-2009

Income (2004-2011)	Mis-timed			Intended			Unwanted			Weighted Total Responses (5-Yr Avg)
	#	%	C.I.(95%)	#	%	C.I.(95%)	#	%	C.I.(95%)	#
<\$10,000	1,400	45.6	42.7 - 48.5	1,100	37.0	34.3 - 39.9	500	17.4	15.3 - 19.7	3,100
\$10,000-\$24,999	1,500	39.8	37.3 - 42.3	1,700	44.4	41.9 - 46.9	600	15.8	14.1 - 17.8	3,800
\$25,000-\$49,999	1,300	32.8	30.6 - 35.1	2,200	54.2	51.8 - 56.6	500	13.0	11.4 - 14.7	4,000
>=\$50,000	1,300	22.4	20.8 - 24.1	4,100	70.3	68.5 - 72.1	400	7.2	6.3 - 8.3	5,900

Birthweight	Mis-timed			Intended			Unwanted			Weighted Total Responses (5-Yr Avg)
	#	%	C.I.(95%)	#	%	C.I.(95%)	#	%	C.I.(95%)	#
Low birth weight	500	32.8	29.4 - 36.3	700	51.7	48.1 - 55.4	200	15.5	12.9 - 18.4	1,400
Normal birth weight	5,500	33.2	32.0 - 34.3	9,000	54.3	53.0 - 55.5	2,100	12.6	11.8 - 13.4	16,600

Smoke 3rd Trimester	Mis-timed			Intended			Unwanted			Weighted Total Responses (5-Yr Avg)
	#	%	C.I.(95%)	#	%	C.I.(95%)	#	%	C.I.(95%)	#
Yes	600	39.5	35.6 - 43.5	600	38.1	34.2 - 42.1	400	22.5	19.2 - 26.1	1,600
No	5,300	32.6	31.4 - 33.7	9,000	55.5	54.3 - 56.7	1,900	11.9	11.1 - 12.7	16,100

**PRAMS Health Indicator 5-Year Aggregate Report - Pregnancy intention- by State;County;DOH Race-
Ethnicity;PRAMS Age Group;Infant Gender;Married;Poverty Level;Income (2004-2011);Birthweight;Smoke 3rd
Trimester;Smoke Before Pregnant;WIC During Pregnancy, for the Year(s)
2000-2004;2001-2005;2002-2006;2003-2007;2004-2008;2005-2009;2006-2010;2007-2011**

Note: Weighted counts (#) represent 5-yr averages, rounded to the nearest hundred; n/r (Not Reportable) - If the unweighted total responses for a dimension (row) is <30 that row will not be shown

Year: 2005-2009

Smoke Before Pregnant	Mis-timed			Intended			Unwanted			Weighted Total Responses (5-Yr Avg)
	#	%	C.I.(95%)	#	%	C.I.(95%)	#	%	C.I.(95%)	#
Yes	1,500	39.6	37.0 - 42.2	1,600	43.3	40.7 - 45.9	600	17.2	15.3 - 19.2	3,700
No	4,400	31.5	30.3 - 32.8	8,000	56.8	55.5 - 58.1	1,600	11.7	10.9 - 12.6	14,000

WIC During Pregnancy	Mis-timed			Intended			Unwanted			Weighted Total Responses (5-Yr Avg)
	#	%	C.I.(95%)	#	%	C.I.(95%)	#	%	C.I.(95%)	#
Yes	3,100	40.6	38.9 - 42.4	3,200	42.7	40.9 - 44.5	1,300	16.7	15.4 - 18.1	7,500
No	2,800	27.6	26.3 - 29.0	6,300	62.4	60.9 - 63.8	1,000	10.0	9.1 - 10.9	10,100

**PRAMS Health Indicator 5-Year Aggregate Report - Pregnancy intention- by State;County;DOH Race-
Ethnicity;PRAMS Age Group;Infant Gender;Married;Poverty Level;Income (2004-2011);Birthweight;Smoke 3rd
Trimester;Smoke Before Pregnant;WIC During Pregnancy, for the Year(s)
2000-2004;2001-2005;2002-2006;2003-2007;2004-2008;2005-2009;2006-2010;2007-2011**

Note: Weighted counts (#) represent 5-yr averages, rounded to the nearest hundred; n/r (Not Reportable) - If the unweighted total responses for a dimension (row) is <30 that row will not be shown

Year: 2004-2008

State	Mis-timed			Intended			Unwanted			Weighted Total Responses (5-Yr Avg)
	#	%	C.I.(95%)	#	%	C.I.(95%)	#	%	C.I.(95%)	#
Totals	5,800	32.3	31.3 - 33.3	9,800	54.7	53.7 - 55.8	2,300	13.0	12.3 - 13.7	17,900

County	Mis-timed			Intended			Unwanted			Weighted Total Responses (5-Yr Avg)
	#	%	C.I.(95%)	#	%	C.I.(95%)	#	%	C.I.(95%)	#
Hawaii	800	35.9	33.0 - 38.9	1,100	49.4	46.4 - 52.5	300	14.6	12.6 - 17.0	2,300
Honolulu	4,000	31.6	30.4 - 32.7	7,100	55.4	54.1 - 56.6	1,700	13.1	12.3 - 14.0	12,800
Kauai	300	32.5	28.0 - 37.3	500	54.1	49.2 - 59.0	100	13.4	10.3 - 17.1	800
Maui	600	32.8	29.8 - 36.0	1,100	56.9	53.6 - 60.1	200	10.3	8.4 - 12.5	1,900

**PRAMS Health Indicator 5-Year Aggregate Report - Pregnancy intention- by State;County;DOH Race-
Ethnicity;PRAMS Age Group;Infant Gender;Married;Poverty Level;Income (2004-2011);Birthweight;Smoke 3rd
Trimester;Smoke Before Pregnant;WIC During Pregnancy, for the Year(s)
2000-2004;2001-2005;2002-2006;2003-2007;2004-2008;2005-2009;2006-2010;2007-2011**

Note: Weighted counts (#) represent 5-yr averages, rounded to the nearest hundred; n/r (Not Reportable) - If the unweighted total responses for a dimension (row) is <30 that row will not be shown

Year: 2004-2008

DOH Race-Ethnicity	Mis-timed			Intended			Unwanted			Weighted Total Responses (5-Yr Avg)
	#	%	C.I.(95%)	#	%	C.I.(95%)	#	%	C.I.(95%)	#
Caucasian	1,100	27.4	25.5 - 29.4	2,600	63.4	61.3 - 65.5	400	9.2	8.0 - 10.5	4,100
Native Hawaiian	1,900	38.0	35.9 - 40.1	2,300	45.9	43.7 - 48.1	800	16.1	14.6 - 17.8	4,900
Chinese	100	22.8	20.5 - 25.2	400	68.0	65.3 - 70.5	100	9.3	7.7 - 11.0	600
Filipino	1,200	34.7	32.6 - 37.0	1,700	52.1	49.8 - 54.3	400	13.2	11.7 - 14.8	3,300
Japanese	500	25.6	23.1 - 28.3	1,400	66.7	63.7 - 69.5	200	7.7	6.2 - 9.6	2,100
Other	900	33.8	31.2 - 36.5	1,300	48.4	45.6 - 51.2	500	17.8	15.7 - 20.1	2,700

PRAMS Age Group	Mis-timed			Intended			Unwanted			Weighted Total Responses (5-Yr Avg)
	#	%	C.I.(95%)	#	%	C.I.(95%)	#	%	C.I.(95%)	#
<20	900	57.2	53.2 - 61.0	400	27.4	24.0 - 31.0	200	15.5	12.8 - 18.5	1,500
20-24	1,900	44.4	42.2 - 46.7	1,800	42.5	40.3 - 44.7	600	13.1	11.6 - 14.7	4,300
25-34	2,500	27.9	26.5 - 29.2	5,300	59.9	58.4 - 61.3	1,100	12.3	11.3 - 13.3	8,900
35+	500	16.6	14.8 - 18.4	2,200	69.8	67.5 - 71.9	400	13.7	12.1 - 15.4	3,200

**PRAMS Health Indicator 5-Year Aggregate Report - Pregnancy intention- by State;County;DOH Race-
Ethnicity;PRAMS Age Group;Infant Gender;Married;Poverty Level;Income (2004-2011);Birthweight;Smoke 3rd
Trimester;Smoke Before Pregnant;WIC During Pregnancy, for the Year(s)
2000-2004;2001-2005;2002-2006;2003-2007;2004-2008;2005-2009;2006-2010;2007-2011**

Note: Weighted counts (#) represent 5-yr averages, rounded to the nearest hundred; n/r (Not Reportable) - If the unweighted total responses for a dimension (row) is <30 that row will not be shown

Year: 2004-2008

Infant Gender	Mis-timed			Intended			Unwanted			Weighted Total Responses (5-Yr Avg)
	#	%	C.I.(95%)	#	%	C.I.(95%)	#	%	C.I.(95%)	#
Male	3,100	33.2	31.8 - 34.6	5,100	54.6	53.1 - 56.1	1,100	12.2	11.2 - 13.2	9,300
Female	2,700	31.3	29.9 - 32.7	4,700	54.8	53.3 - 56.3	1,200	13.9	12.8 - 15.0	8,600

Married	Mis-timed			Intended			Unwanted			Weighted Total Responses (5-Yr Avg)
	#	%	C.I.(95%)	#	%	C.I.(95%)	#	%	C.I.(95%)	#
Yes	2,900	25.1	24.0 - 26.2	7,500	64.9	63.6 - 66.1	1,100	10.0	9.2 - 10.8	11,500
No	2,900	45.2	43.4 - 47.1	2,300	36.4	34.6 - 38.2	1,200	18.4	17.0 - 19.9	6,400

Poverty Level	Mis-timed			Intended			Unwanted			Weighted Total Responses (5-Yr Avg)
	#	%	C.I.(95%)	#	%	C.I.(95%)	#	%	C.I.(95%)	#
0-130%	2,600	40.3	38.5 - 42.1	2,700	41.9	40.1 - 43.7	1,200	17.8	16.4 - 19.2	6,500
131-185%	800	34.2	31.5 - 37.1	1,100	49.3	46.3 - 52.2	400	16.5	14.4 - 18.8	2,300
186+%	1,900	24.9	23.5 - 26.2	5,300	68.4	67.0 - 69.9	500	6.7	6.0 - 7.5	7,700

**PRAMS Health Indicator 5-Year Aggregate Report - Pregnancy intention- by State;County;DOH Race-
Ethnicity;PRAMS Age Group;Infant Gender;Married;Poverty Level;Income (2004-2011);Birthweight;Smoke 3rd
Trimester;Smoke Before Pregnant;WIC During Pregnancy, for the Year(s)
2000-2004;2001-2005;2002-2006;2003-2007;2004-2008;2005-2009;2006-2010;2007-2011**

Note: Weighted counts (#) represent 5-yr averages, rounded to the nearest hundred; n/r (Not Reportable) - If the unweighted total responses for a dimension (row) is <30 that row will not be shown

Year: 2004-2008

Income (2004-2011)	Mis-timed			Intended			Unwanted			Weighted Total Responses (5-Yr Avg)
	#	%	C.I.(95%)	#	%	C.I.(95%)	#	%	C.I.(95%)	#
<\$10,000	1,300	43.9	41.2 - 46.6	1,100	38.0	35.3 - 40.6	500	18.1	16.1 - 20.4	3,000
\$10,000-\$24,999	1,500	39.0	36.8 - 41.3	1,800	45.0	42.7 - 47.3	600	16.0	14.4 - 17.8	3,900
\$25,000-\$49,999	1,400	32.4	30.4 - 34.4	2,300	55.5	53.3 - 57.6	500	12.2	10.8 - 13.7	4,200
>=\$50,000	1,200	21.6	20.1 - 23.2	4,000	71.1	69.4 - 72.7	400	7.3	6.4 - 8.3	5,600

Birthweight	Mis-timed			Intended			Unwanted			Weighted Total Responses (5-Yr Avg)
	#	%	C.I.(95%)	#	%	C.I.(95%)	#	%	C.I.(95%)	#
Low birth weight	400	32.4	28.8 - 36.1	700	53.1	49.2 - 56.9	200	14.5	11.9 - 17.7	1,300
Normal birth weight	5,300	32.3	31.3 - 33.3	9,100	54.8	53.7 - 55.9	2,100	12.9	12.1 - 13.6	16,500

Smoke 3rd Trimester	Mis-timed			Intended			Unwanted			Weighted Total Responses (5-Yr Avg)
	#	%	C.I.(95%)	#	%	C.I.(95%)	#	%	C.I.(95%)	#
Yes	600	39.3	35.6 - 43.1	600	37.8	34.1 - 41.5	300	22.9	19.8 - 26.4	1,500
No	5,100	31.6	30.6 - 32.6	9,100	56.3	55.2 - 57.4	1,900	12.1	11.3 - 12.8	16,100

**PRAMS Health Indicator 5-Year Aggregate Report - Pregnancy intention- by State;County;DOH Race-
Ethnicity;PRAMS Age Group;Infant Gender;Married;Poverty Level;Income (2004-2011);Birthweight;Smoke 3rd
Trimester;Smoke Before Pregnant;WIC During Pregnancy, for the Year(s)
2000-2004;2001-2005;2002-2006;2003-2007;2004-2008;2005-2009;2006-2010;2007-2011**

Note: Weighted counts (#) represent 5-yr averages, rounded to the nearest hundred; n/r (Not Reportable) - If the unweighted total responses for a dimension (row) is <30 that row will not be shown

Year: 2004-2008

Smoke Before Pregnant	Mis-timed			Intended			Unwanted			Weighted Total Responses (5-Yr Avg)
	#	%	C.I.(95%)	#	%	C.I.(95%)	#	%	C.I.(95%)	#
Yes	1,400	39.4	37.0 - 41.8	1,500	43.0	40.6 - 45.4	600	17.6	15.8 - 19.6	3,600
No	4,300	30.4	29.4 - 31.5	8,100	57.8	56.6 - 58.9	1,600	11.8	11.0 - 12.6	14,000

WIC During Pregnancy	Mis-timed			Intended			Unwanted			Weighted Total Responses (5-Yr Avg)
	#	%	C.I.(95%)	#	%	C.I.(95%)	#	%	C.I.(95%)	#
Yes	3,000	39.3	37.6 - 40.9	3,400	44.7	43.0 - 46.3	1,200	16.0	14.8 - 17.3	7,600
No	2,700	26.8	25.6 - 28.1	6,200	62.5	61.1 - 63.8	1,100	10.7	9.9 - 11.6	9,900

**PRAMS Health Indicator 5-Year Aggregate Report - Pregnancy intention- by State;County;DOH Race-
Ethnicity;PRAMS Age Group;Infant Gender;Married;Poverty Level;Income (2004-2011);Birthweight;Smoke 3rd
Trimester;Smoke Before Pregnant;WIC During Pregnancy, for the Year(s)
2000-2004;2001-2005;2002-2006;2003-2007;2004-2008;2005-2009;2006-2010;2007-2011**

Note: Weighted counts (#) represent 5-yr averages, rounded to the nearest hundred; n/r (Not Reportable) - If the unweighted total responses for a dimension (row) is <30 that row will not be shown

Year: 2003-2007

State	Mis-timed			Intended			Unwanted			Weighted Total Responses (5-Yr Avg)
	#	%	C.I.(95%)	#	%	C.I.(95%)	#	%	C.I.(95%)	#
Totals	5,800	32.6	31.6 - 33.7	9,700	54.6	53.5 - 55.7	2,300	12.8	12.0 - 13.5	17,700

County	Mis-timed			Intended			Unwanted			Weighted Total Responses (5-Yr Avg)
	#	%	C.I.(95%)	#	%	C.I.(95%)	#	%	C.I.(95%)	#
Hawaii	800	36.3	33.6 - 39.2	1,100	49.3	46.4 - 52.2	300	14.4	12.4 - 16.7	2,200
Honolulu	4,100	31.9	30.7 - 33.1	7,100	55.3	54.0 - 56.6	1,600	12.8	12.0 - 13.7	12,800
Kauai	300	33.8	29.5 - 38.3	500	53.3	48.7 - 57.9	100	12.9	10.0 - 16.5	800
Maui	600	33.0	30.2 - 36.1	1,100	56.6	53.5 - 59.7	200	10.3	8.6 - 12.4	1,900

**PRAMS Health Indicator 5-Year Aggregate Report - Pregnancy intention- by State;County;DOH Race-
Ethnicity;PRAMS Age Group;Infant Gender;Married;Poverty Level;Income (2004-2011);Birthweight;Smoke 3rd
Trimester;Smoke Before Pregnant;WIC During Pregnancy, for the Year(s)
2000-2004;2001-2005;2002-2006;2003-2007;2004-2008;2005-2009;2006-2010;2007-2011**

Note: Weighted counts (#) represent 5-yr averages, rounded to the nearest hundred; n/r (Not Reportable) - If the unweighted total responses for a dimension (row) is <30 that row will not be shown

Year: 2003-2007

DOH Race- Ethnicity	Mis-timed			Intended			Unwanted			Weighted Total Responses (5-Yr Avg)
	#	%	C.I.(95%)	#	%	C.I.(95%)	#	%	C.I.(95%)	#
Caucasian	1,100	27.8	25.7 - 29.9	2,500	63.2	61.0 - 65.4	400	9.0	7.8 - 10.4	4,000
Native Hawaiian	1,900	38.7	36.7 - 40.7	2,200	45.0	43.0 - 47.1	800	16.3	14.8 - 18.0	4,900
Chinese	200	23.7	20.2 - 27.6	500	68.9	65.0 - 72.6	<50	7.4	6.0 - 9.1	700
Filipino	1,200	34.0	31.7 - 36.3	1,800	53.1	50.6 - 55.5	400	13.0	11.5 - 14.7	3,400
Japanese	600	25.9	23.2 - 28.8	1,400	66.9	63.8 - 69.8	200	7.2	5.7 - 9.0	2,100
Other	900	34.9	32.1 - 37.8	1,300	47.8	44.9 - 50.8	500	17.3	15.2 - 19.7	2,700

PRAMS Age Group	Mis-timed			Intended			Unwanted			Weighted Total Responses (5-Yr Avg)
	#	%	C.I.(95%)	#	%	C.I.(95%)	#	%	C.I.(95%)	#
<20	900	58.5	54.7 - 62.3	400	25.8	22.6 - 29.4	200	15.6	13.0 - 18.7	1,500
20-24	2,000	45.1	42.9 - 47.3	1,800	41.8	39.6 - 44.0	600	13.1	11.7 - 14.7	4,300
25-34	2,400	27.7	26.3 - 29.1	5,300	60.3	58.8 - 61.8	1,000	12.0	11.0 - 13.0	8,700
35+	500	16.6	14.8 - 18.6	2,200	70.4	68.1 - 72.6	400	13.0	11.4 - 14.8	3,100

**PRAMS Health Indicator 5-Year Aggregate Report - Pregnancy intention- by State;County;DOH Race-
Ethnicity;PRAMS Age Group;Infant Gender;Married;Poverty Level;Income (2004-2011);Birthweight;Smoke 3rd
Trimester;Smoke Before Pregnant;WIC During Pregnancy, for the Year(s)
2000-2004;2001-2005;2002-2006;2003-2007;2004-2008;2005-2009;2006-2010;2007-2011**

Note: Weighted counts (#) represent 5-yr averages, rounded to the nearest hundred; n/r (Not Reportable) - If the unweighted total responses for a dimension (row) is <30 that row will not be shown

Year: 2003-2007

Infant Gender	Mis-timed			Intended			Unwanted			Weighted Total Responses (5-Yr Avg)
	#	%	C.I.(95%)	#	%	C.I.(95%)	#	%	C.I.(95%)	#
Male	3,100	33.2	31.8 - 34.6	5,100	54.6	53.1 - 56.1	1,100	12.2	11.3 - 13.2	9,300
Female	2,700	32.0	30.6 - 33.5	4,600	54.6	53.1 - 56.2	1,100	13.4	12.3 - 14.5	8,500

Married	Mis-timed			Intended			Unwanted			Weighted Total Responses (5-Yr Avg)
	#	%	C.I.(95%)	#	%	C.I.(95%)	#	%	C.I.(95%)	#
Yes	3,000	25.7	24.6 - 26.9	7,400	64.7	63.4 - 66.0	1,100	9.6	8.8 - 10.4	11,500
No	2,800	45.4	43.6 - 47.3	2,200	35.9	34.2 - 37.7	1,200	18.6	17.2 - 20.2	6,200

Poverty Level	Mis-timed			Intended			Unwanted			Weighted Total Responses (5-Yr Avg)
	#	%	C.I.(95%)	#	%	C.I.(95%)	#	%	C.I.(95%)	#
0-130%	2,700	40.9	39.1 - 42.7	2,800	42.1	40.3 - 43.9	1,100	17.0	15.7 - 18.4	6,700
131-185%	800	33.7	30.8 - 36.6	1,200	50.7	47.7 - 53.8	400	15.6	13.5 - 18.0	2,300
186+%	1,800	24.2	22.8 - 25.7	5,000	69.1	67.6 - 70.6	500	6.7	5.9 - 7.5	7,300

**PRAMS Health Indicator 5-Year Aggregate Report - Pregnancy intention- by State;County;DOH Race-
Ethnicity;PRAMS Age Group;Infant Gender;Married;Poverty Level;Income (2004-2011);Birthweight;Smoke 3rd
Trimester;Smoke Before Pregnant;WIC During Pregnancy, for the Year(s)
2000-2004;2001-2005;2002-2006;2003-2007;2004-2008;2005-2009;2006-2010;2007-2011**

Note: Weighted counts (#) represent 5-yr averages, rounded to the nearest hundred; n/r (Not Reportable) - If the unweighted total responses for a dimension (row) is <30 that row will not be shown

Year: 2003-2007

Birthweight	Mis-timed			Intended			Unwanted			Weighted Total Responses (5-Yr Avg)
	#	%	C.I.(95%)	#	%	C.I.(95%)	#	%	C.I.(95%)	#
Low birth weight	500	34.3	30.6 - 38.3	700	52.1	48.1 - 56.1	200	13.5	11.0 - 16.6	1,300
Normal birth weight	5,300	32.5	31.5 - 33.6	9,000	54.8	53.7 - 55.9	2,100	12.7	12.0 - 13.5	16,400

Smoke 3rd Trimester	Mis-timed			Intended			Unwanted			Weighted Total Responses (5-Yr Avg)
	#	%	C.I.(95%)	#	%	C.I.(95%)	#	%	C.I.(95%)	#
Yes	600	39.4	35.7 - 43.1	600	37.0	33.4 - 40.7	400	23.7	20.5 - 27.1	1,500
No	5,100	31.9	30.9 - 33.0	9,000	56.4	55.3 - 57.5	1,900	11.7	11.0 - 12.4	15,900

Smoke Before Pregnant	Mis-timed			Intended			Unwanted			Weighted Total Responses (5-Yr Avg)
	#	%	C.I.(95%)	#	%	C.I.(95%)	#	%	C.I.(95%)	#
Yes	1,500	40.5	38.1 - 42.9	1,500	41.9	39.5 - 44.3	600	17.6	15.8 - 19.6	3,600
No	4,200	30.5	29.3 - 31.6	8,000	58.1	56.9 - 59.3	1,600	11.4	10.7 - 12.2	13,800

**PRAMS Health Indicator 5-Year Aggregate Report - Pregnancy intention- by State;County;DOH Race-
Ethnicity;PRAMS Age Group;Infant Gender;Married;Poverty Level;Income (2004-2011);Birthweight;Smoke 3rd
Trimester;Smoke Before Pregnant;WIC During Pregnancy, for the Year(s)
2000-2004;2001-2005;2002-2006;2003-2007;2004-2008;2005-2009;2006-2010;2007-2011**

Note: Weighted counts (#) represent 5-yr averages, rounded to the nearest hundred; n/r (Not Reportable) - If the unweighted total responses for a dimension (row) is <30 that row will not be shown

Year: 2003-2007

WIC During Pregnancy	Mis-timed			Intended			Unwanted			Weighted Total Responses (5-Yr Avg)
	#	%	C.I.(95%)	#	%	C.I.(95%)	#	%	C.I.(95%)	#
Yes	3,100	40.5	38.9 - 42.2	3,300	43.7	42.0 - 45.3	1,200	15.8	14.6 - 17.1	7,500
No	2,600	26.6	25.3 - 27.9	6,200	63.0	61.6 - 64.4	1,000	10.4	9.6 - 11.4	9,900

**PRAMS Health Indicator 5-Year Aggregate Report - Pregnancy intention- by State;County;DOH Race-
Ethnicity;PRAMS Age Group;Infant Gender;Married;Poverty Level;Income (2004-2011);Birthweight;Smoke 3rd
Trimester;Smoke Before Pregnant;WIC During Pregnancy, for the Year(s)
2000-2004;2001-2005;2002-2006;2003-2007;2004-2008;2005-2009;2006-2010;2007-2011**

Note: Weighted counts (#) represent 5-yr averages, rounded to the nearest hundred; n/r (Not Reportable) - If the unweighted total responses for a dimension (row) is <30 that row will not be shown

Year: 2002-2006

State	Mis-timed			Intended			Unwanted			Weighted Total Responses (5-Yr Avg)
	#	%	C.I.(95%)	#	%	C.I.(95%)	#	%	C.I.(95%)	#
Totals	5,700	32.9	31.8 - 33.9	9,700	55.4	54.3 - 56.5	2,000	11.7	11.0 - 12.4	17,500

County	Mis-timed			Intended			Unwanted			Weighted Total Responses (5-Yr Avg)
	#	%	C.I.(95%)	#	%	C.I.(95%)	#	%	C.I.(95%)	#
Hawaii	800	36.5	33.9 - 39.2	1,000	49.7	46.9 - 52.4	300	13.8	11.9 - 16.0	2,100
Honolulu	4,100	32.2	30.9 - 33.5	7,200	56.5	55.1 - 57.8	1,500	11.4	10.6 - 12.3	12,800
Kauai	200	32.6	28.5 - 37.0	400	54.2	49.6 - 58.6	100	13.3	10.3 - 16.9	800
Maui	600	33.8	31.1 - 36.7	1,000	55.2	52.2 - 58.1	200	11.0	9.2 - 13.0	1,800

**PRAMS Health Indicator 5-Year Aggregate Report - Pregnancy intention- by State;County;DOH Race-
Ethnicity;PRAMS Age Group;Infant Gender;Married;Poverty Level;Income (2004-2011);Birthweight;Smoke 3rd
Trimester;Smoke Before Pregnant;WIC During Pregnancy, for the Year(s)
2000-2004;2001-2005;2002-2006;2003-2007;2004-2008;2005-2009;2006-2010;2007-2011**

Note: Weighted counts (#) represent 5-yr averages, rounded to the nearest hundred; n/r (Not Reportable) - If the unweighted total responses for a dimension (row) is <30 that row will not be shown

Year: 2002-2006

DOH Race-Ethnicity	Mis-timed			Intended			Unwanted			Weighted Total Responses (5-Yr Avg)
	#	%	C.I.(95%)	#	%	C.I.(95%)	#	%	C.I.(95%)	#
Caucasian	1,100	28.3	26.1 - 30.6	2,400	62.9	60.4 - 65.2	300	8.8	7.5 - 10.3	3,900
Native Hawaiian	1,900	39.5	37.7 - 41.4	2,200	45.6	43.7 - 47.5	700	14.9	13.5 - 16.4	4,800
Chinese	200	26.2	21.7 - 31.3	400	67.4	62.3 - 72.1	<50	6.4	4.8 - 8.4	600
Filipino	1,200	33.6	31.2 - 36.1	1,900	54.8	52.2 - 57.3	400	11.6	10.1 - 13.3	3,400
Japanese	600	25.0	22.2 - 28.0	1,500	68.3	65.1 - 71.3	100	6.7	5.3 - 8.5	2,200
Other	900	34.8	31.8 - 38.0	1,200	49.2	46.0 - 52.4	400	16.0	13.8 - 18.4	2,500

PRAMS Age Group	Mis-timed			Intended			Unwanted			Weighted Total Responses (5-Yr Avg)
	#	%	C.I.(95%)	#	%	C.I.(95%)	#	%	C.I.(95%)	#
<20	900	62.7	58.9 - 66.3	400	24.6	21.5 - 28.0	200	12.7	10.4 - 15.5	1,500
20-24	1,900	45.4	43.1 - 47.6	1,800	42.2	39.9 - 44.4	500	12.5	11.0 - 14.1	4,300
25-34	2,400	27.5	26.1 - 29.0	5,300	61.7	60.1 - 63.2	900	10.8	9.8 - 11.8	8,600
35+	500	15.9	14.1 - 17.9	2,200	71.2	68.8 - 73.5	400	12.8	11.2 - 14.6	3,000

**PRAMS Health Indicator 5-Year Aggregate Report - Pregnancy intention- by State;County;DOH Race-
Ethnicity;PRAMS Age Group;Infant Gender;Married;Poverty Level;Income (2004-2011);Birthweight;Smoke 3rd
Trimester;Smoke Before Pregnant;WIC During Pregnancy, for the Year(s)
2000-2004;2001-2005;2002-2006;2003-2007;2004-2008;2005-2009;2006-2010;2007-2011**

Note: Weighted counts (#) represent 5-yr averages, rounded to the nearest hundred; n/r (Not Reportable) - If the unweighted total responses for a dimension (row) is <30 that row will not be shown

Year: 2002-2006

Infant Gender	Mis-timed			Intended			Unwanted			Weighted Total Responses (5-Yr Avg)
	#	%	C.I.(95%)	#	%	C.I.(95%)	#	%	C.I.(95%)	#
Male	3,000	33.5	32.0 - 35.0	5,000	55.0	53.5 - 56.5	1,000	11.5	10.6 - 12.5	9,100
Female	2,700	32.2	30.7 - 33.7	4,700	55.8	54.2 - 57.4	1,000	12.0	10.9 - 13.0	8,400

Married	Mis-timed			Intended			Unwanted			Weighted Total Responses (5-Yr Avg)
	#	%	C.I.(95%)	#	%	C.I.(95%)	#	%	C.I.(95%)	#
Yes	3,000	25.8	24.6 - 27.0	7,500	65.3	63.9 - 66.6	1,000	8.9	8.2 - 9.7	11,500
No	2,800	46.7	44.8 - 48.6	2,100	36.1	34.3 - 38.0	1,000	17.2	15.8 - 18.7	5,900

Poverty Level	Mis-timed			Intended			Unwanted			Weighted Total Responses (5-Yr Avg)
	#	%	C.I.(95%)	#	%	C.I.(95%)	#	%	C.I.(95%)	#
0-130%	2,800	41.6	39.8 - 43.4	2,900	43.1	41.3 - 44.9	1,000	15.3	14.0 - 16.6	6,700
131-185%	800	33.7	30.8 - 36.7	1,300	52.8	49.7 - 55.9	300	13.5	11.6 - 15.7	2,500
186+%	1,600	23.1	21.6 - 24.6	4,800	70.5	68.9 - 72.1	400	6.4	5.6 - 7.3	6,900

**PRAMS Health Indicator 5-Year Aggregate Report - Pregnancy intention- by State;County;DOH Race-
Ethnicity;PRAMS Age Group;Infant Gender;Married;Poverty Level;Income (2004-2011);Birthweight;Smoke 3rd
Trimester;Smoke Before Pregnant;WIC During Pregnancy, for the Year(s)
2000-2004;2001-2005;2002-2006;2003-2007;2004-2008;2005-2009;2006-2010;2007-2011**

Note: Weighted counts (#) represent 5-yr averages, rounded to the nearest hundred; n/r (Not Reportable) - If the unweighted total responses for a dimension (row) is <30 that row will not be shown

Year: 2002-2006

Birthweight	Mis-timed			Intended			Unwanted			Weighted Total Responses (5-Yr Avg)
	#	%	C.I.(95%)	#	%	C.I.(95%)	#	%	C.I.(95%)	#
Low birth weight	400	33.5	29.6 - 37.7	700	54.5	50.2 - 58.6	100	12.0	9.6 - 15.0	1,200
Normal birth weight	5,300	32.9	31.8 - 34.0	9,000	55.4	54.3 - 56.6	1,900	11.7	11.0 - 12.5	16,200

Smoke 3rd Trimester	Mis-timed			Intended			Unwanted			Weighted Total Responses (5-Yr Avg)
	#	%	C.I.(95%)	#	%	C.I.(95%)	#	%	C.I.(95%)	#
Yes	600	39.4	35.7 - 43.2	600	38.9	35.2 - 42.7	300	21.7	18.7 - 25.1	1,500
No	5,100	32.2	31.1 - 33.4	8,900	57.1	55.9 - 58.2	1,700	10.7	10.0 - 11.4	15,700

Smoke Before Pregnant	Mis-timed			Intended			Unwanted			Weighted Total Responses (5-Yr Avg)
	#	%	C.I.(95%)	#	%	C.I.(95%)	#	%	C.I.(95%)	#
Yes	1,500	41.8	39.4 - 44.3	1,500	42.1	39.6 - 44.5	600	16.1	14.4 - 18.0	3,600
No	4,100	30.4	29.3 - 31.6	8,000	59.1	57.8 - 60.3	1,400	10.5	9.7 - 11.3	13,500

**PRAMS Health Indicator 5-Year Aggregate Report - Pregnancy intention- by State;County;DOH Race-
Ethnicity;PRAMS Age Group;Infant Gender;Married;Poverty Level;Income (2004-2011);Birthweight;Smoke 3rd
Trimester;Smoke Before Pregnant;WIC During Pregnancy, for the Year(s)
2000-2004;2001-2005;2002-2006;2003-2007;2004-2008;2005-2009;2006-2010;2007-2011**

Note: Weighted counts (#) represent 5-yr averages, rounded to the nearest hundred; n/r (Not Reportable) - If the unweighted total responses for a dimension (row) is <30 that row will not be shown

Year: 2002-2006

WIC During Pregnancy	Mis-timed			Intended			Unwanted			Weighted Total Responses (5-Yr Avg)
	#	%	C.I.(95%)	#	%	C.I.(95%)	#	%	C.I.(95%)	#
Yes	3,100	41.6	39.9 - 43.3	3,300	43.9	42.3 - 45.7	1,100	14.5	13.3 - 15.7	7,400
No	2,600	26.4	25.1 - 27.7	6,300	64.1	62.6 - 65.5	900	9.6	8.7 - 10.5	9,800

**PRAMS Health Indicator 5-Year Aggregate Report - Pregnancy intention- by State;County;DOH Race-
Ethnicity;PRAMS Age Group;Infant Gender;Married;Poverty Level;Income (2004-2011);Birthweight;Smoke 3rd
Trimester;Smoke Before Pregnant;WIC During Pregnancy, for the Year(s)
2000-2004;2001-2005;2002-2006;2003-2007;2004-2008;2005-2009;2006-2010;2007-2011**

Note: Weighted counts (#) represent 5-yr averages, rounded to the nearest hundred; n/r (Not Reportable) - If the unweighted total responses for a dimension (row) is <30 that row will not be shown

Year: 2001-2005

State	Mis-timed			Intended			Unwanted			Weighted Total Responses (5-Yr Avg)
	#	%	C.I.(95%)	#	%	C.I.(95%)	#	%	C.I.(95%)	#
Totals	5,800	33.8	32.8 - 34.9	9,500	55.5	54.4 - 56.6	1,800	10.7	10.0 - 11.4	17,200

County	Mis-timed			Intended			Unwanted			Weighted Total Responses (5-Yr Avg)
	#	%	C.I.(95%)	#	%	C.I.(95%)	#	%	C.I.(95%)	#
Hawaii	700	36.1	33.8 - 38.6	1,000	50.6	48.1 - 53.2	300	13.2	11.5 - 15.2	2,100
Honolulu	4,200	33.3	32.1 - 34.7	7,100	56.3	54.9 - 57.7	1,300	10.4	9.6 - 11.2	12,600
Kauai	300	33.3	29.7 - 37.3	400	55.9	51.8 - 59.9	100	10.8	8.3 - 13.9	800
Maui	600	34.8	32.3 - 37.4	1,000	55.0	52.3 - 57.6	200	10.2	8.7 - 12.0	1,800

**PRAMS Health Indicator 5-Year Aggregate Report - Pregnancy intention- by State;County;DOH Race-
Ethnicity;PRAMS Age Group;Infant Gender;Married;Poverty Level;Income (2004-2011);Birthweight;Smoke 3rd
Trimester;Smoke Before Pregnant;WIC During Pregnancy, for the Year(s)
2000-2004;2001-2005;2002-2006;2003-2007;2004-2008;2005-2009;2006-2010;2007-2011**

Note: Weighted counts (#) represent 5-yr averages, rounded to the nearest hundred; n/r (Not Reportable) - If the unweighted total responses for a dimension (row) is <30 that row will not be shown

Year: 2001-2005

DOH Race-Ethnicity	Mis-timed			Intended			Unwanted			Weighted Total Responses (5-Yr Avg)
	#	%	C.I.(95%)	#	%	C.I.(95%)	#	%	C.I.(95%)	#
Caucasian	1,000	28.1	25.9 - 30.4	2,400	63.7	61.3 - 66.1	300	8.1	6.9 - 9.6	3,700
Native Hawaiian	1,900	41.1	39.4 - 42.7	2,100	45.4	43.8 - 47.1	600	13.5	12.3 - 14.8	4,700
Chinese	200	26.8	22.0 - 32.3	400	67.1	61.6 - 72.2	<50	6.1	4.2 - 8.7	700
Filipino	1,200	35.9	33.4 - 38.4	1,900	53.6	51.0 - 56.2	400	10.5	9.1 - 12.2	3,500
Japanese	500	25.1	22.2 - 28.1	1,500	68.1	64.9 - 71.2	100	6.8	5.4 - 8.6	2,200
Other	900	35.4	32.2 - 38.6	1,200	50.4	47.1 - 53.7	300	14.2	12.1 - 16.6	2,400

PRAMS Age Group	Mis-timed			Intended			Unwanted			Weighted Total Responses (5-Yr Avg)
	#	%	C.I.(95%)	#	%	C.I.(95%)	#	%	C.I.(95%)	#
<20	1,000	65.4	62.0 - 68.7	300	23.1	20.3 - 26.2	200	11.5	9.4 - 13.9	1,500
20-24	2,000	46.1	43.9 - 48.3	1,800	42.6	40.5 - 44.8	500	11.3	9.9 - 12.7	4,300
25-34	2,400	28.1	26.7 - 29.5	5,300	62.6	61.0 - 64.1	800	9.3	8.5 - 10.3	8,500
35+	500	16.4	14.5 - 18.4	2,100	70.2	67.7 - 72.6	400	13.4	11.7 - 15.3	2,900

**PRAMS Health Indicator 5-Year Aggregate Report - Pregnancy intention- by State;County;DOH Race-
Ethnicity;PRAMS Age Group;Infant Gender;Married;Poverty Level;Income (2004-2011);Birthweight;Smoke 3rd
Trimester;Smoke Before Pregnant;WIC During Pregnancy, for the Year(s)
2000-2004;2001-2005;2002-2006;2003-2007;2004-2008;2005-2009;2006-2010;2007-2011**

Note: Weighted counts (#) represent 5-yr averages, rounded to the nearest hundred; n/r (Not Reportable) - If the unweighted total responses for a dimension (row) is <30 that row will not be shown

Year: 2001-2005

Infant Gender	Mis-timed			Intended			Unwanted			Weighted Total Responses (5-Yr Avg)
	#	%	C.I.(95%)	#	%	C.I.(95%)	#	%	C.I.(95%)	#
Male	3,100	34.6	33.1 - 36.0	4,900	54.8	53.3 - 56.3	1,000	10.7	9.8 - 11.6	8,900
Female	2,700	33.0	31.6 - 34.6	4,700	56.2	54.6 - 57.8	900	10.7	9.8 - 11.7	8,300

Married	Mis-timed			Intended			Unwanted			Weighted Total Responses (5-Yr Avg)
	#	%	C.I.(95%)	#	%	C.I.(95%)	#	%	C.I.(95%)	#
Yes	3,000	26.3	25.1 - 27.5	7,500	65.6	64.3 - 66.9	900	8.1	7.4 - 8.8	11,500
No	2,800	49.0	47.1 - 50.8	2,000	35.0	33.3 - 36.8	900	16.0	14.7 - 17.4	5,700

Poverty Level	Mis-timed			Intended			Unwanted			Weighted Total Responses (5-Yr Avg)
	#	%	C.I.(95%)	#	%	C.I.(95%)	#	%	C.I.(95%)	#
0-130%	2,900	42.9	41.2 - 44.7	2,800	42.7	40.9 - 44.4	1,000	14.4	13.2 - 15.6	6,700
131-185%	900	33.1	30.4 - 35.9	1,500	56.0	53.1 - 58.8	300	10.9	9.3 - 12.8	2,700
186+%	1,500	23.2	21.7 - 24.8	4,500	71.2	69.5 - 72.8	400	5.6	4.9 - 6.5	6,300

**PRAMS Health Indicator 5-Year Aggregate Report - Pregnancy intention- by State;County;DOH Race-
Ethnicity;PRAMS Age Group;Infant Gender;Married;Poverty Level;Income (2004-2011);Birthweight;Smoke 3rd
Trimester;Smoke Before Pregnant;WIC During Pregnancy, for the Year(s)
2000-2004;2001-2005;2002-2006;2003-2007;2004-2008;2005-2009;2006-2010;2007-2011**

Note: Weighted counts (#) represent 5-yr averages, rounded to the nearest hundred; n/r (Not Reportable) - If the unweighted total responses for a dimension (row) is <30 that row will not be shown

Year: 2001-2005

Birthweight	Mis-timed			Intended			Unwanted			Weighted Total Responses (5-Yr Avg)
	#	%	C.I.(95%)	#	%	C.I.(95%)	#	%	C.I.(95%)	#
Low birth weight	400	32.8	28.9 - 37.0	700	56.0	51.7 - 60.2	100	11.2	8.9 - 14.0	1,200
Normal birth weight	5,400	33.9	32.8 - 35.0	8,900	55.4	54.3 - 56.5	1,700	10.7	10.0 - 11.4	16,000

Smoke 3rd Trimester	Mis-timed			Intended			Unwanted			Weighted Total Responses (5-Yr Avg)
	#	%	C.I.(95%)	#	%	C.I.(95%)	#	%	C.I.(95%)	#
Yes	600	41.5	38.0 - 45.2	600	39.2	35.7 - 42.8	300	19.2	16.5 - 22.3	1,500
No	5,100	33.1	32.0 - 34.2	8,800	57.1	56.0 - 58.3	1,500	9.8	9.1 - 10.5	15,400

Smoke Before Pregnant	Mis-timed			Intended			Unwanted			Weighted Total Responses (5-Yr Avg)
	#	%	C.I.(95%)	#	%	C.I.(95%)	#	%	C.I.(95%)	#
Yes	1,500	43.7	41.3 - 46.1	1,500	42.3	39.9 - 44.6	500	14.0	12.5 - 15.8	3,500
No	4,100	31.1	29.9 - 32.3	7,900	59.2	58.0 - 60.5	1,300	9.7	9.0 - 10.4	13,300

**PRAMS Health Indicator 5-Year Aggregate Report - Pregnancy intention- by State;County;DOH Race-
Ethnicity;PRAMS Age Group;Infant Gender;Married;Poverty Level;Income (2004-2011);Birthweight;Smoke 3rd
Trimester;Smoke Before Pregnant;WIC During Pregnancy, for the Year(s)
2000-2004;2001-2005;2002-2006;2003-2007;2004-2008;2005-2009;2006-2010;2007-2011**

Note: Weighted counts (#) represent 5-yr averages, rounded to the nearest hundred; n/r (Not Reportable) - If the unweighted total responses for a dimension (row) is <30 that row will not be shown

Year: 2001-2005

WIC During Pregnancy	Mis-timed			Intended			Unwanted			Weighted Total Responses (5-Yr Avg)
	#	%	C.I.(95%)	#	%	C.I.(95%)	#	%	C.I.(95%)	#
Yes	3,100	42.8	41.2 - 44.4	3,300	44.6	43.0 - 46.3	900	12.6	11.5 - 13.7	7,300
No	2,600	27.1	25.8 - 28.5	6,100	63.7	62.3 - 65.1	900	9.1	8.3 - 10.0	9,600

**PRAMS Health Indicator 5-Year Aggregate Report - Pregnancy intention- by State;County;DOH Race-
Ethnicity;PRAMS Age Group;Infant Gender;Married;Poverty Level;Income (2004-2011);Birthweight;Smoke 3rd
Trimester;Smoke Before Pregnant;WIC During Pregnancy, for the Year(s)
2000-2004;2001-2005;2002-2006;2003-2007;2004-2008;2005-2009;2006-2010;2007-2011**

Note: Weighted counts (#) represent 5-yr averages, rounded to the nearest hundred; n/r (Not Reportable) - If the unweighted total responses for a dimension (row) is <30 that row will not be shown

Year: 2000-2004

State	Mis-timed			Intended			Unwanted			Weighted Total Responses (5-Yr Avg)
	#	%	C.I.(95%)	#	%	C.I.(95%)	#	%	C.I.(95%)	#
Totals	5,900	34.5	33.5 - 35.6	9,600	56.0	54.9 - 57.1	1,600	9.4	8.8 - 10.1	17,200

County	Mis-timed			Intended			Unwanted			Weighted Total Responses (5-Yr Avg)
	#	%	C.I.(95%)	#	%	C.I.(95%)	#	%	C.I.(95%)	#
Hawaii	700	36.6	34.5 - 38.8	1,000	51.9	49.6 - 54.2	200	11.5	10.0 - 13.2	2,000
Honolulu	4,300	34.2	32.9 - 35.5	7,100	56.6	55.2 - 57.9	1,200	9.2	8.5 - 10.0	12,600
Kauai	300	33.5	30.1 - 37.0	400	58.7	55.1 - 62.3	100	7.8	6.0 - 10.0	800
Maui	600	35.2	32.9 - 37.5	1,000	55.5	53.0 - 57.9	200	9.4	8.0 - 10.9	1,800

**PRAMS Health Indicator 5-Year Aggregate Report - Pregnancy intention- by State;County;DOH Race-
Ethnicity;PRAMS Age Group;Infant Gender;Married;Poverty Level;Income (2004-2011);Birthweight;Smoke 3rd
Trimester;Smoke Before Pregnant;WIC During Pregnancy, for the Year(s)
2000-2004;2001-2005;2002-2006;2003-2007;2004-2008;2005-2009;2006-2010;2007-2011**

Note: Weighted counts (#) represent 5-yr averages, rounded to the nearest hundred; n/r (Not Reportable) - If the unweighted total responses for a dimension (row) is <30 that row will not be shown

Year: 2000-2004

DOH Race-Ethnicity	Mis-timed			Intended			Unwanted			Weighted Total Responses (5-Yr Avg)
	#	%	C.I.(95%)	#	%	C.I.(95%)	#	%	C.I.(95%)	#
Caucasian	1,100	28.1	25.9 - 30.3	2,500	64.9	62.6 - 67.2	300	7.0	5.9 - 8.3	3,800
Native Hawaiian	2,000	42.8	41.4 - 44.2	2,100	45.8	44.4 - 47.3	500	11.4	10.4 - 12.4	4,700
Chinese	200	25.6	20.6 - 31.4	500	67.7	61.8 - 73.1	<50	6.7	4.4 - 10.0	700
Filipino	1,300	37.3	34.8 - 39.9	1,900	52.9	50.2 - 55.5	300	9.8	8.4 - 11.5	3,500
Japanese	500	25.1	22.2 - 28.2	1,500	68.9	65.6 - 72.0	100	6.1	4.7 - 7.8	2,200
Other	900	35.6	32.4 - 39.0	1,200	51.6	48.2 - 55.0	300	12.8	10.7 - 15.1	2,400

PRAMS Age Group	Mis-timed			Intended			Unwanted			Weighted Total Responses (5-Yr Avg)
	#	%	C.I.(95%)	#	%	C.I.(95%)	#	%	C.I.(95%)	#
<20	1,100	68.7	65.6 - 71.7	300	20.8	18.3 - 23.6	200	10.5	8.6 - 12.7	1,600
20-24	2,000	46.8	44.7 - 48.9	1,800	43.4	41.3 - 45.5	400	9.8	8.6 - 11.1	4,200
25-34	2,400	28.4	27.0 - 29.9	5,400	63.8	62.3 - 65.3	700	7.8	7.0 - 8.6	8,400
35+	500	16.0	14.2 - 18.1	2,100	70.8	68.3 - 73.1	400	13.2	11.5 - 15.0	2,900

**PRAMS Health Indicator 5-Year Aggregate Report - Pregnancy intention- by State;County;DOH Race-
Ethnicity;PRAMS Age Group;Infant Gender;Married;Poverty Level;Income (2004-2011);Birthweight;Smoke 3rd
Trimester;Smoke Before Pregnant;WIC During Pregnancy, for the Year(s)
2000-2004;2001-2005;2002-2006;2003-2007;2004-2008;2005-2009;2006-2010;2007-2011**

Note: Weighted counts (#) represent 5-yr averages, rounded to the nearest hundred; n/r (Not Reportable) - If the unweighted total responses for a dimension (row) is <30 that row will not be shown

Year: 2000-2004

Infant Gender	Mis-timed			Intended			Unwanted			Weighted Total Responses (5-Yr Avg)
	#	%	C.I.(95%)	#	%	C.I.(95%)	#	%	C.I.(95%)	#
Male	3,100	34.9	33.5 - 36.3	4,900	55.5	54.0 - 56.9	900	9.7	8.9 - 10.6	8,900
Female	2,800	34.2	32.7 - 35.7	4,700	56.6	55.1 - 58.2	800	9.2	8.3 - 10.1	8,200

Married	Mis-timed			Intended			Unwanted			Weighted Total Responses (5-Yr Avg)
	#	%	C.I.(95%)	#	%	C.I.(95%)	#	%	C.I.(95%)	#
Yes	3,100	26.4	25.2 - 27.6	7,700	66.1	64.8 - 67.4	900	7.4	6.8 - 8.2	11,600
No	2,800	51.7	50.0 - 53.5	1,900	34.6	32.9 - 36.3	800	13.6	12.4 - 15.0	5,500

Poverty Level	Mis-timed			Intended			Unwanted			Weighted Total Responses (5-Yr Avg)
	#	%	C.I.(95%)	#	%	C.I.(95%)	#	%	C.I.(95%)	#
0-130%	3,000	44.2	42.5 - 45.8	3,000	43.2	41.5 - 44.9	900	12.6	11.6 - 13.8	6,900
131-185%	900	34.0	31.4 - 36.7	1,600	56.6	53.9 - 59.4	300	9.4	7.9 - 11.1	2,800
186+%	1,300	22.3	20.7 - 23.9	4,400	72.5	70.9 - 74.2	300	5.2	4.4 - 6.0	6,000

**PRAMS Health Indicator 5-Year Aggregate Report - Pregnancy intention- by State;County;DOH Race-
Ethnicity;PRAMS Age Group;Infant Gender;Married;Poverty Level;Income (2004-2011);Birthweight;Smoke 3rd
Trimester;Smoke Before Pregnant;WIC During Pregnancy, for the Year(s)
2000-2004;2001-2005;2002-2006;2003-2007;2004-2008;2005-2009;2006-2010;2007-2011**

Note: Weighted counts (#) represent 5-yr averages, rounded to the nearest hundred; n/r (Not Reportable) - If the unweighted total responses for a dimension (row) is <30 that row will not be shown

Year: 2000-2004

Birthweight	Mis-timed			Intended			Unwanted			Weighted Total Responses (5-Yr Avg)
	#	%	C.I.(95%)	#	%	C.I.(95%)	#	%	C.I.(95%)	#
Low birth weight	400	34.6	30.7 - 38.8	600	54.7	50.4 - 58.9	100	10.7	8.4 - 13.5	1,100
Normal birth weight	5,500	34.5	33.5 - 35.6	9,000	56.1	55.0 - 57.2	1,500	9.4	8.7 - 10.0	16,000

Smoke 3rd Trimester	Mis-timed			Intended			Unwanted			Weighted Total Responses (5-Yr Avg)
	#	%	C.I.(95%)	#	%	C.I.(95%)	#	%	C.I.(95%)	#
Yes	600	42.5	39.1 - 46.0	600	41.2	37.8 - 44.8	200	16.2	13.8 - 19.0	1,500
No	5,200	33.8	32.7 - 34.9	8,800	57.6	56.5 - 58.8	1,300	8.6	8.0 - 9.3	15,300

Smoke Before Pregnant	Mis-timed			Intended			Unwanted			Weighted Total Responses (5-Yr Avg)
	#	%	C.I.(95%)	#	%	C.I.(95%)	#	%	C.I.(95%)	#
Yes	1,600	45.4	43.1 - 47.7	1,500	42.8	40.5 - 45.1	400	11.8	10.4 - 13.4	3,400
No	4,200	31.5	30.3 - 32.6	7,900	59.9	58.7 - 61.1	1,100	8.7	8.0 - 9.4	13,200

**PRAMS Health Indicator 5-Year Aggregate Report - Pregnancy intention- by State;County;DOH Race-
Ethnicity;PRAMS Age Group;Infant Gender;Married;Poverty Level;Income (2004-2011);Birthweight;Smoke 3rd
Trimester;Smoke Before Pregnant;WIC During Pregnancy, for the Year(s)
2000-2004;2001-2005;2002-2006;2003-2007;2004-2008;2005-2009;2006-2010;2007-2011**

Note: Weighted counts (#) represent 5-yr averages, rounded to the nearest hundred; n/r (Not Reportable) - If the unweighted total responses for a dimension (row) is <30 that row will not be shown

Year: 2000-2004

WIC During Pregnancy	Mis-timed			Intended			Unwanted			Weighted Total Responses (5-Yr Avg)
	#	%	C.I.(95%)	#	%	C.I.(95%)	#	%	C.I.(95%)	#
Yes	3,200	43.9	42.3 - 45.5	3,300	45.3	43.7 - 46.9	800	10.8	9.8 - 11.8	7,300
No	2,600	27.3	26.0 - 28.7	6,200	64.4	63.0 - 65.8	800	8.3	7.5 - 9.1	9,600