

PRAMS Health Indicator Report - Discuss seat belt use with HCW during PNC- for the State of Hawaii, for the Year(s) 2000;2001;2002;2003;2004;2005;2006;2007;2008;2009;2010;2011;2012;2013

PRAMS Health Indicator Report - Discuss seat belt use with HCW during PNC- by State;County;DOH Race-Ethnicity;PRAMS Age Group;Infant Gender;Married;Poverty Level;Income (2000-2003);Income (2004-2011);Income (2012+);Birthweight;Smoke 3rd Trimester;Smoke Before Pregnant;WIC During Pregnancy, for the Year(s) 2000;2001;2002;2003;2004;2005;2006;2007;2008;2009;2010;2011;2012;2013

Note: Weighted responses, rounded to the nearest hundred; n/r (Not Reportable) - If the unweighted total responses for a dimension (row) is <30 that row will not be shown

The trend analysis section shows the trend for the selected health variable over selected years in a table and a graph. Weighted Total Responses: This number is a weighted representation of the mothers of babies delivered in a given year, who responded to a particular question in the survey. For most questions this will be the mothers of all babies delivered in a given year. For some secondary questions only a subset of the population was asked the question. For example, all survey participants were asked if they smoked during pregnancy, but only those who answered yes were asked how many cigarettes a day. If a dimension value is unknown for a particular survey record, that record will not be included in the counts for that particular dimension.

Note: Data collection for household income changed in 2004 and again in 2012, so there are three different income dimensions, depending on the year.

Below are the indicators included in this report and the long description for each indicator.

PRAMS Health Indicator	Health Indicator Description
Discuss seat belt use with HCW during PNC	Discuss seat belt use with HCW during PNC

Suggested citation:

Hawaii Health Data Warehouse, Hawaii State Department of Health, Pregnancy Risk Assessment Monitoring System, (report title and years), Report Created: 2/10/17

For documentation on other terms and coding in this report, please go to the following links:

[Click here to access PRAMS documentation](#)

[Click here to access DOH-Race Ethnicity coding](#)

[Click here to access The Hawai'i Data Guide](#)

**For questions about this report, please contact
The Hawai'i Health Data Warehouse**

profiles@hhdw.org

(855) 946-5899 x15

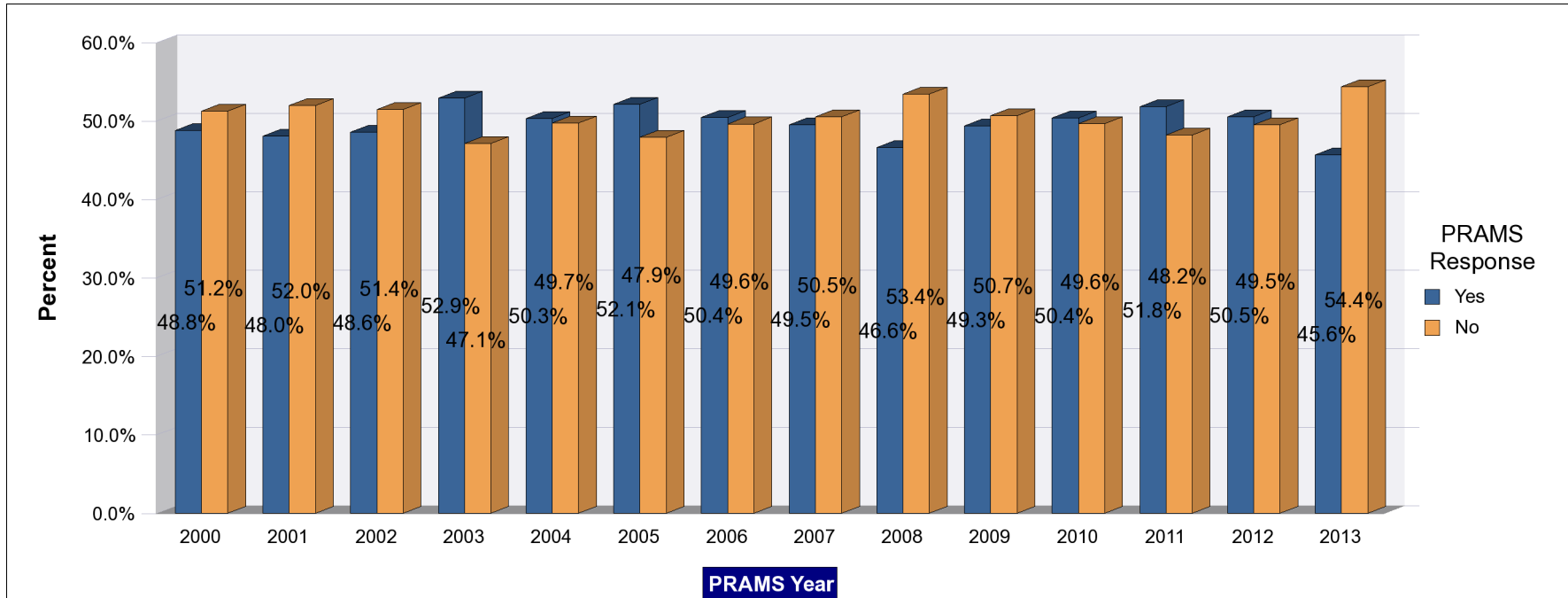
**PRAMS Health Indicator Report - Discuss seat belt use with HCW during PNC- for the State of Hawaii, for the Year(s)
2000;2001;2002;2003;2004;2005;2006;2007;2008;2009;2010;2011;2012;2013**

Note: Weighted responses, rounded to the nearest hundred; n/r (Not Reportable) - If the unweighted total responses for a dimension (row) is <30 that row will not be shown

Year	Yes			No			Weighted Total Responses
	#	%	C.I.(95%)	#	%	C.I.(95%)	#
2000	8,100	48.8	46.6 - 51.0	8,500	51.2	49.0 - 53.4	16,600
2001	7,900	48.0	45.8 - 50.3	8,500	52.0	49.7 - 54.2	16,400
2002	8,000	48.6	45.7 - 51.4	8,500	51.4	48.6 - 54.3	16,500
2003	9,000	52.9	50.1 - 55.6	8,000	47.1	44.4 - 49.9	17,000
2004	8,600	50.3	48.1 - 52.5	8,600	49.7	47.5 - 51.9	17,200
2005	8,800	52.1	49.8 - 54.5	8,100	47.9	45.5 - 50.2	16,800
2006	9,000	50.4	47.9 - 52.9	8,800	49.6	47.1 - 52.1	17,800
2007	8,800	49.5	47.1 - 51.9	9,000	50.5	48.1 - 52.9	17,900
2008	8,500	46.6	44.3 - 49.0	9,700	53.4	51.0 - 55.7	18,300
2009	8,800	49.3	46.2 - 52.5	9,100	50.7	47.5 - 53.8	17,900
2010	9,200	50.4	47.1 - 53.6	9,000	49.6	46.4 - 52.9	18,200
2011	9,400	51.8	48.6 - 55.0	8,800	48.2	45.0 - 51.4	18,200
2012	9,100	50.5	47.2 - 53.8	8,900	49.5	46.2 - 52.8	18,000
2013	8,200	45.6	42.2 - 49.1	9,800	54.4	50.9 - 57.8	18,100

PRAMS Health Indicator Report - Discuss seat belt use with HCW during PNC- for the State of Hawaii, for the Year(s) 2000;2001;2002;2003;2004;2005;2006;2007;2008;2009;2010;2011;2012;2013

Note: Weighted responses, rounded to the nearest hundred; n/r (Not Reportable) - If the unweighted total responses for a dimension (row) is <30 that row will not be shown



PRAMS Health Indicator Report - Discuss seat belt use with HCW during PNC- by State;County;DOH Race-Ethnicity;PRAMS Age Group;Infant Gender;Married;Poverty Level;Income (2000-2003);Income (2004-2011);Income (2012+);Birthweight;Smoke 3rd Trimester;Smoke Before Pregnant;WIC During Pregnancy, for the Year(s) 2000;2001;2002;2003;2004;2005;2006;2007;2008;2009;2010;2011;2012;2013

Note: Weighted responses, rounded to the nearest hundred; n/r (Not Reportable) - If the unweighted total responses for a dimension (row) is <30 that row will not be shown

Year: 2013

State	Yes			No			Weighted Total Responses
	#	%	C.I.(95%)	#	%	C.I.(95%)	#
Totals	8,200	45.6	42.2 - 49.1	9,800	54.4	50.9 - 57.8	18,100

County	Yes			No			Weighted Total Responses
	#	%	C.I.(95%)	#	%	C.I.(95%)	#
Hawaii	1,100	49.2	43.6 - 54.8	1,200	50.8	45.2 - 56.4	2,300
Honolulu	5,800	44.6	40.0 - 49.3	7,200	55.4	50.7 - 60.0	13,000
Kauai	500	62.4	57.1 - 67.5	300	37.6	32.5 - 42.9	800
Maui	800	41.0	35.6 - 46.6	1,100	59.0	53.4 - 64.4	1,900

PRAMS Health Indicator Report - Discuss seat belt use with HCW during PNC- by State;County;DOH Race-Ethnicity;PRAMS Age Group;Infant Gender;Married;Poverty Level;Income (2000-2003);Income (2004-2011);Income (2012+);Birthweight;Smoke 3rd Trimester;Smoke Before Pregnant;WIC During Pregnancy, for the Year(s) 2000;2001;2002;2003;2004;2005;2006;2007;2008;2009;2010;2011;2012;2013

Note: Weighted responses, rounded to the nearest hundred; n/r (Not Reportable) - If the unweighted total responses for a dimension (row) is <30 that row will not be shown

Year: 2013

DOH Race-Ethnicity	Yes			No			Weighted Total Responses
	#	%	C.I.(95%)	#	%	C.I.(95%)	#
Caucasian	1,800	37.5	31.1 - 44.4	3,000	62.5	55.6 - 68.9	4,800
Native Hawaiian	2,800	52.0	45.9 - 58.0	2,600	48.0	42.0 - 54.1	5,400
Chinese	300	35.5	21.4 - 52.7	600	64.5	47.3 - 78.6	900
Filipino	1,600	52.8	44.1 - 61.3	1,400	47.2	38.7 - 55.9	2,900
Japanese	500	28.5	19.1 - 40.1	1,300	71.5	59.9 - 80.9	1,800
Other	1,200	55.9	45.6 - 65.8	1,000	44.1	34.2 - 54.4	2,200

PRAMS Age Group	Yes			No			Weighted Total Responses
	#	%	C.I.(95%)	#	%	C.I.(95%)	#
<20	500	62.2	46.3 - 75.9	300	37.8	24.1 - 53.7	900
20-24	2,100	51.0	43.4 - 58.6	2,000	49.0	41.4 - 56.6	4,100
25-34	4,400	45.2	40.5 - 50.1	5,400	54.8	49.9 - 59.5	9,800
35+	1,200	36.0	28.9 - 43.7	2,100	64.0	56.3 - 71.1	3,300

PRAMS Health Indicator Report - Discuss seat belt use with HCW during PNC- by State;County;DOH Race-Ethnicity;PRAMS Age Group;Infant Gender;Married;Poverty Level;Income (2000-2003);Income (2004-2011);Income (2012+);Birthweight;Smoke 3rd Trimester;Smoke Before Pregnant;WIC During Pregnancy, for the Year(s) 2000;2001;2002;2003;2004;2005;2006;2007;2008;2009;2010;2011;2012;2013

Note: Weighted responses, rounded to the nearest hundred; n/r (Not Reportable) - If the unweighted total responses for a dimension (row) is <30 that row will not be shown

Year: 2013

Infant Gender	Yes			No			Weighted Total Responses
	#	%	C.I.(95%)	#	%	C.I.(95%)	#
Male	3,600	41.1	36.4 - 46.0	5,200	58.9	54.0 - 63.6	8,800
Female	4,600	49.9	44.9 - 54.9	4,600	50.1	45.1 - 55.1	9,200

Married	Yes			No			Weighted Total Responses
	#	%	C.I.(95%)	#	%	C.I.(95%)	#
Yes	4,600	40.5	36.2 - 45.0	6,800	59.5	55.0 - 63.8	11,400
No	3,600	54.4	48.9 - 59.9	3,000	45.6	40.1 - 51.1	6,600

Poverty Level	Yes			No			Weighted Total Responses
	#	%	C.I.(95%)	#	%	C.I.(95%)	#
0-130%	3,500	52.3	46.7 - 57.9	3,100	47.7	42.1 - 53.3	6,600
131-185%	1,300	54.9	45.2 - 64.2	1,100	45.1	35.8 - 54.8	2,400
186+%	2,400	33.5	28.5 - 38.9	4,800	66.5	61.1 - 71.5	7,200

PRAMS Health Indicator Report - Discuss seat belt use with HCW during PNC- by State;County;DOH Race-Ethnicity;PRAMS Age Group;Infant Gender;Married;Poverty Level;Income (2000-2003);Income (2004-2011);Income (2012+);Birthweight;Smoke 3rd Trimester;Smoke Before Pregnant;WIC During Pregnancy, for the Year(s) 2000;2001;2002;2003;2004;2005;2006;2007;2008;2009;2010;2011;2012;2013

Note: Weighted responses, rounded to the nearest hundred; n/r (Not Reportable) - If the unweighted total responses for a dimension (row) is <30 that row will not be shown

Year: 2013

	Yes			No			Weighted Total Responses
	#	%	C.I.(95%)	#	%	C.I.(95%)	#
Income (2012+)							
<=\$17,000	2,300	55.3	48.1 - 62.3	1,800	44.7	37.7 - 51.9	4,100
\$17,001-\$26,000	1,100	46.8	37.4 - 56.5	1,300	53.2	43.5 - 62.6	2,400
\$26,001-\$51,000	2,000	52.1	44.5 - 59.6	1,900	47.9	40.4 - 55.5	3,900
>=\$51,001	2,000	31.7	26.4 - 37.5	4,200	68.3	62.5 - 73.6	6,200

	Yes			No			Weighted Total Responses
	#	%	C.I.(95%)	#	%	C.I.(95%)	#
Birthweight							
Low birth weight	700	51.8	46.7 - 56.9	600	48.2	43.1 - 53.3	1,300
Normal birth weight	7,600	45.1	41.4 - 48.9	9,200	54.9	51.1 - 58.6	16,700

	Yes			No			Weighted Total Responses
	#	%	C.I.(95%)	#	%	C.I.(95%)	#
Smoke 3rd Trimester							
Yes	500	48.2	34.9 - 61.8	500	51.8	38.2 - 65.1	1,000
No	7,600	45.4	41.8 - 49.1	9,100	54.6	50.9 - 58.2	16,600

PRAMS Health Indicator Report - Discuss seat belt use with HCW during PNC- by State;County;DOH Race-Ethnicity;PRAMS Age Group;Infant Gender;Married;Poverty Level;Income (2000-2003);Income (2004-2011);Income (2012+);Birthweight;Smoke 3rd Trimester;Smoke Before Pregnant;WIC During Pregnancy, for the Year(s) 2000;2001;2002;2003;2004;2005;2006;2007;2008;2009;2010;2011;2012;2013

Note: Weighted responses, rounded to the nearest hundred; n/r (Not Reportable) - If the unweighted total responses for a dimension (row) is <30 that row will not be shown

Year: 2013

Smoke Before Pregnant	Yes			No			Weighted Total Responses
	#	%	C.I.(95%)	#	%	C.I.(95%)	#
Yes	1,500	46.2	38.1 - 54.5	1,700	53.8	45.5 - 61.9	3,200
No	6,500	45.4	41.5 - 49.4	7,900	54.6	50.6 - 58.5	14,400

WIC During Pregnancy	Yes			No			Weighted Total Responses
	#	%	C.I.(95%)	#	%	C.I.(95%)	#
Yes	4,200	52.9	47.7 - 58.0	3,700	47.1	42.0 - 52.3	7,900
No	4,000	40.0	35.4 - 44.7	6,100	60.0	55.3 - 64.6	10,100

PRAMS Health Indicator Report - Discuss seat belt use with HCW during PNC- by State;County;DOH Race-Ethnicity;PRAMS Age Group;Infant Gender;Married;Poverty Level;Income (2000-2003);Income (2004-2011);Income (2012+);Birthweight;Smoke 3rd Trimester;Smoke Before Pregnant;WIC During Pregnancy, for the Year(s) 2000;2001;2002;2003;2004;2005;2006;2007;2008;2009;2010;2011;2012;2013

Note: Weighted responses, rounded to the nearest hundred; n/r (Not Reportable) - If the unweighted total responses for a dimension (row) is <30 that row will not be shown

Year: 2012

State	Yes			No			Weighted Total Responses
	#	%	C.I.(95%)	#	%	C.I.(95%)	#
Totals	9,100	50.5	47.2 - 53.8	8,900	49.5	46.2 - 52.8	18,000

County	Yes			No			Weighted Total Responses
	#	%	C.I.(95%)	#	%	C.I.(95%)	#
Hawaii	1,200	51.1	45.8 - 56.4	1,100	48.9	43.6 - 54.2	2,300
Honolulu	6,600	50.9	46.5 - 55.3	6,400	49.1	44.7 - 53.5	12,900
Kauai	400	50.4	44.0 - 56.9	400	49.6	43.1 - 56.0	800
Maui	900	47.5	42.5 - 52.5	1,000	52.5	47.5 - 57.5	1,900

PRAMS Health Indicator Report - Discuss seat belt use with HCW during PNC- by State;County;DOH Race-Ethnicity;PRAMS Age Group;Infant Gender;Married;Poverty Level;Income (2000-2003);Income (2004-2011);Income (2012+);Birthweight;Smoke 3rd Trimester;Smoke Before Pregnant;WIC During Pregnancy, for the Year(s) 2000;2001;2002;2003;2004;2005;2006;2007;2008;2009;2010;2011;2012;2013

Note: Weighted responses, rounded to the nearest hundred; n/r (Not Reportable) - If the unweighted total responses for a dimension (row) is <30 that row will not be shown

Year: 2012

DOH Race-Ethnicity	Yes			No			Weighted Total Responses
	#	%	C.I.(95%)	#	%	C.I.(95%)	#
Caucasian	1,700	42.4	35.9 - 49.2	2,300	57.6	50.8 - 64.1	4,100
Native Hawaiian	2,800	55.1	49.0 - 60.9	2,300	44.9	39.1 - 51.0	5,100
Chinese	400	38.0	25.4 - 52.5	600	62.0	47.5 - 74.6	1,000
Filipino	1,700	52.3	44.5 - 59.9	1,500	47.7	40.1 - 55.5	3,200
Japanese	500	30.0	20.8 - 41.1	1,100	70.0	58.9 - 79.2	1,600
Other	2,000	67.0	58.7 - 74.3	1,000	33.0	25.7 - 41.3	3,000

PRAMS Age Group	Yes			No			Weighted Total Responses
	#	%	C.I.(95%)	#	%	C.I.(95%)	#
<20	700	67.6	54.0 - 78.7	300	32.4	21.3 - 46.0	1,000
20-24	2,100	55.3	47.9 - 62.4	1,700	44.7	37.6 - 52.1	3,700
25-34	4,900	48.5	44.1 - 52.9	5,200	51.5	47.1 - 55.9	10,000
35+	1,500	46.3	38.8 - 54.0	1,700	53.7	46.0 - 61.2	3,300

PRAMS Health Indicator Report - Discuss seat belt use with HCW during PNC- by State;County;DOH Race-Ethnicity;PRAMS Age Group;Infant Gender;Married;Poverty Level;Income (2000-2003);Income (2004-2011);Income (2012+);Birthweight;Smoke 3rd Trimester;Smoke Before Pregnant;WIC During Pregnancy, for the Year(s) 2000;2001;2002;2003;2004;2005;2006;2007;2008;2009;2010;2011;2012;2013

Note: Weighted responses, rounded to the nearest hundred; n/r (Not Reportable) - If the unweighted total responses for a dimension (row) is <30 that row will not be shown

Year: 2012

Infant Gender	Yes			No			Weighted Total Responses
	#	%	C.I.(95%)	#	%	C.I.(95%)	#
Male	4,400	48.6	44.0 - 53.3	4,600	51.4	46.7 - 56.0	9,000
Female	4,700	52.4	47.8 - 57.0	4,300	47.6	43.0 - 52.2	9,000

Married	Yes			No			Weighted Total Responses
	#	%	C.I.(95%)	#	%	C.I.(95%)	#
Yes	5,300	47.8	43.6 - 52.0	5,800	52.2	48.0 - 56.4	11,200
No	3,800	55.1	49.8 - 60.2	3,100	44.9	39.8 - 50.2	6,800

Poverty Level	Yes			No			Weighted Total Responses
	#	%	C.I.(95%)	#	%	C.I.(95%)	#
0-130%	3,800	59.6	54.2 - 64.7	2,600	40.4	35.3 - 45.8	6,400
131-185%	1,700	57.5	49.3 - 65.4	1,300	42.5	34.6 - 50.7	3,000
186+%	2,900	41.7	36.6 - 47.0	4,000	58.3	53.0 - 63.4	6,900

PRAMS Health Indicator Report - Discuss seat belt use with HCW during PNC- by State;County;DOH Race-Ethnicity;PRAMS Age Group;Infant Gender;Married;Poverty Level;Income (2000-2003);Income (2004-2011);Income (2012+);Birthweight;Smoke 3rd Trimester;Smoke Before Pregnant;WIC During Pregnancy, for the Year(s) 2000;2001;2002;2003;2004;2005;2006;2007;2008;2009;2010;2011;2012;2013

Note: Weighted responses, rounded to the nearest hundred; n/r (Not Reportable) - If the unweighted total responses for a dimension (row) is <30 that row will not be shown

Year: 2012

	Yes			No			Weighted Total Responses
	#	%	C.I.(95%)	#	%	C.I.(95%)	#
Income (2012+)							
<=\$17,000	2,500	64.5	57.8 - 70.7	1,400	35.5	29.3 - 42.2	4,000
\$17,001-\$26,000	1,100	50.9	41.8 - 59.8	1,100	49.1	40.2 - 58.2	2,200
\$26,001-\$51,000	2,500	57.6	50.9 - 64.1	1,800	42.4	35.9 - 49.1	4,400
>=\$51,001	2,300	39.1	33.7 - 44.8	3,600	60.9	55.2 - 66.3	5,900

	Yes			No			Weighted Total Responses
	#	%	C.I.(95%)	#	%	C.I.(95%)	#
Birthweight							
Low birth weight	600	51.4	45.9 - 56.9	600	48.6	43.1 - 54.1	1,200
Normal birth weight	8,400	50.5	47.0 - 54.0	8,300	49.5	46.0 - 53.0	16,700

	Yes			No			Weighted Total Responses
	#	%	C.I.(95%)	#	%	C.I.(95%)	#
Smoke 3rd Trimester							
Yes	400	59.7	44.8 - 73.0	300	40.3	27.0 - 55.2	700
No	8,400	50.2	46.8 - 53.6	8,300	49.8	46.4 - 53.2	16,600

PRAMS Health Indicator Report - Discuss seat belt use with HCW during PNC- by State;County;DOH Race-Ethnicity;PRAMS Age Group;Infant Gender;Married;Poverty Level;Income (2000-2003);Income (2004-2011);Income (2012+);Birthweight;Smoke 3rd Trimester;Smoke Before Pregnant;WIC During Pregnancy, for the Year(s) 2000;2001;2002;2003;2004;2005;2006;2007;2008;2009;2010;2011;2012;2013

Note: Weighted responses, rounded to the nearest hundred; n/r (Not Reportable) - If the unweighted total responses for a dimension (row) is <30 that row will not be shown

Year: 2012

Smoke Before Pregnant	Yes			No			Weighted Total Responses
	#	%	C.I.(95%)	#	%	C.I.(95%)	#
Yes	1,300	45.0	37.1 - 53.1	1,500	55.0	46.9 - 62.9	2,800
No	7,500	51.7	48.1 - 55.4	7,000	48.3	44.6 - 51.9	14,600

WIC During Pregnancy	Yes			No			Weighted Total Responses
	#	%	C.I.(95%)	#	%	C.I.(95%)	#
Yes	4,900	59.8	55.1 - 64.4	3,300	40.2	35.6 - 44.9	8,100
No	4,200	42.8	38.5 - 47.3	5,600	57.2	52.7 - 61.5	9,800

PRAMS Health Indicator Report - Discuss seat belt use with HCW during PNC- by State;County;DOH Race-Ethnicity;PRAMS Age Group;Infant Gender;Married;Poverty Level;Income (2000-2003);Income (2004-2011);Income (2012+);Birthweight;Smoke 3rd Trimester;Smoke Before Pregnant;WIC During Pregnancy, for the Year(s) 2000;2001;2002;2003;2004;2005;2006;2007;2008;2009;2010;2011;2012;2013

Note: Weighted responses, rounded to the nearest hundred; n/r (Not Reportable) - If the unweighted total responses for a dimension (row) is <30 that row will not be shown

Year: 2011

State	Yes			No			Weighted Total Responses
	#	%	C.I.(95%)	#	%	C.I.(95%)	#
Totals	9,400	51.8	48.6 - 55.0	8,800	48.2	45.0 - 51.4	18,200

County	Yes			No			Weighted Total Responses
	#	%	C.I.(95%)	#	%	C.I.(95%)	#
Hawaii	1,300	54.1	48.9 - 59.1	1,100	45.9	40.9 - 51.1	2,400
Honolulu	6,700	51.7	47.4 - 56.1	6,300	48.3	43.9 - 52.6	13,000
Kauai	400	52.0	45.7 - 58.1	400	48.0	41.9 - 54.3	900
Maui	1,000	49.5	44.9 - 54.2	1,000	50.5	45.8 - 55.1	1,900

PRAMS Health Indicator Report - Discuss seat belt use with HCW during PNC- by State;County;DOH Race-Ethnicity;PRAMS Age Group;Infant Gender;Married;Poverty Level;Income (2000-2003);Income (2004-2011);Income (2012+);Birthweight;Smoke 3rd Trimester;Smoke Before Pregnant;WIC During Pregnancy, for the Year(s) 2000;2001;2002;2003;2004;2005;2006;2007;2008;2009;2010;2011;2012;2013

Note: Weighted responses, rounded to the nearest hundred; n/r (Not Reportable) - If the unweighted total responses for a dimension (row) is <30 that row will not be shown

Year: 2011

DOH Race-Ethnicity	Yes			No			Weighted Total Responses
	#	%	C.I.(95%)	#	%	C.I.(95%)	#
Caucasian	2,100	45.7	39.3 - 52.2	2,400	54.3	47.8 - 60.7	4,500
Native Hawaiian	3,000	57.1	51.3 - 62.7	2,300	42.9	37.3 - 48.7	5,300
Chinese	300	39.7	25.2 - 56.4	400	60.3	43.6 - 74.8	700
Filipino	2,000	61.1	53.5 - 68.3	1,300	38.9	31.7 - 46.5	3,200
Japanese	500	26.2	18.2 - 36.2	1,300	73.8	63.8 - 81.8	1,800
Other	1,600	60.6	51.4 - 69.1	1,100	39.4	30.9 - 48.6	2,700

PRAMS Age Group	Yes			No			Weighted Total Responses
	#	%	C.I.(95%)	#	%	C.I.(95%)	#
<20	700	72.1	60.5 - 81.4	300	27.9	18.6 - 39.5	900
20-24	2,500	57.7	50.8 - 64.4	1,800	42.3	35.6 - 49.2	4,300
25-34	5,100	51.8	47.3 - 56.2	4,700	48.2	43.8 - 52.7	9,800
35+	1,200	37.5	30.5 - 45.0	1,900	62.5	55.0 - 69.5	3,100

PRAMS Health Indicator Report - Discuss seat belt use with HCW during PNC- by State;County;DOH Race-Ethnicity;PRAMS Age Group;Infant Gender;Married;Poverty Level;Income (2000-2003);Income (2004-2011);Income (2012+);Birthweight;Smoke 3rd Trimester;Smoke Before Pregnant;WIC During Pregnancy, for the Year(s) 2000;2001;2002;2003;2004;2005;2006;2007;2008;2009;2010;2011;2012;2013

Note: Weighted responses, rounded to the nearest hundred; n/r (Not Reportable) - If the unweighted total responses for a dimension (row) is <30 that row will not be shown

Year: 2011

Infant Gender	Yes			No			Weighted Total Responses
	#	%	C.I.(95%)	#	%	C.I.(95%)	#
Male	5,000	54.4	49.8 - 58.9	4,200	45.6	41.1 - 50.2	9,200
Female	4,400	49.2	44.5 - 53.8	4,500	50.8	46.2 - 55.5	8,900

Married	Yes			No			Weighted Total Responses
	#	%	C.I.(95%)	#	%	C.I.(95%)	#
Yes	5,500	48.3	44.2 - 52.5	5,900	51.7	47.5 - 55.8	11,300
No	3,900	57.6	52.3 - 62.6	2,900	42.4	37.4 - 47.7	6,800

Poverty Level	Yes			No			Weighted Total Responses
	#	%	C.I.(95%)	#	%	C.I.(95%)	#
0-130%	3,900	60.5	55.2 - 65.6	2,500	39.5	34.4 - 44.8	6,400
131-185%	1,600	59.9	51.2 - 67.9	1,100	40.1	32.1 - 48.8	2,700
186+%	3,300	40.8	36.1 - 45.7	4,800	59.2	54.3 - 63.9	8,000

PRAMS Health Indicator Report - Discuss seat belt use with HCW during PNC- by State;County;DOH Race-Ethnicity;PRAMS Age Group;Infant Gender;Married;Poverty Level;Income (2000-2003);Income (2004-2011);Income (2012+);Birthweight;Smoke 3rd Trimester;Smoke Before Pregnant;WIC During Pregnancy, for the Year(s) 2000;2001;2002;2003;2004;2005;2006;2007;2008;2009;2010;2011;2012;2013

Note: Weighted responses, rounded to the nearest hundred; n/r (Not Reportable) - If the unweighted total responses for a dimension (row) is <30 that row will not be shown

Year: 2011

Income (2004-2011)	Yes			No			Weighted Total Responses
	#	%	C.I.(95%)	#	%	C.I.(95%)	#
<\$10,000	2,000	61.8	54.3 - 68.8	1,200	38.2	31.2 - 45.7	3,200
\$10,000-\$24,999	1,900	58.4	50.9 - 65.5	1,400	41.6	34.5 - 49.1	3,300
\$25,000-\$49,999	2,700	58.3	51.7 - 64.6	1,900	41.7	35.4 - 48.3	4,500
>=\$50,000	2,200	36.4	31.2 - 41.9	3,900	63.6	58.1 - 68.8	6,200

Birthweight	Yes			No			Weighted Total Responses
	#	%	C.I.(95%)	#	%	C.I.(95%)	#
Low birth weight	700	54.3	48.7 - 59.7	600	45.7	40.3 - 51.3	1,300
Normal birth weight	8,700	51.7	48.2 - 55.2	8,100	48.3	44.8 - 51.8	16,900

Smoke 3rd Trimester	Yes			No			Weighted Total Responses
	#	%	C.I.(95%)	#	%	C.I.(95%)	#
Yes	400	41.7	29.7 - 54.6	500	58.3	45.4 - 70.3	900
No	9,000	52.4	49.1 - 55.8	8,100	47.6	44.2 - 50.9	17,100

PRAMS Health Indicator Report - Discuss seat belt use with HCW during PNC- by State;County;DOH Race-Ethnicity;PRAMS Age Group;Infant Gender;Married;Poverty Level;Income (2000-2003);Income (2004-2011);Income (2012+);Birthweight;Smoke 3rd Trimester;Smoke Before Pregnant;WIC During Pregnancy, for the Year(s) 2000;2001;2002;2003;2004;2005;2006;2007;2008;2009;2010;2011;2012;2013

Note: Weighted responses, rounded to the nearest hundred; n/r (Not Reportable) - If the unweighted total responses for a dimension (row) is <30 that row will not be shown

Year: 2011

Smoke Before Pregnant	Yes			No			Weighted Total Responses
	#	%	C.I.(95%)	#	%	C.I.(95%)	#
Yes	1,600	46.3	39.2 - 53.6	1,900	53.7	46.4 - 60.8	3,500
No	7,700	53.3	49.6 - 56.9	6,800	46.7	43.1 - 50.4	14,500

WIC During Pregnancy	Yes			No			Weighted Total Responses
	#	%	C.I.(95%)	#	%	C.I.(95%)	#
Yes	4,700	58.3	53.5 - 63.0	3,400	41.7	37.0 - 46.5	8,100
No	4,600	46.7	42.3 - 51.2	5,300	53.3	48.8 - 57.7	9,900

PRAMS Health Indicator Report - Discuss seat belt use with HCW during PNC- by State;County;DOH Race-Ethnicity;PRAMS Age Group;Infant Gender;Married;Poverty Level;Income (2000-2003);Income (2004-2011);Income (2012+);Birthweight;Smoke 3rd Trimester;Smoke Before Pregnant;WIC During Pregnancy, for the Year(s) 2000;2001;2002;2003;2004;2005;2006;2007;2008;2009;2010;2011;2012;2013

Note: Weighted responses, rounded to the nearest hundred; n/r (Not Reportable) - If the unweighted total responses for a dimension (row) is <30 that row will not be shown

Year: 2010

State	Yes			No			Weighted Total Responses
	#	%	C.I.(95%)	#	%	C.I.(95%)	#
Totals	9,200	50.4	47.1 - 53.6	9,000	49.6	46.4 - 52.9	18,200

County	Yes			No			Weighted Total Responses
	#	%	C.I.(95%)	#	%	C.I.(95%)	#
Hawaii	1,300	57.1	52.0 - 62.1	1,000	42.9	37.9 - 48.0	2,300
Honolulu	6,500	49.3	45.0 - 53.5	6,700	50.7	46.5 - 55.0	13,200
Kauai	400	48.6	42.8 - 54.5	400	51.4	45.5 - 57.2	800
Maui	1,000	50.7	45.8 - 55.5	1,000	49.3	44.5 - 54.2	1,900

PRAMS Health Indicator Report - Discuss seat belt use with HCW during PNC- by State;County;DOH Race-Ethnicity;PRAMS Age Group;Infant Gender;Married;Poverty Level;Income (2000-2003);Income (2004-2011);Income (2012+);Birthweight;Smoke 3rd Trimester;Smoke Before Pregnant;WIC During Pregnancy, for the Year(s) 2000;2001;2002;2003;2004;2005;2006;2007;2008;2009;2010;2011;2012;2013

Note: Weighted responses, rounded to the nearest hundred; n/r (Not Reportable) - If the unweighted total responses for a dimension (row) is <30 that row will not be shown

Year: 2010

DOH Race-Ethnicity	Yes			No			Weighted Total Responses
	#	%	C.I.(95%)	#	%	C.I.(95%)	#
Caucasian	2,100	47.5	41.1 - 54.0	2,400	52.5	46.0 - 58.9	4,500
Native Hawaiian	2,900	53.4	47.7 - 59.0	2,500	46.6	41.0 - 52.3	5,400
Chinese	200	28.2	16.0 - 44.7	500	71.8	55.3 - 84.0	800
Filipino	1,800	54.0	46.4 - 61.5	1,500	46.0	38.5 - 53.6	3,300
Japanese	500	28.4	19.7 - 39.0	1,200	71.6	61.0 - 80.3	1,700
Other	1,700	64.6	55.6 - 72.7	900	35.4	27.3 - 44.4	2,600

PRAMS Age Group	Yes			No			Weighted Total Responses
	#	%	C.I.(95%)	#	%	C.I.(95%)	#
<20	800	73.5	60.8 - 83.2	300	26.5	16.8 - 39.2	1,100
20-24	2,400	55.0	48.3 - 61.6	2,000	45.0	38.4 - 51.7	4,400
25-34	4,500	47.5	43.1 - 52.0	4,900	52.5	48.0 - 56.9	9,400
35+	1,500	44.6	37.3 - 52.2	1,800	55.4	47.8 - 62.7	3,300

PRAMS Health Indicator Report - Discuss seat belt use with HCW during PNC- by State;County;DOH Race-Ethnicity;PRAMS Age Group;Infant Gender;Married;Poverty Level;Income (2000-2003);Income (2004-2011);Income (2012+);Birthweight;Smoke 3rd Trimester;Smoke Before Pregnant;WIC During Pregnancy, for the Year(s) 2000;2001;2002;2003;2004;2005;2006;2007;2008;2009;2010;2011;2012;2013

Note: Weighted responses, rounded to the nearest hundred; n/r (Not Reportable) - If the unweighted total responses for a dimension (row) is <30 that row will not be shown

Year: 2010

Infant Gender	Yes			No			Weighted Total Responses
	#	%	C.I.(95%)	#	%	C.I.(95%)	#
Male	4,500	49.7	45.3 - 54.2	4,600	50.3	45.8 - 54.7	9,100
Female	4,600	51.0	46.3 - 55.6	4,500	49.0	44.4 - 53.7	9,100

Married	Yes			No			Weighted Total Responses
	#	%	C.I.(95%)	#	%	C.I.(95%)	#
Yes	5,400	46.8	42.7 - 51.0	6,100	53.2	49.0 - 57.3	11,500
No	3,800	56.3	51.2 - 61.3	3,000	43.7	38.7 - 48.8	6,800

Poverty Level	Yes			No			Weighted Total Responses
	#	%	C.I.(95%)	#	%	C.I.(95%)	#
0-130%	3,600	58.2	52.8 - 63.4	2,600	41.8	36.6 - 47.2	6,300
131-185%	1,500	50.4	42.3 - 58.4	1,500	49.6	41.6 - 57.7	3,000
186+%	3,200	41.6	36.7 - 46.6	4,600	58.4	53.4 - 63.3	7,800

PRAMS Health Indicator Report - Discuss seat belt use with HCW during PNC- by State;County;DOH Race-Ethnicity;PRAMS Age Group;Infant Gender;Married;Poverty Level;Income (2000-2003);Income (2004-2011);Income (2012+);Birthweight;Smoke 3rd Trimester;Smoke Before Pregnant;WIC During Pregnancy, for the Year(s) 2000;2001;2002;2003;2004;2005;2006;2007;2008;2009;2010;2011;2012;2013

Note: Weighted responses, rounded to the nearest hundred; n/r (Not Reportable) - If the unweighted total responses for a dimension (row) is <30 that row will not be shown

Year: 2010

Income (2004-2011)	Yes			No			Weighted Total Responses
	#	%	C.I.(95%)	#	%	C.I.(95%)	#
<\$10,000	2,200	65.7	58.3 - 72.3	1,100	34.3	27.7 - 41.7	3,300
\$10,000-\$24,999	1,700	54.3	46.6 - 61.8	1,400	45.7	38.2 - 53.4	3,200
\$25,000-\$49,999	2,000	44.4	38.1 - 50.8	2,600	55.6	49.2 - 61.9	4,600
>=\$50,000	2,500	41.0	35.5 - 46.7	3,600	59.0	53.3 - 64.5	6,200

Birthweight	Yes			No			Weighted Total Responses
	#	%	C.I.(95%)	#	%	C.I.(95%)	#
Low birth weight	600	50.6	45.2 - 56.0	600	49.4	44.0 - 54.8	1,300
Normal birth weight	8,500	50.2	46.8 - 53.7	8,400	49.8	46.3 - 53.2	16,900

Smoke 3rd Trimester	Yes			No			Weighted Total Responses
	#	%	C.I.(95%)	#	%	C.I.(95%)	#
Yes	600	45.0	33.7 - 56.9	800	55.0	43.1 - 66.3	1,400
No	8,500	51.0	47.6 - 54.4	8,100	49.0	45.6 - 52.4	16,600

PRAMS Health Indicator Report - Discuss seat belt use with HCW during PNC- by State;County;DOH Race-Ethnicity;PRAMS Age Group;Infant Gender;Married;Poverty Level;Income (2000-2003);Income (2004-2011);Income (2012+);Birthweight;Smoke 3rd Trimester;Smoke Before Pregnant;WIC During Pregnancy, for the Year(s) 2000;2001;2002;2003;2004;2005;2006;2007;2008;2009;2010;2011;2012;2013

Note: Weighted responses, rounded to the nearest hundred; n/r (Not Reportable) - If the unweighted total responses for a dimension (row) is <30 that row will not be shown

Year: 2010

Smoke Before Pregnant	Yes			No			Weighted Total Responses
	#	%	C.I.(95%)	#	%	C.I.(95%)	#
Yes	1,700	44.0	37.2 - 50.9	2,100	56.0	49.1 - 62.8	3,800
No	7,400	52.3	48.6 - 55.9	6,800	47.7	44.1 - 51.4	14,200

WIC During Pregnancy	Yes			No			Weighted Total Responses
	#	%	C.I.(95%)	#	%	C.I.(95%)	#
Yes	4,700	58.5	53.7 - 63.1	3,300	41.5	36.9 - 46.3	8,000
No	4,500	44.6	40.2 - 49.0	5,600	55.4	51.0 - 59.8	10,100

PRAMS Health Indicator Report - Discuss seat belt use with HCW during PNC- by State;County;DOH Race-Ethnicity;PRAMS Age Group;Infant Gender;Married;Poverty Level;Income (2000-2003);Income (2004-2011);Income (2012+);Birthweight;Smoke 3rd Trimester;Smoke Before Pregnant;WIC During Pregnancy, for the Year(s) 2000;2001;2002;2003;2004;2005;2006;2007;2008;2009;2010;2011;2012;2013

Note: Weighted responses, rounded to the nearest hundred; n/r (Not Reportable) - If the unweighted total responses for a dimension (row) is <30 that row will not be shown

Year: 2009

State	Yes			No			Weighted Total Responses
	#	%	C.I.(95%)	#	%	C.I.(95%)	#
Totals	8,800	49.3	46.2 - 52.5	9,100	50.7	47.5 - 53.8	17,900

County	Yes			No			Weighted Total Responses
	#	%	C.I.(95%)	#	%	C.I.(95%)	#
Hawaii	1,100	47.8	42.8 - 53.0	1,200	52.2	47.0 - 57.2	2,400
Honolulu	6,400	50.6	46.3 - 54.9	6,200	49.4	45.1 - 53.7	12,600
Kauai	400	50.6	44.6 - 56.6	400	49.4	43.4 - 55.4	800
Maui	900	42.7	38.2 - 47.4	1,200	57.3	52.6 - 61.8	2,100

PRAMS Health Indicator Report - Discuss seat belt use with HCW during PNC- by State;County;DOH Race-Ethnicity;PRAMS Age Group;Infant Gender;Married;Poverty Level;Income (2000-2003);Income (2004-2011);Income (2012+);Birthweight;Smoke 3rd Trimester;Smoke Before Pregnant;WIC During Pregnancy, for the Year(s) 2000;2001;2002;2003;2004;2005;2006;2007;2008;2009;2010;2011;2012;2013

Note: Weighted responses, rounded to the nearest hundred; n/r (Not Reportable) - If the unweighted total responses for a dimension (row) is <30 that row will not be shown

Year: 2009

DOH Race-Ethnicity	Yes			No			Weighted Total Responses
	#	%	C.I.(95%)	#	%	C.I.(95%)	#
Caucasian	2,000	47.8	41.6 - 54.2	2,200	52.2	45.8 - 58.4	4,200
Native Hawaiian	3,300	56.2	50.7 - 61.6	2,600	43.8	38.4 - 49.3	5,800
Chinese	300	35.3	21.0 - 52.7	500	64.7	47.3 - 79.0	800
Filipino	1,700	54.9	47.4 - 62.2	1,400	45.1	37.8 - 52.6	3,200
Japanese	500	30.5	21.6 - 41.0	1,100	69.5	59.0 - 78.4	1,600
Other	1,100	44.9	36.1 - 53.9	1,300	55.1	46.1 - 63.9	2,400

PRAMS Age Group	Yes			No			Weighted Total Responses
	#	%	C.I.(95%)	#	%	C.I.(95%)	#
<20	1,100	59.4	48.9 - 69.2	700	40.6	30.8 - 51.1	1,800
20-24	2,400	57.0	50.4 - 63.4	1,800	43.0	36.6 - 49.6	4,200
25-34	4,200	46.6	42.2 - 51.1	4,800	53.4	48.9 - 57.8	9,000
35+	1,200	40.7	33.5 - 48.3	1,800	59.3	51.7 - 66.5	3,000

PRAMS Health Indicator Report - Discuss seat belt use with HCW during PNC- by State;County;DOH Race-Ethnicity;PRAMS Age Group;Infant Gender;Married;Poverty Level;Income (2000-2003);Income (2004-2011);Income (2012+);Birthweight;Smoke 3rd Trimester;Smoke Before Pregnant;WIC During Pregnancy, for the Year(s) 2000;2001;2002;2003;2004;2005;2006;2007;2008;2009;2010;2011;2012;2013

Note: Weighted responses, rounded to the nearest hundred; n/r (Not Reportable) - If the unweighted total responses for a dimension (row) is <30 that row will not be shown

Year: 2009

Infant Gender	Yes			No			Weighted Total Responses
	#	%	C.I.(95%)	#	%	C.I.(95%)	#
Male	4,600	47.8	43.4 - 52.2	5,000	52.2	47.8 - 56.6	9,600
Female	4,300	51.1	46.6 - 55.7	4,100	48.9	44.3 - 53.4	8,400

Married	Yes			No			Weighted Total Responses
	#	%	C.I.(95%)	#	%	C.I.(95%)	#
Yes	4,800	45.6	41.5 - 49.7	5,800	54.4	50.3 - 58.5	10,600
No	4,000	54.7	49.8 - 59.6	3,300	45.3	40.4 - 50.2	7,300

Poverty Level	Yes			No			Weighted Total Responses
	#	%	C.I.(95%)	#	%	C.I.(95%)	#
0-130%	3,400	54.8	49.4 - 60.1	2,800	45.2	39.9 - 50.6	6,300
131-185%	1,500	51.8	43.7 - 59.8	1,300	48.2	40.2 - 56.3	2,800
186+%	2,900	39.6	34.9 - 44.5	4,400	60.4	55.5 - 65.1	7,200

PRAMS Health Indicator Report - Discuss seat belt use with HCW during PNC- by State;County;DOH Race-Ethnicity;PRAMS Age Group;Infant Gender;Married;Poverty Level;Income (2000-2003);Income (2004-2011);Income (2012+);Birthweight;Smoke 3rd Trimester;Smoke Before Pregnant;WIC During Pregnancy, for the Year(s) 2000;2001;2002;2003;2004;2005;2006;2007;2008;2009;2010;2011;2012;2013

Note: Weighted responses, rounded to the nearest hundred; n/r (Not Reportable) - If the unweighted total responses for a dimension (row) is <30 that row will not be shown

Year: 2009

Income (2004-2011)	Yes			No			Weighted Total Responses
	#	%	C.I.(95%)	#	%	C.I.(95%)	#
<\$10,000	1,600	52.4	44.3 - 60.3	1,400	47.6	39.7 - 55.7	3,000
\$10,000-\$24,999	2,200	57.0	50.3 - 63.4	1,600	43.0	36.6 - 49.7	3,800
\$25,000-\$49,999	1,800	49.6	42.7 - 56.4	1,800	50.4	43.6 - 57.3	3,700
>=\$50,000	2,300	37.8	32.6 - 43.3	3,700	62.2	56.7 - 67.4	6,000

Birthweight	Yes			No			Weighted Total Responses
	#	%	C.I.(95%)	#	%	C.I.(95%)	#
Low birth weight	700	51.5	46.3 - 56.7	700	48.5	43.3 - 53.7	1,300
Normal birth weight	8,100	49.0	45.6 - 52.4	8,400	51.0	47.6 - 54.4	16,500

Smoke 3rd Trimester	Yes			No			Weighted Total Responses
	#	%	C.I.(95%)	#	%	C.I.(95%)	#
Yes	800	46.0	35.8 - 56.5	900	54.0	43.5 - 64.2	1,600
No	7,900	49.9	46.5 - 53.2	7,900	50.1	46.8 - 53.5	15,800

PRAMS Health Indicator Report - Discuss seat belt use with HCW during PNC- by State;County;DOH Race-Ethnicity;PRAMS Age Group;Infant Gender;Married;Poverty Level;Income (2000-2003);Income (2004-2011);Income (2012+);Birthweight;Smoke 3rd Trimester;Smoke Before Pregnant;WIC During Pregnancy, for the Year(s) 2000;2001;2002;2003;2004;2005;2006;2007;2008;2009;2010;2011;2012;2013

Note: Weighted responses, rounded to the nearest hundred; n/r (Not Reportable) - If the unweighted total responses for a dimension (row) is <30 that row will not be shown

Year: 2009

Smoke Before Pregnant	Yes			No			Weighted Total Responses
	#	%	C.I.(95%)	#	%	C.I.(95%)	#
Yes	1,800	45.8	39.2 - 52.5	2,100	54.2	47.5 - 60.8	3,900
No	6,900	50.5	46.9 - 54.2	6,700	49.5	45.8 - 53.1	13,600

WIC During Pregnancy	Yes			No			Weighted Total Responses
	#	%	C.I.(95%)	#	%	C.I.(95%)	#
Yes	4,200	57.3	52.5 - 62.0	3,100	42.7	38.0 - 47.5	7,300
No	4,500	44.3	40.1 - 48.6	5,600	55.7	51.4 - 59.9	10,100

PRAMS Health Indicator Report - Discuss seat belt use with HCW during PNC- by State;County;DOH Race-Ethnicity;PRAMS Age Group;Infant Gender;Married;Poverty Level;Income (2000-2003);Income (2004-2011);Income (2012+);Birthweight;Smoke 3rd Trimester;Smoke Before Pregnant;WIC During Pregnancy, for the Year(s) 2000;2001;2002;2003;2004;2005;2006;2007;2008;2009;2010;2011;2012;2013

Note: Weighted responses, rounded to the nearest hundred; n/r (Not Reportable) - If the unweighted total responses for a dimension (row) is <30 that row will not be shown

Year: 2008

State	Yes			No			Weighted Total Responses
	#	%	C.I.(95%)	#	%	C.I.(95%)	#
Totals	8,500	46.6	44.3 - 49.0	9,700	53.4	51.0 - 55.7	18,300

County	Yes			No			Weighted Total Responses
	#	%	C.I.(95%)	#	%	C.I.(95%)	#
Hawaii	1,100	46.3	39.6 - 53.2	1,300	53.7	46.8 - 60.4	2,400
Honolulu	6,100	47.8	45.0 - 50.7	6,700	52.2	49.3 - 55.0	12,800
Kauai	400	46.7	36.2 - 57.5	500	53.3	42.5 - 63.8	900
Maui	800	39.7	32.9 - 46.8	1,300	60.3	53.2 - 67.1	2,100

PRAMS Health Indicator Report - Discuss seat belt use with HCW during PNC- by State;County;DOH Race-Ethnicity;PRAMS Age Group;Infant Gender;Married;Poverty Level;Income (2000-2003);Income (2004-2011);Income (2012+);Birthweight;Smoke 3rd Trimester;Smoke Before Pregnant;WIC During Pregnancy, for the Year(s) 2000;2001;2002;2003;2004;2005;2006;2007;2008;2009;2010;2011;2012;2013

Note: Weighted responses, rounded to the nearest hundred; n/r (Not Reportable) - If the unweighted total responses for a dimension (row) is <30 that row will not be shown

Year: 2008

DOH Race-Ethnicity	Yes			No			Weighted Total Responses
	#	%	C.I.(95%)	#	%	C.I.(95%)	#
Caucasian	1,700	40.0	35.3 - 44.8	2,600	60.0	55.2 - 64.7	4,300
Native Hawaiian	2,400	46.9	42.0 - 51.7	2,700	53.1	48.3 - 58.0	5,200
Chinese	200	33.3	27.2 - 40.0	400	66.7	60.0 - 72.8	600
Filipino	1,800	54.4	49.1 - 59.5	1,500	45.6	40.5 - 50.9	3,400
Japanese	700	32.4	26.2 - 39.3	1,400	67.6	60.7 - 73.8	2,000
Other	1,700	60.6	54.5 - 66.5	1,100	39.4	33.5 - 45.5	2,800

PRAMS Age Group	Yes			No			Weighted Total Responses
	#	%	C.I.(95%)	#	%	C.I.(95%)	#
<20	900	66.6	57.6 - 74.6	500	33.4	25.4 - 42.4	1,400
20-24	2,000	51.3	46.0 - 56.6	1,900	48.7	43.4 - 54.0	4,000
25-34	4,200	43.9	40.7 - 47.2	5,300	56.1	52.8 - 59.3	9,500
35+	1,300	40.2	35.1 - 45.6	2,000	59.8	54.4 - 64.9	3,300

PRAMS Health Indicator Report - Discuss seat belt use with HCW during PNC- by State;County;DOH Race-Ethnicity;PRAMS Age Group;Infant Gender;Married;Poverty Level;Income (2000-2003);Income (2004-2011);Income (2012+);Birthweight;Smoke 3rd Trimester;Smoke Before Pregnant;WIC During Pregnancy, for the Year(s) 2000;2001;2002;2003;2004;2005;2006;2007;2008;2009;2010;2011;2012;2013

Note: Weighted responses, rounded to the nearest hundred; n/r (Not Reportable) - If the unweighted total responses for a dimension (row) is <30 that row will not be shown

Year: 2008

Infant Gender	Yes			No			Weighted Total Responses
	#	%	C.I.(95%)	#	%	C.I.(95%)	#
Male	4,400	45.8	42.5 - 49.1	5,200	54.2	50.9 - 57.5	9,600
Female	4,100	47.6	44.1 - 51.1	4,500	52.4	48.9 - 55.9	8,600

Married	Yes			No			Weighted Total Responses
	#	%	C.I.(95%)	#	%	C.I.(95%)	#
Yes	4,900	42.5	39.7 - 45.5	6,600	57.5	54.5 - 60.3	11,500
No	3,600	53.6	49.5 - 57.7	3,100	46.4	42.3 - 50.5	6,700

Poverty Level	Yes			No			Weighted Total Responses
	#	%	C.I.(95%)	#	%	C.I.(95%)	#
0-130%	3,500	52.7	48.6 - 56.8	3,200	47.3	43.2 - 51.4	6,700
131-185%	1,300	51.1	44.7 - 57.4	1,300	48.9	42.6 - 55.3	2,600
186+%	2,900	37.9	34.5 - 41.3	4,800	62.1	58.7 - 65.5	7,800

PRAMS Health Indicator Report - Discuss seat belt use with HCW during PNC- by State;County;DOH Race-Ethnicity;PRAMS Age Group;Infant Gender;Married;Poverty Level;Income (2000-2003);Income (2004-2011);Income (2012+);Birthweight;Smoke 3rd Trimester;Smoke Before Pregnant;WIC During Pregnancy, for the Year(s) 2000;2001;2002;2003;2004;2005;2006;2007;2008;2009;2010;2011;2012;2013

Note: Weighted responses, rounded to the nearest hundred; n/r (Not Reportable) - If the unweighted total responses for a dimension (row) is <30 that row will not be shown

Year: 2008

Income (2004-2011)	Yes			No			Weighted Total Responses
	#	%	C.I.(95%)	#	%	C.I.(95%)	#
<\$10,000	1,600	54.3	48.1 - 60.5	1,300	45.7	39.5 - 51.9	2,900
\$10,000-\$24,999	2,000	51.0	45.7 - 56.3	1,900	49.0	43.7 - 54.3	4,000
\$25,000-\$49,999	1,800	43.5	38.6 - 48.4	2,400	56.5	51.6 - 61.4	4,200
>=\$50,000	2,400	39.3	35.5 - 43.2	3,700	60.7	56.8 - 64.5	6,200

Birthweight	Yes			No			Weighted Total Responses
	#	%	C.I.(95%)	#	%	C.I.(95%)	#
Low birth weight	500	44.0	35.1 - 53.3	700	56.0	46.7 - 64.9	1,200
Normal birth weight	8,000	46.8	44.3 - 49.3	9,100	53.2	50.7 - 55.7	17,000

Smoke 3rd Trimester	Yes			No			Weighted Total Responses
	#	%	C.I.(95%)	#	%	C.I.(95%)	#
Yes	800	54.2	45.3 - 62.8	700	45.8	37.2 - 54.7	1,500
No	7,500	45.6	43.1 - 48.1	8,900	54.4	51.9 - 56.9	16,400

PRAMS Health Indicator Report - Discuss seat belt use with HCW during PNC- by State;County;DOH Race-Ethnicity;PRAMS Age Group;Infant Gender;Married;Poverty Level;Income (2000-2003);Income (2004-2011);Income (2012+);Birthweight;Smoke 3rd Trimester;Smoke Before Pregnant;WIC During Pregnancy, for the Year(s) 2000;2001;2002;2003;2004;2005;2006;2007;2008;2009;2010;2011;2012;2013

Note: Weighted responses, rounded to the nearest hundred; n/r (Not Reportable) - If the unweighted total responses for a dimension (row) is <30 that row will not be shown

Year: 2008

Smoke Before Pregnant	Yes			No			Weighted Total Responses
	#	%	C.I.(95%)	#	%	C.I.(95%)	#
Yes	1,600	48.2	42.4 - 54.0	1,700	51.8	46.0 - 57.6	3,400
No	6,700	45.9	43.3 - 48.6	7,900	54.1	51.4 - 56.7	14,500

WIC During Pregnancy	Yes			No			Weighted Total Responses
	#	%	C.I.(95%)	#	%	C.I.(95%)	#
Yes	4,200	54.1	50.3 - 57.8	3,600	45.9	42.2 - 49.7	7,800
No	4,200	40.9	37.9 - 44.0	6,100	59.1	56.0 - 62.1	10,400

PRAMS Health Indicator Report - Discuss seat belt use with HCW during PNC- by State;County;DOH Race-Ethnicity;PRAMS Age Group;Infant Gender;Married;Poverty Level;Income (2000-2003);Income (2004-2011);Income (2012+);Birthweight;Smoke 3rd Trimester;Smoke Before Pregnant;WIC During Pregnancy, for the Year(s) 2000;2001;2002;2003;2004;2005;2006;2007;2008;2009;2010;2011;2012;2013

Note: Weighted responses, rounded to the nearest hundred; n/r (Not Reportable) - If the unweighted total responses for a dimension (row) is <30 that row will not be shown

Year: 2007

State	Yes			No			Weighted Total Responses
	#	%	C.I.(95%)	#	%	C.I.(95%)	#
Totals	8,800	49.5	47.1 - 51.9	9,000	50.5	48.1 - 52.9	17,900

County	Yes			No			Weighted Total Responses
	#	%	C.I.(95%)	#	%	C.I.(95%)	#
Hawaii	1,000	43.2	36.6 - 50.1	1,300	56.8	49.9 - 63.4	2,400
Honolulu	6,400	52.2	49.4 - 55.1	5,900	47.8	44.9 - 50.6	12,300
Kauai	500	50.9	40.8 - 60.9	500	49.1	39.1 - 59.2	1,100
Maui	800	39.7	32.8 - 47.0	1,300	60.3	53.0 - 67.2	2,100

PRAMS Health Indicator Report - Discuss seat belt use with HCW during PNC- by State;County;DOH Race-Ethnicity;PRAMS Age Group;Infant Gender;Married;Poverty Level;Income (2000-2003);Income (2004-2011);Income (2012+);Birthweight;Smoke 3rd Trimester;Smoke Before Pregnant;WIC During Pregnancy, for the Year(s) 2000;2001;2002;2003;2004;2005;2006;2007;2008;2009;2010;2011;2012;2013

Note: Weighted responses, rounded to the nearest hundred; n/r (Not Reportable) - If the unweighted total responses for a dimension (row) is <30 that row will not be shown

Year: 2007

DOH Race-Ethnicity	Yes			No			Weighted Total Responses
	#	%	C.I.(95%)	#	%	C.I.(95%)	#
Caucasian	1,900	45.3	40.4 - 50.4	2,200	54.7	49.6 - 59.6	4,100
Native Hawaiian	2,500	51.8	46.8 - 56.8	2,400	48.2	43.2 - 53.2	4,900
Chinese	300	40.0	33.5 - 46.8	400	60.0	53.2 - 66.5	600
Filipino	1,800	53.7	48.5 - 58.8	1,500	46.3	41.2 - 51.5	3,300
Japanese	700	34.3	28.0 - 41.3	1,400	65.7	58.7 - 72.0	2,100
Other	1,700	59.7	53.5 - 65.6	1,100	40.3	34.4 - 46.5	2,900

PRAMS Age Group	Yes			No			Weighted Total Responses
	#	%	C.I.(95%)	#	%	C.I.(95%)	#
<20	1,000	62.2	53.2 - 70.5	600	37.8	29.5 - 46.8	1,700
20-24	2,400	54.8	49.8 - 59.7	2,000	45.2	40.3 - 50.2	4,400
25-34	4,100	46.5	43.2 - 49.9	4,700	53.5	50.1 - 56.8	8,700
35+	1,300	43.4	38.0 - 48.9	1,700	56.6	51.1 - 62.0	3,000

PRAMS Health Indicator Report - Discuss seat belt use with HCW during PNC- by State;County;DOH Race-Ethnicity;PRAMS Age Group;Infant Gender;Married;Poverty Level;Income (2000-2003);Income (2004-2011);Income (2012+);Birthweight;Smoke 3rd Trimester;Smoke Before Pregnant;WIC During Pregnancy, for the Year(s) 2000;2001;2002;2003;2004;2005;2006;2007;2008;2009;2010;2011;2012;2013

Note: Weighted responses, rounded to the nearest hundred; n/r (Not Reportable) - If the unweighted total responses for a dimension (row) is <30 that row will not be shown

Year: 2007

Infant Gender	Yes			No			Weighted Total Responses
	#	%	C.I.(95%)	#	%	C.I.(95%)	#
Male	4,400	48.0	44.7 - 51.4	4,800	52.0	48.6 - 55.3	9,200
Female	4,400	51.0	47.6 - 54.5	4,200	49.0	45.5 - 52.4	8,700

Married	Yes			No			Weighted Total Responses
	#	%	C.I.(95%)	#	%	C.I.(95%)	#
Yes	5,300	47.2	44.3 - 50.2	5,900	52.8	49.8 - 55.7	11,200
No	3,600	53.3	49.1 - 57.4	3,100	46.7	42.6 - 50.9	6,700

Poverty Level	Yes			No			Weighted Total Responses
	#	%	C.I.(95%)	#	%	C.I.(95%)	#
0-130%	3,800	56.3	52.1 - 60.3	2,900	43.7	39.7 - 47.9	6,700
131-185%	1,200	47.1	41.0 - 53.3	1,400	52.9	46.7 - 59.0	2,600
186+%	3,100	42.5	38.9 - 46.1	4,200	57.5	53.9 - 61.1	7,300

PRAMS Health Indicator Report - Discuss seat belt use with HCW during PNC- by State;County;DOH Race-Ethnicity;PRAMS Age Group;Infant Gender;Married;Poverty Level;Income (2000-2003);Income (2004-2011);Income (2012+);Birthweight;Smoke 3rd Trimester;Smoke Before Pregnant;WIC During Pregnancy, for the Year(s) 2000;2001;2002;2003;2004;2005;2006;2007;2008;2009;2010;2011;2012;2013

Note: Weighted responses, rounded to the nearest hundred; n/r (Not Reportable) - If the unweighted total responses for a dimension (row) is <30 that row will not be shown

Year: 2007

Income (2004-2011)	Yes			No			Weighted Total Responses
	#	%	C.I.(95%)	#	%	C.I.(95%)	#
<\$10,000	1,800	61.3	55.0 - 67.3	1,200	38.7	32.7 - 45.0	3,000
\$10,000-\$24,999	2,000	52.0	46.6 - 57.3	1,800	48.0	42.7 - 53.4	3,800
\$25,000-\$49,999	1,900	47.9	42.9 - 53.0	2,100	52.1	47.0 - 57.1	4,000
>=\$50,000	2,400	40.8	36.9 - 44.8	3,500	59.2	55.2 - 63.1	5,900

Birthweight	Yes			No			Weighted Total Responses
	#	%	C.I.(95%)	#	%	C.I.(95%)	#
Low birth weight	700	47.3	39.1 - 55.5	800	52.7	44.5 - 60.9	1,500
Normal birth weight	8,100	49.7	47.2 - 52.2	8,200	50.3	47.8 - 52.8	16,300

Smoke 3rd Trimester	Yes			No			Weighted Total Responses
	#	%	C.I.(95%)	#	%	C.I.(95%)	#
Yes	800	52.9	44.1 - 61.5	700	47.1	38.5 - 55.9	1,500
No	8,000	49.3	46.7 - 51.8	8,200	50.7	48.2 - 53.3	16,200

PRAMS Health Indicator Report - Discuss seat belt use with HCW during PNC- by State;County;DOH Race-Ethnicity;PRAMS Age Group;Infant Gender;Married;Poverty Level;Income (2000-2003);Income (2004-2011);Income (2012+);Birthweight;Smoke 3rd Trimester;Smoke Before Pregnant;WIC During Pregnancy, for the Year(s) 2000;2001;2002;2003;2004;2005;2006;2007;2008;2009;2010;2011;2012;2013

Note: Weighted responses, rounded to the nearest hundred; n/r (Not Reportable) - If the unweighted total responses for a dimension (row) is <30 that row will not be shown

Year: 2007

Smoke Before Pregnant	Yes			No			Weighted Total Responses
	#	%	C.I.(95%)	#	%	C.I.(95%)	#
Yes	1,800	52.3	46.6 - 57.8	1,700	47.7	42.2 - 53.4	3,500
No	6,900	48.9	46.2 - 51.6	7,200	51.1	48.4 - 53.8	14,100

WIC During Pregnancy	Yes			No			Weighted Total Responses
	#	%	C.I.(95%)	#	%	C.I.(95%)	#
Yes	4,200	56.2	52.3 - 59.9	3,300	43.8	40.1 - 47.7	7,500
No	4,500	44.2	41.1 - 47.3	5,700	55.8	52.7 - 58.9	10,200

PRAMS Health Indicator Report - Discuss seat belt use with HCW during PNC- by State;County;DOH Race-Ethnicity;PRAMS Age Group;Infant Gender;Married;Poverty Level;Income (2000-2003);Income (2004-2011);Income (2012+);Birthweight;Smoke 3rd Trimester;Smoke Before Pregnant;WIC During Pregnancy, for the Year(s) 2000;2001;2002;2003;2004;2005;2006;2007;2008;2009;2010;2011;2012;2013

Note: Weighted responses, rounded to the nearest hundred; n/r (Not Reportable) - If the unweighted total responses for a dimension (row) is <30 that row will not be shown

Year: 2006

State	Yes			No			Weighted Total Responses
	#	%	C.I.(95%)	#	%	C.I.(95%)	#
Totals	9,000	50.4	47.9 - 52.9	8,800	49.6	47.1 - 52.1	17,800

County	Yes			No			Weighted Total Responses
	#	%	C.I.(95%)	#	%	C.I.(95%)	#
Hawaii	1,000	46.2	39.0 - 53.6	1,100	53.8	46.4 - 61.0	2,100
Honolulu	6,600	51.3	48.4 - 54.2	6,300	48.7	45.8 - 51.6	12,900
Kauai	500	54.3	42.9 - 65.3	400	45.7	34.7 - 57.1	900
Maui	900	47.1	39.5 - 54.9	1,000	52.9	45.1 - 60.5	1,900

PRAMS Health Indicator Report - Discuss seat belt use with HCW during PNC- by State;County;DOH Race-Ethnicity;PRAMS Age Group;Infant Gender;Married;Poverty Level;Income (2000-2003);Income (2004-2011);Income (2012+);Birthweight;Smoke 3rd Trimester;Smoke Before Pregnant;WIC During Pregnancy, for the Year(s) 2000;2001;2002;2003;2004;2005;2006;2007;2008;2009;2010;2011;2012;2013

Note: Weighted responses, rounded to the nearest hundred; n/r (Not Reportable) - If the unweighted total responses for a dimension (row) is <30 that row will not be shown

Year: 2006

DOH Race-Ethnicity	Yes			No			Weighted Total Responses
	#	%	C.I.(95%)	#	%	C.I.(95%)	#
Caucasian	2,000	46.3	41.3 - 51.3	2,300	53.7	48.7 - 58.7	4,300
Native Hawaiian	2,500	50.9	45.8 - 56.0	2,400	49.1	44.0 - 54.2	4,900
Chinese	200	41.4	34.6 - 48.7	300	58.6	51.3 - 65.4	600
Filipino	1,900	58.6	53.1 - 63.8	1,400	41.4	36.2 - 46.9	3,300
Japanese	800	40.3	33.6 - 47.4	1,300	59.7	52.6 - 66.4	2,100
Other	1,500	55.7	49.3 - 62.0	1,200	44.3	38.0 - 50.7	2,700

PRAMS Age Group	Yes			No			Weighted Total Responses
	#	%	C.I.(95%)	#	%	C.I.(95%)	#
<20	900	58.6	49.3 - 67.4	600	41.4	32.6 - 50.7	1,500
20-24	2,200	49.4	44.2 - 54.6	2,200	50.6	45.4 - 55.8	4,400
25-34	4,600	53.0	49.5 - 56.4	4,100	47.0	43.6 - 50.5	8,700
35+	1,300	41.0	35.7 - 46.4	1,900	59.0	53.6 - 64.3	3,200

PRAMS Health Indicator Report - Discuss seat belt use with HCW during PNC- by State;County;DOH Race-Ethnicity;PRAMS Age Group;Infant Gender;Married;Poverty Level;Income (2000-2003);Income (2004-2011);Income (2012+);Birthweight;Smoke 3rd Trimester;Smoke Before Pregnant;WIC During Pregnancy, for the Year(s) 2000;2001;2002;2003;2004;2005;2006;2007;2008;2009;2010;2011;2012;2013

Note: Weighted responses, rounded to the nearest hundred; n/r (Not Reportable) - If the unweighted total responses for a dimension (row) is <30 that row will not be shown

Year: 2006

Infant Gender	Yes			No			Weighted Total Responses
	#	%	C.I.(95%)	#	%	C.I.(95%)	#
Male	4,600	51.2	47.7 - 54.6	4,400	48.8	45.4 - 52.3	9,000
Female	4,400	49.6	46.1 - 53.2	4,400	50.4	46.8 - 53.9	8,800

Married	Yes			No			Weighted Total Responses
	#	%	C.I.(95%)	#	%	C.I.(95%)	#
Yes	5,600	49.0	46.0 - 52.0	5,800	51.0	48.0 - 54.0	11,400
No	3,400	52.9	48.5 - 57.2	3,000	47.1	42.8 - 51.5	6,400

Poverty Level	Yes			No			Weighted Total Responses
	#	%	C.I.(95%)	#	%	C.I.(95%)	#
0-130%	3,200	52.1	47.7 - 56.5	2,900	47.9	43.5 - 52.3	6,200
131-185%	1,400	57.3	50.3 - 63.9	1,000	42.7	36.1 - 49.7	2,400
186+%	3,600	44.9	41.4 - 48.4	4,400	55.1	51.6 - 58.6	8,000

PRAMS Health Indicator Report - Discuss seat belt use with HCW during PNC- by State;County;DOH Race-Ethnicity;PRAMS Age Group;Infant Gender;Married;Poverty Level;Income (2000-2003);Income (2004-2011);Income (2012+);Birthweight;Smoke 3rd Trimester;Smoke Before Pregnant;WIC During Pregnancy, for the Year(s) 2000;2001;2002;2003;2004;2005;2006;2007;2008;2009;2010;2011;2012;2013

Note: Weighted responses, rounded to the nearest hundred; n/r (Not Reportable) - If the unweighted total responses for a dimension (row) is <30 that row will not be shown

Year: 2006

Income (2004-2011)	Yes			No			Weighted Total Responses
	#	%	C.I.(95%)	#	%	C.I.(95%)	#
<\$10,000	1,500	52.1	45.6 - 58.4	1,400	47.9	41.6 - 54.4	2,900
\$10,000-\$24,999	1,900	50.4	44.8 - 56.0	1,800	49.6	44.0 - 55.2	3,700
\$25,000-\$49,999	2,100	51.3	46.2 - 56.4	2,000	48.7	43.6 - 53.8	4,200
>=\$50,000	2,700	46.4	42.3 - 50.5	3,100	53.6	49.5 - 57.7	5,800

Birthweight	Yes			No			Weighted Total Responses
	#	%	C.I.(95%)	#	%	C.I.(95%)	#
Low birth weight	700	52.1	43.5 - 60.7	700	47.9	39.3 - 56.5	1,400
Normal birth weight	8,200	50.3	47.7 - 52.9	8,100	49.7	47.1 - 52.3	16,400

Smoke 3rd Trimester	Yes			No			Weighted Total Responses
	#	%	C.I.(95%)	#	%	C.I.(95%)	#
Yes	800	46.4	38.0 - 55.1	900	53.6	44.9 - 62.0	1,600
No	8,000	50.7	48.1 - 53.3	7,800	49.3	46.7 - 51.9	15,900

PRAMS Health Indicator Report - Discuss seat belt use with HCW during PNC- by State;County;DOH Race-Ethnicity;PRAMS Age Group;Infant Gender;Married;Poverty Level;Income (2000-2003);Income (2004-2011);Income (2012+);Birthweight;Smoke 3rd Trimester;Smoke Before Pregnant;WIC During Pregnancy, for the Year(s) 2000;2001;2002;2003;2004;2005;2006;2007;2008;2009;2010;2011;2012;2013

Note: Weighted responses, rounded to the nearest hundred; n/r (Not Reportable) - If the unweighted total responses for a dimension (row) is <30 that row will not be shown

Year: 2006

Smoke Before Pregnant	Yes			No			Weighted Total Responses
	#	%	C.I.(95%)	#	%	C.I.(95%)	#
Yes	1,800	48.9	43.3 - 54.6	1,900	51.1	45.4 - 56.7	3,700
No	7,000	50.6	47.9 - 53.4	6,800	49.4	46.6 - 52.1	13,800

WIC During Pregnancy	Yes			No			Weighted Total Responses
	#	%	C.I.(95%)	#	%	C.I.(95%)	#
Yes	4,100	54.0	50.0 - 57.9	3,500	46.0	42.1 - 50.0	7,600
No	4,800	47.5	44.3 - 50.7	5,300	52.5	49.3 - 55.7	10,100

PRAMS Health Indicator Report - Discuss seat belt use with HCW during PNC- by State;County;DOH Race-Ethnicity;PRAMS Age Group;Infant Gender;Married;Poverty Level;Income (2000-2003);Income (2004-2011);Income (2012+);Birthweight;Smoke 3rd Trimester;Smoke Before Pregnant;WIC During Pregnancy, for the Year(s) 2000;2001;2002;2003;2004;2005;2006;2007;2008;2009;2010;2011;2012;2013

Note: Weighted responses, rounded to the nearest hundred; n/r (Not Reportable) - If the unweighted total responses for a dimension (row) is <30 that row will not be shown

Year: 2005

State	Yes			No			Weighted Total Responses
	#	%	C.I.(95%)	#	%	C.I.(95%)	#
Totals	8,800	52.1	49.8 - 54.5	8,100	47.9	45.5 - 50.2	16,800

County	Yes			No			Weighted Total Responses
	#	%	C.I.(95%)	#	%	C.I.(95%)	#
Hawaii	1,100	53.1	46.1 - 60.0	1,000	46.9	40.0 - 53.9	2,100
Honolulu	6,400	52.0	49.2 - 54.7	5,900	48.0	45.3 - 50.8	12,300
Kauai	400	58.4	46.6 - 69.4	300	41.6	30.6 - 53.4	700
Maui	800	49.0	41.4 - 56.6	800	51.0	43.4 - 58.6	1,700

PRAMS Health Indicator Report - Discuss seat belt use with HCW during PNC- by State;County;DOH Race-Ethnicity;PRAMS Age Group;Infant Gender;Married;Poverty Level;Income (2000-2003);Income (2004-2011);Income (2012+);Birthweight;Smoke 3rd Trimester;Smoke Before Pregnant;WIC During Pregnancy, for the Year(s) 2000;2001;2002;2003;2004;2005;2006;2007;2008;2009;2010;2011;2012;2013

Note: Weighted responses, rounded to the nearest hundred; n/r (Not Reportable) - If the unweighted total responses for a dimension (row) is <30 that row will not be shown

Year: 2005

DOH Race-Ethnicity	Yes			No			Weighted Total Responses
	#	%	C.I.(95%)	#	%	C.I.(95%)	#
Caucasian	1,400	38.0	33.0 - 43.2	2,300	62.0	56.8 - 67.0	3,700
Native Hawaiian	2,800	59.1	54.1 - 63.9	1,900	40.9	36.1 - 45.9	4,800
Chinese	300	41.0	34.8 - 47.5	400	59.0	52.5 - 65.2	600
Filipino	2,000	63.8	58.7 - 68.6	1,100	36.2	31.4 - 41.3	3,100
Japanese	800	37.3	31.3 - 43.6	1,400	62.7	56.4 - 68.7	2,200
Other	1,500	61.2	55.0 - 67.0	900	38.8	33.0 - 45.0	2,400

PRAMS Age Group	Yes			No			Weighted Total Responses
	#	%	C.I.(95%)	#	%	C.I.(95%)	#
<20	1,000	65.8	57.4 - 73.3	500	34.2	26.7 - 42.6	1,500
20-24	2,400	56.0	51.1 - 60.9	1,900	44.0	39.1 - 48.9	4,200
25-34	4,100	49.6	46.2 - 53.0	4,200	50.4	47.0 - 53.8	8,300
35+	1,300	46.4	41.0 - 52.0	1,500	53.6	48.0 - 59.0	2,900

PRAMS Health Indicator Report - Discuss seat belt use with HCW during PNC- by State;County;DOH Race-Ethnicity;PRAMS Age Group;Infant Gender;Married;Poverty Level;Income (2000-2003);Income (2004-2011);Income (2012+);Birthweight;Smoke 3rd Trimester;Smoke Before Pregnant;WIC During Pregnancy, for the Year(s) 2000;2001;2002;2003;2004;2005;2006;2007;2008;2009;2010;2011;2012;2013

Note: Weighted responses, rounded to the nearest hundred; n/r (Not Reportable) - If the unweighted total responses for a dimension (row) is <30 that row will not be shown

Year: 2005

Infant Gender	Yes			No			Weighted Total Responses
	#	%	C.I.(95%)	#	%	C.I.(95%)	#
Male	4,600	53.7	50.4 - 57.0	4,000	46.3	43.0 - 49.6	8,600
Female	4,200	50.5	47.1 - 53.8	4,100	49.5	46.2 - 52.9	8,300

Married	Yes			No			Weighted Total Responses
	#	%	C.I.(95%)	#	%	C.I.(95%)	#
Yes	5,300	49.6	46.7 - 52.6	5,400	50.4	47.4 - 53.3	10,800
No	3,400	56.5	52.4 - 60.5	2,600	43.5	39.5 - 47.6	6,100

Poverty Level	Yes			No			Weighted Total Responses
	#	%	C.I.(95%)	#	%	C.I.(95%)	#
0-130%	3,400	56.7	52.6 - 60.7	2,600	43.3	39.3 - 47.4	6,100
131-185%	1,000	54.3	46.8 - 61.5	800	45.7	38.5 - 53.2	1,800
186+%	3,400	45.3	41.8 - 48.7	4,200	54.7	51.3 - 58.2	7,600

PRAMS Health Indicator Report - Discuss seat belt use with HCW during PNC- by State;County;DOH Race-Ethnicity;PRAMS Age Group;Infant Gender;Married;Poverty Level;Income (2000-2003);Income (2004-2011);Income (2012+);Birthweight;Smoke 3rd Trimester;Smoke Before Pregnant;WIC During Pregnancy, for the Year(s) 2000;2001;2002;2003;2004;2005;2006;2007;2008;2009;2010;2011;2012;2013

Note: Weighted responses, rounded to the nearest hundred; n/r (Not Reportable) - If the unweighted total responses for a dimension (row) is <30 that row will not be shown

Year: 2005

Income (2004-2011)	Yes			No			Weighted Total Responses
	#	%	C.I.(95%)	#	%	C.I.(95%)	#
<\$10,000	1,600	55.7	49.7 - 61.5	1,300	44.3	38.5 - 50.3	2,900
\$10,000-\$24,999	2,000	58.7	53.4 - 63.7	1,400	41.3	36.3 - 46.6	3,500
\$25,000-\$49,999	2,100	53.1	48.1 - 58.0	1,800	46.9	42.0 - 51.9	3,900
>=\$50,000	2,200	41.5	37.5 - 45.7	3,100	58.5	54.3 - 62.5	5,300

Birthweight	Yes			No			Weighted Total Responses
	#	%	C.I.(95%)	#	%	C.I.(95%)	#
Low birth weight	600	49.7	40.7 - 58.7	600	50.3	41.3 - 59.3	1,200
Normal birth weight	8,200	52.3	49.9 - 54.8	7,500	47.7	45.2 - 50.1	15,700

Smoke 3rd Trimester	Yes			No			Weighted Total Responses
	#	%	C.I.(95%)	#	%	C.I.(95%)	#
Yes	700	52.6	43.8 - 61.2	600	47.4	38.8 - 56.2	1,300
No	7,900	52.2	49.7 - 54.6	7,300	47.8	45.4 - 50.3	15,200

PRAMS Health Indicator Report - Discuss seat belt use with HCW during PNC- by State;County;DOH Race-Ethnicity;PRAMS Age Group;Infant Gender;Married;Poverty Level;Income (2000-2003);Income (2004-2011);Income (2012+);Birthweight;Smoke 3rd Trimester;Smoke Before Pregnant;WIC During Pregnancy, for the Year(s) 2000;2001;2002;2003;2004;2005;2006;2007;2008;2009;2010;2011;2012;2013

Note: Weighted responses, rounded to the nearest hundred; n/r (Not Reportable) - If the unweighted total responses for a dimension (row) is <30 that row will not be shown

Year: 2005

Smoke Before Pregnant	Yes			No			Weighted Total Responses
	#	%	C.I.(95%)	#	%	C.I.(95%)	#
Yes	1,700	48.2	42.8 - 53.6	1,800	51.8	46.4 - 57.2	3,500
No	6,900	53.2	50.6 - 55.9	6,100	46.8	44.1 - 49.4	13,100

WIC During Pregnancy	Yes			No			Weighted Total Responses
	#	%	C.I.(95%)	#	%	C.I.(95%)	#
Yes	4,100	56.6	52.8 - 60.2	3,200	43.4	39.8 - 47.2	7,300
No	4,500	48.1	45.0 - 51.2	4,900	51.9	48.8 - 55.0	9,400

PRAMS Health Indicator Report - Discuss seat belt use with HCW during PNC- by State;County;DOH Race-Ethnicity;PRAMS Age Group;Infant Gender;Married;Poverty Level;Income (2000-2003);Income (2004-2011);Income (2012+);Birthweight;Smoke 3rd Trimester;Smoke Before Pregnant;WIC During Pregnancy, for the Year(s) 2000;2001;2002;2003;2004;2005;2006;2007;2008;2009;2010;2011;2012;2013

Note: Weighted responses, rounded to the nearest hundred; n/r (Not Reportable) - If the unweighted total responses for a dimension (row) is <30 that row will not be shown

Year: 2004

State	Yes			No			Weighted Total Responses
	#	%	C.I.(95%)	#	%	C.I.(95%)	#
Totals	8,600	50.3	48.1 - 52.5	8,600	49.7	47.5 - 51.9	17,200

County	Yes			No			Weighted Total Responses
	#	%	C.I.(95%)	#	%	C.I.(95%)	#
Hawaii	1,000	49.2	42.8 - 55.8	1,100	50.8	44.2 - 57.2	2,100
Honolulu	6,300	50.5	48.0 - 53.1	6,200	49.5	46.9 - 52.0	12,500
Kauai	400	52.0	41.9 - 62.0	400	48.0	38.0 - 58.1	800
Maui	900	48.8	42.0 - 55.6	900	51.2	44.4 - 58.0	1,800

PRAMS Health Indicator Report - Discuss seat belt use with HCW during PNC- by State;County;DOH Race-Ethnicity;PRAMS Age Group;Infant Gender;Married;Poverty Level;Income (2000-2003);Income (2004-2011);Income (2012+);Birthweight;Smoke 3rd Trimester;Smoke Before Pregnant;WIC During Pregnancy, for the Year(s) 2000;2001;2002;2003;2004;2005;2006;2007;2008;2009;2010;2011;2012;2013

Note: Weighted responses, rounded to the nearest hundred; n/r (Not Reportable) - If the unweighted total responses for a dimension (row) is <30 that row will not be shown

Year: 2004

DOH Race-Ethnicity	Yes			No			Weighted Total Responses
	#	%	C.I.(95%)	#	%	C.I.(95%)	#
Caucasian	1,800	46.2	41.7 - 50.8	2,100	53.8	49.2 - 58.3	3,900
Native Hawaiian	2,400	51.2	46.6 - 55.8	2,300	48.8	44.2 - 53.4	4,800
Chinese	200	39.6	35.1 - 44.3	400	60.4	55.7 - 64.9	600
Filipino	1,900	60.5	55.9 - 65.0	1,300	39.5	35.0 - 44.1	3,200
Japanese	800	36.4	30.6 - 42.6	1,400	63.6	57.4 - 69.4	2,300
Other	1,400	56.9	50.9 - 62.7	1,100	43.1	37.3 - 49.1	2,500

PRAMS Age Group	Yes			No			Weighted Total Responses
	#	%	C.I.(95%)	#	%	C.I.(95%)	#
<20	700	55.4	46.9 - 63.7	600	44.6	36.3 - 53.1	1,300
20-24	2,200	51.2	46.7 - 55.7	2,100	48.8	44.3 - 53.3	4,400
25-34	4,200	50.6	47.5 - 53.7	4,100	49.4	46.3 - 52.5	8,300
35+	1,500	46.1	41.3 - 51.0	1,800	53.9	49.0 - 58.7	3,300

PRAMS Health Indicator Report - Discuss seat belt use with HCW during PNC- by State;County;DOH Race-Ethnicity;PRAMS Age Group;Infant Gender;Married;Poverty Level;Income (2000-2003);Income (2004-2011);Income (2012+);Birthweight;Smoke 3rd Trimester;Smoke Before Pregnant;WIC During Pregnancy, for the Year(s) 2000;2001;2002;2003;2004;2005;2006;2007;2008;2009;2010;2011;2012;2013

Note: Weighted responses, rounded to the nearest hundred; n/r (Not Reportable) - If the unweighted total responses for a dimension (row) is <30 that row will not be shown

Year: 2004

Infant Gender	Yes			No			Weighted Total Responses
	#	%	C.I.(95%)	#	%	C.I.(95%)	#
Male	4,800	50.7	47.7 - 53.6	4,700	49.3	46.4 - 52.3	9,500
Female	3,800	49.8	46.5 - 53.0	3,900	50.2	47.0 - 53.5	7,700

Married	Yes			No			Weighted Total Responses
	#	%	C.I.(95%)	#	%	C.I.(95%)	#
Yes	6,000	49.6	47.0 - 52.2	6,100	50.4	47.8 - 53.0	12,100
No	2,700	51.8	47.6 - 56.0	2,500	48.2	44.0 - 52.4	5,100

Poverty Level	Yes			No			Weighted Total Responses
	#	%	C.I.(95%)	#	%	C.I.(95%)	#
0-130%	3,500	54.7	51.0 - 58.5	2,900	45.3	41.5 - 49.0	6,400
131-185%	1,100	53.6	47.1 - 59.9	900	46.4	40.1 - 52.9	2,000
186+%	3,400	45.4	42.2 - 48.6	4,100	54.6	51.4 - 57.8	7,500

PRAMS Health Indicator Report - Discuss seat belt use with HCW during PNC- by State;County;DOH Race-Ethnicity;PRAMS Age Group;Infant Gender;Married;Poverty Level;Income (2000-2003);Income (2004-2011);Income (2012+);Birthweight;Smoke 3rd Trimester;Smoke Before Pregnant;WIC During Pregnancy, for the Year(s) 2000;2001;2002;2003;2004;2005;2006;2007;2008;2009;2010;2011;2012;2013

Note: Weighted responses, rounded to the nearest hundred; n/r (Not Reportable) - If the unweighted total responses for a dimension (row) is <30 that row will not be shown

Year: 2004

Income (2004-2011)	Yes			No			Weighted Total Responses
	#	%	C.I.(95%)	#	%	C.I.(95%)	#
<\$10,000	1,300	51.2	45.3 - 57.1	1,300	48.8	42.9 - 54.7	2,600
\$10,000-\$24,999	2,400	56.7	52.2 - 61.1	1,800	43.3	38.9 - 47.8	4,300
\$25,000-\$49,999	2,200	51.0	46.6 - 55.3	2,100	49.0	44.7 - 53.4	4,300
>=\$50,000	2,100	43.1	39.2 - 47.1	2,700	56.9	52.9 - 60.8	4,800

Birthweight	Yes			No			Weighted Total Responses
	#	%	C.I.(95%)	#	%	C.I.(95%)	#
Low birth weight	500	45.8	37.2 - 54.5	600	54.2	45.5 - 62.8	1,100
Normal birth weight	8,100	50.5	48.2 - 52.8	8,000	49.5	47.2 - 51.8	16,100

Smoke 3rd Trimester	Yes			No			Weighted Total Responses
	#	%	C.I.(95%)	#	%	C.I.(95%)	#
Yes	600	44.3	36.3 - 52.7	800	55.7	47.3 - 63.7	1,400
No	7,900	50.6	48.3 - 52.9	7,700	49.4	47.1 - 51.7	15,600

PRAMS Health Indicator Report - Discuss seat belt use with HCW during PNC- by State;County;DOH Race-Ethnicity;PRAMS Age Group;Infant Gender;Married;Poverty Level;Income (2000-2003);Income (2004-2011);Income (2012+);Birthweight;Smoke 3rd Trimester;Smoke Before Pregnant;WIC During Pregnancy, for the Year(s) 2000;2001;2002;2003;2004;2005;2006;2007;2008;2009;2010;2011;2012;2013

Note: Weighted responses, rounded to the nearest hundred; n/r (Not Reportable) - If the unweighted total responses for a dimension (row) is <30 that row will not be shown

Year: 2004

Smoke Before Pregnant	Yes			No			Weighted Total Responses
	#	%	C.I.(95%)	#	%	C.I.(95%)	#
Yes	1,800	50.4	45.3 - 55.5	1,700	49.6	44.5 - 54.7	3,500
No	6,700	50.0	47.5 - 52.4	6,700	50.0	47.6 - 52.5	13,400

WIC During Pregnancy	Yes			No			Weighted Total Responses
	#	%	C.I.(95%)	#	%	C.I.(95%)	#
Yes	4,200	54.6	51.2 - 58.0	3,500	45.4	42.0 - 48.8	7,700
No	4,400	47.2	44.3 - 50.1	4,900	52.8	49.9 - 55.7	9,200

PRAMS Health Indicator Report - Discuss seat belt use with HCW during PNC- by State;County;DOH Race-Ethnicity;PRAMS Age Group;Infant Gender;Married;Poverty Level;Income (2000-2003);Income (2004-2011);Income (2012+);Birthweight;Smoke 3rd Trimester;Smoke Before Pregnant;WIC During Pregnancy, for the Year(s) 2000;2001;2002;2003;2004;2005;2006;2007;2008;2009;2010;2011;2012;2013

Note: Weighted responses, rounded to the nearest hundred; n/r (Not Reportable) - If the unweighted total responses for a dimension (row) is <30 that row will not be shown

Year: 2003

State	Yes			No			Weighted Total Responses
	#	%	C.I.(95%)	#	%	C.I.(95%)	#
Totals	9,000	52.9	50.1 - 55.6	8,000	47.1	44.4 - 49.9	17,000

County	Yes			No			Weighted Total Responses
	#	%	C.I.(95%)	#	%	C.I.(95%)	#
Hawaii	1,000	52.4	47.8 - 57.0	900	47.6	43.0 - 52.2	1,900
Honolulu	6,500	52.6	49.1 - 56.2	5,900	47.4	43.8 - 50.9	12,400
Kauai	500	63.8	56.5 - 70.6	300	36.2	29.4 - 43.5	800
Maui	900	50.1	45.2 - 55.1	900	49.9	44.9 - 54.8	1,800

PRAMS Health Indicator Report - Discuss seat belt use with HCW during PNC- by State;County;DOH Race-Ethnicity;PRAMS Age Group;Infant Gender;Married;Poverty Level;Income (2000-2003);Income (2004-2011);Income (2012+);Birthweight;Smoke 3rd Trimester;Smoke Before Pregnant;WIC During Pregnancy, for the Year(s) 2000;2001;2002;2003;2004;2005;2006;2007;2008;2009;2010;2011;2012;2013

Note: Weighted responses, rounded to the nearest hundred; n/r (Not Reportable) - If the unweighted total responses for a dimension (row) is <30 that row will not be shown

Year: 2003

DOH Race-Ethnicity	Yes			No			Weighted Total Responses
	#	%	C.I.(95%)	#	%	C.I.(95%)	#
Caucasian	1,700	47.2	41.0 - 53.6	1,900	52.8	46.4 - 59.0	3,700
Native Hawaiian	2,600	54.6	51.6 - 57.6	2,100	45.4	42.4 - 48.4	4,700
Chinese	300	45.2	30.4 - 60.9	400	54.8	39.1 - 69.6	700
Filipino	2,200	59.7	53.3 - 65.8	1,500	40.3	34.2 - 46.7	3,800
Japanese	700	36.5	28.2 - 45.8	1,300	63.5	54.2 - 71.8	2,000
Other	1,400	64.1	55.2 - 72.1	800	35.9	27.9 - 44.8	2,200

PRAMS Age Group	Yes			No			Weighted Total Responses
	#	%	C.I.(95%)	#	%	C.I.(95%)	#
<20	900	56.3	48.0 - 64.2	700	43.7	35.8 - 52.0	1,600
20-24	2,400	59.2	53.9 - 64.3	1,600	40.8	35.7 - 46.1	4,000
25-34	4,500	52.0	48.1 - 55.9	4,100	48.0	44.1 - 51.9	8,600
35+	1,300	44.9	38.2 - 51.8	1,600	55.1	48.2 - 61.8	2,900

PRAMS Health Indicator Report - Discuss seat belt use with HCW during PNC- by State;County;DOH Race-Ethnicity;PRAMS Age Group;Infant Gender;Married;Poverty Level;Income (2000-2003);Income (2004-2011);Income (2012+);Birthweight;Smoke 3rd Trimester;Smoke Before Pregnant;WIC During Pregnancy, for the Year(s) 2000;2001;2002;2003;2004;2005;2006;2007;2008;2009;2010;2011;2012;2013

Note: Weighted responses, rounded to the nearest hundred; n/r (Not Reportable) - If the unweighted total responses for a dimension (row) is <30 that row will not be shown

Year: 2003

Infant Gender	Yes			No			Weighted Total Responses
	#	%	C.I.(95%)	#	%	C.I.(95%)	#
Male	4,900	54.5	50.8 - 58.3	4,100	45.5	41.7 - 49.2	8,900
Female	4,100	51.0	47.0 - 55.0	3,900	49.0	45.0 - 53.0	8,100

Married	Yes			No			Weighted Total Responses
	#	%	C.I.(95%)	#	%	C.I.(95%)	#
Yes	5,800	51.6	48.1 - 55.1	5,400	48.4	44.9 - 51.9	11,300
No	3,200	55.4	51.2 - 59.6	2,600	44.6	40.4 - 48.8	5,700

Poverty Level	Yes			No			Weighted Total Responses
	#	%	C.I.(95%)	#	%	C.I.(95%)	#
0-130%	4,300	57.6	53.7 - 61.5	3,200	42.4	38.5 - 46.3	7,500
131-185%	1,400	55.1	47.9 - 62.2	1,100	44.9	37.8 - 52.1	2,500
186+%	2,400	43.8	38.8 - 48.9	3,000	56.2	51.1 - 61.2	5,400

PRAMS Health Indicator Report - Discuss seat belt use with HCW during PNC- by State;County;DOH Race-Ethnicity;PRAMS Age Group;Infant Gender;Married;Poverty Level;Income (2000-2003);Income (2004-2011);Income (2012+);Birthweight;Smoke 3rd Trimester;Smoke Before Pregnant;WIC During Pregnancy, for the Year(s) 2000;2001;2002;2003;2004;2005;2006;2007;2008;2009;2010;2011;2012;2013

Note: Weighted responses, rounded to the nearest hundred; n/r (Not Reportable) - If the unweighted total responses for a dimension (row) is <30 that row will not be shown

Year: 2003

Income (2000-2003)	Yes			No			Weighted Total Responses
	#	%	C.I.(95%)	#	%	C.I.(95%)	#
<=\$15,000	2,400	60.1	54.9 - 65.2	1,600	39.9	34.8 - 45.1	4,100
\$15,001-\$25,000	1,200	55.6	48.2 - 62.8	1,000	44.4	37.2 - 51.8	2,200
\$25,001-\$40,000	1,600	51.9	45.4 - 58.3	1,500	48.1	41.7 - 54.6	3,200
>=\$40,001	3,000	46.6	42.0 - 51.2	3,400	53.4	48.8 - 58.0	6,500

Birthweight	Yes			No			Weighted Total Responses
	#	%	C.I.(95%)	#	%	C.I.(95%)	#
Low birth weight	600	52.8	42.6 - 62.9	600	47.2	37.1 - 57.4	1,200
Normal birth weight	8,300	52.9	50.1 - 55.7	7,400	47.1	44.3 - 49.9	15,800

Smoke 3rd Trimester	Yes			No			Weighted Total Responses
	#	%	C.I.(95%)	#	%	C.I.(95%)	#
Yes	700	44.4	36.0 - 53.2	900	55.6	46.8 - 64.0	1,500
No	8,200	53.9	51.0 - 56.8	7,000	46.1	43.2 - 49.0	15,100

PRAMS Health Indicator Report - Discuss seat belt use with HCW during PNC- by State;County;DOH Race-Ethnicity;PRAMS Age Group;Infant Gender;Married;Poverty Level;Income (2000-2003);Income (2004-2011);Income (2012+);Birthweight;Smoke 3rd Trimester;Smoke Before Pregnant;WIC During Pregnancy, for the Year(s) 2000;2001;2002;2003;2004;2005;2006;2007;2008;2009;2010;2011;2012;2013

Note: Weighted responses, rounded to the nearest hundred; n/r (Not Reportable) - If the unweighted total responses for a dimension (row) is <30 that row will not be shown

Year: 2003

Smoke Before Pregnant	Yes			No			Weighted Total Responses
	#	%	C.I.(95%)	#	%	C.I.(95%)	#
Yes	1,600	47.6	41.8 - 53.4	1,800	52.4	46.6 - 58.2	3,400
No	7,200	54.7	51.5 - 57.8	5,900	45.3	42.2 - 48.5	13,100

WIC During Pregnancy	Yes			No			Weighted Total Responses
	#	%	C.I.(95%)	#	%	C.I.(95%)	#
Yes	4,200	58.6	54.7 - 62.4	3,000	41.4	37.6 - 45.3	7,200
No	4,700	48.7	44.9 - 52.4	4,900	51.3	47.6 - 55.1	9,600

PRAMS Health Indicator Report - Discuss seat belt use with HCW during PNC- by State;County;DOH Race-Ethnicity;PRAMS Age Group;Infant Gender;Married;Poverty Level;Income (2000-2003);Income (2004-2011);Income (2012+);Birthweight;Smoke 3rd Trimester;Smoke Before Pregnant;WIC During Pregnancy, for the Year(s) 2000;2001;2002;2003;2004;2005;2006;2007;2008;2009;2010;2011;2012;2013

Note: Weighted responses, rounded to the nearest hundred; n/r (Not Reportable) - If the unweighted total responses for a dimension (row) is <30 that row will not be shown

Year: 2002

State	Yes			No			Weighted Total Responses
	#	%	C.I.(95%)	#	%	C.I.(95%)	#
Totals	8,000	48.6	45.7 - 51.4	8,500	51.4	48.6 - 54.3	16,500

County	Yes			No			Weighted Total Responses
	#	%	C.I.(95%)	#	%	C.I.(95%)	#
Hawaii	1,000	51.0	46.5 - 55.5	1,000	49.0	44.5 - 53.5	1,900
Honolulu	5,800	47.5	43.9 - 51.2	6,400	52.5	48.8 - 56.1	12,200
Kauai	300	52.6	44.6 - 60.5	300	47.4	39.5 - 55.4	700
Maui	900	51.6	46.5 - 56.7	800	48.4	43.3 - 53.5	1,700

PRAMS Health Indicator Report - Discuss seat belt use with HCW during PNC- by State;County;DOH Race-Ethnicity;PRAMS Age Group;Infant Gender;Married;Poverty Level;Income (2000-2003);Income (2004-2011);Income (2012+);Birthweight;Smoke 3rd Trimester;Smoke Before Pregnant;WIC During Pregnancy, for the Year(s) 2000;2001;2002;2003;2004;2005;2006;2007;2008;2009;2010;2011;2012;2013

Note: Weighted responses, rounded to the nearest hundred; n/r (Not Reportable) - If the unweighted total responses for a dimension (row) is <30 that row will not be shown

Year: 2002

DOH Race-Ethnicity	Yes			No			Weighted Total Responses
	#	%	C.I.(95%)	#	%	C.I.(95%)	#
Caucasian	1,600	44.6	38.2 - 51.2	2,000	55.4	48.8 - 61.8	3,500
Native Hawaiian	2,300	49.8	46.8 - 52.9	2,300	50.2	47.1 - 53.2	4,500
Chinese	300	42.3	26.9 - 59.4	400	57.7	40.6 - 73.1	600
Filipino	1,900	56.2	49.2 - 63.0	1,500	43.8	37.0 - 50.8	3,300
Japanese	800	32.3	25.0 - 40.5	1,600	67.7	59.5 - 75.0	2,300
Other	1,300	60.2	50.6 - 69.1	800	39.8	30.9 - 49.4	2,100

PRAMS Age Group	Yes			No			Weighted Total Responses
	#	%	C.I.(95%)	#	%	C.I.(95%)	#
<20	900	56.2	47.4 - 64.7	700	43.8	35.3 - 52.6	1,500
20-24	2,100	52.8	47.3 - 58.1	1,900	47.2	41.9 - 52.7	4,100
25-34	3,900	47.3	43.2 - 51.4	4,300	52.7	48.6 - 56.8	8,200
35+	1,100	41.8	34.9 - 49.0	1,600	58.2	51.0 - 65.1	2,700

PRAMS Health Indicator Report - Discuss seat belt use with HCW during PNC- by State;County;DOH Race-Ethnicity;PRAMS Age Group;Infant Gender;Married;Poverty Level;Income (2000-2003);Income (2004-2011);Income (2012+);Birthweight;Smoke 3rd Trimester;Smoke Before Pregnant;WIC During Pregnancy, for the Year(s) 2000;2001;2002;2003;2004;2005;2006;2007;2008;2009;2010;2011;2012;2013

Note: Weighted responses, rounded to the nearest hundred; n/r (Not Reportable) - If the unweighted total responses for a dimension (row) is <30 that row will not be shown

Year: 2002

Infant Gender	Yes			No			Weighted Total Responses
	#	%	C.I.(95%)	#	%	C.I.(95%)	#
Male	4,100	49.8	45.8 - 53.7	4,100	50.2	46.3 - 54.2	8,200
Female	3,900	47.4	43.4 - 51.4	4,400	52.6	48.6 - 56.6	8,300

Married	Yes			No			Weighted Total Responses
	#	%	C.I.(95%)	#	%	C.I.(95%)	#
Yes	5,200	46.1	42.6 - 49.7	6,100	53.9	50.3 - 57.4	11,300
No	2,800	53.9	49.4 - 58.3	2,400	46.1	41.7 - 50.6	5,200

Poverty Level	Yes			No			Weighted Total Responses
	#	%	C.I.(95%)	#	%	C.I.(95%)	#
0-130%	3,300	51.9	47.6 - 56.1	3,100	48.1	43.9 - 52.4	6,400
131-185%	1,700	50.2	43.7 - 56.7	1,700	49.8	43.3 - 56.3	3,400
186+%	2,100	40.6	35.6 - 45.8	3,100	59.4	54.2 - 64.4	5,300

PRAMS Health Indicator Report - Discuss seat belt use with HCW during PNC- by State;County;DOH Race-Ethnicity;PRAMS Age Group;Infant Gender;Married;Poverty Level;Income (2000-2003);Income (2004-2011);Income (2012+);Birthweight;Smoke 3rd Trimester;Smoke Before Pregnant;WIC During Pregnancy, for the Year(s) 2000;2001;2002;2003;2004;2005;2006;2007;2008;2009;2010;2011;2012;2013

Note: Weighted responses, rounded to the nearest hundred; n/r (Not Reportable) - If the unweighted total responses for a dimension (row) is <30 that row will not be shown

Year: 2002

Income (2000-2003)	Yes			No			Weighted Total Responses
	#	%	C.I.(95%)	#	%	C.I.(95%)	#
<=\$15,000	1,600	48.5	42.8 - 54.2	1,700	51.5	45.8 - 57.2	3,200
\$15,001-\$25,000	1,300	54.0	46.6 - 61.2	1,100	46.0	38.8 - 53.4	2,400
\$25,001-\$40,000	1,900	52.0	45.7 - 58.3	1,700	48.0	41.7 - 54.3	3,600
>=\$40,001	2,600	42.1	37.5 - 46.8	3,600	57.9	53.2 - 62.5	6,300

Birthweight	Yes			No			Weighted Total Responses
	#	%	C.I.(95%)	#	%	C.I.(95%)	#
Low birth weight	500	44.7	33.9 - 55.9	600	55.3	44.1 - 66.1	1,100
Normal birth weight	7,500	49.0	46.1 - 51.9	7,800	51.0	48.1 - 53.9	15,300

Smoke 3rd Trimester	Yes			No			Weighted Total Responses
	#	%	C.I.(95%)	#	%	C.I.(95%)	#
Yes	500	38.0	29.9 - 46.8	800	62.0	53.2 - 70.1	1,300
No	7,400	49.4	46.4 - 52.4	7,600	50.6	47.6 - 53.6	14,900

PRAMS Health Indicator Report - Discuss seat belt use with HCW during PNC- by State;County;DOH Race-Ethnicity;PRAMS Age Group;Infant Gender;Married;Poverty Level;Income (2000-2003);Income (2004-2011);Income (2012+);Birthweight;Smoke 3rd Trimester;Smoke Before Pregnant;WIC During Pregnancy, for the Year(s) 2000;2001;2002;2003;2004;2005;2006;2007;2008;2009;2010;2011;2012;2013

Note: Weighted responses, rounded to the nearest hundred; n/r (Not Reportable) - If the unweighted total responses for a dimension (row) is <30 that row will not be shown

Year: 2002

Smoke Before Pregnant	Yes			No			Weighted Total Responses
	#	%	C.I.(95%)	#	%	C.I.(95%)	#
Yes	1,300	41.1	35.4 - 47.0	1,800	58.9	53.0 - 64.6	3,100
No	6,500	50.1	46.9 - 53.3	6,400	49.9	46.7 - 53.1	12,900

WIC During Pregnancy	Yes			No			Weighted Total Responses
	#	%	C.I.(95%)	#	%	C.I.(95%)	#
Yes	3,700	53.2	49.0 - 57.5	3,200	46.8	42.5 - 51.0	6,900
No	4,200	44.9	41.1 - 48.7	5,200	55.1	51.3 - 58.9	9,400

PRAMS Health Indicator Report - Discuss seat belt use with HCW during PNC- by State;County;DOH Race-Ethnicity;PRAMS Age Group;Infant Gender;Married;Poverty Level;Income (2000-2003);Income (2004-2011);Income (2012+);Birthweight;Smoke 3rd Trimester;Smoke Before Pregnant;WIC During Pregnancy, for the Year(s) 2000;2001;2002;2003;2004;2005;2006;2007;2008;2009;2010;2011;2012;2013

Note: Weighted responses, rounded to the nearest hundred; n/r (Not Reportable) - If the unweighted total responses for a dimension (row) is <30 that row will not be shown

Year: 2001

State	Yes			No			Weighted Total Responses
	#	%	C.I.(95%)	#	%	C.I.(95%)	#
Totals	7,900	48.0	45.8 - 50.3	8,500	52.0	49.7 - 54.2	16,400

County	Yes			No			Weighted Total Responses
	#	%	C.I.(95%)	#	%	C.I.(95%)	#
Hawaii	900	50.2	45.6 - 54.9	900	49.8	45.1 - 54.4	1,800
Honolulu	5,800	48.0	45.1 - 50.8	6,300	52.0	49.2 - 54.9	12,100
Kauai	400	50.8	43.2 - 58.4	400	49.2	41.6 - 56.8	800
Maui	700	45.0	39.9 - 50.2	900	55.0	49.8 - 60.1	1,700

PRAMS Health Indicator Report - Discuss seat belt use with HCW during PNC- by State;County;DOH Race-Ethnicity;PRAMS Age Group;Infant Gender;Married;Poverty Level;Income (2000-2003);Income (2004-2011);Income (2012+);Birthweight;Smoke 3rd Trimester;Smoke Before Pregnant;WIC During Pregnancy, for the Year(s) 2000;2001;2002;2003;2004;2005;2006;2007;2008;2009;2010;2011;2012;2013

Note: Weighted responses, rounded to the nearest hundred; n/r (Not Reportable) - If the unweighted total responses for a dimension (row) is <30 that row will not be shown

Year: 2001

DOH Race-Ethnicity	Yes			No			Weighted Total Responses
	#	%	C.I.(95%)	#	%	C.I.(95%)	#
Caucasian	1,400	39.8	35.0 - 44.8	2,100	60.2	55.2 - 65.0	3,500
Native Hawaiian	2,200	49.2	46.8 - 51.7	2,200	50.8	48.3 - 53.2	4,400
Chinese	300	44.7	32.1 - 58.0	400	55.3	42.0 - 67.9	700
Filipino	2,000	59.1	53.5 - 64.4	1,400	40.9	35.6 - 46.5	3,500
Japanese	600	31.8	25.3 - 39.2	1,400	68.2	60.8 - 74.7	2,000
Other	1,300	57.5	50.3 - 64.3	900	42.5	35.7 - 49.7	2,200

PRAMS Age Group	Yes			No			Weighted Total Responses
	#	%	C.I.(95%)	#	%	C.I.(95%)	#
<20	800	53.8	47.7 - 59.8	700	46.2	40.2 - 52.3	1,600
20-24	2,100	48.7	44.4 - 52.9	2,200	51.3	47.1 - 55.6	4,200
25-34	3,900	49.3	45.9 - 52.6	4,000	50.7	47.4 - 54.1	7,900
35+	1,100	39.9	34.2 - 45.9	1,600	60.1	54.1 - 65.8	2,600

PRAMS Health Indicator Report - Discuss seat belt use with HCW during PNC- by State;County;DOH Race-Ethnicity;PRAMS Age Group;Infant Gender;Married;Poverty Level;Income (2000-2003);Income (2004-2011);Income (2012+);Birthweight;Smoke 3rd Trimester;Smoke Before Pregnant;WIC During Pregnancy, for the Year(s) 2000;2001;2002;2003;2004;2005;2006;2007;2008;2009;2010;2011;2012;2013

Note: Weighted responses, rounded to the nearest hundred; n/r (Not Reportable) - If the unweighted total responses for a dimension (row) is <30 that row will not be shown

Year: 2001

Infant Gender	Yes			No			Weighted Total Responses
	#	%	C.I.(95%)	#	%	C.I.(95%)	#
Male	4,000	48.3	45.1 - 51.5	4,300	51.7	48.5 - 54.9	8,300
Female	3,800	47.8	44.6 - 51.0	4,200	52.2	49.0 - 55.4	8,100

Married	Yes			No			Weighted Total Responses
	#	%	C.I.(95%)	#	%	C.I.(95%)	#
Yes	5,100	46.7	43.8 - 49.6	5,900	53.3	50.4 - 56.2	11,000
No	2,700	50.8	47.2 - 54.4	2,600	49.2	45.6 - 52.8	5,400

Poverty Level	Yes			No			Weighted Total Responses
	#	%	C.I.(95%)	#	%	C.I.(95%)	#
0-130%	3,200	53.0	49.6 - 56.4	2,900	47.0	43.6 - 50.4	6,100
131-185%	1,700	48.7	43.9 - 53.5	1,800	51.3	46.5 - 56.1	3,600
186+%	2,300	41.0	36.9 - 45.1	3,200	59.0	54.9 - 63.1	5,500

PRAMS Health Indicator Report - Discuss seat belt use with HCW during PNC- by State;County;DOH Race-Ethnicity;PRAMS Age Group;Infant Gender;Married;Poverty Level;Income (2000-2003);Income (2004-2011);Income (2012+);Birthweight;Smoke 3rd Trimester;Smoke Before Pregnant;WIC During Pregnancy, for the Year(s) 2000;2001;2002;2003;2004;2005;2006;2007;2008;2009;2010;2011;2012;2013

Note: Weighted responses, rounded to the nearest hundred; n/r (Not Reportable) - If the unweighted total responses for a dimension (row) is <30 that row will not be shown

Year: 2001

Income (2000-2003)	Yes			No			Weighted Total Responses
	#	%	C.I.(95%)	#	%	C.I.(95%)	#
<=\$15,000	1,700	53.0	48.3 - 57.7	1,500	47.0	42.3 - 51.7	3,300
\$15,001-\$25,000	1,100	47.6	41.8 - 53.4	1,200	52.4	46.6 - 58.2	2,200
\$25,001-\$40,000	1,700	49.4	44.8 - 54.1	1,800	50.6	45.9 - 55.2	3,500
>=\$40,001	2,800	43.4	39.6 - 47.2	3,700	56.6	52.8 - 60.4	6,500

Birthweight	Yes			No			Weighted Total Responses
	#	%	C.I.(95%)	#	%	C.I.(95%)	#
Low birth weight	600	57.4	48.5 - 65.9	500	42.6	34.1 - 51.5	1,100
Normal birth weight	7,200	47.4	45.1 - 49.8	8,000	52.6	50.2 - 54.9	15,300

Smoke 3rd Trimester	Yes			No			Weighted Total Responses
	#	%	C.I.(95%)	#	%	C.I.(95%)	#
Yes	700	44.3	37.7 - 51.1	800	55.7	48.9 - 62.3	1,500
No	7,100	48.5	46.1 - 51.0	7,500	51.5	49.0 - 53.9	14,500

PRAMS Health Indicator Report - Discuss seat belt use with HCW during PNC- by State;County;DOH Race-Ethnicity;PRAMS Age Group;Infant Gender;Married;Poverty Level;Income (2000-2003);Income (2004-2011);Income (2012+);Birthweight;Smoke 3rd Trimester;Smoke Before Pregnant;WIC During Pregnancy, for the Year(s) 2000;2001;2002;2003;2004;2005;2006;2007;2008;2009;2010;2011;2012;2013

Note: Weighted responses, rounded to the nearest hundred; n/r (Not Reportable) - If the unweighted total responses for a dimension (row) is <30 that row will not be shown

Year: 2001

Smoke Before Pregnant	Yes			No			Weighted Total Responses
	#	%	C.I.(95%)	#	%	C.I.(95%)	#
Yes	1,500	45.3	40.7 - 50.0	1,800	54.7	50.0 - 59.3	3,300
No	6,100	48.7	46.1 - 51.3	6,400	51.3	48.7 - 53.9	12,500

WIC During Pregnancy	Yes			No			Weighted Total Responses
	#	%	C.I.(95%)	#	%	C.I.(95%)	#
Yes	3,500	51.3	48.1 - 54.6	3,300	48.7	45.4 - 51.9	6,900
No	4,300	45.9	42.8 - 49.1	5,100	54.1	50.9 - 57.2	9,400

PRAMS Health Indicator Report - Discuss seat belt use with HCW during PNC- by State;County;DOH Race-Ethnicity;PRAMS Age Group;Infant Gender;Married;Poverty Level;Income (2000-2003);Income (2004-2011);Income (2012+);Birthweight;Smoke 3rd Trimester;Smoke Before Pregnant;WIC During Pregnancy, for the Year(s) 2000;2001;2002;2003;2004;2005;2006;2007;2008;2009;2010;2011;2012;2013

Note: Weighted responses, rounded to the nearest hundred; n/r (Not Reportable) - If the unweighted total responses for a dimension (row) is <30 that row will not be shown

Year: 2000

State	Yes			No			Weighted Total Responses
	#	%	C.I.(95%)	#	%	C.I.(95%)	#
Totals	8,100	48.8	46.6 - 51.0	8,500	51.2	49.0 - 53.4	16,600

County	Yes			No			Weighted Total Responses
	#	%	C.I.(95%)	#	%	C.I.(95%)	#
Hawaii	1,000	49.8	45.2 - 54.5	1,000	50.2	45.5 - 54.8	1,900
Honolulu	6,000	48.8	46.0 - 51.6	6,300	51.2	48.4 - 54.0	12,300
Kauai	400	51.3	43.3 - 59.2	300	48.7	40.8 - 56.7	700
Maui	800	46.5	41.4 - 51.6	900	53.5	48.4 - 58.6	1,700

PRAMS Health Indicator Report - Discuss seat belt use with HCW during PNC- by State;County;DOH Race-Ethnicity;PRAMS Age Group;Infant Gender;Married;Poverty Level;Income (2000-2003);Income (2004-2011);Income (2012+);Birthweight;Smoke 3rd Trimester;Smoke Before Pregnant;WIC During Pregnancy, for the Year(s) 2000;2001;2002;2003;2004;2005;2006;2007;2008;2009;2010;2011;2012;2013

Note: Weighted responses, rounded to the nearest hundred; n/r (Not Reportable) - If the unweighted total responses for a dimension (row) is <30 that row will not be shown

Year: 2000

DOH Race-Ethnicity	Yes			No			Weighted Total Responses
	#	%	C.I.(95%)	#	%	C.I.(95%)	#
Caucasian	1,700	42.2	37.6 - 46.9	2,300	57.8	53.1 - 62.4	4,000
Native Hawaiian	2,300	50.6	48.1 - 53.2	2,200	49.4	46.8 - 51.9	4,500
Chinese	300	39.6	27.4 - 53.3	400	60.4	46.7 - 72.6	600
Filipino	1,900	58.9	53.3 - 64.3	1,400	41.1	35.7 - 46.7	3,300
Japanese	600	31.9	25.4 - 39.3	1,400	68.1	60.7 - 74.6	2,000
Other	1,300	59.7	52.5 - 66.6	900	40.3	33.4 - 47.5	2,200

PRAMS Age Group	Yes			No			Weighted Total Responses
	#	%	C.I.(95%)	#	%	C.I.(95%)	#
<20	1,000	53.9	47.8 - 59.9	800	46.1	40.1 - 52.2	1,800
20-24	2,000	50.5	46.3 - 54.7	2,000	49.5	45.3 - 53.7	4,000
25-34	4,000	50.5	47.2 - 53.8	4,000	49.5	46.2 - 52.8	8,000
35+	1,100	38.2	32.9 - 43.8	1,800	61.8	56.2 - 67.1	2,800

PRAMS Health Indicator Report - Discuss seat belt use with HCW during PNC- by State;County;DOH Race-Ethnicity;PRAMS Age Group;Infant Gender;Married;Poverty Level;Income (2000-2003);Income (2004-2011);Income (2012+);Birthweight;Smoke 3rd Trimester;Smoke Before Pregnant;WIC During Pregnancy, for the Year(s) 2000;2001;2002;2003;2004;2005;2006;2007;2008;2009;2010;2011;2012;2013

Note: Weighted responses, rounded to the nearest hundred; n/r (Not Reportable) - If the unweighted total responses for a dimension (row) is <30 that row will not be shown

Year: 2000

Infant Gender	Yes			No			Weighted Total Responses
	#	%	C.I.(95%)	#	%	C.I.(95%)	#
Male	4,200	48.1	45.1 - 51.2	4,500	51.9	48.8 - 54.9	8,700
Female	4,000	49.5	46.3 - 52.8	4,000	50.5	47.2 - 53.7	8,000

Married	Yes			No			Weighted Total Responses
	#	%	C.I.(95%)	#	%	C.I.(95%)	#
Yes	5,500	47.5	44.8 - 50.3	6,000	52.5	49.7 - 55.2	11,500
No	2,700	51.6	48.0 - 55.2	2,500	48.4	44.8 - 52.0	5,100

Poverty Level	Yes			No			Weighted Total Responses
	#	%	C.I.(95%)	#	%	C.I.(95%)	#
0-130%	3,600	51.8	48.5 - 55.0	3,400	48.2	45.0 - 51.5	7,000
131-185%	1,200	53.9	48.1 - 59.6	1,000	46.1	40.4 - 51.9	2,300
186+%	2,600	42.4	38.6 - 46.3	3,500	57.6	53.7 - 61.4	6,100

PRAMS Health Indicator Report - Discuss seat belt use with HCW during PNC- by State;County;DOH Race-Ethnicity;PRAMS Age Group;Infant Gender;Married;Poverty Level;Income (2000-2003);Income (2004-2011);Income (2012+);Birthweight;Smoke 3rd Trimester;Smoke Before Pregnant;WIC During Pregnancy, for the Year(s) 2000;2001;2002;2003;2004;2005;2006;2007;2008;2009;2010;2011;2012;2013

Note: Weighted responses, rounded to the nearest hundred; n/r (Not Reportable) - If the unweighted total responses for a dimension (row) is <30 that row will not be shown

Year: 2000

Income (2000-2003)	Yes			No			Weighted Total Responses
	#	%	C.I.(95%)	#	%	C.I.(95%)	#
<=\$15,000	2,000	52.4	48.0 - 56.7	1,800	47.6	43.3 - 52.0	3,800
\$15,001-\$25,000	1,300	50.3	44.7 - 55.8	1,300	49.7	44.2 - 55.3	2,600
\$25,001-\$40,000	1,700	53.0	48.0 - 57.8	1,500	47.0	42.2 - 52.0	3,200
>=\$40,001	2,600	42.6	38.9 - 46.4	3,600	57.4	53.6 - 61.1	6,200

Birthweight	Yes			No			Weighted Total Responses
	#	%	C.I.(95%)	#	%	C.I.(95%)	#
Low birth weight	700	64.9	56.4 - 72.6	400	35.1	27.4 - 43.6	1,000
Normal birth weight	7,300	47.5	45.2 - 49.8	8,100	52.5	50.2 - 54.8	15,500

Smoke 3rd Trimester	Yes			No			Weighted Total Responses
	#	%	C.I.(95%)	#	%	C.I.(95%)	#
Yes	700	53.4	46.2 - 60.4	600	46.6	39.6 - 53.8	1,300
No	7,200	48.8	46.5 - 51.2	7,600	51.2	48.8 - 53.5	14,800

PRAMS Health Indicator Report - Discuss seat belt use with HCW during PNC- by State;County;DOH Race-Ethnicity;PRAMS Age Group;Infant Gender;Married;Poverty Level;Income (2000-2003);Income (2004-2011);Income (2012+);Birthweight;Smoke 3rd Trimester;Smoke Before Pregnant;WIC During Pregnancy, for the Year(s) 2000;2001;2002;2003;2004;2005;2006;2007;2008;2009;2010;2011;2012;2013

Note: Weighted responses, rounded to the nearest hundred; n/r (Not Reportable) - If the unweighted total responses for a dimension (row) is <30 that row will not be shown

Year: 2000

Smoke Before Pregnant	Yes			No			Weighted Total Responses
	#	%	C.I.(95%)	#	%	C.I.(95%)	#
Yes	1,600	48.9	44.2 - 53.7	1,600	51.1	46.3 - 55.8	3,200
No	6,300	49.2	46.6 - 51.7	6,500	50.8	48.3 - 53.4	12,800

WIC During Pregnancy	Yes			No			Weighted Total Responses
	#	%	C.I.(95%)	#	%	C.I.(95%)	#
Yes	4,000	55.2	52.0 - 58.3	3,200	44.8	41.7 - 48.0	7,200
No	4,100	44.4	41.3 - 47.5	5,100	55.6	52.5 - 58.7	9,200