

PRAMS Health Indicator 5-Year Aggregate Report - Getting PNC as early as wanted- for the State of Hawaii, for the Year(s) 2000-2004;2001-2005;2002-2006;2003-2007;2004-2008;2005-2009;2006-2010;2007-2011

PRAMS Health Indicator 5-Year Aggregate Report - Getting PNC as early as wanted- by State;County;DOH Race-Ethnicity;PRAMS Age Group;Infant Gender;Married;Poverty Level;Income (2004-2011);Birthweight;Smoke 3rd Trimester;Smoke Before Pregnant;WIC During Pregnancy, for the Year(s) 2000-2004;2001-2005;2002-2006;2003-2007;2004-2008;2005-2009;2006-2010;2007-2011

Note: Weighted counts (#) represent 5-yr averages, rounded to the nearest hundred; n/r (Not Reportable) - If the unweighted total responses for a dimension (row) is <30 that row will not be shown

The trend analysis section shows the trend for the selected health variable over selected years in a table and a graph. 5-Year Weighted Total Responses: This number is a weighted representation of the mothers of babies delivered in a given year, who responded to a particular question in the survey. For most questions this will be the mothers of all babies delivered in a given year. For some secondary questions only a subset of the population was asked the question. For example, all survey participants were asked if they smoked during pregnancy, but only those who answered yes were asked how many cigarettes a day. If a dimension value is unknown for a particular survey record, that record will not be included in the counts for that particular dimension.

Note: Data collection for household income changed in 2004 and again in 2012. Because of this, 5-year aggregate data does not exist for all 5-year aggregate periods.

Below are the indicators included in this report and the long description for each indicator.

PRAMS Health Indicator	Health Indicator Description
Getting PNC as early as wanted	Did you get prenatal care as early in your pregnancy as you wanted?

Suggested citation:

Hawaii Health Data Warehouse, Hawaii State Department of Health, Pregnancy Risk Assessment Monitoring System, (report title and years), Report Created: 9/29/15

For documentation on other terms and coding in this report, please go to the following links:

[Click here to access PRAMS documentation](#)

[Click here to access DOH-Race Ethnicity coding](#)

[Click here to access The Hawai'i Data Guide](#)

**For questions about this report, please contact
The Hawai'i Health Data Warehouse**

profiles@hhdw.org

(855) 946-5899 x15

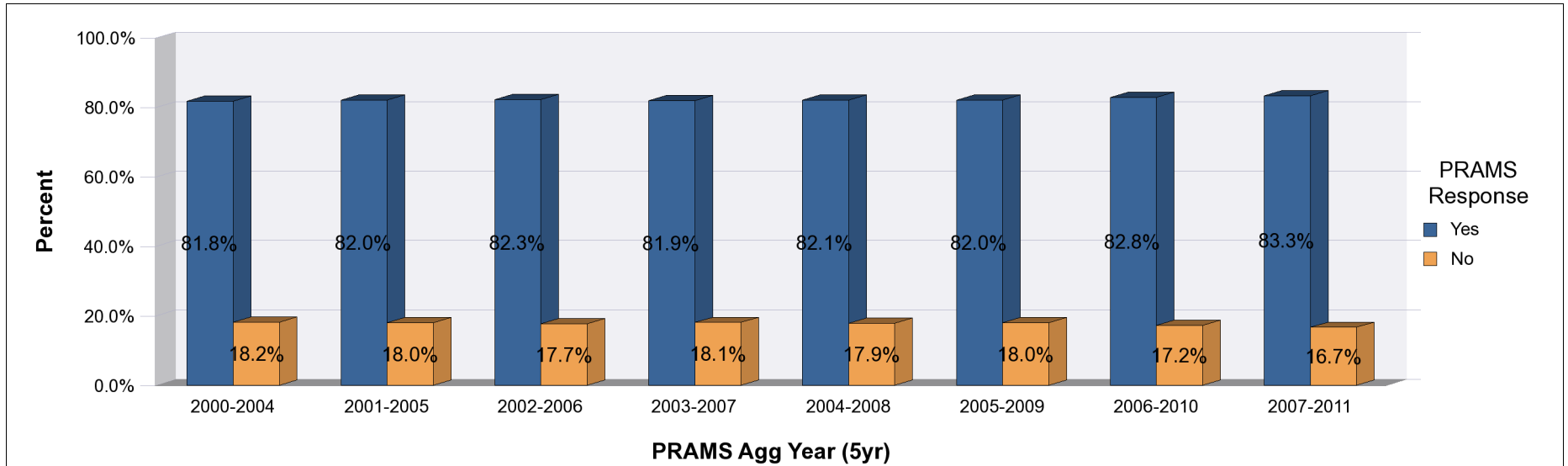
**PRAMS Health Indicator 5-Year Aggregate Report - Getting PNC as early as wanted- for the State of Hawaii, for the Year(s)
2000-2004;2001-2005;2002-2006;2003-2007;2004-2008;2005-2009;2006-2010;2007-2011**

Note: Weighted counts (#) represent 5-yr averages, rounded to the nearest hundred; n/r (Not Reportable) - If the unweighted total responses for a dimension (row) is <30 that row will not be shown

Years	Yes			No			Weighted Total Responses (5-Yr Avg)
	#	%	C.I.(95%)	#	%	C.I.(95%)	#
2000-2004	13,900	81.8	80.9 - 82.6	3,100	18.2	17.4 - 19.1	17,000
2001-2005	14,000	82.0	81.2 - 82.9	3,100	18.0	17.1 - 18.8	17,100
2002-2006	14,300	82.3	81.4 - 83.1	3,100	17.7	16.9 - 18.6	17,400
2003-2007	14,500	81.9	81.1 - 82.8	3,200	18.1	17.2 - 18.9	17,700
2004-2008	14,700	82.1	81.3 - 82.9	3,200	17.9	17.1 - 18.7	17,900
2005-2009	14,800	82.0	81.1 - 82.9	3,200	18.0	17.1 - 18.9	18,000
2006-2010	15,100	82.8	81.8 - 83.7	3,100	17.2	16.3 - 18.2	18,200
2007-2011	15,200	83.3	82.3 - 84.3	3,000	16.7	15.7 - 17.7	18,300

**PRAMS Health Indicator 5-Year Aggregate Report - Getting PNC as early as wanted- for the State of Hawaii, for the Year(s)
2000-2004;2001-2005;2002-2006;2003-2007;2004-2008;2005-2009;2006-2010;2007-2011**

Note: Weighted counts (#) represent 5-yr averages, rounded to the nearest hundred; n/r (Not Reportable) - If the unweighted total responses for a dimension (row) is <30 that row will not be shown



**PRAMS Health Indicator 5-Year Aggregate Report - Getting PNC as early as wanted- by State;County;DOH Race-
Ethnicity;PRAMS Age Group;Infant Gender;Married;Poverty Level;Income (2004-2011);Birthweight;Smoke 3rd
Trimester;Smoke Before Pregnant;WIC During Pregnancy, for the Year(s)
2000-2004;2001-2005;2002-2006;2003-2007;2004-2008;2005-2009;2006-2010;2007-2011**

Note: Weighted counts (#) represent 5-yr averages, rounded to the nearest hundred; n/r (Not Reportable) - If the unweighted total responses for a dimension (row) is <30 that row will not be shown

Year: 2007-2011

State	Yes			No			Weighted Total Responses (5-Yr Avg)
	#	%	C.I.(95%)	#	%	C.I.(95%)	#
Totals	15,200	83.3	82.3 - 84.3	3,000	16.7	15.7 - 17.7	18,300

County	Yes			No			Weighted Total Responses (5-Yr Avg)
	#	%	C.I.(95%)	#	%	C.I.(95%)	#
Hawaii	2,000	82.9	80.8 - 84.8	400	17.1	15.2 - 19.2	2,400
Honolulu	10,800	83.4	82.1 - 84.6	2,100	16.6	15.4 - 17.9	12,900
Kauai	800	84.5	81.4 - 87.1	100	15.5	12.9 - 18.6	900
Maui	1,700	82.7	80.6 - 84.6	400	17.3	15.4 - 19.4	2,100

**PRAMS Health Indicator 5-Year Aggregate Report - Getting PNC as early as wanted- by State;County;DOH Race-Ethnicity;PRAMS Age Group;Infant Gender;Married;Poverty Level;Income (2004-2011);Birthweight;Smoke 3rd Trimester;Smoke Before Pregnant;WIC During Pregnancy, for the Year(s)
2000-2004;2001-2005;2002-2006;2003-2007;2004-2008;2005-2009;2006-2010;2007-2011**

Note: Weighted counts (#) represent 5-yr averages, rounded to the nearest hundred; n/r (Not Reportable) - If the unweighted total responses for a dimension (row) is <30 that row will not be shown

Year: 2007-2011

DOH Race-Ethnicity	Yes			No			Weighted Total Responses (5-Yr Avg)
	#	%	C.I.(95%)	#	%	C.I.(95%)	#
Caucasian	3,700	84.1	82.1 - 85.9	700	15.9	14.1 - 17.9	4,400
Native Hawaiian	4,400	82.9	81.1 - 84.7	900	17.1	15.3 - 18.9	5,300
Chinese	600	87.4	82.6 - 91.0	100	12.6	9.0 - 17.4	700
Filipino	2,700	82.7	80.3 - 84.8	600	17.3	15.2 - 19.7	3,300
Japanese	1,600	86.5	83.5 - 89.0	200	13.5	11.0 - 16.5	1,800
Other	2,200	80.3	77.4 - 83.0	500	19.7	17.0 - 22.6	2,700

PRAMS Age Group	Yes			No			Weighted Total Responses (5-Yr Avg)
	#	%	C.I.(95%)	#	%	C.I.(95%)	#
<20	1,000	70.6	66.2 - 74.7	400	29.4	25.3 - 33.8	1,400
20-24	3,400	78.8	76.5 - 80.9	900	21.2	19.1 - 23.5	4,300
25-34	8,000	85.5	84.2 - 86.7	1,400	14.5	13.3 - 15.8	9,300
35+	2,800	88.7	86.6 - 90.5	400	11.3	9.5 - 13.4	3,200

**PRAMS Health Indicator 5-Year Aggregate Report - Getting PNC as early as wanted- by State;County;DOH Race-Ethnicity;PRAMS Age Group;Infant Gender;Married;Poverty Level;Income (2004-2011);Birthweight;Smoke 3rd Trimester;Smoke Before Pregnant;WIC During Pregnancy, for the Year(s)
2000-2004;2001-2005;2002-2006;2003-2007;2004-2008;2005-2009;2006-2010;2007-2011**

Note: Weighted counts (#) represent 5-yr averages, rounded to the nearest hundred; n/r (Not Reportable) - If the unweighted total responses for a dimension (row) is <30 that row will not be shown

Year: 2007-2011

Infant Gender	Yes			No			Weighted Total Responses (5-Yr Avg)
	#	%	C.I.(95%)	#	%	C.I.(95%)	#
Male	7,900	83.7	82.3 - 85.0	1,500	16.3	15.0 - 17.7	9,400
Female	7,300	82.9	81.4 - 84.3	1,500	17.1	15.7 - 18.6	8,800

Married	Yes			No			Weighted Total Responses (5-Yr Avg)
	#	%	C.I.(95%)	#	%	C.I.(95%)	#
Yes	9,800	86.6	85.5 - 87.7	1,500	13.4	12.3 - 14.5	11,300
No	5,400	78.0	76.2 - 79.7	1,500	22.0	20.3 - 23.8	7,000

Poverty Level	Yes			No			Weighted Total Responses (5-Yr Avg)
	#	%	C.I.(95%)	#	%	C.I.(95%)	#
0-130%	5,000	76.8	74.9 - 78.6	1,500	23.2	21.4 - 25.1	6,500
131-185%	2,300	83.6	80.9 - 86.0	500	16.4	14.0 - 19.1	2,800
186+%	6,900	89.1	87.8 - 90.3	800	10.9	9.7 - 12.2	7,700

**PRAMS Health Indicator 5-Year Aggregate Report - Getting PNC as early as wanted- by State;County;DOH Race-Ethnicity;PRAMS Age Group;Infant Gender;Married;Poverty Level;Income (2004-2011);Birthweight;Smoke 3rd Trimester;Smoke Before Pregnant;WIC During Pregnancy, for the Year(s)
2000-2004;2001-2005;2002-2006;2003-2007;2004-2008;2005-2009;2006-2010;2007-2011**

Note: Weighted counts (#) represent 5-yr averages, rounded to the nearest hundred; n/r (Not Reportable) - If the unweighted total responses for a dimension (row) is <30 that row will not be shown

Year: 2007-2011

Income (2004-2011)	Yes			No			Weighted Total Responses (5-Yr Avg)
	#	%	C.I.(95%)	#	%	C.I.(95%)	#
<\$10,000	2,300	74.1	71.2 - 76.7	800	25.9	23.3 - 28.8	3,100
\$10,000-\$24,999	2,900	79.1	76.6 - 81.3	800	20.9	18.7 - 23.4	3,600
\$25,000-\$49,999	3,600	84.1	82.0 - 85.9	700	15.9	14.1 - 18.0	4,200
>=\$50,000	5,500	90.3	88.9 - 91.5	600	9.7	8.5 - 11.1	6,100

Birthweight	Yes			No			Weighted Total Responses (5-Yr Avg)
	#	%	C.I.(95%)	#	%	C.I.(95%)	#
Low birth weight	1,100	81.7	79.1 - 84.0	200	18.3	16.0 - 20.9	1,300
Normal birth weight	14,100	83.5	82.4 - 84.5	2,800	16.5	15.5 - 17.6	16,900

Smoke 3rd Trimester	Yes			No			Weighted Total Responses (5-Yr Avg)
	#	%	C.I.(95%)	#	%	C.I.(95%)	#
Yes	1,100	74.3	70.0 - 78.2	400	25.7	21.8 - 30.0	1,400
No	13,900	84.1	83.1 - 85.1	2,600	15.9	14.9 - 16.9	16,600

**PRAMS Health Indicator 5-Year Aggregate Report - Getting PNC as early as wanted- by State;County;DOH Race-
Ethnicity;PRAMS Age Group;Infant Gender;Married;Poverty Level;Income (2004-2011);Birthweight;Smoke 3rd
Trimester;Smoke Before Pregnant;WIC During Pregnancy, for the Year(s)
2000-2004;2001-2005;2002-2006;2003-2007;2004-2008;2005-2009;2006-2010;2007-2011**

Note: Weighted counts (#) represent 5-yr averages, rounded to the nearest hundred; n/r (Not Reportable) - If the unweighted total responses for a dimension (row) is <30 that row will not be shown

Year: 2007-2011

Smoke Before Pregnant	Yes			No			Weighted Total Responses (5-Yr Avg)
	#	%	C.I.(95%)	#	%	C.I.(95%)	#
Yes	2,800	77.8	75.3 - 80.1	800	22.2	19.9 - 24.7	3,600
No	12,200	84.8	83.7 - 85.8	2,200	15.2	14.2 - 16.3	14,300

WIC During Pregnancy	Yes			No			Weighted Total Responses (5-Yr Avg)
	#	%	C.I.(95%)	#	%	C.I.(95%)	#
Yes	6,200	79.8	78.1 - 81.3	1,600	20.2	18.7 - 21.9	7,800
No	8,700	86.1	84.8 - 87.3	1,400	13.9	12.7 - 15.2	10,200

**PRAMS Health Indicator 5-Year Aggregate Report - Getting PNC as early as wanted- by State;County;DOH Race-Ethnicity;PRAMS Age Group;Infant Gender;Married;Poverty Level;Income (2004-2011);Birthweight;Smoke 3rd Trimester;Smoke Before Pregnant;WIC During Pregnancy, for the Year(s)
2000-2004;2001-2005;2002-2006;2003-2007;2004-2008;2005-2009;2006-2010;2007-2011**

Note: Weighted counts (#) represent 5-yr averages, rounded to the nearest hundred; n/r (Not Reportable) - If the unweighted total responses for a dimension (row) is <30 that row will not be shown

Year: 2006-2010

State	Yes			No			Weighted Total Responses (5-Yr Avg)
	#	%	C.I.(95%)	#	%	C.I.(95%)	#
Totals	15,100	82.8	81.8 - 83.7	3,100	17.2	16.3 - 18.2	18,200

County	Yes			No			Weighted Total Responses (5-Yr Avg)
	#	%	C.I.(95%)	#	%	C.I.(95%)	#
Hawaii	1,900	82.8	80.6 - 84.9	400	17.2	15.1 - 19.4	2,300
Honolulu	10,700	83.0	81.8 - 84.1	2,200	17.0	15.9 - 18.2	13,000
Kauai	800	84.0	80.5 - 86.9	100	16.0	13.1 - 19.5	900
Maui	1,700	80.9	78.5 - 83.1	400	19.1	16.9 - 21.5	2,000

**PRAMS Health Indicator 5-Year Aggregate Report - Getting PNC as early as wanted- by State;County;DOH Race-Ethnicity;PRAMS Age Group;Infant Gender;Married;Poverty Level;Income (2004-2011);Birthweight;Smoke 3rd Trimester;Smoke Before Pregnant;WIC During Pregnancy, for the Year(s)
2000-2004;2001-2005;2002-2006;2003-2007;2004-2008;2005-2009;2006-2010;2007-2011**

Note: Weighted counts (#) represent 5-yr averages, rounded to the nearest hundred; n/r (Not Reportable) - If the unweighted total responses for a dimension (row) is <30 that row will not be shown

Year: 2006-2010

DOH Race-Ethnicity	Yes			No			Weighted Total Responses (5-Yr Avg)
	#	%	C.I.(95%)	#	%	C.I.(95%)	#
Caucasian	3,600	83.6	81.7 - 85.4	700	16.4	14.6 - 18.3	4,300
Native Hawaiian	4,300	82.2	80.4 - 83.9	900	17.8	16.1 - 19.6	5,300
Chinese	600	86.7	82.4 - 90.1	100	13.3	9.9 - 17.6	700
Filipino	2,700	82.7	80.5 - 84.7	600	17.3	15.3 - 19.5	3,300
Japanese	1,600	85.3	82.3 - 87.8	300	14.7	12.2 - 17.7	1,900
Other	2,200	79.9	77.1 - 82.3	500	20.1	17.7 - 22.9	2,700

PRAMS Age Group	Yes			No			Weighted Total Responses (5-Yr Avg)
	#	%	C.I.(95%)	#	%	C.I.(95%)	#
<20	1,100	71.1	66.9 - 74.9	400	28.9	25.1 - 33.1	1,500
20-24	3,400	78.7	76.5 - 80.7	900	21.3	19.3 - 23.5	4,300
25-34	7,800	84.7	83.4 - 85.9	1,400	15.3	14.1 - 16.6	9,200
35+	2,900	88.6	86.6 - 90.3	400	11.4	9.7 - 13.4	3,200

**PRAMS Health Indicator 5-Year Aggregate Report - Getting PNC as early as wanted- by State;County;DOH Race-Ethnicity;PRAMS Age Group;Infant Gender;Married;Poverty Level;Income (2004-2011);Birthweight;Smoke 3rd Trimester;Smoke Before Pregnant;WIC During Pregnancy, for the Year(s)
2000-2004;2001-2005;2002-2006;2003-2007;2004-2008;2005-2009;2006-2010;2007-2011**

Note: Weighted counts (#) represent 5-yr averages, rounded to the nearest hundred; n/r (Not Reportable) - If the unweighted total responses for a dimension (row) is <30 that row will not be shown

Year: 2006-2010

Infant Gender	Yes			No			Weighted Total Responses (5-Yr Avg)
	#	%	C.I.(95%)	#	%	C.I.(95%)	#
Male	7,900	83.3	82.1 - 84.6	1,600	16.7	15.4 - 17.9	9,400
Female	7,200	82.2	80.8 - 83.5	1,600	17.8	16.5 - 19.2	8,800

Married	Yes			No			Weighted Total Responses (5-Yr Avg)
	#	%	C.I.(95%)	#	%	C.I.(95%)	#
Yes	9,800	86.3	85.2 - 87.3	1,500	13.7	12.7 - 14.8	11,300
No	5,300	77.0	75.3 - 78.7	1,600	23.0	21.3 - 24.7	6,900

Poverty Level	Yes			No			Weighted Total Responses (5-Yr Avg)
	#	%	C.I.(95%)	#	%	C.I.(95%)	#
0-130%	4,900	75.5	73.7 - 77.2	1,600	24.5	22.8 - 26.3	6,500
131-185%	2,300	83.8	81.3 - 86.0	400	16.2	14.0 - 18.7	2,700
186+%	6,800	88.7	87.5 - 89.8	900	11.3	10.2 - 12.5	7,700

**PRAMS Health Indicator 5-Year Aggregate Report - Getting PNC as early as wanted- by State;County;DOH Race-Ethnicity;PRAMS Age Group;Infant Gender;Married;Poverty Level;Income (2004-2011);Birthweight;Smoke 3rd Trimester;Smoke Before Pregnant;WIC During Pregnancy, for the Year(s)
2000-2004;2001-2005;2002-2006;2003-2007;2004-2008;2005-2009;2006-2010;2007-2011**

Note: Weighted counts (#) represent 5-yr averages, rounded to the nearest hundred; n/r (Not Reportable) - If the unweighted total responses for a dimension (row) is <30 that row will not be shown

Year: 2006-2010

Income (2004-2011)	Yes			No			Weighted Total Responses (5-Yr Avg)
	#	%	C.I.(95%)	#	%	C.I.(95%)	#
<\$10,000	2,200	72.1	69.3 - 74.7	900	27.9	25.3 - 30.7	3,100
\$10,000-\$24,999	2,900	78.8	76.5 - 80.9	800	21.2	19.1 - 23.5	3,700
\$25,000-\$49,999	3,500	83.7	81.7 - 85.5	700	16.3	14.5 - 18.3	4,200
>=\$50,000	5,500	90.1	88.7 - 91.3	600	9.9	8.7 - 11.3	6,100

Birthweight	Yes			No			Weighted Total Responses (5-Yr Avg)
	#	%	C.I.(95%)	#	%	C.I.(95%)	#
Low birth weight	1,100	80.1	77.1 - 82.8	300	19.9	17.2 - 22.9	1,400
Normal birth weight	14,000	83.0	82.0 - 84.0	2,900	17.0	16.0 - 18.0	16,800

Smoke 3rd Trimester	Yes			No			Weighted Total Responses (5-Yr Avg)
	#	%	C.I.(95%)	#	%	C.I.(95%)	#
Yes	1,200	73.8	69.8 - 77.4	400	26.2	22.6 - 30.2	1,600
No	13,700	83.7	82.7 - 84.6	2,700	16.3	15.4 - 17.3	16,400

**PRAMS Health Indicator 5-Year Aggregate Report - Getting PNC as early as wanted- by State;County;DOH Race-Ethnicity;PRAMS Age Group;Infant Gender;Married;Poverty Level;Income (2004-2011);Birthweight;Smoke 3rd Trimester;Smoke Before Pregnant;WIC During Pregnancy, for the Year(s)
2000-2004;2001-2005;2002-2006;2003-2007;2004-2008;2005-2009;2006-2010;2007-2011**

Note: Weighted counts (#) represent 5-yr averages, rounded to the nearest hundred; n/r (Not Reportable) - If the unweighted total responses for a dimension (row) is <30 that row will not be shown

Year: 2006-2010

Smoke Before Pregnant	Yes			No			Weighted Total Responses (5-Yr Avg)
	#	%	C.I.(95%)	#	%	C.I.(95%)	#
Yes	2,900	77.2	74.8 - 79.4	800	22.8	20.6 - 25.2	3,700
No	12,000	84.3	83.2 - 85.2	2,200	15.7	14.8 - 16.8	14,200

WIC During Pregnancy	Yes			No			Weighted Total Responses (5-Yr Avg)
	#	%	C.I.(95%)	#	%	C.I.(95%)	#
Yes	6,100	79.4	77.8 - 80.9	1,600	20.6	19.1 - 22.2	7,700
No	8,700	85.3	84.1 - 86.4	1,500	14.7	13.6 - 15.9	10,200

**PRAMS Health Indicator 5-Year Aggregate Report - Getting PNC as early as wanted- by State;County;DOH Race-Ethnicity;PRAMS Age Group;Infant Gender;Married;Poverty Level;Income (2004-2011);Birthweight;Smoke 3rd Trimester;Smoke Before Pregnant;WIC During Pregnancy, for the Year(s)
2000-2004;2001-2005;2002-2006;2003-2007;2004-2008;2005-2009;2006-2010;2007-2011**

Note: Weighted counts (#) represent 5-yr averages, rounded to the nearest hundred; n/r (Not Reportable) - If the unweighted total responses for a dimension (row) is <30 that row will not be shown

Year: 2005-2009

State	Yes			No			Weighted Total Responses (5-Yr Avg)
	#	%	C.I.(95%)	#	%	C.I.(95%)	#
Totals	14,800	82.0	81.1 - 82.9	3,200	18.0	17.1 - 18.9	18,000

County	Yes			No			Weighted Total Responses (5-Yr Avg)
	#	%	C.I.(95%)	#	%	C.I.(95%)	#
Hawaii	1,900	81.8	79.4 - 84.0	400	18.2	16.0 - 20.6	2,300
Honolulu	10,500	82.1	81.0 - 83.2	2,300	17.9	16.8 - 19.0	12,800
Kauai	700	83.0	79.2 - 86.2	200	17.0	13.8 - 20.8	900
Maui	1,600	81.6	79.0 - 83.9	400	18.4	16.1 - 21.0	2,000

**PRAMS Health Indicator 5-Year Aggregate Report - Getting PNC as early as wanted- by State;County;DOH Race-Ethnicity;PRAMS Age Group;Infant Gender;Married;Poverty Level;Income (2004-2011);Birthweight;Smoke 3rd Trimester;Smoke Before Pregnant;WIC During Pregnancy, for the Year(s)
2000-2004;2001-2005;2002-2006;2003-2007;2004-2008;2005-2009;2006-2010;2007-2011**

Note: Weighted counts (#) represent 5-yr averages, rounded to the nearest hundred; n/r (Not Reportable) - If the unweighted total responses for a dimension (row) is <30 that row will not be shown

Year: 2005-2009

DOH Race-Ethnicity	Yes			No			Weighted Total Responses (5-Yr Avg)
	#	%	C.I.(95%)	#	%	C.I.(95%)	#
Caucasian	3,500	84.5	82.7 - 86.1	600	15.5	13.9 - 17.3	4,200
Native Hawaiian	4,100	80.2	78.3 - 82.0	1,000	19.8	18.0 - 21.7	5,200
Chinese	600	87.0	83.4 - 90.0	100	13.0	10.0 - 16.6	700
Filipino	2,700	82.5	80.5 - 84.4	600	17.5	15.6 - 19.5	3,300
Japanese	1,700	84.4	81.6 - 86.8	300	15.6	13.2 - 18.4	2,000
Other	2,100	78.2	75.5 - 80.6	600	21.8	19.4 - 24.5	2,700

PRAMS Age Group	Yes			No			Weighted Total Responses (5-Yr Avg)
	#	%	C.I.(95%)	#	%	C.I.(95%)	#
<20	1,100	68.5	64.5 - 72.2	500	31.5	27.8 - 35.5	1,600
20-24	3,300	78.1	76.0 - 80.0	900	21.9	20.0 - 24.0	4,300
25-34	7,600	84.4	83.1 - 85.5	1,400	15.6	14.5 - 16.9	9,000
35+	2,800	87.7	85.9 - 89.4	400	12.3	10.6 - 14.1	3,100

**PRAMS Health Indicator 5-Year Aggregate Report - Getting PNC as early as wanted- by State;County;DOH Race-Ethnicity;PRAMS Age Group;Infant Gender;Married;Poverty Level;Income (2004-2011);Birthweight;Smoke 3rd Trimester;Smoke Before Pregnant;WIC During Pregnancy, for the Year(s)
2000-2004;2001-2005;2002-2006;2003-2007;2004-2008;2005-2009;2006-2010;2007-2011**

Note: Weighted counts (#) represent 5-yr averages, rounded to the nearest hundred; n/r (Not Reportable) - If the unweighted total responses for a dimension (row) is <30 that row will not be shown

Year: 2005-2009

Infant Gender	Yes			No			Weighted Total Responses (5-Yr Avg)
	#	%	C.I.(95%)	#	%	C.I.(95%)	#
Male	7,700	82.1	80.9 - 83.4	1,700	17.9	16.6 - 19.1	9,300
Female	7,100	81.9	80.6 - 83.2	1,600	18.1	16.8 - 19.4	8,600

Married	Yes			No			Weighted Total Responses (5-Yr Avg)
	#	%	C.I.(95%)	#	%	C.I.(95%)	#
Yes	9,600	86.0	85.0 - 87.0	1,600	14.0	13.0 - 15.0	11,200
No	5,100	75.5	73.7 - 77.1	1,700	24.5	22.9 - 26.3	6,800

Poverty Level	Yes			No			Weighted Total Responses (5-Yr Avg)
	#	%	C.I.(95%)	#	%	C.I.(95%)	#
0-130%	4,800	73.9	72.1 - 75.6	1,700	26.1	24.4 - 27.9	6,500
131-185%	2,000	82.5	79.9 - 84.8	400	17.5	15.2 - 20.1	2,500
186+%	6,800	88.6	87.5 - 89.7	900	11.4	10.3 - 12.5	7,700

**PRAMS Health Indicator 5-Year Aggregate Report - Getting PNC as early as wanted- by State;County;DOH Race-Ethnicity;PRAMS Age Group;Infant Gender;Married;Poverty Level;Income (2004-2011);Birthweight;Smoke 3rd Trimester;Smoke Before Pregnant;WIC During Pregnancy, for the Year(s)
2000-2004;2001-2005;2002-2006;2003-2007;2004-2008;2005-2009;2006-2010;2007-2011**

Note: Weighted counts (#) represent 5-yr averages, rounded to the nearest hundred; n/r (Not Reportable) - If the unweighted total responses for a dimension (row) is <30 that row will not be shown

Year: 2005-2009

Income (2004-2011)	Yes			No			Weighted Total Responses (5-Yr Avg)
	#	%	C.I.(95%)	#	%	C.I.(95%)	#
<\$10,000	2,100	69.4	66.6 - 72.1	900	30.6	27.9 - 33.4	3,000
\$10,000-\$24,999	3,000	78.6	76.5 - 80.6	800	21.4	19.4 - 23.5	3,800
\$25,000-\$49,999	3,400	83.0	81.1 - 84.7	700	17.0	15.3 - 18.9	4,000
>=\$50,000	5,300	89.8	88.6 - 91.0	600	10.2	9.0 - 11.4	5,900

Birthweight	Yes			No			Weighted Total Responses (5-Yr Avg)
	#	%	C.I.(95%)	#	%	C.I.(95%)	#
Low birth weight	1,100	79.0	75.7 - 81.8	300	21.0	18.2 - 24.3	1,400
Normal birth weight	13,700	82.3	81.4 - 83.3	2,900	17.7	16.7 - 18.6	16,600

Smoke 3rd Trimester	Yes			No			Weighted Total Responses (5-Yr Avg)
	#	%	C.I.(95%)	#	%	C.I.(95%)	#
Yes	1,100	73.5	69.7 - 77.0	400	26.5	23.0 - 30.3	1,500
No	13,400	82.9	81.9 - 83.8	2,800	17.1	16.2 - 18.1	16,100

**PRAMS Health Indicator 5-Year Aggregate Report - Getting PNC as early as wanted- by State;County;DOH Race-
Ethnicity;PRAMS Age Group;Infant Gender;Married;Poverty Level;Income (2004-2011);Birthweight;Smoke 3rd
Trimester;Smoke Before Pregnant;WIC During Pregnancy, for the Year(s)
2000-2004;2001-2005;2002-2006;2003-2007;2004-2008;2005-2009;2006-2010;2007-2011**

Note: Weighted counts (#) represent 5-yr averages, rounded to the nearest hundred; n/r (Not Reportable) - If the unweighted total responses for a dimension (row) is <30 that row will not be shown

Year: 2005-2009

Smoke Before Pregnant	Yes			No			Weighted Total Responses (5-Yr Avg)
	#	%	C.I.(95%)	#	%	C.I.(95%)	#
Yes	2,800	76.6	74.3 - 78.8	900	23.4	21.2 - 25.7	3,700
No	11,700	83.5	82.5 - 84.4	2,300	16.5	15.6 - 17.5	14,000

WIC During Pregnancy	Yes			No			Weighted Total Responses (5-Yr Avg)
	#	%	C.I.(95%)	#	%	C.I.(95%)	#
Yes	5,900	78.0	76.4 - 79.4	1,700	22.0	20.6 - 23.6	7,600
No	8,600	84.9	83.8 - 86.0	1,500	15.1	14.0 - 16.2	10,100

**PRAMS Health Indicator 5-Year Aggregate Report - Getting PNC as early as wanted- by State;County;DOH Race-Ethnicity;PRAMS Age Group;Infant Gender;Married;Poverty Level;Income (2004-2011);Birthweight;Smoke 3rd Trimester;Smoke Before Pregnant;WIC During Pregnancy, for the Year(s)
2000-2004;2001-2005;2002-2006;2003-2007;2004-2008;2005-2009;2006-2010;2007-2011**

Note: Weighted counts (#) represent 5-yr averages, rounded to the nearest hundred; n/r (Not Reportable) - If the unweighted total responses for a dimension (row) is <30 that row will not be shown

Year: 2004-2008

State	Yes			No			Weighted Total Responses (5-Yr Avg)
	#	%	C.I.(95%)	#	%	C.I.(95%)	#
Totals	14,700	82.1	81.3 - 82.9	3,200	17.9	17.1 - 18.7	17,900

County	Yes			No			Weighted Total Responses (5-Yr Avg)
	#	%	C.I.(95%)	#	%	C.I.(95%)	#
Hawaii	1,900	82.1	79.6 - 84.4	400	17.9	15.6 - 20.4	2,300
Honolulu	10,500	82.1	81.1 - 83.1	2,300	17.9	16.9 - 18.9	12,800
Kauai	700	83.9	80.0 - 87.2	100	16.1	12.8 - 20.0	900
Maui	1,600	81.3	78.6 - 83.7	400	18.7	16.3 - 21.4	1,900

**PRAMS Health Indicator 5-Year Aggregate Report - Getting PNC as early as wanted- by State;County;DOH Race-Ethnicity;PRAMS Age Group;Infant Gender;Married;Poverty Level;Income (2004-2011);Birthweight;Smoke 3rd Trimester;Smoke Before Pregnant;WIC During Pregnancy, for the Year(s)
2000-2004;2001-2005;2002-2006;2003-2007;2004-2008;2005-2009;2006-2010;2007-2011**

Note: Weighted counts (#) represent 5-yr averages, rounded to the nearest hundred; n/r (Not Reportable) - If the unweighted total responses for a dimension (row) is <30 that row will not be shown

Year: 2004-2008

DOH Race-Ethnicity	Yes			No			Weighted Total Responses (5-Yr Avg)
	#	%	C.I.(95%)	#	%	C.I.(95%)	#
Caucasian	3,400	84.0	82.3 - 85.6	700	16.0	14.4 - 17.7	4,100
Native Hawaiian	4,000	80.3	78.4 - 82.0	1,000	19.7	18.0 - 21.6	5,000
Chinese	500	86.6	84.5 - 88.4	100	13.4	11.6 - 15.5	600
Filipino	2,700	82.1	80.3 - 83.8	600	17.9	16.2 - 19.7	3,300
Japanese	1,900	86.2	84.0 - 88.2	300	13.8	11.8 - 16.0	2,200
Other	2,200	78.5	76.1 - 80.7	600	21.5	19.3 - 23.9	2,700

PRAMS Age Group	Yes			No			Weighted Total Responses (5-Yr Avg)
	#	%	C.I.(95%)	#	%	C.I.(95%)	#
<20	1,000	68.6	64.9 - 72.2	500	31.4	27.8 - 35.1	1,500
20-24	3,400	77.5	75.6 - 79.3	1,000	22.5	20.7 - 24.4	4,300
25-34	7,500	84.7	83.6 - 85.8	1,400	15.3	14.2 - 16.4	8,900
35+	2,800	87.6	85.9 - 89.1	400	12.4	10.9 - 14.1	3,200

**PRAMS Health Indicator 5-Year Aggregate Report - Getting PNC as early as wanted- by State;County;DOH Race-Ethnicity;PRAMS Age Group;Infant Gender;Married;Poverty Level;Income (2004-2011);Birthweight;Smoke 3rd Trimester;Smoke Before Pregnant;WIC During Pregnancy, for the Year(s)
2000-2004;2001-2005;2002-2006;2003-2007;2004-2008;2005-2009;2006-2010;2007-2011**

Note: Weighted counts (#) represent 5-yr averages, rounded to the nearest hundred; n/r (Not Reportable) - If the unweighted total responses for a dimension (row) is <30 that row will not be shown

Year: 2004-2008

Infant Gender	Yes			No			Weighted Total Responses (5-Yr Avg)
	#	%	C.I.(95%)	#	%	C.I.(95%)	#
Male	7,700	81.8	80.7 - 83.0	1,700	18.2	17.0 - 19.3	9,400
Female	7,100	82.4	81.2 - 83.6	1,500	17.6	16.4 - 18.8	8,600

Married	Yes			No			Weighted Total Responses (5-Yr Avg)
	#	%	C.I.(95%)	#	%	C.I.(95%)	#
Yes	9,900	85.8	84.9 - 86.7	1,600	14.2	13.3 - 15.1	11,500
No	4,800	75.4	73.8 - 77.0	1,600	24.6	23.0 - 26.2	6,400

Poverty Level	Yes			No			Weighted Total Responses (5-Yr Avg)
	#	%	C.I.(95%)	#	%	C.I.(95%)	#
0-130%	4,800	74.4	72.7 - 75.9	1,700	25.6	24.1 - 27.3	6,500
131-185%	1,900	81.8	79.3 - 84.0	400	18.2	16.0 - 20.7	2,300
186+%	6,900	88.7	87.7 - 89.6	900	11.3	10.4 - 12.3	7,800

**PRAMS Health Indicator 5-Year Aggregate Report - Getting PNC as early as wanted- by State;County;DOH Race-Ethnicity;PRAMS Age Group;Infant Gender;Married;Poverty Level;Income (2004-2011);Birthweight;Smoke 3rd Trimester;Smoke Before Pregnant;WIC During Pregnancy, for the Year(s)
2000-2004;2001-2005;2002-2006;2003-2007;2004-2008;2005-2009;2006-2010;2007-2011**

Note: Weighted counts (#) represent 5-yr averages, rounded to the nearest hundred; n/r (Not Reportable) - If the unweighted total responses for a dimension (row) is <30 that row will not be shown

Year: 2004-2008

Income (2004-2011)	Yes			No			Weighted Total Responses (5-Yr Avg)
	#	%	C.I.(95%)	#	%	C.I.(95%)	#
<\$10,000	2,100	69.9	67.3 - 72.3	900	30.1	27.7 - 32.7	3,000
\$10,000-\$24,999	3,000	78.6	76.6 - 80.4	800	21.4	19.6 - 23.4	3,900
\$25,000-\$49,999	3,500	83.5	81.8 - 85.1	700	16.5	14.9 - 18.2	4,200
>=\$50,000	5,100	90.0	88.8 - 91.0	600	10.0	9.0 - 11.2	5,700

Birthweight	Yes			No			Weighted Total Responses (5-Yr Avg)
	#	%	C.I.(95%)	#	%	C.I.(95%)	#
Low birth weight	1,100	79.7	76.2 - 82.7	300	20.3	17.3 - 23.8	1,300
Normal birth weight	13,600	82.3	81.5 - 83.2	2,900	17.7	16.8 - 18.5	16,600

Smoke 3rd Trimester	Yes			No			Weighted Total Responses (5-Yr Avg)
	#	%	C.I.(95%)	#	%	C.I.(95%)	#
Yes	1,100	74.2	70.6 - 77.4	400	25.8	22.6 - 29.4	1,500
No	13,400	82.9	82.1 - 83.8	2,700	17.1	16.2 - 17.9	16,100

**PRAMS Health Indicator 5-Year Aggregate Report - Getting PNC as early as wanted- by State;County;DOH Race-
Ethnicity;PRAMS Age Group;Infant Gender;Married;Poverty Level;Income (2004-2011);Birthweight;Smoke 3rd
Trimester;Smoke Before Pregnant;WIC During Pregnancy, for the Year(s)
2000-2004;2001-2005;2002-2006;2003-2007;2004-2008;2005-2009;2006-2010;2007-2011**

Note: Weighted counts (#) represent 5-yr averages, rounded to the nearest hundred; n/r (Not Reportable) - If the unweighted total responses for a dimension (row) is <30 that row will not be shown

Year: 2004-2008

Smoke Before Pregnant	Yes			No			Weighted Total Responses (5-Yr Avg)
	#	%	C.I.(95%)	#	%	C.I.(95%)	#
Yes	2,800	77.0	74.8 - 79.0	800	23.0	21.0 - 25.2	3,600
No	11,700	83.5	82.6 - 84.4	2,300	16.5	15.6 - 17.4	14,000

WIC During Pregnancy	Yes			No			Weighted Total Responses (5-Yr Avg)
	#	%	C.I.(95%)	#	%	C.I.(95%)	#
Yes	6,000	78.4	77.0 - 79.7	1,700	21.6	20.3 - 23.0	7,700
No	8,400	84.9	83.9 - 85.9	1,500	15.1	14.1 - 16.1	9,900

**PRAMS Health Indicator 5-Year Aggregate Report - Getting PNC as early as wanted- by State;County;DOH Race-Ethnicity;PRAMS Age Group;Infant Gender;Married;Poverty Level;Income (2004-2011);Birthweight;Smoke 3rd Trimester;Smoke Before Pregnant;WIC During Pregnancy, for the Year(s)
2000-2004;2001-2005;2002-2006;2003-2007;2004-2008;2005-2009;2006-2010;2007-2011**

Note: Weighted counts (#) represent 5-yr averages, rounded to the nearest hundred; n/r (Not Reportable) - If the unweighted total responses for a dimension (row) is <30 that row will not be shown

Year: 2003-2007

State	Yes			No			Weighted Total Responses (5-Yr Avg)
	#	%	C.I.(95%)	#	%	C.I.(95%)	#
Totals	14,500	81.9	81.1 - 82.8	3,200	18.1	17.2 - 18.9	17,700

County	Yes			No			Weighted Total Responses (5-Yr Avg)
	#	%	C.I.(95%)	#	%	C.I.(95%)	#
Hawaii	1,800	80.1	77.6 - 82.3	400	19.9	17.7 - 22.4	2,200
Honolulu	10,500	82.3	81.2 - 83.3	2,300	17.7	16.7 - 18.8	12,800
Kauai	700	82.0	78.2 - 85.2	200	18.0	14.8 - 21.8	900
Maui	1,500	81.8	79.2 - 84.1	300	18.2	15.9 - 20.8	1,900

**PRAMS Health Indicator 5-Year Aggregate Report - Getting PNC as early as wanted- by State;County;DOH Race-Ethnicity;PRAMS Age Group;Infant Gender;Married;Poverty Level;Income (2004-2011);Birthweight;Smoke 3rd Trimester;Smoke Before Pregnant;WIC During Pregnancy, for the Year(s)
2000-2004;2001-2005;2002-2006;2003-2007;2004-2008;2005-2009;2006-2010;2007-2011**

Note: Weighted counts (#) represent 5-yr averages, rounded to the nearest hundred; n/r (Not Reportable) - If the unweighted total responses for a dimension (row) is <30 that row will not be shown

Year: 2003-2007

DOH Race-Ethnicity	Yes			No			Weighted Total Responses (5-Yr Avg)
	#	%	C.I.(95%)	#	%	C.I.(95%)	#
Caucasian	3,300	84.7	82.9 - 86.3	600	15.3	13.7 - 17.1	4,000
Native Hawaiian	3,900	79.4	77.7 - 81.0	1,000	20.6	19.0 - 22.3	4,900
Chinese	600	84.8	81.3 - 87.8	100	15.2	12.2 - 18.7	700
Filipino	2,800	82.3	80.4 - 84.0	600	17.7	16.0 - 19.6	3,400
Japanese	1,800	85.5	83.0 - 87.7	300	14.5	12.3 - 17.0	2,100
Other	2,100	78.5	75.9 - 80.9	600	21.5	19.1 - 24.1	2,700

PRAMS Age Group	Yes			No			Weighted Total Responses (5-Yr Avg)
	#	%	C.I.(95%)	#	%	C.I.(95%)	#
<20	1,000	68.1	64.4 - 71.6	500	31.9	28.4 - 35.6	1,500
20-24	3,300	76.9	75.0 - 78.7	1,000	23.1	21.3 - 25.0	4,300
25-34	7,400	84.6	83.5 - 85.7	1,300	15.4	14.3 - 16.5	8,700
35+	2,800	88.1	86.3 - 89.6	400	11.9	10.4 - 13.7	3,100

**PRAMS Health Indicator 5-Year Aggregate Report - Getting PNC as early as wanted- by State;County;DOH Race-Ethnicity;PRAMS Age Group;Infant Gender;Married;Poverty Level;Income (2004-2011);Birthweight;Smoke 3rd Trimester;Smoke Before Pregnant;WIC During Pregnancy, for the Year(s)
2000-2004;2001-2005;2002-2006;2003-2007;2004-2008;2005-2009;2006-2010;2007-2011**

Note: Weighted counts (#) represent 5-yr averages, rounded to the nearest hundred; n/r (Not Reportable) - If the unweighted total responses for a dimension (row) is <30 that row will not be shown

Year: 2003-2007

Infant Gender	Yes			No			Weighted Total Responses (5-Yr Avg)
	#	%	C.I.(95%)	#	%	C.I.(95%)	#
Male	7,600	82.1	81.0 - 83.3	1,700	17.9	16.7 - 19.0	9,300
Female	6,900	81.7	80.4 - 82.9	1,500	18.3	17.1 - 19.6	8,500

Married	Yes			No			Weighted Total Responses (5-Yr Avg)
	#	%	C.I.(95%)	#	%	C.I.(95%)	#
Yes	9,900	85.7	84.8 - 86.6	1,600	14.3	13.4 - 15.2	11,500
No	4,600	74.9	73.2 - 76.5	1,600	25.1	23.5 - 26.8	6,200

Poverty Level	Yes			No			Weighted Total Responses (5-Yr Avg)
	#	%	C.I.(95%)	#	%	C.I.(95%)	#
0-130%	5,000	74.2	72.6 - 75.7	1,700	25.8	24.3 - 27.4	6,700
131-185%	1,900	84.1	81.7 - 86.2	400	15.9	13.8 - 18.3	2,300
186+%	6,500	88.9	87.8 - 89.9	800	11.1	10.1 - 12.2	7,300

**PRAMS Health Indicator 5-Year Aggregate Report - Getting PNC as early as wanted- by State;County;DOH Race-Ethnicity;PRAMS Age Group;Infant Gender;Married;Poverty Level;Income (2004-2011);Birthweight;Smoke 3rd Trimester;Smoke Before Pregnant;WIC During Pregnancy, for the Year(s)
2000-2004;2001-2005;2002-2006;2003-2007;2004-2008;2005-2009;2006-2010;2007-2011**

Note: Weighted counts (#) represent 5-yr averages, rounded to the nearest hundred; n/r (Not Reportable) - If the unweighted total responses for a dimension (row) is <30 that row will not be shown

Year: 2003-2007

Birthweight	Yes			No			Weighted Total Responses (5-Yr Avg)
	#	%	C.I.(95%)	#	%	C.I.(95%)	#
Low birth weight	1,000	79.1	75.7 - 82.2	300	20.9	17.8 - 24.3	1,300
Normal birth weight	13,500	82.2	81.3 - 83.0	2,900	17.8	17.0 - 18.7	16,400

Smoke 3rd Trimester	Yes			No			Weighted Total Responses (5-Yr Avg)
	#	%	C.I.(95%)	#	%	C.I.(95%)	#
Yes	1,100	73.8	70.3 - 77.0	400	26.2	23.0 - 29.7	1,500
No	13,200	82.8	81.9 - 83.7	2,700	17.2	16.3 - 18.1	15,900

Smoke Before Pregnant	Yes			No			Weighted Total Responses (5-Yr Avg)
	#	%	C.I.(95%)	#	%	C.I.(95%)	#
Yes	2,700	76.1	73.9 - 78.1	900	23.9	21.9 - 26.1	3,600
No	11,500	83.6	82.7 - 84.5	2,300	16.4	15.5 - 17.3	13,800

**PRAMS Health Indicator 5-Year Aggregate Report - Getting PNC as early as wanted- by State;County;DOH Race-
Ethnicity;PRAMS Age Group;Infant Gender;Married;Poverty Level;Income (2004-2011);Birthweight;Smoke 3rd
Trimester;Smoke Before Pregnant;WIC During Pregnancy, for the Year(s)
2000-2004;2001-2005;2002-2006;2003-2007;2004-2008;2005-2009;2006-2010;2007-2011**

Note: Weighted counts (#) represent 5-yr averages, rounded to the nearest hundred; n/r (Not Reportable) - If the unweighted total responses for a dimension (row) is <30 that row will not be shown

Year: 2003-2007

WIC During Pregnancy	Yes			No			Weighted Total Responses (5-Yr Avg)
	#	%	C.I.(95%)	#	%	C.I.(95%)	#
Yes	5,900	77.9	76.4 - 79.2	1,700	22.1	20.8 - 23.6	7,500
No	8,400	84.9	83.9 - 85.9	1,500	15.1	14.1 - 16.1	9,800

**PRAMS Health Indicator 5-Year Aggregate Report - Getting PNC as early as wanted- by State;County;DOH Race-Ethnicity;PRAMS Age Group;Infant Gender;Married;Poverty Level;Income (2004-2011);Birthweight;Smoke 3rd Trimester;Smoke Before Pregnant;WIC During Pregnancy, for the Year(s)
2000-2004;2001-2005;2002-2006;2003-2007;2004-2008;2005-2009;2006-2010;2007-2011**

Note: Weighted counts (#) represent 5-yr averages, rounded to the nearest hundred; n/r (Not Reportable) - If the unweighted total responses for a dimension (row) is <30 that row will not be shown

Year: 2002-2006

State	Yes			No			Weighted Total Responses (5-Yr Avg)
	#	%	C.I.(95%)	#	%	C.I.(95%)	#
Totals	14,300	82.3	81.4 - 83.1	3,100	17.7	16.9 - 18.6	17,400

County	Yes			No			Weighted Total Responses (5-Yr Avg)
	#	%	C.I.(95%)	#	%	C.I.(95%)	#
Hawaii	1,700	80.6	78.3 - 82.7	400	19.4	17.3 - 21.7	2,100
Honolulu	10,500	82.6	81.6 - 83.7	2,200	17.4	16.3 - 18.4	12,700
Kauai	600	81.7	78.0 - 84.8	100	18.3	15.2 - 22.0	800
Maui	1,500	81.9	79.4 - 84.1	300	18.1	15.9 - 20.6	1,800

**PRAMS Health Indicator 5-Year Aggregate Report - Getting PNC as early as wanted- by State;County;DOH Race-Ethnicity;PRAMS Age Group;Infant Gender;Married;Poverty Level;Income (2004-2011);Birthweight;Smoke 3rd Trimester;Smoke Before Pregnant;WIC During Pregnancy, for the Year(s)
2000-2004;2001-2005;2002-2006;2003-2007;2004-2008;2005-2009;2006-2010;2007-2011**

Note: Weighted counts (#) represent 5-yr averages, rounded to the nearest hundred; n/r (Not Reportable) - If the unweighted total responses for a dimension (row) is <30 that row will not be shown

Year: 2002-2006

DOH Race-Ethnicity	Yes			No			Weighted Total Responses (5-Yr Avg)
	#	%	C.I.(95%)	#	%	C.I.(95%)	#
Caucasian	3,300	85.4	83.6 - 87.0	600	14.6	13.0 - 16.4	3,800
Native Hawaiian	3,800	78.8	77.1 - 80.3	1,000	21.2	19.7 - 22.9	4,800
Chinese	500	84.8	80.6 - 88.2	100	15.2	11.8 - 19.4	600
Filipino	2,800	83.6	81.6 - 85.4	600	16.4	14.6 - 18.4	3,400
Japanese	1,900	86.3	83.8 - 88.5	300	13.7	11.5 - 16.2	2,200
Other	2,000	78.3	75.5 - 80.9	600	21.7	19.1 - 24.5	2,500

PRAMS Age Group	Yes			No			Weighted Total Responses (5-Yr Avg)
	#	%	C.I.(95%)	#	%	C.I.(95%)	#
<20	1,000	66.9	63.2 - 70.4	500	33.1	29.6 - 36.8	1,500
20-24	3,300	78.1	76.2 - 79.9	900	21.9	20.1 - 23.8	4,300
25-34	7,300	84.7	83.5 - 85.8	1,300	15.3	14.2 - 16.5	8,600
35+	2,700	88.8	87.0 - 90.3	300	11.2	9.7 - 13.0	3,100

**PRAMS Health Indicator 5-Year Aggregate Report - Getting PNC as early as wanted- by State;County;DOH Race-Ethnicity;PRAMS Age Group;Infant Gender;Married;Poverty Level;Income (2004-2011);Birthweight;Smoke 3rd Trimester;Smoke Before Pregnant;WIC During Pregnancy, for the Year(s)
2000-2004;2001-2005;2002-2006;2003-2007;2004-2008;2005-2009;2006-2010;2007-2011**

Note: Weighted counts (#) represent 5-yr averages, rounded to the nearest hundred; n/r (Not Reportable) - If the unweighted total responses for a dimension (row) is <30 that row will not be shown

Year: 2002-2006

Infant Gender	Yes			No			Weighted Total Responses (5-Yr Avg)
	#	%	C.I.(95%)	#	%	C.I.(95%)	#
Male	7,400	82.0	80.8 - 83.2	1,600	18.0	16.8 - 19.2	9,000
Female	6,900	82.5	81.2 - 83.7	1,500	17.5	16.3 - 18.8	8,400

Married	Yes			No			Weighted Total Responses (5-Yr Avg)
	#	%	C.I.(95%)	#	%	C.I.(95%)	#
Yes	9,900	86.3	85.3 - 87.2	1,600	13.7	12.8 - 14.7	11,500
No	4,400	74.4	72.7 - 76.1	1,500	25.6	23.9 - 27.3	5,900

Poverty Level	Yes			No			Weighted Total Responses (5-Yr Avg)
	#	%	C.I.(95%)	#	%	C.I.(95%)	#
0-130%	5,000	75.5	73.9 - 77.0	1,600	24.5	23.0 - 26.1	6,600
131-185%	2,100	84.3	81.9 - 86.5	400	15.7	13.5 - 18.1	2,400
186+%	6,100	89.0	87.8 - 90.0	800	11.0	10.0 - 12.2	6,900

**PRAMS Health Indicator 5-Year Aggregate Report - Getting PNC as early as wanted- by State;County;DOH Race-Ethnicity;PRAMS Age Group;Infant Gender;Married;Poverty Level;Income (2004-2011);Birthweight;Smoke 3rd Trimester;Smoke Before Pregnant;WIC During Pregnancy, for the Year(s)
2000-2004;2001-2005;2002-2006;2003-2007;2004-2008;2005-2009;2006-2010;2007-2011**

Note: Weighted counts (#) represent 5-yr averages, rounded to the nearest hundred; n/r (Not Reportable) - If the unweighted total responses for a dimension (row) is <30 that row will not be shown

Year: 2002-2006

Birthweight	Yes			No			Weighted Total Responses (5-Yr Avg)
	#	%	C.I.(95%)	#	%	C.I.(95%)	#
Low birth weight	1,000	80.0	76.4 - 83.1	200	20.0	16.9 - 23.6	1,200
Normal birth weight	13,300	82.5	81.6 - 83.4	2,800	17.5	16.6 - 18.4	16,100

Smoke 3rd Trimester	Yes			No			Weighted Total Responses (5-Yr Avg)
	#	%	C.I.(95%)	#	%	C.I.(95%)	#
Yes	1,100	73.2	69.7 - 76.5	400	26.8	23.5 - 30.3	1,500
No	13,000	83.2	82.3 - 84.1	2,600	16.8	15.9 - 17.7	15,600

Smoke Before Pregnant	Yes			No			Weighted Total Responses (5-Yr Avg)
	#	%	C.I.(95%)	#	%	C.I.(95%)	#
Yes	2,700	76.1	73.9 - 78.1	800	23.9	21.9 - 26.1	3,500
No	11,300	84.0	83.0 - 84.9	2,200	16.0	15.1 - 17.0	13,500

**PRAMS Health Indicator 5-Year Aggregate Report - Getting PNC as early as wanted- by State;County;DOH Race-
Ethnicity;PRAMS Age Group;Infant Gender;Married;Poverty Level;Income (2004-2011);Birthweight;Smoke 3rd
Trimester;Smoke Before Pregnant;WIC During Pregnancy, for the Year(s)
2000-2004;2001-2005;2002-2006;2003-2007;2004-2008;2005-2009;2006-2010;2007-2011**

Note: Weighted counts (#) represent 5-yr averages, rounded to the nearest hundred; n/r (Not Reportable) - If the unweighted total responses for a dimension (row) is <30 that row will not be shown

Year: 2002-2006

WIC During Pregnancy	Yes			No			Weighted Total Responses (5-Yr Avg)
	#	%	C.I.(95%)	#	%	C.I.(95%)	#
Yes	5,900	78.9	77.5 - 80.3	1,600	21.1	19.7 - 22.5	7,400
No	8,200	84.8	83.7 - 85.9	1,500	15.2	14.1 - 16.3	9,700

**PRAMS Health Indicator 5-Year Aggregate Report - Getting PNC as early as wanted- by State;County;DOH Race-Ethnicity;PRAMS Age Group;Infant Gender;Married;Poverty Level;Income (2004-2011);Birthweight;Smoke 3rd Trimester;Smoke Before Pregnant;WIC During Pregnancy, for the Year(s)
2000-2004;2001-2005;2002-2006;2003-2007;2004-2008;2005-2009;2006-2010;2007-2011**

Note: Weighted counts (#) represent 5-yr averages, rounded to the nearest hundred; n/r (Not Reportable) - If the unweighted total responses for a dimension (row) is <30 that row will not be shown

Year: 2001-2005

State	Yes			No			Weighted Total Responses (5-Yr Avg)
	#	%	C.I.(95%)	#	%	C.I.(95%)	#
Totals	14,000	82.0	81.2 - 82.9	3,100	18.0	17.1 - 18.8	17,100

County	Yes			No			Weighted Total Responses (5-Yr Avg)
	#	%	C.I.(95%)	#	%	C.I.(95%)	#
Hawaii	1,600	79.7	77.6 - 81.7	400	20.3	18.3 - 22.4	2,000
Honolulu	10,400	82.6	81.6 - 83.6	2,200	17.4	16.4 - 18.4	12,500
Kauai	600	79.3	75.9 - 82.3	200	20.7	17.7 - 24.1	800
Maui	1,400	81.8	79.6 - 83.8	300	18.2	16.2 - 20.4	1,700

**PRAMS Health Indicator 5-Year Aggregate Report - Getting PNC as early as wanted- by State;County;DOH Race-Ethnicity;PRAMS Age Group;Infant Gender;Married;Poverty Level;Income (2004-2011);Birthweight;Smoke 3rd Trimester;Smoke Before Pregnant;WIC During Pregnancy, for the Year(s)
2000-2004;2001-2005;2002-2006;2003-2007;2004-2008;2005-2009;2006-2010;2007-2011**

Note: Weighted counts (#) represent 5-yr averages, rounded to the nearest hundred; n/r (Not Reportable) - If the unweighted total responses for a dimension (row) is <30 that row will not be shown

Year: 2001-2005

DOH Race-Ethnicity	Yes			No			Weighted Total Responses (5-Yr Avg)
	#	%	C.I.(95%)	#	%	C.I.(95%)	#
Caucasian	3,200	85.7	83.9 - 87.4	500	14.3	12.6 - 16.1	3,700
Native Hawaiian	3,700	77.7	76.3 - 79.1	1,000	22.3	20.9 - 23.7	4,700
Chinese	600	83.8	79.1 - 87.6	100	16.2	12.4 - 20.9	700
Filipino	2,900	83.5	81.5 - 85.3	600	16.5	14.7 - 18.5	3,400
Japanese	1,900	87.3	84.8 - 89.4	300	12.7	10.6 - 15.2	2,200
Other	1,900	77.5	74.6 - 80.2	500	22.5	19.8 - 25.4	2,400

PRAMS Age Group	Yes			No			Weighted Total Responses (5-Yr Avg)
	#	%	C.I.(95%)	#	%	C.I.(95%)	#
<20	1,000	64.7	61.2 - 68.1	500	35.3	31.9 - 38.8	1,500
20-24	3,300	77.5	75.7 - 79.2	1,000	22.5	20.8 - 24.3	4,200
25-34	7,200	85.0	83.8 - 86.1	1,300	15.0	13.9 - 16.2	8,400
35+	2,600	88.7	86.9 - 90.3	300	11.3	9.7 - 13.1	2,900

**PRAMS Health Indicator 5-Year Aggregate Report - Getting PNC as early as wanted- by State;County;DOH Race-Ethnicity;PRAMS Age Group;Infant Gender;Married;Poverty Level;Income (2004-2011);Birthweight;Smoke 3rd Trimester;Smoke Before Pregnant;WIC During Pregnancy, for the Year(s)
2000-2004;2001-2005;2002-2006;2003-2007;2004-2008;2005-2009;2006-2010;2007-2011**

Note: Weighted counts (#) represent 5-yr averages, rounded to the nearest hundred; n/r (Not Reportable) - If the unweighted total responses for a dimension (row) is <30 that row will not be shown

Year: 2001-2005

Infant Gender	Yes			No			Weighted Total Responses (5-Yr Avg)
	#	%	C.I.(95%)	#	%	C.I.(95%)	#
Male	7,300	82.0	80.8 - 83.2	1,600	18.0	16.8 - 19.2	8,800
Female	6,700	82.1	80.8 - 83.2	1,500	17.9	16.8 - 19.2	8,200

Married	Yes			No			Weighted Total Responses (5-Yr Avg)
	#	%	C.I.(95%)	#	%	C.I.(95%)	#
Yes	9,900	86.2	85.2 - 87.1	1,600	13.8	12.9 - 14.8	11,400
No	4,100	73.6	71.9 - 75.2	1,500	26.4	24.8 - 28.1	5,600

Poverty Level	Yes			No			Weighted Total Responses (5-Yr Avg)
	#	%	C.I.(95%)	#	%	C.I.(95%)	#
0-130%	5,000	75.6	74.1 - 77.1	1,600	24.4	22.9 - 25.9	6,600
131-185%	2,300	84.3	82.1 - 86.3	400	15.7	13.7 - 17.9	2,700
186+%	5,700	89.4	88.3 - 90.5	700	10.6	9.5 - 11.7	6,300

**PRAMS Health Indicator 5-Year Aggregate Report - Getting PNC as early as wanted- by State;County;DOH Race-Ethnicity;PRAMS Age Group;Infant Gender;Married;Poverty Level;Income (2004-2011);Birthweight;Smoke 3rd Trimester;Smoke Before Pregnant;WIC During Pregnancy, for the Year(s)
2000-2004;2001-2005;2002-2006;2003-2007;2004-2008;2005-2009;2006-2010;2007-2011**

Note: Weighted counts (#) represent 5-yr averages, rounded to the nearest hundred; n/r (Not Reportable) - If the unweighted total responses for a dimension (row) is <30 that row will not be shown

Year: 2001-2005

Birthweight	Yes			No			Weighted Total Responses (5-Yr Avg)
	#	%	C.I.(95%)	#	%	C.I.(95%)	#
Low birth weight	1,000	82.5	79.1 - 85.4	200	17.5	14.6 - 20.9	1,200
Normal birth weight	13,000	82.1	81.2 - 82.9	2,800	17.9	17.1 - 18.8	15,900

Smoke 3rd Trimester	Yes			No			Weighted Total Responses (5-Yr Avg)
	#	%	C.I.(95%)	#	%	C.I.(95%)	#
Yes	1,100	74.2	70.9 - 77.3	400	25.8	22.7 - 29.1	1,400
No	12,700	82.9	82.0 - 83.7	2,600	17.1	16.3 - 18.0	15,300

Smoke Before Pregnant	Yes			No			Weighted Total Responses (5-Yr Avg)
	#	%	C.I.(95%)	#	%	C.I.(95%)	#
Yes	2,600	76.1	74.0 - 78.1	800	23.9	21.9 - 26.0	3,400
No	11,100	83.7	82.7 - 84.6	2,200	16.3	15.4 - 17.3	13,200

**PRAMS Health Indicator 5-Year Aggregate Report - Getting PNC as early as wanted- by State;County;DOH Race-
Ethnicity;PRAMS Age Group;Infant Gender;Married;Poverty Level;Income (2004-2011);Birthweight;Smoke 3rd
Trimester;Smoke Before Pregnant;WIC During Pregnancy, for the Year(s)
2000-2004;2001-2005;2002-2006;2003-2007;2004-2008;2005-2009;2006-2010;2007-2011**

Note: Weighted counts (#) represent 5-yr averages, rounded to the nearest hundred; n/r (Not Reportable) - If the unweighted total responses for a dimension (row) is <30 that row will not be shown

Year: 2001-2005

WIC During Pregnancy	Yes			No			Weighted Total Responses (5-Yr Avg)
	#	%	C.I.(95%)	#	%	C.I.(95%)	#
Yes	5,700	78.7	77.3 - 80.0	1,600	21.3	20.0 - 22.7	7,300
No	8,100	84.6	83.5 - 85.7	1,500	15.4	14.3 - 16.5	9,600

**PRAMS Health Indicator 5-Year Aggregate Report - Getting PNC as early as wanted- by State;County;DOH Race-Ethnicity;PRAMS Age Group;Infant Gender;Married;Poverty Level;Income (2004-2011);Birthweight;Smoke 3rd Trimester;Smoke Before Pregnant;WIC During Pregnancy, for the Year(s)
2000-2004;2001-2005;2002-2006;2003-2007;2004-2008;2005-2009;2006-2010;2007-2011**

Note: Weighted counts (#) represent 5-yr averages, rounded to the nearest hundred; n/r (Not Reportable) - If the unweighted total responses for a dimension (row) is <30 that row will not be shown

Year: 2000-2004

State	Yes			No			Weighted Total Responses (5-Yr Avg)
	#	%	C.I.(95%)	#	%	C.I.(95%)	#
Totals	13,900	81.8	80.9 - 82.6	3,100	18.2	17.4 - 19.1	17,000

County	Yes			No			Weighted Total Responses (5-Yr Avg)
	#	%	C.I.(95%)	#	%	C.I.(95%)	#
Hawaii	1,600	79.4	77.5 - 81.2	400	20.6	18.8 - 22.5	2,000
Honolulu	10,400	82.7	81.6 - 83.7	2,200	17.3	16.3 - 18.4	12,500
Kauai	600	78.9	75.7 - 81.7	200	21.1	18.3 - 24.3	800
Maui	1,400	79.3	77.2 - 81.2	400	20.7	18.8 - 22.8	1,700

**PRAMS Health Indicator 5-Year Aggregate Report - Getting PNC as early as wanted- by State;County;DOH Race-Ethnicity;PRAMS Age Group;Infant Gender;Married;Poverty Level;Income (2004-2011);Birthweight;Smoke 3rd Trimester;Smoke Before Pregnant;WIC During Pregnancy, for the Year(s)
2000-2004;2001-2005;2002-2006;2003-2007;2004-2008;2005-2009;2006-2010;2007-2011**

Note: Weighted counts (#) represent 5-yr averages, rounded to the nearest hundred; n/r (Not Reportable) - If the unweighted total responses for a dimension (row) is <30 that row will not be shown

Year: 2000-2004

DOH Race-Ethnicity	Yes			No			Weighted Total Responses (5-Yr Avg)
	#	%	C.I.(95%)	#	%	C.I.(95%)	#
Caucasian	3,200	85.1	83.3 - 86.7	600	14.9	13.3 - 16.7	3,800
Native Hawaiian	3,600	77.5	76.3 - 78.7	1,000	22.5	21.3 - 23.7	4,600
Chinese	600	84.1	79.2 - 88.1	100	15.9	11.9 - 20.8	700
Filipino	2,900	83.3	81.3 - 85.1	600	16.7	14.9 - 18.7	3,500
Japanese	1,900	87.5	84.9 - 89.7	300	12.5	10.3 - 15.1	2,100
Other	1,800	77.0	74.0 - 79.8	500	23.0	20.2 - 26.0	2,400

PRAMS Age Group	Yes			No			Weighted Total Responses (5-Yr Avg)
	#	%	C.I.(95%)	#	%	C.I.(95%)	#
<20	1,000	64.7	61.4 - 67.8	500	35.3	32.2 - 38.6	1,500
20-24	3,200	77.0	75.2 - 78.7	1,000	23.0	21.3 - 24.8	4,200
25-34	7,100	84.7	83.5 - 85.8	1,300	15.3	14.2 - 16.5	8,400
35+	2,600	89.2	87.5 - 90.8	300	10.8	9.2 - 12.5	2,900

**PRAMS Health Indicator 5-Year Aggregate Report - Getting PNC as early as wanted- by State;County;DOH Race-Ethnicity;PRAMS Age Group;Infant Gender;Married;Poverty Level;Income (2004-2011);Birthweight;Smoke 3rd Trimester;Smoke Before Pregnant;WIC During Pregnancy, for the Year(s)
2000-2004;2001-2005;2002-2006;2003-2007;2004-2008;2005-2009;2006-2010;2007-2011**

Note: Weighted counts (#) represent 5-yr averages, rounded to the nearest hundred; n/r (Not Reportable) - If the unweighted total responses for a dimension (row) is <30 that row will not be shown

Year: 2000-2004

Infant Gender	Yes			No			Weighted Total Responses (5-Yr Avg)
	#	%	C.I.(95%)	#	%	C.I.(95%)	#
Male	7,200	82.1	80.9 - 83.2	1,600	17.9	16.8 - 19.1	8,800
Female	6,700	81.5	80.2 - 82.7	1,500	18.5	17.3 - 19.8	8,200

Married	Yes			No			Weighted Total Responses (5-Yr Avg)
	#	%	C.I.(95%)	#	%	C.I.(95%)	#
Yes	10,000	86.1	85.2 - 87.0	1,600	13.9	13.0 - 14.8	11,600
No	3,900	72.5	70.9 - 74.1	1,500	27.5	25.9 - 29.1	5,400

Poverty Level	Yes			No			Weighted Total Responses (5-Yr Avg)
	#	%	C.I.(95%)	#	%	C.I.(95%)	#
0-130%	5,100	75.4	73.9 - 76.8	1,700	24.6	23.2 - 26.1	6,800
131-185%	2,400	84.7	82.7 - 86.6	400	15.3	13.4 - 17.3	2,800
186+%	5,400	90.0	88.8 - 91.0	600	10.0	9.0 - 11.2	6,000

**PRAMS Health Indicator 5-Year Aggregate Report - Getting PNC as early as wanted- by State;County;DOH Race-Ethnicity;PRAMS Age Group;Infant Gender;Married;Poverty Level;Income (2004-2011);Birthweight;Smoke 3rd Trimester;Smoke Before Pregnant;WIC During Pregnancy, for the Year(s)
2000-2004;2001-2005;2002-2006;2003-2007;2004-2008;2005-2009;2006-2010;2007-2011**

Note: Weighted counts (#) represent 5-yr averages, rounded to the nearest hundred; n/r (Not Reportable) - If the unweighted total responses for a dimension (row) is <30 that row will not be shown

Year: 2000-2004

Birthweight	Yes			No			Weighted Total Responses (5-Yr Avg)
	#	%	C.I.(95%)	#	%	C.I.(95%)	#
Low birth weight	900	82.3	79.0 - 85.1	200	17.7	14.9 - 21.0	1,100
Normal birth weight	13,000	81.8	80.9 - 82.7	2,900	18.2	17.3 - 19.1	15,800

Smoke 3rd Trimester	Yes			No			Weighted Total Responses (5-Yr Avg)
	#	%	C.I.(95%)	#	%	C.I.(95%)	#
Yes	1,100	73.1	69.8 - 76.1	400	26.9	23.9 - 30.2	1,400
No	12,600	82.7	81.8 - 83.5	2,600	17.3	16.5 - 18.2	15,200

Smoke Before Pregnant	Yes			No			Weighted Total Responses (5-Yr Avg)
	#	%	C.I.(95%)	#	%	C.I.(95%)	#
Yes	2,500	75.2	73.1 - 77.2	800	24.8	22.8 - 26.9	3,400
No	11,000	83.6	82.7 - 84.5	2,200	16.4	15.5 - 17.3	13,200

**PRAMS Health Indicator 5-Year Aggregate Report - Getting PNC as early as wanted- by State;County;DOH Race-
Ethnicity;PRAMS Age Group;Infant Gender;Married;Poverty Level;Income (2004-2011);Birthweight;Smoke 3rd
Trimester;Smoke Before Pregnant;WIC During Pregnancy, for the Year(s)
2000-2004;2001-2005;2002-2006;2003-2007;2004-2008;2005-2009;2006-2010;2007-2011**

Note: Weighted counts (#) represent 5-yr averages, rounded to the nearest hundred; n/r (Not Reportable) - If the unweighted total responses for a dimension (row) is <30 that row will not be shown

Year: 2000-2004

WIC During Pregnancy	Yes			No			Weighted Total Responses (5-Yr Avg)
	#	%	C.I.(95%)	#	%	C.I.(95%)	#
Yes	5,700	78.3	77.0 - 79.6	1,600	21.7	20.4 - 23.0	7,300
No	8,000	84.5	83.4 - 85.6	1,500	15.5	14.4 - 16.6	9,500