

PRAMS Health Indicator 3-Year Aggregate Report - Smoking 3 months before pregnancy- for the State of Hawaii, for the Year(s) 2000-2002;2001-2003;2002-2004;2003-2005;2004-2006;2005-2007;2006-2008;2007-2009;2008-2010;2009-2011;2010-2012;2011-2013

PRAMS Health Indicator 3-Year Aggregate Report - Smoking 3 months before pregnancy- by State;County;DOH Race-Ethnicity;PRAMS Age Group;Infant Gender;Married;Poverty Level;Income (2000-2003);Income (2004-2011);Birthweight;Smoke 3rd Trimester;WIC During Pregnancy, for the Year(s) 2000-2002;2001-2003;2002-2004;2003-2005;2004-2006;2005-2007;2006-2008;2007-2009;2008-2010;2009-2011;2010-2012;2011-2013

Note: Weighted counts (#) represent 3-yr averages, rounded to the nearest hundred; n/r (Not Reportable) - If the unweighted total responses for a dimension (row) is <30 that row will not be shown

The trend analysis section shows the trend for the selected health variable over selected years in a table and a graph. 3-Year Weighted Total Responses: This number is a weighted representation of the mothers of babies delivered in a given year, who responded to a particular question in the survey. For most questions this will be the mothers of all babies delivered in a given year. For some secondary questions only a subset of the population was asked the question. For example, all survey participants were asked if they smoked during pregnancy, but only those who answered yes were asked how many cigarettes a day. If a dimension value is unknown for a particular survey record, that record will not be included in the counts for that particular dimension.

Note: Data collection for household income changed in 2004 and again in 2012. Because of this, income data does not exist for some 3-year aggregate periods.

Below are the indicators included in this report and the long description for each indicator.

PRAMS Health Indicator	Health Indicator Description
Smoking 3 months before pregnancy	Smoking 3 months before pregnancy

Suggested citation:

Hawaii Health Data Warehouse, Hawaii State Department of Health, Pregnancy Risk Assessment Monitoring System, (report title and years), Report Created: 4/3/17

For documentation on other terms and coding in this report, please go to the following links:

[Click here to access PRAMS documentation](#)

[Click here to access DOH-Race Ethnicity coding](#)

[Click here to access The Hawai'i Data Guide](#)

**For questions about this report, please contact
The Hawai'i Health Data Warehouse**

profiles@hhdw.org

(855) 946-5899 x15

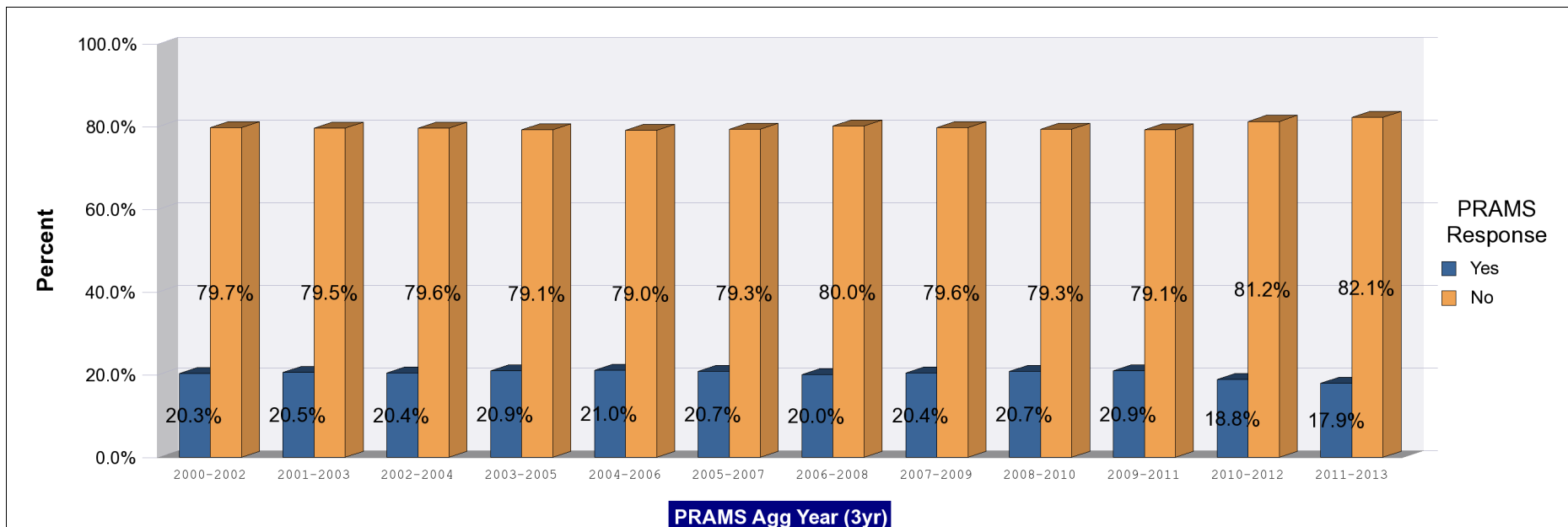
**PRAMS Health Indicator 3-Year Aggregate Report - Smoking 3 months before pregnancy- for the State of Hawaii, for the Year(s)
2000-2002;2001-2003;2002-2004;2003-2005;2004-2006;2005-2007;2006-2008;2007-2009;2008-2010;2009-2011;2010-2012;2011-2013**

Note: Weighted counts (#) represent 3-yr averages, rounded to the nearest hundred; n/r (Not Reportable) - If the unweighted total responses for a dimension (row) is <30 that row will not be shown

Years	Yes			No			Weighted Total Responses (3-Yr Avg)
	#	%	C.I.(95%)	#	%	C.I.(95%)	#
2000-2002	3,300	20.3	19.2 - 21.4	13,100	79.7	78.6 - 80.8	16,500
2001-2003	3,400	20.5	19.3 - 21.7	13,300	79.5	78.3 - 80.7	16,700
2002-2004	3,500	20.4	19.3 - 21.6	13,700	79.6	78.4 - 80.7	17,200
2003-2005	3,600	20.9	19.7 - 22.0	13,700	79.1	78.0 - 80.3	17,300
2004-2006	3,700	21.0	19.9 - 22.1	14,000	79.0	77.9 - 80.1	17,700
2005-2007	3,700	20.7	19.6 - 21.9	14,300	79.3	78.1 - 80.4	18,000
2006-2008	3,700	20.0	18.9 - 21.1	14,800	80.0	78.9 - 81.1	18,500
2007-2009	3,700	20.4	19.1 - 21.6	14,600	79.6	78.4 - 80.9	18,400
2008-2010	3,800	20.7	19.4 - 22.1	14,500	79.3	77.9 - 80.6	18,300
2009-2011	3,800	20.9	19.4 - 22.4	14,500	79.1	77.6 - 80.6	18,300
2010-2012	3,400	18.8	17.4 - 20.3	14,800	81.2	79.7 - 82.6	18,200
2011-2013	3,200	17.9	16.5 - 19.4	14,900	82.1	80.6 - 83.5	18,200

PRAMS Health Indicator 3-Year Aggregate Report - Smoking 3 months before pregnancy- for the State of Hawaii, for the Year(s) 2000-2002;2001-2003;2002-2004;2003-2005;2004-2006;2005-2007;2006-2008;2007-2009;2008-2010;2009-2011;2010-2012;2011-2013

Note: Weighted counts (#) represent 3-yr averages, rounded to the nearest hundred; n/r (Not Reportable) - If the unweighted total responses for a dimension (row) is <30 that row will not be shown



PRAMS Health Indicator 3-Year Aggregate Report - Smoking 3 months before pregnancy- by State;County;DOH Race-Ethnicity;PRAMS Age Group;Infant Gender;Married;Poverty Level;Income (2000-2003);Income (2004-2011);Birthweight;Smoke 3rd Trimester;WIC During Pregnancy, for the Year(s) 2000-2002;2001-2003;2002-2004;2003-2005;2004-2006;2005-2007;2006-2008;2007-2009;2008-2010;2009-2011;2010-2012;2011-2013

Note: Weighted counts (#) represent 3-yr averages, rounded to the nearest hundred; n/r (Not Reportable) - If the unweighted total responses for a dimension (row) is <30 that row will not be shown

Years: 2011-2013

State	Yes			No			Weighted Total Responses (3-Yr Avg)
	#	%	C.I.(95%)	#	%	C.I.(95%)	#
Totals	3,200	17.9	16.5 - 19.4	14,900	82.1	80.6 - 83.5	18,200

County	Yes			No			Weighted Total Responses (3-Yr Avg)
	#	%	C.I.(95%)	#	%	C.I.(95%)	#
Hawaii	500	22.9	20.4 - 25.6	1,800	77.1	74.4 - 79.6	2,300
Honolulu	2,200	16.9	15.0 - 18.9	10,900	83.1	81.1 - 85.0	13,100
Kauai	100	17.9	15.4 - 20.8	700	82.1	79.2 - 84.6	800
Maui	400	18.8	16.6 - 21.2	1,600	81.2	78.8 - 83.4	1,900

PRAMS Health Indicator 3-Year Aggregate Report - Smoking 3 months before pregnancy- by State;County;DOH Race-Ethnicity;PRAMS Age Group;Infant Gender;Married;Poverty Level;Income (2000-2003);Income (2004-2011);Birthweight;Smoke 3rd Trimester;WIC During Pregnancy, for the Year(s) 2000-2002;2001-2003;2002-2004;2003-2005;2004-2006;2005-2007;2006-2008;2007-2009;2008-2010;2009-2011;2010-2012;2011-2013

Note: Weighted counts (#) represent 3-yr averages, rounded to the nearest hundred; n/r (Not Reportable) - If the unweighted total responses for a dimension (row) is <30 that row will not be shown

Years: 2011-2013

DOH Race-Ethnicity	Yes			No			Weighted Total Responses (3-Yr Avg)
	#	%	C.I.(95%)	#	%	C.I.(95%)	#
Caucasian	600	14.3	11.9 - 17.2	3,800	85.7	82.8 - 88.1	4,500
Native Hawaiian	1,300	25.4	22.6 - 28.5	3,900	74.6	71.5 - 77.4	5,300
Chinese	100	10.3	6.2 - 16.7	800	89.7	83.3 - 93.8	900
Filipino	400	13.9	11.0 - 17.4	2,700	86.1	82.6 - 89.0	3,200
Japanese	300	15.1	11.0 - 20.4	1,500	84.9	79.6 - 89.0	1,700
Other	500	17.9	14.2 - 22.3	2,200	82.1	77.7 - 85.8	2,700

PRAMS Age Group	Yes			No			Weighted Total Responses (3-Yr Avg)
	#	%	C.I.(95%)	#	%	C.I.(95%)	#
<20	200	18.6	13.6 - 25.0	800	81.4	75.0 - 86.4	1,000
20-24	1,000	24.0	20.6 - 27.7	3,000	76.0	72.3 - 79.4	4,000
25-34	1,800	17.8	15.9 - 19.9	8,200	82.2	80.1 - 84.1	9,900
35+	300	10.3	8.0 - 13.2	2,900	89.7	86.8 - 92.0	3,300

PRAMS Health Indicator 3-Year Aggregate Report - Smoking 3 months before pregnancy- by State;County;DOH Race-Ethnicity;PRAMS Age Group;Infant Gender;Married;Poverty Level;Income (2000-2003);Income (2004-2011);Birthweight;Smoke 3rd Trimester;WIC During Pregnancy, for the Year(s) 2000-2002;2001-2003;2002-2004;2003-2005;2004-2006;2005-2007;2006-2008;2007-2009;2008-2010;2009-2011;2010-2012;2011-2013

Note: Weighted counts (#) represent 3-yr averages, rounded to the nearest hundred; n/r (Not Reportable) - If the unweighted total responses for a dimension (row) is <30 that row will not be shown

Years: 2011-2013

Infant Gender	Yes			No			Weighted Total Responses (3-Yr Avg)
	#	%	C.I.(95%)	#	%	C.I.(95%)	#
Male	1,500	16.4	14.5 - 18.4	7,600	83.6	81.6 - 85.5	9,100
Female	1,800	19.4	17.3 - 21.6	7,300	80.6	78.4 - 82.7	9,100

Married	Yes			No			Weighted Total Responses (3-Yr Avg)
	#	%	C.I.(95%)	#	%	C.I.(95%)	#
Yes	1,300	11.5	10.0 - 13.2	10,100	88.5	86.8 - 90.0	11,400
No	1,900	28.6	25.9 - 31.4	4,900	71.4	68.6 - 74.1	6,800

Poverty Level	Yes			No			Weighted Total Responses (3-Yr Avg)
	#	%	C.I.(95%)	#	%	C.I.(95%)	#
0-130%	1,600	23.8	21.3 - 26.5	5,000	76.2	73.5 - 78.7	6,500
131-185%	500	18.5	14.9 - 22.9	2,200	81.5	77.1 - 85.1	2,700
186+%	900	12.2	10.3 - 14.5	6,500	87.8	85.5 - 89.7	7,400

PRAMS Health Indicator 3-Year Aggregate Report - Smoking 3 months before pregnancy- by State;County;DOH Race-Ethnicity;PRAMS Age Group;Infant Gender;Married;Poverty Level;Income (2000-2003);Income (2004-2011);Birthweight;Smoke 3rd Trimester;WIC During Pregnancy, for the Year(s) 2000-2002;2001-2003;2002-2004;2003-2005;2004-2006;2005-2007;2006-2008;2007-2009;2008-2010;2009-2011;2010-2012;2011-2013

Note: Weighted counts (#) represent 3-yr averages, rounded to the nearest hundred; n/r (Not Reportable) - If the unweighted total responses for a dimension (row) is <30 that row will not be shown

Years: 2011-2013

Birthweight	Yes			No			Weighted Total Responses (3-Yr Avg)
	#	%	C.I.(95%)	#	%	C.I.(95%)	#
Low birth weight	300	21.8	19.3 - 24.6	1,000	78.2	75.4 - 80.7	1,300
Normal birth weight	3,000	17.6	16.1 - 19.2	13,900	82.4	80.8 - 83.9	16,900

Smoke 3rd Trimester	Yes			No			Weighted Total Responses (3-Yr Avg)
	#	%	C.I.(95%)	#	%	C.I.(95%)	#
Yes	900	100.0	-	0	0.0	-	900
No	2,300	13.6	12.3 - 15.0	14,900	86.4	85.0 - 87.7	17,300

WIC During Pregnancy	Yes			No			Weighted Total Responses (3-Yr Avg)
	#	%	C.I.(95%)	#	%	C.I.(95%)	#
Yes	1,800	22.0	19.8 - 24.3	6,300	78.0	75.7 - 80.2	8,100
No	1,400	14.4	12.6 - 16.4	8,500	85.6	83.6 - 87.4	9,900

PRAMS Health Indicator 3-Year Aggregate Report - Smoking 3 months before pregnancy- by State;County;DOH Race-Ethnicity;PRAMS Age Group;Infant Gender;Married;Poverty Level;Income (2000-2003);Income (2004-2011);Birthweight;Smoke 3rd Trimester;WIC During Pregnancy, for the Year(s) 2000-2002;2001-2003;2002-2004;2003-2005;2004-2006;2005-2007;2006-2008;2007-2009;2008-2010;2009-2011;2010-2012;2011-2013

Note: Weighted counts (#) represent 3-yr averages, rounded to the nearest hundred; n/r (Not Reportable) - If the unweighted total responses for a dimension (row) is <30 that row will not be shown

Years: 2010-2012

State	Yes			No			Weighted Total Responses (3-Yr Avg)
	#	%	C.I.(95%)	#	%	C.I.(95%)	#
Totals	3,400	18.8	17.4 - 20.3	14,800	81.2	79.7 - 82.6	18,200

County	Yes			No			Weighted Total Responses (3-Yr Avg)
	#	%	C.I.(95%)	#	%	C.I.(95%)	#
Hawaii	600	25.7	23.1 - 28.4	1,700	74.3	71.6 - 76.9	2,300
Honolulu	2,300	17.4	15.6 - 19.4	10,900	82.6	80.6 - 84.4	13,200
Kauai	200	18.7	16.0 - 21.6	700	81.3	78.4 - 84.0	800
Maui	400	20.1	18.0 - 22.5	1,600	79.9	77.5 - 82.0	1,900

**PRAMS Health Indicator 3-Year Aggregate Report - Smoking 3 months before pregnancy- by State;County;DOH Race-
Ethnicity;PRAMS Age Group;Infant Gender;Married;Poverty Level;Income (2000-2003);Income (2004-2011);Birthweight;Smoke
3rd Trimester;WIC During Pregnancy, for the Year(s)
2000-2002;2001-2003;2002-2004;2003-2005;2004-2006;2005-2007;2006-2008;2007-2009;2008-2010;2009-2011;2010-2012;2011-2013**

Note: Weighted counts (#) represent 3-yr averages, rounded to the nearest hundred; n/r (Not Reportable) - If the unweighted total responses for a dimension (row) is <30 that row will not be shown

Years: 2010-2012

DOH Race-Ethnicity	Yes			No			Weighted Total Responses (3-Yr Avg)
	#	%	C.I.(95%)	#	%	C.I.(95%)	#
Caucasian	700	16.4	13.8 - 19.3	3,600	83.6	80.7 - 86.2	4,400
Native Hawaiian	1,400	26.2	23.4 - 29.3	3,900	73.8	70.7 - 76.6	5,200
Chinese	100	11.1	6.8 - 17.6	800	88.9	82.4 - 93.2	800
Filipino	500	15.8	12.9 - 19.3	2,800	84.2	80.7 - 87.1	3,300
Japanese	300	17.0	12.7 - 22.2	1,400	83.0	77.8 - 87.3	1,700
Other	400	15.7	12.4 - 19.7	2,400	84.3	80.3 - 87.6	2,800

PRAMS Age Group	Yes			No			Weighted Total Responses (3-Yr Avg)
	#	%	C.I.(95%)	#	%	C.I.(95%)	#
<20	200	21.7	16.5 - 28.0	800	78.3	72.0 - 83.5	1,100
20-24	1,100	26.4	23.0 - 30.0	3,000	73.6	70.0 - 77.0	4,100
25-34	1,800	17.9	16.1 - 20.0	8,000	82.1	80.0 - 83.9	9,800
35+	300	10.8	8.4 - 13.7	2,900	89.2	86.3 - 91.6	3,200

PRAMS Health Indicator 3-Year Aggregate Report - Smoking 3 months before pregnancy- by State;County;DOH Race-Ethnicity;PRAMS Age Group;Infant Gender;Married;Poverty Level;Income (2000-2003);Income (2004-2011);Birthweight;Smoke 3rd Trimester;WIC During Pregnancy, for the Year(s) 2000-2002;2001-2003;2002-2004;2003-2005;2004-2006;2005-2007;2006-2008;2007-2009;2008-2010;2009-2011;2010-2012;2011-2013

Note: Weighted counts (#) represent 3-yr averages, rounded to the nearest hundred; n/r (Not Reportable) - If the unweighted total responses for a dimension (row) is <30 that row will not be shown

Years: 2010-2012

Infant Gender	Yes			No			Weighted Total Responses (3-Yr Avg)
	#	%	C.I.(95%)	#	%	C.I.(95%)	#
Male	1,700	18.0	16.1 - 20.1	7,500	82.0	79.9 - 83.9	9,200
Female	1,800	19.6	17.6 - 21.8	7,300	80.4	78.2 - 82.4	9,000

Married	Yes			No			Weighted Total Responses (3-Yr Avg)
	#	%	C.I.(95%)	#	%	C.I.(95%)	#
Yes	1,400	12.3	10.8 - 14.0	9,900	87.7	86.0 - 89.2	11,300
No	2,000	29.5	26.9 - 32.2	4,900	70.5	67.8 - 73.1	6,900

Poverty Level	Yes			No			Weighted Total Responses (3-Yr Avg)
	#	%	C.I.(95%)	#	%	C.I.(95%)	#
0-130%	1,600	24.8	22.3 - 27.5	4,800	75.2	72.5 - 77.7	6,400
131-185%	600	20.2	16.6 - 24.3	2,300	79.8	75.7 - 83.4	2,900
186+%	1,000	13.5	11.6 - 15.7	6,500	86.5	84.3 - 88.4	7,500

PRAMS Health Indicator 3-Year Aggregate Report - Smoking 3 months before pregnancy- by State;County;DOH Race- Ethnicity;PRAMS Age Group;Infant Gender;Married;Poverty Level;Income (2000-2003);Income (2004-2011);Birthweight;Smoke 3rd Trimester;WIC During Pregnancy, for the Year(s) 2000-2002;2001-2003;2002-2004;2003-2005;2004-2006;2005-2007;2006-2008;2007-2009;2008-2010;2009-2011;2010-2012;2011-2013

Note: Weighted counts (#) represent 3-yr averages, rounded to the nearest hundred; n/r (Not Reportable) - If the unweighted total responses for a dimension (row) is <30 that row will not be shown

Years: 2010-2012

Birthweight	Yes			No			Weighted Total Responses (3-Yr Avg)
	#	%	C.I.(95%)	#	%	C.I.(95%)	#
Low birth weight	300	22.9	20.3 - 25.7	1,000	77.1	74.3 - 79.7	1,300
Normal birth weight	3,100	18.5	17.0 - 20.1	13,800	81.5	79.9 - 83.0	16,900

Smoke 3rd Trimester	Yes			No			Weighted Total Responses (3-Yr Avg)
	#	%	C.I.(95%)	#	%	C.I.(95%)	#
Yes	1,000	100.0	-	0	0.0	-	1,000
No	2,400	13.9	12.6 - 15.3	14,800	86.1	84.7 - 87.4	17,200

WIC During Pregnancy	Yes			No			Weighted Total Responses (3-Yr Avg)
	#	%	C.I.(95%)	#	%	C.I.(95%)	#
Yes	1,900	23.8	21.6 - 26.2	6,200	76.2	73.8 - 78.4	8,100
No	1,500	14.5	12.8 - 16.5	8,500	85.5	83.5 - 87.2	10,000

**PRAMS Health Indicator 3-Year Aggregate Report - Smoking 3 months before pregnancy- by State;County;DOH Race-
Ethnicity;PRAMS Age Group;Infant Gender;Married;Poverty Level;Income (2000-2003);Income (2004-2011);Birthweight;Smoke
3rd Trimester;WIC During Pregnancy, for the Year(s)
2000-2002;2001-2003;2002-2004;2003-2005;2004-2006;2005-2007;2006-2008;2007-2009;2008-2010;2009-2011;2010-2012;2011-2013**

Note: Weighted counts (#) represent 3-yr averages, rounded to the nearest hundred; n/r (Not Reportable) - If the unweighted total responses for a dimension (row) is <30 that row will not be shown

Years: 2009-2011

State	Yes			No			Weighted Total Responses (3-Yr Avg)
	#	%	C.I.(95%)	#	%	C.I.(95%)	#
Totals	3,800	20.9	19.4 - 22.4	14,500	79.1	77.6 - 80.6	18,300

County	Yes			No			Weighted Total Responses (3-Yr Avg)
	#	%	C.I.(95%)	#	%	C.I.(95%)	#
Hawaii	700	28.5	25.8 - 31.2	1,700	71.5	68.8 - 74.2	2,400
Honolulu	2,500	19.4	17.5 - 21.5	10,500	80.6	78.5 - 82.5	13,100
Kauai	200	19.1	16.5 - 21.9	700	80.9	78.1 - 83.5	800
Maui	400	22.3	20.1 - 24.6	1,600	77.7	75.4 - 79.9	2,000

PRAMS Health Indicator 3-Year Aggregate Report - Smoking 3 months before pregnancy- by State;County;DOH Race-Ethnicity;PRAMS Age Group;Infant Gender;Married;Poverty Level;Income (2000-2003);Income (2004-2011);Birthweight;Smoke 3rd Trimester;WIC During Pregnancy, for the Year(s) 2000-2002;2001-2003;2002-2004;2003-2005;2004-2006;2005-2007;2006-2008;2007-2009;2008-2010;2009-2011;2010-2012;2011-2013

Note: Weighted counts (#) represent 3-yr averages, rounded to the nearest hundred; n/r (Not Reportable) - If the unweighted total responses for a dimension (row) is <30 that row will not be shown

Years: 2009-2011

DOH Race-Ethnicity	Yes			No			Weighted Total Responses (3-Yr Avg)
	#	%	C.I.(95%)	#	%	C.I.(95%)	#
Caucasian	800	18.5	15.8 - 21.5	3,600	81.5	78.5 - 84.2	4,400
Native Hawaiian	1,500	27.9	25.1 - 30.8	4,000	72.1	69.2 - 74.9	5,500
Chinese	100	13.1	7.9 - 20.9	600	86.9	79.1 - 92.1	700
Filipino	500	16.4	13.4 - 20.0	2,700	83.6	80.0 - 86.6	3,300
Japanese	400	21.8	17.0 - 27.4	1,400	78.2	72.6 - 83.0	1,700
Other	500	17.5	13.8 - 21.8	2,200	82.5	78.2 - 86.2	2,700

PRAMS Age Group	Yes			No			Weighted Total Responses (3-Yr Avg)
	#	%	C.I.(95%)	#	%	C.I.(95%)	#
<20	400	26.5	21.1 - 32.7	1,000	73.5	67.3 - 78.9	1,300
20-24	1,200	28.9	25.5 - 32.5	3,100	71.1	67.5 - 74.5	4,300
25-34	1,800	19.1	17.2 - 21.2	7,700	80.9	78.8 - 82.8	9,500
35+	400	12.9	10.3 - 16.1	2,800	87.1	83.9 - 89.7	3,200

PRAMS Health Indicator 3-Year Aggregate Report - Smoking 3 months before pregnancy- by State;County;DOH Race-Ethnicity;PRAMS Age Group;Infant Gender;Married;Poverty Level;Income (2000-2003);Income (2004-2011);Birthweight;Smoke 3rd Trimester;WIC During Pregnancy, for the Year(s) 2000-2002;2001-2003;2002-2004;2003-2005;2004-2006;2005-2007;2006-2008;2007-2009;2008-2010;2009-2011;2010-2012;2011-2013

Note: Weighted counts (#) represent 3-yr averages, rounded to the nearest hundred; n/r (Not Reportable) - If the unweighted total responses for a dimension (row) is <30 that row will not be shown

Years: 2009-2011

Infant Gender	Yes			No			Weighted Total Responses (3-Yr Avg)
	#	%	C.I.(95%)	#	%	C.I.(95%)	#
Male	1,900	20.1	18.2 - 22.3	7,600	79.9	77.7 - 81.8	9,500
Female	1,900	21.7	19.6 - 23.9	6,900	78.3	76.1 - 80.4	8,800

Married	Yes			No			Weighted Total Responses (3-Yr Avg)
	#	%	C.I.(95%)	#	%	C.I.(95%)	#
Yes	1,600	14.0	12.4 - 15.7	9,600	86.0	84.3 - 87.6	11,200
No	2,300	31.8	29.1 - 34.5	4,800	68.2	65.5 - 70.9	7,100

Poverty Level	Yes			No			Weighted Total Responses (3-Yr Avg)
	#	%	C.I.(95%)	#	%	C.I.(95%)	#
0-130%	1,800	27.9	25.3 - 30.7	4,700	72.1	69.3 - 74.7	6,500
131-185%	700	23.8	19.9 - 28.2	2,100	76.2	71.8 - 80.1	2,800
186+%	1,100	14.3	12.4 - 16.4	6,600	85.7	83.6 - 87.6	7,700

PRAMS Health Indicator 3-Year Aggregate Report - Smoking 3 months before pregnancy- by State;County;DOH Race-Ethnicity;PRAMS Age Group;Infant Gender;Married;Poverty Level;Income (2000-2003);Income (2004-2011);Birthweight;Smoke 3rd Trimester;WIC During Pregnancy, for the Year(s) 2000-2002;2001-2003;2002-2004;2003-2005;2004-2006;2005-2007;2006-2008;2007-2009;2008-2010;2009-2011;2010-2012;2011-2013

Note: Weighted counts (#) represent 3-yr averages, rounded to the nearest hundred; n/r (Not Reportable) - If the unweighted total responses for a dimension (row) is <30 that row will not be shown

Years: 2009-2011

Income (2004-2011)	Yes			No			Weighted Total Responses (3-Yr Avg)
	#	%	C.I.(95%)	#	%	C.I.(95%)	#
<\$10,000	1,000	30.7	26.9 - 34.8	2,300	69.3	65.2 - 73.1	3,300
\$10,000-\$24,999	900	26.1	22.7 - 29.9	2,600	73.9	70.1 - 77.3	3,500
\$25,000-\$49,999	1,000	23.5	20.4 - 27.0	3,200	76.5	73.0 - 79.6	4,200
>=\$50,000	700	11.2	9.3 - 13.4	5,400	88.8	86.6 - 90.7	6,100

Birthweight	Yes			No			Weighted Total Responses (3-Yr Avg)
	#	%	C.I.(95%)	#	%	C.I.(95%)	#
Low birth weight	300	24.5	21.8 - 27.3	1,000	75.5	72.7 - 78.2	1,300
Normal birth weight	3,500	20.6	19.1 - 22.2	13,400	79.4	77.8 - 80.9	16,900

Smoke 3rd Trimester	Yes			No			Weighted Total Responses (3-Yr Avg)
	#	%	C.I.(95%)	#	%	C.I.(95%)	#
Yes	1,400	99.1	95.5 - 99.8	<50	0.9	0.2 - 4.5	1,400
No	2,500	14.5	13.2 - 15.9	14,400	85.5	84.1 - 86.8	16,900

**PRAMS Health Indicator 3-Year Aggregate Report - Smoking 3 months before pregnancy- by State;County;DOH Race-
Ethnicity;PRAMS Age Group;Infant Gender;Married;Poverty Level;Income (2000-2003);Income (2004-2011);Birthweight;Smoke
3rd Trimester;WIC During Pregnancy, for the Year(s)
2000-2002;2001-2003;2002-2004;2003-2005;2004-2006;2005-2007;2006-2008;2007-2009;2008-2010;2009-2011;2010-2012;2011-2013**

Note: Weighted counts (#) represent 3-yr averages, rounded to the nearest hundred; n/r (Not Reportable) - If the unweighted total responses for a dimension (row) is <30 that row will not be shown

Years: 2009-2011

WIC During Pregnancy	Yes			No			Weighted Total Responses (3-Yr Avg)
	#	%	C.I.(95%)	#	%	C.I.(95%)	#
Yes	2,200	27.5	25.1 - 29.9	5,800	72.5	70.1 - 74.9	7,900
No	1,600	15.8	14.0 - 17.7	8,600	84.2	82.3 - 86.0	10,200

PRAMS Health Indicator 3-Year Aggregate Report - Smoking 3 months before pregnancy- by State;County;DOH Race-Ethnicity;PRAMS Age Group;Infant Gender;Married;Poverty Level;Income (2000-2003);Income (2004-2011);Birthweight;Smoke 3rd Trimester;WIC During Pregnancy, for the Year(s) 2000-2002;2001-2003;2002-2004;2003-2005;2004-2006;2005-2007;2006-2008;2007-2009;2008-2010;2009-2011;2010-2012;2011-2013

Note: Weighted counts (#) represent 3-yr averages, rounded to the nearest hundred; n/r (Not Reportable) - If the unweighted total responses for a dimension (row) is <30 that row will not be shown

Years: 2008-2010

State	Yes			No			Weighted Total Responses (3-Yr Avg)
	#	%	C.I.(95%)	#	%	C.I.(95%)	#
Totals	3,800	20.7	19.4 - 22.1	14,500	79.3	77.9 - 80.6	18,300

County	Yes			No			Weighted Total Responses (3-Yr Avg)
	#	%	C.I.(95%)	#	%	C.I.(95%)	#
Hawaii	600	27.0	24.2 - 30.1	1,700	73.0	69.9 - 75.8	2,400
Honolulu	2,600	19.6	17.9 - 21.4	10,500	80.4	78.6 - 82.1	13,000
Kauai	200	18.8	15.5 - 22.5	700	81.2	77.5 - 84.5	800
Maui	400	21.5	19.0 - 24.4	1,600	78.5	75.6 - 81.0	2,100

PRAMS Health Indicator 3-Year Aggregate Report - Smoking 3 months before pregnancy- by State;County;DOH Race-Ethnicity;PRAMS Age Group;Infant Gender;Married;Poverty Level;Income (2000-2003);Income (2004-2011);Birthweight;Smoke 3rd Trimester;WIC During Pregnancy, for the Year(s) 2000-2002;2001-2003;2002-2004;2003-2005;2004-2006;2005-2007;2006-2008;2007-2009;2008-2010;2009-2011;2010-2012;2011-2013

Note: Weighted counts (#) represent 3-yr averages, rounded to the nearest hundred; n/r (Not Reportable) - If the unweighted total responses for a dimension (row) is <30 that row will not be shown

Years: 2008-2010

DOH Race-Ethnicity	Yes			No			Weighted Total Responses (3-Yr Avg)
	#	%	C.I.(95%)	#	%	C.I.(95%)	#
Caucasian	800	18.9	16.4 - 21.7	3,500	81.1	78.3 - 83.6	4,400
Native Hawaiian	1,500	28.2	25.5 - 31.0	3,900	71.8	69.0 - 74.5	5,500
Chinese	100	13.2	8.1 - 20.8	600	86.8	79.2 - 91.9	700
Filipino	500	15.3	12.6 - 18.4	2,800	84.7	81.6 - 87.4	3,300
Japanese	300	19.3	15.2 - 24.2	1,400	80.7	75.8 - 84.8	1,800
Other	500	18.2	14.9 - 22.1	2,200	81.8	77.9 - 85.1	2,700

PRAMS Age Group	Yes			No			Weighted Total Responses (3-Yr Avg)
	#	%	C.I.(95%)	#	%	C.I.(95%)	#
<20	400	27.6	22.5 - 33.4	1,100	72.4	66.6 - 77.5	1,500
20-24	1,200	29.0	25.9 - 32.4	3,000	71.0	67.6 - 74.1	4,200
25-34	1,800	18.8	17.0 - 20.7	7,600	81.2	79.3 - 83.0	9,400
35+	400	12.6	10.2 - 15.4	2,900	87.4	84.6 - 89.8	3,300

PRAMS Health Indicator 3-Year Aggregate Report - Smoking 3 months before pregnancy- by State;County;DOH Race-Ethnicity;PRAMS Age Group;Infant Gender;Married;Poverty Level;Income (2000-2003);Income (2004-2011);Birthweight;Smoke 3rd Trimester;WIC During Pregnancy, for the Year(s) 2000-2002;2001-2003;2002-2004;2003-2005;2004-2006;2005-2007;2006-2008;2007-2009;2008-2010;2009-2011;2010-2012;2011-2013

Note: Weighted counts (#) represent 3-yr averages, rounded to the nearest hundred; n/r (Not Reportable) - If the unweighted total responses for a dimension (row) is <30 that row will not be shown

Years: 2008-2010

Infant Gender	Yes			No			Weighted Total Responses (3-Yr Avg)
	#	%	C.I.(95%)	#	%	C.I.(95%)	#
Male	2,000	20.6	18.8 - 22.5	7,600	79.4	77.5 - 81.2	9,600
Female	1,800	20.9	19.0 - 23.0	6,900	79.1	77.0 - 81.0	8,800

Married	Yes			No			Weighted Total Responses (3-Yr Avg)
	#	%	C.I.(95%)	#	%	C.I.(95%)	#
Yes	1,600	14.2	12.7 - 15.7	9,600	85.8	84.3 - 87.3	11,200
No	2,200	31.1	28.7 - 33.7	4,900	68.9	66.3 - 71.3	7,100

Poverty Level	Yes			No			Weighted Total Responses (3-Yr Avg)
	#	%	C.I.(95%)	#	%	C.I.(95%)	#
0-130%	1,900	29.2	26.7 - 31.9	4,700	70.8	68.1 - 73.3	6,600
131-185%	600	21.5	18.1 - 25.5	2,200	78.5	74.5 - 81.9	2,800
186+%	1,000	13.4	11.7 - 15.3	6,600	86.6	84.7 - 88.3	7,600

PRAMS Health Indicator 3-Year Aggregate Report - Smoking 3 months before pregnancy- by State;County;DOH Race-Ethnicity;PRAMS Age Group;Infant Gender;Married;Poverty Level;Income (2000-2003);Income (2004-2011);Birthweight;Smoke 3rd Trimester;WIC During Pregnancy, for the Year(s) 2000-2002;2001-2003;2002-2004;2003-2005;2004-2006;2005-2007;2006-2008;2007-2009;2008-2010;2009-2011;2010-2012;2011-2013

Note: Weighted counts (#) represent 3-yr averages, rounded to the nearest hundred; n/r (Not Reportable) - If the unweighted total responses for a dimension (row) is <30 that row will not be shown

Years: 2008-2010

Income (2004-2011)	Yes			No			Weighted Total Responses (3-Yr Avg)
	#	%	C.I.(95%)	#	%	C.I.(95%)	#
<\$10,000	1,000	30.3	26.7 - 34.2	2,200	69.7	65.8 - 73.3	3,200
\$10,000-\$24,999	1,000	28.3	25.1 - 31.7	2,600	71.7	68.3 - 74.9	3,700
\$25,000-\$49,999	900	21.4	18.6 - 24.5	3,200	78.6	75.5 - 81.4	4,100
>=\$50,000	700	11.0	9.3 - 13.0	5,500	89.0	87.0 - 90.7	6,100

Birthweight	Yes			No			Weighted Total Responses (3-Yr Avg)
	#	%	C.I.(95%)	#	%	C.I.(95%)	#
Low birth weight	300	23.1	19.9 - 26.6	1,000	76.9	73.4 - 80.1	1,300
Normal birth weight	3,500	20.5	19.1 - 22.0	13,500	79.5	78.0 - 80.9	17,000

Smoke 3rd Trimester	Yes			No			Weighted Total Responses (3-Yr Avg)
	#	%	C.I.(95%)	#	%	C.I.(95%)	#
Yes	1,600	99.2	96.1 - 99.9	<50	0.8	0.1 - 3.9	1,600
No	2,200	13.3	12.1 - 14.5	14,500	86.7	85.5 - 87.9	16,700

PRAMS Health Indicator 3-Year Aggregate Report - Smoking 3 months before pregnancy- by State;County;DOH Race- Ethnicity;PRAMS Age Group;Infant Gender;Married;Poverty Level;Income (2000-2003);Income (2004-2011);Birthweight;Smoke 3rd Trimester;WIC During Pregnancy, for the Year(s) 2000-2002;2001-2003;2002-2004;2003-2005;2004-2006;2005-2007;2006-2008;2007-2009;2008-2010;2009-2011;2010-2012;2011-2013

Note: Weighted counts (#) represent 3-yr averages, rounded to the nearest hundred; n/r (Not Reportable) - If the unweighted total responses for a dimension (row) is <30 that row will not be shown

Years: 2008-2010

WIC During Pregnancy	Yes			No			Weighted Total Responses (3-Yr Avg)
	#	%	C.I.(95%)	#	%	C.I.(95%)	#
Yes	2,200	27.8	25.6 - 30.2	5,600	72.2	69.8 - 74.4	7,800
No	1,600	15.4	13.8 - 17.1	8,800	84.6	82.9 - 86.2	10,400

PRAMS Health Indicator 3-Year Aggregate Report - Smoking 3 months before pregnancy- by State;County;DOH Race-Ethnicity;PRAMS Age Group;Infant Gender;Married;Poverty Level;Income (2000-2003);Income (2004-2011);Birthweight;Smoke 3rd Trimester;WIC During Pregnancy, for the Year(s) 2000-2002;2001-2003;2002-2004;2003-2005;2004-2006;2005-2007;2006-2008;2007-2009;2008-2010;2009-2011;2010-2012;2011-2013

Note: Weighted counts (#) represent 3-yr averages, rounded to the nearest hundred; n/r (Not Reportable) - If the unweighted total responses for a dimension (row) is <30 that row will not be shown

Years: 2007-2009

State	Yes			No			Weighted Total Responses (3-Yr Avg)
	#	%	C.I.(95%)	#	%	C.I.(95%)	#
Totals	3,700	20.4	19.1 - 21.6	14,600	79.6	78.4 - 80.9	18,400

County	Yes			No			Weighted Total Responses (3-Yr Avg)
	#	%	C.I.(95%)	#	%	C.I.(95%)	#
Hawaii	600	25.3	22.2 - 28.6	1,800	74.7	71.4 - 77.8	2,400
Honolulu	2,500	19.5	18.0 - 21.1	10,400	80.5	78.9 - 82.0	12,900
Kauai	200	19.3	15.4 - 23.9	700	80.7	76.1 - 84.6	900
Maui	400	20.4	17.6 - 23.6	1,700	79.6	76.4 - 82.4	2,100

PRAMS Health Indicator 3-Year Aggregate Report - Smoking 3 months before pregnancy- by State;County;DOH Race-Ethnicity;PRAMS Age Group;Infant Gender;Married;Poverty Level;Income (2000-2003);Income (2004-2011);Birthweight;Smoke 3rd Trimester;WIC During Pregnancy, for the Year(s) 2000-2002;2001-2003;2002-2004;2003-2005;2004-2006;2005-2007;2006-2008;2007-2009;2008-2010;2009-2011;2010-2012;2011-2013

Note: Weighted counts (#) represent 3-yr averages, rounded to the nearest hundred; n/r (Not Reportable) - If the unweighted total responses for a dimension (row) is <30 that row will not be shown

Years: 2007-2009

DOH Race-Ethnicity	Yes			No			Weighted Total Responses (3-Yr Avg)
	#	%	C.I.(95%)	#	%	C.I.(95%)	#
Caucasian	900	20.4	18.0 - 23.0	3,400	79.6	77.0 - 82.0	4,300
Native Hawaiian	1,500	28.1	25.6 - 30.9	3,800	71.9	69.1 - 74.4	5,300
Chinese	100	10.3	6.1 - 16.7	600	89.7	83.3 - 93.9	700
Filipino	400	13.1	10.9 - 15.6	2,900	86.9	84.4 - 89.1	3,400
Japanese	400	18.3	14.8 - 22.4	1,600	81.7	77.6 - 85.2	1,900
Other	500	18.1	15.2 - 21.4	2,300	81.9	78.6 - 84.8	2,800

PRAMS Age Group	Yes			No			Weighted Total Responses (3-Yr Avg)
	#	%	C.I.(95%)	#	%	C.I.(95%)	#
<20	400	26.5	21.9 - 31.7	1,200	73.5	68.3 - 78.1	1,700
20-24	1,200	28.2	25.4 - 31.2	3,100	71.8	68.8 - 74.6	4,300
25-34	1,700	18.7	17.0 - 20.4	7,500	81.3	79.6 - 83.0	9,200
35+	400	11.7	9.6 - 14.2	2,800	88.3	85.8 - 90.4	3,200

PRAMS Health Indicator 3-Year Aggregate Report - Smoking 3 months before pregnancy- by State;County;DOH Race-Ethnicity;PRAMS Age Group;Infant Gender;Married;Poverty Level;Income (2000-2003);Income (2004-2011);Birthweight;Smoke 3rd Trimester;WIC During Pregnancy, for the Year(s) 2000-2002;2001-2003;2002-2004;2003-2005;2004-2006;2005-2007;2006-2008;2007-2009;2008-2010;2009-2011;2010-2012;2011-2013

Note: Weighted counts (#) represent 3-yr averages, rounded to the nearest hundred; n/r (Not Reportable) - If the unweighted total responses for a dimension (row) is <30 that row will not be shown

Years: 2007-2009

Infant Gender	Yes			No			Weighted Total Responses (3-Yr Avg)
	#	%	C.I.(95%)	#	%	C.I.(95%)	#
Male	1,900	20.1	18.4 - 21.8	7,700	79.9	78.2 - 81.6	9,600
Female	1,800	20.7	18.9 - 22.5	6,900	79.3	77.5 - 81.1	8,700

Married	Yes			No			Weighted Total Responses (3-Yr Avg)
	#	%	C.I.(95%)	#	%	C.I.(95%)	#
Yes	1,500	13.5	12.2 - 14.9	9,700	86.5	85.1 - 87.8	11,200
No	2,200	31.2	28.9 - 33.6	4,900	68.8	66.4 - 71.1	7,100

Poverty Level	Yes			No			Weighted Total Responses (3-Yr Avg)
	#	%	C.I.(95%)	#	%	C.I.(95%)	#
0-130%	2,000	29.1	26.8 - 31.5	4,800	70.9	68.5 - 73.2	6,800
131-185%	500	19.3	16.3 - 22.8	2,200	80.7	77.2 - 83.7	2,700
186+%	1,000	13.1	11.6 - 14.7	6,500	86.9	85.3 - 88.4	7,500

PRAMS Health Indicator 3-Year Aggregate Report - Smoking 3 months before pregnancy- by State;County;DOH Race-Ethnicity;PRAMS Age Group;Infant Gender;Married;Poverty Level;Income (2000-2003);Income (2004-2011);Birthweight;Smoke 3rd Trimester;WIC During Pregnancy, for the Year(s) 2000-2002;2001-2003;2002-2004;2003-2005;2004-2006;2005-2007;2006-2008;2007-2009;2008-2010;2009-2011;2010-2012;2011-2013

Note: Weighted counts (#) represent 3-yr averages, rounded to the nearest hundred; n/r (Not Reportable) - If the unweighted total responses for a dimension (row) is <30 that row will not be shown

Years: 2007-2009

Income (2004-2011)	Yes			No			Weighted Total Responses (3-Yr Avg)
	#	%	C.I.(95%)	#	%	C.I.(95%)	#
<\$10,000	1,000	30.9	27.3 - 34.6	2,200	69.1	65.4 - 72.7	3,100
\$10,000-\$24,999	1,100	27.4	24.6 - 30.5	2,800	72.6	69.5 - 75.4	3,900
\$25,000-\$49,999	800	19.8	17.4 - 22.5	3,200	80.2	77.5 - 82.6	4,000
>=\$50,000	700	11.0	9.4 - 12.7	5,400	89.0	87.3 - 90.6	6,100

Birthweight	Yes			No			Weighted Total Responses (3-Yr Avg)
	#	%	C.I.(95%)	#	%	C.I.(95%)	#
Low birth weight	300	22.3	18.7 - 26.4	1,100	77.7	73.6 - 81.3	1,400
Normal birth weight	3,400	20.2	18.9 - 21.5	13,600	79.8	78.5 - 81.1	17,000

Smoke 3rd Trimester	Yes			No			Weighted Total Responses (3-Yr Avg)
	#	%	C.I.(95%)	#	%	C.I.(95%)	#
Yes	1,600	99.0	96.4 - 99.7	<50	1.0	0.3 - 3.6	1,600
No	2,100	12.7	11.7 - 13.8	14,600	87.3	86.2 - 88.3	16,800

**PRAMS Health Indicator 3-Year Aggregate Report - Smoking 3 months before pregnancy- by State;County;DOH Race-
 Ethnicity;PRAMS Age Group;Infant Gender;Married;Poverty Level;Income (2000-2003);Income (2004-2011);Birthweight;Smoke
 3rd Trimester;WIC During Pregnancy, for the Year(s)
 2000-2002;2001-2003;2002-2004;2003-2005;2004-2006;2005-2007;2006-2008;2007-2009;2008-2010;2009-2011;2010-2012;2011-2013**

Note: Weighted counts (#) represent 3-yr averages, rounded to the nearest hundred; n/r (Not Reportable) - If the unweighted total responses for a dimension (row) is <30 that row will not be shown

Years: 2007-2009

WIC During Pregnancy	Yes			No			Weighted Total Responses (3-Yr Avg)
	#	%	C.I.(95%)	#	%	C.I.(95%)	#
Yes	2,100	27.0	25.0 - 29.2	5,600	73.0	70.8 - 75.0	7,700
No	1,600	15.5	14.0 - 17.1	8,800	84.5	82.9 - 86.0	10,400

PRAMS Health Indicator 3-Year Aggregate Report - Smoking 3 months before pregnancy- by State;County;DOH Race-Ethnicity;PRAMS Age Group;Infant Gender;Married;Poverty Level;Income (2000-2003);Income (2004-2011);Birthweight;Smoke 3rd Trimester;WIC During Pregnancy, for the Year(s) 2000-2002;2001-2003;2002-2004;2003-2005;2004-2006;2005-2007;2006-2008;2007-2009;2008-2010;2009-2011;2010-2012;2011-2013

Note: Weighted counts (#) represent 3-yr averages, rounded to the nearest hundred; n/r (Not Reportable) - If the unweighted total responses for a dimension (row) is <30 that row will not be shown

Years: 2006-2008

State	Yes			No			Weighted Total Responses (3-Yr Avg)
	#	%	C.I.(95%)	#	%	C.I.(95%)	#
Totals	3,700	20.0	18.9 - 21.1	14,800	80.0	78.9 - 81.1	18,500

County	Yes			No			Weighted Total Responses (3-Yr Avg)
	#	%	C.I.(95%)	#	%	C.I.(95%)	#
Hawaii	600	25.5	22.1 - 29.2	1,800	74.5	70.8 - 77.9	2,400
Honolulu	2,500	19.0	17.7 - 20.4	10,600	81.0	79.6 - 82.3	13,100
Kauai	200	18.9	14.4 - 24.3	800	81.1	75.7 - 85.6	900
Maui	400	20.2	17.0 - 23.8	1,700	79.8	76.2 - 83.0	2,100

PRAMS Health Indicator 3-Year Aggregate Report - Smoking 3 months before pregnancy- by State;County;DOH Race-Ethnicity;PRAMS Age Group;Infant Gender;Married;Poverty Level;Income (2000-2003);Income (2004-2011);Birthweight;Smoke 3rd Trimester;WIC During Pregnancy, for the Year(s) 2000-2002;2001-2003;2002-2004;2003-2005;2004-2006;2005-2007;2006-2008;2007-2009;2008-2010;2009-2011;2010-2012;2011-2013

Note: Weighted counts (#) represent 3-yr averages, rounded to the nearest hundred; n/r (Not Reportable) - If the unweighted total responses for a dimension (row) is <30 that row will not be shown

Years: 2006-2008

DOH Race-Ethnicity	Yes			No			Weighted Total Responses (3-Yr Avg)
	#	%	C.I.(95%)	#	%	C.I.(95%)	#
Caucasian	900	20.8	18.5 - 23.2	3,400	79.2	76.8 - 81.5	4,300
Native Hawaiian	1,400	27.9	25.4 - 30.6	3,700	72.1	69.4 - 74.6	5,100
Chinese	<50	5.3	3.7 - 7.4	600	94.7	92.6 - 96.3	600
Filipino	400	12.8	10.9 - 15.0	3,000	87.2	85.0 - 89.1	3,400
Japanese	300	16.3	13.4 - 19.6	1,800	83.7	80.4 - 86.6	2,100
Other	600	19.2	16.5 - 22.2	2,400	80.8	77.8 - 83.5	3,000

PRAMS Age Group	Yes			No			Weighted Total Responses (3-Yr Avg)
	#	%	C.I.(95%)	#	%	C.I.(95%)	#
<20	400	27.3	22.9 - 32.2	1,100	72.7	67.8 - 77.1	1,600
20-24	1,200	27.2	24.7 - 29.9	3,200	72.8	70.1 - 75.3	4,400
25-34	1,700	18.5	17.0 - 20.1	7,500	81.5	79.9 - 83.0	9,200
35+	400	11.0	9.1 - 13.1	3,000	89.0	86.9 - 90.9	3,300

PRAMS Health Indicator 3-Year Aggregate Report - Smoking 3 months before pregnancy- by State;County;DOH Race-Ethnicity;PRAMS Age Group;Infant Gender;Married;Poverty Level;Income (2000-2003);Income (2004-2011);Birthweight;Smoke 3rd Trimester;WIC During Pregnancy, for the Year(s) 2000-2002;2001-2003;2002-2004;2003-2005;2004-2006;2005-2007;2006-2008;2007-2009;2008-2010;2009-2011;2010-2012;2011-2013

Note: Weighted counts (#) represent 3-yr averages, rounded to the nearest hundred; n/r (Not Reportable) - If the unweighted total responses for a dimension (row) is <30 that row will not be shown

Years: 2006-2008

Infant Gender	Yes			No			Weighted Total Responses (3-Yr Avg)
	#	%	C.I.(95%)	#	%	C.I.(95%)	#
Male	1,900	20.2	18.6 - 21.8	7,600	79.8	78.2 - 81.4	9,500
Female	1,800	19.8	18.2 - 21.4	7,200	80.2	78.6 - 81.8	8,900

Married	Yes			No			Weighted Total Responses (3-Yr Avg)
	#	%	C.I.(95%)	#	%	C.I.(95%)	#
Yes	1,600	13.6	12.4 - 14.8	10,000	86.4	85.2 - 87.6	11,600
No	2,100	30.8	28.6 - 33.0	4,800	69.2	67.0 - 71.4	6,900

Poverty Level	Yes			No			Weighted Total Responses (3-Yr Avg)
	#	%	C.I.(95%)	#	%	C.I.(95%)	#
0-130%	1,900	28.1	26.0 - 30.3	4,800	71.9	69.7 - 74.0	6,700
131-185%	500	20.6	17.7 - 23.9	2,100	79.4	76.1 - 82.3	2,600
186+%	1,000	13.1	11.7 - 14.6	6,800	86.9	85.4 - 88.3	7,900

PRAMS Health Indicator 3-Year Aggregate Report - Smoking 3 months before pregnancy- by State;County;DOH Race-Ethnicity;PRAMS Age Group;Infant Gender;Married;Poverty Level;Income (2000-2003);Income (2004-2011);Birthweight;Smoke 3rd Trimester;WIC During Pregnancy, for the Year(s) 2000-2002;2001-2003;2002-2004;2003-2005;2004-2006;2005-2007;2006-2008;2007-2009;2008-2010;2009-2011;2010-2012;2011-2013

Note: Weighted counts (#) represent 3-yr averages, rounded to the nearest hundred; n/r (Not Reportable) - If the unweighted total responses for a dimension (row) is <30 that row will not be shown

Years: 2006-2008

Income (2004-2011)	Yes			No			Weighted Total Responses (3-Yr Avg)
	#	%	C.I.(95%)	#	%	C.I.(95%)	#
<\$10,000	900	29.8	26.6 - 33.2	2,200	70.2	66.8 - 73.4	3,100
\$10,000-\$24,999	1,000	27.0	24.3 - 29.8	2,800	73.0	70.2 - 75.7	3,900
\$25,000-\$49,999	900	20.7	18.5 - 23.2	3,400	79.3	76.8 - 81.5	4,300
>=\$50,000	600	10.3	9.0 - 11.9	5,400	89.7	88.1 - 91.0	6,100

Birthweight	Yes			No			Weighted Total Responses (3-Yr Avg)
	#	%	C.I.(95%)	#	%	C.I.(95%)	#
Low birth weight	300	21.1	17.2 - 25.6	1,100	78.9	74.4 - 82.8	1,400
Normal birth weight	3,400	19.9	18.7 - 21.1	13,600	80.1	78.9 - 81.3	17,000

Smoke 3rd Trimester	Yes			No			Weighted Total Responses (3-Yr Avg)
	#	%	C.I.(95%)	#	%	C.I.(95%)	#
Yes	1,600	99.8	98.4 - 100.0	<50	0.2	0.0 - 1.6	1,600
No	2,100	12.3	11.4 - 13.3	14,800	87.7	86.7 - 88.6	16,900

**PRAMS Health Indicator 3-Year Aggregate Report - Smoking 3 months before pregnancy- by State;County;DOH Race-
Ethnicity;PRAMS Age Group;Infant Gender;Married;Poverty Level;Income (2000-2003);Income (2004-2011);Birthweight;Smoke
3rd Trimester;WIC During Pregnancy, for the Year(s)
2000-2002;2001-2003;2002-2004;2003-2005;2004-2006;2005-2007;2006-2008;2007-2009;2008-2010;2009-2011;2010-2012;2011-2013**

Note: Weighted counts (#) represent 3-yr averages, rounded to the nearest hundred; n/r (Not Reportable) - If the unweighted total responses for a dimension (row) is <30 that row will not be shown

Years: 2006-2008

WIC During Pregnancy	Yes			No			Weighted Total Responses (3-Yr Avg)
	#	%	C.I.(95%)	#	%	C.I.(95%)	#
Yes	2,100	26.6	24.6 - 28.6	5,700	73.4	71.4 - 75.4	7,700
No	1,600	15.0	13.8 - 16.4	8,900	85.0	83.6 - 86.2	10,400

PRAMS Health Indicator 3-Year Aggregate Report - Smoking 3 months before pregnancy- by State;County;DOH Race-Ethnicity;PRAMS Age Group;Infant Gender;Married;Poverty Level;Income (2000-2003);Income (2004-2011);Birthweight;Smoke 3rd Trimester;WIC During Pregnancy, for the Year(s) 2000-2002;2001-2003;2002-2004;2003-2005;2004-2006;2005-2007;2006-2008;2007-2009;2008-2010;2009-2011;2010-2012;2011-2013

Note: Weighted counts (#) represent 3-yr averages, rounded to the nearest hundred; n/r (Not Reportable) - If the unweighted total responses for a dimension (row) is <30 that row will not be shown

Years: 2005-2007

State	Yes			No			Weighted Total Responses (3-Yr Avg)
	#	%	C.I.(95%)	#	%	C.I.(95%)	#
Totals	3,700	20.7	19.6 - 21.9	14,300	79.3	78.1 - 80.4	18,000

County	Yes			No			Weighted Total Responses (3-Yr Avg)
	#	%	C.I.(95%)	#	%	C.I.(95%)	#
Hawaii	600	26.6	23.2 - 30.4	1,700	73.4	69.6 - 76.8	2,300
Honolulu	2,500	19.5	18.2 - 20.8	10,400	80.5	79.2 - 81.8	12,900
Kauai	200	22.2	17.3 - 28.0	700	77.8	72.0 - 82.7	900
Maui	400	21.3	17.9 - 25.1	1,500	78.7	74.9 - 82.1	1,900

PRAMS Health Indicator 3-Year Aggregate Report - Smoking 3 months before pregnancy- by State;County;DOH Race- Ethnicity;PRAMS Age Group;Infant Gender;Married;Poverty Level;Income (2000-2003);Income (2004-2011);Birthweight;Smoke 3rd Trimester;WIC During Pregnancy, for the Year(s) 2000-2002;2001-2003;2002-2004;2003-2005;2004-2006;2005-2007;2006-2008;2007-2009;2008-2010;2009-2011;2010-2012;2011-2013

Note: Weighted counts (#) represent 3-yr averages, rounded to the nearest hundred; n/r (Not Reportable) - If the unweighted total responses for a dimension (row) is <30 that row will not be shown

Years: 2005-2007

DOH Race- Ethnicity	Yes			No			Weighted Total Responses (3-Yr Avg)
	#	%	C.I.(95%)	#	%	C.I.(95%)	#
Caucasian	900	21.9	19.5 - 24.4	3,200	78.1	75.6 - 80.5	4,100
Native Hawaiian	1,400	29.0	26.5 - 31.7	3,500	71.0	68.3 - 73.5	5,000
Chinese	<50	4.2	2.9 - 6.2	600	95.8	93.8 - 97.1	600
Filipino	500	13.9	11.9 - 16.1	2,900	86.1	83.9 - 88.1	3,300
Japanese	400	17.6	14.8 - 20.9	1,800	82.4	79.1 - 85.2	2,200
Other	500	18.6	16.0 - 21.6	2,300	81.4	78.4 - 84.0	2,800

PRAMS Age Group	Yes			No			Weighted Total Responses (3-Yr Avg)
	#	%	C.I.(95%)	#	%	C.I.(95%)	#
<20	400	27.9	23.5 - 32.7	1,100	72.1	67.3 - 76.5	1,600
20-24	1,300	28.5	26.0 - 31.2	3,200	71.5	68.8 - 74.0	4,400
25-34	1,700	19.0	17.5 - 20.7	7,200	81.0	79.3 - 82.5	8,800
35+	300	11.0	9.1 - 13.2	2,800	89.0	86.8 - 90.9	3,200

PRAMS Health Indicator 3-Year Aggregate Report - Smoking 3 months before pregnancy- by State;County;DOH Race-Ethnicity;PRAMS Age Group;Infant Gender;Married;Poverty Level;Income (2000-2003);Income (2004-2011);Birthweight;Smoke 3rd Trimester;WIC During Pregnancy, for the Year(s) 2000-2002;2001-2003;2002-2004;2003-2005;2004-2006;2005-2007;2006-2008;2007-2009;2008-2010;2009-2011;2010-2012;2011-2013

Note: Weighted counts (#) represent 3-yr averages, rounded to the nearest hundred; n/r (Not Reportable) - If the unweighted total responses for a dimension (row) is <30 that row will not be shown

Years: 2005-2007

	Yes			No			Weighted Total Responses (3-Yr Avg)
	#	%	C.I.(95%)	#	%	C.I.(95%)	#
Infant Gender							
Male	1,900	20.7	19.1 - 22.3	7,300	79.3	77.7 - 80.9	9,200
Female	1,800	20.8	19.2 - 22.5	7,000	79.2	77.5 - 80.8	8,800

	Yes			No			Weighted Total Responses (3-Yr Avg)
	#	%	C.I.(95%)	#	%	C.I.(95%)	#
Married							
Yes	1,500	13.5	12.4 - 14.7	9,800	86.5	85.3 - 87.6	11,400
No	2,200	33.1	30.8 - 35.3	4,400	66.9	64.7 - 69.2	6,600

	Yes			No			Weighted Total Responses (3-Yr Avg)
	#	%	C.I.(95%)	#	%	C.I.(95%)	#
Poverty Level							
0-130%	1,900	29.8	27.7 - 32.1	4,500	70.2	67.9 - 72.3	6,500
131-185%	500	20.5	17.5 - 23.8	1,900	79.5	76.2 - 82.5	2,300
186+%	1,100	13.7	12.3 - 15.2	6,800	86.3	84.8 - 87.7	7,800

PRAMS Health Indicator 3-Year Aggregate Report - Smoking 3 months before pregnancy- by State;County;DOH Race-Ethnicity;PRAMS Age Group;Infant Gender;Married;Poverty Level;Income (2000-2003);Income (2004-2011);Birthweight;Smoke 3rd Trimester;WIC During Pregnancy, for the Year(s) 2000-2002;2001-2003;2002-2004;2003-2005;2004-2006;2005-2007;2006-2008;2007-2009;2008-2010;2009-2011;2010-2012;2011-2013

Note: Weighted counts (#) represent 3-yr averages, rounded to the nearest hundred; n/r (Not Reportable) - If the unweighted total responses for a dimension (row) is <30 that row will not be shown

Years: 2005-2007

Income (2004-2011)	Yes			No			Weighted Total Responses (3-Yr Avg)
	#	%	C.I.(95%)	#	%	C.I.(95%)	#
<\$10,000	1,000	33.9	30.6 - 37.4	2,000	66.1	62.6 - 69.4	3,000
\$10,000-\$24,999	1,000	26.5	23.9 - 29.4	2,800	73.5	70.6 - 76.1	3,700
\$25,000-\$49,999	900	20.7	18.4 - 23.1	3,300	79.3	76.9 - 81.6	4,200
>=\$50,000	600	10.8	9.4 - 12.4	5,200	89.2	87.6 - 90.6	5,800

Birthweight	Yes			No			Weighted Total Responses (3-Yr Avg)
	#	%	C.I.(95%)	#	%	C.I.(95%)	#
Low birth weight	300	22.0	18.1 - 26.5	1,100	78.0	73.5 - 81.9	1,400
Normal birth weight	3,400	20.6	19.5 - 21.8	13,100	79.4	78.2 - 80.5	16,500

Smoke 3rd Trimester	Yes			No			Weighted Total Responses (3-Yr Avg)
	#	%	C.I.(95%)	#	%	C.I.(95%)	#
Yes	1,600	99.5	98.1 - 99.9	<50	0.5	0.1 - 1.9	1,600
No	2,200	13.2	12.2 - 14.2	14,300	86.8	85.8 - 87.8	16,400

PRAMS Health Indicator 3-Year Aggregate Report - Smoking 3 months before pregnancy- by State;County;DOH Race-Ethnicity;PRAMS Age Group;Infant Gender;Married;Poverty Level;Income (2000-2003);Income (2004-2011);Birthweight;Smoke 3rd Trimester;WIC During Pregnancy, for the Year(s) 2000-2002;2001-2003;2002-2004;2003-2005;2004-2006;2005-2007;2006-2008;2007-2009;2008-2010;2009-2011;2010-2012;2011-2013

Note: Weighted counts (#) represent 3-yr averages, rounded to the nearest hundred; n/r (Not Reportable) - If the unweighted total responses for a dimension (row) is <30 that row will not be shown

Years: 2005-2007

WIC During Pregnancy	Yes			No			Weighted Total Responses (3-Yr Avg)
	#	%	C.I.(95%)	#	%	C.I.(95%)	#
Yes	2,100	27.3	25.3 - 29.3	5,500	72.7	70.7 - 74.7	7,500
No	1,600	15.9	14.6 - 17.3	8,500	84.1	82.7 - 85.4	10,100

PRAMS Health Indicator 3-Year Aggregate Report - Smoking 3 months before pregnancy- by State;County;DOH Race-Ethnicity;PRAMS Age Group;Infant Gender;Married;Poverty Level;Income (2000-2003);Income (2004-2011);Birthweight;Smoke 3rd Trimester;WIC During Pregnancy, for the Year(s) 2000-2002;2001-2003;2002-2004;2003-2005;2004-2006;2005-2007;2006-2008;2007-2009;2008-2010;2009-2011;2010-2012;2011-2013

Note: Weighted counts (#) represent 3-yr averages, rounded to the nearest hundred; n/r (Not Reportable) - If the unweighted total responses for a dimension (row) is <30 that row will not be shown

Years: 2004-2006

State	Yes			No			Weighted Total Responses (3-Yr Avg)
	#	%	C.I.(95%)	#	%	C.I.(95%)	#
Totals	3,700	21.0	19.9 - 22.1	14,000	79.0	77.9 - 80.1	17,700

County	Yes			No			Weighted Total Responses (3-Yr Avg)
	#	%	C.I.(95%)	#	%	C.I.(95%)	#
Hawaii	600	27.3	23.9 - 31.0	1,600	72.7	69.0 - 76.1	2,200
Honolulu	2,500	19.6	18.3 - 20.9	10,400	80.4	79.1 - 81.7	12,900
Kauai	200	22.8	17.7 - 28.8	600	77.2	71.2 - 82.3	800
Maui	400	22.9	19.4 - 26.7	1,400	77.1	73.3 - 80.6	1,800

PRAMS Health Indicator 3-Year Aggregate Report - Smoking 3 months before pregnancy- by State;County;DOH Race-Ethnicity;PRAMS Age Group;Infant Gender;Married;Poverty Level;Income (2000-2003);Income (2004-2011);Birthweight;Smoke 3rd Trimester;WIC During Pregnancy, for the Year(s) 2000-2002;2001-2003;2002-2004;2003-2005;2004-2006;2005-2007;2006-2008;2007-2009;2008-2010;2009-2011;2010-2012;2011-2013

Note: Weighted counts (#) represent 3-yr averages, rounded to the nearest hundred; n/r (Not Reportable) - If the unweighted total responses for a dimension (row) is <30 that row will not be shown

Years: 2004-2006

DOH Race-Ethnicity	Yes			No			Weighted Total Responses (3-Yr Avg)
	#	%	C.I.(95%)	#	%	C.I.(95%)	#
Caucasian	800	21.1	18.9 - 23.6	3,100	78.9	76.4 - 81.1	4,000
Native Hawaiian	1,500	29.7	27.2 - 32.4	3,400	70.3	67.6 - 72.8	4,900
Chinese	<50	4.2	3.1 - 5.8	600	95.8	94.2 - 96.9	600
Filipino	500	14.1	12.1 - 16.2	2,800	85.9	83.8 - 87.9	3,300
Japanese	400	18.2	15.4 - 21.4	1,800	81.8	78.6 - 84.6	2,200
Other	500	19.7	17.0 - 22.7	2,100	80.3	77.3 - 83.0	2,700

PRAMS Age Group	Yes			No			Weighted Total Responses (3-Yr Avg)
	#	%	C.I.(95%)	#	%	C.I.(95%)	#
<20	500	32.0	27.4 - 37.0	1,000	68.0	63.0 - 72.6	1,400
20-24	1,200	28.5	26.0 - 31.1	3,100	71.5	68.9 - 74.0	4,400
25-34	1,600	18.9	17.5 - 20.5	7,000	81.1	79.5 - 82.5	8,700
35+	400	11.5	9.7 - 13.7	2,900	88.5	86.3 - 90.3	3,200

**PRAMS Health Indicator 3-Year Aggregate Report - Smoking 3 months before pregnancy- by State;County;DOH Race-
Ethnicity;PRAMS Age Group;Infant Gender;Married;Poverty Level;Income (2000-2003);Income (2004-2011);Birthweight;Smoke
3rd Trimester;WIC During Pregnancy, for the Year(s)
2000-2002;2001-2003;2002-2004;2003-2005;2004-2006;2005-2007;2006-2008;2007-2009;2008-2010;2009-2011;2010-2012;2011-2013**

Note: Weighted counts (#) represent 3-yr averages, rounded to the nearest hundred; n/r (Not Reportable) - If the unweighted total responses for a dimension (row) is <30 that row will not be shown

Years: 2004-2006

Infant Gender	Yes			No			Weighted Total Responses (3-Yr Avg)
	#	%	C.I.(95%)	#	%	C.I.(95%)	#
Male	1,900	21.0	19.5 - 22.6	7,300	79.0	77.4 - 80.5	9,200
Female	1,800	21.0	19.4 - 22.7	6,700	79.0	77.3 - 80.6	8,500

Married	Yes			No			Weighted Total Responses (3-Yr Avg)
	#	%	C.I.(95%)	#	%	C.I.(95%)	#
Yes	1,700	14.3	13.2 - 15.5	10,000	85.7	84.5 - 86.8	11,700
No	2,100	33.9	31.7 - 36.3	4,000	66.1	63.7 - 68.3	6,100

Poverty Level	Yes			No			Weighted Total Responses (3-Yr Avg)
	#	%	C.I.(95%)	#	%	C.I.(95%)	#
0-130%	1,900	30.0	27.9 - 32.2	4,400	70.0	67.8 - 72.1	6,300
131-185%	500	24.0	20.8 - 27.6	1,600	76.0	72.4 - 79.2	2,100
186+%	1,000	13.1	11.8 - 14.6	6,900	86.9	85.4 - 88.2	7,900

PRAMS Health Indicator 3-Year Aggregate Report - Smoking 3 months before pregnancy- by State;County;DOH Race-Ethnicity;PRAMS Age Group;Infant Gender;Married;Poverty Level;Income (2000-2003);Income (2004-2011);Birthweight;Smoke 3rd Trimester;WIC During Pregnancy, for the Year(s) 2000-2002;2001-2003;2002-2004;2003-2005;2004-2006;2005-2007;2006-2008;2007-2009;2008-2010;2009-2011;2010-2012;2011-2013

Note: Weighted counts (#) represent 3-yr averages, rounded to the nearest hundred; n/r (Not Reportable) - If the unweighted total responses for a dimension (row) is <30 that row will not be shown

Years: 2004-2006

Income (2004-2011)	Yes			No			Weighted Total Responses (3-Yr Avg)
	#	%	C.I.(95%)	#	%	C.I.(95%)	#
<\$10,000	1,000	33.7	30.4 - 37.1	1,900	66.3	62.9 - 69.6	2,900
\$10,000-\$24,999	1,100	28.2	25.7 - 31.0	2,800	71.8	69.0 - 74.3	3,900
\$25,000-\$49,999	800	19.4	17.3 - 21.7	3,400	80.6	78.3 - 82.7	4,300
>=\$50,000	600	10.6	9.2 - 12.2	4,800	89.4	87.8 - 90.8	5,400

Birthweight	Yes			No			Weighted Total Responses (3-Yr Avg)
	#	%	C.I.(95%)	#	%	C.I.(95%)	#
Low birth weight	300	22.8	18.8 - 27.5	1,000	77.2	72.5 - 81.2	1,300
Normal birth weight	3,400	20.9	19.7 - 22.1	13,000	79.1	77.9 - 80.3	16,400

Smoke 3rd Trimester	Yes			No			Weighted Total Responses (3-Yr Avg)
	#	%	C.I.(95%)	#	%	C.I.(95%)	#
Yes	1,500	99.4	97.8 - 99.8	<50	0.6	0.2 - 2.2	1,500
No	2,200	13.6	12.7 - 14.6	14,000	86.4	85.4 - 87.3	16,200

PRAMS Health Indicator 3-Year Aggregate Report - Smoking 3 months before pregnancy- by State;County;DOH Race-Ethnicity;PRAMS Age Group;Infant Gender;Married;Poverty Level;Income (2000-2003);Income (2004-2011);Birthweight;Smoke 3rd Trimester;WIC During Pregnancy, for the Year(s) 2000-2002;2001-2003;2002-2004;2003-2005;2004-2006;2005-2007;2006-2008;2007-2009;2008-2010;2009-2011;2010-2012;2011-2013

Note: Weighted counts (#) represent 3-yr averages, rounded to the nearest hundred; n/r (Not Reportable) - If the unweighted total responses for a dimension (row) is <30 that row will not be shown

Years: 2004-2006

WIC During Pregnancy	Yes			No			Weighted Total Responses (3-Yr Avg)
	#	%	C.I.(95%)	#	%	C.I.(95%)	#
Yes	2,100	27.5	25.7 - 29.5	5,500	72.5	70.5 - 74.3	7,600
No	1,600	16.2	14.9 - 17.6	8,200	83.8	82.4 - 85.1	9,800

PRAMS Health Indicator 3-Year Aggregate Report - Smoking 3 months before pregnancy- by State;County;DOH Race-Ethnicity;PRAMS Age Group;Infant Gender;Married;Poverty Level;Income (2000-2003);Income (2004-2011);Birthweight;Smoke 3rd Trimester;WIC During Pregnancy, for the Year(s) 2000-2002;2001-2003;2002-2004;2003-2005;2004-2006;2005-2007;2006-2008;2007-2009;2008-2010;2009-2011;2010-2012;2011-2013

Note: Weighted counts (#) represent 3-yr averages, rounded to the nearest hundred; n/r (Not Reportable) - If the unweighted total responses for a dimension (row) is <30 that row will not be shown

Years: 2003-2005

State	Yes			No			Weighted Total Responses (3-Yr Avg)
	#	%	C.I.(95%)	#	%	C.I.(95%)	#
Totals	3,600	20.9	19.7 - 22.0	13,700	79.1	78.0 - 80.3	17,300

County	Yes			No			Weighted Total Responses (3-Yr Avg)
	#	%	C.I.(95%)	#	%	C.I.(95%)	#
Hawaii	600	26.5	23.5 - 29.7	1,600	73.5	70.3 - 76.5	2,100
Honolulu	2,500	19.7	18.4 - 21.1	10,200	80.3	78.9 - 81.6	12,700
Kauai	200	21.9	17.5 - 27.1	600	78.1	72.9 - 82.5	800
Maui	400	22.0	18.9 - 25.3	1,400	78.0	74.7 - 81.1	1,800

PRAMS Health Indicator 3-Year Aggregate Report - Smoking 3 months before pregnancy- by State;County;DOH Race-Ethnicity;PRAMS Age Group;Infant Gender;Married;Poverty Level;Income (2000-2003);Income (2004-2011);Birthweight;Smoke 3rd Trimester;WIC During Pregnancy, for the Year(s) 2000-2002;2001-2003;2002-2004;2003-2005;2004-2006;2005-2007;2006-2008;2007-2009;2008-2010;2009-2011;2010-2012;2011-2013

Note: Weighted counts (#) represent 3-yr averages, rounded to the nearest hundred; n/r (Not Reportable) - If the unweighted total responses for a dimension (row) is <30 that row will not be shown

Years: 2003-2005

DOH Race-Ethnicity	Yes			No			Weighted Total Responses (3-Yr Avg)
	#	%	C.I.(95%)	#	%	C.I.(95%)	#
Caucasian	800	20.9	18.5 - 23.6	3,000	79.1	76.4 - 81.5	3,800
Native Hawaiian	1,400	29.9	27.6 - 32.2	3,300	70.1	67.8 - 72.4	4,700
Chinese	<50	4.3	2.5 - 7.5	600	95.7	92.5 - 97.5	700
Filipino	500	15.5	13.3 - 18.0	2,900	84.5	82.0 - 86.7	3,500
Japanese	400	19.2	16.1 - 22.8	1,800	80.8	77.2 - 83.9	2,200
Other	400	16.9	14.1 - 20.0	2,100	83.1	80.0 - 85.9	2,500

PRAMS Age Group	Yes			No			Weighted Total Responses (3-Yr Avg)
	#	%	C.I.(95%)	#	%	C.I.(95%)	#
<20	500	32.7	28.2 - 37.5	1,000	67.3	62.5 - 71.8	1,400
20-24	1,300	29.9	27.4 - 32.6	3,000	70.1	67.4 - 72.6	4,200
25-34	1,500	17.8	16.3 - 19.4	7,100	82.2	80.6 - 83.7	8,600
35+	400	11.5	9.6 - 13.9	2,700	88.5	86.1 - 90.4	3,100

PRAMS Health Indicator 3-Year Aggregate Report - Smoking 3 months before pregnancy- by State;County;DOH Race-Ethnicity;PRAMS Age Group;Infant Gender;Married;Poverty Level;Income (2000-2003);Income (2004-2011);Birthweight;Smoke 3rd Trimester;WIC During Pregnancy, for the Year(s) 2000-2002;2001-2003;2002-2004;2003-2005;2004-2006;2005-2007;2006-2008;2007-2009;2008-2010;2009-2011;2010-2012;2011-2013

Note: Weighted counts (#) represent 3-yr averages, rounded to the nearest hundred; n/r (Not Reportable) - If the unweighted total responses for a dimension (row) is <30 that row will not be shown

Years: 2003-2005

	Yes			No			Weighted Total Responses (3-Yr Avg)
	#	%	C.I.(95%)	#	%	C.I.(95%)	#
Infant Gender							
Male	1,900	20.4	18.9 - 22.0	7,300	79.6	78.0 - 81.1	9,200
Female	1,800	21.4	19.7 - 23.1	6,400	78.6	76.9 - 80.3	8,200

	Yes			No			Weighted Total Responses (3-Yr Avg)
	#	%	C.I.(95%)	#	%	C.I.(95%)	#
Married							
Yes	1,700	14.5	13.3 - 15.8	9,900	85.5	84.2 - 86.7	11,600
No	1,900	33.7	31.4 - 36.0	3,800	66.3	64.0 - 68.6	5,800

	Yes			No			Weighted Total Responses (3-Yr Avg)
	#	%	C.I.(95%)	#	%	C.I.(95%)	#
Poverty Level							
0-130%	2,000	29.2	27.2 - 31.3	4,800	70.8	68.7 - 72.8	6,700
131-185%	400	19.7	16.7 - 23.1	1,700	80.3	76.9 - 83.3	2,100
186+%	900	12.9	11.5 - 14.5	6,100	87.1	85.5 - 88.5	7,000

PRAMS Health Indicator 3-Year Aggregate Report - Smoking 3 months before pregnancy- by State;County;DOH Race-Ethnicity;PRAMS Age Group;Infant Gender;Married;Poverty Level;Income (2000-2003);Income (2004-2011);Birthweight;Smoke 3rd Trimester;WIC During Pregnancy, for the Year(s) 2000-2002;2001-2003;2002-2004;2003-2005;2004-2006;2005-2007;2006-2008;2007-2009;2008-2010;2009-2011;2010-2012;2011-2013

Note: Weighted counts (#) represent 3-yr averages, rounded to the nearest hundred; n/r (Not Reportable) - If the unweighted total responses for a dimension (row) is <30 that row will not be shown

Years: 2003-2005

Birthweight	Yes			No			Weighted Total Responses (3-Yr Avg)
	#	%	C.I.(95%)	#	%	C.I.(95%)	#
Low birth weight	300	21.6	17.5 - 26.3	900	78.4	73.7 - 82.5	1,200
Normal birth weight	3,400	20.8	19.6 - 22.0	12,800	79.2	78.0 - 80.4	16,200

Smoke 3rd Trimester	Yes			No			Weighted Total Responses (3-Yr Avg)
	#	%	C.I.(95%)	#	%	C.I.(95%)	#
Yes	1,500	99.4	97.8 - 99.8	<50	0.6	0.2 - 2.2	1,500
No	2,100	13.5	12.5 - 14.5	13,700	86.5	85.5 - 87.5	15,900

WIC During Pregnancy	Yes			No			Weighted Total Responses (3-Yr Avg)
	#	%	C.I.(95%)	#	%	C.I.(95%)	#
Yes	2,000	27.2	25.3 - 29.1	5,400	72.8	70.9 - 74.7	7,400
No	1,600	16.2	14.8 - 17.7	8,100	83.8	82.3 - 85.2	9,700

PRAMS Health Indicator 3-Year Aggregate Report - Smoking 3 months before pregnancy- by State;County;DOH Race-Ethnicity;PRAMS Age Group;Infant Gender;Married;Poverty Level;Income (2000-2003);Income (2004-2011);Birthweight;Smoke 3rd Trimester;WIC During Pregnancy, for the Year(s) 2000-2002;2001-2003;2002-2004;2003-2005;2004-2006;2005-2007;2006-2008;2007-2009;2008-2010;2009-2011;2010-2012;2011-2013

Note: Weighted counts (#) represent 3-yr averages, rounded to the nearest hundred; n/r (Not Reportable) - If the unweighted total responses for a dimension (row) is <30 that row will not be shown

Years: 2002-2004

State	Yes			No			Weighted Total Responses (3-Yr Avg)
	#	%	C.I.(95%)	#	%	C.I.(95%)	#
Totals	3,500	20.4	19.3 - 21.6	13,700	79.6	78.4 - 80.7	17,200

County	Yes			No			Weighted Total Responses (3-Yr Avg)
	#	%	C.I.(95%)	#	%	C.I.(95%)	#
Hawaii	600	27.7	25.0 - 30.5	1,500	72.3	69.5 - 75.0	2,000
Honolulu	2,400	19.0	17.6 - 20.5	10,200	81.0	79.5 - 82.4	12,600
Kauai	200	22.7	18.7 - 27.2	600	77.3	72.8 - 81.3	800
Maui	400	21.0	18.5 - 23.8	1,400	79.0	76.2 - 81.5	1,800

PRAMS Health Indicator 3-Year Aggregate Report - Smoking 3 months before pregnancy- by State;County;DOH Race-Ethnicity;PRAMS Age Group;Infant Gender;Married;Poverty Level;Income (2000-2003);Income (2004-2011);Birthweight;Smoke 3rd Trimester;WIC During Pregnancy, for the Year(s) 2000-2002;2001-2003;2002-2004;2003-2005;2004-2006;2005-2007;2006-2008;2007-2009;2008-2010;2009-2011;2010-2012;2011-2013

Note: Weighted counts (#) represent 3-yr averages, rounded to the nearest hundred; n/r (Not Reportable) - If the unweighted total responses for a dimension (row) is <30 that row will not be shown

Years: 2002-2004

DOH Race-Ethnicity	Yes			No			Weighted Total Responses (3-Yr Avg)
	#	%	C.I.(95%)	#	%	C.I.(95%)	#
Caucasian	800	21.2	18.5 - 24.1	2,900	78.8	75.9 - 81.5	3,700
Native Hawaiian	1,400	29.4	27.5 - 31.3	3,300	70.6	68.7 - 72.5	4,600
Chinese	<50	4.4	2.2 - 8.6	600	95.6	91.4 - 97.8	700
Filipino	500	14.6	12.3 - 17.2	3,000	85.4	82.8 - 87.7	3,500
Japanese	400	17.8	14.6 - 21.7	1,800	82.2	78.3 - 85.4	2,200
Other	400	17.3	14.2 - 21.0	2,000	82.7	79.0 - 85.8	2,400

PRAMS Age Group	Yes			No			Weighted Total Responses (3-Yr Avg)
	#	%	C.I.(95%)	#	%	C.I.(95%)	#
<20	400	30.9	26.6 - 35.6	1,000	69.1	64.4 - 73.4	1,400
20-24	1,300	30.6	28.0 - 33.4	2,900	69.4	66.6 - 72.0	4,200
25-34	1,400	16.9	15.4 - 18.5	7,100	83.1	81.5 - 84.6	8,500
35+	300	11.3	9.3 - 13.7	2,700	88.7	86.3 - 90.7	3,000

PRAMS Health Indicator 3-Year Aggregate Report - Smoking 3 months before pregnancy- by State;County;DOH Race-Ethnicity;PRAMS Age Group;Infant Gender;Married;Poverty Level;Income (2000-2003);Income (2004-2011);Birthweight;Smoke 3rd Trimester;WIC During Pregnancy, for the Year(s) 2000-2002;2001-2003;2002-2004;2003-2005;2004-2006;2005-2007;2006-2008;2007-2009;2008-2010;2009-2011;2010-2012;2011-2013

Note: Weighted counts (#) represent 3-yr averages, rounded to the nearest hundred; n/r (Not Reportable) - If the unweighted total responses for a dimension (row) is <30 that row will not be shown

Years: 2002-2004

	Yes			No			Weighted Total Responses (3-Yr Avg)
	#	%	C.I.(95%)	#	%	C.I.(95%)	#
Infant Gender							
Male	1,800	19.9	18.4 - 21.6	7,200	80.1	78.4 - 81.6	9,000
Female	1,700	20.9	19.3 - 22.7	6,500	79.1	77.3 - 80.7	8,200

	Yes			No			Weighted Total Responses (3-Yr Avg)
	#	%	C.I.(95%)	#	%	C.I.(95%)	#
Married							
Yes	1,700	14.6	13.3 - 15.9	10,000	85.4	84.1 - 86.7	11,700
No	1,800	32.9	30.7 - 35.3	3,600	67.1	64.7 - 69.3	5,400

	Yes			No			Weighted Total Responses (3-Yr Avg)
	#	%	C.I.(95%)	#	%	C.I.(95%)	#
Poverty Level							
0-130%	1,900	28.0	26.0 - 30.1	4,900	72.0	69.9 - 74.0	6,800
131-185%	500	19.6	16.7 - 22.9	2,100	80.4	77.1 - 83.3	2,700
186+%	700	12.0	10.4 - 13.7	5,400	88.0	86.3 - 89.6	6,200

PRAMS Health Indicator 3-Year Aggregate Report - Smoking 3 months before pregnancy- by State;County;DOH Race-Ethnicity;PRAMS Age Group;Infant Gender;Married;Poverty Level;Income (2000-2003);Income (2004-2011);Birthweight;Smoke 3rd Trimester;WIC During Pregnancy, for the Year(s) 2000-2002;2001-2003;2002-2004;2003-2005;2004-2006;2005-2007;2006-2008;2007-2009;2008-2010;2009-2011;2010-2012;2011-2013

Note: Weighted counts (#) represent 3-yr averages, rounded to the nearest hundred; n/r (Not Reportable) - If the unweighted total responses for a dimension (row) is <30 that row will not be shown

Years: 2002-2004

Birthweight	Yes			No			Weighted Total Responses (3-Yr Avg)
	#	%	C.I.(95%)	#	%	C.I.(95%)	#
Low birth weight	200	20.4	16.3 - 25.2	900	79.6	74.8 - 83.7	1,100
Normal birth weight	3,300	20.4	19.2 - 21.6	12,700	79.6	78.4 - 80.8	16,000

Smoke 3rd Trimester	Yes			No			Weighted Total Responses (3-Yr Avg)
	#	%	C.I.(95%)	#	%	C.I.(95%)	#
Yes	1,400	99.5	98.0 - 99.9	<50	0.5	0.1 - 2.0	1,400
No	2,000	12.9	11.9 - 14.0	13,600	87.1	86.0 - 88.1	15,700

WIC During Pregnancy	Yes			No			Weighted Total Responses (3-Yr Avg)
	#	%	C.I.(95%)	#	%	C.I.(95%)	#
Yes	2,000	27.1	25.2 - 29.1	5,300	72.9	70.9 - 74.8	7,300
No	1,500	15.6	14.2 - 17.1	8,200	84.4	82.9 - 85.8	9,700

PRAMS Health Indicator 3-Year Aggregate Report - Smoking 3 months before pregnancy- by State;County;DOH Race-Ethnicity;PRAMS Age Group;Infant Gender;Married;Poverty Level;Income (2000-2003);Income (2004-2011);Birthweight;Smoke 3rd Trimester;WIC During Pregnancy, for the Year(s) 2000-2002;2001-2003;2002-2004;2003-2005;2004-2006;2005-2007;2006-2008;2007-2009;2008-2010;2009-2011;2010-2012;2011-2013

Note: Weighted counts (#) represent 3-yr averages, rounded to the nearest hundred; n/r (Not Reportable) - If the unweighted total responses for a dimension (row) is <30 that row will not be shown

Years: 2001-2003

State	Yes			No			Weighted Total Responses (3-Yr Avg)
	#	%	C.I.(95%)	#	%	C.I.(95%)	#
Totals	3,400	20.5	19.3 - 21.7	13,300	79.5	78.3 - 80.7	16,700

County	Yes			No			Weighted Total Responses (3-Yr Avg)
	#	%	C.I.(95%)	#	%	C.I.(95%)	#
Hawaii	500	28.4	26.1 - 30.9	1,400	71.6	69.1 - 73.9	1,900
Honolulu	2,300	19.0	17.6 - 20.6	9,900	81.0	79.4 - 82.4	12,300
Kauai	200	24.4	20.7 - 28.4	600	75.6	71.6 - 79.3	700
Maui	400	20.3	18.1 - 22.7	1,400	79.7	77.3 - 81.9	1,700

PRAMS Health Indicator 3-Year Aggregate Report - Smoking 3 months before pregnancy- by State;County;DOH Race-Ethnicity;PRAMS Age Group;Infant Gender;Married;Poverty Level;Income (2000-2003);Income (2004-2011);Birthweight;Smoke 3rd Trimester;WIC During Pregnancy, for the Year(s) 2000-2002;2001-2003;2002-2004;2003-2005;2004-2006;2005-2007;2006-2008;2007-2009;2008-2010;2009-2011;2010-2012;2011-2013

Note: Weighted counts (#) represent 3-yr averages, rounded to the nearest hundred; n/r (Not Reportable) - If the unweighted total responses for a dimension (row) is <30 that row will not be shown

Years: 2001-2003

DOH Race-Ethnicity	Yes			No			Weighted Total Responses (3-Yr Avg)
	#	%	C.I.(95%)	#	%	C.I.(95%)	#
Caucasian	800	21.4	18.7 - 24.5	2,800	78.6	75.5 - 81.3	3,600
Native Hawaiian	1,300	29.9	28.4 - 31.4	3,100	70.1	68.6 - 71.6	4,500
Chinese	<50	5.3	2.5 - 10.8	600	94.7	89.2 - 97.5	700
Filipino	500	15.0	12.6 - 17.7	3,000	85.0	82.3 - 87.4	3,500
Japanese	300	15.9	12.7 - 19.9	1,800	84.1	80.1 - 87.3	2,100
Other	400	17.8	14.4 - 21.8	1,900	82.2	78.2 - 85.6	2,300

PRAMS Age Group	Yes			No			Weighted Total Responses (3-Yr Avg)
	#	%	C.I.(95%)	#	%	C.I.(95%)	#
<20	400	29.1	25.2 - 33.3	1,100	70.9	66.7 - 74.8	1,500
20-24	1,300	31.2	28.7 - 33.9	2,800	68.8	66.1 - 71.3	4,100
25-34	1,400	17.0	15.4 - 18.6	6,900	83.0	81.4 - 84.6	8,300
35+	300	10.6	8.6 - 13.1	2,500	89.4	86.9 - 91.4	2,800

PRAMS Health Indicator 3-Year Aggregate Report - Smoking 3 months before pregnancy- by State;County;DOH Race-Ethnicity;PRAMS Age Group;Infant Gender;Married;Poverty Level;Income (2000-2003);Income (2004-2011);Birthweight;Smoke 3rd Trimester;WIC During Pregnancy, for the Year(s) 2000-2002;2001-2003;2002-2004;2003-2005;2004-2006;2005-2007;2006-2008;2007-2009;2008-2010;2009-2011;2010-2012;2011-2013

Note: Weighted counts (#) represent 3-yr averages, rounded to the nearest hundred; n/r (Not Reportable) - If the unweighted total responses for a dimension (row) is <30 that row will not be shown

Years: 2001-2003

Infant Gender	Yes			No			Weighted Total Responses (3-Yr Avg)
	#	%	C.I.(95%)	#	%	C.I.(95%)	#
Male	1,700	20.4	18.9 - 22.1	6,800	79.6	77.9 - 81.1	8,500
Female	1,700	20.5	18.9 - 22.2	6,500	79.5	77.8 - 81.1	8,100

Married	Yes			No			Weighted Total Responses (3-Yr Avg)
	#	%	C.I.(95%)	#	%	C.I.(95%)	#
Yes	1,600	14.5	13.2 - 15.9	9,600	85.5	84.1 - 86.8	11,200
No	1,800	32.8	30.7 - 35.1	3,700	67.2	64.9 - 69.3	5,400

Poverty Level	Yes			No			Weighted Total Responses (3-Yr Avg)
	#	%	C.I.(95%)	#	%	C.I.(95%)	#
0-130%	1,900	28.5	26.5 - 30.5	4,800	71.5	69.5 - 73.5	6,700
131-185%	600	18.2	15.7 - 21.1	2,600	81.8	78.9 - 84.3	3,100
186+%	600	11.4	9.8 - 13.3	4,800	88.6	86.7 - 90.2	5,400

PRAMS Health Indicator 3-Year Aggregate Report - Smoking 3 months before pregnancy- by State;County;DOH Race-Ethnicity;PRAMS Age Group;Infant Gender;Married;Poverty Level;Income (2000-2003);Income (2004-2011);Birthweight;Smoke 3rd Trimester;WIC During Pregnancy, for the Year(s) 2000-2002;2001-2003;2002-2004;2003-2005;2004-2006;2005-2007;2006-2008;2007-2009;2008-2010;2009-2011;2010-2012;2011-2013

Note: Weighted counts (#) represent 3-yr averages, rounded to the nearest hundred; n/r (Not Reportable) - If the unweighted total responses for a dimension (row) is <30 that row will not be shown

Years: 2001-2003

Income (2000-2003)	Yes			No			Weighted Total Responses (3-Yr Avg)
	#	%	C.I.(95%)	#	%	C.I.(95%)	#
<=\$15,000	1,200	34.1	31.3 - 37.0	2,300	65.9	63.0 - 68.7	3,500
\$15,001-\$25,000	600	26.4	23.0 - 30.0	1,700	73.6	70.0 - 77.0	2,300
\$25,001-\$40,000	700	20.1	17.5 - 22.9	2,700	79.9	77.1 - 82.5	3,400
>=\$40,001	700	10.7	9.3 - 12.4	5,800	89.3	87.6 - 90.7	6,500

Birthweight	Yes			No			Weighted Total Responses (3-Yr Avg)
	#	%	C.I.(95%)	#	%	C.I.(95%)	#
Low birth weight	200	19.0	15.2 - 23.6	900	81.0	76.4 - 84.8	1,100
Normal birth weight	3,200	20.5	19.4 - 21.8	12,300	79.5	78.2 - 80.6	15,500

Smoke 3rd Trimester	Yes			No			Weighted Total Responses (3-Yr Avg)
	#	%	C.I.(95%)	#	%	C.I.(95%)	#
Yes	1,400	99.6	99.0 - 99.9	<50	0.4	0.1 - 1.0	1,400
No	1,900	12.6	11.6 - 13.6	13,200	87.4	86.4 - 88.4	15,200

PRAMS Health Indicator 3-Year Aggregate Report - Smoking 3 months before pregnancy- by State;County;DOH Race-Ethnicity;PRAMS Age Group;Infant Gender;Married;Poverty Level;Income (2000-2003);Income (2004-2011);Birthweight;Smoke 3rd Trimester;WIC During Pregnancy, for the Year(s) 2000-2002;2001-2003;2002-2004;2003-2005;2004-2006;2005-2007;2006-2008;2007-2009;2008-2010;2009-2011;2010-2012;2011-2013

Note: Weighted counts (#) represent 3-yr averages, rounded to the nearest hundred; n/r (Not Reportable) - If the unweighted total responses for a dimension (row) is <30 that row will not be shown

Years: 2001-2003

WIC During Pregnancy	Yes			No			Weighted Total Responses (3-Yr Avg)
	#	%	C.I.(95%)	#	%	C.I.(95%)	#
Yes	1,900	27.6	25.7 - 29.6	5,000	72.4	70.4 - 74.3	7,000
No	1,500	15.4	14.0 - 16.9	8,200	84.6	83.1 - 86.0	9,700

PRAMS Health Indicator 3-Year Aggregate Report - Smoking 3 months before pregnancy- by State;County;DOH Race-Ethnicity;PRAMS Age Group;Infant Gender;Married;Poverty Level;Income (2000-2003);Income (2004-2011);Birthweight;Smoke 3rd Trimester;WIC During Pregnancy, for the Year(s) 2000-2002;2001-2003;2002-2004;2003-2005;2004-2006;2005-2007;2006-2008;2007-2009;2008-2010;2009-2011;2010-2012;2011-2013

Note: Weighted counts (#) represent 3-yr averages, rounded to the nearest hundred; n/r (Not Reportable) - If the unweighted total responses for a dimension (row) is <30 that row will not be shown

Years: 2000-2002

State	Yes			No			Weighted Total Responses (3-Yr Avg)
	#	%	C.I.(95%)	#	%	C.I.(95%)	#
Totals	3,300	20.3	19.2 - 21.4	13,100	79.7	78.6 - 80.8	16,500

County	Yes			No			Weighted Total Responses (3-Yr Avg)
	#	%	C.I.(95%)	#	%	C.I.(95%)	#
Hawaii	500	28.8	26.4 - 31.2	1,300	71.2	68.8 - 73.6	1,900
Honolulu	2,200	18.5	17.1 - 19.8	9,900	81.5	80.2 - 82.9	12,200
Kauai	200	28.7	24.8 - 33.1	500	71.3	66.9 - 75.2	700
Maui	400	20.5	18.3 - 22.9	1,400	79.5	77.1 - 81.7	1,700

PRAMS Health Indicator 3-Year Aggregate Report - Smoking 3 months before pregnancy- by State;County;DOH Race-Ethnicity;PRAMS Age Group;Infant Gender;Married;Poverty Level;Income (2000-2003);Income (2004-2011);Birthweight;Smoke 3rd Trimester;WIC During Pregnancy, for the Year(s) 2000-2002;2001-2003;2002-2004;2003-2005;2004-2006;2005-2007;2006-2008;2007-2009;2008-2010;2009-2011;2010-2012;2011-2013

Note: Weighted counts (#) represent 3-yr averages, rounded to the nearest hundred; n/r (Not Reportable) - If the unweighted total responses for a dimension (row) is <30 that row will not be shown

Years: 2000-2002

DOH Race-Ethnicity	Yes			No			Weighted Total Responses (3-Yr Avg)
	#	%	C.I.(95%)	#	%	C.I.(95%)	#
Caucasian	800	20.9	18.4 - 23.6	2,900	79.1	76.4 - 81.6	3,600
Native Hawaiian	1,300	29.5	28.0 - 30.9	3,100	70.5	69.1 - 72.0	4,400
Chinese	<50	5.5	2.9 - 10.3	600	94.5	89.7 - 97.1	700
Filipino	500	14.3	12.2 - 16.8	2,900	85.7	83.2 - 87.8	3,400
Japanese	300	15.1	12.1 - 18.6	1,800	84.9	81.4 - 87.9	2,100
Other	400	19.5	16.0 - 23.4	1,800	80.5	76.6 - 84.0	2,200

PRAMS Age Group	Yes			No			Weighted Total Responses (3-Yr Avg)
	#	%	C.I.(95%)	#	%	C.I.(95%)	#
<20	500	30.6	27.1 - 34.4	1,100	69.4	65.6 - 72.9	1,600
20-24	1,200	30.9	28.5 - 33.4	2,800	69.1	66.6 - 71.5	4,000
25-34	1,300	16.2	14.8 - 17.7	6,800	83.8	82.3 - 85.2	8,100
35+	300	10.8	8.9 - 13.1	2,500	89.2	86.9 - 91.1	2,800

PRAMS Health Indicator 3-Year Aggregate Report - Smoking 3 months before pregnancy- by State;County;DOH Race-Ethnicity;PRAMS Age Group;Infant Gender;Married;Poverty Level;Income (2000-2003);Income (2004-2011);Birthweight;Smoke 3rd Trimester;WIC During Pregnancy, for the Year(s) 2000-2002;2001-2003;2002-2004;2003-2005;2004-2006;2005-2007;2006-2008;2007-2009;2008-2010;2009-2011;2010-2012;2011-2013

Note: Weighted counts (#) represent 3-yr averages, rounded to the nearest hundred; n/r (Not Reportable) - If the unweighted total responses for a dimension (row) is <30 that row will not be shown

Years: 2000-2002

	Yes			No			Weighted Total Responses (3-Yr Avg)
	#	%	C.I.(95%)	#	%	C.I.(95%)	#
Infant Gender							
Male	1,800	21.1	19.6 - 22.7	6,600	78.9	77.3 - 80.4	8,300
Female	1,600	19.4	17.9 - 21.0	6,500	80.6	79.0 - 82.1	8,100

	Yes			No			Weighted Total Responses (3-Yr Avg)
	#	%	C.I.(95%)	#	%	C.I.(95%)	#
Married							
Yes	1,600	14.1	12.9 - 15.3	9,700	85.9	84.7 - 87.1	11,300
No	1,700	33.8	31.7 - 36.0	3,400	66.2	64.0 - 68.3	5,200

	Yes			No			Weighted Total Responses (3-Yr Avg)
	#	%	C.I.(95%)	#	%	C.I.(95%)	#
Poverty Level							
0-130%	1,800	27.9	26.1 - 29.8	4,700	72.1	70.2 - 73.9	6,500
131-185%	600	19.5	17.0 - 22.2	2,400	80.5	77.8 - 83.0	3,000
186+%	700	12.0	10.4 - 13.7	5,000	88.0	86.3 - 89.6	5,600

PRAMS Health Indicator 3-Year Aggregate Report - Smoking 3 months before pregnancy- by State;County;DOH Race-Ethnicity;PRAMS Age Group;Infant Gender;Married;Poverty Level;Income (2000-2003);Income (2004-2011);Birthweight;Smoke 3rd Trimester;WIC During Pregnancy, for the Year(s) 2000-2002;2001-2003;2002-2004;2003-2005;2004-2006;2005-2007;2006-2008;2007-2009;2008-2010;2009-2011;2010-2012;2011-2013

Note: Weighted counts (#) represent 3-yr averages, rounded to the nearest hundred; n/r (Not Reportable) - If the unweighted total responses for a dimension (row) is <30 that row will not be shown

Years: 2000-2002

Income (2000-2003)	Yes			No			Weighted Total Responses (3-Yr Avg)
	#	%	C.I.(95%)	#	%	C.I.(95%)	#
<=\$15,000	1,200	34.4	31.8 - 37.1	2,200	65.6	62.9 - 68.2	3,400
\$15,001-\$25,000	600	24.8	21.8 - 28.0	1,800	75.2	72.0 - 78.2	2,400
\$25,001-\$40,000	700	20.2	17.8 - 22.8	2,700	79.8	77.2 - 82.2	3,400
>=\$40,001	700	11.0	9.6 - 12.5	5,700	89.0	87.5 - 90.4	6,400

Birthweight	Yes			No			Weighted Total Responses (3-Yr Avg)
	#	%	C.I.(95%)	#	%	C.I.(95%)	#
Low birth weight	200	21.4	17.5 - 25.8	800	78.6	74.2 - 82.5	1,100
Normal birth weight	3,100	20.1	19.0 - 21.3	12,200	79.9	78.7 - 81.0	15,300

Smoke 3rd Trimester	Yes			No			Weighted Total Responses (3-Yr Avg)
	#	%	C.I.(95%)	#	%	C.I.(95%)	#
Yes	1,400	99.0	97.5 - 99.6	<50	1.0	0.4 - 2.5	1,400
No	1,900	12.7	11.7 - 13.6	13,100	87.3	86.4 - 88.3	15,000

PRAMS Health Indicator 3-Year Aggregate Report - Smoking 3 months before pregnancy- by State;County;DOH Race-Ethnicity;PRAMS Age Group;Infant Gender;Married;Poverty Level;Income (2000-2003);Income (2004-2011);Birthweight;Smoke 3rd Trimester;WIC During Pregnancy, for the Year(s) 2000-2002;2001-2003;2002-2004;2003-2005;2004-2006;2005-2007;2006-2008;2007-2009;2008-2010;2009-2011;2010-2012;2011-2013

Note: Weighted counts (#) represent 3-yr averages, rounded to the nearest hundred; n/r (Not Reportable) - If the unweighted total responses for a dimension (row) is <30 that row will not be shown

Years: 2000-2002

WIC During Pregnancy	Yes			No			Weighted Total Responses (3-Yr Avg)
	#	%	C.I.(95%)	#	%	C.I.(95%)	#
Yes	1,900	26.9	25.1 - 28.7	5,100	73.1	71.3 - 74.9	7,000
No	1,500	15.5	14.2 - 16.9	8,000	84.5	83.1 - 85.8	9,500