

**PRAMS Health Indicator 3-Year Aggregate Report - Smoking during last 3 months of pregnancy- for the State of Hawaii, for the Year(s)**

**2000-2002;2001-2003;2002-2004;2003-2005;2004-2006;2005-2007;2006-2008;2007-2009;2008-2010;2009-2011;2010-2012;2011-2013**

PRAMS Health Indicator 3-Year Aggregate Report - Smoking during last 3 months of pregnancy- by State;County;DOH Race-Ethnicity;PRAMS Age Group;Infant Gender;Married;Poverty Level;Income (2000-2003);Income (2004-2011);Birthweight;Smoke Before Pregnant;WIC During Pregnancy, for the Year (s) 2000-2002;2001-2003;2002-2004;2003-2005;2004-2006;2005-2007;2006-2008;2007-2009;2008-2010;2009-2011;2010-2012;2011-2013

*Note: Weighted counts (#) represent 3-yr averages, rounded to the nearest hundred; n/r (Not Reportable) - If the unweighted total responses for a dimension (row) is <30 that row will not be shown*

*The trend analysis section shows the trend for the selected health variable over selected years in a table and a graph. 3-Year Weighted Total Responses: This number is a weighted representation of the mothers of babies delivered in a given year, who responded to a particular question in the survey. For most questions this will be the mothers of all babies delivered in a given year. For some secondary questions only a subset of the population was asked the question. For example, all survey participants were asked if they smoked during pregnancy, but only those who answered yes were asked how many cigarettes a day. If a dimension value is unknown for a particular survey record, that record will not be included in the counts for that particular dimension.*

*Note: Data collection for household income changed in 2004 and again in 2012. Because of this, income data does not exist for some 3-year aggregate periods.*

*Below are the indicators included in this report and the long description for each indicator.*

PRAMS Health Indicator	Health Indicator Description
Smoking during last 3 months of pregnancy	Smoking during last 3 months of pregnancy

*Suggested citation:*

*Hawaii Health Data Warehouse, Hawaii State Department of Health, Pregnancy Risk Assessment Monitoring System, (report title and years), Report Created: 2/21/17*

*For documentation on other terms and coding in this report, please go to the following links:*

[Click here to access PRAMS documentation](#)

[Click here to access DOH-Race Ethnicity coding](#)

[Click here to access The Hawai'i Data Guide](#)

**For questions about this report, please contact  
The Hawai'i Health Data Warehouse**

[profiles@hhdw.org](mailto:profiles@hhdw.org)

**(855) 946-5899 x15**

**PRAMS Health Indicator 3-Year Aggregate Report - Smoking during last 3 months of pregnancy- for the State of Hawaii, for the Year(s)**

**2000-2002;2001-2003;2002-2004;2003-2005;2004-2006;2005-2007;2006-2008;2007-2009;2008-2010;2009-2011;2010-2012;2011-2013**

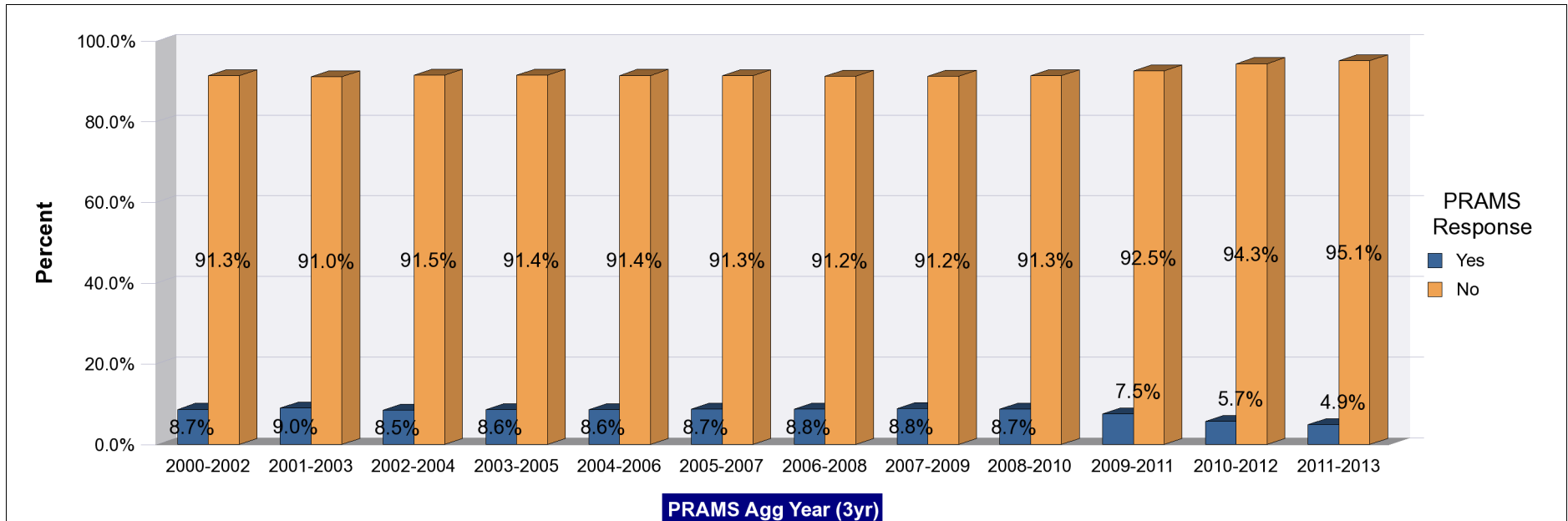
*Note: Weighted counts (#) represent 3-yr averages, rounded to the nearest hundred; n/r (Not Reportable) - If the unweighted total responses for a dimension (row) is <30 that row will not be shown*

Years	Yes			No			Weighted Total Responses (3-Yr Avg)
	#	%	C.I.(95%)	#	%	C.I.(95%)	#
2000-2002	1,400	8.7	8.0 - 9.4	15,200	91.3	90.6 - 92.0	16,600
2001-2003	1,500	9.0	8.2 - 9.8	15,300	91.0	90.2 - 91.8	16,900
2002-2004	1,500	8.5	7.7 - 9.3	15,800	91.5	90.7 - 92.3	17,300
2003-2005	1,500	8.6	7.8 - 9.4	15,900	91.4	90.6 - 92.2	17,400
2004-2006	1,500	8.6	7.8 - 9.4	16,200	91.4	90.6 - 92.2	17,700
2005-2007	1,600	8.7	7.9 - 9.6	16,400	91.3	90.4 - 92.1	18,000
2006-2008	1,600	8.8	8.0 - 9.6	16,900	91.2	90.4 - 92.0	18,500
2007-2009	1,600	8.8	8.0 - 9.8	16,800	91.2	90.2 - 92.0	18,400
2008-2010	1,600	8.7	7.7 - 9.7	16,700	91.3	90.3 - 92.3	18,300
2009-2011	1,400	7.5	6.6 - 8.5	16,900	92.5	91.5 - 93.4	18,300
2010-2012	1,000	5.7	4.9 - 6.6	17,200	94.3	93.4 - 95.1	18,200
2011-2013	900	4.9	4.2 - 5.7	17,300	95.1	94.3 - 95.8	18,200

# PRAMS Health Indicator 3-Year Aggregate Report - Smoking during last 3 months of pregnancy- for the State of Hawaii, for the Year(s)

2000-2002;2001-2003;2002-2004;2003-2005;2004-2006;2005-2007;2006-2008;2007-2009;2008-2010;2009-2011;2010-2012;2011-2013

Note: Weighted counts (#) represent 3-yr averages, rounded to the nearest hundred; n/r (Not Reportable) - If the unweighted total responses for a dimension (row) is <30 that row will not be shown



**PRAMS Health Indicator 3-Year Aggregate Report - Smoking during last 3 months of pregnancy- by State;County;DOH Race-Ethnicity;PRAMS Age Group;Infant Gender;Married;Poverty Level;Income (2000-2003);Income (2004-2011);Birthweight;Smoke Before Pregnant;WIC During Pregnancy, for the Year(s)  
2000-2002;2001-2003;2002-2004;2003-2005;2004-2006;2005-2007;2006-2008;2007-2009;2008-2010;2009-2011;2010-2012;2011-2013**

*Note: Weighted counts (#) represent 3-yr averages, rounded to the nearest hundred; n/r (Not Reportable) - If the unweighted total responses for a dimension (row) is <30 that row will not be shown*

**Years: 2011-2013**

State	Yes			No			Weighted Total Responses (3-Yr Avg)
	#	%	C.I.(95%)	#	%	C.I.(95%)	#
<b>Totals</b>	900	4.9	4.2 - 5.7	17,300	95.1	94.3 - 95.8	18,200

County	Yes			No			Weighted Total Responses (3-Yr Avg)
	#	%	C.I.(95%)	#	%	C.I.(95%)	#
<b>Hawaii</b>	200	8.5	6.9 - 10.5	2,100	91.5	89.5 - 93.1	2,300
<b>Honolulu</b>	500	4.0	3.2 - 5.2	12,500	96.0	94.8 - 96.8	13,100
<b>Kauai</b>	100	6.5	5.0 - 8.5	800	93.5	91.5 - 95.0	800
<b>Maui</b>	100	5.9	4.6 - 7.5	1,800	94.1	92.5 - 95.4	1,900

**PRAMS Health Indicator 3-Year Aggregate Report - Smoking during last 3 months of pregnancy- by State;County;DOH Race-Ethnicity;PRAMS Age Group;Infant Gender;Married;Poverty Level;Income (2000-2003);Income (2004-2011);Birthweight;Smoke Before Pregnant;WIC During Pregnancy, for the Year(s)  
2000-2002;2001-2003;2002-2004;2003-2005;2004-2006;2005-2007;2006-2008;2007-2009;2008-2010;2009-2011;2010-2012;2011-2013**

*Note: Weighted counts (#) represent 3-yr averages, rounded to the nearest hundred; n/r (Not Reportable) - If the unweighted total responses for a dimension (row) is <30 that row will not be shown*

**Years: 2011-2013**

DOH Race-Ethnicity	Yes			No			Weighted Total Responses (3-Yr Avg)
	#	%	C.I.(95%)	#	%	C.I.(95%)	#
Caucasian	100	3.3	2.2 - 4.9	4,300	96.7	95.1 - 97.8	4,500
Native Hawaiian	500	8.7	7.1 - 10.7	4,800	91.3	89.3 - 92.9	5,200
Chinese	<50	1.7	0.9 - 3.3	900	98.3	96.7 - 99.1	900
Filipino	100	2.9	1.7 - 5.0	3,100	97.1	95.0 - 98.3	3,200
Japanese	<50	2.3	0.9 - 5.3	1,700	97.7	94.7 - 99.1	1,700
Other	100	5.2	3.3 - 8.0	2,500	94.8	92.0 - 96.7	2,700

PRAMS Age Group	Yes			No			Weighted Total Responses (3-Yr Avg)
	#	%	C.I.(95%)	#	%	C.I.(95%)	#
<20	<50	4.4	2.1 - 8.8	900	95.6	91.2 - 97.9	1,000
20-24	300	6.4	4.8 - 8.5	3,700	93.6	91.5 - 95.2	4,000
25-34	500	4.9	3.9 - 6.0	9,400	95.1	94.0 - 96.1	9,900
35+	100	3.5	2.2 - 5.5	3,200	96.5	94.5 - 97.8	3,300

**PRAMS Health Indicator 3-Year Aggregate Report - Smoking during last 3 months of pregnancy- by State;County;DOH Race-Ethnicity;PRAMS Age Group;Infant Gender;Married;Poverty Level;Income (2000-2003);Income (2004-2011);Birthweight;Smoke Before Pregnant;WIC During Pregnancy, for the Year(s)  
2000-2002;2001-2003;2002-2004;2003-2005;2004-2006;2005-2007;2006-2008;2007-2009;2008-2010;2009-2011;2010-2012;2011-2013**

*Note: Weighted counts (#) represent 3-yr averages, rounded to the nearest hundred; n/r (Not Reportable) - If the unweighted total responses for a dimension (row) is <30 that row will not be shown*

**Years: 2011-2013**

Infant Gender	Yes			No			Weighted Total Responses (3-Yr Avg)
	#	%	C.I.(95%)	#	%	C.I.(95%)	#
Male	400	4.3	3.4 - 5.4	8,700	95.7	94.6 - 96.6	9,100
Female	500	5.6	4.5 - 6.9	8,600	94.4	93.1 - 95.5	9,100

Married	Yes			No			Weighted Total Responses (3-Yr Avg)
	#	%	C.I.(95%)	#	%	C.I.(95%)	#
Yes	300	2.7	2.0 - 3.6	11,100	97.3	96.4 - 98.0	11,400
No	600	8.7	7.2 - 10.4	6,200	91.3	89.6 - 92.8	6,800

Poverty Level	Yes			No			Weighted Total Responses (3-Yr Avg)
	#	%	C.I.(95%)	#	%	C.I.(95%)	#
0-130%	500	8.2	6.8 - 9.9	6,000	91.8	90.1 - 93.2	6,500
131-185%	100	3.8	2.3 - 6.2	2,600	96.2	93.8 - 97.7	2,700
186+%	200	2.3	1.6 - 3.4	7,200	97.7	96.6 - 98.4	7,400

**PRAMS Health Indicator 3-Year Aggregate Report - Smoking during last 3 months of pregnancy- by State;County;DOH Race-Ethnicity;PRAMS Age Group;Infant Gender;Married;Poverty Level;Income (2000-2003);Income (2004-2011);Birthweight;Smoke Before Pregnant;WIC During Pregnancy, for the Year(s)  
2000-2002;2001-2003;2002-2004;2003-2005;2004-2006;2005-2007;2006-2008;2007-2009;2008-2010;2009-2011;2010-2012;2011-2013**

*Note: Weighted counts (#) represent 3-yr averages, rounded to the nearest hundred; n/r (Not Reportable) - If the unweighted total responses for a dimension (row) is <30 that row will not be shown*

**Years: 2011-2013**

Birthweight	Yes			No			Weighted Total Responses (3-Yr Avg)
	#	%	C.I.(95%)	#	%	C.I.(95%)	#
Low birth weight	100	8.6	6.9 - 10.6	1,200	91.4	89.4 - 93.1	1,300
Normal birth weight	800	4.6	3.9 - 5.5	16,100	95.4	94.5 - 96.1	16,800

Smoke Before Pregnant	Yes			No			Weighted Total Responses (3-Yr Avg)
	#	%	C.I.(95%)	#	%	C.I.(95%)	#
Yes	900	27.6	23.9 - 31.6	2,300	72.4	68.4 - 76.1	3,200
No	0	0.0	-	14,900	100.0	-	14,900

WIC During Pregnancy	Yes			No			Weighted Total Responses (3-Yr Avg)
	#	%	C.I.(95%)	#	%	C.I.(95%)	#
Yes	500	6.7	5.5 - 8.1	7,600	93.3	91.9 - 94.5	8,100
No	300	3.5	2.7 - 4.6	9,600	96.5	95.4 - 97.3	9,900

**PRAMS Health Indicator 3-Year Aggregate Report - Smoking during last 3 months of pregnancy- by State;County;DOH Race-Ethnicity;PRAMS Age Group;Infant Gender;Married;Poverty Level;Income (2000-2003);Income (2004-2011);Birthweight;Smoke Before Pregnant;WIC During Pregnancy, for the Year(s)  
2000-2002;2001-2003;2002-2004;2003-2005;2004-2006;2005-2007;2006-2008;2007-2009;2008-2010;2009-2011;2010-2012;2011-2013**

*Note: Weighted counts (#) represent 3-yr averages, rounded to the nearest hundred; n/r (Not Reportable) - If the unweighted total responses for a dimension (row) is <30 that row will not be shown*

**Years: 2010-2012**

State	Yes			No			Weighted Total Responses (3-Yr Avg)
	#	%	C.I.(95%)	#	%	C.I.(95%)	#
<b>Totals</b>	1,000	5.7	4.9 - 6.6	17,200	94.3	93.4 - 95.1	18,200

County	Yes			No			Weighted Total Responses (3-Yr Avg)
	#	%	C.I.(95%)	#	%	C.I.(95%)	#
<b>Hawaii</b>	200	8.9	7.2 - 10.8	2,100	91.1	89.2 - 92.8	2,300
<b>Honolulu</b>	600	4.9	3.9 - 6.1	12,500	95.1	93.9 - 96.1	13,200
<b>Kauai</b>	100	7.0	5.4 - 9.1	800	93.0	90.9 - 94.6	800
<b>Maui</b>	100	6.5	5.2 - 8.1	1,800	93.5	91.9 - 94.8	1,900



**PRAMS Health Indicator 3-Year Aggregate Report - Smoking during last 3 months of pregnancy- by State;County;DOH Race-Ethnicity;PRAMS Age Group;Infant Gender;Married;Poverty Level;Income (2000-2003);Income (2004-2011);Birthweight;Smoke Before Pregnant;WIC During Pregnancy, for the Year(s)  
2000-2002;2001-2003;2002-2004;2003-2005;2004-2006;2005-2007;2006-2008;2007-2009;2008-2010;2009-2011;2010-2012;2011-2013**

*Note: Weighted counts (#) represent 3-yr averages, rounded to the nearest hundred; n/r (Not Reportable) - If the unweighted total responses for a dimension (row) is <30 that row will not be shown*

**Years: 2010-2012**

DOH Race-Ethnicity	Yes			No			Weighted Total Responses (3-Yr Avg)
	#	%	C.I.(95%)	#	%	C.I.(95%)	#
Caucasian	200	4.4	3.1 - 6.3	4,200	95.6	93.7 - 96.9	4,400
Native Hawaiian	500	9.3	7.6 - 11.3	4,800	90.7	88.7 - 92.4	5,200
Chinese	<50	2.9	1.0 - 8.1	800	97.1	91.9 - 99.0	800
Filipino	100	3.6	2.3 - 5.7	3,200	96.4	94.3 - 97.7	3,300
Japanese	100	3.5	1.7 - 7.0	1,700	96.5	93.0 - 98.3	1,700
Other	200	5.5	3.6 - 8.4	2,600	94.5	91.6 - 96.4	2,800

PRAMS Age Group	Yes			No			Weighted Total Responses (3-Yr Avg)
	#	%	C.I.(95%)	#	%	C.I.(95%)	#
<20	100	6.4	3.8 - 10.4	1,000	93.6	89.6 - 96.2	1,100
20-24	300	7.8	5.9 - 10.2	3,800	92.2	89.8 - 94.1	4,100
25-34	500	5.5	4.5 - 6.8	9,300	94.5	93.2 - 95.5	9,800
35+	100	3.3	2.1 - 5.2	3,100	96.7	94.8 - 97.9	3,200

**PRAMS Health Indicator 3-Year Aggregate Report - Smoking during last 3 months of pregnancy- by State;County;DOH Race-Ethnicity;PRAMS Age Group;Infant Gender;Married;Poverty Level;Income (2000-2003);Income (2004-2011);Birthweight;Smoke Before Pregnant;WIC During Pregnancy, for the Year(s)  
2000-2002;2001-2003;2002-2004;2003-2005;2004-2006;2005-2007;2006-2008;2007-2009;2008-2010;2009-2011;2010-2012;2011-2013**

*Note: Weighted counts (#) represent 3-yr averages, rounded to the nearest hundred; n/r (Not Reportable) - If the unweighted total responses for a dimension (row) is <30 that row will not be shown*

**Years: 2010-2012**

	Yes			No			Weighted Total Responses (3-Yr Avg)
	#	%	C.I.(95%)	#	%	C.I.(95%)	#
<b>Infant Gender</b>							
<b>Male</b>	500	5.2	4.2 - 6.4	8,700	94.8	93.6 - 95.8	9,200
<b>Female</b>	600	6.2	5.1 - 7.6	8,500	93.8	92.4 - 94.9	9,000

	Yes			No			Weighted Total Responses (3-Yr Avg)
	#	%	C.I.(95%)	#	%	C.I.(95%)	#
<b>Married</b>							
<b>Yes</b>	400	3.4	2.6 - 4.4	11,000	96.6	95.6 - 97.4	11,300
<b>No</b>	700	9.5	7.9 - 11.3	6,200	90.5	88.7 - 92.1	6,900

	Yes			No			Weighted Total Responses (3-Yr Avg)
	#	%	C.I.(95%)	#	%	C.I.(95%)	#
<b>Poverty Level</b>							
<b>0-130%</b>	600	9.4	7.9 - 11.3	5,800	90.6	88.7 - 92.1	6,400
<b>131-185%</b>	100	4.6	3.0 - 7.0	2,800	95.4	93.0 - 97.0	2,900
<b>186+%</b>	200	3.2	2.3 - 4.4	7,300	96.8	95.6 - 97.7	7,500

**PRAMS Health Indicator 3-Year Aggregate Report - Smoking during last 3 months of pregnancy- by State;County;DOH Race-Ethnicity;PRAMS Age Group;Infant Gender;Married;Poverty Level;Income (2000-2003);Income (2004-2011);Birthweight;Smoke Before Pregnant;WIC During Pregnancy, for the Year(s)  
2000-2002;2001-2003;2002-2004;2003-2005;2004-2006;2005-2007;2006-2008;2007-2009;2008-2010;2009-2011;2010-2012;2011-2013**

*Note: Weighted counts (#) represent 3-yr averages, rounded to the nearest hundred; n/r (Not Reportable) - If the unweighted total responses for a dimension (row) is <30 that row will not be shown*

**Years: 2010-2012**

Birthweight	Yes			No			Weighted Total Responses (3-Yr Avg)
	#	%	C.I.(95%)	#	%	C.I.(95%)	#
Low birth weight	100	7.7	6.1 - 9.7	1,200	92.3	90.3 - 93.9	1,300
Normal birth weight	900	5.5	4.7 - 6.5	16,000	94.5	93.5 - 95.3	16,900

Smoke Before Pregnant	Yes			No			Weighted Total Responses (3-Yr Avg)
	#	%	C.I.(95%)	#	%	C.I.(95%)	#
Yes	1,000	30.3	26.6 - 34.2	2,400	69.7	65.8 - 73.4	3,400
No	0	0.0	-	14,800	100.0	-	14,800

WIC During Pregnancy	Yes			No			Weighted Total Responses (3-Yr Avg)
	#	%	C.I.(95%)	#	%	C.I.(95%)	#
Yes	700	8.0	6.7 - 9.6	7,500	92.0	90.4 - 93.3	8,100
No	400	3.7	2.9 - 4.8	9,600	96.3	95.2 - 97.1	10,000

**PRAMS Health Indicator 3-Year Aggregate Report - Smoking during last 3 months of pregnancy- by State;County;DOH Race-Ethnicity;PRAMS Age Group;Infant Gender;Married;Poverty Level;Income (2000-2003);Income (2004-2011);Birthweight;Smoke Before Pregnant;WIC During Pregnancy, for the Year(s)  
2000-2002;2001-2003;2002-2004;2003-2005;2004-2006;2005-2007;2006-2008;2007-2009;2008-2010;2009-2011;2010-2012;2011-2013**

*Note: Weighted counts (#) represent 3-yr averages, rounded to the nearest hundred; n/r (Not Reportable) - If the unweighted total responses for a dimension (row) is <30 that row will not be shown*

**Years: 2009-2011**

State	Yes			No			Weighted Total Responses (3-Yr Avg)
	#	%	C.I.(95%)	#	%	C.I.(95%)	#
<b>Totals</b>	1,400	7.5	6.6 - 8.5	16,900	92.5	91.5 - 93.4	18,300

County	Yes			No			Weighted Total Responses (3-Yr Avg)
	#	%	C.I.(95%)	#	%	C.I.(95%)	#
<b>Hawaii</b>	300	11.6	9.8 - 13.7	2,100	88.4	86.3 - 90.2	2,400
<b>Honolulu</b>	900	6.7	5.5 - 8.1	12,200	93.3	91.9 - 94.5	13,100
<b>Kauai</b>	100	8.3	6.5 - 10.4	800	91.7	89.6 - 93.5	800
<b>Maui</b>	100	7.4	6.1 - 9.0	1,800	92.6	91.0 - 93.9	2,000

**PRAMS Health Indicator 3-Year Aggregate Report - Smoking during last 3 months of pregnancy- by State;County;DOH Race-Ethnicity;PRAMS Age Group;Infant Gender;Married;Poverty Level;Income (2000-2003);Income (2004-2011);Birthweight;Smoke Before Pregnant;WIC During Pregnancy, for the Year(s)  
2000-2002;2001-2003;2002-2004;2003-2005;2004-2006;2005-2007;2006-2008;2007-2009;2008-2010;2009-2011;2010-2012;2011-2013**

*Note: Weighted counts (#) represent 3-yr averages, rounded to the nearest hundred; n/r (Not Reportable) - If the unweighted total responses for a dimension (row) is <30 that row will not be shown*

**Years: 2009-2011**

DOH Race-Ethnicity	Yes			No			Weighted Total Responses (3-Yr Avg)
	#	%	C.I.(95%)	#	%	C.I.(95%)	#
Caucasian	200	5.5	4.0 - 7.5	4,100	94.5	92.5 - 96.0	4,400
Native Hawaiian	600	11.6	9.7 - 13.7	4,900	88.4	86.3 - 90.3	5,500
Chinese	<50	5.6	2.3 - 13.1	700	94.4	86.9 - 97.7	700
Filipino	100	4.4	2.9 - 6.6	3,100	95.6	93.4 - 97.1	3,300
Japanese	100	6.9	4.2 - 11.0	1,600	93.1	89.0 - 95.8	1,700
Other	200	7.1	4.8 - 10.4	2,500	92.9	89.6 - 95.2	2,600

PRAMS Age Group	Yes			No			Weighted Total Responses (3-Yr Avg)
	#	%	C.I.(95%)	#	%	C.I.(95%)	#
<20	100	9.1	6.0 - 13.5	1,200	90.9	86.5 - 94.0	1,300
20-24	400	10.1	8.0 - 12.7	3,900	89.9	87.3 - 92.0	4,300
25-34	700	6.9	5.8 - 8.3	8,800	93.1	91.7 - 94.2	9,500
35+	200	5.0	3.4 - 7.3	3,000	95.0	92.7 - 96.6	3,200

**PRAMS Health Indicator 3-Year Aggregate Report - Smoking during last 3 months of pregnancy- by State;County;DOH Race-Ethnicity;PRAMS Age Group;Infant Gender;Married;Poverty Level;Income (2000-2003);Income (2004-2011);Birthweight;Smoke Before Pregnant;WIC During Pregnancy, for the Year(s)  
2000-2002;2001-2003;2002-2004;2003-2005;2004-2006;2005-2007;2006-2008;2007-2009;2008-2010;2009-2011;2010-2012;2011-2013**

*Note: Weighted counts (#) represent 3-yr averages, rounded to the nearest hundred; n/r (Not Reportable) - If the unweighted total responses for a dimension (row) is <30 that row will not be shown*

**Years: 2009-2011**

	Yes			No			Weighted Total Responses (3-Yr Avg)
	#	%	C.I.(95%)	#	%	C.I.(95%)	#
<b>Infant Gender</b>							
<b>Male</b>	700	7.2	6.0 - 8.6	8,800	92.8	91.4 - 94.0	9,500
<b>Female</b>	700	7.8	6.5 - 9.3	8,100	92.2	90.7 - 93.5	8,800

	Yes			No			Weighted Total Responses (3-Yr Avg)
	#	%	C.I.(95%)	#	%	C.I.(95%)	#
<b>Married</b>							
<b>Yes</b>	400	4.0	3.2 - 5.0	10,700	96.0	95.0 - 96.8	11,200
<b>No</b>	900	13.0	11.2 - 15.1	6,200	87.0	84.9 - 88.8	7,100

	Yes			No			Weighted Total Responses (3-Yr Avg)
	#	%	C.I.(95%)	#	%	C.I.(95%)	#
<b>Poverty Level</b>							
<b>0-130%</b>	800	12.8	10.9 - 15.0	5,600	87.2	85.0 - 89.1	6,500
<b>131-185%</b>	200	5.9	4.0 - 8.6	2,700	94.1	91.4 - 96.0	2,800
<b>186+%</b>	300	3.6	2.6 - 4.8	7,400	96.4	95.2 - 97.4	7,700

**PRAMS Health Indicator 3-Year Aggregate Report - Smoking during last 3 months of pregnancy- by State;County;DOH Race-Ethnicity;PRAMS Age Group;Infant Gender;Married;Poverty Level;Income (2000-2003);Income (2004-2011);Birthweight;Smoke Before Pregnant;WIC During Pregnancy, for the Year(s)  
2000-2002;2001-2003;2002-2004;2003-2005;2004-2006;2005-2007;2006-2008;2007-2009;2008-2010;2009-2011;2010-2012;2011-2013**

*Note: Weighted counts (#) represent 3-yr averages, rounded to the nearest hundred; n/r (Not Reportable) - If the unweighted total responses for a dimension (row) is <30 that row will not be shown*

**Years: 2009-2011**

Income (2004-2011)	Yes			No			Weighted Total Responses (3-Yr Avg)
	#	%	C.I.(95%)	#	%	C.I.(95%)	#
<\$10,000	500	14.9	12.1 - 18.2	2,800	85.1	81.8 - 87.9	3,300
\$10,000-\$24,999	400	10.4	8.1 - 13.2	3,100	89.6	86.8 - 91.9	3,500
\$25,000-\$49,999	300	6.1	4.5 - 8.2	4,000	93.9	91.8 - 95.5	4,200
>=\$50,000	200	2.8	1.9 - 4.1	5,900	97.2	95.9 - 98.1	6,100

Birthweight	Yes			No			Weighted Total Responses (3-Yr Avg)
	#	%	C.I.(95%)	#	%	C.I.(95%)	#
Low birth weight	100	8.9	7.2 - 11.0	1,200	91.1	89.0 - 92.8	1,300
Normal birth weight	1,200	7.3	6.4 - 8.4	15,700	92.7	91.6 - 93.6	16,900

Smoke Before Pregnant	Yes			No			Weighted Total Responses (3-Yr Avg)
	#	%	C.I.(95%)	#	%	C.I.(95%)	#
Yes	1,400	35.6	31.9 - 39.5	2,500	64.4	60.5 - 68.1	3,800
No	<50	0.1	0.0 - 0.4	14,400	99.9	99.6 - 100.0	14,500

**PRAMS Health Indicator 3-Year Aggregate Report - Smoking during last 3 months of pregnancy- by State;County;DOH Race-Ethnicity;PRAMS Age Group;Infant Gender;Married;Poverty Level;Income (2000-2003);Income (2004-2011);Birthweight;Smoke Before Pregnant;WIC During Pregnancy, for the Year(s)  
2000-2002;2001-2003;2002-2004;2003-2005;2004-2006;2005-2007;2006-2008;2007-2009;2008-2010;2009-2011;2010-2012;2011-2013**

*Note: Weighted counts (#) represent 3-yr averages, rounded to the nearest hundred; n/r (Not Reportable) - If the unweighted total responses for a dimension (row) is <30 that row will not be shown*

**Years: 2009-2011**

WIC During Pregnancy	Yes			No			Weighted Total Responses (3-Yr Avg)
	#	%	C.I.(95%)	#	%	C.I.(95%)	#
<b>Yes</b>	900	10.9	9.4 - 12.7	7,100	89.1	87.3 - 90.6	7,900
<b>No</b>	500	4.8	3.8 - 6.0	9,700	95.2	94.0 - 96.2	10,200



**PRAMS Health Indicator 3-Year Aggregate Report - Smoking during last 3 months of pregnancy- by State;County;DOH Race-Ethnicity;PRAMS Age Group;Infant Gender;Married;Poverty Level;Income (2000-2003);Income (2004-2011);Birthweight;Smoke Before Pregnant;WIC During Pregnancy, for the Year(s)  
2000-2002;2001-2003;2002-2004;2003-2005;2004-2006;2005-2007;2006-2008;2007-2009;2008-2010;2009-2011;2010-2012;2011-2013**

*Note: Weighted counts (#) represent 3-yr averages, rounded to the nearest hundred; n/r (Not Reportable) - If the unweighted total responses for a dimension (row) is <30 that row will not be shown*

**Years: 2008-2010**

State	Yes			No			Weighted Total Responses (3-Yr Avg)
	#	%	C.I.(95%)	#	%	C.I.(95%)	#
<b>Totals</b>	1,600	8.7	7.7 - 9.7	16,700	91.3	90.3 - 92.3	18,300

County	Yes			No			Weighted Total Responses (3-Yr Avg)
	#	%	C.I.(95%)	#	%	C.I.(95%)	#
<b>Hawaii</b>	300	12.4	10.3 - 14.8	2,100	87.6	85.2 - 89.7	2,400
<b>Honolulu</b>	1,100	8.1	6.9 - 9.5	12,000	91.9	90.5 - 93.1	13,000
<b>Kauai</b>	100	9.2	6.7 - 12.3	800	90.8	87.7 - 93.3	800
<b>Maui</b>	200	7.8	6.2 - 9.8	1,900	92.2	90.2 - 93.8	2,100

**PRAMS Health Indicator 3-Year Aggregate Report - Smoking during last 3 months of pregnancy- by State;County;DOH Race-Ethnicity;PRAMS Age Group;Infant Gender;Married;Poverty Level;Income (2000-2003);Income (2004-2011);Birthweight;Smoke Before Pregnant;WIC During Pregnancy, for the Year(s)  
2000-2002;2001-2003;2002-2004;2003-2005;2004-2006;2005-2007;2006-2008;2007-2009;2008-2010;2009-2011;2010-2012;2011-2013**

*Note: Weighted counts (#) represent 3-yr averages, rounded to the nearest hundred; n/r (Not Reportable) - If the unweighted total responses for a dimension (row) is <30 that row will not be shown*

**Years: 2008-2010**

DOH Race-Ethnicity	Yes			No			Weighted Total Responses (3-Yr Avg)
	#	%	C.I.(95%)	#	%	C.I.(95%)	#
Caucasian	300	6.4	4.9 - 8.3	4,100	93.6	91.7 - 95.1	4,400
Native Hawaiian	700	13.4	11.4 - 15.6	4,700	86.6	84.4 - 88.6	5,500
Chinese	<50	5.7	2.3 - 13.4	700	94.3	86.6 - 97.7	700
Filipino	200	4.9	3.4 - 7.0	3,100	95.1	93.0 - 96.6	3,300
Japanese	200	8.9	6.1 - 12.9	1,600	91.1	87.1 - 93.9	1,800
Other	200	8.1	5.8 - 11.2	2,500	91.9	88.8 - 94.2	2,700

PRAMS Age Group	Yes			No			Weighted Total Responses (3-Yr Avg)
	#	%	C.I.(95%)	#	%	C.I.(95%)	#
<20	200	11.2	8.0 - 15.5	1,300	88.8	84.5 - 92.0	1,500
20-24	500	11.1	8.9 - 13.7	3,700	88.9	86.3 - 91.1	4,200
25-34	800	8.0	6.8 - 9.4	8,600	92.0	90.6 - 93.2	9,400
35+	200	6.3	4.6 - 8.5	3,100	93.7	91.5 - 95.4	3,300

**PRAMS Health Indicator 3-Year Aggregate Report - Smoking during last 3 months of pregnancy- by State;County;DOH Race-Ethnicity;PRAMS Age Group;Infant Gender;Married;Poverty Level;Income (2000-2003);Income (2004-2011);Birthweight;Smoke Before Pregnant;WIC During Pregnancy, for the Year(s)  
2000-2002;2001-2003;2002-2004;2003-2005;2004-2006;2005-2007;2006-2008;2007-2009;2008-2010;2009-2011;2010-2012;2011-2013**

*Note: Weighted counts (#) represent 3-yr averages, rounded to the nearest hundred; n/r (Not Reportable) - If the unweighted total responses for a dimension (row) is <30 that row will not be shown*

**Years: 2008-2010**

Infant Gender	Yes			No			Weighted Total Responses (3-Yr Avg)
	#	%	C.I.(95%)	#	%	C.I.(95%)	#
Male	800	8.4	7.2 - 9.9	8,800	91.6	90.1 - 92.8	9,600
Female	800	8.9	7.6 - 10.5	8,000	91.1	89.5 - 92.4	8,800

Married	Yes			No			Weighted Total Responses (3-Yr Avg)
	#	%	C.I.(95%)	#	%	C.I.(95%)	#
Yes	500	4.9	4.0 - 5.9	10,700	95.1	94.1 - 96.0	11,200
No	1,000	14.7	12.8 - 16.8	6,100	85.3	83.2 - 87.2	7,100

Poverty Level	Yes			No			Weighted Total Responses (3-Yr Avg)
	#	%	C.I.(95%)	#	%	C.I.(95%)	#
0-130%	1,000	15.5	13.5 - 17.7	5,600	84.5	82.3 - 86.5	6,600
131-185%	200	7.2	5.2 - 10.0	2,600	92.8	90.0 - 94.8	2,800
186+%	300	3.5	2.6 - 4.7	7,300	96.5	95.3 - 97.4	7,600

**PRAMS Health Indicator 3-Year Aggregate Report - Smoking during last 3 months of pregnancy- by State;County;DOH Race-Ethnicity;PRAMS Age Group;Infant Gender;Married;Poverty Level;Income (2000-2003);Income (2004-2011);Birthweight;Smoke Before Pregnant;WIC During Pregnancy, for the Year(s)  
2000-2002;2001-2003;2002-2004;2003-2005;2004-2006;2005-2007;2006-2008;2007-2009;2008-2010;2009-2011;2010-2012;2011-2013**

*Note: Weighted counts (#) represent 3-yr averages, rounded to the nearest hundred; n/r (Not Reportable) - If the unweighted total responses for a dimension (row) is <30 that row will not be shown*

**Years: 2008-2010**

Income (2004-2011)	Yes			No			Weighted Total Responses (3-Yr Avg)
	#	%	C.I.(95%)	#	%	C.I.(95%)	#
<\$10,000	600	17.8	14.9 - 21.2	2,600	82.2	78.8 - 85.1	3,200
\$10,000-\$24,999	400	11.8	9.5 - 14.5	3,200	88.2	85.5 - 90.5	3,700
\$25,000-\$49,999	300	7.7	5.9 - 9.9	3,800	92.3	90.1 - 94.1	4,100
>=\$50,000	200	2.9	2.1 - 4.1	6,000	97.1	95.9 - 97.9	6,100

Birthweight	Yes			No			Weighted Total Responses (3-Yr Avg)
	#	%	C.I.(95%)	#	%	C.I.(95%)	#
Low birth weight	100	9.3	7.1 - 12.1	1,200	90.7	87.9 - 92.9	1,300
Normal birth weight	1,500	8.6	7.6 - 9.7	15,500	91.4	90.3 - 92.4	17,000

Smoke Before Pregnant	Yes			No			Weighted Total Responses (3-Yr Avg)
	#	%	C.I.(95%)	#	%	C.I.(95%)	#
Yes	1,600	41.5	37.9 - 45.2	2,200	58.5	54.8 - 62.1	3,800
No	<50	0.1	0.0 - 0.4	14,500	99.9	99.6 - 100.0	14,500

**PRAMS Health Indicator 3-Year Aggregate Report - Smoking during last 3 months of pregnancy- by State;County;DOH Race-Ethnicity;PRAMS Age Group;Infant Gender;Married;Poverty Level;Income (2000-2003);Income (2004-2011);Birthweight;Smoke Before Pregnant;WIC During Pregnancy, for the Year(s)  
2000-2002;2001-2003;2002-2004;2003-2005;2004-2006;2005-2007;2006-2008;2007-2009;2008-2010;2009-2011;2010-2012;2011-2013**

*Note: Weighted counts (#) represent 3-yr averages, rounded to the nearest hundred; n/r (Not Reportable) - If the unweighted total responses for a dimension (row) is <30 that row will not be shown*

**Years: 2008-2010**

WIC During Pregnancy	Yes			No			Weighted Total Responses (3-Yr Avg)
	#	%	C.I.(95%)	#	%	C.I.(95%)	#
<b>Yes</b>	1,000	12.9	11.3 - 14.8	6,800	87.1	85.2 - 88.7	7,800
<b>No</b>	600	5.4	4.4 - 6.7	9,800	94.6	93.3 - 95.6	10,400

**PRAMS Health Indicator 3-Year Aggregate Report - Smoking during last 3 months of pregnancy- by State;County;DOH Race-Ethnicity;PRAMS Age Group;Infant Gender;Married;Poverty Level;Income (2000-2003);Income (2004-2011);Birthweight;Smoke Before Pregnant;WIC During Pregnancy, for the Year(s)  
2000-2002;2001-2003;2002-2004;2003-2005;2004-2006;2005-2007;2006-2008;2007-2009;2008-2010;2009-2011;2010-2012;2011-2013**

*Note: Weighted counts (#) represent 3-yr averages, rounded to the nearest hundred; n/r (Not Reportable) - If the unweighted total responses for a dimension (row) is <30 that row will not be shown*

**Years: 2007-2009**

State	Yes			No			Weighted Total Responses (3-Yr Avg)
	#	%	C.I.(95%)	#	%	C.I.(95%)	#
<b>Totals</b>	1,600	8.8	8.0 - 9.8	16,800	91.2	90.2 - 92.0	18,400

County	Yes			No			Weighted Total Responses (3-Yr Avg)
	#	%	C.I.(95%)	#	%	C.I.(95%)	#
<b>Hawaii</b>	300	12.1	9.9 - 14.7	2,100	87.9	85.3 - 90.1	2,400
<b>Honolulu</b>	1,100	8.5	7.5 - 9.7	11,800	91.5	90.3 - 92.5	12,900
<b>Kauai</b>	100	8.4	5.8 - 12.0	800	91.6	88.0 - 94.2	900
<b>Maui</b>	200	7.2	5.4 - 9.5	2,000	92.8	90.5 - 94.6	2,100

**PRAMS Health Indicator 3-Year Aggregate Report - Smoking during last 3 months of pregnancy- by State;County;DOH Race-Ethnicity;PRAMS Age Group;Infant Gender;Married;Poverty Level;Income (2000-2003);Income (2004-2011);Birthweight;Smoke Before Pregnant;WIC During Pregnancy, for the Year(s)  
2000-2002;2001-2003;2002-2004;2003-2005;2004-2006;2005-2007;2006-2008;2007-2009;2008-2010;2009-2011;2010-2012;2011-2013**

*Note: Weighted counts (#) represent 3-yr averages, rounded to the nearest hundred; n/r (Not Reportable) - If the unweighted total responses for a dimension (row) is <30 that row will not be shown*

**Years: 2007-2009**

DOH Race-Ethnicity	Yes			No			Weighted Total Responses (3-Yr Avg)
	#	%	C.I.(95%)	#	%	C.I.(95%)	#
Caucasian	300	6.8	5.4 - 8.5	4,000	93.2	91.5 - 94.6	4,300
Native Hawaiian	800	14.4	12.5 - 16.6	4,600	85.6	83.4 - 87.5	5,300
Chinese	<50	4.7	2.0 - 10.9	700	95.3	89.1 - 98.0	700
Filipino	200	4.8	3.5 - 6.5	3,200	95.2	93.5 - 96.5	3,400
Japanese	200	8.6	6.2 - 12.0	1,800	91.4	88.0 - 93.8	1,900
Other	200	7.4	5.4 - 10.0	2,600	92.6	90.0 - 94.6	2,800

PRAMS Age Group	Yes			No			Weighted Total Responses (3-Yr Avg)
	#	%	C.I.(95%)	#	%	C.I.(95%)	#
<20	200	11.1	8.1 - 15.0	1,500	88.9	85.0 - 91.9	1,700
20-24	500	10.7	8.9 - 13.0	3,800	89.3	87.0 - 91.1	4,300
25-34	800	8.4	7.3 - 9.8	8,500	91.6	90.2 - 92.7	9,200
35+	200	6.4	4.8 - 8.4	3,000	93.6	91.6 - 95.2	3,200

**PRAMS Health Indicator 3-Year Aggregate Report - Smoking during last 3 months of pregnancy- by State;County;DOH Race-Ethnicity;PRAMS Age Group;Infant Gender;Married;Poverty Level;Income (2000-2003);Income (2004-2011);Birthweight;Smoke Before Pregnant;WIC During Pregnancy, for the Year(s)  
2000-2002;2001-2003;2002-2004;2003-2005;2004-2006;2005-2007;2006-2008;2007-2009;2008-2010;2009-2011;2010-2012;2011-2013**

*Note: Weighted counts (#) represent 3-yr averages, rounded to the nearest hundred; n/r (Not Reportable) - If the unweighted total responses for a dimension (row) is <30 that row will not be shown*

**Years: 2007-2009**

	Yes			No			Weighted Total Responses (3-Yr Avg)
	#	%	C.I.(95%)	#	%	C.I.(95%)	#
<b>Infant Gender</b>							
<b>Male</b>	900	8.9	7.7 - 10.2	8,800	91.1	89.8 - 92.3	9,600
<b>Female</b>	800	8.8	7.6 - 10.2	8,000	91.2	89.8 - 92.4	8,700

	Yes			No			Weighted Total Responses (3-Yr Avg)
	#	%	C.I.(95%)	#	%	C.I.(95%)	#
<b>Married</b>							
<b>Yes</b>	500	4.7	4.0 - 5.6	10,700	95.3	94.4 - 96.0	11,300
<b>No</b>	1,100	15.4	13.6 - 17.3	6,000	84.6	82.7 - 86.4	7,100

	Yes			No			Weighted Total Responses (3-Yr Avg)
	#	%	C.I.(95%)	#	%	C.I.(95%)	#
<b>Poverty Level</b>							
<b>0-130%</b>	1,100	15.6	13.8 - 17.6	5,700	84.4	82.4 - 86.2	6,800
<b>131-185%</b>	200	8.3	6.3 - 10.9	2,500	91.7	89.1 - 93.7	2,700
<b>186+%</b>	200	3.3	2.6 - 4.3	7,300	96.7	95.7 - 97.4	7,500



**PRAMS Health Indicator 3-Year Aggregate Report - Smoking during last 3 months of pregnancy- by State;County;DOH Race-Ethnicity;PRAMS Age Group;Infant Gender;Married;Poverty Level;Income (2000-2003);Income (2004-2011);Birthweight;Smoke Before Pregnant;WIC During Pregnancy, for the Year(s)  
2000-2002;2001-2003;2002-2004;2003-2005;2004-2006;2005-2007;2006-2008;2007-2009;2008-2010;2009-2011;2010-2012;2011-2013**

*Note: Weighted counts (#) represent 3-yr averages, rounded to the nearest hundred; n/r (Not Reportable) - If the unweighted total responses for a dimension (row) is <30 that row will not be shown*

**Years: 2007-2009**

Income (2004-2011)	Yes			No			Weighted Total Responses (3-Yr Avg)
	#	%	C.I.(95%)	#	%	C.I.(95%)	#
<\$10,000	600	19.0	16.0 - 22.4	2,500	81.0	77.6 - 84.0	3,100
\$10,000-\$24,999	500	12.0	10.0 - 14.3	3,400	88.0	85.7 - 90.0	3,900
\$25,000-\$49,999	300	7.4	5.9 - 9.3	3,700	92.6	90.7 - 94.1	4,000
>=\$50,000	200	2.9	2.2 - 3.9	5,900	97.1	96.1 - 97.8	6,100

Birthweight	Yes			No			Weighted Total Responses (3-Yr Avg)
	#	%	C.I.(95%)	#	%	C.I.(95%)	#
Low birth weight	200	11.5	8.8 - 15.0	1,200	88.5	85.0 - 91.2	1,400
Normal birth weight	1,500	8.6	7.7 - 9.6	15,500	91.4	90.4 - 92.3	17,000

Smoke Before Pregnant	Yes			No			Weighted Total Responses (3-Yr Avg)
	#	%	C.I.(95%)	#	%	C.I.(95%)	#
Yes	1,600	43.0	39.6 - 46.5	2,100	57.0	53.5 - 60.4	3,700
No	<50	0.1	0.0 - 0.4	14,600	99.9	99.6 - 100.0	14,600

**PRAMS Health Indicator 3-Year Aggregate Report - Smoking during last 3 months of pregnancy- by State;County;DOH Race-Ethnicity;PRAMS Age Group;Infant Gender;Married;Poverty Level;Income (2000-2003);Income (2004-2011);Birthweight;Smoke Before Pregnant;WIC During Pregnancy, for the Year(s)  
2000-2002;2001-2003;2002-2004;2003-2005;2004-2006;2005-2007;2006-2008;2007-2009;2008-2010;2009-2011;2010-2012;2011-2013**

*Note: Weighted counts (#) represent 3-yr averages, rounded to the nearest hundred; n/r (Not Reportable) - If the unweighted total responses for a dimension (row) is <30 that row will not be shown*

**Years: 2007-2009**

WIC During Pregnancy	Yes			No			Weighted Total Responses (3-Yr Avg)
	#	%	C.I.(95%)	#	%	C.I.(95%)	#
<b>Yes</b>	1,000	13.4	11.8 - 15.1	6,700	86.6	84.9 - 88.2	7,700
<b>No</b>	600	5.5	4.6 - 6.5	9,900	94.5	93.5 - 95.4	10,400

**PRAMS Health Indicator 3-Year Aggregate Report - Smoking during last 3 months of pregnancy- by State;County;DOH Race-Ethnicity;PRAMS Age Group;Infant Gender;Married;Poverty Level;Income (2000-2003);Income (2004-2011);Birthweight;Smoke Before Pregnant;WIC During Pregnancy, for the Year(s)  
2000-2002;2001-2003;2002-2004;2003-2005;2004-2006;2005-2007;2006-2008;2007-2009;2008-2010;2009-2011;2010-2012;2011-2013**

*Note: Weighted counts (#) represent 3-yr averages, rounded to the nearest hundred; n/r (Not Reportable) - If the unweighted total responses for a dimension (row) is <30 that row will not be shown*

**Years: 2006-2008**

State	Yes			No			Weighted Total Responses (3-Yr Avg)
	#	%	C.I.(95%)	#	%	C.I.(95%)	#
<b>Totals</b>	1,600	8.8	8.0 - 9.6	16,900	91.2	90.4 - 92.0	18,500

County	Yes			No			Weighted Total Responses (3-Yr Avg)
	#	%	C.I.(95%)	#	%	C.I.(95%)	#
<b>Hawaii</b>	300	12.1	9.7 - 15.1	2,100	87.9	84.9 - 90.3	2,400
<b>Honolulu</b>	1,100	8.3	7.4 - 9.3	12,000	91.7	90.7 - 92.6	13,100
<b>Kauai</b>	100	7.8	5.0 - 12.0	900	92.2	88.0 - 95.0	900
<b>Maui</b>	200	8.2	6.1 - 11.0	1,900	91.8	89.0 - 93.9	2,100

**PRAMS Health Indicator 3-Year Aggregate Report - Smoking during last 3 months of pregnancy- by State;County;DOH Race-Ethnicity;PRAMS Age Group;Infant Gender;Married;Poverty Level;Income (2000-2003);Income (2004-2011);Birthweight;Smoke Before Pregnant;WIC During Pregnancy, for the Year(s)  
2000-2002;2001-2003;2002-2004;2003-2005;2004-2006;2005-2007;2006-2008;2007-2009;2008-2010;2009-2011;2010-2012;2011-2013**

*Note: Weighted counts (#) represent 3-yr averages, rounded to the nearest hundred; n/r (Not Reportable) - If the unweighted total responses for a dimension (row) is <30 that row will not be shown*

**Years: 2006-2008**

DOH Race-Ethnicity	Yes			No			Weighted Total Responses (3-Yr Avg)
	#	%	C.I.(95%)	#	%	C.I.(95%)	#
Caucasian	300	7.3	6.0 - 9.0	4,000	92.7	91.0 - 94.0	4,300
Native Hawaiian	800	15.0	13.0 - 17.2	4,300	85.0	82.8 - 87.0	5,100
Chinese	<50	2.0	1.1 - 3.5	600	98.0	96.5 - 98.9	600
Filipino	200	4.5	3.4 - 6.0	3,300	95.5	94.0 - 96.6	3,400
Japanese	100	6.6	4.8 - 9.2	2,000	93.4	90.8 - 95.2	2,100
Other	200	8.0	6.2 - 10.2	2,700	92.0	89.8 - 93.8	3,000

PRAMS Age Group	Yes			No			Weighted Total Responses (3-Yr Avg)
	#	%	C.I.(95%)	#	%	C.I.(95%)	#
<20	200	12.2	9.1 - 16.1	1,400	87.8	83.9 - 90.9	1,600
20-24	500	10.5	8.8 - 12.5	3,900	89.5	87.5 - 91.2	4,400
25-34	800	8.6	7.5 - 9.8	8,400	91.4	90.2 - 92.5	9,200
35+	200	5.4	4.1 - 7.1	3,200	94.6	92.9 - 95.9	3,300

**PRAMS Health Indicator 3-Year Aggregate Report - Smoking during last 3 months of pregnancy- by State;County;DOH Race-Ethnicity;PRAMS Age Group;Infant Gender;Married;Poverty Level;Income (2000-2003);Income (2004-2011);Birthweight;Smoke Before Pregnant;WIC During Pregnancy, for the Year(s)  
2000-2002;2001-2003;2002-2004;2003-2005;2004-2006;2005-2007;2006-2008;2007-2009;2008-2010;2009-2011;2010-2012;2011-2013**

*Note: Weighted counts (#) represent 3-yr averages, rounded to the nearest hundred; n/r (Not Reportable) - If the unweighted total responses for a dimension (row) is <30 that row will not be shown*

**Years: 2006-2008**

Infant Gender	Yes			No			Weighted Total Responses (3-Yr Avg)
	#	%	C.I.(95%)	#	%	C.I.(95%)	#
Male	800	8.6	7.6 - 9.8	8,700	91.4	90.2 - 92.4	9,500
Female	800	8.9	7.8 - 10.1	8,100	91.1	89.9 - 92.2	8,900

Married	Yes			No			Weighted Total Responses (3-Yr Avg)
	#	%	C.I.(95%)	#	%	C.I.(95%)	#
Yes	600	5.1	4.4 - 6.0	11,000	94.9	94.0 - 95.6	11,600
No	1,000	14.9	13.2 - 16.7	5,900	85.1	83.3 - 86.8	6,900

Poverty Level	Yes			No			Weighted Total Responses (3-Yr Avg)
	#	%	C.I.(95%)	#	%	C.I.(95%)	#
0-130%	1,100	15.7	14.0 - 17.5	5,700	84.3	82.5 - 86.0	6,700
131-185%	200	8.1	6.3 - 10.4	2,400	91.9	89.6 - 93.7	2,600
186+%	300	3.6	2.9 - 4.5	7,600	96.4	95.5 - 97.1	7,900

**PRAMS Health Indicator 3-Year Aggregate Report - Smoking during last 3 months of pregnancy- by State;County;DOH Race-Ethnicity;PRAMS Age Group;Infant Gender;Married;Poverty Level;Income (2000-2003);Income (2004-2011);Birthweight;Smoke Before Pregnant;WIC During Pregnancy, for the Year(s)  
2000-2002;2001-2003;2002-2004;2003-2005;2004-2006;2005-2007;2006-2008;2007-2009;2008-2010;2009-2011;2010-2012;2011-2013**

*Note: Weighted counts (#) represent 3-yr averages, rounded to the nearest hundred; n/r (Not Reportable) - If the unweighted total responses for a dimension (row) is <30 that row will not be shown*

**Years: 2006-2008**

Income (2004-2011)	Yes			No			Weighted Total Responses (3-Yr Avg)
	#	%	C.I.(95%)	#	%	C.I.(95%)	#
<\$10,000	600	18.6	15.9 - 21.6	2,500	81.4	78.4 - 84.1	3,100
\$10,000-\$24,999	500	12.3	10.3 - 14.5	3,400	87.7	85.5 - 89.7	3,900
\$25,000-\$49,999	300	7.2	5.8 - 8.9	3,900	92.8	91.1 - 94.2	4,300
>=\$50,000	200	3.1	2.4 - 4.1	5,900	96.9	95.9 - 97.6	6,100

Birthweight	Yes			No			Weighted Total Responses (3-Yr Avg)
	#	%	C.I.(95%)	#	%	C.I.(95%)	#
Low birth weight	200	12.4	9.3 - 16.2	1,300	87.6	83.8 - 90.7	1,400
Normal birth weight	1,400	8.5	7.7 - 9.3	15,600	91.5	90.7 - 92.3	17,000

Smoke Before Pregnant	Yes			No			Weighted Total Responses (3-Yr Avg)
	#	%	C.I.(95%)	#	%	C.I.(95%)	#
Yes	1,600	43.8	40.6 - 47.0	2,100	56.2	53.0 - 59.4	3,700
No	<50	0.0	0.0 - 0.2	14,800	100.0	99.8 - 100.0	14,800

**PRAMS Health Indicator 3-Year Aggregate Report - Smoking during last 3 months of pregnancy- by State;County;DOH Race-Ethnicity;PRAMS Age Group;Infant Gender;Married;Poverty Level;Income (2000-2003);Income (2004-2011);Birthweight;Smoke Before Pregnant;WIC During Pregnancy, for the Year(s)  
2000-2002;2001-2003;2002-2004;2003-2005;2004-2006;2005-2007;2006-2008;2007-2009;2008-2010;2009-2011;2010-2012;2011-2013**

*Note: Weighted counts (#) represent 3-yr averages, rounded to the nearest hundred; n/r (Not Reportable) - If the unweighted total responses for a dimension (row) is <30 that row will not be shown*

**Years: 2006-2008**

WIC During Pregnancy	Yes			No			Weighted Total Responses (3-Yr Avg)
	#	%	C.I.(95%)	#	%	C.I.(95%)	#
<b>Yes</b>	1,000	12.9	11.5 - 14.5	6,700	87.1	85.5 - 88.5	7,700
<b>No</b>	600	5.6	4.8 - 6.5	9,800	94.4	93.5 - 95.2	10,400

**PRAMS Health Indicator 3-Year Aggregate Report - Smoking during last 3 months of pregnancy- by State;County;DOH Race-Ethnicity;PRAMS Age Group;Infant Gender;Married;Poverty Level;Income (2000-2003);Income (2004-2011);Birthweight;Smoke Before Pregnant;WIC During Pregnancy, for the Year(s)  
2000-2002;2001-2003;2002-2004;2003-2005;2004-2006;2005-2007;2006-2008;2007-2009;2008-2010;2009-2011;2010-2012;2011-2013**

*Note: Weighted counts (#) represent 3-yr averages, rounded to the nearest hundred; n/r (Not Reportable) - If the unweighted total responses for a dimension (row) is <30 that row will not be shown*

**Years: 2005-2007**

State	Yes			No			Weighted Total Responses (3-Yr Avg)
	#	%	C.I.(95%)	#	%	C.I.(95%)	#
<b>Totals</b>	1,600	8.7	7.9 - 9.6	16,400	91.3	90.4 - 92.1	18,000

County	Yes			No			Weighted Total Responses (3-Yr Avg)
	#	%	C.I.(95%)	#	%	C.I.(95%)	#
<b>Hawaii</b>	300	12.0	9.6 - 14.9	2,000	88.0	85.1 - 90.4	2,300
<b>Honolulu</b>	1,100	8.2	7.3 - 9.2	11,800	91.8	90.8 - 92.7	12,900
<b>Kauai</b>	100	8.2	5.2 - 12.6	800	91.8	87.4 - 94.8	900
<b>Maui</b>	200	8.4	6.2 - 11.3	1,800	91.6	88.7 - 93.8	1,900



**PRAMS Health Indicator 3-Year Aggregate Report - Smoking during last 3 months of pregnancy- by State;County;DOH Race-Ethnicity;PRAMS Age Group;Infant Gender;Married;Poverty Level;Income (2000-2003);Income (2004-2011);Birthweight;Smoke Before Pregnant;WIC During Pregnancy, for the Year(s)  
2000-2002;2001-2003;2002-2004;2003-2005;2004-2006;2005-2007;2006-2008;2007-2009;2008-2010;2009-2011;2010-2012;2011-2013**

*Note: Weighted counts (#) represent 3-yr averages, rounded to the nearest hundred; n/r (Not Reportable) - If the unweighted total responses for a dimension (row) is <30 that row will not be shown*

**Years: 2005-2007**

DOH Race-Ethnicity	Yes			No			Weighted Total Responses (3-Yr Avg)
	#	%	C.I.(95%)	#	%	C.I.(95%)	#
Caucasian	300	7.4	6.0 - 9.1	3,800	92.6	90.9 - 94.0	4,100
Native Hawaiian	700	14.3	12.4 - 16.5	4,300	85.7	83.5 - 87.6	5,000
Chinese	<50	1.5	0.8 - 2.9	600	98.5	97.1 - 99.2	600
Filipino	200	5.2	4.0 - 6.7	3,100	94.8	93.3 - 96.0	3,300
Japanese	100	6.6	4.8 - 8.9	2,000	93.4	91.1 - 95.2	2,200
Other	200	8.2	6.4 - 10.4	2,600	91.8	89.6 - 93.6	2,800

PRAMS Age Group	Yes			No			Weighted Total Responses (3-Yr Avg)
	#	%	C.I.(95%)	#	%	C.I.(95%)	#
<20	100	9.6	6.9 - 13.2	1,400	90.4	86.8 - 93.1	1,600
20-24	500	10.9	9.2 - 12.9	4,000	89.1	87.1 - 90.8	4,400
25-34	800	8.6	7.5 - 9.8	8,100	91.4	90.2 - 92.5	8,800
35+	200	5.5	4.2 - 7.3	3,000	94.5	92.7 - 95.8	3,200

**PRAMS Health Indicator 3-Year Aggregate Report - Smoking during last 3 months of pregnancy- by State;County;DOH Race-Ethnicity;PRAMS Age Group;Infant Gender;Married;Poverty Level;Income (2000-2003);Income (2004-2011);Birthweight;Smoke Before Pregnant;WIC During Pregnancy, for the Year(s)  
2000-2002;2001-2003;2002-2004;2003-2005;2004-2006;2005-2007;2006-2008;2007-2009;2008-2010;2009-2011;2010-2012;2011-2013**

*Note: Weighted counts (#) represent 3-yr averages, rounded to the nearest hundred; n/r (Not Reportable) - If the unweighted total responses for a dimension (row) is <30 that row will not be shown*

**Years: 2005-2007**

Infant Gender	Yes			No			Weighted Total Responses (3-Yr Avg)
	#	%	C.I.(95%)	#	%	C.I.(95%)	#
Male	800	8.8	7.8 - 10.1	8,400	91.2	89.9 - 92.2	9,200
Female	800	8.6	7.5 - 9.8	8,000	91.4	90.2 - 92.5	8,800

Married	Yes			No			Weighted Total Responses (3-Yr Avg)
	#	%	C.I.(95%)	#	%	C.I.(95%)	#
Yes	600	4.9	4.2 - 5.7	10,800	95.1	94.3 - 95.8	11,400
No	1,000	15.3	13.6 - 17.1	5,600	84.7	82.9 - 86.4	6,600

Poverty Level	Yes			No			Weighted Total Responses (3-Yr Avg)
	#	%	C.I.(95%)	#	%	C.I.(95%)	#
0-130%	1,000	15.3	13.6 - 17.1	5,500	84.7	82.9 - 86.4	6,500
131-185%	200	7.8	5.9 - 10.2	2,100	92.2	89.8 - 94.1	2,300
186+%	300	4.0	3.3 - 4.9	7,500	96.0	95.1 - 96.7	7,800

**PRAMS Health Indicator 3-Year Aggregate Report - Smoking during last 3 months of pregnancy- by State;County;DOH Race-Ethnicity;PRAMS Age Group;Infant Gender;Married;Poverty Level;Income (2000-2003);Income (2004-2011);Birthweight;Smoke Before Pregnant;WIC During Pregnancy, for the Year(s)  
2000-2002;2001-2003;2002-2004;2003-2005;2004-2006;2005-2007;2006-2008;2007-2009;2008-2010;2009-2011;2010-2012;2011-2013**

*Note: Weighted counts (#) represent 3-yr averages, rounded to the nearest hundred; n/r (Not Reportable) - If the unweighted total responses for a dimension (row) is <30 that row will not be shown*

**Years: 2005-2007**

Income (2004-2011)	Yes			No			Weighted Total Responses (3-Yr Avg)
	#	%	C.I.(95%)	#	%	C.I.(95%)	#
<\$10,000	600	19.3	16.6 - 22.3	2,400	80.7	77.7 - 83.4	3,000
\$10,000-\$24,999	400	11.6	9.7 - 13.7	3,300	88.4	86.3 - 90.3	3,700
\$25,000-\$49,999	300	6.9	5.5 - 8.5	3,900	93.1	91.5 - 94.5	4,200
>=\$50,000	200	3.3	2.5 - 4.3	5,600	96.7	95.7 - 97.5	5,800

Birthweight	Yes			No			Weighted Total Responses (3-Yr Avg)
	#	%	C.I.(95%)	#	%	C.I.(95%)	#
Low birth weight	200	12.7	9.6 - 16.5	1,300	87.3	83.5 - 90.4	1,400
Normal birth weight	1,400	8.4	7.6 - 9.2	15,200	91.6	90.8 - 92.4	16,500

Smoke Before Pregnant	Yes			No			Weighted Total Responses (3-Yr Avg)
	#	%	C.I.(95%)	#	%	C.I.(95%)	#
Yes	1,600	41.8	38.7 - 44.9	2,200	58.2	55.1 - 61.3	3,700
No	<50	0.1	0.0 - 0.2	14,300	99.9	99.8 - 100.0	14,300

**PRAMS Health Indicator 3-Year Aggregate Report - Smoking during last 3 months of pregnancy- by State;County;DOH Race-Ethnicity;PRAMS Age Group;Infant Gender;Married;Poverty Level;Income (2000-2003);Income (2004-2011);Birthweight;Smoke Before Pregnant;WIC During Pregnancy, for the Year(s)  
2000-2002;2001-2003;2002-2004;2003-2005;2004-2006;2005-2007;2006-2008;2007-2009;2008-2010;2009-2011;2010-2012;2011-2013**

*Note: Weighted counts (#) represent 3-yr averages, rounded to the nearest hundred; n/r (Not Reportable) - If the unweighted total responses for a dimension (row) is <30 that row will not be shown*

**Years: 2005-2007**

WIC During Pregnancy	Yes			No			Weighted Total Responses (3-Yr Avg)
	#	%	C.I.(95%)	#	%	C.I.(95%)	#
<b>Yes</b>	1,000	12.9	11.5 - 14.5	6,600	87.1	85.5 - 88.5	7,500
<b>No</b>	600	5.6	4.8 - 6.6	9,600	94.4	93.4 - 95.2	10,100

**PRAMS Health Indicator 3-Year Aggregate Report - Smoking during last 3 months of pregnancy- by State;County;DOH Race-Ethnicity;PRAMS Age Group;Infant Gender;Married;Poverty Level;Income (2000-2003);Income (2004-2011);Birthweight;Smoke Before Pregnant;WIC During Pregnancy, for the Year(s)  
2000-2002;2001-2003;2002-2004;2003-2005;2004-2006;2005-2007;2006-2008;2007-2009;2008-2010;2009-2011;2010-2012;2011-2013**

*Note: Weighted counts (#) represent 3-yr averages, rounded to the nearest hundred; n/r (Not Reportable) - If the unweighted total responses for a dimension (row) is <30 that row will not be shown*

**Years: 2004-2006**

State	Yes			No			Weighted Total Responses (3-Yr Avg)
	#	%	C.I.(95%)	#	%	C.I.(95%)	#
<b>Totals</b>	1,500	8.6	7.8 - 9.4	16,200	91.4	90.6 - 92.2	17,700

County	Yes			No			Weighted Total Responses (3-Yr Avg)
	#	%	C.I.(95%)	#	%	C.I.(95%)	#
<b>Hawaii</b>	300	13.0	10.4 - 15.9	1,900	87.0	84.1 - 89.6	2,200
<b>Honolulu</b>	1,000	7.9	7.0 - 8.8	11,900	92.1	91.2 - 93.0	12,900
<b>Kauai</b>	100	8.1	5.0 - 12.9	700	91.9	87.1 - 95.0	800
<b>Maui</b>	200	8.9	6.7 - 11.8	1,700	91.1	88.2 - 93.3	1,800

**PRAMS Health Indicator 3-Year Aggregate Report - Smoking during last 3 months of pregnancy- by State;County;DOH Race-Ethnicity;PRAMS Age Group;Infant Gender;Married;Poverty Level;Income (2000-2003);Income (2004-2011);Birthweight;Smoke Before Pregnant;WIC During Pregnancy, for the Year(s)  
2000-2002;2001-2003;2002-2004;2003-2005;2004-2006;2005-2007;2006-2008;2007-2009;2008-2010;2009-2011;2010-2012;2011-2013**

*Note: Weighted counts (#) represent 3-yr averages, rounded to the nearest hundred; n/r (Not Reportable) - If the unweighted total responses for a dimension (row) is <30 that row will not be shown*

**Years: 2004-2006**

DOH Race-Ethnicity	Yes			No			Weighted Total Responses (3-Yr Avg)
	#	%	C.I.(95%)	#	%	C.I.(95%)	#
Caucasian	300	7.0	5.7 - 8.6	3,700	93.0	91.4 - 94.3	4,000
Native Hawaiian	700	13.7	11.9 - 15.8	4,200	86.3	84.2 - 88.1	4,900
Chinese	<50	1.5	0.8 - 2.6	600	98.5	97.4 - 99.2	600
Filipino	200	5.1	4.0 - 6.6	3,100	94.9	93.4 - 96.0	3,300
Japanese	200	6.9	5.1 - 9.2	2,100	93.1	90.8 - 94.9	2,200
Other	200	9.0	7.1 - 11.3	2,400	91.0	88.7 - 92.9	2,700

PRAMS Age Group	Yes			No			Weighted Total Responses (3-Yr Avg)
	#	%	C.I.(95%)	#	%	C.I.(95%)	#
<20	100	9.8	7.1 - 13.4	1,300	90.2	86.6 - 92.9	1,400
20-24	500	11.6	9.8 - 13.6	3,900	88.4	86.4 - 90.2	4,400
25-34	700	7.9	6.9 - 9.1	8,000	92.1	90.9 - 93.1	8,700
35+	200	5.9	4.6 - 7.6	3,000	94.1	92.4 - 95.4	3,200

**PRAMS Health Indicator 3-Year Aggregate Report - Smoking during last 3 months of pregnancy- by State;County;DOH Race-Ethnicity;PRAMS Age Group;Infant Gender;Married;Poverty Level;Income (2000-2003);Income (2004-2011);Birthweight;Smoke Before Pregnant;WIC During Pregnancy, for the Year(s)  
2000-2002;2001-2003;2002-2004;2003-2005;2004-2006;2005-2007;2006-2008;2007-2009;2008-2010;2009-2011;2010-2012;2011-2013**

*Note: Weighted counts (#) represent 3-yr averages, rounded to the nearest hundred; n/r (Not Reportable) - If the unweighted total responses for a dimension (row) is <30 that row will not be shown*

**Years: 2004-2006**

Infant Gender	Yes			No			Weighted Total Responses (3-Yr Avg)
	#	%	C.I.(95%)	#	%	C.I.(95%)	#
Male	800	9.0	8.0 - 10.2	8,400	91.0	89.8 - 92.0	9,200
Female	700	8.2	7.1 - 9.4	7,800	91.8	90.6 - 92.9	8,500

Married	Yes			No			Weighted Total Responses (3-Yr Avg)
	#	%	C.I.(95%)	#	%	C.I.(95%)	#
Yes	600	5.3	4.6 - 6.1	11,000	94.7	93.9 - 95.4	11,700
No	900	15.0	13.3 - 16.9	5,200	85.0	83.1 - 86.7	6,100

Poverty Level	Yes			No			Weighted Total Responses (3-Yr Avg)
	#	%	C.I.(95%)	#	%	C.I.(95%)	#
0-130%	900	15.0	13.4 - 16.8	5,400	85.0	83.2 - 86.6	6,300
131-185%	200	7.4	5.6 - 9.8	2,000	92.6	90.2 - 94.4	2,100
186+%	300	3.9	3.1 - 4.7	7,600	96.1	95.3 - 96.9	7,900

**PRAMS Health Indicator 3-Year Aggregate Report - Smoking during last 3 months of pregnancy- by State;County;DOH Race-Ethnicity;PRAMS Age Group;Infant Gender;Married;Poverty Level;Income (2000-2003);Income (2004-2011);Birthweight;Smoke Before Pregnant;WIC During Pregnancy, for the Year(s)  
2000-2002;2001-2003;2002-2004;2003-2005;2004-2006;2005-2007;2006-2008;2007-2009;2008-2010;2009-2011;2010-2012;2011-2013**

*Note: Weighted counts (#) represent 3-yr averages, rounded to the nearest hundred; n/r (Not Reportable) - If the unweighted total responses for a dimension (row) is <30 that row will not be shown*

**Years: 2004-2006**

Income (2004-2011)	Yes			No			Weighted Total Responses (3-Yr Avg)
	#	%	C.I.(95%)	#	%	C.I.(95%)	#
<\$10,000	500	18.6	15.9 - 21.6	2,400	81.4	78.4 - 84.1	2,900
\$10,000-\$24,999	400	11.5	9.7 - 13.5	3,400	88.5	86.5 - 90.3	3,900
\$25,000-\$49,999	300	6.3	5.1 - 7.8	4,000	93.7	92.2 - 94.9	4,300
>=\$50,000	200	3.1	2.4 - 4.1	5,300	96.9	95.9 - 97.6	5,400

Birthweight	Yes			No			Weighted Total Responses (3-Yr Avg)
	#	%	C.I.(95%)	#	%	C.I.(95%)	#
Low birth weight	200	13.7	10.5 - 17.7	1,100	86.3	82.3 - 89.5	1,300
Normal birth weight	1,300	8.2	7.4 - 9.1	15,100	91.8	90.9 - 92.6	16,400

Smoke Before Pregnant	Yes			No			Weighted Total Responses (3-Yr Avg)
	#	%	C.I.(95%)	#	%	C.I.(95%)	#
Yes	1,500	40.7	37.7 - 43.7	2,200	59.3	56.3 - 62.3	3,700
No	<50	0.1	0.0 - 0.2	14,000	99.9	99.8 - 100.0	14,000



**PRAMS Health Indicator 3-Year Aggregate Report - Smoking during last 3 months of pregnancy- by State;County;DOH Race-Ethnicity;PRAMS Age Group;Infant Gender;Married;Poverty Level;Income (2000-2003);Income (2004-2011);Birthweight;Smoke Before Pregnant;WIC During Pregnancy, for the Year(s)  
2000-2002;2001-2003;2002-2004;2003-2005;2004-2006;2005-2007;2006-2008;2007-2009;2008-2010;2009-2011;2010-2012;2011-2013**

*Note: Weighted counts (#) represent 3-yr averages, rounded to the nearest hundred; n/r (Not Reportable) - If the unweighted total responses for a dimension (row) is <30 that row will not be shown*

**Years: 2004-2006**

WIC During Pregnancy	Yes			No			Weighted Total Responses (3-Yr Avg)
	#	%	C.I.(95%)	#	%	C.I.(95%)	#
<b>Yes</b>	900	12.2	10.9 - 13.7	6,700	87.8	86.3 - 89.1	7,600
<b>No</b>	600	6.0	5.2 - 7.0	9,200	94.0	93.0 - 94.8	9,800

**PRAMS Health Indicator 3-Year Aggregate Report - Smoking during last 3 months of pregnancy- by State;County;DOH Race-Ethnicity;PRAMS Age Group;Infant Gender;Married;Poverty Level;Income (2000-2003);Income (2004-2011);Birthweight;Smoke Before Pregnant;WIC During Pregnancy, for the Year(s)  
2000-2002;2001-2003;2002-2004;2003-2005;2004-2006;2005-2007;2006-2008;2007-2009;2008-2010;2009-2011;2010-2012;2011-2013**

*Note: Weighted counts (#) represent 3-yr averages, rounded to the nearest hundred; n/r (Not Reportable) - If the unweighted total responses for a dimension (row) is <30 that row will not be shown*

**Years: 2003-2005**

State	Yes			No			Weighted Total Responses (3-Yr Avg)
	#	%	C.I.(95%)	#	%	C.I.(95%)	#
<b>Totals</b>	1,500	8.6	7.8 - 9.4	15,900	91.4	90.6 - 92.2	17,400

County	Yes			No			Weighted Total Responses (3-Yr Avg)
	#	%	C.I.(95%)	#	%	C.I.(95%)	#
<b>Hawaii</b>	300	12.2	10.1 - 14.7	1,900	87.8	85.3 - 89.9	2,100
<b>Honolulu</b>	1,000	8.0	7.1 - 9.0	11,700	92.0	91.0 - 92.9	12,700
<b>Kauai</b>	100	8.6	5.8 - 12.7	700	91.4	87.3 - 94.2	800
<b>Maui</b>	100	8.1	6.3 - 10.5	1,600	91.9	89.5 - 93.7	1,800

**PRAMS Health Indicator 3-Year Aggregate Report - Smoking during last 3 months of pregnancy- by State;County;DOH Race-Ethnicity;PRAMS Age Group;Infant Gender;Married;Poverty Level;Income (2000-2003);Income (2004-2011);Birthweight;Smoke Before Pregnant;WIC During Pregnancy, for the Year(s)  
2000-2002;2001-2003;2002-2004;2003-2005;2004-2006;2005-2007;2006-2008;2007-2009;2008-2010;2009-2011;2010-2012;2011-2013**

*Note: Weighted counts (#) represent 3-yr averages, rounded to the nearest hundred; n/r (Not Reportable) - If the unweighted total responses for a dimension (row) is <30 that row will not be shown*

**Years: 2003-2005**

DOH Race-Ethnicity	Yes			No			Weighted Total Responses (3-Yr Avg)
	#	%	C.I.(95%)	#	%	C.I.(95%)	#
Caucasian	300	8.3	6.7 - 10.3	3,500	91.7	89.7 - 93.3	3,800
Native Hawaiian	600	12.8	11.2 - 14.6	4,200	87.2	85.4 - 88.8	4,800
Chinese	<50	2.1	0.7 - 5.9	700	97.9	94.1 - 99.3	700
Filipino	200	6.3	4.9 - 8.2	3,200	93.7	91.8 - 95.1	3,500
Japanese	100	6.4	4.7 - 8.7	2,100	93.6	91.3 - 95.3	2,200
Other	200	7.7	5.8 - 10.1	2,300	92.3	89.9 - 94.2	2,500

PRAMS Age Group	Yes			No			Weighted Total Responses (3-Yr Avg)
	#	%	C.I.(95%)	#	%	C.I.(95%)	#
<20	200	10.5	7.7 - 14.1	1,300	89.5	85.9 - 92.3	1,400
20-24	500	12.3	10.5 - 14.2	3,700	87.7	85.8 - 89.5	4,200
25-34	600	7.5	6.5 - 8.6	8,000	92.5	91.4 - 93.5	8,600
35+	200	5.8	4.4 - 7.5	2,900	94.2	92.5 - 95.6	3,100

**PRAMS Health Indicator 3-Year Aggregate Report - Smoking during last 3 months of pregnancy- by State;County;DOH Race-Ethnicity;PRAMS Age Group;Infant Gender;Married;Poverty Level;Income (2000-2003);Income (2004-2011);Birthweight;Smoke Before Pregnant;WIC During Pregnancy, for the Year(s)  
2000-2002;2001-2003;2002-2004;2003-2005;2004-2006;2005-2007;2006-2008;2007-2009;2008-2010;2009-2011;2010-2012;2011-2013**

*Note: Weighted counts (#) represent 3-yr averages, rounded to the nearest hundred; n/r (Not Reportable) - If the unweighted total responses for a dimension (row) is <30 that row will not be shown*

**Years: 2003-2005**

	Yes			No			Weighted Total Responses (3-Yr Avg)
	#	%	C.I.(95%)	#	%	C.I.(95%)	#
<b>Infant Gender</b>							
<b>Male</b>	800	8.8	7.8 - 9.9	8,400	91.2	90.1 - 92.2	9,200
<b>Female</b>	700	8.4	7.3 - 9.6	7,500	91.6	90.4 - 92.7	8,200

	Yes			No			Weighted Total Responses (3-Yr Avg)
	#	%	C.I.(95%)	#	%	C.I.(95%)	#
<b>Married</b>							
<b>Yes</b>	700	5.7	4.9 - 6.5	10,900	94.3	93.5 - 95.1	11,600
<b>No</b>	800	14.4	12.8 - 16.2	5,000	85.6	83.8 - 87.2	5,800

	Yes			No			Weighted Total Responses (3-Yr Avg)
	#	%	C.I.(95%)	#	%	C.I.(95%)	#
<b>Poverty Level</b>							
<b>0-130%</b>	900	13.8	12.3 - 15.4	5,800	86.2	84.6 - 87.7	6,800
<b>131-185%</b>	200	7.4	5.5 - 9.9	2,000	92.6	90.1 - 94.5	2,200
<b>186+%</b>	300	3.7	3.0 - 4.7	6,700	96.3	95.3 - 97.0	7,000

**PRAMS Health Indicator 3-Year Aggregate Report - Smoking during last 3 months of pregnancy- by State;County;DOH Race-Ethnicity;PRAMS Age Group;Infant Gender;Married;Poverty Level;Income (2000-2003);Income (2004-2011);Birthweight;Smoke Before Pregnant;WIC During Pregnancy, for the Year(s)  
2000-2002;2001-2003;2002-2004;2003-2005;2004-2006;2005-2007;2006-2008;2007-2009;2008-2010;2009-2011;2010-2012;2011-2013**

*Note: Weighted counts (#) represent 3-yr averages, rounded to the nearest hundred; n/r (Not Reportable) - If the unweighted total responses for a dimension (row) is <30 that row will not be shown*

**Years: 2003-2005**

Birthweight	Yes			No			Weighted Total Responses (3-Yr Avg)
	#	%	C.I.(95%)	#	%	C.I.(95%)	#
Low birth weight	100	12.4	9.3 - 16.3	1,000	87.6	83.7 - 90.7	1,200
Normal birth weight	1,300	8.3	7.5 - 9.2	14,900	91.7	90.8 - 92.5	16,200

Smoke Before Pregnant	Yes			No			Weighted Total Responses (3-Yr Avg)
	#	%	C.I.(95%)	#	%	C.I.(95%)	#
Yes	1,500	40.6	37.6 - 43.7	2,100	59.4	56.3 - 62.4	3,600
No	<50	0.1	0.0 - 0.2	13,700	99.9	99.8 - 100.0	13,700

WIC During Pregnancy	Yes			No			Weighted Total Responses (3-Yr Avg)
	#	%	C.I.(95%)	#	%	C.I.(95%)	#
Yes	900	12.2	10.9 - 13.7	6,500	87.8	86.3 - 89.1	7,500
No	600	5.9	5.1 - 6.9	9,100	94.1	93.1 - 94.9	9,700

**PRAMS Health Indicator 3-Year Aggregate Report - Smoking during last 3 months of pregnancy- by State;County;DOH Race-Ethnicity;PRAMS Age Group;Infant Gender;Married;Poverty Level;Income (2000-2003);Income (2004-2011);Birthweight;Smoke Before Pregnant;WIC During Pregnancy, for the Year(s)  
2000-2002;2001-2003;2002-2004;2003-2005;2004-2006;2005-2007;2006-2008;2007-2009;2008-2010;2009-2011;2010-2012;2011-2013**

*Note: Weighted counts (#) represent 3-yr averages, rounded to the nearest hundred; n/r (Not Reportable) - If the unweighted total responses for a dimension (row) is <30 that row will not be shown*

**Years: 2002-2004**

State	Yes			No			Weighted Total Responses (3-Yr Avg)
	#	%	C.I.(95%)	#	%	C.I.(95%)	#
<b>Totals</b>	1,500	8.5	7.7 - 9.3	15,800	91.5	90.7 - 92.3	17,300

County	Yes			No			Weighted Total Responses (3-Yr Avg)
	#	%	C.I.(95%)	#	%	C.I.(95%)	#
<b>Hawaii</b>	300	12.9	11.0 - 15.1	1,800	87.1	84.9 - 89.0	2,000
<b>Honolulu</b>	1,000	7.8	6.9 - 8.9	11,700	92.2	91.1 - 93.1	12,600
<b>Kauai</b>	100	9.5	6.9 - 12.9	700	90.5	87.1 - 93.1	800
<b>Maui</b>	100	7.9	6.4 - 9.9	1,700	92.1	90.1 - 93.6	1,800

**PRAMS Health Indicator 3-Year Aggregate Report - Smoking during last 3 months of pregnancy- by State;County;DOH Race-Ethnicity;PRAMS Age Group;Infant Gender;Married;Poverty Level;Income (2000-2003);Income (2004-2011);Birthweight;Smoke Before Pregnant;WIC During Pregnancy, for the Year(s)  
2000-2002;2001-2003;2002-2004;2003-2005;2004-2006;2005-2007;2006-2008;2007-2009;2008-2010;2009-2011;2010-2012;2011-2013**

*Note: Weighted counts (#) represent 3-yr averages, rounded to the nearest hundred; n/r (Not Reportable) - If the unweighted total responses for a dimension (row) is <30 that row will not be shown*

**Years: 2002-2004**

DOH Race-Ethnicity	Yes			No			Weighted Total Responses (3-Yr Avg)
	#	%	C.I.(95%)	#	%	C.I.(95%)	#
Caucasian	300	8.8	7.0 - 11.0	3,400	91.2	89.0 - 93.0	3,700
Native Hawaiian	600	13.5	12.1 - 15.0	4,100	86.5	85.0 - 87.9	4,700
Chinese	<50	2.1	0.7 - 6.1	600	97.9	93.9 - 99.3	700
Filipino	200	5.5	4.1 - 7.3	3,300	94.5	92.7 - 95.9	3,500
Japanese	100	5.3	3.7 - 7.6	2,100	94.7	92.4 - 96.3	2,200
Other	200	7.5	5.4 - 10.2	2,300	92.5	89.8 - 94.6	2,400

PRAMS Age Group	Yes			No			Weighted Total Responses (3-Yr Avg)
	#	%	C.I.(95%)	#	%	C.I.(95%)	#
<20	200	11.9	9.0 - 15.5	1,300	88.1	84.5 - 91.0	1,500
20-24	500	12.5	10.7 - 14.5	3,700	87.5	85.5 - 89.3	4,200
25-34	600	7.2	6.2 - 8.3	8,000	92.8	91.7 - 93.8	8,600
35+	200	5.0	3.8 - 6.6	2,900	95.0	93.4 - 96.2	3,000

**PRAMS Health Indicator 3-Year Aggregate Report - Smoking during last 3 months of pregnancy- by State;County;DOH Race-Ethnicity;PRAMS Age Group;Infant Gender;Married;Poverty Level;Income (2000-2003);Income (2004-2011);Birthweight;Smoke Before Pregnant;WIC During Pregnancy, for the Year(s)  
2000-2002;2001-2003;2002-2004;2003-2005;2004-2006;2005-2007;2006-2008;2007-2009;2008-2010;2009-2011;2010-2012;2011-2013**

*Note: Weighted counts (#) represent 3-yr averages, rounded to the nearest hundred; n/r (Not Reportable) - If the unweighted total responses for a dimension (row) is <30 that row will not be shown*

**Years: 2002-2004**

	Yes			No			Weighted Total Responses (3-Yr Avg)
	#	%	C.I.(95%)	#	%	C.I.(95%)	#
<b>Infant Gender</b>							
<b>Male</b>	700	8.2	7.2 - 9.3	8,300	91.8	90.7 - 92.8	9,100
<b>Female</b>	700	8.8	7.7 - 10.1	7,500	91.2	89.9 - 92.3	8,200

	Yes			No			Weighted Total Responses (3-Yr Avg)
	#	%	C.I.(95%)	#	%	C.I.(95%)	#
<b>Married</b>							
<b>Yes</b>	700	5.7	5.0 - 6.7	11,100	94.3	93.3 - 95.0	11,800
<b>No</b>	800	14.4	12.7 - 16.2	4,700	85.6	83.8 - 87.3	5,500

	Yes			No			Weighted Total Responses (3-Yr Avg)
	#	%	C.I.(95%)	#	%	C.I.(95%)	#
<b>Poverty Level</b>							
<b>0-130%</b>	900	13.5	12.0 - 15.1	5,900	86.5	84.9 - 88.0	6,900
<b>131-185%</b>	200	7.0	5.3 - 9.4	2,500	93.0	90.6 - 94.7	2,700
<b>186+%</b>	200	3.2	2.5 - 4.2	6,000	96.8	95.8 - 97.5	6,200



**PRAMS Health Indicator 3-Year Aggregate Report - Smoking during last 3 months of pregnancy- by State;County;DOH Race-Ethnicity;PRAMS Age Group;Infant Gender;Married;Poverty Level;Income (2000-2003);Income (2004-2011);Birthweight;Smoke Before Pregnant;WIC During Pregnancy, for the Year(s)  
2000-2002;2001-2003;2002-2004;2003-2005;2004-2006;2005-2007;2006-2008;2007-2009;2008-2010;2009-2011;2010-2012;2011-2013**

*Note: Weighted counts (#) represent 3-yr averages, rounded to the nearest hundred; n/r (Not Reportable) - If the unweighted total responses for a dimension (row) is <30 that row will not be shown*

**Years: 2002-2004**

Birthweight	Yes			No			Weighted Total Responses (3-Yr Avg)
	#	%	C.I.(95%)	#	%	C.I.(95%)	#
Low birth weight	100	11.5	8.7 - 15.1	1,000	88.5	84.9 - 91.3	1,100
Normal birth weight	1,300	8.2	7.4 - 9.1	14,800	91.8	90.9 - 92.6	16,100

Smoke Before Pregnant	Yes			No			Weighted Total Responses (3-Yr Avg)
	#	%	C.I.(95%)	#	%	C.I.(95%)	#
Yes	1,400	41.3	38.2 - 44.5	2,000	58.7	55.5 - 61.8	3,400
No	<50	0.1	0.0 - 0.2	13,600	99.9	99.8 - 100.0	13,700

WIC During Pregnancy	Yes			No			Weighted Total Responses (3-Yr Avg)
	#	%	C.I.(95%)	#	%	C.I.(95%)	#
Yes	900	11.9	10.6 - 13.4	6,500	88.1	86.6 - 89.4	7,400
No	600	6.0	5.1 - 7.0	9,100	94.0	93.0 - 94.9	9,700

**PRAMS Health Indicator 3-Year Aggregate Report - Smoking during last 3 months of pregnancy- by State;County;DOH Race-Ethnicity;PRAMS Age Group;Infant Gender;Married;Poverty Level;Income (2000-2003);Income (2004-2011);Birthweight;Smoke Before Pregnant;WIC During Pregnancy, for the Year(s)  
2000-2002;2001-2003;2002-2004;2003-2005;2004-2006;2005-2007;2006-2008;2007-2009;2008-2010;2009-2011;2010-2012;2011-2013**

*Note: Weighted counts (#) represent 3-yr averages, rounded to the nearest hundred; n/r (Not Reportable) - If the unweighted total responses for a dimension (row) is <30 that row will not be shown*

**Years: 2001-2003**

State	Yes			No			Weighted Total Responses (3-Yr Avg)
	#	%	C.I.(95%)	#	%	C.I.(95%)	#
<b>Totals</b>	1,500	9.0	8.2 - 9.8	15,300	91.0	90.2 - 91.8	16,900

County	Yes			No			Weighted Total Responses (3-Yr Avg)
	#	%	C.I.(95%)	#	%	C.I.(95%)	#
<b>Hawaii</b>	300	13.7	12.0 - 15.6	1,700	86.3	84.4 - 88.0	1,900
<b>Honolulu</b>	1,000	8.1	7.2 - 9.2	11,400	91.9	90.8 - 92.8	12,400
<b>Kauai</b>	100	12.7	10.0 - 16.0	700	87.3	84.0 - 90.0	800
<b>Maui</b>	100	8.4	7.0 - 10.1	1,600	91.6	89.9 - 93.0	1,800

**PRAMS Health Indicator 3-Year Aggregate Report - Smoking during last 3 months of pregnancy- by State;County;DOH Race-Ethnicity;PRAMS Age Group;Infant Gender;Married;Poverty Level;Income (2000-2003);Income (2004-2011);Birthweight;Smoke Before Pregnant;WIC During Pregnancy, for the Year(s)  
2000-2002;2001-2003;2002-2004;2003-2005;2004-2006;2005-2007;2006-2008;2007-2009;2008-2010;2009-2011;2010-2012;2011-2013**

*Note: Weighted counts (#) represent 3-yr averages, rounded to the nearest hundred; n/r (Not Reportable) - If the unweighted total responses for a dimension (row) is <30 that row will not be shown*

**Years: 2001-2003**

DOH Race-Ethnicity	Yes			No			Weighted Total Responses (3-Yr Avg)
	#	%	C.I.(95%)	#	%	C.I.(95%)	#
Caucasian	300	9.0	7.1 - 11.3	3,300	91.0	88.7 - 92.9	3,600
Native Hawaiian	700	14.8	13.7 - 16.1	3,900	85.2	83.9 - 86.3	4,600
Chinese	<50	3.0	1.1 - 8.2	700	97.0	91.8 - 98.9	700
Filipino	200	6.1	4.6 - 8.1	3,400	93.9	91.9 - 95.4	3,600
Japanese	100	4.1	2.6 - 6.5	2,100	95.9	93.5 - 97.4	2,100
Other	200	8.1	5.9 - 11.1	2,100	91.9	88.9 - 94.1	2,300

PRAMS Age Group	Yes			No			Weighted Total Responses (3-Yr Avg)
	#	%	C.I.(95%)	#	%	C.I.(95%)	#
<20	200	12.6	10.0 - 15.8	1,400	87.4	84.2 - 90.0	1,600
20-24	500	12.9	11.2 - 14.8	3,600	87.1	85.2 - 88.8	4,200
25-34	600	7.7	6.7 - 8.9	7,700	92.3	91.1 - 93.3	8,400
35+	100	4.9	3.7 - 6.6	2,700	95.1	93.4 - 96.3	2,800

**PRAMS Health Indicator 3-Year Aggregate Report - Smoking during last 3 months of pregnancy- by State;County;DOH Race-Ethnicity;PRAMS Age Group;Infant Gender;Married;Poverty Level;Income (2000-2003);Income (2004-2011);Birthweight;Smoke Before Pregnant;WIC During Pregnancy, for the Year(s)  
2000-2002;2001-2003;2002-2004;2003-2005;2004-2006;2005-2007;2006-2008;2007-2009;2008-2010;2009-2011;2010-2012;2011-2013**

*Note: Weighted counts (#) represent 3-yr averages, rounded to the nearest hundred; n/r (Not Reportable) - If the unweighted total responses for a dimension (row) is <30 that row will not be shown*

**Years: 2001-2003**

	Yes			No			Weighted Total Responses (3-Yr Avg)
	#	%	C.I.(95%)	#	%	C.I.(95%)	#
<b>Infant Gender</b>							
<b>Male</b>	800	8.8	7.8 - 9.9	7,900	91.2	90.1 - 92.2	8,600
<b>Female</b>	800	9.2	8.1 - 10.5	7,500	90.8	89.5 - 91.9	8,200

	Yes			No			Weighted Total Responses (3-Yr Avg)
	#	%	C.I.(95%)	#	%	C.I.(95%)	#
<b>Married</b>							
<b>Yes</b>	700	5.9	5.1 - 6.9	10,600	94.1	93.1 - 94.9	11,300
<b>No</b>	800	15.2	13.6 - 16.9	4,700	84.8	83.1 - 86.4	5,600

	Yes			No			Weighted Total Responses (3-Yr Avg)
	#	%	C.I.(95%)	#	%	C.I.(95%)	#
<b>Poverty Level</b>							
<b>0-130%</b>	900	13.9	12.5 - 15.5	5,800	86.1	84.5 - 87.5	6,800
<b>131-185%</b>	200	7.4	5.8 - 9.4	2,900	92.6	90.6 - 94.2	3,200
<b>186+%</b>	200	3.2	2.4 - 4.2	5,200	96.8	95.8 - 97.6	5,400

**PRAMS Health Indicator 3-Year Aggregate Report - Smoking during last 3 months of pregnancy- by State;County;DOH Race-Ethnicity;PRAMS Age Group;Infant Gender;Married;Poverty Level;Income (2000-2003);Income (2004-2011);Birthweight;Smoke Before Pregnant;WIC During Pregnancy, for the Year(s)  
2000-2002;2001-2003;2002-2004;2003-2005;2004-2006;2005-2007;2006-2008;2007-2009;2008-2010;2009-2011;2010-2012;2011-2013**

*Note: Weighted counts (#) represent 3-yr averages, rounded to the nearest hundred; n/r (Not Reportable) - If the unweighted total responses for a dimension (row) is <30 that row will not be shown*

**Years: 2001-2003**

Income (2000-2003)	Yes			No			Weighted Total Responses (3-Yr Avg)
	#	%	C.I.(95%)	#	%	C.I.(95%)	#
<=\$15,000	700	18.8	16.6 - 21.2	2,900	81.2	78.8 - 83.4	3,600
\$15,001-\$25,000	200	9.6	7.7 - 12.1	2,100	90.4	87.9 - 92.3	2,300
\$25,001-\$40,000	300	7.5	6.0 - 9.4	3,200	92.5	90.6 - 94.0	3,500
>=\$40,001	200	3.7	2.9 - 4.8	6,200	96.3	95.2 - 97.1	6,500

Birthweight	Yes			No			Weighted Total Responses (3-Yr Avg)
	#	%	C.I.(95%)	#	%	C.I.(95%)	#
Low birth weight	100	10.2	7.7 - 13.3	1,000	89.8	86.7 - 92.3	1,100
Normal birth weight	1,400	8.8	8.0 - 9.7	14,300	91.2	90.3 - 92.0	15,700

Smoke Before Pregnant	Yes			No			Weighted Total Responses (3-Yr Avg)
	#	%	C.I.(95%)	#	%	C.I.(95%)	#
Yes	1,400	43.1	40.0 - 46.3	1,900	56.9	53.7 - 60.0	3,300
No	<50	0.0	0.0 - 0.1	13,200	100.0	99.9 - 100.0	13,300

**PRAMS Health Indicator 3-Year Aggregate Report - Smoking during last 3 months of pregnancy- by State;County;DOH Race-Ethnicity;PRAMS Age Group;Infant Gender;Married;Poverty Level;Income (2000-2003);Income (2004-2011);Birthweight;Smoke Before Pregnant;WIC During Pregnancy, for the Year(s)  
2000-2002;2001-2003;2002-2004;2003-2005;2004-2006;2005-2007;2006-2008;2007-2009;2008-2010;2009-2011;2010-2012;2011-2013**

*Note: Weighted counts (#) represent 3-yr averages, rounded to the nearest hundred; n/r (Not Reportable) - If the unweighted total responses for a dimension (row) is <30 that row will not be shown*

**Years: 2001-2003**

WIC During Pregnancy	Yes			No			Weighted Total Responses (3-Yr Avg)
	#	%	C.I.(95%)	#	%	C.I.(95%)	#
<b>Yes</b>	900	12.8	11.5 - 14.2	6,200	87.2	85.8 - 88.5	7,100
<b>No</b>	600	6.2	5.3 - 7.2	9,100	93.8	92.8 - 94.7	9,700

**PRAMS Health Indicator 3-Year Aggregate Report - Smoking during last 3 months of pregnancy- by State;County;DOH Race-Ethnicity;PRAMS Age Group;Infant Gender;Married;Poverty Level;Income (2000-2003);Income (2004-2011);Birthweight;Smoke Before Pregnant;WIC During Pregnancy, for the Year(s)  
2000-2002;2001-2003;2002-2004;2003-2005;2004-2006;2005-2007;2006-2008;2007-2009;2008-2010;2009-2011;2010-2012;2011-2013**

*Note: Weighted counts (#) represent 3-yr averages, rounded to the nearest hundred; n/r (Not Reportable) - If the unweighted total responses for a dimension (row) is <30 that row will not be shown*

**Years: 2000-2002**

State	Yes			No			Weighted Total Responses (3-Yr Avg)
	#	%	C.I.(95%)	#	%	C.I.(95%)	#
<b>Totals</b>	1,400	8.7	8.0 - 9.4	15,200	91.3	90.6 - 92.0	16,600

County	Yes			No			Weighted Total Responses (3-Yr Avg)
	#	%	C.I.(95%)	#	%	C.I.(95%)	#
<b>Hawaii</b>	300	14.1	12.4 - 16.0	1,600	85.9	84.0 - 87.6	1,900
<b>Honolulu</b>	900	7.7	6.8 - 8.6	11,400	92.3	91.4 - 93.2	12,300
<b>Kauai</b>	100	12.4	9.7 - 15.8	600	87.6	84.2 - 90.3	700
<b>Maui</b>	100	8.3	6.8 - 10.0	1,600	91.7	90.0 - 93.2	1,700

**PRAMS Health Indicator 3-Year Aggregate Report - Smoking during last 3 months of pregnancy- by State;County;DOH Race-Ethnicity;PRAMS Age Group;Infant Gender;Married;Poverty Level;Income (2000-2003);Income (2004-2011);Birthweight;Smoke Before Pregnant;WIC During Pregnancy, for the Year(s)  
2000-2002;2001-2003;2002-2004;2003-2005;2004-2006;2005-2007;2006-2008;2007-2009;2008-2010;2009-2011;2010-2012;2011-2013**

*Note: Weighted counts (#) represent 3-yr averages, rounded to the nearest hundred; n/r (Not Reportable) - If the unweighted total responses for a dimension (row) is <30 that row will not be shown*

**Years: 2000-2002**

DOH Race-Ethnicity	Yes			No			Weighted Total Responses (3-Yr Avg)
	#	%	C.I.(95%)	#	%	C.I.(95%)	#
Caucasian	300	7.7	6.2 - 9.7	3,400	92.3	90.3 - 93.8	3,700
Native Hawaiian	700	14.9	13.8 - 16.0	3,800	85.1	84.0 - 86.2	4,500
Chinese	<50	2.3	0.8 - 6.4	700	97.7	93.6 - 99.2	700
Filipino	200	5.9	4.5 - 7.6	3,200	94.1	92.4 - 95.5	3,400
Japanese	100	3.9	2.5 - 6.2	2,100	96.1	93.8 - 97.5	2,100
Other	200	8.4	6.2 - 11.4	2,100	91.6	88.6 - 93.8	2,200

PRAMS Age Group	Yes			No			Weighted Total Responses (3-Yr Avg)
	#	%	C.I.(95%)	#	%	C.I.(95%)	#
<20	200	11.4	9.3 - 13.9	1,400	88.6	86.1 - 90.7	1,600
20-24	500	12.5	10.9 - 14.3	3,600	87.5	85.7 - 89.1	4,100
25-34	600	7.3	6.3 - 8.3	7,500	92.7	91.7 - 93.7	8,100
35+	200	5.5	4.2 - 7.2	2,600	94.5	92.8 - 95.8	2,800



**PRAMS Health Indicator 3-Year Aggregate Report - Smoking during last 3 months of pregnancy- by State;County;DOH Race-Ethnicity;PRAMS Age Group;Infant Gender;Married;Poverty Level;Income (2000-2003);Income (2004-2011);Birthweight;Smoke Before Pregnant;WIC During Pregnancy, for the Year(s)  
2000-2002;2001-2003;2002-2004;2003-2005;2004-2006;2005-2007;2006-2008;2007-2009;2008-2010;2009-2011;2010-2012;2011-2013**

*Note: Weighted counts (#) represent 3-yr averages, rounded to the nearest hundred; n/r (Not Reportable) - If the unweighted total responses for a dimension (row) is <30 that row will not be shown*

**Years: 2000-2002**

	Yes			No			Weighted Total Responses (3-Yr Avg)
	#	%	C.I.(95%)	#	%	C.I.(95%)	#
<b>Infant Gender</b>							
<b>Male</b>	800	9.3	8.4 - 10.4	7,600	90.7	89.6 - 91.6	8,400
<b>Female</b>	700	8.0	7.0 - 9.1	7,500	92.0	90.9 - 93.0	8,200

	Yes			No			Weighted Total Responses (3-Yr Avg)
	#	%	C.I.(95%)	#	%	C.I.(95%)	#
<b>Married</b>							
<b>Yes</b>	600	5.7	5.0 - 6.5	10,700	94.3	93.5 - 95.0	11,300
<b>No</b>	800	15.1	13.6 - 16.7	4,500	84.9	83.3 - 86.4	5,300

	Yes			No			Weighted Total Responses (3-Yr Avg)
	#	%	C.I.(95%)	#	%	C.I.(95%)	#
<b>Poverty Level</b>							
<b>0-130%</b>	900	13.6	12.3 - 15.0	5,700	86.4	85.0 - 87.7	6,600
<b>131-185%</b>	200	7.1	5.6 - 9.0	2,800	92.9	91.0 - 94.4	3,100
<b>186+%</b>	200	3.4	2.6 - 4.4	5,500	96.6	95.6 - 97.4	5,700

**PRAMS Health Indicator 3-Year Aggregate Report - Smoking during last 3 months of pregnancy- by State;County;DOH Race-Ethnicity;PRAMS Age Group;Infant Gender;Married;Poverty Level;Income (2000-2003);Income (2004-2011);Birthweight;Smoke Before Pregnant;WIC During Pregnancy, for the Year(s)**  
**2000-2002;2001-2003;2002-2004;2003-2005;2004-2006;2005-2007;2006-2008;2007-2009;2008-2010;2009-2011;2010-2012;2011-2013**

*Note: Weighted counts (#) represent 3-yr averages, rounded to the nearest hundred; n/r (Not Reportable) - If the unweighted total responses for a dimension (row) is <30 that row will not be shown*

**Years: 2000-2002**

Income (2000-2003)	Yes			No			Weighted Total Responses (3-Yr Avg)
	#	%	C.I.(95%)	#	%	C.I.(95%)	#
<=\$15,000	700	18.7	16.7 - 20.9	2,800	81.3	79.1 - 83.3	3,500
\$15,001-\$25,000	200	8.4	6.8 - 10.3	2,200	91.6	89.7 - 93.2	2,400
\$25,001-\$40,000	300	8.2	6.7 - 10.0	3,200	91.8	90.0 - 93.3	3,400
>=\$40,001	200	3.2	2.5 - 4.1	6,200	96.8	95.9 - 97.5	6,400

Birthweight	Yes			No			Weighted Total Responses (3-Yr Avg)
	#	%	C.I.(95%)	#	%	C.I.(95%)	#
Low birth weight	100	11.5	9.0 - 14.6	1,000	88.5	85.4 - 91.0	1,100
Normal birth weight	1,300	8.4	7.7 - 9.1	14,200	91.6	90.9 - 92.3	15,500

Smoke Before Pregnant	Yes			No			Weighted Total Responses (3-Yr Avg)
	#	%	C.I.(95%)	#	%	C.I.(95%)	#
Yes	1,400	41.9	39.0 - 44.8	1,900	58.1	55.2 - 61.0	3,300
No	<50	0.1	0.0 - 0.3	13,100	99.9	99.7 - 100.0	13,100

**PRAMS Health Indicator 3-Year Aggregate Report - Smoking during last 3 months of pregnancy- by State;County;DOH Race-Ethnicity;PRAMS Age Group;Infant Gender;Married;Poverty Level;Income (2000-2003);Income (2004-2011);Birthweight;Smoke Before Pregnant;WIC During Pregnancy, for the Year(s)  
2000-2002;2001-2003;2002-2004;2003-2005;2004-2006;2005-2007;2006-2008;2007-2009;2008-2010;2009-2011;2010-2012;2011-2013**

*Note: Weighted counts (#) represent 3-yr averages, rounded to the nearest hundred; n/r (Not Reportable) - If the unweighted total responses for a dimension (row) is <30 that row will not be shown*

**Years: 2000-2002**

WIC During Pregnancy	Yes			No			Weighted Total Responses (3-Yr Avg)
	#	%	C.I.(95%)	#	%	C.I.(95%)	#
<b>Yes</b>	800	12.0	10.8 - 13.2	6,200	88.0	86.8 - 89.2	7,100
<b>No</b>	600	6.2	5.4 - 7.2	8,900	93.8	92.8 - 94.6	9,500