

PRAMS Health Indicator 3-Year Aggregate Report - Smoking cessation during pregnancy- for the State of Hawaii, for the Year(s) 2000-2002;2001-2003;2002-2004;2003-2005;2004-2006;2005-2007;2006-2008;2007-2009;2008-2010;2009-2011;2010-2012;2011-2013

PRAMS Health Indicator 3-Year Aggregate Report - Smoking cessation during pregnancy- by State;County;DOH Race-Ethnicity;PRAMS Age Group;Infant Gender;Married;Poverty Level;Income (2000-2003);Income (2004-2011);Birthweight;Smoke 3rd Trimester;Smoke Before Pregnant;WIC During Pregnancy, for the Year(s) 2000-2002;2001-2003;2002-2004;2003-2005;2004-2006;2005-2007;2006-2008;2007-2009;2008-2010;2009-2011;2010-2012;2011-2013

Note: Weighted counts (#) represent 3-yr averages, rounded to the nearest hundred; n/r (Not Reportable) - If the unweighted total responses for a dimension (row) is <30 that row will not be shown

The trend analysis section shows the trend for the selected health variable over selected years in a table and a graph. 3-Year Weighted Total Responses: This number is a weighted representation of the mothers of babies delivered in a given year, who responded to a particular question in the survey. For most questions this will be the mothers of all babies delivered in a given year. For some secondary questions only a subset of the population was asked the question. For example, all survey participants were asked if they smoked during pregnancy, but only those who answered yes were asked how many cigarettes a day. If a dimension value is unknown for a particular survey record, that record will not be included in the counts for that particular dimension.

Note: Data collection for household income changed in 2004 and again in 2012. Because of this, income data does not exist for some 3-year aggregate periods.

Below are the indicators included in this report and the long description for each indicator.

PRAMS Health Indicator	Health Indicator Description
Smoking cessation during pregnancy	Smoking cessation during pregnancy

Suggested citation:

Hawaii Health Data Warehouse, Hawaii State Department of Health, Pregnancy Risk Assessment Monitoring System, (report title and years), Report Created: 2/21/17

For documentation on other terms and coding in this report, please go to the following links:

[Click here to access PRAMS documentation](#)

[Click here to access DOH-Race Ethnicity coding](#)

[Click here to access The Hawai'i Data Guide](#)

**For questions about this report, please contact
The Hawai'i Health Data Warehouse**

profiles@hhdw.org

(855) 946-5899 x15

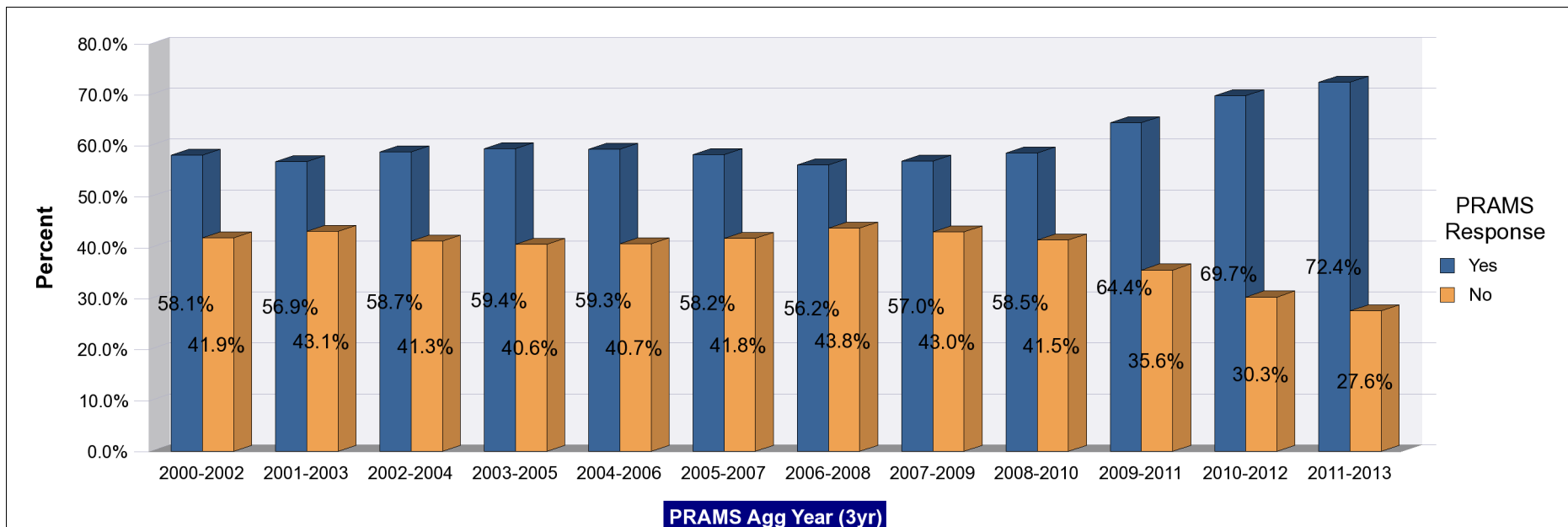
PRAMS Health Indicator 3-Year Aggregate Report - Smoking cessation during pregnancy- for the State of Hawaii, for the Year(s) 2000-2002;2001-2003;2002-2004;2003-2005;2004-2006;2005-2007;2006-2008;2007-2009;2008-2010;2009-2011;2010-2012;2011-2013

Note: Weighted counts (#) represent 3-yr averages, rounded to the nearest hundred; n/r (Not Reportable) - If the unweighted total responses for a dimension (row) is <30 that row will not be shown

Years	Yes			No			Weighted Total Responses (3-Yr Avg)
	#	%	C.I.(95%)	#	%	C.I.(95%)	#
2000-2002	1,900	58.1	55.2 - 61.0	1,400	41.9	39.0 - 44.8	3,300
2001-2003	1,900	56.9	53.7 - 60.0	1,400	43.1	40.0 - 46.3	3,300
2002-2004	2,000	58.7	55.5 - 61.8	1,400	41.3	38.2 - 44.5	3,400
2003-2005	2,100	59.4	56.3 - 62.4	1,500	40.6	37.6 - 43.7	3,600
2004-2006	2,200	59.3	56.3 - 62.3	1,500	40.7	37.7 - 43.7	3,700
2005-2007	2,200	58.2	55.1 - 61.3	1,600	41.8	38.7 - 44.9	3,700
2006-2008	2,100	56.2	53.0 - 59.4	1,600	43.8	40.6 - 47.0	3,700
2007-2009	2,100	57.0	53.5 - 60.4	1,600	43.0	39.6 - 46.5	3,700
2008-2010	2,200	58.5	54.8 - 62.1	1,600	41.5	37.9 - 45.2	3,800
2009-2011	2,500	64.4	60.5 - 68.1	1,400	35.6	31.9 - 39.5	3,800
2010-2012	2,400	69.7	65.8 - 73.4	1,000	30.3	26.6 - 34.2	3,400
2011-2013	2,300	72.4	68.4 - 76.1	900	27.6	23.9 - 31.6	3,200

PRAMS Health Indicator 3-Year Aggregate Report - Smoking cessation during pregnancy- for the State of Hawaii, for the Year(s) 2000-2002;2001-2003;2002-2004;2003-2005;2004-2006;2005-2007;2006-2008;2007-2009;2008-2010;2009-2011;2010-2012;2011-2013

Note: Weighted counts (#) represent 3-yr averages, rounded to the nearest hundred; n/r (Not Reportable) - If the unweighted total responses for a dimension (row) is <30 that row will not be shown



PRAMS Health Indicator 3-Year Aggregate Report - Smoking cessation during pregnancy- by State;County;DOH Race-Ethnicity;PRAMS Age Group;Infant Gender;Married;Poverty Level;Income (2000-2003);Income (2004-2011);Birthweight;Smoke 3rd Trimester;Smoke Before Pregnant;WIC During Pregnancy, for the Year(s) 2000-2002;2001-2003;2002-2004;2003-2005;2004-2006;2005-2007;2006-2008;2007-2009;2008-2010;2009-2011;2010-2012;2011-2013

Note: Weighted counts (#) represent 3-yr averages, rounded to the nearest hundred; n/r (Not Reportable) - If the unweighted total responses for a dimension (row) is <30 that row will not be shown

Years: 2011-2013

State	Yes			No			Weighted Total Responses (3-Yr Avg)
	#	%	C.I.(95%)	#	%	C.I.(95%)	#
Totals	2,300	72.4	68.4 - 76.1	900	27.6	23.9 - 31.6	3,200

County	Yes			No			Weighted Total Responses (3-Yr Avg)
	#	%	C.I.(95%)	#	%	C.I.(95%)	#
Hawaii	300	62.8	56.2 - 69.0	200	37.2	31.0 - 43.8	500
Honolulu	1,700	76.0	70.3 - 80.9	500	24.0	19.1 - 29.7	2,200
Kauai	100	63.5	55.2 - 71.0	100	36.5	29.0 - 44.8	<50
Maui	200	68.3	61.4 - 74.4	100	31.7	25.6 - 38.6	400

PRAMS Health Indicator 3-Year Aggregate Report - Smoking cessation during pregnancy- by State;County;DOH Race-Ethnicity;PRAMS Age Group;Infant Gender;Married;Poverty Level;Income (2000-2003);Income (2004-2011);Birthweight;Smoke 3rd Trimester;Smoke Before Pregnant;WIC During Pregnancy, for the Year(s) 2000-2002;2001-2003;2002-2004;2003-2005;2004-2006;2005-2007;2006-2008;2007-2009;2008-2010;2009-2011;2010-2012;2011-2013

Note: Weighted counts (#) represent 3-yr averages, rounded to the nearest hundred; n/r (Not Reportable) - If the unweighted total responses for a dimension (row) is <30 that row will not be shown

Years: 2011-2013

DOH Race-Ethnicity	Yes			No			Weighted Total Responses (3-Yr Avg)
	#	%	C.I.(95%)	#	%	C.I.(95%)	#
Caucasian	500	76.8	67.6 - 83.9	100	23.2	16.1 - 32.4	600
Native Hawaiian	900	65.6	59.1 - 71.4	500	34.4	28.6 - 40.9	1,300
Chinese	n/r	n/r	n/r	n/r	n/r	n/r	<50
Filipino	300	78.7	67.0 - 87.1	100	21.3	12.9 - 33.0	400
Japanese	200	85.1	68.8 - 93.7	<50	14.9	6.3 - 31.2	300
Other	300	70.8	58.5 - 80.7	100	29.2	19.3 - 41.5	500

PRAMS Age Group	Yes			No			Weighted Total Responses (3-Yr Avg)
	#	%	C.I.(95%)	#	%	C.I.(95%)	#
<20	100	76.1	58.5 - 87.9	<50	23.9	12.1 - 41.5	200
20-24	700	73.3	65.7 - 79.7	300	26.7	20.3 - 34.3	1,000
25-34	1,300	72.7	67.2 - 77.6	500	27.3	22.4 - 32.8	1,800
35+	200	66.2	52.7 - 77.5	100	33.8	22.5 - 47.3	300

**PRAMS Health Indicator 3-Year Aggregate Report - Smoking cessation during pregnancy- by State;County;DOH Race-
Ethnicity;PRAMS Age Group;Infant Gender;Married;Poverty Level;Income (2000-2003);Income (2004-2011);Birthweight;Smoke
3rd Trimester;Smoke Before Pregnant;WIC During Pregnancy, for the Year(s)
2000-2002;2001-2003;2002-2004;2003-2005;2004-2006;2005-2007;2006-2008;2007-2009;2008-2010;2009-2011;2010-2012;2011-2013**

Note: Weighted counts (#) represent 3-yr averages, rounded to the nearest hundred; n/r (Not Reportable) - If the unweighted total responses for a dimension (row) is <30 that row will not be shown

Years: 2011-2013

Infant Gender	Yes			No			Weighted Total Responses (3-Yr Avg)
	#	%	C.I.(95%)	#	%	C.I.(95%)	#
Male	1,100	73.7	67.8 - 78.8	400	26.3	21.2 - 32.2	1,500
Female	1,300	71.3	65.7 - 76.4	500	28.7	23.6 - 34.3	1,800

Married	Yes			No			Weighted Total Responses (3-Yr Avg)
	#	%	C.I.(95%)	#	%	C.I.(95%)	#
Yes	1,000	76.6	70.1 - 82.1	300	23.4	17.9 - 29.9	1,300
No	1,300	69.6	64.3 - 74.4	600	30.4	25.6 - 35.7	1,900

Poverty Level	Yes			No			Weighted Total Responses (3-Yr Avg)
	#	%	C.I.(95%)	#	%	C.I.(95%)	#
0-130%	1,000	65.4	59.6 - 70.8	500	34.6	29.2 - 40.4	1,600
131-185%	400	79.3	68.5 - 87.1	100	20.7	12.9 - 31.5	500
186+%	700	81.0	73.2 - 86.9	200	19.0	13.1 - 26.8	900

**PRAMS Health Indicator 3-Year Aggregate Report - Smoking cessation during pregnancy- by State;County;DOH Race-
Ethnicity;PRAMS Age Group;Infant Gender;Married;Poverty Level;Income (2000-2003);Income (2004-2011);Birthweight;Smoke
3rd Trimester;Smoke Before Pregnant;WIC During Pregnancy, for the Year(s)
2000-2002;2001-2003;2002-2004;2003-2005;2004-2006;2005-2007;2006-2008;2007-2009;2008-2010;2009-2011;2010-2012;2011-2013**

Note: Weighted counts (#) represent 3-yr averages, rounded to the nearest hundred; n/r (Not Reportable) - If the unweighted total responses for a dimension (row) is <30 that row will not be shown

Years: 2011-2013

Birthweight	Yes			No			Weighted Total Responses (3-Yr Avg)
	#	%	C.I.(95%)	#	%	C.I.(95%)	#
Low birth weight	200	60.4	53.4 - 67.0	100	39.6	33.0 - 46.6	300
Normal birth weight	2,200	73.6	69.2 - 77.6	800	26.4	22.4 - 30.8	3,000

Smoke 3rd Trimester	Yes			No			Weighted Total Responses (3-Yr Avg)
	#	%	C.I.(95%)	#	%	C.I.(95%)	#
Yes	0	0.0	-	900	100.0	-	900
No	2,300	100.0	-	0	0.0	-	2,300

Smoke Before Pregnant	Yes			No			Weighted Total Responses (3-Yr Avg)
	#	%	C.I.(95%)	#	%	C.I.(95%)	#
Yes	2,300	72.4	68.4 - 76.1	900	27.6	23.9 - 31.6	3,200

PRAMS Health Indicator 3-Year Aggregate Report - Smoking cessation during pregnancy- by State;County;DOH Race-Ethnicity;PRAMS Age Group;Infant Gender;Married;Poverty Level;Income (2000-2003);Income (2004-2011);Birthweight;Smoke 3rd Trimester;Smoke Before Pregnant;WIC During Pregnancy, for the Year(s) 2000-2002;2001-2003;2002-2004;2003-2005;2004-2006;2005-2007;2006-2008;2007-2009;2008-2010;2009-2011;2010-2012;2011-2013

Note: Weighted counts (#) represent 3-yr averages, rounded to the nearest hundred; n/r (Not Reportable) - If the unweighted total responses for a dimension (row) is <30 that row will not be shown

Years: 2011-2013

WIC During Pregnancy	Yes			No			Weighted Total Responses (3-Yr Avg)
	#	%	C.I.(95%)	#	%	C.I.(95%)	#
Yes	1,200	69.4	64.1 - 74.3	500	30.6	25.7 - 35.9	1,800
No	1,100	75.7	69.3 - 81.1	300	24.3	18.9 - 30.7	1,400

PRAMS Health Indicator 3-Year Aggregate Report - Smoking cessation during pregnancy- by State;County;DOH Race-Ethnicity;PRAMS Age Group;Infant Gender;Married;Poverty Level;Income (2000-2003);Income (2004-2011);Birthweight;Smoke 3rd Trimester;Smoke Before Pregnant;WIC During Pregnancy, for the Year(s) 2000-2002;2001-2003;2002-2004;2003-2005;2004-2006;2005-2007;2006-2008;2007-2009;2008-2010;2009-2011;2010-2012;2011-2013

Note: Weighted counts (#) represent 3-yr averages, rounded to the nearest hundred; n/r (Not Reportable) - If the unweighted total responses for a dimension (row) is <30 that row will not be shown

Years: 2010-2012

State	Yes			No			Weighted Total Responses (3-Yr Avg)
	#	%	C.I.(95%)	#	%	C.I.(95%)	#
Totals	2,400	69.7	65.8 - 73.4	1,000	30.3	26.6 - 34.2	3,400

County	Yes			No			Weighted Total Responses (3-Yr Avg)
	#	%	C.I.(95%)	#	%	C.I.(95%)	#
Hawaii	400	65.4	59.4 - 70.9	200	34.6	29.1 - 40.6	600
Honolulu	1,600	71.7	66.0 - 76.8	600	28.3	23.2 - 34.0	2,300
Kauai	100	62.5	54.2 - 70.1	100	37.5	29.9 - 45.8	200
Maui	300	67.5	61.3 - 73.1	100	32.5	26.9 - 38.7	400

PRAMS Health Indicator 3-Year Aggregate Report - Smoking cessation during pregnancy- by State;County;DOH Race-Ethnicity;PRAMS Age Group;Infant Gender;Married;Poverty Level;Income (2000-2003);Income (2004-2011);Birthweight;Smoke 3rd Trimester;Smoke Before Pregnant;WIC During Pregnancy, for the Year(s) 2000-2002;2001-2003;2002-2004;2003-2005;2004-2006;2005-2007;2006-2008;2007-2009;2008-2010;2009-2011;2010-2012;2011-2013

Note: Weighted counts (#) represent 3-yr averages, rounded to the nearest hundred; n/r (Not Reportable) - If the unweighted total responses for a dimension (row) is <30 that row will not be shown

Years: 2010-2012

DOH Race-Ethnicity	Yes			No			Weighted Total Responses (3-Yr Avg)
	#	%	C.I.(95%)	#	%	C.I.(95%)	#
Caucasian	500	72.9	63.9 - 80.4	200	27.1	19.6 - 36.1	700
Native Hawaiian	900	64.6	58.4 - 70.3	500	35.4	29.7 - 41.6	1,400
Chinese	n/r	n/r	n/r	n/r	n/r	n/r	<50
Filipino	400	77.1	66.3 - 85.2	100	22.9	14.8 - 33.7	500
Japanese	200	79.5	63.4 - 89.6	100	20.5	10.4 - 36.6	300
Other	300	64.7	51.7 - 75.7	200	35.3	24.3 - 48.3	400

PRAMS Age Group	Yes			No			Weighted Total Responses (3-Yr Avg)
	#	%	C.I.(95%)	#	%	C.I.(95%)	#
<20	200	70.5	56.0 - 81.7	100	29.5	18.3 - 44.0	200
20-24	800	70.4	62.9 - 76.9	300	29.6	23.1 - 37.1	1,100
25-34	1,200	69.2	63.6 - 74.3	500	30.8	25.7 - 36.4	1,800
35+	200	69.9	57.0 - 80.3	100	30.1	19.7 - 43.0	300

**PRAMS Health Indicator 3-Year Aggregate Report - Smoking cessation during pregnancy- by State;County;DOH Race-
Ethnicity;PRAMS Age Group;Infant Gender;Married;Poverty Level;Income (2000-2003);Income (2004-2011);Birthweight;Smoke
3rd Trimester;Smoke Before Pregnant;WIC During Pregnancy, for the Year(s)
2000-2002;2001-2003;2002-2004;2003-2005;2004-2006;2005-2007;2006-2008;2007-2009;2008-2010;2009-2011;2010-2012;2011-2013**

Note: Weighted counts (#) represent 3-yr averages, rounded to the nearest hundred; n/r (Not Reportable) - If the unweighted total responses for a dimension (row) is <30 that row will not be shown

Years: 2010-2012

Infant Gender	Yes			No			Weighted Total Responses (3-Yr Avg)
	#	%	C.I.(95%)	#	%	C.I.(95%)	#
Male	1,200	71.3	65.6 - 76.4	500	28.7	23.6 - 34.4	1,700
Female	1,200	68.3	62.6 - 73.5	600	31.7	26.5 - 37.4	1,800

Married	Yes			No			Weighted Total Responses (3-Yr Avg)
	#	%	C.I.(95%)	#	%	C.I.(95%)	#
Yes	1,000	72.5	66.1 - 78.1	400	27.5	21.9 - 33.9	1,400
No	1,400	67.8	62.6 - 72.6	700	32.2	27.4 - 37.4	2,000

Poverty Level	Yes			No			Weighted Total Responses (3-Yr Avg)
	#	%	C.I.(95%)	#	%	C.I.(95%)	#
0-130%	1,000	62.0	56.2 - 67.5	600	38.0	32.5 - 43.8	1,600
131-185%	500	77.2	67.2 - 84.9	100	22.8	15.1 - 32.8	600
186+%	800	76.6	68.9 - 82.9	200	23.4	17.1 - 31.1	1,000

PRAMS Health Indicator 3-Year Aggregate Report - Smoking cessation during pregnancy- by State;County;DOH Race-Ethnicity;PRAMS Age Group;Infant Gender;Married;Poverty Level;Income (2000-2003);Income (2004-2011);Birthweight;Smoke 3rd Trimester;Smoke Before Pregnant;WIC During Pregnancy, for the Year(s) 2000-2002;2001-2003;2002-2004;2003-2005;2004-2006;2005-2007;2006-2008;2007-2009;2008-2010;2009-2011;2010-2012;2011-2013

Note: Weighted counts (#) represent 3-yr averages, rounded to the nearest hundred; n/r (Not Reportable) - If the unweighted total responses for a dimension (row) is <30 that row will not be shown

Years: 2010-2012

Birthweight	Yes			No			Weighted Total Responses (3-Yr Avg)
	#	%	C.I.(95%)	#	%	C.I.(95%)	#
Low birth weight	200	66.6	59.8 - 72.9	100	33.4	27.1 - 40.2	300
Normal birth weight	2,200	70.0	65.7 - 74.0	900	30.0	26.0 - 34.3	3,100

Smoke 3rd Trimester	Yes			No			Weighted Total Responses (3-Yr Avg)
	#	%	C.I.(95%)	#	%	C.I.(95%)	#
Yes	0	0.0	-	1,000	100.0	-	1,000
No	2,400	100.0	-	0	0.0	-	2,400

Smoke Before Pregnant	Yes			No			Weighted Total Responses (3-Yr Avg)
	#	%	C.I.(95%)	#	%	C.I.(95%)	#
Yes	2,400	69.7	65.8 - 73.4	1,000	30.3	26.6 - 34.2	3,400

PRAMS Health Indicator 3-Year Aggregate Report - Smoking cessation during pregnancy- by State;County;DOH Race-Ethnicity;PRAMS Age Group;Infant Gender;Married;Poverty Level;Income (2000-2003);Income (2004-2011);Birthweight;Smoke 3rd Trimester;Smoke Before Pregnant;WIC During Pregnancy, for the Year(s) 2000-2002;2001-2003;2002-2004;2003-2005;2004-2006;2005-2007;2006-2008;2007-2009;2008-2010;2009-2011;2010-2012;2011-2013

Note: Weighted counts (#) represent 3-yr averages, rounded to the nearest hundred; n/r (Not Reportable) - If the unweighted total responses for a dimension (row) is <30 that row will not be shown

Years: 2010-2012

WIC During Pregnancy	Yes			No			Weighted Total Responses (3-Yr Avg)
	#	%	C.I.(95%)	#	%	C.I.(95%)	#
Yes	1,300	66.3	61.0 - 71.2	700	33.7	28.8 - 39.0	1,900
No	1,100	74.3	68.0 - 79.8	400	25.7	20.2 - 32.0	1,500

**PRAMS Health Indicator 3-Year Aggregate Report - Smoking cessation during pregnancy- by State;County;DOH Race-
Ethnicity;PRAMS Age Group;Infant Gender;Married;Poverty Level;Income (2000-2003);Income (2004-2011);Birthweight;Smoke
3rd Trimester;Smoke Before Pregnant;WIC During Pregnancy, for the Year(s)
2000-2002;2001-2003;2002-2004;2003-2005;2004-2006;2005-2007;2006-2008;2007-2009;2008-2010;2009-2011;2010-2012;2011-2013**

Note: Weighted counts (#) represent 3-yr averages, rounded to the nearest hundred; n/r (Not Reportable) - If the unweighted total responses for a dimension (row) is <30 that row will not be shown

Years: 2009-2011

State	Yes			No			Weighted Total Responses (3-Yr Avg)
	#	%	C.I.(95%)	#	%	C.I.(95%)	#
Totals	2,500	64.4	60.5 - 68.1	1,400	35.6	31.9 - 39.5	3,800

County	Yes			No			Weighted Total Responses (3-Yr Avg)
	#	%	C.I.(95%)	#	%	C.I.(95%)	#
Hawaii	400	59.1	53.4 - 64.6	300	40.9	35.4 - 46.6	700
Honolulu	1,700	65.9	60.3 - 71.1	900	34.1	28.9 - 39.7	2,500
Kauai	100	56.7	48.6 - 64.4	100	43.3	35.6 - 51.4	200
Maui	300	66.9	61.2 - 72.2	100	33.1	27.8 - 38.8	400

PRAMS Health Indicator 3-Year Aggregate Report - Smoking cessation during pregnancy- by State;County;DOH Race-Ethnicity;PRAMS Age Group;Infant Gender;Married;Poverty Level;Income (2000-2003);Income (2004-2011);Birthweight;Smoke 3rd Trimester;Smoke Before Pregnant;WIC During Pregnancy, for the Year(s) 2000-2002;2001-2003;2002-2004;2003-2005;2004-2006;2005-2007;2006-2008;2007-2009;2008-2010;2009-2011;2010-2012;2011-2013

Note: Weighted counts (#) represent 3-yr averages, rounded to the nearest hundred; n/r (Not Reportable) - If the unweighted total responses for a dimension (row) is <30 that row will not be shown

Years: 2009-2011

DOH Race-Ethnicity	Yes			No			Weighted Total Responses (3-Yr Avg)
	#	%	C.I.(95%)	#	%	C.I.(95%)	#
Caucasian	600	70.2	61.8 - 77.4	200	29.8	22.6 - 38.2	800
Native Hawaiian	900	58.5	52.6 - 64.1	600	41.5	35.9 - 47.4	1,500
Chinese	n/r	n/r	n/r	n/r	n/r	n/r	<50
Filipino	400	73.7	62.9 - 82.2	100	26.3	17.8 - 37.1	500
Japanese	300	68.9	55.0 - 80.1	100	31.1	19.9 - 45.0	400
Other	300	59.0	46.3 - 70.6	200	41.0	29.4 - 53.7	500

PRAMS Age Group	Yes			No			Weighted Total Responses (3-Yr Avg)
	#	%	C.I.(95%)	#	%	C.I.(95%)	#
<20	200	65.4	52.6 - 76.3	100	34.6	23.7 - 47.4	300
20-24	800	65.8	58.7 - 72.2	400	34.2	27.8 - 41.3	1,200
25-34	1,200	63.9	58.3 - 69.2	700	36.1	30.8 - 41.7	1,800
35+	300	61.8	49.6 - 72.6	200	38.2	27.4 - 50.4	400

**PRAMS Health Indicator 3-Year Aggregate Report - Smoking cessation during pregnancy- by State;County;DOH Race-
Ethnicity;PRAMS Age Group;Infant Gender;Married;Poverty Level;Income (2000-2003);Income (2004-2011);Birthweight;Smoke
3rd Trimester;Smoke Before Pregnant;WIC During Pregnancy, for the Year(s)
2000-2002;2001-2003;2002-2004;2003-2005;2004-2006;2005-2007;2006-2008;2007-2009;2008-2010;2009-2011;2010-2012;2011-2013**

Note: Weighted counts (#) represent 3-yr averages, rounded to the nearest hundred; n/r (Not Reportable) - If the unweighted total responses for a dimension (row) is <30 that row will not be shown

Years: 2009-2011

Infant Gender	Yes			No			Weighted Total Responses (3-Yr Avg)
	#	%	C.I.(95%)	#	%	C.I.(95%)	#
Male	1,200	64.8	59.2 - 70.0	700	35.2	30.0 - 40.8	1,900
Female	1,200	64.1	58.5 - 69.3	700	35.9	30.7 - 41.5	1,900

Married	Yes			No			Weighted Total Responses (3-Yr Avg)
	#	%	C.I.(95%)	#	%	C.I.(95%)	#
Yes	1,100	71.6	65.6 - 76.9	400	28.4	23.1 - 34.4	1,600
No	1,300	59.5	54.4 - 64.4	900	40.5	35.6 - 45.6	2,200

Poverty Level	Yes			No			Weighted Total Responses (3-Yr Avg)
	#	%	C.I.(95%)	#	%	C.I.(95%)	#
0-130%	1,000	54.2	48.6 - 59.7	800	45.8	40.3 - 51.4	1,800
131-185%	500	76.7	67.5 - 83.9	200	23.3	16.1 - 32.5	700
186+%	800	75.1	67.9 - 81.2	300	24.9	18.8 - 32.1	1,100

**PRAMS Health Indicator 3-Year Aggregate Report - Smoking cessation during pregnancy- by State;County;DOH Race-
Ethnicity;PRAMS Age Group;Infant Gender;Married;Poverty Level;Income (2000-2003);Income (2004-2011);Birthweight;Smoke
3rd Trimester;Smoke Before Pregnant;WIC During Pregnancy, for the Year(s)
2000-2002;2001-2003;2002-2004;2003-2005;2004-2006;2005-2007;2006-2008;2007-2009;2008-2010;2009-2011;2010-2012;2011-2013**

Note: Weighted counts (#) represent 3-yr averages, rounded to the nearest hundred; n/r (Not Reportable) - If the unweighted total responses for a dimension (row) is <30 that row will not be shown

Years: 2009-2011

Income (2004-2011)	Yes			No			Weighted Total Responses (3-Yr Avg)
	#	%	C.I.(95%)	#	%	C.I.(95%)	#
<\$10,000	500	51.4	43.9 - 58.9	500	48.6	41.1 - 56.1	1,000
\$10,000-\$24,999	600	60.5	52.5 - 67.9	400	39.5	32.1 - 47.5	900
\$25,000-\$49,999	800	75.3	67.9 - 81.4	200	24.7	18.6 - 32.1	1,000
>=\$50,000	500	74.9	65.6 - 82.4	200	25.1	17.6 - 34.4	700

Birthweight	Yes			No			Weighted Total Responses (3-Yr Avg)
	#	%	C.I.(95%)	#	%	C.I.(95%)	#
Low birth weight	200	63.9	57.4 - 70.0	100	36.1	30.0 - 42.6	300
Normal birth weight	2,200	64.7	60.5 - 68.7	1,200	35.3	31.3 - 39.5	3,500

Smoke 3rd Trimester	Yes			No			Weighted Total Responses (3-Yr Avg)
	#	%	C.I.(95%)	#	%	C.I.(95%)	#
Yes	0	0.0	-	1,400	100.0	-	1,400
No	2,500	100.0	-	0	0.0	-	2,500

PRAMS Health Indicator 3-Year Aggregate Report - Smoking cessation during pregnancy- by State;County;DOH Race-Ethnicity;PRAMS Age Group;Infant Gender;Married;Poverty Level;Income (2000-2003);Income (2004-2011);Birthweight;Smoke 3rd Trimester;Smoke Before Pregnant;WIC During Pregnancy, for the Year(s) 2000-2002;2001-2003;2002-2004;2003-2005;2004-2006;2005-2007;2006-2008;2007-2009;2008-2010;2009-2011;2010-2012;2011-2013

Note: Weighted counts (#) represent 3-yr averages, rounded to the nearest hundred; n/r (Not Reportable) - If the unweighted total responses for a dimension (row) is <30 that row will not be shown

Years: 2009-2011

Smoke Before Pregnant	Yes			No			Weighted Total Responses (3-Yr Avg)
	#	%	C.I.(95%)	#	%	C.I.(95%)	#
Yes	2,500	64.4	60.5 - 68.1	1,400	35.6	31.9 - 39.5	3,800

WIC During Pregnancy	Yes			No			Weighted Total Responses (3-Yr Avg)
	#	%	C.I.(95%)	#	%	C.I.(95%)	#
Yes	1,300	60.7	55.7 - 65.5	900	39.3	34.5 - 44.3	2,200
No	1,100	69.7	63.4 - 75.3	500	30.3	24.7 - 36.6	1,600

PRAMS Health Indicator 3-Year Aggregate Report - Smoking cessation during pregnancy- by State;County;DOH Race-Ethnicity;PRAMS Age Group;Infant Gender;Married;Poverty Level;Income (2000-2003);Income (2004-2011);Birthweight;Smoke 3rd Trimester;Smoke Before Pregnant;WIC During Pregnancy, for the Year(s) 2000-2002;2001-2003;2002-2004;2003-2005;2004-2006;2005-2007;2006-2008;2007-2009;2008-2010;2009-2011;2010-2012;2011-2013

Note: Weighted counts (#) represent 3-yr averages, rounded to the nearest hundred; n/r (Not Reportable) - If the unweighted total responses for a dimension (row) is <30 that row will not be shown

Years: 2008-2010

State	Yes			No			Weighted Total Responses (3-Yr Avg)
	#	%	C.I.(95%)	#	%	C.I.(95%)	#
Totals	2,200	58.5	54.8 - 62.1	1,600	41.5	37.9 - 45.2	3,800

County	Yes			No			Weighted Total Responses (3-Yr Avg)
	#	%	C.I.(95%)	#	%	C.I.(95%)	#
Hawaii	300	54.3	47.8 - 60.6	300	45.7	39.4 - 52.2	600
Honolulu	1,500	59.0	53.9 - 64.0	1,000	41.0	36.0 - 46.1	2,600
Kauai	100	51.2	41.2 - 61.2	100	48.8	38.8 - 58.8	200
Maui	300	64.2	57.0 - 70.8	200	35.8	29.2 - 43.0	400

PRAMS Health Indicator 3-Year Aggregate Report - Smoking cessation during pregnancy- by State;County;DOH Race-Ethnicity;PRAMS Age Group;Infant Gender;Married;Poverty Level;Income (2000-2003);Income (2004-2011);Birthweight;Smoke 3rd Trimester;Smoke Before Pregnant;WIC During Pregnancy, for the Year(s) 2000-2002;2001-2003;2002-2004;2003-2005;2004-2006;2005-2007;2006-2008;2007-2009;2008-2010;2009-2011;2010-2012;2011-2013

Note: Weighted counts (#) represent 3-yr averages, rounded to the nearest hundred; n/r (Not Reportable) - If the unweighted total responses for a dimension (row) is <30 that row will not be shown

Years: 2008-2010

DOH Race-Ethnicity	Yes			No			Weighted Total Responses (3-Yr Avg)
	#	%	C.I.(95%)	#	%	C.I.(95%)	#
Caucasian	500	66.1	58.3 - 73.1	300	33.9	26.9 - 41.7	800
Native Hawaiian	800	52.5	46.9 - 58.1	700	47.5	41.9 - 53.1	1,500
Chinese	n/r	n/r	n/r	n/r	n/r	n/r	<50
Filipino	300	68.2	57.8 - 77.0	200	31.8	23.0 - 42.2	500
Japanese	200	54.3	41.1 - 66.9	200	45.7	33.1 - 58.9	300
Other	300	55.7	44.6 - 66.3	200	44.3	33.7 - 55.4	500

PRAMS Age Group	Yes			No			Weighted Total Responses (3-Yr Avg)
	#	%	C.I.(95%)	#	%	C.I.(95%)	#
<20	200	59.2	47.6 - 69.9	200	40.8	30.1 - 52.4	400
20-24	800	62.7	55.9 - 69.0	500	37.3	31.0 - 44.1	1,200
25-34	1,000	57.3	51.9 - 62.6	800	42.7	37.4 - 48.1	1,800
35+	200	50.3	39.5 - 61.1	200	49.7	38.9 - 60.5	400

**PRAMS Health Indicator 3-Year Aggregate Report - Smoking cessation during pregnancy- by State;County;DOH Race-
Ethnicity;PRAMS Age Group;Infant Gender;Married;Poverty Level;Income (2000-2003);Income (2004-2011);Birthweight;Smoke
3rd Trimester;Smoke Before Pregnant;WIC During Pregnancy, for the Year(s)
2000-2002;2001-2003;2002-2004;2003-2005;2004-2006;2005-2007;2006-2008;2007-2009;2008-2010;2009-2011;2010-2012;2011-2013**

Note: Weighted counts (#) represent 3-yr averages, rounded to the nearest hundred; n/r (Not Reportable) - If the unweighted total responses for a dimension (row) is <30 that row will not be shown

Years: 2008-2010

Infant Gender	Yes			No			Weighted Total Responses (3-Yr Avg)
	#	%	C.I.(95%)	#	%	C.I.(95%)	#
Male	1,200	59.7	54.5 - 64.7	800	40.3	35.3 - 45.5	2,000
Female	1,000	57.2	51.8 - 62.5	800	42.8	37.5 - 48.2	1,800

Married	Yes			No			Weighted Total Responses (3-Yr Avg)
	#	%	C.I.(95%)	#	%	C.I.(95%)	#
Yes	1,000	65.8	60.0 - 71.1	500	34.2	28.9 - 40.0	1,600
No	1,200	53.3	48.4 - 58.1	1,000	46.7	41.9 - 51.6	2,200

Poverty Level	Yes			No			Weighted Total Responses (3-Yr Avg)
	#	%	C.I.(95%)	#	%	C.I.(95%)	#
0-130%	900	47.1	42.0 - 52.3	1,000	52.9	47.7 - 58.0	1,900
131-185%	400	68.1	58.5 - 76.3	200	31.9	23.7 - 41.5	600
186+%	800	73.8	66.9 - 79.8	300	26.2	20.2 - 33.1	1,000

PRAMS Health Indicator 3-Year Aggregate Report - Smoking cessation during pregnancy- by State;County;DOH Race-Ethnicity;PRAMS Age Group;Infant Gender;Married;Poverty Level;Income (2000-2003);Income (2004-2011);Birthweight;Smoke 3rd Trimester;Smoke Before Pregnant;WIC During Pregnancy, for the Year(s) 2000-2002;2001-2003;2002-2004;2003-2005;2004-2006;2005-2007;2006-2008;2007-2009;2008-2010;2009-2011;2010-2012;2011-2013

Note: Weighted counts (#) represent 3-yr averages, rounded to the nearest hundred; n/r (Not Reportable) - If the unweighted total responses for a dimension (row) is <30 that row will not be shown

Years: 2008-2010

Income (2004-2011)	Yes			No			Weighted Total Responses (3-Yr Avg)
	#	%	C.I.(95%)	#	%	C.I.(95%)	#
<\$10,000	400	41.4	34.3 - 48.9	600	58.6	51.1 - 65.7	1,000
\$10,000-\$24,999	600	58.4	51.4 - 65.2	400	41.6	34.8 - 48.6	1,000
\$25,000-\$49,999	600	65.3	57.5 - 72.4	300	34.7	27.6 - 42.5	900
>=\$50,000	500	73.7	65.2 - 80.7	200	26.3	19.3 - 34.8	700

Birthweight	Yes			No			Weighted Total Responses (3-Yr Avg)
	#	%	C.I.(95%)	#	%	C.I.(95%)	#
Low birth weight	200	60.1	51.5 - 68.0	100	39.9	32.0 - 48.5	300
Normal birth weight	2,000	58.5	54.5 - 62.4	1,400	41.5	37.6 - 45.5	3,500

Smoke 3rd Trimester	Yes			No			Weighted Total Responses (3-Yr Avg)
	#	%	C.I.(95%)	#	%	C.I.(95%)	#
Yes	0	0.0	-	1,600	100.0	-	1,600
No	2,200	100.0	-	0	0.0	-	2,200

PRAMS Health Indicator 3-Year Aggregate Report - Smoking cessation during pregnancy- by State;County;DOH Race-Ethnicity;PRAMS Age Group;Infant Gender;Married;Poverty Level;Income (2000-2003);Income (2004-2011);Birthweight;Smoke 3rd Trimester;Smoke Before Pregnant;WIC During Pregnancy, for the Year(s) 2000-2002;2001-2003;2002-2004;2003-2005;2004-2006;2005-2007;2006-2008;2007-2009;2008-2010;2009-2011;2010-2012;2011-2013

Note: Weighted counts (#) represent 3-yr averages, rounded to the nearest hundred; n/r (Not Reportable) - If the unweighted total responses for a dimension (row) is <30 that row will not be shown

Years: 2008-2010

Smoke Before Pregnant	Yes			No			Weighted Total Responses (3-Yr Avg)
	#	%	C.I.(95%)	#	%	C.I.(95%)	#
Yes	2,200	58.5	54.8 - 62.1	1,600	41.5	37.9 - 45.2	3,800

WIC During Pregnancy	Yes			No			Weighted Total Responses (3-Yr Avg)
	#	%	C.I.(95%)	#	%	C.I.(95%)	#
Yes	1,200	54.1	49.3 - 58.9	1,000	45.9	41.1 - 50.7	2,200
No	1,000	64.6	58.6 - 70.2	600	35.4	29.8 - 41.4	1,600

PRAMS Health Indicator 3-Year Aggregate Report - Smoking cessation during pregnancy- by State;County;DOH Race-Ethnicity;PRAMS Age Group;Infant Gender;Married;Poverty Level;Income (2000-2003);Income (2004-2011);Birthweight;Smoke 3rd Trimester;Smoke Before Pregnant;WIC During Pregnancy, for the Year(s) 2000-2002;2001-2003;2002-2004;2003-2005;2004-2006;2005-2007;2006-2008;2007-2009;2008-2010;2009-2011;2010-2012;2011-2013

Note: Weighted counts (#) represent 3-yr averages, rounded to the nearest hundred; n/r (Not Reportable) - If the unweighted total responses for a dimension (row) is <30 that row will not be shown

Years: 2007-2009

State	Yes			No			Weighted Total Responses (3-Yr Avg)
	#	%	C.I.(95%)	#	%	C.I.(95%)	#
Totals	2,100	57.0	53.5 - 60.4	1,600	43.0	39.6 - 46.5	3,700

County	Yes			No			Weighted Total Responses (3-Yr Avg)
	#	%	C.I.(95%)	#	%	C.I.(95%)	#
Hawaii	300	52.0	44.7 - 59.2	300	48.0	40.8 - 55.3	600
Honolulu	1,400	56.8	52.2 - 61.2	1,100	43.2	38.8 - 47.8	2,500
Kauai	100	56.3	44.1 - 67.8	100	43.7	32.2 - 55.9	200
Maui	300	65.1	56.6 - 72.7	200	34.9	27.3 - 43.4	400

PRAMS Health Indicator 3-Year Aggregate Report - Smoking cessation during pregnancy- by State;County;DOH Race-Ethnicity;PRAMS Age Group;Infant Gender;Married;Poverty Level;Income (2000-2003);Income (2004-2011);Birthweight;Smoke 3rd Trimester;Smoke Before Pregnant;WIC During Pregnancy, for the Year(s) 2000-2002;2001-2003;2002-2004;2003-2005;2004-2006;2005-2007;2006-2008;2007-2009;2008-2010;2009-2011;2010-2012;2011-2013

Note: Weighted counts (#) represent 3-yr averages, rounded to the nearest hundred; n/r (Not Reportable) - If the unweighted total responses for a dimension (row) is <30 that row will not be shown

Years: 2007-2009

DOH Race-Ethnicity	Yes			No			Weighted Total Responses (3-Yr Avg)
	#	%	C.I.(95%)	#	%	C.I.(95%)	#
Caucasian	600	66.7	59.9 - 72.8	300	33.3	27.2 - 40.1	900
Native Hawaiian	700	48.7	43.2 - 54.2	800	51.3	45.8 - 56.8	1,500
Chinese	n/r	n/r	n/r	n/r	n/r	n/r	<50
Filipino	300	64.5	54.9 - 73.1	200	35.5	26.9 - 45.1	400
Japanese	200	53.3	41.6 - 64.7	200	46.7	35.3 - 58.4	400
Other	300	59.0	49.2 - 68.2	200	41.0	31.8 - 50.8	500

PRAMS Age Group	Yes			No			Weighted Total Responses (3-Yr Avg)
	#	%	C.I.(95%)	#	%	C.I.(95%)	#
<20	300	57.9	47.0 - 68.0	200	42.1	32.0 - 53.0	400
20-24	800	62.7	56.6 - 68.4	400	37.3	31.6 - 43.4	1,200
25-34	1,000	55.2	50.1 - 60.1	800	44.8	39.9 - 49.9	1,700
35+	200	45.6	35.6 - 56.0	200	54.4	44.0 - 64.4	400

**PRAMS Health Indicator 3-Year Aggregate Report - Smoking cessation during pregnancy- by State;County;DOH Race-
Ethnicity;PRAMS Age Group;Infant Gender;Married;Poverty Level;Income (2000-2003);Income (2004-2011);Birthweight;Smoke
3rd Trimester;Smoke Before Pregnant;WIC During Pregnancy, for the Year(s)
2000-2002;2001-2003;2002-2004;2003-2005;2004-2006;2005-2007;2006-2008;2007-2009;2008-2010;2009-2011;2010-2012;2011-2013**

Note: Weighted counts (#) represent 3-yr averages, rounded to the nearest hundred; n/r (Not Reportable) - If the unweighted total responses for a dimension (row) is <30 that row will not be shown

Years: 2007-2009

Infant Gender	Yes			No			Weighted Total Responses (3-Yr Avg)
	#	%	C.I.(95%)	#	%	C.I.(95%)	#
Male	1,100	56.6	51.8 - 61.4	800	43.4	38.6 - 48.2	1,900
Female	1,000	57.3	52.3 - 62.1	800	42.7	37.9 - 47.7	1,800

Married	Yes			No			Weighted Total Responses (3-Yr Avg)
	#	%	C.I.(95%)	#	%	C.I.(95%)	#
Yes	1,000	65.1	59.9 - 69.9	500	34.9	30.1 - 40.1	1,500
No	1,100	51.4	46.8 - 55.9	1,100	48.6	44.1 - 53.2	2,200

Poverty Level	Yes			No			Weighted Total Responses (3-Yr Avg)
	#	%	C.I.(95%)	#	%	C.I.(95%)	#
0-130%	900	46.3	41.6 - 51.2	1,100	53.7	48.8 - 58.4	2,000
131-185%	300	59.8	50.4 - 68.5	200	40.2	31.5 - 49.6	500
186+%	700	74.7	68.7 - 79.8	200	25.3	20.2 - 31.3	1,000

**PRAMS Health Indicator 3-Year Aggregate Report - Smoking cessation during pregnancy- by State;County;DOH Race-
Ethnicity;PRAMS Age Group;Infant Gender;Married;Poverty Level;Income (2000-2003);Income (2004-2011);Birthweight;Smoke
3rd Trimester;Smoke Before Pregnant;WIC During Pregnancy, for the Year(s)
2000-2002;2001-2003;2002-2004;2003-2005;2004-2006;2005-2007;2006-2008;2007-2009;2008-2010;2009-2011;2010-2012;2011-2013**

Note: Weighted counts (#) represent 3-yr averages, rounded to the nearest hundred; n/r (Not Reportable) - If the unweighted total responses for a dimension (row) is <30 that row will not be shown

Years: 2007-2009

Income (2004-2011)	Yes			No			Weighted Total Responses (3-Yr Avg)
	#	%	C.I.(95%)	#	%	C.I.(95%)	#
<\$10,000	400	38.5	31.9 - 45.6	600	61.5	54.4 - 68.1	1,000
\$10,000-\$24,999	600	56.6	50.2 - 62.7	500	43.4	37.3 - 49.8	1,100
\$25,000-\$49,999	500	63.9	56.8 - 70.5	300	36.1	29.5 - 43.2	800
>=\$50,000	500	73.4	66.0 - 79.7	200	26.6	20.3 - 34.0	700

Birthweight	Yes			No			Weighted Total Responses (3-Yr Avg)
	#	%	C.I.(95%)	#	%	C.I.(95%)	#
Low birth weight	100	48.3	38.6 - 58.1	200	51.7	41.9 - 61.4	300
Normal birth weight	2,000	57.9	54.2 - 61.5	1,400	42.1	38.5 - 45.8	3,400

Smoke 3rd Trimester	Yes			No			Weighted Total Responses (3-Yr Avg)
	#	%	C.I.(95%)	#	%	C.I.(95%)	#
Yes	0	0.0	-	1,600	100.0	-	1,600
No	2,100	100.0	-	0	0.0	-	2,100

PRAMS Health Indicator 3-Year Aggregate Report - Smoking cessation during pregnancy- by State;County;DOH Race-Ethnicity;PRAMS Age Group;Infant Gender;Married;Poverty Level;Income (2000-2003);Income (2004-2011);Birthweight;Smoke 3rd Trimester;Smoke Before Pregnant;WIC During Pregnancy, for the Year(s) 2000-2002;2001-2003;2002-2004;2003-2005;2004-2006;2005-2007;2006-2008;2007-2009;2008-2010;2009-2011;2010-2012;2011-2013

Note: Weighted counts (#) represent 3-yr averages, rounded to the nearest hundred; n/r (Not Reportable) - If the unweighted total responses for a dimension (row) is <30 that row will not be shown

Years: 2007-2009

Smoke Before Pregnant	Yes			No			Weighted Total Responses (3-Yr Avg)
	#	%	C.I.(95%)	#	%	C.I.(95%)	#
Yes	2,100	57.0	53.5 - 60.4	1,600	43.0	39.6 - 46.5	3,700

WIC During Pregnancy	Yes			No			Weighted Total Responses (3-Yr Avg)
	#	%	C.I.(95%)	#	%	C.I.(95%)	#
Yes	1,100	51.3	46.7 - 55.9	1,000	48.7	44.1 - 53.3	2,100
No	1,000	64.7	59.3 - 69.7	600	35.3	30.3 - 40.7	1,600

PRAMS Health Indicator 3-Year Aggregate Report - Smoking cessation during pregnancy- by State;County;DOH Race-Ethnicity;PRAMS Age Group;Infant Gender;Married;Poverty Level;Income (2000-2003);Income (2004-2011);Birthweight;Smoke 3rd Trimester;Smoke Before Pregnant;WIC During Pregnancy, for the Year(s) 2000-2002;2001-2003;2002-2004;2003-2005;2004-2006;2005-2007;2006-2008;2007-2009;2008-2010;2009-2011;2010-2012;2011-2013

Note: Weighted counts (#) represent 3-yr averages, rounded to the nearest hundred; n/r (Not Reportable) - If the unweighted total responses for a dimension (row) is <30 that row will not be shown

Years: 2006-2008

State	Yes			No			Weighted Total Responses (3-Yr Avg)
	#	%	C.I.(95%)	#	%	C.I.(95%)	#
Totals	2,100	56.2	53.0 - 59.4	1,600	43.8	40.6 - 47.0	3,700

County	Yes			No			Weighted Total Responses (3-Yr Avg)
	#	%	C.I.(95%)	#	%	C.I.(95%)	#
Hawaii	300	52.4	44.3 - 60.4	300	47.6	39.6 - 55.7	600
Honolulu	1,400	56.4	52.5 - 60.3	1,100	43.6	39.7 - 47.5	2,500
Kauai	100	58.6	43.8 - 72.0	100	41.4	28.0 - 56.2	200
Maui	300	59.4	49.7 - 68.5	200	40.6	31.5 - 50.3	400

PRAMS Health Indicator 3-Year Aggregate Report - Smoking cessation during pregnancy- by State;County;DOH Race-Ethnicity;PRAMS Age Group;Infant Gender;Married;Poverty Level;Income (2000-2003);Income (2004-2011);Birthweight;Smoke 3rd Trimester;Smoke Before Pregnant;WIC During Pregnancy, for the Year(s) 2000-2002;2001-2003;2002-2004;2003-2005;2004-2006;2005-2007;2006-2008;2007-2009;2008-2010;2009-2011;2010-2012;2011-2013

Note: Weighted counts (#) represent 3-yr averages, rounded to the nearest hundred; n/r (Not Reportable) - If the unweighted total responses for a dimension (row) is <30 that row will not be shown

Years: 2006-2008

DOH Race-Ethnicity	Yes			No			Weighted Total Responses (3-Yr Avg)
	#	%	C.I.(95%)	#	%	C.I.(95%)	#
Caucasian	600	64.7	58.5 - 70.5	300	35.3	29.5 - 41.5	900
Native Hawaiian	700	46.4	41.0 - 51.8	800	53.6	48.2 - 59.0	1,400
Chinese	n/r	n/r	n/r	n/r	n/r	n/r	<50
Filipino	300	65.5	57.0 - 73.1	200	34.5	26.9 - 43.0	400
Japanese	200	59.1	48.3 - 69.1	100	40.9	30.9 - 51.7	300
Other	300	58.2	50.0 - 66.0	200	41.8	34.0 - 50.0	600

PRAMS Age Group	Yes			No			Weighted Total Responses (3-Yr Avg)
	#	%	C.I.(95%)	#	%	C.I.(95%)	#
<20	200	55.3	45.2 - 64.9	200	44.7	35.1 - 54.8	400
20-24	700	61.5	55.7 - 66.9	500	38.5	33.1 - 44.3	1,200
25-34	900	54.1	49.4 - 58.7	800	45.9	41.3 - 50.6	1,700
35+	200	50.4	40.9 - 60.0	200	49.6	40.0 - 59.1	400

PRAMS Health Indicator 3-Year Aggregate Report - Smoking cessation during pregnancy- by State;County;DOH Race-Ethnicity;PRAMS Age Group;Infant Gender;Married;Poverty Level;Income (2000-2003);Income (2004-2011);Birthweight;Smoke 3rd Trimester;Smoke Before Pregnant;WIC During Pregnancy, for the Year(s) 2000-2002;2001-2003;2002-2004;2003-2005;2004-2006;2005-2007;2006-2008;2007-2009;2008-2010;2009-2011;2010-2012;2011-2013

Note: Weighted counts (#) represent 3-yr averages, rounded to the nearest hundred; n/r (Not Reportable) - If the unweighted total responses for a dimension (row) is <30 that row will not be shown

Years: 2006-2008

Infant Gender	Yes			No			Weighted Total Responses (3-Yr Avg)
	#	%	C.I.(95%)	#	%	C.I.(95%)	#
Male	1,100	57.4	52.9 - 61.7	800	42.6	38.3 - 47.1	1,900
Female	1,000	55.0	50.3 - 59.6	800	45.0	40.4 - 49.7	1,800

Married	Yes			No			Weighted Total Responses (3-Yr Avg)
	#	%	C.I.(95%)	#	%	C.I.(95%)	#
Yes	1,000	62.1	57.3 - 66.6	600	37.9	33.4 - 42.7	1,600
No	1,100	51.9	47.6 - 56.2	1,000	48.1	43.8 - 52.4	2,100

Poverty Level	Yes			No			Weighted Total Responses (3-Yr Avg)
	#	%	C.I.(95%)	#	%	C.I.(95%)	#
0-130%	800	44.3	39.8 - 48.9	1,100	55.7	51.1 - 60.2	1,900
131-185%	300	61.4	53.0 - 69.2	200	38.6	30.8 - 47.0	500
186+%	700	72.4	66.9 - 77.4	300	27.6	22.6 - 33.1	1,000

**PRAMS Health Indicator 3-Year Aggregate Report - Smoking cessation during pregnancy- by State;County;DOH Race-
Ethnicity;PRAMS Age Group;Infant Gender;Married;Poverty Level;Income (2000-2003);Income (2004-2011);Birthweight;Smoke
3rd Trimester;Smoke Before Pregnant;WIC During Pregnancy, for the Year(s)
2000-2002;2001-2003;2002-2004;2003-2005;2004-2006;2005-2007;2006-2008;2007-2009;2008-2010;2009-2011;2010-2012;2011-2013**

Note: Weighted counts (#) represent 3-yr averages, rounded to the nearest hundred; n/r (Not Reportable) - If the unweighted total responses for a dimension (row) is <30 that row will not be shown

Years: 2006-2008

Income (2004-2011)	Yes			No			Weighted Total Responses (3-Yr Avg)
	#	%	C.I.(95%)	#	%	C.I.(95%)	#
<\$10,000	300	37.6	31.4 - 44.2	600	62.4	55.8 - 68.6	900
\$10,000-\$24,999	600	54.9	48.8 - 60.9	500	45.1	39.1 - 51.2	1,000
\$25,000-\$49,999	600	65.1	58.7 - 71.0	300	34.9	29.0 - 41.3	900
>=\$50,000	400	69.7	62.4 - 76.1	200	30.3	23.9 - 37.6	600

Birthweight	Yes			No			Weighted Total Responses (3-Yr Avg)
	#	%	C.I.(95%)	#	%	C.I.(95%)	#
Low birth weight	100	41.4	30.8 - 52.7	200	58.6	47.3 - 69.2	300
Normal birth weight	1,900	57.6	54.2 - 60.8	1,400	42.4	39.2 - 45.8	3,400

Smoke 3rd Trimester	Yes			No			Weighted Total Responses (3-Yr Avg)
	#	%	C.I.(95%)	#	%	C.I.(95%)	#
Yes	0	0.0	-	1,600	100.0	-	1,600
No	2,100	100.0	-	0	0.0	-	2,100

PRAMS Health Indicator 3-Year Aggregate Report - Smoking cessation during pregnancy- by State;County;DOH Race-Ethnicity;PRAMS Age Group;Infant Gender;Married;Poverty Level;Income (2000-2003);Income (2004-2011);Birthweight;Smoke 3rd Trimester;Smoke Before Pregnant;WIC During Pregnancy, for the Year(s) 2000-2002;2001-2003;2002-2004;2003-2005;2004-2006;2005-2007;2006-2008;2007-2009;2008-2010;2009-2011;2010-2012;2011-2013

Note: Weighted counts (#) represent 3-yr averages, rounded to the nearest hundred; n/r (Not Reportable) - If the unweighted total responses for a dimension (row) is <30 that row will not be shown

Years: 2006-2008

Smoke Before Pregnant	Yes			No			Weighted Total Responses (3-Yr Avg)
	#	%	C.I.(95%)	#	%	C.I.(95%)	#
Yes	2,100	56.2	53.0 - 59.4	1,600	43.8	40.6 - 47.0	3,700

WIC During Pregnancy	Yes			No			Weighted Total Responses (3-Yr Avg)
	#	%	C.I.(95%)	#	%	C.I.(95%)	#
Yes	1,100	51.5	47.1 - 55.9	1,000	48.5	44.1 - 52.9	2,100
No	1,000	62.8	58.0 - 67.3	600	37.2	32.7 - 42.0	1,600

PRAMS Health Indicator 3-Year Aggregate Report - Smoking cessation during pregnancy- by State;County;DOH Race-Ethnicity;PRAMS Age Group;Infant Gender;Married;Poverty Level;Income (2000-2003);Income (2004-2011);Birthweight;Smoke 3rd Trimester;Smoke Before Pregnant;WIC During Pregnancy, for the Year(s) 2000-2002;2001-2003;2002-2004;2003-2005;2004-2006;2005-2007;2006-2008;2007-2009;2008-2010;2009-2011;2010-2012;2011-2013

Note: Weighted counts (#) represent 3-yr averages, rounded to the nearest hundred; n/r (Not Reportable) - If the unweighted total responses for a dimension (row) is <30 that row will not be shown

Years: 2005-2007

State	Yes			No			Weighted Total Responses (3-Yr Avg)
	#	%	C.I.(95%)	#	%	C.I.(95%)	#
Totals	2,200	58.2	55.1 - 61.3	1,600	41.8	38.7 - 44.9	3,700

County	Yes			No			Weighted Total Responses (3-Yr Avg)
	#	%	C.I.(95%)	#	%	C.I.(95%)	#
Hawaii	300	54.8	46.8 - 62.5	300	45.2	37.5 - 53.2	600
Honolulu	1,500	58.4	54.6 - 62.1	1,000	41.6	37.9 - 45.4	2,500
Kauai	100	63.1	49.0 - 75.2	100	36.9	24.8 - 51.0	200
Maui	200	60.3	50.5 - 69.3	200	39.7	30.7 - 49.5	400

**PRAMS Health Indicator 3-Year Aggregate Report - Smoking cessation during pregnancy- by State;County;DOH Race-
Ethnicity;PRAMS Age Group;Infant Gender;Married;Poverty Level;Income (2000-2003);Income (2004-2011);Birthweight;Smoke
3rd Trimester;Smoke Before Pregnant;WIC During Pregnancy, for the Year(s)
2000-2002;2001-2003;2002-2004;2003-2005;2004-2006;2005-2007;2006-2008;2007-2009;2008-2010;2009-2011;2010-2012;2011-2013**

Note: Weighted counts (#) represent 3-yr averages, rounded to the nearest hundred; n/r (Not Reportable) - If the unweighted total responses for a dimension (row) is <30 that row will not be shown

Years: 2005-2007

DOH Race- Ethnicity	Yes			No			Weighted Total Responses (3-Yr Avg)
	#	%	C.I.(95%)	#	%	C.I.(95%)	#
Caucasian	600	67.0	60.8 - 72.6	300	33.0	27.4 - 39.2	900
Native Hawaiian	700	50.7	45.3 - 56.0	700	49.3	44.0 - 54.7	1,400
Chinese	n/r	n/r	n/r	n/r	n/r	n/r	<50
Filipino	300	63.3	55.1 - 70.7	200	36.7	29.3 - 44.9	500
Japanese	200	62.7	52.9 - 71.5	100	37.3	28.5 - 47.1	400
Other	300	56.2	47.8 - 64.2	200	43.8	35.8 - 52.2	500

PRAMS Age Group	Yes			No			Weighted Total Responses (3-Yr Avg)
	#	%	C.I.(95%)	#	%	C.I.(95%)	#
<20	300	65.6	55.6 - 74.3	100	34.4	25.7 - 44.4	400
20-24	800	61.8	56.3 - 67.0	500	38.2	33.0 - 43.7	1,300
25-34	900	55.3	50.7 - 59.9	800	44.7	40.1 - 49.3	1,700
35+	200	50.4	40.6 - 60.1	200	49.6	39.9 - 59.4	300

**PRAMS Health Indicator 3-Year Aggregate Report - Smoking cessation during pregnancy- by State;County;DOH Race-
Ethnicity;PRAMS Age Group;Infant Gender;Married;Poverty Level;Income (2000-2003);Income (2004-2011);Birthweight;Smoke
3rd Trimester;Smoke Before Pregnant;WIC During Pregnancy, for the Year(s)
2000-2002;2001-2003;2002-2004;2003-2005;2004-2006;2005-2007;2006-2008;2007-2009;2008-2010;2009-2011;2010-2012;2011-2013**

Note: Weighted counts (#) represent 3-yr averages, rounded to the nearest hundred; n/r (Not Reportable) - If the unweighted total responses for a dimension (row) is <30 that row will not be shown

Years: 2005-2007

Infant Gender	Yes			No			Weighted Total Responses (3-Yr Avg)
	#	%	C.I.(95%)	#	%	C.I.(95%)	#
Male	1,100	57.8	53.3 - 62.1	800	42.2	37.9 - 46.7	1,900
Female	1,100	58.8	54.2 - 63.1	800	41.2	36.9 - 45.8	1,800

Married	Yes			No			Weighted Total Responses (3-Yr Avg)
	#	%	C.I.(95%)	#	%	C.I.(95%)	#
Yes	1,000	64.2	59.5 - 68.7	500	35.8	31.3 - 40.5	1,500
No	1,200	54.1	49.9 - 58.2	1,000	45.9	41.8 - 50.1	2,200

Poverty Level	Yes			No			Weighted Total Responses (3-Yr Avg)
	#	%	C.I.(95%)	#	%	C.I.(95%)	#
0-130%	900	49.0	44.6 - 53.5	1,000	51.0	46.5 - 55.4	1,900
131-185%	300	62.7	53.9 - 70.7	200	37.3	29.3 - 46.1	500
186+%	800	70.9	65.5 - 75.8	300	29.1	24.2 - 34.5	1,100

PRAMS Health Indicator 3-Year Aggregate Report - Smoking cessation during pregnancy- by State;County;DOH Race- Ethnicity;PRAMS Age Group;Infant Gender;Married;Poverty Level;Income (2000-2003);Income (2004-2011);Birthweight;Smoke 3rd Trimester;Smoke Before Pregnant;WIC During Pregnancy, for the Year(s) 2000-2002;2001-2003;2002-2004;2003-2005;2004-2006;2005-2007;2006-2008;2007-2009;2008-2010;2009-2011;2010-2012;2011-2013

Note: Weighted counts (#) represent 3-yr averages, rounded to the nearest hundred; n/r (Not Reportable) - If the unweighted total responses for a dimension (row) is <30 that row will not be shown

Years: 2005-2007

Income (2004-2011)	Yes			No			Weighted Total Responses (3-Yr Avg)
	#	%	C.I.(95%)	#	%	C.I.(95%)	#
<\$10,000	400	43.1	37.1 - 49.4	600	56.9	50.6 - 62.9	1,000
\$10,000-\$24,999	600	56.8	50.7 - 62.7	400	43.2	37.3 - 49.3	1,000
\$25,000-\$49,999	600	67.2	60.9 - 72.9	300	32.8	27.1 - 39.1	900
>=\$50,000	400	69.6	62.4 - 76.0	200	30.4	24.0 - 37.6	600

Birthweight	Yes			No			Weighted Total Responses (3-Yr Avg)
	#	%	C.I.(95%)	#	%	C.I.(95%)	#
Low birth weight	100	42.3	32.0 - 53.3	200	57.7	46.7 - 68.0	300
Normal birth weight	2,000	59.7	56.5 - 62.9	1,400	40.3	37.1 - 43.5	3,400

Smoke 3rd Trimester	Yes			No			Weighted Total Responses (3-Yr Avg)
	#	%	C.I.(95%)	#	%	C.I.(95%)	#
Yes	0	0.0	-	1,600	100.0	-	1,600
No	2,200	100.0	-	0	0.0	-	2,200

PRAMS Health Indicator 3-Year Aggregate Report - Smoking cessation during pregnancy- by State;County;DOH Race-Ethnicity;PRAMS Age Group;Infant Gender;Married;Poverty Level;Income (2000-2003);Income (2004-2011);Birthweight;Smoke 3rd Trimester;Smoke Before Pregnant;WIC During Pregnancy, for the Year(s) 2000-2002;2001-2003;2002-2004;2003-2005;2004-2006;2005-2007;2006-2008;2007-2009;2008-2010;2009-2011;2010-2012;2011-2013

Note: Weighted counts (#) represent 3-yr averages, rounded to the nearest hundred; n/r (Not Reportable) - If the unweighted total responses for a dimension (row) is <30 that row will not be shown

Years: 2005-2007

Smoke Before Pregnant	Yes			No			Weighted Total Responses (3-Yr Avg)
	#	%	C.I.(95%)	#	%	C.I.(95%)	#
Yes	2,200	58.2	55.1 - 61.3	1,600	41.8	38.7 - 44.9	3,700

WIC During Pregnancy	Yes			No			Weighted Total Responses (3-Yr Avg)
	#	%	C.I.(95%)	#	%	C.I.(95%)	#
Yes	1,100	53.2	48.9 - 57.4	1,000	46.8	42.6 - 51.1	2,100
No	1,000	64.6	60.0 - 69.0	600	35.4	31.0 - 40.0	1,600

PRAMS Health Indicator 3-Year Aggregate Report - Smoking cessation during pregnancy- by State;County;DOH Race-Ethnicity;PRAMS Age Group;Infant Gender;Married;Poverty Level;Income (2000-2003);Income (2004-2011);Birthweight;Smoke 3rd Trimester;Smoke Before Pregnant;WIC During Pregnancy, for the Year(s) 2000-2002;2001-2003;2002-2004;2003-2005;2004-2006;2005-2007;2006-2008;2007-2009;2008-2010;2009-2011;2010-2012;2011-2013

Note: Weighted counts (#) represent 3-yr averages, rounded to the nearest hundred; n/r (Not Reportable) - If the unweighted total responses for a dimension (row) is <30 that row will not be shown

Years: 2004-2006

State	Yes			No			Weighted Total Responses (3-Yr Avg)
	#	%	C.I.(95%)	#	%	C.I.(95%)	#
Totals	2,200	59.3	56.3 - 62.3	1,500	40.7	37.7 - 43.7	3,700

County	Yes			No			Weighted Total Responses (3-Yr Avg)
	#	%	C.I.(95%)	#	%	C.I.(95%)	#
Hawaii	300	53.2	45.5 - 60.9	300	46.8	39.1 - 54.5	600
Honolulu	1,500	60.1	56.4 - 63.7	1,000	39.9	36.3 - 43.6	2,500
Kauai	100	64.3	49.7 - 76.7	100	35.7	23.3 - 50.3	200
Maui	300	61.1	51.8 - 69.7	200	38.9	30.3 - 48.2	400

PRAMS Health Indicator 3-Year Aggregate Report - Smoking cessation during pregnancy- by State;County;DOH Race-Ethnicity;PRAMS Age Group;Infant Gender;Married;Poverty Level;Income (2000-2003);Income (2004-2011);Birthweight;Smoke 3rd Trimester;Smoke Before Pregnant;WIC During Pregnancy, for the Year(s) 2000-2002;2001-2003;2002-2004;2003-2005;2004-2006;2005-2007;2006-2008;2007-2009;2008-2010;2009-2011;2010-2012;2011-2013

Note: Weighted counts (#) represent 3-yr averages, rounded to the nearest hundred; n/r (Not Reportable) - If the unweighted total responses for a dimension (row) is <30 that row will not be shown

Years: 2004-2006

DOH Race-Ethnicity	Yes			No			Weighted Total Responses (3-Yr Avg)
	#	%	C.I.(95%)	#	%	C.I.(95%)	#
Caucasian	600	67.6	61.6 - 73.2	300	32.4	26.8 - 38.4	800
Native Hawaiian	800	53.8	48.6 - 59.0	700	46.2	41.0 - 51.4	1,500
Chinese	n/r	n/r	n/r	n/r	n/r	n/r	<50
Filipino	300	63.4	55.6 - 70.7	200	36.6	29.3 - 44.4	500
Japanese	300	63.4	54.2 - 71.7	100	36.6	28.3 - 45.8	400
Other	300	54.1	46.0 - 62.0	200	45.9	38.0 - 54.0	500

PRAMS Age Group	Yes			No			Weighted Total Responses (3-Yr Avg)
	#	%	C.I.(95%)	#	%	C.I.(95%)	#
<20	300	70.4	61.4 - 78.0	100	29.6	22.0 - 38.6	500
20-24	700	59.4	54.0 - 64.6	500	40.6	35.4 - 46.0	1,200
25-34	1,000	58.4	53.8 - 62.8	700	41.6	37.2 - 46.2	1,600
35+	200	49.6	40.4 - 58.8	200	50.4	41.2 - 59.6	400

**PRAMS Health Indicator 3-Year Aggregate Report - Smoking cessation during pregnancy- by State;County;DOH Race-
Ethnicity;PRAMS Age Group;Infant Gender;Married;Poverty Level;Income (2000-2003);Income (2004-2011);Birthweight;Smoke
3rd Trimester;Smoke Before Pregnant;WIC During Pregnancy, for the Year(s)
2000-2002;2001-2003;2002-2004;2003-2005;2004-2006;2005-2007;2006-2008;2007-2009;2008-2010;2009-2011;2010-2012;2011-2013**

Note: Weighted counts (#) represent 3-yr averages, rounded to the nearest hundred; n/r (Not Reportable) - If the unweighted total responses for a dimension (row) is <30 that row will not be shown

Years: 2004-2006

Infant Gender	Yes			No			Weighted Total Responses (3-Yr Avg)
	#	%	C.I.(95%)	#	%	C.I.(95%)	#
Male	1,100	57.6	53.4 - 61.8	800	42.4	38.2 - 46.6	1,900
Female	1,100	61.1	56.7 - 65.4	700	38.9	34.6 - 43.3	1,800

Married	Yes			No			Weighted Total Responses (3-Yr Avg)
	#	%	C.I.(95%)	#	%	C.I.(95%)	#
Yes	1,100	63.3	58.9 - 67.5	600	36.7	32.5 - 41.1	1,700
No	1,200	56.1	51.8 - 60.2	900	43.9	39.8 - 48.2	2,100

Poverty Level	Yes			No			Weighted Total Responses (3-Yr Avg)
	#	%	C.I.(95%)	#	%	C.I.(95%)	#
0-130%	1,000	50.4	46.0 - 54.7	900	49.6	45.3 - 54.0	1,900
131-185%	400	69.1	61.1 - 76.1	200	30.9	23.9 - 38.9	500
186+%	700	71.0	65.7 - 75.9	300	29.0	24.1 - 34.3	1,000

PRAMS Health Indicator 3-Year Aggregate Report - Smoking cessation during pregnancy- by State;County;DOH Race- Ethnicity;PRAMS Age Group;Infant Gender;Married;Poverty Level;Income (2000-2003);Income (2004-2011);Birthweight;Smoke 3rd Trimester;Smoke Before Pregnant;WIC During Pregnancy, for the Year(s) 2000-2002;2001-2003;2002-2004;2003-2005;2004-2006;2005-2007;2006-2008;2007-2009;2008-2010;2009-2011;2010-2012;2011-2013

Note: Weighted counts (#) represent 3-yr averages, rounded to the nearest hundred; n/r (Not Reportable) - If the unweighted total responses for a dimension (row) is <30 that row will not be shown

Years: 2004-2006

Income (2004-2011)	Yes			No			Weighted Total Responses (3-Yr Avg)
	#	%	C.I.(95%)	#	%	C.I.(95%)	#
<\$10,000	400	45.0	38.9 - 51.2	500	55.0	48.8 - 61.1	1,000
\$10,000-\$24,999	700	59.8	54.2 - 65.2	400	40.2	34.8 - 45.8	1,100
\$25,000-\$49,999	600	68.0	61.8 - 73.7	300	32.0	26.3 - 38.2	800
>=\$50,000	400	70.7	63.4 - 77.0	200	29.3	23.0 - 36.6	600

Birthweight	Yes			No			Weighted Total Responses (3-Yr Avg)
	#	%	C.I.(95%)	#	%	C.I.(95%)	#
Low birth weight	100	39.9	29.7 - 51.0	200	60.1	49.0 - 70.3	300
Normal birth weight	2,100	61.0	57.8 - 64.1	1,300	39.0	35.9 - 42.2	3,400

Smoke 3rd Trimester	Yes			No			Weighted Total Responses (3-Yr Avg)
	#	%	C.I.(95%)	#	%	C.I.(95%)	#
Yes	0	0.0	-	1,500	100.0	-	1,500
No	2,200	100.0	-	0	0.0	-	2,200

PRAMS Health Indicator 3-Year Aggregate Report - Smoking cessation during pregnancy- by State;County;DOH Race-Ethnicity;PRAMS Age Group;Infant Gender;Married;Poverty Level;Income (2000-2003);Income (2004-2011);Birthweight;Smoke 3rd Trimester;Smoke Before Pregnant;WIC During Pregnancy, for the Year(s) 2000-2002;2001-2003;2002-2004;2003-2005;2004-2006;2005-2007;2006-2008;2007-2009;2008-2010;2009-2011;2010-2012;2011-2013

Note: Weighted counts (#) represent 3-yr averages, rounded to the nearest hundred; n/r (Not Reportable) - If the unweighted total responses for a dimension (row) is <30 that row will not be shown

Years: 2004-2006

Smoke Before Pregnant	Yes			No			Weighted Total Responses (3-Yr Avg)
	#	%	C.I.(95%)	#	%	C.I.(95%)	#
Yes	2,200	59.3	56.3 - 62.3	1,500	40.7	37.7 - 43.7	3,700

WIC During Pregnancy	Yes			No			Weighted Total Responses (3-Yr Avg)
	#	%	C.I.(95%)	#	%	C.I.(95%)	#
Yes	1,200	56.2	52.0 - 60.3	900	43.8	39.7 - 48.0	2,100
No	1,000	62.8	58.2 - 67.1	600	37.2	32.9 - 41.8	1,600

**PRAMS Health Indicator 3-Year Aggregate Report - Smoking cessation during pregnancy- by State;County;DOH Race-
Ethnicity;PRAMS Age Group;Infant Gender;Married;Poverty Level;Income (2000-2003);Income (2004-2011);Birthweight;Smoke
3rd Trimester;Smoke Before Pregnant;WIC During Pregnancy, for the Year(s)
2000-2002;2001-2003;2002-2004;2003-2005;2004-2006;2005-2007;2006-2008;2007-2009;2008-2010;2009-2011;2010-2012;2011-2013**

Note: Weighted counts (#) represent 3-yr averages, rounded to the nearest hundred; n/r (Not Reportable) - If the unweighted total responses for a dimension (row) is <30 that row will not be shown

Years: 2003-2005

State	Yes			No			Weighted Total Responses (3-Yr Avg)
	#	%	C.I.(95%)	#	%	C.I.(95%)	#
Totals	2,100	59.4	56.3 - 62.4	1,500	40.6	37.6 - 43.7	3,600

County	Yes			No			Weighted Total Responses (3-Yr Avg)
	#	%	C.I.(95%)	#	%	C.I.(95%)	#
Hawaii	300	55.8	48.9 - 62.6	200	44.2	37.4 - 51.1	600
Honolulu	1,500	59.3	55.4 - 63.1	1,000	40.7	36.9 - 44.6	2,500
Kauai	100	62.6	49.6 - 74.0	100	37.4	26.0 - 50.4	200
Maui	200	63.2	54.9 - 70.8	100	36.8	29.2 - 45.1	400

PRAMS Health Indicator 3-Year Aggregate Report - Smoking cessation during pregnancy- by State;County;DOH Race-Ethnicity;PRAMS Age Group;Infant Gender;Married;Poverty Level;Income (2000-2003);Income (2004-2011);Birthweight;Smoke 3rd Trimester;Smoke Before Pregnant;WIC During Pregnancy, for the Year(s) 2000-2002;2001-2003;2002-2004;2003-2005;2004-2006;2005-2007;2006-2008;2007-2009;2008-2010;2009-2011;2010-2012;2011-2013

Note: Weighted counts (#) represent 3-yr averages, rounded to the nearest hundred; n/r (Not Reportable) - If the unweighted total responses for a dimension (row) is <30 that row will not be shown

Years: 2003-2005

DOH Race-Ethnicity	Yes			No			Weighted Total Responses (3-Yr Avg)
	#	%	C.I.(95%)	#	%	C.I.(95%)	#
Caucasian	500	61.1	54.0 - 67.7	300	38.9	32.3 - 46.0	800
Native Hawaiian	800	57.6	53.0 - 62.1	600	42.4	37.9 - 47.0	1,400
Chinese	n/r	n/r	n/r	n/r	n/r	n/r	<50
Filipino	300	59.3	50.9 - 67.2	200	40.7	32.8 - 49.1	500
Japanese	300	68.0	58.7 - 76.1	100	32.0	23.9 - 41.3	400
Other	200	54.3	44.8 - 63.5	200	45.7	36.5 - 55.2	400

PRAMS Age Group	Yes			No			Weighted Total Responses (3-Yr Avg)
	#	%	C.I.(95%)	#	%	C.I.(95%)	#
<20	300	69.3	60.4 - 76.9	100	30.7	23.1 - 39.6	500
20-24	700	59.0	53.9 - 64.0	500	41.0	36.0 - 46.1	1,200
25-34	900	58.7	53.8 - 63.4	600	41.3	36.6 - 46.2	1,500
35+	200	50.4	40.5 - 60.3	200	49.6	39.7 - 59.5	300

**PRAMS Health Indicator 3-Year Aggregate Report - Smoking cessation during pregnancy- by State;County;DOH Race-
Ethnicity;PRAMS Age Group;Infant Gender;Married;Poverty Level;Income (2000-2003);Income (2004-2011);Birthweight;Smoke
3rd Trimester;Smoke Before Pregnant;WIC During Pregnancy, for the Year(s)
2000-2002;2001-2003;2002-2004;2003-2005;2004-2006;2005-2007;2006-2008;2007-2009;2008-2010;2009-2011;2010-2012;2011-2013**

Note: Weighted counts (#) represent 3-yr averages, rounded to the nearest hundred; n/r (Not Reportable) - If the unweighted total responses for a dimension (row) is <30 that row will not be shown

Years: 2003-2005

Infant Gender	Yes			No			Weighted Total Responses (3-Yr Avg)
	#	%	C.I.(95%)	#	%	C.I.(95%)	#
Male	1,100	57.9	53.6 - 62.0	800	42.1	38.0 - 46.4	1,900
Female	1,100	61.0	56.5 - 65.3	700	39.0	34.7 - 43.5	1,700

Married	Yes			No			Weighted Total Responses (3-Yr Avg)
	#	%	C.I.(95%)	#	%	C.I.(95%)	#
Yes	1,000	61.1	56.4 - 65.6	600	38.9	34.4 - 43.6	1,700
No	1,100	57.9	53.7 - 61.9	800	42.1	38.1 - 46.3	1,900

Poverty Level	Yes			No			Weighted Total Responses (3-Yr Avg)
	#	%	C.I.(95%)	#	%	C.I.(95%)	#
0-130%	1,000	53.5	49.3 - 57.7	900	46.5	42.3 - 50.7	1,900
131-185%	300	62.3	53.0 - 70.8	200	37.7	29.2 - 47.0	400
186+%	600	71.6	65.7 - 76.8	300	28.4	23.2 - 34.3	900

**PRAMS Health Indicator 3-Year Aggregate Report - Smoking cessation during pregnancy- by State;County;DOH Race-
Ethnicity;PRAMS Age Group;Infant Gender;Married;Poverty Level;Income (2000-2003);Income (2004-2011);Birthweight;Smoke
3rd Trimester;Smoke Before Pregnant;WIC During Pregnancy, for the Year(s)
2000-2002;2001-2003;2002-2004;2003-2005;2004-2006;2005-2007;2006-2008;2007-2009;2008-2010;2009-2011;2010-2012;2011-2013**

Note: Weighted counts (#) represent 3-yr averages, rounded to the nearest hundred; n/r (Not Reportable) - If the unweighted total responses for a dimension (row) is <30 that row will not be shown

Years: 2003-2005

Birthweight	Yes			No			Weighted Total Responses (3-Yr Avg)
	#	%	C.I.(95%)	#	%	C.I.(95%)	#
Low birth weight	100	43.8	33.0 - 55.4	100	56.2	44.6 - 67.0	300
Normal birth weight	2,000	60.6	57.4 - 63.7	1,300	39.4	36.3 - 42.6	3,300

Smoke 3rd Trimester	Yes			No			Weighted Total Responses (3-Yr Avg)
	#	%	C.I.(95%)	#	%	C.I.(95%)	#
Yes	0	0.0	-	1,500	100.0	-	1,500
No	2,100	100.0	-	0	0.0	-	2,100

Smoke Before Pregnant	Yes			No			Weighted Total Responses (3-Yr Avg)
	#	%	C.I.(95%)	#	%	C.I.(95%)	#
Yes	2,100	59.4	56.3 - 62.4	1,500	40.6	37.6 - 43.7	3,600

PRAMS Health Indicator 3-Year Aggregate Report - Smoking cessation during pregnancy- by State;County;DOH Race-Ethnicity;PRAMS Age Group;Infant Gender;Married;Poverty Level;Income (2000-2003);Income (2004-2011);Birthweight;Smoke 3rd Trimester;Smoke Before Pregnant;WIC During Pregnancy, for the Year(s) 2000-2002;2001-2003;2002-2004;2003-2005;2004-2006;2005-2007;2006-2008;2007-2009;2008-2010;2009-2011;2010-2012;2011-2013

Note: Weighted counts (#) represent 3-yr averages, rounded to the nearest hundred; n/r (Not Reportable) - If the unweighted total responses for a dimension (row) is <30 that row will not be shown

Years: 2003-2005

WIC During Pregnancy	Yes			No			Weighted Total Responses (3-Yr Avg)
	#	%	C.I.(95%)	#	%	C.I.(95%)	#
Yes	1,100	55.6	51.5 - 59.7	900	44.4	40.3 - 48.5	2,000
No	1,000	63.8	59.1 - 68.3	600	36.2	31.7 - 40.9	1,600

PRAMS Health Indicator 3-Year Aggregate Report - Smoking cessation during pregnancy- by State;County;DOH Race-Ethnicity;PRAMS Age Group;Infant Gender;Married;Poverty Level;Income (2000-2003);Income (2004-2011);Birthweight;Smoke 3rd Trimester;Smoke Before Pregnant;WIC During Pregnancy, for the Year(s) 2000-2002;2001-2003;2002-2004;2003-2005;2004-2006;2005-2007;2006-2008;2007-2009;2008-2010;2009-2011;2010-2012;2011-2013

Note: Weighted counts (#) represent 3-yr averages, rounded to the nearest hundred; n/r (Not Reportable) - If the unweighted total responses for a dimension (row) is <30 that row will not be shown

Years: 2002-2004

State	Yes			No			Weighted Total Responses (3-Yr Avg)
	#	%	C.I.(95%)	#	%	C.I.(95%)	#
Totals	2,000	58.7	55.5 - 61.8	1,400	41.3	38.2 - 44.5	3,400

County	Yes			No			Weighted Total Responses (3-Yr Avg)
	#	%	C.I.(95%)	#	%	C.I.(95%)	#
Hawaii	300	55.6	49.7 - 61.4	200	44.4	38.6 - 50.3	600
Honolulu	1,400	58.7	54.4 - 62.9	1,000	41.3	37.1 - 45.6	2,300
Kauai	100	59.7	48.7 - 69.9	100	40.3	30.1 - 51.3	200
Maui	200	62.8	55.6 - 69.5	100	37.2	30.5 - 44.4	400

PRAMS Health Indicator 3-Year Aggregate Report - Smoking cessation during pregnancy- by State;County;DOH Race-Ethnicity;PRAMS Age Group;Infant Gender;Married;Poverty Level;Income (2000-2003);Income (2004-2011);Birthweight;Smoke 3rd Trimester;Smoke Before Pregnant;WIC During Pregnancy, for the Year(s) 2000-2002;2001-2003;2002-2004;2003-2005;2004-2006;2005-2007;2006-2008;2007-2009;2008-2010;2009-2011;2010-2012;2011-2013

Note: Weighted counts (#) represent 3-yr averages, rounded to the nearest hundred; n/r (Not Reportable) - If the unweighted total responses for a dimension (row) is <30 that row will not be shown

Years: 2002-2004

DOH Race-Ethnicity	Yes			No			Weighted Total Responses (3-Yr Avg)
	#	%	C.I.(95%)	#	%	C.I.(95%)	#
Caucasian	400	58.7	51.0 - 66.0	300	41.3	34.0 - 49.0	800
Native Hawaiian	700	54.5	50.5 - 58.5	600	45.5	41.5 - 49.5	1,300
Chinese	n/r	n/r	n/r	n/r	n/r	n/r	<50
Filipino	300	61.6	52.4 - 70.1	200	38.4	29.9 - 47.6	500
Japanese	300	72.8	62.4 - 81.2	100	27.2	18.8 - 37.6	400
Other	200	56.0	45.0 - 66.4	200	44.0	33.6 - 55.0	400

PRAMS Age Group	Yes			No			Weighted Total Responses (3-Yr Avg)
	#	%	C.I.(95%)	#	%	C.I.(95%)	#
<20	300	62.8	53.8 - 70.9	200	37.2	29.1 - 46.2	400
20-24	700	59.7	54.5 - 64.7	500	40.3	35.3 - 45.5	1,300
25-34	800	57.3	52.1 - 62.3	600	42.7	37.7 - 47.9	1,400
35+	200	55.4	45.0 - 65.3	100	44.6	34.7 - 55.0	300

**PRAMS Health Indicator 3-Year Aggregate Report - Smoking cessation during pregnancy- by State;County;DOH Race-
Ethnicity;PRAMS Age Group;Infant Gender;Married;Poverty Level;Income (2000-2003);Income (2004-2011);Birthweight;Smoke
3rd Trimester;Smoke Before Pregnant;WIC During Pregnancy, for the Year(s)
2000-2002;2001-2003;2002-2004;2003-2005;2004-2006;2005-2007;2006-2008;2007-2009;2008-2010;2009-2011;2010-2012;2011-2013**

Note: Weighted counts (#) represent 3-yr averages, rounded to the nearest hundred; n/r (Not Reportable) - If the unweighted total responses for a dimension (row) is <30 that row will not be shown

Years: 2002-2004

Infant Gender	Yes			No			Weighted Total Responses (3-Yr Avg)
	#	%	C.I.(95%)	#	%	C.I.(95%)	#
Male	1,000	59.3	54.9 - 63.5	700	40.7	36.5 - 45.1	1,800
Female	1,000	58.1	53.4 - 62.7	700	41.9	37.3 - 46.6	1,700

Married	Yes			No			Weighted Total Responses (3-Yr Avg)
	#	%	C.I.(95%)	#	%	C.I.(95%)	#
Yes	1,000	60.8	56.0 - 65.4	700	39.2	34.6 - 44.0	1,700
No	1,000	56.7	52.4 - 60.9	800	43.3	39.1 - 47.6	1,800

Poverty Level	Yes			No			Weighted Total Responses (3-Yr Avg)
	#	%	C.I.(95%)	#	%	C.I.(95%)	#
0-130%	1,000	52.2	48.0 - 56.4	900	47.8	43.6 - 52.0	1,900
131-185%	300	65.5	56.5 - 73.4	200	34.5	26.6 - 43.5	500
186+%	500	72.6	65.7 - 78.6	200	27.4	21.4 - 34.3	700

PRAMS Health Indicator 3-Year Aggregate Report - Smoking cessation during pregnancy- by State;County;DOH Race-Ethnicity;PRAMS Age Group;Infant Gender;Married;Poverty Level;Income (2000-2003);Income (2004-2011);Birthweight;Smoke 3rd Trimester;Smoke Before Pregnant;WIC During Pregnancy, for the Year(s) 2000-2002;2001-2003;2002-2004;2003-2005;2004-2006;2005-2007;2006-2008;2007-2009;2008-2010;2009-2011;2010-2012;2011-2013

Note: Weighted counts (#) represent 3-yr averages, rounded to the nearest hundred; n/r (Not Reportable) - If the unweighted total responses for a dimension (row) is <30 that row will not be shown

Years: 2002-2004

Birthweight	Yes			No			Weighted Total Responses (3-Yr Avg)
	#	%	C.I.(95%)	#	%	C.I.(95%)	#
Low birth weight	100	45.2	33.5 - 57.5	100	54.8	42.5 - 66.5	200
Normal birth weight	1,900	59.9	56.6 - 63.1	1,300	40.1	36.9 - 43.4	3,200

Smoke 3rd Trimester	Yes			No			Weighted Total Responses (3-Yr Avg)
	#	%	C.I.(95%)	#	%	C.I.(95%)	#
Yes	0	0.0	-	1,400	100.0	-	1,400
No	2,000	100.0	-	0	0.0	-	2,000

Smoke Before Pregnant	Yes			No			Weighted Total Responses (3-Yr Avg)
	#	%	C.I.(95%)	#	%	C.I.(95%)	#
Yes	2,000	58.7	55.5 - 61.8	1,400	41.3	38.2 - 44.5	3,400

PRAMS Health Indicator 3-Year Aggregate Report - Smoking cessation during pregnancy- by State;County;DOH Race-Ethnicity;PRAMS Age Group;Infant Gender;Married;Poverty Level;Income (2000-2003);Income (2004-2011);Birthweight;Smoke 3rd Trimester;Smoke Before Pregnant;WIC During Pregnancy, for the Year(s) 2000-2002;2001-2003;2002-2004;2003-2005;2004-2006;2005-2007;2006-2008;2007-2009;2008-2010;2009-2011;2010-2012;2011-2013

Note: Weighted counts (#) represent 3-yr averages, rounded to the nearest hundred; n/r (Not Reportable) - If the unweighted total responses for a dimension (row) is <30 that row will not be shown

Years: 2002-2004

WIC During Pregnancy	Yes			No			Weighted Total Responses (3-Yr Avg)
	#	%	C.I.(95%)	#	%	C.I.(95%)	#
Yes	1,100	56.5	52.3 - 60.6	800	43.5	39.4 - 47.7	1,900
No	900	61.6	56.6 - 66.3	600	38.4	33.7 - 43.4	1,500

PRAMS Health Indicator 3-Year Aggregate Report - Smoking cessation during pregnancy- by State;County;DOH Race-Ethnicity;PRAMS Age Group;Infant Gender;Married;Poverty Level;Income (2000-2003);Income (2004-2011);Birthweight;Smoke 3rd Trimester;Smoke Before Pregnant;WIC During Pregnancy, for the Year(s) 2000-2002;2001-2003;2002-2004;2003-2005;2004-2006;2005-2007;2006-2008;2007-2009;2008-2010;2009-2011;2010-2012;2011-2013

Note: Weighted counts (#) represent 3-yr averages, rounded to the nearest hundred; n/r (Not Reportable) - If the unweighted total responses for a dimension (row) is <30 that row will not be shown

Years: 2001-2003

State	Yes			No			Weighted Total Responses (3-Yr Avg)
	#	%	C.I.(95%)	#	%	C.I.(95%)	#
Totals	1,900	56.9	53.7 - 60.0	1,400	43.1	40.0 - 46.3	3,300

County	Yes			No			Weighted Total Responses (3-Yr Avg)
	#	%	C.I.(95%)	#	%	C.I.(95%)	#
Hawaii	300	54.1	49.2 - 59.0	200	45.9	41.0 - 50.8	500
Honolulu	1,300	57.7	53.3 - 61.9	1,000	42.3	38.1 - 46.7	2,300
Kauai	100	51.9	42.8 - 60.9	100	48.1	39.1 - 57.2	200
Maui	200	58.4	52.1 - 64.5	100	41.6	35.5 - 47.9	300

PRAMS Health Indicator 3-Year Aggregate Report - Smoking cessation during pregnancy- by State;County;DOH Race-Ethnicity;PRAMS Age Group;Infant Gender;Married;Poverty Level;Income (2000-2003);Income (2004-2011);Birthweight;Smoke 3rd Trimester;Smoke Before Pregnant;WIC During Pregnancy, for the Year(s) 2000-2002;2001-2003;2002-2004;2003-2005;2004-2006;2005-2007;2006-2008;2007-2009;2008-2010;2009-2011;2010-2012;2011-2013

Note: Weighted counts (#) represent 3-yr averages, rounded to the nearest hundred; n/r (Not Reportable) - If the unweighted total responses for a dimension (row) is <30 that row will not be shown

Years: 2001-2003

DOH Race-Ethnicity	Yes			No			Weighted Total Responses (3-Yr Avg)
	#	%	C.I.(95%)	#	%	C.I.(95%)	#
Caucasian	400	58.3	50.4 - 65.7	300	41.7	34.3 - 49.6	700
Native Hawaiian	700	51.1	48.0 - 54.2	600	48.9	45.8 - 52.0	1,300
Chinese	n/r	n/r	n/r	n/r	n/r	n/r	<50
Filipino	300	58.5	49.3 - 67.2	200	41.5	32.8 - 50.7	500
Japanese	300	75.6	63.6 - 84.6	100	24.4	15.4 - 36.4	300
Other	200	54.9	43.3 - 65.9	200	45.1	34.1 - 56.7	400

PRAMS Age Group	Yes			No			Weighted Total Responses (3-Yr Avg)
	#	%	C.I.(95%)	#	%	C.I.(95%)	#
<20	300	57.5	49.2 - 65.4	200	42.5	34.6 - 50.8	400
20-24	700	60.1	55.1 - 64.9	500	39.9	35.1 - 44.9	1,200
25-34	700	54.1	49.0 - 59.1	600	45.9	40.9 - 51.0	1,400
35+	200	55.2	44.2 - 65.8	100	44.8	34.2 - 55.8	300

**PRAMS Health Indicator 3-Year Aggregate Report - Smoking cessation during pregnancy- by State;County;DOH Race-
Ethnicity;PRAMS Age Group;Infant Gender;Married;Poverty Level;Income (2000-2003);Income (2004-2011);Birthweight;Smoke
3rd Trimester;Smoke Before Pregnant;WIC During Pregnancy, for the Year(s)
2000-2002;2001-2003;2002-2004;2003-2005;2004-2006;2005-2007;2006-2008;2007-2009;2008-2010;2009-2011;2010-2012;2011-2013**

Note: Weighted counts (#) represent 3-yr averages, rounded to the nearest hundred; n/r (Not Reportable) - If the unweighted total responses for a dimension (row) is <30 that row will not be shown

Years: 2001-2003

Infant Gender	Yes			No			Weighted Total Responses (3-Yr Avg)
	#	%	C.I.(95%)	#	%	C.I.(95%)	#
Male	1,000	57.8	53.4 - 62.0	700	42.2	38.0 - 46.6	1,700
Female	900	55.9	51.3 - 60.4	700	44.1	39.6 - 48.7	1,600

Married	Yes			No			Weighted Total Responses (3-Yr Avg)
	#	%	C.I.(95%)	#	%	C.I.(95%)	#
Yes	1,000	59.2	54.3 - 64.0	700	40.8	36.0 - 45.7	1,600
No	1,000	54.7	50.6 - 58.7	800	45.3	41.3 - 49.4	1,700

Poverty Level	Yes			No			Weighted Total Responses (3-Yr Avg)
	#	%	C.I.(95%)	#	%	C.I.(95%)	#
0-130%	1,000	51.8	47.7 - 55.8	900	48.2	44.2 - 52.3	1,900
131-185%	300	61.1	52.8 - 68.7	200	38.9	31.3 - 47.2	600
186+%	400	71.8	64.2 - 78.4	200	28.2	21.6 - 35.8	600

PRAMS Health Indicator 3-Year Aggregate Report - Smoking cessation during pregnancy- by State;County;DOH Race-Ethnicity;PRAMS Age Group;Infant Gender;Married;Poverty Level;Income (2000-2003);Income (2004-2011);Birthweight;Smoke 3rd Trimester;Smoke Before Pregnant;WIC During Pregnancy, for the Year(s) 2000-2002;2001-2003;2002-2004;2003-2005;2004-2006;2005-2007;2006-2008;2007-2009;2008-2010;2009-2011;2010-2012;2011-2013

Note: Weighted counts (#) represent 3-yr averages, rounded to the nearest hundred; n/r (Not Reportable) - If the unweighted total responses for a dimension (row) is <30 that row will not be shown

Years: 2001-2003

Income (2000-2003)	Yes			No			Weighted Total Responses (3-Yr Avg)
	#	%	C.I.(95%)	#	%	C.I.(95%)	#
<=\$15,000	500	45.9	41.1 - 50.9	600	54.1	49.1 - 58.9	1,200
\$15,001-\$25,000	400	64.8	57.3 - 71.6	200	35.2	28.4 - 42.7	600
\$25,001-\$40,000	400	62.4	55.1 - 69.2	300	37.6	30.8 - 44.9	700
>=\$40,001	400	64.7	57.3 - 71.5	200	35.3	28.5 - 42.7	700

Birthweight	Yes			No			Weighted Total Responses (3-Yr Avg)
	#	%	C.I.(95%)	#	%	C.I.(95%)	#
Low birth weight	100	48.3	36.8 - 60.0	100	51.7	40.0 - 63.2	200
Normal birth weight	1,800	57.7	54.4 - 60.9	1,300	42.3	39.1 - 45.6	3,100

Smoke 3rd Trimester	Yes			No			Weighted Total Responses (3-Yr Avg)
	#	%	C.I.(95%)	#	%	C.I.(95%)	#
Yes	0	0.0	-	1,400	100.0	-	1,400
No	1,900	100.0	-	0	0.0	-	1,900

PRAMS Health Indicator 3-Year Aggregate Report - Smoking cessation during pregnancy- by State;County;DOH Race-Ethnicity;PRAMS Age Group;Infant Gender;Married;Poverty Level;Income (2000-2003);Income (2004-2011);Birthweight;Smoke 3rd Trimester;Smoke Before Pregnant;WIC During Pregnancy, for the Year(s) 2000-2002;2001-2003;2002-2004;2003-2005;2004-2006;2005-2007;2006-2008;2007-2009;2008-2010;2009-2011;2010-2012;2011-2013

Note: Weighted counts (#) represent 3-yr averages, rounded to the nearest hundred; n/r (Not Reportable) - If the unweighted total responses for a dimension (row) is <30 that row will not be shown

Years: 2001-2003

Smoke Before Pregnant	Yes			No			Weighted Total Responses (3-Yr Avg)
	#	%	C.I.(95%)	#	%	C.I.(95%)	#
Yes	1,900	56.9	53.7 - 60.0	1,400	43.1	40.0 - 46.3	3,300

WIC During Pregnancy	Yes			No			Weighted Total Responses (3-Yr Avg)
	#	%	C.I.(95%)	#	%	C.I.(95%)	#
Yes	1,000	54.3	50.2 - 58.3	900	45.7	41.7 - 49.8	1,900
No	900	60.4	55.4 - 65.2	600	39.6	34.8 - 44.6	1,500

PRAMS Health Indicator 3-Year Aggregate Report - Smoking cessation during pregnancy- by State;County;DOH Race-Ethnicity;PRAMS Age Group;Infant Gender;Married;Poverty Level;Income (2000-2003);Income (2004-2011);Birthweight;Smoke 3rd Trimester;Smoke Before Pregnant;WIC During Pregnancy, for the Year(s) 2000-2002;2001-2003;2002-2004;2003-2005;2004-2006;2005-2007;2006-2008;2007-2009;2008-2010;2009-2011;2010-2012;2011-2013

Note: Weighted counts (#) represent 3-yr averages, rounded to the nearest hundred; n/r (Not Reportable) - If the unweighted total responses for a dimension (row) is <30 that row will not be shown

Years: 2000-2002

State	Yes			No			Weighted Total Responses (3-Yr Avg)
	#	%	C.I.(95%)	#	%	C.I.(95%)	#
Totals	1,900	58.1	55.2 - 61.0	1,400	41.9	39.0 - 44.8	3,300

County	Yes			No			Weighted Total Responses (3-Yr Avg)
	#	%	C.I.(95%)	#	%	C.I.(95%)	#
Hawaii	300	52.5	47.6 - 57.5	300	47.5	42.5 - 52.4	500
Honolulu	1,300	59.2	55.2 - 63.1	900	40.8	36.9 - 44.8	2,200
Kauai	100	59.2	50.5 - 67.3	100	40.8	32.7 - 49.5	200
Maui	200	59.2	52.8 - 65.3	100	40.8	34.7 - 47.2	300

PRAMS Health Indicator 3-Year Aggregate Report - Smoking cessation during pregnancy- by State;County;DOH Race-Ethnicity;PRAMS Age Group;Infant Gender;Married;Poverty Level;Income (2000-2003);Income (2004-2011);Birthweight;Smoke 3rd Trimester;Smoke Before Pregnant;WIC During Pregnancy, for the Year(s) 2000-2002;2001-2003;2002-2004;2003-2005;2004-2006;2005-2007;2006-2008;2007-2009;2008-2010;2009-2011;2010-2012;2011-2013

Note: Weighted counts (#) represent 3-yr averages, rounded to the nearest hundred; n/r (Not Reportable) - If the unweighted total responses for a dimension (row) is <30 that row will not be shown

Years: 2000-2002

DOH Race-Ethnicity	Yes			No			Weighted Total Responses (3-Yr Avg)
	#	%	C.I.(95%)	#	%	C.I.(95%)	#
Caucasian	500	63.2	56.2 - 69.8	300	36.8	30.2 - 43.8	700
Native Hawaiian	600	50.5	47.6 - 53.5	600	49.5	46.5 - 52.4	1,300
Chinese	n/r	n/r	n/r	n/r	n/r	n/r	<50
Filipino	300	58.9	50.2 - 67.1	200	41.1	32.9 - 49.8	500
Japanese	200	75.0	63.3 - 83.9	100	25.0	16.1 - 36.7	300
Other	200	56.8	46.1 - 67.0	200	43.2	33.0 - 53.9	400

PRAMS Age Group	Yes			No			Weighted Total Responses (3-Yr Avg)
	#	%	C.I.(95%)	#	%	C.I.(95%)	#
<20	300	63.4	56.5 - 69.8	200	36.6	30.2 - 43.5	500
20-24	800	61.7	57.0 - 66.2	500	38.3	33.8 - 43.0	1,200
25-34	700	54.3	49.4 - 59.1	600	45.7	40.9 - 50.6	1,300
35+	200	51.5	41.6 - 61.2	100	48.5	38.8 - 58.4	300

**PRAMS Health Indicator 3-Year Aggregate Report - Smoking cessation during pregnancy- by State;County;DOH Race-
Ethnicity;PRAMS Age Group;Infant Gender;Married;Poverty Level;Income (2000-2003);Income (2004-2011);Birthweight;Smoke
3rd Trimester;Smoke Before Pregnant;WIC During Pregnancy, for the Year(s)
2000-2002;2001-2003;2002-2004;2003-2005;2004-2006;2005-2007;2006-2008;2007-2009;2008-2010;2009-2011;2010-2012;2011-2013**

Note: Weighted counts (#) represent 3-yr averages, rounded to the nearest hundred; n/r (Not Reportable) - If the unweighted total responses for a dimension (row) is <30 that row will not be shown

Years: 2000-2002

Infant Gender	Yes			No			Weighted Total Responses (3-Yr Avg)
	#	%	C.I.(95%)	#	%	C.I.(95%)	#
Male	1,000	56.1	52.1 - 60.0	800	43.9	40.0 - 47.9	1,700
Female	900	60.4	56.1 - 64.6	600	39.6	35.4 - 43.9	1,500

Married	Yes			No			Weighted Total Responses (3-Yr Avg)
	#	%	C.I.(95%)	#	%	C.I.(95%)	#
Yes	900	59.9	55.4 - 64.3	600	40.1	35.7 - 44.6	1,600
No	1,000	56.5	52.7 - 60.2	700	43.5	39.8 - 47.3	1,700

Poverty Level	Yes			No			Weighted Total Responses (3-Yr Avg)
	#	%	C.I.(95%)	#	%	C.I.(95%)	#
0-130%	900	52.0	48.3 - 55.8	800	48.0	44.2 - 51.7	1,800
131-185%	400	64.5	57.0 - 71.3	200	35.5	28.7 - 43.0	600
186+%	500	72.3	65.3 - 78.3	200	27.7	21.7 - 34.7	700

PRAMS Health Indicator 3-Year Aggregate Report - Smoking cessation during pregnancy- by State;County;DOH Race-Ethnicity;PRAMS Age Group;Infant Gender;Married;Poverty Level;Income (2000-2003);Income (2004-2011);Birthweight;Smoke 3rd Trimester;Smoke Before Pregnant;WIC During Pregnancy, for the Year(s) 2000-2002;2001-2003;2002-2004;2003-2005;2004-2006;2005-2007;2006-2008;2007-2009;2008-2010;2009-2011;2010-2012;2011-2013

Note: Weighted counts (#) represent 3-yr averages, rounded to the nearest hundred; n/r (Not Reportable) - If the unweighted total responses for a dimension (row) is <30 that row will not be shown

Years: 2000-2002

Income (2000-2003)	Yes			No			Weighted Total Responses (3-Yr Avg)
	#	%	C.I.(95%)	#	%	C.I.(95%)	#
<=\$15,000	500	47.1	42.5 - 51.8	600	52.9	48.2 - 57.5	1,200
\$15,001-\$25,000	400	66.9	60.3 - 72.8	200	33.1	27.2 - 39.7	600
\$25,001-\$40,000	400	59.5	52.6 - 66.0	300	40.5	34.0 - 47.4	700
>=\$40,001	500	70.7	64.0 - 76.5	200	29.3	23.5 - 36.0	700

Birthweight	Yes			No			Weighted Total Responses (3-Yr Avg)
	#	%	C.I.(95%)	#	%	C.I.(95%)	#
Low birth weight	100	47.1	36.7 - 57.7	100	52.9	42.3 - 63.3	200
Normal birth weight	1,800	59.3	56.2 - 62.2	1,200	40.7	37.8 - 43.8	3,000

Smoke 3rd Trimester	Yes			No			Weighted Total Responses (3-Yr Avg)
	#	%	C.I.(95%)	#	%	C.I.(95%)	#
Yes	0	0.0	-	1,400	100.0	-	1,400
No	1,900	100.0	-	0	0.0	-	1,900

PRAMS Health Indicator 3-Year Aggregate Report - Smoking cessation during pregnancy- by State;County;DOH Race-Ethnicity;PRAMS Age Group;Infant Gender;Married;Poverty Level;Income (2000-2003);Income (2004-2011);Birthweight;Smoke 3rd Trimester;Smoke Before Pregnant;WIC During Pregnancy, for the Year(s) 2000-2002;2001-2003;2002-2004;2003-2005;2004-2006;2005-2007;2006-2008;2007-2009;2008-2010;2009-2011;2010-2012;2011-2013

Note: Weighted counts (#) represent 3-yr averages, rounded to the nearest hundred; n/r (Not Reportable) - If the unweighted total responses for a dimension (row) is <30 that row will not be shown

Years: 2000-2002

Smoke Before Pregnant	Yes			No			Weighted Total Responses (3-Yr Avg)
	#	%	C.I.(95%)	#	%	C.I.(95%)	#
Yes	1,900	58.1	55.2 - 61.0	1,400	41.9	39.0 - 44.8	3,300

WIC During Pregnancy	Yes			No			Weighted Total Responses (3-Yr Avg)
	#	%	C.I.(95%)	#	%	C.I.(95%)	#
Yes	1,000	56.4	52.7 - 60.1	800	43.6	39.9 - 47.3	1,800
No	900	60.3	55.6 - 64.8	600	39.7	35.2 - 44.4	1,400