

PRAMS Health Indicator 3-Year Aggregate Report - Smoking - relapsed post-partum- for the State of Hawaii, for the Year(s) 2001-2003;2002-2004;2003-2005;2004-2006;2005-2007;2006-2008;2007-2009;2008-2010;2009-2011;2010-2012;2011-2013

PRAMS Health Indicator 3-Year Aggregate Report - Smoking - relapsed post-partum- by State;County;DOH Race-Ethnicity;PRAMS Age Group;Infant Gender;Married;Poverty Level;Income (2000-2003);Income (2004-2011);Birthweight;Smoke 3rd Trimester;Smoke Before Pregnant;WIC During Pregnancy, for the Year(s) 2001-2003;2002-2004;2003-2005;2004-2006;2005-2007;2006-2008;2007-2009;2008-2010;2009-2011;2010-2012;2011-2013

Note: Weighted counts (#) represent 3-yr averages, rounded to the nearest hundred; n/r (Not Reportable) - If the unweighted total responses for a dimension (row) is <30 that row will not be shown

The trend analysis section shows the trend for the selected health variable over selected years in a table and a graph. 3-Year Weighted Total Responses: This number is a weighted representation of the mothers of babies delivered in a given year, who responded to a particular question in the survey. For most questions this will be the mothers of all babies delivered in a given year. For some secondary questions only a subset of the population was asked the question. For example, all survey participants were asked if they smoked during pregnancy, but only those who answered yes were asked how many cigarettes a day. If a dimension value is unknown for a particular survey record, that record will not be included in the counts for that particular dimension.

Note: Data collection for household income changed in 2004 and again in 2012. Because of this, income data does not exist for some 3-year aggregate periods.

Below are the indicators included in this report and the long description for each indicator.

PRAMS Health Indicator	Health Indicator Description
Smoking - relapsed post-partum	Smoking - relapsed post-partum

Suggested citation:

Hawaii Health Data Warehouse, Hawaii State Department of Health, Pregnancy Risk Assessment Monitoring System, (report title and years), Report Created: 4/3/17

For documentation on other terms and coding in this report, please go to the following links:

[Click here to access PRAMS documentation](#)

[Click here to access DOH-Race Ethnicity coding](#)

[Click here to access The Hawai'i Data Guide](#)

**For questions about this report, please contact
The Hawai'i Health Data Warehouse**

profiles@hhdw.org

(855) 946-5899 x15

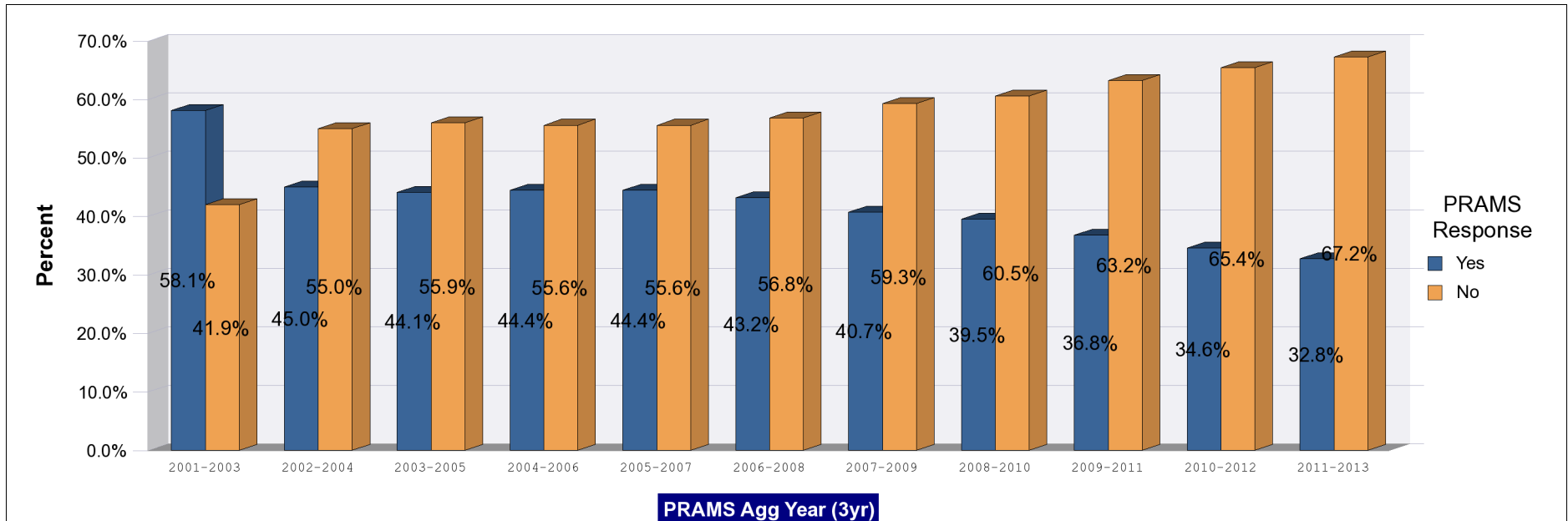
**PRAMS Health Indicator 3-Year Aggregate Report - Smoking - relapsed post-partum- for the State of Hawaii, for the Year(s)
2001-2003;2002-2004;2003-2005;2004-2006;2005-2007;2006-2008;2007-2009;2008-2010;2009-2011;2010-2012;2011-2013**

Note: Weighted counts (#) represent 3-yr averages, rounded to the nearest hundred; n/r (Not Reportable) - If the unweighted total responses for a dimension (row) is <30 that row will not be shown

Years	Yes			No			Weighted Total Responses (3-Yr Avg)
	#	%	C.I.(95%)	#	%	C.I.(95%)	#
2001-2003	n/r	n/r	n/r	n/r	n/r	n/r	<50
2002-2004	300	45.0	38.8 - 51.4	400	55.0	48.6 - 61.2	800
2003-2005	700	44.1	39.5 - 48.7	800	55.9	51.3 - 60.5	1,500
2004-2006	1,000	44.4	40.6 - 48.4	1,200	55.6	51.6 - 59.4	2,200
2005-2007	1,000	44.4	40.4 - 48.5	1,200	55.6	51.5 - 59.6	2,200
2006-2008	900	43.2	39.0 - 47.4	1,200	56.8	52.6 - 61.0	2,100
2007-2009	900	40.7	36.3 - 45.3	1,300	59.3	54.7 - 63.7	2,100
2008-2010	900	39.5	34.8 - 44.3	1,300	60.5	55.7 - 65.2	2,200
2009-2011	900	36.8	32.1 - 41.7	1,600	63.2	58.3 - 67.9	2,500
2010-2012	800	34.6	29.9 - 39.6	1,600	65.4	60.4 - 70.1	2,400
2011-2013	800	32.8	27.9 - 38.1	1,600	67.2	61.9 - 72.1	2,300

PRAMS Health Indicator 3-Year Aggregate Report - Smoking - relapsed post-partum- for the State of Hawaii, for the Year(s) 2001-2003;2002-2004;2003-2005;2004-2006;2005-2007;2006-2008;2007-2009;2008-2010;2009-2011;2010-2012;2011-2013

Note: Weighted counts (#) represent 3-yr averages, rounded to the nearest hundred; n/r (Not Reportable) - If the unweighted total responses for a dimension (row) is <30 that row will not be shown



PRAMS Health Indicator 3-Year Aggregate Report - Smoking - relapsed post-partum- by State;County;DOH Race-Ethnicity;PRAMS Age Group;Infant Gender;Married;Poverty Level;Income (2000-2003);Income (2004-2011);Birthweight;Smoke 3rd Trimester;Smoke Before Pregnant;WIC During Pregnancy, for the Year(s) 2001-2003;2002-2004;2003-2005;2004-2006;2005-2007;2006-2008;2007-2009;2008-2010;2009-2011;2010-2012;2011-2013

Note: Weighted counts (#) represent 3-yr averages, rounded to the nearest hundred; n/r (Not Reportable) - If the unweighted total responses for a dimension (row) is <30 that row will not be shown

Years: 2011-2013

State	Yes			No			Weighted Total Responses (3-Yr Avg)
	#	%	C.I.(95%)	#	%	C.I.(95%)	#
Totals	800	32.8	27.9 - 38.1	1,600	67.2	61.9 - 72.1	2,300

County	Yes			No			Weighted Total Responses (3-Yr Avg)
	#	%	C.I.(95%)	#	%	C.I.(95%)	#
Hawaii	100	35.9	28.4 - 44.1	200	64.1	55.9 - 71.6	300
Honolulu	600	33.4	26.9 - 40.6	1,100	66.6	59.4 - 73.1	1,700
Kauai	<50	22.0	14.5 - 31.8	100	78.0	68.2 - 85.5	<50
Maui	100	28.0	21.3 - 35.9	200	72.0	64.1 - 78.7	200

PRAMS Health Indicator 3-Year Aggregate Report - Smoking - relapsed post-partum- by State;County;DOH Race-Ethnicity;PRAMS Age Group;Infant Gender;Married;Poverty Level;Income (2000-2003);Income (2004-2011);Birthweight;Smoke 3rd Trimester;Smoke Before Pregnant;WIC During Pregnancy, for the Year(s) 2001-2003;2002-2004;2003-2005;2004-2006;2005-2007;2006-2008;2007-2009;2008-2010;2009-2011;2010-2012;2011-2013

Note: Weighted counts (#) represent 3-yr averages, rounded to the nearest hundred; n/r (Not Reportable) - If the unweighted total responses for a dimension (row) is <30 that row will not be shown

Years: 2011-2013

DOH Race-Ethnicity	Yes			No			Weighted Total Responses (3-Yr Avg)
	#	%	C.I.(95%)	#	%	C.I.(95%)	#
Caucasian	200	33.4	23.6 - 44.9	300	66.6	55.1 - 76.4	500
Native Hawaiian	300	35.4	27.5 - 44.1	600	64.6	55.9 - 72.5	900
Chinese	n/r	n/r	n/r	n/r	n/r	n/r	<50
Filipino	100	23.8	14.3 - 36.8	300	76.2	63.2 - 85.7	300
Japanese	100	29.3	15.2 - 48.9	200	70.7	51.1 - 84.8	200
Other	100	39.5	25.6 - 55.2	200	60.5	44.8 - 74.4	300

PRAMS Age Group	Yes			No			Weighted Total Responses (3-Yr Avg)
	#	%	C.I.(95%)	#	%	C.I.(95%)	#
<20	<50	33.5	19.0 - 52.0	100	66.5	48.0 - 81.0	<50
20-24	300	36.0	26.9 - 46.2	400	64.0	53.8 - 73.1	700
25-34	400	32.3	25.7 - 39.8	900	67.7	60.2 - 74.3	1,300
35+	100	24.6	13.5 - 40.5	200	75.4	59.5 - 86.5	200

PRAMS Health Indicator 3-Year Aggregate Report - Smoking - relapsed post-partum- by State;County;DOH Race-Ethnicity;PRAMS Age Group;Infant Gender;Married;Poverty Level;Income (2000-2003);Income (2004-2011);Birthweight;Smoke 3rd Trimester;Smoke Before Pregnant;WIC During Pregnancy, for the Year(s) 2001-2003;2002-2004;2003-2005;2004-2006;2005-2007;2006-2008;2007-2009;2008-2010;2009-2011;2010-2012;2011-2013

Note: Weighted counts (#) represent 3-yr averages, rounded to the nearest hundred; n/r (Not Reportable) - If the unweighted total responses for a dimension (row) is <30 that row will not be shown

Years: 2011-2013

	Yes			No			Weighted Total Responses (3-Yr Avg)
	#	%	C.I.(95%)	#	%	C.I.(95%)	#
Infant Gender							
Male	400	36.2	28.9 - 44.3	700	63.8	55.7 - 71.1	1,100
Female	400	29.8	23.5 - 36.9	900	70.2	63.1 - 76.5	1,300

	Yes			No			Weighted Total Responses (3-Yr Avg)
	#	%	C.I.(95%)	#	%	C.I.(95%)	#
Married							
Yes	300	31.8	24.4 - 40.3	700	68.2	59.7 - 75.6	1,000
No	400	33.5	27.2 - 40.4	900	66.5	59.6 - 72.8	1,300

	Yes			No			Weighted Total Responses (3-Yr Avg)
	#	%	C.I.(95%)	#	%	C.I.(95%)	#
Poverty Level							
0-130%	400	37.4	30.2 - 45.2	600	62.6	54.8 - 69.8	1,000
131-185%	100	29.0	18.5 - 42.5	300	71.0	57.5 - 81.5	400
186+%	200	23.3	15.7 - 33.1	600	76.7	66.9 - 84.3	700

PRAMS Health Indicator 3-Year Aggregate Report - Smoking - relapsed post-partum- by State;County;DOH Race-Ethnicity;PRAMS Age Group;Infant Gender;Married;Poverty Level;Income (2000-2003);Income (2004-2011);Birthweight;Smoke 3rd Trimester;Smoke Before Pregnant;WIC During Pregnancy, for the Year(s) 2001-2003;2002-2004;2003-2005;2004-2006;2005-2007;2006-2008;2007-2009;2008-2010;2009-2011;2010-2012;2011-2013

Note: Weighted counts (#) represent 3-yr averages, rounded to the nearest hundred; n/r (Not Reportable) - If the unweighted total responses for a dimension (row) is <30 that row will not be shown

Years: 2011-2013

Birthweight	Yes			No			Weighted Total Responses (3-Yr Avg)
	#	%	C.I.(95%)	#	%	C.I.(95%)	#
Low birth weight	100	36.5	28.5 - 45.4	100	63.5	54.6 - 71.5	200
Normal birth weight	700	32.5	27.2 - 38.2	1,500	67.5	61.8 - 72.8	2,200

Smoke 3rd Trimester	Yes			No			Weighted Total Responses (3-Yr Avg)
	#	%	C.I.(95%)	#	%	C.I.(95%)	#
No	800	32.8	27.9 - 38.1	1,600	67.2	61.9 - 72.1	2,300

Smoke Before Pregnant	Yes			No			Weighted Total Responses (3-Yr Avg)
	#	%	C.I.(95%)	#	%	C.I.(95%)	#
Yes	800	32.8	27.9 - 38.1	1,600	67.2	61.9 - 72.1	2,300

PRAMS Health Indicator 3-Year Aggregate Report - Smoking - relapsed post-partum- by State;County;DOH Race-Ethnicity;PRAMS Age Group;Infant Gender;Married;Poverty Level;Income (2000-2003);Income (2004-2011);Birthweight;Smoke 3rd Trimester;Smoke Before Pregnant;WIC During Pregnancy, for the Year(s) 2001-2003;2002-2004;2003-2005;2004-2006;2005-2007;2006-2008;2007-2009;2008-2010;2009-2011;2010-2012;2011-2013

Note: Weighted counts (#) represent 3-yr averages, rounded to the nearest hundred; n/r (Not Reportable) - If the unweighted total responses for a dimension (row) is <30 that row will not be shown

Years: 2011-2013

WIC During Pregnancy	Yes			No			Weighted Total Responses (3-Yr Avg)
	#	%	C.I.(95%)	#	%	C.I.(95%)	#
Yes	500	36.6	29.9 - 43.8	800	63.4	56.2 - 70.1	1,200
No	300	27.0	20.3 - 35.0	800	73.0	65.0 - 79.7	1,100

PRAMS Health Indicator 3-Year Aggregate Report - Smoking - relapsed post-partum- by State;County;DOH Race-Ethnicity;PRAMS Age Group;Infant Gender;Married;Poverty Level;Income (2000-2003);Income (2004-2011);Birthweight;Smoke 3rd Trimester;Smoke Before Pregnant;WIC During Pregnancy, for the Year(s) 2001-2003;2002-2004;2003-2005;2004-2006;2005-2007;2006-2008;2007-2009;2008-2010;2009-2011;2010-2012;2011-2013

Note: Weighted counts (#) represent 3-yr averages, rounded to the nearest hundred; n/r (Not Reportable) - If the unweighted total responses for a dimension (row) is <30 that row will not be shown

Years: 2010-2012

State	Yes			No			Weighted Total Responses (3-Yr Avg)
	#	%	C.I.(95%)	#	%	C.I.(95%)	#
Totals	800	34.6	29.9 - 39.6	1,600	65.4	60.4 - 70.1	2,400

County	Yes			No			Weighted Total Responses (3-Yr Avg)
	#	%	C.I.(95%)	#	%	C.I.(95%)	#
Hawaii	100	37.2	30.4 - 44.6	200	62.8	55.4 - 69.6	400
Honolulu	600	35.3	28.9 - 42.3	1,100	64.7	57.7 - 71.1	1,600
Kauai	<50	23.3	15.7 - 33.3	100	76.7	66.7 - 84.3	<50
Maui	100	30.6	24.1 - 38.0	200	69.4	62.0 - 75.9	300

PRAMS Health Indicator 3-Year Aggregate Report - Smoking - relapsed post-partum- by State;County;DOH Race-Ethnicity;PRAMS Age Group;Infant Gender;Married;Poverty Level;Income (2000-2003);Income (2004-2011);Birthweight;Smoke 3rd Trimester;Smoke Before Pregnant;WIC During Pregnancy, for the Year(s) 2001-2003;2002-2004;2003-2005;2004-2006;2005-2007;2006-2008;2007-2009;2008-2010;2009-2011;2010-2012;2011-2013

Note: Weighted counts (#) represent 3-yr averages, rounded to the nearest hundred; n/r (Not Reportable) - If the unweighted total responses for a dimension (row) is <30 that row will not be shown

Years: 2010-2012

DOH Race-Ethnicity	Yes			No			Weighted Total Responses (3-Yr Avg)
	#	%	C.I.(95%)	#	%	C.I.(95%)	#
Caucasian	200	31.5	22.4 - 42.4	400	68.5	57.6 - 77.6	500
Native Hawaiian	300	37.5	29.9 - 45.7	600	62.5	54.3 - 70.1	900
Chinese	n/r	n/r	n/r	n/r	n/r	n/r	<50
Filipino	100	26.5	17.2 - 38.5	300	73.5	61.5 - 82.8	400
Japanese	100	37.4	22.8 - 54.7	100	62.6	45.3 - 77.2	200
Other	100	45.2	30.5 - 60.7	200	54.8	39.3 - 69.5	300

PRAMS Age Group	Yes			No			Weighted Total Responses (3-Yr Avg)
	#	%	C.I.(95%)	#	%	C.I.(95%)	#
<20	100	36.4	21.6 - 54.3	100	63.6	45.7 - 78.4	200
20-24	300	40.4	31.9 - 49.5	500	59.6	50.5 - 68.1	800
25-34	400	32.6	26.1 - 39.8	800	67.4	60.2 - 73.9	1,200
35+	100	25.3	14.7 - 39.9	200	74.7	60.1 - 85.3	200

PRAMS Health Indicator 3-Year Aggregate Report - Smoking - relapsed post-partum- by State;County;DOH Race-Ethnicity;PRAMS Age Group;Infant Gender;Married;Poverty Level;Income (2000-2003);Income (2004-2011);Birthweight;Smoke 3rd Trimester;Smoke Before Pregnant;WIC During Pregnancy, for the Year(s) 2001-2003;2002-2004;2003-2005;2004-2006;2005-2007;2006-2008;2007-2009;2008-2010;2009-2011;2010-2012;2011-2013

Note: Weighted counts (#) represent 3-yr averages, rounded to the nearest hundred; n/r (Not Reportable) - If the unweighted total responses for a dimension (row) is <30 that row will not be shown

Years: 2010-2012

	Yes			No			Weighted Total Responses (3-Yr Avg)
	#	%	C.I.(95%)	#	%	C.I.(95%)	#
Infant Gender							
Male	400	36.6	29.8 - 44.0	700	63.4	56.0 - 70.2	1,200
Female	400	32.7	26.5 - 39.6	800	67.3	60.4 - 73.5	1,200

	Yes			No			Weighted Total Responses (3-Yr Avg)
	#	%	C.I.(95%)	#	%	C.I.(95%)	#
Married							
Yes	300	32.6	25.5 - 40.7	700	67.4	59.3 - 74.5	1,000
No	500	36.1	30.0 - 42.6	900	63.9	57.4 - 70.0	1,400

	Yes			No			Weighted Total Responses (3-Yr Avg)
	#	%	C.I.(95%)	#	%	C.I.(95%)	#
Poverty Level							
0-130%	400	40.3	33.3 - 47.8	600	59.7	52.2 - 66.7	1,000
131-185%	200	35.7	24.8 - 48.3	300	64.3	51.7 - 75.2	500
186+%	200	25.5	18.1 - 34.5	600	74.5	65.5 - 81.9	800

PRAMS Health Indicator 3-Year Aggregate Report - Smoking - relapsed post-partum- by State;County;DOH Race-Ethnicity;PRAMS Age Group;Infant Gender;Married;Poverty Level;Income (2000-2003);Income (2004-2011);Birthweight;Smoke 3rd Trimester;Smoke Before Pregnant;WIC During Pregnancy, for the Year(s) 2001-2003;2002-2004;2003-2005;2004-2006;2005-2007;2006-2008;2007-2009;2008-2010;2009-2011;2010-2012;2011-2013

Note: Weighted counts (#) represent 3-yr averages, rounded to the nearest hundred; n/r (Not Reportable) - If the unweighted total responses for a dimension (row) is <30 that row will not be shown

Years: 2010-2012

Birthweight	Yes			No			Weighted Total Responses (3-Yr Avg)
	#	%	C.I.(95%)	#	%	C.I.(95%)	#
Low birth weight	100	42.0	34.0 - 50.6	100	58.0	49.4 - 66.0	200
Normal birth weight	700	33.9	28.9 - 39.4	1,400	66.1	60.6 - 71.1	2,200

Smoke 3rd Trimester	Yes			No			Weighted Total Responses (3-Yr Avg)
	#	%	C.I.(95%)	#	%	C.I.(95%)	#
No	800	34.6	29.9 - 39.6	1,600	65.4	60.4 - 70.1	2,400

Smoke Before Pregnant	Yes			No			Weighted Total Responses (3-Yr Avg)
	#	%	C.I.(95%)	#	%	C.I.(95%)	#
Yes	800	34.6	29.9 - 39.6	1,600	65.4	60.4 - 70.1	2,400

PRAMS Health Indicator 3-Year Aggregate Report - Smoking - relapsed post-partum- by State;County;DOH Race-Ethnicity;PRAMS Age Group;Infant Gender;Married;Poverty Level;Income (2000-2003);Income (2004-2011);Birthweight;Smoke 3rd Trimester;Smoke Before Pregnant;WIC During Pregnancy, for the Year(s) 2001-2003;2002-2004;2003-2005;2004-2006;2005-2007;2006-2008;2007-2009;2008-2010;2009-2011;2010-2012;2011-2013

Note: Weighted counts (#) represent 3-yr averages, rounded to the nearest hundred; n/r (Not Reportable) - If the unweighted total responses for a dimension (row) is <30 that row will not be shown

Years: 2010-2012

WIC During Pregnancy	Yes			No			Weighted Total Responses (3-Yr Avg)
	#	%	C.I.(95%)	#	%	C.I.(95%)	#
Yes	500	37.0	30.9 - 43.6	800	63.0	56.4 - 69.1	1,300
No	300	30.5	23.6 - 38.3	800	69.5	61.7 - 76.4	1,100

PRAMS Health Indicator 3-Year Aggregate Report - Smoking - relapsed post-partum- by State;County;DOH Race-Ethnicity;PRAMS Age Group;Infant Gender;Married;Poverty Level;Income (2000-2003);Income (2004-2011);Birthweight;Smoke 3rd Trimester;Smoke Before Pregnant;WIC During Pregnancy, for the Year(s) 2001-2003;2002-2004;2003-2005;2004-2006;2005-2007;2006-2008;2007-2009;2008-2010;2009-2011;2010-2012;2011-2013

Note: Weighted counts (#) represent 3-yr averages, rounded to the nearest hundred; n/r (Not Reportable) - If the unweighted total responses for a dimension (row) is <30 that row will not be shown

Years: 2009-2011

State	Yes			No			Weighted Total Responses (3-Yr Avg)
	#	%	C.I.(95%)	#	%	C.I.(95%)	#
Totals	900	36.8	32.1 - 41.7	1,600	63.2	58.3 - 67.9	2,500

County	Yes			No			Weighted Total Responses (3-Yr Avg)
	#	%	C.I.(95%)	#	%	C.I.(95%)	#
Hawaii	200	39.0	32.1 - 46.4	200	61.0	53.6 - 67.9	400
Honolulu	600	37.3	30.9 - 44.2	1,000	62.7	55.8 - 69.1	1,700
Kauai	<50	30.0	21.3 - 40.5	100	70.0	59.5 - 78.7	<50
Maui	100	32.7	26.4 - 39.8	200	67.3	60.2 - 73.6	300

PRAMS Health Indicator 3-Year Aggregate Report - Smoking - relapsed post-partum- by State;County;DOH Race-Ethnicity;PRAMS Age Group;Infant Gender;Married;Poverty Level;Income (2000-2003);Income (2004-2011);Birthweight;Smoke 3rd Trimester;Smoke Before Pregnant;WIC During Pregnancy, for the Year(s) 2001-2003;2002-2004;2003-2005;2004-2006;2005-2007;2006-2008;2007-2009;2008-2010;2009-2011;2010-2012;2011-2013

Note: Weighted counts (#) represent 3-yr averages, rounded to the nearest hundred; n/r (Not Reportable) - If the unweighted total responses for a dimension (row) is <30 that row will not be shown

Years: 2009-2011

DOH Race-Ethnicity	Yes			No			Weighted Total Responses (3-Yr Avg)
	#	%	C.I.(95%)	#	%	C.I.(95%)	#
Caucasian	200	30.6	22.0 - 40.8	400	69.4	59.2 - 78.0	600
Native Hawaiian	400	40.9	33.5 - 48.8	500	59.1	51.2 - 66.5	900
Chinese	n/r	n/r	n/r	n/r	n/r	n/r	<50
Filipino	100	28.3	18.4 - 40.9	300	71.7	59.1 - 81.6	400
Japanese	100	44.3	29.5 - 60.3	100	55.7	39.7 - 70.5	300
Other	100	43.0	28.2 - 59.2	200	57.0	40.8 - 71.8	300

PRAMS Age Group	Yes			No			Weighted Total Responses (3-Yr Avg)
	#	%	C.I.(95%)	#	%	C.I.(95%)	#
<20	100	44.2	29.4 - 60.2	100	55.8	39.8 - 70.6	200
20-24	300	41.0	32.8 - 49.7	500	59.0	50.3 - 67.2	800
25-34	400	35.8	29.1 - 43.1	700	64.2	56.9 - 70.9	1,200
35+	100	21.2	12.1 - 34.5	200	78.8	65.5 - 87.9	300

PRAMS Health Indicator 3-Year Aggregate Report - Smoking - relapsed post-partum- by State;County;DOH Race-Ethnicity;PRAMS Age Group;Infant Gender;Married;Poverty Level;Income (2000-2003);Income (2004-2011);Birthweight;Smoke 3rd Trimester;Smoke Before Pregnant;WIC During Pregnancy, for the Year(s) 2001-2003;2002-2004;2003-2005;2004-2006;2005-2007;2006-2008;2007-2009;2008-2010;2009-2011;2010-2012;2011-2013

Note: Weighted counts (#) represent 3-yr averages, rounded to the nearest hundred; n/r (Not Reportable) - If the unweighted total responses for a dimension (row) is <30 that row will not be shown

Years: 2009-2011

Infant Gender	Yes			No			Weighted Total Responses (3-Yr Avg)
	#	%	C.I.(95%)	#	%	C.I.(95%)	#
Male	400	36.2	29.7 - 43.3	800	63.8	56.7 - 70.3	1,200
Female	500	37.3	30.9 - 44.2	800	62.7	55.8 - 69.1	1,200

Married	Yes			No			Weighted Total Responses (3-Yr Avg)
	#	%	C.I.(95%)	#	%	C.I.(95%)	#
Yes	400	34.4	27.5 - 41.9	700	65.6	58.1 - 72.5	1,100
No	500	38.8	32.6 - 45.3	800	61.2	54.7 - 67.4	1,300

Poverty Level	Yes			No			Weighted Total Responses (3-Yr Avg)
	#	%	C.I.(95%)	#	%	C.I.(95%)	#
0-130%	400	42.8	35.8 - 50.2	600	57.2	49.8 - 64.2	1,000
131-185%	200	44.9	33.7 - 56.5	300	55.1	43.5 - 66.3	500
186+%	200	24.9	18.2 - 33.2	600	75.1	66.8 - 81.8	800

PRAMS Health Indicator 3-Year Aggregate Report - Smoking - relapsed post-partum- by State;County;DOH Race-Ethnicity;PRAMS Age Group;Infant Gender;Married;Poverty Level;Income (2000-2003);Income (2004-2011);Birthweight;Smoke 3rd Trimester;Smoke Before Pregnant;WIC During Pregnancy, for the Year(s) 2001-2003;2002-2004;2003-2005;2004-2006;2005-2007;2006-2008;2007-2009;2008-2010;2009-2011;2010-2012;2011-2013

Note: Weighted counts (#) represent 3-yr averages, rounded to the nearest hundred; n/r (Not Reportable) - If the unweighted total responses for a dimension (row) is <30 that row will not be shown

Years: 2009-2011

Income (2004-2011)	Yes			No			Weighted Total Responses (3-Yr Avg)
	#	%	C.I.(95%)	#	%	C.I.(95%)	#
<\$10,000	200	43.5	33.6 - 53.9	300	56.5	46.1 - 66.4	500
\$10,000-\$24,999	200	42.6	33.3 - 52.4	300	57.4	47.6 - 66.7	600
\$25,000-\$49,999	300	39.5	30.7 - 49.0	500	60.5	51.0 - 69.3	800
>=\$50,000	100	20.8	13.3 - 31.1	400	79.2	68.9 - 86.7	500

Birthweight	Yes			No			Weighted Total Responses (3-Yr Avg)
	#	%	C.I.(95%)	#	%	C.I.(95%)	#
Low birth weight	100	41.3	33.5 - 49.5	100	58.7	50.5 - 66.5	200
Normal birth weight	800	36.4	31.4 - 41.7	1,400	63.6	58.3 - 68.6	2,200

Smoke 3rd Trimester	Yes			No			Weighted Total Responses (3-Yr Avg)
	#	%	C.I.(95%)	#	%	C.I.(95%)	#
No	900	36.8	32.1 - 41.7	1,600	63.2	58.3 - 67.9	2,500

PRAMS Health Indicator 3-Year Aggregate Report - Smoking - relapsed post-partum- by State;County;DOH Race-Ethnicity;PRAMS Age Group;Infant Gender;Married;Poverty Level;Income (2000-2003);Income (2004-2011);Birthweight;Smoke 3rd Trimester;Smoke Before Pregnant;WIC During Pregnancy, for the Year(s) 2001-2003;2002-2004;2003-2005;2004-2006;2005-2007;2006-2008;2007-2009;2008-2010;2009-2011;2010-2012;2011-2013

Note: Weighted counts (#) represent 3-yr averages, rounded to the nearest hundred; n/r (Not Reportable) - If the unweighted total responses for a dimension (row) is <30 that row will not be shown

Years: 2009-2011

Smoke Before Pregnant	Yes			No			Weighted Total Responses (3-Yr Avg)
	#	%	C.I.(95%)	#	%	C.I.(95%)	#
Yes	900	36.8	32.1 - 41.7	1,600	63.2	58.3 - 67.9	2,500

WIC During Pregnancy	Yes			No			Weighted Total Responses (3-Yr Avg)
	#	%	C.I.(95%)	#	%	C.I.(95%)	#
Yes	500	37.8	31.8 - 44.1	800	62.2	55.9 - 68.2	1,300
No	400	34.9	27.9 - 42.7	700	65.1	57.3 - 72.1	1,100

PRAMS Health Indicator 3-Year Aggregate Report - Smoking - relapsed post-partum- by State;County;DOH Race-Ethnicity;PRAMS Age Group;Infant Gender;Married;Poverty Level;Income (2000-2003);Income (2004-2011);Birthweight;Smoke 3rd Trimester;Smoke Before Pregnant;WIC During Pregnancy, for the Year(s) 2001-2003;2002-2004;2003-2005;2004-2006;2005-2007;2006-2008;2007-2009;2008-2010;2009-2011;2010-2012;2011-2013

Note: Weighted counts (#) represent 3-yr averages, rounded to the nearest hundred; n/r (Not Reportable) - If the unweighted total responses for a dimension (row) is <30 that row will not be shown

Years: 2008-2010

State	Yes			No			Weighted Total Responses (3-Yr Avg)
	#	%	C.I.(95%)	#	%	C.I.(95%)	#
Totals	900	39.5	34.8 - 44.3	1,300	60.5	55.7 - 65.2	2,200

County	Yes			No			Weighted Total Responses (3-Yr Avg)
	#	%	C.I.(95%)	#	%	C.I.(95%)	#
Hawaii	100	41.4	33.2 - 50.1	200	58.6	49.9 - 66.8	300
Honolulu	600	39.9	33.7 - 46.5	900	60.1	53.5 - 66.3	1,500
Kauai	<50	29.6	20.1 - 41.3	100	70.4	58.7 - 79.9	<50
Maui	100	37.4	29.1 - 46.5	200	62.6	53.5 - 70.9	300

PRAMS Health Indicator 3-Year Aggregate Report - Smoking - relapsed post-partum- by State;County;DOH Race-Ethnicity;PRAMS Age Group;Infant Gender;Married;Poverty Level;Income (2000-2003);Income (2004-2011);Birthweight;Smoke 3rd Trimester;Smoke Before Pregnant;WIC During Pregnancy, for the Year(s) 2001-2003;2002-2004;2003-2005;2004-2006;2005-2007;2006-2008;2007-2009;2008-2010;2009-2011;2010-2012;2011-2013

Note: Weighted counts (#) represent 3-yr averages, rounded to the nearest hundred; n/r (Not Reportable) - If the unweighted total responses for a dimension (row) is <30 that row will not be shown

Years: 2008-2010

DOH Race-Ethnicity	Yes			No			Weighted Total Responses (3-Yr Avg)
	#	%	C.I.(95%)	#	%	C.I.(95%)	#
Caucasian	100	27.3	19.6 - 36.8	400	72.7	63.2 - 80.4	500
Native Hawaiian	400	48.5	40.8 - 56.2	400	51.5	43.8 - 59.2	800
Chinese	n/r	n/r	n/r	n/r	n/r	n/r	<50
Filipino	100	34.1	23.3 - 46.8	200	65.9	53.2 - 76.7	300
Japanese	100	47.5	31.0 - 64.5	100	52.5	35.5 - 69.0	200
Other	100	40.1	27.1 - 54.7	200	59.9	45.3 - 72.9	300

PRAMS Age Group	Yes			No			Weighted Total Responses (3-Yr Avg)
	#	%	C.I.(95%)	#	%	C.I.(95%)	#
<20	100	43.9	29.3 - 59.7	100	56.1	40.3 - 70.7	200
20-24	300	43.4	35.3 - 51.8	400	56.6	48.2 - 64.7	800
25-34	400	37.7	31.1 - 44.7	600	62.3	55.3 - 68.9	1,000
35+	100	28.7	17.2 - 43.8	100	71.3	56.2 - 82.8	200

PRAMS Health Indicator 3-Year Aggregate Report - Smoking - relapsed post-partum- by State;County;DOH Race-Ethnicity;PRAMS Age Group;Infant Gender;Married;Poverty Level;Income (2000-2003);Income (2004-2011);Birthweight;Smoke 3rd Trimester;Smoke Before Pregnant;WIC During Pregnancy, for the Year(s) 2001-2003;2002-2004;2003-2005;2004-2006;2005-2007;2006-2008;2007-2009;2008-2010;2009-2011;2010-2012;2011-2013

Note: Weighted counts (#) represent 3-yr averages, rounded to the nearest hundred; n/r (Not Reportable) - If the unweighted total responses for a dimension (row) is <30 that row will not be shown

Years: 2008-2010

	Yes			No			Weighted Total Responses (3-Yr Avg)
	#	%	C.I.(95%)	#	%	C.I.(95%)	#
Infant Gender							
Male	400	35.9	29.8 - 42.5	800	64.1	57.5 - 70.2	1,200
Female	500	43.5	36.6 - 50.6	600	56.5	49.4 - 63.4	1,000

	Yes			No			Weighted Total Responses (3-Yr Avg)
	#	%	C.I.(95%)	#	%	C.I.(95%)	#
Married							
Yes	400	35.3	28.7 - 42.5	700	64.7	57.5 - 71.3	1,000
No	500	43.2	36.9 - 49.7	700	56.8	50.3 - 63.1	1,200

	Yes			No			Weighted Total Responses (3-Yr Avg)
	#	%	C.I.(95%)	#	%	C.I.(95%)	#
Poverty Level							
0-130%	400	46.8	39.5 - 54.1	500	53.2	45.9 - 60.5	900
131-185%	200	47.6	36.0 - 59.4	200	52.4	40.6 - 64.0	400
186+%	200	26.8	20.4 - 34.5	600	73.2	65.5 - 79.6	800

PRAMS Health Indicator 3-Year Aggregate Report - Smoking - relapsed post-partum- by State;County;DOH Race-Ethnicity;PRAMS Age Group;Infant Gender;Married;Poverty Level;Income (2000-2003);Income (2004-2011);Birthweight;Smoke 3rd Trimester;Smoke Before Pregnant;WIC During Pregnancy, for the Year(s) 2001-2003;2002-2004;2003-2005;2004-2006;2005-2007;2006-2008;2007-2009;2008-2010;2009-2011;2010-2012;2011-2013

Note: Weighted counts (#) represent 3-yr averages, rounded to the nearest hundred; n/r (Not Reportable) - If the unweighted total responses for a dimension (row) is <30 that row will not be shown

Years: 2008-2010

Income (2004-2011)	Yes			No			Weighted Total Responses (3-Yr Avg)
	#	%	C.I.(95%)	#	%	C.I.(95%)	#
<\$10,000	200	50.0	38.8 - 61.3	200	50.0	38.7 - 61.2	400
\$10,000-\$24,999	300	42.7	34.1 - 51.7	300	57.3	48.3 - 65.9	600
\$25,000-\$49,999	300	43.5	34.2 - 53.1	300	56.5	46.9 - 65.8	600
>=\$50,000	100	24.0	16.5 - 33.6	400	76.0	66.4 - 83.5	500

Birthweight	Yes			No			Weighted Total Responses (3-Yr Avg)
	#	%	C.I.(95%)	#	%	C.I.(95%)	#
Low birth weight	100	43.0	33.5 - 53.1	100	57.0	46.9 - 66.5	200
Normal birth weight	800	39.2	34.2 - 44.3	1,200	60.8	55.7 - 65.8	2,000

Smoke 3rd Trimester	Yes			No			Weighted Total Responses (3-Yr Avg)
	#	%	C.I.(95%)	#	%	C.I.(95%)	#
No	900	39.5	34.8 - 44.3	1,300	60.5	55.7 - 65.2	2,200

PRAMS Health Indicator 3-Year Aggregate Report - Smoking - relapsed post-partum- by State;County;DOH Race-Ethnicity;PRAMS Age Group;Infant Gender;Married;Poverty Level;Income (2000-2003);Income (2004-2011);Birthweight;Smoke 3rd Trimester;Smoke Before Pregnant;WIC During Pregnancy, for the Year(s) 2001-2003;2002-2004;2003-2005;2004-2006;2005-2007;2006-2008;2007-2009;2008-2010;2009-2011;2010-2012;2011-2013

Note: Weighted counts (#) represent 3-yr averages, rounded to the nearest hundred; n/r (Not Reportable) - If the unweighted total responses for a dimension (row) is <30 that row will not be shown

Years: 2008-2010

Smoke Before Pregnant	Yes			No			Weighted Total Responses (3-Yr Avg)
	#	%	C.I.(95%)	#	%	C.I.(95%)	#
Yes	900	39.5	34.8 - 44.3	1,300	60.5	55.7 - 65.2	2,200

WIC During Pregnancy	Yes			No			Weighted Total Responses (3-Yr Avg)
	#	%	C.I.(95%)	#	%	C.I.(95%)	#
Yes	500	40.9	34.7 - 47.3	700	59.1	52.7 - 65.3	1,200
No	400	37.7	30.8 - 45.1	600	62.3	54.9 - 69.2	1,000

PRAMS Health Indicator 3-Year Aggregate Report - Smoking - relapsed post-partum- by State;County;DOH Race-Ethnicity;PRAMS Age Group;Infant Gender;Married;Poverty Level;Income (2000-2003);Income (2004-2011);Birthweight;Smoke 3rd Trimester;Smoke Before Pregnant;WIC During Pregnancy, for the Year(s) 2001-2003;2002-2004;2003-2005;2004-2006;2005-2007;2006-2008;2007-2009;2008-2010;2009-2011;2010-2012;2011-2013

Note: Weighted counts (#) represent 3-yr averages, rounded to the nearest hundred; n/r (Not Reportable) - If the unweighted total responses for a dimension (row) is <30 that row will not be shown

Years: 2007-2009

State	Yes			No			Weighted Total Responses (3-Yr Avg)
	#	%	C.I.(95%)	#	%	C.I.(95%)	#
Totals	900	40.7	36.3 - 45.3	1,300	59.3	54.7 - 63.7	2,100

County	Yes			No			Weighted Total Responses (3-Yr Avg)
	#	%	C.I.(95%)	#	%	C.I.(95%)	#
Hawaii	200	48.8	38.9 - 58.9	200	51.2	41.1 - 61.1	300
Honolulu	600	40.1	34.4 - 46.0	900	59.9	54.0 - 65.6	1,400
Kauai	<50	34.4	21.4 - 50.3	100	65.6	49.7 - 78.6	<50
Maui	100	37.0	27.7 - 47.4	200	63.0	52.6 - 72.3	300

PRAMS Health Indicator 3-Year Aggregate Report - Smoking - relapsed post-partum- by State;County;DOH Race-Ethnicity;PRAMS Age Group;Infant Gender;Married;Poverty Level;Income (2000-2003);Income (2004-2011);Birthweight;Smoke 3rd Trimester;Smoke Before Pregnant;WIC During Pregnancy, for the Year(s) 2001-2003;2002-2004;2003-2005;2004-2006;2005-2007;2006-2008;2007-2009;2008-2010;2009-2011;2010-2012;2011-2013

Note: Weighted counts (#) represent 3-yr averages, rounded to the nearest hundred; n/r (Not Reportable) - If the unweighted total responses for a dimension (row) is <30 that row will not be shown

Years: 2007-2009

DOH Race-Ethnicity	Yes			No			Weighted Total Responses (3-Yr Avg)
	#	%	C.I.(95%)	#	%	C.I.(95%)	#
Caucasian	200	31.5	24.3 - 39.8	400	68.5	60.2 - 75.7	600
Native Hawaiian	400	54.7	46.9 - 62.3	300	45.3	37.7 - 53.1	700
Chinese	n/r	n/r	n/r	n/r	n/r	n/r	<50
Filipino	100	38.0	27.4 - 50.0	200	62.0	50.0 - 72.6	300
Japanese	100	34.2	20.9 - 50.6	100	65.8	49.4 - 79.1	200
Other	100	32.8	22.7 - 44.8	200	67.2	55.2 - 77.3	300

PRAMS Age Group	Yes			No			Weighted Total Responses (3-Yr Avg)
	#	%	C.I.(95%)	#	%	C.I.(95%)	#
<20	100	52.9	38.5 - 66.9	100	47.1	33.1 - 61.5	300
20-24	300	42.9	35.5 - 50.6	400	57.1	49.4 - 64.5	800
25-34	400	39.3	32.9 - 46.0	600	60.7	54.0 - 67.1	1,000
35+	<50	20.9	12.5 - 32.9	100	79.1	67.1 - 87.5	200

PRAMS Health Indicator 3-Year Aggregate Report - Smoking - relapsed post-partum- by State;County;DOH Race-Ethnicity;PRAMS Age Group;Infant Gender;Married;Poverty Level;Income (2000-2003);Income (2004-2011);Birthweight;Smoke 3rd Trimester;Smoke Before Pregnant;WIC During Pregnancy, for the Year(s) 2001-2003;2002-2004;2003-2005;2004-2006;2005-2007;2006-2008;2007-2009;2008-2010;2009-2011;2010-2012;2011-2013

Note: Weighted counts (#) represent 3-yr averages, rounded to the nearest hundred; n/r (Not Reportable) - If the unweighted total responses for a dimension (row) is <30 that row will not be shown

Years: 2007-2009

Infant Gender	Yes			No			Weighted Total Responses (3-Yr Avg)
	#	%	C.I.(95%)	#	%	C.I.(95%)	#
Male	400	36.1	30.4 - 42.3	700	63.9	57.7 - 69.6	1,100
Female	500	45.6	39.1 - 52.2	600	54.4	47.8 - 60.9	1,000

Married	Yes			No			Weighted Total Responses (3-Yr Avg)
	#	%	C.I.(95%)	#	%	C.I.(95%)	#
Yes	400	36.5	30.4 - 43.1	600	63.5	56.9 - 69.6	1,000
No	500	44.3	38.3 - 50.6	600	55.7	49.4 - 61.7	1,100

Poverty Level	Yes			No			Weighted Total Responses (3-Yr Avg)
	#	%	C.I.(95%)	#	%	C.I.(95%)	#
0-130%	400	49.0	42.0 - 55.9	500	51.0	44.1 - 58.0	900
131-185%	100	45.0	33.0 - 57.5	200	55.0	42.5 - 67.0	300
186+%	200	28.1	22.2 - 34.9	500	71.9	65.1 - 77.8	700

PRAMS Health Indicator 3-Year Aggregate Report - Smoking - relapsed post-partum- by State;County;DOH Race-Ethnicity;PRAMS Age Group;Infant Gender;Married;Poverty Level;Income (2000-2003);Income (2004-2011);Birthweight;Smoke 3rd Trimester;Smoke Before Pregnant;WIC During Pregnancy, for the Year(s) 2001-2003;2002-2004;2003-2005;2004-2006;2005-2007;2006-2008;2007-2009;2008-2010;2009-2011;2010-2012;2011-2013

Note: Weighted counts (#) represent 3-yr averages, rounded to the nearest hundred; n/r (Not Reportable) - If the unweighted total responses for a dimension (row) is <30 that row will not be shown

Years: 2007-2009

Income (2004-2011)	Yes			No			Weighted Total Responses (3-Yr Avg)
	#	%	C.I.(95%)	#	%	C.I.(95%)	#
<\$10,000	200	54.9	43.8 - 65.6	200	45.1	34.4 - 56.2	400
\$10,000-\$24,999	300	41.5	33.3 - 50.1	400	58.5	49.9 - 66.7	600
\$25,000-\$49,999	200	42.5	33.8 - 51.6	300	57.5	48.4 - 66.2	500
>=\$50,000	100	27.3	19.9 - 36.1	400	72.7	63.9 - 80.1	500

Birthweight	Yes			No			Weighted Total Responses (3-Yr Avg)
	#	%	C.I.(95%)	#	%	C.I.(95%)	#
Low birth weight	100	49.7	36.4 - 63.1	100	50.3	36.9 - 63.6	<50
Normal birth weight	800	40.0	35.4 - 44.8	1,200	60.0	55.2 - 64.6	2,000

Smoke 3rd Trimester	Yes			No			Weighted Total Responses (3-Yr Avg)
	#	%	C.I.(95%)	#	%	C.I.(95%)	#
No	900	40.7	36.3 - 45.3	1,300	59.3	54.7 - 63.7	2,100

PRAMS Health Indicator 3-Year Aggregate Report - Smoking - relapsed post-partum- by State;County;DOH Race-Ethnicity;PRAMS Age Group;Infant Gender;Married;Poverty Level;Income (2000-2003);Income (2004-2011);Birthweight;Smoke 3rd Trimester;Smoke Before Pregnant;WIC During Pregnancy, for the Year(s) 2001-2003;2002-2004;2003-2005;2004-2006;2005-2007;2006-2008;2007-2009;2008-2010;2009-2011;2010-2012;2011-2013

Note: Weighted counts (#) represent 3-yr averages, rounded to the nearest hundred; n/r (Not Reportable) - If the unweighted total responses for a dimension (row) is <30 that row will not be shown

Years: 2007-2009

Smoke Before Pregnant	Yes			No			Weighted Total Responses (3-Yr Avg)
	#	%	C.I.(95%)	#	%	C.I.(95%)	#
Yes	900	40.7	36.3 - 45.3	1,300	59.3	54.7 - 63.7	2,100

WIC During Pregnancy	Yes			No			Weighted Total Responses (3-Yr Avg)
	#	%	C.I.(95%)	#	%	C.I.(95%)	#
Yes	400	41.0	34.9 - 47.4	600	59.0	52.6 - 65.1	1,100
No	400	41.2	34.9 - 47.8	600	58.8	52.2 - 65.1	1,000

PRAMS Health Indicator 3-Year Aggregate Report - Smoking - relapsed post-partum- by State;County;DOH Race-Ethnicity;PRAMS Age Group;Infant Gender;Married;Poverty Level;Income (2000-2003);Income (2004-2011);Birthweight;Smoke 3rd Trimester;Smoke Before Pregnant;WIC During Pregnancy, for the Year(s) 2001-2003;2002-2004;2003-2005;2004-2006;2005-2007;2006-2008;2007-2009;2008-2010;2009-2011;2010-2012;2011-2013

Note: Weighted counts (#) represent 3-yr averages, rounded to the nearest hundred; n/r (Not Reportable) - If the unweighted total responses for a dimension (row) is <30 that row will not be shown

Years: 2006-2008

State	Yes			No			Weighted Total Responses (3-Yr Avg)
	#	%	C.I.(95%)	#	%	C.I.(95%)	#
Totals	900	43.2	39.0 - 47.4	1,200	56.8	52.6 - 61.0	2,100

County	Yes			No			Weighted Total Responses (3-Yr Avg)
	#	%	C.I.(95%)	#	%	C.I.(95%)	#
Hawaii	200	47.9	37.1 - 58.9	200	52.1	41.1 - 62.9	300
Honolulu	600	43.2	38.2 - 48.4	800	56.8	51.6 - 61.8	1,400
Kauai	n/r	n/r	n/r	n/r	n/r	n/r	<50
Maui	100	43.4	31.7 - 55.8	100	56.6	44.2 - 68.3	300

PRAMS Health Indicator 3-Year Aggregate Report - Smoking - relapsed post-partum- by State;County;DOH Race-Ethnicity;PRAMS Age Group;Infant Gender;Married;Poverty Level;Income (2000-2003);Income (2004-2011);Birthweight;Smoke 3rd Trimester;Smoke Before Pregnant;WIC During Pregnancy, for the Year(s) 2001-2003;2002-2004;2003-2005;2004-2006;2005-2007;2006-2008;2007-2009;2008-2010;2009-2011;2010-2012;2011-2013

Note: Weighted counts (#) represent 3-yr averages, rounded to the nearest hundred; n/r (Not Reportable) - If the unweighted total responses for a dimension (row) is <30 that row will not be shown

Years: 2006-2008

DOH Race-Ethnicity	Yes			No			Weighted Total Responses (3-Yr Avg)
	#	%	C.I.(95%)	#	%	C.I.(95%)	#
Caucasian	200	37.2	30.0 - 45.1	400	62.8	54.9 - 70.0	600
Native Hawaiian	400	56.0	47.9 - 63.7	300	44.0	36.3 - 52.1	700
Chinese	n/r	n/r	n/r	n/r	n/r	n/r	<50
Filipino	100	40.6	30.7 - 51.2	200	59.4	48.8 - 69.3	300
Japanese	100	31.9	20.8 - 45.5	100	68.1	54.5 - 79.2	200
Other	100	37.9	28.2 - 48.6	200	62.1	51.4 - 71.8	300

PRAMS Age Group	Yes			No			Weighted Total Responses (3-Yr Avg)
	#	%	C.I.(95%)	#	%	C.I.(95%)	#
<20	100	52.5	39.4 - 65.2	100	47.5	34.8 - 60.6	200
20-24	300	47.6	40.4 - 54.8	400	52.4	45.2 - 59.6	700
25-34	400	41.6	35.6 - 47.9	500	58.4	52.1 - 64.4	900
35+	<50	21.8	12.8 - 34.5	100	78.2	65.5 - 87.2	200

PRAMS Health Indicator 3-Year Aggregate Report - Smoking - relapsed post-partum- by State;County;DOH Race-Ethnicity;PRAMS Age Group;Infant Gender;Married;Poverty Level;Income (2000-2003);Income (2004-2011);Birthweight;Smoke 3rd Trimester;Smoke Before Pregnant;WIC During Pregnancy, for the Year(s) 2001-2003;2002-2004;2003-2005;2004-2006;2005-2007;2006-2008;2007-2009;2008-2010;2009-2011;2010-2012;2011-2013

Note: Weighted counts (#) represent 3-yr averages, rounded to the nearest hundred; n/r (Not Reportable) - If the unweighted total responses for a dimension (row) is <30 that row will not be shown

Years: 2006-2008

	Yes			No			Weighted Total Responses (3-Yr Avg)
	#	%	C.I.(95%)	#	%	C.I.(95%)	#
Infant Gender							
Male	400	40.3	34.8 - 46.2	700	59.7	53.8 - 65.2	1,100
Female	400	46.4	40.3 - 52.6	500	53.6	47.4 - 59.7	1,000

	Yes			No			Weighted Total Responses (3-Yr Avg)
	#	%	C.I.(95%)	#	%	C.I.(95%)	#
Married							
Yes	400	43.4	37.6 - 49.5	600	56.6	50.5 - 62.4	1,000
No	500	42.9	37.1 - 48.9	600	57.1	51.1 - 62.9	1,100

	Yes			No			Weighted Total Responses (3-Yr Avg)
	#	%	C.I.(95%)	#	%	C.I.(95%)	#
Poverty Level							
0-130%	400	50.5	43.7 - 57.3	400	49.5	42.7 - 56.3	800
131-185%	100	41.1	31.0 - 52.0	200	58.9	48.0 - 69.0	300
186+%	300	35.9	29.6 - 42.6	500	64.1	57.4 - 70.4	700

PRAMS Health Indicator 3-Year Aggregate Report - Smoking - relapsed post-partum- by State;County;DOH Race-Ethnicity;PRAMS Age Group;Infant Gender;Married;Poverty Level;Income (2000-2003);Income (2004-2011);Birthweight;Smoke 3rd Trimester;Smoke Before Pregnant;WIC During Pregnancy, for the Year(s) 2001-2003;2002-2004;2003-2005;2004-2006;2005-2007;2006-2008;2007-2009;2008-2010;2009-2011;2010-2012;2011-2013

Note: Weighted counts (#) represent 3-yr averages, rounded to the nearest hundred; n/r (Not Reportable) - If the unweighted total responses for a dimension (row) is <30 that row will not be shown

Years: 2006-2008

Income (2004-2011)	Yes			No			Weighted Total Responses (3-Yr Avg)
	#	%	C.I.(95%)	#	%	C.I.(95%)	#
<\$10,000	200	52.8	42.0 - 63.3	200	47.2	36.7 - 58.0	300
\$10,000-\$24,999	300	43.7	35.8 - 51.9	300	56.3	48.1 - 64.2	600
\$25,000-\$49,999	300	44.0	36.3 - 52.0	300	56.0	48.0 - 63.7	600
>=\$50,000	100	34.0	26.3 - 42.8	300	66.0	57.2 - 73.7	400

Birthweight	Yes			No			Weighted Total Responses (3-Yr Avg)
	#	%	C.I.(95%)	#	%	C.I.(95%)	#
Low birth weight	100	59.5	41.5 - 75.2	<50	40.5	24.8 - 58.5	<50
Normal birth weight	800	42.1	37.9 - 46.5	1,100	57.9	53.5 - 62.1	1,900

Smoke 3rd Trimester	Yes			No			Weighted Total Responses (3-Yr Avg)
	#	%	C.I.(95%)	#	%	C.I.(95%)	#
No	900	43.2	39.0 - 47.4	1,200	56.8	52.6 - 61.0	2,100

PRAMS Health Indicator 3-Year Aggregate Report - Smoking - relapsed post-partum- by State;County;DOH Race- Ethnicity;PRAMS Age Group;Infant Gender;Married;Poverty Level;Income (2000-2003);Income (2004-2011);Birthweight;Smoke 3rd Trimester;Smoke Before Pregnant;WIC During Pregnancy, for the Year(s) 2001-2003;2002-2004;2003-2005;2004-2006;2005-2007;2006-2008;2007-2009;2008-2010;2009-2011;2010-2012;2011-2013

Note: Weighted counts (#) represent 3-yr averages, rounded to the nearest hundred; n/r (Not Reportable) - If the unweighted total responses for a dimension (row) is <30 that row will not be shown

Years: 2006-2008

Smoke Before Pregnant	Yes			No			Weighted Total Responses (3-Yr Avg)
	#	%	C.I.(95%)	#	%	C.I.(95%)	#
Yes	900	43.2	39.0 - 47.4	1,200	56.8	52.6 - 61.0	2,100

WIC During Pregnancy	Yes			No			Weighted Total Responses (3-Yr Avg)
	#	%	C.I.(95%)	#	%	C.I.(95%)	#
Yes	500	45.0	39.1 - 51.1	600	55.0	48.9 - 60.9	1,100
No	400	42.5	36.7 - 48.5	600	57.5	51.5 - 63.3	1,000

PRAMS Health Indicator 3-Year Aggregate Report - Smoking - relapsed post-partum- by State;County;DOH Race-Ethnicity;PRAMS Age Group;Infant Gender;Married;Poverty Level;Income (2000-2003);Income (2004-2011);Birthweight;Smoke 3rd Trimester;Smoke Before Pregnant;WIC During Pregnancy, for the Year(s) 2001-2003;2002-2004;2003-2005;2004-2006;2005-2007;2006-2008;2007-2009;2008-2010;2009-2011;2010-2012;2011-2013

Note: Weighted counts (#) represent 3-yr averages, rounded to the nearest hundred; n/r (Not Reportable) - If the unweighted total responses for a dimension (row) is <30 that row will not be shown

Years: 2005-2007

State	Yes			No			Weighted Total Responses (3-Yr Avg)
	#	%	C.I.(95%)	#	%	C.I.(95%)	#
Totals	1,000	44.4	40.4 - 48.5	1,200	55.6	51.5 - 59.6	2,200

County	Yes			No			Weighted Total Responses (3-Yr Avg)
	#	%	C.I.(95%)	#	%	C.I.(95%)	#
Hawaii	100	42.6	32.6 - 53.3	200	57.4	46.7 - 67.4	300
Honolulu	700	45.3	40.4 - 50.3	800	54.7	49.7 - 59.6	1,500
Kauai	<50	33.9	20.1 - 51.1	100	66.1	48.9 - 79.9	<50
Maui	100	47.1	35.2 - 59.3	100	52.9	40.7 - 64.8	200

PRAMS Health Indicator 3-Year Aggregate Report - Smoking - relapsed post-partum- by State;County;DOH Race-Ethnicity;PRAMS Age Group;Infant Gender;Married;Poverty Level;Income (2000-2003);Income (2004-2011);Birthweight;Smoke 3rd Trimester;Smoke Before Pregnant;WIC During Pregnancy, for the Year(s) 2001-2003;2002-2004;2003-2005;2004-2006;2005-2007;2006-2008;2007-2009;2008-2010;2009-2011;2010-2012;2011-2013

Note: Weighted counts (#) represent 3-yr averages, rounded to the nearest hundred; n/r (Not Reportable) - If the unweighted total responses for a dimension (row) is <30 that row will not be shown

Years: 2005-2007

DOH Race-Ethnicity	Yes			No			Weighted Total Responses (3-Yr Avg)
	#	%	C.I.(95%)	#	%	C.I.(95%)	#
Caucasian	200	37.3	30.2 - 45.0	400	62.7	55.0 - 69.8	600
Native Hawaiian	400	54.8	47.3 - 62.1	300	45.2	37.9 - 52.7	700
Chinese	n/r	n/r	n/r	n/r	n/r	n/r	<50
Filipino	100	45.5	35.5 - 55.8	200	54.5	44.2 - 64.5	300
Japanese	100	29.5	19.7 - 41.7	200	70.5	58.3 - 80.3	200
Other	100	45.6	35.0 - 56.6	200	54.4	43.4 - 65.0	300

PRAMS Age Group	Yes			No			Weighted Total Responses (3-Yr Avg)
	#	%	C.I.(95%)	#	%	C.I.(95%)	#
<20	200	54.5	42.6 - 65.9	100	45.5	34.1 - 57.4	300
20-24	400	47.3	40.5 - 54.3	400	52.7	45.7 - 59.5	800
25-34	400	42.2	36.3 - 48.4	500	57.8	51.6 - 63.7	900
35+	<50	27.2	16.7 - 41.1	100	72.8	58.9 - 83.3	200

PRAMS Health Indicator 3-Year Aggregate Report - Smoking - relapsed post-partum- by State;County;DOH Race-Ethnicity;PRAMS Age Group;Infant Gender;Married;Poverty Level;Income (2000-2003);Income (2004-2011);Birthweight;Smoke 3rd Trimester;Smoke Before Pregnant;WIC During Pregnancy, for the Year(s) 2001-2003;2002-2004;2003-2005;2004-2006;2005-2007;2006-2008;2007-2009;2008-2010;2009-2011;2010-2012;2011-2013

Note: Weighted counts (#) represent 3-yr averages, rounded to the nearest hundred; n/r (Not Reportable) - If the unweighted total responses for a dimension (row) is <30 that row will not be shown

Years: 2005-2007

Infant Gender	Yes			No			Weighted Total Responses (3-Yr Avg)
	#	%	C.I.(95%)	#	%	C.I.(95%)	#
Male	500	41.9	36.3 - 47.7	600	58.1	52.3 - 63.7	1,100
Female	500	47.1	41.3 - 52.9	600	52.9	47.1 - 58.7	1,100

Married	Yes			No			Weighted Total Responses (3-Yr Avg)
	#	%	C.I.(95%)	#	%	C.I.(95%)	#
Yes	400	41.6	35.8 - 47.5	600	58.4	52.5 - 64.2	1,000
No	600	46.8	41.3 - 52.5	600	53.2	47.5 - 58.7	1,200

Poverty Level	Yes			No			Weighted Total Responses (3-Yr Avg)
	#	%	C.I.(95%)	#	%	C.I.(95%)	#
0-130%	500	50.7	44.4 - 57.0	500	49.3	43.0 - 55.6	900
131-185%	100	43.0	32.4 - 54.2	200	57.0	45.8 - 67.6	300
186+%	300	36.4	30.2 - 43.0	500	63.6	57.0 - 69.8	800

PRAMS Health Indicator 3-Year Aggregate Report - Smoking - relapsed post-partum- by State;County;DOH Race-Ethnicity;PRAMS Age Group;Infant Gender;Married;Poverty Level;Income (2000-2003);Income (2004-2011);Birthweight;Smoke 3rd Trimester;Smoke Before Pregnant;WIC During Pregnancy, for the Year(s) 2001-2003;2002-2004;2003-2005;2004-2006;2005-2007;2006-2008;2007-2009;2008-2010;2009-2011;2010-2012;2011-2013

Note: Weighted counts (#) represent 3-yr averages, rounded to the nearest hundred; n/r (Not Reportable) - If the unweighted total responses for a dimension (row) is <30 that row will not be shown

Years: 2005-2007

Income (2004-2011)	Yes			No			Weighted Total Responses (3-Yr Avg)
	#	%	C.I.(95%)	#	%	C.I.(95%)	#
<\$10,000	200	55.7	46.2 - 64.8	200	44.3	35.2 - 53.8	400
\$10,000-\$24,999	300	46.8	38.9 - 54.8	300	53.2	45.2 - 61.1	600
\$25,000-\$49,999	200	41.5	34.0 - 49.5	300	58.5	50.5 - 66.0	600
>=\$50,000	100	33.7	26.0 - 42.4	300	66.3	57.6 - 74.0	400

Birthweight	Yes			No			Weighted Total Responses (3-Yr Avg)
	#	%	C.I.(95%)	#	%	C.I.(95%)	#
Low birth weight	100	61.9	44.9 - 76.5	<50	38.1	23.5 - 55.1	<50
Normal birth weight	900	43.3	39.2 - 47.5	1,200	56.7	52.5 - 60.8	2,000

Smoke 3rd Trimester	Yes			No			Weighted Total Responses (3-Yr Avg)
	#	%	C.I.(95%)	#	%	C.I.(95%)	#
No	1,000	44.4	40.4 - 48.5	1,200	55.6	51.5 - 59.6	2,200

PRAMS Health Indicator 3-Year Aggregate Report - Smoking - relapsed post-partum- by State;County;DOH Race-Ethnicity;PRAMS Age Group;Infant Gender;Married;Poverty Level;Income (2000-2003);Income (2004-2011);Birthweight;Smoke 3rd Trimester;Smoke Before Pregnant;WIC During Pregnancy, for the Year(s) 2001-2003;2002-2004;2003-2005;2004-2006;2005-2007;2006-2008;2007-2009;2008-2010;2009-2011;2010-2012;2011-2013

Note: Weighted counts (#) represent 3-yr averages, rounded to the nearest hundred; n/r (Not Reportable) - If the unweighted total responses for a dimension (row) is <30 that row will not be shown

Years: 2005-2007

Smoke Before Pregnant	Yes			No			Weighted Total Responses (3-Yr Avg)
	#	%	C.I.(95%)	#	%	C.I.(95%)	#
Yes	1,000	44.4	40.4 - 48.5	1,200	55.6	51.5 - 59.6	2,200

WIC During Pregnancy	Yes			No			Weighted Total Responses (3-Yr Avg)
	#	%	C.I.(95%)	#	%	C.I.(95%)	#
Yes	500	45.6	39.8 - 51.4	600	54.4	48.6 - 60.2	1,100
No	500	44.3	38.6 - 50.2	600	55.7	49.8 - 61.4	1,000

PRAMS Health Indicator 3-Year Aggregate Report - Smoking - relapsed post-partum- by State;County;DOH Race-Ethnicity;PRAMS Age Group;Infant Gender;Married;Poverty Level;Income (2000-2003);Income (2004-2011);Birthweight;Smoke 3rd Trimester;Smoke Before Pregnant;WIC During Pregnancy, for the Year(s) 2001-2003;2002-2004;2003-2005;2004-2006;2005-2007;2006-2008;2007-2009;2008-2010;2009-2011;2010-2012;2011-2013

Note: Weighted counts (#) represent 3-yr averages, rounded to the nearest hundred; n/r (Not Reportable) - If the unweighted total responses for a dimension (row) is <30 that row will not be shown

Years: 2004-2006

State	Yes			No			Weighted Total Responses (3-Yr Avg)
	#	%	C.I.(95%)	#	%	C.I.(95%)	#
Totals	1,000	44.4	40.6 - 48.4	1,200	55.6	51.6 - 59.4	2,200

County	Yes			No			Weighted Total Responses (3-Yr Avg)
	#	%	C.I.(95%)	#	%	C.I.(95%)	#
Hawaii	100	38.6	29.0 - 49.2	200	61.4	50.8 - 71.0	300
Honolulu	700	45.3	40.7 - 50.1	800	54.7	49.9 - 59.3	1,500
Kauai	<50	29.4	16.7 - 46.3	100	70.6	53.7 - 83.3	<50
Maui	100	53.4	41.8 - 64.6	100	46.6	35.4 - 58.2	300

PRAMS Health Indicator 3-Year Aggregate Report - Smoking - relapsed post-partum- by State;County;DOH Race-Ethnicity;PRAMS Age Group;Infant Gender;Married;Poverty Level;Income (2000-2003);Income (2004-2011);Birthweight;Smoke 3rd Trimester;Smoke Before Pregnant;WIC During Pregnancy, for the Year(s) 2001-2003;2002-2004;2003-2005;2004-2006;2005-2007;2006-2008;2007-2009;2008-2010;2009-2011;2010-2012;2011-2013

Note: Weighted counts (#) represent 3-yr averages, rounded to the nearest hundred; n/r (Not Reportable) - If the unweighted total responses for a dimension (row) is <30 that row will not be shown

Years: 2004-2006

DOH Race-Ethnicity	Yes			No			Weighted Total Responses (3-Yr Avg)
	#	%	C.I.(95%)	#	%	C.I.(95%)	#
Caucasian	200	38.7	31.6 - 46.3	300	61.3	53.7 - 68.4	600
Native Hawaiian	400	51.9	44.9 - 58.8	400	48.1	41.2 - 55.1	800
Chinese	n/r	n/r	n/r	n/r	n/r	n/r	<50
Filipino	100	45.6	36.1 - 55.5	200	54.4	44.5 - 63.9	300
Japanese	100	25.0	16.4 - 36.2	200	75.0	63.8 - 83.6	300
Other	100	52.2	41.4 - 62.9	100	47.8	37.1 - 58.6	300

PRAMS Age Group	Yes			No			Weighted Total Responses (3-Yr Avg)
	#	%	C.I.(95%)	#	%	C.I.(95%)	#
<20	200	55.2	44.4 - 65.6	100	44.8	34.4 - 55.6	300
20-24	300	45.0	38.2 - 51.9	400	55.0	48.1 - 61.8	700
25-34	400	42.0	36.3 - 48.0	600	58.0	52.0 - 63.7	1,000
35+	100	36.1	24.6 - 49.4	100	63.9	50.6 - 75.4	200

PRAMS Health Indicator 3-Year Aggregate Report - Smoking - relapsed post-partum- by State;County;DOH Race-Ethnicity;PRAMS Age Group;Infant Gender;Married;Poverty Level;Income (2000-2003);Income (2004-2011);Birthweight;Smoke 3rd Trimester;Smoke Before Pregnant;WIC During Pregnancy, for the Year(s) 2001-2003;2002-2004;2003-2005;2004-2006;2005-2007;2006-2008;2007-2009;2008-2010;2009-2011;2010-2012;2011-2013

Note: Weighted counts (#) represent 3-yr averages, rounded to the nearest hundred; n/r (Not Reportable) - If the unweighted total responses for a dimension (row) is <30 that row will not be shown

Years: 2004-2006

	Yes			No			Weighted Total Responses (3-Yr Avg)
	#	%	C.I.(95%)	#	%	C.I.(95%)	#
Infant Gender							
Male	500	42.3	37.0 - 47.9	600	57.7	52.1 - 63.0	1,100
Female	500	46.6	41.1 - 52.2	600	53.4	47.8 - 58.9	1,100

	Yes			No			Weighted Total Responses (3-Yr Avg)
	#	%	C.I.(95%)	#	%	C.I.(95%)	#
Married							
Yes	400	41.6	36.2 - 47.3	600	58.4	52.7 - 63.8	1,100
No	500	47.0	41.5 - 52.6	600	53.0	47.4 - 58.5	1,100

	Yes			No			Weighted Total Responses (3-Yr Avg)
	#	%	C.I.(95%)	#	%	C.I.(95%)	#
Poverty Level							
0-130%	400	46.6	40.6 - 52.8	500	53.4	47.2 - 59.4	900
131-185%	200	47.1	37.4 - 57.1	200	52.9	42.9 - 62.6	400
186+%	300	38.5	32.3 - 45.0	500	61.5	55.0 - 67.7	700

PRAMS Health Indicator 3-Year Aggregate Report - Smoking - relapsed post-partum- by State;County;DOH Race-Ethnicity;PRAMS Age Group;Infant Gender;Married;Poverty Level;Income (2000-2003);Income (2004-2011);Birthweight;Smoke 3rd Trimester;Smoke Before Pregnant;WIC During Pregnancy, for the Year(s) 2001-2003;2002-2004;2003-2005;2004-2006;2005-2007;2006-2008;2007-2009;2008-2010;2009-2011;2010-2012;2011-2013

Note: Weighted counts (#) represent 3-yr averages, rounded to the nearest hundred; n/r (Not Reportable) - If the unweighted total responses for a dimension (row) is <30 that row will not be shown

Years: 2004-2006

Income (2004-2011)	Yes			No			Weighted Total Responses (3-Yr Avg)
	#	%	C.I.(95%)	#	%	C.I.(95%)	#
<\$10,000	200	51.0	41.8 - 60.0	200	49.0	40.0 - 58.2	400
\$10,000-\$24,999	300	46.4	39.3 - 53.6	400	53.6	46.4 - 60.7	700
\$25,000-\$49,999	200	39.5	32.1 - 47.4	300	60.5	52.6 - 67.9	600
>=\$50,000	200	37.8	29.7 - 46.6	300	62.2	53.4 - 70.3	400

Birthweight	Yes			No			Weighted Total Responses (3-Yr Avg)
	#	%	C.I.(95%)	#	%	C.I.(95%)	#
Low birth weight	100	52.2	34.9 - 68.9	100	47.8	31.1 - 65.1	<50
Normal birth weight	900	44.0	40.1 - 48.1	1,200	56.0	51.9 - 59.9	2,100

Smoke 3rd Trimester	Yes			No			Weighted Total Responses (3-Yr Avg)
	#	%	C.I.(95%)	#	%	C.I.(95%)	#
No	1,000	44.4	40.6 - 48.4	1,200	55.6	51.6 - 59.4	2,200

PRAMS Health Indicator 3-Year Aggregate Report - Smoking - relapsed post-partum- by State;County;DOH Race-Ethnicity;PRAMS Age Group;Infant Gender;Married;Poverty Level;Income (2000-2003);Income (2004-2011);Birthweight;Smoke 3rd Trimester;Smoke Before Pregnant;WIC During Pregnancy, for the Year(s) 2001-2003;2002-2004;2003-2005;2004-2006;2005-2007;2006-2008;2007-2009;2008-2010;2009-2011;2010-2012;2011-2013

Note: Weighted counts (#) represent 3-yr averages, rounded to the nearest hundred; n/r (Not Reportable) - If the unweighted total responses for a dimension (row) is <30 that row will not be shown

Years: 2004-2006

Smoke Before Pregnant	Yes			No			Weighted Total Responses (3-Yr Avg)
	#	%	C.I.(95%)	#	%	C.I.(95%)	#
Yes	1,000	44.4	40.6 - 48.4	1,200	55.6	51.6 - 59.4	2,200

WIC During Pregnancy	Yes			No			Weighted Total Responses (3-Yr Avg)
	#	%	C.I.(95%)	#	%	C.I.(95%)	#
Yes	500	45.6	40.2 - 51.1	600	54.4	48.9 - 59.8	1,200
No	400	43.3	37.7 - 49.1	600	56.7	50.9 - 62.3	1,000

PRAMS Health Indicator 3-Year Aggregate Report - Smoking - relapsed post-partum- by State;County;DOH Race-Ethnicity;PRAMS Age Group;Infant Gender;Married;Poverty Level;Income (2000-2003);Income (2004-2011);Birthweight;Smoke 3rd Trimester;Smoke Before Pregnant;WIC During Pregnancy, for the Year(s) 2001-2003;2002-2004;2003-2005;2004-2006;2005-2007;2006-2008;2007-2009;2008-2010;2009-2011;2010-2012;2011-2013

Note: Weighted counts (#) represent 3-yr averages, rounded to the nearest hundred; n/r (Not Reportable) - If the unweighted total responses for a dimension (row) is <30 that row will not be shown

Years: 2003-2005

State	Yes			No			Weighted Total Responses (3-Yr Avg)
	#	%	C.I.(95%)	#	%	C.I.(95%)	#
Totals	700	44.1	39.5 - 48.7	800	55.9	51.3 - 60.5	1,500

County	Yes			No			Weighted Total Responses (3-Yr Avg)
	#	%	C.I.(95%)	#	%	C.I.(95%)	#
Hawaii	100	42.9	31.1 - 55.6	100	57.1	44.4 - 68.9	200
Honolulu	400	43.2	37.8 - 48.8	600	56.8	51.2 - 62.2	1,000
Kauai	n/r	n/r	n/r	n/r	n/r	n/r	<50
Maui	100	53.9	40.5 - 66.9	100	46.1	33.1 - 59.5	200

PRAMS Health Indicator 3-Year Aggregate Report - Smoking - relapsed post-partum- by State;County;DOH Race-Ethnicity;PRAMS Age Group;Infant Gender;Married;Poverty Level;Income (2000-2003);Income (2004-2011);Birthweight;Smoke 3rd Trimester;Smoke Before Pregnant;WIC During Pregnancy, for the Year(s) 2001-2003;2002-2004;2003-2005;2004-2006;2005-2007;2006-2008;2007-2009;2008-2010;2009-2011;2010-2012;2011-2013

Note: Weighted counts (#) represent 3-yr averages, rounded to the nearest hundred; n/r (Not Reportable) - If the unweighted total responses for a dimension (row) is <30 that row will not be shown

Years: 2003-2005

DOH Race-Ethnicity	Yes			No			Weighted Total Responses (3-Yr Avg)
	#	%	C.I.(95%)	#	%	C.I.(95%)	#
Caucasian	100	40.6	31.8 - 50.0	200	59.4	50.0 - 68.2	400
Native Hawaiian	300	50.2	42.2 - 58.2	300	49.8	41.8 - 57.8	600
Chinese	n/r	n/r	n/r	n/r	n/r	n/r	<50
Filipino	100	47.9	37.0 - 59.0	100	52.1	41.0 - 63.0	200
Japanese	<50	19.9	11.4 - 32.6	100	80.1	67.4 - 88.6	200
Other	100	51.1	38.1 - 64.0	100	48.9	36.0 - 61.9	200

PRAMS Age Group	Yes			No			Weighted Total Responses (3-Yr Avg)
	#	%	C.I.(95%)	#	%	C.I.(95%)	#
<20	100	57.6	44.9 - 69.3	100	42.4	30.7 - 55.1	200
20-24	200	41.2	33.7 - 49.2	300	58.8	50.8 - 66.3	500
25-34	300	40.4	33.7 - 47.4	400	59.6	52.6 - 66.3	600
35+	100	50.2	34.0 - 66.4	100	49.8	33.6 - 66.0	<50

**PRAMS Health Indicator 3-Year Aggregate Report - Smoking - relapsed post-partum- by State;County;DOH Race-
Ethnicity;PRAMS Age Group;Infant Gender;Married;Poverty Level;Income (2000-2003);Income (2004-2011);Birthweight;Smoke
3rd Trimester;Smoke Before Pregnant;WIC During Pregnancy, for the Year(s)
2001-2003;2002-2004;2003-2005;2004-2006;2005-2007;2006-2008;2007-2009;2008-2010;2009-2011;2010-2012;2011-2013**

Note: Weighted counts (#) represent 3-yr averages, rounded to the nearest hundred; n/r (Not Reportable) - If the unweighted total responses for a dimension (row) is <30 that row will not be shown

Years: 2003-2005

	Yes			No			Weighted Total Responses (3-Yr Avg)
	#	%	C.I.(95%)	#	%	C.I.(95%)	#
Infant Gender							
Male	300	41.9	35.5 - 48.5	400	58.1	51.5 - 64.5	700
Female	400	46.1	39.7 - 52.7	400	53.9	47.3 - 60.3	800

	Yes			No			Weighted Total Responses (3-Yr Avg)
	#	%	C.I.(95%)	#	%	C.I.(95%)	#
Married							
Yes	300	38.5	32.1 - 45.2	400	61.5	54.8 - 67.9	700
No	400	49.1	42.7 - 55.5	400	50.9	44.5 - 57.3	800

	Yes			No			Weighted Total Responses (3-Yr Avg)
	#	%	C.I.(95%)	#	%	C.I.(95%)	#
Poverty Level							
0-130%	300	45.5	38.7 - 52.5	400	54.5	47.5 - 61.3	700
131-185%	100	44.4	32.3 - 57.2	100	55.6	42.8 - 67.7	200
186+%	200	37.4	30.1 - 45.3	300	62.6	54.7 - 69.9	500

PRAMS Health Indicator 3-Year Aggregate Report - Smoking - relapsed post-partum- by State;County;DOH Race-Ethnicity;PRAMS Age Group;Infant Gender;Married;Poverty Level;Income (2000-2003);Income (2004-2011);Birthweight;Smoke 3rd Trimester;Smoke Before Pregnant;WIC During Pregnancy, for the Year(s) 2001-2003;2002-2004;2003-2005;2004-2006;2005-2007;2006-2008;2007-2009;2008-2010;2009-2011;2010-2012;2011-2013

Note: Weighted counts (#) represent 3-yr averages, rounded to the nearest hundred; n/r (Not Reportable) - If the unweighted total responses for a dimension (row) is <30 that row will not be shown

Years: 2003-2005

Birthweight	Yes			No			Weighted Total Responses (3-Yr Avg)
	#	%	C.I.(95%)	#	%	C.I.(95%)	#
Low birth weight	n/r	n/r	n/r	n/r	n/r	n/r	<50
Normal birth weight	600	44.0	39.3 - 48.8	800	56.0	51.2 - 60.7	1,400

Smoke 3rd Trimester	Yes			No			Weighted Total Responses (3-Yr Avg)
	#	%	C.I.(95%)	#	%	C.I.(95%)	#
Yes	n/r	n/r	n/r	n/r	n/r	n/r	<50
No	700	44.0	39.4 - 48.7	800	56.0	51.3 - 60.6	1,500

Smoke Before Pregnant	Yes			No			Weighted Total Responses (3-Yr Avg)
	#	%	C.I.(95%)	#	%	C.I.(95%)	#
Yes	700	44.1	39.5 - 48.7	800	55.9	51.3 - 60.5	1,500

PRAMS Health Indicator 3-Year Aggregate Report - Smoking - relapsed post-partum- by State;County;DOH Race-Ethnicity;PRAMS Age Group;Infant Gender;Married;Poverty Level;Income (2000-2003);Income (2004-2011);Birthweight;Smoke 3rd Trimester;Smoke Before Pregnant;WIC During Pregnancy, for the Year(s) 2001-2003;2002-2004;2003-2005;2004-2006;2005-2007;2006-2008;2007-2009;2008-2010;2009-2011;2010-2012;2011-2013

Note: Weighted counts (#) represent 3-yr averages, rounded to the nearest hundred; n/r (Not Reportable) - If the unweighted total responses for a dimension (row) is <30 that row will not be shown

Years: 2003-2005

WIC During Pregnancy	Yes			No			Weighted Total Responses (3-Yr Avg)
	#	%	C.I.(95%)	#	%	C.I.(95%)	#
Yes	400	44.5	38.2 - 51.0	400	55.5	49.0 - 61.8	800
No	300	43.2	36.5 - 50.0	400	56.8	50.0 - 63.5	700

PRAMS Health Indicator 3-Year Aggregate Report - Smoking - relapsed post-partum- by State;County;DOH Race-Ethnicity;PRAMS Age Group;Infant Gender;Married;Poverty Level;Income (2000-2003);Income (2004-2011);Birthweight;Smoke 3rd Trimester;Smoke Before Pregnant;WIC During Pregnancy, for the Year(s) 2001-2003;2002-2004;2003-2005;2004-2006;2005-2007;2006-2008;2007-2009;2008-2010;2009-2011;2010-2012;2011-2013

Note: Weighted counts (#) represent 3-yr averages, rounded to the nearest hundred; n/r (Not Reportable) - If the unweighted total responses for a dimension (row) is <30 that row will not be shown

Years: 2002-2004

State	Yes			No			Weighted Total Responses (3-Yr Avg)
	#	%	C.I.(95%)	#	%	C.I.(95%)	#
Totals	300	45.0	38.8 - 51.4	400	55.0	48.6 - 61.2	800

County	Yes			No			Weighted Total Responses (3-Yr Avg)
	#	%	C.I.(95%)	#	%	C.I.(95%)	#
Hawaii	100	50.6	34.4 - 66.7	100	49.4	33.3 - 65.6	<50
Honolulu	200	44.1	36.6 - 51.8	300	55.9	48.2 - 63.4	500
Kauai	n/r	n/r	n/r	n/r	n/r	n/r	<50
Maui	n/r	n/r	n/r	n/r	n/r	n/r	<50

PRAMS Health Indicator 3-Year Aggregate Report - Smoking - relapsed post-partum- by State;County;DOH Race-Ethnicity;PRAMS Age Group;Infant Gender;Married;Poverty Level;Income (2000-2003);Income (2004-2011);Birthweight;Smoke 3rd Trimester;Smoke Before Pregnant;WIC During Pregnancy, for the Year(s) 2001-2003;2002-2004;2003-2005;2004-2006;2005-2007;2006-2008;2007-2009;2008-2010;2009-2011;2010-2012;2011-2013

Note: Weighted counts (#) represent 3-yr averages, rounded to the nearest hundred; n/r (Not Reportable) - If the unweighted total responses for a dimension (row) is <30 that row will not be shown

Years: 2002-2004

DOH Race-Ethnicity	Yes			No			Weighted Total Responses (3-Yr Avg)
	#	%	C.I.(95%)	#	%	C.I.(95%)	#
Caucasian	100	48.9	36.5 - 61.5	100	51.1	38.5 - 63.5	200
Native Hawaiian	100	47.7	36.9 - 58.8	100	52.3	41.2 - 63.1	300
Chinese	n/r	n/r	n/r	n/r	n/r	n/r	<50
Filipino	<50	46.0	31.7 - 61.0	100	54.0	39.0 - 68.3	<50
Japanese	n/r	n/r	n/r	n/r	n/r	n/r	<50
Other	100	57.2	39.4 - 73.3	<50	42.8	26.7 - 60.6	<50

PRAMS Age Group	Yes			No			Weighted Total Responses (3-Yr Avg)
	#	%	C.I.(95%)	#	%	C.I.(95%)	#
<20	100	60.2	42.8 - 75.2	<50	39.8	24.8 - 57.2	<50
20-24	100	43.0	32.8 - 53.9	100	57.0	46.1 - 67.2	300
25-34	100	39.0	30.0 - 48.8	200	61.0	51.2 - 70.0	300
35+	n/r	n/r	n/r	n/r	n/r	n/r	<50

PRAMS Health Indicator 3-Year Aggregate Report - Smoking - relapsed post-partum- by State;County;DOH Race-Ethnicity;PRAMS Age Group;Infant Gender;Married;Poverty Level;Income (2000-2003);Income (2004-2011);Birthweight;Smoke 3rd Trimester;Smoke Before Pregnant;WIC During Pregnancy, for the Year(s) 2001-2003;2002-2004;2003-2005;2004-2006;2005-2007;2006-2008;2007-2009;2008-2010;2009-2011;2010-2012;2011-2013

Note: Weighted counts (#) represent 3-yr averages, rounded to the nearest hundred; n/r (Not Reportable) - If the unweighted total responses for a dimension (row) is <30 that row will not be shown

Years: 2002-2004

Infant Gender	Yes			No			Weighted Total Responses (3-Yr Avg)
	#	%	C.I.(95%)	#	%	C.I.(95%)	#
Male	200	44.8	36.1 - 53.8	200	55.2	46.2 - 63.9	400
Female	200	45.2	36.5 - 54.2	200	54.8	45.8 - 63.5	400

Married	Yes			No			Weighted Total Responses (3-Yr Avg)
	#	%	C.I.(95%)	#	%	C.I.(95%)	#
Yes	200	42.1	33.9 - 50.9	200	57.9	49.1 - 66.1	400
No	200	48.3	39.2 - 57.6	200	51.7	42.4 - 60.8	400

Poverty Level	Yes			No			Weighted Total Responses (3-Yr Avg)
	#	%	C.I.(95%)	#	%	C.I.(95%)	#
0-130%	100	43.1	33.8 - 52.9	200	56.9	47.1 - 66.2	300
131-185%	100	48.2	33.5 - 63.2	100	51.8	36.8 - 66.5	<50
186+%	100	42.1	31.9 - 52.9	100	57.9	47.1 - 68.1	200

**PRAMS Health Indicator 3-Year Aggregate Report - Smoking - relapsed post-partum- by State;County;DOH Race-
Ethnicity;PRAMS Age Group;Infant Gender;Married;Poverty Level;Income (2000-2003);Income (2004-2011);Birthweight;Smoke
3rd Trimester;Smoke Before Pregnant;WIC During Pregnancy, for the Year(s)
2001-2003;2002-2004;2003-2005;2004-2006;2005-2007;2006-2008;2007-2009;2008-2010;2009-2011;2010-2012;2011-2013**

Note: Weighted counts (#) represent 3-yr averages, rounded to the nearest hundred; n/r (Not Reportable) - If the unweighted total responses for a dimension (row) is <30 that row will not be shown

Years: 2002-2004

Birthweight	Yes			No			Weighted Total Responses (3-Yr Avg)
	#	%	C.I.(95%)	#	%	C.I.(95%)	#
Low birth weight	n/r	n/r	n/r	n/r	n/r	n/r	<50
Normal birth weight	300	45.2	38.9 - 51.7	400	54.8	48.3 - 61.1	700

Smoke 3rd Trimester	Yes			No			Weighted Total Responses (3-Yr Avg)
	#	%	C.I.(95%)	#	%	C.I.(95%)	#
Yes	n/r	n/r	n/r	n/r	n/r	n/r	<50
No	300	44.6	38.4 - 51.0	400	55.4	49.0 - 61.6	700

Smoke Before Pregnant	Yes			No			Weighted Total Responses (3-Yr Avg)
	#	%	C.I.(95%)	#	%	C.I.(95%)	#
Yes	300	45.0	38.8 - 51.4	400	55.0	48.6 - 61.2	800

PRAMS Health Indicator 3-Year Aggregate Report - Smoking - relapsed post-partum- by State;County;DOH Race-Ethnicity;PRAMS Age Group;Infant Gender;Married;Poverty Level;Income (2000-2003);Income (2004-2011);Birthweight;Smoke 3rd Trimester;Smoke Before Pregnant;WIC During Pregnancy, for the Year(s) 2001-2003;2002-2004;2003-2005;2004-2006;2005-2007;2006-2008;2007-2009;2008-2010;2009-2011;2010-2012;2011-2013

Note: Weighted counts (#) represent 3-yr averages, rounded to the nearest hundred; n/r (Not Reportable) - If the unweighted total responses for a dimension (row) is <30 that row will not be shown

Years: 2002-2004

WIC During Pregnancy	Yes			No			Weighted Total Responses (3-Yr Avg)
	#	%	C.I.(95%)	#	%	C.I.(95%)	#
Yes	200	46.3	37.8 - 55.0	200	53.7	45.0 - 62.2	400
No	100	42.0	33.2 - 51.4	200	58.0	48.6 - 66.8	300

PRAMS Health Indicator 3-Year Aggregate Report - Smoking - relapsed post-partum- by State;County;DOH Race-Ethnicity;PRAMS Age Group;Infant Gender;Married;Poverty Level;Income (2000-2003);Income (2004-2011);Birthweight;Smoke 3rd Trimester;Smoke Before Pregnant;WIC During Pregnancy, for the Year(s) 2001-2003;2002-2004;2003-2005;2004-2006;2005-2007;2006-2008;2007-2009;2008-2010;2009-2011;2010-2012;2011-2013

Note: Weighted counts (#) represent 3-yr averages, rounded to the nearest hundred; n/r (Not Reportable) - If the unweighted total responses for a dimension (row) is <30 that row will not be shown

Years: 2001-2003

State	Yes			No			Weighted Total Responses (3-Yr Avg)
	#	%	C.I.(95%)	#	%	C.I.(95%)	#
Totals	n/r	n/r	n/r	n/r	n/r	n/r	<50

County	Yes			No			Weighted Total Responses (3-Yr Avg)
	#	%	C.I.(95%)	#	%	C.I.(95%)	#
Hawaii	n/r	n/r	n/r	n/r	n/r	n/r	<50
Honolulu	n/r	n/r	n/r	n/r	n/r	n/r	<50
Kauai	n/r	n/r	n/r	n/r	n/r	n/r	<50

DOH Race-Ethnicity	Yes			No			Weighted Total Responses (3-Yr Avg)
	#	%	C.I.(95%)	#	%	C.I.(95%)	#
Caucasian	n/r	n/r	n/r	n/r	n/r	n/r	<50
Native Hawaiian	n/r	n/r	n/r	n/r	n/r	n/r	<50
Filipino	n/r	n/r	n/r	n/r	n/r	n/r	<50

PRAMS Health Indicator 3-Year Aggregate Report - Smoking - relapsed post-partum- by State;County;DOH Race-Ethnicity;PRAMS Age Group;Infant Gender;Married;Poverty Level;Income (2000-2003);Income (2004-2011);Birthweight;Smoke 3rd Trimester;Smoke Before Pregnant;WIC During Pregnancy, for the Year(s) 2001-2003;2002-2004;2003-2005;2004-2006;2005-2007;2006-2008;2007-2009;2008-2010;2009-2011;2010-2012;2011-2013

Note: Weighted counts (#) represent 3-yr averages, rounded to the nearest hundred; n/r (Not Reportable) - If the unweighted total responses for a dimension (row) is <30 that row will not be shown

Years: 2001-2003

PRAMS Age Group	Yes			No			Weighted Total Responses (3-Yr Avg)
	#	%	C.I.(95%)	#	%	C.I.(95%)	#
<20	n/r	n/r	n/r	n/r	n/r	n/r	<50
20-24	n/r	n/r	n/r	n/r	n/r	n/r	<50
25-34	n/r	n/r	n/r	n/r	n/r	n/r	<50
35+	n/r	n/r	n/r	n/r	n/r	n/r	<50

Infant Gender	Yes			No			Weighted Total Responses (3-Yr Avg)
	#	%	C.I.(95%)	#	%	C.I.(95%)	#
Male	n/r	n/r	n/r	n/r	n/r	n/r	<50
Female	n/r	n/r	n/r	n/r	n/r	n/r	<50

Married	Yes			No			Weighted Total Responses (3-Yr Avg)
	#	%	C.I.(95%)	#	%	C.I.(95%)	#
Yes	n/r	n/r	n/r	n/r	n/r	n/r	<50
No	n/r	n/r	n/r	n/r	n/r	n/r	<50

PRAMS Health Indicator 3-Year Aggregate Report - Smoking - relapsed post-partum- by State;County;DOH Race-Ethnicity;PRAMS Age Group;Infant Gender;Married;Poverty Level;Income (2000-2003);Income (2004-2011);Birthweight;Smoke 3rd Trimester;Smoke Before Pregnant;WIC During Pregnancy, for the Year(s) 2001-2003;2002-2004;2003-2005;2004-2006;2005-2007;2006-2008;2007-2009;2008-2010;2009-2011;2010-2012;2011-2013

Note: Weighted counts (#) represent 3-yr averages, rounded to the nearest hundred; n/r (Not Reportable) - If the unweighted total responses for a dimension (row) is <30 that row will not be shown

Years: 2001-2003

Poverty Level	Yes			No			Weighted Total Responses (3-Yr Avg)
	#	%	C.I.(95%)	#	%	C.I.(95%)	#
0-130%	n/r	n/r	n/r	n/r	n/r	n/r	<50
131-185%	n/r	n/r	n/r	n/r	n/r	n/r	<50

Income (2000-2003)	Yes			No			Weighted Total Responses (3-Yr Avg)
	#	%	C.I.(95%)	#	%	C.I.(95%)	#
<=\$15,000	n/r	n/r	n/r	n/r	n/r	n/r	<50
\$15,001-\$25,000	n/r	n/r	n/r	n/r	n/r	n/r	<50
\$25,001-\$40,000	n/r	n/r	n/r	n/r	n/r	n/r	<50

Birthweight	Yes			No			Weighted Total Responses (3-Yr Avg)
	#	%	C.I.(95%)	#	%	C.I.(95%)	#
Normal birth weight	n/r	n/r	n/r	n/r	n/r	n/r	<50

PRAMS Health Indicator 3-Year Aggregate Report - Smoking - relapsed post-partum- by State;County;DOH Race-Ethnicity;PRAMS Age Group;Infant Gender;Married;Poverty Level;Income (2000-2003);Income (2004-2011);Birthweight;Smoke 3rd Trimester;Smoke Before Pregnant;WIC During Pregnancy, for the Year(s) 2001-2003;2002-2004;2003-2005;2004-2006;2005-2007;2006-2008;2007-2009;2008-2010;2009-2011;2010-2012;2011-2013

Note: Weighted counts (#) represent 3-yr averages, rounded to the nearest hundred; n/r (Not Reportable) - If the unweighted total responses for a dimension (row) is <30 that row will not be shown

Years: 2001-2003

Smoke 3rd Trimester	Yes			No			Weighted Total Responses (3-Yr Avg)
	#	%	C.I.(95%)	#	%	C.I.(95%)	#
Yes	n/r	n/r	n/r	n/r	n/r	n/r	<50

Smoke Before Pregnant	Yes			No			Weighted Total Responses (3-Yr Avg)
	#	%	C.I.(95%)	#	%	C.I.(95%)	#
Yes	n/r	n/r	n/r	n/r	n/r	n/r	<50

WIC During Pregnancy	Yes			No			Weighted Total Responses (3-Yr Avg)
	#	%	C.I.(95%)	#	%	C.I.(95%)	#
Yes	n/r	n/r	n/r	n/r	n/r	n/r	<50
No	n/r	n/r	n/r	n/r	n/r	n/r	<50