

**PRAMS Health Indicator 5-Year Aggregate Report - Number of cigarettes smoked per avg day last 3 months of pregnancy- for the State of Hawaii, for the Year(s)**

**2000-2004;2001-2005;2002-2006;2003-2007;2004-2008;2005-2009;2006-2010;2007-2011;2008-2012;2009-2013**

PRAMS Health Indicator 5-Year Aggregate Report - Number of cigarettes smoked per avg day last 3 months of pregnancy- by State;County;DOH Race-Ethnicity;PRAMS Age Group;Infant Gender;Married;Poverty Level;Income (2004-2011);Birthweight;Smoke 3rd Trimester;Smoke Before Pregnant;WIC During Pregnancy, for the Year(s)

2000-2004;2001-2005;2002-2006;2003-2007;2004-2008;2005-2009;2006-2010;2007-2011;2008-2012;2009-2013

*Note: Weighted counts (#) represent 5-yr averages, rounded to the nearest hundred; n/r (Not Reportable) - If the unweighted total responses for a dimension (row) is <30 that row will not be shown*

*The trend analysis section shows the trend for the selected health variable over selected years in a table and a graph. 5-Year Weighted Total Responses: This number is a weighted representation of the mothers of babies delivered in a given year, who responded to a particular question in the survey. For most questions this will be the mothers of all babies delivered in a given year. For some secondary questions only a subset of the population was asked the question. For example, all survey participants were asked if they smoked during pregnancy, but only those who answered yes were asked how many cigarettes a day. If a dimension value is unknown for a particular survey record, that record will not be included in the counts for that particular dimension.*

*Note: Data collection for household income changed in 2004 and again in 2012. Because of this, 5-year aggregate data does not exist for all 5-year aggregate periods.*

*Below are the indicators included in this report and the long description for each indicator.*

PRAMS Health Indicator	Health Indicator Description
Number of cigarettes smoked per avg day last 3 months of pregnancy	Number of cigarettes smoked on an average day in the last 3 months of pregnancy among new mothers who reported smoking in the last 2 years

*Suggested citation:*

*Hawaii Health Data Warehouse, Hawaii State Department of Health, Pregnancy Risk Assessment Monitoring System, (report title and years), Report Created: 2/22/17*

*For documentation on other terms and coding in this report, please go to the following links:*

[Click here to access PRAMS documentation](#)

[Click here to access DOH-Race Ethnicity coding](#)

[Click here to access The Hawai'i Data Guide](#)

**For questions about this report, please contact  
The Hawai'i Health Data Warehouse**

[profiles@hhdw.org](mailto:profiles@hhdw.org)

**(855) 946-5899 x15**

**PRAMS Health Indicator 5-Year Aggregate Report - Number of cigarettes smoked per avg day last 3 months of pregnancy- for the State of Hawaii, for the Year(s)**  
**2000-2004;2001-2005;2002-2006;2003-2007;2004-2008;2005-2009;2006-2010;2007-2011;2008-2012;2009-2013**

*Note: Weighted counts (#) represent 5-yr averages, rounded to the nearest hundred; n/r (Not Reportable) - If the unweighted total responses for a dimension (row) is <30 that row will not be shown*

Years	None (0 cigarettes)			Less than 1 cigarette			1 to 5 cigarettes			6 to 10 cigarettes			11 to 20 cigarettes			21 to 40 cigarettes		
	#	%	C.I.(95%)	#	%	C.I.(95%)	#	%	C.I.(95%)	#	%	C.I.(95%)	#	%	C.I.(95%)	#	%	C.I.(95%)
2000-2004	2,400	61.9	59.7 - 64.0	200	4.8	4.0 - 5.9	600	16.3	14.8 - 17.9	400	9.3	8.1 - 10.7	200	6.2	5.2 - 7.3	<50	1.3	0.8 - 1.9
2001-2005	2,400	61.9	59.7 - 64.1	200	5.1	4.2 - 6.2	600	16.1	14.6 - 17.8	400	9.5	8.2 - 11.0	200	5.8	4.8 - 6.9	<50	1.1	0.7 - 1.7
2002-2006	2,400	61.8	59.4 - 64.0	200	4.5	3.6 - 5.6	700	16.5	14.9 - 18.3	400	10.2	8.8 - 11.8	200	5.3	4.4 - 6.5	<50	1.2	0.7 - 1.9
2003-2007	2,400	61.1	58.8 - 63.4	200	5.0	4.0 - 6.1	700	18.5	16.8 - 20.4	400	9.8	8.4 - 11.3	200	4.1	3.3 - 5.1	<50	1.1	0.7 - 1.7
2004-2008	2,400	60.5	58.2 - 62.8	200	5.5	4.5 - 6.6	700	18.8	17.0 - 20.7	400	10.0	8.7 - 11.5	200	3.9	3.1 - 4.9	<50	0.9	0.5 - 1.5
2005-2009	2,500	60.6	58.1 - 63.0	200	5.6	4.6 - 6.9	800	18.7	16.9 - 20.7	400	10.4	8.9 - 12.1	100	3.1	2.4 - 4.1	100	1.3	0.8 - 2.1
2006-2010	2,500	61.3	58.7 - 63.8	200	5.7	4.5 - 7.1	800	18.8	16.9 - 21.0	400	9.6	8.2 - 11.4	100	3.2	2.4 - 4.2	100	1.3	0.8 - 2.1
2007-2011	2,700	65.1	62.4 - 67.6	200	5.4	4.3 - 6.8	700	16.9	15.0 - 18.9	400	8.6	7.1 - 10.4	100	2.9	2.1 - 3.9	<50	1.0	0.5 - 1.8
2008-2012	2,700	67.8	65.0 - 70.4	200	5.2	4.0 - 6.7	600	14.9	13.0 - 16.9	300	8.4	6.9 - 10.3	100	2.8	2.0 - 3.8	<50	0.8	0.4 - 1.6
2009-2013	2,900	70.9	68.1 - 73.5	200	5.0	3.8 - 6.6	500	13.3	11.5 - 15.4	300	7.4	5.9 - 9.2	100	2.6	1.8 - 3.7	<50	0.8	0.4 - 1.6

**PRAMS Health Indicator 5-Year Aggregate Report - Number of cigarettes smoked per avg day last 3 months of pregnancy- for the State of Hawaii, for the Year(s)  
2000-2004;2001-2005;2002-2006;2003-2007;2004-2008;2005-2009;2006-2010;2007-2011;2008-2012;2009-2013**

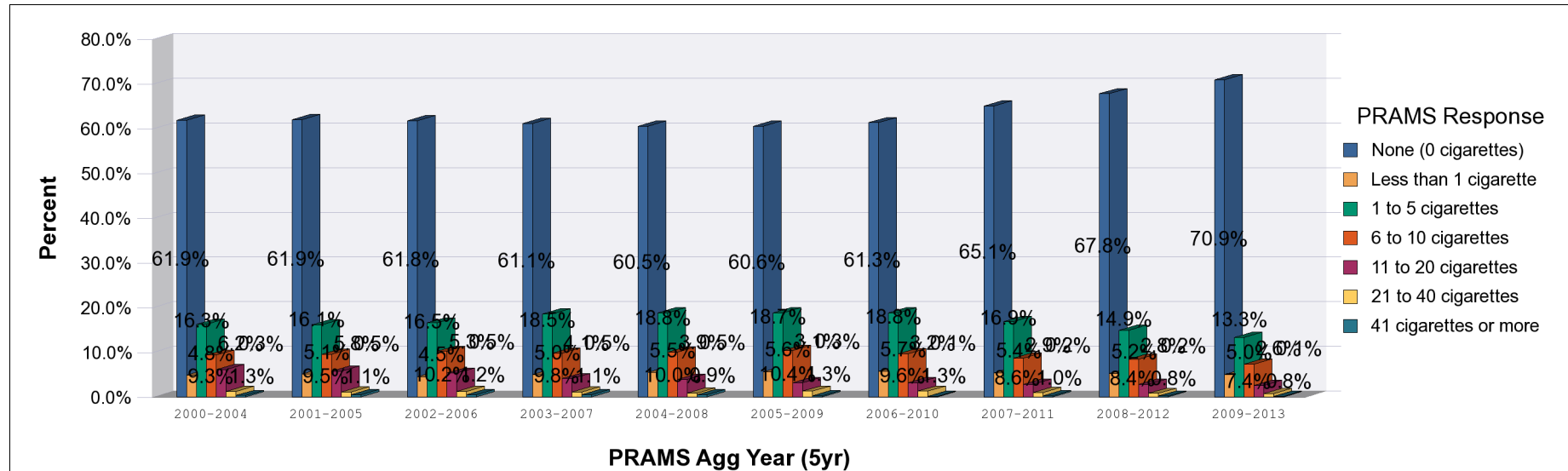
*Note: Weighted counts (#) represent 5-yr averages, rounded to the nearest hundred; n/r (Not Reportable) - If the unweighted total responses for a dimension (row) is <30 that row will not be shown*

Years	41 cigarettes or more			Weighted Total Responses (5-Yr Avg)
	#	%	C.I.(95%)	#
2000-2004	<50	0.3	0.1 - 0.6	3,900
2001-2005	<50	0.5	0.3 - 0.9	3,900
2002-2006	<50	0.5	0.3 - 0.9	4,000
2003-2007	<50	0.5	0.3 - 0.9	4,000
2004-2008	<50	0.5	0.2 - 0.9	3,900
2005-2009	<50	0.3	0.1 - 0.6	4,100
2006-2010	<50	0.1	0.0 - 0.4	4,200
2007-2011	<50	0.2	0.1 - 0.7	4,100
2008-2012	<50	0.2	0.0 - 0.8	4,000
2009-2013	<50	0.1	0.0 - 0.8	4,000

**PRAMS Health Indicator 5-Year Aggregate Report - Number of cigarettes smoked per avg day last 3 months of pregnancy- for the State of Hawaii, for the Year(s)**

**2000-2004;2001-2005;2002-2006;2003-2007;2004-2008;2005-2009;2006-2010;2007-2011;2008-2012;2009-2013**

*Note: Weighted counts (#) represent 5-yr averages, rounded to the nearest hundred; n/r (Not Reportable) - If the unweighted total responses for a dimension (row) is <30 that row will not be shown*



**PRAMS Health Indicator 5-Year Aggregate Report - Number of cigarettes smoked per avg day last 3 months of pregnancy- by State;County;DOH Race-Ethnicity;PRAMS Age Group;Infant Gender;Married;Poverty Level;Income (2004-2011);Birthweight;Smoke 3rd Trimester;Smoke Before Pregnant;WIC During Pregnancy, for the Year(s) 2000-2004;2001-2005;2002-2006;2003-2007;2004-2008;2005-2009;2006-2010;2007-2011;2008-2012;2009-2013**

*Note: Weighted counts (#) represent 5-yr averages, rounded to the nearest hundred; n/r (Not Reportable) - If the unweighted total responses for a dimension (row) is <30 that row will not be shown*

**Year: 2009-2013**

State	None (0 cigarettes)			Less than 1 cigarette			1 to 5 cigarettes			6 to 10 cigarettes			11 to 20 cigarettes			21 to 40 cigarettes		
	#	%	C.I.(95%)	#	%	C.I.(95%)	#	%	C.I.(95%)	#	%	C.I.(95%)	#	%	C.I.(95%)	#	%	C.I.(95%)
<b>Totals</b>	2,900	70.9	68.1 - 73.5	200	5.0	3.8 - 6.6	500	13.3	11.5 - 15.4	300	7.4	5.9 - 9.2	100	2.6	1.8 - 3.7	<50	0.8	0.4 - 1.6

County	None (0 cigarettes)			Less than 1 cigarette			1 to 5 cigarettes			6 to 10 cigarettes			11 to 20 cigarettes			21 to 40 cigarettes		
	#	%	C.I.(95%)	#	%	C.I.(95%)	#	%	C.I.(95%)	#	%	C.I.(95%)	#	%	C.I.(95%)	#	%	C.I.(95%)
<b>Hawaii</b>	400	63.5	59.0 - 67.7	<50	4.1	2.6 - 6.3	200	23.6	19.9 - 27.7	<50	5.4	3.7 - 7.9	<50	3.4	2.1 - 5.5	0	0.0	-
<b>Honolulu</b>	2,000	72.8	68.8 - 76.5	100	5.4	3.7 - 7.8	300	10.5	8.2 - 13.4	200	8.0	5.9 - 10.7	100	2.1	1.2 - 3.8	<50	1.0	0.4 - 2.3
<b>Kauai</b>	100	67.7	62.3 - 72.7	<50	5.2	3.3 - 8.2	<50	14.2	10.7 - 18.7	<50	8.5	5.9 - 12.1	<50	3.4	1.8 - 6.1	<50	0.9	0.3 - 2.9
<b>Maui</b>	300	71.5	67.2 - 75.5	<50	3.8	2.4 - 6.0	100	14.6	11.6 - 18.2	<50	5.8	4.0 - 8.4	<50	3.8	2.4 - 5.9	<50	0.5	0.1 - 1.7

**PRAMS Health Indicator 5-Year Aggregate Report - Number of cigarettes smoked per avg day last 3 months of pregnancy- by State;County;DOH Race-Ethnicity;PRAMS Age Group;Infant Gender;Married;Poverty Level;Income (2004-2011);Birthweight;Smoke 3rd Trimester;Smoke Before Pregnant;WIC During Pregnancy, for the Year(s) 2000-2004;2001-2005;2002-2006;2003-2007;2004-2008;2005-2009;2006-2010;2007-2011;2008-2012;2009-2013**

*Note: Weighted counts (#) represent 5-yr averages, rounded to the nearest hundred; n/r (Not Reportable) - If the unweighted total responses for a dimension (row) is <30 that row will not be shown*

41 cigarettes or more			Weighted Total Responses (5-Yr Avg)
#	%	C.I.(95%)	#
<50	0.1	0.0 - 0.8	4,000

41 cigarettes or more			Weighted Total Responses (5-Yr Avg)
#	%	C.I.(95%)	#
0	0.0	-	700
<50	0.2	0.0 - 1.2	2,700
0	0.0	-	200
0	0.0	-	500

**PRAMS Health Indicator 5-Year Aggregate Report - Number of cigarettes smoked per avg day last 3 months of pregnancy- by State;County;DOH Race-Ethnicity;PRAMS Age Group;Infant Gender;Married;Poverty Level;Income (2004-2011);Birthweight;Smoke 3rd Trimester;Smoke Before Pregnant;WIC During Pregnancy, for the Year(s) 2000-2004;2001-2005;2002-2006;2003-2007;2004-2008;2005-2009;2006-2010;2007-2011;2008-2012;2009-2013**

*Note: Weighted counts (#) represent 5-yr averages, rounded to the nearest hundred; n/r (Not Reportable) - If the unweighted total responses for a dimension (row) is <30 that row will not be shown*

**Year: 2009-2013**

DOH Race-Ethnicity	None (0 cigarettes)			Less than 1 cigarette			1 to 5 cigarettes			6 to 10 cigarettes			11 to 20 cigarettes			21 to 40 cigarettes		
	#	%	C.I.(95%)	#	%	C.I.(95%)	#	%	C.I.(95%)	#	%	C.I.(95%)	#	%	C.I.(95%)	#	%	C.I.(95%)
Caucasian	700	78.6	72.9 - 83.4	<50	3.5	1.7 - 6.8	100	8.9	5.9 - 13.1	100	6.5	4.0 - 10.5	<50	2.5	1.1 - 5.7	0	0.0	-
Native Hawaiian	1,000	63.6	59.1 - 67.9	100	5.3	3.4 - 7.9	300	17.1	14.2 - 20.5	200	9.9	7.3 - 13.3	100	3.5	2.2 - 5.4	<50	0.4	0.2 - 0.7
Chinese	100	73.1	52.9 - 86.7	<50	15.3	5.2 - 37.4	<50	5.2	2.3 - 11.3	<50	5.5	0.8 - 29.3	0	0.0	-	<50	0.9	0.2 - 5.0
Filipino	400	77.4	69.7 - 83.7	<50	5.8	2.7 - 11.7	<50	7.6	4.4 - 12.8	<50	6.9	3.6 - 13.1	<50	2.3	0.9 - 5.8	0	0.0	-
Japanese	300	77.1	66.7 - 85.0	<50	3.7	1.1 - 11.9	100	15.0	8.7 - 24.6	<50	0.8	0.3 - 2.6	<50	1.8	0.3 - 9.1	<50	1.7	0.3 - 7.9
Other	400	67.4	58.3 - 75.4	<50	4.7	2.1 - 10.5	100	16.0	10.4 - 23.9	<50	6.7	3.4 - 13.0	<50	1.6	0.4 - 6.0	<50	3.4	1.1 - 9.9

PRAMS Age Group	None (0 cigarettes)			Less than 1 cigarette			1 to 5 cigarettes			6 to 10 cigarettes			11 to 20 cigarettes			21 to 40 cigarettes		
	#	%	C.I.(95%)	#	%	C.I.(95%)	#	%	C.I.(95%)	#	%	C.I.(95%)	#	%	C.I.(95%)	#	%	C.I.(95%)
<20	200	71.4	60.6 - 80.1	<50	2.4	1.1 - 5.5	<50	13.8	8.0 - 22.6	<50	5.8	2.3 - 14.2	<50	3.8	1.0 - 13.0	<50	2.9	0.7 - 11.5
20-24	900	72.6	67.4 - 77.2	100	5.2	3.1 - 8.6	200	12.8	9.7 - 16.7	100	7.5	5.0 - 11.1	<50	1.4	0.7 - 2.9	<50	0.1	0.0 - 0.4
25-34	1,400	70.5	66.5 - 74.2	100	5.7	3.9 - 8.2	300	13.2	10.8 - 16.2	100	7.1	5.1 - 9.8	<50	2.5	1.5 - 4.0	<50	1.0	0.4 - 2.5
35+	300	67.3	58.3 - 75.2	<50	2.8	1.0 - 7.5	100	14.7	9.4 - 22.1	<50	8.9	4.7 - 16.2	<50	5.8	2.7 - 12.4	<50	0.5	0.1 - 1.5

**PRAMS Health Indicator 5-Year Aggregate Report - Number of cigarettes smoked per avg day last 3 months of pregnancy- by State;County;DOH Race-Ethnicity;PRAMS Age Group;Infant Gender;Married;Poverty Level;Income (2004-2011);Birthweight;Smoke 3rd Trimester;Smoke Before Pregnant;WIC During Pregnancy, for the Year(s) 2000-2004;2001-2005;2002-2006;2003-2007;2004-2008;2005-2009;2006-2010;2007-2011;2008-2012;2009-2013**

*Note: Weighted counts (#) represent 5-yr averages, rounded to the nearest hundred; n/r (Not Reportable) - If the unweighted total responses for a dimension (row) is <30 that row will not be shown*

41 cigarettes or more			Weighted Total Responses (5-Yr Avg)
#	%	C.I.(95%)	#
0	0.0	-	900
<50	0.3	0.0 - 2.1	1,600
0	0.0	-	100
0	0.0	-	600
0	0.0	-	400
0	0.0	-	500

41 cigarettes or more			Weighted Total Responses (5-Yr Avg)
#	%	C.I.(95%)	#
0	0.0	-	300
<50	0.4	0.1 - 2.6	1,300
0	0.0	-	2,000
0	0.0	-	400



**PRAMS Health Indicator 5-Year Aggregate Report - Number of cigarettes smoked per avg day last 3 months of pregnancy- by State;County;DOH Race-Ethnicity;PRAMS Age Group;Infant Gender;Married;Poverty Level;Income (2004-2011);Birthweight;Smoke 3rd Trimester;Smoke Before Pregnant;WIC During Pregnancy, for the Year(s) 2000-2004;2001-2005;2002-2006;2003-2007;2004-2008;2005-2009;2006-2010;2007-2011;2008-2012;2009-2013**

*Note: Weighted counts (#) represent 5-yr averages, rounded to the nearest hundred; n/r (Not Reportable) - If the unweighted total responses for a dimension (row) is <30 that row will not be shown*

**Year: 2009-2013**

Infant Gender	None (0 cigarettes)			Less than 1 cigarette			1 to 5 cigarettes			6 to 10 cigarettes			11 to 20 cigarettes			21 to 40 cigarettes		
	#	%	C.I.(95%)	#	%	C.I.(95%)	#	%	C.I.(95%)	#	%	C.I.(95%)	#	%	C.I.(95%)	#	%	C.I.(95%)
<b>Male</b>	1,400	71.4	67.4 - 75.2	100	4.5	3.0 - 6.9	200	12.4	9.9 - 15.3	200	8.0	5.9 - 10.9	<50	2.2	1.4 - 3.4	<50	1.5	0.7 - 3.2
<b>Female</b>	1,500	70.4	66.4 - 74.1	100	5.4	3.7 - 7.9	300	14.2	11.6 - 17.2	100	6.7	4.8 - 9.3	100	3.0	1.8 - 4.9	<50	0.1	0.0 - 0.3

Married	None (0 cigarettes)			Less than 1 cigarette			1 to 5 cigarettes			6 to 10 cigarettes			11 to 20 cigarettes			21 to 40 cigarettes		
	#	%	C.I.(95%)	#	%	C.I.(95%)	#	%	C.I.(95%)	#	%	C.I.(95%)	#	%	C.I.(95%)	#	%	C.I.(95%)
<b>Yes</b>	1,300	77.7	73.5 - 81.4	100	3.9	2.4 - 6.4	200	10.6	8.0 - 13.9	100	5.4	3.6 - 8.0	<50	2.0	1.1 - 3.8	<50	0.3	0.1 - 1.8
<b>No</b>	1,500	65.9	62.1 - 69.5	100	5.8	4.1 - 8.1	400	15.3	12.8 - 18.1	200	8.8	6.7 - 11.5	100	3.0	2.0 - 4.5	<50	1.1	0.5 - 2.4

Poverty Level	None (0 cigarettes)			Less than 1 cigarette			1 to 5 cigarettes			6 to 10 cigarettes			11 to 20 cigarettes			21 to 40 cigarettes		
	#	%	C.I.(95%)	#	%	C.I.(95%)	#	%	C.I.(95%)	#	%	C.I.(95%)	#	%	C.I.(95%)	#	%	C.I.(95%)
<b>0-130%</b>	1,200	61.9	57.6 - 65.9	100	5.8	4.0 - 8.4	400	19.3	16.3 - 22.8	200	8.3	6.1 - 11.1	100	3.2	2.2 - 4.7	<50	1.3	0.5 - 3.0
<b>131-185%</b>	500	78.3	71.1 - 84.0	<50	4.8	2.2 - 10.2	<50	7.0	4.2 - 11.4	<50	7.3	4.1 - 12.8	<50	1.9	0.7 - 5.2	<50	0.8	0.1 - 5.2
<b>186+%</b>	1,000	81.6	76.7 - 85.7	<50	3.1	1.7 - 5.6	100	8.1	5.5 - 11.9	100	5.7	3.5 - 9.2	<50	1.4	0.5 - 4.1	<50	0.1	0.0 - 0.5

**PRAMS Health Indicator 5-Year Aggregate Report - Number of cigarettes smoked per avg day last 3 months of pregnancy- by State;County;DOH Race-Ethnicity;PRAMS Age Group;Infant Gender;Married;Poverty Level;Income (2004-2011);Birthweight;Smoke 3rd Trimester;Smoke Before Pregnant;WIC During Pregnancy, for the Year(s) 2000-2004;2001-2005;2002-2006;2003-2007;2004-2008;2005-2009;2006-2010;2007-2011;2008-2012;2009-2013**

*Note: Weighted counts (#) represent 5-yr averages, rounded to the nearest hundred; n/r (Not Reportable) - If the unweighted total responses for a dimension (row) is <30 that row will not be shown*

41 cigarettes or more			Weighted Total Responses (5-Yr Avg)
#	%	C.I.(95%)	#
0	0.0	-	1,900
<50	0.2	0.0 - 1.6	2,100

41 cigarettes or more			Weighted Total Responses (5-Yr Avg)
#	%	C.I.(95%)	#
0	0.0	-	1,700
<50	0.2	0.0 - 1.4	2,300

41 cigarettes or more			Weighted Total Responses (5-Yr Avg)
#	%	C.I.(95%)	#
<50	0.3	0.0 - 1.8	1,900
0	0.0	-	600
0	0.0	-	1,200

**PRAMS Health Indicator 5-Year Aggregate Report - Number of cigarettes smoked per avg day last 3 months of pregnancy- by State;County;DOH Race-Ethnicity;PRAMS Age Group;Infant Gender;Married;Poverty Level;Income (2004-2011);Birthweight;Smoke 3rd Trimester;Smoke Before Pregnant;WIC During Pregnancy, for the Year(s) 2000-2004;2001-2005;2002-2006;2003-2007;2004-2008;2005-2009;2006-2010;2007-2011;2008-2012;2009-2013**

*Note: Weighted counts (#) represent 5-yr averages, rounded to the nearest hundred; n/r (Not Reportable) - If the unweighted total responses for a dimension (row) is <30 that row will not be shown*

**Year: 2009-2013**

Birthweight	None (0 cigarettes)			Less than 1 cigarette			1 to 5 cigarettes			6 to 10 cigarettes			11 to 20 cigarettes			21 to 40 cigarettes		
	#	%	C.I.(95%)	#	%	C.I.(95%)	#	%	C.I.(95%)	#	%	C.I.(95%)	#	%	C.I.(95%)	#	%	C.I.(95%)
Low birth weight	200	68.1	63.4 - 72.5	<50	4.4	2.8 - 6.8	100	16.9	13.4 - 21.0	<50	6.2	4.2 - 9.1	<50	3.4	2.0 - 5.6	<50	1.1	0.5 - 2.6
Normal birth weight	2,600	71.3	68.2 - 74.2	200	5.1	3.7 - 6.8	500	12.8	10.9 - 15.0	300	7.4	5.8 - 9.4	100	2.5	1.7 - 3.7	<50	0.7	0.3 - 1.7

Smoke 3rd Trimester	None (0 cigarettes)			Less than 1 cigarette			1 to 5 cigarettes			6 to 10 cigarettes			11 to 20 cigarettes			21 to 40 cigarettes		
	#	%	C.I.(95%)	#	%	C.I.(95%)	#	%	C.I.(95%)	#	%	C.I.(95%)	#	%	C.I.(95%)	#	%	C.I.(95%)
Yes	0	0.0	-	200	17.1	13.1 - 22.1	500	45.7	40.2 - 51.2	300	25.3	20.6 - 30.6	100	8.9	6.3 - 12.4	<50	2.6	1.3 - 5.4
No	2,900	100.0	-	0	0.0	-	0	0.0	-	0	0.0	-	0	0.0	-	0	0.0	-

Smoke Before Pregnant	None (0 cigarettes)			Less than 1 cigarette			1 to 5 cigarettes			6 to 10 cigarettes			11 to 20 cigarettes			21 to 40 cigarettes		
	#	%	C.I.(95%)	#	%	C.I.(95%)	#	%	C.I.(95%)	#	%	C.I.(95%)	#	%	C.I.(95%)	#	%	C.I.(95%)
Yes	2,400	66.9	63.8 - 69.9	200	5.7	4.3 - 7.5	500	15.2	13.1 - 17.5	300	8.2	6.6 - 10.3	100	3.0	2.1 - 4.2	<50	0.8	0.4 - 1.8
No	500	98.5	92.8 - 99.7	0	0.0	-	0	0.0	-	<50	1.2	0.2 - 7.9	0	0.0	-	<50	0.2	0.0 - 1.4

**PRAMS Health Indicator 5-Year Aggregate Report - Number of cigarettes smoked per avg day last 3 months of pregnancy- by State;County;DOH Race-Ethnicity;PRAMS Age Group;Infant Gender;Married;Poverty Level;Income (2004-2011);Birthweight;Smoke 3rd Trimester;Smoke Before Pregnant;WIC During Pregnancy, for the Year(s) 2000-2004;2001-2005;2002-2006;2003-2007;2004-2008;2005-2009;2006-2010;2007-2011;2008-2012;2009-2013**

*Note: Weighted counts (#) represent 5-yr averages, rounded to the nearest hundred; n/r (Not Reportable) - If the unweighted total responses for a dimension (row) is <30 that row will not be shown*

41 cigarettes or more			Weighted Total Responses (5-Yr Avg)
#	%	C.I.(95%)	#
0	0.0	-	300
<50	0.1	0.0 - 0.9	3,700

41 cigarettes or more			Weighted Total Responses (5-Yr Avg)
#	%	C.I.(95%)	#
<50	0.4	0.1 - 2.8	1,200
0	0.0	-	2,900

41 cigarettes or more			Weighted Total Responses (5-Yr Avg)
#	%	C.I.(95%)	#
<50	0.1	0.0 - 0.9	3,500
0	0.0	-	500

**PRAMS Health Indicator 5-Year Aggregate Report - Number of cigarettes smoked per avg day last 3 months of pregnancy- by State;County;DOH Race-Ethnicity;PRAMS Age Group;Infant Gender;Married;Poverty Level;Income (2004-2011);Birthweight;Smoke 3rd Trimester;Smoke Before Pregnant;WIC During Pregnancy, for the Year(s) 2000-2004;2001-2005;2002-2006;2003-2007;2004-2008;2005-2009;2006-2010;2007-2011;2008-2012;2009-2013**

*Note: Weighted counts (#) represent 5-yr averages, rounded to the nearest hundred; n/r (Not Reportable) - If the unweighted total responses for a dimension (row) is <30 that row will not be shown*

**Year: 2009-2013**

WIC During Pregnancy	None (0 cigarettes)			Less than 1 cigarette			1 to 5 cigarettes			6 to 10 cigarettes			11 to 20 cigarettes			21 to 40 cigarettes		
	#	%	C.I.(95%)	#	%	C.I.(95%)	#	%	C.I.(95%)	#	%	C.I.(95%)	#	%	C.I.(95%)	#	%	C.I.(95%)
<b>Yes</b>	1,500	66.8	63.0 - 70.4	100	5.6	3.9 - 7.8	300	14.3	12.0 - 16.9	200	9.0	6.9 - 11.7	100	3.1	2.0 - 4.7	<50	1.0	0.4 - 2.4
<b>No</b>	1,400	75.8	71.4 - 79.7	100	4.1	2.5 - 6.7	200	12.3	9.5 - 15.8	100	5.4	3.6 - 8.2	<50	1.9	1.0 - 3.6	<50	0.5	0.1 - 2.0

**PRAMS Health Indicator 5-Year Aggregate Report - Number of cigarettes smoked per avg day last 3 months of pregnancy- by State;County;DOH Race-Ethnicity;PRAMS Age Group;Infant Gender;Married;Poverty Level;Income (2004-2011);Birthweight;Smoke 3rd Trimester;Smoke Before Pregnant;WIC During Pregnancy, for the Year(s) 2000-2004;2001-2005;2002-2006;2003-2007;2004-2008;2005-2009;2006-2010;2007-2011;2008-2012;2009-2013**

*Note: Weighted counts (#) represent 5-yr averages, rounded to the nearest hundred; n/r (Not Reportable) - If the unweighted total responses for a dimension (row) is <30 that row will not be shown*

41 cigarettes or more			Weighted Total Responses (5-Yr Avg)
#	%	C.I.(95%)	#
<50	0.2	0.0 - 1.5	2,200
0	0.0	-	1,800

**PRAMS Health Indicator 5-Year Aggregate Report - Number of cigarettes smoked per avg day last 3 months of pregnancy- by State;County;DOH Race-Ethnicity;PRAMS Age Group;Infant Gender;Married;Poverty Level;Income (2004-2011);Birthweight;Smoke 3rd Trimester;Smoke Before Pregnant;WIC During Pregnancy, for the Year(s) 2000-2004;2001-2005;2002-2006;2003-2007;2004-2008;2005-2009;2006-2010;2007-2011;2008-2012;2009-2013**

*Note: Weighted counts (#) represent 5-yr averages, rounded to the nearest hundred; n/r (Not Reportable) - If the unweighted total responses for a dimension (row) is <30 that row will not be shown*

**Year: 2008-2012**

State	None (0 cigarettes)			Less than 1 cigarette			1 to 5 cigarettes			6 to 10 cigarettes			11 to 20 cigarettes			21 to 40 cigarettes		
	#	%	C.I.(95%)	#	%	C.I.(95%)	#	%	C.I.(95%)	#	%	C.I.(95%)	#	%	C.I.(95%)	#	%	C.I.(95%)
<b>Totals</b>	2,700	67.8	65.0 - 70.4	200	5.2	4.0 - 6.7	600	14.9	13.0 - 16.9	300	8.4	6.9 - 10.3	100	2.8	2.0 - 3.8	<50	0.8	0.4 - 1.6

County	None (0 cigarettes)			Less than 1 cigarette			1 to 5 cigarettes			6 to 10 cigarettes			11 to 20 cigarettes			21 to 40 cigarettes		
	#	%	C.I.(95%)	#	%	C.I.(95%)	#	%	C.I.(95%)	#	%	C.I.(95%)	#	%	C.I.(95%)	#	%	C.I.(95%)
<b>Hawaii</b>	400	62.1	57.3 - 66.6	<50	5.6	3.6 - 8.4	100	22.2	18.4 - 26.4	<50	6.8	4.7 - 9.8	<50	3.4	2.1 - 5.4	0	0.0	-
<b>Honolulu</b>	1,800	68.8	64.9 - 72.4	100	5.1	3.6 - 7.3	300	13.1	10.6 - 16.0	200	9.2	7.0 - 11.8	100	2.5	1.6 - 4.0	<50	1.1	0.5 - 2.4
<b>Kauai</b>	100	64.6	57.6 - 70.9	<50	5.6	3.1 - 10.0	<50	16.1	11.4 - 22.1	<50	8.9	5.4 - 14.2	<50	4.3	2.2 - 8.3	<50	0.5	0.1 - 2.9
<b>Maui</b>	300	71.4	66.6 - 75.8	<50	4.9	3.0 - 7.8	100	14.2	11.0 - 18.1	<50	6.3	4.0 - 9.6	<50	2.8	1.7 - 4.6	<50	0.5	0.1 - 1.7

**PRAMS Health Indicator 5-Year Aggregate Report - Number of cigarettes smoked per avg day last 3 months of pregnancy- by State;County;DOH Race-Ethnicity;PRAMS Age Group;Infant Gender;Married;Poverty Level;Income (2004-2011);Birthweight;Smoke 3rd Trimester;Smoke Before Pregnant;WIC During Pregnancy, for the Year(s) 2000-2004;2001-2005;2002-2006;2003-2007;2004-2008;2005-2009;2006-2010;2007-2011;2008-2012;2009-2013**

*Note: Weighted counts (#) represent 5-yr averages, rounded to the nearest hundred; n/r (Not Reportable) - If the unweighted total responses for a dimension (row) is <30 that row will not be shown*

41 cigarettes or more			Weighted Total Responses (5-Yr Avg)
#	%	C.I.(95%)	#
<50	0.2	0.0 - 0.8	4,000

41 cigarettes or more			Weighted Total Responses (5-Yr Avg)
#	%	C.I.(95%)	#
0	0.0	-	700
<50	0.3	0.1 - 1.2	2,700
0	0.0	-	200
0	0.0	-	500



**PRAMS Health Indicator 5-Year Aggregate Report - Number of cigarettes smoked per avg day last 3 months of pregnancy- by State;County;DOH Race-Ethnicity;PRAMS Age Group;Infant Gender;Married;Poverty Level;Income (2004-2011);Birthweight;Smoke 3rd Trimester;Smoke Before Pregnant;WIC During Pregnancy, for the Year(s) 2000-2004;2001-2005;2002-2006;2003-2007;2004-2008;2005-2009;2006-2010;2007-2011;2008-2012;2009-2013**

*Note: Weighted counts (#) represent 5-yr averages, rounded to the nearest hundred; n/r (Not Reportable) - If the unweighted total responses for a dimension (row) is <30 that row will not be shown*

**Year: 2008-2012**

DOH Race-Ethnicity	None (0 cigarettes)			Less than 1 cigarette			1 to 5 cigarettes			6 to 10 cigarettes			11 to 20 cigarettes			21 to 40 cigarettes		
	#	%	C.I.(95%)	#	%	C.I.(95%)	#	%	C.I.(95%)	#	%	C.I.(95%)	#	%	C.I.(95%)	#	%	C.I.(95%)
Caucasian	700	75.4	70.0 - 80.2	<50	4.4	2.7 - 7.2	100	9.5	6.5 - 13.8	100	7.7	5.0 - 11.7	<50	2.9	1.6 - 5.3	0	0.0	-
Native Hawaiian	900	60.7	56.3 - 65.0	100	6.0	4.1 - 8.6	300	18.6	15.6 - 22.0	200	10.8	8.2 - 14.1	<50	3.1	2.0 - 4.8	<50	0.3	0.1 - 0.6
Chinese	100	69.0	48.6 - 84.0	<50	17.2	6.0 - 40.3	<50	5.8	2.6 - 12.5	<50	6.1	0.9 - 31.5	<50	0.9	0.2 - 5.0	<50	1.0	0.2 - 5.5
Filipino	400	75.5	68.1 - 81.6	<50	4.5	2.1 - 9.7	100	9.8	6.2 - 15.2	<50	6.8	3.6 - 12.6	<50	3.0	1.3 - 6.6	<50	0.4	0.1 - 2.5
Japanese	200	69.5	59.3 - 78.1	<50	2.4	0.7 - 8.1	100	21.6	14.3 - 31.5	<50	2.9	1.1 - 7.4	<50	1.8	0.3 - 9.4	<50	1.8	0.4 - 8.2
Other	300	66.1	57.6 - 73.6	<50	4.5	2.1 - 9.5	100	15.4	10.2 - 22.4	<50	8.5	4.7 - 14.7	<50	2.2	0.7 - 6.4	<50	3.4	1.1 - 9.8

PRAMS Age Group	None (0 cigarettes)			Less than 1 cigarette			1 to 5 cigarettes			6 to 10 cigarettes			11 to 20 cigarettes			21 to 40 cigarettes		
	#	%	C.I.(95%)	#	%	C.I.(95%)	#	%	C.I.(95%)	#	%	C.I.(95%)	#	%	C.I.(95%)	#	%	C.I.(95%)
<20	200	65.5	56.0 - 73.8	<50	4.5	2.2 - 8.9	100	17.7	11.6 - 25.9	<50	6.6	3.0 - 13.8	<50	2.7	1.1 - 6.5	<50	3.1	0.9 - 10.0
20-24	900	70.0	64.9 - 74.6	100	5.4	3.3 - 8.5	200	13.5	10.4 - 17.4	100	8.9	6.2 - 12.7	<50	1.8	0.9 - 3.4	0	0.0	-
25-34	1,300	67.7	63.8 - 71.4	100	5.8	4.1 - 8.2	300	15.3	12.7 - 18.3	200	7.6	5.6 - 10.2	<50	2.5	1.6 - 3.8	<50	1.0	0.4 - 2.6
35+	300	63.5	55.1 - 71.2	<50	2.5	1.3 - 4.9	100	14.6	9.6 - 21.5	100	12.0	7.4 - 18.9	<50	6.9	3.4 - 13.4	<50	0.5	0.1 - 1.6

**PRAMS Health Indicator 5-Year Aggregate Report - Number of cigarettes smoked per avg day last 3 months of pregnancy- by State;County;DOH Race-Ethnicity;PRAMS Age Group;Infant Gender;Married;Poverty Level;Income (2004-2011);Birthweight;Smoke 3rd Trimester;Smoke Before Pregnant;WIC During Pregnancy, for the Year(s) 2000-2004;2001-2005;2002-2006;2003-2007;2004-2008;2005-2009;2006-2010;2007-2011;2008-2012;2009-2013**

*Note: Weighted counts (#) represent 5-yr averages, rounded to the nearest hundred; n/r (Not Reportable) - If the unweighted total responses for a dimension (row) is <30 that row will not be shown*

41 cigarettes or more			Weighted Total Responses (5-Yr Avg)
#	%	C.I.(95%)	#
0	0.0	-	900
<50	0.5	0.1 - 2.0	1,600
0	0.0	-	100
0	0.0	-	500
0	0.0	-	400
0	0.0	-	500

41 cigarettes or more			Weighted Total Responses (5-Yr Avg)
#	%	C.I.(95%)	#
0	0.0	-	300
<50	0.4	0.1 - 2.6	1,200
<50	0.1	0.0 - 1.0	2,000
0	0.0	-	400

**PRAMS Health Indicator 5-Year Aggregate Report - Number of cigarettes smoked per avg day last 3 months of pregnancy- by State;County;DOH Race-Ethnicity;PRAMS Age Group;Infant Gender;Married;Poverty Level;Income (2004-2011);Birthweight;Smoke 3rd Trimester;Smoke Before Pregnant;WIC During Pregnancy, for the Year(s) 2000-2004;2001-2005;2002-2006;2003-2007;2004-2008;2005-2009;2006-2010;2007-2011;2008-2012;2009-2013**

*Note: Weighted counts (#) represent 5-yr averages, rounded to the nearest hundred; n/r (Not Reportable) - If the unweighted total responses for a dimension (row) is <30 that row will not be shown*

**Year: 2008-2012**

Infant Gender	None (0 cigarettes)			Less than 1 cigarette			1 to 5 cigarettes			6 to 10 cigarettes			11 to 20 cigarettes			21 to 40 cigarettes		
	#	%	C.I.(95%)	#	%	C.I.(95%)	#	%	C.I.(95%)	#	%	C.I.(95%)	#	%	C.I.(95%)	#	%	C.I.(95%)
<b>Male</b>	1,400	68.3	64.4 - 71.9	100	5.0	3.5 - 7.0	300	13.2	10.8 - 16.1	200	9.3	7.1 - 12.0	100	2.8	1.9 - 4.2	<50	1.4	0.6 - 3.1
<b>Female</b>	1,300	67.3	63.3 - 71.0	100	5.4	3.8 - 7.7	300	16.5	13.8 - 19.6	200	7.6	5.6 - 10.2	100	2.7	1.7 - 4.3	<50	0.2	0.0 - 0.6

Married	None (0 cigarettes)			Less than 1 cigarette			1 to 5 cigarettes			6 to 10 cigarettes			11 to 20 cigarettes			21 to 40 cigarettes		
	#	%	C.I.(95%)	#	%	C.I.(95%)	#	%	C.I.(95%)	#	%	C.I.(95%)	#	%	C.I.(95%)	#	%	C.I.(95%)
<b>Yes</b>	1,300	73.9	69.9 - 77.6	100	3.7	2.4 - 5.6	200	13.4	10.6 - 16.7	100	6.2	4.3 - 8.8	<50	2.5	1.5 - 4.1	<50	0.3	0.0 - 2.0
<b>No</b>	1,500	63.2	59.5 - 66.8	100	6.3	4.6 - 8.6	400	16.0	13.5 - 18.8	200	10.0	7.9 - 12.7	100	3.0	2.0 - 4.4	<50	1.2	0.5 - 2.5

Poverty Level	None (0 cigarettes)			Less than 1 cigarette			1 to 5 cigarettes			6 to 10 cigarettes			11 to 20 cigarettes			21 to 40 cigarettes		
	#	%	C.I.(95%)	#	%	C.I.(95%)	#	%	C.I.(95%)	#	%	C.I.(95%)	#	%	C.I.(95%)	#	%	C.I.(95%)
<b>0-130%</b>	1,100	57.9	53.8 - 61.8	100	6.1	4.4 - 8.4	400	20.8	17.8 - 24.3	200	10.0	7.7 - 12.9	100	3.6	2.5 - 5.2	<50	1.3	0.6 - 3.0
<b>131-185%</b>	500	74.4	67.5 - 80.3	<50	4.7	2.3 - 9.4	100	8.7	5.7 - 13.0	100	8.4	4.9 - 13.9	<50	2.6	1.1 - 5.8	<50	0.8	0.1 - 5.1
<b>186+%</b>	900	79.8	75.0 - 83.9	<50	3.5	2.0 - 6.1	100	9.0	6.3 - 12.8	100	6.2	3.9 - 9.6	<50	1.4	0.6 - 3.2	<50	0.1	0.0 - 0.5

**PRAMS Health Indicator 5-Year Aggregate Report - Number of cigarettes smoked per avg day last 3 months of pregnancy- by State;County;DOH Race-Ethnicity;PRAMS Age Group;Infant Gender;Married;Poverty Level;Income (2004-2011);Birthweight;Smoke 3rd Trimester;Smoke Before Pregnant;WIC During Pregnancy, for the Year(s) 2000-2004;2001-2005;2002-2006;2003-2007;2004-2008;2005-2009;2006-2010;2007-2011;2008-2012;2009-2013**

*Note: Weighted counts (#) represent 5-yr averages, rounded to the nearest hundred; n/r (Not Reportable) - If the unweighted total responses for a dimension (row) is <30 that row will not be shown*

41 cigarettes or more			Weighted Total Responses (5-Yr Avg)
#	%	C.I.(95%)	#
0	0.0	-	2,000
<50	0.4	0.1 - 1.6	2,000

41 cigarettes or more			Weighted Total Responses (5-Yr Avg)
#	%	C.I.(95%)	#
0	0.0	-	1,700
<50	0.3	0.1 - 1.4	2,300

41 cigarettes or more			Weighted Total Responses (5-Yr Avg)
#	%	C.I.(95%)	#
<50	0.3	0.0 - 1.7	1,900
<50	0.4	0.1 - 2.9	700
0	0.0	-	1,200

**PRAMS Health Indicator 5-Year Aggregate Report - Number of cigarettes smoked per avg day last 3 months of pregnancy- by State;County;DOH Race-Ethnicity;PRAMS Age Group;Infant Gender;Married;Poverty Level;Income (2004-2011);Birthweight;Smoke 3rd Trimester;Smoke Before Pregnant;WIC During Pregnancy, for the Year(s) 2000-2004;2001-2005;2002-2006;2003-2007;2004-2008;2005-2009;2006-2010;2007-2011;2008-2012;2009-2013**

*Note: Weighted counts (#) represent 5-yr averages, rounded to the nearest hundred; n/r (Not Reportable) - If the unweighted total responses for a dimension (row) is <30 that row will not be shown*

**Year: 2008-2012**

Birthweight	None (0 cigarettes)			Less than 1 cigarette			1 to 5 cigarettes			6 to 10 cigarettes			11 to 20 cigarettes			21 to 40 cigarettes		
	#	%	C.I.(95%)	#	%	C.I.(95%)	#	%	C.I.(95%)	#	%	C.I.(95%)	#	%	C.I.(95%)	#	%	C.I.(95%)
Low birth weight	200	65.0	59.3 - 70.4	<50	4.1	2.5 - 6.6	100	18.1	13.9 - 23.2	<50	6.1	3.7 - 10.0	<50	5.8	3.3 - 9.8	<50	0.9	0.3 - 2.4
Normal birth weight	2,500	68.1	65.2 - 71.0	200	5.3	4.1 - 6.9	500	14.4	12.5 - 16.6	300	8.6	7.0 - 10.6	100	2.5	1.7 - 3.6	<50	0.8	0.4 - 1.7

Smoke 3rd Trimester	None (0 cigarettes)			Less than 1 cigarette			1 to 5 cigarettes			6 to 10 cigarettes			11 to 20 cigarettes			21 to 40 cigarettes		
	#	%	C.I.(95%)	#	%	C.I.(95%)	#	%	C.I.(95%)	#	%	C.I.(95%)	#	%	C.I.(95%)	#	%	C.I.(95%)
Yes	0	0.0	-	200	16.1	12.7 - 20.3	600	46.1	41.2 - 51.1	300	26.1	21.8 - 31.0	100	8.6	6.3 - 11.6	<50	2.5	1.2 - 5.0
No	2,700	100.0	-	0	0.0	-	0	0.0	-	0	0.0	-	0	0.0	-	0	0.0	-

Smoke Before Pregnant	None (0 cigarettes)			Less than 1 cigarette			1 to 5 cigarettes			6 to 10 cigarettes			11 to 20 cigarettes			21 to 40 cigarettes		
	#	%	C.I.(95%)	#	%	C.I.(95%)	#	%	C.I.(95%)	#	%	C.I.(95%)	#	%	C.I.(95%)	#	%	C.I.(95%)
Yes	2,300	64.1	61.1 - 66.9	200	5.8	4.5 - 7.5	600	16.7	14.6 - 19.0	300	9.3	7.6 - 11.3	100	3.1	2.3 - 4.2	<50	0.9	0.4 - 1.8
No	400	98.3	91.8 - 99.7	0	0.0	-	0	0.0	-	<50	1.4	0.2 - 9.1	0	0.0	-	<50	0.3	0.0 - 1.6

**PRAMS Health Indicator 5-Year Aggregate Report - Number of cigarettes smoked per avg day last 3 months of pregnancy- by State;County;DOH Race-Ethnicity;PRAMS Age Group;Infant Gender;Married;Poverty Level;Income (2004-2011);Birthweight;Smoke 3rd Trimester;Smoke Before Pregnant;WIC During Pregnancy, for the Year(s) 2000-2004;2001-2005;2002-2006;2003-2007;2004-2008;2005-2009;2006-2010;2007-2011;2008-2012;2009-2013**

*Note: Weighted counts (#) represent 5-yr averages, rounded to the nearest hundred; n/r (Not Reportable) - If the unweighted total responses for a dimension (row) is <30 that row will not be shown*

41 cigarettes or more			Weighted Total Responses (5-Yr Avg)
#	%	C.I.(95%)	#
0	0.0	-	300
<50	0.2	0.1 - 0.9	3,700

41 cigarettes or more			Weighted Total Responses (5-Yr Avg)
#	%	C.I.(95%)	#
<50	0.6	0.1 - 2.4	1,300
0	0.0	-	2,700

41 cigarettes or more			Weighted Total Responses (5-Yr Avg)
#	%	C.I.(95%)	#
<50	0.2	0.1 - 0.9	3,600
0	0.0	-	400

**PRAMS Health Indicator 5-Year Aggregate Report - Number of cigarettes smoked per avg day last 3 months of pregnancy- by State;County;DOH Race-Ethnicity;PRAMS Age Group;Infant Gender;Married;Poverty Level;Income (2004-2011);Birthweight;Smoke 3rd Trimester;Smoke Before Pregnant;WIC During Pregnancy, for the Year(s) 2000-2004;2001-2005;2002-2006;2003-2007;2004-2008;2005-2009;2006-2010;2007-2011;2008-2012;2009-2013**

*Note: Weighted counts (#) represent 5-yr averages, rounded to the nearest hundred; n/r (Not Reportable) - If the unweighted total responses for a dimension (row) is <30 that row will not be shown*

**Year: 2008-2012**

WIC During Pregnancy	None (0 cigarettes)			Less than 1 cigarette			1 to 5 cigarettes			6 to 10 cigarettes			11 to 20 cigarettes			21 to 40 cigarettes		
	#	%	C.I.(95%)	#	%	C.I.(95%)	#	%	C.I.(95%)	#	%	C.I.(95%)	#	%	C.I.(95%)	#	%	C.I.(95%)
<b>Yes</b>	1,400	63.5	59.9 - 67.0	100	6.0	4.4 - 8.1	400	16.0	13.6 - 18.7	200	10.1	7.9 - 12.7	100	3.3	2.2 - 4.8	<50	1.0	0.4 - 2.3
<b>No</b>	1,300	73.3	69.1 - 77.2	100	4.0	2.5 - 6.2	200	13.4	10.6 - 16.8	100	6.4	4.4 - 9.2	<50	2.1	1.2 - 3.5	<50	0.6	0.2 - 2.0

**PRAMS Health Indicator 5-Year Aggregate Report - Number of cigarettes smoked per avg day last 3 months of pregnancy- by State;County;DOH Race-Ethnicity;PRAMS Age Group;Infant Gender;Married;Poverty Level;Income (2004-2011);Birthweight;Smoke 3rd Trimester;Smoke Before Pregnant;WIC During Pregnancy, for the Year(s) 2000-2004;2001-2005;2002-2006;2003-2007;2004-2008;2005-2009;2006-2010;2007-2011;2008-2012;2009-2013**

*Note: Weighted counts (#) represent 5-yr averages, rounded to the nearest hundred; n/r (Not Reportable) - If the unweighted total responses for a dimension (row) is <30 that row will not be shown*

41 cigarettes or more			Weighted Total Responses (5-Yr Avg)
#	%	C.I.(95%)	#
<50	0.2	0.0 - 1.5	2,200
<50	0.2	0.0 - 1.1	1,700



**PRAMS Health Indicator 5-Year Aggregate Report - Number of cigarettes smoked per avg day last 3 months of pregnancy- by State;County;DOH Race-Ethnicity;PRAMS Age Group;Infant Gender;Married;Poverty Level;Income (2004-2011);Birthweight;Smoke 3rd Trimester;Smoke Before Pregnant;WIC During Pregnancy, for the Year(s) 2000-2004;2001-2005;2002-2006;2003-2007;2004-2008;2005-2009;2006-2010;2007-2011;2008-2012;2009-2013**

*Note: Weighted counts (#) represent 5-yr averages, rounded to the nearest hundred; n/r (Not Reportable) - If the unweighted total responses for a dimension (row) is <30 that row will not be shown*

**Year: 2007-2011**

State	None (0 cigarettes)			Less than 1 cigarette			1 to 5 cigarettes			6 to 10 cigarettes			11 to 20 cigarettes			21 to 40 cigarettes		
	#	%	C.I.(95%)	#	%	C.I.(95%)	#	%	C.I.(95%)	#	%	C.I.(95%)	#	%	C.I.(95%)	#	%	C.I.(95%)
<b>Totals</b>	2,700	65.1	62.4 - 67.6	200	5.4	4.3 - 6.8	700	16.9	15.0 - 18.9	400	8.6	7.1 - 10.4	100	2.9	2.1 - 3.9	<50	1.0	0.5 - 1.8

County	None (0 cigarettes)			Less than 1 cigarette			1 to 5 cigarettes			6 to 10 cigarettes			11 to 20 cigarettes			21 to 40 cigarettes		
	#	%	C.I.(95%)	#	%	C.I.(95%)	#	%	C.I.(95%)	#	%	C.I.(95%)	#	%	C.I.(95%)	#	%	C.I.(95%)
<b>Hawaii</b>	400	61.1	56.1 - 65.8	<50	5.4	3.4 - 8.3	200	22.2	18.4 - 26.6	100	7.9	5.5 - 11.3	<50	3.4	2.1 - 5.5	0	0.0	-
<b>Honolulu</b>	1,800	65.5	61.9 - 68.9	100	5.2	3.8 - 7.2	400	15.9	13.4 - 18.7	300	9.0	7.0 - 11.5	100	2.7	1.7 - 4.2	<50	1.4	0.7 - 2.6
<b>Kauai</b>	100	62.5	54.4 - 69.9	<50	5.6	3.1 - 10.1	<50	18.6	12.9 - 26.1	<50	8.9	5.1 - 15.1	<50	3.8	1.8 - 7.7	<50	0.5	0.1 - 2.9
<b>Maui</b>	300	69.1	63.9 - 74.0	<50	6.3	4.0 - 9.8	100	14.1	10.9 - 18.2	<50	7.4	4.7 - 11.3	<50	2.6	1.4 - 4.7	<50	0.5	0.1 - 1.7

**PRAMS Health Indicator 5-Year Aggregate Report - Number of cigarettes smoked per avg day last 3 months of pregnancy- by State;County;DOH Race-Ethnicity;PRAMS Age Group;Infant Gender;Married;Poverty Level;Income (2004-2011);Birthweight;Smoke 3rd Trimester;Smoke Before Pregnant;WIC During Pregnancy, for the Year(s) 2000-2004;2001-2005;2002-2006;2003-2007;2004-2008;2005-2009;2006-2010;2007-2011;2008-2012;2009-2013**

*Note: Weighted counts (#) represent 5-yr averages, rounded to the nearest hundred; n/r (Not Reportable) - If the unweighted total responses for a dimension (row) is <30 that row will not be shown*

41 cigarettes or more			Weighted Total Responses (5-Yr Avg)
#	%	C.I.(95%)	#
<50	0.2	0.1 - 0.7	4,100

41 cigarettes or more			Weighted Total Responses (5-Yr Avg)
#	%	C.I.(95%)	#
0	0.0	-	700
<50	0.3	0.1 - 1.1	2,800
0	0.0	-	200
0	0.0	-	500

**PRAMS Health Indicator 5-Year Aggregate Report - Number of cigarettes smoked per avg day last 3 months of pregnancy- by State;County;DOH Race-Ethnicity;PRAMS Age Group;Infant Gender;Married;Poverty Level;Income (2004-2011);Birthweight;Smoke 3rd Trimester;Smoke Before Pregnant;WIC During Pregnancy, for the Year(s) 2000-2004;2001-2005;2002-2006;2003-2007;2004-2008;2005-2009;2006-2010;2007-2011;2008-2012;2009-2013**

*Note: Weighted counts (#) represent 5-yr averages, rounded to the nearest hundred; n/r (Not Reportable) - If the unweighted total responses for a dimension (row) is <30 that row will not be shown*

**Year: 2007-2011**

DOH Race-Ethnicity	None (0 cigarettes)			Less than 1 cigarette			1 to 5 cigarettes			6 to 10 cigarettes			11 to 20 cigarettes			21 to 40 cigarettes		
	#	%	C.I.(95%)	#	%	C.I.(95%)	#	%	C.I.(95%)	#	%	C.I.(95%)	#	%	C.I.(95%)	#	%	C.I.(95%)
Caucasian	700	71.6	66.4 - 76.3	<50	4.4	2.9 - 6.8	100	13.4	10.1 - 17.6	100	7.4	4.8 - 11.2	<50	2.9	1.6 - 5.2	<50	0.2	0.0 - 1.4
Native Hawaiian	900	57.0	52.7 - 61.2	100	6.4	4.6 - 8.9	300	20.3	17.2 - 23.8	200	11.4	8.8 - 14.7	100	3.6	2.4 - 5.5	<50	0.7	0.3 - 1.7
Chinese	100	64.2	43.2 - 80.9	<50	17.8	5.7 - 43.9	<50	8.8	4.3 - 17.0	<50	7.0	1.0 - 34.9	<50	1.1	0.2 - 5.8	<50	1.2	0.2 - 6.3
Filipino	400	74.4	67.5 - 80.3	<50	4.6	2.2 - 9.6	100	10.4	7.1 - 15.0	<50	7.5	4.2 - 13.1	<50	2.6	1.1 - 6.2	<50	0.4	0.1 - 2.4
Japanese	300	67.6	58.4 - 75.6	<50	4.5	2.0 - 10.0	100	21.4	14.7 - 30.1	<50	3.3	1.4 - 7.6	<50	1.6	0.3 - 8.5	<50	1.6	0.3 - 7.3
Other	400	65.0	57.1 - 72.1	<50	3.7	1.9 - 7.3	100	17.9	12.6 - 24.8	<50	8.1	4.7 - 13.6	<50	1.9	0.6 - 6.1	<50	3.2	1.1 - 9.3

PRAMS Age Group	None (0 cigarettes)			Less than 1 cigarette			1 to 5 cigarettes			6 to 10 cigarettes			11 to 20 cigarettes			21 to 40 cigarettes		
	#	%	C.I.(95%)	#	%	C.I.(95%)	#	%	C.I.(95%)	#	%	C.I.(95%)	#	%	C.I.(95%)	#	%	C.I.(95%)
<20	200	60.7	51.9 - 68.9	<50	7.7	4.3 - 13.3	100	19.6	13.6 - 27.4	<50	7.4	3.8 - 14.0	<50	2.1	0.8 - 5.5	<50	2.5	0.7 - 8.9
20-24	900	68.2	63.5 - 72.6	100	6.1	4.1 - 9.0	200	14.5	11.5 - 18.1	100	9.0	6.4 - 12.4	<50	1.9	1.0 - 3.5	0	0.0	-
25-34	1,200	64.4	60.5 - 68.0	100	5.0	3.5 - 7.1	400	18.7	15.9 - 21.8	100	7.6	5.7 - 10.1	100	2.7	1.7 - 4.1	<50	1.5	0.7 - 3.1
35+	300	62.2	54.1 - 69.7	<50	3.1	1.6 - 6.1	100	14.1	9.5 - 20.6	100	12.9	8.2 - 19.7	<50	7.2	3.8 - 13.5	<50	0.4	0.1 - 1.5

**PRAMS Health Indicator 5-Year Aggregate Report - Number of cigarettes smoked per avg day last 3 months of pregnancy- by State;County;DOH Race-Ethnicity;PRAMS Age Group;Infant Gender;Married;Poverty Level;Income (2004-2011);Birthweight;Smoke 3rd Trimester;Smoke Before Pregnant;WIC During Pregnancy, for the Year(s) 2000-2004;2001-2005;2002-2006;2003-2007;2004-2008;2005-2009;2006-2010;2007-2011;2008-2012;2009-2013**

*Note: Weighted counts (#) represent 5-yr averages, rounded to the nearest hundred; n/r (Not Reportable) - If the unweighted total responses for a dimension (row) is <30 that row will not be shown*

41 cigarettes or more			Weighted Total Responses (5-Yr Avg)
#	%	C.I.(95%)	#
0	0.0	-	1,000
<50	0.5	0.1 - 2.0	1,600
0	0.0	-	100
0	0.0	-	600
0	0.0	-	400
<50	0.1	0.0 - 0.7	600

41 cigarettes or more			Weighted Total Responses (5-Yr Avg)
#	%	C.I.(95%)	#
0	0.0	-	400
<50	0.4	0.1 - 2.4	1,400
<50	0.2	0.0 - 0.9	1,900
0	0.0	-	500

**PRAMS Health Indicator 5-Year Aggregate Report - Number of cigarettes smoked per avg day last 3 months of pregnancy- by State;County;DOH Race-Ethnicity;PRAMS Age Group;Infant Gender;Married;Poverty Level;Income (2004-2011);Birthweight;Smoke 3rd Trimester;Smoke Before Pregnant;WIC During Pregnancy, for the Year(s) 2000-2004;2001-2005;2002-2006;2003-2007;2004-2008;2005-2009;2006-2010;2007-2011;2008-2012;2009-2013**

*Note: Weighted counts (#) represent 5-yr averages, rounded to the nearest hundred; n/r (Not Reportable) - If the unweighted total responses for a dimension (row) is <30 that row will not be shown*

**Year: 2007-2011**

Infant Gender	None (0 cigarettes)			Less than 1 cigarette			1 to 5 cigarettes			6 to 10 cigarettes			11 to 20 cigarettes			21 to 40 cigarettes		
	#	%	C.I.(95%)	#	%	C.I.(95%)	#	%	C.I.(95%)	#	%	C.I.(95%)	#	%	C.I.(95%)	#	%	C.I.(95%)
<b>Male</b>	1,400	65.3	61.6 - 68.8	100	6.0	4.5 - 8.1	300	15.2	12.8 - 18.1	200	9.1	7.1 - 11.7	100	2.8	1.9 - 4.2	<50	1.6	0.8 - 3.2
<b>Female</b>	1,300	64.9	61.1 - 68.5	100	4.7	3.3 - 6.7	400	18.6	15.8 - 21.7	200	8.1	6.1 - 10.7	100	2.9	1.9 - 4.6	<50	0.4	0.1 - 1.0

Married	None (0 cigarettes)			Less than 1 cigarette			1 to 5 cigarettes			6 to 10 cigarettes			11 to 20 cigarettes			21 to 40 cigarettes		
	#	%	C.I.(95%)	#	%	C.I.(95%)	#	%	C.I.(95%)	#	%	C.I.(95%)	#	%	C.I.(95%)	#	%	C.I.(95%)
<b>Yes</b>	1,300	71.9	68.1 - 75.5	100	4.1	2.8 - 5.9	300	15.0	12.3 - 18.1	100	6.0	4.3 - 8.4	<50	2.4	1.5 - 3.9	<50	0.6	0.2 - 1.8
<b>No</b>	1,400	59.8	56.3 - 63.3	200	6.4	4.8 - 8.5	400	18.3	15.8 - 21.1	200	10.6	8.5 - 13.2	100	3.2	2.2 - 4.7	<50	1.3	0.6 - 2.7

Poverty Level	None (0 cigarettes)			Less than 1 cigarette			1 to 5 cigarettes			6 to 10 cigarettes			11 to 20 cigarettes			21 to 40 cigarettes		
	#	%	C.I.(95%)	#	%	C.I.(95%)	#	%	C.I.(95%)	#	%	C.I.(95%)	#	%	C.I.(95%)	#	%	C.I.(95%)
<b>0-130%</b>	1,100	54.4	50.5 - 58.2	100	6.4	4.7 - 8.7	500	22.8	19.8 - 26.2	200	10.7	8.4 - 13.4	100	3.8	2.7 - 5.5	<50	1.6	0.8 - 3.2
<b>131-185%</b>	500	72.0	65.4 - 77.8	<50	5.4	2.9 - 9.7	100	11.1	7.9 - 15.5	100	7.8	4.6 - 12.8	<50	2.2	0.8 - 5.4	<50	1.1	0.2 - 4.5
<b>186+%</b>	1,000	78.1	73.6 - 82.0	<50	3.8	2.5 - 5.9	100	10.4	7.7 - 14.0	100	5.9	3.7 - 9.1	<50	1.6	0.8 - 3.4	<50	0.1	0.0 - 0.5

**PRAMS Health Indicator 5-Year Aggregate Report - Number of cigarettes smoked per avg day last 3 months of pregnancy- by State;County;DOH Race-Ethnicity;PRAMS Age Group;Infant Gender;Married;Poverty Level;Income (2004-2011);Birthweight;Smoke 3rd Trimester;Smoke Before Pregnant;WIC During Pregnancy, for the Year(s) 2000-2004;2001-2005;2002-2006;2003-2007;2004-2008;2005-2009;2006-2010;2007-2011;2008-2012;2009-2013**

*Note: Weighted counts (#) represent 5-yr averages, rounded to the nearest hundred; n/r (Not Reportable) - If the unweighted total responses for a dimension (row) is <30 that row will not be shown*

41 cigarettes or more			Weighted Total Responses (5-Yr Avg)
#	%	C.I.(95%)	#
<50	0.0	0.0 - 0.2	2,100
<50	0.4	0.1 - 1.5	2,000

41 cigarettes or more			Weighted Total Responses (5-Yr Avg)
#	%	C.I.(95%)	#
<50	0.0	0.0 - 0.2	1,800
<50	0.3	0.1 - 1.3	2,400

41 cigarettes or more			Weighted Total Responses (5-Yr Avg)
#	%	C.I.(95%)	#
<50	0.2	0.0 - 1.7	2,000
<50	0.4	0.1 - 2.7	700
<50	0.1	0.0 - 0.3	1,200

**PRAMS Health Indicator 5-Year Aggregate Report - Number of cigarettes smoked per avg day last 3 months of pregnancy- by State;County;DOH Race-Ethnicity;PRAMS Age Group;Infant Gender;Married;Poverty Level;Income (2004-2011);Birthweight;Smoke 3rd Trimester;Smoke Before Pregnant;WIC During Pregnancy, for the Year(s) 2000-2004;2001-2005;2002-2006;2003-2007;2004-2008;2005-2009;2006-2010;2007-2011;2008-2012;2009-2013**

*Note: Weighted counts (#) represent 5-yr averages, rounded to the nearest hundred; n/r (Not Reportable) - If the unweighted total responses for a dimension (row) is <30 that row will not be shown*

**Year: 2007-2011**

Income (2004-2011)	None (0 cigarettes)			Less than 1 cigarette			1 to 5 cigarettes			6 to 10 cigarettes			11 to 20 cigarettes			21 to 40 cigarettes		
	#	%	C.I.(95%)	#	%	C.I.(95%)	#	%	C.I.(95%)	#	%	C.I.(95%)	#	%	C.I.(95%)	#	%	C.I.(95%)
<\$10,000	500	50.4	45.0 - 55.9	100	6.0	3.9 - 9.2	300	24.3	20.1 - 29.2	100	12.8	9.3 - 17.3	<50	4.6	2.9 - 7.3	<50	1.3	0.6 - 2.8
\$10,000-\$24,999	700	61.9	56.6 - 66.8	100	6.3	4.1 - 9.6	200	18.7	15.1 - 23.0	100	7.6	5.2 - 10.9	<50	3.7	2.2 - 6.2	<50	1.8	0.6 - 5.0
\$25,000-\$49,999	800	73.4	68.3 - 77.9	100	5.1	3.1 - 8.3	100	12.2	9.2 - 16.2	100	7.4	5.0 - 10.9	<50	0.8	0.4 - 1.8	<50	0.7	0.2 - 3.0
>=\$50,000	600	77.3	71.6 - 82.1	<50	3.7	2.1 - 6.3	100	10.6	7.4 - 15.1	<50	6.1	3.5 - 10.6	<50	2.1	0.9 - 4.9	<50	0.1	0.0 - 0.8

Birthweight	None (0 cigarettes)			Less than 1 cigarette			1 to 5 cigarettes			6 to 10 cigarettes			11 to 20 cigarettes			21 to 40 cigarettes		
	#	%	C.I.(95%)	#	%	C.I.(95%)	#	%	C.I.(95%)	#	%	C.I.(95%)	#	%	C.I.(95%)	#	%	C.I.(95%)
Low birth weight	200	60.7	54.3 - 66.7	<50	4.5	2.5 - 8.0	100	21.8	16.8 - 27.8	<50	6.8	4.2 - 11.0	<50	5.7	3.2 - 9.8	<50	0.6	0.2 - 2.0
Normal birth weight	2,500	65.6	62.8 - 68.3	200	5.5	4.3 - 7.0	600	16.3	14.3 - 18.4	300	8.8	7.2 - 10.7	100	2.6	1.8 - 3.7	<50	1.0	0.5 - 1.9

Smoke 3rd Trimester	None (0 cigarettes)			Less than 1 cigarette			1 to 5 cigarettes			6 to 10 cigarettes			11 to 20 cigarettes			21 to 40 cigarettes		
	#	%	C.I.(95%)	#	%	C.I.(95%)	#	%	C.I.(95%)	#	%	C.I.(95%)	#	%	C.I.(95%)	#	%	C.I.(95%)
Yes	0	0.0	-	200	15.5	12.4 - 19.1	700	48.3	43.7 - 52.8	400	24.7	20.8 - 29.1	100	8.2	6.1 - 10.9	<50	2.8	1.5 - 5.1
No	2,700	100.0	-	0	0.0	-	0	0.0	-	0	0.0	-	0	0.0	-	0	0.0	-

**PRAMS Health Indicator 5-Year Aggregate Report - Number of cigarettes smoked per avg day last 3 months of pregnancy- by State;County;DOH Race-Ethnicity;PRAMS Age Group;Infant Gender;Married;Poverty Level;Income (2004-2011);Birthweight;Smoke 3rd Trimester;Smoke Before Pregnant;WIC During Pregnancy, for the Year(s) 2000-2004;2001-2005;2002-2006;2003-2007;2004-2008;2005-2009;2006-2010;2007-2011;2008-2012;2009-2013**

*Note: Weighted counts (#) represent 5-yr averages, rounded to the nearest hundred; n/r (Not Reportable) - If the unweighted total responses for a dimension (row) is <30 that row will not be shown*

41 cigarettes or more			Weighted Total Responses (5-Yr Avg)
#	%	C.I.(95%)	#
<50	0.5	0.1 - 3.2	1,000
0	0.0	-	1,100
<50	0.3	0.1 - 1.6	1,000
0	0.0	-	800

41 cigarettes or more			Weighted Total Responses (5-Yr Avg)
#	%	C.I.(95%)	#
0	0.0	-	400
<50	0.2	0.1 - 0.8	3,800

41 cigarettes or more			Weighted Total Responses (5-Yr Avg)
#	%	C.I.(95%)	#
<50	0.6	0.2 - 2.1	1,400
0	0.0	-	2,700



**PRAMS Health Indicator 5-Year Aggregate Report - Number of cigarettes smoked per avg day last 3 months of pregnancy- by State;County;DOH Race-Ethnicity;PRAMS Age Group;Infant Gender;Married;Poverty Level;Income (2004-2011);Birthweight;Smoke 3rd Trimester;Smoke Before Pregnant;WIC During Pregnancy, for the Year(s) 2000-2004;2001-2005;2002-2006;2003-2007;2004-2008;2005-2009;2006-2010;2007-2011;2008-2012;2009-2013**

*Note: Weighted counts (#) represent 5-yr averages, rounded to the nearest hundred; n/r (Not Reportable) - If the unweighted total responses for a dimension (row) is <30 that row will not be shown*

**Year: 2007-2011**

Smoke Before Pregnant	None (0 cigarettes)			Less than 1 cigarette			1 to 5 cigarettes			6 to 10 cigarettes			11 to 20 cigarettes			21 to 40 cigarettes		
	#	%	C.I.(95%)	#	%	C.I.(95%)	#	%	C.I.(95%)	#	%	C.I.(95%)	#	%	C.I.(95%)	#	%	C.I.(95%)
<b>Yes</b>	2,300	61.4	58.5 - 64.1	200	6.0	4.8 - 7.5	700	18.7	16.6 - 21.0	400	9.4	7.8 - 11.4	100	3.2	2.3 - 4.3	<50	1.1	0.6 - 2.0
<b>No</b>	400	97.7	91.8 - 99.4	0	0.0	-	<50	0.6	0.1 - 3.6	<50	1.5	0.2 - 9.3	0	0.0	-	<50	0.3	0.0 - 1.6

WIC During Pregnancy	None (0 cigarettes)			Less than 1 cigarette			1 to 5 cigarettes			6 to 10 cigarettes			11 to 20 cigarettes			21 to 40 cigarettes		
	#	%	C.I.(95%)	#	%	C.I.(95%)	#	%	C.I.(95%)	#	%	C.I.(95%)	#	%	C.I.(95%)	#	%	C.I.(95%)
<b>Yes</b>	1,400	60.5	57.0 - 63.9	100	6.1	4.6 - 8.1	400	18.5	16.0 - 21.3	200	10.1	8.0 - 12.6	100	3.2	2.2 - 4.8	<50	1.4	0.7 - 2.7
<b>No</b>	1,300	71.4	67.4 - 75.1	100	4.3	2.9 - 6.3	300	14.4	11.7 - 17.7	100	7.0	5.0 - 9.7	<50	2.2	1.3 - 3.7	<50	0.5	0.1 - 2.0

**PRAMS Health Indicator 5-Year Aggregate Report - Number of cigarettes smoked per avg day last 3 months of pregnancy- by State;County;DOH Race-Ethnicity;PRAMS Age Group;Infant Gender;Married;Poverty Level;Income (2004-2011);Birthweight;Smoke 3rd Trimester;Smoke Before Pregnant;WIC During Pregnancy, for the Year(s) 2000-2004;2001-2005;2002-2006;2003-2007;2004-2008;2005-2009;2006-2010;2007-2011;2008-2012;2009-2013**

*Note: Weighted counts (#) represent 5-yr averages, rounded to the nearest hundred; n/r (Not Reportable) - If the unweighted total responses for a dimension (row) is <30 that row will not be shown*

41 cigarettes or more			Weighted Total Responses (5-Yr Avg)
#	%	C.I.(95%)	#
<50	0.2	0.1 - 0.8	3,700
0	0.0	-	400

41 cigarettes or more			Weighted Total Responses (5-Yr Avg)
#	%	C.I.(95%)	#
<50	0.2	0.0 - 1.4	2,300
<50	0.2	0.0 - 0.9	1,800

**PRAMS Health Indicator 5-Year Aggregate Report - Number of cigarettes smoked per avg day last 3 months of pregnancy- by State;County;DOH Race-Ethnicity;PRAMS Age Group;Infant Gender;Married;Poverty Level;Income (2004-2011);Birthweight;Smoke 3rd Trimester;Smoke Before Pregnant;WIC During Pregnancy, for the Year(s) 2000-2004;2001-2005;2002-2006;2003-2007;2004-2008;2005-2009;2006-2010;2007-2011;2008-2012;2009-2013**

*Note: Weighted counts (#) represent 5-yr averages, rounded to the nearest hundred; n/r (Not Reportable) - If the unweighted total responses for a dimension (row) is <30 that row will not be shown*

**Year: 2006-2010**

State	None (0 cigarettes)			Less than 1 cigarette			1 to 5 cigarettes			6 to 10 cigarettes			11 to 20 cigarettes			21 to 40 cigarettes		
	#	%	C.I.(95%)	#	%	C.I.(95%)	#	%	C.I.(95%)	#	%	C.I.(95%)	#	%	C.I.(95%)	#	%	C.I.(95%)
<b>Totals</b>	2,500	61.3	58.7 - 63.8	200	5.7	4.5 - 7.1	800	18.8	16.9 - 21.0	400	9.6	8.2 - 11.4	100	3.2	2.4 - 4.2	100	1.3	0.8 - 2.1

County	None (0 cigarettes)			Less than 1 cigarette			1 to 5 cigarettes			6 to 10 cigarettes			11 to 20 cigarettes			21 to 40 cigarettes		
	#	%	C.I.(95%)	#	%	C.I.(95%)	#	%	C.I.(95%)	#	%	C.I.(95%)	#	%	C.I.(95%)	#	%	C.I.(95%)
<b>Hawaii</b>	400	57.7	52.5 - 62.8	<50	6.0	3.9 - 9.2	200	22.4	18.4 - 27.1	100	10.4	7.5 - 14.3	<50	3.0	1.7 - 5.1	<50	0.5	0.1 - 3.0
<b>Honolulu</b>	1,700	61.5	58.0 - 64.8	200	5.5	4.1 - 7.4	500	18.3	15.7 - 21.1	300	9.8	7.9 - 12.1	100	3.3	2.2 - 4.8	<50	1.6	0.9 - 2.8
<b>Kauai</b>	100	62.9	54.0 - 71.0	<50	4.9	2.6 - 9.1	<50	21.1	14.5 - 29.7	<50	6.6	3.4 - 12.6	<50	2.7	1.1 - 6.5	<50	1.8	0.4 - 7.2
<b>Maui</b>	300	65.2	59.2 - 70.7	<50	6.5	4.0 - 10.4	100	15.9	12.0 - 20.8	<50	8.9	5.8 - 13.4	<50	3.1	1.6 - 5.6	<50	0.5	0.1 - 1.7

**PRAMS Health Indicator 5-Year Aggregate Report - Number of cigarettes smoked per avg day last 3 months of pregnancy- by State;County;DOH Race-Ethnicity;PRAMS Age Group;Infant Gender;Married;Poverty Level;Income (2004-2011);Birthweight;Smoke 3rd Trimester;Smoke Before Pregnant;WIC During Pregnancy, for the Year(s) 2000-2004;2001-2005;2002-2006;2003-2007;2004-2008;2005-2009;2006-2010;2007-2011;2008-2012;2009-2013**

*Note: Weighted counts (#) represent 5-yr averages, rounded to the nearest hundred; n/r (Not Reportable) - If the unweighted total responses for a dimension (row) is <30 that row will not be shown*

41 cigarettes or more			Weighted Total Responses (5-Yr Avg)
#	%	C.I.(95%)	#
<50	0.1	0.0 - 0.4	4,200

41 cigarettes or more			Weighted Total Responses (5-Yr Avg)
#	%	C.I.(95%)	#
0	0.0	-	700
<50	0.1	0.0 - 0.6	2,800
0	0.0	-	200
0	0.0	-	500

**PRAMS Health Indicator 5-Year Aggregate Report - Number of cigarettes smoked per avg day last 3 months of pregnancy- by State;County;DOH Race-Ethnicity;PRAMS Age Group;Infant Gender;Married;Poverty Level;Income (2004-2011);Birthweight;Smoke 3rd Trimester;Smoke Before Pregnant;WIC During Pregnancy, for the Year(s) 2000-2004;2001-2005;2002-2006;2003-2007;2004-2008;2005-2009;2006-2010;2007-2011;2008-2012;2009-2013**

*Note: Weighted counts (#) represent 5-yr averages, rounded to the nearest hundred; n/r (Not Reportable) - If the unweighted total responses for a dimension (row) is <30 that row will not be shown*

**Year: 2006-2010**

DOH Race-Ethnicity	None (0 cigarettes)			Less than 1 cigarette			1 to 5 cigarettes			6 to 10 cigarettes			11 to 20 cigarettes			21 to 40 cigarettes		
	#	%	C.I.(95%)	#	%	C.I.(95%)	#	%	C.I.(95%)	#	%	C.I.(95%)	#	%	C.I.(95%)	#	%	C.I.(95%)
Caucasian	700	70.6	65.6 - 75.1	<50	5.0	3.3 - 7.5	100	13.8	10.6 - 17.9	100	7.6	5.1 - 11.0	<50	2.8	1.5 - 5.1	<50	0.2	0.0 - 1.4
Native Hawaiian	800	52.5	48.3 - 56.6	100	6.5	4.6 - 9.0	300	22.1	18.8 - 25.7	200	13.6	10.9 - 16.9	100	4.0	2.6 - 6.0	<50	1.2	0.6 - 2.5
Chinese	100	64.3	42.0 - 81.7	<50	19.4	6.2 - 46.6	<50	6.2	2.9 - 13.1	<50	7.6	1.1 - 37.2	<50	1.2	0.2 - 6.3	<50	1.3	0.2 - 6.8
Filipino	400	69.6	62.5 - 75.8	<50	5.1	2.4 - 10.5	100	13.7	9.7 - 18.9	<50	7.0	4.0 - 11.9	<50	3.9	2.0 - 7.7	<50	0.8	0.2 - 2.8
Japanese	300	63.2	54.3 - 71.3	<50	4.6	2.0 - 10.1	100	25.7	18.5 - 34.5	<50	4.1	1.9 - 8.8	<50	0.7	0.2 - 3.1	<50	1.6	0.3 - 7.4
Other	300	60.2	52.9 - 67.1	<50	4.1	2.3 - 7.2	100	20.4	15.1 - 27.1	100	8.9	5.5 - 13.9	<50	2.8	1.1 - 6.7	<50	3.5	1.3 - 9.2

PRAMS Age Group	None (0 cigarettes)			Less than 1 cigarette			1 to 5 cigarettes			6 to 10 cigarettes			11 to 20 cigarettes			21 to 40 cigarettes		
	#	%	C.I.(95%)	#	%	C.I.(95%)	#	%	C.I.(95%)	#	%	C.I.(95%)	#	%	C.I.(95%)	#	%	C.I.(95%)
<20	300	60.5	52.3 - 68.3	<50	7.5	4.3 - 12.6	100	21.8	15.8 - 29.3	<50	5.6	2.8 - 11.1	<50	2.4	1.0 - 5.7	<50	2.2	0.6 - 7.9
20-24	900	65.0	60.4 - 69.3	100	6.5	4.4 - 9.5	200	15.2	12.2 - 18.8	100	10.3	7.7 - 13.8	<50	2.8	1.7 - 4.7	<50	0.2	0.0 - 1.3
25-34	1,100	59.4	55.6 - 63.1	100	5.2	3.7 - 7.2	400	21.5	18.5 - 24.8	200	9.1	7.1 - 11.6	100	2.6	1.7 - 4.0	<50	2.0	1.1 - 3.6
35+	300	59.3	51.5 - 66.6	<50	3.6	1.9 - 6.7	100	15.4	10.5 - 22.0	100	13.8	9.3 - 20.0	<50	7.3	3.8 - 13.6	<50	0.7	0.2 - 2.5

**PRAMS Health Indicator 5-Year Aggregate Report - Number of cigarettes smoked per avg day last 3 months of pregnancy- by State;County;DOH Race-Ethnicity;PRAMS Age Group;Infant Gender;Married;Poverty Level;Income (2004-2011);Birthweight;Smoke 3rd Trimester;Smoke Before Pregnant;WIC During Pregnancy, for the Year(s) 2000-2004;2001-2005;2002-2006;2003-2007;2004-2008;2005-2009;2006-2010;2007-2011;2008-2012;2009-2013**

*Note: Weighted counts (#) represent 5-yr averages, rounded to the nearest hundred; n/r (Not Reportable) - If the unweighted total responses for a dimension (row) is <30 that row will not be shown*

41 cigarettes or more			Weighted Total Responses (5-Yr Avg)
#	%	C.I.(95%)	#
0	0.0	-	1,000
<50	0.2	0.0 - 1.2	1,600
0	0.0	-	100
0	0.0	-	500
0	0.0	-	400
<50	0.1	0.0 - 0.7	600

41 cigarettes or more			Weighted Total Responses (5-Yr Avg)
#	%	C.I.(95%)	#
0	0.0	-	400
0	0.0	-	1,300
<50	0.2	0.0 - 0.9	1,900
0	0.0	-	500

**PRAMS Health Indicator 5-Year Aggregate Report - Number of cigarettes smoked per avg day last 3 months of pregnancy- by State;County;DOH Race-Ethnicity;PRAMS Age Group;Infant Gender;Married;Poverty Level;Income (2004-2011);Birthweight;Smoke 3rd Trimester;Smoke Before Pregnant;WIC During Pregnancy, for the Year(s) 2000-2004;2001-2005;2002-2006;2003-2007;2004-2008;2005-2009;2006-2010;2007-2011;2008-2012;2009-2013**

*Note: Weighted counts (#) represent 5-yr averages, rounded to the nearest hundred; n/r (Not Reportable) - If the unweighted total responses for a dimension (row) is <30 that row will not be shown*

**Year: 2006-2010**

Infant Gender	None (0 cigarettes)			Less than 1 cigarette			1 to 5 cigarettes			6 to 10 cigarettes			11 to 20 cigarettes			21 to 40 cigarettes		
	#	%	C.I.(95%)	#	%	C.I.(95%)	#	%	C.I.(95%)	#	%	C.I.(95%)	#	%	C.I.(95%)	#	%	C.I.(95%)
<b>Male</b>	1,400	62.3	58.7 - 65.8	100	6.2	4.6 - 8.3	400	16.8	14.3 - 19.7	200	9.8	7.8 - 12.2	100	3.1	2.2 - 4.5	<50	1.7	0.9 - 3.3
<b>Female</b>	1,200	60.2	56.5 - 63.9	100	5.1	3.6 - 7.0	400	21.1	18.2 - 24.3	200	9.5	7.4 - 12.1	100	3.2	2.1 - 5.0	<50	0.8	0.4 - 1.7

Married	None (0 cigarettes)			Less than 1 cigarette			1 to 5 cigarettes			6 to 10 cigarettes			11 to 20 cigarettes			21 to 40 cigarettes		
	#	%	C.I.(95%)	#	%	C.I.(95%)	#	%	C.I.(95%)	#	%	C.I.(95%)	#	%	C.I.(95%)	#	%	C.I.(95%)
<b>Yes</b>	1,300	69.6	65.8 - 73.1	100	4.2	2.9 - 6.0	300	15.6	12.9 - 18.8	100	7.5	5.7 - 9.8	<50	2.3	1.5 - 3.7	<50	0.8	0.3 - 2.0
<b>No</b>	1,300	54.9	51.4 - 58.3	200	6.9	5.2 - 9.0	500	21.3	18.7 - 24.3	300	11.3	9.2 - 13.9	100	3.8	2.7 - 5.5	<50	1.7	0.9 - 3.0

Poverty Level	None (0 cigarettes)			Less than 1 cigarette			1 to 5 cigarettes			6 to 10 cigarettes			11 to 20 cigarettes			21 to 40 cigarettes		
	#	%	C.I.(95%)	#	%	C.I.(95%)	#	%	C.I.(95%)	#	%	C.I.(95%)	#	%	C.I.(95%)	#	%	C.I.(95%)
<b>0-130%</b>	1,000	49.4	45.7 - 53.1	100	6.5	4.8 - 8.7	500	25.1	22.0 - 28.5	300	12.5	10.1 - 15.2	100	4.4	3.1 - 6.1	<50	2.2	1.3 - 3.8
<b>131-185%</b>	400	68.2	61.6 - 74.2	<50	5.5	2.9 - 10.0	100	13.3	9.6 - 18.0	100	9.2	5.9 - 14.2	<50	2.2	0.8 - 5.9	<50	1.1	0.3 - 4.7
<b>186+%</b>	900	76.5	72.2 - 80.4	100	4.5	3.0 - 6.6	100	11.3	8.5 - 15.0	100	5.8	3.8 - 8.7	<50	1.7	0.9 - 3.1	<50	0.1	0.0 - 0.5

**PRAMS Health Indicator 5-Year Aggregate Report - Number of cigarettes smoked per avg day last 3 months of pregnancy- by State;County;DOH Race-Ethnicity;PRAMS Age Group;Infant Gender;Married;Poverty Level;Income (2004-2011);Birthweight;Smoke 3rd Trimester;Smoke Before Pregnant;WIC During Pregnancy, for the Year(s) 2000-2004;2001-2005;2002-2006;2003-2007;2004-2008;2005-2009;2006-2010;2007-2011;2008-2012;2009-2013**

*Note: Weighted counts (#) represent 5-yr averages, rounded to the nearest hundred; n/r (Not Reportable) - If the unweighted total responses for a dimension (row) is <30 that row will not be shown*

41 cigarettes or more			Weighted Total Responses (5-Yr Avg)
#	%	C.I.(95%)	#
<50	0.0	0.0 - 0.2	2,200
<50	0.1	0.0 - 0.9	2,000

41 cigarettes or more			Weighted Total Responses (5-Yr Avg)
#	%	C.I.(95%)	#
<50	0.0	0.0 - 0.2	1,800
<50	0.1	0.0 - 0.8	2,300

41 cigarettes or more			Weighted Total Responses (5-Yr Avg)
#	%	C.I.(95%)	#
0	0.0	-	2,000
<50	0.4	0.1 - 2.9	600
<50	0.1	0.0 - 0.3	1,200



**PRAMS Health Indicator 5-Year Aggregate Report - Number of cigarettes smoked per avg day last 3 months of pregnancy- by State;County;DOH Race-Ethnicity;PRAMS Age Group;Infant Gender;Married;Poverty Level;Income (2004-2011);Birthweight;Smoke 3rd Trimester;Smoke Before Pregnant;WIC During Pregnancy, for the Year(s) 2000-2004;2001-2005;2002-2006;2003-2007;2004-2008;2005-2009;2006-2010;2007-2011;2008-2012;2009-2013**

*Note: Weighted counts (#) represent 5-yr averages, rounded to the nearest hundred; n/r (Not Reportable) - If the unweighted total responses for a dimension (row) is <30 that row will not be shown*

**Year: 2006-2010**

Income (2004-2011)	None (0 cigarettes)			Less than 1 cigarette			1 to 5 cigarettes			6 to 10 cigarettes			11 to 20 cigarettes			21 to 40 cigarettes		
	#	%	C.I.(95%)	#	%	C.I.(95%)	#	%	C.I.(95%)	#	%	C.I.(95%)	#	%	C.I.(95%)	#	%	C.I.(95%)
<\$10,000	500	44.7	39.5 - 50.0	100	6.4	4.2 - 9.7	300	26.4	22.0 - 31.3	200	15.2	11.6 - 19.6	100	5.0	3.2 - 7.8	<50	2.3	1.2 - 4.2
\$10,000-\$24,999	600	59.0	54.0 - 63.9	100	6.0	3.8 - 9.2	200	20.8	17.1 - 25.1	100	7.8	5.5 - 11.0	100	4.7	2.9 - 7.4	<50	1.8	0.6 - 4.9
\$25,000-\$49,999	700	68.6	63.4 - 73.3	100	5.0	3.1 - 8.1	100	14.1	10.8 - 18.3	100	10.1	7.3 - 13.8	<50	0.9	0.4 - 2.2	<50	0.9	0.3 - 3.0
>=\$50,000	600	76.3	70.8 - 81.0	<50	5.0	3.1 - 7.8	100	11.8	8.4 - 16.4	<50	5.1	2.9 - 8.8	<50	1.7	0.8 - 3.5	<50	0.1	0.0 - 0.8

Birthweight	None (0 cigarettes)			Less than 1 cigarette			1 to 5 cigarettes			6 to 10 cigarettes			11 to 20 cigarettes			21 to 40 cigarettes		
	#	%	C.I.(95%)	#	%	C.I.(95%)	#	%	C.I.(95%)	#	%	C.I.(95%)	#	%	C.I.(95%)	#	%	C.I.(95%)
Low birth weight	200	56.3	49.2 - 63.1	<50	3.2	1.4 - 6.9	100	25.7	19.8 - 32.6	<50	10.0	6.4 - 15.4	<50	4.6	2.3 - 8.9	<50	0.3	0.1 - 1.7
Normal birth weight	2,400	61.9	59.1 - 64.5	200	5.9	4.7 - 7.4	700	18.1	16.1 - 20.3	400	9.6	8.1 - 11.5	100	3.0	2.2 - 4.1	100	1.4	0.8 - 2.3

Smoke 3rd Trimester	None (0 cigarettes)			Less than 1 cigarette			1 to 5 cigarettes			6 to 10 cigarettes			11 to 20 cigarettes			21 to 40 cigarettes		
	#	%	C.I.(95%)	#	%	C.I.(95%)	#	%	C.I.(95%)	#	%	C.I.(95%)	#	%	C.I.(95%)	#	%	C.I.(95%)
Yes	0	0.0	-	200	14.7	11.9 - 18.0	800	48.7	44.4 - 53.0	400	24.9	21.4 - 28.9	100	8.2	6.2 - 10.8	100	3.3	2.0 - 5.5
No	2,500	100.0	-	0	0.0	-	0	0.0	-	0	0.0	-	0	0.0	-	0	0.0	-

**PRAMS Health Indicator 5-Year Aggregate Report - Number of cigarettes smoked per avg day last 3 months of pregnancy- by State;County;DOH Race-Ethnicity;PRAMS Age Group;Infant Gender;Married;Poverty Level;Income (2004-2011);Birthweight;Smoke 3rd Trimester;Smoke Before Pregnant;WIC During Pregnancy, for the Year(s) 2000-2004;2001-2005;2002-2006;2003-2007;2004-2008;2005-2009;2006-2010;2007-2011;2008-2012;2009-2013**

*Note: Weighted counts (#) represent 5-yr averages, rounded to the nearest hundred; n/r (Not Reportable) - If the unweighted total responses for a dimension (row) is <30 that row will not be shown*

41 cigarettes or more			Weighted Total Responses (5-Yr Avg)
#	%	C.I.(95%)	#
0	0.0	-	1,000
0	0.0	-	1,100
<50	0.4	0.1 - 1.7	1,000
0	0.0	-	800

41 cigarettes or more			Weighted Total Responses (5-Yr Avg)
#	%	C.I.(95%)	#
0	0.0	-	300
<50	0.1	0.0 - 0.4	3,800

41 cigarettes or more			Weighted Total Responses (5-Yr Avg)
#	%	C.I.(95%)	#
<50	0.2	0.0 - 1.0	1,600
0	0.0	-	2,500

**PRAMS Health Indicator 5-Year Aggregate Report - Number of cigarettes smoked per avg day last 3 months of pregnancy- by State;County;DOH Race-Ethnicity;PRAMS Age Group;Infant Gender;Married;Poverty Level;Income (2004-2011);Birthweight;Smoke 3rd Trimester;Smoke Before Pregnant;WIC During Pregnancy, for the Year(s) 2000-2004;2001-2005;2002-2006;2003-2007;2004-2008;2005-2009;2006-2010;2007-2011;2008-2012;2009-2013**

*Note: Weighted counts (#) represent 5-yr averages, rounded to the nearest hundred; n/r (Not Reportable) - If the unweighted total responses for a dimension (row) is <30 that row will not be shown*

**Year: 2006-2010**

Smoke Before Pregnant	None (0 cigarettes)			Less than 1 cigarette			1 to 5 cigarettes			6 to 10 cigarettes			11 to 20 cigarettes			21 to 40 cigarettes		
	#	%	C.I.(95%)	#	%	C.I.(95%)	#	%	C.I.(95%)	#	%	C.I.(95%)	#	%	C.I.(95%)	#	%	C.I.(95%)
<b>Yes</b>	2,200	57.9	55.1 - 60.5	200	6.2	5.0 - 7.7	800	20.6	18.5 - 22.9	400	10.4	8.8 - 12.3	100	3.5	2.6 - 4.6	100	1.4	0.8 - 2.3
<b>No</b>	400	97.3	90.5 - 99.3	0	0.0	-	<50	0.7	0.1 - 4.2	<50	1.7	0.2 - 10.7	0	0.0	-	<50	0.3	0.1 - 1.9

WIC During Pregnancy	None (0 cigarettes)			Less than 1 cigarette			1 to 5 cigarettes			6 to 10 cigarettes			11 to 20 cigarettes			21 to 40 cigarettes		
	#	%	C.I.(95%)	#	%	C.I.(95%)	#	%	C.I.(95%)	#	%	C.I.(95%)	#	%	C.I.(95%)	#	%	C.I.(95%)
<b>Yes</b>	1,300	56.0	52.6 - 59.4	100	6.1	4.6 - 8.2	500	20.9	18.3 - 23.8	300	11.2	9.2 - 13.7	100	4.0	2.8 - 5.6	<50	1.7	1.0 - 3.1
<b>No</b>	1,200	68.4	64.4 - 72.0	100	5.0	3.5 - 7.0	300	15.9	13.1 - 19.2	100	7.7	5.8 - 10.3	<50	2.1	1.2 - 3.4	<50	0.7	0.3 - 2.0

**PRAMS Health Indicator 5-Year Aggregate Report - Number of cigarettes smoked per avg day last 3 months of pregnancy- by State;County;DOH Race-Ethnicity;PRAMS Age Group;Infant Gender;Married;Poverty Level;Income (2004-2011);Birthweight;Smoke 3rd Trimester;Smoke Before Pregnant;WIC During Pregnancy, for the Year(s) 2000-2004;2001-2005;2002-2006;2003-2007;2004-2008;2005-2009;2006-2010;2007-2011;2008-2012;2009-2013**

*Note: Weighted counts (#) represent 5-yr averages, rounded to the nearest hundred; n/r (Not Reportable) - If the unweighted total responses for a dimension (row) is <30 that row will not be shown*

41 cigarettes or more			Weighted Total Responses (5-Yr Avg)
#	%	C.I.(95%)	#
<50	0.1	0.0 - 0.4	3,800
0	0.0	-	400

41 cigarettes or more			Weighted Total Responses (5-Yr Avg)
#	%	C.I.(95%)	#
0	0.0	-	2,300
<50	0.2	0.0 - 0.9	1,800

**PRAMS Health Indicator 5-Year Aggregate Report - Number of cigarettes smoked per avg day last 3 months of pregnancy- by State;County;DOH Race-Ethnicity;PRAMS Age Group;Infant Gender;Married;Poverty Level;Income (2004-2011);Birthweight;Smoke 3rd Trimester;Smoke Before Pregnant;WIC During Pregnancy, for the Year(s) 2000-2004;2001-2005;2002-2006;2003-2007;2004-2008;2005-2009;2006-2010;2007-2011;2008-2012;2009-2013**

*Note: Weighted counts (#) represent 5-yr averages, rounded to the nearest hundred; n/r (Not Reportable) - If the unweighted total responses for a dimension (row) is <30 that row will not be shown*

**Year: 2005-2009**

State	None (0 cigarettes)			Less than 1 cigarette			1 to 5 cigarettes			6 to 10 cigarettes			11 to 20 cigarettes			21 to 40 cigarettes		
	#	%	C.I.(95%)	#	%	C.I.(95%)	#	%	C.I.(95%)	#	%	C.I.(95%)	#	%	C.I.(95%)	#	%	C.I.(95%)
<b>Totals</b>	2,500	60.6	58.1 - 63.0	200	5.6	4.6 - 6.9	800	18.7	16.9 - 20.7	400	10.4	8.9 - 12.1	100	3.1	2.4 - 4.1	100	1.3	0.8 - 2.1

County	None (0 cigarettes)			Less than 1 cigarette			1 to 5 cigarettes			6 to 10 cigarettes			11 to 20 cigarettes			21 to 40 cigarettes		
	#	%	C.I.(95%)	#	%	C.I.(95%)	#	%	C.I.(95%)	#	%	C.I.(95%)	#	%	C.I.(95%)	#	%	C.I.(95%)
<b>Hawaii</b>	400	55.3	49.7 - 60.8	<50	6.0	3.7 - 9.5	200	23.0	18.7 - 28.0	100	11.5	8.2 - 15.7	<50	3.4	1.9 - 5.9	<50	0.9	0.2 - 3.2
<b>Honolulu</b>	1,700	60.8	57.7 - 63.9	100	5.3	4.1 - 7.0	500	17.9	15.6 - 20.4	300	10.8	8.8 - 13.0	100	3.4	2.4 - 4.7	<50	1.5	0.9 - 2.7
<b>Kauai</b>	100	62.2	52.4 - 71.0	<50	5.0	2.3 - 10.4	<50	21.8	14.7 - 31.1	<50	7.3	3.5 - 14.9	<50	1.9	0.6 - 6.0	<50	1.8	0.4 - 7.2
<b>Maui</b>	300	65.8	59.3 - 71.8	<50	6.9	4.2 - 11.4	100	16.5	12.2 - 22.0	<50	8.1	5.0 - 12.9	<50	1.9	0.8 - 4.6	<50	0.3	0.0 - 1.5

**PRAMS Health Indicator 5-Year Aggregate Report - Number of cigarettes smoked per avg day last 3 months of pregnancy- by State;County;DOH Race-Ethnicity;PRAMS Age Group;Infant Gender;Married;Poverty Level;Income (2004-2011);Birthweight;Smoke 3rd Trimester;Smoke Before Pregnant;WIC During Pregnancy, for the Year(s) 2000-2004;2001-2005;2002-2006;2003-2007;2004-2008;2005-2009;2006-2010;2007-2011;2008-2012;2009-2013**

*Note: Weighted counts (#) represent 5-yr averages, rounded to the nearest hundred; n/r (Not Reportable) - If the unweighted total responses for a dimension (row) is <30 that row will not be shown*

41 cigarettes or more			Weighted Total Responses (5-Yr Avg)
#	%	C.I.(95%)	#
<50	0.3	0.1 - 0.6	4,100

41 cigarettes or more			Weighted Total Responses (5-Yr Avg)
#	%	C.I.(95%)	#
0	0.0	-	700
<50	0.3	0.1 - 0.8	2,700
0	0.0	-	200
<50	0.4	0.1 - 2.8	500

**PRAMS Health Indicator 5-Year Aggregate Report - Number of cigarettes smoked per avg day last 3 months of pregnancy- by State;County;DOH Race-Ethnicity;PRAMS Age Group;Infant Gender;Married;Poverty Level;Income (2004-2011);Birthweight;Smoke 3rd Trimester;Smoke Before Pregnant;WIC During Pregnancy, for the Year(s) 2000-2004;2001-2005;2002-2006;2003-2007;2004-2008;2005-2009;2006-2010;2007-2011;2008-2012;2009-2013**

*Note: Weighted counts (#) represent 5-yr averages, rounded to the nearest hundred; n/r (Not Reportable) - If the unweighted total responses for a dimension (row) is <30 that row will not be shown*

**Year: 2005-2009**

DOH Race-Ethnicity	None (0 cigarettes)			Less than 1 cigarette			1 to 5 cigarettes			6 to 10 cigarettes			11 to 20 cigarettes			21 to 40 cigarettes		
	#	%	C.I.(95%)	#	%	C.I.(95%)	#	%	C.I.(95%)	#	%	C.I.(95%)	#	%	C.I.(95%)	#	%	C.I.(95%)
Caucasian	700	70.6	66.0 - 74.8	100	6.2	4.3 - 9.0	100	12.7	9.8 - 16.1	100	7.3	5.1 - 10.3	<50	2.6	1.3 - 4.9	<50	0.5	0.1 - 1.7
Native Hawaiian	800	52.4	48.3 - 56.5	100	5.7	4.0 - 8.0	300	21.6	18.5 - 25.1	200	14.6	11.8 - 18.0	100	4.1	2.7 - 6.1	<50	1.3	0.6 - 2.6
Chinese	<50	64.9	42.6 - 82.2	<50	12.3	2.8 - 40.5	<50	7.8	3.6 - 16.3	<50	9.6	1.5 - 43.2	<50	3.8	1.3 - 10.2	<50	1.6	0.3 - 8.5
Filipino	300	66.0	59.3 - 72.0	<50	5.0	2.6 - 9.4	100	17.3	13.1 - 22.5	<50	8.4	5.0 - 13.6	<50	2.6	1.2 - 5.2	<50	0.8	0.2 - 3.1
Japanese	300	61.4	53.4 - 68.9	<50	4.2	2.0 - 8.5	100	23.3	17.0 - 31.1	<50	6.4	3.6 - 11.4	<50	2.7	1.2 - 6.1	<50	2.0	0.6 - 7.0
Other	300	60.0	53.1 - 66.4	<50	5.2	3.1 - 8.5	100	20.6	15.5 - 26.7	<50	8.9	5.6 - 13.7	<50	2.3	1.0 - 5.3	<50	2.6	0.8 - 8.0

PRAMS Age Group	None (0 cigarettes)			Less than 1 cigarette			1 to 5 cigarettes			6 to 10 cigarettes			11 to 20 cigarettes			21 to 40 cigarettes		
	#	%	C.I.(95%)	#	%	C.I.(95%)	#	%	C.I.(95%)	#	%	C.I.(95%)	#	%	C.I.(95%)	#	%	C.I.(95%)
<20	300	63.6	55.8 - 70.8	<50	8.4	5.1 - 13.7	100	19.2	13.8 - 26.0	<50	4.8	2.2 - 10.1	<50	2.2	0.8 - 5.4	<50	1.8	0.4 - 7.8
20-24	800	64.2	59.8 - 68.3	100	6.3	4.4 - 8.9	200	16.4	13.4 - 19.8	100	10.0	7.5 - 13.2	<50	2.6	1.5 - 4.3	<50	0.4	0.1 - 1.7
25-34	1,100	59.0	55.3 - 62.5	100	4.5	3.2 - 6.3	400	21.0	18.3 - 24.1	200	10.5	8.3 - 13.2	100	2.8	1.8 - 4.1	<50	1.9	1.0 - 3.4
35+	200	53.1	45.7 - 60.4	<50	5.5	3.2 - 9.3	100	15.5	10.9 - 21.7	100	17.1	12.2 - 23.5	<50	7.6	4.1 - 13.7	<50	0.7	0.2 - 2.7

**PRAMS Health Indicator 5-Year Aggregate Report - Number of cigarettes smoked per avg day last 3 months of pregnancy- by State;County;DOH Race-Ethnicity;PRAMS Age Group;Infant Gender;Married;Poverty Level;Income (2004-2011);Birthweight;Smoke 3rd Trimester;Smoke Before Pregnant;WIC During Pregnancy, for the Year(s) 2000-2004;2001-2005;2002-2006;2003-2007;2004-2008;2005-2009;2006-2010;2007-2011;2008-2012;2009-2013**

*Note: Weighted counts (#) represent 5-yr averages, rounded to the nearest hundred; n/r (Not Reportable) - If the unweighted total responses for a dimension (row) is <30 that row will not be shown*

41 cigarettes or more			Weighted Total Responses (5-Yr Avg)
#	%	C.I.(95%)	#
<50	0.2	0.0 - 1.4	1,000
<50	0.3	0.1 - 1.3	1,600
0	0.0	-	100
0	0.0	-	500
0	0.0	-	400
<50	0.5	0.1 - 2.1	600

41 cigarettes or more			Weighted Total Responses (5-Yr Avg)
#	%	C.I.(95%)	#
0	0.0	-	500
<50	0.2	0.0 - 1.0	1,300
<50	0.3	0.1 - 1.1	1,900
<50	0.5	0.1 - 3.1	400



**PRAMS Health Indicator 5-Year Aggregate Report - Number of cigarettes smoked per avg day last 3 months of pregnancy- by State;County;DOH Race-Ethnicity;PRAMS Age Group;Infant Gender;Married;Poverty Level;Income (2004-2011);Birthweight;Smoke 3rd Trimester;Smoke Before Pregnant;WIC During Pregnancy, for the Year(s) 2000-2004;2001-2005;2002-2006;2003-2007;2004-2008;2005-2009;2006-2010;2007-2011;2008-2012;2009-2013**

*Note: Weighted counts (#) represent 5-yr averages, rounded to the nearest hundred; n/r (Not Reportable) - If the unweighted total responses for a dimension (row) is <30 that row will not be shown*

**Year: 2005-2009**

Infant Gender	None (0 cigarettes)			Less than 1 cigarette			1 to 5 cigarettes			6 to 10 cigarettes			11 to 20 cigarettes			21 to 40 cigarettes		
	#	%	C.I.(95%)	#	%	C.I.(95%)	#	%	C.I.(95%)	#	%	C.I.(95%)	#	%	C.I.(95%)	#	%	C.I.(95%)
<b>Male</b>	1,300	60.4	56.9 - 63.7	100	6.3	4.8 - 8.3	400	16.9	14.5 - 19.5	200	10.6	8.5 - 13.1	100	3.9	2.8 - 5.4	<50	1.7	0.9 - 3.3
<b>Female</b>	1,200	60.8	57.2 - 64.2	100	4.9	3.6 - 6.6	400	20.8	18.0 - 23.8	200	10.2	8.1 - 12.7	<50	2.3	1.4 - 3.7	<50	0.8	0.4 - 1.7

Married	None (0 cigarettes)			Less than 1 cigarette			1 to 5 cigarettes			6 to 10 cigarettes			11 to 20 cigarettes			21 to 40 cigarettes		
	#	%	C.I.(95%)	#	%	C.I.(95%)	#	%	C.I.(95%)	#	%	C.I.(95%)	#	%	C.I.(95%)	#	%	C.I.(95%)
<b>Yes</b>	1,200	68.8	65.3 - 72.1	100	4.4	3.1 - 6.1	300	14.7	12.3 - 17.4	100	8.1	6.2 - 10.4	<50	2.7	1.8 - 4.1	<50	1.0	0.4 - 2.2
<b>No</b>	1,300	54.4	51.0 - 57.7	200	6.5	5.1 - 8.4	500	21.8	19.2 - 24.6	300	12.2	10.0 - 14.7	100	3.4	2.4 - 4.9	<50	1.6	0.8 - 2.9

Poverty Level	None (0 cigarettes)			Less than 1 cigarette			1 to 5 cigarettes			6 to 10 cigarettes			11 to 20 cigarettes			21 to 40 cigarettes		
	#	%	C.I.(95%)	#	%	C.I.(95%)	#	%	C.I.(95%)	#	%	C.I.(95%)	#	%	C.I.(95%)	#	%	C.I.(95%)
<b>0-130%</b>	1,000	49.7	46.2 - 53.3	100	6.3	4.8 - 8.4	500	24.5	21.6 - 27.6	300	13.3	11.0 - 16.1	100	3.9	2.8 - 5.6	<50	2.1	1.2 - 3.6
<b>131-185%</b>	400	64.6	57.9 - 70.8	<50	4.7	2.7 - 8.1	100	15.4	11.3 - 20.5	100	9.6	6.1 - 14.9	<50	3.5	1.6 - 7.6	<50	1.3	0.3 - 5.5
<b>186+%</b>	900	76.1	72.1 - 79.6	100	4.9	3.4 - 7.0	100	10.2	7.8 - 13.2	100	6.2	4.3 - 8.9	<50	2.2	1.3 - 3.8	<50	0.2	0.0 - 1.1

**PRAMS Health Indicator 5-Year Aggregate Report - Number of cigarettes smoked per avg day last 3 months of pregnancy- by State;County;DOH Race-Ethnicity;PRAMS Age Group;Infant Gender;Married;Poverty Level;Income (2004-2011);Birthweight;Smoke 3rd Trimester;Smoke Before Pregnant;WIC During Pregnancy, for the Year(s) 2000-2004;2001-2005;2002-2006;2003-2007;2004-2008;2005-2009;2006-2010;2007-2011;2008-2012;2009-2013**

*Note: Weighted counts (#) represent 5-yr averages, rounded to the nearest hundred; n/r (Not Reportable) - If the unweighted total responses for a dimension (row) is <30 that row will not be shown*

41 cigarettes or more			Weighted Total Responses (5-Yr Avg)
#	%	C.I.(95%)	#
<50	0.2	0.1 - 0.8	2,100
<50	0.3	0.1 - 1.0	2,000

41 cigarettes or more			Weighted Total Responses (5-Yr Avg)
#	%	C.I.(95%)	#
<50	0.4	0.2 - 1.1	1,700
<50	0.1	0.0 - 0.8	2,300

41 cigarettes or more			Weighted Total Responses (5-Yr Avg)
#	%	C.I.(95%)	#
<50	0.1	0.0 - 0.8	2,100
<50	0.9	0.2 - 3.4	600
<50	0.2	0.1 - 1.0	1,200

**PRAMS Health Indicator 5-Year Aggregate Report - Number of cigarettes smoked per avg day last 3 months of pregnancy- by State;County;DOH Race-Ethnicity;PRAMS Age Group;Infant Gender;Married;Poverty Level;Income (2004-2011);Birthweight;Smoke 3rd Trimester;Smoke Before Pregnant;WIC During Pregnancy, for the Year(s) 2000-2004;2001-2005;2002-2006;2003-2007;2004-2008;2005-2009;2006-2010;2007-2011;2008-2012;2009-2013**

*Note: Weighted counts (#) represent 5-yr averages, rounded to the nearest hundred; n/r (Not Reportable) - If the unweighted total responses for a dimension (row) is <30 that row will not be shown*

**Year: 2005-2009**

Income (2004-2011)	None (0 cigarettes)			Less than 1 cigarette			1 to 5 cigarettes			6 to 10 cigarettes			11 to 20 cigarettes			21 to 40 cigarettes		
	#	%	C.I.(95%)	#	%	C.I.(95%)	#	%	C.I.(95%)	#	%	C.I.(95%)	#	%	C.I.(95%)	#	%	C.I.(95%)
<\$10,000	500	42.9	38.0 - 47.9	100	7.4	5.0 - 10.8	300	26.9	22.7 - 31.6	200	15.6	12.1 - 19.9	100	4.8	3.0 - 7.5	<50	2.5	1.3 - 4.5
\$10,000-\$24,999	700	59.3	54.6 - 63.8	100	5.5	3.7 - 7.9	200	20.5	17.1 - 24.4	100	8.9	6.4 - 12.1	<50	4.3	2.7 - 6.7	<50	1.4	0.5 - 4.2
\$25,000-\$49,999	600	68.7	63.7 - 73.2	<50	4.6	2.9 - 7.1	100	12.6	9.6 - 16.3	100	10.9	7.9 - 14.7	<50	1.7	0.8 - 3.5	<50	1.0	0.3 - 3.4
>=\$50,000	600	75.6	70.5 - 80.0	<50	4.9	3.1 - 7.6	100	11.5	8.4 - 15.5	<50	5.5	3.3 - 9.1	<50	2.1	1.0 - 4.1	<50	0.3	0.0 - 1.8

Birthweight	None (0 cigarettes)			Less than 1 cigarette			1 to 5 cigarettes			6 to 10 cigarettes			11 to 20 cigarettes			21 to 40 cigarettes		
	#	%	C.I.(95%)	#	%	C.I.(95%)	#	%	C.I.(95%)	#	%	C.I.(95%)	#	%	C.I.(95%)	#	%	C.I.(95%)
Low birth weight	200	48.7	41.0 - 56.3	<50	5.3	2.6 - 10.3	100	27.3	20.9 - 34.8	<50	11.9	7.6 - 18.2	<50	6.2	3.2 - 11.7	0	0.0	-
Normal birth weight	2,300	61.7	59.1 - 64.2	200	5.6	4.5 - 7.0	700	17.9	16.0 - 19.9	400	10.3	8.7 - 12.1	100	2.9	2.1 - 3.9	100	1.4	0.9 - 2.3

Smoke 3rd Trimester	None (0 cigarettes)			Less than 1 cigarette			1 to 5 cigarettes			6 to 10 cigarettes			11 to 20 cigarettes			21 to 40 cigarettes		
	#	%	C.I.(95%)	#	%	C.I.(95%)	#	%	C.I.(95%)	#	%	C.I.(95%)	#	%	C.I.(95%)	#	%	C.I.(95%)
Yes	0	0.0	-	200	14.2	11.6 - 17.2	800	47.5	43.6 - 51.5	400	26.4	22.9 - 30.2	100	8.0	6.1 - 10.4	100	3.3	2.0 - 5.3
No	2,500	100.0	-	0	0.0	-	0	0.0	-	0	0.0	-	0	0.0	-	0	0.0	-

**PRAMS Health Indicator 5-Year Aggregate Report - Number of cigarettes smoked per avg day last 3 months of pregnancy- by State;County;DOH Race-Ethnicity;PRAMS Age Group;Infant Gender;Married;Poverty Level;Income (2004-2011);Birthweight;Smoke 3rd Trimester;Smoke Before Pregnant;WIC During Pregnancy, for the Year(s) 2000-2004;2001-2005;2002-2006;2003-2007;2004-2008;2005-2009;2006-2010;2007-2011;2008-2012;2009-2013**

*Note: Weighted counts (#) represent 5-yr averages, rounded to the nearest hundred; n/r (Not Reportable) - If the unweighted total responses for a dimension (row) is <30 that row will not be shown*

41 cigarettes or more			Weighted Total Responses (5-Yr Avg)
#	%	C.I.(95%)	#
0	0.0	-	1,100
<50	0.2	0.0 - 1.5	1,100
<50	0.6	0.2 - 2.0	900
<50	0.3	0.0 - 1.8	700

41 cigarettes or more			Weighted Total Responses (5-Yr Avg)
#	%	C.I.(95%)	#
<50	0.6	0.1 - 4.0	300
<50	0.2	0.1 - 0.6	3,700

41 cigarettes or more			Weighted Total Responses (5-Yr Avg)
#	%	C.I.(95%)	#
<50	0.6	0.3 - 1.5	1,600
0	0.0	-	2,500

**PRAMS Health Indicator 5-Year Aggregate Report - Number of cigarettes smoked per avg day last 3 months of pregnancy- by State;County;DOH Race-Ethnicity;PRAMS Age Group;Infant Gender;Married;Poverty Level;Income (2004-2011);Birthweight;Smoke 3rd Trimester;Smoke Before Pregnant;WIC During Pregnancy, for the Year(s) 2000-2004;2001-2005;2002-2006;2003-2007;2004-2008;2005-2009;2006-2010;2007-2011;2008-2012;2009-2013**

*Note: Weighted counts (#) represent 5-yr averages, rounded to the nearest hundred; n/r (Not Reportable) - If the unweighted total responses for a dimension (row) is <30 that row will not be shown*

**Year: 2005-2009**

Smoke Before Pregnant	None (0 cigarettes)			Less than 1 cigarette			1 to 5 cigarettes			6 to 10 cigarettes			11 to 20 cigarettes			21 to 40 cigarettes		
	#	%	C.I.(95%)	#	%	C.I.(95%)	#	%	C.I.(95%)	#	%	C.I.(95%)	#	%	C.I.(95%)	#	%	C.I.(95%)
<b>Yes</b>	2,200	57.5	54.9 - 60.0	200	6.0	4.9 - 7.4	800	20.3	18.3 - 22.4	400	11.1	9.5 - 13.0	100	3.4	2.6 - 4.5	100	1.4	0.8 - 2.3
<b>No</b>	300	96.2	89.0 - 98.7	0	0.0	-	<50	1.5	0.4 - 5.5	<50	1.9	0.3 - 12.0	0	0.0	-	<50	0.4	0.1 - 2.2

WIC During Pregnancy	None (0 cigarettes)			Less than 1 cigarette			1 to 5 cigarettes			6 to 10 cigarettes			11 to 20 cigarettes			21 to 40 cigarettes		
	#	%	C.I.(95%)	#	%	C.I.(95%)	#	%	C.I.(95%)	#	%	C.I.(95%)	#	%	C.I.(95%)	#	%	C.I.(95%)
<b>Yes</b>	1,200	55.3	52.0 - 58.6	100	6.3	4.8 - 8.2	500	20.7	18.3 - 23.5	300	12.0	9.9 - 14.4	100	3.8	2.7 - 5.4	<50	1.7	1.0 - 3.0
<b>No</b>	1,200	67.3	63.7 - 70.8	100	4.9	3.5 - 6.7	300	15.9	13.3 - 18.9	200	8.5	6.5 - 11.1	<50	2.2	1.4 - 3.5	<50	0.8	0.3 - 2.2

**PRAMS Health Indicator 5-Year Aggregate Report - Number of cigarettes smoked per avg day last 3 months of pregnancy- by State;County;DOH Race-Ethnicity;PRAMS Age Group;Infant Gender;Married;Poverty Level;Income (2004-2011);Birthweight;Smoke 3rd Trimester;Smoke Before Pregnant;WIC During Pregnancy, for the Year(s) 2000-2004;2001-2005;2002-2006;2003-2007;2004-2008;2005-2009;2006-2010;2007-2011;2008-2012;2009-2013**

*Note: Weighted counts (#) represent 5-yr averages, rounded to the nearest hundred; n/r (Not Reportable) - If the unweighted total responses for a dimension (row) is <30 that row will not be shown*

41 cigarettes or more			Weighted Total Responses (5-Yr Avg)
#	%	C.I.(95%)	#
<50	0.3	0.1 - 0.7	3,700
0	0.0	-	300

41 cigarettes or more			Weighted Total Responses (5-Yr Avg)
#	%	C.I.(95%)	#
<50	0.2	0.1 - 0.8	2,300
<50	0.3	0.1 - 1.1	1,800

**PRAMS Health Indicator 5-Year Aggregate Report - Number of cigarettes smoked per avg day last 3 months of pregnancy- by State;County;DOH Race-Ethnicity;PRAMS Age Group;Infant Gender;Married;Poverty Level;Income (2004-2011);Birthweight;Smoke 3rd Trimester;Smoke Before Pregnant;WIC During Pregnancy, for the Year(s) 2000-2004;2001-2005;2002-2006;2003-2007;2004-2008;2005-2009;2006-2010;2007-2011;2008-2012;2009-2013**

*Note: Weighted counts (#) represent 5-yr averages, rounded to the nearest hundred; n/r (Not Reportable) - If the unweighted total responses for a dimension (row) is <30 that row will not be shown*

**Year: 2004-2008**

State	None (0 cigarettes)			Less than 1 cigarette			1 to 5 cigarettes			6 to 10 cigarettes			11 to 20 cigarettes			21 to 40 cigarettes		
	#	%	C.I.(95%)	#	%	C.I.(95%)	#	%	C.I.(95%)	#	%	C.I.(95%)	#	%	C.I.(95%)	#	%	C.I.(95%)
<b>Totals</b>	2,400	60.5	58.2 - 62.8	200	5.5	4.5 - 6.6	700	18.8	17.0 - 20.7	400	10.0	8.7 - 11.5	200	3.9	3.1 - 4.9	<50	0.9	0.5 - 1.5

County	None (0 cigarettes)			Less than 1 cigarette			1 to 5 cigarettes			6 to 10 cigarettes			11 to 20 cigarettes			21 to 40 cigarettes		
	#	%	C.I.(95%)	#	%	C.I.(95%)	#	%	C.I.(95%)	#	%	C.I.(95%)	#	%	C.I.(95%)	#	%	C.I.(95%)
<b>Hawaii</b>	400	56.2	50.2 - 62.0	<50	5.8	3.4 - 9.5	100	19.8	15.5 - 25.0	100	13.0	9.4 - 17.7	<50	4.3	2.5 - 7.4	<50	0.9	0.2 - 3.4
<b>Honolulu</b>	1,600	60.7	57.9 - 63.4	100	5.3	4.2 - 6.7	500	18.5	16.4 - 20.9	300	9.9	8.3 - 11.7	100	4.1	3.1 - 5.4	<50	1.0	0.6 - 1.8
<b>Kauai</b>	100	63.7	52.8 - 73.4	<50	3.4	1.1 - 9.7	<50	23.5	15.4 - 34.1	<50	6.9	3.0 - 15.1	<50	1.1	0.2 - 6.9	<50	1.4	0.2 - 8.5
<b>Maui</b>	300	64.2	57.2 - 70.6	<50	6.9	4.1 - 11.6	100	16.7	12.1 - 22.6	<50	8.0	4.8 - 13.1	<50	2.8	1.3 - 6.0	0	0.0	-

**PRAMS Health Indicator 5-Year Aggregate Report - Number of cigarettes smoked per avg day last 3 months of pregnancy- by State;County;DOH Race-Ethnicity;PRAMS Age Group;Infant Gender;Married;Poverty Level;Income (2004-2011);Birthweight;Smoke 3rd Trimester;Smoke Before Pregnant;WIC During Pregnancy, for the Year(s) 2000-2004;2001-2005;2002-2006;2003-2007;2004-2008;2005-2009;2006-2010;2007-2011;2008-2012;2009-2013**

*Note: Weighted counts (#) represent 5-yr averages, rounded to the nearest hundred; n/r (Not Reportable) - If the unweighted total responses for a dimension (row) is <30 that row will not be shown*

41 cigarettes or more			Weighted Total Responses (5-Yr Avg)
#	%	C.I.(95%)	#
<50	0.5	0.2 - 0.9	3,900

41 cigarettes or more			Weighted Total Responses (5-Yr Avg)
#	%	C.I.(95%)	#
0	0.0	-	600
<50	0.5	0.2 - 1.1	2,600
0	0.0	-	200
<50	1.3	0.4 - 3.7	400



**PRAMS Health Indicator 5-Year Aggregate Report - Number of cigarettes smoked per avg day last 3 months of pregnancy- by State;County;DOH Race-Ethnicity;PRAMS Age Group;Infant Gender;Married;Poverty Level;Income (2004-2011);Birthweight;Smoke 3rd Trimester;Smoke Before Pregnant;WIC During Pregnancy, for the Year(s) 2000-2004;2001-2005;2002-2006;2003-2007;2004-2008;2005-2009;2006-2010;2007-2011;2008-2012;2009-2013**

*Note: Weighted counts (#) represent 5-yr averages, rounded to the nearest hundred; n/r (Not Reportable) - If the unweighted total responses for a dimension (row) is <30 that row will not be shown*

**Year: 2004-2008**

DOH Race-Ethnicity	None (0 cigarettes)			Less than 1 cigarette			1 to 5 cigarettes			6 to 10 cigarettes			11 to 20 cigarettes			21 to 40 cigarettes		
	#	%	C.I.(95%)	#	%	C.I.(95%)	#	%	C.I.(95%)	#	%	C.I.(95%)	#	%	C.I.(95%)	#	%	C.I.(95%)
Caucasian	600	67.8	63.3 - 72.0	100	5.9	4.0 - 8.6	100	14.1	11.1 - 17.7	100	7.8	5.6 - 10.7	<50	3.5	2.2 - 5.6	<50	0.5	0.1 - 1.8
Native Hawaiian	800	53.6	49.5 - 57.5	100	5.8	4.1 - 8.0	300	21.3	18.1 - 24.8	200	13.5	11.0 - 16.6	100	4.0	2.7 - 6.0	<50	1.4	0.7 - 2.8
Chinese	<50	68.2	56.0 - 78.3	<50	4.8	1.4 - 14.6	<50	17.8	10.3 - 29.0	<50	1.5	0.3 - 6.4	<50	7.8	3.3 - 17.1	0	0.0	-
Filipino	300	66.8	60.9 - 72.2	<50	4.4	2.5 - 7.7	100	18.7	14.4 - 23.8	<50	5.7	3.5 - 9.2	<50	2.8	1.4 - 5.6	<50	1.2	0.4 - 3.5
Japanese	300	62.8	55.5 - 69.5	<50	4.8	2.4 - 9.2	100	20.5	15.2 - 27.1	<50	7.2	4.1 - 12.2	<50	4.2	2.2 - 8.0	<50	0.5	0.1 - 3.2
Other	300	59.4	53.1 - 65.3	<50	5.4	3.2 - 8.8	100	18.8	14.4 - 24.2	100	10.7	7.3 - 15.3	<50	4.5	2.5 - 8.0	<50	0.4	0.1 - 2.5

PRAMS Age Group	None (0 cigarettes)			Less than 1 cigarette			1 to 5 cigarettes			6 to 10 cigarettes			11 to 20 cigarettes			21 to 40 cigarettes		
	#	%	C.I.(95%)	#	%	C.I.(95%)	#	%	C.I.(95%)	#	%	C.I.(95%)	#	%	C.I.(95%)	#	%	C.I.(95%)
<20	300	63.4	56.0 - 70.2	<50	7.6	4.4 - 13.0	100	21.9	16.5 - 28.6	<50	4.0	1.8 - 8.3	<50	2.2	0.9 - 5.6	<50	0.5	0.1 - 3.0
20-24	800	63.6	59.6 - 67.5	100	5.9	4.3 - 8.1	200	16.7	13.9 - 20.0	100	9.0	6.9 - 11.7	100	3.8	2.5 - 5.7	<50	0.4	0.1 - 1.7
25-34	1,000	59.1	55.7 - 62.5	100	4.6	3.4 - 6.3	400	20.2	17.5 - 23.2	200	10.4	8.4 - 12.8	100	3.9	2.7 - 5.5	<50	1.4	0.8 - 2.6
35+	200	53.3	46.3 - 60.2	<50	5.1	2.9 - 9.0	100	16.0	11.4 - 21.8	100	18.3	13.3 - 24.5	<50	5.9	3.3 - 10.2	<50	0.5	0.1 - 3.1

**PRAMS Health Indicator 5-Year Aggregate Report - Number of cigarettes smoked per avg day last 3 months of pregnancy- by State;County;DOH Race-Ethnicity;PRAMS Age Group;Infant Gender;Married;Poverty Level;Income (2004-2011);Birthweight;Smoke 3rd Trimester;Smoke Before Pregnant;WIC During Pregnancy, for the Year(s) 2000-2004;2001-2005;2002-2006;2003-2007;2004-2008;2005-2009;2006-2010;2007-2011;2008-2012;2009-2013**

*Note: Weighted counts (#) represent 5-yr averages, rounded to the nearest hundred; n/r (Not Reportable) - If the unweighted total responses for a dimension (row) is <30 that row will not be shown*

41 cigarettes or more			Weighted Total Responses (5-Yr Avg)
#	%	C.I.(95%)	#
<50	0.4	0.1 - 1.6	900
<50	0.5	0.2 - 1.5	1,500
0	0.0	-	<50
<50	0.4	0.1 - 2.3	500
0	0.0	-	400
<50	0.9	0.3 - 2.9	600

41 cigarettes or more			Weighted Total Responses (5-Yr Avg)
#	%	C.I.(95%)	#
<50	0.4	0.1 - 2.5	400
<50	0.5	0.2 - 1.5	1,300
<50	0.3	0.1 - 1.1	1,700
<50	1.0	0.3 - 3.6	400

**PRAMS Health Indicator 5-Year Aggregate Report - Number of cigarettes smoked per avg day last 3 months of pregnancy- by State;County;DOH Race-Ethnicity;PRAMS Age Group;Infant Gender;Married;Poverty Level;Income (2004-2011);Birthweight;Smoke 3rd Trimester;Smoke Before Pregnant;WIC During Pregnancy, for the Year(s) 2000-2004;2001-2005;2002-2006;2003-2007;2004-2008;2005-2009;2006-2010;2007-2011;2008-2012;2009-2013**

*Note: Weighted counts (#) represent 5-yr averages, rounded to the nearest hundred; n/r (Not Reportable) - If the unweighted total responses for a dimension (row) is <30 that row will not be shown*

**Year: 2004-2008**

Infant Gender	None (0 cigarettes)			Less than 1 cigarette			1 to 5 cigarettes			6 to 10 cigarettes			11 to 20 cigarettes			21 to 40 cigarettes		
	#	%	C.I.(95%)	#	%	C.I.(95%)	#	%	C.I.(95%)	#	%	C.I.(95%)	#	%	C.I.(95%)	#	%	C.I.(95%)
<b>Male</b>	1,200	59.6	56.3 - 62.7	100	5.9	4.5 - 7.6	400	18.5	16.1 - 21.2	200	10.0	8.2 - 12.1	100	4.7	3.5 - 6.3	<50	1.0	0.5 - 1.9
<b>Female</b>	1,100	61.6	58.2 - 64.8	100	5.0	3.7 - 6.8	400	19.1	16.5 - 21.9	200	10.1	8.1 - 12.4	100	2.9	2.0 - 4.3	<50	0.8	0.4 - 1.7

Married	None (0 cigarettes)			Less than 1 cigarette			1 to 5 cigarettes			6 to 10 cigarettes			11 to 20 cigarettes			21 to 40 cigarettes		
	#	%	C.I.(95%)	#	%	C.I.(95%)	#	%	C.I.(95%)	#	%	C.I.(95%)	#	%	C.I.(95%)	#	%	C.I.(95%)
<b>Yes</b>	1,200	65.7	62.4 - 68.9	100	5.1	3.8 - 6.8	300	15.4	13.1 - 18.1	200	8.7	7.0 - 10.9	100	4.0	2.9 - 5.5	<50	0.7	0.3 - 1.5
<b>No</b>	1,200	56.2	53.0 - 59.4	100	5.8	4.4 - 7.5	500	21.5	19.0 - 24.3	200	11.1	9.2 - 13.3	100	3.8	2.7 - 5.2	<50	1.1	0.6 - 2.1

Poverty Level	None (0 cigarettes)			Less than 1 cigarette			1 to 5 cigarettes			6 to 10 cigarettes			11 to 20 cigarettes			21 to 40 cigarettes		
	#	%	C.I.(95%)	#	%	C.I.(95%)	#	%	C.I.(95%)	#	%	C.I.(95%)	#	%	C.I.(95%)	#	%	C.I.(95%)
<b>0-130%</b>	1,000	50.6	47.2 - 53.9	100	5.8	4.4 - 7.6	500	23.4	20.7 - 26.4	300	13.3	11.1 - 15.8	100	4.9	3.6 - 6.6	<50	1.6	0.9 - 2.7
<b>131-185%</b>	300	64.4	58.0 - 70.2	<50	4.9	2.8 - 8.7	100	17.2	12.9 - 22.6	<50	9.1	6.0 - 13.5	<50	2.7	1.2 - 5.7	<50	0.4	0.1 - 2.7
<b>186+%</b>	800	74.5	70.7 - 78.0	100	5.5	3.9 - 7.8	100	11.0	8.6 - 14.0	100	5.6	3.9 - 7.9	<50	2.9	1.8 - 4.7	<50	0.2	0.0 - 1.2

**PRAMS Health Indicator 5-Year Aggregate Report - Number of cigarettes smoked per avg day last 3 months of pregnancy- by State;County;DOH Race-Ethnicity;PRAMS Age Group;Infant Gender;Married;Poverty Level;Income (2004-2011);Birthweight;Smoke 3rd Trimester;Smoke Before Pregnant;WIC During Pregnancy, for the Year(s) 2000-2004;2001-2005;2002-2006;2003-2007;2004-2008;2005-2009;2006-2010;2007-2011;2008-2012;2009-2013**

*Note: Weighted counts (#) represent 5-yr averages, rounded to the nearest hundred; n/r (Not Reportable) - If the unweighted total responses for a dimension (row) is <30 that row will not be shown*

41 cigarettes or more			Weighted Total Responses (5-Yr Avg)
#	%	C.I.(95%)	#
<50	0.4	0.1 - 1.0	2,000
<50	0.6	0.3 - 1.4	1,900

41 cigarettes or more			Weighted Total Responses (5-Yr Avg)
#	%	C.I.(95%)	#
<50	0.4	0.2 - 1.1	1,800
<50	0.5	0.2 - 1.2	2,100

41 cigarettes or more			Weighted Total Responses (5-Yr Avg)
#	%	C.I.(95%)	#
<50	0.4	0.2 - 1.1	2,000
<50	1.3	0.4 - 3.9	500
<50	0.2	0.1 - 1.0	1,100

**PRAMS Health Indicator 5-Year Aggregate Report - Number of cigarettes smoked per avg day last 3 months of pregnancy- by State;County;DOH Race-Ethnicity;PRAMS Age Group;Infant Gender;Married;Poverty Level;Income (2004-2011);Birthweight;Smoke 3rd Trimester;Smoke Before Pregnant;WIC During Pregnancy, for the Year(s) 2000-2004;2001-2005;2002-2006;2003-2007;2004-2008;2005-2009;2006-2010;2007-2011;2008-2012;2009-2013**

*Note: Weighted counts (#) represent 5-yr averages, rounded to the nearest hundred; n/r (Not Reportable) - If the unweighted total responses for a dimension (row) is <30 that row will not be shown*

**Year: 2004-2008**

Income (2004-2011)	None (0 cigarettes)			Less than 1 cigarette			1 to 5 cigarettes			6 to 10 cigarettes			11 to 20 cigarettes			21 to 40 cigarettes		
	#	%	C.I.(95%)	#	%	C.I.(95%)	#	%	C.I.(95%)	#	%	C.I.(95%)	#	%	C.I.(95%)	#	%	C.I.(95%)
<\$10,000	500	45.5	40.8 - 50.4	100	5.7	3.8 - 8.5	300	25.5	21.5 - 29.9	100	15.0	11.8 - 18.9	100	5.2	3.4 - 7.8	<50	2.7	1.5 - 4.8
\$10,000-\$24,999	700	59.0	54.6 - 63.2	100	5.8	4.1 - 8.2	200	19.8	16.5 - 23.6	100	9.8	7.4 - 12.7	100	5.0	3.4 - 7.3	<50	0.2	0.0 - 1.4
\$25,000-\$49,999	600	67.6	62.9 - 72.0	<50	5.2	3.4 - 8.0	100	13.4	10.4 - 17.0	100	10.3	7.7 - 13.8	<50	2.2	1.1 - 4.2	<50	0.5	0.1 - 1.8
>=\$50,000	500	73.9	68.8 - 78.4	<50	5.6	3.6 - 8.7	100	12.8	9.5 - 17.0	<50	4.2	2.5 - 7.1	<50	2.9	1.6 - 5.2	<50	0.3	0.0 - 1.9

Birthweight	None (0 cigarettes)			Less than 1 cigarette			1 to 5 cigarettes			6 to 10 cigarettes			11 to 20 cigarettes			21 to 40 cigarettes		
	#	%	C.I.(95%)	#	%	C.I.(95%)	#	%	C.I.(95%)	#	%	C.I.(95%)	#	%	C.I.(95%)	#	%	C.I.(95%)
Low birth weight	100	42.7	34.5 - 51.3	<50	6.1	3.1 - 11.8	100	30.3	23.1 - 38.6	<50	14.6	9.5 - 21.6	<50	5.7	2.7 - 11.8	0	0.0	-
Normal birth weight	2,200	62.0	59.6 - 64.4	200	5.4	4.4 - 6.6	600	17.8	16.0 - 19.8	300	9.6	8.3 - 11.2	100	3.7	2.9 - 4.7	<50	1.0	0.6 - 1.6

Smoke 3rd Trimester	None (0 cigarettes)			Less than 1 cigarette			1 to 5 cigarettes			6 to 10 cigarettes			11 to 20 cigarettes			21 to 40 cigarettes		
	#	%	C.I.(95%)	#	%	C.I.(95%)	#	%	C.I.(95%)	#	%	C.I.(95%)	#	%	C.I.(95%)	#	%	C.I.(95%)
Yes	0	0.0	-	200	13.8	11.4 - 16.6	700	47.6	43.8 - 51.4	400	25.4	22.2 - 28.8	200	9.8	7.8 - 12.3	<50	2.3	1.4 - 3.7
No	2,400	100.0	-	0	0.0	-	0	0.0	-	0	0.0	-	0	0.0	-	0	0.0	-

**PRAMS Health Indicator 5-Year Aggregate Report - Number of cigarettes smoked per avg day last 3 months of pregnancy- by State;County;DOH Race-Ethnicity;PRAMS Age Group;Infant Gender;Married;Poverty Level;Income (2004-2011);Birthweight;Smoke 3rd Trimester;Smoke Before Pregnant;WIC During Pregnancy, for the Year(s) 2000-2004;2001-2005;2002-2006;2003-2007;2004-2008;2005-2009;2006-2010;2007-2011;2008-2012;2009-2013**

*Note: Weighted counts (#) represent 5-yr averages, rounded to the nearest hundred; n/r (Not Reportable) - If the unweighted total responses for a dimension (row) is <30 that row will not be shown*

41 cigarettes or more			Weighted Total Responses (5-Yr Avg)
#	%	C.I.(95%)	#
<50	0.4	0.1 - 1.5	1,000
<50	0.4	0.1 - 1.6	1,100
<50	0.9	0.3 - 2.3	900
<50	0.3	0.0 - 1.9	700

41 cigarettes or more			Weighted Total Responses (5-Yr Avg)
#	%	C.I.(95%)	#
<50	0.7	0.1 - 4.3	300
<50	0.5	0.2 - 0.9	3,600

41 cigarettes or more			Weighted Total Responses (5-Yr Avg)
#	%	C.I.(95%)	#
<50	1.2	0.6 - 2.3	1,500
0	0.0	-	2,400

**PRAMS Health Indicator 5-Year Aggregate Report - Number of cigarettes smoked per avg day last 3 months of pregnancy- by State;County;DOH Race-Ethnicity;PRAMS Age Group;Infant Gender;Married;Poverty Level;Income (2004-2011);Birthweight;Smoke 3rd Trimester;Smoke Before Pregnant;WIC During Pregnancy, for the Year(s) 2000-2004;2001-2005;2002-2006;2003-2007;2004-2008;2005-2009;2006-2010;2007-2011;2008-2012;2009-2013**

*Note: Weighted counts (#) represent 5-yr averages, rounded to the nearest hundred; n/r (Not Reportable) - If the unweighted total responses for a dimension (row) is <30 that row will not be shown*

**Year: 2004-2008**

Smoke Before Pregnant	None (0 cigarettes)			Less than 1 cigarette			1 to 5 cigarettes			6 to 10 cigarettes			11 to 20 cigarettes			21 to 40 cigarettes		
	#	%	C.I.(95%)	#	%	C.I.(95%)	#	%	C.I.(95%)	#	%	C.I.(95%)	#	%	C.I.(95%)	#	%	C.I.(95%)
<b>Yes</b>	2,100	58.2	55.8 - 60.6	200	5.8	4.7 - 7.0	700	19.8	17.9 - 21.8	400	10.7	9.2 - 12.3	200	4.1	3.3 - 5.2	<50	1.0	0.6 - 1.6
<b>No</b>	200	96.7	90.6 - 98.9	0	0.0	-	<50	3.3	1.1 - 9.4	0	0.0	-	0	0.0	-	0	0.0	-

WIC During Pregnancy	None (0 cigarettes)			Less than 1 cigarette			1 to 5 cigarettes			6 to 10 cigarettes			11 to 20 cigarettes			21 to 40 cigarettes		
	#	%	C.I.(95%)	#	%	C.I.(95%)	#	%	C.I.(95%)	#	%	C.I.(95%)	#	%	C.I.(95%)	#	%	C.I.(95%)
<b>Yes</b>	1,200	56.2	53.0 - 59.4	100	5.6	4.3 - 7.3	400	20.3	17.8 - 23.0	300	12.1	10.1 - 14.4	100	4.1	3.0 - 5.5	<50	1.2	0.7 - 2.2
<b>No</b>	1,100	65.9	62.5 - 69.2	100	5.5	4.1 - 7.3	300	16.5	14.1 - 19.3	100	7.5	5.8 - 9.6	100	3.6	2.5 - 5.2	<50	0.5	0.2 - 1.2

**PRAMS Health Indicator 5-Year Aggregate Report - Number of cigarettes smoked per avg day last 3 months of pregnancy- by State;County;DOH Race-Ethnicity;PRAMS Age Group;Infant Gender;Married;Poverty Level;Income (2004-2011);Birthweight;Smoke 3rd Trimester;Smoke Before Pregnant;WIC During Pregnancy, for the Year(s) 2000-2004;2001-2005;2002-2006;2003-2007;2004-2008;2005-2009;2006-2010;2007-2011;2008-2012;2009-2013**

*Note: Weighted counts (#) represent 5-yr averages, rounded to the nearest hundred; n/r (Not Reportable) - If the unweighted total responses for a dimension (row) is <30 that row will not be shown*

41 cigarettes or more			Weighted Total Responses (5-Yr Avg)
#	%	C.I.(95%)	#
<50	0.5	0.3 - 1.0	3,700
0	0.0	-	200

41 cigarettes or more			Weighted Total Responses (5-Yr Avg)
#	%	C.I.(95%)	#
<50	0.5	0.2 - 1.1	2,200
<50	0.5	0.2 - 1.3	1,700



**PRAMS Health Indicator 5-Year Aggregate Report - Number of cigarettes smoked per avg day last 3 months of pregnancy- by State;County;DOH Race-Ethnicity;PRAMS Age Group;Infant Gender;Married;Poverty Level;Income (2004-2011);Birthweight;Smoke 3rd Trimester;Smoke Before Pregnant;WIC During Pregnancy, for the Year(s) 2000-2004;2001-2005;2002-2006;2003-2007;2004-2008;2005-2009;2006-2010;2007-2011;2008-2012;2009-2013**

*Note: Weighted counts (#) represent 5-yr averages, rounded to the nearest hundred; n/r (Not Reportable) - If the unweighted total responses for a dimension (row) is <30 that row will not be shown*

**Year: 2003-2007**

State	None (0 cigarettes)			Less than 1 cigarette			1 to 5 cigarettes			6 to 10 cigarettes			11 to 20 cigarettes			21 to 40 cigarettes		
	#	%	C.I.(95%)	#	%	C.I.(95%)	#	%	C.I.(95%)	#	%	C.I.(95%)	#	%	C.I.(95%)	#	%	C.I.(95%)
<b>Totals</b>	2,400	61.1	58.8 - 63.4	200	5.0	4.0 - 6.1	700	18.5	16.8 - 20.4	400	9.8	8.4 - 11.3	200	4.1	3.3 - 5.1	<50	1.1	0.7 - 1.7

County	None (0 cigarettes)			Less than 1 cigarette			1 to 5 cigarettes			6 to 10 cigarettes			11 to 20 cigarettes			21 to 40 cigarettes		
	#	%	C.I.(95%)	#	%	C.I.(95%)	#	%	C.I.(95%)	#	%	C.I.(95%)	#	%	C.I.(95%)	#	%	C.I.(95%)
<b>Hawaii</b>	400	56.7	51.2 - 62.1	<50	4.4	2.5 - 7.6	100	19.7	15.7 - 24.3	100	13.6	10.2 - 18.0	<50	4.6	2.8 - 7.5	<50	0.9	0.2 - 3.3
<b>Honolulu</b>	1,700	61.3	58.5 - 64.1	100	4.9	3.8 - 6.3	500	18.1	16.0 - 20.5	300	9.6	8.0 - 11.6	100	4.3	3.3 - 5.7	<50	1.3	0.8 - 2.1
<b>Kauai</b>	100	66.1	56.3 - 74.7	<50	4.6	2.1 - 9.5	<50	20.6	13.6 - 30.2	<50	6.4	3.1 - 12.9	<50	1.0	0.3 - 3.9	<50	1.3	0.2 - 7.9
<b>Maui</b>	300	63.8	57.2 - 69.9	<50	6.2	3.6 - 10.6	100	18.2	13.7 - 23.9	<50	6.6	3.8 - 11.1	<50	3.5	1.8 - 6.6	0	0.0	-

**PRAMS Health Indicator 5-Year Aggregate Report - Number of cigarettes smoked per avg day last 3 months of pregnancy- by State;County;DOH Race-Ethnicity;PRAMS Age Group;Infant Gender;Married;Poverty Level;Income (2004-2011);Birthweight;Smoke 3rd Trimester;Smoke Before Pregnant;WIC During Pregnancy, for the Year(s) 2000-2004;2001-2005;2002-2006;2003-2007;2004-2008;2005-2009;2006-2010;2007-2011;2008-2012;2009-2013**

*Note: Weighted counts (#) represent 5-yr averages, rounded to the nearest hundred; n/r (Not Reportable) - If the unweighted total responses for a dimension (row) is <30 that row will not be shown*

41 cigarettes or more			Weighted Total Responses (5-Yr Avg)
#	%	C.I.(95%)	#
<50	0.5	0.3 - 0.9	4,000

41 cigarettes or more			Weighted Total Responses (5-Yr Avg)
#	%	C.I.(95%)	#
<50	0.1	0.0 - 0.6	600
<50	0.4	0.2 - 0.9	2,700
0	0.0	-	200
<50	1.6	0.6 - 4.1	400

**PRAMS Health Indicator 5-Year Aggregate Report - Number of cigarettes smoked per avg day last 3 months of pregnancy- by State;County;DOH Race-Ethnicity;PRAMS Age Group;Infant Gender;Married;Poverty Level;Income (2004-2011);Birthweight;Smoke 3rd Trimester;Smoke Before Pregnant;WIC During Pregnancy, for the Year(s) 2000-2004;2001-2005;2002-2006;2003-2007;2004-2008;2005-2009;2006-2010;2007-2011;2008-2012;2009-2013**

*Note: Weighted counts (#) represent 5-yr averages, rounded to the nearest hundred; n/r (Not Reportable) - If the unweighted total responses for a dimension (row) is <30 that row will not be shown*

**Year: 2003-2007**

DOH Race-Ethnicity	None (0 cigarettes)			Less than 1 cigarette			1 to 5 cigarettes			6 to 10 cigarettes			11 to 20 cigarettes			21 to 40 cigarettes		
	#	%	C.I.(95%)	#	%	C.I.(95%)	#	%	C.I.(95%)	#	%	C.I.(95%)	#	%	C.I.(95%)	#	%	C.I.(95%)
Caucasian	600	66.9	62.1 - 71.4	100	5.4	3.5 - 8.1	100	14.3	11.2 - 18.0	100	8.7	6.2 - 11.9	<50	3.9	2.3 - 6.5	<50	0.5	0.1 - 1.8
Native Hawaiian	800	55.3	51.6 - 58.9	100	4.7	3.3 - 6.6	300	20.9	18.0 - 24.1	200	12.3	10.0 - 15.0	100	4.7	3.3 - 6.5	<50	1.7	0.9 - 3.0
Chinese	<50	63.4	42.2 - 80.4	<50	2.3	0.4 - 11.9	<50	27.3	11.7 - 51.6	<50	1.5	0.3 - 6.9	<50	5.5	2.0 - 14.2	0	0.0	-
Filipino	300	63.5	57.3 - 69.4	<50	4.8	2.9 - 7.8	100	20.1	15.5 - 25.6	<50	6.6	3.9 - 11.0	<50	2.9	1.3 - 6.1	<50	1.5	0.5 - 5.0
Japanese	300	69.6	62.6 - 75.7	<50	3.9	1.9 - 8.0	100	17.0	12.3 - 23.2	<50	5.2	2.8 - 9.3	<50	3.8	2.0 - 7.3	<50	0.5	0.1 - 2.9
Other	300	57.6	50.8 - 64.1	<50	6.2	3.7 - 10.2	100	18.4	13.8 - 24.2	100	12.1	8.1 - 17.6	<50	4.3	2.3 - 7.9	<50	0.4	0.1 - 2.7

PRAMS Age Group	None (0 cigarettes)			Less than 1 cigarette			1 to 5 cigarettes			6 to 10 cigarettes			11 to 20 cigarettes			21 to 40 cigarettes		
	#	%	C.I.(95%)	#	%	C.I.(95%)	#	%	C.I.(95%)	#	%	C.I.(95%)	#	%	C.I.(95%)	#	%	C.I.(95%)
<20	300	65.6	58.6 - 72.1	<50	7.4	4.3 - 12.5	100	20.0	14.9 - 26.3	<50	3.8	1.7 - 8.3	<50	1.9	0.8 - 4.1	<50	1.0	0.1 - 6.2
20-24	900	62.9	59.0 - 66.6	100	5.4	3.9 - 7.4	200	16.7	14.0 - 19.8	100	9.7	7.5 - 12.5	100	4.0	2.7 - 5.8	<50	0.6	0.2 - 1.7
25-34	1,000	59.4	55.8 - 62.8	100	4.1	2.9 - 5.7	400	20.5	17.7 - 23.5	200	9.9	7.9 - 12.3	100	4.5	3.2 - 6.3	<50	1.5	0.8 - 2.7
35+	200	57.6	50.3 - 64.5	<50	4.4	2.3 - 8.2	100	14.5	10.3 - 20.1	100	16.5	11.7 - 22.8	<50	5.3	2.9 - 9.4	<50	0.8	0.2 - 3.0

**PRAMS Health Indicator 5-Year Aggregate Report - Number of cigarettes smoked per avg day last 3 months of pregnancy- by State;County;DOH Race-Ethnicity;PRAMS Age Group;Infant Gender;Married;Poverty Level;Income (2004-2011);Birthweight;Smoke 3rd Trimester;Smoke Before Pregnant;WIC During Pregnancy, for the Year(s) 2000-2004;2001-2005;2002-2006;2003-2007;2004-2008;2005-2009;2006-2010;2007-2011;2008-2012;2009-2013**

*Note: Weighted counts (#) represent 5-yr averages, rounded to the nearest hundred; n/r (Not Reportable) - If the unweighted total responses for a dimension (row) is <30 that row will not be shown*

41 cigarettes or more			Weighted Total Responses (5-Yr Avg)
#	%	C.I.(95%)	#
<50	0.4	0.1 - 1.6	900
<50	0.4	0.2 - 1.2	1,500
0	0.0	-	<50
<50	0.6	0.2 - 2.2	500
0	0.0	-	400
<50	1.0	0.3 - 3.2	500

41 cigarettes or more			Weighted Total Responses (5-Yr Avg)
#	%	C.I.(95%)	#
<50	0.4	0.1 - 2.3	500
<50	0.7	0.3 - 1.6	1,400
<50	0.2	0.0 - 0.8	1,800
<50	1.0	0.3 - 3.6	400

**PRAMS Health Indicator 5-Year Aggregate Report - Number of cigarettes smoked per avg day last 3 months of pregnancy- by State;County;DOH Race-Ethnicity;PRAMS Age Group;Infant Gender;Married;Poverty Level;Income (2004-2011);Birthweight;Smoke 3rd Trimester;Smoke Before Pregnant;WIC During Pregnancy, for the Year(s) 2000-2004;2001-2005;2002-2006;2003-2007;2004-2008;2005-2009;2006-2010;2007-2011;2008-2012;2009-2013**

*Note: Weighted counts (#) represent 5-yr averages, rounded to the nearest hundred; n/r (Not Reportable) - If the unweighted total responses for a dimension (row) is <30 that row will not be shown*

**Year: 2003-2007**

Infant Gender	None (0 cigarettes)			Less than 1 cigarette			1 to 5 cigarettes			6 to 10 cigarettes			11 to 20 cigarettes			21 to 40 cigarettes		
	#	%	C.I.(95%)	#	%	C.I.(95%)	#	%	C.I.(95%)	#	%	C.I.(95%)	#	%	C.I.(95%)	#	%	C.I.(95%)
<b>Male</b>	1,200	60.2	57.0 - 63.3	100	5.6	4.3 - 7.3	400	18.8	16.4 - 21.5	200	9.0	7.3 - 11.1	100	4.8	3.6 - 6.5	<50	1.1	0.6 - 2.0
<b>Female</b>	1,200	62.1	58.8 - 65.3	100	4.3	3.1 - 5.9	400	18.2	15.7 - 21.0	200	10.5	8.6 - 12.9	100	3.3	2.3 - 4.7	<50	1.0	0.5 - 2.1

Married	None (0 cigarettes)			Less than 1 cigarette			1 to 5 cigarettes			6 to 10 cigarettes			11 to 20 cigarettes			21 to 40 cigarettes		
	#	%	C.I.(95%)	#	%	C.I.(95%)	#	%	C.I.(95%)	#	%	C.I.(95%)	#	%	C.I.(95%)	#	%	C.I.(95%)
<b>Yes</b>	1,200	66.0	62.7 - 69.2	100	5.0	3.7 - 6.8	300	14.8	12.5 - 17.4	200	8.5	6.7 - 10.7	100	4.5	3.3 - 6.3	<50	0.7	0.3 - 1.5
<b>No</b>	1,200	57.0	53.8 - 60.1	100	4.9	3.7 - 6.5	500	21.7	19.1 - 24.4	200	10.9	9.0 - 13.1	100	3.7	2.7 - 5.1	<50	1.4	0.8 - 2.5

Poverty Level	None (0 cigarettes)			Less than 1 cigarette			1 to 5 cigarettes			6 to 10 cigarettes			11 to 20 cigarettes			21 to 40 cigarettes		
	#	%	C.I.(95%)	#	%	C.I.(95%)	#	%	C.I.(95%)	#	%	C.I.(95%)	#	%	C.I.(95%)	#	%	C.I.(95%)
<b>0-130%</b>	1,100	52.9	49.7 - 56.2	100	5.1	3.8 - 6.8	500	21.9	19.4 - 24.7	300	12.6	10.5 - 15.0	100	5.2	3.9 - 6.9	<50	1.6	0.9 - 2.6
<b>131-185%</b>	300	65.3	58.8 - 71.2	<50	4.1	2.2 - 7.4	100	18.0	13.5 - 23.7	<50	8.5	5.5 - 13.0	<50	2.9	1.3 - 6.5	<50	0.4	0.1 - 2.7
<b>186+%</b>	800	74.0	70.0 - 77.7	100	5.8	4.0 - 8.2	100	11.7	9.1 - 14.9	100	5.4	3.7 - 7.9	<50	2.6	1.6 - 4.3	<50	0.2	0.0 - 1.2

**PRAMS Health Indicator 5-Year Aggregate Report - Number of cigarettes smoked per avg day last 3 months of pregnancy- by State;County;DOH Race-Ethnicity;PRAMS Age Group;Infant Gender;Married;Poverty Level;Income (2004-2011);Birthweight;Smoke 3rd Trimester;Smoke Before Pregnant;WIC During Pregnancy, for the Year(s) 2000-2004;2001-2005;2002-2006;2003-2007;2004-2008;2005-2009;2006-2010;2007-2011;2008-2012;2009-2013**

*Note: Weighted counts (#) represent 5-yr averages, rounded to the nearest hundred; n/r (Not Reportable) - If the unweighted total responses for a dimension (row) is <30 that row will not be shown*

41 cigarettes or more			Weighted Total Responses (5-Yr Avg)
#	%	C.I.(95%)	#
<50	0.5	0.2 - 1.1	2,100
<50	0.5	0.2 - 1.1	1,900

41 cigarettes or more			Weighted Total Responses (5-Yr Avg)
#	%	C.I.(95%)	#
<50	0.5	0.2 - 1.2	1,800
<50	0.5	0.2 - 1.1	2,200

41 cigarettes or more			Weighted Total Responses (5-Yr Avg)
#	%	C.I.(95%)	#
<50	0.6	0.3 - 1.2	2,100
<50	0.8	0.2 - 2.8	500
<50	0.3	0.1 - 1.1	1,100

**PRAMS Health Indicator 5-Year Aggregate Report - Number of cigarettes smoked per avg day last 3 months of pregnancy- by State;County;DOH Race-Ethnicity;PRAMS Age Group;Infant Gender;Married;Poverty Level;Income (2004-2011);Birthweight;Smoke 3rd Trimester;Smoke Before Pregnant;WIC During Pregnancy, for the Year(s) 2000-2004;2001-2005;2002-2006;2003-2007;2004-2008;2005-2009;2006-2010;2007-2011;2008-2012;2009-2013**

*Note: Weighted counts (#) represent 5-yr averages, rounded to the nearest hundred; n/r (Not Reportable) - If the unweighted total responses for a dimension (row) is <30 that row will not be shown*

**Year: 2003-2007**

Birthweight	None (0 cigarettes)			Less than 1 cigarette			1 to 5 cigarettes			6 to 10 cigarettes			11 to 20 cigarettes			21 to 40 cigarettes		
	#	%	C.I.(95%)	#	%	C.I.(95%)	#	%	C.I.(95%)	#	%	C.I.(95%)	#	%	C.I.(95%)	#	%	C.I.(95%)
Low birth weight	100	44.7	36.4 - 53.2	<50	8.0	4.2 - 14.6	100	29.2	22.2 - 37.3	<50	14.0	9.2 - 20.9	<50	3.5	1.3 - 8.9	0	0.0	-
Normal birth weight	2,300	62.5	60.1 - 64.8	200	4.7	3.8 - 5.8	700	17.6	15.8 - 19.6	300	9.4	8.0 - 11.0	200	4.1	3.3 - 5.2	<50	1.2	0.7 - 1.8

Smoke 3rd Trimester	None (0 cigarettes)			Less than 1 cigarette			1 to 5 cigarettes			6 to 10 cigarettes			11 to 20 cigarettes			21 to 40 cigarettes		
	#	%	C.I.(95%)	#	%	C.I.(95%)	#	%	C.I.(95%)	#	%	C.I.(95%)	#	%	C.I.(95%)	#	%	C.I.(95%)
Yes	0	0.0	-	200	12.8	10.5 - 15.5	700	47.6	43.9 - 51.4	400	25.1	21.9 - 28.6	200	10.5	8.4 - 13.1	<50	2.7	1.7 - 4.4
No	2,400	100.0	-	0	0.0	-	0	0.0	-	0	0.0	-	0	0.0	-	0	0.0	-

Smoke Before Pregnant	None (0 cigarettes)			Less than 1 cigarette			1 to 5 cigarettes			6 to 10 cigarettes			11 to 20 cigarettes			21 to 40 cigarettes		
	#	%	C.I.(95%)	#	%	C.I.(95%)	#	%	C.I.(95%)	#	%	C.I.(95%)	#	%	C.I.(95%)	#	%	C.I.(95%)
Yes	2,100	58.4	55.9 - 60.7	200	5.3	4.3 - 6.5	700	19.7	17.8 - 21.7	400	10.6	9.2 - 12.3	200	4.5	3.5 - 5.6	<50	1.1	0.7 - 1.8
No	300	97.1	91.7 - 99.0	0	0.0	-	<50	2.9	1.0 - 8.3	0	0.0	-	0	0.0	-	0	0.0	-

**PRAMS Health Indicator 5-Year Aggregate Report - Number of cigarettes smoked per avg day last 3 months of pregnancy- by State;County;DOH Race-Ethnicity;PRAMS Age Group;Infant Gender;Married;Poverty Level;Income (2004-2011);Birthweight;Smoke 3rd Trimester;Smoke Before Pregnant;WIC During Pregnancy, for the Year(s) 2000-2004;2001-2005;2002-2006;2003-2007;2004-2008;2005-2009;2006-2010;2007-2011;2008-2012;2009-2013**

*Note: Weighted counts (#) represent 5-yr averages, rounded to the nearest hundred; n/r (Not Reportable) - If the unweighted total responses for a dimension (row) is <30 that row will not be shown*

41 cigarettes or more			Weighted Total Responses (5-Yr Avg)
#	%	C.I.(95%)	#
<50	0.7	0.1 - 4.4	300
<50	0.5	0.2 - 0.9	3,700

41 cigarettes or more			Weighted Total Responses (5-Yr Avg)
#	%	C.I.(95%)	#
<50	1.2	0.7 - 2.2	1,500
0	0.0	-	2,400

41 cigarettes or more			Weighted Total Responses (5-Yr Avg)
#	%	C.I.(95%)	#
<50	0.5	0.3 - 0.9	3,700
0	0.0	-	300



**PRAMS Health Indicator 5-Year Aggregate Report - Number of cigarettes smoked per avg day last 3 months of pregnancy- by State;County;DOH Race-Ethnicity;PRAMS Age Group;Infant Gender;Married;Poverty Level;Income (2004-2011);Birthweight;Smoke 3rd Trimester;Smoke Before Pregnant;WIC During Pregnancy, for the Year(s) 2000-2004;2001-2005;2002-2006;2003-2007;2004-2008;2005-2009;2006-2010;2007-2011;2008-2012;2009-2013**

*Note: Weighted counts (#) represent 5-yr averages, rounded to the nearest hundred; n/r (Not Reportable) - If the unweighted total responses for a dimension (row) is <30 that row will not be shown*

**Year: 2003-2007**

WIC During Pregnancy	None (0 cigarettes)			Less than 1 cigarette			1 to 5 cigarettes			6 to 10 cigarettes			11 to 20 cigarettes			21 to 40 cigarettes		
	#	%	C.I.(95%)	#	%	C.I.(95%)	#	%	C.I.(95%)	#	%	C.I.(95%)	#	%	C.I.(95%)	#	%	C.I.(95%)
<b>Yes</b>	1,200	56.3	53.2 - 59.5	100	5.2	4.0 - 6.9	400	20.3	17.9 - 23.0	300	11.5	9.5 - 13.8	100	4.4	3.3 - 5.8	<50	1.6	0.9 - 2.7
<b>No</b>	1,200	67.0	63.6 - 70.2	100	4.8	3.5 - 6.4	300	16.2	13.7 - 19.0	100	7.7	6.0 - 9.8	100	3.6	2.5 - 5.3	<50	0.4	0.2 - 1.1

**PRAMS Health Indicator 5-Year Aggregate Report - Number of cigarettes smoked per avg day last 3 months of pregnancy- by State;County;DOH Race-Ethnicity;PRAMS Age Group;Infant Gender;Married;Poverty Level;Income (2004-2011);Birthweight;Smoke 3rd Trimester;Smoke Before Pregnant;WIC During Pregnancy, for the Year(s) 2000-2004;2001-2005;2002-2006;2003-2007;2004-2008;2005-2009;2006-2010;2007-2011;2008-2012;2009-2013**

*Note: Weighted counts (#) represent 5-yr averages, rounded to the nearest hundred; n/r (Not Reportable) - If the unweighted total responses for a dimension (row) is <30 that row will not be shown*

41 cigarettes or more			Weighted Total Responses (5-Yr Avg)
#	%	C.I.(95%)	#
<50	0.6	0.3 - 1.3	2,200
<50	0.3	0.1 - 0.9	1,800

**PRAMS Health Indicator 5-Year Aggregate Report - Number of cigarettes smoked per avg day last 3 months of pregnancy- by State;County;DOH Race-Ethnicity;PRAMS Age Group;Infant Gender;Married;Poverty Level;Income (2004-2011);Birthweight;Smoke 3rd Trimester;Smoke Before Pregnant;WIC During Pregnancy, for the Year(s) 2000-2004;2001-2005;2002-2006;2003-2007;2004-2008;2005-2009;2006-2010;2007-2011;2008-2012;2009-2013**

*Note: Weighted counts (#) represent 5-yr averages, rounded to the nearest hundred; n/r (Not Reportable) - If the unweighted total responses for a dimension (row) is <30 that row will not be shown*

**Year: 2002-2006**

State	None (0 cigarettes)			Less than 1 cigarette			1 to 5 cigarettes			6 to 10 cigarettes			11 to 20 cigarettes			21 to 40 cigarettes		
	#	%	C.I.(95%)	#	%	C.I.(95%)	#	%	C.I.(95%)	#	%	C.I.(95%)	#	%	C.I.(95%)	#	%	C.I.(95%)
<b>Totals</b>	2,400	61.8	59.4 - 64.0	200	4.5	3.6 - 5.6	700	16.5	14.9 - 18.3	400	10.2	8.8 - 11.8	200	5.3	4.4 - 6.5	<50	1.2	0.7 - 1.9

County	None (0 cigarettes)			Less than 1 cigarette			1 to 5 cigarettes			6 to 10 cigarettes			11 to 20 cigarettes			21 to 40 cigarettes		
	#	%	C.I.(95%)	#	%	C.I.(95%)	#	%	C.I.(95%)	#	%	C.I.(95%)	#	%	C.I.(95%)	#	%	C.I.(95%)
<b>Hawaii</b>	400	56.1	51.0 - 61.1	<50	3.7	2.0 - 6.5	100	19.2	15.5 - 23.5	100	13.8	10.6 - 17.8	<50	6.1	4.1 - 8.9	<50	1.0	0.3 - 3.3
<b>Honolulu</b>	1,700	62.7	59.7 - 65.6	100	4.5	3.4 - 5.9	400	15.3	13.3 - 17.5	300	10.2	8.5 - 12.3	100	5.5	4.3 - 7.1	<50	1.4	0.8 - 2.4
<b>Kauai</b>	100	62.6	53.2 - 71.0	<50	4.8	2.2 - 9.9	<50	20.2	13.5 - 29.3	<50	9.7	5.7 - 15.9	<50	1.1	0.3 - 4.0	<50	1.7	0.4 - 7.4
<b>Maui</b>	300	63.8	57.5 - 69.5	<50	5.7	3.4 - 9.5	100	18.8	14.3 - 24.3	<50	4.8	2.6 - 8.7	<50	4.9	3.0 - 8.0	<50	0.3	0.0 - 1.6

**PRAMS Health Indicator 5-Year Aggregate Report - Number of cigarettes smoked per avg day last 3 months of pregnancy- by State;County;DOH Race-Ethnicity;PRAMS Age Group;Infant Gender;Married;Poverty Level;Income (2004-2011);Birthweight;Smoke 3rd Trimester;Smoke Before Pregnant;WIC During Pregnancy, for the Year(s) 2000-2004;2001-2005;2002-2006;2003-2007;2004-2008;2005-2009;2006-2010;2007-2011;2008-2012;2009-2013**

*Note: Weighted counts (#) represent 5-yr averages, rounded to the nearest hundred; n/r (Not Reportable) - If the unweighted total responses for a dimension (row) is <30 that row will not be shown*

41 cigarettes or more			Weighted Total Responses (5-Yr Avg)
#	%	C.I.(95%)	#
<50	0.5	0.3 - 0.9	4,000

41 cigarettes or more			Weighted Total Responses (5-Yr Avg)
#	%	C.I.(95%)	#
<50	0.1	0.0 - 0.6	600
<50	0.4	0.2 - 0.9	2,700
0	0.0	-	200
<50	1.7	0.7 - 4.2	400

**PRAMS Health Indicator 5-Year Aggregate Report - Number of cigarettes smoked per avg day last 3 months of pregnancy- by State;County;DOH Race-Ethnicity;PRAMS Age Group;Infant Gender;Married;Poverty Level;Income (2004-2011);Birthweight;Smoke 3rd Trimester;Smoke Before Pregnant;WIC During Pregnancy, for the Year(s) 2000-2004;2001-2005;2002-2006;2003-2007;2004-2008;2005-2009;2006-2010;2007-2011;2008-2012;2009-2013**

*Note: Weighted counts (#) represent 5-yr averages, rounded to the nearest hundred; n/r (Not Reportable) - If the unweighted total responses for a dimension (row) is <30 that row will not be shown*

**Year: 2002-2006**

DOH Race-Ethnicity	None (0 cigarettes)			Less than 1 cigarette			1 to 5 cigarettes			6 to 10 cigarettes			11 to 20 cigarettes			21 to 40 cigarettes		
	#	%	C.I.(95%)	#	%	C.I.(95%)	#	%	C.I.(95%)	#	%	C.I.(95%)	#	%	C.I.(95%)	#	%	C.I.(95%)
Caucasian	600	66.2	61.1 - 71.0	<50	5.1	3.2 - 8.0	100	11.5	8.5 - 15.3	100	11.6	8.6 - 15.6	<50	4.9	3.1 - 7.7	<50	0.3	0.0 - 1.7
Native Hawaiian	900	56.5	53.1 - 59.8	100	4.0	2.9 - 5.6	300	20.3	17.7 - 23.2	200	11.9	9.8 - 14.4	100	5.5	4.1 - 7.2	<50	1.4	0.8 - 2.5
Chinese	<50	64.0	39.1 - 83.1	<50	2.6	0.5 - 13.5	<50	22.0	6.6 - 52.8	<50	1.7	0.4 - 7.9	<50	9.7	3.7 - 23.3	0	0.0	-
Filipino	400	65.3	58.8 - 71.2	<50	5.4	3.3 - 8.7	100	17.5	13.1 - 23.0	<50	6.1	3.5 - 10.7	<50	3.4	1.7 - 6.6	<50	1.8	0.6 - 5.0
Japanese	300	70.8	63.7 - 77.1	<50	3.7	1.6 - 8.4	100	14.4	10.0 - 20.3	<50	6.0	3.4 - 10.4	<50	4.7	2.5 - 8.7	<50	0.5	0.1 - 2.9
Other	300	57.6	50.2 - 64.6	<50	4.9	2.7 - 8.8	100	15.0	10.8 - 20.5	100	11.1	7.3 - 16.7	<50	8.0	4.8 - 13.3	<50	2.5	0.8 - 7.8

PRAMS Age Group	None (0 cigarettes)			Less than 1 cigarette			1 to 5 cigarettes			6 to 10 cigarettes			11 to 20 cigarettes			21 to 40 cigarettes		
	#	%	C.I.(95%)	#	%	C.I.(95%)	#	%	C.I.(95%)	#	%	C.I.(95%)	#	%	C.I.(95%)	#	%	C.I.(95%)
<20	300	66.6	59.8 - 72.7	<50	6.7	3.7 - 11.8	100	19.2	14.4 - 25.1	<50	3.5	1.6 - 7.3	<50	2.7	1.4 - 5.1	<50	1.0	0.1 - 6.2
20-24	800	62.4	58.4 - 66.1	100	4.5	3.1 - 6.3	200	15.4	12.8 - 18.4	100	10.9	8.5 - 13.9	100	5.0	3.6 - 6.9	<50	1.1	0.4 - 2.9
25-34	1,100	61.2	57.7 - 64.7	100	4.3	3.0 - 5.9	300	17.3	14.8 - 20.2	200	10.2	8.2 - 12.6	100	5.8	4.2 - 7.9	<50	1.0	0.5 - 2.0
35+	200	56.1	48.6 - 63.3	<50	3.2	1.5 - 6.5	100	13.8	9.5 - 19.5	100	16.1	11.3 - 22.4	<50	7.4	4.5 - 12.2	<50	2.5	0.9 - 6.3

**PRAMS Health Indicator 5-Year Aggregate Report - Number of cigarettes smoked per avg day last 3 months of pregnancy- by State;County;DOH Race-Ethnicity;PRAMS Age Group;Infant Gender;Married;Poverty Level;Income (2004-2011);Birthweight;Smoke 3rd Trimester;Smoke Before Pregnant;WIC During Pregnancy, for the Year(s) 2000-2004;2001-2005;2002-2006;2003-2007;2004-2008;2005-2009;2006-2010;2007-2011;2008-2012;2009-2013**

*Note: Weighted counts (#) represent 5-yr averages, rounded to the nearest hundred; n/r (Not Reportable) - If the unweighted total responses for a dimension (row) is <30 that row will not be shown*

41 cigarettes or more			Weighted Total Responses (5-Yr Avg)
#	%	C.I.(95%)	#
<50	0.4	0.1 - 1.6	900
<50	0.4	0.2 - 1.2	1,500
0	0.0	-	<50
<50	0.6	0.2 - 2.2	500
0	0.0	-	500
<50	0.9	0.2 - 3.3	500

41 cigarettes or more			Weighted Total Responses (5-Yr Avg)
#	%	C.I.(95%)	#
<50	0.4	0.1 - 2.3	500
<50	0.7	0.3 - 1.6	1,400
<50	0.1	0.0 - 0.9	1,700
<50	1.0	0.3 - 3.8	400

**PRAMS Health Indicator 5-Year Aggregate Report - Number of cigarettes smoked per avg day last 3 months of pregnancy- by State;County;DOH Race-Ethnicity;PRAMS Age Group;Infant Gender;Married;Poverty Level;Income (2004-2011);Birthweight;Smoke 3rd Trimester;Smoke Before Pregnant;WIC During Pregnancy, for the Year(s) 2000-2004;2001-2005;2002-2006;2003-2007;2004-2008;2005-2009;2006-2010;2007-2011;2008-2012;2009-2013**

*Note: Weighted counts (#) represent 5-yr averages, rounded to the nearest hundred; n/r (Not Reportable) - If the unweighted total responses for a dimension (row) is <30 that row will not be shown*

**Year: 2002-2006**

Infant Gender	None (0 cigarettes)			Less than 1 cigarette			1 to 5 cigarettes			6 to 10 cigarettes			11 to 20 cigarettes			21 to 40 cigarettes		
	#	%	C.I.(95%)	#	%	C.I.(95%)	#	%	C.I.(95%)	#	%	C.I.(95%)	#	%	C.I.(95%)	#	%	C.I.(95%)
<b>Male</b>	1,300	62.0	58.8 - 65.1	100	4.6	3.5 - 6.1	300	16.5	14.3 - 18.9	200	9.2	7.4 - 11.3	100	6.0	4.6 - 7.8	<50	1.2	0.6 - 2.4
<b>Female</b>	1,200	61.5	58.1 - 64.7	100	4.4	3.2 - 6.1	300	16.6	14.2 - 19.3	200	11.3	9.2 - 13.7	100	4.6	3.4 - 6.2	<50	1.2	0.6 - 2.3

Married	None (0 cigarettes)			Less than 1 cigarette			1 to 5 cigarettes			6 to 10 cigarettes			11 to 20 cigarettes			21 to 40 cigarettes		
	#	%	C.I.(95%)	#	%	C.I.(95%)	#	%	C.I.(95%)	#	%	C.I.(95%)	#	%	C.I.(95%)	#	%	C.I.(95%)
<b>Yes</b>	1,200	66.0	62.6 - 69.3	100	4.9	3.6 - 6.7	200	12.7	10.6 - 15.1	200	9.4	7.5 - 11.8	100	5.6	4.2 - 7.4	<50	0.9	0.5 - 1.8
<b>No</b>	1,200	58.0	54.8 - 61.1	100	4.2	3.1 - 5.6	400	20.0	17.5 - 22.6	200	10.9	9.0 - 13.1	100	5.0	3.8 - 6.7	<50	1.5	0.8 - 2.8

Poverty Level	None (0 cigarettes)			Less than 1 cigarette			1 to 5 cigarettes			6 to 10 cigarettes			11 to 20 cigarettes			21 to 40 cigarettes		
	#	%	C.I.(95%)	#	%	C.I.(95%)	#	%	C.I.(95%)	#	%	C.I.(95%)	#	%	C.I.(95%)	#	%	C.I.(95%)
<b>0-130%</b>	1,100	53.9	50.7 - 57.1	100	5.0	3.7 - 6.6	400	20.1	17.7 - 22.8	300	12.1	10.1 - 14.4	100	6.7	5.2 - 8.5	<50	1.6	0.9 - 2.9
<b>131-185%</b>	400	69.7	63.4 - 75.3	<50	2.8	1.4 - 5.5	100	13.5	9.7 - 18.4	100	9.6	6.3 - 14.4	<50	3.1	1.5 - 6.2	<50	0.7	0.1 - 4.4
<b>186+%</b>	700	74.2	69.8 - 78.1	<50	5.0	3.4 - 7.5	100	10.0	7.5 - 13.1	100	6.8	4.7 - 9.7	<50	3.5	2.1 - 5.7	<50	0.3	0.1 - 1.2

**PRAMS Health Indicator 5-Year Aggregate Report - Number of cigarettes smoked per avg day last 3 months of pregnancy- by State;County;DOH Race-Ethnicity;PRAMS Age Group;Infant Gender;Married;Poverty Level;Income (2004-2011);Birthweight;Smoke 3rd Trimester;Smoke Before Pregnant;WIC During Pregnancy, for the Year(s) 2000-2004;2001-2005;2002-2006;2003-2007;2004-2008;2005-2009;2006-2010;2007-2011;2008-2012;2009-2013**

*Note: Weighted counts (#) represent 5-yr averages, rounded to the nearest hundred; n/r (Not Reportable) - If the unweighted total responses for a dimension (row) is <30 that row will not be shown*

41 cigarettes or more			Weighted Total Responses (5-Yr Avg)
#	%	C.I.(95%)	#
<50	0.4	0.2 - 1.1	2,000
<50	0.5	0.2 - 1.1	1,900

41 cigarettes or more			Weighted Total Responses (5-Yr Avg)
#	%	C.I.(95%)	#
<50	0.4	0.2 - 1.1	1,900
<50	0.5	0.2 - 1.1	2,100

41 cigarettes or more			Weighted Total Responses (5-Yr Avg)
#	%	C.I.(95%)	#
<50	0.6	0.3 - 1.2	2,100
<50	0.7	0.2 - 2.5	600
<50	0.2	0.0 - 1.4	1,000



**PRAMS Health Indicator 5-Year Aggregate Report - Number of cigarettes smoked per avg day last 3 months of pregnancy- by State;County;DOH Race-Ethnicity;PRAMS Age Group;Infant Gender;Married;Poverty Level;Income (2004-2011);Birthweight;Smoke 3rd Trimester;Smoke Before Pregnant;WIC During Pregnancy, for the Year(s) 2000-2004;2001-2005;2002-2006;2003-2007;2004-2008;2005-2009;2006-2010;2007-2011;2008-2012;2009-2013**

*Note: Weighted counts (#) represent 5-yr averages, rounded to the nearest hundred; n/r (Not Reportable) - If the unweighted total responses for a dimension (row) is <30 that row will not be shown*

**Year: 2002-2006**

Birthweight	None (0 cigarettes)			Less than 1 cigarette			1 to 5 cigarettes			6 to 10 cigarettes			11 to 20 cigarettes			21 to 40 cigarettes		
	#	%	C.I.(95%)	#	%	C.I.(95%)	#	%	C.I.(95%)	#	%	C.I.(95%)	#	%	C.I.(95%)	#	%	C.I.(95%)
Low birth weight	100	45.6	37.0 - 54.5	<50	6.4	3.1 - 13.0	100	25.0	18.5 - 32.8	<50	15.5	10.3 - 22.5	<50	6.8	3.5 - 12.9	0	0.0	-
Normal birth weight	2,300	63.1	60.7 - 65.4	200	4.4	3.5 - 5.5	600	15.9	14.2 - 17.7	400	9.8	8.4 - 11.4	200	5.1	4.1 - 6.2	<50	1.3	0.8 - 2.1

Smoke 3rd Trimester	None (0 cigarettes)			Less than 1 cigarette			1 to 5 cigarettes			6 to 10 cigarettes			11 to 20 cigarettes			21 to 40 cigarettes		
	#	%	C.I.(95%)	#	%	C.I.(95%)	#	%	C.I.(95%)	#	%	C.I.(95%)	#	%	C.I.(95%)	#	%	C.I.(95%)
Yes	0	0.0	-	200	11.8	9.6 - 14.5	700	43.3	39.5 - 47.0	400	26.7	23.4 - 30.2	200	13.9	11.5 - 16.8	<50	3.1	1.9 - 5.0
No	2,400	100.0	-	0	0.0	-	0	0.0	-	0	0.0	-	0	0.0	-	0	0.0	-

Smoke Before Pregnant	None (0 cigarettes)			Less than 1 cigarette			1 to 5 cigarettes			6 to 10 cigarettes			11 to 20 cigarettes			21 to 40 cigarettes		
	#	%	C.I.(95%)	#	%	C.I.(95%)	#	%	C.I.(95%)	#	%	C.I.(95%)	#	%	C.I.(95%)	#	%	C.I.(95%)
Yes	2,100	58.5	56.1 - 61.0	200	4.8	3.9 - 6.0	600	17.7	15.9 - 19.7	400	11.2	9.7 - 12.9	200	5.9	4.8 - 7.2	<50	1.3	0.8 - 2.1
No	300	97.5	92.7 - 99.2	0	0.0	-	<50	2.5	0.8 - 7.3	0	0.0	-	0	0.0	-	0	0.0	-

**PRAMS Health Indicator 5-Year Aggregate Report - Number of cigarettes smoked per avg day last 3 months of pregnancy- by State;County;DOH Race-Ethnicity;PRAMS Age Group;Infant Gender;Married;Poverty Level;Income (2004-2011);Birthweight;Smoke 3rd Trimester;Smoke Before Pregnant;WIC During Pregnancy, for the Year(s) 2000-2004;2001-2005;2002-2006;2003-2007;2004-2008;2005-2009;2006-2010;2007-2011;2008-2012;2009-2013**

*Note: Weighted counts (#) represent 5-yr averages, rounded to the nearest hundred; n/r (Not Reportable) - If the unweighted total responses for a dimension (row) is <30 that row will not be shown*

41 cigarettes or more			Weighted Total Responses (5-Yr Avg)
#	%	C.I.(95%)	#
<50	0.7	0.1 - 4.7	300
<50	0.4	0.2 - 0.8	3,700

41 cigarettes or more			Weighted Total Responses (5-Yr Avg)
#	%	C.I.(95%)	#
<50	1.2	0.7 - 2.2	1,500
0	0.0	-	2,400

41 cigarettes or more			Weighted Total Responses (5-Yr Avg)
#	%	C.I.(95%)	#
<50	0.5	0.3 - 0.9	3,600
0	0.0	-	300

**PRAMS Health Indicator 5-Year Aggregate Report - Number of cigarettes smoked per avg day last 3 months of pregnancy- by State;County;DOH Race-Ethnicity;PRAMS Age Group;Infant Gender;Married;Poverty Level;Income (2004-2011);Birthweight;Smoke 3rd Trimester;Smoke Before Pregnant;WIC During Pregnancy, for the Year(s) 2000-2004;2001-2005;2002-2006;2003-2007;2004-2008;2005-2009;2006-2010;2007-2011;2008-2012;2009-2013**

*Note: Weighted counts (#) represent 5-yr averages, rounded to the nearest hundred; n/r (Not Reportable) - If the unweighted total responses for a dimension (row) is <30 that row will not be shown*

**Year: 2002-2006**

WIC During Pregnancy	None (0 cigarettes)			Less than 1 cigarette			1 to 5 cigarettes			6 to 10 cigarettes			11 to 20 cigarettes			21 to 40 cigarettes		
	#	%	C.I.(95%)	#	%	C.I.(95%)	#	%	C.I.(95%)	#	%	C.I.(95%)	#	%	C.I.(95%)	#	%	C.I.(95%)
<b>Yes</b>	1,300	58.4	55.3 - 61.4	100	4.5	3.4 - 6.0	400	18.0	15.8 - 20.5	300	11.8	9.8 - 14.1	100	5.1	3.9 - 6.5	<50	1.6	0.9 - 2.8
<b>No</b>	1,100	65.7	62.2 - 69.1	100	4.7	3.4 - 6.5	300	14.8	12.5 - 17.5	100	8.1	6.4 - 10.3	100	5.7	4.1 - 7.7	<50	0.7	0.3 - 1.7

**PRAMS Health Indicator 5-Year Aggregate Report - Number of cigarettes smoked per avg day last 3 months of pregnancy- by State;County;DOH Race-Ethnicity;PRAMS Age Group;Infant Gender;Married;Poverty Level;Income (2004-2011);Birthweight;Smoke 3rd Trimester;Smoke Before Pregnant;WIC During Pregnancy, for the Year(s) 2000-2004;2001-2005;2002-2006;2003-2007;2004-2008;2005-2009;2006-2010;2007-2011;2008-2012;2009-2013**

*Note: Weighted counts (#) represent 5-yr averages, rounded to the nearest hundred; n/r (Not Reportable) - If the unweighted total responses for a dimension (row) is <30 that row will not be shown*

41 cigarettes or more			Weighted Total Responses (5-Yr Avg)
#	%	C.I.(95%)	#
<50	0.6	0.3 - 1.2	2,200
<50	0.3	0.1 - 1.0	1,700

**PRAMS Health Indicator 5-Year Aggregate Report - Number of cigarettes smoked per avg day last 3 months of pregnancy- by State;County;DOH Race-Ethnicity;PRAMS Age Group;Infant Gender;Married;Poverty Level;Income (2004-2011);Birthweight;Smoke 3rd Trimester;Smoke Before Pregnant;WIC During Pregnancy, for the Year(s) 2000-2004;2001-2005;2002-2006;2003-2007;2004-2008;2005-2009;2006-2010;2007-2011;2008-2012;2009-2013**

*Note: Weighted counts (#) represent 5-yr averages, rounded to the nearest hundred; n/r (Not Reportable) - If the unweighted total responses for a dimension (row) is <30 that row will not be shown*

**Year: 2001-2005**

State	None (0 cigarettes)			Less than 1 cigarette			1 to 5 cigarettes			6 to 10 cigarettes			11 to 20 cigarettes			21 to 40 cigarettes		
	#	%	C.I.(95%)	#	%	C.I.(95%)	#	%	C.I.(95%)	#	%	C.I.(95%)	#	%	C.I.(95%)	#	%	C.I.(95%)
<b>Totals</b>	2,400	61.9	59.7 - 64.1	200	5.1	4.2 - 6.2	600	16.1	14.6 - 17.8	400	9.5	8.2 - 11.0	200	5.8	4.8 - 6.9	<50	1.1	0.7 - 1.7

County	None (0 cigarettes)			Less than 1 cigarette			1 to 5 cigarettes			6 to 10 cigarettes			11 to 20 cigarettes			21 to 40 cigarettes		
	#	%	C.I.(95%)	#	%	C.I.(95%)	#	%	C.I.(95%)	#	%	C.I.(95%)	#	%	C.I.(95%)	#	%	C.I.(95%)
<b>Hawaii</b>	300	57.0	52.4 - 61.5	<50	4.3	2.7 - 6.7	100	17.9	14.7 - 21.5	100	13.2	10.4 - 16.6	<50	6.6	4.6 - 9.5	<50	0.9	0.3 - 2.4
<b>Honolulu</b>	1,700	62.9	60.0 - 65.7	100	5.1	4.0 - 6.6	400	15.0	13.1 - 17.2	200	9.3	7.6 - 11.2	200	6.0	4.7 - 7.5	<50	1.3	0.8 - 2.3
<b>Kauai</b>	100	58.2	49.9 - 66.0	<50	6.6	3.7 - 11.8	<50	21.0	15.0 - 28.7	<50	11.8	7.5 - 18.0	<50	2.1	0.8 - 5.2	<50	0.4	0.1 - 1.9
<b>Maui</b>	300	64.6	59.1 - 69.7	<50	5.4	3.3 - 8.7	100	18.4	14.5 - 23.1	<50	4.7	2.9 - 7.6	<50	4.8	3.1 - 7.6	<50	0.3	0.0 - 1.6

**PRAMS Health Indicator 5-Year Aggregate Report - Number of cigarettes smoked per avg day last 3 months of pregnancy- by State;County;DOH Race-Ethnicity;PRAMS Age Group;Infant Gender;Married;Poverty Level;Income (2004-2011);Birthweight;Smoke 3rd Trimester;Smoke Before Pregnant;WIC During Pregnancy, for the Year(s) 2000-2004;2001-2005;2002-2006;2003-2007;2004-2008;2005-2009;2006-2010;2007-2011;2008-2012;2009-2013**

*Note: Weighted counts (#) represent 5-yr averages, rounded to the nearest hundred; n/r (Not Reportable) - If the unweighted total responses for a dimension (row) is <30 that row will not be shown*

41 cigarettes or more			Weighted Total Responses (5-Yr Avg)
#	%	C.I.(95%)	#
<50	0.5	0.3 - 0.9	3,900

41 cigarettes or more			Weighted Total Responses (5-Yr Avg)
#	%	C.I.(95%)	#
<50	0.1	0.0 - 0.6	600
<50	0.4	0.2 - 0.9	2,700
0	0.0	-	200
<50	1.7	0.7 - 4.3	400

**PRAMS Health Indicator 5-Year Aggregate Report - Number of cigarettes smoked per avg day last 3 months of pregnancy- by State;County;DOH Race-Ethnicity;PRAMS Age Group;Infant Gender;Married;Poverty Level;Income (2004-2011);Birthweight;Smoke 3rd Trimester;Smoke Before Pregnant;WIC During Pregnancy, for the Year(s) 2000-2004;2001-2005;2002-2006;2003-2007;2004-2008;2005-2009;2006-2010;2007-2011;2008-2012;2009-2013**

*Note: Weighted counts (#) represent 5-yr averages, rounded to the nearest hundred; n/r (Not Reportable) - If the unweighted total responses for a dimension (row) is <30 that row will not be shown*

**Year: 2001-2005**

DOH Race-Ethnicity	None (0 cigarettes)			Less than 1 cigarette			1 to 5 cigarettes			6 to 10 cigarettes			11 to 20 cigarettes			21 to 40 cigarettes		
	#	%	C.I.(95%)	#	%	C.I.(95%)	#	%	C.I.(95%)	#	%	C.I.(95%)	#	%	C.I.(95%)	#	%	C.I.(95%)
Caucasian	600	65.1	59.9 - 70.0	<50	5.4	3.5 - 8.4	100	11.3	8.4 - 15.1	100	12.0	8.8 - 16.0	<50	5.4	3.5 - 8.3	<50	0.3	0.0 - 1.8
Native Hawaiian	900	57.4	54.4 - 60.3	100	5.0	3.8 - 6.5	300	19.9	17.6 - 22.3	200	10.1	8.4 - 12.1	100	6.0	4.8 - 7.5	<50	1.3	0.8 - 2.0
Chinese	<50	64.2	40.8 - 82.4	<50	8.3	1.3 - 39.0	<50	13.2	3.2 - 40.9	<50	1.2	0.3 - 5.4	<50	13.1	4.5 - 32.4	0	0.0	-
Filipino	400	64.7	58.4 - 70.5	<50	5.5	3.4 - 8.8	100	17.1	12.9 - 22.3	<50	7.9	4.9 - 12.5	<50	2.9	1.4 - 6.0	<50	1.3	0.4 - 4.6
Japanese	300	71.7	64.4 - 78.0	<50	4.8	2.2 - 10.0	100	11.7	7.7 - 17.2	<50	6.7	3.9 - 11.5	<50	4.7	2.5 - 8.9	<50	0.5	0.1 - 3.1
Other	300	58.4	50.9 - 65.6	<50	4.4	2.3 - 8.2	100	16.1	11.7 - 21.8	<50	8.5	5.0 - 13.8	<50	9.3	5.6 - 15.0	<50	2.4	0.7 - 7.9

PRAMS Age Group	None (0 cigarettes)			Less than 1 cigarette			1 to 5 cigarettes			6 to 10 cigarettes			11 to 20 cigarettes			21 to 40 cigarettes		
	#	%	C.I.(95%)	#	%	C.I.(95%)	#	%	C.I.(95%)	#	%	C.I.(95%)	#	%	C.I.(95%)	#	%	C.I.(95%)
<20	300	66.1	60.0 - 71.7	<50	7.6	4.7 - 12.3	100	17.6	13.6 - 22.6	<50	4.1	2.2 - 7.4	<50	3.1	1.8 - 5.1	<50	1.1	0.2 - 5.5
20-24	900	62.6	58.9 - 66.1	100	5.2	3.8 - 7.0	200	15.9	13.5 - 18.6	100	9.7	7.5 - 12.4	100	4.8	3.6 - 6.4	<50	1.1	0.5 - 2.7
25-34	1,000	61.9	58.4 - 65.3	100	4.7	3.4 - 6.4	300	15.9	13.5 - 18.6	200	9.8	7.9 - 12.1	100	6.7	5.0 - 8.9	<50	0.8	0.5 - 1.5
35+	200	54.0	46.4 - 61.4	<50	3.2	1.6 - 6.4	100	15.9	11.4 - 21.7	100	14.9	10.3 - 21.0	<50	8.9	5.4 - 14.2	<50	2.1	0.7 - 6.2

**PRAMS Health Indicator 5-Year Aggregate Report - Number of cigarettes smoked per avg day last 3 months of pregnancy- by State;County;DOH Race-Ethnicity;PRAMS Age Group;Infant Gender;Married;Poverty Level;Income (2004-2011);Birthweight;Smoke 3rd Trimester;Smoke Before Pregnant;WIC During Pregnancy, for the Year(s) 2000-2004;2001-2005;2002-2006;2003-2007;2004-2008;2005-2009;2006-2010;2007-2011;2008-2012;2009-2013**

*Note: Weighted counts (#) represent 5-yr averages, rounded to the nearest hundred; n/r (Not Reportable) - If the unweighted total responses for a dimension (row) is <30 that row will not be shown*

41 cigarettes or more			Weighted Total Responses (5-Yr Avg)
#	%	C.I.(95%)	#
<50	0.5	0.1 - 1.7	900
<50	0.4	0.2 - 1.2	1,500
0	0.0	-	<50
<50	0.6	0.2 - 2.1	600
0	0.0	-	400
<50	0.9	0.2 - 3.4	500

41 cigarettes or more			Weighted Total Responses (5-Yr Avg)
#	%	C.I.(95%)	#
<50	0.4	0.1 - 2.3	500
<50	0.7	0.3 - 1.6	1,400
<50	0.2	0.0 - 1.0	1,600
<50	1.1	0.3 - 4.0	400



**PRAMS Health Indicator 5-Year Aggregate Report - Number of cigarettes smoked per avg day last 3 months of pregnancy- by State;County;DOH Race-Ethnicity;PRAMS Age Group;Infant Gender;Married;Poverty Level;Income (2004-2011);Birthweight;Smoke 3rd Trimester;Smoke Before Pregnant;WIC During Pregnancy, for the Year(s) 2000-2004;2001-2005;2002-2006;2003-2007;2004-2008;2005-2009;2006-2010;2007-2011;2008-2012;2009-2013**

*Note: Weighted counts (#) represent 5-yr averages, rounded to the nearest hundred; n/r (Not Reportable) - If the unweighted total responses for a dimension (row) is <30 that row will not be shown*

**Year: 2001-2005**

Infant Gender	None (0 cigarettes)			Less than 1 cigarette			1 to 5 cigarettes			6 to 10 cigarettes			11 to 20 cigarettes			21 to 40 cigarettes		
	#	%	C.I.(95%)	#	%	C.I.(95%)	#	%	C.I.(95%)	#	%	C.I.(95%)	#	%	C.I.(95%)	#	%	C.I.(95%)
<b>Male</b>	1,200	60.9	57.8 - 63.9	100	5.7	4.4 - 7.3	300	16.8	14.7 - 19.1	200	8.6	7.0 - 10.6	100	6.5	5.1 - 8.2	<50	1.1	0.6 - 2.2
<b>Female</b>	1,200	63.1	59.8 - 66.2	100	4.5	3.3 - 6.1	300	15.4	13.2 - 17.9	200	10.5	8.6 - 12.8	100	5.0	3.8 - 6.6	<50	1.1	0.6 - 2.0

Married	None (0 cigarettes)			Less than 1 cigarette			1 to 5 cigarettes			6 to 10 cigarettes			11 to 20 cigarettes			21 to 40 cigarettes		
	#	%	C.I.(95%)	#	%	C.I.(95%)	#	%	C.I.(95%)	#	%	C.I.(95%)	#	%	C.I.(95%)	#	%	C.I.(95%)
<b>Yes</b>	1,200	64.8	61.4 - 68.0	100	5.3	4.0 - 7.1	300	13.7	11.7 - 16.1	200	8.9	7.0 - 11.2	100	6.1	4.7 - 7.9	<50	0.8	0.4 - 1.6
<b>No</b>	1,200	59.4	56.4 - 62.3	100	4.9	3.8 - 6.3	400	18.3	16.1 - 20.7	200	10.1	8.4 - 12.1	100	5.5	4.2 - 7.1	<50	1.3	0.7 - 2.5

Poverty Level	None (0 cigarettes)			Less than 1 cigarette			1 to 5 cigarettes			6 to 10 cigarettes			11 to 20 cigarettes			21 to 40 cigarettes		
	#	%	C.I.(95%)	#	%	C.I.(95%)	#	%	C.I.(95%)	#	%	C.I.(95%)	#	%	C.I.(95%)	#	%	C.I.(95%)
<b>0-130%</b>	1,200	56.2	53.2 - 59.2	100	5.7	4.4 - 7.3	400	18.2	16.1 - 20.6	200	11.2	9.4 - 13.3	100	6.8	5.4 - 8.5	<50	1.3	0.7 - 2.3
<b>131-185%</b>	400	66.6	60.6 - 72.1	<50	3.9	2.4 - 6.5	100	15.7	11.8 - 20.5	<50	8.2	5.2 - 12.7	<50	4.1	2.3 - 7.1	<50	0.8	0.1 - 3.9
<b>186+%</b>	600	74.6	70.1 - 78.6	<50	4.9	3.1 - 7.5	100	10.1	7.6 - 13.3	100	6.4	4.3 - 9.3	<50	3.4	2.0 - 5.7	<50	0.5	0.2 - 1.4

**PRAMS Health Indicator 5-Year Aggregate Report - Number of cigarettes smoked per avg day last 3 months of pregnancy- by State;County;DOH Race-Ethnicity;PRAMS Age Group;Infant Gender;Married;Poverty Level;Income (2004-2011);Birthweight;Smoke 3rd Trimester;Smoke Before Pregnant;WIC During Pregnancy, for the Year(s) 2000-2004;2001-2005;2002-2006;2003-2007;2004-2008;2005-2009;2006-2010;2007-2011;2008-2012;2009-2013**

*Note: Weighted counts (#) represent 5-yr averages, rounded to the nearest hundred; n/r (Not Reportable) - If the unweighted total responses for a dimension (row) is <30 that row will not be shown*

41 cigarettes or more			Weighted Total Responses (5-Yr Avg)
#	%	C.I.(95%)	#
<50	0.4	0.2 - 1.1	2,000
<50	0.5	0.2 - 1.2	1,900

41 cigarettes or more			Weighted Total Responses (5-Yr Avg)
#	%	C.I.(95%)	#
<50	0.4	0.2 - 1.1	1,800
<50	0.5	0.2 - 1.1	2,000

41 cigarettes or more			Weighted Total Responses (5-Yr Avg)
#	%	C.I.(95%)	#
<50	0.6	0.3 - 1.2	2,100
<50	0.7	0.2 - 2.4	600
<50	0.2	0.0 - 1.5	900

**PRAMS Health Indicator 5-Year Aggregate Report - Number of cigarettes smoked per avg day last 3 months of pregnancy- by State;County;DOH Race-Ethnicity;PRAMS Age Group;Infant Gender;Married;Poverty Level;Income (2004-2011);Birthweight;Smoke 3rd Trimester;Smoke Before Pregnant;WIC During Pregnancy, for the Year(s) 2000-2004;2001-2005;2002-2006;2003-2007;2004-2008;2005-2009;2006-2010;2007-2011;2008-2012;2009-2013**

*Note: Weighted counts (#) represent 5-yr averages, rounded to the nearest hundred; n/r (Not Reportable) - If the unweighted total responses for a dimension (row) is <30 that row will not be shown*

**Year: 2001-2005**

Birthweight	None (0 cigarettes)			Less than 1 cigarette			1 to 5 cigarettes			6 to 10 cigarettes			11 to 20 cigarettes			21 to 40 cigarettes		
	#	%	C.I.(95%)	#	%	C.I.(95%)	#	%	C.I.(95%)	#	%	C.I.(95%)	#	%	C.I.(95%)	#	%	C.I.(95%)
Low birth weight	100	49.2	40.9 - 57.6	<50	7.5	3.9 - 14.0	100	20.4	15.0 - 27.0	<50	13.8	9.3 - 20.1	<50	8.3	4.7 - 14.4	0	0.0	-
Normal birth weight	2,300	63.0	60.7 - 65.3	200	4.9	4.0 - 6.0	600	15.8	14.2 - 17.5	300	9.2	7.9 - 10.8	200	5.4	4.5 - 6.5	<50	1.2	0.7 - 1.9

Smoke 3rd Trimester	None (0 cigarettes)			Less than 1 cigarette			1 to 5 cigarettes			6 to 10 cigarettes			11 to 20 cigarettes			21 to 40 cigarettes		
	#	%	C.I.(95%)	#	%	C.I.(95%)	#	%	C.I.(95%)	#	%	C.I.(95%)	#	%	C.I.(95%)	#	%	C.I.(95%)
Yes	0	0.0	-	200	13.4	11.1 - 16.1	600	42.4	38.8 - 45.9	400	25.0	21.9 - 28.4	200	15.1	12.7 - 18.0	<50	2.8	1.8 - 4.5
No	2,400	100.0	-	0	0.0	-	0	0.0	-	0	0.0	-	0	0.0	-	0	0.0	-

Smoke Before Pregnant	None (0 cigarettes)			Less than 1 cigarette			1 to 5 cigarettes			6 to 10 cigarettes			11 to 20 cigarettes			21 to 40 cigarettes		
	#	%	C.I.(95%)	#	%	C.I.(95%)	#	%	C.I.(95%)	#	%	C.I.(95%)	#	%	C.I.(95%)	#	%	C.I.(95%)
Yes	2,000	58.7	56.3 - 61.0	200	5.4	4.4 - 6.6	600	17.4	15.7 - 19.2	400	10.5	9.1 - 12.1	200	6.5	5.4 - 7.7	<50	1.2	0.7 - 1.9
No	300	96.8	92.2 - 98.7	0	0.0	-	<50	2.9	1.1 - 7.6	0	0.0	-	0	0.0	-	<50	0.3	0.0 - 1.4

**PRAMS Health Indicator 5-Year Aggregate Report - Number of cigarettes smoked per avg day last 3 months of pregnancy- by State;County;DOH Race-Ethnicity;PRAMS Age Group;Infant Gender;Married;Poverty Level;Income (2004-2011);Birthweight;Smoke 3rd Trimester;Smoke Before Pregnant;WIC During Pregnancy, for the Year(s) 2000-2004;2001-2005;2002-2006;2003-2007;2004-2008;2005-2009;2006-2010;2007-2011;2008-2012;2009-2013**

*Note: Weighted counts (#) represent 5-yr averages, rounded to the nearest hundred; n/r (Not Reportable) - If the unweighted total responses for a dimension (row) is <30 that row will not be shown*

41 cigarettes or more			Weighted Total Responses (5-Yr Avg)
#	%	C.I.(95%)	#
<50	0.8	0.1 - 4.8	300
<50	0.4	0.2 - 0.9	3,600

41 cigarettes or more			Weighted Total Responses (5-Yr Avg)
#	%	C.I.(95%)	#
<50	1.2	0.7 - 2.3	1,500
0	0.0	-	2,400

41 cigarettes or more			Weighted Total Responses (5-Yr Avg)
#	%	C.I.(95%)	#
<50	0.5	0.3 - 1.0	3,500
0	0.0	-	300

**PRAMS Health Indicator 5-Year Aggregate Report - Number of cigarettes smoked per avg day last 3 months of pregnancy- by State;County;DOH Race-Ethnicity;PRAMS Age Group;Infant Gender;Married;Poverty Level;Income (2004-2011);Birthweight;Smoke 3rd Trimester;Smoke Before Pregnant;WIC During Pregnancy, for the Year(s) 2000-2004;2001-2005;2002-2006;2003-2007;2004-2008;2005-2009;2006-2010;2007-2011;2008-2012;2009-2013**

*Note: Weighted counts (#) represent 5-yr averages, rounded to the nearest hundred; n/r (Not Reportable) - If the unweighted total responses for a dimension (row) is <30 that row will not be shown*

**Year: 2001-2005**

WIC During Pregnancy	None (0 cigarettes)			Less than 1 cigarette			1 to 5 cigarettes			6 to 10 cigarettes			11 to 20 cigarettes			21 to 40 cigarettes		
	#	%	C.I.(95%)	#	%	C.I.(95%)	#	%	C.I.(95%)	#	%	C.I.(95%)	#	%	C.I.(95%)	#	%	C.I.(95%)
<b>Yes</b>	1,300	59.0	56.1 - 61.9	100	4.8	3.7 - 6.2	400	17.6	15.5 - 19.8	200	11.3	9.4 - 13.5	100	5.3	4.1 - 6.6	<50	1.4	0.7 - 2.5
<b>No</b>	1,100	65.2	61.8 - 68.5	100	5.5	4.1 - 7.4	200	14.4	12.2 - 17.0	100	7.4	5.8 - 9.4	100	6.5	4.9 - 8.5	<50	0.7	0.4 - 1.6

**PRAMS Health Indicator 5-Year Aggregate Report - Number of cigarettes smoked per avg day last 3 months of pregnancy- by State;County;DOH Race-Ethnicity;PRAMS Age Group;Infant Gender;Married;Poverty Level;Income (2004-2011);Birthweight;Smoke 3rd Trimester;Smoke Before Pregnant;WIC During Pregnancy, for the Year(s) 2000-2004;2001-2005;2002-2006;2003-2007;2004-2008;2005-2009;2006-2010;2007-2011;2008-2012;2009-2013**

*Note: Weighted counts (#) represent 5-yr averages, rounded to the nearest hundred; n/r (Not Reportable) - If the unweighted total responses for a dimension (row) is <30 that row will not be shown*

41 cigarettes or more			Weighted Total Responses (5-Yr Avg)
#	%	C.I.(95%)	#
<50	0.6	0.3 - 1.3	2,200
<50	0.3	0.1 - 1.0	1,700

**PRAMS Health Indicator 5-Year Aggregate Report - Number of cigarettes smoked per avg day last 3 months of pregnancy- by State;County;DOH Race-Ethnicity;PRAMS Age Group;Infant Gender;Married;Poverty Level;Income (2004-2011);Birthweight;Smoke 3rd Trimester;Smoke Before Pregnant;WIC During Pregnancy, for the Year(s) 2000-2004;2001-2005;2002-2006;2003-2007;2004-2008;2005-2009;2006-2010;2007-2011;2008-2012;2009-2013**

*Note: Weighted counts (#) represent 5-yr averages, rounded to the nearest hundred; n/r (Not Reportable) - If the unweighted total responses for a dimension (row) is <30 that row will not be shown*

**Year: 2000-2004**

State	None (0 cigarettes)			Less than 1 cigarette			1 to 5 cigarettes			6 to 10 cigarettes			11 to 20 cigarettes			21 to 40 cigarettes		
	#	%	C.I.(95%)	#	%	C.I.(95%)	#	%	C.I.(95%)	#	%	C.I.(95%)	#	%	C.I.(95%)	#	%	C.I.(95%)
<b>Totals</b>	2,400	61.9	59.7 - 64.0	200	4.8	4.0 - 5.9	600	16.3	14.8 - 17.9	400	9.3	8.1 - 10.7	200	6.2	5.2 - 7.3	<50	1.3	0.8 - 1.9

County	None (0 cigarettes)			Less than 1 cigarette			1 to 5 cigarettes			6 to 10 cigarettes			11 to 20 cigarettes			21 to 40 cigarettes		
	#	%	C.I.(95%)	#	%	C.I.(95%)	#	%	C.I.(95%)	#	%	C.I.(95%)	#	%	C.I.(95%)	#	%	C.I.(95%)
<b>Hawaii</b>	300	56.2	52.1 - 60.2	<50	4.5	3.1 - 6.7	100	17.9	15.0 - 21.1	100	13.9	11.3 - 17.1	<50	6.5	4.7 - 8.9	<50	0.9	0.4 - 1.9
<b>Honolulu</b>	1,700	62.9	60.0 - 65.7	100	4.7	3.6 - 6.2	400	15.6	13.7 - 17.7	200	8.7	7.2 - 10.6	200	6.3	5.1 - 7.9	<50	1.5	0.9 - 2.5
<b>Kauai</b>	100	62.2	55.0 - 68.9	<50	4.8	2.6 - 8.7	<50	19.5	14.3 - 26.1	<50	9.7	6.4 - 14.5	<50	3.5	1.7 - 6.9	<50	0.3	0.1 - 1.8
<b>Maui</b>	300	63.5	58.5 - 68.3	<50	5.9	4.0 - 8.8	100	16.5	13.1 - 20.5	<50	6.1	4.2 - 8.9	<50	5.8	3.8 - 8.7	<50	0.8	0.3 - 2.4

**PRAMS Health Indicator 5-Year Aggregate Report - Number of cigarettes smoked per avg day last 3 months of pregnancy- by State;County;DOH Race-Ethnicity;PRAMS Age Group;Infant Gender;Married;Poverty Level;Income (2004-2011);Birthweight;Smoke 3rd Trimester;Smoke Before Pregnant;WIC During Pregnancy, for the Year(s) 2000-2004;2001-2005;2002-2006;2003-2007;2004-2008;2005-2009;2006-2010;2007-2011;2008-2012;2009-2013**

*Note: Weighted counts (#) represent 5-yr averages, rounded to the nearest hundred; n/r (Not Reportable) - If the unweighted total responses for a dimension (row) is <30 that row will not be shown*

41 cigarettes or more			Weighted Total Responses (5-Yr Avg)
#	%	C.I.(95%)	#
<50	0.3	0.1 - 0.6	3,900

41 cigarettes or more			Weighted Total Responses (5-Yr Avg)
#	%	C.I.(95%)	#
<50	0.1	0.0 - 0.6	600
<50	0.2	0.1 - 0.7	2,600
0	0.0	-	200
<50	1.3	0.4 - 3.6	400



**PRAMS Health Indicator 5-Year Aggregate Report - Number of cigarettes smoked per avg day last 3 months of pregnancy- by State;County;DOH Race-Ethnicity;PRAMS Age Group;Infant Gender;Married;Poverty Level;Income (2004-2011);Birthweight;Smoke 3rd Trimester;Smoke Before Pregnant;WIC During Pregnancy, for the Year(s) 2000-2004;2001-2005;2002-2006;2003-2007;2004-2008;2005-2009;2006-2010;2007-2011;2008-2012;2009-2013**

*Note: Weighted counts (#) represent 5-yr averages, rounded to the nearest hundred; n/r (Not Reportable) - If the unweighted total responses for a dimension (row) is <30 that row will not be shown*

**Year: 2000-2004**

DOH Race-Ethnicity	None (0 cigarettes)			Less than 1 cigarette			1 to 5 cigarettes			6 to 10 cigarettes			11 to 20 cigarettes			21 to 40 cigarettes		
	#	%	C.I.(95%)	#	%	C.I.(95%)	#	%	C.I.(95%)	#	%	C.I.(95%)	#	%	C.I.(95%)	#	%	C.I.(95%)
Caucasian	600	65.1	60.0 - 70.0	<50	4.0	2.4 - 6.7	100	12.4	9.3 - 16.3	100	11.7	8.6 - 15.7	100	6.4	4.3 - 9.4	<50	0.1	0.0 - 0.8
Native Hawaiian	800	56.0	53.4 - 58.6	100	5.4	4.3 - 6.7	300	20.5	18.5 - 22.7	100	10.0	8.5 - 11.7	100	6.5	5.3 - 7.8	<50	1.3	0.9 - 1.9
Chinese	n/r	n/r	n/r	n/r	n/r	n/r	n/r	n/r	n/r	n/r	n/r	n/r	n/r	n/r	n/r	n/r	n/r	n/r
Filipino	400	62.7	56.4 - 68.7	<50	5.3	3.3 - 8.6	100	17.2	12.9 - 22.5	100	8.7	5.6 - 13.4	<50	3.6	1.8 - 6.8	<50	1.9	0.7 - 5.3
Japanese	300	76.6	69.5 - 82.5	<50	4.5	2.0 - 9.9	<50	11.0	7.1 - 16.6	<50	5.3	2.9 - 9.4	<50	2.6	1.1 - 6.4	0	0.0	-
Other	300	59.6	51.9 - 66.8	<50	3.9	1.9 - 8.0	100	13.9	9.7 - 19.5	<50	7.9	4.6 - 13.2	100	10.6	6.6 - 16.6	<50	3.6	1.4 - 8.6

PRAMS Age Group	None (0 cigarettes)			Less than 1 cigarette			1 to 5 cigarettes			6 to 10 cigarettes			11 to 20 cigarettes			21 to 40 cigarettes		
	#	%	C.I.(95%)	#	%	C.I.(95%)	#	%	C.I.(95%)	#	%	C.I.(95%)	#	%	C.I.(95%)	#	%	C.I.(95%)
<20	400	66.7	61.3 - 71.7	<50	6.5	4.0 - 10.2	100	18.0	14.2 - 22.6	<50	4.7	2.9 - 7.6	<50	2.8	1.8 - 4.4	<50	0.9	0.2 - 4.9
20-24	900	62.4	58.9 - 65.8	100	4.8	3.5 - 6.5	200	16.4	14.1 - 19.1	100	10.1	7.9 - 12.7	100	4.7	3.5 - 6.2	<50	1.1	0.5 - 2.5
25-34	900	60.9	57.3 - 64.3	100	5.2	3.8 - 7.1	200	15.7	13.3 - 18.4	100	8.9	7.2 - 11.1	100	8.1	6.3 - 10.4	<50	1.2	0.6 - 2.1
35+	200	56.7	49.3 - 63.7	<50	0.8	0.3 - 2.1	100	15.3	11.0 - 20.7	100	15.3	10.9 - 21.2	<50	8.6	5.1 - 14.1	<50	2.9	1.2 - 6.6

**PRAMS Health Indicator 5-Year Aggregate Report - Number of cigarettes smoked per avg day last 3 months of pregnancy- by State;County;DOH Race-Ethnicity;PRAMS Age Group;Infant Gender;Married;Poverty Level;Income (2004-2011);Birthweight;Smoke 3rd Trimester;Smoke Before Pregnant;WIC During Pregnancy, for the Year(s) 2000-2004;2001-2005;2002-2006;2003-2007;2004-2008;2005-2009;2006-2010;2007-2011;2008-2012;2009-2013**

*Note: Weighted counts (#) represent 5-yr averages, rounded to the nearest hundred; n/r (Not Reportable) - If the unweighted total responses for a dimension (row) is <30 that row will not be shown*

41 cigarettes or more			Weighted Total Responses (5-Yr Avg)
#	%	C.I.(95%)	#
<50	0.2	0.0 - 1.4	900
<50	0.3	0.1 - 0.9	1,500
n/r	n/r	n/r	<50
<50	0.6	0.2 - 2.0	600
0	0.0	-	400
<50	0.5	0.1 - 3.1	500

41 cigarettes or more			Weighted Total Responses (5-Yr Avg)
#	%	C.I.(95%)	#
<50	0.3	0.1 - 2.0	600
<50	0.6	0.2 - 1.4	1,400
0	0.0	-	1,600
<50	0.5	0.1 - 3.3	400

**PRAMS Health Indicator 5-Year Aggregate Report - Number of cigarettes smoked per avg day last 3 months of pregnancy- by State;County;DOH Race-Ethnicity;PRAMS Age Group;Infant Gender;Married;Poverty Level;Income (2004-2011);Birthweight;Smoke 3rd Trimester;Smoke Before Pregnant;WIC During Pregnancy, for the Year(s) 2000-2004;2001-2005;2002-2006;2003-2007;2004-2008;2005-2009;2006-2010;2007-2011;2008-2012;2009-2013**

*Note: Weighted counts (#) represent 5-yr averages, rounded to the nearest hundred; n/r (Not Reportable) - If the unweighted total responses for a dimension (row) is <30 that row will not be shown*

**Year: 2000-2004**

Infant Gender	None (0 cigarettes)			Less than 1 cigarette			1 to 5 cigarettes			6 to 10 cigarettes			11 to 20 cigarettes			21 to 40 cigarettes		
	#	%	C.I.(95%)	#	%	C.I.(95%)	#	%	C.I.(95%)	#	%	C.I.(95%)	#	%	C.I.(95%)	#	%	C.I.(95%)
<b>Male</b>	1,200	60.7	57.7 - 63.6	100	5.5	4.3 - 7.0	400	17.3	15.3 - 19.6	200	8.7	7.2 - 10.6	100	6.3	5.0 - 8.0	<50	1.2	0.6 - 2.3
<b>Female</b>	1,200	63.2	60.0 - 66.3	100	4.1	3.0 - 5.6	300	15.0	12.9 - 17.5	200	10.0	8.2 - 12.2	100	5.9	4.6 - 7.7	<50	1.3	0.8 - 2.3

Married	None (0 cigarettes)			Less than 1 cigarette			1 to 5 cigarettes			6 to 10 cigarettes			11 to 20 cigarettes			21 to 40 cigarettes		
	#	%	C.I.(95%)	#	%	C.I.(95%)	#	%	C.I.(95%)	#	%	C.I.(95%)	#	%	C.I.(95%)	#	%	C.I.(95%)
<b>Yes</b>	1,200	64.2	60.9 - 67.3	100	5.1	3.8 - 6.8	300	14.3	12.3 - 16.7	200	8.9	7.1 - 11.1	100	6.3	4.9 - 8.1	<50	1.0	0.6 - 1.8
<b>No</b>	1,200	59.6	56.7 - 62.4	100	4.6	3.5 - 5.9	400	18.1	16.0 - 20.4	200	9.8	8.2 - 11.6	100	6.0	4.7 - 7.5	<50	1.5	0.8 - 2.7

Poverty Level	None (0 cigarettes)			Less than 1 cigarette			1 to 5 cigarettes			6 to 10 cigarettes			11 to 20 cigarettes			21 to 40 cigarettes		
	#	%	C.I.(95%)	#	%	C.I.(95%)	#	%	C.I.(95%)	#	%	C.I.(95%)	#	%	C.I.(95%)	#	%	C.I.(95%)
<b>0-130%</b>	1,200	55.8	52.9 - 58.7	100	5.4	4.1 - 6.9	400	18.4	16.4 - 20.7	200	11.3	9.5 - 13.3	100	7.2	5.8 - 8.9	<50	1.4	0.9 - 2.4
<b>131-185%</b>	400	67.7	62.0 - 72.9	<50	3.1	1.8 - 5.3	100	15.7	12.0 - 20.3	100	8.8	5.8 - 13.2	<50	3.6	2.1 - 6.3	<50	0.7	0.1 - 3.7
<b>186+%</b>	600	75.0	70.4 - 79.2	<50	4.5	2.9 - 7.1	100	10.3	7.6 - 13.8	<50	5.6	3.7 - 8.6	<50	3.9	2.4 - 6.5	<50	0.6	0.2 - 2.0

**PRAMS Health Indicator 5-Year Aggregate Report - Number of cigarettes smoked per avg day last 3 months of pregnancy- by State;County;DOH Race-Ethnicity;PRAMS Age Group;Infant Gender;Married;Poverty Level;Income (2004-2011);Birthweight;Smoke 3rd Trimester;Smoke Before Pregnant;WIC During Pregnancy, for the Year(s) 2000-2004;2001-2005;2002-2006;2003-2007;2004-2008;2005-2009;2006-2010;2007-2011;2008-2012;2009-2013**

*Note: Weighted counts (#) represent 5-yr averages, rounded to the nearest hundred; n/r (Not Reportable) - If the unweighted total responses for a dimension (row) is <30 that row will not be shown*

41 cigarettes or more			Weighted Total Responses (5-Yr Avg)
#	%	C.I.(95%)	#
<50	0.2	0.1 - 0.7	2,000
<50	0.4	0.2 - 1.0	1,800

41 cigarettes or more			Weighted Total Responses (5-Yr Avg)
#	%	C.I.(95%)	#
<50	0.1	0.0 - 0.5	1,900
<50	0.5	0.2 - 1.1	2,000

41 cigarettes or more			Weighted Total Responses (5-Yr Avg)
#	%	C.I.(95%)	#
<50	0.5	0.2 - 1.0	2,100
<50	0.3	0.0 - 1.9	600
0	0.0	-	800

**PRAMS Health Indicator 5-Year Aggregate Report - Number of cigarettes smoked per avg day last 3 months of pregnancy- by State;County;DOH Race-Ethnicity;PRAMS Age Group;Infant Gender;Married;Poverty Level;Income (2004-2011);Birthweight;Smoke 3rd Trimester;Smoke Before Pregnant;WIC During Pregnancy, for the Year(s) 2000-2004;2001-2005;2002-2006;2003-2007;2004-2008;2005-2009;2006-2010;2007-2011;2008-2012;2009-2013**

*Note: Weighted counts (#) represent 5-yr averages, rounded to the nearest hundred; n/r (Not Reportable) - If the unweighted total responses for a dimension (row) is <30 that row will not be shown*

**Year: 2000-2004**

Birthweight	None (0 cigarettes)			Less than 1 cigarette			1 to 5 cigarettes			6 to 10 cigarettes			11 to 20 cigarettes			21 to 40 cigarettes		
	#	%	C.I.(95%)	#	%	C.I.(95%)	#	%	C.I.(95%)	#	%	C.I.(95%)	#	%	C.I.(95%)	#	%	C.I.(95%)
Low birth weight	100	50.2	42.2 - 58.2	<50	5.0	2.3 - 10.8	100	23.2	17.7 - 29.9	<50	14.0	9.6 - 19.9	<50	7.2	4.2 - 12.2	<50	0.3	0.1 - 1.7
Normal birth weight	2,300	62.9	60.6 - 65.1	200	4.8	3.9 - 5.9	600	15.8	14.2 - 17.5	300	9.0	7.8 - 10.5	200	5.8	4.8 - 7.0	<50	1.3	0.9 - 2.0

Smoke 3rd Trimester	None (0 cigarettes)			Less than 1 cigarette			1 to 5 cigarettes			6 to 10 cigarettes			11 to 20 cigarettes			21 to 40 cigarettes		
	#	%	C.I.(95%)	#	%	C.I.(95%)	#	%	C.I.(95%)	#	%	C.I.(95%)	#	%	C.I.(95%)	#	%	C.I.(95%)
Yes	0	0.0	-	200	12.7	10.5 - 15.3	600	42.6	39.2 - 46.1	400	24.5	21.5 - 27.7	200	16.1	13.7 - 18.9	<50	3.3	2.1 - 5.0
No	2,400	100.0	-	0	0.0	-	0	0.0	-	0	0.0	-	0	0.0	-	0	0.0	-

Smoke Before Pregnant	None (0 cigarettes)			Less than 1 cigarette			1 to 5 cigarettes			6 to 10 cigarettes			11 to 20 cigarettes			21 to 40 cigarettes		
	#	%	C.I.(95%)	#	%	C.I.(95%)	#	%	C.I.(95%)	#	%	C.I.(95%)	#	%	C.I.(95%)	#	%	C.I.(95%)
Yes	2,000	58.3	56.0 - 60.6	200	5.1	4.2 - 6.3	600	17.6	16.0 - 19.4	300	10.3	8.9 - 11.8	200	7.0	5.8 - 8.3	<50	1.4	0.9 - 2.1
No	300	96.0	91.2 - 98.2	<50	0.3	0.0 - 1.4	<50	3.1	1.1 - 8.2	0	0.0	-	<50	0.4	0.1 - 2.3	<50	0.2	0.0 - 1.3

**PRAMS Health Indicator 5-Year Aggregate Report - Number of cigarettes smoked per avg day last 3 months of pregnancy- by State;County;DOH Race-Ethnicity;PRAMS Age Group;Infant Gender;Married;Poverty Level;Income (2004-2011);Birthweight;Smoke 3rd Trimester;Smoke Before Pregnant;WIC During Pregnancy, for the Year(s) 2000-2004;2001-2005;2002-2006;2003-2007;2004-2008;2005-2009;2006-2010;2007-2011;2008-2012;2009-2013**

*Note: Weighted counts (#) represent 5-yr averages, rounded to the nearest hundred; n/r (Not Reportable) - If the unweighted total responses for a dimension (row) is <30 that row will not be shown*

41 cigarettes or more			Weighted Total Responses (5-Yr Avg)
#	%	C.I.(95%)	#
0	0.0	-	300
<50	0.3	0.2 - 0.7	3,600

41 cigarettes or more			Weighted Total Responses (5-Yr Avg)
#	%	C.I.(95%)	#
<50	0.8	0.4 - 1.6	1,500
0	0.0	-	2,400

41 cigarettes or more			Weighted Total Responses (5-Yr Avg)
#	%	C.I.(95%)	#
<50	0.3	0.2 - 0.7	3,400
0	0.0	-	300

**PRAMS Health Indicator 5-Year Aggregate Report - Number of cigarettes smoked per avg day last 3 months of pregnancy- by State;County;DOH Race-Ethnicity;PRAMS Age Group;Infant Gender;Married;Poverty Level;Income (2004-2011);Birthweight;Smoke 3rd Trimester;Smoke Before Pregnant;WIC During Pregnancy, for the Year(s) 2000-2004;2001-2005;2002-2006;2003-2007;2004-2008;2005-2009;2006-2010;2007-2011;2008-2012;2009-2013**

*Note: Weighted counts (#) represent 5-yr averages, rounded to the nearest hundred; n/r (Not Reportable) - If the unweighted total responses for a dimension (row) is <30 that row will not be shown*

**Year: 2000-2004**

WIC During Pregnancy	None (0 cigarettes)			Less than 1 cigarette			1 to 5 cigarettes			6 to 10 cigarettes			11 to 20 cigarettes			21 to 40 cigarettes		
	#	%	C.I.(95%)	#	%	C.I.(95%)	#	%	C.I.(95%)	#	%	C.I.(95%)	#	%	C.I.(95%)	#	%	C.I.(95%)
<b>Yes</b>	1,300	59.4	56.6 - 62.2	100	4.4	3.4 - 5.6	400	17.4	15.4 - 19.5	200	11.3	9.5 - 13.3	100	5.6	4.5 - 6.9	<50	1.5	0.9 - 2.6
<b>No</b>	1,100	64.7	61.3 - 68.0	100	5.5	4.1 - 7.4	300	14.9	12.6 - 17.5	100	6.9	5.4 - 8.8	100	6.9	5.2 - 9.0	<50	0.9	0.5 - 1.8

**PRAMS Health Indicator 5-Year Aggregate Report - Number of cigarettes smoked per avg day last 3 months of pregnancy- by State;County;DOH Race-Ethnicity;PRAMS Age Group;Infant Gender;Married;Poverty Level;Income (2004-2011);Birthweight;Smoke 3rd Trimester;Smoke Before Pregnant;WIC During Pregnancy, for the Year(s) 2000-2004;2001-2005;2002-2006;2003-2007;2004-2008;2005-2009;2006-2010;2007-2011;2008-2012;2009-2013**

*Note: Weighted counts (#) represent 5-yr averages, rounded to the nearest hundred; n/r (Not Reportable) - If the unweighted total responses for a dimension (row) is <30 that row will not be shown*

41 cigarettes or more			Weighted Total Responses (5-Yr Avg)
#	%	C.I.(95%)	#
<50	0.4	0.2 - 1.0	2,200
<50	0.1	0.0 - 0.9	1,700