

Daily Screen Time in Hawaii

Daily Screen Time in Hawaii, by School Type, Indicator, State, Gender, Grade Level, and DOH Race-Ethnicity,* for the Years 2005 - 2015

The weighted data is available for middle school for all years; high school weighted data is not available for 2001 or 2003. Questions for certain health indicators were not asked in all years.

Below are the indicators included in this report and the long description for each indicator.

YRBS Health Indicator	Health Indicator Description
Hours of TV watched on avg school day	Number of hours students watched TV per day on an average school day
Hours of video games played on avg school day	Number of hours students played video or computer games or used a computer for something that was not school work per day on an average school day
Hours of screentime on avg school day	Number of hours students watched TV or played video games or used a computer for something that was not school work, per day on an average school day

Suggested citation:

Hawaii Health Data Warehouse, State of Hawaii, Hawaii School Health Survey: Youth Risk Behavior Survey Module, (report title and years), Report Created: 8/2/16

For documentation on other terms and coding in this report, please go to the following links:

[Click here to access YRBS documentation](#)

[Click here to access Race-Ethnicity coding](#)

[Click here to access Hawai'i Data Guide](#)

For questions about this report, please contact the Hawaii Health Data Warehouse

profiles@hhdw.org

(855) 946-5899 x15

** Race-ethnicity data from 2011 forward may not be comparable to data from previous years.*

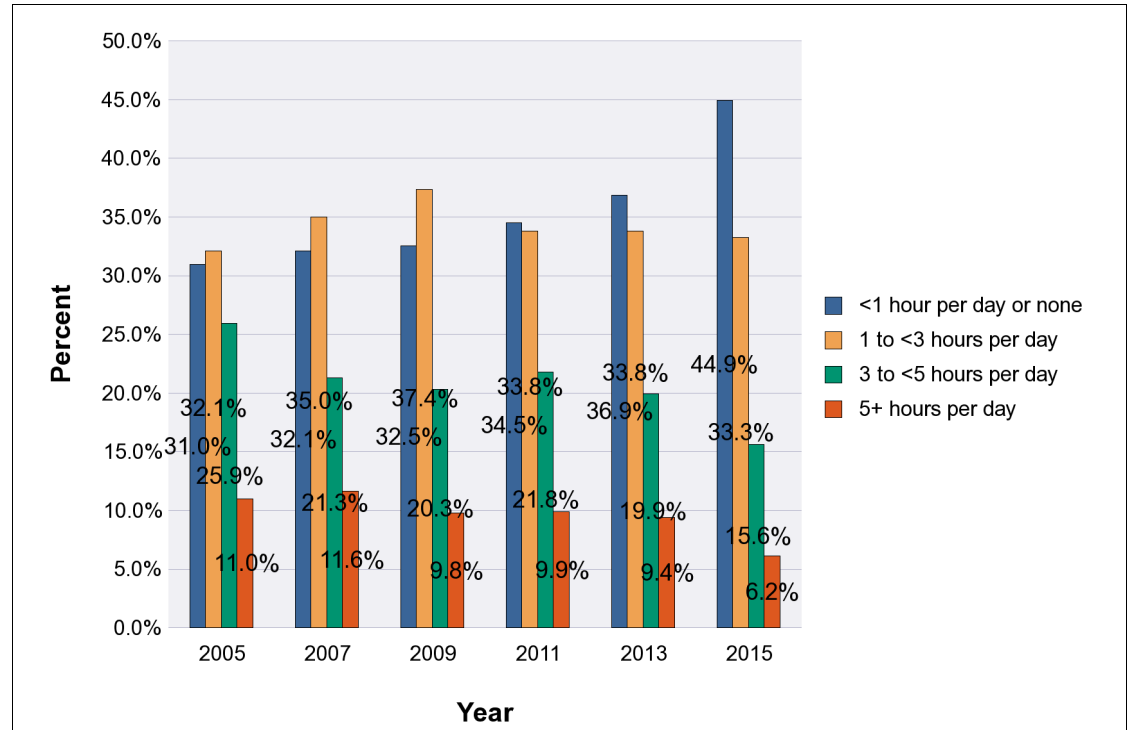
Daily Screen Time in Hawaii, by School Type and Indicator, for the Years 2005 - 2015

Note: Weighted percentages, 95% confidence interval; n/r (Not Reportable) - Total unweighted responses less than 100

High Schools

Hours of TV watched on avg school day

Year	YRBS Response	Percent
2005	<1 hour per day or none	31.0%
	1 to <3 hours per day	32.1%
	3 to <5 hours per day	25.9%
	5+ hours per day	11.0%
Year	YRBS Response	Percent
2007	<1 hour per day or none	32.1%
	1 to <3 hours per day	35.0%
	3 to <5 hours per day	21.3%
	5+ hours per day	11.6%
Year	YRBS Response	Percent
2009	<1 hour per day or none	32.5%
	1 to <3 hours per day	37.4%
	3 to <5 hours per day	20.3%
	5+ hours per day	9.8%
Year	YRBS Response	Percent
2011	<1 hour per day or none	34.5%
	1 to <3 hours per day	33.8%
	3 to <5 hours per day	21.8%
	5+ hours per day	9.9%



Daily Screen Time in Hawaii, by School Type and Indicator, for the Years 2005 - 2015

Note: Weighted percentages, 95% confidence interval; n/r (Not Reportable) - Total unweighted responses less than 100

High Schools

Hours of TV watched on avg school day

Year	YRBS Response	Percent
2013	<1 hour per day or none	36.9%
	1 to <3 hours per day	33.8%
	3 to <5 hours per day	19.9%
	5+ hours per day	9.4%
Year	YRBS Response	Percent
2015	<1 hour per day or none	44.9%
	1 to <3 hours per day	33.3%
	3 to <5 hours per day	15.6%
	5+ hours per day	6.2%

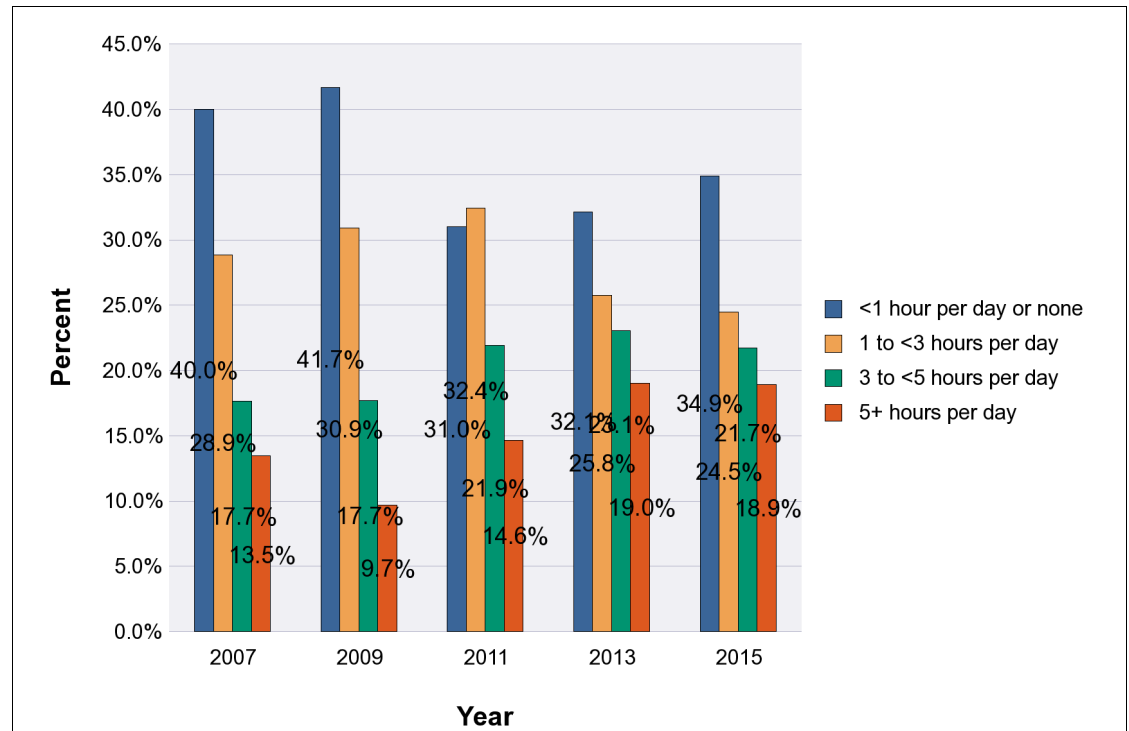
Daily Screen Time in Hawaii, by School Type and Indicator, for the Years 2005 - 2015

Note: Weighted percentages, 95% confidence interval; n/r (Not Reportable) - Total unweighted responses less than 100

High Schools

Hours of video games played on avg school day

Year	YRBS Response	Percent
2007	<1 hour per day or none	40.0%
	1 to <3 hours per day	28.9%
	3 to <5 hours per day	17.7%
	5+ hours per day	13.5%
2009	<1 hour per day or none	41.7%
	1 to <3 hours per day	30.9%
	3 to <5 hours per day	17.7%
	5+ hours per day	9.7%
2011	<1 hour per day or none	31.0%
	1 to <3 hours per day	32.4%
	3 to <5 hours per day	21.9%
	5+ hours per day	14.6%
2013	<1 hour per day or none	32.1%
	1 to <3 hours per day	25.8%
	3 to <5 hours per day	23.1%
	5+ hours per day	19.0%
2015	<1 hour per day or none	34.9%
	1 to <3 hours per day	24.5%
	3 to <5 hours per day	21.7%
	5+ hours per day	18.9%



Daily Screen Time in Hawaii, by School Type and Indicator, for the Years 2005 - 2015

Note: Weighted percentages, 95% confidence interval; n/r (Not Reportable) - Total unweighted responses less than 100

High Schools

Hours of video games played on avg school day

Year	YRBS Response	Percent
2015	<1 hour per day or none	34.9%
	1 to <3 hours per day	24.5%
	3 to <5 hours per day	21.7%
	5+ hours per day	18.9%

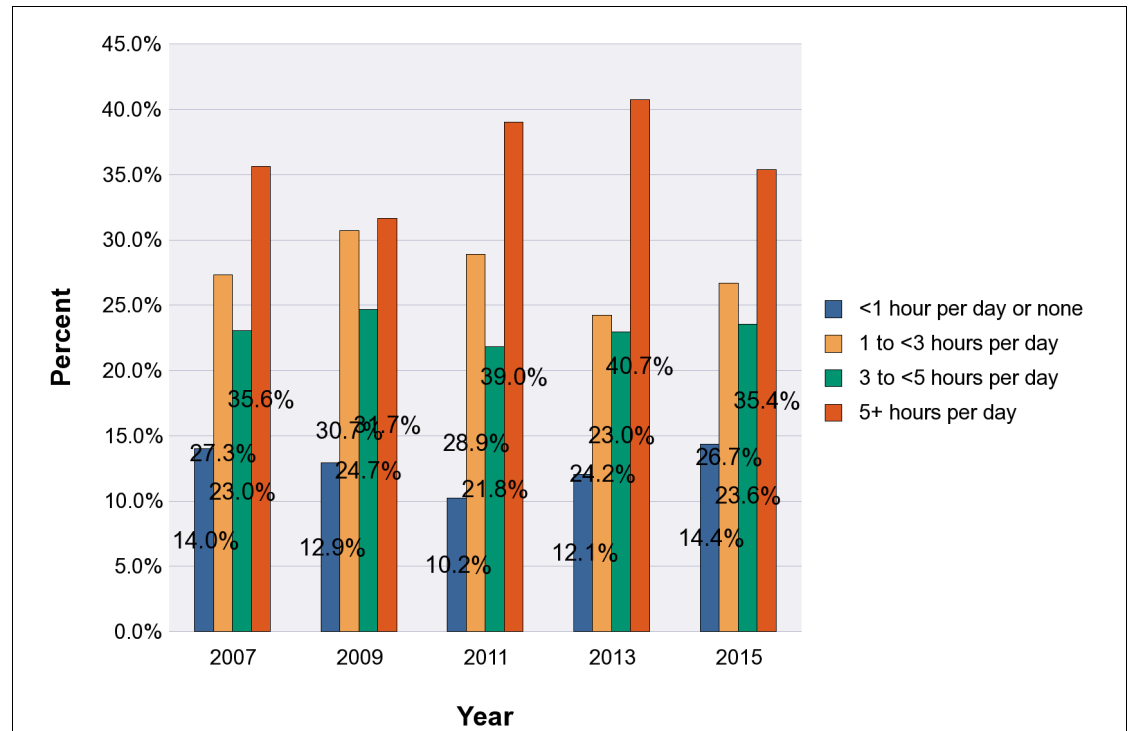
Daily Screen Time in Hawaii, by School Type and Indicator, for the Years 2005 - 2015

Note: Weighted percentages, 95% confidence interval; n/r (Not Reportable) - Total unweighted responses less than 100

High Schools

Hours of screentime on avg school day

Year	YRBS Response	Percent
2007	<1 hour per day or none	14.0%
	1 to <3 hours per day	27.3%
	3 to <5 hours per day	23.0%
	5+ hours per day	35.6%
2009	<1 hour per day or none	12.9%
	1 to <3 hours per day	30.7%
	3 to <5 hours per day	24.7%
	5+ hours per day	31.7%
2011	<1 hour per day or none	10.2%
	1 to <3 hours per day	28.9%
	3 to <5 hours per day	21.8%
	5+ hours per day	39.0%
2013	<1 hour per day or none	12.1%
	1 to <3 hours per day	24.2%
	3 to <5 hours per day	23.0%
	5+ hours per day	40.7%
2015	<1 hour per day or none	14.4%
	1 to <3 hours per day	26.7%
	3 to <5 hours per day	23.6%
	5+ hours per day	35.4%



Daily Screen Time in Hawaii, by School Type and Indicator, for the Years 2005 - 2015

Note: Weighted percentages, 95% confidence interval; n/r (Not Reportable) - Total unweighted responses less than 100

High Schools

Hours of screentime on avg school day

Year	YRBS Response	Percent
2015	<1 hour per day or none	14.4%
	1 to <3 hours per day	26.7%
	3 to <5 hours per day	23.6%
	5+ hours per day	35.4%

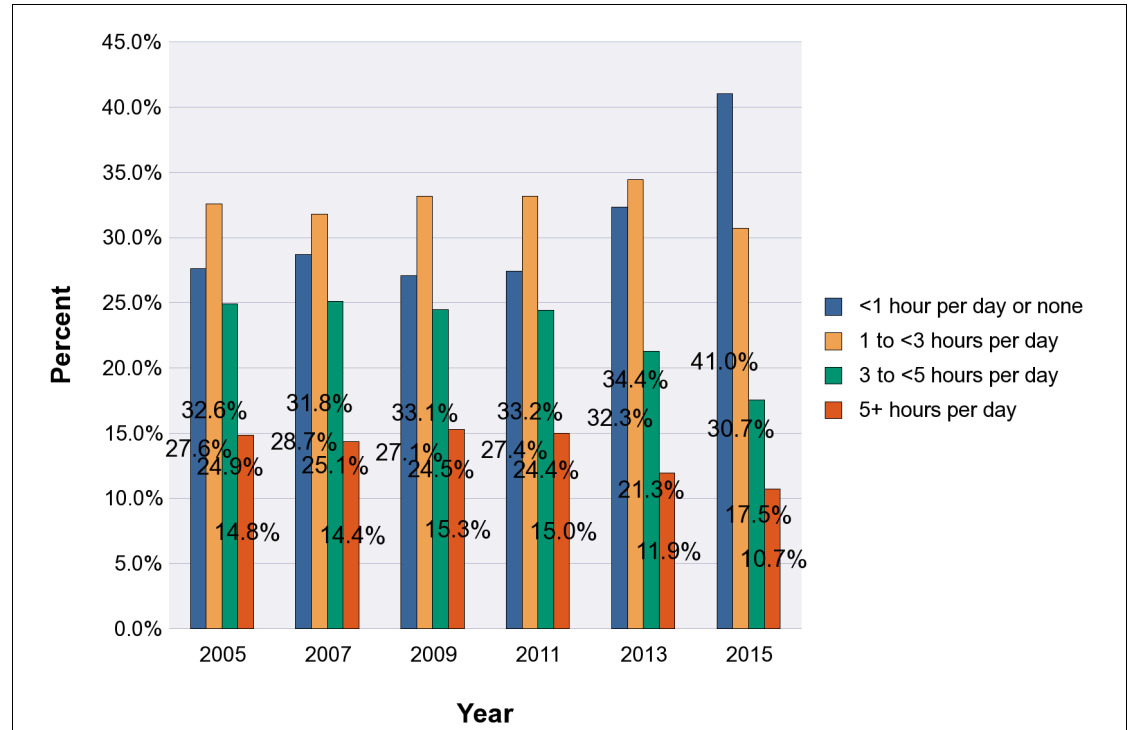
Daily Screen Time in Hawaii, by School Type and Indicator, for the Years 2005 - 2015

Note: Weighted percentages, 95% confidence interval; n/r (Not Reportable) - Total unweighted responses less than 100

Middle Schools

Hours of TV watched on avg school day

Year	YRBS Response	Percent
2005	<1 hour per day or none	27.6%
	1 to <3 hours per day	32.6%
	3 to <5 hours per day	24.9%
	5+ hours per day	14.8%
Year	YRBS Response	Percent
2007	<1 hour per day or none	28.7%
	1 to <3 hours per day	31.8%
	3 to <5 hours per day	25.1%
	5+ hours per day	14.4%
Year	YRBS Response	Percent
2009	<1 hour per day or none	27.1%
	1 to <3 hours per day	33.1%
	3 to <5 hours per day	24.5%
	5+ hours per day	15.3%
Year	YRBS Response	Percent
2011	<1 hour per day or none	27.4%
	1 to <3 hours per day	33.2%
	3 to <5 hours per day	24.4%
	5+ hours per day	15.0%



Daily Screen Time in Hawaii, by School Type and Indicator, for the Years 2005 - 2015

Note: Weighted percentages, 95% confidence interval; n/r (Not Reportable) - Total unweighted responses less than 100

Middle Schools

Hours of TV watched on avg school day

Year	YRBS Response	Percent
2013	<1 hour per day or none	32.3%
	1 to <3 hours per day	34.4%
	3 to <5 hours per day	21.3%
	5+ hours per day	11.9%
Year	YRBS Response	Percent
2015	<1 hour per day or none	41.0%
	1 to <3 hours per day	30.7%
	3 to <5 hours per day	17.5%
	5+ hours per day	10.7%

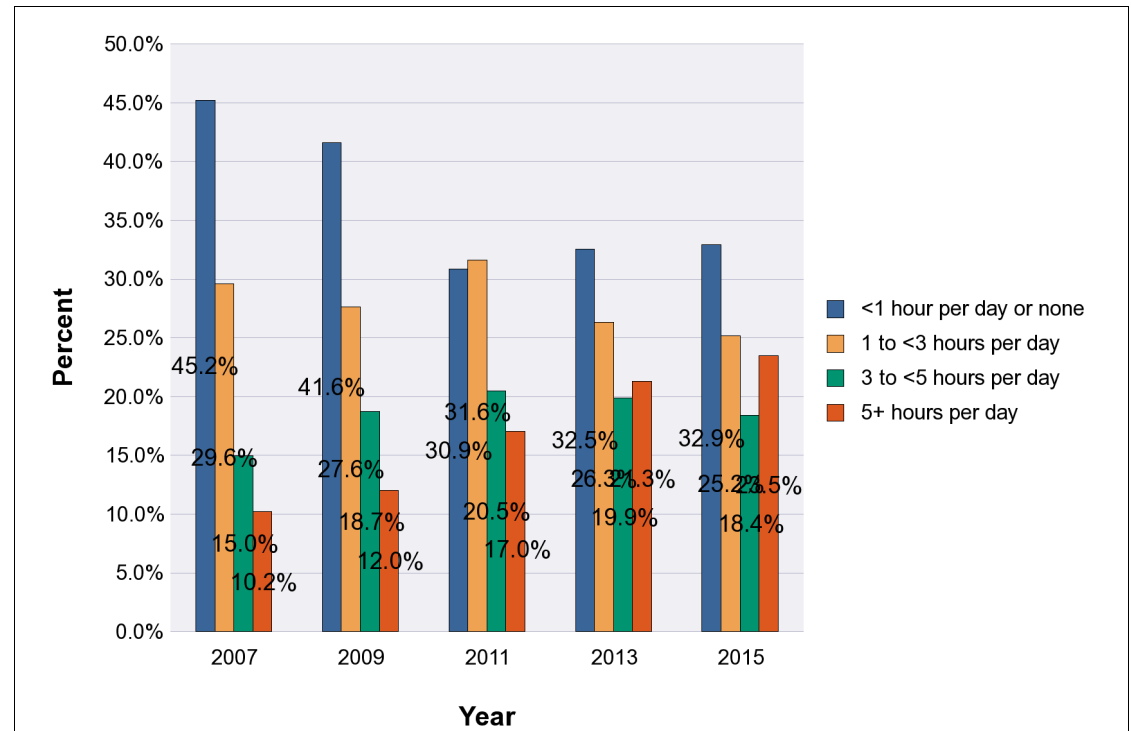
Daily Screen Time in Hawaii, by School Type and Indicator, for the Years 2005 - 2015

Note: Weighted percentages, 95% confidence interval; n/r (Not Reportable) - Total unweighted responses less than 100

Middle Schools

Hours of video games played on avg school day

Year	YRBS Response	Percent
2007	<1 hour per day or none	45.2%
	1 to <3 hours per day	29.6%
	3 to <5 hours per day	15.0%
	5+ hours per day	10.2%
2009	<1 hour per day or none	41.6%
	1 to <3 hours per day	27.6%
	3 to <5 hours per day	18.7%
	5+ hours per day	12.0%
2011	<1 hour per day or none	30.9%
	1 to <3 hours per day	31.6%
	3 to <5 hours per day	20.5%
	5+ hours per day	17.0%
2013	<1 hour per day or none	32.5%
	1 to <3 hours per day	26.3%
	3 to <5 hours per day	19.9%
	5+ hours per day	21.3%
2015	<1 hour per day or none	32.9%
	1 to <3 hours per day	25.2%
	3 to <5 hours per day	18.4%
	5+ hours per day	23.5%



Daily Screen Time in Hawaii, by School Type and Indicator, for the Years 2005 - 2015

Note: Weighted percentages, 95% confidence interval; n/r (Not Reportable) - Total unweighted responses less than 100

Middle Schools

Hours of video games played on avg school day

Year	YRBS Response	Percent
2015	<1 hour per day or none	32.9%
	1 to <3 hours per day	25.2%
	3 to <5 hours per day	18.4%
	5+ hours per day	23.5%

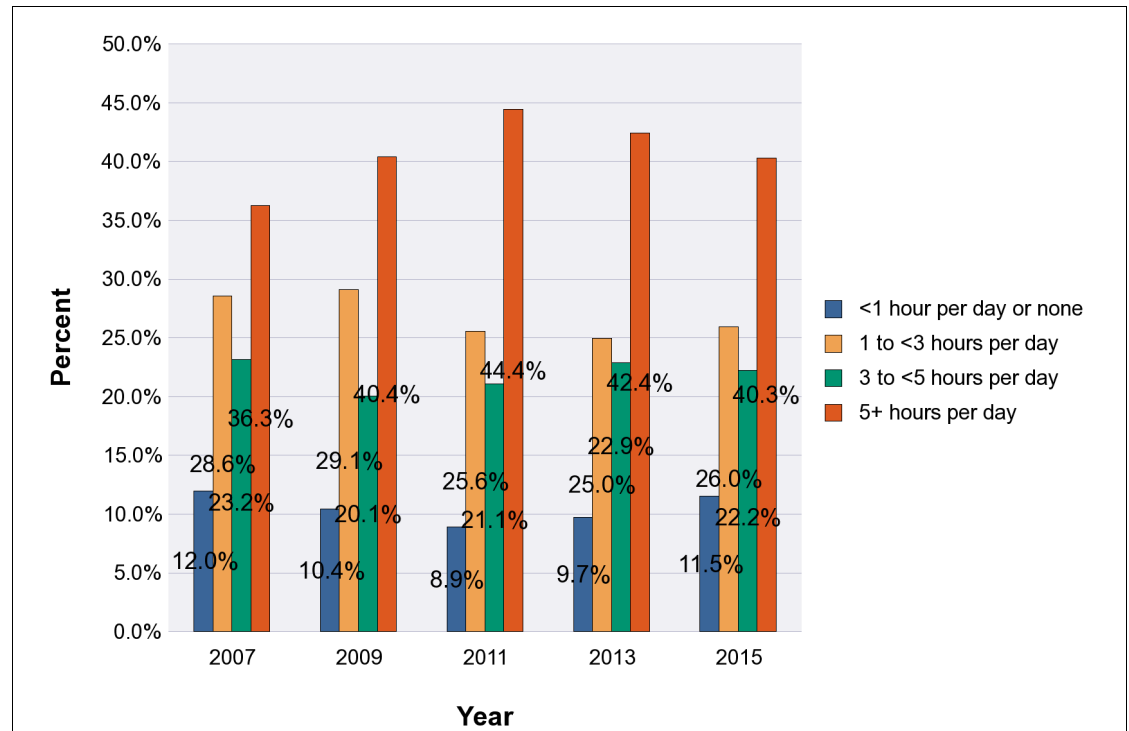
Daily Screen Time in Hawaii, by School Type and Indicator, for the Years 2005 - 2015

Note: Weighted percentages, 95% confidence interval; n/r (Not Reportable) - Total unweighted responses less than 100

Middle Schools

Hours of screentime on avg school day

Year	YRBS Response	Percent
2007	<1 hour per day or none	12.0%
	1 to <3 hours per day	28.6%
	3 to <5 hours per day	23.2%
	5+ hours per day	36.3%
2009	<1 hour per day or none	10.4%
	1 to <3 hours per day	29.1%
	3 to <5 hours per day	20.1%
	5+ hours per day	40.4%
2011	<1 hour per day or none	8.9%
	1 to <3 hours per day	25.6%
	3 to <5 hours per day	21.1%
	5+ hours per day	44.4%
2013	<1 hour per day or none	9.7%
	1 to <3 hours per day	25.0%
	3 to <5 hours per day	22.9%
	5+ hours per day	42.4%
2015	<1 hour per day or none	11.5%
	1 to <3 hours per day	26.0%
	3 to <5 hours per day	22.2%
	5+ hours per day	40.3%



Daily Screen Time in Hawaii, by School Type and Indicator, for the Years 2005 - 2015

Note: Weighted percentages, 95% confidence interval; n/r (Not Reportable) - Total unweighted responses less than 100

Middle Schools

Hours of screentime on avg school day

Year	YRBS Response	Percent
2015	<1 hour per day or none	11.5%
	1 to <3 hours per day	26.0%
	3 to <5 hours per day	22.2%
	5+ hours per day	40.3%

Daily Screen Time in Hawaii, by School Type, Indicator, State, Gender, Grade Level, and DOH Race-Ethnicity,* for the Years 2005 - 2015

*Note: Weighted counts rounded to nearest 100, weighted percentages, 95% confidence interval;
n/r (Not Reportable) - Total unweighted responses less than 100*

High Schools

Indicator: Hours of TV watched on avg school day

Year: 2015

State	Hours of TV watched on avg school day											
	<1 hour per day or none			1 to <3 hours per day			3 to <5 hours per day			5+ hours per day		
	#	%	CI	#	%	CI	#	%	CI	#	%	CI
Totals	17,700	44.9%	42.6 - 47.3	13,100	33.3%	31.2 - 35.3	6,200	15.6%	14.2 - 17.1	2,400	6.2%	4.9 - 7.4

Gender	Hours of TV watched on avg school day											
	<1 hour per day or none			1 to <3 hours per day			3 to <5 hours per day			5+ hours per day		
	#	%	CI	#	%	CI	#	%	CI	#	%	CI
Male	8,700	45.4%	42.9 - 47.9	6,300	32.8%	30.2 - 35.5	2,900	15.4%	13.7 - 17.1	1,200	6.3%	5.0 - 7.7
Female	8,900	44.5%	41.6 - 47.5	6,800	33.7%	31.5 - 35.9	3,200	15.8%	13.6 - 18.0	1,200	6.0%	4.2 - 7.7

Grade Level	Hours of TV watched on avg school day											
	<1 hour per day or none			1 to <3 hours per day			3 to <5 hours per day			5+ hours per day		
	#	%	CI	#	%	CI	#	%	CI	#	%	CI
9th Grade	4,600	41.1%	37.4 - 44.8	4,000	35.7%	32.7 - 38.7	1,900	16.6%	14.3 - 19.0	700	6.6%	4.5 - 8.7
10th Grade	3,900	40.2%	36.6 - 43.7	3,600	37.1%	33.8 - 40.4	1,500	15.5%	11.8 - 19.2	700	7.2%	4.9 - 9.6
11th Grade	4,500	51.5%	47.2 - 55.9	2,500	28.0%	24.9 - 31.1	1,400	15.6%	12.8 - 18.4	400	4.9%	3.1 - 6.6
12th Grade	4,400	47.8%	43.1 - 52.6	2,900	32.1%	27.8 - 36.4	1,300	14.4%	11.7 - 17.0	500	5.7%	3.8 - 7.6

* Race-ethnicity data from 2011 forward may not be comparable to data from previous years.

Daily Screen Time in Hawaii, by School Type, Indicator, State, Gender, Grade Level, and DOH Race-Ethnicity,* for the Years 2005 - 2015

*Note: Weighted counts rounded to nearest 100, weighted percentages, 95% confidence interval;
n/r (Not Reportable) - Total unweighted responses less than 100*

High Schools

Indicator: Hours of TV watched on avg school day

Year: 2015

DOH Race-Ethnicity	Hours of TV watched on avg school day											
	<1 hour per day or none			1 to <3 hours per day			3 to <5 hours per day			5+ hours per day		
	#	%	CI	#	%	CI	#	%	CI	#	%	CI
Caucasian	2,200	41.2%	31.7 - 50.8	2,200	40.8%	32.6 - 49.0	800	14.5%	10.4 - 18.6	200	3.5%	0.5 - 6.5
Native Hawaiian	4,000	45.0%	41.2 - 48.8	2,900	32.8%	30.0 - 35.7	1,400	16.3%	14.1 - 18.4	500	5.9%	4.3 - 7.5
Filipino	4,500	42.3%	37.8 - 46.8	3,500	33.1%	28.6 - 37.5	1,800	16.7%	13.8 - 19.5	800	7.9%	5.7 - 10.1
Japanese	1,700	45.4%	40.8 - 50.1	1,300	33.8%	27.5 - 40.1	600	15.3%	11.2 - 19.4	200	5.5%	1.8 - 9.2
Black	n/r	n/r	n/r	n/r	n/r	n/r	n/r	n/r	n/r	n/r	n/r	n/r
Native Alaskan/ American Indian	n/r	n/r	n/r	n/r	n/r	n/r	n/r	n/r	n/r	n/r	n/r	n/r
Other Asian	800	59.7%	52.5 - 67.0	300	21.1%	18.1 - 24.2	200	14.9%	10.9 - 18.8	100	4.3%	1.2 - 7.3
Other Pacific Islander	500	50.6%	37.7 - 63.5	300	26.1%	18.2 - 34.0	100	10.0%	4.3 - 15.6	100	13.3%	7.2 - 19.4
Other	3,200	47.1%	44.9 - 49.4	2,200	32.5%	29.0 - 36.0	1,000	15.0%	12.9 - 17.1	400	5.4%	3.3 - 7.4

* Race-ethnicity data from 2011 forward may not be comparable to data from previous years.

Daily Screen Time in Hawaii, by School Type, Indicator, State, Gender, Grade Level, and DOH Race-Ethnicity,* for the Years 2005 - 2015

*Note: Weighted counts rounded to nearest 100, weighted percentages, 95% confidence interval;
n/r (Not Reportable) - Total unweighted responses less than 100*

High Schools

Indicator: Hours of TV watched on avg school day

Year: 2013

State	Hours of TV watched on avg school day											
	<1 hour per day or none			1 to <3 hours per day			3 to <5 hours per day			5+ hours per day		
	#	%	CI	#	%	CI	#	%	CI	#	%	CI
Totals	14,800	36.9%	34.1 - 39.7	13,500	33.8%	31.6 - 36.0	8,000	19.9%	18.0 - 21.8	3,800	9.4%	7.9 - 11.0

Gender	Hours of TV watched on avg school day											
	<1 hour per day or none			1 to <3 hours per day			3 to <5 hours per day			5+ hours per day		
	#	%	CI	#	%	CI	#	%	CI	#	%	CI
Male	6,900	35.3%	31.4 - 39.2	6,600	33.6%	30.9 - 36.3	4,100	21.2%	18.6 - 23.7	1,900	10.0%	8.4 - 11.6
Female	7,800	38.4%	35.6 - 41.2	6,900	33.7%	30.7 - 36.8	3,900	18.9%	16.2 - 21.7	1,800	8.9%	6.7 - 11.2

Grade Level	Hours of TV watched on avg school day											
	<1 hour per day or none			1 to <3 hours per day			3 to <5 hours per day			5+ hours per day		
	#	%	CI	#	%	CI	#	%	CI	#	%	CI
9th Grade	3,900	35.2%	29.7 - 40.6	3,800	34.1%	29.3 - 38.9	2,300	20.8%	17.2 - 24.5	1,100	9.8%	7.4 - 12.2
10th Grade	3,700	37.2%	33.0 - 41.4	3,300	33.4%	29.2 - 37.5	1,900	18.9%	14.9 - 23.0	1,100	10.5%	7.3 - 13.7
11th Grade	3,400	37.6%	34.9 - 40.3	2,800	31.6%	27.9 - 35.3	1,900	21.3%	17.6 - 25.0	900	9.5%	5.8 - 13.2
12th Grade	3,600	37.7%	32.6 - 42.9	3,300	35.2%	30.7 - 39.8	1,800	19.4%	16.7 - 22.1	700	7.6%	4.5 - 10.8

* Race-ethnicity data from 2011 forward may not be comparable to data from previous years.

Daily Screen Time in Hawaii, by School Type, Indicator, State, Gender, Grade Level, and DOH Race-Ethnicity,* for the Years 2005 - 2015

*Note: Weighted counts rounded to nearest 100, weighted percentages, 95% confidence interval;
n/r (Not Reportable) - Total unweighted responses less than 100*

High Schools

Indicator: Hours of TV watched on avg school day

Year: 2013

DOH Race-Ethnicity	Hours of TV watched on avg school day											
	<1 hour per day or none			1 to <3 hours per day			3 to <5 hours per day			5+ hours per day		
	#	%	CI	#	%	CI	#	%	CI	#	%	CI
Caucasian	2,200	37.0%	30.1 - 43.9	2,000	34.8%	28.6 - 41.0	1,300	22.2%	16.4 - 28.0	400	6.0%	2.3 - 9.7
Native Hawaiian	3,400	38.5%	35.2 - 41.8	3,000	34.8%	31.1 - 38.6	1,500	17.5%	14.5 - 20.4	800	9.2%	6.8 - 11.6
Filipino	3,600	32.5%	28.4 - 36.5	3,900	34.8%	31.1 - 38.4	2,500	22.1%	18.1 - 26.2	1,200	10.6%	7.2 - 14.0
Japanese	1,500	37.0%	16.8 - 57.2	1,400	36.1%	23.8 - 48.3	800	19.4%	10.0 - 28.7	300	7.6%	0.0 - 15.3
Black	n/r	n/r	n/r	n/r	n/r	n/r	n/r	n/r	n/r	n/r	n/r	n/r
Native Alaskan/ American Indian	n/r	n/r	n/r	n/r	n/r	n/r	n/r	n/r	n/r	n/r	n/r	n/r
Other Asian	600	47.1%	38.2 - 56.0	300	25.2%	16.1 - 34.2	300	19.9%	11.0 - 28.8	100	7.8%	1.8 - 13.7
Other Pacific Islander	500	44.9%	33.6 - 56.3	300	30.7%	18.1 - 43.2	200	15.7%	8.5 - 22.9	100	8.7%	1.5 - 15.9
Other	2,700	40.1%	36.7 - 43.5	2,100	31.0%	28.1 - 33.9	1,300	18.9%	14.6 - 23.3	700	10.0%	7.6 - 12.3

* Race-ethnicity data from 2011 forward may not be comparable to data from previous years.

Daily Screen Time in Hawaii, by School Type, Indicator, State, Gender, Grade Level, and DOH Race-Ethnicity,* for the Years 2005 - 2015

*Note: Weighted counts rounded to nearest 100, weighted percentages, 95% confidence interval;
n/r (Not Reportable) - Total unweighted responses less than 100*

High Schools

Indicator: Hours of TV watched on avg school day

Year: 2011

State	Hours of TV watched on avg school day											
	<1 hour per day or none			1 to <3 hours per day			3 to <5 hours per day			5+ hours per day		
	#	%	CI	#	%	CI	#	%	CI	#	%	CI
Totals	14,600	34.5%	32.3 - 36.7	14,300	33.8%	32.4 - 35.2	9,200	21.8%	19.9 - 23.7	4,200	9.9%	8.5 - 11.3

Gender	Hours of TV watched on avg school day											
	<1 hour per day or none			1 to <3 hours per day			3 to <5 hours per day			5+ hours per day		
	#	%	CI	#	%	CI	#	%	CI	#	%	CI
Male	6,700	32.7%	29.6 - 35.8	6,700	32.5%	29.7 - 35.4	5,000	24.2%	21.6 - 26.8	2,200	10.6%	8.6 - 12.5
Female	7,800	36.3%	32.8 - 39.9	7,500	35.0%	32.2 - 37.8	4,200	19.4%	16.3 - 22.5	2,000	9.3%	7.1 - 11.4

Grade Level	Hours of TV watched on avg school day											
	<1 hour per day or none			1 to <3 hours per day			3 to <5 hours per day			5+ hours per day		
	#	%	CI	#	%	CI	#	%	CI	#	%	CI
9th Grade	3,600	30.6%	27.2 - 34.0	4,300	36.4%	32.8 - 40.0	2,700	22.7%	19.5 - 25.9	1,200	10.4%	8.2 - 12.5
10th Grade	3,900	35.9%	32.1 - 39.8	3,400	31.3%	29.1 - 33.6	2,300	21.4%	18.0 - 24.9	1,200	11.3%	7.7 - 14.8
11th Grade	3,700	36.8%	30.7 - 42.9	3,400	33.9%	30.4 - 37.4	2,000	20.1%	15.4 - 24.8	900	9.2%	5.6 - 12.8
12th Grade	3,200	35.5%	30.3 - 40.7	3,000	32.6%	27.5 - 37.8	2,100	23.6%	18.8 - 28.4	800	8.3%	6.1 - 10.5

* Race-ethnicity data from 2011 forward may not be comparable to data from previous years.

Daily Screen Time in Hawaii, by School Type, Indicator, State, Gender, Grade Level, and DOH Race-Ethnicity,* for the Years 2005 - 2015

*Note: Weighted counts rounded to nearest 100, weighted percentages, 95% confidence interval;
n/r (Not Reportable) - Total unweighted responses less than 100*

High Schools

Indicator: Hours of TV watched on avg school day

Year: 2011

DOH Race-Ethnicity	Hours of TV watched on avg school day											
	<1 hour per day or none			1 to <3 hours per day			3 to <5 hours per day			5+ hours per day		
	#	%	CI	#	%	CI	#	%	CI	#	%	CI
Caucasian	2,600	44.2%	38.7 - 49.6	2,000	34.4%	26.8 - 42.1	1,100	18.1%	11.7 - 24.6	200	3.3%	1.1 - 5.5
Native Hawaiian	3,200	33.4%	29.6 - 37.2	3,500	36.7%	33.8 - 39.5	2,000	21.0%	18.2 - 23.7	900	9.0%	6.3 - 11.6
Filipino	2,500	23.6%	19.0 - 28.1	3,700	35.2%	31.2 - 39.3	2,800	26.4%	22.5 - 30.2	1,600	14.8%	11.9 - 17.7
Japanese	700	40.3%	34.2 - 46.5	600	33.4%	26.3 - 40.5	400	22.7%	17.2 - 28.3	100	3.5%	0.1 - 6.9
Black	n/r	n/r	n/r	n/r	n/r	n/r	n/r	n/r	n/r	n/r	n/r	n/r
Native Alaskan/ American Indian	n/r	n/r	n/r	n/r	n/r	n/r	n/r	n/r	n/r	n/r	n/r	n/r
Other Asian	1,000	45.2%	41.0 - 49.4	700	29.4%	23.8 - 35.0	500	20.3%	15.1 - 25.6	100	5.1%	1.2 - 8.9
Other Pacific Islander	700	47.3%	40.1 - 54.5	300	24.6%	18.4 - 30.9	200	15.4%	8.9 - 21.9	200	12.6%	4.0 - 21.3
Other	3,200	35.8%	30.1 - 41.5	2,900	32.4%	28.4 - 36.4	1,900	21.2%	16.9 - 25.5	1,000	10.6%	7.3 - 13.8

* Race-ethnicity data from 2011 forward may not be comparable to data from previous years.

Daily Screen Time in Hawaii, by School Type, Indicator, State, Gender, Grade Level, and DOH Race-Ethnicity,* for the Years 2005 - 2015

*Note: Weighted counts rounded to nearest 100, weighted percentages, 95% confidence interval;
n/r (Not Reportable) - Total unweighted responses less than 100*

High Schools

Indicator: Hours of TV watched on avg school day

Year: 2009

State	Hours of TV watched on avg school day											
	<1 hour per day or none			1 to <3 hours per day			3 to <5 hours per day			5+ hours per day		
	#	%	CI	#	%	CI	#	%	CI	#	%	CI
Totals	15,600	32.5%	30.0 - 35.1	17,900	37.4%	34.5 - 40.2	9,700	20.3%	17.3 - 23.3	4,700	9.8%	8.3 - 11.3

Gender	Hours of TV watched on avg school day											
	<1 hour per day or none			1 to <3 hours per day			3 to <5 hours per day			5+ hours per day		
	#	%	CI	#	%	CI	#	%	CI	#	%	CI
Male	7,500	30.6%	27.1 - 34.1	9,400	38.2%	34.9 - 41.5	5,000	20.6%	15.5 - 25.6	2,600	10.6%	8.0 - 13.2
Female	7,900	34.3%	30.0 - 38.6	8,500	36.6%	32.5 - 40.8	4,700	20.2%	14.9 - 25.5	2,100	8.9%	6.8 - 11.0

Grade Level	Hours of TV watched on avg school day											
	<1 hour per day or none			1 to <3 hours per day			3 to <5 hours per day			5+ hours per day		
	#	%	CI	#	%	CI	#	%	CI	#	%	CI
9th Grade	4,500	32.2%	27.1 - 37.4	5,200	36.6%	31.7 - 41.4	2,800	19.5%	14.7 - 24.2	1,700	11.7%	8.3 - 15.2
10th Grade	4,100	34.6%	25.8 - 43.4	4,700	39.0%	34.0 - 44.1	2,100	18.0%	10.8 - 25.2	1,000	8.4%	4.9 - 11.9
11th Grade	3,000	28.6%	20.5 - 36.6	4,100	39.4%	29.8 - 49.1	2,500	23.8%	15.9 - 31.8	900	8.2%	4.5 - 11.9
12th Grade	3,700	34.1%	29.8 - 38.5	3,800	35.1%	29.5 - 40.7	2,200	20.4%	14.2 - 26.7	1,100	10.3%	6.6 - 14.1

* Race-ethnicity data from 2011 forward may not be comparable to data from previous years.

Daily Screen Time in Hawaii, by School Type, Indicator, State, Gender, Grade Level, and DOH Race-Ethnicity,* for the Years 2005 - 2015

*Note: Weighted counts rounded to nearest 100, weighted percentages, 95% confidence interval;
n/r (Not Reportable) - Total unweighted responses less than 100*

High Schools

Indicator: Hours of TV watched on avg school day

Year: 2009

DOH Race-Ethnicity	Hours of TV watched on avg school day											
	<1 hour per day or none			1 to <3 hours per day			3 to <5 hours per day			5+ hours per day		
	#	%	CI	#	%	CI	#	%	CI	#	%	CI
Caucasian	1,700	27.7%	19.3 - 36.1	2,800	45.9%	36.2 - 55.7	1,200	19.6%	11.7 - 27.4	400	6.8%	0.0 - 14.6
Native Hawaiian	4,400	38.0%	33.3 - 42.7	4,500	38.5%	31.1 - 46.0	2,300	19.8%	11.8 - 27.8	400	3.7%	1.2 - 6.1
Filipino	3,000	26.4%	19.1 - 33.6	3,700	33.1%	26.9 - 39.4	2,800	24.5%	16.4 - 32.6	1,800	16.0%	11.2 - 20.9
Japanese	1,800	34.8%	22.9 - 46.7	2,200	43.0%	32.0 - 54.1	700	13.3%	6.8 - 19.8	400	8.9%	4.3 - 13.5
Black	n/r	n/r	n/r	n/r	n/r	n/r	n/r	n/r	n/r	n/r	n/r	n/r
Native Alaskan/ American Indian	n/r	n/r	n/r	n/r	n/r	n/r	n/r	n/r	n/r	n/r	n/r	n/r
Other Asian	700	38.4%	27.1 - 49.6	500	30.2%	23.1 - 37.3	300	18.8%	12.7 - 25.0	200	12.6%	3.3 - 21.8
Other Pacific Islander	n/r	n/r	n/r	n/r	n/r	n/r	n/r	n/r	n/r	n/r	n/r	n/r
Other	2,900	32.5%	27.8 - 37.3	3,100	35.8%	31.2 - 40.4	1,800	20.8%	16.4 - 25.1	1,000	10.9%	9.2 - 12.6

* Race-ethnicity data from 2011 forward may not be comparable to data from previous years.

Daily Screen Time in Hawaii, by School Type, Indicator, State, Gender, Grade Level, and DOH Race-Ethnicity,* for the Years 2005 - 2015

*Note: Weighted counts rounded to nearest 100, weighted percentages, 95% confidence interval;
n/r (Not Reportable) - Total unweighted responses less than 100*

High Schools

Indicator: Hours of TV watched on avg school day

Year: 2007

State	Hours of TV watched on avg school day											
	<1 hour per day or none			1 to <3 hours per day			3 to <5 hours per day			5+ hours per day		
	#	%	CI	#	%	CI	#	%	CI	#	%	CI
Totals	16,800	32.1%	28.6 - 35.5	18,300	35.0%	32.1 - 37.9	11,100	21.3%	18.4 - 24.2	6,100	11.6%	8.8 - 14.4

Gender	Hours of TV watched on avg school day											
	<1 hour per day or none			1 to <3 hours per day			3 to <5 hours per day			5+ hours per day		
	#	%	CI	#	%	CI	#	%	CI	#	%	CI
Male	8,300	30.4%	24.9 - 36.0	10,300	37.6%	32.8 - 42.4	5,400	20.0%	16.2 - 23.8	3,300	12.0%	7.4 - 16.6
Female	8,500	33.8%	29.3 - 38.3	8,100	32.2%	28.6 - 35.7	5,700	22.7%	19.0 - 26.5	2,800	11.3%	7.5 - 15.0

Grade Level	Hours of TV watched on avg school day											
	<1 hour per day or none			1 to <3 hours per day			3 to <5 hours per day			5+ hours per day		
	#	%	CI	#	%	CI	#	%	CI	#	%	CI
9th Grade	4,100	27.8%	20.0 - 35.6	5,100	34.7%	26.9 - 42.6	3,200	21.7%	16.2 - 27.1	2,300	15.8%	9.8 - 21.7
10th Grade	4,100	30.8%	25.3 - 36.3	4,300	33.0%	26.5 - 39.4	3,100	23.3%	15.2 - 31.3	1,700	13.0%	7.3 - 18.6
11th Grade	4,400	33.7%	27.4 - 40.0	4,600	35.1%	28.7 - 41.5	2,900	22.2%	17.8 - 26.6	1,200	9.0%	4.8 - 13.1
12th Grade	4,200	37.7%	34.0 - 41.4	4,200	38.0%	31.5 - 44.5	1,800	16.5%	11.0 - 22.0	900	7.8%	4.7 - 10.9

* Race-ethnicity data from 2011 forward may not be comparable to data from previous years.

Daily Screen Time in Hawaii, by School Type, Indicator, State, Gender, Grade Level, and DOH Race-Ethnicity,* for the Years 2005 - 2015

*Note: Weighted counts rounded to nearest 100, weighted percentages, 95% confidence interval;
n/r (Not Reportable) - Total unweighted responses less than 100*

High Schools

Indicator: Hours of TV watched on avg school day

Year: 2007

DOH Race-Ethnicity	Hours of TV watched on avg school day											
	<1 hour per day or none			1 to <3 hours per day			3 to <5 hours per day			5+ hours per day		
	#	%	CI	#	%	CI	#	%	CI	#	%	CI
Caucasian	n/r	n/r	n/r	n/r	n/r	n/r	n/r	n/r	n/r	n/r	n/r	n/r
Native Hawaiian	5,500	41.0%	32.2 - 49.8	4,700	35.3%	26.4 - 44.2	1,600	12.0%	6.7 - 17.4	1,600	11.7%	4.8 - 18.7
Filipino	2,400	20.7%	13.9 - 27.5	3,900	34.1%	28.3 - 39.8	3,300	28.8%	21.1 - 36.4	1,900	16.4%	11.2 - 21.7
Japanese	1,600	31.3%	23.4 - 39.2	1,900	35.7%	25.7 - 45.6	1,200	23.1%	15.4 - 30.7	500	10.0%	4.2 - 15.7
Black	n/r	n/r	n/r	n/r	n/r	n/r	n/r	n/r	n/r	n/r	n/r	n/r
Native Alaskan/ American Indian	n/r	n/r	n/r	n/r	n/r	n/r	n/r	n/r	n/r	n/r	n/r	n/r
Other Asian	n/r	n/r	n/r	n/r	n/r	n/r	n/r	n/r	n/r	n/r	n/r	n/r
Other Pacific Islander	n/r	n/r	n/r	n/r	n/r	n/r	n/r	n/r	n/r	n/r	n/r	n/r
Other	3,300	32.7%	28.4 - 37.1	3,300	33.0%	27.2 - 38.9	2,400	23.7%	18.7 - 28.8	1,100	10.5%	6.7 - 14.3

* Race-ethnicity data from 2011 forward may not be comparable to data from previous years.

Daily Screen Time in Hawaii, by School Type, Indicator, State, Gender, Grade Level, and DOH Race-Ethnicity,* for the Years 2005 - 2015

*Note: Weighted counts rounded to nearest 100, weighted percentages, 95% confidence interval;
n/r (Not Reportable) - Total unweighted responses less than 100*

High Schools

Indicator: Hours of TV watched on avg school day

Year: 2005

State	Hours of TV watched on avg school day											
	<1 hour per day or none			1 to <3 hours per day			3 to <5 hours per day			5+ hours per day		
	#	%	CI	#	%	CI	#	%	CI	#	%	CI
Totals	16,400	31.0%	27.8 - 34.1	17,000	32.1%	29.9 - 34.3	13,700	25.9%	23.1 - 28.8	5,800	11.0%	8.9 - 13.1

Gender	Hours of TV watched on avg school day											
	<1 hour per day or none			1 to <3 hours per day			3 to <5 hours per day			5+ hours per day		
	#	%	CI	#	%	CI	#	%	CI	#	%	CI
Male	8,200	29.9%	25.2 - 34.6	9,200	33.4%	30.0 - 36.7	7,100	25.9%	22.3 - 29.6	3,000	10.8%	7.9 - 13.6
Female	8,100	32.2%	28.0 - 36.4	7,800	30.8%	28.0 - 33.7	6,500	25.7%	22.7 - 28.6	2,900	11.3%	7.7 - 14.9

Grade Level	Hours of TV watched on avg school day											
	<1 hour per day or none			1 to <3 hours per day			3 to <5 hours per day			5+ hours per day		
	#	%	CI	#	%	CI	#	%	CI	#	%	CI
9th Grade	4,800	29.4%	22.9 - 35.9	5,700	35.2%	30.4 - 39.9	3,600	22.1%	17.8 - 26.5	2,200	13.4%	9.7 - 17.0
10th Grade	4,400	32.9%	28.1 - 37.7	4,300	31.9%	28.1 - 35.7	3,400	25.2%	21.0 - 29.5	1,300	10.0%	5.1 - 14.9
11th Grade	3,500	28.1%	23.3 - 33.0	3,500	28.3%	23.8 - 32.9	3,900	31.4%	25.0 - 37.9	1,500	12.1%	8.0 - 16.3
12th Grade	3,600	35.0%	30.9 - 39.1	3,300	31.7%	27.1 - 36.2	2,600	25.5%	20.6 - 30.3	800	7.8%	4.6 - 11.1

* Race-ethnicity data from 2011 forward may not be comparable to data from previous years.

Daily Screen Time in Hawaii, by School Type, Indicator, State, Gender, Grade Level, and DOH Race-Ethnicity,* for the Years 2005 - 2015

*Note: Weighted counts rounded to nearest 100, weighted percentages, 95% confidence interval;
n/r (Not Reportable) - Total unweighted responses less than 100*

High Schools

Indicator: Hours of TV watched on avg school day

Year: 2005

DOH Race-Ethnicity	Hours of TV watched on avg school day											
	<1 hour per day or none			1 to <3 hours per day			3 to <5 hours per day			5+ hours per day		
	#	%	CI	#	%	CI	#	%	CI	#	%	CI
Caucasian	3,900	46.7%	40.2 - 53.1	2,300	27.6%	22.1 - 33.1	1,700	20.9%	15.4 - 26.4	400	4.9%	2.0 - 7.8
Native Hawaiian	3,300	31.7%	27.5 - 36.0	3,400	32.1%	25.5 - 38.7	2,800	27.0%	22.9 - 31.0	1,000	9.2%	6.3 - 12.2
Chinese	n/r	n/r	n/r	n/r	n/r	n/r	n/r	n/r	n/r	n/r	n/r	n/r
Filipino	3,400	25.5%	16.6 - 34.3	4,100	30.3%	25.8 - 34.8	3,600	26.5%	21.2 - 31.8	2,400	17.8%	12.2 - 23.3
Japanese	1,800	22.6%	16.9 - 28.3	3,200	40.5%	33.1 - 47.9	2,100	27.2%	20.4 - 34.0	800	9.7%	4.1 - 15.3
Black	n/r	n/r	n/r	n/r	n/r	n/r	n/r	n/r	n/r	n/r	n/r	n/r
Other Pacific Islander	n/r	n/r	n/r	n/r	n/r	n/r	n/r	n/r	n/r	n/r	n/r	n/r
Other	1,800	34.1%	27.1 - 41.0	1,400	27.4%	21.0 - 33.8	1,300	25.2%	18.5 - 32.0	700	13.3%	8.3 - 18.3

* Race-ethnicity data from 2011 forward may not be comparable to data from previous years.

Daily Screen Time in Hawaii, by School Type, Indicator, State, Gender, Grade Level, and DOH Race-Ethnicity,* for the Years 2005 - 2015

*Note: Weighted counts rounded to nearest 100, weighted percentages, 95% confidence interval;
n/r (Not Reportable) - Total unweighted responses less than 100*

High Schools

Indicator: Hours of video games played on avg school day

Year: 2015

State	Hours of video games played on avg school day											
	<1 hour per day or none			1 to <3 hours per day			3 to <5 hours per day			5+ hours per day		
	#	%	CI	#	%	CI	#	%	CI	#	%	CI
Totals	13,700	34.9%	33.2 - 36.5	9,600	24.5%	23.1 - 25.8	8,500	21.7%	19.4 - 24.0	7,500	18.9%	16.6 - 21.3

Gender	Hours of video games played on avg school day											
	<1 hour per day or none			1 to <3 hours per day			3 to <5 hours per day			5+ hours per day		
	#	%	CI	#	%	CI	#	%	CI	#	%	CI
Male	6,400	33.7%	30.0 - 37.3	5,200	27.1%	24.5 - 29.6	4,100	21.7%	17.9 - 25.4	3,400	17.6%	14.8 - 20.4
Female	7,200	36.1%	33.9 - 38.3	4,400	21.8%	19.4 - 24.1	4,400	21.8%	19.8 - 23.9	4,100	20.3%	16.7 - 23.8

Grade Level	Hours of video games played on avg school day											
	<1 hour per day or none			1 to <3 hours per day			3 to <5 hours per day			5+ hours per day		
	#	%	CI	#	%	CI	#	%	CI	#	%	CI
9th Grade	3,600	32.0%	29.0 - 35.1	2,900	25.6%	22.8 - 28.5	2,600	22.9%	19.8 - 26.0	2,200	19.4%	16.1 - 22.8
10th Grade	3,600	36.9%	33.7 - 40.1	2,300	23.4%	21.0 - 25.7	2,000	20.0%	16.7 - 23.3	1,900	19.7%	15.8 - 23.6
11th Grade	3,100	35.1%	30.8 - 39.5	2,300	26.6%	22.9 - 30.2	1,900	21.6%	17.1 - 26.2	1,500	16.7%	13.9 - 19.5
12th Grade	3,200	35.2%	31.7 - 38.8	2,000	22.2%	18.6 - 25.9	2,100	22.8%	20.2 - 25.3	1,800	19.7%	15.9 - 23.5

* Race-ethnicity data from 2011 forward may not be comparable to data from previous years.

Daily Screen Time in Hawaii, by School Type, Indicator, State, Gender, Grade Level, and DOH Race-Ethnicity,* for the Years 2005 - 2015

*Note: Weighted counts rounded to nearest 100, weighted percentages, 95% confidence interval;
n/r (Not Reportable) - Total unweighted responses less than 100*

High Schools

Indicator: Hours of video games played on avg school day

Year: 2015

DOH Race-Ethnicity	Hours of video games played on avg school day											
	<1 hour per day or none			1 to <3 hours per day			3 to <5 hours per day			5+ hours per day		
	#	%	CI	#	%	CI	#	%	CI	#	%	CI
Caucasian	1,800	32.6%	27.8 - 37.3	1,600	30.1%	24.8 - 35.3	1,300	23.5%	19.4 - 27.6	800	13.9%	9.4 - 18.3
Native Hawaiian	3,500	40.5%	37.8 - 43.3	2,000	22.7%	20.2 - 25.2	1,600	18.4%	15.5 - 21.3	1,600	18.4%	15.5 - 21.3
Filipino	3,300	30.8%	26.9 - 34.8	2,400	22.7%	19.6 - 25.8	2,500	23.1%	19.2 - 27.0	2,500	23.4%	19.8 - 27.0
Japanese	1,300	33.6%	29.0 - 38.2	1,000	25.6%	20.2 - 30.9	1,100	28.2%	20.1 - 36.4	500	12.6%	5.1 - 20.1
Black	n/r	n/r	n/r	n/r	n/r	n/r	n/r	n/r	n/r	n/r	n/r	n/r
Native Alaskan/ American Indian	n/r	n/r	n/r	n/r	n/r	n/r	n/r	n/r	n/r	n/r	n/r	n/r
Other Asian	300	24.3%	19.3 - 29.2	300	20.1%	12.9 - 27.2	400	31.0%	22.6 - 39.4	300	24.7%	19.5 - 29.8
Other Pacific Islander	600	53.5%	45.1 - 61.9	200	21.0%	13.8 - 28.3	100	9.0%	3.4 - 14.5	200	16.5%	11.3 - 21.8
Other	2,300	34.2%	30.6 - 37.7	1,700	25.4%	22.7 - 28.0	1,400	20.1%	16.4 - 23.9	1,400	20.3%	17.7 - 23.0

* Race-ethnicity data from 2011 forward may not be comparable to data from previous years.

Daily Screen Time in Hawaii, by School Type, Indicator, State, Gender, Grade Level, and DOH Race-Ethnicity,* for the Years 2005 - 2015

*Note: Weighted counts rounded to nearest 100, weighted percentages, 95% confidence interval;
n/r (Not Reportable) - Total unweighted responses less than 100*

High Schools

Indicator: Hours of video games played on avg school day

Year: 2013

State	Hours of video games played on avg school day											
	<1 hour per day or none			1 to <3 hours per day			3 to <5 hours per day			5+ hours per day		
	#	%	CI	#	%	CI	#	%	CI	#	%	CI
Totals	13,000	32.1%	29.7 - 34.6	10,400	25.8%	23.8 - 27.7	9,300	23.1%	20.4 - 25.8	7,700	19.0%	16.8 - 21.2

Gender	Hours of video games played on avg school day											
	<1 hour per day or none			1 to <3 hours per day			3 to <5 hours per day			5+ hours per day		
	#	%	CI	#	%	CI	#	%	CI	#	%	CI
Male	6,600	33.2%	29.0 - 37.5	5,300	26.7%	24.2 - 29.1	4,400	22.5%	19.0 - 26.0	3,500	17.6%	14.7 - 20.6
Female	6,400	31.1%	28.7 - 33.4	5,100	24.8%	21.9 - 27.7	4,900	23.7%	20.0 - 27.4	4,200	20.4%	18.0 - 22.8

Grade Level	Hours of video games played on avg school day											
	<1 hour per day or none			1 to <3 hours per day			3 to <5 hours per day			5+ hours per day		
	#	%	CI	#	%	CI	#	%	CI	#	%	CI
9th Grade	4,000	35.7%	31.4 - 40.1	2,900	26.2%	22.2 - 30.2	2,300	20.2%	16.1 - 24.3	2,000	17.9%	15.0 - 20.8
10th Grade	3,000	29.5%	24.1 - 34.8	2,400	23.9%	21.2 - 26.7	2,600	26.1%	21.0 - 31.2	2,100	20.6%	16.6 - 24.5
11th Grade	2,700	29.2%	23.0 - 35.4	2,300	25.0%	21.4 - 28.5	2,400	26.1%	21.1 - 31.1	1,800	19.7%	15.6 - 23.9
12th Grade	3,300	34.4%	30.1 - 38.7	2,600	27.2%	22.4 - 31.9	1,900	20.2%	15.7 - 24.7	1,700	18.2%	14.4 - 22.1

* Race-ethnicity data from 2011 forward may not be comparable to data from previous years.

Daily Screen Time in Hawaii, by School Type, Indicator, State, Gender, Grade Level, and DOH Race-Ethnicity,* for the Years 2005 - 2015

*Note: Weighted counts rounded to nearest 100, weighted percentages, 95% confidence interval;
n/r (Not Reportable) - Total unweighted responses less than 100*

High Schools

Indicator: Hours of video games played on avg school day

Year: 2013

DOH Race-Ethnicity	Hours of video games played on avg school day											
	<1 hour per day or none			1 to <3 hours per day			3 to <5 hours per day			5+ hours per day		
	#	%	CI	#	%	CI	#	%	CI	#	%	CI
Caucasian	1,800	31.4%	25.2 - 37.7	1,600	27.7%	21.1 - 34.3	1,500	26.7%	21.1 - 32.3	800	14.1%	8.9 - 19.4
Native Hawaiian	3,800	42.6%	39.6 - 45.7	1,900	21.3%	18.8 - 23.7	1,700	18.9%	16.3 - 21.5	1,500	17.2%	14.9 - 19.5
Filipino	3,000	26.4%	22.6 - 30.1	3,100	27.7%	23.9 - 31.5	2,600	23.6%	19.2 - 27.9	2,500	22.4%	18.8 - 25.9
Japanese	1,300	31.2%	20.3 - 42.2	1,000	25.7%	16.4 - 35.0	1,200	29.4%	20.5 - 38.4	500	13.6%	7.7 - 19.6
Black	n/r	n/r	n/r	n/r	n/r	n/r	n/r	n/r	n/r	n/r	n/r	n/r
Native Alaskan/ American Indian	n/r	n/r	n/r	n/r	n/r	n/r	n/r	n/r	n/r	n/r	n/r	n/r
Other Asian	300	21.1%	12.9 - 29.4	400	27.5%	18.1 - 36.9	400	26.5%	16.1 - 36.8	300	24.9%	17.2 - 32.7
Other Pacific Islander	400	40.6%	30.1 - 51.0	200	20.1%	11.3 - 28.9	200	22.0%	15.3 - 28.8	200	17.3%	5.1 - 29.5
Other	2,000	30.2%	28.0 - 32.4	1,700	25.7%	22.6 - 28.8	1,500	22.6%	20.2 - 25.1	1,400	21.4%	18.1 - 24.8

* Race-ethnicity data from 2011 forward may not be comparable to data from previous years.

Daily Screen Time in Hawaii, by School Type, Indicator, State, Gender, Grade Level, and DOH Race-Ethnicity,* for the Years 2005 - 2015

*Note: Weighted counts rounded to nearest 100, weighted percentages, 95% confidence interval;
n/r (Not Reportable) - Total unweighted responses less than 100*

High Schools

Indicator: Hours of video games played on avg school day

Year: 2011

State	Hours of video games played on avg school day											
	<1 hour per day or none			1 to <3 hours per day			3 to <5 hours per day			5+ hours per day		
	#	%	CI	#	%	CI	#	%	CI	#	%	CI
Totals	13,000	31.0%	29.3 - 32.7	13,600	32.4%	30.8 - 34.1	9,200	21.9%	20.4 - 23.5	6,100	14.6%	13.3 - 16.0

Gender	Hours of video games played on avg school day											
	<1 hour per day or none			1 to <3 hours per day			3 to <5 hours per day			5+ hours per day		
	#	%	CI	#	%	CI	#	%	CI	#	%	CI
Male	6,300	31.2%	28.7 - 33.7	6,500	32.0%	28.9 - 35.1	4,300	21.3%	18.8 - 23.8	3,100	15.5%	13.4 - 17.6
Female	6,600	30.7%	27.8 - 33.6	7,000	32.7%	29.8 - 35.6	4,800	22.6%	19.8 - 25.3	3,000	13.9%	11.6 - 16.3

Grade Level	Hours of video games played on avg school day											
	<1 hour per day or none			1 to <3 hours per day			3 to <5 hours per day			5+ hours per day		
	#	%	CI	#	%	CI	#	%	CI	#	%	CI
9th Grade	3,200	28.2%	24.3 - 32.2	3,800	33.4%	30.0 - 36.8	2,500	21.4%	19.2 - 23.6	1,900	16.9%	14.1 - 19.8
10th Grade	3,600	33.4%	29.9 - 36.9	3,700	34.4%	31.3 - 37.4	2,200	20.6%	16.6 - 24.5	1,300	11.7%	8.6 - 14.8
11th Grade	3,200	32.2%	27.9 - 36.4	3,000	30.2%	26.9 - 33.6	2,200	21.9%	18.2 - 25.6	1,600	15.7%	12.2 - 19.2
12th Grade	2,700	30.4%	26.8 - 34.1	2,800	31.4%	26.9 - 36.0	2,200	24.0%	19.5 - 28.4	1,300	14.2%	11.4 - 16.9

* Race-ethnicity data from 2011 forward may not be comparable to data from previous years.

Daily Screen Time in Hawaii, by School Type, Indicator, State, Gender, Grade Level, and DOH Race-Ethnicity,* for the Years 2005 - 2015

*Note: Weighted counts rounded to nearest 100, weighted percentages, 95% confidence interval;
n/r (Not Reportable) - Total unweighted responses less than 100*

High Schools

Indicator: Hours of video games played on avg school day

Year: 2011

DOH Race-Ethnicity	Hours of video games played on avg school day											
	<1 hour per day or none			1 to <3 hours per day			3 to <5 hours per day			5+ hours per day		
	#	%	CI	#	%	CI	#	%	CI	#	%	CI
Caucasian	2,200	36.7%	29.8 - 43.6	2,200	38.1%	30.9 - 45.3	1,100	18.4%	14.2 - 22.6	400	6.8%	3.5 - 10.1
Native Hawaiian	3,900	40.3%	36.4 - 44.2	3,200	33.7%	28.9 - 38.6	1,600	16.6%	11.8 - 21.5	900	9.4%	6.4 - 12.3
Filipino	2,100	20.3%	16.8 - 23.9	3,300	31.7%	27.4 - 36.0	2,800	26.9%	22.7 - 31.1	2,200	21.0%	16.6 - 25.5
Japanese	400	21.7%	15.5 - 28.0	700	40.5%	31.4 - 49.5	400	23.3%	17.1 - 29.4	300	14.5%	9.7 - 19.3
Black	n/r	n/r	n/r	n/r	n/r	n/r	n/r	n/r	n/r	n/r	n/r	n/r
Native Alaskan/ American Indian	n/r	n/r	n/r	n/r	n/r	n/r	n/r	n/r	n/r	n/r	n/r	n/r
Other Asian	400	17.2%	11.4 - 23.0	500	23.8%	17.3 - 30.4	800	35.8%	29.3 - 42.3	500	23.2%	15.0 - 31.3
Other Pacific Islander	700	51.7%	45.5 - 57.8	300	23.3%	16.1 - 30.5	200	13.9%	10.2 - 17.7	200	11.1%	6.1 - 16.0
Other	2,700	30.7%	27.4 - 33.9	2,800	31.8%	28.3 - 35.4	1,900	21.4%	18.7 - 24.1	1,400	16.2%	13.7 - 18.7

* Race-ethnicity data from 2011 forward may not be comparable to data from previous years.

Daily Screen Time in Hawaii, by School Type, Indicator, State, Gender, Grade Level, and DOH Race-Ethnicity,* for the Years 2005 - 2015

*Note: Weighted counts rounded to nearest 100, weighted percentages, 95% confidence interval;
n/r (Not Reportable) - Total unweighted responses less than 100*

High Schools

Indicator: Hours of video games played on avg school day

Year: 2009

State	Hours of video games played on avg school day											
	<1 hour per day or none			1 to <3 hours per day			3 to <5 hours per day			5+ hours per day		
	#	%	CI	#	%	CI	#	%	CI	#	%	CI
Totals	20,000	41.7%	37.0 - 46.3	14,800	30.9%	27.8 - 34.1	8,500	17.7%	14.9 - 20.5	4,600	9.7%	7.4 - 11.9

Gender	Hours of video games played on avg school day											
	<1 hour per day or none			1 to <3 hours per day			3 to <5 hours per day			5+ hours per day		
	#	%	CI	#	%	CI	#	%	CI	#	%	CI
Male	9,500	38.9%	32.9 - 44.8	8,000	32.4%	27.0 - 37.9	4,500	18.2%	14.6 - 21.8	2,600	10.5%	8.5 - 12.5
Female	10,200	44.2%	39.3 - 49.0	6,900	29.6%	26.3 - 32.8	4,000	17.4%	13.7 - 21.0	2,100	8.9%	5.7 - 12.1

Grade Level	Hours of video games played on avg school day											
	<1 hour per day or none			1 to <3 hours per day			3 to <5 hours per day			5+ hours per day		
	#	%	CI	#	%	CI	#	%	CI	#	%	CI
9th Grade	6,500	45.6%	37.8 - 53.4	3,800	26.9%	22.2 - 31.5	2,500	17.9%	13.7 - 22.1	1,400	9.7%	6.3 - 13.0
10th Grade	4,400	37.9%	31.8 - 44.0	3,800	32.4%	26.0 - 38.7	2,600	21.8%	15.6 - 28.0	900	7.9%	4.5 - 11.3
11th Grade	4,000	38.3%	29.9 - 46.7	3,800	36.2%	28.2 - 44.1	1,600	14.9%	8.1 - 21.8	1,100	10.6%	7.1 - 14.2
12th Grade	4,800	43.3%	35.0 - 51.6	3,300	30.3%	24.9 - 35.7	1,700	15.6%	10.1 - 21.1	1,200	10.8%	5.2 - 16.5

* Race-ethnicity data from 2011 forward may not be comparable to data from previous years.

Daily Screen Time in Hawaii, by School Type, Indicator, State, Gender, Grade Level, and DOH Race-Ethnicity,* for the Years 2005 - 2015

*Note: Weighted counts rounded to nearest 100, weighted percentages, 95% confidence interval;
n/r (Not Reportable) - Total unweighted responses less than 100*

High Schools

Indicator: Hours of video games played on avg school day

Year: 2009

DOH Race-Ethnicity	Hours of video games played on avg school day											
	<1 hour per day or none			1 to <3 hours per day			3 to <5 hours per day			5+ hours per day		
	#	%	CI	#	%	CI	#	%	CI	#	%	CI
Caucasian	2,200	34.8%	25.3 - 44.3	2,100	33.5%	23.0 - 44.1	1,200	19.1%	13.6 - 24.6	800	12.6%	7.9 - 17.2
Native Hawaiian	6,400	55.6%	47.5 - 63.7	3,700	32.0%	24.1 - 39.8	1,300	10.8%	4.1 - 17.6	200	1.6%	0.0 - 4.3
Filipino	4,200	36.6%	31.3 - 42.0	3,300	28.7%	23.1 - 34.3	2,600	23.1%	16.2 - 30.0	1,300	11.5%	7.6 - 15.5
Japanese	1,700	34.1%	26.4 - 41.7	1,600	30.9%	24.5 - 37.3	1,000	20.5%	13.8 - 27.2	700	14.5%	6.3 - 22.8
Black	n/r	n/r	n/r	n/r	n/r	n/r	n/r	n/r	n/r	n/r	n/r	n/r
Native Alaskan/ American Indian	n/r	n/r	n/r	n/r	n/r	n/r	n/r	n/r	n/r	n/r	n/r	n/r
Other Asian	500	28.1%	21.9 - 34.4	600	35.7%	30.0 - 41.4	400	20.9%	11.1 - 30.7	300	15.2%	6.2 - 24.3
Other Pacific Islander	n/r	n/r	n/r	n/r	n/r	n/r	n/r	n/r	n/r	n/r	n/r	n/r
Other	3,300	37.4%	32.6 - 42.1	2,700	30.8%	26.7 - 34.9	1,700	19.2%	16.2 - 22.2	1,100	12.7%	10.3 - 15.1

* Race-ethnicity data from 2011 forward may not be comparable to data from previous years.

Daily Screen Time in Hawaii, by School Type, Indicator, State, Gender, Grade Level, and DOH Race-Ethnicity,* for the Years 2005 - 2015

*Note: Weighted counts rounded to nearest 100, weighted percentages, 95% confidence interval;
n/r (Not Reportable) - Total unweighted responses less than 100*

High Schools

Indicator: Hours of video games played on avg school day

Year: 2007

State	Hours of video games played on avg school day											
	<1 hour per day or none			1 to <3 hours per day			3 to <5 hours per day			5+ hours per day		
	#	%	CI	#	%	CI	#	%	CI	#	%	CI
Totals	20,800	40.0%	35.5 - 44.5	15,000	28.9%	25.1 - 32.6	9,200	17.7%	15.0 - 20.3	7,000	13.5%	10.5 - 16.5

Gender	Hours of video games played on avg school day											
	<1 hour per day or none			1 to <3 hours per day			3 to <5 hours per day			5+ hours per day		
	#	%	CI	#	%	CI	#	%	CI	#	%	CI
Male	10,200	38.0%	32.2 - 43.8	8,600	31.8%	26.3 - 37.2	4,500	16.6%	13.7 - 19.6	3,700	13.6%	8.4 - 18.9
Female	10,600	42.1%	37.1 - 47.1	6,500	25.8%	20.7 - 30.9	4,700	18.7%	14.6 - 22.7	3,400	13.4%	9.4 - 17.3

Grade Level	Hours of video games played on avg school day											
	<1 hour per day or none			1 to <3 hours per day			3 to <5 hours per day			5+ hours per day		
	#	%	CI	#	%	CI	#	%	CI	#	%	CI
9th Grade	5,900	40.4%	34.0 - 46.9	3,700	25.1%	18.8 - 31.4	2,700	18.2%	14.1 - 22.3	2,400	16.2%	10.2 - 22.2
10th Grade	5,300	41.4%	32.2 - 50.5	4,200	32.6%	27.6 - 37.6	2,000	15.4%	9.0 - 21.9	1,400	10.6%	4.9 - 16.4
11th Grade	4,500	34.6%	28.1 - 41.2	4,000	30.8%	22.9 - 38.7	2,900	21.9%	18.5 - 25.3	1,700	12.7%	7.8 - 17.5
12th Grade	4,900	44.3%	35.9 - 52.7	3,000	27.5%	18.0 - 37.0	1,600	14.2%	9.9 - 18.5	1,500	14.0%	7.2 - 20.7

* Race-ethnicity data from 2011 forward may not be comparable to data from previous years.

Daily Screen Time in Hawaii, by School Type, Indicator, State, Gender, Grade Level, and DOH Race-Ethnicity,* for the Years 2005 - 2015

*Note: Weighted counts rounded to nearest 100, weighted percentages, 95% confidence interval;
n/r (Not Reportable) - Total unweighted responses less than 100*

High Schools

Indicator: Hours of video games played on avg school day

Year: 2007

DOH Race-Ethnicity	Hours of video games played on avg school day											
	<1 hour per day or none			1 to <3 hours per day			3 to <5 hours per day			5+ hours per day		
	#	%	CI	#	%	CI	#	%	CI	#	%	CI
Caucasian	n/r	n/r	n/r	n/r	n/r	n/r	n/r	n/r	n/r	n/r	n/r	n/r
Native Hawaiian	6,400	48.2%	36.9 - 59.4	3,000	22.8%	14.5 - 31.2	1,600	12.3%	5.1 - 19.5	2,200	16.7%	7.3 - 26.1
Filipino	4,100	35.5%	28.5 - 42.5	3,200	27.6%	23.5 - 31.7	2,500	21.5%	16.1 - 26.9	1,800	15.4%	10.5 - 20.3
Japanese	1,400	25.8%	16.0 - 35.7	2,000	37.4%	29.7 - 45.2	1,200	22.8%	16.5 - 29.1	700	13.9%	6.3 - 21.5
Black	n/r	n/r	n/r	n/r	n/r	n/r	n/r	n/r	n/r	n/r	n/r	n/r
Native Alaskan/ American Indian	n/r	n/r	n/r	n/r	n/r	n/r	n/r	n/r	n/r	n/r	n/r	n/r
Other Asian	n/r	n/r	n/r	n/r	n/r	n/r	n/r	n/r	n/r	n/r	n/r	n/r
Other Pacific Islander	n/r	n/r	n/r	n/r	n/r	n/r	n/r	n/r	n/r	n/r	n/r	n/r
Other	4,200	42.0%	36.8 - 47.1	3,100	30.9%	25.1 - 36.8	1,700	17.2%	13.3 - 21.1	1,000	9.9%	6.7 - 13.1

* Race-ethnicity data from 2011 forward may not be comparable to data from previous years.

Daily Screen Time in Hawaii, by School Type, Indicator, State, Gender, Grade Level, and DOH Race-Ethnicity,* for the Years 2005 - 2015

*Note: Weighted counts rounded to nearest 100, weighted percentages, 95% confidence interval;
n/r (Not Reportable) - Total unweighted responses less than 100*

High Schools

Indicator: Hours of screentime on avg school day

Year: 2015

State	Hours of screentime on avg school day											
	<1 hour per day or none			1 to <3 hours per day			3 to <5 hours per day			5+ hours per day		
	#	%	CI	#	%	CI	#	%	CI	#	%	CI
Totals	5,600	14.4%	12.5 - 16.2	10,400	26.7%	24.9 - 28.5	9,200	23.6%	21.6 - 25.5	13,800	35.4%	33.6 - 37.2

Gender	Hours of screentime on avg school day											
	<1 hour per day or none			1 to <3 hours per day			3 to <5 hours per day			5+ hours per day		
	#	%	CI	#	%	CI	#	%	CI	#	%	CI
Male	2,700	14.4%	11.7 - 17.1	5,100	27.2%	24.9 - 29.5	4,400	23.6%	21.4 - 25.7	6,600	34.8%	32.0 - 37.6
Female	2,800	14.3%	12.5 - 16.2	5,200	26.3%	23.2 - 29.4	4,600	23.3%	20.4 - 26.2	7,200	36.0%	32.4 - 39.7

Grade Level	Hours of screentime on avg school day											
	<1 hour per day or none			1 to <3 hours per day			3 to <5 hours per day			5+ hours per day		
	#	%	CI	#	%	CI	#	%	CI	#	%	CI
9th Grade	1,300	11.4%	9.4 - 13.4	3,000	27.6%	24.9 - 30.3	2,700	24.7%	21.1 - 28.3	4,000	36.3%	32.1 - 40.5
10th Grade	1,500	15.3%	13.0 - 17.6	2,600	27.2%	24.2 - 30.2	1,900	19.8%	17.6 - 22.0	3,600	37.7%	34.3 - 41.1
11th Grade	1,400	16.4%	12.9 - 20.0	2,200	25.6%	21.5 - 29.6	2,400	27.8%	22.8 - 32.8	2,600	30.2%	26.5 - 33.9
12th Grade	1,400	14.9%	12.3 - 17.5	2,400	26.1%	22.3 - 30.0	2,000	21.9%	19.2 - 24.6	3,400	37.1%	33.8 - 40.3

* Race-ethnicity data from 2011 forward may not be comparable to data from previous years.

Daily Screen Time in Hawaii, by School Type, Indicator, State, Gender, Grade Level, and DOH Race-Ethnicity,* for the Years 2005 - 2015

*Note: Weighted counts rounded to nearest 100, weighted percentages, 95% confidence interval;
n/r (Not Reportable) - Total unweighted responses less than 100*

High Schools

Indicator: Hours of screentime on avg school day

Year: 2015

DOH Race-Ethnicity	Hours of screentime on avg school day											
	<1 hour per day or none			1 to <3 hours per day			3 to <5 hours per day			5+ hours per day		
	#	%	CI	#	%	CI	#	%	CI	#	%	CI
Caucasian	600	10.3%	6.4 - 14.2	1,600	30.5%	26.2 - 34.7	1,500	28.2%	22.3 - 34.1	1,700	31.0%	25.3 - 36.7
Native Hawaiian	1,500	17.2%	14.6 - 19.7	2,400	28.2%	25.4 - 31.1	1,900	21.9%	19.1 - 24.6	2,800	32.7%	29.7 - 35.7
Filipino	1,300	12.3%	9.5 - 15.0	2,400	22.9%	19.9 - 25.9	2,500	23.9%	19.4 - 28.3	4,300	40.9%	37.2 - 44.7
Japanese	500	14.4%	9.0 - 19.8	1,100	28.1%	18.2 - 37.9	900	23.1%	16.4 - 29.9	1,300	34.4%	26.4 - 42.4
Black	n/r	n/r	n/r	n/r	n/r	n/r	n/r	n/r	n/r	n/r	n/r	n/r
Native Alaskan/ American Indian	n/r	n/r	n/r	n/r	n/r	n/r	n/r	n/r	n/r	n/r	n/r	n/r
Other Asian	200	11.8%	8.3 - 15.3	300	22.8%	13.9 - 31.7	400	28.2%	19.5 - 36.9	500	37.3%	29.9 - 44.6
Other Pacific Islander	300	26.6%	19.3 - 33.9	300	27.6%	21.9 - 33.3	200	16.0%	10.3 - 21.8	300	29.8%	23.9 - 35.8
Other	1,000	15.3%	12.5 - 18.1	1,800	26.9%	24.3 - 29.5	1,500	21.6%	19.0 - 24.1	2,400	36.2%	33.6 - 38.7

* Race-ethnicity data from 2011 forward may not be comparable to data from previous years.

Daily Screen Time in Hawaii, by School Type, Indicator, State, Gender, Grade Level, and DOH Race-Ethnicity,* for the Years 2005 - 2015

*Note: Weighted counts rounded to nearest 100, weighted percentages, 95% confidence interval;
n/r (Not Reportable) - Total unweighted responses less than 100*

High Schools

Indicator: Hours of screentime on avg school day

Year: 2013

State	Hours of screentime on avg school day											
	<1 hour per day or none			1 to <3 hours per day			3 to <5 hours per day			5+ hours per day		
	#	%	CI	#	%	CI	#	%	CI	#	%	CI
Totals	4,800	12.1%	10.1 - 14.0	9,600	24.2%	22.0 - 26.4	9,100	23.0%	21.3 - 24.6	16,200	40.7%	37.8 - 43.6

Gender	Hours of screentime on avg school day											
	<1 hour per day or none			1 to <3 hours per day			3 to <5 hours per day			5+ hours per day		
	#	%	CI	#	%	CI	#	%	CI	#	%	CI
Male	2,300	12.2%	8.6 - 15.7	4,900	25.5%	22.3 - 28.8	4,300	22.2%	19.6 - 24.9	7,700	40.1%	35.5 - 44.7
Female	2,400	11.9%	10.2 - 13.6	4,600	23.0%	20.3 - 25.7	4,700	23.5%	21.3 - 25.7	8,400	41.5%	38.6 - 44.5

Grade Level	Hours of screentime on avg school day											
	<1 hour per day or none			1 to <3 hours per day			3 to <5 hours per day			5+ hours per day		
	#	%	CI	#	%	CI	#	%	CI	#	%	CI
9th Grade	1,600	14.8%	10.9 - 18.7	2,600	23.4%	20.7 - 26.2	2,500	22.9%	18.9 - 26.8	4,300	38.9%	34.2 - 43.6
10th Grade	1,100	10.7%	8.1 - 13.2	2,300	23.2%	18.3 - 28.2	2,400	24.1%	20.6 - 27.6	4,200	42.0%	36.6 - 47.3
11th Grade	1,000	10.9%	7.5 - 14.2	2,000	22.1%	18.5 - 25.7	2,000	22.7%	19.4 - 26.0	4,000	44.4%	39.2 - 49.6
12th Grade	1,100	11.7%	9.3 - 14.1	2,600	27.5%	22.4 - 32.7	2,100	22.4%	18.6 - 26.1	3,600	38.4%	33.9 - 42.9

* Race-ethnicity data from 2011 forward may not be comparable to data from previous years.

Daily Screen Time in Hawaii, by School Type, Indicator, State, Gender, Grade Level, and DOH Race-Ethnicity,* for the Years 2005 - 2015

*Note: Weighted counts rounded to nearest 100, weighted percentages, 95% confidence interval;
n/r (Not Reportable) - Total unweighted responses less than 100*

High Schools

Indicator: Hours of screentime on avg school day

Year: 2013

DOH Race-Ethnicity	Hours of screentime on avg school day											
	<1 hour per day or none			1 to <3 hours per day			3 to <5 hours per day			5+ hours per day		
	#	%	CI	#	%	CI	#	%	CI	#	%	CI
Caucasian	600	9.9%	5.5 - 14.2	1,600	28.7%	23.9 - 33.5	1,500	26.0%	21.6 - 30.5	2,000	35.4%	27.9 - 43.0
Native Hawaiian	1,300	15.7%	13.7 - 17.6	2,500	29.0%	25.3 - 32.7	1,500	18.0%	14.5 - 21.5	3,200	37.4%	34.1 - 40.7
Filipino	1,000	9.0%	5.7 - 12.2	2,200	19.6%	16.0 - 23.2	2,800	25.6%	20.9 - 30.3	5,100	45.9%	41.5 - 50.2
Japanese	600	15.9%	1.6 - 30.1	800	20.5%	14.0 - 27.0	1,000	26.5%	19.6 - 33.3	1,500	37.2%	24.9 - 49.4
Black	n/r	n/r	n/r	n/r	n/r	n/r	n/r	n/r	n/r	n/r	n/r	n/r
Native Alaskan/ American Indian	n/r	n/r	n/r	n/r	n/r	n/r	n/r	n/r	n/r	n/r	n/r	n/r
Other Asian	100	10.6%	5.4 - 15.7	200	15.9%	9.4 - 22.3	400	29.0%	22.1 - 35.9	600	44.6%	35.8 - 53.4
Other Pacific Islander	200	21.0%	12.8 - 29.2	300	27.5%	21.3 - 33.6	100	13.0%	7.2 - 18.8	400	38.5%	27.3 - 49.8
Other	800	11.3%	9.1 - 13.6	1,600	24.5%	22.0 - 27.1	1,400	21.1%	19.3 - 23.0	2,800	43.0%	39.8 - 46.2

* Race-ethnicity data from 2011 forward may not be comparable to data from previous years.

Daily Screen Time in Hawaii, by School Type, Indicator, State, Gender, Grade Level, and DOH Race-Ethnicity,* for the Years 2005 - 2015

*Note: Weighted counts rounded to nearest 100, weighted percentages, 95% confidence interval;
n/r (Not Reportable) - Total unweighted responses less than 100*

High Schools

Indicator: Hours of screentime on avg school day

Year: 2011

State	Hours of screentime on avg school day											
	<1 hour per day or none			1 to <3 hours per day			3 to <5 hours per day			5+ hours per day		
	#	%	CI	#	%	CI	#	%	CI	#	%	CI
Totals	4,300	10.2%	8.8 - 11.7	12,000	28.9%	27.6 - 30.2	9,100	21.8%	20.2 - 23.4	16,200	39.0%	37.0 - 41.1

Gender	Hours of screentime on avg school day											
	<1 hour per day or none			1 to <3 hours per day			3 to <5 hours per day			5+ hours per day		
	#	%	CI	#	%	CI	#	%	CI	#	%	CI
Male	2,200	10.8%	8.7 - 12.8	5,500	27.4%	24.4 - 30.4	4,200	21.1%	19.0 - 23.1	8,200	40.8%	36.6 - 45.0
Female	2,000	9.6%	8.2 - 11.0	6,500	30.5%	27.6 - 33.4	4,800	22.4%	20.4 - 24.4	8,000	37.5%	35.1 - 39.9

Grade Level	Hours of screentime on avg school day											
	<1 hour per day or none			1 to <3 hours per day			3 to <5 hours per day			5+ hours per day		
	#	%	CI	#	%	CI	#	%	CI	#	%	CI
9th Grade	1,000	8.9%	6.5 - 11.3	2,900	25.8%	23.1 - 28.5	2,700	24.0%	20.8 - 27.1	4,700	41.3%	38.5 - 44.2
10th Grade	1,200	11.5%	8.3 - 14.7	3,400	31.6%	27.8 - 35.4	2,000	19.0%	16.3 - 21.6	4,100	38.0%	33.9 - 42.1
11th Grade	1,000	10.2%	7.9 - 12.5	3,000	29.8%	26.7 - 33.0	2,200	21.9%	18.2 - 25.6	3,800	38.1%	31.7 - 44.4
12th Grade	900	10.4%	7.7 - 13.1	2,600	28.7%	24.8 - 32.6	2,000	22.5%	19.3 - 25.6	3,500	38.4%	34.6 - 42.3

* Race-ethnicity data from 2011 forward may not be comparable to data from previous years.

Daily Screen Time in Hawaii, by School Type, Indicator, State, Gender, Grade Level, and DOH Race-Ethnicity,* for the Years 2005 - 2015

*Note: Weighted counts rounded to nearest 100, weighted percentages, 95% confidence interval;
n/r (Not Reportable) - Total unweighted responses less than 100*

High Schools

Indicator: Hours of screentime on avg school day

Year: 2011

DOH Race-Ethnicity	Hours of screentime on avg school day											
	<1 hour per day or none			1 to <3 hours per day			3 to <5 hours per day			5+ hours per day		
	#	%	CI	#	%	CI	#	%	CI	#	%	CI
Caucasian	800	13.8%	9.1 - 18.5	2,200	37.5%	32.0 - 43.0	1,600	27.1%	21.5 - 32.8	1,300	21.6%	15.6 - 27.5
Native Hawaiian	1,100	11.3%	8.7 - 13.9	3,400	35.9%	31.1 - 40.8	1,900	19.7%	16.9 - 22.4	3,200	33.1%	29.8 - 36.4
Filipino	400	4.3%	2.3 - 6.3	2,100	20.6%	17.8 - 23.4	2,300	22.0%	16.9 - 27.0	5,500	53.2%	47.7 - 58.6
Japanese	100	6.9%	3.6 - 10.3	600	32.1%	24.8 - 39.5	500	26.0%	19.0 - 33.0	600	34.9%	27.0 - 42.8
Black	n/r	n/r	n/r	n/r	n/r	n/r	n/r	n/r	n/r	n/r	n/r	n/r
Native Alaskan/ American Indian	n/r	n/r	n/r	n/r	n/r	n/r	n/r	n/r	n/r	n/r	n/r	n/r
Other Asian	100	6.1%	1.5 - 10.6	500	24.1%	18.3 - 29.9	400	19.6%	15.2 - 23.9	1,100	50.3%	45.8 - 54.7
Other Pacific Islander	400	26.4%	18.9 - 33.8	400	25.5%	18.8 - 32.2	200	14.6%	6.6 - 22.5	500	33.6%	25.9 - 41.3
Other	1,000	11.7%	8.1 - 15.3	2,400	27.2%	24.5 - 29.9	2,000	23.0%	20.2 - 25.9	3,400	38.1%	34.0 - 42.1

* Race-ethnicity data from 2011 forward may not be comparable to data from previous years.

Daily Screen Time in Hawaii, by School Type, Indicator, State, Gender, Grade Level, and DOH Race-Ethnicity,* for the Years 2005 - 2015

*Note: Weighted counts rounded to nearest 100, weighted percentages, 95% confidence interval;
n/r (Not Reportable) - Total unweighted responses less than 100*

High Schools

Indicator: Hours of screentime on avg school day

Year: 2009

State	Hours of screentime on avg school day											
	<1 hour per day or none			1 to <3 hours per day			3 to <5 hours per day			5+ hours per day		
	#	%	CI	#	%	CI	#	%	CI	#	%	CI
Totals	6,100	12.9%	11.4 - 14.5	14,600	30.7%	26.9 - 34.6	11,700	24.7%	21.2 - 28.2	15,000	31.7%	28.6 - 34.7

Gender	Hours of screentime on avg school day											
	<1 hour per day or none			1 to <3 hours per day			3 to <5 hours per day			5+ hours per day		
	#	%	CI	#	%	CI	#	%	CI	#	%	CI
Male	3,300	13.5%	10.7 - 16.2	7,200	29.6%	24.4 - 34.8	5,700	23.7%	19.6 - 27.8	8,000	33.2%	28.7 - 37.8
Female	2,800	12.1%	9.3 - 14.9	7,300	31.8%	27.2 - 36.5	6,000	25.8%	20.9 - 30.8	7,000	30.2%	26.2 - 34.3

Grade Level	Hours of screentime on avg school day											
	<1 hour per day or none			1 to <3 hours per day			3 to <5 hours per day			5+ hours per day		
	#	%	CI	#	%	CI	#	%	CI	#	%	CI
9th Grade	1,900	13.3%	10.1 - 16.6	4,600	32.4%	27.9 - 36.9	2,900	20.9%	15.7 - 26.1	4,700	33.4%	25.5 - 41.3
10th Grade	1,400	12.3%	6.8 - 17.7	3,300	28.3%	21.4 - 35.3	4,000	33.8%	28.3 - 39.4	3,000	25.6%	17.5 - 33.7
11th Grade	1,300	12.6%	9.4 - 15.9	3,000	28.6%	20.9 - 36.3	2,500	24.1%	15.6 - 32.6	3,600	34.6%	28.0 - 41.3
12th Grade	1,400	13.0%	9.1 - 16.8	3,600	33.0%	25.7 - 40.4	2,200	20.5%	17.0 - 24.0	3,600	33.4%	28.4 - 38.4

* Race-ethnicity data from 2011 forward may not be comparable to data from previous years.

Daily Screen Time in Hawaii, by School Type, Indicator, State, Gender, Grade Level, and DOH Race-Ethnicity,* for the Years 2005 - 2015

*Note: Weighted counts rounded to nearest 100, weighted percentages, 95% confidence interval;
n/r (Not Reportable) - Total unweighted responses less than 100*

High Schools

Indicator: Hours of screentime on avg school day

Year: 2009

DOH Race-Ethnicity	Hours of screentime on avg school day											
	<1 hour per day or none			1 to <3 hours per day			3 to <5 hours per day			5+ hours per day		
	#	%	CI	#	%	CI	#	%	CI	#	%	CI
Caucasian	600	9.7%	4.7 - 14.7	1,700	28.1%	21.8 - 34.5	1,700	28.0%	19.4 - 36.7	2,100	34.2%	27.3 - 41.1
Native Hawaiian	2,300	19.8%	16.3 - 23.3	4,200	36.2%	26.4 - 46.0	3,200	27.9%	19.4 - 36.3	1,900	16.1%	12.0 - 20.3
Filipino	1,100	9.8%	5.3 - 14.3	2,500	22.4%	16.8 - 27.9	2,900	26.0%	18.3 - 33.6	4,700	41.9%	34.9 - 48.9
Japanese	700	14.0%	5.8 - 22.2	1,700	34.2%	22.5 - 45.9	900	17.8%	9.8 - 25.8	1,700	34.0%	26.2 - 41.7
Black	n/r	n/r	n/r	n/r	n/r	n/r	n/r	n/r	n/r	n/r	n/r	n/r
Native Alaskan/ American Indian	n/r	n/r	n/r	n/r	n/r	n/r	n/r	n/r	n/r	n/r	n/r	n/r
Other Asian	200	8.7%	1.7 - 15.6	400	25.7%	18.2 - 33.1	400	25.0%	18.6 - 31.5	700	40.6%	31.8 - 49.4
Other Pacific Islander	n/r	n/r	n/r	n/r	n/r	n/r	n/r	n/r	n/r	n/r	n/r	n/r
Other	900	10.0%	7.5 - 12.5	2,900	33.1%	28.4 - 37.7	1,900	21.7%	18.6 - 24.7	3,100	35.2%	31.4 - 39.0

* Race-ethnicity data from 2011 forward may not be comparable to data from previous years.

Daily Screen Time in Hawaii, by School Type, Indicator, State, Gender, Grade Level, and DOH Race-Ethnicity,* for the Years 2005 - 2015

*Note: Weighted counts rounded to nearest 100, weighted percentages, 95% confidence interval;
n/r (Not Reportable) - Total unweighted responses less than 100*

High Schools

Indicator: Hours of screentime on avg school day

Year: 2007

State	Hours of screentime on avg school day											
	<1 hour per day or none			1 to <3 hours per day			3 to <5 hours per day			5+ hours per day		
	#	%	CI	#	%	CI	#	%	CI	#	%	CI
Totals	7,300	14.0%	11.4 - 16.7	14,200	27.3%	24.5 - 30.2	12,000	23.0%	20.1 - 26.0	18,500	35.6%	31.8 - 39.4

Gender	Hours of screentime on avg school day											
	<1 hour per day or none			1 to <3 hours per day			3 to <5 hours per day			5+ hours per day		
	#	%	CI	#	%	CI	#	%	CI	#	%	CI
Male	3,900	14.4%	10.3 - 18.6	7,300	27.1%	22.9 - 31.3	6,100	22.7%	18.5 - 26.8	9,600	35.8%	29.5 - 42.1
Female	3,400	13.5%	11.2 - 15.8	6,900	27.6%	23.7 - 31.6	5,800	23.4%	19.7 - 27.0	8,900	35.5%	31.3 - 39.7

Grade Level	Hours of screentime on avg school day											
	<1 hour per day or none			1 to <3 hours per day			3 to <5 hours per day			5+ hours per day		
	#	%	CI	#	%	CI	#	%	CI	#	%	CI
9th Grade	2,300	15.7%	8.0 - 23.3	3,200	22.0%	16.5 - 27.5	2,900	19.5%	14.4 - 24.6	6,300	42.9%	36.1 - 49.7
10th Grade	1,500	11.9%	6.8 - 16.9	3,800	29.8%	20.6 - 39.1	3,500	26.9%	20.1 - 33.7	4,000	31.4%	23.2 - 39.6
11th Grade	1,900	14.2%	9.1 - 19.4	3,300	25.1%	19.7 - 30.4	3,300	25.4%	19.8 - 31.0	4,600	35.3%	28.9 - 41.7
12th Grade	1,600	14.2%	9.5 - 18.9	3,800	34.7%	29.3 - 40.2	2,200	20.4%	15.0 - 25.7	3,400	30.7%	22.3 - 39.1

* Race-ethnicity data from 2011 forward may not be comparable to data from previous years.

Daily Screen Time in Hawaii, by School Type, Indicator, State, Gender, Grade Level, and DOH Race-Ethnicity,* for the Years 2005 - 2015

*Note: Weighted counts rounded to nearest 100, weighted percentages, 95% confidence interval;
n/r (Not Reportable) - Total unweighted responses less than 100*

High Schools

Indicator: Hours of screentime on avg school day

Year: 2007

DOH Race-Ethnicity	Hours of screentime on avg school day											
	<1 hour per day or none			1 to <3 hours per day			3 to <5 hours per day			5+ hours per day		
	#	%	CI	#	%	CI	#	%	CI	#	%	CI
Caucasian	n/r	n/r	n/r	n/r	n/r	n/r	n/r	n/r	n/r	n/r	n/r	n/r
Native Hawaiian	2,900	21.7%	15.0 - 28.4	4,200	31.7%	22.0 - 41.3	2,100	15.9%	7.8 - 23.9	4,100	30.8%	19.7 - 41.9
Filipino	900	8.0%	3.5 - 12.5	2,400	20.6%	16.1 - 25.1	2,800	24.4%	19.6 - 29.2	5,400	47.0%	41.7 - 52.3
Japanese	500	9.9%	4.2 - 15.6	1,200	22.6%	14.9 - 30.3	1,900	36.2%	26.6 - 45.8	1,600	31.3%	22.6 - 39.9
Black	n/r	n/r	n/r	n/r	n/r	n/r	n/r	n/r	n/r	n/r	n/r	n/r
Native Alaskan/ American Indian	n/r	n/r	n/r	n/r	n/r	n/r	n/r	n/r	n/r	n/r	n/r	n/r
Other Asian	n/r	n/r	n/r	n/r	n/r	n/r	n/r	n/r	n/r	n/r	n/r	n/r
Other Pacific Islander	n/r	n/r	n/r	n/r	n/r	n/r	n/r	n/r	n/r	n/r	n/r	n/r
Other	1,200	12.4%	7.0 - 17.8	3,200	32.4%	27.0 - 37.9	2,200	22.2%	17.8 - 26.6	3,300	32.9%	29.1 - 36.8

* Race-ethnicity data from 2011 forward may not be comparable to data from previous years.

Daily Screen Time in Hawaii, by School Type, Indicator, State, Gender, Grade Level, and DOH Race-Ethnicity,* for the Years 2005 - 2015

*Note: Weighted counts rounded to nearest 100, weighted percentages, 95% confidence interval;
n/r (Not Reportable) - Total unweighted responses less than 100*

Middle Schools

Indicator: Hours of TV watched on avg school day

Year: 2015

State	Hours of TV watched on avg school day											
	<1 hour per day or none			1 to <3 hours per day			3 to <5 hours per day			5+ hours per day		
	#	%	CI	#	%	CI	#	%	CI	#	%	CI
Totals	10,300	41.0%	38.6 - 43.5	7,700	30.7%	29.2 - 32.2	4,400	17.5%	16.3 - 18.8	2,700	10.7%	9.3 - 12.1

Gender	Hours of TV watched on avg school day											
	<1 hour per day or none			1 to <3 hours per day			3 to <5 hours per day			5+ hours per day		
	#	%	CI	#	%	CI	#	%	CI	#	%	CI
Male	5,200	42.5%	38.3 - 46.7	4,000	32.5%	29.6 - 35.4	1,900	15.2%	12.5 - 17.9	1,200	9.7%	7.8 - 11.7
Female	5,000	39.5%	36.9 - 42.1	3,700	28.9%	26.8 - 30.9	2,500	19.9%	18.8 - 21.0	1,500	11.8%	9.9 - 13.6

Grade Level	Hours of TV watched on avg school day											
	<1 hour per day or none			1 to <3 hours per day			3 to <5 hours per day			5+ hours per day		
	#	%	CI	#	%	CI	#	%	CI	#	%	CI
6th Grade	2,000	40.3%	37.0 - 43.7	1,600	31.6%	28.8 - 34.5	800	17.2%	14.4 - 20.1	500	10.8%	7.6 - 13.9
7th Grade	4,200	40.7%	37.6 - 43.7	3,300	31.7%	29.1 - 34.3	1,700	16.2%	14.4 - 17.9	1,200	11.5%	9.2 - 13.7
8th Grade	4,000	41.4%	36.5 - 46.3	2,800	29.3%	26.2 - 32.4	1,900	19.3%	15.6 - 23.1	1,000	10.0%	7.2 - 12.8

* Race-ethnicity data from 2011 forward may not be comparable to data from previous years.

Daily Screen Time in Hawaii, by School Type, Indicator, State, Gender, Grade Level, and DOH Race-Ethnicity,* for the Years 2005 - 2015

*Note: Weighted counts rounded to nearest 100, weighted percentages, 95% confidence interval;
n/r (Not Reportable) - Total unweighted responses less than 100*

Middle Schools

Indicator: Hours of TV watched on avg school day

Year: 2015

DOH Race-Ethnicity	Hours of TV watched on avg school day											
	<1 hour per day or none			1 to <3 hours per day			3 to <5 hours per day			5+ hours per day		
	#	%	CI	#	%	CI	#	%	CI	#	%	CI
Caucasian	1,100	37.8%	29.0 - 46.5	1,100	36.0%	31.8 - 40.2	600	20.7%	14.0 - 27.4	200	5.6%	3.2 - 8.0
Native Hawaiian	2,400	42.6%	40.0 - 45.1	1,700	28.9%	26.4 - 31.3	1,000	16.8%	15.3 - 18.4	700	11.8%	9.8 - 13.8
Filipino	2,300	38.1%	34.0 - 42.3	1,900	31.5%	28.4 - 34.7	1,100	17.3%	15.2 - 19.4	800	13.0%	10.5 - 15.5
Japanese	900	50.5%	44.0 - 57.0	500	27.7%	24.2 - 31.2	300	15.7%	11.2 - 20.2	100	6.1%	2.5 - 9.7
Black	n/r	n/r	n/r	n/r	n/r	n/r	n/r	n/r	n/r	n/r	n/r	n/r
Native Alaskan/ American Indian	n/r	n/r	n/r	n/r	n/r	n/r	n/r	n/r	n/r	n/r	n/r	n/r
Other Asian	200	53.5%	46.2 - 60.8	100	29.8%	21.9 - 37.6	<50	10.6%	7.2 - 14.1	<50	6.1%	1.8 - 10.4
Other Pacific Islander	700	37.4%	29.1 - 45.7	500	26.4%	18.0 - 34.7	300	18.0%	11.5 - 24.4	400	18.3%	13.2 - 23.4
Other	1,700	44.0%	42.1 - 45.9	1,200	31.1%	28.2 - 34.0	600	16.1%	13.8 - 18.3	300	8.8%	6.8 - 10.8

* Race-ethnicity data from 2011 forward may not be comparable to data from previous years.

Daily Screen Time in Hawaii, by School Type, Indicator, State, Gender, Grade Level, and DOH Race-Ethnicity,* for the Years 2005 - 2015

*Note: Weighted counts rounded to nearest 100, weighted percentages, 95% confidence interval;
n/r (Not Reportable) - Total unweighted responses less than 100*

Middle Schools

Indicator: Hours of TV watched on avg school day

Year: 2013

State	Hours of TV watched on avg school day											
	<1 hour per day or none			1 to <3 hours per day			3 to <5 hours per day			5+ hours per day		
	#	%	CI	#	%	CI	#	%	CI	#	%	CI
Totals	8,400	32.3%	30.1 - 34.5	8,900	34.4%	32.5 - 36.4	5,500	21.3%	19.1 - 23.6	3,100	11.9%	10.9 - 13.0

Gender	Hours of TV watched on avg school day											
	<1 hour per day or none			1 to <3 hours per day			3 to <5 hours per day			5+ hours per day		
	#	%	CI	#	%	CI	#	%	CI	#	%	CI
Male	4,000	31.8%	29.2 - 34.3	4,500	35.8%	32.6 - 39.1	2,800	21.9%	19.1 - 24.7	1,300	10.5%	9.2 - 11.9
Female	4,300	32.9%	29.7 - 36.0	4,400	33.1%	30.3 - 35.9	2,700	20.7%	17.3 - 24.2	1,700	13.3%	11.1 - 15.4

Grade Level	Hours of TV watched on avg school day											
	<1 hour per day or none			1 to <3 hours per day			3 to <5 hours per day			5+ hours per day		
	#	%	CI	#	%	CI	#	%	CI	#	%	CI
6th Grade	1,600	30.0%	24.7 - 35.2	2,200	39.9%	36.5 - 43.3	1,000	17.5%	14.4 - 20.6	700	12.6%	10.3 - 14.9
7th Grade	3,500	33.5%	30.4 - 36.5	3,400	32.9%	29.4 - 36.3	2,300	21.8%	17.6 - 26.0	1,200	11.9%	9.7 - 14.1
8th Grade	3,100	32.2%	29.8 - 34.7	3,300	33.3%	29.9 - 36.8	2,200	23.0%	19.5 - 26.4	1,100	11.5%	9.9 - 13.1

* Race-ethnicity data from 2011 forward may not be comparable to data from previous years.

Daily Screen Time in Hawaii, by School Type, Indicator, State, Gender, Grade Level, and DOH Race-Ethnicity,* for the Years 2005 - 2015

*Note: Weighted counts rounded to nearest 100, weighted percentages, 95% confidence interval;
n/r (Not Reportable) - Total unweighted responses less than 100*

Middle Schools

Indicator: Hours of TV watched on avg school day

Year: 2013

DOH Race-Ethnicity	Hours of TV watched on avg school day											
	<1 hour per day or none			1 to <3 hours per day			3 to <5 hours per day			5+ hours per day		
	#	%	CI	#	%	CI	#	%	CI	#	%	CI
Caucasian	1,200	39.0%	32.0 - 45.9	1,200	37.2%	31.1 - 43.2	600	19.6%	12.7 - 26.4	100	4.3%	2.1 - 6.5
Native Hawaiian	1,800	31.3%	28.2 - 34.3	2,000	33.7%	31.0 - 36.5	1,200	21.0%	18.6 - 23.4	800	14.0%	11.0 - 16.9
Filipino	1,600	25.4%	20.0 - 30.8	2,000	32.2%	27.5 - 36.9	1,500	24.6%	19.6 - 29.7	1,100	17.8%	15.1 - 20.5
Japanese	600	31.5%	24.4 - 38.7	900	45.0%	37.0 - 53.0	400	19.9%	8.5 - 31.4	100	3.5%	0.6 - 6.5
Black	n/r	n/r	n/r	n/r	n/r	n/r	n/r	n/r	n/r	n/r	n/r	n/r
Native Alaskan/ American Indian	n/r	n/r	n/r	n/r	n/r	n/r	n/r	n/r	n/r	n/r	n/r	n/r
Other Asian	700	44.5%	36.1 - 52.9	500	27.4%	23.3 - 31.5	300	15.0%	10.6 - 19.5	200	13.0%	5.2 - 20.9
Other Pacific Islander	600	34.3%	24.2 - 44.5	500	29.2%	25.5 - 32.9	500	26.2%	14.2 - 38.2	200	10.2%	5.1 - 15.4
Other	1,000	30.7%	27.9 - 33.6	1,100	36.3%	34.0 - 38.5	700	22.0%	19.7 - 24.2	300	11.0%	9.3 - 12.8

* Race-ethnicity data from 2011 forward may not be comparable to data from previous years.

Daily Screen Time in Hawaii, by School Type, Indicator, State, Gender, Grade Level, and DOH Race-Ethnicity,* for the Years 2005 - 2015

*Note: Weighted counts rounded to nearest 100, weighted percentages, 95% confidence interval;
n/r (Not Reportable) - Total unweighted responses less than 100*

Middle Schools

Indicator: Hours of TV watched on avg school day

Year: 2011

State	Hours of TV watched on avg school day											
	<1 hour per day or none			1 to <3 hours per day			3 to <5 hours per day			5+ hours per day		
	#	%	CI	#	%	CI	#	%	CI	#	%	CI
Totals	7,000	27.4%	25.4 - 29.5	8,500	33.2%	30.5 - 35.8	6,300	24.4%	22.3 - 26.6	3,800	15.0%	12.5 - 17.5

Gender	Hours of TV watched on avg school day											
	<1 hour per day or none			1 to <3 hours per day			3 to <5 hours per day			5+ hours per day		
	#	%	CI	#	%	CI	#	%	CI	#	%	CI
Male	3,700	29.4%	26.4 - 32.4	4,200	32.8%	29.6 - 36.1	3,000	23.8%	21.3 - 26.2	1,800	14.0%	11.7 - 16.3
Female	3,200	25.4%	22.5 - 28.3	4,300	33.6%	29.9 - 37.2	3,200	25.2%	22.5 - 27.9	2,000	15.9%	12.8 - 19.0

Grade Level	Hours of TV watched on avg school day											
	<1 hour per day or none			1 to <3 hours per day			3 to <5 hours per day			5+ hours per day		
	#	%	CI	#	%	CI	#	%	CI	#	%	CI
6th Grade	1,600	28.3%	25.6 - 31.1	1,800	33.4%	29.6 - 37.1	1,200	22.6%	19.1 - 26.1	900	15.7%	12.4 - 18.9
7th Grade	2,900	29.0%	25.7 - 32.3	3,400	33.6%	30.0 - 37.1	2,300	23.0%	20.9 - 25.2	1,500	14.4%	11.0 - 17.8
8th Grade	2,400	24.9%	21.8 - 28.0	3,200	33.1%	29.0 - 37.2	2,600	26.8%	23.1 - 30.5	1,500	15.3%	11.7 - 18.8

* Race-ethnicity data from 2011 forward may not be comparable to data from previous years.

Daily Screen Time in Hawaii, by School Type, Indicator, State, Gender, Grade Level, and DOH Race-Ethnicity,* for the Years 2005 - 2015

*Note: Weighted counts rounded to nearest 100, weighted percentages, 95% confidence interval;
n/r (Not Reportable) - Total unweighted responses less than 100*

Middle Schools

Indicator: Hours of TV watched on avg school day

Year: 2011

DOH Race-Ethnicity	Hours of TV watched on avg school day											
	<1 hour per day or none			1 to <3 hours per day			3 to <5 hours per day			5+ hours per day		
	#	%	CI	#	%	CI	#	%	CI	#	%	CI
Caucasian	1,000	33.2%	29.1 - 37.3	1,300	40.8%	33.0 - 48.5	600	18.0%	11.2 - 24.9	300	8.0%	5.8 - 10.2
Native Hawaiian	1,800	30.1%	26.9 - 33.3	1,900	31.6%	28.3 - 34.8	1,400	23.2%	20.5 - 25.9	900	15.2%	12.7 - 17.6
Filipino	1,200	18.7%	15.9 - 21.4	1,900	30.5%	27.1 - 34.0	2,000	31.5%	27.7 - 35.4	1,200	19.3%	15.6 - 22.9
Japanese	300	33.1%	22.4 - 43.8	200	30.6%	23.5 - 37.7	200	27.8%	20.0 - 35.6	100	8.5%	3.5 - 13.6
Black	n/r	n/r	n/r	n/r	n/r	n/r	n/r	n/r	n/r	n/r	n/r	n/r
Native Alaskan/ American Indian	n/r	n/r	n/r	n/r	n/r	n/r	n/r	n/r	n/r	n/r	n/r	n/r
Other Asian	200	28.9%	23.5 - 34.3	300	38.6%	30.2 - 47.0	200	23.3%	20.1 - 26.6	100	9.2%	2.7 - 15.6
Other Pacific Islander	400	36.5%	31.1 - 42.0	300	28.6%	20.6 - 36.6	200	17.6%	12.9 - 22.4	200	17.3%	9.1 - 25.4
Other	1,500	26.8%	24.0 - 29.6	2,000	35.2%	29.8 - 40.6	1,400	24.3%	19.8 - 28.8	800	13.7%	10.5 - 17.0

* Race-ethnicity data from 2011 forward may not be comparable to data from previous years.

Daily Screen Time in Hawaii, by School Type, Indicator, State, Gender, Grade Level, and DOH Race-Ethnicity,* for the Years 2005 - 2015

*Note: Weighted counts rounded to nearest 100, weighted percentages, 95% confidence interval;
n/r (Not Reportable) - Total unweighted responses less than 100*

Middle Schools

Indicator: Hours of TV watched on avg school day

Year: 2009

State	Hours of TV watched on avg school day											
	<1 hour per day or none			1 to <3 hours per day			3 to <5 hours per day			5+ hours per day		
	#	%	CI	#	%	CI	#	%	CI	#	%	CI
Totals	7,800	27.1%	22.4 - 31.7	9,600	33.1%	28.8 - 37.5	7,100	24.5%	20.8 - 28.2	4,400	15.3%	12.7 - 17.9

Gender	Hours of TV watched on avg school day											
	<1 hour per day or none			1 to <3 hours per day			3 to <5 hours per day			5+ hours per day		
	#	%	CI	#	%	CI	#	%	CI	#	%	CI
Male	4,000	27.1%	21.2 - 33.0	5,000	34.1%	29.7 - 38.6	3,200	21.6%	16.3 - 26.9	2,500	17.2%	13.9 - 20.5
Female	3,800	27.1%	21.6 - 32.6	4,500	31.9%	26.2 - 37.7	3,900	27.7%	22.8 - 32.5	1,900	13.3%	10.1 - 16.5

Grade Level	Hours of TV watched on avg school day											
	<1 hour per day or none			1 to <3 hours per day			3 to <5 hours per day			5+ hours per day		
	#	%	CI	#	%	CI	#	%	CI	#	%	CI
6th Grade	1,700	27.0%	20.2 - 33.7	2,400	36.9%	26.9 - 46.9	1,400	21.4%	16.7 - 26.1	900	14.7%	9.5 - 20.0
7th Grade	2,900	26.3%	20.6 - 32.0	3,600	31.9%	26.6 - 37.3	2,800	24.9%	20.0 - 29.8	1,900	16.9%	13.4 - 20.4
8th Grade	3,100	27.8%	20.9 - 34.7	3,500	31.8%	26.3 - 37.3	2,900	26.1%	19.6 - 32.6	1,600	14.3%	10.3 - 18.3

* Race-ethnicity data from 2011 forward may not be comparable to data from previous years.

Daily Screen Time in Hawaii, by School Type, Indicator, State, Gender, Grade Level, and DOH Race-Ethnicity,* for the Years 2005 - 2015

*Note: Weighted counts rounded to nearest 100, weighted percentages, 95% confidence interval;
n/r (Not Reportable) - Total unweighted responses less than 100*

Middle Schools

Indicator: Hours of TV watched on avg school day

Year: 2009

DOH Race-Ethnicity	Hours of TV watched on avg school day											
	<1 hour per day or none			1 to <3 hours per day			3 to <5 hours per day			5+ hours per day		
	#	%	CI	#	%	CI	#	%	CI	#	%	CI
Caucasian	800	23.9%	15.8 - 32.1	1,500	44.4%	34.5 - 54.4	800	23.3%	18.1 - 28.4	300	8.4%	4.2 - 12.6
Native Hawaiian	2,000	28.5%	14.8 - 42.2	2,400	34.3%	21.1 - 47.6	1,400	20.3%	10.9 - 29.6	1,200	16.9%	11.5 - 22.3
Filipino	1,200	19.3%	13.5 - 25.0	1,900	30.0%	23.1 - 36.8	2,000	32.0%	25.2 - 38.8	1,200	18.8%	12.7 - 24.9
Japanese	n/r	n/r	n/r	n/r	n/r	n/r	n/r	n/r	n/r	n/r	n/r	n/r
Black	n/r	n/r	n/r	n/r	n/r	n/r	n/r	n/r	n/r	n/r	n/r	n/r
Native Alaskan/ American Indian	n/r	n/r	n/r	n/r	n/r	n/r	n/r	n/r	n/r	n/r	n/r	n/r
Other Asian	n/r	n/r	n/r	n/r	n/r	n/r	n/r	n/r	n/r	n/r	n/r	n/r
Other Pacific Islander	n/r	n/r	n/r	n/r	n/r	n/r	n/r	n/r	n/r	n/r	n/r	n/r
Other	1,700	29.5%	25.4 - 33.6	1,900	31.5%	27.6 - 35.4	1,500	25.9%	21.2 - 30.5	800	13.1%	10.4 - 15.7

* Race-ethnicity data from 2011 forward may not be comparable to data from previous years.

Daily Screen Time in Hawaii, by School Type, Indicator, State, Gender, Grade Level, and DOH Race-Ethnicity,* for the Years 2005 - 2015

*Note: Weighted counts rounded to nearest 100, weighted percentages, 95% confidence interval;
n/r (Not Reportable) - Total unweighted responses less than 100*

Middle Schools

Indicator: Hours of TV watched on avg school day

Year: 2007

State	Hours of TV watched on avg school day											
	<1 hour per day or none			1 to <3 hours per day			3 to <5 hours per day			5+ hours per day		
	#	%	CI	#	%	CI	#	%	CI	#	%	CI
Totals	9,300	28.7%	25.7 - 31.7	10,300	31.8%	28.2 - 35.4	8,100	25.1%	22.0 - 28.3	4,600	14.4%	12.9 - 15.9

Gender	Hours of TV watched on avg school day											
	<1 hour per day or none			1 to <3 hours per day			3 to <5 hours per day			5+ hours per day		
	#	%	CI	#	%	CI	#	%	CI	#	%	CI
Male	5,300	31.9%	28.3 - 35.6	5,000	30.3%	25.1 - 35.5	3,500	21.5%	18.5 - 24.4	2,700	16.3%	13.3 - 19.3
Female	4,000	25.2%	20.3 - 30.0	5,300	33.5%	30.1 - 37.0	4,600	29.0%	24.0 - 33.9	1,900	12.3%	9.7 - 15.0

Grade Level	Hours of TV watched on avg school day											
	<1 hour per day or none			1 to <3 hours per day			3 to <5 hours per day			5+ hours per day		
	#	%	CI	#	%	CI	#	%	CI	#	%	CI
6th Grade	2,000	31.1%	22.2 - 40.0	2,300	36.3%	30.1 - 42.4	1,200	19.3%	14.2 - 24.4	900	13.3%	7.1 - 19.6
7th Grade	4,000	30.9%	23.4 - 38.4	3,700	29.0%	22.7 - 35.3	3,400	26.7%	21.3 - 32.0	1,700	13.5%	10.2 - 16.7
8th Grade	3,300	25.9%	21.0 - 30.8	4,200	32.7%	27.2 - 38.3	3,300	25.8%	21.5 - 30.1	2,000	15.6%	13.3 - 18.0

* Race-ethnicity data from 2011 forward may not be comparable to data from previous years.

Daily Screen Time in Hawaii, by School Type, Indicator, State, Gender, Grade Level, and DOH Race-Ethnicity,* for the Years 2005 - 2015

*Note: Weighted counts rounded to nearest 100, weighted percentages, 95% confidence interval;
n/r (Not Reportable) - Total unweighted responses less than 100*

Middle Schools

Indicator: Hours of TV watched on avg school day

Year: 2007

DOH Race-Ethnicity	Hours of TV watched on avg school day											
	<1 hour per day or none			1 to <3 hours per day			3 to <5 hours per day			5+ hours per day		
	#	%	CI	#	%	CI	#	%	CI	#	%	CI
Caucasian	n/r	n/r	n/r	n/r	n/r	n/r	n/r	n/r	n/r	n/r	n/r	n/r
Native Hawaiian	n/r	n/r	n/r	n/r	n/r	n/r	n/r	n/r	n/r	n/r	n/r	n/r
Filipino	1,600	24.3%	17.4 - 31.3	1,900	29.3%	22.3 - 36.3	2,000	31.0%	24.8 - 37.3	1,000	15.3%	9.8 - 20.8
Japanese	n/r	n/r	n/r	n/r	n/r	n/r	n/r	n/r	n/r	n/r	n/r	n/r
Black	n/r	n/r	n/r	n/r	n/r	n/r	n/r	n/r	n/r	n/r	n/r	n/r
Native Alaskan/ American Indian	n/r	n/r	n/r	n/r	n/r	n/r	n/r	n/r	n/r	n/r	n/r	n/r
Other Asian	n/r	n/r	n/r	n/r	n/r	n/r	n/r	n/r	n/r	n/r	n/r	n/r
Other Pacific Islander	n/r	n/r	n/r	n/r	n/r	n/r	n/r	n/r	n/r	n/r	n/r	n/r
Other	1,500	24.9%	21.6 - 28.2	1,900	31.6%	28.0 - 35.1	1,600	26.3%	22.8 - 29.9	1,100	17.2%	14.3 - 20.1

* Race-ethnicity data from 2011 forward may not be comparable to data from previous years.

Daily Screen Time in Hawaii, by School Type, Indicator, State, Gender, Grade Level, and DOH Race-Ethnicity,* for the Years 2005 - 2015

*Note: Weighted counts rounded to nearest 100, weighted percentages, 95% confidence interval;
n/r (Not Reportable) - Total unweighted responses less than 100*

Middle Schools

Indicator: Hours of TV watched on avg school day

Year: 2005

State	Hours of TV watched on avg school day											
	<1 hour per day or none			1 to <3 hours per day			3 to <5 hours per day			5+ hours per day		
	#	%	CI	#	%	CI	#	%	CI	#	%	CI
Totals	10,600	27.6%	24.4 - 30.9	12,500	32.6%	29.8 - 35.5	9,600	24.9%	22.1 - 27.8	5,700	14.8%	12.5 - 17.2

Gender	Hours of TV watched on avg school day											
	<1 hour per day or none			1 to <3 hours per day			3 to <5 hours per day			5+ hours per day		
	#	%	CI	#	%	CI	#	%	CI	#	%	CI
Male	5,900	29.2%	24.9 - 33.5	6,500	32.1%	28.4 - 35.9	4,900	24.4%	20.3 - 28.6	2,900	14.2%	10.7 - 17.6
Female	4,700	25.6%	20.4 - 30.9	6,100	33.2%	28.4 - 38.0	4,700	25.6%	21.9 - 29.4	2,800	15.5%	13.0 - 18.1

Grade Level	Hours of TV watched on avg school day											
	<1 hour per day or none			1 to <3 hours per day			3 to <5 hours per day			5+ hours per day		
	#	%	CI	#	%	CI	#	%	CI	#	%	CI
6th Grade	1,700	28.9%	22.3 - 35.6	2,000	33.6%	25.8 - 41.4	1,400	23.4%	16.7 - 30.1	800	14.0%	9.7 - 18.4
7th Grade	4,300	26.7%	23.1 - 30.4	5,200	32.4%	30.2 - 34.6	4,000	25.1%	21.2 - 29.0	2,500	15.8%	10.8 - 20.8
8th Grade	4,300	27.3%	23.2 - 31.3	5,200	32.9%	28.1 - 37.6	4,100	25.4%	20.7 - 30.2	2,300	14.4%	11.7 - 17.1

* Race-ethnicity data from 2011 forward may not be comparable to data from previous years.

Daily Screen Time in Hawaii, by School Type, Indicator, State, Gender, Grade Level, and DOH Race-Ethnicity,* for the Years 2005 - 2015

*Note: Weighted counts rounded to nearest 100, weighted percentages, 95% confidence interval;
n/r (Not Reportable) - Total unweighted responses less than 100*

Middle Schools

Indicator: Hours of TV watched on avg school day

Year: 2005

DOH Race-Ethnicity	Hours of TV watched on avg school day											
	<1 hour per day or none			1 to <3 hours per day			3 to <5 hours per day			5+ hours per day		
	#	%	CI	#	%	CI	#	%	CI	#	%	CI
Caucasian	1,600	30.7%	21.1 - 40.3	1,800	36.0%	27.5 - 44.6	1,200	23.1%	11.5 - 34.8	500	10.1%	4.5 - 15.8
Native Hawaiian	2,400	34.5%	27.3 - 41.8	2,100	29.6%	24.0 - 35.3	1,200	17.5%	12.5 - 22.6	1,300	18.3%	12.2 - 24.4
Chinese	n/r	n/r	n/r	n/r	n/r	n/r	n/r	n/r	n/r	n/r	n/r	n/r
Filipino	2,100	19.5%	14.9 - 24.1	3,700	33.5%	27.3 - 39.8	3,300	30.5%	26.0 - 35.1	1,800	16.5%	12.3 - 20.6
Japanese	1,000	22.9%	17.9 - 28.0	1,800	39.7%	34.8 - 44.5	1,100	24.1%	20.2 - 28.0	600	13.4%	7.6 - 19.1
Black	n/r	n/r	n/r	n/r	n/r	n/r	n/r	n/r	n/r	n/r	n/r	n/r
Other Pacific Islander	n/r	n/r	n/r	n/r	n/r	n/r	n/r	n/r	n/r	n/r	n/r	n/r
Other	1,800	34.7%	24.6 - 44.8	1,600	30.2%	21.2 - 39.3	1,200	23.8%	16.8 - 30.8	600	11.3%	6.8 - 15.8

* Race-ethnicity data from 2011 forward may not be comparable to data from previous years.

Daily Screen Time in Hawaii, by School Type, Indicator, State, Gender, Grade Level, and DOH Race-Ethnicity,* for the Years 2005 - 2015

*Note: Weighted counts rounded to nearest 100, weighted percentages, 95% confidence interval;
n/r (Not Reportable) - Total unweighted responses less than 100*

Middle Schools

Indicator: Hours of video games played on avg school day

Year: 2015

State	Hours of video games played on avg school day											
	<1 hour per day or none			1 to <3 hours per day			3 to <5 hours per day			5+ hours per day		
	#	%	CI	#	%	CI	#	%	CI	#	%	CI
Totals	8,300	32.9%	30.3 - 35.5	6,300	25.2%	23.6 - 26.7	4,600	18.4%	16.9 - 19.9	5,900	23.5%	21.2 - 25.8

Gender	Hours of video games played on avg school day											
	<1 hour per day or none			1 to <3 hours per day			3 to <5 hours per day			5+ hours per day		
	#	%	CI	#	%	CI	#	%	CI	#	%	CI
Male	4,000	32.6%	29.2 - 35.9	3,400	27.9%	25.8 - 30.0	2,400	19.3%	16.7 - 21.8	2,500	20.2%	17.9 - 22.6
Female	4,200	33.0%	29.8 - 36.1	2,900	22.7%	20.3 - 25.1	2,200	17.7%	15.9 - 19.5	3,400	26.7%	23.8 - 29.5

Grade Level	Hours of video games played on avg school day											
	<1 hour per day or none			1 to <3 hours per day			3 to <5 hours per day			5+ hours per day		
	#	%	CI	#	%	CI	#	%	CI	#	%	CI
6th Grade	1,900	38.4%	35.5 - 41.3	1,400	28.0%	25.0 - 31.1	800	16.4%	13.8 - 19.0	800	17.2%	14.6 - 19.8
7th Grade	3,400	33.2%	29.7 - 36.7	2,300	22.8%	20.5 - 25.1	1,900	18.8%	16.2 - 21.3	2,600	25.2%	22.9 - 27.6
8th Grade	2,900	29.6%	25.5 - 33.7	2,500	26.3%	23.9 - 28.6	1,900	19.1%	16.9 - 21.3	2,400	25.0%	20.0 - 30.1

* Race-ethnicity data from 2011 forward may not be comparable to data from previous years.

Daily Screen Time in Hawaii, by School Type, Indicator, State, Gender, Grade Level, and DOH Race-Ethnicity,* for the Years 2005 - 2015

*Note: Weighted counts rounded to nearest 100, weighted percentages, 95% confidence interval;
n/r (Not Reportable) - Total unweighted responses less than 100*

Middle Schools

Indicator: Hours of video games played on avg school day

Year: 2015

DOH Race-Ethnicity	Hours of video games played on avg school day											
	<1 hour per day or none			1 to <3 hours per day			3 to <5 hours per day			5+ hours per day		
	#	%	CI	#	%	CI	#	%	CI	#	%	CI
Caucasian	800	26.3%	22.1 - 30.4	900	30.4%	23.9 - 36.8	600	21.7%	15.8 - 27.6	600	21.7%	12.7 - 30.7
Native Hawaiian	2,300	39.4%	34.2 - 44.5	1,300	23.3%	20.6 - 26.1	900	15.9%	14.0 - 17.9	1,200	21.4%	17.8 - 25.0
Filipino	1,500	24.4%	20.0 - 28.8	1,300	22.0%	19.3 - 24.8	1,200	19.5%	16.3 - 22.6	2,100	34.1%	28.8 - 39.3
Japanese	500	28.6%	22.7 - 34.5	600	33.7%	18.1 - 49.3	400	21.8%	16.3 - 27.4	300	15.8%	6.2 - 25.4
Black	n/r	n/r	n/r	n/r	n/r	n/r	n/r	n/r	n/r	n/r	n/r	n/r
Native Alaskan/ American Indian	n/r	n/r	n/r	n/r	n/r	n/r	n/r	n/r	n/r	n/r	n/r	n/r
Other Asian	100	30.8%	25.1 - 36.5	100	26.4%	18.4 - 34.4	100	24.2%	19.2 - 29.1	100	18.6%	9.9 - 27.3
Other Pacific Islander	900	50.2%	40.1 - 60.3	500	25.8%	16.2 - 35.4	100	6.8%	2.6 - 11.0	300	17.2%	9.3 - 25.1
Other	1,300	32.4%	29.0 - 35.8	1,100	26.4%	24.7 - 28.1	800	19.3%	17.3 - 21.4	900	21.9%	19.1 - 24.6

* Race-ethnicity data from 2011 forward may not be comparable to data from previous years.

Daily Screen Time in Hawaii, by School Type, Indicator, State, Gender, Grade Level, and DOH Race-Ethnicity,* for the Years 2005 - 2015

*Note: Weighted counts rounded to nearest 100, weighted percentages, 95% confidence interval;
n/r (Not Reportable) - Total unweighted responses less than 100*

Middle Schools

Indicator: Hours of video games played on avg school day

Year: 2013

State	Hours of video games played on avg school day											
	<1 hour per day or none			1 to <3 hours per day			3 to <5 hours per day			5+ hours per day		
	#	%	CI	#	%	CI	#	%	CI	#	%	CI
Totals	8,400	32.5%	30.3 - 34.7	6,800	26.3%	23.5 - 29.1	5,100	19.9%	17.7 - 22.1	5,500	21.3%	18.1 - 24.5

Gender	Hours of video games played on avg school day											
	<1 hour per day or none			1 to <3 hours per day			3 to <5 hours per day			5+ hours per day		
	#	%	CI	#	%	CI	#	%	CI	#	%	CI
Male	4,200	32.9%	30.1 - 35.7	3,500	27.5%	24.6 - 30.3	2,600	20.4%	17.8 - 23.1	2,400	19.2%	15.8 - 22.6
Female	4,200	32.3%	29.3 - 35.2	3,300	25.1%	21.3 - 29.0	2,500	19.4%	16.3 - 22.5	3,000	23.2%	19.2 - 27.3

Grade Level	Hours of video games played on avg school day											
	<1 hour per day or none			1 to <3 hours per day			3 to <5 hours per day			5+ hours per day		
	#	%	CI	#	%	CI	#	%	CI	#	%	CI
6th Grade	2,000	36.0%	30.2 - 41.8	1,600	29.7%	25.6 - 33.8	1,000	17.5%	13.7 - 21.3	900	16.8%	12.8 - 20.8
7th Grade	3,600	35.0%	30.4 - 39.5	2,600	25.4%	21.6 - 29.2	2,000	19.1%	16.7 - 21.4	2,100	20.6%	15.7 - 25.5
8th Grade	2,700	27.8%	24.0 - 31.6	2,500	25.6%	21.2 - 30.1	2,100	21.9%	18.1 - 25.7	2,400	24.7%	19.3 - 30.0

* Race-ethnicity data from 2011 forward may not be comparable to data from previous years.

Daily Screen Time in Hawaii, by School Type, Indicator, State, Gender, Grade Level, and DOH Race-Ethnicity,* for the Years 2005 - 2015

*Note: Weighted counts rounded to nearest 100, weighted percentages, 95% confidence interval;
n/r (Not Reportable) - Total unweighted responses less than 100*

Middle Schools

Indicator: Hours of video games played on avg school day

Year: 2013

DOH Race-Ethnicity	Hours of video games played on avg school day											
	<1 hour per day or none			1 to <3 hours per day			3 to <5 hours per day			5+ hours per day		
	#	%	CI	#	%	CI	#	%	CI	#	%	CI
Caucasian	1,000	32.7%	27.0 - 38.4	900	29.2%	22.0 - 36.4	800	26.2%	20.1 - 32.3	400	11.8%	7.6 - 16.1
Native Hawaiian	2,200	37.8%	34.2 - 41.4	1,500	25.6%	22.6 - 28.7	1,000	17.2%	14.1 - 20.3	1,100	19.3%	15.3 - 23.4
Filipino	1,600	25.8%	22.4 - 29.3	1,400	23.2%	18.8 - 27.7	1,500	24.7%	20.2 - 29.2	1,600	26.2%	23.2 - 29.2
Japanese	500	25.2%	14.2 - 36.3	800	39.7%	30.2 - 49.2	300	15.9%	4.4 - 27.4	400	19.1%	8.0 - 30.3
Black	n/r	n/r	n/r	n/r	n/r	n/r	n/r	n/r	n/r	n/r	n/r	n/r
Native Alaskan/ American Indian	n/r	n/r	n/r	n/r	n/r	n/r	n/r	n/r	n/r	n/r	n/r	n/r
Other Asian	500	30.2%	18.9 - 41.4	300	17.0%	8.2 - 25.9	200	14.6%	9.3 - 19.9	700	38.2%	21.5 - 54.8
Other Pacific Islander	800	42.5%	26.0 - 58.9	500	25.6%	13.4 - 37.7	300	16.5%	5.1 - 27.9	300	15.5%	10.2 - 20.8
Other	900	30.3%	27.4 - 33.2	800	27.4%	24.1 - 30.6	600	19.7%	16.6 - 22.9	700	22.6%	20.0 - 25.2

* Race-ethnicity data from 2011 forward may not be comparable to data from previous years.

Daily Screen Time in Hawaii, by School Type, Indicator, State, Gender, Grade Level, and DOH Race-Ethnicity,* for the Years 2005 - 2015

*Note: Weighted counts rounded to nearest 100, weighted percentages, 95% confidence interval;
n/r (Not Reportable) - Total unweighted responses less than 100*

Middle Schools

Indicator: Hours of video games played on avg school day

Year: 2011

State	Hours of video games played on avg school day											
	<1 hour per day or none			1 to <3 hours per day			3 to <5 hours per day			5+ hours per day		
	#	%	CI	#	%	CI	#	%	CI	#	%	CI
Totals	7,700	30.9%	28.4 - 33.3	7,900	31.6%	29.3 - 34.0	5,100	20.5%	19.2 - 21.8	4,300	17.0%	12.9 - 21.1

Gender	Hours of video games played on avg school day											
	<1 hour per day or none			1 to <3 hours per day			3 to <5 hours per day			5+ hours per day		
	#	%	CI	#	%	CI	#	%	CI	#	%	CI
Male	3,500	28.3%	25.8 - 30.8	4,000	31.8%	29.3 - 34.4	2,700	21.5%	19.0 - 24.0	2,300	18.4%	14.1 - 22.6
Female	4,200	33.3%	30.3 - 36.3	4,000	31.5%	28.1 - 34.9	2,500	19.6%	17.4 - 21.8	2,000	15.6%	11.0 - 20.1

Grade Level	Hours of video games played on avg school day											
	<1 hour per day or none			1 to <3 hours per day			3 to <5 hours per day			5+ hours per day		
	#	%	CI	#	%	CI	#	%	CI	#	%	CI
6th Grade	2,000	37.8%	33.7 - 41.9	1,700	30.9%	28.5 - 33.4	900	17.5%	15.1 - 19.9	700	13.8%	10.4 - 17.2
7th Grade	3,100	31.5%	27.5 - 35.5	3,300	32.8%	29.7 - 35.9	2,100	20.8%	18.1 - 23.5	1,500	14.9%	10.5 - 19.2
8th Grade	2,500	26.3%	23.8 - 28.9	2,900	30.7%	26.1 - 35.2	2,100	21.8%	18.8 - 24.8	2,000	21.2%	15.0 - 27.4

* Race-ethnicity data from 2011 forward may not be comparable to data from previous years.

Daily Screen Time in Hawaii, by School Type, Indicator, State, Gender, Grade Level, and DOH Race-Ethnicity,* for the Years 2005 - 2015

*Note: Weighted counts rounded to nearest 100, weighted percentages, 95% confidence interval;
n/r (Not Reportable) - Total unweighted responses less than 100*

Middle Schools

Indicator: Hours of video games played on avg school day

Year: 2011

DOH Race-Ethnicity	Hours of video games played on avg school day											
	<1 hour per day or none			1 to <3 hours per day			3 to <5 hours per day			5+ hours per day		
	#	%	CI	#	%	CI	#	%	CI	#	%	CI
Caucasian	1,200	36.9%	29.0 - 44.8	1,000	32.3%	26.7 - 38.0	600	20.4%	15.5 - 25.3	300	10.4%	7.3 - 13.4
Native Hawaiian	2,200	38.5%	34.9 - 42.1	1,900	32.9%	30.2 - 35.6	1,000	17.5%	14.9 - 20.0	600	11.1%	8.6 - 13.6
Filipino	1,300	20.5%	17.0 - 24.1	1,800	29.1%	22.9 - 35.3	1,500	24.7%	19.6 - 29.7	1,600	25.7%	14.4 - 36.9
Japanese	200	28.7%	22.0 - 35.3	300	34.1%	23.1 - 45.1	200	21.4%	15.8 - 27.1	100	15.8%	7.2 - 24.4
Black	n/r	n/r	n/r	n/r	n/r	n/r	n/r	n/r	n/r	n/r	n/r	n/r
Native Alaskan/ American Indian	n/r	n/r	n/r	n/r	n/r	n/r	n/r	n/r	n/r	n/r	n/r	n/r
Other Asian	200	19.6%	12.0 - 27.2	300	35.1%	31.5 - 38.7	200	20.5%	16.1 - 25.0	200	24.7%	14.6 - 34.9
Other Pacific Islander	400	39.0%	33.9 - 44.1	300	29.5%	23.2 - 35.7	100	14.2%	8.2 - 20.2	200	17.3%	9.8 - 24.9
Other	1,700	30.1%	25.1 - 35.1	1,800	32.9%	29.6 - 36.2	1,200	21.0%	18.8 - 23.2	900	16.0%	11.3 - 20.7

* Race-ethnicity data from 2011 forward may not be comparable to data from previous years.

Daily Screen Time in Hawaii, by School Type, Indicator, State, Gender, Grade Level, and DOH Race-Ethnicity,* for the Years 2005 - 2015

*Note: Weighted counts rounded to nearest 100, weighted percentages, 95% confidence interval;
n/r (Not Reportable) - Total unweighted responses less than 100*

Middle Schools

Indicator: Hours of video games played on avg school day

Year: 2009

State	Hours of video games played on avg school day											
	<1 hour per day or none			1 to <3 hours per day			3 to <5 hours per day			5+ hours per day		
	#	%	CI	#	%	CI	#	%	CI	#	%	CI
Totals	11,900	41.6%	37.7 - 45.5	7,900	27.6%	24.1 - 31.2	5,400	18.7%	15.8 - 21.7	3,400	12.0%	9.1 - 14.9

Gender	Hours of video games played on avg school day											
	<1 hour per day or none			1 to <3 hours per day			3 to <5 hours per day			5+ hours per day		
	#	%	CI	#	%	CI	#	%	CI	#	%	CI
Male	6,100	42.4%	38.1 - 46.6	3,500	24.4%	20.4 - 28.3	3,100	21.8%	17.6 - 25.9	1,700	11.5%	8.4 - 14.7
Female	5,700	40.7%	34.7 - 46.6	4,400	31.0%	25.6 - 36.4	2,200	15.8%	11.2 - 20.3	1,800	12.6%	8.5 - 16.7

Grade Level	Hours of video games played on avg school day											
	<1 hour per day or none			1 to <3 hours per day			3 to <5 hours per day			5+ hours per day		
	#	%	CI	#	%	CI	#	%	CI	#	%	CI
6th Grade	3,100	49.3%	43.2 - 55.5	1,900	29.8%	23.1 - 36.4	900	13.4%	7.8 - 19.0	500	7.5%	4.1 - 10.9
7th Grade	4,200	37.7%	32.3 - 43.1	3,100	28.0%	23.9 - 32.1	2,400	21.7%	17.8 - 25.7	1,400	12.6%	8.6 - 16.6
8th Grade	4,500	40.7%	36.2 - 45.3	2,900	26.3%	20.6 - 32.1	2,100	18.9%	14.0 - 23.7	1,500	14.1%	8.4 - 19.9

* Race-ethnicity data from 2011 forward may not be comparable to data from previous years.

Daily Screen Time in Hawaii, by School Type, Indicator, State, Gender, Grade Level, and DOH Race-Ethnicity,* for the Years 2005 - 2015

*Note: Weighted counts rounded to nearest 100, weighted percentages, 95% confidence interval;
n/r (Not Reportable) - Total unweighted responses less than 100*

Middle Schools

Indicator: Hours of video games played on avg school day

Year: 2009

DOH Race-Ethnicity	Hours of video games played on avg school day											
	<1 hour per day or none			1 to <3 hours per day			3 to <5 hours per day			5+ hours per day		
	#	%	CI	#	%	CI	#	%	CI	#	%	CI
Caucasian	1,700	49.5%	42.2 - 56.8	900	25.3%	17.6 - 32.9	600	17.8%	7.5 - 28.1	300	7.5%	0.9 - 14.2
Native Hawaiian	3,400	50.6%	41.8 - 59.4	1,500	22.2%	16.2 - 28.3	1,100	16.9%	10.7 - 23.0	700	10.3%	3.4 - 17.3
Filipino	2,000	32.9%	27.0 - 38.8	1,800	29.2%	20.8 - 37.6	1,200	20.0%	14.8 - 25.3	1,100	17.9%	12.3 - 23.5
Japanese	n/r	n/r	n/r	n/r	n/r	n/r	n/r	n/r	n/r	n/r	n/r	n/r
Black	n/r	n/r	n/r	n/r	n/r	n/r	n/r	n/r	n/r	n/r	n/r	n/r
Native Alaskan/ American Indian	n/r	n/r	n/r	n/r	n/r	n/r	n/r	n/r	n/r	n/r	n/r	n/r
Other Asian	n/r	n/r	n/r	n/r	n/r	n/r	n/r	n/r	n/r	n/r	n/r	n/r
Other Pacific Islander	n/r	n/r	n/r	n/r	n/r	n/r	n/r	n/r	n/r	n/r	n/r	n/r
Other	2,400	41.4%	37.5 - 45.4	1,800	30.4%	26.4 - 34.5	1,000	17.3%	14.5 - 20.1	600	10.8%	6.9 - 14.7

* Race-ethnicity data from 2011 forward may not be comparable to data from previous years.

Daily Screen Time in Hawaii, by School Type, Indicator, State, Gender, Grade Level, and DOH Race-Ethnicity,* for the Years 2005 - 2015

*Note: Weighted counts rounded to nearest 100, weighted percentages, 95% confidence interval;
n/r (Not Reportable) - Total unweighted responses less than 100*

Middle Schools

Indicator: Hours of video games played on avg school day

Year: 2007

State	Hours of video games played on avg school day											
	<1 hour per day or none			1 to <3 hours per day			3 to <5 hours per day			5+ hours per day		
	#	%	CI	#	%	CI	#	%	CI	#	%	CI
Totals	14,800	45.2%	41.3 - 49.2	9,700	29.6%	26.5 - 32.6	4,900	15.0%	12.6 - 17.4	3,300	10.2%	7.9 - 12.6

Gender	Hours of video games played on avg school day											
	<1 hour per day or none			1 to <3 hours per day			3 to <5 hours per day			5+ hours per day		
	#	%	CI	#	%	CI	#	%	CI	#	%	CI
Male	6,700	40.5%	35.0 - 45.9	5,100	30.8%	24.7 - 36.9	2,700	16.2%	12.5 - 19.9	2,100	12.5%	9.1 - 15.9
Female	7,900	50.0%	43.3 - 56.6	4,500	28.4%	22.8 - 34.1	2,200	13.7%	10.6 - 16.8	1,300	7.9%	4.5 - 11.2

Grade Level	Hours of video games played on avg school day											
	<1 hour per day or none			1 to <3 hours per day			3 to <5 hours per day			5+ hours per day		
	#	%	CI	#	%	CI	#	%	CI	#	%	CI
6th Grade	3,200	49.8%	40.5 - 59.0	1,900	28.9%	22.5 - 35.3	700	11.2%	7.7 - 14.6	700	10.1%	6.5 - 13.7
7th Grade	5,300	41.6%	35.4 - 47.8	4,200	32.4%	26.8 - 37.9	1,800	14.2%	10.8 - 17.6	1,500	11.8%	7.6 - 15.9
8th Grade	6,100	47.0%	39.1 - 55.0	3,500	27.3%	22.2 - 32.5	2,200	16.8%	12.3 - 21.4	1,100	8.8%	5.7 - 11.9

* Race-ethnicity data from 2011 forward may not be comparable to data from previous years.

Daily Screen Time in Hawaii, by School Type, Indicator, State, Gender, Grade Level, and DOH Race-Ethnicity,* for the Years 2005 - 2015

*Note: Weighted counts rounded to nearest 100, weighted percentages, 95% confidence interval;
n/r (Not Reportable) - Total unweighted responses less than 100*

Middle Schools

Indicator: Hours of video games played on avg school day

Year: 2007

DOH Race-Ethnicity	Hours of video games played on avg school day											
	<1 hour per day or none			1 to <3 hours per day			3 to <5 hours per day			5+ hours per day		
	#	%	CI	#	%	CI	#	%	CI	#	%	CI
Caucasian	n/r	n/r	n/r	n/r	n/r	n/r	n/r	n/r	n/r	n/r	n/r	n/r
Native Hawaiian	3,900	50.1%	40.7 - 59.5	2,500	32.0%	23.9 - 40.1	600	7.7%	0.0 - 15.4	800	10.2%	4.0 - 16.4
Filipino	2,900	44.0%	33.1 - 54.8	1,500	22.6%	15.0 - 30.2	1,300	19.7%	13.6 - 25.8	900	13.7%	11.1 - 16.4
Japanese	n/r	n/r	n/r	n/r	n/r	n/r	n/r	n/r	n/r	n/r	n/r	n/r
Black	n/r	n/r	n/r	n/r	n/r	n/r	n/r	n/r	n/r	n/r	n/r	n/r
Native Alaskan/ American Indian	n/r	n/r	n/r	n/r	n/r	n/r	n/r	n/r	n/r	n/r	n/r	n/r
Other Asian	n/r	n/r	n/r	n/r	n/r	n/r	n/r	n/r	n/r	n/r	n/r	n/r
Other Pacific Islander	n/r	n/r	n/r	n/r	n/r	n/r	n/r	n/r	n/r	n/r	n/r	n/r
Other	2,600	41.7%	35.8 - 47.6	1,900	31.1%	26.6 - 35.6	1,000	16.2%	12.9 - 19.6	700	10.9%	7.5 - 14.4

* Race-ethnicity data from 2011 forward may not be comparable to data from previous years.

Daily Screen Time in Hawaii, by School Type, Indicator, State, Gender, Grade Level, and DOH Race-Ethnicity,* for the Years 2005 - 2015

*Note: Weighted counts rounded to nearest 100, weighted percentages, 95% confidence interval;
n/r (Not Reportable) - Total unweighted responses less than 100*

Middle Schools

Indicator: Hours of screentime on avg school day

Year: 2015

State	Hours of screentime on avg school day											
	<1 hour per day or none			1 to <3 hours per day			3 to <5 hours per day			5+ hours per day		
	#	%	CI	#	%	CI	#	%	CI	#	%	CI
Totals	2,900	11.5%	9.4 - 13.6	6,500	26.0%	24.0 - 27.9	5,500	22.2%	20.2 - 24.2	10,000	40.3%	37.9 - 42.7

Gender	Hours of screentime on avg school day											
	<1 hour per day or none			1 to <3 hours per day			3 to <5 hours per day			5+ hours per day		
	#	%	CI	#	%	CI	#	%	CI	#	%	CI
Male	1,500	12.4%	9.5 - 15.4	3,400	27.9%	24.8 - 31.0	2,800	23.3%	20.0 - 26.6	4,400	36.4%	33.8 - 38.9
Female	1,300	10.6%	8.3 - 12.9	3,000	23.9%	21.5 - 26.3	2,700	21.3%	19.5 - 23.1	5,600	44.2%	41.0 - 47.3

Grade Level	Hours of screentime on avg school day											
	<1 hour per day or none			1 to <3 hours per day			3 to <5 hours per day			5+ hours per day		
	#	%	CI	#	%	CI	#	%	CI	#	%	CI
6th Grade	700	15.3%	13.2 - 17.5	1,400	29.7%	26.0 - 33.5	900	18.8%	16.5 - 21.1	1,700	36.2%	31.7 - 40.7
7th Grade	1,200	11.3%	9.4 - 13.1	2,500	24.8%	22.0 - 27.5	2,300	22.9%	19.8 - 26.0	4,200	41.1%	38.4 - 43.8
8th Grade	900	9.8%	6.7 - 12.9	2,400	25.2%	21.5 - 28.9	2,200	23.2%	20.6 - 25.8	4,000	41.9%	36.5 - 47.3

* Race-ethnicity data from 2011 forward may not be comparable to data from previous years.

Daily Screen Time in Hawaii, by School Type, Indicator, State, Gender, Grade Level, and DOH Race-Ethnicity,* for the Years 2005 - 2015

*Note: Weighted counts rounded to nearest 100, weighted percentages, 95% confidence interval;
n/r (Not Reportable) - Total unweighted responses less than 100*

Middle Schools

Indicator: Hours of screentime on avg school day

Year: 2015

DOH Race-Ethnicity	Hours of screentime on avg school day											
	<1 hour per day or none			1 to <3 hours per day			3 to <5 hours per day			5+ hours per day		
	#	%	CI	#	%	CI	#	%	CI	#	%	CI
Caucasian	200	6.9%	2.5 - 11.4	900	29.2%	22.2 - 36.3	800	27.7%	22.9 - 32.5	1,100	36.1%	29.5 - 42.8
Native Hawaiian	800	14.8%	12.2 - 17.3	1,600	28.5%	25.1 - 31.9	1,100	19.2%	17.4 - 21.1	2,100	37.5%	33.3 - 41.6
Filipino	400	6.8%	4.5 - 9.1	1,200	19.9%	16.7 - 23.1	1,300	22.0%	17.8 - 26.1	3,100	51.4%	47.1 - 55.6
Japanese	200	8.6%	5.4 - 11.8	600	35.8%	23.7 - 47.9	400	22.8%	12.8 - 32.7	600	32.9%	22.7 - 43.0
Black	n/r	n/r	n/r	n/r	n/r	n/r	n/r	n/r	n/r	n/r	n/r	n/r
Native Alaskan/ American Indian	n/r	n/r	n/r	n/r	n/r	n/r	n/r	n/r	n/r	n/r	n/r	n/r
Other Asian	100	15.6%	12.6 - 18.7	100	26.7%	21.5 - 31.8	100	30.6%	22.2 - 39.0	100	27.1%	15.3 - 38.9
Other Pacific Islander	400	19.6%	13.9 - 25.3	500	25.6%	17.1 - 34.1	300	18.3%	6.7 - 29.9	700	36.5%	29.8 - 43.2
Other	500	13.3%	10.7 - 15.9	1,000	26.0%	24.0 - 28.0	900	22.1%	19.7 - 24.4	1,500	38.7%	34.9 - 42.4

* Race-ethnicity data from 2011 forward may not be comparable to data from previous years.

Daily Screen Time in Hawaii, by School Type, Indicator, State, Gender, Grade Level, and DOH Race-Ethnicity,* for the Years 2005 - 2015

*Note: Weighted counts rounded to nearest 100, weighted percentages, 95% confidence interval;
n/r (Not Reportable) - Total unweighted responses less than 100*

Middle Schools

Indicator: Hours of screentime on avg school day

Year: 2013

State	Hours of screentime on avg school day											
	<1 hour per day or none			1 to <3 hours per day			3 to <5 hours per day			5+ hours per day		
	#	%	CI	#	%	CI	#	%	CI	#	%	CI
Totals	2,500	9.7%	8.5 - 11.0	6,400	25.0%	22.6 - 27.4	5,800	22.9%	20.6 - 25.2	10,800	42.4%	39.2 - 45.7

Gender	Hours of screentime on avg school day											
	<1 hour per day or none			1 to <3 hours per day			3 to <5 hours per day			5+ hours per day		
	#	%	CI	#	%	CI	#	%	CI	#	%	CI
Male	1,200	9.7%	7.9 - 11.5	3,100	25.3%	22.3 - 28.2	3,000	23.9%	21.5 - 26.4	5,100	41.1%	38.0 - 44.2
Female	1,300	9.8%	8.1 - 11.5	3,200	24.8%	22.0 - 27.6	2,800	21.9%	18.7 - 25.0	5,700	43.6%	39.3 - 47.8

Grade Level	Hours of screentime on avg school day											
	<1 hour per day or none			1 to <3 hours per day			3 to <5 hours per day			5+ hours per day		
	#	%	CI	#	%	CI	#	%	CI	#	%	CI
6th Grade	600	10.8%	7.5 - 14.0	1,600	29.9%	25.1 - 34.6	1,200	21.9%	18.6 - 25.1	2,000	37.5%	31.6 - 43.4
7th Grade	1,000	10.0%	8.2 - 11.9	2,700	26.1%	21.5 - 30.7	2,300	22.7%	19.0 - 26.4	4,200	41.2%	35.3 - 47.2
8th Grade	800	8.8%	6.9 - 10.7	2,000	21.2%	17.5 - 24.9	2,300	23.4%	19.5 - 27.4	4,500	46.5%	41.0 - 52.1

* Race-ethnicity data from 2011 forward may not be comparable to data from previous years.

Daily Screen Time in Hawaii, by School Type, Indicator, State, Gender, Grade Level, and DOH Race-Ethnicity,* for the Years 2005 - 2015

*Note: Weighted counts rounded to nearest 100, weighted percentages, 95% confidence interval;
n/r (Not Reportable) - Total unweighted responses less than 100*

Middle Schools

Indicator: Hours of screentime on avg school day

Year: 2013

DOH Race-Ethnicity	Hours of screentime on avg school day											
	<1 hour per day or none			1 to <3 hours per day			3 to <5 hours per day			5+ hours per day		
	#	%	CI	#	%	CI	#	%	CI	#	%	CI
Caucasian	400	12.1%	7.7 - 16.6	800	26.7%	19.8 - 33.6	1,000	32.3%	22.7 - 41.9	900	28.9%	22.2 - 35.7
Native Hawaiian	600	11.1%	8.8 - 13.4	1,500	26.6%	23.1 - 30.1	1,100	20.0%	17.3 - 22.6	2,400	42.4%	37.0 - 47.7
Filipino	400	6.7%	4.6 - 8.8	1,100	18.9%	15.1 - 22.7	1,300	21.2%	16.8 - 25.7	3,200	53.2%	49.3 - 57.1
Japanese	100	3.3%	0.0 - 6.7	600	32.6%	22.5 - 42.8	600	29.8%	22.6 - 37.1	700	34.2%	24.8 - 43.6
Black	n/r	n/r	n/r	n/r	n/r	n/r	n/r	n/r	n/r	n/r	n/r	n/r
Native Alaskan/ American Indian	n/r	n/r	n/r	n/r	n/r	n/r	n/r	n/r	n/r	n/r	n/r	n/r
Other Asian	200	12.7%	6.9 - 18.4	400	23.9%	10.8 - 37.0	200	14.8%	10.6 - 19.0	800	48.6%	31.3 - 65.9
Other Pacific Islander	200	12.0%	7.3 - 16.7	500	29.3%	16.6 - 42.0	400	19.5%	9.9 - 29.0	700	39.3%	26.7 - 51.8
Other	300	8.7%	7.2 - 10.1	700	24.4%	21.3 - 27.5	700	23.7%	21.2 - 26.2	1,300	43.2%	39.1 - 47.3

* Race-ethnicity data from 2011 forward may not be comparable to data from previous years.

Daily Screen Time in Hawaii, by School Type, Indicator, State, Gender, Grade Level, and DOH Race-Ethnicity,* for the Years 2005 - 2015

*Note: Weighted counts rounded to nearest 100, weighted percentages, 95% confidence interval;
n/r (Not Reportable) - Total unweighted responses less than 100*

Middle Schools

Indicator: Hours of screentime on avg school day

Year: 2011

State	Hours of screentime on avg school day											
	<1 hour per day or none			1 to <3 hours per day			3 to <5 hours per day			5+ hours per day		
	#	%	CI	#	%	CI	#	%	CI	#	%	CI
Totals	2,200	8.9%	8.0 - 9.8	6,300	25.6%	22.5 - 28.7	5,200	21.1%	19.2 - 23.0	11,000	44.4%	40.1 - 48.8

Gender	Hours of screentime on avg school day											
	<1 hour per day or none			1 to <3 hours per day			3 to <5 hours per day			5+ hours per day		
	#	%	CI	#	%	CI	#	%	CI	#	%	CI
Male	1,100	8.9%	7.4 - 10.4	3,200	25.9%	22.4 - 29.5	2,400	19.9%	18.1 - 21.7	5,600	45.3%	40.6 - 49.9
Female	1,100	8.8%	7.2 - 10.4	3,200	25.2%	21.9 - 28.6	2,800	22.3%	19.4 - 25.3	5,400	43.6%	39.0 - 48.3

Grade Level	Hours of screentime on avg school day											
	<1 hour per day or none			1 to <3 hours per day			3 to <5 hours per day			5+ hours per day		
	#	%	CI	#	%	CI	#	%	CI	#	%	CI
6th Grade	600	11.7%	9.9 - 13.6	1,500	28.5%	24.9 - 32.1	1,000	19.3%	16.1 - 22.5	2,200	40.4%	34.3 - 46.6
7th Grade	900	9.6%	7.5 - 11.8	2,600	26.8%	22.3 - 31.2	2,200	22.2%	20.2 - 24.3	4,100	41.3%	35.8 - 46.9
8th Grade	600	6.4%	5.4 - 7.4	2,100	22.7%	19.4 - 26.1	2,000	21.0%	16.8 - 25.3	4,700	49.9%	43.7 - 56.1

* Race-ethnicity data from 2011 forward may not be comparable to data from previous years.

Daily Screen Time in Hawaii, by School Type, Indicator, State, Gender, Grade Level, and DOH Race-Ethnicity,* for the Years 2005 - 2015

*Note: Weighted counts rounded to nearest 100, weighted percentages, 95% confidence interval;
n/r (Not Reportable) - Total unweighted responses less than 100*

Middle Schools

Indicator: Hours of screentime on avg school day

Year: 2011

DOH Race-Ethnicity	Hours of screentime on avg school day											
	<1 hour per day or none			1 to <3 hours per day			3 to <5 hours per day			5+ hours per day		
	#	%	CI	#	%	CI	#	%	CI	#	%	CI
Caucasian	300	9.3%	6.5 - 12.2	1,100	35.2%	27.2 - 43.2	800	24.8%	20.5 - 29.0	1,000	30.7%	25.9 - 35.4
Native Hawaiian	600	10.7%	9.3 - 12.2	1,700	29.7%	26.8 - 32.5	1,300	23.3%	20.2 - 26.4	2,100	36.3%	32.8 - 39.8
Filipino	300	5.4%	4.1 - 6.6	1,000	15.9%	12.7 - 19.1	1,000	17.3%	11.6 - 22.9	3,700	61.5%	54.4 - 68.5
Japanese	100	8.0%	2.5 - 13.5	200	30.3%	21.5 - 39.0	200	19.1%	13.9 - 24.3	300	42.7%	29.3 - 56.1
Black	n/r	n/r	n/r	n/r	n/r	n/r	n/r	n/r	n/r	n/r	n/r	n/r
Native Alaskan/ American Indian	n/r	n/r	n/r	n/r	n/r	n/r	n/r	n/r	n/r	n/r	n/r	n/r
Other Asian	100	7.0%	4.5 - 9.5	200	23.3%	15.7 - 31.0	200	21.8%	13.3 - 30.3	400	47.9%	39.9 - 55.9
Other Pacific Islander	100	14.8%	9.9 - 19.6	300	30.6%	23.0 - 38.3	200	17.6%	11.7 - 23.5	400	37.0%	28.3 - 45.7
Other	400	8.0%	6.4 - 9.5	1,400	25.9%	20.2 - 31.5	1,200	22.6%	20.8 - 24.3	2,400	43.6%	37.0 - 50.1

* Race-ethnicity data from 2011 forward may not be comparable to data from previous years.

Daily Screen Time in Hawaii, by School Type, Indicator, State, Gender, Grade Level, and DOH Race-Ethnicity,* for the Years 2005 - 2015

*Note: Weighted counts rounded to nearest 100, weighted percentages, 95% confidence interval;
n/r (Not Reportable) - Total unweighted responses less than 100*

Middle Schools

Indicator: Hours of screentime on avg school day

Year: 2009

State	Hours of screentime on avg school day											
	<1 hour per day or none			1 to <3 hours per day			3 to <5 hours per day			5+ hours per day		
	#	%	CI	#	%	CI	#	%	CI	#	%	CI
Totals	3,000	10.4%	7.8 - 13.0	8,300	29.1%	25.9 - 32.3	5,700	20.1%	16.6 - 23.5	11,500	40.4%	36.7 - 44.1

Gender	Hours of screentime on avg school day											
	<1 hour per day or none			1 to <3 hours per day			3 to <5 hours per day			5+ hours per day		
	#	%	CI	#	%	CI	#	%	CI	#	%	CI
Male	1,700	12.2%	6.9 - 17.6	3,600	25.4%	21.3 - 29.5	3,100	21.4%	15.7 - 27.2	5,800	41.0%	36.9 - 45.0
Female	1,200	8.6%	6.7 - 10.4	4,600	32.7%	27.3 - 38.1	2,600	18.7%	15.1 - 22.4	5,600	40.0%	34.0 - 46.0

Grade Level	Hours of screentime on avg school day											
	<1 hour per day or none			1 to <3 hours per day			3 to <5 hours per day			5+ hours per day		
	#	%	CI	#	%	CI	#	%	CI	#	%	CI
6th Grade	800	12.3%	7.5 - 17.1	2,200	34.6%	26.1 - 43.0	1,200	19.5%	14.6 - 24.3	2,100	33.7%	27.8 - 39.7
7th Grade	1,100	10.2%	7.2 - 13.2	2,700	25.1%	19.5 - 30.6	2,400	21.7%	18.1 - 25.3	4,700	43.0%	38.0 - 48.0
8th Grade	1,000	9.6%	5.0 - 14.2	3,200	29.5%	24.3 - 34.7	2,000	18.9%	12.9 - 24.9	4,500	42.0%	36.4 - 47.5

* Race-ethnicity data from 2011 forward may not be comparable to data from previous years.

Daily Screen Time in Hawaii, by School Type, Indicator, State, Gender, Grade Level, and DOH Race-Ethnicity,* for the Years 2005 - 2015

*Note: Weighted counts rounded to nearest 100, weighted percentages, 95% confidence interval;
n/r (Not Reportable) - Total unweighted responses less than 100*

Middle Schools

Indicator: Hours of screentime on avg school day

Year: 2009

DOH Race-Ethnicity	Hours of screentime on avg school day											
	<1 hour per day or none			1 to <3 hours per day			3 to <5 hours per day			5+ hours per day		
	#	%	CI	#	%	CI	#	%	CI	#	%	CI
Caucasian	400	11.0%	6.5 - 15.5	1,200	35.8%	27.7 - 44.0	800	23.9%	17.4 - 30.4	1,000	29.2%	23.4 - 35.1
Native Hawaiian	700	10.5%	5.4 - 15.6	2,300	35.3%	23.9 - 46.7	1,200	18.0%	8.7 - 27.3	2,400	36.2%	27.9 - 44.4
Filipino	500	7.4%	4.0 - 10.8	1,300	20.7%	16.0 - 25.4	1,200	19.8%	14.7 - 24.9	3,200	52.0%	45.7 - 58.3
Japanese	n/r	n/r	n/r	n/r	n/r	n/r	n/r	n/r	n/r	n/r	n/r	n/r
Black	n/r	n/r	n/r	n/r	n/r	n/r	n/r	n/r	n/r	n/r	n/r	n/r
Native Alaskan/ American Indian	n/r	n/r	n/r	n/r	n/r	n/r	n/r	n/r	n/r	n/r	n/r	n/r
Other Asian	n/r	n/r	n/r	n/r	n/r	n/r	n/r	n/r	n/r	n/r	n/r	n/r
Other Pacific Islander	n/r	n/r	n/r	n/r	n/r	n/r	n/r	n/r	n/r	n/r	n/r	n/r
Other	700	11.3%	8.7 - 13.8	1,700	29.7%	25.5 - 33.9	1,200	20.9%	17.7 - 24.2	2,200	38.1%	33.4 - 42.8

* Race-ethnicity data from 2011 forward may not be comparable to data from previous years.

Daily Screen Time in Hawaii, by School Type, Indicator, State, Gender, Grade Level, and DOH Race-Ethnicity,* for the Years 2005 - 2015

*Note: Weighted counts rounded to nearest 100, weighted percentages, 95% confidence interval;
n/r (Not Reportable) - Total unweighted responses less than 100*

Middle Schools

Indicator: Hours of screentime on avg school day

Year: 2007

State	Hours of screentime on avg school day											
	<1 hour per day or none			1 to <3 hours per day			3 to <5 hours per day			5+ hours per day		
	#	%	CI	#	%	CI	#	%	CI	#	%	CI
Totals	3,900	12.0%	9.3 - 14.7	9,200	28.6%	25.2 - 31.9	7,500	23.2%	20.1 - 26.3	11,700	36.3%	33.0 - 39.6

Gender	Hours of screentime on avg school day											
	<1 hour per day or none			1 to <3 hours per day			3 to <5 hours per day			5+ hours per day		
	#	%	CI	#	%	CI	#	%	CI	#	%	CI
Male	1,900	11.5%	8.9 - 14.0	5,100	30.8%	26.4 - 35.1	3,100	18.9%	15.3 - 22.4	6,400	38.9%	35.5 - 42.2
Female	1,900	12.3%	7.9 - 16.6	4,200	26.4%	21.4 - 31.3	4,400	27.7%	21.6 - 33.8	5,300	33.7%	28.4 - 38.9

Grade Level	Hours of screentime on avg school day											
	<1 hour per day or none			1 to <3 hours per day			3 to <5 hours per day			5+ hours per day		
	#	%	CI	#	%	CI	#	%	CI	#	%	CI
6th Grade	1,000	16.3%	8.3 - 24.4	2,100	32.8%	23.6 - 41.9	1,300	19.6%	15.0 - 24.1	2,000	31.3%	25.0 - 37.7
7th Grade	1,400	11.2%	7.9 - 14.4	3,700	28.8%	23.0 - 34.6	2,800	21.5%	15.1 - 27.9	4,900	38.5%	33.3 - 43.7
8th Grade	1,400	10.8%	8.1 - 13.5	3,400	26.7%	22.6 - 30.8	3,400	26.6%	21.9 - 31.4	4,600	35.9%	30.9 - 40.9

* Race-ethnicity data from 2011 forward may not be comparable to data from previous years.

Daily Screen Time in Hawaii, by School Type, Indicator, State, Gender, Grade Level, and DOH Race-Ethnicity,* for the Years 2005 - 2015

*Note: Weighted counts rounded to nearest 100, weighted percentages, 95% confidence interval;
n/r (Not Reportable) - Total unweighted responses less than 100*

Middle Schools

Indicator: Hours of screentime on avg school day

Year: 2007

DOH Race-Ethnicity	Hours of screentime on avg school day											
	<1 hour per day or none			1 to <3 hours per day			3 to <5 hours per day			5+ hours per day		
	#	%	CI	#	%	CI	#	%	CI	#	%	CI
Caucasian	n/r	n/r	n/r	n/r	n/r	n/r	n/r	n/r	n/r	n/r	n/r	n/r
Native Hawaiian	n/r	n/r	n/r	n/r	n/r	n/r	n/r	n/r	n/r	n/r	n/r	n/r
Filipino	600	8.8%	3.0 - 14.6	1,600	24.6%	18.5 - 30.7	1,500	23.3%	16.9 - 29.7	2,800	43.3%	34.9 - 51.7
Japanese	n/r	n/r	n/r	n/r	n/r	n/r	n/r	n/r	n/r	n/r	n/r	n/r
Black	n/r	n/r	n/r	n/r	n/r	n/r	n/r	n/r	n/r	n/r	n/r	n/r
Native Alaskan/ American Indian	n/r	n/r	n/r	n/r	n/r	n/r	n/r	n/r	n/r	n/r	n/r	n/r
Other Asian	n/r	n/r	n/r	n/r	n/r	n/r	n/r	n/r	n/r	n/r	n/r	n/r
Other Pacific Islander	n/r	n/r	n/r	n/r	n/r	n/r	n/r	n/r	n/r	n/r	n/r	n/r
Other	700	12.0%	8.4 - 15.6	1,500	23.9%	19.6 - 28.2	1,500	24.6%	19.5 - 29.6	2,400	39.5%	33.9 - 45.1

* Race-ethnicity data from 2011 forward may not be comparable to data from previous years.