

## Perceived Likelihood of Completing a Post High School Program in Hawaii

### Perceived Likelihood of Completing a Post High School Program in Hawaii, by School Type, Indicator, State, Gender, Grade Level, and DOH Race-Ethnicity,\* for the Years 2007 - 2015

*The weighted data is available for middle school for all years; high school weighted data is not available for 2001 or 2003. Questions for certain health indicators were not asked in all years.*

*Below are the indicators included in this report and the long description for each indicator.*

YRBS Health Indicator	Health Indicator Description
How likely to complete post high school program	How likely is it that you will complete a post high school program such as a vocational training program, military service, community college or 4-year college?

*Suggested citation:*

*Hawaii Health Data Warehouse, State of Hawaii, Hawaii School Health Survey: Youth Risk Behavior Survey Module, (report title and years), Report Created: 8/3/16*

*For documentation on other terms and coding in this report, please go to the following links:*

[Click here to access YRBS documentation](#)

[Click here to access Race-Ethnicity coding](#)

[Click here to access Hawai'i Data Guide](#)

*For questions about this report, please contact the Hawaii Health Data Warehouse*

[profiles@hhdw.org](mailto:profiles@hhdw.org)

**(855) 946-5899 x15**

*\* Race-ethnicity data from 2011 forward may not be comparable to data from previous years.*

*Report Source: The Hawaii Health Data Warehouse;  
Data Source: State of Hawaii, Hawaii School Health Survey:  
Youth Risk Behavior Survey Module*

*Report Date: 08/03/2016*

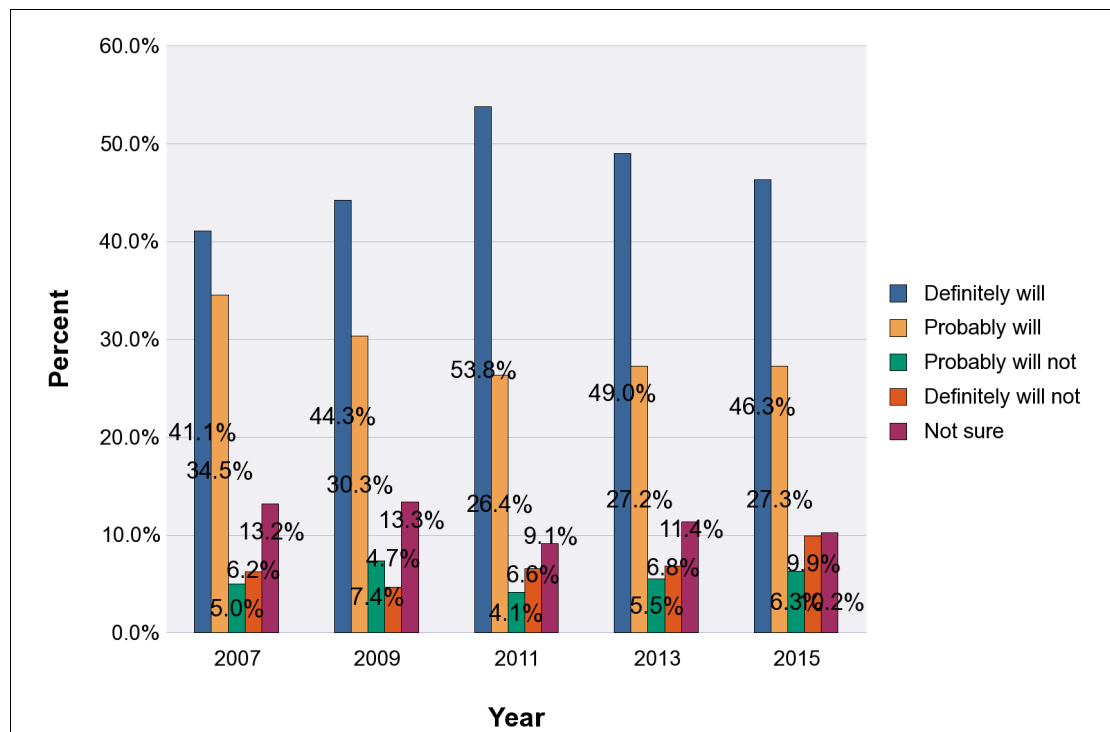
## Perceived Likelihood of Completing a Post High School Program in Hawaii, by School Type and Indicator, for the Years 2007 - 2015

*Note: Weighted percentages, 95% confidence interval; n/r (Not Reportable) - Total unweighted responses less than 100*

### High Schools

#### How likely to complete post high school program

Year	YRBS Response	Percent
2007	Definitely will	41.1%
	Probably will	34.5%
	Probably will not	5.0%
	Definitely will not	6.2%
	Not sure	13.2%
Year	YRBS Response	Percent
2009	Definitely will	44.3%
	Probably will	30.3%
	Probably will not	7.4%
	Definitely will not	4.7%
	Not sure	13.3%
Year	YRBS Response	Percent
2011	Definitely will	53.8%
	Probably will	26.4%
	Probably will not	4.1%
	Definitely will not	6.6%
	Not sure	9.1%
Year	YRBS Response	Percent
2013	Definitely will	49.0%
	Probably will	27.2%
	Probably will not	5.5%
	Definitely will not	6.8%
	Not sure	11.4%
Year	YRBS Response	Percent
2015	Definitely will	46.3%
	Probably will	27.3%
	Probably will not	6.3%
	Definitely will not	9.9%
	Not sure	10.2%



## Perceived Likelihood of Completing a Post High School Program in Hawaii, by School Type and Indicator, for the Years 2007 - 2015

*Note: Weighted percentages, 95% confidence interval; n/r (Not Reportable) - Total unweighted responses less than 100*

### High Schools

#### How likely to complete post high school program

Year	YRBS Response	Percent
2013	Definitely will	49.0%
	Probably will	27.2%
	Probably will not	5.5%
	Definitely will not	6.8%
	Not sure	11.4%
Year	YRBS Response	Percent
2015	Definitely will	46.3%
	Probably will	27.3%
	Probably will not	6.3%
	Definitely will not	9.9%
	Not sure	10.2%

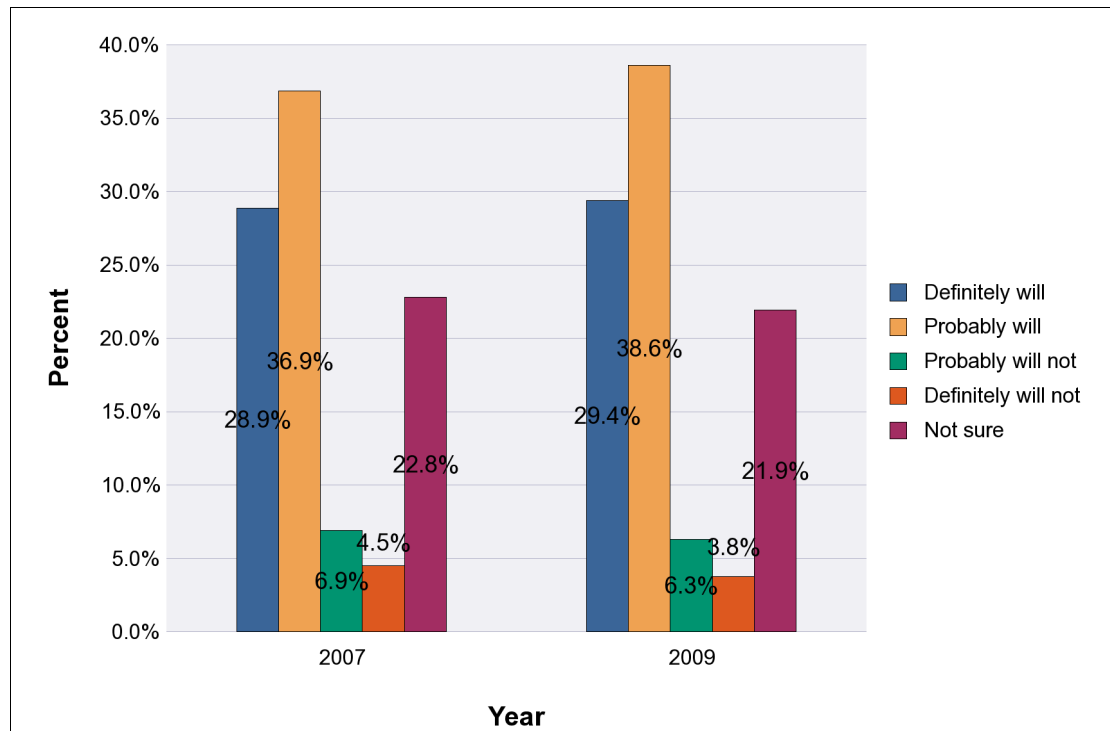
## Perceived Likelihood of Completing a Post High School Program in Hawaii, by School Type and Indicator, for the Years 2007 - 2015

*Note: Weighted percentages, 95% confidence interval; n/r (Not Reportable) - Total unweighted responses less than 100*

### Middle Schools

#### How likely to complete post high school program

Year	YRBS Response	Percent
2007	Definitely will	28.9%
	Probably will	36.9%
	Probably will not	6.9%
	Definitely will not	4.5%
	Not sure	22.8%
Year	YRBS Response	Percent
2009	Definitely will	29.4%
	Probably will	38.6%
	Probably will not	6.3%
	Definitely will not	3.8%
	Not sure	21.9%



**Perceived Likelihood of Completing a Post High School Program in Hawaii, by School Type,  
Indicator, State, Gender, Grade Level, and DOH Race-Ethnicity,\* for the Years 2007 - 2015**

*Note: Weighted counts rounded to nearest 100, weighted percentages, 95% confidence interval;  
n/r (Not Reportable) - Total unweighted responses less than 100*

**High Schools**

**Indicator: How likely to complete post high school program**

**Year: 2015**

State	How likely to complete post high school program														
	Definitely will			Probably will			Probably will not			Definitely will not			Not sure		
	#	%	CI	#	%	CI	#	%	CI	#	%	CI	#	%	CI
<b>Totals</b>	17,800	46.3%	42.6 - 50.0	10,500	27.3%	24.6 - 29.9	2,400	6.3%	5.1 - 7.5	3,800	9.9%	8.6 - 11.2	3,900	10.2%	8.5 - 12.0

Gender	How likely to complete post high school program														
	Definitely will			Probably will			Probably will not			Definitely will not			Not sure		
	#	%	CI	#	%	CI	#	%	CI	#	%	CI	#	%	CI
<b>Male</b>	7,200	39.1%	34.7 - 43.4	5,600	30.6%	28.0 - 33.3	1,500	8.4%	6.9 - 9.9	2,000	10.8%	8.8 - 12.9	2,000	11.1%	8.9 - 13.3
<b>Female</b>	10,500	53.3%	49.7 - 56.9	4,800	24.4%	21.2 - 27.7	800	4.3%	3.1 - 5.4	1,700	8.6%	7.2 - 10.0	1,900	9.4%	7.5 - 11.3

Grade Level	How likely to complete post high school program														
	Definitely will			Probably will			Probably will not			Definitely will not			Not sure		
	#	%	CI	#	%	CI	#	%	CI	#	%	CI	#	%	CI
<b>9th Grade</b>	4,200	39.3%	35.7 - 42.9	3,500	33.1%	28.6 - 37.5	600	5.9%	4.6 - 7.3	900	8.1%	6.2 - 10.1	1,500	13.6%	10.8 - 16.3
<b>10th Grade</b>	4,400	46.2%	41.7 - 50.8	2,600	27.2%	23.2 - 31.2	600	6.6%	4.5 - 8.8	800	8.9%	6.8 - 10.9	1,100	11.1%	8.4 - 13.8
<b>11th Grade</b>	4,200	49.4%	42.4 - 56.4	2,100	24.3%	20.1 - 28.5	600	7.4%	4.4 - 10.3	1,000	11.2%	9.2 - 13.2	700	7.7%	5.8 - 9.6
<b>12th Grade</b>	4,800	52.9%	47.3 - 58.5	2,100	23.7%	20.6 - 26.7	500	5.0%	3.2 - 6.9	1,000	11.3%	8.8 - 13.8	600	7.1%	4.1 - 10.0

\* Race-ethnicity data from 2011 forward may not be comparable to data from previous years.

**Perceived Likelihood of Completing a Post High School Program in Hawaii, by School Type,  
Indicator, State, Gender, Grade Level, and DOH Race-Ethnicity,\* for the Years 2007 - 2015**

*Note: Weighted counts rounded to nearest 100, weighted percentages, 95% confidence interval;  
n/r (Not Reportable) - Total unweighted responses less than 100*

**High Schools**

**Indicator: How likely to complete post high school program**

**Year: 2015**

DOH Race-Ethnicity	How likely to complete post high school program														
	Definitely will			Probably will			Probably will not			Definitely will not			Not sure		
	#	%	CI	#	%	CI	#	%	CI	#	%	CI	#	%	CI
Caucasian	3,200	60.8%	52.2 - 69.5	1,100	21.5%	16.9 - 26.0	200	4.6%	1.9 - 7.4	500	9.1%	4.6 - 13.5	200	4.0%	1.4 - 6.7
Native Hawaiian	3,100	36.7%	33.7 - 39.7	2,800	32.5%	28.9 - 36.1	800	9.8%	8.3 - 11.3	900	10.8%	8.9 - 12.8	900	10.1%	8.6 - 11.7
Filipino	4,700	45.7%	40.7 - 50.7	3,200	30.5%	25.6 - 35.5	300	3.2%	2.1 - 4.3	800	8.1%	5.4 - 10.8	1,300	12.5%	9.1 - 15.9
Japanese	2,100	55.4%	41.5 - 69.3	700	17.7%	11.8 - 23.7	200	5.2%	0.0 - 11.4	400	11.5%	7.1 - 16.0	400	10.2%	5.5 - 14.8
Black	n/r	n/r	n/r	n/r	n/r	n/r	n/r	n/r	n/r	n/r	n/r	n/r	n/r	n/r	n/r
Native Alaskan/ American Indian	n/r	n/r	n/r	n/r	n/r	n/r	n/r	n/r	n/r	n/r	n/r	n/r	n/r	n/r	n/r
Other Asian	900	64.2%	51.7 - 76.7	200	18.1%	9.5 - 26.7	100	4.3%	2.1 - 6.5	100	6.6%	4.2 - 8.9	100	6.8%	0.5 - 13.1
Other Pacific Islander	200	21.4%	14.8 - 28.0	300	33.5%	26.6 - 40.5	100	10.6%	6.6 - 14.5	100	12.8%	7.1 - 18.5	200	21.7%	15.6 - 27.7
Other	3,100	46.9%	42.8 - 50.9	1,800	26.9%	24.6 - 29.2	500	7.6%	5.8 - 9.3	600	9.3%	7.6 - 11.0	600	9.3%	7.1 - 11.6

\* Race-ethnicity data from 2011 forward may not be comparable to data from previous years.

**Perceived Likelihood of Completing a Post High School Program in Hawaii, by School Type,  
Indicator, State, Gender, Grade Level, and DOH Race-Ethnicity,\* for the Years 2007 - 2015**

*Note: Weighted counts rounded to nearest 100, weighted percentages, 95% confidence interval;  
n/r (Not Reportable) - Total unweighted responses less than 100*

**High Schools**

**Indicator: How likely to complete post high school program**

**Year: 2013**

State	How likely to complete post high school program														
	Definitely will			Probably will			Probably will not			Definitely will not			Not sure		
	#	%	CI	#	%	CI	#	%	CI	#	%	CI	#	%	CI
<b>Totals</b>	19,600	49.0%	45.9 - 52.2	10,900	27.2%	24.5 - 30.0	2,200	5.5%	4.2 - 6.8	2,700	6.8%	5.6 - 8.1	4,500	11.4%	9.8 - 13.0

Gender	How likely to complete post high school program														
	Definitely will			Probably will			Probably will not			Definitely will not			Not sure		
	#	%	CI	#	%	CI	#	%	CI	#	%	CI	#	%	CI
<b>Male</b>	8,500	43.3%	39.6 - 47.1	5,800	29.6%	26.3 - 32.9	1,200	6.2%	4.4 - 7.9	1,400	6.9%	5.5 - 8.3	2,700	14.0%	11.1 - 16.9
<b>Female</b>	11,100	54.9%	51.3 - 58.4	5,100	25.1%	21.5 - 28.6	1,000	4.8%	3.2 - 6.5	1,300	6.5%	4.5 - 8.5	1,800	8.7%	6.8 - 10.6

Grade Level	How likely to complete post high school program														
	Definitely will			Probably will			Probably will not			Definitely will not			Not sure		
	#	%	CI	#	%	CI	#	%	CI	#	%	CI	#	%	CI
<b>9th Grade</b>	4,700	42.5%	37.1 - 47.9	3,400	30.8%	26.4 - 35.2	500	4.9%	2.7 - 7.2	700	6.7%	4.1 - 9.3	1,700	15.1%	11.5 - 18.7
<b>10th Grade</b>	4,900	49.7%	44.8 - 54.5	2,500	25.3%	21.4 - 29.1	600	6.4%	4.2 - 8.5	600	6.5%	5.0 - 8.0	1,200	12.2%	8.6 - 15.9
<b>11th Grade</b>	4,200	46.3%	41.2 - 51.3	2,700	30.4%	24.9 - 36.0	400	4.3%	2.4 - 6.2	800	8.4%	4.2 - 12.6	900	10.6%	7.3 - 13.8
<b>12th Grade</b>	5,700	59.3%	53.3 - 65.3	2,100	22.3%	17.7 - 26.8	500	5.2%	3.3 - 7.1	600	6.0%	4.0 - 8.1	700	7.2%	4.2 - 10.1

\* Race-ethnicity data from 2011 forward may not be comparable to data from previous years.

**Perceived Likelihood of Completing a Post High School Program in Hawaii, by School Type,  
Indicator, State, Gender, Grade Level, and DOH Race-Ethnicity,\* for the Years 2007 - 2015**

*Note: Weighted counts rounded to nearest 100, weighted percentages, 95% confidence interval;  
n/r (Not Reportable) - Total unweighted responses less than 100*

**High Schools**

**Indicator: How likely to complete post high school program**

**Year: 2013**

DOH Race-Ethnicity	How likely to complete post high school program														
	Definitely will			Probably will			Probably will not			Definitely will not			Not sure		
	#	%	CI	#	%	CI	#	%	CI	#	%	CI	#	%	CI
Caucasian	3,500	61.8%	53.4 - 70.2	1,200	20.9%	14.7 - 27.1	300	5.5%	2.1 - 9.0	300	5.4%	2.4 - 8.3	400	6.4%	3.9 - 8.8
Native Hawaiian	3,500	40.3%	36.1 - 44.4	2,800	32.1%	26.7 - 37.4	700	7.8%	5.7 - 10.0	600	7.4%	4.6 - 10.1	1,100	12.5%	10.5 - 14.5
Filipino	5,400	49.0%	43.6 - 54.4	3,100	28.1%	23.3 - 32.8	400	3.9%	2.2 - 5.6	600	5.5%	3.4 - 7.6	1,500	13.5%	10.5 - 16.5
Japanese	2,000	51.0%	39.6 - 62.3	1,000	24.7%	15.8 - 33.6	200	4.1%	0.0 - 8.9	300	8.0%	0.0 - 18.3	500	12.2%	3.9 - 20.5
Black	n/r	n/r	n/r	n/r	n/r	n/r	n/r	n/r	n/r	n/r	n/r	n/r	n/r	n/r	n/r
Native Alaskan/ American Indian	n/r	n/r	n/r	n/r	n/r	n/r	n/r	n/r	n/r	n/r	n/r	n/r	n/r	n/r	n/r
Other Asian	800	58.4%	45.4 - 71.3	300	21.6%	14.3 - 29.0	100	5.7%	3.7 - 7.8	100	5.8%	2.0 - 9.5	100	8.5%	4.0 - 13.0
Other Pacific Islander	400	38.0%	27.4 - 48.6	300	31.7%	20.1 - 43.4	100	7.7%	3.6 - 11.9	100	8.9%	3.0 - 14.9	100	13.6%	6.4 - 20.8
Other	3,300	50.2%	47.5 - 52.9	1,800	27.7%	24.7 - 30.7	400	5.7%	4.5 - 6.9	400	6.8%	4.4 - 9.2	600	9.7%	7.6 - 11.7

\* Race-ethnicity data from 2011 forward may not be comparable to data from previous years.



**Perceived Likelihood of Completing a Post High School Program in Hawaii, by School Type,  
Indicator, State, Gender, Grade Level, and DOH Race-Ethnicity,\* for the Years 2007 - 2015**

*Note: Weighted counts rounded to nearest 100, weighted percentages, 95% confidence interval;  
n/r (Not Reportable) - Total unweighted responses less than 100*

**High Schools**

**Indicator: How likely to complete post high school program**

**Year: 2011**

State	How likely to complete post high school program														
	Definitely will			Probably will			Probably will not			Definitely will not			Not sure		
	#	%	CI	#	%	CI	#	%	CI	#	%	CI	#	%	CI
<b>Totals</b>	22,500	53.8%	50.1 - 57.5	11,000	26.4%	23.9 - 28.9	1,700	4.1%	3.5 - 4.8	2,700	6.6%	4.9 - 8.2	3,800	9.1%	7.1 - 11.2

Gender	How likely to complete post high school program														
	Definitely will			Probably will			Probably will not			Definitely will not			Not sure		
	#	%	CI	#	%	CI	#	%	CI	#	%	CI	#	%	CI
<b>Male</b>	9,500	46.7%	42.8 - 50.6	6,100	30.0%	26.7 - 33.4	1,000	5.1%	4.0 - 6.1	1,500	7.5%	5.2 - 9.8	2,200	10.7%	8.0 - 13.3
<b>Female</b>	12,900	60.7%	56.7 - 64.8	4,900	23.1%	20.3 - 25.8	700	3.2%	2.2 - 4.2	1,200	5.5%	3.6 - 7.4	1,600	7.5%	5.2 - 9.9

Grade Level	How likely to complete post high school program														
	Definitely will			Probably will			Probably will not			Definitely will not			Not sure		
	#	%	CI	#	%	CI	#	%	CI	#	%	CI	#	%	CI
<b>9th Grade</b>	5,200	45.2%	38.6 - 51.7	3,400	30.1%	25.6 - 34.6	700	5.9%	4.0 - 7.8	800	7.1%	4.4 - 9.7	1,400	11.8%	8.8 - 14.7
<b>10th Grade</b>	5,700	52.8%	45.4 - 60.3	2,900	27.0%	20.7 - 33.3	300	2.9%	1.8 - 4.0	700	6.7%	3.6 - 9.7	1,100	10.6%	6.5 - 14.6
<b>11th Grade</b>	5,800	57.3%	51.3 - 63.3	2,600	25.4%	20.8 - 29.9	400	4.0%	1.7 - 6.3	600	5.7%	3.2 - 8.2	800	7.6%	4.4 - 10.9
<b>12th Grade</b>	5,700	62.4%	56.5 - 68.3	2,000	21.7%	17.8 - 25.7	300	3.4%	2.0 - 4.8	600	6.5%	3.7 - 9.4	500	5.9%	4.5 - 7.4

\* Race-ethnicity data from 2011 forward may not be comparable to data from previous years.

**Perceived Likelihood of Completing a Post High School Program in Hawaii, by School Type,  
Indicator, State, Gender, Grade Level, and DOH Race-Ethnicity,\* for the Years 2007 - 2015**

*Note: Weighted counts rounded to nearest 100, weighted percentages, 95% confidence interval;  
n/r (Not Reportable) - Total unweighted responses less than 100*

**High Schools**

**Indicator: How likely to complete post high school program**

**Year: 2011**

DOH Race-Ethnicity	How likely to complete post high school program														
	Definitely will			Probably will			Probably will not			Definitely will not			Not sure		
	#	%	CI	#	%	CI	#	%	CI	#	%	CI	#	%	CI
Caucasian	3,700	64.0%	58.2 - 69.8	1,100	19.7%	15.0 - 24.4	200	3.3%	1.0 - 5.6	500	8.2%	4.2 - 12.2	300	4.9%	1.6 - 8.2
Native Hawaiian	4,200	44.0%	38.3 - 49.6	3,200	33.4%	28.9 - 38.0	500	5.2%	3.4 - 7.1	700	7.3%	4.2 - 10.5	1,000	10.0%	6.5 - 13.6
Filipino	5,400	51.6%	45.5 - 57.7	3,000	28.5%	23.5 - 33.5	300	3.2%	1.3 - 5.1	500	4.9%	2.3 - 7.6	1,200	11.8%	8.9 - 14.7
Japanese	1,100	61.7%	53.4 - 70.1	300	19.1%	13.2 - 24.9	100	4.8%	2.0 - 7.5	100	7.4%	2.9 - 12.0	100	7.0%	2.3 - 11.7
Black	n/r	n/r	n/r	n/r	n/r	n/r	n/r	n/r	n/r	n/r	n/r	n/r	n/r	n/r	n/r
Native Alaskan/ American Indian	n/r	n/r	n/r	n/r	n/r	n/r	n/r	n/r	n/r	n/r	n/r	n/r	n/r	n/r	n/r
Other Asian	1,700	74.0%	64.5 - 83.6	400	17.5%	11.9 - 23.2	<50	1.3%	0.0 - 3.1	<50	1.5%	0.0 - 3.6	100	5.6%	1.8 - 9.4
Other Pacific Islander	500	39.9%	32.6 - 47.1	300	24.5%	18.1 - 31.0	200	11.2%	6.7 - 15.6	100	7.6%	3.3 - 12.0	200	16.8%	8.7 - 24.9
Other	5,100	56.8%	51.3 - 62.2	2,300	25.5%	21.5 - 29.4	300	3.5%	2.2 - 4.8	600	6.7%	4.9 - 8.5	700	7.5%	4.9 - 10.1

\* Race-ethnicity data from 2011 forward may not be comparable to data from previous years.

**Perceived Likelihood of Completing a Post High School Program in Hawaii, by School Type,  
Indicator, State, Gender, Grade Level, and DOH Race-Ethnicity,\* for the Years 2007 - 2015**

*Note: Weighted counts rounded to nearest 100, weighted percentages, 95% confidence interval;  
n/r (Not Reportable) - Total unweighted responses less than 100*

**High Schools**

**Indicator: How likely to complete post high school program**

**Year: 2009**

State	How likely to complete post high school program														
	Definitely will			Probably will			Probably will not			Definitely will not			Not sure		
	#	%	CI	#	%	CI	#	%	CI	#	%	CI	#	%	CI
<b>Totals</b>	20,900	44.3%	40.8 - 47.7	14,300	30.3%	27.5 - 33.2	3,500	7.4%	5.2 - 9.5	2,200	4.7%	2.7 - 6.6	6,300	13.3%	10.9 - 15.8

Gender	How likely to complete post high school program														
	Definitely will			Probably will			Probably will not			Definitely will not			Not sure		
	#	%	CI	#	%	CI	#	%	CI	#	%	CI	#	%	CI
<b>Male</b>	9,000	37.0%	32.8 - 41.3	8,200	33.7%	30.5 - 37.0	2,200	9.2%	6.9 - 11.5	1,200	4.9%	2.9 - 6.9	3,700	15.2%	12.1 - 18.3
<b>Female</b>	11,900	52.3%	47.0 - 57.6	6,100	26.7%	22.2 - 31.1	1,200	5.2%	1.9 - 8.5	1,000	4.5%	1.9 - 7.2	2,600	11.3%	8.0 - 14.6

Grade Level	How likely to complete post high school program														
	Definitely will			Probably will			Probably will not			Definitely will not			Not sure		
	#	%	CI	#	%	CI	#	%	CI	#	%	CI	#	%	CI
<b>9th Grade</b>	5,000	35.4%	29.4 - 41.4	4,500	31.7%	27.0 - 36.3	1,400	9.7%	6.2 - 13.2	800	5.7%	2.3 - 9.1	2,500	17.5%	13.2 - 21.7
<b>10th Grade</b>	5,200	45.0%	38.3 - 51.7	3,500	30.2%	24.3 - 36.1	1,100	9.6%	4.9 - 14.3	400	3.3%	1.2 - 5.3	1,400	11.9%	7.8 - 16.0
<b>11th Grade</b>	4,900	47.5%	38.3 - 56.7	3,400	32.9%	25.2 - 40.6	600	5.9%	3.4 - 8.4	300	2.9%	0.2 - 5.7	1,100	10.8%	6.3 - 15.3
<b>12th Grade</b>	5,700	52.0%	38.7 - 65.4	2,800	25.9%	16.4 - 35.5	400	3.4%	1.6 - 5.2	700	6.4%	2.8 - 9.9	1,300	12.3%	5.0 - 19.5

\* Race-ethnicity data from 2011 forward may not be comparable to data from previous years.

**Perceived Likelihood of Completing a Post High School Program in Hawaii, by School Type,  
Indicator, State, Gender, Grade Level, and DOH Race-Ethnicity,\* for the Years 2007 - 2015**

*Note: Weighted counts rounded to nearest 100, weighted percentages, 95% confidence interval;  
n/r (Not Reportable) - Total unweighted responses less than 100*

**High Schools**

**Indicator: How likely to complete post high school program**

**Year: 2009**

DOH Race-Ethnicity	How likely to complete post high school program														
	Definitely will			Probably will			Probably will not			Definitely will not			Not sure		
	#	%	CI	#	%	CI	#	%	CI	#	%	CI	#	%	CI
Caucasian	3,700	62.4%	53.9 - 70.9	1,000	17.4%	7.7 - 27.2	300	5.4%	3.3 - 7.6	300	5.0%	0.1 - 9.9	600	9.8%	2.9 - 16.6
Native Hawaiian	3,700	32.1%	24.4 - 39.9	3,700	32.1%	22.9 - 41.3	1,300	11.2%	5.4 - 17.0	500	4.7%	0.0 - 10.7	2,300	19.8%	13.2 - 26.5
Filipino	4,600	40.4%	33.1 - 47.7	4,100	36.4%	27.8 - 45.0	700	6.1%	3.4 - 8.8	500	4.1%	2.0 - 6.1	1,500	13.1%	7.3 - 18.8
Japanese	2,300	46.8%	40.7 - 52.9	1,500	30.0%	22.8 - 37.2	300	6.4%	2.4 - 10.4	400	7.3%	0.2 - 14.4	500	9.5%	3.0 - 16.0
Black	n/r	n/r	n/r	n/r	n/r	n/r	n/r	n/r	n/r	n/r	n/r	n/r	n/r	n/r	n/r
Native Alaskan/ American Indian	n/r	n/r	n/r	n/r	n/r	n/r	n/r	n/r	n/r	n/r	n/r	n/r	n/r	n/r	n/r
Other Asian	1,100	67.1%	55.3 - 78.8	200	14.6%	5.4 - 23.8	100	3.5%	0.9 - 6.2	100	6.2%	0.7 - 11.7	100	8.6%	0.0 - 18.8
Other Pacific Islander	n/r	n/r	n/r	n/r	n/r	n/r	n/r	n/r	n/r	n/r	n/r	n/r	n/r	n/r	n/r
Other	4,200	48.0%	42.6 - 53.4	2,800	32.1%	27.6 - 36.5	600	6.4%	4.4 - 8.5	300	3.8%	2.3 - 5.3	800	9.7%	7.5 - 11.8

\* Race-ethnicity data from 2011 forward may not be comparable to data from previous years.

**Perceived Likelihood of Completing a Post High School Program in Hawaii, by School Type,  
Indicator, State, Gender, Grade Level, and DOH Race-Ethnicity,\* for the Years 2007 - 2015**

*Note: Weighted counts rounded to nearest 100, weighted percentages, 95% confidence interval;  
n/r (Not Reportable) - Total unweighted responses less than 100*

**High Schools**

**Indicator: How likely to complete post high school program**

**Year: 2007**

State	How likely to complete post high school program														
	Definitely will			Probably will			Probably will not			Definitely will not			Not sure		
	#	%	CI	#	%	CI	#	%	CI	#	%	CI	#	%	CI
<b>Totals</b>	21,300	41.1%	35.3 - 46.8	17,900	34.5%	30.1 - 39.0	2,600	5.0%	3.8 - 6.1	3,200	6.2%	4.2 - 8.3	6,800	13.2%	10.4 - 16.0

Gender	How likely to complete post high school program														
	Definitely will			Probably will			Probably will not			Definitely will not			Not sure		
	#	%	CI	#	%	CI	#	%	CI	#	%	CI	#	%	CI
<b>Male</b>	9,300	34.7%	27.5 - 42.0	10,300	38.5%	31.7 - 45.3	1,000	3.8%	2.0 - 5.6	2,100	7.7%	4.6 - 10.9	4,100	15.2%	11.3 - 19.2
<b>Female</b>	12,000	47.9%	42.5 - 53.3	7,600	30.3%	25.6 - 35.0	1,500	6.1%	4.3 - 7.9	1,200	4.7%	2.4 - 6.9	2,700	11.0%	7.0 - 15.0

Grade Level	How likely to complete post high school program														
	Definitely will			Probably will			Probably will not			Definitely will not			Not sure		
	#	%	CI	#	%	CI	#	%	CI	#	%	CI	#	%	CI
<b>9th Grade</b>	4,900	33.9%	26.6 - 41.3	5,000	34.4%	24.0 - 44.8	700	4.8%	2.3 - 7.4	1,000	7.2%	1.9 - 12.6	2,800	19.6%	13.7 - 25.5
<b>10th Grade</b>	3,700	28.7%	21.6 - 35.7	5,600	43.5%	36.2 - 50.8	900	7.0%	3.9 - 10.2	900	7.1%	3.3 - 11.0	1,800	13.7%	7.5 - 19.8
<b>11th Grade</b>	7,000	53.9%	42.2 - 65.5	3,800	28.8%	21.2 - 36.4	500	3.5%	1.3 - 5.7	600	4.8%	1.1 - 8.5	1,200	9.1%	4.4 - 13.8
<b>12th Grade</b>	5,500	50.3%	42.3 - 58.2	3,500	32.0%	26.5 - 37.4	400	4.0%	1.4 - 6.5	600	5.6%	1.7 - 9.4	900	8.2%	2.8 - 13.7

\* Race-ethnicity data from 2011 forward may not be comparable to data from previous years.

**Perceived Likelihood of Completing a Post High School Program in Hawaii, by School Type,  
Indicator, State, Gender, Grade Level, and DOH Race-Ethnicity,\* for the Years 2007 - 2015**

*Note: Weighted counts rounded to nearest 100, weighted percentages, 95% confidence interval;  
n/r (Not Reportable) - Total unweighted responses less than 100*

**High Schools**

**Indicator: How likely to complete post high school program**

**Year: 2007**

DOH Race-Ethnicity	How likely to complete post high school program														
	Definitely will			Probably will			Probably will not			Definitely will not			Not sure		
	#	%	CI	#	%	CI	#	%	CI	#	%	CI	#	%	CI
Caucasian	n/r	n/r	n/r	n/r	n/r	n/r	n/r	n/r	n/r	n/r	n/r	n/r	n/r	n/r	n/r
Native Hawaiian	3,300	25.6%	14.2 - 36.9	5,300	41.2%	31.5 - 50.9	600	4.7%	2.3 - 7.1	1,300	10.2%	4.9 - 15.5	2,400	18.3%	11.2 - 25.4
Filipino	5,000	43.3%	34.9 - 51.7	3,900	34.3%	25.3 - 43.3	500	3.9%	1.0 - 6.8	600	5.4%	0.0 - 11.0	1,500	13.0%	7.8 - 18.2
Japanese	2,600	49.7%	40.1 - 59.2	2,000	39.0%	27.4 - 50.6	100	1.2%	0.0 - 3.0	300	4.9%	0.1 - 9.7	300	5.3%	1.3 - 9.3
Black	n/r	n/r	n/r	n/r	n/r	n/r	n/r	n/r	n/r	n/r	n/r	n/r	n/r	n/r	n/r
Native Alaskan/ American Indian	n/r	n/r	n/r	n/r	n/r	n/r	n/r	n/r	n/r	n/r	n/r	n/r	n/r	n/r	n/r
Other Asian	n/r	n/r	n/r	n/r	n/r	n/r	n/r	n/r	n/r	n/r	n/r	n/r	n/r	n/r	n/r
Other Pacific Islander	n/r	n/r	n/r	n/r	n/r	n/r	n/r	n/r	n/r	n/r	n/r	n/r	n/r	n/r	n/r
Other	4,600	46.0%	40.3 - 51.7	3,500	34.8%	29.4 - 40.2	500	4.9%	2.6 - 7.2	600	6.1%	3.6 - 8.6	800	8.2%	4.6 - 11.8

\* Race-ethnicity data from 2011 forward may not be comparable to data from previous years.

**Perceived Likelihood of Completing a Post High School Program in Hawaii, by School Type,  
Indicator, State, Gender, Grade Level, and DOH Race-Ethnicity,\* for the Years 2007 - 2015**

*Note: Weighted counts rounded to nearest 100, weighted percentages, 95% confidence interval;  
n/r (Not Reportable) - Total unweighted responses less than 100*

**Middle Schools**

**Indicator: How likely to complete post high school program**

**Year: 2009**

State	How likely to complete post high school program														
	Definitely will			Probably will			Probably will not			Definitely will not			Not sure		
	#	%	CI	#	%	CI	#	%	CI	#	%	CI	#	%	CI
<b>Totals</b>	8,100	29.4%	24.6 - 34.3	10,600	38.6%	34.5 - 42.7	1,700	6.3%	4.3 - 8.3	1,000	3.8%	2.2 - 5.4	6,000	21.9%	19.4 - 24.5

Gender	How likely to complete post high school program														
	Definitely will			Probably will			Probably will not			Definitely will not			Not sure		
	#	%	CI	#	%	CI	#	%	CI	#	%	CI	#	%	CI
<b>Male</b>	4,000	29.0%	23.5 - 34.5	5,400	39.1%	33.9 - 44.3	1,000	7.3%	4.8 - 9.9	600	4.4%	2.3 - 6.5	2,800	20.2%	16.6 - 23.8
<b>Female</b>	4,000	30.0%	24.9 - 35.0	5,200	38.2%	34.2 - 42.2	700	5.0%	3.0 - 7.0	400	3.1%	1.1 - 5.1	3,200	23.7%	20.3 - 27.2

Grade Level	How likely to complete post high school program														
	Definitely will			Probably will			Probably will not			Definitely will not			Not sure		
	#	%	CI	#	%	CI	#	%	CI	#	%	CI	#	%	CI
<b>6th Grade</b>	2,000	31.5%	23.5 - 39.4	2,200	35.3%	28.8 - 41.7	300	4.1%	2.0 - 6.2	200	3.1%	0.8 - 5.5	1,600	26.0%	19.1 - 32.9
<b>7th Grade</b>	2,900	28.1%	23.2 - 33.1	3,800	36.7%	33.2 - 40.2	900	9.1%	5.1 - 13.1	300	3.2%	1.4 - 5.0	2,400	22.9%	18.1 - 27.7
<b>8th Grade</b>	3,200	29.8%	21.8 - 37.8	4,500	42.9%	35.3 - 50.6	500	4.3%	1.1 - 7.5	500	4.6%	1.8 - 7.4	1,900	18.3%	13.0 - 23.6

\* Race-ethnicity data from 2011 forward may not be comparable to data from previous years.

**Perceived Likelihood of Completing a Post High School Program in Hawaii, by School Type,  
Indicator, State, Gender, Grade Level, and DOH Race-Ethnicity,\* for the Years 2007 - 2015**

*Note: Weighted counts rounded to nearest 100, weighted percentages, 95% confidence interval;  
n/r (Not Reportable) - Total unweighted responses less than 100*

**Middle Schools**

**Indicator: How likely to complete post high school program**

**Year: 2009**

DOH Race-Ethnicity	How likely to complete post high school program														
	Definitely will			Probably will			Probably will not			Definitely will not			Not sure		
	#	%	CI	#	%	CI	#	%	CI	#	%	CI	#	%	CI
Caucasian	1,000	29.6%	20.0 - 39.2	1,300	40.0%	29.7 - 50.4	100	1.9%	0.0 - 5.1	200	6.5%	0.2 - 12.8	700	21.9%	10.2 - 33.6
Native Hawaiian	1,800	27.1%	17.7 - 36.5	2,600	39.8%	30.5 - 49.0	400	5.9%	1.8 - 10.0	200	2.8%	0.2 - 5.4	1,600	24.5%	18.5 - 30.5
Filipino	1,700	30.0%	21.3 - 38.7	2,300	39.1%	32.4 - 45.8	400	6.2%	2.7 - 9.8	100	2.1%	0.4 - 3.8	1,300	22.6%	17.4 - 27.8
Japanese	n/r	n/r	n/r	n/r	n/r	n/r	n/r	n/r	n/r	n/r	n/r	n/r	n/r	n/r	n/r
Black	n/r	n/r	n/r	n/r	n/r	n/r	n/r	n/r	n/r	n/r	n/r	n/r	n/r	n/r	n/r
Native Alaskan/ American Indian	n/r	n/r	n/r	n/r	n/r	n/r	n/r	n/r	n/r	n/r	n/r	n/r	n/r	n/r	n/r
Other Asian	n/r	n/r	n/r	n/r	n/r	n/r	n/r	n/r	n/r	n/r	n/r	n/r	n/r	n/r	n/r
Other Pacific Islander	n/r	n/r	n/r	n/r	n/r	n/r	n/r	n/r	n/r	n/r	n/r	n/r	n/r	n/r	n/r
Other	1,900	33.4%	29.1 - 37.7	2,100	37.5%	33.6 - 41.3	400	6.6%	4.1 - 9.1	300	4.5%	2.3 - 6.6	1,000	18.0%	15.0 - 21.1

\* Race-ethnicity data from 2011 forward may not be comparable to data from previous years.



**Perceived Likelihood of Completing a Post High School Program in Hawaii, by School Type,  
Indicator, State, Gender, Grade Level, and DOH Race-Ethnicity,\* for the Years 2007 - 2015**

*Note: Weighted counts rounded to nearest 100, weighted percentages, 95% confidence interval;  
n/r (Not Reportable) - Total unweighted responses less than 100*

**Middle Schools**

**Indicator: How likely to complete post high school program**

**Year: 2007**

State	How likely to complete post high school program														
	Definitely will			Probably will			Probably will not			Definitely will not			Not sure		
	#	%	CI	#	%	CI	#	%	CI	#	%	CI	#	%	CI
<b>Totals</b>	9,000	28.9%	24.5 - 33.3	11,500	36.9%	32.5 - 41.2	2,200	6.9%	4.6 - 9.2	1,400	4.5%	3.0 - 5.9	7,100	22.8%	19.2 - 26.4

Gender	How likely to complete post high school program														
	Definitely will			Probably will			Probably will not			Definitely will not			Not sure		
	#	%	CI	#	%	CI	#	%	CI	#	%	CI	#	%	CI
<b>Male</b>	4,100	25.7%	20.4 - 31.1	6,100	37.9%	33.4 - 42.3	1,200	7.3%	4.5 - 10.2	800	5.2%	3.1 - 7.2	3,800	23.9%	18.8 - 29.0
<b>Female</b>	4,900	32.4%	26.9 - 37.9	5,400	35.9%	29.8 - 42.1	1,000	6.5%	3.6 - 9.4	600	3.7%	2.1 - 5.3	3,200	21.4%	17.3 - 25.6

Grade Level	How likely to complete post high school program														
	Definitely will			Probably will			Probably will not			Definitely will not			Not sure		
	#	%	CI	#	%	CI	#	%	CI	#	%	CI	#	%	CI
<b>6th Grade</b>	1,700	27.5%	21.9 - 33.0	2,000	32.1%	27.1 - 37.0	300	4.7%	1.6 - 7.8	500	7.3%	4.4 - 10.2	1,800	28.5%	22.7 - 34.3
<b>7th Grade</b>	3,600	29.5%	21.5 - 37.5	4,500	36.9%	30.8 - 43.0	900	7.5%	5.3 - 9.8	600	4.9%	2.2 - 7.6	2,600	21.2%	17.2 - 25.1
<b>8th Grade</b>	3,600	29.4%	22.7 - 36.1	4,800	40.0%	32.6 - 47.5	900	7.6%	3.8 - 11.4	300	2.6%	1.2 - 4.1	2,500	20.4%	15.2 - 25.5

\* Race-ethnicity data from 2011 forward may not be comparable to data from previous years.

**Perceived Likelihood of Completing a Post High School Program in Hawaii, by School Type,  
Indicator, State, Gender, Grade Level, and DOH Race-Ethnicity,\* for the Years 2007 - 2015**

*Note: Weighted counts rounded to nearest 100, weighted percentages, 95% confidence interval;  
n/r (Not Reportable) - Total unweighted responses less than 100*

**Middle Schools**

**Indicator: How likely to complete post high school program**

**Year: 2007**

DOH Race-Ethnicity	How likely to complete post high school program														
	Definitely will			Probably will			Probably will not			Definitely will not			Not sure		
	#	%	CI	#	%	CI	#	%	CI	#	%	CI	#	%	CI
Caucasian	n/r	n/r	n/r	n/r	n/r	n/r	n/r	n/r	n/r	n/r	n/r	n/r	n/r	n/r	n/r
Native Hawaiian	n/r	n/r	n/r	n/r	n/r	n/r	n/r	n/r	n/r	n/r	n/r	n/r	n/r	n/r	n/r
Filipino	1,700	26.5%	19.3 - 33.8	2,400	38.1%	30.5 - 45.7	500	7.5%	4.0 - 11.0	400	7.0%	3.3 - 10.7	1,300	20.9%	15.1 - 26.7
Japanese	n/r	n/r	n/r	n/r	n/r	n/r	n/r	n/r	n/r	n/r	n/r	n/r	n/r	n/r	n/r
Black	n/r	n/r	n/r	n/r	n/r	n/r	n/r	n/r	n/r	n/r	n/r	n/r	n/r	n/r	n/r
Native Alaskan/ American Indian	n/r	n/r	n/r	n/r	n/r	n/r	n/r	n/r	n/r	n/r	n/r	n/r	n/r	n/r	n/r
Other Asian	n/r	n/r	n/r	n/r	n/r	n/r	n/r	n/r	n/r	n/r	n/r	n/r	n/r	n/r	n/r
Other Pacific Islander	n/r	n/r	n/r	n/r	n/r	n/r	n/r	n/r	n/r	n/r	n/r	n/r	n/r	n/r	n/r
Other	1,600	27.2%	22.6 - 31.9	2,400	39.8%	34.7 - 44.9	400	6.7%	4.9 - 8.6	300	4.9%	2.9 - 6.8	1,300	21.4%	16.1 - 26.7

\* Race-ethnicity data from 2011 forward may not be comparable to data from previous years.