

## Perceived Likelihood of Completing High School in Hawaii

### Perceived Likelihood of Completing High School in Hawaii, by School Type, Indicator, State, Gender, Grade Level, and DOH Race-Ethnicity,\* for the Years 2007 - 2015

*The weighted data is available for middle school for all years; high school weighted data is not available for 2001 or 2003. Questions for certain health indicators were not asked in all years.*

*Below are the indicators included in this report and the long description for each indicator.*

YRBS Health Indicator	Health Indicator Description
How likely to complete high school	How likely is it that you will complete high school

*Suggested citation:*

*Hawaii Health Data Warehouse, State of Hawaii, Hawaii School Health Survey: Youth Risk Behavior Survey Module, (report title and years), Report Created: 8/2/16*

*For documentation on other terms and coding in this report, please go to the following links:*

[Click here to access YRBS documentation](#)

[Click here to access Race-Ethnicity coding](#)

[Click here to access Hawai'i Data Guide](#)

*For questions about this report, please contact the Hawaii Health Data Warehouse*

[profiles@hhdw.org](mailto:profiles@hhdw.org)

**(855) 946-5899 x15**

*\* Race-ethnicity data from 2011 forward may not be comparable to data from previous years.*

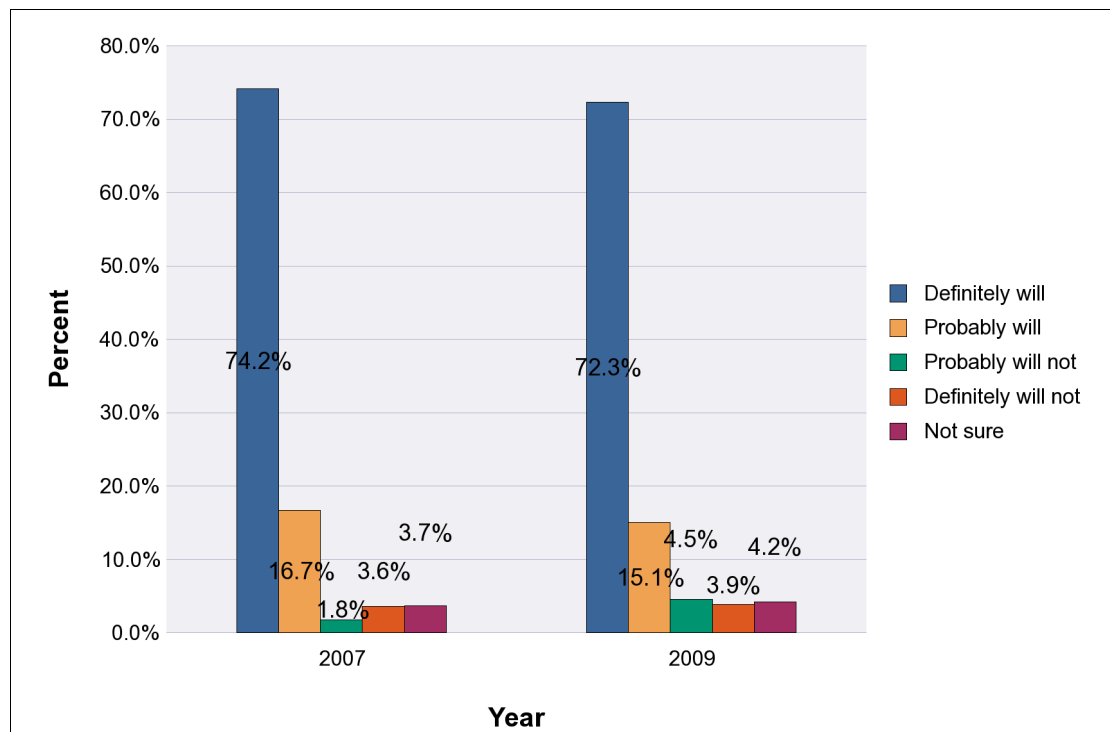
## Perceived Likelihood of Completing High School in Hawaii, by School Type and Indicator, for the Years 2007 - 2015

*Note: Weighted percentages, 95% confidence interval; n/r (Not Reportable) - Total unweighted responses less than 100*

### High Schools

#### How likely to complete high school

Year	YRBS Response	Percent
2007	Definitely will	74.2%
	Probably will	16.7%
	Probably will not	1.8%
	Definitely will not	3.6%
	Not sure	3.7%
Year	YRBS Response	Percent
2009	Definitely will	72.3%
	Probably will	15.1%
	Probably will not	4.5%
	Definitely will not	3.9%
	Not sure	4.2%



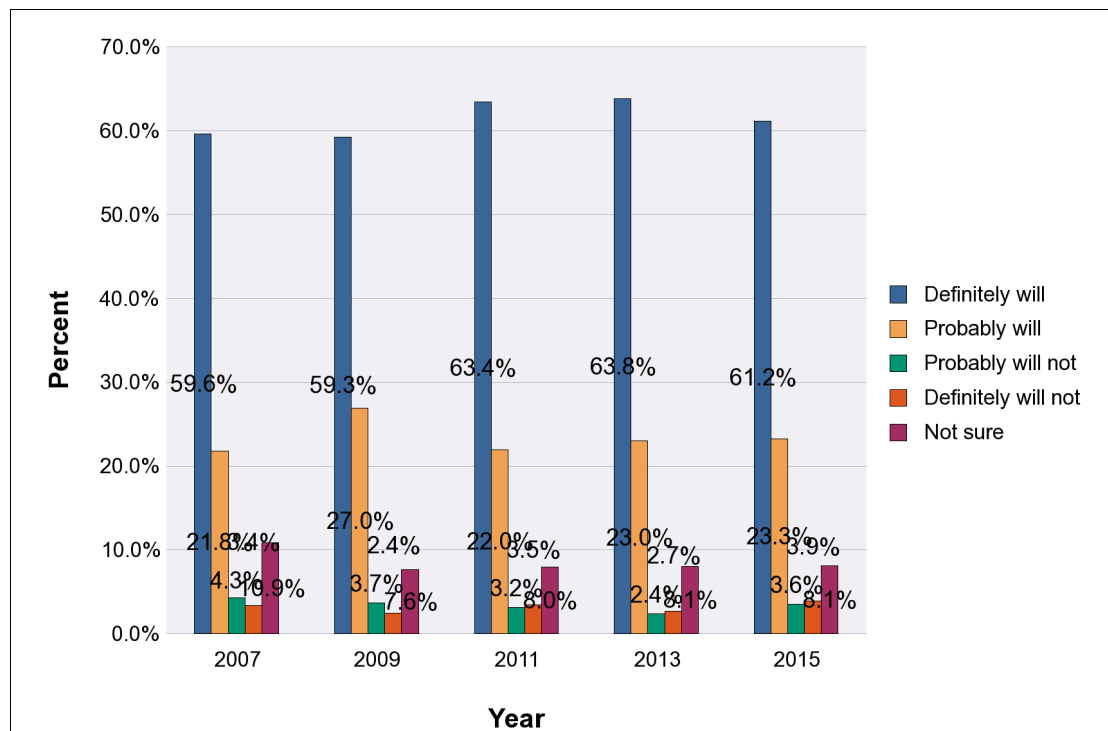
## Perceived Likelihood of Completing High School in Hawaii, by School Type and Indicator, for the Years 2007 - 2015

*Note: Weighted percentages, 95% confidence interval; n/r (Not Reportable) - Total unweighted responses less than 100*

### Middle Schools

#### How likely to complete high school

Year	YRBS Response	Percent
2007	Definitely will	59.6%
	Probably will	21.8%
	Probably will not	4.3%
	Definitely will not	3.4%
	Not sure	10.9%
Year	YRBS Response	Percent
2009	Definitely will	59.3%
	Probably will	27.0%
	Probably will not	3.7%
	Definitely will not	2.4%
	Not sure	7.6%
Year	YRBS Response	Percent
2011	Definitely will	63.4%
	Probably will	22.0%
	Probably will not	3.2%
	Definitely will not	3.5%
	Not sure	8.0%



## Perceived Likelihood of Completing High School in Hawaii, by School Type and Indicator, for the Years 2007 - 2015

*Note: Weighted percentages, 95% confidence interval; n/r (Not Reportable) - Total unweighted responses less than 100*

### Middle Schools

#### How likely to complete high school

Year	YRBS Response	Percent
2013	Definitely will	63.8%
	Probably will	23.0%
	Probably will not	2.4%
	Definitely will not	2.7%
	Not sure	8.1%
Year	YRBS Response	Percent
2015	Definitely will	61.2%
	Probably will	23.3%
	Probably will not	3.6%
	Definitely will not	3.9%
	Not sure	8.1%

**Perceived Likelihood of Completing High School in Hawaii, by School Type, Indicator, State, Gender, Grade Level, and DOH Race-Ethnicity,\* for the Years 2007 - 2015**

*Note: Weighted counts rounded to nearest 100, weighted percentages, 95% confidence interval; n/r (Not Reportable) - Total unweighted responses less than 100*

**High Schools**

**Indicator: How likely to complete high school**

**Year: 2009**

State	How likely to complete high school														
	Definitely will			Probably will			Probably will not			Definitely will not			Not sure		
	#	%	CI	#	%	CI	#	%	CI	#	%	CI	#	%	CI
<b>Totals</b>	34,500	72.3%	69.0 - 75.6	7,200	15.1%	12.4 - 17.7	2,200	4.5%	3.0 - 6.1	1,800	3.9%	2.4 - 5.4	2,000	4.2%	3.0 - 5.5

Gender	How likely to complete high school														
	Definitely will			Probably will			Probably will not			Definitely will not			Not sure		
	#	%	CI	#	%	CI	#	%	CI	#	%	CI	#	%	CI
<b>Male</b>	16,600	67.6%	62.9 - 72.3	3,900	16.1%	12.9 - 19.4	1,500	6.2%	3.3 - 9.2	1,200	5.1%	2.4 - 7.8	1,200	5.0%	2.9 - 7.1
<b>Female</b>	17,800	77.6%	73.0 - 82.2	3,200	13.9%	10.2 - 17.6	600	2.8%	1.4 - 4.2	600	2.5%	0.8 - 4.1	700	3.2%	1.5 - 4.8

Grade Level	How likely to complete high school														
	Definitely will			Probably will			Probably will not			Definitely will not			Not sure		
	#	%	CI	#	%	CI	#	%	CI	#	%	CI	#	%	CI
<b>9th Grade</b>	9,300	65.2%	57.8 - 72.5	2,500	17.7%	13.9 - 21.5	900	6.6%	3.1 - 10.1	800	5.6%	3.5 - 7.8	700	4.9%	2.7 - 7.2
<b>10th Grade</b>	8,400	72.2%	64.3 - 80.1	1,900	16.6%	9.8 - 23.4	600	5.1%	1.0 - 9.2	200	1.9%	0.6 - 3.1	500	4.2%	0.8 - 7.7
<b>11th Grade</b>	8,200	78.2%	72.1 - 84.4	1,300	12.1%	7.7 - 16.4	300	3.0%	0.6 - 5.3	300	2.6%	0.3 - 4.9	400	4.2%	1.4 - 6.9
<b>12th Grade</b>	8,300	75.7%	65.5 - 85.9	1,500	13.5%	4.3 - 22.7	300	3.1%	0.6 - 5.5	500	4.8%	0.8 - 8.7	300	3.0%	0.2 - 5.9

\* Race-ethnicity data from 2011 forward may not be comparable to data from previous years.

**Perceived Likelihood of Completing High School in Hawaii, by School Type, Indicator, State, Gender, Grade Level, and DOH Race-Ethnicity,\* for the Years 2007 - 2015**

*Note: Weighted counts rounded to nearest 100, weighted percentages, 95% confidence interval;  
n/r (Not Reportable) - Total unweighted responses less than 100*

**High Schools**

**Indicator: How likely to complete high school**

**Year: 2009**

DOH Race-Ethnicity	How likely to complete high school														
	Definitely will			Probably will			Probably will not			Definitely will not			Not sure		
	#	%	CI	#	%	CI	#	%	CI	#	%	CI	#	%	CI
Caucasian	5,100	82.3%	74.7 - 90.0	600	9.6%	4.0 - 15.3	300	4.4%	0.3 - 8.4	100	1.8%	0.0 - 3.8	100	1.9%	0.0 - 4.9
Native Hawaiian	7,100	61.2%	53.7 - 68.7	2,300	19.6%	12.7 - 26.6	900	7.9%	4.3 - 11.5	700	6.3%	0.0 - 12.6	600	5.0%	1.9 - 8.1
Filipino	8,500	74.9%	68.5 - 81.4	1,600	13.9%	9.9 - 17.9	400	3.5%	0.7 - 6.2	300	2.3%	0.8 - 3.8	600	5.4%	1.7 - 9.0
Japanese	3,800	77.1%	64.8 - 89.3	700	13.7%	5.9 - 21.5	200	3.8%	0.0 - 7.5	200	3.7%	0.2 - 7.3	100	1.8%	0.0 - 4.6
Black	n/r	n/r	n/r	n/r	n/r	n/r	n/r	n/r	n/r	n/r	n/r	n/r	n/r	n/r	n/r
Native Alaskan/ American Indian	n/r	n/r	n/r	n/r	n/r	n/r	n/r	n/r	n/r	n/r	n/r	n/r	n/r	n/r	n/r
Other Asian	1,300	78.5%	72.4 - 84.6	100	7.9%	2.4 - 13.3	100	6.2%	0.0 - 13.1	<50	2.0%	0.0 - 4.2	100	5.4%	1.2 - 9.6
Other Pacific Islander	n/r	n/r	n/r	n/r	n/r	n/r	n/r	n/r	n/r	n/r	n/r	n/r	n/r	n/r	n/r
Other	6,500	73.2%	68.8 - 77.7	1,500	16.7%	12.2 - 21.2	200	2.6%	1.1 - 4.1	400	4.1%	2.0 - 6.2	300	3.4%	1.7 - 5.1

\* Race-ethnicity data from 2011 forward may not be comparable to data from previous years.

**Perceived Likelihood of Completing High School in Hawaii, by School Type, Indicator, State, Gender, Grade Level, and DOH Race-Ethnicity,\* for the Years 2007 - 2015**

*Note: Weighted counts rounded to nearest 100, weighted percentages, 95% confidence interval;  
n/r (Not Reportable) - Total unweighted responses less than 100*

**High Schools**

**Indicator: How likely to complete high school**

**Year: 2007**

State	How likely to complete high school														
	Definitely will			Probably will			Probably will not			Definitely will not			Not sure		
	#	%	CI	#	%	CI	#	%	CI	#	%	CI	#	%	CI
<b>Totals</b>	38,400	74.2%	68.3 - 80.1	8,700	16.7%	12.7 - 20.8	900	1.8%	1.0 - 2.5	1,900	3.6%	1.8 - 5.4	1,900	3.7%	2.0 - 5.4

Gender	How likely to complete high school														
	Definitely will			Probably will			Probably will not			Definitely will not			Not sure		
	#	%	CI	#	%	CI	#	%	CI	#	%	CI	#	%	CI
<b>Male</b>	19,300	71.7%	63.9 - 79.4	5,100	19.0%	12.7 - 25.4	400	1.5%	1.0 - 2.1	1,200	4.5%	1.9 - 7.0	900	3.3%	1.6 - 5.1
<b>Female</b>	19,100	77.0%	72.3 - 81.7	3,500	14.2%	11.0 - 17.4	500	2.0%	0.5 - 3.4	700	2.7%	0.8 - 4.6	1,000	4.1%	1.4 - 6.8

Grade Level	How likely to complete high school														
	Definitely will			Probably will			Probably will not			Definitely will not			Not sure		
	#	%	CI	#	%	CI	#	%	CI	#	%	CI	#	%	CI
<b>9th Grade</b>	9,400	64.8%	52.5 - 77.2	3,100	21.1%	12.8 - 29.4	200	1.3%	0.0 - 2.9	800	5.7%	0.7 - 10.8	1,000	7.0%	3.5 - 10.5
<b>10th Grade</b>	9,100	70.5%	62.9 - 78.0	2,600	20.3%	13.9 - 26.6	200	1.9%	0.0 - 3.9	600	4.8%	0.2 - 9.5	300	2.5%	0.5 - 4.5
<b>11th Grade</b>	10,600	81.3%	73.3 - 89.4	1,600	12.1%	5.7 - 18.5	200	1.6%	0.2 - 3.0	300	2.1%	0.2 - 3.9	400	2.9%	0.6 - 5.3
<b>12th Grade</b>	9,100	83.0%	78.0 - 88.0	1,300	12.4%	8.2 - 16.5	200	1.8%	0.6 - 3.0	100	1.3%	0.1 - 2.6	200	1.5%	0.2 - 2.8

\* Race-ethnicity data from 2011 forward may not be comparable to data from previous years.

**Perceived Likelihood of Completing High School in Hawaii, by School Type, Indicator, State, Gender, Grade Level, and DOH Race-Ethnicity,\* for the Years 2007 - 2015**

*Note: Weighted counts rounded to nearest 100, weighted percentages, 95% confidence interval;  
n/r (Not Reportable) - Total unweighted responses less than 100*

**High Schools**

**Indicator: How likely to complete high school**

**Year: 2007**

DOH Race-Ethnicity	How likely to complete high school														
	Definitely will			Probably will			Probably will not			Definitely will not			Not sure		
	#	%	CI	#	%	CI	#	%	CI	#	%	CI	#	%	CI
Caucasian	n/r	n/r	n/r	n/r	n/r	n/r	n/r	n/r	n/r	n/r	n/r	n/r	n/r	n/r	n/r
Native Hawaiian	8,900	67.3%	55.0 - 79.5	2,900	21.8%	12.1 - 31.4	100	0.7%	0.0 - 2.1	800	6.3%	0.9 - 11.7	500	3.9%	0.4 - 7.4
Filipino	8,300	72.2%	62.8 - 81.6	1,900	16.2%	9.5 - 23.0	200	2.0%	1.2 - 2.7	500	4.8%	0.2 - 9.3	600	4.9%	1.8 - 8.0
Japanese	4,400	85.5%	77.9 - 93.1	500	10.1%	4.1 - 16.0	100	1.8%	0.0 - 4.3	0	0.0%	0.0 - 0.0	100	2.7%	0.0 - 6.2
Black	n/r	n/r	n/r	n/r	n/r	n/r	n/r	n/r	n/r	n/r	n/r	n/r	n/r	n/r	n/r
Native Alaskan/ American Indian	n/r	n/r	n/r	n/r	n/r	n/r	n/r	n/r	n/r	n/r	n/r	n/r	n/r	n/r	n/r
Other Asian	n/r	n/r	n/r	n/r	n/r	n/r	n/r	n/r	n/r	n/r	n/r	n/r	n/r	n/r	n/r
Other Pacific Islander	n/r	n/r	n/r	n/r	n/r	n/r	n/r	n/r	n/r	n/r	n/r	n/r	n/r	n/r	n/r
Other	7,800	78.4%	73.4 - 83.4	1,500	14.6%	10.4 - 18.9	200	1.9%	0.7 - 3.2	300	2.6%	1.1 - 4.1	200	2.4%	0.8 - 4.1

\* Race-ethnicity data from 2011 forward may not be comparable to data from previous years.



**Perceived Likelihood of Completing High School in Hawaii, by School Type, Indicator, State, Gender, Grade Level, and DOH Race-Ethnicity,\* for the Years 2007 - 2015**

*Note: Weighted counts rounded to nearest 100, weighted percentages, 95% confidence interval; n/r (Not Reportable) - Total unweighted responses less than 100*

**Middle Schools**

**Indicator: How likely to complete high school**

**Year: 2015**

State	How likely to complete high school														
	Definitely will			Probably will			Probably will not			Definitely will not			Not sure		
	#	%	CI	#	%	CI	#	%	CI	#	%	CI	#	%	CI
<b>Totals</b>	14,700	61.2%	57.5 - 64.9	5,600	23.3%	20.6 - 26.0	900	3.6%	2.4 - 4.7	900	3.9%	3.1 - 4.6	1,900	8.1%	6.7 - 9.5

Gender	How likely to complete high school														
	Definitely will			Probably will			Probably will not			Definitely will not			Not sure		
	#	%	CI	#	%	CI	#	%	CI	#	%	CI	#	%	CI
<b>Male</b>	6,400	54.9%	50.7 - 59.1	3,000	25.9%	23.3 - 28.5	600	4.8%	3.1 - 6.5	600	4.8%	3.8 - 5.8	1,100	9.6%	7.4 - 11.8
<b>Female</b>	8,200	67.1%	62.9 - 71.3	2,600	20.9%	17.2 - 24.6	300	2.3%	1.1 - 3.5	400	3.0%	1.9 - 4.0	800	6.7%	5.4 - 8.0

Grade Level	How likely to complete high school														
	Definitely will			Probably will			Probably will not			Definitely will not			Not sure		
	#	%	CI	#	%	CI	#	%	CI	#	%	CI	#	%	CI
<b>6th Grade</b>	2,300	49.8%	44.7 - 54.9	1,400	30.8%	26.2 - 35.4	100	3.2%	2.0 - 4.4	200	4.0%	2.6 - 5.5	600	12.1%	10.0 - 14.3
<b>7th Grade</b>	5,700	58.8%	54.5 - 63.1	2,300	23.8%	20.6 - 27.1	400	3.6%	1.6 - 5.6	400	4.4%	3.5 - 5.2	900	9.4%	7.6 - 11.1
<b>8th Grade</b>	6,500	69.2%	65.3 - 73.1	1,800	19.3%	16.0 - 22.5	300	3.4%	2.2 - 4.6	300	3.2%	2.1 - 4.3	500	4.9%	2.9 - 6.9

\* Race-ethnicity data from 2011 forward may not be comparable to data from previous years.

**Perceived Likelihood of Completing High School in Hawaii, by School Type, Indicator, State, Gender, Grade Level, and DOH Race-Ethnicity,\* for the Years 2007 - 2015**

*Note: Weighted counts rounded to nearest 100, weighted percentages, 95% confidence interval;  
n/r (Not Reportable) - Total unweighted responses less than 100*

**Middle Schools**

**Indicator: How likely to complete high school**

**Year: 2015**

DOH Race-Ethnicity	How likely to complete high school														
	Definitely will			Probably will			Probably will not			Definitely will not			Not sure		
	#	%	CI	#	%	CI	#	%	CI	#	%	CI	#	%	CI
Caucasian	2,000	68.7%	61.6 - 75.8	600	21.9%	15.4 - 28.3	100	2.8%	0.8 - 4.8	<50	1.2%	0.2 - 2.1	200	5.5%	3.9 - 7.0
Native Hawaiian	3,100	56.7%	52.7 - 60.7	1,300	24.7%	22.1 - 27.3	300	5.3%	2.6 - 8.0	300	5.8%	4.5 - 7.2	400	7.5%	6.0 - 9.0
Filipino	3,700	62.5%	53.0 - 72.0	1,400	24.4%	17.9 - 30.8	100	2.1%	0.6 - 3.7	200	3.2%	1.7 - 4.7	500	7.8%	5.4 - 10.2
Japanese	1,200	72.4%	64.7 - 80.0	300	16.8%	9.5 - 24.0	100	3.3%	0.0 - 7.8	<50	1.1%	0.0 - 3.4	100	6.4%	0.0 - 14.3
Black	n/r	n/r	n/r	n/r	n/r	n/r	n/r	n/r	n/r	n/r	n/r	n/r	n/r	n/r	n/r
Native Alaskan/ American Indian	n/r	n/r	n/r	n/r	n/r	n/r	n/r	n/r	n/r	n/r	n/r	n/r	n/r	n/r	n/r
Other Asian	300	69.3%	61.9 - 76.7	100	20.2%	16.2 - 24.3	<50	0.6%	0.0 - 1.5	<50	3.7%	0.3 - 7.1	<50	6.1%	0.8 - 11.5
Other Pacific Islander	900	55.6%	46.3 - 64.9	400	24.7%	16.3 - 33.0	<50	1.2%	0.4 - 2.0	100	3.4%	0.3 - 6.4	300	15.2%	9.8 - 20.7
Other	2,500	64.7%	60.9 - 68.5	800	20.3%	17.8 - 22.8	200	4.8%	2.5 - 7.1	200	4.0%	2.8 - 5.1	200	6.2%	4.9 - 7.6

\* Race-ethnicity data from 2011 forward may not be comparable to data from previous years.

**Perceived Likelihood of Completing High School in Hawaii, by School Type, Indicator, State, Gender, Grade Level, and DOH Race-Ethnicity,\* for the Years 2007 - 2015**

*Note: Weighted counts rounded to nearest 100, weighted percentages, 95% confidence interval; n/r (Not Reportable) - Total unweighted responses less than 100*

**Middle Schools**

**Indicator: How likely to complete high school**

**Year: 2013**

State	How likely to complete high school														
	Definitely will			Probably will			Probably will not			Definitely will not			Not sure		
	#	%	CI	#	%	CI	#	%	CI	#	%	CI	#	%	CI
<b>Totals</b>	15,900	63.8%	61.1 - 66.6	5,700	23.0%	20.8 - 25.2	600	2.4%	1.8 - 3.0	700	2.7%	2.1 - 3.3	2,000	8.1%	5.5 - 10.6

Gender	How likely to complete high school														
	Definitely will			Probably will			Probably will not			Definitely will not			Not sure		
	#	%	CI	#	%	CI	#	%	CI	#	%	CI	#	%	CI
<b>Male</b>	7,000	58.2%	55.5 - 60.9	3,200	26.2%	22.7 - 29.7	400	3.1%	1.9 - 4.3	400	3.1%	2.1 - 4.2	1,100	9.4%	6.7 - 12.0
<b>Female</b>	8,800	69.3%	64.9 - 73.7	2,500	19.9%	17.2 - 22.6	200	1.7%	1.3 - 2.2	300	2.2%	1.3 - 3.1	900	6.9%	4.2 - 9.5

Grade Level	How likely to complete high school														
	Definitely will			Probably will			Probably will not			Definitely will not			Not sure		
	#	%	CI	#	%	CI	#	%	CI	#	%	CI	#	%	CI
<b>6th Grade</b>	2,900	56.0%	50.5 - 61.6	1,400	27.5%	21.7 - 33.3	100	1.6%	0.9 - 2.3	100	2.5%	1.2 - 3.8	600	12.3%	6.1 - 18.6
<b>7th Grade</b>	6,200	61.7%	57.8 - 65.7	2,500	24.9%	22.9 - 26.8	200	2.2%	1.0 - 3.5	300	2.7%	1.9 - 3.6	900	8.4%	6.4 - 10.4
<b>8th Grade</b>	6,700	70.4%	67.1 - 73.8	1,700	18.4%	15.0 - 21.9	300	3.1%	2.2 - 4.0	300	2.7%	1.9 - 3.4	500	5.4%	3.0 - 7.7

\* Race-ethnicity data from 2011 forward may not be comparable to data from previous years.

**Perceived Likelihood of Completing High School in Hawaii, by School Type, Indicator, State, Gender, Grade Level, and DOH Race-Ethnicity,\* for the Years 2007 - 2015**

*Note: Weighted counts rounded to nearest 100, weighted percentages, 95% confidence interval;  
n/r (Not Reportable) - Total unweighted responses less than 100*

**Middle Schools**

**Indicator: How likely to complete high school**

**Year: 2013**

DOH Race-Ethnicity	How likely to complete high school														
	Definitely will			Probably will			Probably will not			Definitely will not			Not sure		
	#	%	CI	#	%	CI	#	%	CI	#	%	CI	#	%	CI
<b>Caucasian</b>	2,100	68.8%	62.2 - 75.5	700	23.9%	15.6 - 32.3	<50	0.3%	0.0 - 0.9	100	2.3%	0.0 - 4.8	100	4.6%	1.9 - 7.4
<b>Native Hawaiian</b>	3,500	61.2%	58.0 - 64.4	1,500	26.4%	23.9 - 29.0	200	2.9%	1.6 - 4.2	200	2.7%	1.6 - 3.8	400	6.8%	5.1 - 8.5
<b>Filipino</b>	3,900	64.1%	57.7 - 70.5	1,200	20.1%	16.7 - 23.5	100	1.6%	0.9 - 2.3	200	3.3%	1.8 - 4.8	700	10.9%	6.3 - 15.4
<b>Japanese</b>	1,400	74.4%	57.0 - 91.7	400	19.8%	5.8 - 33.9	<50	1.8%	0.0 - 5.6	<50	1.1%	0.0 - 3.3	100	2.9%	0.0 - 6.8
<b>Black</b>	n/r	n/r	n/r	n/r	n/r	n/r	n/r	n/r	n/r	n/r	n/r	n/r	n/r	n/r	n/r
<b>Native Alaskan/ American Indian</b>	n/r	n/r	n/r	n/r	n/r	n/r	n/r	n/r	n/r	n/r	n/r	n/r	n/r	n/r	n/r
<b>Other Asian</b>	1,100	64.2%	56.7 - 71.6	300	20.7%	10.8 - 30.6	100	6.5%	2.5 - 10.5	<50	2.8%	0.7 - 5.0	100	5.8%	2.6 - 9.0
<b>Other Pacific Islander</b>	1,000	57.7%	51.3 - 64.2	300	19.8%	15.3 - 24.4	100	5.4%	0.5 - 10.4	<50	1.9%	0.0 - 4.0	300	15.1%	8.3 - 21.8
<b>Other</b>	2,000	65.6%	62.8 - 68.3	700	23.3%	20.0 - 26.5	100	2.5%	1.5 - 3.5	100	2.8%	1.7 - 4.0	200	5.8%	4.5 - 7.1

\* Race-ethnicity data from 2011 forward may not be comparable to data from previous years.

**Perceived Likelihood of Completing High School in Hawaii, by School Type, Indicator, State, Gender, Grade Level, and DOH Race-Ethnicity,\* for the Years 2007 - 2015**

*Note: Weighted counts rounded to nearest 100, weighted percentages, 95% confidence interval; n/r (Not Reportable) - Total unweighted responses less than 100*

**Middle Schools**

**Indicator: How likely to complete high school**

**Year: 2011**

State	How likely to complete high school														
	Definitely will			Probably will			Probably will not			Definitely will not			Not sure		
	#	%	CI	#	%	CI	#	%	CI	#	%	CI	#	%	CI
<b>Totals</b>	15,800	63.4%	61.4 - 65.5	5,500	22.0%	20.5 - 23.4	800	3.2%	2.5 - 3.8	900	3.5%	2.7 - 4.3	2,000	8.0%	6.8 - 9.1

Gender	How likely to complete high school														
	Definitely will			Probably will			Probably will not			Definitely will not			Not sure		
	#	%	CI	#	%	CI	#	%	CI	#	%	CI	#	%	CI
<b>Male</b>	7,000	56.3%	52.7 - 59.9	3,100	24.8%	22.8 - 26.8	500	4.3%	3.2 - 5.3	600	4.7%	3.2 - 6.2	1,200	10.0%	8.6 - 11.4
<b>Female</b>	8,800	70.8%	68.7 - 72.8	2,400	19.0%	17.1 - 20.9	200	2.0%	1.5 - 2.5	300	2.2%	1.7 - 2.8	700	6.0%	4.3 - 7.6

Grade Level	How likely to complete high school														
	Definitely will			Probably will			Probably will not			Definitely will not			Not sure		
	#	%	CI	#	%	CI	#	%	CI	#	%	CI	#	%	CI
<b>6th Grade</b>	3,000	55.2%	52.4 - 57.9	1,400	26.5%	23.9 - 29.2	200	2.8%	1.8 - 3.9	200	3.0%	2.0 - 4.0	700	12.5%	9.0 - 16.0
<b>7th Grade</b>	6,400	63.8%	59.2 - 68.4	2,100	21.3%	18.7 - 23.9	300	3.4%	2.2 - 4.6	400	3.8%	2.7 - 5.0	800	7.6%	6.2 - 9.0
<b>8th Grade</b>	6,300	68.0%	65.6 - 70.3	1,900	19.9%	17.5 - 22.2	300	3.1%	2.3 - 3.8	300	3.4%	2.1 - 4.7	500	5.7%	4.0 - 7.5

\* Race-ethnicity data from 2011 forward may not be comparable to data from previous years.

**Perceived Likelihood of Completing High School in Hawaii, by School Type, Indicator, State, Gender, Grade Level, and DOH Race-Ethnicity,\* for the Years 2007 - 2015**

*Note: Weighted counts rounded to nearest 100, weighted percentages, 95% confidence interval;  
n/r (Not Reportable) - Total unweighted responses less than 100*

**Middle Schools**

**Indicator: How likely to complete high school**

**Year: 2011**

DOH Race-Ethnicity	How likely to complete high school														
	Definitely will			Probably will			Probably will not			Definitely will not			Not sure		
	#	%	CI	#	%	CI	#	%	CI	#	%	CI	#	%	CI
Caucasian	2,300	72.8%	68.5 - 77.1	600	18.8%	15.0 - 22.6	100	2.1%	1.0 - 3.3	100	1.6%	0.1 - 3.1	100	4.7%	1.7 - 7.6
Native Hawaiian	3,500	60.4%	57.5 - 63.3	1,400	23.7%	20.6 - 26.7	300	5.0%	3.7 - 6.4	200	3.5%	2.3 - 4.6	400	7.5%	5.4 - 9.5
Filipino	3,600	59.8%	56.6 - 63.1	1,400	23.7%	20.1 - 27.4	200	2.7%	0.8 - 4.6	300	4.3%	2.7 - 6.0	600	9.4%	7.0 - 11.7
Japanese	600	70.0%	64.9 - 75.2	200	20.0%	16.0 - 23.9	100	6.5%	1.2 - 11.8	<50	0.3%	0.0 - 1.0	<50	3.2%	0.9 - 5.5
Black	n/r	n/r	n/r	n/r	n/r	n/r	n/r	n/r	n/r	n/r	n/r	n/r	n/r	n/r	n/r
Native Alaskan/ American Indian	n/r	n/r	n/r	n/r	n/r	n/r	n/r	n/r	n/r	n/r	n/r	n/r	n/r	n/r	n/r
Other Asian	600	74.0%	63.1 - 84.9	100	12.8%	2.1 - 23.6	<50	1.3%	0.0 - 3.6	<50	3.0%	0.6 - 5.4	100	8.9%	3.5 - 14.3
Other Pacific Islander	600	53.8%	44.7 - 62.9	200	22.1%	17.4 - 26.8	<50	4.4%	1.2 - 7.6	100	5.3%	0.4 - 10.3	100	14.3%	9.8 - 18.8
Other	3,700	66.7%	63.3 - 70.0	1,200	20.6%	18.3 - 22.8	100	1.9%	1.2 - 2.7	200	3.4%	2.1 - 4.7	400	7.4%	5.4 - 9.4

\* Race-ethnicity data from 2011 forward may not be comparable to data from previous years.

**Perceived Likelihood of Completing High School in Hawaii, by School Type, Indicator, State, Gender, Grade Level, and DOH Race-Ethnicity,\* for the Years 2007 - 2015**

*Note: Weighted counts rounded to nearest 100, weighted percentages, 95% confidence interval; n/r (Not Reportable) - Total unweighted responses less than 100*

**Middle Schools**

**Indicator: How likely to complete high school**

**Year: 2009**

State	How likely to complete high school														
	Definitely will			Probably will			Probably will not			Definitely will not			Not sure		
	#	%	CI	#	%	CI	#	%	CI	#	%	CI	#	%	CI
<b>Totals</b>	16,500	59.3%	56.0 - 62.5	7,500	27.0%	24.2 - 29.7	1,000	3.7%	2.0 - 5.5	700	2.4%	1.3 - 3.5	2,100	7.6%	6.3 - 9.0

Gender	How likely to complete high school														
	Definitely will			Probably will			Probably will not			Definitely will not			Not sure		
	#	%	CI	#	%	CI	#	%	CI	#	%	CI	#	%	CI
<b>Male</b>	7,700	55.1%	51.1 - 59.1	3,900	28.1%	24.7 - 31.5	800	5.9%	2.9 - 8.8	400	2.7%	0.9 - 4.4	1,200	8.3%	6.0 - 10.6
<b>Female</b>	8,700	63.7%	59.6 - 67.9	3,600	25.9%	22.5 - 29.4	200	1.4%	0.5 - 2.3	300	2.0%	1.0 - 3.0	900	6.9%	5.1 - 8.7

Grade Level	How likely to complete high school														
	Definitely will			Probably will			Probably will not			Definitely will not			Not sure		
	#	%	CI	#	%	CI	#	%	CI	#	%	CI	#	%	CI
<b>6th Grade</b>	3,500	55.6%	47.2 - 64.0	1,800	29.0%	22.4 - 35.6	100	1.5%	0.0 - 2.9	200	2.4%	1.1 - 3.7	700	11.5%	7.9 - 15.2
<b>7th Grade</b>	5,900	56.1%	49.7 - 62.4	2,900	28.0%	23.2 - 32.7	500	4.8%	1.2 - 8.3	300	3.0%	1.4 - 4.6	900	8.2%	5.3 - 11.2
<b>8th Grade</b>	7,000	64.7%	59.2 - 70.3	2,700	25.4%	20.8 - 29.9	400	3.6%	1.4 - 5.8	200	1.5%	0.1 - 2.9	500	4.8%	2.9 - 6.7

\* Race-ethnicity data from 2011 forward may not be comparable to data from previous years.

**Perceived Likelihood of Completing High School in Hawaii, by School Type, Indicator, State, Gender, Grade Level, and DOH Race-Ethnicity,\* for the Years 2007 - 2015**

*Note: Weighted counts rounded to nearest 100, weighted percentages, 95% confidence interval;  
n/r (Not Reportable) - Total unweighted responses less than 100*

**Middle Schools**

**Indicator: How likely to complete high school**

**Year: 2009**

DOH Race-Ethnicity	How likely to complete high school														
	Definitely will			Probably will			Probably will not			Definitely will not			Not sure		
	#	%	CI	#	%	CI	#	%	CI	#	%	CI	#	%	CI
Caucasian	2,200	66.5%	56.0 - 77.0	700	20.9%	12.2 - 29.6	<50	1.3%	0.0 - 4.3	100	3.9%	0.0 - 9.4	200	7.3%	2.7 - 11.9
Native Hawaiian	3,600	54.2%	43.3 - 65.0	2,400	35.6%	24.5 - 46.7	200	2.8%	0.0 - 5.8	<50	0.5%	0.0 - 1.6	500	6.9%	2.3 - 11.4
Filipino	3,400	57.6%	52.1 - 63.2	1,500	25.6%	20.6 - 30.6	200	3.9%	1.5 - 6.4	200	3.3%	1.4 - 5.2	600	9.5%	6.4 - 12.6
Japanese	n/r	n/r	n/r	n/r	n/r	n/r	n/r	n/r	n/r	n/r	n/r	n/r	n/r	n/r	n/r
Black	n/r	n/r	n/r	n/r	n/r	n/r	n/r	n/r	n/r	n/r	n/r	n/r	n/r	n/r	n/r
Native Alaskan/ American Indian	n/r	n/r	n/r	n/r	n/r	n/r	n/r	n/r	n/r	n/r	n/r	n/r	n/r	n/r	n/r
Other Asian	n/r	n/r	n/r	n/r	n/r	n/r	n/r	n/r	n/r	n/r	n/r	n/r	n/r	n/r	n/r
Other Pacific Islander	n/r	n/r	n/r	n/r	n/r	n/r	n/r	n/r	n/r	n/r	n/r	n/r	n/r	n/r	n/r
Other	3,500	61.7%	57.3 - 66.2	1,300	22.9%	19.9 - 26.0	300	4.5%	2.1 - 6.9	100	2.1%	0.8 - 3.3	500	8.8%	6.1 - 11.5

\* Race-ethnicity data from 2011 forward may not be comparable to data from previous years.



**Perceived Likelihood of Completing High School in Hawaii, by School Type, Indicator, State,  
Gender, Grade Level, and DOH Race-Ethnicity,\* for the Years 2007 - 2015**

*Note: Weighted counts rounded to nearest 100, weighted percentages, 95% confidence interval;  
n/r (Not Reportable) - Total unweighted responses less than 100*

**Middle Schools**

**Indicator: How likely to complete high school**

**Year: 2007**

State	How likely to complete high school														
	Definitely will			Probably will			Probably will not			Definitely will not			Not sure		
	#	%	CI	#	%	CI	#	%	CI	#	%	CI	#	%	CI
<b>Totals</b>	18,800	59.6%	55.4 - 63.9	6,900	21.8%	18.4 - 25.2	1,400	4.3%	2.7 - 5.9	1,100	3.4%	2.4 - 4.3	3,400	10.9%	8.3 - 13.4

Gender	How likely to complete high school														
	Definitely will			Probably will			Probably will not			Definitely will not			Not sure		
	#	%	CI	#	%	CI	#	%	CI	#	%	CI	#	%	CI
<b>Male</b>	8,300	51.4%	45.4 - 57.4	4,200	26.1%	21.1 - 31.2	1,100	6.9%	3.8 - 10.0	700	4.3%	2.7 - 6.0	1,800	11.2%	8.3 - 14.1
<b>Female</b>	10,500	68.5%	63.8 - 73.3	2,600	17.3%	13.7 - 21.0	200	1.6%	0.1 - 3.1	300	2.2%	0.9 - 3.4	1,600	10.3%	6.7 - 13.9

Grade Level	How likely to complete high school														
	Definitely will			Probably will			Probably will not			Definitely will not			Not sure		
	#	%	CI	#	%	CI	#	%	CI	#	%	CI	#	%	CI
<b>6th Grade</b>	3,000	46.0%	38.6 - 53.5	1,700	25.6%	19.8 - 31.4	500	8.2%	2.2 - 14.2	300	4.2%	1.8 - 6.6	1,000	15.9%	10.9 - 21.0
<b>7th Grade</b>	7,300	59.4%	52.0 - 66.8	3,000	24.3%	17.5 - 31.1	400	3.3%	0.9 - 5.8	300	2.5%	0.6 - 4.4	1,300	10.4%	7.1 - 13.7
<b>8th Grade</b>	8,300	66.9%	61.5 - 72.4	2,100	17.3%	13.8 - 20.8	400	3.4%	1.3 - 5.5	400	3.6%	1.4 - 5.9	1,100	8.8%	4.6 - 13.0

\* Race-ethnicity data from 2011 forward may not be comparable to data from previous years.

**Perceived Likelihood of Completing High School in Hawaii, by School Type, Indicator, State, Gender, Grade Level, and DOH Race-Ethnicity,\* for the Years 2007 - 2015**

*Note: Weighted counts rounded to nearest 100, weighted percentages, 95% confidence interval;  
n/r (Not Reportable) - Total unweighted responses less than 100*

**Middle Schools**

**Indicator: How likely to complete high school**

**Year: 2007**

DOH Race-Ethnicity	How likely to complete high school														
	Definitely will			Probably will			Probably will not			Definitely will not			Not sure		
	#	%	CI	#	%	CI	#	%	CI	#	%	CI	#	%	CI
Caucasian	n/r	n/r	n/r	n/r	n/r	n/r	n/r	n/r	n/r	n/r	n/r	n/r	n/r	n/r	n/r
Native Hawaiian	n/r	n/r	n/r	n/r	n/r	n/r	n/r	n/r	n/r	n/r	n/r	n/r	n/r	n/r	n/r
Filipino	3,200	50.0%	42.3 - 57.7	1,700	27.5%	20.3 - 34.6	200	2.9%	0.0 - 5.9	500	7.2%	3.2 - 11.3	800	12.4%	8.4 - 16.3
Japanese	n/r	n/r	n/r	n/r	n/r	n/r	n/r	n/r	n/r	n/r	n/r	n/r	n/r	n/r	n/r
Black	n/r	n/r	n/r	n/r	n/r	n/r	n/r	n/r	n/r	n/r	n/r	n/r	n/r	n/r	n/r
Native Alaskan/ American Indian	n/r	n/r	n/r	n/r	n/r	n/r	n/r	n/r	n/r	n/r	n/r	n/r	n/r	n/r	n/r
Other Asian	n/r	n/r	n/r	n/r	n/r	n/r	n/r	n/r	n/r	n/r	n/r	n/r	n/r	n/r	n/r
Other Pacific Islander	n/r	n/r	n/r	n/r	n/r	n/r	n/r	n/r	n/r	n/r	n/r	n/r	n/r	n/r	n/r
Other	3,500	58.1%	53.5 - 62.7	1,500	24.6%	20.7 - 28.5	300	4.7%	2.1 - 7.3	200	4.0%	2.0 - 6.1	500	8.6%	6.0 - 11.2

\* Race-ethnicity data from 2011 forward may not be comparable to data from previous years.