

Substance Abuse and Dependence in Hawaii

Substance Abuse and Dependence in Hawaii, by School Type, Indicator, State, Gender, Grade Level, and DOH Race-Ethnicity,* for the Years 2011 - 2015

The weighted data is available for middle school for all years; high school weighted data is not available for 2001 or 2003. Questions for certain health indicators were not asked in all years.

Below are the indicators included in this report and the long description for each indicator.

YRBS Health Indicator	Health Indicator Description
CRAFFT - score among all students	CRAFFT score among all students
CRAFFT - score among students currently using alcohol or marijuana	CRAFFT score among students who have used alcohol or marijuana during the past 30 days

Suggested citation:

Hawaii Health Data Warehouse, State of Hawaii, Hawaii School Health Survey: Youth Risk Behavior Survey Module, (report title and years), Report Created: 8/9/16

For documentation on other terms and coding in this report, please go to the following links:

[Click here to access YRBS documentation](#)

[Click here to access Race-Ethnicity coding](#)

[Click here to access Hawai'i Data Guide](#)

For questions about this report, please contact the Hawaii Health Data Warehouse

profiles@hhdw.org

(855) 946-5899 x15

** Race-ethnicity data from 2011 forward may not be comparable to data from previous years.*

*Report Source: The Hawaii Health Data Warehouse;
Data Source: State of Hawaii, Hawaii School Health Survey:
Youth Risk Behavior Survey Module*

Report Date: 08/09/2016

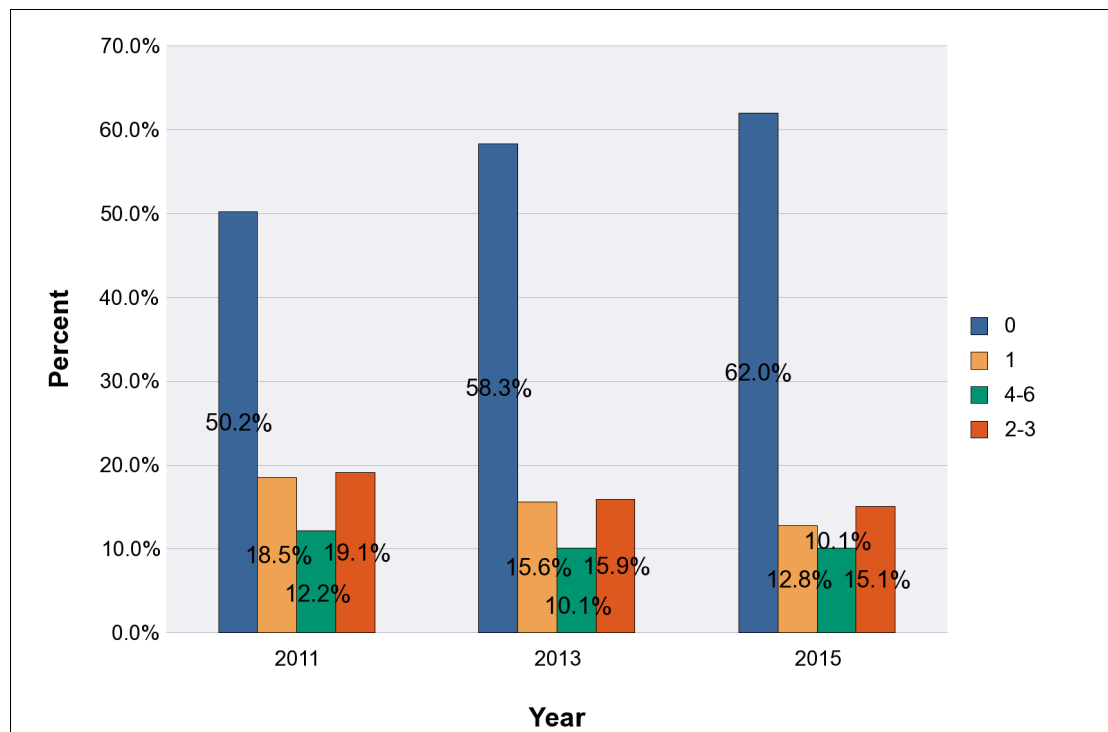
Substance Abuse and Dependence in Hawaii, by School Type and Indicator, for the Years 2011 - 2015

Note: Weighted percentages, 95% confidence interval; n/r (Not Reportable) - Total unweighted responses less than 100

High Schools

CRAFFT - score among all students

Year	YRBS Response	Percent
2011	0	50.2%
	1	18.5%
	4-6	12.2%
	2-3	19.1%
Year	YRBS Response	Percent
2013	0	58.3%
	1	15.6%
	4-6	10.1%
	2-3	15.9%
Year	YRBS Response	Percent
2015	0	62.0%
	1	12.8%
	4-6	10.1%
	2-3	15.1%



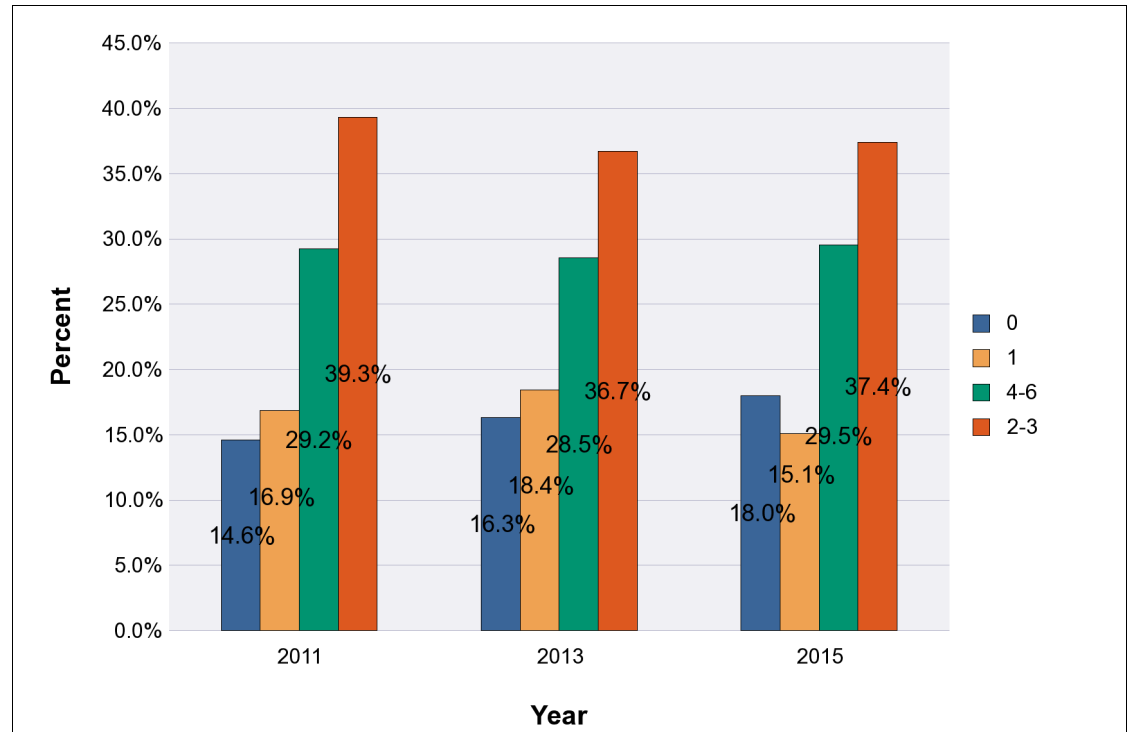
Substance Abuse and Dependence in Hawaii, by School Type and Indicator, for the Years 2011 - 2015

Note: Weighted percentages, 95% confidence interval; n/r (Not Reportable) - Total unweighted responses less than 100

High Schools

CRAFFT - score among students currently using alcohol or marijuana

Year	YRBS Response	Percent
2011	0	14.6%
	1	16.9%
	4-6	29.2%
	2-3	39.3%
Year	YRBS Response	Percent
2013	0	16.3%
	1	18.4%
	4-6	28.5%
	2-3	36.7%
Year	YRBS Response	Percent
2015	0	18.0%
	1	15.1%
	4-6	29.5%
	2-3	37.4%



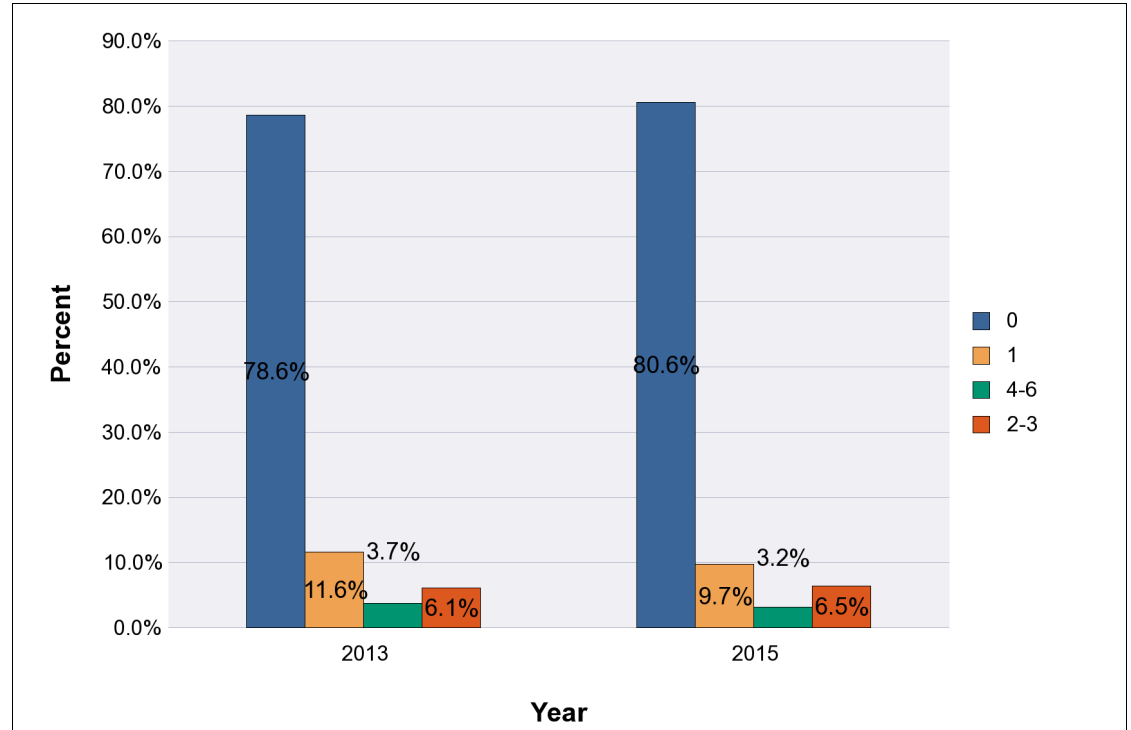
Substance Abuse and Dependence in Hawaii, by School Type and Indicator, for the Years 2011 - 2015

Note: Weighted percentages, 95% confidence interval; n/r (Not Reportable) - Total unweighted responses less than 100

Middle Schools

CRAFFT - score among all students

Year	YRBS Response	Percent
2013	0	78.6%
	1	11.6%
	4-6	3.7%
	2-3	6.1%
Year	YRBS Response	Percent
2015	0	80.6%
	1	9.7%
	4-6	3.2%
	2-3	6.5%



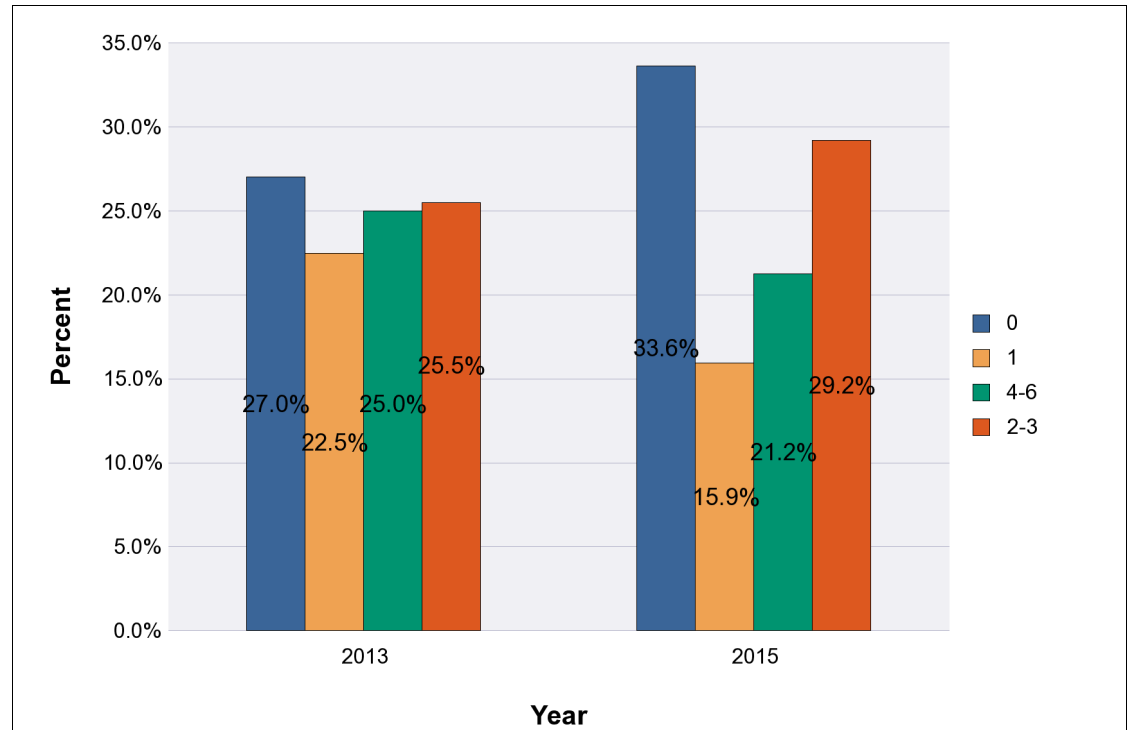
Substance Abuse and Dependence in Hawaii, by School Type and Indicator, for the Years 2011 - 2015

Note: Weighted percentages, 95% confidence interval; n/r (Not Reportable) - Total unweighted responses less than 100

Middle Schools

CRAFFT - score among students currently using alcohol or marijuana

Year	YRBS Response	Percent
2013	0	27.0%
	1	22.5%
	4-6	25.0%
	2-3	25.5%
Year	YRBS Response	Percent
2015	0	33.6%
	1	15.9%
	4-6	21.2%
	2-3	29.2%



Substance Abuse and Dependence in Hawaii, by School Type, Indicator, State, Gender, Grade Level, and DOH Race-Ethnicity,* for the Years 2011 - 2015

*Note: Weighted counts rounded to nearest 100, weighted percentages, 95% confidence interval;
n/r (Not Reportable) - Total unweighted responses less than 100*

High Schools

Indicator: CRAFTT - score among all students

Year: 2015

	CRAFTT - score among all students											
	0			1			4-6			2-3		
	#	%	CI	#	%	CI	#	%	CI	#	%	CI
State												
Totals	23,500	62.0%	59.5 - 64.5	4,800	12.8%	11.7 - 13.9	3,800	10.1%	8.7 - 11.6	5,700	15.1%	13.7 - 16.4

	CRAFTT - score among all students											
	0			1			4-6			2-3		
	#	%	CI	#	%	CI	#	%	CI	#	%	CI
Gender												
Male	11,800	64.6%	61.5 - 67.6	2,200	12.0%	10.3 - 13.7	1,900	10.2%	8.5 - 11.8	2,400	13.2%	11.1 - 15.4
Female	11,700	59.7%	56.8 - 62.6	2,600	13.5%	12.1 - 14.9	2,000	10.1%	8.1 - 12.1	3,300	16.7%	14.4 - 19.0

	CRAFTT - score among all students											
	0			1			4-6			2-3		
	#	%	CI	#	%	CI	#	%	CI	#	%	CI
Grade Level												
9th Grade	7,900	72.6%	68.7 - 76.4	1,100	10.3%	7.8 - 12.9	800	7.8%	6.0 - 9.5	1,000	9.3%	7.0 - 11.7
10th Grade	5,800	60.3%	56.3 - 64.4	1,200	12.1%	9.6 - 14.6	1,100	11.7%	8.6 - 14.8	1,500	15.9%	12.0 - 19.7
11th Grade	5,000	59.6%	54.5 - 64.8	1,300	15.0%	12.5 - 17.6	800	9.0%	6.7 - 11.3	1,400	16.3%	13.7 - 18.9
12th Grade	4,500	52.9%	47.5 - 58.2	1,300	14.7%	11.5 - 17.9	1,100	12.5%	9.8 - 15.3	1,700	20.0%	16.6 - 23.3

* Race-ethnicity data from 2011 forward may not be comparable to data from previous years.

Substance Abuse and Dependence in Hawaii, by School Type, Indicator, State, Gender, Grade Level, and DOH Race-Ethnicity,* for the Years 2011 - 2015

*Note: Weighted counts rounded to nearest 100, weighted percentages, 95% confidence interval;
n/r (Not Reportable) - Total unweighted responses less than 100*

High Schools

Indicator: CRAFFT - score among all students

Year: 2015

DOH Race-Ethnicity	CRAFFT - score among all students											
	0			1			4-6			2-3		
	#	%	CI	#	%	CI	#	%	CI	#	%	CI
Caucasian	3,200	59.4%	52.7 - 66.1	800	15.4%	11.3 - 19.6	500	8.7%	4.4 - 13.0	900	16.5%	13.0 - 20.0
Native Hawaiian	4,500	53.4%	49.1 - 57.7	1,100	13.6%	11.6 - 15.6	1,200	13.7%	11.4 - 16.0	1,600	19.3%	17.0 - 21.6
Filipino	6,900	67.6%	62.3 - 72.8	1,300	12.7%	10.1 - 15.4	700	7.1%	4.6 - 9.5	1,300	12.6%	8.8 - 16.4
Japanese	2,800	73.7%	68.7 - 78.7	300	8.7%	4.6 - 12.7	300	7.0%	2.5 - 11.5	400	10.7%	6.4 - 15.0
Black	n/r	n/r	n/r	n/r	n/r	n/r	n/r	n/r	n/r	n/r	n/r	n/r
Native Alaskan/ American Indian	n/r	n/r	n/r	n/r	n/r	n/r	n/r	n/r	n/r	n/r	n/r	n/r
Other Asian	1,100	81.6%	70.5 - 92.8	100	6.9%	2.1 - 11.6	100	4.9%	0.0 - 10.9	100	6.6%	3.0 - 10.1
Other Pacific Islander	600	62.9%	54.6 - 71.2	100	14.4%	9.8 - 19.0	100	12.3%	6.9 - 17.8	100	10.4%	6.5 - 14.2
Other	3,700	57.2%	53.3 - 61.0	900	13.2%	11.2 - 15.3	900	13.9%	11.4 - 16.5	1,000	15.7%	13.5 - 17.9

* Race-ethnicity data from 2011 forward may not be comparable to data from previous years.

Substance Abuse and Dependence in Hawaii, by School Type, Indicator, State, Gender, Grade Level, and DOH Race-Ethnicity,* for the Years 2011 - 2015

*Note: Weighted counts rounded to nearest 100, weighted percentages, 95% confidence interval;
n/r (Not Reportable) - Total unweighted responses less than 100*

High Schools

Indicator: CRAFTT - score among all students

Year: 2013

State	CRAFTT - score among all students											
	0			1			4-6			2-3		
	#	%	CI	#	%	CI	#	%	CI	#	%	CI
Totals	22,800	58.3%	55.4 - 61.3	6,100	15.6%	14.3 - 17.0	4,000	10.1%	8.2 - 12.1	6,200	15.9%	14.4 - 17.4

Gender	CRAFTT - score among all students											
	0			1			4-6			2-3		
	#	%	CI	#	%	CI	#	%	CI	#	%	CI
Male	11,400	59.4%	55.7 - 63.2	3,100	16.2%	14.5 - 17.9	1,800	9.4%	7.0 - 11.8	2,900	14.9%	12.8 - 17.0
Female	11,400	57.3%	53.7 - 60.9	3,000	15.0%	12.9 - 17.2	2,200	10.8%	8.4 - 13.2	3,400	16.9%	14.6 - 19.1

Grade Level	CRAFTT - score among all students											
	0			1			4-6			2-3		
	#	%	CI	#	%	CI	#	%	CI	#	%	CI
9th Grade	7,000	64.2%	58.4 - 70.0	1,700	15.7%	12.4 - 18.9	900	8.1%	5.0 - 11.3	1,300	12.0%	8.7 - 15.3
10th Grade	5,900	60.2%	54.9 - 65.5	1,500	15.1%	12.3 - 17.9	900	9.2%	6.1 - 12.3	1,500	15.5%	12.6 - 18.5
11th Grade	5,000	55.7%	50.9 - 60.4	1,500	17.0%	13.8 - 20.1	1,000	11.0%	8.4 - 13.6	1,500	16.4%	14.1 - 18.6
12th Grade	4,700	51.5%	45.8 - 57.2	1,400	15.5%	11.3 - 19.7	1,200	12.7%	8.8 - 16.7	1,800	20.3%	16.8 - 23.8

* Race-ethnicity data from 2011 forward may not be comparable to data from previous years.

Substance Abuse and Dependence in Hawaii, by School Type, Indicator, State, Gender, Grade Level, and DOH Race-Ethnicity,* for the Years 2011 - 2015

*Note: Weighted counts rounded to nearest 100, weighted percentages, 95% confidence interval;
n/r (Not Reportable) - Total unweighted responses less than 100*

High Schools

Indicator: CRAFFT - score among all students

Year: 2013

DOH Race-Ethnicity	CRAFFT - score among all students											
	0			1			4-6			2-3		
	#	%	CI	#	%	CI	#	%	CI	#	%	CI
Caucasian	3,300	57.0%	51.9 - 62.1	900	15.7%	11.0 - 20.4	600	10.9%	7.6 - 14.1	900	16.4%	11.8 - 21.0
Native Hawaiian	4,300	48.7%	45.2 - 52.3	1,400	15.6%	12.8 - 18.3	1,500	16.6%	13.6 - 19.6	1,700	19.1%	16.4 - 21.7
Filipino	6,600	62.7%	57.8 - 67.6	1,900	17.5%	14.4 - 20.7	600	5.8%	3.2 - 8.4	1,500	13.9%	10.5 - 17.3
Japanese	2,800	75.4%	65.1 - 85.6	400	10.0%	3.0 - 17.1	100	3.1%	0.0 - 6.5	400	11.5%	6.7 - 16.3
Black	n/r	n/r	n/r	n/r	n/r	n/r	n/r	n/r	n/r	n/r	n/r	n/r
Native Alaskan/ American Indian	n/r	n/r	n/r	n/r	n/r	n/r	n/r	n/r	n/r	n/r	n/r	n/r
Other Asian	1,100	76.2%	66.9 - 85.6	200	14.8%	7.5 - 22.2	<50	1.9%	0.2 - 3.6	100	7.0%	1.8 - 12.2
Other Pacific Islander	500	50.7%	40.8 - 60.5	200	18.6%	11.2 - 26.1	200	15.7%	10.7 - 20.7	200	15.0%	8.9 - 21.1
Other	3,500	54.8%	51.4 - 58.2	1,000	15.5%	12.8 - 18.2	700	11.4%	8.4 - 14.4	1,200	18.3%	15.5 - 21.2

* Race-ethnicity data from 2011 forward may not be comparable to data from previous years.

Substance Abuse and Dependence in Hawaii, by School Type, Indicator, State, Gender, Grade Level, and DOH Race-Ethnicity,* for the Years 2011 - 2015

*Note: Weighted counts rounded to nearest 100, weighted percentages, 95% confidence interval;
n/r (Not Reportable) - Total unweighted responses less than 100*

High Schools

Indicator: CRAFTT - score among all students

Year: 2011

State	CRAFTT - score among all students											
	0			1			4-6			2-3		
	#	%	CI	#	%	CI	#	%	CI	#	%	CI
Totals	20,700	50.2%	47.3 - 53.1	7,600	18.5%	16.8 - 20.2	5,000	12.2%	10.1 - 14.3	7,900	19.1%	17.4 - 20.9

Gender	CRAFTT - score among all students											
	0			1			4-6			2-3		
	#	%	CI	#	%	CI	#	%	CI	#	%	CI
Male	10,600	52.7%	49.3 - 56.1	3,600	18.1%	15.4 - 20.9	2,500	12.3%	10.0 - 14.6	3,400	16.9%	14.5 - 19.4
Female	10,100	47.9%	44.2 - 51.6	4,000	18.7%	16.3 - 21.2	2,600	12.2%	9.3 - 15.0	4,500	21.2%	18.8 - 23.7

Grade Level	CRAFTT - score among all students											
	0			1			4-6			2-3		
	#	%	CI	#	%	CI	#	%	CI	#	%	CI
9th Grade	6,200	53.7%	48.7 - 58.6	2,200	18.9%	14.7 - 23.1	1,300	10.9%	7.4 - 14.4	1,900	16.6%	13.6 - 19.5
10th Grade	5,500	51.4%	46.9 - 55.9	2,200	21.1%	18.0 - 24.2	900	8.1%	5.9 - 10.4	2,100	19.3%	17.0 - 21.6
11th Grade	4,900	49.9%	40.7 - 59.0	1,600	16.1%	12.9 - 19.3	1,300	13.5%	8.4 - 18.6	2,000	20.5%	14.7 - 26.2
12th Grade	4,000	44.7%	39.5 - 49.8	1,600	17.2%	14.0 - 20.5	1,600	17.4%	13.1 - 21.6	1,900	20.7%	18.0 - 23.4

* Race-ethnicity data from 2011 forward may not be comparable to data from previous years.

Substance Abuse and Dependence in Hawaii, by School Type, Indicator, State, Gender, Grade Level, and DOH Race-Ethnicity,* for the Years 2011 - 2015

*Note: Weighted counts rounded to nearest 100, weighted percentages, 95% confidence interval;
n/r (Not Reportable) - Total unweighted responses less than 100*

High Schools

Indicator: CRAFFT - score among all students

Year: 2011

DOH Race-Ethnicity	CRAFFT - score among all students											
	0			1			4-6			2-3		
	#	%	CI	#	%	CI	#	%	CI	#	%	CI
Caucasian	2,800	47.7%	42.2 - 53.2	1,000	16.9%	12.5 - 21.2	800	13.6%	9.8 - 17.3	1,300	21.9%	16.8 - 27.0
Native Hawaiian	4,100	42.8%	37.2 - 48.4	2,100	21.7%	18.7 - 24.6	1,300	13.8%	10.5 - 17.1	2,100	21.7%	16.3 - 27.1
Filipino	5,400	52.0%	47.4 - 56.6	2,100	20.2%	15.6 - 24.8	1,100	10.4%	6.7 - 14.0	1,800	17.3%	14.3 - 20.4
Japanese	1,200	66.0%	56.0 - 76.0	300	14.9%	10.3 - 19.6	200	10.5%	5.5 - 15.4	200	8.6%	4.3 - 12.9
Black	n/r	n/r	n/r	n/r	n/r	n/r	n/r	n/r	n/r	n/r	n/r	n/r
Native Alaskan/ American Indian	n/r	n/r	n/r	n/r	n/r	n/r	n/r	n/r	n/r	n/r	n/r	n/r
Other Asian	1,600	71.0%	65.0 - 77.0	300	14.3%	8.6 - 20.0	100	5.1%	0.0 - 11.0	200	9.6%	4.2 - 15.0
Other Pacific Islander	400	31.5%	21.9 - 41.1	300	24.4%	15.7 - 33.1	300	19.7%	11.6 - 27.8	300	24.4%	15.0 - 33.7
Other	4,600	51.9%	46.4 - 57.3	1,300	15.0%	13.0 - 17.0	1,200	13.0%	10.2 - 15.9	1,800	20.1%	17.1 - 23.0

* Race-ethnicity data from 2011 forward may not be comparable to data from previous years.

Substance Abuse and Dependence in Hawaii, by School Type, Indicator, State, Gender, Grade Level, and DOH Race-Ethnicity,* for the Years 2011 - 2015

*Note: Weighted counts rounded to nearest 100, weighted percentages, 95% confidence interval;
n/r (Not Reportable) - Total unweighted responses less than 100*

High Schools

Indicator: CRAFFT - score among students currently using alcohol or marijuana

Year: 2015

State	CRAFFT - score among students currently using alcohol or marijuana											
	0			1			4-6			2-3		
	#	%	CI	#	%	CI	#	%	CI	#	%	CI
Totals	2,000	18.0%	15.1 - 20.9	1,700	15.1%	12.5 - 17.6	3,300	29.5%	25.7 - 33.4	4,100	37.4%	34.4 - 40.4

Gender	CRAFFT - score among students currently using alcohol or marijuana											
	0			1			4-6			2-3		
	#	%	CI	#	%	CI	#	%	CI	#	%	CI
Male	800	17.2%	12.9 - 21.6	800	15.6%	11.7 - 19.5	1,500	31.2%	26.9 - 35.5	1,800	36.0%	30.4 - 41.6
Female	1,100	18.7%	15.8 - 21.7	900	14.7%	11.2 - 18.3	1,700	28.3%	23.1 - 33.4	2,300	38.3%	32.5 - 44.0

Grade Level	CRAFFT - score among students currently using alcohol or marijuana											
	0			1			4-6			2-3		
	#	%	CI	#	%	CI	#	%	CI	#	%	CI
9th Grade	400	20.7%	15.8 - 25.7	200	11.9%	6.0 - 17.7	700	34.6%	26.4 - 42.7	700	32.8%	24.4 - 41.2
10th Grade	400	13.8%	10.4 - 17.2	400	13.4%	7.3 - 19.5	1,000	34.1%	26.5 - 41.6	1,100	38.7%	30.5 - 47.0
11th Grade	600	23.5%	15.9 - 31.1	500	18.9%	14.5 - 23.2	600	22.6%	16.7 - 28.5	900	35.0%	28.6 - 41.4
12th Grade	500	15.2%	9.8 - 20.6	500	15.8%	11.0 - 20.7	900	28.3%	21.7 - 34.9	1,300	40.7%	35.7 - 45.6

* Race-ethnicity data from 2011 forward may not be comparable to data from previous years.

Substance Abuse and Dependence in Hawaii, by School Type, Indicator, State, Gender, Grade Level, and DOH Race-Ethnicity,* for the Years 2011 - 2015

*Note: Weighted counts rounded to nearest 100, weighted percentages, 95% confidence interval;
n/r (Not Reportable) - Total unweighted responses less than 100*

High Schools

Indicator: CRAFFT - score among students currently using alcohol or marijuana

Year: 2015

DOH Race-Ethnicity	CRAFFT - score among students currently using alcohol or marijuana											
	0			1			4-6			2-3		
	#	%	CI	#	%	CI	#	%	CI	#	%	CI
Caucasian	400	19.8%	12.8 - 26.8	500	22.3%	14.1 - 30.5	400	22.0%	12.6 - 31.3	700	36.0%	25.8 - 46.2
Native Hawaiian	500	16.3%	12.0 - 20.6	500	14.7%	11.5 - 17.9	1,000	32.6%	27.8 - 37.3	1,100	36.4%	32.3 - 40.5
Filipino	500	20.6%	12.2 - 29.1	200	10.1%	3.4 - 16.8	700	28.6%	20.6 - 36.5	900	40.7%	31.7 - 49.7
Japanese	n/r	n/r	n/r	n/r	n/r	n/r	n/r	n/r	n/r	n/r	n/r	n/r
Black	n/r	n/r	n/r	n/r	n/r	n/r	n/r	n/r	n/r	n/r	n/r	n/r
Native Alaskan/ American Indian	n/r	n/r	n/r	n/r	n/r	n/r	n/r	n/r	n/r	n/r	n/r	n/r
Other Asian	n/r	n/r	n/r	n/r	n/r	n/r	n/r	n/r	n/r	n/r	n/r	n/r
Other Pacific Islander	n/r	n/r	n/r	n/r	n/r	n/r	n/r	n/r	n/r	n/r	n/r	n/r
Other	300	13.3%	10.5 - 16.1	300	16.2%	12.3 - 20.1	800	36.0%	32.0 - 40.1	700	34.5%	28.9 - 40.1

* Race-ethnicity data from 2011 forward may not be comparable to data from previous years.

Substance Abuse and Dependence in Hawaii, by School Type, Indicator, State, Gender, Grade Level, and DOH Race-Ethnicity,* for the Years 2011 - 2015

*Note: Weighted counts rounded to nearest 100, weighted percentages, 95% confidence interval;
n/r (Not Reportable) - Total unweighted responses less than 100*

High Schools

Indicator: CRAFFT - score among students currently using alcohol or marijuana

Year: 2013

State	CRAFFT - score among students currently using alcohol or marijuana											
	0			1			4-6			2-3		
	#	%	CI	#	%	CI	#	%	CI	#	%	CI
Totals	1,900	16.3%	13.2 - 19.5	2,200	18.4%	15.6 - 21.2	3,300	28.5%	23.7 - 33.4	4,300	36.7%	33.9 - 39.5

Gender	CRAFFT - score among students currently using alcohol or marijuana											
	0			1			4-6			2-3		
	#	%	CI	#	%	CI	#	%	CI	#	%	CI
Male	1,000	18.0%	13.1 - 22.8	1,100	20.0%	14.8 - 25.2	1,500	26.5%	19.1 - 33.8	2,000	35.6%	31.4 - 39.9
Female	900	14.8%	10.9 - 18.7	1,000	16.9%	13.2 - 20.6	1,800	30.6%	24.9 - 36.2	2,300	37.7%	33.3 - 42.1

Grade Level	CRAFFT - score among students currently using alcohol or marijuana											
	0			1			4-6			2-3		
	#	%	CI	#	%	CI	#	%	CI	#	%	CI
9th Grade	400	16.4%	11.8 - 21.0	600	21.7%	11.6 - 31.9	700	28.9%	17.7 - 40.1	800	33.0%	27.2 - 38.8
10th Grade	300	12.9%	5.6 - 20.3	400	15.7%	10.8 - 20.5	700	30.3%	20.8 - 39.8	1,000	41.1%	33.7 - 48.5
11th Grade	500	17.6%	11.7 - 23.4	500	17.1%	11.9 - 22.2	800	29.2%	22.6 - 35.8	1,000	36.2%	31.3 - 41.0
12th Grade	700	18.0%	11.8 - 24.3	700	19.6%	11.7 - 27.4	1,000	26.8%	19.0 - 34.5	1,400	35.7%	28.7 - 42.6

* Race-ethnicity data from 2011 forward may not be comparable to data from previous years.

Substance Abuse and Dependence in Hawaii, by School Type, Indicator, State, Gender, Grade Level, and DOH Race-Ethnicity,* for the Years 2011 - 2015

*Note: Weighted counts rounded to nearest 100, weighted percentages, 95% confidence interval;
n/r (Not Reportable) - Total unweighted responses less than 100*

High Schools

Indicator: CRAFFT - score among students currently using alcohol or marijuana

Year: 2013

DOH Race-Ethnicity	CRAFFT - score among students currently using alcohol or marijuana											
	0			1			4-6			2-3		
	#	%	CI	#	%	CI	#	%	CI	#	%	CI
Caucasian	200	11.4%	6.1 - 16.7	300	17.0%	7.7 - 26.3	600	31.8%	23.8 - 39.8	700	39.8%	32.9 - 46.7
Native Hawaiian	500	13.4%	7.1 - 19.7	500	13.7%	10.7 - 16.7	1,200	36.8%	30.0 - 43.6	1,200	36.1%	31.4 - 40.8
Filipino	600	24.8%	18.2 - 31.4	700	26.2%	16.6 - 35.7	400	17.0%	9.3 - 24.8	800	32.0%	23.2 - 40.8
Japanese	n/r	n/r	n/r	n/r	n/r	n/r	n/r	n/r	n/r	n/r	n/r	n/r
Black	n/r	n/r	n/r	n/r	n/r	n/r	n/r	n/r	n/r	n/r	n/r	n/r
Native Alaskan/ American Indian	n/r	n/r	n/r	n/r	n/r	n/r	n/r	n/r	n/r	n/r	n/r	n/r
Other Asian	n/r	n/r	n/r	n/r	n/r	n/r	n/r	n/r	n/r	n/r	n/r	n/r
Other Pacific Islander	n/r	n/r	n/r	n/r	n/r	n/r	n/r	n/r	n/r	n/r	n/r	n/r
Other	300	14.4%	9.9 - 18.9	400	17.6%	13.5 - 21.8	600	29.8%	23.1 - 36.4	800	38.2%	32.0 - 44.4

* Race-ethnicity data from 2011 forward may not be comparable to data from previous years.

Substance Abuse and Dependence in Hawaii, by School Type, Indicator, State, Gender, Grade Level, and DOH Race-Ethnicity,* for the Years 2011 - 2015

*Note: Weighted counts rounded to nearest 100, weighted percentages, 95% confidence interval;
n/r (Not Reportable) - Total unweighted responses less than 100*

High Schools

Indicator: CRAFFT - score among students currently using alcohol or marijuana

Year: 2011

State	CRAFFT - score among students currently using alcohol or marijuana											
	0			1			4-6			2-3		
	#	%	CI	#	%	CI	#	%	CI	#	%	CI
Totals	2,200	14.6%	11.4 - 17.8	2,500	16.9%	13.9 - 19.9	4,300	29.2%	25.8 - 32.7	5,800	39.3%	35.8 - 42.9

Gender	CRAFFT - score among students currently using alcohol or marijuana											
	0			1			4-6			2-3		
	#	%	CI	#	%	CI	#	%	CI	#	%	CI
Male	1,300	18.6%	13.8 - 23.5	1,000	14.8%	10.5 - 19.2	2,000	29.4%	23.7 - 35.2	2,500	37.1%	31.4 - 42.8
Female	900	11.1%	8.2 - 14.1	1,500	18.6%	15.1 - 22.2	2,300	29.0%	24.8 - 33.3	3,300	41.2%	37.1 - 45.2

Grade Level	CRAFFT - score among students currently using alcohol or marijuana											
	0			1			4-6			2-3		
	#	%	CI	#	%	CI	#	%	CI	#	%	CI
9th Grade	700	19.5%	14.0 - 25.0	400	12.5%	8.2 - 16.8	1,000	29.2%	21.8 - 36.6	1,300	38.8%	32.1 - 45.5
10th Grade	500	14.0%	10.2 - 17.7	900	25.2%	16.6 - 33.7	700	19.1%	13.2 - 25.0	1,500	41.8%	37.0 - 46.6
11th Grade	400	12.2%	3.3 - 21.0	500	13.4%	8.6 - 18.3	1,100	31.5%	23.9 - 39.1	1,600	42.9%	32.8 - 53.0
12th Grade	500	12.6%	8.1 - 17.2	600	15.7%	9.4 - 22.0	1,500	37.2%	30.5 - 43.8	1,400	34.5%	30.1 - 38.9

* Race-ethnicity data from 2011 forward may not be comparable to data from previous years.

Substance Abuse and Dependence in Hawaii, by School Type, Indicator, State, Gender, Grade Level, and DOH Race-Ethnicity,* for the Years 2011 - 2015

*Note: Weighted counts rounded to nearest 100, weighted percentages, 95% confidence interval;
n/r (Not Reportable) - Total unweighted responses less than 100*

High Schools

Indicator: CRAFFT - score among students currently using alcohol or marijuana

Year: 2011

DOH Race-Ethnicity	CRAFFT - score among students currently using alcohol or marijuana											
	0			1			4-6			2-3		
	#	%	CI	#	%	CI	#	%	CI	#	%	CI
Caucasian	300	12.3%	6.3 - 18.3	500	17.4%	10.0 - 24.7	800	29.3%	21.8 - 36.9	1,100	41.0%	33.2 - 48.8
Native Hawaiian	700	17.1%	9.0 - 25.3	800	18.2%	12.7 - 23.8	1,200	27.5%	20.7 - 34.4	1,600	37.1%	28.3 - 45.9
Filipino	500	16.3%	10.9 - 21.7	600	16.8%	9.5 - 24.1	900	27.0%	18.6 - 35.4	1,300	39.9%	32.5 - 47.3
Japanese	n/r	n/r	n/r	n/r	n/r	n/r	n/r	n/r	n/r	n/r	n/r	n/r
Black	n/r	n/r	n/r	n/r	n/r	n/r	n/r	n/r	n/r	n/r	n/r	n/r
Native Alaskan/ American Indian	n/r	n/r	n/r	n/r	n/r	n/r	n/r	n/r	n/r	n/r	n/r	n/r
Other Asian	n/r	n/r	n/r	n/r	n/r	n/r	n/r	n/r	n/r	n/r	n/r	n/r
Other Pacific Islander	n/r	n/r	n/r	n/r	n/r	n/r	n/r	n/r	n/r	n/r	n/r	n/r
Other	400	11.4%	6.8 - 16.0	500	15.1%	11.5 - 18.6	1,000	31.9%	25.8 - 37.9	1,300	41.7%	34.1 - 49.3

* Race-ethnicity data from 2011 forward may not be comparable to data from previous years.

Substance Abuse and Dependence in Hawaii, by School Type, Indicator, State, Gender, Grade Level, and DOH Race-Ethnicity,* for the Years 2011 - 2015

*Note: Weighted counts rounded to nearest 100, weighted percentages, 95% confidence interval;
n/r (Not Reportable) - Total unweighted responses less than 100*

Middle Schools

Indicator: CRAFTT - score among all students

Year: 2015

State	CRAFTT - score among all students											
	0			1			4-6			2-3		
	#	%	CI	#	%	CI	#	%	CI	#	%	CI
Totals	17,200	80.6%	78.3 - 83.0	2,100	9.7%	8.4 - 11.1	700	3.2%	2.4 - 3.9	1,400	6.5%	5.3 - 7.6

Gender	CRAFTT - score among all students											
	0			1			4-6			2-3		
	#	%	CI	#	%	CI	#	%	CI	#	%	CI
Male	8,600	81.1%	78.9 - 83.4	1,000	9.7%	7.7 - 11.8	300	3.2%	2.1 - 4.3	600	5.9%	4.5 - 7.4
Female	8,500	80.2%	76.6 - 83.8	1,000	9.8%	7.2 - 12.3	300	3.2%	2.3 - 4.0	700	6.9%	5.5 - 8.4

Grade Level	CRAFTT - score among all students											
	0			1			4-6			2-3		
	#	%	CI	#	%	CI	#	%	CI	#	%	CI
6th Grade	3,500	84.4%	80.4 - 88.4	400	9.3%	7.2 - 11.5	100	1.8%	0.8 - 2.7	200	4.5%	2.5 - 6.6
7th Grade	7,100	80.8%	77.8 - 83.8	900	10.0%	7.7 - 12.2	200	2.8%	1.8 - 3.9	600	6.4%	4.8 - 8.0
8th Grade	6,500	79.2%	76.9 - 81.6	800	9.2%	7.0 - 11.3	300	4.1%	3.0 - 5.1	600	7.5%	5.2 - 9.9

* Race-ethnicity data from 2011 forward may not be comparable to data from previous years.

Substance Abuse and Dependence in Hawaii, by School Type, Indicator, State, Gender, Grade Level, and DOH Race-Ethnicity,* for the Years 2011 - 2015

*Note: Weighted counts rounded to nearest 100, weighted percentages, 95% confidence interval;
n/r (Not Reportable) - Total unweighted responses less than 100*

Middle Schools

Indicator: CRAFFT - score among all students

Year: 2015

DOH Race-Ethnicity	CRAFFT - score among all students											
	0			1			4-6			2-3		
	#	%	CI	#	%	CI	#	%	CI	#	%	CI
Caucasian	2,300	83.1%	77.7 - 88.4	300	9.9%	6.5 - 13.2	100	3.7%	1.1 - 6.2	100	3.4%	1.1 - 5.7
Native Hawaiian	3,500	71.5%	68.4 - 74.7	600	13.0%	10.8 - 15.3	200	4.3%	2.9 - 5.6	500	11.2%	8.7 - 13.6
Filipino	4,400	84.1%	80.8 - 87.5	400	7.8%	5.4 - 10.1	100	2.7%	1.8 - 3.5	300	5.4%	3.3 - 7.5
Japanese	1,600	96.8%	92.6 - 100.0	100	3.1%	0.0 - 7.3	0	0.0%	0.0 - 0.0	<50	0.1%	0.0 - 0.4
Black	n/r	n/r	n/r	n/r	n/r	n/r	n/r	n/r	n/r	n/r	n/r	n/r
Native Alaskan/ American Indian	n/r	n/r	n/r	n/r	n/r	n/r	n/r	n/r	n/r	n/r	n/r	n/r
Other Asian	300	90.9%	85.3 - 96.6	<50	5.0%	2.3 - 7.6	0	0.0%	0.0 - 0.0	<50	4.1%	0.7 - 7.5
Other Pacific Islander	1,200	78.1%	72.7 - 83.5	200	11.6%	7.9 - 15.2	100	3.9%	0.0 - 8.4	100	6.5%	3.5 - 9.4
Other	2,600	78.0%	74.3 - 81.7	400	10.9%	8.6 - 13.1	100	4.1%	2.7 - 5.4	200	7.1%	5.4 - 8.7

* Race-ethnicity data from 2011 forward may not be comparable to data from previous years.

Substance Abuse and Dependence in Hawaii, by School Type, Indicator, State, Gender, Grade Level, and DOH Race-Ethnicity,* for the Years 2011 - 2015

*Note: Weighted counts rounded to nearest 100, weighted percentages, 95% confidence interval;
n/r (Not Reportable) - Total unweighted responses less than 100*

Middle Schools

Indicator: CRAFTT - score among all students

Year: 2013

State	CRAFTT - score among all students											
	0			1			4-6			2-3		
	#	%	CI	#	%	CI	#	%	CI	#	%	CI
Totals	17,300	78.6%	75.5 - 81.7	2,500	11.6%	9.2 - 14.0	800	3.7%	2.6 - 4.8	1,300	6.1%	4.8 - 7.4

Gender	CRAFTT - score among all students											
	0			1			4-6			2-3		
	#	%	CI	#	%	CI	#	%	CI	#	%	CI
Male	8,900	79.6%	75.7 - 83.6	1,300	11.9%	8.8 - 14.9	400	3.4%	2.3 - 4.4	600	5.1%	3.7 - 6.5
Female	8,300	77.5%	74.2 - 80.7	1,200	11.3%	8.9 - 13.7	400	4.1%	2.5 - 5.6	800	7.2%	5.6 - 8.7

Grade Level	CRAFTT - score among all students											
	0			1			4-6			2-3		
	#	%	CI	#	%	CI	#	%	CI	#	%	CI
6th Grade	3,800	83.5%	80.0 - 87.0	400	9.5%	7.7 - 11.3	100	1.6%	0.0 - 3.5	200	5.4%	3.2 - 7.5
7th Grade	7,200	81.2%	77.8 - 84.6	1,000	11.2%	8.4 - 13.9	300	3.2%	2.1 - 4.3	400	4.5%	3.1 - 5.8
8th Grade	6,200	73.5%	67.3 - 79.7	1,100	12.8%	8.7 - 16.9	500	5.4%	2.6 - 8.2	700	8.3%	6.5 - 10.1

* Race-ethnicity data from 2011 forward may not be comparable to data from previous years.

Substance Abuse and Dependence in Hawaii, by School Type, Indicator, State, Gender, Grade Level, and DOH Race-Ethnicity,* for the Years 2011 - 2015

*Note: Weighted counts rounded to nearest 100, weighted percentages, 95% confidence interval;
n/r (Not Reportable) - Total unweighted responses less than 100*

Middle Schools

Indicator: CRAFTT - score among all students

Year: 2013

DOH Race-Ethnicity	CRAFTT - score among all students											
	0			1			4-6			2-3		
	#	%	CI	#	%	CI	#	%	CI	#	%	CI
Caucasian	2,200	81.2%	76.5 - 85.9	200	8.0%	4.7 - 11.4	100	5.4%	2.7 - 8.0	100	5.4%	2.8 - 8.0
Native Hawaiian	3,600	71.7%	67.6 - 75.8	800	15.2%	11.8 - 18.6	200	5.0%	3.9 - 6.1	400	8.1%	6.4 - 9.9
Filipino	4,400	81.1%	77.9 - 84.3	600	10.9%	8.6 - 13.2	200	3.5%	0.3 - 6.8	200	4.5%	2.6 - 6.5
Japanese	1,500	90.8%	84.1 - 97.6	100	7.7%	2.9 - 12.6	0	0.0%	0.0 - 0.0	<50	1.4%	0.0 - 4.2
Black	n/r	n/r	n/r	n/r	n/r	n/r	n/r	n/r	n/r	n/r	n/r	n/r
Native Alaskan/ American Indian	n/r	n/r	n/r	n/r	n/r	n/r	n/r	n/r	n/r	n/r	n/r	n/r
Other Asian	1,400	88.7%	83.7 - 93.7	100	6.9%	2.9 - 10.9	<50	1.8%	0.0 - 5.6	<50	2.6%	0.0 - 5.6
Other Pacific Islander	900	60.0%	46.0 - 74.0	300	21.2%	11.4 - 31.1	100	5.3%	0.0 - 10.6	200	13.4%	6.4 - 20.4
Other	2,000	76.6%	74.1 - 79.2	300	11.1%	9.3 - 12.9	100	4.2%	2.8 - 5.5	200	8.1%	6.3 - 9.9

* Race-ethnicity data from 2011 forward may not be comparable to data from previous years.

Substance Abuse and Dependence in Hawaii, by School Type, Indicator, State, Gender, Grade Level, and DOH Race-Ethnicity,* for the Years 2011 - 2015

*Note: Weighted counts rounded to nearest 100, weighted percentages, 95% confidence interval;
n/r (Not Reportable) - Total unweighted responses less than 100*

Middle Schools

Indicator: CRAFFT - score among students currently using alcohol or marijuana

Year: 2015

State	CRAFFT - score among students currently using alcohol or marijuana											
	0			1			4-6			2-3		
	#	%	CI	#	%	CI	#	%	CI	#	%	CI
Totals	900	33.6%	28.0 - 39.2	400	15.9%	12.4 - 19.5	600	21.2%	16.5 - 26.0	800	29.2%	23.7 - 34.6

Gender	CRAFFT - score among students currently using alcohol or marijuana											
	0			1			4-6			2-3		
	#	%	CI	#	%	CI	#	%	CI	#	%	CI
Male	400	32.1%	25.9 - 38.2	300	18.7%	11.8 - 25.7	300	21.6%	14.8 - 28.4	400	27.6%	21.8 - 33.5
Female	500	35.3%	26.7 - 43.8	200	13.3%	9.0 - 17.5	300	21.0%	15.7 - 26.2	400	30.5%	23.9 - 37.1

Grade Level	CRAFFT - score among students currently using alcohol or marijuana											
	0			1			4-6			2-3		
	#	%	CI	#	%	CI	#	%	CI	#	%	CI
6th Grade	200	46.1%	32.6 - 59.6	100	22.5%	13.4 - 31.6	<50	9.6%	5.5 - 13.7	100	21.8%	14.8 - 28.8
7th Grade	300	34.2%	23.5 - 44.8	200	17.7%	11.7 - 23.7	200	21.0%	12.0 - 30.1	300	27.1%	21.4 - 32.8
8th Grade	400	29.2%	22.8 - 35.5	200	12.5%	6.2 - 18.8	300	24.6%	19.4 - 29.8	400	33.8%	23.0 - 44.5

* Race-ethnicity data from 2011 forward may not be comparable to data from previous years.

Substance Abuse and Dependence in Hawaii, by School Type, Indicator, State, Gender, Grade Level, and DOH Race-Ethnicity,* for the Years 2011 - 2015

*Note: Weighted counts rounded to nearest 100, weighted percentages, 95% confidence interval;
n/r (Not Reportable) - Total unweighted responses less than 100*

Middle Schools

Indicator: CRAFFT - score among students currently using alcohol or marijuana

Year: 2015

DOH Race-Ethnicity	CRAFFT - score among students currently using alcohol or marijuana											
	0			1			4-6			2-3		
	#	%	CI	#	%	CI	#	%	CI	#	%	CI
Caucasian	n/r	n/r	n/r	n/r	n/r	n/r	n/r	n/r	n/r	n/r	n/r	n/r
Native Hawaiian	200	26.9%	20.8 - 33.1	100	12.7%	6.8 - 18.7	200	18.0%	11.7 - 24.2	400	42.4%	35.8 - 49.0
Filipino	n/r	n/r	n/r	n/r	n/r	n/r	n/r	n/r	n/r	n/r	n/r	n/r
Japanese	n/r	n/r	n/r	n/r	n/r	n/r	n/r	n/r	n/r	n/r	n/r	n/r
Black	n/r	n/r	n/r	n/r	n/r	n/r	n/r	n/r	n/r	n/r	n/r	n/r
Native Alaskan/ American Indian	n/r	n/r	n/r	n/r	n/r	n/r	n/r	n/r	n/r	n/r	n/r	n/r
Other Asian	n/r	n/r	n/r	n/r	n/r	n/r	n/r	n/r	n/r	n/r	n/r	n/r
Other Pacific Islander	n/r	n/r	n/r	n/r	n/r	n/r	n/r	n/r	n/r	n/r	n/r	n/r
Other	200	33.3%	28.4 - 38.3	100	15.6%	10.7 - 20.5	100	24.1%	17.2 - 31.0	100	26.9%	21.4 - 32.4

* Race-ethnicity data from 2011 forward may not be comparable to data from previous years.

Substance Abuse and Dependence in Hawaii, by School Type, Indicator, State, Gender, Grade Level, and DOH Race-Ethnicity,* for the Years 2011 - 2015

*Note: Weighted counts rounded to nearest 100, weighted percentages, 95% confidence interval;
n/r (Not Reportable) - Total unweighted responses less than 100*

Middle Schools

Indicator: CRAFFT - score among students currently using alcohol or marijuana

Year: 2013

State	CRAFFT - score among students currently using alcohol or marijuana											
	0			1			4-6			2-3		
	#	%	CI	#	%	CI	#	%	CI	#	%	CI
Totals	700	27.0%	21.0 - 33.1	600	22.5%	18.2 - 26.8	700	25.0%	19.5 - 30.4	700	25.5%	21.5 - 29.5

Gender	CRAFFT - score among students currently using alcohol or marijuana											
	0			1			4-6			2-3		
	#	%	CI	#	%	CI	#	%	CI	#	%	CI
Male	400	30.2%	23.2 - 37.2	300	23.4%	17.7 - 29.2	300	24.7%	19.2 - 30.2	300	21.7%	16.0 - 27.4
Female	300	24.2%	16.4 - 32.0	300	21.6%	15.8 - 27.5	400	25.2%	17.2 - 33.1	400	29.0%	22.8 - 35.2

Grade Level	CRAFFT - score among students currently using alcohol or marijuana											
	0			1			4-6			2-3		
	#	%	CI	#	%	CI	#	%	CI	#	%	CI
6th Grade	n/r	n/r	n/r	n/r	n/r	n/r	n/r	n/r	n/r	n/r	n/r	n/r
7th Grade	300	28.8%	17.2 - 40.3	200	19.5%	13.0 - 26.0	300	28.3%	18.5 - 38.1	200	23.4%	15.2 - 31.7
8th Grade	300	25.3%	18.2 - 32.4	300	23.7%	15.8 - 31.7	300	24.2%	15.6 - 32.7	400	26.8%	21.5 - 32.1

* Race-ethnicity data from 2011 forward may not be comparable to data from previous years.

Substance Abuse and Dependence in Hawaii, by School Type, Indicator, State, Gender, Grade Level, and DOH Race-Ethnicity,* for the Years 2011 - 2015

*Note: Weighted counts rounded to nearest 100, weighted percentages, 95% confidence interval;
n/r (Not Reportable) - Total unweighted responses less than 100*

Middle Schools

Indicator: CRAFFT - score among students currently using alcohol or marijuana

Year: 2013

DOH Race-Ethnicity	CRAFFT - score among students currently using alcohol or marijuana											
	0			1			4-6			2-3		
	#	%	CI	#	%	CI	#	%	CI	#	%	CI
Caucasian	n/r	n/r	n/r	n/r	n/r	n/r	n/r	n/r	n/r	n/r	n/r	n/r
Native Hawaiian	200	25.0%	17.1 - 32.9	200	22.5%	15.4 - 29.6	200	26.8%	19.6 - 34.0	200	25.7%	18.5 - 32.9
Filipino	n/r	n/r	n/r	n/r	n/r	n/r	n/r	n/r	n/r	n/r	n/r	n/r
Japanese	n/r	n/r	n/r	n/r	n/r	n/r	n/r	n/r	n/r	n/r	n/r	n/r
Black	n/r	n/r	n/r	n/r	n/r	n/r	n/r	n/r	n/r	n/r	n/r	n/r
Native Alaskan/ American Indian	n/r	n/r	n/r	n/r	n/r	n/r	n/r	n/r	n/r	n/r	n/r	n/r
Other Asian	n/r	n/r	n/r	n/r	n/r	n/r	n/r	n/r	n/r	n/r	n/r	n/r
Other Pacific Islander	n/r	n/r	n/r	n/r	n/r	n/r	n/r	n/r	n/r	n/r	n/r	n/r
Other	100	22.7%	17.0 - 28.4	100	19.3%	14.0 - 24.7	100	23.0%	15.5 - 30.4	100	35.0%	28.1 - 41.8

* Race-ethnicity data from 2011 forward may not be comparable to data from previous years.